



Bailey County Journal



Volume 35, No. 26

Published every Sunday at Muleshoe, Bailey County, Texas 79347

Sunday, June 30, 1996

Storm front brings nasty clouds, 1/2 inch of rain

By JOANNA GALLMAN
Journal staff writer

Ominous, low-hanging clouds churned over Muleshoe Thursday, dropping steady showers.

The soot-black clouds skirted the southeast end of the city, drawing curious onlookers from businesses, shops and homes.

Doppler rader at the the National Weather Service in Lubbock failed to pick up the fast-moving storm, but the Bailey County Sheriff's Department received several inquiries from residents concerning tornado activity.

Jody James, an observer for the Weather Service in Lubbock, said the clouds were associated with a tropical air mass moving into the area, and were invisible on radar due to their low elevation.

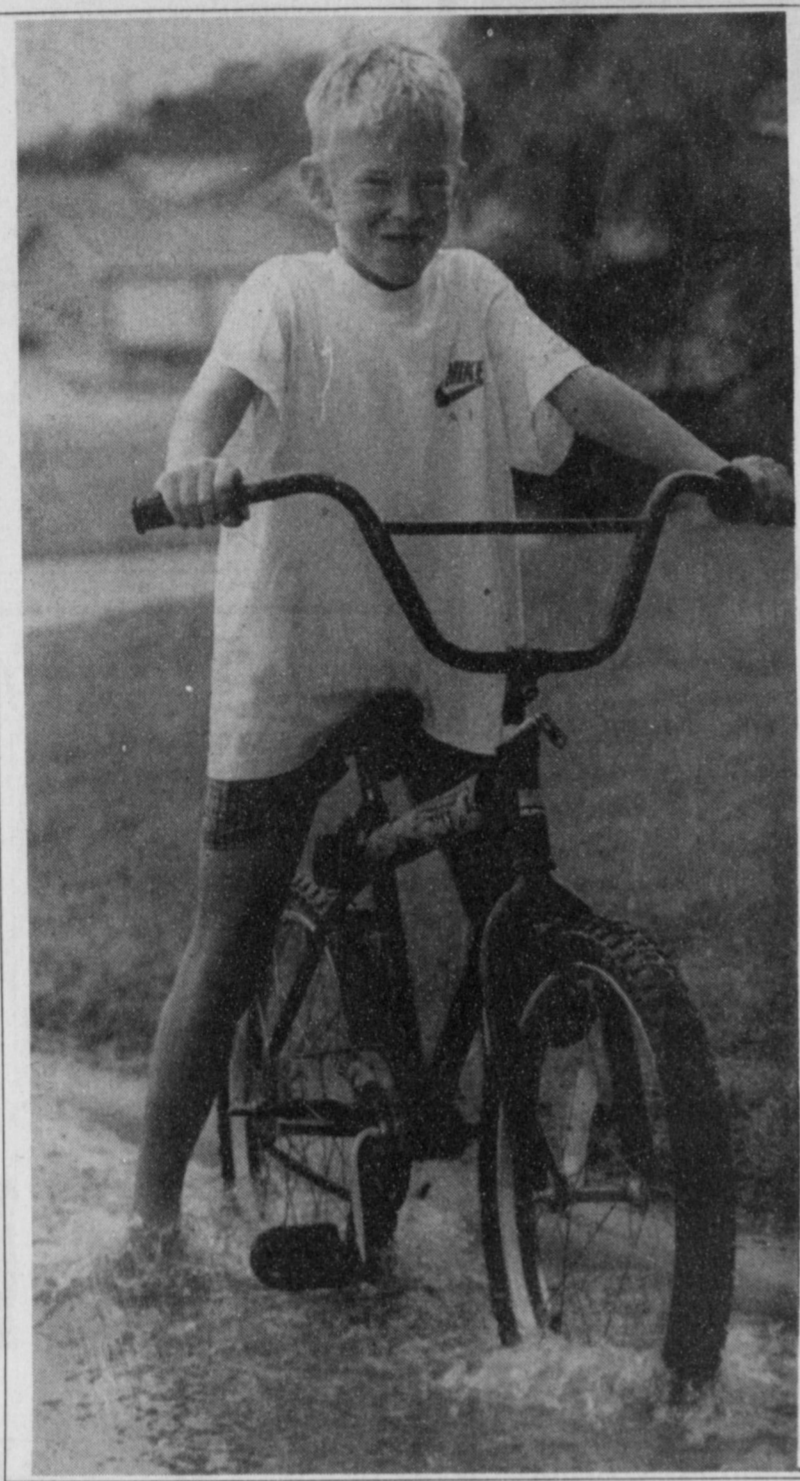
"Those type clouds are a different breed of wall clouds than those we worry about in April or May," James said, noting that the type of clouds seen yesterday are capable of producing funnels, which are rarely destructive ones. "We call those low-energy funnels — ninety percent of the time they are totally harmless."

Although no tornadoes were reported, many areas received substantial rainfall.

Needmore and Maple reported one-half inch of rainfall, while Enochs and Lariat received .6".

R.G. Bennett, an observer for the Weather Service in Muleshoe, said that .57" fell in the city, bringing the monthly total to 4.54".

"The rains have helped irrigated farming out," said Calvin Meissner of the Lariat Gin. "It doesn't help the sub-level moisture that much, but it helps farmers keep caught up on irrigation."



Curbing the tide

Andy Dale, 9, navigates a small river flowing down 17th Street toward the city park, the result of an afternoon shower Thursday. It rained about a 1/2 inch in the city.

Boll Weevil Eradication Plan remains controversial a year later

By RICK WHITE
Managing Editor

The boll weevil eradication program remains controversial a year after it was overwhelmingly approved by High Plains cotton producers.

Proponents say eradication is essential to the survival of the state's lucrative cotton industry.

Opponents believe they are paying too much for something that never has, and never will be, a problem on the High Plains.

Cotton is a \$1.3 billion a year industry in Texas, tops in the nation.

"It's highly controversial," said James Brown, board member of Plains Cotton Growers, Inc. "Me personally, I voted for it. But everyone's situation is different. I understand fully why some people don't want it."

"There's a lot of misinformation," added Brown, who farms between 300-500 acres of cotton in Parmer County. "This is a chance to stop it before it becomes a problem."

Earlier this month, a Hale County judge granted summary judgment in favor of 10 Hale County farmers who challenged the constitutionality of

"I'm sure they don't want to pay any more for controlled spraying. But we've been keeping them out of their front yard for 32 years with the ongoing diapause program."

— Roger Haldenby
PCG executive director

the assessments levied by the Texas Boll Weevil Eradication Foundation.

The plaintiffs also contend that Hale County farmers pay more than their share because of high production. The foundation assesses payment based on how many acres farmers cultivate and how much cotton they produce.

Foundation officials deny those claims.

The Foundation is made up of nine zones across the state. Each zone is a separate voting entity and is responsible for assessing and collecting its levies. The assessment money is not pooled.

The Lower Rio Grande Valley zone opted out of the spray-

ing program last fall, citing staggering losses blamed on the destruction of beneficial insects. A move to have a recall vote in the High Plain is underway.

A fall diapause spraying program designed to keep the extremely destructive boll weevil off the Caprock has been in place since 1963. Producers were charged between 10-50 cents a bale at the compress, depending on the amount of the spraying needed to create a "buffer zone" between the Caprock and the Rolling Plains.

Diapause is the stage when boll weevils stop reproducing and start storing fat for the winter.

"It's just 10 people intent on having the program discontinued," said Roger Haldenby, executive assistant of Plains Cotton Growers and the High Plain Boll Weevil program coordinator. "I'm sure they don't want to pay any more for controlled spraying. But we've been keeping them out of their front yard for 32 years with the ongoing diapause program."

A series of warm winters drastically increased the boll weevil's survival rate, leaving some southern portions of the

Continued on page 3

County Commission wary of building purchase plan

By JOANNA GALLMAN
Journal staff writer

Bailey County Commissioners Friday failed to pass a resolution that would apply revenue from the sale of the Bailey Central Appraisal District Office toward the purchase of a new office.

Instead, commissioners unanimously passed a resolution to approve the sale of the old appraisal office.

Commissioner Benny Claunch believed the appraisal district will have difficulty selling the old office, which he said has a history of structural problems.

Claunch said he was opposed to passing the resolution because he feared that the district will be stuck with maintenance of two buildings, if the

purchase of a new office has been made before the old one has been sold. He added that the appraisal district's proposal should have been presented in the form of two separate resolutions.

The resolution can pass only if three out of four voting entities approve it. Muleshoe Independent School District and Three Way High School have already passed the resolution. The City of Muleshoe will discuss the issue July 8.

If the resolution passes, the district will purchase the vacant Bank of America building on south Main at a total cost of \$65,000.

The Muleshoe Area Hospital and High Plains Underground Water Conservation Districts are not voting entities, but will share the cost of the building, if the resolution passes.

In other business, commissioners approved the hiring of Bailey County EMS Assistant Director Kem Bales.

Bales, a Lubbock paramedic, was hired for \$20,000 at the suggestion of Jackey Wayne Burris, Bailey EMS Director. Bales will fill a paramedic position vacated by Bradley Gathright, and serve as assistant director.

He was hired at a \$5,000 increase over Gathright's salary, in exchange for weekend coverage.

Commissioners passed a motion to employ two Bailey County Extension Agents for \$8,000 annually, beginning Sept. 1.

Commissioners also voted to purchase two pre-budgeted evaporative coolers to be installed in the Bailey County Coliseum.

Clay's Corner ginner gives in to technology

By JOANNA GALLMAN
Journal staff writer

CLAY'S CORNER — Don McDonald was a ginner at Clay's Corner Gin before the center pivot was the most popular form of irrigation.

Through the years, he has watched the entire ginning industry transform from a mostly hands-on process to a large-scale, technologically advanced operation.

"It's really hard to give in to technology, especially at my age," said McDonald, who began ginning in 1974.

One by one, he has watched his competitors join the ranks of the agriculturally modern. Faced with the decision to jump on the technology bandwagon or be forced out of business, McDonald has begun to modernize the cooperative gin.

McDonald added a Univer-

sal Density cotton press to the gin in 1991. The press is now used to standardize the size and density of a cotton bale, while increasing the market price of the bale.

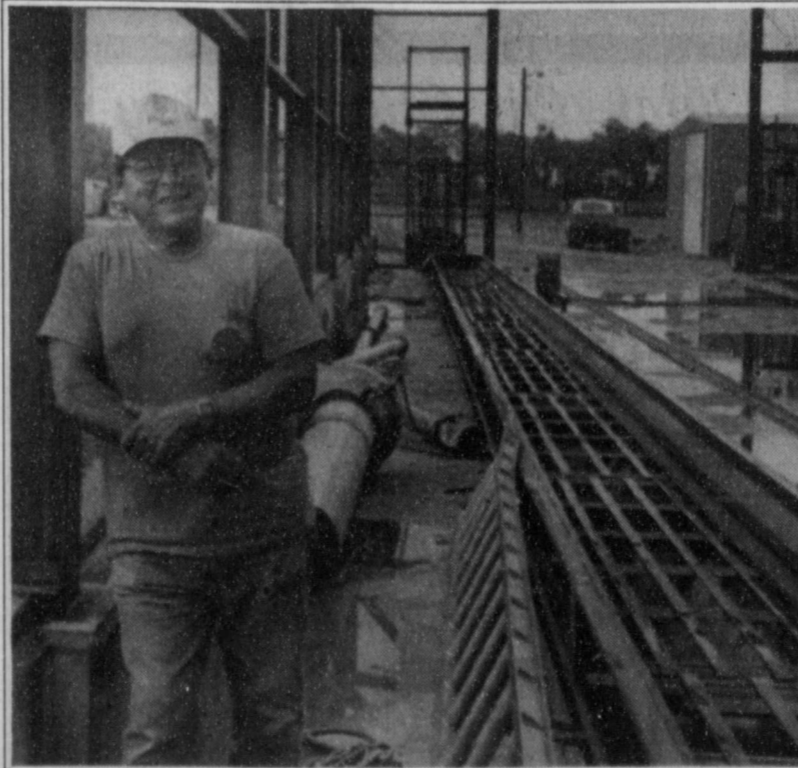
McDonald also built a new gin office in 1994, and remodeled the interior of the gin last year.

"If you're going to run a gin, there is just certain upkeep you've got to do that you can't do in one year," he said, adding that changing with the times is a matter of survival.

"Everything is going toward larger gins and gin consolidations," he said. "If these gins don't put in UD presses and things, they'll go out of business."

Clay's Corner Gin is one of the last to install module feeders; huge machines that aid in

Continued on page 3



Gin construction

Evaristo Sanchez, an employee of Clay's Corner Gin near Lazbuddie, stands in the framework of an addition to the gin. Gin employees have been constructing a shed to house a module feeder since March.

Chamber of Commerce July 4th schedule of events

- 7-9 a.m.: Chuckwagon breakfast in Mule Monument lot.
- 9 a.m.: Parade line-up at south end of Main Street.
- 10 a.m.: Parade begins.
- 12 p.m.: Deadline to enter in Muleshoe Country Club golf scramble.
- 1 p.m.: Golf scramble tee off.
- 2 p.m.: Park activities begin, including food and craft booths.
- 3 p.m.: Local talent begins performances.
- 5 p.m.: Kids' relays begin; Young Riders host dummy roping.
- 5:30 p.m.: Turtle races.
- 6 p.m.: Tractor pull.
- 8-10 p.m.: Bubba Cox and Lariat Band.
- 8:30 p.m.: "Keepers of the Legend" outdoor play.
- 10 p.m.: Fireworks display.
- Following fireworks: street dance in front of KMUL.

AROUND MULESHOE

Muleshoe to be sprayed for mosquitoes by airplane Monday

The City of Muleshoe will be sprayed for mosquitoes by airplane Monday, weather permitting. If not, the city will be sprayed as soon as weather permits.

Rheata White Art Studios presenting art demos July 3-6

Rheata White's Art Studio will be presenting live art demonstrations July 3-6 at Joe's Boot Shop.

Mickey Stephans and other artists will be demonstrating silk painting July 3 at 11 a.m., Buster Jones will be presenting paper casting July 4 at 10:45 a.m., and Rheata White will be demonstrating general art July 5 at 2:30 p.m. Paul Milosevich and other artists will be demonstrating oil painting July 6 at 1 p.m.

World War II veteran reunion slated for July 10-13 in Irving

World War II Veterans who served in the 37th Combat Engineers in Camp Bowie, Texas, or the 591st Engineer Boat Regiment in Europe are being sought for a reunion July 10-13, in Irving's Holiday Inn Holidome DFW Airport South.

To make reservations, veterans should call (214)986-8806 or (800)360-2242. Veterans are encouraged to mention the 591st EBR when they call.

Muleshoe DECA chapter hosting Broom and Mop Sale July 3-4

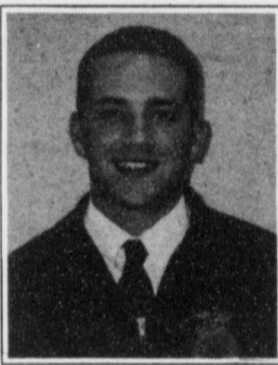
The Muleshoe DECA chapter will be holding a broom and mop sale in the Muleshoe State Bank parking lot July 3-4.

The sale will begin each morning at 8 a.m. Brooms, mops, brushes, and many other cleaning aids made by the blind will be on sale.

For more information, call Kandy Wilcox at 965-2678.

Lazbuddie FFA member will attend leadership conference in Clarendon

Brice Redwine of Lazbuddie will attend the Future Farmers of America Area I Leadership Conference at Clarendon College July 10-12.



Brice Redwine

The conference will focus on improving student leadership skills. Redwine will represent the Lazbuddie FFA Chapter, one of approximately 50 chapters taking part in the conference.

Students named to Eastern New Mexico University Dean's Honor Roll

Hope Free, Dani Heathington, and Mayme McElroy, all of Muleshoe, were among 479 Eastern New Mexico University students named to the 1996 spring semester Dean's Honor Roll.

Free is a senior accounting major, Heathington is a senior elementary education major, and McElroy is a senior home economics major.

To be eligible for the Dean's Honor Roll students must maintain a 3.25 GPA while enrolled in 15 semester hours.

Insect similar to squash bug poses no threat to row crops

Jean Fortenberry, District Two County Extension Agent has been notified of the occurrence of an insect on mesquites and other trees. The bug is reportedly similar to a squash bug, and has been identified as "Mozena Obtusa Uhler," an insect that occurs from South Texas through the Panhandle.

Fortenberry said the bug prefers mesquite and other



Flower power

Several hibiscus plants grace the yard of Charles and Marie Lenau. Their garden at 313 E. Fir was named Jennyslippers Garden Spot of the Week

woody ornamentals, but will feed on other trees as well, and can be easily killed with Sevin or Dursban.

While few of these insects have been seen in row crops, Fortenberry said they should be just passing through and pose no threat.

Motley County Junior Rodeo slated for July 12-13 in Roaring Springs

The 22nd Annual Motley County Junior Rodeo will be held at the Old Settler's Arena in Roaring Springs July 12-13.

Two rodeo performances are scheduled for Friday night at 7:30 p.m. and Saturday night at 4 p.m. Rodeo books will close at 5 p.m. on July 9.

Division prizes include saddles, a set of Rickey Trammell bits and spurs, and Montana Silversmith belt buckles.

Events for the rodeo include barrel racing, flag racing, pole bending, goat tying, tie down roping, ribbon roping, breakaway, straight-away chute dogging, team roping, steer daubing, calf riding, steer riding, bareback, saddle bronc, and bull riding.

A dance will be held nightly at 9 p.m. For more information or entry blanks, contact Cathey Turner, Rodeo Secretary, Box 666 Matador, TX 79244, (806) 347-2834, or Beverly Logsdon, County Extension Agent, Box 670, Matador, TX 79244.

10th Annual Clovis Music Festival slated for July 26-27 at high school

Two concerts have been scheduled for July 26 and 27 in Clovis, NM during the 10th Annual Clovis Music Festival.

The concerts will feature the Fireballs, Frankie Valli and the Four Seasons, the Bellamy Brothers, and Wade Haynes. Both concerts will begin at 8 p.m. in Rock Staubus Gymnasium on the Clovis High School campus.

Other activities scheduled for the music festival include a hot air balloon rally, a classic car show, and tours of the original Norman Petty Studios.

For details and ticket information, contact the Clovis/Curry County Chamber at (505)763-3435, 215 Main Street, Clovis, NM 88101; Cannon Air Force Base at the Office for Information, Travel and Tickets, (505)784-2563; or the North Plains Mall Marketing Office, 2809 N. Prince, (505)769-2308.

Lariat Church of Christ Vacation Bible School slated for July 15-17

The Lariat Church of Christ will hold Vacation Bible School July 15-17 at the church in Lariat.

The Bible school will run from 9 to 11:30 a.m. each day. All children from age three through the sixth grade are invited to attend.

For more information, call Carolyn Stancell at 925-6616.

Community calendar

Calendar info: Norma Perez, 272-4248

The deadline to appear in the Journal's Community Calendar is Thursday at 5 p.m.

Monday, July 1

Round Dancing, 8-10 p.m. Bailey County Coliseum.
4-H meeting, 6-8.

Tuesday, July 2

Alcoholics Anonymous 7 p.m., 723 W. Ave. E. For more information call 272-3002.

Rebekahs, 7:30 p.m., Rebekah Lodge.

The Rotary Club, 12-1 p.m., Bailey County Coliseum meeting room.

Beta Sigma Phi Alpha Zeta Phi, 7:30.

Beta Sigma Phi Zeta Rho, 7:30.

Wednesday, July 3

DECA, mop and broom sale, Muleshoe State Bank parking lot, 8 a.m.

Thursday, July 4

Oddfellows, 8 p.m., Oddfellows Lodge.

TOPS, Church of Christ, 6:00 p.m.

Alcoholics Anonymous, 7 p.m., 723 W. Ave. E. For more information call 272-3002.

Muleshoe Muleskinners, Fire Department, 7:30.

Old Settler's Reunion, 10 a.m.-10:30 p.m.

DECA, mop and broom sale, Muleshoe State Bank parking lot, 8 a.m.

Friday, July 5

Kiwanis, 6:30-8 a.m., at the Snack Shack.

Muleshoe Class of 1966 Reunion, 9:30 a.m.-7 p.m.

Saturday, July 6

Muleshoe Class of 1976 Reunion, 8 a.m.-7 p.m., Country Club pool.

Muleshoe Class of 1966 Reunion 9:30 a.m.-7 p.m.

Editor's note: The Community Calendar appears in Sunday's Bailey County Journal.

Fancy That



Ladies' Apparel
**STOREWIDE
END OF THE
MONTH
SALE**

Draw For Discount

Everything Is
10% -40% OFF

Layaway Available
OPEN 9:30-5:30 Mon.-Sat.

**517 1/2 N. Main
769-9121 Clovis, NM**

ZIMMATIC SUMMER SAVINGS DAYS

Zimmatic® puts flexible irrigation into a whole new light.



Get a FREE Zimmatic Flexible Flashlight With a Quote!

FLEXIBLE FLASHLIGHT

Stop in for a quote on a new Zimmatic irrigation system before June 30, and you'll walk out with a FREE Zimmatic® Flexible Flashlight by Black & Decker®. The possibilities have never been brighter.

FLEXIBLE FINANCING

This summer it really pays to buy a new Zimmatic pivot! Choose one of these hot summer savings packages when you purchase by June 30, 1996, and take delivery by November 30, 1996:

- \$1,600 cash rebate* with June or July delivery, \$1,200 cash rebate* with August or September delivery, \$800 cash rebate* with October or November delivery, **OR**
- 7.95% low-interest loan or lease for 5 years with delayed first payment until January 1, 1998, **OR**
- Interest-free financing until March 1, 1997.

*Rebates based on a new, 8-tower Zimmatic irrigation system. Certain credit restrictions and conditions may apply.

IRRIGATION PUMPS & POWER

West Hiway 84 • P.O. Box 313
Muleshoe, Texas 79347
272-4483 272-5597

ZIMMATIC®
Built To Be The Leader.

Lindsay Manufacturing Company • P.O. Box 156 • Lindsay, Nebraska 68644 • 1-800-829-5300

Progress might have been all right once but it has gone on too long
—Ogden Nash

Bailey County Journal USPS 040-200

Established March 31, 1963. Published by Triple S Publishing, Inc. Every Sunday at 304 W. Second. Box 449, Muleshoe, TX 79347.

Second Class Postage paid at Muleshoe, TX.

POSTMASTER: Send address changes to the Bailey County Journal, P.O. Box 449, Muleshoe, TX 79347.

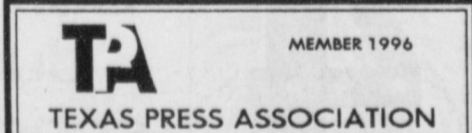
We are qualified members of:

Panhandle Press Association, National Newspaper Association, West Texas Press Association and Texas Press Association

WEST TEXAS PRESS ASSOCIATION

PPA

Panhandle Press Association



Scot Stinnett, Publisher
Lisa Stinnett, Vice-President/Comptroller
Rick White, Editor
Holly Millsap, Classifieds
Pat Durben, Advertising

© 1990



SUBSCRIPTIONS: Muleshoe Journal and Bailey County Journal
By Carrier Yearly - \$22.00
Bailey and surrounding counties: by mail - \$24.00
Elsewhere - \$26.00
Advertising Rate Cards on Application

Advertisers should check their ad the first day of insertion. The Journals will not be liable for failure to publish an ad or for a typographical error or errors in publications except to the extent of the cost of the ad for the first day of insertion. Adjustment for errors will be limited to the cost of that portion of the ad where the error occurred.



The Sacred Cod hangs over the rear of the chamber of the Massachusetts House of Representatives in Boston. The five-foot fish symbolizes the importance of the fishing industry in the state's early growth and development.

-- NEW --

Quick Oil Change Bay

6 qts. Quaker State 10/30 and Motorcraft filter

\$17⁹⁵

SPECIAL

We will pick up and deliver from 8:00 to 12:00 noon Monday-Friday.

Call Crista at Muleshoe Motor Co. to make an appointment (806) 272-4251.

- We will check all fluids, wipers, and belts -

Muleshoe Motor Company

1225 W. American Blvd.
1-800-432-7617 272-4251

Kenmore presents study in San Francisco

Kyle Kenmore of Muleshoe recently participated in the High Power Liquid Chromatography convention in San Francisco.

Kenmore, a junior biochemistry/pre-med major at Texas Tech, presented a paper on a research project he has been conducting for two years.

The research project is "Capillary-Scale Refractive Index Detection by Interferometric Backscatter," a process that will eventually be used to measure ingredients in pharmaceuticals.

Refractive index detection involves exposing a capillary tube to laser beams and measuring the radiation emitted from the substance in the tube. Each element gives off a minute, but distinctive level of radiation.

Kenmore, the only under-

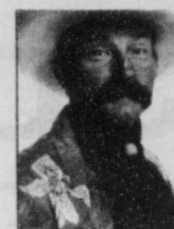


Kyle Kenmore

graduate researcher at the conference, said the process may someday be used to separate and record levels of various elements in pharmaceuticals.

Kenmore is the son of Ronnie and Connie Kenmore and the grandson of Dorothy Ray Harlan, all of Muleshoe.

'Babe' threatens white meat market



BAXTER BLACK
ON THE EDGE OF COMMON SENSE

This year the movie, **BABE**, was nominated for several Academy Awards including Best Picture. It was very popular and made a lot of money. It stars a pig named Babe. A gilt to be more specific... a feeder pig maybe weighin' 80 - 100 lbs. But it was a cute pig. It talked, of course, was kind and brave. And to top it off it did heroic deeds and yet maintained a sensitivity that would make Phil Donahue blush.

All this anthropomorphism, giving a pig human qualities, is necessary if movie makers expect an audience to relate to the hero. It made me wonder if the movie, **BABE** had a deleterious effect on the price of The Other White Meat. I made a couple calls but the Pork Producers were non-committal. They had an up market this spring.

But I would not have been surprised if it had. The sheep and veal people have known for years that it is hard to convince the public to eat something cute.

Rabbit raisers are careful to avoid any advertising including the words *Bunny Burger* or *BBQ's Bunny Ribs* or *Bunny on a Grill*. Even in the frozen north they've never developed a market for the *Baby Seal Club Sand-*

wich. Australians have never had trouble eating lamb, mostly because they're so numerous over there they are thought of more often as ants or road kill. Yet in my one trip 'Down Under' I saw no *Koala Kabobs*. Too cute.

The Chinese seem to eat anything under the sun from thousand year old eggs to objects that crawl on the sea floor but I've never heard of a *Panda Patty*.

The reverse is also true... that it is easier to eat something less cuddly. That may be part of the success of the chicken business. In books, movies and stories, chickens are seldom portrayed in flattering roles. They're usually stupid or pompous, i.e. Fog horn Leghorn, Chicken Little, Huey, Dewey and Louie. Even the Little Red Hen turns out to be a Republican.

The eel is another good example. The oyster, the goat, fish in general, most reptiles and the Spotted Owl in certain parts of the country.

But I do suspect the Pork Producers were worried about their business while **BABE** was showing in thousands of theaters to hundreds of thousands of young impressionable kids. Had to be. I know French restaurateurs worried when the **BLACK STALION** was showing.

Study shows rural land prices decline during drought

COLLEGE STATION — Corn and cattle are not the only things feeling the heat from the summer drought.

An expert with the Real Estate Center at Texas A&M University concluded that some rural lands have decreased in value because of the hot weather and dry conditions.

Charles E. Gilliland, asso-

ciate research economist with the center, says that land values, particularly those in the High Plains, San Antonio and the lower Rio Grande regions have declined because of the drought.

Real Estate Center statistics show that land along the Canadian River has dropped 16 percent in value since 1994, an

average of \$193 per acre. Research also shows that land values north of the river have decreased 9 percent since 1994 — to an average of \$364 per acre, while land to the south has dropped to \$401 per acre, down 7 percent.

"Drought and a pronounced decline in cattle prices combined to make 1995 a particu-

larly bleak year for these Texas ranches," Gilliland said.

Effects of the drought have also been felt on the outer edges of San Antonio, where prices have fallen 13 percent from \$980 in 1994, to \$856 per acre in 1995. Gilliland said that the shortage of rainfall and the uncertainty surrounding water rights to the Edwards Aquifer

have contributed to the problems in the area.

The drought has also lowered land prices in the lower Rio Grande Valley, where values fell 10 percent — from \$1,377 in 1994 to \$1,242 per acre in 1995.

Gilliland said many factors, including insects and the overall real estate activities in

the area, have added to the decrease in value.

One region that has been spared by the drought is the Highland Lakes area near Austin. There land values rose from \$1,016 in 1994 to \$1,200 per acre in 1995. Gilliland attributes this to recent land sales for recreational purposes.

Ginner

Continued from page 1

ginning cotton at a faster and more efficient pace than traditional methods.

"We just didn't have the money to spend on it," he said, adding that the module feeder will be the last major addition to the gin for some time.

Cotton modules are made of approximately 18,000 pounds of cotton.

A module feeder rolls on tracks over the top and sides of a cotton module, suctioning cotton from all sides simultaneously. Augers and spiked cylinders feed the cotton onto conveyor belts that carry it inside the gin for processing.

McDonald and his employees began work to install a module feeder in March. A 6,800-square-foot steel shed is being built to house the machine.

The \$150,000 project is scheduled to be completed in August.

Clay's Corner Gin bales approximately 1,000 modules of cotton each season. Each finished bale of cotton weighs approximately 2,500 pounds.

A module feeder will suction four modules at a time and at a 30 percent faster rate than the traditional use of manned suction pipes, which at best could suction two modules at a

time.

McDonald recalls a time when cotton ginning wasn't as modern or efficient.

"Back when I started ginning, everybody hauled their cotton in trailers instead of modules. There were lots of flat tires and overturned trailers," McDonald said. "If it was that way now, I wouldn't still be in the business."

Before the advent of cotton modules, farmers had to wait for their cotton trailers to be emptied into the gin before they could return to the field to strip another load. Inefficient ginning procedures, unfavorable weather conditions and frantic farmers made for intense relationships during ginning seasons.

"It used to be a push and strain for the farmers and the ginners. Tempers got a little short at times," McDonald said, adding that since the gin's purchase of a module truck in 1979, the gin processes only about 12-13 trailer loads of cotton per season.

"The marketing is also a lot different now than it used to be," he said. "Now we have on-line marketing, computers, and fax machines. The books used to be recorded by hand. We usually had two or three

people working in the office. Now one does all the paper work and has spare time."

McDonald said the push for larger gins is imminent, and change unavoidable.

"Bigger gins don't necessarily do any better job for the farmer, but they've got to consolidate and update just to make ends meet."

Technology has moved in, but small-town service will never become obsolete, McDonald said.

"I'll be here until I get tired or until they run me off," he said. "I enjoy it, especially those years when you can do a good job for the farmer, get a good price for his cotton, and watch him leave here with a smile on his face."

Federal Land Bank Association

316 Main St., Muleshoe
806-272-3010

Long Term Financing for Farms, Ranches, Rural Housing, Operating and Improvements.

Current Variable Rate 7.8%.

Fixed rates are available.

Call for quote.
A Property Rights Advocate and Equal Opportunity Lender.

THERE'S NO EXCUSE FOR DOMESTIC VIOLENCE.

For information on how you can help stop domestic violence, call us.

1-800-END ABUSE

Family Violence Prevention Fund

NO DOWN PAYMENT LAYAWAY

FOR BACK TO SCHOOL

STARTS TODAY

FOR MEN, JUNIORS, WOMEN'S PLUS AND BOYS

Men's Levi's 501 Jeans, Reg. 29.99	27.99	Women's Plus Levi's 522 Jeans, Reg. 49.99	39.99
Men's Levi's 550 Jeans, Reg. 35.99	29.99	Boys' 4-7 Levi's 550 Jeans, Reg. \$22	18.99
Juniors' Levi's 501 Jeans, Reg. \$45	29.99	Boys' 8-14 Levi's 550 Jeans, Reg. \$25	22.99
Juniors' Levi's 512, 550 & 560 Jeans, Reg. \$47	36.99	Boys' Student & Husky Levi's 550 Jeans, Reg. \$27	24.99

Weevils

Continued from page 1

High Plains infested with weevils. High Plains farmers voted to establish the foundation's spraying program in the 30-county area around Lubbock in April of 1995.

Five million acres were sprayed in the southern High Plains during a five-week period this fall, at a cost of about \$12.3 million, according to Shawn Wade, director of communications for the Plains Cot-

ton Growers.

A PCG graphic of weevils caught in traps in May indicated heavy concentrations of weevils in five counties in the southern High Plains. One area of concern is the number of overwintered weevils caught in Hale and Hockley Counties, the report said.

"We can't just depend on nature," Haldenby said. "It will take man working with nature."

Sports

Muleshoe
 GAME 2
 July 1, 6 p.m.

Olton Morton
 GAME 5
 July 3, 8 p.m.

Levelland Littlefield
 GAME 3
 July 2, 8 p.m.

GAME 8
 July 6, 7 p.m.

Loser's bracket

Loser game 2
 GAME 4
 July 2, 6 p.m.

Loser game 1
 GAME 6
 July 3, 6 p.m.

Loser game 3
 GAME 9
 July 7, p.m.

Loser game 5
 GAME 7
 July 5, 7 p.m.

Loser game 8 if first loss

Champion Or Champion

Little League District 2
11-12 year-old all-stars
July 1-7, Muleshoe

all games at Roger Miller Park

Little League District 2
9-10 year-old all-stars
July 3-8, Littlefield

Littlefield
 GAME 1
 July 3, 6 p.m.

Levelland
 GAME 3
 July 5, 8 p.m.

Muleshoe
 GAME 2
 July 3, 8 p.m.

Morton
 GAME 6
 July 7, 7 p.m.

Loser's bracket

Loser game 1
 GAME 4
 July 5, 6 p.m.

Loser game 2
 GAME 5
 July 6, 7 p.m.

Loser game 5
 GAME 7
 July 8, 8 p.m.

Loser game 8 if first loss

Champion Or Champion

MULESHOE ROSTER

12-year-olds		11-year-olds	
Mark Rodriguez	A's	Bryan Long	White Sox
Roddy Spradling	A's	Juan Jiminez	White Sox
Ricky Rudd	Cardinals	Daniel Ramirez	White Sox
Stephan Shelburne	Cardinals	Philip Field	Twins
Trevor Gartlin	Lazbuddie	Coaches	
Jeffrey Guillen	Lazbuddie	Bo Long	manager
Andy Dominguez	Twins	Steve Gartin	coach
D.J. Dominguez	Twins		

MULESHOE ROSTER

10-year-olds		Dagan Provence	Sudan
Ryan Maricle	Dollar Bills	Cory Puckett	Lazbuddie
Bryan King	Dollar Bills	Tanner Gartin	Lazbuddie
Tatom Heathington	Dollar Bills	Robbie Bomer	Chargers
Lance Layton	Sudan	Kory Atwood	U-Bars
Cody Altman	Fireballs	Coaches	
Ryan Wiley	Astros	David Marricle	manager
9-year-olds		Tadd Young	coach
Landon Wilson	Sudan	Ronnie Puckett	coach

Little League District 2
9-10 year-old select
July 1-12, Lubbock

MULESHOE ROSTER

10-year-olds	
Barry Morris	Fireballs
Jonathan Marlow	Chargers
Chase Winkler	U-Bars
Evan Maxwell	Sudan
Daniel Bonilla	Lazbuddie
Kolby Wilkerson	Lazbuddie
9-year-olds	
Levi Bandy	Fireballs
J.C. Orozco	Chargers
Tanner Winkler	U-Bars
Derek Wiley	Astros
Kade Gaston	Sudan
Coaches	
Toddy Bandy	manager
Keith Morris	coach
Kevin Harris	coach

SCHEDULE

First round
 July 1
 Brownfield vs Southwest No. 1, 6 p.m.
 Levelland No. 1 vs. Northwest, 8 p.m.

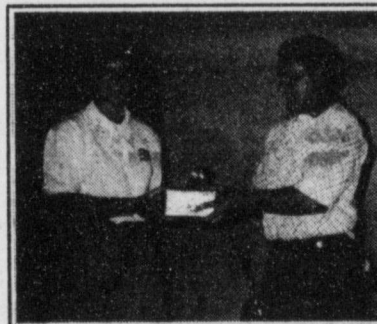
July 2
 Littlefield vs Ropes, 6 p.m.
 Dixie vs West No. 1, 8 p.m.

July 3
 Midwest vs Morton, 6 p.m.
 Levelland vs Southwest No. 2

July 5
 West No. 2 vs Muleshoe, 6 p.m.
 * — all games at the Midwest LL field in Lubbock

Phillips wins Naomi/Marie tourney

Jeff Baker, right, golf pro at Muleshoe Country Club, presents Yolanda Phillips, left, a gift for winning the Naomi/Marie Golf Tournament. Yolanda shot a net of 70 to win the tournament. A total of 13 ladies competed in the tournament, which was held May 15.



Phillips accepts prize

- SALE -

Ladies' Separates & Dresses **20%-50% OFF**

SALE JUNE 24-JULY 6

No Returns on Sale Items

Owner Sheree Hunt

All Sterling Silver Jewelry **25% OFF**

Fashion Jewelry **50% OFF**

Infant & Children's Playwear **30% OFF**

Brighton & Navasota Belts **20%-40% OFF**

Sheree's Attic
 & Merle Norman
 1519 W. American Blvd. 272-3459

Muleshoe Pea & Bean, Inc.



is now offering forward contracting to anyone who is interested in growing black-eyed peas or pinto beans. According to our local FSA Offices, the following counties are now among the designated double cropping regions: Bailey, Parmer, Lamb, Castro, Deaf Smith, Cochran, Yoakum & Gaines. Black-eyed peas and pinto beans grow productively behind harvested wheat, and can be planted into mid July. If you are interested please give us a call at (806) 272-5589.

We do not carry any fireworks that Bailey County has put a limit on. YES, YOU CAN SHOOT THEM. NOT ALL FIREWORKS ARE COMPLETELY BANNED.


Early Bird Discount
 The sooner you buy, the more you save!

EAGLE FIREWORKS
 3 miles east on Hwy. 70
 Plainview Hwy. 965-2903

BRING THIS AD AND GET A SPECIAL DISCOUNT!

Local news about local folks.
Muleshoe Journal
 To Subscribe, 272-4536

My daughter wanted to know who handles our auto insurance.




Then it hit me ... she gets her drivers license next month!

So what do I do? What kind of coverage will she need? How do I get the best insurance for my dollar? **No problem** ... I'll just call my agent at **Farm Bureau Insurance.** 806-272-4567

If I have a problem, he's always there. And, I can count on him to provide the insurance coverage I need for my family at **competitive rates.**

Whether it's protecting your family through auto, home or life insurance, we've got the coverage you need to plan for the future. Farm Bureau Insurance helps you be there for the ones you love.

Texas Farm Bureau Mutual Insurance Co.
 Texas Farm Bureau Underwriters
 Southern Farm Bureau Casualty Insurance Co.
 Southern Farm Bureau Life Insurance Co.



966TXA30D

Got a news tip? An idea? A complaint?
 You're opinions matter to us. Call 272-4536.

Farm program signup deadline set for July 12

FARM PROGRAM

If you have not signed into the 1996 Farm Program, or have not called this office to set up an appointment to do so, please call us and let us schedule an appointment for you. July 12, 1996, is the final date to sign into the program. This is a one time sign up for a seven year period. There are no late file provisions except for CRP acreage coming out of the program. Also, keep in mind that all signatures on the contracts just be received in this office by August 1, 1996.

FRUITS AND VEG-ETABLES

Bailey County has been designated as a double cropping region. This means that a producers can plant fruits or vegetables behind small grain that was harvested or small grain that had been planted for harvest but has failed acreage. The fruits and vegetables must be planted on the same acre-

age as the small grains were planted. Fruits and vegetables planted behind failed cotton is not permitted (must be able to harvest both crops in the same year).

REPAYMENT PROVI-SIONS

The Federal Agriculture Improvement and Reform Act of 1996, signed into law on April 4, 1996, specifies that deficiency overpayment amounts shall be automatically deducted from Production Flexibility Contract (PFC) payments. Producers that enter into the Agricultural Market Transition Act (AMTA) by signing Form CCC-478, "Production Flexibility Contract", agree to have their PFC payments automatically reduced to satisfy outstanding deficiency over-payment amounts. Some producers had submitted early offset or multiple payment plan agreements. These agreements are now

FARM SERVICE AGENCY NEWS

void. 1996 final PFC payments, issued by September 30, 1996, will be automatically reduced for wheat, barley, oats, and upland cotton deficiency overpayments. 1997 advance PFC payments will be automatically reduced for corn and grain sorghum deficiency overpayments and any remaining outstanding overpayment amounts. Interest will not accrue on overpayment amounts offset from PFC payments. Producers may also elect to have their 1996 advance PFC payments reduced to satisfy deficiency overpayment amounts. Producers wishing to offset their 1996 advance PFC payment must provide written notification to this office. Contact this office at 272-4538, if you have any questions regarding repayment of 1995 deficiency overpayments.

LOANS & LDP CHANGES

New legislation terminated the following programs effective with the 1996 crop year:

- * honey price support loan program
 - * rye price support loan & LDP's
 - * Farmer Owned Reserve
- Current procedures for outstanding loans under these programs shall remain in effect for the remaining term of the applicable program.

To be eligible for loan and LDP's, producers must annually certify and comply with the following:

- * HELC/WC
 - * acreage reporting.
- If a producer wishes to obtain loan or LDP benefits for a crop, the operator of the farm must report for the crop:
- * reasonableness for the quantity to be eligible for loan or LDP, as determined by COC.
 - * producer shares applicable to the crop.
 - * crop insurance coverage of an amount at least equal to CAT coverage for economically significant crops or a written waiver of all rights to emergency crop assistance in lieu of purchasing crop insurance.
 - * controlled substance provisions.
- Interest charged on loans,

or any transactions related to loans for 1996, will be 1% higher than the rate under the interest rate formula currently used. Any LDP or overpayment or receivable resulting from LDP will not be charged the additional 1% interest. New legislation prohibits extension of loans.

CERTIFICATION

Producers are reminded to call to set up an appointment to certify their acreage. Also, do not destroy the crop before reporting the acreage in this office and to your insurance company.

HOLIDAY

This office will be closed July 4, 1996, in observance of Independence Day.

Egypt top U.S. wheat importer

Egypt, Japan, China, the Philippines and Pakistan were the top five importers of U.S. wheat in the marketing year ending May 31, 1996, according to preliminary export statistics for the 1995-96 marketing year (June-May). The preliminary statistics indicate that the United States exported a total of 34 million metric tons (MMT) of wheat, or 1.25 billion bushels of wheat, compared to 32.3

MMT or 1.18 billion bushels during the previous marketing year.

The preliminary figures were reported by U.S. wheat Associates from accumulated export data released by the U.S. Department of Agriculture's Foreign Agricultural Service (FSA) in its weekly "U.S. Export Sales" report. At the top of the sales list in the 1994-95 marketing

year was Egypt., with accumulated wheat exports of 5,071,700 metric tons (MT), followed by Japan at 3,468,400 MT, china at 2,979,300 MT, the Philippines at 2,058,500 MT and Pakistan at 1,671,700 MT. Rounding out the top ten list were Korea, Mexico, Nigeria, Sri Lanka and Taiwan. (Note: one metric ton equals 36.74 bushels.)

EARLY DEADLINES

Because of the July 4th holiday, the Muleshoe Journal will be published Tuesday, July 2 so that those on the mail route will receive the paper before the weekend.

Deadlines for the Thursday, July 4th issue of the Muleshoe Journal will be:


Editorial & Classified Advertising:
Friday, June 28 at 5:00 p.m.

Retail Advertising:
Monday, July 1 at 12:00 noon

Thank you!

Muleshoe Journal

304 W. 2nd 272-4536



CHECK OUT the FIREWORKS at ALLSUP'S

It's America's Birthday, and in her honor we're offering super deals to you. So come to Allsup's, where our low prices and great products are sure to light you up!

 <p>6 pk., 12 oz. cans \$1.49</p>	<p>COMBO MEAL 2 Hot Diggidy Corn Dogs! & Tallsup \$1.89</p>
<p>HONCHO Fountain Drink PLASTIC 99¢ PLASTIC REFILL 79¢ 89¢</p>	<p>ALL VARIETIES FRITO LAY* LAY'S OR WAVY LAY'S Potato Chips REG. \$1.59 89¢</p>

Instantly Win up to \$1,000

Get a Free Game Ticket With Every HONCHO 44 oz. Fountain Drink Purchase!

PLUS Enter to win a 1996 Ford Ranger XLT Pick-up!

ALLWAYS a LOW PRICE on

<p>TEXAS FIRECRACKER Sausage 2.99¢ FOR</p>	<p>BANQUET ASSTD. FLAVORS T.V. Dinners 9 OZ., REG. \$1.69 \$1.29</p>	<p>FITTI Diapers 26 CT. MED. OR 20 CT. LG. \$4.99</p>
<p>You'll find all this and more at your Allsup's store Store #34 318 W. American Blvd. 272-4862 MULESHOE</p>		<p>DECKER Meat Franks 12 OZ. PKG. 59¢</p>

<p>BREAKFAST BURRITO Ham or Sausage \$1.09</p>	<p>B-B-Q SANDWICH EA. 99¢</p>
---	--

LOW PRICES, GREAT PRODUCTS 24 HOURS A DAY



Allways

PRICES EFFECTIVE 6/30-7/6/96 OFFER GOOD WHILE SUPPLIES LAST

Taste Of Summer Sale

ALL TYPES
Coca-Cola,
Dr. Pepper, Sprite
2 3 liter btl. \$3

LOWE'S VALUABLE COUPON
6 pack, 12 oz. cans
Coca-Cola, Dr. Pepper, Sprite
\$1.14

LIMIT 1 COUPON PER CUSTOMER • LIMIT 4 SIX PACKS PER COUPON • ADDITIONAL PURCHASES \$1.29

MEAT

Whole Slab Pork Spare Ribs
lb. **89¢**

Value Pack, Boneless Top Sirloin Steaks
lb. **\$1.79**

Shurline, 12 oz. pkgs. - **LIMIT 4**
Meat Wieners **4/\$1**
Bar S, 1 lb. pkg., Jumbo **Franks** **99¢**

Hillshire Farms Regular, Beef or Lite **Smoked Sausage** lb. **\$1.89**
Advance Fajita **Chicken Breasts** lb. **\$3.49**

Louis Rich Regular, Turkey Breast, or Fat Free **Variety Pack** 9-12 oz. pkg. **\$1.99**
Louis Rich Turkey Ham or Smoked **White Turkey** 8 oz. pkg. **\$1.89**
Louis Rich Fat Free **Turkey Ham** 5 oz. pkg. **\$1.89**
Louis Rich Stack Pack Oven Roasted **Chicken Breast** 12 oz. pkgs. **2/\$5**
Oscar Mayer Regular, Bun Length, or Light **Meat Wieners** 16 oz. pkg. **\$1.69**
Oscar Mayer Cotto Salami or Red Rind **Meat Bologna** 16 oz. pkg. **\$1.69**
Value Pack, Boneless Skinless **Chicken Breast** lb. **\$2.19**
Peyton's Smoked or **Polish Sausage** 14 oz. pkg. **99¢**
Louis Rich, Red Rind **Turkey Bologna** 1 lb. pkg. **99¢**
Bar S **Bologna** 12 oz. pkg. **89¢**
Bar S, 3 lb. bag **Hamburger Patties** **\$4.79**
Santa Fe **Tortillas** 12 ct. pkg. **99¢**
Market Made **Hamburger Patties** lb. **\$1.29**
Hormel, Cure 81 **Boneless Half Ham** lb. **\$3.69**
Hormel Sandwich Maker, **SLICED FREE!**
Chopped Ham 5 lb. pkg. **\$5.99**

PRODUCE

Red Juicy Watermelons
ea. **\$1.99**

Thompson Seedless Grapes
lb. **88¢**

Golden Ripe Bananas, White Onions, Honeydew Melons, Sweet Juicy Cantaloupes
YOUR CHOICE!
3 lbs. \$1

Extra Large, Red Ripe **Tomatoes** lb. **99¢**

NABISCO
WHEAT THINS • SNACK CRACKERS • TRISCUIITS • MR. PHIPPS • RITZ AIR CRISPS • HARVEST CRISPS • BETTER CHEDDARS

ASSORTED Nabisco Crackers **\$3.50**
5.5-10 oz. For

Honey Maid **OREO**
ORIGINAL PREMIUM

Nabisco Assorted Honey Maid **Grahams** 16 oz. pkgs. **2/\$5**
Nabisco Regular, Reduced Fat or Doublestuf **Oreo Cookies** 20 oz. pkgs. **2/\$5**
Nabisco Assorted Premium **Crackers** 15-16 oz. pkgs. **2/\$3**

NILLA
NABISCO REGULAR OR REDUCED FAT Nilla Wafers **2.39**
12 oz.

BLOWOUT BARGAINS

REG. \$2.19 NOW **1.89**
GULF LITE Charcoal Starter

REG. \$2.49 NOW **2.19**
Salsa or Salsa Con Queso

REG. \$3.50 NOW **3.19**
Lays' Wavy Lay's or Tostitos' Chips

REG. \$1.89 NOW **1.59**
Hamburger or Hot Dog Buns

REG. \$1.99 NOW **1.69**
Charcoal Briquets

REG. \$2.99 NOW **2.69**
HEFTY Bowls or Plates

REG. \$1.99 NOW **1.69**
Solo Party Cups

REG. \$1.49 NOW **1.19**
ASSORTED Mondo Fruit Squeezers

REG. \$5.19 NOW **4.89**
ASSORTED Sports Drinks

REG. \$3.19 NOW **2.89**
ASSORTED Leach's Drinks

SCHELLINGS SAVINGS

JELLO No Bake Double Layer Dessert **3/\$1.89**
3 oz. Sugar Free

MAXWELL HOUSE Log Cabin Syrup **2.59**
24 oz. btl.

MAXWELL HOUSE Maxwell House Coffee **2.19**
11.5-13 oz. can

MINUTO RICE **2.89**
28 oz. box

POST CEREAL NEW! Cranberry Almond Crunch **1.99**
13 oz. box

POST CEREAL Waffle Crisp **1.99**
15.75 oz. box

IN-AD COUPON VALID: EXPIRES JULY 3, 1996
Redeemable at Leach's
SAVE 20¢
on ONE 16 oz. bottle of any KRAFT® or THICK 'N SPICY® Barbecue Sauce

IN-AD COUPON VALID: EXPIRES JULY 3, 1996
Redeemable at Leach's
SAVE \$1.00
on ONE 32 oz. or larger jar of any MIRACLES® SOUP® or KRAFT® Mayonnaise Product

REG. \$2.19 NOW **1.89**
Hamburger or Hot Dog Buns

REG. \$1.99 NOW **1.69**
Charcoal Briquets

REG. \$2.99 NOW **2.69**
HEFTY Bowls or Plates

REG. \$1.99 NOW **1.69**
Solo Party Cups

REG. \$1.49 NOW **1.19**
ASSORTED Mondo Fruit Squeezers

REG. \$5.19 NOW **4.89**
ASSORTED Sports Drinks

REG. \$3.19 NOW **2.89**
ASSORTED Leach's Drinks

REGULAR or With Jalapeno **Ranch-Style Beans** 15 oz. cans **2/88¢**

Yellow Squeeze **French's Mustard** 16 oz. jar **89¢**

Mild, Medium or Hot, Pace **Picante Sauce** 24 oz. btl. **\$2.19**

Shurline, Hamburger **Dill Slices** 32 oz. jar **99¢**

REGULAR, LESS SALT, LITE, OR SMOKED FLAVOR **Spam Luncheon Meat** 12 oz. can **1.79**

HORMEL CHUNK **Breast of Chicken** 12 oz. can **1.29**

HORMEL **Chunk Ham or Turkey** 12 oz. can **99¢**

PHILADELPHIA Cream Cheese **1.19**
REGULAR OR 1/2 LESS FAT

KRAFT ASSORTED Shredded Cheese **1.79**
8 oz. pkg.

AMERICAN FRIENDLY Kraft Singles **1.99**
12 oz.

KRAFT PARMESAN/ROMANO, Regular, or Fat Free 100% Grated **Parmesan Cheese** **\$3.39**
8 oz. can

KRAFT REGULAR ASSORTED Pourable Dressing **1.99**
16 oz.

Wells Blue Bunny **Ice Cream Dream**

Blue Bunny Vanilla or Neapolitan **Ice Cream Sandwiches** 12 ct. pkg. **2/\$5**

Blue Bunny **Juice Bomb Pop Jr. or Bomb Pop Jr.** 12 ct. pkg. **\$1.69**

Blue Bunny Nutty Sundae Cones **2.59**
6 ct. pkg. For

Blue Bunny Assorted Old Fashioned **Ice Cream** 1/2 gal. rnd. ctns. **2/\$5**

Blue Bunny Assorted Deluxe Fudge Bars or Sweet Freedom **Citrus Lites** **1.79**
12 oz.

Frozen & Dairy

NEW! STRAWBERRY, COCOONUT, OR BANANA **Fruit Stix or FudgStix** **1.99**
4 ct. pkg.

MARQUET ASSORTED **Fried Chicken** 10-25 oz. pkg. **2.79**

MARQUET MEXICAN CHICKEN **Chicken Nuggets** 12 ct. pkg. **2.79**

Fried **Chicken** 12 ct. pkg. **1.99**

Farmer **Cheese** 12 ct. pkg. **1.29**

Colby Jack **Cheese** 12 ct. pkg. **2.59**

REG. \$5.19 NOW **5.19**
Shurline Biscuits

REG. \$1.99 NOW **99¢**
Borden Milk

REG. \$1.79 NOW **1.79**
Valvesta Slices

WESTERN MONEY UNION TRANSFER™
"The fastest way to send money"

Lowie's MARKETPLACE

515 W. American Blvd.
401 W. American Blvd.
Muleshoe 272-4585

OPEN MONDAY-SATURDAY 7:30 A.M. - 9:00 P.M., SUNDAY 9:00 A.M. - 6:00 P.M.

Health & Beauty

18.75 oz. where available
VOS Assorted, **Shampoo or Conditioner**
15 oz. btl. **88¢**

All One Man, 78th Anniversary Pack **Band-Aid**
60 ct. pkg. **99¢**

37 Exposure **Kodak Pocket Camera**
For **\$6.99**

REG. \$2.50 NOW **2.50**
6 ct. pkg. For

LOWE'S MARKETPLACE

515 W. American Blvd.
Muleshoe 272-4406

ENOCHS NEWS

By Mrs. J.D. Bayless

The Shelton family reunion was held at the Villa Inn in Lubbock. Four of the older sisters attended, including: Martha Leake of Lubbock, Lucille Smith of Hart, Margie Peterson of Morton and Johnnie Houghton of Saratoga. There was a total of 73 present from Texas, New Mexico, Colorado, Arizona, California and Arkansas.

Mr. and Mrs. Ira Steele of Austin visited with Dale and Rose Nichols Saturday.

Mr. and Mrs. Ted Thomas visited her parents, Mr. and Mrs. Keith Price, last weekend. They also visited Mrs. Inez Sanders.

Mr. and Mrs. Bill Key were in Littlefield to visit his sisters, Mr. and Mrs. Homer Howard and Mrs. Lucille Butler, last Tuesday.

Amey Drennan of Leaman spent Saturday night with her grandmother, Mrs. Myrna Turney.

George Tyson died Satur-

day, June 15. I express my sympathy to his family.

Mr. and Mrs. Harvey Blackstone helped their son, Thomas, and family, move to Littlefield Monday.

Susie Shields, of Lelia Lake, and her daughter, Roslyn Daylan and children, of Seagraves, visited their mother and grandmother, Mrs. Lorella Jones and Wendell, Sunday. They will be staying for an extended visit.

The farmers are very busy trying to get their feed planted. I sure would like to see another good rain.

Mr. and Mrs. Leon Dupler of Andrews visited their daughter, Beverly and Jarrol Layton, and daughters, Ashley and Lauren. They attended the funeral services for George Tyson Monday. Ashley went home with them to spend the week.

Rose Nichols attended the oil painting workshop in Morton Saturday.

REBEKAH NEWS

BY Dana Bartholf

Lodge opened in regular session, June 25, with Alene Bryant in the chair and 12 members in attendance.

The minutes of the last meeting were read and approved. There were no additions or corrections.

In the report of sickness and distress, Dana Bartholf reported on her daughter and son. Ruby Green reported that Bernice Holdeman fell and hurt her arm and that Adele Tompkins is in the local nursing home.

In committee reports, there were 27 phone calls, 10 home visits, two nursing home visits, 23 cards mailed, eight gifts given, four dishes, two flowers, two funerals, and two hospital visits.

The bills were read and the per capita tax of \$336.25 was voted on, passed and paid. It was also voted on to repay Ina

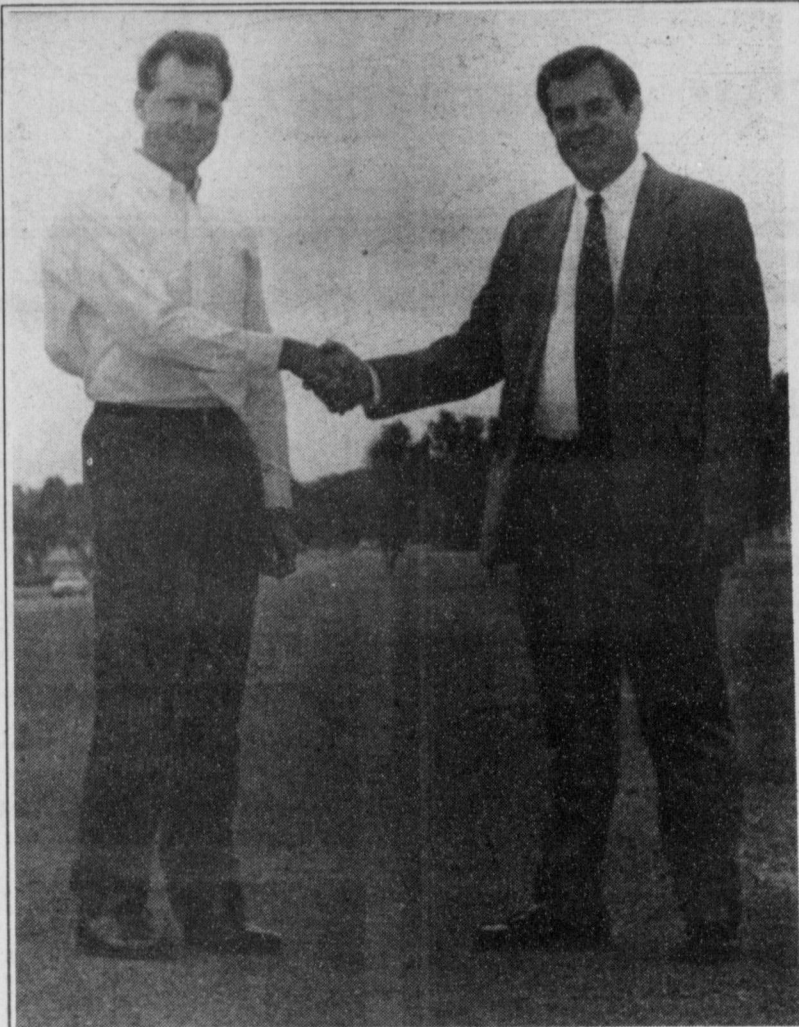
Wilemon the \$48 dollars that is owed to her. This was passed and paid. There is a check number 1499, dated May 28, 1996, for \$79.08, missing, if anyone finds it let Patsy Chance or Ina Wilemon know.

In old business there of our members went to Friona Wednesday to purchase the material for our skirts. The money for the skirts are to be donated to the lodge.

The Rebekah garage sale has been postponed until after they have a cleanup day.

In new business, Ruby Green asked permission to have her family reunion in the Lodge Hall on the weekend of July 14. This was voted on and approved.

July 2, will be installation of new officers, The dress will be casual and they will have no meal. Joyline Costen will be Deputy Warden.



Rotary makes tracks

Rotary Club member Dr. Robert Lepard and Muleshoe Mayor Robert Montgomery stand on a new walking track in City Park. The Rotary Club financed construction of the track through funds raised at the club's annual Labor Day team roping.

SENIOR CITIZEN NEWS

The Senior Citizens met at the Depot, Monday, June 24, for a covered dish luncheon.

Irene Dilts led the invocation and allegiance to the Flag. There were 19 members present and two guests.

The program was given by Perry Hunsaker, he is with the "Hospice of the Plains" in Plainview.

Maxine Ragsdale encouraged everyone to attend "Keep-

ers of the Legend," which will be present July 3 to 9th.

Minutes of the last meeting were read and approved. Buster Kittrell read a poem entitled, "You Know When You Are Growing Old."

Those having birthdays in June were Clara Coffman, Zida Mae Black, Opal Robison and Crystal Walton.

The meeting was dismissed by Clara Coffman.



The tallest person to ever be president of the U.S. was Abraham Lincoln.

ROTARY CLUB NEWS

The Muleshoe Rotary Club reviewed service work for the year and installed new officers at its meeting June 25 at the Bailey County Civic Center.

The record of work by the Rotary Club for the 1995-96 year showed more than \$11,000 in funds donated to a wide range of community projects, including \$3,500 to a new walking trail at City Park.

Other projects benefitting from Rotary funds were \$3,000 in scholarships; \$1,280 for four Muleshoe youths to attend the Rotary RYLA camp; and \$1,000 for various school projects.

Installed for the 1996-97 year were:

- Lary Hooten, president.

He replaces outgoing president Mike McDearmon.

- Daniel Lusk, vice president. He replaces Hooten.

- Adrian Meador, secretary, who replaces Lusk.

- Bill James, treasurer, who replaces Sam Harlan.

- Thurman Myers, sergeant at arms, who replaces Charles Moraw.

Incoming directors for the new year will be McDearmon as past president; Robert Johnson, who will head international service; Larry Kirk, who will chair chair community service; James Turnbow, who will chair club service and Don Carter, who will chair vocational service.

WEST PLAINS TELECOMMUNICATIONS, INC.

"THE PHONE COMPANY"

P.O. Box 1012 - Muleshoe - 1-800-741-5533

NEW DIGITAL TELEPHONE SERVICE

MULESHOE - SUDAN - EARTH - SPRINGLAKE - OLTON

Call Waiting -- Cancel Call Waiting -- Call Forwarding
Tone Dialing -- Speed Calling -- Three Way Calling
Remote Access to Call Forwarding -- Toll Control

(Additional Features available as tariffs are approved)
Such as Caller ID & Voice Mail

Call our office for details

Home Folks Caring For Folks At Home.



MULESHOE AREA HOME HEALTH

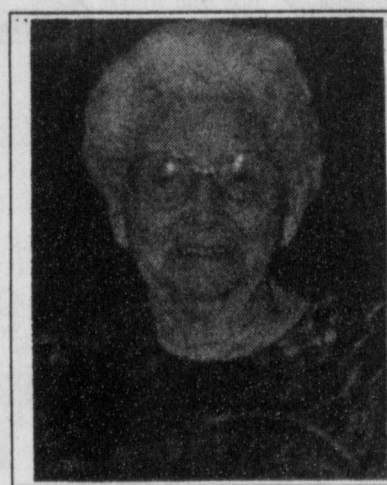
Agency

Featured Patient

Audrey Lillian Magby has lived in Muleshoe since 1984. She was married to the late James Richard Magby. She has four children - Irene Morris of Progress, Flowella Johnson of Clovis, Boyd Magby of Muleshoe and Lee Magby of Muleshoe. She has 11 grandchildren, 28 great-grandchildren and three great-great-grandchildren.

Mrs. Magby has always enjoyed being a homemaker, as well as piecing quilts in the past. She belongs to the Assembly of God in Muleshoe.

She says the girls at the Home Health Agency are all very nice. They take very good care of her.



Audrey Lillian Magby

To receive Home Health Services, talk with your physician or talk with hospital personnel when you are hospitalized.

24 Hour # 272-3346

Local Nurse on call 24 hours a day to offer prompt service.

We accept Medicare, Medicaid and Private Insurance
It Is Your Right To Choose The Home Health Agency You Prefer.



Affiliated with

LUBBOCK METHODIST HOSPITAL SYSTEM

FREE Information On Advance Directives

Also known as Living Wills or Right To Die Directives.

You may call our agency 272-3346 for these directives. You may also obtain these forms and assistance at 623 West 2nd Street.

A Brand New Video...

BAXTER BLACK by Himself

BAXTER PERFORMING HIS POETRY, ONE-ON-ONE. JOIN HIM AS HE TAKES YOU TO THE CORRAL FOR *THE SQUEEZE CHUTE* AND *JOSE AND THE HOODOO COW*. OR GO TO THE WOODS WITH HIM IN *SPRINGTIME IN THE ROCKIES* AND *THE WILDERNESS WALL*. AND OF COURSE WE CAN'T FORGET THE ARENA WITH *THE ROPER'S RULE*, *HEADER OR HEELER?* AND *THE DOG AND THE RABBIT*.
17 IN ALL, AND ALL PURE BAXTER...



Yes, send me copies of BAXTER BLACK by Himself at \$22.95 each - \$

More? You want more? ... help yourself!

- | | | | |
|---|--|---------|----|
| NEW <input type="checkbox"/> | BAXTER BLACK - COWBOY PRIDE (cassette tape)..... | \$ 9.99 | \$ |
| NEW <input type="checkbox"/> | BAXTER BLACK BUCKS OFF (cassette tape)..... | \$ 9.99 | \$ |
| <input type="checkbox"/> | DUNNY AND THE DUCK (64 pg softcover book)..... | \$12.95 | \$ |
| <input type="checkbox"/> | HEY, COWBOY, WANNA GET LUCKY? (223 pg hardback book)..... | \$21.00 | \$ |
| <input type="checkbox"/> | CROUTONS ON A COW PIE, VOLUME II (208 pg hardback book)..... | \$24.95 | \$ |
| <input type="checkbox"/> | COYOTE COWBOY POETRY (208 pg hardback book)..... | \$24.95 | \$ |
| <input type="checkbox"/> | BAXTER BLACK'S FIRST VIDEO (62 min/video)..... | \$19.95 | \$ |
| <input type="checkbox"/> | BAXTER BLACK LIVE ON PUBLIC TV (78 min/video)..... | \$19.95 | \$ |
| <input type="checkbox"/> | BAXTER BLACK LIVE UPTOWN (cassette tape)..... | \$ 9.99 | \$ |
| <input type="checkbox"/> | BAXTER BLACK LIVE AT THE GRANGE (cassette tape)..... | \$ 9.99 | \$ |
| <input type="checkbox"/> | BAXTER BLACK ON MONDAY (cassette tape - 3 VOLUMES Available).... | \$ 9.99 | \$ |
| <small>(Please select one or more Tape #1, Tape #2, or Tape #3 at \$9.99 each)</small> | | | |
| <input type="checkbox"/> | 4 PAK Cassette Collection (4 cassette tape set)..... | \$25.75 | \$ |
| <small>(Baxter Black Live, Baxter Black & Friends, Generic Cowboy Poetry & The Buckskin Mare)</small> | | | |

Shipping Charges	Order total:	Add
	Up to \$20.00	\$2.00
	\$20.01 to \$50.00	\$3.00
	\$50.01 to \$75.00	\$4.00
	\$75.01 to \$100.00	\$5.00
	\$100.01 & up	\$6.00

Shipping Charges \$

Grand Total \$

Please send your check or money order to: COYOTE COWBOY COMPANY

NAME _____
ADDRESS: _____
CITY: _____ STATE: _____ ZIP: _____

ATTN: DEPT MULE
P.O. BOX 190
BRIGHTON, CO 80601
MC & VISA

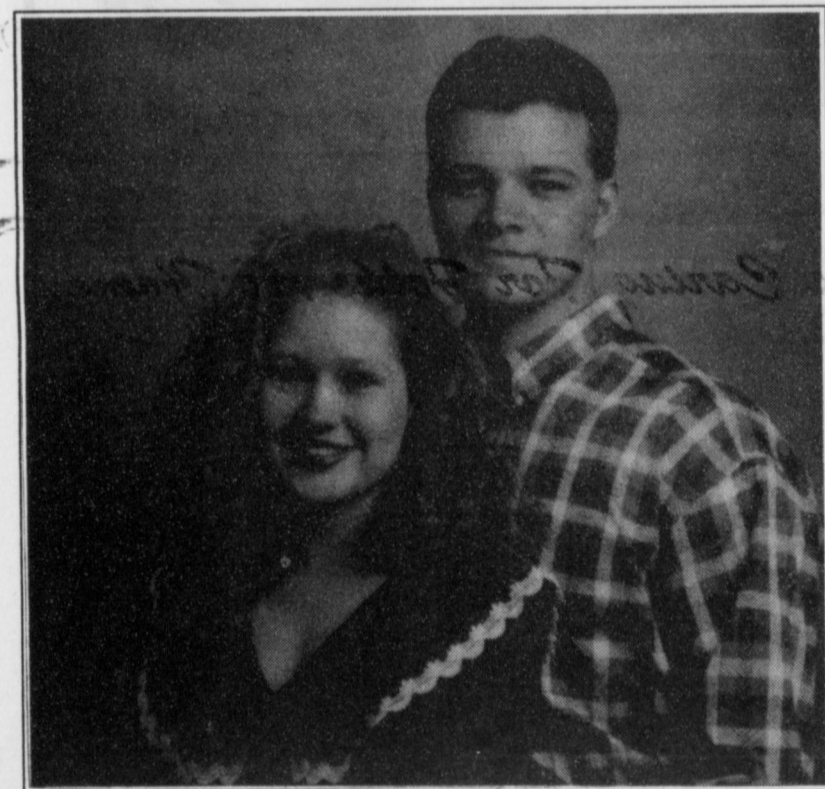
ENGAGEMENT



Beth Ann Kuehn and Armando Torres

Frank and Shirley Lehman of Crothersville, Ind., announce the engagement and approaching marriage of their daughter to Armando Torres, son of Juan and Irma Torres of Lazbuddie. Beth Ann is a 1996 graduate of Christ for the Nations Institute in Dallas and a graduate of Crothersville High School. Armando is a graduate of the First Baptist High School in Lazbuddie and a 1995 graduate of Christ for the Nations Institute in Dallas. Armando is currently pastoring a church in Dothan, Ala and is working with Aftershock Ministries Youth Conference in Dothan. The couple plan a July 5 wedding at the New Life Campgrounds in Underwood, Ind., with a reception to follow.

ENGAGEMENT



Stacy Duncan and Bryan Wehmeyer

Mr. and Mrs. Sidney Duncan, of Clovis, N.M., announce the engagement and approaching marriage of their daughter, Stacy, to Bryan Wehmeyer, of Cannon AFB, and son of Mr. and Mrs. Tony Jacobs, of Waterloo, Ill. Stacy is a 1994 graduate of Clovis High School and is currently attending Clovis Community College as a radiologic technologist student. She is currently employed by Plan Inc. as a life guard. Bryan is stationed at Cannon AFB, Clovis, N.M. as an Avionics Technician on an F 111. He attended Waterloo High School, Waterloo Ill. and attended Tech school for Air Force in Denver, Colo. The couple plan a August 10 wedding at the 16th and Pile Church of Christ in Clovis.

SCAC NEWS

The Student Community Action Club (SCAC) met recently in the home of Barak Harlan and elected new officers for the 1996-97 school year.

Elected were, president, Heather Hooten, vice president, Mark McGuire, secretary, Stacy Harlan, treasurer, Colby Latham, reporter, JoBeth Gilleland, chaplain, Chris Shelburne, parliamentarian, Isaac Miramontes and historian, Cari Faver.

Outgoing officers were, president, Barak harlan, vice president, Michelle Williams, secretary, Chad Johnson, treasurer, Cari Favor, reporter, Heather Hooten, chaplain, Carlos Rojas, parliamentarian, John Embry and historian, Holly Hutton.

PUBLIC RECORD

OBITUARIES

Bessie Harryman Tilger

MORTON — Funeral services for Bessie Harryman Tilger, 78, of Morton were held Friday, June 28, at the First Baptist Church of Morton with Danny Jackson, pastor, officiating.

Burial followed in the City of Lubbock Cemetery under the direction of the Ellis Funeral Home of Morton.

Mrs. Tilger died Wednesday, June 26, at the Methodist Hospital in Lubbock after an illness.

She was born May 21, 1918 in York Town, Texas. She married Orville Tilger August 6, 1938 in Brownfield, Texas.

She was a 1935 graduate of Ropes High School where she played on the state girls basketball team. She was a member of Who's Who in America twice.

She was actively involved in selecting young girls to train as nurses to work at the Cochran Memorial Hospital. She was also active in the Cochran County Sheriff's Posse. She was a member of the First Baptist Church of Morton, where she taught Sunday School for a number of years.

She was the first lady to be selected to the Morton City Council. She was a homemaker.

Survivors include her husband, Orville, of the home; one son, Dale Tilger of Morton; one sister, Margaret Stepleton of Houston.

Kathryn Cooper

MORTON — Funeral services for Kathryn Cooper, 78, of Morton, were held Thursday, June 27, at the First Missionary Baptist Church with the Rev. Gordon Renshaw, officiating.

Burial followed in the Morton Memorial Cemetery under the direction of the Ellis Funeral Home of Morton.

Mrs. Cooper died, Tuesday, June 25, in the Cochran Memorial Hospital after an illness. She was born Jan. 25, 1918 in Calahan County, Texas. She married G.E. "Jr" Cooper, July 14, 1965 in Denver City, Texas. Her first husband, H.L. "Short" Baker died in 1964.

She had been a resident of Morton since 1949, moving there from Vealmoor, Texas. She was a member of the Morton Senior Citizens and the First Missionary Baptist Church. She was a homemaker.

Survivors include her husband, G.F. "Jr" Cooper of the home; four sons, Donnye Baker of Morton, Larry Baker of Bryan, Texas, George F. Cooper, III, of San Angelo, and Jerry Don Cooper of Lubbock; one daughter, Janice M. Bracken of Mesquite, Texas; one sister, Bennie Barber of Big Spring; one brother, Dean Holland of Big Spring; 13 grandchildren and 17 great-grandchildren.

The family suggest memorials to the Lubbock Meals on Wheels, 2304 34th St., Lubbock, Texas 79411 or the Morton Senior Citizens.

POLICE

Arrests

June 20 — Margaret Rodriguez, 23, was charged with failure to appear, no insurance, and no seat belt.

June 21 — Ronald Wayne Armstrong, 17, was charged on a DPS warrant for speeding, no seatbelt, and failure to appear.

June 24 — Alvaro Venegas, 26, was charged with disorderly conduct (fighting).

June 24 — Cipriana Marie Perez, 22, was charged with disorderly conduct (fighting).

June 24 — Elvira Sepulveda Flores, 36, was charged with disorderly conduct (fighting).

SHERIFF'S

Arrests

June 21 — Jose Sambrano, 32, was charged with probation violation.

June 24 — Joe Arrendondo, 22, was charged with assault.

June 24 — Fabian G. Toscano, 35, was charged with theft by check.

June 25 — Tracey W. Angeley, 55, was charged with assault.

June 25 — Maria Arriola, 25, was charged with class C theft.

HOSPITAL ADMISSIONS

The Muleshoe Area Medical Center has reported the following admissions:

June 21 — Marie Carmen Gonzales

June 22 — Marie Carmen Gonzales, Robbie Nowlin

June 23 — Marie Carmen Gonzales, Robbie Nowlin, Eris Anthony, Gilbert Castorena

June 24 — Robbie Nowlin, Eris Anthony

June 25 — Eris Anthony, Dovie Sears

June 26 — Alijandro Sisneros, Eris Anthony, Robert Byrd, Dovie Sears, Eldridge Graves, Beatrice Blackburn

June 27 — Alijandro Sisneros, Eris Anthony, Robert Byrd, Dovie Sears, Maggie Martinez, Eldridge Graves, Beatrice Blackburn

Annual Art Show

Various Artists July 3,4,5,6

Demonstrations at Joe's Boot Shop & Rheata White Studio & Gallery

with Mickey Stephens, Buster Jones, Paul Milosevich, Thresa Naggs, Bethe Macrejewski, Rheata White, Jason Sailor, Herring, Cox, Green and others.

Floral Design - 1 Day Classes - July 10th & 13th, 10:00-2:00

Beginners Oil Painting - Fridays 3:00-5:30

Beginners Water Color and/or Drawing - Tuesdays 10:00-12:00

Beginners Silk Painting - Thursdays 10:00-2:00

Thursday Afternoons - Kids - 3:00-4:00, 4:00-5:00

Reservations Must Be Made

Rheata White Studio & Gallery

228 Main, Muleshoe 272-3889 or 272-4696 - before 6:00 p.m.
272-4888 (from 1:00-5:00) Tues., Wed., Thurs.

Have A Nice Day!


THURSDAY, JULY 4TH

SCHEDULE

7:00-9:00 a.m. - Chuckwagon Breakfast-Mulelot

9:00 a.m. - Parade Line-Up, south end of Main Street

10:00 a.m. - Parade begins



Land of the free
Home of the bray..
Happy 4th
MULESHOE, TEXAS

After parade -At this time we encourage your family to take in the sites. Muleshoe Heritage Center hosts the largest Mule Shoe, Jane's Ranch House, Depot, and Log Cabin. The Outdoor Play: Keepers of the Legend, hosted by Muleplex will begin at 8:30 p.m. at the Heritage Center.

Joe's Boot Shop - Tent Sale and Live Entertainment through the day.

Treasure's from the Heart will host a Flea Market and Antique Sale. Muleshoe Country Club will host a Golf Scramble, tee off time 1:00 p.m.-call before 12:00 for reservations. We want your family to take time out to observe the many murals painted on the buildings depicting our Bailey County heritage and the cultures in Muleshoe.

Last but not least, we want you to visit our local businesses, many have stayed open this holiday.

2:00 p.m. - Park Activities begin: games, food and craft booths

3:00 p.m. - Local talent takes stage

5:00 p.m. - Kids Relays, Young Riders, Dummy Roping

5:30 p.m. - Turtle Races

6:00 p.m. - Tractor Pull

8:00 p.m. - 10:00 p.m. - Bubba Cox and Lariat Band


10:00 p.m. - Fireworks display

After fireworks - Street Dance in front of KMUL, KKYC sponsoring

MULESHOE STATE BANK

101 W. American Blvd.
272-4561 Muleshoe, TX

801 Ave. A
481-9580 Farwell, TX



Treasures From The Heart

TENT SALE

July 2-6

Truck Load of Antique Furniture

Buffets

Secretaries

Children's Wardrobes

Small Collectables & Handmade Crafts

Dressers

Wardrobe

OPEN:
10:00-5:30
Monday thru
Saturday

1536 W.
American Blvd.
Muleshoe 272-4217
(Formerly Leal's Restaurant)

July 4th

JOIN US FOR

TRADE DAYS

• Sidewalk Sales • Garage Sales
• Lemonade & Coke Stands
• Kids Corner • Special Inside Buys
Parking Lot Spaces Still Available

Jacqueline Starr, Gunstream wed in Shreveport

Copy deadline

The deadline for news items to be submitted to the Muleshoe and Bailey County Journals is at noon on the preceding Tuesday for the Thursday edition and at noon on the preceding Friday for the Sunday edition. (Copy deadlines for society news: wedding, anniversary, engagement and birthday announcements are at 5 p.m. on Monday and Wednesday for the Thursday and Sunday editions.)

SHREVEPORT, La. — Jacqueline Tanya Starr and Danny Hagen Gunstream, both of Shreveport, La., were united in marriage Saturday, June 29, in the Cathedral of St. John Berchmans, with Father Charles Glorioso officiated.

Music was provided by Larry Meier, organist; trumpeters Mike Scarlato and Gary Wurtz. Violinists were Leonard Kacencjar and Gary Bruns backed by a string quartet and Pete Terracina provided vocal.

The brides parents are Mr. and Mrs. Jay T. Starr of Shreveport. Her grandparents are the late Mr. W.E. Strickland of Winnfield, La., Mrs. Freda Starr and the late Mr. Elmer Starr, both of Houston.

The grooms parents are Mr. and Mrs. R. Daniel "Smokey" Hyde of Shreveport. Mrs. Hyde is the former Shirley Henry of Muleshoe and Mr. Danny Michael Gunstream of Bossier City, La., also formerly of Muleshoe. Grandparents are Mr. and Mrs. M.D. Gunstream

of Ruidoso, N.M. and Mr. and Mrs. Clyde Henry, of Canyon, Texas, formerly of Muleshoe.

Given in marriage by her father, the bride wore a delicate white Italian satin gown with a beaded bodice. The slim skirt had a scalloped border of the same beaded lace as does the detachable chapel train. Elegant tapered sleeves with pearls enhanced her cathedral length veil.

Kristy Costanza, cousin of the bride, served as maid of honor. Bridesmaids were Anna Joyner and Marilyn Jackson, both of Shreveport. Groomsmen were Curtis Joyner, Danny Hyde, brother of the groom and Mike Johnson, all of Shreveport. David Donahue, brother-in-law of the groom, of Dallas, Frank Piccolo, brother of the bride, and Jason Piccolo, nephew of the bride, both of Natchitoches, La.

Lauren Joyner, God child of the groom, served as flower girl and Allison Piccolo, niece of the bride, served as ring bearer.

The bride is a graduate of Northwood High School and is a sales representative for Stay In Touch Paging, Inc. in Shreveport. The groom is a graduate of Southwood High School and LSU Baton Rouge. He is a member of Phi Kappa Theta Fraternity and is employed at Stay In Touch Paging, Inc. as manager of all retail branches.

The reception was held in the home of the groom's parents, Mr. and Mrs. Smokey Hyde. As the sun set across Cross Lake, along with torches and lighted fountains, the mood was set for a traditional old South feast of frog legs, chicken wings and catfish fingers. The highlight was the departure of the bride and groom, as a wedding barge picked up the new

Mr. and Mrs. Gunstream, and escorted them across Cross Lake amidst a sparkling fireworks display.

After a wedding trip to Cancun, Mexico, the couple will reside in Shreveport.

Common sense is the collection of prejudices acquired by age 18.

—Albert Einstein



GOD'S HOUSE IS ALWAYS OPEN

Immaculate Conception Catholic Church
805 E. Hickory
Father Joseph Augustine

First Baptist Church
220 West Ave. E.
Pastor, Stacey Conner

Emmanuel Baptist Church
Iglesia Bautista Emmanuel
107 East Third
Isaias Cardenas, Pastor

Trinity Baptist Church
314 E. Ave. B
Pastor Robert Brown

Circle Back Baptist Church
Intersection FM 3397 & FM 298
Rev. Jessie Shaver
946-3676

Calvary Baptist Church
1733 W. Ave. C
Pastor Ben Davis

Progress Baptist Church
Progress, Texas

Richland Hills Baptist Church
17th & West Ave. D, Brad Gathright
St. Matthews Baptist Church
Corner of West Boston & West Birch
Pastor, Floyd R. Monroe

Progress Second Baptist Church
1st and 3rd Sundays, Rev. Arthur Hayes

Primitive Baptist Church
621 South First
Elder Cleveland Bass, Pastor

1st Baptist Church
Lazbuddie, Tx. 965-2126

Lazbuddie Church of Christ
Minister, Nathan Crawford
Sunday School 9:30 a.m.
Morning Services 10:20 a.m.
Evening Services 5:00 p.m.
Wednesday Night 7:00 p.m.

First Assembly of God
272-3017 or 272-3984
Rev. Jack Stone, Pastor
521 South First Street
Sunday Services:
9:45 & 11:00 a.m., 6:30 p.m.
Wednesday Services 7:30 p.m.

Lazbuddie Methodist Church
965-2121

On Top

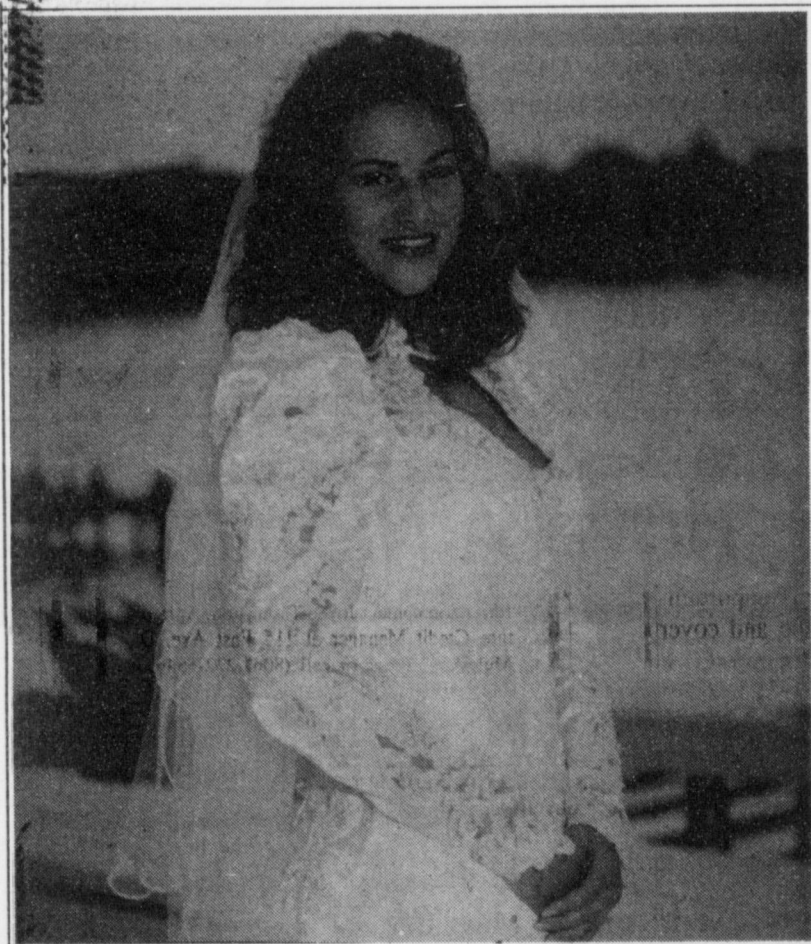
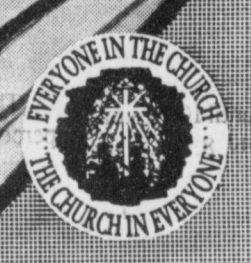
The Bible, "God's holy word," is still the best seller, and most quoted book. From the original Greek and Hebrew this book has been translated into many languages:

Through the centuries men have devotedly studied and sought out the truth in the Bible. When one reads the Bible with an open mind, God's word is "as sharp as a two edged sword."



The Church is God's appointed agency in this world for spreading the knowledge of His love for man and of His demand for man to respond to that love by loving his neighbor. Without this grounding in the love of God, no government or society or way of life will long persevere and the freedoms which we hold so dear will inevitably perish. Therefore, even from a selfish point of view, one should support the Church for the sake of the welfare of himself and his family. Beyond that, however, every person should uphold and participate in the Church because it tells the truth about man's life, death and destiny; the truth which alone will set him free to live as a child of God.

© Coleman Adv. Serv.



Mrs. Danny Gunstream nee Jacqueline Starr

"Well, It Just Must Be the Will of God"

Well, it is the will of God. That's all there is to it."

So said an anguished father in India who had just lost his young son in a cholera epidemic. So, unfortunately, says someone at almost every death, tragedy, or disaster the world has ever known. We say it because we don't know

what else to say. Better to keep our mouths shut. We say it because we feel that in some way everything that happens in a world created by an all-powerful God must be part of His will. Wrong. That was true in Paradise, but it has ceased to be true since sin and its consequences, everything from cockleburrs to mortality, entered Eden and spoiled Paradise.

The little boy had died. The father was trying to resign himself to life without his son. "It is just the will of God," he said again to a wise missionary named Leslie Weatherhead who knew him well enough to try to help him think about what he was saying:

"Supposing someone crept up the steps onto the veranda tonight, while you slept, and deliberately put a wad of cotton soaked in cholera germ culture over your little girl's mouth as she lay in that cot there on the veranda, what would you think about that?"

"My God," he said, "what would I think about that? Nobody would do such a damnable thing. If he attempted it and I caught him, I would kill him with as little compunction as I would a snake, and throw him over the veranda."

"But John," Weatherhead said quietly, "isn't that just what you have accused God of doing when you said it was his will? Call your little boy's death the result of mass ignorance, call it mass folly, call it mass sin, if you like, call it bad drains or communal carelessness, but don't call it the will of God."

In a very fine little book entitled *The Will of God*, Weatherhead went on to say, "Surely we cannot identify as the will of God something for which a man would be locked up in jail, or put in a criminal lunatic asylum."

But we do. All too often we do. Like insurance companies who label everything they can't control or don't understand an "act of God," we lay at the feet of the Author of life the blame for death and we attach to the Giver of all good gifts the responsibility for almost everything that goes very badly wrong. I know, because I do it, too.

It is a mistake that says more about me than I like to think.

Curtis Shelburne is minister of the 16th & Avenue D Church of Christ in Muleshoe.



Focus On Faith
Curtis Shelburne

what else to say. Better to keep our mouths shut. We say it because we feel that in some way everything that happens in a world created by an all-powerful God must be part of His will. Wrong. That was true in Paradise, but it has ceased to be true since sin and its consequences, everything from cockleburrs to mortality, entered Eden and spoiled Paradise.

The little boy had died. The father was trying to resign himself to life without his son. "It is just the will of God," he said again to a wise missionary named Leslie Weatherhead who knew him well enough to try to help him think about what he was saying:

"Supposing someone crept up the steps onto the veranda tonight, while you slept, and deliberately put a wad of cotton soaked in

El Divino Salvador Methodist Church
E. 5th and E. Ave. D
Guadalupe Ballinas, Pastor

First United Methodist Church
507 W. 2nd Street
John Wagoner, Pastor
9:00 a.m. - Holy Communion, Chapel
9:45 a.m. - Sunday School
11:00 a.m. - Morning Worship, Sanctuary

St. John Lutheran
Lariat, Texas
Sunday School and Bible Church Services 9:30 a.m.
Fellowship 10:30 a.m.
Classes 10:45 a.m.
Rev. Richard Greenthaner

The Christian Center
Morton Hwy.
Reydon Stanford
272-3877

New Covenant Church
Plainview Hwy
Sunday School 9:30 a.m.
Sunday Morning Worship 10:15 a.m.
Wednesday 7:00 p.m.
Jimmy Low, Pastor

New Vision Church Of The Nazarene
814 W. Ave. C
272-3622
Pastor David R. McIntire

Primera Iglesia Bautista
223 E. Ave. B
Roy Martinez, Pastor

"Iglesia Pentecostal Unida"
207 East Ave. G
272-3636
Pastor: Wenceslado Trevino

Lariat Church of Christ
Sunday School 10:00 a.m.
Worship 11:00 & 6:00
Wednesday Services 7:00 p.m.
Sam Billingsley, Minister

Muleshoe Church of Christ
21st & W. Amer. Blvd
Sunday School 9:30 a.m.
Morning Worship 10:20
Evening Services 6 p.m.
Wed. Night 7:30 p.m.
John Knox, Minister

16th & Ave. D Church of Christ
Sunday Morning Family Bible Study 9:45 a.m.
Worship 10:30 a.m.
Small Groups/Afternoon Service 1:30 p.m.
Wednesday 7:00 p.m.
Curtis Shelburne, Minister
272-4619

Irrigation Pumps & Power
W. Hwy 84 272-4483

Western Drug
114 Main 272-3106

Bobo Insurance Agency
108 E. Ave. C 272-4264

5-Area Telephone Cooperative, Inc.
302 Uvalde 272-5533

Attend The Church Of Your Choice!

James Crane Tire Co.
322 N. 1st 272-4594

American Valley, Inc.
W. Hwy 84 272-4266

Bob Stovall Printing
221 E. Ave. B. 272-3373

Wes-Tex Feed Yards, Inc.
272-7555

Bailey Gin Co.
946-3397

First Bank
Member F.D.I.C.
202 South First 272-4515

Journal Classifieds

Call 272-4536 Deadlines: For Thursday, 5 p.m. Monday; for Sunday, 5 p.m. Thursday Call 272-4536

A Journal back in time



1 year ago July 2, 1995

Mia Jennings, from Lazbudie, participated in the Miss Texas/America Pageant.

Lowe's Market Place hosted a golf tournament in Lubbock.

July 6, 1995

A Frontiers in Writing Conference was held in Amarillo for unpublished writers.

Brenda Lapps was hired as a special education teacher at M.I.S.D.

5 years ago July 4, 1991

Shurfine 25 lb. bag of dog food was \$3.99.

Hot weather helped cotton after an excessive amount of rain.

July 7, 1991

Marsha Wilson was Kiwanis sweetheart.

The top five songs were 1. "The Thunder Rolls", Garth Brooks 2. "Don't Rock the Juke Box", Alan Jackson 3. "Point of Light", Randy

Travis 4. "We Both Walk", Lorrie Morgan 5. "I am a simple man", Ricky Van Shelton.

10 years ago July 3, 1986

The class of 1976 held their 10 year reunion. They had dinner at the Catholic Church and KMUL disc jockeys supplied music from the 70's.

JoBeth Gilliland was the "Leader of Tomorrow."

July 6, 1986

Two papers before July 6, the Journal ran an "MHS Trivia" and the answers appeared in this paper. Who ever answered the most questions correctly won \$25-100. One question asked "What was the theme of the 1959 Jr./Sr. Banquet?" The answer, "Oriental Garden". Another question asked "When did the MHS Band become the 'Mighty M Marching Band'?" The answer, "1958-59."

Frito's chips at Pay-n-Save

were .99¢. 25 years ago July 1, 1971

A question asked "Chicago is planning the world's tallest building, name it". The answer was the Sears Roebuck's 110-story headquarters. It is 1450 ft.

July 6, 1971

Record albums at Gibson's were \$3.75.

Tommy Gibbins and Janie Cousatte received their marriage license.

The Ringling Brothers and Barnum and Bailey performed a show in Lubbock.

50 years ago June 27, 1946

An article listed 12 men in the war that were missing or dead. Those men were Tech. Sgt. Ira L. Arnold, Master Sgt. Raymond W. Damron, Pvt. Alfred M. Dockins, Tec. 5 Robert L. Gore, S. Sgt. Buster W. Harper, 1st Lt. Clarence Jaeggli, Capt. Glen T. Maltby, Jr., 1st Lt. Walter A.W. Moeller, Pvt. Glen Ogle, Pvt. Henry G. Pollard, Jr., Pfc. W.W. Southerland, Pfc. Frank Tarleton. Four of these men were killed in action, one was missing, five died in non-battle action.

— Compiled by
Lesli Radford

AVON

Has Openings For Representatives
For Information, contact Tommie - Toll Free 1-888-222-5099
Independent Representative

26s-4tpd

Real Estate

For Sale - By owner, 3 bdrm, 1 3/4 bath, single garage in Richland Hills Addition of Muleshoe. For more info call 806-965-2477.

For Sale - 3 bdrm, 2 bath, 2100 sq. ft. - recently updated - new central air, fireplace, and lots of extras \$65,000 - Open House Sunday, July 7, 2-5 p.m., 1722 W. Ave. Dor Call 272-4818 for an appointment.
26t-4tpd

House For Sale: Nice 3 bedroom, one bath, in Lenau Addition. Call 272-3920.
23s-6sun c

For Sale by Owner: 4-3 carport, basement, large lot, newly remodeled, builtins, formal living and dining area, family den and dining area, 3300 sq. ft. 272-3024.
27s-4tpd

Wanted

\$\$\$ WANTED \$\$\$
We buy used mobile homes. We pay top dollar, any year, any condition. We need your used mobile home. Please Call 1-800-404-1321.
7t-tfc

Want to do house cleaning. Call Becky 272-5205.
27s-3tpd

For Sale

For Sale
CONSOLE/SPINET PIANO
Take on small payments. See locally
1800-343-6494.
27s-1tpd

For Sale: Maytag Washer and Dryer. Call 965-2389.
27s-tfc

For Sale: Metal Shop, 60 ft x 80 ft, on 230 ft. x 175 ft. lot. Call 272-4817 or 272-5205
27s-4tpd

For Sale - Real Cheap
Hens - Geese - Ducks - Pot Belly Pig - Rabbits - Guinipigs - Love birds with cages - pea hen. 806-257-2212.
25s-3 sun pd.

Miscellaneous

Round-up Applications
Pipe-Wick mounted on high-boy, 30" or 4" rows. Cotton, Milo, Soy Beans and Corn.
Call Roy OBryan, 806-265-3247.
25t-tfc

Reflexology
For stress, headache, diabetes, P.M.S., Muscle Strain, Back Problems, Appts: 272-4867.
24s-6 sunpd

90 Days - No Payment
2-3 or 4 bdrm mobile homes available. Free Washer and Dryer pkg. with ad.
Call Bryan 800-333-8803

Used and Repos
2 and 3 bdrm mobile homes for sale. Financing available. Call Bryan 800-333-8803.
25t-4tc

PRIMESTAR
Mini Dish TV
About \$1 per day
No dish to buy.
505-762-0679
1-800-815-2358 pin #9240
23t-tfc

Farm For Sale

1 Acre For Sale or Trade, Large Barn, 2 wells, and Septic Tank. Call 903-963-7917
25s-5tc

Auto Insurance
1 Mon. - 12 Mon.
Payment Plans
Jennings Insurance
1-800-413-4444
Littlefield
26s- sun tfc

BETTER LIVING

MOBILE HOMES
Spring Special
6 - 1800' sq. ft. Double Wides to choose from.
\$10,000 SAVINGS
WAS \$59,000
SPRING SPECIAL
\$49,995
Hurry in - these won't last long!
Model #8952*
*Approximate

1-800-404-1321
(505)356-5448
Portales
Lic. # D00681
'Se Habla Espanol'

NOTICE TO BIDDERS

The Bailey County Commissioners Court will receive bids until 10:00 a.m., Monday, July 8, 1996, for the purchase of fuel for all Bailey County vehicles and road equipment. Purchases will be made through pumps with the use of key cards. All fuel purchases by the Precincts, as well as diesel purchases by the Ambulance Service, will require storage tanks, which may need to be furnished. Bailey County is required to pay state taxes, but is exempt from federal taxes. Bailey County is a bonded user of diesel fuel.

Separate unit bids will need to be submitted for

gasoline, regular and unleaded, and for diesel fuel. Please submit bids for entire county and/or by individual precinct.

The bids shall reflect the percentage above wholesale cost of fuel per tank wagon. This percentage shall remain in constant throughout the term of the agreement. Payment will be made from General and Precinct funds.

The Commissioners Court reserves the right to reject any or all bids and to waive formalities. Bids should be submitted to the County Judge's office, 300 South 1st, Muleshoe, Texas 79347, prior to the above date and time.

Published in the Bailey County Journal Sunday, June 23 and 30, 1996.

Help Wanted

CONSERVATION JOBS:

Wildlife positions \$16,000 - \$35,000/yr. Clerical, security, game warden, etc. No experience. For info call 219-769-8301 Ext. WTX 759. 8 a.m. - 8 p.m. Sun.-Fri.
27s-4 sun pd

Muleshoe Independent School District is now taking applications for bus drivers for the 1996-97 school year. For more information, please call Richard at MISD, 272-4710.
25s-6tc

Automobile

1990 Dually extended cab, automatic, 460 engine, fuel injection, all power, \$11,995.00 (505) 359-1775, Portales

1991 extended cab, dually diesel, \$10,995.00 (505) 359-0947, Portales

1987 Corvette, loaded, 5 speed, 64,000 actual miles, extra nice (505) 359-1775, Portales

1994 Chrysler LHS, low miles, loaded, sunroof, \$17,995.00 (505) 359-1775, Portales

Ford Pick-ups - extended cabs - all with 460 engines. 4 to choose from. (505) 359-0947, Portales

I don't meet competition; I crush it.
— Charles Revson

Classifieds Sell!

Call The Journal Today
272-4536

James F. Hayes & Co.

AGRICULTURAL REAL ESTATE SERVICES

656 Acres of C.R.P. — Clays Corner Hub Area. Two years left on contract. 3 irrigation wells, 1 domestic well. 90% lays good with good soils. Will be productive farm when it comes out of C.R.P.

640 Acres Oklahoma Lane — 2 Sprinklers, 4 irrigation wells, 115 Acres of pasture, modest home, 2 domestic wells

152 Acres West of Muleshoe. Electric Center pivot sprinkler. 2 wells, 1/2 circle of improved grass. Good barbed wire fence.

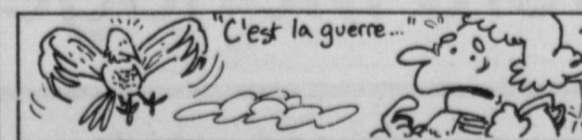
120 acres west of Muleshoe. 2 wells. Good soil. Lays good. Immediate possession available. \$250.00 per acre.

320 Acres in the Lazbuddie area, 2 wells, 1 sprinkler, 80 acres of C.R.P. PRICED RIGHT

160 Acres Northeast of Muleshoe in Parmer County. Excellent water. Excellent soil. Electric Center Pivot Sprinkler. New set of bowls on pump. Top Notch Farm

317 Acres in Lamb County on Bailey County line. 3 wells, 1 sprinkler, lays good. Call for details!

Vic Coker, Agent
310 Main St. Suite 103 Muleshoe
Office 272-3100 Home 965-2468
WHEN LAND INVOLVES COWS AND PLOWS



The first successful parachute jump was made from a tower in 1783 by the French physicist Sebastien Lenormand.

CLASSIFIED RATES

15 Words And Under, First Run: \$3.00
Every Run After The Initial Run: \$2.55
16 Words And Over: 1st Run .20 Per Word
16 Words And Over: 2nd Run .17 Per Word
CLASSIFIED DISPLAY RATES
\$3.00 Per Column Inch
DEADLINES
For Thursday Paper, 5 p.m. Monday
For Sunday Paper, 5 p.m. Thursday

To Receive The Reduced Rate After The First Insertion, The Ad Must Run Continuously. We Reserve The Right To Classify, Revise, Or Reject Any Ad. We Are Not Responsible For Any Error After Ad Has Run Once

Byrd Realty
Ronald Byrd
Licensed Broker
Farwell, Texas

Crista Bass
Sales Associate
Home (806) 925-6464

Office (806) 481-3846
Mobile (505) 760-1495
308 Third St., Farwell, TX

In The Country, 3 bedroom, 1 3/4 bath, 2 car garage. Additional 2 bedroom, 1 bath home. 30' x 80' quonset barn, large domestic well, 20'x60' metal R.V. storage building. Highway frontage. All on 8 acres. Many, Many extras! Call For Details

78 Acres NW of Muleshoe, Highway Frontage. Excellent development property. Owner will sell as one unit for \$40,000 or will divide into 5 or 10 acre tracts at \$750.00 per acre. If you have wanted a small acreage, this is your prime opportunity

Northwest of Muleshoe - Nice 3 bedroom, 1 3/4 bath home, has nice utility room and large living room with single car garage. Also large storage building and an additional mobile home hood-up. Call for more details

A leader in the telecommunications field.
SALES
Expansion and growth requires us to add to our sales team. We are now recruiting energetic, enthusiastic, motivated outside sales representatives for the Levelland area. Experience preferred but not required, will train.

We offer a great opportunity within one of the fastest growing industries that includes: stability of a base salary, plus an attractive commission/bonus structure, vehicle allowance, cellular telephone, medical/dental/life, 401 (k) retirement savings plan, vacation and more. Rapid advancement opportunities. EOE. Please submit your resume and cover sheet to:
Human Resource, 1005 College Avenue
Levelland, TX 79336 No Phone Calls Please
22t-tfc

Nieman Realty
George Nieman, Broker 272-5285 or 272-5286
116 E. Ave. C

RICHLAND HILLS
JUST LISTED-IMMACULATE 3-2-2 Brick Home, Geo. Heat Pump, Built-ins, FP, Nice landscaped yd., Stor. Bldg., MORE!! \$70's!!! RH3

NICE 3-3-1 Brick, cent. Heat, Evap. Air, built-ins, 2000' + lv. area, fenced yd., stor. bldg., MORE !! \$60's !!! RH-2

VERY NICE 3-2-2 Brick, cent. A&H, built-ins, FP, approx. 2,000' + lv. area, auto, spkrl., storage bldg., fenced yd., MORE !!! \$60's !!! RH-1

NICE 3-2-2 Brick, cent. A&H, built-ins, FP, approx. 2150' lv. area, fenced yd., MORE!!! \$69K!!! RH-7

HIGHLAND AREA
VERY NICE 2-1-1 Home, wall furnace, window air, nicely decorated, storm cellar, stor. bldg. \$20's !!! HL-7
2 Bdrm, 1 bath home, fenced yard. \$16,500!!! HL-4

VERY NICE 3-2-2 Brick, Cent. A&H, built-ins, fenced yd., spkrl. sys., MUCH MORE!!! \$60's !!! HL-1

3-2-2 home, Cent. A&H, built-ins, fenced yd., corner lot. \$30's !!! HL-2

VERY NICE 3-2-1 carport Home, heat pump, built-ins, nice carpet, fans, storage-workshop! MUCH MORE!!! \$40's !!! HL-6

NICE 3-2 Home, Heat Pump, FP, fenced yd., stor. bldg. \$30's!!! HL-3

VERY NICE 3-1 1/2-2 carport home, Geothermal Heat Pump, built-ins, FP, fenced yd., Stor. Bldg. !!! HL5

RURAL HOMES
VERY NICE 3-2 Home on 13.2 acre tract on pavement close to town, built-ins, large shop w/office, large barn, storage bldgs. & MUCH MORE!!! \$125K !!! HR-1

NICE 3-2-2+2 Carport Brick Home on 2.5 acres on pavement, close to town, Heat Pump, built-ins, FP, MUCH MORE. \$70K !!! HR-3

JUST LISTED -3-2-2 Home 1.36 ac. on pavement, Cent. A&H, built-ins, freshly painted interior & exterior, fans, fenced yd., 31' x 40' barn !!! \$40's!!! HR-2

ASK ABOUT OUR COMMERCIAL LISTINGS!!!
Office Bldg. & 2, 160' shop bldg., 184' of frontage on Highway 214. PRICED TO SELL!!! \$20's!!!
160 acre tract, 8" well, circle spkrl. w/drops, fully allotted!!
PARMER - BAILEY CO. Area-Elevator & Cleaning Facility - 12 million lb. Capacity, Scales, Dryer, & Office on approx. 6.5 acres!!! PRICED TO SELL !!! POSSIBLE OWNER FINANCING!!!

SALE OF FARM REAL ESTATE
80.002 Acres More or Less
Northern Bailey County, Texas

The Farm Service Agency (FSA) will sell at a Trustee's Foreclosure Sale to the highest bidder or bidders, for cash, at the area of the Easterly door of the courthouse at 10:00 a.m. or within three hours thereafter, in Bailey County, TX, on Tuesday July 2, 1996. FSA's minimum bid is \$29,840.00. For specific information contact Joyce Thompson, Agriculture Credit Manager at 115 East Ave. D., Muleshoe, Texas or call (806) 272-5549 or (806) 792-0078.
FSA is an Equal Opportunity Lender
25s-3 sun c

LENAU ADDITION
Nice 2-2-2 Brick, on corner lot, heat pump, fenced yard, storage bldg., MORE! \$40's !!! L-1

NICE 3-2-1 carport Home, geothermal heat pump, fenced yd., storage bldg. \$27,500!!! L-3

JUST LISTED - NICE 3-2-1 Home, built-ins, heat pump, extra insulation, fenced yd., stor. bldg., \$30's!!! L-4

HIGH SCHOOL
NICE 2-1-1 Brick, Heat Pump, nice carpets, well insulated, storm windows & doors. \$30's!!! HS6

NICE 3-2 Home, Cent. A&H, built-ins, nice carpet, fans, stor. bldg., fenced yd. \$30's HS5

PRICE REDUCED-NICE 3-2-2 carport home, cent. A&H, built-ins, guest cottage or eff. apartment, insul. wkshop-stor. bldg. w/elect., fenced yd., & MORE!!! \$39K HS2

JUST LISTED -2-1-1 Home, floor & wall furnace, evap. air, siding exterior, stor. bldg., fenced yard !!! \$20's !!! HS-7

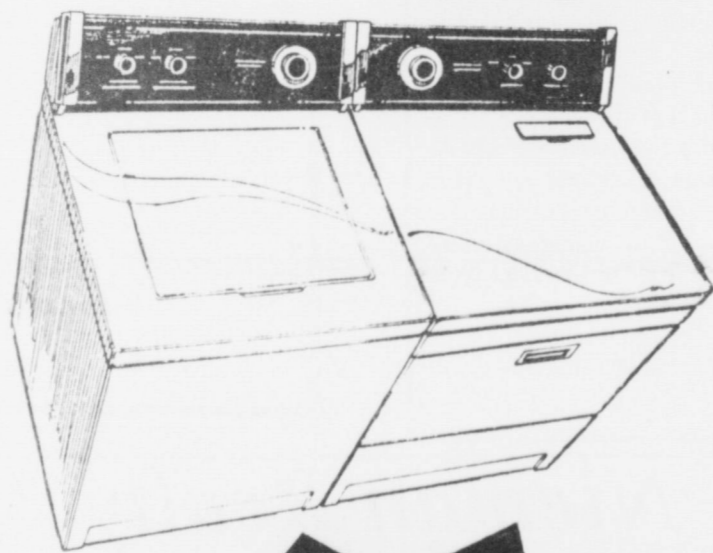
JUST LISTED-NICE 2-1-1 Home, nice carpets, stove, refrig., wall furnace, covered deck, fenced yd., stor. bldg., MORE !!! \$20's!!! HS-4

COUNTRY CLUB
2-1-1 carport home, wall furnace heat, nice carpet, storm shelter, storage bldg., fenced yd. MORE!!! \$20'S.

COLORTYME[®]

RENT • TO • OWN

Is Here In Muleshoe, Texas

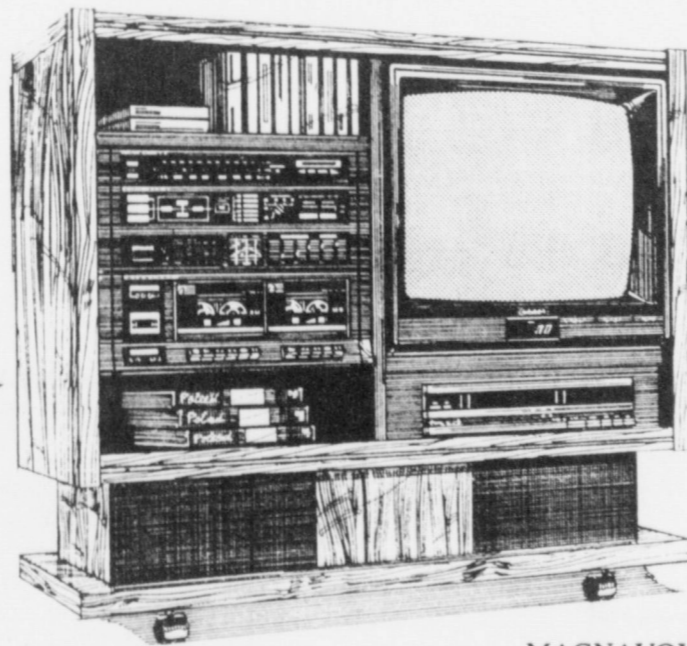


WASHER / DRYER PAIR

- Large-capacity washer
- Large-capacity 4-cycle dryer
- 3 temperature settings

WHIRLPOOL[®] REFRIGERATOR

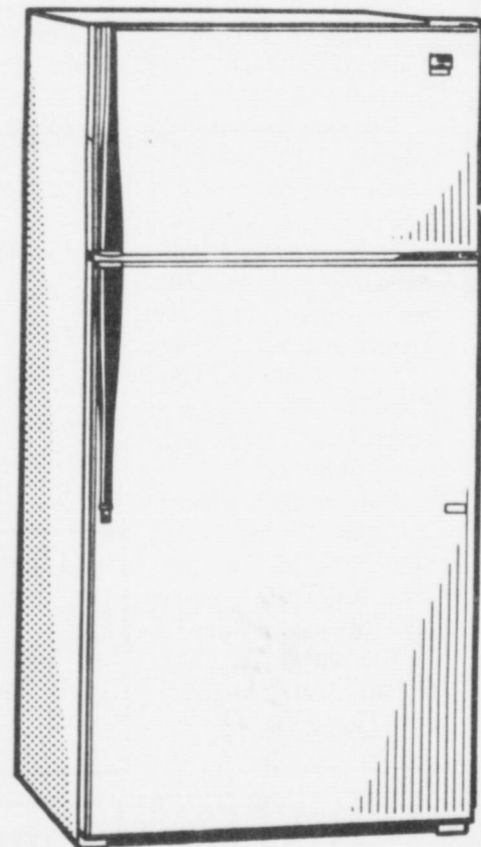
- Frost free convenience
- No fingerprint textured doors
- Choice of sizes



MAGNAVOX HOME ENTERTAINMENT CENTER

AV2510P1

- 25" TV
- Universal remote
- 15 watt audio system remote,
- VCR 2 head
- on-screen,
- woodgrain



Open 5 days a week
10 a.m.-5 p.m.
Closed on Wednesday & Sunday

We Will Be Open
4th of July 'til 2 p.m.



**129 South Main
Muleshoe, TX 272-5596
Clovis, NM 505-769-2444**

Johnny Lucero, Store Manager