

Owls Lose Second District Game To Swifts

Fire Meeting Today

The Silverton Volunteer Fire Department meets today (Thursday) at 6:30 p.m. at the fire station.

Mrs. Peggy Cole Buried Friday

Funeral services for Mrs. Wynona Faye (Peggy) Cole, 53, of Loop were conducted at 2:00 p.m. Friday at the First Baptist Church in Loop. Officiating were the Rev. C. H. Murphy, jr., pastor of the First Baptist Church in Lamesa, and Leon Grosdidier, Christian Social Mission Director of the Lubbock Baptist Association.

Graveside services followed in the Plainview Cemetery, with the Rev. Norris Taylor, pastor of the First Baptist Church in Spur, and the Rev. Gene Anglin, pastor of the Memorial Baptist Church in Lubbock, officiating.

Burial was under the direction of Connally Funeral Home of Seagraves.

Mrs. Cole died early Wednesday at Brownfield Regional Hospital after suffering a sudden illness.

She was born in Texas and married Leo Cole, pastor of the First Baptist Church at Loop, on June 22, 1946 in Tulia. They moved from Silverton to Flomot, and from there to New Home before moving to Loop in December 1978.

Mrs. Cole was preceded in death by a son, daughter-in-law, grandson and granddaughter, all of whom are also buried in the Plainview Cemetery.

Survivors include a son, John, of Socorro; three daughters, Alice Rushing of Fort Worth, Donna Finizia of Germany and Lori Bradford of Lubbock; three sisters, Mrs. J. B. Burk of Farmersville, California, Lois Tidrick of Anthony, New Mexico and Wilma Perkins of Hereford; three brothers, Ed Davis of Happy, Jack Davis and Joe Davis, both of Silverton; and four grandsons.

Bread Buffet Planned At Tulia

Do you enjoy trying different and interesting breads? Kay Wells, Swisher County Assistant Extension Agent, invites you to come to the Swisher County Extension Homemakers Annual Bread Buffet to be held in the Presbyterian Church on Friday, November 2, from 11:30 a.m. until 1:00 p.m. in Tulia. The location is at 113 North Crosby.

Salad will compliment all the different kinds of breads. There will be sweet breads and cakes for dessert. Tickets are \$2.50 and a recipe book will be available for purchase at the door.

For tickets call the Extension office, 995-3721, or contact any of the Extension Homemakers in the Swisher County clubs.

EMS CLUB TO

MEET NOVEMBER 7

Silverton EMS Club will meet Wednesday, November 7, at 8:00 p.m. at the City Hall. At the last meeting, it was decided to meet on the first Wednesday of each month.

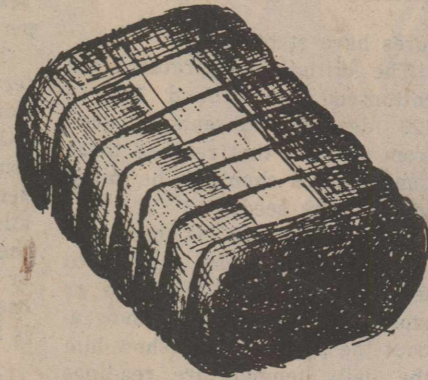
Mrs. Fogerson Selected For Special Honor

Announcement has been made by Mrs. Dexter Otis Arnold, chairman, board of advisors of the Outstanding Young Women of America, that Mrs. Lynda Lea Fogerson has been selected as one of the Outstanding Young Women of America for 1979.

Purpose of this awards program is to recognize the many young women who give their time, talents and unselfish service to enrich the quality of American life.



Silverton: Home of Scenic Lake Mackenzie



Briscoe County News

THURSDAY, NOVEMBER 1, 1979

VOLUME 71 NUMBER 44

Hail Damages Area Crops Once Again



Damage to the area's milo and cotton crops was inflicted by a storm which hit about 8:30 p.m. Monday, bringing hail, high winds and a torrent of rain. The affected cotton is stringing out of the bolls with lint and green bolls littering the ground.

Briscoe County News Photo

Meeting Date Changed Here

The date for the meeting of merchants, clubs, churches and individuals interested in promoting the Old Fashioned Christmas Jubilee in Silverton on Saturday, December 1, has been changed due to the original date being election day.

The meeting will be at 6:30 p.m. Monday, November 5, at the City Hall.

Everyone is asked to be ready to present his or her ideas for participation in the special day which will officially open the Christmas season in Silverton.

Mrs. Earl Cantwell has been a patient for several days at Lockney General Hospital.

SENIOR CITIZENS TO HAVE BIRTHDAY PARTY

Silverton Senior Citizens will have their regular monthly birthday party Tuesday, November 6, at 6:00 p.m.

Please note the time change from 7:00 to 6:00 p.m.

Everyone needs to bring a partner for "42."

Chalupa Supper Is Friday Night

The Silverton chapter of Future Homemakers of America will sponsor a Chalupa Supper Friday night, November 2, before the Silverton - Claude game.

Chalupas, tortillas, chili con queso, hot sauce, salad, home-

Once again hail, high winds and heavy rains have damaged Briscoe County crops in the Silverton area. In addition, roofs, windows, vehicles, trees and shrubs in the path of the storm were damaged.

The storm, which began about 8:30 p.m. Monday with a tornado watch, dumped a large quantity of hail ranging from pea to golfball and henegg size. When the hail stopped falling, the ground looked like it was covered with a couple of inches of snow.

When the tornado watch neared its 2:00 a.m. expiration, another tornado watch was placed into effect until 6:00 a.m. Tuesday. The storm that began about 2:00 a.m. brought a hard downpour of rain and high winds to the area. The overnight rainfall figure in Silverton was 1.70 inches, as officially measured by Fred A. Strange.

At Lake Mackenzie, rainfall measured 2.50 inches, but the hail was small and fell only a few minutes. According to Mrs. Neil Taylor, it was not considered to be a damaging hailstorm.

It is not yet known just how much damage the cotton and milo crops received. Most of the soybean crop in the path of the storm already had been harvested, and much of the maize had been cut. The milo was still standing, but some of the grain shattered out of the heads. One farmer estimated that he had 1,000 pounds per acre on the ground.

The cotton in the path of the hailstorm was damaged, some fields much worse than others. Some of the fields showed cotton stringing out of the bolls, with lint and green bolls littering the ground.

The storm traveled from southwest to northeast, with its worst part seeming to move directly over Silverton.

The low temperature in Silverton Tuesday morning was 38°. The lowest temperature recorded so far this fall has been 31° on October 23. The last freeze last spring was April 13, when the temperature dipped to 32°.

The rainfall this week brings the 1979 total to date to 30.16 inches. The monthly measurements, as furnished by Fred A. Strange, are:

January85
February53
March	3.03
April	1.42
May	4.15
June	11.14
July	3.50
August	3.08
September	1.06
October	1.40
Total	30.16

Michael Greenhaw returned to school Monday after having undergone knee surgery at Methodist Hospital in Lubbock on October 19. He had undergone surgery on the same knee last January.

made pies and tea will be served. The supper will be served from 5:00 until 7:00 p.m. Tickets are available for \$2.75.

Absentee Voting Underway In Amendment Election

Absentee voting in the Texas Constitutional Amendment Election began last week in the County Clerk's office in the Briscoe County Courthouse.

Voters can vote absentee through Friday, November 2.

On Tuesday, November 6, the polls open at 7:00 a.m. and close at 7:00 p.m. in the voting precincts in Briscoe County. Quitaque voters will mark their ballots at the City Hall in Quitaque. San Jacinto community voters will go to their community building. Silverton voters in Precinct 1 will vote at the City Hall in Silverton; Precinct 2 voters go to the Pioneer Room at the First

State Bank, and Precinct 4 voters go to the community room of the P.C.A. building.

Voters will decide the fate of three proposed constitutional amendments. The first concerns the appointment of notaries public for the state, the second would provide for legislative review of the process of rulemaking by agencies in the executive department, and the third would authorize the legislature to provide for the guarantee of loans for purchase of farm and ranch real estate for qualified borrowers by the sale of general obligation bonds of the State of Texas.

Halloween Coronation Held Saturday Night

The Silverton chapter of Future Homemakers of America sponsored the annual Halloween Coronation Saturday night, October 27, in the school auditorium. Sixth graders Donna Tomlin and Joe Ted Edwards were elected as Princess and Prince. Seniors Traci Mayfield and Tommy Potter were elected as Halloween Queen and King.

Crown bearers were Jennifer

and Jeffrey Grimland, Cody Potter and Amy Minyard.

The Halloween royalty were crowned by Melissa Greenhaw, FHA president, and Tim Dea, FFA member.

Connie Rowell was master of ceremonies. Entertainment was provided by the Brownies and FHA Sponsor Tina Underwood and Jeni Denton. Mike Cornett assisted the girls onto the stage.

Grains Eligible For Reserve; No 1980 Feed Grain Set-Aside, Diversion

It has been announced that all 1978 grain crops currently under loan to the Commodity Credit Corporation (CCC) and all 1979 grain crops eligible for CCC loans may be placed in the farmer-owned reserve program. The only grain not affected is barley, which currently has a market price above the department's "call" level, thus making it ineligible for the reserve.

It was also announced there will be no set-aside or diversion for 1980 feed grain crops.

Producers are reminded about the importance of good farming practices as they plan for 1980 and are cautioned not to bring fragile lands into production. Farmers who plant these lands in 1980 will not have this added to their farms' normal crop acreage in subsequent years.

The program decisions were based on projected supply and demand factors for 1979 and 1980. A tighter supply is seen for the future. The actions announced will help meet domestic and export requirements and reduce the risk of rapid food price inflation.

Under actions announced, all producers of barley, corn and sorghum will be eligible for target price protection, loans and for participation in the farmer-owned reserve in 1980. Oat producers will be eligible for loans and the reserve program in 1980.

Producers are assured of at least the same 1980 feed grain and soybean loan rates as in 1979. This means loan levels of at least \$2.00 for corn, \$1.90 for sorghum, \$1.63 for barley and \$1.03 for oats, \$1.70 for rye and \$4.50 for soybeans.

The public will be asked to comment on possible changes in the operation of the farmer-owned reserve program in the next few weeks. No changes in the reserve management rules are being made at this time.

Preliminary feed grain target price ranges will be announced by March 15. Current estimates based on the formula in the Food and Agriculture Act of 1977 indicate these prices would be \$2.08 per bushel for corn, \$2.46 for sorghum and \$2.35 for barley.

In order to qualify for full target price protection, farmers cannot plant more corn, sorghum or barley in 1980 than was considered planted and set aside from these crops this year. Farmers who exceed this acreage will be subject to an allocation factor that can reduce any target price payment by up to 20 percent.

National program acreages (NPA) of 82.1 million acres for corn, 13.9 million for sorghum and 7.9 million for barley were also announced. The NPA is the number of acres for each crop needed to be planted to meet projected domestic and export requirements as well as provide for an adequate carryover.

Crops eligible to move immediately into the farmer-owned reserve are 1978 and 1979-crop wheat, corn, sorghum, oats and rice under CCC loan. Barley will be eligible for entry when it is no longer in a call status.

Adams Funeral Is Saturday

Mr. and Mrs. Joe Gallington received word Monday from Kansas City, Missouri, that their grandson, Tony Adams, 20, was shot to death at 3:00 a.m. October 29.

Funeral services will be conducted at 9:00 a.m. Saturday, November 3, in Kansas City, Missouri.

Mr. and Mrs. Gallington plan to attend the funeral if weather permits.

Silverton's Owls kicked off to Nazareth to open last Friday night's game, their defense performed beautifully on the first series of plays, and the Swifts were forced to punt. The Owls fumbled the punt, Nazareth recovered, went on to score, and this set the tone of the game as the Owls lost their second district game, 28-14.

Both the offense and defense did a very good job at times, and both had complete break-downs at other times during the game. Another turning point in the game seemed to be when the Owls made a first down on the Nazareth one, and in four tries were unable to score.

Nazareth's Brian Huseman scored all four of the Swifts' touchdowns, earning Player of the Week honors for himself. He rushed for 210 yards on 35 carries.

Mark Brown was Silverton's leading rusher with 198 yards on 28 carries.

The Swifts drew first blood in the first quarter of the game, kicked the extra point, and held a 7-0 lead. The Swifts scored again in the second quarter, but Brown evened the score before halftime with touchdown runs of 58 and 97 yards. The Owls' first PAT failed, but Silverton tied the score at 14-14 when Bobby McPherson ran the ball in for two points after Brown's second long scoring run.

After Nazareth put another touchdown on the board in the third quarter, the Owls had a golden opportunity to put the ball in the end zone when quarterback Paul Brannon connected with Nicky McJimsey for a 33-yard pass play that gave Silverton a first down on the Swift 11.

After making another first down on the one, three plays netted nothing for the Owls, and on fourth down Silverton fumbled the ball into the end zone where Nazareth recovered to end the threat.

Silverton attempted to come back again in the fourth quarter, but Nazareth stole an Owl pass attempt, and the Swifts added another score in the closing seconds of the game.

The win put Nazareth's district record at 2-1 while dropping Silverton to 5-3 and 1-2 in District 2-B North Zone.

Kelly Comer led the Owl defense with 13 tackles and four assists; Zane Reagan got 13 tackles and two assists. Other leading tacklers were Greg Hill, nine tackles and one assist; Tommy Potter, seven tackles and one assist; Roger Cantwell, five tackles and one assist, and Mike Cornett, five tackles and one assist.

Elsewhere in District 2-B North Zone, Claude defeated Happy 15-13 and Valley defeated Motley County 34-6.

"Our next two games both will be tough ones," Coach Jerry Watson said. "We're going to have to come back and play with the intensity that we did in the first part of the season. The team had a good workout Monday. The players' spirits are good and they want to win."

It will be the last home game of the season when the Owls host Claude Friday night. The Owls will be needing all the spirit and support of their fans, so plan to pack the stands to cheer for the Owls. Game time is 7:30 p.m.

New Business Opening Here

The Slip Joint will have its grand opening November 6 in the former location of the Brown & Son Cafe at the intersection of the Lockney and Quitaque highways, southwest of Silverton.

Mrs. Tammy Brannon and Mrs. Belinda Matlock are owners of the new shop, which features arts, crafts and ceramics. They are offering a 10% discount on crafts started between November 6 and November 10.

The shop will be open Tuesdays through Saturdays from 9:00 a.m. until 6:30 p.m. It will also be open Wednesday evenings from 7:00 until 9:30 o'clock.

BRISCOE COUNTY NEWS

(SECD-065280)

PUBLISHED EVERY THURSDAY AT SILVERTON, TEXAS 79257
 BY CHARLES AND MARY ANN SARCHET
 SECOND CLASS POSTAGE PAID AT SILVERTON, TEXAS 79257
 Postmaster: Send Address Changes To Briscoe County News, Box 130, Silvertown, Texas 79257
 CHARLES R. SARCHET PUBLISHER
 MARY ANN SARCHET EDITOR
 SUBSCRIPTION RATE PER YEAR \$6.50
 Display Advertising Rates Available on Request
 Classified and Legal Rates, Each Insertion .5c per word, \$1.00 minimum
 Closes and Thanks \$1.00

KIKER'S KORNER

Earnest Kiker

THIS YEAR'S SEED CRUCIAL FOR NEXT YEAR'S COTTON

Seed for next year's cotton crop will have to come largely from this year's yield, and handling of this seed will be crucial, area cotton specialists say. Since much of this crop will be modulated, particular attention should be given to modulating only dry cotton.

If the moisture content of the plant components — lint, seed, burs, stems and other—going into the module exceeds 10 to 12 percent, excessive heating could occur, damaging the seed and even the lint.

Similar damage can occur to "wet" cotton that is stored in ricks or trailers for two to three days before ginning.

The last good cotton seed crop we had was 1977. Some good seed was produced in 1978, but with 4.6 million acres of cotton planted on the South Plains this year, the seed supply has been nearly depleted.

Cotton farmers will depend heavily on 1979 seed for their 1980 planting. Producers and delinters both will have to be careful how they handle this seed.

Particular attention should be given to monitoring the temperature of cotton stored in modules. Temperature readings should be obtained and recorded daily until it is apparent that tempera-

tures have stabilized. The critical temperatures for cottonseed are around 110 to 120 degrees Fahrenheit. Seed from modules that reached these temperatures shouldn't be saved for planting seed.

If the decision is made to "risk" seed that was exposed to temperatures of 110 degrees or more, let your delinter know about the problems and show him the daily temperature readings obtained for that module. This will give him an indication of the extent of the damage and enable him to make a more critical inspection of the seed.

In addition to the standard germination test, the delinter may suggest additional evaluations of such seed, such as cold germination, Tetrazolium (TZ) and fatty acid tests.

This extra effort will involve some time and money, and in the end the seed may still be sent to the oil mill. This, however, is a much better alternative than ending up with a barn full of seed that fails to produce a stand.

YOUNG FARMERS

ENJOY SALAD SUPPER

Saturday night, October 20, the Silvertown Young Farmers and their wives enjoyed a salad supper in the Pioneer Room at the First State Bank.

After supper, Wayland Fitzgerald gave a talk on citizenship, after which everyone enjoyed playing "42."

C. L. Dunn of Spur visited friends in Silvertown last week.

EVER - FLOWING RIVER



by Andy Callis

Pastor

Assembly of God Church

Silvertown, Texas

The Bible is a great river of spiritual reality rising out of Israel's remote past and continuing to flow more deeply and powerfully through succeeding centuries. It is fed by many rushing streams and mighty torrents and into it has flowed the spiritual wisdom and insight of twelve centuries.

The long river of the Bible is broad and very deep, and the Holy Spirit moves upon the face of its waters. Here men that thirst come to drink of the water of life. Here those who hunger come to be fed. Here those who weep in sorrow come for consolation. Here the lame, the halt and the blind some for heal-

ing. The power of its onrushing current turns many a wheel. Following the shores of this river, no man need be lost or lose his way in jungles of speculation nor deserts of spiritual dryness. It is like the ancient river that "went out of Eden to water the garden," for it is a river that enriches the soul of humanity.

Wanted: 50 good self-righteous sinners who are afraid to face the Judgement. We have a place for you at the Assembly of God Church. It's called an old-fashioned altar and there you can find peace of soul when sin is forgiven.

(Paid Advertising)

Electric Company Lowers Base Rate In Texas

The base rate for electricity for most of Southwestern Public Service Company's customers in Texas went down one-half cent per kilowatt hour October 1.

The reason is that SPS's winter rates went into effect at that time. During the summer months—June, July, August and September—the base rate for residential service is 2.75 cents per kilowatt hour for all KWH after the first 30. The rest of the year, or during the winter months, the base rate after 30 kilowatt hours is 2.25 cents per KWH.

A customer who used 500 kilowatt hours in September received an electric bill for \$30.94 plus city tax. His bill in October for 500 kilowatt hours would have been \$27.08 plus tax.

Not all of the savings this customer would realize would come from the lower winter rate, however. SPS paid less for its fuel in October than it did in September, so these savings were passed on to the customers. The fuel cost portion of the September bill was \$13.52 while the October fuel cost portion dropped to \$12.02.

For a customer who uses 500 kilowatt hours per month, the winter base rate saves him \$2.36 over the summer rate.

Here's the way the bill is broken down:

September (summer rate)	
Base rate - 1st 30 KWH	\$ 4.50
Next 470 KWH	12.92
Total base rate	
500 KWH	\$17.42
Fuel Cost (factor \$.027047)	\$13.52
Total Electric Bill (less City tax)	\$30.94
October (winter rate)	
Base rate - 1st 30 KWH	\$ 4.50
Next 470 KWH	10.56
Total Base Rate	\$15.06
Fuel Cost (factor \$.024040)	\$12.02
Total Electric Bill (less City tax)	\$27.08

The fuel cost factor is determined by averaging the fuel costs for all of Southwestern's eleven generating stations. This includes the cost of coal, natural gas and fuel oil.

Southwestern Public Service Company's base rates for winter months are lower than for summer months because the Texas Public Utilities Commission requires all electric utilities in this state to design their rates this way.

SPS customers use more electricity in the summer months because of air conditioning and irrigation. The summer load determines the amount of generating capability that SPS must have. If SPS customers used the same amount of electricity in the winter months, the cost of generating a kilowatt hour would be less.

Pat Cogdill returned home last Friday from an Amarillo hospital where he recently underwent back surgery. He is recuperating at his home.

Welfare cheaters Finding easy street Can be rocky road

Nearly 2,000 Texans who tried to cheat their way into the state's food stamp program in 1978 found themselves talking to a district attorney instead, courtesy of the Investigations Division of the Texas Department of Human Resources (DHR).

In a year-end report to DHR Commissioner Jerome Chapman, the director of the DHR Investigations Division, Ed Richards, said his 130 investigators presented 1,973 food stamp fraud cases in 1978 to local prosecutors. About 95 percent of the cases prosecuted resulted in convictions.

Richards said the amount of money involved in cases presented for prosecution in the food stamp program in 1978 totaled \$728,379. Working with prosecutors and judges, DHR investigators arranged for \$459,434 to be returned to the state as restitution from those illegally attempting to participate in the program.

Income falsified

Most widely attempted ruse for falsely obtaining food stamps is failure to report true income. Next most common attempt is to falsify the number of persons in a household.

Sentences ranged from 30 days to seven years confinement. Most of the terms were probated to permit the offenders to make restitution to the program.

Richards said most would-be cheaters are tripped up in the eligibility process by suspicions of DHR eligibility workers or by caseworkers who routinely recertify the eligibility of a household. The workers notify the Investigations Division of their suspicions, and the case is investigated.

Neighbors or relatives frequently volunteer information about persons attempting welfare fraud, Richards said.

Persons go to great lengths to attempt to cheat the system, according to Richards. DHR investigators made a case against a Houston woman who was maintaining two nonexistent families, each with 14 children. She claimed she was serving as authorized representative for these two families, after giving caseworkers bogus names, addresses, and telephone numbers. The total amount of fraud was \$27,578 before she was apprehended. Her case is pending.

Two years and fine

A Dallas man who owned a large home, a Cadillac, and two late-model Oldsmobiles fraudulently obtained food stamps for himself and his family. He drew a two-year probated term, a fine, and was ordered to repay the amount of the stamps he had obtained.

Another program in which a substantial amount of fraud is attempted is Aid to Families with Dependent Children (AFDC). This is DHR's only cash grant program and aids one-parent families with dependent children.

Richards said his investigators presented 1,878 cases for prosecution during 1978 in the AFDC program. The amount of fraud involved was \$1,431,651. One individual amount ranged up to \$23,815.

Prosecution of the cases resulted in restitution of \$788,363 fraudulently taken from the AFDC program.

Most attempts at AFDC fraud, like food stamps, involve misrepresentation of

income. Jail terms were meted out in nearly every case. Most were probated to permit the offender to make restitution to the state.

Total restitution in 1978 to both the food stamp and AFDC programs totaled \$1,309,325, Richards said.

Another major activity of the Investigations Division is its role in DHR's child support collection program.

Mothers deserted

Most AFDC families are headed by a mother who has been abandoned or deserted by the father of her children. During 1978, DHR investigators located 482 absent fathers and took them to court to establish paternity and child support. Collections from the child support program now are running about \$600,000 monthly. This support enables many of the one-parent families to become self-sufficient and takes them off the welfare rolls.

Richards pointed out that welfare fraud is committed by providers of services as well as recipients of services. Investigators made fraud cases against six nursing homes, four pharmacists, one physician, and seven dentists, with about \$180,000 in fraud being involved.

The Investigations Division was established by DHR in 1974 to protect the integrity of the department's programs. Most investigators are experienced in police work. Others are specialists in

DHR's financial and medical programs.

The division also assists in the department's investigations of child abuse and neglect and other situations involving human suffering and death.

Solar greenhouse conserves energy

COLLEGE STATION — Higher transportation costs may increase the demand for locally grown foods, and a solar greenhouse being built and tested at Texas A&M University could be the first step toward efficient, year-round vegetable gardening.

Dr. Cornelius van Bavel, who heads the solar energy research project, has developed a fluid roof greenhouse that stores excess energy.

The greenhouse has a transparent, hollow-core roof through which a sky-blue solution of copper chloride is circulated. The chloride solution acts as a selective filter to gather heat from the sun but does not interfere with the transmission of light. The heat captured in the fluid roof is stored in the solution in a 500-gallon underground tank for use during cool nights to keep the plants at a uniform temperature.

Other methods can be used now to conserve energy in greenhouses, the researcher says. For example, he suggests reducing air leakage, providing double glazing, using thermal screens at night and improving the efficiency of heating systems.

The Congregation Of The CHURCH OF CHRIST Meeting At Rock Creek

EXTENDS A GRACIOUS WELCOME TO ALL TO ATTEND ANY AND ALL OF OUR SERVICES.

SUNDAY

Morning Worship 10:30 a.m.
 Evening Worship 6:00 p.m.

WEDNESDAY

Evening 7:00 p.m.

WATT A SAVINGS

Caulking around windows and doors, adequate insulation in walls and ceilings, efficient heating and cooling equipment — such as a heat pump — all are ways to help you save watts.

Booklets on ways to help you save energy — and at the same time, make your home more comfortable — are available at Southwestern Public Service Company. Come by our office today.



SOUTHWESTERN PUBLIC SERVICE

909.12

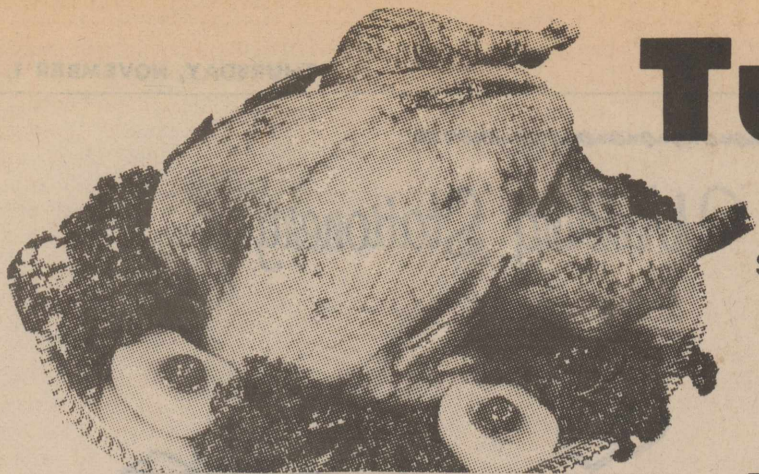
GIFTS FOR ALL

Sue Moore of Sue's Gifts and Accessories, would like to invite all in this area to visit her gift shop in Floydada for the perfect gift for all ages. Also she has a complete line of party supplies.

If you need a gift for man, woman, boy or girl, Sue invites you to come in and look around. She will be happy to serve you.

SUE'S GIFTS AND ACCESSORIES

126 W. California Floydada, Texas
 Phone 983-5312 Master Charge honored



Turkeys

SHURFRESH SELF-BASTING 18 - 22 LB. AVERAGE TENDER TIMER

69¢

SHURFRESH 4 - 6 LB. **Baking Hens** LB. **59¢**

SHURFRESH SLICED **Bacon** LB. PKG. **99¢**

Half Hams

SHURFRESH BONELESS FULLY COOKED

\$2.19

SHURFRESH PORK **Sausage** LB. PKG. **99¢**

SHURFRESH PORK **Sausage** 2 LB. PKG. **\$1.98**



SHURFINE ENRICHED **Flour** 5 LB. PAPER BAG **69¢**

Grocery Specials

SHURFINE SALTINE **Crackers** 2 16 OZ. BOX **\$1**

SHURFINE TALL **Kitchen Bags** 15 CT. BOX **99¢**

SHURFINE TRASH 30 GAL. SIZE **Can Liners** 10 CT. BOX **\$1.09**

SHURFINE 2 PLY ASSTD. **Bath Tissue** 8 RL. BAG **\$1.49**

SHURFINE FREE RUNNING OR IODIZED **Salt** 2 26 OZ. BOXES **49¢**

ROXEY RATION **Dog Food** 6 15 1/2 OZ. CANS **\$1**

TASTY SHURFINE **Instant Tea** 3 OZ. JAR **\$1.49**

SHURFINE EVAPORATED **Milk** 2 13 OZ. CANS **79¢**

COLA/ROOT BEER **Shurfine Pop** 2 LITER BOTTLE **79¢**

SHURFINE MEDIUM GRAIN **Rice** 32 OZ. BAG **69¢**

SHURFINE MANDARIN **Oranges** 11 OZ. CAN **59¢**

SHURFINE CRANBERRY **Sauce** WHOLE OR STRAINED 2 16 OZ. CANS **79¢**

SHURFINE YELLOW CLING **Peaches** SLICES/HALVES 2 16 OZ. CANS **89¢**

SHURFINE CRUSHED/CHUNK **Pineapple** SLICED 2 15 1/4 OZ. CANS **89¢**

SHURFINE UNSWEETENED **Juice** GRAPEFRUIT 6 - 6 OZ. CANS **89¢**

SHURFINE FANCY **Tomato Juice** 46 OZ. CAN **69¢**

SHURFINE **Pork & Beans** 4 16 OZ. CANS **\$1**

Dairy Specials

SHURFRESH HALFMOON **Colby Cheese** LONGHORN 10 OZ. PKG. **99¢**

SHURFRESH BUTTERMILK/SWEETMILK **Biscuits** 4 8 OZ. CANS **59¢**

SHURFRESH SOFT **Margarine** 16 OZ. BOWL **59¢**

SHURFRESH TASTY **Cinnamon Rolls** 9 1/2 OZ. CAN **69¢**

The ULTIMATE FALL FOOD SALE SPECIALS



BELL **Ice Cream** 1/2 GAL. **89¢**



SHURFINE GRANULATED **Sugar** 5 LB. BAG **\$1.09**



SHURFINE WHOLE KERNEL/CREAM-STYLE **Golden 4 Corn** 17 OZ. CANS **\$1**



FOR HOUSEHOLD USE **Shurfine Bleach** GALLON JUG **59¢**



SHURFINE Macaroni & Cheese **Dinner** 5 7 1/2 OZ. BOX **\$1**



SHURFINE POWDERED **Detergent** BLUE OR ALL PURPOSE 49 OZ. BOX **\$1.09**



We Give **DOUBLE STAMPS** every Wednesday



SHURFINE VEGETABLE **Shortening** 48 OZ. CAN **\$1.59**

Shelf Specials

SHURFINE CUT **Green Beans** 3 16 OZ. CANS **\$1**

SHURFINE **Spinach** 3 15 OZ. CANS **\$1**

SHURFINE FRESH SHELLED **Blackeyes** 3 15 OZ. CANS **\$1**

SHURFINE EARLY HARVEST **Sweet Peas** 2 17 OZ. CANS **79¢**

SHURFINE WHOLE IRISH **Potatoes** 3 16 OZ. CANS **89¢**

SHURFINE WHOLE PEEL **Tomatoes** 3 16 OZ. CANS **\$1**

SHURFINE TOMATO **Sauce** 5 8 OZ. CANS **\$1**

SHURFINE PINK **Salmon** 15 OZ. CAN **\$1.69**

SHURFINE LIGHT **Chunk Tuna** 6 1/2 OZ. CAN **69¢**

SHURFINE STRAWBERRY **Preserves** 18 OZ. JAR **89¢**

SHURFINE **Grape Jelly** 18 OZ. JAR **69¢**

SHURFINE CRUNCHY/CREAMY **Peanut Butter** 18 OZ. JAR **98¢**

SHURFINE **Waffle Syrup** 32 OZ. BTL. **79¢**

SHURFINE FRESH PAK CUCUMBER **Chips** 16 OZ. JAR **69¢**

SHURFINE TOMATO **Catsup** 32 OZ. BTL. **69¢**

SHURFINE SALAD **Dressing** 32 OZ. JAR **89¢**

SHURFINE BLACK **Pepper** 4 OZ. CAN **79¢**

Frozen Food Specials

SHURFINE ORANGE **Concentrate** 12 OZ. CAN **69¢**

SHURFINE NON-DAIRY WHIPPED **Topping** 2 9 OZ. BOWLS **\$1**

SHURFINE FROZEN BROCCOLI CAULIFLOWER SPEARS **Vegetables** 2 10 OZ. CTNS. **\$1**

SHURFINE CRINKLE CUT **Potatoes** 32 OZ. BAG **89¢**

Apples

WASHINGTON RED OR GOLDEN DELICIOUS **3 \$1** LBS.

CALIFORNIA ROMAINE **Lettuce** LG. HEAD **39¢**

WASHINGTON D'ANJOU **Pears** 3 LBS. **\$1**

OCEAN SPRAY **Cranberries** LB. PKG. **59¢**

CALIFORNIA **Carrots** LB. PKG. **25¢**

YELLOW SWEET **Onions** 2 LBS. **29¢**



WE RESERVE THE RIGHT TO LIMIT Prices Effective Oct. 28 - Nov. 10, 1979



AS A MAN THINKETH

Gerald Beasley
MEN KISS CALVES

"When Ephraim spoke, men trembled; he was exalted in Israel; but he incurred guilt through Baal and died. And now they sin more and more, and make for themselves molten images, idols skilfully made of their silver, all of them the work of

craftsmen. Sacrifice to these, they say. Men kiss calves!" (Hosea 13:1-2, Revised Standard Version)

Yes, ancient Israel took its eyes off God and sank into the slime of folly-filled heathen idolatries. How could their values get so messed up?

America is beset with materialism. "Things" allure us from

dawn till dark. Slop and drivel assail our senses and souls via the beautiful colors of living room boob tube.

"Covetousness is idolatry" (Col. 3:5), and one definition of covetous is to be "wrongfully desirous" of mere things.

Time: 2050 A. D. Place: Eastern Hemisphere University (History of Great Civilization class).

Student: "What really happened to the U. S.?" Professor: "It was destroyed by idolatry." Student: "You mean they were too concerned with the material?" Professor: "Right! The pursuit of material things was their religion. They put comfort above Christ and gains above God." Men kiss calves!

Young Farmers See Film

The Silverton chapter of Young Farmers met Thursday night, October 25, in the vocational agriculture building. After the usual business meeting, a film was shown on forage and fertilization.

Members attending were Fred Brannon, Rodney and Tommy Bullock, Jeff Tiffin, Clinton Dickerson, Bill Reid, Calvin Shelton, Cal Gauden, Fred Minyard, Tobe Riddell, Rick Hester, Mike Grady and Jerry Bean.

LINES FROM YND A

Lynda Fogerson
Briscoe County
Assistant Extension Agent

THE SENSIBLE DIET PLAN

The calories in our diet should come from three main nutrients—carbohydrate, fat and protein. A sensible diet will not omit any of these essential nutrients.

The Sensible Diet Plan allows the required nutrients each day without exceeding the body's caloric needs. It makes meal planning easier since calorie counting is not required. You are able to substitute a variety of foods into the diet.

The key to the success of this diet plan is to know and observe the serving sizes. This requires accurate measurement. A 1/2 cup serving is exactly that—no more. A diet scale may be necessary to determine a three ounce serving of meat.

This Sensible Diet Plan is:

- 4 1/2 cup servings of fruit and/or vegetables
- 4 slices bread or 4 1/2 cup servings of cereal or pasta
- 2 cups skim milk
- 2 2 1/2 to 3 ounce servings lean meat, fish or poultry
- 3 teaspoons fat (do not exclude—it has a high satiety value and helps keep you from feeling hungry)

Of course, this does not include pies, cakes, fried foods, banana splits, and all the goodies we think are "essential." But it will provide a well-balanced diet with adequate variety. It will also be the kind of meal pattern you could live with for a long period of time.

Weight loss is a slow process. Weight was gained over a long time and must be lost the same way—no more than one to two pounds per week.

As with all diets, you should have your doctor's approval. You may have a physical problem which requires additional dietary restrictions.

Remember, in dieting, cut down—not out—a necessary food group.

SCHOOL LUNCHROOM MENU MONDAY

Fish, Tartar Sauce, Buttered Corn, Tossed Salad, Peach Cobbler, Cornbread, Butter, Milk

TUESDAY

Vegetable Soup, Grilled Cheese Sandwiches, Pear, Milk

WEDNESDAY

Corn Dog, Pinto Beans, Tossed Salad, Banana Pudding, Cornbread, Milk

THURSDAY

Hot Dogs, French Fries, Fruit, Bun, Milk

FRIDAY

No School

Grand Opening

NOVEMBER 6

THE SLIP JOINT

Arts, Crafts, Ceramics
Fun For Everyone - All Ages

10% Discount on Anything Started Between November 6 and November 10

Located at the Intersection of Lockney Highway and Quitaque Highway (Old Brown & Son Cafe Building)

Owners: Tammy Brannon and Belinda Matlock

Open Tuesday - Saturday, 9:00 a.m. to 6:30 p.m.
Open Wednesday night, 7:00 to 9:30

-- Large Selection of Animals --

Shop in your home community



Big cities thrive on small town money

Too much small town money travels to big cities. Are you helping build big city buildings and pave big city streets with out-of-town buying? Money spent away from home keeps traveling. Money spent at home returns to you in community improvements.

Spend your dollars where they do the most good. Shop your hometown businessman. Remember, a community is like a home, with neglect it loses its value.

First State Bank
P. O. BOX 9
SILVERTON, TEXAS 79257



Your Wedding Stationery

By



Carlson Craft



assures you of a complete selection ... beautiful printing...correct wording ... ALL at surprisingly modest prices. Stop in soon for helpful advice from our Bridal Department.

- ★ INVITATIONS and ANNOUNCEMENTS
- ★ THANK YOU NOTES

- ★ NAPKINS
- ★ BRIDAL BOOKS
- ★ ACCESSORIES



Just Like Sambo's, We're Lowering Our Prices To Fight Inflation!

RIB - EYE STEAK	-----	\$6.95
CHICKEN FRIED STEAK	-----	\$4.00
HAMBURGER STEAK	-----	\$3.00
HOTSTEAK SANDWICH	-----	\$3.00
FRIED SHRIMP	-----	\$5.50
All above orders served with creamed potatoes, salad		

3 CHEESE ENCHILADAS	-----	\$2.50
EL MONTE BURGER	-----	\$3.50
PIC-A-DILLY BURGER	-----	\$3.50
SWISS MUSHROOM BURGER	-----	\$3.50
MERT BURGER	-----	\$3.50
These double-meated burgers served with Fries or Onion Rings		

CHEESEBURGER	-----	\$1.10
HAMBURGER	-----	.95
GRILLED CHEESE	-----	\$1.25
BACON, LETTUCE AND TOMATO	-----	\$2.25
STEAK ON A BUN	-----	\$2.50
All Sandwiches served with Chips		

SALAD BAR	-----	\$2.75
FRENCH FRIES	-----	.75
ONION RINGS	-----	.95

ICED TEA	-----	.40	MILK	-----	.60
COFFEE	-----	.30	SOFT DRINK	-----	.50

This Menu Served At Noon and In The Evenings.

Sixty years of lending has given us more faith than ever in American Agriculture.



FEDERAL LAND BANK
ASSOCIATION OF FLOYDADA
105 South Wall
FLOYDADA, TEXAS 79235
Ph. 983-2480



The Land Bank
The Bank of Generations

THE FIGHTING OWLS OF SILVERTON HIGH SCHOOL



VARSITY OWLS — 10-Mark Brown, 11-Paul Brannon, 20-Bobby McPherson, 21-Mark Patton, 22-Casey Bean, 31-Cam Forbes, 33-Nicky McJimsey, 40-

Tommy Potter, 41-Gary Juarez, 50-Roger Cantwell, 51-Bill Denton, 62-Kelly Comer, 63-Greg Hill, 64-Mike Cornett, 70-Brandon Jarrett, 72-Joe Edd Arnold,

73-Brent Grabbe, 80-Zane Reagan, 82-Russell Couch, 83-Diji Couch, 84-John Segura and 61-James Jarrett.
Briscoe County News Photo

BEAT CLAUDE

Varsity Schedule

Sept. 7-Kress, Here 8:00
Sept. 14-LCH, There 8:00
Sept. 21-McLean, There
Sept. 28-Lazbuddie, Here
Oct. 5-Hart, There
Oct. 12-Happy, Here
Oct. 19-Valley, There
Oct. 26-Nazareth, Here
Nov. 2-Claude, Here
Nov. 9-Motley Co., There

Jr. Varsity Schedule

Sept. 6-Kress, Here
Sept. 13-LC, There
Sept. 20-McLean Here
Sept. 27-Lazbuddie, There
Oct. 4-Hart, Here
Oct. 11-Happy, There
Oct. 18-Valley, Here
Oct. 25-Nazareth, There
Nov. 1-Claude, There
Nov. 8-Motley Co., Here

Jr. High Schedule

Sept. 13-LC, There
Sept. 20-Open
Sept. 27-Lazbuddie, There
Oct. 4-Hart, Here
Oct. 11-Happy, There
Oct. 18-Valley, Here
Oct. 25-Nazareth, There
Nov. 1-Claude, There
Nov. 8-Motley Co., Here

Hamilton Oil Company

Nance's Food Store

Jones Dept. Store

Verlin B. Towe Agency

First State Bank

Briscoe County Farm Bureau

Ray Thompson Implement, Inc.

Jerry's Malt Shop

Fogerson Lumber and Supply

Briscoe County News

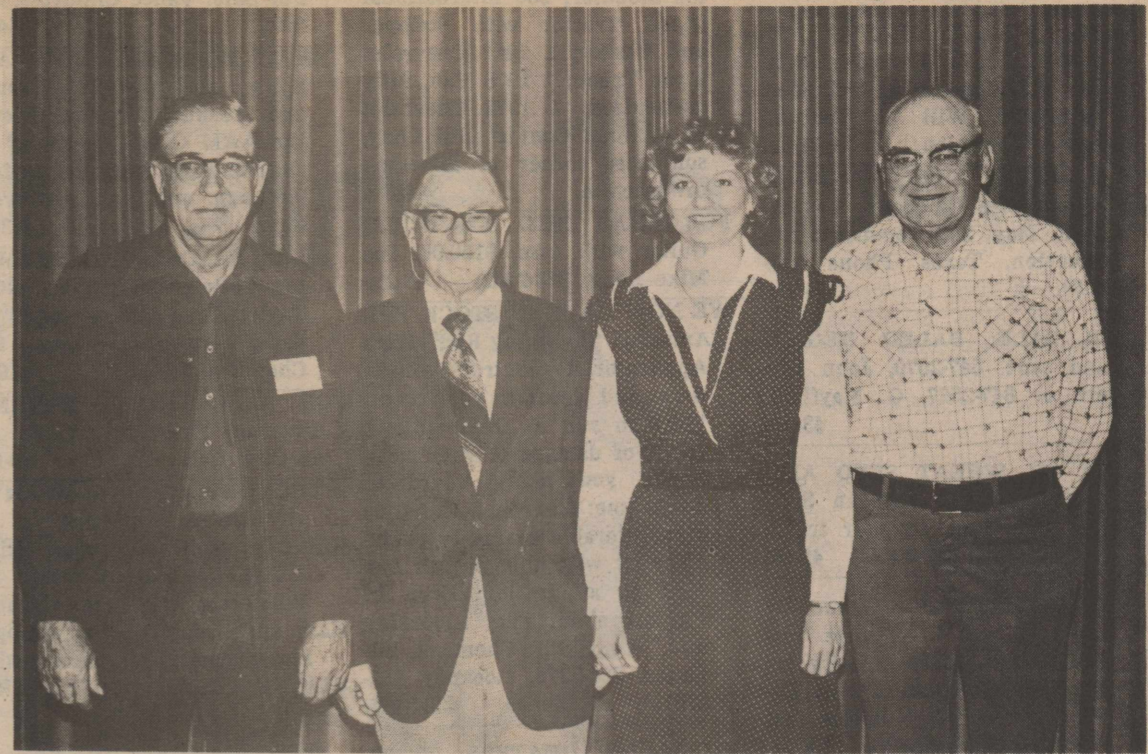
Jack's Pharmacy

Briscoe Cooperatives

Silverton Oil Company

Silverton Funeral Home

Silverton Auto Parts



JUDGES ATTEND SEMINAR— Eighty-eight justices of the peace attended a 20-hour Texas Justice of the Peace Training Center Seminar October 9-12 in Amarillo. The seminars are held in compliance with Article 5872, Section

b, Texas Revised Civil Statutes. The training center is based at Southwest Texas State University. Among the judges attending were (left to right) Judge Sidney G. Hooper, Swisher County Precinct 1; Judge W. C. Weathered,

Swisher County Precinct 4; Judge Barbara Pigg, Briscoe County Precinct 1, and Judge Dick Taylor, Briscoe County Precinct 2.

Miss Bullock Is Shower Honoree

Miss Roxanne Bullock, bride-elect of David Williams, was honored at a miscellaneous bridal shower and coffee from 10:00 until 11:00 a.m. Saturday, October 20, in the Pioneer Room at the First State Bank in Silverton. Guests were greeted by Mrs. Willard Vardell and presented to the honoree and her mother, Mrs. Gail Bullock, and to Mrs. J. L. Williams, mother of her fiancé.

Mrs. Steve Green presided at the guest registry which was decorated with a sifter holding an ivy plant.

Coffee, spiced tea and cinnamon doughnuts were served by Miss Faye Lynn Perkins and Mrs. Tommy Davis from a table covered with a white lace-edged cloth. A white China coffee service was used. The colors chosen by the bride-elect, pastel blue and yellow, were carried out in

* New Arrival

Mr. and Mrs. Andy Bullock are parents of a son, Andy Lee, Jr., born at Lockney General Hospital October 23. He weighed seven pounds.

Grandparents are Mr. and Mrs. Gail Bullock and Mrs. Minerva Patino.

Great-grandparents are Mrs.

the centerpiece which was a hat decorated with a flower and assorted kitchen utensils.

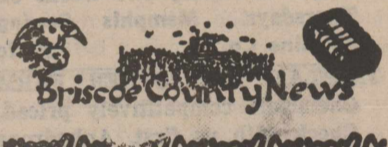
Hostesses for the party were Mrs. A. R. Martin, Mrs. James Patton, Mrs. Lois Cline, Mrs. Thelma Reagan, Mrs. Jack Davis, Mrs. Frances Edwards, Mrs. Willard Vardell, Mrs. Joe Davis, Miss Patsy Davis, Mrs. Steve Green, Mrs. Mildred Brooks, Mrs. Georgia Thornton, Mrs. Joe Kit-chens, Mrs. Annie Williams, Mrs. Kelsie Baker, Miss Janice Baker, Mrs. Dana Martin, Mrs. R. E. Sweek, Mrs. Charlie Clardy, Mrs. Freeman Tate, Mrs. Jerry Patton and Mrs. Clifton Stodghill.

Bertha Bullock Holder of Amarillo, Troy Oliver of Dover, Arkansas and Julia Garza of McAllen.

Mr. and Mrs. Ken Sarchet and Brandon of Lubbock spent the weekend with Mr. and Mrs. Charles Sarchet. Other Sunday dinner guests in the Sarchet home were Mrs. Betty Sue Skelton of Lubbock and Mrs. June Murphy of Saudi, Arabia.

Mrs. Berton Hughes is to enter St. Anthony's Hospital in Amarillo this afternoon, and is to undergo gall bladder surgery Friday morning.

SCHOOL SUPPLIES



Money Market

12.193%

6 MONTH

SAVINGS CERTIFICATE

Earn A High Rate on a Short Term Basis. And Get More For Your Money

(Effective 10-25-79-10-31-79)

Minimum Deposit \$10,000.00

Federal Regulations prohibit the compounding of interest on Money Market Certificates.

This does not apply on certificates described below.

SAVINGS & CERTIFICATES RATES

TYPE OF ACCOUNT	MINIMUM DEPOSIT	ANNUAL RATE	EFFECTIVE RATE COMPOUNDED DAILY
Pass Book	5.00	5.50%	5.65%
90 Day	5.00	5.75%	5.92%
1 Year Certificate	1,000.00	6.50%	6.72%
2 1/2 Year Certificate	1,000.00	6.75%	6.98%
4 Year Certificate	1,000.00	7.50%	7.79%
6 Year Certificate	1,000.00	7.75%	8.06%
8 Year Certificate	1,000.00	8.00%	8.33%
4 Year Money Mkt. CD Oct. 70	1,000.00	10.55%	
6 Months Money Mkt. CD	10,000.00	Rate On Request	

RATES NEGOTIABLE ON 100,000. OR MORE INTEREST COMPOUNDED DAILY — PAID QUARTERLY EXCEPT 6 MONTH MONEY MARKET CERT. FEDERAL REGULATIONS REQUIRE A SUBSTANTIAL PENALTY FOR EARLY WITHDRAWAL.

Either Way You Get More For Your Money

CENTRAL PLAINS SAVINGS ASSOCIATION

SILVERTON 823-2056 416 Main
TULIA 200 N. Maxwell 995-3521
HALE CENTER 707 Main Street 839-2446
PLAINVIEW 2804 Olton Rd. 293-2607
DIMMITT 216 N. Broadway 647-2118

FOR SALE

GARAGE SALE: UNITED Methodist Youth. Saturday, 9:00 a.m. 700 Commerce, Methodist parsonage. Will be held if weather permits. 44-1tc

FOR SALE: CORNISH ROCK Fryng Size Chickens. 4.5 lbs. O. E. May, 303 Commerce St., Silvertown, Texas. Phone 823-2054. 44-1tp

FOR SALE: BALED HEGARI and cane. 847-2570, John Wyatt, or 847-2527, G. Mayfield. 43-2tc

TAM 101 WHEAT SEED AND Mitchell Select Soybean Seed For Sale. Bulk in your truck. Ray Teeple, 847-2665. 42-tfc

THINK CHRISTMAS! Come by and see us. Hand-made turquoise and silver jewelry by Lee Clay and paintings by Celia Martin. First building East of Brown's Hardware. Saturdays from 8:30 until 12:30. 42-tfc

FOR SALE: 1976 OLDS 88 TWO Door; Low Mileage; Extra Clean; Loaded. Phone 823-2228. 35-tfc

FIRE EXTINGUISHERS FOR Sale by the Silvertown Fire Department at the City Hall.

FOR WEDDING, ANNIVERSARY and Special Occasion Cakes, Call Ruby Kitchens, Phone 847-2511.

HOUSE FOR SALE: TWO BED-rooms and Garage. See by appointment. 823-2209. 39-tfc

FOR SALE: THREE BEDROOM House with cellar located at 101 North Main in Silvertown. Call 847-2241. 37-tfc

FOR SALE: 1978 CHEVROLET Nova. Clean and low mileage. See John T. Francis or call 847-2619. 36-tfc

THREE BEDROOM HOUSE FOR Sale. Small cellar and storage behind garage. 808 Lone Star Street. Mrs. J. E. Vaughan. 30-tfc

SINGER SEWING MACHINES, Vacuum Cleaners, Smith-Corona Typewriters, Adding Machines, Stereos. Sales, Service, Financing. Here every two weeks on Thursdays. Memphis Sewing Machine Co. 29-tfc

TREFLAN AND OTHER FARM Chemicals competitively priced. Check with us first. Anhydrous Ammonia Liquid Blends Available now. Lone Star Chemical, 823-2376 or 652-2761. 7-tfc

MAKE US YOUR CULTIVATOR and Tillage Tool Headquarters. We have Graham-Hoeme, Adams, Nichols, and IH—both in plain and hardfaced. Brown-McMurtry Implement, Silvertown, Texas. 17-tfc

NEED A V-BELT? BROWN-Mc Murtry Implement now has a good stock of V-Belts in the most needed sizes. 30-tfc

FOR SALE: IRRIGATION FIT-tings, valves, tubes. Can save you money. See Ware or Stan Fogerson. 14-tfc

FOR SALE: JOHN BLUE COT-ton Moduler; 560 International Diesel Tractor with Stripper and Basket; 1 1967 Chevrolet 2 ton Truck; 1 1976 Van, fully customized; 1 1973 Chevrolet El Camino. Contact Bill Long, southeast corner of Silvertown townsection. 44-2tc

FOR SALE: USED D-25 GUILD Guitar with case, \$150.00. See Mike Long, 823-2262. 44-2tp

WE NOW HAVE IN STOCK THE Amazing "Lightning Rod" Wick Applicator, to control Johnson Grass and weeds in your crops. You can run in wind without worry of damage to your crop, saving you many hours of down time; also you will notice a considerable saving in chemical cost with this proven method of application. Drop in and ask about The "Lightning Rod." Lone Star Chemical, Silvertown 823-2376, Lockney 652-2761, Residence 652-3434.

HOT WATER HEATERS: 20, 30, 40 Gallon; Gas and Butane. Brown Hardware. 36-tfc

FOR SALE: WE ARE A DEALER for Sanitas Wallpaper. Prompt delivery. Sample books available. Fogerson Lumber & Supply. 34-tfc

FOR SALE: HOUSE AND FOUR Lots on Lone Star Street. L. B. Garvin, Jr., 823-2235. 37-tfc

66. 68 JOHN DEERE MOWERS: Ray Thompson Implement Co. 5-tfc

12x60 MOBILE HOME FOR Sale. Contact Rick Hester. 38-tfc

OLD SCRATCH CATTLE OIL-ers: Sales, Service, Parts and Insecticides available through Henry T. Hamblen, Wayside, Texas. 806-764-3461. 27-tfc

MOORMAN'S FEEDS To better utilize your grazing, use Moorman Mineral and Protein It Pays To Figure Cost **DONNIE MARTIN** Silvertown, Texas

Underground Plastic Irrigation Water and Gas Pipe Installed
SILVERTON METAL WORKS
806-823-2431 or 823-2173

OUR BUSINESS IS EXHAUSTING . . . Custom Tailpipes for Pickups, Cars, Tractors and Combines. Dual Exhaust a Specialty. **DON'S MUFFLER SHOP** 123 W. California Street Floydada, Texas 983-2273

FAMBRO GATES AND PANELS. Designed by and built for ranchers. All steel; wind proof; custom made. Full details available from the local dealer, Brown Hardware in Silvertown. 5-tfc

NEARLY NEW 10-SPEED BIKE For Sale. Vance Childress, 823-2072. 44-tfc

RAW, ROASTED, HOT AND Spicy, and Cocktail Peanuts and Peanut Oil For Sale at the AAM Office, south of the caution light in Quitaque from 9:00 a.m. until 4:00 p.m. weekdays. 43-3tp

SEED: CASCOT AND PAYMA-ster Cottonseed; Funks, NC+, Taylor-Evans Cane and Sudans; Soybeans. Lone Star Chemical, 823-2376. 19-tfc

FOR SALE: TRASH BARRELS. Silvertown Fire Department. Ask at City Hall. 20-tfnc

LOCKNEY MEAT COMPANY USDA Inspection Kill Days Monday through Friday **CUSTOM PROCESSING** Wholesale and Retail Meat Half and Quarter cut, wrapped, frozen and fully guaranteed **SAM & KELLY FORTENBERRY** 652-3305 Corner of US 70 and Farm Road 378 South

SEE BROWN - McMURTRY FOR your International Electric Fences, insulators and wire. 38-tfc

FOR SALE OR RENT: JONES Dept. Store Building. Contact John Will Nichols, Drawer CC, Tulla, Texas 79088. Call collect 806/995-3575. 32-tfc

SHAKLEE PRODUCTS SOLD AT Et Cetera. 48-tfc

ATTENTION FARMERS & RANCHERS

We have buyers for large and small parcels of farm and ranch land in your area. If you are interested in selling, call collect 806 935-6826, or write John Dyslin, Broadmoore Realty, Box 239, Dumas, Texas 79029. 409-tfc

WANTED

SILVERTON FIRE DEPART-ment needs your old straw brooms for fighting grass fires. Call a fireman or drop them by the City Hall. 42-tfnc

INSULATION INSTALLED AND guaranteed. Fire resistant. Marr Insulation Co., 652-3593, Lockney, or call Flute Hutsell. 42-tfc

WOULD LIKE TO LEASE GRAZ-ing land for 150 to 400 cows—cash lease. If you have such grazing land for lease call collect 405 782-3974 or 214 785-6751. 40-8tp

DRY CLEANING, LAUNDRY: Briscoe County News is the Silvertown pick-up station for Tulla Laundry and Cleaners. Clothes will be picked up and delivered on Thursdays only. 31-tfc

CHECK OUR CHEMICAL PRICES. We Have Liquid Fertilizer Available. Lone Star Chemical, 823-2376 or 652-2761. 4-tfc

LET US DO YOUR HERBICIDE and Insecticide Spraying. We have two ground rigs and airplane. Lone Star Chemical.

FOR ALL YOUR LIFE INSURANCE HOSPITALIZATION NEEDS - USE and SOUTHLAND LIFE
Archie Castleberry 11th and Washington Amarillo, Texas

MAC'S BACKHOE SERVICE Call Harvey McJimsey Silvertown, Texas

Underground Irrigation Pipe Plastic Gas Pipe RHODE PIPE CO. 823-2458 - 823-2459 Silvertown, Texas

STOP PAINTING Cover all outside walls & overhang with U. S. Steel Products. Free Estimates Stan-By Steel Siding 1501 N. Columbia PLAINVIEW, TEXAS Phone 293-9330

LET US STRIP AND MODULE YOUR COTTON
WEAKS BROTHERS Gary - 847-2234 Victor 668-2961

SHEAR DELIGHT BEAUTY SA-lon is now taking appointments Tuesdays through Saturdays. Phone 823-2468. Shirley Henderson. 44-tfc

WANTED: CUSTOM SWATHING or baling. Leo Comer, 823-2179 or Larry Comer, 823-2190. 36-tfc

FOR PORTABLE DISC ROLL-ing, see R. N. McDaniel. Phone 823-2160. 43-2tp

LOST LOST: ONE CHINESE PUG Male. Call Don Cornett, 847-2519. 44-tfc

CARDS OF THANKS

CARD OF THANKS I want to express my heartfelt thanks to each of you for your help: to the ambulance crew, Stan, W. J. and Lynn; all of you who visited me while I was in the hospital, who sent cards and remembered me in your prayers, and for the many, many offers of help to my family. Ted Kingery

CARD OF THANKS We would like to express our thanks for the cards, visits and prayers while Pat was in the hospital. Thank you again. Pat and Carabel Cogdill

CARD OF THANKS We want to send a special thanks to all our friends and relatives for making Jim's 80th birthday party a very happy surprise and success. Thanks for all the wonderful cards, gifts, and happy thoughts for him. We think the people of Silvertown, Quitaque, Turkey, South Plains and Lockney are the greatest. Again thanking all of you for your thoughts. Hope we can help some of you celebrate your 80th birthdays. We love all of you. Jim and Agnes

CARD OF THANKS Thank you for the cards, phone calls and flowers that were sent to the Peggy Cole family. Leo Cole and children Jack and Frances Davis and family Joe and Tina Davis and family

PRINTING Letterpress and Offset BRISCOE COUNTY NEWS 823-2333

PRINTING Letterpress and Offset BRISCOE COUNTY NEWS 823-2333

CARD OF THANKS We want to thank everyone for the flowers, food, cards, visits, words of sympathy, and prayers at the passing of our loved one. A special thank you to Pastor Royce Denton, Bill Griffin and the ladies of the First Baptist Church. May God bless each one of you. The family of Martha E. James Mr. and Mrs. Gerald James

CARD OF THANKS I would like to thank my many friends and loved ones for the visits, telephone calls, beautiful flowers and cards while I was in the hospital, and thanks to my friends for the food, visits and many words of comfort since I have been home. Thanks to Anthony and Helen who went with me in the ambulance to the hospital after my accident. May God bless each and everyone. Ida Smith

CARD OF THANKS Thank you for the visits, cards, prayers, gifts, concern and telephone calls while I was in the hospital and for the food and visits since I have been home. All are appreciated very much. Michael Greenhaw and family

CARD OF THANKS Thanks to the Silvertown Volunteer Fire Department for answering our call, and thanks to Quinn and James Edwards for spotting the fire and coming to put it out. Joe and Polly Montague

CARD OF THANKS On behalf of the Silvertown Volunteer Fire Department, I would like to thank Joe and Polly Montague for their donation to our department. These special gifts help to finance the purchase of new and better equipment. Jerry Patton, President

Distinctive **Wedding STATIONERY** By Carlson Craft

INVITATIONS and ANNOUNCEMENTS NAPKINS BRIDAL BOOKS ACCESSORIES

Fast Service, Beautiful Styles, Reasonably Priced!

SEE US FOR ALL TYPES **COMMERCIAL PRINTING**

Briscoe County News

RAY TEEPLE FERTILIZERS Proper Fertilizer Blends To Meet Your Soil Needs Nitrogen - Phosphate - Potassium - Sulfur - Zinc and All Traces

get an application job you can depend on - now and later

Dependable applications start with experienced people who know how and when to apply fertilizers and chemicals. You can depend on us for yield-boosting recommendations, mixes, application rates and quality work.

Let us save your valuable time and still meet your critical schedules. Call today for more facts on custom application on your fields.



Custom Application - Soil Testing **DON'T GUESS - SOIL TEST** Phone 847 - 2665

SEED CLEANING

Mr. Farmer,

We are now ready to clean - treat - bag or bulk your seed wheat.

Ask us about trading your wheat for cleaned seed wheat.

Call collect for appointment 983-2821 **Producers Cooperative Elevator** Floydada, Texas

Diamond Industrial Supply Co., Inc. Phone Days 296-7418 - Nights 293-1200 or 296-7828 1014 Broadway Plainview, Texas

SKF BCA TIMKEN BOWER "We Appreciate Your Business More" Chain Sprockets V-Belts Sheaves U-Joints Oil Seats O-Rings Wisconsin

DR. O. R. McINTOSH OPTOMETRIST South Main Street Phone 983-3460 FLOYDADA, TEXAS

Notice to Briscoe Co-op Gin Customers:

This season's charges will be as follows: **Ginning \$1.10 per hundred** **Bagging and Ties \$11.00 per bale** **Module Hauling \$45.00 per module up to 15 miles**

We will appreciate any or all of your ginning and cotton handling.

The Board of Directors and Management of Briscoe Cooperatives

We'll sell you this \$35 WOODCUTTER'S KIT for \$20. when you buy a new John Deere Chain Saw

This kit has everything you need to start cutting firewood... except the gas. And it includes the tools you'll need to keep your saw cutting right. Buy a new John Deere Chain Saw and it's yours for only \$00.00. The kit includes a 2 1/2-gal. fuel can, bar lube, 2-cycle engine oil, felling wedge, a pair of cowhide gloves, and a flat file, file guide and "gaugit" to keep your saw's chain sharp. And for helpful tips on keeping your saw in top condition, there's the Oregon® Saw Chain Maintenance Manual.

Ray Thompson Implement Co. Silvertown, Texas