

BRISCOE COUNTY NEWS

PUBLISHED EVERY THURSDAY AT SILVERTON, TEXAS 79257
BY CHARLES AND MARY ANN SARCHET
SECOND CLASS POSTAGE PAID AT SILVERTON, TEXAS 79257
CHARLES R. SARCHET PUBLISHER
MARY ANN SARCHET EDITOR
SUBSCRIPTION RATE \$4.50
Display Advertising Rates: Available on Request
Classified and Legal Rates, Each Insertion 5c per word, \$1.00 minimum
Cards of Thanks \$1.00
MEMBER TEXAS AND PANHANDLE PRESS ASSOCIATIONS

News From Your Local ASCS

PROPOSED DETERMINATIONS REGARDING 1979 WHEAT PROGRAM

The Secretary of Agriculture proposes to make the following determinations with respect to the 1979 crop of wheat: (a) Determine preliminary 1979 national program acreage level, (b) determine recommended reduction from previous year's harvested acreage to guarantee target price protection on total 1979 planted acreage, (c) determine whether there should be a set-aside requirement and, if so, the extent of such requirement, (d) determine whether there should be a land diversion program and, if so, the extent of such diversion and level of payment, (e) if a set-aside is required whether a limitation should be placed on planted acreage, and (f) whether the special grazing and hay program should be implemented.

Most of the above determinations are required to be made by the Secretary on or before August 15, 1978, in accordance with provisions in Sections 107A and 109 of the Agricultural Act of 1949, as amended.

The Secretary invites written comments on the proposed determinations. Comments must be received on or before July 27, 1978. Acting Director, Production Adjustment Division, ASCS, USDA, Room 3630, South Building, P. O. Box 2415, Washington, D. C. 20013 is the address. For further information, contact Bruce R. Weber (ASCS), 202-447-7987.

The following determinations with respect to the 1979 crop of wheat are to be made pursuant to Sections 107A and 109 in the Agricultural Act of 1949, as amended by the Food and Agriculture Act of 1977 (Pub. L. 95-113) hereafter referred to as the "Act."

a. National Program Acreage. The Act requires that the Secretary proclaim a national program acreage for the 1979 wheat crop not later than August 15, 1978. The national program acreage for wheat shall be the number of harvested acres the Secretary determines (on the basis of a national average farm yield) will produce the quantity (less imports) that the Secretary estimates will be utilized domestically and for exports during the 1979-80 marketing year. The national program acreage may be adjusted by an amount the Secretary determines will accomplish a desired increase or decrease in carryover stocks.

If favorable worldwide production conditions exist throughout the current 1978-79 marketing year, the carryover stocks of wheat as of June 1, 1979, could be over 1.3 billion bushels, the highest since 1961. If there is such a high level of carryover stocks at the beginning of the 1979 program year, and assuming favor-

able worldwide production conditions continue, program adjustments would be needed for the 1979 crop in order to reduce the 1979-80 carryover level to approximately 7.5 percent (or 1,100 million bushels) of the 1978-79 estimated world consumption level of wheat. This would likely result in estimated domestic use of around 725 to 750 million bushels of wheat with exports as low as 900 million bushels for the 1979-80 marketing year. Under these circumstances, the 1979 national program acreage would be approximately 44.5 million acres, down 20 to 25 percent from the estimated 1978 national program acreage.

However, if unfavorable worldwide production conditions were to exist through the 1978-79 marketing year, carryover stock could be as low as 830 million bushels. If unfavorable weather conditions continue for the 1979-80 crop, estimated 1979-80 marketing year domestic use would likely be near 675 to 700 million bushels of wheat and exports at about 1,300 million bushels. Under these conditions, it is estimated that the national program acreage for 1979 would be approximately 63.0 million acres, 8 to 10 percent higher than the estimated 1978 national program acreage.

b. Voluntary Reduction From Previous Year's Harvester Acreage. Section 107A (d) (3) of the Act provides that the 1979 wheat acreage eligible for payments shall not be reduced by application of an allocation factor (not less than 80 percent nor more than 100 percent) if producers reduce the acreage of wheat planted for harvest on the farm from the previous year by at least the percentage recommended by the Secretary in his proclamation of the national program acreage.

c. Determine Whether There Should Be A Set-Aside For 1979, And If So, Level Of Such Set-Aside.

Section 107A (f) (1) of the Act provides that the Secretary shall provide for a set-aside of cropland if he determines that the total supply of wheat will, in the absence of a set-aside, likely be excessive taking into account the need for an adequate carryover to maintain reasonable and stable supplies and prices in order to meet a national emergency. The Secretary is required to announce a set-aside program not later than August 15, 1978, for the 1979 wheat crop. If a set-aside of cropland is in effect, then as a condition of eligibility for loans, purchases, and deficiency and disaster payments, producers must set-aside and devote to conservation uses an acreage of cropland equal to the announced set-aside percentage times the acreage of wheat planted for harvest in 1979.

The need for a 1979 wheat set-aside will depend upon several factors. Production conditions throughout the world during the current 1978 crop year will have a significant impact on the actions which may need to be taken for the 1979 wheat crop. If favorable crop conditions exist for the 1978 wheat crop, ending U. S. wheat stocks as of June 1, 1979, could be over 1.3 billion bushels. This level of stocks and continued favorable production conditions for the 1979 crop would indicate significant set-aside requirements would be needed to adjust 1979 wheat supplies. A desired carry-over level of wheat stocks at the end of the 1979-80 marketing year would approximate 1.1 billion bushels. However, if worldwide production conditions during the balance of the current crop year were unfavorable, ending stocks for the 1978-79 marketing year could be as low as 830 million bushels. If these unfavorable production conditions continued into 1979, producers would be encouraged to plant additional wheat acreage to meet demand and maintain an adequate level of carryover stocks. Under these conditions no set-aside would be required for the 1979 wheat program.

The current assessment of the 1978 world-wide wheat crop prospects would indicate a need for a set-aside in 1979. However, the appropriate level of set-aside can only be determined when further information is obtained with res-

pect to the 1978 U. S. wheat crop as well as foreign production prospects and needs. d. Determination Of Whether There Should Be A Land Diversion Requirement And, If So, The Extent Of Such Diversion And Level Of Payment.

Section 107A (f) (2) of the Act authorizes the Secretary to make land diversion payments to producers of wheat, whether or not a set-aside is in effect. Land diversion payments may be made if the Secretary determines they are necessary to assist in adjusting the total national acreage of wheat to desired goals. If land diversion payments are made, producers will be required to devote to approved conservation uses an acreage of cropland equal to the amount of such land diversion. Land diversion payment levels will be determined by the Secretary.

Land diversion payments may be established at a flat offer rate (specific rate per bushel times farm program yield) or through the submission of bids by producers. In determining the acceptability of bids, it is likely the Department will take into consideration the extent of the diversion to be undertaken and the productivity of the acreage being diverted.

e. Limitation On Planted Acreage.

Section 107A (f) (1) of the Act provides that the Secretary may limit the acreage planted to wheat, if a set-aside is in effect. Such

limitation shall be applied on a uniform basis to all wheat-producing farms.

f. Special Grazing And Hay Program.

Section 109 of the Act provides that the Secretary is authorized to administer a special wheat acreage grazing and hay program for 1979. Under this special program, a producer shall be permitted to designate a portion of the acreage on the farm intended to be planted to wheat, feed grains, or upland cotton for harvest, not in excess of 40 percent of such acreage intended to be planted or 50 acres, whichever is greater. Such designated acreage shall be planted to wheat (or some other commodity other than corn or grain sorghum) and used by the producer for grazing purposes or for hay rather than for commercial grain production.

The provisions of Section 109 were implemented under the 1978 wheat program. Slightly over 1.3 million acres of planted wheat acreage were designated under the program at a payment rate equal to the higher of 50 cents per bushel of the deficiency payment rate determined for the 1978 wheat crop times the farm program payment yield. If the special wheat grazing and hay program were implemented again in 1979, it is proposed that the program would be subject to similar terms and conditions applicable to the 1978 program.

Provisions of the 1979 wheat program consideration will be given to any data, views and recommendations that may be received relating to the above items.

Comments will be made available for public inspection at the Office of the Acting Director during regular business hours (8:15 a.m. to 4:45 p.m.)

Executive Order 12044 (43 FR 12661, March 24, 1978) requires at least a 60-day public comment period on any proposed significant regulations except where the Agency determines this is not possible. In view of the fact that the

provisions of the 1979 wheat program must be announced by August 15, 1978, it is hereby found and determined that compliance with provisions of Executive Order 12044 is impractical and contrary to the public interest. Accordingly, comments must be received by July 27, 1978, in order to be assured of consideration.

Mr. and Mrs. Glen Lindsey attended an Eastern Star Joyce Roberts Roundup at Mesquite over the weekend.

We Are Now A Dealer For
THE ULTRA STAMP
The Finest and Most Advanced
PRE-INKED STAMP
On The Market.
IMAGINE -- A MODERN HAND STAMP THAT PRODUCES CRISP, CLEAN IMPRESSIONS WITHOUT A STAMP PAD, WITH THOUSANDS OF IMPRINTS BETWEEN RE-INKINGS. EASY TO RE-INK.
Briscoe County News

JULY Festival of SAVINGS!
IN A BAG 8 LB. ALAMO 2.49
ORANGE QT. GATORADE 49c
LEMON QT. GATORADE 49c
SHURFINE 10 LB. FLOUR 1.28
32 OZ. MOP & GLOW 1.79
SHURFINE 18 OZ. GRAPE JELLY 69c
SHURFINE STRAWBERRY 18 OZ. PRESERVES 99c
SHURFINE 80 CT. Sandwich Bags 59c
SHURFINE HLVS. 303 PEACHES 2/89c
SHURFINE SLL. 303 PEACHES 2/89c
SHURFINE 303 3 FOR Blackeye Peas 89c
SHURFINE NON-DAIRY 16 OZ. CREAMER 89c
SHURFINE 303 SLICED BEETS 2/79c
SHURFINE LIGHT QT. CORN SYRUP 89c
Dairy And Frozen Food
WHIPPED TOPPING Cool Whip 9 OZ. TUB 59c
SHURFINE CHOPPED Spinach 2 10 OZ. PKGS. 59c
PATIO MEXICAN Dinners 6 PKGS. 59c
MORTON MEAT Beef/Chicken/Turkey Pot Pies 3 8 OZ. PKGS. 89c
KRAFT NATURAL Swiss/Mozzarella Sliced Cheese 6 OZ. PKG. 79c
Health And Beauty Aids
SHAMPOO Prell Liquid 7 OZ. BTL. 99c
AEROSOL Secret 4 OZ. CAN. 99c
CREME DEODORANT Secret 1 OZ. SIZE 69c
MOUTHWASH Signal 8 OZ. BTL. 49c
EVERYDAY A SAVINGS EVENT!
SHURFINE GT. SIZE DETERGENT 1.29
HONEY BOY CHUM TALL SALMON 1.39
SHURFINE SHORTENING 1.79
SHURFINE Facial Tissue 2/1.00
Lemon Tree LEMONADE 99c
LIPTON ICE TEA 99c
U.S.D.A. GRADE "A" COUNTRY PRIDE
Whole Fryers 59c
Pork Chops \$1.39
Pork Chops \$1.79
Pork Chops \$1.69
CANTALOUPE 19c
CALIFORNIA Peaches 49c
FULL EAR Corn 3 EARS 49c
YELLOW SWEET Onions 2 LBS. 29c
NANCE'S
venture FOODS
PRICES EFFECTIVE THURSDAY, FRIDAY & SATURDAY

The American farmer builds two things better than anyone else in the world. He builds the next generation, passing along a special kind of wisdom... respect for the soil, honesty, independence, and faith in the future. And he builds his land, leaving it better than he found it. That kind of building usually requires borrowed long-term capital. That's where we have helped for 60 years.

The Land Bank
The Bank of Generations

FEDERAL LAND BANK
ASSOCIATION OF FLOYDADA
105 South Wall
FLOYDADA, TEXAS 79235
Ph. 983-2480

**WE HAVE
SPRAYER
PARTS
FOR ALL TYPES OF SPRAYERS**

**Let Us Help You With Your
Sprayer Needs!**

**RAY THOMPSON
IMPLEMENT COMPANY**

Diamond Industrial Supply Co., Inc.

Phone Days 296-7418 — Nights 299-1200 or 296-7828
1014 Broadway
Plainview, Texas

Chain	U-Joints
Sprockets	Oil Seals
V-Belts	O-Rings
Sheaves	Wisconsin
SKF	BCA
TIMKEN	BOWER

"We Appreciate Your Business More"

**The Congregation Of The
CHURCH OF CHRIST
Meeting At Rock Creek**

EXTENDS A GRACIOUS WELCOME TO ALL TO
ATTEND ANY AND ALL OF OUR SERVICES.

SUNDAY

Morning Worship 10:30 a.m.
Evening Worship 6:00 p.m.

WEDNESDAY

Evening 7:00 p.m.

**KIKER'S
KORNER**

**STINK BUGS ARE COMMON
GARDEN PESTS**

Stink bugs are common pests in the home garden and they attack many different vegetables.

The most common species of stink bugs is the southern green stink bug. This bug is about one-half inch long, shield shaped and green in color. The harlequin bug is also a species common to the home garden and is easily recognized by its bright red, black and yellow color pattern. Other damaging species include the little green stink bug and the brown stink bug.

Immature stink bugs are shaped much like the adults but are often marked with stripes or checks of white, red, yellow and black. They are often found in groups of from 10 to 50, feeding on plant foliage.

Stink bugs damage plants by sucking juices from plant tissue. Heavily infested plants may have a wilted appearance. If infestations are allowed to persist, plants may lose their leaves and fruit.

Use care when hand picking stink bugs, since the pests produce a chemical with a disagreeable odor which can also irritate the eyes.

Stink bugs may be controlled with Sevin, malathion or naled. Gardeners should read and follow directions on the label before applying any insecticide.

**PRUSSIC ACID POISONING
IN LIVESTOCK**

Extremely hot, dry weather in Briscoe County could lead to prussic acid poisoning in livestock grazing certain pasture grasses and forages. The acid builds up in stressed plants that become particularly dangerous when new growth results after a rain.

Although many plants contain the toxic material that causes poisoning, those causing the highest mortality in livestock when new growth is grazed following drought conditions are Johnson and Sudan grasses and sorghum or hybrids of these.

The most dangerous time as far

As the grazing is concerned is when wilted plants put forth new growth. Livestock should not be allowed access to the wilted plants or plants putting out new growth immediately after a rain. New plant growth usually becomes nontoxic and can be grazed within 10 days to two weeks following a rain.

As far as prussic acid poisoning is concerned, the poison acts rapidly and can kill animals within minutes. In most acute cases, animals become affected within 10-15 minutes after eating toxic material and can die in two to three minutes. Symptoms may include a brief period of stimulation followed by depression and paralysis. Signs of colic may be present. Stupor (loss of sensibility), difficult breathing and frequent convulsions may result. Death is caused by suffocation since oxygen remains in the blood and is not exchanged to the tissues.

To prevent prussic acid poisoning in livestock, these precautions should be taken:

1. Hungry animals should not be turned in on suspected plants that may contain prussic acid. An animal well filled with hay before turning in a new pasture will be less affected by the plant material that may be toxic.
2. Remove all animals from the pasture if one in the herd shows any signs of poisoning. Keep in drylot and feed cured hay until suspected forage can be tested.
3. Call a veterinarian immediately if an animal appears to be poisoned. An antidote to treat affected animals is highly efficient if given early by intravenous injection. This product is available from veterinarians for ranchers who want to keep a supply on hand for emergency use.
4. Have suspect plant material checked by the Texas Veterinary Medical Diagnostic Laboratories at College Station or Amarillo. Local veterinarians can assist in packaging and submitting samples.

The overall key to preventing prussic acid poisoning in livestock is to be aware of plant materials that may cause poisoning and then to keep cattle from grazing such plants until the toxic stage has passed.

A proclamation by the President of the United States has declared the week of July 25 to be National Farm Safety Week.

The proclamation reads: "All Americans, and a sizeable portion of the rest of the world's people, depend upon American agriculture for much of their food and fiber. Anything that diminishes the ability of farmers and ranchers to meet these vital needs is of great concern. Farm accidents are among the costliest impediments to production and cause great suffering and economic loss. "Accidents can destroy the lives and bodies, as well as the economic resources of farm families. Neither the individuals involved, nor the Nation, can afford these losses. Farm safety leaders believe that most farm accidents could be prevented with greater care in controlling hazards and unsafe practices—the same kind of dedicated, careful management and attention to detail that has made possible our incredible increase in agricultural production.

"Now, therefore, I, Jimmy Carter, President of the United States of America," do hereby designate the week beginning July 25, 1978, as National Farm Safety Week. I call upon the men and women who operate the Nation's farms and ranches to regard safety as an integral part of all their activities. "In witness whereof, I have hereunto set my hand this twenty-first day of March, in the year of our Lord nineteen hundred seventy-eight, and of the Independence of the United States of America the two hundred and second."

PLAN QUAIL COVER

Though hunting season may seem far away, it's not too soon to begin planning for quail. And summer is a good time to increase your chances with the birds by improving their cover.

As most quail hunters know, quail are found in areas with a good mixture of grass, weeds and woody vegetation. This cover is frequently provided by clumps of blackberry, wild rose, yaupon, cedar, plum, young pine, privet, sasafra and sumic.

But when such cover isn't found naturally, it can be constructed. A brush shelter can be built by half-cutting a tree about 12-foot tall and bending it until the top rests

on the ground. Then brush and logs are piled on the half-cut trunk until a thick covering is provided.

Trees covered with grapevine or greenbriar can be half-cut so they will continue to live and pushed over similar to the brush shelters. The purpose in half-cutting trees is to put the tops close to the ground, yet encourage continued growth.

Coveys like to loaf, dust and move about freely under woody cover which protects them from above. Locate the cover on well-drained ground.

Although live vegetation is more durable, artificial cover can be used in grassland devoid of suitable woody plants. Construct shelters of poles, boards or heavy brush so that the roof is about eight inches above the ground. Space poles or boards in the roof about two to three inches apart. Overall size of the structure should be about six to eight feet square.

Quail also should have some specific nesting cover needs. In addition to being well drained, the area should have open stands of tall grass and brush.

Quail seem to want a place where they can see what is going on near the nest, which is constructed on the ground. Since quail need six to eight-inch high grass for their nests, pastures which have been mowed or grazed short won't be suitable for nesting.

Fencing, which provides protection from overgrazing, will rejuvenate cover and increase nesting.

Mrs. Mildred Brooks is now employed at the Senior Citizens Center in Tulla.

MEMORIAL PROGRAM

Your Memorial Gift is a fitting tribute to a loved one. This remembrance helps support the research, education and service programs of the American Cancer Society.

Memorial gift funds may be sent to your local Unit of the Society.

**AMERICAN
CANCER
SOCIETY**

YOU ARE INVITED

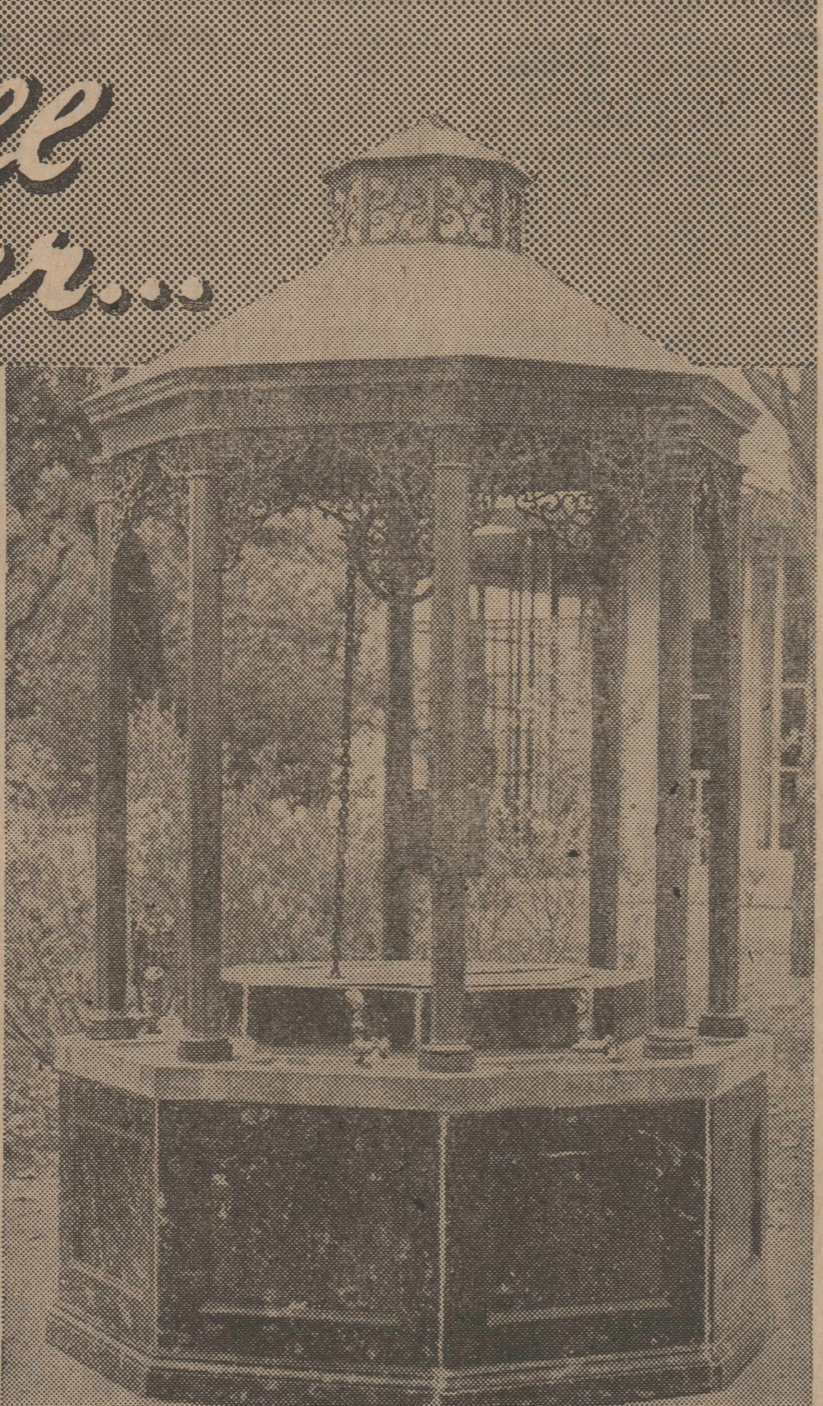
TO SEE OUR LARGE SELECTION OF PAPER ITEMS FOR THE BRIDE

WEDDING INVITATIONS
100 For \$13.90 and up
NAPKINS, GUEST BOOKS
THANK YOU NOTES
LATEST STYLES

BRISCOE COUNTY NEWS

**JACK'S PHARMACY
WILL BE CLOSED
ALL DAY
SATURDAY, JULY 29**

*A well
of water...*



Many important events have taken place at the well. In days long ago it was a meeting place, where all came because of the necessity to obtain life-sustaining water.


Jacob met his beloved Rachel at the well. Moses met the daughters of his future father-in-law at the well in Midian. Much later Jesus Christ met a woman of Samaria at the well and said, "Whosoever drinketh of the water that I shall give him shall never thirst: but the water that I shall give him shall be in him a well of water springing up into everlasting life."

The church of God today is a meeting place where many come to obtain this life-giving and life-sustaining water of which Jesus spoke.

The Church is God's appointed agency in this world for spreading the knowledge of His love for man and of His demand for man to respond to that love by loving his neighbor. Without this grounding in the love of God, no government or society or way of life will long persevere and the freedoms which we hold so dear will inevitably perish. Therefore, even from a selfish point of view, one should support the Church for the sake of the welfare of himself and his family. Beyond that, however, every person should uphold and participate in the Church because it tells the truth about man's life, death and destiny; the truth which alone will set him free to live as a child of God.

**EVERYONE IN THE CHURCH
THE CHURCH IN EVERYONE**

Coleman Adv. Ser.



First State Bank

**What... heats, broils, roasts;
simmers, sizzles, broasts;
grills, bakes, stews;
panfries, and
even barbecues?**



**GAS COOKING
OUTDOORS**

Gas cooking outdoors sure makes sense in the summertime. It keeps the heat out, so your house stays cool. You save on air conditioning. Plus there's no charcoal or lighter fluid to buy, and no wait. Gas reaches cooking temperature fast and cooks full family dinners, everything your inside range and oven can cook, with that great outdoor flavor.

Take the heat out of the kitchen. Install a gas grill on the patio. It sure makes sense in the summertime, or anytime!

Charmglow 2000

With 351 square inches of cooking surface and deep hood design, this popular grill has the capacity to cook a big turkey or whole ham. Heat sets with the turn of a knob, and the special H-shaped burner and permanent briquettes heat the entire cooking area evenly.

Only \$7.11 budget-priced on your monthly statement.

List Price..... \$231.50	YOU SAVE..... 30.00
Discount Price... 201.50	5% Sales Tax.... 10.08
+ Cash Price.... 211.58	+ Budget Price*.. 256.96

Budget terms: no down payment, \$7.11 per month for 36 months

Charmglow 3200

This family favorite has a cooking grid that is over two feet wide and a foot deep. Its split gas burner heats each half of the cooking surface separately from the other so you can cook different foods at different temperatures. And its exclusive Charm-Rok® briquettes insure uniform heat over the 461 square-inch cooking area.

Only \$9.30 budget-priced on your monthly statement.

List Price..... \$293.50	YOU SAVE..... 30.00
Discount Price... 263.50	5% Sales Tax.... 13.18
+ Cash Price.... 276.68	+ Budget Price*.. 334.80

Budget terms: no down payment, \$9.30 per month for 36 months.

Buy one of these Charmglow grills before August 1, 1978 and save \$30.

Charmglow 4000

The complete outdoor range. Two separate cooking surfaces, each with its own control. Cook a complete meal on one side, keep food warm on the other. Its 702 square inches of cooking surface is all the cooking room you need for a big family meal.

Only \$14.01 budget-priced on your monthly statement.

List Price..... \$427.00	YOU SAVE..... 30.00
Discount Price... 397.00	5% Sales Tax.... 19.85
+ Cash Price.... 416.85	+ Budget Price*.. 504.36

Budget terms: no down payment, \$14.01 per month for 36 months.

* Prices include normal post-type installation and 8% sales tax.
* Budget terms are available at 12.99% annual interest on declining balance.



**PIONEER
NATURAL GAS COMPANY**
(A Division of PIONEER CORPORATION)

© PNG 1978

MR. FARMER!

DON'T SPEND PROFITS TO FEED BOLL WORMS!

BIOLOGICAL INSECT CONTROL

TRICHOGRAMMA WASPS

The tiny *Trichogramma* wasp is the best-known of the egg parasites. It attacks over 200 pest species in all kinds of habitats, including the eggs of codling moth, bollworms, leafworms, fruitworms, cutworms, armyworms, cane borers, and almost all moth and butterfly eggs that hatch into the worm pests attacking orchard and field crops.

The *Trichogramma* parasite lays its eggs in the eggs of the pests. When this occurs, development of the pest worm ceases, and the *Trichogramma* egg hatches into a larva which feeds on the immature pest inside the egg. The larva completes its development inside the pest egg, emerging as an adult. Depending on the size of the egg to be parasitized, the *Trichogramma* may deposit one or more eggs

in it, and several larvae may develop inside the same egg. The life cycle from egg to adult varies according to temperature and moisture in the habitat; it may be one week or two months. Adult parasites are free-living, feeding on nectar and ovipositing (laying eggs) in the eggs of pests.

Trichogramma, as an egg parasite, is immediately effective in its action; it kills the pests *before* they can damage a plant. *Trichogramma* also affects suppression of all other life stages of the pest; a drastic reduction in the numbers of pest eggs leaves fewer insects to survive to adulthood, making their biological control by other insects that much more effective.

Trichogramma releases assist the natural buildup of beneficial insects in the field or garden, through immediate reduction of the eggs of the pest against which they are released, and through establishment of field populations of this important natural enemy. By adding these insects to the field or garden periodically, their presence can be assured when the pests arrive. When the parasites are released early in the season, the minor pest situations serve as their oviposition source, helping build *Trichogramma* populations to control the major pest situations as they develop. A sequence of releases throughout the season is preferable to just one large release. Results depend on timing of the releases and placement of the wasps where and when the moths are laying eggs. Releases should be begun as soon as the first moths are seen.



PROOF OF PERFORMANCE FROM PAST
LOCAL SATISFIED CUSTOMERS!

Why Pay More When We
Can Supply For Less!

35¢ AN ACRE COTTON,
GRAIN SORGHUM, and CORN

YOUR BUSINESS APPRECIATED

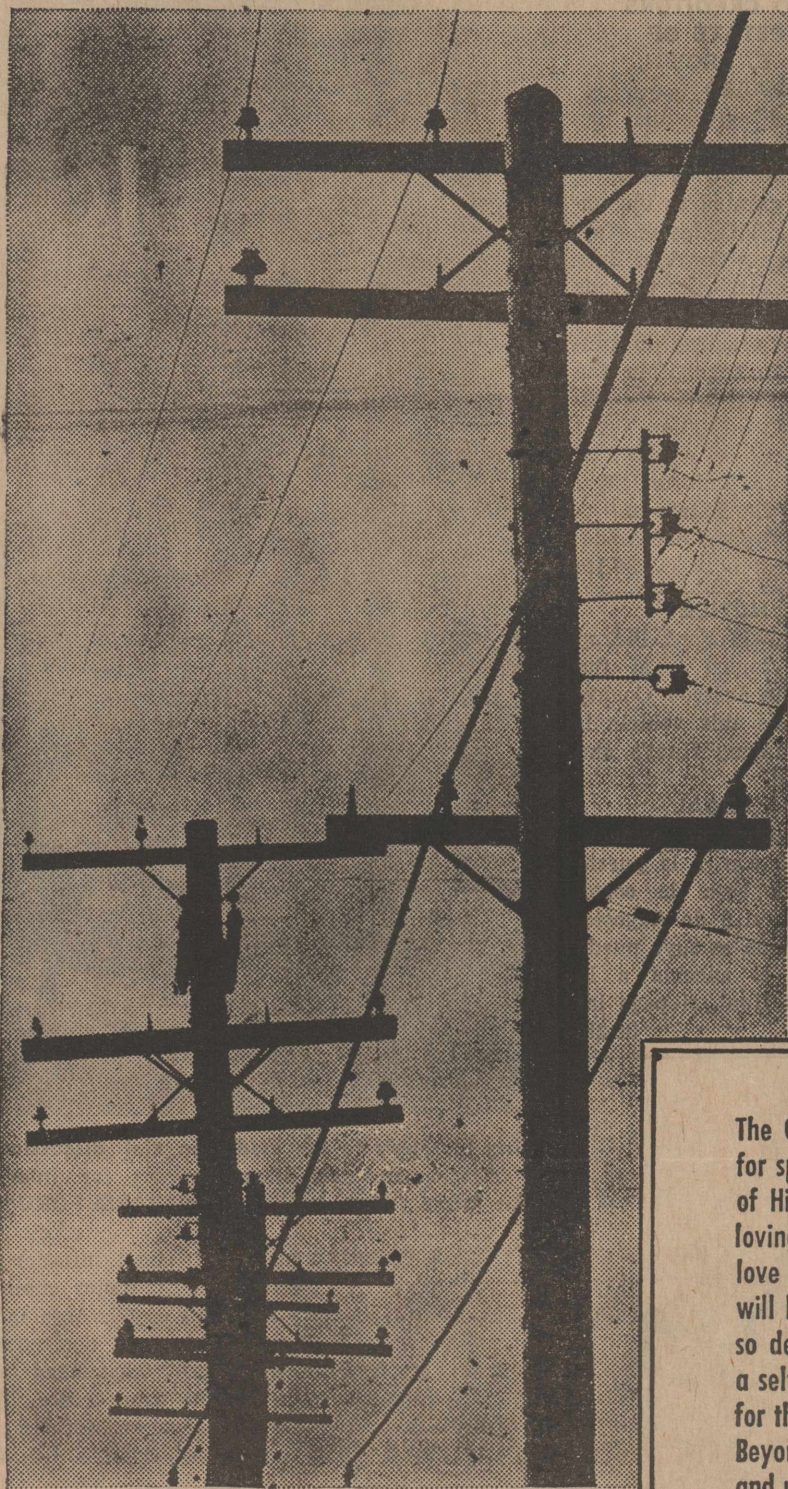
HARRIS GIN CO.

SCHOOL SUPPLIES





COMMUNICATION



Telephone lines spread across our nation, giving us immediate contact with loved ones. Vital business is rapidly contracted through this medium.

Our linkage to God is prayer. Through prayer we can express our love, our thanks, and seek God's help.

"Hearken unto the voice of my cry, my King, and my God: for unto thee will I pray."

Attend church, join others in fellowship and prayer to God.



The Church is God's appointed agency in this world for spreading the knowledge of His love for man and of His demand for man to respond to that love by loving his neighbor. Without this grounding in the love of God, no government or society or way of life will long persevere and the freedoms which we hold so dear will inevitably perish. Therefore, even from a selfish point of view, one should support the Church for the sake of the welfare of himself and his family. Beyond that, however, every person should uphold and participate in the Church because it tells the truth about man's life, death and destiny; the truth which alone will set him free to live as a child of God.

Coleman Adv. Serv.

ASSEMBLY OF GOD

Lemy L. Pike, Pastor

Sunday

Sunday School..... 9:45 a.m.
Worship Service..... 11:00 a.m.
Evening Service..... 7:00 p.m.

Wednesday

Worship Service..... 7:30 p.m.

★

CHURCH OF CHRIST SILVERTON

Ted Kingery, Minister

Sunday

Sunday School..... 9:00 a.m.
Morning Worship..... 10:00 a.m.
Evening Worship..... 6:00 p.m.

Wednesday

Bible Study..... 7:00 p.m.

★

FIRST BAPTIST CHURCH

Royce Denton, Pastor

Sunday

Library Opens..... 9:15 a.m.
Sunday School..... 9:45 a.m.
Worship Service..... 11:00 a.m.
Library Opens..... 4:30 p.m.
Youth Choir..... 4:30 p.m.
Training Union..... 5:00 p.m.
Mission Friends, G.A. and R.A..... 5:00 p.m.
Evening Worship..... 6:00 p.m.

Second Monday

Night W. M. S..... 7:00 p.m.

Second and Fourth Tuesday

W. M. S..... 9:30 a.m.

Wednesday

Junior High Acteens..... 3:35 p.m.
High School Acteens, first and third Wednesday..... 3:35 p.m.
Mid-Week Service..... 7:00 p.m.
Choir Rehearsal..... 7:45 p.m.

Second Saturday

Baptist Men..... 7:00 a.m.

FIRST UNITED METHODIST CHURCH

Jesse Dea, Pastor

Sunday

Sunday School..... 9:45 a.m.
Worship Service..... 11:00 a.m.
M. Y. F..... 5:00 p.m.
Evening Worship..... 6:00 p.m.

Wednesday

Choir Practice..... 6:00 p.m.

★

NEW FELLOWSHIP BAPTIST MISSION

Sunday

Sunday School..... 9:45 a.m.
Worship Service..... 11:00 a.m.
Training Union..... 5:00 p.m.
Evening Service..... 6:00 p.m.

Wednesday

Choir Rehearsal..... 7:00 p.m.
Prayer Service..... 8:00 p.m.

★

OUR LADY OF LORETO CATHOLIC CHURCH

Father David Greika

Sunday

Mass..... 10:00 a.m.

★

ROCK CREEK CHURCH OF CHRIST

Earl Cantwell, Minister

Sunday

Worship Service..... 10:30 a.m.
Evening Worship..... 6:00 p.m.

Wednesday

Worship Service..... 7:00 p.m.

ATTEND CHURCH

BROWN - McMURTRY IMPLEMENT CO.

SILVERTON AUTO PARTS

RHODE PIPE COMPANY

NANCE'S FOOD STORE

JONES DEPT. STORE

SILVERTON FUNERAL HOME

BRISCOE COOPERATIVES

BRISCOE COUNTY NEWS

VERLIN B. TOWE AGENCY

D & D CHEMICAL & FERTILIZERS, INC.

ASHEL McDANIEL TEXACO

GRABBE - SIMPSON CHEVROLET CO., INC.

FOGERSON LUMBER & SUPPLY

JACK'S PHARMACY

SILVERTON OIL COMPANY

BROWN HARDWARE AND FURNITURE

RAY THOMPSON IMPLEMENT, INC.

FIRST STATE BANK

JERRY'S MALT SHOP

FOR SALE

USED MATTRESS AND BOX SPRINGS For Sale. \$25.00. Inquire at Briscoe County News. 30-4fc

FOR SALE: CATALINA AVOCADO green dryer. Jimmy Stone, 823-2204. 29-2tc

OFF-WHITE DRAPES, VALANCE, and rod for sale. Fits window 108" wide, 63" long. Call or come by after 4:30. Mrs. Seymour Brannon. 29-2tc

FOR YOUR AVON NEEDS, contact Vicki Bean at 847-2658. Now serving the rural area around Silvertown. 29-4tp

FOR SALE: 3 BEDROOM HOUSE, 500 11th Street. Carpet, Fireplace, panelled, FHA approved. 823-2468. 29-4tp

14x54 WESTCHESTER TWO BEDROOM mobile home for sale. Call 847-2281 after 5:00. 28-4tc

FOR SALE: ONE HIGH VOLUME lake water pump, with diesel engine. This is a closed vein impeller pump with stainless steel seals. 28 HP on air cooled engine with 12 volt DC Flutran Pump. Fast easy priming. Pump can be regulated to pump from 400 GPM to 2600 GPM. It is mounted on trailer for easy moving and quick set up. Has adjustable stabilizer legs for easy leveling. Can be seen at 802 Braidfoot, Silvertown, Texas. Telephone 823-2257. Jim Brooks. 28-4tc

FOR WEDDING, ANNIVERSARY and Special Occasion Cakes, Call Ruby Kitchens, Phone 847-2511. 24-4tc

FOR SALE: HOUSE AND FOUR Lots on Lone Star Street. One upstairs room. Phone 823-2235. 27-4tc

FOR SALE: 4 BEDROOM STUCO house and lot with cellar in Silvertown. Close to school. \$8,000.00 or will sell house to be moved. Need listings on dryland farms, grassland for lease or sale. J. C. Harris Agency. Office Phone 684-2218, Home Phone 684-2511. 24-4tc

INSULATION INSTALLED AND guaranteed. Fire resistant. Marr Insulation Co., 652-3593, Lockney, or call Flute Hutsell. 20-4tc

RHOMAN
The Year Round Trailer
A-1 EQUIPMENT
1404 North Date
Plainview, Texas
20-13tc

PLANNED PARENTHOOD
CLINICS
First and Third Tuesdays
For Information Call
Virginia Stark at 995-4116
23-8tp

For Your Insurance
Needs
FARM - HOME - CROP HAIL - LIFE
Call
FLOYD PERKINS
INSURANCE AGENCY
Home Phone 995-4895
293-5031 2112 W. 5th
Plainview, Texas

DR. O. R. McINTOSH
OPTOMETRIST
316 South Main Phone 983-3460
FLOYDADA, TEXAS

CHECK WITH US, FOR ALL YOUR FARM CHEMICAL NEEDS

BRISCOE COOPERATIVE

ANN PAYNE HAIRCUTS
Maja Beauty Salon
Tuesdays
Call 823-2244 or 823-2370
28-2tc

MAKE US YOUR CULTIVATOR and Tillage Tool Headquarters. We have Graham-Hoeme, Adams, Nichols, and IH—both in plain and hardfaced. Brown-McMurtry Implement, Silvertown, Texas. 17-4tc

FOR YOUR HEARING AIDS AND Needs, check Page 7 in the Yellow Pages of your telephone directory. 15-4tc

HERBICIDE WORK AVAILABLE at Lone Star Chemical. Phone Main Office, 806-652-2761; Deanie Henderson, 806-652-3434; Rick Kellison, 806-652-3504; Jim Martin, 806-652-3594; Bill Evans, 806-652-3765; Silvertown Office, 806-823-2376. Ground and Aerial Application; Fast, Dependable Service. Will accept all collect calls. 16-4tc

FAMBRO GATES AND PANELS, Designed by and built for ranchers. All steel; wind proof; custom made. Full details available from the local dealer, Brown Hardware in Silvertown.

OLD SCRATCH CATTLE OILERS: Sales, Service, Parts and Insecticides available through Henry T. Hamblen, Wayside, Texas. 806-764-3461. 27-4tc

MOORMAN'S FEEDS
To better utilize your grazing, use Moorman Mineral and Protein
It Pays To Figure Feed Cost
DONNIE MARTIN
Silvertown, Texas

HOT WATER HEATERS: 20, 30, 40 Gallon; Gas and Butane. Brown Hardware. 36-4tc

SEE BROWN - McMURTRY FOR your International Electric Fencers, insulators and wire. 38-4tc

HOUSE FOR SALE: 703 BRAID- foot Street. Jay Towe, 823-2482 or 823-2046. 37-4tc

FOR SALE: TRASH BARRELS. Silvertown Fire Department, ask at City Hall. 20-4tc

F. C. GATEWOOD HOUSE, SHOP and three lots For Sale. Contact F. E. Hutsell, 823-2087 or 823-2189. 46-4tc

ALL BRAND SEWING MACHINE
SERVICE CENTER
Sales and Service
New and Used Machines
111 South Main Lockney
Phone 652-2721
14-4tc

THE YARN SHOP
"Something for Everyone!"
W. E. Schott Res. 406 Briscoe

HOUSE FOR SALE: TWO BED- rooms and Garage. See by appointment. 823-2209. 39-4tc

SINGER SEWING MACHINES
Vacuum Cleaners, Smith-Corona Typewriters, Adding Machines
Stereos. Sales, Service, Financing. Here every two weeks on Thursdays. Memphis Sewing Machine Co. 29-4tc

FARM CHEMICALS: ALL TYPES chemical available at Lone Star Chemical, Inc. Phone Main Office, 806-652-2761; Deanie Henderson, 806-652-3434; Rick Kellison, 806-652-3504; Jim Martin, 806-652-3594; Bill Evans, 806-652-3765; Silvertown Office, 806-823-2376. Will accept all collect calls. 16-4tc

SEVERAL SIZES USED ALUMINUM pipe. Lots of aluminum fittings. Lots of good used irrigation tubes. Check us for prices and quantities. Fogerson Lumber & Supply. 29-2tc

66, 68 JOHN DEERE MOWERS. Ray Thompson Implement Co.

SEARS KENMORE PORTABLE dishwasher with Power Miser for sale. Two years old, excellent condition. \$195.00. Call 823-2169. 30-4tc

DEMONSTRATE TOYS, GIFTS, party plan. No collecting, delivering, or cash investment. Kit on loan. Free training. 296-7318, Plainview. Ask for Vera. 30-2tc

TRICHAGRAMMA WASPS AND LADYBUGS
Call Buddy Brown, 847-2228
Home Phone 847-2621
BROWN & SON GIN
30-2tc

FOUR ONLY: REAR WHEEL AND tire for lawn and garden tractors. \$25.00 each. Brown-McMurtry Implement. 30-3tc

NEED A V-BELT? BROWN-Mc- Murtry Implement now has a good stock of V-Belts in the most needed sizes. 30-4tc

FEDDERS REFRIGERATED AIR conditioner for sale. 8000 BTU, good condition. John Wyatt, 847-2570. 30-4tc

GARAGE SALE THURSDAY, FRI- day, Saturday. Lem Weaver home. 30-1tc

FOR SALE: 1 ALUMINUM FLAT bottom boat on trailer; wired, registered, ready to go; new motor had four hours test on motor, \$700.00. Also 1 refrigerated air conditioner; runs on 240 watts, 14,000 BTU; ran one last summer; a good buy—it's a Wizard, \$350.00. Also 1 Super-electric 3-speed fan; 25-inch, brand new, \$25.00. One Mirror-matic cooker, 25 quart, \$30.00. Would trade air conditioner for boat motor, 25 HP or more. H. M. Cowell, 805 West Seventh, Call 823-2205. 30-2tc

I HAVE CHANGED TO CITY W- ater and have for sale a ¾ HP submersible pump and 190 feet new wire. Pump used three months only for household water for one person. Five-year protection plan. Josephine Anderson. 30-4tc

GARAGE SALE SATURDAY AND Sunday. 702 First, Ronnie Hester. Baby things, electric stove, miscellaneous furniture and clothes. 30-1tc

WANTED
DRY CLEANING, LAUNDRY: Briscoe County News is the Silvertown pick-up station for Tullia Laundry and Cleaners. Clothes will be picked up and delivered on Thursdays only. 31-4tc

CARD OF THANKS
We know that God has blessed our family with the finest friends and neighbors on earth. We thank each of you for every deed of kindness shown us while Date was in the hospital, and we thank God again today for you.
"Date" Martin and family

FOR ALL YOUR LIFE INSURANCE and HOSPITALIZATION NEEDS - USE
Archie Castleberry
SOUTHLAND LIFE
11th and Washington
Amarillo, Texas

SILVERTOWN LODGE
754 AF&AM
meets at 7:30 p.m.
on the second Tuesday
of each month
W. J. Copeland, W. M.
Aaron Younger, Secretary
Underground
Irrigation Pipe
Plastic Gas Pipe
RHODE PIPE CO.
Phone 823-2458 or 823-2459
Silvertown, Texas

MAC'S BACKHOE SERVICE
Call Harvey McJimsey
Silvertown, Texas
17-4tc

NOTICE TO CREDITORS OF THE ESTATE OF JOHNNY DEAN BAIRD, DECEASED.

Notice is hereby given that original letters of administration upon the Estate of Johnny Dean Baird, deceased, were granted to the undersigned on the 30th day of January, 1978, by the County Court of Briscoe County, Texas. All persons having claims against the said Estate are hereby required to present the same to me within the time prescribed by law. My address is: Box 462, Silvertown, Texas 79257. My attorney is J. W. Lyon, Jr., Box 657, Silvertown, Texas 79257.
JERRY L. BAIRD
Administrator of the Estate of Johnny Dean Baird, deceased.
30-1tc

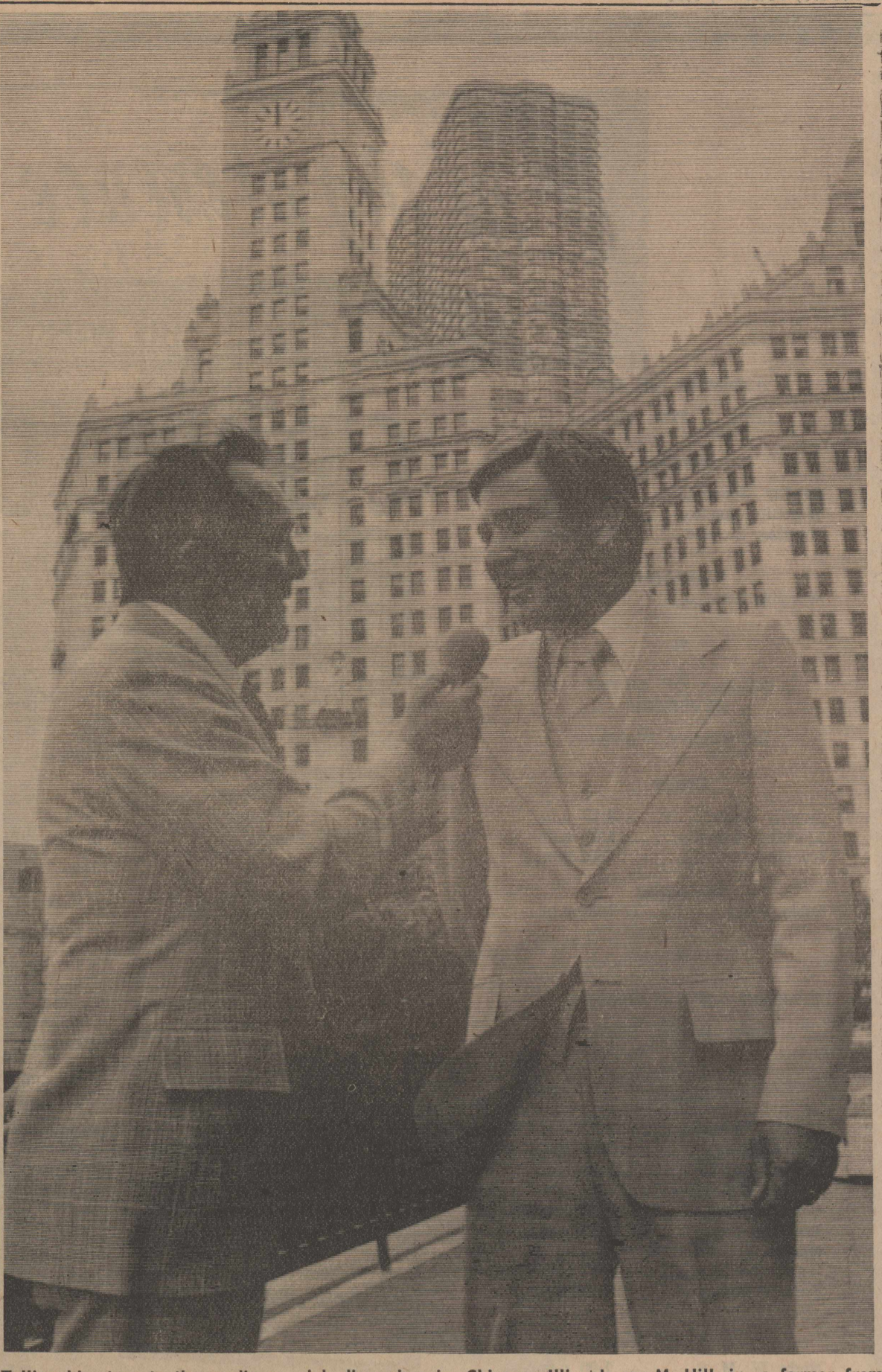
NOTICE TO CREDITORS OF THE ESTATE OF HOWARD E. BROWN, DECEASED

Notice is hereby given that original letters testamentary upon the Estate of Howard E. Brown, deceased, were granted to the undersigned on the 24th day of May, 1978, by the County Court of Briscoe County, Texas. All persons having claims against the said Estate are hereby required to present the same to me within the time prescribed by law. My address is: Box 657, Silvertown, Texas 79257.
J. W. Lyon, Jr., Independent
Executor of the Estate of Howard E. Brown, deceased.
30-1tc

LEGAL NOTICE
Will auction a 1969 Ford Pickup at 10:30 a.m. August 9 at the west door of the Briscoe County Courthouse unless this vehicle is picked up at Tommy Hunt's and the charges paid.

NOTICIA LEGAL
Vendre por auccion un campeon, Ford, 1969 10:30 a.m. a la puerta occidente de la casa de corte, Silvertown, Texas, el 9 de Agosto, 1978, si ese campeon es suyo puede clamarlo antes el auccion a lo lugar de Tomas Hunt, si paga las cargas. 30-2tc

EVERYONE READS AND USES WANT ADS



Telling his story to the media on how inflation and debt affect American farms today during a special discussion in Chicago, Illinois for International Harvester's FARM FORUM magazine is (right) James M. Hill, jr., a farmer from Tullia, Texas.

DEBT CONSIDERED TOOL— CONTINUED FROM PAGE ONE you owe a lot of money." The Hills have two sons, Brad, 13 years old, and Brian, 10, both of whom actively assist their father's farming operations. In addition to his comments about inflation and debt, Hill said a major challenge facing farmers in his area for 1978 is the recent crop destruction by hail storms which meant much replanting and late crops. Other areas of concern are the cost-price squeeze and the declining water table necessary for irrigation. Also under discussion at the Chicago meeting were product design and similar subjects. Hill and fellow panelists met with International Harvester design and engineering personnel during the three-day visit.

A "Do-it-yourself" Ad for U.S. Savings Bonds.

If you want it done, you gotta do it yourself. Do what? Well, save for a college education, vacation, or even a down payment on a new home. How do you do it? With U.S. Savings Bonds, the Payroll Savings Plan, and the chart below. So, take pen in hand and fill in the blanks. My dream is \$_____. If I joined the Payroll Savings Plan and set aside \$_____ each week, I could save enough to make my dream come true in _____ years. Now you know how much and how easily you can save by buying Bonds through the Payroll Savings Plan. So, why not sign up today? After all, nobody's gonna do it for you.

Series E Bonds pay 6% interest when held to maturity of 5 years (4 1/4% the first year). Interest is not subject to state or local income taxes, and federal tax may be deferred until redemption.

Take stock in America.

TULIA INSECT CONTROL
Tree Spraying and Trimming
Termite Control
Licensed - Insured
Call 995-4477, Tullia
18-4tc

Bill's Trim Shop
We specialize in Pickup Seats, Car Interior
895-4616
1/4 301 SE 2nd 1/4
on Highway 86 in Tullia