

Basketball

HASKELL
JVJG Knox City JV Tourney
Dec. 12-14 at Knox City
JVJG-JVB, VG-VB vs Archer City
Fri., Dec. 13, 4 p.m.
at Archer City
PAINT CREEK
VG-VB vs Rule
Fri., Dec. 13, 6:00 p.m.
at Rule
JH vs Newcastle
Mon., Dec. 16 at Newcastle
RULE
VG-VB vs Paint Creek
Fri., Dec. 13, 6 p.m.
at Rule
JH-B, VG vs Benjamin
Tues., Dec. 17, 5 p.m.
at Benjamin

Calendar

Early deadlines

Deadline for news and advertising for the New Year's edition, Thurs., Dec. 26, of the Haskell Free Press will be Thurs., Dec. 19 at 4:30 p.m. Deadline for news and advertising for the Thurs., Jan. 2 issue, of the Haskell Free Press will be Tues., Dec. 24 at noon.

Christmas Cantata

The Community Christmas Cantata will be held Sun., Dec. 15 at 7 p.m. at the First Baptist Church in Haskell.

Aggie Moms

The Abilene Area Aggie Moms' Club will meet Tues., Dec. 17 at 6:45 p.m. at the Coldwell Banker Panian & Mash building, 2500 S. Willis, Abilene. A light meal will be served. For more information, contact Venita Teal at 325-669-0886 or Kathy Hocke at 325-721-3131.

Decorating contest

The Woman's Club of Rochester will sponsor the Rochester Light Decorating Contest this year. Judging will be held Wed., Dec. 18. For more information or to enter a rural residence, call 940-742-3384 or 742-3486.

Food distribution

The Haskell County Ministerial Alliance Food Distribution Center will distribute food Sat., Dec. 21 from 10 a.m. til 11:30 a.m. at 206 S. 2nd (building east of Civic Center) in Haskell. Volunteers and boxes are needed.

Food distribution

The Haskell County Ministerial Alliance Food Distribution Center will distribute food Sat., Dec. 21 from 9:30 a.m. til 11 a.m. at the First Baptist Church in Rule. Volunteers are welcome.

Candlelight service

A candlelight service will be held Christmas Eve, Dec. 24 at 6 p.m. at the First United Methodist Church in Haskell.

Christmas Eve service

A Christmas Eve service will be held Christmas Eve, Dec. 24 at 8 p.m. at the St. George Catholic Church in Haskell.

Expense account

An expense account to help Wendy West of Haskell, daughter of Dana West, with funeral expenses for her infant twins has been established at Haskell National Bank.

Al-Anon

Al-Anon meets Thursday evenings at 8 p.m. at the AA building across from the RV park in Haskell.

Index

Out of the Past..... Page 4
Menus Page 8
Classifieds..... Page 9

All Star Christmas Sat., Dec. 14 • Parade 4 p.m.

The Haskell Free Press

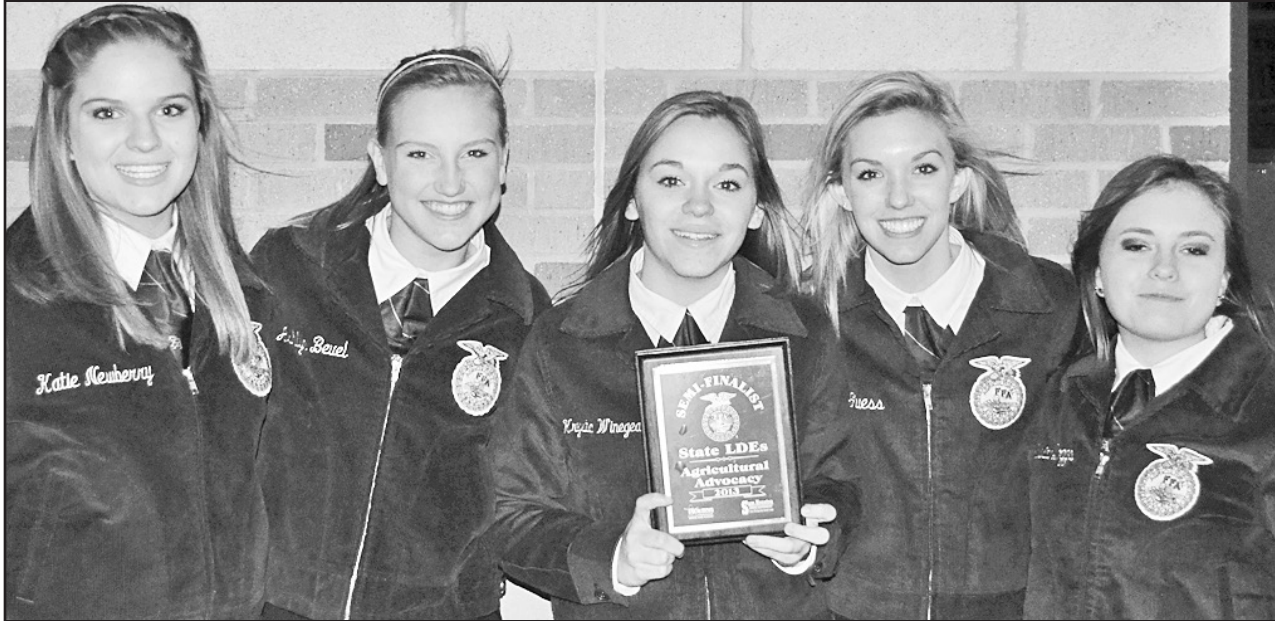
VOL. 127-NO. 50, ©DECEMBER 12, 2013

"The People's Choice"

10 PAGES-ONE SECTION-75 CENTS

Haskell FFA team competes at State FFA LDE

Sam Houston State University in Huntsville was host this past weekend for the State FFA Leadership Development Events. Out of the approximately 1,200 high schools in Texas with active FFA organizations only 20 teams make it to the state competition.



COMPETE AT STATE—The Haskell FFA Agricultural Advocacy team competed at the State FFA Leadership Development Events held last weekend at Sam Houston State University in Huntsville. The team placed in the top 20 teams, just missing out on the finals round. Team members are, l-r, Katie Newberry, Ashlyn Bevel, Krysta Winegeart, Jacee Guess and Daphni Leonard.

Christmas parade, activities to be held in Haskell Saturday

by Caron Yates

True to the words of the 1951 song by Meredith Willson, "It is beginning to look a lot like Christmas," decorations are going up, shopping has begun and an All Star Christmas has been scheduled.

The Haskell Christmas parade, sponsored by the Haskell Chamber of Commerce, is set to take place Sat., December 14, beginning at 4 p.m. Instead of the traditional night parade, Mynea Short chamber manager, said that the results of a community planning session indicated that the majority wanted to try something new this year. With that in mind, an afternoon and evening of fun and entertainment has been planned.

Businesses, families, organizations and individuals are encouraged to have an entry in the parade. Entry forms and information can be found at www.haskelltxonline.com or at the Chamber of Commerce office. Although they would like to know ahead of time how many will participate, you can also sign up at the gate. Please be at the Haskell Civic Center to begin lining up by 3:30 p.m.

After the parade, approximately 4:30 to 5:00 p.m., there will be a number of musical performances at the courthouse gazebo. The program will include area performers and a preview performance of songs from the upcoming community Christmas cantata.

You will want to be present for the Christmas ticket drawing at 5 p.m. Shop local, shop Haskell, as many Haskell merchants are participating. For every \$10 spent, you will receive a ticket with your name on it,

to be placed in the drawing. Drawings will be for various items, as well as Haskell Dollars, however you must be present to win.

From 5:30 until 8 p.m., events for all ages have been planned. The Haskell Elementary PTO and the Early Learning Center on the east side of the square are joining forces. As a fund-raiser, they will be offering Breakfast with Santa, which includes pancakes and toppings for \$6/adults and \$4/children 3-12. Photos with Santa will be available for \$5 and Christmas in Who-Ville, which includes crafts and games, will be \$1 per ticket. All of these activities will take place at the Early Learning Center, with package pricing available at the door.

At the same time you can enjoy Christmas carolers around the square. Short thirty minute Christmas films will also be shown on the west side of the square in the God Loves You Ministries building. You are welcome to stop in and view one or all.

High school and college students are invited to a "Redneck Christmas Dance," held at the American Legion Hall from 8:30 until 11:30. Admission is \$5 per person at the door, which will go toward the HHS student New York trip now being planned. Students are encouraged to wear their tackiest Christmas sweater to compete in the "Ugliest Christmas Sweater Contest." A cash prize will be awarded.

Success of this area wide event, depends upon our participation. Mark your calendars for Dec. 14 and get in the Christmas spirit, then be on the Haskell square for the All Star Christmas.



WORLD CHAMPION RANCH RODEO TEAM—The 2013 World Champion Ranch Rodeo team is Sandhill Cattle Co. They also won the WHPD ranch rodeo last June. Pictured are Bob Morehouse, WRCA representative; Randy Knight, Sandhill Cattle Co., and Sammy Larned, WHPD representative.

Sandhill Cattle Co. wins 2013 World Champion Ranch Team title

by Caron Yates

There may have been a time when ranch cowboys spent their days and perhaps nights, only tending to cattle and other tasks on the ranch. Today's ranch cowboys, especially if they are good at their work, also have an opportunity to showcase their cowboy skills.

For the past eighteen years the Working Ranch Cowboys Association, which is committed to preserving the heritage and lifestyle of the Working Ranch Cowboy, has sponsored the World Champion Ranch Rodeo.

It was held November 7th to 11th in Amarillo this year. The 2013 World Champion Ranch Team is the Sandhill Cattle Co. from Earth. It just so happens they were also the winners in this year's Wild Horse Prairie Days Ranch Rodeo, held in Haskell this past June. Sandhill team members were Tripp Townsend, Riley

Smith, Randy Knight, Tyler Rice and Autumn Townsend.

The Sandhill Cattle Co., established in 1998, is owned by Townsend and Smith. Sandhill leases 15,000 acres of grass in Lamb County, which runs about 2000 head of yearlings in the summer. During the winter, 3000 head of yearlings are cared for on wheat pasture. Sandhill also owns a 4000 head preconditioning lot.

After the work on the ranch is "laid by", cowboys from many ranches across the U.S. compete in various ranch rodeos. A ranch must win first in at least one rodeo to qualify for the World Championship competition. Twenty-three teams met in Amarillo to compete this year, and of those, six participated in the 2013 WHPD rodeo. Besides Sandhill, also competing were Circle Bar Ranch, Truscott; Crutch Ranch, Borger, 2012 WHPD winner;

Driver Land & Cattle Co., Garden City; Pitchfork Land & Cattle, Guthrie; and Swenson Land & Cattle, Stamford. Several of these ranches and the cowboys that represent them are from our area.

Winners in the individual ranch events, as well as the overall winners received up to \$35,000 in money and prizes. The Haskell WHPD, which has been a sanctioned rodeo for eighteen years, awarded \$12,000 to winners in cash and prizes this year.

The ranch rodeo competition is a great opportunity for these cowboys to exhibit their expertise, win prizes and provide engaging entertainment for the rest of us. You won't want to miss the 2014 WHPD event to be held in Haskell the first full weekend in June. You may even get to watch another winning team on their way to the world championship.

FOR NEWS ITEMS OR TO SUBSCRIBE, CALL 940-864-2686

Mineral supplements for stockers grazing small grains pasture

by Jason Westbrook
CEA-Ag, Haskell Co.
Gazing out across a field of green wheat or rye or triticale forage, one might assume the nutritional needs of stocker cattle are being adequately supplied by the forage. However, concentrations of macro- and trace minerals can range from deficient to adequate in these forages.

Relative to calf requirements, the calcium concentration in small grains forages ranges from adequate to marginal to very deficient in some instances, while phosphorus can be slightly deficient

to adequate. Magnesium concentrations can be low relative to requirements of a lactating cow but marginal to adequate for stocker calves. Copper and zinc, two trace minerals of concern, also range from very deficient to adequate. Mineral deficiencies can retard growth and impair immune function. Calcium is involved in smooth muscle contraction and a calcium deficiency may play a role in the incidence and severity of bloat.

Research has demonstrated that stocker cattle grazing small grains pastures will respond efficiently to a complete mineral supplement. "Complete" meaning a

supplement containing salt, macro-minerals and trace minerals in appropriate concentrations. On wheat pasture in northwestern Oklahoma, providing a complete mineral supplement to stocker cattle increased daily gain 0.50-0.57 lb. compared to no supplement (no salt or other feeds). In another 4 year trial in Oklahoma, daily gain was 0.24 lb. higher when stockers on wheat consumed a complete mineral supplement versus grazing with no supplements. The responses in these two studies occurred with average mineral supplement intakes ranging from 0.16 to 0.46 lb./day. Based on these responses, providing a mineral supplement would have improved 120 day gains by 29 to 60 lb./head with mineral consumption

ranging from 19 to 55 lb./head. If the value of added gain on a stocker calf is \$1.00/lb., in the worst case scenario of 29 lb. added gain and 55 lb. mineral consumption, the breakeven cost for the mineral supplement would be about \$1050/ton.

In addition to supplying necessary mineral elements to stockers, mineral supplements are a means of delivering ionophores that can further enhance weight gain. The 4 year Oklahoma study mentioned previously also compared a mineral+ionophore (Rumensin @ 1600 gm/ton mineral) to no supplement or

mineral supplement without ionophore. Including an ionophore in the minerals supplement increased daily gains another 0.23 lb./day compared to mineral only while the ionophore+mineral combination increased daily gain 0.46 lb./day compared to no supplement.

Average consumption of the ionophore+mineral supplement was 0.15 lb./day. So, across a 120 day grazing period, including the ionophore in the mineral would have added another 28 lb. compared to mineral alone and 55 lb. compared to no supplement. Assuming a daily intake of 0.20 lb./day

of the ionophore+mineral, the 120 day consumption would be 24 lbs./head. Compared to no supplement, the breakeven cost of the ionophore+mineral supplement would be over \$4000/ton if value of added weight on the stocker calf is \$1.00/lb.

Bottomline, forage analyses has shown that mineral concentrations in small grains pasture can be marginal to deficient and research has demonstrated that stocker cattle grazing small grains forages will respond efficiently and economically to mineral supplements.

Haskell Co. Arrest Report

The following arrests were reported by the Haskell County Sheriff's Office during the week of Dec. 2-8:

Joshua Issac Frame, burglary of a motor vehicle, resisting arrest and arson

Tony Mayhaw, driving while intoxicated, 2nd.

Cody Wyrick, picked up at Middleton Unit on bench warrant.

Ricky Clay Truelson, driving while intoxicated, 3rd or more.

Roberto Guerrero, aggravated assault with a deadly weapon.

Thirty-four calls were made to 911.

Commissioners' Court report

The Haskell County Commissioners' Court met at the regular meeting place Tues., Nov. 26 with all commissioners present. The County Judge was absent.

No burn ban is in effect.

A motion to renew the membership with the State of Texas Co-op Purchasing Program passed.

Commissioner Billy Wayne Hester is to check the wiring at the courthouse for the installation of metal detectors.

Haskell Co. Gin Report

Dec. 9, 2013 Haskell	
Haskell County Gin...	2,106
Haskell Co-op Gin.....	4,446
O'Brien	
O'Brien Co-op.....	5,951
Rule	
Rule Co-op Gin.....	6,812
Weinert	
Griff's Gin.....	0
Weinert Gin.....	2,095
Total bales.....	21,410

New rules to fight zebra mussels

In the state's ongoing effort to combat the spread of invasive zebra mussels, new rules took effect Dec. 10 requiring that all boats operating on public water in 17 Northeast Texas counties be drained after use.

Under the new regulations, persons leaving or approaching public water in the affected counties are required to drain all water from their vessels and on-board receptacles. This applies to all types and sizes of boats whether powered or not, personal watercraft, sailboats, or any other vessel used to travel on public waters.

The rules apply on all public waters in Collin, Cooke, Dallas, Denton, Fannin, Grayson, Hood, Jack, Kaufman, Montague, Palo Pinto, Parker, Rockwall, Stephens, Tarrant, Wise and Young counties.

Applicable in all areas where boats can be launched, the regulation requires the draining of live wells, bilges, motors, and any other receptacles or water-intake systems coming into contact with public waters.

Under these rules, live fish cannot be transported in water that comes from the water body where they were caught, personally caught

live bait can be used only in the water body where it was caught, and no off-site tournament weigh-ins would be allowed if live fish are being transported in water from a water body in one of the affected counties. (Anyone planning a tournament should check with Texas Parks and Wildlife's Inland Fisheries Division.)

Anglers are allowed to transport and use commercially purchased live bait in water provided they have a receipt that identifies the source of the bait. Any live bait purchased from a location on or adjacent to a public water body that is transported in water from that water body could only be used as bait on that same water body.

Movement from one access point to another on the same lake during the same day does not require drainage and there is an exception for governmental activities and emergencies. Marine sanitary systems are not covered by the new regulations.


Lakes Belton and Stillhouse Hollow are covered by an emergency rule extending these same water draining requirements to all public water in Bell and Coryell counties. The department is considering expansion of the recently implemented rules to include Bell, Coryell, and 28 additional counties in North and Central Texas. The department will provide notice and opportunities for public comment on any changes.

Zebra mussels became established in Texas in Lake Texoma in 2009. Last year, they were found in Lake Ray Roberts and the Elm Fork of the Trinity River. More recently, zebra mussels have spread to Lakes Bridgeport, Lewisville, and Belton. They can expand their range even farther by hitching a ride on trailered boats that have been immersed or moored in waters where they have established populations.

The rapidly reproducing mussels, originally from Eurasia, can have serious economic and recreational impact to Texas reservoirs. They can clog public-water intake pipes, harm boats and motors left in infested waters by covering boat hulls, clog water-cooling systems, annoy boat-dock owners by completely covering anything left under water, and make water recreation hazardous because of their sharp edges.

From an environmental perspective, zebra mussels are filter feeders, which means they compete with baitfish such as shad for available forage. Any impact on baitfish in turn can affect their predators—game fish such as bass, striped bass and catfish. Zebra mussels also threaten native mussel populations because they will colonize on their shells and essentially suffocate them.

*Wishing you a Beautiful Holiday Season
and a New Year of Peace and Happiness*



Christmas Open House
Tuesday, December 17th, 9:00 a.m. to 3:00 p.m.
We will close the bank lobby and drive through December 24th at 1 p.m.
Regular business hours will resume on Thurs., December 26th.
We will be closed Wed., Jan. 1st, including the drive-through.
Regular business hours will resume on Thurs., Jan. 2nd.

Officers, Directors & Employees of
Haskell National Bank
Member FDIC
601 N. 1st • 864-2631
Haskell, Texas

Andy

Betty Sue

Mallori

Pam

Jerese

Paula

Robbie

Carla

Meranda

Commie

Tam J.

Amanda

Randy

Think fire safety this holiday season

For most of us, the holidays represent a treasured time of year, and we work hard to make it special for the people we care about most. We decorate our homes with great thought and detail, and entertain friends and family by hosting parties and cooking elaborate meals and treats. But as we do these things, fire safety is rarely a thought. It may seem that the holidays and home fires are two completely different topics, but they're not; national statistics show that the holiday season turns sorrowful, and sometimes even fatal for so many households each year as the result of home fires. Cooking, Christmas trees, candles and holiday lights—all key parts of the holiday season—are significant causes of fires that occur this time of year.

While it's quite a somber perspective on the holiday season, the good news is that it doesn't have to be this way. With just one or two minor changes, often taking a few minutes, or even seconds, of time, the holidays can stay festive and safe for everybody. It's important for people to take basic but vital fire safety precautions as they plan and prepare for the upcoming holiday season. These simple steps can greatly reduce the risk of fire and its potentially devastating impact on homes and families:

- **Cooking:** NFPA statistics show that unattended cooking is the leading cause of U.S. home fires and home fire injuries. Stay in the kitchen while you're frying, grilling or broiling food. Most cooking fires involve the stovetop, so keep anything that can catch fire away from it, and turn off the stove when you leave the kitchen, even if it's for a short period of time. If you're simmering, boiling, baking or roasting food, check it regularly and use a timer to remind you that you're cooking. Create a "kid-free zone" of at least three feet around the stove and areas where hot food and drinks are prepared or carried.

- **Candles:** Candles are widely used throughout the holidays, and December is the peak month for home candle fires. More than half of all candle fires start because the candle was too close to things that could catch fire. Consider using flameless candles, which look and smell like real candles. However, if you do use traditional candles,

keep them at least 12 inches away from anything that can burn, and remember to blow them out when you leave the room or go to bed. Use candle holders that are sturdy, won't tip over and are placed on uncluttered surfaces. Avoid using candles in the bedroom where two of five U.S. candle fires begin or other areas where people may fall asleep. Lastly, never leave a child alone in a room with a burning candle.

- **Christmas trees:** U.S. fire departments annually respond to 250 structure fires caused by Christmas trees. Nearly half of them are caused by electrical problems, and one in four resulted from a heat source that's too close to the tree. Here are some guidelines for picking, placing and lighting a tree:

If you have an artificial tree, be sure it's labeled, certified or identified by the manufacturer as fire-retardant.

If you choose a fresh tree, make sure the green needles don't fall off when touched; before placing it in the stand, cut 1-2 inches from the base of the trunk. Add water to the tree stand, and be sure to water it daily.

Make sure your tree is at least three feet away from any heat source, like fireplaces, space heaters, radiators, candles and heat vents or lights.

Make sure the tree is not blocking an exit. Use lights that have the label of an independent testing laboratory, and make sure you know whether they are designed for indoor or outdoor use.

Replace any string of lights with worn or broken cords, or loose bulb connections. Connect no more than three strands of mini-string sets and a maximum of 50 bulbs for screw-in bulbs.

Never use lit candles to decorate the tree.

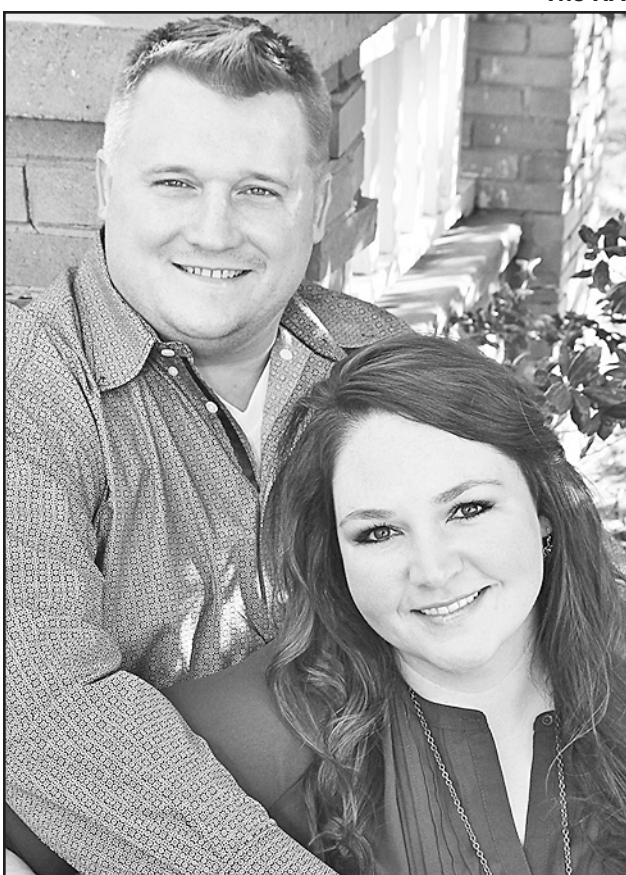
Always turn off Christmas tree lights before leaving the home or going to bed.

After Christmas, get rid of the tree. Dried-out trees are a fire hazard and should not be left in the home or garage, or placed outside the home.

Think green. Check to see if your community has a Christmas tree recycling program.

Bring outdoor electrical lights inside after the holidays to prevent hazards and make them last longer.

The holidays are a truly special time of year. Following these fire safety precautions and measures will ensure it remains one.



KARL THOMAS PENNINGTON - AMY SUZANNE TURNER

Turner, Pennington to marry in May

Cole and Susan Turner of Rochester announce the engagement of their daughter, Amy Suzanne, to Karl Thomas Pennington.

The bride-elect is a 2004 graduate of Rochester High School and received her Bachelor of Science in Nursing from Hardin Simmons University in 2010. She is currently employed at St. Luke's Emergency Department in The Woodlands, having recently transitioned from Transplant IMU at St. Luke's Hospital in Texas

Medical Center, downtown Houston.

The prospective groom is a 2000 graduate of Alief High School and received a Bachelor of Business Administration in Energy Commerce from Texas Tech University. He is employed by Anadarko Petroleum Corporation in The Woodlands. His parents are Gwen Sue and Jim Hoffmaster.

The couple plans a May 2014 wedding and will make their home in The Woodlands.

4-H Clubs to meet Sunday

The Haskell County 4-H Clubs will hold the December 4-H club meeting Sunday afternoon, Dec. 15 at the Haskell County Extension Office from 4:00 to 5:00 p.m. Any youth 8 years old and in the third grade through the twelfth grade are welcome to come and join.

The group will meet and have a "Chinese ornament gift exchange party." So any 4-H'ers attending need to bring a \$5 gift to be able to

participate in the exchange of gifts. Also, the upcoming 4-H events and contests will be discussed, followed by refreshments.

For more information, contact the Haskell County Extension Office at 940-864-2658 or 864-2546.

Clear Fork Crime Stoppers
1-800-222-TIPS

Help support the Wall of Honor Project

by donating your aluminum cans!

Drop off containers are located:
•behind Haskell Home Health, 417 S. 1st St.;
•at Mike Harrell's office, 606 N. 1st St.;
•behind 405 N. Ave. H,
and at the Haskell Country Club.

Open House

Sat., December 14 • 12 to 6 p.m.

Refreshments served.

Register to WIN

1. Sperry Topsiders shoes
2. Brighton earrings
3. Jess & Jane top

Drawings after the parade.

Gift Certificates • FREE Gift Wrapping

Personality-Slipper Shoppe

940/864-2501 • 864-3051

South Side of Square

Haskell, Texas

Come in for your FREE 2014 Calendar!

SAVE 25% off Jewelry

Yankee Candles
Children's Books
John Deere Gift Items
Collegiate Gift Items

Some restrictions apply.



Duck Dynasty Caps

regular \$19.99

\$14.99

Just arrived...
Gooseberry Patch Cookbooks

Many new titles to choose from



Give a delicious gift...

Russell Stover Candy



Millionaires, Assorted Chocolates and Sugar Free Candies

When in doubt, Give a Gift Card!

THE DRUG STORE

is your locally owned FULL SERVICE PHARMACY and has a complete line of

HOME MEDICAL EQUIPMENT

Give a Lift Chair for Christmas!

For all your Holiday Cooking...

We carry Quality

Watkins Products

*Vanilla * Black Pepper *Spices & Seasonings

Sale prices good December 12-14, 2013

www.haskelldrugstore.com

Monday-Friday 8 a.m. to 6 p.m.

Saturday 8 a.m. to 2 p.m.

THE DRUG STORE
Haskell • 864-2673

E-mail your news, photos and ads to The Haskell Free Press at hfpnews@lycos.com or hfp@valornet.com

MAJESTIC SENIOR LIVING

Haskell

1302 North 1st Street • License #136258

Value your independence but need a helping hand?

We offer 24-hour compassionate, personalized care in a loving and supportive home environment.

ASSISTED LIVING
DEMENTIA, ALZHEIMER'S & MEMORY CARE
SHORT-TERM STAYS FOR REHABILITATION & RESPITE CARE
SENIOR DAY PROGRAM

Learn more about how we might benefit you or a loved one.

Call Today 940-864-2727

Kimberly Hutto, Administrator

MajesticSeniorLivingHaskell

www.majesticliving.com

All Star Christmas

Sponsored by Haskell Chamber of Commerce

SATURDAY, DECEMBER 14TH

4:00 - 4:30: PARADE ON THE SQUARE

4:30 - 5:00: MUSICAL PERFORMANCES

5:00 - 5:15: CHRISTMAS TICKET DRAWINGS

5:30 - 8:00: EVENTS FOR ALL AGES

Haskell Early Learning Center



- * BREAKFAST WITH SANTA* \$6 ADULTS/ \$4 KIDS 3 TO 12 - PANCAKES & TOPPINGS
- * PHOTOS WITH SANTA** \$5 PER PHOTO
- * CHRISTMAS IN WHO-VILLE** \$1 PER TICKET (CRAFTS & GAMES)
- * PACKAGE PRICING AVAILABLE AT DOOR**

5:30 - 8:00: CHRISTMAS FILMS

God Loves You Mondays

8:30 - 11:30: DANCE

American Legion Hall



- * A REDNECK CHRISTMAS DANCE*** \$5 PER PERSON AT THE DOOR
- *** HIGH SCHOOL & COLLEGE STUDENTS ONLY
- WEAR YOUR TIGHTEST CHRISTMAS SWEATER TO COMPETE IN "UGLIEST CHRISTMAS SWEATER CONTEST" AT EVENT. CASH PRIZE AWARDED TO WINNER.

OPINION

TEXAS PRESS ASSOCIATION

State Capital



HIGHLIGHTS By Ed Sterling

Governor, Texas lawmakers honor Mandela

AUSTIN—Following the death of Nelson Mandela on Dec. 5, Gov. Rick Perry and other elected officials released statements in honor of the former president of South Africa whose message of racial reconciliation and leading role in breaking down apartheid in that country are acknowledged globally.

Perry said: "Through his valiant struggle against the injustices of apartheid, Nelson Mandela became a symbol of what one person can do to change the world. His life and legacy will remain an inspiration to people everywhere who believe in the power of freedom to create stronger nations and forge a better world for future generations. Today, the prayers of Texans are with Mandela's family, his friends, and the people of South Africa."

State Sen. Rodney Ellis of Houston said: "Texas joins the rest of the world in mourning the loss of Nelson Mandela, one of history's bravest leaders. His sacrifice and courage in the face of unspeakable hardship demonstrated the extent to which some must fight for their freedom. We must all honor his legacy as we continue the struggle to improve all peoples' lives. My thoughts and prayers are with the Mandela family."

State Sen. Leticia Van de Putte of San Antonio said: "Today, a great man left us. Nelson Mandela was not just a hero of South Africa, but for all of humanity— an inspirational soul who possessed the courage to stand up to injustice, regardless of what it might cost him personally. On the 20th anniversary of his release from prison, I stood inside his former cell on Robben Island, the place where he spent 18 of his 27 years of incarceration. I was overcome with emotion realizing what he sacrificed to end apartheid and free a people."

Van de Putte said two Mandela quotes "daily inspire me in my work as an elected official":

• "Overcoming poverty is not a gesture of charity. It is an act of justice. It is the protection of a fundamental human right, the right to dignity and a decent life."

• "Education is the most powerful weapon which you can use to change the world."

Interim studies are assigned

Lt. Gov. David Dewhurst, who presides over the Senate, last week assigned work to two committees, to be conducted before the Texas Legislature meets in January 2015.

On Dec. 4, Dewhurst charged the Senate Committee on Agriculture, Rural Affairs & Homeland Security with studying the state's recent and ongoing efforts to secure the border.

Dewhurst asked the committee to study the effectiveness of the recent Department of Public Safety "surge operation" who earlier this fall put more personnel on duty in the Mexico border region. He also asked the committee to evaluate the most effective methods to deal with evolving threats, deter illegal immigration, and deter transnational and drug-related violence and crime.

In addition, Dewhurst called on the committee to study "whether current crime statistics reporting accurately measures all crime and crimes related to illegal border activities" and for recommendations on "how to best take advantage of the available crime data and identify potential barriers to adopting a more comprehensive statewide system."

On Dec. 6, Dewhurst charged another committee, the Senate Committee on State Affairs, with studying "the growing concern of privacy protection and ways to make Texas government even more transparent."

That study assignment, Dewhurst said, will be broken down into four areas: surveillance, data collection and aggregation, transparency and consent and use of technology to increase government transparency.

The area of transparency and consent, in particular, directs the committee "to identify potential reforms that would increase the ability of citizens to understand the data being collected about them and with whom that data is being shared."

Abbott files gun rights brief

Texas Attorney General Greg Abbott on Dec. 4 joined a bipartisan coalition of attorneys general from 26 states and one U.S. territory in filing a U.S. Supreme Court amicus brief in the case *Abramski v. The United States*, regarding in defense of gun rights.

Abbott's office said the brief, authored by West Virginia, urges the high court to reverse a lower court ruling that criminalizes intrastate private firearm sales from one authorized individual to another. Chief among the states' arguments is that "no federal law regulates private, intrastate firearms transfers between law-abiding individuals who may lawfully possess firearms."

Pauken ends campaign

Tom Pauken, former chair of the Texas Republican Party and former chair of the Texas Workforce Commission, last week announced he would not continue his campaign for governor in the GOP primary. Listed as the Republican candidates for governor are Greg Abbott, Miriam Martinez, Lisa Fritsch and Larry S. Kilgore.

From Out of the Past

From the files of The Haskell Free Press

10 Years Ago December 11, 2003

The Haskell Indians basketball team won the championship trophy in the Haskell Invitational Tournament. Osiel Garcia, Ross Hairgrove and Kendall Mitchell were named to the All-Tournament Team.

Advancing to state competition were the Haskell FFA Ag Issues and Jr. Skills teams. The Ag Issues team, made up of Lindy Layman, Alexis Reed, Lindsay Pannell, Jaclyn Drinnon, Stephanie Grand, Brittany Campbell and Callie Thomasson, placed 1st at state. The Jr. Skills team placed third and included team members Maggie Teague, Ashley Foster and Stephanie Grand.

Named to the District 8-2A All-District First Team were Haskell Indians sophomore Josh Barbee and junior Ray Cuellar.

20 Years Ago December 16, 1993

Haskell Chamber of Commerce welcomed three new businesses with a ribbon

cutting. They are Kountry Crafts, owned by Vickie Bullard and Donna Thomas; McDonald Appliance, owned by Earl McDonald; and Peddler's Village, owned by Pat Grand.

The Fidelis Sunday School class at First Baptist Church in Haskell held their Christmas party. Billy Jo Roberson brought the devotional and Randy McLelland and Ford Cole provided Christmas music.

Rice Springs Care Home recognized Beatrice Messenger, who has worked the past twenty-five years in the dietary department. She received an engraved silver tray at a special awards presentation.

30 Years Ago December 15, 1983

Mr. and Mrs. Bill Pennington were honored with a reception in observance of their 50th wedding anniversary. Hosting the celebration were their children and grandchildren. They have lived in Haskell all of their

married years. He is a retired farmer and was Haskell County sheriff for six years.

Mr. and Mrs. Phillip Josselet of Haskell announce the birth of their daughter, Jennifer Diane, born at Hendrick Medical Center in Abilene. Grandparents are Mr. and Mrs. Bobby Tidwell of Haskell and Mary Louise Josselet of Anchorage, Alaska.

Airman Martha Garcia, daughter of Jacoribia and Don Smith of Rochester, has been assigned to Keesler Air Force Base in Mississippi, after completing basic training. She will receive specialized instruction in the communications operations field.

40 Years Ago December 13, 1973

Mrs. Jerry Larned of Monahans has been named to Outstanding Young Women of America, and is eligible for statewide and national honors. She is the daughter-in-law of Mr. and Mrs. Joe Larned of Haskell. Band director Wendell

Gideon announced that two band members, competing against almost four hundred others, have been chosen for the All-District Band. Melissa Roberson, flute section and Pat Everett, clarinet received the honor.

The Rule girls defeated Aspermont, Stamford and Haskell to win first place in the Stamford Invitational Basketball tournament. Fran Wilson and Carol Dudensing were named to the All-Tournament team.

50 Years Ago December 12, 1963

A parade is not made without children and pets. The team of "Elf" Greg Thompson, son of Mr. and Mrs. Claude Thompson, and his four-legged "feller" won first place in the pet segment of the Christmas parade.

The Weinert Chapter of FHA held a meeting on National Program of Work. Guest speakers were Douglas Myers and Sue Yeary. A questionnaire on the subjects discussed was given to all high school students by program coordinator Sandra Dutton.

Mrs. Opal Rose has announced the purchase of the income tax service formerly belonging to Courtney Hunt. She has been employed by Mr. Hunt for the past 21 years.

100 Years Ago December 13, 1913

Mr. Grindstaff went out to his interurban home near Josselet and spent the week on the farm.

C.T. Jones and Summer Boone of the Miller Creek community were in the city Monday.

Miss Franke Terrell is in the city and will give an entertainment at Dick's theatre Saturday night.



Ask the Mayor

By John Gannaway, Mayor of the City of Haskell

Had enough of it yet? Winter, that is. We Texans hate ice that slows our travel at break-neck speed, causes us to slip, fall and break bones...hey, that's why we live in Texas! We can take the sandstorms and occasional warnings from tornadoes, but cold and ice? Not! Jan and I have observed in the past elderly couples holding hands and we were thinking, "Isn't that sweet, still in love after all those years." Now we know especially after our therapy days of bad hips and sore shoulders: We do it for balance. We lean upon each other instead of a cane. Now doesn't that just take all the romance out of the situation?

The weather situation has caused churches, schools and the city and county offices to close. City Hall received some calls wondering why the city hadn't salted or sanded the streets. The city does not do that; we

have no equipment, staff for that service. You need to thank the Highway Department for taking care of the highways, it doesn't include residential streets. I guess if you lived in the northern or eastern states that would be a priority for equipment... we need sand fighters, usually.

This coming week is filled with all sorts of Christmas parties, the parade on Dec. 14 at 4p.m., the Cantata at First Baptist Church at 7:00 Sun., Dec. 15. Jason Daniels, the director, has been issuing warnings about keeping the voices...no colds, sore throats, or coughs allowed.

Since the last column, (especially grandparents) have commented on the suggestion of giving gift cards to the grandchildren. Everyone has a story about why. I still think one must have at least one prettily wrapped gift under the

tree, then maybe the rest in a gift card.

High fives to the businesses who have decorated their windows for the Christmas season. I especially was proud to include in that number the Public Works Department (the former Medford GMC building)...way to go Matthew Duran and city workers; can't overlook your City Hall as well. The County Courthouse is all lighted and the grounds as usual (remember a large number of those decorations came from the Clay and Allie Bell Smith collection and donated by your former mayor, Bob Smith). On a personal note, we finally got our house inside and outside decorated. Every year it takes longer and longer and every year I proclaim I'm not going to hang the outside lights myself—then before you know it, Christmas is here again and I find myself precariously perched once again on that ladder. The wife exclaims: "If it takes a week to decorate for Christmas, you have too much junk!" And she lobbies yearly that we should reduce our number of trees, wreaths and arrangements... maybe that would work if she didn't put the "age" tag on it. I know I'm 72 but I

still feel... maybe 52?

Yes, tis the season for giving. Unfortunately in our case as it is in many of yours: taxes, house insurance, car insurance all due at the end of the year. One barely gets over the cheer from Christmas when Uncle Sam greets us with his bill. A question from a citizen concerned a property tax bill on inventory for businesses. I am way out in left field on this one, but after the frivolity of the season wears off I promise to find that answer. It appears this citizen overheard business owners discussing this at the Post Office one morning and since the original purpose of this article was to answer your questions I shall endeavor to do so.

Closing thought: Are you thinking about your family members: Mom and Dad, Grands all those loved ones who have already passed (as my dad used to say: "Crossed the great divide")? I especially remember them at Christmas time in front of a lighted tree in a moment of solitude. I remember my dad always saying: "If I were alone on a desert island, I'd still have a Christmas tree." I hope you have your Christmas tree and all your loved ones gathered by your side this Christmas.

The Haskell Free Press

Established January 1, 1886
PUBLISHED EVERY THURSDAY
420 North First Street • P. O. Box 555
HASKELL, TEXAS 79521
Phone 940-864-2686 • Fax 940-864-2687
hfp@valornet.com

John McDougalPublisher
Lisa ShawBusiness Manager
Doris McDougalProduction
Caron YatesEditor

Periodical Paid Haskell, Texas 79521
(USPS 237-040)

SUBSCRIPTION RATES:

Haskell County, one year, \$25.00.
Outside of Haskell County, one year, \$34.00.

NOTICE TO PUBLIC—Any erroneous reflection upon the character, reputation or standing of any firm, individual or corporation will be gladly corrected upon being called to the attention of the publisher.

POSTMASTER: Send address changes to The Haskell Free Press, P.O. Box 555, Haskell, TX. 79521-0555.

This issue mailed Wed., Dec. 11, 2013



The Haskell Free Press

Faithfully covering
the news and events
of Haskell County
since 1886.

At holiday time, take stock of loved ones' health, safety needs

Going to see the folks at holiday time conjures very specific expectations: Epic feasts, football overkill, reconnecting with relatives, umpteenth re-tellings of ancient family yarns. It wouldn't be Thanksgiving or Christmas without these rituals.

If your parents are in their mid-60s or older, it also may be time to add one more item to your holiday to-do list: Taking stock of mom and dad's health needs and ability to care for themselves.

Because this step concedes age's slow erosion of independence, it may not be easy for you and your loved ones. However, with mutual recognition that it's grounded in love and concern, it can be seen as a way to support and extend self-sufficient living.

Here are some ways to make your holiday inventory as thorough and effective as possible.

- Give your parents the option of making the process as open or discreet as they like. If they opt for privacy, involve only the family members of their choice. If they prefer openness, the "checkup" can be a full-family project.

- Scour the house and grounds for accident risks. Consider not only current hazards (slick shower floors, poorly grounded electrical outlets, loose porch railings, dead branches on trees) but also ones that could become more dangerous as mobility, coordination and

vision decline. These future hazards could include sidewalks or patios with uneven surfaces, rugs without slip-resistant backing, hard-to-navigate furniture arrangements, electrical or phone cords that could get underfoot, poorly lit attics or storage areas, shelves that can't be reached without a step-stool, and gas heaters or appliances that are hard to shut off.

- Look closely for potential fire hazards and be sure fire safety equipment is fully operational. Working smoke alarms should be in every major room and batteries should be checked for freshness. Better still are wired-in alarms that don't require batteries. If you can afford a sprinkler system, get one.

Does the fireplace have an attached safety screen? Is there an easy-to-access fire extinguisher on every floor? Are windows easy to open in case exit doors are inaccessible? Are windows blocked by shrubs that could prevent their use as exits?

Electrical fires are common. Has the home's wiring been checked recently for damaged insulation and short circuits? Are any outlets or extension plugs loaded beyond the manufacturer's recommendations? Are electrical cords run under rugs where they could be abraded by foot traffic or punctured by carpet tacks?

- It's typical for people

to become more forgetful with age. One common result is seniors leaving range burners on after use. If this happens repeatedly, consider arranging for meals to be delivered and asking your parents to heat foods with a microwave or toaster oven only.

In most areas of Texas, seniors who no longer can prepare their own meals can get low-cost home-delivered meals through their local area agency on aging. Call 800-252-9240 to ask about this service.

- Some safety and accessibility improvements—such as wider doorways, bathroom grab bars and wheelchair or walker ramps—require time and professional carpentry skill to properly install. Get started on these products as early as your budget permits and your parents give their consent.

- If possible, involve neighbors and family friends in a safety support network. Give them your contact information and ask that they be alert for any signs that your parents' physical or mental health are creating unsafe situations. A friendly heads-up call could be a life saver.

Getting this process started often takes sensitivity and a bit of advance planning. But once it's in place, most families find it both unobtrusive and another way to reinforce the traditional holiday feelings of caring and togetherness.



JUDGING TEAM—The District 3 4-H Livestock Judging Contest was held in Vernon Nov.19. Haskell County 4-H participants were, front row, l-r, Garret Dutton, Ethan Drager, Hadley Sloan and Cade Anderson; back row, Lori Beth Rodgers and Cody Dutton. Not pictured was the 4-H Livestock Judging Coach, Brandon Anderson.

Parties can bring joy, and sometimes unplanned discomfort

Holiday partygoers may choose to mingle first and eat later, but they may return home with an unexpected guest—an upset stomach—if those foods have been sitting at improper temperatures for too long, says Dr. Vickie Vaclavik, a clinical nutritionist at UT Southwestern Medical Center.

"To deter bacteria growth, holiday party hosts should remember the two-hour

rule," she says. "Foods should not sit unprotected at room temperature for more than about two hours."

Cream-based products, eggs, meats and milk are examples of foods in party fare that naturally promote bacteria growth that cause food-borne illness.

"If these categories of foods are to be left out—either unrefrigerated or not held hot—they may become unsafe to eat. The host may use smaller,

easily replaced batches, which should be discarded after a couple of hours, or the foods should be held at the right temperatures."

Other tips include: Replacing platters for fresh food instead of adding fresh food to a dirtied dish; keeping hot foods at 140 degrees Fahrenheit or warmer, and cold foods at 40 degrees F or colder; keeping your hands, work surfaces and utensils clean.

Prices Good Thru 12/28/13



Tamales

Hot or Mild

\$4.99
Per Dozen



Mix and Match



Try our
NEW Chicken Chimi
made with Hatch Green Chiles

\$2.69

Only at Allsup's

HASKELL #153
1000 N. AVE. E • 940-864-2519
RULE #91
510 UNION AVE. • 940-997-2358

Jack Link's Jerky
3.25 oz. **\$4.99**

Stride or Trident Layers Gum
each **99¢**

Mtn Dew, Diet Dew, or Code Red
24 oz. cans **2 \$3 FOR 3**

Pepsi Products
6 pack **\$1.99**

Western Family Bath Tissue
4 roll pkg. 1 @ regular price or **2 \$2.50 FOR 2**

Western Family Paper Towels
roll 1 @ regular price or **3 \$2 FOR 2**



Beef & Bean Burrito & a 44 oz. Honcho

\$2.99

World Famous



got dairy?

SHURFINE SOUR CREAM
8 oz. **79¢**

PLAINS EGG NOG
quart **\$1.69**

PLAINS DIPS
French Onion, Green Chile, or Ranch, 12 oz. **\$1.29**

SHURFINE WHIPPING CREAM
8 oz. **79¢**

SHURFINE HALF & HALF
pint **79¢**

STOP BY ALLSUP'S TO REGISTER TO WIN TICKETS TO THE PRO-BOWL IN HAWAII

Calendar

Christmas Cantata set Sun., Dec. 15

The Community Christmas Cantata will be held Sun., Dec. 15 at 7 p.m. at the First Baptist Church in Haskell.

Deadlines

All deadlines for issues of the Haskell Free Press are at noon on Mondays.

Vet office open

The Veterans Service office in Haskell is now open. The office, located on the first floor of the west wing of the courthouse, will be open on the first and third Thursdays of each month from 10 a.m. to

noon. For information, call 940-256-1125 any time or email Haskell vaso@yahoo.com.

Water conservation

The City of Haskell has implemented stage three of the Drought Contingency Plan of the City of Haskell Water Conservation Plan. Stage three calls for a mandatory 25% reduction in water use by all City of Haskell water customers. Please make every effort to conserve and help secure our water supply as long as possible. For more information or a copy of the water conservation plan, contact Haskell City Hall.

Water conservation

The City of Rule has implemented Stage Four of its Drought Contingency Plan Emergency Water Shortage/Water Allocations. Please contact Rule City Hall or call 940-996-2214 for more information.

AWANA to meet

The AWANA Club (Approved Workmen Are Not Ashamed) will meet at the Cornerstone Fellowship Baptist Church, 1600 N. 1st St., Haskell on Mondays, from 6:30 to 8:00 p.m. Children must be age 5 by Sept. 1 through sixth grade. For more information call 940-864-5557.

Mac classes

The December schedule for free Mac Computer classes include a daytime class, Thurs., Dec. 19 at 1 p.m., and the first night class, Dec. 12 at 7 p.m. All classes, led by Tom Miller, Mac Consultant and Trainer, are held in the activity room at the North Mockingbird Branch of Abilene Public Library, 1214 N. Mockingbird Lane. All Mac users are encouraged to attend. There are no fees or dues. Advance registration is not required. The classes, not sponsored by the library, are organized by volunteers Miller, Bill Emery, Barbara Kelly and Bob Kolquist, using the library facilities. Contact Tom Miller at 325-518-6662 or abilenemacuser2@gmail.com for more information.

iPhone class

Tom Miller, Mac consultant, trainer and leader for the free classes for new iPhone Users, stresses that the class is for persons who don't know anything about the iPhone. The next class will be Thurs., Dec. 12, at the North Mockingbird Branch of the Abilene Public Library at 1 p.m. in the activity room, 1214 N. Mockingbird Lane. Contact Tom Miller, 325-518-6662 or Barbara Kelly, 325-692-1087, abilenemacuser2@gmail.com for details.

Goodfellows seek donations, to take applications Saturday

The Haskell Goodfellows will distribute Christmas packages to needy families again this year. The project will be conducted as it has in previous years and a sincere effort will be made to provide a Christmas package of useful items to those who might not otherwise have provisions for Christmas.

On Sat., Dec. 14, the names of those who qualify for the Goodfellows project may be placed by application at the Haskell City Hall between 1 and 3 p.m.

This year's Goodfellows project will be a joint effort between the Haskell Lions Club, the Haskell County Child Welfare Board and the Haskell Volunteer Fire Department. The Lions Club will take care of the food portion of the project; the Child Welfare Board will handle the toys and clothes and the Fire Department will

handle delivery.

Haskell Lions Club officers are John Hicks, president; Lela Bevel, vice-president and Donnie Rieger, secretary-treasurer.

If you would like to help with this project by donating food, toys, money or clothes,

contact any member of the Lions Club for more information.

All cash donations may be made at the Haskell Free Press office at 420 N. First, or mailed to the Free Press at P.O. Box 555, Haskell, Texas 79521.

Haskell Fire Dept. holds annual Christmas party

The Haskell Volunteer Fire Department held their annual Christmas party Mon., Dec. 9 at the Haskell Civic Center.

Fire Chief Mathew Cunningham gave the annual run report for the 2013 year listing 18 structure fires, 4 vehicle fires and 15 brush fires. The department also answered calls to 15 automobile wrecks, 1 aircraft emergency, 38 EMS assists

and 5 other calls. Firemen Chance Strickland and Al Merchant were to be awarded five year service pins when the department was called to answer a grass fire near Weinert.

The party was concluded with the singing of Silent Night led by Stephen Wright, Chaplain. The tradition has been carried on by members for decades.

VERNON COLLEGE
VERNON - WICHITA FALLS
www.vernoncollege.edu

2014 Spring
Registration

Campus Connect Registration
Now - January 8

Come see a Course Schedule Advisor (CSA) today!

Classes begin **January 21**

Check out our registration guide online for specific dates and times

Register for Continuing Education classes at any time

Vernon College - The best connection you'll ever make!

REID'S CONSTRUCTION CO.

Our Trade Skills include:

- Carpentry
- Woodwork
- Painting
- Texture •Tile
- Flooring
- Electrical
- Decks
- All types of roofing
- Laminate
- Composition
- Metal
- Flat Roofs
- Siding
- Additions
- Major remodels




Call Jim
Cell 903-204-3706
Knox City, Texas 79529

"One Company, One Job, One Price!"

"The only job worth doing, is the one well done"

Jim Reid, Owner
Knox City • Munday • Haskell • Stamford

Your Hometown Bankers



First Bank ★ Texas

Since 1885

- Agriculture Loans
- Construction Loans

- Home Improvement Loans
- Real Estate Loans

- Personal Loans
- Commercial Loans

South First, Abilene
(325) 674-1885

Judge Ely, Abilene
(325) 673-1885

Clyde, TX
(325) 893-5884

Haskell, TX
(940) 864-8555

Buffalo Gap Rd., Abilene
(325) 695-1885

Baird, TX
(325) 854-1295

Munday, TX
(940) 422-4522

Stamford, TX
(325) 773-2122

Mid-Cities - Bedford, TX
(817) 553-2500

www.go2FBT.com

Equal Housing LENDER

MEMBER FDIC

Players of the week

Haskell Maiden Reagan Hadaway was named to the Abilene Reporter-News Big Country Top Six Tues., Dec. 10.

Hadaway, a junior forward, scored a combined 41 points, 12 boards, 10 assists and 10 steals in games with Hawley (54-20) and Ranger (52-20).

Haskell Maiden Jacie Klose was named to the Abilene Reporter-News Big Country Top Six Tues., Dec. 10.

Klose, a junior guard, scored 19 points in the Hawley game. In the Ranger game, she had a double-double of 10 assists, 10 steals and seven points.

Goodfellows Donations

The Haskell Goodfellows are accepting donations for Christmas boxes to be distributed to needy families this holiday season. Boxes will be delivered on Dec. 24 to those who have been selected to receive them. Those with donations of food, contact a Lions Club member, toys and clothing may be taken to the Haskell Fire Dept.; and cash donations may be sent to The Haskell Free Press, P. O. Box 555, Haskell, Texas 79521.

Haskell County Food Distribution Center.....	\$250
In memory of Truman Barbee	
by J.W. and Louetta Wallace.....	\$25
In memory of Scott Fields	
by Faye Bledsoe.....	\$50
In memory of Mom & Dad	
by Faye Bledsoe.....	\$50
Robert Tribbey family.....	\$100
Anonymous.....	\$750
Total this week.....	\$1225
Previous total.....	\$225
Total to date.....	\$1450



SET THE TABLE FOR SAVINGS!

Bring in three non-perishable food items to be donated to a local food pantry and receive waived installation fees on up to three connections on new or additional services, including television, telephone and internet.

Offer good through December 31, 2013. Donations accepted at all SRTC offices. All non-perishable food items must have a current use-by date. Some restrictions may apply. Services where available. Up to three connections waived additional connections \$20 each.

VERNON OFFICE
7110 US Hwy 287 E
Vernon, TX 76384
(940) 886-2217
(888) 886-2217

HASKELL OFFICE
113 N. Ave. D
Haskell, TX 79521
(940) 863-1125
(888) 863-1125

SEYMOUR OFFICE
310 W California
Seymour, TX 76380
(940) 889-1125
(877) 889-1125

ask@srcaccess.net

Routine check-ups crucial in fighting oral cancer

The numbers for oral cancer—cancers of the mouth and pharynx—aren't good. The American Cancer Society reports about 30,990 new cases of oral cancer will be diagnosed in the United States this year, with approximately 7,430 deaths (one every 71 minutes).

Treatment of oral cancer, particularly in its later stages, results in significant facial disfiguration and daily lifestyle problems in speaking, eating and swallowing. Because oral cancer is usually not diagnosed early, less than half of all patients are cured. "If you get oral cancer, it's devastating and causes a very severe change in your quality of life," said Lance Read, D.D.S., assistant professor of surgery with the Texas A&M Health Science Center College of Medicine. "As we get older, things change, and we can neglect our teeth. But, young people need to be aware oral cancer isn't just a disease for the old. Anyone can have habits that may be deleterious to his or her health."

Presently, the best way to screen for oral cancer is a routine check of the neck, head, cheeks and oral cavity by a dentist. Individuals also should do a monthly self-exam of their lips, gums, tongue (including the side) and mouth (including the floor) and report any unusual lesions, said Dr. Read, chief of the Department of Dentistry and the Division of Oral & Maxillofacial Surgery at Scott & White Hospital in Temple.

A recent survey by the Baylor College of Dentistry-HSC found Texas adults knew little about the risk factors for and the signs and symptoms of oral cancer but had plenty of misinformation, said Kay Rankin, D.D.S., professor and associate chair of the Department of Public Health Sciences at HSC-BCD.

Though 79 percent of respondents reported hearing about oral or mouth cancer, only 28 percent actually had undergone an oral cancer exam. And, only 22 percent of those examined had that exam in the past year.

"Oral cancer examinations are particularly important for high-risk individuals, such as tobacco and alcohol users," Dr. Rankin said. "Oral cancer spreads quickly. This is why early diagnosis and treatment is so important. Early diagnosis improves the outcome."

Doctors Read and Rankin agree lifestyle plays a big role in preventing oral cancer. Avoid smoking and tobacco use, minimize or avoid alcohol consumption, keep good oral hygiene habits and see a dentist regularly.

From the AG

By Greg Abbott



Give wisely this holiday season

During this season of joy and thanksgiving, Texans across the state will generously donate their time and money to support a wide array of charitable endeavors. From offering change to Salvation Army volunteers to collecting gifts for needy families, well-meaning Texans will have ample opportunities to support those who are less fortunate. Amidst the hustle and bustle of the holiday season, it is easy to forget that unscrupulous scam artists are eager to take advantage of Texans' generosity.

Fortunately, just a little research can help you ensure your donations actually help the neediest among us. To avoid falling victim to a holiday scammer, always remember to ask questions and check the facts.

Who wants your money? Texans who are approached by a person seeking a donation should ask for an official identification or other documentation proving the individual is associated with a charitable organization. Even if a solicitor mentions a well-

known charity, it is important to ask for the organization's address and telephone number. Be cautious of copycat organizations using a name similar to a well-known charity. In the Internet age, scam artists may resort to spam email solicitations that appear to support a legitimate charity's website but actually direct donors to fraudulent websites that subject donors to the threat of identity theft.

Potential donors who have never heard of the purported charity mentioned by the solicitor should seek additional information or even conduct their own research. Legitimate charities will not object if a donor asks for additional time to research the organization and its charitable work.

How will your donation be used? Don't be fooled by a compelling story or a heartbreaking photo in an email solicitation. Before making a donation, research the organization's goals and question its programs. It is often helpful to obtain written documentation detailing how much the organization spends on administrative

and fundraising costs versus how much it spends directly on charitable projects or the intended recipients of donations. Comparing the administrative costs, fees and expenses for several charities may help you decide which organizations to support.

Before making a donation, remember to confirm the tax-exempt status of an organization to verify whether or not the donation will be tax deductible.

Never be pressured to donate right away. A legitimate solicitor will be patient and give you time to research the organization. If solicited by phone, do not give out personal financial information—including your credit card or bank account numbers.

When researching an organization, a good resource to consider is www.give.org. This website is maintained by the Council of Better Business Bureaus to promote wise charitable giving. If you believe you were defrauded by a fraudulent charity or nonprofit organization, you may file a complaint with the Office of the Attorney General's Charitable Trusts

Section online at www.oag.state.tx.us/consumer/charitycomplaint.pdf or call 800-252-8011.

Make your gift count. Take your time, check the facts, and give wisely this holiday season.

Motorists urged to watch out for deer

'Tis the season to be cautious—deer season that is.

Along with cooler weather, fall months bring about an increase in deer activity so Texas motorists should keep a close watch for animals that occasionally wander onto the highway, especially at night.

According to the Texas Department of Transportation (TxDOT) more than 7,000 animal-related crashes occurred on Texas highways in 2009, many involving deer. Twenty-five of those crashes involved a fatality.

"Deer-vehicle collisions increase during the fall because the animals are more active," said Carol Rawson, Traffic Operations director. "It's this time of year that motorists need to be extra watchful and take steps to avoid collisions."

Texas Parks and Wildlife

(TPWD) biologists predict an increase in deer population this year because of plenty of rain that has created an ideal environment for wildlife to flourish.

Deer-car accidents tally to more than 1.5 million crashes in the United States, costing an estimated \$1.1 billion in vehicle damage, according to recent reports from the Insurance Institute for Highway Safety.

The Institute suggests the following defensive driving tips to avoid hitting a deer:

- Drive carefully in areas known to have high deer populations. Places where roads divide agricultural fields from forestland are particularly dangerous.
- If you see a deer, slow down. Others are probably nearby.
- Use high-beam headlights when there is no

oncoming traffic. The high beams will reflect off deer's eyes and warn you of their presence.

- If a deer is in your lane, brake firmly but stay in the lane. The most serious crashes occur when drivers swerve.

- Don't rely on deer whistles, deer fences or reflectors to deter deer.

- Wear seat belts.
- If your car strikes a deer, don't touch the animal. If the deer is blocking the highway, call the police.

Remember, it is unlawful to possess a deer or part of a deer that has been hit by a motor vehicle. For more information on fish and wildlife laws, go to <http://www.tpwd.state.tx.us/publications/annual/general/penalties/>.

Adults need flu shots, plus vaccinations, too

Think you don't need any vaccinations because you're well past puberty?

When you're rolling a sleeve up to get the flu shot this year, you might take a minute and ask whether any other immunizations are due, or overdue.

Dr. R. Doug Hardy, an infectious disease specialist at UT Southwestern Medical Center, says that while immunizations are one of the 10 greatest American achievements of the past century, only children's vaccines are well utilized.

"People need to be more aware of the value of adult vaccines," Dr. Hardy says.

He said the numbers are low partly because many adults incorrectly assume

that the vaccines they received as children will last a lifetime. Still others weren't immunized as children.

Dr. Hardy says adults should discuss the recommended vaccination schedule with their doctor and determine whether they should be immunized against any of the following conditions:

- Influenza
- P n e u m o c o c c a l (polysaccharide)
- Hepatitis A/B
- Measles, mumps, rubella (MMR)
- Tetanus, diphtheria, pertussis (Td/Tdap)
- Human papillomavirus (HPV)
- Varicella
- Meningococcal

Pick up your copy of **The Haskell Free Press** for 75¢ per copy at one of these convenient locations:

- Allsup's
- Dollar General
- Modern Way
- Star Stop
- Wes-T-Go

Season's Best

We sincerely appreciate all of our fine customers and invite you to join us as we celebrate the birth of Jesus Christ.

Open House

Thurs., Dec. 19
9 a.m. to 3 p.m.

Rule

P. O. Box 10
Rule, Texas 79547
940-997-2216
Member FDIC

Banking Center

A Branch of Hamlin National Bank

Modern Way ACE Hardware

SATURDAY ONLY - DEC. 14TH

AFTER THE PARADE SALE

5 HOURS ONLY - 4 P.M. TIL 9 P.M.

<p>HOT DOGS Plain or With Chili 3 for \$1.00 Serving 4-6 P.M. ONLY</p>	<p>US #1 Russet Potatoes 10 lb. bag \$1.00 LIMIT 2 PLEASE AT THIS LOW PRICE</p>	<p>SHURFINE SUGAR 4 lb. bag 99¢ LIMIT 2</p>	<p>COVERED WAGON BACON 10 lb. box \$10.99 LIMIT 2</p>
<p>Roma Tomatoes 10 for \$1.00</p>	<p>PILLSBURY Grands Biscuits 99¢ LIMIT 6 PLEASE</p>	<p>HORMEL Little Sizzlers 12 OZ. PKG 5 for \$5.00</p>	<p>SHURFINE Hot Dogs 12 OZ. 69¢</p>
<p>FRESH CRISP Head Lettuce 2 for \$1.00</p>	<p>WESTERN FAMILY Bathroom Tissue 12 Pk Double Roll \$2.99</p>	<p>Lady Bug Pillow 18" Pillow \$6.99</p>	<p>Black & Decker Auto Adjustable Wrench Requires 2 "AAA" Batteries included \$6.99</p>



CHRISTMAS MUSIC—Haskell Kindergarten students in Haskell Monday with a variety of Christmas selections. The children delighted the community at Majestic Living Center.

Haskell School Menu

Dec. 16-20 Breakfast	Lunch
Milk variety and 100% fruit juice is available at every meal.	Milk variety is available at every meal.
Monday: Oatmeal and blueberry muffin or cereal variety and Texas toast	Monday: Two pizza dippers, spaghetti sauce, garden salad, baby carrots, apple slices, breadstick
Tuesday: Chicken-n-biscuit or animal crackers and string cheese	Tuesday: Baked potato with ham and cheese, breadstick, garden salad, seasoned corn, snowball salad
Wednesday: Pancake and sausage on stick, oven roasted potatoes or cereal variety and Texas toast	Wednesday: Steak fingers, mashed potatoes with gravy, savory green beans, apple-pineapple d'lite
Thursday: Sunrise sandwich or animal crackers and string cheese	Thursday: BBQ on bun, pinto beans, baby carrots, orange smiles
Friday: Breakfast taco or cereal variety and Texas toast	Friday: Cheeseburger, garden salad, fresh veggie cup, mixed fruit

ECC Menu

Mon., Dec. 16 Ultimate chili and beans, pickles, onions, cornbread, white cake, tea or coffee	pumpkin dessert, tea or coffee
Wed., Dec. 18 Chicken, dressing, giblet gravy, rolls, cranberries, sweet potatoes, green beans,	Fri., Dec. 20 BBQ sausage, potato salad, misc. dessert, tea or coffee
	Announcements begin at 11:45 a.m. followed by lunch.

Rule School Menu

Dec. 16-20 Breakfast Fresh fruit, juice or milk are offered daily.	Wednesday: Pancake on a stick Thursday: Sunrise sandwich Friday: Cereal, toast Lunch Milk is served daily.	baby carrots, apple slices, pudding Tuesday: Baked potato with ham and cheese, breadsticks, garden salad, seasoned corn, snowball salad Wednesday: Chicken	nuggets, mashed potatoes with gravy, green beans, apple, pineapple, roll Thursday: BBQ on bun, black beans, baby carrots, orange smiles Friday: Cheeseburger, salad, veggie cup, mixed fruit
Monday: Oatmeal, blueberry muffin loaf	Monday: Pizza dippers with spaghetti sauce, salad,		
Tuesday: Chicken and biscuit			

Caution urged to prevent spread of Oak Wilt disease

With the long-anticipated arrival of cooler weather, now is the perfect opportunity to enjoy some time by the campfire but be careful to pay close attention to the firewood you are picking. Transporting and storing diseased wood is a known means of spreading the devastating oak wilt fungus to previously uninfected neighborhoods. Utilizing these prevention steps is the key to safeguarding against spreading the disease through the selection and use of firewood:

- Select well-seasoned firewood. Well-seasoned wood is cut before the summer and is typically dry with loose bark and cracked ends. Avoid oak wood that appears unseasoned, that may have tight bark and cut ends which show no cracks or signs of aging. The extreme heat and drying of a full Texas summer effectively destroys the fungus in cut firewood.

- Safely store unknown sources of firewood. If the oak wood comes from an unknown source and it is not well seasoned, cover the woodpile with a clear piece of plastic. Burying the edges of the plastic will prevent the entry or exit of insects that might have been attracted to diseased wood and fungal mats.

- Destroy diseased red oaks. A knowledgeable arborist or forester should diagnose red oaks (i.e., Texas red, blackjack or shumard oak) that die rapidly (2-3 weeks) or in groups (2 or more trees over several years) for oak wilt. Trees suspected to have died recently from oak wilt should be destroyed by burning, burying or chipping. The heat of a fire destroys the fungus and the smoke emitted poses no threat to healthy trees. When

planning to do any outdoor burning, be sure and check with local officials to see if an outdoor burning ban is in place for your county and take care not to burn on windy days with low humidity.

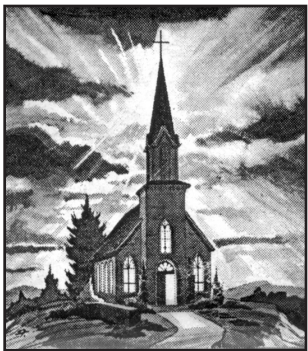
- Avoid wounding oaks during vulnerable seasons. The general recommendation is to avoid injuries to oaks from February through June. The best times for pruning of oaks are during the heat of summer (minimal spore production) or the cold of winter (minimal insect activity).

- Paint all oak wounds including pruning cuts. Throughout the year, immediately apply a thin coat of latex or pruning paint to all fresh wounds and other injuries that expose the inner bark or sapwood of oaks. This prevents contaminated sap beetles from infecting the wound with oak wilt spores.

Hunters, especially west of IH 35, should be especially careful in not transporting recently killed oak trees off of ranch land. The probability exists of moving red oaks that have died of oak wilt and having these trees produce disease spores while being stored. If in doubt, again always cover the wood with clear plastic and seal the edges with rocks or soil.

Oak firewood is an important commodity to Texans, whether it's used for firing up the barbecue pit or for warming up on a chilly hunter's morning. By selecting well-seasoned, disease-free firewood and by following other disease prevention guidelines, homeowners are taking the correct steps to prevent a new oak wilt disease outbreak in their neighborhood. Please visit www.texasoakwilt.org for more information on this devastating tree disease.

This Week's Devotional Message:



Let Love Adorn Your Home with Holiday Happiness

Your favorite stores are all a-glitter with lights, ornaments, tinsel, candles, wreaths and gift wrappings. However, these seasonal adornments may not put you in a gala holiday mood, and if so, assuming that you have no major problems or sorrows, something must be wrong. Have you quarreled recently with a relative or friend? Are you normally impatient with

people? Then it's time to get rid of these negative tendencies. Mend that quarrel, no matter whose fault it was. Let your house of worship put some love and kindness in your heart before you plug in the Christmas lights. Then your home and your life will be much brighter during the upcoming holidays, as well as at all other times of the year.

ATTEND CHURCH THIS SUNDAY

- HASKELL—
- East Side Baptist Church**
Shawn Smith, Youth & Worship pastor
Sun. 9:45 a.m., 11 a.m., 6 p.; Wed. 7 p.m.
600 N. 1st East, Haskell
 - Christian Church**
Sun. 10:45 a.m.
107 N. Ave. F, Haskell
 - Church of God**
Bruce Ray, pastor
Sun. 10 a.m., 11 a.m., 6 p.m.
Wed. 7:00 p.m.
714 North First East, Haskell
 - Trinity Lutheran Church**
Rev. David White, pastor
Sunday School 9:30 a.m., Worship 10:30
Hwy 380 East, Haskell
 - Iglesia Bautista El Calvario**
Art Flores, Interim pastor
Sun. 9:45 a., 10:45 a., 5 p.m.; Wed. 7 p.m.
607 S. 7th, Haskell
 - First United Methodist Church**
Rev. Dustin Wilhite, pastor
Sun. 9:45 a.m., 10:50 a.m. 6 p.m.
Wed. 6 p.m.
201 N. Ave. F, Haskell
 - First Assembly of God**
Rev. J.C. Amburn
Sun. 9:45 a., 10:45 a., 6 p.m.; Wed. 7 p.m.
1500 N. Ave. E, Haskell
 - St. George Catholic Church**
Father George Roney
Sat. Mass 7 p.m.; Sun. Morn. 9:00 a.m.
901 N. 16th, Haskell
 - Church of Christ**
Philip Sims, minister
Sun. 9:30 a.m., 10:30 a.m., 6 p.m.;
Wed. 7 p.m.
510 N. Ave. E, Haskell
 - First Presbyterian Church**
Kelly Pigott, interim pastor
Sun. Morn. 9:30 a.m.
306 N. Ave. E, Haskell
 - Trinity Baptist Church**
Larry White, pastor
Sun. 10 a., 11 a., 6:30 p.m.; Wed. 6:30 p.
114 S. Ave. D, Haskell

- Hopewell Baptist Church**
Sun. 9:30 a.m., 11:00 a.m.; Wed. 7 p.m.
908 N. Ave. A, Haskell
- Greater Independent Baptist Church**
Rev. Earnest Flanders, Jr., pastor
Sun. 9:30 a., 11:00 a., 6:30 p.; Wed. 7 p.
301 N. 3rd St., Haskell, 940-863-4405
- New Covenant Foursquare**
Bill and Renee Glass, pastors
Sun. 10 a.m., 11 a.m., 6:30 p.m.
Wed. 7 p.
200 S. Ave. F, Haskell
- First Baptist Church**
Rev. Jim McCurley
Jason Daniels, minister of Youth and Music
Sun. 9:45 a., 10:55 a., 6 p.m.; Wed. 6:30 p.m.
301 N. Ave. E, Haskell
- Cornerstone Fellowship Baptist Church**
Morris R. Johnson, pastor
Sun. 9:30 a.m. 10:45 a.m., 6 p.m.
Wed. 7 p.m.
1600 N. First St., Haskell
- God Loves You Ministries**
Mark Wallace, pastor
Church Service 10 a.m.
West side of square, Haskell

- WEINERT—
- First Baptist Church**
Dan Bullock, pastor
Sun. 10 a.m., 11 a.m., 6 p.m., Wed. 7 p.m.
Weinert
 - Weinert Foursquare Church**
Rev. Robert Harrison
Sunday 11 a.m
Weinert
- ROCHESTER—
- Church of Christ**
Mitchell Greer, minister
Sun. 10 a.m., 10:45 a.m.
West on Main Street, Rochester
 - First Baptist Church**
Bishop Helsley, pastor
Sun. 9:45 a.m., 11 a.m., 6 p.m.;
Prayer Time/Team Kids 5 p.m.;
Wed. Youth meeting 7 p.m.
500 Main, Rochester
 - Union Chapel Baptist Church**
Clovie Dever
Sun. 9:45 a., 10:45 a., 6 p.m.; Wed. 7 p.m.
Rochester

- Faith Chapel of Rochester**
Randy Hollingsworth, minister
Sun. 10 a.m., 11 a.m., Wed. 6 p.m.
Hwy 6, Rochester
- SAGERTON—
- Sagerton Methodist Church**
Cory Graham, pastor
Sun. Morn. 9:45 a.m.
Sagerton
- Faith Lutheran Church**
Anna Robbins, pastor
Sun. 10:30 a.m.
Sagerton
- RULE—
- First Baptist Church**
Scott Hensley, pastor
Sun. 9:45 a., 11:00 a., 5 p.m.; Wed. 7 p.m.
1001 Union Ave., Rule
- Primitive Baptist Church**
Dale Turner Jr., pastor
First & Third Sundays 10 a.m.
Corner of 8th & Robins, Rule
- Church of Christ**
John Greeson, minister
Sun. 9:45 a., 10:40 a., 6 p.m.; Wed. 7 p.m.
811 Union, Rule
- Primera Iglesia Bautista**
Alfa y Omegas
Manuel Marin, pastor
Sun. 10 a., 11:00 a., 5 p.m.; Wed. 6 p.m.
500 Elm Street, Rule
- Sweet Home Baptist Church**
Russell Stanley, pastor
Sunday 10 a.m.
Gladstone Ave., Rule, 940-997-2296
- West Bethal Baptist Church**
Rev. Clovis Dever
Sun. 10 a., 11 a., 8 p.m.; Wed. 7:30 p.m.
300 Sunny Ave., Rule
- PAINT CREEK—
- Paint Creek Baptist Church**
Sun. 10:00 a.m., 11:00 a.m., 6 p.m.
Paint Creek
- O'BRIEN—
- O'Brien Baptist Church**
Jim Reid, pastor
Sun. 9:45 a., 11 a., 5 p., 6 p., Wed. 6 p.m.
O'Brien

Sonic Drive-In
1402 N. Ave. E
864-8533
Randy Phelps, Manager

Steele Fire Apparatus
Hwy. 380 East • 864-2208

Modern Way Food Store
1202 N. Ave. E • 864-3763

HANSON PAINT & BODY SHOP
207 S. 1st • 864-3631
Professional Auto Body Repair
Glass Installation • 24 Hour Wrecker Service

Rule Co-op Gin & Elevator
301 Adams • Rule • 996-2421

Smitty's Auto Parts
107 N. 1st East • 864-2607

The Haskell Free Press

"The People's Choice"
420 N. First
Haskell, Texas
940-864-2686

Serving Haskell County Since 1886

Like what you're reading?
Call
940-864-2686
to subscribe.



Shop The Haskell Free Press CLASSIFIEDS



940-864-2686

ALL DEADLINES MONDAY AT NOON • hfpnews@lycos.com

940-864-2686

Garage Sale

INSIDE GARAGE SALE: 1107 N. Ave. I, Sat. 8 to noon. Twin-sized waterbed frame with mirrored headboard and storage drawers, microwave cart, bath chairs, wheel chair, kitchen items, holiday items, clothing, comforters and much more misc. 50p

Help Wanted

Administrator Steve King or April Roby at 940-989-3526. 50-1c

Public Notices

CAUSE NO. 11,909 THE ESTATE OF DYRAL J. SISK and THE ESTATE OF SHARON SISK, DECEASED.

Plaintiffs vs. CAROLYN WILLIAMSON AND THE UNKNOWN HEIRS OF RANDY K. WILLIAMSON, DECEASED Defendants

CENTRAL TEXAS FEDERAL LAND BANK, FLCA, Defendant IN REM ONLY

IN THE 39TH JUDICIAL DISTRICT COURT OF HASKELL COUNTY, TEXAS

NOTICE BY PUBLICATION STATE OF TEXAS TO CAROLYN WILLIAMSON and the Unknown Heirs, Representatives, Successors and Assigns of RANDY K. WILLIAMSON, Deceased:

You have been sued. You may employ an attorney. If you or your attorney do not file a written answer with the clerk who issued this citation by 10:00 a.m. on the Monday next following the expiration of 42 days after you were served this citation and petition, a default judgment may be taken against you. The Plaintiff's Original Petition of CHRISTIE WOODS, in her capacity as the Dependent Administrator of the ESTATE OF DYRAL J. SISK, DECEASED, and in her capacity as the Successor Independent Administrator of the ESTATE OF SHARON SISK, DECEASED, Plaintiff, was filed against RANDY K. WILLIAMSON, deceased, and CAROLYN WILLIAMSON, Defendant, on May 22, 2012, and Plaintiff's First Amended Original Petition on June 18, 2012, in the 39th Judicial District Court of Haskell County, Texas, and is numbered Cause No. 11,909, and entitled "The Estate of Dyral J. Sisk and The Estate of Sharon Sisk, deceased, Plaintiffs,

Public Notices

vs. Randy K. Williamson, deceased and Carolyn Williamson, Defendants, and Central Texas Federal Land, Defendant IN REM ONLY." This lawsuit is a partition suit requesting the Court to order a jointly owned 261.0 acre tract of land partitioned in kind or by sale.

The Court has authority in this suit to enter any judgment or decree in the Plaintiff's interest which will be binding upon you. Issued and given under my hand and seal of said Court at Haskell, Texas, this 18th day of November, 2013.

Penny Young Anderson Clerk of the 39th Judicial Court Haskell County, Texas Debbie Gresselt, Deputy 49-52c

NOTICE

The City of Haskell is accepting bids to replace the roof at the Haskell Civic Center. This will be a full replacement of the existing roof. All existing fixtures that are currently vented or protruding through the roof will be expected to be water tight after construction is complete.

We have experienced some leaking and ponding of water on the East side and would like you to include in the bid any extra needs to assist with this problem.

The City will be

Public Notices

accepting bids until Friday, December 20th at noon. The City Council will review all bids at their regular Council meeting on Monday, December 23rd, 2013.

Please contact Brandon Anderson at 940-864-2333 to inspect the property for the project and with any questions pertaining to the bid process.

Please bid the job to include tear off, disposal and clean up. The City will be able to allow the dumping of allowable waste at the City of Haskell Landfill located 6 miles East of Haskell on Hwy. 380. 50-51c

PUBLIC NOTICE

CITY OF RULE TEXAS COMMUNITY DEVELOPMENT BLOCK GRANT PROGRAM DISASTER RELIEF FUND

The City of Rule is giving notice of the City's intent to submit a Disaster Relief Fund application for a grant from the Texas

Public Notices

Community Development Block Grant Program with the Texas Department of Agriculture. The grant application requested is up to \$350,000.00 for water system improvements in the City of Rule. The application is available for review at City Hall during regular business hours. 50c

PUBLIC NOTICE CITY OF ROCHESTER TEXAS COMMUNITY DEVELOPMENT BLOCK GRANT PROGRAM DISASTER RELIEF FUND

The City of Rochester is giving notice of the City's intent to submit a Disaster Relief Fund application for a grant from the Texas Department of Agriculture. The grant application requested is up to \$350,000.00 for water system improvements in the City of Rochester. The application is available for review at City Hall during regular business hours. 50c

For Rent

FOR LEASE: Retail and office space. Big Country Real Estate 864-2238. 3tfc

RESIDENTIAL and commercial leasing available. Companies welcome. Westex Properties. 940-256-2930. 45tfc

Jobs Wanted

SPECTACULAR HOUSE Cleaning. I do it all, from ceiling fans to windows. Senior discount. 20 years experience. Call Jody 940-863-4015, 817-812-9459. References available. 50p

Help Wanted

HELP WANTED: Immediate openings. Haskell County Gin. 864-2358. 41tfc

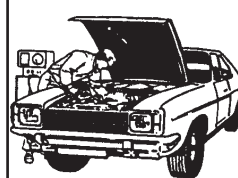
FIRST BANK TEXAS-Haskell is accepting applications for a responsible, energetic teller/customer service representative. Applicant should possess computer skills, an eagerness to learn, be a team player and enjoy working with the public. Employment applications can be obtained at 200 S. Ave. E, Haskell, TX. 49-50c

WES-T-GO convenience store is now accepting applications. Apply in person at store. 400 N. Ave. E. 50-6c

SUBWAY in Haskell is now accepting applications for a manager. Apply in person at store. 400 N. Ave. E. 50-6c

GIBSON CARE CENTER is hiring LVNs and CNAs. CNAs, full-time at \$9.00 per hour with benefits part-time at \$10.00 per hour, no benefits. LVNs call for information, full-time and part-time needed. For more information, contact

EXPERT AUTO WORK REASONABLE RATES



See us for all your auto mechanic needs. 20 years experience. We do it right the first time. US 277 South - Haskell

FOR RENT

Forks \$25 per day
Digger 9" & \$50
12" Auger per day
Tree Sheer \$75 per day

Steele Fire
940-864-2208

CNAs Weekend RNs

Immediate opening on 6-2 shift & PRN openings available for CNA with State certification. RN needs state license. We offer a competitive salary & benefits available for full time employees. EOE. For more info, please call (940) 864-8537, or apply in person:

HASKELL HEALTH CARE CENTER
1504 No First St. Haskell

POLITICAL CALENDAR

The Haskell Free Press is authorized to make the following announcement for the political office in Haskell County, subject to the action of the 2014 Primaries.

Unless otherwise specified the candidates listed paid for the announcement, and have designated themselves as campaign treasurer.

All political advertising is cash in advance.

Comm. Precinct 2
Tiffen Mayfield

WE BUY SCRAP METALS!

Copper, Brass, Aluminum Cans, Batteries, etc.
Pick up available for JUNK CARS!
Anson Metal Recycling
3014 FM 707, Anson
325-823-2500

Dodson Concrete Construction

Commercial - Residential
David Dodson
704 N. Ave. F • Haskell
940-864-2038
Over 30 Years in the Business
FREE ESTIMATES

RESIDENT ASSESSMENT COORDINATOR (MDS)

Long term care facility seeks experienced LVN w/thorough understanding of MDS, detail oriented and able to meet deadlines. Excellent communication "people" skills necessary. Competitive salary & benefits available for full time employees. EOE. For more information, please call our Administrator, 940-864-8537, or apply HASKELL HEALTH CARE CENTER, 1504 North First St., Haskell.

HCR

HASKELL COUNTY REALTY
103 N. Ave. E
Haskell, TX 79521
940-864-2665
1-800-658-6342
Chan Guess, Rhonda Lisle, Roger Roewe - agents
Bridget Guess - broker
www.haskellcountyrealty.com

RESIDENTIAL:

- 5275 FM 2163-JUST OUTSIDE OF TOWN! 2.6 +/- ACRES, 2/1. \$20,000
- 1200 N. AVE. L-CORNER LOT & SPACIOUS! 2/2. \$47,500. REDUCED
- 705 ROBBINS, RULE-VERY NICE! 3/2 BRICK HOME W/ FIREPLACE & OPEN FLOOR PLAN! \$53,000 UNDER CONTRACT
- 504 S. AVE. F-GREAT CURB APPEAL! PACKAGE DEAL! 4/1. \$49,900 REDUCED
- 506 S. AVE. F-COZY! PACKAGE DEAL! 2/1. \$29,900 REDUCED
- 504 N. 7TH-SURPRISINGLY SPACIOUS! 3 (OR) 4/2. (REPAIR ALLOWANCE AVAILABLE) \$69,900 UNDER CONTRACT
- 1201 N. AVE. K-THE COMPLETE PACKAGE! MUST SEE! 3/2 \$74,900. NEW
- 1605 N. AVE. E-NEW IMPROVEMENTS! 3/2. \$89,900 REDUCED
- 2062 HWY. 380W-SPACIOUS FAMILY HOME ON 2.5 +/- ACRES! 4/3. \$99,900 UNDER CONTRACT
- 121 N. 12TH AVE., MUNDAY-BEAUTIFUL BRICK HOME W/ UNENDING AMENITIES! 4/2. \$104,500
- 1310 N. AVE. H-NEWLY RENOVATED AND MOVE IN READY! MOTIVATED SELLER! 4/2. \$149,900
- 5131 FM 2163-COUNTRY HOME BEAUTIFULLY UPDATED THROUGHOUT ON +/- 14 ACRES! 4/1.5. \$158,000
- 7485 HWY. 380 E-RANCH LIVING, LOG HOME ON 40 +/- ACRES! 5/2. \$225,000 UNDER CONTRACT
- 2245 FM 2163-ROCHESTER-LARGE BRICK HOME ON 12 +/- ACRES. \$199,900 REDUCED
- 8047 CR 1694-KNOX CITY-40 +/- ACRES, GREAT COUNTRY LIVING! 4/2. \$250,000 REDUCED

For more listings call or go to haskellcountyrealty.com.

RIKE REAL ESTATE

Mary Rike Broker John Rike, Agent Megan Cox, Agent
mary@rikerealestate.com john@rikerealestate.com megan@rikerealestate.com
415 S. First Street
Haskell, Texas 79521
940-864-2411 325-370-6572
www.rikerealestate.com

1001 N. G-Beautiful 3/3 with wonderful yard and many amenities. \$175,000-NEW
265 AC. NW HASKELL CO.-\$825/ac.-NEW
1106 N. L-2/1. Move in ready Cottage! \$42,500.-NEW
412 N. 1ST-Commercial bldg. C/HC, living quarters and large upstairs. \$52,500-NEW
7734 HWY. 6-Rule Drive in theater on 4 ac. \$60,000-NEW
NORTH OF RULE, HWY. 6-61.1 Ac. CRP farm. \$65,000-NEW
103 N. H-2/1. \$49,900
503 S. 9TH-3/1. \$23,500
503 N. AVE. F-Investment! 2/1. \$19,000
EARLES CAMP, Lake Stamford-2/2 completely furnished! \$25,000
707 N. H-4/3. \$212,500
2112 EAST ROAD-2 acre lot. \$8,500
HASKELL 40 ACRE FARM-Tank, septic and electricity, pens and more. \$80,000
1001 N. 4TH ST. EAST-3/2. \$75,000
703 N. E-4/3. \$192,000
2410 CR 183, ROCHESTER-2/3 on 1.5 acres with wonderful yard. \$59,500-PENDING
807 N. H-3/2. \$89,900-PENDING
1703 N. F-3/2.5. \$139,900.-PENDING
600 N. 5TH STREET-3 or 4/3 with finished basement. A must see! \$119,000-REDUCED
608 6TH ST. ROCHESTER-2/2 with great parking. \$45,000-REDUCED
509 N. AVE. F-3/3. \$44,500-REDUCED
7H RANCH-2779 +/- Ac. of prime Haskell County land. \$950/Ac.-REDUCED
300 N. AVE. L-Large 4/3. \$114,500-REDUCED
13 AVE. E-Commercial building! \$54,500-REDUCED
701 N. E-4/3. \$59,500-REDUCED
NORTH 1ST STREET WEST-3/2.5 with 10K decorating allowance! \$98,500.-REDUCED
1007 NORTH 8TH STREET-4/2.5 on large corner lot. \$174,500-REDUCED
95 ACRES-Close to city limits with beautiful views and many amenities.-REDUCED
1208 N. THIRD-Site built. 4/3 on acreage. \$79,500-REDUCED
300 N. 2ND-HUD owned.-SOLD
409 N. H EAST-Country Living on 6 +/- acres. \$52,500-SOLD
www.rikerealestate.com

Like what you're reading?

We'll send it to you each week for just \$25 a year. (in Haskell County)

Yearly Subscription Rates

\$25 a year in county • \$34 out-of-county

Name _____
Address _____
City _____ State _____ Zip _____

Clip and Mail Coupon, Along with Check or Money Order to:

The Haskell Free Press

P. O. Box 555, 420 N. First, Haskell, TX 79521

Maidens basketball

Maidens take down Lady Bearcats 54-20

Haskell got off to a fast start on the road in a 54-20 win over Hawley. The Maidens outscored the Lady Bearcats 30-6 in the first half and continued to dominate the rest of the game to improve to 7-3 on the season.

Jacie Klose lead all Maiden scorers with 19 points followed by Kenzie Shelton with 14, Reagan Hadaway 11, Destiny Pierce 5, Crissy Bassett 4 and MyKaylee Wilhite 2. "Our scoring has been well balanced for the most part this year and that can make it very difficult on our opponents," Haskell head coach Blake Eddleman said. Hadaway had a team high 10 assists followed by Klose with 3 and Bassett 3.

Defensively, the Maidens held Hawley below 10 points for three different quarters. "Any time we hold our opponent below 10 during a quarter, we call that a shut down quarter. The girls have done a great job again this year taking pride in our man to man defense and understanding its importance," Eddleman added. Klose and Hadaway lead the team in steals with 5 each. Leading the team in rebounds was Hadaway with 7, Shelton 6, Klose 4 and Katie Newberry 4. "Overall, I thought we executed well on offense and I was really pleased with our defensive performance. We have a very smart team again this year

and they take a lot of pride in their play on both ends of the floor," Eddleman said.

Haskell 17 13 8 16 = 54
Hawley 2 4 10 4 = 20

Scoring: Klose 19, Shelton 14, Hadaway 11, Pierce 5, Bassett 4, Wilhite 2.

Maidens knock off Lady Bulldogs 52-20

The Maidens were scheduled to compete in the Albany Basketball Tournament last weekend; however, due to the bad weather and bad road conditions, the girls were only able to play one game on Thursday. Haskell jumped out to a 32-13 lead at half and continued to control the second half to get the 52-20 win over Ranger and improve to 8-3 on the season.

The Maidens were lead by Juniors Reagan Hadaway and Jacie Klose. Reagan poured in 30 points and Jacie had a double-double finishing with 10 assists and 10 steals against the Lady Bulldogs. Other leading scorers were Kenzie Shelton with 8, Jacie Klose 7, Crissy Bassett 2, Hayley Holland 2, Brittany Amos 2 and Alye Stewart 1. Klose had a team high 10 assists followed by Destiny Pierce with 4. "Offensively, the girls did a great job executing our man offense, zone offense and fast break. They all did an excellent job making the extra pass and knocking down open shots," Haskell head coach Blake Eddleman said.

The Maiden defense

proved to be way too much for the Lady Bulldogs throughout the entire game.

"Defensively, we played tough from start to finish against Ranger. When the girls talk and really focus in on their defense individually and collectively, we are pretty tough to score on," Eddleman added. Leading the team in rebounds was Shelton with 7, Bassett 6 and Stewart 4. Klose had a team high 10 steals followed by Hadaway with 5. "Overall, I thought we played well this week. Our offense was balanced and our defense was really solid in both games," Eddleman said.

Haskell 15 17 11 9 = 52
Ranger 5 8 3 4 = 20

Scoring: Hadaway 30, Shelton 8, Klose 7, Bassett 2, Holland 2, Amos 2, Stewart 2.

Area Basketball scores

Girls

Haskell 52, Ranger 20

Scoring for Haskell: Hadaway 30, Shelton 8, Klose 7, Amos 2, Bassett 2, Stewart 2.

Boys

Hawley 44, Haskell 42

Scoring for Haskell: Silvas 14, Bell 12, Smith 6, Meinzer 4, Hanson 3, Lowrey 2.

JV: Hawley 42, Haskell 22

Go Indians!
Go Maidens!



Come Let Us Adore Him

Putting the People of Our Community First

Welcome to Our

Open House

All Day Wednesday, Dec. 18

~ Holiday Banking Hours ~

Christmas Eve: Tues., Dec. 24, Closed at 1:00 p.m.

Christmas: Bank Closed Wed., Dec. 25

Regular Banking Hours resume Thurs., Dec. 26

New Year's: Bank Closed Wed., Jan. 1

Regular Banking Hours resume Thurs., Jan. 2

First Bank Texas

Haskell Office



200 South Avenue E • (940) 864-8555

MEMBER FDIC

CASHSAVER

COST PLUS FOOD OUTLET

"WE SAVE YOU CASH"

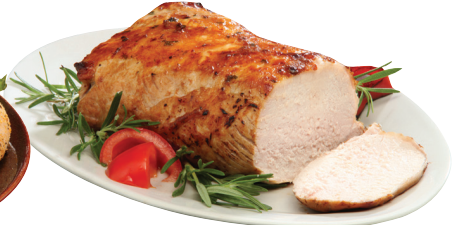
1513 N. SWENSON AVE. IN STAMFORD



BONELESS SKINLESS CHICKEN BREASTS

\$1.68 lb.

PLUS 10% ADDED AT CHECKOUT



WHOLE BONELESS PORK LOIN CUT & WRAPPED FREE

\$1.98 lb.

PLUS 10% ADDED AT CHECKOUT



JOHN MORRELL COCKTAIL SMOKIES 12 OZ. PKG.

\$1.78 ea.

PLUS 10% ADDED AT CHECKOUT



BONELESS ARM ROAST VALUE PACK

\$2.98 lb.

PLUS 10% ADDED AT CHECKOUT



CALIFORNIA NAVEL ORANGES 4 LB. BAG

\$1.87 ea.

PLUS 10% ADDED AT CHECKOUT



HOT HOUSE TOMATOES 4 PACK

\$1.23 ea.

PLUS 10% ADDED AT CHECKOUT



BEST CHOICE VEGETABLES 11-15.25 OZ. SELECTED VARIETIES

48¢

PLUS 10% ADDED AT CHECKOUT



CRISCO VEGETABLE OR CANOLA OIL 48 OZ.

\$2.86

PLUS 10% ADDED AT CHECKOUT



BEST CHOICE SOFT DRINKS 2 LITER BOTTLE SELECTED VARIETIES

66¢

PLUS 10% ADDED AT CHECKOUT



DORITOS TORTILLA CHIPS 11 OZ. SELECTED VARIETIES

\$2.26

PLUS 10% ADDED AT CHECKOUT



GENERAL MILLS CEREAL 16-18 OZ. SELECTED VARIETIES

\$2.70

PLUS 10% ADDED AT CHECKOUT



ANGEL SOFT BATHROOM TISSUE 24 ROLLS

\$4.86

PLUS 10% ADDED AT CHECKOUT



NABISCO CHIPS AHOY! COOKIES 9.5-13 OZ. SELECTED VARIETIES

\$2.56

PLUS 10% ADDED AT CHECKOUT



PRINGLES SUPER STACK POTATO CRISPS 5.32-6.63 OZ. SELECTED VARIETIES

\$1.31

PLUS 10% ADDED AT CHECKOUT



BLUE BONNET SPREAD 16 OZ. QUARTERS REGULAR OR LIGHT

76¢

PLUS 10% ADDED AT CHECKOUT



BRIGHT & EARLY FRUIT DRINK 59 OZ. ORANGE, APPLE OR GRAPE

87¢

PLUS 10% ADDED AT CHECKOUT



GRAVY TRAIN DOG FOOD 16 LB., BEEF OR BEEF, LIVER & BACON FLAVOR

\$7.36

PLUS 10% ADDED AT CHECKOUT



SARA LEE PIE 37 OZ. SELECTED VARIETIES

\$3.16

PLUS 10% ADDED AT CHECKOUT



DASANI WATER 24 PACK, HALF LITER BOTTLES

\$3.40

PLUS 10% ADDED AT CHECKOUT



BLUE BELL FRUIT BARS 6 PACK SELECTED VARIETIES

\$1.76

PLUS 10% ADDED AT CHECKOUT

PRICES EFFECTIVE DECEMBER 11 THRU DECEMBER 17, 2013