

Basketball

HASKELL
VB-VG Albany Tournament
Dec. 5-7 at Albany
B game-7th-8th vs Albany
Mon., Dec. 9, 5 p.m.
at Haskell
JVG-JVB, VG-VB vs Knox City
Tues., Dec. 10, 4 p.m.
at Knox City
PAINT CREEK
VG-VB Woodson Tourney
Dec. 5-7 at Woodson
JH vs Throckmorton
Mon., Dec. 9
at Paint Creek
VG vs Rule
Tues., Dec. 10, 7:30 p.m.
at Rule
RULE
VG-VB Rising Star Tourney
Dec. 5-7 at Rising Star
JH vs Knox City
Mon., Dec. 9, 6 p.m.
at Knox City
VG vs Paint Creek
Tues., Dec. 10
at Rule
VB vs Rotan
Tues., Dec. 10, 6 p.m.
at Rule

Calendar

Santa letters

Hey kids! Santa is getting ready to make his trip to Haskell on Christmas Eve. It's time to get your Christmas letters written and sent to him. Letters to Santa may be dropped off at the Free Press office at 420 N. First St., mailed to P.O. Box 555, Haskell, Texas 79521 or emailed to hfpnews@lycos.com. Deadline for having your letter printed in the newspaper is Thurs., Dec. 5 at 4:30 p.m. Letters will be printed on Dec. 19.

Stew luncheon

Haskell Healthcare Center, 1504 N. 1st St. in Haskell, will hold a stew luncheon Thurs., Dec. 5 from 11 a.m. to 1 p.m. Stew, cornbread and dessert will be served. Tickets are \$5 each and are available from any employee or a limited supply of tickets will be available at the door. Proceeds will help buy Christmas presents for the residents. Delivery is available with an order of five or more within the city limits by calling 940-864-8537 in advance.

Christmas music

Haskell Kindergarten students will sing Christmas selections Fri., Dec. 9 at 9 a.m. at Majestic Living Center, 1301 N. 1st St. The public is invited to come enjoy the music presented by the children.

Art Association

The Brazos West Art Association will meet Mon., Dec. 9 at 6:30 p.m. at the Church of Christ annex for the annual Christmas party. Each member is asked to bring a dish for the meal, a gift to exchange, and a toy for the Haskell County Child Welfare.

Early deadlines

Deadline for news and advertising for the New Year's edition, Thurs., Dec. 26, of the Haskell Free Press will be Thurs., Dec. 19 at 4:30 p.m.

Deadline for news and advertising for the Thurs., Jan. 2 issue, of the Haskell Free Press will be Tues., Dec. 24 at noon.

Christmas Cantata

The Community Christmas Cantata will be held Sun., Dec. 15 at 7 p.m. at the First Baptist Church in Haskell.

Index

Obituaries..... Page 2
Out of the Past.... Page 4
Menus Page 8
Classifieds..... Page 9

Shop Haskell first

The Haskell Free Press

VOL. 127-NO. 49, ©DECEMBER 5, 2013

"The People's Choice"

10 PAGES-ONE SECTION-75 CENTS

Caldwell honored at Texas EMS conference

by Caron Yates
For thirty plus years Casey Caldwell served Haskell County and its residents

through his work with the ambulance service. Born in Dallas in 1962, he came to work in Haskell

in the early to mid '80's, first as an employee and later as the Haskell County EMS administrator. During his

time with the ambulance service, he was dedicated to serving the citizens of the county while providing emergency medical care. Because of his caring and compassionate ways, he was loved and respected by many. He, along with his EMS partners never missed a football game, rodeo or other civic event, always "on standby" with the ambulance.

July 11 of this year, Caldwell at the age of 50, unexpectedly passed away. He was remembered by friends with a special memorial service in Haskell, and also in Slidell where he was laid to rest.

Hospital personnel recently submitted Caldwell's name to the EMS State registry as a candidate for induction into the EMS Hall of Honor. Those inducted must meet certain criteria including being an active duty EMS, hold current individual Texas EMS certification or licensure, have no disciplinary actions against them and be approved by the DSHS Office of EMS and Trauma Systems

Coordination.

Caldwell was inducted and honored at the EMS Awards Luncheon during the Texas EMS Conference 2013 held in Fort Worth on November 26. His parents Kenneth and Monisa Caldwell of Decatur were invited to attend and were presented a flag which had been flown over the capitol in Austin. They were also presented with a marble statuette engraved with his name and death date, by members of the EMS color guards of several cities.

Caldwell's name will appear on a plaque of EMS personnel who died while on active duty. It hangs in the Capitol building in Austin.

Also honored in the very moving and inspirational ceremony was a young paramedic from Pampa who died the same day as Caldwell and several from West, who lost their lives in the explosion.

While he is certainly missed by his community and family, it is good that his dedication and service to his chosen profession, has also been recognized by others.



CALDWELL HONORED—Kenneth and Monisa Caldwell, parents of Haskell County EMS Administrator Casey Caldwell, accept honors bestowed their son during the Texas EMS Conference held Nov. 26 in Fort Worth.

Christmas parade, activities set Sat., Dec. 14

by Caron Yates
True to the words of the 1951 song by Meredith Willson, "It is beginning to look a lot like Christmas," decorations are going up, shopping has begun and an All Star Christmas has been scheduled.

The Haskell Christmas parade, sponsored by the Haskell Chamber of Commerce, is set to take place Sat., December 14, beginning at 4 p.m.

Instead of the traditional night parade, Mynea Short chamber manager, said that the results of a community planning session indicated that the majority wanted to try something new this year. With that in mind, an afternoon and evening of fun and entertainment has been planned.

Businesses, families, organizations and individuals are encouraged to have an entry in the parade. Entry

forms and information can be found at www.haskelltxsonline.com or at the Chamber of Commerce office. Although they would like to know ahead of time how many will participate, you can also sign up at the gate. Please be at the Haskell Civic Center to begin lining up by 3:30 p.m.

After the parade, approximately 4:30 to 5:00 p.m., there will be a number of musical performances at

the courthouse gazebo. The program will include area performers and a preview performance of songs from the upcoming community Christmas cantata.

You will want to be present for the Christmas ticket drawing at 5 p.m. Shop local, shop Haskell, as many Haskell merchants are participating. For every \$10 spent, you will receive a ticket with your name on it, to be placed in the drawing.

Drawings will be for various items, as well as Haskell Dollars, however you must be present to win.

From 5:30 until 8 p.m., events for all ages have been planned. The Haskell Elementary PTO and the Early Learning Center on the east side of the square are joining forces. As a fundraiser, they will be offering Breakfast with Santa, which includes pancakes and toppings for \$6/adults and \$4/children 3-12. Photos with Santa will be available for \$5 and Christmas in Who-Ville, which includes crafts and games, will be \$1 per ticket. All of these activities will take place at the Early Learning Center, with package pricing available at the door.

At the same time you can enjoy Christmas carolers around the square. Short thirty minute Christmas films will also be shown on the west side of the square in the God Loves You Ministries building. You are welcome to stop in and view one or all.

High school and college students are invited to a "Redneck Christmas Dance," held at the American Legion Hall from 8:30 until 11:30. Admission is \$5 per person at the door, which will go toward the HHS student New York trip now being planned. Students are encouraged to wear their tackiest Christmas sweater to compete in the "Ugliest Christmas Sweater Contest." A cash prize will be awarded.

Success of this area wide event, depends upon our participation. Mark your calendars for Dec. 14 and get in the Christmas spirit, then be on the Haskell square for the All Star Christmas.

UIL announces conference cutoff numbers for 2014-16

by Caron Yates
The University Interscholastic League released the conference cutoff numbers for the 2014-2016 reclassification and realignment this week.

These numbers provide the range of enrollment for each of the six conferences, including the divisional cutoffs for football. High school enrollment numbers

for the cutoffs include 6A, 2100 or more students; 5A, 1060 to 2099 students; 4A, 465 to 1059 students; 3A, 220 to 464 students; 2A, 105 to 219 students; and 1A, 104.9 or fewer students.

Conferences 1A through 4A also are divided into Division I and Division II categories to help level the playing field. They are designated as 4A Div. I, 686

to 1059 students; Div. II, 465 to 685 students; 3A Div. I, 315 to 464 students; Div. II, 220 to 314 students; 2A Div. I, 158 to 219 students, Div. II, 105 to 157 students; 1A Div. I, 55 to 104.9 students; and Div. II, 54 and fewer students.

In an effort to better equalize the 5A schools, a 6A conference was added. In addition now all 1A schools

are those which play six man football. Previous 1A eleven man schools are now 2A, 2A are now 3A and so forth.

Haskell Athletic Director and head football coach Grady Benton says Haskell High School will now be classified as 2A, Division II. Enrollment turned in for HHS was 146 students. Benton explained, "We will drop down to the smaller division, along with Winters from our current district. Stamford, Anson and Forsan, also in our district, will remain in 2A Division I. Because of this change, we will not know until February 3, what teams we will play in district. This complicates planning a preseason schedule."

The Rule Bobcats will remain 1A Division II, while Paint Creek will change from 1A Div. I to Div. II.

The 2014-2016 alignments will be released on Feb. 3 for football and basketball. District alignments for other activities will be released in the order of their seasons.

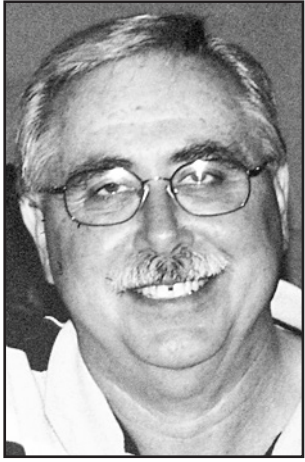


VEHICLE FIRE—This pickup truck burned late Wednesday afternoon, Nov. 27 at the residence of Greg Kean located at 606 S. Ave. G. Haskell fire units responded quickly and got the fire under control. No damage occurred to the garage.

FOR NEWS ITEMS OR TO SUBSCRIBE, CALL 940-864-2686

Obituaries

Edward Duane 'Eddie' Briles



EDDIE BRILES

Funeral services for Edward Duane 'Eddie' Briles, 59, of Haskell were held Sun., Dec. 1 at First Baptist Church in Haskell with John Greeson and Rev. Jim McCurley officiating. Interment was in Rule Cemetery in Rule under the direction of Smith Family Funeral Homes.

Mr. Briles passed away Wed., Nov. 27 at Hendrick Medical Center in Abilene.

Born March 6, 1954 at the U.S. Naval Hospital in Oakland, California, he was the son of Dennis Ray Briles and Wanda Nelle McCain Briles. He graduated from Rule High School in 1972. Eddie went on to graduate from West Texas State University in August 1976 with a B.S. in Nursing. He

was commissioned into the Army as 2nd Lt. where he served five years as Staff Nurse at Brooke Army Medical Center in Fort Sam Houston. Eddie received the Army Service Ribbon and Army Commendation Medal for service above and beyond the call of duty. He then served at Wilford Hall Medical Center as Staff Nurse in ICU at Lackland Air Force Base, San Antonio. There, he received the Air Force Outstanding Unit Award, Air Force Longevity Service Award Ribbon with 1 Bronze Oakleaf Cluster. He was honorably discharged with rank of Captain in February of 1987.

He married Teresa Ann Rhoads May 26, 1973 in Rule and celebrated 40 years of marriage this past May. Eddie was the owner/agent of Lindsey Insurance in Rule and worked as RN (state) Case Manager for Caprock Home Health Services in Abilene and was the weekend RN at Gibson Care Center in Aspermont. Eddie was a member of the First Baptist Church of Haskell.

Eddie enjoyed watching Baylor football, especially from the sidelines, watching his son coach, spending time

with grandchildren, and razzing friends, family, his patients, and well, everyone he met.

He was preceded in death by his father, Dennis Ray Briles; mother, Wanda McCain Briles; grandparents, George Abe Briles and Irene Felton Briles, O.J. McCain and Ada Belle Place McCain, W.O. (Bill) Kitley and Elsie (Tottie) McCain Kitley, and father-in-law, Eugene Rhoads.

Survivors include his wife, Teresa of Haskell; daughter, Brandi Beard and husband Jon of Lubbock; son, Jason Briles and wife Jennifer of Graham; brother, Art Briles and wife Jan of Waco; 6 grandchildren, Trinity and Briely Anthony, Kash Beard, and Braylee, Brenna and Brett Briles; and numerous nieces, nephews, cousins, aunts and uncles.

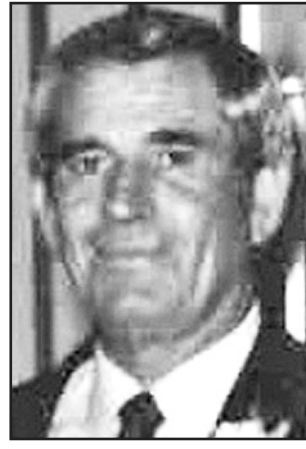
Serving as pallbearers were Keith Briles, Dale Carroll, Keith Everett, Johnny Fouts, Andy Gannaway and Jimmy Lisle.

If desired, memorials may be made in Eddie's name to the charity of your choice.

Online condolences may be shared with the family at www.smithfamilyfh.com.

PD. NOTICE

Jackie Gene Cox



JACKIE COX

Funeral services for Jackie Gene Cox, 78, of Haskell were held Sat., Nov. 30 at Cornerstone Fellowship Baptist Church in Haskell with Rev. Morris Johnson officiating. Burial was at Willow Cemetery in Haskell under the direction of Smith Family Funeral Homes.

Mr. Cox passed away Tues., Nov. 26 at Stamford Memorial Hospital.

One of six children, Jackie

was born Nov. 2, 1935 in Stamford, the son of Minnie (Turnbow) and Leslie Cox. Growing up in Haskell and a proud Haskell High School graduate, in Jackie's earlier years, he was in the grocery business along with farming here and there. Later, owner of a trucking company for dirt and gravel, Jackie retired after many years in the business, but always kept farming close to his heart and farmed for numerous years. He loved building and working on old tractors and enjoyed gardening. Jackie was a member of Cornerstone Fellowship Baptist Church.

He was preceded in death by his parents, Leslie and Minnie Cox; a son, Ricky Cox; three brothers, R.L. Cox, Jimmy Cox and Charles Cox; and two sisters, Carolyn Atkinson and Mary Cox.

Survivors include his son,

Chris Cox and wife Laura of Buffalo Gap; brother, Rex Cox and wife Rosalie of Bandera; sister, Wilma Saunders of Sedona, Arizona; grandson, Dalton Cox of Buffalo Gap; two sisters-in-law, Eunice Larned and husband Joe of Haskell, Francis Cox of Albany; and numerous nieces, nephews, and cousins.

Serving as Jackie's pallbearers were his nephews, Mike Cox, Randy Cox, Dennis Cox, Bob Cox, Michael Cox and Bart Cox. Honorary pallbearers were Wayne and Wanda Ham and Kenny and Jeanine Powell.

If desired, memorials may be given in Jackie's name to Cornerstone Fellowship Baptist Church, 1600 N. 1st Street, Haskell, TX 79521.

Online condolences and memories may be shared with the Cox family by visiting www.smithfamilyfh.com. PD. NOTICE

Grace Lee and Garrett Leroy West



GRACE LEE WEST - GARRETT LEROY WEST

Grace Lee and Garrett Leroy West, infant twins, passed peacefully in the arms of their loving family Thurs., Nov. 28 at Hendrick

Medical Center in Abilene, after just a few beautiful and unforgettable hours. Graveside services were held Wed., Dec. 4 at Willow

Cemetery in Haskell under the direction of Smith Family Funeral Home.

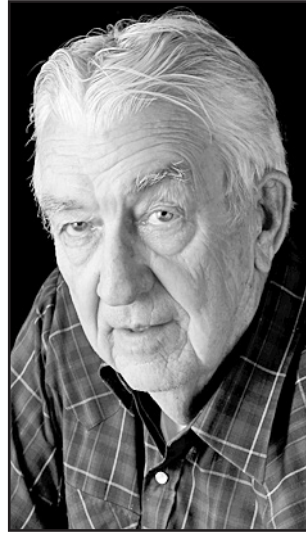
Grace and Garrett's family was blessed with the short time they had before brother and sister went to their heavenly home.

The babies are survived by their mother, Wendy West of Haskell; father, Delano Thomason of Haskell; grandparents, Sonny and Dana West of Haskell; uncle, Kevin West also of Haskell; and a niece, Lauryn Collins and nephews, Anthony and Dylan West.

Online condolences may be shared with the family at www.smithfamilyfh.com.

PD. NOTICE

Lt. Col. Emory Earl Smith (Ret.) USAF



EARL SMITH

Funeral services for Lt. Col. Emory Earl Smith (Ret.) USAF, 86, longtime citizen of Haskell, were held Sat., Nov. 30 at Cornerstone Baptist Church in Haskell. A military burial was conducted at Willow Cemetery under the direction of Smith Family

Funeral Homes.

Mr. Smith died of natural causes Wednesday morning, Nov. 27.

He graduated from Haskell High School on May 31, 1945, his 18th birthday. Two days later, Earl reported for active duty in the United States Navy and served for the remainder of World War II. After his discharge he attended Texas A&M and graduated in 1950. Afterward, Earl worked at various jobs until he realized his calling and began his 26-year career in the Air Force, where he served in both the Korean War and Vietnam.

Following his military career, he taught Air Force Junior ROTC for 5 years in Columbia, South Carolina. This allowed him to share his military experience and inspire young students.

Teaching was a fulfilling end to his service to his country. He retired in 1976. After returning to Haskell, he was an instructor pilot teaching several in Haskell to fly and earn their pilot's license.

Earl was a devoted and loving family man, and committed to his community. He was a member of Cornerstone Fellowship Baptist Church in Haskell.

Survivors include his wife of 43 years, Pat Smith; his daughter and son-in-law Mona and Richard Rejino; and his grandchildren Maggie and Adam, all of Dallas; his sons and daughter in-laws, Bill and Judi, Scott and Pat, Kelly and Amy, all of Wilmington, North Carolina; his daughter Susan; nine grandchildren, and five great grandchildren.

PD. NOTICE

Calendar

Expense account for West family

An expense account to help Wendy West of Haskell, daughter of Dana West, with funeral expenses for her infant twins has been established at Haskell National Bank.

Rochester Decorating contest

The Woman's Club of Rochester will sponsor the Rochester Light Decorating Contest this year. Judging will be held Wed., Dec. 18. For more information or to enter a rural residence, call 940-742-3384 or 742-3486.

Aggie Moms

The Abilene Area Aggie Moms' Club will meet

Tues., Dec. 17 at 6:45 p.m. at the Coldwell Banker Panian & Mash building, 2500 S. Willis, Abilene. A light meal will be served. For more information, contact Venita Teal at 325-669-0886 or Kathy Hocke at 325-721-3131.

Mac classes

The December schedule for free Mac Computer classes will include two daytime classes, Thurs., Dec. 5 and Dec. 19 at 1 p.m., and the first night class, Dec. 12 at 7 p.m. All classes, led by Tom Miller, Mac Consultant and Trainer, are held in the activity room at the North Mockingbird Branch of Abilene Public Library, 1214 N. Mockingbird Lane. All Mac users are encouraged to attend.

There are no fees or dues. Advance registration is not required. The classes, not sponsored by the library, are organized by volunteers Miller, Bill Emery, Barbara Kelly and Bob Kolquist, using the library facilities. Contact Tom Miller at 325-518-6662 or abilenemacuser2@gmail.com for more information.

iPhone class

Tom Miller, Mac consultant, trainer and leader for the free classes for new iPhone Users, stresses that the class is for persons who don't know anything about the iPhone. The next class will be Thurs., Dec. 12, at the North Mockingbird Branch of the Abilene Public Library at 1 p.m. in the activity room, 1214 N. Mockingbird Lane. Contact Tom Miller, 325-518-6662 or Barbara Kelly, 325-692-1087, abilenemacuser2@gmail.com for details.

AWANA to meet

The AWANA Club (Approved Workmen Are Not Ashamed) will meet at the Cornerstone Fellowship Baptist Church, 1600 N. 1st St., Haskell on Mondays, from 6:30 to 8:00 p.m. Children must be age 5 by Sept. 1 through sixth grade. For more information call 940-864-5557.

Vet office open

The Veterans Service office in Haskell is now open. The office, located on the first floor of the west wing of the courthouse, will be open on the first and third Thursdays of each month from 10 a.m. to noon. For information, call 940-256-1125 any time or email Haskell_vaso@yahoo.com.

"Home Town Service You Deserve"

- Oxygen •Wheelchairs •Hospital Beds
- Trapeze Bars •Walkers •Canes
- Bedside Commodes •Lift Chair
- Diabetic Supplies •Nebulizers
- Power Mobility •Ten Units •So Much More!

Seymour Medical Supply, Inc.

Hardeman • Foard • Wilbarger • Wichita • King
Knox • Baylor • Archer • Haskell • Throckmorton
Young • Jack • Cottle

110 W. Reiman, Seymour, TX 76380
940-889-6060 • 866-889-1076
Call 24 hrs a day, 7 days a week!

Connected to
customers

Holiday music fills the air. Bright lights twinkle to herald the season.

At AEP Texas, we never forget the value electricity brings to our lives. That's why we work each day to deliver affordable, reliable electric service and help you stay safe while using it. AEP Texas reminds you to use only safety-approved holiday lights and extension cords, check light strings carefully and never overload outlets. We're more than electricity. We're AEP Texas, connected to your life.

AEP TEXAS
A unit of American Electric Power

AEPTexas.com



DECEMBER LODGE MEETING—Attending the December meeting of Lodge ODHS #241 were, l-r, Jerry Don Klose, Phyllis Klose, Harry Koehler, Elton Klose and Evelyn Moeller.

Haskell Lodge # 241

To begin the wonderful month of December, members of ODHS #241 came together for a regular meeting Dec. 1.

President, Jerry Don Klose, opened the meeting, following proper procedures as are to be administered at regular meetings.

Having a birthday this month is Milbert Opitz, who will be celebrating birthday number 93. Congratulations to a fine gentleman.

The lodge membership sends their condolences to the family of Garrett Spitzer. Garrett was born Oct. 16, 1914 and passed away Nov. 13. His warmth and humor shall be missed.

Also, members send condolences to J.R. Merchant, whose wife Inez passed away in November. J.R. and Inez recently moved to a retirement home and although Inez was not a member, J.R. was a member

and Inez attended meetings as his guest, enjoying domino games and fellowship with the membership. She will be missed.

Old time Christmas remembrances were the topic during visitation and fellowship. Gifts received, gifts denied and gifts from long ago which are still treasured. The men seemed to want bicycles and they received them by magic and/or Santa. One bicycle was denied, but he had been eyeing a red toolbox complete with tools, and it seems the jolly ole man decided to give the toolbox instead of a bicycle. Tools were enjoyed, but bike was never realized.

Women voiced their joy at girl things, including homemade dolls made by mother, story book dolls, doll beds and dishes, clothes, and even a train set on its track which ran around and under

the Christmas tree.

Discussion about heritage, hard times and appreciation of discipline received led everyone to continue their thankfulness, being so close to Thanksgiving, and wondering how an affluent society with lack of discipline will fare as the years go by.

Another topic, which came up, was the lack of water in our area. We desperately need rain.

We are expecting many new residents who in turn will need a good water supply to sustain them.

Door prizes were given to Jerry Don Klose, Phyllis Klose and Harry Koehler.

After a fine evening of fellowship, members left the meeting in good spirits and looking forward to our meeting once again, at Camacho and Charlie's on Jan. 5 beginning at 4 p.m. with meeting followed by socializing and reminiscing.

Be mindful of allergies when decorating

As you begin pulling down the holiday decorations from the attic this season, doctors at UT Southwestern Medical Center have some tips for cutting down allergy risks.

"Carrying items down from dusty attics or pulling them from garages and other storage areas can stir up dust

and molds," says Dr. Rebecca Gruchalla, chief of allergy and immunology at UT Southwestern.

If you have fabric decorations, try washing them before putting them up. When selecting decorations, try avoiding fabric, which trap more dust than plastic,

metal and glass items.

If the decorations appear dusty, take them outside and wipe them down before putting them up in your home. That can be particularly helpful with artificial trees, which can accumulate dust and mold in the branches.

Other things that may exacerbate symptoms in persons with asthma and allergies during the holiday season include: scented candles, wood stored for fireplaces, even the smoke from fires can be a trigger of asthma attacks. If traveling during the holidays, consider taking your own pillow containing a dust mite-proof encasement.

NHS begins blanket drive in Haskell

A blanket drive is being conducted in Haskell by the Haskell High School, National Honor Society Chapter. The drive will continue through Wed., Dec. 11 at 3:30 p.m.

This winter is projected to be very cold and wet and the group wants to help those in need.

New blankets are preferred, but used blankets in good condition will also be accepted.

A box for new blankets and a box for used blankets will be placed at four

locations: the Haskell High School office, the Haskell Junior High office, Haskell Elementary office and the Haskell CISD Administration office.

Used blankets will be washed and folded. Blankets will be distributed to those in need Thurs. and Fri., Dec. 12-13.

Al-Anon

Al-Anon meets Thursday evenings at 8 p.m. at the AA building across from the RV park in Haskell.



Parenting tips for stress-free holidays

The holidays are a joyous time when loved ones come together to share traditions and to celebrate. But for many families, the holidays can also be a time of stress and frustration, sometimes unintentionally resulting in an increased risk of child abuse and neglect.

"Research tells us that economic and personal stress are leading contributors to child abuse and neglect," said Wendell Teltow, Executive Director of Prevent Child Abuse Texas. "For too many parents, the holidays increase stress levels because of extra demands on their time, money and energy. To minimize the risk of abuse, it's best to reduce unnecessary stress by planning ahead."

Prevent Child Abuse Texas offers the following tips to help families enjoy the holidays while keeping tension to a minimum:

- Establish a budget for holiday spending. Be realistic about what you can afford to spend on gifts, entertainment, decorations for the home, special foods, travel, etc.

- Hold a family meeting to discuss holiday plans. Ask for ideas from the children for family activities that would appeal to them.

- Post a calendar of family activities in a place where all family members will see it. Ask each person to remind you of school events, church activities, parties, etc.

- Remind children that a gift's importance is not determined by the amount of money spent on it. Handmade gifts and freshly baked cookies are welcome and appreciated by friends and relatives.

- Check community calendars and local lists of events to find inexpensive or free activities for children. Write all possibilities on individual slips of brightly colored paper and put them in a 'holiday fun jar.' When children have been especially cooperative with other family members, allow them to choose a slip of paper from the jar. Then, the family can enjoy an afternoon of skating, sledding or other fun activity together.

- Have your children make a list of elderly or shut-in neighbors in your area. Plan to share a meal, some of your time, or run errands for these neighbors. Explain to children that helping and sharing are important elements of special holidays.

- Find time to relax and reflect on the simple joys of the holidays. When you feel yourself becoming overwhelmed, take a break to get a better perspective on what needs to be done and what can be done.

- If you find that it is becoming difficult to avoid being verbally or physically harsh with your children, STOP. Don't take out your anger on your kids. Instead, try the following:

- *Take a deep breath and count to 20.

- *Phone a friend.

- *Take a walk outside, or use another form of exercise.

- *Laugh. Even a comedy show on television will help relieve stress.

- *Spend one hour doing something you really enjoy.

3 Day SALE
Thurs., Fri. & Sat., Dec. 5, 6 & 7



40% off

All Sperry Topsiders
Register to win Willow Tree Angel
Free Gift Wrapping and Gift Certificates Available
Personality-Slipper Shoppe
940/864-2501 • 864-3051
South Side of Square Haskell, Texas

Come in for your FREE 2014 Calendar!

SAVE 25% off
Frames
Men's Wallets
Ladies' Clothing
Duck Dynasty Gifts
Coca Cola Gift Items
Ladies' Purses & Wallets
Discount off regular price
Limited to stock on hand. Some restrictions apply.

Boxed Christmas Cards
(Leanin Tree Not included)

10	\$1	20	\$2
count		count	

Christmas Ornaments
Buy One Ornament at Regular Price and Buy a Second Ornament, of equal or lesser value for
1/2 price!

Give a delicious gift...
Russell Stover Candy
Millionaires, Assorted Chocolates and Sugar Free Candies

When in doubt, Give a Gift Card!

THE DRUG STORE
is your locally owned
FULL SERVICE PHARMACY
and has a complete line of
HOME MEDICAL EQUIPMENT




Give a Lift Chair for Christmas!

For all your Holiday Cooking...
We carry Quality
Watkins Products
*Vanilla * Black Pepper *Spices & Seasonings

Sale prices good December 5-7
www.haskelldrugstore.com
Monday-Friday 8 a.m. to 6 p.m.
Saturday 8 a.m. to 2 p.m.

THE DRUG STORE
Haskell • 864-2673



Merry Christmas and Happy New Year

from the staff of

Haskell Home Health

Michelle Johnson, RN Branch Supervisor
Shelley Myers, RN
Jalenn Earle, Secretary
Vicky Cochran, LVN
Jeryl Anne Cooper, LVN
Patricia Hemphill, HHA
Charles Townsend, PT

417 South First
Haskell, Texas 79521
Phone 940-864-5074 • Fax 940-864-6163

All Star Christmas
Sponsored by Haskell Chamber of Commerce

SATURDAY, DECEMBER 14TH

4:00 - 4:30: PARADE ON THE SQUARE
4:30 - 5:00: MUSICAL PERFORMANCES
5:00 - 5:15: CHRISTMAS TICKET DRAWINGS
5:30 - 8:00: EVENTS FOR ALL AGES

Haskell Early Learning Center

- ☛ BREAKFAST WITH SANTA*
- ☛ \$6 ADULTS/ \$4 KIDS 3 TO 12 - PANCAKES & TOPPINGS
- ☛ PHOTOS WITH SANTA**
- ☛ \$5 PER PHOTO
- ☛ CHRISTMAS IN WHO-VILLE**
- ☛ \$1 PER TICKET (CRAFTS & GAMES)
- ☛ PACKAGE PRICING AVAILABLE AT DOOR* **

5:30 - 8:00: CHRISTMAS FILMS
God Loves You Ministers

8:30 - 11:30: DANCE
American Legion Hall

- ☛ A REDNECK CHRISTMAS DANCE***
- ☛ \$5 PER PERSON AT THE DOOR
- ☛ HIGH SCHOOL & COLLEGE STUDENTS ONLY
- ☛ NEAR YOUR TALLEST CHRISTMAS SWEATER
- ☛ TO COMPETE IN "UGLIEST CHRISTMAS SWEATER CONTEST" AT EVENT. CASH PRIZE AWARDED TO WINNER.

PTO/ ELC
FUNDRAISER

HHS STUDENTS
NY TRIP
FUNDRAISER***

OPINION

TEXAS PRESS ASSOCIATION

State Capital



HIGHLIGHTS By Ed Sterling

Candidates line up for party primaries

AUSTIN—Texas' primary election is set for March 4, 2014, and the list of candidates for statewide office is largely settled, with Dec. 9 as the filing deadline.

Most recently gaining notice was state Sen. Leticia Van de Putte, D-San Antonio, who announced her candidacy for lieutenant governor on Nov. 23. Van de Putte has 22 years of experience as a state lawmaker—eight years as a state representative and 14 years as a senator. She serves as chair of the Senate Committee on Veteran Affairs and Military Installations. Van de Putte and her colleague Sen. Wendy Davis, D-Fort Worth, who is seeking the Texas Democratic Party's nomination for governor, form the nucleus of an effort to end a 20-year Republican sweep in statewide elections. Also seeking the Texas Democratic Party's nomination for lieutenant governor is Sadrift Municipal Court Judge Reynaldo "Ray" Madrigal.

State Attorney General Greg Abbott, a Republican, is campaigning to succeed Rick Perry as governor. Last summer, Perry chose not to seek another term in the office he has occupied since 2001 and speculation about his mounting a second run for the presidency continues. Also running for the Republican Party of Texas' gubernatorial nomination are former Univision personality Miriam Martinez of the Rio Grande Valley, author and former radio show host Lisa Fritsch of Austin and secessionist Larry S. Kilgore of Arlington.

4 Republicans to vie

While incumbent Lt. Gov. David Dewhurst has presided over the Senate since January 2003, he appears unready to change his job description. Dewhurst, who explored and passed on a possible run for governor, faces a field of three of his fellow Republicans in the GOP primary: Texas Land Commissioner and former state lawmaker Jerry Patterson, Agriculture Commissioner and former state senator Todd Staples, and state Sen. Dan Patrick of Houston, chair of the Senate Education Committee.

4 seek to be next AG

In the race to succeed Greg Abbott as state attorney general is Houston attorney Sam Houston, a Democrat, the lone candidate seeking his party's nomination. Seeking the Republican Party's nomination are Texas Railroad Commission Chairman Barry Smitherman of Austin, state Rep. Dan Branch of Dallas, chairman of the House Higher Education Committee; and freshman state Sen. Ken Paxton of McKinney, vice chair of the Senate Transportation

Committee and former House member (2003-2012).

4 running for comptroller

Seeking the Texas GOP nomination for comptroller of public accounts, to succeed Susan Combs as the state's chief financial officer, are Republicans Harvey Hilderbran of Kerrville, chair of the House Committee on Ways and Means; Sen. Glenn Hegar of Katy, chair of the Senate Committee on Nominations; and Debra Medina of Wharton, a registered nurse, tea party activist and GOP primary candidate for governor in 2010. Accounting executive and energy company chief financial officer Mike Collier of Kingwood is running for comptroller on the Democratic ticket.

5 after Ag Dept. role

Now in primary races for the top spot at the Texas Department of Agriculture are Republicans J. Allen Carnes of Uvalde, former state Rep. Tommy Merritt of Longview, Karnes City rancher and attorney Eric Opiela, former state Rep. Sid Miller of Stephenville. Democrat Jim Hogan of Cleburne is seeking his party's nomination for agriculture commissioner. Whoever wins election in November will succeed Agriculture Commissioner Todd Staples, who is running for lieutenant governor.

Incumbent chief justice files

Texas Supreme Court Chief Justice Nathan Hecht, a Republican, has filed for candidacy to retain his current position. Hecht, who has been a member of the high court since 1988, was appointed chief justice on Sept. 10 and was sworn in on Oct. 1. He succeeded fellow Republican Wallace Jefferson. As of Dec. 1, no Democrat had filed as a candidate for chief justice.

TxDOT has repair plan

The Texas Department of Transportation on Nov. 26 announced a resolution to manage the maintenance of roads heavily used by energy companies in LaSalle County, where cheap patches on damaged stretches were proposed to the Texas Legislature last summer, due to budget tightening.

TxDOT leaders said they have agreed with La Salle County to share responsibility in repairing roads in need and maintaining them over time and agreements with other affected counties in the region are being worked on. Counties will purchase the materials while TxDOT will perform repairs and provide labor. "Once fixed, the county will take over maintenance of the roads and be responsible for them for five years or until traffic in those energy areas drops off," according to TxDOT's statement.

10 Years Ago December 4, 2003

The Noah Project-North's annual Christmas Tour of Homes included the beautiful homes of Bob and Darlene Smith, Misty McMeans, Lance and Rhonda Hanson, Daniel Riley and John and Glenda Gayle Rutkowski.

Haskell Elementary held their annual Jump Rope for Heart event, under the direction of P.E. teacher Tiffany Thomas. Top collectors were Shelton Toliver, second grade; Cole Ray Hutchinson, third grade; Felysha Walker, fourth grade; and Nathan Meredith, fifth grade.

The Haskell CISD and Rochester CLISD held a joint school board meeting to finalize a local consolidation agreement. Both boards unanimously approved the agreement.

20 Years Ago December 9, 1993

Mrs. Marvin (Myrtle) Phemister has been named

"Club Woman of the Year" by the Haskell County Family and Community Education Clubs. She is an active member and president of the Weinert club.

Representing Haskell County Farm Bureau at the Texas Farm Bureau Convention in San Antonio were Wes Jones, Lonnie Hodgins, Robert Ace Turner, Marvin and Myrtle Phemister, Steve and Phoi McGuire and Steven Lehrmann.

Three Haskell graduates were among McMurry University students selected for inclusion to Who's Who Among American Students in American Universities and Colleges. They are Terri Hise, junior; Melissa Phemister, senior; and Harper Stewart, senior.

30 Years Ago December 8, 1983

Lane-Felker's float depicting a wedding, received the nod as the Grand Prize Float in the second annual

night Christmas parade.

Winners from over one hundred entries in the First Annual Haskell County Pecan Show were Charles Swinson, Champion Native; Wallace Allison, Overall Grand Champion and Champion Shelling; and S.A. Ezzell, Reserve Champion Overall and Champion In Shell.

40 Years Ago December 6, 1973

First Baptist Church of Haskell ordained eight new deacons during a special ordination service at the church. New deacons are David Alderman, Milton Christian, Felton Everett, Charles Gibson, Dan Griffith, Gentry Middleton, Jimmy Owens and Harvey Simmons.

Mr. and Mrs. John Wheeler Lee of Rochester, were honored on their 50th wedding anniversary with an open house, hosted by their children. They are both natives of Haskell County

and he is a retired stock farmer.

Coach Tommy McAdams' Haskell Indians earned four places on the District 6-AA All-District First Team. They are Tim Pringle, senior quarterback and Charles Alexander, senior running back, named on offense. On the defensive side were James McCoy, senior lineman and Pringle, secondary.

50 Years Ago December 5, 1963

The Weinert Bulldogs edged out the Mozelle Mustangs 47-42 to take the Class B Championship. Bulldogs scoring touchdowns were Eddie Roberts, Johnny Cunningham, Dale Carroll and Larry Caddell. Jack Dunnam kicked several extra points. Quarterback Jimmy Hackney also passed for a touchdown.

Twelve 4-H Clubs which recently organized for the year in Haskell County will accelerate their activities with work sessions under the supervision of Mary Jo Leverett, County Home Demonstration Agent and Frank Martin, County Agricultural Agent.

100 Years Ago December 6, 1913

Honorable F.M. Brally, State Superintendent of Public Instruction and now head of the Extension Department at the University of Texas, was one of the most prominent visitors to the Haskell County Teachers Institute recently held here.

Mr. and Mrs. R.C. Ledford representing a coffee company, gave a demonstration at the popular grocery store of Posey and Huckaby. All day long, coffee and cake were served to the public, and a social feeling pervaded the occasion that concealed the business phase of the enterprise.



Ask the Mayor

By John Gannaway, Mayor of the City of Haskell

We are definitely into the holiday season with Halloween gone and Thanksgiving just another good memory—now comes Christmas. Richardson's kicked off the holiday season with an open house. It was very well attended and lots of fun: snacks and good bargains. I'm hoping they will make it a tradition.

For Thanksgiving, the wife and I went to Fort Worth to visit our daughter and son-in-law as well as our niece and her family. The visiting was wonderful, the food was outstanding and, as usual, more of me returned than left. Our scales indicate I added about seven pounds for my knees to tote around. However, the wife says that new fat comes off much easier than old fat—we'll see. I shouldn't complain—I should just be thankful there was plenty of food to enjoy. Speaking of being thankful, I wonder how many of us are truly aware of just how much we have to be thankful for. You may be in a 'woe is me' mode but if you will just look around, you will not have to look very far or very hard to find someone who has much less to be thankful

for than you. So take a deep breath, put a smile on your face and be thankful for what you have as well as the many worse problems that you don't have.

When we got back into town on Saturday about noon, I noticed that some of our city employees were working on Avenue D. I stopped just long enough for David Gonzales to tell me that he was working on three new water leaks. It certainly seems as though we are going to have to take some serious action to try to halt this problem because if we don't, it is only going to get worse. Our aging infrastructure is something that we are going to have to deal with and our choices are not going to be easy or inexpensive. We are going to have to do some very serious cogitating and begin to address this problem because it isn't going to go away. If you have any suggestions on how to address this problem, I am open to any and all. It would be nice if there was some way we could get some federal money to help solve our problem. In my humble but correct opinion, we could certainly spend

some of our tax dollars more wisely than they do when you consider some of the projects they fund.

Now that Christmas is rapidly approaching, the time has come to encompass the opportunity (or challenge—whichever you prefer) to purchase gifts for grandchildren. I am a firm believer that their likes and dislikes change with the wind. One day this outfit is just wonderful, the next it is the most awful thing in the world. So in an attempt to satisfy their fancies, you request wish lists concerning their Christmas wants. And to our dismay these lists usually never arrive. So off we go on numerous shopping trips looking for just the right gift for everyone on our list. Then comes Christmas morning when all of those beautifully wrapped packages are torn into with a vengeance as we concentrate on the look on their faces when the contents of the packages are revealed. Guess what! By the look on their faces, we can tell that what we thought was just the right gift—well, there is always next year.

Decorating is on the agenda—trying to beat the next cold spell to do all the outside stuff. But all of this is complicated by this recalcitrant computer! Yes, we got a new one with new Windows 7 program. Jan vacillates between crying and screaming swearing

she'll never own another one. We "elderly" don't like changes! Yesterday was the Noah Project's Tour of Homes and we ran into ole St. Nick at Andy and Christy's home. In fact at one point the old gentleman was in the bathtub! We weren't able to make all of the homes on the tour but I'm told it was a huge success.

On a more serious and sad note, we lost another of our citizens, Eddie Briles, to an accident. The First Baptist Church was filled to capacity yesterday for his service. Eddie was one in a million. He was a jokester, but he had a penchant of being where he was needed and offering support only Eddie could. In our family we're still laughing over the conversation he and our daughter, Julie, had. When Matthew, our nephew and her cousin, and Jason Briles were playing basketball their senior year, they had a pretty good team. Julie made a point of driving no matter how far to their games. She always sat with Eddie and Teresa; Andy and Christy. At one such game she was proclaiming to them (as she was still single) "I want a man who's more of a man than I am." Eddie, in only the way he could said, "Lots of luck." Just about brought the house down and a situation we've laughed about and enjoyed for years. We'll miss him.

The Haskell Free Press

Established January 1, 1886
PUBLISHED EVERY THURSDAY
420 North First Street • P. O. Box 555
HASKELL, TEXAS 79521
Phone 940-864-2686 • Fax 940-864-2687
hfp@valornet.com

John McDougalPublisher
Lisa ShawBusiness Manager
Doris McDougalProduction
Caron YatesEditor

Periodical Paid Haskell, Texas 79521
(USPS 237-040)

SUBSCRIPTION RATES:

Haskell County, one year, \$25.00.
Outside of Haskell County, one year, \$34.00.

NOTICE TO PUBLIC—Any erroneous reflection upon the character, reputation or standing of any firm, individual or corporation will be gladly corrected upon being called to the attention of the publisher.
POSTMASTER: Send address changes to The Haskell Free Press, P.O. Box 555, Haskell, TX. 79521-0555.

This issue mailed Wed., Dec. 4, 2013



Help support the Wall of Honor Project by donating your aluminum cans!

Drop off containers are located:
•behind Haskell Home Health, 417 S. 1st St.;
•at Mike Harrell's office, 606 N. 1st St.;
•behind 405 N. Ave. H, and at the Haskell Country Club.

Members for Beginning Farmers and Ranchers Committee named

Agriculture Deputy Secretary Krysta Harden has announced the appointment of 20 members to serve on the Secretary's Advisory Committee on Beginning Farmers and Ranchers during a trip to the University of Delaware. The Committee will provide guidance to the Secretary on expanding opportunities that will help beginning farmers and ranchers succeed in agriculture.

"The next generation of America's farmers and ranchers are more diverse than ever before, have new market opportunities and continue to bring innovative ideas to the agriculture industry," Deputy Secretary Harden said. "The Secretary and I look forward to working closely with this Advisory Committee to continue supporting the promise of agriculture's future. At the same time, we need passage of a new Food, Farm and Jobs Bill to invest in support and assistance for new farmers in the years to come."

The following individuals have been asked to serve on the committee through September 2015:

- Chris Beyerhelm, Deputy Administrator for Farm Loan Programs with the Farm Service Agency from Washington, D.C.
- Deborah Cavanaugh-Grant, Local Food Systems and Small Farms Educator, University of Illinois Extension
- Dr. Duncan M. Chembezi, Professor and Extension Economist from Alabama A&M University

- in Madison, Alabama
- Michelle Conner, Owner/Farm Manager of Evandale Farm, LLC, and Beginning Farmer Program Coordinator from Pittsfield, New Hampshire
- Marcus Creasy, Cow/Calf Producer & Immediate Past President of the Arkansas Cattlemen's Association in Arkansas
- Kole James Fitzpatrick, Regional Technical Assistance Specialist with Intertribal Agriculture Council & Operator of a Small Cow/Calf Ranch from Montana

- Marty Gerencer, Principal/Owner of Morse Marketing Connections, LLC in Michigan
- Timothy M. Gossman, Farm Loan Officer/Senior Vice President, Root River State Bank from Minnesota
- Christopher Holman, Farmer/Owner Operator of Nami Moon Farms from Custer, Wisconsin
- Adrienne Farrar Houël, President and CEO of Greater Bridgeport Community Enterprises, Inc., from Connecticut

- Dr. Anna J. Jones-Crabtree, Beginning Farmer and Owner/Operator of Vilicus Farms in Montana
- Yani Rose Keo, Executive Director/Co-Founder of the Alliance for Multicultural Community Services and President/Founder of Cambodian Gardens Inc., from Texas
- Gary Matteson, V.P. of Young, Beginning, Small Farmer Programs for the Farm Credit Council from Washington, D.C.
- Maria Miller, Director of

Education, National Farmers Union in Colorado

- Julie D. Neill, Owner/Operator of Neill & Sons Dairy, a grazing dairy in Missouri

- Peter Scheffert, Farm Loan Officer with Farmers State Bank of Hartland from Minnesota

- Jose Antonio Serrano, General Manager of Alba Organics from California

- Dr. Garry Stephenson, Professor/Coordinator of Small Farms Program from Oregon State University

- Dr. Jennifer Elaine Taylor, Coordinator of Small Farm Programs from Florida Agricultural & Mechanical University in Tallahassee, Florida

- Windy Mae Van Dam, Dairy Rancher/Former Operator of 2 B Dairy and Director, Animal Health & Food Safety Laboratory Board from California

The committee will provide public and industry perspectives on USDA strategies, policies, and programs to broadly capture the many issues relevant to beginning farmers and ranchers including but not limited to opportunities in local food systems, generational transfers, training and credit. The committee's upcoming meeting will be announced in the Federal Register prior to the meeting and will include the meeting date, details and topics for discussion. Information will also be available on the committee's website at: <http://www.outreach.usda.gov/committees/ACBFR.htm>.



VISITS PRODUCTION FACILITY—Students from the Rochester Vocational Technical Center and Rule campuses visited the Kinder Morgan Production Katz Strawn Unit facility recently.



Students visit Katz Strawn Unit

On Nov. 6, twenty-one students from the Rochester Vocational Technical Center and Rule campuses toured the Kinder Morgan Production Katz Strawn Unit facility. Comprised of older, petroleum producing units, the Katz Field has been revitalized by introducing a tertiary carbon dioxide flood recovery project expected to increase production in excess of 5,000 BOPD. Field trip students were instructed in safety procedures and OSHA guide lines, introduced to satellite controlled automation systems and toured production facilities.

The students were

accompanied by Monty Moeller, Rochester campus instructor and Janice Qualls, Rule science teacher. Qualls has been employed by Kinder Morgan as an independent contractor for the construction of a carbon

dioxide pipeline from the Kinder Morgan Sac-Roc Unit through three Eastern Shelf counties, Scurry, Fisher and Stonewall, terminating at the Katz Field Unit, and continues to provide land services as requested.

Keep Christmas in the black

People can't do much to assure a white Christmas, but they can avoid going further into the red.

Don't dip into savings or max out credit cards just to purchase gifts, Texas AgriLife Extension Service family economics specialists recommend. Instead, think of creative ways of gift-giving and to celebrate the season.

"When people have traditions, they do things the way they always have done them without giving thought as to whether that is a sustainable and affordable way for them to have a holiday," said Nancy Granovsky, AgriLife Extension family economics specialist.

This may be the year for a change.

"This year might be the year when gifts come from the heart instead of the pocketbook," Dr. Joyce Cavanagh, AgriLife Extension family economics specialist, said.

•Have a yard sale. "People may have things that they no longer need or use," Cavanagh said. "That could be an income producing opportunity—having a yard sale or a garage sale and selling what they have that they no longer need. The additional resources can help provide some small gifts for a family or special foods for holiday meals.

•Cut back on the number of gifts. "Instead of each person buying each of nine adults a gift, draw names for one person each. Then make it a game to guess who gave that particular gift," Granovsky said. "Start a new tradition. It is not exactly the same as the previous one but may bring more happiness and fun to a gift exchange. Plus, our homes would not be filling with as many things as they tend to."

•Make gifts. "Think about how families probably celebrated the holidays during the Great Depression,"

Cavanagh added. "Make things for each other. Children might draw pictures for their grandparents or their aunts and uncles."

Granovsky agreed. "A lot of children have special hobbies," she said. "If we could reinforce in children the fact that what they are producing with their hands, with their minds, with their abilities is going to be valued by somebody else, they may never have thought of it as a giftable skill. It is a gift to receive something that comes from another individual."

•Offer services. "What is it that someone could really use?" Cavanagh said. "Perhaps coupons for a free night of babysitting. Children might give to their parents a coupon that they will do some chore that their parent does. Adults might figure out what it is that their friends and family members enjoy. So think about what is it that you can do for someone else and give a homemade gift certificate."

•Think ordinary. "If you have an older relative who likes to write letters to people, some nice cards and stationary and postage stamps might be a good gift," she added. "Things that get at the every day kinds of things for people whose budgets might be tight make good gifts. That saves them the money that they might otherwise be spending on medication and food but also gives them that uplift of continuing to be able to do something that is important to them."

•Spend time. "In many circumstances, the best gift that can be given is the gift of time," Granovsky added. "One good idea for someone who may be experiencing difficulty would be a greeting card, a very happy holiday greeting card with a special certificate that says 'I'm bringing dinner to you on such-and-such a day' or 'The week of such-and-

such you don't have to cook because we're going to bring over supper each evening.' That might be good for an elderly neighbor, a single mom struggling or certainly for parents of young children."

•Teach a skill. "We are seeing the trend toward more and more people starting to cook at home again, and in many cases cooking at home for the first time in a long time," Granovsky said. "So it is a time of skill-building for children. Holidays would be a perfect time to build a new family custom. Children can develop a new way of understanding food preparation that can be fun as well as save money for people."

Overall, the family economists noted, be open and honest with the family's expectations for gifts and financial reality.

"If you know that it is going to be a tough year at Christmas for your family, it's probably a good idea to begin to have some conversations with your kids about what their realistic expectations for the holiday might be," Cavanagh said. "If you are a family where in the past the kids have gotten a lot of things, and this year you know that's not going to happen, do some preparations about not having the same kind of gift Christmas as in the past, but it doesn't mean we can't enjoy Christmas."

Whatever the decisions are about gifts, the specialists said, watch spending.

"Don't overuse credit cards to maintain the kind of Christmas from the past," Granovsky said. "Every year we encourage people to budget for their expenses and limit what they spend on their credit cards. This year it is going to be even more important for people to exercise additional restraint in using that credit."

Clear
Fork
Crime
Stoppers
1-800-222-TIPS

5-C Smokehouse

Catering & Custom Smoked Meats

Brisket, Ribs, Pork loin, Sausage, Ham and Turkey
Sides Available Also!

Pre-Orders ONLY

Call us for All of Your Catering and Special Cooking Needs!

940-997-0020 • 940-923-0813

Ray Don and Joe Campbell
Owners
804 Gladstone • Rule, Texas 79547

Your Hometown Bankers



First
Bank ★ Texas

Since 1885

- Agriculture Loans
- Home Improvement Loans
- Personal Loans
- Construction Loans
- Real Estate Loans
- Commercial Loans

South First, Abilene

(325) 674-1885

Judge Ely, Abilene

(325) 673-1885

Clyde, TX

(325) 893-5884

Haskell, TX

(940) 864-8555

Buffalo Gap Rd., Abilene

(325) 695-1885

Baird, TX

(325) 854-1295

Munday, TX

(940) 422-4522

Stamford, TX

(325) 773-2122

Mid-Cities - Bedford, TX

(817) 553-2500

www.go2FBT.com



MEMBER FDIC



INDIAN SCORE—Haskell Indian senior #12 Kelby Bell puts one up during last week's game against the Eula Pirates.



MAIDEN GUARD—Haskell Maiden Destiny Pierce on guard while an Eula Pirate is on the drive.



ATTEMPTS TO STOP A DRIVE—Haskell Maiden #23 Crissy Bassett stands her ground as an Eula Lady Pirate drives toward the hoop.



INDIAN DEFENSE—Haskell Indians Riley Meinzer and #12 Kelby Bell in defense mode during the recent game against Eula.



REBOUND—Haskell Maidens #41 Katie Newberry and #15 Reagan Hadaway looking for the rebound.



MOVING DOWN COURT—Haskell Maiden #5 Jacie Klose on the drive against Eula last week.



LOOKS TO SCORE—Senior Haskell Indian #10 Dakota Silvas looks for a bucket.

Maidens basketball

Maidens fall to Lady Pirates 59-57

After starting the season 4-0, the Maidens finally lost to Eula 59-57 at home. The Lady Pirates entered the game with an impressive 9-1 record and ranked 8th in the State in Class A Division II.

Haskell got off to a slow start and found themselves down 19-9 after the first quarter. However, the Maidens fought back the second quarter and went into halftime down 29-27.

The second half was a battle to the very end but the long range shooting from Eula proved to be a little too much for Haskell. "I was very proud of how hard the girls played and fought back after getting down early. I think you have to give Eula a lot of credit with how they shot the ball against our man to man defense. They made 9 out of 18 three pointers against us and that is very impressive for a high school girls basketball team," head coach Blake Eddleman said.

The Maidens had three girls in double figure scoring. Reagan Hadaway had 17, Jacie Klose 16 and Kenzie Shelton 15. Crissy Bassett had 3 points, Destiny Pierce 2 and Katie Newberry 2.

Haskell 9 18 19 11 = 57
Eula 19 10 18 12 = 59

Maidens compete in the 33rd Annual Fantasy of Lights Basketball Tournament

After enjoying a couple of days off and spending time with family during Thanksgiving, the Maidens traveled to Wichita Falls to play in the traditional Fantasy of Lights basketball tournament last weekend. Haskell competed in the small school girl's division.

On Friday, the Maidens started off first with a dominating win over Notre Dame 62-27. The Haskell offense was led by Reagan

Hadaway with 32 points, Kenzie Shelton 10, Jacie Klose 9, Alye Stewart 4, Crissy Bassett 3, Destiny Pierce 2 and Katie Newberry 2.

That evening, Haskell lost to a very good team from Central Heights 60-42. The Lady Blue Devils entered the game with a 9-0 record and ranked 6th in the State in Class 2 A. Leading scorers for the Maidens were Klose with 15, Shelton 10, Hadaway 6, Pierce 4, Stewart 3, Bassett 2 and Newberry 2.

On Saturday, the Maidens started the day off by defeating Holliday 42-29. Haskell was led by Hadaway and Shelton who both recorded double-doubles. Hadaway had 16 points and 11 rebounds. Shelton had 11 points and 11 rebounds. Other leading scorers were Bassett with 7 points, Pierce 5 and Klose 4.

Finally, the Maidens lost to Texoma Christian 45-37 in the fourth place game. The Lady Eagles entered the tournament ranked 3rd in the State in TAPPS small schools. The Haskell offense was led by Hadaway with 19 points, Klose 7, Shelton 5, Pierce 4 and Bassett 2.

"Overall, I was very proud of how the girls competed and represented Haskell on and off the court at the tournament. It was a great team building experience and it is always great to play against some of the best teams across the state. We accomplished several goals up here this weekend and we improved individually and collectively," Haskell head coach Blake Eddleman said.

Haskell	20	15	14	13	= 62
Notre Dame	3	12	8	4	= 27
Haskell	9	14	13	6	= 42
Ken. Heights	22	17	14	7	= 60
Haskell	11	10	10	12	= 43
Holliday	4	10	7	8	= 27
Haskell	10	9	12	6	= 37
Tex. Christian	8	11	12	14	= 45

Players of the week

Haskell Indian Dakota Silvas was named to the Abilene Reporter-News Big Country Top 10 Tues., Nov. 26.

The senior point guard led the Indians to wins over Trent (46-45) and Baird (57-32) last week with a combined 40 points for both games.

He also posted a combined 11 assists and 11 steals.

Haskell Indian Kelby Bell was named to the Abilene Reporter-News Big Country Top 10 Tues., Dec. 3.

The senior post had high numbers at the Fantasy of Lights Tournament in Wichita Falls, averaging 17 points, 10 boards and five steals during four games.

Bell had a double-double of 26 points and 16 boards in a 63-52 win over Lometa.



SET THE TABLE FOR SAVINGS!

Bring in three non-perishable food items to be donated to a local food pantry and receive waived installation fees on up to three connections on new or additional services, including television, telephone and internet.

Offer good through December 31, 2013. Donations accepted at all SRC offices. All non-perishable food items must have a current use-by date. Some restrictions may apply. Services where available. Up to three connections waived additional connections \$20 each.

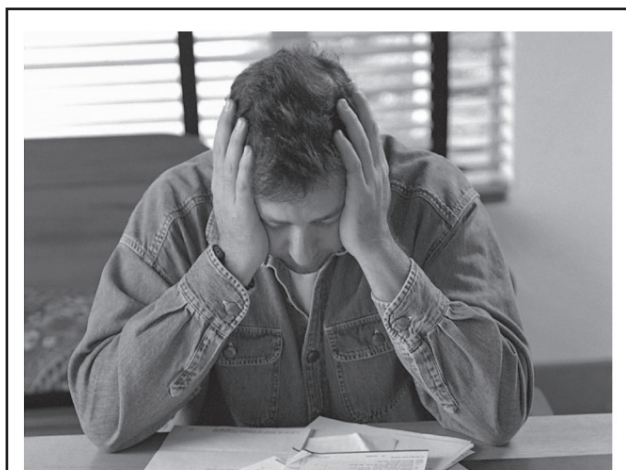


VERNON OFFICE
7110 US Hwy 287 E
Vernon, TX 76384
(940) 886-2217
(888) 886-2217

HASKELL OFFICE
113 N Ave. D
Haskell, TX 79521
(940) 863-1125
(888) 863-1125

SEYMOUR OFFICE
310 W California
Seymour, TX 76380
(940) 889-1125
(877) 889-1125

ask@srcaccess.net



Interest rate too high?

Find out how our great rates and flexible loan programs can help you. We offer competitive *refinancing* for agricultural, rural real estate, country home and agribusiness loans.



Central Texas
Farm Credit, ACA

www.centraltexasaca.com

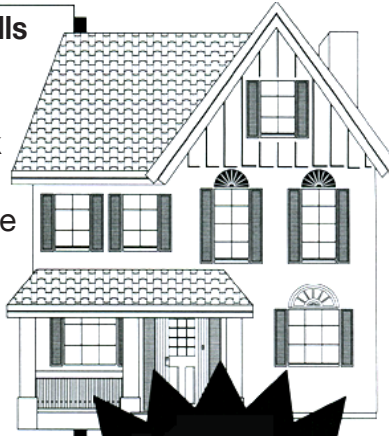
550 South 2nd
Haskell, Texas 79521
940-864-8565

Part of the Farm Credit System

REID'S CONSTRUCTION CO.

Our Trade Skills include:

- Carpentry
- Woodwork
- Painting
- Texture •Tile
- Flooring
- Electrical
- Decks
- All types of roofing
- Laminate
- Composition
- Metal
- Flat Roofs
- Siding
- Additions
- Major remodels



Call Jim
Cell 903-204-3706
Knox City, Texas 79529

"One Company, One Job, One Price!"

"The only job worth doing, is the one well done"

Jim Reid, Owner
Knox City • Munday • Haskell • Stamford

Drone used to help detect wheat disease progression

by Jason Westbrook
CEA-Ag, Haskell Co.
Tiny helicopter is tool to help save water

Dr. Charlie Rush hopes to use a unique method—helicopter drone—to track disease progression across wheat fields to eventually help producers make better irrigation decisions.

Rush, a Texas A&M AgriLife Research plant pathologist in Amarillo, has enlisted the help of Ian Johnson, a Montana State University-Bozeman graduate student who is using his work in the university's Science and Natural History Filmmaking Program to help scientists conduct research.

Approximately 1.1 million acres of wheat in the High Plains are irrigated, Rush said, making wheat the second-largest user of irrigation water from the Ogallala Aquifer. In this same region, mite-vectored virus diseases are the predominant pathogenic constraint to sustainable wheat production each year.

The viruses causing these diseases are transmitted by the wheat curl mite, he said. Infected wheat plants not only have reduced grain and forage yields, but also greatly reduced root weight and water-use efficiency. Therefore, fertilizer and groundwater applied as irrigation to diseased wheat is largely wasted.

Rush's team is using the helicopter to take remote images of a field study where they are trying to develop an economic threshold for irrigation of wheat infected with wheat streak and other mite-vectored diseases.

"The problem for farmers is that these diseases develop in gradients over time and they don't know whether or not they should apply new pesticides or fertilizers or water," he said. "Most of these practices are done in April, and that is when the disease is just starting to show up. They may know they have disease in the field, but they really don't know how much damage it might cause."

"So what we are trying to do is be able to go in early in the season and look at the disease development at a particular time and then based on what it looks like, say in early April, be able to give them a prediction of what the crop will be at harvest time."

To do that, Rush said his team has been going into the field using different types of remote imaging, such as the hand-held hyperspectral radiometer, to measure and quantify the severity of disease development in the field.

"Now the application and use of this helicopter drone is one more way of measuring the disease development," he said. "The beautiful thing about this is instead of having to deal with handheld devices, you can come in and fly the entire field in a matter of five minutes and get a very, very high resolution. So we are excited about the possibilities this may provide for our project."

Johnson said he will use

the drone to make four or five flights during the growing season and then generate results that will help Rush. This Y6 helicopter, named for its Y shape and six propellers, is made by 3D Robotics and includes an autopilot.

"That allows us to preprogram flights and fly a grid. As it is flying the grid, it takes top-down photos," Johnson said. "Once we collect the photos, we stitch them together and build a giant photo mosaic of each field we flew over. We are hoping to provide incremental photo coverage of the fields as the disease progresses through the fields."

Johnson said using this technology for agricultural research provides a whole list of improvements to the previous services available. Many researchers have used satellite imagery before, but this provides resolution 100 to 1,000 times greater than the Landsat satellite imagery Rush and his team used in the past.

"That's a huge improvement when you are looking at ground-coverage and trying to pick out diseased plants," he said. "Another improvement is temporal resolution. We can fly this every day for a couple of weeks or every week for a whole season, whereas with satellite you have to wait two to three weeks for a pass and that is if you can get your slot. So this is a great improvement."

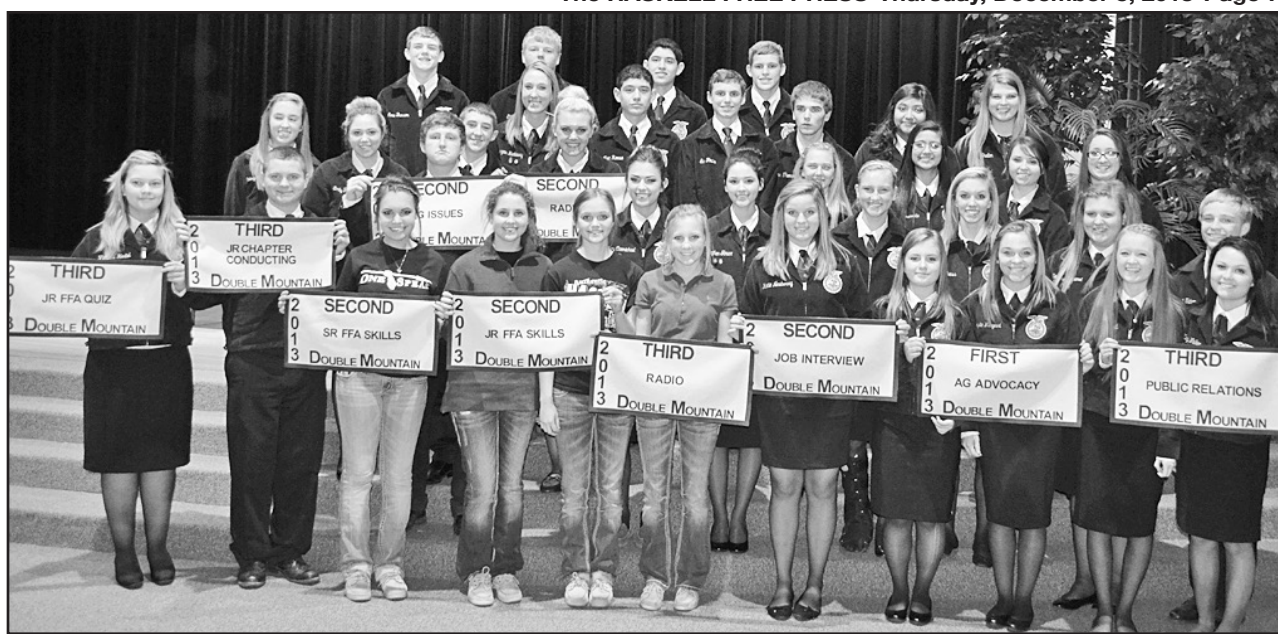
Another thing, Johnson said, is the drone is currently using visible spectrum only—still photographs—because the project is focused on the yellow band of light, which easily captures the typical symptoms of wheat streak mosaic.

"But this is a modular system," he said. "We could put near infrared, thermal, any array of multi-spectral sensors on here to capture whatever data it is the project demands."

Rush said one of the things he is most excited about with this new technology is that although aerial images have been taken before and unmanned aircraft have been used to measure things, "they have never been used to our knowledge to manage irrigation applications, especially in diseased crops."

"This is something that is totally new," he said. "Obviously, in the Texas Panhandle where water is such a precious resource, anything that we can do to reduce waste or farmers putting on irrigation water when it is not going to pay off for them is going to be a positive thing."

Rush said he is confident that with the studies currently underway, this new technology will allow them to very quickly provide growers with the information they need to better manage their irrigation.



HASKELL FFA TEAMS

Haskell FFA teams compete at District and Area contests

Haskell FFA students have been extremely busy competing in leadership development contests over the past few weeks. FFA leadership development contests aim at developing students' premier leadership, critical thinking, and public speaking skills.

On Nov. 19 at the Double Mountain District contests, Haskell FFA was proudly represented by 36 members competing in eleven events. Teams which placed first or second at district advanced to compete in the Area II competition Nov. 26 at Lamesa.

The second place Agricultural Advocacy team advanced from Area and will compete at State Dec. 6-7. Unlike UIL and athletic events, FFA competitions are not divided by school size; all schools, no matter how large or small, compete against each other. The

Area II FFA Association includes all schools from Haskell to Brownfield and from Sonora to El Paso. Congratulations to all our Haskell FFA Leadership Teams and good luck to the Ag Advocacy at State.

Results from District and Area are as follows:

Agriculture Advocacy, first District, second Area will compete at State Dec. 6-7: Ashlyn Bevel, Jacee Guess, Daphni Leonard, Katy Newberry and Krysta Winegeart.

Ag Issues Forum, second District, third Area: Emily Fouts, Kaley Mathis, Meghan Glover, Lucy Carmichael and Pryce Stewart.

FFA Radio, second District, third Area: Reagan Hadaway, Makenzie Gass and Crissy Bassett.

Jr. FFA Skills, second District, third Area: Alye Stewart, Mykaylee Wilhite

and Kylie Adams.

Sr. FFA Skills, second District, third Area: Reagan Hadaway, Makenzie Gass and Crissy Bassett.

Job Interview, second District, third Area: Emily Fouts.

Public Relations, third District: Kourtney Howard, Sarah Campbell, Kaylee Walker and Garret Tatum.

Jr. Chapter Conducting, third District: Sam Fouts, Hayden Hudson, Chase

Gibson, Lane Burson, Alex Alvarez, Payton Thomas, Isaiah Alvarez, Caden Tatum and Austin Alsbrook.

Jr. FFA Quiz, third District: Victoria Hertel, Hayden Hudson, Chase Gibson and Payton Thomas.

Sr. FFA Quiz, seventh District: Abbi Alsbrook, Kenzie Shelton, Morgan Nava-Munoz, Aubrie Tatum and Jolene Navarrette.

Jr. FFA Creed, ninth District: Abby Homeyer.

Calendar

Deadlines

All deadlines for issues of the Haskell Free Press are at noon on Mondays.

Water conservation

The City of Haskell has implemented stage three of the Drought Contingency Plan of the City of Haskell Water Conservation Plan. Stage three calls for a mandatory 25% reduction in water use by all City of Haskell water customers. Please make every effort to

conserve and help secure our water supply as long as possible. For more information or a copy of the water conservation plan, contact Haskell City Hall.

Water conservation for City of Rule

The City of Rule has implemented Stage Four of its Drought Contingency Plan Emergency Water Shortage/Water Allocations. Please contact Rule City Hall or call 940-996-2214 for more information.

Area basketball scores

Girls	Boys
Eula 59, Haskell 57	Eula 48, Haskell 45
Scoring for Haskell: Hadaway 17, Klose 16, Shelton 15, Bassett 3, Pierce 2, Newberry 2.	Scoring for Haskell: Bell 16, Silvas 14, Martinez 6, Hanson 5, Meinzer 2, Winterstein 2.
JV: Eula 42, Haskell 29	JV: Haskell defeated Eula

Haskell Co. Arrest Report

The following arrests were reported by the Haskell County Sheriff's Office during the week of Nov. 25-Dec. 1:

- Tiffany McKinney, possession of controlled substance.
- Lee Allen Mathis, theft by check Class B.
- Forty calls were made to 911.

Haskell Co. Gin Report

Dec. 2, 2013 Haskell	
Haskell County Gin...	1,600
Haskell Co-op Gin.....	3,245
O'Brien Rule	
O'Brien Co-op.....	4,770
Weinert	
Rule Co-op Gin.....	5,864
Griff's Gin.....	0
Weinert Gin.....	1,568
Total bales.....	17,047

HASKELL CONSOLIDATED INDEPENDENT SCHOOL DISTRICT STATEMENT OF REVENUES, EXPENDITURES, AND CHANGES IN FUND BALANCE GOVERNMENTAL FUNDS FOR THE YEAR ENDED AUGUST 31, 2013

	General Fund	Other Funds	Total Governmental Funds
REVENUES:			
Total Local and Intermediate Sources	\$ 2,379,523	\$ 161,832	\$ 2,541,355
State Program Revenues	4,946,587	50,143	4,996,730
Federal Program Revenues	20,137	816,854	836,991
Total Revenues	7,346,247	1,028,829	8,375,076
EXPENDITURES:			
Current:			
Instruction	3,472,989	572,548	4,045,537
Instructional Resources and Media Services	89,030	-	89,030
Curriculum and Instructional Staff Development	71,865	376	72,241
School Leadership	414,423	-	414,423
Guidance, Counseling and Evaluation Services	155,644	-	155,644
Health Services	56,339	-	56,339
Student (Pupil) Transportation	137,259	-	137,259
Food Services	12,016	408,553	420,569
Extracurricular Activities	303,479	-	303,479
General Administration	399,675	623	400,298
Facilities Maintenance and Operations	978,455	-	978,455
Security and Monitoring Services	28,049	-	28,049
Data Processing Services	191,608	-	191,608
Debt Service:			
Principal on Long Term Debt	-	783,000	783,000
Interest on Long Term Debt	-	32,224	32,224
Bond Issuance Cost and Fees	-	26,473	26,473
Capital Outlay:			
Facilities Acquisition and Construction	265,497	-	265,497
Intergovernmental:			
Payments to Fiscal Agent/Member Districts of SSA	117,606	-	117,606
Other Intergovernmental Charges	88,735	-	88,735
Total Expenditures	6,782,669	1,823,797	8,606,466
Excess (Deficiency) of Revenues Over (Under) Expenditures	563,578	(794,968)	(231,390)
OTHER FINANCING SOURCES (USES):			
Refunding Bonds Issued	-	725,000	725,000
Transfers In	-	41,616	41,616
Premium or Discount on Issuance of Bonds	-	26,473	26,473
Transfers Out (Use)	(41,616)	-	(41,616)
Total Other Financing Sources (Uses)	(41,616)	793,089	751,473
Net Change in Fund Balances	521,962	(1,879)	520,083
Fund Balance - September 1 (Beginning)	1,070,022	102,588	1,172,610
Fund Balance - August 31 (Ending)	\$ 1,591,984	\$ 100,709	\$ 1,692,693

Clear Fork
Crime Stoppers
1-800-222-TIPS

GONZALES CARPET CLEANING
Carpet Cleaning • Upholstery Cleaning
Emergency Water Extraction • Expert Floor Care
Waxing Polishing & Cleaning

Residential & Commercial
(325) 721-8195 • (325) 773-2258

Robert Gonzales
P. O. Box 929
Stamford, TX
79553



PAINT CREEK FFA—The Paint Creek FFA teams participated in the Double Mountain District Leadership Development event Tues., Nov. 19 held in Anson. FFA members include, front row, l-r, Sarah Edwards, Zhenia McTasney and Gabby Mendoza; back row, Marco Martinez, Caitlyn Douglass, Cody Mayfield, Caitlin Medford, Hunter Hollingsworth, Ben Steele, Justin Bailey, Ashley Crossley, Catherine Lemond, Devon Benitez, Hannah Grand, Corey Mengwasser and Sebastian Acosta.

Paint Creek FFA teams compete at District

Paint Creek FFA members attended the Double Mountain District Leadership Development Event Nov. 19 in Anson. Schools in the Double Mountain FFA District include Anson, Aspermont, Hamlin, Haskell, Hawley, Jayton-Girard, Lueders-Avoca, Paint Creek, Roby, Rotan and Stamford.

Paint Creek took a total of 16 students making up seven different Leadership Development Event teams with multiple students competing on at least two

different teams.

The teams that competed along with their placings were: Junior Chapter Conducting, fourth place; Senior Chapter Conducting, third place; Junior Quiz, fifth place; Senior Quiz, second place;

Junior Creed, sixth place; Senior Creed, fifth place; and Junior Skills, third place.

The Senior Quiz team advanced with their second place and competed in the Area II FFA LDE's in Lamesa Tues., Nov. 26.

Search narrows for Greenbug resistance gene in wheat

by Jason Westbrook
CEA-Ag, Haskell Co.

Texas A&M AgriLife Research wheat scientists are getting closer to pinpointing the genes controlling greenbug resistance in wheat and recently published their findings.

"Transcriptomics of induced defense responses to greenbug aphid feeding in near isogenic wheat lines" has been accepted for publication in Plant Science journal. The article can be accessed at <http://bit.ly/1dvKcP3>.

Researchers involved in the study were Dr. Srirama Krishna Reddy, Dr. Jackie Rudd and Dr. Shuyu Liu, all with AgriLife Research in Amarillo, and Dr. Yiqun Weng. Weng, formerly with AgriLife Research, designed and started the experiment and is now with the U.S. Department of Agriculture-Agricultural Research Service in Madison, Wisconsin.

The project was supported partially by a U.S. Department of Agriculture National Institute of Food and Agriculture grant, AgriLife Research and Texas Wheat Producers Board.

Most of the hard red winter wheat in the U.S. is cultivated in the Southern Great Plains, where the yields are hampered by several phloem-feeding insects, Rudd said. The primary pest, the greenbug aphid, is estimated to cause economic losses of about \$405 million annually.

TAM 112 is currently one of the most popular wheat varieties in Texas and Western Kansas, partially because of good resistance to greenbugs, he said. This research will make it easier to develop more varieties with greenbug resistance.

Using established genomic strategies, the AgriLife Research scientists have identified a set of candidate genes that are associated with greenbug resistance, Liu said.

"This step had not previously been done in

greenbug research, so this new identification is an advance in the knowledge of greenbug resistance at the gene level," he said. "It will help us understand the molecular mechanisms of greenbug resistance."

The goal was to identify the genes expressed differently between the known susceptible groups of wheat lines and those showing greenbug resistance, Liu said.

Reddy explained the study, saying it was conducted using Affymetrix GeneChip Wheat Genome Arrays to investigate the gene expression of host defense responses upon greenbug feeding on both resistant and susceptible groups of wheat lines derived from two near-isogenic lines.

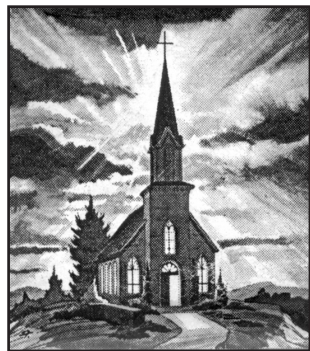
"Near-isogenic lines mean that the two lines were similar in all traits except for their nature of resistance to greenbug infestation," Reddy said. "This allows us to identify differentially expressed genes and associate them with greenbug resistance."

The study identified 692 differentially expressed genes between resistant and susceptible groups. Among them, 122 genes were known to be associated with biotic stress responses such as insect feeding, he said.

The resistant group activated more genes related to early defense signaling, which minimizes the feeding damage, Reddy said. In the susceptible lines, more genes related to cell wall stability and basal defense were activated, indicating the greenbugs had caused significant damage during feeding.

Combining this new knowledge with other approaches of gene identification will help the researchers identify and confirm gene-specific markers for greenbug resistance, and then this technology can be utilized by wheat geneticists and breeders, he said.

This Week's Devotional Message:



God made the winter, sparkling with silver and white

The trees have shed their autumn glow
From branches dark and bare.
And soon the patterned flakes of snow
Will spiral through the air,
Adorning them with clumps of white
To take the place of leaves;
While icicles, a dazzling sight,
Are hanging from the eaves.

Your house of worship will attest,
The beauty and the cold
Will signify a world at rest;
The year is growing old.
So just enjoy the frosty scene
And try to understand
The way God's love will intervene,
When winter chills the land.

ATTEND CHURCH THIS SUNDAY

—HASKELL—

- East Side Baptist Church**
Shawn Smith, Youth & Worship pastor
Sun. 9:45 a.m., 11 a.m., 6 p.; Wed. 7 p.m.
600 N. 1st East, Haskell
- Christian Church**
Sun. 10:45 a.m.
107 N. Ave. F, Haskell
- Church of God**
Bruce Ray, pastor
Sun. 10 a.m., 11 a.m., 6 p.m.
Wed. 7:00 p.m.
714 North First East, Haskell
- Trinity Lutheran Church**
Rev. David White, pastor
Sunday School 9:30 a.m., Worship 10:30
Hwy 380 East, Haskell
- Iglesia Bautista El Calvario**
Art Flores, Interim pastor
Sun. 9:45 a.m., 10:45 a., 5 p.m.; Wed. 7 p.m.
607 S. 7th, Haskell
- First United Methodist Church**
Rev. Dustin Wilhite, pastor
Sun. 9:45 a.m., 10:50 a.m. 6 p.m.
Wed. 6 p.m.
201 N. Ave. F, Haskell
- First Assembly of God**
Rev. J.C. Amburn
Sun. 9:45 a., 10:45 a., 6 p.m.; Wed. 7 p.m.
1500 N. Ave. E, Haskell
- St. George Catholic Church**
Father George Roney
Sat. Mass 7 p.m.; Sun. Morn. 9:00 a.m.
901 N. 16th, Haskell
- Church of Christ**
Phillip Sims, minister
Sun. 9:30 a.m., 10:30 a.m., 6 p.m.;
Wed. 7 p.m.
510 N. Ave. E, Haskell
- First Presbyterian Church**
Kelly Pigott, interim pastor
Sun. Morn. 9:30 a.m.
306 N. Ave. E, Haskell
- Trinity Baptist Church**
Larry White, pastor
Sun. 10 a., 11 a., 6:30 p.m.; Wed. 6:30 p.
114 S. Ave. D, Haskell

- Hopewell Baptist Church**
Sun. 9:30 a.m., 11:00 a.m.; Wed. 7 p.m.
908 N. Ave. A, Haskell
- Greater Independent Baptist Church**
Rev. Earnest Flanders, Jr., pastor
Sun. 9:30 a., 11:00 a., 6:30 p.; Wed. 7 p.
301 N. 3rd St., Haskell, 940-863-4405
- New Covenant Foursquare**
Bill and Renee Glass, pastors
Sun. 10 a.m., 11 a.m., 6:30 p.m.
Wed. 7 p.
200 S. Ave. F, Haskell
- First Baptist Church**
Rev. Jim McCurley
Jason Daniels, minister of Youth and Music
Sun. 9:45 a., 10:55 a., 6 p.m.; Wed. 6:30 p.m.
301 N. Ave. E, Haskell
- Cornerstone Fellowship Baptist Church**
Morris R. Johnson, pastor
Sun. 9:30 a.m. 10:45 a.m., 6 p.m.
Wed. 7 p.m.
1600 N. First St., Haskell
- God Loves You Ministries**
Mark Wallace, pastor
Church Service 10 a.m.
West side of square, Haskell
- WEINERT—**
- First Baptist Church**
Dan Bullock, pastor
Sun. 10 a.m., 11 a.m., 6 p.m., Wed. 7 p.m.
Weinert
- Weinert Foursquare Church**
Rev. Robert Harrison
Sunday 11 a.m
Weinert
- ROCHESTER—**
- Church of Christ**
Mitchell Greer, minister
Sun. 10 a.m., 10:45 a.m.
West on Main Street, Rochester
- First Baptist Church**
Bishop Helsley, pastor
Sun. 9:45 a.m., 11 a.m., 6 p.m.;
Prayer Time/Team Kids 5 p.m.;
Wed. Youth meeting 7 p.m.
500 Main, Rochester
- Union Chapel Baptist Church**
Clovie Dever
Sun. 9:45 a., 10:45 a., 6 p.m.; Wed. 7 p.m.
Rochester

- Faith Chapel of Rochester**
Randy Hollingsworth, minister
Sun. 10 a.m., 11 a.m., Wed. 6 p.m.
Hwy 6, Rochester
- SAGERTON—**
- Sagerton Methodist Church**
Cory Graham, pastor
Sun. Morn. 9:45 a.m.
Sagerton
- Faith Lutheran Church**
Anna Robbins, pastor
Sun. 10:30 a.m.
Sagerton
- RULE—**
- First Baptist Church**
Scott Hensley, pastor
Sun. 9:45 a., 11:00 a., 5 p.m.; Wed. 7 p.m.
1001 Union Ave., Rule
- Primitive Baptist Church**
Dale Turner Jr., pastor
First & Third Sundays 10 a.m.
Corner of 8th & Robins, Rule
- Church of Christ**
John Greeson, minister
Sun. 9:45 a., 10:40 a., 6 p.m.; Wed. 7 p.m.
811 Union, Rule
- Primera Iglesia Bautista**
Alfa y Omegas
Manuel Marin, pastor
Sun. 10 a., 11:00 a., 5 p.m.; Wed. 6 p.m.
500 Elm Street, Rule
- Sweet Home Baptist Church**
Russell Stanley, pastor
Sunday 10 a.m.
Gladstone Ave., Rule, 940-997-2296
- West Bethal Baptist Church**
Rev. Clovis Dever
Sun. 10 a., 11 a., 8 p.m.; Wed. 7:30 p.m.
300 Sunny Ave., Rule
- PAINT CREEK—**
- Paint Creek Baptist Church**
Sun. 10:00 a.m., 11:00 a.m., 6 p.m.
Paint Creek
- O'BRIEN—**
- O'Brien Baptist Church**
Jim Reid, pastor
Sun. 9:45 a., 11 a., 5 p., 6 p, Wed. 6 p.m.
O'Brien

Haskell School Menu

- | | |
|--|---|
| <p>Dec. 9-13
Breakfast
Milk variety and 100% fruit juice is available at every meal
Monday: Sausage kolache, oven roasted potatoes or cereal variety and Texas toast
Tuesday: Cheddar cheese omelet wrap or animal crackers and string cheese
Wednesday: Breakfast pizza or cereal variety and Texas toast
Thursday: Waffles and sausage or animal crackers and string cheese
Friday: Cinnamon roll and bacon or cereal variety and Texas toast</p> | <p>Lunch
Milk variety is available at every meal.
Monday: Beef and bean burrito, broccoli bites, garden salad, orange smiles
Tuesday: Two crispy tacos, garden salad, charro beans, salsa, cinnamon applesauce
Wednesday: Spaghetti with meat sauce, garden salad, savory green beans, breadstick, sliced peaches
Thursday: Turkey, dressing, mashed potatoes, gravy, savory green beans, roll, fruit, cranberry sauce
Friday: Hot dogs, sweet potato fries, cucumber dippers, fresh seasonal fruit</p> |
|--|---|

Paint Creek School Menu

- | | | |
|--|---|--|
| <p>Dec. 9-13
Breakfast
Milk and juice are served daily.
Monday: Sausage, biscuits
Tuesday: Oatmeal muffin squares, yogurt
Wednesday: Toast, eggs, sausage
Thursday: Breakfast club
Friday: Biscuits, sausage, gravy</p> | <p>Lunch
Milk is served daily.
Monday: Chicken sandwich, tater tots, beans, salad, pears
Tuesday: Tangerine chicken, rice, baby carrots, broccoli, pineapples
Wednesday: Toasted ham and cheese, chips, salad, hot cinnamon apples
Thursday: Baked potatoes,</p> | <p>toast, baby carrots, fruit
Friday: Chicken Parmesan, green beans, salad, breadsticks, apples</p> |
|--|---|--|

ECC Menu

- | | | |
|---|--|--|
| <p>Mon., Dec. 9
Veggie beef stew, tuna or pimento sandwich, pickles, onions, cookie, jello, Coke cake, tea or coffee</p> | <p>Wed., Dec. 11
Chicken fried steak, au gratin potatoes, green beans, hot rolls, white cake, tea or coffee</p> | <p>Fri., Dec. 13
Beef enchilada, refried beans, onions, chips, garden salad, lemon cream cake, tea or coffee
Announcements begin at 11:45 a.m. followed by lunch.</p> |
|---|--|--|

Sonic Drive-In
1402 N. Ave. E
864-8533
Randy Phelps, Manager

Steele Fire Apparatus
Hwy. 380 East • 864-2208

Modern Way Food Store
1202 N. Ave. E • 864-3763

HANSON PAINT & BODY SHOP
207 S. 1st • 864-3631
Professional Auto Body Repair
Glass Installation • 24 Hour Wrecker Service

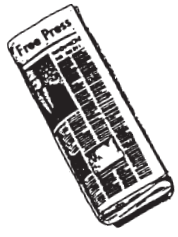
Rule Co-op Gin & Elevator
301 Adams • Rule • 996-2421

Smitty's Auto Parts
107 N. 1st East • 864-2607

The **Haskell Free Press**

"The People's Choice"
420 N. First
Haskell, Texas
940-864-2686

Serving Haskell County Since 1886



Shop The Haskell Free Press CLASSIFIEDS



940-864-2686

ALL DEADLINES MONDAY AT NOON • hfpnews@lycos.com

940-864-2686

For Sale

FOR SALE: Old part of Willow Cemetery, 1/2 of Lot 49, Block 6, Row 7, \$750. Contact Douglas Brown, 806-935-3200.
46-49c

FOR SALE: 25 ft. Aljo by Skyline travel trailer. Sleeps 7, 1 slide-out, separate bedroom with queen size bed. Extra clean, \$5,600.00. 940-658-3065. 49p

FOR SALE: GE deep freeze. \$200 OBO. 940-864-3515. 49p

Cars For Sale

FOR SALE: 2005 Ford F350 Lariat Crew Cab 6.0 diesel, automatic, 2WD, 120,000 miles in excellent condition. \$12,000.00. 325-280-5066. 48-49c

2006 KAWASAKI NOMAD 1600 in excellent condition. 42,300 miles with new tires, Vance & Hines exhaust and K&N air filter. \$5,000.00. 325-280-5066. 48-49c

Garage Sale

GARAGE SALE: Sat., Dec. 7. 8 a.m. til 900 N. Ave. G. Toys, baby clothes, misc. 49p

For Rent

FOR LEASE: Retail and office space. Big Country Real Estate 864-2238. 3tfc

RESIDENTIAL and commercial leasing available. Companies welcome. Westex Properties. 940-256-2930. 45tfc

S&S STORAGE in Haskell has storage units for rent. Call 864-2208. 49c

Help Wanted

HELP WANTED: Immediate openings. Haskell County Gin. 864-2358. 41tfc

WANTED: Night time, live in caregiver for elderly female who is checked twice during night. Day time care is provided. Your room and utilities provided in compensation. Your day time schedule can be yours. Call 325-660-7298 or 325-665-9366 or 940-864-8034. In Haskell. References needed. 48-49c

CORRECTIONAL OFFICERS needed at Rolling Plains Detention Center. Responsible for the custody and discipline of inmates assigned to the unit. High school diploma or equivalent required. There will be a \$500.00 sign on bonus for all applicants that successfully complete the pre-employment requirements, orientation training, OJT and a 6

Clear Fork Crime Stoppers
1-800-222-TIPS

EXPERT AUTO WORK
REASONABLE RATES
See us for all your auto mechanic needs. 20 years experience. We do it right the first time.
US 277 South • Haskell

Help Wanted

month probation period. Applications can be picked up Rolling Plains Detention Center or online at www.emeraldcompanies.com. 48-49c

ROLLING PLAINS Detention Center is hiring transport drivers. Responsible for the custody, discipline, and transfer of inmates. High school diploma or equivalent and must be at least 21 years of age. Valid driver's license in the State of Texas with a clear MVR for 3 years. Applicants may apply in person at Rolling Plains or online at www.emeraldcompanies.com. 48-49c

ROLLING PLAINS Detention Center is hiring a maintenance worker. Responsible for conducting regular inspections and performing maintenance tasks on the buildings, grounds and equipment. High school diploma or equivalent. Five years experience in building, grounds and equipment maintenance repair. Valid Texas driver's license. Applications can be completed at www.emeraldcompanies.com or can be picked up Rolling Plains. 48-49c

FIRST BANK TEXAS-Haskell is accepting applications for a responsible, energetic teller/customer service representative. Applicant should possess computer skills, an eagerness to learn, be a team player and enjoy working with the public. Employment applications can be obtained at 200 S. Ave. E, Haskell, TX. 49-50c

Public Notices

PUBLIC NOTICE
The No Child Left Behind Act of 2001 (NCLB) states that any teacher hired after the first day of the 2002-2003 school year to teach in a Title I, Part A program must be highly qualified. For the 2013-2014 school year, Haskell CISD reports that 98.33% of teachers in core academic subject areas meet the highly qualified requirements as required by NCLB. 49c

NOTICE TO THE CITIZENS OF WEINERT
The Texas Commission on Environmental Quality (TCEQ) has notified the City of Weinert water system that the drinking water being supplied to customers has exceeded the Maximum Contaminant Level (MCL) for Nitrate. The U.S. Environmental Protection Agency (EPA) has established the MCL for Nitrate at 10 mg/L, and

Dodson Concrete Construction
Commercial - Residential
David Dodson
704 N. Ave. F • Haskell
940-864-2038
Over 30 Years in the Business
FREE ESTIMATES

HCR HASKELL COUNTY REALTY
PO Box 617
103 N. Ave. E
Haskell, TX 79521
940-864-2665 office
940-256-1184 cell
www.haskellcountyrealty.com
rhonda@haskellcountyrealty.com
Rhonda Lisle
Accredited Staging Professional
Real Estate Agent
"Where We Make YOU Our #1 Priority!"

Public Notices

has determined that it is a health concern at levels above the MCL. Analysis of drinking water in your community for Nitrate indicates a level of 23.4 mg/L.

Infants below the age of six months who drink water containing nitrate in excess of the MCL could become seriously ill and, if untreated, may die. Symptoms include shortness of breath and blue baby syndrome.

You do not need to use an alternative water supply. However, if you have health concerns, you may want to talk to your doctor to get more information about how this may affect you.

At the present time we are currently looking into ways to correct this problem. An engineer has been hired and is awaiting approval for a filtration system. If you are pregnant or have an infant under six months included in this public water system as a customer, we have made arrangements with local grocery store in Haskell (Modern Way) so that you may get bottled water at the City of Weinert's expense. Please go by Weinert City Hall to pick up ID card before charging water.

If you have any questions or would like to know if you are currently being served as a customer of this public water system please feel free to call or contact the City Secretary Patricia Horan, c/o City of Weinert, Box 248, Weinert, Texas 76388 at 940-673-8223.

Our Public Water System ID# is 1040004. 49c

CAUSE NO. 11,909
THE ESTATE OF DYRAL J. SISK AND THE ESTATE OF SHARON SISK, DECEASED.
Plaintiffs vs.
CAROLYN WILLIAMSON AND THE UNKNOWN HEIRS OF RANDY K. WILLIAMSON, DECEASED
Defendants
CENTRAL TEXAS FEDERAL LAND BANK, FLCA,
Defendant IN REM ONLY
IN THE 39TH JUDICIAL DISTRICT COURT OF HASKELL COUNTY, TEXAS
NOTICE BY PUBLICATION

FOR RENT
Forks \$25 per day
Digger 9" & 12" Auger \$50 per day
Tree Sheer \$75 per day
Steele Fire
940-864-2208

WE BUY SCRAP METALS!
Copper, Brass, Aluminum
Cans, Batteries, etc.
Pick up available for **JUNK CARS!**
Anson Metal Recycling
3014 FM 707, Anson
325-823-2500

Public Notices

STATE OF TEXAS TO CAROLYN WILLIAMSON and the Unknown Heirs, Representatives, Successors and Assigns of RANDY K. WILLIAMSON, Deceased:

You have been sued. You may employ an attorney. If you or your attorney do not file a written answer with the clerk who issued this citation by 10:00 a.m. on the Monday next following the expiration of 42 days after you were served this citation and petition, a default judgment may be taken against you. The Plaintiff's Original Petition of CHRISTIE WOODS,

Public Notices

in her capacity as the Dependent Administrator of the ESTATE OF DYRAL J. SISK, DECEASED, and in her capacity as the Successor Independent Administrator of the ESTATE OF SHARON SISK, DECEASED, Plaintiff, and CAROLYN WILLIAMSON, Defendant, on May 22, 2012, and Plaintiff's First Amended Original Petition on June 18, 2012, in the 39th Judicial District Court of Haskell County, Texas, and is numbered Cause No. 11,909, and entitled "The Estate of Dyrall J. Sisk

Public Notices

and The Estate of Sharon Sisk, deceased, Plaintiffs, vs. Randy K. Williamson, deceased and Carolyn Williamson, Defendants, and Central Texas Federal Land, Defendant IN REM ONLY." This lawsuit is a partition suit requesting the Court to order a jointly owned 261.0 acre tract of land partitioned in kind or by sale.

The Court has authority in this suit to enter any judgment or decree in the

Public Notices

Plaintiffs' interest which will be binding upon you.

Issued and given under my hand and seal of said Court at Haskell, Texas, this 18th day of November, 2013.

Penny Young Anderson
Clerk of the
39th Judicial Court
Haskell County, Texas
Debbie Gresselt, Deputy
49-52c

POLITICAL CALENDAR

The Haskell Free Press is authorized to make the following announcement for the political office in Haskell County, subject to the action of the 2014 Primaries.

Unless otherwise specified the candidates listed paid for the announcement, and have designated themselves as campaign treasurer.

All political advertising is cash in advance.

Comm. Precinct 2
Tiffen Mayfield

HCR HASKELL COUNTY REALTY
103 N. Ave. E
Haskell, TX 79521
940-864-2665
1-800-658-6342
Chan Guess, Rhonda Lisle, Roger Roewe - agents
Bridget Guess - broker
www.haskellcountyrealty.com

- FARM & RANCH LAND**
- 160 +/- ACRES LOOP RD - PASTURE LAND - PRIME HUNTING OR GRAZING.
- 131 +/- ACRES NE HASKELL CO. - CAN'T BEAT THIS COMBO OF CULTIVATION AND PASTURE!
- 200 +/- ACRES NW HASKELL CO. - 160 ACRES UNDER PIVOT, 40 GRASS LAND!
- 156 +/- ACRES CR 268 - NE HASKELL COUNTY, MATTSON COMMUNITY 96 ACRES OF CULTIVATED & 80 ACRES PASTURE. **NEW**
- 315 +/- ACRES CR 268 - NE HASKELL COUNTY, MATTSON COMMUNITY, 131 ACRES CULTIVATED & 184 ACRES PASTURE. **NEW**

For more listings call or go to **haskellcountyrealty.com.**

Like what you're reading?

We'll send it to you each week for just \$25 a year. (in Haskell County)

Yearly Subscription Rates
\$25 a year in county
\$34 out-of-county

Name _____
Address _____
City _____ State _____ Zip _____

Clip and Mail Coupon, Along with Check or Money Order to:
The Haskell Free Press
P. O. Box 555, 420 N. First
Haskell, TX 79521

CNAs Weekend RNs
Immediate opening on 6-2 shift & PRN openings available for CNA with State certification. RN needs state license. We offer a competitive salary & benefits available for full time employees. EOE. For more info, please call (940) 864-8537, or apply in person:
HASKELL HEALTH CARE CENTER
1504 No First St. Haskell

Langford Roustabout Services, LLC
8348 U.S Hwy 277 N.
Haskell, TX 79521

Scott Langford
Owner
940-256-0535

Doug Sorrells
Supervisor
940-256-0536

Office 940-864-3490
Fax 940-864-3491

RIKE REAL ESTATE
Mary Rike Broker John Rike, Agent Megan Cox, Agent
mary@rikerealestate.com john@rikerealestate.com megan@rikerealestate.com
415 S. First Street
Haskell, Texas 79521
940-864-2411 325-370-6572
www.rikerealestate.com

1106 N. AVE. L-2/1. Move in ready Cottage! \$42,500.-**NEW**
412 N. 1ST-Commercial bldg. C/HC, living quarters and large upstairs. \$52,500-**NEW**
7734 HWY. 6-Rule Drive in theater on 4 ac. \$60,000-**NEW**
NORTH OF RULE, HWY. 6-61.1 Ac. CRP farm. \$65,000-**NEW**
600 N. 5TH STREET-3 or 4/3 with finished basement. A must see! \$139,000
103 N. AVE. H-2/1. \$49,900
503 S. 9TH-3/1. \$23,500
503 N. AVE. F-Investment! 2/1. \$13,000
EARLES CAMP, Lake Stamford-2/2 completely furnished! \$25,000
707 N. AVE. H-4/3. \$212,500
2112 EAST ROAD-2 acre lot. \$8,500
HASKELL 40 ACRE FARM-Tank, septic and electricity, pens and more. \$80,000
2410 CR 183, ROCHESTER-2/3 on 1.5 acres with wonderful yard. \$59,500
1001 N. 4TH ST. EAST-3/2. \$75,000
703 N. AVE. E-4/3. \$192,000
1703 N. AVE. F-3/2.5. \$139,900.-**PENDING**
300 NORTH 2ND-HUD owned.-**PENDING**
409 N. AVE. H EAST-Country Living on 6 +/- acres. \$52,500-**PENDING**
608 6TH ST. ROCHESTER-2/2 with great parking. \$45,000-**REDUCED**
509 N. AVE. F-3/3. \$44,500-**REDUCED**
7H RANCH-2779 +/- Ac. of prime Haskell County land. \$950/Ac.-**REDUCED**
300 N. AVE. L-Large 4/3. \$114,500-**REDUCED**
13 AVE. E-Commercial building! \$54,500-**REDUCED**
807 N. AVE. H-3/2. \$89,900-**REDUCED**
701 N. AVE. E-4/3. \$59,500-**REDUCED**
NORTH 1ST STREET WEST-3/2.5 with 10K decorating allowance! \$98,500.-**REDUCED**
1007 NORTH 8TH STREET-4/2.5 on large corner lot. \$174,500-**REDUCED**
95 ACRES-Close to city limits with beautiful views and many amenities.-**REDUCED**
1208 N. THIRD-Site built. 4/3 on acreage. \$79,500-**REDUCED**
www.rikerealestate.com

Enjoy a healthier holiday

The winter holidays shouldn't be a nightmare for people watching their waistlines. Experts at UT Southwestern Medical Center offer a few tips on how to cut calories and eat sensibly.

"Place a super-sized salad bowl filled with fresh leafy greens and colorful veggies at the front of the serving line," says Lona Sandon, a registered dietitian at UT Southwestern. "This will

encourage you and your guests to start the meal with a healthful, high-fiber, low-calorie appetizer."

Other tips include:
 •Use broth to sauté instead of butter—104 calories saved per tablespoon;
 •Substitute 1/3 cup of mayonnaise and 1/3 cup of nonfat yogurt for 2/3 cup of mayonnaise—480 calories saved;
 •Use nonfat milk instead of whole milk—60 calories

saved per cup;

•Use plain nonfat yogurt instead of cream—720 calories saved per cup; and
 •Eat skinless chicken—360 calories saved per whole bird

Cooks should also experiment with sugar substitute Splenda, a no-calorie sweetener ideal for baking at up to 450 degrees Fahrenheit. Every time you use one tablespoon of Splenda rather than sugar you save 45 calories.

Haskell Goodfellows to accept applications Sat. at City Hall

The Haskell Goodfellows will distribute Christmas packages to needy families again this year. The project will be conducted as it has in previous years and a sincere effort will be made to provide a Christmas package of useful items to those who might not otherwise have provisions for Christmas.

On Sat., Dec. 7 and Sat., Dec. 14, the names of those who qualify for the Goodfellows project may be placed by application at the Haskell City Hall between 1 and 3 p.m.

This year's Goodfellows project will be a joint effort between the Haskell Lions Club, the Haskell County Child Welfare Board and the Haskell Volunteer Fire

Department. The Lions Club will take care of the food portion of the project; the Child Welfare Board will handle the toys and clothes and the Fire Department will handle delivery.

Haskell Lions Club officers are John Hicks, president; Lela Bevel, vice-president and Donnie Rieger, secretary-treasurer.

If you would like to help with this project by donating food, toys, money or clothes, contact any member of the Lions Club for more information.

All cash donations may be made at the Haskell Free Press office at 420 N. First, or mailed to the Free Press at P.O. Box 555, Haskell, Texas 79521.

Goodfellows Donations

The Haskell Goodfellows are accepting donations for Christmas boxes to be distributed to needy families this holiday season. Boxes will be delivered on Dec. 24 to those who have been selected to receive them. Those with donations of food, contact a Lions Club member, toys and clothing may be taken to the Haskell Fire Dept.; and cash donations may be sent to The Haskell Free Press, P. O. Box 555, Haskell, Texas 79521.

In memory of Dee Larned by Ruth Larned\$25
 Friendly Folks Sunday School Class FUM\$200
 Total this week\$225



Come Let Us Adore Him

Putting the People of Our Community First

Welcome to Our

Open House

All Day Wednesday, Dec. 18

~ Holiday Banking Hours ~

Christmas Eve: Tues., Dec. 24, Closed at 1:00 p.m.

Christmas: Bank Closed Wed., Dec. 25

Regular Banking Hours resume Thurs., Dec. 26

New Year's: Bank Closed Wed., Jan. 1

Regular Banking Hours resume Thurs., Jan. 2

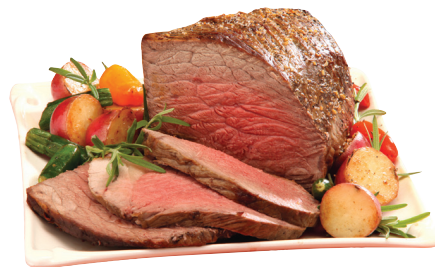
First Bank ★ Texas

Haskell Office

CASHSAVER

COST PLUS FOOD OUTLET

"WE SAVE YOU CASH"
 1513 N. SWENSON AVE. IN STAMFORD



RUMP OR BOTTOM ROUND ROAST

\$3.26 lb.

PLUS 10% ADDED AT CHECKOUT



BONELESS SIRLOIN END PORK CHOPS VALUE PACK

\$1.68 lb.

PLUS 10% ADDED AT CHECKOUT



BAR S BACON 12 OZ. PKG.

\$3.26 ea.

PLUS 10% ADDED AT CHECKOUT



FAST FIXIN' CHICKEN STRIPS OR NUGGETS 56 OZ. PKG.

\$4.98 ea.

PLUS 10% ADDED AT CHECKOUT



GOLDEN RIPE BANANAS

38¢ lb.

PLUS 10% ADDED AT CHECKOUT



ICEBERG HEAD LETTUCE

73¢ ea.

PLUS 10% ADDED AT CHECKOUT



WOLF BRAND CHILI 15 OZ. SELECTED VARIETIES

94¢

PLUS 10% ADDED AT CHECKOUT



RANCH STYLE BEANS 15 OZ. SELECTED VARIETIES

78¢

PLUS 10% ADDED AT CHECKOUT



GENERAL MILLS CEREAL 11.3-13 OZ. SELECTED VARIETIES

\$2.52

PLUS 10% ADDED AT CHECKOUT



CAMPBELL'S CHUNKY SOUP 15.25-19 OZ. SELECTED VARIETIES

\$1.56

PLUS 10% ADDED AT CHECKOUT



FRITO LAY FRITOS OR CHEETOS 8.75-10.25 OZ. SELECTED VARIETIES

\$2.17

PLUS 10% ADDED AT CHECKOUT



HOT, LEAN OR CROISSANT POCKETS 9 OZ. SELECTED VARIETIES

\$1.48

PLUS 10% ADDED AT CHECKOUT



NABISCO PREMIUM SALTINE CRACKERS 16 OZ. ORIGINAL OR UNSALTED

\$1.86

PLUS 10% ADDED AT CHECKOUT



KNORR RICE OR PASTA SIDES 3.8-5.9 OZ. SELECTED VARIETIES

96¢

PLUS 10% ADDED AT CHECKOUT



MINUTE MAID JUICE OR SIMPLY LEMONADE 59 OZ. SELECTED VARIETIES

\$2.26

PLUS 10% ADDED AT CHECKOUT



BETTY CROCKER FRUIT SNACKS 6-18 CT. SELECTED VARIETIES

\$1.92

PLUS 10% ADDED AT CHECKOUT



BEST CHOICE MACARONI & CHEESE DINNER 7.25 OZ.

28¢

PLUS 10% ADDED AT CHECKOUT



BLUE BELL ICE CREAM HALF GALLON SELECTED VARIETIES

\$3.97

PLUS 10% ADDED AT CHECKOUT



MRS. BAIRD'S LARGE LOAF BREAD 20 OZ.

\$1.64

PLUS 10% ADDED AT CHECKOUT



BUDWEISER, BUD LIGHT, COORS, COORS LIGHT OR MILLER LITE 12 PACK, 12 OZ. CANS OR BOTTLES

\$10.70

PLUS 10% ADDED AT CHECKOUT

PRICES EFFECTIVE DECEMBER 4 THRU DECEMBER 10, 2013