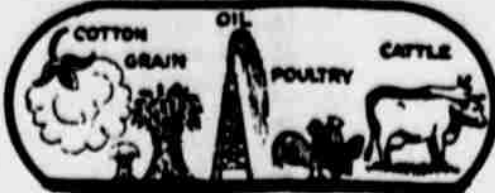


SUMMARY
 Herren
 17-24
 LL
 2.76
 15.97
 17.91
 FUTURE
 19th
 24th

THE HASKELL FREE PRESS



"HASKELL—A GOOD PLACE TO VISIT; A BETTER PLACE TO LIVE"

EIGHTY-EIGHT HASKELL, TEXAS 79521, THURSDAY, SEPTEMBER 26, 1974 NUMBER THIRTY-NINE



YOUNGER FOLKS around Haskell had never like rubber boots to keep water and mud boots until recently. People all over the Has- rummaged around in attics and the back of for raincoats and rubber boots. (Staff Photo)

Herman Marcus Dedication Oct. 1

The Herman Marcus plant, located on West Highway 380, will be dedicated on October 1, by Governor Dolph Briscoe. The plant, in operation since December 12, 1973, is an important industry to Haskell and Haskell County. The Haskell Industrial Foundation was instrumental in providing building and grounds and securing this business for the Haskell area.

Mrs. Amelia Perry, manager of the plant, is optimistic and enthusiastic about the operation of the Herman Marcus plant in Haskell. The plant has been open less than a year and is constantly growing both in employees and production. Mr. Claude Lester, Production Specialist, has indicated the employees are highly efficient and the quality of garments being turned out at the local plant is excellent.

Dedication has been set for just before noon, Oct. 1, with Governor Dolph Briscoe as speaker for the occasion. The dedication will be held at the court house in conjunction

with the rally. Herman Marcus officials who will be present for the dedication are Richard Marcus and wife, president of Herman Marcus; Herman Marcus, chairman of the Board of Directors; Fred Holkstra, vice president; and Mrs. Carolyn Aiken, payroll department.

Open house will be observed all afternoon and it is expected a large number of people will take advantage of the opportunity to tour the modern garment manufacturing facility.

Some of the most recent accomplishments at the plant includes paving of parking lot and driveway, which completed the work to be done by the Industrial Foundation, and the erection of a new sign by Herman Marcus.

Production on the fall line of merchandise was completed Sept. 24, and they are now making holiday and spring wear. Production quota for the plant remains at 1,000 garments per week.



GRAND CHAMPION STEER of the 1974 Haskell County Fair was shown by Cindy Thomas, daughter of Mr. and Mrs. C. A. Thomas of Haskell. Cindy also showed the champion Angus steer, champion crossbred steer, and reserve champion heifer of the show. (Staff Photo by Don Comedy)

Indians Gain First Victory

The Indians gained their first TD on a 10 yard run. PAT failed.

The Tribe used less than 4 minutes of the second period and moved the ball 62 yards in 9 plays for the score. Quarterback Gary McAdams made the TD on a one-yard dive play. PAT failed.

The Panthers managed only 4 yards during their next three downs and a 15 yard punt set another Tribe score.

The TD came six plays later when Pippin carried 29 yards around right end for the six points. McAdams' pass to Cris Love finalized the Indian scoring at 26 points.

The Panthers moved the ball 50 yards in 14 plays to open the second half but failed to score. The Tribe held the ball only six plays before being forced to punt. A 37 yard punt by Cris Love moved the ball to the Seymour 13 yard line and got the Indians out of a hole.

Neither team threatened to score until the closing seconds of the game. The Indians managed to move the ball to within 8 yards of a score but couldn't quite manage the distance required.

The Panthers got the ball

on the 11 yard line and a five yard penalty moved them back to the 6. With five sec- (Continued on Page 7, Sec. 1)

Stamford Game Tickets On Sale

Some reserved seat tickets for the Haskell-Stamford football game this week are available. Price of reserved seat tickets is \$2.00.

Student tickets are on sale for 75c if purchased at the high school. If purchased at the game they are \$1.00.

Either student tickets or the reserved tickets may be purchased at the Haskell High School office.

Haskell County Fair A Success

The Haskell County Fair, which closed Saturday night after a 3 day run, was considered a great success. The parade Thursday afternoon, noting the beginning of the fair, drew large crowds and floats, bands, horseback riders and farm implements were appreciated by those who gathered to watch. Large crowds attended the fair and the exhibits were very good.

Winners of the drawings during the fair included Lucretia Highnote of Haskell; Chris Hager of Haskell; and Mrs. Jerry Hester of Weinert.

Women and Youth divisions of the fair continue to grow and contribute much to the enjoyment of the fair. Results of the judging of exhibits are given below.

ANTIQUES

Class I—Styles and Periods
 1. Francine Johnson
 2. Jenny Brazell

Class II—Attic Antiques

1. Jenny Brazell
 2. Mrs. W. P. Trice
 3. Kyle Wilfong

Class III—Antiques other than Furniture
 1. Mrs. W. B. Guess
 2. Mrs. Walter Kretschmer
 3. Mrs. John Larned

Class IV—Accessories to go with Antiques
 1. Mrs. Bob Penman

Class V—Best of Collection

1. Mrs. Benny Williams
Grand Champions
Women's Division
 Hobbies and Crafts: La-Quita Wilfong.
 Canned Goods: Sandra Fry.
 Textiles: Mrs. Kenneth Lane.

Art, Professional: Melanie Whitley; Amateur: Denia McDonald.

Adult Education Exhibits
 First Place: Josselet Home Demonstration Club.
 Second Place: Haskell Young Homemakers.
 Third Place: L.O.C. Home Demonstration Club of Sager-ton.

(Continued on Page 1, Sec. 2)

New Deadlines Announced

The Haskell Free Press is now being printed offset and due to extra time required for make-ready, the following policies are announced: Classified deadline has been

changed from 10 a. m. Wednesday to 5 p. m. Tuesday. No exceptions.

All news items, except events happening on Tuesday night, must be in by 5 p. m. Tuesday.

Political Rally Tues.

Next Tuesday, Oct. 1, will be a big day in Haskell when Governor Dolph Briscoe, other state officials and dignitaries come to Haskell for what will be the biggest political rally in a long time, or possibly ever. Activities will get underway at 10 a. m. when a number of state offi-

cials, state candidates, area and district candidates, and local candidates are welcomed to speak to the citizens of Haskell county.

The Haskell High School Band will provide entertainment at the meeting and it is expected that a number of county schools will provide students the opportunity to attend this unusual meeting. It is unusual because, as far as we can determine, it is the first time both the Governor and Lt. Governor of Texas have been in Haskell at the same time. It is the first time a governor of Texas has been

to Haskell since Alan Shivers was governor and came to Haskell in the 1950's.

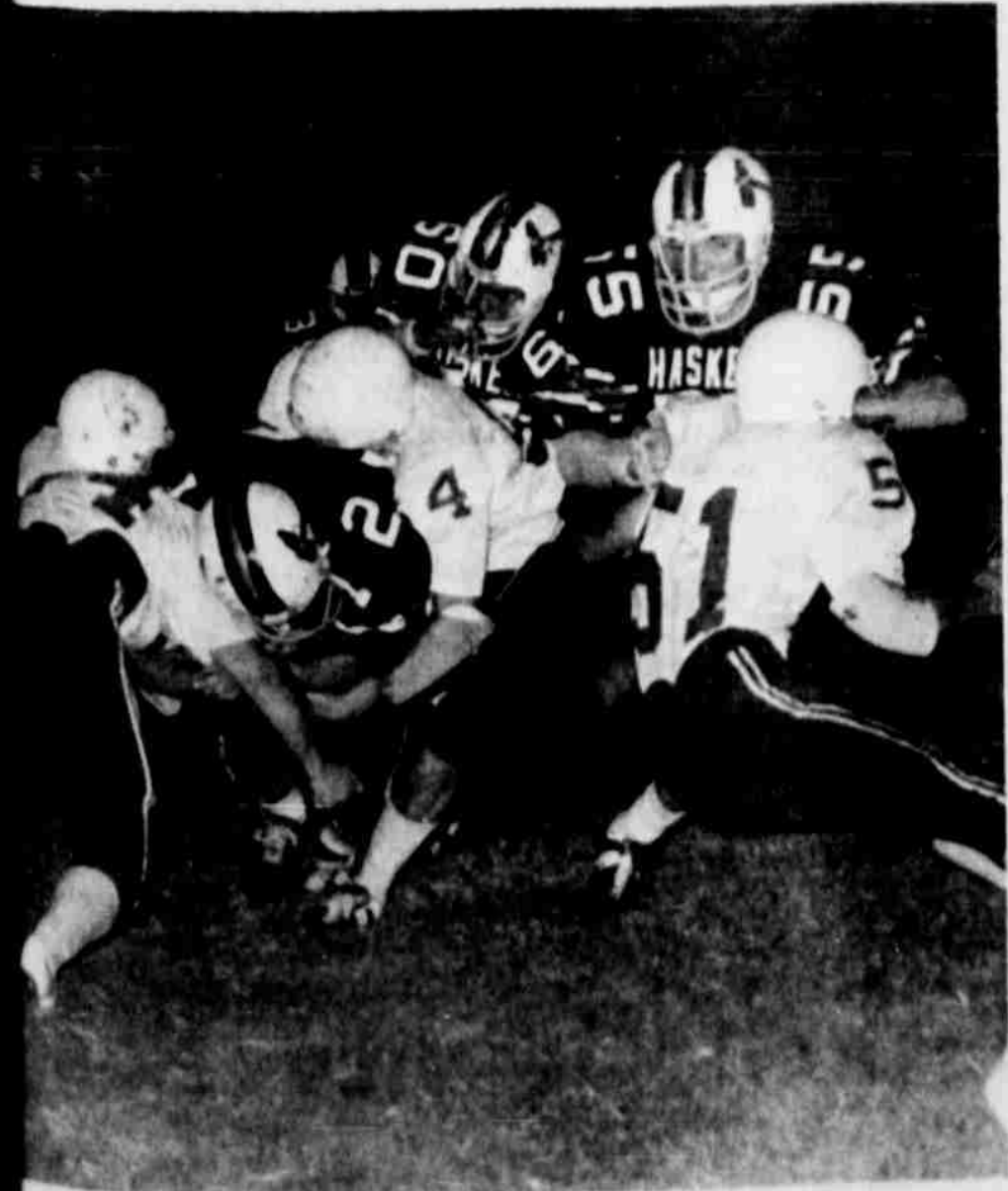
Royce Adkins stated that confirmation has been received that Governor Briscoe, Lt. Governor Bill Hobby, Commissioner of Agriculture, John White, Jack Hightower, candidate from the 13th Congressional district, Ray Farabee, candidate for State Senator from 30th district, Bill

Heatley, State Representative and possibly State Attorney General John Hill, or a representative from his office. Other area and local candidates are expected to attend.

Some 2,000 people from a 23-county area of North Central Texas are expected to attend the giant rally to be held on the courthouse lawn. The Governor's appearance is one of many he is currently

making across the state in his campaign for re-election. Governor Briscoe will also dedicate Haskell's newest industry, the Herman Marcus plant which manufactures ladies garments, while he is in Haskell.

Following the Governor's address and the dedication of the Herman Marcus plant, a barbecue luncheon will be held catered by Clifford Tein-

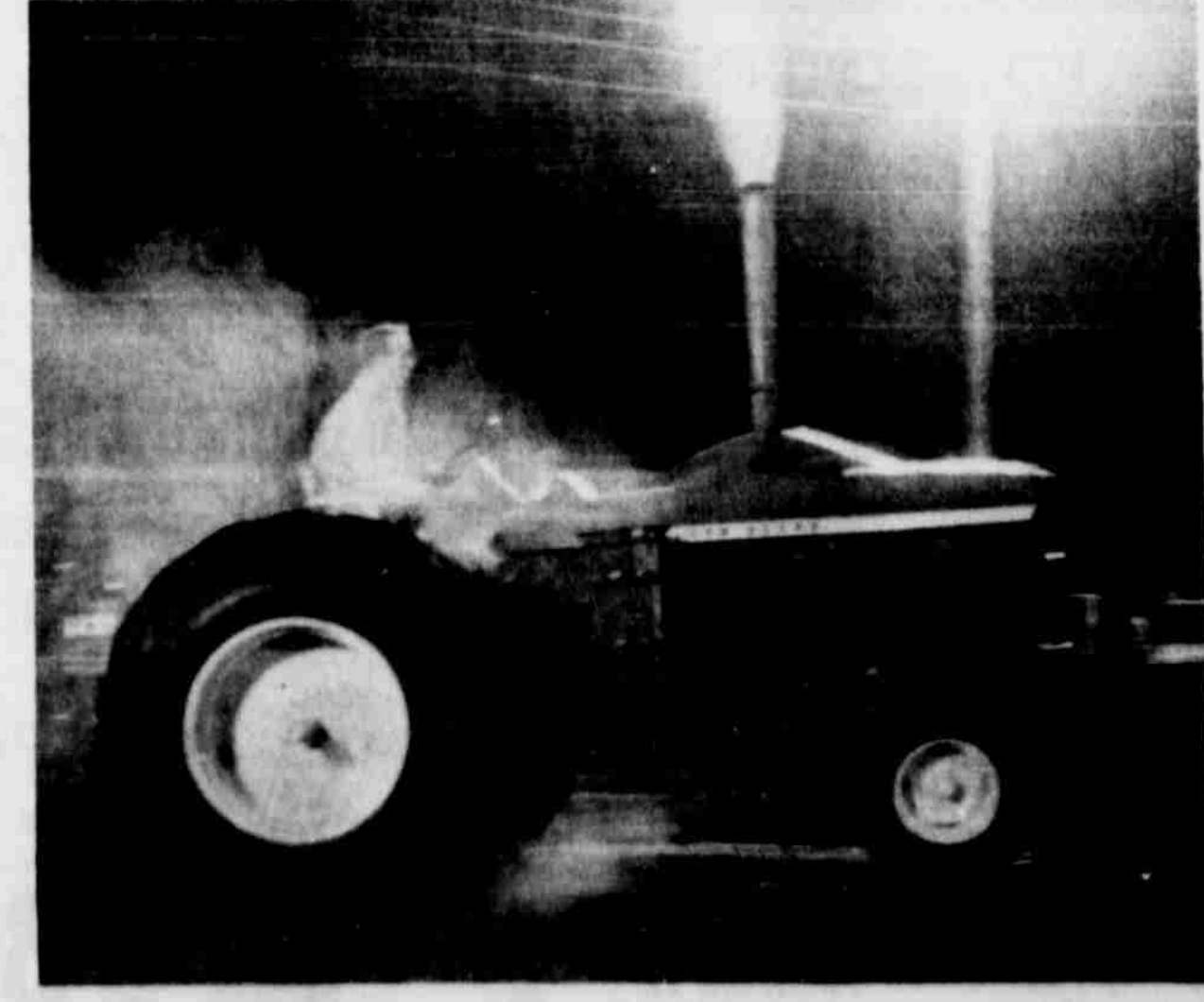


QUARTERBACK Gary McAdams dives one yard for a touchdown last Friday against the Seymour Panthers. Adam Sanchez, 60, and Les Lane, 55, assist in the play. The Tribe downed the Panthers 26-12 in the contest to earn their first win of the season. (Staff Photo by Don Comedy)

Rally Tickets Available

Tickets for the barbecue on Oct. 1, at the political rally are available at the following locations in Haskell County: In Haskell at Biard's Cleaners, Lane/Felker, Johnson Pharmacy, Oates Drug Store, Western Auto Store, West Texas Utilities, Ben Franklin Store, Haskell National Bank, Frazier's Appliances, Bynum's Hardware and Furniture, M-System, Hale Farm Supply, Woodard Farm Sales, Personality Shoppe, Heidenheimer's Department Store, Chamber of Commerce, Amelia Perry at Herman Marcus, Winona's, Lane Apparel, Lyles Jewelry, Barber Shop Antiques, C&B Store, Haskell Free Press, Fabric Boutique, City Floral and Carolyn Reynolds in the Court House; Farmers National Bank in Rule; Home State Bank in Rochester; First National Bank in Munday; Jiggs Edwards and Mayfield Grocery in Weinert.

The rally will begin at 10 a. m. and Cliff Teinert of Albany will cater the noon barbecue. Tickets are available at any of the above places for \$2.50 each.



IN A CLOUD OF SMOKE . . . Pat Hale begins his first run in the second annual tractor pull held last Saturday night. Hale placed first in the 9,000 pound open class with a pull of 297' 5". In the 9,000 pound super stock class, Pat was one of three to pull the sled the maximum 300'. A mechanical failure in the pull-off forced his tractor off the track and disqualified him. (Staff Photo by Don Comedy)



REX THOMAS of Lamesa gets off to a leaping start in the tractor pull. The front wheels of some tractors came off the ground as much as 18 inches. For the second year the tractor pull was a special feature of the Haskell County Fair. (Staff Photo by Don Comedy)

Vets Eligible For Insurance

More than two million Vietnam Era veterans are eligible to participate in a new low-cost Veterans Group Life Insurance program, according to C. H. Herren, Service Officer for Haskell County. This program offers as much as \$20,000 life insurance coverage for \$3.40 per month to veterans who are 34 years of age or younger, and \$6.80 for those 35 or older.

The non-renewable, five-year term insurance is available to veterans who have been discharged or released from military service since April 2, 1970. The new program was authorized by Public Law 93-289, the Veterans Insurance Act of 1974, approved May 24, 1974, and is supervised by the Veterans Administration. The Act also offers insurance coverage in amounts of \$15,000, \$10,000 and \$5,000 for those who do not wish to have the full \$20,000 coverage.

Application forms for veterans discharged prior to August 1, 1974, may be obtained from the office of Servicemen's Group Life Insurance, 212 Washington Street, Newark, N. J. 07102. Applicants must furnish evidence of good health, but VA-rated

service-connected disabilities will be waived.

Servicemen discharged on or after August 1, 1974, will receive application forms automatically. Personnel leaving active military duty are covered 120 days at no cost, and during this time they may convert their Servicemen's Group Life Insurance to Veterans Group Life Insurance without any medical examination.

Veterans who are eligible and are interested in obtaining low-cost life insurance coverage, should write to the New Jersey address shown above, or they may contact their local Veterans Service Officer for assistance.

this summer. The 17 year old Rule High School Senior has been an outstanding 4-H member for several years. She has won several 4-H contests on the County and District level and has competed on the State level. She was selected to attend the 4-H National Citizenship Shortcourse in Washington D. C. as a Texas Delegate and has been the Haskell County Gold Star Girl.

Three top winners will be announced during an awards ceremony Oct. 5 at 1:15 p. m. in the Baker Hotel Lounge Room after an Honor Lunch-

eon sponsored by the J. C. Penny Company.

The 46 finalists, including top winners, will model their fashions in a public showing at 10 a. m. and 11 a. m. the next morning in the Women's Building Auditorium on State Fair grounds.

Top state wide winner in the Revue will represent Texas at the National 4-H Club Congress Dec. 1-3 in Chicago, according to Margret Ann Vanderpoorten, 1974 State 4-H Dress Revue chairman and clothing specialist with the Texas Agricultural Extension Service, the Texas

AAM University. In the Revue, top winners will receive medals from the Sheep and Wool Association. Top winners division will be from the Sheep and Wool Association. To compete at the level, all 4-H members in the competition will receive 17,000 4-H points. They represent 17,000 4-H members in the competition. They represent 17,000 4-H members in the competition. They represent 17,000 4-H members in the competition.

To Compete In State Revue

Southwest Metroplex visitors to the State Fair next month will include 46 contestants in the 1974 State 4-H Dress Revue.

The statewide competition is held annually in conjunction with State Fair—as a feature of Rural Youth Day on fair grounds.

Miss Carol Dudensing will be one of the 46 contestants vying for top honors. Carol is a member of the Sagerton 4-H Club and won the District III Dress Revue in Abilene



COOKING WITH GAS . . . When it gets too wet for a tractor pull you simply heat the ground until all moisture is evaporated, pack the dry dirt and proceed. Sound simple? If you saw the condition of the ground last Saturday before work began you wouldn't think so. Many hours of labor were necessary before the track was finally complete. Almost 1,000 gallons of butane were used in drying the ground. This burner and 500 gallons of butane were donated by Penman Butane of Rochester. Haskell Butane donated 500 gallons of butane to help make the event possible. Staff Photo by D. Comedy.

GRAND OPENING

SATURDAY, OCT. 5

Mr. A's Western Store

106 BROADWAY
ASPERMONT, TEXAS

REGISTER NOW FOR BIG DRAWING
STARTING AT 4:30 P. M.

6 BIG WINNERS

- 1 pair Tony Lama Boots
- 1 pair Sanders Boots
- 1 \$20 in merchandise
- 1 \$15 in merchandise
- 2 \$10 in merchandise

You Do Not Have to be Present to Win

MEDICINE CHEST Pharmacy

Phone 864-2602
1406 N. 1st St.

SAVE EVERYDAY

with

DISCOUNT PRICES

Like These!

Bayer Aspirin

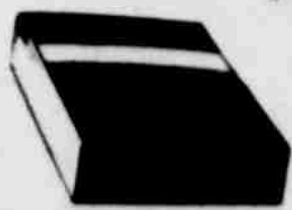


100 Tablets

54¢

Our Reg. 88¢

POLAROID 108 Colorpack Film



\$3.77

TYPE 108 LAND FILM

Our Reg. 3.99

Use Our Drive In Window

FOR FAST, FRIENDLY SERVICE . . . at the

Medicine Chest

VISINE

Eye Drops



Our Reg. 1.23

88¢

PRESCRIPTIONS

ARE OUR

Main Concern

Thank You!

There are lots of smiling faces in Haskell this week. Some of them were caused by the good rains—but most of them were caused by the Haskell County Fair. I don't know whether it's because of the rain or because it was such a success! And SUCCESS it was! To the person who had a part in making it the success it was, I can't express the gratitude I feel toward you. I would like to mention your name, but just as sure as I gave a big "Thank You" to some individual, I would leave another out—So would each of you who helped in any way; a small part or a big part, let me say publicly, "Thank you from the very depth of my heart." Whenever I walk down the streets of Haskell I almost burst with pride, knowing it's our town and our people who work the hardest, ready to back anything worthwhile to make it better.

Today is the day to begin our plans on a bigger and better fair for 1975. Some wheels and ideas are already in motion. Your ideas will be appreciated and considered. As I've said before I will not mention names, but for those of you who helped to get the fair grounds buildings in order, those who helped register exhibits, the exhibitors, judges, entertainers, and just folks in general who attended. Please accept my "Thank You." Especially for those who manned the gates, sold tickets, for the ambulance standing by—"Thank You!"

As I look forward to another fair year I have no doubts that you will be there again in '75 as you have in years past. I'm proud we're the same team.

J. R. PERRY, President
Haskell County Fair Association

Haskell County Fair ASSOCIATION

n-Sanders Pledge Nuptial Vows

Hogan and Sanders were married Sept. 14, at the Methodist Church in Lubbock. The bride is the daughter of Mr. and Mrs. Alvin Toney. The groom is the son of Mr. and Mrs. Alvin Toney. The ceremony was officiated by Rev. J. Waid Griffin. The bride wore a dress of salmon pink and a pink carnation corsage. The groom wore a suit and tie. The reception was held at the church parlor. The bride and groom will reside in Lubbock. The rehearsal dinner was held at the Lubbock Inn on Friday night.



MRS. JERRY GLENN SANDERS
... formerly Joyce Kaye Hogan

and aunts of the bride in the Methodist Church Fellowship Hall. The bride graduated from Noodle-Horn High School and attended Hardin-Simmons University. The bridegroom graduated from Weinert High School and also attended Hardin-Simmons University. He is employed by John Deere Implement Co. in Munday.

year were read and adopted. Delegates to the State THDA meeting in Amarillo are slated to make their report Sept. 26, at 9:30 a. m. in the Community Room. All club members are urged to attend. On October 16, there will be a speaker from Western Texas College in Snyder, present at the meeting to make a talk on the courses available on campus and at Haskell. Everyone is invited and especially juniors and seniors from all high schools in the county. The meeting will be held at 4 p. m. in the Community Room. Miss Thelma Wirgess, District Agent, will be present at the April Council. Mrs. Elliott urged all members to report on work done as a result of demonstrations.

Young-Head Vows Read In Lubbock

Miss Johnna Lee Young and Mr. Curtis Glenn Head exchanged wedding vows on September 21, in Bowman Chapel of the First United Methodist Church in Lubbock with Rev. J. Waid Griffin, pastor, officiating. Parents of the bride are Mr. and Mrs. Robert J. Young of Lubbock and the bridegroom's parents are Mr. and Mrs. Gaylon T. Head of Breckenridge. The groom is the grandson of Mrs. Dick Andrews and the nephew of Lois Redwine. Organist was Jerry Brainard.

Maid of honor was Miss Shannon Young, sister of the bride. She wore a dress of pink and green floral print on white. Her bouquet was pink roses and white carnations. Ushers were Mack Elston III and Tutt Mercer, both of Lubbock. Best man was Gaylon T. Head, father of the bridegroom. The bride, given in marriage by her father, wore her mother's wedding gown. The gown, made of candlelight satin, had long sleeves and high neck with lace around the shoulders to form a shawl effect, also a slight

bustle and the skirt made her train. Her veil was waist length and her bouquet was pink roses and white carnations. The bride's mother wore a lime green dress and a pink carnation corsage. The bridegroom's mother wore a dress of salmon pink and a pink carnation corsage. The bride's grandmother, Mrs. Irma Greenlee, of Grand Junction, Colo., also attended the ceremony. The reception was held in the church parlor. The three tiered wedding cake was sur-

rounded by pink roses and carnations. The bride graduated from Monterrey High School and attended Texas Tech University. The groom graduated from Coronado High School and attended Texas Tech University. He is employed by Broyhill Furniture Industries, Lenoir, N. C. The couple will reside in Richardson. The rehearsal dinner was hosted by the groom's parents at Lubbock Inn on Friday night.

B&PW Club Meets Oct. 1

The Business and Professional Women's Club will meet Tuesday night, October 1, at 6:30 in the Community Room. All members are urged to be presented as plans will be made in connection with improving the Haskell County Museum.

The Chinese and Romans were as proud of their special hams as are Americans, Italians and Poles today. Chinese hams were cured with yellow wine brine, smoked over tea leaves and dried in the wind.

ALL
COATS
20% off

One Day Only—Sat., Sept. 28

New Shipment of
Junior Formals

WINONA'S
HASKELL

Garden Club Holds Meeting

The Haskell Garden Club met Sept. 12 in the Community Room for a salad luncheon beginning the new year. Mrs. Norman Nanny gave the invocation. Mrs. Leon Pearsey presided over the business meeting in the absence of Mrs. C. G. Moore, president. Due to illness, Mrs. I. E. Warren of Baird, was unable to present the program. Committees reported and

discussions concerning the flower show at the Haskell County Fair were held. Members were urged to enter three arrangements each. The pilgrimage of the SCS Plant Center at Knox City will be held Sept. 18. Members will meet at the home of Mrs. Cliff Dunham by 8:15 in the morning.

Mrs. Zeno Hemphill of Coleman will present the program October 10th. Mrs. Hemphill is District Director of District VIII. There will be a luncheon in her honor at 12 noon. Mrs. Garvin Foote was a guest and new members were recognized.

Naomi SS Class Installs Officers

The Naomi S. S. Class of the First Baptist Church met Monday night for their social and installation of officers. Mrs. Clara Biard, presided over the meeting. The class sang, "Our Best," accompanied at the piano by Mrs. Hassie Couch.

Mrs. Felker had the officers to come forward and she took as her scripture, Cor. 2, 3rd chapter, the theme being letters that have been written. The most important of all letters being love letters, not written with ink on tables of stone, but in fleshy tables of the heart. She then had each person take a Bible and make a pledge to the class to do her best the next year as an officer. The class then joined hands and sang "I Have A Story to Tell to the Nations." The closing prayer was led by Mrs. Felker.

The four groups then served pie and coffee to the following members: Mmes. Lora Mae Mullins, Claudie Mae Bland, Emma Bland, Lois Sherman, Hassie Couch, Sadie Payne, Freida Carter, Mildred Mancill, Mattie Muriel Felker, Clara Biard, Opal Adkins, Ardith Reynolds, Clytee James, Frances Lane, Ruby Smith, Lelia Mae Atchison, Elsie Roberts, Betty Jo Clanton, and Ethel Lou Shelton.

Local Women Attend Meet

Three local women participated in convention activities at the Texas Home Demonstration Association 48th annual state meeting in Amarillo, Sept. 17-19.

Delegates from Haskell County were Mrs. Eldon Anderson of Haskell, Mrs. Gus Rueffer of Weinert, and Georgia Wade of Haskell.

They joined more than 700 members of Texas Home Demonstration clubs throughout the state in workshops and special programs.

Local delegates attended workshops on delegate responsibilities, publicity, citizenship, family life, 4-H, health, cultural arts and recreation, safety and THDA itself.

Addressing the association as keynote speakers were Judge Mary Lou Robinson of Amarillo, Mrs. Wilmer Smith of Wilson, Texas, and Mrs. Florence W. Low, assistant director for home economics with the Texas Agricultural Extension Service, the Texas A&M University System.

Robinson discussed the role of women in a changing world, and Mrs. Smith spoke on "Her View of Women in various countries."

Mrs. Low's topic was "Looking Forward with THDA."

Home Demonstration clubs, numbering 1,195 in Texas with more than 20,000 members, are sponsored by the Texas A&M University System and the U. S. Dept. of Agriculture cooperating.

Clubs are part of the Extension educational effort to bring the latest information on homemaking to all families in Texas.

Haskell HD Council Meets

The Haskell County HD Council met Sept. 19 at the Community Room with 14 members and two visitors present.

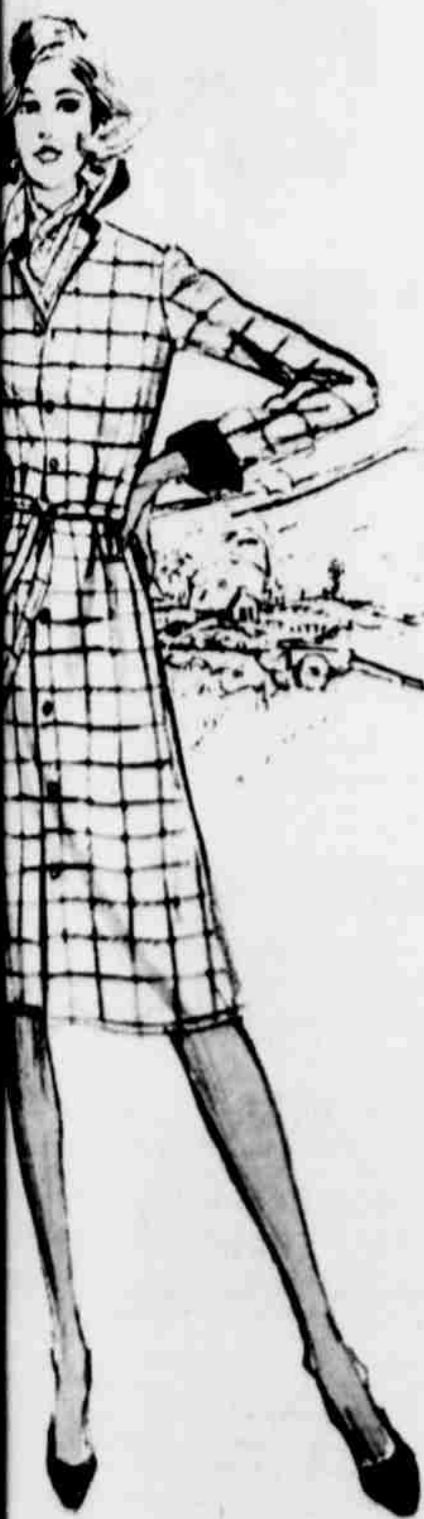
Five clubs were represented as Mrs. Yates reported on the trip to Canyon, made by the clubs, and the attendance at the "Texas" program in Palo Dura Canyon. 27 club members and visitors attended the presentation.

Recommendations for the

Mothers Feted

On Sunday, Sept. 22, Mr. and Mrs. Jerry Jetton hosted a birthday dinner for their mothers, Mrs. Velma Jetton and Mrs. Opal Rose, whose birthdays fall on the same day. Present for the occasion were Mrs. Lowell Taggart, Tammy and Sherry, and Mr. and Mrs. Don Griffin, all of Crowley; Mrs. Delbert Rose, Kevin and Alisa, of Fort Worth; Mr. and Mrs. Jesse Seets, Mrs. Jetton, Mrs. Rose, and the hosts, Mr. and Mrs. Jetton and daughters, Shelah and Sharia.

Shirtmaker



... a bright new star in fashion's world. ... love living in this Fall. And the best of the ... its plaid to advantage. The windowpane ... textured Dacron® gabardine will go non- ... white with black, red or navy with ... 6-18.

\$38.00

Lane-Felker

We Are Now Carrying
A Complete Stock of

**RED HEART
YARN**

The
FABRIC BOUTIQUE
416 N. 1st—864-2462

IT'S OUR

20th ANNIVERSARY
and
New Car Time

WE ARE CELEBRATING OUR 20TH YEAR... as your Dodge-Plymouth and Chrysler Dealer in Haskell. We would like to thank all the fine people of this area for their past patronage.

Come in and help us
celebrate our anniversary
and see the new 1975
Chryslers-Plymouths-Dodges
Thurs. & Fri., Sept. 26-27



NEW SMALL CHRYSLER—Cordoba, an intermediate, personal luxury car, will debut in dealer showrooms. Offered are many luxury features normally available only in bigger cars.

**Perry
Motor Company**

HASKELL, TEXAS

DEATH NOTICES

Mrs. Battilagio
Mrs. Frank Battilagio of Plymouth, Mich., died Tuesday, Sept. 17, after a brief illness. Funeral services were conducted in Detroit, Michigan, Sat., Sept. 21. She was preceded in death by her mother, Mrs. Jess Bell, Dec. 21, 1973. She is survived by her husband, Frank; two sons, Johnny of the home, and Frank, Jr. of Detroit; one granddaughter; and her stepfather, Jess Bell, of Rule.

Rube D. Turpen
Rube D. Turpen, 91, of Moore, Okla., died Sunday, Sept. 22, in Oklahoma City, Okla. Funeral services were held at 2 p. m. Wednesday, Sept. 25, in the Church of Christ in Haskell with Larry Suttle, minister, officiating. Burial was in the Willow Cemetery under the direction of Holden-McCauley Funeral Home.

Born Nov. 15, 1882, in Lamar County, Mr. Turpen came to Haskell at an early age and lived almost all his life here, going to Moore, Okla., in June to make his home with his son. He was a member of the Church of Christ. Survivors are one son, R.

D. Turpen, Jr., of Moore, Okla.; one daughter, Mozelle Lee of Austin; two daughters-in-law, Mrs. Evelyn Turpen and Mrs. Pauline Turpen, both of Midland; 10 grandchildren and 11 great-grandchildren.

Pallbearers were Jimmy Owens Bill Reeves, Clarence Taylor, Bill Pennington, C. D. Pennington and Morrell Dick.

Palo Speck

Palo Speck, 72, of Rochester, died at 8 p. m. Friday, Sept. 20, in Hendrick Memorial Hospital after an illness of 18 days. Funeral services were conducted Sunday at 3 p. m. in the First Baptist Church in Rochester with the Rev. Moody Smith, pastor, officiating. Burial was in Rochester Cemetery with Smith Funeral Home in charge.

Born Jan. 14, 1902, in Rochester, he married Miss Mae Grady Jan. 21, 1922 in Rochester.

He was a leading citizen of Rochester, deacon at First Baptist Church and a former city councilman. He was an extensive landowner and rancher in Haskell county.

Survivors are his wife of the home; two sisters, Mrs. Nancy Chanch of Wichita Falls and Mrs. Pearl Mc-

Guire of Sweetwater; and several nieces and nephews. Pallbearers were R. B. Townsend, Keel Acree, Hollis Wolf, Virgil Mitchell, Knott Ballard, Johnny Scoggins, Wimpy Hollingsworth and Joe Hudson.

Mrs. Simmons

Mrs. I. N. Simmons, 84, of Fredericksburg, and a former Haskell resident died at 5:15 p. m. Friday, Sept. 20, at Shannon Hospital in San Angelo. Funeral services were held Sunday at 2:00 p. m. in the First Baptist Church in Haskell with the Rev. Dudley Bragg, pastor, officiating. Burial was in the Willow Cemetery under the direction of Holden-McCauley Funeral Home.

Born Oct. 18, 1889, in Sherman, she came to Haskell in 1922, and moved to Fredericksburg in 1966.

She married I. N. Simmons June 2, 1910. He died in 1966.

Survivors are three daughters, Mrs. J. D. Thomas of Houston, Mrs. Anita Henry of Conroe, and Mrs. Frank Junell of San Angelo; one son, Jack Simmons of Orlando, Fla.; two sisters, Mrs. George Chisholm of Fredericksburg, and Edith Funk of Sadler; and three brothers, Cecil Funk of Roswell, N. M., Alton Funk of Sadler, and Gail Funk of Sadler.

Pallbearers were Harold Spain, Tom Watson, R. C. Couch, Jr., Hayden McDonald, W. V. Felker and W. P. Trice.

Attend Funeral Service For Mrs. Druessedow

Those attending the funeral service for Mrs. H. Y. Druessedow on Sept. 15, from out of town were: Mrs. Freddie Sagebiel, Jr. of Seguin; Mr. and Mrs. Bobby Prichard, Jr., and Mr. and Mrs. Kenneth Kline of San Antonio; Mr. and Mrs. Bobby Druessedow and family, Mr. and Mrs. Bobby McGary and family of Abilene; Mr. and Mrs. Royal Enloe, Mrs. Gloria Jean Von Trump and children of Fort Worth; Andrew Kline of Alpine; Mr. and Mrs. Johnny Hudson and son of Pilot Point; Mrs. Gary Druessedow of Wichita Falls; David Fischer of El Paso; Miss Pamela Druessedow of Dallas; Mr. and Mrs. Ernest Sanders of Waco;

Mr. and Mrs. Pete James of Dallas; Mr. and Mrs. Buddy Letz of Wylie; Mr. and Mrs. Bernard Letz, Mr. and Mrs. Clancy Lehrmann, Mr. Robert Dudensing and Harvey of Old Glory; Mr. and Mrs. Alvin Druessedow of Abernathy; Mr. and Mrs. Jessie Priest of Wichita Falls; Mr. and Mrs. Willie Stoll, Mr. and Mrs. John Stoll, Jr. and Herbert Stoll of Taylor; Mr. and Mrs. Adolph Letz, Mrs. Herman Klose, Mr. and Mrs. Alton Poe, Mr. and Mrs. Carl Druessedow and Mr. and Mrs. Bob Prichard of Stamford; Mr. and Mrs. Bill McCoy and Karen Huckabee of Abilene; Mr. and Mrs. Walter Fischer, Mr. and Mrs. Wallace Dudensing of Sagerton; Mr. and Mrs. Clement Dudensing of Stamford; Mr. and Mrs. Harold Hasskamp of Hurst; and Mr. and Mrs. Roy Letz of Rule.

Weight Watchers

The Haskell Chapter of the Weight Watchers organization will host open house on Monday nights, Sept. 20, Oct. 7 and 14, at 5:30 p. m. Regular members will meet at 5 p. m. and weigh in. All meetings are held in the First Presbyterian Church of Haskell.

The Stamford Chapter will host open house on Thursday nights, Oct. 3, 10 and 17, at 6 p. m. in the First United Methodist Church. Regular members will meet at 5:15 p. m. to weigh in.

The public is invited to attend these meetings at no charge.

AROUND TOWN

Mr. and Mrs. D. V. Elbert spent the weekend in Mesquite and Garland visiting their children, Ruth and David and their families. They all attended the baseball game Sunday afternoon and enjoyed seeing the Rangers beat the Kansas City Royals, 4-3.

Mr. and Mrs. Loyd Brazell and children from Brownfield spent the weekend with Mr. and Mrs. Buddy Brazell.

Mr. and Mrs. Clinton Herrea were in Dallas over the weekend to be with their son, Clinton, Jr. of Arlington who underwent surgery on his hand in Baylor Hospital.

Weekend visitors in the E. L. Hilliard home were Mr. and Mrs. Kenneth Hilliard of Lubbock, Ellen Hilliard, Joan Ballard and Steven Little of

Olds-Chev. On Display 26-27

The 1975 models of Oldsmobiles and Chevrolets are now on display at Bailey Toliver Chevrolet Company. Special showing of the new cars will be Sept. 26-27. Refreshments will be served and the salesmen will be on hand to answer your questions and offer you a good deal on one of the factory fresh models.

Oldsmobile has announced that its 1975 model line-up includes 35 models with increased emphasis on the smaller car market.

Four new entries in Oldsmobile's small car line give the division the widest range of models and the broadest market coverage in the automaker's long history. The Starfire is an all-new car from Oldsmobile and features comfortable 2-plus-2 interior seating and sporty exterior design. It is available in one body style, a sport coupe. Also available from Olds is the Omega, Cutlass, Delta 88, Ninety-Eight and Toronado.

Chevrolet marks one of the most significant years of product development in its history for 1975 with important breakthroughs in vehicle design and an expanded line-up of 46 models in eight different car lines. Pacesetters in the 1975 models are an all-new sporty sub-compact, the Monza 2-plus-2, and the completely re-designed Nova. In the full sized cars a number of changes have been made from grille to roof lines. The popular Monte Carlo features restyled grille, wrap-around tail lights and luxury interiors with a choice of standard bench or optional 50-50 reclining passenger seat or swivel bucket seats, plus a number of other options.

The Toliver agency invites you to see the new models in their showroom Sept. 26-27.

Abilene. Captain and Mrs. Fred Whitney and Frederick of Big Spring, Brenda Nanny of Texas Tech Law School and James Cannon of Lubbock spent the weekend with Mr. and Mrs. Don Nanny.

Visiting in the Wallace Cox, Jr. home this week are Jo's brother, Mr. and Mrs. John Copenhaver and son, Andy. John is a purchasing specialist for State Farm Insurance and Mary is a nurse at Illinois State University.

Rev. Bob Brown Lions Speaker

The Haskell Lions Club met Tuesday at the Haskell Steak House for the regular weekly luncheon meeting with Don Comedy, vice president, calling the meeting to order. Darold Roberson led the song session, accompanied at the piano by Jo Overton. After the Pledge of Allegiance Lion Gene Long gave the invocation.

Doyle High, president of the club, recognized guests of the club and present were Mrs. Bud Herren, guest of her husband and Mr. and Mrs. John Copenhaver and son, Andy, guests of Wallace Cox, Jr.

President High presented Aubrey Headstream, program chairman for the day, who introduced Rev. Robert Brown, Sr., who brought the program. Rev. Brown spoke to the club on the subject, "It's Impossible." He gave several illustrations indicating that few things are impossible and admonished the club to put those words out their vocabulary. He stressed the importance of thinking and acting positively. The thought provoking program was enjoyed by the club.

Special Session Comm. Court

Haskell County Commissioners Court met in special session Tuesday, Sept. 24, with all members present. Jenny Brazell, County Clerk, recorded the following actions of the Court:

Minutes of Sept. 10 meeting were read and approved. The proposed budget for 1975 was examined and discussed and a motion by Perry, second by Byrd to adopt the said proposed budget carried.

Mrs. Thornton met with the Commissioners Court to discuss the need for equipment for Haskell County Library. With no further business a motion and second to adjourn until Oct. 7, carried.

Bonnie Atkins, Johnny Fouts and Eugene Lane were home from Tech last weekend.

Convicts Arraigned For

Two escaped convicts from Colorado State Prison, who terrorized a large section of West Texas last month, were

Miss Hannsz Is Sweetheart

Miss Charlotte Hannsz, daughter of Mr. and Mrs. Jimmy Hannsz, was crowned 1974-75 Indian Band Sweetheart during the half-time activities at Indian Field last Friday, Sept. 20. She received a dozen roses and a tier presented by band president Kyle Wilfong. Charlotte is also band secretary.

Miss Lisa Stocks, daughter of Mr. and Mrs. A. M. Stocks, was first runner-up. John Cox, son of Mr. and Mrs. Wallace Cox, Jr., presented a single rose to her. Lisa is also band reporter.

Miss Pat Everett, daughter of Mr. and Mrs. Felton Everett, was second runner-up. Clark Richardson, son of Mr. and Mrs. A. C. Richardson, presented her a single rose.

Shawn Lane, son of Mr. and Mrs. Len Lane, and Hollie High, daughter of Mr. and Mrs. Doyle High, were the attendants. They carried the flowers and crown onto the field.

Band Sweetheart is chosen by the band members and she must be a member of the band and a senior.

Men's Shoe Sale Continued
FREEMAN
H.I.S. - Bridal
The SHO CAST
FAMILY FOOTWEAR
864-864
North Of S



It's New Car Time

You are invited to come in and see the 1975 Chevrolets and Oldsmobiles Thurs. and Fri., Sept. 26-27



1975 OLDSMOBILE NINETY EIGHT REGENCY

FREE COFFEE BOTH DAYS



NEW FLAIR FOR AMERICA'S FAVORITE—The standard Chevrolet, America's No. 1 car choice level of luxury for 1975 and presents a different new look in front that gives separate identity to the (bottom photo) and the top-of-the-line Caprice Classic models (top photo). Styling changes include lines for four door and sport sedan. The regular size Chevrolets and station wagons are available in three series... Caprice Classic, Impala and Bel Air.



Chevrolet pickup trucks for 1975 combine a more stylish look with hauling and important engineering advances for smoother and more economical operation. Front end styling with new grille, four trim levels, including new top-of-the-line line with Cheyenne and Scottsdale series. Among engineering advances are catalytic converters, unleaded fuel, for trucks of under 6,001 GVW, a re-designed 250-cubic inch six-cylinder engine usage based on GVW ratings, and a line of improved optional equipment wider availability.

Come in and see the 1975 models

Bailey Toliver Chevrolet Company

Phone 864-2626

"Sales and Service on Olds and Chevrolets"

Haskell,



CHAMPION HEIFER of the 1974 Haskell County Fair was shown by Reida Schester. She is the daughter of Mr. and Mrs. George Mullino. The same judged reserve champion of the American Junior Hereford Show at the fair. (Staff Photo by Don Comedy)

College News

James E. Harris, a senior at Texas Tech University, has been awarded a \$50 scholarship for the 1974-75 academic year by the Sigma Phi Epsilon Educational Foundation. Harris, whose home is in Haskell, is a member of Sigma Phi Epsilon and serves as president of his chapter. He is studying Pre-med and is a member of the Pre-med Society and of Phi Eta Sigma honorary fraternity.

Sigma Phi Epsilon, a national college fraternity founded in 1901 at the University of Richmond, Va., has 193 chapters at colleges and universities in 43 states and the District of Columbia. The foundation is supported by contributions from undergraduate and alumni members who qualify on the basis of scholarship, leadership in fraternity and college and community activities, and need.

Seven hundred-fifty degrees were awarded during summer commencement exercises at Sam Houston State University in Huntsville. Among those receiving degrees was Edward Silba, agriculture major, from Haskell.

HOSPITAL NOTES

Admissions
MEDICAL: Karen Godbout, Abilene; Columbus White, Haskell; Melissa J. Draper, Knox City; George Ann Stapp, Haskell; Hardin Coffield, Haskell; Mrs. Sam H. Smith, Rule; Thomas Hernandez, Rochester; William D. Reed, Rochester; Diana Sue Owens, Haskell.
ACCIDENT: Edward Ray Yarbrough, Rule.
DISMISSED: Luphia Lane, Eugene Abila, Karen Godbout, George Ann Stapp, Hardin Coffield.

Look Who's New
 Mr. and Mrs. Jerry Garland Camp, Sr. of Haskell announce the birth of a son, Jerry Garland, Jr., born on Sept. 23, 1974, weighing 8 lbs., 6 ozs.

the new teachers. He also gave brief comments from Mr. Kenneth Sams, School Superintendent, who was not able to be present. The District Workshop will be in Haskell Oct. 15 in First Presbyterian Church. Registration will begin at 9:30 a. m. and the meeting will conclude at 1:30 p. m. The only expense of the workshop will be for lunch, which will be \$2.25. Lunch will be served by the Haskell Young Homemakers. Anyone interested is invited to attend.

Oates Receives Appointment

NEW ORLEANS — Don Oates, of Metairie, La., has been appointed assistant vice president for management services for the Federal Intermediate Credit Bank of New Orleans (FICB). Oates joined the FICB in 1972 as assistant vice president for credit, a position he held until his recent appointment.

Prior to joining the New Orleans bank, Oates was senior credit analyst for the FICB of Houston, Texas. He has also served as vice president of the West Texas Production Credit Association (PCA) of Pecos, Texas.

Oates received a B. A. degree in business administration from North Texas State University at Denton.

He is married and is the father of two children.

Oates is the son of Mr. and Mrs. C. V. Oates of Haskell.

The FICB of New Orleans is a wholesale bank which provides loan funds to PCAs in the Fifth Farm Credit District of Louisiana, Alabama, and Mississippi at a discount rate.

PCAs provide short and intermediate term agricultural production loans to farmers, ranchers and commercial fishermen.

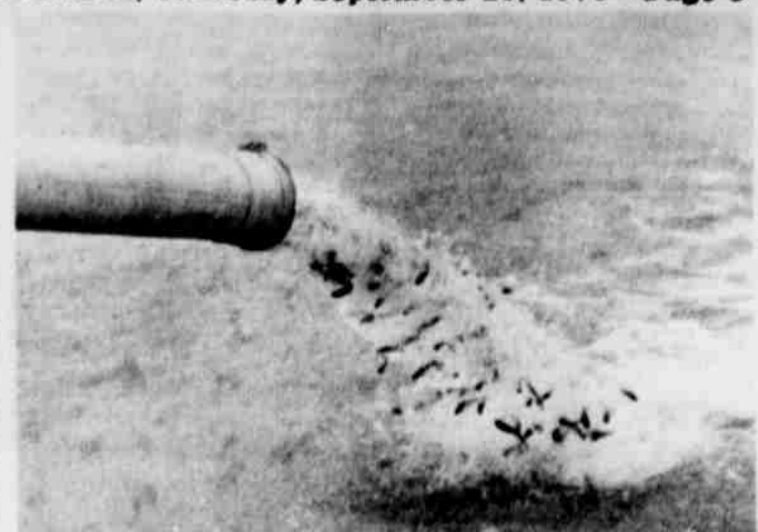
In East Prussia, it used to be considered bad for the geese for the housewife to spin on St. Matthew's Day.

Rehab. Cattle Sale September 30

Anyone wishing to donate livestock should contact the West Texas Rehabilitation Center (915-692-1633) so pick-up arrangements can be made. Cash donations can be mailed to the Center at 4601 Hartford, Abilene, Tex. 79605.

The Cattle Sale is set for 1:00 p. m., Sept. 30, at Ranchers and Farmers Livestock Commission in Abilene. The Horse Sale will be Oct. 5 at 1:00 p. m. at Abilene Auction and the Sheep and Goat Sale will follow Oct. 14 at the Coleman Livestock Auction in Coleman. A Farm Equipment Sale is set for November 9 in Lawn, Texas. Chairman Morris emphasized that all donations are tax deductible.

The West Texas Rehabilitation Center is a private, non-profit treatment and diagnostic center serving the handicapped of the Southwest. The Center has served more than 21,000 individuals since it began operations August 15, 1953.



IF YOU COULD CATCH FISH as fast as the Texas Parks and Wildlife Department turns them loose, things might get pretty exciting. Some 25,000 Blue Catfish were released last week in Lake Stamford. The entire procedure took less than 20 seconds. (Staff Photo by Don Comedy)

Holds Meeting

TEXAS—Rep. Charles Finell of need recently Subcommittee another pub- agricultural the hearing in town of Elsa various short-haling wires, ties, bagging, ment, fertiliz- produce pack- materials, and als. as to establish ment role in shortages. are no easy ly Subcommit- working with of Food and some solu- sa. d. committee held ting in Austin e members of are Greg Mon-

Haskell PTA Holds Meeting

The Haskell Elementary PTA met Wednesday, Sept. 18, in the Elementary School Cafetorium. Mrs. Pat Henry, president, called the meeting to order and presided. New members were registered and registering members will continue until Oct. 16.

Bill Jones, new Elementary Principal, was introduced and he in turn introduced

Adult Classes Register Sept. 30

By JAMES LANIER
 Registration for basic Adult Education classes will be held Monday, Sept. 30, at 7:30 p. m. in the Visual Aids Room of Haskell High School building, 600 N. Ave. E in Haskell. Classes will begin in October, time and days to be decided. No tuition charge is made.

Instruction will be offered at three levels in the program:

Basic for those who have not completed the 3rd grade; Intermediate for those who have not completed the 7th grade; Upper for those who have completed 7th and above grades. Classes will meet two hours twice a week at a commonly convenient time.

The courses offered in Adult Basic Education are designed to alleviate poverty and eliminate illiteracy by teaching adults to read, write and speak the English

language and to acquire practical skills in the basic subjects.

The ultimate goal of Adult Basic Education is to prepare students to pass the General Education Development Test, which, if successfully completed, will qualify for a High School Equivalency Certificate issued by the Texas Education Agency. These courses are also designed to give the students skill training so they can increase salable skills as well as gain personal satisfaction. Materials will be furnished free to each student.

Haskell will have two teachers if enough people are interested. James Lanier will teach the upper level and GED Test instruction. All other levels will be taught by Delores Foster.

Anyone interested of desiring more information is invited to contact Mr. Lanier at Junior High School, phone 864-2915 or 864-2155, after 4:30 p. m.

Around Town

Carol Jo Thomson of the University of Texas spent the weekend with her grandparents, Mr. and Mrs. Hallie Chapman.

Mr. and Mrs. Clinton Herren spent several days in San Antonio where Mr. Herren attended a Veterans Service Officers conference. They then went to Houston for several days.

Mrs. Edith Hudspeth had as visitors last week, Mr. and Mrs. Billy Carrigan and Debra from Abilene and Curtis Jordan of Chicago, Ill. He is the son of Mr. and Mrs. Al Jordan, former Haskell residents.

Mrs. Thurman Rhoads had as her guests last weekend, her daughter and family, Mr. and Mrs. Joe Kitchens, Jana Michelle and Heather Diane from Plainview.

Mr. and Mrs. O. W. Tooley and Mr. and Mrs. Burnell Gilleland were in Dilley, Texas last Thursday to attend the funeral services of Mrs. Tooley's oldest brother, Wesley Stewart.

Mr. Herbert Klose has returned home from the Seymour hospital.

Mr. and Mrs. Ronald Hilliard, Jarred and Jason, of

Crosbyton, visited his parents, Mr. and Mrs. E. L. Hilliard last weekend.

Eighth Grade Undeclared

The Haskell Junior High Warriors and the JayVees traveled to Seymour last Thursday night. The seventh graders lost by a score of 14 to 0. Their season record now stands at 1 and 2. After the season opening win over Anson, they have lost to Hamilton and Seymour.

The eighth graders defeated Seymour by a score of 14 to 0. They are undefeated and unscored on after three games. The Indian JayVees lost by a score of 21 to 8 to bring their season record to 0 and 3.

Because of a mix-up in scheduling, the Warriors and JayVees games scheduled with Stamford this Thursday will be canceled. The JayVees will play Aspermont in Haskell on October 3.

The next action for the two Warrior teams will be at Knox City on October 10.

FACE OF MIND

...ABLES
 ED
 SAFE
 SIT BOX

You'll be surprised over our very safe deposit box rental fees! It's a comfortable feeling knowing your valuables are safely protected from fire, theft and all kinds of disaster. Bank vault. Talk with us today for a safe deposit box for your valu-

MERS NATIONAL BANK
 RULE, TEXAS
 —MEMBER FDIC—

CHEVROLET FOR 1975. CARS THAT MAKE SENSE FOR TODAY.



Nova LN Sedan

Jean City

LARGEST AND NEWEST STOCK IN TEXAS
 (Thousands of Pairs)

Trangler Work Lee Play Levi School

Large lots—On Sale—Reg. 11.50, Sale \$9.20
 Girls—Men—Free Alter.—Fancy 13.00, Sale 10.40

BOOT BARN

ony Lama Work Nocona Play Texas School

Large lots—On Sale—Reg. 29.95, Sale \$24.95
 Girls—Mens—Free layaway—Fancy 64.95, Sale \$52.
 Only 52 Miles North of Luskey's... For Best Buys and Best Selections, Come to

Lane Apparel FOR MEN
 Next to M-System—Haskell

MONZA 2+2 The small car of tomorrow will probably be a little more powerful, handy and comfortable than ever. The 1975 Monza 2+2, shown above, offers this today. It has advanced like rectangular headlights set in a soft front end, fold down rear seat, and a new 4.3-litre V8 engine available.

NOVA In the background above, our new Nova LN Sedan. A luxurious Nova with thick carpeting and wide-back reclining front seats. For 1975, all Novas have been emphatically refined along the lines of elegant European sedans. Nova's always been good. Now it's beautiful.

CAMARO Our sensibly sporty compact. It looks like a million and drives like it looks.

IMPALA America's favorite car continues to provide the room many families need plus plenty of quiet and comfort. Still the great American value.

WAGONS Big ones, small ones, in-between ones. Practical wagons that make sense for America. And you.

CHEVELLE Mid-size, easy to drive, room for six, mid-priced, strong reputation for value. America's most popular intermediate.

MONTE CARLO Its special ability: making you feel good. About the way it looks and drives. About your own taste and judgment.

CHEVROLET'S NEW EFFICIENCY SYSTEM FOR 1975 It's the key part of a program aimed at helping our new cars run leaner (more economically), run cleaner—and save you money every mile.

The Efficiency System is standard on all 1975 Chevrolets with V8 or 6-cylinder engines. It's a series of significant engineering improvements working together for the very first time.

Components include High Energy Ignition, catalytic converter, Early Fuel Evaporation and steel-belted radial ply tires. In sum, the System is designed to heighten the pleasure and lower the cost of driving a 1975 Chevrolet—to bring you a better running car in many ways, along with improved fuel economy, more miles between recommended maintenance and an engine that stays cleaner internally because of no-lead fuel.

Your Chevrolet dealer will gladly give you the details and answer your questions. See him and the sensible 1975 Chevrolets starting September 27.

CHEVROLET MAKES SENSE FOR AMERICA



DEMOCRATIC Political Rally

Oct. 1 10:00 A.M.
Courthouse Lawn
Haskell, Texas

Governor
Dolph Briscoe
To Dedicate
Herman Marcus
Plant

Barbecue
12:00 Noon
Tickets
\$2.50

Also scheduled to speak are: Lt. Gov. Bill Hobby; State Senator Jack Hightower, candidate for U. S. Congress; John White, Comm. of Agriculture; St. Rep. Bill Heatley; Ray Farabee, Candidate for St. Sen. Several other officials and candidates plan to attend.

Barbecue will be catered by Clifford Teinert of Albany, recent winner of the Big Country Cowboy Cookoff in Abilene. Tickets are available from most local businesses.

Classified ads

WANTED: Reliable party to assume payments on 19 months old Singer Sewing machine, console model, does all fancy stitches without attachments. Original price \$434.00, balance \$129.50 or \$17.24 a month. Call 864-2662. 38-39p

WANTED: Someone to stay with elderly man. Would prefer a male. Call 864-2807.

LOST AND FOUND

FOUND: Approximately six weeks old white terrier puppy. Contact Betsy Nanny, 864-2665. 39p

STRAYED

STRAYED: 3 calves and a small Collie dog. If seen, call Kenneth Russell, Rochester, 743-3324 days, night 743-3270. 38-40p

FOR RENT

EXTRA NICE house for rent or sale. \$150.00 a month rent or \$3,000.00 equity, \$105.00 monthly payments, 7% loan, balance \$11,000.00. 2 large bedrooms, kitchen, den, stove, new carpet, central heat and air. 408 S. Ave. H, 864-2728. 38-39p

FOR RENT: Unfurnished 3 bedroom house. Call 864-2271 after 5:30 p. m. Located at 904 N. Ave. E. 39p

FOR RENT: 2 bedroom furnished apts., bills paid. Call Dee Larned, 864-2400 or 864-2611. 39-41c

MISCELLANEOUS

TOLE PAINTING CLASSES beginning Oct. 5. Come by for enrollment. Wigwam Drive In, 864-2431. 37-40c

FREE LICENSE PLATES and lower interest rate when you finance your car with Leo Fetsch, 422-4259, Munday. 32tf

SENSATIONAL CRAFTS for Christmas, needlepoint, crewel, cross-stitch, unfinished footstool, unusual wood plaques for découpage and tole painting, art supplies. Craft Corner, Wigwam Drive In, Haskell, Texas. 36-39c

A PHOTOGRAPH of yourself or a loved one is something only you can give, have photographs made now for holiday giving. The holiday season is just around the corner. Blackstock Studio, 417 S. First St., Haskell, Tx. Ph. 864-2783. 39c

NO REGRET, the best yet: Blue Lustre cleans carpets beautifully. Rent electric shampooer \$1. Perry Bros. 39c

SUPER RUMMAGE SALE: Friday and Saturday, Sept. 27-28, 9 a. m. to 5 p. m. 601 N. Ave. G. 39p

RUMMAGE SALE at Rule: Dresses, slacks sets, shoes 7½B and 8½B; pants and sweaters, blouses and other items. All are partially new! Starts Saturday 28th, '74. Mrs. Vance Saffel home, yellow house on school street. 39c

PORCH SALE: 202 S. Ave. C. Starts Friday at 1:00 p. m., all day Sat. Girl's bicycle, table and chairs, many misc. items. 39p

WOULD SWAP 4 man heavy duty nylon rubber raft with oars, oarlocks, seats and motor mount for something of equal value. Like new, cost \$100.00. Doyle Baugh, Rule 987-2186. 39p

HOUSEHOLD SALE: Everything goes. Fri. ad Sat., 27-28, 607 E. Oliver, Stamford, Tx. 39p

A DOLLAR saved is a dollar earned. It's easy, if you let Bill Carter do your repair work on brick, plaster or stucco. Small jobs appreciated. Ph. 864-3170 or write P. O. Box 273, Haskell. 39p

FREE PUPPIES. Call 864-3083. 39p

O. T. FOIL 504 S. Ave. F Professional Paperhanging Wallcovering Call 864-3584 38-44p

REDWINE ESTATE Four Bedroom Rock House 300 E. Ave. H Mrs. Virgil Sonnemaker 864-2595 Charley Redwine 864-8978

BAKERY needs sales. High school, married, to sell. Guarantee season. See Ray Haskell Ware, Abilene, Mead's 37tf

WANTED: Reliable party to assume payments on 19 months old Singer Sewing machine, console model, does all fancy stitches without attachments. Original price \$434.00, balance \$129.50 or \$17.24 a month. Call 864-2662. 38-39p

WANTED: Someone to stay with elderly man. Would prefer a male. Call 864-2807.

LOST AND FOUND

FOUND: Approximately six weeks old white terrier puppy. Contact Betsy Nanny, 864-2665. 39p

STRAYED

STRAYED: 3 calves and a small Collie dog. If seen, call Kenneth Russell, Rochester, 743-3324 days, night 743-3270. 38-40p

FOR RENT

EXTRA NICE house for rent or sale. \$150.00 a month rent or \$3,000.00 equity, \$105.00 monthly payments, 7% loan, balance \$11,000.00. 2 large bedrooms, kitchen, den, stove, new carpet, central heat and air. 408 S. Ave. H, 864-2728. 38-39p

FOR RENT: Unfurnished 3 bedroom house. Call 864-2271 after 5:30 p. m. Located at 904 N. Ave. E. 39p

FOR RENT: 2 bedroom furnished apts., bills paid. Call Dee Larned, 864-2400 or 864-2611. 39-41c

MISCELLANEOUS

TOLE PAINTING CLASSES beginning Oct. 5. Come by for enrollment. Wigwam Drive In, 864-2431. 37-40c

FREE LICENSE PLATES and lower interest rate when you finance your car with Leo Fetsch, 422-4259, Munday. 32tf

SENSATIONAL CRAFTS for Christmas, needlepoint, crewel, cross-stitch, unfinished footstool, unusual wood plaques for découpage and tole painting, art supplies. Craft Corner, Wigwam Drive In, Haskell, Texas. 36-39c

A PHOTOGRAPH of yourself or a loved one is something only you can give, have photographs made now for holiday giving. The holiday season is just around the corner. Blackstock Studio, 417 S. First St., Haskell, Tx. Ph. 864-2783. 39c

NO REGRET, the best yet: Blue Lustre cleans carpets beautifully. Rent electric shampooer \$1. Perry Bros. 39c

SUPER RUMMAGE SALE: Friday and Saturday, Sept. 27-28, 9 a. m. to 5 p. m. 601 N. Ave. G. 39p

RUMMAGE SALE at Rule: Dresses, slacks sets, shoes 7½B and 8½B; pants and sweaters, blouses and other items. All are partially new! Starts Saturday 28th, '74. Mrs. Vance Saffel home, yellow house on school street. 39c

PORCH SALE: 202 S. Ave. C. Starts Friday at 1:00 p. m., all day Sat. Girl's bicycle, table and chairs, many misc. items. 39p

WOULD SWAP 4 man heavy duty nylon rubber raft with oars, oarlocks, seats and motor mount for something of equal value. Like new, cost \$100.00. Doyle Baugh, Rule 987-2186. 39p

HOUSEHOLD SALE: Everything goes. Fri. ad Sat., 27-28, 607 E. Oliver, Stamford, Tx. 39p

A DOLLAR saved is a dollar earned. It's easy, if you let Bill Carter do your repair work on brick, plaster or stucco. Small jobs appreciated. Ph. 864-3170 or write P. O. Box 273, Haskell. 39p

FREE PUPPIES. Call 864-3083. 39p

O. T. FOIL 504 S. Ave. F Professional Paperhanging Wallcovering Call 864-3584 38-44p

REDWINE ESTATE Four Bedroom Rock House 300 E. Ave. H Mrs. Virgil Sonnemaker 864-2595 Charley Redwine 864-8978

PUBLIC NOTICE

WATER WELL DRILLING, irrigation and domestic. Portable Welding. Call W. P. Hise, 864-3727. 29tf

UP TO 33% POSTAL SAVINGS by using new Mail-Lite bags. Heavy manila envelopes made stronger, waterproof with air bubble lining. Ideal for mailing pictures and small items. Haskell Free Press. 41fc

HAD A PARTY? Going to? Had visitors? Gone places? Call 864-2686 or come by the Free Press, tell us, we'd like to know, and so would Haskell Free Press readers. 41fc

PLEASE REMEMBER that classified ads are CASH IN ADVANCE for individuals not having businesses and not having charge accounts with the Haskell Free Press. Rates are printed at the top of the classified page. Please bring your ad by or mail it with your check. Thanks for your cooperation. Classified Ad Dept. 41fc

FOR RENT

EXTRA NICE house for rent or sale. \$150.00 a month rent or \$3,000.00 equity, \$105.00 monthly payments, 7% loan, balance \$11,000.00. 2 large bedrooms, kitchen, den, stove, new carpet, central heat and air. 408 S. Ave. H, 864-2728. 38-39p

FOR RENT: Unfurnished 3 bedroom house. Call 864-2271 after 5:30 p. m. Located at 904 N. Ave. E. 39p

FOR RENT: 2 bedroom furnished apts., bills paid. Call Dee Larned, 864-2400 or 864-2611. 39-41c

MISCELLANEOUS

TOLE PAINTING CLASSES beginning Oct. 5. Come by for enrollment. Wigwam Drive In, 864-2431. 37-40c

FREE LICENSE PLATES and lower interest rate when you finance your car with Leo Fetsch, 422-4259, Munday. 32tf

SENSATIONAL CRAFTS for Christmas, needlepoint, crewel, cross-stitch, unfinished footstool, unusual wood plaques for découpage and tole painting, art supplies. Craft Corner, Wigwam Drive In, Haskell, Texas. 36-39c

A PHOTOGRAPH of yourself or a loved one is something only you can give, have photographs made now for holiday giving. The holiday season is just around the corner. Blackstock Studio, 417 S. First St., Haskell, Tx. Ph. 864-2783. 39c

NO REGRET, the best yet: Blue Lustre cleans carpets beautifully. Rent electric shampooer \$1. Perry Bros. 39c

SUPER RUMMAGE SALE: Friday and Saturday, Sept. 27-28, 9 a. m. to 5 p. m. 601 N. Ave. G. 39p

RUMMAGE SALE at Rule: Dresses, slacks sets, shoes 7½B and 8½B; pants and sweaters, blouses and other items. All are partially new! Starts Saturday 28th, '74. Mrs. Vance Saffel home, yellow house on school street. 39c

PORCH SALE: 202 S. Ave. C. Starts Friday at 1:00 p. m., all day Sat. Girl's bicycle, table and chairs, many misc. items. 39p

WOULD SWAP 4 man heavy duty nylon rubber raft with oars, oarlocks, seats and motor mount for something of equal value. Like new, cost \$100.00. Doyle Baugh, Rule 987-2186. 39p

HOUSEHOLD SALE: Everything goes. Fri. ad Sat., 27-28, 607 E. Oliver, Stamford, Tx. 39p

A DOLLAR saved is a dollar earned. It's easy, if you let Bill Carter do your repair work on brick, plaster or stucco. Small jobs appreciated. Ph. 864-3170 or write P. O. Box 273, Haskell. 39p

FREE PUPPIES. Call 864-3083. 39p

O. T. FOIL 504 S. Ave. F Professional Paperhanging Wallcovering Call 864-3584 38-44p

REDWINE ESTATE Four Bedroom Rock House 300 E. Ave. H Mrs. Virgil Sonnemaker 864-2595 Charley Redwine 864-8978

Fords Debut Sept. 26-27

The new 1975 Fords will make their debut at Bill Wilson Motor Company, Sept. 26-27. An all-new car, additional lines, significant improvements and engineering advancements, highlight the new car showing this year. Bill Wilson Motors invites everyone by to see the new line for 1975.

Ford has introduced the Granada, a completely new automobile with classic styling and five-passenger seating comfort. It is available in 2-door and 4-door models in two series, the basic Granada and the luxurious Granada Ghia. J. B. Gipson of Bill Wilson Motors said, "It is a new concept for an American car." It is neither a small car nor a big car, but combines the best characteristics of both.

Indians . . .

onds left Seymour scored on a 94 yard pass play. PAT failed. Final score, Haskell 26, Seymour 12.

Defensive standouts for the Tribe were O. D. Johnson, Johnny Larned and George Brown.

The Indians will meet the Stamford Bulldogs in Stamford this Friday night at 8 p. m. See you there!

YARDSTICK

Haskell	Seymour
18 First Downs	15
198 Yards Rush	188
45 Yards Pass.	132
2 of 6 Passes comp.	2 of 9
3 for 35 Penalties	4 for 26
55 Offensive Plays	56
0 Fumbles Lost	1
1 Pass. Inter. by	0
3 for 37 Punts, avg.	2 for 15

DISTRICT 7A
HASKELL 26, Seymour 12
ASPERMONT 25, Jayton 0
Rule 46, MUNDAY 0
Memphis 6, CROWELL 0
PADUCAH 24, Spur 6

Also offered this year will be eight new Ford LTD's to choose from: 2 Landaus, 2 Broughams, 2 LTD's, and 2 handsome wagon models. The new LTD Landau provides fine-car features and

STATEMENT OF OWNERSHIP, MANAGEMENT AND CIRCULATION

STATEMENT REQUIRED BY THE ACT OF CONGRESS OF OCT. 23, 1962; (Section 4369, Title 39, United States Code) SHOWING THE OWNERSHIP, MANAGEMENT AND CIRCULATION OF THE HASKELL FREE PRESS, published weekly at Haskell, Texas 79521, for September 26, 1974.

1. The names and addresses of the publisher, editor, managing editor and business manager are:

Publisher, Billy M. Comedy, 606 N. Third, Haskell, Haskell County, Texas; Editor, Dale Leggett, Rt. 2, Haskell, Texas; Managing Editor, same; Business Manager, Billy M. Comedy, Haskell, Texas 79521.

2. Owner: Haskell Free Press Publishing Co., Inc., Haskell, Texas 79521; Billy M. Comedy, Clydene Comedy, Haskell, Texas 79521; G. E. Talkington, Margaret Talkington, Lafayette, La. 70501.

3. The known bondholders, mortgages and other security holders owning 1% or more of total amount of bonds, mortgages or other securities are: Jetty V. Clare, Haskell, Texas 79521.

4. The average number of copies of each issue of this publication sold or distributed, through the mail or otherwise, to paid subscribers during the 12 months preceding the date shown above was 2550.
s/ Billy M. Comedy, Publisher.

Sworn to and subscribed before me the 26th day of September, 1974.
s/ Lois Redwine.
(SEAL) My Commission Expires June 1, 1975.

styling to challenge more expensive cars. Standard features include: hidden headlamps, vinyl roof with color-keyed vinyl bodyside moldings, electric trunk lid release, front cornering lamps, full wheel covers, comfortable flight bench seat with fold-down center armrest and many other features.

The popular mid-size Torino and the compacts, including the Pinto and Maverick, have also been refined and offer engineering features to satisfy discriminating customers.

The Mustang and Mustang II remain popular sport models, as well as the Thunderbird.

Rain Still Falling In Co.

It now appears the drought has been broken with another week of rainfall in Haskell County. Good rains have soaked the farm and ranch land and some water is beginning to run into tanks and into area lakes. An official at West Texas Utilities Power Plant stated that Stamford lake had risen one foot since the rains began two weeks ago. Pete Beecher, General Manager of WCTMWA, said Monday that Miller Creek had not caught any water but that continued rainfall would probably cause the watershed to produce some run-off and the lake would begin catching the long-awaited water. He also stated that it would take a hard rain for the lake to catch an appreciable amount of water. Member towns of the Water Authority, and interested citizens are anxious to see the lake filled.

Rainfall has been general in the county with the following amounts from various places: Sagerton reported 2 inches this week to make a total of 7 inches received; Rule has received approximately 2 inches this week; The Mattson Community has received 5.2 inches; Rochester reports heavy rainfall for the week but no specific amount; Haskell has received 4.06 the past week.

The prospects for more rain appeared good Wednesday morning with heavy clouds and mist falling.

The Haskell Free Press
Established January 1, 1886
PUBLISHED EVERY THURSDAY

Member TEXAS PRESS ASSOCIATION

BILL COMEDY, G. E. TALKINGTON—Co-Owners
BILL COMEDY—Publisher

Entered as second-class matter at the postoffice at Box 577, Haskell, Texas 79521, under the Act of March 3, 1879

SUBSCRIPTION RATES		
In Haskell and Adjoining Counties		
	Sub	Tax Total
One Year	\$ 5.00	25 \$ 5.25
Six Months	\$ 3.00	.15 \$ 3.15
Two Years	\$ 9.50	.48 \$ 9.98
Elsewhere in Texas		
One Year	\$ 6.00	.30 \$ 6.30
Six Months	\$ 4.00	.20 \$ 4.20
Two Years	\$11.50	.58 \$12.08
Outside of Texas		
One Year	\$ 8.00	.40 \$ 8.40
Six Months	\$ 4.50	.23 \$ 4.73
Two Years	\$15.50	.73 \$16.23

NOTICE TO PUBLIC—Any erroneous reflection upon the character, reputation or standing of any firm, individual or corporation will be gladly corrected upon being called to the attention of the publishers.

Thank You!

We would like to take this opportunity to say thanks to the many fine people in the Haskell area for assistance and attendance at the Haskell County Fair and Tractor Pull.

Special thanks to Penman Butane Co. in Rochester for the use of their burner and donation of 500 gallons of butane and Haskell Butane Co. for donating 500 gallons of butane.

PAT HALE
TRACTOR PULL CHAIRMAN



HASKELL INDIAN JIM PIPPIN scores one of three touchdowns against Seymour. Helping to make the score possible was Johnny Hawkins, 82, and Randy Phemister, 37. The Tribe beat the Panthers 26-12 for their first win of the season. (Staff Photo by Don Comedy)

AUCTION

KNOX COUNTY EQUIPMENT AND SOME ANTIQUE FURNITURE FROM COURT HOUSE
Friday, Sept. 27, 1974 - 10 A. M.
MUNDAY, TEXAS

EAST OF BLINKING LIGHT AT COUNTY BARN
Secretary Desk over 100 years old in good shape.

Hat Racks	49 K 10 Int. truck with Tulsa wench and poles
32 Bentwood Chairs	63 G.M.C. truck V/8 2 ton new motor and tires
Public Address System	8x16 van body
Several refrigerators and freezers from county commodity store	16 ft. steel bed with double cylinder lift
Tables, Desks, etc.	59 G.M.C. dump truck
Two 4-drawer filing cabinets	52 Chev. pickup
Essick cooler	50 Chev. truck
Typewriters	53 G.M.C. truck with Le-land bed and wench
16 drawer card file	600 Ford tractor
Equipment	6 ft. Dearborn mower
99 E. Motor Grader Cat. 12	Two 3-point shredder
60 Model F 600 Ford truck with steel bed and lift	1 Drag type shredder

Equipment can be seen and shown Sept. 26, 1 to 5 p. m. at County Barn in Munday, Texas. For information, contact County Commissioners.
SALE CONDUCTED BY
Gerald Lawrence Auction Co.
1200 Meander—Phone 673-8527—ABILENE, TEXAS

POLITICAL CALENDAR

The Free Press is authorized to make the following announcements for office in Haskell County, subject to the action of the Republican General Election in 1974. All political advertising, announcements & printing is cash in advance.

STATE SENATOR

Mary Kirchhoff

The above political announcement was paid for by the candidate listed.

ART CLASSES
Mon., Wed. Afternoons
Tues., Thurs. Evenings
Sat. Mornings
MAE'S GALLERY
915-773-5451, Stamford
38-41c

INSTANT CASH for any good merchandise modern or old. Ph. 864-3197 anytime.

LACKEY'S
Throckmorton Highway
Haskell, Tex. 21tf

JUNK - A - TIQUES, glassware, furniture, baby bed, books, dishes, bottles, record player, radios, ice cream chair, dolls, misc. We buy sell or trade. 1704 N. First St. Mrs. Harley Langford. 11tf

H. F. LANGFORD
Sand and Gravel
Caliche and Fill
Rule Hwy. West Haskell

SHUR-WAY PEST CONTROL
For Over 14 Years
State Lic. 403-G
Telephone Haskell
864-2372

France's Beauty Salon
Open Monday thru Friday
864-3156—1107 N. 7th
2 Operators to Serve You
36-39p



CHARLOTTE HANNSZ, daughter of Mr. and Mrs. Jimmy Hannsz of Haskell, was crowned 1974-75 Indian Band Sweetheart during halftime ceremonies last Friday night. She received a dozen roses and a tiara presented by Kyle Wilfong, band president. (Staff Photo by Don Comedy)

Flower Show Winners

Sweepstakes winners at the Haskell County Fair Flower Show were: Mrs. T. B. Roberson in Horticulture; Mrs. C. B. Rhea in Artistic Arrangements.

The theme of the show was "Happiness Is" sponsored by the Haskell Garden Club.

Best of Show winners in Artistic Arrangements were: Mrs. W. P. Trice in all fresh material; Mrs. C. B. Rhea in all dried material; Mrs. Leon Pearsey in Creativity, using fresh and dried material.

Winning the Award of Merit were: Mrs. Carl Anderson, Hanging Basket; Mrs. C. B. Rhea, Pot Plant; Mrs. T. B. Roberson, Blooming Annual; Mrs. Ruby Matthews, Shrub Award of Excellence in Horticulture was given to Mrs. Carl Anderson.

Ribbon winners in Horticulture were: Mrs. T. B. Roberson, 10 blue, 4 red, 1 white; Cliff Dunnam, 7 blue, 2 red; Mrs. W. B. Guess, 6 blue, 1 red, 1 white; Carl Anderson, 6 blue; Mrs. Leone Pearsey, 5 blue, 1 white; Mrs. T. W. Williams, 5 blue, 2 red, 4 white; Mrs. R. S. Sanders, 3 blue, 2 white; Mrs. Carl Anderson, 3 blue; Mrs. Cliff Dunnam, 3 blue, 2 red, 2 white; Mrs. Norman Bevel, 2 blue, 2 red, 1 white; Mrs. Henry Harris, 2 blue, 2 red; Mrs. Elbert Johnson, 2 blue,

1 white; Mrs. W. P. Trice, 3 blue; Mrs. C. G. Moore, 2 blue, 1 white; Mrs. K. H. Thornton, 2 blue; Mrs. C. B. Rhea, 2 blue; Mrs. Otho Nanny, 1 blue; Mrs. Adell Thomas, 1 blue; Mrs. Ruby Matthews, 1 blue; Mrs. Keith Kainer, 1 blue; Mrs. George Billington, 1 blue; Mrs. T. C. Walker, 1 blue; Pat Howeth, 1 blue; Dr. T. W. Williams, 1 blue; Mrs. Walter Kretschmer, 1 red; Mrs. Howell Greene, 1 white.

Ribbon winners in Artistic Arrangements were: Mrs. C. B. Rhea, 4 blue, 2 red, 1 white; Mrs. Cliff Dunnam, 4 blue, 2 red, 1 white; Mrs. W. P. Trice, 1 blue; Mrs. T. W. Williams, 1 blue, 1 white; Mrs. R. S. Sanders, 1 blue; Mrs. Norman Bevel, 1 red, 1 white; Mrs. C. O. Holt, 2 white; Mrs. T. B. Roberson, an honorable mention.

Ribbon winners in the Junior division were: Tracy Fry, 3 blue; Cam Klose, 1 blue, and 2 white.

General Chairman for the show was Mrs. Cliff Dunnam and Schedule Chairman was Mrs. C. B. Rhea.

Judges for the Flower Show were Mrs. Marvin Stamford of Stamford, Mrs. Joe Hagins of Hamlin and Mrs. W. H. Buchanan of Abilene.

The Romans processed the first country hams in Gaul. Curing and smoking of meat were practiced in many parts of the world because these were the only methods of meat preservation.

Medford Shows 1975 Autos

Medford Buick-Pontiac is showing the new 1975 models of Buicks and Pontiacs Sept. 26-27. Pontiac has announced a new mid-sized Grand LeMans for this year, and Buick also has some additions in the compact line. One of the features on new models is a new maximum mileage system which requires unleaded fuel and includes items like GM specification steel-belted radial tires, a High Energy Electronic Ignition, and a catalytic converter. These engineering changes have been made to provide long periods between service and up to 22,500 miles between spark plug changes.

Many changes in the new autos are refinements to assure the customer of satisfaction with his purchase. With the energy crisis and customers turning to smaller cars, new car buyers will have several choices in the Pontiac and Buick line. Along with the compacts and mid-sized cars, a line of full size autos is available.

Buick has a large selection of models for everyone whether it be the young person who is looking for a small sports car or the family seeking a larger luxury model. An introduction to the Buick line is the new Skyhawk Hatchback Coupe. This auto should find wide acceptance from all age buyers. The Apollo in the compact line has been refined in its design and all the quality features of Buick engineering are also found in this model as well as all the full-sized cars.

Whether you are interested in the popular Century series or your taste runs to the Electra Limited, you will find a wide selection of the new models at Medford's and



KERRY KEMP, daughter of Mr. and Mrs. Giles Kemp of Haskell, was champion youth exhibitor of the 1974 Haskell County Fair. (Staff Photo by Don Comedy)

Perry Motor Co. Observes 20th Anniversary

Perry Motor Company is celebrating their 20th anniversary this week with the showing of the new 1975 Chrysler, Plymouths and Dodge line of autos. Show days for the new lines are Sept. 26-27, and Perry Motors invites you to come by and see these fine autos and help them celebrate their 20th anniversary.

Chrysler has introduced the Cordoba, a new, intermediate size two-door hardtop built on a 115 inch wheelbase. It will debut as a fresh competitor in the rapidly expanding luxury specialty car market.

They invite you to come by and see the new cars as well as GMC pickups.

The Cordoba is designed to reflect the Chrysler name and heritage of fine road cars.

Also new from Chrysler-Plymouth is an intermediate size Fury. The standard size Fury is known as Gran Fury. The intermediate size models will replace the Satellite line. The sporty mid-size Road Runner is newly styled. New models are also being introduced in the popular compact Valiant line.

Chrysler-Plymouth Division enters the 1975 model year with a wide range product lineup tailored specifically to meet the transportation needs and tastes of today's discrim-

inating, individual per Engineering and innovations in fuel economy, value, ease of use and comfortable life engines, spark plugs, Dodge models, an all-new Sprinter, an intermediate economy, richer accents and a variety of sports Darts. The customer preferred a wider range of car-type ap-

TEXAS THEATRE
HASKELL, TEXAS
Thurs., Fri., Sat., Sun.—Sept. 26-27-28-29
"Summer of '42"
—Rated R—

TOWER DRIVE IN
RULE, TEXAS
Thurs., Fri., Sat.—Sept. 26-27-28
SUTHERLAND & GOULD
do it to the C.I.A. as
with ZOUZOU **S&P OYS** PG
Sunday Only—Sept. 29
'When Women Lost Their Tails'
—Rated R—



GRAND CHAMPION WETHER of the 1974 Haskell County Fair was shown by Jerry Don Vandivere of Albany. He is the 15-year-old son of Mr. and Mrs. S. W. Vandivere of Albany. (Staff Photo by Don Comedy)

SHUGART COUPON
M SYSTEM
112 N. Ave. D
Mon., Sept. 30
9 WALLET SIZE COLOR PORTRAITS 99¢
Extra charge for GROUPS
ASK FOR FREE 8 x 10 OFFER

RUSS AGRICULTURE FLYING
AERIAL SPRAYING
Cotton Defoliation
Green Bug Spraying
Russ Matthews, Owner
Call 864-2035
Haskell, Texas

First Federal Savings and Loan Association of Stamford
Do You Require Security In Your Savings Plan?
See Us For From 5 1/4% Passbook Savings To 7 1/2% on Certificates of Deposit
Savings Accounts Insured to \$20,000 Interest Guaranteed
FIRST FEDERAL SAVINGS AND LOAN ASSN. OF STAMFORD
122 W. McHarg Stamford, Texas 79553

Anacin 100's \$1.07
FAST PAIN RELIEF
HEADACHE, COLIC, BODY ACHES, NEURALGIA

8 oz. **Alpha Keri** BATH OIL \$1.99

MyoFlex 2oz \$1.33

C-126-2 \$1.20

Di-Gel 12 Oz \$1.33
LIQUID Anti-Gas Antacid

DE VILBISS **Vaporizer** \$4.44

OATES DRUG STORE
● DELIVERY SERVICE
● 30 DAY CHARGE
● PRESCRIPTION RECORD SERVICE
● 24 HOUR EMERGENCY SERVICE
● MASTER CHARGE
● FAST, DEPENDABLE SERVICE
● HEALTH AID RENTAL
Doyle High, Owner
Phones: 864-2515 - 864-
SAVE ON ALL YOUR DRUG NEEDS

SECTION TWO

THE HASKELL FREE PRESS



VOLUME EIGHTY-EIGHT HASKELL, TEXAS 79521, THURSDAY, SEPTEMBER 26, 1974 NUMBER THIRTY-NINE

Sonja Tidrow, white; Laurie Fouts white; Tom Barnett blue; Kiersta Lane red; Sharla Drinnon blue.

Flat Goods

6-10 years: Donna Kemp, blue; Don Kretschmer, blue; Don Kretschmer, white; Terry Kuykendall, blue; Cam Klose, red; Linda Wells, red.

Clothing

11-13 years: Gena Fischer, blue; Kerry Kemp, red; Debra Wells, 2 blue; Kim Lane, red; Janet Phillips, blue; Kathy Campbell, blue; De Ann Carter, red.

Flat Goods

11-13 years: Julie Coleman, red; De Ann Carter, 2 blue, 2 red, 1 white; Tammy Young, white.

Clothing

14-19 years: Bettye Newsome, red; Reva Greenwood, red; Reeva Hamblin, blue; Bettye Newsome, blue; Linda Sarobia, red; Charlotte Hanns, blue; Pam Stockton, white; Joanne Cloud, 3 red; Frances Tribbey, white; Susan Lewis, blue; Linda Rhoads, red; Rosie Surek, white, red; Sylvia Ortiz, blue; Sandy Oliver, red; Amelia Moore, red; Sandy Oliver, white; Amelia Moore, blue; Lynn Fouts, white; Carol Dudensing, red; Kathy Caddell, red, 2 white; Leesa Drinnon, 2 blue, 2 red; Kathy Perrin, red; Lynn Fouts, white; Linda Sarobia, blue; Linda Rhoads, blue; Gae Farmer, 2 red; Carolyn Muhle, white; Laurie Fouts, white.

Posters and Exhibits

6-10 years: Linda Fischer, blue, red; Linda Wells, red; Becky Medford, red; Steven Quada, red; Jackie Workman, white; Belinda Trussell, white.

11-13 years: Janet Phillips, white; Kathy Campbell, red; Tammy Young, red; Sharla Drinnon, red.

14-19 years: Leland Workman, red; Christa Pruett, red; Tammy Gibbs, white; Teresa Jenkins, red; Lisa Locks, blue, best of show; Leesa Drinnon, red; Tamala Turnbow, red; Cindy Thomas, blue; Cynthia Jones, red; Marsie Mickler, blue; Sarah Corez, red; Bertie Jordan, blue.

Youth Art

Jerri Sharp, white; Christi Terrell, red, blue; Sharon Jones, red; Susan Miller, blue; Mark Miller, blue; Kim Hager, red; Gena Fischer, blue; Jim Muehlestein, red; Matt Muehlestein, blue; Kim Campbell, 2 blue, 1 red, 1 white; Kim Kainer, blue; Louisa Escobeda, 2 white; Mary Lee Hawkins, 2 blue; Best of Show; Kim Campbell, 1 white, 3 red; Mark Smith, 2 blue; Chuck Smith, 2 blue; Melanie Schoomaker, 2 blue, 1 red; Lori Schoomaker, blue.

YOUTH DIVISION

Hobbies and Crafts

6-10 years: Cam Klose, white; Julie Coleman, red; Hope Gonzales, white; Gloria Garcia, blue; Angela Fannin, blue; Susan Miller, blue; Bruce Daniels, red; Jackie Workman, red (2); Terry Kuykendall, blue (2); Regina Kuykendall, blue; Rachel Pimental, white; Ruben Gonzales, red; Jack Pritchard, red (2); Tammy Wright, red; Susie McNeil, white; Linda Fischer, white; Kathy Kemp, red; Denise Pierce, blue, red; Paul Cox, white; Rachelle Dunham, red; James Cox, white; Barry Tidrow, red; Bruce Daniels, red, white; Bob Bullard, red; Debbie Quada, red; Steven Quada, red; John Hawkins, red; Kenneth Bell, red; Charles Wells, white; Mike White, red; Stella Escamillo, red; Cam Klose, blue (3), red (4), white (2); Linda Fischer, blue; Regina Gibson, red (3); Kerry Patton, red; Ron Ballard, blue; Victor Salinas, white; Shanda Reeves, red; Dennis Carver, red; Martha Nell Garcia, red; Tommie Lynn, white; Delia Aguilera, red; Becky Medford, red; Paul Barnett, red; Bruce Daniels, red; Tom Rhoads, red.

11-13 years: Rocky Young, white (2); Jeff Hatfield, blue; Debra Morris, blue; Cynthia Lota, blue; Wade Matthews, blue; Gina Fischer, red (2); Tonya White, (2); Bryan Middlebrook, red, 3, white; Angella Reid, blue, red; Janet Phillips, red (4), blue; Terri Gideon, red (3), white; Berry Alvis, red; Mark Miller, white; Wade Matthews, red; Reva Greenwood, red; Sonja Tidrow, red (2); De Ann Carter, blue, red (2); Yvonne Howard, blue 2, red 2, white 3; Kathy Campbell, red; Lanny Ballard, blue; Kerry Kemp, red, white (5); Kerry Kemp, red, white; Sherry Rhoads, white; Renae McBroom, blue; Debra Wells, red (2).

14-19 years: Ellen Neely, red; Venetia Rogers, red (2); Betty Newsom, white; Johnnie Morrow, red; Verlene Wedware, white; Leland Workman, blue (2), red; LuAnn Dodson, blue; Louisa Escobeda, red; Joanne Cloud, red (2); Ricky Brazell, blue (2); Debbie Del Hierro, blue (2); Reva Greenwood, red; Deborah Soto, blue; Cindy Thompson, red; Lynn Fouts, red (4), blue. Best of Show:

Cathy Caddell, red; Pam Co-

cker, red; Coleen Townsend, blue; Jill LeFevre, blue; Kathy Perrin, blue, red (3); Elena Rojas, red; Sharon Terrell, red.

Kristi McKeever, blue; Mandy McKeever, red; Shari Sharp, red; Susan Miller, blue; Mark Miller, blue; Sharon Terrell, red; Christi Terrell, red; Sarah McLaughley, red; Charles Gray, white.

Field Crops

Wheat: Mike New, blue; Kraig Kupatt, blue; Lynn Wheatley, red; Jack Rueffer, red; Ray Farmer, red.

Pecans (qt.): Kyle Markey, blue; Lynn Wheatley, red; Rickey Miller, blue; Rickey Tidrow, blue.

Cotton Stalk: Lynn Wheatley, red; Gary Thomas, blue; Charles Gray, blue, Best of Show; Charles Gray, red; Bryant Tidrow, red; David Gray, red.

Johnson Grass: Bryant Tidrow, red; Rickey Miller, red; Jeff Thane, red; Ronnie Oliver, red.

Oats: Nicki Hunt, red; Kraig Kupatt, red; Rickey Miller, red; Dwain Weise, white; Eddie Klose, white; Ray Farmer, blue; Tim Powell, red; Jack Rueffer, blue.

Okra: Jerry Tumlinson, blue; Gary Thomas, blue; Scotty Langford, red; Terry Tatum, red; Rickey Tidrow, blue; Debra Wells, blue; Kyle Markey, red; Ray Farmer, blue.

Peanuts: Rickey Miller,

blue; Ray Farmer, blue. Onions: Clyde Stegemoller, blue; Dwain Weise, blue; Eddie Klose, white; Ray Farmer, blue.

Hybrid Forage Sorghum: Rickey Miller, blue.

Apples: Terry Bartley, blue.

Banana Peppers: Terry Bartley, red; Terry Tatum, blue; Rickey Tidrow, blue.

Peppers (other varieties): Tommy Watson, blue; Terry Bartley, white; Ray Farmer, blue; Cliff Grand, red; Debra Wells, blue.

Bell Pepper: Ricky Tidrow, blue; Terry Tatum, red (2). Peaches: Ricky Tidrow, red; Linda Wells, blue. Large Tomatoes: Ricky Tidrow, red; Terry Bartley,

blue; Linda Wells, blue. Small Tomatoes: Ricky Tidrow, blue; Gary Thomas, blue; Debra Wells, blue.

Pumpkin: Scotty Langford, red; Traci Fry, blue.

Coastal Bermuda: Dwain Weise, red.

Milo: Terry Bruggeman, red; Charles Gray, blue (2); Eddie Klose, red.

Castor Beans: Cliff Grand, red.

Cotton Seed: Eddie Klose, red; Mike New, red.

Peas: Eddie Klose, blue; Ray Farmer, blue.

Cotton: Kraig Kupatt, blue; Ray Farmer, blue.

Cotton Stalk, Stormproof: Kyle Markey, red.

Cotton Stalk, Lankert 611: Jack Rueffer, red.

Pomegranate: Robert Ivey, red.

Red Potatoes: David Gray, blue.

White Potatoes: David Gray, blue.

String Beans: Traci Fry, red.

Guar: Kyle Markey, red.

Cotton Balls: Bryant Tidrow, white; Jack Rueffer, red.

Maize: Tim Powell, red.

Sorghum Alum: Kraig Kupatt, blue.

ADULT DIVISION

Field Crops, Garden Products

Small Tomatoes: Mrs. Norman Bevel, red.

Milo: Gus Rueffer, red (2); white (1); Charles Gibson, blue.

(Continued Page 2, Section 2)

CONSERVATION POINTS
BERRY, JR.
Conservationist

ditional seven acres of bermuda on his own.

One farm had a bad erosion problem with a creek meandering through it. This area consisted of 24 acres. 14 acres were shaped and sprigged to bermuda as a grassed waterway, leaving 10 acres of cropland planned for forage sorghums. Middlebrook later sprigged this 10 acres to bermuda making a 24-acre pasture.

On the three cropland fields, Middlebrook destroyed 43,611 feet of old conventional terraces and replaced them with 84,421 feet of level altered interval parallel terraces.

Haskell County has received \$19,000 for the balance of 1974 with which to develop new Great Plains contracts. SCS can offer complete conservation planning and implementation for four or five contracts. The back-log of applications now on hand will more than use up these funds. However, if you have a situation of extremely high priority, the Great Plains program will accept your application and every effort will be made to take care of your needs.

If you are interested, contact your SCS office in Haskell at once.

Tammy Bishop, red; Kathy Perrin, blue; Reida Mullino, blue; Tammie Harris, blue; Joan Easterling, blue; Carla Easterling, red; Kathy Perrin, red; Cynthia Sorrels, red; Kathy Howeth, red; Bernita Jackson, red; Sharon Adkisson, blue; Jill LeFevre, 2 blue; Olga Rojas, blue; Vicki Hewitt, 2 red; Pam Stockton, red, blue; Trudy Covey, blue; Laura Hunt, red; Dorothy Jackson, blue; Nita Casillas, red; Pam Stockton, blue; Nita Casillas, blue; Mary Salinas, red; Mary Lou Salinas, red; Jamie Lopez, blue; Venetia Rogers, red; Rhona Myers, blue; Reeva Hamblin, blue; Kathy Caddell, 3 blue, 1 red; Gae Farmer, blue; Martha Watson, 2 blue; Peggy Gutierrez, blue, red; Leesa Drinnon, blue; Susan Mullino, blue; Debbie Del Hierro, blue; Vicki Hewitt, blue. Best of Show: Laura Hunt, red; Dorothy Jackson, blue; Peggy Gutierrez, blue; Rosa Rocha, red; Betty Gutierrez, 2 blue.

Clothing

6-10 years: Linda Fincher, blue; Ember Miller, red; Donna Kemp, red; Linda Wells, blue; Shannon Lane, blue; Becky Medford, blue;

day, Sept. 30

99¢



NO LIMIT

HUGART COLOR PHOTOS

ASK About Our FREE 8 x 10 OFFER
M-SYSTEM
112 N. Ave. D
Haskell Haskell
PHONE 864-2015

FOOD SAVINGS We Want You to Know About

Fresh Pork Spare Ribs LB 79¢	PRODUCE California Red Delicious Apples LB 29¢
Wilson Bologna LB 79¢	Bananas LB 15¢
Store Made Sausage LB 69¢	10 LB. Bag Potatoes 89¢
Round Steak LB \$1.29	Frozen Food
Chuck Steak LB 98¢	Strawberries 3 10 oz. pkg. \$1
Hamburger Meat LB 79¢	Gold King 1 lb. bag Hush Puppies 39¢
Green Giant Sweet Peas 3 17 oz. cans \$1	Wolf Chili No. 300 can 69¢
Green Giant Green Beans 3 cans \$1	Griffin 4 oz. can Black Pepper 49¢
Contadina Whole Tomatoes 3 cans \$1	Sweep Stakes MACKEREL can 49¢
Heinz Keg'O Ketchup 69¢	Bleach 1 Gal. PUREX 69¢
Wolf No. 300 can Tamales 39¢	Liquid Giant Size IVORY 69¢
POGUE GROCERY	
—EXTRA PARKING BEHIND STORE. HOME OWNED AND OPERATED— 113 NORTH AVENUE E HASKELL, TEXAS PHONE 864-2015	

(From Page 1, Section 2)

- Sweet Potatoes: Hoyt Perry, blue.
 Eggplant: S. F. Turner, blue.
 Cotton Stalk: Paul Fischer, red (2).
 Pecans: H. V. Woodard, blue (2).
 Pepper (other varieties): H. V. Woodard, blue (2).
 Apples: H. V. Woodard, blue (1), red (1).
 Watermelon: J. L. Reid, blue.
 Pomegranate: Mrs. Norman Bevel, blue.
 Other Fruit: Mrs. Norman Bevel, blue.

Clothing

- Street dress or cotton blend
 1. Mrs. Keith Kainer
 Street dress, knitted or bonded
 2. Mrs. Georgia Wade
 Tailored coat or suit, must be lined
 1. Carolyn Mathis
 2. Linda Kuykendall
 3. Mrs. Walter A. Fisher

- Sportswear
 2. Mrs. Coy Payne
 Child's clothing, under 2 yrs.
 1. Carolyn Mathis
 Child's Sunday dress, 2-6
 1. Mrs. Burl Medford
 2. Mrs. Paul Fischer
 3. Mrs. Keith Kainer

- Child's play clothes, 2-6
 1. Mrs. Paul Fischer
 2. Mrs. Burl Medford

- Accessories, costume jewelry
 1. Mrs. Earl Livengood
 2. Mrs. Earl Livengood
 3. Mrs. M. C. Calk

- Knitted or crocheted garment
 1. Mrs. Jesse Miller
 2. Mrs. Walter A. Fischer

- Purses
 1. Mrs. Francine Johnson

- Scarves
 1. Mrs. Paul Fischer
 2. Mrs. M. C. Cunningham
 3. Mrs. Walter A. Fischer

- Belts
 1. Mrs. Cora Lee Woods

- Bedding and Quilts
 Pieced quilts
 1. Mrs. O. L. Howard
 2. Mrs. Alton Middleton
 3. Mrs. John Larned

- Applied quilts
 1. Hortense Lees

- Embroidered quilts
 1. Mrs. Kenneth Lane
 2. Mrs. Walter Moeller

- Afghans, crocheted
 1. Robbie Roberts
 2. Mrs. Gus Rueffer
 3. Mrs. John Larned

- Afghans, loomed
 1. Mrs. Freddie Sagebiel
 2. Mrs. Bob Herren

- Handwork
 Pillows
 1. Betty Strickland
 2. Mrs. John Larned

- Tablecloths
 1. Mrs. Arrendondo

- Aprons
 1. Mrs. Earl Livengood

- Pillow Cases
 2. Inez Plumlee

- Rugs
 1. Mrs. F. A. Gauntt

- Crocheted Articles
 1. Mrs. J. C. Kainer
 2. Mrs. John Larned

- Knitted articles
 1. Mrs. Keith Kainer

- Crocheted scarves
 1. Mrs. Walter A. Fischer
 2. Mary Arrendondo
 3. Mrs. Gus Rueffer

- Potholders
 1. Mrs. Earl Livengood

- Others
 1. Jane Prichard
 2. Inez Plumlee
 3. Mrs. Gladys Merchant

2. Mrs. Kenneth Lane
 3. Mrs. Gus Rueffer
 Misc. pictures, all others
 1. Mrs. Ronney Conner
 2. Mrs. Lewis Bruggeman
 3. Mary Murphy

- Ceramics
 1. Mrs. John Larned
 2. Jan Eastland

- China paintings
 1. Mrs. John Larned
 2. Doris Reeves
 3. Anita Herren

- Wooden purses
 1. Paula Wilfong
 2. Betty Sanders

- Photo
 1. Pat Howeth
 2. Mary Murphy

- Foil Art
 1. M. D. Rollins

- Artificial flowers
 1. Mrs. Carl Bailey
 2. Anita Herren

- Wood-work
 1. Keith Hannaz
 2. Billy Jack Ray
 3. Pansy Harris

- Novelties
 1. Mrs. Keith Kainer
 2. Linda Kuykendall
 3. Jan Eastland

- Fabric pictures
 1. Francine Johnson
 2. Mrs. Joe Soto
 3. Mrs. Keith Kainer

- C. Fabric pictures
 1. Francine Johnson
 2. Becky Gholson
 3. Mrs. Jesse Miller

- ARTS AND CRAFTS
 Hobbies, Crafts, Collections
 Division

- Senior Citizens
 Christmas decorations
 1. Mrs. W. B. Wilson

- Embroidery
 1. Mrs. F. E. Gauntt
 2. Mrs. Fred Ray, Sr.

- Scrapbook
 1. Mrs. W. E. Johnson
 2. Mrs. W. E. Johnson

- Sportswear
 1. Mrs. Minnie Reeves

- Novelties
 1. Pinkie Robertson
 2. Pinkie Robertson and Cleo Mondy
 3. Myrtle Cobb
 3. Mrs. Fred Ray

- Afghans, crocheted
 1. Mrs. Fred Ray, Sr.

- Afghans, loomed
 1. Cleo Mondy
 2. Mrs. Myrtle Cobb
 3. Mrs. W. B. Wilson

- Canned Foods
 Pickles and Relishes
 Beet Pickles
 1. Mrs. Paul Fischer
 2. Mrs. Wayne Wells
 3. Mrs. W. P. Trice

- Mixed Pickles
 2. Mrs. Jimmy Browning
 3. Mrs. Sandra Fry

- Sweet pickles, cucumber
 1. Mrs. Sandra Fry
 2. Mrs. W. P. Trice
 Mustard Sour Pickles
 3. Mrs. Sandra Fry

- Hot Pepper Relish
 2. Shady Lane

- Dill Pickles, cucumber
 1. Mrs. Paul Fischer
 2. Mrs. W. P. Trice
 3. Mrs. Wayne Wells

- Relish (sweet)
 1. Mrs. W. P. Trice

- Pickles, okra
 1. Mrs. C. H. Herren
 2. Mrs. Wayne Wells
 3. Mrs. Paul Fischer

- Beet Relish
 3. Mrs. Wayne Wells

- Sweet Gherkins
 1. Mrs. W. P. Trice

- Blackberries
 3. Jean Kemp

- Peaches
 1. Mrs. Paul Fischer
 2. Mrs. Leonard Kieke
 3. Mrs. Jimmy Browning

- Pears
 1. Mrs. W. P. Trice

- Tomatoes, whole
 2. Jean Kemp

- Tomatoes, juice
 2. Mrs. W. P. Trice

- Vegetables, Asparagus
 2. Mrs. W. P. Trice
 Green Beans
 1. Mrs. W. P. Trice
 2. Mrs. Dean Quade
 3. Mrs. Wayne Wells

- Wax Beans
 1. Mrs. W. P. Trice

- Corn
 1. Mrs. Leonard Kieke

- Green Peppers
 3. Jean Kemp

- Field Peas
 1. Mrs. Jimmy Browning
 2. Mrs. Wayne Wells
 3. Mrs. Paul Fischer

- Carrots
 1. Mrs. Jimmy Browning

- Potatoes, Irish
 3. Pat Howeth

- Soup Mixture
 Tomatoes and Okra
 1. Mrs. Wayne Wells

- Overall winner
 Sandra Fry, sweet pickles

- Apples
 1. Jean Kemp

- Berry
 1. Blackberry, Jean Kemp
 3. Blackberry, Mrs. W. P. Trice

- Grape
 1. Jean Kemp

- Plum
 1. Sandra Fry
 2. Jean Kemp

- Peach
 3. Jean Kemp

- Others
 Pear jelly, Mrs. Earl Livengood

- Pomegranate jelly, Jean Kemp

- Honey, Preserves, Jams, Butters and Marmalades, Cherry Preserves
 2. Grape Preserves, Jean Kemp

- Peach preserves
 3. Frances Lane

- Pear preserves
 1. Mrs. Andy Wilfong

2. Frances Lane
 Strawberry-fig preserves
 1. Mrs. Dean Quade
 Grape jam
 3. Pansy Harris

- Plum jam
 1. Mrs. W. P. Trice
 2. Mrs. C. H. Herren

- Strained Honey
 1. Mrs. W. P. Trice
 2. Mrs. H. V. Woodard

- Orange Marmalade
 2. Jean Kemp

- Fig preserves
 1. Shady Lane
 2. Frances Lane

- Prickly Pear Jelly
 1. Louise Thornhill

- Meats
 Chicken
 2. Jean Kemp

- PROFESSIONAL ART
 Landscapes—Oil
 1. Jean Hobbs
 2. Eunice Helwig
 3. A. F. Norman

- Still Life—Oil
 1. Melanie Whitney
 2. Jean Hobbs
 3. Luphia Lane

- Abstract—Oil
 1. Flossie Walker
 2. Judy Lehde
 3. Anita Herren

- Portraits—Oil
 1. Dean Johnston
 2. Judy Lehde
 3. Jean Hobbs

- Others—Oil
 Miniature
 1. Anita Herren

- Figures
 1. Betty Sanders

- Animal
 1. A. F. Norman

- Best of Show: Melanie Whitney, Landscape.

- AMATEUR ART
 Landscapes—Oil
 1. Pansy Harris
 2. Dena McDonald
 3. Horace Hatfield



1975 Granada
 Ford Division's Granada is about half a ton lighter and two feet shorter than most standard cars. It is available in two- and four-door models as a basic Granada and a more luxurious Granada. Standard equipment includes a 250-cubic-inch six-cylinder engine and manual front disc brakes. Engines are available.

- Still Life—Oil
 1. Dena McDonald
 2. Pansy Harris
 3. Clara Tibbits
- Others—Oil
 Miniature
 1. Pansy Harris
- Animal
 1. Pansy Harris
- Best of Show: Dena McDonald, Still Life.
- YOUTH DIVISION
 Canned Foods
 6-10 years: Cam Klose, blue (3), red (5); Donna Kemp, blue (1), red (1); Kathy Kemp, blue, red.
 11-13 years: Kerry Kemp, blue (30) red, (12) white, (2), Bail Award; Debra Wells, blue (10); Linda Wells, blue (8), red (1), Vegetable Ball Award; Angella Reid, red.
 14-19 years: Debbie Del Hierro, blue; Cissy Wright, blue; Jamie Beauchamp, blue, Bail Award Pickled; Gae Farmer, red, blue.
- (Continued on Page 7)

BOB'S SHOE SHOP
 Phone 864-3675
 We Repair All Shoes and Boots
 Open from 9:00-1:00-2:00
 101 W. WILSON ST.
 HASKELL, TEXAS

Look close at all the new '75 Ford Cars & Trucks

Now! At **BILL WILSON FORD**

Bronco
 Ranchero
 Ford SuperCab
 Ford Pickup
 Pinto Runabout
 Maverick 4-Dr.
 Mustang II Ghia
 Granada Ghia
 Gran Torino
 Elite
 LTD Landau 4-Dr.
 Thunderbird

Sept. 27-28

BILL WILSON MOTOR
 Haskell, Texas

Glass Installation - Complete Body Repair

HANSON PAINT & BODY

South First and Ave. A
 Haskell, Texas 79521
 BOBBY HANSON
 Off. Ph. 864-3631—Night Ph. 864-3602

"I Thought I Was Insured!"

There are several types of Homeowner Policies—the standard policy does not cover water leakage from plumbing or heating system, or theft by mysterious disappearance—other Homeowner Policies do cover these and other losses. Let us, at Hartsfield Agency review any exclusions in your policy.

Want to buy or sell a property? It may happen sooner if you list with us. We have many buyers for various types of property and the mortgage loan connections, too.

The HARTSFIELD AGENCY
 HASKELL PH. 864-2665

FOOTBALL

INDIANS Vs.

STAMFORD 8:00 p.m. there

THIS PAGE SPONSORED BY THE
FOLLOWING FIRMS AND INDIVIDUALS

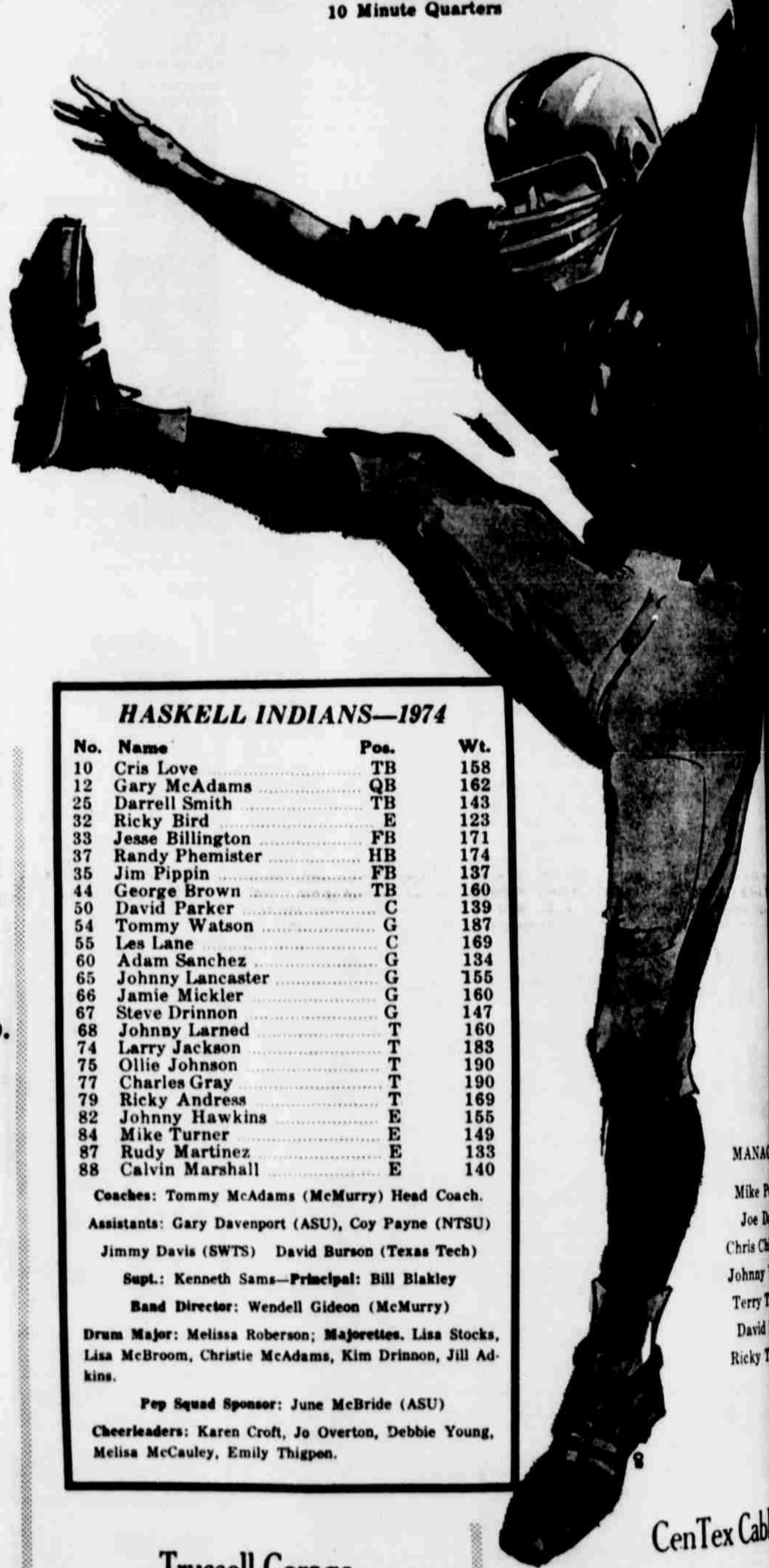
Brister & SoRelle Const. Co.
 Texaco, Inc.
 Larry Gilliam
 Duncan Gin Company
 Western Auto
 W. O. Nanny Plumbing
 Wallace Exxon Station
 M - System
 Boggs & Johnson
 Jones Cox & Co.
 COUNTRY STORE
 Hale Farm Supply
 Bailey Toliver Chevrolet - Olds
 Medford Buick-Pontiac
 Kennedy Lumber Co.
 Dad 'n Lad Shop
 Dairy Queen
 Lane-Felker
 Lane Apparel
 Jeter's Westside Texaco Station
 Dean's Butane Company
 Conner Nursery & Floral Co.
 Haskell County Farm Bureau
 Biggon Drinnon
 Hammer Laundry
 Buster's Drive-In Grocery
 Haskell Co-op Gin

Haskell Steak House
 Biard's Cleaners
 Letz Builders Supply
 West Texas Sheet Metal
 Haskell Co. Warehouse & Comp.
 Jerry Sorrells, Manager
 Haskell Livestock Auction
 Wheatley's Men's Wear
 General Telephone Co.
 Cliff's Garage
 John Leek Electric
 Perry's Gulf Station
 Personality Shoppe
 Smart Wear for Women—864-2501
 Owen's Radio & TV
 Ben Franklin
 Bartley's Grocery
 Dairy Cream
 Farmer's Co-Op Gin
 Vergil Smith, Manager
 Haskell National Bank
 Holden-McCauley Funeral Home
 Eastside Mobil
 Bill Pennington
 Fabric Boutique
 Merchant Plumbing & Heating
 Bill and Doris Reeves
 City Cafe

HASKELL INDIANS—1974

No.	Name	Pos.	Wt.
10	Cris Love	TB	158
12	Gary McAdams	QB	162
25	Darrell Smith	TB	143
32	Ricky Bird	E	123
33	Jesse Billington	FB	171
37	Randy Plemister	HB	174
35	Jim Pippin	FB	137
44	George Brown	TB	160
50	David Parker	C	139
54	Tommy Watson	G	187
55	Les Lane	C	169
60	Adam Sanchez	G	134
65	Johnny Lancaster	G	155
66	Jamie Mickler	G	160
67	Steve Drinnon	G	147
68	Johnny Larned	T	160
74	Larry Jackson	T	183
75	Ollie Johnson	T	190
77	Charles Gray	T	190
79	Ricky Address	T	169
82	Johnny Hawkins	E	155
84	Mike Turner	E	149
87	Rudy Martinez	E	133
88	Calvin Marshall	E	140

Coaches: Tommy McAdams (McMurry) Head Coach.
 Assistants: Gary Davenport (ASU), Coy Payne (NTSU)
 Jimmy Davis (SWTS) David Burson (Texas Tech)
 Supt.: Kenneth Sams—Principal: Bill Blakley
 Band Director: Wendell Gideon (McMurry)
 Drum Major: Melissa Roberson; Majorettes: Lisa Stocks,
 Lisa McBroom, Christie McAdams, Kim Drinnon, Jill Ad-
 kins.
 Pep Squad Sponsor: June McBride (ASU)
 Cheerleaders: Karen Croft, Jo Overton, Debbie Young,
 Melissa McCauley, Emily Thigpen.



Haskell Indians 1974 Schedule

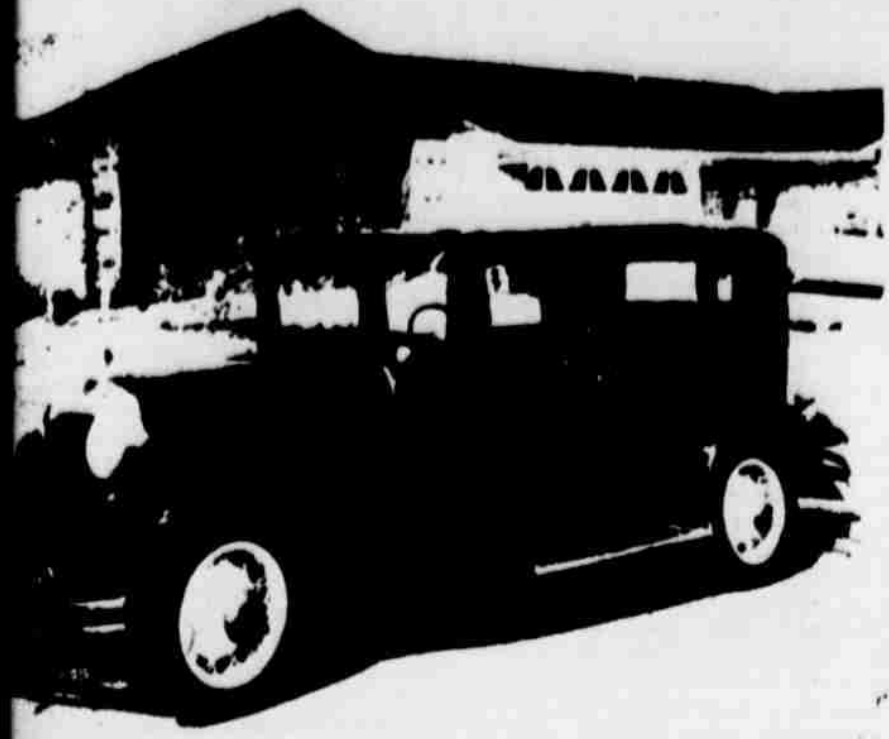
VARSITY

Friday, Sept 6	Haskell 0, Anson 25
Friday, Sept. 13	Haskell 6, Hamlin 34
Friday, Sept. 20	Haskell 26, Seymour 12
Friday, Sept. 27—Stamford	there 8:00 p. m.
Sat., Oct. 5—Olney	there 8:00 p. m.
Oct. 11—Open Date	
*Friday, Oct. 18—Aspermont	here 7:30 p. m.
*Friday, Oct. 25—Munday	there 7:30 p. m.
*Friday, Nov. 1—Crowell	here 7:30 p. m.
*Friday, Nov. 8—Paducah	there 7:30 p. m.
*Friday, Nov. 15—Knox City	here 7:30 p. m.

* Denotes conference games
10 Minute Quarters

Trussell Garage
 Federal Land Bank Assn.
 Woodard Farm Sales
 Anderson Construction Co.
 Parker's Super Market
 McGee & Tidrow Builders Supply
 Renfro Grocery
 Bill Wilson Motor Co.
 The Shoe Castle
 Nine Point Grain
 Heidenheimer's

CenTex Cable
 Winona's
 Richardson Truck & Tra
 Hager Pest Control
 Chris Hager, Owner
 Fieldan Motel
 Herman Marcus, Inc.
 Perry's
 Dulaney Abstract
 Bob's Shoe Shop
 Elsie's Hi-Lander
 Philpot Supply & Service



1931 CHRYSLER CD
[STRAIGHT EIGHT] 4-DOOR
SEDAN

Bill T. Murphy of 505... the present owner of... beautiful old auto, re... admiring the car as a... Haskell, Texas. At that... car was owned by the... Chrysler dealer, Howard... it was from Mr. Perry... Murphy finally purchased... in 1971.
Murphy's father in

New Mexico did restoration work on the exterior of the car which included repainting and replacing worn metal parts. Mr. Murphy himself is currently restoring the interior of the vehicle.

Plans are under way to make this car the official transportation of the local Jaycee organization for use in street parades and other special events.

or physically deficient, one of their greatest needs is to grow socially. Retarded children usually have a limited circle of contacts and acquaintances, and this limits their opportunities to practice personal relationships. The 4-H program develops social growth in these exceptional children."

Through 4-H leadership projects and activities all youth can grow and develop in a wholesome way, points out the Texas A&M University System specialist. Projects in personal grooming, recreation, care for pets, safety, shopping, and creative arts and crafts are among many activities available to these youth.

"The continued growth of this program depends on interested volunteers and teen leaders. Those interested in giving a little of their time to lend a helping hand to

these exceptional youngsters should contact their county Extension office," urges Bullard. "Those who give guidance will add a rewarding and exciting dimension to the volunteer leadership responsibilities in their community."

Time To Order Tree Seedlings

It is time to order tree seedlings from the Texas Forest Service for the 1974-75 planting season, according to Mason Cloud, head of the Forest Environment Department. The 21 windbreak species available this year will cost \$5 per hundred. The minimum order for windbreak species is 100 seedlings and they are shipped prepaid. A check or money order pay-

able to the Texas Forest Service must accompany each order before the trees can be shipped. Orders are processed as received and shipped from mid-December through February. Tree planters are urged to place their orders early in the fall.

During the 1974 planting season, 401,000 windbreak seedlings were distributed to 185 Texas counties, from Dal-lam county in the extreme northwestern part of the Pan-handle, to Cameron county in the Rio Grande Valley. The total of 401,000 trees was planted by 750 planters.

Boy Scout and Girl Scout camps from the Panhandle to the Gulf Coast planted trees as part of their continued interest and activities to conserve our natural resources. More than 35 soil and water conservation districts in the Texas Panhandle region purchased about 300 packets

of 150 seedlings each and planted them on farms and ranches to provide special protection for game animals and birds.

Texas landowners have shown imagination in the wide variety of tree plantings. Tree seedlings which start at the Texas Forest Service Indian Mound Nursery are planted on thousands of sites by hundreds of ordinary people. Your neighbors have been good citizens of conservation; isn't it about time that you joined them?

Applications for tree seedlings are available from county and district offices of the Soil Conservation Service, Agricultural Stabilization and Conservation Service, Extension Service, or by writing the Texas Forest Service, % Agronomy Dept., Texas Tech University, Lubbock, Texas 79409, phone 806-742-5109.

SCHOOL LUNCH MENUS

School lunch menus for week of Sept. 30-Oct. 4:

Monday: Hamburgers, lettuce, tomatoes, pickles, onion, potato chips, ranch beans, sliced pineapple, and milk.

Tuesday: Braised beef on rice, seasoned green beans, tossed salad, hot rolls, butter, banana pudding, milk.

Wednesday: Burritos, buttered greens, potato salad, cornbread, butter, apple crisp, milk.

Thursday: Beef and spaghetti, buttered corn, cabbage slaw, hot rolls, butter, cranberry crunch, milk.

Friday: Chili con carne, spinach, creamed potatoes, carrot sticks, cornbread, butter, fruit jello, milk.

Honors

Utilities Co., Creek Pow-er and fam-ily-b-que supper underwood's of supper was held 17, at the Am-building. Endance were: E. O. Holt, Mr. C. Cobb, Mr. R. Tucker, Mr. T. Atchison, r. Bowers, Mr. D. Darden, Lori and Mrs. D. Nathan, Mr. and Mrs. J. R. Jos-eph and Mrs. J. B. granddaugh-

4-H Helps Handicapped

COLLEGE STATION — Ev-ery child should have the opportunity to grow and de-velop to the maximum of his or her ability. And this cer-tainly includes those special children who need assistance due to mental and physical handicaps, points out a 4-H and youth specialist for the Texas Agricultural Extension Service.

"4-H offers a special program for the mentally retarded and physically handicapped that is designed to help these children develop basic skills and happy, well-ad-justed personalities," says Lanny Bullard. "Although social maladjustment is not a prob-lem peculiar to the mentally

WHY EARN LESS?

50%	4 YEAR CERTIFICATES \$5,000 MINIMUM Compounded Yield	7.79%
75%	2 1/2 YEAR CERTIFICATES \$1,000 MINIMUM Compounded Yield	6.98%
50%	1 YEAR CERTIFICATES \$5,000 MINIMUM Compounded Yield	6.72%
25%	PASSBOOK SAVINGS \$5. MINIMUM Compounded Yield	5.39%

earn less at some other places when you can earn more at West Savings? We'll even compound your earnings each day, day for an even higher rate of return. All accounts are insured up to \$20,000 by the Federal Savings & Loan Insurance Corporation. You can even cancel certificates early if you need money but of course, a substantial earnings penalty would be assessed.

Our passbook savings the Lazy Money Plan. If you've got lazy money in a coffee can, checking account, piggy bank or safe, we'll make your lazy money go to work for you and pay you every day that it works at an annual compounded rate of 7 percent. You can get it back anytime that you want with earnings for the entire work period.

Send your money where the money is and just let us know you want to put it to work. We'll do the rest and help you grow.

Southwest Savings & Loan
853 N. Judge Ely at E. N. 10th
340 Hickory at North 4th
2625 Barrow at South 27th
Abilene, Texas
915-673-8153

The Dodge Boys PROUDLY PRESENT THEIR NEW '75s.



DODGE CHARGER SPECIAL EDITION '75.
There's been a change in Charger. It's a whole new car!



DODGE CORONET '75.
A totally new two-door hardtop joins the Coronet line. It's a little bit smaller—a little bit sportier.



DODGE DART '75.
The small car that's "right on target"—again!



DODGE MONACO '75.
Monaco was never more beautiful than now.



DODGE PICKUPS '75.
For the man who'd rather drive a truck than a car.

Dodge CHRYSLER
AUTHORIZED DEALERS

On display now at
Perry Motor Co.
Haskell, Texas



Rice Springs News

Rain and more rain, but isn't it great. Our residents couldn't get out too much and horse shoe throwing was at a stand still, but there was in-between showers of rain some porch sitting. Sam Wright, Matt Keathly and John Baugh spent much time killing flies that seemed to like our porch to find shelter under. They sorta had a contest with their fly swatters. Sam Wright, I believe, always won. Come to think of it, Sam always wins the 42 games also.

Everyone still enjoys our Bible Study each Friday night. We always have a good attendance. Mrs. Klose teaches the lesson. They are studying from the Book of First Thessalonians.

Many of our residents have entered handwork in the fair, so we have a number of ribbon winners which we are really proud of.

Mrs. Montey Penman of Knox City visited her aunts, Charity Bradley and Ethel Rose, over the weekend.

Roland Rose of Abilene, Windell Rose of Eagle Mt., Calif., Mr. and Mrs. Lofie Williams of Rule, Mr. and Mrs. Grady Webb and baby of Chickasha, Okla., and Joy Spalding of Hamlin visited their mother, Mrs. Ethel Rose and Aunt Charity Bradley.

Mrs. Bonnie Osborne and Maria Hoekendorf of Altus, Okla., visited Mr. Dana Wood.

Mr. and Mrs. Sherman Robinett of Lamesa visited Mrs. Earl Roberts. Mrs. Roberts also had a birthday and was taken out to supper at her son's, Ed Roberts.

Visiting Mr. and Mrs. Sam Bradford were Mrs. Louise Hine from Garden Grove, Calif., and Mr. Joe Bennite from Sweetwater.

Mr. and Mrs. Lee Vaughn of Aspermont visited Mrs. Abernathy.

Mr. and Mrs. L. E. Hines had as visitors Wednesday, Mrs. Hines' brother and sis-

ter-in-law, Mr. and Mrs. Aubrey Daniel and her sister and nephew, Mrs. Sherman Moulton and Sherman Jr. from Lubbock.

Also visiting Mr. and Mrs. Hines last week were Mr. and Mrs. Port Williams of Hamlin.

Charity Bradley's cousin, Jessie Ashley, of Killeen visited this week.

Visiting Mrs. Connie Martin was her granddaughter and husband, Mr. and Mrs. Billie Hertel from Stamford, her son, and wife, Mr. and Mrs. E. W. Martin from Knox City and Mr. and Mrs. Dick Frazier of Rule.

We extend to the family of Henriette Druessedow our sincere sympathy. Mrs. Druessedow came to Rice Springs in August, 1972. She was 85 years old. We shall miss Mrs. Druessedow very much.

Leisure Lodge News

Mr. and Mrs. Sherman Robinett of Lamesa visited her aunt, Mrs. Carrie Edwards, Monday. Visiting Mrs. Edwards on Saturday were Mrs. Edna Adkins and Claudia Reid of Rochester.

Mr. and Mrs. Ray Wright of Hillsboro visited his father, Mr. J. A. Wright, Sunday.

Mr. T. W. Free of Abilene visited Mr. Pat Weaver recently.

Mr. and Mrs. Dudley Pittman of Odessa and Mr. and Mrs. Archie Pittman of Aztec, N. M., are visiting this week with their father, Mr. D. D. Pittman.

Visiting with Mrs. Easter Mullis this week were Rev. Moody Smith and Mrs. Clara Cross of Rochester, Mrs. Cecil Jetton of the Jud Community.

Visiting with Mr. C. H. White this week were his children, friends, and relatives. Mr. Floyd White of Ft. Worth, Lloyd White of Littlefield, Mr. and Mrs. Sammy White, Mr. and Mrs. Durward White of Knox City, Mr. and Mrs. Wiley Bean of Plains, Mr. and Mrs. W. R. Roberson of Rochester, Jimmy White, Mr. and Mrs. Bill Roberson of Knox City; L. B. White of Haskell, Mr. and Mrs. Carl Baugh of Rule, Mr. and Mrs. Gordon Timmons of Lubbock, Mrs. Emma Cummings of Olney, Myrtle Townsend, Earlene Townsend, and Leone Strickland of Rochester, Mr. and Mrs. Dwight Griffin of Elmore, Okla., Mr. and Mrs. Guy Marshall, O'Brien, Rev. J. R. Williams, Mr. and Mrs. Aubrey Fouts, Lennie Yarborough and Mrs. R. C. Ezell, all of Rule. Mr. White is in the Haskell Hospital critically ill.

Sunday services were held by the Church of Christ and the Central Baptist. Mrs. Byrd and a group from the Four-square Church brought the Tuesday devotion.

Other patients in the Haskell Hospital this week are: Mr. Welton Howard and Mrs. Georgia Ann Stapp.

The Dietary School in Abilene last week was attended by Mrs. Dewie Wester and Mrs. Oma Jane Cummings.

Visitors of Mrs. Mary Collins over the weekend were Mr. and Mrs. Edd Hargrove and family of Cisco, Mr. and Mrs. Bill Pittman and family of Throckmorton.

Mrs. Collins' great-granddaughter, Debra Nell Miller, became the bride of Ricky Dale Brantley on Saturday night, September 14, in Irving, Texas. Mr. and Mrs. O. P. Collins, grandmother of the bride, Mr. and Mrs. L. V. Collins, Mr. and Mrs. Ray, all of Haskell, attended the wedding.

Janice Matthews, a native of Mangum, Oklahoma, is doing her County Extension Training here to become the County Extension Agent in Dickens County. For the next few weeks Miss Matthews will be working under the leadership of Mrs. Barbara Elliott, Haskell County Extension Agent.

Miss Matthews is a graduate of Southwestern State College in Weatherford, Oklahoma, and taught school one year in Norwood, Colo.

She is the daughter of Mr. and Mrs. W. L. Matthews of Mangum, Oklahoma.

The Haskell Sons of Hermann Lodge No. 241 is conducting a membership campaign that will continue through October 31.

Lodge officials report the drive is known as the "Tomorrow's Needs" campaign.

Membership representatives of the local lodge are: Harry G. Koehler, P. O. Box 65, Haskell 79521; and Caroline Moore, P. O. Box 123, Munday 76371.

Gen Symposium
LUBBOCK — A symposium on energy management in cotton gins has been set for Oct. 3 at South Park Inn here, according to Billy C. Gunter, district agent with the Texas Agricultural Extension Service.

Purpose of the symposium is to bring to light some current developments related to

the energy crisis which affect current and future operations of cotton gins, says Gunter. This symposium also is designed to bring to the attention of ginner on the High Plains the newly developed 'monoflow conveying system' and module building and feeding systems.

The Texas Agricultural Extension Service in cooperation with the Southwestern Public Service Company, is conducting the one day symposium.

Topics to be covered in the event include air pollution, review of the electric power situation, care and maintenance of motors and motor controls, and voltage drop, energy use and motor operation.

The meeting gets underway at 8:30 a. m., Oct. 3, and a lunch will be provided, courtesy of Southwestern Public Service, Gunter explains.

Following the formal presentations a panel discussion will be held consisting of the speakers and Roy Baker, director of South Plain Ginning Research Laboratory.

Trains Here

Janice Matthews, a native of Mangum, Oklahoma, is doing her County Extension Training here to become the County Extension Agent in Dickens County. For the next few weeks Miss Matthews will be working under the leadership of Mrs. Barbara Elliott, Haskell County Extension Agent.

Miss Matthews is a graduate of Southwestern State College in Weatherford, Oklahoma, and taught school one year in Norwood, Colo.

She is the daughter of Mr. and Mrs. W. L. Matthews of Mangum, Oklahoma.

Lodge Sets Member Drive

The Haskell Sons of Hermann Lodge No. 241 is conducting a membership campaign that will continue through October 31.

Lodge officials report the drive is known as the "Tomorrow's Needs" campaign.

Membership representatives of the local lodge are: Harry G. Koehler, P. O. Box 65, Haskell 79521; and Caroline Moore, P. O. Box 123, Munday 76371.

WASHINGTON



"As It Looks from Here"

OMAR BURLESON
Congressman—17th District

WASHINGTON, D. C. — In the early years of the United States foreign investments helped develop its economy. In the 1800's, foreign ownership comprised more than one-fourth of all business holdings, valued at that time at approximately \$80 million. By 1837 it amounted to \$300 million and by 1914 had increased to more than \$7 billion.

Following World War I, this trend began to reverse itself. The United States began exporting its own capital, with our corporations going into business around the world. In recent years, there has been a concern among some of our economists that too much capital was being sent overseas and that the export of jobs went along with it.

This trend is now back toward greater foreign investments in the United States with little knowledge as to its effect. There has been no real survey of direct foreign

investment in this country since 1959.

Recently, there has passed the House of Representatives a bill known as the "Foreign Investment Study Act of 1974." What the measure does is simply to authorize the Secretary of Commerce and the Secretary of the Treasury to conduct a study for a better understanding of the implications of these investments, both as to the United States Government and among the public at large, in order that there be a foundation for a national policy on foreign ownership of business in this Nation.

The best figures available show that during 1972, investment by foreign nations in this country amounted to about \$1 billion, while in 1973 the increase was about \$3 billion. Over \$10 billion of these direct investments are in mining, manufacturing and petroleum which amount to a total of \$38 billion.

There is little information on how much real estate and agricultural facilities are owned by foreign nationals or foreign governments. It is known, however, that the Japanese have purchased manufacturing plants, natural resources, including coal mines and agricultural lands, particularly in the midwestern states.

A hodge-podge of state laws

has made it difficult to get an over-all picture of the real effect of this type of ownership. For instance, there is little Federal regulation in foreign ownership of banks since foreign banks are not required to be a member of the Federal Reserve System. Since the Mid-East oil producing nations have reaped huge profits from the sale of crude oil, billions of dollars have gone into investments in other countries.

Numerous reasons are given for the more developed nations wanting to do business in this country. We probably have fewer restrictions and controls than most countries and our technology is readily available. Some other countries and, particularly in South and Central America, have limitations as to what foreigners can own. For instance, there is a prohibition in many countries against foreign investments in public utilities, transportation, communications, insurance, publishing, marketing and other enterprises. Except for some

State controls, foreign government most anything in States. In light of the many answers lacking and a proper understanding is essential to the appraisal of the effect of these investments on our country. Federal review of foreign investments is needed on which can be based.

Some people hedgehog blood warts.

Every day, more than 186,000 adults in The Big Country read more local West Texas news sports in The Reporter-News.

By mail in West Texas
ONE YEAR morning and Sunday
ONE YEAR morning only
Or Subscribe through Your Home town agent
Mary Lowe Edwin Roberts
864-2254 864-2566



CONSERVE AND SAVE ON ELECTRIC COOKING

Today's modern electric range offers you a host of special features which assure uniform cooking results each time. You'll find that cooking electrically is clean, cool and economical.

For best results, use flat bottom utensils with tight fitting covers. Utensils of medium or heavy weight aluminum conduct heat faster, transfer heat evenly and respond quickly to temperature changes.

Match the utensil to the size of the unit. Use 8 inch units for large utensils. Use 6 inch units for small to average sized pans.

Use high setting for a quick start for any surface cooking, or to boil water quickly. When cooking temperature is reached, switch to a lower setting.

Do not pre-heat the oven for roasting or broiling, but do pre-heat the oven to the temperature given in the recipe for baking.

Select correct, measured heat. The accurate heat selector switch or oven thermostat enables you to select, exactly, the same correct temperature each time you use it.

For good heat distribution around the pans, when baking, they should not touch the sides of the oven or each other. Allow one inch clearance. Check for doneness at minimum baking time on recipe, don't keep opening oven door to peek.

Remember, Buddy supplies the energy—but only you can use it wisely!

Calendar of Events - OCTOBER

	1 Lions Rainbow Sewing Club Weinert HDC UFW WMU Junior Garden Club Chamber of Commerce Lutheran Council 7:30 B&PW Club	2 Church of Christ Ladies Bible Class Church Night FBC RA's, GA's, Youth FBC Prayer Meeting HDC Council	3 Cancer Center American Legion ALCW HDC - LOC Center Point HDC Reary Club Progressive Study Club	4 YOUR SAVINGS DRAW GOOD INTEREST AT HNB	5 Football, Okla 8 p. m.
6 Attend the Church of Your Choice	7 Haskell Chap. 181 RAM Haskell Council 119 R&SM Fire Dept. ASC Community Action Rebekah Lodge Organ Club Columbus Day Holiday	8 Order of Eastern Star Lions WMU Farm Bureau School Board City Council Jossiet HDC UFW	9 Same As October 2 Senior Citizens, 2 p. m.	10 Cancer Center Rotary Club Young Homemakers Garden Club	12 Columbus Day
13 Attend the Church of Your Choice Lutheran League, 2:30	14 Fire Dept. ASC Commissioners Court Masonic Lodge No. 682 Farmers Union Guild Presbyterian Women Bratos-West Art	15 Ruth Class WMU Hospital Board Rainbow Sewing Club Men's Prayer Breakfast, City Cafe, 6:30 B&PW Club	16 Same as October 2 HD Council PTA	17 Cancer Center Rotary Club American Legion Progressive Study Club	19 MARKET NATIONAL FIRST CHURCH IS THE ECONOMIC PROGRAM
20 Attend the Church of Your Choice	21 Fire Dept. ASC Com. Cub Scouts Haskell Commandery No. 49 K. T. Cowbells, 7:30 Teachers Meeting	22 Lions Club WMU City Council Chamber of Commerce Lutheran Com. Night Commissioners Court	23 Same as October 2 Senior Citizens, 2 p. m.	24 Rotary Club Cancer Center	25 Football, Munday, there, 7:30
27 Attend the Church of Your Choice	28 Fire Dept. ASC Masonic Lodge 682 Cub Scouts Veterans Day	29 Lions Club	30 Same as October 2	31 Rotary Club Halloween	USE OUR WINDOW TALKERS

Remember, Buddy supplies the energy—but only you can use it wisely!

PUBLISHED AS A PUBLIC SERVICE BY **HASKELL NATIONAL BANK**

— MEMBER F. D. I. C. —

For Your Convenience
Clip This Calendar
Dates You Want to Remember

Section 2)
 LE SHOW
 1. Phil Chap-
 Calvin Wil-
 1. Brady
 FFA
 Angus heifer:
 Angus
 Wilfong.
 1. Reida
 Haskell
 1. Wilfong.
 1. Cin-
 2. Cal-
 Cindy Thom-
 1. Cin-
 Kim Hager,
 Lida Mullino,
 eford heifer:
 Haskell Co.
 mpion Here-
 ndy Thomas.
 mpion heifer:
 (Hereford)
 nd champion
 omas. (Here-
 LASSES
 Angus steers:
 2. Rod
 ester; 3. John
 ester FFA.
 Angus steers:
 enborn, Has-
 Dennis Grand,
 3. Dennis
 us steer: Cin-
 mpion Angus
 asend.
 y heavy weight
 y Thomas; 2.
 ylor Co. 4H;
 Haskell FFA.
 ddle weight
 ce Progst.
 Stan Hager,
 asan Mullino.
 ht weight
 Hager, Wein-
 ong, Haskell;
 er, Taylor Co.
 asbred steer:
 mpion cross-
 rice Propst.
 y weight
 Hager, Wein-
 Thomas, Has-
 Mullino, Roch-
 ddle weight
 Townsend, Ro-
 Hager, Wein-
 Mickler, Has-
 ht weight
 Wilfong, Has-
 amy Herricks,
 die Bland, Ro-
 reford: Kim
 mpion Here-
 send.
 mpion steer of
 Cindy Thomas,
 Big Red, Sim-
 d-Angus cross.
 nd champion
 ow: Kim Ha-
 reford heavy-
 ne exhibitor):
 ylor Co. 4H.
 or FFA): Ro-

Senior does: 1. O. D. and Dan Ryan Shipp; 2. O. D. and Dan Ryan Shipp; 3. John Hawkins, Aspermont.
 Junior bucks: 1. Shannon Lane, Haskell; 2. Kiersta Lane, Haskell; 3. Jackie Workman, Aspermont.
 Senior buck: 1. Bill and John Hawkins, Aspermont; 2. Jackie Workman, Aspermont; 3. O. D. and Dan Ryan Shipp.
 Fryers: 1. O. D. and Dan Ryan Shipp; 2. The Lanes, Haskell; 3. Jackie Workman, Aspermont.
 Best doe of show: O. D. and Dan Ryan Shipp (senior doe).
 Reserve best doe of show: O. D. and Dan Ryan Shipp.
 Best all around rabbit of show: O. D. and Dan Ryan Shipp (senior doe).
 Best buck of show: Bill and John Hawkins (senior buck).
 Best pen of fryers: O. D. and Dan Ryan Shipp.
 Best opposite sex: Bill and John Hawkins.
SHEEP SHOW
Breeding Classes
 Medium wool ewe lambs: 1. Craig Townsen, Hawley FFA; 2. Jay Pace, Hawley FFA; 3. Tim Nix, Anson FFA.
 Medium wool ewes: 1. Tommy Spraberry, Anson, Jones Co. 4H; 2. Tommy Spraberry; 3. Jay Pace.
 Champion medium wool ewe: Tommy Spraberry.
 Reserve champion medium wool ewe: Tommy Spraberry.
 Southdown ewe lambs: 1. Delbert Dodds, Paint Creek FFA; 2. Johnny Gonzales, Paint Creek FFA.
 Southdown ewes: 1. Jimmy Pace, Hawley 4H; 2. Jimmy Pace.
 Champion Southdown ewe: Jimmy Pace.
 Reserve champion Southdown ewe: Jimmy Pace.
 Fine wool ewe lamb: 1. Wayne Schmidt, Anson, FFA.
 Grand champion ewe: Tommy Spraberry, Jones Co. 4H. (Hampshire).
 Reserve grand champion ewe: Tommy Spraberry.
 Medium wool ram lambs: 1. Tim Nix, Anson FFA; 2. Danny Anglin, Anson FFA; 3. Jay Pace, Hawley FFA.
 Medium wool rams: 1. Jay Pace, Hawley FFA.

Champion medium wool ram: 1. Tim Nix.
 Reserve champion medium wool ram: 1. Danny Anglin.
 Southdown ram lambs: 1. Rocky Parsons, Albany FFA; 2. Bill Shack, Albany FFA; 3. Jimmy Pace.
 Champion Southdown ram: Rocky Parsons.
 Reserve champion Southdown ram: Bill Shack.
 Fine wool ram: 1. Wayne Schmidt.
 Grand champion ram: Rocky Parsons (Southdown).
 Reserve grand champion ram: Tim Nix (med. wool).
WETHER CLASSES
 Fine wool wethers, light weights: 1. Gil Richardson, Haskell FFA; 2. Dwain Weise, Haskell FFA; 3. Lynn Wheatley, Haskell FFA.
 Fine wool heavyweights: 1. Jerry Don Vandivere, Albany 4H; 2. Larry Jackson, Haskell FFA; 3. Terry Bartley, Haskell FFA.
 Champion fine wool wether: Jerry Don Vandivere.
 Reserve champion fine wool wether: Larry Jackson.
 Fine wool cross light weights: 1. David Gray, Haskell FFA; 2. Gray; 3. Cliff Grand, Haskell FFA.
 Fine wool cross heavyweights: 1. Jerry Don Vandivere, 2. Susie Pate, Albany FFA; 3. Tim Nix, Anson FFA.
 Champion fine wool cross wether: Jerry Don Vandivere.
 Reserve champion fine wool cross wether: Susie Pate.
 Medium wool wethers: 1. Russ Lewis, Haskell 4H; 2. Susan Lewis, Haskell 4H; 3. Mark Lewis, Haskell 4H.
 Heavyweight medium wool wethers: 1. Bill Shack; 2. Jim Ballard, Rochester FFA; 3. Rocky Parsons, Albany FFA.
 Champion medium wool wether: Bill Shack.
 Reserve champion medium wool wether: Russ Lewis.
 Southdown wethers: 1. Susan Lewis, Haskell 4H; 2. Bill Shack, Albany FFA; 3. Jim Ballard, Rochester FFA.
 Grand champion wether: Jerry Vandivere.
 Reserve grand champion wether: Bill Shack.



1975 Pontiac Grand Prix

If we could build only one car, this would be it. As if Grand Prix wasn't luxurious enough; now we have a super luxurious LJ model. Super two-tone paint outside. And a super posh interior. If you could own only one car, this should be it.

TRACTOR PULL RESULTS
 The Tractor Pulling Contest of the Haskell County Fair certainly did not disappoint the large crowd of spectators. The event was just as exciting as it had been billed. Tractors of all sizes and shapes were entered in the various classes of the contest. The entries in this event totaled 58 and probably displayed some of the best tractors and drivers to be found competing in this type contest anywhere.
 Winners of the contest follow:
9,000 Non-Turbo Class
 First: Gary Hoffman of San Angelo with a 4020 John Deere; second, Elbert Long of Big Spring with an International Harvester 966; third, Bobby Eggemeyer of San Angelo with a 4020 John Deere.
9,000 Turbo Class
 First, Charley Anderson of Lamesa with a Massey-Ferguson 1130; second, Wayne Williams of Carnegie, Okla., with a 3020 John Deere; third, M. C. Hodges of Ft. Cobb, Okla., with a 4000 John Deere.
9,000 Open Class
 First: Pat Hale of Haskell

with a 4020 John Deere; second, Don Fenley of Gainesville with a Massey-Ferguson; third, Ronnie Culp of Lamesa with an International Harvester 856.
9,000 Super Stock
 First: Derwood Blagrove of Ackerly with a 1206 International Harvester; second, Ken Sicking of Gainesville with an Allis-Chalmers 190XT; third, Pat Hale of Haskell with a 4020 John Deere.
7,000 Open Class
 First: Ken Sicking of Gainesville with an Allis-Chalmers 190XT; second, Don Fenley of Gainesville with a Massey 327 Chev. engine; third, James Braswell of Lamesa with a Massey 44 with 283 Chev. engine.
12,000 Texas Non-Turbo
 First: Elbert Long of Big Spring with an International Harvester 966; second, Ruben Almaguer of San Saba with a 4230 John Deere; third, Gary Hoffman of San Angelo with a 4020 John Deere.
12,000 Turbo Class
 First: Derwood Blagrove of Ackerly with an International Harvester 1468; second, Ronald Kinney of Rule with a 4630 John Deere;

third, Johnny Wheatley of Haskell with a 4630 John Deere.

15,000 Texas Turbo
 First: Derwood Blagrove of Ackerly with a 1468 International Harvester; second, Sonny Denson of Rule with a 1270 Case; third, Spencer Ford of Hamlin with a 4630 John Deere.
15,000 Texas Turbo
 First: Derwood Blagrove

of Ackerly with a 1468 International Harvester; second, Vernon Brister of Haskell with a 4630 John Deere; third, Spencer Ford of Hamlin with a 4630 John Deere.

"Baby Beef" Cuts Food Bill

COLLEGE STATION — If you'd like to eat more beef but can't afford existing prices, there may be an alternative in "baby beef."
 According to a livestock and meat specialist for the Texas Agricultural Extension Service, baby beef is beef produced from young animals weighing 400 to 700 lbs. that have come off pastures where they have been nursing.
 "Baby beef was once quite popular in the supermarket, but in recent years the trend has been toward choice heavy beef," points out Woodrow Bailey. "However, the high cost of feedgrains has caused the price of fat animals to jump while young calves coming off pastures have sold for considerably less."
 This price differential on August 10 was 20 per cent, according to the Texas A&M University System specialist. So, consumers could save that much on their beef dollar by purchasing baby beef

instead of heavy beef.
 What are the basic differences in the two types of beef?
 "The major factor is that there is less marbling—flecks of fat—in the lean portion of the meat," points out Bailey. "This means that loin steaks from baby beef do not lend themselves to broiling as well as those from heavy beef. But for all other methods of cooking, baby beef is excellent. In fact, baby beef is unsurpassed for pan frying."
 The specialist encourages consumers to look for baby beef in the supermarket, as some stores are beginning to display it once again. Better yet, check with a rancher or an auctioneer and buy a young calf weighing 500 to 600 lbs. Then have it custom slaughtered, cut and wrapped for your home freezer. Often the manager of a local meat processing plant will be able to obtain a calf for you.
 "If it's high quality beef you want, you can get it—and at a savings, too — by purchasing baby beef," contends Bailey.

GRAND Stamford
 Fri.-Sat.-Sun., 27-28-29
 2 Disney Color Hits
 "Castaway Cowboy"
 "Absent Minded Professor"

DRIVE-IN Theatre
 OPEN EVERY NIGHT

Fri. 27-Sat. 28
 "MAGNUM FORCE"
 Clint Eastwood—Color

Sun. 29, Mon. 30,
 Tues., Oct. 1
 "Ride In A Pink Car"
 Glenn Corbett—Color

Wed. 2, Thurs. 3
 X-ADULTS ONLY
 No One Under 18
 Proof Required
 "DEEP LOVE"
 Nude Color

INSURANCE
 Automobile - Fire - Life
 and Casualty
Furrh Lane Agency
 510 North First — Phone 864-3216



Coming soon! The first subcompact Pontiac Astre.

Worth waiting for. The '75 Astre's so new, your Pontiac dealer may not have it in stock yet. But don't let that stop you. Contact him to get the full story on the many features and availability of the new Astre Hatchback and Safari wagon. He'll be happy to take your order!



1975 Pontiac Bonneville

Strictly a high-level operation. For '75, we started at the top. With an elegant new roof line. Then we added new rectangular headlamps. A luxurious interior. And our Radial Tuned Suspension with steel-belted radials standard. Bonneville makes your driving strictly high class.

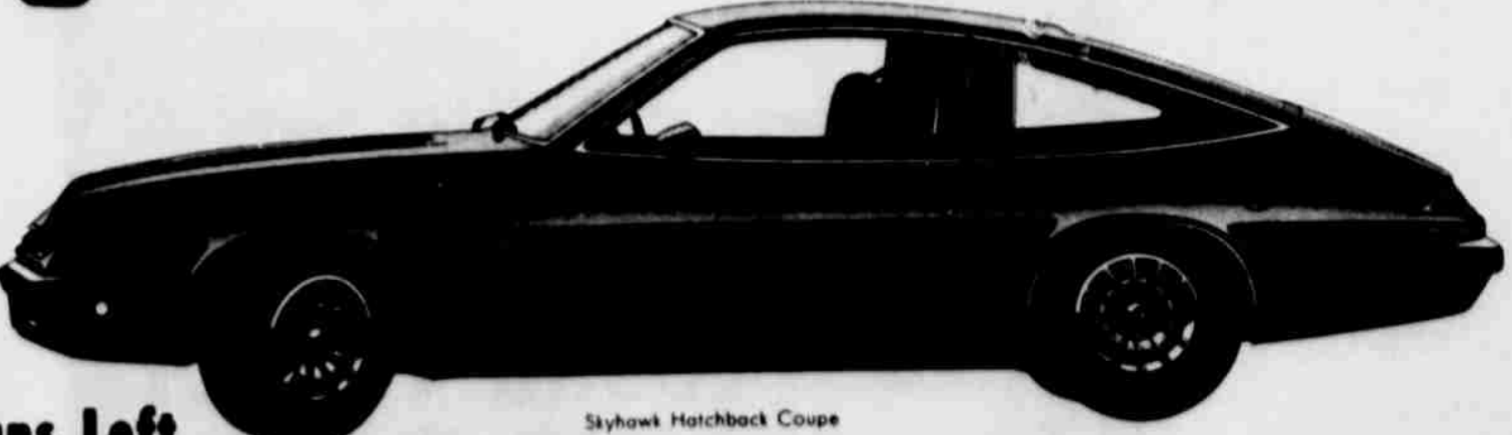


Electro Limited Hardtop Coupe



1975 Pontiac Ventura SJ

Our mission: give the compact some class. Mission accomplished. We just built the classiest Ventura of them all... Ventura SJ. It's got your kind of style. Distinctive. A luxurious interior. And a Radial Tuned Suspension with steel-belted radial tires. That's class in a compact.



Skyhawk Hatchback Coupe

You Are Invited To
 Come In And See
 The 1975
BUICKS-PONTIACS-GMC
 Thurs. & Fri., Sept. 26-27

We Still Have Some 1974 Cars and Pickups Left

Medford Buick-Pontiac
 Haskell, Texas

