

Shorter Days Increase Driving Hazards

Austin, Oct. 31—"The falling leaves of red and brown" mean happy times for most Texans. Football, Thanksgiving, deer season and relief from hot summer days are on the Texas scene.

But fall also means shorter days and longer hours of darkness. The sun sets earlier and twilight begins between five and six o'clock. Motorists beware.

Reports made to the Department of Health's Vital Statistics Division show over half of all traffic deaths occur from night accidents, even though less driving is done at night than during daylight hours. About one-third of pedestrian traffic deaths occur between 5 and 8 p. m.

Dusk is considered the most hazardous time of day both for motorists and for pedestrians. There is too much daylight for automobile and street lights to be effective, and there is not enough daylight to see clearly.

The early morning hours of winter present the same hazard, but the fatigue factor is much higher for evening driving. Everyone is fresh and wide awake in the mornings, but may be tired and not so careful at the end of a long day.

For the next six months you have a greater chance than ever of being forced to drive after dark. In addition, rain and other poor road conditions increase during these months.

Pedestrians are mainly responsible for their own safety when darkness falls, because drivers cannot see them easily. They should wear light colored clothing and always walk facing oncoming traffic.

For motorists, the first traffic safety measure should be to reduce your speed at dusk. In Texas, the night speed limit is 55 miles per hour as compared to 60 for the daylight hours. Darkness presents a new set of conditions demanding that you drive more slowly.

The cardinal rule for night driving is never so fast that you cannot stop within the area illuminated by your headlights. Always be alert for pedestrians or animals which might dart out into traffic at any time.

Turn your driving—not parking—lights on at the first hint of darkness. You may be able to see, but the other fellow may need your lights to identify you before you actually need them to see the road.

Dim your lights when approaching a car from behind as well as for oncoming traffic. In town, do not use bright lights except in emergencies.

Never pull out into traffic until you have turned on your lights, and always be alert for vehicles with burned out or dim lights. Check your headlights frequently. Both should be working and properly adjusted.

Human judgment of speed and distance of oncoming traffic diminishes at dusk. Use extra caution at crossings and intersections.

At the end of a working day every worker is anxious to get home. Allow for fatigue, in yourself and for other motorists. No matter how tired and irritable you feel, do not rely on the other fellow's driving ability. He probably feels worse than you do.

Application of these common sense principles can help to reduce traffic deaths in Texas. Traffic hazards work around the clock and they do not care how tired you are.

CAST YOUR VOTE for these FAVORITES!

PIGGY WIGGLY has one PLATFORM → PLEASING YOU the MOST!

THESE PRICES EFFECTIVE FRIDAY & SATURDAY, NOVEMBER, 2-3

Coffee Folgers 1 Pound **99c**

FLOUR Light Crust 5 lb. box **49c** 25 lb. Print **1.89**

CRISCO Contains 10c Coupon 3 Lb. Can **89c**

RIO OLEO 3 Lbs. **59c**

DO YOUR MID-WEEK SHOPPING WEDNESDAY for EXTRA SAVINGS

DOUBLE R & H GREEN STAMPS

with each purchase of \$3.00 or more!



Compare Variety!

MIRACLE WHIP pt. 33c

CATSUP, Hunts 14 oz. **19c**

STOKELEYS SPINACH, ... 2 303 cans ... **29c**

PINTO BEANS, ... 2 lb. cello ... **19c**

STOKELEYS GOLDEN CORN, ... 2 303 cans ... **34c**

STOKELEYS CUT GREEN BEANS, 303 can ... **21c**

CAMPFIRE PORK & BEANS . No. 2 1/2 can **17c**

KRAFT CARMELS, ... 1 lb. bag ... **35c**

WE CARRY A COMPLETE LINE OF HORMEL VACCUM PACK LUNCH MEATS!

Cranberry Sauce Kimbells 300 can **19c**

Sweet Peas Stokeleys 303 Honey Pod can **19c**

Coconut Durkee's 1 lb. bag **49c**

DATES Dromedary 1 lb. pkg. **37c**

Apple Butter Bama 22 oz. **23c**

BANANAS, ... Central America Lg. ... Lb. **11c**

SPUDS Russets 10 lb. bag **39c**

CUCUMBERS, ... Pound ... **10c**

BELL PEPPER, ... Pound ... **10c**

CELERY, ... large stalk ... each ... **15c**

YAMS Sandy Land Pound **10c**

CABBAGE, ... Med. Heads ... Pound ... **3c**

T-Bone Top Grade Calf Lb. **65c**

PORK CHOPS, ... choice cuts ... Lb. ... **59c**

SPARE RIBS, ... Pound ... **49c**

ARM ROAST, ... Pound ... **49c**

HAM, ... center slices ... pound ... **99c**

SALT JOWL, ... Pound ... **19c**

FRANKS, ... Family Pack ... 3 lbs. ... **79c**

BACON, ... Mid-West Tra-Pak ... **47c**

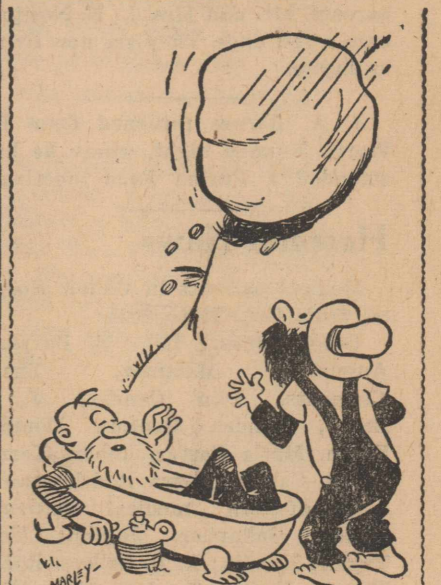
BORDENS **BISCUITS** 2 cans **23c**

Tomato Juice 3 Stokeleys 46 oz. **89c**

APPLE SAUCE Stokeleys 303 **19c**

DASH For Automatic Washers Reg. Size **37c**

IVORY SOAP 4 Personal Size **23c**



R. L. YOUNG INSURANCE

ROTAN DIAL 261

LOWEST PRICED

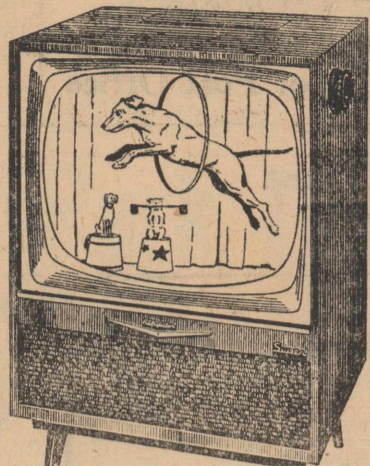
RCA VICTOR

TV ORIGINAL in Rich Console Styling

ONLY
\$259.95

Enjoy the exciting new
"LIVING IMAGE" picture

RCA Victor's new Eaton brings you 261 square inches of viewable "Living Image" picture—bright, clear, steady! Balanced Fidelity Sound adds extra realism. "High-Sharp-and-Easy" tuning lets you dial standing up! Come in—see the Eaton today!



The Eaton. In ebony, mahogany grained or lined oak grained finishes. Model 21T735.



FOR UHF—New High Speed UHF tuning covers 70 UHF channels in 2 1/2 seconds! Optional, extra, at low cost.

Ask about the exclusive RCA Victor Factory Service Contract

HOME Lbr. Co.

Phone 318 Rotan, Texas
TV CENTER OF ROTAN

RCA, Philco, Zenith, Westinghouse
RADIO & TV SETS
RADIO SALES & SERVICE
Air Conditioners & Parts
West Side of Square

BEN WARWICK

Owner, TV & Radio Technician
Telephone 3951 Roby, Texas

The Rotan Advance
Thursday, Nov. 1, 1956 (No. 40)

NEWS
*** County ***
Agricultural Agent
Texas A. & M. College
Extension Service

James S. Norman, County Agent

Each year at this time, County Extension Agents are required to make their Plan of Work for the following year with the help of representative people in the county. The following is an analysis of the County Situation, taken from the County Extension Plan of Work for Fisher County:

Analysis of County Situation 1957

Fisher County, located on the lower Rolling Plains of West Texas, is predominately an agricultural county with 254,921 acres of cropland and 254,957 acres of grass land. There are seventeen minor communities in the county but only eleven that really act as an independent community in any way.

Most of the income is derived from cotton, grain sorghum and wheat. Most of this is produced under dryland farming conditions. Only about 700 acres of cropland is irrigated. 88% of Fisher County livestock is beef cattle. The other 12% is composed of dairy cattle, sheep and hogs. Dairying seems to have been on the increase the last 10 years but is being effected now by the drought. Poultry, egg production is showing a big increase now.

A ready market is available for most dairymen in the county. Routes run out of Abilene and Lubbock to pick up milk. Marketing

facilities for grain and cotton are not so readily available. There is neither grain elevator, cotton warehouse, nor livestock auction ring in the county. Most grain goes to Hamlin, just across the county line or to Wichita Falls for sale or storage. Cotton is sent to Abilene and cattle are sold and bought for the most part through auction rings in Sweetwater, San Angelo and Abilene. The Santa Fe and MKT both have lines going through the county.

According to the 1954 preliminary census, there are 1191 farms and ranches in the county with a population of (1950 census) 11,023. Roby, the county seat has a population of 1,000; Rotan 3,100.

The average yield per acre of crops are as follows: 120 pounds lint cotton per acre, 750 pounds of grain sorghum per acre and 8.8 bushels wheat per acre. The 1956 cotton allotment—82,430 acres, wheat 29,557 acres.

There are 10 cotton gins in the county. A cotton oil mill and 3 cotton warehouses located at Rotan. Two gypsum mills and a small oil refinery. A 9-county electric co-op headquarters is located at Roby. There are two hospitals in the county.

The standard of living is high despite the drought of the past 5 to 6 years. Since 1950, however, many farmers have worked part or full time off the farm to supplement their farm income due to the prolonged drought.

Within the last year oil production has increased considerably in Fisher County.

Practically 100% of the farms have electricity; 742 have telephones 333 farms have home freezers.

More Improved Fertilizers Are On The Way:

Fertilizers are a lot better than they used to be, but more improved fertilizer material can be expected

in the future, reports M. K. Thornton, extension agricultural chemist.

Higher analysis fertilizers containing more nutrients and less bulky inert matter, and soluble or liquid fertilizers—all now on the market—have reduced weight and bulk and made both storage and application of fertilizer materials cheaper and easier for farmers and home gardeners.

Industrial and State-Federal research now being carried out will undoubtedly lend to further improvements, says Thornton.

One of these improvements will be the development of slower acting or less soluble forms of chemical fertilizer that will not leach out of the soil so rapidly. This will mean that enough fertilizer can be applied in one operation to meet the demands of a long-season crop, thus eliminating the need for repeated applications throughout the season. It will reduce present heavy losses of nitrogen through leaching. It will also prevent excessive potash consumption, now a problem in alfalfa and certain other crops in many parts of the country.

Other improvements will change the physical makeup of fertilizer materials, making them easier to store and to apply. A start in this direction has been made with the development of some granular products that have less tendency than older materials to cake and harden during storage and that distribute more easily and uniformly in the field.

A lot more work needs to be done in developing these better fertilizers, says Thornton. But farmers would do well to be alert for new developments in this field because they will open opportunities for increased efficiency of production and greater farm profits.

TO EDITOR:

We favor the election of Adlai Stevenson as President of the United States, Estes Kefauver as vice president, if any reader ever had any doubt. The reasons:

The Democratic party is most representative of all the people, particularly our section. This is a government in which the political party carries a major role.

Old aged assistance to elder citizens and cash money for helpless dependent children. Social Security for all the people and the Youth Administration to help our youth. REA created by the Democrats for benefits of rural people, the greatest blessing of all to farm wives to enjoy at home. 100% Farm Price Support and Soil Conservation, Sound Banking system to protect deposits up to ten thousand dollars. Hot School lunches for school kids. Farm to Market road. Low Money interest for those who need it. Housing program. Women Suffrage and Right to Vote. RFD rural delivery. Parcel Post service. Standard wages for women workers, and many other good legislation for all the people, 'not just a few.' Small business and farmers and workers almost down and out.

Now, regardless of how good wages you are getting you can't catch up with present high cost of living. Highest in history, and too, remember tite money and high rates of interest if you can get it. Look-

Rotan Electric
CROSLY RADIO & TV
RADIO & TV SERVICE
Appliance and Motor Repair
ELECTRICAL WIRING
Authorized BENDIX DEALER
All Work Guaranteed
Lee Rasberry
Phone Day or Night 375
113 N. Cleveland Rotan



BE AN ANGEL
in a
BERKSHIRE Slip

Designed to emphasize the figure. Nylon tricot flares into a flounce. Five rows of angel lace enhance flounce and bust line. Embroidered roses tucked into the lace. Blue, Pink or White. Sizes 32-38. \$5.95



BE AN ANGEL
in
BERKSHIRE Lingerie

Doubly matching petticoat and brief... both of nylon tricot. Blue, Pink or White. Petticoat, flounced with 5 rows of angel lace. Brief lace trimmed in front and lightly elasticized.
Petticoat—small, med., large. \$3.95
Brief—sizes 5 to 7. \$1.95

H. L. DAVIS & CO.

at your pocketbook, ladies and vote Democratic. Think of Benson and Allan Shivers and company and vote as you please.

Respectfully, Cecil Lotief.

Dr. Lawrence Hayes, Mrs. Hayes and their grandchildren, Melodie and Mike Freeman of Tulsa, Okla., who had visited here a week, went to Waco Friday of last week to attend homecoming at Baylor University and to visit their daughter, and their grandchildren, Melodie. They were joined there by their daughter, Mrs. R. C. Freeman, and Mr. Freeman, parents of Melodie and Mike, for the homecoming.

Mr. and Mrs. Joe Allen Blevins of Port Worth, spent the week end here with his grandmother, Mrs. John Price.

IT'S RANGE CHANGE



Suddenly you know how modern a range should be—

flame-fast gas ranges alone

offer 4 times less fuel cost!

Sally, this is Jane... I'm so upset. Our electric bill has really jumped since we got our new electric range.

Jane, our gas bill is one of the lowest-cost conveniences we have! Why don't you switch to gas at less than 1/4 the cost!

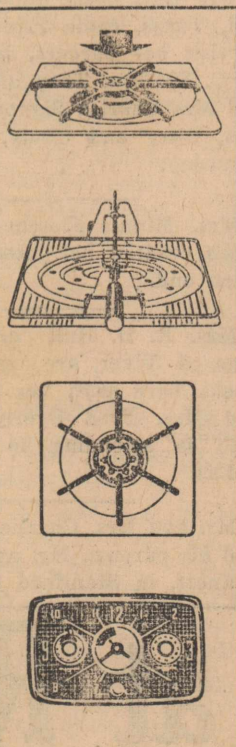
ONLY WITH EXCITING NEW FEATURES LIKE THESE CAN YOU REALLY COOK MODERN!

Cook-Saver Automatic Top Burner Control. New flame-fast gas Cook-Saver holds pre-set temperature. Foods won't burn! Makes all your pans automatic!

Built-In Rotisserie. Broil indoors with flame-kissed "barbecue" flavor. Turns out your favorite foods easily and deliciously.

Simmer Flame. On each burner, tiny points of flame make waterless, "vitamin-save" cookery a snap. Unlimited keep-warm and simmer settings.

Automatic Clock-Controlled Oven. Cooks whole meals while homemaker is away... turns oven on and off automatically. Even circulation of heat... use any rack position.



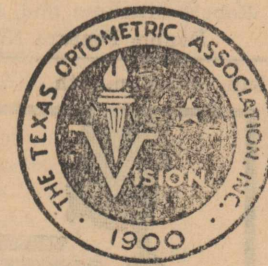
But of course! Smart Southwest Moderns know that cooking with gas is the most economical way to cook. It costs less than 1/4 as much to use as electric cooking. This means: If you can cook on an electric range for \$2.20 a month—you can do the same amount of cooking with gas for less than 55¢ a month. (Or a savings of \$19.80 a year!) What's more, an automatic gas range costs less to buy, less to install, and less to operate and maintain. No wonder smart women say truly modern cooking is cooking with flame-fast gas.

SAFEST COOKING EVER! American Gas Association seal assures reliability. Fire insurance statistics prove gas is safer!
SIZZLING TRADE-INS NOW on your gas or electric range. Cook modern—change today to a new ultra-modern gas range.

see your gas range dealer or
LONE STAR GAS COMPANY
More than 85 out of 100 women cook with gas!

KNOW Your Optometrist

Look for this seal on his door!

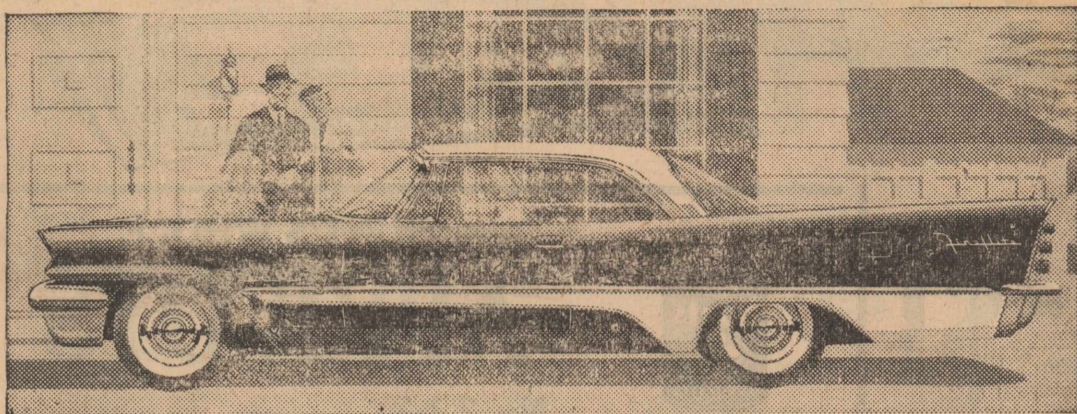


IT'S YOUR ASSURANCE OF PROFESSIONAL PROTECTION

Consult a member of Texas Optometric Association

- Dr. CLYDE E. DAWSON Snyder
Dr. JOHN B. MAJORS Sweetwater
Dr. JACK LEWIS Sweetwater
Drs. BLUM & NESBIT Snyder
Drs. MAJORS & MAJORS Colorado City

ANNOUNCING DESOTO FOR '57



THESE GIANT ADVANCES MAKE THE 1957 DE SOTO THE MOST EXCITING CAR IN THE WORLD TODAY!

The 1957 De Soto is completely new—not just a face-lift, but a totally new car! It has literally dozens of remarkable new engineering and styling advances. New Torsion-Aire Ride . . . the softest, smoothest ride ever. Dynamic new V-8 power . . . from three new advanced V-8 engines. New ultra-smooth Push-Button TorqueFlite transmission . . . terrific take-off at the touch of a button. And with its sparkling new Flight-Sweep '57 Styling, De Soto stands just 4 feet 7 inches from road to roof! Today, see and drive the new 1957 De Soto . . . the most exciting car in the world today . . . at our showroom now!

KENNEDY MOTORS

112 NORTH CLEVELAND AVE. ROTAN, TEXAS

YOUR DE SOTO DEALER PRESENTS GROUCHO MARX IN "YOU BET YOUR LIFE" EVERY WEEK ON BOTH RADIO AND TV . . . NBC NETWORKS.

The Rotan Advance
Thursday, Nov. 1, 1956 No. 40

Circle I Meets In Home Of Mrs. Hughes

Circle No. 1, the Lucille Reagan Circle of the First Baptist Church, met Monday afternoon in the home of Mr. and Mrs. Obed Hughes to complete the study of "On Our Doorstep, which has been taught by Mrs. C. J. Dalton.

After the program, Mrs. Hughes served pumpkin pie topped with whipped cream and coffee to Mes. Emmett Cave, J. W. Perry, J. T. Smith, Ira Morrow, W. L. Morrow, M. D. Ivey, Bernice Stockton, Shela Taggart, L. C. J. Cross, J. C. Parks, Ruple Morrow and Sheila Denise Lightfoot.

USE ADVANCE WANT ADS

Mrs. Bernice Stockton spent last week in Lubbock visiting with her nephew, Jack Strong and family. Mr. and Mrs. Howard Davison, Mrs. Bernice Stockton spent Sunday with Mrs. Will Davison in McCaulley.

DANCE

SATURDAY, NOV. 10th

V. F. W. HALL, ROTAN

Music by All Western Band of Snyder

PUBLIC INVITED

Freedom
is a Fine Line
that can be broken
easily . . . Voting is the
one sure way of
keeping the Freedom
Line from Breaking . . .

Be Sure
to Exercise Your
Freedom by Voting
on Election Day . . .
Vote November 6th.

West Texas Utilities
Company

Jr. G. A.'s Have Japanese Program

The Junior G. A., 11 to 12 year old girls of the First Baptist church enjoyed a Japanese Tea Monday, Oct. 29 from 4 to 5 o'clock, given by Circle II of WMS.

Mrs. Mac Weathersbee gave the introduction and one chapter of Koji of Japan which will be the Mission book and study on Missions.

Mrs. Weathersbee also gave the girls a joy by showing them about 25 minutes of colored slides of Japan.

The room was decorated with a table of all kind of articles from Japan which was very interesting, and several posters were shown.

The girls were seated around the table on pillows and were served Japanese food or sweets—rice crispie balls, candied cherries, sugar cookies and hot tea.

Attending were, Mrs. Ruple Morrow, WMS president; Mrs. Mac Weathersbee, Ritta Head, Janice Steager, Deanna Parks, Wanda McKimney, Daphne Hamm, Dona Stricklin, Wanda Stricklin. Visitors, Sherron Weems and Counselor Mrs. Chester Schick.

Painful Progress

The Texas Safety Association reports that in 1930, about the time the automobile age really began to roll, two out of five traffic accident fatalities were pedestrians. Now it is only about one out of five.

In other words, in 25 years pedestrian deaths have dropped from about 40 per cent of our national traffic toll to a little over 20 per cent.

That would suggest we are making progress in pedestrian protection, as undoubtedly we are. Ceaseless education, better street lighting, walk-wait traffic lights, these are some of the things that have brought improvement. Gains have been made despite the fact that the proportion of drivers in our total population is much greater than it was 25 years ago.

Despite such favorable influences, 8,400 pedestrians died on streets and highways last year. Progress is slow and painful, to the pedestrian often very painful.

Texas Safety Association figures show that pedestrian traffic victims are most often persons who have never driven a car, and consequently have less understanding of distance, speed, lighting, stopping ability, the limitations of the man behind the wheel.

We need to push every physical protection for the pedestrian, lighting, street and signal engineering, overpasses and tunnels. We need firm and fair enforcement of regulations applying to both motorists and those on foot.

But most of all we need to teach both the common sense of sharing the earth and the paths man has built across it. The horn-honking and fist-shaking conflict one observes on almost any street corner is senseless.

The motorist has a great obligation imposed not only by law but by the sobering realization that his steel armor will always win over yielding flesh.

The pedestrian must surrender some of his heritage of walking where and as he chose.

The man on foot and the man on wheels must learn to live together in a spirit of courtesy and fair play.

Mrs. Darthulia Hale and her mother, Mrs. Lena M. Green, went to Colorado Thursday of last week to visit Mr. and Mrs. John Ross Hale and son.

Be

FOR TEXAS

Be a

DEMOCRAT

Vote

DEMOCRATIC

From

Court House

to

White House

Paid Pol. Adv.

YOUNG'S FOOD VALUES

Swifts PURE ICE CREAM, 1-2 gal. . .	79c
Honey Cup MELLORINE, 1-2 gal. . .	49c
Frozen STRAWBERRIES, 10 oz. pkg. . .	22c
Frozen GREEN PEAS, 10 oz. pkg.	19c
FISH STICKS, 8 oz. pkg.	35c
FOLGERS COFFEE, lb.	99c
Vegetole SHORTENING, 3 lb. can . . .	69c
ELBERTA PEACHES, 3 No. 2 1/2 cans . .	89c
Rosedale Fancy CORN, 6 No. 303 cans .	89c
Wapco Whole New POTATOES 6 303 . . .	69c
MACKEREL, 6 tall cans	98c
CELERY, stalk	15c
RED SPUDS, 10 lbs.	39c
ORANGES, 5 lb. bag	39c
BARTLETT PEARS, lb.	19c

KLEENEX, 400 size	28c
BEWLEY'S BEST FLOUR, 25 lb.	\$1.98
Bewleys BISCUIT FLOUR, 25 lb.	\$1.69
BEWLEYS MEAL, 10 lb.	79c
PORK STEAK, lb.	43c
PORK SAUSAGE, home-made, lb.	43c
SALT BACON, lb.	32c
Bewleys EGG MASH, 100 lb. Krakets . . .	\$4.40
20% Protein	
WHEAT GRAY SHORTS, 100 lbs.	\$2.98

Geo. W. Young & Son

TAX DISCOUNT NOTICE

THE SAME DISCOUNT WILL APPLY
THIS YEAR AS LAST ON EARLY
PAYMENT OF CITY TAXES

The following will apply

3% Oct. 1 thru Oct. 31

2% Nov. 1 thru Nov. 30

1% Dec. 1 thru Dec. 31

First and Last Days Inclusive

CITY OF ROTAN

DON'T YOU

Let that BLUE NORTHER catch you without a Warm Winter Coat, or a Pair of Boots to keep those feet warm. You're feet are important you know. DEE'S is the place YOU need to visit. There you will find Wool Coats, Suedes, Gloves, Elk Coats, Boots for the Entire Family.

DEE'S

Shoe Shop and Western Store

HURRY! **HUNT FOODS** **DOLLAR** **STRETCHER** **SALE**

HUNT'S
Tomato Juice 10 ³⁰⁰ Cans **\$1** 4 ^{46 oz.} Cans **\$1**

Miracle Whip Salad
DRESSING quart **49c**

Velveeta
CHEESE 2 ^{Lb} Box **79c**



Hunt's
Peaches
 300 size
 5 for **\$1**

Hunt's Solid Pack
Tomatoes
 No. 300
 6 for **\$1**



HUNT'S WHOLE
APRICOTS
 No. 2 1-2
 Can **3 for \$1**

HUNT'S
SPINACH
 No. 300
 Can **7 for \$1**

HUNT'S Fancy Tender Garden
PEAS
 No. 300
 Can **6 for \$1**

HUNT'S GREEN
BEANS
 No. 300
 Can **5 for \$1**

HUNT'S PURPLE
PLUMS
 No. 300
 Can **4 for \$1**

HUNT'S
Fruit Cocktail
 2 1-2
 Can **5 for \$1**

HUNT'S SLICED or HALVES
PEACHES
 No. 2 1-2
 Can **3 for 89c**

HUNT'S
PEARS
 300
 Can **4 for \$1**

PIE APRICOTS gallon can 99c	HUNT'S FRUIT COCKTAIL 2 1-2 can 3 for \$1	HUNT'S WHOLE APRICOTS 300 can 6 for \$1	HUNT'S PEARS No. 2 1-2 can 3 for \$1
---	---	---	--

FRUITS and VEGETABLES

Texas
Oranges 5 ^{Lb.} Sack **39c**

Cello
CARROTS ^{Lb.} Bag **10c**

Yellow
Onions lb. **7c**

Rutagaba
Turnips lb. **7c**

Fresh Green
CABBAGE lb. **3c**

Russet
Potatoes 10 ^{Lb.} Sack **49c**

Meat Dept. Values!

Fully Cooked sliced Free
Picnic Hams lb. **35c**

Fresh
GROUND MEAT, ... Lb. ... **25c**

Lean
Pork Steak lb. **39c**

Lean
Pork Chops lb. **49c**

Choice
CHUCK ROAST, ... Lb. ... **37c**

Loin & Round
STEAK lb. **69c**

Fresh Dressed
HENS lb. **45c**

Pork
ROAST, ... Lb. ... **39c**

Hunt's
CORN
 No. 300
 6 cans
\$1

Hunt's
Country Style PICKLES
 2 1-2 Jar
 3 for
\$1

Calf
LIVER
 Lb. ... **39c**

Matchless
BACON
 Lb. ... **49c**

D. J. Smith & Co.

Extra Bonus! Save S & H
 GREEN STAMPS
 Phone 260 or 265

SUBSCRIBE TO:

The Abilene Reporter-News FALL BARGAIN OFFER

REGULAR \$18.00
PRICE
NOW ONLY . . .

ONE YEAR **\$11.95**
BY MAIL

Family Weekly Magazine and 8 pages
Sunday comics in color.

Daily and Sunday
Daily Only
\$10.95

You Read More Exclusive Local West Texas News and Latest News in the Reporter-News

The Biggest Newspaper Bargain In
West Central Texas!

'Give Pedestrians A Break In Traffic'

E. C. McFadden of Dallas, president of the Texas Safety Association, Inc., opened November with a plea to motorists as he asked for their complete cooperation in the current pedestrian safety program which the Texas Safety Association is conducting.

"Be your brother's keeper—give pedestrians a break in traffic! So long as 'dog eat dog' attitude prevails, we will have disgracefully high pedestrian traffic tolls," McFadden said. "Drivers know that walkers are no match for them, and they should give way whenever a pedestrian's safety is at stake."

"Even when the pedestrian is flagrantly breaking safety rules," he said, a motorist has no right to make the walker pay for his carelessness with his life.

McFadden also reminded motorists that there are special classes of pedestrians who have an extra claim to the driver's protection. These are youngsters, oldsters and the blind.

"Children are likely to play in the street, and drivers should be on the lookout for them near schools and playgrounds and in res-



Keeping house for a family of twelve on the sidewalks of the British port of Hongkong is no easy task for these refugees from communist China. A major problem is to find food. CROP gifts help these families and others resettled by Church World Service in housing developments.

idential districts," McFadden said.

Elderly people may have impaired sight and hearing, and their reactions are usually slow, he said. The driver must allow for these handicaps by giving older folks extra time for all traffic actions.

"Of course, these precautions

The Rotan Advance

Thursday, Nov. 1, 1956 (No. 40)

must be greatly increased when dealing with the blind," McFadden explains. Blind persons usually carry a white cane or are escorted by guide dogs, these are the driver's cue to proceed with extreme caution. It's always wise to assume that the blind person is not aware of the traffic situation.

"If you try to drive as if the safety of everyone you meet is your personal concern, you'll do your part in the pedestrian safety program," McFadden concluded.

Double Birthday Party Enjoyed By Group

Jimmy and Donna Gruben, children of Mr. and Mrs. Glen Gruben celebrated with a double birthday party Monday at their home.

Donna was three years old Monday Oct. 22 and Jimmy will be six, November 7, but they had their party together.

Enjoying the affair, with ice-cream and cake were Robert and Reba Carter, Lou McCombs, Doug and Randy Upshaw, Deborah Rains, Sharon Phillips, Sue Jane Mirick, Joel and Becky Cobb, Connie Byrd and Beverly and Jackie Huckaby.

Others present were grandparents Mr. and Mrs. Aroin Cross, great-grandmother, Mrs. R. L. Williamson, Mrs. Billie McCombs, Mrs. Jimmy Huckaby, Mrs. Glen Upshaw, Mrs. Walter Byrd, Mrs. Odell Ranis, Mrs. Ray Cobb, Mrs. Horace Carter, Mrs. Otis Mirick and their mother, Mrs. Glen Gruben.

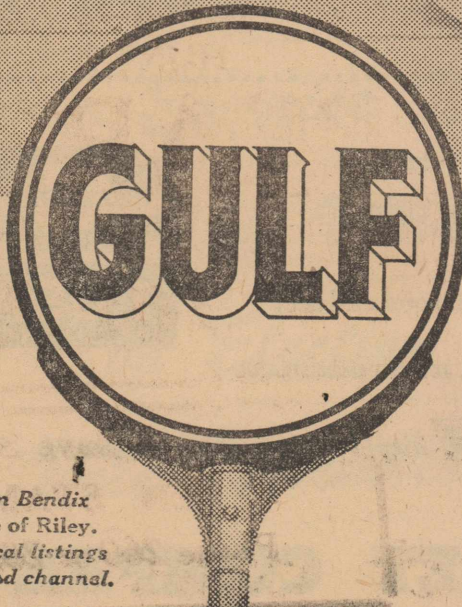
In the first reunion in 44 years, sisters of Mrs. L. B. Green gathered here last Sunday. Here for the occasion were Mr. and Mrs. Jake McKinney, Mr. and Mrs. Neal McKinney and family of Dublin and James McKinney of Weatherford. Mr. and Mrs. Leo Prater of Martinez California also enjoyed the reunion with the relatives.



TELL ME, RILEY,
WHAT GIVES YOUR CAR SO
MUCH PICK UP AND GO?

SURE THING, CHUM—
CLEAN-BURNING NO-NOX.
GULF TAKES OUT THE GOO
AND GIVES YOU MORE GO

I GET IT. NO-NOX KEEPS
YOUR ENGINE CLEAN, YOU KEEP
THE HORSEPOWER YOU BOUGHT



Get clean-burning
GULF NO-NOX
the "high-value" gasoline

*See William Bendix
in The Life of Riley.
Consult local listings
for time and channel.

J. O. KENNEDY, Distributor of Gulf Oil Products

Be
FOR TEXAS
Be a
DEMOCRAT



A Sikh boy flood victim has his fractured leg set by a medical student. Medical students from the Ludhiana Christian Medical college in India waded through neck-deep water to deliver food, clothing, medical aid and hope to some of the forty-five million people affected by the great India floods of 1955. Famine and disease follow in the wake of floods. Contributions through the Christian Rural Overseas Program (CROP) will be needed to help supply food for these people for many months.



TELEPHONE TALK

by Truman Black, Manager

Color Comes to Telephones

"Whats your favorite color?" is often a popular topic of conversation among school children.

When girls are talking about Susie's new dress, or boys get together to comment—sometimes critically—on a new jacket in the crowd, everybody has a special color—the one they like best.

Mostly it's blue or red. But again, it might be green or yellow, or any of the other colors of the rainbow.

Well, color has become a popular subject at the telephone company—namely, the new color telephones.

We don't boast having telephones in every color of the rainbow, but we do have them in eight, bright beautiful colors. You can choose from ivory, beige, red, brown, green, grey, yellow and blue.

Color telephones brighten up your home by blending or contrasting with the color schemes. They add smartness to an office or store, too.

The cost is \$10 for the set, plus a one-time installation charge of \$2.00, for a telephone in your favorite color. And if you order a color set as an extension for more convenience, just add the regular monthly extension rate of \$1.00 to the one-time charges. Call the telephone company today to order a color telephone. You'll be glad you did.

A Real Bargain

From time to time, stores come up with sales where you buy things at reduced prices, or even "two for one."

Here at the telephone company, we offer you what amounts to a "three for two" savings on Long Distance calls all year long.

You can place three station-to-station calls for approximately the cost of two person-to-person calls.

You see, a station-to-station call is really similar to a local call. Your call goes to a telephone—not a person. Frequently, the person you want to talk with is the one who answers.

Lower station-to-station rates let you call Long Distance more often. Take advantage of this bargain service and save money.

And remember, rates are lower every evening after 6 p. m. and all day Sunday.

"Just Pick Up the Phone"

How often have you said to someone; "Don't worry about it. Just pick up the phone and call."

Yes, the telephone saves you time and steps each and every day, because for many of your errands all you have to do is "pick up the phone."

Call by number. It's twice as fast.

SOUTHWESTERN BELL TELEPHONE COMPANY



Elmdale Church Wins District Award

Abilene—The Elmdale Baptist Church six miles from Abilene has been named winner of the district 17 Town and Country Achievement Award sponsored by the Baptist General Convention of Texas, the Rev. L. L. Trott, district missions secretary, said this week.

The same church only recently won the Town and Country Award for the Sweetwater Baptist Association. The district includes an 11-county area extending from Rotan and Roscoe on the west to Ranger on the east, and from Haskell on the north past Sweetwater, Abilene and Eastland on the south.

One of the judges' main considerations in making the award was the Elmdale Church's influence in community affairs, Mr. Trott said.

Members of the congregation not only sponsor an Explorer Scout unit, but also urge cooperation in the local school and PTA, encourage pride in the appearance of community homes, study soil conservation methods and work toward home mission projects.

Within its own congregation, the church has also remodeled its annex, enlarged the educational space, remodeled its kitchen facilities, bought new pews for the auditorium, carpeted the aisles, painted the building and secured a water supply for the congregation.

Although the church failed in its attempt to dig a water well, it did win three new converts as a result of the effort.

The Elmdale church now has 172 members and an annual budget of \$6,800. Its pastor is the Rev. Paul Nelson. Members give 12% of their annual church budget through the Texas Baptist cooperative program of home and foreign mission support.

Mr. and Mrs. J. C. Parks of Odessa, are announcing the birth of a 5-1-2 pound son Oct. 25. Mrs. Parks' mother, Mrs. A. C. Dodson, flew from her home in Arlington, Cal. Tuesday to be with her daughter. Mrs. Parks is the granddaughter of Mrs. Stella Morrow.

Dr. Lawrence Hayes, Mrs. Hayes, Mrs. Ira Morrow and Mrs. L. W. Dickson of Roby, will leave Sunday afternoon for Corpus Christi, where they will attend the General Convention of the Texas Baptist Churches.

Mr. and Mrs. Ray Smith of Matador, visited his mother, Mrs. W. B. Berry, Monday night.

Mr. and Mrs. Elmo Cummins, Chris and Beth of Abilene, spent Saturday night and Sunday with her parents, Mr. and Mrs. J. D. Burk.

Donald Lewis, a pre-med student at Texas University, visited his parents, Mr. and Mrs. Kelly Lewis, last week end.

Mr. and Mrs. Henry Withers visited their children, Mr. and Mrs. Wade H. Smith in Midland last week end.

.....IT'S RANGE CHANGE SALE TIME!



SAVE \$60⁰⁰

ON OUR MOST POPULAR Universal GAS RANGE



GAS APPLIANCE PURCHASE PLAN
FREE INSURANCE
EASY TERMS

- Temperature controlled top-burner FOODS WON'T BURN!
- Automatic oven and burner lighting MATCHLESS OPERATION
- Comfort-Touch oven door COOL, CLEAN KITCHENS
- One-Hour electric timer clock
- Reci-file rotating recipe chart

Model 8035CP

\$309.95
Special Trade-In 60.00

249⁹⁵

\$1 DOWN...as low as \$1.88 weekly

PAYABLE MONTHLY

LONE STAR GAS COMPANY

Mrs. J. V. Hellums returned home Monday afternoon from Corpus Christi, where she attended the funeral of her brother-in-law, B. R. Wilson. She spent several days with her sister, Mrs. Wilson, and then visited her daughter, John Hellums, in Austin. Mrs. Jas. B. Day and Mr. and Mrs. Earl Keese of Stamford, also attended the funeral and returned home Wednesday of last week.

Mr. and Mrs. Jerry Noles of Dallas, visited their parents, Mr. and Mrs. W. R. Noles and Mr. and Mrs. Kelly Lewis last week end.

ROBY

NATIONAL FARM LOAN ASSOCIATION
SECRETARY-TREASURER'S OFFICE
FEDERAL LAND BANK LOANS

B. L. Conley, Sec'y-Treasurer
Roby, Texas

The Rotan Advance

Thursday, Nov. 1, 1956 No. 40

IT'S GOOD SENSE

to be a

DEMOCRAT

The Party of All the People -- in Texas and the Nation

Johnson Wax Sale

THURSDAY, FRIDAY & SATURDAY

Hard Gloss GLOCOAT qt. 85c; 1/2 gal 1.59

BEAUTIFLOR, Qts. 85c

PASTE WAX, 1 lb. 57c; 2 lb. \$1.09

STRIDE, New Liquid Wax
Qts. \$1.19 Pts. 65c

JUBILEE KITCHEN WAX, 14 oz. . . 55c

RAID, House & Garden Spray,
Regular \$1.59—Special \$1.19

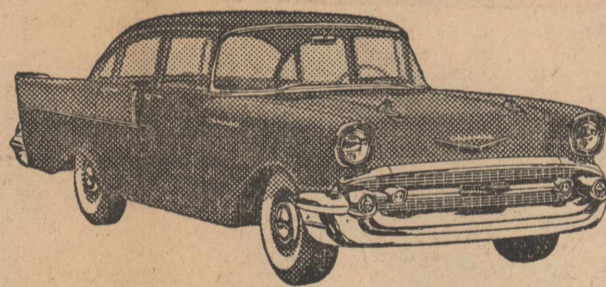
JOHNSON POLISHER-SCRUBBER
FOR RENT

Clark-Benson Hdw.

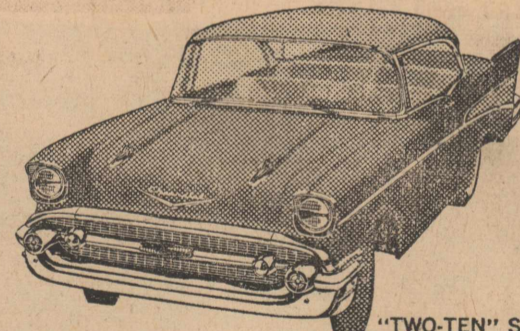
new Chevies by the score—

all sweet, smooth and sassy!

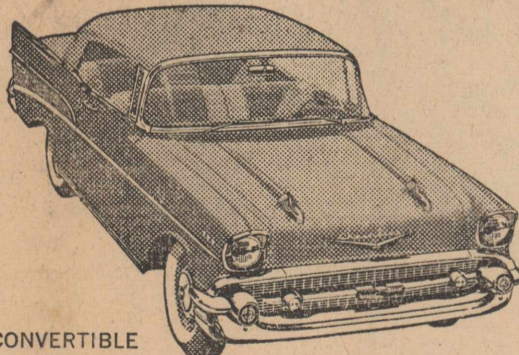
(There are 16 more where these four came from)



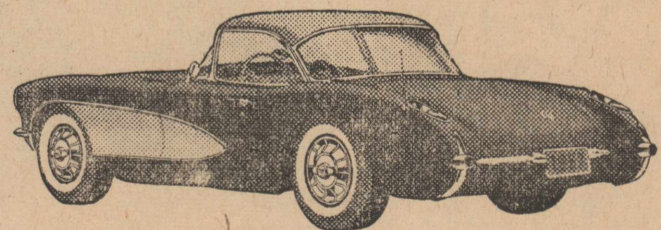
"ONE-FIFTY" 4-DOOR SEDAN



"TWO-TEN" SPORT COUPE



BEL AIR CONVERTIBLE



CORVETTE

Look over the whole line-up of new Chevrolets for '57. Nineteen new passenger car models that are lower, longer and new right down to the wheels—plus the dashing new Corvette.

There's one that will fit into your life beautifully. Come in soon and see!

AIR CONDITIONING—TEMPERATURES MADE TO ORDER—AT NEW LOW COST. LET US DEMONSTRATE!

Only franchised Chevrolet dealers display this famous trademark

HOGSETT CHEVROLET COMPANY

101 W. Snyder Ave.

Rotan, Texas

FB Dist. Winner To Compete For Queen

Houston—Thirteen lovely farm and ranch girls, all winners of Farm Bureau district eliminations, will compete here November 12 in the state finals of the Texas Farm Bureau queen contest.

The winner of the state-wide search for the most beautiful farm or ranch girl in Texas will receive \$500 in expenses for herself and her matron escort to make a trip to Miami Beach, Florida. They will travel on a special train with the Texas delegation to the 38th annual convention of the American Farm Bureau Federation December 9-13 in Miami Beach.

All contestants will receive beautiful wrist watches from the Texas Farm Bureau. In addition, the twelve district queens who do not win the state crown will receive a week's stay at the Crazy Hotel in Mineral Wells, compliments of the management. The state farm organization will pay expenses for all the contestants and their matron escorts to attend the state convention in Houston. The queen eliminations will be held in connection with the convention.

Queen nominees are: Donna Black, Dumas; Joann Vaughn, Tullia; Virginia Hudspeth, Forestburg; Norma Jean Walterscheid, Muenster; Janelle Ritchie, Troup; Doty Echols, Lamesa; Betty Richie, Brady; Flora McKethan, McGregor; Marha Jean Currie, Cold Springs; Shirley Zamzow, Karnes City; Marilyn Knudsen, Danevang; Martha McKamey, Taft and Jane Moseley, San Juan.

Melvin Munn, director of public relations for Blue-Cross-Blue Shield, Dallas, will be master of ceremonies.

Special Election For One Amendment

Through error on the part of a recent Legislature, one proposed constitutional amendment, will not appear on the regular General Election ballot, Nov. 6, 1956.

A special election is required on Nov. 13 for this one amendment.

It will cost practically as much to hold this special election as the regular one.

County Judge Bruce McCain is asking the voters if they prefer to hold this special election with only three voting boxes, Roby, Rotan and Absentee, with all voters having the privilege of voting at these. This would cut the cost from about \$1600 to \$300, and save the county budget from going into the red. He asks that voters write, call or see him, so he may as determine which system they want.

Please let him know your wishes so that plans can be made.

Dodge Increases Power To Aid Driving Safety

"All the power that any safe driver would need," in the words of Dodge President M. C. Patterson, has been built into the larger engines of the 1957 Dodge Swept-Wing passenger cars.

The new engines provide "full-time driver control" of the 1957 cars under all conditions of weather and terrain and with ample reserves of power on tap to enable motorists to "get out of difficult situations before they happen," Patterson said.

Compression ratio of the popular Getaway six-cylinder engine, available in Dodge Coronet models has been raised to 80 to 1. Horsepower is 138 @ 4000 rpm.

Displacement of the Dodge Red Ram V-8 engine has been increased from 315 to 325 cubic inches and the compression ratio raised to 8.5 to 1. Horsepower is 245 @ 4400 rpm. Designated to operate on regular fuels, the Red Ram V-8 is standard equipment in Coronet V-8 and Royal models.

The Super Red Ram V-8 engine for Custom Royal models is equipped with a four-barrel carburetor, dual exhausts and extensions, special distributor, special air cleaner

Taxpayers Can Save Money By Voting For Amendment No. 2

One of the proposed Constitutional Amendments offered in the November 6 General Election presents taxpayers of Texas a rare opportunity—that of saving some money.

The proposed amendment would allow Commissioners Courts to reallocate the amounts levied for their four regular operating funds—general fund, jury fund, permanent improvement fund and road and bridge fund—on an annual basis. Now the amounts that can be levied for these funds are fixed by the Constitution and cannot be changed except in reallocation elections, which must be held every six years or oftener.

The proposed amendment guarantees a four barrel intake manifold. Horsepower is 260 @ 4400 rpm.

A special, high-performance D-500 engine, available with double rocker arms and dual exhausts and extensions, has a single four-barrel carburetor. Horsepower is 285 @ 4800 rpm. The D-500 engine with four-barrel carburetors develops 310 hp @ 4800 rpm.

antes that the total tax rate could not be raised, for it sets the same maximum as now provided, 80 cents on the \$100 valuation.

No private business could long exist if it had to guess six years in advance on its fiscal operations. Adoption of this amendment would free the counties to operate on a more efficient, business-like basis.

The people, by adopting this amendment therefore, can save in two ways: first, their Commissioners Courts will be given the opportunity to operate their fiscal affairs in a modern way which will make for economy, and, second, they will save the cost of expensive reallocation elections every few years.

The proposal, undoubtedly, is the most progressive step toward better, more efficient, more business-like county government that has been taken in one hundred years or more.

We think it deserves the support of every taxpayer.

Jerry Thomas and her roommate at McMurry College, Abilene, spent the week end here with Jerry's parents, Mr. and Mrs. Clifton Thomas.

Mr. and Mrs. O. B. Cave and Jane spent the week end visiting her parents, Mr. and Mrs. W. F. Taylor in Big Spring.

TAX DISCOUNT NOTICE

THE SAME DISCOUNT WILL APPLY THIS YEAR AS LAST ON EARLY PAYMENT OF SCHOOL TAXES

The following will apply

3% Oct. 1 thru Nov. 2

2% Nov. 3 thru Dec. 2

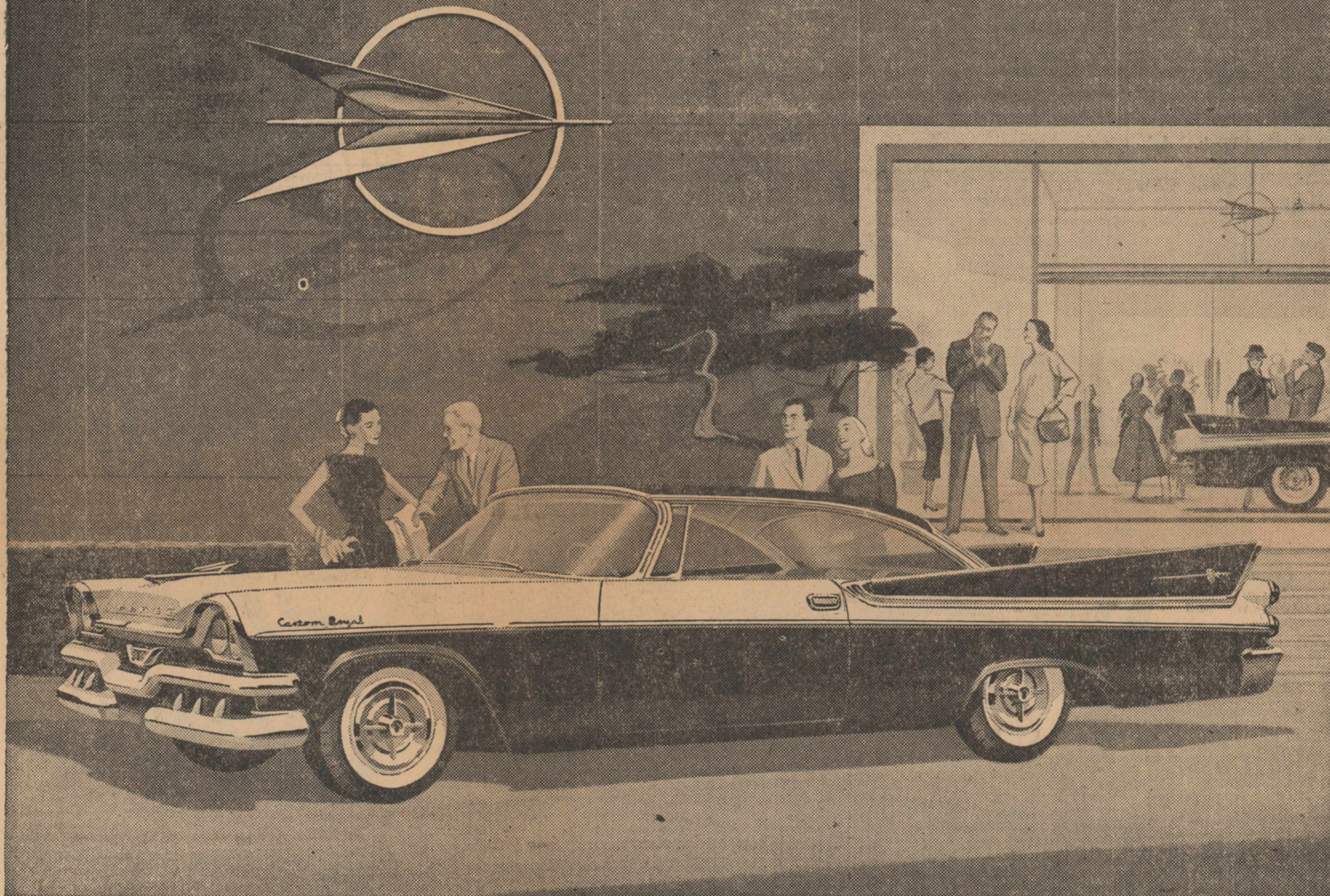
1% Dec. 3 thru Jan. 1

ROTAN INDEPENDENT SCHOOL DISTRICT

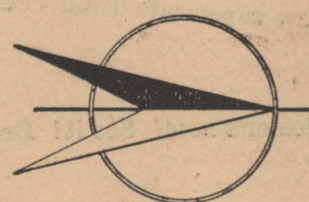
Mr. and Mrs. Casey Jones, Mrs. C. B. Barth, Mrs. Edna Morgan, Mrs. Jonnie Morgan and Mrs. Phil J. Malouf attended the golden anniversary of the Order of the Eastern Star, Grand Chapter of Texas, last week in Fort Worth. Mrs. Pauline Smith of Lubbock, and Ed L. Sharpe of Dallas, were installed Thursday as the heads of Texas' 139,000 members of the O. E. S.

USE ADVANCE WANT ADS

Step into the wonderful world of AUTODYNAMICS



A low-slung beauty with Flight-Sweep style: Swept-Wing '57 Dodge Custom Royal Lancer 2-Door.



It unleashes a hurricane of power
It breaks through the vibration barrier
It is swept-wing mastery of motion

SWEPT-WING '57 Dodge

How do you describe a car so daring in concept, so revolutionary in features and advances, so rewarding in beauty and performance?

How do you explain its newness when everything about it is new?

On display today is just such a car—the Swept-Wing '57 Dodge that steps you into the wonderful world of Autodynamics.

What is this wonderful world of Autodynamics? It is a world where everything is new from road to roof to achieve absolute mastery of motion.

Here's what it does in the Swept-Wing Dodge:

- It unleashes a hurricane of power from a thundering new aircraft-type Super Red Ram V-8 engine that's a spitfire in action!
- It tames a tornado of torque with a new TorqueFlite Push-Button Drive for the greatest get-away on the road!

- It breaks through the vibration barrier with a revolutionary new rubber-mounted suspension system—Dodge Torsion-Aire—that features race car torsion-bars. You ride in a "Realm of Silence," isolated from vibration, noise and road shock.

- It is swept-wing mastery of motion in a sleek, low-slung beauty barely 4½ feet high that has no equal in the way it corners, handles and rides.

You have never seen, felt or owned any car that compared with this new Swept-Wing Dodge. See and drive it today . . . now at your Dodge dealer's!

ON DISPLAY TODAY!

SCALES MOTOR COMPANY

301 W. Snyder

LET
I.ydick Roofing Co.
of Abilene

Make your estimate to Re-roof your residence or building.
ESTIMATES MADE FREE
ALL WORK GUARANTEED

We Use Genuine Ruberoid Roofing Materials

Phone 4088 Abilene, Texas

Rent a FOOD LOCKER

For big food savings, greater year 'round menu variety and new shopping convenience, rent a food locker now! Call us for complete details.

PORTER LOCKER PLANT

CUT YOUR FOOD BUDGET

TAX DISCOUNT NOTICE

THE SAME DISCOUNT WILL APPLY THIS YEAR AS LAST ON EARLY PAYMENT OF STATE, COUNTY AND SCHOOL TAXES

The following will apply:

3% Oct. 1 thru Nov. 2

2% Nov. 3 thru Dec. 2

1% Dec. 3 thru Jan. 1

First and Last Days Inclusive

Howard A. House

Tax Assessor-Collector

Wasson Serving With Naval Air Station

Jolley S. Wasson, utilitiesman third class, USN, son of Mr. and Mrs. Robert F. Wasson of box 253, Rotan Texas is now serving aboard the U. S. Naval Auxiliary Air Station, Brown Field at Chula Vista, Calif. Wasson is presently assigned to the Air Station's Security Division.

Wasson enlisted in the Navy in Sept. 1953, at Little Rock, Ark.

During his naval career he has served in the Philippines; Kodiak, Alaska; and Kwadgeline. He reported to this command in August 1956 from the Amphibious Construction Battalion one at Camp McGill, Japan.

Mr. and Mrs. Floyd Briscoe of Hamlin, visited Mr. and Mrs. C. B. Barth Sunday.

Mr. and Mrs. J. W. Perry visited relatives and friends in Clyde Sunday afternoon.

Dr. and Mrs. Harold Cheek and daughters, Martha Lynn, Mary Jane, Virginia and Macy Ann of Dallas, came Friday to visit Mr. and Mrs. Emmett Cave. Dr. and Mrs. Cheek went to Lubbock and spent the week end and the girls stayed here with their grandparents.

Becky Strickland and her roommate at McMurry College, Abilene, Becky Affleck of Big Spring, spent the week end here with Mr. and Mrs. Mar Strickland.

County Judge Urges Voting For No. 2

Voters of Fisher County will have an opportunity in the general election November 6 to make the most progressive change in county fiscal operation seen in 100 years or more, according to County Judge Bruce McCain.

That will be to vote for House Joint Resolution No. 23 which would amend the Constitution of Texas to allow Commissioners Courts to reallocate the tax levies for the four regular county operating funds on an annual basis without the necessity of holding reallocation elections.

Adoption of the amendment will do more to put county government on a business-like operating basis than anything that has been proposed in many years, Judge McCain declared.

Under this basis the Commissioners Court could levy only the amounts actually needed in the operating funds instead of the amount now fixed by the Constitution, which are, general fund 25c, road and bridge 15c, permanent improvement 25c and jury fund 15c, this being on a \$100 value.

The full amounts fixed by the Constitution are not always needed in a certain fund, but a larger amount may be needed in another fund. Under the present law, the only way the amounts can be changed is for the Commissioners Court to call a reallocation election every six years or oftener. Holding these elections, of course, costs the counties thousands upon thousands of dollars, Judge McCain pointed out.

By voting for this amendment, the taxpayers can save themselves money in two ways. First, by making it possible for their Commissioners Court to operate on a more business-like basis, and second, by eliminating the cost of expensive reallocation elections.

Under no circumstances could

adoption of the amendment cause an increase in county taxes, because it fixes the maximum county levy for the four regular funds at 80c on the \$100 valuation, which is the same as the present maximum.

"Sometimes it seems that few proposals are presented to the taxpayers which gives him an opportunity to save some money. But this is just what adoption of this amendment would do, so we hope the voters of this county will give it an overwhelming majority Nov. 6, Judge Bruce McCain said.

FHA To Handle Freight Rate Reduction For Drought Feed

Walter T. McKay, the agency's state director, was advised today of the designation of Farmers Home Administration to execute certification forms in connection with reduced freight rates recently worked out between the President and railroad representatives to further assist farmers and stockmen in drought stricken areas. This revised tariff provides for a reduction of 50% in the freight rate of hay forwarded to destination due to the drought, and applies only in connection with hay purchases of individuals who are entitled to assistance under the Hay and Roughage program.

Farmers Home Administration is authorized to execute certificates in behalf of farmers and ranchers only. Details of the program and forms required may be obtained from county FHA offices.

Mr. and Mrs. Al Finch visited their son, Jim at T. C. U., Fort Worth last week end. Ann Tillotson went with them and visited her cousin, Carolyn Leach.

Mr. and Mrs. Joe Dale Burk and son Vick of Colorado City, visited his parents, Mr. and Mrs. J. D. Burk last week end.

The Rotan Advance

Thursday, Nov. 1, 1956 No. 40

Rotan Lodge No. 958 A. F. & A. M.



Meets Third Thursday Night of each month. Visitors Invited
Vernon Frazier, W. M.
Robert Phillips, Sec.



Meets Every Thursday Night 8:00 o'clock
Willie Martin, Noble Grand
Lee Hefner, Vice Grand
Howard Smith, Secretary.



The O. E. S. meets each second Tuesday at 7:30 in the Hall.
Visitors welcome.
Oleta Huckaby, W. M.
Edna Morgan, Sec.



Meets Every Tuesday, 12:30. At Ritz Coffee Shop. Visitors Welcome
John Jackson, President



V. F. W.
Meeting Nights
First and Third Thursday 8:00 p. m. at the VFW Hall
W. F. Edwards Jr., Commander
Austin McKinney, QM.
Milton Teague, Adjutant.

LOCAL UNION NO. 74 of the
United Cement, Lime and Gypsum Workers International Union
Affiliated with American Federation of Labor and the DISTRICT COUNCIL NO. 4
Meets 2nd & 4th Mondays at American Legion Hall Rotan, Texas



Every Watch is timed on our Western Electric Watch Master.
McCLURKIN'S

FARM & RANCH LOANS
8-10 & 15 year at 5%
NO APPRAISAL FEE
We Also Represent Company Making City Loans
General Line of Stock Company Insurance
FIRE CASUALTY LIABILITY
M. W. Strickland
Phone 278 Rotan



SUDDENLY, IT'S 1960...

In one flaming moment, Plymouth leaps 3 full years ahead! Plymouth's traditionally great engineering brings you the fabulous new Fury "301" V-8... revolutionary new Torsion-Aire ride... exciting sports-car handling... new super-safe Total Contact Brakes... dramatic Flight-Sweep Styling. The car you might have expected in 1960 is at your Plymouth dealer's now! See it! Drive it! Own it!

PLYMOUTH!

