

Basketball

HASKELL
JVG-VG vs Newcastle
 Fri., Dec. 16, 5:00 p.m.
 at Newcastle
JVB-VB vs Clyde
 Fri., Dec. 16, 5:15 p.m.
 at Clyde
7-8G vs Anson
 Mon., Dec. 19, 5:30 p.m.
 at Anson
JVG-B, VG-B vs Stamford
 Tues., Dec. 20, 4 p.m.
 at Haskell
PAINT CREEK
VG-VB Rotan Tourney
VG-VB vs Abilene Hawks
 Tues., Dec. 20, 6 p.m.
 at Paint Creek

Calendar

Open house

The faculty and students of Haskell Elementary School would like to invite you to attend our open house Thurs., Dec. 15 from 6:00 to 7:00 p.m. Special musical performances will be presented in the cafeteria at 5:30 p.m. by Kindergarten, first and second grades. We would like to invite everyone to visit our school. School will dismiss at 12:15 p.m. Fri. Dec. 16. Classes resume Tues., Jan. 3.

Jr. livestock entries

Haskell County Junior Livestock Show entries are due to the Extension Office by Dec. 16. Entry forms can be picked up at the Extension Office during business hours. If there are any questions, please contact the office at 940-864-2658.

Food distribution

The Haskell County Ministerial Alliance Food Distribution Center will distribute food Sat., Dec. 17 from 10 a.m. til 11:30 a.m. at 206 S. 2nd (building east of Civic Center) in Haskell.

Food distribution

The Haskell County Ministerial Alliance Food Distribution Center will distribute food Sat., Dec. 17 from 9:30 a.m. til 11 a.m. at the First Baptist Church in Rule.

Christmas choir

The Texas Boys' and Men's Choir will present special Christmas music at the Trinity Lutheran Church in Haskell Sat., Dec. 17 at 7 p.m.

4-H dance

Looking for a great way to spend an evening? The Knox Co. 4-H Club will be hosting a Christmas dance Sat., Dec. 17 from 7 to 10 p.m. at the Munday Events Center. Whether you are interested in joining 4-H or simply want to enjoy yourself, don't miss out on a night full of Christmas spirit! Refreshments will be provided.

Last Chance video

The Haskell County Extension office will be showing The Last Chance videos from 8:30 a.m. to 12:00 p.m. Tues., Dec. 20. Three CEU's will be given for anyone needing them. Cost will be \$10.00. 2-IPM and 1-Laws and Regulations will be given. RSVP by Dec. 19 to the Extension office at 940-864-2658.

Candlelight service

First Methodist Church in Haskell will host a Christmas Eve candlelight service Sat., Dec. 24 at 6 p.m.



Index

Weather Page 1
 Obituaries..... Page 2
 Out of the Past.... Page 4
 Classifieds..... Page 9

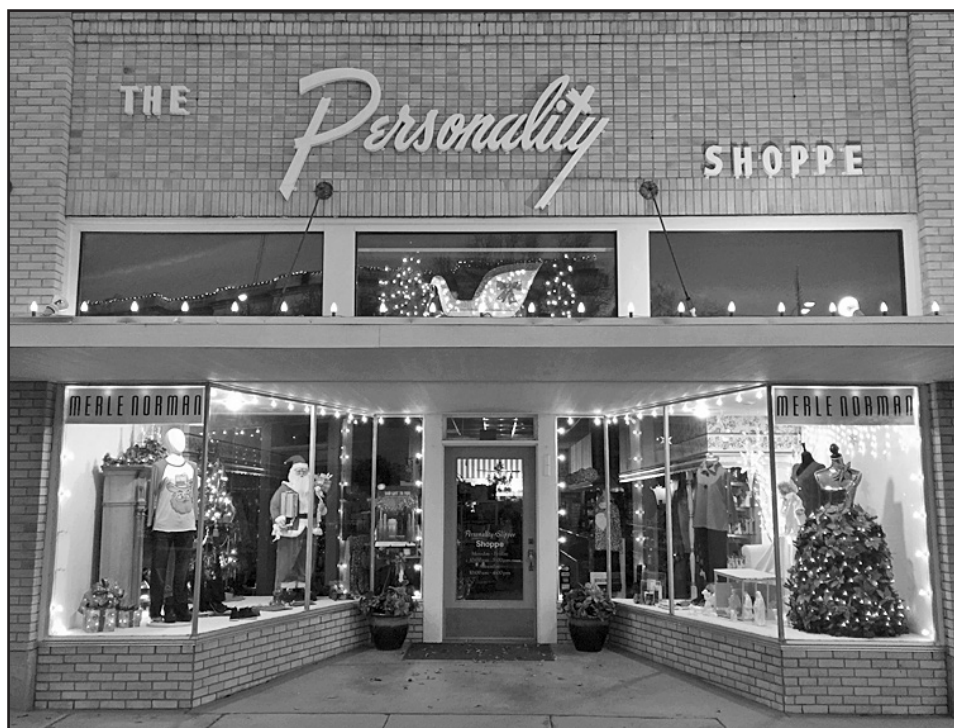
Shop Haskell merchants for last minute gifts

The Haskell Free Press

VOL. 130-NO. 50, ©DECEMBER 15, 2016

"The People's Choice"

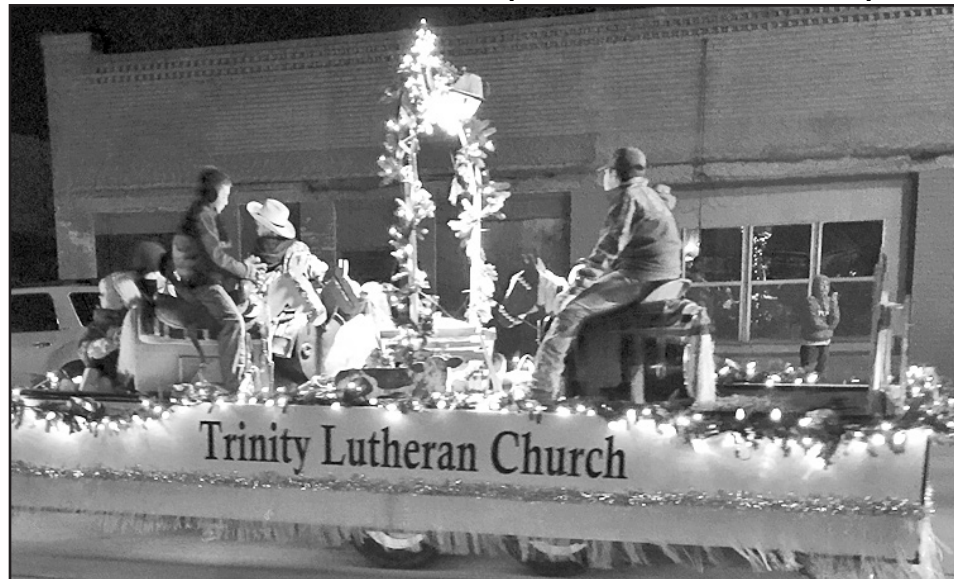
10 PAGES-ONE SECTION-75 CENTS



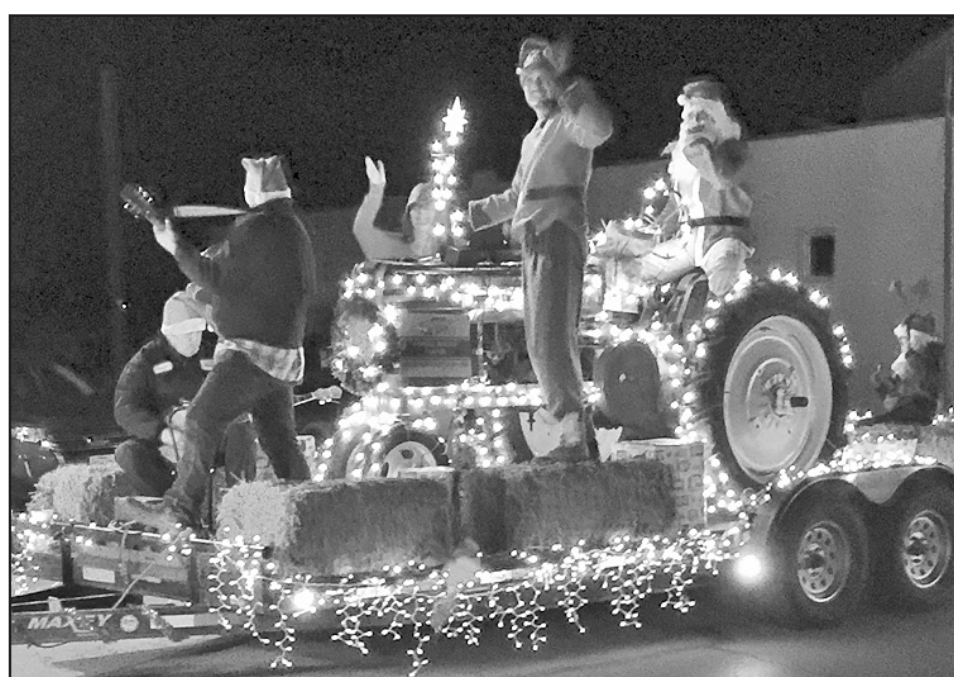
THE PERSONALITY-SLIPPER SHOPPE-Business Window Winner



HASKELL MEMORIAL HOSPITAL-First place float in the Christmas parade



TRINITY LUTHERAN CHURCH-Second place float in the Christmas parade



HASKELL SERVICE CENTER-Third place float in the Christmas parade

Contact local FSA by Fri., Dec. 16 to learn about CRP grasslands

Farm and Foreign Agricultural Services Deputy Under Secretary Alexis Taylor announced that the U.S. Department of Agriculture (USDA) will accept more than 504,000 acres that were offered by producers during the recent ranking period for the Conservation Reserve Program (CRP) Grasslands enrollment. Through the voluntary CRP Grasslands program, grasslands threatened by development or conversion to row crops are maintained as livestock grazing areas, while providing important conservation benefits.

USDA will accept more than 2,100 offers totaling more than 504,000 acres across 34 states. Over 70 percent of the acres are from beginning farmers, veterans and underserved producers. About two-thirds of the acres are in counties with the highest threat for conversion. Additionally, nearly 60 percent of the acres are in wildlife priority areas and nearly three-fourths of the acres will have a wildlife-focused conservation plan as part of the operation.

"This 15-year commitment on more than half a million acres demonstrates that voluntary, incentive-based conservation methods benefit producers and help to preserve our natural resources," said Taylor. "Combining conservation and wildlife benefits, while still supporting livestock production, is a clear example of how agriculture and conservation can go hand-in-hand."

USDA is also reminding producers that it is still accepting additional offers for CRP Grasslands. The current ranking period that closes on Dec. 16, also includes a new CRP Grasslands practice specifically tailored for small-scale livestock grazing operations to encourage broader participation. Small livestock operations with 100 or fewer head of grazing dairy cows (or the equivalent) can submit applications to enroll up to 200 acres of grasslands per farm. USDA's goal is to enroll up to additional 200,000 acres. The new practice for small-scale livestock grazing operations encourages greater diversity geographically and in all types of livestock operation. Small livestock operations are encouraged to contact their local Farm Service Agency office to learn more about this program before Dec. 16, to be considered as part of the current ranking period.

Participants in CRP Grasslands establish or maintain long-term, resource-conserving grasses and other plant species to control soil erosion, improve water quality and develop

wildlife habitat on marginally productive agricultural lands. CRP Grasslands participants can use the land for livestock production (e.g. grazing or producing hay), while following their conservation and grazing plans in order to maintain the cover. A goal of CRP Grasslands is to minimize conversion of grasslands either to row crops or to non-agricultural uses. Participants can receive annual payments of up to 75 percent of the grazing value of the land and up to 50 percent to fund cover or practices like cross-fencing to support rotational grazing or improving pasture cover to benefit pollinators or other wildlife.

USDA will select offers for enrollment based on six ranking factors: (1) current and future use, (2) new farmer/rancher or underserved producer involvement, (3) maximum grassland preservation, (4) vegetative cover, (5) environmental factors and (6) pollinator habitat. Offers for the second ranking period also will be considered from producers who submitted offers for the first ranking period but were not accepted, as well as from new offers submitted through Dec. 16.

Small livestock operations or other farming and ranching operations interested in participating in CRP Grasslands should contact their local FSA office. To find your local FSA office, visit <http://offices.usda.gov>. To learn more about FSA's conservation programs, visit www.fsa.usda.gov/conservation.

Throughout the Obama Administration, USDA has generated thousands of critical partnerships to conserve and protect our natural resources on working landscapes, while enrolling a record number of acres in conservation programs. Seventy-percent of the nation's land is owned and tended to privately, and America's farmers, ranchers and landowners have willingly stepped up to address the growing impacts of a changing climate. With USDA's support, they work to implement voluntary practices that improve air and water quality, prevent soil erosion and create and protect wildlife habitat. Since 2009, USDA has invested more than \$29 billion to help producers make conservation improvements, working with as many as 500,000 farmers, ranchers and landowners to protect land and water on over 400 million acres nationwide. Read more about USDA's record conservation outcomes under this Administration at Caring for our Land, Air and Water: Preserving Precious Natural Resources for Tomorrow.

Goodfellows Donations

The Haskell Goodfellows are accepting donations for Christmas boxes to be distributed to needy families this holiday season. Boxes will be delivered to those who have been selected to receive them. Those with donations of food, contact a Lions Club member, toys and clothing may be taken to the Haskell Fire Dept.; and cash donations may be sent to The Haskell Free Press, P. O. Box 555, Haskell, Texas 79521.

Anonymous.....	\$20.00
Total this week.....	\$20.00
Previous total.....	\$625.00
Total to date.....	\$645.00

Weather

by Kim Hutto
 National Weather Service
 Volunteer Co-op Observer
 Temperature

Mon., Dec. 5.....	41°/57°
Tues., Dec. 6.....	38°/50°
Wed., Dec. 7.....	22°/38°
Thurs., Dec. 8.....	22°/50°
Fri., Dec. 9.....	37°/57°
Sat., Dec. 10.....	48°/64°
Sun., Dec. 11.....	51°/66°

FOR NEWS ITEMS OR TO SUBSCRIBE, CALL 940-864-2686

December sales tax receipts reported

Texas Comptroller Glenn Hegar announced he sent cities, counties, transit systems and special purpose

taxing districts \$627.6 million in local sales tax allocations for December, 0.2 percent more than in December 2015. These allocations are based on sales made in October by monthly filers.

"The cities of Dallas, Fort Worth, Austin, El Paso and San Antonio continue to see significant increases in sales tax allocations," Hegar said.

The City of Haskell had a 2.95 percent decrease for December 2016 of \$38,206.92 in comparison to \$39,371.13 for December 2015. 2016 payments to date of \$541,075.07 reflect a 1.86 percent increase over 2015 payments to date of \$531,168.83.

The City of O'Brien had a 7.52 percent decrease for December 2016 of \$204.84 in comparison to \$221.52 for December 2015. 2016 payments to date of \$3,086.25 reflect a 27.31 percent decrease over 2015 payments to date of \$4,246.23.


The City of Rochester had a 20.81 percent increase for December 2016 of \$597.80 in comparison to \$494.82 for December 2015. 2016 payments to date of \$8,213.98 reflect a 13.38 percent increase over 2015 payments to date of \$7,244.13.

The City of Rule had a 10.07 percent increase for December 2016 of \$2,099.61 in comparison to \$1,907.41 for December 2015. 2016 payments to date of \$27,255.44 reflect a 7.06 percent decrease over 2015 payments to date of \$29,325.98.

The City of Weinert had a 117.93 percent increase for December 2016 of \$211.55 in comparison to \$97.07 for December 2015. 2016 payments to date of \$3,554.10 reflect a 12.68 percent increase over 2015 payments to date of \$3,154.05.

HANN SZ
BUNKHOUSES & RV PARK
 carla@srcaccess.net 325-665-9118
Rent by the night, week or month.
 One hunting cabin with 6 beds.
 One cabin with a queen bed.
 Laundry house and bath house.
 Horseshoe pit and picnic area.
 5 RV spaces and hookups.
 Like us on Facebook
 Credit cards accepted
 218 CR 210 • Haskell
Come enjoy your stay in Haskell County. Feels like Home!

Need an Experienced Ag Lender?



When it's time to finance your farm and ranch real estate, look no further than Central Texas Farm Credit. We provide great rates and a variety of flexible loan programs.

Central Texas Farm Credit, ACA
 www.centraltexasaca.com

**550 South 2nd
 Haskell, Texas 79521
 940-864-8565**

Part of the Farm Credit System

Obituaries

Dorothy Cox



DOROTHY COX
 Dorothy Cox, 93, a long time resident of Haskell, passed away Sun., Dec. 11 in Abilene. Dorothy requested that no services be held. Cremation arrangements are under the direction of Smith Family Funeral Homes.

Born Jan. 19, 1923 in Somervill County, Texas, she was the daughter of Montie Irene (Graham) and Claud Cornelius Muse. She graduated from Lueders High School in 1940. She served in the U.S. Navy from 1942-1944. She married Glen Cox in Stamford in 1947. She was a member of the First Baptist Church, Haskell. Dorothy loved her family and volunteering, especially at her church. She was known for baking and her cookies. She enjoyed reading in her spare time.

She was preceded in death by her parents and husband; two sisters, Lorene Bonner

and Ruby Martin. Survivors include two daughters, Jody Biba of Haskell and Nelda Rogers of Austin; three grandsons, Michael Blocker of Dallas, Jason Biba and wife Duste of Abilene, and Kenneth Rogers, Jr., of Austin; granddaughter, Christie Howeth and husband Collin of Knox City; three great-granddaughters, Gracie Howeth of Knox City, Eren Howeth of Knox City and Kelsey Biba of Abilene. Online condolences may be shared with the family at www.smithfamilyfh.com Smith Family Funeral Homes. PD NOTICE



CONSOLATION WINNERS—The Rule Ladycats won the consolation bracket at the Woodson tournament recently. Leann Manske was named to the all tournament team. Team members are, front row, Madalyn Navarette; back row, l-r, Lauryn Crane, Marissa Mora, McKenzie Gray, Kennedy Fritzler, Kourtney Hertel and Leann Manske. They are coached by Reece Walker.



PLACE SECOND—The Rule Bobcats placed second in the Woodson Tournament recently. Ron Mitchell and Brandon Mitchell received all tournament honors. Team members are, front row, l-r, Brandon Mitchell, Ron Mitchell, J.W. Eppler and Fabian Hollingsworth; back row, Mason Helms, Del Fritzler, Danny Kreger, Chase Thompson and Jacob Navarette.



STUDY DEMOCRACY—The students in the Political Science Class of Rule ISD has spent the semester on a comparative study of the relationship of democracy and its suitability to countries of the Middle East. After fifteen weeks the students have agreed that of all the countries in the Northern Mediterranean, Egypt is probably closest to achieving full democracy. After studying the cause and effect relationship of democracy in these countries, they turned their attention to the U.S. presidential race focusing primarily on the effect of media. They began in September and tracked various polls and the relationship of media on the expressive and strategic voters. After the election was concluded the students were to design and draw a political cartoon that depicted what they felt was the outcome. The course was demanding and required a lot of thought and discussion. Class members are, l-r, Kaysen Barnett, Thomas Short and Samantha Snell.



Season's Best
 We sincerely appreciate all of our fine customers and invite you to join us as we celebrate the birth of Jesus Christ.

Open House
 Thurs., Dec. 22
 9 a.m. to 3 p.m.

Rule Banking Center
 A Branch of Hamlin National Bank

P. O. Box 10
 Rule, Texas 79547
 940-997-2216
 Member FDIC

We invite you to call our agents for your insurance needs

940-864-2665

HASKELL COUNTY INSURANCE AGENCY INC.
 103 N. Ave. E
 Haskell, Texas
 Serving the Haskell area since 1890

Bo Tatum
Shyla Tatum

- Residential
- Commercial
- Farm and Ranch
- Auto

We appreciate your business!

Players of the week

Haskell Maidens Taylor Manske, Ashlyn Bevel and Landry Hanson were named to the Abilene Reporter-News Big Country Top 10 Tues., Dec. 13.

After losing to Jacksboro 42-24 on Friday in pool play, the Maidens rallied with three straight wins to claim the Wildcat Classic Tournament in Archer City, capping it with a 54-46 win

over Jacksboro in the title game.

Manske, Bevel and Hanson were at the forefront of an effort that saw Haskell improve to 11-5 overall with five wins in six games.

Manske had 54 points and 60 rebounds in six starts. Bevel posted 65 points and nine steals. Hanson had 65 points, 34 boards, 13 assists and 10 steals.

Calendar

Music Jubilee

The Haskell Country Music Jubilee will be held the second Monday of the month from 6:30 to 9 p.m. at the American Legion Hall in Haskell. Those interested in playing and listening are encouraged to come and enjoy the fun. A practice session will be held the Thursday before the Jubilee.

Operation Recovery

Operation Recovery, a faith-based 12-step meeting, will be held Fridays at 7 p.m. at God Loves You Ministries on the west side of the square.

TeamKID

TeamKID, for children ages 4 years old to sixth grade, meets on Wednesdays from 5:30 to 6:45 p.m. at the First Baptist Church in Haskell. If your child needs a ride, call 864-2581.

Weekly story time

The Haskell County Library, 300 N. Ave. E., will host a weekly story time every Friday from 10 to 10:30 a.m. Any age children, with parental supervision, are invited to listen and participate in stories, songs, rhymes and activities. For more information call 940-864-2747 or visit <https://www.facebook.com/HaskellCountyLibrary/>.

AWANA

Cornerstone Fellowship Baptist Church will begin the AWANA program for children age 5 through fifth grade Mon., Jan. 9. AWANA meets each Monday from 5:30 to 7:00 p.m., through March, except on school holidays. Call 940-864-3004 for more information.



ZEB PETTY - LAUREN CARTER

Carter, Petty plan March wedding

Richard and Teresa Carter of Littlefield and Rod and Julie Petty of Rule are announcing the engagement and upcoming marriage of their children, Zeb Petty and Lauren Carter.

Petty is the grandson of the late Donald and Laverne Lee and the late Gilbert Petty and Ann Petty of Rule.

Carter is the granddaughter of Charles and Ethel Mae Carter of Guymon, Oklahoma and Gary and Betty Adams of Manter, Kansas.

Petty is a graduate of West Texas A&M University in Canyon. He is employed in Childress County as County Extension Agent Ag/NR.

Carter is a graduate of West Texas A&M University in Canyon. She is currently at Texas Tech University working on her Masters in Occupational Therapy to be completed in December 2017.

The couple plans a March 11 wedding in Amarillo.

They plan to reside in Lubbock.



HASKELL
FUNERAL HOME

Offering Traditional Funeral Packages
Starting at \$5,995

We honor and accept all prearrangements made at other funeral homes.

We take pride in serving you.

2 Avenue D, Haskell, TX 79521 • 940-863-4620 • Fax: 940-863-4619

CHRISTMAS EVE

Candlelight

SERVICE

First Methodist
December 24th 6:00pm





Christmas Dance

DECEMBER 17, 2016

MUNDAY EVENTS CENTER

South Cedar Avenue (Behind Grain Elevator)

Free to Enter  7-10 P.M.

ALL AGES WELCOMED

You don't have to be in 4-H to attend.

ALL 4-H CLUBS WELCOMED

Parents Encouraged

Sponsored by the
Knox County 4-H Club.
FMI 740.459.2651

Texas A&M University AgriLife Extension Service

by Darlene Hopkins, CEA-FCS, Haskell Co.



Giving a bicycle for Christmas? Don't forget the helmet!

Bicycles are always a popular gift at Christmas time, and many parents are shopping now for that perfect new bicycle for their child—maybe even their first bicycle. This is an excellent opportunity to teach children about the importance of wearing a helmet to protect their head. According to National Safe Kids, helmets reduce the risk of head injury by at least 45 percent, brain injury by 33 percent, facial injury by 27 percent and fatal injury by 29 percent.

Safe Kids also reports that bicycles are associated with more injuries in children than any other product except automobiles. The Texas Medical Association reports that head injuries account for more than 60 percent of bicycle-related deaths, which reinforces why helmets should be considered an important part of bike riding.

“Learning to ride a bicycle is not just child’s play,” said Texas A&M AgriLife Extension Service agent Darlene Hopkins.

“In addition to promoting healthy living habits, riding bicycles can teach children about becoming independent. With this new independence, children need to learn to follow important safety rules. One of the most important rules is to always wear a helmet.”

Parents can be great role models to promote bicycle safety by wearing helmets on every trip. A child who rides with companions wearing helmets or adults in general is more likely to wear a helmet himself. Even very young toddlers on tricycles should wear helmets to establish good habits.

When selecting a helmet for your child, follow these tips:

- Look for a helmet that has been certified to meet Consumer Product Safety Commission standards.
- Make sure the helmet fits properly. To do this, measure around the rider’s head about an inch above his or her eyebrows, and select an appropriately sized helmet.
- When wearing a helmet, make sure the rim sits level from front to back and is worn low and

just above the eyebrows.

- Make sure the helmet fits snugly. Adjust the helmet’s size with extra foam pads, which are provided with most helmets.

- Buckle the chin strap on every ride.

- Replace a helmet if it has been in a crash, even if no damage is visible.

In addition to helmets, parents need to find safe places to ride, such as parks, sidewalks, or playgrounds. It is important to supervise preschoolers when they are riding, and keep children younger than 10 from riding bikes in the street.

When teaching children to ride bicycles, also educate them on these tips for safe bicycle riding:

- Always wear a bike helmet.
- Make sure the bicycle is the right size for the rider and in good working order.
- Wear the proper clothing—neon, fluorescent, or other bright colors when riding day or night.
- Teach children to make eye contact with

drivers.

- Ride in the same direction as other traffic.

- Use hand and arm signals.

- There should only be one rider per saddle.

- Keep at least one hand on the handlebars.

- The bicycle must have a white light on the front and a red reflector or red light on the rear (for riding at night).

- Use effective brakes that are capable of making the braked wheel skid.

For more information, visit the Bicycle Helmet Safety Institute’s website at <http://www.bhsi.org/>, Bike Texas at <http://www.biketexas.org>, Safe Kids Worldwide at <http://www.safekids.org/bike>.

Clear Fork
Crime Stoppers
1-800-222-TIPS

BE A SRTC Santa's Helper AND SURF FASTER, FREE!



Help Santa ensure a Merry Christmas for children in need. Donate a new, unwrapped toy to SRTC’s toy drive between November 1 and December 15, 2016. When you do, SRTC will boost your Internet speeds for 3 months at no additional charge. That’s right. When you open your heart, SRTC opens the throttle. You’ll get to test drive the next tier of Internet speed for 3 months.

Bring your toy donation to any SRTC office. In exchange, SRTC will boost your SRTC Internet access speed. You decide if you want to keep the new service in place or return to your previous SRTC Internet speed. If you want to keep your new speed, do nothing. If you want to drop back down to your previous speed, just let us know. It’s that simple.

SANTA
Telephone



ROSA
Cooperative

VERNON OFFICE
7110 US Hwy 287 E
Vernon, TX 76384
(940) 886-2217
(888) 886-2217

HASKELL OFFICE
113 N. Ave. D
Haskell, TX 79521
(940) 863-1125
(888) 863-1125

SEYMOUR OFFICE
310 W California
Seymour, TX 76380
(940) 889-1125
(877) 889-1125

ask@srcaccess.net

Must have SRTC Internet access to receive boost in SRTC Internet speeds. Service where available. Some restrictions may apply. Accounts must be in current status to receive promotion. Customers wishing to return to prior Internet speed must notify SRTC by the 17th day of the third promotional month in order to return to previous speed/rate for next billing cycle. Donated toys should have a value of at least \$10 to qualify for this promotion. Contact SRTC for full promotional details.

Charles & Leatrice Swinson

will celebrate their

75th Wedding Anniversary

Sat., Dec. 17 from 2 to 4 p.m.
with a come-and-go-party at
Haskell Healthcare Center
1501 N. First Street, Haskell
Everyone is cordially invited to attend.

No gifts, please

MERRY CHRISTMAS



Tablets
starting as low as
\$20⁶²
out the door!!!



HUM by Verizon is \$2999
with purchase of an activation or upgrade!

- Vehicle Health
- Roadside Assistance
- Stolen Vehicle Location
- Boundary Alerts





Bluetooth Ear Buds on sale!
\$79⁹⁹
BEM Wireless



Free Devices!!!!



**10 Avenue D
Haskell TX 79521
940-864-2310**

BASKETBALL '17

Indians



Haskell Indians

**JVB, VB vs
Clyde**
Fri., Dec. 16, 5:15 p.m.
at Clyde

**JVB, VB vs
Stamford**
Tues., Dec. 20, 5:15 p.m.
at Haskell



HASKELL INDIANS—Front row, l-r, Tanner Thomas, Austin Alsabrook, Kellen Parks, Ezell Woods and Caleb Wheat; back row, Aaron Skiles, Alec Roewe, Lane Burson, Kyler Hoover, RJ Chavez and Rocky Haggard.



Maidens

Haskell Maidens

**JVG, VG vs
Newcastle**
Fri., Dec. 16, 5 p.m.
at Newcastle

**JVG, VG vs
Stamford**
Tues., Dec. 20, 4 p.m.
at Haskell



HASKELL MAIDENS—Sitting, l-r, Landry Hanson, Courtney Whitt and Makinzie Garvin; standing, C'Era Taylor, Ariel Martinez, Ashlyn Bevel, Jordan Garvin, Hollyn Hadaway and Taylor Manske.

This Page Sponsored By The Following Indian and Maiden Boosters

**Big Country Electric Cooperative
Summit TrueValue & NAPA Auto Parts
Smith Family Funeral Homes
Communication Connection/Verizon Wireless
Hanson Paint and Body
Modern Way/ACE & Fuel
Personality-Slipper Shoppe
Spring Market
Haskell County Insurance Agency
Haskell Funeral Home**

**First Bank Texas
Haskell Co-op Gin
Haskell National Bank
Haskell Free Press
Haskell Save-A-\$
Larned Sales Center
Smitty's Auto Supply
Matlock & Associates
Double A Drive Inn
Haskell Feeds**



Texas A&M University AgriLife Extension Service

by Jason Westbrook, CEA-Ag, Haskell Co.

Lentil potential as Rolling Plains winter crop being tested

Just as lentils add variety to a soup, Dr. Emi Kimura believes they could add variety to the crop options for wheat producers in the Rolling Plains.

Lentils are legumes that grow in pods on a bushy plant, and as a legume, they are high in nitrogen, which would be beneficial for the following wheat crop, Kimura, a Texas A&M AgriLife Extension Service agronomist in Vernon, said.

"In the Rolling Plains of Texas, our crop options are limited because of rainfall," she said. "Our average is 25 inches of annual precipitation, but that is not spread out through the growing season. Primarily it comes in the spring and fall, so during the summer growing season, we really don't have enough moisture. We have to concentrate on drought-tolerant crops."

Currently, she said, the crop options for fall planting are limited to canola. Canola has done very well, improving soil tilth for the following wheat production.

"But it would be nice to have an additional crop rotation option to not only improve soil health, but to also improve wheat production," Kimura said. "Lentil is a grain legume that can improve overall fertility in the soil through nitrogen fixation as well as allow grassy weed control and break disease cycles."

Lentils are also known to be very tolerant to the extreme environmental conditions such as high temperatures and low limited moisture conditions, she said.

"If we get too much stress during the flowering or fruit set, that might reduce the yield potential, but it is still a strong drought-tolerant crop that can be planted as a winter crop," Kimura said.

In the U.S., the lentil crop is generally planted in the Pacific Northwest in Washington and Idaho and is planted in the spring, she said. However, there have been considerable studies to improve the winter hardiness of lentils so they can be planted in the fall as winter lentils.

"I believe winter lentils will work better than spring lentils because our summer precipitation is so low and summer heat might be too high," Kimura said.

"I planted a variety called Morton winter lentil on Sept. 30 at the AgriLife Research station at Chillicothe, along with winter wheat and canola, just to compare the rotation options. Next year I will come back and plant winter wheat after the winter lentil to investigate how it positively or negatively affects the winter wheat."

Beyond this initial study, Kimura said more studies will need to be done on seeding rate, variety, timing, and weed and insect control.

Some other considerations will be eventual marketing, but first has to come the testing to see if it will grow here, she said. It is planted with the same drill as canola or winter wheat, but harvesting could be slightly different. Several methods need to be tested, but it might be similar to canola. The lentil harvest would be after wheat and canola.

Kimura said she is not sure if lentils lend themselves to grazing or harvesting for forage prior to harvest of the grain. She is testing if the forage can be harvested this fall because as a legume it would have a higher forage quality than just a grass.

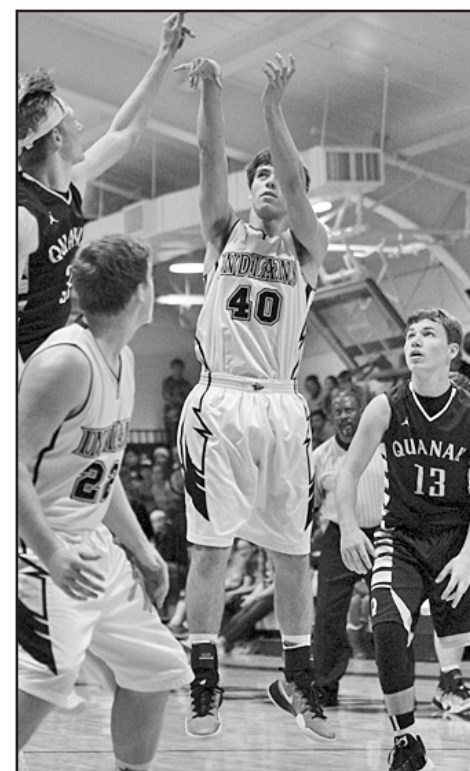
"If we can make it work, we can improve crop diversity or available crop options for Rolling Plains' wheat producers, but also we can contribute to improved diversification of available protein sources for Texas," she said.



MAIDENS WIN—Haskell Maiden #35 Ashlyn Bevel, left, beats the Quanah defender and takes it to the basket. Maiden #3 Landry Hanson takes the ball to the basket in the Maidens win over Quanah.



DEFEATS QUANAH—Haskell Indian #10 Kellen Parks, left, sets to shoot three in the Indians win over Quanah. Indian #40 Rocky Haggard, right, goes up with the jumper against Quanah.



Haskell Co. Arrest Report

The following arrests were reported by the Haskell County Sheriff's Office during the week of Dec. 5-11:

Mary Aguilar, driving while license invalid with previous convictions.

Bobbi Lynn Herricks, trespass warrant Haskell County and manufacture/delivery of controlled substance methamphetamine.

Jose J. Salas-Maldonado, driving while intoxicated 1st and open container.

Lorenzo Antonio Rueda, driving while license invalid with alcohol suspension.

Eddie Dean Martinez, public intoxication.

Sixteen calls were made to 911.



UP FOR TWO—Haskell Maiden #23 Courtney Whitt takes the rebound up for two points against Quanah.

High-speed Internet at an affordable price.

A reliable connection to the Internet is important in today's world, and Windstream believes everyone should have access to it. That's why we offer Lifeline, a discounted Internet service plan to make basic service more affordable for qualified customers.

To see if you qualify for Lifeline, call:
Residential customers 1-800-347-1991
Or visit www.windstream.com/Lifeline



Lifeline is a government assistance program that is limited to one benefit per household and the service is non-transferable. Only eligible consumers may enroll in the program. Consumers who willfully make false statements in order to obtain the benefit can be punished by fine or imprisonment or can be barred from the program. Low-income individuals residing on tribal lands may be eligible for additional discounts on these charges and may receive service for as little as \$0.00 per month. Windstream and the Windstream logo are registered service marks of Windstream Services, LLC © 2016 Windstream Services, LLC. Additional restrictions may apply. 18426NA1

Internet de alta velocidad a un precio asequible.

Una conexión confiable a Internet es importante en el mundo actual y Windstream cree que todos deberían tener acceso a ella. Es por eso que ofrecemos Lifeline, un plan de servicio de Internet con descuento para que el servicio básico sea más asequible para los clientes calificados.

Para ver si califica para Lifeline, llame al:
Clientes residenciales 1-800-347-1991
O visite www.windstream.com/Lifeline



Lifeline es un programa de asistencia del gobierno que se limita a un beneficio por hogar y el servicio no es transferible. Solamente los clientes elegibles pueden inscribirse en el programa. Los consumidores que voluntariamente hacen declaraciones falsas con el fin de obtener el beneficio pueden ser castigados con una multa o encarcelamiento o pueden ser excluidos del programa. Las personas con ingresos bajos que residen en tierras tribales pueden ser elegibles para descuentos adicionales para estos cargos y pueden recibir el servicio a un precio tan bajo como \$0.00 por mes. Windstream y el logotipo de Windstream son marcas de servicio registradas de Windstream Services, LLC © 2016 Windstream Services, LLC. Pueden aplicarse restricciones adicionales. 18426NA1

Go Maidens! Go Indians!



Merry Christmas
and
Happy New Year

from the staff of
Haskell Home Health

Michelle Johnson, RN Branch Manager
Shelley Myers, RN
Jalenn Earle, Secretary
Vicky Cochran, LVN
Jeryl Anne Cooper, LVN
Patricia Hemphill, HHA
Charles Townsend, PT

417 South First
Haskell, Texas 79521
Phone 940-864-5074 • Fax 940-864-6163



Season's Greetings

It's been a pleasure serving you this year. From all of us here at the bank, we would like to wish all of our customers a wonderful and happy holiday season. We sincerely appreciate your business, and look forward to working with you again next year. Merry Christmas and a safe and Happy New Year to you and your family.

First Bank Texas

Munday
940-422-4522

Haskell
940-864-8555

Stamford
325-773-2122

www.go2fibt.com



Silba to ride in Horseback Ride 'N' Ruck March

Jeffrey Silba, a 2006 Haskell High School graduate and son of Francis and the late Jessie Silba of Haskell, will soon embark on a horseback ride in support of a cause that is very near and dear to his heart.

The Horseback Ride 'N' Ruck March to Recovery, which will be held in March 2017, is a 550 mile ride across the Western Texas Trans Pecos Plains. The purpose is to bring awareness and aid to our recovering and fallen veterans and their families. He will be accompanied by Margaux Gebers of Fairfield, California. Silba, who has served in the United States Army for more than ten years, including four deployments says, "As members of the military community for a collective fifteen years and having served overseas on multiple occasions, we can empathize with these families' situations. These circumstances drive us to contribute in any way we can."

The trip will take them over a trail that was established by the U.S. Army in the 1850s to distribute messages and supplies between San Antonio and El Paso. The Army Corps of Engineers sent scouts over northern and southern routes of the plains to find the most efficient delivery routes.

The Ride 'N' Ruck will travel along the southern route, stopping at some of the same forts the original scouts used. Silba says, "In keeping with tradition, we will ruck march portions of the trip or ride our horses, Deuces and Sonny, to the destination in Ft. Bliss."

Ultimately they hope to raise funds and donate them to the Semper Fi Fund, 3rd US Cavalry Association, Valhalla Ranch and the 4 Horsemen Ranch for Veterans.

The Semper Fi Fund donates 94% of their collections to veterans and military families of all branches, who are in need of extra support. As a part of the 3rd Cavalry Regiment, they wish to contribute to the scholarship funds that benefit past and present troopers and families within the unit. Valhalla Ranch of Kiowa, CO caters exclusively to combat veterans to help them recuperate and heal through horsemanship. Lastly, the 4 Horsemen Ranch for Veterans is the startup of Silba. He uses the ranch to take veterans and active duty service members hunting, riding, camping, or just to give them a time of "getting away from it all."

Silba, who is stationed out of Ft. Hood, but is currently serving in Afghanistan, emphasizes that all funds collected will be donated to the above mentioned foundations.

To contribute to this worthy cause, go to <https://www.paypal.me/4HRanchForVeterans> or <https://www.gofundme.com/RideAndRuckFund>.

For more information on the foundations you may visit <https://semperfund.org/> or <https://www.facebook.com/3d-US-CavalryAssociation-234528900021836/> or <https://www.facebook.com/4HorsemenRanch/>

Silba and Gebers, all too familiar with the aftermath of physical and emotional injuries that can plague our returning soldiers, would greatly appreciate any and all contributions to this fund raising event.

Residential lighting contest winners



STACY BRIDGES—First place Residential Lighting Contest



DEBBIE STRICKLAND—Second place Residential Lighting Contest



HOLLIE ROBLEDO—Third place Residential Lighting Contest

E-mail your news, photos and ads to The Haskell Free Press at hfpnews@lycos.com or hfp@valornet.com

GONZALES CARPET CLEANING
 Carpet Cleaning • Upholstery Cleaning
 Emergency Water Extraction • Expert Floor Care
 Waxing Polishing & Cleaning

Robert Gonzales
 P. O. Box 929
 Stamford, Tx
 79553

Residential & Commercial
 (325) 721-8195

"Home Town Service You Deserve"



- Oxygen •Wheelchairs •Hospital Beds
- Trapeze Bars •Walkers •Canes
- Bedside Commodes •Lift Chairs
- Diabetic Supplies •Nebulizers
- Power Mobility • So Much More!

Seymour Medical Supply, Inc.

Hardeman • Foard • Wilbarger • Wichita • King
 Knox • Baylor • Archer • Haskell • Throckmorton
 Young • Jack • Cottle
 110 W. Reiman, Seymour, TX 76380
 940-889-6060 • 866- 889-1076

*Wishing you a Beautiful Holiday Season
and a New Year of Peace and Happiness*

Andy

Betty Sue

Mallori

Pam

Jessie

Paula

Robbie

Carla

Meranda

Connie

Tam J.

Cassie

Tamara

Randy

Christmas Open House

Friday, December 16th, 9:00 a.m. to 3:00 p.m.

We will be closed Monday, Dec. 26, including the drive-through.
 Regular business hours will resume on Tuesday, Dec. 27th.
 We will be closed Monday, Jan. 2, including the drive-through.
 Regular business hours will resume on Tuesday, Jan. 3rd.

Officers, Directors & Employees of
Haskell National Bank
 Member FDIC
 601 N. 1st • 864-2631
 Haskell, Texas



SKILLATHON TEAM—The Haskell County 4-H Livestock Skillathon Team competed at the District 3 Contest in Munday Thurs., Dec. 8. The Livestock Skillathon Contest is an educational contest that teaches livestock knowledge. 4-H'ers identify livestock equipment, grains and minerals used for livestock, and livestock breeds. It also consists of a meats placing class and wool placing class. Students also test their knowledge on feed tag analysis and medicine labels as to what the products contain and proper usage. Team members are, front row, l-r, Evan Enriquez, Grant Ferguson, Colton Hopkins and Lane Addington; back row, Hadley Sloan and Austen Sanford.



JR. SKILLATHON TEAM—The Haskell County Junior Livestock Skillathon Team placed first. Team members are, l-r, Evan Enriquez, Colton Hopkins, Grant Ferguson and Lane Addington.



Hopkins is second High Individual Jr. Overall

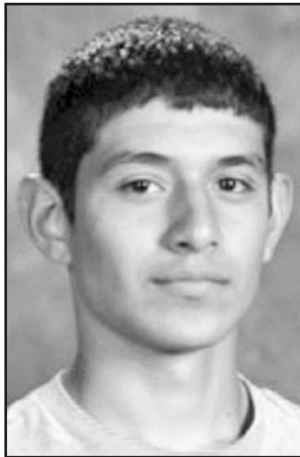
INDIVIDUAL AWARD—Haskell County 4-H Livestock Skillathon team member Colton Hopkins was second High Individual Junior Overall in the District 3 contest held Dec. 8.

Haskell Co. Gin Report

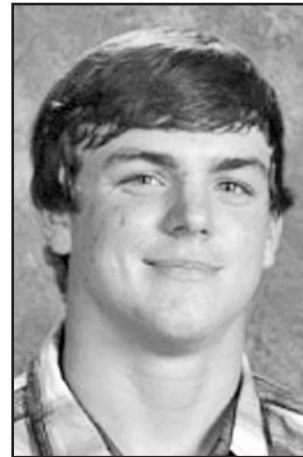
Dec. 9, 2016
Haskell

Haskell Co. Gin.....	2,650
Haskell Co-op Gin.....	5,963
O'Brien	
O'Brien Co-op.....	6,200
Rule	
Rule Co-op Gin.....	4,427
Weinert	
Weinert Gin.....	2,450
Total bales	21,690

Students visit Rotary Club



ALEX ALVAREZ



LANE BURSON

football recognitions and FFA contest awards.

He enjoys stock showing, hanging out with his pals and working on the farm.

He plans to attend Texas Tech University and major in agribusiness.

Deann Conner is the daughter of Jana Hinkle of Old Glory.

She attends Sagerton Methodist Church.

At Haskell High School, she is a yearbook staff member. She was an athlete, playing sports until she was diagnosed with scoliosis and underwent major back surgery.

She is musically talented and likes to sing and play guitar.

She plans to attend Midwestern State University studying to be a Radiology Technologist.

Caden Tatum is the son of Jonathan Tatum of Haskell.

He attends First Baptist Church in Haskell.

At Haskell High School, he plays football and is in one act play.

He was named to the All-District second team in football.

He enjoys playing sports and hanging out.

He plans to attend Tulsa Welding School.



DEANN CONNER

Alex Alvarez is the son of Alberto and Julie Alvarez of Haskell.

He attends Calvary Baptist Church.

At Haskell High School, he played varsity football. He enjoys reading books over the muscles in the human body and how they work; lifting weights and attending church.

He plans to attend Vernon College for an Associate's degree in nursing, then later attend Midwestern State



CADEN TATUM

University in pursuit of a Bachelor's degree.

Lane Burson is the son of Jimmy and Missy Burson of Haskell.

He attends First Baptist Church in Haskell.

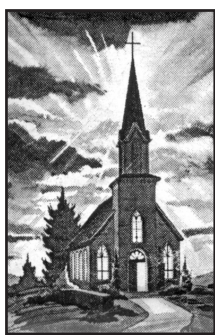
At Haskell High School, he participates in football, basketball, FFA (advocacy and meats), one act play and UIL (accounting).

He was named the Built Ford Tough Player of the Week in 2015, has received several district



ATTEND PLAY—Haskell Elementary fifth grade students and teachers attended ACU's performance of "Andro & Cles and the Lion" directed by Gary Varner. The ACU drama department added a special twist to this familiar fable which made it enjoyable and entertaining to the students. Fifth grade students perform a musical play in the spring, so the teachers felt this was a very educational experience. Teachers are Kamron Arce, Kristi Gibson, Jennifer Roewe and Pam Gibson, music teacher.

This Week's Devotional Message:



The Bible is the world's greatest book of instructions

There are many kinds of instruction books available, designed to teach us how to do practically everything from cooking and gardening to how to build your own airplane. However, the most valuable book of all is the Bible, because it teaches us how to live a good life. Also, it's timeless, with its basic common sense advice that never has to be revised or updated, because it doesn't change with each passing

fad of human behavior. If you prefer a more modern form of language, there are several reliable translations, but find out first which one your house of worship recommends. This is another good reason for being there, along with hearing interpretations of the Scriptures, the most helpful and fascinating collection of writings, of the word of God, with which our world has ever been blessed.

ATTEND CHURCH THIS SUNDAY

—HASKELL—

- East Side Baptist Church**
Terry Bunch, pastor
Sun. 9:45 a., 11 a.; 6 p.; Wed. 7 p.
600 N. 1st East, Haskell
- Christian Church**
Sun. 10:45 a.m.
107 N. Ave. F, Haskell
- Church of God**
Bruce Ray, pastor
Sun. 10:30 a.m. Thurs. 7:00 p.m.
714 North First East, Haskell
- Trinity Lutheran Church**
Rev. David White, pastor
Sunday 9:30 a., Worship 10:30
Hwy 380 East, Haskell
- Iglesia Bautista El Calvario**
Sun. 9:45 a., 10:45 a, 5 p.; Wed. 7 p
607 S. 7th, Haskell
- First United Methodist Church**
Rev. David Johnson, pastor
Sun. 9:45 a., 10:50 a, 6 p. Wed. 6 p
201 N. Ave. F, Haskell
- First Assembly of God**
Rev. J.C. Amburn
Sun. 9:45 a., 10:45 a, 6 p.; Wed. 7 p
1500 N. Ave. E, Haskell
- St. George Catholic Church**
Father Angelo Consemio
Sat. Mass 7 p.m.; Sun. 9:00 a.m.
901 N. 16th, Haskell
- Church of Christ**
Philip Sims, minister
Sun. 9:30 a., 10:30 a, 6 p.; Wed. 7 p
510 N. Ave. E, Haskell
- First Presbyterian Church**
Kelly Pigott, interim pastor
Sun. Morn. 9:30 a.m., 6 p.m.;
306 N. Ave. E, Haskell
- Trinity Baptist Church**
Larry White, pastor
Sun. 10 a., 11 a., 6:30 p.; Wed. 6:30 p
114 S. Ave. D, Haskell
- Hopewell Baptist Church**
Sun. 9:30 a., 11:00 a.; Wed. 7 p.
908 N. Ave. A, Haskell

Greater Independent Baptist Church

- Ollie Johnson, pastor
Sun. 9:30 a., 11:00 a, 6:30 p.; Wed. 7 p
301 N. 3rd St., Haskell
940-863-4405
- New Covenant Foursquare**
Bill and Renee Glass, pastors
Sun. 10 a., 11 a., 6:30 p. Wed. 7 p.
200 S. Ave. F, Haskell
- First Baptist Church**
Ollie Pierson, pastor
Juddson Smith, Family Life Pastor
Sun. 9:45 a.m., 10:55 a.m., 6 p.m.;
Wed. 6:30 p.m.
301 N. Ave. E, Haskell
- Cornerstone Fellowship Baptist Church**
Sun. 9:30 a., 10:45 a., 5 p., Wed. 6 p.
1600 N. First St., Haskell
- God Loves You Ministries**
Mark Wallace, pastor
Church Service 10 a.m.
West side of square, Haskell
- WEINERT—
- First Baptist Church**
Dan Bullock, pastor
Sun. 10 a., 11 a., 6 p., Wed. 7 p.
Weinert
- Foursquare Church**
Rev. Robert Harrison
Sunday 11 a.m
Weinert
- ROCHESTER—
- Church of Christ**
Mitchell Greer, minister
Sun. 10 a.m., 10:45 a.m.
West on Main Street, Rochester
- First Baptist Church**
Jim McCurley, pastor
Sun. 9:45 a.m., 11 a.m., 6 p.m.;
Prayer Time/Team Kids 5 p.m.;
Wed. Youth meeting 7 p.m.
500 Main, Rochester
- Union Chapel Baptist Church**
Clovis Dever
Sun. 9:45 a., 10:45 a, 6 p.; Wed. 7 p
Rochester

Faith Chapel of Rochester

- Randy Hollingsworth, minister
Sun. 10 a.m., 11 a.m., Wed. 6 p.m.
Hwy. 6, Rochester
- SAGERTON—
- Sagerton Methodist Church**
Cory Graham, pastor
Sun. Morn. 9:45 a.m.
Sagerton
- Faith Lutheran Church**
Anna Robbins, pastor
Sun. 10:30 a.m.
Sagerton
- RULE—
- First Baptist Church**
Scott Hensley, pastor
Sun. 9:45 a., 11 a., 5 p.; Wed. 7 p.
1001 Union Ave., Rule
- Primitive Baptist Church**
Dale Turner Jr., pastor
First & Third Sundays 10 a.m.
Corner of 8th & Robins, Rule
- Church of Christ**
Paul Leonard, minister
Sun. 9:45 a., 10:40 a, 6 p.; Wed. 7 p
811 Union, Rule
- Primera Iglesia Bautista**
Alfa y Omegas
Manuel Marin, pastor
Sun. 10 a., 11:00 a., 5 p.; Wed. 6 p.
500 Elm Street, Rule
- Sweet Home Baptist Church**
Russell Stanley, pastor
Sunday 10 a.m.
Gladstone Ave., Rule
940-997-2296
- West Bethal Baptist Church**
Rev. Clovis Dever
Sun. 10 a., 11 a., 8 p.; Wed. 7:30 p.
300 Sunny Ave., Rule
- PAINT CREEK—
- Paint Creek Baptist Church**
Sun. 10:00 a.m., 11 a.m., 6 p.m.
Paint Creek
- O'BRIEN—
- O'Brien Baptist Church**
Jim Reid, pastor
Sun. 9:45 a., 11 a, 5 p, 6 p, Wed. 6 p
O'Brien

Sonic Drive-In

1402 N. Ave. E
864-8533
Randy Phelps, Manager

Steele Fire Apparatus

Hwy. 380 East • 864-2208

Modern Way Food Store

1202 N. Ave. E • 864-3763

HANSON PAINT & BODY SHOP

207 S. 1st • 864-3631
Professional Auto Body Repair
Glass Installation • 24 Hour Wrecker Service

Rule Co-op Gin & Elevator

301 Adams • Rule • 996-2421

Smitty's Auto Parts

107 N. 1st East • 864-2607

Big Country Electric Cooperative announces annual Youth Tour Contest

For students to win a trip to Washington, D.C., Big Country Electric Cooperative holds a contest for high school students each year, and the winning students get to attend the Government-in-Action Youth Tour in June.

Students: Here are 10 reasons to apply today!

1. It's free. Big Country EC completely covers the cost of Youth Tour for the contest winners. That's airfare, hotel accommodation, meals and attractions—everything!

2. It's fun. You'll spend days touring the most popular attractions in D.C., including memorials, monuments and museums. You'll go on a dinner and dancing cruise on the Potomac River, attend a performance at the Kennedy Center and explore an important city. It's a once-in-a-lifetime experience that you don't want to miss!

3. You get to travel. You get to leave your summer job, siblings and routine behind for a 10-day trip!

4. You meet new people. More than 1,700 teens from across the nation attend Youth Tour, including about 140 from Texas, sponsored by electric cooperatives all over the state. You'll make new friends as you travel and experience the nation's capital with your fellow students.

5. You get a classic American experience. Washington, D.C., is a place like no other. It's rich in history and heritage. That's why Youth Tour was created more than 50 years ago, inspired by then-Senator Lyndon B. Johnson, to give youths the opportunity to discover "what the flag stands for and represents."

6. You learn a lot. You'll be surrounded by museums and attractions that focus on science, art, history, space, American

culture and so much more. There's a lot to take in, but you'll return home with a ton of newfound knowledge.

7. You can gain leadership experience. All Youth Tour participants can apply to be on the national Youth Leadership Council. One student is selected from each state, and all members of the YLC return to D.C. in July for a leadership workshop through the National Rural Electric Cooperative Association.

8. You can make your voice heard. During Youth Tour, you'll get to spend a day on Capitol Hill and meet with your congressional representatives and their staff members. That means you'll get face time with some of the most powerful people in the nation and an opportunity to talk about issues that are important to you and your community.

9. You can put Youth

Tour on your college application and résumé. If you're planning to continue your education after high school, Youth Tour can help make you stand out. It offers experiences that can shape your college application and essays, and your career path.

10. You connect with opportunity. Youth Tour alumni get plugged into the co-op community and are in a great position to learn about scholarships, internships and jobs offered through the electric cooperative network.

Did those 10 reasons convince you? To apply, eligible entrants must:

- Be a current tenth, eleventh, or twelfth grader at a school in Big Country EC's service area (Borden, Fisher, Garza, Haskell, Jones, Kent, Mitchell, Nolan, Scurry, Shackelford, Stonewall and Throckmorton Counties).

• Students' parents/guardians do not have to be members/customers of Big Country Electric Cooperative in order to compete in and win the Youth Tour contest.

• Submit application form to Sarah McLen via email to smclen@bigcountry.coop or fax to 325-776-2246. Application form may be downloaded online at bigcountry.coop, click on Youth Tour link.

• Once your application is received, you will receive an email with a link to the BCEC Youth Tour 2017 closed group to post your video. Videos will only be available to the group of Youth Tour participants, not the public.

• Submit a video on the topic: Does residential solar make sense for you?

We want you to put yourself in the decision-making shoes for your household and make a video about your findings and conclusion. This is a hot topic and there is

a wealth of information available for you to research.

Be unique, be creative, learn something and have fun!

• Video must be posted by 11:59 p.m. on Jan. 26, 2017.

The three winning contestants will be chosen to represent BCEC on the Government-in-Action Youth Tour in Washington, D.C. on June 7-16, 2017. An alternate will also be chosen in the event a winner cannot make the trip. Each winner and the runner-up will also receive a \$1,500 scholarship from Big Country Electric Cooperative!

Find your reason to compete and win!

Support group

The Jones County Alzheimer's Association Support Group meets the second Monday of the month at 4 p.m. at Country Elegance, 1700 Columbia St., Stamford. For information, contact Patsy Richards at 325-773-5511.

Shop The Haskell Free Press

CLASSIFIEDS

940-864-2686 ALL DEADLINES MONDAY AT NOON • hfpnews@lycos.com 940-864-2686

For Sale
CHRISTMAS KITTENS: Three-black with markings from calico mother. Phone 940-864-3802 or 940-256-1365. 50-51p

FOR SALE: Sleeper sofa; king size box spring and mattress; recliner. Good condition. Call 940-864-3782, Haskell. 50-51p

Help Wanted
COMMUNICATION CONNECTION/Verizon Wireless is now hiring a

full time Customer Service Representative. Must have computer experience and some knowledge of Smart Phones, be energetic and friendly. Monday through Saturday. Please bring resume to 10 Ave. D, Haskell. 49-50c

PAINT CREEK ISD has an immediate opening for a full-time custodian. \$10.00 per hour. 7:30 a.m. to 4:00 p.m. Apply at Paint Creek School, 4485 FM 600, Haskell or call 940-864-2868 for more information. 50-51c

Help Wanted
NOTICE: The North Central Texas Municipal Water Authority is taking applications to fill an open maintenance position. Water treatment experience is preferred but not essential. Must be willing to work toward

Help Wanted
obtaining Class C or higher water license. Education: High school or better. Hospital and retirement plans available. Send application or resume to North Central Texas Municipal Water Authority, P.O. Box 36,

Munday, Texas 76371. Phone: (940) 422-4051. FAX: (940) 422-4385. davidk@nctmwa.org. NCTMWA is an equal opportunity employer. 49-50c

FOR RENT
45' Man Lift \$250 per day
Dump Trailer \$75 per day
Bobcat & Bucket \$125 per day
Forks \$25 per day
Digger 9" & 12" Auger \$50 per day
Tree Sheer \$75 per day
Steele Fire 940-864-2208

The Family of Joel Bevel would like to thank everyone for your prayers, cards, flowers, meals, memorials, kind words and support. It is difficult to find words to express how thankful we are for your expression of love to our family during this truly difficult time. God bless each and everyone of you.
The Bevel Family

CALL US TODAY (940) 864-2665

HASKELL COUNTY REALTY

VIEW ALL OF OUR PROPERTIES AT

www.haskellcountyrealty.com

RIKE

REAL ESTATE LLC

Megan Cox, Owner/Broker
Melanie Grindstaff, Agent
415 S. First St. • Haskell, TX 79521
940-864-2411 325-370-6572
www.rikerealestate.com

FARM & RANCH
20 +/- AC. SE OF ROCHESTER—Ideal hunting property. \$1250/Ac.—**NEW**
461 +/- AC. ON CR130—All dry land with excellent yields. \$1100/Ac.—**NEW**
BARN ON HWY. 6, ROCHESTER—Over 24,000 sq. ft. of space with electricity and water. \$120,000—**NEW**
36 +/- AC. U.S. HWY. 380 E—Just east of town. Utilities in the area. \$2500/Ac.—**NEW**
37 +/- AC. ON 277 BYPASS IN HASKELL—Perfect for pasture or commercial property. A must see!
5 +/- AC.—Perfect homestead just outside Haskell city limits. Great views. \$30,000.—**NEW**
445.605 +/- AC.—On Loop Rd. \$950/Ac.—**REDUCED**
412.17 +/- AC. EAST OF HASKELL—High fence. Perfect hunting property. \$1250/Ac.—**NEW**
162.9 +/- AC. NW HASKELL CO.—Ideal dryland farm on CR 188. \$1050/Ac.
219.5 +/- AC. WEST OF O'BRIEN—Dryland farm amongst pivots. \$1050/Ac.
158.6 +/- AC.—Irrigated farm west of O'Brien on CR 185. \$1650/Ac.—**CURRENT ACTIVE TENANT**
48.2 +/- AC. NORTH OF RULE—\$1300/Ac.—**PENDING**
231.1 +/- AC.—Prime Haskell Co. dryland farm located on FM 618. \$1150/Ac.—**REDUCED**
30 AC. WEST OF O'BRIEN ON 2229—\$1500/Ac.

HASKELL RESIDENTIAL
1801 N. AVE. G—3 or 4/3 on large corner lot. \$170,000—**NEW**
1410 N. AVE. L—3/2. \$69,900—**PENDING**
408 N. AVE. C—4/2 with fireplace. \$72,000—**NEW**
804 N. 9TH ST.—2/2 on oversized lot. \$72,000
402 N. AVE. D—4/2. \$59,900
1206 N. 9TH—3/2. Large corner lot. \$67,000
800 N. 3RD E—3/2 on large shaded lot. \$95,000
1904 N. AVE. F—Large 3/3. \$162,500—**REDUCED**
607 N. 5TH ST.—3/2. \$109,000—**REDUCED**
708 S. 7TH ST.—3/1 with new CH/A. \$44,500
1 N. AVE. P—3/2. \$57,000—**MAKE AN OFFER**
1405 N. AVE. H—2 or 3/2. \$48,500
1009 N. AVE. H—4/2. \$99,900—**REDUCED**
821 HWY. 380W—4/2 on 6 +/- Ac. \$179,900—**SOLD**
703 N. AVE. L—4/3. \$334,000—**REDUCED**
1407 N. AVE. E—Historic 4/2. \$160,000—**REDUCED**
1507 N. AVE. F—4/2. \$137,500—**REDUCED**
703 N. AVE. E—Large 4/3.5 with a pool. \$212,500
308 S. AVE. L—New 2/2. \$39,000—**REDUCED**

BIG COUNTRY RESIDENTIAL
811 S. 9TH, MUNDAY—2/2 on the outskirts of Munday. \$62,500—**NEW**
1002 SUNNY AVE., RULE—2 or 3/2. \$49,900—**NEW**
581 S. 12TH, MUNDAY—3/2. \$85,000—**REDUCED**
1208 N. PAWNEE, RULE—2/1. \$42,000—**NEW**
811 N. 3RD, MUNDAY—3/2. \$57,500—**NEW**
341 N. H, MUNDAY—2/1. \$42,000—**NEW**
11624 FM 617 ON 80 +/- AC.—2/2. \$175,000—**REDUCED**
500 CARDIFF AVE, RULE—3/2. \$42,000—**REDUCED**
704 SUNNY AVE., RULE—3/1. \$57,500—**NEW**
1212 ADAMS, RULE—3/2. Clean, move in ready. \$32,000—**NEW**
703 N. 16TH, RULE—3/2 on corner lot. \$62,900—**NEW**
841 S. 5TH ST., MUNDAY—3 or 4/2. \$32,000—**NEW**
1209 UNION, RULE—Cute 2/1, w/RV storage. \$42,500
220 S. 12TH AVE, MUNDAY—3/3. \$68,900—**REDUCED**
530 MAIN ST., MUNDAY—3/2. \$64,000—**REDUCED**
1008 SE 5TH ST., KC—3/2. \$59,900—**REDUCED**

COMMERCIAL
30 +/- AC. N OF HASKELL—Commercial land on the bypass of US 277. Contact for info.—**NEW**
419 S. 1ST ST. WILD HORSE TRADING POST—Prime Haskell real estate location. \$85,000.—**REDUCED**
551 US HWY 277, MACIAS BALLROOM—\$212,500
Texas REALTORS®

Haskell, TX Aspermont, TX

Langford

Scott Langford
(940) 256-0535

Owner

Realtors & Anchors

Tim Pearson
(940) 256-0874

Jason Langford
(940) 864-3490

(940) 256-1741

Like what you're reading?

We'll send it to you each week for just \$25 a year.
(in Haskell County)

Call 940-864-2686 to subscribe

Yearly Subscription Rates
\$25 a year in county • \$34 out-of-county

Name _____

Address _____

City _____ State _____ Zip _____

Clip and Mail Coupon, Along with Check or Money Order to:

The Haskell Free Press

P. O. Box 555, 420 N. First, Haskell, TX 79521



'Tis the season for Red and Green!
20% off!
 Everything Red or Green in the Store

Christmas T-shirts 20% off

Gift Certificates Available!
 Sale prices good Sat., Dec. 17 only!

Missy's Boutique
 Affordable, Trendy and Unique!
 407-A South 1st St. - Haskell
 Melissa Glover - owner
 940-207-0049
 We appreciate your business!



SHOP HASKELL MERCHANTS FOR

DEC 24 **Last Minute Christmas Gifts**

If you're coming up long on Christmas gifts to give and short on ideas, put your mind to rest! Select from a variety of Christmas gifts available at your Haskell merchants where you get friendly service from folks interested in giving you the finest service and savings. Remember ~ when you Shop Haskell First, our community prospers!



Mark your calendar!
Customer Appreciation Day
Wed., Dec. 21
 11 a.m. to 2 p.m.
 Enjoy treats and eats!
FREE GIFTS!
DOOR PRIZES!
 Register to WIN a Flat-Screen TV!

Come in to receive your FREE 2017 Calendar!

COUPON

Save 25% off one GIFT item!

December 15-17, 2016
 Must present coupon for discount.
 Some restrictions apply. No Lay-a-ways.
 Limit one coupon per customer.
 No Gift Wrapping. Limited to stock on hand.
 Discount taken off regular price.
 Cannot be used on Sale Merchandise.
 Coupon good December 15-17, 2016 only!

COUPON

Our shelves are stocked with **Great Christmas Gifts!**

- ★ Stars
- Books
- Jewelry
- Gift Cards
- Calendars
- Lift Chairs
- Splatterware
- Yankee Candles
- Kitchen Gadgets
- Crosses Angels
- Camouflage Gifts
- The Elf on the Shelf
- Stocking Stuffers for All
- Scarves Socks Belts Caps
- RUSSELL STOVER CANDY
- Leanin' Tree Christmas Cards
- Frames Dominoes Cookbooks
- Purses, Wallets & Cell Phone Cases
- Coca Cola, John Deere & Western Gifts
- Collegiate Gifts - Texas Tech, UT and A&M
- Clocks Wall Art
- Much, much more!

Give a delicious gift...
Russell Stover Candy
 Millionaires, Assorted Chocolates and Sugar Free Candies

When in doubt, give a Gift Card!
 For all your Holiday Cooking...
 We carry Quality

Watkins Products
 *Vanilla * Black Pepper *Spices & Seasonings

THE DRUG STORE
 100 South Avenue E
 Haskell, TX 79521
 Phone: (940) 864-2673 Fax: (940) 864-3731
 www.haskelldrugstore.com

@haskelldrugstore
haskelldrugstore
 Monday-Friday 8 a.m. to 6 p.m.
 Saturday 8 a.m. to 2 p.m.
 Closed Sunday and Holidays

We are your **Compounding Specialists!**



DON'T MISS OUT ON THIS YEAR'S Blowout Sale!

- PHONE AND TABLET BUNDLES
- BLUETOOTH SPEAKERS
- BLUETOOTH HEADSETS
- PHONE CASES
- WEEGO PRODUCTS
- STEELIES

AND MUCH MORE!

verizon
 Communication Connection 940-864-2310
 10 Ave D Haskell, TX 79521



Sale
 Buy 1 Item Clothes or Shoes
 Get 2nd **1/2 price**
 (thru Dec. 24)

Merle Norman
FREE GIFT
 with purchase of 2 or more products
Personality-Slipper
Shoppe
 940/864-2501 • 864-3051
 South Side of Square Haskell, Texas

Last Minute Christmas Gifts!



Stormy Kromer Apparel 1/2 off Reg. Price
 (backpacks, mittens, koozies, ear warmers)

Moore Maker Knives • Hunting Supplies
Muck Boots On Sale!
 Leashes, Collars and Treats ~ for your furry friends ~
King Ropes AND caps (NEW ARRIVALS DAILY)
Yard Art On Sale!
Ladies Purses, Shoes and Wallets On Sale!
 Select Scabbards for him
 Horse tack • Stock show supplies
Sullivan Show Boxes 10% off!
 Horse Blankets for any horseman
FREE GIFT WRAPPING!!!!

Haskell Feeds
 337 US Bus. 277S Haskell • 864-2614

SHOP HERE for EVERYONE!
Christmas Sale
All Apparel and Shoes on Sale!
 Super Discounts throughout the Store!
Everything 20-30% off
 Just in time for Christmas!

Sale starts Today!
 Where Winners Shop

Sport-About of Haskell 940-864-3891
 402 N. 1st

We accept Discover, VISA, AMEX, MasterCard