



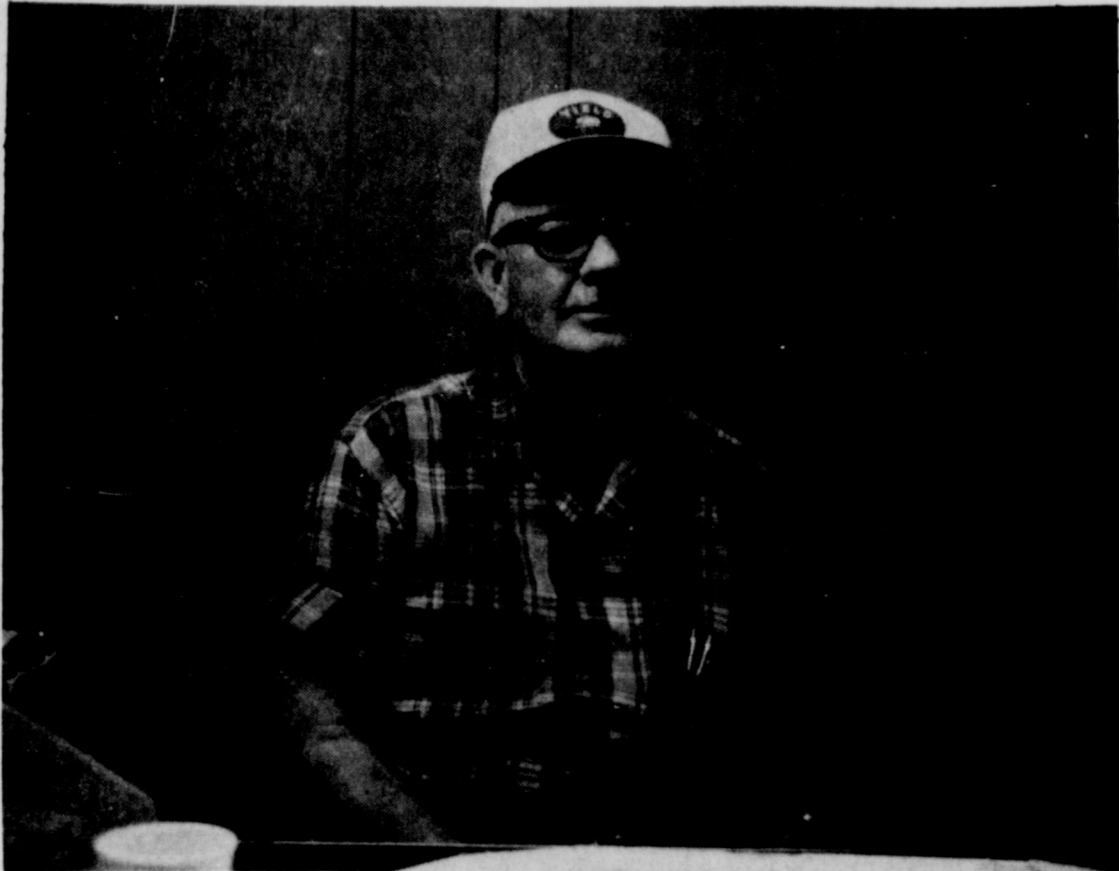
# ABERNATHY WEEKLY REVIEW



VOLUME 47 Hale County - Abernathy, Texas - Lubbock County

THURSDAY, APRIL 25, 1968

NUMBER 25



E. L. (Poochie) KELLY

...General Manager of Plains Grain & Farm Supply

## Plains Grain Marks 50 Years In Business

The business currently known as Plains Grain & Farm Supply in Abernathy has rounded out more than 50 years of service to the farmers of this area. In observance of the occasion, J. C. Mills, owner of the business, has ordered a page advertisement in this issue of The Abernathy Weekly Review to thank the customers, and to give well-deserved recognition to the faithful people who work with him in the operation of Plains Grain & Farm Supply.

From a small beginning, the business has grown in keeping with the ever-expanding service expected from such a firm. In addition to handling all kinds of grain grown in the area, the firm has planting seed, farm chemical department, including herbicides, insecticides, fertilizers, etc., along with ground rigs and aerial application service. Also, the firm has Ralston Purina and other feeds to serve the cattle, swine, chicken and rabbit breeders. It stocks fertilizers and chemicals and applicators for lawns.

A big station for the firm's two-way radio communications system is in the Plains Grain & Farm Supply office. A number of the company vehicles have two-radio contact with the office, allowing faster service to customers in a 20-30-mile radius.

The physical plant includes the old-type elevator building along with four barn-type grain storage units and nine grain storage tanks, a number of storage tanks and buildings for farm chemical operations and the central office. In addition to Mills and Manager E. L. Kelly, five other people work out of the Plains Grain & Farm Supply office.

ner, which he remained for 40 years. He retired in 1960. 1921-Coal remained the largest commodity handled by firm. 1921-1926-Grain (wheat and sudan) began being threshed and brought in by wagons. The wagons had a break-drop which lowered the back of the wagon about one foot. The grain was scooped out the back by manual labor. Mr. Nichols and Mr. Brown were two of the workmen. Milo was cut and sold in the head. 1924-Arthur Reed was employed, and remained with the firm until 1945.

1926-1927-Air compressor type dump was installed to unload trucks then being used for hauling the wheat in loads of 100 bushels. 1935-The corner office (original) was moved to where the present office now stands. 1940-Present office was built. 1940-Elevator was destroyed by fire, and was rebuilt on the site of the original structure.

1943-Milo was beginning to be combined, replacing headed maize. 1945-Shelton Hardin followed Arthur Reed as elevator manager.

1949-Six tanks were constructed to increase grain storage capacity. 1950-Large grain storage barns were built east of office. 1956-1957-Grain dryers were installed.

1958-Two grain tanks were installed west of grain storage barns. 1959-Shelton Hardin resigned after 14 years of service as elevator manager.

1959-E. L. Kelly followed Hardin as elevator manager. 1960-E. B. Lindsey retired as owner of the elevator, selling the business now known as Plains Grain & Farm Supply to J. C. Mills, current owner.

MATEJOWSKYS' GRANDSON IS BORN IN GERMANY Mr. and Mrs. Elmo Matejowsky have a new grandson, born April 19, to S/Sgt. and Mrs. Dale Matejowsky of Frankfurt, Germany. He weighed 7 pounds 3 ounces. The Dale Matejowskys have a daughter, also born in Germany, where the father is U.S. Air Force duty. The Elmo Matejowskys flew to Frankfurt last year to see their son and family.

### COMMUNITY SINGING IS APRIL 28th

The Community Singing will be held at 2 p. m. Sunday, April 28, in Abernathy Assembly of God Church. Community Singings held earlier this year at Northside Baptist Church drew good crowds. Pastor Hollis Shewmake said, He joins the Pastor, officials and members of the Assembly of God in inviting everyone to the singing April 28.

## Rural Businesses Are Developed With FHA

Many Hale and Castro County low-income rural people have increased buying power, as a result of Federal opportunity loans, to Donald R. Jennings, supervisor of the Farmers Home Administration.

Jennings, who has been Farmers Home Administration's Hale and Castro County Supervisor for three years, said six farm and other rural families received over \$9,350 in economic opportunity loans since July 1, 1966.

They used the loans, Jennings said, to develop small businesses.

Over 2,700 opportunity loans have been made in Texas since the beginning of the program in January 1965 with more than 430 being made this fiscal year.

### O.E.O. Loans

The opportunity loans, a part of the Federal anti-poverty program, which Congress enacted three years ago. The loan program is administered by the Farmers Home Administration for the Office of Economic Opportunity.

Low-income rural people, through the local Farmers Home Administration office, may receive loans up to \$3,500 to develop income-producing businesses or to enlarge farming operations. Borrowers may take up to 15 years to repay the loan.

For the first time, according to Jennings, people who could never before qualify for loans can now get the money they need to develop or expand a business enterprise or a farming operation.

### Reasonable Success

"But in all cases," Jennings added, "the enterprise—whether it is farming or business—must have a reasonable chance of success."

Through the Hale and Castro County Office, loans have been made for such nonfarm enterprises as cafes, hot shops, upholstery shops, garages, sheet metal shops, custom harvesting equipment and lawn mowing.

Applications for loans are made through the Farmers Home Administration Hale County office in Plainview at 1403-A West 5th Street. The Castro County Office is in the basement of the courthouse in Dimmitt.

ty office in Plainview at 1403-A West 5th Street. The Castro County Office is in the basement of the courthouse in Dimmitt.

## PRIMARY ELECTIONS SCHEDULED IN TEXAS SATURDAY, MAY 4th

Texas voters will go to the polls Saturday, May 4, to ballot in the first primary elections in both the Democratic and Republican parties. Voting will be the full range from U.

S. Representatives and Governor in the top offices to precinct chairmen.

In addition to selecting candidates for various offices, Texas voters will express their opinions on three propositions: liquor by the drink, pari-mutual wagering on horse races and creation of a Texas Dairy Commission. The propositions are expressions of public opinion and have no force or effect as law.

Balloting in Abernathy's Hale County box will be in city hall, Aaron DuBoise, election judge. Voting in Lakeview, Hale County, will be in the Lakeview Methodist Church, S. M. Harrison, election judge. Polls at both places will open at 8 a. m. and close at 7 p. m.

Voting in Abernathy's Lubbock County box will be in Joe Thompson Implement Co., building, Frank B. Lovelace, election judge. Voting at New Deal will be in the New Deal Clubhouse and in the New Deal School. Polls in Lubbock County open at 7 a. m. and close at 7 p. m.

Precinct conventions in all of the above voting places will be held election day, Saturday, May 4. Every qualified voter is urged to attend the precinct conventions. Ask the election judge the hour and the place your precinct convention will be held.

Applications for loans are made through the Farmers Home Administration Hale County office in Plainview at 1403-A West 5th Street. The Castro County Office is in the basement of the courthouse in Dimmitt.

## Liner Offers Hints On Cotton Planting

With the cotton planting season almost here, Hale County producers should give careful consideration to proper seeding rates, advises County Agricultural Agent Ollie Liner.

Studies at the South Plains Research and Extension Center show that an optimum plant population ranges from 20,000 to 50,000 plants per acre on 40-inch rows, Liner said.

A planting rate of 20 pounds of good quality acid delinted seed per acre will provide a sufficient number of plants, points out the agent. In fact, if every seed produced a plant, there would be more than enough plants required for maximum yields, he stated.

### Plant Population

With an average of 4,000 seed per pound, a 20-pound per acre planting rate could produce 80,000 plants. However, under actual field conditions about 60 per cent emergence may be considered. Therefore, the plant population would number about

48,000 per acre with a spacing of slightly more than three inches between plants. Under skip row conditions the planting rate may be increased by 10 to 20 per cent.

Farmers in the county sometimes use excess planting rates to compensate for possible adverse planting conditions or loss due to hail, adds Liner. Actually, this practice is rarely justified and would be of benefit only if hail took out 59 to 90 per cent of the seedlings.

Why this range of hail damage? With an initial population of 48,000 plants per acre, a hail destroying up to 50 per cent of the seedlings would leave 24,000 plants per acre, enough for maximum yields. On the other hand, if hail damage of 90 per cent or more occurs, replanting would be necessary even if a planting rate of 40 pounds were used.

### Leave First Stand

Often stands are replanted which should be left, it's always best, if possible, to leave that early first stand. Replanting in June places the boll maturation period in an unfavorable environment for producing high quality fiber. An early crop, even with a reduced stand of a plant every six to eight inches,

## CULP IS NEW MANAGER AT BYLOW

The Niles Culp family moved here from Hereford last week, and he will serve as manager of Bylow Discount Food in Abernathy. Culp will work with Harold Fielding, who will be connected with the store in a supervisory capacity. This managerial arrangement will allow Fielding more time to devote to ministerial work. He is pastor of Abernathy Assembly of God Church.

Culp and his wife, Joan, have three children, Mike, 7, in the second grade; Melanie, 4, and Julie, about two. The Culp family resides at 903 First Street in South Abernathy.

will usually make the producer more profit in quality line than thicker stands of replanted, later maturing cotton. As hail damage occurs later in the season, the decision on whether or not to replant becomes more critical.

Excessive planting rates may cause more problems than they solve. Seeding disease is usually greater with high planting rates. This is particularly true if higher rates are used to compensate for poor quality seed, Liner said.

Furthermore, high plant populations will result in taller plants with higher set bolls, which delay maturity and contribute to lower micronaire fiber, explains Liner. Equally important is the fact that many new varieties with improved fiber quality are less tolerant to high plant populations than the familiar rapid fruiting varieties grown in past years.

## COUNTY LINE CO-OP GIN MEET IS APRIL 30

J. M. Johnston, manager, announced that the 15th Annual Meeting of stockholders of County Line Co-op Gin organization will be held at 7:30 p. m. Tuesday, April 30, in Abernathy School cafeteria. Dinner will be served, and all stockholders and their families are urged to attend. Dinner music will be provided by Marvin Stephens. The principal speaker on the program will be Leon Hill of Amarillo, a noted after-dinner speaker.

Movies will be provided for entertainment of the children. The business session will include the annual audit report and other reports, the election of one director, and the distribution of dividend checks.

Term of board president Lindell Myatt expires this year. Other members of the Board of Directors are H. F. Gregg, vice president, J. W. Hamilton, secretary, Tom Johnson and G. W. Gates.

## LOCAL NEWS

J. Morris Thomas was under treatment at HI-Plains Hospital, Hale Center.

George S. Reagan, on Navy duty at Corpus Christi, has been promoted to Petty Officer Second Class. He is a son of Mr. and Mrs. George L. Reagan.

Mr. and Mrs. Finis Robertson have returned from a trip to Comanche. En route, they visited in the Possum Kingdom Lake homes of Mr. and Mrs. Dennis Barker and Mrs. W. A. Henson.

Mr. and Mrs. Jerry Phillips of Big Spring visited his parents, Mr. and Mrs. Leland Phillips, here last weekend.

Karen Kelly and Narvin Kain of San Antonio visited in the home of her parents, Mr. and Mrs. E. L. Kelly, last weekend. Miss Kelly teaches in the San Antonio Public School System.

Mrs. Mason Harlon of Goree visited her father, J. J. Mills, in Lubbock and in the home of her brother, J. C. Mills, here last weekend. Mr. and Mrs. D. E. Lyles of Corpus Christi visited relatives and friends here. They are former Abernathy residents.

Guy Roland of Garland visited here Friday morning. He formerly was employed in the mechanical department of The Abernathy Weekly Review.

The newest member of the staff, Murry M. Joiner, brings to Plains Grain & Farm Supply over ten years of experience in this type business. He is in charge of the fertilizer and farm chemicals department of the firm. Joiner and his wife,

Dorothy, and their four children are moving here from Idalou. The Joiner children are Debbie, 14, in the 8th grade; Kathy, 12, in the 6th grade; Bart, 7, in the 1st grade, and Jan, 4.

## Country Club - Sponsored Talent Show Slated

The Abernathy Country Club is sponsoring a TALENT SHOW, May 4, 1968, at 8:00 p. m. in the High School Auditorium.

Auditions for the show will be held April 26th in the High School Auditorium, and will start at 4:00 p. m. with the Junior Division; 5:00 p. m. for the High School Division; and 8:00 p. m. for the Adult Division. Judges will be chosen outside the area competing. Trophies will be awarded to

the First and Second Place Winners in each division. A trophy will also be given to the most outstanding talent of the show.

Acts may be by individuals or groups, but no more than six persons may perform with any group. There will be a limit of not more than 5 minutes per act. Any necessary props must be furnished by the contestant.

The First Place Winners from the Talent Show last year will be the guest performers and will not be in competition

with the other contestants.

We are inviting the surrounding towns to help us in providing talent for this show. If anyone in this area has a talent and likes to perform, now is their chance! Entry blanks will be sent out to each of these towns and published in the Abernathy Weekly Review. If you are interested, please fill them out as soon as possible and return them to Mrs. Charles Wilson, 507 Ave. F., Box 52, Abernathy, Texas. However, entries will be taken until the night of audition.

Tickets will go on sale soon at Pinson's Pharmacy, Graham's Restaurant, Struve Hardware & Dry Goods, and several of the members will be selling them, including Ted Wayne Watts, Lon Carmickle, Morris Kerr and Harold McCune. You may also purchase them at the box office. Tickets will be 75¢ for students and \$1.50 for adults.

We are inviting everyone to this family night of fun and entertainment! Following is the official entry blank:

| T A L E N T S H O W   |                                     |
|---|-------------------------------------|
| ABERNATHY HIGH SCHOOL AUDITORIUM  | 8:00 P. M. MAY 4, 1968              |
| Sponsored by THE ABERNATHY COUNTRY CLUB   |                                     |
| AUDITION - APRIL 26, 1968   | JUNIOR DIVISION - 4 P. M.           |
| (In the High School Auditorium)   | HIGH SCHOOL DIV. - 6 P. M.          |
|   | ADULT DIVISION - 8 P. M.            |
| First and Second Place Winners in each of these divisions will be awarded trophies. A trophy will also be given to the most outstanding talent of the show. |                                     |
| Any necessary props must be furnished by the contestant.  |                                     |
| Acts may be by individuals or groups, but no more than six persons may perform with any group. Limit of not more than 5 minutes per act.                    |                                     |
| DIVISION _____  | AGE _____                           |
| NAME _____  | MAILING ADDRESS _____               |
| DESCRIPTION OF ACT _____  | GROUP NAME _____ NO. IN GROUP _____ |

If interested, please fill out as soon as possible and return to: Mrs. Charles Wilson, 507 Ave. F., Box 52, Abernathy, Texas. Entries will be taken until the night of audition.

News and ads turned in Mondays may not be

# Keep Non-Crop Areas WEED-FREE



with **CHLOREA** GRANULAR

Complete, Long-Lasting Control of ALL Vegetation

APPLY CHLOREA GRANULAR around irrigation wells, oil and fuel storage tanks, farm buildings, utility poles, in storage and working areas, along fence rows. KILLS WEEDS AND GRASSES harboring insects and rodents; prevents spread of seed into farmland; reduces fire hazard; improves maintenance. CHLOREA GRANULAR is a pelletized chemical combination. Ready for use... no mixing or adding of water. Easy to apply... broadcast by hand or with portable seeder.

Contact Your Supplier or  
**chipman** WEED CONTROL  
**RHODIA INC.** CHIPMAN DIVISION  
 Box 6272, Bob Harris Sta.  
 Pasadena, Texas 77502

## Demonstration Reports Are Available

Another year of hard work and effort has been put into the completion of actual result demonstrations on farms in Hale County, reports County Agricultural Agent Ollie Linder. And the findings of these demonstrations are now complete and have been compiled into a handbook available at the County Extension Office.

The overall agricultural demonstration program is sponsored by the County Program Building Committee, points out Linder. Chairman of this committee is S. M. True Jr., Chairman of the Cotton Sub-committee is Woody Allen while W.T. McEachern heads up the Grain Sorghum Sub-committee and Clarence Wright is chairman of the Small Grain Sub-committee and Other Crops Sub-committee chairman is Don Hegi.

"We feel that our result demonstration program has progressed especially well over the past year," Linder said.

Cotton varieties and cotton fertilization and soybean varieties are demonstrations which should be of particular interest to most county producers.

## Sunflower Breeding Gaining Prominence

The sunflower is fast gaining prominence as a possible cash crop in the Southwest. A breeding program has been underway at the High Plains Research Foundation since 1961. The aims of the sunflower breeding program are to develop improved varieties that are completely adapted to mechanization, have high yielding ability, short stalks, and are disease and insect resistant. Since some varieties now have an oil content of 40% and because of the low irrigation requirements and a growing season of 85 to 96 days, sunflowers could become a dependable cash crop in many areas.

This is a crop that has been more highly developed in countries other than its native USA. The Russian sunflower breeders have developed sunflower varieties that contain as much as 56% oil.

## Wallace Backer To Speak

Dr. Henry Bucklew, lecturer and author, will be the speaker for a "Wallace for President" campaign meeting set for Thursday at 8 p.m. in the Chamber of Commerce Bldg. at 710 W. 5th St. in Plainview.

Bucklew is a former mayor of national commander of the Veterans of Foreign Wars. He is the author of three books and former editor of the Southern Baptist News.

Wallace currently is making a bid to have his name placed on ballots throughout the United States for president under the American Party.

## Pioneer Gas Re-Elects Directors

The annual stockholders meeting of Pioneer Natural Gas Co. was held Tuesday in Amarillo, and the eight present directors were re-elected. An additional director also was named to the board.

The way was cleared for possible future financing and expansion, with approval of an amendment to the firm's articles of incorporation providing for authorized but unissued preferred stock.

The amendment authorized issuance of 200,000 shares of Class A preferred stock with par value of \$100, and 500,000 shares of Class B preferred stock without par value. The company has no immediate plans for issuance of any of the preferred stock, according to C. I. Wall, president and chairman of the board.

**Returned To Board**  
 The directors returned to the board were A. F. Cox, George W. Dupree, J. Harvey Herd, M. E. Furnell, B. P. Smith, W. J. Walker, Wall and K. B. Watson. Laurence R. Jones Jr., Kansas City, Mo., was named as a new director.

All officers were re-elected. They include Wall; B. P. Smith, executive vice president; A. F. Cox, senior vice president; K. B. Watson, senior vice president and general counsel; T. S. Whittis, senior vice president; M. B. Edquist, vice president; C. H. Rainwater, vice president; C. J. Gholson, assistant vice president; R. W. Lewis, assistant vice president; R. R. McCafferty, assistant vice president; J. L. Pratt, assistant vice president and controller; W. N. Lampe, secretary and general attorney; and R. W. Lee, treasurer.

## AREA 1 YH MEET SLATED APRIL 26

The Area 1 Association of Young Homemakers will attend a Special Activity Day, Friday, April 26, 1968, in the auditorium of South Plains Electric Cooperative, Inc., 116 North Amarillo Road, Lubbock, Texas. Approximately 200 Young Homemakers from a 33 county area of the Panhandle and South Plains will attend this all-day program. Registration will be from 9:30 to 10:00 a.m. Mr. Delbert Smith, Information and Power Use Manager of South Plains Electric Cooperative, Inc., will extend the welcome at 10:00 a.m. Mrs. R. B. (Linda) Stanton of Idalou, Area 1 Association of Young Homemakers president will give the response. Mr. Nick Craig, Electrification Advisor, Rita Blanca Electric Cooperative, Dalhart, Texas, will act as Master of Ceremonies for the day. Miss Carolyn Rodgers, Staff Home Economist with the Home Service Department of Maytag Company, Newton, Iowa, will start the program with an unique presentation on "What Goes Into the Dishwasher", a demonstration and talk including table appointments. Following Miss Rodgers, Dr. William S. Banowsky, Minister of the Broadway Church of Christ, Lubbock, will speak on "The New Morality". Dr. Banowsky, soon to leave the area, has given much of his time, speaking to various groups on this subject. Miss Jamie Henderson, Area 1 Young Home-maker Little Sister from Wolf-orth, will give a devotional at the 12:15 p.m. salad luncheon buffet. "How Now - Brown" will be presented at 1:15 p.m. by Mrs. Cynthia M. Skaggs of Las Cruces, New Mexico. Mrs. Skaggs' background includes her own custom design business, fashion show coordinating and commentation from the east to the west coast. All clothes shown will be those designed and tailored by Mrs. Skaggs. Ten area cooperatives will sponsor the activity day. Hostesses for the event are Mrs. Mary Phillips, Home Economist, Light-house Electric Cooperative, Inc., Floydada; Mrs. Joanne Bray, Home Service Advisor, Bailey County Electric Cooperative Association, Muleshoe and Mrs. Mary Fort, Home Service Advisor, South Plains Electric Cooperative, Inc., Lubbock. The sponsoring electric cooperatives are: Bailey County Electric Cooperative Association, Muleshoe; Deal Smith County Electric Cooperative, Inc., Hereford; Dickens County Electric Cooperative, Inc., Spur; Greenbelt Electric Cooperative, Inc., Wellington; Lamb County Electric Cooperative, Inc., Littlefield; Lighthouse Electric Cooperative, Inc., Floydada; North Plains Electric Cooperative, Inc., Perryton; Rita Blanca Electric Cooperative, Inc., Dalhart; South Plains Electric Cooperative, Inc., Lubbock; and Swisher County Electric Cooperative, Inc., Tulia.

# SEED HEADQUARTERS

GRAIN SORGHUM, WHEAT, SOY BEANS, OATS, BARLEY, AND CORN BUYERS, SHIPPERS, & WAREHOUSING ABOVE COMMODITIES.

## Seed Special

Hybrid Sudan Seed, \$2.50 per 50 Lb. Bag

- |                   |   |         |
|-------------------|---|---------|
| Lindsey Hybrids   | Green Leaf Hybrids                      | Pioneer |
| P. A. G. Hybrids  | R. C. Mitchell Hybrids                  |         |
| Paymaster Hybrids | Advance Hybrids - Amak R 10 - Amak R 12 |         |
| Frontier Hybrids  | Excel Hybrids                           |         |

Other Seeds - Cowpeas (Edible & Field), Legumes, Corn Seed, Sorghums, Sudan, Grasses, Wheat, Soy Beans.

## Feed & Salt

Special: 5-Pound Bag PURINA Puppy Chow, 75¢

Ralston Purina Feed Ward's Feed Salt, Minerals (Bags or Blocks)

## Fertilizers

Liquids (Straights & Blends) A. A. (Gas) Grace Slurry Mix  
 Dries (Straight & Blends)

## Oil & Greases

Texaco Oil & Greases Champlin Oil & Greases

## Tires, Tubes & Batteries

Dayton Tires, Batteries & Tubes  
 Seiberling Tires & Tubes

## Herbicides, Insecticides, Chemicals All Types

Rigs for Lease - Herbicides & Insecticides  
 Custom Application With Hann Hi-Boys

All Types of Yard & Lawn Fertilizer For Sale and Applicators to Loan

# Plains Grain & Farm Supply



701 Texas Avenue - Abernathy - 298-2521 PO 3-4868

April 30, 1968 - 7:30 P.M.

# 15th ANNUAL MEETING of COUNTY LINE CO-OP GIN

IN ABERNATHY SCHOOL CAFETERIA

DINNER WILL BE SERVED

MOVIES WILL BE SHOWN FOR THE CHILDREN

FOLLOWING THE DINNER

The Business Session Will Include: The Annual Audit Report, Election of One Director. The Term of Lindell Myatt Expires This Year. And, The Distribution Of

## DIVIDEND CHECKS

PRINCIPAL SPEAKER WILL BE MR. LEON HILL OF AMARILLO. DINNER MUSIC WILL BE PROVIDED BY MR. MARVIN STEPHENS OF ABERNATHY.

ALL STOCKHOLDERS AND THEIR FAMILIES ARE URGED TO ATTEND

## COUNTY LINE CO-OP GIN

Lindell Myatt, H. F. Gregg, J. W. Hamilton, Jr.

Tom Johnson and G. W. Gates, Directors;

J. M. Johnston, Manager

PHONE 757-2677

## NEW DEAL SCHOOL SCHEDULE CALENDAR OF EVENTS

- May 2, 3, 4 - State Spring Meet in Austin.
- May 4 - Junior-Senior Banquet.
- May 19 - Baccalaureate Services in New Deal First Baptist Church at 8:00 p.m.
- May 20 - High School Commencement Exercises in High School Gymnasium at 8 p.m.
- May 21 - Junior High School Commencement at 8:00 p.m.

## APRIL 30 Deadline Nears For Homestead, Taxation Filing

Property owners have until April 30 to render their property for taxation at the county tax office and apply for a residence homestead exemption for 1968.

Under provisions of the Texas Constitution, a property owner may claim up to \$3,000 of the valuation for tax purposes of a residence homestead as an exemption from state property taxes. The exemption does not apply to county or special district taxes, Russell S. Hardin, county tax assessor - collector said.

The rendition for taxation and the application for the homestead exemption must be made each year by the property owner himself. This applies to persons who pay their taxes as part of their monthly payments to a loan agency as well as to persons whose homes are free of debt.

"Banks or loan agencies can pay the taxes on a piece of property on which they hold a mortgage and add the taxes to the monthly payments, but they cannot render the property for taxation or make an application for a homestead exemption. Only the owner can do that," Hardin said.

He also pointed out that a property owner, by applying for the homestead exemption, can save up to \$14.10 on the maximum \$3,000 exemption at the present state property tax rate of 47 cents on each \$100 of valuation.

## Construction Of SPF Swine Plant Starts At Lockney \$265,417 New Total Of Pledges For WBC

LOCKNEY - Melvin Brock and sons, Harold and Bryon, have begun construction of a Swine Feeding Plant to be known as Brock Hog Company. The new plant is located six miles north of town on the Melvin Brock farm.

Foundation was poured Monday on the first of two 36 x 48 foot structures designed to handle 200 head of disease free swine. The feeding operation is to have a capacity of approximately 400 hogs when both buildings are completed and can accommodate 1,200 animals annually.

The SPF - Specific Pathogenic Free - swine never come in contact with soil from the time they are born until they reach market. Slanted floors will be placed within the buildings, each of which will have 16 pens. SPF animals are relatively new to the livestock industry and this type is preferred by meat packers.

Contributions and pledges totaling \$265,417.12 were reported at a noon meeting Friday of persons working on the Wayland Baptist College development fund drive.

Speaker at the meeting was Plainview attorney Paul Lyle, who discussed the financial value of the college to the area. Lyle said a gift to the development fund was not "Really a gift, but a swap."

### Comparison Due

He said the annual budget of Wayland College is larger than the combined budget of area towns, larger than the Hale County or City of Plainview budget. He said the college has a payroll of approximately \$700,000 a year, most of which he said is spent in Plainview, and it has been estimated that each student and his family spends approximately \$1,000 a year above college costs each year in the area. "We should focus on attracting new industry to Plainview,"

Lyle said. "But we should not neglect an industry we already have - Wayland College."

### Payne Comments

R. V. Payne, chairman of the Plainview region of the drive, then discussed the contribution Wayland makes in other than financial areas. "An investment in Wayland is also an investment in providing a place for a good Christian education, an investment in youth, and the resulting benefits from providing those two things," Payne said.

Overall goal of the drive is \$1.5 million to provide a new science building, a new physical education center and new student housing at the college.

Groundbreaking ceremonies were held last week for the Moody Science Building. Harry Minor, office director of the drive, urged campaign workers to complete pledge card work and May 10 was set as a tentative deadline for cards to be completed.

Dealer of  
Golden Urea & Sol-U-Phos  
Liquid Fertilizers  
— Also —  
Anhydrous Ammonia,  
Dry Formulations Fertilizer,  
Texaco Motor Oils  
& Greases



Dealer of  
Golden Urea & Sol-U-Phos  
Liquid Fertilizers  
— Also —  
Anhydrous Ammonia,  
Dry Formulations Fertilizer,  
Texaco Motor Oils  
& Greases



**Plains Grain and Farm Supply**

WHOLESALE AND SHIPPERS  
GRAINS, SEEDS, AND FERTILIZER

Box 188 — Phone 298-2521 - Lubbock Ph. PO 3-4868  
Abemathy, Texas



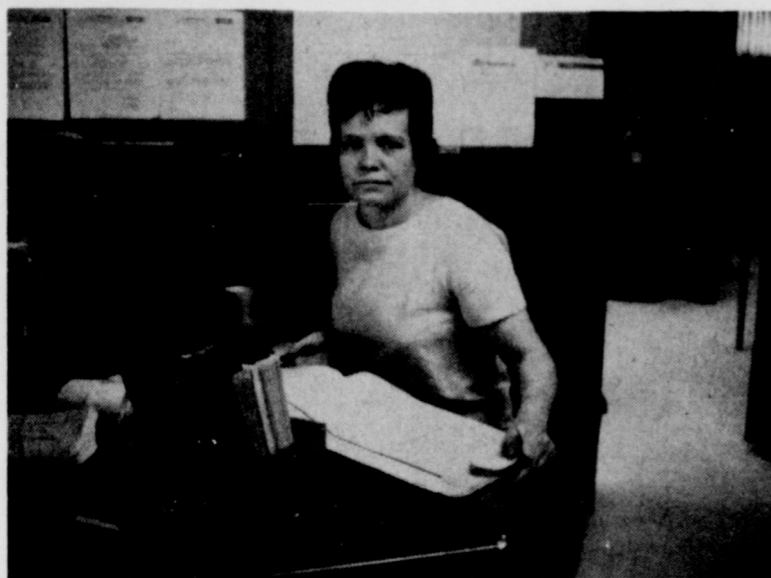
# This Is Plains Grain & Farm Supply ... A One-Stop Service

**If We Don't Have It, We Will Get It. If We Don't Know The Answers,  
We Have A Telephone And We Will Use It.  
We know where to call to get the information YOU need.**

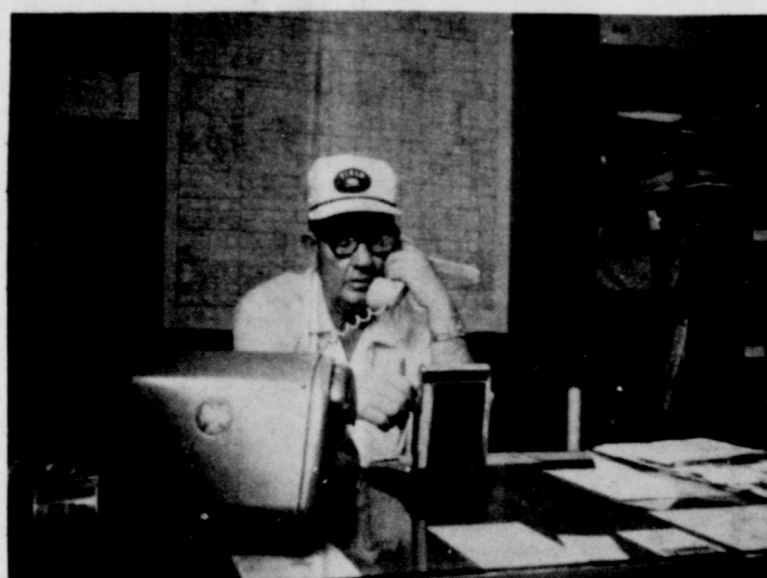
Plains Grain & Farm Supply Stands For Honesty , Dependability And Fairness

**Plains Grain & Farm Supply Is Proud Of Its Employees.**

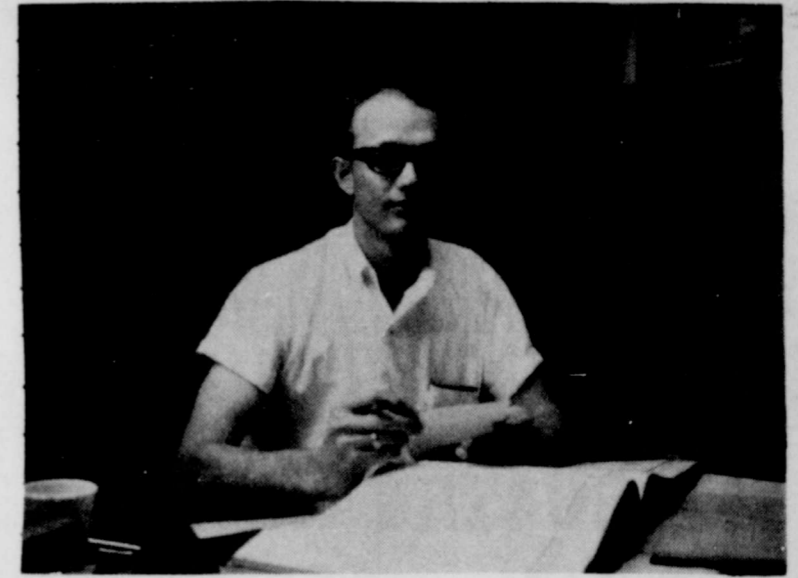
**We Think They Are All Outstanding In Personality, Honesty And Dependability  
You Can See This In Their Pictures Below:**



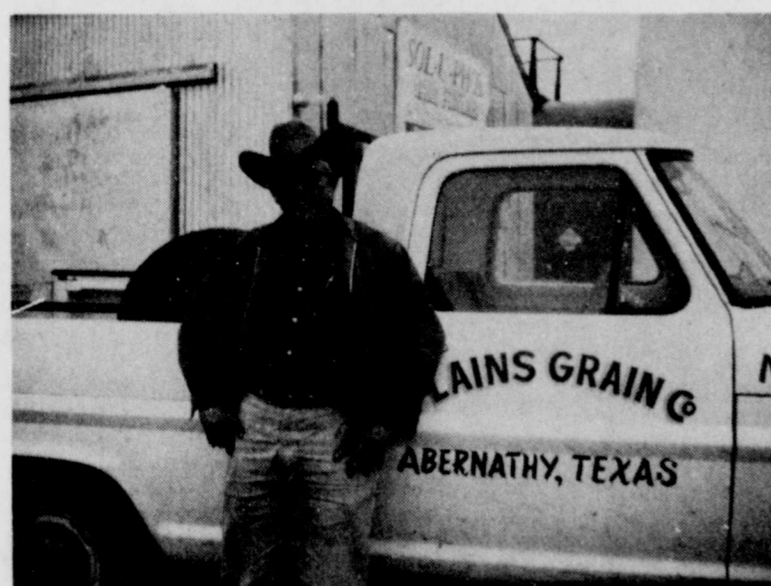
MRS LOIS FULLER, BOOKKEEPER



E. L. (POOCHIE) KELLY, GENERAL MANAGER



CHARLES R. HOBGOOD, OFFICE MANAGER



R. L. (BOB) ADAMS, PLANTING SEED & FARM CHEMICALS



MURRY M. JOINER, IN CHARGE OF FARM CHEMICALS  
DEPARTMENT



HENRY MASERANG, ELEVATOR SUPERINTENDENT,  
AND FARM CHEMICALS

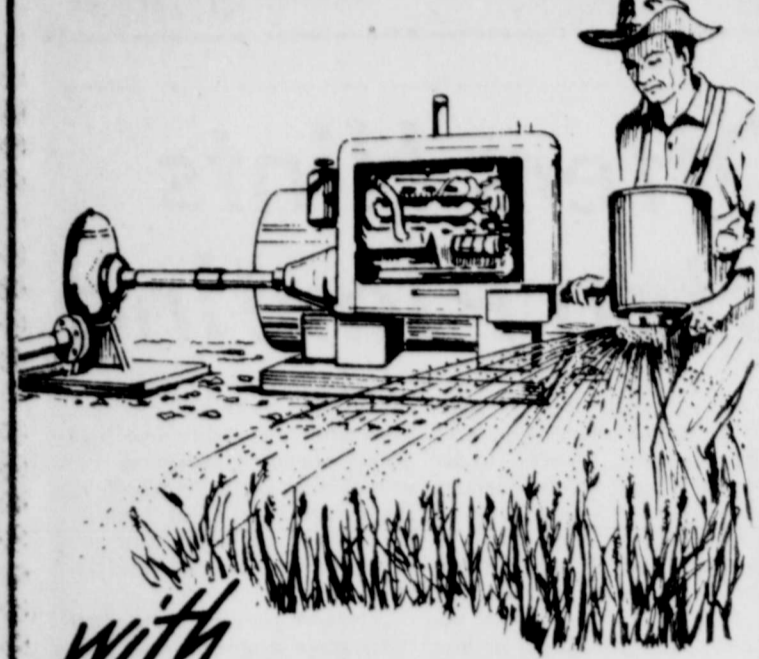
**Come By And Visit Us. We Are Always Glad To See You**

The Coffee Is Hot and The Cokes Are Cold, and  
The "Welcome" To You Is Always Warm. Be Our Guest. ...

**We Are Proud Of This Firm , Which Has Provided A Market,  
Merchandise And Service To The Farmers Of This Area For Over 50 Years.  
Thank You For The Business You Have Given Us.**

News and ads turned in Mondays may not be

# Keep Non-Crop Areas WEED-FREE



with **CHLOREA GRANULAR**

Complete, Long-Lasting Control of ALL Vegetation

APPLY CHLOREA GRANULAR around irrigation wells, oil and fuel storage tanks, farm buildings, utility poles, in storage and working areas, along fence rows. KILLS WEEDS AND GRASSES harboring insects and rodents; prevents spread of seed into farmland; reduces fire hazard; improves maintenance. CHLOREA GRANULAR is a pelletized chemical combination. Ready for use... no mixing or adding of water. Easy to apply... broadcast by hand or with portable seeder.

Contact Your Supplier or



**RHODIA INC.**  
CHIPMAN DIVISION  
Box 6272, Bob Harris Sta.  
Pasadena, Texas 77502

## Demonstration Reports Are Available

Another year of hard work and effort has been put into the completion of actual result demonstrations on farms in Hale County, reports County Agricultural Agent Ollie Limer. And the findings of these demonstrations are now complete and have been compiled into a handbook available at the County Extension Office.

The overall agricultural demonstration program is sponsored by the County Program Building Committee, points out Limer. Chairman of this committee is S. M. True Jr., Chairman of the Cotton Sub-committee is Woody Allen while W.T. McEachern heads up the Grain Sorghum Sub-committee and Clarence Wright is chairman of the Small Grain Sub-committee and Other Crops Sub-committee chairman is Don Hegi.

"We feel that our result demonstration program has progressed especially well over the past year," Limer said.

Cotton varieties and cotton fertilization and soybean varieties are demonstrations which should be of particular interest to most county producers.

Copies of the Result Demonstration Handbook may be obtained at the County Extension Office or by writing to the County Agent, Box L, Plainview.

## Sunflower Breeding Gaining Prominence

The sunflower is fast gaining prominence as a possible cash crop in the Southwest. A breeding program has been underway at the High Plains Research Foundation since 1961. The aims of the sunflower breeding program are to develop improved varieties that are completely adapted to mechanization, have high yielding ability, short stalks, and are disease and insect resistant. Since some varieties now have an oil content of 40% and because of the low irrigation requirements and a growing season of 85 to 96 days, sunflowers could become a dependable cash crop in many areas.

This is a crop that has been more highly developed in countries other than its native USA. The Russian sunflower breeders have developed sunflower varieties that contain as much as 56% oil.

## Wallace Backer To Speak

Dr. Henry Bucklew, lecturer and author, will be the speaker for a "Wallace for President" campaign meeting set for Thursday at 8 p.m. in the Chamber of Commerce Bldg. at 710 W. 5th St. in Plainview.

Bucklew is a former mayor of national commander of the Veterans of Foreign Wars. He is the author of three books and former editor of the Southern Baptist News.

Wallace currently is making a bid to have his name placed on ballots throughout the United States for president under the American Party.

## Pioneer Gas Re-Elects Directors

The annual stockholders meeting of Pioneer Natural Gas Co. was held Tuesday in Amarillo, and the eight present directors were re-elected. An additional director also was named to the board.

The way was cleared for possible future financing and expansion, with approval of an amendment to the firm's articles of incorporation providing for authorized but unissued preferred stock.

The amendment authorized issuance of 200,000 shares of Class A preferred stock with par value of \$100, and 500,000 shares of Class B preferred stock without par value. The company has no immediate plans for issuance of any of the preferred stock, according to C. I. Wall, president and chairman of the board.

**Returned To Board**  
The directors returned to the board were A. F. Cox, George W. Dupree, J. Harvey Herd, M. E. Purnell, B. P. Smith, W. E. Walker, Wall and K. B. Watson. Laurence R. Jones Jr., Kansas City, Mo., was named as a new director.

All officers were re-elected. They include Wall; B. P. Smith, executive vice president; A. F. Cox, senior vice president; K. B. Watson, senior vice president and general counsel; T. S. Whitts, senior vice president; M. E. Edquist, vice president; C. H. Rainwater, vice president; C. J. Gholson, assistant vice president; R. W. Lewis, assistant vice president; R. R. McCafferty, assistant vice president; J. L. Pratt, assistant vice president and controller; W. N. Lampe, secretary and general attorney; and R. W. Lee, treasurer.

## AREA 1 YH MEET SLATED APRIL 26

The Area 1 Association of Young Homemakers will attend a Special Activity Day, Friday, April 26, 1968, in the auditorium of South Plains Electric Cooperative, Inc., 110 North Amarillo Road, Lubbock, Texas. Approximately 200 Young Homemakers from a 33 county area of the Panhandle and South Plains will attend this all-day program.

Registration will be from 9:30 to 10:00 a.m. Mr. Delbert Smith, Information and Power Use Manager of South Plains Electric Cooperative, Inc., will extend the welcome at 10:00 a.m. Mrs. R. B. (Linda) Stanton of Idalou, Area 1 Association of Young Homemakers president will give the response. Mr. Nick Craig, Electrification Advisor, Rita Blanca Electric Cooperative, Dalhart, Texas, will act as Master of Ceremonies for the day. Miss Carolyn Rodgers, Staff Home Economist with the Home Service Department of Maytag Company, Newton, Iowa, will start the program with an unique presentation on "What Goes Into the Dishwasher" a demonstration and talk including table appointments. Following Miss Rodgers, Dr. William S. Banowsky, Minister of the Broadway Church of Christ, Lubbock, will speak on "The New Morality". Dr. Banowsky, soon to leave the area has given much of his time, speaking to various groups on this subject. Miss Jamie Henderson, Area 1 Young Home-maker Little Sister from Wolf-ford, will give a devotional at the 12:15 p.m. salad luncheon buffet. "How Now - Brown" will be presented at 1:15 p.m. by Mrs. Cynthia M. Skaggs of Las Cruces, New Mexico. Mrs. Skaggs' background includes her own custom design business, fashion show coordinating and commentary from the east to the west coast. All clothes shown will be those designed and tailored by Mrs. Skaggs. Ten area cooperatives will sponsor the activity day. Hostesses for the event are Mrs. Mary Phillips, Home Economist, Light-house Electric Cooperative, Inc. Floydada; Mrs. Joanne Bray, Home Service Advisor, Bailey County Electric Cooperative Association, Muleshoe and Mrs. Mary Fort, Home Service Advisor, South Plains Electric Cooperative, Inc., Lubbock. The sponsoring electric cooperatives are: Bailey County Electric Cooperative Association, Muleshoe; Deaf Smith County Electric Cooperative, Inc., Hereford; Dickens County Electric Cooperative, Inc., Spur; Greenbelt Electric Cooperative, Inc., Wellington; Lamb County Electric Cooperative, Inc., Littlefield; Lighthouse Electric Cooperative, Inc., Floydada; North Plains Electric Cooperative, Inc., Perryton; Rita Blanca Electric Cooperative, Inc., Dalhart; South Plains Electric Cooperative, Inc., Lubbock; and Swisher County Electric Cooperative, Inc., Tulita.

# SEED HEADQUARTERS

GRAIN SORGHUM, WHEAT, SOY BEANS, OATS, BARLEY, AND CORN BUYERS, SHIPPERS, & WAREHOUSING ABOVE COMMODITIES.

## Seed Special

Hybrid Sudan Seed, \$2.50 per 50 Lb. Bag

|                   |   |         |
|-------------------|---|---------|
| Lindsey Hybrids   | Green Leaf Hybrids                      | Pioneer |
| P. A. G. Hybrids  | R. C. Mitchell Hybrids                  |         |
| Paymaster Hybrids | Advance Hybrids - Amak R 10 - Amak R 12 |         |
| Frontier Hybrids  | Excel Hybrids                           |         |

Other Seeds - Cowpeas (Edible & Field), Legumes, Corn Seed, Sorghums, Sudan, Grasses, Wheat, Soy Beans.

## Feed & Salt

Special: 5-Pound Bag PURINA Puppy Chow, 75¢

Ralston Purina Feed  
Salt, Minerals (Bags or Blocks)



## Fertilizers

Liquids (Straights & Blends)  
Drys (Straight & Blends)

A. A. (Gas)  
Grace Slurry Mix

## Oil & Greases

Texaco Oil & Greases  
Champlin Oil & Greases

## Tires, Tubes & Batteries

Dayton Tires, Batteries & Tubes  
Seiberling Tires & Tubes

## Herbicides, Insecticides, Chemicals All Types

Rigs for Lease - Herbicides & Insecticides  
Custom Application With Hann Hi-Boys

All Types of Yard & Lawn Fertilizer For Sale and Applicators to Loan

# Plains Grain & Farm Supply



701 Texas Avenue - Abernathy - 298-2521 PO 3-4868

April 30, 1968 - 7:30 P.M.

# 15th ANNUAL MEETING of COUNTY LINE CO-OP GIN

IN ABERNATHY SCHOOL CAFETERIA

## DINNER WILL BE SERVED

MOVIES WILL BE SHOWN FOR THE CHILDREN

FOLLOWING THE DINNER

The Business Session Will Include: The Annual Audit Report, Election of One Director. The Term of Lindell Myatt Expires This Year. And, The Distribution Of **DIVIDEND CHECKS**

PRINCIPAL SPEAKER WILL BE MR. LEON HILL OF AMARILLO. DINNER MUSIC WILL BE PROVIDED BY MR. MARVIN STEPHENS OF ABERNATHY.

ALL STOCKHOLDERS AND THEIR FAMILIES ARE URGED TO ATTEND

## COUNTY LINE CO-OP GIN

Lindell Myatt, H. F. Gregg, J. W. Hamilton, Jr.

Tom Johnson and G. W. Gates, Directors;

J. M. Johnston, Manager - PHONE 757-2677

## NEW DEAL SCHOOL SCHEDULE CALENDAR OF EVENTS

May 2, 3, 4--State Spring Meet in Austin.  
May 4--Junior-Senior Banquet.  
May 19--Baccalaureate Services in New Deal First Baptist Church at 8:00 p.m.  
May 20--High School Commencement Exercises in High School Gymnasium at 8 p.m.  
May 21--Junior High School Commencement at 8:00 p.m.

## APRIL 30 Deadline Nears For Homestead, Taxation Filing

Property owners have until April 30 to render their property for taxation at the county tax office and apply for a residence homestead exemption for 1968.

Under provisions of the Texas Constitution, a property owner may claim up to \$3,000 of the valuation for tax purposes of a residence homestead as an exemption from state property taxes. The exemption does not apply to county or special district taxes, Russell S. Hardin, county tax assessor - collector said.

The rendition for taxation and the application for the homestead exemption must be made each year by the property owner himself. This applies to persons who pay their taxes as part of their monthly payments to a loan agency as well as to persons whose homes are free of debt.

"Banks or loan agencies can pay the taxes on a piece of property on which they hold a mortgage and add the taxes to the monthly payments, but they cannot render the property for taxation or make an application for a homestead exemption. Only the owner can do that," Hardin said.

He also pointed out that a property owner, by applying for the homestead exemption, can save up to \$14.10 on the maximum \$3,000 exemption at the present state property tax rate of 47 cents on each \$100 of valuation.

## Construction of SPF Swine Plant Starts At Lockney

LOCKNEY - Melvin Brock and sons, Harold and Bryon, have begun construction of a Swine Feeding Plant to be known as Brock Hog Company. The new plant is located six miles north of town on the Melvin Brock farm.

Foundation was poured Monday on the first of two 36 x 48 feet structures designed to handle 200 head of disease free swine. The feeding operation is to have a capacity of approximately 400 hogs when both buildings are completed and can accommodate 1,200 animals annually.

The SPF - Specific Pathogenic Free - swine never come in contact with soil from the time they are born until they reach market. Slanted floors will be placed within the buildings, each of which will have 16 pens. SPF animals are relatively new to the livestock industry and this type is preferred by meat packers.

## \$265,417 New Total Of Pledges For WBC

Contributions and pledges totaling \$265,417.12 were reported at a noon meeting Friday of persons working on the Wayland Baptist College development fund drive.

Speaker at the meeting was Plainview attorney Paul Lyle, who discussed the financial value of the college to the area. Lyle said a gift to the development fund was not "Really a gift, but a swap."

**Comparison Due**  
He said the annual budget of Wayland College is larger than the combined budget of area towns, larger than the Hale County or City of Plainview budget.

He said the college has a payroll of approximately \$700,000 a year, most of which he said is spent in Plainview, and it has been estimated that each student and his family spends approximately \$1,000 a year above college costs each year in the area.

"We should focus on attracting new industry to Plainview,"

Lyle said, "But we should not neglect an industry we already have - Wayland College."

**Payne Comments**  
R. V. Payne, chairman of the Plainview region of the drive, then discussed the contribution Wayland makes in other than financial areas.

"An investment in Wayland is also an investment in providing a place for a good Christian education, an investment in youth, and the resulting benefits from providing those two things," Payne said.

Overall goal of the drive is \$1.5 million to provide a new science building, a new physical education center and new student housing at the college. Groundbreaking ceremonies were held last week for the Moody Science Building.

Harry Minor, office director of the drive, urged campaign workers to complete pledge card work and May 10 was set as a tentative deadline for cards to be completed.

Dealer of  
Golden Urea & Sol-U-Phos  
Liquid Fertilizers  
— Also —  
Anhydrous Ammonia,  
Dry Formulations Fertilizer,  
Texaco Motor Oils  
& Greases



**Plains Grain and Farm Supply**

WHOLESALE AND SHIPPERS  
GRAINS, SEEDS, AND FERTILIZER  
Box 188 — Phone 298-2521 - Lubbock Ph. PO 3-4868  
Abernathy, Texas

Dealer of  
Golden Urea & Sol-U-Phos  
Liquid Fertilizers  
— Also —  
Anhydrous Ammonia,  
Dry Formulations Fertilizer,  
Texaco Motor Oils  
& Greases



# This Is Plains Grain & Farm Supply ... A One-Stop Service

**If We Don't Have It, We Will Get It. If We Don't Know The Answers,  
We Have A Telephone And We Will Use It.**

**We know where to call to get the information YOU need.**

Plains Grain & Farm Supply Stands For Honesty , Dependability And Fairness

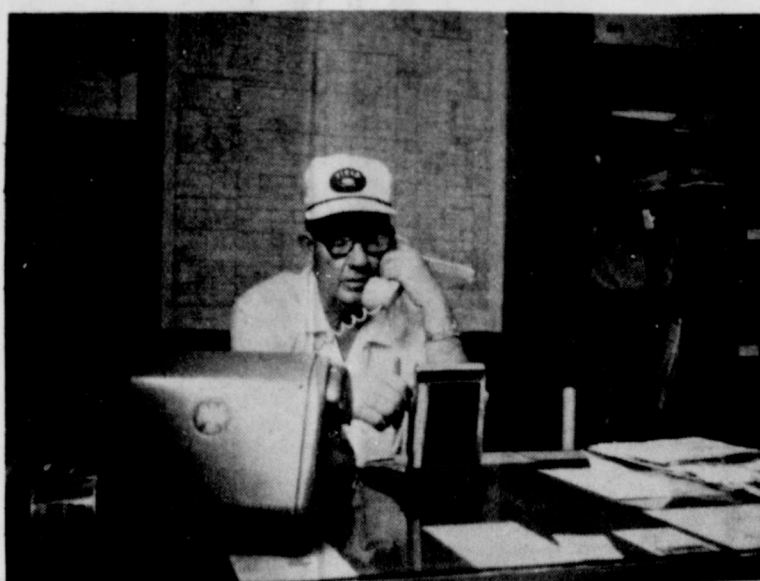
**Plains Grain & Farm Supply Is Proud Of Its Employees.**

**We Think They Are All Outstanding In Personality, Honesty And Dependability**

**You Can See This In Their Pictures Below:**



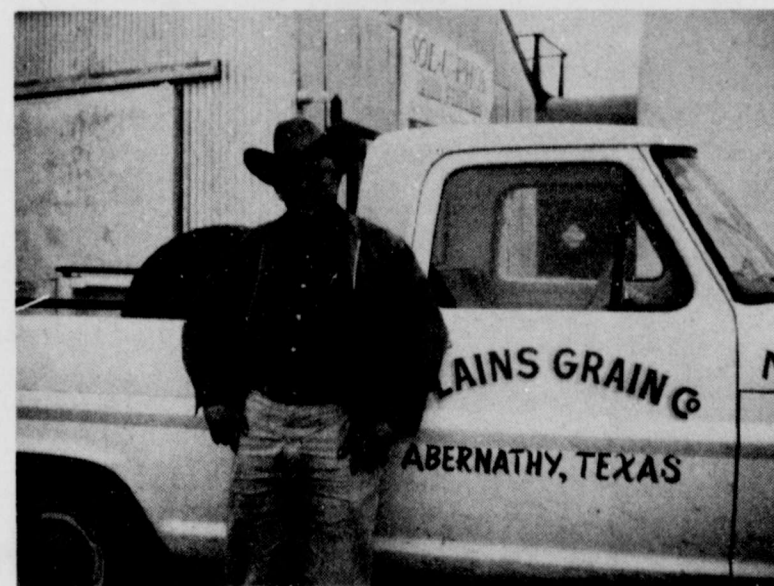
MRS LOIS FULLER, BOOKKEEPER



E. L. (POOCHIE) KELLY, GENERAL MANAGER



CHARLES R. HOBGOOD, OFFICE MANAGER



R. L. (BOB) ADAMS, PLANTING SEED & FARM CHEMICALS



MURRY M. JOINER, IN CHARGE OF FARM CHEMICALS DEPARTMENT



HENRY MASERANG, ELEVATOR SUPERINTENDENT, AND FARM CHEMICALS

**Come By And Visit Us. We Are Always Glad To See You**

The Coffee Is Hot and The Cokes Are Cold, and  
The "Welcome" To You Is Always Warm. Be Our Guest. ...

We Are Proud Of This Firm , Which Has Provided A Market,  
Merchandise And Service To The Farmers Of This Area For Over 50 Years.  
Thank You For The Business You Have Given Us.

**New Deal HD Club  
Tours Greenhouse**

New Deal Home Demonstration Club met Thursday in the Toreador Room of Furr's Cafeteria in Town and Country center.

Norris Clark and Rob Hamilton conducted members through a tour of a local

greenhouse and spoke on floral arrangements.

Next meeting will be at 2 p.m. May 2 in New Deal Community Center.



**VOTE FOR  
JUDGE JAMES A. JOY**

OF PLAINVIEW  
ASSOCIATE JUSTICE

of the

**Seventh Court of Civil Appeals**

**ELECT**

**JAMES A. JOY MAY 4TH**

Pol. Adv. Pd.

\*Native of Crowell, Ford County

\*The Only Man in This Race With Judicial Experience

**Travel for less  
in Ford Country.**

**Cross the Lone Star State  
in a '68 Falcon.  
Small European price,  
Texas-size style  
and comfort.**

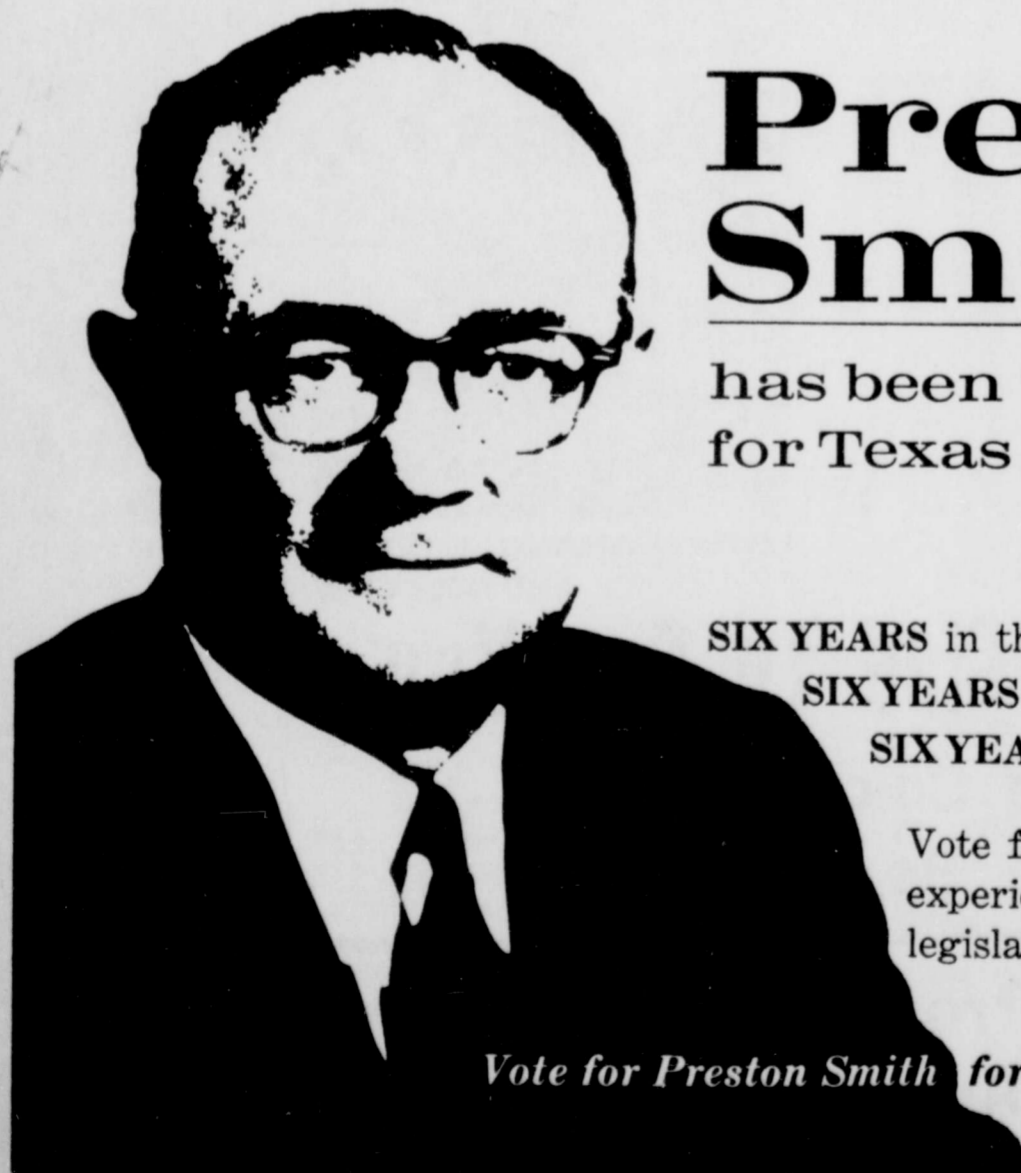
Falcon seats not 4 but 6. Has big-car power. All kinds of luggage space. Economy-champ gas mileage. Options like SelectShift, power front disc brakes.



**See the light.  
The switch is on to... FORD**

**ABERNATHY MOTOR COMPANY**

Phone 298-2821 Ford Dealer Abernathy, Texas



**Preston Smith**

has been working for Texas since 1944

SIX YEARS in the Texas House.  
SIX YEARS in the Texas Senate.  
SIX YEARS as Lt. Gov. of Texas.

Vote for the man with experience in every elective legislative office.

Vote for Preston Smith for Governor of Texas.

(Pol. Adv. Pd. by Preston Smith For Governor Committee, Clayton Enger, Area Chairman.)

**Nominees Sought  
For 'Pioneer Woman'**

Deadline for nominations for the "Pioneer Woman of the Plains" has been set for May 10, according to Mrs. Helen Pemberton, chairman of the program committee.

This is the ninth year the Plainview Business and Professional Women's Club, sponsoring organization of the annual Pioneer Round-Up, has honored a pioneer woman of this area.

Previous winners of the honor are Mrs. Sallie LeMond, Hale Center, 1960; Mrs. Frank Norfleet, Hale Center, 1961; Mrs. Lillian Fortenberry, Edmonson, 1962; Mrs. Maggie Davis, Plainview, 1963; Mrs. Coleman Jones, Plainview, 1964; Mrs. Tom Vaughn, Plainview, 1965; Mrs. L. T. Mayhugh, Plainview, 1966 and Mrs. O. B. Jackson, Plainview, 1967.

Announcement of the "Pioneer Woman of the Plains" will be the highlight of the evening activities of the 40th Round-Up planned for Saturday, May 18 and will be staged at the Hale County Agriculture Center.

**Entry Blanks Mailed**

Entry blanks have been mailed to all civic clubs, women's clubs and organizations in Plainview and surrounding areas. Individuals may also submit names to be considered for this honor. A group of judges will select the winner based on the information submitted. The number of times a person is nominated will have no effect on the selecting of the honoree. Entry blanks and additional information may be obtained by contacting Mrs. Pemberton, CA4-45258 or Miss Wilma Courtney, CA3-3702.

According to the rules of the event, the nominee must have been a pioneer resident of the High Plains, short biographies including the candidate's outstanding contributions to home, church, community and general welfare of her fellowman must be submitted and all entries must be signed by the person submitting the letter of nomination. Nominees submitted in

**Ginning Study  
Funds Approved**

Rep. George Mahon Wednesday announced the approval of a \$65,791 grant by the Economic Development Administration for a two year study aimed at saving jobs in the cotton ginning industry.

The funds were requested by the Texas Independent Ginners Association with Texas Tech designated contractor for the project.

According to Rep. Mahon, the general objective of the study will be to evaluate the economic and technical conditions and trends in the cotton ginning industry in the United States; to estimate and evaluate the effects of these changes on employment, payrolls, capital requirements, repayment capacity, return on invested capital and to arrive at recommendations regarding these and related issues.

past years will be eligible and may be submitted again, except those who have already received the honor.

Other scheduled events of this year's Round-Up include the reception beginning at 10 a.m. honoring all pioneers; the parade down Broadway at 3 p.m.; the supper beginning at 6 p.m. in the Agriculture Center; the program at 8:00 and the square dance following.

**Five Will Join  
Wayland College  
Faculty In Fall**

Wayland College recently signed contracts with five teachers who will join the faculty at the beginning of the fall semester according to Dr. W. Wayne Alford, dean of the college.

Donald L. Cook, on leave of absence from Wayland the past two years while working on his Ph. D at Texas Tech, contracted as assistant professor of English and as head of the department of English. He is to have his doctorate by the time he takes over his duties at Wayland.

Willis Apple, part time instructor at Wayland, will become a full time faculty member as assistant professor of Education. Apple has the M.A. degree from Texas Christian University. He has been superintendent of schools at Dennis, Aledo, Burleson, Spade and Munday and the past two years has been assistant superintendent of the Lockney schools.

Robert D. Hamner will join the Wayland faculty as instructor in English. Hamner, now a graduate student at the University of Texas, has an M. A. degree from the University and has completed 36 hours toward his doctorate.

Bob Clindaniel signed a contract with Wayland April 1 effective June 1 as athletic director and men's basketball coach.

Glenn E. Johnston, a graduate student at Texas Tech, will be a part-time instructor in mathematics. He holds the M.A. degree from Tech.

Mrs. Reta Jane Carter, Plainview the past year a part-time instructor in English at Wayland, will assume full time duties as an English instructor at the start of the fall semester. She has an M.A. degree from the University of Kansas.

Dr. Alford said vacancies in the art, chemistry and music departments for full time instructors and in the physics department for a part-time teacher are to be filled to complete the 50 member faculty.

Clindaniel was head basketball coach at Plainview High School 17 years before taking the Wayland post. He has two masters degrees and will teach physical education and head the department of physical education at Wayland in addition to his other duties.

**Ted  
Watts,  
your  
Great  
Southerner**



Your Great Southerner is a well-trained and thoroughly competent insurance man. He is doing a job he likes, something he's proud of. He's accomplishing something for his clients and for himself. He has some new ideas on what insurance can do and how it can be used imaginatively. Why not call him? We think you'll like him.



HOME OFFICE / HOUSTON, TEXAS  
SEE YOUR GREAT SOUTHERNER WHEN HE CALLS!

201 South Avenue E.  
Abernathy, Texas  
PHONE 298-2360

PROVEN DEPENDABLE HYBRID GRAIN SORGHUMS

**RICHARDSON**

404R 1700 303R 202R 101SR \$17.00CWT.

FORAGE AND R.S. HYBRIDS \$13.00CWT.

BEAUTIFUL HYBRID BOUNTIFUL SERVICE GRAIN CO.

**WHITTENBURG UNDERSTANDS... ELECT HIM GOVERNOR**

Pol. Adv. Team for Whittenburg Robert Malone, Ch.

LET'S KEEP BILL SHAVER As Judge of 72nd District Court (Pol. Adv.)

J. Davis Armistead, O. D.  
J. M. Bealmear, O. D.  
D. L. Griffith, O. D.  
Doctors of Optometry

Visual Analysis - Effective Reading Training - Contact Lenses  
2132 - 50th Street Lubbock SH 7 - 1635

**"My Hat Is In The Ring"**

**VOTE  
Jack Eason  
for  
HALE COUNTY  
COMMISSIONER**

Precinct No. 3  
DEMOCRATIC PRIMARY



**NEW! For clean Sorghum...  
spray weeds when you see them!  
with BANVEL®**

Velsicol announces Banvel herbicide for control of all hard-to-kill weeds of major importance in grain sorghum. This includes carelessnessweed (pigweed), sunflower, lambs-quarter, purslane, morning glory and other annual broadleaf weeds. Banvel herbicide is applied post-emergence, so there are no weeds sprays in years when rain is scarce and weeds are not a problem. With Banvel you see your weed problem and then spray—all in plenty of time to give young sorghum plants plenty of opportunity to grow.

Banvel is not dependent on soil moisture for its effectiveness, so its results are dependable. And it's a liquid that won't clog your sprayers; nor does Banvel need constant agitation.

Banvel increases yields. It's excellent for use on grain sorghum, wheat, barley, oats and field corn. Order Banvel herbicide to get full potential from your valuable, high-yielding sorghum seed.

See your dealer today. You'll be glad you did!



VELSICOL CHEMICAL CORPORATION  
341 E. Ohio Street • Chicago, Illinois 60611

©VELSICOL CHEMICAL CORPORATION, 1968

THE GROWING WORLD OF  
**VELSICOL**

Prosper with pesticides by using them safely! Follow label directions.

HYBRIDS  
13,00CW



act Lenses  
35

### SCHEDULE OF EVENTS GIVEN (School - Community)

April 27-AHS Junior-Senior Annual Banquet, school cafeteria, 7:30 p.m.

April 30-County Line Co-op Gin annual meeting of stockholders, Abernathy School cafeteria, 7:30 p.m.

May 3-Chori Spring Concert, Auditorium, 8:00 p.m.  
May 4-Abernathy County Club Talent Show, Auditorium, 8 p.m.

May 7-FFA Parent-Son Banquet, school cafeteria, 7:30 p.m.

May 10-All Sports Banquet, cafeteria, 7:30 p.m.

May 11-Junior High Band Festival, all day, auditorium and old gym.

May 14-Abernathy Co-op Gin Annual meeting of stockholders, school cafeteria, 7:30 p.m.

May 17-Annual membership meeting of Co-op Grain Co. of Abernathy, school cafeteria, 7:30 p.m.

May 20-Spring Band Concert, Auditorium, 8 p.m.

May 21-National Honor Society Annual Awards Assembly, Auditorium, 10:30 a.m.

May 21-Abernathy Consumers Fuel Association annual meeting of stockholders, school cafeteria, 7:30 p.m.

May 26-AHS Senior Class Baccalaureate, auditorium, 8 p.m.

May 27-Abernathy High School Commencement, auditorium, 8 p.m.

May 28-Junior High Commencement, auditorium, 8 p.m.

### 1954 WOMEN'S CLUB MEETS

The 1954 Women's Club met Wednesday April 17 in the Club room. Betty Neve and Wanda Beeson were hostesses. The Club elected new officers for the new club year. Those present were Mmes. Cheryl Thompson, Betty Smith, Faye Shadden, Betty Neve, Frankie Mills, Janice McKenzie, Thelma McLaugh, Marjorie Allen, Kay Knight, Carole Evans, Joanne Allen, Wanda Beeson and Gale Davis.

### Hale Ranked Second In Voting Strength

Hale County is the second largest voting county in the 30th senatorial district, according to a tabulation of voter registration reported by county tax officials. Hale County's 13,624 voters ranks second to Wichita County's 41,736 in the district represented by Sen. Jack Hightower of Vernon. Twenty counties are located in the district. Hale County's voting strength has shown a marked increase the past four years, climbing from 11,084 in 1964 to 13,624 in 1968—a difference of 2,540.

But the increase isn't nearly as spectacular as the average hike in district figures. The tabulation shows that the district gained about 40 per cent in voting strength since 1964, the last previous presidential election. In part this gain is due to the removal of the \$1.67 poll tax, and in part it is due to the Legislature's requirement that persons over 60 who live in rural areas or towns under 10,000 must register each year to be eligible to vote.

## New County Residents Must Vote On State Races In Clerk's Office

Voters in the May primary who moved into a county on or after Nov. 4, 1967, must vote between Monday and April 30 in the office of the County Clerk in the County of their present residence, according to information supplied by Hale County Clerk Mildred Tucker.

A new law enacted last year permits registered voters with less than six months' residence in the county to vote on all statewide offices and issues if they have lived in the state longer than one year, but they must vote in the county clerk's office under procedures similar to the absentee voting.

The new law puts into effect a constitutional amendment adopted in November, 1966.

**Former Ruling**  
Formerly, a person who moved from one county to another within the state was totally disfranchised for the first six months after he moved, unless one or more of the various types of districts (congressional, legislative, judicial, etc.) included both the county of his former residence and the county of his new residence.

If he had lived in a district for six months before the election, he could vote on statewide offices and issues and on the offices for districts in which he had six months' residence, but he could not vote on local offices and issues within the county.

The new law preserves the voting rights which existed under the old law, but the procedure for voting has been changed. Until now, person entitled to vote on the basis of six months' residence in a district voted on election day at the regular polling place for the voting precinct of his new residence.

Under the new law, no one who has resided in the county less than six months may vote at a regular polling place, and all voting by such persons must be done through the county clerk's office.

**Appear In Person**  
The voter must appear in person at the clerk's office between the 20th day and the fourth day preceding the election unless he is unable to appear because of sickness or physical disability or unless he is absent from the county during that period.

Sick or disabled voters and those temporarily absent from the county may obtain a ballot by mail.

Persons living in a city of 10,000 or more population who registered in the county of their former residence must have their registration transferred through the county tax assessor-collector's office before they vote.

Persons living elsewhere than in a city of 10,000 or more are not required to transfer their registration, but they should have their voter registration certificate with them when they apply for a ballot in the county clerk's office. However, if a voter has lost his certificate, he will be permitted to vote after making an affidavit of that fact.

Miss Tucker warned that the voters living in a city of 10,000 or more who have moved from one voting precinct to another within the county since registering also must have their registration transferred through the tax assessor-collector's office by April 29 in order to vote in the May 4 primary. They will vote on election day at the regular polling place for the voting precinct of their present residence.

Voters registered in some other county who moved into the county before Nov. 4 will also vote a full ballot at the regular polling place on election day, but they also must have their registration transferred by April 29 if they live in a city of 10,000 or more.

Regular, absentee voting in the County Clerk's office at the Courthouse will continue until April 30, from 8 a.m. to noon and 1 p.m. to 5 p.m., Monday through Friday.

## To Plant Or Not? Farmers Are Debating

The decision up to Hale County farmers today is whether to register, but they should have their voter registration certificate with them when they apply for a ballot in the county clerk's office.

Farming operations in Hale County the past few weeks have centered around a flurry of activity to get fertilizer and herbicides into the ground to get croplands ready for planting.

And due to favorable weather the past two weeks, most of the pre-plant activities have been taken care of except in portions where farmers are still pre-watering.

**Farmers Tempted**  
The last few days presenting abundant sunshine and clear skies have tempted area farmers with the possibility of planting. And some farmers have planted grain sorghum and cotton.

Vegetable farmers have been seeding their crops for the past month and some of the early seeded sugar beets are up.

However most farmers will wait to plant their crops between May 1 and 10 or anytime after the 10-day soil temperature average rises to 60 degrees.

**Heavy Moisture**  
Due to the unusually heavy winter moisture, Hale County Agent Ollie Linder said the sub-soil moisture is the best it has been in several years and this always helps insure a good crop. Most farmers are catching up on their pre-plant activities after several weeks of damp weather which prohibited field work Linder said.

The wheat crop looks excellent and Linder forecasts an increase over the 1967 wheat yield of more than 60 per cent.

The 1967 wheat crop suffered extensive damage in the late May 3 freeze and suffered decreased yields due to drought. Linder estimated Hale County wheat farmers harvested an average 20 bushels of wheat from 50,000 acres last year.

**Total Rainfall**  
Total rainfall to date is 4.69 inches compared to 1.09 inches on this date last year. A breakdown of moisture received shows .98 of an inch in January, 1.21 inches in February, 1.72 inches in March and .78 inch during April.

It is estimated in 1968 that farmers will plant 123,588 acres of cotton compared to 104,168 acres at this time last year and 155,612 acres of grain sorghum, approximately 50,000 acres less than in 1967.

It is estimated the area castor crop will cover approximately 66,000 acres on the High Plains.

## Give her the one she likes best



Cattle like Pioneer's 985 because it tastes so good. Strip grazing tests show they'll graze it first every time—they'll eat more and make more milk or meat for you.

Hybrid 985 gives you more feed per acre, too. In Texas A & M tests at Weslaco (1966), it was the top yielder. In the 1967 Texas Research Foundation performance trials at Renner, Pioneer 985 ranked 1st in yield (oven dry forage) in two of three tests when compared with competitive sorghum-sudangrass hybrids.

Use 985 to fit your needs—with milk cows, beef cattle, hogs, sheep or turkeys—for pasture, green chop, haylage or hay. The extra palatability and extra tonnage gives you more profit.

Co-op Grain Company  
Martin Gin & Fertilizer  
Plains Grain & Farm Supply  
Service Grain & Fertilizer Co.



**Re-Elect Russell S. Hardin Tax Assessor Collector Of Lubbock County**

Paid Pol. Adv.

**Special Offer**  
**Buy 3 Get 1 Free**

OUT 533 - 755 - 788A  
92F - 115F

Plains Grain & Farm Supply  
Abernathy  
Big State Grain Co.  
Abernathy  
Big State Grain Co.  
County Line  
Martin Gin

"He's been drawing on our savings account without telling me."

That's bad, little lady... unless he's got a really good buy, and wants to surprise you. However, if he was smart, he'd leave the savings alone for the protection of both of you. We're always GLAD to help, first with sound information and advice, and second with a low-cost loan, for any deal... on car, home, business or farm. And for you folks who don't have a savings account, why not open one with us? Our interest payments will help your money grow.

© 1965 National Litho

**ABERNATHY FIRST STATE BANK**  
PHONE 298-2556 - MEMBER FDIC

## Postal Patrons CAN STOP CERTAIN TYPES OF AD MAIL

Mail patrons offended by pandering advertisements can now take steps to curb such mail, Postmaster Herman Lambert said today in announcing plans for administering a new law which gives each family the right to decide that an ad is "erotically arousing or sexually provocative."

When an advertisement sent through the mails is offensive on these grounds, a postal patron can now ask the post office to direct the mailer to send no more mail to him and to remove immediately the patron's name from all mailing lists he owns, controls or rents.

To assist patrons, the Post Office Department has published a brief pamphlet—How You Can Curb Pandering Advertisements—which is now available at the Abernathy post office. In addition to explaining how the law works, the pocket-size leaflet contains a form letter one can use when sending his complaint to the post office.

The pamphlet explains that when a patron receives an advertisement which is, in his opinion, pandering, he must send the ad, its envelope and the form letter, or one which includes its language, to his post office with the words, "Request for prohibitory order" on the face of the envelope.

Postmaster Lambert said: "This new law should give some protection to American families offended by advertisements they believe to be morally harmful, particularly to their children."

Last year the Post Office Department received some 140,000 complaints from those offended by pandering advertisements. While in most cases the ads were not legally obscene and were therefore mailable, they are often offensive and are usually not the type of material one would want his children to read," Postmaster Lambert said.

He added that "because the law gives a mail patron the sole right to decide what is offensive, and does not deny others the right to receive the same mail, the Congress felt it does not violate Constitutional guarantees of freedom of speech."

While the patron's complaint will only be directed to the sender, Postmaster Lambert believes that one or two complaints will provide substantial protection because "the great bulk of this advertising comes from fewer than 20 so-called 'smut dealers' who are frequently swapping mailing lists."

If a mailer does not strike a complainant's name from this mailing list, and the patron receives a second mailing 30 days after the firm has received the prohibitory order, he may bring the matter to the attention of the postmaster issuing the initial order by writing him and enclosing the second pandering ad with its envelope. If the mailer still fails to respect the order, the Postmaster General may ask the Attorney General to apply for a Federal Court order directing compliance. Failure to observe the order may be punishable by a fine or imprisonment.

## Elimination Contests For 4-H Members Set

The County 4-H Elimination Contests will be held April 30, beginning with registration at 6 p.m. at the Hale Center High School, according to Doris M. Lesh, Assistant County Home Demonstration Agent, and Jimmie D. Walker, assistant county agricultural agent.

Approximately 70 4-H members will participate in the annual event. Method demonstrations on topics including public speaking, money management, civil defense, soil, water and range conservation, poultry, electric share-the-fun, entomology and many others will be presented.

Each contest is divided into two divisions—the Junior Division for those members under 14 and the Senior Division. Most of the demonstrations are presented in teams of two 4-H'ers, but some are individual presentations and still others are teams composed of four or more individuals.

According to Extension Agents, the first place teams named in the Junior and Senior division of each contest will participate in the District Elimination Contest to be held May 4 on the Texas Tech Campus.

From the District contest, the top two teams or individuals of each contest will go on to State competition to be held on the Texas A&M Campus in early June. Last year, Hale County had 16 representatives at the state contest, won 5 first places.

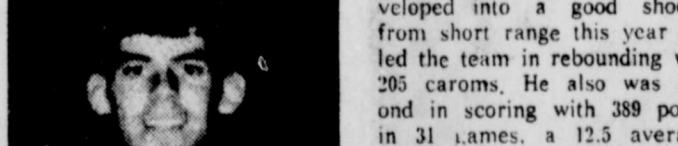
Alice Baumgardner, past Texas 4-H Council member, presided at the first meeting of Roundup last year. John I. Bowling, member of the Texas 4-H Youth Development Foundation, was recognized as a friend of 4-H. Both are from Hale County.

The public is cordially invited to the County Contests at the Hale Center High School April 30. The Demonstrations will begin at 6:30 p.m. The awards program will be at 8:15 p.m.

## Shewmake Inks With Pioneers

Hollis Shewmake, a starting postman for the Plainview Building basketball team this past season, has signed to play with Wayland College.

Shewmake, 6-5, is the son of the Rev. and Mrs. Hollis Shewmake of Abernathy. The



Prior to his sophomore season at PHS, Shewmake had never played basketball. He developed into a good shooter from short range this year and led the team in rebounding with 205 caroms. He also was second in scoring with 389 points in 31 games, a 12.5 average.

**Honorable Mention**  
He was named honorable mention all-district. Shewmake led the district in scoring through the first three games and wound up with 240 points, a 13.3 average and pulled down 129 rebounds.

For the season, Shewmake hit 154 of 281 shots for a 54.8 percentage and 95 of 169 in league play for an even hotter 56.2. He connected on 76 per cent of his free throws in district games.

Shewmake is the first Wayland recruit for next season.

award for combat aerial support of ground operations in Vietnam.

Compton, a door gunner in Troop D, 1st Squadron of the 4th Infantry Division's 10th Cavalry near Pleiku, entered the Army in June 1967 and

completed basic training at Ft. Polk, La. He was stationed at Ft. Polk, La., before arriving overseas last November. He also holds the Bronze Star Medal for heroism.

The 19-year-old soldier is a 1967 graduate of Hale Center High School.

## News Of Men In Service

PLEIKU, VIETNAM (AHT NC)--Army Private First Class Willie Compton, son of MR.

and Mrs. Augustus Compton, Route 2, Hale Center, Tex., received the Air Medal April

6 near Pleiku, Vietnam. Pvt. Compton earned the

**APRIL - 1968 TUESDAY**

**30**

## Buy your ELECTRIC clothes dryer by Tuesday and save an extra \$15.00!

Tuesday, April 30, 1968, is the last time Public Service customers can enjoy your Reddy Kilowatt Dealers' offer of a free \$15.00 money-saving certificate on the purchase of a new electric clothes dryer. It's just like getting 300 loads dried free since electric clothes dryers operate at only 5¢ a load - total cost!

BUY AT THE STORE WITH REDDY ON THE DOOR

### Classes In Remedial Reading Use Variety Of Learning Aids

Mrs. Martha McMaster's first, second, and third grade remedial reading class uses some of the same techniques in learning as used in the junior high and high school reading classes. Seven different classes consist of eight students each. These classes meet every day for thirty to forty minutes.

Some of the aids used to promote faster and better reading are the Junior Control Reader, the Tack X, and the View Lex.

When using the View Lex, the students wear earphones. They listen to a story and watch a film strip that illustrates the story to which they are listening.

COMING SOON!

### Barbara's Town & Country Salon

#### Abernathy Public Schools Lunchroom Menu

April 22-26, 1968

**Monday**  
Barbeque on a bun, sweet relish, cabbage sa

**Tuesday**  
Creamed turkey, rice, cranberry sauce, english peas, hot rolls and butter, peanut butter crunch, 1/2 pt. milk.

**Wednesday**  
Meatballs in tomato sauce, navy beans, toss salad with dressing, fruit jello, french bread and butter, 1/2 pt. milk.

**Thursday**  
Pinto beans with ham, mixed greens, cornbread and butter, orange juice, peach cobbler, 1/2 pt. milk.

**Friday**  
Hamburgers with lettuce, onions and pickles, potato wedges, pork and beans, strawberry short cake, 1/2 pt. chocolate milk.

# WANT-ADS

## WANT-ADS

(Rates: 5¢ per word; 80¢ minimum if paid in advance, or 90¢ minimum if ad is charged. If ad is not paid on first billing, a 25¢ charge will be added for each re-billing. Card of Thanks \$1.00)

Buy that black and white or color TV at BRUCE FURNITURE. We do our own service, have 20 years experience. Phone 298-2551 Bruce Furniture

FOR RENT: 2 bedroom home at 1403 Avenue M. See or call R. R. Knox, Phone 298-2085, or Pete Knox, Phone 298-2328. (4-18-p)

NOTICE---See the Southwestern Public Service Co. ad in this paper. We are the Reddy Kilowatt dealer in Abernathy, and you can take advantage of the \$15.00 offer at Bruce TV & Appliance, 718 Ave. C, Phone 298-2551 (4-25)

FOR SALE---One lot, approximately one acre, one mile south of New Deal, on the highway. City water, gas and electricity available. Brooks Speer, Lubbock Phone PO-3-6933. (4-25-p)

IRRIGATION Pump Pulling Service. Call M. E. (Dude) Smith, Phone 298-2159. (tsr)

ELECTRICAL SERVICE calls on farm wells, gins and elevators. Bill Wolf & Sons, Abernathy Phone 298-2114, Lubbock PO 2-2606. (tsr)

FOR SALE---Two-bedroom house, utility room, attached garage. Wired for electric range and dryer, 1210 13th St. Melvin Rape, Phone 298-2086. (tsr)

FOR SALE: My three bedroom home at 802 14th Street, over 1500 sq. ft. floor space, fully carpeted, floor furnace, extra large bedrooms are 12 x 18, 14 x 15 and 12 x 15 with plenty of closets. 16 x 18 living room, large utility room with walk in storage closet, 2-car carport. Consider good pickup or tractor in the trade. Call Richard Havens at Ralls, Phone 4771; or Abernathy 298-2033.

TAPE PLAYERS for home or automobile, for 8-track tapes, on sale at Newton Radio & TV, 1312 Ave. D, Abernathy, Phone 298-2338.

FOR SALE---One eight room residence and three rental units furnished, on three adjoining lots. Would take late model pickup in the trade. All to be sold together. Phone 298-4162. (4-25-p)

FOR SALE---Membership in New Deal Water Supply. Call PO-3-6933. (4-25-p)

LEARN TO FLY--Join the Flying Club. Most economical. New airplanes. East ramp at Lubbock Municipal Airport. Vance Scoggin, Phone Lubbock, PO 3-7241. (5-16-p)

FOR SALE--Coppertone O'Keefe & Merritt gas range. Bought new and used only four months. Good as new, and will be sold at a bargain price. Melvin Patterson, Phone 298-2450. (4-25-c)

JUST ARRIVED!  
New from Gibson! Graduation Books: Combination scrap and photo books--Mod scrap books--All with white pages and plenty of re-fills--pocket size photo books--All in time for GRADUATION!  
ANN'S GIFTS  
310 Main Abernathy  
PHONE 298-4051

YARD LEVELING, dirt moving, garden breaking, and yards prepared for new lawns. Call A. C. Harris, Sr., 298-2250, or Buck Young, 298-2867. (4-25-p)

NEED A TRASH BARREL? Call Fred Boone, 298-2637, and I'll deliver the barrel to your home. Top cut out. \$3.

PRINTING  
SERVICE now available in Abernathy. Printing for businesses and for social events, including showers, programs, tickets, yearbooks, brochures, etc. Come by or call us for estimates on your next printing job. Ann's Gift Shop, 310 Main Street, Phone 298-4051. (tsr-nc)

NEED STORAGE Space? You can buy a building with over 2700 sq.-ft. of floor space for less than \$2 a sq.-ft. On paved street, 25-Foot lot, for another building site or parking, on north side of present building, goes with deal. Phone 298-2033.

**HILL'S ABERNATHY PHARMACY**  
QUALITY PRESCRIPTION SERVICE  
PHONE 298-2313

FOR SALE---Three used Sunbeam electric, twin-blade lawn mowers. All in good condition. \$20.00 each. They are trade-ins on Sunbeam mowers. Struve Hardware & Dry Goods, Abernathy. (tsr)

FOR SALE  
Large Brick Home on First Street in Abernathy. Large fireplace in paneled 20' x 30' den and 12' x 30' Sun Room, fully carpeted, built in oven and cook top. KitchenAid dishwasher, Utility Room, plenty of built-ins and Closet Space, Gas Central Heating and Air-Conditioning, Extra large Double Garage with three large storage closets.

12' x 18' screened-in back porch with Gas Charcoal cooker built in; large fenced back yard with shrubs and bearing fruit trees.

Phone 298-2033

FOR SALE, to be moved, a 4-room house. Will sell cheap. See or call Harold Davis at Service Grain & Fertilizer Co., 298-2226, or 757-2574, nights. (tsr)

FOR SALE---Membership in New Deal Water Supply. Call PO-3-6933. (4-25-p)

FOR SALE---One eight room residence and three rental units furnished, on three adjoining lots. Would take late model pickup in the trade. All to be sold together. Phone 298-4162. (4-25-p)

FOR SALE---Membership in New Deal Water Supply. Call PO-3-6933. (4-25-p)

FOR SALE---1962 Ford Falcon; 4-door; air-conditioner; heater & radio; in good condition. See at 509 Phillips Blvd. in North Abernathy. Curtis Davenport. (tsr)

FOR SALE---Rebuilt Batteries. We have a complete shop to repair your battery, 6 or 12 volts. Bring them in. See us for good, used furniture. Bargain Store, Ave. D at 3rd St., block north of John Deere house. (5-30-p)

FOR SALE---Three used Sunbeam electric, twin-blade lawn mowers. All in good condition. \$20.00 each. They are trade-ins on Sunbeam mowers. Struve Hardware & Dry Goods, Abernathy. (tsr)

FOR SALE---One eight room residence and three rental units furnished, on three adjoining lots. Would take late model pickup in the trade. All to be sold together. Phone 298-4162. (4-25-p)

FOR SALE---Membership in New Deal Water Supply. Call PO-3-6933. (4-25-p)

FOR SALE---One eight room residence and three rental units furnished, on three adjoining lots. Would take late model pickup in the trade. All to be sold together. Phone 298-4162. (4-25-p)

FOR SALE---Membership in New Deal Water Supply. Call PO-3-6933. (4-25-p)

FOR SALE---One eight room residence and three rental units furnished, on three adjoining lots. Would take late model pickup in the trade. All to be sold together. Phone 298-4162. (4-25-p)

## ABERNATHY WEEKLY REVIEW

ESTABLISHED IN 1921  
Published on Thursday of each week in Abernathy, Texas. Entered as Second Class mail matter at the post office in Abernathy, Texas, under The Act of Congress of March 3, 1879. Subscription rates: \$3.00 per year in Hale and Lubbock Counties; all other, \$4.00 per year.  
Buford F. Davenport, Editor and Publisher  
P. O. Drawer D, Abernathy, Texas 79311  
605 Avenue C Phone: Area Code 806 - 298-2033

FOR "a job well done feeling" clean carpets with Blue Lustre. Rent electric shampooer \$1. Struve Hardware & Dry Goods.

Let Us Get Your Air Conditioner Ready For Summer Service. BRUCE FURNITURE Phone 298-2551 Abernathy

YOU'LL BE Surprised at the beautiful job you can do with Decorator Antiquing Finishes. "Color it Antique, a greathome furnishing idea." Buy antiquing and wood graining Decorator finishes at Higginbotham-Bartlett Co. in Abernathy, 298-2010.

NOTICE  
Photo copies of most anything. Let us copy your personal documents. Reasonable prices. Quick service.

HILL'S ABERNATHY PHARMACY  
PHONE 298-2313

FUNK'S-G, Buy 3 Get 1 Free on 755, 788A, 92F and 115F. Plains Grain & Farm Supply, Big State Grain and Martin Gin, Abernathy. (4-25-c)

Used 3 months 1968 Singer sewing machine in walnut console. Equipt with automatic zig-zagger, fancy patterns, blind hems, etc. \$24.50 cash or good credit 4 payments at \$6.50. Write Credit Department, 1114 10th Street, Lubbock, Texas.

When you buy air conditioning Why not buy the best--Artic Circle. Bruce Furniture, Abernathy. Phone 298-2551.

CARPET CLEANING  
Check with us about custom cleaning, or do it yourself. LON CLEANERS  
917 Ave. D -- Abernathy  
Phone 298-2826



NOTICE---If you are building or thinking of building or repairing, remember we have everything you need. Higginbotham-Bartlett Co., phone 298-2010, Abernathy.

FOR SALE---1962 Ford Falcon; 4-door; air-conditioner; heater & radio; in good condition. See at 509 Phillips Blvd. in North Abernathy. Curtis Davenport. (tsr)

FOR SALE---Rebuilt Batteries. We have a complete shop to repair your battery, 6 or 12 volts. Bring them in. See us for good, used furniture. Bargain Store, Ave. D at 3rd St., block north of John Deere house. (5-30-p)

FOR SALE---Three used Sunbeam electric, twin-blade lawn mowers. All in good condition. \$20.00 each. They are trade-ins on Sunbeam mowers. Struve Hardware & Dry Goods, Abernathy. (tsr)

FOR SALE---Membership in New Deal Water Supply. Call PO-3-6933. (4-25-p)

FOR SALE---One eight room residence and three rental units furnished, on three adjoining lots. Would take late model pickup in the trade. All to be sold together. Phone 298-4162. (4-25-p)

FOR SALE---Membership in New Deal Water Supply. Call PO-3-6933. (4-25-p)

FOR SALE---One eight room residence and three rental units furnished, on three adjoining lots. Would take late model pickup in the trade. All to be sold together. Phone 298-4162. (4-25-p)

YOUR BUSINESS IS APPRECIATED



**Gene's Shoe Shop**  
4th St. & Ave. H  
Lubbock

COLOR TV SERVICE  
RADIO AND STEREO SERVICE  
APPLIANCE AND REFRIGERATION SERVICE

**NEWTON RADIO & TV**  
SALES & SERVICE  
TWO WAY RADIO EQUIPPED TRUCKS  
1312 AVE. D Phone 298-2338  
RCA WHIRLPOOL

PHONE 298-2338  
ABERNATHY

BENSTEM LANDSCAPING  
"Your Yard Doctor"  
Spraying, Pruning, Weed Killing, Tree Removal, Lawn Mowing, Edging, Complete Landscape Service. Licensed Architect. Free estimates. No Job too Large or too Small. See "Joe" Benstem, 1409 Ave. M in Abernathy after 6 p.m. or all Sunday afternoon, or Write P. O. Box 913, Abernathy. (tsr)

ALL PEST CONTROL  
Any Home or Business \$4.95 per month with 1-year Service. Effective extermination of Roaches, Ants, Silverfish, Spiders, Mice, Rats, Etc. PHONE 298-2351 After 6p.m.

GOOD STOCK of RCA Whirlpool home appliances, refrigerators, washers, dryers, etc. Newton Radio & TV, 1312 Ave. D, Abernathy, Phone 298-2338.

HI-PLAINS DRILLING, INC.  
On Highway South of Abernathy Owners - Operators  
Test Holes & Water Wells, DWAYNE TAYLOR  
Irrigation Wells, GARY GRANT  
Pump Sales, ED FINLEY  
Pump Pulling & Service, SAM WADE  
Hi-Speed Bailing Rig, CHARLES HENDERSON  
TRY OUR OWNER-OPERATED SERVICE  
CALIFORNIA WESTERN PUMPS  
Phone 298-2343 - Abernathy  
Lubbock Phone PO 2-2554

Political Announcements  
The following announcements for political offices are made subject to the action of the Democratic Primary May 4, 1968.

FOR COMMISSIONER  
Precinct 3, Hale County  
Everett E. Masters  
Jack Eason  
Ernest Rice, re-election

FOR DISTRICT ATTORNEY  
Frank Stovall, re-election

FOR COUNTY SHERIFF  
Troy Porterfield, re-election  
FOR COUNTY ATTORNEY  
Tom Hamilton  
FOR COUNTY TAX ASSESSOR-COLLECTOR  
Bill Hollars, re-election

The following announcements for political offices are made subject to the action of the Republican Primary, May 4, 1968.

FOR STATE REPRESENTATIVE, 79th Legislative District:  
DEJUAN STRICKLAND

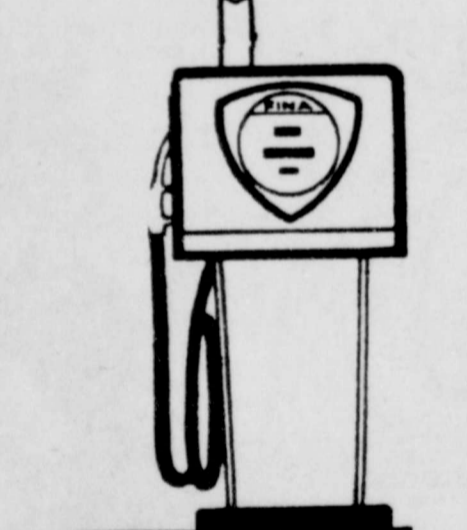
FOR STATE REPRESENTATIVE, 79th Legislative District:  
RALPH WAYNE

# PIONEER Sorghums are WEATHER BEATERS

High yielding Pioneer sorghums have bred in vigor that helps them "beat the weather". Official tests prove it. In 5 years of Texas A & M tests, covering hundreds of comparisons, Pioneer entries outyielded the others 7 times out of 10.

That's why farmers call Pioneer sorghums "weather beaters". See me soon for your dependable, high yielding Pioneer seed.

Co-op Grain Company  
Martin Gin & Fertilizer  
Plains Grain & Farm Supply  
Service Grain & Fertilizer Co.



with Pflash!

WITH "PFLASH"? We're Not Quite Sure What "Pflash" Is, But We Are Certain of the Top Quality of FINA Gasoline. We Know It Is A Good Gasoline. Stop At The Retail Station For FINA, or Call Us For Wholesale Delivery to Your Fam.

ALL POPULAR BRANDS OF MOTOR OIL



tires for cars, pickups, trucks & tractors

**Abernathy Oil Co.**  
PHONE 298-2255 -- ROYCE HENSON

## New outstanding yielder NK222A

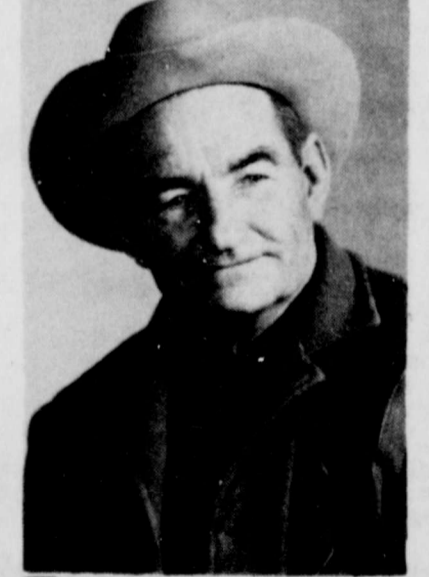
yellow endosperm; larger, heavier heads.

Tops in yield performance in 4 of 5 trials across the sorghum belt, new NK 222A will give you excellent threshability and high bushel weight. It is 3 to 4 days later in maturity than NK 222. It is a little taller with longer, fuller heads. NK 222A has drought resistance, resistance to head smut and good standability.

Place your order now for New NK 222A at your local Northrup King Seed Dealer.

J. Morris & Harold Thomas  
Phone 757-2758 or 757-2705  
Rt. 2, Abernathy, Texas  
NORTHROP KING SEEDS

## VOTE FOR EXPERIENCE - DEPENDABLE - CAPABLE



**Ernest Rice**  
YOUR County Commissioner  
Precinct 3  
Hale County  
Democratic Party

**Wolf Irrigation**  
TURNKEY JOBS  
DOMESTIC or IRRIGATION  
WELL DRILLING  
MACHINE SHOP  
WATER WELL  
ACID SERVICE  
LIQUID or DRY  
ABERNATHY, TEXAS  
Phone 298-2114  
LUBBOCK PO 2-2606



CALL FOR COTTON