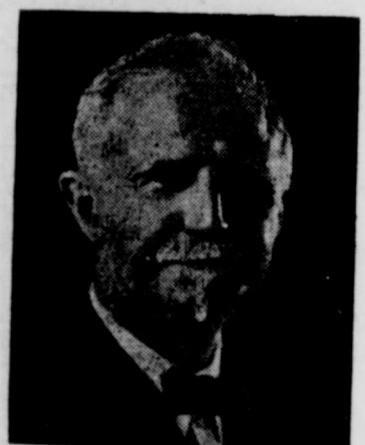


HAPPY NEW YEAR

ABERNATHY WEEKLY REVIEW

VOLUME 40 HALE COUNTY — ABERNATHY, TEXAS — LUBBOCK COUNTY THURSDAY, DECEMBER 29, 1960 NUMBER EIGHT

Babson Predicts "Fair Year" For Farmers in 1961



BABSON

(Editor's Note: Roger W. Babson predicts a "fair" year for the nation's farmers in 1961. The internationally-known business commentator and investment adviser has been a record over many years of being 80 per cent correct in his predictions. Following is Babson's Business and Financial Forecast for 1961.)

BABSON'S BUSINESS AND FINANCIAL FORECAST FOR 1961

This year I have divided my forecast into eight sections as indicated by the following eight headings. Instead of covering general business as a separate topic, I am presenting a reading of the following will give a clear idea of my thoughts on general business. Naturally, my first subject will be the political outlook.

POLITICS AND THE NEW PRESIDENT

I do not expect any big changes under President Kennedy. If he had won by a landslide I would be quite worried, but with a narrow plurality in the electoral college and only a small fraction of a 1 per cent over Nixon in the total popular vote, I think that our new President will be very much in his good behavior. Certainly he will not have much influence with either the Republicans or the Conservative Democrats of the South. He may make radical recommendations in his inaugural address to "save face," but most of these will not become legislation.

He will recommend certain new welfare legislation, which will include medical care for the aged, an increase in Social Security, a new minimum wage, increased public housing help for the distressed areas, and more aid for education.

COMMODITY PRICES

INCLUDING GOLD

Higher prices of commodities at the retail level are more or less certain, but wholesale prices will probably decline in most instances. Prices will not rise because of inflation during 1961. The first of the price advances will be absorbed by the manufacturer. Owing to the increased competition in all lines, wise manufacturers and retailers will keep their selling prices down. This means that their profits will be less if they are unable to reduce their costs. All of this means that general business may show less increase in activity and profits in 1961 than in the previous year.

Now, in relation to gold: Three-fifths of the Free World's gold comes from African mines; one-fifth from Canada; and the balance from the U.S. and elsewhere. There are many rumors that the U.S. will "re-evaluate," creating a higher price for gold. This won't happen during 1961, and I think that the price of many gold stocks will decline during 1961.

The very discussion in Congress of possible competition would cause us to lose more gold. Everything will probably be done to avoid such a discussion and I believe President Kennedy will publicly state that he is opposed to it.

Temporarily, dollar devaluation might be a shot in the arm for American business, but it will not cure the cancer or whatever else is causing the pain. Not only would foreign banks withdraw gold before such legislation passed; but if such legislation should pass in the U.S., it would be followed by similar legislation in England, France, Switzerland, Germany, and other important

countries. I advise investors now to forget this question of gold devaluation and not speculate in gold stocks at this time. Leading gold stocks are now selling 25 per cent or more above their price a year ago. Another thing that investors should remember when buying Canadian gold stocks is that a number of Canadian gold mining companies are now receiving a subsidy from the Canadian government to keep them from being shut down by high labor costs. This subsidy would come off as the price of gold rises.

Stocks and Bonds

It is unpopular for me to take a bearish position in my Annual Forecast. Most of the newspapers and my readers like optimistic forecasts. In all the years I have been making these forecasts, last December was the first time that I refused to take a definite position. At that time the Dow-Jones Industrial Average was 670 and today it is fluctuating around 600.

Corporation earnings reports now coming out are not good. In many cases the gross is kept up or perhaps increased, but the net is off. Many companies will show a decline in 1961 compared with 1959. Prosperity has continued so long that most manufacturers, retailers, and consumers are assuming it will last at least another year. I cannot honestly agree with this. Therefore, I feel that 1961 will see lower prices for the Dow-Jones Industrial Average than the year that many readers with small businesses are showing a profit. Those who are not should begin to reduce their loans and "trim their sails."

In many cases good bonds now yield more than good stocks. This is unfavorable to the stock market and favorable to the bond market. The yield on bonds will continue around their present levels in 1961. Many readers will be wise in shifting now from stocks to bonds. There will be reductions in stock dividends; hence it would be much better to hold bonds with fixed interest payments rather than risk a reduction in the dividend payments of stocks. I especially call readers' attention to tax-exempt general obligation municipal bonds. These are the fixed-interest municipals of cities with a direct lien on all the taxable property in the city. I would advise holding bonds of such large cities as might be vulnerable to bombing in case of World War III.

My favorite municipals are those of the capital cities in the interior of the country; in fact any growing interior city should be high-grade investment. These bonds must pay their interest irrespective of business conditions. The capital cities are especially helped by having the payroll of the state governments.

Living Costs and Inflation

A person like myself, who has had children and grandchildren, knows how each succeeding generation considers as necessities what the parents considered luxuries. This together with the higher cost of labor, is the primary reason for today's record-high (127.3) cost of living.

As there is only so much land available, rents will increase slowly. There, however, need not be a higher cost of food. The farmers are constantly raising greater crops which are being processed in more economical ways. The only reason for the cost of food to increase is the dependence on packages. Ultimately all vegetables will be wholly or partly cooked and purchased in containers.

Wages will hold up although there will be more unemployment in 1961. This means that take-home pay will be less for most families.

Inflation is not to be feared during 1961. With his small popular vote plurality, Mr. Kennedy will be very slow to do anything to hurt the purchasing power of the dollar. Barring World War III I believe that the dollar will be just as sound a year from now as it is today. Our U.S. dollar is looked upon by the World as a

Farm Income And Prices

Good crops and moderate prices indicate a fair year in 1961 for farmers. I, therefore, look for a reasonably heavy volume of the things farmers buy during 1961, including equipment for getting on with less help. The farmers cannot expect any boom, but profits, on an average, should be at satisfactory levels. My forecast, in detail is: Larger volume of marketings should more than offset any reduction in farm prices. Therefore, 1961 cash receipts for farmers should be slightly higher than 1960's \$11,300,000 net. I further-

more learn that the intelligent farmer is reducing his indebtedness, which is always an optimistic sign. As I dictate this forecast, I am told that growing conditions are favorable in most sections, with sufficient moisture in the ground and other seasonal optimistic factors. The prices which farmers will receive in 1961 for crops will, of course depend upon weather; but each year, agricultural science is helping the farmers to avoid early frost losses and to secure needed moisture.

Employment, Wages, And Taxes

Strike activity may well be at a postwar minimum during 1961, with any dislocations limited to independent separate companies. First important outside negotiations will come in the auto industry, but not until September 1961. Railroad workers cannot strike until November 1, 1961 at the earliest. Most steel contracts hold until June 30, 1962.

GLENN REAGAN ON LOCAL BOARD OF SUPERVISORS

State Soil Conservation Meeting Slated In Dallas

Representatives from the local Hale County Soil Conservation District are making plans to attend the 20th Annual Meeting of the Association of Texas Soil Conservation Districts, to be held January 11-13 in Dallas. Among the members of the local Board of Supervisors is Glenn Reagan, who farms northwest of Abernathy.

Antelopes Advance To Finals In Caprock Basketball Tourney

The Abernathy Antelopes advanced to the Wednesday night finals of the ABC Caprock Basketball Tournament in Lubbock by defeating the Tom S. Lubbock Cowhands, 71-55, Tuesday afternoon. The Antelopes had advanced to the semi-finals by downing Denver City Monday afternoon.

Last Rites For J. H. Smith, 78

Funeral services for J. H. Smith, 78, a longtime Abernathy resident, were held at 2 p. m. Saturday in the Lakeview Baptist Church.

Officiating were the Rev. Tony Longval, the Rev. Harold Poage and the Rev. A. O. Brewer.

Smith died Wednesday of last week in Methodist Hospital, Lubbock. He was a retired farmer and had lived in the Abernathy area since 1917. He was a member of the Baptist Church and was a Scottish Rite Mason.

Masonic graveside services were performed in Plainview Cemetery.

Closing Set Here For New Year's

Abernathy First State Bank, the post office and many other places here will be closed Monday, Jan. 2, for a New Year Holiday. There will be no rural mail delivery that day.

775 SERIES SET IN OPEN BOWLING

Roy Evans, County Line farmer, made a 775 series in open bowling at A-1 Lanes in Abernathy Thursday. He bowled games of 236, 269 and 270.

Mrs. Jim Jackson was returned home Friday of last week from Methodist Hospital, Lubbock, by Dennis & Chambers ambulance.

Mr. and Mrs. Vernon Petty of Albuquerque, visited relatives here during Christmas. He is the son of Elmer Petty.

New Deal Teams To Play In Double-Header

The New Deal boys and girls basketball teams will travel to Roosevelt Friday and Saturday for participation in the Roosevelt Double Header.

Next week the New Deal basketball teams will participate in the Ideal Invitational Basketball Tournament which begins Tuesday, January 3, and continues through Saturday.

Defeat Sanks Teams

The New Deal teams traveled to Sanks last Tuesday night and brought home their third straight District 7-B victory. The Sanks girls were early season favorites in the district. New Deal's girls played what was probably their best game of the season and the hard work and hustle paid off for them.

Hale County prospective sugar beet growers organized in Plainview last week, elected officers and directors, and determined to make an aggressive effort to get Congress to include in the next sugar legislation provision that they and other new growers might share in the production of the nation's sugar.

Ernest Sammann of Prairieview community, was elected president, A. C. Glenn of Edmondson vice-president and Ray Bradshaw of Cotton Center, secretary-treasurer.

Directors named are Homer Garrison, Plainview; Don Hehl, Petersburg; Albert Sammann, Prairieview; Bill Wilson, Halfway; Morris Thomas, Cotton Center; Joe Barton, Abernathy; Ronnie Tullis, Hale Center; Grady Murray, Edmondson.

Homer E. Garrison presided, having acted as chairman of a volunteer group of interested farmers, that he be relieved, due to press of other public duties.

From Hereford Lee Benefield, president of the Texas Sugar Beet Growers Association, came to tell of the work of the 33 members of that association. They have made an unceasing effort to obtain additional acreage and to open up sugar production in areas where it has been proven economical and meaningful to protect the interest of old growers and prospective growers where beets are yet unproven.

Hereford interests have expended more than \$15,000 in their promotional efforts, he said.

Sugar is sugar, whether from beets or cane, he said. You can't tell the difference. He urged that

people of the area ask for beetnew faces in high places in Washington, including Secretary of Agriculture, the Vice-president, and even the President-elect.

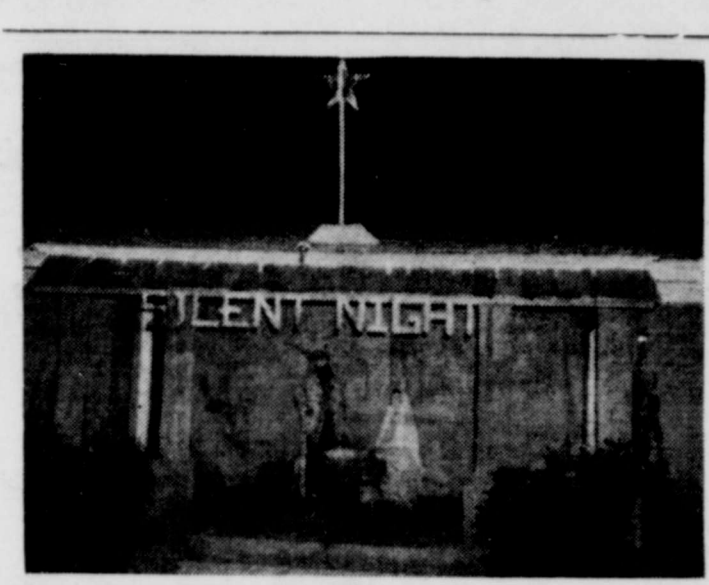
Witherspoon said that there's hope that the members of the House Agriculture Committee will themselves introduce an appropriate bill in Congress.

A million tons of Cuba's quota would give production for ten American refineries, Witherspoon said. A \$15,000,000 refinery in this irrigated area would support 40,000 acres production and would add \$12 million directly to the producer income, which would amount to a turn-over addition in the order of \$100 as the production dollars went through the various hands.

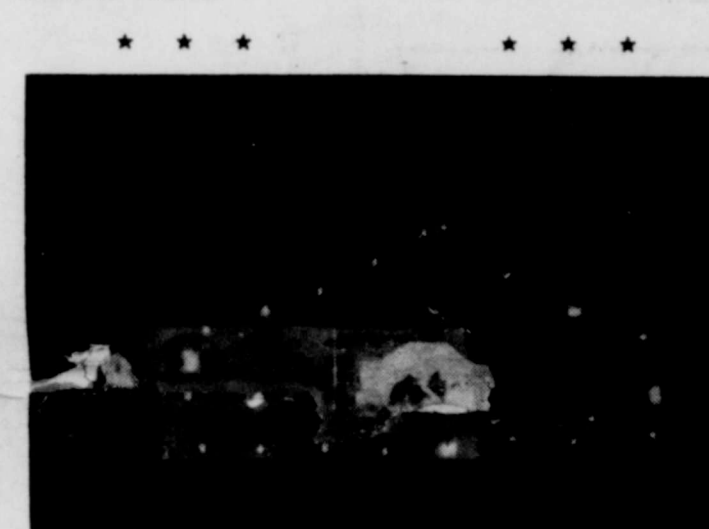
MISS EVELYN LYLES IS MARRIED TO CARROLL TEETER IN LUBBOCK

Miss Evelyn Lyles, daughter of Mr. and Mrs. D. E. Lyles of Abernathy, and Mr. Carroll Teeter, son of Mr. and Mrs. Clayton Teeter of New Deal, exchanged wedding vows Tuesday, December 20, at 7:30 p. m. in the home of Mr. and Mrs. David Hobbs, 5220 W. 16th Street, Lubbock.

The Rev. Joe R. Griffin, pastor of the First Baptist Church, Abernathy, performed the double ring ceremony. Miss Lyles was given in marriage by her father.



TAKES FIRST PRIZE—This scene above, entered by Abernathy senior Girl Scout Troop 95, took first prize of \$25.00 in the Outdoor Category of the Christmas Decorating Contest sponsored by the local Lions Club. The Girl Scouts displayed their entry on the front porch of the Phil Sterrett home at 712-2nd St.—(Staff Photo).



INSIDE CATEGORY WINNER—The manger scene pictured above won first prize of \$25.00 for the Sam Wade family, 1509 Avenue M, in the Lions Club sponsored Christmas Decorating Contest. All entries were judged on attractiveness, originality, theme, and layout.—(Staff Photo).

E. L. FISHER DIES FRIDAY AT HOME

Funeral services for Edgar Lee Fisher, 83, a long-time resident of the Lakeview, area who died at 3:05 p. m. Friday, were held Saturday.

Rites were conducted in the Lakeview Methodist Church. Officiating was the Rev. R. H. Knight, pastor. Burial was in the Strip Cemetery, near Lakeview.

A native of Versailles, Mo., Fisher came to the Lakeview area in 1907 from Tipton, Okla.,

where he had lived for seven years. He was a farmer and rancher.

Survivors include his wife, Mary; three daughters, Mrs. G. W. Casey, Bula; Mrs. Winston Wilson, Friona; Mrs. W. L. McDowell, New Port, Ark.; two sons, Avery and John both of Petersburg; two sisters, Mrs. Ollie Moyanahan, San Diego, Calif.; and Mrs. Frances Baxter, Riverside, Calif.; 11 grandchildren.

Ernest Sammann Named President Of County Sugar Beet Association

Ernest Sammann of Prairieview community, was elected president, A. C. Glenn of Edmondson vice-president and Ray Bradshaw of Cotton Center, secretary-treasurer.

Directors named are Homer Garrison, Plainview; Don Hehl, Petersburg; Albert Sammann, Prairieview; Bill Wilson, Halfway; Morris Thomas, Cotton Center; Joe Barton, Abernathy; Ronnie Tullis, Hale Center; Grady Murray, Edmondson.

Homer E. Garrison presided, having acted as chairman of a volunteer group of interested farmers, that he be relieved, due to press of other public duties.

From Hereford Lee Benefield, president of the Texas Sugar Beet Growers Association, came to tell of the work of the 33 members of that association. They have made an unceasing effort to obtain additional acreage and to open up sugar production in areas where it has been proven economical and meaningful to protect the interest of old growers and prospective growers where beets are yet unproven.

Hereford interests have expended more than \$15,000 in their promotional efforts, he said.

Sugar is sugar, whether from beets or cane, he said. You can't tell the difference. He urged that

BULLETIN! "Kenny" Rankin Is Heart Victim

M. H. "Kenny" Rankin died shortly after 4 p.m. Wednesday at his home here. Doctors reported that he suffered a heart attack. Rankin, who was employed by the Post Office Department in Abernathy, had not felt well the past two or three days. It was reported.

Funeral arrangements were pending at the time The Review went to press.

Local School Appoints Text Book Committee

During the recent school board meeting a Textbook Committee was appointed for the local school. Each year, a few books come up for adoption. Superintendent Noel Johnson pointed out, and the books chosen will be adopted for six years.

Superintendent Johnson further stated that it is currently costing about seven million dollars a year to furnish free textbooks for Texas school children. This is why teachers constantly remind parents to urge their children to keep the books covered and to take care of them.

Members are the committee: Junior High school principal, G. L. Addison; Elementary school principal, Jerry Moorehead; L. B. Moorehead, Teresa Reed, Jimmie Wilson, Velma Fieley, and Bobbie Eason; Vocal Music for high school, Everett Maxwell; Texas History for high school, Howard Humphrey; Vocational agriculture, Dwight Lindsey; and shorthand, Florine Forbes. The committee chairman is Ralph Stevenson, high school principal.

Mrs. Reeves Gives Kindergarten Report

Kindergarten in Abernathy has had a very successful three months in the realm of progress of the children, according to Mrs. Joe B. Reeves. The children have all been very eager and enthusiastic in accepting the routine and classes.

An interesting and well-planned program has been planned for the months ahead. Mrs. Reeves stated. Classes will resume at 8:30 a. m., Tuesday January 3. See her ad in the Want-Ad section of this paper.

Diphtheria Shots for School Pupils Urged

Dr. Kenneth Gregory, City Health Officer, reported Tuesday that around 400 diphtheria shots had been administered locally up to that date.

It was stated that in a recent meeting, Dr. Pickford of the Lubbock City-County Health Unit, recommended that all school children get diphtheria boosters, or start their series shots, before returning to school next week.

It was also brought out that it would be a good idea for all adults who have been in the Plainview area recently, or who have been in contact with people from that area, to get diphtheria shots.

It was further stated that even though a person may have had their diphtheria shot, they could still "carry" the disease to others.

It's The Law In TEXAS

Although it may come as a surprise to some people, the federal government levies a tax which applies to gifts made by one person to another. However, the government has no desire to tax ordinary birthday and Christmas gifts. The law therefore excludes from taxable gifts the first \$3,000 given to each individual in each calendar year.

The law excludes from taxable gifts to the church, community chest, and similar charitable organizations, and allows each giver an exemption of \$30,000 before the tax applies.

The tax applies whether the gift is of money or of property. If it is of property, the tax is computed on the fair market value of the property at the date of the gift.

The purpose of many gifts is to remove the property from the taxable estate of the giver at the time of his death. This may or may not be accomplished. The federal law provides that transfers made within three years before date of death shall be deemed to have been made in contemplation of death and shall be taxable in the estate of the one who dies.

It may be advisable to "look a gift horse in the mouth" for the gift may cost the one who receives the gift in income taxes as well as the giver in gift taxes.

For income tax purposes the cost basis of property received by gift is the cost to the giver regardless of the fact that the giver may have paid a gift tax on the gift. The other rule is that in case of property received by inheritance, the cost basis is the fair market value at the date of the decedent's death.

An example will show the application of the rules. Suppose a farmer acquired his land in the early days at a cost of \$10,000. This property is now worth \$50,000. The farmer wishes to retire and to escape estate taxes, so he gives the farm to his daughter.

Although he may pay federal gift taxes totalling several thousand dollars, when the daughter decides to sell the farm for its \$50,000 value, she still has to pay income tax on \$40,000 profit (difference between the sales price and her father's cost of \$10,000). On the other hand, if the far-

Letter To The Editor

Box 1555
Lubbock, Texas
December 6, 1960

Dear Buford:
Your paper is most helpful to me. Thanks for your many kindnesses. If I can be of service to you or any of the folks at any time, I want you to call upon me. I hope to close my Lubbock office in a few days.

Merry Christmas and Happy New Year to you and the Abernathy Weekly Review Staff.

Sincerely,
George Mahon

Freeport, Texas
Dec. 7, 1960
Abernathy Weekly Review,
Dear Editor,
I don't want to miss a single copy of the paper, so please renew my subscription. Inclosed is four dollars. I really enjoy getting the paper and keeping up with all the happenings in good old Abernathy.

A friend,
Mrs. Gladys Slough.

Mr. and Mrs. Travis Mitchell and son Mike of King City, Calif., are visiting his parents, Mr. and Mrs. W. L. Mitchell, of Abernathy. They will also visit the parents of Mrs. Travis Mitchell, who live in Lubbock.

The Dalton James family of New Deal spent the Christmas weekend in Dallas. James is Superintendent of the New Deal public schools.

mer had not given the farm to her under his will, he would have saved the gift tax. The daughter would have taken the property at a cost basis of \$50,000, so upon the sale she would not have had to pay any income tax.

Of course, there would have been some estate tax and administration expenses in the father's estate, but that would have been much less than the taxes which resulted from the gift. However, depending upon individual and particular circumstances, there may be occasions when a gift is advisable. Your lawyer can advise you on this matter.

(This news feature, prepared by the State Bar of Texas, is written to inform—not to advise. No person should ever apply or interpret any law without the aid of an attorney who is fully advised concerning the facts involved, because a slight variance in facts may change the application of the law.)

Legal Notice

ORDINANCE NO. 177
AN ORDINANCE DEFINING AND PRESCRIBING THE RATES APPLICABLE TO THE SALE OF NATURAL GAS AND NATURAL GAS SERVICE BY PIONEER GAS COMPANY TO ITS CUSTOMERS WHO USE NATURAL GAS WITHIN THE CITY LIMITS OF ABERNATHY, TEXAS.

WHEREAS, hereof, on October 6, 1960, Pioneer Natural Gas Company, successor of West Texas Gas Company, submitted an application to the governing body of the City of Abernathy, proposing a schedule of rates to cover the sale of natural gas and natural gas service by Pioneer Natural Gas Company to its customers who use natural gas within the city limits of the City of Abernathy, such application being here referred to and made a part hereof; and

WHEREAS, said application has been considered by the governing body of the City of Abernathy, and it is the opinion of the City Council that the proposed schedule of rates for the sale of natural gas and natural gas service by Pioneer Natural Gas Company is just and reasonable, and should be approved;

NOW, THEREFORE, be it ordained by THE CITY COUNCIL OF THE CITY OF ABERNATHY:

1. That Pioneer Natural Gas Company, its successors and assigns may make charges for the sale of natural gas and natural gas service to its customers who use natural gas within the City of ABERNATHY as follows:

Monthly rate:

First 2,000 cu. ft. or less per month, \$1.65;
Next 8,000 cu. ft. per month 60.5 cents per M. cu. ft.;
Next 40,000 cu. ft. per month 55 cents per M. cu. ft.;
Next 50,000 cu. ft. per month 50 cents per M. cu. ft.;
Next 200,000 cu. ft. per month 33 cents per M. cu. ft.;
Next 200,000 cu. ft. per month 33 cents per M. cu. ft.;
All Over 500,000 cu. ft. per month 28 cents per M. cu. ft.

Minimum bill \$1.65 per month. Delayed payment charge—ten per cent of bill will be added if not paid within ten (10) days after date of billing.

2. The rates prescribed herein become effective for all meter reading periods beginning on and after December 15, 1960.

3. All ordinances or parts of ordinances in conflict herewith are hereby repealed to the extent of the conflict.

4. The fact that the increase in rates proposal has been under consideration by the City Council for two months and it has been clearly shown that the above mentioned rates increase is need-

Company to remain in continuous fair margin of profit state, and the rate increase will not go into effect until January 28, 1961, creates an emergency and an urgent public necessity that the rule requiring Ordinances to be read on three separate meetings be suspended and said rule is hereby suspended and this Ordinance is hereby passed as an Emergency Ordinance on the date of its introduction.

PASSED AND APPROVED this 5th day of December, A. D., 1960.

F. O. GRAHAM,
Mayor
City of Abernathy, Texas

ATTEST:
Orelia Clement,
City Clerk
City of Abernathy, Texas

APPROVED AS TO LEGAL FORM:
James A. Joy
City Attorney

Basketball Schedule

Dec. 26-28—Caprock Tournament (Boys), Tech Coliseum.
Jan. 3—Hale Center, There.
Jan. 5-7—Hale Center Tourny (Girls).
Jan. 6—Tahoka, There.
Jan. 10—Floydada, There.
Jan. 13—Muleshoe, Here.
*Jan. 17—Olton, There.
*Jan. 20—Lockney, There.
*Jan. 24—Morton, There.
*Jan. 27—Floydada, Here.
*Jan. 31—Muleshoe, There.
Feb. 2-4—H. S. U. Tourny (Girls), (Abilene).
Feb. 3—Open (Boys).
*Feb. 7—Olton, Here.
*Feb. 10—Lockney, Here.
*Feb. 14—Morton, Here.
*Denotes District 2-AA conference games.



Entering the New Year with every confidence, we want you to know we are fully aware of our obligations to you, our friends and customers. Thank you for your loyalty.

REMEMBER, ABERNATHY OIL CO.
Cosden Retail and Wholesale Distributor
Gives FRONTIER SAVINGS STAMPS
ABERNATHY OIL COMPANY
Royce Henson — Night CY 8-2671
CY 8-2255 — 709 Ave. D

With Best WISHES for a Happy New Year

ABERNATHY CONSUMERS FUEL ASSOCIATION

Best Wishes for the coming year

Clifton Newton — Bill Greene — Jim Jackson
NEWTON RADIO & TV

A PROSPEROUS New Year

We've enjoyed patronage this past year and look forward to serving you in the future.

WELD - RITE
Welding and Machine
HERNON PEEL

Best Wishes for the New Year

As we think back through the days gone by, we are sincerely grateful for your kindness and your patronage.

SERVICE When You Need It Most
LAMAR MCKENZIE
INSURANCE COMPANY
CY 8-2049 Abernathy

Happy New Year

Thanks for your courtesies and thanks for your patronage.

A-1 LANES
CY 8-2848 — Abernathy

and
A-1 CAFE
CY 8-2169 — Abernathy

Open Bowling Through Sunday
League Bowling Will Resume MONDAY, JANUARY 2
A-1 LANES
A-1 CAFE
Opens At 6:30 A. M. Daily

RESOLVE to SAVE with these FOOD VALUES AT Harold's

WHITE MAID Original Butter
12-oz. can ... 37c
6-oz. can ... 19c

SWEETHEART FLOUR
5-lb. bag ... 39c

White Swan Blackeye Peas ... 300 can 10c
Maxwell House Instant — 20c off
Coffee ... 6-oz. 79c

Supreme Pecan Sandies .. 1-lb. bag 49c

Our Darling Cream Style Wh. or Yel. Corn ... 303 can 19c

Super Save Margarine ... lb. 19c

Facial Tissue 400-ct box
Kleenex ... box 25c

Hi-C Orange Drink ... 46-oz can 29c

Northern Toilet Tissue ... 4 rolls 29c

Northern, 80-ct. box
Napkins ... 2 for 25c

Any Flavor, Reg. Box
Jello ... 3 for 25c

Sunshine Krispy Crackers ... lb. box 25c

Wapco Sour or Dill Pickles ... qt. 29c
Wesson Oil ... qt. 59c
Fancy Yellow, White Swan Popcorn ... 2 for 29c
White Swan Biscuits ... 3 for 25c
Liquid, W-P, 22-oz. Detergent ... can 49c

Light Crust White Corn Meal . 2-lb. box 19c

Pantry Brand Dried— 1-lb. cello bag
Blackeye Peas ... 15c

lb. 59c

Meat Specials

We Feature Glover's Grain Fed USDA Federal Inspected and Graded. Sold On Satisfaction Guaranteed or Your Money Cheerfully Refunded. Compare Prices and Quality and See The Difference

SALT JOWLS ... Lb. 19c
Wilson's 100% Pure Pork, Hot or Mild SAUSAGE ... 1-lb. Roll 39c
Lean and Juicy GROUND BEEF ... Lb. 45c

Don't Forget Egg Nog Mix — We Have Your Favorite Brand

DOUBLE FRONTIER STAMPS ON WEDNESDAY WITH \$2.50 PURCHASE OR MORE
1412 Ave. D, Abernathy, Texas, CY 8-2266 Open 7 a. m. Close 9 p. m.



"Sin Inherited"

BY ROY DEAN VERNER
Reading Time: 4 Minutes

The question has been asked numbers of times, "Do we inherit the guilt of the sins of Adam and of our parents, or will we be held accountable only for those which we personally commit?" This is a very important question and it needs to be answered only on the teaching of the Bible. The Scriptures clearly teach that we must answer to God for our own sins rather than those of our ancestors. "So then every one of us shall give account of himself to God." (Rom. 14:12). "For we must all appear before the judgment seat of Christ; that every one may receive the things done in his body, according to that he hath done." (II Cor. 5:10). The doctrine that a baby is born with the stain of the sin of Adam and his parents upon him is known as "original sin." It means that a little baby who has never personally sinned is in a lost condition. Neither the expression "original sin" nor the idea it represents is found in the Bible. God's word teaches the opposite. "The son shall not bear the iniquity of the father." (Ezek. 18:20). In other words, a child is not accountable for his parents' sin.

Sin is an act—"the transgression of the law" (I John 3:4) and therefore is not an inheritable trait. It can no more be inherited than a person can learn to cook a meal or drive an automobile by inheritance. These are acts

rather than characteristics and acts cannot be inherited. If babies were born sinners, Jesus would not have chosen them as examples for us to follow. But, in speaking to his disciples he said, "Except ye be converted, and become as little children, ye shall not enter into the kingdom of heaven." (Matt. 18:3). If babies are sinners Jesus was saying, "Except ye be converted, and become (LITTLE SINNERS) ye shall not enter the kingdom of heaven." It is quite obvious from such reasoning that this cannot be true.

Let's suppose for a moment that little children are lost in sin. If they are, where in God's word has he given the plan of salvation for them? I find in the Scripture that people are to believe, repent, and be baptized for the remission of sins. Are babies capable of believing in God and Christ? Can they turn away from sin and Satan, and turn to God and salvation? Can they as penitent believers be baptized into Christ in obedience to his commands?

One can readily see that infants are not capable of such acts any more than they are capable of sinning. Until a child is old enough to understand the meaning of sin and is old enough to sin he is pure in the sight of God.

Paid Advertising.

FREE Bible Correspondence Course
Write: CHURCH OF CHRIST
Abernathy, Texas, or Call CY 8-2718

Texas Highway Commission Approves Highway Work For Hale County

The Texas Highway Commission today approved the expenditure of \$13,900 for highway safety and betterment in Hale County during 1961, announced District Highway Engineer O. L. Crain of Lubbock.

He said a total of 14.1 highway miles in the county will be involved. The work will be under the supervision of H. Bruce Bryan, District Maintenance Engineer.

This work is part of two statewide "highway housekeeping" programs revealed today by the Texas Highway Department. Totalling \$40 million, the programs are keyed to safety features and proper upkeep of the State's highway system.

The two safety-and-betterment programs will be evenly divided financially throughout the State with \$20 million to be spent on the U. S. and State Highway System and \$20 million earmarked for the Farm and Ranch-to-Market Road System.

The 1,075 items involved in the two programs, covering a total of 224 counties will all be done during the next calendar year. A total of 2,799 miles of U. S. and State Highways and 2,686 miles of Farm-to-Market Roads are included in the work list. Highways are due for improvements such as surface widening, bridge widening and replacement, base strengthening, and paving of

shoulders.

District Engineer O. L. Crain said a total of 434.4 miles in this highway district would be involved at a total cost of \$1,994,000.

The following projects will take place in this county:

HALE COUNTY
1961 State Highway Safety And Betterment Program
FM 1071, from FM 594 West 2.0 miles, seal coat, at a cost of \$1,800.
FM 789 from 1.0 mile south of FM 784 to FM 54 7.3 miles, seal coat at a cost of \$6,490.
1961 Farm-to-Market Road Improvement Program
State Hwy. 194 from Swisher countyline, Southeast, 4.8 miles seal coat, cost \$5,700.

Ralph Reagan of Odessa visited his mother, Mrs. G. A. Reagan, and other relatives here during Christmas holidays.

Martha Bonn of Seal Beach, Calif., visited her mother, Mrs. Chris Bonn, here during Christmas holidays.

Mrs. Herman Johnson was returned to Taylor Clinic in Lubbock Friday by Dennis & Chambers ambulance.

Mr. and Mrs. Harold D. Sparks and daughter, Pam, of Albuquerque, N. M., spent Christmas here with Mrs. Sparks' parents, Mr. and Mrs. C. J. Pharr.

Lakeview News

J. H. Smith, affectionately known as Uncle Joe Smith passed away Dec. 21, in a Lubbock Hospital where he had been receiving treatment for 3 weeks.

Funeral services were held Saturday, Dec. 24, in the Lakeview Baptist Church, with Rev. Tony Longval of Wolforth, Rev. Harold Poage of Abernathy and Rev. A. O. Brewer of Abernathy officiating.

Burial was in Plainview Cemetery with Masonic Rites. The Franklin Bartley Funeral Home in charge of arrangements.

He is survived by his sister-in-law, Mrs. C. S. Smith, 3 nieces, Miss Rita Smith of the home, Mrs. Ray Castleberry of Riverside, Calif., and Mrs. Jim Fitzgerald, of Floydada; 2 nephews, J. A. and Odell Smith.

Relatives who came to attend the services included Roger Castleberry of Oklahoma City; J. P. Billingsley and Hugh Billingsley of Dunn, Ollie Richardson of Hermleigh, Russell Richardson, Lorraine, J. W. Padgett, Waco, Mrs. Fern Vin Cures, Sunny Mead, Calif., Mrs. Dub Sewell and children of Sacramento, Calif., and Mr. and Mrs. Johnny Miller of Moreno, Calif.

E. L. Fisher, 93, pioneer resident of Lakeview community, passed away at the family home on Plainview highway Dec. 23.

Funeral services were held Dec. 24, at 4 o'clock in the Lakeview Methodist Church with the pastor, Rev. R. H. Knight, officiating, assisted by Rev. Partain,

pastor of the Happy Union Baptist church.

Pallbearers were Paul Willis, Henry Scarborough, Melvin Miller, Bill Rankin, Loren Neis and Lawrence Amerson.

Mr. Fisher had lived on his farm in this community 53 years with the exception of a few years in the 30s when the family resided in Johnson, Kansas.

He is survived by his wife, Mary; 2 sons, Avery and John of Petersburg; 3 daughters, Mrs. Mrs. Travis Harrison in Ringgold, Texas, Saturday Dec. 24.

Funeral rites and interment was in Claremore, Oklahoma December 27, where her husband, Rev. Travis Harrison served as pastor of the First Nazarene church the past 9 years. He is a nephew of S. M. Harrison.

Mrs. W. D. McDowell of Newport, Ark., came here by plane to attend funeral rites of her father, E. L. Fisher.

Mrs. Elmer Robinson and children of Cisco and Mr. and Mrs. Harvey Howell and children of Lubbock visited their mother, Mrs. E. L. McGaugh during Christmas.

Mr. and Mrs. Lee Cowart of Pueblo, Colo., were here to spend the holidays with their mother, Mrs. N. Matthews and returned to their home Tuesday.

Guests in the R. E. Anderson home included H. A. Ledbetter of Gordonville, Mr. and Mrs. Kermit Mitchell of Tulla, Mr. and Mrs. Preston Mitchell of Albuquerque, Mr. and Mrs. A. W. Mayo of Lubbock and Rev. and Mrs. Wm. Mayo of Brownfield.

Mr. and Mrs. Leon Manley and

children of Lamesa spent the week end with her parents, Mr. and Mrs. Herbert Watson.

Mr. and Mrs. Clifton Corley and children of Hereford and Mr. and Mrs. W. D. Anderson of Amarillo, visited in the Udeol Adams home.

Mr. and Mrs. J. C. Belt spent the holidays with relatives in Welch and Abilene.

The Hernon Peels moved to their new home on West Second Street this week. Also nearing completion on West Second St., is a new home for the Pete Thompson family.

A residence is under construction for the Marvin Struve family on their farm at the east edge of town.

Schedule

Following is the schedule for the Freshman and B team boys and girls games:

Jan. 9—Floydada (Fr. & B Boys) There, 6 p. m.
Jan. 9—Post (Fr. & B Girls), Here, 6 p. m.
Jan. 16—Tahoka (Fr. & B Girls) There, 6 p. m.
Jan. 19-21—Idalou (Fr. Doubleheader), There.
Jan. 23—Tahoka (Fr. & B Girls), Here, 6:30 p. m.
Feb. 2—Floydada (Fr. & B Boys) Here, 6:30 p. m.
Feb. 7-11—Crosbyton Tourney, (Fr. Boys & Girls).
Feb. 13—Tahoka (Fr. & B Boys) There, 6:30 p. m.

WELCOME TO THE TOWN & COUNTRY SHOPPING CENTER

- 4TH STREET & COLLEGE — LUBBOCK, TEXAS
- FURRS SUPER MARKET PO 3-8482
 - SNOWWHITE BAKERY PO 3-9102
 - TOWN & COUNTRY GIFTS PO 3-2350
 - HARDWARE PO 3-8337
 - TG & Y VARIETY PO 3-8722
 - FABRIC MART PO 3-6611
 - BUD'S MEN'S SHOP PO 2-4600
 - JONES-ROBERTS SHOES PO 3-4945
 - JONES JEWELRY PO 3-4945
 - ESTATE PLANNING SERVICE & INSURANCE PO 3-3431
 - RADIO-TV REPAIR PO 3-0208
 - COBBS DEPT STORE PO 3-9471
 - WOMACK'S BABY SHOP PO 3-1170
 - WALLACE THEATRES PO 3-5231
 - CHRIS' REYAL DRUG PO 2-2033
 - LAINDROMAT PO 3-8582
 - BEAUTY SALON PO 5-5536
 - BAPPR SHOP PO 3-0487
 - MARCY CIGANERS PO 3-8182
 - HAPPY TRAVEL AGENCY PO 3-1036
 - AL'S SPORT SHOP FURR CAFETERIA MILANS TOYLAND PO 5-9212
 - PAR-TEE-PUTT GOLF PO 5-8174
 - DUNLAP DEPT. STORE PO 3-8517



LEE'S TASTY SAUSAGE
COUNTRY STYLE — ALL PORK
Made From Pork Hams, Loins and Shoulders
INSPECTED
None Better. Ask For It At Your Grocers.
We Serve The South Plains
LEE'S SAUSAGE
CY 8-2088 Wholesale Only Abernathy

DRS. CAULEY and WELCH
OPTOMETRISTS
Visual Examinations and Contact Lenses
1114 Ave. L Lubbock, Phone PO 5-7180

Best Wishes for a happy New Year

in earnest appreciation of your patronage in the closing year we wish to say to each of you, "Season's Greetings."

H'GGINBOTHAM - BARTLETT CO.

Happy New Year

May grace in abundance Fill your days Throughout the New Year

New Year NEIGHBORS

J. W. SMITH FERTILIZER CO.

- SPECIALS AT McALISTER'S**
THURSDAY, FRIDAY, SATURDAY, DECEMBER 29, 30, 31
- Sunshine Crackers Lb. 26c
 - Campbells Soups 2 for 33c
 - Spam each 45c
 - Giant Tide 75c
 - Folgers Coffee lb. 69c
 - Maxwell House Instant Coffee 10-oz. \$1.39
 - Donald Duck Frozen Orange Juice 6-oz. 18c
 - Diamond Catsup 12-oz. 15c
 - Kimbell Biscuits 3 for 25c
 - Purex and Clorox half gal. 35c
 - Kimbell Shortening 3-lbs. 59c
 - All Meat Bologna lb. 39c
 - Kimbells Tamales No. 2 can 25c
 - Supreme Ginger Snaps ... 1-lb. 25c
 - Chicken of the Sea Chunk Tuna 3 cans 95c

Charge Accounts are strictly 30 days
We Close At 6:30 p. m.
McALISTER GROCERY & MARKET
2 Deliveries Daily 9:30 A. M. and 4:30 P. M.
CY 8-2728 — Abernathy

Meet Mercury Meteor... the new and better low-price car

1961 MERCURY METEOR 800

HIGHLIGHTS

NEW NAME! 2 ALL-NEW SERIES! NEW SUPER-ECONOMY "6" AND V-8 ENGINES! FAR LOWER PRICES! • This year, with the Meteor 600 and 800 series, Mercury has 2 full series of low-price cars. • Prices start hundreds of dollars below last year. • Optional equipment and transportation cost far less too.

FULL SIZE! • There's more interior comfort than in last year's Mercury. Outside dimensions are trimmer for easier parking and garaging.

FAR MORE VALUE THAN OTHER LOW-PRICE CARS. • Mercurys are heavier (starting at 3708 lbs., curb weight) have a longer wheelbase (120 inches). • First with Cushion-Link suspension (absorbs small bumps you still feel in other cars). • More self-servicing features than any other low-price car...everything from a self-lubricating chassis to self-cleaning spark plugs. Why not get more, save more? Just see your Mercury dealer. LINCOLN-MERCURY DIVISION Ford Motor Company.

*Cushion-Link suspension is exclusive on all Meteor 800's, Montereys, and Mercury station wagons.

1961 MERCURY PRICE COMPARISON CHART		
1. MERCURY METEOR 600 Priced right in the heart of the low-price field.	2. MERCURY METEOR 800 Priced to compete with the top series low-price cars.	3. MERCURY MONTEREY Finest, most luxurious of all 1961 Mercurys.

ASK YOUR MERCURY DEALER ABOUT HIS NEW EXTENDED WARRANTY ON ALL 1961 MODELS

ABERNATHY MOTOR COMPANY
MERCURY DEALER
CY 8-2821
Abernathy, Texas

BEST WISHES FOR GOOD CHEER

ABUNDANT SUCCESS AND HAPPINESS

SERVICE GRAIN COMPANY

The old year becomes history... the New Year with all its opportunities has arrived.

best wishes FOR A HAPPY PROSPEROUS New Year

ANN'S DRESS SHOP
Annie Gladys Vida

Highlights and Sidelights from The State Capital In Austin

By VERN SANFORD
Texas Press Association

AUSTIN, TEXAS—By the time Austin sweeps up the last of the holiday tinsel, it will be time to prepare for another round of festivities.

Committees already are meeting to plan details of the inaugural events that will attract thousands of visitors to the Texas capital, come January 17.

Gov. Price Daniel will take the oath of office for his third term; Lt. Gov. Ben Ramsey for his sixth term. If weather permits an inaugural parade these two officials will ride at the head of it up Congress Avenue to the Capitol grounds where the swearing-in ceremony will be held.

A reception and a half-dozen balls will fill out the day. For his past two inaugurations, Governor Daniel has held a prayer breakfast beforehand for state officials.

NO SPECIAL SESSION—Haggling and suspense over who will be Speaker of the House for the 57th Legislature will continue until January 10.

That is the first day of the regular session when House members by secret ballot, will elect the speaker from their membership.

Rep. James Cotten of Weatherford asked Governor Daniel to call lawmakers together this month. New members could be sworn in and a speaker elected in a one-day session, he said. This would give the speaker time to organize committees and be ready to go to work in January.

But Governor Daniel said that any legislature meeting this year would be the 56th Legislature, which could not elect a speaker for the 57th Legislature.

Reps. Wade Spillman of McAllen and James Turman of Gober are candidates for speaker. Both, reportedly, are "ahead."

Spillman, in a recent letter to House members, announced addition of two more pledges to him. He said, "A majority of the members have committed their vote to me for Speaker." Jim Turman says the same thing. So, the big question is: How will the members vote?

SAFETY DRIVE LAUNCHED—This year's campaign for careful driving during the holidays was launched on "Safety Sunday" December 11.

Many organizations, including the Texas Press Association, will help in the annual drive to cut

the Christmas-through-New Year accident toll.

"Safety Sunday" said the governor in his proclamation of the special day is "to awaken the conscience of every driver to the understanding that negligence at the wheel is a transgression of God's own command, 'Thou shalt not kill!'"

In past years, the governor noted, the all-out campaigns have resulted in the death toll's falling below Department of Public Safety predictions.

Last year the DPS predicted 111 deaths. When the holiday season ended only 91 had died, for a total of 20 lives saved.

PROGRAM FOR AGED—Enactment of medical care for the aged and an increase in state pensions are among recommendations of a joint legislative committee to study problems of the aging.

Committee announced it would work for a constitutional amendment to raise by \$10,000,000 a year the ceiling on old age assistance. It also urged that the next Legislature pass laws to put into effect a program to provide state help for the medical expenses of needy oldsters.

Transfer of senile, but not mentally ill, patients from mental hospitals to nursing home care was recommended.

Sen. Crawford Martin of Hillsboro, is chairman of the committee, and Rep. Howard Green of Fort Worth is vice-chairman.

VET BOND SALE CANCELED—Veterans Land Board has set aside plans to hold a bond sale this month because of criticism from Land Commissioner-Elect Jerry Sadler.

Board announced its decision "with regret," declaring that the veterans waiting to buy land would be the losers.

No bonds have been sold since June 1958, because the state ceiling on interest was too low to attract buyers, Board said it felt the people were expressing their desire to get the program in full operation again when they approved a constitutional amendment in November to raise the interest ceiling.

Sadler had protested the sale. He said he felt the bonds could be sold at a more favorable rate next year after a change in the national administration.

DAM SITE RECOMMENDED—Milligan, in Brazos County, has been recommended to the State

Board of Water Engineers as the College Station and Navasota and site for a proposed reservoir on several industrial firms.

Statistics for the proposed water contract by the Brazos River 900,000 gallons of water a day, Authority, the towns of Bryan, cost an estimated \$44,000,000. It

would not be completed until about 1970 and paid for in 2020.

PARR LOSSES OUT—Texas Supreme Court refused to review a lower court ruling that blocked George Parr's fight to become Duval County's Democratic Party chairman.

Parr won a district court order for a re-count, but the San Antonio Court of Civil Appeals overturned the decision. Supreme Court refused to step in, noting that the Election Code said it had no jurisdiction to review election contests.

It was another setback for the Duke of Duval, once credited with the power to decide how any political race in the county would go.

SHORT SHORTS—State's general revenue fund is going deeper in the hole, sinking to a deficit of \$76,724,738 on the state treasurer's last report. Deficit increased \$10,000,000 in three weeks.

On the plus side, the state has received a check for \$36,547.92 as its share of income from the sale of 119,400,000 board feet of lumber and other uses of the Texas national forests. Money will be divided among the 11 East Texas counties in which the forests are located.

The weatherman's wild predictions soon made him the laughing stock of the small Texas town, so he put in a request for a transfer. In the blank he was asked the reason for requesting a transfer, he wrote, "the climate doesn't agree with me."

Santa Fe Magazine

"My wife," said Sam, "talks to herself."

"So does mine," confided Bill, "but she doesn't know it—she thinks I listen."

FLOYD SHIPMAN & SON AGENCY

CY 8-2536—Abernathy Insurance & Real Estate Farm Loans, and G. I. & F. H. A. Loans

Dallas Man Heads '60 Cancer Society's Crusade in Texas



It was another setback for the Duke of Duval, once credited with the power to decide how any political race in the county would go.

SHORT SHORTS—State's general revenue fund is going deeper in the hole, sinking to a deficit of \$76,724,738 on the state treasurer's last report. Deficit increased \$10,000,000 in three weeks.

On the plus side, the state has received a check for \$36,547.92 as its share of income from the sale of 119,400,000 board feet of lumber and other uses of the Texas national forests. Money will be divided among the 11 East Texas counties in which the forests are located.

The weatherman's wild predictions soon made him the laughing stock of the small Texas town, so he put in a request for a transfer. In the blank he was asked the reason for requesting a transfer, he wrote, "the climate doesn't agree with me."

Santa Fe Magazine

"My wife," said Sam, "talks to herself."

"So does mine," confided Bill, "but she doesn't know it—she thinks I listen."

FLOYD SHIPMAN & SON AGENCY

CY 8-2536—Abernathy Insurance & Real Estate Farm Loans, and G. I. & F. H. A. Loans

THIRD PRIZE winner in the Inside Category of the Christmas Decorating Contest was the D. P. Moore home at 1405 Avenue M, pictured above. Third place winners in each category of the Lions Club sponsored contest received \$10.-- (Staff Photo). SECOND PRIZE of \$15.00 was awarded Mrs. J. C. Mills in the Christmas Decorating Contest, sponsored by the local Lions Club, for her entry in the Inside Category of the contest. Picture of the entry failed to turn out properly. — RH.

CARD OF THANKS

We express our sincere appreciation to all our friends and neighbors for the kindness, flowers, food, and words of sympathy during the recent illness and death of our loved one. May God bless each of you.
Mrs. C. I. Rhodes and Family

Santa Fe railroad men say: "Watch for us... we watch for you." There have been death and near-fatal accidents at railroad crossings in Abernathy over the years. "Stop, Look and Listen" is a good policy to follow at railroad crossing. (Street intersections, too!).

GRUEN and ELGIN WATCHES DIAMONDS Charms and Identification Bracelets
WELCH'S
Jewelry and Watch Repair Pearls Restring, Engraving Welch's Custom Jewelers 1107 Main St. PO 3-9862

Wishing you NEW YEAR Greetings
ROSE GARDEN Nursery & Florists
Florene and R. C. Patterson Jr.

ABERNATHY INVITED TO HAVE SPECIAL DAY AT FORT WORTH EXPOSITION AND STOCKSHOW

FORT WORTH, Texas—An invitation has been sent to Abernathy to have a special day at the 1961 Southwestern Exposition and Fat Stock Show here. Dates of the exposition are January 27 through February 5.

By having a "Day" at the Fort Worth Stock Show Abernathy would receive special recognition and publicity at the Stock Show and throughout North and West Texas, according to W. R. Watt, Stock Show president-manager.

The invitation provides special block reservation of seats for the rodeo. The local band is invited to play a concert on the Stock Show grounds and be guests of the Stock Show management at

the rodeo. The 1961 Fort Worth rodeo will feature the famous chariot race between two four-horse teams from the "Ben-Hur" movie.

Also, the city is invited to ride in the opening day parade or in the rodeo grand entry on the city's special day or both.

Many cities and organizations make annual trips to attend the Fort Worth Show, which will be observing its 65th season.

Phone CY 8-2427
FOR QUALITY, LADI-MIX CONCRETE
Delivered To Your
Farm, Job, Residence or Business
HERNDON & JEFFERY
Ready Mixed Concrete
11th St. and Ave. C Abernathy

every good wish for the NEW YEAR
We Will Be Closed From 4:00 P. M. Saturday Through Sunday and Monday, Open Tuesday A. M. January 3.
LAMBERT'S CLEANERS
Phone CY 8-2242
FREE MOTHPROOFING
FREE PICK UP AND DELIVERY
LON CLEANERS
Phone CY 8-2826

SHAMROCK
For Friendly, Courteous, Efficient SERVICE
Stop At ATTEBURY SHAMROCK SERVICE
Corner of 13th & Ave. D
Need Your Car Washed, Greased or Oil Cranged?
Dial CY 8-2053
Boney & Martha Attebury

GOOD WISHES AS ANOTHER YEAR IS UNDERWAY
As we chart our course for the New Year, our thoughts turn gratefully to those who have made possible our progress in the past. With sincere appreciation this greeting brings thanks and all good wishes for the coming year.
Abernathy Weekly Review
Buford and Dorothy Davenport — Orson Rea — Richard Havens

THANK YOU
...the most sincere expression we know to convey our appreciation for your friendliness and patronage this past year.
May we extend cordial greetings and good wishes for your health, happiness and prosperity in the months to come.
and a Happy New Year
ABERNATHY MOTOR COMPANY

NEWS FROM THE CHURCH OF THE NAZARENE

Abernathy, Texas
(By James H. Robertson, Pastor)
Nazarene Giving

The per capita giving of the Abernathy Church of the Nazarene for 1960 was \$357.17. This compares with a denominational average of \$142.37 for 1960. The local per capita giving was an increase of \$39.93 over 1959 while the denominational increase was \$7.00 per capita over 1959.

Giving for all purposes by the denomination climbed to an all time record of \$45,350,000 which is an increase of \$3,170,000 over 1959.

General church statistics released this week by Dr. S. T. Ludwig, General church secretary for the Church of the Nazarene revealed that the denomination started a new church every week during 1960. The Abilene district started two new churches during 1960 and have three planned by June 1, 1961.

American Samoa and Denmark were among the world areas entered by the Church of the Nazarene in 1960. At the year's end, full time missionaries were serving in 42 world areas. One of the missionaries is Mrs. Wanda Knox, a resident of Abernathy until her departure for New Guinea in October 1960.

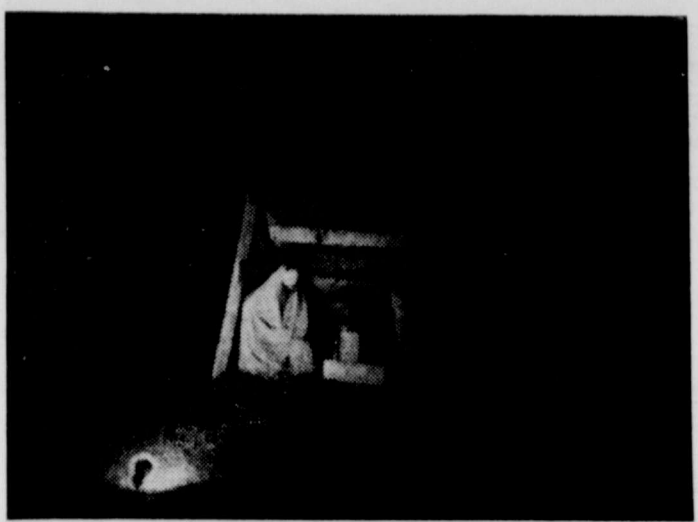
Special offerings at Thanksgiving for Missions were over \$1,000.00. The Abernathy Church gave \$1539.75 of this amount. The Church of the Nazarene leads all other denominations in the United States in per capita giving. This is brought about by faithfulness of its members with their tithes and offerings.

Youth Carolers
A number of the youth of the Church of the Nazarene went caroling last Friday night. The group was sponsored by Mrs. James Robertson and included: Ann Robertson, Barbara Patterson, Peggy Joyce, and Beverly Spruelli. Ladell and Betty Patterson and Jamie Hall.

During the evening the group went to some 15 homes of members of the congregation and were served refreshments at the home of R. C. Patterson, Jr., after caroling.

Yule Party For High School And College Young People
The High School and College young people of the Church of the Nazarene enjoyed a Christmas party at the parsonage, 508 Ave. E, last week.

The table was covered with a green net table cloth, decorated with large poinsettias and holly leaves. Refreshments were cookies shaped like bells, stars and Santa Clauses, snowballs, also there were Christmas tree sandwiches served with red punch with green ice cubes.
Christmas games and home movies of various church youth camps and meetings were enjoyed by the following: Peggy and



MRS. MELVIN RAPE and daughters, Marion and Susan, prepared the manger scene pictured above, and took third prize of \$10.00 in the Outside Category of the Lions Club sponsored Christmas Decorating Contest. The display is in the front yard of their residence at 1210-13th Street.--(Staff Photo).

SOCIAL SECURITY INFORMATION

Recent changes in the Social Security Act reduce to three years the amount of covered work a person who reaches retirement age must have to qualify for social security retirement insurance. Before the law was changed, a person reaching retirement age this year needed almost five years of covered employment to qualify.

The retirement age is 65 for men and 62 for women, according to John G. Hutton, district manager of the Lubbock Social Security office. "This means that many older people and the families of some deceased workers may now be eligible for benefits," Mr. Hutton said.

If an application has been filed previously and turned down because there was not enough work under social security, a new application should be made to determine if the new requirements can be met. A minimum of six quarters or about a year and a half of covered work is always required, and the maximum is 40 quarters or 10 years of covered work. Benefits would begin with October for those found eligible under the recent changes, Hutton explained.

People who want more detailed information about this change in the law should direct their inquiries to the Social Security Administration, 1616 19th Street, Lubbock, Texas.

Builders Class Enjoys Christmas Party
The Home Builders Sunday School class of the Church of the Nazarene held its annual Christmas party at the home of their teacher, Mrs. Carl Ellis last week. Table games were enjoyed and refreshments fitting the season were served to: W. G. and Billie Jean Spruelli, Ladell and Betty Patterson, Sam and Wynn Wade, Archie and Pauline Archibald, Vester and Rose Patterson and Mr. and Mrs. Carl Ellis.

Antelopes ...

(Continued From Front Page)

quarter surge then really poured on the coal in the final period. Jerry Givens and John Brown sparked the Antelope attack in both scoring and floor-leadership. After Givens had reentered the lineup, the Antelopes overtook Denver City, 39-38, midway in the third period and then snowballed that margin into an eleven point advantage within five minutes.

Givens was the game's leading scorer with 16 points and Brown contributed 13 to Coach Wayne Preston's balanced scoring machine. Mike Ritchey added 10 points for the Antelopes. Johnny Fulbright and Pat Hubbard each netted 10 points for Denver City.

The Antelopes entered the tournament with 10 games under their belts—9 wins and only one loss. Their lone loss came at the hands of the Plainview Bulldogs in the second game of the Plainview Tournament early in the season.

Record
Prior to the Caprock Tournament, the Antelopes had defeated Slaton once, Littlefield once, Levelland twice, Hale Center twice, and Idalou, Crosbyton and Roosevelt once each.

The AHS girls team, coached by Pete Wilson, has won 9 games and lost 5 during the early part of the season.

They won their season opener, 65-34, over Frenship, then lost by 6 points to Slaton, 67-61. They lost their next two games by only four points, falling to White Deer 66-62 and losing to Cotton Center, 60-56. They won the next three games, defeating Roosevelt 61-58, downing Sudan, 53-52, and out-scoring Slaton, 70-60. Their fourth loss came at the hands of Sudan, 61-34.

The local lasses smothered Idalou, 80-53, then won their first two games in the Abernathy Tournament, defeating Crosbyton 78-41, and running past Roosevelt 57-43, but lost out in the finals of the tourney by a one-point margin to Cotton Center, 74-73. Two weeks ago they defeated the Hale Center girls 70-57, here, and then won over Cotton Center for the first time this season, 55-53, early last week.

Over 12,000 boys and adults in the Scouting program also join with us, in saying "thank you" for a job well done. Your News Media does a real fine job in serving the towns and people involved and we are thankful for this outstanding service to all concerned.

We wish for you and yours a very Happy Healthy and Prosperous New Year. It is our sincere hope that we in Scouting have merited your continued support and for this we shall be eternally grateful.

With sincere best wishes to you and all related to your News Media,
Sincerely yours,
Cliff H. Cummings,
President
South Plains Council
W. Benson,
Scout Executive
South Plains Council.

perous New Year. It is our sincere hope that we in Scouting have merited your continued support and for this we shall be eternally grateful.

With sincere best wishes to you and all related to your News Media,
Sincerely yours,
Cliff H. Cummings,
President
South Plains Council
W. Benson,
Scout Executive
South Plains Council.

Hi-Plains Hi-Lights

NEWS from the High Plains Research Foundation

Soybean yields in three variety tests, conducted at the High Plains Research Foundation during 1960, ranged from 34.02 bushels to 54.08 bushels per acre. Of the thirty-four varieties tested in the three projects, the highest yield was obtained from an experimental variety, D56-1131.

Ten standard commercial varieties were evaluated at the Foundation. The Hood variety produced 41.76 bushels; the Hill, 39.52 and the Lee 39.36 in this test. The average yield of these 10 varieties was 37.40 bushels.

In another test, twelve varieties were evaluated in maturity group No. 5 of which two were commercial and ten experimental varieties. In this test an experimental variety, D56-1131, produced the highest yield of 54.08 bushels. The Hill variety produced 48.12 and the Dorman 44.46 bushels. The average yield of the 12 varieties in maturity group 5 was 46.75 bushels.

Maturity group No. 6 consisted of 12 varieties, two of which were

commercial and ten experimental. In this test the Lee was the highest yielding variety with 48.12 bushels, Hood was next with 46.29 bushels per acre. The average yield for the twelve in maturity group 6 was 44.61 bushels.

The 34 varieties were planted on June 20 in an area devoted to cotton in 1959. A total of fourteen and one half inches of irrigation water was supplied in preplant and three other irrigations during the growing season. 29.29 inches of rainfall occurred between June 1st, and November 1st. The planting rate for the standard commercial varieties was 80 pounds per acre, the rate for maturity groups 5 & 6 was 60 pounds per acre. All plots received 120 pounds of nitrogen from urean sidedressed on July 28, 1960.

Seed for maturity groups 5 and 6 were furnished by the Agricultural Research Service of U. S. D. A. through a cooperative agreement with the Texas Agricultural Experiment Station.

"The high yields in these tests are encouraging in our search for higher yielding soybean varieties adapted to the High Plains. These tests are in addition to the 454 strains of soybeans that were planted in the Foundation's breeding program," Dr. Earl H. Collier, Chief Agronomist said in releasing the information.

DOUBLE HEADLR AT TEXAS TECH SLATER FOR FRIDAY AND SATURDAY

Lubbock, — Texas Tech's 6-9 center, Harold Hudgens, is expected to return to the Red Raider lineup for the Holiday Double-headers in the Coliseum here Thursday and Friday nights, Dec. 29 and 30.

Hudgens has been out since suffering a hairline crack in an ankle bone in the Red Raiders' loss to University of Kansas in the second game of the season. He was averaging 24 points a game.

Participating also in the double-headers will be Texas A&M, U. S. Air Force Academy and Eastern Kentucky State.

Texas A&M and Eastern Kentucky will open competition with a 7 p. m. game Dec. 29. At 9 p. m.

Texas Tech and the Air Force Academy collide. The following night Texas A&M and the Air Force Academy will play at 7 p. m., preceding the Texas Tech-Eastern Kentucky contest at 9 p. m.

Texas Tech is one of the favorites for the Southwest Conference championship. Eastern Kentucky is a perennial Ohio Valley Conference power, and Air Force is the top independent in the Rocky Mountain area.

Reserved seats are being sold for \$3 (below the concourse) and \$2.50 for each night. General admissions are \$1.50 each. Tickets may be bought at the box office the night of the game or at the Athletic Office on 6th street south of Jones Stadium.

POPE'S PARTS PLACE

YOUR AUTOMOTIVE PARTS JOBBER

CY 8-2534 — 1312 Avenue D, on Highway

Name Brands at the Right Price

OUR OBLIGATIONS

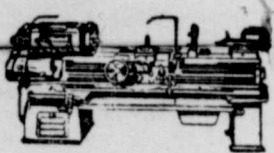
As we enter this New Year, we pledge anew our willingness to serve this community in any capacity, at any time we are called upon.



TED ANDREWS
AND MEMBERS OF THE
Hale County Sheriff Department

FIRST STATE BANK

MEMBER F. D. I. C.



PUMP REPAIR AND
GEAR HEAD WORK

WELDING

A and C TURBINE PUMPS
MACHINE WORK

"Where Quality Doesn't Cost, It Pays"

Pump Pulling
And
Setting
Casing Pulling

Domestic Well
Service



SAM WADE
Phone CY 8-2614
Nite CY 8-2217

MANCILL SMITH
Phone CY 8-2614
Nite CY 8-2842

John Duty Company

Phone CY 8-2022

Call Any of These Numbers for Complete Well Service
15th and Ave. D. Abernathy

FRIENDLY
GREETINGS



We wish all of you unlimited success and achievement in the New Year.

NEEL ELECTRIC

CHOICE IRRIGATED FARMS

160 Acres or More if Desired

498 Acres near Dimmitt, 117 acres cotton, 4 8-in. wells, natural gas, clean deep soil. A Very Choice Farm for \$315.00 per acre.

DAN NELSON

with

FORSON REAL ESTATE

4 Blocks South of Courthouse on Hwy 385

Dimmitt, Texas

Phone MI 7-3274

NOTICE OF ELECTION
TO BE HELD
TUESDAY, JANUARY 10, 1961

For Water District Director and County Committeemen.

Polling Places in Lubbock County

1. City Hall, Idalou
2. Old County Courthouse, Lubbock
3. Community Clubhouse, Shallowater
4. City Hall, Slaton

For District Director:

- (Vote for One)
1. Elmer Blankenship, Route 2, Wilson
 2. Earl Weaver, Idalou
 - 3.

For County Commitmen:

(Residents Vote for One Commitman-at-Large)

1. W. J. Bryant, 1902 Avenue C, Lubbock
2. Dan Young, 402 19th Street, Lubbock
- 3.

(Residents of Commissioner's Precinct No. 3. Vote for One)

1. Virgil Isom, Idalou
2. Carlos May, Route 1, Idalou
- 3.

BE SURE TO CAST YOUR VOTE

HIGH PLAINS UNDERGROUND WATER
CONSERVATION DISTRICT NO. 1

to Our Fine Neighbors
of the Community—
NEW YEAR



GREETING

As we pause to review the year just closing we are reminded of your loyal support which has contributed so much to our success and happiness. May the days of the New Year hold many pleasant experiences for you and yours.

BARRINGTON FOOD

IN NEW DEAL



LETTERS TO THE EDITOR

WAYLAND BAPTIST COLLEGE
Plainview, Texas
Office of Director
of Public Relations
December 1, 1960

Mr. Buford Davenport
Abernathy Review
Abernathy, Texas

Dear Mr. Davenport:
We think you will be interested in the International Relations Conference which members of the International Relations Club of Wayland Baptist College have planned for February 10-11, 1961. Representatives from several countries will attend.

The Club has asked me to invite you to a Press Conference at 2:30 p. m. February 10, which will be followed by a program at which the Nigerian representative from Washington will speak on conditions in Africa.

Four area newsmen will serve as a panel to interview representatives from such newsworthy world spots as Israel, Nigeria, India and Russia. You are asked to formulate questions and send them to me for submission to the newsmen. Following the panel interview and discussion, as time allows, questions may be asked from the floor but it would be most helpful to have questions which may occur to you well in advance of the Press Conference. They may be sent to me.

International Relations Club and the Office of Public Relations would be most happy to have you attend other sessions as well. If reservations are made by February 1, we would be glad to have you remain for the dinner session at which time a representative from the Indian Embassy will speak. Tickets for the dinner are \$1.25.

The Russian Embassy representative will speak at the final session on Saturday morning. This should be an interesting session, too.

Won't you put February 10 and 11 in your engagement book, especially the 2:30 p. m. Press Conference in Wayland Auditorium. This is your opportunity to get first hand information from spokesmen for their government.

Thank you for your wonderful cooperation to the Office of Public Relations in running stories about Wayland Baptist College students from your area. We surely appreciate past courtesies and will be most happy to assist you at any time it is possible. Sincerely yours,
Ailese Parton, Director
of Public Relations.

AIC Dale Matejowsky, son of Mr. and Mrs. Elmo Matejowsky, was home for the Christmas holidays from Kelly Field, San Antonio, Texas.



Happy New Year

We will be open Monday

Davis Grocery

TOP QUALITY SERVICE IS OUR BUSINESS WE FIX FLATS EXPERT WASHING AND LUBRICATION
TIRES — TUBES — MOTOR OILS — BATTERIES — WAXING — POLISHING — CANDIES — COLD DRINKS
Get Your 900 or 950-14 Trailer Tires Here Now.
CALL US FOR ROAD SERVICE

Mobil **PHONE CY 8-2787** **Mobil**

ABERNATHY, TEXAS

CARBON MONOXIDE POISON

During the chilling days of winter, hardly a week goes by that someone somewhere in Texas does not die from carbon monoxide poisoning. Such deaths come under the broad heading of "accidental" but a more apt heading would be "careless."

The fact of the matter is that carbon monoxide poisoning is the end result of improperly adjusted heaters, leaky vents or none at all, and lack of ventilation in rooms where any kind of fire is burning.

Perhaps the greatest danger lies in the tasteless, odorless, and colorless character of carbon monoxide. Unless you have complicated testing equipment and keep checking about every 15 minutes, there is absolutely no warning of the presence of gas until symptoms appear.

Even these symptoms are masked. A seemingly mild headache, slightly watering eyes or a touch of stomach upset are symptoms of carbon monoxide poisoning. If sleeping in a closed room with a faulty heater burning, death may come without waking or warning. In fact most carbon monoxide deaths follow this pattern.

Regardless of heating fuel, precautions must be taken, since carbon monoxide is the result of incompletely burned fuel. Proper venting should be installed with outlets leading outside the building and carefully checked for leaks. Under all conditions ventilation is a must. If nothing more than a "cracked" window.

Hale County
Don Shane Robinson, George William Anderson, Gordon Leon Fore, L. C. Fred, Gordon Dale May, Richard Eugene Shackelford, Joe Willie Crothers, Monte Vern Lee, Beverly Howell Reed, Don Orville Allen, Wallace Weldon Baldwin, Dennis Woodrow Batt, Jr., and Billy Charles Barnes.

Swisher County: Chester B. Coleman and Robert Stephen Copeland.
By direction of Local Board, Bertha M. Clapp, Cl. Asst.

The Roy Dean Vermer family plans to visit in Mount Pleasant.

Paying Over "A" Loan
Price for Lower Grades of Cotton
See Us Before You Sell Your "B" COTTON
YOUNG & COMPANY
Cotton Buyers
Phone CY 8-2585 **Abernathy**
Back office at Lamar McKenzie Insurance Building at 909 Ave. D
HAPPY NEW YEAR

Happy New Year

May each of us find the New Year the one we have dreamed of so long... the year in which each ambition will be realized, not only by ourselves but by those about us. Let's make it a wonderful year, all of us!

Clyde and Shelby Pittman

PITTMAN GULF SERVICE

Specials
Thursday, Friday and Saturday
MARVIN STRUVE GROCERY
Dial CY 8-2532 for Free Delivery
Parking Place In Front

DR. PEPPER OR — 12 reg. ctn. Blackeyed — 1-lb. Cello Bag

Coca Cola 49c Peas 15c

Folgers Ken-L Ration

Coffee ... lb. 69c Dog Food ... 16-oz. 13c

Gladiola FLOUR 59c
5-Lb. Bag

Pet or Carnation Supreme

Milk ... large 15c Crackers ... 1-lb. 26c

JANUARY 4, 1961, DR. PEPPER WILL BE SERVED FREE (2:00 to 5:00) Golden Oleo lb. 19c

HAPPY NEW YEAR Peters Mobil Service

Marketing Quotas Approved By Hale County Farmers

Hale County cotton farmers approved by a whopping 590 to 16 vote the 1961 marketing quotas the December 12 referendum. The unofficial vote count, although light in comparison to the number of voters eligible to participate, was far over the two-thirds majority required for approval.

The total vote in the county was 610, there being four ballots challenged, said John B. Martin, ASC supervisor.

The County ASC committee was to meet Thursday and officially canvass the referendum ballot, E. J. Pope Jr., is committee chairman and Earl Laney and R. A. Gregory are members.

The local voting followed the trend across Texas, where farmers voted by a good majority to continue the support programs.

THANK YOU
Louis Cantu, who has undergone surgery at hospitals in Houston and Lubbock recently, wishes to express his sincere thanks to everyone who has helped him in any way, including the following persons:

Johnny Skipper, M. S. Smith, H. C. Chastain, Buddy Reynolds, Pete Ortiz, Wilburn Lobstein, F. J. Smith, Earnest Hemphill, R. H. Lutrick, George Wilkes, Marvin Teaff, D. D. Skipper, Willie Dann, A. B. Teaff, Bob Rogers, A. L. Marcy, L. D. Hogan, Joe Oswald, E. J. Pope, Jr., Ray Linton, St. Peters, John Marsh, Dan McNeill, Elias Vecchio, Ted Wisdom, Mrs. R. D. Slough, Sr., Lon Carmickle, Billy and Dianna Clark, Juan Dominguez Jr., M. D. Slough, Eddie Guerrant, King Collins, Foy Hendrix, Owen Benn, Chester Pearce, Billy Curry, Juan Dominguez, O. L. Tucker, L. E. Greenlee, Lois Fuller, Johnny Phillips, Louis Ortiz, J. O. Reynolds, Mr. Sons, Eugene Hill, Mr. and Mrs. Bob Adams, Albert Ortiz, E. L. Ortiz, Virgil Phillips, "Paul", R. J. Holt, Robert Holt, Arno, and others.

OUR NEW YEAR GREETINGS

As we prepare to welcome the New Year, we want to say just a word of thanks to each of you. You have been loyal and considerate and we are truly grateful. Best wishes for New Year.

FROM ALL OF US
Graham's Restaurant

OUR VERY BEST WISHES TO ALL FOR A GOOD NEW YEAR



WARD'S MEN'S STORE

HALE EMPLOYS 1st ASSOCIATE COUNTY AGENT

Charles E. Cypert, Clovis, N. M., will assume duties as associate Hale County agriculture agent January 1, said County Judge Lee Nowlin.

Assistant agronomist at the Plains Experiment Station at Clovis for the past two years, Cypert will assist with this county's Extension Service program in association with County Agriculture Agent Ollie Limer.

Born and reared at Hillsboro, Cypert has a BS degree in animal husbandry and an M. S. degree in agronomy, 1956 and 1958 respectively, from Texas A & M College.

Cypert will be Hale County's first associate county agent. B. F. Yeates is assistant county agent.

Cypert and his wife, Elizabeth, are parents of one child, a daughter, Deidra Beth.

NEW YEAR Greetings

ALL GOOD WISHES To Our Friends



Greeting you with every good wish for a **HAPPY NEW YEAR**

HAMMOND MAYTAG SALES HELEN'S GIFT SHOP

TO THE FRIENDS WHOSE PATRONAGE WE HAVE ENJOYED. . . .
TO THOSE, ALSO, WHOM WE HOPE TO SERVE,
MAY THE NEW YEAR HOLD FOR YOU A LARGE MEASURE OF GOOD FORTUNE AND GOOD CHEER.

SINCERE GOOD WISHES FOR A JOYOUS
NEW YEAR

The Employees of Your
CO-OP GRAIN COMPANY

PLAINS AREA LEADS IN COTTON ALLOTMENT GAIN

Plains cotton farmers have received their 1961 acreage allotments. There is an increase over in 1960 "A" allotments. In some counties where the "B" acreage plantings were high the 1961 allotment does not show a considerable increase.

There will be no "B" acreage for 1961, Dale Carter, area ASC representative, pointed out.

The ASC 1960 and 1961 allotments for a 20-county area including this part of the Plains

shows a percentage increase over last year's base A allotment. The total increase for the 20 counties over the "A" and "B" total for last year is 6.4 per cent.

The Lubbock Cotton Exchange which provides the figures points out that the national acreage increase over the 1960 base allotment was only 11.3 per cent increase. Texas received a 15 per cent increase and for the Plains the increase was 16.5 per cent.

School Calendar

For 1960-1961

(Subject to Revision)

January 3, School Resumes.
January 23, (80 days) mid-term.
February 14, (Tuesday School out at 2:00 p.m.), Valentine's.
March 3, Teacher's Meeting, Lubbock.
March 30, (School out at 2:00 p.m.), Easter.
April 4, School Resumes.
May 21, Baccalaureate.
May 25, Junior High Commencement.
May 26, High School Commencement.

TWO PRIZES GIVEN

T. A. Brewer won the first prize, a beautiful mantle piece, given free by the Rose Garden Nursery & Florists on Dec. 21 at their shop. Second prize, a table center piece, also very beautiful, was won by Mrs. "Choc" Brewer. Both reside in Abernathy and each of them was highly pleased with the very attractive decorations.

Mrs. Jesse Knight, Sr., was a patient in a Lubbock hospital.

Lunchroom Menu

Tuesday, Jan. 3
Stew with vegetables, potatoes, spinach, combination salad, Hot rolls, cookies, butter and milk.

Wednesday, Jan. 4
Fish, potatoes, green beans, hot rolls, Jello with fruit, Cake squares, butter and milk.

Thursday, Jan. 5
Barbecued Beef, corn, carrot sticks, hot rolls, fruit cobbler, butter and milk.

Friday, Jan. 6
Hamburgers, dried beans, cornbread, chilled tomatoes, fruit cup, butter and milk.

Mr. and Mrs. Paul Stanford of Albuquerque visited her parents, Mr. and Mrs. Frank B. Lovelace, here during Christmas.

TOWER OF PIZZA SPECIALITY

How can a pizza be more than a pizza? When it's a TOWER OF PIZZA pie that owes its zest and lively taste to secret spices and flavorings, plus specially imported cheese. Little wonder, then, that TOWER OF PIZZA are the best in Lubbock and area.

For a delightfully delicious dinner, treat yourself to one of the TOWER OF PIZZA pies. They are located at 1003 College Ave. PO 3-3393 in Lubbock.

No doubt about it Pizza Pie is fast becoming just about everybody's favorite, and here is an idea for you busy housewives. How about building a party supper around TOWER OF PIZZA'S wonderful tasty Pizza Pies.

In this entire section there is not another establishment that surpasses this well known eating place in service and satisfaction.

Mrs. Grace Verner formerly Mrs. Grace Shaw of Abernathy has spared no expense in making it one of the best, by installing the latest, specially constructed, pizza pie ovens, without which, you can not make the genuine pizza pies.

In making this review we are pleased to give the TOWER OF PIZZA commendation for the excellent service they give and for the leading position they hold.

The Foundation of All Business Is

Confidence

We want to send our sincere...
THANK YOU
...your way.

and to you, whose confidence we treasure, we sincerely wish a New Year of happiness and prosperity.

From ALL of US to All of YOU

BIG STATE GRAIN COMPANY



The Egyptian sphinx is an eternal tribute to the memory of the dead. Honor your loved ones with our dignified service. Standardized, modern equipment.

Sanders Funeral Home
1420 Main St. — Lubbock — Phone PO 3-6433
Ambulance Service

In New, Air-Conditioned, Oxygen-Equipped Coach.



Wishing you
all the joys
and happiness

IN THE
NEW YEAR

We have set our goal to serve you more efficiently in the future and we trust that our efforts will meet with your approval.

BILL WOLF & SONS
Irrigation Supplies

Lubbock Area Directory Guide

Esthers
BEAUTY SALON
★ Permanents that satisfy
★ Artistic hair styling
PO 5-5322
PHONE
Across From Tech Girls Dorm
2424 14th St. Lubbock

Patronize Your
Home Town FIRST

But consider these
friendly Lubbock
firms for merchandise
and services not
available in
Abernathy

MEXICAN FOOD
For The Best
Lillie's Special
2 Stuffed Chiles, Rice
Beans, 1 Taco
Lillie's Restaurant
1500 Block 34th Lubbock

A-B AUTOMATIC TRANSMISSIONS
New Location
1932 TEXAS AVENUE
Transmission Adjustment and
Oil Change
\$10.95
This Week Only
One Year Warranty
On Exchange Units
PO 3-6494
AUTOMATIC TRANSMISSIONS
1932 TEXAS AVENUE

GENE'S DRIVE IN
GOOD FOOD
FRIENDLY SERVICE
DINING ROOM INSIDE
Open 24 Hours
PO 2-9303
E. 19th and Quirt

AUTHORIZED
"Hoover" Sales
Service, New
and Used
Repairs on All
Makes
SH 7-2448
4808 Ave "Q"
Lubbock

WESTERN WAYS MOTEL
Dee & Ina Wooley, Owners
COFFEE SHOP
Steaks, Chops
Sea Foods
Swimming Pool
FREE TV
PO 5-3371
For Reservations
W. LEE ROBERTS, Mgr.
Highway 87 North-east

WAYNE'S WHIRLWIND Drive Inn
THE GREAT WHIRLEY BURGER
Avenue H North of Lubbock

A&M Piece Goods Dress Materials
Fashions by the Yard
DRAPERY FABRICS
UPHOLSTERY FABRICS
Notions—A wide selection of buttons, zippers, thread and trimmings
No. 1 2225 19th PO 5-9055
No. 2 2831 34th SW 9-8125

BRADY Spring & Axle
Brady Spring & Axle
Brakes
Wheel Alignment
Springs
Wheel Balancing
Shock Absorbers
B. R. Brady
Owner
1802 Texas Ave. PO 2-2198

THE SIRLOIN
WE SPECIALIZE IN
Charcoal Broiled Steaks
and BAR-B-Q
"STEAK"ing in Lubbock
Since 1950
Abernathy Highway

Tommy Fisher — Bill Fisher
Billy Fisher
Tailor Made Seat Covers
Auto Glass
Convertible Tops
B. & M. TRIM & GLASS CO.
905 Avenue K — Ph. PO 3-1161
Lubbock, Tex. PO 3-7539

INSURANCE
Read & Company
COMPLETE UNDERWRITING AND SERVICE SINCE 1918
16 and Ave. M, Lubbock, Texas
Phone POter 5-9411

R. W. HILL
All Kinds of Concrete
and Masonry Construction
Rural Plumbing and
Electrical Work
Carpenter Work
Painting of All Kinds
2204 Ave. J. PO 2-1220
If no ans. call PO 2-2692

Smart Furniture
The Tradingest, Swappingest
Store in the Southwest
Large Selection of New
and Used Furniture
COMPLETE HOUSEHOLD
OF USED FURNITURE
FOR ONLY \$180.00
EASY TERMS
309 N. College PO 2-0548

Cecil's Drapery Shop
INTERIOR DECORATING
Selection of Fabrics
Draw Drapes, Curtains
Bed Spreads, Upholstering
Curtain Boards
Kerch Rods
GIFTS
Owners
Cecil & J. B. Hutton
SH 4-9519 2227 34th

General Machine, Pump & Gear
Head Work, Portable Welding,
Ornamental Iron, Boiler Work,
Steel Awnings
Plains Iron Works & Machine Shop
1122 B Erskine, Ph. PO 2-8220
Lubbock, Texas
C. H. Hamlin Night Phone
Manager SH 4-5647
24-HOUR SERVICE

Your Family Chiropractor
FAMILY HEALTH SERVICE
Special Attention To
CHILDREN and
Nervous Condition
Dr. Charles N. Leger
PO 8-8361 Day or Night
113 N. Avenue "U" Lubbock

DOWNTOWN Brake & Electric
Milton Horst, Owner
906 Avenue J. PO 5-7294
Electrical — Brakes
Carburetor — Alignment
Motor Tune Up
OUR BRAKE SPECIAL
'50 thru '58 CHEVROLET
\$22.50
Other Models In Comparison

Chris' Retail Drug
TOWN & COUNTRY
SHOPPING CENTER
4th and College
COMPLETE DRUG SERVICE
DOUBLE FRONTIER STAMPS
ON ALL PRESCRIPTIONS
Phone PO 2-4464

Southwestern Industrial Products, Inc.
Tahoka Hwy. U. S. 87 South
Lubbock, Texas
Box 671
Day SH 4-6525, Nite SW 9-4552
We manufacture underground
water lines and gas lines in
sizes 1/2" through 8" diameter.
All installation fully
guaranteed
Eleven years of service on the
South Plains

Cessna Sales & Service
Flight Training, Charter
CHAMPS Aviation, Inc.
Air Ambulance Lubbock
Municipal Airport PO 2-0508
Track Rdpath

BOAZ Rx PHARMACY
1905 Avenue "X"
PO 3-1606
PRESCRIPTIONS, DRUGS
We Appreciate Your
Patronage
Open Nights and Sundays
J. T. Boaz, Jr.
Owner

SKYLINE
A Fine Place To Dine
With Airport Atmosphere
Sirloin Strip \$2.00
Mexican Plate \$1.25
MUNICIPAL AIRPORT

McLAIN OIL COMPANY
Shamrock Distributor
Levellville Morton
Ropesville New Deal
Lubbock
GASOLINE
DIESEL FUEL
OILS, GREASES
GOODYEAR TIRES
317 Avenue H
Lubbock
PO 3-3621 PO 2-5918

107 NORTH COLLEGE
Lubbock Self-Service
Latest Styles
For All The
Family
Childrens Shoes
Womens Flats
2 for \$5.00
Texas Brand
Western Boots
J. M. Goldwater
Owner

TOWER of PIZZA
GRACE VERNER
PO 3-3393
SPECIALIZING IN ITALIAN FOODS PIZZA — SPAGHETTI ITALIAN SANDWICHES GOOD COFFEE
ORDERS TO GO
11 A. M. to 2 A. M.
Sunday: 5 p. m. to 2 a. m.
1003 COLLEGE

SMALLWOOD'S Vacuum Cleaner Repair
ALL VACUUM CLEANERS
AND POLISHERS REPAIRED
New and Used Cleaners
BAGS FOR ALL MAKES
Sales and Service
FILTER-QUEEN DEALER
3021-B 34th SW 5-2161

J. R. HUSE Brake and Alignment
Bear Wheel Alignment
Bear Dynamic Wheel Balancing
J. R. HUSE
Owner
PO 5-6717
615 19th St
Complete Brake Service
Truck Wheel Alignment
Truck Wheel Balancing

A. P. Hodges Real Estate
Insurance of All Kinds
Car Financing — New or Old
—FARMS—
291-A. 62 A. Cott Alt. \$160.00
per A. All Cult. Possession.
145 A. 31 A. Cott Alt. 1/4 Min.
All Cult. \$260.00 per A.
One to Twenty A. Tracts near
Lubbock.
50 A on Hiway, 3 br. House 20.5
A. Cot. Trade for 1/2 Sec. Yoak-
um or Terry Co.
A. P. HODGES AGENCY
PO 3-0703, 1020 17th, Lubbock

LYNCH HAT WORKS
1106 Ave J PO 5-7171
37 Years in Lubbock
HATS MADE TO ORDER
Conformed To Fit
\$16.00 to \$40.00
HATS CLEANED, BLOCKED
COMPLETE RENOVATION
DRESS or WESTERN HATS
IN STOCK \$2.50 to \$15.00
GIFT CERTIFICATES

8th STREET TRIM SHOP
Tailored Seat Covers, sport tops
Headlins and Door Panels
Rebuilt Truck Seats
Floor Mats For
All Makes
of Cars
1310 8th St. Lubbock
LORENZO & BERNARD ISOM
Owners

LUBBOCK FLOOR COVERING COMPANY
212 10th Street Phone 5-8427
Interior Decorating
BY
DONNA
2148 19th PO 3-9243

ALL MATERIALS FOR
NEEDLEPOINT BAGS
Handwoven Matching Skirt
and Sweater Kits to Knit
RIBBON KNIT DRESSES
All Types of Domestic and
Imported Yarns
KNITTING MACHINES
SETTLER'S YARN SHOP
1912 Broadway PO 5-9612

Western Storm Window Co.
Aluminum Storm Windows
and Doors
Custom Made Weather
Protection for Family Home
Manufactured Locally
Beautiful Slender Frames
Self-Storing, No Changing
Permanent, Made to Order
Custom Made
Aluminum Awnings
3906 Idaho Highway
P. O. Box 831 PO 5-6328

JUY - RITE
Many Pair
2 for
\$5.00
ECONOMIZES
FRONTIER
STAMPS
SELF SERVICE SHOES
1029 - 34th Street

ATTENTION FARMERS
GET YOUR OILS, GREASE,
FILTERS, TIRES, TUBES
AND RECAPS AT
Wholesale Prices
INCE. OIL COMPANY
34th and Ave A SH 4-2326

HULL GENTRY DRUG
PRESCRIPTIONS
THREE LOCATIONS
111 N. College Ave.
2425 34th St.
1902 Parkway Drive

PLAINS Body Works
C. G. Gilliland, Owner
WE SPECIALIZE IN INSURANCE WORK
Wrecks Rebuilt, Fender Repair
Auto Glass Installed
PO 3-7732 907 Ave. E
Nights and Sundays, SH 7-1408

Want-Ads

(Rates: 3c per word, or 65c minimum, if ad is paid in advance; 75c minimum if ad is charged).

FOR SALE—The Lee Irish home at 511 Ave. D in Abernathy. See J. L. Irish, Dial CY 8-2082. (1st)

FOR SALE—2 Houses and 3 lots, Corner 12th St. and Ave. G. Phone CY 8-2025 or CY 8-2170 or See I. L. Johnson. (1st)

LET US help you sell your farm or ranch. Buyers Waiting. Small Improved Acreage for Sale.

TEXAS LAND COMPANY
New Deal — PO 3-0150
C. W. Barrington
12-22 29-c

PARENTS interested in sending their children to Kindergarten, please phone Mrs. Joe B. Reeves, CY 8-2852, Abernathy. (1st)

FOR SALE—six well-located residential building lots (one-half block) in Abernathy. Contact Mrs. Hugh K. Fry by calling Lubbock, Sherwood 4-9761, after 3 p.m. (1st)

WILL BUY—your livestock. Market prices paid. Or, I will haul your livestock to market for you. Leo Kitchens, Phone CY 8-2259, Abernathy. (12-29-p)

WATER WELL DRILLING
Domestic Wells 3 7/8 to 12 Inch. Test Holes, Circulation Holes and Clean Outs.
GLEN FETIT
Phone CY 8-2706 — CY 8-2114
708 15th St. Abernathy

ATTENTION
Upholstery Work? Bring it to 1006 Ave. E. Years of Experience. Expert Workmanship.
W. L. MITCHELL
Dial CY 8-2087 Abernathy

PRESSURE PUMP SERVICE
Call Us For Prompt Service On Your Pressure Pumps.
BILL SMITH
Phone CY 8-2766 or CY 8-2114
Or leave word at Bill's Irrigation.

CUSTOM MADE DRAPERIES AND BED SPREADS
See us for Upholstering Materials and KAPOK
ROBINSON DRAPERY SHOP
Dial CY 8-2510 Abernathy (1st)

FOR SALE—New 3-bedroom brick home, 2 ceramic tile baths, colored fixtures, Carpeted. Central heating and air conditioning. All electric kitchen. Large loan established.
CICIL McCURDY LUMBER
CY 8-2590 — Abernathy (1st)

WATER WELL DRILLING
Wells Cleaned Out and Drilled Deeper.
Gravel Packing — Air Developing
Dwayne Taylor
Phone CY 8-2543 — Abernathy

NOTICE
We do Custom Killing and Processing for your Deep Freeze. 1/4 or Whole Beef. See us for Prices.
Day Phone CY 8-2133
Night Phone CY 8-2833
JAKE TURNER WHOLESALE MEAT CO.
15th St., 2 Blocks East of Hwy.

Mufflers Installed
We Install Any Make Muffler All Work Guaranteed
Jones Conoco
Phone CY 8-2113 Abernathy

FOR YOUR irrigation needs in Plastic Pipe, for irrigating and for gas lines, and for line and foundation ditch-digging. Call Cliff Howard, CY 8-2271, Abernathy, 1111 13th St. (1st)

RANCH
Three Hours Drive From Abernathy. Will Carry 75 to 125 Head of Cattle. Also Other Farm and Ranch Listings.
PETTIT AGENCY
Box 908 Abernathy, Tex.
Ph. CY 8-2818 Res. CY 8-2340

FOR SALE
G.I. or Conventional Financing. New Home, 3 Bedrooms House on Pavement, 2 baths, Carport, Many Extras. \$2,500.00 or Less Down, Full Price \$13,500.00. 2 Bedroom House, Near School, Carport, Nice. \$1,500 or less down, \$9,500 Full Price.
Would Take Trade-Ins on These.
MYSTEL REALTY CO.
Dial CY 8-2326 Abernathy

NATIONALLY ADVERTISED HATS
Men's Hats — All Sizes.
Need To Move These
at COST
To Make Room for New Shipment.
WARD'S MEN'S STORE
CY 8-2505 — Abernathy

HELP WANTED!
Apply At
GRAHAM RESTAURANT
Dial CY 8-2246 — Abernathy

NOTICE
Let us clean your carpet, or rent you the machine and you clean your own.
LON CLEANERS
Cy-8-2826 Abernathy

MATEJOWSKY FINA SERVICE
Gas — Oil — Tires — Tubes
Flats Fixed — Accessories
Used Tires and Re-Caps
Candy — Drinks
Prestone — Zerex
Save on Motor Oil—Buy by the case.
Phone CY 8-2429 Abernathy (1st)

TURNKEY Job on Concrete Irrigation Pipe, Sals, Howard or J. W. Stricklin, Brown Supply Co., 1102 Ave. D, Dial CY 8-2434, Abernathy. (1st)

The Very Best in Custom Slaughtering.
HOGS AND BEEF
Out, wrapped and kept frozen. All facilities to cater to customer's needs.
Goodnight Sausage Factory
Plainview Highway
Lubbock, Texas
PO-2-3662 (1st)

WANT TO BUY OR SELL A FARM OR PERHAPS A RANCH? OR MAYBE IT'S CITY PROPERTY.
For anything you want in Real Estate see
AUGUST JONES REAL ESTATE
912 Ave. D—Abernathy
Office, CY 8-2252, Res. CY 8-2768

Babsor's Prediction

(Continued From Front Page) back, the labor force is becoming larger. This means that it will be more difficult for those getting through schools and colleges to get positions in 1961 unless they are well trained in business, mechanics, or electronics. Certainly, the demand for executives will be less in 1961 than it has been for some years. Those executives who now have positions should strive to do better work, not ask for increases, and do everything possible to hold onto their jobs.

Labor leaders hope to have a key to the White House with Mr. Kennedy as President. This may apply to the settling of strikes and contract disputes. The AFL-CIO will influence more votes in Congress during 1961-62 than in 1959-60. The conservative Southern Democrats, however, will unite with Republicans to block radical labor legislation. Congress certainly will not outlaw the "right-to-work" laws which have been passed in certain conservative states, nor will labor get a revision of the Taft-Hartley Act. Congress will not compel industry to collect dues from union members, but may temper the recent Court decisions ruling against excess union spending.

All the above means that labor will be able to hold its own during 1961 and secure some small increases in wages, pensions, and improved working conditions; but this may not be what labor expected to get due to the election of President Kennedy.

The Federal Government will not increase income taxes during 1961; but may close some loopholes and increase certain excise taxes.

Building And Real Estate
Looking back over the years that I have been making these Annual Forecasts, it seems that building and real estate have been the last to profit from a boom, and the last to suffer from

the following reaction. Readers all know that from its World War II low point new building, especially of homes, is a serious problem; and to an all-time high in 1959. Part of this growth has been due to increased population and higher incomes.

In addition to the natural growth to which new building was entitled, it was greatly encouraged by loans to veterans without down payment, the acceptance of twenty-year mortgages by banks in place of a maximum mortgage of five years, and by subsidies of various kinds. Like all stimulants, however, these have gradually become less effective. Hence, a decline in new building and new home construction is only natural to expect in 1961.

I do, however, forecast that a move for urban renewal will be urged and secured by the new President. This means pulling down the slums of large cities and substituting brick apartment houses with playgrounds. When any new building is built, it increases the value of the adjoining land and increases real estate taxes.

Therefore, 1961 may see real estate prices hold their own and even rise in certain sections. Small farms near cities will continue to increase in price, and this will be true of most well-drained suburban property. Every family is justified in mortgaging a home in 1961, but I doubt if 1961 will be a good year to speculate in real estate. The bloom is surely off in Florida, where the supply of new houses temporarily exceeds the demand.

World Outlook
I cannot conscientiously close this forecast for 1961 without calling readers' attention to the unsatisfactory situation that we find in the world today. I do not need to comment on Russia or China, as readers are well acquainted with conditions there. I am especially troubled about the way the Communists are working into Central and South America. I know South America very well. It has virtually no "middle class". There are a few rich, but millions are very poor. The Communists are organizing great strikes in Latin America. As these strikes accomplish something for the wageworkers, they give the Communists good ammunition for further progress. This situation has been intensified by the agents of Castro.

Another very sore spot is Africa, which I visited two years ago. South Africa will blow up of itself, without any help or hindrance from Russia. The Congo, however, which the United Nations is now trying to straighten out, is a serious problem; and the Congolese feel that their condition would be improved by Russia's help. The great African continent, however, will be concerned with the new countries which have been given their independence from the colonial system they have been under for 150 years. Here, Russia, Belgium, and France are playing a waiting game to see if the new nations can make good by themselves.

I cannot imagine the Russians now going to war over Berlin. I am more disturbed about the gains in the Communist vote in European countries. For instance, the Communists in Italy received only 19 per cent of the vote in 1946, but 28 per cent in 1960. Even in France, the Communist vote is again increasing. The money interests of France want the Algerian rebels stamped out for good, while the farmers and small businessmen want DeGaulle to give Algeria its freedom. When I was in France a few weeks ago, it was generally conceded that if DeGaulle should suddenly drop dead, chaos might reign. I dislike to end this forecast with these pessimistic comments; but even if our country is going along on an even keel, some occurrence in some other part of the world could upset all our plans. Hence, **BE SURE YOU HAVE MADE A WILL!**

Aliens In U.S. Must Register In January
Washington (AP)—Every alien in the United States must register his address to the Immigration and Naturalization Service during January 1961.

J. M. Swain, head of the service, issued the reminder last Saturday.

He urged that aliens go to the nearest post office or immigration field office and fill out an address report form. Willful violation of the law could make an alien subject to fine, jail sentence, and subsequent deportation.

HAPPY NEW YEAR

ABERNATHY FLORISTS
Dorothy and Dorothy

We welcome the New year with great anticipation and pledge to serve you in every instance to the best of our ability.

FOR LEASE
2 Operator Beauty Shop. Complete Equipment. Phone CY 8-2052 or see Mrs. Mary E. Joy, 201 Ave. D, Abernathy, Texas. (1st)

NOTICE
Beginning Today and until further notice we will give one set of DISHES with each G. E. Automatic Portable Dishwasher.

Bruce Furniture
Phone CY 8-2551 Abernathy

IRRIGATION WELL DRILLING
Spudder or Rotary
O. D. Weir — Dwayne Taylor
CY 8-2377 — CY 8-2343
Abernathy

SHOES
A Few Men's Work and Dress Shoes, Ladies' Flats and Children's Shoes
for sale at COST
WARD'S MEN'S STORE
CY 8-2505 — Abernathy

FOR SALE — 320 Acres, 3 wells, 90 Acres "A" Cotton, Good Improvement. Near Abernathy, Texas. Large Loan. \$385.00 per acre.
SHIPMAN INSURANCE AGENCY
Phone CY 8-2583 Abernathy

Tappan Built-In Ranges
Kitchenaid Dish Washers
Cabinets — All Kinds
Storm Doors Installed
HOME FURNISHINGS CO.
Dial CY 8-2726 Abernathy

New March of Dimes Funds Help Eric, Birth Defects Victim, Reach Age of 2

Eric Brantner is a frail and appealing little boy who achieved the age of two years the other day in his crossroads home at Palouse, Wash.

Held in his mother's arms on that great day, blue-eyed Eric could recognize his birthday well-wishers, among them his dancing hound-dog, Jupiter. But not so long ago, Eric wasn't given much time by most doctors to enjoy Jupiter or other members of the household. He was born three months premature and also developed an enlarged head (hydrocephalus) due to excess fluid on the brain. His despairing parents, Gail and Vonda Brantner, did not believe that a second birthday was in the cards for Eric.

Then, as the head grew alarmingly larger, the substantial body members of the Whitman County Chapter of The National Foundation came forward with an offer of March of Dimes funds if they were needed for patient aid.

They were urgently needed. Eric was rushed to Sacred Heart Hospital in Spokane, 65 miles away. There, at the age of 10 months, he underwent surgery for nearly four hours. The surplus fluid was drained away, relieving the pressure on the brain caused by blockage, and a plastic tube was inserted to keep the accumulating fluid flowing from the head to the blood stream near the heart.

Although Eric's appearance today belies his two years—the little boy looks scarcely more than six months old—the doctors' view is that he now has a good chance of survival. He cannot sit up by himself and he is only just learning to toddle uncertainly in a baby walker. But he engages in lively play with his mother and father, who is a section hand for the Great Northern Railway, with his dotting brother Mark, three years, and of course with his frisky but gentle four-footed companion, Jupiter.

Eric enjoys the dubious distinction of being one of the first victims of a significant

birth defect to be given patient aid in continental United States under The National Foundation's expanded program, which includes arthritis in addition to helped develop both the Salk and the Sabin polio preventives with March of Dimes funds, moved into the area of birth defects because these congenital malformations comprise the largest unmet childhood medical problem in the nation today.

With generous support of the New March of Dimes in January, hopefully the number of Eric's will in time be many thousands fewer.

Otherwise, Eric's plight is not singular. Each year in this



On second birthday, which his parents never expected Eric to celebrate, his mother Vonda Brantner holds him aloft.

Hale County Receives \$35,923 in Taxes From Texas Railroads

Texas railroads paid \$35,923 in Hale county during 1959, according to the Texas Railroad Association.

"That amount was the county's share of the nearly \$10,000,000 the railroads paid throughout the state."

In addition, of course, was the large total in taxes the railroads' approximately 40,000 Texas employees contributed on their own property. The vast majority of railroad workers, many of whom live in Hale county, own their own homes.

The largest railroad contribution in Hale county was for the support of education. The school tax for 1959 totaled \$19,289.

City and village taxes amounted to \$5,118, while the share of the county government's operating expenses paid for by the railroad totaled \$5,773. The road and bridge fund gained \$3,763 from the railroads in 1959. All other taxes brought the total for the county to \$35,923.

"With the future of our country and state depending to a great extent upon the education of our youth, I am glad to see that nearly half of the taxes paid by the railroad in '59, a total of \$4,565,103 went to support schools, said Walter Caven, general counsel of the Texas Railroad Association. "Recognizing this need for education, many of our railroads also make scholarships available every year."

A familiar landmark five miles west of Abernathy has been razed. It was the Will Murray ranch house, nearly a half century old.

New Deal Cage Schedule Listed

Following is the 1960-61 NDHS boys' and girls' basketball schedule.

Jan. 3-7—Idalou Tournament.
Jan. 10—Shallowater, There.
Jan. 13—Southland, There.
Jan. 17—Roosevelt, There.
Jan. 20—Cooper, There.
Jan. 24—Lorenzo, There.
Jan. 27—Wilson, There.
Feb. 3—Shallowater, at New Deal.
Feb. 7—Southland, at New Deal.
Feb. 10—Roosevelt, at New Deal.

ABERNATHY WEEKLY REVIEW

Abernathy, Texas Thursday, December 29, 1960 Page 8
Published On Thursday of Each Week in Abernathy, Texas
Entered as Second Class Mail Matter at the Post Office at Abernathy, Texas, Under The Act of Congress of March 3, 1879 ESTABLISHED IN 1921

Richard Havens, Editor — Buford F. Davenport, Publisher
P. O. Box 847, Abernathy, Texas
105 Avenue C Telephone CY 8-2933

National Advertising Representative
WEEKLY NEWSPAPER REPRESENTATIVES, INC.

ATLANTA • CHICAGO • DETROIT • LOS ANGELES • NEW YORK

HD Club Meeting "Pope's" Parts Place Causes Classic Remark

The Abernathy Home Demonstration Club entertained their husbands with a 42 party in the home of Mr. and Mrs. Thomas Conner, December 19. Everyone enjoyed the exchanging of Christmas gifts.

Refreshments of pie and coffee were served to the following members and husbands: Messrs. and Mrs. L. R. Smith, R. L. Hall, W. F. Wolf, C. L. Adams, R. C. Patterson, Jr., Thomas Conner, Alvin Druesedow, T. A. Brewster, Melvin Johnson, G. D. Clapp, and Mrs. E. M. Davis, and one visitor, Mrs. Rose.

January 6, will be the first meeting date of the club for the new year. The meeting will be held at the club house with Mrs. E. M. Davis as hostess.

Mrs. T. A. Brewster, Reporter

With due respect to our Catholic friends and relatives, we pass on to our readers this classic remark made in all innocence by a 9-year-old boy, Fritz, son of Mr. and Mrs. Rudolph Struve.

Riding with his mother on Ave. D, Fritz spotted Pope's Parts Place sign at 14th St. Evidently, it was the first time he had noticed the sign. "Look, mother," the lad said, and read the sign, with emphasis on the word "Pope." "Look what Kennedy has done," he continued, "all the way from Washington he is changing the names of businesses out here."



Stock Up For THE NEW YEAR With These Food Specials

THURSDAY, FRIDAY AND SATURDAY, DECEMBER 29, 30 and 31

Blackeye Peas FOOD KING 10c 300 CAN

Shurfresh
Biscuits . . . 3 for 25c

Food King
Oleo Lb. 15c

Wilson's — 24-oz. Can
Chili 49c

CHOICE MEATS
SALT PORK Lb. 35c
ALL MEAT FRANKS Lb. 49c
PINKNEYS HAREST TIME BACON 2-lbs. 89c

Coffee SHURFINE or MAXWELL HOUSE **lb. 59c**

Big Chief Dry
Blackeye Peas Lb. 17c

Sunshine Hi Ho
Crackers Lb. 35c

Kimbells — 303 can
Tomatoes 2 for 27c

Shurfine
Shortening 3-lbs. 59c

Energy Liquid
Detergent 22-oz. 39c

Gerbers Strained
Baby Foods 3 for 29c

Fresh FROZEN FOODS

Fisher Boy
FISH STICKS 8-oz. 19c

Food King
STRAWBERRIES 10-oz. 19c

Golden Fresh FRUITS & VEGETABLES

White
POTATOES 10-lbs. 49c

Golden Ripe
BANANAS Lb. 12 1/2c

SMITH'S FOOD STORE

WE RESERVE THE RIGHT TO LIMIT QUANTITY!

AG FOOD STORES Dial CY 8-2627 **Plenty of Parking Space North & South of Store**

AFFILIATED