

ABERNATHY WEEKLY REVIEW



VOLUME 39 Hale County — Abernathy, Texas — Lubbock County

(16 PAGES IN TWO SECTIONS)

THURSDAY, OCTOBER 6, 1960

NUMBER 48

Highway Action For Abernathy

Freeway Through Town, Divided Highway To Hale Center, Pavement To Airport

Recent actions by the Texas Highway Department include highway improvement plans in and near Abernathy. The projects include the freeway through Abernathy, addition of lanes for a divided highway on U. S. 87 between Abernathy and Hale Center, and a paved FM Highway from Abernathy to Abernathy Municipal Airport east of town.

Bids Being Taken
Bids will be received until Oct. 18 for construction of new concrete pavement from one-half mile south of Abernathy, through Abernathy to a point one-half mile northwest of Abernathy. This will be the wide, new freeway through town. It will be about one and one-half blocks east of the present route of U. S. 87 through town. There will be freeway traffic overpasses at the south end and the north end of town, and freeway traffic will be in an underpass in the center of town. Main Street will be over the freeway underpass in the center of town. Purchase of the freeway right-

of-way through Abernathy was made on most property in 1956, and most of the structures were moved from the right-of-way that year.

H. C. Weaver of Plainview will be the State's supervising engineer on the project here and a similar one for a freeway through Hale Center. Reports said 350 working days will be allowed for completion.

New FM 2060
Additional financing in the amount of \$13,000 recently was granted for a new paved farm road, FM 2060, from Abernathy east 5.3 miles to Abernathy Municipal Airport. This project had previously been programmed by Texas Highway Department for \$71,000. Reports said all but two or three property owners along this route had already signed right-of-way easements.

Work On FM 54
FM Highway 54 from U. S. Highway 87 east to FM 400 also is to be improved with reconstruction of grading, structures and surfacing.

About ten miles of new FM Highway paving is being done west of town. The new paving starts from FM 597, at a point about six miles west of Abernathy, and extends south to connect with another FM paved highway.

News From New Deal

Enrollment
Dalton James, New Deal school superintendent, reported that the enrollment at the end of last week was 582 students. This is 47 students above the count taken during the second week of school this year, which was 535.

High School Class Officers
Officers for 1960-61 for the New Deal High School classes were announced by high school principal, A. A. Chandler. Following is a list of the officers:

Senior Class
President of the senior class is Glenn Looney; vice president is Lonnie Greenhill; secretary is June Bell; and treasurer is Sue Slaton.

Junior Class
Officers of the junior class are: Earlene Worthan, president; Emily Ellison, vice president; Mary Ann Stansbury, secretary; and Betty Deavours, treasurer.

Sophomore Class
Don Enger is president of the sophomore class; Dona Slaton is vice president; Jimmy Justice is secretary; and Tanya McDonald is treasurer.

Freshman Class
Freshman class officers include: Mack Covey, president; Molly Vickers, vice president; Ruth Middlebrooks, secretary; and Jimmy Eddy, treasurer.

Add New Teacher
A new teacher was added to the school staff last week when the seventh grade was split into two sections and Mr. Baker, fifth grade teacher was moved up to the seventh grade spot.

Miss Eula Faye Mangrum of Buffalo Valley, Oklahoma, near Tahina, was employed to fill the position vacated by Mr. Baker. She received her degree this past summer from Southeastern State Teachers College, Durrett Oklahoma.

Football!
The New Deal Lions football team had an open date last week, but will be back in action tomorrow night when they open their conference play at Sands (Ackerly).

NOTICE
"Don't be caught dead sitting on your seat belt," says a reminder sign on the instrument panel of patrol cars with the Texas Department of Public Safety.

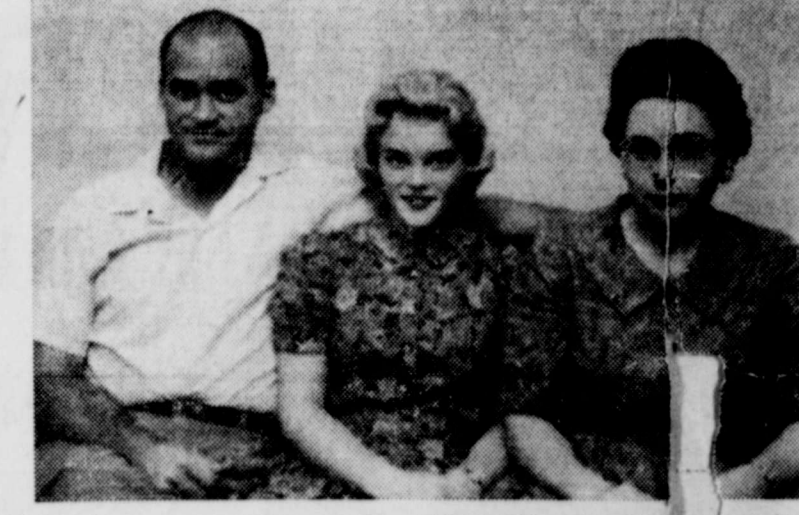
Reorganization Meeting Set Oct. 13 By Cub Pack No. 81

(By Waldo Cox)
There is considerable interest being shown in Cub Scouting in Abernathy. The organization has been very active in the past. The prospects look good for a very full program this coming year.

Cubbing is a cooperative program. It is based upon the joint work of the parent and the Cub. The program engulfs boys from the ages 8 to 10½ years at which time they go into a preparatory program for entering the Boy Scouts.

The work of the Cubbing program depends upon the interest of the parents in giving some of their time to assist and supervise meetings. At present there are forty-five Cubs, there are more than fifty boys who have indicated their desire to join the Cubs.

In order to accept these boys there must be enough mothers willing to accept the responsibilities of Den Mothers and assistant Den Mothers to form at least eight new dens. This calls for sixteen to twenty mothers willing to give an hour a week for den meet-



Pictured above are Mr. and Mrs. Alvis Bilbrey and their daughter, Elaine, this week's TUCO Topics family. —(Staff Photo)



By REVA FLORENCE

The Bilbrey family has been with the TUCO family for seven years and Southwestern Public Service Company might well be proud of their contribution to the growth of its development. Alvis Bilbrey was reared at Slaton, graduating from high school there. During his high school days he was active in sports, lettering in football three years. (His interest in sports has also represented the TUCO baseball team a few years ago since his employment with SWPS).

After graduation from Slaton High School, Alvis worked for a time in Lubbock with the Merriott Electric Company and the McDonald Packing Company. He entered the service in 1941 being inducted at El Paso with an armored division and from there transferred to Camp Polk with the Third Armored Division. At the outbreak of World War II he

(Continued on page 7)

Al Owens Dies Friday; Last Rites Held Here

Allen Owens, 36, of 1405 Avenue H, Abernathy, died at 1:15 a.m. Friday in West Texas Hospital, Lubbock, where he had been a patient 10 days. He had been in declining health about a week.

Funeral services were conducted Saturday afternoon at Abernathy First Methodist Church. Rev. B. G. Coggin, pastor of the church, officiated. Burial was in the cemetery under direction of Sammie Neal Home, Lubbock.

Survivors include his wife, Raymond W. Owens, and brother, Charles Ray Owens, both of Abernathy.

Allen Owens was born Aug. 13, 1924, at Commerce, and came to Abernathy with his parents in 1930. His mother died Oct. 29, 1958. He was a member of Abernathy First Methodist Church and Abernathy Lodge No. 809 IOOF.

Funeral Is Held For C. E. Willis

LITTLEFIELD (Special) — Funeral services for Clyde Edgar Willis, 72, a pioneer barber and tailor here, were held at 3 a.m. Friday in the First Methodist Church here, with the Rev. Alby Cochrell, pastor, officiating.

Willis came to Lamb County in 1912 and to Littlefield in 1913. He opened a tailor shop here in 1913 and later was one of the city's first barbers. He died Wednesday in the Knight Rest Home here.

Survivors include: Mrs. Gene, Dallas; two daughters, Mrs. J. D. Webb, Abernathy; Mrs. L. L. Thornton, Littlefield; brother, Guy Willis, Littlefield; and four grandchildren.

Crash Near Tulia Fatal For Former Hale Center Woman

A Swisher County woman was killed and her husband and daughter, 12, were injured in a two-car collision at 5:50 p.m. Sunday at a country road intersection 4½ miles east of Tulia.

Mrs. Roy "Bo" Cruce, about 35, was killed when the car driven by her husband, Bo, also about 35, was in collision with a pickup truck driven by Wayne Beville, 21, of Tulia.

The Cruce family formerly resided between Hale Center and Abernathy.

The collision occurred on Highway 21, near the intersection of Highway 21 and Highway 21. The Cruce car was heading west and the setting sun may have obscured the driver's vision.

Medill's pickup was traveling north. Cruce, his daughter and Beville were taken to Swisher County Hospital at Tulia in a Wallace ambulance. Cruce was suffering from a skull fracture, Beville had cuts on the head, and Beville's hand was cut, according to officers.

Two other passengers in the Cruce car, two sons, 6 and 7, of Mr. and Mrs. Floyd Myra, escaped injury in the crash. An 11-year-old child in the pickup was killed in Swisher County 17 months ago.

School Tax Notices Mailed

No Increase In Rate Or Assessment Value

Tax notices were mailed Saturday to taxpayers of the Abernathy Consolidated County Line Independent School District, announced school superintendent Noel Johnson.

No Increase
It was pointed out that this year's assessment value and tax rate are the same as last year's, with no increase involved.

The school district has 1650 tax accounts, and for a period covering the past 10 years they have collected over 97% of the taxes due. It was stated that approximately 80% comes in during the month of October when taxpayers receive a 3% discount. If the

taxes are paid in November, a 2% discount is available, and 1% discount if paid in December. The face amount of the tax due must be paid if the taxes are paid in January. After January 31, penalty and interest are added to the amount.

Tax Roll
The school district has a tax roll of approximately \$21,000,000. Of this amount, approximately \$11,000,000 is assessed on oil and utilities properties (utilities including power companies, telephone companies, natural gas, and railroads).

The tax roll will produce approximately \$365,000. The balance of this year's \$528,000 budget will come from state resources, superintendent Johnson stated.

May Be Paid By Mail
School taxes may be paid by mail or in person. The school tax office is located in the administrative offices in the east end of the high school building, the same as it has been the past three years.

Office hours are from 8:30 a.m. to 5:00 p.m. Monday through Friday, and from 8:30 a.m. until 12 noon on Saturdays.

Earl Carter is tax assessor-collector for the school district, in addition to being business manager for the school. He has been with the public schools here for 13 years (now in his 14th year here), and this is his second year to serve in his present capacity.

Judy Stracener is the business office secretary and is also in her second year in that capacity. For a number of years she was employed by Abernathy First State Bank. She is a 1945 graduate of Abernathy high school.

Mrs. H. E. Rantz, Pioneer Resident, Dies Here Saturday

Funeral services for Mrs. Homer E. Rantz, 67, a resident of this area since 1911, were held at 2 p.m. Monday in the First Methodist Church here.

Mrs. Rantz died about 11 p.m. Saturday at her home at 1303 13th St., Abernathy, after suffering a long illness.

Officiating at funeral services was the Rev. H. B. Coggin, pastor of the First Methodist Church. Burial was in Abernathy Cemetery under the direction of Dennis & Chambers Funeral Home.

Survivors include two sons, Morris, Littlefield; Hilbert, Abernathy; two brothers, A. E. Goebel, Abernathy; Norbert Goebel, Evant, Texas; two sisters, Miss Elizabeth Goebel, Abernathy; and Mrs. Nelson Smith, of Petersburg.

Rites Held For W. A. Mahagan

PETERSBURG (Special) — Funeral services for William Arthur Mahagan, 73, were held at 3 p.m. Saturday in the Petersburg First Baptist Church.

Mahagan, a retired farmer who resided near here, died at 1 a.m. Friday in a Plainview hospital. He came to this area in 1907 from Kansas.

The Rev. Russell Poague, pastor, officiated at funeral services, assisted by the Rev. E. S. Weathers, retired Baptist minister, Plainview. Burial was in the Petersburg Cemetery under direction of Dennis & Chambers Funeral Home, Abernathy.

Survivors include his wife, two sons, Waymon and Arthur, Petersburg; three daughters, Mrs. R. C. Reedy and Mrs. M. E. Smith, both of Abernathy; and Mrs. H. E. Barnwell, Mason, Ohio; and 17 grandchildren.

Don Hughes, son of Mr. and Mrs. George Hughes, returned home Tuesday from a Lubbock hospital where he had surgery on a finger that was broken in football play. He is a member of the AHS Antelope squad.

Former Abernathians Are Suicide, Wound Victims In Tragedy At Plainview

PLAINVIEW, SEPT. 28 — A man was killed and a woman wounded this morning at 311 Elm Street in what investigating officers said was suicide and attempted murder.

Dead is Earl Crable, about 56, a resident here and in this area the past several years.

Wounded was Mrs. Ruby Crable, estranged wife of Crable. A .22 caliber bullet pierced Mrs. Crable's arm just below the shoulder. She was receiving treatment at the Plainview Hospital and Clinic, where she was taken by Henderson Brothers Ambulance Service.

Crable apparently died instantly. A bullet entered the right side of his forehead and lodged on the left side of his forehead. Records at the office of District Clerk E. A. Madera show that Mrs. Crable filed for divorce Sept. 22.

50 Cars Free In Sweepstakes

Fifty cars will be given free in a nation-wide Mercury-Comet Sweepstakes. Twenty-five 1961 Mercurys and 25 1961 Comets will be given away in the Sweepstakes.

Entry forms may be obtained at Abernathy Motor Co. from Thursday, October 6 through October 31, closing date of the Sweepstakes. "It is easy to enter... nothing to buy... it's fun," says the announcement.

For further details see one of Abernathy Motor Company's advertisements in this 16-page issue of The Abernathy Weekly Review.

AUTOMOBILE SHOWINGS SET THIS WEEK AT LOCAL DEALERSHIPS

The 1961 lines of Mercury and Chevrolet automobiles go on display at dealerships in Abernathy this week.

Abernathy Motor Co. will show its 1961 Mercury to the public Thursday, October 6, and the 1961 Chevrolet will go on public display at Reid Chevrolet here Friday, October 7.

Mercury for 1961 will introduce two new lines, both under the familiar Monterey series in size and price. These new offerings will be at Abernathy Motor Co.

Reid Chevrolet will show the 1961 Chevrolet automobiles and trucks and the 1961 Corvair, with additional body styles.

Abernathy Motor Co. showed its 1961 Ford and Falcon lines to the public last week.

BANK HOLIDAY SET OCTOBER 12

Abernathy First State Bank will be closed Wednesday, Oct. 12, Columbus Day, a legal banking holiday. Customers are reminded of the night depository unit at the southeast entrance to the bank building. Deposits may be made here at night, over the weekend and on holidays.

Shelton Hardin has returned to Abernathy and is now associated with the Big State Grain Company. He is no novice at grain handling, having been connected with the grain business here for some fourteen or fifteen years.

Smith's Food Store To Give Double Thrift Saving Stamps

Smith's Food Store of 717 Ave. C, Abernathy, will start giving Double Thrift Stamps, and will deliver them to customers at the store.

Double Thrift Stamps free, the Smiths announced. Smith's Food Store will give 20,000 Double Thrift Stamps.

Every Wednesday will be "double" Double Thrift Stamp day with each cash purchase of \$2.50 or more, and "double" Double Thrift Stamps will be given all day Thursday, Friday and Saturday, Oct. 6, 7 and 8.

AHS Antelopes Have Open Date Friday

The Abernathy Antelope football team will have an open date this week, but will resume their schedule next Friday night, Oct. 14, when they will play host to the Morton Indians in their first conference game of the season.

Even though the boys of coach Curtis Davenport will be idle this week as far as a game is concerned, they have not been idle in workouts. The coaching staff and football boys are working earnestly, making preparation for their conference bid in District 2-AA next week.

A-1 Lanes Bowling News

The Traveling Queens league bowled at Amarillo Oct. 2.

The Hygrade Gin team composed of Marlene Shipman, Dean Myatt, Faye Lutrick, Alice Selke and Ann McCune won 1 and lost 1 to Lubbock Bowling Club team. Alice Selke had high game and series for the team with 213-525.

In second series the Hygrade Gin team won 4 points from Plainview Bowl No. 1 team. Alice also had high game and series with 196-559.

Shipman Insurance Agency team, Oleta Edwards, Inez Gragg, Mary Lutrick, Cecile Pettit and Dorothy Davenport, won 3 points and lost 1 to Young's of Amarillo, and in the second round Shipman Insurance team won 2 points and lost 2 to Tulia Bowl. Other members of the team are Mozelle Owens and Lois Lovelace.

The Traveling Queens league bowls every first Sunday in each month and will bowl at Lubbock Bowling Club November 6.

The League is made up of teams from Abernathy, Lubbock, Plainview, Tulia and Amarillo and will bowl in Abernathy at a later date.

Crable entered Mrs. Crable's apartment through the front door. Mrs. Martine said the screen apparently was not latched and the man walked in.

In a moment gun fire was heard. Mrs. Martine said Mrs. Crable ran from the bedroom of

Smith's Food Store To Give Double Thrift Saving Stamps

Smith's Food Store of 717 Ave. C, Abernathy, will start giving Double Thrift Stamps, and will deliver them to customers at the store.

Double Thrift Stamps free, the Smiths announced. Smith's Food Store will give 20,000 Double Thrift Stamps.

Every Wednesday will be "double" Double Thrift Stamp day with each cash purchase of \$2.50 or more, and "double" Double Thrift Stamps will be given all day Thursday, Friday and Saturday, Oct. 6, 7 and 8.

News From City Hall

Abernathy City Council held a regular meeting Monday night. Following are a few of the reports given the Council by City Manager Paul Noland covering activities in September.

POLICE ACTIVITY

Aug. 30 to Oct. 1
92 traffic contacts
65 warnings
28 tickets no drivers license
3 tickets speeding
8 tickets crosswalk violations
6 tickets muffler law violations
1 ticket change lanes without safety, caused accident.
1 ticket improper start from parked position
12 thefts including hub caps, bicycles, wrenches and air horn.
1 murder
12 placed in jail
6 drunks
4 violation liquor law
2 vags.
4 disturbance calls
Served 15 local and out of town warrants and citations.
1 fire
5 complaints to pickup stray dogs.
5 wrecks were checked inside the city limits
2 wrecks were checked outside of the city limits
Have had 2 different complaints

TAX DISCOUNT OFFERED FOR OCTOBER PAYMENT

Taxpayers can save three per cent on their city, school, county and state taxes by making payments in October. Payments in November earn a two per cent discount, and those made in December are discounted one per cent.

Mr. and Mrs. O. F. Rea attended the wedding of a great niece of Mr. Rea Saturday night in Monahans, Texas. They came back and visited with friends in O'Donnell Sunday driving home Sunday afternoon.

C. W. Snodgrass bought a residence at 1008 14th St. in Abernathy from R. H. Stevens, Mr. and Mrs. Snodgrass will move to that address from their farm northwest of town after the first of January. Mr. and Mrs. Jim Bob Smith and son, Kevin, who now occupy that house, will move to a new home they plan to build on their property south of the school.

(Continued on page 5)

(Continued on page 5)

(Continued on page 5)

(Continued on page 5)

(Continued on page 5)

(Continued on page 5)

(Continued on page 5)

GRAND OPENING

Prices Good Through Saturday, October 8



Harold's Super Save

TAKES ANOTHER STEP FORWARD AND JOINS THE PROGRESSIVE GROUP

OF SUPER SAVE

MARKETS

14th Avenue D Abernathy, Texas Phone CY 8-2266

As a Member of the Large and Progressive Group of SUPER SAVE MARKETS We will Always Strive To Offer Food Shoppers of Abernathy and Surrounding Areas the Highest Quality Foods At the Lowest Prices!

OPEN 7:00 A. M.

DOUBLE FRONTIER STAMPS ON TUESDAY

CLOSE 9:00 P. M.



Limit 10 Cans

5¢ ea

COFFEE

White Swan



2 \$1¹⁹ LB. CAN

Double Frontier Stamps On Thursday, Friday And Saturday

Mountain Pass

TOMATO SAUCE 3 cans 21¢

FREE 10 Baskets of Groceries

30 Cup Automatic Coffee Maker | Elec. Cap. Op. | 10,000 Frontier Stamps | Dr. ings Every Hour

FREE COCA COLA ALL DAY FRIDAY

Wapco — 12-Oz. Bottle

CATSUP 2 for 29¢

Van Camp — 303 Can

PORK & BEANS 2 for 25¢

Bama Preserves and — 12-Oz. Jars

JELLY'S 5 for \$1.00

SHORTENING



Ranch Style — 300 Size Can

BEANS 2 cans 25¢

TIDE giant size 69¢

Super Save

OLEO 3 lbs. 45¢

Libby Crushed — Flat Cans

PINEAPPLE 6 for \$1.00

Libby — 303 Can

FRUIT COCKTAIL 5 for \$1.00

Libby — No. 2 1/2 Can

PEACHES 4 for \$1.00

SEE THE CLOWNS

RED SKELTON FUN MASKS

FULL COLOR • PLASTIC • 3-DIMENSIONAL



ALL 3 Only 50¢ and the YELLOW SHIELD from the front of any size PET INSTANT package!

GET DETAILS HERE PET INSTANT 12 NONFAT DRY MILK Qt.

PET RITZ PIES

Apple

Cherry

Peach

ea. 49¢

Pet Canned

Milk 2 tall cans 29¢

89¢

FINEST QUALITY MEATS

HOT DOGS 5¢ each Sat. only

Build your menu around our featured GLOVER'S Grain Fed Beef. USDA Federal Inspected, 100 Percent Satisfaction Guaranteed or your money cheerfully refunded.

FRYERS Tysons Pride Grade "A" Lb. 29¢

BACON Wilsons Ranch Style 2 Lb. Pkg. 98¢

ROAST CHUCK ivers e Beef Lb. 39¢

PORK STEAK Lb. 39¢

GROUND BEEF 3 Lbs. 98¢

FRANKS Wrights Tender Smoked 3 Lbs. 89¢

FREE With Each Purchase of \$25.00 1/2 Pound Armour's Canned Ham. FREE

GARDEN FRESH VEGETABLES

Visit Our Produce Department

FRESH PRODUCE DAILY

White Potatoes 10 lbs. 49¢ Tokay Grapes 2 lb. 25¢

Solid and Fresh Lettuce head 29¢ Golden Ripe Bananas lb. 10¢

Sugar 10 Lbs. 98¢

Limit 2

KERNEL OHTO UPINBUCKET



Come One Come All See The Great Clowns Friday Afternoon and All Day Saturday



NEW! EASY OPENING! LIGHT CRUST FLOUR

in the RIP-TOP BOX

5-lb. Box 39¢

25-lb. Pillow Case \$1.79

LIGHT CRUST MEAL 5-Lb. Bag 29¢

Swifts — Half Gallons

MELLORINE 3 for \$1.00

NOTICE

(Re-printed as a reminder to dog owners. This Ordinance has been in effect for several weeks.)

ORDINANCE NO. 93 AN ORDINANCE REGULATING THE KEEPING OF DOGS WITHIN THE CITY LIMITS, AND FIXING A PENALTY FOR THE VIOLATION THEREOF.

BE IT ORDAINED BY THE CITY COUNCIL OF THE CITY OF ABERNATHY, TEXAS:

SECTION 1. No dogs shall be permitted to run at large in the City of Abernathy, and it shall be the duty of the registered owner of every dog to keep same within a fenced enclosure or on a leash at all times.

SECTION 2. Any dog found in the City running at large is hereby declared to be a nuisance and shall be impounded as herein-after provided.

SECTION 3. It shall be the duty of the animal warden or his authorized agent to capture and impound in a pen, to be provided by the City engineer of said City for that purpose any dog, male or female, found running at large within the City of Abernathy, Texas. If such dog, male or female, is not redeemed and reclaimed and taken from said shelter within the time required under the provision of this ordinance, then the animal warden shall advertise said dog for sale twenty-four hours by posting one notice of said sale at the door of the City Hall, which notice gives the time and place of the sale and shall, if not redeemed, sell said dog, male or female, at public auction and if no one shall bid upon the same, the amount of charges due on said dog, the said dog shall be bought by the City at once and killed by the animal warden or his duly authorized agent.

SECTION 4. The owner or keeper of any dog or dogs captured or impounded under the provisions of this ordinance shall be permitted and allowed at any time within forty-eight hours after such dog or dogs shall have been impounded, to redeem, reclaim and again receive possession of said dog or dogs, upon payment to the City Clerk or his duly authorized agent, the sum of \$1.00 per day or fractional part thereof during such time said dog or dogs may have been impounded, said sum to be deposited with the City Treasurer for the use and benefit of the City.

SECTION 5. It is not intended that this ordinance change, amend, effect, on in anywise repeal any other ordinance of this city.

SECTION 6. Any person violating any provision of this ordinance shall be deemed guilty of a misdemeanor and upon conviction shall be fined in any sum not exceeding \$200.00.

SECTION 7. This ordinance shall be enforced from and after its publication and the City Secretary is hereby directed to publish same.

PASSED AND APPROVED this,



"SELF-CONTROL"

BY ROY DEAN VERNER

Reading Time: 4 Minutes

Peter lists the Christian graces: "In your faith supply virtue; and in your virtue knowledge; and in your knowledge self-control; and in your self-control patience; and in your patience godliness; and in your godliness brotherly kindness; and in your brotherly kindness love." (II Pet. 1:5-7 ASV) Man either masters his passions or his passions master him! The Christian is exhorted to put to death his earthly members: fornication, uncleanness, passion, evil desire, and covetousness which is idolatry. (Col. 3:5). The works of the flesh are catalogued by Paul, whereupon he concludes by stating, "They who practice such things shall not inherit the kingdom of God." (Gal. 5:21).

Self-government is the dividing line between the physical and moral, the animal and the spiritual. Man descends to the level of the lower animals when he fails to practice self-control. In fact, he is acting as a mere animal when he allows his carnal appetites and passions to govern him. To be governed by the flesh is death. (Rom. 8:5, 6). Paul further states, "But this I say, Walk by the Spirit, and ye shall not fulfill the lust of the flesh. For the flesh lusteth against the Spirit, and the Spirit against the flesh; for these are contrary the one to the other." (Gal. 5:16, 17). It is clear, therefore, that man is to wage a constant warfare against the evil propensities of his carnal nature.

Self-mastery is the greatest achievement in life. The mastery of self engages man's will, and the man's will determines man's character; and man's character determines man's destiny. The will is not for self-assertion but for

self-mastery. The apostle Paul set a magnificent example of self-control. He declared, "I therefore so run, as not uncertainly; so fight I, as not beating the air; but I buffet my body, and bring it into bondage: lest by any means, after that I have preached to others, I myself should be rejected." (I Cor. 9:26, 27).

Self-control is not only necessary in Christianity, but it must begin with Christianity. A person cannot become a Christian without self-control. Man must leave off what he would desire to do in order to become a Christian, and yield himself completely, through self-control, to the Will of God. He must determine within himself that he intends to do only as God's Will stipulates. He must follow the example of Jesus's self-control as He said, "Not my will, but thine be done" (Matt. 26:39). Without this, it is impossible for one to become a child of God. Jesus taught this very vividly when he said, "Not every one that saith unto me, Lord, Lord, shall enter into the kingdom of heaven; but he that doeth the will of my Father who is in heaven. Many will say to me in that day, Lord, Lord, did we not prophesy by thy name and by thy name cast out demons, and by thy name do many mighty works? And then will I profess unto them, I never knew you: depart from me, ye that work iniquity." (Matt. 7:21-23).

Begin to exercise self-control today by becoming a New Testament Christian. The terms laid down by our Lord are simple, and obedience is not difficult, it only requires that man yield himself completely to the Will of God.

(Paid Advertising)

FREE
Bible Correspondence Course
Write: CHURCH OF CHRIST
Abernathy, Texas, or Call CY-8-2718

7th day of March, A. D. 1960.

E. O. Graham, Mayor

ATTEST:
L. J. Carter,
City Secretary
(SEAL)

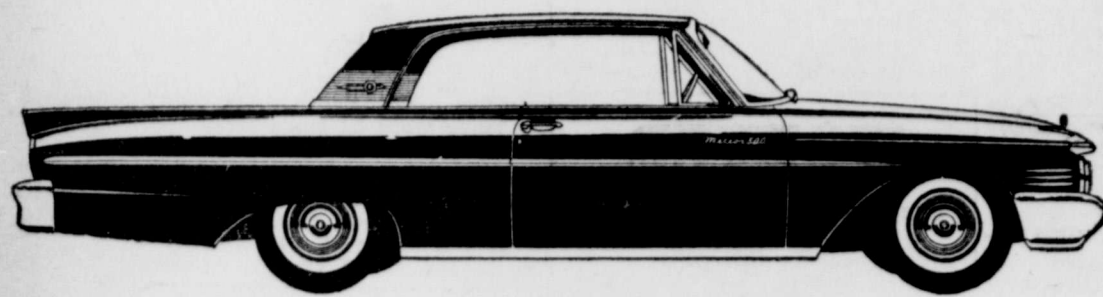
DRIVE SAFELY — The best safety known device is about nine inches above your shoulders.

MERCURY METEOR

600 & 800 series
priced right in the heart of the low-price field



Mercury Meteor 600 4-door Sedan



Mercury Meteor 800 2-door Hardtop

SEE... DRIVE MERCURY—THE BETTER LOW-PRICE CARS
AT OUR SHOWROOM TODAY!

We Invite You To See The
1961 Mercury
On Display Thursday, October 6
ABERNATHY MOTOR COMPANY
FORD and MERCURY SALES and SERVICE
CY-8-2821 — Falcon Dealer — Abernathy, Texas

Four BIG Advantages in Trading at Carl Phillips 66 Super Service Station on Ave. D at 7th St. in Abernathy



1. Conveniently Located, with wide driveways, easy to enter from Avenue D or from 7th Street. Serving the Retail Trade.
2. Quick, Courteous Service... washing windshields, airing tires, checking under the car's hood and filling the tank.
3. TOP QUALITY... serving you with Phillips 66 and Flite-Fuel Gasoline and Phillips Motor Oil... Tops in Quality.
4. We Give and Redeem BIG CHIEF Saving Stamps... an extra bonus for trading here.

CARL PHILLIPS 66 SUPER SERVICE STATION

CY-8-2016 Phillips Super Service—Retail—611 Ave. D
CY-8-2451—Wholesale Service—In North Abernathy
Cars Washed & Lubricated... Flats Fixed
We Give and Redeem BIG CHIEF Saving Stamps

TRADE AT HOME

... local merchants are dependable businessmen, who share with you the taxes that keep your schools and city operating.

BANK AT HOME

... enjoy the many banking services offered by the convenient, attractive, and modern facilities of

ABERNATHY FIRST STATE BANK

CY-8-2556 — Member of FDIC

SAFE DEPOSIT BOXES

... In 4 Sizes

The First State Bank's
PUBLIC SERVICE
CORNER...

Congratulations —and good luck!

To newly licensed drivers, congratulations! But remember, safe driving depends on you. Despite millions more car-miles traveled, good drivers practicing safety helped reduce traffic deaths last year. Still nearly 40,000 died—so we must all do even better. Do your part!



BACK THE ATTACK
ON TRAFFIC ACCIDENTS

Help stop senseless killing on our highways. Drive safely yourself. Insist on strict law enforcement for your own protection. Work actively with others to support your local Safety Council. Remember—where traffic laws are strictly enforced, deaths go down.

Published in an effort to save lives in cooperation with
The National Safety Council
The Advertising Council

WANT-ADS

(Rates: 3¢ per word, or 65¢ minimum, if ad is paid in advance; 75¢ minimum if ad is charged.)

LOST—2 White Face Calves. One 8-weeks-old, Bull. One about 325 pounds, Heifer. Phone PL 7-2466. Doyle Oswalt. (10-13-c)

FOR SALE—1947 Chevrolet Truck Grain Box. 1932 Motor. See at Toty's Beauty Shop. Phone CY-8-2055, Abernathy. (11c)

FOR SALE—Used 20 Ft. Chest Type Freezer. \$35.00 Down. Struve Hardware & Drygoods. Phone CY-8-2531. Abernathy

WANTED! Someone with good credit to make small payments on Fine SPINET PIANO. NOTHING DOWN. First Payment in November. Write at once. McFARLAND MUSIC CO. 722 W. 3rd. — Elk City, Okla. (11p)

ATTENTION Let us Clean and Adjust and Replace filters on your Floor Furnace, Wall Heater, Panel-Ray or Central Heating, also light them for you before the cold days begin. Also oil your motors and bearings. Call us now. ABERNATHY SHEET METAL WORKS Abernathy (10-27-c) Phone CY-8-2120

FOR SALE—17-inch portable television set, with stand. Set has new picture tube, and is in good condition. \$50.00. Phone CY-8-2426, Abernathy.

See Us For FALL FLOWER BULBS Nice Selection. WAITS FARM STORE CY-8-2423 — Abernathy

ANOTHER SPACE SAVER New Shipment of Upright Metal Cabinets. Ideal Storage Room. BRUCE FURNITURE Dial CY-8-2551 Abernathy

FOR YOUR irrigation needs in Plastic Pipe, for irrigating and for gas lines, and for line and foundation ditch-digging, call Cliff Howard. CY-8-2271, Abernathy, 1111 13th St. (tsr)

FOR SALE G.I. or Conventional Financing. New Home, 3 Bedroom House, on Pavement, 2 Baths, Carpet, Many Extras. \$2,500.00 or Less Down. Full Price \$13,500.00. 2 Bedroom House, Near School, Carpet, Nice. \$1,500.00 or less Down. \$9,500.00 Full Price. Would Take Trade-Ins on These. NYSDEL REALTY CO. Abernathy Dial CY-8-2326

WANTED CARS TO POLISH & WAX For Road Service Call JONES CONOCO Dial CY-8-2113 — Abernathy

FOR SALE—six well-located residential building lots (one-half block) in Abernathy. Contact Mrs. Hugh K. Fry by calling Lubbock, SHERWOOD 4-9761, after 3 p.m. (tsr)

NOTICE—for a more economical vacation trip this summer, go FALCON, Ford Falcon, sold and serviced by Abernathy Motor Co.

For All Types Of Plumbing, Repairs, Remodeling, And New Construction, Heating & Air Conditioning, Call RAY HIGGINBOTHAM CY-8-2683 — Abernathy (10-6-p)

WANTED Commercial Quantities of Dry Blackeyes Top Market Prices DORMAN & COMPANY 1920 Ave. E — PO-2-0896 Lubbock, Texas (10-6-c)

NOTICE Windmill and pressure pump repair service. Call us when you need well, windmill, or pump service. Bill Smith, CY-8-2764, or leave word at Bill's Irrigation, CY-8-2114, Abernathy.

TRADE-UP to a better, later model A-1 Used Car. We have a wide selection of A-1 Used Cars. Abernathy Motor Co. (tsr)

FOR SALE—1 1954 Oliver, Self Propelled Combine. Terms. JOE THOMPSON IMPLEMENT CO. Dial CY-8-2541 Abernathy

STALK SHREDDERS See the New Wilson 2 and 4-Row Rotary Stalk Shredders at J. W. Smith Fertilizer Co. J. W. SMITH Abernathy CY-8-2722

FOR SALE—1 Massey-Harris Super 27 Self Propelled Combine. Terms. JOE THOMPSON IMPLEMENT CO. Dial CY-8-2541 Abernathy

RANCHES FOR SALE 12,200 Acres Deeded Land, 12,000 Acres Leased, 35 Miles South of Ft. Sumner, N. Mex. Partly Irrigated. Improvements Fair. River runs through near center of land. 1,600 Acres, Hale County, Half Grass, Half in Cultivation. The Cultivated Land is Irrigated. SHIPMAN INSURANCE AGENCY Phone CY-8-2563 Abernathy

FOR SALE—New 3-bedroom brick home, 2 ceramic tile baths, colored fixtures. Carpeted. Central heating and air conditioning. All electric kitchen. Large loan established. CECIL McCURDY LUMBER CY-8-2520 — Abernathy (tsr)

ATTENTION! Imps Designed For Boy's Rooms. "oto-Vue" Hand Painted Ahaca shades. Very Beautiful. You must see these. BRUCE FURNITURE Phone CY-8-2551 Abernathy

White Auto Store 913 Ave. D CY-8-2744

The Very Best in Custom Slaughtering. HOGS AND BEEF Cut, wrapped and quick frozen. All facilities to cater to customer's needs. Goodnight Sausage Factory Plainview Highway Lubbock, Texas PO-2-3662 (tsr)

ATTENTION! Complete Starter and Generator Service, Including parts. White Auto Store 913 Ave. D CY-8-2744

FOR SALE—Three-bedroom house, wall to wall wool carpet, knotty pine kitchen, draped, 35 ft. frontage, garage. 1400 sq. ft. Best buy that can be found for only \$10,850. FHA loan established. 1108 12th St., phone CY-8-2102, Abernathy.

IRRIGATION TEST HOLES Dial CY-8-2343 DWAYNE TAYLOR

CUSTOM MADE DRAPERIES AND BED SPREADS See us for Upholstering Materials and KAPPOK ROBISON DRAPERY SHOP Dial CY-8-2510 Abernathy

JACKS SERVICE STATION Regular and Ethyl Gas, Kerosene, Popular Brands of Motor Oils, Cigars, Candles, Cold Drinks, Flats Fixed. —USED TIRES— Phone CY-8-2690 — Abernathy Highway and North Drive

We Are Ready To DEFOAMATE Your Cotton All New Equipment, First Time To Be Used In This Area. WAITS FARM STORE CY-8-2423 — Abernathy

WATER WELL DRILLING Domestic Wells 7 7/8 to 12 Inch. Test Holes, Casing Holes and Clear Cuts. GLEN PETTIT Phone CY-8-2900 — CY-8-2114 708 15th St. — Abernathy

WANT TO BUY OR SELL A FARM OR PERHAPS A RANCH? OR MAYBE IT'S CITY PROPERTY. For anything you want in Real Estate, see AUGUST JONES, REAL ESTATE 912 Ave. D, Abernathy Office, CY-8-2332, Res. CY-8-2769

Give roaches the business with long lasting invisible Roach Filmz. It gets 'em. Struve Hardware and Dry Goods Co.

FOR SALE—1 1954 John Deere Self Propelled Combine. Terms. JOE THOMPSON IMPLEMENT CO. Dial CY-8-2541 Abernathy

BATTERIES Highest Quality—Lowest Price White Auto Store Dial CY-8-2744 Abernathy

JUST RECEIVED Truck Loads of TRAILER TIRES, CARL PHILLIPS SERVICE DEPARTMENT CY-8-2337 — Abernathy

IS YOUR COTTON READY FOR JACKING? Let us show you how to do toward saving you money with your own TY the freeze comes.

Ask about the NEW activator which drops the leaves better than ever before. See us before it is too late... AIR RAY SPRAYERS ABERNATHY AIRPORT DA 8-2333

NEW STORE HOURS. We are now Opening at 8:00 a. m. and Closing at 5:00 p. m. During these hours Call CY-8-2334. After 5:00 p. m. Call CY-8-2843 or CY-8-2035. ABERNATHY FLORISTS Dorothy Stephens-Dorothy Deering

Let us clean your carpet, or rent you the machine and you clean your own. LON CLEANERS CY-8-2826 Abernathy

WANT TO BUY OR SELL REAL ESTATE? Farms, Ranches or City Property Listings Needed. ALL TYPES OR INSURANCE PETTIT REAL ESTATE AND INSURANCE Box 908 — Abernathy Dial CY-8-2818 — Res. CY-8-2340

First Graders To Be Featured On P-TA Program

The Abernathy Parent-Teachers Association is to meet at 3:00 p. m. Wednesday, Oct. 12, in the school auditorium. The program for the meeting will be "Safety At School." This will be a student program featuring the first grade students. Special guests for the P-TA meeting will be parents of the first grade students.

O. E. S. TO HAVE SALAD SUPPER AND STATED MEETING The Order of the Eastern Star is to have a salad supper at 6 p. m. today (Thursday), with the regular stated meeting set for 7:30 p. m. Mr. and Mrs. Brooks Speer, Worthy Patron and Worthy Matron, urge all members to be present as this will be Friendship Night.

GOOD USED FURNITURE We can furnish most anything you need at prices you can afford. BRUCE FURNITURE CY-8-2551 Abernathy

IRRIGATION WELL DRILLING Spudder or Rotary O. D. Weir — Dwayne Taylor CY-8-2377 Abernathy

NOTICE! We do Custom Killing and Processing for your Deep Freezer, 1/2 or Whole Beef. See us for Prices. Day Phone CY-8-2133 Night CY-8-2833 JAKE TURNER WHOLESALE MEAT CO. 15th St., 2 Blocks East of Hiway.

HELP WANTED! Apply At GRAHAM'S RESTAURANT Dial CY-8-2246 — Abernathy

DINETTES! Just Received New Shipment. Formica Top, Easy to Keep Clean. BRUCE FURNITURE Dial CY-8-2551 Abernathy

JOB PRINTING Business Forms, Statements, Envelopes, Etc. Call Yeager Wholesale, Phone CY-8-2408, or see—JOHN HALL 712 Main St. — Lubbock

WATER WELL DRILLING Wells Cleaned Out and Drilled Deeper Gravel Packing — Air Developing Dwayne Taylor Phone CY-8-2343 — Abernathy

NOTICE Are you in need of a TEST PUMP to develop your new well? Custom Test Pumping DUTY & WADE IRRIGATION CY-8-2922 — Abernathy

NOTICE NEW STORE HOURS. We are now Opening at 8:00 a. m. and Closing at 5:00 p. m. During these hours Call CY-8-2334. After 5:00 p. m. Call CY-8-2843 or CY-8-2035. ABERNATHY FLORISTS Dorothy Stephens-Dorothy Deering

Let us clean your carpet, or rent you the machine and you clean your own. LON CLEANERS CY-8-2826 Abernathy

WANT TO BUY OR SELL REAL ESTATE? Farms, Ranches or City Property Listings Needed. ALL TYPES OR INSURANCE PETTIT REAL ESTATE AND INSURANCE Box 908 — Abernathy Dial CY-8-2818 — Res. CY-8-2340

NOTICE NEW STORE HOURS. We are now Opening at 8:00 a. m. and Closing at 5:00 p. m. During these hours Call CY-8-2334. After 5:00 p. m. Call CY-8-2843 or CY-8-2035. ABERNATHY FLORISTS Dorothy Stephens-Dorothy Deering

Let us clean your carpet, or rent you the machine and you clean your own. LON CLEANERS CY-8-2826 Abernathy

WANT TO BUY OR SELL REAL ESTATE? Farms, Ranches or City Property Listings Needed. ALL TYPES OR INSURANCE PETTIT REAL ESTATE AND INSURANCE Box 908 — Abernathy Dial CY-8-2818 — Res. CY-8-2340

WANT TO BUY OR SELL REAL ESTATE? Farms, Ranches or City Property Listings Needed. ALL TYPES OR INSURANCE PETTIT REAL ESTATE AND INSURANCE Box 908 — Abernathy Dial CY-8-2818 — Res. CY-8-2340

WANT TO BUY OR SELL REAL ESTATE? Farms, Ranches or City Property Listings Needed. ALL TYPES OR INSURANCE PETTIT REAL ESTATE AND INSURANCE Box 908 — Abernathy Dial CY-8-2818 — Res. CY-8-2340

ABERNATHY WEEKLY REVIEW

ABERNATHY, TEXAS, THURSDAY, OCT. 6, 1960 Page 4
Published On Thursday of Each Week In Abernathy, Texas Entered As Second Class Mail Matter At The Post Office At Abernathy, Texas, Under The Act of Congress of March 3, 1979 ESTABLISHED IN 1921
Richard Havens, Editor — Buford F. Davenport, Publisher P. O. Box 847, Abernathy, Texas
605 Avenue C Telephone CY-8-2033

LIONS CLUB NEWS



Rev. Darrell Moore, program chairman at the Lions Club noon luncheon at Graham's Restaurant Tuesday, turned the program over to high school football coach, Curtis Davenport. Coach Davenport presented the film of the Abernathy-Tulia football game played last Friday night. With this film one could point out the more outstanding plays of the game as well as the errors made. Although it was not stated in the write-up of the game on page one of the second section of this week's Review, Johnnie Adams was responsible for a large amount of Abernathy's yardage on the ground last week as he broke through for nice yardage on several occasions. Lubbock County Clerk issued a marriage license to Carl McKee, Jr., of Abernathy and Miss Hattie Jane Townsend, Lubbock. Mrs. Robert F. Littleton's brother, C. E. Boyd, of Okdale, Calif., and his daughter, Mrs. Clyde Dean Miller of Modesto, Calif., visited in the Littleton home here.

Band, Home Ec Departments Move

At the Abernathy School Board meeting Monday night, the Board tentatively accepted the Home-making Department and the Band Department although final acceptance will be delayed until the departments are 100% complete. The two departments were occupied last Tuesday for the first time, it was reported by school superintendent Noel Johnson. Superintendent Johnson also stated that the agriculture students are occupying the new agriculture classroom section, and the shop is nearing completion although it has not yet been accepted.

Max Wisdoms Run Dairy Bee Drive-In Here

Mr. and Mrs. Max Wisdom are now operating the Dairy Bee Drive-In, an eating place on the east side of Highway 87 and on the south side of FM 597 in South Abernathy. The Wisdoms leased the place from E. M. Davis. See the Dairy Bee advertisement in this issue of the Review for further information, including special prices. Mall News to The Review

Children's Photos To Be Made

The time is almost here for the opening of this newspaper's Big Child Photograph Contest, and we're urging all of our readers to have their children ready for the big day. Winston E. Lucas of Irving, Texas, will be in Abernathy on Tuesday, October 18 at Goebel Variety, 10 a. m. to 6 p. m. for the purpose of taking pictures in this vicinity. In addition to having their pictures printed in this newspaper, the children will be competing for \$20.00 in prizes which are being offered for the three best photographs made during the day. The photographs will be made absolutely free of charge, and there is no charge for their publication in The Weekly Review. Proofs will be shown and from these you may select the picture of your child which you would like to appear in this newspaper. If you wish extra photographs, they may be purchased, but no purchase is necessary in order to have your child's picture printed in this newspaper, or in order to compete for the prizes. It is entirely up to you, whether you buy pictures or not. There is no age limit on the contest, and every child's photograph in this section is wanted so that they may all appear in The Weekly Review. However, it is necessary that all pictures must be of uniform size, so they

Legal Notice

NOTICE TO TAXPAYERS On October 4, 1960, the City Council of the City of Abernathy met in regular session in its regular meeting place at City Hall. The following action was taken: The Proposed Budget for the City of Abernathy for the fiscal year 1960-61 was discussed and formally presented. The Council directed that the budget be placed on file with the City Clerk for inspection by taxpayers. Taxpayers in the City of Abernathy, and all interested persons are hereby notified that the budget, as presented, is on file for inspection. On October 17, 1960, the City Council of the City of Abernathy will meet in City Hall at its regular meeting place at 8:00 p. m. for the purpose of holding a public hearing regarding said budget, and notice is hereby given of said hearing.

POPE'S PARTS PLACE
CY-8-2534 — 1312 Avenue D, on Highway
YOUR AUTOMOTIVE PARTS JOBBER
Name Brands at the Right Price

Phone CY-8-2517
DAIRY BEE
Open Under New Management
This Weeks Special
4 HAMBURGERS \$1.00
Free drink with order of Steak Fingers or Fried Chicken
Open Week Days — 10 A. M. To 10 P. M.
Sundays — 1:00 P. M. To 10 P. M.
Max and Wanda Wisdom—New Managers

Specials At McAlister's
Friday - Saturday, Oct. 7 & 8

Biscuits	KIMBELL	3 for 25¢
Oleo	KIMBELL and GOLDEN	2 lb. 39¢
12 Coca Cola		49¢
12 Dr. Pepper		49¢
Oleo	IMPERIAL	1 lb. 38¢
Lucky Whip		52¢
Sugar		10 lb. 99¢
Coffee	KIMBELLS	1 lb. 65¢
Cabbage		1 lb. 5¢
Pk. & Beans	VAN CAMP, 16 oz., 2 for	25¢
Pineapple	CR. and SLICED, 9 oz.	15¢
Wrigley Gum		6 for 19¢
Crackers	SUNSHINE	1 lb. 26¢
Cheese Whiz	KRAFTS	16 oz. 49¢
Post Toasties		giant 29¢

Charge Accounts are strictly 30 days
We Close at 6:30 p.m.

McALISTER GROCERY & MARKET
2 Deliveries Daily 9:30 A. M. and 4:30 P. M.
CY-8-2728 — Abernathy

ATTENTION!
Complete Starter and Generator Service, Including parts.
White Auto Store 913 Ave. D CY-8-2744

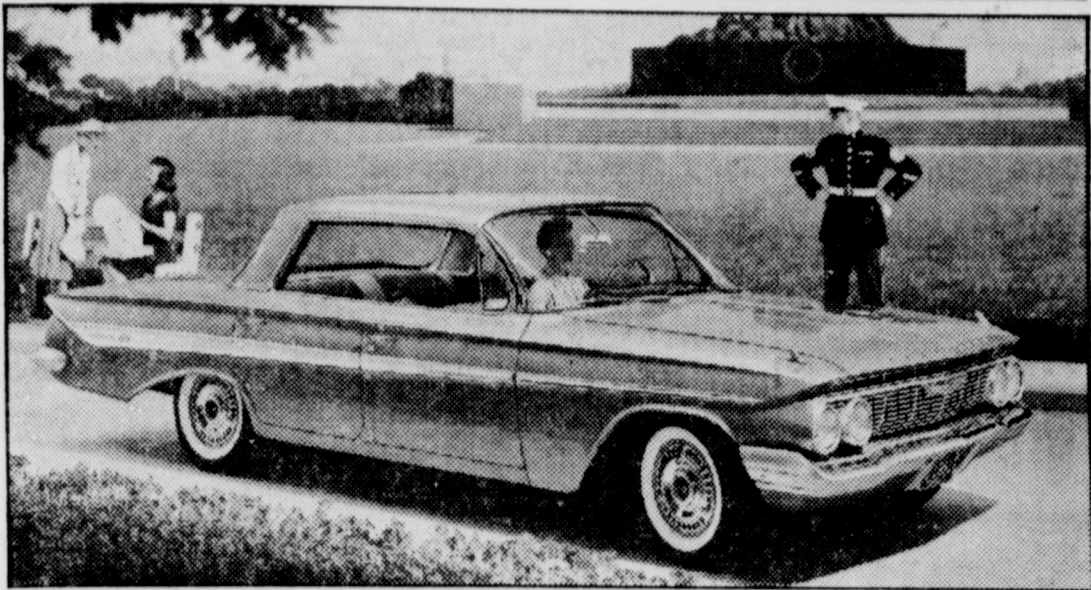
The Very Best in Custom Slaughtering. HOGS AND BEEF Cut, wrapped and quick frozen. All facilities to cater to customer's needs. Goodnight Sausage Factory Plainview Highway Lubbock, Texas PO-2-3662 (tsr)

McCormick No. 21 COTTON STRIPPER
For Better Turn Out!
LEAVES NO COTTON IN THE FIELD
\$1,400.00
Mounted On International Tractor
This Versatile
NO. 21 STRIPPER
Can Also Be Mounted On
JOHN DEERE TRACTORS AND
MASSEY - FERGUSON TRACTORS
As Well As On
MANY OTHER TRACTORS
Struve Mercantile Company
McCORMICK IMPLEMENTS
Phone CY-8-2622 — Abernathy

SPECIALS
Friday & Saturday Oct. 7 & 8
Marvin Struve Grocery
Dial CY-8-2532 for Free Delivery

Jelly	APPLE, Mug, 14 oz. Kimbell, Reg. 35c, 2 for	.59
Kleenex	400 COUNT	2 for .49
Towels	PAPER, Large Scott	2 for .59
Beans	PINTO 300 Can, Kimbells	2 for .19
Soup	TOMATO, Campbells	2 for .23
Tomatoes	300 Can Diamond	2 for .25
Cake Mix — Spice Cake		
Gladiola		25c
Frito's	BEAN DIP, 4 oz.	2 for .19
Dog Food	KIMBELL, 300 can	2 for .15
Tobacco	PRINCE ALBERT	can .19
TIDE		large .30
Corn	COUNTRY KIST, 12 oz.	2 for .29
HAMS Picnic		lb. .35

Sleek Impala One of 20 New Chevrolets



Designers have applied smooth, graceful lines to the '61 Chevrolet Impala, Bel Air and Biscayne passenger car lines. Wings on the rear deck have been smoothed into the body. Roof lines, as noted in the Impala Sport Sedan (above) are freshly contoured and are separately styled for each model. Overall body design features gently sloping lines. Rear trunk deck lid now opens flush with top of hump affording easier loading and unloading. Fuel tank has been repositioned for greater safety. The Impala Sport Sedan is one of 20 body styles in the standard Chevrolet line.

Class On Civil Defense To Begin Monday, October 17

A class on Civil Defense is scheduled to begin at 7 o'clock Monday night, Oct. 17, according to Frank Bartlett who will teach the 12-hour course.

Mr. Bartlett, an Abernathy Junior High teacher and a holder of a Civil Defense instructors certificate, stated that those wanting to enroll should contact him either at the Junior High school building or at his home after school hours, phone CY-8-2253. Only 20 persons will be taught in this class, therefore only the first 20 persons who contact Mr. Bartlett will be enrolled in this particular class. However, another class will be available in the future.

The 20-student class will meet in Room No. 2 of the Junior High building, at 7 p.m. Oct. 17, and will meet each successive Monday night from 7 to 9 p.m. for six weeks. It was stated that all sessions are a must to get the full benefit of the course.

The instructor will present each enrollee with a free manual and other material for future reference. He will make use of films, slides, film strips, charts and tape recordings to make the lessons graphic and interesting.

There is no charge for enrolling in such a course.

CARD OF THANKS

Our sincere thanks to all who were so kind and thoughtful during the illness and following death of our Loved One, May God's richest blessings be upon all of you. The Family of Johnny Cloud.

Flower Show Report Given

The City Garden Club Flower Show was held in the city club room Saturday, Sept. 24, from 2:30 to 5:30 p. m., with Mrs. S. R. Jackson as general chairman.

The show was judged by Mrs. G. H. Williams, Mrs. Ray Slay, Mrs. Effie Fortenberry of Lubbock.

The Tri-Color Award was given to Mrs. H. H. Selke for more first places in horticulture, also the tri-color award in conservation and education. The tri-color award was won by Mrs. Arval Weaks with more first places in flower arrangements. Sweepstakes award was given to Mrs. H. H. Selke.

A number of first prizes were given to Meses. Ray Linton, S. M. Harrison, T. O. Brown, Chris Benn, A. B. Myatt, H. H. Vineyard, F. B. Lovelace, W. V. Halford, G. B. Adkisson, A. Z. Newman, J. P. Nystel, Marvin Struve, Ira Lee Herral, Floyd Shipman, Jack Barton, E. H. Beard, Eula Patterson, Alma Ruth Patterson, and Mrs. Nunn.

Mrs. Jim Franklin and her three children, Linda Sue, Larry and Mary Anita, of Stanton visited here last weekend in the home of her parents, Mr. and Mrs. Edgar Heath.

The Review wants your news.

Lakeview News

Mr. and Mrs. E. E. Senter were in Altus, Okla., Wednesday and Thursday.

Mr. and Mrs. Udell Adams attended a field day program for seed grain dealers in Scott City, Kans., Friday and Saturday.

Rev. and Mrs. O. N. Reed visited Mrs. Reed's mother, Mrs. J. P. Cunningham, who has been ill in a hospital in Tahoka.

Mr. and Mrs. Herbert Watson were called to Durant, Okla., to the bedside of her mother, Mrs. Lillie Tugwell, who is seriously ill.

Herschel Warren of Burk Burnett visited in the S. M. Harrison home.

Mr. and Mrs. T. W. Driver attended a birthday dinner for their granddaughter, Geneva Gilmore, at Cotton Center Sunday.

Mr. and Mrs. E. L. Fisher have been ill at their home.

Mr. and Mrs. Gary Holcomb of Bogalusa, La., Mr. and Mrs. Roscoe Holcomb of Kemp, Mrs. Grace Pollock and Mrs. Viola Braden of Mabank and Mr. and Mrs. James Holcomb of Lubbock spent several days in the home of Mrs. N. Matthews and were here to attend the birthday party for their father, L. H. Holcomb.

Mr. and Mrs. Lee Roy Waters visited the aunts, Mrs. Lizzie Gilmore and Mrs. Mary Gilmore in Post Sulphur.

Mr. and Mrs. A. W. Mayo and Paula of Lubbock were Sunday guests in the R. E. Anderson home.

Gordon Thoms ginned the first bale of cotton at the Lakeview gin Sept. 23. He received 50c per lb. for the premium bale.

Mr. and Mrs. A. B. Colwell, Mr. and Mrs. Lawrence Emerson, Mr. and Mrs. J. C. Belt, Mmes. N. Matthews, E. L. McLaugh and several others attended funeral rites in Bethel Baptist Church in Plainview Friday for T. E. Mull, father of Mrs. Lloyd Goldston and a former resident of this community.

Mr. and Mrs. Harry Ragland of Plainview visited in the E. E. Senter home Sunday.

Mrs. T. L. King was given a surprise birthday party in her home Monday night by members of the Friendship Sunday School class.

Mr. and Mrs. Leonard Brooks of Los Lunas, New Mexico, who came to attend the Johnny Cloud funeral rites in Levelland Friday spent the week end with her mother, Mrs. T. L. King.

Mrs. Wilson Wilson and sons of Friona and her parents, Mr. and Mrs. Fisher Sunday.

Linda King and Gerald Watson, students of Texas State, Camp Creek, spent the weekend with their

City Hall . . .

(Continued from page 1)

that there had been several dogs poisoned in the north west part of town.

There were no break-ins reported in the month of September. Corporation Court fines for Sept. \$389.51.

COMPLAINTS HANDLED MONTH OF SEPTEMBER

8 calls to pick up stray or sick dogs, 1 call to pick up 4 dead cats.

2 calls—failure to pick up garbage, 2 calls to pick up extra garbage.

1 call about fire plug extending over curbing.

2 calls of mosquito fog making resident sick.

1 call to obtain weed removal.

WATER AND SEWER ACTIVITY MONTH OF SEPTEMBER

Pumped 9,297,900 gallons of water between Sept. 5 and Sept. 26 for an average per capita usage of 3,611 gallons for the period, or an average per capita usage of 171 per day.

The garbage truck traveled 196 miles, between Sept. 15 and Sept. 30, using 78.9 gallons of gas and hauling 55,080 pounds of garbage and trash.

775 feet of utility lines were laid. The garbage dump was graded 3 times.

A man was employed for one week to stay at the dump to count the number of dumps made by those other than city employees and to direct dumping. This information will be used to determine necessary action needed to solve the dump problem.

The dump was de-flyed several times through fly bait and use of diesel oil.

Garbage cans were sprayed for flies during pick ups.

An intensive campaign to cut all weeds on city right of way was begun, and nearly completed.

Two sewer stop ups were remedied.

Record keeping on all utility activities was commenced.

224.5 gallons of gas were used during the period (two weeks).

70% of the unpaved streets were graded.

Streets were cleaned; some parts of town twice.

A comprehensive consultation with the city engineer was held, where needs and conditions were thoroughly discussed.

CARD OF THANKS

We wish to express our appreciation to our wonderful friends and neighbors for all the help, kindness, beautiful floral offerings and words of sympathy during the long illness and death of our mother and sister. It is times such as this that make us realize how much our friends mean to us and how impossible it would be to be without them.

The Family of Mrs. H. E. Rantz

Mail NEWS to The Review.

Jr. High Band Names Officers

Bill Forbes was chosen drum major and Linda Miller was picked for assistant drum major of the Abernathy Junior High Band last week. Selected for twirler positions were: Peggy Gist, Janice Phillips, Janna Stevenson, and Margaret Toler. Shanna Crenshaw will be alternate twirler.

Judges were drum majors and twirlers of the high school band.

At present, there are 123 enrolled in high school band, 82 in junior band, 64 in the intermediate band class, and 78 in the tonette class, stated Everett Maxwell, Band Director.

MASONS TO MEET HERE OCTOBER 13

A stated meeting of Abernathy Lodge No. 1142 A. F. & A. M., will be held at the Masonic Lodge Hall on Ave. E, Thursday, Oct. 13. Bob Drace, Worshipful Master, reminds members of the time change beginning this month.

Lodge will open at 7:30 p. m., an hour earlier than during the Summer months. He urges all members to attend, and extends an invitation to visiting Masons.

WAREHOUSE IS ERECTED

Rudolph Struve, owner of Struve's IH Store, McCormick farm tractor and implements sales and service firm, has erected an all-steel warehouse south of the old cheese factory building. The 40 x 72-ft. structure will be used as a warehouse for tractors and other farm machinery, Struve said.

Fred Boone of Abernathy and Bill Smith of Slaton spent five days recently fishing at Table Rock Lake, near Cassville, Missouri. Boone stated they made a nice catch of Bass while there.

Mrs. A. Cope, former Abernathian, is at 3007 36th St. in Lubbock. She is staying with the L. A. Danners, also former local residents, and helping care for Mrs. Danner's mother, Mrs. Poe.

Big State Grain To Add Building At Plant Here

Big State Grain Company is adding a one million bushel storage building just across the street north of the present storage plant. This building will be 100 x 300 feet of the same construction as the present storage buildings.

They are also adding 100,000 bushels capacity in grain bins just south of the present bins beside the elevator leg. These are of metal construction and are upright bins.

This addition and the facilities at County Line reported in last week's Review will give Big State Grain Company approximately two and one quarter million bushels storage capacity.

IOOF LODGE TO MEET TONIGHT

The IOOF Lodge of Abernathy will be host to a Circle meeting Thursday night, Oct. 6, at 7:30.

Finus Hill, Noble Grand, urges all members to be present at this meeting.

COTTON FARMERS

How much cotton are you going to make this year?

Most likely it depends on the freeze and when you will be able to haul it to the gin.

We can save you money and send you on the way to the gin by defoliating your cotton now, before it is too late. Dry and mature your cotton, speed up the harvest, retard boll rot, up the grade are the aids of defoliation.

AIRWAY SPRAYERS

ABERNATHY AIRPORT
DA 8-2333

BEFORE YOU START

BE SURE YOU CAN STOP!

Use Our Brake Service

Scotty's Repair Shop

Phone CY-8-2757

Abernathy

NOW

Wholesale -- Retail



PRODUCTS

I Am Now Wholesale Commission Agent For Abernathy and Surrounding Territory.

We Are Equipped To Make Wholesale Deliveries To You; Deliveries To Your Farm Or Gin of—

HUMBLE FUELS--LUBRICANTS

And Other Specialized Products For Farm and Home.

Come in today and let us explain this excellent service now available to you.

C. C. SHIPMAN

C. C. and Billy Shipman — Owners

Phone CY-8-2230

Happy Motoring!

Abernathy

"Econ," "Happy Motoring" are registered trademarks

BARRINGTON FOOD

IN NEW DEAL

White Swan

Coffee lb. 69c

Giant Tide 65c

Shortening,
Flaffo 3 lbs. 69c

FRESH FRUITS AND VEGETABLES

Tokay
GRAPES
lb. 12c

Frozen
Strawberries 19c

Large, Frozen, Simple Simon
PIES 3 for 99c

King Size
Dr. Pepper
Carton of 12
49c

PUMPKIN

10c

Each

20-Ounce Box

BISQUIK 23c

STEAK SALE

Round 79c

Sirloin 69c

T-Bone 69c

Grade "A" FRYERS

lb. 29c



Save Money With A Capitol M
CAPITOL STAMPS

Tuesday Is Double Stamp Day
AT BARRINGTON'S

Abernathy B Team In 26-12 Win Over Hale Center B

Abernathy's Antelope B team traveled to Hale Center last Thursday evening and brought home a 26-12 victory. The local lads scored in each quarter of the ball game, and displaying fine defensive work held the Hale Center B team scoreless until midway in the final quarter.

Halfback Joe Ybarra opened the scoring for Abernathy in the first quarter when he broke loose on a 65-yard touchdown scamper. The try for extra points failed. In the second quarter, fullback George Reagan, who has been out of action due to an injury, plowed through from four yards out for the second touchdown, then added the extra points to put Abernathy out front, 14-0.

Waymon Morgan was credited with Abernathy's third quarter touchdown as he plunged over the double marker from two yards out. Ben Templeton, who plays center and fullback, added the final score in the fourth period on a 15-yard TD run. Tries for extra points in the third and fourth quarters failed.

After Abernathy reserves took over in the last half of the final quarter Hale Center managed two touchdowns. The defense tightened on the extra points tries, however, and the game ended with the final score standing, 26-12.

15 Boys Play — Coach Davenport played 15 boys in the tilt (that number being

suited up for the game). The starting line-up included: Bobby Pettit, quarterback; George Reagan, fullback; Richard Saari and Joe Ybarra, halfbacks; Ben Templeton, center; Jim Stillwell and Kay Don Habbinga, guards; Randy Henson and Charles Wisdom, tackles; Don Hughes and Douglas Simpson, ends.

Others who saw considerable action were Waymon Morgan, Jerry Bradshaw and Ronald Anderson, backs; Randy Wright, center; Jerry Settles, tackle; Kenneth Reedy, end; and James Waters, guard.

Floydada B Here — The local B team will play host to the Floydada B team at 6:00 o'clock this evening (Thursday) on the local football field. These two teams battled to a 0-0 tie in their first meeting of the season, and the game tonight should be as equally matched.

"B" Team Schedule
 Sept. 8—Floydada 0; Abernathy 0.
 Sept. 15—Lockney 6; Abernathy 16.
 Sept. 29—Hale Center 12; Abernathy 26.
 Oct. 6—Floydada, Here, 6:30 p. m.
 Oct. 13—Hale Center, Here, 6 p. m.
 Oct. 20—Olton, Here, 6 p. m.
 Oct. 27—Lockney, There, 6 p. m.
 Nov. 3—Olton, There, 6 p. m.

DRIVE SAFELY — The best safety known device is about nine inches above your shoulders.

READY MIX CONCRETE BACK IN TOWN

Hirndon & Jeffrey, Abernathy's ready mixed concrete people, are back in town after an absence of some 47 days during which they mixed the concrete for the Cone elevator addition just east of Iowa Avenue Gin twelve miles north of town. While building the grain bins it was necessary to run continuously and they ran thus for seven days and nights, until pouring of the bins were completed. There was plenty of other pouring to be done that did not require 24-hour service, which used the balance of the 47 days.

They are back in town now and have reset their mixer and are mixing concrete as usual.

Due to an error of the telephone company in compiling the present telephone directory the name Hirndon & Jeffrey was left out and they are not listed. They have a phone however and the number may be noted in their ad in this issue as it has been for several months at regular intervals.

Their phone number is CY-8-2427 and it will be listed in the forthcoming directory.

MONDAY IS DEADLINE

Deadline for news copy and ad copy is Monday at 5:30 p. m. Deadline for reporting on Monday night meetings or other news happening on Monday night is at noon on Tuesday.

Only copy accepted Tuesday morning will be that covering Monday night events. Other copy coming in on Tuesday morning will be carried over to next week's paper.

Hale County Is Soil Conservation Winner

College Station—Texas' six individual grand award winners and the state's three outstanding districts in the 13th annual national soil conservation program have been announced by The Goodyear Tire & Rubber Company, sponsor of the event, according to Jack Barton, soil and water conservation specialist for the Texas Agricultural Service.

Districts named as winners were District 1, Hale County SCD; District 2, Southmost SCD; and District 3, Llano SCD.

Individual winners from each district were District 1, F. F. Calhoun, Plainview and Don P. Hegi, Petersburg; District 2, Dean Alexander, La Feria and Olney J. Dean, Jr., McAllen; District 3, James D. Epperson, Valley Springs and J. L. Renick, Llano.

In addition to receiving plaques as permanent symbols of their conservation accomplishments, the six Texans will be guests of Good-year at the Wigwam resort and Goodyear Farms at Litchfield Park, Arizona in December, Barton said.

The program annually provides awards for districts and individuals in the categories of organization, education, planning, promotion and accomplishment in soil and water conservation at the state level.

WELCOME TO MEETINGS

"Abernathy city council meetings are open to the public," said Mayor Edgar O. Graham, "and we invite interested citizens to sit in on these sessions," he added. Regular sessions are held at 8 p. m. on the first Monday of each month in the city hall.

USDA INCREASES GRAIN INSPECTION FEES

College Station—The U. S. Department of Agriculture has announced an increase, effective September 1, in fees charged for appeal inspection of grain and for overtime charges in connection with these inspections.

Fees which were \$8 per car were increased to \$9 per car, and cargo grain fees were increased from \$2 per thousand bushels to \$2.25 a thousand. Comparable increases were made in fees for appeals on trucklots and on submitted samples.

Overtime charges on appeals on grain, which are authorized by the United States Grain Standard Act, were increased from \$5.80 an hour to \$6.40 an hour per man.

The new fees and charges are contained in revised regulations under the United States Grain Standards Act, which was scheduled for publication in the Federal Register August 30, 1960.

C. C. Shipman Is Now Humble Wholesale Dealer

C. C. Shipman, long time service station operator here has recently secured the wholesale dealership for Humble products in this area. He is at present serving the public with Humble products, Gas, Oil and Tires at his Humble station and will continue this service.

He will now serve the wholesale trade as far as possible through his station pumps until receiving a delivery truck. You may bring your barrels and have them filled at wholesale through his pumps until such time as he receives the truck. Oils, of course, you may get at wholesale by the case any time.

NEW BUILDING

Struve Mercantile Company is building an implement warehouse and machinery assembly house. The new building is to be 40 by 72 feet and is located just south of the old cheese factory building and on the back or west end of the lot. It is of all steel construction on a concrete slab foundation.

Mr. and Mrs. J. P. Nystel visited in Ruidoso last week end. They also visited the Eastern New Mexico State Fair at Roswell.

Pete McKee has moved to 1012 15th St.
 Ethel W. Bradway has moved to 1008 4th St.

Tappan Built-In Ranges
Kitchenaid Dish Washers
Cabinets — All Kinds
Storm Doors Installed
HOME FURNISHINGS CO.
 Dial CY-8-2726 Abernathy



The 1961 Ford Galaxie Club Victoria (top), a new model in the Ford line that will be introduced to the public on September 29, features the crisp, fresh appearance that earned a gold medal from an international fashion authority for "functional expression of classic beauty." (Bottom) and introduces another new model—the Country Squire. The new Ford station wagon series includes the nine-passenger Country Squire and the six-passenger Country Squire. The new Ford station wagons have a 60" tailgate window, and the tailgate itself is seven inches wide. All 1961 Fords feature new dimensions for greater stability and such major engineering improvements as new DA lubrication, heavier, self-adjusting brakes, and longer wheelbase, trim and underbody parts.

COMPLETE INSURANCE SERVICE

We Write Your

FIRE
 AUTOMOBILE
 CASUALTY
 AND OTHER INSURANCE

In Old Line Legal Reserve Stock Companies. They Are Strong, Reliable Companies That Pay Claims to the Letter of the Insurance Contract

see us today

McKENZIE INSURANCE COMPANY

CY-8-2049

Abernathy

SERVICE When You Need It Most

Am I Right?

IT'S EASY TO DRIVE A MAN TO DRINK BUT HARD TO PULL HIM AWAY FROM IT



Yes, and you can lead a horse to water but can't make him drink. Also man or horse, it is lots easier to drink where there is water than where there is none. You have "struck water" when you contact us for any kind of Sheet Metal Work.

ABERNATHY SHEET METAL WORKS
 "Where Quality Prevails"
 ABERNATHY CY-8-2120

HOME OWNED AND OPERATED

YOU'LL BE PLEASED

NOTICE

TO CITY OF ABERNATHY TAX PAYERS

By Paying Your Taxes Early You Can Take Advantage of the Following Discounts:

If Paid In:	Discount
OCTOBER	3%
NOVEMBER	2%
DECEMBER	1%

All Taxes Are Due and Payable January 1, 1961. Beginning February 1, 1961, Penalty and Interest Will be Added.

City of Abernathy
L. J. Carter
TAX COLLECTOR



Dad! give your boy an "oil well" mechanical toy--only \$2.00

This is one of the most remarkable new mechanical toys of the year—so strong and easy to work that a three-year old can play with it... so interesting to operate that it appeals to boys in their early teens.

Secure an "oil well" coupon from your neighbor under the Humble sign. Mail it with \$2.00 to the address indicated. Within a week or two, your boy will have his "oil well" and you'll have a happy little "oil man" in your home.

HUMBLE OIL & REFINING COMPANY
 America's Leading Energy Company

Plus coupon from any Humble Dealer

"Kids love this toy!"



Happy Motoring!

"Econ," "Happy Motoring" are registered trademarks

Eligibility Of Young Voters

With reference to those who have reached voting age this year, may I refer such ones to Section 33' (Art. 5.01), to wit:

"And who is exempt from the payment of a poll tax by reason of the fact that he or she has not yet reached the age of twenty-one years on the first day of January preceding, but who shall have since become eligible to vote by reason of length of residence or age, shall not later than thirty (30) days before any election at which he wishes to vote obtain from Assessor and Collector of Taxes for the county of his or

her residence a certificate of exemption from the payment of a poll tax, and no such person who has failed or refused to obtain such certificate of exemption from the payment of a poll tax shall be allowed to vote."

This information has been copied from the Texas Election Laws by James I. O'Neill, one of the local election judges, for the benefit of those concerned.

The certificate of exemption may be acquired from the office of the Hale County Tax Assessor and Collector in the courthouse at Plainview, or by writing Marshal Surratt, Hale County Tax Assessor-Collector, Plainview, Texas, or the Lubbock County tax office if you reside in that county.

Young Men May Register Here At Post Office

Young men of South Hale County may register for Selective Service at Abernathy post office, it was announced by Herbert T. Hardin, acting postmaster. Heretofore, they were required to go to the Selective Service office in Plainview to register.

The young men are required to register for Selective Service upon reaching their 18th birthday.

CUNNINGHAM GIN CHANGES HANDS AND NAME

The former Cunningham Gin is now under new management and the name has been changed to Hygrade Gin, Inc. Two names have been added to the ownership—Henry Hortenstine of Amarillo and A. L. Higgins of Abernathy. The name of Mark Hortenstine remains as one of the owners. He also resides in Amarillo.

Mr. A. L. Higgins joined the Hortenstines last April and moved his family to Abernathy in June. He purchased a home at 1608 Ave. L and now resides there. He and his wife and three boys aged eleven, five, and three. The oldest is in school, the next is in kindergarten. The Higgins have placed their membership with the North Side Baptist Church. He is a Mason and was a member of the Lions Club at Pecos before moving here.

Mr. Higgins is not new to West Texas nor the Plains Country, having been born at Ackerly in 1926 and later moving to Pecos. He is an experienced gin man having been connected with gins in various capacities for the past several years. He has ginned lots of three-bales-to-the-acre cotton around Pecos but says that is the top and not the average production.

Mr. Higgins will manage the Hygrade Gin here and invites all those who have been ginning here under former managements to continue to bring their cotton to this gin as usual. He also invites as many others as will, to give him a trial of a few bales. He says the gin has been thoroughly overhauled and is in tip top shape for first class ginnings.

TUCO Topics

(Continued from page 1)

received a short discharge and re-enlisted with the Air Corps for three years but served for the duration of the war. He was stationed at San Antonio, Lubbock (1942) and Bryan, Texas in 1943. Here he was with the Radio Department and attended an Instrument Flying School. He was the given overseas service traveling across India by an outmoded trail to China and naturally this route took him over "The Hump" (Himalayan Mountains). He remained in North China at Siam for the duration of the war being discharged at San Antonio, January 8, 1946 at Ft. Sam Houston.

Alvis began work with the Southwestern Public Service Company in March of 1948. For one year he worked with maintenance, was then promoted to Fireman, and then to his present position as Turbine Operator. During this time he has attended various First Aid Schools and received the Ten-Year Service Award. He is due to receive the Fifteen Year Service Award next year. He as well as the company is proud to say he has had no lost time accidents during this time.

Since Alvis does shift work he has four days off duty every ten days. This gives him a little more time to enjoy his hobby which is "hamming". In other words he is a Licensed Amateur Radio operator and has talked with other operators as far out as Australia.

Also he has been heard by amateur operators as far away as Russia and Czechoslovakia for he has received cards from them telling him that they had received the message. Also he has talked with operators from all the states in the Union, this includes Hawaii and Alaska. Bilibrey built all of his radio equipment himself and TUCO is proud to have an employee of this ability. Not only has he built radio equipment but he and his wife, Margaret, built their own house—it just took one year—from June to June (1950-1951).

Margaret Bilibrey was born in

California moving to Slaton at an early age and attending school there. After her graduation from high school, she worked one year as a stenographer for the Welfare Department in Slaton. She and Alvis were married in 1943, living in Bryan until Alvis left for overseas duty. She keeps busy seeing that Alvis "stays on the job" and taking an interest in the activities of their daughter, Elaine. She and her family are also active members of the Methodist Church. And so with these duties and sewing as a hobby she is kept busy.

Elaine, the daughter of Alvis and Margaret Bilibrey was born in Slaton, January 18, 1945 and has attended all of the local schools. While in Junior High she was Drum Major for the Junior High Band and active in other activities. She is at present a sophomore in our local high school and plays the clarinet in the Antelope Band. She is the Annual representative of the FHA this year, plays guard in basketball and also is active in church work. She is a member of the MYF and is the publicity chairman for that organization. Also she is the pianist for this organization of the Methodist Church.

News Bits
The George Reagan family is "supposedly" on vacation this week. Willie Florence teasingly told George he was the type who likes to take his vacation while the wife works—but George says a family fishing trip may be worked in before time for him to be back on duty.

Thoughts For The Week
Next to excellence is the appreciation of it.

Thackery.
You cannot antagonize and influence at the same time.

J. S. Knox.
The rarest gift in the world is simple goodness. Without it, intellectual gifts seem trivial.

Heien Carey Dalloio

Dan Blanchard, City Policeman and Hale County Deputy, has a new telephone number, which local citizens should write in the back of their telephone books. The number is CY 8-2342, and is an extension from the office of the Justice of Peace, Blanchard said.

State Fair To Open October 8

Dallas—The 1960 State Fair of Texas will present its giant Diamond Jubilee Exposition in Dallas Oct. 8-23 in celebration of the 75th anniversary year of this, the largest Fair in the land.

The Diamond Jubilee will feature great theatrical attractions such as "Flower Drum Song" and "Ice Capades," livestock events like the Pan-American Livestock Exposition and State Fair Horse Shows, exhibits features that include the Texas International Trade Fair and Southwestern Automotive Exposition, and an entertainment "Shower of Stars."

The Rodgers and Hammerstein musical, "Flower Drum Song," will be presented nightly with matinees Saturdays, Sundays and Wednesdays. "Ice Capades" will be seen nightly except Sundays, with a schedule of matinees Saturdays, Sundays and Oct. 12.

Senior citizens will be saluted on Oct. 10, "Jubilee Day," when special honor will be paid those who attended one of the first five State Fairs, 1886-1890.

The "Shower of Stars" will present Nelson Eddy Oct. 10, the Musical Festival honoring composer Richard Rodgers Oct. 11, teen-age idol Fabian and Brenda Lee Oct. 13, circus clown Em-

mett Kelly Oct. 14, recording star Jimmie Rodgers and Homer & Jethro Oct. 18 and a College Jazz Festival Oct. 19.

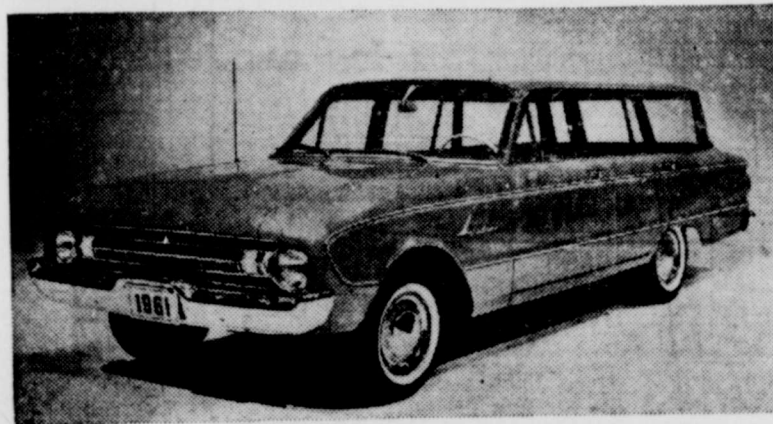
In addition, "big-name" stars Arthur Godfrey and Rex Allen will appear at the Horse Shows Godfrey on Oct. 7, 8, 9, and Allen Oct. 14, 15, 16.

A record premium total of \$120,770 has been offered in the various livestock, horse show and poultry events. The Pan-American Livestock Show is the second week of the Fair, Oct. 17-22. The Horse Shows will be staged in three big series.

The Texas International Trade Fair will have exhibits from all over the world. The Agriculture Show features chemistry in agriculture. "Playtime USA" will have a trout-fishing pond. The Auto Show will introduce many of the new 1961 model cars. Model kitchens will be shown at the Electric and Natural Gas shows.

The Women's Department offers record premium of \$10,448 in 733 classes of its ten divisions. Free fashion shows will be presented daily.

Best place in the world for Abernathy merchants to advertise: The Abernathy Weekly Review, dial CY-8-2033.



The 1961 Ford Falcon (Tudor Sedan, top) features a new, convex-shaped aluminum grille and introduces a new optional, 101-horsepower engine along with durability improvements in aluminum surfaces, underbody parts and other trim items. The Falcon, most successful new car in history, delivers up to 30 miles per gallon on regular grade gasoline. The Fordor station wagon (bottom) features the convenient roll-down tailgate window and a 76.2-cubic-foot load space, comparable to that of the 1957 Ford. The 1961 Falcon will be offered in four models—two- and four-door sedans and two- and four-door station wagons. The new Falcon preserves the styling of the 1960 model, and continues to offer six-passenger seating room, the sports car feel, and 23.7-cubic-foot luggage capacity.

BOWLING

Provides Fun For

1 TWO

Or

22

At

A-1 Lanes

In Abernathy

Bowl Alone . . . Bowl by 2's, 3's, 4's or bring a party of 22 (or more). Since A-1 Lanes opened, there's always "Something To Do" in Abernathy.

There's Always A Place To Eat, Also.

A-1 Cafe

Is Open For

Spectators & Bowlers

Alike.

Everything From "Just a Coke" To Full Course Meals.

Breakfast — Lunches — Dinners

A-1 CAFE

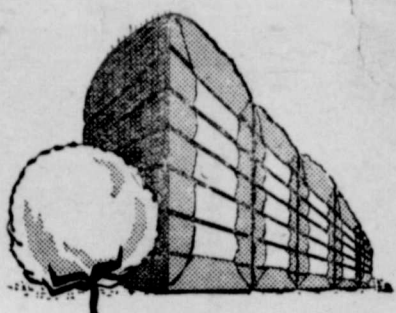
A-1 LANES — South Abernathy
Cafe Opens at 6:30 a. m. Daily

The 1960 Ginning Season Has Opened At

HYGRADE GIN INC.

From Boll

To Bale



Our Gin Is In Top Condition

And Ready For The New Ginning Season.

We are confident of our ability to give you TOPS in ginning service, as well as TOPS in Turn Out and Sample.

In addition to having our plant thoroughly overhauled, tuned and ready to go, we have a trained crew to operate the plant. Our office staff is experienced in handling all the paper work on your cotton and seed.

WE WILL BUY YOUR COTTON

Or will handle the details of placing it in the Government Loan. We are also a purchasing agency for your "A" plan cotton.

To all the farmers served in the previous seasons, we invite you to come back this year. To the new farmers in our community, we solicit your business. Give us a trial run of bales to gin. We believe you, too, will be pleased with the service we offer, and the good job our gin plant will do in providing the best possible turn out.

HYGRADE GIN INC.

Owners

Mark Hortenstine - Henry Hortenstine

A. L. Higgins — Owner - Manager

Mrs. Foy Hendrix, Bookkeeper-Clerk

CY-8-2126

Abernathy

COSDEN



REMEMBER, ABERNATHY OIL CO.,
Cosden Retail & Wholesale Distributor
Gives FRONTIER SAVINGS STAMPS

ABERNATHY OIL CO.

CY-8-2255 — 709 Ave. D

Royce Henson — Night CY-8-2671

BRING US YOUR

GRAIN

We Will Appreciate

Handling It.

We Have The

CAPACITY

and the

FACILITIES

for

RAPID HANDLING

BIG STATE GRAIN CO.

CY 8-2661

Abernathy

THREE BIG DAYS

DOUBLE THRIFT STAMPS



The Champ Of Stamps

-- DOOR BUSTERS --

!! FREE !!

\$10.00 Worth of Double Thrift Stamps to the First 25 Customers Each Morning this Thursday, Friday & Saturday



THESE TERRIFIC BUYS GOOD:
Thursday, Friday and Saturday

Double Double Thrift Stamps

All Day Thursday Friday and Saturday, Oct. 6, 7, 8

FREE!

\$3.00 Worth of Double-Thrift Stamps all day Thursday, Friday and Saturday to all adult Customers.

MILK Shurfine Evaporated Tall Can **10c**

5 Shurfine Lb. Bag **29c**

23c 400-Ct. Box



FLOUR

KLEENEX



Double Double-Thrift Stamps every Wed. With \$2.50 Purchase Or More.



LIBBY'S 46-Oz. Can
TOMATO JUICE

25c

ENERGY — Giant Box
DETERGENT

49c

FOOD KING — 3-Lb. Can
SHORTENING

49c

SOFLIN — 4-Rolls
TISSUE

29c

BACON Wrights 2-Lb. Thick Sliced **98c**

SALT PORK lb. 29c
PORK LIVER 2 lbs. 29c

PRESERVES

Food King 18-Ounce Peach, Plum Apricot, Strawb. **3 For \$1.00**

ASPIRIN Bayers 100-ct. Bottle **59c**

Shurfresh Saltines, 1-lb. box **19c**
Austex All Meat, 300 can **39c**
CHILI

Fisher Boy — 8-Oz. Pkg. **FISH STICKS**
Suzannes — 24-Ct Pkg. **ROLLS**
Shurfine — 6-Oz. Can, 2 for **LEMONADE** **19c**

GRAHAM CRACKERS Sunshine 1-Lb. Box **33c**

PINEAPPLE Sweet Treat Crushed Heavy Syrup, 300 Can **2 for 39c**

GRAPEFRUIT DRINK Libbys, 32-oz. can Pineapple- **5 for \$1.00**

GRAPES Tokay lb. **10c**

Russets, 10 Lb. Bag **39c**

POTATOES

Crisp Firm Heads **LETTUCE** lb. **10c**

GLEEM **Tooth Paste** Reg. 53c Size **45c**

FREE!!! 20,000 Double Thrift Stamps

Drawing, SATURDAY NIGHT
7:00 P. M., October 8.
Need Not Be Present To Win

1st PRIZE 10,000
2nd PRIZE 5,000
3rd PRIZE 3,000
4th PRIZE 2,000



SMITH'S FOOD STORE

PRICES EFFECTIVE THURSDAY, FRIDAY AND SATURDAY

DIAL CY 8-2627

PLENTY OF FREE PARKING

ABERNATHY WEEKLY REVIEW

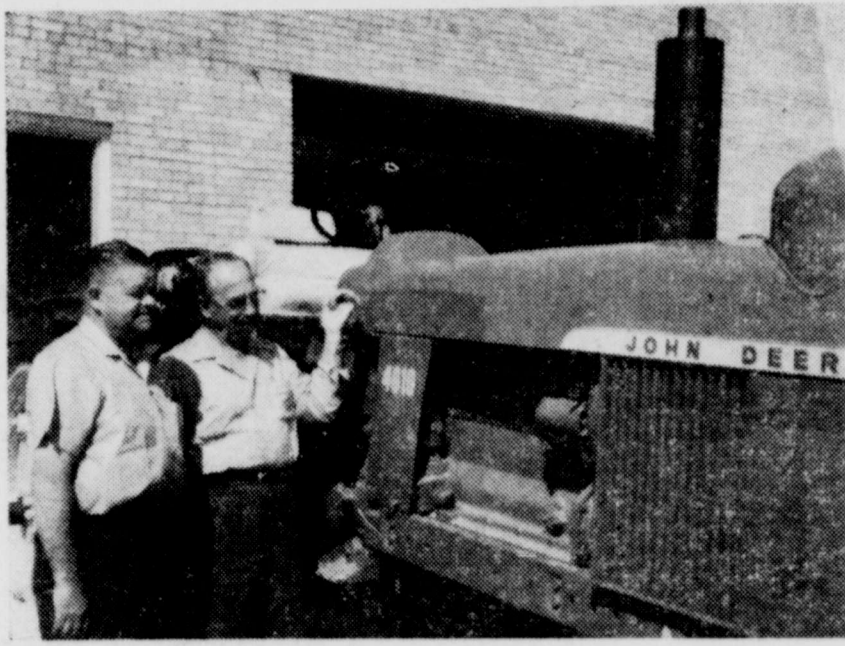


VOLUME 39 Hale County — Abernathy, Texas — Lubbock County

THURSDAY, OCTOBER 6, 1960

NUMBER 48

Antelopes Feed Hornets' Sting, 28-7



INSPECT NEW JOHN DEERE 4010 TRACTOR—Shown here inspecting the first 1961 model John Deere 4010 tractor received at Joe Thompsen Implement Co. in Abernathy are Joe Thompsen, left, and Roy W. Dwyer, Mr. Dwyer, who resides in Plainview, is John Deere's territory manager. The John Deere 4010 is a six-cylinder tractor with 80-HP rating. It has 49-gallon capacity butane fuel tank mounted up front.—(Staff Photo)

Abernathy's ill-fated Antelopes were defeated 28-7 by the Tulia Hornets there last Friday night. The Antelopes managed only one touchdown and kicked the extra point, and also drove to the one-yard line early in the final quarter only to see the ball squirt away as they were hard hit at the line of scrimmage by a host of Hornets, and Tulia recovered the fumble and took over on their own one.

Quarterbacks John Brown and Keith Beard, as well as halfback Mike Ritchey, filled the air with passes during the tilt, but were unable to complete only seven out of 23 attempts. Thirteen passes fell incomplete and three were intercepted, one being returned for a touchdown by Tulia.

Defensively, the boys played better ball than they did against Denver City, but Tulia had a wide variety of deceptive plays and also connected on short passes.

Abernathy's Ronald Barrick, Joe Tom Brown and Larry Florence each recovered Tulia fumbles during the game, and the Antelopes fumbled three times, recovering once.

Abernathy TD
Abernathy's lone touchdown came late in the second quarter after Tulia had already scored twice. Tulia kicked off to the Antelopes and Mike Ritchey took the kick on his own 25 yard line and carried to the 35. A pass intended for end Jerry Gist fell incomplete, then Brown hit Mike Ritchey with a pass, the play covering 29 yards to Tulia's 35.

Tom Ritchey lost a yard, then Mike Ritchey took a pitchout from Beard and hit Tom Ritchey with a pass to the 12 yard line. Beard failed to gain, a pass fell incom-

plete, Dan Thorn was stopped for a no gain, Keith Beard hit end Jack Waters with a bullet pass in the end zone for the TD. Mike Ritchey kicked the extra point to set the score at 12-7, favor of Tulia.

Tulia TDs
Tulia's first touchdown was scored early in the first quarter by speedy halfback Gerry Don Haught on a 51 yard scamper. The try for EP went with the goal posts.

Early in the second period, Tulia marched from their own 34 to Abernathy's 21, but were stopped when Neal Humphrey intercepted a Hornet pass on his own 15. From here Abernathy had the ball three plays, the third being a pass to the right that intended for Humphrey, but the pass was intercepted by Tulia quarterback Paul Caraway who streaked to the goal line 25 yards away. On the try for extra points Jackie Habbinga tackled Troy Brasher before he got to the line of scrimmage. The score then was 12-0.

After Abernathy made their touchdown in the second quarter they kicked to Tulia who moved to the 50 yard line where they fumbled on fourth down and Larry Florence recovered on Tulia's 42. Three Antelope passes fell incomplete, then Beard lost four yards on fourth down, and Tulia took over on their own 46.

Tulia completed two short passes good for four yards to the 50, then a Caraway-Charlie Mitchell pass combination to the left flat resulted in a touchdown, Mitchell going the distance in record time. The same pass combination resulted in the extra points to put the Hornets out front 20-7.

Late Drives
Late in the fourth quarter Tulia drove to Abernathy's 31 yard line. A penalty set them back to the 36 and the Antelopes held on fourth down and took over on their own 57. From here the Antelopes drove to Tulia's 25 yard marker where passes fell incomplete as the game ended.

The two teams tied on the number of first downs with 12 each. The Antelopes managed only four first downs in the first half to the Hornets' 7. On the seven pass completions, Abernathy made 139 yards, Abernathy punted once for 35 yards, and Tulia punted twice averaging 33 yards per kick. Abernathy received four penalties for 36 yards, and Tulia was penalized 105 yards on 11 penalties.



BROTHERS TEAM UP—Pictured above are the six sets of brothers on the 1960-61 Abernathy High School Antelope football squad. In the photo, "big brother" is standing and "little brother" is kneeling. From left to right, standing to kneeling, they are: Jackie and Kay Don Habbinga, Ronald and Billy Barrick, Leo and John Kiker, Mike and Tom Ritchey, John and Richard Saari, and twin brothers Johnnie (24) and Donnie Adams. (Photo Courtesy Abernathy School Athletic Dept.)

The Hornet's final TD came on the first play of the fourth quarter when Brasher barreled over from six yards out, capping a 73 yard drive. A pass to Mitchell was good for the extra points to make the final score, 28-7.

USDA PLANS NEW RESEARCH ON SCREW-WORMS

While some scientists are trying to send a rocket to the moon, others are trying to rid the Southwest of one of its worst livestock pests—the screwworm.

The USDA has announced that new research on means of eradicating the screwworm will begin soon at Kerrville. This is the same USDA station that was responsible for much of the basic research that led to the sterile-fly technique used successfully against the screwworm in the Southeast.

One of the main projects of the USDA's entomologists will be to develop better methods of rearing screwworms, and also to find ways to produce strains of the insect better suited to sterilization by radiation.

In announcing the new project, the USDA reported that Dr. Raymond C. Bushland would head the researchers.

Soil Testing Is Farmers' Best Return

College Station—Efficient farming methods are prerequisites to maximum profits, and failure to determine the soil's need for lime and fertilizer is not efficiency. Dr. W. F. Bennett, extension soil chemist, says that the best place to determine the amount of lime or fertilizer a pasture or field needs is in the laboratory.

"A farmer or rancher gets more return on the money spent for testing and then applying recommended treatment to his soil than he does on any other money spent for crop production," Dr. Bennett points out.

Improper nutrient balance, coupled with a lack of weed, insect and disease control, greatly reduces the potential effectiveness of fertilizer. If the soil is high in acid or low in lime content, the phosphorus, potassium and some of the nitrogen is lost to growing plants, Bennett continues. Addition of agricultural limestone to such soils will result in greater use of plant nutrients, resulting in increased crop yields.

Application of limestone produces such beneficial results as providing calcium for plant food and making phosphorus more available for plant use. Also, soil bacteria are stimulated, the soil is easier to work, forage plants are more nutritious for livestock and toxic materials in the soil are neutralized, Dr. Bennett continues.

All of the above benefits are made available to landowners whose soil is tested to determine what is needed. Soil samples are easy to collect, and any county agent can give you information on taking and mailing them, Dr. Bennett concludes.

Under conditions of good management, feeding aureomycin to milking cows at a low-level apparently has no advantage, reports A. M. Meekma, extension dairy husbandman. On the other hand, the dairyman may run the risk of having his milk condemned because of faulty feed mixing or may create antibody resistance disease organisms in his herd and is sure to increase feed costs if the antibiotic is fed.



Our customers come from many states — and our reputation for friendly service is traveling far and wide. Enjoy it yourself — drive in soon and regular.

COME IN PLEASE
DRIVE OUT PLEASED

CONSUMERS FUEL ASSOCIATION
"Where Customers Send Their Friends"
Dial CY-8-2330

LEE'S TASTY SAUSAGE
COUNTRY STYLE — ALL PORK
Made From Pork Hams, Loins and Sides
INSPECTED
None Better. Ask For It At Your Grocer.
We Serve the South Plains
Lee's Sausage
Wholesale Only

Gin Your Cotton With FARMERS TUCO GIN

We Have The Very Latest Moss Super - Constellation

DOUBLE UNIT LINT CLEANER

**DOUBLE ACTION
DOUBLE CAPACITY
DOUBLE PERFORMANCE
DOUBLE DRYING SYSTEM**

Better Sample With Less Fiber Damage

This Equipment Was Installed For One Purpose Only: To Improve the Quality of Your Sample.

GIVE US A FEW TRIAL BALES

We Believe You Will Be Completely Satisfied With the Quality of Our Service.

FARMERS TUCO GIN
A. L. Marcy, Manager
Phone CY-8-2467
On north side of FM Highway 54, three miles north of Abernathy

DON'T MISS THE BIG 75th BIRTHDAY PARTY

STATE FAIR OF TEXAS

DIAMOND JUBILEE EXPOSITION

A GALAXY OF STELLAR ATTRACTIONS

THE BROADWAY HIT
FLOWER DRUM SONG
ICE CAPADES
SHOWER OF STARS
— FABULOUS HEADLINES —
ARTHUR GODFREY, NELSON EDDY,
RICHARD RODGERS, FABIAN,
BRENDA LEE, EMMETT KELLY,
REX ALLEN, JIMMIE RODGERS,
HOWIE & JETRO, AND
COLLEGE JAZZ FESTIVAL

STATE FAIR
HORSE SHOWS
Texas International Trade Fair
Exciting Cotton Bowl Football
MILLION-DOLLAR MIDWINTER
MOBIL SKY REVUE
Wonderful and new exhibits and displays

SEWING FASHION FESTIVAL
Pan-American Livestock Exposition

OCT. 8-23 • DALLAS

MR. GINNER—Mr. Manufacturer!

This Special Item Now Available **LOCALLY**

Brandon & Clark Electric Co.
2314 4th Street
LUBBOCK
Phone PO 5-8818

Distributors For
JANETTE
GEAR MOTORS AND SPEED REDUCERS

50 CARS FREE

WIN A NEW 1961 MERCURY or COMET

IN THE **MERCURY-COMET SWEEPSTAKES!**

Mercury Meteor 800 2-door Hardtop

Comet 2-door Sedan

25 MERCURYS-25 COMETS
50 CARS FREE

You will be happy to own either the '61 Mercury or '61 Comet. Each of the cars given away will be equipped with automatic transmission, white sidewall tires, radio, heater, directional signals and windshield washer.

EASY TO ENTER... NOTHING TO BUY... IT'S FUN
GET YOUR FREE ENTRY FORM AT OUR SHOWROOM TODAY... HURRY!
SWEEPSTAKES OPENS OCT. 6, CLOSES OCT. 31, 1960

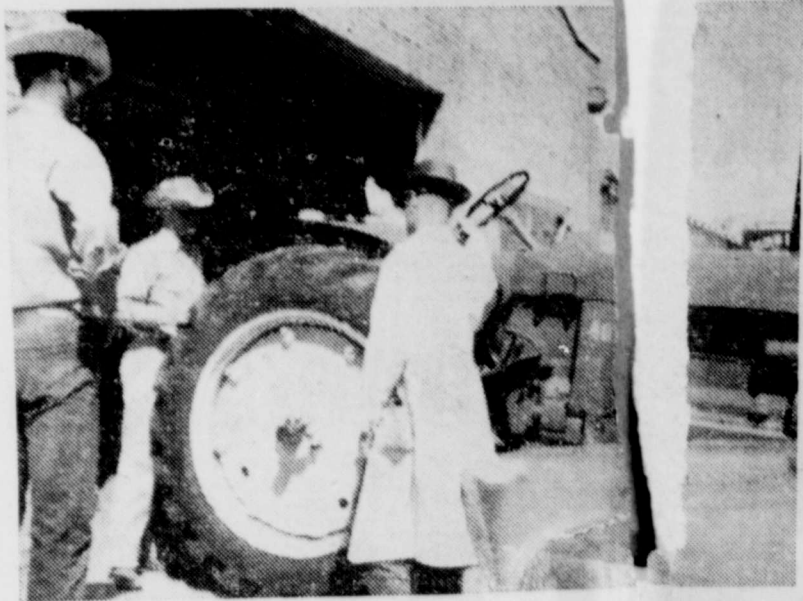
ABERNATHY MOTOR COMPANY
CY-8-2821 — Mercury Dealer — Abernathy, Texas

Better Hog Prices Are Foreseen

College Station—The price outlook for hogs for the next few months is considerably brighter, John McHaney, extension economist, says that prices received by farmers in the last half of 1960 will be higher than those received in the last half of 1959. He says they will not, however, reach the peak prices of 1958, and the usual fall price decline can be expected. McHaney explains this forecasted price rise by pointing out that the 1960 spring pig crop was down 16 percent from the 1959 spring crop. This decrease was brought about mainly because fewer sows farrowed and fewer pigs were produced per sow. Spring prices in 1961 will be

largely determined by the size of the 1960 fall crop, McHaney continues. According to the present crop forecast, the 1960 fall crop should be smaller than the 1959 crop, thus the prices received in the spring of 1961 should be higher than those received this year. The specialist concludes with a word of warning for swine producers. He says there are indications that this downward trend in production may be the shortest on record, and just because prices may be better in the last half of 1960 and in the first few months of 1961 is no reason to believe that prices will bring satisfactory returns to all producers in the last half of 1961.

DRIVE SAFELY -- You're never safe enough to afford one careless moment.



B. H. BEARD, RIGHT, SERVICE DEPARTMENT MANAGER at Joe Thompson Implement Co. in Abernathy, is discussing the new 1961 six-cylinder John Deere 4010 tractor with two local farmers, Darrell Stephens, left, and Elza Lambert, center. (Staff photo)

GUIDEBOOK ON TEXAS LABOR LAW AVAILABLE TO BUSINESS MEN

Businessmen who operate small or medium sized businesses in Texas now have a guidebook on Texas labor law available for handy reference.

Written by two Texas Tech business administration professors, the booklet is entitled "Texas Labor Law for the Small Employer."

"It is not intended to replace the need for an attorney," says Dr. William G. Cain of Tech's management department. He co-authored the booklet with Charles E. Dale, Tech assistant professor of finance who is also an attorney.

"The purpose of this handbook is to serve as a reference for the many thousands of employers who operate small or medium sized businesses within the boundaries of Texas," Cain said. "It attempts to point out the framework of Texas State Law which governs relationships between the employer and his employees."

The handbook is essentially written for application to the smaller company engaged in what is called "intra-state commerce"—whose business is done primarily within the state of Texas. It may be obtained by writing Cain or Dale at Texas Tech.

Seven chapters in the book cover such subjects as "Special Conditions of Employment for Women and Minors," "Employer Safety Responsibility," "Wages," "Workmen's Compensation Laws," "Labor Relations," "Texas Unemployment Compensation," and a "Miscellaneous" chapter on Sunday laws on sales and working hours, information needed by the state and voting privileges. The booklet points up many legal aspects many businessmen do not know or are not aware of. For instance, current wages for personal services cannot be the subject of garnishment in Texas. And, a married man cannot assign his wages (to a person to whom he is in debt) without the consent of the wife according to Vernon's Texas Civil Statutes (Articles 4099 and 6165a).

1935 Study Club

The 1935 Study Club members met in the home of Mrs. Dan Ward on Sept. 22. The program theme for the year is "Now we are Fifty with Hawaii and Alaska."

Mrs. Philip Sterrett discussed the "Physical Features and Climate of Alaska." Mrs. John Hale, the "Physical Features and Climate of Hawaii."

The following members were in attendance: Mmes. Fred Blumen-

stock, W. V. Cunningham, Loyd Edwards, John Hale, J. L. Harston, E. A. Houston, Thomas Johnston, Frank Lovelace, Kit Medlin, J. L. Miller, Jr., R. A. McAlister, Ray Pinson, Phil Sterrett, Dan Ward, and R. R. Struve.

The next meeting will be on Oct. 13, with Mrs. R. R. Struve as hostess.

Abernathy area . . . the best place in the world to live!



TEXAS TECH'S 1960 Schedule

- Sept. 17—West Texas (HN)
- Sept. 24—Texas A&M (N-SWC)
- Oct. 1—Texas (N-SWC)
- Oct. 8—TCU (N-SWC)
- Oct. 15—Baylor (HN-SWC)
- Oct. 22—SMU (H-SWC)
- Oct. 29—Rice (SWC)
- Nov. 5—Tulane (H)
- Nov. 12—Wyoming (H)
- Nov. 19—Arkansas (H-SWC)

H—Lubbock
N—Night
SWC—Southwest Conference

E. J. HOLUB
Texas Tech

SOUTHWEST CONFERENCE FOOTBALL PLAY—long a Texas Tech goal—will be attained this fall by the Red Raiders, who again have the school's first All-American, center E. J. Holub, in the lineup.

Drs. Cauley and Welch
OPTOMETRISTS
Visual Examinations and Contact Lenses
1114 Ave. L Lubbock Phone PO 5-7180

DENNIS & CHAMBERS FUNERAL HOME
We Honor All Burial Insurance
CASH BURIAL INSURANCE TO AGE 85
FAMILY GROUP INSURANCE
Up to \$500 — \$1.00 per Mo.—5 Members
Up to \$750 — \$1.50 per Mo.—5 Members
Up to \$1000 — \$2.00 per Mo.—4 Members
THESE RATES APPLY UP TO AGE 30
For Rates On Other Ages, See Us.
AMBULANCE SERVICE

WARNING
SCHOOL BUSES
Motorists are warned to observe the state law in regard to passing school buses stopped to take on or discharge passengers. The law requires that motorists STOP, then proceed with caution (not to exceed 10 mph) in passing a bus. School bus drivers are obligated to take the license number of any vehicle passing a bus in any other manner than that described above.
MOTOR SCOOTERS
Law enforcement officers warn parents that they will be held responsible if they allow their minor child to operate a motor scooter without a drivers license. In addition to having a drivers license, those who ride motor scooters must obey all traffic laws, including the observance of all stop signs. All motor scooters must have mufflers before they can be operated.

THANK YOU: A warm and heartfelt thanks to you, whose thoughtfulness and acts of kindness, made my recent stay in the hospital a short and pleasant one.
Mason Hawkins
The Review Phone No: CY-8-2033

Can YOU STOP in Time? SLOW DOWN and LIVE!

"Ask me another question if you like. I've read this week's issue of The Abernathy Weekly Review, son."

THANK YOU FOR YOUR PAST PATRONAGE

WE ARE READY TO GIN COTTON

Our Plant Has Been Modernized This Past Summer.
We Are Getting Better Grades and Turnouts Than Ever Before As A Result.

EXTRA SERVICE

We Also Offer Services That Cannot Be Had At Any Other Gin In Our Community.

You Are Invited To Come By And Look And Learn

SERVING THE FARMERS
TWELVE MONTHS
OF EACH YEAR.

ABERNATHY GIN COMPANY
Phone CY-8-2432
Abernathy, Texas

1961 Corvair
Rampside is inclined to save work

With an exclusive hinged side-loading ramp, powered by the rear-mounted 80-hp, air-cooled the Chevrolet Corvair 95 light-duty truck offers Corvair engine for low operating costs. On a 95-inch wheelbase, it has a loading height of 14 inches at the side gate and 26.5 inches at the rear.

NOTICE TO TAX PAYERS
Of The
Abernathy Consolidated County Line Independent
SCHOOL DISTRICT

By Paying Your Taxes Early You Can Take Advantage of the Following Discounts:

If Paid In:	Discount
OCTOBER	3%
NOVEMBER	2%
DECEMBER	1%

TAXES ARE DUE JANUARY 1, 1961
Penalty and Interest If Not Paid By Jan. 31, 1961.

EARL CARTER TAX COLLECTOR
Office in Abernathy High School Building
OFFICE HOURS — 8:30 A. M. To 5:00 P. M.
Open Until Noon On Saturdays
— TAXES MAY ALSO BE PAID BY MAIL —

Grain Market Development Program Expanded By GSPA

The entire feed grain industry including corn producers, the grain seed industry, export firms and cooperative and independent grain dealers, it was announced this week, are mustering forces behind the foreign market development program which the Grain Sorghum Producers Association of Amarillo, Texas initiated and has been administering the past two years. It is expected that this new and broader interest in financing and directing the export promotion program will increase activities in this connection as much as five times over the present program.

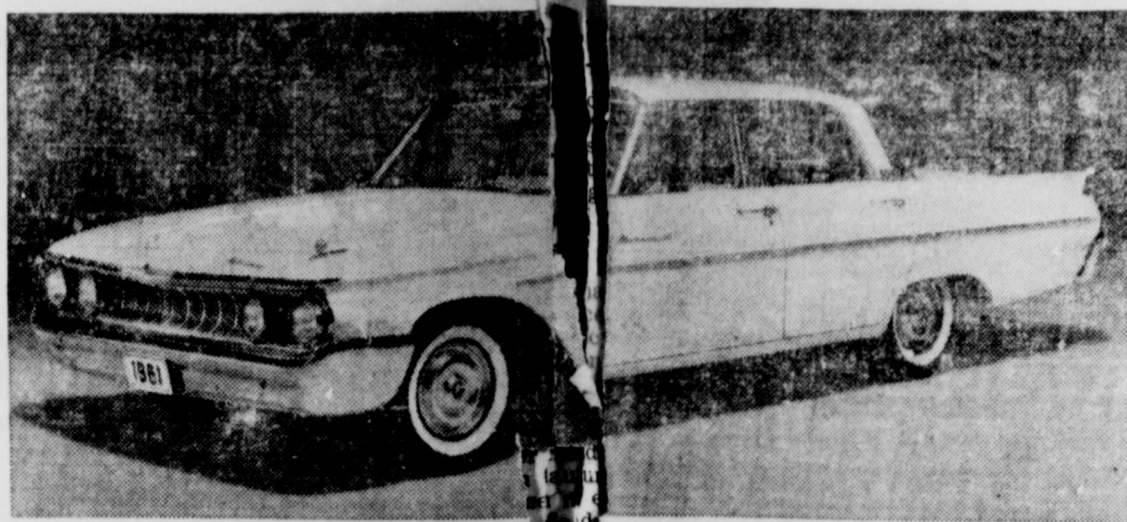
The announcement relative to the expanded program was made after an area Director's Meeting of the Grain Sorghum Producers Association in Tulla, Texas July 6, 1960. The Board acted on the recommendation of R. G. Peeler, Director of Hereford, Texas and Bill Nelson of Amarillo, Texas, the Association's Executive Officer who have been negotiating with the other grain interests the past several months.

Organizations joining with the Grain Sorghum Producers Association are the Hybrid Corn and Hybrid Sorghum Divisions of the American Seed Trade Association, Chicago, Illinois, the National Corn Growers Association, Boone, Iowa, The North American Export

Association, New York City, Farmers Grain Dealers Association of Des Moines, Iowa, Continental Grain Company, New York City and Cargill Grain Corporation, Minneapolis, Minnesota. All of these grain industry groups have combined forces for this effort through a newly formed organization which is known as the U. S. Feed Grains Council. The expanded Council program is to remain under the administrative direction of Bill Nelson who is to serve as the Executive Director.

It is expected that this Council approach will provide for an increase in the exchange of county agents and other agricultural leaders in potential U. S. grain market areas, as well as allow for the bringing of an increased number of foreign feed grain users and processors to the area to study grain sorghum and other feed grains, and provide greater understanding of our grades, standards and trading practices.

In addition to Frank Moore of Plainview, Elbert Harp of Hereford and Sam Gilbreath of Dimmitt who will represent the Grain Sorghum Producers on the Council's Board of Directors, other officers are: Walter Goeppinger of National Corn Growers Association, Boone, Iowa, Nelson Urban, Pioneer Hi-Bred Corn Company, Des



Mercury for 1961 offers a completely new line of cars, with two series that are priced squarely into competition in the low-price field. The new Mercurys are 4 1/2 inches shorter and 1 1/2 inches narrower, yet they retain Mercury's reputation for interior comfort, riding qualities and distinctive styling. Fourteen models with a wide selection of engine and transmission options are offered, including the first six-cylinder engine in Mercury history. Pictured is the Meteor 600, four-door sedan.

Moines, Iowa, Fred Maywald, Farmers Grain Dealers Association of Des Moines, Iowa, Bill Pierce of Cargill Grain Corporation, Minneapolis, Minnesota.

Other business at the Grain Sorghum Producers Association meeting in Tulla included a report from Charles C. Gidney, Jr., from Rome, Italy who is administering the European feed grain market development projects. He is encouraged at the potential for expanding grain sorghum and other U. S. feed grain exports to the European area if continued efforts are made toward removing or lessening trade barriers,

import duties and licensing restrictions. He further praised the work of area county agents and other agricultural trade education programs throughout Europe.

Martin Gossett, Moore County Agent from Dallas, reported on the expanded efforts of grain sorghum producers in his county in attempting to interest livestock feeders in establishing feed-lot operations in the area. He pointed out that the final result of this effort was to be seen with the opening in August of at least one big feed lot.

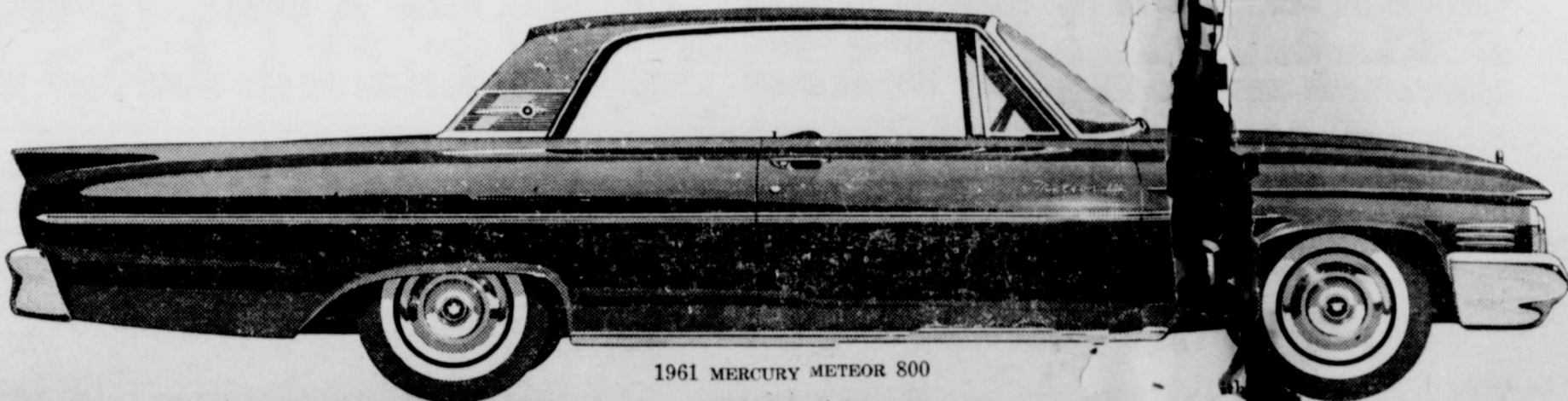
News About Men In Service

FORT RILEY, KAN. (AHTNC)—Army Specialist Four Henry F. Healy, 20, son of Mrs. Hazel M. Healy, Abernathy, Texas, was assigned to the 1st Infantry Division at Fort Riley, Kan., Sept. 26.

An ammunition specialist in Headquarters Company of the division's 12th Infantry, Healy entered the Army in August, 1957.

Healy, whose wife, Norma, lives in Ogden, Kan., attended Abernathy High School.

All new—and here today!



1961 MERCURY METEOR 800

MERCURY METEOR

600 and 800 series

Priced right in the heart of the low-price field

HIGHLIGHTS

Modern new size—trimmer, better proportioned, for easier handling and parking.

7 self-servicing features including chassis that is pre-lubricated for first 30,000 miles.

Even roomier than last year. More rear-seat shoulder room, hip room, and head room. More entrance room. Bigger trunk.

New Super-Economy engines. Up to 15% more gas mileage.

Mercury's first "6" plus new V-8's that use regular gas. Up to 10% better pickup than last year's brilliant Mercury.

First low-price car with a fine-car ride. Exclusive Cushion-Link suspension!



1961 MERCURY METEOR 600



1961 MERCURY METEOR 800

1961 MERCURY PRICE COMPARISON CHART	
PRICES START HUNDREDS LESS THAN LAST YEAR	
Optional equipment and transportation cost far less, too!	
1. MERCURY METEOR 600	Priced right in the middle of the low-price field with such cars as Chevrolet Bel Air and Plymouth Belvedere.
2. MERCURY METEOR 800	Priced with the top series in the low-price field with such cars as Chevrolet Impala and Plymouth Fury.
3. MERCURY MONTEREY	Finest, most luxurious of all 1961 Mercurys.

HERE IS A NEW AND BETTER LOW-PRICE CAR —WITH A 12-MONTH OR 12,000-MILE WARRANTY

You're looking at the newest car in the low-price field—the Mercury Meteor. But the resemblance to other low-price cars ends with the price.

COSTS LESS TO DRIVE! You save on upkeep. Your Mercury dealer is extending his warranty on all 1961 Mercurys to one full year or 12,000 miles, whichever comes first. See him for full information. He will be glad to show you a copy of his new warranty.

You save on gas. Mercury's new, wider choice of engines and transmissions lets you tailor your new Meteor to your kind of driving. Choose super economy, super power, or any combination in between. And just think of these 7 other savings:

A new pre-lubricated chassis lets you drive 30,000 miles before it needs another lubrication. A new-type oil filter lets you drive 4,000 miles between oil changes. Mufflers are aluminumized for more than double the life. Brakes are self-adjusting.

New zinc-coated body panels protect your car from rust two or three times as long. Spark plugs are self-cleaning, save gas. A special Super-Enamel finish never needs waxing.

LOOKS BETTER AND IS! The styling and size are completely new. Trimmer, easier to garage, far more agile. You get a deluxe interior in every model at no extra cost.

FEELS LIKE MORE! Here's the first low-price car to provide a true "fine-car feel." Not just shock absorbers and springs for your riding comfort, but a unique new system of rubber cushioning called Cushion-Link suspension. It is exclusive on all Meteor 800's, Monterays, and Mercury station wagons. No more bumps from tar strips and other road-surface irregularities.

Don't miss the first showing! See your Mercury dealer now. Here, without question, is the newest and smartest buy in the low-price field.

LINCOLN-MERCURY DIVISION, Ford Motor Company.

1961 MERCURY—the better low-price car

WIN A NEW MERCURY OR COMET! 50 CARS GIVEN AWAY FREE! Enter the Mercury-Comet Sweepstakes, October 6 to 31. Easy to enter. See your Mercury Dealer now. Subject to state and local regulations.

ABERNATHY MOTOR COMPANY
CY-8-2821 — Mercury Dealer — Abernathy, Texas

Postscripts On Athletics

(By Dr. Rhea H. Williams, State Director, Interscholastic League)

With the advent of the 1960 football season, there needs again to be a reemphasis of the values and merits of the game of football as it is related to our educational system. In this age where there is a growing tendency for our youth to become physically softer, we need the help of all in encouraging students to devote themselves to a program which requires rigid discipline and control of their attitudes, emotions and physical habits. There is no greater opportunity offered by the public school curriculum for improving the physical, mental and emotional discipline than is found in the game of football.

We need during this time of world tension to develop young citizens who have the ability to discipline themselves, to think in times of emergencies and to learn the value of developing and maintaining strong and healthy bodies. If we are not careful, we will develop a "pot plant" generation of youth that will not be able to meet the stress and strain of modern day society.

Favor To "Whom"?
It should always be kept in mind that the school and the community are rendering a most worthwhile service by providing a sound, educational, competitive interschool football program. Unfortunately, there are some parents who feel that they are doing the school and the community a favor by allowing their sons to participate in football. Any parent or any boy who has such an idea is completely "missing the boat," as just the reverse is true. The parents should be eternally thankful that there is still some type of program in the school which requires such rigid discipline in order to achieve success. Where else in the school or community can you find any other program with better organized supervision and trained personnel than you have in football? Where else in the community can you find any more equipment and facilities for the protection and welfare of your child than is provided for football?

It is essential that parents realize that they have a prime responsibility in the training, guidance and direction of their son's mental, physical and social attitude towards football. They can make a great contribution to the boy's education and to the school's football program by indoctrinating their offspring to the effect that it is a privilege and an honor to be a member of the local high school team.

There is a growing "protective-ness" on the part of some parents relative to participation in football competition. This is especially true in the case of many mothers who want to "spread their wings" excessively over their children—many times until they are over 21 years of age. This attitude on the part of some parents encourages a boy not to participate in football because it is too rough or because he may get injured. Certainly, there may be an occasional injury to a boy engaged in a contact sport; but the important question is, "What is the average boy doing when he is not engaged in some worthwhile, outside, supervised activity?" It is a proven fact by statistics that a boy is much safer in supervised football practice than he is when he is not supervised.

Car Versus Football
Paradoxically, in some cases, the same parents who will not let a boy go out for football because it is too dangerous will buy him an automobile or a "hot rod" and think nothing of it. From the viewpoint of the boy's scholastic achievements and his safety, statistics prove conclusively that the most dangerous thing the parent can do is to give him uninhibited freedom with an automobile.

It is a strange set of values on which some of our parents operate as regards allowing their sons to participate in football. Some of the parents abhor the idea of perspiration, physical exertion and bodily contact. This once again is typical of the softness which is permeating our society. With air conditioning, cars and the other luxuries which exist today, there is an even greater challenge on the part to see that our young people participate in vigorous, competitive athletic activities.

The coach and the school have a great responsibility when parents permit their boys to participate in interschool football. The coach and the school should always keep in mind that the parents by so doing are entrusting to the coach the most precious possession they have. Therefore, it is imperative that the coach take every precaution to insure the health and welfare of each individual participant.

This means requiring physical examinations before participating, issuing adequate equipment which fits the player, teaching techniques and skills which are educationally sound, employing officials who are able to conduct the game properly, and providing the proper emotional, educational and social background for the participants.

Good For Boy
There is an equal responsibility on the part of the school, the coaches and the parents to see that every effort is made to provide each player who participates in football the proper educational background in which to develop those specific citizenship traits which can come out of football. There should be less "protective-ness" on the part of parents and more encouragement by parents of boys to participate in vigorous activities. The parents should stress to the boy that it is a privilege for him to participate and represent the local high school team, thereby negating the viewpoint that he is doing the school a favor by playing.

The coach and the school should do everything possible to insure that what they do is for the welfare of the individual boy and not for the glory of the coach or the school. The individual boy should be the focus and anything to the contrary should not be permitted. With the cooperation of the parents, the coaches and the school, there is no reason why each boy who voluntarily elects to participate this year in our Texas high schools should not come out at the end of the season a better citizen and a better individual.

Am I Right?

DON'T GRUMBLE OVER TODAY'S PORTION — YOU NEVER KNOW WHAT'S COOKING FOR TOMORROW

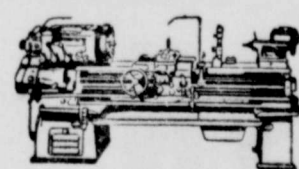


How true is the above. Our only means of getting "dough" is to serve your heating, ventilating, air conditioning and sheet metal needs in such a manner guaranteeing your continued use of our services.

ABERNATHY SHEET METAL WORKS
"Where Quality Prevails"
ABERNATHY CY-8-2120

HOME OWNED AND OPERATED

YOU'LL BE PLEASED



Pump Repair And Gear Head Work
WELDING

A & C Turbine Pumps Machine Work

"Where Quality Doesn't Cost, It Pays"

Pump Pulling and Setting
Casing Pulling
SAM WADE

Domestic Well Service
RED A

MANCILL SMITH

Phone CY-8-2614
Nite CY-8-2217

Phone CY-8-2614
Nite CY-8-2842

John Duty Company

Phone CY-8-2022

Call Any of These Numbers For Complete Well Service.
15th and Ave. D Abernathy

Pope Relected ASC Committee Head In Hale

The Hale County Agriculture Stabilization and Conservation committee was relected at a meeting of community delegates in Plainview.

The committee members are E. J. Pope, Jr., of Abernathy, chairman; J. Earl Lancy, vice chairman; R. A. Gregory, member; Joe Barton, first alternate, all relected; and Swann Pettit, second alternate.

Chairmen of the twelve community committees were the delegates for the annual ASC organization convention.

The county committee year is from Oct. 1 to Sept. 30.

Edith Wilson is to keep three children whose mother is dead, and whose father is unable to keep them. They are two boys, ages 10 and 15, and a girl, 5. They come from East Texas and are to stay at least one year and perhaps permanently. Edith Wilson is cafeteria manager at the Abernathy Schools and lives at 1011 Ave. E. She attends the Church of Christ regularly.

Mail News to The Review

PREPARED?



Get Your First Aid Needs Here.

Pinson Pharmacy

"Prescriptions Accurately Filled, Reasonably Priced"

Dial CY-8-2222 — Abernathy

Lunchroom Menu

ABERNATHY SCHOOL (Subject to Change)

Monday, Oct. 10
Barbecued Pork, Potatoes, Green Beans, Hot Rolls, Butter, Fruit Cobbler, Milk.

Tuesday, Oct. 11
Hamburgers, Baked Beans, Cornbread, Butter, Fruit Cobbler, Milk.

Wednesday, Oct. 12
Steak, Rice, Green Beans, Tossed Salad, Hot Rolls, Butter, Ice Cream, Milk.

Thursday, Oct. 13
Meat Loaf, Potatoes, Spinach, Hot Rolls, Butter, Cake Squares, Milk.

Friday, Oct. 14
Fried Chicken, Potatoes, Buttered Peas, Sliced Tomatoes, Hot Rolls, Butter, Ice Cream, Milk.

TEXAS RESIDENTS MAY OBTAIN PROOF OF AGE FROM CENSUS BUREAU

Last year 10,610 residents of Texas turned to the U. S. Bureau of the Census for help in proving they were born. These persons were among an estimated 30 million United States residents who are without proof of age or birth. The historical records of the Census Bureau provide the only source of this information for most of these 30 million people.

Proof of age or birth is needed to collect social security and other retirement benefits. It is needed to obtain passports. It is needed to qualify for jobs carrying certain age or citizenship requirements. It is needed for some forms of insurance.

Since 1920, the Census Bureau has provided more than three and one-half million persons with copies of their Census records on age, place of birth, citizenship, or kinship. Persons seeking such records of facts about themselves should write to the Personal Census Service Branch, Bureau of the Census, Pittsburg, Kansas, for a Census Records Search Application Form. A fee of \$3.00 is charged for a search of not more than two censuses for one person and for one copy of the information found. Additional copies cost \$1.00 each. An expedited search costs \$4.00. Expedited searches are usually completed within a few days while the routine \$3.00 search may take up to 30 days, depending upon the backlog of requests and the ease or difficulty in locating the information.

The personal information in the records of the 1900 and later Censuses is confidential by law and may be furnished upon the written requests of the person to whom it relates or, for a proper purpose, a legal representative such as guardian or administrator of an estate. Information regarding a child who has not reached legal age may be obtained upon the written request of either parent.

Martin Gin Plant Is Modernized

(By O. F. REA)

The former Ritchie Gin, located west of the draw on the Littlefield highway, FM 34, changed hands in May this year. The new owners are Mr. Ray Martin and his wife, Lena. Mr. Martin is no novice at ginning on the Plains, having spent the past 33 years in gins in the Plains area.

He spent seven years with a gin at Hürwood, seven years at Wolforth, eleven years at Leveland with the late Henry Brown and his son Howard. He next went to Dimmitt for seven years as manager of a gin. From Dimmitt he came to the gin he purchased from Ritchie.

Mr. Martin's family consists of himself and his wife. They are members of the Baptist church and he is a Mason. They have a home at the gin.

Since purchasing this gin, Mr. Martin has made a modern "Plains type" gin of it. He has installed new stands in place of the old ones, installed a new floor level press, put in additional cleaning equipment such as Air Line cleaners, Green Leaf and Stick machine, Dryers, Moss Double Lint cleaners and a number of electric motors. These and many other additions and improvements have made a modern gin of the type necessary here on the Plains.

Mr. Martin will handle his own purchase plan for buying your "B" plan cotton and handling your government loans on "A" plan cotton. Both will be handled at the gin office making it unnecessary for you to make a trip to the cotton warehouse for your loan papers.

Mrs. Martin will handle the office, bookkeeping and weighing. See their ad on another page of this issue.

Mrs. Vernon Pettit was a patient in a Lubbock hospital last week.

Wiles E. Gibson - AIRWAY SPRAYERS

We Believe

We Can Serve You Best!

1. Locally Operated
2. Year Around Service
3. Serving Abernathy Area
4. Dependable Service
5. 7 Airplanes to Speed Your Job
6. The Best In Equipment

CONTACT

AIRWAY SPRAYERS

ABERNATHY AIRPORT

Day or Nite -- DA 8-2333

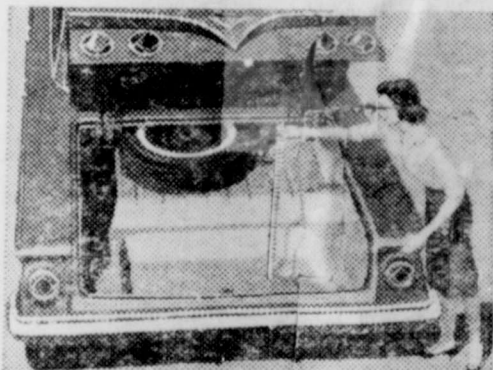
FRIDAY! THE GREATEST

SIXTY-ONE DERFUL CHEVROLET

Here's the car that reads you loud and clear—the new-size, year-size '61 Chevrolet. We started out by giving the outside size a boost of 10 extra inches of clearance for parking and maneuvering, but inside we left you a full measure of Chevy comfort. Door openings are as much as 6 inches wider to give feet, knees, and elbows the undisputed right of way. And the new easy-chair seats are as much as 14% higher—just right for seeing, just right for sitting.

Once you've settled inside you'll have high and wide praised for Chevrolet's spacious new dimensions (in the Sport Coupes, for example, head room has been upped as much as 2 inches, and there's more leg room, too—front and rear). Chevy's new trunk is something else that will please you hugely—what with its deep-well shape and bumper-level loading it holds things you've never been able to get in a trunk before.

Yet, generously endowed as this car is with spaciousness and stetched elegance, it holds steadfastly to the thrifty, dependable virtues Chevrolet buyers have come to take for granted. Your dealer's the man to see for all the details.

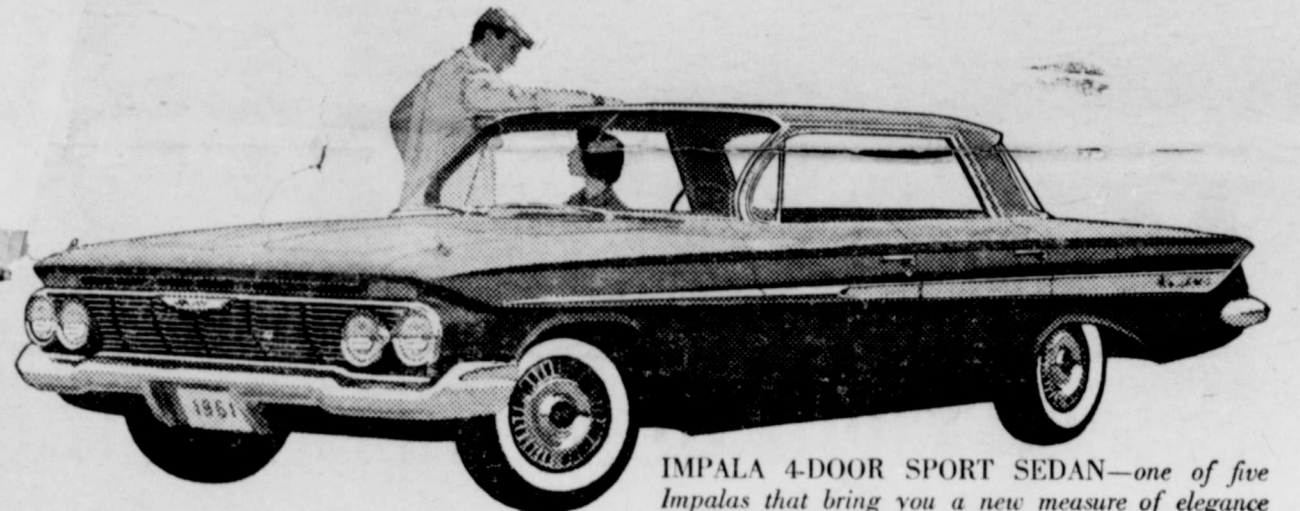


There's never been a trunk like it before! The floor's recessed more than half a foot and the loading height is as much as 10½ inches lower.

INTRODUCING THE '61 CHEVY BISCAYNE 6

the lowest priced full-sized Chevy with big-car comfort at small-car prices!

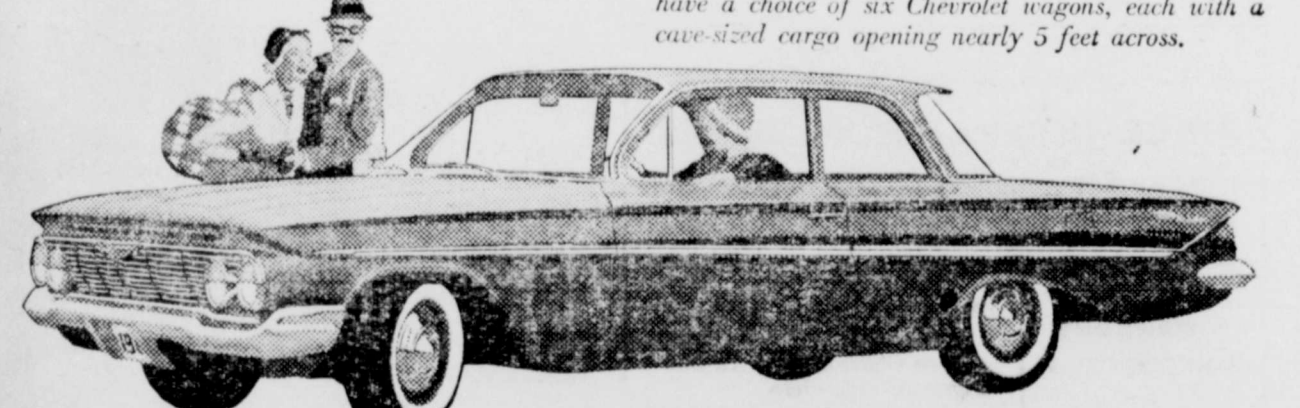
Chevy's new '61 Biscaynes—6 or V8—give you a full measure of Chevrolet quality, roominess and proved performance—yet they're priced down with many cars that give you a lot less! Now you can have economy and comfort, too!



IMPALA 4-DOOR SPORT SEDAN—one of five Impalas that bring you a new measure of elegance from the most elegant Chevs of all.



NOMAD 9-PASSENGER STATION WAGON. You have a choice of six Chevrolet wagons, each with a cave-sized cargo opening nearly 5 feet across.



BEL AIR 2-DOOR SEDAN, like all '61 Chevrolets, brings you Body by Fisher newness—more front seat leg room.



Biscayne 4-Door Sedan

See the new Chevrolet cars, Chevy Corvairs and the new Corvette at your local authorized Chevrolet dealer's

REID CHEVROLET

CY-8-2561

Abernathy

LET US HANDLE YOUR

-GRAIN-

WE HAVE INCREASED

Storage Capacity

AND

Handling Capacity

This Means FASTER and More EFFICIENT

SERVICE

TO YOU.

SERVICE GRAIN CO.

CY 8-2226

Abernathy

Co-Op Grain Co. Adds Facilities

Co-op Grain Company of Abernathy is adding storage capacity at its plant. A new grain storage and handling building is being erected east of the office where you have perhaps seen grain piled in the open for the last two years.

The new facility is 140 feet by 200 feet, and will be equipped with an auger below ground level in the center. In fact, it will be in a tunnel below ground which will facilitate better handling of grain. This addition will also be equipped with the most modern

eration equipment. Upon completion of this new addition the maximum capacity will be boosted to 1,150,000 bushels. This is an increase of 650,000 bushels.

This information was furnished by Co-op manager Glen Hammond.

Tommy Jo Johnson, daughter of Mr. and Mrs. Tom Johnson of County Line and Betty Struve, daughter of Mr. and Mrs. Vic Struve are attending Eastern New Mexico University at Portales.

Lynn Green, son of Mr. and Mrs. Delton Green of Lubbock, spent several days here in the home of his cousin, Mrs. Richard Havens and family.

OPENINGS IN U. S. ARMY SECURITY AGENCIES

The US Army Security Agency is associated with communications security, for and within, the Department of the Army. It is not a part of the US Army Counter Intelligence Corps or the US Army Criminal Investigation Division. Personnel of the US Army Security Agency are not agents, are not authorized a civilian clothing allowance, and are not connected with "cloak and dagger" activities.

The type of duties you will perform, the mission of the US Army

Security Agency and its activities cannot be revealed until you are given the required security clearance which will authorize you to have access to highly sensitive (classified) material necessary to the performance of your specific assignment.

It is desirable that individuals accepted for service in the US Army Security Agency be able to exercise imagination, powers of concentration, in electronics, mathematics, electrical mechanics, and other fields of engineering in communication. Individuals possessing education, experience, or aptitude for training in foreign languages, personnel administration, accounting, supply administration and many other occupations are also required to perform support type duties necessary to the successful accomplishment of the assigned mission. Individuals accepted for assignment to the Agency must possess interest, enthusiasm, and aptitude to absorb technical training. This does not necessarily mean that you will be trained in the field you desire; but, you will be trained, based on your aptitude and personal desires given consideration whenever possible. Previous experience, education, and the needs of the US Army Security Agency.

In order to be considered for enlistment in the US Army Security Agency, persons must meet the

Versatility aplenty in
1961 Corvair Greenbrier Sports Wagon



Chevrolet will raise the lid on a real surprise package when they reveal the 1961 Greenbrier Sports Wagon. A promising addition to the Corvair line is this 95-inch wheelbase vehicle with rear-installed engine and independent suspension. The Greenbrier is certain to fit transportation needs from backwoods camps to swank hotels. Seats may be repositioned to fit specialized requirements. There also is a commercial counterpart—a delivery vehicle named the Corvan.

EVERYBODY ought to have GAS LIGHTS!

Distinctively and authentically styled, Gas Lights cast a soft glow that bids "welcome" to guests... serves as a silent deterrent to nighttime trespassers.

SEVEN MODELS—PRICED FROM **\$49.50**—INSTALLED

To order, contact any employee of **PIONEER NATURAL GAS COMPANY**

YARD WORK, TRASH HAULING, FILLS MADE
We Also Do Asphalt Paving — Driveways, Parking Areas, Etc.

ALSO TILLING AND GARDEN PLOWING

Abernathy Dirt Contractors
Dirt—Cement—Sand and Gravel, Hauled and Levelled
MAX WISDOM — 4th and Avenue C — CY-8-2633

provide complete details and information.

- Be a high school graduate or equivalent.
- Obtain minimum prescribed scores on specific test administered at the recruiting main station.
- Be accepted for enlistment in the US Army Agency by the US Army Security Agency Field Representative at the US Army Recruiting Main Station.

For information, call your local Army Recruiting office in Lubbock. Call collect, POster 3-2821.

Eddie Lee Coleman has moved to 105 E.3rd St.

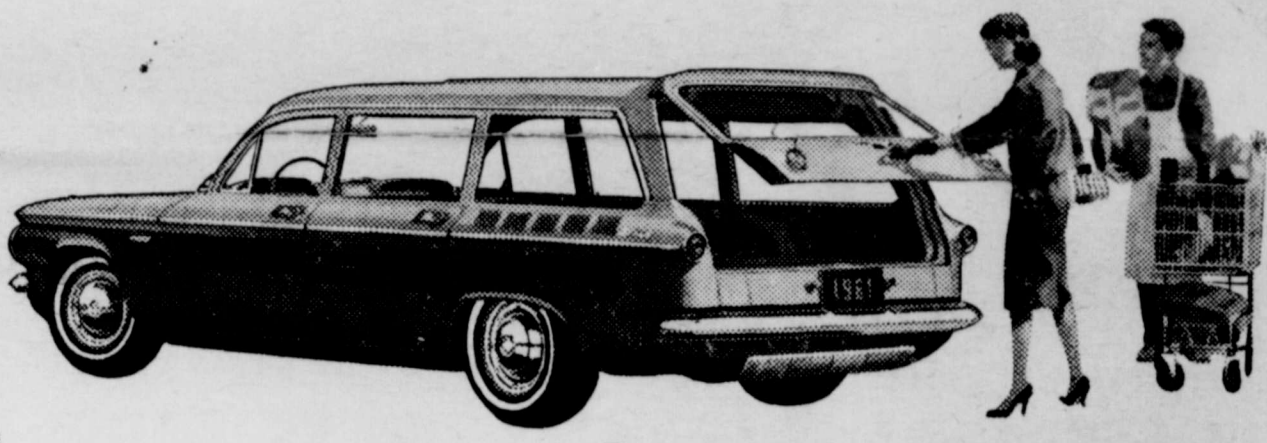
DRIVE SAFELY — The best safety known device is about nine inches above your shoulders.

Big State Grain Adds New Station At County Line

Big State Grain Company of Abernathy is building a grain gathering station at County Line, just east of the Co-op Gins. An office, scales, elevator leg and two bins are being constructed. The bins will be of medium size compared to modern grain elevator bins and will serve as unloading bins for grain growers in that vicinity. One bin will be for dry grain and the other for high moisture grain. The grain will be loaded out and transported to the Abernathy storage of Big State Grain Company for drying and storing or shipping.

SHOW ON WORTH!

NEW '61 CHEVY CORVAIR



The newest car in America: the CORVAIR 700 LAKE-WOOD 4-DOOR STATION WAGON.



CORVAIR 700 CLUB COUPE. Like all coupes and sedans, it has a longer range fuel tank.



CORVAIR 700 4-DOOR SEDAN. Provisions for heating ducts are built right into its Body by Fisher.



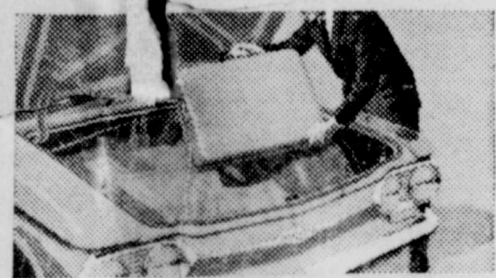
more space... more spunk... and wagons, too!

Make the new Chevy Corvair for '61 with complete line of complete thrift cars.

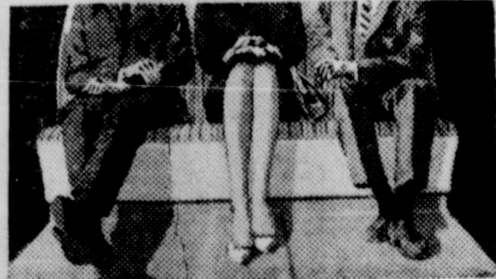
To start with, the Corvair has a budget-pleasing price and Corvair goes on from there... you even more. With extra miles per gallon... quicker-than-ever cold-start... so you start saving sooner... a new extra-cost optional heater that warms everyone evenly. Riding along with the extra economy: more room inside for you, more room up front for your luggage (sedans and coupes have almost 12% more usable trunk space).

And our new wagons? You'll love them—think they're the greatest thing for families since houses. The Lakewood Station Wagon does a man-sized job with cargo, up to 66 cubic feet of it. The Greenbrier Sports Wagon you're going to have to see—it gives you up to 175.5 cubic feet of space for you and your things.

Corvair's whole thrifty lineup gets its pep from a spunkier 145-cu.-in. air-cooled rear engine. Same rear-engine traction, same smooth, level independent-suspension ride. See the polished and refined 1961 Corvair... chance you get at your Chevrolet dealer's.



Spare tire is in the rear in coupes and sedans—leaving more luggage space up front.



Even middle-seat passengers sit pretty, thanks to Corvair's practically flat floor.

Now in production—the GREENBRIER SPORTS WAGON with up to twice as much room as ordinary wagons (third seat optional at extra cost).

The Home Folks Eat Here Because They Know Where They Like To Eat Best.

CLEAN — COOL — COMFORTABLE
CONGENIAL — DECENT

Good Food

REASONABLE PRICES

These Are What Have Built Our Reputation As Being

"Abernathy's Most Popular Eating Place"

RESERVATIONS FOR SPECIAL OCCASIONS

Graham's Restaurant

Recommended by TOUR and T. R. A. Abernathy
Dial CY-8-2246

STRIPS FROM TOP to BOTTOM

SHED-A-LEAF.
Cotton DEFOLIANT

Takes the Leaves off... Makes Cotton Picking Easy!
Now Available as Liquid or Dust

Contact Gene Garvin At
CROPDUSTERS DELUXE
North Avenue D or Phone CY 8-2866

For More Information.
WE SATISFY!!

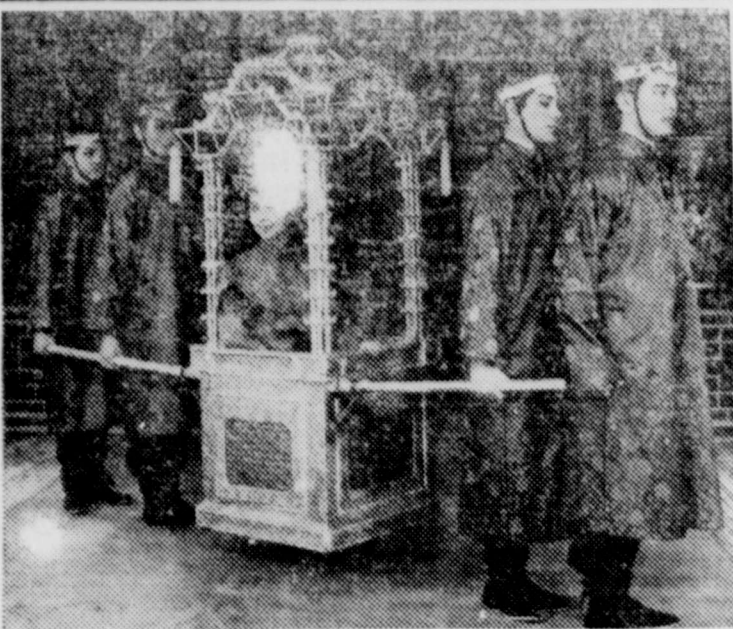
See the new Chevrolet cars, Chevy Corvairs and the new Corvette at your local authorized Chevrolet dealer's

REID CHEVROLET

CY-8-2561

Abernathy

'Flower Drum Song' At State Fair



"Flower Drum Song," the lavish and tuneful Rodgers and Hammerstein Broadway musical hit, will be presented in 24 performances Oct. 7-22 during the 1960 State Fair of Texas in Dallas. The show is set in San Francisco's exotic Chinatown.

Good Housekeeping Around Grain Bins Helps To Lower Amount of Loss To Insects

College Station—In many areas of the state, grain has been stored or is now in the process of being stored. Insects will damage much of this stored grain if preventative measures are not taken before storage. C. F. Garner and R. L. Ridgway, extension entomologists, offer helpful hints on ways to prevent insect damage of stored grain.

One of the first requirements for proper grain storage is the use of adequate storage facilities, the specialists say. Grain storage structures should exclude all outside moisture, and they should also be easily accessible for inspection and fumigation of the grain. Bins in which grain can be aerated are helpful in cooling or drying grain.

No matter how well the storage facilities are constructed, they cannot protect the grain unless they are clean. Before they are used, bins should be cleaned thoroughly of all waste material and sprayed with a residual spray. Old grain, trash or other debris furnishes excellent living quarters for insects, the entomologists continue. The specialists point out

that good housekeeping practices in and around grain storage bins will aid in eliminating insect infestations.

Malathion has been approved for use in stored grain as a protectant against insects. The specialists report that a tolerance of eight parts per million has been established. If this chemical is applied before the grain is placed in final storage, it will greatly reduce the possibility of insect damage.

Garner and Ridgway suggest a conference with the county agent before grain storage begins. The agent can supply valuable information and suggestions that may prevent sizable losses due to insect damage.

Football Schedule

Following is the 1960 schedule for the Yearling football team:

- Oct. 11—Tulia, There.
- Oct. 25—Olton, There.
- Nov. 1—Lockney, Here.
- Nov. 8—Dimmitt, There.

All games will be played at 6:30 p. m. unless changed.

Niblets Whole Kernal Food King Pal Injector

The "Clothes Bank" reopened the first week of September, reports Captain Charlie Carmack, commanding officer of The Salvation Army, Plainview. The clothes bank was put into operation at the start of this year in the effort to really meet the clothing requirements of those thought deserving by the school nurses, welfare agencies, church welfare committee's, and individuals who might know where such a need existed.

Clothing distribution to the needy in Hale County has in the past been a real problem. Prior to the opening of the clothes bank most churches had their clothes closets, the schools had a clothes room, and then the Red Cross, and the Salvation Army strived to meet the needs of families with clothing.

The old method of giving out clothing simply made it "one big merry-go-round" as a certain number of families saw how easy it was to go from one group to another getting clothing. Each group might be unaware that a person might have received clothing from a school, church or welfare agency all in one day.

Each family that seeks clothing assistance receives a clothing allotment card listing the number of the garments that they are eligible to receive, and the next date that they will be eligible.

A complete report is kept of each application, and if any school church or welfare agency requests information, a complete report will be forwarded them once each month.

Since the clothes bank was opened on January 5, 1960, 23 applications have been received from Abernathy. To the 127 individuals in these families 566 garments of clothing have been issued along with 39 pairs of shoes and 19 items of furniture.

Many families are expected to need assistance in getting their children ready for school and as the clothes bank prepared to reopen its doors on September 6th, it was noted that The Salvation Army is in need of children's clothing. Should any church group, or individual have clothing of any kind that they would like to donate to the clothes bank they are requested to drop a card or letter to The Salvation Army, Box 172, Plainview, Texas, and their donation will be picked up each Friday.

Best place in the world for Abernathy merchants to advertise: The Abernathy Weekly Review, dial CY-8-2033.

DRIVE SAFELY — A 'tight nut' at the end of a steering wheel is a safety device.

Our School Clothes LOOK NEW 'Cause They're SANITONE Clean!



SPOTS OUT!

DIRT GONE!

COLORS SPARKLE!

You want your youngsters to look their best . . . so send their school clothes to us for Sanitone Dry Cleaning. Gets out all the dirt . . . even stubborn spots and the embedded soil that makes clothes look old before their time. They'll come back looking like new again. Try our Sanitone Service and see.

Lon Cleaners
Pick-Up and Delivery Service.
Phone CY-8-2826
Abernathy

Please . . .

If Any . . .

- DIES
- ELOPES
- GETS MARRIED
- HAS GIRLFRIEND
- GOES AWAY
- HAS A CAR
- HAS A HOUSE
- HAS A JOB
- IS ILL
- HAS AN OPERATION
- HAS AN ACCIDENT
- BUYS A CAR
- WINS A PRIZE
- RECEIVES AN AWARD
- BUILDS A HOUSE
- MAKES A SPEECH
- HOLDS A MEETING
- OR PART IN ANY AFFAIR

THAT NEWS WE WANT IT The review

WELCOME TO MEETINGS

"Abernathy city council meetings are open to the public," said Mayor Edgar O. Graham, "and we invite interested citizens to sit in on these sessions," he added. Regular sessions are held at 8 p. m. on the first Monday of each month in the city hall.

The Review wants your news.

New Law Benefits Disabled Veterans

Austin, Texas—A large number of Texas veterans who have serious handicaps resulting from active military service will benefit from a law recently enacted by Congress and signed by the President. This announcement was made today by Charles L. Morris, Executive Director of the Texas Veterans Affairs Commission in Austin.

Veterans who have disabilities resulting from service in the Armed Forces may receive compensation from the Veterans Administration for these disabilities. If the service-connected condition is disabling to a degree of 50 percent or more, additional allowances are payable to the veteran on account of his wife, dependent children and dependent parents. Prior to passage of the new law, this additional allowance was payable on behalf of only three of the veteran's children.

The new law provides for an additional allowance for all dependent children of the veteran, if the veteran has disabilities of service origin evaluated at 50 percent or more. Those disabled veterans who are receiving compensation at 50 percent or more, and who have more than three de-

pendent children are advised to contact their nearest Veterans Affairs Commission office or Veterans County Service Officer for additional information and assistance in obtaining these additional benefits.

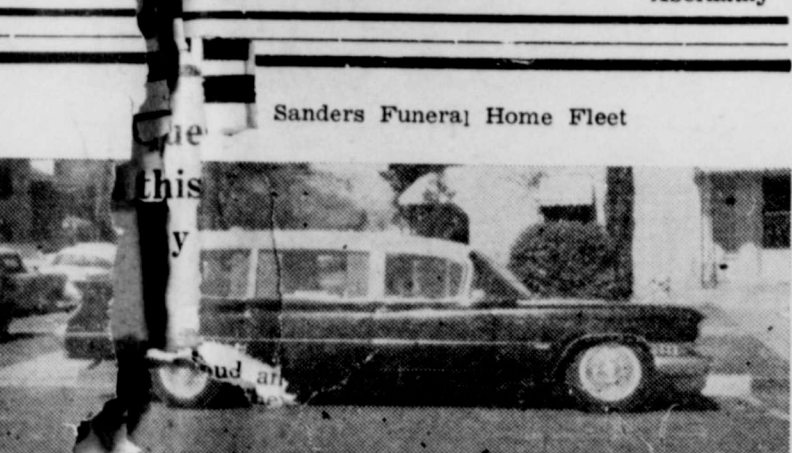
Morris stated that this new law became effective on July 1, 1960, and benefits payable as a result of the new law will be effective from the date the Veterans Administration receives proof that the disabled veteran has such additional dependents.

School Bus Law

The following is paragraph (a) of Section 104 of the School Bus Law, regarding Overtaking and Passing a School Bus:

The driver of a vehicle upon a highway outside of the limits of any incorporated city or town upon meeting or overtaking from either direction any school bus which has stopped on the highway for the purpose of receiving or discharging any school children shall stop the vehicle immediately before passing the school bus, but may then proceed past such school bus at a speed which is prudent, not exceeding ten (10) miles per hour, and with due caution for the safety of such children.

Phone CY-8-2427
We Are Back Home and Ready To Serve Your Concrete Needs.
RANDON & JEFFREY
Ready Mixed Concrete
11th St. and Ge. C. Abernathy



SANDERS FUNERAL HOME
1420 Main St. - Lubbock - Phone PO 3-6433
AMBULANCE SERVICE
in New Air-Conditioned, Oxygen-Equipped Coach.

Only 11 weeks 'til Christmas
BEGIN PREPARING FOR IT NOW
USE OUR VERY CONVENIENT
Lay-A-Way Purchase Plan
Pick it out NOW—Take it home XMAS
New Merchandise Arriving Daily
Come in today, let us Dress you up.
ANN'S DRESS SHOP
Dial CY-8-2244 Abernathy

Are You A Sports Fan?
Enjoy A Good Ball Game?
Don't miss out on these because your TV is acting up. Bring it in, we can put you in business again. May even get you going without having your set brought in. Call us now.
Newton Radio & TV
Dial CY-8-2338 Abernathy

IT'S TIME FOR A CHANGE!

For Happier Motoring,

VOTE THIS TICKET:

<input checked="" type="checkbox"/> DRAIN AND REFILL RADIATOR	<input type="checkbox"/> CHECK TRANSMISSION OIL	<input type="checkbox"/> ADJUST CARBU-RATOR	<input type="checkbox"/> CLEAN SPARK PLUGS
<input type="checkbox"/> DRAIN AND FLUSH CRANK-CASE	<input type="checkbox"/> CHECK BATTERY WATER	<input type="checkbox"/> SERVICE AIR CLEANER	<input type="checkbox"/> ROTATE TIRES
	<input type="checkbox"/> ADJUST BRAKES	<input type="checkbox"/> LUBRICATE CHASSIS	

Now is a great time to put your car in shape for the coming season, so you can enjoy the delightful driving days ahead!

Keeping your car in the best possible condition is part of our job in competing with others for your business. As good businessmen, we know we must give you top-notch service. As good neighbors, we want to help you out in every possible way.

So, come in today. Let us show you the way to more pleasant driving.

Abernathy Motor Company Service Department
Corner of Ave. D and Main Street
Dial CY-8-2821 For Service on the Road or in Your Field.

MARTIN GIN
(FORMERLY RITCHIE GIN)
WE WILL APPRECIATE YOUR BUSINESS

MORE DOLLARS PER BALE

WE HAVE COMPLETELY MODERNIZED —

- Old Gin Stands Replaced
- Added Airline Cleaners
- 14-Ft. Green Leaf and Stick
- Machine Drying System
- Moss Double Lint Cleaners
- And Additional Power.
- 33 Years Ginning Experience.

We Will Buy Your "B" Plan Cotton
Handle Paper On "A" Plan Cotton
Right Here In Our Office, And Will Buy Your Seed. **EXPERIENCED CREW.**

GINNERS—Scott Prather, Frank Tannehill.
RAY AND LENA MARTIN, OWNERS
7 1/2 Miles West On Littlefield Highway 54
Telephone PL 7-2307

Chevy adds Corvair Station Wagon



Chevrolet stylists adroitly meshed the requirements of a roomy and versatile vehicle with the crisp, smart design of the Corvair line and came up with this sparkling new Corvair Lakewood Station Wagon. The car with its air-cooled engine in the rear, folding seat and forward luggage compartment is readily adaptable to almost any job... commercial or pleasure. In addition to the Lakewood, Chevrolet added a sports wagon and three half-ton trucks to the Corvair line for '61.

NOTICE

STATE LAW
RECOVERY OF CIVIL DAMAGES DUE TO
DESTRUCTION OF PROPERTY BY MINORS

Section 1. Any property owner, including any municipal corporation, county, school district or other political subdivision of the State of Texas, or any department or agency of the State of Texas, or any person, partnership, corporation or association, or any religious organization whether incorporated or unincorporated, shall be entitled to recover damages in an amount not to exceed Three Hundred Dollars (\$300) from the parents of any minor under the age of eighteen (18) years and over the age of ten (10), who maliciously and willfully damages or destroys property, real, personal or mixed, belonging to such owner. However, this Act shall not apply to parents whose parental custody and control of such child has been removed by court order, decree, or judgment.

Section 2. The suit may be brought in any court of competent jurisdiction, and venue thereof shall be governed by the statutes regulating venue in actions based upon trespass. The recovery shall be limited to the actual damages in an amount not to exceed Three Hundred Dollars (\$300), in addition to taxable court costs.

Section 3. The action authorized in this Act shall be in addition to all other actions which the owner is entitled to maintain and nothing in this Act shall preclude recovery in a greater amount from the minor or from any other person, including the parents, for damages to which such minor or other person would otherwise be liable, it being the purpose of this Act to authorize recovery from parents, and to limit the amount of the recovery, in situations where they would not otherwise be liable.

Young Men May Register Here At Post Office

Young men of South Hale County may register for Selective Service at Abernathy post office, it was announced by Herbert T. Hardin, acting postmaster. Hereafter, they were required to go to the Selective Service office in Plainview to register. The young men are required to register for Selective Service upon reaching their 18th birthday.

Local ambulance telephone number: CY-8-2331. Dennis & Chambers Funeral Home.

SOCIAL SECURITY INFORMATION

About 25,000 parents working for their sons or daughters in a trade or business will be covered for the first time under social security beginning in 1961. The 1960 amendments to the social security law, signed by the President on September 13, 1960, makes no change in the provision which says that work performed by a parent in the home of a son or daughter is not covered by social security and, therefore, cannot count toward the payment of social security benefits. However, work that a parent does for a son or daughter in a trade or business can now be covered, if a bona fide employer-employee relationship exists.

Such a relationship exists if the parent has the right to direct and control him in the way he works both as to the final results and as to the details of work, where, and how the work is to be done. The employer need not actually exercise control; it is sufficient that he has a right to do so.

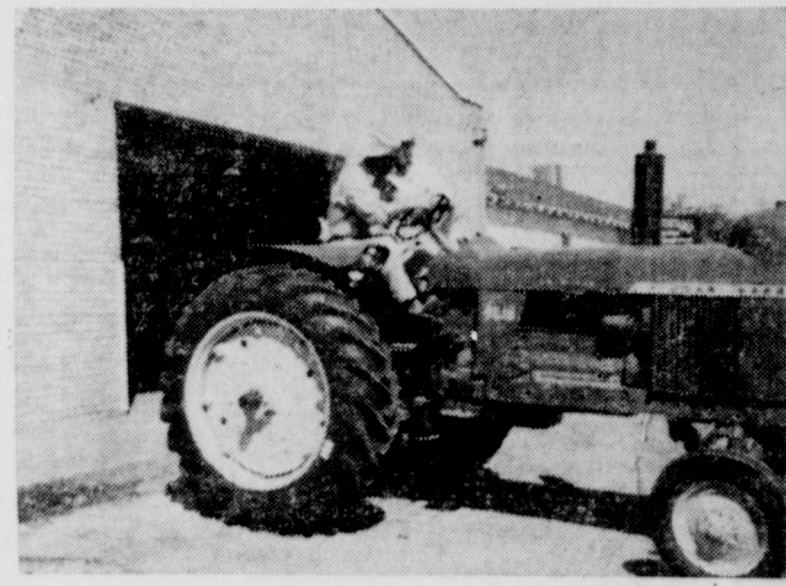
Many parents who will be covered by this new provision have already worked for social security wages and payments must be paid on or before April 30, 1961, and their number must be reported.

A representative Social Security Plainview on county court and will be glad to discuss matters pertaining to social security.



Miss Texas Rural Electric

Miss Texas Rural Electrification for 1961—Carnetta Burgett of Shallowater, 18, daughter of Mr. and Mrs. Billie J. Burgett of Route 1, Shallowater. She will be a student at West Texas State College at Canyon this fall. She's 5'-6" tall, weighs 123, measures 36-24-36. She was named to the state beauty title during the Twentieth Annual Meeting of Texas Electric Cooperatives, Inc., in Austin August 11-12. She entered the state contest as Miss South Plains Electric Co-Op, representing this rural utility which headquarters in Lubbock.



TWO ABERNATHY FARMERS are show here on the new 1961 John Deere 4010 tractor which went on display at Joe Thompson Implement Co. in Abernathy last week. The 6-cylinder John Deere has an 80-HP rating. Men on the tractor are Elza Lambert, at the steering wheel, and Clyde Benn.—(Staff Photo)

Junior High Yearling Football Teams Split Wins With Hale Center Teams Here

The Junior High seventh and eighth grade Yearlings split victories with the teams from Hale Center here last Tuesday night, the local seventh grade winning 2-0 on a safety, and the Abernathy eighth graders losing to the visitors, 20-14.

8th Grade Game

The local eighth grade football team met their first defeat of the season in a hard-fought battle with the Hale Center eighth graders, losing by one touchdown, 20-14.

Outstanding gains for the Yearlings were made by Jake Malloy and Joe Sandeval. They made one touchdown each on 40-yard runs, led by good team blocking.

Hale Center had a good offensive team also, scoring three touchdowns and one conversion.

The local seventh and eighth grade football teams have one more home game, this coming November first with Lockney. Out of town games remaining are with Lockney, Olton, Tulia and Dimmitt.

7th Grade Game

The Abernathy seventh grade Yearlings downed the Hale Center seventh grade team here last Tuesday night 2-0 in a hard fought defensive battle.

Outstanding runs during the game were made by Bobby Knowles and Pat Hale. One in particular was made when Knowles

GOVERNMENT SURPLUS SALES

NOW anyone can buy DIRECT from U. S. GOVERNMENT SURPLUS DEPOTS, by mail for yourself or for resale. Cameras, binoculars, cars, jeeps, trucks, boats, hardware, office machines and equipment, tents, tools and tens-of-thousands of other items at a fraction of their original cost. Many items brand new. For list of hundreds of U. S. Government Surplus Depots, located in every State and overseas with pamphlet "How Government Can Ship Direct To You," plus procedures, HOW TO BUY and how to get FREE SURPLUS mail \$2.00 to SURPLUS SALES INFORMATION SERVICES, P. O. Box No. 1818, Washington 5, D. C. (9-7-61)

Herbert Browder Memorials

Lubbock, Texas

Phone PO 5-5902

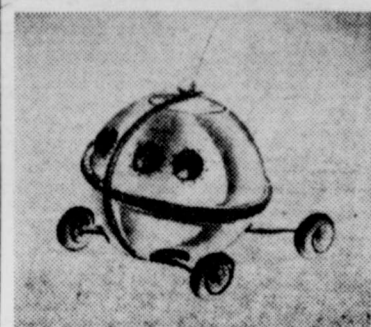
1302 34th St.

Evolution of Auto Is Dream Mixture

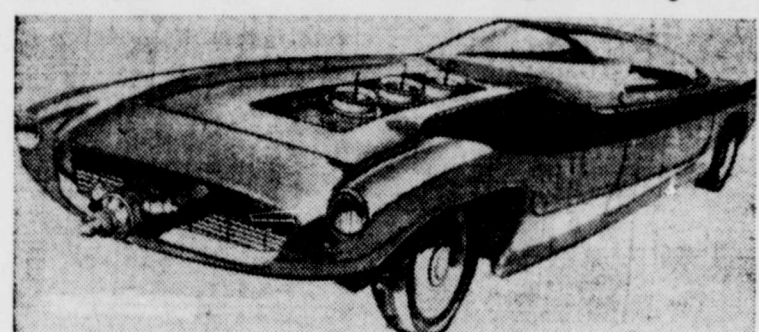
The greatest puzzle in the automobile industry is now to make a car that will satisfy all of the people involved in its manufacture — and still please the buyer.

"Each group of engineers has strong interests and objectives that are often widely separated," says M. C. Patterson, Dodge general manager. "Each has its own idea of what a car should be, and no two of them are alike. So, the evolution of a new car is bound to involve certain conflicts."

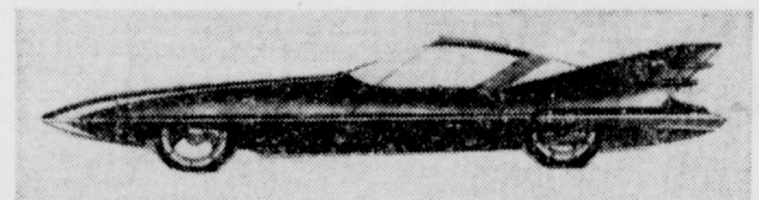
"The fact that new cars do come out year after year is indeed a triumph of knowledge, imagination, creative ability, and most of all, cooperation and team work."



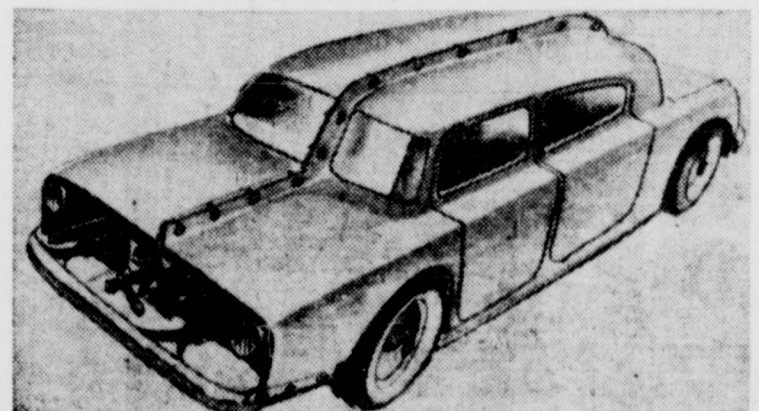
THE SAFETY ENGINEER visualizes the ideal car as a sphere—safe but little room for the engine.



THE PERFORMANCE ENGINEER is chiefly concerned with the engine. He wants everything under the hood except hot and cold running water.



THE STYLIST wants beautiful lines, fine balance, and an eye-catching expression of an artistic theme.



THE BODY ENGINEER'S perfect car is one with no structural problems, no tough curves, no tight places—just a straight-forward design.



• MIX THEM ALL together properly and you have what the sales force hopes is indeed a dream car for the average American motorist.

SCHOOL'S OPEN

Drive Carefully

With the opening of school early last month, the AAA Texas Division urges motorists to remain alert for youngsters crossing the streets on their way to and from classes.

Pointing out that 14 per cent of all pedestrian deaths are school age children, the AAA Club reminded motorists that youngsters seldom are sufficiently aware of traffic dangers and consequently take unnecessary chances in crossing the street. "It's up to the motorist to watch out for these youngsters, many of whom are just learning the fundamentals of traffic safety," said the AAA Texas Division. The AAA Club said that a safety poster on the theme, "School's

Open — Drive Carefully," will soon make its appearance on local streets. It will be attached to telephone and light poles, and motorists are urged to heed its advice.

Throughout the nation, the Motor Club said, over 14,000 copies of the poster will be distributed and posted by clubs affiliated with the American Automobile Association. The new poster, designed by Clement McGuire, a 17-year-old student at Marquette High School for Hearing and Handicapped Children in Philadelphia, Pennsylvania, was a first prize winner in the National Traffic Safety Poster Contest. The prize was awarded to a panel of nationally-known artists and art experts.

We Are Ready To . . .

DEFOLIATE Your Cotton

We Have

All New Equipment

First Time To Be Used In This Area

NOTICE!

Watch For The Date of An Important Meeting To Be Held SOON.

All area farmers who won prizes in the Sorghum Head Show at Amarillo are urged to be present at this meeting.

Monroe Waits Farm Store

Your DeKalb Dealer

308 Ave. D - Abernathy - CY-8-2423

Complete Service

for

Cotton Farmers

The County Line Cooperative Gins

Have One Of The Best Equipped Gins in The Area. Through COUNTY LINE COOPERATIVE GINS These additional services are available to our patrons

COTTONSEED crushed and products marketed thru PLAINS COOPERATIVE OIL MILL

COTTON handled and stored with the

FARMERS COOPERATIVE COMPRESS

COTTON MARKETING SERVICE available for "A" and "B" cotton through

PLAIN COTTON COOPERATIVE ASSN.

Savings made from all of these farmer-owned, farmer controlled operations are returned to farmers who produce the cotton as cooperative refunds.

USE THESE SERVICES AND SAVE

COUNTY LINE CO-OPERATIVE GINS

Mathew Goodrich, Manager

TOP QUALITY SERVICE IS OUR BUSINESS

WE FIX FLATS

EXPERT WASHING AND LUBRICATION

TIRES - TUBES - MOTOR OILS - BATTERIES - WAXING - POLISHING - CANDIES - COLD DRINKS

Have A Good Supply of 900 X 14" & 950 X 14" Trailer Tires. GET YOURS NOW.



Phone CY-8-2787

PETERS MOBIL SERVICE

Abernathy



Mail Volume Is Increasing

A new all-time high in the nation's mail volume was reached during fiscal year 1960 ended June 30, which continued the steady upward trend of the past seven years at a rate which even exceeds the population growth, according to advance information from the Annual Report of the Post Office Department which has been made available to acting Postmaster Herbert Hardin.

of mail which includes about one billion pieces of parcel post. It was stated that this would mean an increase of nearly 25 percent over the corresponding figures for 1953 when the annual volume was 50.9 billion pieces.

During this same period, it was pointed out, the revenue of the Department also has shown an impressive gain with an increase from \$2,091,714,000 in fiscal year 1953 to \$3,276,800,000 for fiscal year 1960.

Here in Abernathy, receipts of the post office climbed from \$16,919.19 in 1954 to \$26,557.40 last year.

about how much mail we have to handle from day to day or how many people are making use of the Postal Service," acting Postmaster Hardin stated, "but the whole Department keeps busy in devising ways and means for doing the job not only more efficiently but more economically. As I recall it, that was the way President Eisenhower outlined the principal objectives of the Department when Postmaster General Arthur E. Summerfield was being sworn in back in 1953, and that's the way we have been operating ever since.

"We can't deny that we still make mistakes and that the hu-

man element still plays a vitally important part in daily operations, but the statistics in the Department's annual report offer positive proof that we are making progress on a nationwide basis. As an example, while the mail volume showed an increase of 16 billion pieces handled annually, the employment increase during this same period amounted to only 11 percent.

"By way of explanation, it should be mentioned that the employment figures based on thousands of man-years are first worked out under two separate headings, carriers and 'all other,' and then combined for the over-all percentage figures just mentioned for fiscal 1960.

"It should also be mentioned that there has been a steady and substantial increase in 'city carriers' call volume from 4.5 percent in 1954 to 23.5 percent in the latest estimates. This increase has been essential to the growth of established city delivery service in addition to the extensive expansion of routes of routes which were already in operation. It required the equivalent of approximately 9,000,000 man-years and 100,000 more business connections.

"There is no better way of demonstrating the Department's ever-improving efficiency than by showing just how much more mail is handled per man-year of effort—excluding city carriers. Last year the total handled by one man was 132,000 pieces of mail. For 1960 the corresponding figure was 157,000.

"It is of course, true that all the additional service has made it necessary to take on many new employees and that our total increase from 506,520 in 1953 to 562,568 on June 30, 1960, but as pointed out in the original 1960

report figures, the workload increase during the same period was nearly 25 percent.

"To my way of thinking that's the story in a nutshell and I seriously doubt if there has ever been a story just like it in the entire history of the Post Office Department. I am also of the opinion that it would be impossible to overemphasize the importance of this story—not only for today's operations but for the years that lie ahead.

"In a recent speech on this subject the Postmaster General brought out that by 1970 our population is expected to be 208,000,000 and that our annual mail volume by then will be more than 90 billion pieces. The U. S. Bureau of Standards, an entirely separate organization, estimates that our mail volume will be doubled within the next 25 years, and it all fits into the same picture.

"It was in another speech about the Post Office Department that another official expressed his sentiments about the situation like this: 'We are proud of our record. We have no apologies to make and no regrets to express. What has been done was once said to be impossible. Now it is history.' Those are also my sentiments."

Included among items cited by acting Postmaster Hardin as recent accomplishments by the Department were the following: Established the first large-scale program of automatic mail handling by machinery on a nationwide basis.

Developed the "airlift" program

FLOYD SHIPMAN & SON AGENCY

CY-8-2536—Abernathy Insurance & Real Estate Farm Loans, and G. I. & F. H. A. Loans

which speeds up the delivery of approximately one letter out of every 17 on a "space available" basis.

Continued with the development of faster machines for letter sorting, parcel post sorting, and for mail culling, facing and canceling.

Continued with plans for a new automatic postal sub-station which will vend stamps, envelopes, post cards and writing paper, and

which will have money changers for both coins and bills.

Mr. and Mrs. Ray Willis were in Austin last weekend to visit their son and daughter-in-law, Mr. and Mrs. George Ray Willis, and to attend the Texas Tech-Texas U. football game.

Mr. and Mrs. C. J. Pharr recently visited in the home of their daughter, Mrs. Harold Sparks and family in Albuquerque.

LET'S TALK LUMBER

The cheapest Lumber is not necessarily the cheapest price. It is that Lumber that is best suited to your job and what you are using it for after building is completed.

Building A Cotton Trailer?

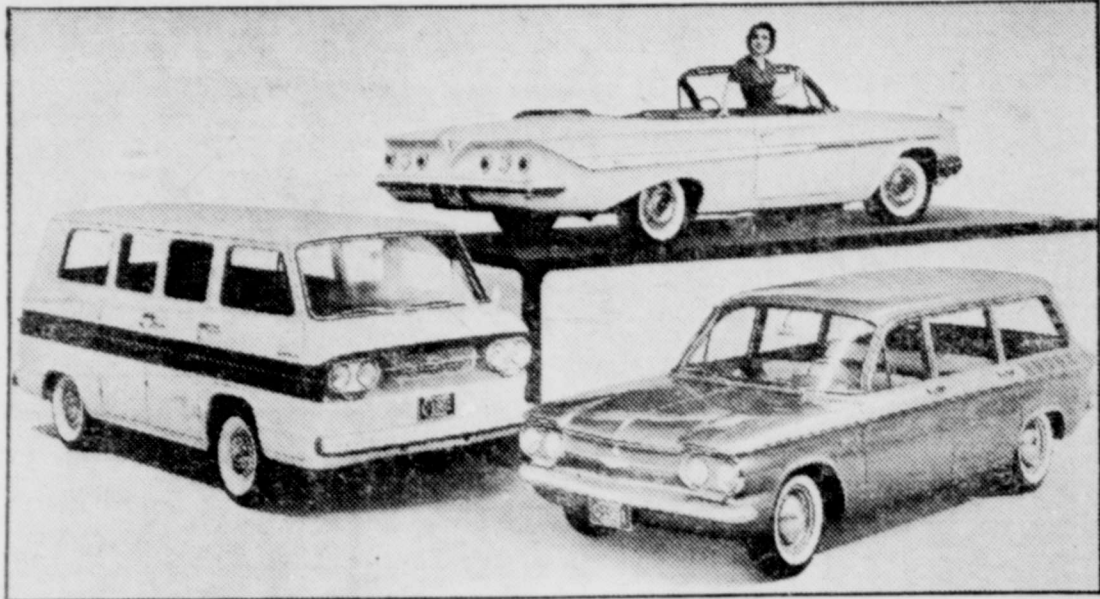
We can furnish you the correct material at the correct price for a trailer that will give you the service you may expect.

Come In, Let's Talk Trailer Material.

Higginbotham-Bartlett Co.

CY-8-2010 — Abernathy

Chevy Beautifies, Expands Lines for '61



*Three for the road—here are three smart new Chevrolet passenger cars which will make their bow to the public on October 7. Left—One of the newcomers in the Corvair line... the Green-brier Sports Wagon designed for multiple cargo jobs and outdoor living with seats that may be repositioned to accommodate many varied arrangements. Center—The sleek Impala Convertible with its soft, graceful body lines converging into an entirely new styling motif. Right—Another new model is the challenging Corvair Lakewood Station Wagon with rear-engine and second folding seat. Front and rear compartments combined give the Lakewood an unusual amount of cargo space.

We'll Appreciate An Opportunity To GIN YOUR COTTON

Abernathy

Farmers Co-Op Has

2 MODERN GIN PLANTS

Both Have Been Thoroughly Re-Conditioned and Are Ready For The

1960 GINNING SEASON

We have MOSS LINT CLEANERS, IN TANDEM, also AUTOMATIC FEED CONTROL and LINT PUSHERS, an AUTOMATIC SAMPLER and also DOUBLE DRYING SYSTEM.

Our Crews Are Experienced Gin Men, Who Will Handle the Processing of Your Cotton To Give the Best Possible

TURN-OUT GRADE & SAMPLE

Also, we have a trained office force to take care of all the paper work in a satisfactory manner.

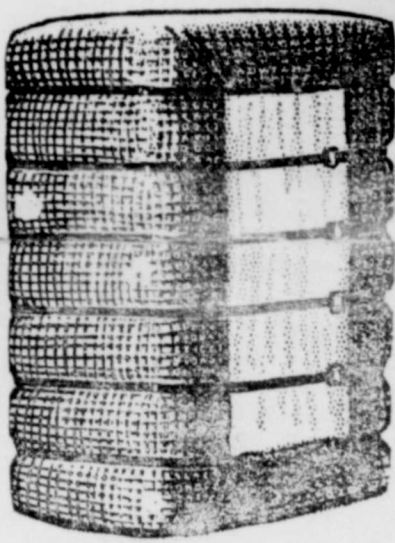
We are an Authorized Purchasing Agency for Your "A" Plan Cotton. We will also Buy Your "B" Plan Cotton and, of course, All Your Seed.

We Invite Our Regular Customers Back. We Enjoyed Serving You Last Year. Also, We Invite Those Who Haven't Ginned Here to Give Us A Trial. We Believe You, Too, Will Be Pleased With Our Service.

ABERNATHY FARMERS CO-OP GINS & DE-LINTING PLANT

"Where Service Makes the Difference"

Phone CY 8-2625 — Leland Phillips, Manager



IS TO THE ELECTRIC RANGE!

AND YOU CAN MAKE THAT CHANGE NOW EASILY — ECONOMICALLY — QUICKLY

Yes, your Reddy Kilowatt Electric Appliance Dealer is ready to help you make the big change to the modern range — of course, it's electric. See his new models — ask about the special wiring allowance — learn about his easy terms.

The age is electric — and so is the best way to cook. ASK ABOUT WIRING INSTALLATION ALLOWANCE

SEE YOUR REDDY KILOWATT APPLIANCE DEALER



Vertical text on the right edge of the page, including 's v o l', 'st m fe fu w in Al le', 'Na la. Mi las', and 'O Con Abe the low cres incr cent gas in t Th have Here to l south Th crea ema meet MRS PAR Mr Tues pink of M sistin Mme Shipn Adkis ans, wait, Cliffot C. M. Crow, Beard Settler. The baby were of 2:3