

WEATHER

February 22	51	23	.00
February 23	55	24	.00
February 24	63	24	.00
February 25	74	29	.00

BAILEY COUNTY JOURNAL

'The Community Of Opportunity-Where Water Makes The Difference'



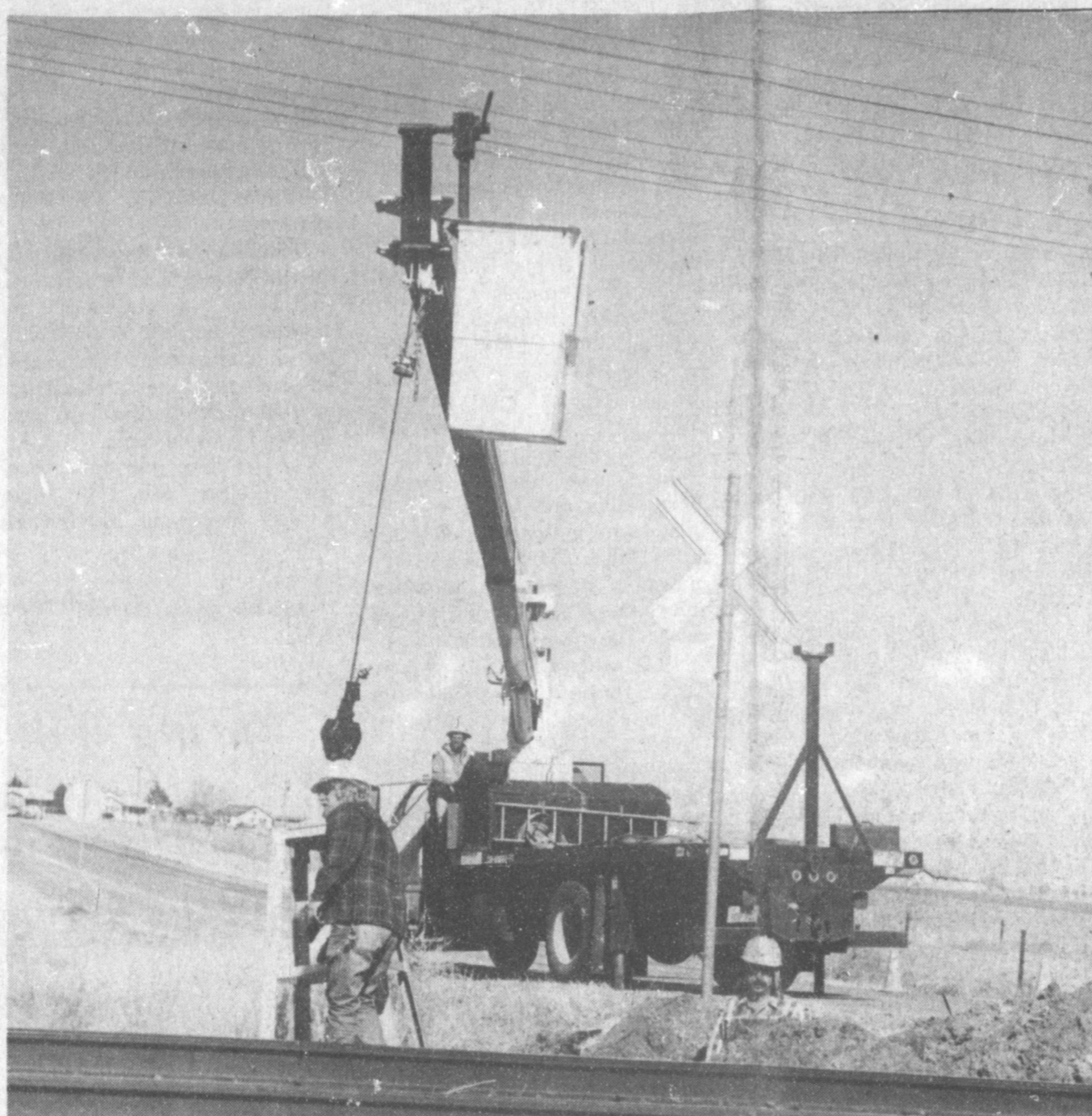
Vol. 27, No. 9

12 PAGES TODAY

Published Every Sunday At Muleshoe, Bailey County, Texas 79347

20^c Sunday, February 26, 1989

Ranch House Renovation Continues



CROSSING ARMS BEING INSTALLED-This week, Santa Fe Railway began work on the long awaited crossing arms at several locations in Muleshoe. This work is being done at the crossing at the east city limits, at the crossing that goes into the County Club Addition. Other crossing arms will be installed on West Fifth Street and on West 15th Street, near Texas Sesame, and north of Wiedebush. All three of these crossings have been plagued by vehicle/train accidents in the past. (Journal Photo)

Clubs, Organizations Invited To Help Work

R. A. Bradley, chairman of the Muleshoe Heritage Foundation commented this week, "Since we believe that the Muleshoe

Heritage Center, the Santa Fe Depot, the Janes Ranch house, and the Old Muleshoe Ranch cookhouse are something this community is interested in because you have been so good in donating your time, materials and money in the past.

World Day Of Prayer

Next Friday

World Day of Prayer, on Friday, March 3, marks its 102nd observance as thousands of Christians join together in 170 countries and regions of the world to pray as one body for each other and for peace in the world.

In Muleshoe, World Day of Prayer observances will be held in First United Methodist Church of Muleshoe, 507 West Second at 7 p.m. in the chapel.

Theme of the 1989 World Day of Prayer is "Jesus, Teach Us to Pray." The prayers and worship resources were written by an ecumenical group of Christian women in Burma and then translated into hundreds of languages and dialects.

This year's service brings to consciousness the struggles of the people of Burma, so ravaged by the terrors of war and economic oppression. It also invites a deeper understanding of the Lord's Prayer stressing the power of intercessory prayer and challenging those who pray to listen and respond to those in need, wherever and whenever they may be.

Since its founding in 1941, Church Women United has been the official sponsor of World Day of Prayer in the United States and has assumed responsibility for the preparation and distribution of World Day of Prayer resources and materials in this country.

"We believe that you are interested in finishing it. We need your HELP so that all of this can become a reality. We work every Tuesday night from 7 p.m. until 9 p.m. There is work for all - men and women.

"We have many windows to sand, paint and clean, floors to sand and paint, doors to sand, hang and paint. Cracks to fill. Sweeping, cleaning, carry out trash, etc."

He continued, "Each week until finished, a different segment of this community will be invited to show up on Tuesday night to work, so all of this can be finished and be yours.

"On each Wednesday, following the work night, a report will be made public as to the progress and who showed up to help. Let's see which group will have the best percent show up (Our own

Cont. Page 6, Col. 1

Track Coach Visits Kiwanis With Program

By: R. A. Bradley

Nine Kiwanians and two guests met Friday morning at the Old Corral. It seems that since school is out and so many going skiing or somewhere that we were short. Even Sweetheart Justine Hanes was either sleeping or gone. We sure miss her when she is absent.

Our guests Friday morning were Jon Keith Turner, son of Keith Turner, and Tom Duncan, head track coach for Muleshoe.

Jim Lutz led the club in the pledge to the flag and R. A. Bradley gave the invocation. Lyndon Huckaby had the friendship coin and said that he could not think of a more deserving person than himself to have the coin, but decided that Kevin Harris might need a friend.

Jim Lutz gave a report about a meeting that he and Keith Turner went to with the South Plains Council of the Boy Scouts of America to re-construct the scouting department in Muleshoe. Terry Hutto will be the committee chairman and will be looking for people to be on the committee.

Tom Duncan, Muleshoe High School track coach was our program. Coach Duncan, along with Coach Jim Stewart, was very enthusiastic about track and the young men they have out for track.

Coach Duncan was in Muleshoe in 1981. The 1989 track theme is "Commitment to Excellence."

The program for the track team and the training program is very much planned out for the Excellence of the athletes. Their first obligation for the young men is to be a 'Good Person,' 'Diligent Student' and 'Highly Competitive Athlete.'

Coach Duncan stated that they had 30 boys out -- nine seniors, six juniors, six sophomores and nine freshmen and more seem to be interested.

The plans and enthusiasm for the 1989 track team and season was very evident in Coach Duncan. Coach, we all know that enthusiasm is contagious, so stay right in there.

Good Luck to you and the boys and girls in your track season. We are all pulling for you.

The Jennyslippers will meet at noon Tuesday at the Muleshoe Public Library.

Those attending are asked to take a sack lunch.

Tonight, Sunday, *The Anchor Brothers Band* from Sudan will be in concert at the New Vision Nazarene Church in Muleshoe.

All interested persons are invited to the 6 p.m. concert.

Teacher of the Week for Watson Junior High School was Doris Scoggin, seventh grade science teacher.

Students of the Week include Farah Black, sixth grade; Shawn Wheeler, seventh grade and Cory Welch, eighth grade.

Meeting in special called session Wednesday morning, members of the Muleshoe City Council passed a resolution pertaining to a change in the current paving project in Muleshoe; and heard Ricky Wall of Mission Cable discuss the new channels available to local cable subscribers.

On Tuesday, March 7, 11 a.m.-2 p.m., Coffee Memorial Blood Center of Amarillo will conduct a Blood Drive at the First United Methodist Church of Lazbuddie.

Coffee Memorial Blood Center said over 75 units of blood are needed each day to meet the routine blood needs of 18 hospitals in the Panhandle.

They point out that each donation can help as many as 3-4 persons; an all volunteer program assures that blood will be available and it will be safe blood; and the donor receives a mini-physical which includes blood pressure, pulse, temperature, hematocrit (iron level); it helps to control health care costs and becomes a vital part of the community's lifeblood.

Rev. Charles Fisk of the Progress Baptist Church, said the church will be presenting a Billy Graham film, "Cry From the Mountain," at 6 p.m. at the church on Sunday, February 26.

"Cry From the Mountain," is one of a series of Billy Graham films, which also include "The Hiding Place" and "Joni and the Prodigal," all released by World-Wide Pictures.

Rev. Fisk said the entire area is issued an invitation to attend the showing of the film at no charge on February 26.

Local Road Rally Scheduled Here

On March 18

One of the more popular annual events in Muleshoe is all set to take place on March 18, in the Bailey County Coliseum.

It will be the Seventh Annual Muleshoe Roadrider Motorcyclist Rally.

Actual events get underway on Friday night at 9 p.m. with the light show.

Registration gets underway at 7 a. m. on Saturday, with the poker run, a noon parade, field events and games; the bike show followed by a meal and awards and presentations, as well as the 50/50 drawing.

Several cash awards will be presented, along with over 60 trophies during the day.

Special awards will be presented at the Rally; the long distance male; long distance female; long distance 2-up; oldest rider and hard luck award.

There will be free camping at the coliseum.

Severe Weather Spotlights As Springtime Draws Near

Governor William P. Clements Jr., has proclaimed the week of February 26-March 4, 1989, as Severe Weather Awareness Week in Texas.

The Governor's Division of Emergency Management, in conjunction with the National Weather Service and the Texas Insurance Advisory Association, annual sponsors the week to encourage Texans to be aware of the severe weather problems that can threaten the state. Tornadoes, heavy thunderstorms, hail, lightning, floods and flash floods are serious weather phenomena for which Texans should be prepared.

"Last year, at least 13 people in our state lost their lives as a result of tornadoes, thunderstorm winds, lightning and flash floods," the Governor said in the proclamation. "Loss of life and property damage can be reduced if our citizens are prepared for severe weather situations."

The Division of Emergency Management is making available brochures on various severe weather preparedness tips to local emergency management offices for distribution to citizens. The Texas Insurance Advisory Association also plans to make information available. The National Weather Service will focus on a specific type of severe weather daily during Awareness Week.

Although tornadoes, severe thunderstorms and floods can strike virtually any part of Texas at any time, spring seems to bring an increase in violent weather.

You can take precautions to assist yourself and your family in the event of a tornado.

Periodically hold a tornado drill so that family members know what to do and where to go if the National Weather Service issues a tornado warning. The safest part of a house during a tornado traditionally is the basement, but be aware of the potential for flooding if there is

heavy rain the the area. Interior bathrooms, hallways and closets on the ground floor also offer protection from tornado winds. Avoid windows and outside walls. Take along blankets or sleeping bags to protect yourself from falling debris and shattering glass, which are frequently the cause of death and injury during a tornado.

Make certain you have a portable radio and several flashlights (and fresh batteries for both) as well as bottled water, extra prescription medications and a first aid kit in your shelter area.

Remember, if a tornado strikes, electricity, gas, water and sewer service may be disrupted for several days.

Jennyslippers Will Sponsor Student Night

It was announced Tuesday morning that the Jennyslippers will be sponsoring the second annual High School Students-Parents Night to give information on ways to seek financial assistance for students to attend college.

The special seminar will be held at 7 p.m. on Monday, March 6, in the Muleshoe High School Cafeteria.

An informative meeting is being planned and more instructions on the actual application process will be given.

Speakers will be Lynda Tinsley, director of financial aid, WTSU, Canyon; Cathy Wright, Opportunity Plan; Dr. Ronny Barnes, financial aid department, Texas Tech University; Major Wood, Texas Tech ROTC; Mattie Hicks, nursing instructor, South Plains College; Mrs. Linda Marr, Muleshoe High School counselor; Wayland Ethridge, principal and Dr. Lawrence Ward, superintendent of the Muleshoe ISD.

Mobile homes and automobiles are dangerous places to be Cont. Page 6, Col. 1

MISD To Participate In Public School Week

All four campuses of the Muleshoe Independent School District will be involved in Public School Week, March 6-10. Theme for the week is "See Us Shine."

Both Muleshoe High School and Watson Junior High School will hold an 'open house' in conjunction with their report card pickup on March 9.

On that date, school will dismiss early so parents can go by to pick up their children's cards.

At Dillman Elementary, the time to pick up report cards will be 1:30-5 p.m. and 6-8 p.m.; at DeShazo Elementary, the time is 2-4 p.m. and 5-7 p.m.

Open House at Watson Junior High School will be 6-8:30 p.m. and at Muleshoe High School 5:30-8 p.m.

Junior High School will have a history fair in conjunction with its open house.

The State Board of Education in January adopted a resolution recognizing March 6-10 as Texas Public Schools Week.

The resolution encourages citizens "to take an active interest in the school system by cooperating with their school board, superintendent, principals and teachers, and visiting the schools to see their students shine in the classroom."

Texas has officially recognized Texas Public Schools Week for more than 30 years. The theme of this year's observance, sponsored by the Texas School Public Relations Association, Texas Association of School Administrators and Texas Association of School Boards, is "See Us Shine."

"Public schools and students benefit from the participation of community groups and organizations in the local education system," the resolution reads.

"Texas must continue to support a strong educational system so that our children will have the opportunity to develop into the future leaders of the state and nation."

"During this special week, Cont. Page 6, Col. 6

Crime Line ALERT!

Bailey County Crime Line is offering a \$300 cash reward for information that will lead to the arrest of the suspects involved in the burglary of the Muleshoe Livestock Auction that took place during the early morning hours of February 20, 1989.

Call 272-HELP. Remember! You will remain completely anonymous.

Bailey County Crime Line is offering a \$300 cash reward for information that will lead to the arrest of the suspects involved in the burglary of the Lamb Star Feeders feed lot that took place during the early morning hours of February 21, 1989.

Call 272-HELP. Remember! You will remain completely anonymous.

Crime Line's only source of income is from donations. If you can make a donation in any amount, please mail it to Bailey County Crime Line, 300 South First Street, Muleshoe, TX 79347.

Courthouse News

MARRIAGE LICENSE
Leonard Frank Taylor and Lori Dawn Cox, Portales, N.M.
Billy Mike Hunt, Friona and Sheree Lynn Rea, Muleshoe

WARRANTY DEEDS
Rey Velarde and Abelina Velarde to Rey Velarde, Jr.—The Southwesterly 10 feet of Lot (14) and all of Lot (13), in Block (7), Original Town of Muleshoe, Bailey County, Texas.

Terry Don Nickell and wife, Kimberly Dee Nickell to Christopher Lane Johnson and wife, Adena Kay Johnson—All of Lot Number (13), in Block Number (5), Lenau Subdivision to the City of Muleshoe, Bailey County, Texas.

Marjorie O. Simmons to Sherri Lynn Harmon—The East 100 acres of Labor (2), League 111, Crosby County School Land, Bailey and Lamb Counties, Texas.

Tommy Keith Morris and wife, Janice Fern Morris to Carlos Guerra, Jr. and wife, Maria L. Guerra—All of Lot (6), Block (1), Lenau Subdivision Number 2 to the City of Muleshoe, Bailey County, Texas.

Edith Virginia Lee, Georgia Mae Norris and Howard Dillard Roebuck to Stephen L. Stevenson and wife, Eunice L. Stevenson—All of Lot (2), Block (2), Pool Addition to the City of Muleshoe, Bailey County, Texas.

COUNTY COURT
Poyner's White's Stores, Inc VS Refugio Delao, Sr., Motion To Dismiss

DISTRICT COURT
Howard Watson and wife, Julia Ann Watson, Individually and as next friends to Troy Leon Watson and Neal Russell Watson VS Billy Mayfield, Judgment of Court Reversed and Case Remanded For New Trial.

Sy Alton Ellibee VS National Union Fire Ins. Co. and Maxine Holcomb, Order of Dismissal

Bailey County Appraisal District VS Jack Kemp, Order of Dismissal

Scorio Deleon and Roman Deleon DV

Bailey County Appraisal District VS Charlie Hanks, d/b/a Charlie's Originals, Order of Non Suit

Local Man's Brother Dies At Seagraves

Memorial services for Leroy Wilkinson, 61, of Seagraves were conducted at 2:30 p.m. Thursday, Feb. 23 in the First Baptist Church of Seagraves with the Rev. Gene Tone, pastor, officiating.

Cremation was under the direction of Connally Funeral Home. Wilkinson died at 5:30 a.m. Wednesday at his home following a brief illness. Justice of the Peace Fred Connally ruled natural causes in the death.

He was born in Sudan and married Vera Morgan on Jan. 25, 1948, in Clovis, N.M. He was a member of the Seagraves Masonic Lodge and the Lions Club. He served on the board of Goodfellows and the United Way. He had worked for Southwestern Public Service Co. since 1944, and was a company manager when he moved to Seagraves in 1970. He was a Baptist.

Survivors include his wife, Vera; a daughter, Sharon Wilkinson of Dallas; and a brother, Pete of Muleshoe.

Those who are too quick on the draw find themselves with less money in their savings accounts.

George Nesbitt Funeral Services Held At Morton

Funeral services for George B. Nesbitt, 32, of Morton were held at 2 p.m. Friday, Feb. 24 in the First Baptist Church of Morton with the Rev. John Culwell, pastor, officiating.

Burial was in Morton Memorial Cemetery under the direction of Ellis Funeral Home. Nesbitt died at 5:36 a.m. Wednesday in Lubbock General Hospital following a lengthy illness.

Born Nov. 6, 1956, in Morton, he was a lifetime resident of

La Velle Sims Services Held At Pampa

Services for LaVelle R. Sims, 61, of Pampa were held at 4 p.m. Friday, Feb. 24 in Mary Ellen Harvester Church of Christ with Glen Walton, minister of North Amarillo Church of Christ, officiating.

Interment was in Fairview Cemetery under direction of Carmichael-Whitley Funeral Home. She died Wednesday at Amarillo's High Plains Baptist Hospital following a lengthy illness.

She was raised in Hobart, Okla. and moved to Lefors in 1942. She married Bill Sims on July 18, 1947, in Borger. She worked for Cabot Corp. until 1949. She was a member of the Church of Christ.

Survivors include her husband, Bill; three sons, Gregg of Pampa, Mickey of Lubbock and Randy of Dumas; a daughter, Sandra Keeton of Pampa; two brothers, Eddie Don Davis of Waterloo, Iowa, and Bill Nabors of Pampa; two stepbrothers, Tommy Jinks, of Muleshoe and Tollie Jinks Jr. of Pampa; a stepsister, Maxine Parker of Wichita Falls; and six grandchildren.

The family suggests memorials be made to Don and Syble Harrington Cancer Center in Amarillo.

Hoyt Tiller Funeral Services Held Saturday

Funeral services for Hoyt E. Tiller, 79, of Bula were held at 2 p.m. Saturday, Feb. 25 in the Missionary Baptist Church of Bula with the Rev. Harold Brown, pastor, officiating.

Burial was in Sudan Cemetery under the direction of Hammons Funeral Home of Littlefield. Tiller died at 5:45 a.m. Thursday in Littlefield Hospitality House following a lengthy illness.

Born in Eldorado, Okla., he moved to Bula from Quanah in 1945. He married Amy Margaret Crume on Feb. 2, 1928, in Quanah. She died in December of 1985. He was a retired farmer and a member of Missionary Baptist Church.

Survivors include a son, Dewitt of Bula; a brother, C.J. of Needmore; four grandchildren; and 10 great grandchildren.

Morton. He was a cowboy and a member of the First Baptist Church.

Survivors include his father, Lawrence Nesbitt of Morton; grandparents, Mrs. G.G. Nesbitt of Morton and Mrs. Bert Darland of Lubbock; a sister, Lynda Wampler of Lubbock; three brothers, Allen Nesbitt of Giddings, Rick Nesbitt of Midland, and Les Nesbitt of Amherst; four nieces; and four nephews.

Claud H. Gillis Services Held At Roby

Funeral services for Claud H. Gillis, 82, of Roby were held at 2 p.m. Saturday in the First United Methodist Church with the Rev. Jim Hawthorne officiating.

Burial was in Roby Cemetery under the direction of Weathersbee Funeral Home. Gillis died at 1:30 a.m. Wednesday in Austin while visiting relatives.

He was born on Nov. 24, 1906, in Lockhart. He was the son of the late Mr. and Mrs. William H. Gillis. He married Eva Dell Jarnagin on Feb. 6, 1935, in Fisher County. She died April 3, 1987. Gillis and his wife made their home in Jones County and later Fisher County. They then moved to Ropesville and Muleshoe where they lived for 23 years. They moved back to Roby in 1972, when Gillis retired from dairy farming. He was a member of the First United Methodist Church.

Survivors include four daughters, Velta Anne Hord of Pierson, Fla., Virginia Carroll Welch of Lubbock, Lynda Pat Stewart of Amarillo and Billie Jo Ratliff of Austin; a brother, Clinton Gillis of Hamlin; five sisters, Ethel Gillis, Ella Gillis, Nina Murff and Linnie Daniels, all of Roswell, and Ruth Andres of Palm Springs, Calif.; 11 grandchildren; and three great grandchildren.

Ida Lovelady Former Area Resident Dies

Funeral services for Ida Etter Lovelady, 92, of Rensselaer, Ind. were held at 1 p.m. Saturday, Feb. 25 in Jackson Funeral Chapel with the Rev. Donald Ruhl, pastor of the Trinity United Methodist Church, officiating.

Mrs. Lovelady died at 7:15 a.m. Thursday in Jasper County Hospital in Rensselaer, Ind.

She was born on Dec. 3, 1896, in Montague, TX and moved to Rensselaer ten years ago, having lived in Muleshoe and Tahoka previously. She married Frank Lovelady on Nov. 19, 1914, in Davidson, Okla. He died June 12, 1952. She was a hotel and restaurant manager in Michigan and Florida, retiring ten years ago. She was a member of Rebekah Lodge No. 100 in Tahoka and the Pippian Sisters.

Survivors include a daughter, Mrs. Donald (June) Pullins of Rensselaer, Ind.; a sister, Mrs. Jeanie Gladys McDougal of Dallas; eight grandchildren; 23 great grandchildren; and five great great grandchildren.

Tax Tips To Help!

WHAT KIND OF EXPENSES DOES THE IRS CONSIDER MISCELLANEOUS ITEMIZED DEDUCTIONS?

Expenses that may fall into the "miscellaneous itemized deductions" category include:

- professional society membership dues.
- employment-related educational expenses.
- office-in-the-home expenses.
- professional books, magazines, journals, and periodicals.
- work clothes and uniforms.
- union dues and fees.
- safe deposit box rental.
- tax counsel and assistance.
- cost of work-related small tools and supplies.
- fees paid to your IRA custodian.

Deductions for these expenses are not subject to a two percent of AGI floor. This means that the amount deductible is limited to the amount by which the total of all miscellaneous deductions exceeds two percent of your adjusted gross income.

Do you have questions about how the tax laws affect your return? Call your local H&R Block office.

The life you save may offer a reward.

Banks Expected To Ask Refund On Franchise Tax

State Comptroller Bob Bullock Monday alerted local governments that recent court decisions may cost them \$60 or more in refunds of bank franchise tax money they got in 1985-87.

In a letter to cities, school districts, counties and special districts, Bullock said that banks seeking refunds will look to the local government entities for that money.


The problem comes from court decisions invalidating parts of the franchise tax law which covers all corporations. The Legislature brought banks under the franchise tax for the first time in 1985 and earmarked the tax money for local governments.

The 1987 Legislature "repaired" the tax law so that the taxes paid in 1988 and the \$40 million expected in 1989 should not be affected, Bullock said.

Bullock told local officials they can expect to see refund requests starting next month.

Black holes, pulsars, quasars... the dimensions of the universe. Texas students are launching careers for the possibility of living in space. Come see us shine March 6-10 during Texas Public Schools Week.

Spring Will Soon Be Here
Let me check and tune-up your lawn sprinkler for the coming season
NuWay Lawn Sprinkler Co.
Bob Solberg - Owner
Lic. 26937 FREE ESTIMATES
Complete Lawn Sprinkler Servicing And Installation
Call 505-762-4872 Day or Nite
Clovis, New Mexico
Serving your area for the last 12 years


HOMESTEAD EXEMPTIONS

CAN LOWER THE PROPERTY TAXES ON YOUR HOME
A homestead Exemption lowers the property taxes on your home by lowering its taxable value. For example, if your home is valued at \$50,000 and you receive a \$5,000 homestead exemption, your home will be taxed as if it were worth only \$45,000.
You qualify for a homestead exemption if you owned your home on January 1 and used it as your primary residence on January 1. It doesn't matter whether your home is a house, a condominium or a mobile home.
Exemptions are available to all homeowners on their school taxes. Additional exemptions are available to homeowners who are disabled or age 65 or over. Other exemptions may be offered to homeowners by school districts, counties, cities, and special districts. All taxing units offer exemptions to disabled veterans.
Apply to your local appraisal district office at the address shown
Bailey County Appraisal District
104 E. Ave C 272-5501


DOES YOUR CAR PULL TO THE LEFT OR THE RIGHT?
Could be it needs the front end aligned. Let us check it out and straighten it if required.
FRONT-END ALIGNMENT ONLY \$28⁰⁰
Includes:
• Camber Adjustment • Caster Adjustment
• Toe Adjustment • Tire Check
• Shock Absorber Check • Steering Linkage Check
Don't Wait! Special Price Ends 2-28-89
Robert D. Green, Inc.
2400 W. Amer. Blvd. 272-4588
 Mr. Goodwrench

Patients In West Plains Medical Center

FEB. 21-23
TUESDAY, FEB. 21
Tammie Galaviz, Baby Girl Galavis and Matt Phelps
WEDNESDAY, FEB. 22
Tammie Galaviz, Baby Girl Galaviz, Matt Phelps and Michael Villarreal
THURSDAY, FEB. 23
Luther Hall, Emma Fagin and Guadalupe O'Campos

Horse Auction
Monday, February 27, 1989
7:00 P.M.
Consignments Welcome
Bob Smith Owner Triple S Auction Service
Lance Folson Auctioneer
Smyer, Texas 234-2405

"Supplying food for a nation is taxing enough your accountant shouldn't be."
You know the feeling...worry. Worry over the weather, the soil conditions, the equipment and of course, the result of your crops. Farming is a tough enough job without the worry of your financial and tax situation. You need an accounting firm that understands your bottom line needs and that really works for you. At McKay and Co., we're a very professional, highly qualified staff of accountants that does exactly that.
Call us for help with all your agri-business, financial and tax needs; and you'll have one less thing to worry about.

McKay & Co.
Certified Public Accountants
Clovis 819 Parkland 769-2131
Farwell 114 S. Ninth 481-3307

STATE CAPITAL

HIGHLIGHTS
 By Lyndell Williams
 TEXAS PRESS ASSOCIATION

AUSTIN—While legislators labor in obligatory hearings, some unusual happenings in Texas history are occurring:

• The Lt. Governor and Speaker urged the demolition of the original Texas General Land Office building, now a crumbling museum in the front corner of the Capitol lawn.

• The attorney general running for governor called for a summit meeting of top Texas bankers to resolve the lending crisis.

• Commissioners of the State Board of Insurance and the Public Utility Commission continued to draw charges of incompetence or conflict of interest from irate senators.

The insurance board took renewed heat for failing to act for at least six months on the insolvency of Best Lloyds Insurance Co.

State insurance officials are now suing two company officials for conspiracy to defraud policyholders and creditors.

Conflict of Interest?
 Meanwhile, two of Gov. Bill

Clement's appointees to the Public Utility Commission face questions from senators over whether they are too closely tied to the utilities they regulate.

The two commissioners, Marta Greytok and William Cassin, were appointed during the interim but now face confirmation. They denied any conflict of interest.

State Rep. Lloyd Criss, D-La Marque, has written senators asking them to deny confirmation of Cassin's appointment because he was long an attorney for Houston Lighting and Power Co., now waging a rate hike battle against consumer advocates and Attorney General Jim Mattox.

Mattox Back In

Mattox was put back into the middle of rate hike battles last week when the Texas Supreme Court reversed, 5-4, its earlier ruling that Mattox had no legal right to represent state agencies as consumers.

The vote split down party lines, except for Raul Gonzalez, who voted with the losing Republicans. The reversal was won on the vote of Franklin Spears, who voted against Mattox in the earlier decision.

Mattox, the activist bulldog who has waded into utility rate cases and insurance industry squabbles, ventured into the banking world by calling for a summit of top state lenders to discuss the crisis facing banks and savings and loan institutions.

Mattox, who as a congressman served on the House banking panel, faulted lawmakers for failing to address the lending crisis and leaving the industry vulnerable to federal law.

Landmark or Blemish?

Debate over whether to renovate or demolish the 132-year-old Land Office building began when the State Preservation Board got a report detailing its poor construction and deterioration.

Lt. Gov. Bill Hobby, who sits on the board, said the \$3.8 million restoration price tag is too high for a dilapidated building, which happens to sit on Capitol grounds. He plans to either abstain or point thumbs down when the final vote is taken.

Speaker Gib Lewis will tour the building again, but said the wisest decision is to call in the bulldozers.

Unused by the state, the crumbling structure houses museum collections of the Daughters of the Republic of Texas and the United Daughters of the Confederacy.

Briscoe Eyeing Race

Not only is former governor Mark White exploring the prospects of running for governor in 1990, but his predecessor, Dolph Briscoe, has a former aide checking out his chances for a comeback.

Howard Richards, who was Briscoe's general counsel, last week confirmed that he has been asking people around the Capitol what they think about Briscoe making another race. "The response has been very good," Richards said.

Briscoe, a 65-year-old Democrat and Uvalde rancher, was governor from 1973 through 1978.

Other Highlights

• The regents of West Texas State University in Canyon plan to prepare a report by May on the

possibility of merging the school with the University of Texas or Texas A&M systems.

• The Senate last week confirmed two of Gov. Clements' appointments to the University of Texas System Board of Regents. Former U.S. Rep. Tom Loeffler of San Antonio and Houston accountant Robert Cruikshank were confirmed, 30-0.

• A recent poll indicated 70 percent of Texas voters believe the Legislature will raise taxes, despite the governor's pledge to veto them.

• The same poll shows Gov. Clements still has a negative rating of about 53 percent, better than the 68 percent rating in 1987.

• The original Goddess of Liberty statue from the Capitol dome will be moved from storage to the Texas Memorial Museum at the University of Texas.

Globetrotters To Perform At ENMU

Eastern New Mexico University, Portales, will be one of the stops on the 1989 Harlem Globetrotters sixty-third annual tour. The Globetrotters will again face their longtime rivals, the Washington Generals, at 7 p.m. in Greyhound Arena on Sunday, February 26.

Currently riding a world-record winning streak of 6,278 consecutive games, for 63 seasons the Trotters have demonstrated their unique brand of basketball to over 100 million fans in 103 countries. Through the years, they've become much more than just a basketball team. They've earned a special place as an authentic American institution.

Stars of the 1989 Trotters include: the astonishing and hilarious "Clown Prince of Basketball," "Sweet Lou" Dunbar; sensational sharpshooting marvel Sandra "Sweetness" Hodge; the amazing hardcourt athlete Billy Ray Hobbly; high-flying slam dunk phenomons Robert "Skywalker" Wallace and Harold "Bobo" Hubbard; incredible trick dribbler Larry Coleman; three-point terror Osborne "The Wizard" Lockhart; the crafty young forward Tyrone Howard and slick ballhandlers Carl Johnson and Allen Jones.

According to veteran Washington Generals coach Red Klotz, the hungry Generals are fielding their most powerful team ever. The club's roster includes some of the hottest shooters in basketball. "The Globetrotters will have their hands full this season," says Klotz. "Quite frankly, we are tired of losing and plan to end the Trotters winning streak once and for all."

Tickets are \$9 general admission, \$12 for ENMU students, and \$7 for senior citizens and children 12 and under.



BOOK PRESENTED TO HERITAGE FOUNDATION—During the regular meeting of the Heritage Foundation Monday night members of the History Book Committee presented a history book "Tales and Trails Of Bailey County" to the Heritage Foundation Back Row: (Not In Order) Anne Camp, Vivian White, Evelyn Peat, Billy Downing, and Bobbie Harrison, members of the History Book Committee; R.A. Bradley, Cara Juan Schuster, Murine Hooten, Mary Moore and Al Henderson.

Firearm Safety Course Slated By SP

A pistol firearms safety class, designed for persons who would like to do target practice at South Plains College's pistol firing range, is scheduled April 1.

The class will meet 9 a.m.-3 p.m. in the SPC Law Enforcement

Building, Room 116. Cost is \$15, which includes all supplies.

Instructors are George Lawless and Larry Nichols, associate professors of law enforcement at SPC, and Don Franklin, SPC law enforcement instructor.

"The pistol firearms safety course is open to anyone who needs minimum qualifications for participation on SPC's pistol firing range," explained Lawless. "We'll cover rules and regulations plus provide some limited on-hands familiarization of the range itself," he said. A range participation card will be issued on completion of the class.

Pre-registration is required. For more information, contact the SPC Continuing Education Office at 894-9611, ext. 391.

Soil Samples Determine Need For Fertilizers

It's not too late to collect soil samples for testing to determine fertilizer needs for this year's crop.

Collecting soil samples now and getting them tested can help farmers get a jump on the spring rush at soil testing labs, said Spencer Tanksley, county agent with the Texas Agricultural Extension Service.

Once fertilizer needs are determined, farmers can place their orders, Tanksley said. Again, by ordering early, they can avoid the spring rush. Also, fertilizers usually cost more in the spring when demand is greater and supplies tighter.

With fertilizer at hand, farmers can begin application when field conditions permit. This minimizes spring planting delays because of tight dealer schedules and reduces the potential for moisture loss just prior to planting, Tanksley said.

For more information concerning soil testing, contact the county Extension office.

Cash Rewards Up To \$1,000 For Information!
 Call
Bailey County Crime Line
272-HELP

Nationally Advertised on TV



TRY NEW Coronet Sparkle PAPER TOWELS

4 For 3.00

ALL IT LEAVES IS CLEAN

Super Absorbent Virtually Lint Free

Higginbotham-Bartlett

"Quality & Service at The Right Price"

215 Main  272-3351

FASHION FOILING

Is Here!

The metallic look of lamé is now available for fabric decorating. This unbelievably hot look enables you to choose gold, silver, bronze, and a rainbow of colors in reflective foils for easy at home, iron-on fabric applications. It's a stunning look, easy to do, and lasts wash after wash. Our selection of patterns include: Southwestern and everyday Designs for T-Shirts, sweats and other wearable art. Come by and experience fashion foiling.



Iron on transfer \$1.99 Iron on foil \$1.99 per color In less than 5 minutes, a ready to wear garment for less than \$5.00



Supplied by **KAY'S CRAFTS** etc. Crafted by You

At **Ben Franklin**

Better Quality for less

Mon. - Sat. Sun.
 8 a.m. - 8 p.m. 12 - 5 p.m.

2104 W. Amer. Blvd. 272-3855

IRA IRA IRA IRA IRA

Individual Retirement Accounts Are No. 1 With Us!


An IRA is the best tax shelter available. It reduces current taxes, encourages you to save and accumulate a retirement fund.

An individual can save up to \$2,000 per year ... \$2,250 with a non-working spouse. If a husband and wife both work, two separate plans can be set up with a maximum savings of \$4,000 per year.

All interest earned is tax deferred. The amount of savings which can be deferred depends upon whether or not the saver has a pension and earnings.

There is a penalty for early withdrawal before age 59½, except for disability or death. Withdrawals must start by age 70½.

INDIVIDUAL RETIREMENT ACCOUNTS ARE A SPECIALTY. STOP IN FOR MORE INFORMATION



MULESHOE STATE BANK

MEMBER FDIC

101 West American Blvd. Phone 806/272-4561
 MULESHOE, TEXAS 79347



FEBRUARY BIRTHDAYS CELEBRATED—Five residents of the Muleshoe Nursing Home celebrated their birthdays in February and were honored with a birthday party Thursday afternoon in the day room. The Needmore Community Club hosted the party. Creations by Helen provided the flowers and Mr. and Mrs. Shanks and the Needmore Community Club provided the music. Those celebrating birthdays were: Pearl Cox, standing, born Feb. 21, 1908; Seated (From Left) Ruby McCamish, Feb. 11, 1905; Thelma Stearns, Feb. 6, 1907; and Margaret Beard, Feb. 2, 1910. Also celebrating her birthday, but unable to attend. Inez Allgood, Feb. 11, ???

(Journal Photo)

Creative Living

by Sheryl Borden

Information on a new bread-making machine, stuffed toys to stitch and stuff, and recycling will be featured on "Creative Living" on Tuesday, February 28 at 12 noon and repeated on Saturday, March 4 at 2 p.m. on KENW-TV. (All times are Mountain.)

Connie Moyers will demonstrate a very unique bread-making machine called the Automatic Bread Maker which mixes, kneads and bakes the

bread all in the same unit. Connie is the Marketing Home Economist with Southwestern Public Service Co., in Clovis, N.M.

Jeanne Bakelar represents the Pro-Environmental Packaging Council, Inc. in Sparta, New Jersey. Jeanne is recognized across the country as an expert in the field of recycling and solid waste disposal and has taken her crusade into the supermarket.

The flashback segment will feature Jean Benson who will demonstrate several stuffed toys you can make yourself. Jean has authored a Farm Journal Craft Book called "Stuffed Toys to Stitch and Stuff" and has her own business called "Critter Crafts" in pasco, WA.

On Tuesday, February 28 at 9:30 p.m. and on Thursday, March 2 at 12 noon, "Creative Living" will feature segments on homemade gingerbread, and wine and wine etiquette.

Zella Junkin, represents General Foods and Wilton Enterprises in Woodridge, IL. Zella will show how to use the Gingerbread Cookie and Cake Mix that General Foods has just introduced to make the job of preparing pan cookies much easier and economical.

Aldo Cella, the white-suited bon vivant who stars in television commercials that bear his own name, will share his knowledge on wine and wine etiquette. Also represents Cella Wines.

"Creative Living" is produced and hosted by Sheryl Borden.

Daisy Scouts

Daisy Girl Scouts met Wednesday, Feb. 22 at the Fire Station where they will continue to meet until the weather is warmer, at which time they will meet back at the Scout Hut.

The meeting opened with the promise and then the group went on a nature walk to look for signs of spring and to look for natural items, to make a poster.

Averi Wilkerson took refreshments which it was reported that everyone enjoyed.

Those present were: Adrienne Ashford, Shari Alanis, Kayla Claybrok, Kinsee Estep, Elizabeth Torres, Karen Jo Wimberley, Casey Tosh, Chyla Torres, Diana Gable, Misty Garcia, Melissa Flores, Averi Wilkerson, Jamie Prather, Stephanie Kirk, and Lisa Marie Ramirez. Troop leaders are Linda Flores, Linda Tosh, Cherry Estep and Mary Ann Ramirez.

TAXPAYERS' Rights, Remedies, Responsibilities

Want to learn more about the property tax system? That's possible by reading a pamphlet the State Property Tax Board has written and made available at the local appraisal district office.

It's called "Taxpayers' Rights, Remedies, Responsibilities" and it may help you save money. Learn about tax relief available through

- homestead exemptions
- disabled veteran exemptions
- special productivity value for farm, ranch, and timber land
- tax deferral for over-65 homeowners

You'll learn how your property is appraised. That way, you can decide if the appraisal district's value is reasonable.

If you think it isn't, the pamphlet tells you how to prepare an appeal to the appraisal review board. You'll learn the types of protests the appraisal review board can hear and useful evidence to bring to your hearing.

Important dates in the tax year are listed. You'll know what your responsibilities are and when you are obligated to satisfy them.

"Remedies" is free to taxpayers. Ask for yours today at

State Property Tax Board

Box 15900 Austin, TX 78761-5900

Bailey County Tax Appraisal District

104 E. Ave. C. Muleshoe 272-5501

Latest Arrivals



Amy Lynn Jones

Mr. and Mrs. Doug Jones are the proud parents of a daughter, Amy Lynn, who was born at 9:55 p.m. Monday, Feb. 13 at the Littlefield Medical Center in Littlefield.

The young lady weighed six pounds and nine ounces and was 21 and a half inches long. She has a five year old sister, Lea, and a two year old sister, Sarah.

Grandparents are Mr. and Mrs. Ralph Martin of O'Donnell and Ann Jones of Odessa and

Keith Jones of Earth.

Mrs. Jones is special ed teacher at the Sudan Schools and Jones is a coach and also a teacher in Sudan.

Madison Marie Myers

Thurman and Rhonda Myers announce the birth of their first child, a daughter, born at 3:08 p.m., Monday, February 13, 1989, at Lubbock Methodist Hospital.

She weighed seven pounds, nine ounces and was 20 and one-fourth inches long.

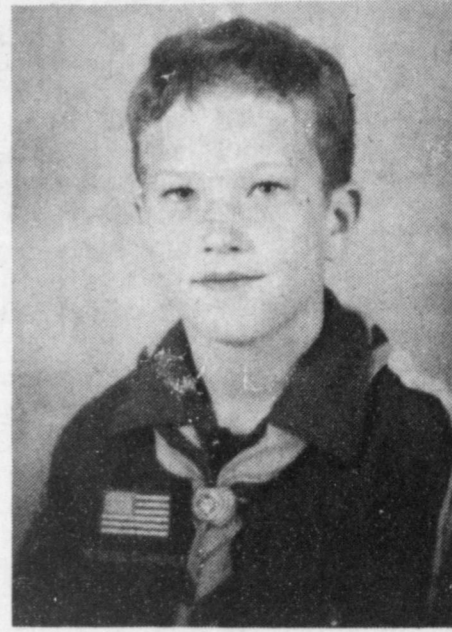
The Myers' first child was named Madison Marie Myers.

Grandparents are Jack and Bobbie Dunham and Clayton and Gladys Myers, all of Muleshoe.

Great-grandparents are Vernal King and Loni Ballard, both of Muleshoe; and Mr. and Mrs. R. P. Dunham, Muskogee, OK.

Tori Shantel Galaviz

Juan and Tammie Galaviz are the proud parents of a daughter,



PAYTON RENNELS

Payton Rennels

Receives God

And Me Award

Payton Rennels, 9 year old son of Mr. and Mrs. Jack Rennels, received the God and Me Award Sunday during the regular morning worship services of the First United Methodist Church. The award was presented by the pastor of the church, the Rev. Richard Edwards, who also helped Payton achieve his award by acting as his counselor.

The purpose of the God and Me program is to enable children to put together the story of their lives with the story of God's love as revealed through Jesus Christ. The God and Me Award is part of the God and Country series emphasized by the Cub Scouts.

Payton is a member of Den I of Muleshoe Cub Scout Pack 620. He received this award as part of his work on his Bear badge.

He is the grandson of Gil Lamb of Muleshoe and he has two brothers, Gilrobert 13, a member of Boy Scouts; and Greyson 7 who is a Tiger Cub. Payton is a third grader at Mary DeShazo Elementary School.

We're the team that's on your team!



We're the full service bank offering personal and business checking accounts and savings plans, personal and real estate loans, trust service and safety deposit boxes. We've got a full, working team, with daily banking hours, and drive-in-window convenience.

For a powerhouse of financial professionals giving you protection and strategy in the big game play of life, bank with us!

1ST BANK MULESHOE

272-4515

202 S. 1st



STUDENTS PARTICIPATE IN MATHCOUNTS—Seventh and Eighth grade students at Watson Junior High who are participating in the 1988-89 Mathcounts include: Back Row (From Left) Douglas Snell, Hector Arzola, Stacey Langfitt, and Amanda Ashford; Front Row: Amelia Flores, Mark Garcia and Rhona Stevens. Not Pictured: Jolene Benavidez. (Journal Photo)

Watson Junior High Participate In Mathcounts

Seventh and eighth grade students at Watson Junior High have been attending accelerated coaching sessions in order to participate in the 1988-89 Mathcounts competition. This year's team members are: Stacey

Langfitt, Amanda Ashford, Douglas Snell, and Hector Arzola. Alternates are: Rhona Stevens, Mark Garcia, Amelia Flores, and Jolene Benavidez.

The South Plains Chapter of Texas Society of Professional Engineers conducted this year's chapter contest on the campus of Texas Tech University, Lubbock. The objective of Mathcounts is to motivate students to achieve proficiency and knowledge in mathematics. Students competed against area schools in the 40/40 Sprint Round, Target Round, and Team Round. Schools that placed in the top three positions were Lubbock schools: Hutchinson Junior High, All Saints Episcopal, and Slaton Junior High. Hutchinson and All Saints will compete in Austin at the state level.

All participants received T-shirts and calendars from the College of Engineering, TTU. It was reported that Watson

students enjoyed a guided tour of a chemical engineering lab. Stacey Langfitt was presented five dollars from the Dean of Engineering for her superb calculating abilities.

Mathcounts is a cooperative project of National Society of Professional Engineers, the CNA Insurance Companies, the National Council of Teachers of Mathematics, NASA, and the United States Department of Education.

Watson Junior High students will continue coaching sessions to prepare for the Math Bowl which will be held at Eastern New Mexico University, Portales on April 8.

Karen McLaughlin is the sponsor for the group.

The Lone Star state can sparkle with pride for its educational accomplishments. Education in Texas began over 150 years ago in a one-room schoolhouse. Today, students learn an array of basic skills plus sophisticated training in exciting new fields. Come see us shine during Texas Public Schools Week, March 6-10.

Ruth Sunday School Class Holds Meeting

The Ruth Sunday school class of the Sudan First Baptist Church met Monday in the home of Evelyn Ritchie for their February social. Mutt Hanna asked the blessing prior to the meal.

Gwen West brought the devotional on Hearts, Valentines and Cupids and used the love chapter in Corinthians for the bases.

Others attending were Oleta Reece, Billye Doty, Sue Chester, Joann Chester and Mary Hanna.

Don't Worry About A Full Parking Lot!!!

Come on in and get served quickly.

New At Leal's:

- Beef or Chicken Fajitas
- Chicken Enchiladas with red or green sauce
- Sopapillas
- Your choice, topped sopapilla topped with stew meat, taco meat or chicken



The Finest in Mexican Food... Since 1957

Leal's

1542 W. Amer. Blvd. 272-3294

Lazbuddie 4-H News

By Joanna Gallman

The Lazbuddie 4-H Club met on Monday, Feb. 13 in the Lazbuddie school cafeteria. Brett Thomas conducted the meeting. Bobby Weaver and Jody Copp led the club in the motto and pledge. Holly Morris called the roll. Twenty-two members were present. Many members were gone to stock shows.

Patsy Britting, from the

Rebekah Lodge News

Muleshoe Rebekah Lodge No. 114 met in their regular session Tuesday, Feb. 21 with Linda Tosh presiding in the absence of the Noble Grand Audrey Langfitt. Della Puckett and Ruby Garner presented the flags. Ruby Green, chaplain, gave the opening prayer. June Green, secretary, read the minutes of the previous meeting and they were approved.

Dorothy M. Browning from Mary's Rebekah Lodge was introduced and welcomed as a new member of the lodge by transfer.

Plans were made for the representatives to attend the pre-association meeting at Leveland Saturday night to plan the program for the South Plains Association meeting to be held in April.

It was reported that 15 members attended the Friona Rebekah Lodge No. 308 meeting to help initiate a new member into their lodge.

Following other routine business Lodge was dismissed by Terie Snell.

Refreshments were served to 16 members by June Green and Lori Tosh.

Region 16 Service Center in Amarillo, gave a very interesting program on Self-esteem. She illustrated how spoken words and actions of others can take away from our self-esteem. She stated that when a person has a low self-esteem, it is easier for that person to be swayed and end up into trouble.

Using a case study and exercise with the 4-H members, she showed them that others can only hurt them if they allow it. By knowing we are a worthwhile person, capable of being loved and successful is the first step in protecting our self-esteem. Thinking positive about ourself and sharing positive things with our friends also helps to build self-esteem.

To help the members in a tough situation, she taught the

club members one statement that could help them. "No matter what you say or do to me, I'm still a worthwhile person."

Finally, she shared that a strong self-esteem would help to keep a person out of trouble and avoid giving in to pressures to try alcohol or drugs. She did such a good job in her presentation that all the club members and their parents enjoyed it. Twelve parents were present for the meeting.

The next meeting of the Lazbuddie 4-H Club will be on March 13, 1989.

Sudan Students Participate In Math-A-Thon

Once again the Sudan fifth grade participated in the Math-athon which is sponsored annually by the St. Junes Childrens Research Hospital. The money which is earned through pledges is used to help in research for the cure of childrens critical and fatal diseases. All of the money earned goes toward research.

To participate in this program, students must first seek people to pledge money for each math problem they work. After getting the pledges the students work in a math booklet which contains 210 problems that have been provided by the St. Junes Hospital. This effort is very helpful as well as fun and it does provide the child with a sense of helping others. After participating the child will receive a certificate, T-shirt (for earning \$25.00) and an athletic bag (for earning \$100.00) plus an ice cream sundae.

This year's fifth grade class collected \$291.31. Those participating and receiving a certificate, ice cream and T-shirt are Justin Bellar, Kassy Kinnie, MarJoe Bigbee, Holly Francis, Lee Ray and Katie Horn. Ray and Kinnie will receive a calculator for being the highest money collectors.

Others participating and receiving a certificate and ice cream cone are Joe Ruiz, Debra Conley, and Joe Gonzales.

Mike Fisher is the sponsor.

Defined

Matrimony: An institution in which a man loses his bachelor degree and his wife acquires a master's.

—U.S. Coast Guard Magazine.

Kristi Hargrove Named Student Of Month

The Student of the Month of January at Sudan High School is Kristi Hargrove. While in high school, she has been involved in basketball, track, cross-country and golf. Last year she was a member of the state qualifying mile relay team.

Her freshman year she was chosen as class favorite. She has participated in FCA, FHA, UIL Literary events and FTA.

Last year she was inducted into the National Honor Society and was a member of the One Act Play in which she was elected to the All-Star Cast. Presently she is serving as class reporter and FTA District Chaplain and State Representative.

Kristi is a member of the First Baptist Church in Sudan.

Student of the Month is sponsored by the Student Council and selected by the high school teachers. It is not solely selected on academic standing, but good behavior in class, good attitude, spirit, respect for teachers, determination, involvement in classroom and school activities and cooperation in class.

Noemi Acosta is associated with House of Beauty

- Hair Cuts
- Perms
- Manicures
- Sculptured Nails
- Hair Coloring

She invites all her friends and customers to call for an appointment.

272-4152

109 Ave. B.

Bailey County Journal USPS 040-200
 Established March 31, 1963. Published by Muleshoe Publishing Co., Inc. Every Sunday at 304 W. Second, Box 149, Muleshoe, Texas 79347. Second Class Postage paid at Muleshoe, Texas 79347.

Member NATIONAL NEWSPAPER ASSOCIATION WEST TEXAS PRESS ASSOCIATION PANHANDLE PRESS ASSOCIATION

L.P. Hall—President & Publisher
 Sammy Hall—Vice President & Controller
 Oleta Williams—News
 Evlene Harris—Society

SUBSCRIPTIONS
 Muleshoe Journal and Bailey County Journal
 Bailey and Surrounding Areas
 Muleshoe Journal and Bailey County Journal
 Elsewhere in Texas \$14.75
 Muleshoe Journal and Bailey County Journal
 Outside of Texas \$16.50
 Yearly by Carrier \$12.50
 Advertising rate card on application

Hat's Off! Our Teachers Are What Our Kids Will Be!!

What class can you take in Muleshoe High School where it's perfectly all right to get dirty and messy, and have a lot of fun doing it?

It's Hellen Adrian's art classes, of course.

In her fifth year at MHS, Hellen Adrian moves and motivates her students, and guides them to bright paintings, modern art, murals, and let's the student express his or her innermost feelings, all through the paint medium.

Formerly housed inside the high school building, the art department was moved to the former Industrial Arts building between high school and the ag department last fall at the request of Mrs. Adrian. "We needed space, and a place where we could get dirty and messy," she said. "We have a lot of room out here, and we all love it."

Hellen Adrian received her degree in art from West Texas State University in Canyon and taught for a year at Alameda, California, when husband, Lonnie was in the service.

She then taught for six years in Plainview before they moved to Muleshoe, where Lonnie operates a photography studio.

Although she co-sponsors the high school annual, and does some photography for the annual, comments, "I do not pretend to be the professional my husband is with photography."

In explaining her teaching philosophy, she added, "It's always fun to help someone realize their potential. It's not magic, you just help bring out what talent's already there."

She added, "I love my kids, and they work hard for me."

In community art, Hellen Adrian and her students have done murals for the football field, on the side of Joe Rhodes Boot Shop, on the side of the Harvey Bass Appliance Building, and at the Mule Memorial.

They have also done art work for the

Muleshoe Chamber of Commerce and Agriculture Banquet and for the windows at the Southwestern Public Service building.

She and Lonnie are the parents of Gracie, age four and Christi, age six. The family sport for the Adrians is snow skiing. Christi was in a back pack on skis at the age of nine months, and Gracie made her first skiing trip at the age of six weeks.

They are very active in the Richland Hills Baptist Church.

Hellen Adrian is a vibrant, shining example of the strong caliber of Muleshoe teachers.

thriftway

Ask Ann Richards

Editors Note: State Treasurer Ann W. Richards each week answers questions about personal finance and state government. These questions are compiled from various letters to the State Treasury. Answers are not intended to take the sound advice of reputable financial advisers or other professional counselors.



non-payment when the bond comes due, is very low. A "D" rating is the lowest grade, indicating the borrower has defaulted on its repayment at some time.

In a sense, the city's bond rating is its credit rating. The better the bond rating, the lower the interest the city will have to pay on the loan. That means less money out of the taxpayer's pocket, since it is usually through taxes that the loan is repaid.

I'm ready to move out of my apartment and into a house, but I'm not sure whether to buy or to rent. I know a lot of it has to do with the market in the area where I am planning to move, but how do I find out what that market it like?

Market considerations are certainly important when deciding whether to rent or buy a home. However, there are a number of other important factors to consider as well.

Contact the Real Estate Center at Texas A & M University. The center conducts research into the very areas about which you are asking. If they can not tell you the answer, they can tell you where to find it. Call (409) 845-2031 or write: The Real Estate Center, Texas A & M University, College Station, Texas, 77843-2115.

If you have a question to ask, write to:

Ask Ann Richards
PO Box 12608
Capitol Station
Austin, Texas 78711

When I read about my city's bond rating dropping, what does that mean?

It is important to understand what a bond is, and how the rating system works.

There are different types of bonds, but generally, bonds are loans issued to help governments pay for improvement projects, such as a water plant or roads. A bond certificate shows the loan amount, how much interest will be paid, when repayment will be made and the collateral pledged if payment can not be made.

Bond ratings are grading systems used in judging the financial condition of corporations and municipalities issuing bonds. It's a bit like the government's report card. "AAA" is the highest, meaning the risk of



FARMERS VISIT FRESHMAN HONORS CLASS—Recently, this group of farmers, along with one rancher, visited Jean Allison's Freshman Honors Class, and heard stories about farming and ranching in this area. The students said they were very pleased with responses to their questions. (Journal Photo)

Onion Planting Time Here For Texans

Onion planting time is here! Onions do well in Texas if growers plant the right variety at the appropriate time, said Spencer Tanksley, county agent with the Texas Agricultural Extension Service.

Success with onions has to do with understanding the phenomena of bulbing, he said.

Bulbing occurs as a result of the length of daylight hours. Day-length requirement differs among varieties which have broken down into short-day, intermediate-day and long-day types.

Tanksley said that a variety's day-length requirement must be met or bulbing will not occur.

Short-day varieties, such as the new 1015Y or Texas Super Sweet onion, require about 12 hours of daylight and will produce anywhere in Texas if planted at the right time, Tanksley said. Medium-day and long-day types, which produce hotter and more pungent onions, grow only in specific areas.

Tanksley said the larger the plant, or the more leaves it has when bulbing is initiated, the larger the bulb will be.

The best way to have the right sized plant at the right time is to set out pencil-sized transplants before the average frost free date, Tanksley said. In Bailey County, the average date of the last freeze is April 15.

Most Texas soils are adequate for growing onions, but some may need more organic matter to increase drainage, Tanksley said.

Planting onions on top of raised beds will improve drainage and will enable the soil to warm up more quickly in the spring, said Tanksley.

Several weeks prior to planting, evenly scatter about one-half pound of a complete fertilizer, such as 10-10-10, over each 50 square feet of bed surface.

To plant onions, make small holes in the row three to four inches apart and about one inch deep. Set one transplant in each hole, firm the soil around it and

water immediately.

After three to four weeks, sidedress plants with one cup of ammonium sulfate or two-thirds cup of ammonium nitrate. Place the fertilizer about four inches from the onion plants.

Keep the soil moist, especially once bulbing (swelling at the base of the plant) begins.

Mulching around plants with two to three inches of organic matter is highly recommended, Tanksley said.

Once plants start to mature, as indicated by a softening of the "neck" just above the bulb, allow the soil to begin drying. When bulbs are mature, the softened necks will cause the plant tops to fall over. At this time, pull up the onions and place them in a dry place to cure.

Several days later, clip the roots and tops, leaving one inch of stem attached to the bulbs to prevent entry of decay organisms.

Onions usually are ready for harvesting between May and late July, Tanksley said.

A fund has been set up at First Bank in Muleshoe to help offset the cost of double liver transplants for the twin sons of Mr. and Mrs. Delmer Bleeker.

They are the grandsons of Mr. and Mrs. Vernon Bleeker.

A year old the first of February, the twins have spent most of their life in a hospital and are currently waiting for life-saving liver transplants.

Your contributions can be made to the Bleeker Twins Fund at First Bank in Muleshoe; or the Bleeker Twins Fund at the Keller State Bank, Box 483, Keller, TX 76248.

Farmers and Ranchers

There are a number of topics of interest available to you on the IRS "Tele-Tax" automated telephone system. Check for "Tele-Tax" numbers in your tax return package.

Freshman Honors Class Listens

To Area Farmers

Recently, Freshman Honors American History students received a visit from a few local farmers and a lone rancher.

The students are studying a unit on the farmers of our history. They prepared questions for the visitors who each got a turn to tell their story of the facts.

Mrs. Allison and her students enjoyed the stories of the past. They heard these interesting stories from Ronald Scott, Jay Cage, Scott Campbell, D. B. Head, Austin Latham, Horace

NEWS VIEWS

George Bush, President:
"There is but one just use of power and it is to serve people."

Richard Dorman, designated budget director:
"I would recommend a tax increase only if the nation faced a crisis so severe that there were no alternatives."

Hutton and Buck Campbell. Mrs. Allison and her students would like to say *Thank You* and wish the new farmers and ranchers of our community many prosperous well-deserved years.

MISD...

Cont. From Page 1
parents and taxpayers are invited to visit the public schools to recognize the tremendous importance that our educational system has for our community," the Board's resolution said.

**Cash Reward
Up To \$1,000
For Information!**

**Call
Bailey County
Crime Line
272-HELP**

Ranch House

Cont. From Page 1

Show and Do).

"Anyone who would like to come and help each Tuesday, please do. We would love to have you.

"On Tuesday, February 28, the Heritage Board and families are invited to be at the Old Janes Ranch House. On March 7, the Kiwanis Club; March 14, Rotary; March 21, Lions and on March 28, City Council, Mayor and City Hall.

"These are the ones invited through March. Each week, there will be a report on the progress and a new group will be added.

"Come, we need you," con-

Weather...

Cont. From Page 1
during a tornado. If you live in a mobile home, make sure all family members know where the nearest substantial shelter is. If you are in your mobile home or car and can't get to a better shelter: go outside, lie down in the nearest ravine, ditch or culvert and cover your head with your hands. Be aware of the possibility of flooding in low-lying areas. Do not hide under your mobile home or car because both can easily be picked up and carried away by a tornado.

Your local (city or county) emergency management office can provide you with additional information on severe weather precautions. The Governor's Division of Emergency Management, the National Weather Service, the Texas Insurance Advisory Association and the Federal Emergency Management Agency are sources of information and publications on various weather phenomena for local governments.

cluded Bradley.

Twelve people showed up to work on the Janes Ranch House on Tuesday, February 21. These people worked a total of 30 hours, from 7 - 9:30 p.m.

Many of those working pulled staples out of the floor in preparing the floors for sanding. Also, the rest of the carpet was removed, as well as the carpet stripping.

The living room, dining room, kitchen and butler's pantry are hardwood and will be finished in natural. The first floor bedrooms and all the upstairs are in pine or cypress and were painted.

The basement was cleaned by some of the men. Some of the working materials are stored there.

The electricians have lights in all the rooms now, as well as in the basement. Most of the rooms have electric baseboard heaters and they are reported to work very well.

The Heritage Center board said the electricians have done an excellent job in figuring out the wiring. There will be new wiring throughout the house.

A new ceiling in the east room upstairs has been finished, and when the floors and woodwork have been sanded, it will be ready to paint.

Those working on Tuesday evening were Raul Sanchez, Saul Sanchez, Luis Sanchez Jr., Al Henderson, Wilcy Moore, Don Martin, Robert and Maureen Hooten, Janie and Frank Saldana and R. A. and Marie Bradley.

"We would like to thank everyone for their support and invite you to come out to work with us on Tuesday evenings at 7 p.m.," said a spokesperson for the Heritage Foundation Board.

It's That Time of Year Again
For: A&M's

fiscal inventory

Your local A&M Farm and Ranch Supply Store will be closed:
Sunday, February 26, 1989
for their fiscal inventory. We will be open to serve you on Monday, Feb. 27, 1989 at our usual times.

Mon.-Sat. 7:30 a.m. - 6:00 p.m. Sundays 12:30 a.m. - 5:00 p.m.

Thank You, From: The Staff & Management of A&M

WE ARE HAVING a SPRINGTIME SAVINGS FEST

Master PLUMBER

30 gal.

L.P. Gas Water Heater

GV 303 TL

5-Year Limited Warranty. See Details in Store.

135⁹⁵

Fry & Cox, Inc.
"Your Store Of First Choice"

401 S. 1st Sale Ends 3/4/89

K.C. Mufflers & Manufacturing, Inc.

Would like to express our appreciation to these local businessmen who helped to make our exhibit at the International Trade Show, a success. They are as follows:

Paul Poynor - Poyyors Home And Auto
Bobby Free - Galante
Bob Stovall - Bob Stovall Printing
Cliff Black - Barrett Produce

EXTENSIVE REDUCTIONS

75% and more off Most Seasonal Merchandise

Ladies coordinates by Joyce® Devon® Country Suburbans® JH Collectibles® Donovan-Galvani®

Val. **75% OFF**
29⁰⁰ to 150⁰⁰

Only 2 racks left
Hurry! They won't last long at these close out prices!

Ladies Dresses by Sabino Henry Lee® Liz Claborne® JH Collectibles®

Val. **75% OFF**
to 144⁰⁰

Incredible end of season savings!

Mens Tweed Jackets & Top Coats

Val. **75% OFF**
99⁰⁰ to 175⁰⁰

Take advantage of These fanastic savings!

Select group Mens Suits

Val. To 129⁹⁹ **75% OFF**
sizes 36 To 48
Your cost **32⁵⁰**

Large group Ladies shoes & boots by Nicole® Penaljo® Dexter®

Values 36.⁰⁰ To 84.⁹⁹ **75% OFF**

Famous Brands Skirts from our Chicago Aquisition bold styles, vibrant colors.

Values 65⁰⁰ 110⁰⁰
Now only **14⁹⁹**
Save over 75%!

Famous Brand Blouses from our Chicago Aquisition

Values 35⁰⁰ to 88⁰⁰ **12⁹⁹**
Take advantage of These savings!

Select group of Ladies blouses & sweaters by Ship-n-Shore Donnkenny® Angenie® Western Connection® Knitivo® Design Zone®

Val. 22⁰⁰ To 90⁰⁰ **75% OFF**
Last call!

Levi 501 Jeans Light Blue color only

Reg. 28⁹⁹ **75% OFF**
Waist sizes 28-34
your cost **\$7.25**

Bentley's
SMART FASHION

MULESHOE 1111 Main St. 9-8 Mon. Sat. 272-4119

From The State Senate

By: Tell Bivins

When I was campaigning for the Texas Senate, I had many conversations with people about economic development for Texas and especially our part of the State.

One man I met said that when flying over the Panhandle in an airplane the only apparent economic activity was agriculture and energy. I responded this might be true if you were in an airplane, but if you were in the space shuttle you could clearly see that the crown of Texas is in virtually the geographic center of the United States. And with a good telescope you could see that we have the transportation infrastructure to become a major marketing and distribution center for the entire country.

Yet our state government has created a road block which is seriously impeding our efforts to become such a distribution center. Texas is now the only state that taxes goods in transit that are in the State for a short period of time. Every other state has some form of tax exemption for personal property brought into their state for assembling, storing, manufacturing, processing or fabrication when that property is shipped out of the state within a short period of time. This type of statute is sometimes referred to as a Freeport Exemption.

The absence of a Freeport Exemption is costing Texas—especially our part of Texas. Jobs go to other manufacturing and distribution centers in Albuquerque, Oklahoma City, Tulsa, Shreveport, southern New Mexico and highly competitive states such as California and Florida. It is easy to see why Texas trails her sister states. Why locate a distribution facility or a plant in Texas when every other state exempts from taxation material or components brought in, assembled or fabricated and then shipped out of state again?

Texas had a Freeport Exemption statute for many years. But in 1986, our supreme court struck down that statute, saying

it violated the Texas constitution. The Texas Legislature responded in 1987, by adopting a law that called for a constitutional amendment permitting a Freeport Exemption in Texas. Unfortunately when the measure went before the voters in November, 1987 it did so as one of 23 measures on the ballot. There was no organized effort to pass the amendment, and it failed by a margin of less than one percent.

I believe a Freeport exemption is so important for our part of Texas that I want to try again. Senator Robert McFarland and I co-authored Senate Joint Resolution 11.

Because we are both extremely sensitive to creating state mandates on local governments and taxing entities, our resolution provides for a local option with regard to the Freeport Exemption. That way communities that want to use this very valuable tool for economic development purposes may do so.

Another aspect of our proposed constitutional amendment that was not a part of the 1987 measure is a feature which assures that all goods manufactured and assembled from purely Texas raw materials and then kept in the state for only a short period of time may also be granted the Freeport Exemption. This provision will see to it that Texas-based businesses are treated just as fairly as out of state businesses.

Finally, SJR 11 provides for the first time for a separate local option for oil and gas and other petroleum products. Oil and gas and other petroleum products were excluded from the benefits of a Freeport Exemption under the previous Texas statute. Senator McFarland and I felt that with a separate local option for these products communities could have an even more powerful incentive for job creation.

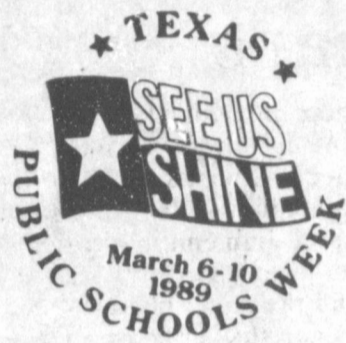
Perhaps the most dramatic example of what the absence of a Freeport Exemption could mean to Texas over time is to look at California and its Freeport

Exemption history.

Shortly after California repealed their exemption, major warehouse and distribution facilities were moved across the state line into Nevada. The impact was especially strong in Reno. In a few short years, jobs in manufacturing and distribution increased in Nevada and more than tripled their share of employment outside tourism and gambling.

By the time California realized its error and reinstated its Freeport Exemption, huge investments had been made in new Nevada facilities. And they weren't just warehouses. Major manufacturing plants had been opened and businesses had made a long-term commitment to Nevada operations.

Senate Joint Resolution 11 deals with taxes. Because of this Lt. Governor Hobby assigned it to the Senate Finance Committee. I am happy to report that last week SJR 11 passed the Finance Committee by an overwhelming margin and is now pending before the full Senate.



Nursing Home News

By: Joy Stancell

Effie Smith was visited by Marie Hines of Hereford, Tuesday.

Ora Roberts was visited by her granddaughter, Darla, her sons, James and J.D., and her daughter, Ruby.

Eric Smith has a nice smile for his wife, Lucy Faye, when she visits him every afternoon.

Birdie Warren was visited by her son, James Warren, Tuesday morning.

John Seid was visited by Mr. and Mrs. Ed Ziegenfuss Tuesday afternoon.

Mary Sisemore had several friends visit her Wednesday. Her son, Tommy Sisemore, visited her Tuesday afternoon. Her friends, Kay and Betty, visited.

Conard Burford was visited by Mr. and Mrs. Joe Smallwood and his wife, Willie Burford.

Joyce Gist visited her mother, Ona Coffey, Tuesday.

Thursday morning Pastor Mike Doyle and Clara Lou Jones conducted a devotional for the residents.

Friday afternoon we enjoyed a "Day In Holland" presented by Mary and Johanna Mesman of the Farwell area. We appreciate all of the visitors who participated.

Tuesday afternoon Beth Watson, Claudine Embry, Frieda Locker, Mary Scoggins, Jackie Johnson and Nicholas came to shampoo and set the ladies hair.

Tuesday morning Louise Legg from Me Ma's Ceramic Shop in Sudan came to give ceramic lessons. Residents participating were Ora Roberts, Lois Ethridge, Effie Smith, Martha Smaltz, Thelma Stearns, Pearl Cox, Julia Hawkins, Ruby McCamish, Emma Schuster, Edna Willoughby and Stella Morgan.

Our thanks to Luia Maye Shanks for the delicious home made cookies that she baked and brought us Tuesday.

Holly Milsap hosted a birthday party in honor of her mother, Pearl Cox, Tuesday afternoon in the nursing home day room. Refreshments of Valentine cakes, angel food cake, chocolate covered cherries and punch were served to the residents, visitors and employees.

Ruby McCamish celebrated her birthday last weekend. Visiting with her family in the home of her daughter, Barbara Bilbry, she got to hold one of her great great grandchildren for the first time. She states "they had a wonderful family reunion."

Mildred Nieman and Mrs. Contreras were recently hospitalized. Please remember them in your prayers.

Our sympathy to Pasty Franklin on the death of her sister and Guy Kendall at the loss of his sister.

Glenda Dale, Marilyn Wilson and Jo Dean Neil visited the nursing home Tuesday afternoon. Among those they visited were Ora Roberts, Edna Willoughby and Effie Smith.

Thank you Truth Seeker Sunday School Class of the First Baptist Church for your donation to our activity fund.

Lona Embry and Joylene Costen are not chairman of our Memorial Fund. If you would like to make a memorial donation you may bring it by the nursing home or mail it to one of the ladies. We deeply appreciate you remembering us.

Selfish thrift makes one a rich pauper.

Get The Most For Your Fertilizer Dollar

★ Complete, Computerized Formulations Including Micronutrients, Tailored To Your Soil Test On Your Farm

★ Only Fluids Can Be Custom-Blended And Assure Complete Uniformity Throughout The Mix (Think About It-- You Can't Apply Fertilizer Evenly On The Ground With An Uneven Mix In The Hopper)

★ Only Fluids Give You This Much Flexibility In Application Methods:

- Our Custom Broadcast Application. (No Dry Applicator Can Match It) Even Enough To Add Herbicides If You Wish.
- Our Custom Surface Banding Concentrates Your Fertilizer To Minimize Nutrient Tie Up In The Soil.
- We Can Help You Gear Up To Apply Fluids Yourself-- While You're Doing Another Tillage Operation.
- Only Fluids Are Acceptable For Fertilization Through Your Center Pivot.

Let's Visit About Fluid Fertilizers-----
The Modern Alternative For Your Farm

Western "66" Co.

Earth Hwy.
Muleshoe

272-4556

It's February!

Do You Know

Where Your Corn Seed Is?



It's In The Bag

and

In Our Warehouse!

It's Not Too Late To Get Your Name On Golden Harvest Corn Seed For This Year



6%

Cash Discount Thru March 3

Call Our Dealers For Complete Details:

Willis James.....925-6716
Wayne Clark.....965-2895
Horace Morgan.....925-6725
Okla, Lane Farm Store.....825-2345



AR-B Seeds, Inc.

518 West Seventh

935-5298

Dumas, Texas

Golden Harvest. Golden yields.

Three Way Menu

FEB. 27-MARCH 3
MONDAY
BREAKFAST
Cereal, Juice and Milk
LUNCH
Corn/Frankfurters, Coleslaw, Fried Squash, Rolls, Milk and Ice Cream

TUESDAY
BREAKFAST
Apple Slices, Juice, Toast and Milk
LUNCH
Meat Enc. w/Cheese, Salad, Corn on Cob, Crackers, Milk and No Bake Cookies

WEDNESDAY
BREAKFAST
Scrambled Eggs, Hash Browns and Milk
LUNCH
Italian Burgers, Cheese/Potatoe Rounds, Lettuce, Tomatoe Slices, Milk and Choc. Cake

THURSDAY
BREAKFAST
Bacon, Gravy, Juice, Biscuits and Milk
LUNCH
Salmon Patties, Salad, Macaroni, Veg. Casso., Hot Rolls, Milk, Honey/Butter

FRIDAY
BREAKFAST
Breakfast Burritos, Juice and Milk
LUNCH
Chilli w/Beans, Spanish Cabbage, Celery/Cheese Stixs, Cornbread, Milk and Jello/Fruit

The most dangerous animal alive today is man.

Muleshoe Menu

FEB. 27-MARCH 3
MONDAY
NO SCHOOL
TUESDAY
BREAKFAST
Milk, French Toast, Sticks, Syrup and Fruit
LUNCH
Milk, Juicy Burgers, Lettuce & Tomato, Pickles & Onions, Tater Tots, Cobbler

COMBO
Milk, Hamburgers, Lettuce & Tomato, Pickles & Onions, Tater Tots and Cobbler

WEDNESDAY
BREAKFAST
Milk, Cheese Toast and Fruit
LUNCH
Milk, Beef Taquitos, Beans, Salad, Crackers, Peanut-Butter-Confection

COMBO
Milk, Enchallada, Beans, Salad, Crackers, Peanut Butter Confection

THURSDAY
BREAKFAST
Milk, Toast, Jelly and Fruit
LUNCH
Milk, Burritos, Corn French Fries and Cake

COMBO
Milk, Frito Pie, Corn, Salad, Crackers and Cake

FRIDAY
BREAKFAST
Milk, Biscuits, Scrambled Eggs, Sausage and Fruit

Your time today is priceless, so use the hours preciously.

LUNCH

Milk, Fried Chicken, Gravy, Creamed Potatoes, Green Beans, Hot Rolls and Fruit

COMBO
Milk, Steak & Gravy, Creamed Potatoes, Green Beans, Hot Rolls and Fruit

Girl Scout Focus Set On World Peace

Girl Scouts are focusing on world peace through world friendship during February. Lord Baden-Powell, who founded both Girl Guides and Boy Scouts in England, and his wife, Lady Olave Baden-Powell, who served many years as World Chief Guide, shared a February 22 birthday. In honor of their expansion of the two organizations around the world, Girl Scouts are holding special observances.

Family banquets with international themes; individual troop ceremonies honoring the 1989 hundredth anniversary of Lady Baden-Powell's birth; multi-troop festivals with each troop presenting aspects of a different country; international pen pals and foreign foods tasting teas are some of the ways Girl Scouts are celebrating. There are 112 member nations in the World Association of Girl Guides and Girl Scouts.

Junior high and senior high-age Girl Scouts are preparing for a 1991 first-hand experience in world friendship - a trip to Our Chalet in Adelboden, Switzerland, one of four World Centers maintained by the World Association.

Enochs News

by: Mrs. J.D. Bayless

Kelly Mosser of Slaton spent Friday afternoon till Sunday afternoon with his grandparents, Mr. and Mrs. E.N. McCall.

Mrs. Paula Grant and daughter, Ashley, of San Antonio flew home Thursday after visiting her parents, the Dale Nichols, for a while.

Everyone was so thankful for the inch of rain received Thursday and that night.

Several from our area attended the Bailey County Electric meeting at Morton Scivity Building Saturday.

Mr. and Mrs. Bill Key took Vonna Hamilton to Littlefield after church Sunday to take her out to eat at the Pizza Hut for her 18th birthday dinner.

Visitors at the Baptist Church Sunday were Kelly Mosser of Slaton, David and Bethany Nichols of Canyon, Tory Roberts and Fernando DeLarosa.

Dale Nichols drove to Canyon Friday to bring his grandchildren, David and Bethany Nichols home with him for a visit.

Mr. and Mrs. Craig Kirby and children stopped in for a visit with her parents, Sunday evening, Mr. and Mrs. Goldman Stroud.

Mr. and Mrs. Jarrol Layton went skiing at Ruidoso last weekend. The children, Ashley and Lourine, stayed with their grandparents, Mr. and Mrs. Leon Dupler at Andrews while their parents were gone.

Mr. and Mrs. Buford Peterson visited her sister, the F.A. Smiths, at Hart Monday.

Visitors at the Baptist Church last Sunday were Mrs. Deanne McPhersons and children.

It's Time to Spring for Our Savings

The John Deere Spring SALE ADVERTISER is out! Stop in today and spring for special values like these...

<p>Save on the purchase of this durable John Deere</p> <h3>Mower Section</h3> <p>Just \$49</p> <p>Reg. \$76. Offer expires March 11, 1989.</p>	<p>Save Over 20%</p> <h3>Automotive Battery</h3> <p>John Deere New Dimension</p> <p>Just \$49.95</p> <p>Reg. \$64.95. Offer expires March 11, 1989.</p>
<p>Save 10%</p> <h3>John Deere Oil Filter</h3> <p>Just \$2.99</p> <p>Reg. \$3.27. Offer expires March 11, 1989.</p>	<p>Save on dependable, double-acting</p> <h3>Hydraulic Cylinder</h3> <p>Just \$44.95</p> <p>Reg. \$52.50. Offer expires March 11, 1989.</p>
<p>Save Over 30%</p> <h3>Hose Tip Guard</h3> <p>Just \$7.99</p> <p>Reg. \$11.70. Offer expires March 11, 1989.</p>	<p>Save Big</p> <h3>Finger Pickup Kit</h3> <p>Just \$20.99</p> <p>Reg. \$25.30. Offer expires March 11, 1989.</p>

DENT & CO.
MULESHOE, TEXAS 79347
HWY. 84 WEST (806)-272-4296

"LAWNS" GREAT BEGIN HERE

Sale Prices Good Through March 4, 1989

CARE PRODUCT

Crabgrass Control

Only: **\$9.99**

Reg. \$10.99

Control it Now!

40# Bag

At A&M FARM & RANCH SUPPLY

PRECISION PRODUCTS, INC.

Structural Broadcast Spreader

At: **\$24.95**

Reg. \$29.95

58-50 BROADCAST SPREADER
Featuring a Non-Corrosive Structural Foam, 50# Cap Hopper, 8" x 150 Rubber Tired semi-pneumatic wheels, 4" x 8" Spreading width, Totally enclosed Gear Box with Nylon Gears, &c. Painted Steel Tubular Hand and Leg Stand.

"NOTICE" A&M Stores will be closed Sunday, Feb. 26, 1989 for inventory. We will be open for business on Monday, Feb. 27, 1989.

SAVE WATER SAVE MONEY SAVE TIME

RAIN DRIP

Drip Watering Products

LESS WATER - BETTER RESULTS

- Easier planning & installation (even hillsides)
- Circuits can be longer (to 600')
- Saves even more time & money
- No extra parts to buy for optimum performance
- Constant, even flow - regardless of normal pressure changes (up to 60 PSI)

All On Sale For: **20% off**

NELSON Oscillating Sprinkler

RAINSHOWER™ 40

For Just: **\$6.99**

Reg. \$8.09

non-puddling

#1015 "Perfect For Anywhere"

HYPONEX COW MANURE

45# Bag

All New This Year A 45# Bag For The Price of A 40#

Your Choice Of Cow Manure Or Organic Peat

Only: **\$1.99**

Reg. \$2.99

5/8" x 80' Garden Hose

Only: **\$12.99**

Reg. \$16.99

#Five Point

NEILSON RAIN TRAIN® 200

metal traveling sprinkler

Maximum coverage 16,000 sq. ft.

Adjustable arms give coverage width from 15 to 55 ft.

Follows pattern laid out by hose

Extra powerful - cuts hose easily up grades, around corners

2 forward speeds and a neutral for stationary use

Now: **\$44.99**

Reg. \$61.99

No. 1860 NELSON

HYPONEX Potting Soil

20 Lb. Bag

SPREAD THE WORD

At: **\$1.79**

Reg. \$2.49

Power Rake Universal Blades

For: **\$4.99**

#780-0273

780-0273

For Thatcher Blades

SUPER LAWN FOOD

Formulated especially for alkaline soils of the Southwest, Turf Magic Super Lawn Food supplies all the essential nutrients to keep plants green, healthy and growing vigorously. The high percentage of nitrogen and iron combine to give a double shot of greening power. Sulfur is provided to help counteract the high PH of our soils. This highly available source of plant food is easy to spread and can be used around trees and shrubs.

Covers: 6,400 sq. ft.

Now Only: **\$6.99**

Reg. \$7.59

16-4-4 Plus Iron and Sulfur SIZE: 40 LB. BAG

All Season's Weed & Feed

At: **\$5.99**

20 Lb. Bag

Covers: 5,000 sq. ft.

Our best all-around, all-season fertilizer. Keeps your lawn thick, green and lush. Compare for yourself and save.

Reg. \$6.79

Gates greenlawn FLEXOGEN® HOSE

5/8" x 50'

For: **\$19.99**

Reg. \$26.32

Lifetime Replacement If Flexogen ever fails, Gates will replace it at no charge.

Rotary or Oscillating Sprinkler

Only: **\$1.49**

Reg. \$6.99

Covers an area up to 2,400 sq. ft. Adjustable spray pattern. Includes accessory adapter and connector with automatic water stop. No. 2534

Rotary Sprinkler

Covers a diameter up to 60' Includes accessory adapter and connector with automatic water stop. No. 2532

Reg. \$9.99

Your Choice: \$4.99

Come By Any Of Our 3 Locations To Serve You.

2600 Mabry Dr. Clovis, N.M. 1-505-762-7717

1601 S. Ave. D. Portales, N.M. 1-505-356-8543

1302 W. American Blvd., Muleshoe, Texas 1-806-272-5571

All Stores Open Monday-Saturday 7:30 A.M. - 6:00 P.M.

Sundays 12:30 - 5:00 P.M.

Rotary Sprinkler

Covers a diameter up to 60' Includes accessory adapter and connector with automatic water stop. No. 2532

Reg. \$9.99

**SPC Schedules
CLEP Testing
On March 13**

Examinations for college credit will be given March 13 at South Plains College as part of the nationwide College Level Examination Program (CLEP).

The CLEP system awards college credit by examination, said Renee Hester, coordinator of testing and assessment. CLEP exams will be administered at 9 a.m. in the SPC Student Assistance Center, located on the third floor of the library. Fee is \$35.

Two types of CLEP exams are available -- general exams in English composition, humanities, math, natural sciences, social sciences and history; and subject exams in such topics as American government, general psychology, freshman English, general chemistry and many others.

To make an appointment or find out more information, contact SPC's counseling office at (806) 894-9611, ext. 364.

Mother Goose's Nursery Rhymes, The Little Engine that Could, Green Eggs and Ham, The Legend of the Bluebonnet... Texas students are enriching their lives through reading. Come read some illuminating tales with us, and see us shine March 6-10 during Texas Public Schools Week.

Over the past 150 years, Texas citizens have built an education system that is second to none. Teachers are hard at work preparing students for a challenging future. Visit your local school and let us dazzle you during Texas Public Schools Week March 6-10.

The nicest people are those who say the nicest things--about us.

USDA Recommends Marketing

The U.S. Department of Agriculture today announced a decision to recommend a federal marketing order to promote and to set minimum quality standards for potatoes produced in 21 western Texas and 10 eastern New Mexico counties, an area known as the "High Plains."

J. Patrick Boyle, administrator of USDA's Agricultural Marketing Service, said the order would authorize grade, size, and maturity regulations, for these potatoes, and size, capacity, weight, dimension, marking, and pack of containers used in marketing these potatoes. The order also would authorize research on and promotion of these potatoes, but would not authorize paid advertising for them.

An 11-member administrative committee patterned on those governing similar orders for

other commodities would administer the order, Boyle said. Six members would represent growers, four would represent handlers and one would represent the public at large. "The secretary of agriculture would appoint the handler and grower members from a list of peer-selected nominees, and then would select the public member from nominees offered by the ten grower and handler members," Boyle said.

Authority for such an order rests in the Agricultural Marketing Agreement Act of 1937, said Boyle. "Upon evaluating comments on the recommendation, the secretary of agriculture will decide whether to proceed to the next stage, a producer referendum, to determine support for the proposed order," he said.

The order would become effective only if approved either A) by two-thirds of those voting in the referendum, or B) by those producing at least two thirds of the volume of potatoes represented in the referendum, and grown during a period set by the secretary.

The recommendation will appear as a recommended decision

in the Jan. 31 Federal Register. Comments and exceptions, post-marked by Mar. 2, should be sent to the Hearing Clerk, Rm. 1079-S, USDA, Washington, D.C. 20250. Copies of the decision are available from Ronald L. Cioffi, Chief, Marketing Order Administration Branch, Fruit and Vegetable Division, AMS, USDA, Rm. 2525-S, Washington, D.C. 20090-6456, telephone (202) 447-5697, or from the Officer-In-Charge, Texas Marketing Field Office, USDA, AMS, 1313 East Hackberry Street, McAllen, Texas 78501-4698, telephone (512) 682-2833.



**Extended Weather Sale
Prices Extended until March 15th**

5000 Sq. Ft. Weed & Feed 5.⁷⁹

Lawn & Garden Fertilizers Start At 4.⁸⁹



Planters & Pots Still Available

Hyponex Products

- 45# Organic Peat 2.49
- 45# Cow Manure & Compost 2.69
- 40# All Purpose Potting Soil 3.29
- 20# All Purpose Potting Soil 1.89
- 8# All Purpose Potting Soil 99¢
- 4# All Purpose Potting Soil 69¢
- 16# Professional Mix Potting Soil 3.19
- 4# Professional Mix Potting Soil 1.09

We will issue rainchecks on out of stock items.

Spreaders Available

Zipp Fertilizer 20 lb. bag 99¢

No Rainchecks on this item. 15-5-10

Higginbotham-Bartlett
"Quality & Service At The Right Price"
215 Main 272-3351

**Fire Department
News
by: Alton Parker**

Meeting was called to order by President Reeder and as no new business, the meeting was turned over to J. O. Parker, training officer, for regular training.

The newer members of the department went with H. E. Reeder and had a driving course in the new fire truck, the pumper truck. The rest of the department either retrained on how to draw a suction on the small quick-response trucks or a refresher course on driving the water truck.

The letter below was received by Jimmy Mills from Mrs. Shirley White:

Feb. 15, 1988

Mr. Jimmy Mills-Fire Marshall
Muleshoe Fire Department
213 E. Ave. B
Muleshoe, Texas 79347

Dear Mr. Mills,

On Tuesday, Feb. 7, a fire started in my home in Muleshoe while I was at work at Talk Station. Due to the quick reporting by Energas Co. and the quick response of you folks, the damage to my home was minimal.

At times it's easy to take services like the fire department for granted, but when a fire happens to you, you realize the skill and professionalism, as well as dedication of people like yourselves.

I just wanted to take this opportunity to say thank you.

Sincerely,
Shirley White



Best of Press

How True
During the campaign we call them men of vision; afterward we call them visionaries.
—Evening News, Buffalo.

He Is?
A radical is a person who can out talk you on any subject.
—Pilot, Brunswick, Ga.

Good Deed
Make someone happy today. Mind your own business!
—Record, Columbia, S.C.

Just One Head Injury



CAN CHANGE YOUR MIND

A reminder from the UPS Trampers.

Rip's IN TEXICO
314 Wheeler
482-3363



**Justin Ropers.
For more than just rodeo.**

Justin introduced the first Roper boot to offer classic styling with superior comfort and fit. Since then, rodeo riders, workers, outdoorsmen and people of all walks of life have turned to the Justin Roper for its unduplicated craftsmanship. Justin. For more than just rodeo.

Justin ORIGINAL ROPER
Since 1879. 100% American made.
as low as \$79.⁹⁸

NOW ESPECIALLY FOR CHILDREN

JUSTIN JUNIORS as low as \$46.⁹⁸

ALL FELT HATS 20% off

SUITS one group 50% off

SHIRTS one group \$14.⁹⁸

LAYAWAYS WELCOME
OPEN 8:00 a.m.-6:30 p.m. c.s.t.



ANNOUNCES

"New" Product
"New" Lower Price!
Satisfaction Guaranteed



TMX 8712
DUPLIX MOBILE
TELEPHONE-RADIO
(Combined Mobile Telephone
And Trunked Two-Way Radio)

★★★★★ Five Star
Authorized Dealer

For Full Details Contact ASCOM



Associated
Communications, Inc.

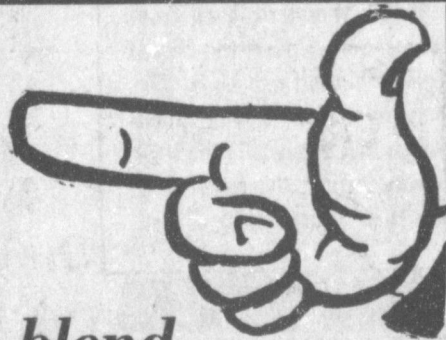
806-293-3626
PLAINVIEW, TEXAS
3422 OLTON ROAD

1-800-88-ASCOM

505-763-5520
CLOVIS, NEW MEXICO
116 E. GRAND AVE.

"FOR YOUR TOTAL RADIO COMMUNICATIONS NEEDS"

MR. FARMER



Foster Fertilizer features a blend

of custom mixed and applied Liquid Fertilizers

ALSO

Anhydrous Ammonia and dry fertilizer is available.

A custom service at competitive prices.

We have been serving this area for 28 years.

Let us mix and apply your fertilizer according to your Specific Soil Requirements.

Your Business is Appreciated

Foster Fertilizer

Lazbuddie, Tx.

965-2921

Sudan News

By: Evelyn Ritchie

Mr. and Mrs. Mike Morris and children attended the stock show held during the weekend in San Antonio.

Theron Hill was released from Methodist Hospital after having undergone surgery there last week. He is recuperating well at home.

Mr. and Mrs. Jim Anslow of Slidell, Las. visited last week with her sister, Mrs. Rhoda Minyard.

Norma Poe of Littlefield, a former Sudan resident, has been released from several days hospitalization at the Methodist Hospital in Lubbock.

Kathy Gardner of San Angelo visited during the weekend with her parents, Mr. and Mrs. Dewayne Powell and her sisters, Sherri and Kim and families.

Bessie Lee Burke underwent surgery last week at the St. Mary's Hospital in Lubbock and is reportedly doing well.

Derwin Beauchamp and Jon Ann Ford were in Medicine Mound during the weekend to visit Jon Ann's brother, Jimmy Williams.

Williams

Sheila Summer of Lubbock visited during the weekend with her parents, Mr. and Mrs. Bob Summer.

Sis got out of town for the weekend!!!

Donald Doty of Lubbock visited recently with his parents, Mr. and Mrs. Wayne Doty.

Felix Mancado underwent surgery at a hospital in Lubbock recently. It was reported that she is doing well.

On Tuesday night Feb. 14, the Wink team defeated the Sudan Hornets 65-73 in a practice game in Seagraves.

Maxfield took top scoring honors for the Hornets when he sank six-two point and four-three point field goals and five free ones for 28. King had four and two for 12 and Freeman four and two for ten. Justin Holley contributed a two point and one three point field goal and Gonzales sank a three pointer. Bryan Baker and Quincey Lee both hit a field goal for two each.

Wink took a 21-12 lead in the first quarter but the Hornets tied it up at 37 by halftime. Sudan added another 13 and 15 but Wink added 18 in both remaining quarters for their win.

The Hornets will meet Sundown in bi-district on Friday, Feb. 24 at 6 p.m. at Whiteface.

Mr. and Mrs. B.A. Beauchamp have returned home from an extended vacation when they visited friends and relatives in California and Arizona. While in Arizona one of his sisters, Mr. and Mrs. Cotton Robertson of Farwell joined them and another sister, Mr. and Mrs. Butch Blind in Arizona.

Wendell Horn has been hospitalized this week at the Methodist Hospital in Lubbock.

Mr. and Mrs. Harold Haynie were in Canyon Saturday evening to visit her brother, Mr. and Mrs. Al Harrison following the surgery last week, of Mrs. Harrison. It was reported that Glenna is doing well.

New inventions are made possible by old thoughts.

Jo Gaye Mapp and Dusty of Hobbs, N.M. visited during the weekend with her parents, Mr. and Mrs. Wayne Doty.

Sharla Harrison-George moved into second place on the career scoring list at Wayland with her 26 points in a game with Lubbock Christian Saturday night. The Sudan senior hit a short jumper with 5:20 left in the game to tie Ruth Cannon for second place with 2,159 points, then hit a 10-foot jumper off the left baseline with 1:13 left to move into second place alone.

Harrison-George currently has 2,161 career points, 149 away from tying Carmen Wynn's total of 2,310. She would have to average 28.8 ppg to tie Wynn's record in the season remaining regular season games. If the Queens win district and bi-district championships, she would need to average 18.6 to

break the record in the first round of the national tournament. Harrison-George is currently averaging 29.9 ppg. She scored 28 points in Monday's game in over St. Mary of the Plains move within 76 points of leading Carmen Wynn's career scoring mark of 2,310. Harrison-George hit her first 11 field goal attempts Monday night and finished the evening 12-14 from the field and 4-4 at the line.

Marie Beckett was to undergo surgery Thursday at the Methodist Hospital in Lubbock.

Mr. and Mrs. Hugh Martin of O'Connell has been here visiting their daughter, Mr. and Mrs. Dou Jones and girls and were here to meet their newest granddaughter, Amy Lynn, who was born Monday.

Wendell Horn is a patient in the Methodist Hospital in Lub-

bock. Wayne Rogers is a patient in the St. Anthony's Hospital in Amarillo.

Bessie Lee Burke is a surgical patient in St. Mary's of the Plains Hospital.

Hospital in Lubbock.

Dewayne Powell was released Thursday from the Methodist Hospital where he underwent tests.

Mrs. J.W. Olds visited first of the week in Plainview with Mr. and Mrs. Bobby Bouldin.

Sheila Summer of Lubbock visited during the weekend with her parents, Mr. and Mrs. Bob Summer and grandmother, Ila Ruth Gilreath.

Mr. and Mrs. Terry Livelsy and girls were in San Antonio during the weekend to attend the

stockshow.

Mrs. Marie Beckett was to undergo surgery on Thursday of this week. She is a patient in the Methodist Hospital in Lubbock.

Mr. and Mrs. Lee Ray and

children were in San Antonio during the weekend to attend the stockshow there.

Dewayne Powell has been a patient in the Methodist Hospital this week.

WHY WAIT FOR YOUR TAX REFUND WHEN YOU CAN GET YOUR MONEY FAST!

Use H&R Block's Rapid Refund Program

It's a loan against your expected federal income tax refund. Available whether H&R Block prepares your tax return or not.

IT'S FAST! H&R BLOCK

272-3332 224 W. 2nd St. Muleshoe, Tex.

Immaculate Conception Catholic Church

Fathert Patrick Maher Northeast of City

First Baptist Church
220 West Ave. E.
Barry Bradley, Pastor

Emmanuel Baptist Church
Iglesia Bautista Emmanuel
107 East Third
Isaiaas Cardenas, Pastor

Trinity Baptist Church
314 E. Ave. B.
Rev. Dale Berry

Circle Back Baptist Church
Intersection FM 3397 & FM 298
946-3676 Pastor Glen Price

Calvary Baptist Church
1733 W. Ave. C.
Rev. Rick Michaels

Muleshoe Baptist Church
8th and Ave. G.
Bob Dodd, Pastor

Progress Baptist Church
Charles Fisk, Pastor
Progress, Texas

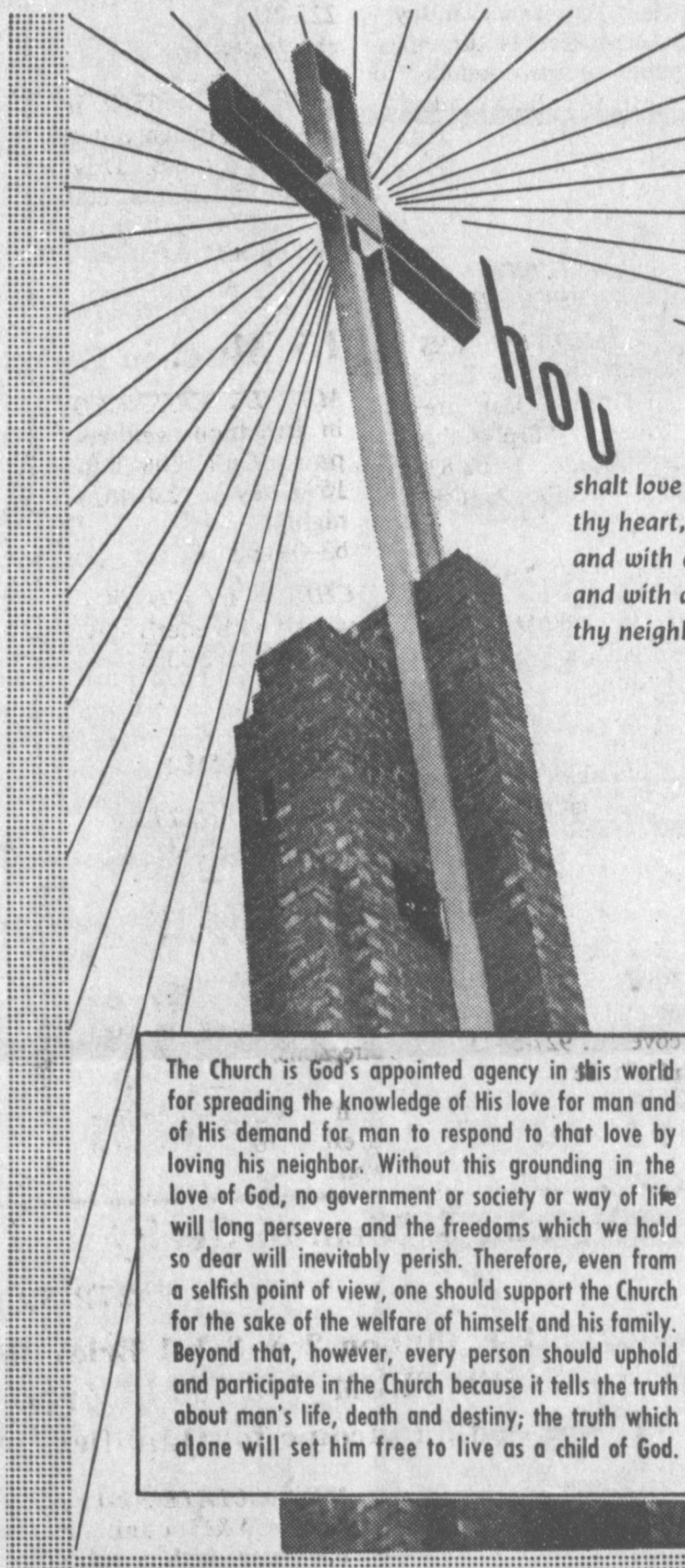
Richland Hills Baptist Church
17th and West Ave. D.
Allen Petersen, Pastor

St. Matthews Baptist Church
Corner of West Boston & West Birch
M.S. Brown, Pastor

Progress Second Baptist Church
1st and 3rd Sunday
Rev. Arthur Hayes

The Community Church
Morton Hwy.
Jim Cope, Pastor
965-2356

Church Of The Nazarene
9th and Ave. C.
Dennis Hayes, Pastor



Thou shalt love the Lord thy God with all thy heart, and with all thy soul, and with all thy strength, and with all thy mind, and thy neighbor as thyself.

Luke 10:27

The basis of God's first and greatest commandment is love. God gave man the freedom to choose ... and therefore will not force his love on anyone. God took the first step and is always ready to receive any who would come to Him.

The Church is God's appointed agency in this world for spreading the knowledge of His love for man and of His demand for man to respond to that love by loving his neighbor. Without this grounding in the love of God, no government or society or way of life will long persevere and the freedoms which we hold so dear will inevitably perish. Therefore, even from a selfish point of view, one should support the Church for the sake of the welfare of himself and his family. Beyond that, however, every person should uphold and participate in the Church because it tells the truth about man's life, death and destiny; the truth which alone will set him free to live as a child of God.



Lazbuddie Methodist Church
965-2121
Larry Reid Farris, Pastor

St. John Lutheran
Sunday School and Bible Classes 9:30 a.m.
Church Services 10:30 a.m.
Rev. Mac Bearss, Pastor

Templo Calvario
507 South Main
Sunday 10:00 a.m.
Sunday Evening 7:00 p.m.
Evangelistic Services
J.L. Soto, Pastor

El Divino Salvador Methodist Church
5th and Ave. D.
Jose M. Fernandez, Pastor

Truth Tabernacle (Pentecostal Church)
200 E. Ithaca & Fir
Pastor: Les James
272-3391

Jehovah Witness
Friona Hwy.
Boyd Lowery, Pastor

New Covenant Church
Plainview Hwy.
Sunday 10:00 a.m.
Wednesday 7:00 p.m.
Jimmy Lowe, Pastor

Longview Baptist Church
965-3413
B.C. Stonechiper, Pastor

Primera Iglesia Bautista
223 E. Ave. E.
Roy Martinez, Pastor

Lariat Church Of Christ
Sunday School 10:00 a.m.
Worship 11:00 & 6:00 p.m.
Wednesday Services 7:00 p.m.
Sam Billingsley, Minister

Muleshoe church Of Christ
Clovis Hwy.
Bret McCasland, Minister

16th & Ave. D. Church Of Christ
Sunday 10:30 a.m.
Evening 6:00 p.m.
Wednesday 8:00 p.m.

First Assembly Of God
Rev. David C. McCune
9:45 Sunday School
11:00 Morning Worship
6:30 Evening Services
7:30 Mid Week Services
272-3984

Primitive Baptist Church
621 South First
Elder Cleveland Bass, Pastor

Spanish Assembly Of god
East 6th and Ave. F.
Mike Doyle, Pastor

First United Methodist Church
507 W. 2nd Street
Richard Edwards, Pastor

1st Baptist Church
Lazbuddie, Tx. 965-2126
Gary Wilcox, Pastor

Lazbuddie Church Of Christ
965-2932

United Pentacostal Lighthouse Church
207 East Ave. G.
Rev. J.A. Torres

Western Drug 114 Main 272-3106	Little Gulf 202 W. Amer. Blvd. 272-4918	Ana's House of Beauty 109 W. Ave. B. 272-4152	American Valley, Inc. W. Hwy. 84 272-4266	Dairy Queen 1204 W. Amer. Blvd. 272-3412
Fry & Cox, Inc. 401 S. First 272-4511	Bob Stovall Printing 221 E. Ave. B. 272-3373	James Roy Meat Market 506 W. Amer. Blvd. 272-4361	Lookin Good 206 Main 272-5052	Robert D. Green, Inc. 2400 W. Amer Blvd. 272-4588
Main Street Beauty Salon 115 Main 272-3448	1st Bank 202 South First 272-4515	Bratcher Motor Supply 107 E. Ave. D. 272-4288	5-Area Telephone Co-Op Inc. 302 Uvalde 272-5533	
Irrigation Pumps & Power West Hwy. 84 272-4483	Farmers Co-Op Elevators 113 N. 1st 272-4335	Bentley's 110 Main 272-4119	Richland Hills Texaco 1914 W. Amer. Blvd. 272-4875	

GRAIN PRICES

FEED CORN.....4.88 cwt
WCY.....5.70 cwt
RCY.....5.00 cwt
WHITE FOOD CORN...6.85 cwt
MILO.....4.13 cwt
SOYBEANS.....7.04 cwt
NEW WHEAT.....3.70 cwt
99%

Prices-February 26, 1989
MARKETS COURTESY OF
FARMERS CO-OP
ELEVATORS
Muleshoe, Texas
272-4335



Unpredictable Forecast? Shop The Classifieds

272-4536

CLASSIFIED RATES
Minimum Charge \$2.30
Consecutive insertions Minimum Charge \$2.00
CLASSIFIED DISPLAY RATES
\$1.75 Per Column Inch
DEADLINES
12 noon Tuesday For Thursday Paper
12 noon Friday For Sunday Paper
We reserve the right to classify, revise, or reject any ad. Not responsible for any error after ad has run once.

1. Personals

A J.T.P.A... Staff person will be available at Muleshoe Community Action on Tuesdays 9:30-3:30 to discuss applications and available services. s1-1t-16tc

FOR REGISTERED Child care, full time or drop-in's. 272-3036. d1-2t-4tc

FRANK'S Refrigeration & Appliance Service Parts & Repairs.
817 Gum Muleshoe, Texas 79347
PHONE Home 272-3822 fl-6s-tfc

Call your local used cow dealer for 7 day a week dead stock removal. 965-2903 or 1-800-692-4043. cl -37t-tfc

PIANO FOR SALE Wanted: Responsible party to assume small monthly payments on piano. See locally. Call credit manager 1-800-447-4266. p1-8t-6tp

Will do housecleaning if interested. Call 925-6795. w1-8t-4tc

WANTED Painting ext.-int. Cabinet New-Formica. We do wall-papering, any carpentry work. Call 272-4874 Tommy & Barbara Hall h1-9s-8tc

3 All Steel Arch Buildings. Straighter sides. Big doors, grain kit, "Quick" delivery included. 40x44 was \$9,400 will take \$6,950; 40x82 was \$14,700 1st \$9,950, 50x112 was \$22,700 now \$14,950. 303-757-3107. p1-9s-2tpts

CONCERNED About Someone's Drinking? **HELP IS AVAILABLE** through Al-Anon Call 272-2350 or 965-2870 or come to visit Tuesday nights, 8:00 p.m. or Saturday mornings at 10:30 a.m. and through AA call 965-2870 or come visit Tuesday nights, 8:00 at 620 W. Second, Muleshoe.

Judging others often prevents us from appraising ourselves. Selfishness will break up any partnership.

1. Personals

Mary Kay Cosmetics
Josie Flowers
272-3865
Call 8-12a.m. and after 6p.m.

3. Help Wanted

Help wanted need Asst. Farm Manager. Need High School Education, Farm Experience required. Must be mechanically inclined & people oriented, Salary negotiable, Call 272-5506, or come by Bamert Seed Co., Muleshoe, TX. b3-8t-4tc 23,29,2,5,9

ATTENTION RN'S West Plains Medical Center, Muleshoe, needs RN's for several vacancies. Salary negotiable. In house health plan. Hospital and Nursing Home and Dr.'s Clinic connected. Call Kay Swint, DON, 272-4524. s3-8t-3tc t-s-s

Prairie Acres, Fulltime LVN, 3-11 shift, Competitive Wages, Group Insurance, Superior Rated Facility, Contact Jo Blackwell or Mary Johnston, 201 15th, Friona, TX 79035 or Call 806-247-3922. p3-9s-3tc 26,2,5

LVN, MA, or EMT, parttime. Need extra money? Complete Mobil Insurance Physical. Call 806-747-3223. t3-8s-3tc 19, 23, 26

ATTENTION HIRING Government jobs-your area. Many immediate openings without waiting list or test. \$17,840 \$69,485. Call 1-602-838-8885. Ext. R-10191. p3-6s-6tp

WE ARE NOW taking applications for Part-Time Sales Clerk. Muleshoe Fina 102 E. Amer. Blvd. Muleshoe, TX 79347 272-5278 i3-8s-2tc

5. Apts.

For Rent NICE- Large one bedroom range and refrigerator furnished. Good Location. Water Paid. Deposit Required. 272-7575. h5-5t-tfc

8. Real Estate

TWO BEDROOM, 1 bath, garage, carpeted, fenced back yard. Kitchen appliances, washer, dryer and chest freezer included. One block from the high school. Call 272-5405. p8-5s-9tp

ATTENTION GOVERNMENT HOMES from \$1 (U-repair). Delinquent tax property. Repossessions. Call 1-602-838-8885 Ext. GH 10191. p8-6s-6tp

8. Real Estate

FOR SALE: 2 bedroom 1 bath mobile home on 60 x 100 lot with 2 car carport in Country Club Addition. Call: 925-6480 after dark. 08-45s-tfc

3-2-1 **STUCCO.** Close to town on Hwy. 2 bedrooms downstairs, 1 bedroom and bath upstairs. Fire place. A must see on 100x400 lot. Call Whitt Reid Real Estate 272-3611 or Thursie Reid, 272-5318. w18-3s-tfc

NICE 3 bedroom, 2 bath house, 2 miles west of Muleshoe. With large barn. Nice location. Call 946-3340. d8-25s-tfc

ATTENTION: First time home buyers, 2 and 3 bedroom Mobile Homes. No credit needed. We deliver. Call 806-894-7212. b8-7s-8tc

3BEDROOM BRICK on 3 acres of land, 2/car detached garage, fireplace, built-ins, Central heat with a house well. Barn and corrals. Country Club Addition. Call 272 3390 or 272-4010. a18-3s-8tc

FOR SALE OR RENT 3 bedroom house. In the Country. Can be moved. Call 946-3417. 11-9s-tfc

8. Real Estate

REPOS: 2 and 3 bedroom Mobile Homes No Credit needed. Low down payment. Low monthly payments. Call 806-894-8187. b8-7s-8tc

9. Automobiles For Sale

Is It True You Can Buy Jeeps for \$44 through the U.S. government? Get the facts today! Call 1-312-742-1142 Ext. 6976-A. p9-3t-4tp

ATTENTION GOVERNMENT SEIZED VEHICLES from \$100. Fords, Mercedes, Corvettes, Chevys. Surplus Buyers Guide. 1-602-838-8388 Ext. A-10191. p9-6s-6tp

11. For Sale 1983 14x80 **MANATEE MOBILE HOME** 3 bedroom, 2 bath. Large bedrooms, storm windows, assumable loan. 263.68/month. Call 965-2364 after 5:00 p.m.

FOR SALE 16ft. Deck Boat, 85 Johnson Motor or real clean, has been covered. 927-5423. r11-7t-tfc

11. For Sale

FOR SALE: 14' Gamefisher Boat, 7 1/2 h.p. Motor, Tilt Trailer. Mercury Motor, Tilt Trailer. Phone 272-3822. fl11-9s-4tc

FOR SALE: 1988 Ford Aerostar van, 4 captain chairs, 7 - passenger-16,000 miles sell or trade for larger van. 227-2188. r11-9s-2tc

FOR SALE: 1500 ft. Pivot Sprinkler Galvanized. All new Drive Train and Drops. 806-373-3734 Call after 6:00 p.m. m11-9s-4tc

15. Misc.

MAN EXPERIENCED in irrigation well repair. Call 806-238-1596 day or 238-1328 nights. b3-49s-tfc

CHRISTIAN WOMAN will sit with elderly day or night. 272-3339. 1p-7t-3tp

For Rent

KITCHENETTES 272-4533
Experts are like ordinary people—they seldom agree.

Doing favors for people is habit-forming, in both directions.

It's always easy to find an excuse for delaying hard work.

8. Real Estate

SMALLWOOD REAL ESTATE
232 Main Muleshoe 272-4838
3 Bedroom, 2 Bath Stucco House. Close to Mary Deshazo School. \$500.00 closing cost. \$180.00 per month includes Tax, Insurance, and Escro. ***
3 Bedroom, 1 Bath, 1 Car Garage Brick Homes, Starting at \$23,500.00 Around \$650.00 to move in. ***

JoAnn Chester Realty
806-227-2363
REDUCED
Bailey County Farms
504 Acres irrigated with Pivots
177 acres Dry Land ***
700 acres Dry Land-CIRCLEBACK ***
240 acres 2-8 in Wells on highway
70 EAST OF EARTH

Whitt Reid Real Estate
201 Main Street Muleshoe, Tx.
272-3611

Would you like 20% return?
Rent property for sale.
5 Rent Houses - trailer park
Come by, lets's talk
Thursie Reid-272-5318
Sandra Chancey-925-6727
Geo. Potect-272-4047
Roy Whitt-272-3058

8. Real Estate

REQUEST FOR BIDS ON TEXAS HIGHWAY CONSTRUCTION
Sealed proposals for constructing 3.867 miles of fabric underseal, seal coat and asphaltic concrete pavement overlay on Spur 270 from US 60 to Main St. in Friona, on SH 214 from US 84 in Muleshoe to Avenue I, and from o.583 mile S. of covered by CPM 168-17-5, CPM 461-1-168-17-5, CPM 461-616 & CPM 563-3-7 in Parmer, Bailey & Lamb Counties will be recieved at the Department of Highways and Public Transportation, Austin, until 1:00 p.m. March 7, 1989 and then publicly opened and read. Plans and specifications including minimum wage rates as provided by Law are available for inspection at the office of Rhea Bradley Resident Engineer, Littlefield, Texas, and at the State Department of Highways and Public Transportation, Austin, Texas. Bidding Proposals are to be requested from the Construction Division, D.C. Greer State Highway Building, 11th and Brazos Streets, Austin, Texas, at the expense of the bidder. Usual rights reserved

Public Notice
Notice is hereby given that the Commissioners Court of Bailey County will enter into a contract with any banking corporation, association or individual banker in Bailey County for the depositing of the public funds of Bailey County in such bank, on March 13, 1989. Any banking corporation, association of individual banker in Bailey County desiring to be designated as county depository shall make and deliver to the County Judge an application applying for such funds and said application shall:
1. State the amount of paid up capital stock and permanent surplus of said bank; and,
2. there shall be furnished with said application a statement showing the financial condition of said bank at the date of application; and
3. be delivered to the County Judge on or before March 13, 1989 at 10:00 a.m.; and
4. be accompanied by a CERTIFIED CHECK for \$8,700.00, as required by V.T.C.A., Local Government Code 116.023. Said application should set out all terms and conditions for the handling of such funds, including, but not limited to, the rate of interest, if any, to be paid on demand deposits, and the rate of interest, if any, to be paid on time deposits. This notice shall be published once a week in some newspaper published in Bailey County and posted at the courthouse door of Bailey County.
Jim Watson
County Judge

18. Legals

NOTICE FOR BIDS
The Bailey County Commissioners Court will receive bids until 10:00 A.M., March 13, 1989, for the purchase of fuel for all precincts. Purchases may be made through pumps, with the use of keys or cards, and storage tanks may need to be furnished. Bailey County is required to pay state taxes, but is exempt from federal taxes.
Separate bids will need to be submitted for regular and unleaded gasoline, and for diesel fuel. The bid shall reflect the percentage above wholesale cost of fuel per tank wagon. The Commissioners Court reserves the right to reject any or all bids and to waive formalities.
Jim Watson
County Judge

Bingham & Nieman Realty

116 E. Ave. C. 272-5285 or 5286

PRICES REDUCED UP TO \$7,000 on 2 & 3-1-1 Brick Homes, Cent. heat, Energy Efficient. PRICED FROM \$23,500 !!! Approx. \$600.00 total move-in, payments based on income for Qualified Buyers.

RICHLAND HILLS
IMMACULATE 3-2-2 Brick, corner lot, Cent. A&H, built-ins, FP, loads of storage & closet space, much more!
PRICE REDUCED 3-1-1 Brick, Cent. Heat, Evap. air, built-ins, fenced yard....
VERY NICE 3-2-3 Home, Cent. A&H, built-ins, FP, fans, spktr. sys., fenced. **PRICED TO SELL!!!!**
VERY NICE 3-2-2 Brick Home, Cent. A&H, built-ins (inc. kitchen ctr., compactor, & microwave) Jacuzzi, loads of storage, basement, aut. spktr. sys. & Much More!!!!

JUST LISTED 3-2-1 carport Brick, Cent. A&H, built-ins, FP, den or 4th bdrm., storage bldg., Fenced yd.
HIGHLAND AREA
JUST LISTED-Nice Large 2-2-2 Brick, Cednt. A&H, utility, cov. patio, fenced yard & more!!!!!!
VERY NICE 3-2-2 Brick, Cent. A&H newly remodeled kitchen with built-ins, storm windows, fenced yard, storage bldg. and much more!!!!
NICE 3-2-2 Brick home (2 story), on corner lot, Cent. A&H, built-ins, and much more. **LET'S LOOK TODAY!!!!!!**

NICE 3-2-1 carport home 2 living areas, priced under \$20 per sq. ft., fenced yard, workshop-storage, & more!!!!!!
NICE 3-1 1/2-1 Brick Home Cent. A&H, built-ins, large den w/Fireplace, fenced yard, storage bldg. \$50's!!!!
HIGH SCHOOL
NICE 2-1 1/2-2 Home, corner lot, built-ins, nice carpet, heat pump, fenced yard, storage bldg. & more!!!!
PRICE REDUCED FOR QUICK SALE! Nice 2-1-1 Home, Cent. Heat, carpets, work-storage area, and much more. \$19,950.00!!!!

IMMACULATE 3-2-1 carport, Brick Home, Cent. A&H, built-ins, nice finished basement with fireplace, spktr. sys., & much more!!!!
COUNTRY CLUB-VERY NICE 3-2-2 brick, Cent. A&H, built-ins, FP, Earthtone carpet, large fenced yd., storage-workshop, corner lot. \$50's!!!!
LENAU ADDITION
COZY 3-1 1/2-1 home, Cent. heat, nice earthtone carpets, fenced yard, storage bldg., & more!!!!
3-1-1 home, Cent. A&H, utility, storage bldg., cellar, gas grill & more. \$20's!!!!
COUNTRY HOMES
NICE 3-2-2 Brick on 1 acre on pavement, close to town, DW, WB stove, utility, storm windows & doors. \$50's!!!!
VERY NICE 3-2-1 Home on 1 acre, close to town, Cent. Heat, Evap. air, nice carpets, nicely remodeled. \$30's!!!!
HOME TO BE MOVED, Nice 4-3-2 Home. Cent. A&H, built-ins, fireplace, loads of storage & closet area, 2150 sq. ft. of living area, much more, \$40's!!!!!!
2-1 home, 20 acres, sub. pump, sprinkler, barns & corrals. \$40's!!!!
Nice, well maintained Self-Service Laundry. 34 washers, 16 dryers in nice, modern building, excellent location. Books available to qualified Buyer.
SALE OR LEASE nicely remodeled office bldg. with over 3,000 sq. ft. of area, excellent location across from Courthouse. **PRICED TO SELL!!!!**
APPROX. 3,000 sq. ft. bldg. Railroad frontage. **CASH PRICE \$15,000.00**
69+ acres, improved pasture, 8" well, undgrd. line, fenced, plus nice 3-2-2 home, Cent. A&H, built-ins, utility, storm cellar, nice shop, & much more, close to town!!!!

DIANNE NIEMAN, BROKER

GEORGE NIEMAN, BROKER