

# THE JAYTON CHRONICLE



Vol. 48 -- Number 2

Entered as Second Class Matter

JAYTON, KENT COUNTY, TEXAS 79528

\$4.00 Per Year Thursday, February 17, 1972

## County Agrees To Buy Recreational Equipment Community Center

### This Week In Jayton



Well, the in-fighting Texas politicians and officials continues, and the fate of the party primaries still at stake.

Governor Smith and Sec. Bullock came up with a state financed plan to hold primaries. State Comptroller Calvert refused to pass the money without a vote from Attorney General Martin ruled it was unconstitutional to pay for primaries with state money and that only the Texas legislature could change it.

There we go again. Smith will call a special election when HE is ready. It is up to him, now, to make a move. We shall see what he shall see.

Most of the candidates for president, who are members of Congress, do not have a very good record. They don't show up at the capitol often.

Margaret Chase Smith has been fussing about it. She likes to kick them out of office.

There is a list of some of the voting records: Harris of Iowa voted 51% of the time, Hartke of Indiana 58%, of Indiana 59%, Muskie of Maine 59%, Goldwater of Arizona 53%, Saxbe of Ohio 53%, Mundt of South Carolina 53% a year; McGovern's record is listed as very poor.

Smith wants to kick them out who votes less than 50 percent of the time.

Some of the best known, and most members of the Lubbock Journal staff, especially in the rural areas, are Laine.

Some of his continuing features "The Face of a Cow" showing pictures of well known men of the early era. Work has been printed in a selling book.

For many years Mr. Laine taught a Journalism course at Tech on feature writing.

A few years ago when our country was about a sophomore at the University, he was one of these classes. He spent part time at Smith in Lubbock as a lin-

The Kent County Commissioners Court had a very busy day Monday, working several hours into the afternoon. A group of high school students met with them, for the second time, on behalf of getting entertainment for the community center. In this group were Brenda Wilson, LaFonda Arnold, Penney Sartain, Stephanie Owens, Edwin Long, Bobby Hudson, David Fincher, Brad English, Tom Hanke, Robbie Panter, and Harold Wayne Judy.

Hamilton made a motion, seconded by Carriker to purchase a pool table, two ping pong tables, a shuffleboard, and a table soccer. All members voted for this measure.

Sarah Byrd made a motion, seconded by Hamilton to employ Home Lumber Co. of Rotan to construct a club house at the gold course on a bid of \$22,000.00, Byrd, Hamilton, Carriker and Gallagher voted for this measure. Dickerson, who had been present for part of the meeting had left before this motion was taken. This was for a brick building. Fleeman of Lubbock had bid \$22,817.00 on a brick building and Tusha Building Co. had bid \$18,975 for a metal building.

A motion was made by Dickerson and seconded by Carriker to purchase grader blades from Plains Equipment Co. at \$1.22 per foot. There were other bids for \$1.35, \$1.41 and \$1.45. All members voted for this measure.

A motion was made by Hamilton and seconded by Byrd to purchase 1 premium and regular gasoline from Mobil Oil Co. diesel from P-P Gas Co. and butane and propane from Parker Butane, according to bids submitted. All members voted for this.

A motion was made by Byrd, seconded by Hamilton to employ Malone Fence Co. to construct a fence around the Kent County Playground for \$1,088.30. This was low of four bids. All members voted for this measure.

A motion was made by Carriker, seconded by Hamilton to allow Atlantic Richfield Co. to run a two inch water line across a county road. This measure passed.

A motion was made by Byrd and seconded by Carriker to advertise for bids for a pick-up truck to be used by the county road department. Vote on this was unanimous.

Gleann Phillips and Mark Geeslin met with the court to discuss purchase of fire fighting equipment, the minutes show. No action was taken on this matter.

Also an order was passed to pay the current bills.

type operator.

Laine had assigned members of the class to each write a special type feature story. Donny who had not yet mastered the art of typing, went down to the print shop, set his article in type, printed a copy on the proof press and turned his story in.

This gave Mr. Laine a real

## No Accidents In Kent Co. In January Annual FHA Banquet Held Here Saturday

The Jayton Chapter of FHA held their annual sweetheart banquet in the Jayton cafeteria Saturday, February 12. The theme of the banquet was "Love is . . ." and the cafeteria was decorated in Snoopy characters.

The guest speaker was Curly Hays from West Texas Utilities Company in Abilene. He spoke on the goals and abilities of young people.

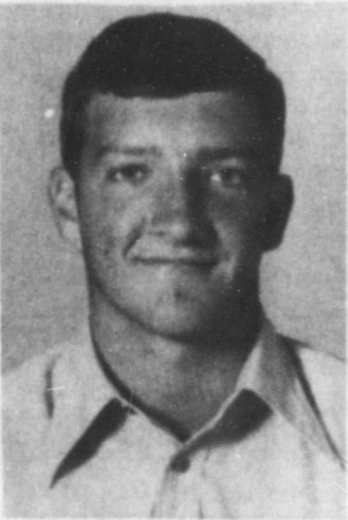
The FHA girls voted on their favorite beau, who was Phillip Vardiman; and Karen Ewing, our president, presented him with a key chain.

The girls also selected Brad English as the "Most Irresistible Boy", and gave him a gift. This new honor was started this year and will be an annual event.

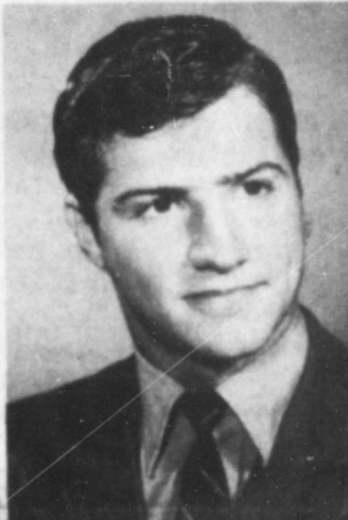
Mr. Eugene Harris provided entertainment with favorite piano selections.

Special guests of the FHA girls were their dates; Mrs. Kathy Owens, our sponsor; Mrs. Helen Owens, Mrs. Sarah Byrd, and Mr. and Mrs. Jerry English, our chapter parents. Other guests included Mr. and Mrs. R.N. Pierce, Mr. and Mrs. Ralph Newton, Mr. and Mrs. Bill McMeans, and Joe Thompson, who made pictures of the highlights of the evening.

We want to thank the 8th grade girls who served our meal: Vicki McMeans, Nyiene Sherer, Kathleen Rider, Patti



BRAD ENGLISH



PHILLIP D. VARDIMAN

Ewing, Debbie Baker, D'Lynn Bryd, Rena Bural, Kathy Ballard and Debroah Smith.

We would like to thank also the mothers who prepared the food. The meal was delicious and the banquet was a big success. REPORTED

The Texas Highway Patrol investigated no accidents on rural highways in Kent County during the month of January, according to Sergeant Jirek, Highway Patrol supervisor of this area.

These crashes resulted in no persons killed and no persons injured.

The rural traffic accident summary for the 60 counties of the Lubbock Department of Public Safety Region for January, 1972 shows a total of 500 accidents resulting in nine persons killed and 217 persons injured as compared to January, 1971 with 476 accidents resulting in 17 persons killed and 235 persons injured.

Also during 1971, Lubbock County's 511 traffic accidents was the highest number recorded by any county of the Lubbock Department of Public Safety Region. Parker County ranked second with 429 accidents.

The nine traffic deaths for the month of January, 1972 occurred in the following counties; Lubbock, 3; Palo Pinto, 2; Cochran, Garza, Gray and Wheeler one each.

### STUDENTS PLAN FUND RAISING

High school students will conduct a fund drive for Multiple Sclerosis, on a door to door basis the first of next week, states the local chairman Raymond Hughes.

Posters are now on display at the Teen Scene, the Phillips 66 Station, McAteer's and the Spot.

Watch for them and give liberally, Hughes said.

## Work Now Finished On Farm Road 1083

The construction work has been completed on 4.05 mile section of F.M. Highway 1083 in Kent County. A contract in the amount of \$71,966.46 was awarded to High Plains Pavers, Inc. of Plainview, Texas, by the Highway Commission on September 13, 1971, for the construction work on this project.

This project begins at its intersection of U.S. Highway 380 5.7 miles southwest of Jayton and extends 4.05 miles

north to the end of the existing pavement on F.M. Highway 1083, 3.7 miles southwest of Jayton. This project completes a paved route from Jayton west and south of to U.S. Highway 380.

The construction work consisted of grading, structures, base, and a one course surface treatment.

Nelson Shave, Supervising Resident Engineer of Hamlin, was in charge of the project while it was under construction.

## MOD Moms Meet

### CITY ELECTION

The city of Jayton will have a city election Saturday, April 1st, 1972 in the county court room, for the purpose of electing three city councilmen. The terms of Euel Harrison, Mike Owen and Edd Kyle are expiring. Anyone wishing to seek this office as councilman may make application to have his or her name placed on ballot at the city water office at any time.

Wall Street in New York was named because it follows the line of the palisade wall or stockade built in 1652 across the southern end of Manhattan Island.

Javits says Nixon takes more liberal stand.

F-14's test crash laid to faulty design.

On Tuesday February 8 at 1:00 the MOD Moms had a meeting on community improvement. Guest speakers were District Agents, Mr. J. C. Simmons and Miss Thelma Wiggs. Both of these persons have been involved in community improvement programs a great deal. They gave an information lecture on how people in a community can organize to participate in the Texas Community Improvement program. The purpose of the program is to stimulate individual family, and community effort toward improving their communities.

The communities who have entered the program are judged on the improvements made during the past year. There are cash prizes awarded to District and State winners.

## School Trustee Election Scheduled For April 1

A school trustee election will be held in the Jayton-Girard district April 1, states R. N. Pierce superintendent.

Three positions will be subject to the election. These are the places now held by Garth Gregory, and James Long of Girard. Also, the position held by Bill Sartain, the unexpired two years, will be for election.

Anyone wishing to be a candidate in this election should see the secretary of the board Buddy Gallagher, or go to the office of the superintendent, where the paper work will be taken care of.

At the March 9th meeting of the board they will receive and open bids for the construction of new dressing rooms in the gym.

## Jayton H-SU Student On Orange Picking Trip

Lajuana Hamilton of Jayton was one of a delegation of Hard In-Simmons University students and staff members who left Abilene at 12 noon Friday for the Rio Grande Valley.

Their mission was to pick oranges at the university-owned orchard Saturday.

A caravan included about 70 of them 60 students. The orchard is located near Mission. Upon returning to Abilene late Sunday or early Monday, the oranges were to be given to persons making at least \$1 contribution or more to the library fund.

Exes returning to the campus for Homecoming, Feb. 18-19, will have an opportunity to make pledges to the library fund and receive a bag of oranges.

## Kent County 4-H Stock Show Set For Feb. 25-26

Plans are shaping up for the thirtieth annual Kent County Livestock Show. The show will be Friday and Saturday, February 25-26 at the 4-H Club Barn in Clairemont.

Swine will be judged on Friday afternoon, February 25 at 6:00 p.m. One class of weeding gilts and three classes of market hogs will be judged. Following the swine judging, four classes of lambs will be placed.

On Saturday morning, three

classes of beef steers will be judged. Two classes of Quarter horse fillies will be placed following the beef judging. Livestock judge will be Jesse Holloway from Lubbock Christian College. E.W. Cade Jr. will place the horse entries.

Prizes will be given to the 4-H Club members from contributions being made to the Livestock Show Committee. Gus Fincher is finance chair-

man for the show. The 4-H Club members and parents will maintain a concession stand on Friday and Saturday during the show. A barbeque will be served at noon on Saturday for \$1.50 a plate.

The top 50% of each market class will sell at auction on Saturday afternoon. Animals that place in the lower 50% of each class will sell at floor price.

## Sewing Workshop Is Conducted

A few night sewing workshop will be finished on Monday night Feb. 14. The workshop started on Tuesday Feb. 8 and usually lasted from 7 to 11 p.m. each night. It was held at the Home Economics Cottage at school and one night at the Kent Community Center.

The Las Dama's Club had planned the workshop in December and the following members participated: Lidia Garcia, Sally Trevino, Sally Garcia, Monix Martinez, and Sandi Alvarado.

There were three visitors who were interested in learning to sew and these were: Bea Shipp, Vi Jackson, and Joy Panter.

The instructors were Bert Stanaland, Mrs. Robert Koonce, Mrs. Ben Boland, and Mrs. Gordon Hamilton.

The purpose of the workshop was to learn the importance of the basic principles in sewing by doing them. Each participant constructed a blouse with a collar and sleeves. By doing this project they learned about fitting patterns, laying out a pattern for

cutting, stay stitching, fitting the blouse, collar, and sleeve application and also straightening a fabric that is off grain. We wish to thank the school and Mrs. Owens for their cooperation in letting us use the machines in the Home Economics Cottage a spokesman said.



(1). Mrs. Robert Koonce, Jay Panter, Mrs. Hamilton, and Vi Jackson.

(2). L to R Sally Trevino, Sandi Alvarado, Mrs. Koonce, Monix Martinez. In the background, Vi Jackson and Sally

Garcia.

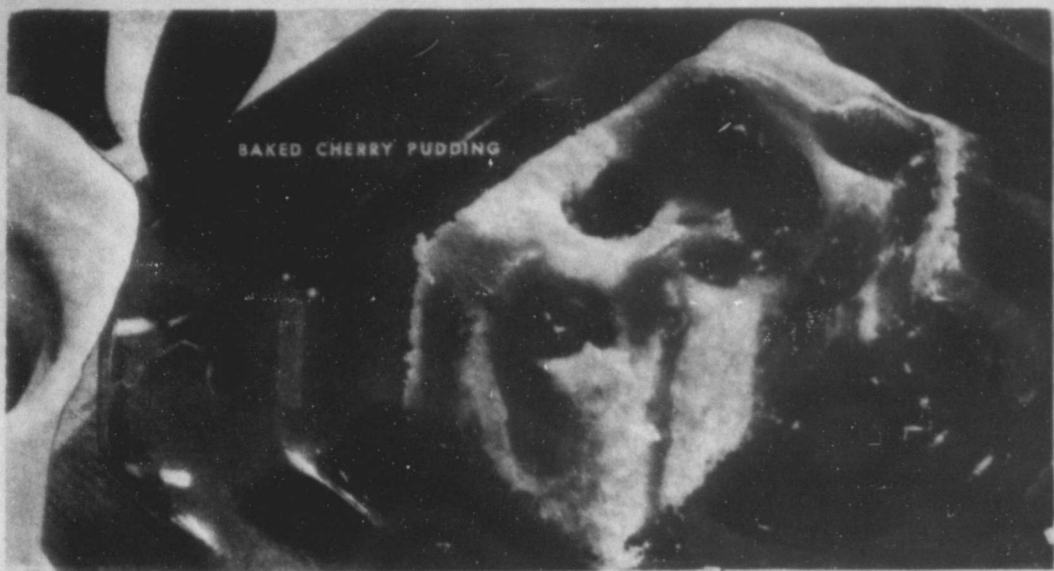
(3). Mrs. Koonce helping Monix Martinez.

(4). Mrs. Boland helping Sally Trevino with her collar and Bea Shipp in background trying to thread her machine.

JAYTON CHRONICLE \$3.00



From The Recipe File Of Opal Richards



Baked Cherry Pudding

Cream 1/3 cup Shortening and 2/3 cup sugar.

Add 1 egg and 1/2 cup milk, 1/2 teaspoon vanilla, 1/2 teaspoon lemon extract, 1/8 teaspoon salt, 1 1/2 cups flour, and 2 teaspoons baking powder; beat 2 minutes.

Pour into greased shallow pan. Spread with 1/2 cup drained cherries.

Bake 25 minutes in moderate oven. Cut in squares and serve warm with Cherry Sauce.

CHERRY SAUCE

Blend 2/3 cup sugar, 2 tablespoons flour, and 1/8 teaspoon salt.

Add 1 cup water, 2 tablespoons butter or oleo, 2 tablespoons lemon juice, and 2/3 cup cherries and juice.

Cook slowly, stirring constantly, until sauce thickens.

CHERRY TOPPED CHEESE CAKE PIE

1 cup fine graham cracker crumbs

3 tablespoons sugar

1/4 cup softened butter

1 package (8-oz.) cream cheese, softened

1/2 cup sugar

2 cups (or one 4 1/2 oz. container) Whipped Topping, thawed

3/4 cup canned cherry pie filling

Combine crumbs, 3 tablespoons sugar, and the butter; mix well. Press into bottom and sides of 8-inch pie pan. Chill - hour. Beat cream cheese with 1/2 cup sugar until creamy. Blend in whipped topping. Pour into crust. Spread pie filling around edge. Chill at least 3 hours. Makes 6 to 8 servings.

Cherry Salad Ring

Lightly oil a 1-qt. ring mold with salad or cooking oil (not olive oil); set aside to drain. Coarsely chop and set aside on absorbent paper to drain

1/2 cup maraschino cherries

(To avoid a pink tint in the salad, drain cherries thor-

She Can Bake A Cherry Pie



If there is one time of year for Cherry pie, it's in February. Not only is Cherry pie symbolic of George Washington's birthday but that's also the time when the stores feature canned cherries at special prices. Here, trimmings from the pastry are used to make a hatchet decoration for the top crust.

CHERRY PIE

Pastry for 2-crust pie  
3 tablespoons corn starch  
2/3 cup sugar  
1/2 teaspoon salt  
1 cup juice, drained from cherries

2 tablespoons Mazola margarine  
1 teaspoon lemon juice  
1/4 teaspoon red food coloring  
2 (1-pound) cans, pitted sour red cherries, packed in water, drained

Mix corn starch, sugar, salt and cherry juice in a saucepan. Place over medium heat and cook, stirring constantly, until mixture comes to a boil and boils 1 minute. Remove from heat. Stir in margarine, lemon juice, food coloring and cherries.

Pour into pastry lined 9-inch pie pan. Cover with top crust. Seal and flute edges. Make several slits in crust to permit escape of steam. Bake in 425 degree F. (hot) oven 35 to 40 minutes, or until crust is golden brown.



CHERRY SALAD RING

oughly). Drain thoroughly, reserving syrup, contents of

1 No. 2 can crushed pineapple (about 1 1/2 cups, drained)  
Pour into a small cup or custard cup

1/4 cup cold water

Sprinkle evenly over water  
1 tablespoon (1 env.) un-

flavored gelatin  
Let stand about 5 min. to soften

Stir the softened gelatin into 1/2 cup very hot water

Stir until completely dissolved. Blend in 3/4 cup reserved pineapple syrup and 1/4 cup lime juice

Arrange about 2 tablespoons maraschino cherries in bottom

of the mold. Pour in a small amount of gelatin mixture (just enough to cover the cherries.) Chill in refrigerator until partially set.

Chill remaining gelatin mixture until slightly thicker than consistency of thick, unbeaten egg white.

Meanwhile, beat until fluffy 8 oz. cream cheese, softened

Add gradually and beat in the remaining pineapple syrup.

When gelatin mixture is about the same consistency as cheese mixture, stir several tablespoons into the cheese mixture. Continue to add gelatin mixture slowly, beating constantly until well blended.

Stir in pineapple and remaining cherries.

When first layer in mold is of desired consistency, spoon the cheese mixture over. It spreading evenly. (Both layers should be of almost the same consistency when combined to avoid separation when unmolded). Chill in refrigerator until firm.

Unmold onto chilled plate; garnish. 6 to 8 servings

This Week...

from Page 1.

thrill. The next day he displayed Donny's story to the entire class. "This is something unusual", he told the class. "This article gets an A, and I haven't read it yet. Anyone who would go to all this trouble to turn in a story in this form deserves nothing but the best," he told the group. Later, smiling, Donny told friends privately, "He didn't know that was the easiest way for me to do it, since I can't type."

Donny said he enjoyed this course more than any he had taken. Laine got away from the usual type of classroom study and concentrated on the main course of study, of teaching young prospective journalists how to write an interesting, readable feature story.

Donny and I had interesting letter this week from Cong. George Mahon. It was about current fiscal matters of the government. He sent a copy of a speech he recently made on the floor of the House of Representatives about the Nixon budget, which shows a 44 billion dollar deficit. Mahon is very apprehensive about continued government red-ink spending.

FOR SALE: Hegari Bundles for sale, 1 1/2 mile, south east of Girard, Call C.V. Hagar, Girard, Texas, Ph. 284-2302 2-2tp

NOTICE  
Cobalt Blue Battery Conditioner Eliminates Sulphation Build-up in Your Car or Tractor. No more dead calls. ABEMARTIN-DISTRIBUTOR Box 337, Girard, Texas 79518

METHODISTS SET SPUR REVIVAL

Ed Robb, Methodist evangelist, headquartered in Abilene, will lead a revival at the First United Methodist Church, Spur, February 20 through 27.

Services will be held daily at 7 a. m. and 7 p. m.

Gene Moore, and his wife, Bobbie, will accompany Rev. Robb, and will have charge of special music.

"We would like to extend a special invitation to area residents to attend this meeting and hear Rev. Robb," states Rev. Howard Marcom, Spur pastor.

NOTICE: If you need a decorated cake for any occasion birthday, wedding, anniversary, shower. Will also bake undecorated, stacked, pound, sheet, etc. Call Wendell Hicks. Phone 237-4778 or 237-3134. Jayton, Texas. 79528. 42-3tp

of the mold. Pour in a small amount of gelatin mixture (just enough to cover the cherries.) Chill in refrigerator until partially set. Chill remaining gelatin mixture until slightly thicker than consistency of thick, unbeaten egg white. Meanwhile, beat until fluffy 8 oz. cream cheese, softened. Add gradually and beat in the remaining pineapple syrup. When gelatin mixture is about the same consistency as cheese mixture, stir several tablespoons into the cheese mixture. Continue to add gelatin mixture slowly, beating constantly until well blended. Stir in pineapple and remaining cherries. When first layer in mold is of desired consistency, spoon the cheese mixture over. It spreading evenly. (Both layers should be of almost the same consistency when combined to avoid separation when unmolded). Chill in refrigerator until firm. Unmold onto chilled plate; garnish. 6 to 8 servings

Aspermont FFA News

Friday and Saturday, Feb. 11th and 12th were the dates for this year's County Livestock Show. Members of the Aspermont FFA exhibited all the grand champion with the exception of the grand champion steer. The steer show was composed entirely of 4-H members. Judy Pittcock had the grand champion steer, and Don Wayne Jones had the re-

serve champion steer. Champion exhibited by the Aspermont FFA were as followed.

Grand Champion Swine was exhibited by Kollin Shadle-Aspermont FFA, Cross Bred Pig exhibited by Darla Dixon-Aspermont FFA, Champion Berkshire was exhibited by Billy Marrow-Aspermont

YORKSHIRE BOAR FOR SALE: Contact Steve Cochran, Rt. 1 Aspermont, Texas, Phone: 806-254-2125. 1-2tc

BUSINESS OPPORTUNITY MAN OR WOMAN: Reliable person from this area to service and collect from automatic dispensers. No experience needed...we establish accounts for you. Car, references and \$995,000 to \$3,490,00 cash capital necessary. 4 to 12 hours weekly could net good part-time income. Full-time more. For local interview, write, include telephone number, Eagle Industries, 3938 Meadowbrook Road, St. Louis Park, Minnesota 55426. 42-ltp.

FLAIR felt tipped pens at the Jayton Chronicle

FOR FOOT COMFORT "Mason Shoes" Contact: Abe Martin Bob 337, Girard, Texas 79518

New Spring Fashions Are Here  
Also Easter Dresses. Buffy & Peaches N' Cream by Claudarella. See Them Now!  
Priscilla's Young World  
Phone 675-2125 - Crosbyton - 108 Berkshire

CARD OF THANKS  
We would like to thank each and every one, for your help and kindness, when we needed it most. For the lovely flowers, food, prayers and cards. For your ever concern and thoughtfulness, it meant so much to us.  
Thank you,  
The Family of Ivey F. Murdoch

FOR SALE: Livestock feeder with hay rack. Contact the Aspermont FFA Chapter, Drawer 549, Aspermont, or phone: 817-989-2656, Aspermont. 1-2tc

OFFICE SUPPLIES AT JAYTON CHRONICLE

ITCHING LIKE MAD? Get this doctor's formula! Zemo speedily stops torment of externally caused itching...of eczema, minor skin irritations, non-poisonous insect bites. Desensitizes nerve endings. Kills millions of surface germs. "De-itch" skin with Zemo-Liquid or Ointment.

FFA, Champion Hampshire Pig was exhibited by Kollin Shadle Aspermont FFA, Champion Duroc was exhibited by Royce Swink of Stone's County 4-H  
In the lamb show Aspermont FFA exhibited all of the breed champion and the grand champion lamb. The winners were:  
Grand Champion lamb exhibited by Steve Yarborough-Aspermont FFA, Champion Hampshire lamb exhibited by Patti Pittcock Aspermont FFA, Champion Fine Wool Lamb exhibited by Tom Gather-Aspermont FFA, Champion Suffolk Lamb exhibited by Debbie Allen Aspermont FFA, Champion South Dawn Lamb exhibited by Harriett Martin-Aspermont FFA, Champion

Cross-Bred lamb exhibited by Steve Yarborough Aspermont FFA.  
In the heifer show the Champion heifer was the Tom Jameson-Aspermont and reserve grand champion heifer was shown by Weaver-Aspermont FFA.

MEN NEEDED in this area to train LIVESTOCK BUYERS  
LEARN TO BUY CATTLE, HOGS AND SHEEP at sale barns, feed stores, ranches. We prefer to train 21 to 35 with livestock experience. For local interview, write for phone, address and background info.  
NATIONAL MEAT PACKERS TRAINING  
1805 East Ave. Dept. D  
Ft. Worth, Texas 76102

Pickup -- and delivery service at KENT COUNTY NURSING HOME Mondays, Wednesdays and Fridays  
Kenady Drug  
ASPERMONT, TEXAS

7th Anniversary SALE  
Starts Thurs. Feb. 17th to Sat. Feb. 19th  
FREE PRIZES TO FIRST 5 LADIES IN THE STORE EACH DAY  
Drive to Rotan. It'll be Worth the Trip. Open 9:00 a. m. to 6:00 p. m.  
"DISCOUNTS STORE WIDE"  
Darden's Dept. Store  
102 W. Snyder - 735-3402 - Rotan

Valentine Special Two For One Offer  
One Renewal One New Sub Both For \$3.00  
Two New Subs Both For \$3.00  
Offer Good Through February Only  
THIS OFFER DOES NOT APPLY TO TWO RENEWAL SUBS  
The Jayton Chronicle

THE OLDE NURSERY  
"Sure George, we'll take a check for a new cherry tree from"  
Kent County State Bank MEMBER F. D. I. C.  
TRANS AT LOW RATES