

Phone 569-2191
Before Noon Tuesday
TO PLACE YOUR
CLASSIFIED AD

BURKBURNETT INFORMER STAR

MORE THAN A NEWSPAPER... A WICHITA COUNTY LEGEND SINCE 1908

Price 10¢

VOLUME 66

BURKBURNETT, WICHITA COUNTY, TEXAS 76354

THURSDAY, MAY 9, 1974

NUMBER 36

BHS Valedictorian, Salutatorian Announced



CO-VALEDICTORIANS
Chris Strayhorn



Shelly Moore

The 1973-74 Valedictorians, Salutatorian, and top ten graduating seniors of Burk Burnett High School were announced last week. Co-valedictorians were Chris Strayhorn and Shelly Moore, each with an average of 100. Salutatorian was Georgianna Neal with an average of 99.7333. Chris is the son of Mr. and Mrs. John W. Strayhorn; Shelly is the daughter of Mr. and Mrs. Tom

Moore; and Georgianna is the daughter of Mr. and Mrs. Victor G. Neal, all of Burk Burnett.

Other top ten seniors include (in order with highest grades first) Leah Rogers, Paul Deutsch, Rebecca Tate, Cheryl Mead, Lynn M. Leonard, Carol Bratina, Benny Wilkinson, Johnnie Sue Dennis, Douglas Alan Schneider, and Virginia Gail Cullison.



SALUTATORIAN
Georgianna Neal

MS Hope Chest Drive Set

Organization of the 1974 MS Hope Chest Campaign in Burk Burnett is moving forward with the enlistment of many volunteers, according to Mrs. Ralph White, president of the Current Literature Study Club, and Mrs. H.R. Jefferis, project chairman. It is expected that 175 marchers will be enlisted under the supervision of Mrs. Jefferis and Dennis Barnes, president of the Burk Burnett High School student council. The drive will be Monday, May 13.

Mrs. Jefferis said, "The national multiple sclerosis society's overall campaign this year is geared to an 'athletes vs. MS' theme and is being directed nationally by Era Parseghian (Notre Dame football coach)." MS, a crippling neurological disease that affects the spinal column, disables hundreds of young Americans and millions more around the world.

Mrs. Jefferis said that the scientific community believes we are closer now than ever before to finding the cause and developing a cure to multiple sclerosis. She noted that the recent report of the National

Advisory Commission on MS to the president and congress, and the facts that the most extensive study of MS ever undertaken was started in Philadelphia.

The campaign in Burk Burnett hopes to raise \$1000 as its share of the \$14 million goal set by the

national organization. "We need all the help we can get," Mrs. Jefferis said. Any one wishing to assist in the campaign is urged to call her at 569-2839 or get in touch with Dennis Barnes or any member of the BHS student council.



MS CHAIRMEN--The Multiple Sclerosis 1974 Hope Chest Campaign in Burk Burnett will be Monday. Pictured are the three chairmen who will supervise the drive. From left are Mrs. H.R. Jefferis, project chairman (Current Literature Study Club); Mrs. Donna Perkins, Counselor of the BHS Student Council; and Dennis Barnes, president of the Burk Burnett High School Student Council.

Informer/Star Photo

C-C Members Hear BHS Choir

Members of the Burk Burnett Chamber of Commerce heard the Burk Burnett High School Choir Monday at the regular monthly Chamber luncheon held at noon in the Community Center.

The choir, under the direction of Ted James, performed both contemporary and older num-

bers, with several smaller groups also singing.

Earlier, Chamber manager Jim Lemley announced that the Chamber has obtained eight new memberships this month. He also said that a workday has been scheduled for Saturday at 9 p.m. in the Oil Park for a "general cleanup."

There will be a directors luncheon at 12 noon Thursday in the Texas Electric Reddy Room.

A Newcomer's Coffee has been slated for 10 a.m., May 25 (Saturday) in the National Room of the First National Bank.

John Gill catered the luncheon.

Oil Park Work Day Scheduled

A "general cleanup" will occur Saturday at the Boomtown Oil Park as about 40 volunteers gather there for a work day at 9 a.m.

Jess Carille will supervise 19 students from the 3753rd student squadron, Sheppard AFB, and 15 Boy Scouts from Troop 154, who have volunteered a days' work toward park improvements. They will be aided by members of the

Burk Burnett American Legion Post 264 and any other interested citizens.

Chamber manager Jim Lemley said, "We will welcome anyone interested in helping." Mrs. Ralph White, president of the Current Literature Study Club, said that her club will furnish refreshments for workers that day.

Mrs. Loretta Hunt is Oil Park Committee chairman.

Faith Rummage Sale Scheduled

A "Faith Rummage Sale" sponsored by St. John's Episcopal Church will be held Saturday, May 11 starting at 10 a.m. in front of Gill's Grocery. There will also be specially baked goodies for the weekend.

Allred-Hightower-Farabee Winners

Turnout at the May 4 Democratic and Republican primaries was light as predicted by most officials. In Burk Burnett precincts, only 1090 persons voted.

In Burk Burnett, voters went overwhelmingly for Jack Hightower (Congress, 13th Dist.), who received 769 local votes. Finny had 67 and Ruffin had 237.

For governor, Briscoe carried Burk Burnett as he did the state. His total Burk vote was 748, compared to 18 for Alexander, 16 for Posey, and 253 for Farenthold.

In the state comptroller race, Bullock carried Burk Burnett with 680 votes to Edburg's 201.

Burk Burnett voters approved incumbent Jesse James for state treasurer with 643 votes to Yarborough's 412.

Betting Fails Locally

Agriculture commissioner White carried in Burk Burnett with 687 votes over Schroeder's 269 votes; and Kelly edged Wallace locally for railroad commissioner with 436 votes to 420 votes.

Dave Allred carried Burk for representative, District 52, with 607 votes to Vernon Stewart's 467. Farabee also carried Burk Burnett for Senator, district 30, with 615 local votes to Finnell's 468.

Spurlock defeated Crouch locally for the Court District 2 office with 537 votes for Spurlock and 279 for Crouch. Hank Anderson won in Burk for County Attorney with 781 votes over Benesh who received 199 votes.

Paramutual betting failed in Burk Burnett with a vote of 240 for and 775 against.



RETIRING DIRECTORS--Pictured are three of the four retiring directors of the Burk Burnett Library being presented plaques by chairman Jack Aaron for their service as directors. From left are Jack Aaron, Mrs. Marjorie Kauer [who served an eight year

term], Mrs. F.T. Felty [who served a five year term], and Dan Shaffner [who served a four year term.] Alvin R. Hill [who served a four year term] was not present for the photo. New directors will be announced in June.

Informer/Star Photo

Regular Business Discussed

The Burk Burnett School Board met Monday, May 6, for its regular monthly session. Sixteen items were on the agenda to be discussed.

First the board approved the regular meeting of April 8,

special meetings of April 15, 25, and 26, and emergency meeting of April 27. Then the financial report, athletic and activity reports, presentation of school bids and report on tax collections were all unanimously

Schools Are Classified

Baccalaureate Set

The Burk Burnett High School senior class has announced that their baccalaureate will be held May 26 at 8:00 p.m. in the First Baptist Church in Burk Burnett.

Ed Morris, minister of the Church of Christ, will be the speaker with Father David A. Jones, Vicar of the Episcopal Church of St. John the Divine,

giving the invocation and Reverend Donald A. Hodgson, pastor of the Apostolic Church of the Lord Jesus Christ, giving the benediction.

All parents, friends, and associates of these graduating seniors are encouraged to attend this inspirational service.

★★★★★
Impressions
★★★★★
Thoughts
OF A
Newsmen
by Leon Smith

The BHS Choir sounded great Monday at the Chamber Luncheon. The choir sang several songs, including three which were performed at contest recently. The group is under the direction of Ted James.

Voting was extremely light as usual all over the state. Many people don't consider it worth their one vote to go to the polling place and mark their ballots. Possibly the government should go to the expense of mailing ballots to registered voters, having a set three-day postmark deadline for the marked ballots to be returned to counting officials.

This would swamp the Post Offices, but might be worth the trouble in the long run. Voting has seemed to dwindle down more and more each year.

President Nixon might finally give America a chance to clear up the Watergate Mess (although maybe not make it "perfectly clear"). He delivered edited transcripts of presidential conversations to the House Judiciary Committee last week in an attempt to satisfy its request for several tape recordings.

If Mr. Nixon did not want his conversations repeated verbatim, he should not have

recorded them. The tapes are evidence now and should be turned over to the House Judiciary Committee immediately so that the Watergate "cat and mouse" game can be ended. Postponing the turnover will only be another thorn in the side of justice.

The Committee should exert authority, instead of compromising at the command of the President. Only when the tapes are received can Watergate become "perfectly clear"; for until then there will be unanswered questions which will postpone solving the Watergate riddle.

America needs the answer.

4-H Play Day Set

The Burk Burnett 4-H Club will sponsor a Play Day at the Burk Burnett Riding Arena on Kelly St. Saturday, May 11, with registration beginning at 1 p.m.

Riding will start at 2 p.m. and the entry fee is 25 cents. Trophies and ribbons will be awarded and the Play Day is open to anyone wishing to participate.

Poppy Day To Be Saturday

Hundreds of disabled veterans in Veterans Administration Hospitals across the land are busily fashioning red crepe paper poppies--the memorial flower worn each year around Memorial Day in honor of America's war dead. The American Legion Auxiliary and Junior Auxiliary will sell poppies May 11.

The American Legion Auxiliary pays these hospital-confined men for making the little red blooms by hand, money they spend for candy, chewing gum, and other treats; money they would not have were it not for the preparations begun early each year for Poppy Day.

Just a small percent of the public really know how and where the poppies they see each Memorial Day are made. The disabled men look forward to making the flowers as a relief from hospital boredom. But they

are also well aware that the fund derived from the poppies each year can only be used for rehabilitation and child welfare by the Auxiliary. The large sums contributed by the sympathetic public alleviate

suffering and hardship throughout the land.

The Auxiliary urges, "Wear a poppy proudly and remember the pleasure your offering will bring to someone less fortunate than you".

Pre-Schoolers To Enroll Next Week

Pre-School enrollment for kindergarten and first grade students, who will attend Burk Burnett Schools during the 1974-75 school year, will be held during the week of May 13 thru May 17. Hours of pre-school enrollment will be from 9:00 A.M. to 12:00 A.M., and from 1:00 p.m. to 3:00 P.M. each day at Primary Building, Southside Elementary, and Sheppard-

Burk Burnett School.

To be eligible for kindergarten, a child must be 5 years old on or before September 1, 1974. To be eligible for 1st grade, a child must be 6 years old on or before September 1, 1974. Public kindergarten is by choice and not compulsory this year.

Enrollment will be held in the school office of each of the respective schools.

Parents need to secure and present at the time of enrollment the following: 1. Immunization Record from a licensed physician of (a.) DPT-a series of 3, one of which has been since age 4. (b.) Sabin Polio-a series of 3, one of which has been since age 4. (c.) Rubeola vaccine or the history of 7 day measles. (d.) Rubella vaccine (3 day measles) is required regardless of disease. 2. An official Birth Certificate from the bureau of Vital Statistics of the state of birth must also be presented at the time of enrollment.

The above records must be presented in order for a student to enroll.

BHS Band Wins "Sweepstakes"

The Burk Burnett High School Band received a "Sweepstakes" rating this year for the first time ever, as a result of a contest held in Vernon last Tuesday, April 30.

Earlier this year the Burk Burnett Marching Band received a "I" rating from all three judges at marching contest. Later, at Vernon, the band received three

"I" ratings in the concert band contest. At the same contest a sightreading competition was held in which the band received three "I"s from the judges for performing a number never before practiced by the band.

Therefore, the band earned the highest award possible, the Sweepstakes trophy, for a perfect season.

Nursing Home Week Begins Sunday, May 12

May 12-18 was proclaimed Burk Burnett Nursing Home Week by the Burk Burnett mayor Tuesday. Evergreen Manor and Hickory Elm Convalescent Center urge all citizens to visit nursing homes during the observance.

Hickory Elm and Evergreen will be two of some 600 Texas Nursing Home Association nursing homes to observe National Nursing Home Week under the theme: "Nursing Homes--We care". The Nursing

Home Week program starts on Mother's Day, May 12.

Hickory Elm will have an open house for the general public on that day and during the afternoon a display of Arts & Crafts made by residents of the Home will be shown, under the direction of Eloise Stubblefield, social director.

Refreshments will be served and Mr. John E. Arthur (administrator), Mrs. Arthur (director of nurses), and Mrs. Ruby Lange (director of nurses), will be on hand to

greet visitors. The following Wednesday, May 15, a domino tournament will begin between the Hickory Elm residents and the Highland and Parkway Convalescent Homes residents of Wichita Falls. Other activities are also being planned.

Evergreen Manor will have an open house Sunday May 12, from 2 to 4 p.m., with entertainment and refreshments. The general public is urged to attend.




NURSING HOME WEEK--May 12-18 was proclaimed Burk Burnett Nursing Home Week Tuesday by the Burk Burnett mayor. Pictured are Mrs. Ruby Lange [director of nurses], Mr. and Mrs. O.J. Cooper, and John E. Arthur [administrator] at Hickory Elm Convalescent Center in Burk Burnett, as they

urge citizens to visit nursing homes during Nursing Home Week. Mr. Cooper settled in the Cooper Community in 1901 and married Mrs. Cooper in 1923. They have two sons, six grandchildren, and three great grandchildren.

Informer/Star Photo

BURKBURNETT
INFORMER STAR


Published each THURSDAY at 417 Avenue C, Burkburnett, Texas by

 **SMILS Communications, Inc.**
S. J. McBeath, Publisher

Entered as second class matter at the Post Office at Burkburnett, Texas, 76354, under the Act of March 30, 1879.

Subscription Rates
\$5.00 per year in Wichita, Cotton, Tillman Counties
\$6.00 per year elsewhere
(Above rates plus tax where applicable)

NOTICE TO THE PUBLIC: Any erroneous reflection upon the character, standing or reputation of any person, firm, or corporation, which may appear in this newspaper will be gladly corrected as soon as it is brought to the attention of the publisher.

TEXAS PRESS ASSOCIATION
Member  1974

STATE CAPITAL
Highlights
AND Sidelights
by Bill Boykin
TEXAS PRESS ASSOCIATION

AUSTIN, Tex. — New federal revenue sharing funds totalling \$294,045,044 will be distributed to state, county and city governments in Texas during the next fiscal year.

This is \$9 million more than allocations for the current year which amount to \$285,228,345 for all units of government in the state.

Gov. Dolph Briscoe reported state government will get nearly \$3 million more for the 1974-75 fiscal period beginning July 1 than the 1973-74 allotment.

State government's cut is \$98,081,488 compared with \$95,283,690 for this year.

An overpayment of \$108,711, due to an Office of Revenue Sharing mistake in Washington, will be deducted from next year's funds sent to Texas.

The allocation is based on a formula including consideration of population, per capita income and tax effort.

Under next year's formula, hospital district taxes will be considered in the total county tax effort. Hospital taxes previously had been considered a city tax effort.

Six Texas counties will get larger revenue sharing allotments while some cities within the counties will get smaller amounts.

Harris County, which now receives \$6.87 million, will get \$9.65 million for 1974-75. Houston will receive slightly less — \$17,366,689 as compared with \$18 million under current formulas.

The Dallas County total will increase from \$3.58 million to \$5.2 million. Nueces County's share will increase from \$1.7 million to \$2.3 million. Bexar County's from \$2.6 million to \$5.2 million. El Paso County's from \$1.2 to \$1.9 million and Tarrant County from \$1.8 million to \$3.25 million.

The city of Dallas will get slightly less — \$13.1 million, as compared with \$13.6 million. Corpus Christi's total will decline from \$3.66 million to \$3.4 million. San Antonio's from \$9.6 million to \$9.3 million, El Paso's from \$6.1 million to \$6 million and Fort Worth's from \$5.26 million to \$5 million.

DROUGHT DECLARATION SOUGHT — Governor Briscoe has requested U.S. Secretary of Agriculture Earl L. Butz to declare Coleman County a disaster area as a result of drought conditions in the county.

Briscoe requested the disaster declaration provide low interest loans and other assistance to farmers and businesses that suffered wheat crop losses from the drought.

The Governor informed Secretary Butz a number of other Texas counties have been affected by prolonged dry weather and high winds and similar requests for supplementary Federal assistance may be received from other county officials in the near future.

State Agriculture Commissioner John C. White said estimates of wheat losses due to drought conditions in 47 Texas counties run about \$160 million.

ATTORNEY GENERAL RULES — Under most circumstances submission by State Welfare agencies of basic information concerning the identity of welfare recipients to a centralized computer does not violate any Federal or State common law statutory or constitutional right of privilege.

Atty. Gen. John Hill has ruled. In an opinion requested by Governor Briscoe, Attorney General Hill noted there would be no public disclosure of the information, hence no violation of law. The Governor had noted that the centralized computer list would eliminate the need for welfare recipients to fill out applications.

Hill also issued an opinion saying it is a legitimate expenditure of campaign funds for "publicity" purposes to furnish transportation to members of the press to accompany a candidate on campaign travels.

"If paying for the transportation of newsmen is a means of securing publicity, and we think it is, then we cannot say that it is an unreasonable one," Hill said in his opinion.

APPOINTMENTS — Governor Briscoe has named five Pilot Commissioners for the Port of Galveston and Texas City. Each will serve a two-year term expiring April 15, 1975.

Appointees from Galveston are Sam Tramonte, William Spruill, Leroy Brown, and J.C. Seiffert. Fifth appointee was Allen D. Wilkenfeld of Texas City.

HOST COMMITTEE NAMED — Lt. Gov. Bill Hobby has named the following four state senators to serve on an ad hoc host committee for the Southern Legislative Conference in San Antonio, July 16-19: Sens. Nelson W. Wolff and Glenn Kothmann, both of San Antonio; John Traeger, Seguin; and Grant Jones, Abilene.

RIGHT TO READ MEETING — Dr. Ruth Holloway, U.S. Office of Education director of the nationwide "Right to Read" program, will speak at the conference of Texas reading coordinators in Austin May 13-14.

Sponsored by the Texas Education Agency, the conference will be held at the Thompson Center on the University of Texas-Austin campus. Eighty additional schools will be added to the program in September. The program is designed to match learning needs of every student with special training for reading teachers and supervisors.

HUD AGREEMENT SIGNED — Governor Briscoe has entered into an agreement with the U.S. Department of Housing and Urban Development transferring administrative responsibilities for HUD's 38 neighborhood facilities to the Texas Department of Community Affairs.

The facilities, which are located in 32 Texas communities, have been built under terms of the Housing and Urban Development Act of 1965. Under terms of the Act, ownership of the centers is vested in the community with HUD remaining responsible for administering use of the centers.

Under the new agreement, the Department of Community Affairs will assist local governments and local service agencies in developing and implementing programs to more fully utilize the neighborhood facilities. At present, HUD officials say, there is gross under-utilization of space and equipment at many of the facilities.

SALARY-PERSONNEL POLICIES — Salaries and personnel policies for non-faculty employees of Texas universities will be examined as a part of a statewide study directed by the Coordinating Board, Texas College and University System.

First phase of the study, to be completed this fall, is expected to result in recommendations to the 64th Legislature regarding level of state funding required to support equitable salary policies for non-faculty employees, says Higher Education Commissioner Bevington Reed.

SHORT SNORTS
Dr. Kenneth Gaver has been selected to serve as new Commissioner for the Texas Department of Mental Health and Mental Retardation. Gaver comes from Ohio where he performed similar duties.

Frances Smith Dodds, former member of the Houston Chronicle capitol bureau, has been named Director of Planning for the Governor's Criminal Justice Division.

Construction activity in Texas during March was notable for 2.7 per cent increase in the seasonally adjusted index of residential construction, the Bureau of Business Research reports.

For nearly a century the good neighbor has been serving the people of Texas. Help now by sending a generous donation to your local chapter of the American National Red Cross.

Obituaries
Claude Brown
Funeral services for Claude Brown, 64, a former long-time Burkburnett resident, were Tuesday at 2 p.m. in Gainesville, Texas. Brown died Sunday night.

He formerly attended Fairview School and was a member of the Nazarene Church. Brown was employed by Burk Royalty Oil Co.

Survivors include his mother, Mrs. William Brown; his wife and stepdaughter; four brothers; and three sisters.

John Porter Hickerson
Funeral services for John Porter Hickerson, 716 Sunset Dr., Burkburnett, were at 4 p.m. Tuesday, May 7, in the Burkburnett Church of Christ. A 50-year resident of Grandfield, Oklahoma, who moved to Burkburnett 19 years ago, Hickerson died in a Wichita Falls hospital Sunday.

Officiating was Church of Christ minister Ed Morris. Burial was in Grandfield Cemetery under direction of Gray Funeral Home.

Hickerson was born Feb. 21, 1896, in Centralia, Mo. He was a member of the Church of Christ and a veteran of World War I. He was a member of the American Legion 50 years.

Hickerson married Daisy Lawson on June 3, 1917 at Frederick, Oklahoma. The marriage terminated in August, 1954.

On August 12, 1955 he married Jewel Clement at Burkburnett and she survives him.

Other survivors include a son, Billy Don of Grandfield; a daughter, Mrs. Minnie L. Kooiker of Minneapolis, Minn.; a stepson, William H. Clement of Burkburnett; a stepdaughter, Mary Ruth Clement of Wichita Falls; a sister, Mrs. Eva Haynes of Grandfield; 10 grandchildren and five great grandchildren.

Orin T. Hofacket
Funeral services for Orin T. Hofacket, 76, a Wichita County resident since 1922, were Friday in Owens & Brumley Funeral Home. He died last Thursday in an Iowa Park nursing home.

Officiating was Rev. Max Dowling of the Central Baptist Church. Burial was in the Burkburnett Cemetery.

Hofacket was born Feb. 6, 1898, in Madill, Indian Territory. He was a retired farmer and rancer who came to Burkburnett in 1922.

Survivors include his wife, Agda; a son, Dan of Wichita Falls; three brothers, Charles of Burkburnett, Edd of Levelland; and Homa of Chattanooga, Okla.; seven sisters, Mrs. Lettie Young of Wichita, Kan., Mrs. Clemie Dome of Edmond, Okla., Mrs. E.G. Goff of Lawton, Okla., Ima Hofacket of Oklahoma City, Mrs. Myron Outhouse of Perrin, Tex., Mrs. S.P. Henderson of Norman, Oklahoma, and Mrs. Raymond Carson of Faxon, Okla.; a grandchild and three great-grandchildren.

Clifton Oran Wilson
Clifton Oran Wilson, 81, a resident of Randlett, Oklahoma since 1908 died Saturday in a hospital at Sulphur, Oklahoma. Funeral services were conducted Monday at 2 p.m. in the Randlett Church of Christ. William Willholt retired Church of Christ minister of Burkburnett officiated and Jimmy Kinnaid, local minister assisted. Burial was in the Randlett Cemetery under the direction of Owens & Brumley Funeral Home of Burkburnett.

Wilson was born April 3, 1893 in Missouri. He was a veteran of World War I, a member of the Church of Christ and a retired mail carrier.

Survivors include his wife Beulah of the home; three sons, James of Amarillo, Irvin of Burkburnett, and Oran of Bossier City, La.; one daughter, Mrs. Lanette Miller of Holliday, twelve grandchildren and three great-grandchildren.

Pallbearers were grandsons, and they were Dr. Richard Smith of Amarillo, Dennis Smith of Wichita Falls, Danny Smith of Burkburnett, A2C Dale Swinford, of McConnell AFB, Kansas, Doug Wilson of Bossier City, La., and Terry Kirkpatrick of Randlett.



Robertson Wins District Contest

Ronny Robertson, son of Mr. and Mrs. Fred Davis of One William, Burkburnett, recently won first place in poetry at the District PTA workshop held in Bowie, Texas. His poem, "Peace", has won other awards also.

Ronny, age 8, is a third-grader at Hardin Grade School. His teacher is Mrs. Carolyn Paskus.

The first-place poem which Ronny wrote qualifies him for state competition. The contest was part of the PTA Cultural Arts Contest which is held each February in Burkburnett. First place winners are then sent to the district contest, and from there to state.

Ronny Robertson

Band Parents To Install New Officers

The Burkburnett Band Parents will hold the last meeting of the current school year on Thursday, May 9, at 7:30 p.m. in the High School Band Hall.

New officers to be installed include Mr. William Hromas, president; Mrs. Wanda Roberts, vice president; Mrs. Charlotte Green, 2nd vice pres.; concession chairman; Mrs. Phyllis Bruce, 3rd vice pres.; publicity and communications; Mrs. Billy Hromas, secretary; and Mr. Dan Elzie, treasurer.

Installing officer will be Rusty Stowe, Quannah band director. He is a former student teacher with the Burkburnett band program.



Thank You

My family and I wish to thank you for your support and vote. If there is any way I can be of assistance to you please call on me.

Dave Allred Representative
52nd District

Presenting, just a few of the boys who make up Burkburnett's Little League for the 1974 summer baseball season.



DOES YOUR HOME NEED REPAIRS? SEE US FOR YOUR HOME IMPROVEMENT LOAN!

Since 1907

1st THE NATIONAL BANK
BURKBURNETT, TEXAS

'100% Interest In You'

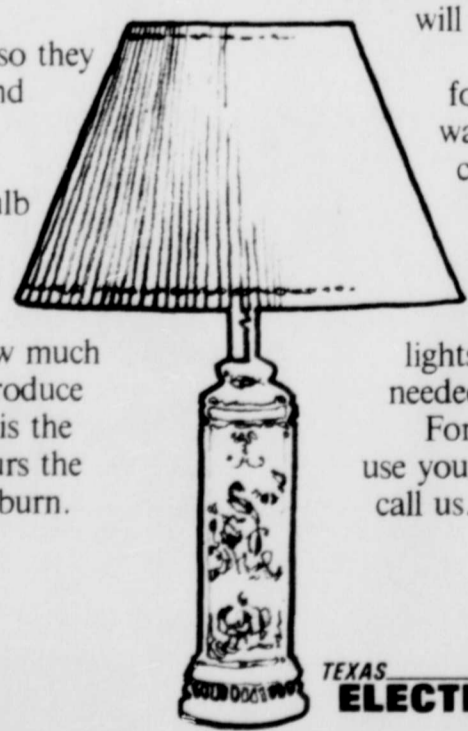


These bright ideas will help you light your home more efficiently.

It makes sense to use adequate lighting for reading, working or for security, and it makes sense to do it efficiently.

Locate table lamps so they provide the most light and fewest shadows.

When buying light bulbs, choose the right bulb for the job. Remember that the lumen rating tells you the light output of bulbs. Watts tell you how much electricity is needed to produce that light. And bulb life is the estimated number of hours the bulb can be expected to burn.



Where bulbs are difficult to change, choose a "long life" bulb which may have less lumens for its wattage, but will last longer.

Decorative lights call for less lumens and lower wattage. A photo electric cell or timer will regulate the use of security lighting.

And it's always a good idea to turn lights off when they are not needed.

For more ideas on how to use your electric service wisely, call us. We'd like to help.



PIGGY WIGGLY

TO MOTHER WITH LOVE

New Store Hours to
Serve YOU Better

7 - 12 Mon. - Sat.
7 - 9 Sunday

USDA Choice, Superb Valu Trim,
Heavy Aged Beef, Arm Cut

Swiss Steak
\$1.19

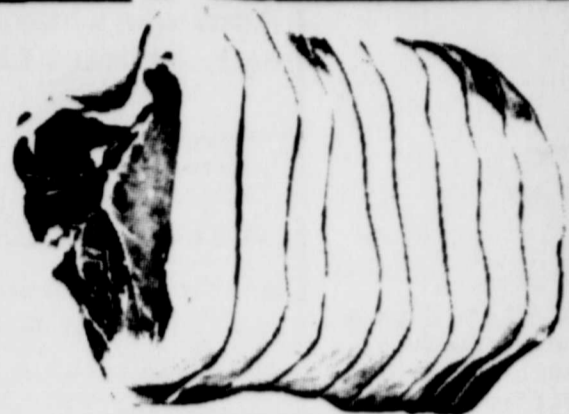
Lb.

USDA Choice Superb Valu Trim
Rump Roast Heavy Aged Beef **\$1.39**

Farmer Jones, No. 1 Quality,
Sliced Bacon 2-Lb. \$2.16 **\$1.09**

Farmer Jones, 12-oz. 79¢ or
Rath Franks 12-oz. **89¢**

Fresh, 2-Lb. \$1.15
Breakfast Sausage Lb. **59¢**



Full Quarter, Sliced
Pork Loin
98¢

Lb.

USDA Choice Superb Valu Trim, Heavy Aged Beef,
Bottom Round Steak Top or Eye of Lb. **\$1.89**

USDA Choice Superb Valu Trim, Heavy Aged Beef,
Round Roast Lb. **\$1.99**

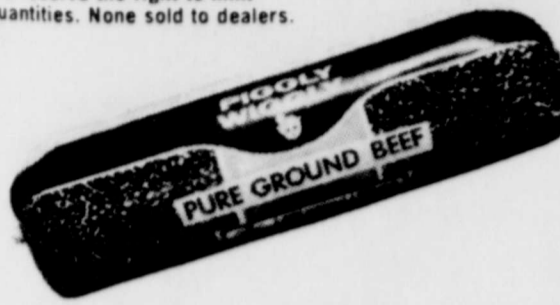
USDA Choice Superb Valu Trim, Heavy Aged Beef,
In Cry-O-Vac, Processed Free
Trimmed Beef Loin Lb. **\$1.39**

USDA Grade A, 12 to 16 Lb. Avg. Half or
Whole Hen Turkeys Lb. **68¢**

Booth Meat and Serve
Shrimp Portions 7-oz. **\$1.45**

Piggly Wiggly, Uncooked
Perch Fillets Lb. **99¢**

Prices good thru May 11, 1974.
We reserve the right to limit
quantities. None sold to dealers.



Piggly Wiggly, 3-Lb. Chub Pack, Fresh

Ground Beef
88¢

Lb.

Oscar Mayer sliced
Bologna 8 oz. pkg. **79¢**

Oscar Mayer chopped
Ham 8 oz. pkg. **\$1.13**

Chicken of the Sea, Peeled and
Deveined Shrimp 16-oz. **\$2.99**

Piggly Wiggly Longhorn or Half Moon
Horn Cheese lb. **\$1.49**

Farmer Jones, Old Fashioned Flavor
Sliced Bologna 12-oz. **79¢**

USDA Choice Superb Valu Trim,
Heavy Aged Beef, In Cry-O-Vac
Boneless Beef Brisket Lb. **\$1.09**

Mother's Day
SUNDAY
MAY 12th



**Geraniums, Begonias,
or Caladiums**

Mother's Day Plants
\$1.99
Ea. "Your Choice"

Yellow, Lb. **29¢**

Fresh Delicious
Tangerines Lb. **29¢**

Fresh
Corn Lb. **10¢**

Ripe, California
Strawberries 3 Ctns. **\$1**



Cake

Angel Food

79¢

11-oz.
Cake

Northern Assorted
Paper Napkins 160-Ct. **49¢**

Towie Thrown
Stuffed Olives 5-oz. Jar **59¢**

Salon Fashion, Taupe, Beige, Coffee
Panty Hose Pair **39¢**



Piggly Wiggly, Grade A

Large Eggs

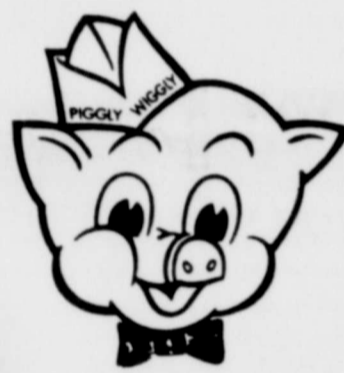
49¢

Doz.
Ctn.

Morton
Honey Buns 9-oz. Pkg. **39¢**

Pepperidge Farm, 4 Varieties
Turnovers 12 1/2-oz. Pkg. **59¢**

Miss Breck
Hair Spray 13-oz. Can **53¢**



Dixie, White, 9 Inch

Paper Plates

59¢

100-Ct.
Pkg.

Sara Lee, Apple or
Cherry Pies 33-oz. Pkg. **\$1.89**

Mrs. Smith's, 10 Inch
Frozen Pie Shells 2 Pack **75¢**

Piggly Wiggly, Buttermilk
or Sweetmilk
Canned Biscuits 10-Ct. Can **10¢**



**Pepsi
Cola**

Plus Deposit

\$1.39

32-oz.
Size

Kraft, Miniature
Marshmallows 6 1/4-oz. Bag **25¢**

Towie
Maraschino Cherries 8-oz. Jar **59¢**

Lipton Pure
Instant Tea 3-oz. Jar **99¢**

Lady Alice, All Flavors

Mellorine

49¢

1/2-Gal.
Ctn.

Piggly Wiggly, Whole Kernel
or Cream Style Corn or Cut

Green Beans

5 \$1



16-oz.
Cans

Piggly Wiggly, 100% Pure Florida,
Frozen

Orange Juice

19¢



6-oz.
Can

Piggly Wiggly, Whipped

Topping

3 \$1



10-oz.
Ctns.

Free 100 S&H Green Stamps
with this coupon and purchase of
5-Lb. Piggly Wiggly, Chub Pack,
Fresh
Ground Beef
Coupon expires
May 11, 1974.

Free 150 S&H Green Stamps
with this coupon and purchase of
any 5-Lb.
Canned Ham
Coupon expires
May 11, 1974.

Free 50 S&H Green Stamps
with this coupon and purchase of
any 1-Lb. Piggly Wiggly, Un-
cooked
Fish Fillets
Coupon expires
May 11, 1974.

Free 50 S&H Green Stamps
with this coupon and purchase of
one (1) 12-Pack Local Brand
Ice Cream Novelties
Coupon expires
May 11, 1974.

Free 100 S&H Green Stamps
with this coupon and purchase of
one (1) 24-Pack Family Size
Lipton Tea Bags
Coupon expires
May 11, 1974.

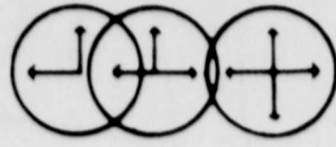
Free 50 S&H Green Stamps
with this coupon and purchase of
one (1) 12-oz. Pkg. Sara Lee
Pound Cake
Coupon expires
May 11, 1974.

Free 50 S&H Green Stamps
with this coupon and purchase of
one (1) 260-Ct. Pkg. Curly Super
Soft
Cotton Balls
Coupon expires
May 11, 1974.

Free 50 S&H Green Stamps
with this coupon and purchase of
two (2) Heads
Fresh Lettuce
Coupon expires
May 11, 1974.

"THERE IS A TIME FOR EVERYTHING..." Ecclesiastes 3:1, The Living Bible, Tyndale House

GOD'S FIVE MINUTES



First Christian Church

Second & Avenue D
Rev. John White, Pastor
Sunday Morning Worship, 10:50

Church of Christ

First and Avenue C
Ed Morris, Minister
Sunday Morning Worship 10:40

Church of God

121 S. Avenue E
J. W. McNeece, Pastor
Sunday Morning Worship, 11:00

Grace Lutheran Church

Third and Avenue E.
Rev. Albert C. Lindemann
Sunday Morning Worship, 10:30

Trinity Lutheran Church

8 Miles West on Highway 240
Lawrence Boye
Worship 9:30, Sunday School 10:4

First United Methodist Church

Avenue C and 4th Street
Rev. William W. Penn, Pastor
Sunday Morning Worship, 10:30

Church of the Nazarene

Third and Holly
Rev. M. Alsbrook, Pastor
Sunday Morning Worship, 10:50

Penecostal Church of God

415 N. Berry Street
Rev. R. F. Wheeler, Pastor
Sunday Morning Worship, 11:00

Episcopal Church of St. John the Divine

1000 S. Berry Street
Father David A. Jones, Vicar
Choral Eucharist, 10:30 Sunday



BETWEEN "WISDOM" AND "WONDERS"

Mrs. Edgar Dean has written a beautiful book titled *All The Women of the Bible*. It could be the first book of its kind to do justice to those noble women of Scripture.

In a Biblical concordance, "women" lies between "wisdom" and "wonders." How fitting! For the women of the Bible were veritable wonders of wisdom as well as grace and beauty.

- It was the women who were the last to leave the cross
- and a woman who was first to reach the tomb
- from a woman's lips came the first proclamation of the resurrection
- and a woman was the first preacher to the Jews (Luke 2:37-38)
- a woman was the first to welcome Paul and Silas to Europe (Acts 16:13)
- and a woman was the first convert in Europe (Acts 16:14)

As you look at this picture, the words of Proverbs come to mind:

"A gracious woman is an honorable person" (Proverbs 11:16)

ATTEND CHURCH THIS WEEK

This column belongs to our readers. We will accept printable items and pay \$1.00 for each item published. In the case of quotations, the name of the author and the title and publisher of the book must be given. Address items to "God's Five Minutes," Box 12157, Fort Worth, Tex. 76116

Apostolic Church Of the Lord Jesus Christ

703 Magnolia
Rev. Donald P. Hodgson, Pastor
Sunday School 10:00

Assembly of God

Corner of College and Ave. B.
Rev. J. W. Hocker, Pastor
Sunday Morning Worship, 11:00

Calvary Baptist Church

College and Avenue B
Ray C. Morrow, Pastor
Sunday Service, 11:00

Cashion Baptist Church

Wichita Highway
Rev. Ed Newhouse, Pastor
Sunday Church Service, 11:00

Central Baptist Church

814 Tidal Street
Rev. Max Dowling, Pastor
Sunday Morning Worship, 10:40

First Baptist Church

Corner of Avenue D and 4th
Rev. Lamoin Champ, Pastor
Sunday Morning Worship, 10:40

JanLee Baptist Church

Opposite Burkburnett High School
Rev. Wayne S. Glazener, Pastor
Sunday Morning Worship, 11:00

Providence Baptist Church

Floyd & W. 6th Street
Rev. T. L. Longmile, Pastor
Sunday Morning Worship 10:50

St. Jude Catholic Church

600 Davey Drive
Confession, 5:30 - 6:30 Saturday
Masses, 7:00 p.m. Saturday,
10:00 a.m. Sunday
Father Harry W. Fisher



BELGIUM GUEST--Mr. Norbert De Canck visited the Evening Lions Club Tuesday with Mr. Don Laurence. De Canck is an International Lions member from Belgium, where he is an engineer with Sprague Electric.

Crossword Puzzle

ACROSS

1. Rounded roof
5. Uses
13. Heron
14. Musical work
15. Armed force
17. Preposition
18. Carbonated water
19. Put
20. Sun god
22. Behold!
24. Neither
25. Injunction
28. High male voices
31. Visionary
35. Meadows
36. Top card
37. Unemployed
38. Former German State
40. Climb
41. Colors plural
43. Damage
46. Be
47. Greek letter
48. Golf mound defect
51. Prepare copy
53. Suffix

DOWN

1. Plunges
2. Musical instrument
3. Fog
4. English letter
5. We
6. Also
7. Blow up
8. Musical note in water
9. Possessive pronoun
10. Jerusalem hill
11. Prefix: within
12. French-German river
16. Ages
21. Article
23. Prefix: ear
25. Downy
26. Of a duke
27. Heroic poems
28. High mountain
29. Irish sea god
30. Greek letter
32. Girl's name
33. Total letter
34. Born
36. Infirmary
39. Ocean
40. Propelled
42. Topping
43. Eve's mate
44. Note: slang
45. Ritual
48. Hindmost
49. Girl's name
50. Glimpse
52. — Aviv
54. Squatted
56. Building wings
58. In the matter of
59. French "the"

Answer to Puzzle

ACROSS: 1. DOME, 5. EMPLOY, 13. HERON, 14. OPERA, 15. ARMY, 17. PREPOSITION, 18. SODA, 19. PUT, 20. SUN, 22. BEHOLD!, 24. NEITHER, 25. INJUNCTION, 28. HIGH, 31. VISIONARY, 35. MEADOWS, 36. ACE, 37. UNEMPLOYED, 38. GERMANY, 40. CLIMB, 41. COLORS, 43. DAMAGE, 46. BE, 47. OMEGA, 48. BUNKER, 51. XEROX, 53. SUFFIX.

DOWN: 1. PLUNGES, 2. MUSICAL INSTRUMENT, 3. FOG, 4. LETTER, 5. WE, 6. ALSO, 7. BLOW UP, 8. MUSICAL NOTE, 9. POSSESSIVE, 10. JERUSALEM, 11. PREFIX, 12. FRENCH-GERMAN RIVER, 16. AGES, 21. ARTICLE, 23. PREFIX, 25. DOWNY, 26. OF A DUKE, 27. HEROIC POEMS, 28. HIGH MOUNTAIN, 29. IRISH SEA GOD, 30. GREEK LETTER, 32. GIRL'S NAME, 33. TOTAL LETTER, 34. BORN, 36. INFIRMARY, 39. OCEAN, 40. PROPELLED, 42. TOPPING, 43. EVE'S MATE, 44. NOTE, 45. RITUAL, 48. HINDMOST, 49. GIRL'S NAME, 50. GLIMPSE, 52. AVIV, 54. SQUATTED, 56. BUILDING WINGS, 58. IN THE MATTER OF, 59. FRENCH "THE".

★ Hardin Honor Roll ★

GRADE 3

Kafer, Section 1; Linda Baker, Gloria Beggs, Wendy Bonkowski, Christy Brock, Ramona Bryant, David Carter, Regina Dingmon, Gloria Dominguez, Kim Dunn, Renee Fields, Deanna Hamilton, Larri Sue Holcomb, Danny Kauffman, Jimmy Morgan, Dana Rivard, Tina Swaim, Dee Dee Wilkerson, Rebecca Valiant.

Hays, Section 2; Lori Ann Allmon, Valeri Coito, Vickie Dilks, Bruce January, Steve Mallory, Doug Stone.

Leitner, Section 3; Kimberly Bogardts, Frankie Costa, Anja Wilburn.

Paskus, Section 4; Adam Coker, Bobbie Jo Harrison, Gina Lackey, Steve Patty, Katherine Porterfield, Gordon Smith, Tammy Wright, Russell Whitworth.

Clark, Section 5; Franklin Thomas.

GRADE 4

Reynolds, Section 2; Phillip Allen, Thomas Crawford,

Douglas Hassell, Crystal Moon. Olson, Section 3; Kelly Cozby, Dudley Chandler, Dennis Hurst, Susan Sprole.

Dunn, Section 4; Jere Baber, Jeff Fuhrman, Holly Huddleston, Kelly Martin, Christy Pruett, Elizabeth Williams.

Smart, Section 5; Susan Brumfield, Clint Crater, Lisa Fidalio, Lisa Gray, Robert Griffin, Janna Hamilton, Kevin Keene, Marilyn Keown, Robert King, James Reed, Julie Weese.

GRADE 5

Grady, Section 1; Marlene Antec.

McSpadden, Section 2; Jerry Green, Naomi Nelson.

Dodson, Section 3; Melynda Adams, Carmel Beasley, James Farmer, Donna Riddle, Bonnie Tate, Victoria Valiant.

Kerr, Section 5; Amy Bruendl, Shirley Collyott, Lisa Dingmon, Terri Gaston, Ronald Gilbert, Bobby Morrow, Les Schroeder, Rebecca Woodall.

Little League Wants Redeemable Seals

Vic Fore, President of the Burkburnett Little League, has announced a community-wide program that will enable teams in the local League to obtain free bats and baseballs this season. The program is sponsored by Scott Paper Company, in cooperation with Little League Baseball, Incorporated whose international Headquarters is in Williamsport, Pennsylvania. During the season, Scott will give away approved Little League baseballs and bats. Every "Seal of Quality" on a package of Scott Products will be redeemable towards bats and baseballs for the League that send in seals. The Burkburnett Little League is asking cooperation of all local residents in saving the seals from specified Scott product packages to help this League obtain baseballs and bats. "The Little League movement has made it possible for hundreds of youngsters in our area to take an active part in the country's national game of baseball," Mr. Fore said. "In addition to physical activity which contributes to the fitness, vigor and vitality of our youth, Little League Baseball builds qualities of fair play, cooperation, discipline and leadership. Our activities are family-oriented and inspire all members of the family to work together."

Little League Baseball in 1974 marks its 35th year of service to youth. It began in Williamsport, Pa., in 1939. Today, there are more than 2,500,000 youngsters enrolled and more than 50,000 teams compete in 31 countries of the world. Residents are asked to deposit seals in containers that will be located at League ball fields during games. Seals also can be mailed to the Seal-Saving Chairman, Pat Smyres at 517 Sycamore, Burkburnett, Tx. 76354. Seals may also be picked up at residents' homes in response to a phone call to 569-2814. It is an opportunity for public-spirited neighbors to get behind a campaign that will help local youngsters.

there's Money to be Made thru Classified

This Church Directory Is Sponsored By The Following Burkburnett Merchants In The Interest Of The Spiritual Growth Of This Community:

<p>Wolfe Ford Company COMPLETE SALES AND SERVICE SHEPPARD ROAD PHONE 569-2275</p>	<p>"Serving Burkburnett Since 1907" THE NATIONAL BANK BURKBURNETT, TEXAS DRIVE IN AND WALK UP WINDOW BANKING</p>	<p><i>Famous</i> Department Store 569-2441 Burkburnett, Texas</p>	<p>GABE'S MUSIC 211 EAST THIRD Instructions on: Drums-Plano-Guitar-Accordian & Voice Popular & Sacred 211 East Third 569-8136</p>
<p>Lippard Furniture 200 E. 3rd 569-3112</p>	<p>211 West 3 SHAMBURGER BUILDING CENTERS Burkburnett 569-2242</p>	<p>New Homes - Equities - Rentals Property Management G-and-H Real Estate Co. 569-0362 1308 Sheppard Rd.</p>	<p>The Sewing Box FABRICS - NOTIONS - PATTERNS DRESSMAKER SEWING MACHINES 201 E. 3rd 569-0522</p>
<p>UNITED SUPER MARKET INC "The Finest In Groceries" Wichita Highway and Tidal Street</p>	<p>CITY PHARMACY Kenneth Hasting Larry Pribble 569-1491 300 S. Ave. D</p>	<p>HICKORY ELM CONVALESCENT CENTER YOUR RECOVERY IS OUR REWARD 800 Red River Expressway 569-1466</p>	<p>Burk's Sweet Shop Arleigh & Patricia Franklin 512 Sheppard Rd. 569-3643</p>
<p>Lloyd Clemmer Lumber Co. YOUR BUSINESS APPRECIATED SEE US FOR PRICES BEFORE YOU BUY 569-2911</p>	<p><i>The</i> BURKBURNETT Bank BEST BRAND OF BANKING 569-1444</p>	<p>GIBSON'S DISCOUNT CENTER Where you always buy the best for less. 1,000 Red River Expressway 569-1437</p>	<p>SPINKS TEXACO SERVICE CENTER 400 S. Ave. D 569-8122</p>
<p>TEXAS ELECTRIC SERVICE COMPANY People power... at your service. Bill Vincent, Mgr.</p>	<p>Manhattan DEPARTMENT STORE WE GIVE S&H GREEN STAMPS</p>	<p>GREENWAY FINA SERVICE STATION 418 Ave. D 569-2942</p>	<p>Burk Insurance Agency Auto Insurance - Home Owners HOWARD & RANDY CLEMENT</p>
<p>Wampler Insurance Agency For Insurance Of All Kinds 203 N. Ave. D 569-1461 Burkburnett</p>	<p>Pat's Electric 104 Linden 569-1331</p>	<p>BURKBURNETT INFORMER STAR "MORE THAN A NEWSPAPER, A COMMUNITY LEGEND..." 569-2191 569-0021</p>	<p>Darter Insurance Service Reeford & Peggy YOUR BUSINESS APPRECIATED</p>

Mesquite Brush Problem Solved

The increase of worthless mesquite is a problem of growing concern to livestock men of this area, according to Bill Fleming of the Soil Conservation Service in Iowa Park.

Mesquite is a prolific seed producer and livestock and wild animals relish the ripe beans. A peculiarity of mesquite is that the seed germinate more readily when they have passed through the digestive system of livestock and thus are spread over areas other than where the existing brush is growing.

Mesquite plants have tremendous root systems and are great water robbers. It requires over 200 gallons of water to grow one pound of dry mesquite wood, while it requires about 55 gallons of water to produce one pound of dry grass. It is easy to figure that grass production is

reduced in proportion to the amount of brush growing in the pasture.

Brush management is a highly technical operation because of widely varying conditions. It may be accomplished by various methods. The methods most commonly used are dozing, rootplowing, and use of chemicals according to the SCS. The cost of control treatment in itself is a major factor to consider. At best it is an expensive operation that varies widely in cost and effectiveness.

Anyone desiring to use chemicals, this is the time of year to apply them. Results obtained with many of the chemicals have been extremely variable. Differences in the method of application, concentration of the chemicals, humidity, temperature, soil

moisture, growth stages and other factors contribute to erratic results.

Aerial spraying has the greatest potential for treating mesquite brush infested grasslands that do not need seeding because of the possibility of treating large areas in a short time at a reasonable cost.

The ideal time to spray mesquite brush is 45 days after the first leaves appear in the spring, with the soil temperature approximately 75 degrees and plenty of soil moisture present. In Wichita County the beginning spraying date will be May 13 this year.

"Landowners planning to treat brush this year may be eligible for government cost-share assistance through the RECP or REAP Farm Program," Fleming said.



RECORD YEAR ON PRICE—The 1973 crop of Texas onions sold for \$51,480,000, a jump from \$14,379,000 the previous year. It was a record year for onions, brought about by crop failures in Europe and a lack of storage onions in the United States. Prices shot from \$4.85 per hundred-weight to \$16.90. According to Agriculture Commissioner John C. White a moderately high market is expected this year, depending on the availability of storage stocks.

County Agent News

B.T. HAWS

We would like to invite you to visit one of the following small grain variety and fertilizer test plots on Tuesday, May 14. The schedule will be as follows: 10 A.M. -- John Turner Farm, Puntkin Center Community; 1:30 P.M. -- Ralph Swinford Farm, Friberg-Cooper Community; 3:00 P.M. -- Dewey Conley Farm, 2 miles southwest of Iowa Park on the Kamay Highway.

Dr. Dale Lovelace, Agronomist, and Virgil Woodfin, Iowa Park Experiment Station, will be on hand to discuss each small grain variety in the test plot. They will also be able to discuss any problem that you might have in connection with small grain.

Emory Boring, Entomologist from Vernon, will be on hand to discuss any insect problem that you might have in connection with field or hay crops.

The small grain variety and fertilizer test plots look real good. I hope your time will permit you visiting one of these plots at the scheduled time.

The United States annually exports about one-fifth of its sorghum crop, making it the leading sorghum exporting country. And a continuing upturn is expected in exports over the long run. Japan is by far the leading importer, followed by Israel, India, Venezuela, Chile, Nicaragua, the Netherlands, Iran and Africa. Leading competitors with the U.S. in grain exports are Argentina, South Africa and Thailand.

Weeds are still a major problem in raising food and fiber crops, and farmers are using the cheapest and most effective means to combat them; herbicides. More than 70 percent of the U.S. cropland was treated with herbicides in 1968. About 90 to 95 percent of the cotton, rice and peanuts is

treated today. Crops that must compete with weeds for an entire season suffer yield losses from 40 to 90 percent.

Top-notch management is needed in fertilizing pastures this spring since fertilizer costs are up and supplies are down. Here are some suggestive guidelines to help insure the most productive fertilization program on pastures.

Grass production is highly dependent on nitrogen fertilization. A minimum of 50 pounds of nitrogen per acre is required to obtain a satisfactory yield of a ton of forage. Apply at least this much nitrogen per acre per application. Smaller applications will mean limited lower quality forage.

If adequate fertilizer cannot be applied to all acres for each hay cutting or grazing period, then rotate fertilizer applications so that all acres get some nitrogen during the season. This will help maintain stands, reduce weed problems and insure future production.

Using only nitrogen fertilizer is another possibility if the soil has medium to high levels of phosphorus and potassium. Timing of fertilization, weed control and other practices must be as near optimum as possible to produce the best results and profits.

Clara-Fairview H.D. Club Meets

The Clara-Fairview Home Demonstration Club met in the Texas Electric Reddy Room, Thursday, May 2.

Guests for the meeting were members from the City View Home Demonstration Club. Twenty persons were present.

WEEKLY MARKET REPORT

Vegetable and poultry counters will offer "shopper savings" this week, one expert predicts.

Economical vegetables in good supply include cabbage, carrots, celery and new crop yellow onions. Mrs. Gwendolyn Clyatt, consumer marketing information specialist with the Texas Agricultural Extension Service, The Texas A&M University System, reported.

Also, asparagus, radishes, green onions, lettuce, mustard, collard and turnip greens.

Turning to poultry counters, the specialist cited whole turkey, turkey parts and fryer chickens "among the most economical, high-quality protein food available."

"Fresh fruit items in good supply at economical prices are

apples, oranges, bananas and grapefruit. Raisin supplies are moderate, and dried prunes should be ample."

At pork counters, values include hams, picnics, Boston butt roasts, shoulder roasts and steaks, end-cut loin roasts and chops.

"Beef cuts on special are the ones in less demand, because preparation time is a bit longer--chuck cuts, round steaks and stew meat."

CONSUMER WATCH-WORDS: A chuck cut in labeling language means the cut comes from the shoulder. Blade cuts from the shoulder blade area are slightly more tender than arm chuck cuts, which come from below the blade area nearer the front leg. Chuck cuts require moist heat cookery.

Home Demonstration News

By Dee James
County Extension Agent

Today's casual, unlined jackets need a "finishing touch" to make them as attractive on the inside as the outside. For a "completed" look, finish all raw edges attractively, using one of many techniques. One way to finish a seam, hem or facing on knit or stretch fabric is to bind it. Using double fold tape, pin the wider half of the tape to the wrong side of seam allowance or facing, with the narrower half to the right side. Stitch through all thicknesses from the right side. Or, cut a true bias strip one inch wide from a lining fabric and use it instead of tape. With right sides of seam allowance and bias strip together, stitch bias strip to seam allowance, making one-eighth inch seam. Then turn bias strip to the wrong side of the seam allowance, encasing it with the strip. Stitch again in groove of original stitching line. Finally, trim away excess bias strip.

Another attractive finish utilizes stretch lace--which is ideal on knits and woven fabrics that tend to ravel. Using this method, fold lace in half to

encase the seam. On hems or facings, apply lace flat--it isn't necessary to encase them with lace. A different type of seam also can improve a garment's overall appearance. For example, French seams make a neat appearance when using sheer fabric--such as chiffon, lace, voile or eyelet.

Flat-felled seams, on the other hand, give an attractive finish to sportswear that features topstitching. To make a flat-felled seam, first stitch wrong sides of fabric together, creating a five-eighths inch seam. Next, press seam open and trim one seam allowance to one-eighth inch. Press the wider seam allowance over the narrow one and fold the edge under narrowly. Then topstitch on the folded edge.

Consider your figure when selecting a zipper for a garment. Many dress patterns call for a 22-inch zipper. However, home-sewers might actually need other lengths. For example, a short person may find an 18- or 20-inch zipper better proportioned--and more comfortable. A taller girl, on the other hand, may need a longer zipper for convenience when dressing or undressing. Thus, a 24-inch zipper makes a better choice for her.

Other factors also influence correct zipper length. For one, consider hip width--especially for pants and skirts. This dictates how much room a person needs to get in and out of a garment. Another factor to keep in mind is garment design. If a shirt's zipper shows below the jacket hem, the outfit loses some of its appeal. To avoid this, use two shorter zippers applied in two seams. Or, utilize a hidden zipper that's completely inconspicuous.

Rummage Sale Scheduled

The Wichita County Humane Society will hold a rummage sale at 1405 Bluff on May 23-25 from 9 a.m. to 6 p.m. Mrs. G.C. Cottle at 569-1908 will accept donated items in Burkburnett.

Burk Riding Club Wins 1st In Parade

The regular meeting of the Burk Riding Club was held at the club arena Thursday evening, May 2. Vice president Paul Drake presided in the absence of the president.

Various activities for the club were discussed; the treasurer's report was given and a run-down of the parades in the next few weeks the club is to participate in was told. The next parade will be the Red River Rodeo Parade in Wichita Falls on June 12.

Thirty riders represented the Burk Riding Club at the Santa Rosa Parade in Vernon last week. The club brought home a 1st place trophy in parade competition, and club sweetheart, Danita Roberts, was first runner-up in the Rodeo Queen contest.

The District 21 Play Day for this month was at Electra Sunday, May 5. Local members enjoyed a picnic lunch at the arena. There was a large turnout.

The Burk 4-H Club will hold an Open Play Day at the Burk

Arena Saturday, May 11. Registration will begin at 1 p.m. and rides will start at 2 p.m. This will include a jackpot barrel race.

The regular monthly play day will be Sunday, May 12.

Big Pasture Ambulance Fund

The Big Pasture Ambulance Service is planning a fund drive to raise money for insurance, gas, and telephone bills. The service is a non-profit corporation formed by friends of the community to provide ambulance service. No government aid is available, but the service hopes to get aid from the city and county in the next fiscal year.

Towns included are Chattanooga, Devol, Loveland, Grandfield, and Randlett. Donations will be accepted at the First State Bank of Grandfield.

Darter Insurance Service

Reeford and Peggy Darter
C. J. Lippard
Complete Line of General Insurance

Auto - Business - Homeowners - Household Goods
"YOUR INDEPENDENT AGENT IN BURK"
212 E. 3rd BURKBURNETT 569-2691

PUBLISHER'S COPY

Consolidated Report of Condition of The Burkburnett Bank

of Burkburnett in the State of Texas and Domestic Subsidiaries at the close of business on April 24, 1974.

ASSETS		DOLLARS	Cts.
1. Cash and due from banks (including \$-unreported debits)		619,645	32
2. U.S. Treasury securities		441,086	00
3. Obligations of other U.S. Government agencies and corporations		1,150,000	00
4. Obligations of States and political subdivisions		297,436	29
5. Other securities (including \$-corporate stocks)		20,000	00
6. Trading account securities		None	00
7. Federal funds sold and securities purchased under agreements to resell		1,100,000	00
8. Other loans		404,374	59
9. Bank premises, furniture and fixtures, and other assets representing bank premises		127,972	12
10. Real estate owned other than bank premises		None	00
11. Investments in subsidiaries not consolidated		None	00
12. Customer's liability to this bank on acceptances outstanding		None	00
13. Other assets		108,285	39
14. TOTAL ASSETS		7,904,739	71
LIABILITIES			
15. Demand deposits of individuals, partnerships, and corporations		2,340,179	97
16. Time and savings deposits of individuals, partnerships, and corporations		3,806,592	66
17. Deposits of United States Government		2,238,97	17
18. Deposits of States and political subdivisions		838,947	77
19. Deposits of foreign governments and official institutions		None	00
20. Deposits of commercial banks		12,500	00
21. Certified and officers' checks, etc.		66,377	03
22. TOTAL DEPOSITS		7,089,984	42
(a) Total demand deposits		2,340,179	97
(b) Total time and savings deposits		4,749,804	45
23. Federal funds purchased and securities sold under agreements to repurchase		None	00
24. Other liabilities for borrowed money		None	00
25. Mortgage indebtedness		None	00
26. Acceptances executed by or for account of this bank and outstanding		201	29
27. Other liabilities		7,291,836	71
28. TOTAL LIABILITIES		7,291,836	71
29. MINORITY INTEREST IN CONSOLIDATED SUBSIDIARIES		None	00
RESERVES ON LOANS AND SECURITIES			
30. Reserve for bad debts losses on loans set up pursuant to Internal Revenue Service rulings		44,099	25
31. Other reserves on loans		None	00
32. Reserves on securities		None	00
33. TOTAL RESERVES ON LOANS AND SECURITIES		44,099	25
CAPITAL ACCOUNTS			
34. Capital notes and debentures		None	00
(Specify interest rate and maturity of each issue outstanding)			
35. Equity capital, total		None	00
36. Preferred stock-total par value		None	00
(No. shares outstanding--)			
37. Common stock-total par value		125,000	00
(No. shares authorized--10,000) (No. shares outstanding--10,000)			
38. Surplus		125,000	00
39. Undivided profits		318,803	75
40. Reserve for contingencies and other capital reserves		None	00
41. TOTAL CAPITAL ACCOUNTS		568,803	75
42. TOTAL LIABILITIES, RESERVES, AND CAPITAL ACCOUNTS		7,904,739	71
MEMORANDA			
1. Average of total deposits for the 15 calendar days ending with call date		7,244,069	40
2. Average of total loans for the 15 calendar days ending with call date		3,980,463	63
3. Unearned discount on installment loans included in total capital accounts		None	00

I, Gary Owen, Vice-President & Cashier, of the above-named bank, do solemnly swear that this report of condition is true and correct, to the best of my knowledge and belief.

Correct-Attest: *[Signature]* Directors.

State of Texas, County of Wichita, ss: *[Signature]* Notary Public.

FARM & GARDEN CENTER

- Tomato, Pepper, Bedding Plants
- Bulk Garden, Flower, Grass Seeds
- Hanging Baskets, Flower Plants
- Potting Soil, Mulches, Fertilizers
- BIRD BATHS CROCKERY

Specials Now On
Trees - Shrubs - Roses

The secret to success with roses

- One-step method for feeding your roses and controlling insects. Systemic action.
- Control black spot and powdery mildew and certain other fungal diseases common to roses.

Fresh Graded BEREND BROS. EGGS

FARMERS... WE HAVE A COMPLETE LINE OF FIELD SEEDS

HYBRID MAIZE & SUDANS
HAYGRAZER-HEGARI-RED TOP
Cattle Sprays, Remedies & Supplies

Feed - Seed - Grain
PURINA CHOWS
BEREND BROS.

PURINA HEALTH PRODUCTS

SAVE \$3.00 SAVE \$3.00 SAVE \$2.50

MINN-GLO LATEX SEMI-GLOSS
• Super-Scrubability Washes Repeatedly
• Provides Attractive, Low-Gloss Finish
• Ideal for Hard-to-Clean Areas
• Available in 100 High-Fashion Colors
REGULARLY \$10.49

MINN-FLO-X LATEX HOUSE PAINT
• Super-Tough Water-Fade-Resistance
• For All Surfaces - Wood, Metal, Masonry
• Resists Stains, Grease, Fat, Water, Cleanup
REGULARLY \$10.49

MASONRY LATEX FLOOR FINISH
• For Interior, Exterior Masonry Surfaces
• Excellent for Entry Above or Below Ground Level
• Available in All Favorite Colors
REGULARLY \$9.99

NOW At One, Low-Money Saving Price \$7.49

4 BIG DAYS
Wednesday, Thursday, Friday, Saturday

211 N. Ave. B SHRAMBURGER BUILDING CENTERS 569-2242

BUY AUTO LIABILITY From The **Travelers Insurance Co.** It Doesn't Cost Any More To **BE SURE**

HOWARD CLEMENT - Agents - RANDY CLEMENT

News From RANDLETT

by Mollie Elliott

Mrs. Dezzie Kemp visited her son, Mr. and Mrs. Glen Kemp of Burk Burnett recently.

Mr. and Mrs. C.C. Watkins of Henrietta spent Thursday night and Friday with her mother Mrs. Zaida Bryant.

Mrs. Flora Hatcher was honored Sunday, April 28, on her 70th birthday. Present were her children, Mr. and Mrs. Ray Dean Hatcher and family of Burk Burnett; Mr. and Mrs. Phillip Hatcher of Okemah, Okla.; Mrs. Howard Hatcher and daughters of Iowa Park; Mr. and Mrs. Jay Jefferies and son, Kent, of Oklahoma City; and Dr. and Mrs. Clyde Parson of Wichita Falls.

Mr. and Mrs. R.C. Brown were Saturday evening dinner guests of their son, M/Sgt. and Mrs. Maurice Brown and family of Burk Burnett.

Mr. and Mrs. Hugh Frye spent Saturday night and Sunday of last week with their



Airman Hargrove

Hargrove is Assigned To Lowry AFB

SAN ANTONIO -- Airman Harold D. Hargrove, son of retired Air Force Chief Master Sergeant and Mrs. Irvin O. Hargrove, of 816 Easy St., Burk Burnett, Tex., has been assigned to Lowry AFB, Colo., after completing Air Force basic training.

During his six weeks at the Air Training Command's Lackland AFB, Tex., he studied the Air Force mission, organization and customs and received special instruction in human relations.

The airman has been assigned to the Technical Training Center at Lowry for specialized training in the armament systems field.

Airman Hargrove attended Burk Burnett High School.

Straight From The Horse's Mouth

Every horse has six teeth above and below. Before three years old he sheds his middle teeth; at three he sheds one more on either side of the central tooth; at four he sheds two corner and last of the fore teeth. Between four and five, the horse cuts the under tusks; at five will cut the upper tusks, at which time his mouth will be complete. At six years, the grooves and hollows begin to fill up a little; at seven the grooves will be well-nigh filled, except the corner teeth, leaving little brown spots where the dark brown hollows formerly were. At eight the whole of the hollows and grooves are filled up. At nine there is very often seen a small bill to the outside corner teeth; the point of the tusk is worn off, and the part that was concave begins to fill up and become rounding; the squares of the central teeth begin to disappear, and the gums leave them small and narrow at the top.

-From Yearbook of the Texas Department of Agriculture 1914

of Wichita Falls visited her grandmother, Mrs. Zaida Bryant Sunday.

Herman Rhoads entered a Lawton hospital Sunday of last week and underwent surgery Monday. He came home Wednesday.

Kimberly Harrison was ill at her home this week.

daughter Mr. and Mrs. Terry Morris and children of Fort Worth.

Mr. and Mrs. T.L. Wileman arrived home last Thursday after a 6-day visit with their son Mr. and Mrs. Larry Wileman and family of Boise City, Okla. While there they all visited Red River Valley, New Mexico.

Flora Hatcher was reported ill at her home last week.

Mrs. Fred Spoon was ill at her home Sunday.

Mr. and Mrs. Glen Solomon

Mr. and Mrs. Bill McGarry and children of Burk Burnett visited her parents Mr. and Mrs. R.H. Rhoads Saturday afternoon.

Mr. and Mrs. C.M. Morrow of Burk Burnett visited Mollie Elliott Sunday afternoon.

Mr. and Mrs. Homer Uzell of Lufkin visited Miss Alta Mae Braden and Mrs. Beulah Wilson Saturday morning.

Mollie Elliott spent Monday night and Tuesday with her son, Mr. and Mrs. David Elliott of Lawton.

Mrs. L.E. Ellis and Elaine of Burk Burnett visited her parents Mr. and Mrs. R.H. Rhoads Sunday afternoon.

The out of town relatives who attended the funeral of Mr. C.O. Wilson Monday were Mr. and Mrs. James Smith, Dr. and Mrs. Richard Smith and daughters, and Mrs. Debbie Piggot of Amarillo; Mr. and Mrs. I.L. Smith and Danny, Mrs. Diana Wise and Jamie of Burk Burnett; Mr. and Mrs. Dennis Smith of Wichita Falls; Mrs. Lanell Miller and Denise Seinfeld, of Holliday; A2C Dale Swinford of McConnell AFB, Kansas; Mr. Oran E. Wilson, Donna, Deneice and Doug of Bossier City, La.; Mr. Buck Horner and Mary Ann of Romance, Arkansas; Mrs. Pearl Pantet, Mrs. Lina Bell Tipton, Mrs. Nancy Martin of Enid, Oklahoma; Mrs. Norma Wilson of Tulsa, Oklahoma; Mrs. Maurice Brown, Terri, Kevin and Keith of Burk Burnett, and Mr. Ramey Wilson of Lawton, Oklahoma.

Devol Doings

Mrs. Avis Wood, accompanied by two sisters, Mrs. Erma Morse and Mrs. Vern Mathews of Oklahoma City, left Tuesday of last week for Mt. Pleasant, Texas where they will visit relatives and then return to Oklahoma City where Mrs. Wood will spend a week with her sisters before returning to Devol.

Mrs. Flora Mays returned home Thursday of last week after spending the past ten days in Duncan visiting her sister, Mrs. Mattie Sanders and a niece and nephew, Mr. and Mrs. W.J. Caruthers.

Mrs. A.D. Green returned home from Lawton Monday where she was a patient in the Southwestern Hospital. Neigh-

bors calling on her Tuesday were; Mrs. Javis Kinder, Mrs. L.V. Adams, Mrs. Gary Adams, Mrs. Leo Zwiacker, Mrs. J.T. Perry and Rev. Laine Crowe. Sunday company of Mr. and Mrs. A.D. Green included Mrs. Green's mother, Mrs. Lillie Renegar of Walters, Tracy Coy of Walters, and Mr. Green, son of Mr. and Mrs. A.D. Green Jr. of Commerce, Texas.

Mrs. Jimmy Bryan and daughter, Connie of Iowa Park, Texas visited her mother, Mrs. Lillian Hutson Sunday.

Sunday dinner guests in the home of Mr. and Mrs. Lin Harmes were Rev. and Mrs. Laine Crowe and family and Mr. and Mrs. Junior Turner. Sunday evening company were Mr. and

Mrs. A.D. Green and Mr. and Mrs. L.V. Adams.

Mr. and Mrs. J.P. Eley returned home Sunday from Houston, Texas where Mrs. Eley has been at the bed of her mother, Mrs. Ella Ratlaf, who has been critically ill. Mrs. Ratlaf's condition has improved and she is now able to be moved to a rest home.

Members of the First Baptist Church of Devol are planning a dedication service of their new facilities Sunday, May 19. Guest

speaker will be George McDow of the First Baptist Church in Walters and Special music will be featured.



Friend of the CONSUMERS

Residential-Commercial
Mobile Home-Window Units

Eddins

AIRCONDITIONING & HEATING CO.

WE SERVICE ALL BRANDS

205 East 3rd Phone 569-0671

WASTE FREE BONELESS **SHOULDER ROAST** LB. **98¢**

PLAY **BONUS "BLACK-OUT" BINGO** GET 1000 EXTRA S&H GREEN STAMPS

UNITED Premium Quality BEEF

RANCH **STEAK** CENTER CUT 7-BONE CHUCK LB. **89¢**

SWISS **STEAK** ROUND BONE ARM CUTS LB. **\$1.09**

VELVEETA CHEESE FOOD 2 LB. BOX **\$1.59**

FRESH FROZEN **SPLIT FRYER BREAST** "ALL WHITE MEAT" 5 LB. BOX **\$2.99**

PICKLES BEST MAID • DILL • POLISH DILL • KOSHER DILL QT. JAR **49¢**

SHURFINE **FLOUR** 5 LB BAG **79¢**

SHURFINE **COFFEE** 1 LB CAN • DRIP • REG • ELECTRA PERK **79¢**

"SHURFINE CANNED GOOD 89¢ SALE"

FRUIT COCKTAIL	3	303 CANS
BARTLETT PEAR HALVES	3	303 CANS
CORN WHOLE OR CREAM KERNEL STYLE	4	303 CANS
CUT GREEN BEANS	4	303 CANS
WHOLE PEELED TOMATOES	4	303 CANS
PEAS EARLY HARVEST	4	303 CANS
SPINACH	4	303 CANS
MIX VEGETABLES	4	303 CANS
FRESH SHELL BLACK EYE PEAS	4	300 CANS

89¢

PLAY UNITED'S BONUS BLACKOUT BINGO **OLEO** SURFRESH REG. QTRS. 3 1-LB. CRTNS **\$1**

NESTEA INSTANT **TEA** 3 OZ. JAR **88¢**

UNITED GRADE "A" MEDIUM **EGGS** DOZ..... **39¢**

UNITED SUPER MARKETS WE GIVE S&H GREEN STAMPS

PRICES GOOD THRU' MAY 11TH

VRJC Commencement Set

Commencement exercises for Venon Regional Junior College will be held at 8 p.m., May 18, in Wilbarger Memorial Auditorium.

Dr. Bevington Reed, Commissioner of Higher Education for the state of Texas will deliver the commencement address to the 53 graduates.

Degrees will be conferred and certificates awarded by Dr. David L. Norton, college president.

The public is invited to attend the first formal VRJC commencement and reception honoring the graduates following the exercises.

Graduating from Burkburnett is Randall Joe Trevilion, who will receive an Associate in Applied Science degree.



SCHOOL PLAY--Shown is a scene from the Burkburnett High School play to be held Friday and Saturday at 8 p.m. in the high school cafeteria. The play, "You Were Born On a Rotten Day", features the acting of Chris Amburn (left) and Robin Walton. The play is a comedy dealing with astronomy and astrology. Mrs. Ferne Bloodworth is director and Al Maheffey is assistant director. Christopher Sergel wrote the play. (Staff Photo by Ricky Stevens)

News From Hickory Elm

Birthday cake for residents having birthdays during the month of April was contributed by Pauline Varner and Debbie. Volunteers helping with serving were Rosa Dilbeck, Faye Anderson, Tina Howard and Edith Holland. Entertainment was provided by Francine and Dianne Benson and Mrs. McNeese. Those having birthdays during the month of April were: Roxie Dixon, Sarah M. Smith, Walter Cox, Jennie Stubblefield and Myrtle Audrain.

Sarah Cochran was visited by Laura Morrison and Marion Cummings from East Texas.

Loma Henson was visited by her son, Stanley Henson and Mrs. Henson, Baytown, Texas.

Assembly of God Christ's Ambassadors and their directors presented a singing and devotional on April 30th, which was enjoyed very much by the residents and staff.

We want to thank Amelia Spencer for the magazines brought to the home and Mrs. Fowler for bringing the beautiful flowers from the First Baptist Church which were in memory of her husband, Buddy Fowler.

Visiting Mr. and Mrs. O.J. Cooper Sr. were: Mr. and Mrs. E.L. Wineinger, Francenia Spencer, Ella Gill, Gertrude Barfield, Mr. and Mrs. O.J. Cooper Jr., Mr. and Mrs. R.C. Brown and grandchildren from Pampa, Texas, Mrs. Leo Foster, and Mrs. W.P. Rogers.

Visiting Kate Kennedy: Mrs. Leo Foster, W.R. and Gladys Carswell, Amelia Spencer, Mrs. W.P. Rogers, Ella Gill, and Gertrude Barfield.

Mr. Oscar Klinkerman had as visitors: Clara Klinkerman, Beulah Wilson, Marvin Klinkerman, Amelia Spencer, Sheresa and Leon Riley, and Marian Black.

Clara Klinkerman also visited Walter Hines and Etta Ramming.

Mr. and Mrs. Ed Hord of Mt. Pleasant, Texas visited Mrs. Gower and Becky.

Mrs. Leo Foster visited Mr. and Mrs. J.A. Hanks.

The Pioneer Singing Group of Randlett entertained Saturday, May 4th. The residents enjoy this group and look forward to the Saturdays they can come out.

NEW PATIENT: Thelma Sarah Childress.

NEW EMPLOYEES: Ethel Howard, Mozella Sands, Denise Krueger, Clorine Moody, Billie Arles, Nora Smith, Lenora Young and Hester Archer.

There were 27 present for Sunday School May 5. Frank Mallory was the speaker. Leading the singing were Gene Breeden, Mrs. L.H. Bryant and Richard Mallory. Ruth Anderson assisted at the piano.

Mr. Steve Davis is visiting a daughter in Durant, Oklahoma until after Mother's Day.

Mr. Ed Bruner is touring parts of Arkansas with his son-in-law for a few days.

Fran Benson's Circle B Hair Fashions

NOW OPEN

CORNER EAST COLLEGE and BRADLEY

Specializing in Long Hair

Register for FREE Basic Hair Cut, Shampoo and Set, to be given away May 17th. No Purchase necessary.

Phone 569-1387 for Appointment!

LATE APPOINTMENTS TO MEET YOUR NEEDS

HOURS - Tuesday through Friday 8 a.m. to 5 p.m.

Saturday..... 8 a.m. to 1 p.m.



UNITED Premium Quality BEEF

LEAN TENDER

CHUCK ROAST

TENDER LEAN BLADE CUTS

69¢

LB.

PRICES GOOD THRU MAY 11TH



UNITED SUPER MARKETS

WE GIVE 8% GREEN STAMPS

QUANTITY RIGHTS RESERVED



UNITED PREMIUM QUALITY BEEF

BONELESS TOP ROUND

ROUND STEAK LB. **\$1.39**

RIB STEAK LB. **\$1.09**

BONELESS FAMILY STEAK LB. **98¢**

CENTER CUT BEEF SHOULDER LB. **\$1.09**

WASTEFREE

GRILL OR BROIL

GROUND BEEF **69¢** LB.

WITH TEXTURED VEGETABLE HYDRATED PROTEIN

BIG "U" BACON **69¢** 12 OZ. PKG.

UNITED FROZEN FOOD

PATIO MEXICAN OR ENCHILADA **DINNERS 2 FOR \$1**

MATEY 8 OZ. PKG. **FISH STICKS 3 FOR \$1**

The Perfect Shortening Extra-light, Natural way to cook

WILSON'S BAKE-RITE

PURE SHORTENING

ONLY **98¢** 3 LB.

UNITED MELLORINE

ASST'D FLAVORS HALF GAL. **49¢**

LITTLE BROWNIE COOKIES

SUGAR LEMON PECAN **3 39¢ PKGS. \$1**

BILTMORE LUNCH MEATS

12 OZ. CAN **44¢**

MISS BRECK 13 OZ. **HAIR SPRAY 49¢**

BAYER ASPIRIN 100 CT. **79¢**

JOHNSON BABY SHAMPOO 13 OZ. BTL. **\$1.19**

LARGE 18 OZ. BOX **POST TOASTIES 39¢**

ROXEY **DOG FOOD..... 8 300 CAN \$1**

Shop & Save!



NEW CROP TEXAS WHITE **ONIONS** LB.

Farm Fresh United Produce

NEW CROP TEXAS

CANTALOUPE

..... LB. **25¢**

FRESH CRISP **CARROTS** 16 OZ. CELLO BAG **2 FOR 29¢**

NEW RED **POTATOES** LB. **25¢**

CALIF. VALENCIA NEW CROP **ORANGES** FULL O' JUICE LB. **18¢**

News From Evergreen Manor

We still have Social Hour 11-12 each morning. We have a full house every day. Jeanette Osborne is the teacher. She talks mostly of old times, things that happened when we were younger. We older people call them the good old days. We open our lesson each day and close with a prayer. Any one is welcome to come and sit through our Social Hour.

Mr. and Mrs. J.E. Mullins from Electra visited his brother, C.D. Mullins.

We had 25 in Sunday School. Mr. Wortham brought a good lesson assisted by Mr. Kinnard. The afternoon service was brought by the First Baptist Church. The singing and service were enjoyed.

Visiting Winnie Austin were Mr. and Mrs. Jack Austin, Wichita Falls; Mr. and Mrs. Wallace Martin, Electra; Mr. and Mrs. Algene Hallis and Mable Austin, Robert Lee, Tex.

Mr. and Mrs. Keeble Jones from Duncan, Okla. visited her mother, Mrs. Pruett.

Bea Burrows spent several days with her sister, Ruth Beldon.

Mrs. Hofacket from Iowa Park visited Mrs. Laura Galloway.

Mr. and Mrs. Bobby Strait visited Mrs. Quinn, their grandmother. Mr. and Mrs. Glen Quinn from Odessa, Tex. visited his mother, Mrs. Quinn.

Mr. and Mrs. Lloyd Rush from Wichita Falls spent the weekend with his parents, Mr. and Mrs. Ben Rush.

Mrs. Delmer Owens from Wichita Falls visited Mrs. Prenderville.

Evergreen Manor wishes to extend an invitation to one and all. Texas Nursing Home Week. Open House, Sunday May 12, 1974, 2:00-4:00.



ENTERTAINMENT--The Harding family of Burk Burnett entertained the Evening Lions Club Tuesday. Chuck Harding, owner of A.B.E. Music in Burk Burnett, is pictured with his family (from left) including daughter Theresa; his wife, Anita; Harding; and his son, Charles.

Boomtown Jaycees Elect Officers

The Boomtown Jaycees elected officers for the new chapter last Thursday, May 2, in a meeting held in the Texas

Sullivan To PFC

FT. SILL, OKLAHOMA---Patrick M. Sullivan, 19, son of Patrick M. Sullivan of Burk Burnett, was promoted to Army Private First Class at Fort Sill Oklahoma recently.

PFC. Sullivan is a cannoneer in Battery C, 2nd Battalion, 37th Field Artillery.

His wife, Donna, lives in Lawton, Okla.

Electric Reddy Room. Officers include Greg Williams, president; Bob Conner, Internal vice pres.; Richard Alexander, External vice pres.; Bill LeBlanc, secretary; Jackie Cornelius, treasurer; and James Richter, state director. On the Board of Directors are Willy Lacy, Don Ohda, and Ken Youngblood.

The new chapter will receive its charter Friday night at 7:30 in the Community Center during a banquet, which is open to the public. Tickets are available at both banks.

Boy Scouts Seek Operational Funds

Each year the Northwest Texas Council, Boy Scouts of America, conducts a Sustaining Membership Enrollment in order to secure necessary funds to service the Scouting program in a 13-county area. About 48 per cent of the council's income is secured from United Fund sources and the balance is raised from special Friends of Scouting and parents of young men in the program.

The council organization provides a Service Center which maintains records, counseling service, develops programs and maintains liaison with Regional and National officers. It maintains a small staff of well-trained personnel who are available to assist the unit in all

areas of Scouting. The council maintains two camps that are available for use and many other services which could not be afforded by an individual unit.

It costs just about \$25 per boy to sustain a council-wide program. Yet, to charge such a fee for membership would prevent many youngsters from belonging. Therefore Friends of Scouting and parents have a volunteer opportunity to participate as they can.

According to Don Van Hying, Burk Burnett Sustained Membership Chairman, the Burk Burnett community has thus far reported just over \$800 in the current sustained membership drive. This figure represents approximately one-

fourth of the Burk Burnett goal. In order for Burk Burnett to contribute its share of the council goal and to sustain the 225 boys now in one of the Scouting programs in Burk Burnett, an additional \$2200 must be raised this year.

Van Hying urges families of scouts and Friends of Scouting to contribute whatever possible when contacted by a campaign worker. According to Van Hying, "If you are contacted by a campaign worker in the next few weeks, please contribute freely. Your contribution will help the Burk Burnett Scouting Program continue to grow and progress."



READY TO RIDE--Pictured are several fund-raisers who rode in the ESA Million Dollar Bike Ride Saturday. A total of 26 riders received approximately \$600 in pledges for St. Jude's Children's Hospital. (Staff Photo by Ricky Stevens)

Southside Honor Roll

GRADE 3

Mrs. Shipp, Section 1; Darla Bilyeu, Gary Bolden, Carrie Brown, Karen Carter, Kathy Engeldinger, Tresa Fullerton, Robin Hill, Angie Kaspar, Leann McPhail, Karen Payne, Leslie Smiley, Marguerite Umlah.

Miss Nitzel, Section 2; Timmy Cornelius, Laura DeGreve, Ginger Ener, Melody Glazener, Donna Newhouse, Sandra Spurlock, Brenna Standlee.

Sara Fullerton, Section 3; Wayne Cray, Laura Drake, David Leffick, Linda Pettit, Jimmy Phillips, Wally Reed, Patricia Strahan, Brock Utter, Jon Walworth, Shane Wright, Mike Peterson, Todd Cadwallader, Rusty Reber.

GRADE 4

V. Owen, Section 1; Amy Hall, Celeste Heinze, Anita Lang, Tracy Lewis, Loretta McCurdy, Nita Moore, Tracie Morton, Lori Oakley, Thomas Phillips, James Riccitello, Kim Tullis.

Koller, Section 2; Jeffrey Arnold, Melanie Arthur, Michael Askins, Joe Deutsch, Billy Luke, Kathy Roy, Bruce Wasserzieher, Teresa Wernofsky.

Steele, Section 3; Tim Hodgson, Ginny Ilten, Bill Pittard, Mary Schmidt, Bryan Stringer, Carla Wolf, Rhonda DeLong.

GRADE 5

Taliaferro, Section 1; Jackie Alexander, Karen Bryan, Kelly Easter, Kathy Fullerton, Jody Gilbreath, Cheryl Heptner, Amber Hester, Chuck McCullough.

Velda Anderson, Section 2; Ricky McGrath, Caroline Phillips, Rena Thaxton, Robert DeLong.

Fore, Section 3; Tracy Hudson, Susan Liffick, Mary Robinson, Linda Sparkman, James Strahan.

Tips For Two Home Owners

If your vacation home is second rate safetywise, correct the situation when you open it for the spring, cautions the Texas Safety Association.

For safe, enjoyable vacations and weekends furnish the vacation home with the same care used for the primary home. It doesn't have to be fancy to be safe.

TSA suggests that you measure up your vacation home against this checklist of some of the major hazards that afflict second homes:

- Are wells, cisterns and similar fixtures protected with sturdy covers?
- Are wooden stairs and porches in good shape and free of rotting lumber and protruding nails?

—Is interior paint lead-free or lead free?

—Is mechanical equipment in safe working condition?

—Are roofs fire resistant and in good condition?

—Are there sufficient electrical outlets to avoid overuse

of extension cords?

—Has wiring been safety checked by an expert?

—Are heating installations inspected and serviced once a year?

—Do all sleeping areas have at least two means of exit in case of fire?

—Are fuel pressure tanks and fuel storage tanks kept outside the house?

And while you're at it, the safety group says, see that your primary home meets these minimal safety standards, too.

Evergreen Manor wishes to extend an invitation to one and all. Texas Nursing Home Week OPEN HOUSE Sunday May 12, 1974 2:00 - 4:00

Start your own Long Distance savings plan.

Say you phone Los Angeles and talk three minutes:

	Station-to-Station One-Plus Dialing		Person-to-Person Operator Assisted*	
	Nights	Weekends	Evenings	Weekdays
	11 pm to 8 a.m. daily	8 a.m. to 11 p.m. Saturday and 8 a.m. to 5 p.m. Sunday	5 p.m. to 11 p.m. Sunday through Friday	8 a.m. to 5 p.m. Monday through Friday
		65¢	70¢	\$1.25
		\$1.20		\$1.55

Being choosy can result in real economy, so take your pick. Then travel by Long Distance... and stay awhile.

Like to have more information about Long Distance rates? Fill out and mail the coupon. We'll send you a free guide that shows you the best times to call and gives examples of rates to major cities.

Southwestern Bell
P. O. Box 787
St. Louis, Missouri 63188

Name _____
Address _____
City _____ State _____ Zip _____

Southwestern Bell

*Credit card, third number, hotel-guest and collect calls, plus calls made from pay telephones. Rates above do not include tax.

Thoughts

From The Living Bible

And you husbands, show the same kind of love to your wives as Christ showed to the church when he died for her, to make her holy and clean, washed by baptism and God's Word; so that he could give her to himself as a glorious church without a single spot or wrinkle

or any other blemish, being holy and without a single fault. That is how husbands should treat their wives, loving them as parts of themselves.

Ephesians 5:25-28
Religious Heritage of America



ESPECIALLY FOR LUNCH OR BRIDGE--Guests will love this sandwich loaf which is filled with cheese, chicken and ham spreads, then covered with a cream cheese topping. The recipe has been tested by Texas Department of Agriculture home economists. Other recipes for Texas-grown products are available by writing: Agriculture Commissioner John C. White, P. O. Box 12847, Capitol Station, Austin, Texas 78711.

Jehovah's Witnesses To Attend Convention

Dennis Ott, one of the overseers of the new Burk Burnett congregation of Jehovah's Witnesses, announced today a 2-day convention of 23 congregations in Abilene this weekend.

"Be Confident of Divine Victory" is the subject for discussion of the public discourse Sunday at 2:00 P.M., to be delivered by H.A. Fetzik, district supervisor for Jehovah's Witnesses. Ott quoted Fetzik as saying, "The Bible indicates even now we can benefit from the approaching Divine Victory. One of the benefits derived now is improved family life because of applying principles. It results in upbuilding association with persons you can trust and who

will gladly help you, in addition to obtaining peace of mind and gaining a real purpose in life."

Another outstanding feature of the assembly, according to Mr. Ott, will be the ordination of new ministers symbolized by their water baptism. Andrew Billy, circuit supervisor for the Witnesses in West Texas, will direct the ordination program scheduled to begin Sunday at 9:15 A.M.

Among those who are making plans to attend the convention from Burk Burnett, in addition to the Ott's, will be Ed and Barbara Harrison, Preston and Judy Meier, Don and Peggy Green, the Donald Brantleys, Ray Brantleys, Lonnie Moons and the Johnny Moons.

An estimated 1500 delegates are expected to attend this assembly that begins Saturday, May 11, at 1:45, at the Abilene Civic Center, said Mr. Ott, and that "all sessions are free, no collection plates are ever passed at our conventions or local meetings. It will be a very interesting and informative program for all...please come if you can."

Merritt Will Graduate May 18

Lloyd Ray Merritt of Burk Burnett will be among those to be graduated from William Carey College in Hattiesburg, Mississippi on May 18, 1974. Lloyd, the son of Mr. and Mrs. George L. Merritt, will receive a bachelor degree with a major in Business Administration and minor in Economics. During college years, the graduate was a member of the Pen & Sword Society.

PARR'S WOMEN'S WEAR
Our 40th Year In Fashion Apparel
ELECTRA, TEXAS
76360
817/495-2021 Exit Hwy. 25 off 287

Add To Your Savings EVERY WEEK

Annual Dividend Rates	Passbook Account	Annual Yield With Daily Compounding
5 1/4%		5.39%
5 1/2%	6-month Certificate \$1,000 minimum	5.92%
6%	12-month Certificate \$1,000 minimum	6.18%
6 1/2%	12-month Certificate \$5,000 minimum	6.72%
6 3/4%	30-month Certificate \$5,000 minimum	6.98%

All accounts compounded daily, paid or credited quarterly. A substantial penalty is required for early withdrawal on certificates.

Come Save With Us!
WE HAVE A SAVINGS PLAN FOR YOU.

First Savings & Loan Assn.
Burk Burnett
Orchid Branch
1006 Holliday, Wichita Falls



Trim crust from 1 loaf unsliced sandwich bread; cut lengthwise into 4 slices. Spread 3 slices with softened butter. Place 1 slice on serving plate; spread with Ham Spread, Top with second slice; spread with Chicken-Nut Spread. Top with third slice; spread with Golden Cheese Spread. Top with unbuttered bread slice. Frost with cream cheese frosting. Just before serving, garnish with carrot flowers.

HAM SPREAD: Mix one 2 1/2-ounce can deviled ham, 1/4 cup dairy sour cream, 2 tablespoons sweet pickle relish, drained, 2 teaspoons grated onion, and dash of hot pepper sauce. Yield: about 1 cup.

CHICKEN-NUT SPREAD: Mix 1 1/2 cups finely chopped chicken, 1/4 cup finely chopped celery, 3 tablespoons chopped pecans, 1/4 teaspoon salt and 1/2 cup mayonnaise. Yield: about 2 cups.

GOLDEN CHEESE SPREAD: Mix 2 cups shredded cheddar cheese (about 8 ounces), one 3-ounce package softened cream cheese, 2 tablespoons mayonnaise, 1/2 teaspoon Worcestershire sauce and 1/8 teaspoon each onion salt, garlic salt and celery salt. Yield: about 1 1/2 cups.

FROSTING: Mix 2 packages (8 ounces each) cream cheese, softened, and 1/2 cup light cream; tint with few drops yellow food color. Frost loaf; chill until set about 30 minutes. Wrap with damp cloth; chill at least 2 1/2 hours. Yield: 12-14 servings.

GARNISH: Scrape one large carrot and slice four circles from widest part. Cut triangles from circles to form petals. Place on loaf with radish slice for center of flower. Use green onion stems for flower stems and curly endive for grass. For additional recipes write Agriculture Commissioner John C. White, P.O. Box 12847, Capitol Station, Austin, Texas 78711.

Fashion Career

Like To Own A Dress Shop?
All Name Brand Ladies Wear
FACTORY FRESH LATEST STYLES
YOUR CUSTOMERS
SAVE UP TO 50%
COMPLETE INVENTORY
BEAUTIFUL REDWOOD FIXTURES
COMPLETE TRAINING PROGRAM
VISIT OUR STORES
TALK TO OUR OWNERS
Very High Earnings
Investment - \$12,500
OTHER CHOICE AREAS AVAILABLE
CALL COLLECT MR. TODD 904-396-1707
OR Write
HY-STYLE SHOPPE
P. O. Box 26009 Jacksonville, Florida 32218



NEW ANNUAL STAFFERS—Pictured are new members of the Burk Burnett High School "Derrick" staff with the editor and assistant editor. On the back row from left are Elaine Walker, Jeanette Johnsonbaugh, LaRee Pierce, Kay Alvey, and Traye Young. Seated from left are Nancy Cadou, Patti Scobee [asst. editor], Gay Blackney [editor], and Cathy Key.

Second year members include Jan Lindsey, Marty Hudson, Kim Ridgeway, Patti Scobee, and Gay Blackney. Graduating members are Shelly Moore, Susie Dennis, Kris Aaron, Sherry Key, Karen Paulson, Stacy Muller, Sue Ann Hutchison, Carolyn Nichols, and Tom Watkins. [Informer/Star Photo]

Farewell Party Given Connors

Mr. and Mrs. E.E. Connor of Wichita Falls were honored with a farewell party Sunday in the home of Mr. Conner's brother, Mr. and Mrs. H.E. Clayton, 5400 Burk Burnett Highway. Hosts were Mrs. Lidra Dale and Mrs. Ruth Steele of Burk Burnett and Mrs. Laura May Hopkin of Devol, Okla.

The Connors will reside in La Grange, Tex.; they had lived in Wichita County for 21 years.

The following guests attended: Mrs. Edith Babers, Mrs. Vadie Bolin, Mrs. Jewel Goin, Mrs. Grace Sanders, Mrs. Bertha Lynch, Mrs. Marcella Green, Mrs. Mary Breen, and Patty and Gary Green, and Max, Don and Jimmy Shelton, Mr. and Mrs. James Cregar, Mr. Allen Dale, and Mr. H.E. Clayton. Sending gifts were Mrs. Flora Hatcher, Mrs. Ida Green, Mr. and Mrs. Richard Firman, and Billy Clayton.

SCHOOL Lunch Menu

Monday—Hog Dog with Mustard Relish, Potato Chips, Crispy Cole Slaw, Bun, Milk, Orange Juice, Apricot Cobbler.

Tuesday—Hamburger, Onion, Pickle, Mustard, French Fries, Lettuce & Tomatoes, Bun, Milk, Cookies.

Wednesday—Ravioli with Cheese, Pinto Beans, Seasoned Mixed Greens, Corn Bread, Butter, Milk, Chilled Apple Sauce.

Thursday—Hamburger & Spaghetti, Buttered Corn, Cranberry Sauce, Broccoli, Garlic Stick, Butter, Milk, Pudding with Vanilla Wafers.

Friday—Fried Chicken, Whipped Potatoes, Green Beans, Hot Bread, Butter, Milk, Ice Cream.

Baby Shower Honors Miller

A baby shower honoring Mrs. Royce Miller was given in the home of Mrs. Charles Chittum Tuesday evening, April 30. A color scheme of yellow and green was carried out in table decorations and a yellow bassinet loaded with gifts.

Hostesses for the shower were Mrs. Chittum, Weldon Gorham, William Geer Jr., and Mrs. Larry Pribble.

Baptist Young Women Meet

The Baptist Young Women of the First Baptist Church (Morning Group) met Wednesday, May 1, in the home of Mrs. Tony Battista. Judy Flory, President of the group, presented the mission study.

It was decided to send a birthday cake to a patient at Evergreen Manor. This particular patient has been "adopted" by the Baptist Young Women Morning Group as a mission project and has been visited on several occasions with gifts of clothing and companionship.

Following a short business meeting, refreshments were served to Judy Flory, Pat Brown, Linda Miller, Sheryl Thompson, Jeniece Weakley, Virginia Pribble, and two guests: Twila Olds and Jo Ann Brooks.

Blair-McBride Engagement Announced

Mr. and Mrs. John P. Blair of 705 Sycamore, Burkburnett, announce the engagement of their daughter, Shirley Anne, to Bobby H. McBride, son of Mr. and Mrs. Oscar H. McBride. The wedding has been set for June 28, in the First Baptist Church.

Mr. McBride and Miss Blair are both graduates of Burkburnett High School. She is employed by Robbie's House of Hallmark and he, a former Vernon Regional Junior College student, is employed by Allis-Chalmers.



Shirley Anne Blair

Federated Missionary Society Hears Reports

Mrs. Carl Miller and Miss Hazel Wagoner entertained The Federated Missionary Society Friday afternoon at 2 p.m., in the home of Mrs. Miller.

Mrs. E.C. Miller, President, presided with Miss Wagoner giving the Opening Prayer. Mrs. C.B. Beldon led the singing of an old song "Love Lifted Me."

Roll call was answered by each member quoting a Bible verse. Minutes of the previous Meeting were read by Mrs. Beldon, Secretary. They were approved as read.

Mrs. Mallet led a discussion on helping the needy, with Mrs. B.L. Turner giving a detailed report on our Welfare projects. A donation was given for a

needy family. Mrs. Lena Hinkle, Chairman of the Card and Cheer Committee, gave a report. She also reported on visits to the hospital with Mrs. Turner.

Mrs. Hinkle gave the Devotion; her subject was "Love." Mrs. Turner offered the Prayer. The Program was given by Mrs. Beldon, a tribute to "Mothers."

Other members present were: Mmes. Bertha Mitchell, Fannie Baker, Bertha Vandenburg, Zelta Bee Ney and Mrs. James Haley; with special guests, Mrs. Artie Whitesides and Miss Bea Burrows.

Refreshments were served by the hostesses and a social hour was enjoyed.

VIA Plans Scrapbook

VIA met last Tuesday in the home of Karen Smith. A theme for the scrapbook was discussed.

The group decided that there would be a VIA-sponsored dance in early June. A booth for the Bi-Centennial celebration was also discussed.

Any girl, age 11-18, who would like to join VIA should contact Karen Smith at 569-0093 or Chris Smith at 569-1282.



FASHION-WISE — Cotton cloque shapes a princess-style coat dress for 1974 Maid of Cotton Kathy Raskin. In black and white dots, the Teal Trainsa design features long sleeves and mandarin collar.

Newcomers

- John Polito
- Jay Reynolds
- Mike Bates
- William Guy
- Kenneth Truman
- Charles Schneider
- Arthur Buchanan
- Barry Sherman
- David McNeese
- W.F. Magee
- William Stephens
- James Richter
- Walter A. Ingram
- Lynn Dozier
- Kenneth Corbin
- Roger Koch
- John Lewis
- Charles Arthington
- William M. Smith
- Tim Crawford
- R.L. Harrelston
- Mrs. Debbie Dahl
- Thomas E. Suttle
- Joseph R. Mainelli
- Walter M. Lawson

PERSONAL

Captain Phil Duncan from Randolph AFB, Texas, visited several days last week in the home of Mr. and Mrs. Carl Law.

Eldon Morris was in Duncan, Oklahoma Sunday for a small family gathering in the home of Arville and Gladys Morris.

Say It With
JUANITA'S FLOWERS
569-3197

New Consumer's Guide Shows Cost Per Ounce

AUSTIN—The Comparison Shopper, a consumer guide to figuring cost per ounce, is available through the Texas Department of Agriculture (TDA).

Shaped like a wheel, the guide is pocket-size and provides a convenient reference for the money-wise consumer.

"It's a simple gadget to operate," said Agriculture Commissioner John C. White. "By aligning the package price with the package weight, cost per

ounce can be read from the wheel."

TDA home economists remind shoppers, however, that the cheapest buy is not always the best. They suggest reading labels when making comparisons. Ingredients are listed by weight in descending order.

Home economists also suggest buying according to use. For example, sliced peaches are a better buy for cobblers than peach halves which are more expensive and will have to be sliced.

The Consumer Services Division of TDA is responsible for spot-checking weights of grocery products to insure that labels are correct. White asked consumers to report discrepancies between labels and actual weights to Consumer Services.

For free copies of the Comparison Shopper wheel, write to Commissioner John C. White, Texas Department of Agriculture, P.O. Box 12847, Austin, Texas 78711.

Dolan Honored

Connie Dolan was honored Saturday at noon with a luncheon given by Mrs. Rudolph Robinson in the Garden Room of the Wichita Falls Country Club.

Decorations for the affair featured a huge owl wearing the mortarboard with school colors; and a floral arrangement centered the table.

Seventeen guests attended, with special guest being the honoree's mother, Mrs. Lonnie Dolan.

Connie was junior varsity cheerleader her sophomore year and was Varsity cheerleader while a junior and senior. She was head cheerleader her senior year.

During her senior year in high school, Connie was National Cheerleader Association Instructor and was voted All School Beauty. She was secretary-treasurer of FTA, and a member of OEA and the Psychology-Sociology Club.

She plans to attend Midwestern University this summer and enroll in the Radiologic Technology Course.

Bloodmobile Will Arrive May 30

The Contemporary Study Club will be in charge of the Bloodmobile to be held Thursday, May 30, in the National Room of the First National Bank.

Hours will be from 12 noon til 6 p.m. Burkburnett's quota is 90 pints.

Everyone 18 years of age or older is urged to become a blood donor.

Allen-Swearingen Engagement Announced



Denita Allen

Mr. and Mrs. Darwin Allen announce the engagement of their daughter, Denita Kay, to Larry Wayne Swearingen, son of Mrs. Lois Dougherty and Mrs. Randall Swearingen. The wedding date has been set for May 23, 1974, in Jan Lee Baptist Church, Burkburnett.

Denita is a 1974 graduate of Burkburnett High School and a student at Mrs. Carter's School of Beauty in Wichita Falls.

Larry is a graduate of Big Pasture High School and is employed by Wilkins Electric in Burkburnett.

Parr-Jenkins To Be Married

Mr. and Mrs. W.H. (Bill) Parr, former residents of Burkburnett, announce the engagement and approaching marriage of their daughter, Mary Beth, to Hal D. Jenkins. The wedding will be Saturday, June 1, 1974, at 7 p.m. in the Central Baptist Church in Italy, Texas.

Mary Beth, the granddaughter of Mr. and Mrs. Cliff Cannon and Mrs. W.H. Parr Sr., is a 1969 graduate of Monahans, Texas, High School and attended Odessa College, Odessa, Tex. for one year before moving to Dallas where she is now employed.

Hal, the son of Mr. and Mrs. Ralph Jenkins of Italy, Texas, is a graduate of Italy High School. He farms and raises beef cattle in Italy where the couple will reside.



WITH PRIDE—Sheppard AFB—Staff Sergeant Adrian B. Moore proudly points to a notebook cover that took more than 200 hours to complete. The picture of fighting stallions on the wall recently won first prize in an arts and crafts contest at Sheppard Air Force Base. [USAF Photo by Airman Tony Thomas]

PIANO INSTRUCTIONS
B.A. Degree in Music Education
CLASS & PRIVATE LESSONS
Expressway Village Near S.A.F.B.
Call 855-5119

5 & 10 M & N 5 & 10
DOWNTOWN Sewing Sale

Dacron Double Knits 1-5 yd. lengths \$1.99 yard	Non-Roll Elastic 3/4" & 7/8" 40¢ yard value 18¢ yard
Assorted Print, Bonded Knits, Sail Cloth and Blends Material Values to \$1.99 49¢ yard	Assorted Embroidery Goods Scarves, Bibs, Aprons, Towels Sale Price 57¢
Assorted Brass and Nickel Safety Pins Sale Price 9¢ 25¢ Value	Jumbo Plastic Sewing Chest Sale Price \$2.99
Assorted Widths and Colors Buckle Belting Sale Price 5¢ yard	Shredded Pillow Foam Sale Price 37¢ Bag

SHOP M&N
Mom's favorite Gifts are Here!

New Arrival...

Mr. and Mrs. Bobby Cox of 115 North Harwell, announce the birth of a son, Shane Wesley Cox, born April 25, 1974. He weighed 6 pounds and 13 ounces and was 18 1/2 inches long. Grandparents are Mr. and Mrs. Robert L. Townsend of 107 Avenue B in Burkburnett, and Mr. and Mrs. Altie Cox of Lorenzo, Texas.

Ella Mentry

IDENTIFY THE ONLY EXPLORER WHO HAS FLOWN OVER BOTH NORTH AND SOUTH POLES?



The "Explorer" Who Has AUTO LIABILITY INSURANCE With Us, Has ADEQUATE LIMITS Over Both BODILY INJURY AND PROPERTY DAMAGE. Wherever His Exploits Take Him...CALL NOW. The answer is Admiral Byrd.

Lindenborn Insurance Agency
416 Ave. C
Office 589-1281 - Res. 689-8874

Corner DRUG STORE
320 EAST 3RD STREET
PHONE 569-2251 BURKBURNETT, TEXAS

The MARION FIRST AID SYSTEM Meets The Requirements Of The OCCUPATIONAL SAFETY & HEALTH ACT. If You Must Meet OSHA Standards, You Need To Know How This First Aid System Can Help You. ASK US.

a New Concept in First Aid...
for Industry, Office, Outdoors, Home

the Marion **UNITIZED** first aid system

Your MASTER CHARGE and BANK AMERICARD BANK

The BURKBURNETT Bank
BEST BRAND OF BANKING

MEMBER F.D.I.C.

THEY'RE ALL IN CLASSIFIED

OPPORTUNITY SAVINGS PROFITS RESULTS

AN AD COST
7¢ Per Word
\$1.00 Minimum

RENTALS

FOR RENT--Two bedroom, furnished trailer. Central air. Call 569-1036 after 5 p.m. or 692-8425. 35-tfc

FOR RENT--Five room unfurnished house. Available May 15th. Call 569-3726 after 3 p.m. 35-tfc

FOR RENT--Bedroom and bath Utilities furnished. 404 E. 3rd. 569-3753. 23-tfc

FOR RENT--Town and Country three bedroom mobile home. Private lot with fenced back yard. Call 569-3005 before 8 a.m. or after 7:30 p.m. 32-tfc

Neville Apts.
Furnished and unfurnished one, two and three bedrooms. Swimming pool. Call 569-0087. Manager, Apt. 6, Mrs. Opal Sykes. 10-tfc

FOR RENT--Mobile home spaces. Large fenced lots with patios and gas lights. Water and sewage paid. Alexanders, 569-2381. 569-0144 or 569-3918. 22-tfc

RANCHHOUSE MOTEL
DAILY RATES \$7 to \$12. Also nice efficiency apartments. \$35 and \$40 weekly. New carpets. Oklahoma Cut-Off. Phone 569-0217.

FOR SALE OR RENT--1969 10'x65' three bedroom mobile home. Also 14'x72' two bedroom and den mobile home. Contact Reeford Darter at 569-0538 or 569-2691. 33-tfc

OFFICE SPACE FOR LEASE
Come by Pioneer Real Estate at 302 N. Avenue D to see the offices or call 569-1494. 19-tfc

FOR RENT--La Maison Apartments. Two bedroom brick apartments. Air-conditioned, nicely furnished. Fenced. Gas and water paid. Washer and dryer facilities. 1000 East Sycamore. Call 569-3289 or 723-1093. 36-tfc

FOR RENT--Clean, three room furnished apartment. Nice yard. Adults. Bills paid. \$90. Call 569-3476. 36-tfc

FOR RENT--Furnished one bedroom house. Nice for elderly or retired. Bills paid. Inquire at 125 Ave. D. 36-tfc

FOR RENT--Furnished house, one bedroom. Walk-in closets and storage space. Call 569-2066 after 5 p.m. 36-tfc

FOR RENT--Trailer space with many shade trees. Water paid. 623 E. 2nd. 36-tfc

FOR RENT--Two bedroom unfurnished house. Close to town. \$75 per month. Call 569-3238. 36-tfc

FOR RENT--Clean three bedroom mobile home. Furnished, central heat/air. Fenced yard. Water and sewer paid. 411 1/2 E. 6th. 36-tfc

FOR RENT--Cute one bedroom furnished house. Clean, water paid. Inquire at 619 E. Second. Call 569-0173. 36-tfc

FOR RENT--Unfurnished three bedroom and den. 2 baths. refrigerated air-conditioners. \$150. Call Jo Smith Realtor. 569-3490. 36-tfc

REAL ESTATE

G-and-H
4 BEDROOM BRICK with formal dining room and separate living room. Large den. Privacy fenced yard. Low 40's. Realtor 569-0362. Nites 569-3673.

FOR SALE--Small two bedroom, brick, central heat. Two refrigerated air units. Carpet, beautiful shade trees. Fenced. Good central location. Call Elaine Hubbard Nor-tex Realty 569-2411. 35-2tc

G-and-H
EIGHT RENTAL UNITS. Needs work but has excellent income potential. Realtor 569-0362. Nites Furl Galloup 569-3673.

Pioneer Real Estate Multiple Listing Service

OLD FASHIONED SERVICE IN A NEW KIND OF WAY
3 BEDROOM brick home on Ruby. This home has central heat and air, carpeted, built-ins. 1 1/2 baths plus garage.

PAYMENTS UNDER \$90 for this 3 bedroom brick home on Cheryl. Equity will be less than you think.

NEW HOME #25 Redfox Lane in Jan Lee Acres. Beautiful 4 bedroom home with over 2400 square feet. 2 1/2 baths, den with corner fireplace, covered patio, and many, many extras.

Open House Sunday May 12 1:30 - 5:30

NEW HOME
1320 Lucille--3 bedroom home that you can afford. Over 1500 square feet plus double garage, fireplace, carpet, built-ins, and all other things you could want.
569-1494 Nights Bob 569-2798 Doss 569-1887 Duane 569-1934
302 N Ave D

G-and-H
ACROSS FROM TENNIS COURTS. 1/2 block from high school; and two blocks from the swimming pool. 3 bedroom brick with huge family room with fireplace. Realtor 569-0362. Nites 569-3673.

G-and-H
2 BEDROOM brick with fireplace, built in book shelves and built-in range and oven. Realtor 569-0362. Nites Margaret Long 569-1015.

REAL ESTATE

FOR SALE--Investment or building lot (approximately 20 acres) in nationally known development near Albuquerque, N.M. Must sacrifice. Save \$600 over adjacent lots. Total price \$12,000 or best offer. (Monthly payment plan available). Call 855-4724 after 5 p.m. 35-2tp

FOR SALE--Three bedroom 2 bath house. Carpeted, well located. Phone 569-2779. 36-2tp

G-and-H
UNDER TWENTY. 4 bedroom, fully carpeted with den and built in kitchen. Corner lot, gas grill, lovely yard. Realtor 569-0362. Nites 569-1015 or 569-3673.

OLD FASHIONED SERVICE IN A NEW KIND OF WAY

OLDER HOME but has everything you need. 3 bedrooms, central air, carpeted throughout, storm cellar and closed in patio.

NEW HOMES under construction, all have fireplaces, carpeting throughout, 1 1/2 baths and kitchens with built-ins. prices will range from \$25,000 to \$29,000.

NEW HOME #25 Redfox Lane in Jan Lee Acres. Beautiful 4 bedroom home with over 2400 square feet. 2 1/2 baths, den with corner fireplace, covered patio, and many, many extras.

Open House Sunday May 12 1:30 - 5:30

NEW HOME
1320 Lucille--3 bedroom home that you can afford. Over 1500 square feet plus double garage, fireplace, carpet, built-ins, and all other things you could want.
569-1494 Nights Bob 569-2798 Doss 569-1887 Duane 569-1934
302 N Ave D

FOR SALE--Newly redecorated two bedroom home. Fenced in back yard. FHA approved. Call 569-1494 11 a.m. to 4 p.m. 36-1tc

G-and-H
LIKE NEW! Lovely 3 bedroom brick home--featuring 12'x30' swimming pool. Covered patio area with gas grill. IMMEDIATE OCCUPANCY. Realtor 569-0362. Nites 569-1301.

WANTED

WANTED--Dependable sitter for 3 month old boy. 4 days a week. References requested. Call 569-1832 after 5 p.m. 36-n/c

WANTED--Central Baptist Church in Burk Burnett is in need of a part time secretary. Interested individuals may contact: Day West 569-1570 or the church office at 569-1518. Member of a Southern Baptist Church preferred. 34-tfc

WANTED

MANAGER TRAINEES
WANTED--A National Consumer Finance Company has immediate openings for men to train for management. Experience not necessary but desired. Outstanding company benefits with an excellent opportunity for advancement due to expansion. Confidential interview. Call Century Acceptance Corporation, Vernon, Texas at (817) 552-9386. 35-2tc

WANTED

WANTED--General home repair work--Carpentry--Re-roofing. R&R Construction 569-0146 569-2807 33-tfc

WANTED--Baby crib. Good condition and reasonable. Call 569-1832 after 5 p.m. 36-n/c

CARPENTRY and Painting wanted. Call 299-3331. 36-5tp

FOR SALE

Marble elegance with quality

*Vanity Tops with Integral Lavatories
*Tub Enclosures
*Window Sills
*Fireplace Facings

CUSTOM MADE & INSTALLED
ATHENS CULTURED MARBLE
E. B. BURTON
311 E. 3rd St. Burk Burnett 569-1711

LOSE WEIGHT safely & fast with X-11 Diet Plan \$3.00. **REDUCE** Excess Fluids with X-Pel \$3.00. Money Back Guarantee Gibson Products. 33-15-tc

HAROLD'S TV offers warranty service on RCA, GE, PHILCO, and TRUETONE. All work is fully guaranteed. Call 569-0321 for service. 21-tfc

USED PIANOS FOR SALE
\$75 UP
ABE MUSIC
211 E. 3RD--
569-8136. OPEN UNTIL 9 P.M.

MRS. MAC'S GREENHOUSE.
Many kinds of bedding plants and hanging baskets. 308 West 2nd, 3 1/2 blocks West of Post Office. 35-4tp

SERVICES

Boomtown Arts & Crafts
900 Okla. Cutoff
569-3641
Craft, Decoupage and Art Supplies

LUNASTONE
Art Plaster, painted and white wear, camel tables, elephant tables, large dogs, zebras, cowboys. Over 300 other items.
909 Violet
Phone 569-0269 35-4tp

FILL SAND TOP SOIL
Driveway Material
Yard Leveling
Backhoe work, dump trucks, tractor mowing and gardens plowed. Also light hauling.
A. L. Elliott 569-1310

MR. FARMER
Let us write your crop bill now and you pay July 15th. **DARTER INSURANCE AND REAL ESTATE.** Phone 569-2691. 35-tfc

NEED A PLUMBER?
For New and Repair Plumbing Licensed and Bonded Also Backhoe Service Call 569-3567 H&B PLUMBING

Specializing in HOSPITAL DISABILITY INCOME LIFE INSURANCE
Mutual of Omaha United of Omaha COLLINS AGENCY
1418 Eight St., Wichita Falls Ph. 723-1451

HOUSER'S MOWER SHOP
Tune ups and repairs on all makes. Crankshafts straightened. Scissors sharpened. 507 East 4th St.

FOREIGN AUTO
New & Used Volkswagen Parts
PHONE 569-0411
103 E 3RD ST.

THOMPSON BICYCLE SHOP, 908 MIMOSA
PHONE 569-1014. Major repair--Adjustment Hours: 5 P.M.--10 P.M. ALL DAY SATURDAY. 34-tfc

SEWING MACHINES Dryers Washing Machines Freezers Air Conditioners Refrig
JONES APPLIANCE SERVICE
Jerry Jones Phone Electra, Texas 1-495-2674

Fill Sand & Top Soil BACKHOE WORK COTTON COZBY
569-3962

HOME REPAIR
Roof repair, carpenter, tile, floor tile, paneling. How may we help you? Call 569-3280. Ask for Larry. 7-tfc

THORNTON'S
Maytag Sales & Service, new washers, dryers, dishwashers, disposals. Service & Repair on all makes. Keys made. Scissors & Hoes Sharpened. 415 North Ave. B, 569-8155. 13-tfc

TV SICK?
Save money. Drop if off at 222 East Third or call 569-2801 for home service. YOUR RCA SALES & SERVICE DEALER
BEAVER FURNITURE AND APPLIANCE
569-2801

BRITANNICA 3
Part Time, Any Time Free Training Available Men or Women
Community Representatives Needed Now!
In the following Counties: Wichita, Wilbarger, Baylor, Archer, Clay
CALL (817) 336-4275 or Send brief resume to Greg B. Whitehead, District Manager, Encyclopedia Britannica, University Plaza Bldg., 100 N. University Dr., Suite 283, Ft. Worth, Texas 76107
Did you know that Britannica has just completely re-written their set for the first time in 47 years. It is truly a \$32,000,000 marvel. The reviews have been terrific, and the public response, has been overwhelmingly enthusiastic, however, most people don't know we have come out with our first all new set, three months ago. Selling could be easy if you were telling your friends about a traditionally great, all new product. Contact us TODAY!

Johnson and Johnson
Has Immediate Openings For PRODUCTION EMPLOYEES
EXCELLENT BENEFITS. COMPETITIVE WAGES. APPLY IN PERSON TO THE TEXAS EMPLOYMENT COMMISSION OR JOHNSON AND JOHNSON, HENRIETTA HWY., WICHITA FALLS, TEXAS.
LEADERSHIP BEYOND COMPLIANCE.
AD PAID BY EMPLOYER.
AN EQUAL OPPORTUNITY EMPLOYER M/F

FOR SALE
FOR SALE--Monuments, nationally advertised stones. Dates cut. Mrs. D.C. McNeill. 404 E. 3rd, phone 569-3753. 27-tfc

FOR SALE--1972 Hillcrest 12' x 60'--two bedroom, carpeted, completely furnished. Separate dining room. Washer and dryer. Full bath, central heat and air. Westside Trailer Park, Lot 27. Phone 569-1900. 35-1tp

FOR SALE--10 speed bicycle, VISTA Esquire. Like new. \$70. RCTA-TV \$20. Phone 569-3466. 36-1tc

RUMMAGE SALE--407 S. Holly. Carpet, two beds, lots of miscellaneous. Starts Thursday. 36-1tp

Fat? Overweight? Try the Diadax plan--Reduce excess fluid with Fluidex no prescription at City Pharmacy. 28-11tp

FOR SALE--808 Tidal. Dining table with 4 chairs real cheap. Depression glass. Collectors items. Some antiques. Old lamps. Toaster oven, broiler ovenette, like new. 2 brass lamps. Clothes and miscellaneous, dishes. Lots of Bargains. Come see us Thursday and Friday. 36-1tp

FAITH RUMMAGE SALE sponsored by St. John's Episcopal Church. Saturday, May 11, 10 A.M. in front of Gill's Grocery. Also! Specially baked goodies for the weekend. 36-1tc

LOSE WEIGHT safely & fast with X-11 Diet Plan \$3.00. **REDUCE** Excess Fluids with X-Pel \$3.00. Money Back Guarantee. Gibson Products. 27-15tc

FOR SALE--5 room house to be moved. 7 miles west of Burk. Call 569-3069. 36-1tp

WANTED--Would like to babysit for working mother. For more information call 569-0422. 35-2tc

WANTED TO BUY--Volks-wagens and other foreign cars for salvage. Foreign Auto, 103 E. Third. 569-0411. 48-tfc

FOR SALE
IT'S inexpensive to clean rugs and upholstery with Blue Luster. Rent electric shampooer. Wackers in Park Plaza. 36-1tc

GARAGE SALE--105 S. Ave. D (at back of parking lot). Baby items, childrens and adults clothing, miscellaneous. Friday, 10 a.m. to 7 p.m. 36-1tc

GARAGE SALE--Washer, dog house, dinette table, clothing items, carpet remnants, bedspread, curtains. Many goodies. 715 Magnolia Thursday through Saturday from 10 a.m. to 4 p.m. 36-1tc

REDUCE safe and fast with GoBese Tablets & E-Vap "water pills". Corner Drug. 33-8tp

YARD SALE--1108 Bishop Road. Thursday and Friday only. 36-1tp

EXPENSIVE carpeting needs tender loving care. Trewax Rug Shampoo is the "loving care" product. Cleans gently thoroughly, repels dirt. Rent electric shampooer \$1. Shamburger Building Centers across from Post Office, Burk Burnett, Texas. 569-2242. 36-1tc

GARAGE SALE--118 West College (in back). Clothing, furniture, Tappan gas range. Thursday until ?? 36-1tc

HAROLD'S TV introduces one-day Service. Leave your TV at Harold's before noon. Pick it up at 5:30 the same day. Call 569-0321. 21-tfc

FOR SALE--Newly redecorated two bedroom home. Fenced in back yard. FHA approved. Call 569-1494 11 a.m. to 4 p.m. 36-1tc

G-and-H
LIKE NEW! Lovely 3 bedroom brick home--featuring 12'x30' swimming pool. Covered patio area with gas grill. IMMEDIATE OCCUPANCY. Realtor 569-0362. Nites 569-1301.

LOST and FOUND
REWARD OFFERED--Lost puppy, 6 weeks old. Black and brown, with four white feet. White flea collar with yellow medicine stain. Strayed from Dairy Queen area. Under care of vet. Please call 569-3526 after 4 p.m. 36-1tp

All Insurance is the same 'til you have a claim!
BURK INSURANCE AGENCY
HOWARD CLEMENT
303 Ave. C Phone 569-3333

SERVICES

BUY CROP HAIL NOW!

WAMPLER INSURANCE AGENCY
SECURITY & SERVICE
203 NO. AVE 'D'
BURKBURNETT PH. 569-1461

SERVICES

TREE REMOVAL AND TRIMMING. Carl Smith at 569-2718 or 569-1603. 24-4tc

WATER WELLS DRILLED PUMPS REPAIRED
RICHARD WISEMAN
723-5209
LICENSED
205 Valley View Road
Wichita Falls, Texas 40-12tc

Child Care
By the Day, Hour, or Week
Ages: Infants to 9 years

ARTS BOOKS CRAFTS

627 E. 4th
State Licensed

Planned program, fenced yard, balanced diet, experienced workers, constant supervision.

Call 569-0361 or 569-3646 after 5:30
HOURS: 7 a.m. to 5:30 p.m.
MONDAY thru FRIDAY

Thar's Gold In Them Thar Beans

AUSTIN—Texas pinto bean growers are no longer working for "beans" as the price for pintos has risen to unprecedented highs in 1974.

Agriculture Commissioner John C. White recently reported that pintos were selling at \$32.50 per hundred pounds in January compared to \$27 in November, 1973, and \$9.85 in November, 1972.

Lowered production coupled with increased demand domestically and abroad have brought the sharp increase in pintos and all other classes of beans. Despite relatively high prices at planting time, U.S. bean growers did not increase their 1973 acreage, probably because farming alternatives looked better at the time, White said.

U.S. acreage was off one percent with yields down seven percent from 1972. Total pinto bean production in the U.S. in 1973 was 4,707,000 cwt., compared to 5,173,000 cwt. in 1972.

Colorado, Idaho and California are the leading producers of pintos. Texas production is limited to Moore and Culberson Counties, which produce 800 to 1,500 pounds an acre.

World demand for the pinto bean as a protein source has steadily increased despite a decreased supply. Demand from foreign markets has increased due to the short supply of protein foods, while domestic markets are turning toward dried beans as an answer to the higher prices of all protein foods.



BHS CHOIR—The Burk Burnett High School Choir performed for the Burk Burnett Chamber of Commerce during the regular monthly luncheon Monday at noon in the Civic Center. Shown is the choir as it sings one of its contest tunes for the group of approximately 50. The choir is under the direction of Ted James. [Informer/Star Photo]

Weekly Health Tip

The air inside most houses is probably as polluted as the air outside, says a report in Modern Medicine. Outside air gets inside the home. To it is added the smoke and fumes of cooking and heating appliances, chlorine escapes from boiling water, and now we have the added, host of chemicals from sprays - cleaners, deodorants, hair sprays, lacquers, bleaches, pesticides, and air fresheners. The lacquers and waxes can coat the lungs just as they coat other surfaces. It poses the question - do the many convenience sprays improve the quality of living more than they endanger health?

Corner DRUG STORE
302 E. 3rd ST.
BURKBURNETT PH. 569-2251

NOTICES

LEGAL NOTICES

Bids will be received by the City of Burk Burnett no later than 5:00 P.M. 20 May 74 for a five (5) year lease of City owned property known as the Ellis Farm approximately 32 acres located East of Burk Burnett of F.M. 1177. Bid specifications may be obtained at City Hall, 415 Avenue C. Burk Burnett.

36-2tc

SCHOOL BOARD
Cont'd from Page 1

The board accepted the resignations of Mrs. Dianne Baltz (Shep-Burk), Mrs. Jane Brown (high school), Mrs. Dianne Carper (junior high), Mrs. Beth Coppage (junior high), Mrs. Anne Gillespie (high school), Mrs. Vicki Lenahan (all schools), Mrs. Sharon Martin (Hardin), and Mrs. Julia Stanley (high school).

Employed were William Branun (high school), Mrs. Freida Gilstrap (high school), Robert L. Mobley (Shep-Burk), Mrs. Mary Rogers (high school), and Danny Taylor (high school).



SWEEPSTAKES TROPHY—Pictured is Lori McClain, daughter of Burk Burnett High School band director Jimmie McClain, holding a huge trophy won by the band recently for receiving "I" [superior] ratings at concert, sightreading, and marching contest this past year. [Staff Photo by Ricky Stevens]

Sheppard AFB Notes

Length-of-service pins and certificates were presented to three civilians Tuesday morning at Sheppard Air Force Base, Tex., for 30 years service to the federal government.

The pins were presented to Thomas J. Dorman and Thomas A. Thompkins, training instructors, and to Walter E. Hiler, and electronic training device fabricator and repairer, all with the School of Applied Aerospace Sciences.

The awards were presented by Major General Robert L. Petit, Sheppard Technical Training Center Commander.

A native of Philadelphia, Pa., Mr. Dorman began his civilian federal career at Francis Warren AFB, Wyo., in January 1956, after serving in both the U.S. Army and Air Force.

He has been employed as a training instructor in the Department of Communication and Missile Training at Sheppard since 1960, except for a brief period of military service in 1962. He is presently an instructor in communication maintenance and resides with his family in Burk Burnett.

Medals were presented to two people at Sheppard Air Force Base Tuesday, marking the end of a distinguished career in the U.S. Air Force.

Lieutenant Colonel Richard N. Mead was presented the Meritorious Service Medal by Colonel John H. Allison, Sheppard base commander. Colonel Mead was presented the award for his outstanding service as secretary/custodian of the Sheppard Officers' Club, from Sept. 18, 1972 to April 30, 1974. The colonel will retire in Burk Burnett.

In another ceremony, Technical Sergeant Donald L. Braun was presented the First Oak Leaf Cluster to the Air Force Commendation Medal. He earned the award as an aircraft maintenance technician with the 3750th Maintenance and Supply Group from Aug. 16, 1971 until his retirement.

EWELL'S HOME REPAIR SERVICE
QUALITY WORK-FREE ESTIMATES
Carpentry-Concrete
Painting-Roof Repair
1102 Cheryl Cr. Ph. 569-0600

CARD OF THANKS

The family of Dan Alphas wishes to express our thanks to our friends for being our friends in our need of sorrow. God bless you.

The Sauls Family

CARD OF THANKS

We wish to thank the many friends and relatives of our beloved mother and grandmother, Mrs. Ben McDonald, for all their acts of kindness and consideration during her lengthy illness and recent passing.

The family of Mrs. Ben L. McDonald Sr.

GENERAL CONCRETE WORK
--Drives, walks, patios, curbs.
Ken Benson 569-1387.

E & V ELECTRIC
ALL TYPES OF ELECTRICAL CONTRACTING AND REPAIRS
FREE ESTIMATES

Karry Elliott 569-2897
Eddie Viavattene 569-0345

A Trusted Family Friend ... in a time of need

OWENS & BRUMLEY FUNERAL HOME
Serving you since 1921
Phone 569-3361

MAY 12 IS MOTHERS DAY

AN INVITATION TO REVIVAL SERVICES AT PENTECOSTAL Church Of God
415 N. Berry Street
BURKBURNETT, TEXAS
SUNDAY MAY 12
7:30 P.M. Nightly

Rev. H. Y. Clipper
Nocona, Texas

THIS COPY SHOULD NOT BE PREPARED BEFORE COMPLETION OF REPORT OF CONDITION

Call No. 489 Charter No. 13668 National Bank Region No. 11

REPORT OF CONDITION, CONSOLIDATING DOMESTIC SUBSIDIARIES, OF THE
First National Bank of Burk Burnett

IN THE STATE OF Texas AT THE CLOSE OF BUSINESS ON April 24 1974
PUBLISHED IN RESPONSE TO CALL MADE BY COMPTROLLER OF THE CURRENCY, UNDER TITLE 12, UNITED STATES CODE, SECTION 161.

ASSETS	Dollars	Cts.
Cash and due from banks (including \$ No unposted debits)	2 458	884 17
U.S. Treasury securities	1 177	925 00
Obligations of other U.S. Government agencies and corporations	1 700	000 00
Obligations of States and political subdivisions	2 501	033 14
Other securities (including \$ No corporate stock)	15	000 00
Trading account securities	None	
Federal funds sold and securities purchased under agreements to resell	600	000 00
Loans	9 737	410 73
Bank premises, furniture and fixtures, and other assets representing bank premises	34	894 73
Real estate owned other than bank premises	None	
Investments in unconsolidated subsidiaries and "associated companies"	None	
Customers' liability to this bank on acceptances outstanding	3	000 00
Other assets (including \$ No direct lease financing)	17	327 850 77
TOTAL ASSETS	17 327	850 77
LIABILITIES		
Demand deposits of individuals, partnerships, and corporations	5 437	096 43
Time and savings deposits of individuals, partnerships, and corporations	8 463	499 68
Deposits of United States Government	35	952 64
Deposits of States and political subdivisions	1 528	784 77
Deposits of foreign governments and official institutions	None	
Deposits of commercial banks	100	000 00
Certified and officers' checks, etc.	126	921 74
TOTAL DEPOSITS	\$ 15 712	255 26
(a) Total demand deposits	\$ 5 437	096 43
(b) Total time and savings deposits	\$ 9 275	158 83
Federal funds purchased and securities sold under agreements to repurchase	None	
Liabilities for borrowed money	None	
Mortgage indebtedness	None	
Acceptances executed by or for account of this bank and outstanding	None	
Other liabilities	206	188 33
TOTAL LIABILITIES	15 918	443 59
MINORITY INTEREST IN CONSOLIDATED SUBSIDIARIES	None	
RESERVES ON LOANS AND SECURITIES		
Reserve for bad debt losses on loans (set up pursuant to IRS rulings)	172	122 24
Other reserves on loans	None	
Reserves on securities	None	
TOTAL RESERVES ON LOANS AND SECURITIES	172 122 24	
CAPITAL ACCOUNTS		
Capital notes and debentures	None	
% Due	\$	
% Due	\$	
Equity capital-total	1 257	284 94
Preferred stock-total par value	None	
Common Stock-total par value	200	000 00
No. shares authorized	8,000	
No. shares outstanding	8,000	
Surplus	300	000 00
Undivided profits	757	284 94
Reserve for contingencies and other capital reserves	None	
TOTAL CAPITAL ACCOUNTS	1 257 284 94	
TOTAL LIABILITIES, RESERVES, AND CAPITAL ACCOUNTS	17 357 850 77	
MEMORANDA		
Average of total deposits for the 15 calendar days ending with call date	16 010	266 00
Average of total loans for the 15 calendar days ending with call date	9 691	400 00
Interest collected not earned on installment loans included in total capital accounts	None	
Standby letters of credit	None	

I, R. Dale Lewis, Vice President & Cashier of the above-named bank do hereby declare that this report of condition is true and correct to the best of my knowledge and belief.

R. Dale Lewis

We, the undersigned directors attest the correctness of this report of condition and declare that it has been examined by us and to the best of our knowledge and belief is true and correct.

Harold VanLoh
H. C. Preston, Jr.
A. R. Hill

Directors



FIRST POPPY--Tiffany Alvey sold the first poppy to the Burk Burnett Mayor recently to kick-off the American Legion Auxiliary poppy sale. Also pictured is Auxiliary member Mrs. Joe Alvey. Proceeds from the poppies are used 100 per cent disabled veterans in remembrance of fighting men who died in the service of their country. [Informer/Star Photo]

Car Show To Be May 18, 19

An antique auto show will be held in Burk Burnett May 18 and 19. Sponsored by the Wichita Falls Antique Auto Club, the show will be in the junior high football stadium. Some 100 cars will be exhibited. For more information contact Sam Robertson, 305 N. Berry or phone 569-0146.

Dogs Shutout IP 2-0

Burk Burnett's pitcher Bimbo Davis delivered a three-hit shut out to the Iowa Park Hawks to close the gap between them with a score of 2-0. The win over Iowa Park gives Burk Burnett a 3-2 record in zone play. Iowa Park is leading with 4-1 in the zone. Davis, who scratched up



Robbie Pemberton

Pemberton Wins State

Robbie Pemberton, son of Mr. and Mrs. W.H. Pemberton, placed 1st in State Finals in Persuasive Speaking last Friday, May 3, in Austin. He is a Burk Burnett High School student. His speech, titled "Should the United States Detente be continued?" lasted six minutes and 35 seconds of the seven minutes allowed. Pemberton, who received a plaque and medal, commented that the contest was highly organized and well executed. Accompanying him was Mrs. Hamilton, his speech teacher, and Tim Pollard, who placed fifth in science.

Little League Games Begin

Little League play began in Burk Burnett Friday night (after a rain-out Monday causing postponement of the first games). The Burk Bank team, with the aid of the first homerun of the season hit by David Sherman, stopped First National Bank 12 to 1. Burk Bank kept a clean slate by also defeating Lafitte Exxon 9 to 1 Saturday morning. In other action, G and H Real Estate came from behind to slip by Herb's Discount 5 to 4, and in the Minor League, Burk Auto defeated Burk Lions 15 to 12.

Duffers' Corner by 'Putsey'

Two of our Burk Burnett golfers are making an excellent showing in the Olney Gold Tournament. Bob Carpenter, member of Hidden Valley Golf Course, and Bill Darland, Burk Burnett High School Principal, are presently leading the first flight. The final round scheduled for last Sunday is now scheduled for next Saturday. Best of luck to both of these fine golfers.

Some of our future pros may be playing right now at Hidden Valley Golf Course. Bruce Brookman, Sean McBeath, Brad Darland, Joe Lay, Jimmy Boardman, Ami Bruendle, and Cindy Gregory are just a few of the younger group who play an impressive game of golf.

May 7th inaugurated our weekly ladies day. A nine hole ringer tournament was started which will continue thru July. Ladies interested in joining this Tuesday group contact the Pro-shop (569-8133). This Saturday, May 11th, the annual Lions Club Father-Son tournament will be held beginning at 9 A.M. All Players are requested to be present by 8:30 A.M. Entry fee is \$2.00 per team. There will be four age groups with trophies for each group.

Tip for the week: Find and use your dominant eye for putting. Your local pro can help you to determine your dominant eye.

Henderson Chosen For All-Star Game

AUSTIN--The Texas High School Coaches Association announced last week that Burk Burnett High School's Zac Henderson has been selected to play in the 40th Annual High School All-Star football game Thursday, August 1, in the Houston Astrodome. Henderson will be a back on the 32-member North team, of which Bill Shipman of Lewisville will coach.

Henderson, 6'2" and weighing 182 pounds, was a member of the 1973 BHS Bulldogs Varsity football team, coached by Pat Smiley, athletic director. Henderson recently signed a letter of intent to attend Oklahoma University.

BHS Crushers Win Powder Puff Game

Powder Puff action kicked off last Friday night in the BHS football stadium with the Crushers defeating the Smashers 28-0.

In the first half, Jody Masters put together three large scampers to set the Crushers up for scores to make the score 20-0 ending the first half. The Smashers took advantage of numerous defensive holding calls to set up deep in Crushers territory in the second half, but failed to score.

In the fourth quarter a Crusher broke and scampered down to the Smashers 3 yard line where Tracey Martin slipped in to make the score 26-0, the two-point conversion was good, ending the game 28-0.

Football wasn't the only attraction. Boys dressed up like girl cheerleaders were on hand when the 1973-74 Powder Puff queen was crowned. The queen was David Ray, a sophomore.



JV CHEERLEADERS -- Junior Varsity Cheerleaders for 1974-75 at Burk Burnett High School were recently chosen. They are [back from left] Jana Barnes, Laura Lewis, and Lora

Coleman; [front from left] Teresa Reuwer, Stacey Weise, and Carol Tullis. [Informer/Star Photo]

SAFB Chooses Welsh For Degree Program

Captain Billy A. Welsh, an instructor in the budget officer course at the School of Applied Aerospace Sciences (SAAS) at Sheppard Air Force Base, was recently selected for the advanced degree program.

The captain married the former Linda J. Miller of Jackson, Tenn., and they have two daughters, Juanita, 9, and Jennifer, 8. He and his wife presently serve on the board of the Sheppard-Burk Burnett Parent-Teacher Association.

The program, under the Air Force Institute of Technology, permits those selected to attend a college or university to obtain an advanced degree in their speciality. Captain Welsh will attend the University of Oklahoma, Norman, Okla., for a master degree in business administration.

Captain Welsh enlisted in the Air Force in July 1962. He earned a bachelor of business administration degree from the University of Oklahoma in 1967, and was commissioned that year upon completion of Officers Training School.



Captain Welsh

Lions Sponsor Tourney

The Burk Burnett Lions Club will sponsor a "father-son" type golf tournament Saturday, May 11, at the Hidden Valley Golf Course in Burk Burnett. The idea is to have partnerships consisting of father-son, mother-daughter, or any older person teamed up with a partner under 17 years of age.

There will be four flights, with entrants in each flight divided by the age of the younger partner. Flights will probably be divided into the following categories: 6-and under, 7-9, 10-12, and 13-16; with the youngest flight playing nine holes and others 18.

Each partner will alternate on each stroke, with just one ball in play during the tournament.

To register, call the golf course or Mickey Cornelius (Lions Club president) before 9 a.m. Saturday (which is tee off time).

The tournament is open to persons in the Wichita County area.

HIDDEN VALLEY GOLF COURSE
ACROSS FROM KOA - BURKBURNETT

- 9 hole Par 3 Course
- Driving Range
- Putting Green

HOURS
Weekday 9 a.m. to Dark
Sat. & Sun. 8 a.m. to Dark
Phone 569-8133

New and Used First Line Equipment at Bargain Prices.

30% off on new RAM Clubs

Palace Theatre

PG **"SHOWDOWN"**
A Universal Picture-TECHNICOLOR

DEAN MARTIN · ROCK HUDSON

FRI-SAT-SUN-MAY 10-11-12

YOU'RE Invited

to visit our

Completely REMODELED Supply House

WE CARRY COMPLETE LINES OF

- ★ HARDWARE
- ★ PLUMBING SUPPLIES
- ★ ELECTRICAL SUPPLIES

ALSO LAWN and GARDEN TOOLS

P.S. - Yes we are still the Area's Complete OIL FIELD SUPPLY HOUSE!

SEE US FOR YOUR BLOCK ICE!

HUNT SUPPLY

OKLAHOMA CUTOFF
Phone 569-1541