

# BURKBURNETT

# INFORMER

# STAR

MORE THAN A NEWSPAPER . . . A WICHITA COUNTY LEGEND SINCE 1908 . . .

VOLUME 65

BURKBURNETT, WICHITA COUNTY, TEXAS 76354

THURSDAY, DECEMBER 14, 1972

NUMBER 15

## Editor's Viewpoint



MONTE WILLIAMS

The Burk Bulldogs wound up their 1972 Football Season last Friday night losing to the Lewisville Farmers by a score of 34-0. It was a tough game and a tough loss for the Bulldogs. But, long before hundreds of fans and the mighty Bulldogs made that drive to Ft. Worth, all knew that only one victor would emerge from that game. And as many of us saw, the Farmers came out on top. Fans as well as Bulldogs felt that sharp little inward pain of defeat. Its just part of the game and its there at the end of all games for one side or another.

The beauty part about it all is that the good' sweetness of victory over our district and region can never be taken away and that's quite an accomplishment in itself. The Burk Bulldogs produced the most successful football campaign ever displayed in Burk Burnett and it was done through sheer determination, and hard work by both the coaching staff and team members.

So, when you get right down to it, we in Burk certainly have much more to be proud of than we sometimes think and especially our 1972 Bulldog Football team. These young gentlemen have given their very best efforts and are to be commended. Their overall performances during the season made it a season to remember for a long time in Burk Burnett.

Christmas! The word all by itself makes you feel good and think of all the good things of life. That's the way it hits me anyway. It makes you full of cheer so that you laugh at things that aren't really funny at all. Just this week, my wife went shopping. She packed home all her bags, piled them on the couch, made me a cup of coffee, grappled my house-shoes out of the closet. How nice it was. I asked out of curiosity, how much all that cost. She quickly said how much and ended with a big grin. I laughed a little myself. Why, I'll never know but it did prove my point. Sometimes you 'DO' laugh at things that aren't really funny at all.

This coming week in downtown Burk Burnett promises to be an exciting and fun one. Its the last shopping week before Christmas and the local Chamber of Commerce has planned many special activities for your Christmas shopping enjoyment while downtown. Oh! Santa Claus will be downtown during the week to talk to all boys and girls. He might even have a chunk of candy or two. Various Choral groups will be caroling on the streets hoping to boost your spirits and the excitement of Christmas, and all stores will be open late for your shopping convenience.

If you are not a Boomtown, we invite you to visit us anytime, but especially during our Christmas season. We're going to have a lot of fun and would like to share it with everyone possible.

And by the way, on Saturday, December 23, a group of Burk Merchants is sponsoring a downtown Kidee Matinee at the Palace Theatre. It would be a great time for mom and dad to do some private shopping. We'll say exactly what time in our next issue of the Informer/Star. Thanks.



Big Sam Hancock, 190 lb. Senior Quarterback for the Burk Bulldogs, tries in desperation to score against the Farmers of Lewisville. Several times the Bulldogs started on drives but failed to put it all together and hit pay dirt. Last Friday night was definitely not the Bulldogs night as they suffered two fumbles, three interceptions, and five dropped passes. The final score was 34-0 in favor of Lewisville. \*\*\*\*\*

Saturday, December 23

## Santa Claus Coming To Town

Santa Claus, late night shopping and Christmas carolers for your listening pleasure are all coming to Downtown Burk Burnett next week.

Old St. Nick will be on hand in his sleigh Saturday, December 23. Santa will have handfuls of candy and other goodies to hand out to little ones as they relate their special Christmas wishes.

Numerous groups of carolers from local churches and the local schools will be around from 4:30 - 6:30 Monday through Friday to sing the traditional

Christmas carols. The special groups will include the 21st Century Singers from the First Baptist Church, carolers from Hardin Jr. High and Southside Elementary Schools, a live manger scene from the Jan Lee Baptist Church, a group from the First Christian Church as well as numerous other groups from local churches and organizations.

Any groups wishing to join in and present an approx. 30 minute program of Christmas carols during the above mentioned two hour period or any

time Saturday, Dec. 23 is urged to contact the Burk Burnett Chamber of Commerce for further information.

Most Burk Burnett merchants will begin staying open until 8:00 p.m. beginning this Saturday and continuing on through Saturday, December 23.

A Community Christmas tree will also be located on the Burk Burnett Bank parking lot adjacent to Henry's Bakery. The tree and the entire week of Christmas activities are being sponsored by the Retail Trades Committee of the Cham-

ber of Commerce, with Lester Yates as chairman of the committee.

Remember, Saturday, December 23 is the special day for local youngsters as Santa will be in town all day and will be passing out bags of fruit and candy to the local kiddos.

Local citizens are urged to come and join in the Christmas festivities and to enjoy their Christmas shopping in Burk Burnett.

## Last Weekend

# Robbery, Theft, Vandalism Hits Heavy In Burkburnett

"Since this is the Christmas season there will be an increase in robberies and Burk residents can help us by of course keeping their doors locked and by keeping an eye out for any suspicious behavior," commented Buck Abbott, Chief of the Burk Burnett Police Department. He further commented that any information turned in will be strictly confidential and that if residents will aide the police the robbery rate can be lowered.

Burkburnett residents were blasted by robbers and vandals this weekend.

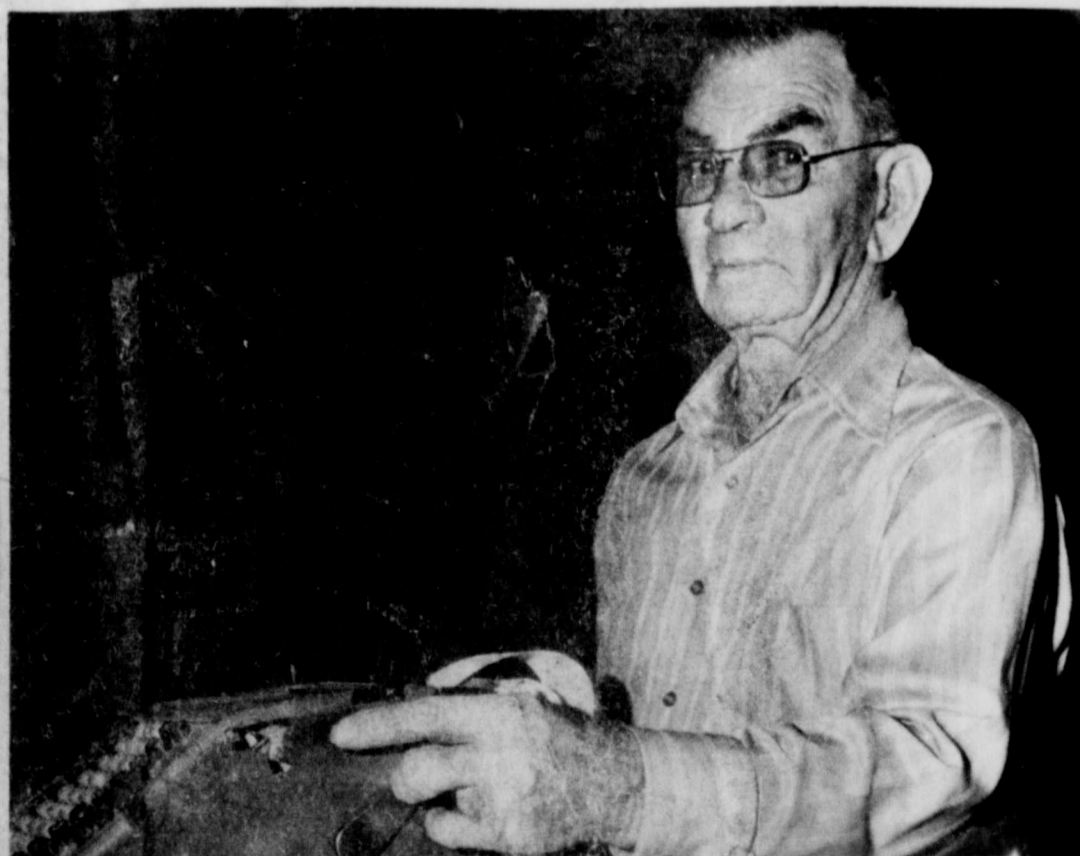
While the residents of 909 Tejas and 909 Kiowa were attending the Burk - Lewisville football game in Fort Worth, burglars were ransacking their houses of electrical appliances, clothing, and household accessories. The Tejas robbery added up to approximately \$3000 including \$1000 in stereo equipment, \$1200 in woman's clothing, and \$500 in household accessories and appliances. The Kiowa residents suffered an approximate \$600 loss. The robbers apparently broke into both houses through the rear windows. The police have one suspect so far and it is believed that at least three people were involved in the robberies. One gold three dimensional picture was recovered and a cash box which contained personal papers belonging to the Tejas residents. Both items were found on the side of the road by small children whose parents returned the items to the Police Station. The picture alone was estimated at \$160.

A mobile home on Highway 240 near the Boomtown Historical Marker was vandalized Friday. Damage to the furniture, kitchen cabinets and interior amounted to \$1,000. An armed robber at the Jiffy Food Store at 909 Sheppard Road got away with \$48 and the Police have no suspects at this time.

Two robbers entered the Gun Shop through the roof, but were apprehended and arrested in the Shop by Burk Policemen. The two accused men are Billy Eugene Rousey and Roy Leonard Kerr and are both residents of

Wichita Falls. Their car was also impounded as it was found outside the Gun Shop in the easy alley way. Bond was set at \$7,500 each. One of the

(See ROBBERY, Pg. 2)



Mr. Bill Crosley, employed at the Gun Shop in downtown Burk Burnett, points to a hole in the Gun Shop cash register. The hole was blown into the register by a Smith & Wesson 357 Magnum belonging to a Burk Burnett policeman. The shot was fired as a warning to two burglars who were trapped in the building and refused to come out. The two burglars entered the business through an air conditioning duct in the roof, intending, apparently, to make off with a good haul as they had a Van parked in back of the store. The men were both on the floor behind the counter when the shot was fired. Needless to say, both crawled out real slow with their hands in the air immediately following the blast.

## Burk Dogs Blasted By Lewisville Farmers

by Sedelta Verble  
Fog filled Amon Carter Stadium set the stage for a heartbreaking Bulldog 34-0 loss to the Lewisville Farmers during the Semi-Final tilt Friday night. The Farmer victory earned them the right to match Uvalde who defeated Brenham 27-21.

The Farmers sowed the seeds of victory early in the battle as Paul Rice and Mike Nichols romped up and down Amon Carter and is a result the Lewisville team led 14-0 at halftime.

Rice, a 175-pound sophomore, had already racked up 1,956 yards rushing when he entered the game and junior Mike Nichols,

a 207-pound fullback added 116 yards to the total 324 yards for Lewisville.

So the Bulldogs weren't just watching the two backs race around. These guys had obviously done exceptionally well all season.

Turnovers also hurt the 'Dogs as they forfeited two fumbles and had three passes snatched away, but these were taken away late in the game when the 'Dogs saw no other way than to hit the airways.

Amid the scoring the Bulldogs blocked the extra point tries and caused the Lewisville gang to have one TD called back. Rick Bradley and

David Spinks were responsible for the blocking and Spinks earlier batted down the intended pointer after the Farmers scored for the third time, and Bradley thwarted the extra on the last TD.

Throughout the contest the Bulldogs fought valiantly and never gave up to the fighting Farmers. The fact that Spinks and Bradley kept blocking those extras, displays to all the effort given by the Bulldogs. The scoreboard reflected a sad night but looking back over the season everything looks brighter with an outstanding 10-3 record and three beautiful trophies.



ALBERT DILLARD President of First Savings & Loan Association announced today that the Association's assets had passed the \$10,000 mark. The Association was founded in 1960 by a group of local businessmen and has enjoyed a record growth since that date.

Dear Editor,

We wish to make this announcement regarding the Christmas holidays which are upon us. Now, we realize that sometime in our lives we encounter hardships which are usually beyond our control. However, traditionally again this Christmas, we wish to help provide toys to children whose parents have had a little hard luck. We have toys for children ages 1-14 years.

Due to circumstances beyond our control, we will be unable to deliver toys to children in their homes this Christmas as we have in past years. We are asking those who desire toys for their children to come by our home at 612 1/2 E. 2nd Street and pick up the gifts. All we need to know is the age and sex of the children. Please don't consider this charity as we don't--just a helping hand. Okay?

We endeavor to maintain our slogan that "A child is a child regardless of color, creed, or race." And each of them should have a good Christmas.

The time to come by for the gifts are Thursday, Dec. 14 or Friday, Dec. 15 only, from 9-3 p.m. both days. Please don't bring the children.

Wishing you and yours a Merry Christmas,  
Russell and Jaunita Duvall

## Advertising Sign Owners Must Acquire A Permit

Owners of advertising signs along Interstate, US and major state-numbered highways have until December 30, 1972 to apply for permits required under the Texas Highway Beautification Act.

The act controls all outdoor advertising signs from the largest signboard to the smallest sign hanging from a fence along the right of way line.

The Texas Highway Commission established the deadline under the legislation which came effective on June 29, 1972. The act requires that no person may erect or maintain a sign within 660 feet of an Interstate or federal-aid primary highway in Texas without a license to engage in outdoor advertising.

On-premise signs - those advertising activities conducted on the premises and those offering the property for sale are exempt.

The act will be implemented in stages. The first stage requires the owner of the sign to obtain a State license and post a bond. The license fee is \$25 and the license is valid for an indefinite period.

The license application must be accompanied by a bond in the amount of \$2500 for each county in which signs are located, or a maximum bond of \$10,000 for owners with signs in more than three counties.

Privately owned signs maintained or owned by churches, restaurants, motels, auto dealers and land owners are our main interest since they have not responded to the regulations governing outdoor advertising signs. Sign companies who sell advertising copy to customers are aware of the new law. The sign owner who has only on or more sign located on a friends property or leased site must have a license and per-

mit. There will be a public meeting at the Texas Highway Department Main District Office in Wichita Falls, at 1:30 p.m. Wednesday, Roy A. Horn of the office will conduct the meeting. If there is any doubt about your sign, it will be to your advantage to attend.

## Prizes Donated For Christmas Lighting Contest

Mrs. Marjorie Kauer told the INFORMER/STAR Tuesday morning that prizes had been donated for the winners of the Christmas Lighting Contest which is being sponsored by the Community Service Council

(See PRIZES, Pg. 2)

**Informer-News Corporation,  
Publishers**

**Lon H. Williams, President-Publisher**

Entered as second class matter at the Post Office at  
Burk Burnett, Texas, 76354, under the Act of March  
30, 1879.

**SUBSCRIPTION RATES**

\$5.00 per year in Wichita, Cotton, Tillman Counties

\$6.00 per year elsewhere

**NOTICE TO THE PUBLIC:** Any erroneous reflection upon  
the character, standing or reputation of any person, firm or  
corporation, which may appear in this newspaper will be gladly  
corrected as soon as it is brought to the attention of the  
publisher.



**Robbery**

Continued From Page One

alleged robbers is out on bond while the other one remains in the County jail.

And finally the Junior High was broken into. Damage was done to several desks and file cabinets but only \$1 was stolen. The police say the vandals were probably juveniles because money was left lying on an inside desk. The Police have two suspects.

Because of the hazardous weather, it is surprising that only two minor fender-bender accidents have occurred. Police Chief Abbott noted that this is exceptional and that Burk Burnett citizens are obviously taking caution and cooperating with the weather advisories or more serious accidents would have occurred.

**Prizes**

Continued From Page One

of Burk Burnett. First prize in the contest will be a yard light donated by Texas Electric. Second and third prizes will be Savings Bonds donated by the Burk Burnett Bank and the First National Bank. Six area prizes in the amount of \$10.00 Gift

Certificates will be donated by various Burk Burnett businesses. Preliminary judging of the contest started on December 12 and will end on the 16th. Judging finals will be held December 18 and 19th.



Dear Ray:  
I want to thank you for your hospitality during my recent visit to Burk Burnett. That telephone came in very handy, and saved me considerable time and effort.

I've had a copy of the story sent to you. Unfortunately the few paragraphs about how Burk Burnett got its name, which I took from the history book, got eliminated from the story.

But again, thanks very much for your courtesy.

Sincerely,  
Nicholas C. Chriss  
Los Angeles Times

determination of the people of our part of Texas.

My job has been exciting. I remained enthusiastic and I have been challenged continuously by North Texans who want things done, people who aren't content with sitting back and complaining. The determined attitudes of our people must not deteriorate, and I see no reason why they should.

Although we all know that the government continues to function day by day, it is hard for me to realize that for the first time in more than a decade I will not be a part of it. Personally, I will leave and take up my former profession. Although this is perhaps the most saddening experience I have ever had, it's the reassurance that our system is a very strong one, and that there are people like you behind it, that will work to erase my personal feeling of loss.

As for my own plans, I intend to stay here in Washington and open a law office. An attractive offer has been extended to me by an established Dallas firm to become a partner and represent interests of the Southwest here in the nation's capital. I look forward to our friendship continuing as a result of this good offer, Ray, and I intend to be back to see you and my hundreds of friends in North Texas just as often as possible.

Please feel free to get in touch with me whenever I can be of help to you. I want us to stay in contact, and I want to share in continuing to get things done for North Texas.

Warmest personal regards,  
Graham Purcell

Dear Ray:  
With Congress not in session now, my time allows a lot of reflection. Soon another man will take my seat. I have had it for eleven years and that's what I want to talk about.

You and countless thousands of friends have placed in me the greatest trust and the most humbling responsibility over those years that anyone can ever hope to have. To have had your trust in my ability to speak for North Texas here in Washington is a personal treasure. The responsibilities of this office have not been burdensome to me as they have been for many colleagues. The telling difference is not between them and me, however. They just haven't had people like you supporting them.

Eleven years ago I took my turn at a job which will never be finished. If I could do it, I would like to walk up to everyone in North Texas and say "Thank you." At the same time, and more importantly, I would impart to each a measure of the tremendous faith which I have developed in our area.

The former 13th Congressional District has consistently distinguished itself in its progressive willingness to pull together and advance, both economically and socially. We're not far from people who have chosen other courses, preferring negativism and complaint to the hard work and forward

TO: All Editors and Extension Personnel  
This is to inform you of my joining the Agricultural Extension Service at Lubbock as Area Information Specialist, replacing Tom Curl who left in mid-summer.

While these early days are being spent mostly in reviewing files and procedures and getting acquainted with people in Dis-



BURK BASKETBALLERS are (left to right) Mark Bailey, Danny Nix, Mike Millar, Skip Dean, Terry Thomas, Greg Maise, Mark Johnson, Larry MacMahill.

**Petrolia Wins Burk Tourney**

Danny Nix paced the Bulldogs with points in the Burk Burnett Tournament Saturday as tough Petrolia rolled by the Bulldogs 81-68. The tilt leaves the Pirates with nine wins and the Burk Burnett championship trophy.

Quanah took the consolation trophy with a 64-55 victory over Seymour. The Burk B Team played Seymour for a 31-35 loss on Saturday and Burk Burnett outplayed Childress 70-46. Quanah stired the flames for consolation hopes

as they ran past Seymour and the Coyotes downed Childress 71-59. Nocona edges Henrietta 64-51 and Petrolia took the Coyotes 86-75 to round out the Burk Burnett Tournament giving the Wichita Falls Coyotes third place.



Much of the Burk Bulldogs great support this year came from the student body. During last Friday's Pep Rally these two youngsters gave a very spirit sparking demonstration. By pouring one clear solution into another clear solution the mixture momentarily turned bright orange and then automatically changed into a deep black color. We all know that's Bulldog country colors.

**During Holidays  
U.S. Postal Service  
On Reduced Schedule**

The U.S. Postal Service will operate a reduced schedule of services for the Christmas holiday period this year, Postmaster W.T. Zimmerman announced today.

On Saturday, December 23, delivery and collection services will remain on their regular schedules.

On Christmas Eve, Sunday, December 24, all post offices will be closed so that postal employees may enjoy the holiday with their families.

Post office lobbies will be open in many cities for mail deposit, access to lock boxes, and purchase of stamps from self-service machines. Collection and special delivery services will be provided.

On Christmas Day, all offices will be closed. However, special delivery services will be provided.

Jim Owen Jones  
Area Information Specialist

**MISSILE CLUB**

4318 Burk Road  
Between Sheppard Main Gate 7 & North Gate

**Live Music-Dancing**

COUNTRY-WESTERN BAND  
Top Hands

**Friday & Saturday Nights  
Jam Session--Wednesday**

MEMBERSHIP OPEN

**READ THE  
CLASSIFIED  
PAGE TODAY**

**Applications  
Now Accepted  
For Postal Exam**

The United States Postal Service announces an examination for substitute rural carrier of record at the Burk Burnett, Texas Post Office. Applications must be submitted before January 1, 1973.

**INTERESTED IN CONSERVATION  
HUNTING & FISHING STORIES,  
BEAUTIFUL COLOR PHOTOGRAPHS  
GET A SUBSCRIPTION TO:**

**TEXAS PARKS &  
WILDLIFE MAGAZINE**

TEXAS' BEST OUTDOOR  
INFORMATION. ONLY \$3.15  
PER YEAR - \$5.25 FOR 2 YRS.  
(FOREIGN SUBSCRIPTIONS NOT  
INCLUDING APO & FPO - \$4.00  
PER YEAR) SINGLE COPIES  
53¢. SEND CHECK OR MONEY  
ORDER TO: TEXAS PARKS &  
WILDLIFE DEPARTMENT-DEPT.  
JOHN H. REAGAN BUILDING  
AUSTIN, TEXAS-78701

**State Hospital Needs  
Generosity For Success**

The Christmas Season at the Wichita Falls State Hospital with its 1400 patients depends on your interest and generosity for its success. Among the patients are those who have outlived family and friends, who never receive any mail or any visitors, who are dependent on the concern of volunteers for any of the small favors of life.

The Volunteer Services Council of the Wichita Falls State Hospital seeks the support of individuals and organizations in the fifty-two county area from which patients come to achieve four goals:

First, two NEW gifts for each patient, a large one and a small one.

Second, getting groups to sponsor certain projects; for example, 1400 soft Hershey bars

are needed for little elderly patients who must watch what they eat; 100 cartons of cigarettes for those who still smoke; 50 large size dresses, blouses and large size men's shirts, and artificial Christmas trees.

Third, carolling groups, sponsors for ward parties, furnishing refreshments and other Christmas entertainment.

Fourth, funds with which to purchase Christmas needs. Checks should be made out to: Volunteer Services Council, Wichita Falls State Hospital, Box 300, Wichita Falls, Texas 76307.

Your town through its religious, civic, and community organizations has supported needs in Christmases past. You have made it possible for an elderly patient to reach out an aged,

wrinkled hand to touch a new soft sweater belonging only to her, bringing a warm glow to her face. You have made it possible for a child's arm to close eagerly around a doll belonging only to her. We urge your continued support this year.

In making gifts, the following procedure should be followed: Label each item "Christmas Gift." Include donor's name and address. The gift should be unwrapped, including wrapping paper and ribbons if possible. If the gift is intended for a particular patient or ward, the information should be with the item. The earlier the gifts are received the better. Special shopping or requests will be attempted to fulfill needs which do not come in.

**Parents  
Beware Harmful Toys**

A flying toy activated by exploding capsveers unexpectedly in flight and strikes a youngster in the face, causing serious injuries and scars.

Two girls are playing catch with a toy punch ball that had been blown up to its recommended size. A defect in the ball causes it to explode in the face of one of the girls, leaving her permanently blind in one eye.

A child playing with a toy heating unit designed to mold plastic trinkets puts her hand inside the unit. The intense heat, generated by electric current, burns her severely.

All these incidents involving children were accidents that actually occurred last year. They had one thing in common. They were caused by hazardous toys purchased from reputable dealers.

There are many joys at Christmas—a time for families to gather, a time especially for children to celebrate. But all too often family happiness has been marred by pain, even tragedy, when toys bought for children caused injury, says state health officials.

Shiny ribbons and bright wrappings hid dolls whose arms disintegrated to reveal stiff wire supports.

Wagons had wheels that pulled off, exposing sharply pointed axles.

Toy rattles have broken when dropped, resulting in small pieces that could be swallowed, and sharp fragments that could cut and scratch.

Other toys shoot potentially deadly missiles, provide electrical shock, turning hazards, and other maiming injuries. Remember the Indian Love Beads which contained the dead-

ly Jequirity bean? Or toys with toxic paints and lacquers? Many children receive lead poisoning each year from eating paint chips from old painted surfaces.

An estimated 700,000 injuries to children each year have been caused by toys. Thousands, perhaps millions of others, have gone unreported.

More than 60 percent of all toys sold in the United States each year are sold during the last three months of the year. Until recently, parents and other buyers of toys could rely only on their own judgments in selecting toys. Today, consumers are being assisted in the search for playthings by the FDA's Bureau of Product Safety, which under the Child Protection and Toy Safety Act regulates toys and other articles intended for children.

Under the law, FDA has ordered toy manufacturers and retail toy stores to remove from sale more than 800 individual toys. Any person who offers for sale such an article is subject to a fine and/or imprisonment under the Federal Hazardous Substances Act.

Despite these efforts by health authorities to improve the design of toys and to ban toys that pose a potential hazard, the ultimate responsibility for toy safety must rest with parents and other purchasers of toys. It is also up to each parent to make sure that his child plays with toys safely. Even a baseball could be dangerous if given to the wrong child.

But parents should be extremely cautious about the toys they buy, for there are reported instances of certain toys banned by federal authorities still being offered for sale in some retail toy stores in Texas.

Toys banned by FDA include rattles and similar items that contain rigid wires or sharp points that could cause serious puncture wounds, toys with small loose pieces that could be inhaled or swallowed, baby bouncers and similar products with scissor action joints and coil springs that could cut or pinch small fingers and toes, and many others.

When choosing a toy for small children, make sure it is too large to be swallowed and does not have detachable parts that can lodge in the windpipe, ears or nostrils. The parent should be sure the toy is not apt to break easily into small pieces or leave jagged edges and does not have sharp edges or points. Be sure the toy has not been put together with easily exposed straight pins, sharp wires, or nails. Avoid products made of glass or brittle plastic. Toys should not have exposed flames or build up heat to dangerous levels. Check for frayed electrical wiring and for parts which can pinch fingers or catch hair. For children under two, avoid long cords and thin plastic bag materials.

Parents should avoid toys that produce excessive noise. Even toy cap pistols fired too close to a child's ear can cause damage. Avoid shooting games, especially those involving darts and arrows, unless the games are played under parental supervision.

Texas health officials hope you pause occasionally from your merrymaking this holiday season to consider these hazards. Plan in advance and your Christmas can be a merry one with no regrets lingering over into the New Year.

**RECRUITING**

**HIGH SCHOOL GRADUATES**

**SPECIAL CHRISTMAS ENLISTMENT OFFER**

**Today's Army wants to join you.**

**U.S. ARMY**

**MEN 17-34 YOU CAN ENLIST NOW AND GO AFTER THE HOLIDAYS.**

**ASK YOUR LOCAL ARMY RECRUITER ABOUT ENLISTING TODAY AND SPENDING CHRISTMAS AT HOME**

**YOUR NEW PAY STARTS AT \$288 MONTHLY-- YOUR NEW CHRISTMAS HOLIDAY PAY WILL EARN YOU \$144.**

**AND YOU DON'T REPORT FOR DUTY UNTIL AFTER JANUARY 1ST!**

For Details See:  
SFC LANKFORD--SFC LONG--SSG HAMMAN  
WICHITA FALLS RECRUITING STATION  
P.O. BOX 2466, 8th at Lamar  
WICHITA FALLS PHONE 766-1663

# FARM REVIEW

## Spray Winter Weeds Now Before They Kill Grain

Winter annual weeds are beginning to appear, especially in early planted fields of wheat and other small grains, according to Frank C. Petr, area agronomist of the Texas Agricultural Extension Service at Amarillo. Now is the time to start making plans for spraying these weeds before they utilize moisture and nutrients needed by the grain crop.

"Tansy mustard and Kochia are the weeds most commonly encountered in the major wheat growing area of the state," Petr explains. "They can be controlled easily with one-half pound of 2,4-D applied either by air or ground spray equipment. It is important that the small grain plants are fully tillered before 2,4-D is applied. Yield losses and plant deformity may result if the plants are too young."

Not all wheat fields require spraying, since good stands of

vigorous wheat shade the ground early and discourage germination and growth of weeds, the agronomist says. In late-planted fields or in those that did not receive moisture until recently, the weeds may not appear until January or February. Therefore, fields should be checked carefully.

"Weeds are easiest to kill while they are in a rosette stage with a diameter approximately the size of a half-dollar," Petr advises. "If the weeds are elongated and yellow blossoms have begun to appear, it may be too late. They have already caused a reduction in potential grain yield."

"Research on weed competition which has been conducted by Dr. Allen F. Wise at the Southwestern Great Plains Research Center at Bushland, indicates that one weed per square foot can reduce wheat yields by 10 percent. If a potential

yield of 40 bushels per acre is assumed, the yield loss would be about four bushels or about \$7.00 per acre at current prices. With an estimated spray cost of \$1.50 per acre, this could mean an extra \$5.50 per acre as a result of controlling the weeds. When two weeds are present per square foot the estimated yield loss is 20 percent. Assuming a 15-bushel-per-acre yield potential under dryland conditions, the loss caused by weed competition would be about three bushels. In this situation the farmer could pay the spray cost of \$1.50 and realize an additional \$4.00 per acre from the weed control practice."

One-half pound of 2,4-D will control most winter annual broadleaf weeds, advises Petr. However, treacle mustard is showing up in some fields in the Northern High Plains. This weed is more difficult to kill and requires one pound of 2,4-D for effective control, says the area agronomist. It is important to fight this weed diligently to prevent its spread and hopefully to eradicate it.

In Archer, Clay & Wichita Counties

## Emergency Loans Available

Emergency loans may be made in counties where property damage or severe production losses have occurred as a result of a national disaster and are designated as emergency loan areas by the Secretary of Agriculture.

Archer, Clay and Wichita counties are so designated. The disaster must have occurred after January 1, 1972 and prior to July 1, 1973. Emergency loans are made primarily for

and expenses to carry out his proposed farming operations (4) in aid of credit and (5) the management of his farming or ranching operations.

To be eligible for subsequent Emergency Loans after the first full operating year following the disaster, applicants must be unable to obtain credit elsewhere.

Public Law 1-385 signed into law on August 16, 1972, makes principal cancellations available to applicants who receive Emergency Loans based on qualifying property losses or production losses caused by a disaster. An applicant's cancellation may be up to \$5,000 on losses not compensated for by insurance or otherwise.

Applications for loans or information regarding this program may be secured by contacting the office of the County Supervisor, Farmers Home Administration, Room 309 Federal Building, 1000 Lamar, Wichita Falls, Texas.



Roy W. Uelner, general manager, Allis-Chalmers Corp. Agricultural Equipment Division, recently completed arrangements for sponsorship of the Agricultural Sales and/or Proficiency Awards Program of the National Future Farmers of America (FFA). From left are Donald N. McDowell, executive director, National FFA Foundation sponsoring committee; Raymond E. Dague, manager, customer and dealer affairs, Agricultural Equipment Division; Mr. Uelner; and Philip H. Johnson, national vice president, FFA. The annual award program is designed to complement the training provided in the vocational agriculture classroom by making practical application of the academic subjects.

### Allis-Chalmers Corp. Local Dealer To Sponsor Program For Burkburnett FFA

The Allis-Chalmers Corp. Farm Equipment dealer of Burkburnett says that the division will sponsor the Agricultural Sales and/or Proficiency program of the National Future Farmers of America (FFA) beginning in 1973.

The annual awards program is designed to complement the training provided in the vocational agriculture classroom by making practical application of the academic subjects.

"Allis-Chalmers welcomes this opportunity to assist individual FFA members prepare themselves for a sales and service occupation in agriculture. The annual awards program provides individuals with incentive to do the best job in accordance with their performance potential," according to Larry Implement Co., of Burkburnett, Texas. (Sam Law Owner)

tenance firms.

According to Roy W. Uelner, general manager, Allis-Chalmers Agricultural Equipment Division, the FFA program is essential since agricultural on-farm trends towards larger farms with larger machinery and production capability. "The need is to fill the gap between the producing farmer and supporting agribusinessmen," Mr. Uelner said. "This FFA program is designated to do just that."

Among areas of employment for FFA program participants are feed and other farm supply stores, farm equipment dealership lumber and building supply stores, roadside markets and producer-retailing operations, florist shops, garden centers, nurseries and landscape maintenance.

### Fish Farming Meet Set For January

A Fish Farming Conference and the annual convention of the Catfish Farmers of Texas will be held Jan. 5-6 at Texas A&M University.

The Fish Farming Conference on Jan. 5 will provide detailed, current research findings on commercial production of freshwater fish, particularly catfish, announces James T. Davis, fisheries specialist for the Texas Agricultural Extension Service.

Some of the Nation's top fisheries scientists as well as several fish farmers will be on hand to discuss topics of interest to everyone involved in any aspect of fish production, points out Davis.

Speakers will place emphasis on the current status of the fish farming industry and on the outlook of the immediate future.

The Catfish Farmers of Texas will convene on Jan. 6. Officers and directors will be elected during a business session. A large exhibit room will be available for displaying equipment and materials pertinent to fish production and management.

Following the business session, fish farming facilities at Texas A&M will be toured, adds Davis.

Conference sponsors are the Extension Service and the Texas A&M Department of Wildlife and Fisheries Sciences.

## Indoor-Outdoor Tree ?

Consider using a living Christmas tree this year. Since everyone seems to be more ecology minded these days, what would be more fitting than a tree that could be used in the home for the holiday season and then moved to the yard or patio as a permanent fixture.

"While the traditional Christmas tree is usually a conifer of some type, many broadleafed plants also make attractive Christmas decorations," contends Everett Janne, landscape horticulturist for the Texas Agricultural Extension Service. The female Yaupon holly makes an attractive Christmas tree with its bright red berries and small dark-green leaves.

"Regardless of the type of plant you select, be sure it is adapted for the area or is suited for interior landscaping," notes the Texas A & M University specialist.

For South Texas plants that may be used as living Christmas trees include Podocarpus, Aleppo pine and Norfolk Island pine. Suggestions for Central Texas include the Deodar cedar, Arizona cypress, juniper, Podocarpus and Yaupon holly as well as many other holly varieties. The Norfolk Island pine serves as a delightful plant for interior landscaping.

## Dec. 8th Cotton Samples Graded

The USDA Cotton Division Classing Office at Altus graded 29,300 samples for the week ending December 8, and the season total stood at 122,100 samples classed. This is estimated at about 40 percent of this season's crop, according to C.E. Cox, officer in charge at Altus. Last year at this time total classed was only 15,800 samples, while two years ago at this date 145,000 had been classed.

Total classed from North Texas counties this year stood at 18,500 samples, compared with 485 samples last year at this date, and 18,300 two years ago.

Grades on North Texas cotton classed during the week were 65 percent White and 34 percent Light Spotted. Predominant grades were Strict Low Middling (4), accounting for 37 percent of the total, Low Middling (5), with 27 percent, and Strict Low Middling Light Spotted (42), with 26 percent.

Staples were predominantly 31, 32, and 33. Staple 31 accounted for 30 percent of the total, staple 32 was 42 percent, and staple 33 was 17 percent. Micronaire readings were in the 3.5 to 4.9 range on 53 percent of the samples. 29 percent was 5.0 to 5.2, and 18 percent 5.3 and above.

Pressley readings showed fiber strength mostly in the range 75,000 to 94,000 pounds per square inch, with the average being 84 thousand pounds.

The Agricultural Marketing Service reported that the cotton market in the territory was more active last week. Demand was stronger, although prices fluctuated up and down within about a hundred point range. Average prices on predominant qualities were about 475 to 650 points above government loan rates. Cottonseed prices remained steady at \$51 per ton.

way pine and a great variety of junipers make beautiful living Christmas trees, according to Janne. Some interesting decorative effects can be achieved by using plants that are a little out of the ordinary in regard to shape rather than the typically conical shape usually associated with the Christmas tree.

"Schedule your plans so that the trees doesn't remain in the house more than two weeks," advises the horticulturist.

"Place it where it isn't in the air stream of a heater or air vent. A room temperature of 65 degrees at night will help keep the tree fresh."

Be sure to place the root ball or container in a leak-proof tub or box, or cover the rug or floor with polyethylene film to prevent water damage. If the plant is balled-and-burlapped, put it in a container large enough to place an inch or two of damp peat moss, saw dust or pine bark around the ball to prevent excessive drying. Because of the low humidity usually found in heated homes, plants will probably require watering at least twice a week and maybe more often. They must receive enough moisture to prevent desiccation, cautions Janne.

Once the tree has been in a warm environment for a week or more, don't move it outdoors if the weather is severe. Instead, place it in the garage or some other cool protected area until weather conditions moderate.

The horticulturist advises against the use of lights on living Christmas trees as the heat from bulbs can damage leaves and bark if they touch. Small twinkle lights are usually safe to use if care is taken in placing them on the tree.

"With a little care and imagination, you can plan something different this year that will provide pleasure and beauty for many years to come," adds Janne.

### NATB Tips To Shoppers

Christmas shoppers were warned today to "Lock them up or lose them."

"Every year hundreds of Christmas shoppers in Texas are victimized by thieves who steal Christmas packages from parked cars, and sometimes the car itself," said C.C. Benson, manager of the southwestern division of the National Automobile Theft Bureau (NATB).

Therefore, the NATB urges Texas motorists to always take these precautions while shopping:

- \* Don't leave packages or other possessions on the seats or the floor of your parked car. Put them in the trunk.
- \* Roll your windows up tight, and lock your car doors.
- \* Don't forget to remove your ignition key when you remove yourself from your parked auto -- even for a moment.
- \* Don't park your car in a remote or dimly lit spot.

FACTORY Authorized Service  
HAROLD'S TV SERVICE  
224 E. 3rd. Burkburnett

## Farmcast

A Weekly Report Of Agri-Business News

Compiled From Sources Of The Texas Department of Agriculture  
John C. White, Commissioner

Winter Weather Stops Harvest... Consumers Sound Off... Confined Feeding Regulations Rejected... Cold Weather Slows Screwworm.

Old man winter slowed harvest of Texas agricultural products from the Panhandle to the Rio Grande Valley. Citrus harvest was at a slower pace due to cold, wet weather. Cotton and grain sorghum harvest on the High and Low Plains was delayed by snow and freezing weather.

Peanut and soybean harvest was also cut back due to the weather; farmers were also unable to complete seeding of wheat and oats.

But in spite of the bad weather, overall harvest is generally ahead of last year. Cotton harvest for the state is now more than 40 percent complete compared with less than a third a year ago. Grain sorghum harvest, on the other hand, is slightly below last year at this time. Peanut harvest is virtually complete. Sugarbeet harvest is 60 percent finished compared to only about 50 percent at this time last year. Soybean harvest is behind this year compared to 1971; this year the crop is about three-fourths gathered; a year ago harvesting of soybeans was 85 percent complete.

Peanut harvest is again slowed due to the weather for the third straight week in a row.

Wheat seeding throughout the state is almost complete as is oat planting. Flax seeding is 75 percent complete compared with slightly more than half a year ago.

CONSUMERS had their chance to sound off recently regarding dairy products. A survey of consumers was sponsored recently by the Texas Department of Agriculture to give the dairy industry information on consumer acceptance of dairy products.

The two most serious complaints voiced by the consumer were spoiled and bad quality products and faulty containers. High prices were also a complaint by consumers.

Consumers suggested to the dairy industry that it provide fresher dairy products, date all product containers, use more glass milk containers, provide a wider variety of cheeses.

The survey was conducted in the Houston, Lubbock, San Antonio, and Tyler areas.

TEXAS Water Quality Board's proposed water pollution control regulations for dairy and poultry operations have been withdrawn. The Texas Water Quality Board will continue its present policy of handling each confined feeding operation individually under its waste control order or "permit" system. Only swine are exempt from the Swine operations are required to register under the swine feeding regulations.

COLD weather has slowed screwworm infestations, and this providing an opportunity for officials in charge of the screwworm eradication program an opportunity to make plans for 1973.

Screwworm eradication officials at Mission look upon this period as a time to "catch up" in efforts to eradicate the screwworm in 1973.

Cooperation between Mexico and the U. S. governments as well as cattle producers in those two countries will help to improve prospects for the 1973 eradication effort, officials explained.

**BOOMTOWN PHOTO**

D. E. BRADY  
817-569-0511  
414 AVENUE C

AVAILABLE FOR PRIVATE PARTIES

1-8 p.m. Daily  
9-2 Sat.  
Others by appt.  
569-0511

## Better Potatoes From More Phosphorus-Less Nitrogen

Higher quality West Texas potatoes can be had for a slight sacrifice in yield if farmers are willing to use less nitrogen with more phosphorus. This exhortation comes from Dr. William N. Lipe, assistant professor of horticulture at the Texas A&M University Experiment Station near Lubbock.

In potato fertility research conducted by Lipe during 1971 and 1972, high residual nitrogen levels coupled with large pre-plant applications of nitrogen was the primary cause of poor quality in West Texas potatoes.

"The quality of a potato," says Lipe, is related directly to low specific gravity (the measure of density of a potato), high reducing sugar content, and low total solids (solid content) of a potato, sometimes determined by drying which takes away water content and leaves

only the solids).

"Farmers sometime take the easy and cheaper route to high yield by using large applications of nitrogen to cotton, grain, sugar beets and vegetables. This results in residual accumulations of 300 to 400 pounds of nitrogen in the upper two to four feet of soil on many High Plains farms. Such residual causes sharp declines in the level of specific gravity and total solids the next year in vegetable crops and sharp increases in the levels of reducing sugars. In 1972 trials, high incidence of tuber rot also occurred in high nitrogen treatments, especially with the Red La Soda variety."

The solution? Proper balance of nitrogen and phosphorus. The effects of phosphorus were just the opposite from those of nitrogen, Lipe explains. Although phosphorus did not significantly increase yield as did nitrogen, it did have advantageous effects on quality. Specific gravity and total solids increased slightly with increasing levels of phosphorus. Especially notable was a decrease in reducing sugars as the level of applied phosphorus increased.

"It is apparent," Lipe exerts, "that in order to maintain high quality in potatoes, it may be necessary to sacrifice some of the yield with a proper balance of nitrogen and phosphorus."

Growers are encouraged to begin a good soil testing program correlated with fertilizer response, in order to assure the best potato production for the consumer.

## Tips On Buying New Dishwasher

If Santa leaves a dishwasher under the Christmas tree, it could mean a surprise--and a real reduction of kitchen clean-up chores all year long.

Lillian Cochran, home management specialist with the Texas Agricultural Extension Service, Texas A&M University, offered some hints in the selection, use and care of this appliance, now in one-fourth of the nation's homes.

In selecting one, first examine the family's needs for a dishwasher--several different kinds are available. Then use these needs as a guide in choosing the one to buy.

"Look for dishwasher with features that allow 'programming' the machine for different loads."

"Some models have a 'rinse and hold' cycle, so there's no need to waste water on partial loads--an ideal option for a single person or small family."

Other models may feature a long, heavy duty or soak cycle for pots and pans. "All dishwashers offer the convenience of warming plates--simply by advancing the dial to the dry cycle."

Where there's limited space, as in some homes and apartments, a portable may be the answer.

"Portable models roll up to the sink at wash time, connect to the hot water faucet, and plug into an electrical outlet."

As an added bonus, some portables convert to under-the-counter use once a permanent place is available, Miss Cochran said.

On the other hand, built-ins fit right under the counter for easy loading.

**APPLY NOW**

We Train You to Work As **LIVESTOCK BUYERS**

If you have some livestock experience we will train you to buy cattle, sheep and hogs.

For a local interview, write today with your background. Include your complete address and phone number.

**LIVESTOCK BUYERS, INC.**  
Box 1181  
Des Moines, Iowa 50311

Training Cattle and Livestock Buyers

**equipment operators!**

Here's a man's boot every step of the way! Rugged, handsome, ready for a rough day's work anytime. Easy on the feet, too. Stop on--try on Pecos by Red Wing and be convinced!

**FAMOUS DEPARTMENT STORE**

569-2441  
Downtown Burkburnett

**Attention Farmers!!**

We are now delinting seed daily, 8 a.m. -- 6 p.m. Monday through Friday.

Please call for appointment. Free Germination.

We invite you to visit and inspect our new modern delinting facilities.

**DI-SYSTON DE-MOSAN MIST-O-MATIC Seed Treatments**

See your local Gin manager for our

**BULCOT BRAND**  
PLANTING SEED

PHONE: DAY 405--687-2593 PLANT  
NIGHT 405--482-2146 ALTUS  
405--482-1210 ALTUS

**Southwest Seed & Delinting Co., Inc.**

Box 207  
ELMER, OKLA.

# ROUND THE TOWN

by Sylvia Lohofner



Mrs. A.P. Yearly, 83, a former resident of this city, now living with her daughter, Mrs. Emma Tom Hansard at 1208 Monroe in Wichita Falls, opened the holiday Christmas season by entertaining 27 relatives of the Clement family on Sunday, December 3rd. The house was beautifully decorated throughout, done mostly by Mrs. Yearly herself. A long-time close friend, Mrs. Ruth Beldon of Burkburnett dressed in Santa attire, distributed gifts to all. A recording was made of songs, talks and entertainment. Pictures were also taken. Refreshments were served from an attractively decorated table to Mr. and Mrs. Tom Gill of Lubbock, Harold Green family of Tahoka, D.L. Richardson and family of Oklahoma City, Mr. and Mrs. Herrold Casey of Norman, Okla., John Clement, Mr. and Mrs. J.P. Hickerson, the Howard Clement family, Eugene Robertson and family, all of Burkburnett; Mrs. Othelia Bibeau, Mary Ruth Clement, Emma Tom Hansard and Mrs. Yearly, all of Wichita Falls. All enjoyed the gala holiday party given by the gracious hostess.

Mr. E.L. Nease, a patient in the Bethania Hospital in Wichita Falls, is receiving treatment and special care. Mrs. A. Bass and daughter Debby attended the funeral services for his mother, Mrs. Ross Leese, 71, of Stockton, Calif., Thursday. The services and interment were in Lodi, Calif. The Bass family returned Sunday.

Barbara Ross is still in the SAFB hospital this writing. She is recovering from pneumonia and other complications. Mrs. W.T. Bracken was returned to her home Monday from several day's stay in the Wichita Falls General Hospital where she received treatment. Mrs. Alice Goodwin has returned to her home in Longview, Texas after being ill and confined to a motel room in Denton. She had attended the funeral of her sister, Mrs. Virgil (Gertrude) Taylor in Gainesville when she was taken ill. On the same day as her sisters' funeral, the funeral of her nephew Johnny Morris was held in Wichita Falls. He had been ill a long time and died in Houston. Mr. Morris was the son of Mrs. Margaret Greer of Houston, formerly of Wichita Falls. She is the sister of Mrs. Goodwin, and had visited in the Goodwin home in Burk many times before Alice moved to Longview several months ago.

Mr. Seth Brown, who is a patient in the Wichita General Hospital, is still very ill and it is indefinite when he will return home. Older residents of Burk were saddened by the news of the death last week of Mrs. Thelma Kimbrough, 72, in Wichita Falls. Mrs. Kimbrough and her late husband lived and served the Burk area during the boom period. Their one daughter, Peggy Jean, now Mrs. Jack Helmeamp, was born in this city. Following the boom era the family moved to Wichita.

Mrs. Cleo Stamps is in the Wichita General Hospital receiving tests and treatment. Mr. and Mrs. Ray Johnson from Little Rock, Arkansas visited his aunt, Mrs. Gilley. Visiting Mrs. Wilburn was her son from Electra. Visiting Mr. and Mrs. C.D. Mullins were their grandson and wife, Mr. and Mrs. Germany from White Deer, Texas. Mr. and Mrs. Mills and son from Wichita Falls visited their grandmother, Vera Ellis, Sunday.

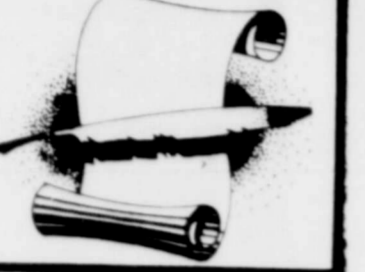
Mrs. Johnson's children presented her with a new television for Christmas. Evergreen Manor wishes to extend an invitation to everyone to come and celebrate our annual Christmas Party, Saturday, December 23 at 7:00 p.m. Santa will be here and Mr. O.D. Wortham will be master of ceremonies. Visiting Minnie Hill was her son George from Wichita Falls and granddaughter Diana Rieley from Providence, Rhode Island. We were saddened to learn of the death of Mrs. Cole, better known as Mother Cole. She had been here six years and will be missed very much. We extend our love and sympathy to the family.

Mrs. J.C. Adams, who was the victim of a broken shoulder caused from a fall in her home, is resting well in the Wichita General Hospital at this writing. Mrs. Jack Bass, who recently underwent major surgery in the SAFB Hospital, is doing fine. She was able to accompany her husband Jack to Stockton, Calif. to attend the funeral of his mother. Mr. and Mrs. Ray Anderson attended the Burk-Lewisville Football game in Ft. Worth Friday night and then drove to Carrollton and spent the night with their daughter and family, Peggy and Don Kennedy. The Kennedys' accompanied them to Burk Saturday for a longer visit. They returned home Sunday P.M. Mike Meyers was released from a Wichita Falls Hospital Monday and is recuperating at home. Mike's knee required surgery for torn ligaments and torn cartilage as a result of the Burkburnett-Dumas football game.

Mr. and Mrs. Bert Knapp have moved from their home in Burk. Mrs. Knapp will live in Oxford, N.Y., while Mr. Knapp is enroute overseas. Mr. and Mrs. Harry Beall and son Clark from Bristol, Okla. spent the Thanksgiving holidays with Mrs. Beall's parents, Mr. and Mrs. A.C. Harris in this city. Mr. and Mrs. Herman David Green of this city are the parents of a baby girl born in Wichita Falls last week. She has been named Belinda. Mr. and Mrs. Carlton Gibson, former residents of Burk, were here Tuesday for a visit with friends and relatives. The Gibsons now live in Longview, Tex. though Mr. Gibson's headquarters are at Nashville, Tenn. with an oil company. Gordon Jeffers and a friend Louis Herwitz were in Burkburnett over the weekend visiting with Mr. and Mrs. F. G. Jeffers. Dr. and Mrs. D.R. Peevey of Austin and Miss Margaret Matthews of San Antonio were dinner guests in the home of Mr. and Mrs. J.C. Adams last Friday. They all are former residents of this city. Mr. and Mrs. H.E. Thomas and girls Judith Kay and Paula Jean from Big Springs, Texas were visiting in the home of her parents, Mr. and Mrs. Lester Coats last week. Mrs. Lucille Duvall returned to her home in Burkburnett Sunday after spending a week in Beaumont and San Antonio visiting with friends. Mr. and Mrs. Floyd Skipwith with Betty and Sue of Dallas spent the recent holidays here with his parents, Mr. and Mrs. V.C. Skipwith. Mrs. John Brookman is in Humble, Texas this week at the bedside of her sister-in-law who underwent a major operation. Mr. and Mrs. Audrey Waldrop had as their guests last week, Mrs. Lee Havens Sr. and Lee Havens Jr. and wife and children from Fort Arthur. A son was born to Mr. and Mrs. Dudley Keen last week in a Wichita Falls hospital. He has been named Tommy Lee.

## RANDLETT NEWS

By Mollie Elliott



Mr. and Mrs. Kenneth Kirkpatrick and sons Terry, Randy, and John, and Dana and Denise Swinford attended the National Finals Rodeo in Oklahoma City on Saturday. Enroute home, they attended a basketball tournament in Waurika.

Winford Whitehead and family of Comanche on Saturday. Mrs. Vera Fulf's returned home on Sunday of last week after a 10 day visit with her daughter and family, Mr. and Mrs. Bob Alexander and daughters of Dallas. Another daughter, Mrs. Jesse Goode, went after her mother.

Robbin Hatcher of Burkburnett spent Saturday night and Sunday with her grandmother, Mrs. Flora Hatcher.

Mr. and Mrs. Jim Fender returned home Saturday of last week after a visit with her mother, Mrs. A.D. Rodden of Lubbock and her sister, Mr. and Mrs. Edgar Dawson of Plainview.

Mr. and Mrs. Herman McAdoo and Dale spent the weekend with their son, Mr. and Mrs. Efton McAdoo of Oklahoma City.

Mr. and Mrs. Jerry Hayes and daughters of Spearman returned home Sunday of last week after a weekend visit with his mother, Mrs. Jewel Hayes and family.

Mrs. Mollie Elliott spent Wednesday night with her son, Mr. and Mrs. David Elliott of Lawton, Okla.

Mr. and Mrs. David Elliott were Sunday dinner guests of his mother, Mrs. Mollie Elliott and during the afternoon they visited Mr. and Mrs. Harland Hicks and Rhonda of Wichita Falls.

Mrs. Jody Lambert visited her daughter, Mr. and Mrs. ...

Mr. and Mrs. John Bragg of Henrietta visited her parents, Mr. and Mrs. Jim Fender last week.

## City To Make Application For Amendment Dec. 14

The City of Burkburnett will make application to the Texas Water Quality Board, in a public hearing Dec. 14, for an amendment to its waste control order for a proposed improved municipal sewage treatment plant to be located adjacent to the existing plant northeast of Burkburnett.

Mr. Cran Wilson of Bossier City, La. spent Saturday night and Sunday with his mother Mrs. C.O. Wilson, and then traveled to Cameron College for a week's F.A.A. refresher course. Before returning to his home, he spent Friday night with his mother.

## NEWCOMERS

James Sharkey, John P. Mynatt, Roger Jackson, Bob Webb, Thomas G. Jackson, Charles Ed Wheeler, Dale Morfeld, Robert A. Davis

Mr. John Bragg of Henrietta visited her parents, Mr. and Mrs. Jim Fender last week. Mr. and Mrs. F.G. Jeffers spent the weekend in Ft. Smith, Ark. with their son, Gordon and Dr. and Mrs. Charles McClendon. Gordon and Dr. McClendon are both stationed at Camp Coffee, Ark.

Mr. and Mrs. H.E. Thomas and girls Judith Kay and Paula Jean from Big Springs, Texas were visiting in the home of her parents, Mr. and Mrs. Lester Coats last week. Mrs. Lucille Duvall returned to her home in Burkburnett Sunday after spending a week in Beaumont and San Antonio visiting with friends. Mr. and Mrs. Floyd Skipwith with Betty and Sue of Dallas spent the recent holidays here with his parents, Mr. and Mrs. V.C. Skipwith. Mrs. John Brookman is in Humble, Texas this week at the bedside of her sister-in-law who underwent a major operation. Mr. and Mrs. Audrey Waldrop had as their guests last week, Mrs. Lee Havens Sr. and Lee Havens Jr. and wife and children from Fort Arthur. A son was born to Mr. and Mrs. Dudley Keen last week in a Wichita Falls hospital. He has been named Tommy Lee.

## Bad Weather Does Not Stop Rding Club Activities

The club has been busy this past month. The weather was bad every time there was an activity scheduled. There was an open play combined with the regular play for the month. Trophies were given for the high points in each division and trophy given to the visiting team. The day for the play was from the north and it rained all day, but we have always said cowboys and cowgirls are tough and I really believe it now. All six events were completed. The winners in each division were: Senior Men Ken Williams and Senior Woman Phyllis Klinkerman; Inter. Girl, Sam Thornton; Inter. Boy, Tom Lowery; Jr. Girl, Jan Klinkerman; Jr. Boy, Dennis Douglas; Pee Wee Girl, Ginger Gilbert; Pee Wee Boy, Stephen Douglas. The high point visiting club was the Sheppard Club. Everyone had a good time in spite of the weather. On November 19 a winter roast was scheduled with a trail ride. It was 38 degrees and very cold but everyone could get warm by the campfire. The month of December has started with bang. The Christmas party and Awards Banquet were combined Saturday night. There was a full house. The food was catered and it was delicious. The building was decorated with pretty Christmas decorations. Elmer Klinkerman served as master of ceremonies and gave a very special thank you to his co-workers for this past year. They were Paul Holderness, Jack Spanble, Marcia Spanble, Dreda Goins, Bobbie Klinkerman, Tom Lowery, Wendell Goins, Dee Cox, Frank Smith, and Chuck Perkins. Several times these people had some tough decisions to make. We are very proud of their work. It takes every member working together to make every playday go well. The members all have worked hard and they know the importance of this. Elmer, Jack and Paul presented the trophies to members who worked hard all year earning points. Belt Buckles were presented to first place members. Winners are as follows: Pee Wee Girls: 1st Joy Klinkerman, 2nd Cindy Spanble, 3rd Janice Griffith, 4th Carla Dobbs, 5th Cindy Hoover, 6th Staci Baber. Pee Wee Boys: 1st Patrick Perkins, 2nd Bryan Perkins, 3rd Steven Douglas, 4th Jeffery Griffith, 5th Royce Williams, 6th Steven Baber, 7th Joe Shook. Jr. Girls: 1st Jan Klinkerman, 2nd Kendra Williams, 3rd Wendy Holderness, 4th Julie Spantle, 5th Tammy Holderness. Junior Boys: 1st John Spantle, 2nd Dennis Douglas, 3rd Ben Shannon, 4th Gary Wells. Intermediate Girls: 1st Nancy Good, 2nd Brenda Campos. Intermediate Boys: 1st Marco Bennett, 2nd Roy Wells, 3rd Tom Lowery, 4th Griff Klinkerman. Senior Women: 1st Pam Baber, 2nd Dee Cox, 3rd Bobbie Klinkerman, 4th Phyllis Klinkerman, 5th Peggy Holderness. Senior Men: 1st Ken Williams, 2nd Frank Smith and Wendell Goins (tie), 3rd Jim Adolphis, 5th Tom Morrison. Miss Danita Roberts is the 1973 Queen. She was presented a belt and buckle that she will wear while serving the honor for the club. Miss Wendy Holderness was recognized for the fine job she did as the 1972 Queen. After presentation of awards everyone enjoyed the games that were played. Bye bye for now, see you next year and "Happy Holidays."

## News From Evergreen Manor

Mr. and Mrs. Ray Johnson from Little Rock, Arkansas visited his aunt, Mrs. Gilley. Visiting Mrs. Wilburn was her son from Electra. Visiting Mr. and Mrs. C.D. Mullins were their grandson and wife, Mr. and Mrs. Germany from White Deer, Texas. Mr. and Mrs. Mills and son from Wichita Falls visited their grandmother, Vera Ellis, Sunday.

## Contemporary Study Club Held Meeting In National Room

The Contemporary Study Club met in the National Room for their regular business and social meeting. Mrs. Dan White was hostess and Mrs. Tom Evans was co-hostess. Mrs. Edgar Fulcher, president, called the meeting to order with the club collect. Roll call was answered by giving the name of a "Famous Texas Pioneer." During the meeting the club heard reports from Mrs. Frank Miller on the Projects Committee. The club voted to donate gifts for the patients at the State Hospital and to start a project to re-cycle aluminum cans. Mrs. Bill Pittard gave a report for the Community Service Council and it was decided to make a donation and to pledge it's support to Educational Television. Mrs. Robert Norris presented the program "Requirement for a Courthouse." She told the story of how a city in New Jersey would not let their elaborate old Courthouse be torn down and how they preserved a beautiful heritage. Mrs. Frank Miller won the door prize. The next meeting will be a Christmas Party in the home of Mrs. Tom Smith.

## Stamp MiniAlbum For 72 Sold At Post Office

Postmaster W. T. Zimmerman said today that the U.S. Postal Service's 1972 mini-album, containing all of the commemorative stamps issued this year, is now on sale at the Burkburnett post office. The newest edition of the highly-popular folder sells for \$3.00. Last year, nearly one million mini-albums were sold, and increased demand is anticipated for the 1972 version. Thirty-one stamps are contained in the mini-album. These are protected by see-through mounts. There is descriptive text for each stamp. The mini-album double-folds to 8 1/2 x 11 inches and is red, white and blue on enamel paper. The mini-album is one of the new philatelic items offered to provide information about stamps and to encourage interest in stamp collecting, particularly by young people. The postmaster pointed out that the mini-albums make ideal Christmas gifts. His initial supply of the mini-albums is limited.

## Southside PTA Xmas Bazaar

Don't forget the Southside P.T.A. Christmas Bazaar at 309 E. 3rd (to be held in the vacant building between M&N and Henry's Bakery) Dec. 15 from 11 a.m. to 5 p.m. and Dec. 16 from 9 a.m. to 5 p.m. There will be homemade jellies and jams, home canned fruits and vegetables, handwork, Christmas candles and homemade goodies. Please keep in mind these items could be frozen and kept for Christmas desserts. All proceeds will go for air-conditioning for the school.

## Widows Into Wives

You're a football widow because you don't understand the game? Here, terms, for the novice: 1) Quarterback: player who calls the shots. 2) Referee: Man with whistle who stays out of trouble. 3) Penalty: Someone goofed. 4) Fumble: Someone goofed terribly. 5) Touchdown: Six points for our side. 6) Pigskin: Also called a football. 7) Half-time: Everyone rests but the band. 8) Time-Out: Strategy huddle. 9) Coach: Man having fit on sidelines. 10) Here: Man carried off field on teammates' shoulders.

Ring Southwestern Bell today and order a phone for somebody's Christmas...either an extension or a second line with a different number. An additional phone is practical, convenient and saves steps. Choose from the modern Trimline® phone with the dial in the handset, the Princess® set with light-up dial or perhaps a familiar wall or desk model. All are available in cheery colors to complement any decor. For a gift that will be appreciated long after the holiday season ends, just call our business office. We'll do the rest.

Southwestern Bell

Your SHIELD for SHELTER

## Shelter

INSURANCE SHIELD OF SHELTER

Your MFA Insurance Agent cares about the things you care about. This shield is your sign of complete protection—for your car, your family, your home, your health, and your life.

Will Bonham  
The "Brute"  
Barber Shop  
766-3092  
1318 HARRISON STREET  
WICHITA FALLS, TEXAS

Reg. Haircuts \$2.00  
Style \$5.50  
APPOINTMENTS PREFERRED



Mrs. Donald West

## Vaughn-West Vows Read

The marriage of Miss Jeannie Vaughn and Donald West was solemnized recently in the First Baptist Church by the church

### Husbands of Study

### Club Attend Xmas

### Dessert Party

A Christmas dessert party, starring husbands of members of Burk Burnett Study Club, was held at the home of Mrs. Dale Mortland. Co-hostesses were Mmes. Alvin Hill and Joe Gillespie.

Mrs. Harold VanLoh welcomed the members and guests and presented Mrs. Mortland, who was in charge of the program.

E.D. Potter read the Christmas story from St. Luke.

Brenda Smith and Kathy Graves, piano students of Mrs. Mortland, played selections of Christmas music. Misses Smith and Graves each played a duet with Mrs. Mortland.

Joe Gillespie led the group in singing of Christmas carols with Mrs. Mortland at the piano.

Lt. Col. (Ret.) Jane Sewell spoke on international goodwill and about Christmas she had spent in foreign countries. She ended the talk by reading I Corinthians 13, adding that the word love binds all people of all nations.

Christmas gifts were exchanged by members and a social hour followed.

### Local Nurse

### Attends Seminar

Janice Fields, R.M., Burk Burnett, charge nurse at the Bethania Hospital in Wichita Falls, was among the 102 nursing personnel from 12 counties who attended a Nurses Seminar entitled "The Cardiac Patient and You, the Nurse" in Seymour recently (Nov. 28). The one-day meeting was held in Fellowship Hall of the First United Methodist Church, with Dr. George LeBeau, internist at the Medical & Surgical Clinic in Wichita Falls, and Miss Beth Vaughan of Dallas, as featured speakers. Dr. LeBeau spoke on "Clinical Significance of Laboratory Findings" and Cardiovascular Pharmacology. Miss Vaughan, who is an instructor at Texas Women's University, spoke on "Nursing Care of the Acute Myocardial Infarction Patient in General Hospitals". Chairmen of the workshop, sponsored by the Baylor County Division of the American Heart Association, were Barbara Laws, R.N., and Lois Wells, R.N., co-chairmen of the Division's Professional Education Committee.

pastor Rev. Lamoin Champ. The bride is the daughter of Frances Spence, Burk Burnett and the groom is the son of Mr. and Mrs. Granville West also of Burk Burnett.

The bride chose a formal gown of sateen. The empire bodice was fashioned in chantilly lace. Scalloped chantilly lace formed the stand up neckline, long pointed sleeves and encircled the waistline. The softly gathered skirt was adorned with a deep flounce of the matching lace. Her mantilla of imported English illusion

was edged with the chosen lace. She carried a colonial cascading nosegay of blue and white flowers.

The bride was given in marriage by her brother Jimmy Vaughn.

Attendants for the bride were Becky Jones, maid of honor, Vicki Wright, bridesmaid and Patricia Vaughn, sister of the bride was flower girl. Candelights were Ammy Vaughn and Sherry West.

Wendell McBride was best man for the groom and ushers were Charles Vaughn, brother of the bride and Rocky Richter. The ring bearer was Clay Howard, all of Burk Burnett.

## CLASSIFIEDS REALLY WORK

## Obituaries

### Pearl N. Cole

Services and burial were in Bertrand, Nebraska for Mrs. Pearl N. Cole, 78, a resident of Burk Burnett for twelve years. She died Friday morning in a Burk Burnett nursing home. She was born April 17, 1894 in Smithfield, Nebraska. Survivors include three sons, Loren of Burk Burnett; Neal of Hayes, Nebraska and Carol of Little Rock, Calif.; two daughters, Mrs. Joe Keyes of North Hollywood, California and Mrs. John Steiney of Los Alamos, California; three sisters, Mrs. Anna Roberts of Sacramento, Calif., Mrs. Myrtle Yost of Banning, California and Mrs. Ina Martinez of Glendale, Calif.; a brother, Raymond Collins of Omaha, Nebraska; eleven grandchildren and seven great grandchildren.

### Owen Walker Hatcher

Services for Owen Walker Hatcher, 78, who died Saturday were held at 2 p.m. Wednesday in Central Baptist Church. The Rev. Max Dowling, pastor, officiated.

Graveside services are at 3 p.m. Thursday in Pleasant Hill Cemetery near Caddo, Oklahoma. Burial is under the direction of Owens & Brumley Funeral Home.

Born Jan. 30, 1894, Hatcher was a retired farmer. He had been a resident of Burk Burnett and Randlett, Okla. areas for 50 years.

Survivors include his wife, Tommie; two daughters, Mrs. Lela Coursey of Grove City, Calif.; and Mrs. Samantha Lambert of Randlett; seven sons, Arvil of Bockchito, Okla., Ernest of Carrollton, O.W. Jr. of Sunnyvale, Calif.; and Olen, David, Alvin and Owen A.; all of Selma, Calif.; a stepdaughter, Mrs. Bernice Horton of Hinton, Okla.; three brothers, three sisters and 27 grandchildren.

## Needy Families For Xmas Food Made Available

The Community Service Council will have the names of families needing Christmas baskets. A name can be gotten from Mr. Larry Di Marzio, 569-3158 or Mrs. Lewis Brock-er at 569-3786.

PHILCO Factory Authorized Service

HAROLD'S TV SERVICE 224 E. 3rd. Burk Burnett

FRIDAY-SATURDAY-SUNDAY  
DECEMBER 15TH-16TH-17TH

PARAMOUNT PICTURES PRESENTS

# The Godfather

Marlon Brando

## Lit. Club Hosts XMAS Fete

The Current Literature Club's Christmas party was held Thursday in the home of Mrs. J.L. Caffee with Mrs. Roy T. Magers and Mrs. F.G. Jeffers, assistant hostesses. Mrs. Ralph White, president, welcomed Mrs. John Clement as a new club member. Mrs. Fred Hunt reported on the recent Community Service Council meeting. There is a possibility that Educational TV may be brought by micro-wave to this area and it is hoped the community will be interested in and support this project. Mrs. Hunt stated the Council is again sponsoring the Christmas baskets and the Christmas lighting contest. Plans for the open-air pavilion are going forward.

It was voted to place the name of Mrs. Roy T. Magers, PIONEER CLUB WOMAN, in the Golden Book in Texas Federation of Women's Clubs Clubhouse in Austin. The Club will provide a Christmas basket for someone less fortunate than we. Mmes. John Brookman, Marjorie Kauer and Sid Gamblin were appointed to nominating committee. Rather than exchange of gifts, members contributed to a money tree for a club project. Mrs. Carl Hardaway, counselor, made some comments from GFWC on the plight of delinquent boys and girls who are thrown in jail with hardened criminals, where it costs \$2000.00 a year to maintain them. Juvenile crime is up 78%. Some needs are a

preventative program and separation from der criminals. Mrs. Mage gave an interesting talk (the doll renovation depot in Marshall, followed by an exhibit of some dolls by members, one doll being nearly a hundred years old. Mrs. Al Hoefener read a story, "The Loneliest Christmas Until --", Mmes. Alicia Nemecek and Arlie Metzger accompanied on the piano by Mrs. Bill Vincent, sang several duets of Christmas songs.

### Santa Claus Visits 150 Children At Community Center

Approximately 150 children at the Burk Burnett Community Service Center were thrilled to see Santa Claus at the Christmas Party given by the Sheppard Air Force Base Firemen. Fred Waters was assisted by Firemen Robert Beard, Walter C. White, Robert Higginbottom, Raymond L. Luna, Ronnie L. Pearcey, Daymon Cooke, and Sgt. Burdick. Also assisting were W.A.F.'s Lucinda Reed, Wanerly Strope and Anna M. Smith. Gifts, sandwiches, fruit, candy and punch were furnished by the firemen. Preston Milk Stores furnished the ice. These men are to be commended for their efforts in helping those less fortunate.

## Hudsons To Observe 50th Wedding Anniversary

Mr. and Mrs. Fred V. Hudson Sr. of Burk Burnett will be honored December 17 in observance of their 50th Wedding Anniversary.

Open house will be held from 2 until 4 p.m. at the home of their daughter, Mrs. Don Briscoe, 707 Maple Avenue. All friends and relatives of the

couple are invited.

The couple was married Dec. 22, 1922 in Anson, Texas. They came to Burk Burnett from California in Nov. 1967.

They have six children other than the two living in Burk Burnett and 38 grandchildren and 14 great-grandchildren.

## 'Tasters Choice' Social In National Room

E.S.A. Theta Epsilon Chapter met in the National Room last Monday evening for a "Tasters Choice" Social. Each member brought two of their favorite dishes where all ate family style. There were 18 present.

The social was combined with saying goodbye and good luck to Joan Higgins. She was presented with an engraved Trivet by president Helen Eaton.

The welfare chairman, Kathleen Brammer, collected items from members for the Thanksgiving basket and delivered them to a needy family before Thanksgiving.

The next meeting will be held in the home of Mrs. Kathleen Brammer with the program being presented by Mrs. Pat Adams on "Florida and the Everglades."

## Mailing Tips Outlined For Holiday Season

Projecting a holiday volume of 9 billion pieces of mail this year, Postmaster W.T. Zimmerman has announced a series of recommended mailing deadlines.

Two of these deadlines should be remembered by every member of the household.

They are: December 15 - the last day for mailing surface greetings within the United States; and December 21 - the final date for posting all domestic airmail greetings and letters.

Postal officials are quite confident that all mail deposited before these suggested deadlines will be delivered in time for Christmas, which comes on a Monday this year.

In an effort to help customers with their "wrapping worries," the Postal Service has publicized a number of helpful tips.

Some of the suggestions include:

If a single item is being mailed, it should be cushioned with shredded paper, excelsior, compressed tissue paper, cloth, or expanded plastic foam.

If two or more items are mailed in the same carton or box, cushioning material should protect all items from contact with each other, and each item should have its own individual wrapper.

Cardboard containers, including large soap, cereal boxes, etc., larger than the gift being mailed should be cut down to about the size of the gift to minimize shaking and breaking in transit.

Fragile articles must be individually cushioned, and all 4 sides of the container should be padded with cushioning material.

Tape used to seal containers should be durable type and should cover or secure firmly all flaps.

Paper for the outer wrapping should be at least equal in quality and strength to the kraft

stock used for grocery bags. Incidentally, such bags, in good condition, provide excellent wrapping when trimmed to the proper size to fit the package snugly.

Wrapped packages also should be secured with strong twine, not ordinary light string. Twine should be knotted at several intersecting points to keep it from loosening.

All packages that contain delicate articles should be marked FRAGILE.

Any food or other products that might deteriorate quickly should be marked PERISHABLE.

All packages should contain the name and address of the person to whom it is being mailed inside the package as well as outside. An address contained inside the package is insurance that it will be received promptly even if accidentally opened or if the outside address should become obliterated.

Be sure to put your return address on the package. And, finally, address the package correctly and legibly. Be sure to include the ZIP Code. (Call your local post office if you don't know the ZIP Code). Mail with the proper ZIP Code is processed more rapidly than mail without the codes.

First U. S. postal rural route in Texas originated out of La Grange on August 1, 1899.



Brenda Kay Wilson

## Wilson-Kemp To Wed

Mr. and Mrs. Weldon Wilson of 205 Holly announce the engagement of their daughter Brenda Kay to Leslie Wayne Kemp, son of Mr. and Mrs. Durward Kemp of 725 West Third. Miss Wilson is a senior at Burk Burnett High School and is employed by Gill's Grocery. Kemp is a graduate of Burk-

burnett High School and is a sophomore at Midwestern University. He is also employed at Gill's Grocery.

Their wedding date has been set for January 13, at eight p.m. in the Burk Burnett Church of Christ. All friends and relatives are invited to attend.



## Lions Club Celebrates 50th Anniversary

The Burk Burnett Lions celebrated their 50th anniversary with a banquet on December 5. Lion President Larry DiMarzio welcomed the Lions and their wives and the visiting Lion Dignitaries and their wives. Lion Roy Magers recapped the events and accomplishments of the Burk Burnett Lions for the past fifty years.

Deputy District Governor James Taylor offered congratulations to the members for their 50 years in Lionism on behalf of the Lions International and then introduced the guest speaker, District Governor of 2E-1, Lion Loren Maples and his wife. Governor Maples talked about the importance of each and every Lion to the World of Lionism. He talked also of the

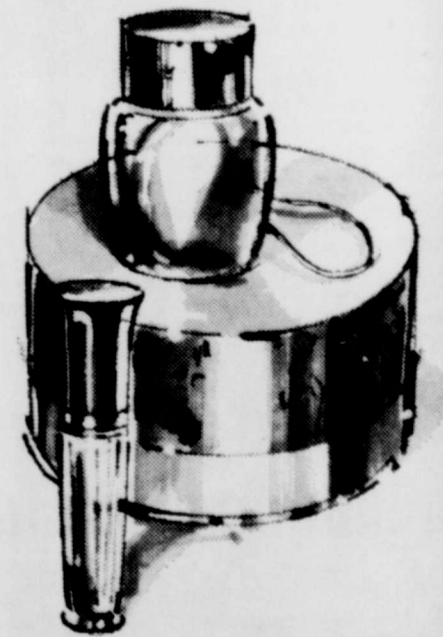
Texas Lions and praised the local club for their projects and their participation in Lionism on the local, state and international level. One of the highlights of the night's activities was the presentation of the 50-Year Charter Monarch Award to Lion J. Frank Kelley, the only one of the 25 charter members still residing in Burk Burnett and active in the organization. Also presented were 40, 20, 15 and 10 year awards.

Several songs were presented by the Burk Burnett Jr. High Chorus.

Everyone enjoyed the evening's activities and club members are looking forward to the next fifty years of Lionism.

## 'TIS THE SEASON FOR DUBARRY.

Delight her with our exotic blend of floral and oriental essences.



# Comtesse

For body and bath  
Gift wrapped, individually and in sets.

CORNER DRUG STORE  
BURKBURNETT

320 EAST 3RD ST. PH. 569-2251

## JACK WOOD'S CARPET

Branch 2  
1308 Sheppard 569-0081  
BURKBURNETT

Jack has a Christmas Special for YOU!

We will give you 5 per cent off on the total sales price of any carpet in the store.



You may choose from 64 different samples.

32 Shags  
7 Plush  
11 High-Lows Patterns  
14 Kitchen Carpet



# SHEPPARD AIR FORCE BASE

## Dodd And Gann Receive Pins For 30 Years Work

SHEPPARD AFB, TEXAS--John M. Dodd and Cecil Gann, both civilian employees at Sheppard AFB who reside in Burk Burnett, Texas, were awarded pins for 30 years of government service in ceremonies Monday morning at Sheppard. Making the presentation was Major General Robert L. Pettit, commander of Sheppard Technical Training Center.

John Dodd, a native of Paris, Miss., is an aircraft piston engine mechanic foreman with the Consolidated Maintenance Squadron, 3750th Maintenance

and Supply Group. He entered the U.S. Army in 1942 where he served as an aircrew chief until his discharge in 1945. He began his civilian career as an aircraft service mechanic at Keesler AFB, Miss., in 1946, transferring to Sheppard in 1949 as an aircraft training devices assembly repairer. He became a maintenance assistant foreman in 1952.

During his career he has attended formal training courses on aircraft engines, safety practices, and management for

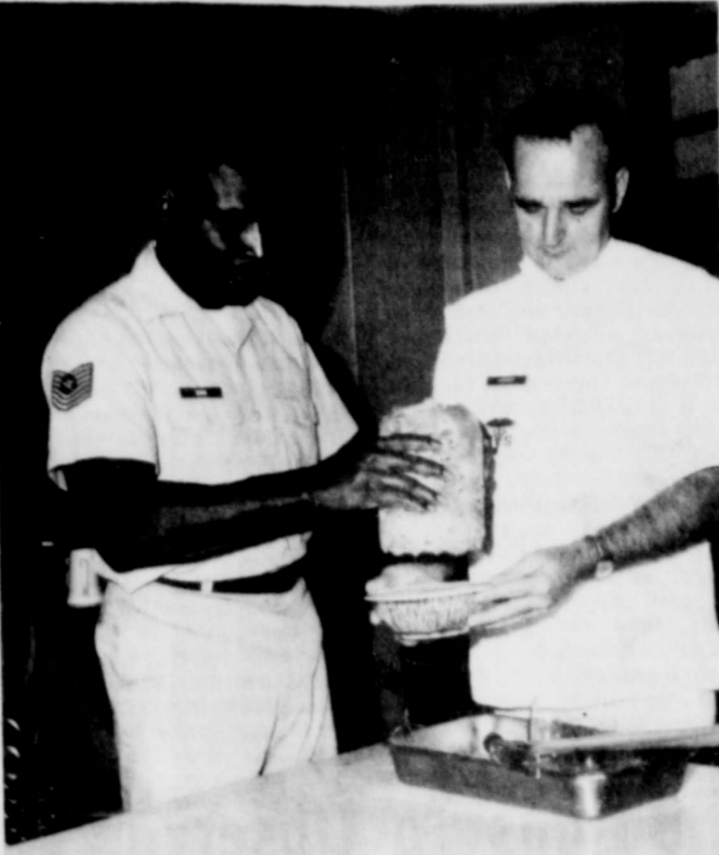
supervisors. Cecil Gann, a carpenter with the 3750th Civil Engineering Squadron, a native of Booneville, Mo. After serving in the Army during World War II, he enlisted in the Air Force until his retirement August 1963. He began his civilian career at Sheppard in December 1963.

## Civilians Receive Superior Ratings

SHEPPARD AFB, TEXAS--Two outstanding performance ratings, a quality salary increase, and special awards were presented to civilians at Sheppard AFB recently for exemplary performance at their jobs.

Outstanding performance ratings were awarded to William J. Hiber, supervisory hospital registrar, Director of Base Medical Services, at the USAF Regional Hospital; and Inez W. Eberly, diet typist, of Field Training Detachment 205, Seymour Johnson AFB, N.C., who also received a sustained superior performance cash award of \$150.

Charles L. Capron, training instructor in the Department of Communications and Missile Training of the School of Applied Aerospace Sciences, Sheppard, was awarded a quality salary increase; and Frances E. Jones, clerk typist in the School of Health Care Sciences, received a special act or service award of \$100.



SHEPPARD AFB, TEXAS--OCCUPATIONAL THERAPY CRAFT--Sergeant Davis and Technical Sergeant Carmody, also of Occupational Therapy, demonstrate how to make an ice candle in the clinic at Sheppard. The perforated candle, made in a large glass jar, gives off special effects when burned. (OFFICIAL U.S. AIR FORCE PHOTO BY TSGT. ROBERT PAGE)

## Civilians Receive Superior Ratings At SAFB Hospital Activity Serves As Key To Helping Mentally Ill

Through the office window one can see the people file into the clinic, sit down, and pick up the objects they had been working on the day before. Some look confused, others cocky and confident, still others matter of factly head for their own projects in the occupational therapy section of the USAF Regional Hospital at Sheppard AFB.

As they search for what they want to do, sometimes gently directed by the staff, Master Sergeant Will E. Davis says softly that the most important aspect of helping the mentally ill is patience and understanding, directing them to help themselves.

Sergeant Davis watches the patients from the office and continues talking about them and their problems. "Understanding and self-respect are important here for the staff and the patients."

In the clinic a young, attractive woman with long, jet black hair wanders aimlessly around, conspicuous by her inactivity.

Sergeant Davis continues, "We try to give a person an activity that attempts to treat his problem. For a potentially violent person we have woodworking, something physical. For a person who has trouble making decisions, we offer simple tasks that require a few simple decisions to achieve a finished product."

A tall, blond airman first class notices the woman and talks to her. Although in the office one can hear nothing, her expression and gestures tell all: she shrugs, her face all but yells an intense feeling of hopelessness.

"The treatment is explained to the patients, and they are aware of why they are here. Nowadays there is more freedom for the patients, more open discussion of his problem and an attempt to get the patients to help themselves."

The technician returns to the woman, now seated and leaning against a counter with her head propped on her hand, gazing off into nowhere. He carries a large box, places it on the floor next to her. She looks down. Knowing he has her attention, he opens the box and pulls out several kits. She is at last interested, and gradually he pulls her out of her depression, interesting her so that she finally takes one of the kits and goes over to a table to examine

## Off-Duty Firemen Deliver Goodies To Day Care Center

SHEPPARD AFB, TEXAS--Off-duty firemen at Sheppard Air Force Base delivered Christmas "goodies" and toys to the Day Care Center, 600 West 7th Street in Burk Burnett Friday afternoon.

They took gifts and bags of fruit to about 40 children. Many of the toys had been repaired by the firemen.

The group also visited aged shut-ins taking them fruits, nuts and candy.

Chairmen for the project were Robert Beard and Staff Sergeant Dennis Burdick.

## Civilian Employees Receive 10 And 20 Year Pins

SHEPPARD AFB, TEXAS--Twenty-one civilian employees at Sheppard AFB were awarded 10 and 20-year length of service pins during November.

Recipients of 20-year pins, in the School of Applied Aerospace Sciences, Sheppard (SAASS), were Donald M. Marlett, Charles E. Samek, and Howard L. Whitson of the Department of Aircraft Maintenance Training; Raymond Haynes, Civil Engineering Training; Joe E. Fowler, Operations Division; Doris C. McGee, Communications and Missiles Training; and Jack B. Williams, Transportation Training.

Also awarded 20-year pins were John F. Greenwood, Henry B. Kelley, and William L. Taylor, of the 3750th Maintenance and Supply Group; Willie Moore and Alvie L. Pope of 3750th Air Base Group; and Norbert E. Thompson of the USAF Regional Hospital.

Ten year awards went to Lee R. Allen, Victor L. Hill, Robert N. Simpson, and Freddy Waters, of the Civil Engineering Squadron; and Morgan Wilkerson of Air Base Group.

Others awarded 10-year pins were Marybelle Elliott, Commander of Troops; Eugene E. Stevens Jr., Training Aids Division; and Harry O. Weaver, Communications and Missiles Training, all of SAASS.



SHEPPARD AFB, TEXAS--TOP JUNIOR OFFICER--Captain Billie E. Sargent, right, accepts the awards for Junior Officer of the Quarter from Major General Robert L. Pettit, Sheppard Technical Training Center, commander. Captain Sargent is an instructor and squadron commander with the Department of Comptroller Training, School of Applied Aerospace Sciences. (OFFICIAL USAF PHOTO)

## Capt. Sargent Named Junior Officer Of Quarter

SHEPPARD AFB, TEXAS--Captain Billie E. Sargent received a pin set for being named Junior Officer of the Quarter during the staff meeting at Sheppard Technical Training Center Wednesday morning.

Major General Robert L. Pettit, center commander, made the presentation. Captain Sargent received the honor for the period July 1 through Sept. 30, 1972.

The captain is an instructor in the Advanced Officer Financial Administration course of the Department of Comptroller Training, USAF School of Applied Aerospace Sciences Sheppard, and also serves as commander of the 372nd Instructor Squadron of the School.

ceeding that which is normally expected of a junior officer." The captain was graduated from Westington Springs, S.D. high school; received an associate degree from Westington Springs Junior College and a bachelor of science degree in business from the University of Colorado in Boulder, Colo.; and a master of business administration degree with major in computer science at Texas A&M University in 1968.

He came to Sheppard in December 1960 from Selfridge AFB, Mich.



## NCO Wives Set Xmas Party Plans

SHEPPARD AFB, TEXAS--Sheppard's Noncommissioned Officers' Wives Club announced final plans for the Christmas dinner - dance, during their Thursday meeting at the Sheppard NCO Club.

The dinner-dance will be December 16, 6:30 p.m. in the ball room at the NCO Club.

Hostesses will be the club's board members. Reservations may be made by calling Mrs. Charles Oakes, 855-2014 before Dec. 14.

A luncheon will be held Dec. 21. Reservations for this meeting may be made with Mrs. Lee Roseland, 692-0121.

Hostesses for this week's meeting were Mesdames Coy Hinkle and Jerry Ferrell. Mrs. Roseland was elected vice president and Mesdames Edward Garcia and Royella Shrewsbury were announced as card and publicity chairman, respectively.

New members present for the meeting were Mesdames William Hummel and Ronald Sears.

SHEPPARD AFB, TEXAS--Lieutenant Colonel Donald L. Watkins is base comptroller at Sheppard Air Force Base. He assumed these duties following the retirement of Colonel Edward C. Thomas.

Colonel Watkins came to Sheppard in 1969 from the Canal Zone where he served as chief, budget branch, Air Force Technical Applications for three years. His first assignment at Sheppard was as chief, financial management branch, Department of Comptroller Training, USAF School of Applied Aerospace Sciences. He also served as chief, Department of Comptroller Training before his reassignment.

His other assignments have been as budget and fiscal officer, Defense Atomic Support Agency, Manzano Base, New Mexico for four years; budget officer, Nevada Weapons Effects Test site for one year; chief of management analysis, Tenth Air Force at Selfridge AFB, Mich.; and budget and accounting officer at O'Hare International Airport. He also attended the University of Michigan through the Air Force Institute of Technology program.

A native of Jacksonville, Ill., Colonel Watkins received a bachelor of science degree from Bradley University; both a bachelor of business administration and master of business administration at the University of Michigan; and a master of educational administration at the University of New Mexico.

His military education includes the Industrial College of the Armed Forces, Professional Military Comptroller course and the Advanced Financial Administration course.

He holds membership in the American Society of Military Comptrollers, Federal Government Accountants Association and the American Institute of Certified Public Accountants. He is president of the Board of Directors of the Sheppard



Lt. Col. Donald L. Watkins

Military Federal Credit Union and treasurer of Boy Scout Troop 232 at Sheppard. Colonel Watkins and his wife Betty, have five children, Thomas, Diane, David, Randal and Jill. They reside at 111 Polaris Street in Capehart Housing at Sheppard.

## Sgt. Bernard Receives Commendation Medal

SHEPPARD AFB, TEXAS--Staff Sergeant Bernard L. Ganshart, son of Mr. and Mrs. Lawrence J. Ganshart of 504 Oak Street, Burk Burnett, has received the U.S. Air Force Commendation Medal at Sheppard AFB, Tex.

Sergeant Ganshart earned the medal for meritorious service at Indian Mountain Air Force Station, Alaska, with the 708th Aircraft Control and Warning Squadron.

He is now assigned at Sheppard as a military training instructor with a unit of the Air Training Command. ATC provides flying, technical and basic military training for U.S. Air Force personnel.

The sergeant is a 1962 graduate of Gratiot (Wis.) Union Free High School. His wife is the former Norma L. Davis.

Flowers Are For Every Occasion  
JUANITA'S FLOWERS  
569-3197

*A Trusted Family Friend . . . in a time of need*

**OWENS & BRUMLEY FUNERAL HOME**  
Serving you since 1921  
Phone 569-3361

**At your service:**

## Electricity that helps make products and jobs better.

No matter where you look in industry today, electric energy is there. It is powerful energy that stamps and molds, that heats and cools, that pushes and pulls, that heats and cools. Or sensitive energy that sews and scrolls, calculates and controls. Whether you build cars, or airplanes, or mobile homes, or make clothes, or process petroleum and petrochemical products - whatever your job, electricity helps you

in a hundred ways to do it better, faster, easier. Electricity is one of the things that has helped build America's great industrial capability, and helped raise our standard of living - by putting better products in everyone's reach, and by making better jobs available.

And it's clear that industrial uses of electricity will continue to

increase in the years ahead. When additional power is needed, we'll be ready to provide it to industry and to all our customers.

But getting ready and staying ready is an increasingly expensive, never-ending job at Texas Electric. Our construction expenditures are at a record high for facilities necessary to keep an adequate and reliable power supply at your service.

**TEXAS ELECTRIC SERVICE COMPANY**  
People power... at your service  
R. J. VINCENT, Manager, Phone 569-3373



FORTY HORSES, ALL IN A ROW--Actually there are two rows of Belgian draft horses in the Schlitz 40-horse hitch, scheduled to appear in the Cotton Bowl Parade on New Year's Day. The huge team, driven by Dick Sparrow, is shown in a practice drive on Sparrow's Iowa farm. Horses in the huge team average

At Cotton Bowl

# Schlitz 40-Horse Team To Perform

DALLAS, Texas--All horses officially become one year older on New Year's Day, so the Cotton Bowl Parade here on Jan. 1 will be a huge birthday party for the Schlitz 40-horse hitch.

The nationally televised parade (9:30 a.m. CST, on CBS-TV) will feature the famous team of Belgian draft horses pulling a historic circus wagon, the Columbia.

"Actually, in calendar years, we have six 2-year-olds, 13 or 14 3-year-olds and the same number of 4-year-olds," said Dick Sparrow, the "Forty" driver.

Sparrow, 43, is an Iowa farmer and horse breeder who was chosen for the monumental task of training the 40-horse hitch, the first since 1904.

"Normally, I like a spirited, animated draft horse," Sparrow says, "but in the 'Forty' I want more tractable, quiet horses, with the disposition of riding horses that are good with kids."

The "Forty" is harnessed four abreast, ten deep. With the wagon, the whole rig stretches out about 140 feet. Sparrow, a 245 pound six-footer, holds big handfuls of leather lines to drive the horses.

The lead team and wheel horses are the most important, Sparrow says. The lead team of four must keep stepping out and going no matter what--unless they get a signal from Sparrow to stop.

The last two ranks of four horses each are the "wheelers." They provide nearly

all of the pulling power. "What I see out there is mostly followers, but those leaders and wheelers got to have a mind of their own," Sparrow said.

Most of the horses are geldings. There are five mares. "The 2-year-olds will mature out to about 2,100 pounds," Sparrow said. "The average weight of the team is now about 1,500 pounds. Last summer it was closer to 1,900. By the time of the parade in Milwaukee next Fourth of July, they'll run up to about a ton apiece."

In height, the Belgians range up to 18 hands, which, at four inches to the hand, is six feet tall at the withers, the ridge between the shoulder bones of a horse. None of the 40 horses is less than 16 hands. The average riding horse is about 14 1/2 hands.

Horses of Belgian size require a lot of fuel. Sparrow estimates that in Texas each will eat about 10 pounds of oats, six pounds of corn and 30 pounds of hay each day, and will drink 15 to 20 gallons of water.

Why Belgians? "Mainly because they're the only plentiful draft horse breed in the United States," Sparrow said, "and it would have been virtually impossible to get a matched team of 40 Clydesdales or Percherons, all with the same color, size, and disposition."

Besides, Sparrow has worked

with Belgians nearly all his life. There are five draft horse breeds: Belgian, Clydesdale, Percheron, Shire and Suffolk. The latter two are relatively rare in the United States.

All of Sparrow's Belgians are color-matched (sorrel) and have blond manes and tails. They were mostly trained, for abreast, pulling manure spreaders on Sparrow's 1,100 acre farm in central Iowa. He grows corn and soybeans and feeds cattle.

Forty-horse hitches were popular in the late 19th century and early part of this century when major circuses featured them in street parades. They were simply spectacles, in those days when the public appreciated horsemanship, because 40 horses were not required to pull a 5 or 6 ton bandwagon. But the driver's skill in controlling and turning the huge teams was widely admired.

And so it is today, even though there are few people around who appreciate the skill of a "long string driver."

The Schlitz "Forty" was specifically trained for the 1972 Schlitz Circus Parade. The parade is held annually in Milwaukee, Wis., on the Fourth of July. The "Forty" was such a popular success that Robert A. Uhlein, Jr., chairman and president of the sponsoring jobs. Schlitz Brewing Company, and a horseman himself, decided to have it appear around the country.

The team's first appearance outside of the Midwest will be in Dallas.

The Columbia bandwagon, built in 1903 for Barnum & Bailey, belongs to the Circus World Museum, at Baraboo, Wis., original winter quarters of Ringling Bros. Circus. The museum, in turn, is part of the State Historical Society of Wisconsin, with which Schlitz cooperates in staging the annual circus parade in Milwaukee.

Fifty to 60 people will travel with the 40-horse hitch caravan from Iowa to Texas. The 55 head of horses will travel in four semi-trailer trucks. Besides the 40 horses on the varsity, Sparrow will bring four spare Belgians and 11 saddle horses, the latter ridden by outriders alongside the Forty to keep crowd back.

The Sparrow gang will stay with their horses in Dallas at State Fair Park. The big animals will be on public display from December 28 through New Year's Day. The horse barn is in the shadow of the Cotton Bowl where Texas will play Alabama on the gridiron.

"If you'd lose a troublesome visitor, lend him money." (Benjamin Franklin)



## HARDIN GRADE SCHOOL HONOR ROLL

GRADE 3  
Shipp, Section 1: Melanie Arthur, Karla Bushea, Brian Faust, Keith Felty, Robin Hatcher, Matt Huffman, Lloyd Kohler, Lori McClain, Nita Moore, Tracie Morton, Debra Muller, Clarissa Norris, Elizabeth Richter, Paul Saladino, Bryan Stringer, Kim Tullis, Bruce Wasserzieher, Nitzel, Section 2: Gina Glazener, Juanice Griffith, Amy Hall, Tracy Lewis, Billy Luke, Loretta McCurdy, Robbie McGarry, Lori Oakley, Bill Pittard, Donna Rutledge, Carla Wolf, Teresa Wernofsky, Darren Mayers, Mark McClurkin, Fullerton, Section 3: Gary Balls, Sherry Boswell, David Cobb, Tim Hodgson, Virginia Iton, Anita Lang, Tomastia Morales, Chris Petty, Lori Rorabaw, Kathy Roy, Cindy Rutledge, Verne Strahan.

GRADE 4  
Tiffany Alvey, Linda Baggett, Lisa Dowdy, Cheryl Heptner, Tracy Hudson, Susan Liffick,

Caroline Phillips, John Tayloe, Koller, Section 2: Kelly Easter, Kathy Fullerton, Mark Hayes, Ricky McGrath, Michelle Montgomery, Acie O'Kelly, Mark Robinson, James Schnitker, Rena Thaxton, Douglas Gray.

Steele, Section 3: Diana Chavis, Shirley Froman, Jody Gilbreath, Amber Hester, Linda Sparkman.

GRADE 5  
Taliaferro, Section 1: Tommy Darland, Todd Dillard, Keith Easter, Cindy Gregory, Ricky Hatcher, Dana Lionberger, Terry Moore, Debbie Pettit, Kathy Schroeder, Shirley Spurlock, Marion Umlah, Lynda Weiss, Kirk Wolfe.

Garland, Section 2: Robert Davis, Greg Hrazdil, Bruce Littlefield, Jennifer Petty, Shannan Powell, Brenda Waters.

Fors, Section 3: Lisa Castee, Lori Hall, Cindy Kohler, James Lee, Royce Sladen, David Stansberry.

## SOUTHSIDE ELEMENTARY HONOR ROLL

2nd Six Weeks 72-73  
GRADE 3  
Kafer, Section 1: Steven Brown, Lisa Fidalio, Tammy Kauffman, Kim McClendon, Cynthia Stephens.

Hays, Section 2: Lei Land Arnold, James Reed, Kelly Martin, Kimberly Snoddy, Susan Sprole.

Leitner, Section 3: Glen Bearden, Kerry Patterson.

Mays, Section 4: Johnalee Brightman, Sherry Cox, Sherri Curry, Lisa Gray, Janna Hamilton, Kevin Keene, Marilyn Keown, Robert King, Michael McCoy, Rusty Mills, Connie Onda, Tommy Phillips, Kendall Smith, Julie Weese.

Clark, Section 5: Ila Chumley, Monica Hicks, Crystal Moon, Christy Pruett.

GRADE 4  
Wilson, Section 1: Karla Adams, Richard Dean, Mark Mallett, Lisa Rivard, Lisa Dingman.

Reynolds, Section 2: Marlene Antee, Amy Bruendl, Jerry Green, Terry Moore, Bobby Morrow, Les Schroeder.

Olson, Section 3: Tommy Gibson, Ricky Martin.

Dunn, Section 4: Tania Barnes, Sid Chambers, Michele Ness, Cindy Spanable, David Taylor, Kelli Wallace.

Smart, Section 5: Belinda Bartley, Beverly Bryan, Glen Fields, David Graves, Rebecca Woodall.

GRADE 5  
Grady, Section 1: Karen Allen, Paskus, Section 2: Neal Howard.

Martin, Section 3: Michelle Bowers, Suzanne Ellis, Janet Orman, Perry Thomas.

Bratina, Section 4: Jeffery Baber, Kevin Dunn, Randy Parker, John Powell, Anita Sykes.

Kerr, Section 5: Steven Merritt, Annette Walker.

McSpadden, Section 6: John Ezzell.

The Northern Lights are caused by electrical solar discharges in the upper atmosphere.

## CHURCHES OF BURKBURNETT

**Guidelines of Life**

THE DAWN OF REDEEMING GRACE  
by Rev. M. Alsbrook, Pastor, Church of the Nazarene

Scripture - Matthew 21-2 Now when Jesus was born in Bethlehem of Judea in the days of Herod the King, behold, there came wise men from the east of Jerusalem. Saying, Where is he that is born King of the Jews? for we have seen his star in the east, and are come to worship him.

The above title is inscribed in the ever popular Christmas Carol "Silent Night" and is proper theme for this season of year as we commemorate the birth of Emmanuel - God with us. Christ is the light which lighteth every man who comes into the world.

As we think of the beginning of His dawning upon man's pathway, we recall the turning to Christ of Lou Wallace, the author of the Christian novel, "Ben Hur". He had been commissioned by Robert Ingersoll, the noted atheist, to make a five year intense study of the Bible in order to ridicule and negate the Christian stand of the scriptures being the Word of God. We are told that as Wallace read the words of the text, his heart was gripped by the gospel story and his life changed. As the five year study was completed he had not only come to believe the Bible as God's Word but had accepted the living Christ of its pages. One can imagine what a testimonial report like this had on his benefactor. The exact opposite was accomplished from what had been initiated. God has said that His Word would not return unto Him void and this is just one more triumph of His redeeming grace. Those who intensely search for Him still find Him and wise men still follow His star.

God never lacks the means to guide earnest inquirers and humble seekers whose interest has been awakened. The wise men were magi-not magicians; astronomers, not astrologers; scientists, not wizards. May all men everywhere honorably emulate their example as did Lou Wallace and find for themselves that which really satisfies at Bethlehem (the house of bread). Jesus is that living bread which came down from Heaven to meet earth's spiritually hungering need. May many search and be found by Him this Christmas.

**Worship In The Church Of Your Choice This Sunday ----- And Take The Family**  
This Church Directory Is Sponsored By The Following Burk Burnett Businessmen In The Interest Of The Spiritual Growth Of This Community

- Apostolic Church of the Lord Jesus Christ**  
703 Magnolia  
Donald P. Hodgson, Pastor  
Sunday School 10:00 a.m.
- Assembly of God Church**  
Corner of College and Ave. B  
Rev. J. W. Hocker, Pastor  
Sunday Morning Worship, 11:00 a.m.
- Calvary Baptist Church**  
College and Ave. B  
Ray C. Morrow, Pastor  
Sunday Service, 11:00 a.m.
- Cashion Baptist Church**  
Wichita Highway  
Rev. Ed Newhouse, Pastor  
Sunday Church Service, 11:00 a.m.
- Central Baptist Church**  
814 Tidal Street  
Rev. Max Dowling, Pastor  
Sunday Morning Worship, 10:40 a.m.
- First Baptist Church**  
Corner of Avenue D and 4th  
Lamoine Champ, Pastor  
Sunday Morning Worship 10:40 a.m.
- Janlee Baptist Church**  
Opposite Burk Burnett High  
Rev. Wayne S. Glazener, Pastor  
Sunday Morning Worship, 11:00 a.m.
- Providence Baptist Church**  
T.L. Longmile, Pastor  
Floyd & W. 6th Street
- St. Jude Catholic Church**  
600 Davey Drive  
Father Richard Beaumont  
Confession, 5:30-6:30 p.m. Saturday  
Masses, 7:00 p.m. Saturday, 10:00 a.m. Sunday

- First Christian Church**  
Second & Avenue D  
Rev. John White, Pastor  
Sunday Morning Worship, 10:30 a.m.
- Church of Christ**  
First and Avenue C  
Ed Morris, Minister  
Sunday Morning Worship, 10:40 a.m.
- Church of God**  
121 S. Ave. E  
J. E. Dement, Pastor  
Sunday Morning Worship, 11:00 a.m.
- Episcopal Church of St. John the Divine**  
1000 S. Berry Street  
Father David A. Jones, Vicar  
Choral Eucharist, 10 a.m. Sunday
- Grace Lutheran Church**  
Third and Avenue E  
Rev. Albert C. Lindemann  
Sunday Morning Worship, 10:30 a.m.
- Trinity Lutheran Church**  
8 Miles West on Highway 240  
Sunday Morning Worship, 9:30 A.M.
- First United Methodist Church**  
Ave. C & 4th Street  
Rev. William W. Penn, Pastor  
Sunday Morning Worship, 10:30 a.m.
- Church of the Nazarene**  
Third and Holly  
Rev. M. Alsbrook, Pastor  
Sunday Morning Worship, 10:50 a.m.
- Penecostal Church of God**  
415 N. Berry Street  
Rev. R.F. Wheeler Pastor  
Sunday Morning Worship, 11:00 a.m.  
Sunday evening 7 p.m.  
Wed. and Sat. 7:30 p.m.

**CORNELIUS INSURANCE AGENCY**  
III TEJAS BURKBURNETT 569-3498

I would like to take this opportunity to congratulate the Burk Burnett Bulldogs on their fine season. You got us in the Christmas spirit early this year. I have never seen a more dedicated group of fine young men in my life.

A special thanks to our fine coaching staff for a tremendous job.

An extra special thanks to a fine band and their directors for an excellent half time show at each game.

T.M. Cornelius

<p><b>THE Manhattan</b> BURKBURNETT'S LEADING DEPT STORE</p> <p>WE GIVE S&amp;H GREEN STAMPS</p>	<p><b>WOLFE FORD COMPANY</b> Complete Service and Sales Sheppard Road Phone 569-2275</p>	<p><b>Wampler Insurance Agency</b> For Insurance Of All Kinds 203 N. Ave. D 569-1461 Burkburnett, Texas</p>	<p>New Homes - Equities - Rentals Property Management</p> <p><b>G and H Real Estate Co.</b> 569-0362 1308 Sheppard Rd.</p>
<p><b>UNITED SUPER MARKET INC.</b> "The Finest In Groceries" Wichita Highway and Tidal Street</p>	<p><b>Lippard Furniture &amp; Lippard Insurance Agency</b> 200 E. 3rd 569-3112</p>	<p><b>BURKBURNETT INFORMER</b> "More than a Newspaper, A Community Legend..." "Quality Printing Is Our Specialty" 569-2191 Burk Burnett, Texas</p>	<p><b>Famous Department Store</b> 569-2441 Burkburnett, Texas</p>
<p><b>LLOYD CLEMMER LUMBER CO.</b> Your Business Appreciated See Us For Prices Before You Buy 569-2911</p>	<p><b>Pat's Electric</b> 104 Linden 569-1331</p>	<p><b>TEXAS ELECTRIC SERVICE</b> People power... it work for you Bill Vincent, Mgr.</p>	<p><b>Famous Department Store</b> 569-2441 Burkburnett, Texas</p>

# Classified ads

AN AD COST  
7¢ Per Word  
\$1.00 Minimum  
Burkurnett  
INFORMER/STAR

## Country & Western Dance

EVERY SATURDAY NIGHT at 9 p.m.  
FEATURING SALLY BISHOP & GROUP

## American Legion RED RIVER EXPRESSWAY

### BIG PASTURE SENIOR CLASS IS SPONSORING A Fish Dinner

SUNDAY, DEC. 17 Serving 11 a.m. to ?  
Big Pasture Cafeteria, Randlett, Okla.  
Adults, \$1.50 Children under 12, \$1.00  
EVERYONE IS INVITED

### FLOWERS UNLIMITED

## Symbolic Floral Arrangements Key Christmas Decor In Home

Christmas is a family festival. We celebrate it by making our homes colorful and bright, singing carols, providing rich feasts, and giving gifts in the tradition of the Wise Men of the East.

In keeping with the spirit of the season, cut flowers and plants are wonderful to receive and give at this time. However, floral decorations for the home will demand more attention than placing flowers neatly in a vase.

The dining and living rooms are usually the first concern of a hostess, and are as important a focus in home decor as the Christmas tree. It is in these areas that hostesses wish to convey the impression of cheer for both planned festivities and those times when friends drop in unexpectedly.

The occasion calls for imagination and sparkling, rich colors. The answer to both needs can be found in centerpieces, floral compositions, or encircling symbols of the season with appropriate floral selections.

FTD florists note that a favorite Christmas plant, the poinsettia, represents fertility and eternity, and is a prime symbol of the season as well as a frequent subject of legends.

One 16th century tale tells of a small girl who followed the Wise Men to the cradle of the infant Jesus and wept because she had no flowers to place beside the manger. An angel appeared and bid her to take weeds from the field and present them before the infant, and as she did so, the weeds blossomed into a vivid, beautiful poinsettia.

—MM.



Certainly, Christmas is virtually filled with symbolism. Figurines in the shape of angels, shepherds, Madonna and Child, the three Kings, musicians, reindeer, etc., as well as candles, bells, and Christmas balls are all appropriate reminders of the holiday, and are traditionally incorporated within the design of floral arrangements.

During this season, few Christian homes seem truly

decorated without a wreath at the door, in the window, or perhaps as a focus in some living area other than that in which the Christmas tree is placed.

The round form (of the Della Robbia wreath) symbolizes eternity, while the flowers and fruits are symbolic of the cycle of the seasons.

In milder climates, FTD florists suggest that the feeling of the first Christmas, which occurred in a mild climate, may be captured with palms, magnolia, poinsettias, and other foliage and blossoms of the East. In colder climates, winter wonderlands can be made of cones, greens, and ribbon to bring the joy of the season into the home.

### FOR SALE MISCELLANEOUS

FOR SALE--Monuments, nationally advertised stones. Dates Cut, Mrs. D.C. McNeill, 914 E. 3rd, Phone 569-3753, 27-TFC

Reduce safe & fast with GoBese Tablets & E-Vap "water pills" at Corner Drugstore. 11-6p

FOR SALE--House Plan Portfolio, 400 designs, \$2.95 guaranteed. Larry Farnsworth, box 1841-TI Las Vegas, Nevada, 89101. 9-8tp

MARY KAY & MR. K COSMETICS - - Holiday gifts, Free wrapping. Bernie Mills, consultant, 1109 E. Sycamore, 569-3534. 9-8tc

FOR SALE--Solid Oak Antique Buffet, perfect condition, \$150. If interested call 569-3170, 14-2tc

FOR SALE--12 bass accordion; tricycle, sturdy coffee table; new rug shampooer; small baby bed; antique floor lamp. 803 Tidal. 569-2369. 14-1tc

MARY KAY COSMETICS - - Complimentary facial, replacement orders. Call Norma Gregory, 703 Sycamore, 569-1012. 14-3tc

FOR SALE - - 1961 Rambler Station Wagon, 6 cylinder, overdrive, radio, heater, factory air, luggage rack, good tires and runs good. \$250.00. Call 569-0567. 15-1tc

FOR SALE--Refrigerator; 120 watt stainless steel waterless cookware. Call 569-2351. 15-1tc

NEW AVON, 1/2 price. 20% to 30% off on everything. Collectibles, antiques, new freight damaged furniture. Refrigerators and stoves. Trade-Way Bargains, 569-3981. 15-1tc

FOR SALE--Dryer, one full bed, living room furniture, humidifier. Call 569-3608. 15-1tc

FOR SALE--Imperial Wizard Washer and Westinghouse Dryer. Both real clean. Good condition. Call 569-3675. See at 1005 Frances. 15-2tc

GARAGE SALE--912 Mimosa, 4 p.m. Thurs, Fri., All day Sat. 15-1tc

ORDER EARLY FOR THE HOLIDAYS - - Homemade candies, Pecan pies, fresh apple cakes. To order call the Apostolic Church, (Mrs. Hodgson) 569-1967 or 569-3462. 15-3NC

BRACE yourself for a thrill the first time you use Blue Lustre to clean rugs. Rent shampooer, St. Wackers in Parker Plaza. 15-1tc

For Sale - 1971 Kawasaki, 175 Trail Bike, low mileage. Excellent condition. Call 569-1841 13-1tc

IT's terrific the way we're selling Blue Lustre to clean rugs and upholstery. Rent shampooer, St. Wackers in Parker Plaza. 15-1tc

HOMEMADE GOODIES FOR THE HOLIDAYS - - Fudge, Divinity, Peanut Brittle, Hard Assorted Candies, Pecan Pies, and Fresh Apple Cakes. To order call the Apostolic Church, (Mrs. Hodgson) 569-1965 or 569-3462. 15-3NC

PROFESSIONAL "do-it-yourselfers" rent a Trewax Shampooer today! Only \$1. Gets Carpets Trewax Clean, Sham-burger Building Center. 15-1tc

T & T Cement Construction  
408 E. 2nd St. Burkurnett  
569-1762  
COSTS NO MORE FOR THE BEST Bonded and Insured

FOR SALE--4 HP Trail Bike, Less than 50 miles. Bought new last year for \$199.95, will sacrifice for \$97.50. Phone 569-2743 after 6 p.m. 15-1tc

### LOST & FOUND

FOUND--One Bird Dog found Sunday in the vicinity of Carolyn Lane. Owner identify to claim from Mrs. Hedsoe, 103 Carolyn Lane. 15-NC

### CARDS of THANKS

CARD of THANKS  
I would like to thank the coaches, fellow team members, fans, and friends for their concern and thoughtfulness shown while I was in the hospital.  
Mike Meyers

CARD of THANKS  
In grateful appreciation, I wish to say "Thank You" for your kindness and thoughtfulness shown me during my stay in the hospital and upon returning home.  
Mrs. Edward Bankhead

### WANTED

WORKING MOTHERS  
I will give loving gentle care to your child while you work. Near highschool, 569-3548. 13-4tc

### NOTICES

NOTICE  
The Community Service Council will have the names of families needing Christmas baskets. A name may be obtained from Mr. Larry Di Marzio, 569-3158 or Mrs. Lewis Brocker, 569-3786. 15-NC

### RENTALS

FOR RENT--3 room furnished house. Water paid. Close to town. \$45.00 per month. Call 569-2077 or 569-2774. 11-1tc

FOR RENT--2 bedroom house. Water paid. See at 304 8th Street or call 569-1603. 15-2tc

FOR RENT--Furnished one bedroom apartment, central heat/cooling. Electric kitchen. Carpet, carport. No Pets. Royal Manor, 627 S. Harwell. Call 569-2828. 15-1tc

FOR RENT OR LEASE--3 bedroom brick unfurnished house. 1 1/2 baths, completely redecorated. Central heat/air, fully carpeted. Separate utility with washer, dryer connections. New built-in kitchen including dishwasher and disposal, fenced yard, patio, large new storage building, attached garage. Beautiful yard with fruit trees. \$165.00 per month. Call 569-0567. 15-1tc



"I Forgot A Present For Emma"

Give a thought to increasing your Homeowner Policy to include the new purchases of household furnishings and Christmas gifts.

**WAMPLER INSURANCE AGENCY**  
SECURITY & SERVICE  
203 NO. AVE 'D'  
BURKURNETT PH. 569-1461

### SERVICES

J-Bar-N Plumbing Service  
License & Bonded  
New Repair  
Commercial Residential  
REASONABLE RATES  
J.T. Williams 569-0388  
7-2tp

Sewing Machine Repairs  
All Makes Models  
All GUARANTEED  
REASONABLE RATES  
51-2tp

THORNTON'S REPAIR SHOP  
All makes washer and dryers, hoes and scissors sharpened, bicycle repair, 415 N. Ave. B, Ph. 569-855. 22-TFC

CHARLES SMITH  
SAND & GRAVEL  
HAULED  
Phone 569-718  
after 3:30 p.m.

Pays hospital/surgical bills  
For person in person health insurance, call Bob Carter  
40 Ave. C  
569-2902

Larry's Home Repair & General Handyman Service  
Roof Repair, Carpenter, Rooms Paneled, Ceramic Tile, Floor Tile, Sheet Metal, Painting and Other Odd Jobs, Repair Screening of all kinds. Ask for Larry, 569-3230 after 3 p.m. 7-ttc

Child Care  
By the Day, Hour, or Week  
Ages: Infants to 9 years  
ARTS & BOOKS CRAFTS  
627 E. 4th  
State Licensed  
Call 569-0361 or 569-3646 after 5:30  
HOURS: 7 a.m. to 5:30 p.m.  
MONDAY thru FRIDAY

40 BARREL TANK TRUCK  
\$8,000 hour, Oil or Salt Water  
Time Departure to Return  
William Browning & Son  
592-5905  
10-6tc

TV and Radio Tubes Tested  
Free. Harold's TV Service,  
224 E. Third. 569-0321.

WATER WELLS DRILLED  
PUMPS REPAIRED--  
RICHARD WISEMAN  
723-5205  
LICENSED  
205 Valley View Road,  
Wichita Falls, Texas  
40-12tc

BURK CAMPER SALES  
AND RENTALS  
"Quality Built Campers"  
Shells, \$149.95 up  
Campers, \$850.00 up  
Protect Your Tools & Gear  
Special Orders, 7 - 10 day  
Delivery  
569-0212 569-0137  
See at B & R TEXACO  
14-2tc

Corner DRUG STORE  
302 E. 3rd St.  
BURKURNETT PH. 569-2251

### RENTALS

FOR RENT - - LA MAISON--  
2 bedroom brick, air conditioned, nicely furnished, fenced, gas and water paid. Washer and dryer, 1000 E. Sycamore. 569-0127 or 767-4472. 1-ttc

FOR RENT--Unfurnished two bedroom house with washer connections. No pets. One or 2 children. 600 N. Avenue F. 569-2194. 11-ttc

FOR RENT--3 bedroom house in Devol, Okla. Contact A.J. Mays, 569-0023 after 4 p.m. 15-2tc

FOR RENT--Furnished 2 bedroom house with garage. One child accepted. No pets. 609 E. 4th or 569-2519. 14-ttc

FOR RENT--Unfurnished 3 bedroom house. Military preferred, 2 children or less. H.K. Landes, 1401 Sheppard Road. 14-ttc

FOR SALE--Large 3 room modern furnished house. Also one for rent. Inquire at 114 Avenue D. 569-2567. 14-ttc

For Rent - 129 Lilac Lane. 2 BR house, fenced in yard. 569-3430 13-ttc

For Rent - 2 BR furn. duplex water paid \$70 per mo. Redeclared 569-2077 or 569-2774 13-ttc

For Rent - 2 BR furnished house. Washer and dryer connections. 710 Glendale 569-3144. after 6 p.m. Weekdays. 13-ttc

For Rent - 3 BR house fenced back yard 835 Lee St. Shade trees. 817/433-2607 6-ttc

Neville Apts.  
Furnished and unfurnished one, two and three bedrooms. Swimming pool. Call 569-0037. Manager, Apt. 6, Mrs. Opal Sykes. 14-ttc

FOR RENT--2 bedroom unfurnished house with washer and dryer connections. 569-3857. 414 Glendale. 14-ttc

FOR RENT--Furnished bedroom. Utilities and linens furnished. 569-3753. 404 E. 3rd. 15-ttc

Weekly Health Tip  
from Joe Gillespie

Frequency of broken bones in auto accidents suggests a first aid kit in each car, including wooden splints, 4 x 30 inches for legs and 3 x 14 inches for arms, plus six triangular bandages and other large dressings. If possible, splint the fractured limb inside the vehicle where the victim lies, before moving him. This can avoid further harmful injury. Hasty attempts to "get the injured out of the car" can do great harm.

Corner DRUG STORE  
302 E. 3rd St.  
BURKURNETT PH. 569-2251

### REAL ESTATE

FOR SALE  
FOR QUICK SALE LIST YOUR PROPERTY WITH US.

SNOW WHITE - a pretty 3 BR home, carpeted, 1 1/2 baths, family room-kitchen, fenced, equity, Assume loan. \$11 monthly. \$13,600.

LIKE NEW - 3 BR frame \$200 down payment, only \$8250

BRAND NEW - 3BR brick, 1 1/2 baths, carpeting, family room-kitchen, built-in range, garbage disposal. . . \$18,100

SPIC AND SPAN--2 bedroom asbestos siding, spacious living, dining room, fenced. Only \$6,000.

IMMEDIATE POSSESSION--Spacious 2 bedroom and den. Carpeted, built-in oven. Cooktop. Central heat. Low down payment. Assume loan.

Jo Smith Realty  
Phone 569-3490

FOR SALE  
Tom's Trailer Park  
707 Sheppard Road  
Private Home, 2BR and bath, 2 large storage houses, 12 unit trailer park, full; 12 patio; 5 car ports; children play area. Hard surface drive; quiet, trees shade all trailers. Ideal location. Enjoying good income. Owner wants to quit. Will finance. For information, call Bill Bentley, salesman, a/c 405 342-5458, Temple, Okla. after 6 p.m. 12-ttc

WANTED TO BUY one acre of land outside city limits preferably with old house. Reasonable. Cash. M.H. DeYoe, Route #4, Box 277A, Wichita Falls, Texas 76301. 15-1tp

HOUSE FOR SALE--Older 3 bedroom frame house with central heat and air, large fenced in back yard. Call 569-1219. 11-TFC 10

HELPFUL ADVICE FOR THE WOMAN DRIVER  
To get the green light as a safe driver, you should realize that good driving is more a matter of attitude than of manipulative skills. Being able to turn on a dime or park in someone's pocket means nothing if a driver also daydreams at the wheel. Making "good time" en route is foolishness if in the course of doing so a driver is reckless. Most important, driving skills--regardless of how polished--are cancelled out if a driver operates a car as an expression of what she happens to be feeling at the moment--anger, frustration, bravado or exuberance. Like brushing your teeth, driving should be a function apart, something you do unencumbered by other considerations. Sliding behind a steering wheel, you should put aside whatever happens to be on your mind. For a free booklet of helpful advice on safe driving and maintenance of your car, write to Gulf Oil Company-U.S., P.O. Box 1519-TG, Houston, Texas 77001. Ask for the booklet, "Straight Talk for the Woman Driver." And remember, your one purpose is to get from where you are to where you want to go, your one function is to do it skillfully, thoughtfully and safely.



BUY AUTO LIABILITY From The

**WAMPLER INSURANCE AGENCY**  
SECURITY & SERVICE  
203 NO. AVE 'D'  
BURKURNETT PH. 569-1461

Job Opportunity  
Editor-Newsman

APPLY IN PERSON

Burkurnett Informer-Star

417 AVENUE C

SALE  
**ZENITH COLOR TV'S**  
ALL MODELS--ALL SIZES  
SAVINGS ARE GREAT--SERVICE INCLUDED

**Bills T.V., Furn. & Appl.**

301 N. Ave. D Burkurnett

BUY AUTO LIABILITY From The **TRAVELERS INSURANCE CO.** It Doesn't Cost Any More To **BE SURE**

HOWARD CLEMENT - Agents - RANDY CLEMENT  
303 AVENUE C PHONE 569-3333



BURKBURNETT  
INFORMER STAR

# SHOPPER

covering

- \* SHEPPARD AIR FORCE BASE
- \* RANDLETT                      \* DEVOL
- \* GRANDFIELD                \* BURKBURNETT
- INFORMER READERS

Reaching Approximately

## 20,000 People

**GIFTS** for Everyone

Time For Shopping?

Give a Famous Gift Certificate



For Him

For Her

By Van Heusen, Campus, & Fruit of the Loom <b>Shirts \$3.98-\$13.00</b> Including Knits		By Stockton of Dallas, Kay Windsor, Pat Perkins, & Others <b>Pant Suits</b>	
Gift Box <b>Shirt &amp; Tie Set \$7.95</b>	By Farah, Lee, & Levi <b>Knit Slacks \$14.00</b> <sup>Up</sup>	By Smart Time <b>Robes</b>	By Pinchurst & Evelt <b>Lingerie</b>
<b>Robes &amp; Pajamas</b>	By Campus & Van Heusen <b>Sweaters</b>	By Stevens, Town & Country, & Mojuv <b>Hosiery</b>	<b>Sweaters &amp; Knit Capes</b>
By Turlee, Campus <b>Sport Coats \$42.50</b> <sup>UP</sup>	By Wembley & Sweet <b>Ties \$3.50-\$5.50</b>	By Mojuv <b>Gloves</b>	By Daniel Greene <b>Houseshoes</b>



THE **Famous** DEPARTMENT STORE  
Downtown Burkburnett



Phone 569-2441

Famous For Values"

Burkburnett Texas



# PIGGLY WIGGLY

Prices good Dec. 11-13. Quantity rights reserved



Elegant **Sundown** dinnerware

Saucer 29¢ <sup>with each \$3 purchase</sup>

Satin Rose Stainless off sale Dec. 16 Complete your set now!

**DOUBLE**  
S&H Green Stamps every Wednesday

with \$2.50 purchase or more excluding beer, wine and cigarettes

3-5 Blooms, 6" Pots  
**POINSETTIAS** ea. \$2.69  
Golden Ripe  
**BANANAS** lb. **10¢**

Detergent 49 oz. box

**TIDE 69¢**

Piggly Wiggly All Vegetable 3 lb. can

**SHORTENING 59¢**

Northern Paper, Jumbo Roll

**TOWELS 4** <sup>Jumbo Rolls</sup>

Piggly Wiggly Facial

**TISSUE 5** <sup>200 Count Boxes</sup>

Piggly Wiggly All Purpose

**FLOUR 39¢** <sup>5 lb. Bag</sup>

Miss Breck 13 oz. can

**HAIR SPRAY 49¢**

Morton's Frozen Beef, Chicken or Turkey, Pot

**PIES 2** <sup>8 of Pies</sup> **37¢**

USDA Choice Valu-trim Blade Cut Chuck

**ROAST 59¢** <sup>lb.</sup>

USDA Choice Valu-trim Rib

**STEAK 89¢** <sup>lb.</sup>

WIN FREE CASH!  
This week's Jackpot  
**\$700.00**

**JACKPOT** Day

Register just once!  
Nothing to buy  
Get your card punched this week!

**PIGGLY WIGGLY**

# Merry Christmas

**FOLLOW THE FIND OUT WHY YOUR**

WE GIVE GREEN STAMPS

SHOP UNITED MEAT DEPT. AND SAVE!

WE GIVE GREEN STAMPS

PRICES GOOD THRU' DEC. 11th

STORE HOURS  
9-6 Sunday  
8-8 Mon. - Sat.

BIG "U" PURE PORK SAUSAGE . . . . 2 LB BAG 98¢

TENDAMADE STEAK FINGERS . . . . LB. 98¢

HEAT 'N SERVE

FRESH LEAN SEMI-BONELESS

**PORK STEAK**

LB. **69¢**

FRESH PICNIC CUTS

**PORK ROAST**

4 to 6 lb. avg.

LB. **49¢**

QUANTITY RIGHTS RESERVED

BONELESS BEEF SHOULDER

**ROAST** . . . . . **88¢** LB.

BONELESS STEW BEEF

EXTRA LEAN CHUNKS OF BEEF

LB. **98¢**

FRESH 100% ALL BEEF GROUND BEEF

LB. **69¢**

*Farm Fresh United Produce*

RUSSET ALL PURPOSE

**POTATOES**

LB. BAG **49¢**

CALIFORNIA LARGE SIZE

**AVOCADOES** . . . 3 FOR **49¢**

FANCY RUBY RED

**GRAPEFRUIT** . . . 4 FOR **49¢**

FRESH SWEET BELL PEPPER 5 LARGE PODS **49¢**

FRESH LONG GREEN CUCUMBERS 5 LARGE SLICERS **49¢**

GEBHARDT'S JUMBO

TAMALES . . 3 NO. 2 1/2 CANS **\$1**

UNITED assorted flavors

MELLORINE . . 3 HALF GALS. **\$1**

MEADOLAKE

OLEO . . . 4 QUARTERED ONE LB. CARTONS **\$1**

MORTON FROZEN

**CREAM PIES**

ASSORTED FLAVORS

4 FOR **\$1.00**

PATIO FROZEN

MEXICAN or BEEF or CHEESE ENCHILADA

**DINNERS** 3 **\$1**

49¢ PKGS.

LIMIT 3 THERE AFTER 49¢

**A-SAVING WE WILL GO...**

**CROWDS TO UNITED! FRIENDS SHOP HERE!!!**



'UNITED PREMIUM QUALITY BEEF'  
**BEEF CUTLETS** BONELESS WASTE FREE  
 \$ **38** LB.



**DISCOUNT PRICES** plus  
 THE EXTRA VALUE OF S&W GREEN STAMPS  
**FAST COURTEOUS SERVICE TOO!**

UNITED PREMIUM QUALITY  
**CHUCK STEAK**  
 BLADE CUT  
**59**¢ LB.

BIG U THICK SLICED  
**BACON**  
**2** lb. pack **1** 69



**REMINDER!**  
 FINAL DAY TO REDEEM YOUR  
 MORE FOR '72 CARD  
 FOR 1200 STAMPS  
 IS DEC. 18th

- SHOP UNITED FOR SAVINGS BY THE DOLLARS!
- OUR DARLING **CORN** GOLDEN CREAM STYLE or WHOLE KERNEL... **5** 303 CANS
  - MILE HIGH **BEANS** CUT GREEN... **5** 303 CANS
  - OUR DARLING **PEAS** EARLY JUNE... **5** 303 CANS
  - SHURFINE **SPINACH**... **5** 303 CANS
  - RANCH STYLE **PEAS** BLACKEYED... **5** 300 CANS
  - VAN CAMPS **TUNA** GRATED... **3** 1/2 oz. cans
  - SHURFINE **PEACHES** SLICED OR HALVES... **3** NO. 2 1/2 CANS

**Oxydol** GIANT BOX 10¢ OFF LABEL  
**69**¢

**cheer** KING SIZE 25¢ OFF LABEL  
**1** 19

DELTA BATHROOM  
**TISSUE**  
 reg. 89¢  
**10** Roll Pack **69**¢

POST OR KELLOGG  
**CORN FLAKES**  
 LARGE 18 oz. BOX  
**35**¢

GERBERS JR  
**BABY FOOD**  
 2 JARS **39**¢

A.B.  
**ELBO RONI**  
 10 oz. Pkg. **23**¢

MEMBER AFFILIATED **U** PRICES GOOD THRU DEC. 16th

Medium  
**EGGS**  
 UNITED PREMIUM QUALITY  
 GRADE "A" CAGED DOZ.  
**49**¢

MARYLAND CLUB  
**COFFEE**  
 REG. DRIP or ELECTRIC PERK  
 WITH COUPON **74**¢  
 1 POUND CAN



SHURFRESH CORN OIL  
**MARGARINE**  
 4's LB. Package **32**¢

THIS COUPON IS WORTH 15¢ TO YOU!  
 When you buy a pound can of Maryland Club Coffee with coupon #33 WITHOUT... 89¢  
**74**¢  
 COUPON EXPIRES DEC. 16

**UNITED SUPER MARKETS**  
 WE GIVE S&W GREEN STAMPS  
 QUANTITY RIGHTS RESERVED

# Congratu BULLD

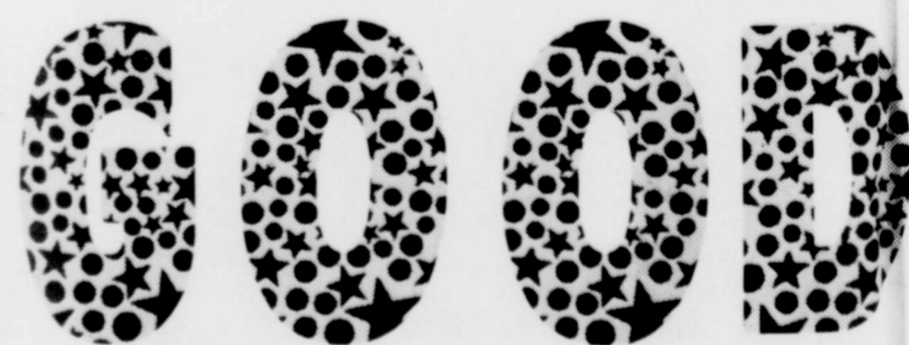
On Your Highly Suc



1972 Burk Burnett

Varsity Footb

District - Region



<p><b>PRESTON DAIRY</b> <i>&amp; Preston Milk</i> Store BURKBURNETT, TEXAS</p> 	<p><b>TEXAS ELECTRIC SERVICE COMPANY</b> 569-373 301 E. 3rd. St. <b>REDDY Always SCORES!</b> Burkburnett</p> 
<p><b>Berend Bros.</b> PURINA CHOWS &amp; SEEDS 569-2811 510 Ave. B Burkburnett</p> 	<p><b>MATHIS</b> CHEVROLET BUICK OLDSMOBILE AUTHORIZED SALES - SERVICE EXPRESSWAY AT SHEPPARD DRIVE-BURKBURNETT, TEXAS, 569-3281</p> 
<p><b>WAMPLER INSURANCE AGENCY</b> "Property, Liability, Life Insurance" CLIFF WAMPLER General Insurance Phone 569-1401 Burkburnett, Texas 208 N. Ave. D</p> 	<p><b>SHAMBURGER BUILDING CENTER</b> "Complete Building Center" 569-2242 "The Lumber Number" Bill Haynes, Manager</p> 
<p><i>The Burk Insurance</i> HOMES FOR SALE OR RENT <b>569-3333</b> Nights Call 569-3613 303 AVENUE C</p> 	<p><b>VIRGIL MILLS CONSTRUCTION CO.</b> Red River Expressway 569-1131</p>
<p><b>ADA'S Fabrics</b> Compare Quality-Price-Guarantee And You'll Know For The Best In Fabrics 210 E. 3 569-0522</p>	<p><b>BOOMTOWN PHOTO</b> 414 Ave. C WEDDINGS- PORTRAITS- ADVERTISING "Class Pictures, Groups, Locations" STUDIO &amp; LOCATION Reasonable prices and outstanding quality. DON - 569-0511</p>
<p><b>JAMES SPINKS TEXACO</b> <b>BRAKE SERVICE</b> S &amp; H Green Stamps On All Repairs Mechanic On Duty Tune Ups 408 E. 3rd D</p> 	<p><b>WACKER'S</b> PARKER PLAZA 569-3861 BURKBURNETT</p> 
<p><b>BELL STATIONS, INC.</b> 208 N. Berry 569-1404 "BACKING THE BULLDOGS"</p>	<p><b>BURKBURNETT INFORMER STAR</b> "The Number One Advertising Media For Burk Burnett" 417 Ave. C 569-2191</p>
<p><b>HICKORY ELM CONVALESCENT CENTER</b> Your Recovery Is Our Reward 800 Red River Expressway 569-1466</p>	<p>Block and Crushed Ice Camper Storage Tenters-Campers- Trailers-Motor Homes- <b>KOA</b> Red River KOA Kampground (817) 569-3081 Burkburnett, Texas</p> 
<p><b>CORNELIUS INSURANCE AGENCY</b> Life - Hospitalization T.M. and MICKEY CORNELIUS 308 E 3rd 569-3498</p>	<p><b>JIM HOUSTON</b> Rodeo Equipment Saddlery &amp; Western Wear 569-3111 Oklahoma Cutoff</p> 
<p><b>HUNT OIL FIELD SUPPLY</b></p> 	<p><b>UNITED SUPER MARKET INC.</b> "The Finest In Groceries" Wichita Highway and Tidal Street 569-2541</p> 

# tulations DOGS

## Successful Season!



# ett High School otball Team ional Champs

# OLUCN

<p><b>BEAVER FURNITURE &amp; APPLIANCE</b> WE BUY &amp; SELL USED FURNITURE AND APPLIANCES RCA &amp; PHILCO Sales &amp; Service We Take Trades 569-2801 222 E 3rd</p>	<p>"Serving Burkburnett Since 1907" <b>THE NATIONAL BANK</b> BURKBURNETT, TEXAS DRIVE IN AND WALK UP WINDOW BANKING • LOANS OF ALL TYPES • U.S. SAVINGS BONDS • AFTER HOURS DEPOSITORY • SAFE DEPOSIT BOXES • BANK-BY-MAIL</p>
<p><b>Coy's JEWELRY</b> • DIAMONDS • WATCHES • SILVERWARE • GIFTS  BURKBURNETT</p>	<p><b>Wolfe Ford Co.</b> COMPLETE SALES AND SERVICE AUTHORIZED FORD DEALER SALES - PARTS SERVICE "You can get the best deal yet in Burkburnett at Wolfe Ford Co." 1007 Sheppard Rd. 569-2275</p>
<p><b>TULLIS SUBARU</b> Where you can buy a new car for only 1896.97 SALES, PARTS, SERVICE Good Selection of Clean Used Cars YOUR <b>TORAL</b> TIRE DIST. For North Texas Ph. 569-1454 Ph. 569-1455</p>	<p><b>CAMPBELL AUTO SUPPLY</b> Complete Automotive &amp; Tractor Parts PAINT AND SUPPLIES "Your NAPA Jobber" 223 East 3rd. St. pho. 569-3391 BURKBURNETT, TEXAS</p>
<p><i>Lippard</i> <b>Furniture &amp; Appliances</b> EXCLUSIVE &amp; QUALITY LINES OF FURNITURE &amp; APPLIANCES BASSETT - RIVERSIDE - FLANDER SEMCO CARPET - BURVEN OF CALIFORNIA TAPPAN - G.E. TV &amp; APPLIANCES <b>LIPPARD INSURANCE AGENCY</b> Burkburnett</p>	<p><b>ALEXANDER SERVICE STATION</b>  GOODYEAR TIRES MOBIL PRODUCTS 324 E. 3rd. 569-2381</p>
<p>Help Stamp Out LAZY MONEY! <b>FIRST SAVINGS and LOAN</b> INSURED 569-2206 BURKBURNETT 314 E. 3rd. St.</p>	<p><b>LLOYD CLEMMER LUMBER COMPANY</b>  FOR EVERY BUILDING NEED • BUILDING HARDWARE • JONES-BLAIR • ROOFING SHINGLES • DIERKS POSTS • IDEAL WINDOW &amp; DOOR UNITS 569-2911</p>
<p>R. B. JOHNSTON <b>THE Famous DEPARTMENT STORE</b> 569-2441 Burkburnett</p>	<p> <b>LEER</b> Commercial Refrigeration Manufacturer N Berry St. 569-2432</p>
<p>BUTCH RAYNES - OWNER <b>B &amp; R TEXACO STATION</b> • ROAD SERVICE • MINOR AUTO REPAIRS • TAIL PIPES &amp; MUFFLERS • TIRE REPAIR • WHEEL BALANCING • PICK UP &amp; DELIVERY 569-0212</p>	<p><b>Western Auto</b> THE FAMILY STORE AND CATALOG ORDER CENTER FRANK SCOBEE, Mgr. 203 E. 3rd Burkburnett</p>
<p>We Give <b>GREEN STAMPS</b> <b>Manhattan DEPARTMENT STORE</b> 218 EAST 3rd. Ph. 569-2661</p>	<p>The <b>BURKBURNETT Bank</b> Member of Federal Deposit Insurance Corporation BEST BRAND OF BANKING  "GROWING WITH BURKBURNETT" 317 E. 3 569-1444</p>
<p><b>CITY PHARMACY</b> 569-1491 300 S. Ave. D </p>	<p><b>WILLIAMS PETROLEUM</b> Williams Drive 569-2531 Burkburnett, Texas </p>
<p><b>Henry's Pastry Shop</b> WEDDING PARTY &amp; BIRTHDAY CAKES PASTRIES DELICIOUS DO-NUTS With "That Golden Creamy Taste" Serving Burkburnett For 21 Years 569-3201 311 E. 3d</p>	<p><b>Corner DRUG STORE</b> 320 EAST 3rd STREET "Your Prescription Is Our First Concern" PHONE 569-2251 - BURKBURNETT, TEXAS</p>

Don't Forget Your Car  
This Christmas  
Give It The Service It  
Needs & Deserves.

Minor Tune-Up  
**\$7.95** LABOR

Service Auto  
Transmission  
**\$6.95** LABOR

Wash & Polish  
**\$12.50**

Align Front End &  
Balance 4 Tires  
**\$15.95**

Pack Front  
Wheel Bearings  
**\$2.95** REGULAR **\$6.95** DISC BRAKES

Bring This Ad With You For  
These Money Saving Specials

**MATHIS SERVICE DEPT.**

EXPRESSWAY AT SHEPPARD DRIVE  
BURKBURNETT, TEXAS 569-3381

# Season's GREETINGS

**HAROLD'S TV SERVICE**  
Burkburnett  
224 E. Third 569-0321

To Our Customers,  
We make every effort to repair your equipment to original factory specifications and to give you the good service you deserve.

In the event we fail your expectations, please feel free to contact me personally and I will strive to the utmost to remedy all problems.

Harold E. Oakley, CET



*Santa says,  
here's a  
Christmas*

## BONUS for you

AT  
**CORNER DRUG STORE**

320 EAST 3rd STREET

BURKBURNETT, TEXAS

PHONE 569-2251

*Santa suggests*



...do your  
**CHRISTMAS  
SHOPPING  
NOW!**

**West Bend Coffee Pot**  
Now \$15.98  
Reg. \$18.98

**Steam Iron**  
Now \$8.98  
Reg. \$11.98

**Bearley Scales**  
Now \$6.95    Now \$7.98  
Reg. \$8.95    Reg. \$9.98

**Sonac Denture Cleaner**  
Now \$16.95  
Reg. \$18.95

**Lefton Lamp**  
Now \$7.50  
Reg. \$14.95

**12 Oz. Libbey Glasses**  
6 For \$2.75

Save \$\$\$\$\$

for him...for her...

By Shopping Early    At Corner Drug

for Father...for Mother...

Queen Knives    Letter Key Chains    Coty Cosmetics  
One-Third Off    Now \$1.19    One-Half Off  
Reg. \$1.98

for Sis...for Brother...for Everyone!

Boxed Christmas Cards    Christmas Candles    Copper Gift Ware    Mugs  
One-Third Off    Reduced As Marked    One-Third Off    Complete Stock Reduced

## Santa's SALE

Reg. \$1  
**Toys 77¢**

Reg. \$1  
**Boxed Cards 77¢**

**Barbie-Type Dolls 77¢**

**25 Bows 37¢**

From  
**Poinsettias 10¢**

27 Varieties  
**Stocking Stuffers 27¢**

**Gifts \$1-\$2**  
For school, club, or church parties

DISCOUNTS for schools, clubs, or churches

**BEN FRANKLIN STORE**

Downtown Burkburnett



# Santa's Special Selections

## Christmas Gift Center

FIELDCREST "CRUSADER" AUTOMATIC ELECTRIC BLANKET



**SALE**

5% Polyester 35% Rayon

Twin Size Single Control

**\$17**

Double Size Single Control

**\$20**

Double Size Dual Control

**\$22**

GOOD COLOR CHOICE

2 YEAR WARRANTY

Haggar Double Knit Slacks....Polyester Double Knit Jump Suits....Men's Jiffies Leisure Footwear....Women's Robes and Pajamas....Arrow Shirts....Ties..... Dingo Harness Boots....Stetson Hats....Women's Bags ..... Luggage.... Panty Hose....Sweaters.... Wide Belts

TAKE THE GUESS WORK OUT OF GIFT BUYING  
GIFT CERTIFICATE

**Manhattan**  
DEPARTMENT STORE

To \_\_\_\_\_

Present this Certificate to us for merchandise of your selection to the value of \_\_\_\_\_ Dollars

With all good wishes from \_\_\_\_\_

Authorized by \_\_\_\_\_

STORE HOURS **8 to 8 TILL XMAS**

STARTING SAT., DEC. 16

WE GIVE



GREEN STAMPS

**Manhattan**  
DEPARTMENT STORE

WE GIVE



GREEN STAMPS

## Season's Greetings

You're Invited

To A

# Christmas Party

Each Day Until Christmas!



**FREE COFFEE**  
Come As You Are



**1<sup>st</sup>**  
**THE NATIONAL BANK**  
BURKBURNETT, TEXAS

DURING THE DAY-IN, DAY-OUT ROUTINE OF OUR BANK, WE FORGET TO TELL OUR CUSTOMERS JUST HOW WONDERFUL THEY REALLY ARE. DURING OUR "CHRISTMAS PARTY" WE ARE GOING TO MAKE A SPECIAL EFFORT TO TELL YOU HOW WONDERFUL WE THINK YOU ARE...AND HOW MUCH WE APPRECIATE YOUR PATRONAGE, AND TO SAY... THANKS FOR BANKING WITH US.

## TIME IS MONEY

Now you can let your Savings at First Savings & Loan do your Christmas Shopping!

PREMIUM	WITH DEPOSIT OF \$1,000.00	WITH DEPOSIT OF \$5,000.00	WITH DEPOSIT OF \$10,000.00
ELGIN CUBE ALARM CLOCK	FREE	FREE	FREE
ELGIN TRAVEL ALARM CLOCK	FREE	FREE	FREE
BRADLEY MEN'S OR LADIES WRIST WATCH	FREE	FREE	FREE
LADIES PENDANT WATCH	CAN PURCHASE FOR \$5.00	FREE	FREE
BUREN-HAMILTON 17 JEWEL MEN'S OR LADIES WRIST WATCH	CAN PURCHASE FOR \$15.00	CAN PURCHASE FOR \$5.00	CAN PURCHASE FOR \$3.00

Beautiful watches and clocks made by Elgin or a division of Elgin can be yours when you take advantage of one of First Savings and Loan's attractive savings plans.

They'll Make Excellent Christmas Gifts!

First Savings Not Only Gives You A Premium For Opening An Account But LOOK At The Savings Plans Being Offered

Regular Savings	<b>5.00%</b>
Per Annum Yields If Left 12 Months	<b>5.13%</b>
90 Day Notice	<b>5.25%</b>
Per Annum Yields If Left 12 Months	<b>5.39%</b>
Certificates - 1 Year \$1,000 Minimum	<b>5.75%</b>
Per Annum Yields If Left 12 Months	<b>5.91%</b>
Certificates - 2 Year \$5,000 Minimum	<b>6.00%</b>
Per Annum Yields If Left 24 Months	<b>6.18%</b>

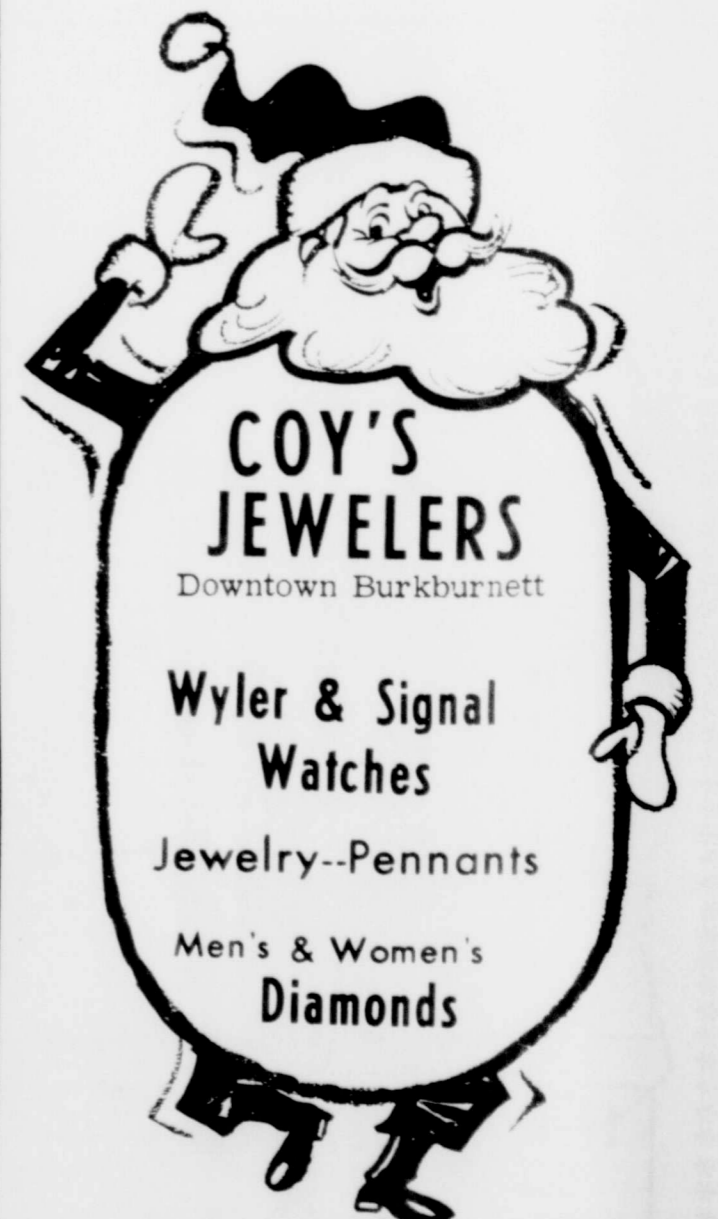
**Accounts In  
By The 10th  
Earn From The 1st**

**First Savings & Loan Association**

Burkburnett, Texas  
314 E. 3rd. Street Phone 569-2206



ORCHID BRANCH  
11th & Holiday Ph 322-4448




# SANTA WILL BE IN BURK SAT., DEC. 23rd!

*Christmas Inventory Clearance*




**10 PER CENT OFF**  
On All Merchandise

**ADA'S FABRICS**  
DOWNTOWN BURKBURNETT

FREE  FREE

**FREE PONY**

To Be Given Away at a Drawing  
**THURSDAY, DEC. 21, 1972**  
AT



MUSIC LESSONS & INSTRUMENTS  
211 E. 3RD BURKBURNETT, TEXAS  
PHONE: 566-8138

**REGISTRATION CARD**

TO BE ELIGIBLE, FILL OUT ALL SPACES & DEPOSIT IN DRAW

AT 

NAME \_\_\_\_\_ AGE \_\_\_\_\_


ADDRESS \_\_\_\_\_

PHONE \_\_\_\_\_

FAVORITE INSTRUMENT \_\_\_\_\_

STRINGS DRUMS BRASS WOODWINDS

WINNER NEED NOT BE PRESENT



You'll never know how big a paycheck your brood cows can deliver until you winter 'em on

**New Purina Range Breeder II**

New PURINA RANGE BREEDER II is a high-quality supplement for wintering brood cows. It contains all the high-quality proteins, processed grains, minerals and vitamins (A and D) you get in Purina's all-natural protein Range Breeder Checkers plus a low level of urea. Only two percent, but enough to lower your wintering costs without sacrificing brood cow performance in any way.

A 5-year study with 400 Hereford cows at Purina's Oklahoma beef research ranch proved that calves from cows wintered on Purina Range Breeder supplement outweighed control-group calves by 19 lbs. per head. At \$30 per hundred-weight, that's \$5.70 per calf.

A 3-year Purina research study shows that cows fed on new PURINA RANGE BREEDER II performed at the same high level (and sometimes even better) than cows fed Purina's all-natural protein Range Breeder supplements and at lower cost; \$1.00 per calf lower.

Let us show you how your brood cows can deliver a bigger paycheck (as much as \$6.70 per calf) with new PURINA RANGE BREEDER II.

**GOING OUT FOR BUSINESS SALE**

PHILCO SPECIALS With Trade-In	RCA SPECIALS With Trade-In
16 Foot Frost Free Refrigerator REG. \$329.95 <b>\$259.95</b>	One Only -- '72 Model -- 25 Inch XL100 Color Television REG. \$689.95 <b>\$589.95</b>
13 Foot -- Avacado Refrigerator REG. \$209.95 <b>\$169.95</b>	One Only -- '72 Model -- 16 Inch Portable Color Television REG. \$319.95 <b>\$289.95</b>
25 Inch -- Maple Color Television REG. \$549.95 <b>\$499.95</b>	Color Television REG. \$489.95 <b>\$449.95</b>
<p><b>Stereo</b></p> <p>60 Inch -- Spanish <b>\$279.95</b> REG. \$349.95 72 Inch -- Spanish <b>\$329.95</b> REG. \$449.95 60 Inch -- Maple <b>\$189.95</b> REG. \$249.95</p>	

Best Prices Guaranteed On All 1973 Model RCA Color TV's  
IF YOU FIND IF YOU FIND ONE CHEAPER IN 30 DAYS, WE WILL REFUND THE DIFFERENCE!

**USED FURNITURE**

Small Office Type--Like New Refrigerator .....	\$ 49.95
A.M.--F.M, Stereo--Walnut Stereo Console .....	89.95
A.M.--F.M.--Stereo, Dust Cover, Like New Stereo Component .....	89.95
Maytag--Perfect Special Portable Washer .....	89.95
23 Inch--Black & White--Motorola Television .....	45.00
23 Inch--Black & White--Catalina Television .....	49.50
2 Pc. Brown Velvet, Like New Living Room Suite.....	129.95
2 Pc. Green Tweed Living Room Suite.....	119.95
Mobile-Maid Portable Dishwasher.....	45.00
7 Pc. Gate-Leg Dining Room Set.....	69.95

12 Only 35 LIGHTS  
**Christmas Light Sets \$1.49**

12 Only  
**Silver Jewelry Boxes \$1.79**

12 Only Set of 6 STAINLESS STEEL  
**Steak Knives \$1.98**

POCKET TRANSITOR  
**RCA Radios \$3.95**

8 Pc. Sets  
**Mixing Bowls \$1.49**

**RCA Clock Radio \$11.95**

**BEAVERS FURNITURE & APPLIANCE**

222 E. THIRD BURKBURNETT 569-2801

**Fall Bulbs-Shrubs**  
Tulips, Daffodils, Iris, Hyacinth  
Potting Soil-Mulches-Peat Moss-Bagged Fertilizer

Berend Bros. Eggs      We Buy Pecans

**BEREND BROS.**  
Leon Veitenheimer, Mgr.  
510 N. Ave. B 569-2811



Fantastic Selection Of GIFTS FROM

**ROBBIE'S HOUSE OF HALLMARK**  
312 E. 3rd Pho. 569-3632

*For Him*

Famous Brand Selection Of Cologone & After Shave Gift Sets

*For Her*

Merle Norman Cosmetics & Gift Sets

<b>Hobby Kits</b>	<b>Gift Wrapping</b> at no extra cost!
<b>Candle Arrangements</b> For Every Occasion	
COMPLETE LINE Party Goods By Hallmark	CHRISTMAS Gift Wrap Tags, Seals, Ties <b>One-Half Price</b>
MEN'S & LADIES' Billfolds By Rolf	BEAUTIFUL Jewelry By Hattie Carnegie
THESE & MANY OTHER GIFT ITEMS	