

BURKBURNETT

INFORMER STAR

MORE THAN A NEWSPAPER . . . A WICHITA COUNTY LEGEND SINCE 1908 . . .

VOLUME 65

BURKBURNETT, WICHITA COUNTY, TEXAS 76354

THURSDAY, DECEMBER 7, 1972

NUMBER 14

Editor's Viewpoint



MONTE WILLIAMS

My wife and I rolled into Burkburnett last Wednesday afternoon about 1:30 p.m. for the first time in our lives. The snow had just begun to fall and we figured it would probably come a pretty good one before it was all over. So we searched for a room for the night and found a nice cozy one at the Twilight Inn here in Burk. We couldn't help wondering what it was going to be like living here.

It all happened pretty suddenly for us. One day the boss asked when I could be ready to move my family to Burkburnett. I told him whenever he needed me there. THAT my friend, was when the little shock took place. The boss said, "Good." "You can be there and start to work the day after tomorrow."

Now I have only one thing to say about this little story that you have just read and that's HERE I IS, BABY! HERE I IS!

I've heard people say many times about many subjects, Man, they're going to the dogs. Youth, going to the dogs, government, going to the dogs, education, going to the dogs. I personally don't believe any of that stuff.

Now there is one exception that I do believe . . . the State Championship IS going to the dogs. Those of Burkburnett High School. And it's apparent that the fans of Burkburnett have been to and for the dogs all the way. And it's also pretty apparent that all of the support given will continue to the last down of the season. This Friday night the 'Dogs' tangle with Lewisville in Fort Worth at TCU stadium. Let us as supporters of this fine football team be there with bells on, if we have to, and let these fellows know that we care. We all know the importance of this game. And if by chance you are wondering how in the heck to get to TCU Stadium, we have in this issue, a map which shows you exactly. See you there, Bulldogs.

The Burkburnett/Informer Star Shopper, which is regularly published on the first Thursday of the Month has been scheduled for the second Thursday of December. We feel that a large majority of the Christmas business is done in the last several shopping days of the month convenient for the businessman, as well as the consumer, when published Dec. 14.

By the way and just in case you are wondering . . . I confess that this is the first column of this sort that I have ever written. And with a few more remarks like the one I just heard from a member of this newspaper's faithful staff, it may be my last.

Thanks very much for reading the Burkburnett/Informer Star. We may make another stab next week.

BURKBURNETT VS. LEWISVILLE

TICKETS NOW ON SALE AT SCHOOL TAX OFFICE ON GLENDALE Students, \$1.00 Adults, \$2.50 ALL Gate Tickets, \$3.00 Ticket Deadline: 2:30 p.m. Fri.

DOGS BURN DEMONS 7-6



Burkburnett High School Football Coach, Bill Froman, accepts the quarterfinal trophy moments after the Bulldogs of Burkburnett edged the powerful Dumas Demons out of contention by a score of 7-6. The clinched fish of a Burk Bulldog tightens in the foreground with excitement and gladness of victory. Deep down, both players and coaches knew, that only gridiron battle of the same caliber as the last will produce yet another victory for the mighty 'Dogs.

LEWISVILLE NEXT

The Bulldogs of Burkburnett have shown their stuff once again as they whipped a fired up team of Dumas Demons on their home turf last Saturday afternoon. The score of 7-6 says a lot for itself but not near all that needs to be said about either team.

The Bulldogs knew from the beginning that the task of defeating the Demons was not going to be an easy one and that every play must count. They formed their game plan and according to Bulldog Coach Bill Froman, carried it out to the tee.

True, the game was close and heartbeats stopped on countless plays, but when two teams of this caliber meet on the old football field, that's the way it's gotta be.

People from Burkburnett and Dumas paid good money to see that game and no doubt, they got every penny worth of good, tough, football enjoyment.

With 7:29 left in the first quarter Zac Henderson cracked up the middle and plastered the first and only Burk touchdown on the scoreboard. Rusty Barrett split the uprights with the seemingly routine point after to make the score 7-0.

Second quarter action was as fierce as the first. The Demons of Dumas were not to be held as they tallied their 6 pointer. Both teams lined up at the line of scrimmage for the PAT. The ball was snapped, placed,

kicked, up . . . only to be batted to the ground by a determined Rick Bradley of the Burk Bulldogs. The score stood 7-6, and remained that way for the rest of the game. Time and time again, fans thought surely that the score was about to change. But both teams defenses held to the gun.

Briefly, that's what happened last Saturday afternoon here in Burk. Both teams are to be commended. Everyone knows that only one team can win and all are happy that the Dogs did. However, to make it to the top, there are two rugged contests yet to be played. The first of the two remaining will be played this Friday night in Fort Worth at TCU Stadium, against Lewisville.

The Informer/Star talked with coach Bill Froman late Tuesday evening and asked him to tell us what he knows about Lewisville. Coach Froman briefly described our next opponents.

Lewisville has a real good football team or they wouldn't be where they are now. There are only four of us left now and in only two more weekends, there will be only one and they will be the state champs. And naturally, we are going to try all out to be that one team.

Lewisville fields some tightlinemen in their guards and tackles plus a 215 pound fullback. The player we'll have to watch real close is Paul Rice, a tailback

weighing about 170. This boy has collected over 1900 yards rushing and averages carrying the ball somewhere between 30-40 times a ball game. Primarily, Lewisville is a running team but they will go to the air if they need to. When scouting these teams, yes, we do look for weaknesses but mostly we look for their strengths. By knowing the opposing teams strong points, we can work for counteraction and thus be more prepared to meet and handle their game plan.

Our game plan will be much as it has been before. We've been successful so far and hope to continue our success. We can change if the need arises.

We have one injury that will effect our game some. That's Mike Myers, Senior All - District Lineman. Myers was injured in last weeks game against Dumas and will be out for the remainder of the season.

No doubt, interesting and tough football is scheduled for Friday night. Bulldog fans are encouraged to attend the game and back the Dogs all the way.

Christmas Lighting Contest To Be Held

The Community Service Council of Burkburnett will sponsor an Outdoor Christmas Lighting Contest this year. Six housing districts will be judged in the contest as well as businesses in downtown Burkburnett.

All entries will be judged on Artistic Merit, Originality, Homemade facilities and lighting techniques. Preliminary judging will start on December 12 and continue through the 16th with judging finals to be held December 18 and 19.

For your information, the districts are outlined as follows: District One--West of railroad and north of College Street; District Two--East of railroad and north of Tidal Street; District Three--South of College Street, west of railroad and north of Kramer; District Four--South of Kramer Street and west of railroad; District Five--East of railroad, West of Berry Street, and south of Tidal Street; and District Six--South of Tidal and East of Berry.

In Burkburnett

Christmas Activities Planned

Special activities for the upcoming Christmas season were set in a Tuesday meeting by the Retail Trades Committee of the Burk Chamber of Commerce.

A community Christmas tree

will go up early next week in the corner of the Burkburnett Bank parking lot. Individuals or merchants that might have any tree decorations that they could donate for the community tree are asked to bring them

by the Chamber office at 412 Avenue C.

Beginning on Monday, December 18th and continuing through Saturday, December 23 many of the Burkburnett merchants will be staying open until

8:00 p.m. for the shopping convenience of local citizens.

Special highlights of this week long period however will be the appearance of Santa Clause as well as a number of choral groups to sing traditional Christmas carols.

Santa will be located in his special house adjacent to the community Christmas tree each afternoon that week from approximately 4:30 until 6:30. The special choral groups will also present selected Christmas numbers during that same period of time.

The members of the Trades Committee voted not to make any plans for a City-Wide Auction Sale in the near future. The special Auction was initially planned for some three weeks ago, but was rained out.

It is hoped by the group that another auction can be held in the early spring when the weather might be a little more predictable.

Great things are in the making for the Christmas season, so watch the pages of the INFORMER/STAR.

Over \$500,000,000

Burk Western Auto Order Tops Goal

The Western Auto Company reached a new plateau of sales last week as they passed the one-half BILLION DOLLAR MARK for this year and Western Auto of Burkburnett placed the order that boosted the company over that goal.

It turned out to be a pretty big day all the way around for our local Western Auto Store. Helping to unload the merchandise that pushed sales over one-half billion dollars was Conrad Roewe, Western Auto

Territory Sales Manager from the Dallas Region, and Billy Hall, Assistant Distribution Center Manager. Not only did these two gentlemen help unload but Mr. Hall presented Western Auto Manager, Frank Scobee with a credit memo for the entire amount of the large Christmas merchandise shipment.

In presenting the credit memo to Frank Scobee Mr. Hall stated that Western Auto Stores like this one in Burkburnett are fully accredited for making

sales all that they are for his company. Hall also pledged continued support from the Western Auto Company to all Western Auto Stores.

Earlier in the day, Conrad Roewe, presented local Western Auto owner, Mrs. Dorothy Page with a plaque recognizing her 25 years in the Western Auto Store Business.

(Continued On Page 2)

Informer Star

Names New

Managing Editor

The Burkburnett/Informer Star proudly announces the association of Monte Williams as the papers new Managing Editor. Williams comes to Boomtown from the city of Mineral Wells, Texas with his wife, Deanna, and son Steven, 4. "I've been in Burkburnett for five days now and already feel like a Boomtown," stated Williams. "People in Burk don't waste any time letting you know about the Bulldogs, the oilwells, and their town as a whole." "Though we've been here only a short time, my family and I are already positive that we'll like Burk and are looking forward to meeting and getting to know all of the Boomtowners possible." In Mineral Wells, Williams held the position of Sales Manager and Assistant Editor at the Advance Morning News, a daily publication.



MONTE WILLIAMS has been named new managing Editor of the Burkburnett/Informer Star. Williams replaces Raymond Greenwood, who is now the new manager of the Burkburnett Chamber of Commerce. Williams took the reins of the newspaper as of December 1.



During the regular luncheon of the Burkburnett Chamber of Commerce Monday, Raymond Greenwood was introduced to members and guests as the new Chamber Manager. Greenwood assumed the position of the Chamber Manager as of December 1st.

SHOP EARLY
14 Days Left

Burk Chamber Introduces Greenwood As Manager

Members and guests of the Burkburnett Chamber of Commerce enjoyed lunch together Monday, December 4th at the Burk Community Center. A most interesting program was presented to the group by Mrs. Loretta Hunt, Chairman of the Oil Patch Museum Committee. Mrs. Hunt told chamber guests and members, "Our hope is that it will titillate your minds, stir your imaginations, and engage your hands in finding and preserving the relics, antiquities and memorabilia of the heritage that is ours of Boomtown, USA." Mrs. Hunt then proceeded in showing and explaining several pieces that played vital rolls in the building and developing of Boomtown. These artifacts included a log

hook, pony rod, sheller, bearing and a large clock. Also shown was a picture of Boomtown actually during the oil boom times and how such pictures could be preserved through the use of decoupage.

The highlight of the meeting was the acceptance of a portrait of Bob Waggoner, given by Mrs. F.E. Smith, the daughter of Bob Waggoner.

Bob Waggoner was born in 1867 in Decatur, Texas and moved to Wichita Falls in 1880. The Burk Waggoner was the 2nd well drilled during the Burk Boom back in 1919. Bob Waggoner passed away in Feb. of 1947 but not without leaving behind a great history in the city of Burkburnett. Following Mrs. Hunts very

interesting program, Joel Graves presented a most enjoyable program of music. Joel chose Christmas music to sing, putting all present in the spirit to celebrate the Birth of Jesus Christ.

Chamber President, Reid McCandless, then introduced Burkburnett's new Chamber of Commerce Manager, Raymond Greenwood. Greenwood pledged his most enthusiastic support to the growth and prosperity of the city of Burkburnett. Greenwood told those attending that the Chamber of Commerce stands ever ready to serve Burk and that any questions may be called to the Chamber of Commerce office or directly to him.

GO BULLDOGS



Western Auto Manager, Frank Scobee and Mrs. Dorothy Page, Western Auto owner, proudly display the plaque awarded Mrs. Page by the Western Auto Company for her 25 years in the Western Auto Business. Conrad Roewe, territory sales manager, presented the plaque.



Conrad Roewe, Western Auto Supply Company Territory Sales Manager from the Dallas Division, points to the sign which says that Western Auto of Burkburnett placed the order that pushed Western Auto Company over the \$500,000,000 mark for the year. Billy Hall, Assistant Distribution Center Manager presents a credit memo for the entire cost of the merchandise to Frank Scobee, Burk Western Auto Manager. Looking on from between the two gentlemen is Inez Hodges, office manager at Western Auto. To Frank Scobee's right is Roy Dalton, service man, Donna Myers, Steve Hodges, Patsy Scobee, Raymond Farmer and Cotton Clemmons.

RIGHT--Coy Camp relates his past experiences of growing up when Wichita was a small town, full of fun by spending hours of hunting and fishing.

BOTTOM--Cheerleaders Judy Frye leads the 4-3AAA Quarter-Final Champions into Bulldog Stadium to meet the downfall of the Dumas Demons.

Informer-News Corporation, Publishers

Lon H. Williams, President-Publisher

Entered as second class matter at the Post Office at Burkburnett, Texas, 76354, under the Act of March 30, 1879.

SUBSCRIPTION RATES

\$5.00 per year in Wichita, Cotton, Tillman Counties
\$6.00 per year elsewhere

NOTICE TO THE PUBLIC: Any erroneous reflection upon the character, standing or reputation of any person, firm or corporation, which may appear in this newspaper will be gladly corrected as soon as it is brought to the attention of the publisher.



IT'S NOT TOO LATE!

JOIN FIRST NATIONAL BANK'S 1973 CHRISTMAS CLUB NOW



A total of \$22,014.00 in Christmas Club funds were mailed to savers this week. If you would like to join our club for next year, fill out and return an application to us. If requested we will automatically deduct weekly amounts from your checking account without any service charge.

A Cordial Invitation to Join our New Club

PLEASE DETACH BEFORE PRESENTING CHECK FOR PAYMENT

(Please fill out this form and return to us)

Payment Class \$ _____ No. _____
(We will cover above)

Print Name _____

Your Address _____

Your Signature _____

- \$.50 Club earns \$25.00
- \$1.00 Club earns \$50.00
- \$2.00 Club earns \$100.00
- \$3.00 Club earns \$150.00
- \$5.00 Club earns \$250.00

1st THE NATIONAL BANK

300 E. 3RD BURKBURNETT, TEXAS



Coy Camp Reminisces About Boyhood Years

by Sedelta Verble

"It didn't take much to have a good time when I was a boy. I lived on a farm and raised pinto beans and cotton. Why, you could have fun just by getting out of work," joked Coy Camp with his sparkling brown eyes betraying a warm and mischievous nature as he reminisces of his boyhood years spent in Wichita Falls.

"When my two younger brothers and three sisters and I lived in Wichita Falls it wasn't much bigger than Burk is now. Later on during the Dust Bowl, I was in New Mexico farming frijoles and pintos, but I've spent most of my life in Wichita Falls. Then and now I love the wide open spaces, he concluded.

Coy now owns Coy's Jewellery Store and Pet Shop but finds enough time to relax and pass his spare hours with fishing and hunting.

"Oh, I'll bet I've fished every lake in the country, but my favorite is Lake Wichita. I catch Crappies, Sandbass and Catfish with live bait, a rod and reel, and I leave the rest to luck," Coy said in response to his favorite sporting hobbies.

Coy's other hobbies came in handy in 1964 when he bought his business. He had tinkered with watches and helped repair them for his cousin as "something to do when he came home from the oil refinery in Wichita."

The refinery closed down after 16 years of employment for Coy. He then opened his present business where he sells jewelry.

The jewellery store is also a pet shop and supply center. Here tropical fish swim around in colorful sea-like tanks. Coy is well equipped on this other aspect of fishing as he tends and manages the wide ranging assortment of fish.

She can answer questions about your electric service.

Answering questions about your electric service is just one of the jobs of a customer service representative.

Whenever you call Texas Electric, one of our representatives is at your service. To assist in billing matters. To help set up a Level Payment or Automatic Bank Draft Plan.

A customer service representative can take your application for service, or arrange for transfer of service if you're moving to a new address in our service area.

You can get information about special services, such as lighting, kitchen planning, heating or air conditioning.

Our customer service representatives are trained to help you by supplying information and taking care of your electric service needs or problems.

It's the job of every one of us to see that you get the most value from your electric service.

TEXAS ELECTRIC SERVICE COMPANY
People power... at your service
B. J. VINCENT, Manager, Phone 569-3373



"I pick up most of the fish at Ft. Worth, but they really come from Florida and overseas. There are over 100 species that include every color of the rainbow. I sometimes pick up a book about them and that's where I learned all I know about them."

"Some are really unusual. Once we had some blind cave fish who could hear the dropping food as we fed them. They couldn't see a thing yet they killed a goldfish I put in with them. Yes, there are many unusual fish and you have to consider that they all need special care such as salt water fish that require different water," he related.

We get a lot of questions about fish we don't have but I think the people are just curious."

In the same store he still repairs watches. The time pieces require tiny distinct tools of numerous kinds.

"All you need to fix a watch is patience, tweezers, a magnifying loop and no temper," Coy grinned when asked about watch repair.

Coy combines his many hobbies and merchant activities in a variety spiced life. He lives with his wife, Lorraine, on Iowa Park Road, and has a daughter and granddaughter in Monaghans.

On weekdays you'll find him behind the counter as well informed businessman but on the weekends, look for him near Lake Wichita relaxing with a rod and reel, or in the country with his bird dog on the trail of quail.

But no matter what, remember on those sunny summer Saturdays when the breeze is softly blowing and the rippling lake is shaded by green leaved trees to look for Coy in the wide open spaces of his native county where he played as a boy.

PHILCO
Factory Authorized
Service

HAROLD'S TV SERVICE
224 E. 3rd. Burkburnett

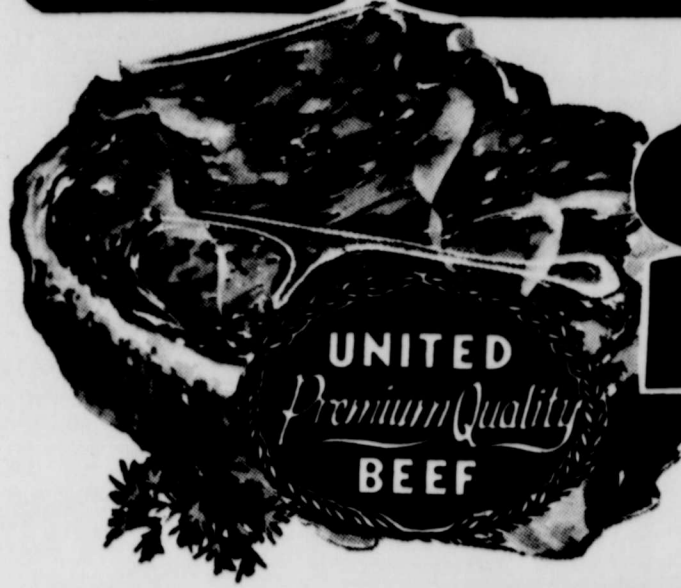
Shop United

DISCOUNT PRICES

FAST
COURTEOUS
SERVICE TOO!



Plus THE EXTRA VALUE OF
S&H GREEN STAMPS



UNITED PREMIUM QUALITY BEEF

CHUCK ROAST

Blade Cut
LB

49¢

GROUND CHUCK FRESH EXTRA LEAN **78¢ LB.**

UNITED PREMIUM QUALITY

RANCH STEAK

69¢

LB.

'UNITED PREMIUM QUALITY BEEF'

SWISS ROUND BONE
STEAK
78¢
LB.

BONELESS BEEF SHOULDER
ROAST
79¢
LB.

RIB
STEAK
88¢
LB.



UNITED PREMIUM QUALITY
BEEF RIBS
THICK & MEATY
38¢
LB.

6 Ctn. 10 oz. Bottle
Dr. Pepper
Plus Deposit **39¢**



UNITED PREMIUM QUALITY

BEEF CUTLETS

BONELESS WASTE FREE **\$1.38 LB.**

STEW BEEF

LEAN CHUNKS OF BEEF **88¢ LB.**

GROUND BEEF

FRESH 100% ALL BEEF **68¢ LB.**

UNITED PREMIUM QUALITY
BEEF ROAST
7 CUT CHUCK
69¢
LB.

SLAB
Bacon Sliced
79¢ Lb.

CLUB STEAK
SMALL LEAN CUTS
\$1.18
LB.

BONELESS
FAMILY STEAK
88¢
LB.

FOOD KING
BISCUITS
BUTTERMILK OR SWEETMILK
10 CT. CAN **8¢**

FOOD KING
OLEO
8 oz. patties **8¢**

SHURFINE
POP
ASSORTED FLAVORS
12 oz. Can **8¢**

SHURFINE BLACK
PEPPER
1 oz. CAN **8¢**

SHURFINE
SALT
26 oz. BOX **8¢**

MORRISON'S
SPUD KITS
2 1/4 OZ. Pkg **8¢**

Gebhardt's
Chili Con Carne
24 Oz. Can **59¢**

HORMEL
VIENNA SAUSAGE
4 CANS **\$1.00**

GEBHARDT'S LONGHORN
CHILI WITH BEANS
NO. 300 CANS **\$1.00**
N
SHUR FRESH
CRACKERS
POUND BOX **22¢**

DRUGS - DISCOUNT PRICES!
AQUA-NET
HAIR SPRAY
13 oz. CAN
REG. 69¢ **48¢**



DRUGS - DISCOUNT PRICES!
4-WAY
NASAL SPRAY
REG. 94¢ **78¢**

LARGE SIZE CHEF BOY-AR-DEE
PIZZA
• BEEF & CHEESE
• PEPPERONI
• CHEESE SALAMI
reg. 99¢ **69¢**

BAKE-RITE
SHORTENING
3 **59¢**
LB. CAN

WE GIVE
FRESH PASCAL CELERY LARGE STALK **10¢**
FANCY TANGERINES ZIPPER SKIN **3 LB. BAG 49¢**

QUANTITY RIGHTS RESERVED



PRICES GOOD THRU' DEC. 9th

CENTRAL AMERICAN
BANANAS
10¢
LB.

U.S. NO. 1 RUSSET
POTATOES
5 LB. BAG **39¢**

UNITED

SUPER MARKETS

WE GIVE S&H GREEN STAMPS

Raymond Greenwood Recognized For Role In Community Services

by Sedelta Verble

Raymond Greenwood and ten individuals from surrounding rural communities in Wichita County were honored at the Texas Community Improvement Awards banquet recently. The banquet which was held at Hirsch High Cafeteria was given to recognize organized rural communities and outstanding individuals for their work in rural community development. The program which was attend-

ed by 260 people is sponsored annually by Wichita Soil and Water Conservation, Texas Electric Service Company and Texas A&M Extension Service.

Raymond Greenwood, former editor of the Burk Burnett In-former/Star and presently Manager of the Burk Burnett Chamber of Commerce, was presented a plaque for his exceptional contribution to agriculture and interest in rural families. Outstanding individuals honored from the Wichita County, according to com-

munity, were E.J. Simons, Mrs. Annie Powell, Gary Lyles, Mrs. Wanna Hunter and Bill Jenne. Awards were also presented to outstanding youths which included Kenneth Schroeder, Dan-nie Flippin, Randy Myers, Reagan Schmidt, and Lynn An-nette Morton. The Texas Electric Service Company was cited as the busi-ness making the most outstand-ing contribution to conservation and Mrs. Elmer Klinkerman re-ceived the conservation home-maker award.



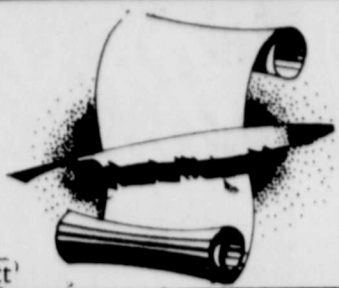
E.L. Watson (left) District Manager of Texas Electric Service Company, presents Raymond Greenwood with the Texas Community Improvement Award for contributions to agriculture in the tri-county region and for his interest in rural families.



CONSERVATION HONORS (left to right)--Wade Bailey, Outstanding Conservation Teacher; Willie Morton, Top Conservation Farmer in the district; Donald Hill, Chairman of Wichita Soil & Water Conservation District; Mrs. Elmer Klinkerman, Conservation Homemaker, and E.L. Watson of Texas Electric Service Company.

RANDLETT NEWS

(By Mollie Elliott)



Mr. and Mrs. Leroy Hise and daughters spent the holiday with his brother, Mr. and Mrs. David Hise of Oklahoma City.

Mr. and Mrs. A.S. Nason were Thanksgiving day guests of their daughter, Mr. and Mrs. Wayne Boles of Wichita Falls.

Dana Swinford suffered a broken ankle Sunday afternoon when her horse fell on her. She was taken to Wichita Falls Hospital for treatment.

Mr. and Mrs. Bob Ritchie and son Mackie of Wichita Falls were Thanksgiving guests of her parents, Mr. and Mrs. M. M. Bowles.

Mr. and Mrs. B.B. Menz, accompanied by Freda Butler and sons spent Thanksgiving Day with Mr. and Mrs. Harry Mayer of Dallas. Freda remained there.

Mr. and Mrs. Lewis Williams and Mrs. Bob Williams were Thanksgiving Day guests of his sister, Mrs. Mary Cogle of Hastings.

Mr. and Mrs. W.R. Moore of Edmond visited her parents, Mr. and Mrs. W.R. Baldwin Saturday and Sunday.

Mr. and Mrs. Edwin Anderson and children, Mr. and Mrs. Glenn Solmon of Wichita Falls visited Mr. and Mrs. A.L. Anderson Sunday.

Mr. and Mrs. Jason Spannagel and children of Cement and Mr. and Mrs. John Duke and children of Lawton were at their parents, Mr. and Mrs. T.E. Spannagel, Thanksgiving Day.

Mr. Roy Richards of Fort Worth and Mr. and Mrs. Bill Fuller and children of Wichita Falls visited Mr. and Mrs. W.R. Baldwin, Thanksgiving Day.

Mr. and Mrs. C.H. Thompson spent the Thanksgiving holiday with their daughter, Mr. and Mrs. Oneal Weaver and daughters of Canton.

Mr. and Mrs. David Esparza and son David Troy of Wichita Falls visited her parents, Mr. and Mrs. W.R. Baldwin, Saturday.

Miss Dana Goode of Stillwater visited with her parents, Mr. and Mrs. Jess Goode.

Mr. and Mrs. Bob Alexander and daughters of Dallas spent Thanksgiving Holiday with her mother, Mrs. Vera Fuels and other relatives.

Mr. and Mrs. Buster Roger of Dallas spent the holidays with her mother, Mrs. J.C. Kemp and other guests were Mr. and Mrs. Otto Kemp of Duncan and Mike Kemp of Wichita Falls.

Mr. and Mrs. Robert Goode accompanied by Mr. and Mrs. Buck Pruitt and daughters of Duncan visited Mrs. Jon Livingston of Corona, Okla. Thanksgiving Day.

Visiting Mr. and Mrs. W.F. Jimmy Kinnard narrowly escaped serious injury Saturday when he was filling his tractor with propane. It ignited and he suffered a burned right hand. He jumped from the tractor and rolled on the ground, putting out his burning clothing.

Mr. and Mrs. Joe Thompson of Corpus Christi returned home recently after a visit with Mr. and Mrs. O.O. Green, Mr. and Mrs. Bobby Williams visited Mrs. Bob Williams.

Morrow on Thanksgiving were Mr. and Mrs. S.M. Smith, Mr. and Mrs. Raymond Simmons, Mr. and Mrs. Nickle Simmons and children, Mr. and Mrs. Clarence Newell and baby, Mr. and Mrs. Leon Morrow and sons of Burk Burnett and Mrs. Loretta Postelwalte.

Mr. and Mrs. Fred Spoon returned home Tuesday of last week after a few days visit with their son, Mr. and Mrs. Willard Spoon and family of Springtown.

Mr. and Mrs. Don Fowler and children of Ft. Worth visited his parents, Mr. and Mrs. Ted Fowler Saturday.

Mrs. Phillip Britt and children of Iowa Park visited her parents, Mr. and Mrs. R. C. Brown Sunday.

Mr. and Mrs. Don Jepson and children of Arlington returned home Sunday of last week after a visit with her parents, Mr. and Mrs. Frank Etier.

H. T. Bentley of Corpus Christi visited his brother, Mr. and Mrs. Lavoy Bentley Tuesday night of last week.

Mr. and Mrs. A.S. Nason visited Mr. and Mrs. Frank Eidson of Kamay Tuesday in honor of R.V. Nason's birthday.

Mrs. Frank Etier was ill at her home last week.

Mark and Greg Ressel of Savannah, Okla. visited their grandparents, Mr. and Mrs. C.B. Ressel last Thursday.

Mrs. Lavoy Bentley was reported ill at her home last Thursday.

Mrs. Freda Butler of Walters visited Mr. and Mrs. E.B. Menz Tuesday of last week.

Miss Gina Westerford of Rossevelt, Okla. was a weekend guest of Vicki Kinnard.

Mrs. Lavoy Bentley is visiting her daughter, Mr. and Mrs. Bill Goodwill of Austin.

Mr. and Mrs. R.E. Mong and Glenna of Bartberton, Ohio, Mrs. Freda Butler and Mrs. Vera Ingersall of Walters, Okla. were guests during the week of Mr. and Mrs. B. B. Menz.

Mr. and Mrs. Carl Newell of Wichita Falls visited Mr. and Mrs. Hugu Frye Sunday.

Mr. and Mrs. John Tuel of Bryson were Sunday guests of Mr. and Mrs. A.S. Nason.

Homer Tiley of Fredrick and Mr. and Mrs. Oliver Matthew of Lawton were Sunday guests of Mr. and Mrs. C.H. Thompson.

Mr. and Mrs. Joe Thompson of Corpus Christi returned home recently after a visit with Mr. and Mrs. O.O. Green, Mr. and Mrs. Bobby Williams visited Mrs. Bob Williams.

NEW TELEPHONE BOOK

CLOSES SOON!

CALL NOW for extra listings, changes in your present listing, or to order additional service.

MR. BUSINESSMAN: Be sure you are adequately represented in the Yellow Pages of the new directory—make it easy for buyers to find YOU when they're ready to buy.

Southwestern Bell

Christmas Cantata

BORN A KING

December 17 6.30 p.m. & December 20 7.00 p.m.

Organist: Mrs. D. Duke
Pianist: Mrs. J. Mason

- TRUMPETS
- TROMBONES

FIRST BAPTIST CHURCH

BURKBURNETT 4TH & AVE. D.

Phi Beta Kappa is America's oldest Greek letter college fraternity.

School Menu

December 11-15, 1972

MONDAY - Chicken Fried Steak, buttered corn, green beans, bread, butter, milk, peanut butter brownies.

TUESDAY - Hamburger, onion, pickle, mustard, french fries, seasoned blackeye peas, bun, butter, milk, peach crisp.

WEDNESDAY - Barbecue wieners, pinto beans, buttered spinach, corn bread, butter, milk, spiced apples.

THURSDAY - Meat loaf with creole gravy, buttered peas, carrot sticks, bread, butter, milk, chocolate cake.

FRIDAY - Fried chicken, hot rolls, whipped potatoes, creamed cole slaw, butter, milk, ice cream.

TIME IS MONEY

Now you can let your Savings at First Savings & Loan do your Christmas Shopping!

	WITH DEPOSIT OF \$1,000.00	WITH DEPOSIT OF \$5,000.00	WITH DEPOSIT OF \$10,000.00
ELGIN CUBE ALARM CLOCK	FREE	FREE	FREE
ELGIN TRAVEL ALARM CLOCK	FREE	FREE	FREE
BRADLEY MEN'S OR LADIES WRIST WATCH	FREE	FREE	FREE
LADIES PENDANT WATCH	CAN PURCHASE FOR \$10.00	FREE	FREE
BUREN-HAMILTON 17 JEWEL MEN'S OR LADIES WRIST WATCH	CAN PURCHASE FOR \$15.00	CAN PURCHASE FOR \$5.00	CAN PURCHASE FOR \$3.00

Beautiful watches and clocks made by Elgin or a division of Elgin can be yours when you take advantage of one of First Savings and Loan's attractive savings plans.

They'll Make Excellent Christmas Gifts!

First Savings Not Only Gives You A Premium For Opening An Account But LOOK At The Savings Plans Being Offered

Regular Savings	5.00%
Per Annum Yields If Left 12 Months	5.13%
90 Day Notice	5.25%
Per Annum Yields If Left 12 Months	5.39%
Certificates - 1 Year \$1,000 Minimum	5.75%
Per Annum Yields If Left 12 Months	5.91%
Certificates - 2 Year \$5,000 Minimum	6.00%
Per Annum Yields If Left 24 Months	6.18%

Accounts In By The 10th Earn From The 1st

First Savings & Loan Association

Burkburnett, Texas
314 E. 3rd Street Phone 569-2206

ORCHID BRANCH
11th & Holliday Ph. 322-4448

BRADLEY TIME

Assortment 1-1974

VIVE LE GIFT!

DURING THE 1600'S THE ARCHBISHOP GAVE QUEEN ELIZABETH OF ENGLAND ENOUGH MONEY EVERY CHRISTMAS TO REPLENISH HER EASTERS WARDROBE. THE AMOUNT: \$200.

MARKED DOWN!

IN PRE-WAR CHINA, AGED PARENTS RECEIVED GIFTS OF "LONGEVITY ROBES" FROM THEIR DUTIFUL CHILDREN WHO REVERED OLD AGE.

BOOMTOWN PHOTO

D. E. BRADY
817-569-0511
414 AVENUE C

Now Is The Time For That Portrait Sitting For Your Christmas Cards!

1-8 p.m. Daily
9-2 Sat.
Others by appt.
569-0511

Bridal Shower Held In Honor Of Susie Elliot

A bridal shower honoring Miss Susie Elliott, bride-elect of Brooks Hill, was held recently in the National Room. The serving table was decorated in the bride's chosen colors, white and cranberry. Assisting with hostess duties were Mesdames Frank Miller, Dan White, Edgar Fulcher, M.D.

Cheney, Joe Boucher, H. S. Thaxton, Robert Norriss and Cliff Wanpeler. Special guests were Mrs. Harry Elliott, the bride's mother, Mrs. Brooks Hill, Sr., mother of the groom, and Mrs. Pete Laurito, grandmother of the groom, both of Austin.

Home Demonstration Club Met At Spencer Home

Cooper Home Demonstration Club met last Monday in the home of Miss Amelia Spencer. Mrs. Bee Bryant, president, opened the meeting by reading a poem entitled, "You Can Find Happiness Within". Sixteen members and one guest, Mrs. Frances George who joined the club, were present.

Mrs. P.S. Swinford gave a safety hint on carbon monoxide poisoning, it's cause and preventive measures. Mrs. Laura Creger gave a report on arrangements made for the Christmas Party to be held at Luby's Cafeteria on December 14.

NEWCOMERS

- Michael Williams
- Gary McKee
- Donald Winkler
- Dennis L. Harsh
- Franklin Garrison
- E.J. Gross
- John E. Strong
- Jimmy Clark
- Stephen Marhafer
- Paul Pochinich
- Thomas Petrasek
- Harvey Sabine
- Roger Burt
- Mrs. Roger Burts, Sr.
- Lewis Butler
- Dewey Turner
- Dwight K. Gaston
- Joseph Heape
- John Dykes
- William Routley
- Raymond Jones
- Ronald G. Davis
- Dennis L. Arnold

Service Unit 23 Monthly Meeting Held Last Wed.

The monthly meeting for the Service Unit #23 was held last Wednesday with an attendance of nine leaders and assistants. Louise Newton, Service Unit Director, gave a report on the National Convention held in Dallas in October. She brought ideas from other councils such as art festivals and softball. Mrs. Newton said changes in the Girl Scout Promise and in the Laws were made. Discussions at the meeting included calendar sales, collecting for the needy and a Christmas party to be held Dec. 18. Representatives were chosen to attend the NorCenTex Council meeting on Nov. 28 in Mundy. The flag ceremonies were held at Hardin Elementary School by Cadet Troop #48.



THANKSGIVING DAY--Mr. & Mrs. Roy Mahaffey celebrated their 25th wedding anniversary Nov. 23.

On Thanksgiving Day Mahaffeys Celebrate Silver Anniversary

Thanksgiving Day, Nov. 23, was a special day for the Roy Mahaffeys. Roy and his wife Mildred celebrated their 25th wedding anniversary that day. They were married Nov. 23, 1947, in Goodwell, Oklahoma.

where both were students in college. Since that time, they have lived in Goodwell, Mooreland and Hooker, Okla. where Roy was an Industrial Arts instructor in high school. In September, 1956, Mr. and Mrs. Mahaffey and sons David, Kenneth, and James moved to Burkburnett. Roy became an instructor at SAFB. In 1957 and 1959, two more sons, Alan and John, were added to the family. Roy continued at Shepard instructing in the fields of electronics, refrigeration, and water treatment. Mildred spent her time running her "Boys' Home" and doing church work in the Church of Christ where both are members. Now their son David is discharged from the Navy and works in Boston, Mass. Kenneth is a senior at the University of Texas at Austin and James is a sophomore at Freed Hardeman College in Henderson, Tenn. Alan and John remain at home.

Girl Scout Council Held Meeting At Baptist Church

The NorCenTex Girl Scout Council held its semi-annual Council meeting Tuesday at the First Baptist Church Fellowship Hall in Mundy.

Delegates from the Council's eleven county jurisdiction considered reports from its membership body. Mrs. E.W. McRae, Council President, reported on the historic action taken at the recent Girl Scout National Council Meeting held in Dallas. The program featured a report by Misses Lynne and Alice McRae about their learning experiences while attending "Focus '72" in St. Louis Missouri. Senior Girl Scouts of Troop 58, Wichita Falls, will host a musical number. Hostessing the Council meeting were Service Unit 42 of Mundy, Mrs. Doris Dickerson, Director.

Gregory Morris Graduated From Naval Center

Navy seaman recruit Gregory K. Morris, son of Mr. and Mrs. H. E. Williams of 103 Rose, graduated from the recruit training at the Naval Training Center at San Diego. He is a 1971 graduate of Burkburnett High School. Those visiting during the Thanksgiving Holidays were Kenneth Mahaffey, Austin; Mr. and Mrs. W.C. Mahaffey, Burkburnett; Mr. and Mrs. Lester Mahaffey, Glencoe, Okla.; Miss Shirley Jackson, Tipton, Okla.; Mr. and Mrs. Charles Cullum and family, Woodward, Okla.; and Mr. and Mrs. Melvin Bultman and sons of Elkhart, Kansas. Others sent cards and best wishes for the occasion.

Pack 156 Monthly Meeting Held

The monthly meeting of Pack 156 was held on November 30 at the Youth Center. The meeting was opened with the Color Guard leading the group in the Pledge of Allegiance. Den 1 put on a skit for the group. Bobcat awards were presented to Billy Gilley, Scotty Kemp, Tommy Crawford, Herbert Jentsch, Tommy Richburg, William Alexander, Keith Ashton, Terry Harrold, Les Schroeder, Mike Creekmore, Dean Corsaut, Michael Davis, and David Cobb. Recruiter Badges were presented to Mark Creekmore, Mike Creekmore, Billy Gilley, Scotty Kemp and Dean Corsaut. Allan Thomas, Bob Stevenson, Bob Morrow and Steven Carr earned the 1 Year Star. One Bear, Gold and Silver Arrow was awarded to Raymond Wyatt. Den 2's Denner Bar went to Dalton Granger, and the Assistant Denner Bar went to Bob Stevenson. Den 3's Denner Bar was presented to Trey Duncan and the Assistant Denner Bar went to Larry Organ. In Den 4 the Denner Bar went to Tommy Crawford and the Assistant Denner Bar went to Herbert Jentsch.

ellos, Todd Onda, Bobby Morrow and Robert E. Collins, Jr., were introduced. James and Kevin Prince were introduced as new Den Chiefs in Den 1 and Den 4. New Web-Pack 156 was praised for their participation and it was announced that the Northwest Texas Council rated the Pack as number one on the list in Recruiter Time-Loc Roundup. Approximately 100 people were in attendance. Cupcakes, punch and tea were enjoyed by all.

Garden Club Meeting At Home Of Mrs. Holtzen

The Burkburnett Garden Club held its November meeting last Wednesday in the home of Mrs. Arnold Holtzen. Mrs. Cauthorn, president, gave the inspirational meditation and prayer for peace. A short business session was conducted. Mrs. Crane reported on the last community council meeting. It was voted not to have a December meeting. The guest speaker Clark Gresham who is the precinct county commissioner, presented a talk on some of the duties the commissioners have. A question and answer session was held. Mrs. Gresham gave one of her own composed readings, "Christmas in Heaven".

A lovely refreshment plate was served by the hostess to two guests, Mr. and Mrs. Clark Gresham, and 7 members.

Senior Citizens Meet On Dec. 14

The next regular meeting of the Burkburnett Senior Citizens Club will be held December 14 in the Community Center. Lunch will be served at 12:00 noon. Several guests have been invited. A silent movie will be put on by several members. This will be followed by the Christmas program. All members should plan to be present as this is the only meeting to be held in December.

Southside P.T.A. Will Hold Meeting

The Southside P.T.A. will meet December 12 at 2:45 p.m. The program will be Christmas songs, poems, and readings presented by all 5th grade classes. The nursery will be open and films are available. All members are urged to attend. A Christmas Bazaar will be held December 15 from 11:00 a.m. to 5:00 p.m. at 309 E. Third Street and December 16th from 9:00 a.m. to 5:00 p.m.



The Scots have been playing golf for over 600 years.

FACTORY Authorized Service HAROLD'S TV SERVICE 224 E. 3rd. Burkburnett

JUST IN TIME FOR... CHRISTMAS GIFTING

20% OFF

Cash Only THROUGHOUT OUR ENTIRE SHOP ONE WEEK ONLY

MON. DEC. 4 THRU SAT. DEC. 9

- LONGS
- FORMALS
- LINGERIE
- ETC.

The BRIDAL Shop

415 S. AVE. B-BURKBURNETT, TEXAS-PH. 569-2281 (Located at Burkburnett Florists)

Look Who's New



INTRODUCING - Natalie Dawn Stevens. Born December 7 to Ralph and Kathy (Roark) Stevens. The family, former residents of Burkburnett, now lives in Eastland. Natalie's grandparents are Mr. and Mrs. Virgil Stevens of Wichita Falls, and formerly of this city, and Mr. and Mrs. Ted Roark of Burkburnett. Natalie is seven months old in the picture but she will soon be one year old.



INTRODUCING - Mark Layne Morris. Born January 5, he is the son of Ty and Sharon (Stevens) Morris who are now living in Hurst but formerly resided in this city. Mark's grandparents are former Burkburnett, Mr. and Mrs. Virgil Stevens of Wichita Falls and Mr. and Mrs. N.C. Morris of Burkburnett.

Alcohol Abuse Meeting To Be Held, Dec. 13

On December 13 at 7 p.m. there will be a public meeting of immense importance to the citizens of Burkburnett and the surrounding areas to discuss a vital community health problem. This community meeting will be sponsored by the Law Enforcement Agencies of Burkburnett. The purpose of this multi-sponsored project is to inform the citizens of our community of the recently much publicized problem of alcohol abuse and addiction in our community. Three well informed speakers from Wichita Falls will attempt to enlighten us not only of the drug/alcohol problem, but what is being done in our area and throughout this country, why the sudden interest, and how, where, and by what method you and your loved ones may benefit. There will be a question and answer session at the end of the meeting and a variety of printed literature will be available. To attend this free, timely, and much needed seminar you need only to take the East Service Road of Red River Expressway to Fry Vaughn American Legion Post #264, located between Burk and Glendale Exits.

Your SHIELD for SHELTER

Shelter

INSURANCE SHIELD OF SHELTER

Your MFA Insurance Agency cares about the things you care about. This shield is your sign of complete protection-for your car, your family, your home, your health, and your life.

INTRODUCING - Chuck Lindenborn

416 Ave. C Office 569-1611 Home 569-0374

'TIS THE SEASON FOR DuBARRY.

Deck your tree with our fragrant Portables...Perfume sized just right to tuck into her purse...all in decorative boxes to hang on the tree.

Available in 3 forms of La Fleur and Comessa™ fragrances.

- Perfume Glace, \$1.50
- Perfume Rollette, \$2.00
- Refillable Purse Spray, \$2.50

All special gifts at very special prices.

CORNER DRUG STORE BURKBURNETT

320 EAST 3RD ST. PH. 569-2251

FABRIC SALE

OVER 25,000 SMART WOMEN SHOP FABRIC EVERY DAY!

<h3>FELT SQUARES</h3> <p>9" x 12". Made of 50% rayon and 50% wool. A great assortment of decorator colors. Perfect for those creative holiday decorations</p> <h1>12¢</h1> EA.	<h3>BLOUSE PRINTS</h3> <p>Gorgeous holiday colors! Bright splashy prints. 45" wide, on bolts, and 100% acetate.</p> <h1>\$1.29</h1> YD.	<h3>SLEEPWEAR FLEECE</h3> <p>Extra special 100% nylon fleece. 45" wide, machine wash and dry. Your choice of a beautiful array of solids and prints. A truly outstanding savings on sleepwear.</p> <h1>77¢</h1> YD.
<h2>OUR BETTER QUALITY 100% POLYESTER DOUBLE KNITS</h2> <p>Selection so fabulous you've got to see it to believe it—ribs, mini-ribs, tone on tone, multi-colored jacquards, boucles and others. 60" wide and of course on bolts. Select from stunning fall colors!</p> <h1>\$2.99</h1> YD.		
<h3>METALLIC BONDED KNITS</h3> <p>Perfect for holiday gowns and party dresses. 15% metal, 85% orlon acrylic, 60" wide and on bolts. Select from a wide range of bright original colors.</p> <h1>\$2.99</h1> YD.	<h3>VINYL</h3> <p>Brilliant decorator colors—biggest selection ever! 100% vinyl face with cloth back. 54" wide and on rolls.</p> <h1>99¢</h1> YD.	<h3>WILD ANIMAL FAKE FUR</h3> <p>Leopards, tigers, zebras in many colors. 100% acrylic face on 100% cotton back. 54" wide on bolts. Washable. Make spreads, drapes, and rugs—coats, jackets, and vests, too.</p> <h1>\$3.99</h1> YD.
<h3>POLYESTER CREPE</h3> <p>Heavyweight 100% polyester crepe—on bolts. 45" wide, machine wash & dry & perma press.</p> <h1>\$1.99</h1> YD.	<h3>100% ORLON ACRYLIC</h3> <p>60" WIDE Machine Wash & Dry STRIPES PRINTS SOLIDS</p> <h1>\$1.99</h1> YD.	<h3>100% COTTON PLUS VELOUR</h3> <p>60" WIDE REG. \$4.99 Machine Washable</p> <h1>\$3.88</h1> YD.

fabrific FABRIC CENTERS

SHOP 9 A.M.—6 P.M. MON. THRU SAT. 213 E. Third--BURKBURNETT 109 W. Cash--Iowa Park PRICES GOOD IN BOTH STORES

We're #1 We're #1 We're #1 We're #1 We're #1

Semifinal
BULLDOGS
VS
LEWIS
 Friday 8:00
 Amon Carter
 Fort Worth



'Dog Defense Dooms Dumas

by Sedelta Verble

One point that's all it took, in the four quarters of battle the offense and defense played with exceptional effort, yet one point made the difference as the 'Dogs knocked the Dumas Demons out of contention 7-6 Saturday afternoon.

The Burkburnett population turned out to cheer on the magnificent 'Dogs in a rare regional bout played on home ground. Rick Bradley blocked the seemingly routine extra point which turned out to make the difference between going on to the semifinals and staying home for the next two weeks. This is in accordance with UIL rules which say that should the occur the team have the most penetrations will go on and if this is tied as with the Dogs and Demons then the first downs will be the deciding factor. And in the first down category, the Demons led the Dogs 14-11. The Bulldogs turned in defensive plays that would have pleased Scrooge as the Orange Crush machine held the powerful Demons throughout the contest. Henderson and Bradley led the Dogs in tackles and defensive plays executed. QB Sam Hancock, Henderson, and Mario-Castro picked off passes intended for the Demons and this too contributed to the many sided defensive sported by the 'Dogs.

The first TD turned in during the battle was chalked up by Zac Henderson after Castro plucked a miscued Demon pass at the Bark 25 and pulled it back to the 35. Hancock converted four plays and Henderson went home free with six of the only points scored. Rusty Barrett came through for the Bulldogs toeing the extra point over and giving the Bulldogs a seven point lead.

During the Bulldogs big field show the Demons weren't sleeping though. They waited their turn at the ball and then drove back to the Bark 12, but when a fourth and two obstacle occurred they were unable to rack up the needed yardage and gave the ball back to the 'Dogs. The Demons had learned a less from the Bulldogs as to interception and how they can change the game and so when Waylon Irving stole a Hancock pitch the Demons went on to hit the board with six big points. When it was time to tie up the game though the Demons must have been surprised when 'Ball-dozer' Bradley wouldn't allow them the extra point.

Second half was scoreless and consisted mostly of brilliant defensive plays turned in by both state contenders. The only other time either team crossed into pay dirt was in second quarter action by the Bulldogs. Mark Bulla romped across the goal line only to have it called back because of holding by Burkburnett.

Hancock intercepted a Dumas pass late in the third period in the endzone. The Orange Crusher defense held steady until the Demons again came knocking, but this time were met by Allan Fournier and Ted Neible. The 'Dogs were not safe though until the clock ran out, because the Demons were dangerously close for the entire fourth quarter. Field position did not have to be especially close either as one field goal would have handed the victory to the Demons.

Bradley and Henderson were outstanding throughout the contest. The usual greats were putting in their expected performances such as Sam Hancock, Mark Bulla, Neible, Scott Fourniers, David Spinks, Scott Smitch, Castro and Barrett. Mike Myers was exceptional until injury moved him to the bench, but as always with the State - Bound Bulldogs, they played as only champions can - as a team.



QB SAM HANCOCK, #17, romps downfield amid a pest of Demon defensive players itching to pull down the powerful field general as screaming fans stand in Bulldog Stadium to get a better view.



BENNY WILKERSON, #11, hangs on tight with all his might as another Bulldog helps to make sure Demon #20 is stopped.



PRESTON DAIRY
 & Preston Milk
 Store
 BURKBURNETT, TEXAS

TEXAS ELECTRIC SERVICE COMPANY
 People power... at your service
 569-3373
 301 E. 3rd. St. Burkburnett
REDDY Always SCORES!

Berend Bros.
 PURINA CHOWS & SEEDS
 569-2811 510 Ave. B
 Burkburnett

MATHIS
 CHEVROLET OLDSMOBILE
 AUTHORIZED SALES - SERVICE
 EXPRESSWAY AT SHEPPARD DRIVE—BURKBURNETT, TEXAS, 569-3381

WAMPLER INSURANCE AGENCY
 "Property, Liability, Life Insurance"
 CLIFF WAMPLER General Insurance
 Phone 569-1461 Burkburnett, Texas 203 N. Ave. D

SHAMBURGER BUILDING CENTER
 "Complete Building Center"
 569-2242 "The Lumber Number"
 Bill Haynes, Manager

The Burk Insurance
 HOMES FOR SALE OR RENT
569-3333
 Nights Call 569-3613
 303 AVENUE C THE TRAVELERS

VIRGIL MILLS CONSTRUCTION CO.
 Red River Expressway
 569-1131

ADA'S Fabrics
 Compare Quality-Price-Guarantee
 And You'll Know For The Best In Fabrics
 210 E. 3 569-0522

BOOMTOWN PHOTO
 414 Ave. C
 WEDDINGS- PORTRAITS- ADVERTISING
 "Class Pictures, Groups, Locations"
 STUDIO & LOCATION
 Reasonable prices and outstanding quality.
 DON - 569-0511

JAMES SPINKS TEXACO
TEXACO BRAKE SERVICE
 S & H Green Stamps On All Repairs
 Mechanic On Duty Tune Ups
 400 S. Ave. D 569-8122 Burkburnett, Texas

WACKER'S
 PARKER PLAZA 569-3861
 BURKBURNETT

BELL STATIONS, INC.
 208 N. Berry 569-1404
 "BACKING THE BULLDOGS"

BURKBURNETT INFORMER STAR
 "The Number One Advertising Media For Burkburnett"
 417 Ave. C 569-2191

HICKORY ELM CONVALESCENT CENTER
 Your Recovery Is Our Reward
 800 Red River Expressway 569-1466

Block and Crushed Ice Camper Storage
 Tents-Campers- Trailers-Motor Homes-
KOA Red River KOA Kampground
 (817) 569-3081 Burkburnett, Texas

CORNELIUS INSURANCE AGENCY
 Life - Hospitalization
 T.M. and MICKEY CORNELIUS
 308 E. 3rd 569-3498

JIM HOUSTON
 Rodeo Equipment
 Saddlery & Western Wear
 569-3111 Oklahoma Cutoff

HUNT OIL FIELD SUPPLY

UNITED SUPER MARKET INC.
 "The Finest In Groceries"
 569-2541 Wichita Highway and Tidal Street

To Am...

... We're #1 We're #1 We're #1 We're #1 We're #1

finals
DOGGS
S.
SVILLE
8:00 PM
ter Stadium
Worth



Froman and his victory for lunch bunch crown around the shiny regional trophy like steel filing to a magnet. Head Coach Froman and the magnificent "Orange Crushers" have achieved what no other Burk team ever has--the Regional Championship.

BHS Hosts Basketball Tournament Tonight

by Sedelta Verble
 Burk Burnett Basketball fans will be treated to an exhibition of roundball action tonight when Burk Burnett takes on Quanah at 9:00. The Bulldogs will be hosting this tournament for 7 other teams during the two day session.

The "Dogs have already brought home one trophy from the Pampa tournament last week. This was in reward for their stringent efforts after defeating Sanger 78-42 with Danny Nix contributing 34 big points. The "Dogs were thrown into Consolation play after Dumas slipped by the Orange and Black 77-70. Mike Miller was high point man with 22 points.

The Pampa Tournament was the first tournament the Bull-

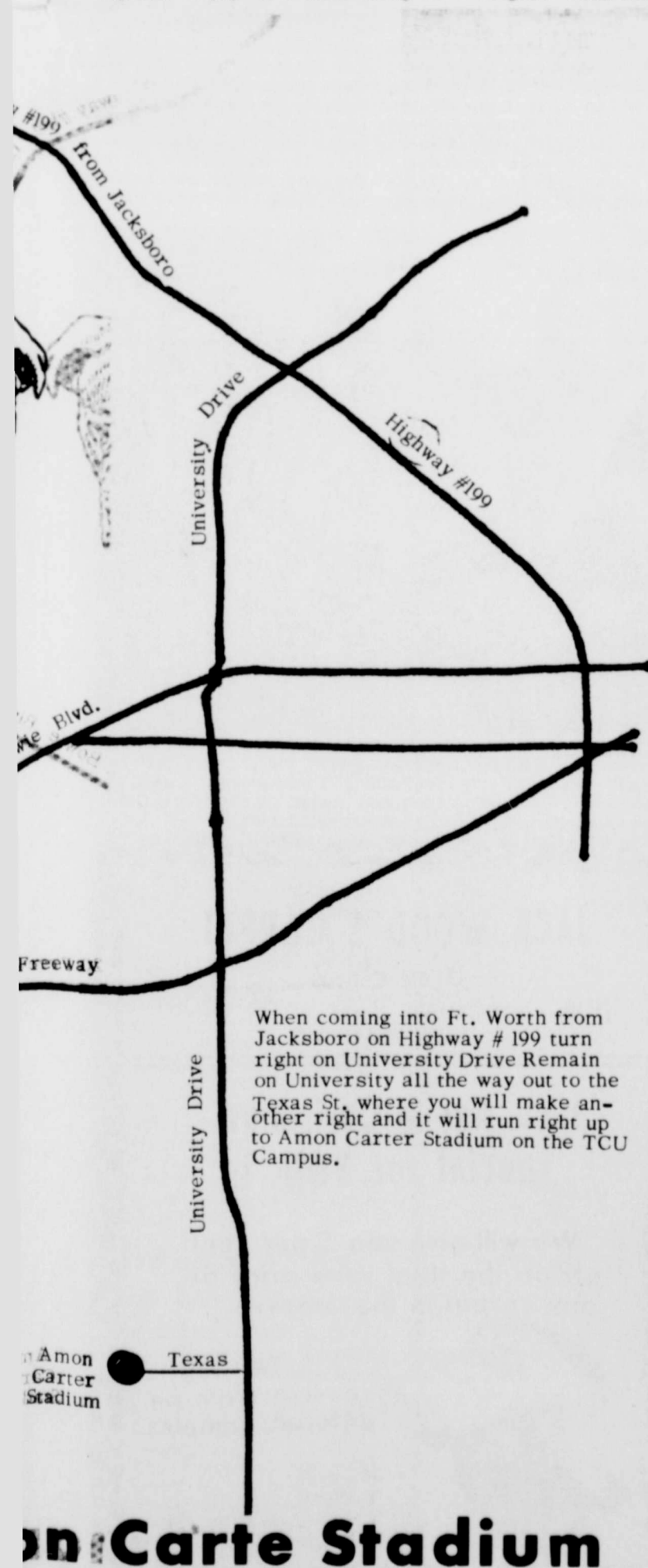
dogs have played in but they battled Seymour earlier in the week and defeated them a whopping 101-43. Mike Miller scored 24 points while Larry MacMahill chalked up 20.

Representing Burk Burnett as center this year is Greg Maisie, guards are Larry MacMahill, and Danny Nix, and filling the forward positions are Mike Miller and Paul Dean.

The schedule for the Burk Burnett Tournament starts Thursday at 6:00 with Petrolia against the Burk Burnett B Team, at 7:30 Seymour takes on Coyotes, Childress is bye and finally at 9:00 Burk Burnett A Team takes on Quanah. The Tournament will be resumed Saturday as Burk Burnett continues to host the seven teams.



Zac zooms toward pay dirt after he broke away from a pack of Dumas Demons to give the "Dogs their only TD. Henderson was also a big factor in holding the aereal Demons to six points.



When coming into Ft. Worth from Jacksboro on Highway # 199 turn right on University Drive Remain on University all the way out to the Texas Sr. where you will make another right and it will run right up to Amon Carter Stadium on the TCU Campus.

on Carte Stadium

<p>BEAVER FURNITURE & APPLIANCE WE BUY & SELL USED FURNITURE AND APPLIANCES 569-2801</p> <p>RCA & PHILCO Sales & Service We Take Trades 222 E. 3rd.</p>	<p>"Serving Burkburnett Since 1907" THE NATIONAL BANK BURKBURNETT, TEXAS</p> <p>• LOANS OF ALL TYPES • U.S. SAVINGS BONDS • AFTER HOURS DEPOSITORY • SAFE DEPOSIT BOXES • BANK-BY-MAIL</p> <p>DRIVE IN AND WALK UP WINDOW BANKING</p>
<p>Coy's JEWELRY * DIAMONDS * WATCHES * SILVERWARE * GIFTS</p> <p> </p> <p>BURKBURNETT</p>	<p>Wolfe Ford Co. COMPLETE SALES AND SERVICE AUTHORIZED FORD DEALER</p> <p> </p> <p>SALES - PARTS SERVICE "You can get the best deal yet in Burkburnett at Wolfe Ford Co." 1007 Sheppard Rd. 569-2275</p>
<p>TULLIS SUBARU Where you can buy a new car for only 1896.97</p> <p>SALES, PARTS, SERVICE Good Selection of Clean Used Cars</p> <p>YOUR DORAL TIRE DIST. For North Texas Ph. 569-1454</p>	<p>CAMPBELL AUTO SUPPLY Complete Automotive & Tractor Parts PAINT AND SUPPLIES "Your NAPA Jobber" 223 East 3rd. St. pho. 569-3391 BURKBURNETT, TEXAS</p>
<p><i>Lippard</i> Furniture & Appliances EXCLUSIVE & QUALITY LINES OF FURNITURE & APPLIANCES BASSETT - RIVERSIDE - FLANDERS BEMCO CARPET - BURVEN OF CALIFORNIA TAPPAN - GE. TV & APPLIANCES</p> <p>LIPPARD INSURANCE AGENCY Burkburnett</p>	<p>ALEXANDER SERVICE STATION</p> <p> </p> <p>GOODYEAR TIRES MOBIL PRODUCTS 324 E. 3rd. 569-2381</p>
<p>Help Stamp Out LAZY MONEY! FIRST SAVINGS and LOAN INSURED 569-2206 BURKBURNETT 314 E. 3rd. St.</p>	<p>LLOYD CLEMMER LUMBER COMPANY </p> <p>• BUILDING HARDWARE • JONES-BLAIR • ROOFING SHINGLES • DIERKS POSTS • IDEAL WINDOW & DOOR UNITS</p> <p>FOR EVERY BUILDING NEED 569-2911</p>
<p>R. B. JOHNSTON THE Famous DEPARTMENT STORE 569-2441 Burkburnett</p>	<p> LEER Commercial Refrigeration Manufacturer</p> <p>N Berry St. 569-2432</p>
<p>BUTCH RAYNES - OWNER B & R TEXACO STATION 569-0212</p> <p>* ROAD SERVICE * MINOR AUTO REPAIRS * TAIL PIPES & MUFFLERS * TIRE REPAIR * WHEEL BALANCING * PICK UP & DELIVERY</p>	<p>Western Auto THE FAMILY STORE AND CATALOG ORDER CENTER</p> <p>FRANK SCOBEE, Mgr. 203 E. 3rd Burkburnett</p>
<p>We Give GREEN STAMPS Manhattan DEPARTMENT STORE 218 EAST 3rd. Pho. 569-2651</p>	<p>The BURKBURNETT Bank Member of Federal Deposit Insurance Corporation</p> <p>BEST BRAND OF BANKING</p> <p></p> <p>"GROWING WITH BURKBURNETT" 317 E. 3 569-1444</p>
<p>CITY PHARMACY 569-1491 300 S. Ave. D</p>	<p>WILLIAMS PETROLEUM Williams Drive 569-2531 Burkburnett, Texas</p>
<p> Henry's Pastry Shop WEDDING PARTY & BIRTHDAY CAKES PASTRIES DELICIOUS DO-NUTS With "That Golden Creamy Taste" Serving Burkburnett For 21 Years 569-3201 311 E. 3rd</p>	<p>Corner DRUG STORE 320 EAST 3rd STREET "Your Prescription Is Our First Concern" PHONE 569-2251 - BURKBURNETT, TEXAS</p>

TOPS Tx 636 Met Mon. Night At Baptist Church

TOPS Tx 636 met Monday night at the Central Baptist Church for the monthly business meeting. Twenty three members weighed in with Dorothy Smith named Best Loser of the Week. The average attendance during the month of November was twenty-four. Members were reminded of the Bazaar to be held December 9 (see classified section) and urged to have items there Friday morning. The Christmas Party will be held in the National Room December 19. Each member should have their gift at the party for their secret pal. The evening closed with members singing TOPS songs to the tunes of various Christmas Carols.

Woods & Waters

By Mike Gaines



Deer season got off to a good start with many area hunters getting a deer the first day. The cold weather we had last week was a big help. It started the rut season for deer and the old bucks weren't as cautious as they normally would be. Jerry McClure bagged a fine

8-pointer opening weekend. Mike Hooper and myself got two 8-point bucks and a doe while hunting on the Hilt Ranch southwest of Gatesville, Texas. The Hilt Ranch is set up on a basis that allows you to pay for only what you kill. If you hunt for a weekend and don't bag anything, it doesn't cost anything. This kind of hunting lease by season where you might pay several hundred dollars and not even see a deer. This certainly isn't the case on the Hilt Ranch for Saturday afternoon I had six bucks right under my stand. Jewell Hilt and his family show you exactly what southern hospitality means. You are greeted in the morning with a hot cup of coffee and taken out to pre-arranged blinds set up in some of the most beautiful country I've seen in Texas. So, when you plan your hunt next year you might consider the Hilt Ranch. I know that's where I will be opening day. Good Hunting, and get those deer!



Mike Gaines (above) shows off the two fine deer he bagged while hunting on the Hilt Ranch near Gatesville, Texas. Displaying another beautiful specimen is Mike Hooper who hunted with Gaines on the Hilt Ranch.

News of Yesteryear 10 years ago

The home of Martin Wright, east of Burk, suffered extensive damage from a fire Monday night. The fire was discovered by the Wrights when they returned home about midnight. Fire was caused by an explosion of the hot water heater. Fire, water and smoke damaged a bath, utility room, den and kitchen. Carpets and drapes also were heavily damaged. Mr. and Mrs. Troy Miller and Mr. and Mrs. C.W. Ramsey attended the Lamar Tech-Howard Payne football game in Brownwood Saturday night. Members of the Burk Burnett Optimist Club have begun soliciting support for their upcoming Christmas Tree Sale early in December announced James Spinks, chairman. Wolfe Ford Co. has offered to let the Club use its downtown lot for the tree sale. Proceeds of the Burk Burnett Optimist Club's tree sale will be earmarked for youth work, announced Bill Reasoner, president. The Clara Fairview Community Banquet will be held in Southmour Shopping Center in Wichita Falls. Wynmore Downing will present the program and B.T. Haws will present the Bridwell Award Certificates. Special guests from Burk Burnett and Wichita Falls plan to attend. Elmer Klinkerman is president of the organization. Jerry Wolfe, Denn Johnson, Sonny Bentley, Perry Ellis, Tex Wallace and Terrell Goins, officers of the Burk Burnett FFA Chapter attended a District Leadership Clinic last week. The District Sweetheart Banquet will be Dec. 10 in the Wilbarger Auditorium in Vernon. Each FFA Chapter in the District will be represented by its Chapter Sweetheart. Lovely Barbara Wolfe is the Burk Burnett FFA Sweetheart. Burk Burnett is one of the 52 Texas School Districts which federal authorities say must be integrated by next year in order to receive federal funds, an associated Press report said. Officials of the Burk school could not be reached for comment Wednesday night. A 1957 state law requires voter approval before desegregation can be carried out. State funds are withdrawn if a district integrates without voter approval. Texas Electric started its three day open house celebration at 8 a.m. Thursday in its new offices at Third S. and Avenue C. Early visitors saw the many modern features of the new offices, including the electric demonstration kitchen-laundry, the Reddy Room, the modern lighting throughout the offices and the display of major appliances, according to Jim Ady, Electric Co. manager. Guests are being served coffee, cold drinks and cookies. Children receive refreshments and favors.



Mrs. Baird baked her bread the old-fashioned yeast-rising way for wonderful flavor and soft texture.



Today her family still uses that baking method... because they still care about quality.

READ THE CLASSIFIED PAGE TODAY

CHURCHES OF BURKBURNETT

Apostolic Church of the Lord Jesus Christ

703 Magnolia
Donald P. Hodgson, Pastor
Sunday School 10:00 a.m.

Assembly of God Church
Corner of College and Ave. B
Rev. J. W. Hocker, Pastor
Sunday Morning Worship, 11:00 a.m.

Calvary Baptist Church
College and Ave. B
Ray C. Morrow, Pastor
Sunday Service, 11:00 a.m.

Cashion Baptist Church
Wichita Highway
Rev. Ed Newhouse, Pastor
Sunday Church Service, 11:00 a.m.

Central Baptist Church
814 Tidal Street
Rev. Max Dowling, Pastor
Sunday Morning Worship, 10:40 a.m.

First Baptist Church
Corner of Avenue D and 4th
Lamoin Champ, Pastor
Sunday Morning Worskip 10:40 a.m.

Janlee Baptist Church
Opposite Burk Burnett High
Rev. Wayne S. Glazener, Pastor
Sunday Morning Worship, 11:00 a.m.

Providence Baptist Church
T.L. Longmire, Pastor
Floyd & W. 6th Street

St. Jude Catholic Church
600 Davey Drive
Father Richard Beaumont
Confession, 5:30-6:30 p.m. Saturday
Masses, 7:00 p.m. Saturday, 10:00 a.m. Sunday

Guidelines of Life



An Attitude In Which to Approach Christmas by Rev. M. Alsobrook, pastor, Church of the Nazarene

1 Peter 3:1-5
In the same way, you wives, be submissive to your own husbands so that even if any of them are disobedient to the word they may be won without a word by the behavior of their wives. As they observe your chaste and respectful behavior. And let not your adornment be external only—braiding the hair, and wearing gold jewelry, and putting on dresses; but let it be the hidden person of the heart, with the imperishable quality of a gentle and quiet spirit, which is precious in the sight of God. For in this way in former times the holy women also, who hoped in God, used to adorn themselves, being submissive to their own husbands.

As the Christmas season commences, my memory goes back to a poem learned yesteryear. Its simple sweetness and humility speak volumes. It was inscribed by an Irish-American educator, the late Charles A. McConnell, Th.D., and its Irish dialect adorned more than a few Christmas cards and publications. I quote:
"Father of all, Creator, God—
A 'boon I pray
That e'en in me-Thy life, Thyself
Might dwell today.
Not majesty, nor power, nor might
Crave I of Thee—
But that the Babe of Bethlehem
Be born in me."

Less is known of the thirty-five year background of the conversion to Christ of this well educated and formerly avowed atheist than of his last sixty-two years of vibrant service to his Lord and Christ.

Through the lovingly concerned prayers and Christ-like life of his wife, he was won to Christ (humanly speaking). She prayed for him—not at him. Her life adorned the doctrine of God. Her quiet meekness, sweetness, prayerful, gentle Christ-likeness carried a devastating blow to the self-centered Satanic stronghold of his unbelieving heart. The lack of or abundance of anointing upon and unction in the pulpit of her church (She was an Episcopalian) did not quench the action, as far as she was concerned, in her pew. She reflected the life in the Holy Spirit in so many ways that her husband was turned to her Christ without an agitating nor provoking word on her part. Little wonder that in ensuing years after she was gone, her husband would rise and call her memory "blessed!"
Would to God today that all of us who call ourselves Christians would show forth this attitude of heart and life in real Christianity. May the Holy Spirit, using us as examples of the grace of God, gather our loved ones, friends and acquaintances to Christ in this Christmastime.

First Christian Church
Second & Avenue D
Rev. John White, Pastor
Sunday Morning Worship, 10:50 a.m.

Church of Christ
First and Avenue C
Ed Morris, Minister
Sunday Morning Worship, 10:40 a.m.

Church of God
121 S. Ave. E
J. E. Dement, Pastor
Sunday Morning Worship, 11:00 a.m.

Episcopal Church of St. John the Divine
1000 S. Berry Street
Father David A. Jones, Vicar
Choral Eucharist, 10 a.m. Sunday

Grace Lutheran Church
Third and Avenue E
Rev. Albert Lindemann, C.
Sunday Morning Worship, 10:30 a.m.

Trinity Lutheran Church
8 Miles West on Highway 240
Sunday Morning Worship, 9:30 A.M.

First United Methodist Church
Ave. C & 4th Street
Rev. William W. Penn, Pastor
Sunday Morning Worship, 10:30 a.m.

Church of the Nazarene
Third and Holly
Rev. M. Alsobrook, Pastor
Sunday Morning Worship, 10:50 a.m.

Penecostal Church of God
415 N. Berry Street
Rev. R.F. Wheeler, Pastor
Sunday Morning Worship, 11:00 a.m.
Sunday evening 7 p.m.
Wed. and Sat. 7:30 p.m.

Hattaway Hosted Alma Jackson Missionary Circle

Mrs. Ruth Hattaway was hostess Monday night to the Alma Jackson Missionary Circle of the First Baptist Church. Mrs. Ruth Beldon, chairman, presided over the business meeting. Mrs. Hunt gave the secretary and treasurer report. Members were reminded to take canned goods to the Faith Mission as one of the December projects and take cup cakes and coffee to one of the adopted wards of the State Hospital. Mrs. Beldon dismissed with prayer. Refreshments were served to 14 members and one visitor, Mrs. Irene Cox. The next meeting will be with Loretta Hunt Dec. 18th.

QUESTION AND ANSWERS

Q--How long do I have to convert my National Service Life Insurance Policy?
A--NSLI five year term insurance can be converted at any time while in force. Term policies with numbers prefixed by "W" cannot be kept in force if they expire after the insured's 50th birthday and they must be converted before they expire.
Q--An extra large dividend put me over the income limit this year. Will this cause my VA pension to be discontinued?
A--No. As long as this income could not have been anticipated and was of a non-recurring nature, it will have no effect on your pension.
Q--What should I do if my VA benefit check is not delivered on time?
A--You should wait long enough for the mails to clear, then write the VA regional office which has your file. Include your name if you're a veteran, or the deceased veteran's name if it is a death claim, and your claim number. Do not write to the Treasury Department, as this will result in further delay.



CLARA-FAIRVIEW COMMUNITY AWARDS--J. Frank Kelley receives the Continuous Service Award for 13 years service, Kenneth Schroeder the Outstanding Youth Award, and E. J. Simons, the Outstanding Individual Award at the Texas Community Improvements Awards banquet held recently.

Worship In The Church Of Your Choice This Sunday ----- And Take The Family

This Church Directory Is Sponsored By The Following Burk Burnett Businessmen In The Interest Of The Spiritual Growth Of This Community

THE Manhattan
WE GIVE S&H GREEN STAMPS

WOLFE FORD COMPANY
Complete Service and Sales
Sheppard Road
Phone 569-2275

Wampler Insurance Agency
For Insurance Of All Kinds
203 N. Ave. D 569-1461
Burk Burnett, Texas

JACK WOOD'S CARPET
Branch 2
1308 Sheppard 569-0081
BURKBURNETT

UNITED SUPER MARKET INC.
"The Finest in Groceries"
Wichita Highway and Tidal Street

Lippard Furniture & Lippard Insurance Agency
200 E. 3rd 569-3112

BURKBURNETT INFORMER
"More than a Newspaper, A Community Legend..."
"Quality Printing Is Our Specialty"
569-2191 Burk Burnett, Texas

New Homes - Equities - Rentals
Property Management
G and H Real Estate Co.
569-0362
1308 Sheppard Rd.

LLOYD CLEMMER LUMBER CO.
Your Business Appreciated
See Us For Prices Before You Buy
569-2911

Pat's Electric
104 Linden 569-1331

ELECTRIC SERVICE
People power... at work for you
Bill Vincent, Mgr.

Famous Department Store
569-2441
Burk Burnett, Texas

Jack has a Christmas Special for YOU!
We will give you 5 per cent off on the total sales price of any carpet in the store.
You may choose from 64 different samples.
32 Shags
7 Plush
11 High-Lows Patterns
14 Kitchen Carpet



SHEPPARD AIR FORCE BASE

Col. Burkett Addresses Sheppard Analysis Class

SHEPPARD AFB, TEXAS--Colonel Daniel L. Burkett, director of management analysis, Headquarters U.S. Air Force, addressed students and faculty of the Management Analysis Officers course of the Department of Comptroller Training, School of Applied Aerospace Sciences at Sheppard.

of advanced analysis techniques to a wide range of studies undertaken in support of Air Force management.

Colonel Burkett was assigned in 1970 to the directorate of data automation, Headquarters USAF, where he served as chief of the systems and equipment division and as deputy director. He transferred to management analysis in June 1972.

The course is designed to teach officers, second lieutenant through colonels, to function effectively in management analysis capacities throughout the Air Force. The curriculum includes program analysis, statistical analysis and the concepts of management information systems.

With A Heart Of Steel Unusual Teacher 'Hired' At Sheppard AFB

SHEPPARD AFB, TEXAS--The School of Health Care Sciences at Sheppard has a new typing instructor. One may think there is nothing unusual about that--and he is right!

He has a bachelor degree from the University of Omaha and a master degree from George Washington University. He is rated as a senior navigator and command pilot.

shown that is much preferred over the conventional method and some have gone so far as to say that the teaching machine is the most enjoyable learning experience they have had.

There are also five Military Assistance Program students, three from Vietnam, one from Thailand, and one Army student from Taiwan.

U.S. Air Force students in Sheppard's current Management Analysis Officers course are two first lieutenants and five second lieutenants from Myrtle Beach AFB, S.C., Gunter AFB, Ala., Wurtsmith AFB, Mich., Shaw AFB, S.C., Wright-Patterson AFB, Ohio, Malmstrom AFB, and Barksdale AFB, La.



SHEPPARD AFB, TEXAS--PROJECT CHRISTMAS BEGINS--Major General Robert L. Pettit, commander of Sheppard Technical Training Center, kicks off Project Christmas 1972 with a donation given at a staff meeting this week. The charity will collect money in red cartons like the one being held by Chaplain (Major) Shural Knippers, co-chairman of the project. The money will be spent to buy foodstuffs for needy airmen at Sheppard. (USAF PHOTO BY TSGT. ROBERT PAGE)

Following a long career in Strategic Air Command (SAC) as a pilot, navigator, and in command and control, Colonel Burkett entered the field of data automation in 1960 with an assignment to International Telephone and Telegraph in Paramus, N.J. He spent three years at the facility working on the SAC automated command and control system, 46 SL.

There are many new typing instructors hired around the country each year. There is just one slight difference, however--this one is a machine. It has become a widely recognized fact in recent years that teaching of many physical skills can be done effectively using a programmed approach which allows each student to gain proficiency according to his ability. The machine employed in teaching beginning typists in the Medical Administrative Specialist Course uses this principle. It also provides a visual stimulus learning environment which group-paces the entire class and forces students of like ability to progress at the same speed.

From 1963 to 1965 he was at SAC Headquarters working on the implementation of 46 SL. He attended the Air War College in 1965-1966.

It is known that this means

Your Dividends May Double By Wearing A Seat Belt

SHEPPARD AFB, TEXAS--Five days of checking on-base drivers for seat belt use has produced about 40 Sheppardites who will be eligible for a raft of prizes.

Enco Station, Spinks Texaco Station (Burkumett), McGinty Tire Co., Sheppard Pizza and Hoagie House, Zeno's, and Harold Corbett Motor Co., are providing the prizes.

What makes them the lucky ones of the 185 cars stopped by members of the Safety Council, School of Applied Aerospace Sciences? They were wearing their seat belts. The other 145 wish they had been.

When a car is stopped on base, the driver will be given a coupon to fill out if he or she is wearing a seat belt. The coupon is then deposited in a box at the Base Exchange, and names will be drawn for prizes. First drawing will be Dec. 15, and others will be held monthly.

The School Safety Council is sponsoring the program to encourage the use of seat belts in automobiles. Base clubs, the credit unions, Joe Pistocco Cadillac - Pontiac, Flowers

The program which began Nov. 22, is being supervised by Master Sergeant Lawrence Zumbrun, safety noncommissioned officer at the school. Members of the safety council are making the random checks of cars.

Civilian Workers Awarded Raise

SHEPPARD AFB, TEXAS--Five civilian employees at Sheppard AFB were honored this week for exemplary performance at their jobs.

Percentage of drivers wearing seat belts has risen since the start of the program from 12 percent to near 25 percent, according to Sergeant Zumbrun.

Awarded a quality salary increase was Coy W. Dennis, a management analyst officer with Management Engineering Detachment 5 at Sheppard.

The 15 prizes will be given by drawings throughout March 1973.

Awarded sustained superior performance cash awards of \$200 were Charles R. Heacox, a training instructor with the motor vehicle operation branch, Headquarters Squadron, 3750th Maintenance and Supply Group; and Jack S. Schmidt, an air-conditioning equipment mechanic with the 3750th Civil Engineering Squadron.

Phyllis Smith Takes Golf Championship

SHEPPARD AFB, TEXAS--Phyllis Smith edged defending champion Joyce Braswell for the club championship of the Sheppard Ladies Golf Association Fall Championship Tuesday afternoon.

Mrs. Smith overtook Mrs. Braswell on the final hole of the 18-hole Sheppard golf course to win her first title.

Sandy McAllister was the top finisher in the first flight while Dina Kholmman captured the nine-hole crown.

Two Officers Receive Medals

SHEPPARD AFB, TEXAS--Two officers of the U.S. Air Force Regional Hospital, Sheppard, were recently decorated in ceremonies at Sheppard.

Colonel Jerry Richey was presented the Bronze Star and Captain Evelyn D. Pelletier the Air Force Commendation Medal.

Making the presentation was Colonel William C. Hernquist, commander of the hospital.

Prices effective Dec. 7-10

PIGGLY WIGGLY

Satin Rose Stainless Flatware off sale Dec. 15 Complete your sets now!



Elegant **Sundown** dinnerware

Coffee Cup 29¢ with each \$2 purchase

Folger's **COFFEE** lb. 69¢

Limit one with \$5 purchase or more excluding beer, wine and cigarettes.

Piggly Wiggly Tomato **JUICE** 3 46 oz. cans \$1

Northern Northern Towels **TOWELS** 4 Jumbo Rolls \$1

Liquid Detergent **IVORY** 22 oz. Bottle 39¢

Ken-L-Ration Regular, 16 oz. can for **DOG FOOD** 6 89¢

Reg. Super or Unscented Hair Spray **STYLE** 13 oz. can 39¢

Golden Delicious **APPLES** lb. 25¢

Ruby Red Grapefruit 19¢ lb. Rusette Shoestring Potatoes 5 20¢ oz. pkgs.

Family Pack **Pork Chops**

Double Green Stamps every Wednesday 68¢ lb. A combination of loin end and rib end pork chops

USDA Choice Valu-trimmed lb. **RIB STEAK** 89¢

WIN FREE CASH! This week's Jackpot **\$700.00**

JACKPOT Day

Register just once! Nothing to buy

Get your card punched this week!

PIGGLY WIGGLY

MISSILE CLUB

4318 Burk Road
Between Sheppard Main Gate 7 & North Gate

Live Music-Dancing
COUNTRY-WESTERN BAND
Top Hands

Friday & Saturday Nights
Jam Session--Wednesday

MEMBERSHIP OPEN

A Trusted Family Friend . . . in a time of need

OWENS & BRUMLEY FUNERAL HOME

Serving you since 1921

Phone 569-3361

ROUND THE TOWN

by Sylvia Lohoefer



Mrs. Florence Nichols is in Midlothian, Tex. helping care for her brother, Roy Gilbert, who is quite ill suffering from a heart condition, and his wife who is seriously ill.

Mrs. Lucille (J.C.) Adams had the misfortune Monday of falling in her home and breaking her right shoulder. She also received many bad bruises. She is in the Wichita General Hospital.

Mrs. Danny (Barbara) Mulligan and little daughter, Shannon, of Houston spent several days here last week visiting her father Joe Wolfe and other relatives.

Mrs. Loren (Dorothy) Cole

returned home Sunday night from Norton, Kansas where she has been at the bedside of her father, W.P. Erickson, age 91, who is very ill in a hospital in that city.

Word was received here of a car wreck Friday night involving Mr. and Mrs. Robert Callison of Fort Stockton, Tex. Mrs. Callison is the former Opal Eldson, daughter of Mrs. S.E. Eldson of this city. They are both in a Fort Stockton hospital badly injured. The driver of the other car failed to observe the stop sign and ran into them completely demolishing their car.

Mrs. Mabel Johnson and daughter, Ethlyn, visited their son

and brother Cletus Johnson in Wichita, Kansas this past weekend. They also visited Mrs. Johnson who has had major surgery in a Wichita Hospital and has been quite ill.

Eugene Wilkinson returned home Thursday from Stevenson, Calif. where she visited his sister and husband, Mr. and Mrs. C.J. Ilie. Gene made the trip by plane and enjoyed it very much.

Mr. and Mrs. Clark Gresham attended the funeral services last week of Mr. Ben T. Cordray in Tahlequah, Okla. Mr. Cordray, a former resident of Burk, died Nov. 18. Services were held in the Baptist Church of Tahlequah on Tuesday. In-

terment was in the Tahlequah Cemetery. He was employed by the Bohner Oil Co. here for several years. Cordray was the son-in-law of Mrs. Bertha Smith of the Evergreen Manor and the brother-in-law of Mrs. Clark Gresham.

Mr. and Mrs. S.M. Butts visited her sister and husband, Mr. and Mrs. Dick McDaniel in Electra, Sunday. Mr. McDaniel is seriously ill in a nursing home in that city.

Dr. and Mrs. Carl Morrison had as their guests last week Dr. David Morrison and daughter Katherine Monden of Glade-water, Tex.; Judge and Mrs. Floyd Jackson of Oklahoma City and Mrs. Kay Henson of Grand

Prairie, Tex. All attended the funeral services of Mr. Jim Morrison in Electra and the interment in Gotebo, Okla. Mr. D.C. Dodson of this city also attended the funeral.

Mrs. W.S. (Lucille) Duvall has returned from a visit, through the Thanksgiving holidays, with her daughters and families, Doris and Vance Lenz in Ardmore, Okla. and Jane and Jack Cagle in Gainesville.

Mrs. Leo (Zelpha) Foster is nursing a severe case of the "shingles". Their Thanksgiving visit to their son Jack in Burnett, Tex. was curtailed when she became too ill to stay longer.

Ray Cullens of Los Angeles, Calif. visited his mother, Mrs. Essie Cullens this past weekend. Cullens is with the National Broadcasting Company in Los Angeles and was enroute to a convention in New Orleans.

Greg Gilbert, a student at Texas Tech-Lubbock, attended the football game here Saturday

and visited his parents, Mr. and Mrs. Clarence Gilbert and grandmother, Mrs. Ina Gilbert over the weekend.

A baby born was born to Mr. and Mrs. Bobby Hayes of Wichita Falls Nov. 25th. He has been named Chadwick Shane. Mrs. Hayes is the former Karen Metz, daughter of Mrs. Gwen Metz of Burk. Chadwick is the great grandson of Mr. and Mrs. B.L. Turner of this city.

Earl Johnson of Dalhart, Tex. was in this area on business and spent Sunday night in the home of his father-in-law and wife, Mr. and Mrs. Arthur Houser.

Mrs. Robert (Barbara) Royston is a patient in the SAFB hospital recuperating from a case of pneumonia.

Mrs. Gwen Metz, who broke a bone in her ankle, two weeks ago is now able, with her foot in a cast, to get about on crutches. She has gone back to part time work.

News From In And Around Temple

A delayed Thanksgiving dinner proved to be an "unbelievable success" for all concerned except possibly the turkeys," Joe Baker, member of the senior citizen board, said.

The center's coordinator, Mrs. Louise Mooney, checked the guest and membership register and reported 170 attended and mentioned 17 dinners were carried to shuttles.

Improvised tables creeked under the weight of food piled high. Pies, cakes, ham salads, dressing and many other goodies were left after the long line of hungry humans filed by, in cafeteria style, to heap plates to the brim.

The center furnished the turkey and members brought in the rest. Non members contributed \$1 each and the complaint department received narry a grumble.

Mrs. R. C. Nelson's donated hand painted quilt was auctioned by Jim Witt, County RECAP director, and added \$120 to the center's bank account. Ben Shackelford, president of the Walters Bank, and David Moore, president of Temple's First National Bank, placed bids for their banks. Other bidders were Bessie Cullum, Joe Baker, Nathan Stone, Alton Moore and the quilt went to David Moore who made the final personal bid.

Leaders of Temple's senior citizen facility are finalizing plans for a Christmas season bazaar set for December 14 in the seniors' recently constructed center, according to Louise Mooney, director.

Letters have been mailed to all members asking for cooperation in making items that can be sold to help defray expenses. Non-members are eligible to contribute as many items as they care to, Mrs. Mooney said.

Just 24 hours prior to the "big bazaar" a "Kandy Kaper" project is expected to attract many women bringing in their favorite candy recipes and cooking pans plus ingredients to make their recipe more tasteful. For 3 1/2 hours, 1:00-4:30 p.m., there is a good possibility many kinds of candy will be brewed under the supervision of Janice Duncan, extension Home Economist, if she accepts the invitation that has been extended. Her assistance will assure the center receiving credit for a workshop activity.

Mothers signed applications, paid entrance fees and some purchased scouting's official magazine hoping to see their recruits get off to a good start. Scouts were urged to purchase scout uniforms one item at a time if finances prevented getting the works to start with. Meetings will be held weekly in the City Hall at 7:00 p.m. Friday.

All senior citizens are encouraged to make things at the center thereby killing two birds with one endeavor--social benefit and creating a saleable item.

"We have a sewing machine and anyone can make anything they care to. I hope we can get started to all working together on different projects in the center so we can get credit for time expended on crafts," the director said. Plans call for starting quilting operations following the Christmas holidays.

A Christmas tree has been donated by Mrs. Leo Niblett to the center. Members can add to the beauty of the gift by bringing at least one ornament, the leaders suggest.

The coordinator hopes members planning to make articles for the bazaar will report their intentions in order that she will know what to expect and further plans for the bazaar.

During a three-hour organizational meeting Scouting for Temple was again organized Friday when parents or guardians and boys met to get troop 114 back into activity.

Ulys M. Morgan, Black Beaver council member of the professional staff of Lawton, aroused enthusiasm by showing slides and explaining the outstanding features of scouting to the extent Gary Hart volunteered to serve as Scout Master and was promised assistance by Jack Randolph. Peggy Randolph signed on as transportation chairman, Eddie Laxson will chair a five-man sponsoring committee made up of Leonard Roderick, Dee Ricketts, Charles Walker and George Kindred.

Jay Driskell was named senior patrol leader.

Jerry Hargrove has the job of leading his patrol composed of Michael Smith, assistant patrol leader; scribe, Timmy Smith; quartermaster Sammy Tucker and grubmaster John Randolph.

Mothers signed applications, paid entrance fees and some purchased scouting's official magazine hoping to see their recruits get off to a good start. Scouts were urged to purchase scout uniforms one item at a time if finances prevented getting the works to start with. Meetings will be held weekly in the City Hall at 7:00 p.m. Friday.

News From Evergreen Manor

Mr. and Mrs. Paul Lamb from Sparks, Okla. and Bill Ellis from Wichita Falls visited their mother, Vera Ellis, over the weekend.

Mrs. Anthony Speaks To Study Club

A rousing call for a return to pioneer values in America was voiced by Mrs. M.K. Anthony as featured speaker for the annual banquet of the Burk Burnett Council of Federated Study Clubs last Thursday evening, at the Civic Center.

"The United States is called a Christian nation, but we are in trouble until we become a practicing Christian nation," Mrs. Anthony pointed out.

"Someone has to point the way and each woman standing firmly for what she believes in makes a mammoth contribution to her country," she concluded. Mrs. Anthony, who is a teacher at Wichita Falls High School, was introduced by Mrs. Harry Elliott.

Mrs. F.C. Jeffers served as mistress of ceremonies. Others on the program were Mrs. Albert Dillard, who gave the welcome address, Mrs. A.H. Lohoefer, the invocation, and Mrs. Don Mills, who paid tribute to Mrs. Dot Wolfe, in whose memory the Forum Study Club has presented to the Civic Center a large painting of a Texas landscape by Mrs. Wallace Landrum.

A program of dinner music was presented by the Burk Burnett High School stage band under the direction of Rusty Stowe. Members of the band included Chris Strayhorn, Paul Good, Tommy Hawk, Dicky Larson, Tracey Janeke, Evelyn Smith, Debbie Wood, Ed Wintermeyer, Carl Hilton, Greg Swain, Ken Schroeder, Jimmy Phalan, Mike Roberts, Randy Marsh, Bill Newton, Robbie Widour, Mike Lewis, Steve Hall, Jeff Hall, Robin Wampler, and Alfred Claycamp.

Visiting with Rosa Penn were her son, Bill Penn from Wichita Falls, her grandson Jo Bob Penn and her son-in-law, Hal Byrd.

Mr. and Mrs. Ray Williams from Randlett visited Mrs. Hurst.

Visiting Mr. and Mrs. C.D. Mullins Sunday were his brother John Mullins, from Electra; a niece, Betty Huff from Dallas, and a friend, Mrs. George Prater from Alvard, Texas.

Mrs. Myrtle Gresham from Oklahoma City, Mr. and Mrs. Carl Turner and Mr. and Mrs. C.B. Ressel, all from Randlett, visited Fay Postelwait.

J.A. Franks and Mandla of Baton Rouge, La. visited Mrs. Lillian Watt during the Thanksgiving holidays.

Mrs. Johnson went to her daughters Sunday where all her children met and had their Christmas dinner.

A singing group from Randlett Assembly of God Church presented gospel music and singing Thursday night. They will sing every two weeks from 6 until 7. We thank you all.

We were saddened to learn of the death of Alice Goodman, a sister of Mrs. Goodman who worked in the home for some time and made a lot of friends that send their love and sympathy to Mrs. Goodman at this time.



PRE CHRISTMAS SALE!

CORNER DRUG STORE

320 EAST 3rd STREET BURKBURNETT, TEXAS PHONE 569-2251

POLAROID

Big Shot Camera
Now \$22.95
Reg. \$26.95

Square Shooter II
Now \$14.95
Reg. \$19.95



Airmaid Panty Hose
Now \$1.19
Reg. \$1.79

Christmas Gift Wrap
3 Roll Pack 99¢

Schick Hot Lather Machines
Now \$13.95

Picture Frames
Now 89¢
Reg. \$1.29



Coty Cosmetics
Complete Stock
Half Price



Ten minutes of Miami: \$2.10

That's the cost of a 10-minute call from here to the tropical city if you dial it yourself the One-Plus way from 5 p.m. to 11 p.m., Sunday through Friday. It's figured like this:

First three minutes: 70¢ Each extra minute: 20¢

One-Plus rates on out-of-state calls are even lower all day Saturday & Sunday till 5 p.m.

One-Plus...there's no cheaper way to call Long Distance.



Southwestern Bell

BHS Speech-Drama Department Hosts Tri-School Tournament

by Sedelta Vertle

Burk High School Speech and Drama Departments hosted a tri-school speech tournament as preliminaries to the Spring UIL meet. Iowa Park and Vernon Schools attended this meet which was the first of its type to be hosted by BHS. The day long contest includes 16 events including a new category called Character Make-Up. As the BHS side the names of winners in each division, BHS contestants fared well in these events.

DEBATE: Burk Burnett teams won first and second rounds. Final round will be held today. Patty Bellaire and Mark Bailey will debate Ken Schroeder and Robby Pimberton.

STORYTELLING: 1st Robin Walton, B; 2nd LuAnn Victory, B; 3rd Shelly Moore, B.

ORIGINAL POETRY: 1st Marsha Milam, B; 2nd LuAnn Victory, B; 3rd Patty Bellaire and Paula Henry.

ORIGINAL ORATORY: 1st, Dwight Caldwell; 2nd Ken Wingham, B; 3rd Michael Irwin.

ADVANCED POETRY: 1st, Tina Thomas, 2nd Greg Easley, 3rd Kim Boynton.

ADVANCED PROSE: 1st Greg Easley, 2nd Teri Garland, B;

3rd Robin Walton, B.

NOVICE POETRY: 1st Robin Walton, B; 2nd Taz Thomas, 3rd Leah Lambert.

NOVICE PROSE: 1st Linda Myers, 2nd Diana Osborne, B; 3rd Mark Roberson.

ADVANCED EXTEMPORANEOUS - INFORMATIVE: 1st Glenda Hawkins, 2nd Kim Boynton, 3rd Robert Kienchloe.

ADVANCED EXTEMPORANEOUS - PERSUASIVE: 1st Karen Neal, 2nd Terry Hunt Tooley, 3rd Eddie Schuman.

NOVICE EXTEMPORANEOUS-PERSUASIVE: 1st Dwight Caldwell, B; and Gary Doherty; 2nd Modena Moore, 3rd Doug Duffey.

DUET ACTING: 1st Walton and Victory, B; 2nd Schuman and Eggleston; 3rd Moore and Shubird, B.

SOLO ACTING: 1st Audrey Bushfield, 2nd Shelly Moore and Robin Walton, B; 3rd Tommy Baldwin.

CHARACTER MAKEUP: 1st LuAnn Victory, B; 3rd Karen Deal, B.

DRAMATIC INTERPRETATION: 1st Linda Myers, 2nd LaVelda Norris, B; 3rd Kathy Fidalio, B.

FACTORY Authorized Service
HAROLD'S TV SERVICE
224 E. 3rd. Burkburnett

GOOD LUCK

Orbit Skating Rink

569-1721 Burkburnett 569-0137

Winter Schedule

Thurs.--7-9 p.m., Fri.--7:30-9:30 & 9:30-11 p.m., Sat.--2-4:30 & 7:30-10 p.m., Sun.--2-4:30 p.m; Mon., Tue., Wed--Special Parties.

Lessons Available

CHRISTMAS GIFT IDEAS
Skates, Skate Cases, & Skate Accessories

LET US help you with your Birthday Christmas parties. They are fun for all!

FARM REVIEW

Winter Pasture, Rare Commodity

High-quality winter pastures should be used to greatest advantage, says Dr. Neal Pratt, agronomist for the Texas Agricultural Extension Service, Texas A&M University.

Winter pastures have been relatively slow to become started this fall, due to inadequate rainfall during September and early October. And short days, cool temperatures and cloudy weather which prevail during much of December, January and February will limit pasture growth during the winter. Thus, pasture management is critical.

"The most efficient way to use winter pastures is to limit grazing. This means permitting cattle to graze the high-quality forage for the time needed to meet their nutrient requirements," points out Pratt.

Cows can be easily trained to be removed from the pastures after they obtain their nutrient requirements. By keeping the cattle from lying down, winter pasture can provide up to twice the grazing obtained when cattle are permitted to stay on the pasture continuously during the day and night.

"Cows with calves can usually obtain their protein requirements when grazing every third or fourth day or by grazing one-and-a-half to two hours each day. Grazing low-quality forage in an adjoining pasture or providing hay can be an effective way to stretch high-quality winter pastures."

Electric fences work well for controlling the pasture area to be grazed. When one area is grazed heavily, cattle can be moved to another area to facilitate applying topdress fertilizer for regrowth.

For additional information on management of winter pastures, Pratt suggests a visit to the county Extension office. Information from pasture demonstrations is available in many counties.

Farmcast

A Weekly Report Of Agri-Business News

Compiled From Sources Of The Texas Department of Agriculture
John C. White, Commissioner

Sheep and Lamb Feeding Declines... New Trailer Light Laws... Cattle, calf, sheep sales up, hog sales down... Egg Production Declines...

A three percent reduction in sheep and lambs on feed in Texas is reported by the Texas Crop and Livestock Reporting Service. Elsewhere, sheep and lamb feeding increased two percent in seven major feeding areas of the nation.

Texas sheep and lambs on feed in Texas totaled 210,000 head, down three percent from a year ago. Sheep and lambs on feed during September and October are down five percent from a year ago. Marketings of fed sheep totaled 141,000 head, or two percent below the same period last year.

DEPARTMENT of Public Safety has issued requirements for cotton trailers under 15,000 pounds gross weight when operated during daytime with visibility of more than 1,000 feet. The requirements coincide with the provisions of the lighting and trailer brake law as amended in the last special session of the Legislature.

Regulations include the following: for trailers less than 80 inches in width and under 30 feet in length—two red reflectors, one on each side of the rear. Trailers less than 80 inches wide and more than 30 feet in length: one amber reflector on each side centrally located on trailer body, and two red reflectors, one on each side of the rear.

Complete details may be obtained from your local Texas Department of Public Safety office.

SALES of cattle, calves, sheep and goats were above a year earlier, but hogs sales declined from last year's levels throughout the state.

Cattle and calves marketed through auctions numbered 803,000 head, which is seven percent above a year ago and 13 percent above a month ago.

Sheep sales totaled 100,000 head, up 14 percent from last year, but 21 percent below a month ago. Goats sold total 37,000 head, which is six percent above a year ago.

Hogs sold totaled 44,000 head, or 30 percent below a year ago.

EGG production in Texas is six percent below a year ago, but three percent above last month.

Texas layers totaled 11.4 million, which is a 10 percent decrease from a year ago; nationwide the number of layers is five percent below a year ago.

Texas eggs laid daily per 100 hens averaged 57.9 during the month. This compared with 55.3 a year ago. Nationwide, production was slightly higher than for the Texas average with 60.8 eggs laid per 100 hens.

Egg-type chick hatch in Texas was down 21 percent from a year ago. Hatch of broiler chicks increased 17 percent from a year ago. Turkey poultry hatch was up 26 percent from a month in the state.

Egg production totaled 204 million, down six percent from a year ago.

WEATHER conditions throughout the state continue to delay harvest of cotton and other crops. Cotton harvest is about 40 percent complete, which is 10 percent ahead of this time last year. Corn harvest is completed. Grain sorghum harvest is nearing final stages. Yields have been good throughout the state.

Pecan harvest is being slowed by wet, cold weather. Wheat seeding for the state is completed except for a few isolated areas.

anamid Company, and Carroll, second disease. Both prevent professor in the College of Veterinary Medicine at Colorado State University.

As to leptospirosis and vibriosis in beef cattle, Carroll told the producers not to guess whether the first disease is present in their herd, because diagnosis is simple and inexpensive, and to vaccinate their animals each year against the

Both anaplasmosis and brucellosis are obstacles to larger calf crops.

Collins is consulting veterinarian for the American Cy-

Mold Causes Pig Poisoning

Have you ever heard of "Mycotoxicosis Russian Roulette"? You may not have, but chances are you're playing that deadly game if you feed moldy feeds to your pigs.

According to Dr. Gene Cope, extension veterinarian, Texas Agricultural Extension Service, Amarillo, mycotoxicosis is a two-dollar word which means "poisoning of the host following entrance into the body of one or more toxicants produced by a mold." While the condition has been recognized for many years, serious research was not initiated until the last decade.

The problem is complex, says Dr. Cope, because the production of toxin is influenced by many factors:

1. The strain of fungus; not all fungus produces toxin.
2. The temperature at which it grows; the best environment for toxin production seems to be a period of moderately warm weather followed by a period of cool weather and a fairly high moisture content.
3. The length of time it grows.
4. Other bacterial growth associated with it.
5. The species of animal to which it is fed; this may be even more specific, with tox-

icity varying with sex and age. Research indicates that animals which eat feeds contaminated by mycotoxins suffer from a variety of debilitating and lethal conditions such as hemorrhaging, anemia, cancer, poor growth rate, poor feed conversion and others.

Some molds produce a toxin which elicits similar responses in sows as the hormone estrogen, points out Dr. Cope. In sows this response to the toxin may be one of swollen mammary glands and prolapse of reproductive organs.

"Apparently, mycotoxins affect the reproductive system in varied ways, from completely stopping milk production, marked decrease in the vitality of new born pigs, numerous stillbirths and lowered ovulation rates to normal pregnancy and lactation. These variable results may be related to the amount of mycotoxin consumed."

Many abortions are reported in swine with no evidence of virus or bacterial infection, Dr. Cope cautions. It is possible that mycotoxins may play a role in some of these undiagnosed cases.

The best way to keep from playing "Mycotoxicosis Russian Roulette" is to avoid feeding moldy feeds.

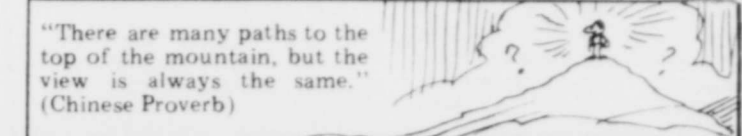
Research indicates that animals which eat feeds contaminated by mycotoxins suffer from a variety of debilitating and lethal conditions such as hemorrhaging, anemia, cancer, poor growth rate, poor feed conversion and others.

Some molds produce a toxin which elicits similar responses in sows as the hormone estrogen, points out Dr. Cope. In sows this response to the toxin may be one of swollen mammary glands and prolapse of reproductive organs.

"Apparently, mycotoxins affect the reproductive system in varied ways, from completely stopping milk production, marked decrease in the vitality of new born pigs, numerous stillbirths and lowered ovulation rates to normal pregnancy and lactation. These variable results may be related to the amount of mycotoxin consumed."

Many abortions are reported in swine with no evidence of virus or bacterial infection, Dr. Cope cautions. It is possible that mycotoxins may play a role in some of these undiagnosed cases.

The best way to keep from playing "Mycotoxicosis Russian Roulette" is to avoid feeding moldy feeds.



"There are many paths to the top of the mountain, but the view is always the same." (Chinese Proverb)

Farm Bureau Adopts 'No Trespassing Plan'

Wichita County Farm Bureau has adopted the new Property Protection Plan offered by the Texas Farm Bureau.

Effective Nov. 1, 1972, all members with the official "No Trespassing" signs posted on their property will be protected against trespassing and other offenses. This reward is provided by the Texas Farm Bureau and affiliated insurance companies.

Action was taken by the County Board of Directors to adopt the program.

The new service-to-member program provides for the posting of property according to the new anti-trespass law passed during the last regular session of the Legislature.

A reward of \$200 is offered by the Texas Farm Bureau and Insurance Companies for information leading to the arrest and final conviction of persons found guilty of trespassing, felony theft, arson, or malicious mischief as defined by Article 1350 on property of a current Farm Bureau member.

Each member will automatically have protection on the effective date provided he has properly posted his property. Signs will be available from the county Farm Bureau at a cost of 45¢ each.

In addition to the sign, the member may elect to purchase name plates that may be attached to the sign. These cost an additional 75¢ each. Decals for automobiles, trucks and vehicles will be provided at no cost to the member.

The county Farm Bureau will be responsible for completing a form furnished to them for the purpose of reporting information leading to the arrest and final conviction under the program.

The Farm Bureau insurance adjuster will investigate and send the report with further information to the state office. The \$200. check will be sent from the Texas Farm Bureau to the county Farm Bureau president who will deliver it to the property owner.

There is no cost to the individual member for the protection except for the signs and optional name plates to be attached to the sign. The county Farm Bureau assumes the cost of the program which is 20¢ for each current member of the organization having a fire or casualty policy with the Texas Farm Bureau Insurance Companies.

Electric fences work well for controlling the pasture area to be grazed. When one area is grazed heavily, cattle can be moved to another area to facilitate applying topdress fertilizer for regrowth.

For additional information on management of winter pastures, Pratt suggests a visit to the county Extension office. Information from pasture demonstrations is available in many counties.

WEATHER conditions throughout the state continue to delay harvest of cotton and other crops. Cotton harvest is about 40 percent complete, which is 10 percent ahead of this time last year. Corn harvest is completed. Grain sorghum harvest is nearing final stages. Yields have been good throughout the state.

Pecan harvest is being slowed by wet, cold weather. Wheat seeding for the state is completed except for a few isolated areas.

anamid Company, and Carroll, second disease. Both prevent professor in the College of Veterinary Medicine at Colorado State University.

As to leptospirosis and vibriosis in beef cattle, Carroll told the producers not to guess whether the first disease is present in their herd, because diagnosis is simple and inexpensive, and to vaccinate their animals each year against the

Both anaplasmosis and brucellosis are obstacles to larger calf crops.

Collins is consulting veterinarian for the American Cy-

ing problems out of your animals, but don't get them fat," as he explained the connection between poor nutrition and the difficulties of bulls and cows in reproduction.

Beverly, who also said the bull is more important than any single cow in the herd, is specialist in animal reproduction and Herd is specialist in beef cattle nutrition with the Texas Agricultural Extension Service of Texas A&M University.

Because the blood disease of anaplasmosis ranks second only to respiratory diseases as a nationwide destroyer of the beef cattleman's profits, Dr. W.W. Collins told the producers that it may be the next disease "chosen by the U.S. Department of Agriculture to be eradicated." No area, including the Rolling Plains, which was mostly clear in 1963, is now clear of this disease, he said.

And Dr. E.J. Carroll pointed the finger at Texas and Oklahoma as containing more than 60 percent of all U.S. herds infected with brucellosis, adding that this year in Colorado 85 percent of all infected cattle were shipped there from Texas.

Both anaplasmosis and brucellosis are obstacles to larger calf crops.

Collins is consulting veterinarian for the American Cy-

ing problems out of your animals, but don't get them fat," as he explained the connection between poor nutrition and the difficulties of bulls and cows in reproduction.

Beverly, who also said the bull is more important than any single cow in the herd, is specialist in animal reproduction and Herd is specialist in beef cattle nutrition with the Texas Agricultural Extension Service of Texas A&M University.

Because the blood disease of anaplasmosis ranks second only to respiratory diseases as a nationwide destroyer of the beef cattleman's profits, Dr. W.W. Collins told the producers that it may be the next disease "chosen by the U.S. Department of Agriculture to be eradicated." No area, including the Rolling Plains, which was mostly clear in 1963, is now clear of this disease, he said.

And Dr. E.J. Carroll pointed the finger at Texas and Oklahoma as containing more than 60 percent of all U.S. herds infected with brucellosis, adding that this year in Colorado 85 percent of all infected cattle were shipped there from Texas.

Both anaplasmosis and brucellosis are obstacles to larger calf crops.

Collins is consulting veterinarian for the American Cy-

ing problems out of your animals, but don't get them fat," as he explained the connection between poor nutrition and the difficulties of bulls and cows in reproduction.

Beverly, who also said the bull is more important than any single cow in the herd, is specialist in animal reproduction and Herd is specialist in beef cattle nutrition with the Texas Agricultural Extension Service of Texas A&M University.

Because the blood disease of anaplasmosis ranks second only to respiratory diseases as a nationwide destroyer of the beef cattleman's profits, Dr. W.W. Collins told the producers that it may be the next disease "chosen by the U.S. Department of Agriculture to be eradicated." No area, including the Rolling Plains, which was mostly clear in 1963, is now clear of this disease, he said.

And Dr. E.J. Carroll pointed the finger at Texas and Oklahoma as containing more than 60 percent of all U.S. herds infected with brucellosis, adding that this year in Colorado 85 percent of all infected cattle were shipped there from Texas.

Both anaplasmosis and brucellosis are obstacles to larger calf crops.

Collins is consulting veterinarian for the American Cy-

formation leading to the arrest and final conviction of persons found guilty of trespassing, felony theft, arson, or malicious mischief as defined by Article 1350 on property of a current Farm Bureau member.

Each member will automatically have protection on the effective date provided he has properly posted his property. Signs will be available from the county Farm Bureau at a cost of 45¢ each.

In addition to the sign, the member may elect to purchase name plates that may be attached to the sign. These cost an additional 75¢ each. Decals for automobiles, trucks and vehicles will be provided at no cost to the member.

The county Farm Bureau will be responsible for completing a form furnished to them for the purpose of reporting information leading to the arrest and final conviction under the program.

The Farm Bureau insurance adjuster will investigate and send the report with further information to the state office. The \$200. check will be sent from the Texas Farm Bureau to the county Farm Bureau president who will deliver it to the property owner.

There is no cost to the individual member for the protection except for the signs and optional name plates to be attached to the sign. The county Farm Bureau assumes the cost of the program which is 20¢ for each current member of the organization having a fire or casualty policy with the Texas Farm Bureau Insurance Companies.

Electric fences work well for controlling the pasture area to be grazed. When one area is grazed heavily, cattle can be moved to another area to facilitate applying topdress fertilizer for regrowth.

For additional information on management of winter pastures, Pratt suggests a visit to the county Extension office. Information from pasture demonstrations is available in many counties.

WEATHER conditions throughout the state continue to delay harvest of cotton and other crops. Cotton harvest is about 40 percent complete, which is 10 percent ahead of this time last year. Corn harvest is completed. Grain sorghum harvest is nearing final stages. Yields have been good throughout the state.

Pecan harvest is being slowed by wet, cold weather. Wheat seeding for the state is completed except for a few isolated areas.

anamid Company, and Carroll, second disease. Both prevent professor in the College of Veterinary Medicine at Colorado State University.

As to leptospirosis and vibriosis in beef cattle, Carroll told the producers not to guess whether the first disease is present in their herd, because diagnosis is simple and inexpensive, and to vaccinate their animals each year against the

Both anaplasmosis and brucellosis are obstacles to larger calf crops.

Collins is consulting veterinarian for the American Cy-

ing problems out of your animals, but don't get them fat," as he explained the connection between poor nutrition and the difficulties of bulls and cows in reproduction.

Beverly, who also said the bull is more important than any single cow in the herd, is specialist in animal reproduction and Herd is specialist in beef cattle nutrition with the Texas Agricultural Extension Service of Texas A&M University.

Because the blood disease of anaplasmosis ranks second only to respiratory diseases as a nationwide destroyer of the beef cattleman's profits, Dr. W.W. Collins told the producers that it may be the next disease "chosen by the U.S. Department of Agriculture to be eradicated." No area, including the Rolling Plains, which was mostly clear in 1963, is now clear of this disease, he said.

And Dr. E.J. Carroll pointed the finger at Texas and Oklahoma as containing more than 60 percent of all U.S. herds infected with brucellosis, adding that this year in Colorado 85 percent of all infected cattle were shipped there from Texas.

Both anaplasmosis and brucellosis are obstacles to larger calf crops.

Collins is consulting veterinarian for the American Cy-

ing problems out of your animals, but don't get them fat," as he explained the connection between poor nutrition and the difficulties of bulls and cows in reproduction.

Beverly, who also said the bull is more important than any single cow in the herd, is specialist in animal reproduction and Herd is specialist in beef cattle nutrition with the Texas Agricultural Extension Service of Texas A&M University.

Because the blood disease of anaplasmosis ranks second only to respiratory diseases as a nationwide destroyer of the beef cattleman's profits, Dr. W.W. Collins told the producers that it may be the next disease "chosen by the U.S. Department of Agriculture to be eradicated." No area, including the Rolling Plains, which was mostly clear in 1963, is now clear of this disease, he said.

And Dr. E.J. Carroll pointed the finger at Texas and Oklahoma as containing more than 60 percent of all U.S. herds infected with brucellosis, adding that this year in Colorado 85 percent of all infected cattle were shipped there from Texas.

Both anaplasmosis and brucellosis are obstacles to larger calf crops.

Collins is consulting veterinarian for the American Cy-

ing problems out of your animals, but don't get them fat," as he explained the connection between poor nutrition and the difficulties of bulls and cows in reproduction.

Beverly, who also said the bull is more important than any single cow in the herd, is specialist in animal reproduction and Herd is specialist in beef cattle nutrition with the Texas Agricultural Extension Service of Texas A&M University.

Because the blood disease of anaplasmosis ranks second only to respiratory diseases as a nationwide destroyer of the beef cattleman's profits, Dr. W.W. Collins told the producers that it may be the next disease "chosen by the U.S. Department of Agriculture to be eradicated." No area, including the Rolling Plains, which was mostly clear in 1963, is now clear of this disease, he said.

And Dr. E.J. Carroll pointed the finger at Texas and Oklahoma as containing more than 60 percent of all U.S. herds infected with brucellosis, adding that this year in Colorado 85 percent of all infected cattle were shipped there from Texas.

Both anaplasmosis and brucellosis are obstacles to larger calf crops.

Collins is consulting veterinarian for the American Cy-

ing problems out of your animals, but don't get them fat," as he explained the connection between poor nutrition and the difficulties of bulls and cows in reproduction.

Beverly, who also said the bull is more important than any single cow in the herd, is specialist in animal reproduction and Herd is specialist in beef cattle nutrition with the Texas Agricultural Extension Service of Texas A&M University.

Because the blood disease of anaplasmosis ranks second only to respiratory diseases as a nationwide destroyer of the beef cattleman's profits, Dr. W.W. Collins told the producers that it may be the next disease "chosen by the U.S. Department of Agriculture to be eradicated." No area, including the Rolling Plains, which was mostly clear in 1963, is now clear of this disease, he said.

And Dr. E.J. Carroll pointed the finger at Texas and Oklahoma as containing more than 60 percent of all U.S. herds infected with brucellosis, adding that this year in Colorado 85 percent of all infected cattle were shipped there from Texas.

Both anaplasmosis and brucellosis are obstacles to larger calf crops.

Collins is consulting veterinarian for the American Cy-

formation leading to the arrest and final conviction of persons found guilty of trespassing, felony theft, arson, or malicious mischief as defined by Article 1350 on property of a current Farm Bureau member.

Each member will automatically have protection on the effective date provided he has properly posted his property. Signs will be available from the county Farm Bureau at a cost of 45¢ each.

In addition to the sign, the member may elect to purchase name plates that may be attached to the sign. These cost an additional 75¢ each. Decals for automobiles, trucks and vehicles will be provided at no cost to the member.

The county Farm Bureau will be responsible for completing a form furnished to them for the purpose of reporting information leading to the arrest and final conviction under the program.

The Farm Bureau insurance adjuster will investigate and send the report with further information to the state office. The \$200. check will be sent from the Texas Farm Bureau to the county Farm Bureau president who will deliver it to the property owner.

There is no cost to the individual member for the protection except for the signs and optional name plates to be attached to the sign. The county Farm Bureau assumes the cost of the program which is 20¢ for each current member of the organization having a fire or casualty policy with the Texas Farm Bureau Insurance Companies.

Electric fences work well for controlling the pasture area to be grazed. When one area is grazed heavily, cattle can be moved to another area to facilitate applying topdress fertilizer for regrowth.

For additional information on management of winter pastures, Pratt suggests a visit to the county Extension office. Information from pasture demonstrations is available in many counties.

WEATHER conditions throughout the state continue to delay harvest of cotton and other crops. Cotton harvest is about 40 percent complete, which is 10 percent ahead of this time last year. Corn harvest is completed. Grain sorghum harvest is nearing final stages. Yields have been good throughout the state.

Pecan harvest is being slowed by wet, cold weather. Wheat seeding for the state is completed except for a few isolated areas.

anamid Company, and Carroll, second disease. Both prevent professor in the College of Veterinary Medicine at Colorado State University.

As to leptospirosis and vibriosis in beef cattle, Carroll told the producers not to guess whether the first disease is present in their herd, because diagnosis is simple and inexpensive, and to vaccinate their animals each year against the

Both anaplasmosis and brucellosis are obstacles to larger calf crops.

Collins is consulting veterinarian for the American Cy-

ing problems out of your animals, but don't get them fat," as he explained the connection between poor nutrition and the difficulties of bulls and cows in reproduction.

Beverly, who also said the bull is more important than any single cow in the herd, is specialist in animal reproduction and Herd is specialist in beef cattle nutrition with the Texas Agricultural Extension Service of Texas A&M University.

Because the blood disease of anaplasmosis ranks second only to respiratory diseases as a nationwide destroyer of the beef cattleman's profits, Dr. W.W. Collins told the producers that it may be the next disease "chosen by the U.S. Department of Agriculture to be eradicated." No area, including the Rolling Plains, which was mostly clear in 1963, is now clear of this disease, he said.

And Dr. E.J. Carroll pointed the finger at Texas and Oklahoma as containing more than 60 percent of all U.S. herds infected with brucellosis, adding that this year in Colorado 85 percent of all infected cattle were shipped there from Texas.

Both anaplasmosis and brucellosis are obstacles to larger calf crops.

Collins is consulting veterinarian for the American Cy-

ing problems out of your animals, but don't get them fat," as he explained the connection between poor nutrition and the difficulties of bulls and cows in reproduction.

Beverly, who also said the bull is more important than any single cow in the herd, is specialist in animal reproduction and Herd is specialist in beef cattle nutrition with the Texas Agricultural Extension Service of Texas A&M University.

Because the blood disease of anaplasmosis ranks second only to respiratory diseases as a nationwide destroyer of the beef cattleman's profits, Dr. W.W. Collins told the producers that it may be the next disease "chosen by the U.S. Department of Agriculture to be eradicated." No area, including the Rolling Plains, which was mostly clear in 1963, is now clear of this disease, he said.

And Dr. E.J. Carroll pointed the finger at Texas and Oklahoma as containing more than 60 percent of all U.S. herds infected with brucellosis, adding that this year in Colorado 85 percent of all infected cattle were shipped there from Texas.

Both anaplasmosis and brucellosis are obstacles to larger calf crops.

Collins is consulting veterinarian for the American Cy-

ing problems out of your animals, but don't get them fat," as he explained the connection between poor nutrition and the difficulties of bulls and cows in reproduction.

Beverly, who also said the bull is more important than any single cow in the herd, is specialist in animal reproduction and Herd is specialist in beef cattle nutrition with the Texas Agricultural Extension Service of Texas A&M University.

Because the blood disease of anaplasmosis ranks second only to respiratory diseases as a nationwide destroyer of the beef cattleman's profits, Dr. W.W. Collins told the producers that it may be the next disease "chosen by the U.S. Department of Agriculture to be eradicated." No area, including the Rolling Plains, which was mostly clear in 1963, is now clear of this disease, he said.

And Dr. E.J. Carroll pointed the finger at Texas and Oklahoma as containing more than 60 percent of all U.S. herds infected with brucellosis, adding that this year in Colorado 85 percent of all infected cattle were shipped there from Texas.

Both anaplasmosis and brucellosis are obstacles to larger calf crops.

Collins is consulting veterinarian for the American Cy-

ing problems out of your animals, but don't get them fat," as he explained the connection between poor nutrition and the difficulties of bulls and cows in reproduction.

Beverly, who also said the bull is more important than any single cow in the herd, is specialist in animal reproduction and Herd is specialist in beef cattle nutrition with the Texas Agricultural Extension Service of Texas A&M University.

Because the blood disease of anaplasmosis ranks second only to respiratory diseases as a nationwide destroyer of the beef cattleman's profits, Dr. W.W. Collins told the producers that it may be the next disease "chosen by the U.S. Department of Agriculture to be eradicated." No area, including the Rolling Plains, which was mostly clear in 1963, is now clear of this disease, he said.

And Dr. E.J. Carroll pointed the finger at Texas and Oklahoma as containing more than 60 percent of all U.S. herds infected with brucellosis, adding that this year in Colorado 85 percent of all infected cattle were shipped there from Texas.

Both anaplasmosis and brucellosis are obstacles to larger calf crops.

Collins is consulting veterinarian for the American Cy-

ing problems out of your animals, but don't get them fat," as he explained the connection between poor nutrition and the difficulties of bulls and cows in reproduction.

Cattle Raisers Association Proposes Methods To Combat Fever Ticks

The gravity of the fever tick infestation in Texas does not warrant calling a status of national emergency, directors of the Texas and Southwestern Cattle Raisers Association told Senator Lloyd C. Bentsen at a called meeting of the board in

Classified ads

AN AD COST
7¢ Per Word
\$1.00 Minimum
Burkburnett
INFORMER/STAR

Country & Western Dance

EVERY SATURDAY NIGHT at 9 p.m.
FEATURING SALLY BISHOP & GROUP

American Legion RED RIVER EXPRESSWAY

GIFT-GIVING AROUND THE WORLD

Admire a picture on a Russian's wall-and he may take it down and give it to you! And pity the poor Fiji Islander-at certain times of the year, he must give a neighbor *anything* the man asks for.

Among primitive New Guinea residents, where fishing is all-important, a gift of netting catches compliments, while in America you can give socks, ties, even an electric toothbrush and still net yourself hearty thanks.

Christmas, the season of love and charity, has always fostered giving. In England, the day after Christmas is known as Boxing Day. The concept of Boxing Day originated in the custom of giving Christmas boxes to tradesmen, servants and minor public officials. This tradition continues, although today the emphasis is on giving to the poor.

Lords and princes of the Middle Ages gave saddles, swords and horses to their faithful knights, while noble ladies gave their menkerchiefs to affix to their lances or helmets-as tokens of good will and support.

Queen Elizabeth of England, during the late 1500's, fostered the custom of Christmas gift-giving by requiring her courtiers to deliver presents before the throne. Woe betide those who didn't produce! To forestall her royal wrath, one archbishop gave her \$200 every Yule to replenish her wardrobe. Court ladies presented her with the first silk stockings made in Europe.

A distinctly American gift today that's popular with parents and children alike is a set of books such as the World Book Encyclopedia and The Childcraft How and Why Library. The 1972 World Book is a landmark in educational publishing and is the largest, most comprehensive edition of the world's largest-selling encyclopedia. The 1972 Childcraft volumes encourage the young child to open doors to life and learning...to a lifetime adventure of enrichment through books.

Looking back at more recent history, in pre-revolutionary China, aged parents received birthday gifts of "longevity robes" from their dutiful children who revered old age.

Thinking in more earthly terms, Charlemagne, 8th century king of the Franks, is alleged to have given his generals all the land they could walk around from sunup to sundown.

Perhaps because he thought generosity was a jewel of a trait, Emperor Nero of Rome used to throw parties during which gems would be showered upon the guests from special baskets on the ceiling.

Most insistent on giving? Perhaps the Berbers of North Africa take this award. Since the dawn of time, they have believed that milk is "full of holiness." For that reason, most nomad Arabs in Africa will urge a traveler to help himself to a drink of milk. But if the traveler offers to buy it from them, they fly in-horror to a rage!

FOR SALE MISCELLANEOUS

FOR SALE--Monuments, nationally advertised stones. Dates Cut, Mrs. D.C. McNeill, 914 E. 3rd. Phone 569-3753 27-TFC

Reduce safe & fast with GoBest Tablets & E-Vap "water pills" at Corner Drugstore. 11-6tp

FOR SALE--House Plan Portfolio, 400 designs, \$2.95 guaranteed. Larry Farnsworth, box 1841-TI Las Vegas, Nevada, 89101. 9-8tp

REPOSSESSED Kirby Classic and attachments. Pay-off balance or assume easy monthly terms. Call 569-3653. 12-2tp

KIRBY'S rebuilt and used with and without attachments. Call 569-3653 12-2tp

MARY KAY & MR. K COSMETICS - - Holiday gifts. Free wrapping. Bennie Mills, consultant. 1109 E. Sycamore. 569-3534. 9-8tc

FOR SALE--Male Silver Toy Poodle. AKC registered. Championship bloodline. 569-1008. 14-1tc

FOR SALE--1965 Buick Wildcat. Good condition. Reasonable price. Call 569-3152 or see at 515 N. Hilltop. 14-1tp

FOR SALE--14 foot Chrysler Dart Boat. 30 HP motor. \$400.00. 569-0301. 14-1tp

FOR SALE--Triple velvet gold drapes; 120 base accordion; refrigerator; set of stainless steel pans. 569-2321. 14-1tc

CAR FOR SALE--1964 Renault. Good condition. 569-0094. 14-1tc

BARBIE DOLL CLOTHES - - Last week to order. Reasonable prices. Home-made. 569-2765. 14-1tp

FOR SALE--6 1/2 foot artificial Scotch Pine Christmas tree. Used two times. \$10.00. 569-3245. 14-1tc

MARY KAY COSMETICS - - Complimentary facial, replacement orders. Call Norma Gregory, 703 Sycamore. 569-1012. 14-1tc

FOR SALE--Recliner, \$20; 5-place dinette, \$15; electric train set, \$10; mechanical drawing equipment, \$7.50; portable electric organ, \$15; orange and gold flower arrangement, \$2.50. Call 569-1984. 14-1tc

FOR SALE--Used C. B. units. Reasonably priced. 209 S. Ave. B, #10 after 6:30 p.m. 14-1tp

Have Practice PIANO'S FOR RENT OR SALE. ABE Music, 211 E. 3rd. 569-8136. 14-1tc

FOR SALE--Dryer; 2 full beds; humidifier; living room furniture. Call 569-3608. 14-1tp

GARAGE SALE--1104 Cheryl. New items added. Toys, Xmas decorations and misc. Thurs., Fri., and Sat. 14-1tc

GARAGE SALE--632 Pecan. Furniture, clothes and toys. New items added. Friday only. 14-1tp

FOR SALE--Solid Oak Antique Buffet, perfect condition. \$150. If interested call 569-3170. 14-2tc

FOR SALE--12 bass accordion; tricycle; sturdy coffee table; new rug shampooer; small baby bed; antique floor lamp. 803 Tidal. 569-2369. 14-1tc

FOR SALE--Grandfather clock, mirror, toys, clothes, bowling ball, purses and misc. 709 Pecan. 14-1tc

T&T Cement Construction
408 E. 2nd St. Burkburnett 569-1762
COSTS NO MORE FOR THE BEST Bonded and Insured

FOR SALE--1964 Chev. II, V8 automatic transmission, air cond. 4 door. \$395.00. 569-2987 after 5 p.m. and weekends. 14-1tp

TO GIVE AWAY--2 black puppies. Mother is a poodle. 115 Hyland. 569-2068. 14-1tc

FOR SALE MISCELLANEOUS

For Sale--Hammond Organ, Model E. 182. Like new, 1/2 price. Excellent for home or church. 569-2687. 13-2tc

GARAGE SALE--103 Hyland Dr. Thurs. through Sat. Bicycle tricycle, hair dryer, chime door-bell, clothes, vacuum, electrical equipment and misc. 14-1tc

FOR SALE--1969 12x50 Brookwood, furnished, carpeted, air. \$3,500. ALSO 2 lots, 50 x 100, & 50 x 90. Fenced, patio, metal storage shed. \$1,400 each. Call 569-1426 after 4:30 p.m. 14-1tc

FOR SALE--1968 Impala Custom coupe. Power, air and automatic. Real nice. \$1,395. 569-1853. 14-1tc

For Sale - 1971 Kawasaki, 175 Trail Bike, low mileage. Excellent condition. Call 569-1841 13-1tc

NEW Avon, 1/2 Price. 20% to 30% off on everything. Collectibles, antiques, new freight damaged furniture. Refrigerators and stoves. Trade-Way Bargains. 569-3981. 14-1tc

TEXAS OIL COMPANY has opening in Burkburnett area. No experience necessary. Age nor important. Good character a must. We train. Air Mail A.S. Dickerson, Pres., Southwestern Petroleum Corp., Ft. Worth, Tex. 14-1tp

Original Paintings
by Ken Cunningham
Now on Display
At
Lippard Furniture

WANTED

WORKING MOTHERS I will give loving gentle care to your child while you work. Near highschool. 569-3548. 13-4tc

HELP WANTED--Ladies wanted to collect information for the new Burkburnett City Directory. Write to P.O. Box 906, drawer A. \$1.60 per hour with opportunity to earn more. 14-1tp

Will Do SEWING in my home. 569-0290. 14-1tc

A.B.E. Music
WANT TO BUY USED PIANO'S. WILL PAY CASH OR TRADE.
211 E. 3rd 569-8136

CARDS of THANKS

CARD OF THANKS
It is with gratitude and appreciation to the Devol Baptist Church, the First National Bank of Burkburnett, friends, neighbors and relatives for your cards, flowers, telephone calls, visits, deeds of kindness and prayers while in the hospital and since my return home. May God's love abide with all of you.
Ora Lillian Stevens
Devol, Okla.

NOTICES

NOTICE
Do you know a song, but don't know the words? Let us give you the words! CITY WIDE RALLY Saturday, December 9, Central Baptist Church, 7:30 p.m. Folk - Rock Group "Foundation" in concert. 14-1tc

Christmas Bazaar
Saturday, December 9, 1972
9:00 a.m. till ?
319 Ave. C
(Behind Harold's T.V.)
Decorations, Gifts, Baked Goods, White Elephant Sale
Sponsored by TOPS Tx 636
14-1tp

SERVICES

J-Bar-N Plumbing Service
Licensed & Bonded
New or Repair
Commercial or Residential
REASONABLE RATES
J.T. Williams 569-0388
7-2tp

Sewing Machine Repairs
All Makes-Models
All Work GUARANTEED
REASONABLE RATES
Call 569-2687
51-2tp

THORTON'S REPAIR SHOP
All makes washer and dryers, keys made, hoes & scissors sharpened, bicycle repair. 415 N. Ave. B, Pho. 569-3155. 22-TFC

CHARLES SMITH SAND & GRAVEL HAULED
Phone 569-2718 after 3:30 p.m.

Pays hospital/surgical bills

For person to person health insurance, call:
Bob Carter
40 Ave. C
569-2902

Larry's Home Repair & General Handyman Service
Roof Repair, Carpenter, Rooms Paneled, Ceramic Tile, Floor Tile, Sheet Metal, Painting and Other Old Jobs, Repair Screening of all kinds. Ask for Larry, 569-3280 after 3 p.m. 7-1tc

Child Care

By the Day, Hour, or Week
Ages: Infants to 9 years

ARTS BOOKS CRAFTS
627 E. 4th
State Licensed
Planned program, fenced yard, balanced diet, experienced workers, constant supervision.
Call 569-0361 or 569-3646 after 5:30
HOURS: 7 a.m. to 5:30 p.m.
MONDAY thru FRIDAY

40 BARREL TANK TRUCK \$8,000 hour, Oil or Salt Water Time Departure to Return
William Browning & Son
592-5905 10-6tc

TV and Radio Tubes Tested Free. Harold's TV Service. 224 E. Third. 569-0321.

RICHARD WISEMAN LICENSED
205 Valley View Road, Wichita Falls, Texas 40-12tc

BURK CAMPER SALES AND RENTALS
"Quality Built Campers"
Shells, \$149.95 up
Campers, \$650.00 up
Protect Your Tools & Gear
Special Orders, 7 - 10 day Delivery
569-0212 569-0137
See at B&R TEXACO 14-2tc

RENTALS

FOR RENT--Clean, furnished cottage. No pets. \$65.00 per month plus bills. 406 W. Third. Phone 855-3520. 9-1tc

FOR RENT--Unfurnished two bedroom house with washer connections. No pets. One or 2 children. 600 N. Avenue F. 569-2194. 11-1tc

FOR RENT--4 bedroom furnished trailer. Fenced yard. \$65.00 per month. 569-2351. 14-1tc

FOR RENT--2 bedroom house with garage. One child accepted. No pets. 609 E. 4th. or 569-2519. 13-1tc

RENTALS

FOR RENT - - LA MAISON-- 2 bedroom brick, air conditioned, nicely furnished, fenced, gas and water paid. Washer and dryer. 1000 E. Sycamore. 569-0127 or 767-4472. 1-1tc

FOR RENT--3 bedroom unfurnished house with washer and dryer connections. 713 Glendale. 569-3857. 10-1tc

For Rent - 2 BR house with garage. One child accepted. 609 E. 4th. call 569-2519-tfc

FOR RENT--3 bedroom unfurnished house with washer and dryer connections. 569-3857. 414 Glendale. 14-1tc

FOR RENT--Unfurnished 3 bedroom house. Military preferred, 2 children or less. H.K. Landes, 1401 Sheppard Road. 14-1tc

FOR SALE--Large 3 room modern furnished house. Also one for rent. Inquire at 114 Avenue D. 569-2567. 14-1tc

For Rent - 129 Lilac Lane. 2 BR house, fenced in yard. 569-3430 13-1tc

For Rent - 2 BR furn. duplex water paid \$70 per mo. Redecorated 569-2077 or 569-2774 13-1tc

For Rent - 2 BR furnished house. Washer and dryer connections. 710 Glendale 569-3144. after 6 p.m. Weekdays. 13-1tc

For Rent - 3 BR house fenced back yard 835 Lee St. Shade trees. 817/433-2607 6-1tc

Neville Apts.
Furnished and unfurnished one, two and three bedrooms. Swimming pool. Call 569-3037. Manager, Apt. 6, Mrs. Opal Sykes. 10-4tc

FOR RENT--3 room furnished house. Water paid. Close to town. \$45.00 per month. Call 569-2077 or 569-2774. 11-1tc

For Rent - Large 2 BR house, unfurnished. Washer connections. Small child accepted. No pets. 569-2527 13-4tc

Weekly Health Tip
from Joe Gillespie

In case of a chemical burn of the eye, 60 to 90 seconds may be the difference between blindness and sight. It is important to dilute the chemical with water as quickly as possible by gently flushing the eye with water, while immersed in a bucketful, or slowly from a faucet or pitcher - holding the lids open if necessary. The slight discomfort can mean the saving of eyesight. Follow with prompt medical care.

Corner DRUG STORE
302 E. 3rd St.
BURKBURNETT PH. 569-2251

LOST & FOUND

LOST--Wire rimmed prescription glasses. Finder return or mail to 209 S. Avenue B, #10. \$5.00 reward. 14-1tp

"I know at last what distinguishes men from animals: financial worries." (Jules Renard)

REAL ESTATE

FOR SALE

FOR QUICK SALE LIST YOUR PROPERTY WITH US.

SNOW WHITE - a pretty 3 BR home, carpeted, 1 1/2 baths, family room-kitchen, fenced, equity, Assume loan. \$111 monthly.

LIKE NEW - 3 BR frame \$200 down payment, only \$8250

BRAND NEW - 3BR brick, 1 1/2 baths, carpeting, family room-kitchen, built-in range, garbage disposal. . . \$18,100

2 BR and den, carpeted. Low down payment, Only \$6000. Immediate possession.

\$750 down, assume loan. 3 BR frame and brick, spacious kitchen, built-ins, fenced \$101 monthly

Jo Smith Realty
Phone 569-3490

FOR SALE

Tom's Trailer Park
707 Sheppard Road

Private Home, 2BR and bath, 2 large storage houses, 12 unit trailer park, full; 12 batios; 5 car ports; children play area. Hard surface drive; quiet, trees shade all trailers. Ideal location. Enjoying good income. Owner wants to quit. Will finance. For information, call Bill Bentley, salesman, a/c 405 342-5458, Temple, Okla. after 6 p.m. 12-1tc

THINK SAFETY FOR A HAPPY HOLIDAY

The Christmas-New Year holiday season is the brightest and happiest of the year but it frequently is one of the most dangerous as well.

The Consumers Insurance Information Bureau says that for a safer holiday season, celebrants should think of the twin danger areas, Home and Highway.

Home decorations, particularly where real evergreen is used, are a potential source for fire. Keep all decorations away from heat and flame. Use only lighting approved by the Underwriters Laboratory, shown by the UL label. Discard any lights with worn wires and loose or broken sockets. Do not use flammable ornaments or decorations on trees or mantel pieces.

A live tree should be kept out-of-doors until needed. Then, it should be placed in a stand containing water. A fresh diagonal cut on the trunk about one inch above the original cut will help the tree absorb water and stay fresh longer. The tree should be removed soon after Christmas and certainly as soon as it shows signs of drying.

The country's highways are also a particular danger over the holiday season. Weather and extra partying contribute to high traffic tolls during this period. In 1971, more than 1,400 people lost their lives as a result of motor vehicle accidents during the Christmas and New Year holiday weekends.

The Bureau says that alcohol is involved in at least 50 percent of all fatal accidents. It suggests that party goers eat a meal beforehand and, as a rule of thumb set a limit of two drinks an hour.

CIB, sponsored by the National Association of Insurance Agents, recommends extra precaution at home and on the highways throughout the year but especially during the holiday season.

REAL ESTATE

FOR SALE IN RANDLETT-- 3 bedroom frame home, carpeted, 20 minute drive from Sheppard. Call 281-3370. 4-tfc

SELLING BURKBURNETT

OWNER SAYS REDUCE PRICE on this custom built home in JanLee Acres-- paneled den, fireplace, 1 3/4 baths, fenced. WORTH YOUR consideration. Worth Your Careful Consideration.

DELUXE COUNTRY LIVING in JanLee Acres--Lovely 3 bedroom brick, den, fireplace, formal living, kitchen, all conveniences. 2 full baths, 2-car garage, sitting on 1 1/2 acres.

THERE'S ROOM FOR LAUGHTER in this 4 bedroom brick, formal living room, 18 x 24 den, fireplace, 1 3/4 baths, wood fence, storage buildings. 2400 sq. feet living area.

THE WIFE YOU SAVE MAY BE YOUR OWN--3 bedroom brick, kitchen/den area with dishwasher, built-in stove, 2 full baths, carpet, 2-car garage, fenced.

CLOSE TO EVERYTHING-- 2 bedroom, large living, utility, garage with room on top. Double carport, 2 large pecan trees.

RENT--Small furnished one bedroom house. Older 3 bedroom home.

HIGH AND GRADE SCHOOL LOCATION - 3 bedroom brick on large corner lot. 1 1/2 baths. Central heat. Carpet. Hardwood. Fenced.

Loise Bean Realty
569-2321 569-3985

For Sale

SPANISH FLAVOR--Pretty three bedroom brick home. Cathedral ceiling, fireplace, carpeted, dressing area off master bedroom. 2 baths, built-ins, utility room, double garage. Decorator touches throughout.

IMMACULATE-- 3 bedroom frame, fenced yard, \$550 moves you in.

LARGE REDECORATED 3 bedroom brick, 2 baths, built-in oven range, breakfast bar, large fenced in yard. Immediate possession. \$18,100.

LIST WITH US AND THEN START PACKING- Listings Needed.

Alexander Agency
569-2831 569-3434

HOUSE FOR SALE--Older 3 bedroom frame house with central heat and air, large fenced in back yard. Call 569-1219. 11-TFC 10

Car Wash

Sponsored by Theta Epsilon Sorority at James Spinks Texaco, 400 South Ave. D. SATURDAY, DECEMBER 9, 9 a.m.-2 p.m. \$1.50

Major Oil Company Station For Lease

* Attractive rent structure * Highway station
* 20,000 gallon average Contact: Eddie Graham 767-4356

G-AND-H REAL ESTATE

569-0362

1308 Sheppard Road

- VACANT EQUITIES
- ★ REDUCED \$500--1029 Jewell. 3 bedroom, 1 1/2 baths, all electric, CA & CH, fenced.
 - ★ REDUCED \$500--1031 Jewell. 4 bedroom, 1 1/2 baths, all electric, CA & CH, fenced.
 - ★ REDUCED \$100--1112 Ruby, 3 bedroom, 1 1/2 baths, CA & CH.
 - ★ REDUCED \$200--709 Dana. 3 bedroom, 1 1/2 baths, redecorated, CA & CH. 7 foot privacy fence.
- BEST BUYS
- ★ 401 Vaughn--New FHA Financing. A lovely home on a boultie size lot.
 - ★ 605 S. Harwell--See to appreciate this nice 3 bedroom home located in the midst of your own private pecan grove.
 - ★ 1005 JanLee--Completely redecorated, even including new shag carpeting throughout. Ideally located just across from Burk-Hi. Immediate Occupancy!

(YOUR HOSTS)
Marie Tinsley ----- Home 569-0033
Elmer Larry Ford, USAF Retired ----- Home 855-2936
Karl King ----- Home 855-5214
Al McFarlane, USAF Retired ----- Home 855-4653
Gordon Blair, USAF Retired ----- Home 855-2193
Bert Pandy, USAF Retired ----- Home 322-1002

G-AND-H REAL ESTATE

Nights 569-0033.

SALE

ZENITH COLOR TV'S

ALL MODELS--ALL SIZES SAVINGS ARE GREAT--SERVICE INCLUDED

Bills T.V., Furn. & Appl.

301 N. Ave. D Burkburnett

BUY AUTO LIABILITY From The **TRAVELERS INSURANCE CO.** It Doesn't Cost Any More To **BE SURE** HOWARD CLEMENT - Agents - RANDY CLEMENT 303 AVENUE C PHONE 569-3333