

BURKBURNETT NEWS

HARRY C. DODSON, Owner and Editor



Printed Each Tuesday At Burkburnett, Wichita County, Texas

Printed weekly at Burkburnett, Wichita County, Texas. Entered as second-class matter at the post office at Burkburnett, Texas, October 1, 1963, under the Act of Congress of March 3, 1879.

Second-class Postage Paid at Burkburnett, Texas

Notice to the Public: Any erroneous reflection upon the character standing or reputation of any person, firm or corporation, which may appear in The News, will be gladly corrected as soon as it is brought to the attention of the publisher.

Subscription Rates:

Burkburnett Star \$2.00 Per Year
 Burkburnett News \$2.00 Per Year
 Burkburnett Star and News \$3.00 Per Year

TOO MANY COOKS



THE UNWELCOMED GUEST

The American housewife may have her last opportunity to raise questions about "politicians in the pantry" when the Hart Packaging and Labeling Bill is considered by the Interstate and Foreign Commerce Committee of the U. S. House of Representatives.

The Senate, in passing the bill, chose to disregard existing state and national laws which protect against intentionally deceptive packaging and labeling practices. These laws are fully supported by industry and Better Business Bureaus.

Almost every shopper can tell which products are high-priced, which low-priced and which medium-priced, and she doesn't base her choice of product on splitting hundreds of a cent. Yet the bill would authorize government agencies to find that the fractional weights of products "ARE LIKELY to impair the ability of consumers to make price per unit comparisons" and to issue regulations setting the only weights at which products could be sold, regardless of price.

In an Alice-in-Wonderland exercise of "making a word mean what I want it to mean," the agencies could establish what a "serving" of a product must be, and what "small," "medium" and "large" must mean. This arbitrary freezing of practices could seriously interfere with future efforts to provide better bargains for the shopper.

Other provisions of the bill duplicate and contradict existing state and federal laws and regulations. They would apply even though the manufacturer was making a conscientious competitive effort to supply the customer with a high quality product at the lowest possible price. Competition is still the best means to assure that Mrs. Housewife will get the best possible bargain—not unnecessary laws which interfere with competition.

Yet there are many questions which Mrs. Housewife could raise as to what influence the Hart Bill will have on her range of choice of products and on the cost of her market basket items.

One such question might well be, who knows better, and is more solicitous about, the needs of Mrs. Housewife than the manufacturer, who life or death in business depends upon her confidence?

Nearly 275,000 pedestrians were injured and 9,000 were killed during 1965 in the United States, according to The Travelers Insurance Companies. This includes 300 persons who were injured while actually standing on a traffic safety isle.

William Howard Taft said: "To obey the law is to support democracy. If every man thinks every law must suit him in order that he shall obey it, he does not support democracy but destroys it. The basis of good government lies in the fact that the people are willing to obey the law as they have determined it to be."

The nation's 730 investor-owned gas companies have been extending their lines into previously unserved communities at a rate six times greater than government-owned systems, the American Gas Association reports.

Did you Know?

THERE ARE 330,000 TRADEMARKS ON FILE AT THE U.S. PATENT OFFICE; BELOW ARE FOUR PRESENT DAY PRESTIGE SYMBOLS KNOWN TO MILLIONS. CAN YOU IDENTIFY THEM?



IF YOU KNOW THREE OF THEM, YOU'RE AN EXPERT. TWO RIGHT IS PASSING.

THIS PRESTIGE TRADEMARK WILL BE SEEN FOR THE FIRST TIME IN THE FALL. CAN YOU GUESS THE PRODUCT?

ANSWERS: 1. AMERICAN AIRLINES.
 2. RANDOM HOUSE PUBLISHERS.
 3. OMEGA WATCHES.
 4. THE PLAZA.
 5. MERCURY COUGAR (LUXURY/SPORTS CAR).

LOCAL BOYS IN VIET NAM

Listed below are the names and addresses of local boys who are serving with the U.S. Armed Forces in Viet Nam. We are sure they would appreciate receiving letters or cards from Burkburnett residents regardless of whether you know them or not.

The Burkburnett Star-News will be glad to publish the names of other local boys in Viet Nam if parents or friends will call 569-2191 and give us this information.

A2/c Jerry W. Melton
 AF 18701596
 1964 Comm. Gp. AFCS
 Box 7134
 APO 96307
 San Francisco, California

Chaplain Weldon Wright
 HHC 1st Brigade,
 1st Cavalry Div. (AIR)
 APO San Francisco 96490

Tommy R. Morrow
 FN 692664
 E. Div. US Sacramento AOE
 FPO San Francisco 96601

A1/c James E. Brunson
 AF 16618204
 6254th Combat SPT-GP
 Box 166
 API San Francisco 96295

S/Sgt. Edgar Milstead
 RA 540 20 869
 Company B, 2nd Bn.,
 28th Infantry
 APO 96345
 San Francisco, California

Pfc. Don Trotter RA 16826903
 Co. D, 1st Bn. 12th Cav.
 (Air Borne)
 1st Cav. Div. (Air Mobil)
 APO San Francisco, Calif.
 96490

Capt. Herbert Lawson
 Hq. & Hq. Company
 14th ICC, APO 96312
 San Francisco, California

Pfc. William E. Tyler, Jr.
 U.S. 55833104
 48th. AVN Co. (AML)
 A PO 96321
 San Francisco, Calif.

Donalq Hervey 54164045
 USA Central Registra Det.
 APO San Francisco 96243

A. Gene McCallister
 920 1451 FA
 E Division
 U.S.S. Enterprise CVA (N) 65
 FPO San Francisco 96601

Sp/4 Joe M. Bilyeu
 RA 18711830
 B Btry. 3rd. BN 13th. Artl.
 APO San Francisco 96225
 Jerry D. Brookman
 EMC 996-55-01 Box 6408
 U.S. Naval Support Activity
 APO San Francisco 96337

Cpl. Kenneth Durham
 2087919, U.S.M.C.
 1st Motor Transport Battalion
 H&S Co. Supply Section
 %F.P.O. San Francisco, Calif.
 96602

Sgt. David L. Nunn
 U.S.M.C. 1637803
 FL S6 "A" Sup. Co.
 E.O.D. Team
 III MAF, FMF PAC FPO
 San Francisco, Calif. 96602

Larry G. Shumann,
 STG. 3rd—6927154
 USS Buck (DD761)
 % Fleet Post Office
 San Francisco, Calif. 96601
 S/Sgt. Charles F. Cazart
 RA 25287811
 B Troop, 3rd. Sqd. 4th PAV.
 25th Infantry Div.
 APO San Francisco 96225

Johnny W Jones, AX3
 775-87-60
 H. S. 6
 % F.P.O., San Francisco,
 California

J. R. Anderson Rites Are Held

Funeral services for James Ray Anderson, 70-year-old retired oil company bookkeeper, who died Tuesday afternoon in a Wichita Falls hospital, were conducted at First Baptist Church at 2 p.m. Thursday.

Rev. Lamoin Champ, church pastor officiated. Masonic rites were held in the chapel of Crestview Memorial Park in Wichita Falls. Entombment in Crestview Mausoleum under direction of Owens Brunley Funeral Home.

Born Dec. 6, 1895, in Bonham, Tex., he was a retired bookkeeper for La Salle Petroleum Corp., a veteran of World War I, and a member of the Masonic Lodge in Denison, Tex.

Anderson has resided in Burkburnett the last 30 years.

Survivors include his widow; two brothers, Frank of Pottsboro, Tex., and Arthur A. of Denison; and three sisters, Mrs. Ida M. McFarland, Miss Vickie Anderson and Mrs. Winnie Turner, all of Denison.

Notice To Bidders

Sealed proposals for construction of The Burkburnett Library Building in Burkburnett, Texas will be received at the Municipal Offices, until 3:00 p.m. July 27, 1966, and then publicly opened and read. Plans and specifications including minimum wage rates as provided by law are available at the office of Caffee-Bellamy & Associates, Architects & Engineers, 2123 Brook Street, Wichita Falls, Texas. The Owner reserves the right to reject any or all bids or waive any informality of a bid and to accept any bid regardless of its price relation to any other bid, as the best interest of the Owner may appear.

Capt. W. F. Lundberg
 OF 105743
 Hq. Hqts. Bat.
 1st Cav. Div. Arty.
 APO San Francisco 96490

Sp. 5 Gerald W. Ryals,
 18392481,
 167 Trans. Det.,
 APO 96296,
 San Francisco, California

Classified Ads Bring Results

EAT IT HERE OR
"TAKE IT HOME HOT"
 FROM
UNDERWOOD'S
 IN
 Parker Plaza — Burkburnett

Bids Wanted

The Board of Education of the Burkburnett Independent School District reserves the right to reject any and all bids. Plans and specifications are available in the Superintendent's Office.

The Burkburnett Independent School District reserves the right to reject any and all bids. Plans and specifications are available in the Superintendent's Office.

KINDERGARTEN FIVE YEAR OLDS

Grace Lutheran Church

ADVANCE START IN EDUCATION

CHRISTIAN ATMOSPHERE

CALL — Pastor 569-2706, 569-3164
 Teacher, Mrs. C. Koenig — 569-3222

SKIP'S GOLFLAND Miniature Golf Course

Located at Berry and Magnolia Street

—Wholesome Fun For Everyone—

Even the physically handicapped can play

18 Holes..... 35c

Special Rates—Club, Church and School Parties

A. D. STEELE, Owner Call 569-2706

Golf is America's Most Popular Outdoor Participant's Game

FOR THE CONVENIENCE OF OUR CUSTOMERS

LEA'S BEAUTY CLINIC

Will Be Open Until 10:00 P.M.

Every Day Monday Through Friday

On Saturdays—
 7:30 a.m. — 6 p.m.

Complete Beauty Service
 Latest In Hair Fashioning

6—Beauty Operators To Serve You—

LEA DIXON, Owner and Operator

LOUISE COX Night Operators...

DIANNE KNIGHT PATSY AARON

MARTY FORD JEANETTA JOHNSON

PHONE **569-3941**

1105 Sheppard Rd. Burkburnett, Tex.

SALUTING . . .



OUR MIDGET LEAGUE BASEBALL TEAM AND MANAGERS
 J. D. TAYLOR AND M. W. MORRIS

The BURKBURNETT Bank



Burnett, Wichita County, Texas

Central States News Views

ROAD TO JAIL is what appears to be, but the old Louis city workhouse will be permitted Interstate 55 to pass through city.



AGED FORESTERS maintain the health and vigor of some 1,000 pulpwood trees in Kimberly-Clark Corporation's southwoodlands to help meet a growing U.S. demand for paper.



LEADS POLICE on merry chase over lawns and through trees before submitting to "arrest" in Franklin Park, Ill.

Insects Insecticides

Latest report from Texas University on resistance bollworm and tobacco to chemical insecticides not good. Weldon Newton, extension entomologist, means some of the pre-

viously used insecticides won't do the job this year if there is a high insect population. Newton encourages farmers to follow the recommendations listed in the 1966 Texas Guide for Controlling Cotton Insects.

Even a mosquito doesn't get a slap on the back until he starts working.

Health and Safety Tips From AMA

BED WETTING

Bed wetting on the part of older children is a nuisance problem that plagues untold American families.

Bed wetting is messy for the parents, who have to clean it up. It is uncomfortable and humiliating for the child. And it can be very difficult to stop.

One of hundreds of letters on this theme received annually by Today's Health, the magazine of the American Medical Association, begins: "I have four children, ages nine, seven, five

and four, who have never achieved the ability to stay dry at night. All still have occasional accidents during the day."

At least two separate studies in hospital clinics, says Today's Health, revealed that incidence of bed wetting among 1,000 patients over five years old was as high as 25 per cent. Also, there is evidence from several studies that bed wetting can be hereditary as well as a psychological problem.

The parent is advised to explore with the physician the various means that might be taken to train the children — either to enlarge their bladder capacity so they could go through the night, or to respond to the feeling of fullness and wake up before wetting the bed.

Several possibilities exist: use

of drugs to relax the bladder; use of salty foods at bedtime to cut down urine secretion; training the child to voluntarily refrain from urinating for longer and longer periods. The family physician may suggest other measures which may prove helpful.

Mr. and Mrs. George Willingham and son Kenneth and Mr. T. J. Willingham attended funeral services for Herman Partney last Wednesday in Throckmorton, Texas. Mr. Partney was a former area resident. He was the father of Mrs. Eddy Willingham.

A great advantage of wood over metal for many uses is that wood does not reflect heat.

Grandfield, Okla. Stockyards

JULY 7, 1966

148 CATTLE—1 HOG
 Light Steer Calves — \$25.00 to \$29.00.
 Heavy Steer Calves — \$23.00 to \$25.00.
 Feeder Steers — \$22.00 to \$24.00.
 Light Heifer Calves — \$22.00 to \$24.00.
 Feeder Heifers — \$20.00 to \$23.00.
 Stocker Cows — \$110.00 to \$125.00.
 Canners & Cutters — \$11.00 to \$14.00.

Pairs — \$175.00 to \$200.00.
 Baby Calves — \$30.00 to \$40.00.
 Butcher Calves — \$21.00 to \$23.00.
 Packer Bulls — \$20.00 to \$22.00.
 Sale every Thursday, 12:30.

Stormproof Cotton

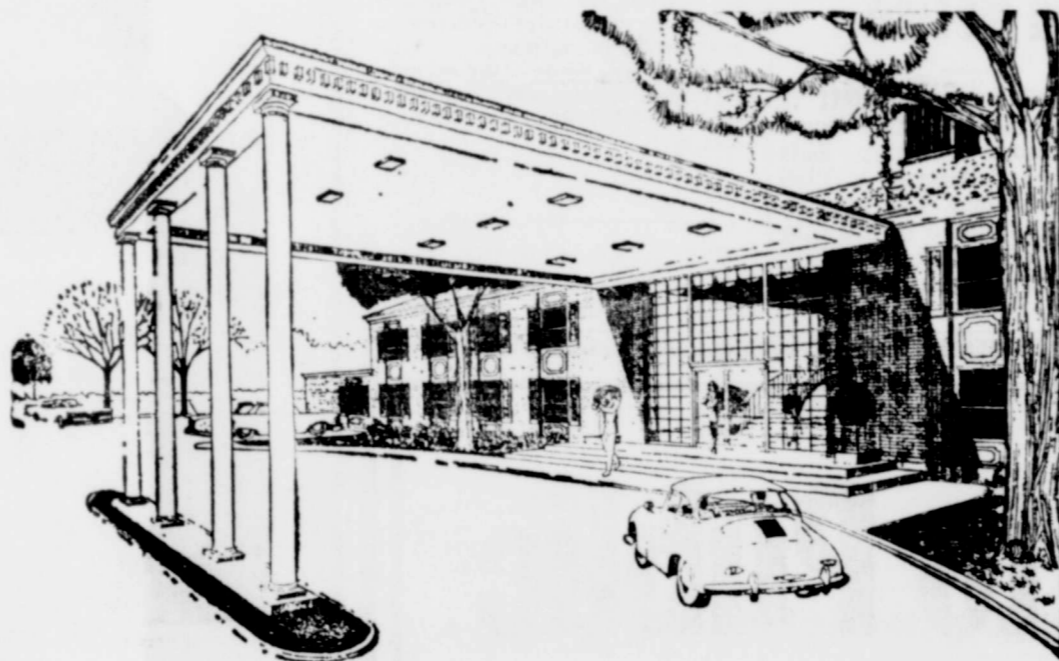
Blightmaster A-5 developed by plant breeders of the Texas Agricultural Experiment Station in cooperation with the U. S. Department of Agriculture has been released by the Texas Station. It is well adapted to stripper harvesting and has shown well in tests comparing it with other stormproof varieties and others commonly grown. Yields up to two bales an acre have been produced.

WIN A FREE FUN-FILLED WEEK END



RAMADA INN

"Luxury for Less"



FOR YOUR FAMILY

NEW TRIP EACH WEEK

CONTEST RULES

1. Winner to receive a free week-end at participating Ramada Inns.
2. Week-end includes two nights lodging and food for an individual Family of up to five members. Meals include two Breakfasts, Saturday Lunch, Saturday Evening Dinner, and Sunday Dinner for each member of the party.
3. Winning family will provide own transportation to and from.
4. You may enter in as many stores as you wish each week. No purchase necessary.
5. Winner must be married or of legal age, and reside in trade area.
6. One preliminary winner will be drawn each week at each participating store. These winners from each store will then be placed in the final prize drawing that week. New contest each week.

REGISTER HERE

CICERO SMITH LUMBER CO.
BOOMTOWN BOWL
MANHATTAN DEPARTMENT STORE
BEAVER FURNITURE AND APPLIANCE
THE BURKBURNETT BANK
MATHIS CHEVROLET

PALACE THEATRE
BEN FRANKLIN STORE
FAMOUS DEPARTMENT STORE
BUTLER 5 & 10 STORE
FIRST NATIONAL BANK
TEXAS ELECTRIC SERVICE CO.

AND NOW . . .
 WE ARE SERVING
Breakfast
 • OPEN 7 A. M. •
Underwoods
 Baker Plaza Burk Burnett



enjoy flameless electric living in a **TOTAL ELECTRIC GOLD MEDALLION HOME**. There's wonderful modern living in a Total Electric Gold Medallion Home, where flameless electricity heats in winter and cools in summer, cooks the meals, does the dishes, washes and dries clothes, provides plenty of hot water and does so many other jobs efficiently and economically. Before you build or buy a home, let us give you complete information about Total Electric Living in a Gold Medallion Home . . . and about our low rate for all-electric homes.

TEXAS ELECTRIC SERVICE COMPANY



Doctor in the Kitchen

by W. W. Bauer, M.D.
Consultant, National Dairy Council

COOL FOODS FOR HOT WEATHER

High temperatures seem to put temperamental people out of temper for hot foods. And why not? There used to be lots of prejudices about the temperature of foods and drinks, and health educators had their share. I remember a controversy I had with some of my colleagues when I was so bold as to suggest that cool drinks were okay if they were sipped and not gulped. My defense was that there was some chance of this advice being followed, while if I suggested that all iced drinks be banned, all I would get was the big laugh and the designation "health crank." Later, the Journal of the A.M.A. published an article saying that iced drinks do no harm if they are not taken too fast. Well, differences of opinion make life more interesting.

Cool Planning
So now, does hot weather really make a difference in what and how we eat? Eating should be a pleasure and not a chore. This means that we should pay attention to eating somewhat differently when the weather is hot. Naturally we must keep the diet balanced. Thus we should not reduce our intake of protein. But we may get protein in milk, ice cream, cheese, cold meats, poultry and fish, and eggs hard-cooked in your salads — instead of the conventional hot

cooked foods which are fine when the weather is cool. Neither do we need as many calories to maintain body temperature when it's hot; so we can reduce the fats in our diet, especially the hot fried ones, and get our quota of fat from cream on our berries and, again, ice cream, and cool salad dressings. Since we need fewer calories, we can use more of the low-sugar vegetables so useful in salads — lettuce, white or red cabbage, radishes, young onions, carrots, cucumbers, tomatoes. Enriched bread-stuffs round out a well-planned diet.

Cool Meals
What about "a hot dish with every meal," which used to be a nutritional slogan? Maybe I'm a maverick, but I see no real need for a hot dish in hot weather, when there are so many cool foods that can serve just as well. Salads, for example, can be made in infinite variety, garnished with fish, cheese, fruits, vegetables, meat, crisp bacon, anchovies, eggs, nuts, olives and pickles. With the addition of some of the numerous varieties of flavored wafers now available, salads become meals in themselves. Beverages? Cool milk, shakes of various flavors, iced tea or coffee, soft drinks served in a pleasant room or on the patio, or under the trees on a picnic. . . . That's cool, man, co-ol!



Policyholder Questions Answered by the Institute of Life Insurance 277 Park Ave., N.Y., N.Y., 10017

Q. Is it true that, if I make my wife the owner of my life insurance, she won't have to pay any estate tax on it when I die?
A. First of all, you may not have to worry about Federal estate taxes if your estate (including life insurance proceeds) is no larger than \$120,000. With her "marital deduction," your wife can inherit that much from you free of any Federal tax. And half of anything she gets over \$120,000 is ordinarily tax-free.

But tax planning requires specific professional advice. Under certain conditions, proceeds from life insurance policies that you do not own (even though they insure your life) are not considered part of your estate for Federal (and perhaps state) tax purposes.

You may be able to reduce the impact of estate taxes by giving your wife complete and irrevocable ownership of one or more of your policies now. You cannot retain any rights yourself — such as the right to change beneficiaries,



borrow against the policy, convert or cash it in.

And if you die within three years after giving her a policy, it will still likely be considered part of your estate, on the grounds that you gave it to her "in contemplation of death."

Even though you live long enough to meet that condition, at least part of the proceeds may be taxable if you pay any of the policy premiums during the three years preceding your death.

Here are some other factors: You may have to pay a gift tax on the cash value of the policy when you give it to her. If your wife dies before you, the cash value will be part of her estate for tax purposes.

If she survives you, whatever is left from the proceeds of your policy may be subject to estate taxes when your wife dies (probably with no marital deduction to cushion the tax impact).

These are some of the reasons why you should also consult a lawyer for help in setting up your estate.

Golf is the game that turned the cows out of the pasture and let the bull in.

Grandfield, Okla. Stockyards

JULY 14, 1966

183 CATTLE—6 HOGS

- Light Steer Calves — \$24.00 to \$27.50.
- Heavy Steer Calves — \$23.00 to \$25.00.
- Feeder Steers — \$22.00 to \$24.00.
- Light Heifer Calves — \$22.00 to \$24.00.
- Light Heifer Calves — \$22.00 to \$25.00.
- Feeder Heifers — \$20.00 to \$23.00.
- Stocker Cows — \$120.00 to \$145.00

- Canners and Cutters— \$10.00 to \$15.00.
- Fat Cows — \$15.00 to \$16.80.
- Pairs — \$150.00 to \$221.00.
- Baby Calves — \$20.00 to \$35.00.
- Butcher Calves — \$21.00 to \$23.00.
- Packer Bulls — \$20.00 to \$21.00.
- Wilford C. White, Manager.

Bid Notice

The City of Burkburnett is asking for bids on two complete restroom facilities. Bids will be opened August 1, 1966 at 7:30 p.m. Plans and specifications are available in the City Manager's office at the City Hall, Monday through Friday, 8 a.m. until 5 p.m.

Home Folks Serve You - at Underwoods -



MRS. PAULINE VARNER . . . manager of Underwood's in Parker Plaza in Burkburnett. She lives at 608 Magnolia, is married and the mother of five children. She is member of the Church of God.



MRS. TINA HOWARD . . . Assistant Manager, lives at 704 East 1st. A member of the Church of God, Mrs. Howard is married and the mother of seven children.



MRS. EVELYN HOWARD . . . 520 Buckner, Burkburnett, is married and has two children, Danny 13 and Carla, 2 years old.



KAY ROEBUCK . . . the daughter of Mr. and Mrs. G. A. Stubblefield of Burkburnett. She lives in Lincoln Heights and has one son, Scott.



CONNIE VARNER . . . 608 Magnolia, is a student at Burkburnett High School, and lives with her parents.



BILLY BEEMAN . . . son of Mr. and Mrs. Roy J. Beeman, 509 Harriett, attends Presbyterian Church and is a student at Burkburnett High School.

Notice to Public

DUE TO THE EXTREME HIGH TEMPERATURE AND DRY CONDITION THAT PRESENTLY EXISTS, THE CITY COUNCIL ASKS YOUR COOPERATION IN FOLLOWING THE WATER CONSERVATION PROGRAM AS FOLLOWS:

DAYS TO WATER LAWN FOR EACH ZONE AT THIS TIME:

ZONE 1 — Area South of College Street

To water on even number days, as 2, 4, 6, 8, 10, etc.

ZONE 2 — Area North of College Street

To water on odd number days, or 1, 3, 5, 7, 9, etc.

The Cooperation given during this conservation program is appreciated by the Mayor, Council and City Manager. We hope this need for conservation will soon be over.

JESS WHATLEY
City Manager

FREE!

WITH THIS AD

ONE PINT Underwood's BAR-B-Q BEANS

WITH PURCHASE OF

ONE POUND OR MORE BAR-B-Q

- GOOD -

Wednesday, JULY 20 thru Sunday, JULY 24

Underwood's Bar-B-Q

PARKER PLAZA

BURKBURNETT, TEXAS

WASHINGTON AND SMALL BUSINESS

BY C. WILSON HARDER

Little over 30 years ago, in the midst of economic stress, the nation's farmers turned to Washington for a solution to their existing problem.

Now their chickens have come home to roost.

The entire situation was

perpetuated by government

policy who

and that

year the

of the

to the

the agri-

committee why the govern-

ment sold millions of bush-

els of surplus corn on the open

market.

He purposely sold," he said,

to move prices down

enough so that they would

be below the support lev-

el, so that we

thereby get compliance

from the feed grain

program. That was the

intent and purpose and

of the program."

Senator George Murphy, Cal-

ifornia, is on record with well

documented evidence that the

big farm operators who have

the resources, are moving to

Mexico, leaving the smaller

farmers holding the bag.

And this points up the prob-

lem the American farmer faces.

The uninformed big city masses

are political reservoirs which

must be carried no matter what

happens to the farmer.

A Fine Finale: Light and Lacy



What is more welcome after a big dinner than a delicate, dainty dessert? Loisita's Cottage-Cream Dessert is just such a lace-cupped little sweet, filled with a blend of cottage cheese, glacé citron, and semi-sweet chocolate pieces. The Boden Kitchen encourages the clever cook to add touches distinctively her own—candied pineapple or orange peel, perhaps.

Loisita's Cottage-Cream Dessert
(Makes 3 cups—a generous 1/3 cup per cookie cup)
3 cups (1-1/2 lbs.) Borden's small curd Creamed Cottage Cheese
1-1/4 cups sugar
2 teaspoons vanilla extract
1 (4-oz.) jar glacé diced citron, finely chopped
1/3 cup semi-sweet chocolate pieces
Pistachio nuts, optional extract

In a large-size electric mixer bowl, beat cottage cheese at medium speed until almost smooth. Add sugar and vanilla; beat well. Turn mixture into a colander lined with a double thickness of clean, dry cheesecloth. Set into a low pan. Refrigerate for at least 12 hours or overnight; let drain thoroughly. Turn drained mixture into large-size mixing bowl. Add finely chopped citron and chocolate pieces; mix well. At serving time, fill wafer-thin cookie cups, cup cakes or Mary Ann shells with a generous 1/3 cup filling. Sprinkle with finely chopped pistachio nuts.

Ripe Olives In Party Spaghetti



This rich, olive-studded sauce is perfect party fodder for the young set in that it can be made days in advance; it's easy to serve, a breeze to eat and infinitely stretchable. Just keep plenty of cans of California ripe olives on hand and stir some in when the pot runs low.

NORTH BEACH SPAGHETTI
1 pound ground lean beef
1/4 cup cooking oil
1 cup chopped celery
1/2 cup finely chopped carrot
1 (No. 2 1/2) can tomatoes
2 tablespoons instant minced onion
1/4 cup chopped parsley
1 tablespoon salt
1 teaspoon basil
1/2 teaspoon black pepper
1/2 bay leaf
1 cup canned California ripe olives
12 ounces spaghetti

Brown beef in oil. Add celery and carrot, cooking until celery looks transparent. Add tomatoes, onion, parsley and seasonings. Cover; simmer 1 to 1 1/2 hours. Cut olives into chunks; stir into sauce 5 minutes before serving. Cook spaghetti in boiling salted water until tender; drain and serve with sauce. Makes 6 servings.



Dip In, Please

The party hostess is usually hard pressed to come up with interesting "nibbles" to tantalize her guests before the meal.

Many home-makers ride the pretzel-peanut and potato chip circuit but inventive hostesses go one step further and offer an assortment of dips.

There's an art to making a tempting dip and of course ingredients are always the main thing. Dips have fads. At one time the bleu cheese and sour cream blend was a favorite but that one has given way to the mixture made with packaged onion soup. Everyone is always on the lookout for a new dip idea and often a lady guest will accept her hostess—pencil and paper in hand—to request her recipe.

For the dip lover (and aren't we all) there's an excellent new suggestion. Take some sour cream and sprinkle it with McCormick-Schilling Salad Supreme seasoning and you'll taste how this new product gives flavor magic to bland sour cream. Its unique taste comes from the careful blending of luscious cheese, a hint of garlic, whole and ground spices, sesame, poppy and celery seeds.

Versatile Salad Supreme is also a fabulous seasoning to sprinkle over an already-dressed salad, on a fresh bread before you toast it in the oven or on scrambled eggs. But it really shines in the dip category. At your next party concoct a dip with Salad Supreme and when you ask your guests to "Dip in, Please" you'll notice their enthusiastic reaction. If you're smart you'll make two batches—or even three, just in case.

Burk Residents Are Moving To New Mexico

Mr. and Mrs. Carl Law of 442 West Third will be moving to New Mexico on July 23rd. Carl taught sixth grade here last year. In New Mexico he will be teaching Navajo Indians as an employee of the Bureau of Indian Affairs, an agency of the U.S. Department of the Interior.

Eloise was Junior High School secretary for five years. Her parents are Mr. and Mrs. Eldon Morris of 624 West Third.

Carl's parents live in Albany, Texas.

The failure of a single bearing can cause a space ship's destruction. Petroleum Today reports in a discussion of the importance of oil-derived lubricant to the U.S. space effort.

LOTS OF TAXES PAID

New York — By July 1 of this year, U. S. motorists will have paid an estimated \$100 billion in state and federal motor fuel taxes since the first levy was enacted in 1919, according to Oil Facts. Citing U. S. Bureau of Public

Roads figures, the American Petroleum Institute publication says that with collections running about \$20.5 million a day, the cumulative total is expected to reach \$104 billion by the end of 1966.

569-2191 For Quality Printing

DR. SIMS

ANNOUNCES HE WILL BE BACK IN BURKBURNETT EACH TUESDAY THURSDAY AND SATURDAY

CITY PHARMACY

300 So. Ave. D Pho. 569-1491—After Hours 569-2597

THIS WEEK'S SPECIALS

	Regular Price	
Gelusil Tabs 100	\$1.98	98¢
Antihistaminic and Decongestant		
N T Z Spray 20ML	\$1.43	98¢
Playtex Living Gloves	\$1.39 Pr.	89¢
Playtex Baby Pants	\$1.79	\$1.19
Single Dose with Syringe For Cats and Dogs		
Rabies Vaccine (Do It Yourself)		98¢

BEAT THE HEAT . . .



USE CONVENIENT DRIVE-IN WINDOW

Savings On PRESCRIPTIONS Everyday

Profits in The STAR Get Results

REPORT OF CONDITION OF

Charter No. 13668

The First National Bank

BURKBURNETT IN THE STATE OF TEXAS

CLOSE OF BUSINESS ON JUNE 30, 1966

In response to call made by Comptroller of the State under Section 5211, U. S. Revised Statutes

ASSETS	
Balances with other banks, and cash	
in process of collection	\$1,558,061.02
State Government obligations, direct	
guaranteed	1,024,802.50
of States and political subdivisions	1,422,271.14
and discounts	4,161,973.80
Assets	135,299.02
Liabilities	16,833.77
TOTAL ASSETS	8,319,241.25

LIABILITIES	
deposits of individuals, partner-	
and corporations	3,279,765.25
and savings deposits of individuals,	
partnerships, and corporations	2,897,192.94
of United States Government	142,209.99
of States and political subdivisions	537,068.53
of commercial banks	29,957.22
and officers' checks, etc.	397,125.32
Deposits	\$7,283,319.25
Total demand deposits	\$4,259,663.66
Total time and	
savings deposits	\$3,023,655.59
Liabilities	267,466.44
TOTAL LIABILITIES	7,550,785.69

CAPITAL ACCOUNTS	
Common stock—	
total par value	200,000.00
shares authorized 8000	
shares outstanding 8000	
Retained profits	300,000.00
	250,000.00
	18,455.56
Capital Accounts	768,455.56
Liabilities and Capital Accounts	\$8,319,241.25

MEMORANDA	
of total deposits for the 15 calendar	
ending with call date	7,244,677.00
of total loans for the 15 calendar	
ending with call date	4,278,152.00
shown above are after deduction of	
loan reserves of	106,033.87

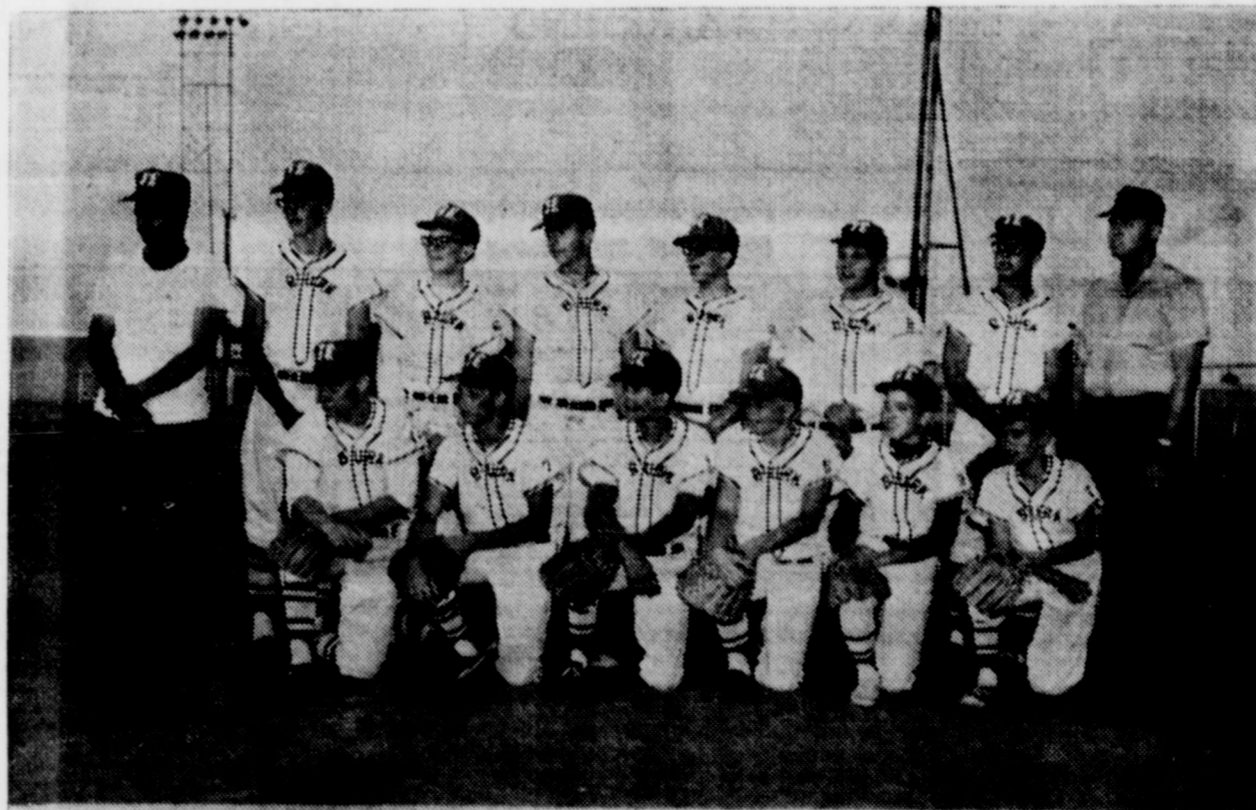
James E. Frye, Vice-President of the above-named bank hereby declare that this report of condition is correct to the best of my knowledge and belief.

/s/ James E. Frye

The undersigned directors attest the correctness of report of condition and declare that it has been prepared by us and to the best of our knowledge and belief true and correct.

/s/ C. B. BOWLES
/s/ GLEN H. BEAR
/s/ GEORGE H. McCLARTY

SALUTING . . .



OUR CONNIE MACK BASEBALL TEAM AND MANAGERS
KENNETH YOUNG AND C. D. LANDRUM

Texas Electric Service Co.

BURKBURNETT, TEXAS

Janlee Baptist Church
 Rev. Homer V. Southerland
 Pastor

Across from High School

Sunday School, 9:30 a. m.
 Worship Service, 11:00 a. m.
 Training Union, 6:00 p. m.
 Evening Worship, 7:00 P. M.

Wednesday—
 Teachers and Officers 7:00 p. m.
 Church in Prayer—7:45 p. m.
 Choir Practice, 8:15 p. m.

Church of Christ
 Eugene Gilmore, Minister

Bible Study Sunday, 9:45 a. m.
 Worship, 10:45 a. m.
 Young People Class 5:00 p. m.
 Worship, 6:00 p. m.
 Bible Study, Wednesday, 7:30 p. m.
 Ladies' Bible Class, Tuesday, 9:30 a. m.

Grace Lutheran Church
 Third St. and Ave E
 Philip M. Otten, Pastor

The Church of the Lutheran Hour, TV's "This is the Life", Sunday, 9:15 a. m., Sunday School and Bible Classes. Worship Service at 10:30.

First Christian Church
 Jack Gardiner, Minister
 2nd Street and Avenue D
 Phone 569-2062
 Res. Phone 569-1236

SUNDAY —
 9:45 a. m., Church School.
 10:50 a. m., Morning Worship.
 5:45 p. m., Youth Fellowship
 7:00 p. m., Evening Worship

WEDNESDAY —
 7:00 p. m., Choir.

Cashion Baptist Church
 Wichita Highway
 Rev. Philip Watson, Pastor

SUNDAY:
 Sunday School, 9:45 a. m.
 Morning Worship, 11:00 a. m.
 Training Union, 9:30 p. m.
 Evening Worship, 7:30 p. m.

TUESDAY:
 WMU — 7:30 p. m.

WEDNESDAY:
 Beginners and Primary Sunbeams Junior Choir. Christian Development Program, 6:45 p. m.

Hour of Power, 7:30 p. m.

Church of Jesus Christ Of Latter Day Saints

Elders Briem and Allen
 Ward of the church located at 3200 Cheryl, Wichita Falls with services each Sunday at 10:00 a. m. and 5:30 p. m.
 Primary classes are held at the Town Hall in Burkburnett on Wednesday at 4:00 p. m. for children, ages 2-11.

DOOR OPENERS



Keys and churches are door openers. In both cases, each require you to put forth some effort. The key you must insert in the lock and turn. Our Lord made the way to heaven even easier, for all that you have to do is present yourself and believe.

"For by grace are ye saved through faith; and that not of yourselves; it is the gift of God: Not of works lest any man should boast: For we are his workmanship, created in Christ Jesus unto good works, which God hath before ordained that we should walk in them."

EVERYONE IN THE CHURCH
 THE CHURCH IN EVERYONE

The Church is God's appointed agency in this world for spreading the knowledge of His love for man and of His demand for man to respond to that love by loving his neighbor. Without this grounding in the love of God, no government or society or way of life will long persevere and the freedoms which we hold so dear will inevitably perish. Therefore, even from a selfish point of view, one should support the Church for the sake of the welfare of himself and his family. Beyond that, however, every person should uphold and participate in the Church because it tells the truth about man's life, death and destiny; the truth which alone will set him free to live as a child of God.

First Baptist Church
 Lamoin Champ, Pastor
 Maurice Fennell,
 Minister of Education—Music

Corner Avenue D and 4th

Sunday School — 9:30 a. m.
 Morning Worship — 10:40 a. m.
 Training Union — 5:30 p. m.
 Evening Worship—6:30 p. m.

WEDNESDAY:
 Teachers and Officers Meeting — 6:30 p. m.
 Prayer Meeting — 7:30 p. m.

Trinity Lutheran Church At Clara
 (Missouri Synod.)
 8 Miles West on Hwy. 240
 Walter Streicher, Pastor

Sunday — 8:30 a. m. Sunday School and Bible Study.
 9:30 a. m. Worship Service
 Monday — 6:30 to 8:30 p. m. Weekday School.
 Wednesday—7:30 p. m. Walter League Meeting.

First Baptist Church
 DEVOL, OKLAHOMA

Sunday School, 9:45 a. m.
 Morning Worship, 11:00 a. m.
 Training Union, 7:00 p. m.
 Evening Worship, 8:00 p. m.
 Prayer Meeting, Wednesday, 7:30 p. m.
 Intermediate and Junior G. A. each Tuesday evening at the Church, 4:00 p. m.
 Sunbeams at Church Tuesday evening at 4:00 p. m.

Calvary Baptist Church
 College and Ave B
 Ray C. Morrow, Pastor

10:00 a. m., Sunday School.
 An Independent Southern Baptist Church.
 We use the Bible as our only literature.
 11:00 a. m., Song, Preaching Service.
 7:00 p. m., Young Peoples Services.
 7:30 p. m., Night Preaching Service.
 Wednesday Night—
 6:45 p. m., Teachers Meeting.
 7:30 p. m.—Prayer Meeting.

Central Baptist Church
 814 Tidal St.

Kenneth D. Bradshaw, Pastor
 Sunday School, 9:30 a. m.
 Morning Worship, 10:45 a. m.
 Training Union, 6:00 p. m.
 Evening Worship, 7:00 p. m.
 Wednesday Night Prayer Service, 7:30 p. m.

Church Of Christ
 Randlett, Oklahoma

Corky Grisham, Minister
 Home-Office Phone Ly 9-2893
 WORSHIP SERVICES

SUNDAY —
 10:00 a. m., Bible Study.
 10:45 a. m., Morning Worship.
 6:00 p. m., Evening Worship.

WEDNESDAY —
 7:30 p. m., Bible Study.

Church of God
 R. B. Underwood, Pastor

10:00 a. m., Sunday School.
 11:00 a. m., Morning Worship.
 7:00 p. m., Evangelistic Service.
 7:30 p. m., Wednesday, Young Peoples Endeavor.
 7:30 p. m., Friday, Prayer Meeting.

NOTICE

Burkburnett residents are invited to attend the First Presbyterian Church in Grandfield, Oklahoma.
 Sunday School—10:00 a. m.
 Morning Worship—11:00 a. m.
 Wednesday Bible Study—7:30 p. m.
 Rev. Campbell B. Long, Pastor

Episcopal Church Of St. John the Divine
 1000 S. Berry St.
 Rev'd. Michael Merriman,
 Vicar In Charge

SUNDAY —
 8:45 a. m.—Holy Communion.
 10:30 a. m.—Church School.

WEDNESDAY —
 4:00 p. m.—Youth Meeting.
 7:00 p. m.—Holy Communion.
 7:30 p. m.—Forum.

SATURDAY —
 7:00 p. m.—Hymn Practice.

DAILY —
 7:30 a. m.—Morning Prayer.
 5:30 p. m.—Evening Prayer.

Pentecostal Church Of God
 Berry Street
 Rev. Gerald Bryant, Pastor

Sunday School, 9:45 a. m.
 Morning Worship, 11:00 a. m.
 Sunday Night Evangelistic Service, 7:00 p. m.
 Saturday Night Fellowship, 7:30 p. m.

First Church of Christ Scientist
 2156 Avenue H
 Wichita Falls, Texas

Sunday School for children under 20 years of age, 10:00 a. m. in the Church Education Nursery.
 Services at 11:00 a. m.
 Wednesday Evening Service, 8:00 p. m.

Randlett Baptist Church
 Randlett, Oklahoma
 Rev. T. E. Lee, Jr., Pastor

SUNDAY —
 Sunday School, 9:45 a. m.
 Morning Worship, 11:00 a. m.
 Training Union, 7:00 p. m.
 Evening Worship, 8:00 p. m.
 Wednesday Evening Prayer Service, 7:30 p. m.

Assembly of God Church
 Corner of College and Ave D
 Rev. J. W. Hucker, Pastor

Sunday School, 9:45 a. m.
 Morning Worship, 11:00 a. m.
 Evening Worship, 7:15 p. m.
 Women's Missionary Conference, Tuesday, 2:00 p. m.
 Prayer Meeting, Wednesday, 7:30 p. m.

Church of the Nazarene
 Main at Holly
 R. B. Fitzgerald, Pastor

Sunday School, 9:45 a. m.
 Morning Worship, 11:00 a. m.
 Young Peoples Service, 7:00 p. m.
 Junior Society, 6:15 p. m.
 Evening Worship, 7:00 p. m.
 Wednesday Prayer Service, 7:30 p. m.

First Methodist Church
 Avenue C and 4th Street
 Phone 569-3778

Rev. Don Youngblood, Minister
 Sunday School — 9:30 a. m.
 Morning Worship Service — 10:35 a. m.
 Methodist Youth Fellowship — 5:45 p. m.
 Evening Worship Service — 7:00 p. m.
 Bible Study — 7:30 p. m.
 Wednesday
 Nursery provided for Church Services.
 Kindergarten — Week 8:30 — 11:30 a. m.

THIS SERIES OF CHURCH ADS IS BEING SPONSORED BY THE UNDERSIGNED INDIVIDUALS AND BUSINESS INSTITUTIONS:

THE BURKBURNETT BANK
 MEMBER OF FDIC

AT Piggly Wiggly
 Parker Plaza,
 Burkburnett
 —Greater Variety
 Lowest Prices

We Give S&H Green Stamps

WOLFE FORD CO.
 Complete Service and Sales

Sheppard Road Phone 569-2275

Hofacket Humble Ser. Sta.
 Road Service—Mechanic On Duty

We Give S&H Green Stamps

College and Ave. D Phone 569-8129

BOOMTOWN BOWL
 AMF "Magic Triangle" Pinspotter

Snack Bar—Nursery Phone 569-8139

1001 Wichita Highway

A FRIEND

TED'S TV
 809 East 3rd Street
PARTS AND SUPPLIES
 Repairs and Service All Makes
 USED TV'S FOR SALE
 Call 569-2814 — Day or Night
 TED and ANGIE RANDALL

BURKBURNETT FLORIST

Member Florist Telegraph Delivery
 Mr. and Mrs. L. V. Richards
 115 So. Ave. B. Phone 569-2281

CLIFF WAMPLER
 For Insurance Of All Kinds

203 N. Ave. D Phone 569-3161
 Burkburnett, Texas

Texas Electric Service
 Joe T. Salter, Manager
 "Live Better Electrically"
 Phone 569-3373

BRING A FRIEND WITH YOU THIS SUNDAY

UNITED SUPER MARKET
 Kenneth Palmer,
 Manager
 Wichita Highway
 and Tidal Street

Manhattan DEPARTMENT STORE
 We Give S&H Green Stamps

DAIRY MART
 909 Wichita Hwy. Phone 569-8114
 Fine Food and Friendly Service
 CALL IN ORDERS
 Mr. and Mrs. John Gratton

Cicero Smith Lumber Co.
 Free Estimates—Call Us For Service

GENE ALLEN, Mgr.
 Phone 569-3711

Manhattan DEPARTMENT STORE
 We Give S&H Green Stamps

DAIRY MART
 909 Wichita Hwy. Phone 569-8114
 Fine Food and Friendly Service
 CALL IN ORDERS
 Mr. and Mrs. John Gratton

Cicero Smith Lumber Co.
 Free Estimates—Call Us For Service

GENE ALLEN, Mgr.
 Phone 569-3711

IDEAL DRIVE-IN CLEANERS
 Joe and Jill Hensley
 407 East 3rd St. Phone 569-2347

UNITED SUPER MARKET
 Kenneth Palmer,
 Manager
 Wichita Highway
 and Tidal Street

BURK INSURANCE AGENCY
 Insurance —Real Estate and Real Estate
 Phone 569-3333 Next to Legion

COMPLIMENTS OF
THE FAMOUS DEPARTMENT STORE

Insure Today — Be Sure Tomorrow
LIPPARD INSURANCE AGENCY
 319 Avenue C Phone 569-3161

Monaghan Furn. & Apl.
 Furniture
 Color TV's
 200 East 3rd St. Phone 569-3161

Lloyd Clemmer Lumber
 Your Business Appreciated
 See Us For Prices Before You Buy
 Okla. Cut-Off Phone 569-3161

Buy Auto Liability From The Travelers Insurance Co.

IT DOESN'T COST ANY MORE TO
BE SURE
HOWARD CLEMENT, Agent
New Location — Next To Legion Hut

'Buck' Abbott Chosen As Burk Burnett's Chief Of Police At Tuesday Night's Council Meet

"Buck" Abbott was chosen as Burk Burnett's chief of police at Tuesday night's council meeting. Abbott, 38, has served on the police force for 14 years and has been Assistant Police for the past six years. He has been added to the force as a city policeman. The council met at 7:30 p. m. at the city hall. Other members present were Mayor H. J. Hickey, City Manager Jess Whatley, and several council members. Abbott will take office on August 1st.

TELL ME

HOW MANY VOLUMES DID THE CHINESE ENCYCLOPEDIA PRINTED IN 1726...HAVE?




5020 VOLUMES! LAID END TO END, ITS PAGES WOULD REACH AROUND THE WORLD $3\frac{1}{2}$ TIMES!

HOW THIN CAN WIRE BE MADE?



IN ELECTRONIC INSTRUMENTS, WIRE SO FINE IS USED THAT WITH 6 COATS OF INSULATION IT IS STILL NO LARGER THAN A STRAND OF SPIDER WEB!

IS PENICILLIN DERIVED FROM ANIMAL VEGETABLE OR MINERAL MATTER?



VEGETABLE! IT IS MADE FROM A MOLD... AND MOLDS ORIGINATE FROM VEGETABLES!

WHICH OF OUR GAME BIRDS HEAR THE BEST?



THE WILD TURKEY IS CREDITED WITH THE MOST ACUTE HEARING!

Mrs. I. C. Evans Is Hostess To The Pinkston Circle

The Florence Pinkston Circle of the First Baptist Church met Monday night in the home of Mrs. I. C. Evans for the monthly missionary program. The "Call to Prayer" was offered by Mrs. Gail Butts and followed by a special prayer by Mrs. Thaxton for all our missionaries and our men in military service in Viet Nam. After a short business session conducted by Mrs. Thaxton, the program on "Thriving American Cults" was presented by Mrs. Evans, the program chairman. Mrs. Brookman brought some startling facts and statistics on crime and the breakdown of

moral behavior in America. Mrs. Evans related six examples of why women leave their church and join individual cults. Mrs. Quattlebaum very ably evaluated the situation by saying our churches needed more mature Christians so that we may help and warn these individuals who begin to shop around for other beliefs about God to meet their own problems. The meeting was closed with prayer by Mrs. Clyde Taylor. A dainty refreshment plate was served by Mrs. Evans to Mesdames John Brookman, Hal D. Mabry, R. L. Quattlebaum, R. P. Thaxton, Gail Butts, Clyde Taylor and Miss Beth Brookman. Nothing makes the younger generation seem so bad as having lost your membership in it.

CUSTOM UPHOLSTERING and REFINISHING

PRICES SHOWN IN HOME
FREE PICK-UP AND DELIVERY

AUTO SEAT COVERS

Furniture and Appliances For Sale
Everything Down — Up To 24-Months To Pay

East 3rd Phone 569-1717

President Urges Citizens To Invest In Savings Bonds

Ed Gossett, volunteer U. S. Savings Bond chairman for Texas, joined with President Johnson today in urging citizens to "Put a small part of your prosperity into U. S. Savings Bonds."

Mr. Gossett, was quoting from the President's special Independence Day message, prepared for newspaper, radio and television release, which asks the American people to "invest a few dollars each month in the front lines of battle for a stronger America and a safer world."

"Even while we celebrate Independence Day," the President's message said, "there is no real holiday from responsibility. We must go on with the work of building peace, enlarging our prosperity, guarding against inflation and recession... if only half of the 70 million employed Americans bought just one \$25 Savings Bond a month for only one year, they would meet most of the special cost of the struggle that we are making for peace in Vietnam this year. Think about how much more meaningful your holiday enjoyment would be if you could honestly say, 'I have pledged to do my share as an American. I will buy U.S. Savings Bonds on a regular monthly basis.'"

Mr. Gossett said that the President's holiday statement, in the form of a public service ad, had been distributed by the Advertising Council, Inc. to all media in Texas.

Tax Man Sam Sez:

FARM TAX RECORDS
Authorities at Texas A&M say that the average farm in Texas is worth \$250,000. This means that the days of the one-horse farm are past. Operating a farm nowadays is a big business. Running a big business requires good tax records. The farmer who fails to keep good tax records may find himself plowing his profits into a Form 1040.

Keeping good records is always good business.

NOTICE

GRANDFIELD STOCKYARDS

SALE DAY HAS BEEN CHANGED FROM MONDAY TO Thursday

SALE TIME: 12:30 P. M.

Your Business Appreciated

WILFORD C. WHITE
LOGAN 9-2758
MOUNTAIN PARK, OKLAHOMA

PUBLIC AUCTION!

Horse and Cattle Production Sale

Saturday, July 23, 1966

SALE WILL START AT 2:00 P. M.

TREEFIELD RANCH

Known As Old Burnside Ranch — 2 1/2 Miles West Of The Intersection Of F. M. 1206 and F. M. 368 ON F. M. 1206 (VALLEY VIEW ROAD) — ONE MILE EAST OF VALLEY VIEW.

OWNER — J. R. McKINNEY, M. D.

Two-year Appaloosa geldings registered by Boy T-1936.
Two-year Bay Quarter registered gelding by Lauro Blaine.
Two-year old sorrel grade geldings.
Four-year Bay Registered Quarter mare — excellent conformation by Social Outcast P67493 in foal to Lauro Blaine.
Four-year Bay Registered Quarter mare by Social Outcast — excellent conformation — sells open — will breed to Lauro Blaine is desired.
Two-year Palomino registered Quarter Filly by Lauro Blaine.
Yearlings — Registered Quarter Horses — By Lauro Blaine — Four Fillys and three horse colts. These good-headed, well-built colts have strong Hancock breeding on their dam's side — most would make excellent 4-H or show horse project colts.
Five-year grade mare in foal to Lauro Blaine.

1—Two-year Appaloosa Stallion — good color.
1—Two-year grade filly — open.
1 Aged grade mare in foal to Lauro Blaine.

CATTLE — (All Cattle have been Bangs tested) and are Bangs Free.

1—Four-year old Black Angus Bull — Postlemere 12 of Treefield, grandson of famous Postlemere 766.
1—Five-year-old Bull — Marshall 133 of 77.
5 Registered Black Angus cattle — bred for late Fall calving.
7 Registered Black Angus Heifers — bred for late Fall calving.
7 Steer Calves.
5 Registered Black Angus heifer calves.
Reference Sire Lauro Blaine P-77,079 is by Lauro P-1571 by Wimpy P-1 and is out of Sally Blaine B16,909 by King P-234.

Animals Positively To Be Sold — No Pass-outs. Sale to Be Handled by H. and W. Auction Company.

JELLY and BILL
MAGER and WHITE
Phones 767-5634 or 767-0931 and Phones 322-4645 or 723-4986
Wichita Falls, Texas Wichita Falls, Texas

AUCTIONEERS

WHAT'S THE ANSWER

When your car needs service... but you need your car?



DRIVE A NEW

IMPALA CHEVROLET

ONLY \$3.00 A DAY

While Your Car Is In Our Shop!

A convenience "plus" for our service customers! No need to put off needed service or repairs because you can't do without transportation. We'll rent you a smart new car to drive while we put your car in tip-top shape! Try it next time your car needs service.

ADVANCE RESERVATION SAVES TIME!

MATHIS CHEVROLET CO.

Best Place By Far To Buy Your Car

Chevrolet-Oldsmobile AND PONTIAC

300 E. 2ND, BURKBURNETT, TEXAS
Phone 569-3381

Why Buy Less Than The Best?

THE LARGEST MULTIPLE LINE INSURANCE COMPANY IN THE WORLD. SEE YOUR AGENT. INSURE With The TRAVELERS INSURANCE CO.

BURK INSURANCE
Howard Clement
Phone 569-3333—Next to Legion

CLASSIFIED RATES
5c per Word 20c per Line
60c Minimum Charge

FOR RENT
FOR RENT—Nice 1 bedroom furnished house. 125 Ave. F. Call 569-2332. 24-CZ

FOR RENT
FURNISHED OR UNFURNISHED—2, 3, and 4 bedroom houses. Also 1 and 2 bedroom apartments. ...

FOR SALE
A GOOD SELECTION OF 2 and 3 bedroom homes. FRAMES AND BRICKS.

Burk Insurance AGENCY
Phone 569-3333
303 Ave C.
SUNDAYS AND HOLIDAYS 569-3613 - 569-2904 48-41C

FOR RENT—2 bedroom unfurnished house. 412 Glendale. Ph. 569-3857. 32-CZ

FOR RENT—2 room modern furnished house. Reasonable. 524 Berry. Ph. 569-1169. 45-CZ

FOR RENT—2 bedroom unfurnished house. Attached carport. Fenced yard. Ph. 569-3138. 45-CZ

FOR RENT—Furnished 2 or 3 bedroom house. Fenced yard. Children welcome. 717 Glendale. Ph. 569-3493. 45-CZ

LA MAISON APTS. ... Two bedrooms, furnished. Brick. Refrigerated air. Wood paneling. Fenced. Washer, dryer. Gas, water paid. Convenient to expressway and SAFB. 1000 East Sycamore. Ph. 767-4472 or 569-1044. 46-CZ

FOR RENT OR SALE—Two bedroom house. 135 Lilac Lane. Call Joseph Jancke. Attorney. 569-3761 or 569-3410. 46-CZ

FOR SALE
FOR SALE—Three bedroom frame house. Newly remodeled. No down payment to right party. Also three bedroom brick. Very reasonable price. \$200 down payment. Ph. 569-2206. After 5 p. m. call 569-1396. 49-CZ

For Sale
Large dining room suite. Table and six chairs. Refinished in beautiful antique green color. Good condition. Reasonable price.
PHONE 569-2724 after 5:30 p.m.
42-CZ

Need to copy a document, certificate, legal paper, etc.? See First Savings and Loan for quick copies on new Xerox Copy Machine. 15c per copy. Phone 569-2206. 16-CZ

FOR SALE—Frigidaire Coldwall refrigerator. Good condition. Cheap. 610 Magnolia. Ph. 569-2889. 46-11C

FOR SALE—B-flat clarinet. Good condition. \$50.00. Mrs. Ken Palmer. Ph. 569-2407. 45-21P

FOR SALE

FOR SALE Residential and Commercial Properties
Cliff Wampler
Real Estate Broker
"Licensed and Bonded"
Phone 569-3161
203 North Avenue D

FOR SALE—Nice three bedroom brick home. Bath and a half. Carpet wall-to-wall. 117 Hyland Dr. Call 569-1044. 46-21P

FOR SALE—1959 1-ton Ford truck, 1 owner. 34,000 miles. Never used as a work truck. Ph. 569-1737 or 569-3130. 46-11P

CAMPBELL Auto Supply MACHINE SHOP

- Valve jobs
- Crankshaft grinding
- Block reborring
- Piston nurlized and top groves cut
- Head surfaced
- Piston pin fitting
- Brake drums turned
- Manuflex head for crack
- All types valve guide and seat work
- Motor rebuilding

223 East 3rd St.
Burkburnett, Texas

Leon Husky, Machinist
569-3391 PHO. 569-3392 16-CZ

FOR SALE—Late model Gibson refrigerator. Large freezer across top. Good condition. \$75.00. Ph. 569-2705. 46-11C

FOR SALE—Snow Cone stand on trailer chassis. Located south end Parker Plaza. \$150.00. Ph. 569-2617. 46-11C

FOR SALE—14-ft. Lone Star aluminum boat with Evinrude 35-h. p. electric and trailer. \$450.00. Ph. 569-2998, after 3:00 p. m. weekdays. 46-11P

PEACHES
Fair Beauty and Mamie Ross Peaches
You May Pick Them Yourself or Buy Them At The Stand
Chitwood Orchard
F. M. Road 171
Near Charlie

SERVICES
SERVICES—Will baby sit in your home evenings or weekends. Ph. 569-3060. 46-11C

FOR "a job well done feeling" clean carpets with Blue Lustre. Rent electric shampooer \$1. Wackers, 416 So. Ave. D. 46-11C

SERVICES

SERVICES—For expert TV repair, call Burk TV Service, 569-2801. 2-CZ

CHECK YOUR TV TUBES FREE AT BURK TV SERVICE, 123 E. Main. Phone 569-2801. 2-CZ

FURNITURE UPOLSTERING
You can entrust your fine furniture and antiques to us for the ultimate in upholstery. FINEST WORKMANSHIP REASONABLE PRICES
JAMES GIBBONS UPOLSTERY
Grandfield, Oklahoma
PHONE GOver 9-5277 For Free Pickup and Delivery 48-CZ

HORSES BOARDED. Walking "A" Stables. Cashion Road. Jim and Evelyn Adolphus, Ph. 855-2974. 45-41C

BUGGED? Call Gad Garland, 569-3995. 46-CZ

Wanted
Good Used Furniture
Used Air Conditioners
Used Gas Ranges
Will Buy or Take On Trade
Bills TV & Furn.
Phone 569-3651 27-CZ

WANTED
To Be Given Away—
TO BE GIVEN AWAY...
CUTE KITTENS
6-WEEKS OLD
Phone 569-2724
AFTER 5:30 P. M. 44-CZ

HELP WANTED
Help Wanted—Inside help and car hops for Dairy Mart in Burkburnett. Apply in person. 909 Sheppard Rd. 36-CZ

HELP WANTED
Male or Female
Electrolux Corporations have 2 franchises available in Burkburnett for 2 full time (or part time) representatives. No investment required. We have a free training program for those who qualify. Opportunity to earn from \$100.00 to \$200.00 per week.
For further information call Sales Manager, 322-6967 or apply in person at 1005 1/2 Baylor, Wichita Falls. 45-21C

HELP WANTED—Male or Female—LIBRARIAN. Capable of establishing new library. Send resume to Burkburnett Library, P. O. Box 457, Burkburnett, Texas. 46-21C

HELP WANTED—Need experienced beauty operator. Full or part time. Ideal Beauty Shop, 315 1st St. 46-11C

Crossword Puzzle

ACROSS
1. Hard blow
5. British native
9. Conjunction
12. Three
13. Scorch
14. French "King"
15. Irritate
16. Turning
18. Near
19. Agitate
21. Out of date
22. Number
24. In bed
26. Roman road
27. Mideast native
29. Lure
31. War office: abbr.
32. Duck
34. Smoke particles
36. Hawaiian dish
38. Fabric
40. Dross
43. Confess
45. Sleigh
47. Go astray
48. Renovate
50. Single thing
52. Sun god
53. Skulls
55. English school
57. Building wing
58. Liberate
59. Salamander
60. French river
61. Stops
62. Girl's nickname
20. Tantalum: chem.
23. Citizens
25. Distributes
28. Exist
30. Preposition
33. Argon: chem.
35. Bone: anat.
36. Package
37. Excessively
39. Adorned with feathers
41. Feathered missiles
42. Concedes
44. Rune for "w"
46. Twice: prefix
49. Spouse
51. Canvas shelter
54. Vase
56. Golf mound

Answer to Puzzle

S	S	B	L	S	O	N	G	S	L	A	T
L	M	B	E	E	N	E	J	E	T	E	
N	O	I	S	S	W	I	N	V	E	R	
V	I	N	E	M	E	N	E	R			
D	R	E	T	S	M	O	V	E			
D	V	I	S	A	D	E	R	I	O	D	
L	O	O	S	I	V	E	L				
S	S	O	L	I	V	E					
B	E	L	I	D	E	B	E	N	E	L	
E	S	S	A	L	I	S	L	V	E		
N	O	I	L	L	O	R	E	I			
O	N	V									

HELP WANTED
WANTED—Dependable woman to baby sit in my home five days a week. Ph. 569-1329. 46-11P

FOUND
FOUND—Woman's high heel black patent shoe northwest of Burkburnett. Ph. 569-3044. 46-11C

NOTICE
On June 26, 1966 Steve Gose Enterprises, Inc. tendered for filing with the Federal Communications Commission an application for a construction permit for a new standard AM radio station for Burkburnett, Texas, frequency 850, Class II station, power of 1,000 watts using a directional antenna system, daytime only, antenna height of 296 feet above ground level, with studio and transmitter site located 2.45 miles south on F.M. 369 from Highway 240, Wichita County, Burkburnett, Texas.
The officers and directors of Steve Gose Enterprises, Inc. are Steve Gose, Bill Thacker, Jerry Wilder and Harry V. Allison; and the owners of ten percent or more of capital stock are Steve Gose, Bill Thacker and Jerry Wilder.
The application is on file for public inspection at the Chamber of Commerce, 412 Avenue C, Burkburnett, Texas.

Mrs. V. A. Stiegelhauer of Harlingen, Tex. visited several days last week in the home of her sister and husband, Mr. and Mrs. W. A. Minick.

IMAGINATIVE DIVIDERS
It's thrifty to build your storage into walls and partitions, dividing rooms.
According to the Southern Pine Association, clothing, books, appliances and TV all can be contained in storage type dividers—artfully camouflaged by decorative lumber. This releases space elsewhere for family living.
Advanced fuels and lubrications developed by oil companies have made substantial contributions to the U.S. space effort, according to Petroleum Today.

SPECIALS... THIS WEEK

89c—FAMILY SIZE
Crest Toothpaste... 69c
\$1.49 PINT DISPENSER BOTTLE
HiSohex... \$1.99
GILLETTE FOAMY
Shaving Cream... 79c
\$1.00—OLD SPICE
Stick Deodorant... 69c

BRITE WATCH BAND
FOR TIMEX WATCHES
\$1.00 - \$1.50 - \$2.00 - \$2.50

CORNER DRUG PRESCRIPTIONS STORE
320 East Third St.
After Hours 569-2328 or 569-2377
Store Hours 8 A.M. to 8 P.M. Sun. - Holidays 8 to 11 A.M.

Three Cheers For A Cookout

Decide on the spur-of-the-moment to eat on the porch or in the back yard. Cook the meat outside and heat the bean dish outside, or in the oven to be carried out when ready to eat. Giant burgers are a hit. For six hearty servings use 2 pounds of beef and 1/2 lb. cheese, grated. Form the meat into 18 thin patties and sprinkle each with salt and pepper. Put a sprig of onion on each patty; top each with another patty and a slice of cheese on 6 patties; top each with remaining patties. Cook to desired doneness and put in buns. Serve your choice of catsup, mustard, pickles, onions, ripe olives, or sliced tomatoes. **Chili Onion And Bean Bake** is the easy-to-perfect vegetable. Have potatoes on hand if you like, and melon is a fine dessert.

Chili Onion And Bean Bake
2 cans (1 lb. each) pork
1 can or jar (1 lb.) small whole onions
1/4 cup chili sauce
1/2 teaspoon chili powder
1/2 teaspoon dry mustard

Combine pork and beans with drained onions in a casserole. Mix remaining ingredients and stir into pork. Bake or heat until piping hot. Six servings.

SUBSCRIPTION ORDER FORM

PLEASE ENTER MY SUBSCRIPTION TO THE BURKBURNETT STAR AND NEWS FOR () YEARS, BEGINNING WITH THE NEXT ISSUE.

NAME

ADDRESS

CITY STATE

I ENCLOSE PAYMENT () BILL ME ()

SUBSCRIPTION RATES: \$3.00 A YEAR.

Mail or bring this form to Burkburnett Star Office, P. O. Box 906, Burkburnett, Texas.

CLASSIFIED ADS WORK WONDER