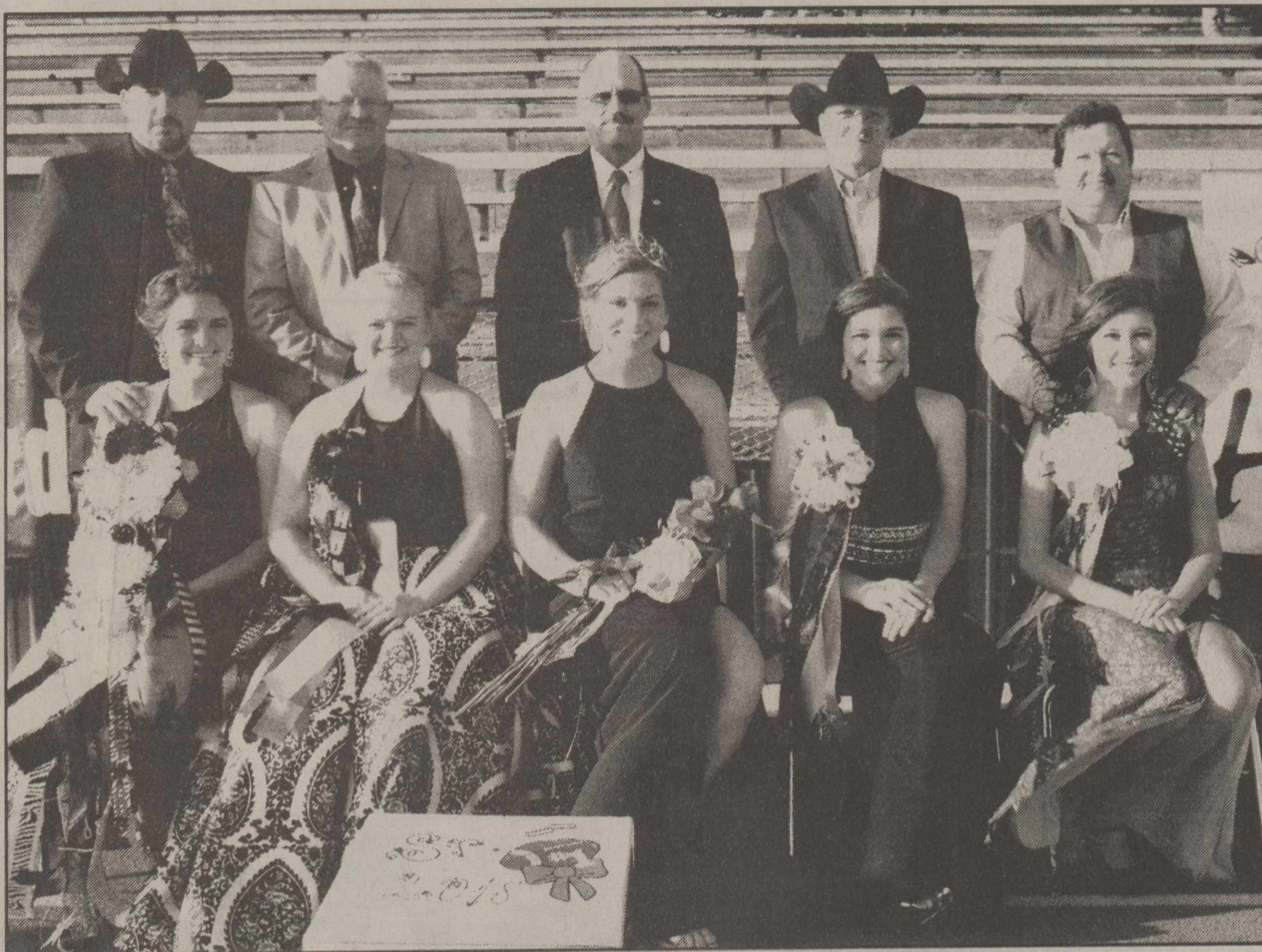


Melvin Mitts 06/17  
PO Box 523  
Stratford, TX 79084



## Homecoming 2016

The Homecoming queen, candidates and their fathers were recognized Friday night at the game. Shown from left, candidates and their fathers: Daniela and Abraahn Valdez, Raeleigh and Barney Willborn, Queen Laynee and Ed Burr, Nicolle and Scott Law, and Nancy and Juan Garay.

**Editor's Note:** Starting in next week's issue we will be **Spotlighting a Stratford business every month.** Sherman County Development and The Stratford Star have teamed up to inform the readers of our businesses here in Stratford and Sherman County. Some have been established for years and some not so old. We hope you will enjoy reading each one and see what they have to offer.

**NOW TAKING PECAN ORDERS**  
\$9.50 per lb.  
24 lbs. per case  
Call Brenda Bell @ (806) 753-7201 (cell)  
Or (806) 366-4446. Leave a Message!  
Deadline to order is October 24th

## 4-H Holding Coat Drive October 1st

Sherman County 4-H is having a local Coat Drive for kids in our area. 4-H members will be going around town on the afternoon of Saturday, October 1st to collect gently used or new coats. Clean out your closets and find outgrown or unused coats that 4-H can pass on to others. If you would rather make a cash donation that will be greatly appreciated as well. This project is part of One Day 4-H - a statewide community service day. When you have gathered your gently used or new coats that you would like the Sherman County 4-H Council members to pick up call the 4-H office (806-366-2081) before October 1st. We would also like to collect sweatshirts, jackets, gloves, and hats to help keep kids warm this winter. If you have any questions please call Jill at the Extension Office at 366-2081.

## ACT Boot Camp Coming to Sherman County Barn!

The ACT has become such an important component to college acceptance and scholarship dollars that it is now MANDATED in over 15 states...and this trend is growing! Stratford High School has responded by hosting an intensive, school day Boot Camp offered by Test Prep Seminars, a leader in college readiness and test preparation.

This is a \$350 program that Stratford High School is very proud to offer their students for only \$39! This comprehensive program is designed to:

- Quickly raise student test scores
- Minimize student anxiety
- Increase access to scholarship dollars
- Identify college readiness
- Maximize student potential
- Improve college entrance opportunities

This intensive school day ACT Boot Camp will be available Wednesday, October 12<sup>th</sup> in the Sherman County Barn at 501 S Maple Street, Stratford, TX 79084.

To learn more, visit [www.testprepseminars.org](http://www.testprepseminars.org) or contact Ms. McBryde at 806-366-3322.

## What's Happening- In Stratford

2<sup>nd</sup> Annual Breakfast Food Drive by XIT  
More info Page 8

Storm Siren testing on  
Wednesdays at 12 noon

Scot Hall Activities-  
(listed elsewhere in paper)

Stratford Elks to Play at Borger Friday,  
September 30<sup>th</sup>, Good Luck

4-H Coat Drive October 1<sup>st</sup>

Lollipop Junction  
Annual Cheese Sales

Business Spotlight October 6<sup>th</sup> issue  
of The Stratford Star

\*\*\*\*\*

## Pumpkin Rolls and Cheese Sales Being Conducted

Making plans for entertaining guest during the fall holidays or looking for gifts that will please everyone? Lollipop Junction can help you!!

Over the next two weeks, Lollipop Junction will be conducting their annual cheese sales from Zak's Cheese, Inc. A variety of cheeses, including the popular Ranch Cheese, along with beef summer sausage, fudge, and popcorn are available. In addition, selections for gift boxes featuring a variety of cheeses, sausage, and salami are available and make excellent gifts for Thanksgiving gatherings, birthdays, Christmas, or to say Thank You.

In addition, Lollipop Junction is teaming with Biti Pies and offering Pumpkin Rolls. The Pumpkin Rolls are made by the grandma's recipe that includes the yummy cream cheese and pecan filling!! The Pumpkin Rolls are 10 inches in length and sell for \$15.00 per roll.

Orders for both the Zak's Cheese items and Pumpkin Rolls will be taken on a prepaid basis from October 3-21, 2016. Delivery of the items will be the week of November 14th

To place an order, contact any one of the following board members Koreley Whittington, Brent Reed, Christine Brown, Jennifer DeAnda, or Susie Spurlock. In addition, Erika at Lollipop Junction, telephone 366-5886 may be contacted to place an order.

Thanks Stratford for your support of Lollipop Junction and helping the center obtain funds for replacing the roof of its building. For more information about Lollipop Junction, or learn how you can help the non-profit childcare center, contact Susie Spurlock at 396-2864.

## No Man's Land Historical Society to hold 82 Annual Meeting

The No Man's Land Historical Society will hold its 82nd Annual Meeting on Sunday, October 2, 2016, at the Oklahoma Panhandle State University Ballroom. The doors will open at 12:30 and lunch will be served at 1:00.

As part of Oklahoma Archaeology Month, the speaker will be Matt Oliver who will deliver a talk on Obsidian through Time and Space in Oklahoma. Matt Oliver is a Graduate Research Assistant at the University of Oklahoma and has been conducting research in this area and elsewhere in Oklahoma on obsidian Native American artifacts. The public is welcomed, and members are encouraged to renew their memberships at the door. Everyone is invited to join the No Man's Land Historical Society.

## Ports-to-Plains Alliance Annual Meeting

By Gaynelle Riffe

Ports-to-Plains Alliance held their annual meeting in San Angelo Sept 13-15.

Attendees ranged from Mexico through the U.S. plains states to Canada. Many of the travelers from Colorado, Nebraska, North & South Dakota made a point of stopping at Stratford's Pilot Travel Center as they knew it was a new facility on the Ports to Plains Corridor. I am glad they were not using the 2017 Rand McNally Atlas front Unites States map as US 287 from bums to Boise City is missing! That one observation in 1989 as the first Sherman County Economic Development was investigating the benefits of transportation to Stratford Economic Development was a shock to see the four lane rode missing. That is when I became involved in transportation. The first action was to get US 287 from Dumas to Boise City reinstated, putting Stratford back on the map. I have watched it since then, the last time was about 2013. I am not sure when it was changed back to taking the four lane from Dumas to Stratford and on to Boise City off the map but I will be on that project again. There is some thought of expanding 1-27 both South and North. One 1-27 route proposed out of Amarillo is the proposed west loop 335 connecting to US 385 through Channing, baihart and on to Boise City. That thought will certainly take Stratford off the map. We must stay alert in the coming 10 years if Stratford does not want a 30 mile by pass.

## Stratford Hospital District Board Meeting Minutes August 16, 2016

### Board Members Present

Richard Chumley  
Janet Reinart  
Cecil Wright  
Ed Metcalf

### Others Present

Mark Moore  
Shelly Worley  
Armando Rivera  
Jimmy Lanning  
Tommy Brian  
Jamie Jacoby  
Zack Ammons

Meeting called to order:

Opening Prayer:

**Community Comments:** There were no community comments.

Richard Chumley asked for the motion to approve the July monthly minutes. Janet Reinart motioned to approve the minutes and Eddie Metcalf seconded and the motion carried 3/0.

### CEO Report:

#### SHD:

Update on Hail Damage:  
Mark Moore introduced Zack Ammons (Contractor for AHS). Zack reported to the Board of Directors that 2 Central Air Units will be replaced and should be starting on Coldwater Manor within the next two weeks. A discussion was held on the type of material to be used to apply to the roof and it was decided to use value ply roofing systems, also reported that 4 windows have been put in but still needs to be framed out, and the fifth one is on order. Also Zack is going to contact the insurance company in regards to the repairs on the Clinic.

#### Coldwater Manor:

Mark Moore reported to the Board of Directors that the passenger van of Coldwater Manor was totaled. He will be looking for new bids on a larger passenger van and will present at the next months board meeting.

#### Clinic:

Mark Moore reported to the Board of Directors that the clinic has seen fewer patients due to the time of year and less sickness. Tommy Brian reported that the clinic has done several back to school physicals for the students.

#### Pharmacy:

Shelly Worley reported to the Board of Directors that prescriptions were down due to the time of year and less sickness. Shelly Worley discussed adding new vitamins and supplements, adding arm braces and leg braces, to the inventory at the pharmacy with additional shelving needed to display the new inventory. The Board of Directors agreed on the addition of new purchases.

#### EMS:

Jimmy Lanning reported to the Board of Directors that for the month of July he had 26 Calls, 13 Transports, 15 Non Transports and 3 Stand-byes. Jimmy Lanning reported to the board that he will be starting an EMT class. If a student passes the national registry and request financial aid, and the student agrees to work for Stratford EMS for one year the cost of the class will be refunded, if that student is approved.

**New Business:** There was no new business.

Richard Chumley asked for the motion to approve the district bills. Janet Reinart motioned to approve and Eddie Metcalf seconded and the motion carried 3/0.

LTC Group was discussed and approved. Richard Chumley asked for a motion to approve the LTC Group. Ed Metcalf motioned to approve and Cecil Wright seconded and the motion carried 3/0.

Armando Rivera discussed the financial report with the Board of Directors with no overall concerns. A preliminary budget was distributed to be voted on at the September board meeting.

Richard Chumley asked for a motion to adjourn to the executive meeting at 7:45 PM, Cecil Wright motioned and Ed Metcalf seconded and the motion carried 3/0.

### SCOT HALL ACTIVITIES

Men's Pool-daily 1 p.m. M-F

Ladies Mexican Train Dominoes-  
Mondays 1:30 p.m.

Ladies Chair Exercises-M-W-F  
10:00 -10:30 a.m.

Ladies Yoga-Tuesdays 8:15-10:00 a.m.

Monthly Luncheon-4<sup>th</sup> Thursday-12 noon  
(covered dish luncheon)

Proud of  
you  
Stratford  
Elks  
Good  
Luck  
Beat  
Borger

## Births

Jeremy and Lindsay (Stein) Fykes of Argyle, TX are happy and proud to announce the birth of their son Jett Phillip on September 18, 2016 at 2:46 a.m. weighing in at 5 pounds 13 ounces and 18 inches long. Maternal Grandparents are Craig Stein of Moorhead, MN and the late Lynda Stein. Paternal grandparents are Jim Fykes and Jessie Fykes of Denton, TX Great grandparents are Marty Bain of Corinth, TX and the late Phillip Bain and Earl & Kathy Stein of Moorhead, MN.

## SCOT NEWS

SCOT September luncheon was held Thursday Sept. 22. Host and hostesses for the event were Claude and Leonda Fedric, James and Linda Spurlock and Terri Carter. Darlene Looney provided the entertainment by playing selections on the piano and singing. Ladies Yoga will begin on October 4th at 8:15 a.m. This is a time change from 9:15 of last year. Hosts for the October luncheon which will be held October 27 are Kay Bachman, Betty Carter, and Ronnie Pickens.



## WE BELIEVE HEROES DESERVE A BREAK

We believe the qualities that make you a successful educator also make you an A+ customer. That's why Farmers offers special preferred rates for teachers. Now that is smart! Contact a local Farmers agent to start saving today.

Call today to learn about our discounts!

**806.396.5810**

**GARY CLEMENTS**

Your Local Agent | License # 000000  
205 NORTH MAIN  
STRATFORD, TX 790841167  
GCLEMENTS@FARMERSAGENT.COM



**FARMERS**  
INSURANCE

## Mitchell Theaters

Northridge 8  
Guymon, OK  
[www.northridge8.com](http://www.northridge8.com)  
580-338-3281  
Southgate 6  
Liberal, Kansas  
[www.southgate6.com](http://www.southgate6.com)  
620-624-5573  
Garden City, Kansas  
[www.sequoyah8.com](http://www.sequoyah8.com)  
620-275-2760

\*\*\*  
One of the symptoms of an  
approaching nervous break-  
down is the belief that one's  
work is terribly important.  
—Bertrand Russell  
\*\*\*

**A Medical Fund has  
been set up for  
Shelly Lawrence  
At the First State  
Bank of Stratford.**



The Baltimore Colts were the first professional football team to have a cheerleading squad.



The Stratford Star  
(USPS 523-108)

Published for over 100 years  
805 Purnell  
Stratford, TX 79084  
Telephone: 806-366-5885  
Fax: 806-366-5884  
E-Mail: [stardm@xit.net](mailto:stardm@xit.net)

The Stratford Star is published weekly  
Editor & Publisher Martha Robertson  
Advertising & Photographer Shari Hudson

Subscription rates  
\$33.00 per year in Sherman & Adjoining counties  
\$40.00 per year all others  
\$27.00 per (9 months) College rate

The Stratford Star-PO Box 8-Stratford, TX 79084

Periodicals postage paid at Stratford, TX  
POSTMASTER: Send address changes to Stratford Star,  
PO Box 8-Stratford, TX 79084

\*\*\*\*\*

### Attention to all subscribers!! Rate change

The Stratford Star is no longer sending out notices when your paper is due. Check the label on the paper and see what month your subscription expires. I will be putting "Stars" on the current month" If you have a Star on your label it means that your sub expires that month. If you are not sure the amount you owe if you live out of the area call 753-7373 and double check. Locally is \$33.00 and out of the area \$40.00. If you are paying for someone else's sub, you will be billed for that person. The Stratford Star, PO Box 8, Stratford, TX 79084  
Thanks-Marty

## Good Luck Elks

### Deadline for The Stratford Star

Deadline for Stratford Star items. Photos by  
Sundays at 4 p.m. Letters to Editor 9 a.m. on  
Mondays (typed) and all other articles and ads  
at 10 a.m. on Mondays. (PLEASE)  
Thank you



### ETA ALPHA'S 33RD HOLIDAY BAZAAR

Eta Alpha's 33rd Annual Arts & Crafts Bazaar is Saturday, October 29, 2016 in Boise City, OK At the Community Building on North Cimarron St.

A full day, shop early for Christmas, so many choices, Lunch available & gifts given away all day.

Two Door Prizes given away at 4:00 pm with proceeds going towards Boise City Recreation Foundation, specifically The Splash Pad.

Open to ALL Artists, Craft persons & Commercial Exhibitors

If interested in obtaining a Booth call immediately-Call Frankie Robertson 580-544-2252 or 580-517-1943 if no answer leave a message & phone # Or call Ruby Gore 580-544-2447

## Homecoming 2016 Week

Lollipop Junction joined Stratford Schools in celebrating Homecoming 2016 Week with daily theme days. Pictures from celebrating your favorite team day include the Pre-K Class with teachers Erika and Christina and the Infant and Toddler Class Students.

Lollipop also celebrated Western Day, Crazy Day and Blue and White Day at the Day Care Center



### Stratford Hospital District

"Proudly serving the medical needs of Stratford and Sherman County"  
Stratford Family Medical Clinic

#### Stratford Family Medical Clinic

Mon. - Thurs 8 a.m. - 5 p.m. Fri, 8 a.m. - 3 p.m.  
396-5583 Tommy Brian, ANP & Krista Brown ANP

#### Elk Pharmacy

Mon.-Fri. 9 a.m. - 5:30 PM  
"Check our Competitive pricing"  
"Compounding Available"

366-5505 Shelly Worley, PharmD, RPH

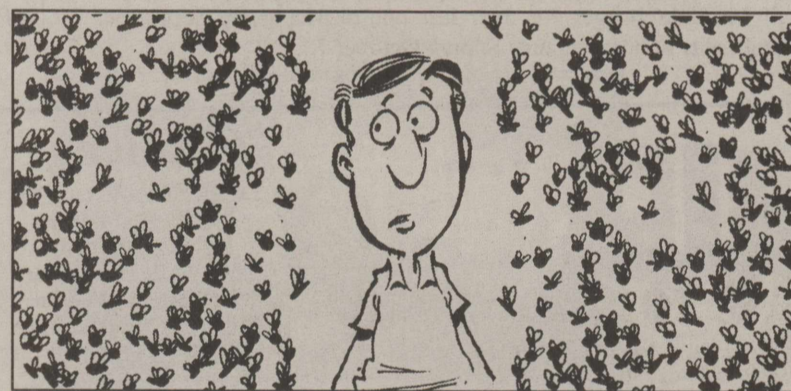
#### Coldwater Manor Nursing Facility

396-5568 Mark Moore, LNFA

#### Stratford EMS

9-1-1 or 396-2844 Jimmy Lanning, Director

The Stratford Hospital District operates on a non-discriminatory basis, giving equal treatment and access to services without regard to sex, race, religion, age or ethnicity.



Insects outnumber humans 100,000,000 to one.

## The Churches of Stratford Welcome You

**First Assembly of God**  
Kevin Anderson, Pastor  
921 Fulton  
Sunday School 9:45 a.m.  
Morning Worship 10:45 a.m.  
Evening Worship 6:00 p.m.  
Wed. Bible Study 6:30 p.m.

**First Christian Church**  
5th & Main  
Sunday School 9:45 a.m. (nursery)  
Morning Worship 10:45 a.m. (nursery)  
No Sunday evening Worship Service

**First United Methodist**  
Rev. Steve Ulrey 396-2178  
520 N. Main  
Sunday School 9:20 a.m.  
Morning Worship 10:30 a.m.  
Junior & Senior High UMY 6:00 p.m.

**St. Joseph Catholic Church**  
6th & Pearl  
Rectory 366-5687  
Sunday morning 8:00 a.m. (English) 9:30 (Spanish)  
Sacrament of Reconciliation Before Mass or t.  
Christian Formation Classes K-6 Grade Wed. Afternoon  
Jr. & Sr. High. Wed. 6:30-8:30 p.m.

**First Baptist Church**  
Pastor Ron Whitt  
702 N. 3rd  
Sun.-Coffee 8:30 a.m.  
Sunday School 9:30 a.m.  
Worship Service 10:30 a.m.  
Wed. Children 6 p.m. youth 7 p.m.

**Heritage Bible Baptist**  
Pastor Mark Looney  
302 S. Main  
For more info-call 396-2212  
Morning worship 11:00 a.m.  
Evening Service 6 p.m.  
Thurs. Service 7:00 p.m.



This page sponsored by  
Stratford Grain 396-5541  
Lautz 769-5541  
Stratford Star  
366-5885

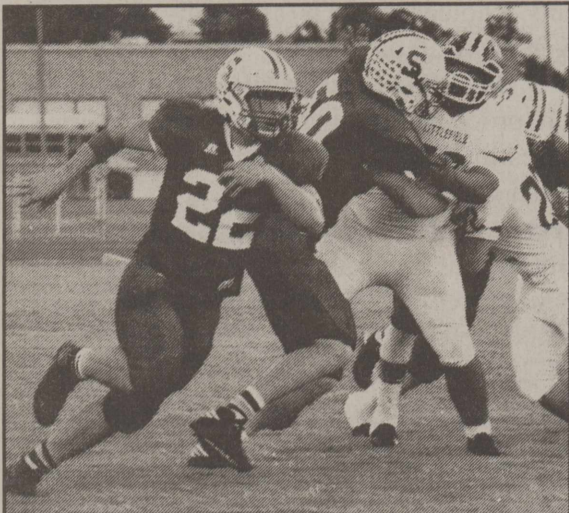
**La Mision Bautista**  
Mision Bautista  
401 S. Wall 396-5376  
Domingo (Sunday)  
Estuela Dominical 9:45 a.m.  
Miercoles (Wednesday)  
Servicio De Adoration 11 a.m. Estudio  
Biblico & Servicio De Oracion 6 p.m.  
Servicio De Adoration 6 p.m. se Cuidamos  
Susuinos Durante El Servicio

**Eben-Ezer Templo Hispano**  
Asambleas De Dios  
Pastor: Juan M. Valenzuela  
806-366-3071  
205 N. Poplar-Hwy 287 268-2188  
Escuela Dominical 10 a.m. - 12 noon  
Servicio De Adoracion 5 p.m.-7 p.m.  
Miercoles: Servicio De Adoracion 6-8 p.m.

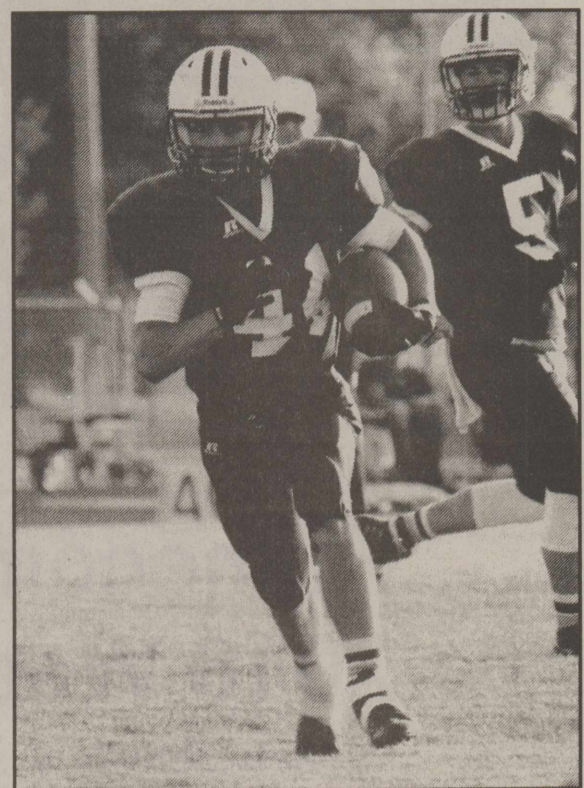
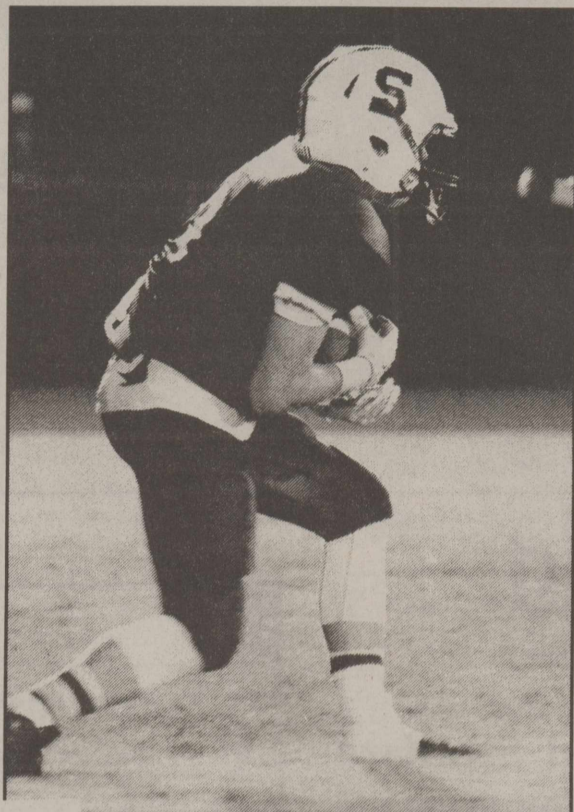
**Kerrick Community**  
Pastor Roy Harris  
Community Building  
10 a.m. Worship Service

**Church of Christ**  
Raymond Glendinning  
N. 3rd & Chestnut  
Sunday School 9:30 a.m.  
Morning Worship 10:30 a.m.  
Evening Worship 5:00 p.m.  
Wednesday Bible Study 7:00 p.m.

# Football- Stratford Elk Style Homecoming 2016



Stratford-Elk #22 Gage Brooks finds a hole in defense and breaks free as #50 Russell Spurlock blocks to score for the Elks in their 48-7 homecoming win over Littlefield on Friday, September 23, 2016.



## Elks Trample Littlefield

By the Elk Express Staff

It was the big homecoming game in Stratford, and the Elks would not disappoint their fans. After jumping to a 14-0 first quarter lead, the Elks went onto trounce Littlefield in a non-district game, 48-7.

Bronc Hodges scored the first TD of the night with a 27-yard run followed by a Gage Brooks kick. Fernando Jacquez later found pay dirt on a 37 yard pass from quarterback Kade McBryde with Brooks adding the extra point.

In the second quarter, Brooks broke for a 90 yard scoring run (kick failed). Pedro Ortega added six more to the score on a one-yard run with Hodges tacking on the extra two. A 50 yard pass play from McBryde to Shay Hess (kick failed) rounded out first half play.

The Elks went on to add two more touchdowns in the second half, on a 75-yard run by Brooks with a Zorro Daniels kick, and a 58-yard run by Daniel DeCasas with Brooks booting the PAT.

Littlefield scored once in the final quarter on 51-yard run.

Offensively the Elks rushed for 333 yards compared to Littlefield's 213. Brooks had 11 carries for 232 yards, DeCasas carried 3 times for 58 yards, and Hodges four times for 43 yards. McBryde was 5 for 10 in passing for the night.

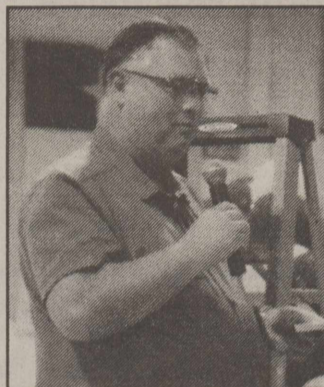
Defensively, Brooks had three solo tackles and eight assists. Hess had three solos and 11 assists while Kobi Garza had three solos and eight assists.

Named as players of the week were offensive lineman - Noah Harris, offensive back Brooks, defensive lineman - Garza, defensive backs McBryde and Hess, special teams - Zorro Daniels, and scout team - Abraham Villegas.

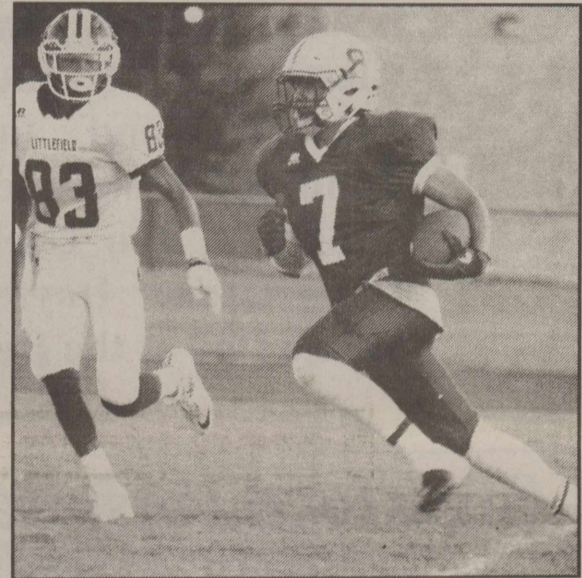
The Elks will travel to Borger for their last non-district game September 30, before beginning district play at home against Sunray October 7.

Shay Hess #3 catches a pass downfield from Kade McBryde and scores in Elks homecoming win.

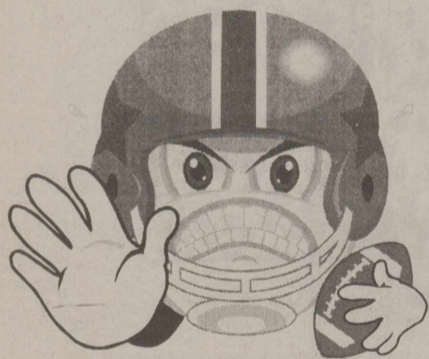
Stratford Elk #44 Bronc Hodges picks up some yards on the carry in the Elks 48-7 Homecoming win over Littlefield.



Mr. Hanna giving the Pep Talk



Stratford Elk #7 Fernando Jacquez scores on a pass from Kade McBryde in the Elks win over Littlefield.



**Roger Allen Class of 1981**  
Stratford vs Borger  
Perryton vs Snyder  
Panhandle vs Wheeler  
Canadian vs Vernon  
Canyon vs Amarillo High  
Valley vs Crowell  
Texas vs Oklahoma St.  
Tennessee vs Georgia  
Texas A&M vs South Carolina  
Kansas St vs West Virginia  
Panhandle St. vs Texas A&M-Commerce  
Navy vs Air Force  
Cleveland vs Washington  
New Orleans vs San Diego  
Tennessee vs Houston  
Seattle vs New York Jets  
Oakland vs Baltimore  
Tie Breaker Dallas 35 vs San Francisco 24

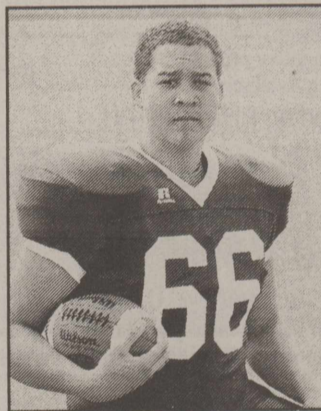
## Challenge

**ViAnn Reed class of 1982**  
Stratford vs Borger  
Perryton vs Snyder  
Panhandle vs Wheeler  
Canadian vs Vernon  
Canyon vs Amarillo High  
Valley vs Crowell  
Texas vs Oklahoma St.  
Tennessee vs Georgia  
Texas A&M vs South Carolina  
Kansas St. vs West Virginia  
Panhandle St. vs Texas A&M-Commerce  
Navy vs Air Force  
Cleveland vs Washington  
New Orleans vs San Diego  
Tennessee vs Houston  
Seattle vs New York Jets  
Oakland vs Baltimore  
Tie Braker Dallas 28 vs San Francisco 14

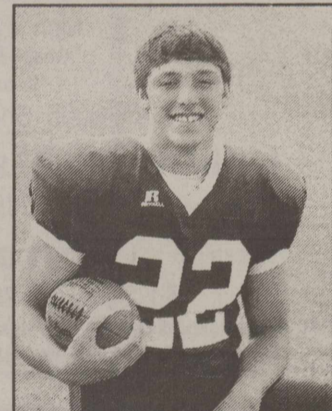
Roger won the challenge last week

I ♥ Football

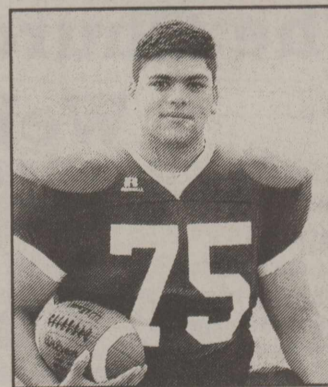
## Players of the Week



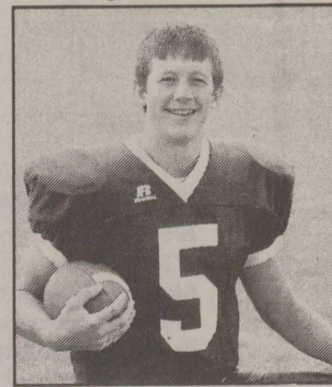
Noah Harris



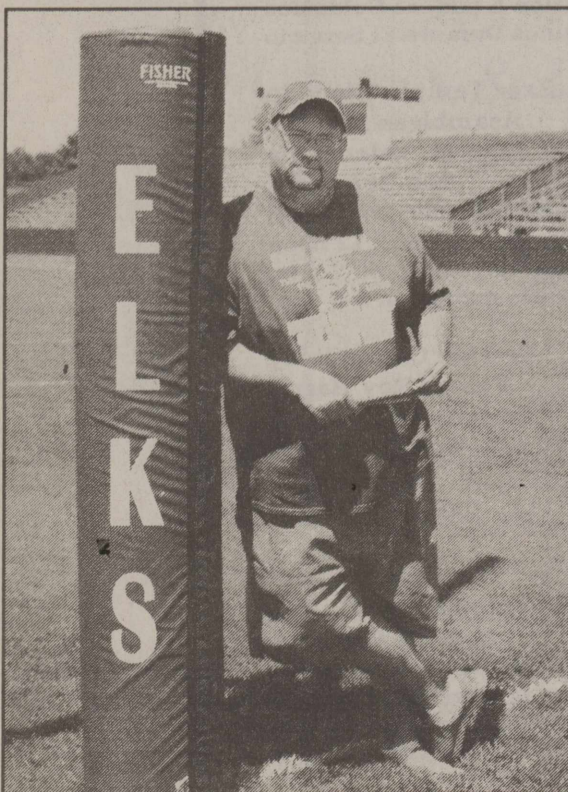
Gage Brooks



Kobi Garza



Kade McBryde

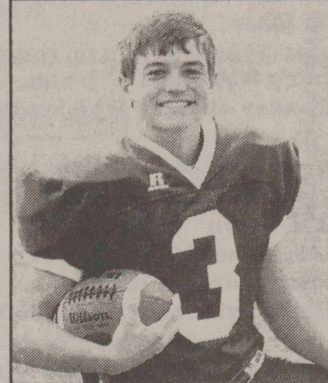


## Time Out With Rog!

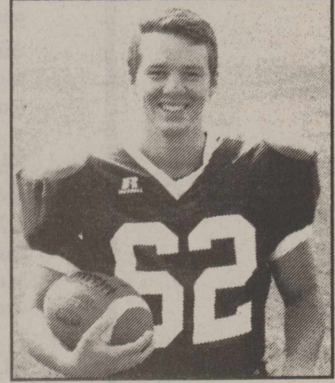
Homecoming 2016 was a HUGE success!! The Stratford Elks rebounded to that team in Hemphill, and rebounds do not refer to basketball season because that is a long way away. The Elks ran with authority and the pass and catch was great eyesight for this reporter. That town with the small acreage (Littlefield) was thinking "I don't want to play Stratford for Homecoming again". Now it's on to the Big Ole Borger Bulldogs, where this field reporter has played some playoff games back in the day. If you don't know where the stadium is in Borger, look for a Jiffy Pop Popcorn fully popped and it is right beside it. So think popcorn. We don't know that much about Borger but they are probably quick and athletic. Now we are going to play a different animal, we have been only playing cats and now we get to play the dogs. Even my top notch staff is lost because we have no idea about Borger because we have never played them. This reporter is going to admit that this isn't my best article to date. So bring your shock collar because we are going to potty train the dogs!!!! Everyone meet at Bulldog Stadium, enjoy the dogfight and popcorn! Last game before district where the rubber meets the road. So let's pray for all who are sick and our National leaders. Once an Elk always an Elk.

Roger Malon Allen  
Class of 1981

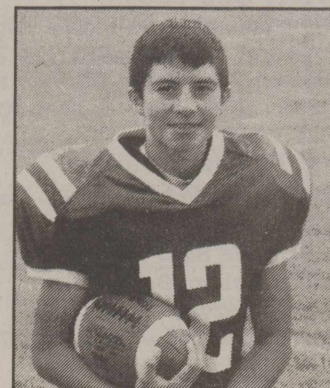
P.S. we have a kicker named Zorro and Go was throwing up before the game. So there you GO



Shay Hess



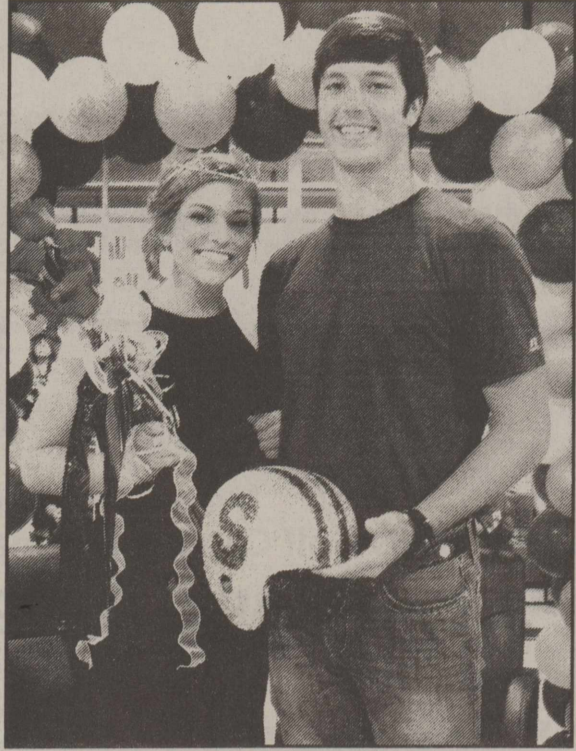
Zorro Daniels



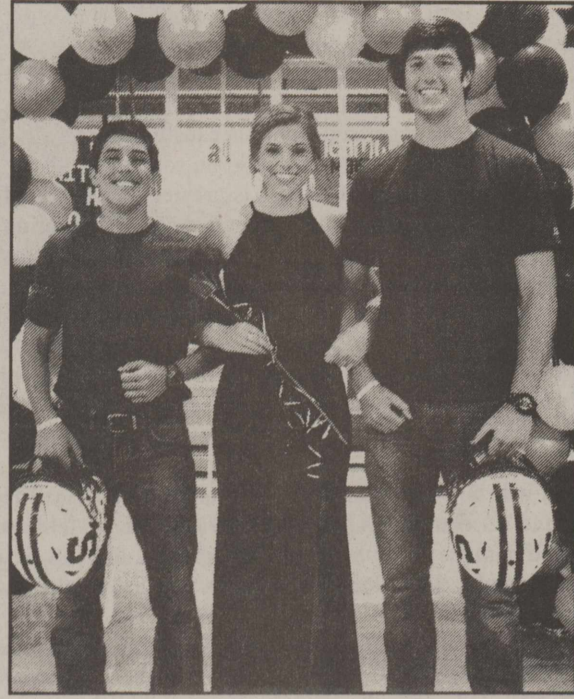
Abraham Villegas

Players of the week are Offensive Line- Noah Harris, Offensive Back Gage Brooks, Defensive Line- Kobe Garza, Defensive Back -Kade McBryde and Shay Hess, Special Team-Zorro Daniels and Scout Team Abraham Villegas

# Homecoming 2016



Crowned 2016 Homecoming King and Queen at the Pep Rally on Friday, September 23, 2016 were Laynee Burr and Russell Spurlock.



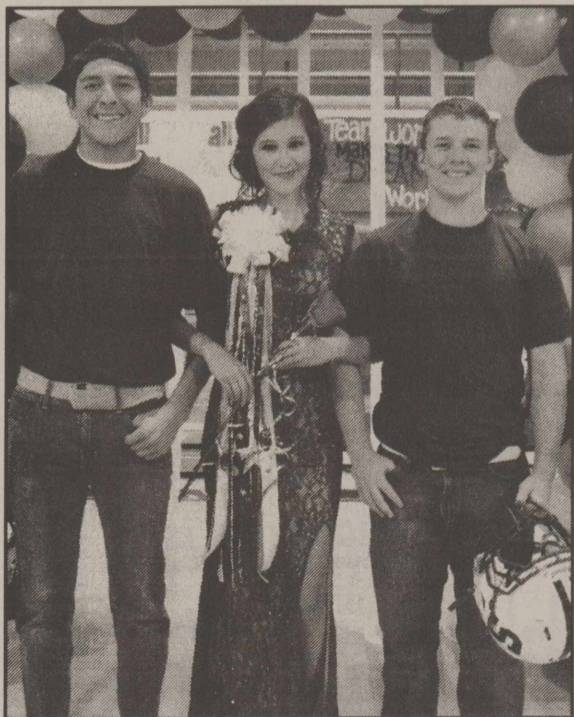
Homecoming queen candidate Laynee Burr escorted by Julio Duran and Russell Spurlock.



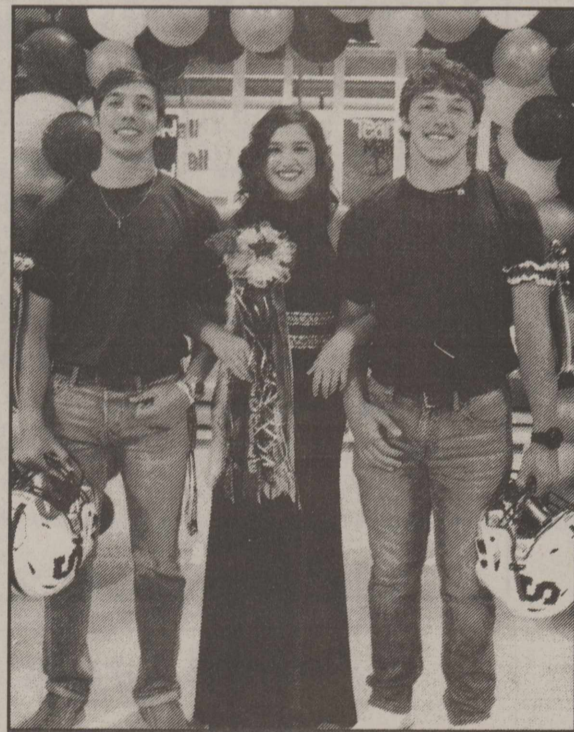
Homecoming queen candidate Daniela Valdez escorted by Parker Hanna and Bret Barnard.



Homecoming queen candidate Raeleigh Willborn escorted by Francisco Barajas and Kobi Garza.



Homecoming queen candidate Nancy Garay escorted by Jaime Jacquez and Zorro Daniels.



Homecoming queen candidate Nicolle Law escorted by Fernando Jacquez and Gage Brooks.



Crown bearers were Rese Schoonover and Francisco Ortega



Presenting a sign to Tanner Stone for his Shot Put Championship were Coach Rutherford and Mr. Hanna. The sign will later be hanging in the school.

## Planting sorghums early might help reduce sugarcane aphid damages

Writer: Kay Ledbetter, 806-677-5608, skledbetter@ag.tamu.edu Contact: Dr. Ed Bynum, 806-677-5600, EBynum@ag.tamu.edu

AMARILLO - Every year is a learning year right now for Texas A&M AgriLife Extension Service entomologists and anyone else dealing with the sugarcane aphid, both on grain sorghum and forage sorghum in the Texas High Plains.

"We -have a lot more information about grain sorghum than we do on the forage sorghum," said Dr. Ed Bynum, AgriLife Extension entomologist at Amarillo.

Bynum, participating in a recent forage sorghum turn-row meeting near Bushland, said the crops are pretty close to each other, the major difference being the grain sorghums are shorter and the forage sorghums are taller and have more leaf area.

"But I think the type of damage the sugarcane aphid is causing is basically going to be the same regardless of whether it's forage sorghum or grain sorghum."

What is known, he said, is the amount of yield loss is greater in grain sorghums when infestations become established in the whorl stage than during the flowering and grain-filling stages.

"We know when infestations get started in the whorl stage and you don't do anything to protect the sorghum, you can have as much as 80 to 100 percent yield loss in that grain sorghum," Bynum said.

"So, I would expect that it would be similar to that in these forages. Looking at the forage sorghum plots, what was evident is where infestations were really heavy, they were not putting on the amount of grain as others that did not have as heavy an infestation."

Bynum said specific data will be coming in after Dr. Jourdan Bell, AgriLife Extension agronomist in Amarillo, and her team measure the grain yield, silage yield and quality. While the biggest expected damage from the sugarcane aphid is the loss of grain yield, he said it also weakens the stalk. So in forage sorghums that grow taller, weak stalks could result in a lot of lodging.

Another thing worth noting, Bynum said, is the grain sorghum trials infested at the grain-filling and dough growth stages saw yield losses of only about 20 percent.

"So there is a lot of difference between when the sugarcane aphids begin to build up in the grain sorghums and also the forage sorghums, I believe," he said. "The question is, what kind of management practices can you do to try to avoid the level of damage you get?"

After two years of infestations in the High Plains, he said they know the aphids generally are brought in from the South.

"They don't overwinter north of Amarillo, or haven't in the last two years, so we know that the aphids have to be blown back in here," Bynum said.

In the South Plains, they begin infesting sorghums in the early part of June and populations build in July, he said. But infestations the last two years in the Amarillo area and north haven't been seen until August and into September.

"Your management practices need to aim at avoiding the sugarcane aphids until you can get the forage sorghums at a later growth stage," Bynum said. "I would think that if you can adjust your planting dates and plant earlier, you can get into the field and get the crop up and get it cut before you get the sugarcane aphid damage."

The second part of the equation is controlling the sugarcane aphids, he said. "What levels of control are you going to get when the sorghum is waist-high compared to when it is 5-feet tall or taller? We know the level of control is better if you can get

better coverage within that canopy."

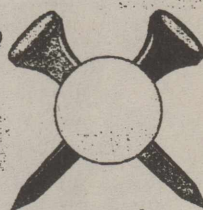
Bynum said two aerial insecticide applications were made to the forage sorghum field plots. The first application was with Transform at a rate of 2 ounces per acre, a high rate, trying to get good control.

"They did get a good level of control, but because of the pockets of infestations and sorghums that were taller than others, they still had areas that didn't get good control, so the aphids built back up," he said.

A second application of Silvanto was made about two and a half weeks later, at a rate of 6 ounces, and again some plots had good control while others didn't, Bynum said.

"It comes back to the amount of leaf canopy and it not allowing that chemical to get down into the plant," he said. "Try to scout as early as you can and if you find sugarcane aphids, try to get an application on as early as possible. You don't want to allow the population to build up and have to treat when plants are taller and there is more leaf area on the plant."

## "SUPPORT OUR TROOPS" GOLF TOURNAMENT



Saturday October 15, 2016—2:00 PM Shotgun

1 Person Scramble

\$350 per Team

Includes Green Fees, Cart, 2 drink tickets & Meal

Comanche Trails Golf Complex, Tomahawk course

### Texas Panhandle Honor Flight SPONSOR LEVELS:

<input type="checkbox"/> NAME SPONSOR	\$25	<table border="1"> <tr> <td colspan="2">Amount Enclosed</td> </tr> <tr> <td><input type="checkbox"/> Team</td> <td>\$ 350.00</td> </tr> <tr> <td><input type="checkbox"/> Sponsorship</td> <td>\$ _____</td> </tr> <tr> <td><input type="checkbox"/> Total</td> <td>\$ _____</td> </tr> </table>	Amount Enclosed		<input type="checkbox"/> Team	\$ 350.00	<input type="checkbox"/> Sponsorship	\$ _____	<input type="checkbox"/> Total	\$ _____
Amount Enclosed										
<input type="checkbox"/> Team	\$ 350.00									
<input type="checkbox"/> Sponsorship	\$ _____									
<input type="checkbox"/> Total	\$ _____									
<input type="checkbox"/> TEE BOX SPONSOR	\$100 (12x 18)									
<input type="checkbox"/> CLUBHOUSE BANNER	\$500 —MUST FURNISH OWN BANNER									
<input type="checkbox"/> FRONT GATE BANNER	\$1000 —MUST FURNISH OWN BANNER									
<input type="checkbox"/> GOLF CART SPONSOR	\$2500 —Your company name advertised on each cart (exclusive)									

Sponsorship & Doorprize Questions call: Tammy Lewis 806-570-3677

Team Captain: \_\_\_\_\_ Phone \_\_\_\_\_

Name: \_\_\_\_\_ Phone \_\_\_\_\_

Name: \_\_\_\_\_ Phone \_\_\_\_\_

Name: \_\_\_\_\_ Phone \_\_\_\_\_

Mail entry to: TXPHF P.O. Box 3218 c/o Tammy Lewis Amarillo, TX 79116

Make Checks Payable to: Texas Panhandle Honor Flight

## Business Directory

PO Box 510  
Stratford, TX 79084  
Phone: 806-366-5557

### Duncan Chevrolet

www.duncanchevrolet.com  
E-mail: duncanch@xit.net  
AN AMERICAN REVOLUTION

### Stratford Auto Electric

806-366-5941  
saeroymc@gmail.com  
Altronics, starters, Alternators,  
ACmotors  
New & Rebuilt  
Full Line Available

### Stratford Grain Company

Stratford 396-5541  
Lautz 769-4485

4 North Main

### A & I Parts Center

Automotive and Industrial Parts  
201 N. 2<sup>nd</sup> Street-  
Stratford, TX 79084

Tel: (806) 366-5592  
\*Toll-free 800-624-5494  
Fax: (806) 366-2583

### Structured Touch Massage Therapy Clinic

Cece Yelek, CMT, LMT  
401 N. Third #11. or 7199 Co. Rd P  
Stratford, TX - Sunray, TX  
Office 806-366-ahhh (2444)  
Cell 806-290-3655  
Open 9-5 by Appointment Only

### Shari Hudson Photography

PO Box 243  
Stratford, TX 79084  
Cell PH: 806-753-7798  
Email: ghud@xit.net  
www.sharihudsonphotography.com  
Seniors-Children-Families  
Wedding-Special events  
Engagements

### Vincent Insurance Agency

Sabrina Melton  
PO Box 739 Office: 806-396-2456  
Stratford, TX 79084 Home: 396-2512  
Email: vincins@xit.net



DAVIS GEOMATICS, LLC  
PROFESSIONAL GEOMATIC CONSULTANTS

J.D. Davis  
R.P.L.S., L.S.L.S., CFedS  
Licensed State Land Surveyor  
Certified Federal Surveyor  
COLORADO • KANSAS • OKLAHOMA • TEXAS  
Office: 806-374-4334 • Cell: 806-336-0564 • Fax: 806-359-0686  
Toll Free: 866-570-0169 • www.geopro.us • e-mail: jdavis@geopro.us  
P.O. Box 4061 • Amarillo, Texas 79116-4061  
Firm No. 100822-00

### Albert's Manor House Restaurant



Daily Specials  
Friday Night  
Fish Buffet  
Sunday Buffet  
Breakfast All Day

Open-6 a.m. - 9 p.m. Everyday  
TAKE-OUTS WELCOME  
1817 Dumas Ave Dumas, TX  
935-5507

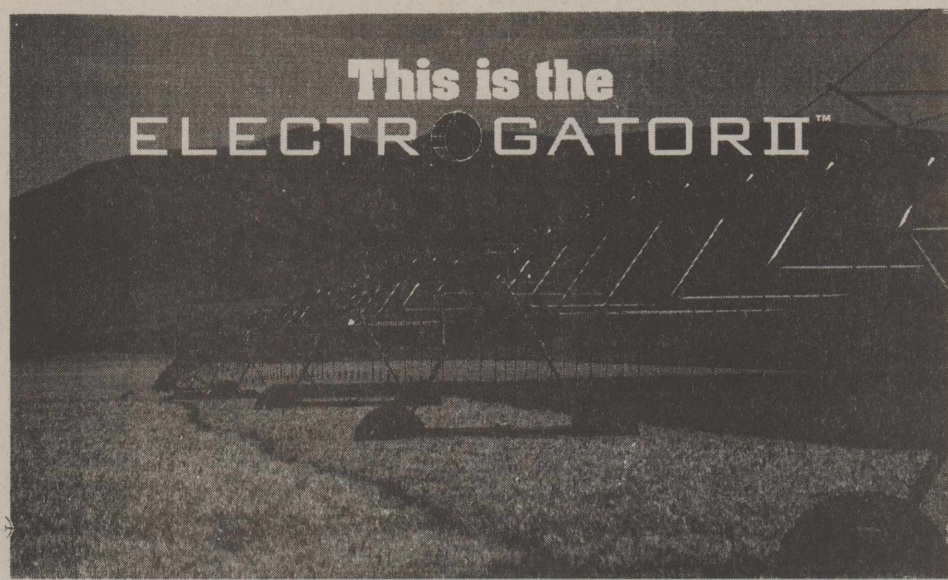


621 Peters Avenue  
Dalhart, TX 79022

Clements Insurance  
Home • Auto • Life  
Farm & Ranch • Commercial

Gary Clements

205 N Main  
Stratford, TX 79084  
Cell: 806 346-5217  
gclements@farmersagent.com



**This is the ELECTROGATOR II™**

The Electrogator II from Reinke is built for durability and longevity. Simply put, it is the best engineered mechanized irrigation system on the market today. Find out more about the features, benefits and advantages of the Electrogator II by talking to your local Reinke dealer today.

Texas Electric Co.

806-679-9007 Chuck's Cell

301 North Poplar

PO Box 1123 Stratford, Texas 79084

806-396-2300 Office



PROFESSIONALS IN PEST CONTROL TECHNOLOGY  
Serving the area since 1965

**Stevenson & Sons**  
Pest Control OF DALHART

- TERMITE, RODENT & PEST CONTROL FOR YOUR HOME & BUSINESS
- YARD & TREE SPRAYING

DALHART PH. 249-4202 BOX 192  
JIM STEVENSON DALHART, TEXAS

It Pays To Look In The

# ★ Star Classifieds

Phone 366-5885 ...The Best Salesperson Around

## Help Wanted

Coldwater Manor in Stratford, Texas is looking for experienced RN's, LVN's and CNA's. If interested please come by 1111 Beaver Road for an application or send your resume to [dgross@shdistrict.com](mailto:dgross@shdistrict.com) EOE

Elevator laborer wanted. Must have valid Texas Driver's License and a working knowledge of the English language. Apply in person at Stratford Grain Co. 4 N. Main

Coldwater Manor is now taking applications for immediate hiring in the Dietary Department and Housekeeping. Must be 18 years or older, if interested stop by Coldwater Manor at 1111 Beaver Road Stratford, TX for an application. EOE

The City of Stratford is accepting applications for an Animal Control/Code Enforcement Officer until the position is filled. Must have high school diploma or GED and computer skills. Please contact Chief Randy Hooks for a complete job description or with any questions at 806-366-3051. 9-22-tfn

DRIVERS: Team needed. Earning Potential of \$105K+ Nice Sign on Bonus! Co, Paid benefits, Drivers & Family! Out 2-3 Weeks. CDLA w/Haz End. 855-205-6361

## Houses for Sale

House for sale: REDUCED PRICE  
125,000 2 living areas, 3 bedroom, 1.75 bath, fireplace, nice yard, approx. 2,000 sq.ft 1313 N. Chestnut St. Call Steve or Linda Haynes 806-366-2478 or 789-7956 5-2 tfn

Spacious 2100 sq. ft. 3 bedroom, 2.5 baths, 2 living areas, attached 2 car garage with covered driveway. Large backyard w/metal fence on large corner lot. New heating and A/C unit, updated bathrooms, gaswood burning fireplace. \$146,900 320. N. Wall. For more information please call: 806-930-6575 or 806-930-6725

Remember The  
Stratford Star  
Classifieds  
Call 366-5885  
Or Email to  
[stardm@xit.net](mailto:stardm@xit.net)

Or mail to PO Box 8  
Stratford, TX 79084

## ENGINEERING SERVICES PUBLIC NOTICE

The City of Texhoma has recently received notice of a Contract award from the Texas Department of Agriculture (TDA) for a TxCDBG program project. Accordingly, the City of Texhoma is seeking to contract with a qualified engineer/engineering firm registered to practice in the State of Texas to prepare all preliminary and final design plans and specifications, and to conduct all necessary interim and final inspections.

A copy of the Request for Proposal for Services may be obtained from the Panhandle Regional Planning Commission, P.O. Box 9257, Amarillo, Texas 79105, ATTN: Dustin Meyer, (806) 372-3381. A statement of qualifications for these proposed services will be required.

Please submit your proposal of services and a statement of qualifications for these proposed services to the address below:

Jennifer Johnson, City Secretary  
City of Texhoma, City Hall  
P.O. Box 10123  
Texhoma, TX 73960

Proposals must be received by the City no later than 5:00 p.m. on the 12th day of October, 2016 to be considered. The City will hold a Council meeting at 7:30 p.m. at City Hall and may award the contract at that time. The City reserves the right to negotiate with any and all individuals, engineers or firms that submit proposals, as per the Texas Professional Services Procurement Act and the Uniform Grant and Contract Management Standards. Para más información en español, comuníquese con municipio al 806-827-7411.

The City of Texhoma is an Affirmative Action/Equal Opportunity Employer.  
Published in The Stratford Star, Thursday, September 29, 2016

**TRIANGLE REALTY**

**EAST SHERMAN CO**  
+/- 161 ACRES

Highly productive farm in a good crop producing area. Equipped with a quarter mile sprinkler, owner is leasing an irrigation well just off the NE corner of the property. The leased well is producing 500-600 gpm.

Call for pricing.

**CRAIG COOPER**  
LAND SPECIALIST

**806.736.8235**

????????????????

Watch for changes  
coming in the next  
few weeks and  
months to  
The Stratford Star



Skiles wins at Tri-State Fair & Rodeo Youth Steer Show

## Skiles Wins Grand Champion Youth Steer Honors at the 2016 Tri-State Fair & Rodeo

Stewart Skiles, Stratford, Tx, was awarded the Grand Champion during the Youth Steer Show September 24 at the 2016 Tri-State Fair & Rodeo in Amarillo. The 14-year-old son of Jeb and Krista Skiles, was chosen by judge David Groschke, Groesbeck, Tx with his European Breed Steer. In addition to receiving a banner and buckle, Skiles will receive a premium check from the Tri-State Fair & Rodeo.

- More than 2,000 youth from across the panhandle participated in the livestock events over the 9-day event. There were 454 steers entered in the youth show.

For more information on the 2015 events and results, visit the official fair website [www.tristatefair.com](http://www.tristatefair.com), or contact the Exposition Office at (806) 376-7767

The 2016 Texas Farm Bureau Insurance Companies' Tri-State Fair and Rodeo was September 16-24 at the Tri-State Exposition grounds in Amarillo. The Tri-State Fair and Rodeo is the largest annual event each year in the Texas Panhandle averaging more than 120,000 people. In recent years, fair visitors have represented 36 states, several foreign countries and all 36 Panhandle counties. An event of this scale would not be possible without the local volunteers who put in more than 15,000 hours during the nine days of the fair. The Tri-State Fair and Rodeo is estimated to create a \$5 million economic impact for the city of Amarillo during the event.

The Amarillo Tri-State Exposition is a 501(c) (3) non-profit organization. Funds generated through events at the Tri-State Exposition complex go to support local students in the Panhandle. Each year more than 500 volunteers, donors and sponsors contribute to the Amarillo Tri-State Exposition's mission of serving youth and showcasing our proud cultural heritage. Each year the Tri-State Exposition awards more than a \$500,000 in premiums, scholarships and other forms of giving to the area's youth.

## XIT Announces 2nd Annual Rise & Shine Food Drive

XIT Communications is coordinating and kicking off its second-annual Rise & Shine Food Drive On October 1st! This year's food drive will once again focus on non-perishable breakfast food items, which will be collected and donated to several food pantries in the communities of Stratford, Dalhart, Texline and Vega. The breakfast food drive will continue through the end of November.

Last year, thanks to everyone who participated, XIT representatives collected and delivered more than 150 grocery totes of food to the following area food pantries: The Pantry of Stratford, The Food Pantry at Lincoln Street Baptist Church, Dalhart Church of the Nazarene Food Bank, Texline Food Pantry and the Vega Food Pantry/UMC. The same pantries are participating in the upcoming drive. This year, with everyone's help, we would like to shatter last year's total!

Starting immediately, all XIT customers and community members alike, are invited to stop by any XIT location to pick up a "Rise & Shine" grocery tote. We invite you to fill the tote with non-perishable breakfast food items, and then drop the items off at any of our three office locations in Dalhart or Stratford. Whether you donate one item, several items or a whole tote full, the food will help feed those in our local communities who are struggling to put food on their tables. When you bring your donated food items into our office, we will give you a new reusable grocery tote to keep as our "Thank You" for helping to feed those in need! Breakfast food items needed include such things as boxed cereals, pancake and muffin mixes, gravy and biscuit mixes, powdered milk, coffee, hot chocolate, jam, peanut butter, cereal bars, Pop-Tarts, canned or dried fruit, maple syrup and fruit juices. Any food items donated will be graciously accepted. Monetary donations are also accepted for those who may not have time in their schedule to shop.

XIT would like to ask everyone in our local communities to join us in this effort to fill the hunger gaps that exist in our cities and neighborhoods. We need everyone to participate as much as they possibly can to make the breakfast food drive successful! We, at XIT, take this endeavor seriously, and hope you will assist us with our outreach efforts! Let's stomp out local hunger ... Together!

**Rise and Shine**  
To Fight Hunger...

**XIT** Rural Telephone Cooperative, Inc. Communications

**2nd Annual Breakfast Food Drive**  
October 1 - November 30  
Breakfast items will support the following area food pantries:  
The Pantry of Stratford, Texline Food Pantry, The Food Pantry at Lincoln Street Baptist Church, Dalhart Church of the Nazarene Food Bank and Vega Food Pantry/UMC  
Monetary donations welcome!

- Pick up a grocery tote from XIT
- Fill it with breakfast items (non-perishable)
- Bring the items to XIT

You will be given a new grocery tote to keep as our Thank You when you drop off your food items.

**DALHART:**  
244-3355 • 1624 Tennessee Ave  
384-3311 • 12324 US Hwy 87

**STRATFORD:**  
366-3355 • 401 N 3rd St