

The P  
Capitol of Texa

Melvin Mitts 06/17  
PO Box 523  
Stratford, TX 79084

# The Stratford Star

75 cents

Published for over 100 years in Stratford, Sherman County, Texas 79084 usps 523 Number 36 September 8, 2016

## 6th Annual Stratford Community Tailgate Party and Dance Saturday, September 10, 2016 Stratford Country Club

No entry fee - Cash prizes for top three entries  
Cook Applications are available at extension office.  
You provide all items you need for cooking your item,  
equipment you need for set up, electricity, etc.

Meal - 7:00 PM  
Dance - 8:00 PM - 11:00 PM

Bring your lawn chair and enjoy an evening  
of food, fun and fellowship!

All proceeds go to Sherman County Livestock Association

Any questions call: Dinah - 806-753-7053, Eddie - 806-753-7039,  
or Heather - 620-629-1593

\*\* All 2017 Sherman County Livestock Exhibitors are required to sell 3  
tickets. Tickets can be picked up at the extension office. Exhibitors  
will be charged \$45 for not selling tickets.\*\*

## Take time to be heard, attend local conservation program meeting

When: Sept 14, 2016

Time: 9:00a.m. - 11:00a.m.

Location: Happy State Bank 100 N Main Stratford, TX

Stratford, Texas, Aug 10, 2016—The USDA Natural Resources  
Conservation Service (NRCS) in Sherman County and the  
Sherman County Soil and Water Conservation District cordially  
invite the public to attend their Fiscal Year 2017-Local Working  
Group (LWG) meeting Sept 14 2016, from 9a.m. to 11 a.m.

The purpose of this annual LWG meeting is to bring together  
conservation stakeholders to discuss conservation topics and  
issues, and to set local conservation priorities to help farmers,  
ranchers and private landowners conserve and manage the natural  
resources.

The meeting also updates attendees on recent conservation  
efforts and allows for an opportunity to collect public input to  
help guide future conservation activities. Through regular  
identification of conservation opportunities, effective Farm Bill  
investments can continue to benefit Sherman County. Farmers,  
ranchers, conservationists, and others interested in obtaining  
Federal technical and financial assistance to improve private lands  
are invited to participate.

For more information, please contact Bruce Meyer, district  
conservationist, at 806 396 5517 Ext-3 or visit the NRCS web site  
at <http://www.tx.nrcs.usda.gov/>.

## Library Card Sign-up Month

By Sandy Baskin - Librarian

September is Library Card Sign-up Month - a time when the American Library  
Association and libraries across the country remind parents that a library card is the  
most important school supply of all.

The observance was launched in 1987 to meet the challenge of then Secretary of  
Education William J. Bennett who said: "Let's have a national campaign ... every child  
should obtain a library card - and use it." Since then, thousands of public and school  
libraries join each fall in a national effort to ensure every child does just that.

Library cards are generally free to those living in the library's service area. In most  
cases, borrowing privileges are granted on the spot. Some libraries may require some  
form of identification, proof of residency or the signature of a guardian.

Today's libraries play an important role in the education and development of children.  
Studies show that children who are read to in the home and who use the library perform  
better in school and are more likely to continue to use the library as a source of lifetime  
learning.

Librarians are literacy experts. Libraries offer a variety of programs to stimulate an  
interest in reading and learning. Preschool story hours expose young children to the joy  
of reading, while homework centers provide computers and assistance to older children  
after school. Summer reading clubs keep children reading during school vacation and  
have been shown to be the most important factor in avoiding the decrease in reading  
skills that educators refer to as "summer learning loss."

Society is changing in the way it consumes information. Libraries are evolving with  
these changes in order to serve the public and to continue to fulfill their role in leveling  
the playing field for all who seek information and access to technologies.

Today's public libraries are thriving technology hubs that millions rely on as their first  
or only choice for Internet access and digital content. In addition to books, magazines,  
DVDs, computers, libraries provide access to e-books. Ninety percent of libraries offer  
access to e-books, an increase of 14 percent from 2012.

Often the library is the first point of contact in helping community members. From  
providing assistance to small business owners to assisting with access to e-government  
resources, libraries are changing lives through education.

Libraries are America's great information equalizers — the only place people of all  
ages and backgrounds can find and freely use such a diversity of resources, along with  
the expert guidance of librarians.

## Imagine That at The Imagination Station

By Gaynelle Riffe

"Whale of a Sale" Sept. 9 (Sneak a Peek) and Sept. 10

It is truly a Whale of a Sale. There are some especially nice items in silver, brass,  
crystal, decorator items, and furniture. What else... Holiday, children's wear (coats) and  
toys, linens (afghans), shoes (boots), household (bread maker), picture frames, outdoor  
etc.

All items not sold will be shared with other not for profit: Thrift Store, Amarillo  
Downtown Women's, Faith City, Martha's Home, Salvation Army and etc.

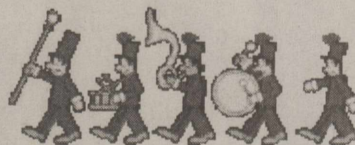
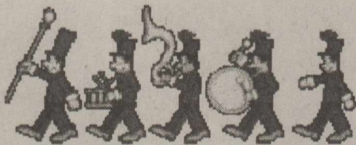
## Estate Sale

Sept 9 & 10 from

9am to 5pm

at 409 S Chestnut

Everything must go!



## Band Boosters Homecoming Enchilada Dinner

Friday, September 23, 2016

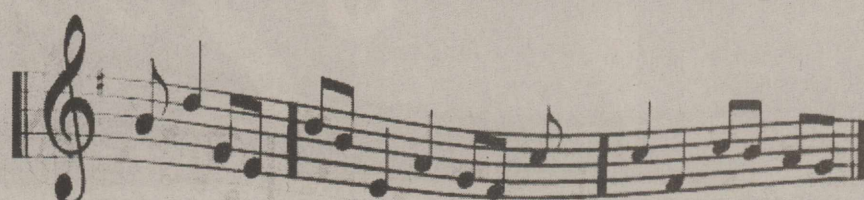
High School Cafeteria

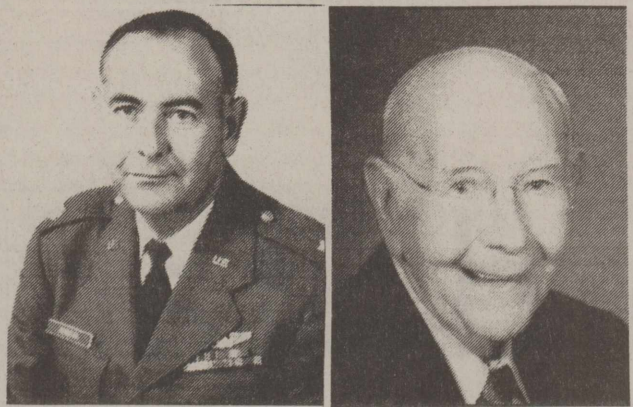
5:00-7:00 PM

Tickets \$8.00 each

Get your ticket from any Big Blue Band member

**GO BIG BLUE!!!**





**John C. Duncan –**  
April 4, 1929-August 28, 2016

John C. Duncan, 87, of Amarillo, died Sunday, Aug. 28, 2016.

Memorial services were held at 1:00 p.m., Tuesday, Aug. 30, 2016, in Central Church of Christ Chapel with Bob Crass and Tom Monroe officiating.

Private burial was in Memory Gardens Cemetery. Military rites were provided by DAV Chapter 26. Arrangements were by Boxwell Brothers Funeral Directors, 2800 Paramount Blvd.

John Duncan was born April 4, 1929, in Altus, Okla. He grew up in Turkey, TX, Des Moines, NM and Canyon, TX. He graduated from West Texas Normal High School in 1946. John attended West Texas State University and Abilene Christian College before going in the Air Force in 1951. He received his wings and was commissioned in 1952, as a second lieutenant. He flew the KC97 and KC135 in the Cold War. He retired from active military in May of 1963 and continued in the Air Force Reserves as the liaison for the Air Force Academy for the next 7 years. He retired from the Air Force as senior pilot with the rank of major. The family lived in West Palm Beach, FL, Tucson, AZ, Merced, CA, Bermuda and Rome, NY.

He moved to Amarillo in 1963. He began his insurance career with Southwestern Life Insurance and then became a general agent with Transamerica Life Companies. He became a member of Chartered Life Underwriters and served 3s past president of Amarillo Area Life Underwriters Association. He was involved in Amarillo Downtown Rotary Club, Optimist Club of Amarillo, where he served as president. He was also a member of Retired Officers Club.

He was an active member of Central Church of Christ. Earlier in his life he helped establish churches in Hamilton, Bermuda and Rome, NY. He was on the planning board for the inception of High Plains Children's Home.

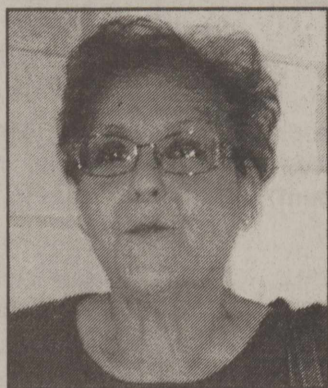
In March 10, 1953, Mr. Duncan married the love of his life, Janette Simmons in Clovis, New Mexico on a three-day pass. They immediately moved to West Palm Beach, Florida and started their adventures together. Together they raised four children. Last March they celebrated their 63rd wedding anniversary.

Special interests include TTU Lady Raider Basketball, Stratford Elks, family gatherings, activities with his grandchildren and nickel coffee.

He was preceded in death by his parents, James and Edna Duncan; two brothers, Hugh Duncan and Kenneth Duncan; a sister, June McEntire; and a grandson, Christopher Duncan.

Survivors include his wife, Janette Duncan, of Amarillo; two sons, Steve Duncan, of Amarillo and Paul Duncan and wife, Susan, of Eastland; two daughters, Lisa Ritchie and husband, Tim of Amarillo and Dana Buckles and husband, Scott of Stratford; 11 grandchildren, Jared Duncan, Missy Blakely and husband Chris, Mindy Thompson and husband Chaz, Ashley Thompson and husband Tylrr, Aaron Ritchie and wife Becky, Natalie Roberts and husband Dustin, Peter Ritchie and wife Kaytlin, Annie Richardson and husband Brandon, Carson Buckles, Haley Buckles and Hunter Buckles; 10 great-grandchildren, Caleb and Jackson Ritchie, Ritchie, Rachel and Ruby Roberts, Alexis Richardson, Reese Blakely, Fox Thompson, and Kamdyn and Peyton Thompson; two brothers, James Duncan and wife Lynn and Don Duncan and wife Diane; and three sisters, Carol Monroe and husband Tom, Jane Tarrab and Sharon Ratliff.

The family suggests memorials be made to High Plains Children's Home.



**Maria Dolores Zavala**  
April 28 1956-September 4, 2016

Maria Dolores Zavala, 60 of Stratford, died Sunday, September 4, 2016. A rosary service was held at 6:00 P.M. on Wednesday, September 7, 2016 at Boxwell Brothers Memorial Chapel, 500 N. Maddox. Funeral Mass will be held at 2:00 P.M. on Thursday, September 8, 2016 at St. Peter & Paul Catholic Church in Dumas. Burial will be private. Arrangements are by Boxwell Brothers Funeral Directors of Dumas, 500 N. Maddox.

Maria was born on April 28, 1956 in Big Spring, Texas to Ramon and Magdalena Jurado. She graduated from Stratford High School in 1975 and had worked as a CNA for many years.

She was preceded in death by her parents. She is survived by her husband, Vicente Zavala of Mexico; a daughter, Lisa Jurado of Stratford; two sons, Vicente Zavala III of Stratford and Steven Zavala of Dumas; a sister, Ramona Perez of Dumas; and eleven grandchildren.

Sign the online guestbook at [boxwellbrothers.com](http://boxwellbrothers.com)

**SCOT HALL ACTIVITIES**

Men's Pool-daily 1 p.m. M-F

Ladies Mexican Train Dominoes-  
Mondays 1:30 p.m.

Ladies Chair Exercises-M-W-F  
10:00 -10:30 a.m.

Ladies Yoga-Tuesdays 9:15-10:00 a.m.

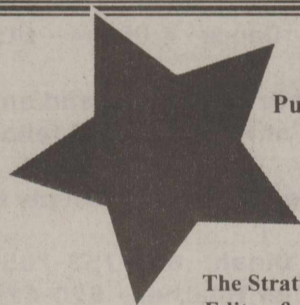
Monthly Luncheon-4<sup>th</sup> Thursday-12 noon  
(covered dish luncheon)

**Attention to all subscribers!!**

**Rate change**

The Stratford Star is no longer sending out notices when your paper is due. Check the label on the paper and see what month your subscription expires. **I will be putting "Stars" on the current month** If you have a Star on your label it means that your sub expires that month. If you are not sure the amount you owe if you live out of the area call 753-7373 and double check. Locally is \$33.00 and out of the area \$40.00. If you are paying for someone else's sub, you will be billed for that person. The Stratford Star, PO Box 8, Stratford, TX 79084

Thanks-Marty



The Stratford Star  
(USPS 523-108)

Published for over 100 years

805 Purnell

Stratford, TX 79084

Telephone: 806-366-5885

Fax: 806-366-5884

E-Mail: [stardm@xit.net](mailto:stardm@xit.net)

The Stratford Star is published weekly

Editor & Publisher Martha Robertson

Advertising & Photographer Shari Hudson

Subscription rates

\$33.00 per year in Sherman & Adjoining counties

\$40.00 per year all others

\$27.00 per (9 months) College rate

The Stratford Star-PO Box 8-Stratford, TX 79084

Periodicals postage paid at Stratford, TX

POSTMASTER: Send address changes to Stratford Star,

PO Box 8-Stratford, TX 79084

**No Friday Night**

**Football This Week**

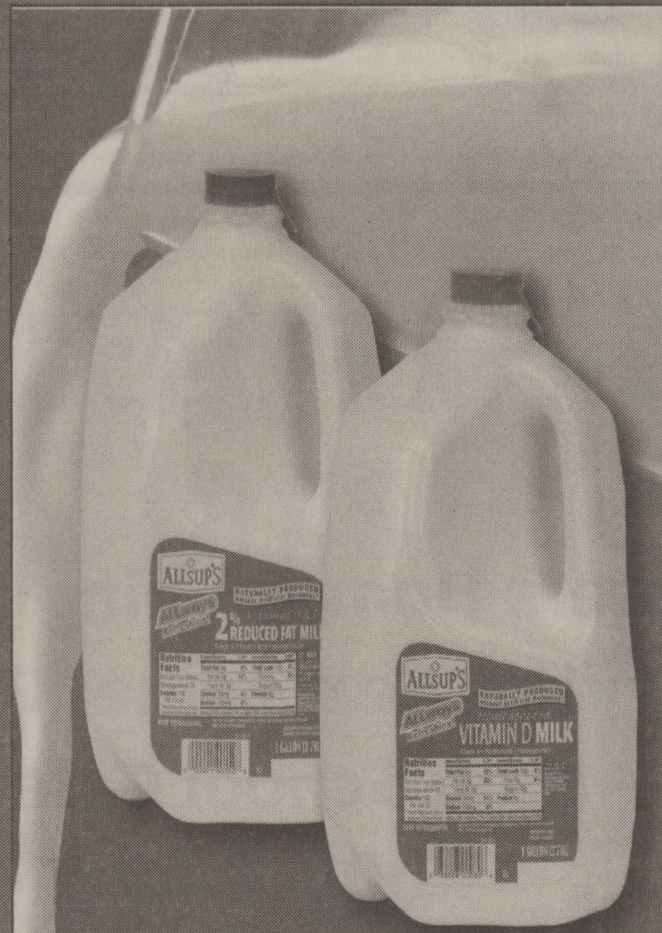
Prices Good Thru 10/01/16

**NEW FOR FALL**

Store No. 361  
10 South Maple  
Stratford, TX 79084  
806-396-1180

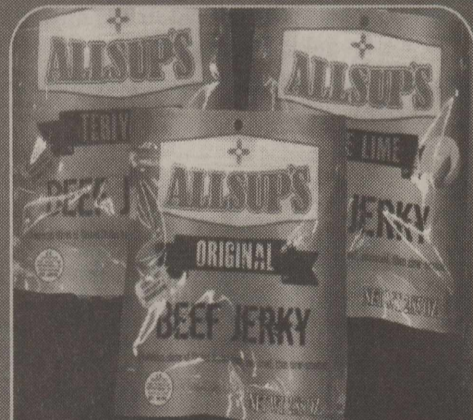


**HAVE YOU BEEN HATCHED?**



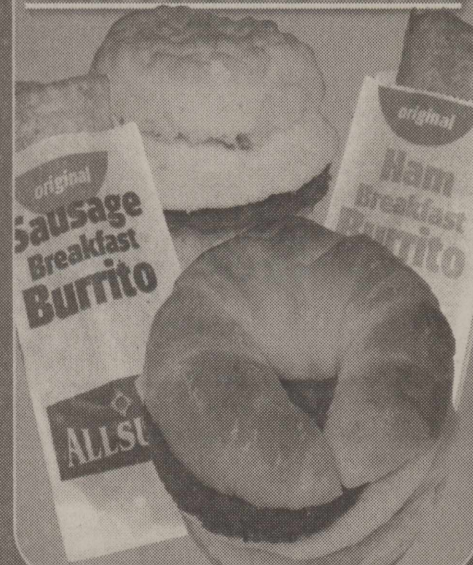
**Milk**  
GALLON  
SELECT VARIETIES  
**\$2.99**

**EXTRA SAVINGS**



Allsup's Jerky **\$5.49**  
2.85 OZ.

**ALLSUP'S BREAKFAST ANYTIME**



**Your Invited, To First Assembly of God!**

If you do not have a regular church home, then on September 11, 2016 you are invited to a special morning of Worship and Gods Word. We have been talking about this special day all summer and we are calling it "150 DAY". We are endervering to reach a goal of 150 in our morning worship service and you are invited to help reach that Goal. However its not about a number its about inviting you to come and worship the Lord with us. So set this day aside and come be with us. This special service will begin at 10:45 am and we would love to have you come and visit us.

Blessings to our friends in Stratford,  
Pastor Kevin Anderson

**Tales From No Man's Land Museum**

No Man's Land Museum in Goodwell is interested in every aspect of history of the Oklahoma Panhandle. Perhaps an unlikely subject is mining in the Oklahoma Panhandle. It was coal, however, that led to the creation of the town of Mineral City (later called Mineral) in Cimarron County.

Coal was discovered in the 1880's, and by 1886, two coal mines were operating in the western edge of present Cimarron County. A large two story stone structure was built near the mines by the Western Land and Cattle Company of Kingman, Kansas, and the settlement of Mineral City began. The post office was established in 1888, with Sebastian L. Baker being appointed postmaster. He took over the large building that housed not only the post office but also served as a hotel and store and provided a place for dances.

John Skelley became postmaster in 1898, after purchasing the building-from the Bakers. He and his wife continued to care for the mail and offered a large inventory of groceries and mercantile. A steady stream of local farmers and ranchers came seeking their mail as well as homesteaders in covered wagons going into New Mexico. Using hand-cut stone, a school was built for the Skelley children and their neighbors. By 1908, the family was living near the vacant old rock building, when a tornado hit during the night. The Skelley home was damaged, but the large store building was destroyed and part of the school was destroyed.

By 1911, the hopes for a prosperous mining operation were also destroyed when it was found that the coal was too soft and wouldn't burn efficiently. In February, 1911, the Mineral Post Office was discontinued and the mail was sent to Wheelless. The Skelley family continued to run the store for several more years and operated their ranch.

The Skelley family would have probably said that it was also a place of drama when the post office was robbed. In a copy of a 1903 Roswell Daily Record, a news item reported that two men who had been previously apprehended had been tried for the robbery at Mineral City and sentenced to four years. A news item in a 1904 Deming, New Mexico newspaper, reported on a murderer who had attended a dance at Mineral City. When he came to a second dance, he was arrested and taken back to New Mexico for trial.

In a 1967 interview, William May, Cimarron County resident, stated that coal mining and the Rock Island Railroad led to the establishment of Old Mineral in 1885. He said that a railroad was planned to run from Liberal to the coal deposits and on to Tucumcari. Another route was sought when coal mining was abandoned. May stated, "In a mere fifteen years, or so, a city was thought of, was born, lived and died."

The archives of the No Man's Land Museum has the 1967 interview of William May, an envelope postmarked Mineral, Oklahoma, five checks written by John Skelley of Mineral, Oklahoma, and a photo of the rock house at Mineral, Oklahoma. The Museum in Goodwell is open Tuesday-Friday from 10:00 a.m.-4:00 p.m. Everyone is invited to come to the Museum and celebrate the counties of Cimarron, Texas and Beaver.

**NOTICE OF 2016 TAX YEAR  
PROPOSED PROPERTY TAX RATE FOR**

A tax rate of \$ .910000 per \$100 valuation has been proposed for adoption by the governing body of CITY OF STRATFORD. This rate exceeds the lower of the effective or rollback tax rate, and state law requires that two public hearings be held by the governing body before adopting the proposed tax rate.

The governing body of CITY OF STRATFORD proposes to use revenue attributable to the tax rate increase for the purpose of OPERATIONS.

PROPOSED TAX RATE	\$ <u>.910000</u> per \$100
PRECEDING YEAR'S TAX RATE	\$ <u>.890000</u> per \$100
EFFECTIVE TAX RATE	\$ <u>.851368</u> per \$100
ROLLBACK TAX RATE	\$ <u>.917405</u> per \$100

The effective tax rate is the total tax rate needed to raise the same amount of property tax revenue for CITY OF STRATFORD from the same properties in both the 2015 tax year and the 2016 tax year.

The rollback tax rate is the highest tax rate that CITY OF STRATFORD may adopt before voters are entitled to petition for an election to limit the rate that may be approved to the rollback rate.

YOUR TAXES OWED UNDER ANY OF THE ABOVE RATES CAN BE CALCULATED AS FOLLOWS:

$$\text{property tax amount} = (\text{rate}) \times (\text{taxable value of your property}) / 100$$

For assistance or detailed information about tax calculations, please contact:

TERESA EDMOND  
CITY OF STRATFORD tax assessor-collector  
PO BOX 239, 402 N. 3RD STREET, STRATFORD, TX 79084  
806-366-5566  
shercad@xit.net

You are urged to attend and express your views at the following public hearings on the proposed tax rate:

First Hearing: 09-08-16 at 6:00 pm at CITY HALL COUNCIL CHAMBERS  
Second Hearing: 09-14-16 at 6:00 pm at CITY HALL COUNCIL CHAMBERS

**A Medical Fund has  
been set up at Happy  
State Bank for Zackary  
Eloy Garcia, son of Tina  
Garcia . Zackary is  
related to the Garzas  
here in Stratford**

**The Churches of Stratford  
Welcome You**

**First Assembly of God**  
Kevin Anderson, Pastor  
921 Fulton  
Sunday School 9:45 a.m.  
Morning Worship 10:45 a.m.  
Evening Worship 6:00 p.m.  
Wed. Bible Study 6:30 p.m.

**First Christian Church**  
5<sup>th</sup> & Main  
Sunday School 9:45 a.m. (nursery)  
Morning Worship 10:45 a.m. (nursery)  
No Sunday evening Worship Service

**First United Methodist**  
Rev. Steve Ulrey 396-2178  
520 N. Main  
Sunday School 9:20 a.m.  
Morning Worship 10:30 a.m.  
Junior & Senior High UMY 6:00 p.m.

**St. Joseph Catholic Church**  
6<sup>th</sup> & Pearl  
Rectory 366-5687  
Sunday morning 8:00 a.m. (English) 9:30 (Spanish)  
Sacrament of Reconciliation Before Mass or t.  
Christian Formation Classes K-6 Grade Wed. Afternoon  
Jr. & Sr. High. Wed. 6:30-8:30 p.m.

**First Baptist Church**  
Pastor Ron Whitt  
702 N. 3<sup>rd</sup>  
Sun.-Coffee 8:30 a.m.  
Sunday School 9:30 a.m.  
Worship Service 10:30 a.m.  
Wed. Children 6 p.m. youth 7 p.m.

**Heritage Bible Baptist**  
Pastor Mark Looney  
302 S. Main  
For more info-call 396-2212  
Morning worship 11:00 a.m.  
Evening Service 6 p.m.  
Thurs. Service 7:00 p.m.



**La Mision Bautista**  
Mision Bautista  
401 S. Wall 396-5376  
Domingo (Sunday)  
Estuela Dominical 9:45 a.m.  
Miercoles (Wednesday)  
Servicio De Adoration 11 a.m. Estudio  
Biblico & Servicio De Oraction 6 p.m.  
Servicio De Adoration 6 p.m. se Cuidamos  
Susuinos Durante El Servicio

**Eben-Ezer Templo Hispano**  
Asambleas De Dios  
Pastor: Juan M. Valenzuela  
806-366-3071  
205 N. Poplar-Hwy 287 268-2188  
Escuela Dominical 10 a.m. - 12 noon  
Servicio De Adoracion 5 p.m.-7 p.m.  
Miercoles: Servicio De Adoracion 6-8 p.m.

**Kerrick Community**  
Pastor Roy Harris  
Community Building  
10 a.m. Worship Service

**Church of Christ**  
Raymond Glendinning  
N. 3<sup>rd</sup> & Chestnut  
Sunday School 9:30 a.m.  
Morning Worship 10:30 a.m.  
Evening Worship 5:00 p.m.  
Wednesday Bible Study 7:00 p.m.

This page sponsored by  
Stratford Grain 396-5541  
Lautz 769-5541  
Stratford Star  
366-5885

## Selective Service News & Notes

### Key Facts About Selective Service Registration

(NAPS)—Young men in the United States often find turning 18 can bring a number of opportunities. It also brings an important obligation—registering with Selective Service.

Registration is mandated by the federal government and is required in order to be eligible for college loans, federal jobs and more.

To help make the process more understandable, here are some key questions and answers.

**Q. Who must register with the Selective Service and when must they register?**

A. All young men, including immigrants, regardless of their status, are required to register within 30 days of their 18th birthday. Immigrants who arrive after their 18th birthday must register within 30 days of their arrival if younger than 26.

**Q. In addition to being in compliance with the law, are there benefits to registering?**

A. Proof of registration is required when applying for federal college loans and grants, including Federal Pell Grants, Federal Supplemental Educational Opportunity Grants (FSEOG), Direct Stafford Loans/PLUS Loans, National Direct Student Loans, and College Work-Study.

Registration is also required for federal jobs, and the U.S. Citizenship and Immigration Services (USCIS) makes registration with Selective Service a condition for U.S. citizenship if the man first arrived in the U.S. before his 26th birthday.

It is also necessary for jobs with many state and municipal governments as well as government contractors. Some states even require it when applying for a driver's license.



All young men, including immigrants, are required to register with Selective Service within 30 days of their 18th birthday.

**Q. Can failing to register bring penalties?**

A. Yes. A man who fails to register may, if prosecuted and convicted, face a fine of up to \$250,000 and/or a prison term of up to five years.

**Q. Is registration difficult or complicated?**

A. Over the past few years, registration has become increasingly convenient.

Many find the easiest and fastest way to register is to register online at [www.sss.gov](http://www.sss.gov). However, a valid Social Security Number is required for online registration. Those who do not have a Social Security Number must register at a U.S. post office.

Selective Service "mail-back" registration forms are available at any U.S. post office. Those living overseas may register at any U.S. Embassy or consular office.

It is also possible to register when applying for Federal Student Financial Aid (FAFSA form). Simply check "Register Me" on Box #22 of the form. In addition, some high schools have a staff member or teacher appointed as a Selective Service Registrar who can assist with the registration process.

To learn more, visit [www.sss.gov](http://www.sss.gov).

### Strawberries Join The Fight Against Diabetes

(NAPS)—Here's food for thought: Two new studies, one from Brigham and Women's Hospital/Harvard Medical School, and the other from Illinois Institute of Technology, discovered that eating strawberries regularly may reduce risk factors for diabetes, one of the most significant chronic diseases affecting Americans today. The research uncovered a direct correlation between frequency of strawberry intake and reduced risk factors for diabetes.



It's the berries: Several servings of strawberries each week may reduce risk factors for diabetes.

The first study, "Strawberry polyphenols and insulin resistance: a dose-response study in obese individuals with insulin resistance," at the FASEB Experimental Biology conference by Britt Burton-Freeman, Ph.D., MS, Director, Center for Nutrition Research, Institute for Food Safety and Health at Illinois Institute of Technology, found that when obese adults with insulin resistance, a condition that dramatically increases person's risk for type 2 diabetes and pre-diabetes, consumed beverages containing different amounts of whole strawberry powder prepared in a beverage and drank with a meal, peak glucose was blunted with less insulin in individuals who consumed the highest amounts tested, about 3 to 4 servings of strawberries with their meal.

Meanwhile, at the 2015 American Diabetes Association's 75th Scientific Sessions, Dr. Howard Sesso, ScD, MPH of Brigham and Women's Hospital/Harvard Medical School presented the study Strawberry intake, hemoglobin A1c, and risk of developing diabetes in women, which examined data from the Women's Health Study, which included over 27,000 nondiabetic middle-aged women. At the start of the study, the women reported how often they ate strawberries. More than a decade later, over 2,900 women developed diabetes. Compared to women who rarely or never ate strawberries, those who had at least 2 servings of strawberries each week had a significant 19% lower risk of developing diabetes. Dr. Sesso, who led the Harvard study, said, "We found that eating

even a modest amount of strawberries each week was associated with a decreased risk of developing diabetes in middle-aged and older women."

Further, the Harvard researchers looked at the women's hemoglobin A1c, a marker for high blood sugar. Women who ate more strawberries may be less likely to have an elevated hemoglobin A1c exceeding 6 percent.

Collectively, the data presented from these researchers have important implications for diabetes disease risk reduction efforts through diet.

**Tips On Enjoying Strawberries**

A serving of strawberries is 1 cup, or about eight berries.

- Select strawberries that are bright red in color, and that have a natural shine and fresh-looking, green caps.

- Refrigerate and keep them dry until just before use.

- Leave the green caps on and wash with a gentle spray of cool water.

- Gently blot them dry and remove the green caps with a light twist or the point of a knife.

Here are a few fresh ideas for enjoying strawberries:

- Toss sliced strawberries over a green salad and drizzle with balsamic vinaigrette.

- Top your morning cereal with sliced strawberries.

- Dip fresh strawberries in dark chocolate.

- Freeze whole strawberries and use them to cool your cocktails.

**Learn More**

For further information, including creative recipes, visit [www.californiastrawberries.com](http://www.californiastrawberries.com).

## Business Directory

PO Box 510  
Stratford, TX 79084  
Phone: 806-366-5557

### Duncan Chevrolet

[www.duncanchevrolet.com](http://www.duncanchevrolet.com)  
E-mail: [duncanch@xit.net](mailto:duncanch@xit.net)  
AN AMERICAN REVOLUTION

### Stratford Auto Electric

806-366-5941  
[saeroymc@gmail.com](mailto:saeroymc@gmail.com)  
Altronics, starters, Alternators,  
ACmotors  
New & Rebuilt  
Full Line Available

### Stratford Grain Company

Stratford 396-5541  
Lautz 769-4485

4 North Main



### A & I Parts Center

Automotive and Industrial Parts  
201 N. 2<sup>nd</sup> Street-  
Stratford, TX 79084

Tel: (806) 366-5592  
\*Toll-free 800-624-5494  
Fax: (806) 366-2583

### Structured Touch Massage Therapy Clinic

Cece Yelek, CMT, LMT  
401 N. Third #11. or 7199 Co. Rd P  
Stratford, TX - Sunray, TX  
Office 806-366-ahhh (2444)  
Cell 806-290-3655  
Open 9-5 by Appointment Only

### Shari Hudson Photography

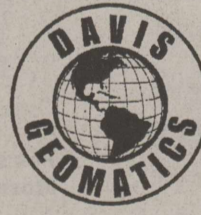
PO Box 243  
Stratford, TX 79084  
Cell PH: 806-753-7798  
Email: [ghud@xit.net](mailto:ghud@xit.net)  
[www.sharihudsonphotography.com](http://www.sharihudsonphotography.com)  
Seniors-Children-Families  
Wedding-Special events  
Engagements



### Vincent Insurance Agency

Sabrina Melton

PO Box 739 Office: 806-396-2456  
Stratford, TX 79084 Home: 396-2512  
Email: [vincins@xit.net](mailto:vincins@xit.net)



DAVIS GEOMATICS, LLC  
PROFESSIONAL GEOMATIC CONSULTANTS

J.D. Davis

R.P.L.S., L.S.L.S., CFedS  
Licensed State Land Surveyor  
Certified Federal Surveyor  
COLORADO • KANSAS • OKLAHOMA • TEXAS

Office: 806-374-4334 • Cell: 806-336-0564 • Fax: 806-359-0686  
Toll Free: 866-570-0169 • [www.geopro.us](http://www.geopro.us) • e-mail: [jdavis@geopro.us](mailto:jdavis@geopro.us)  
P.O. Box 4061 • Amarillo, Texas 79116-4061  
Firm No. 100828-00

### Albert's Manor House Restaurant



Daily Specials  
Friday Night  
Fish Buffet  
Sunday Buffet  
Breakfast All Day

Open 6 a.m. - 9 p.m. Everyday  
TAKE-OUTS WELCOME  
1817 Dumas Ave Dumas, TX  
935-5507



Clements Insurance  
Home • Auto • Life  
Farm & Ranch • Commercial

Gary Clements

621 Peters Avenue  
Dalhart, TX 79022

205 N Main  
Stratford, TX 79084

Cell: 806 346-5217

[gcllements@farmersagent.com](mailto:gcllements@farmersagent.com)

# What is 4-H?

Texas 4-H is a club for kids and teens ages 5-18, and it's BIG! It's the largest youth development program in Texas with more than 550,000 youth each year. No matter where you live or what you like to do, Texas 4-H has something that lets you be a better you! You may think 4-H is only for your friends with animals, but it's so much more! You can do activities like shooting sports, food science, healthy living, robotics, fashion, and photography. Texas 4-H is part of Texas A&M AgriLife Extension Service and the Texas A&M System. Founded in 1908, 4-H is the largest youth development program in Texas, reaching more than 550,000 youth each year.

In 4-H, the activities are organized by topics and called 'projects.' All 4-H members must be enrolled in at least one project. When you choose a project, you will learn everything there is to know about that topic. You will participate in various hands-on activities, learn new skills, do community service, or even make speeches about your project.

**How to choose your 4-H project:**

Select a project you like.

Select a project that can be completed.

Consider the money and time it will take. Can parents/guardians help?

Consider the space and equipment that you have at home.

A 4-H project should be fun, serve a purpose, and be worth the effort.

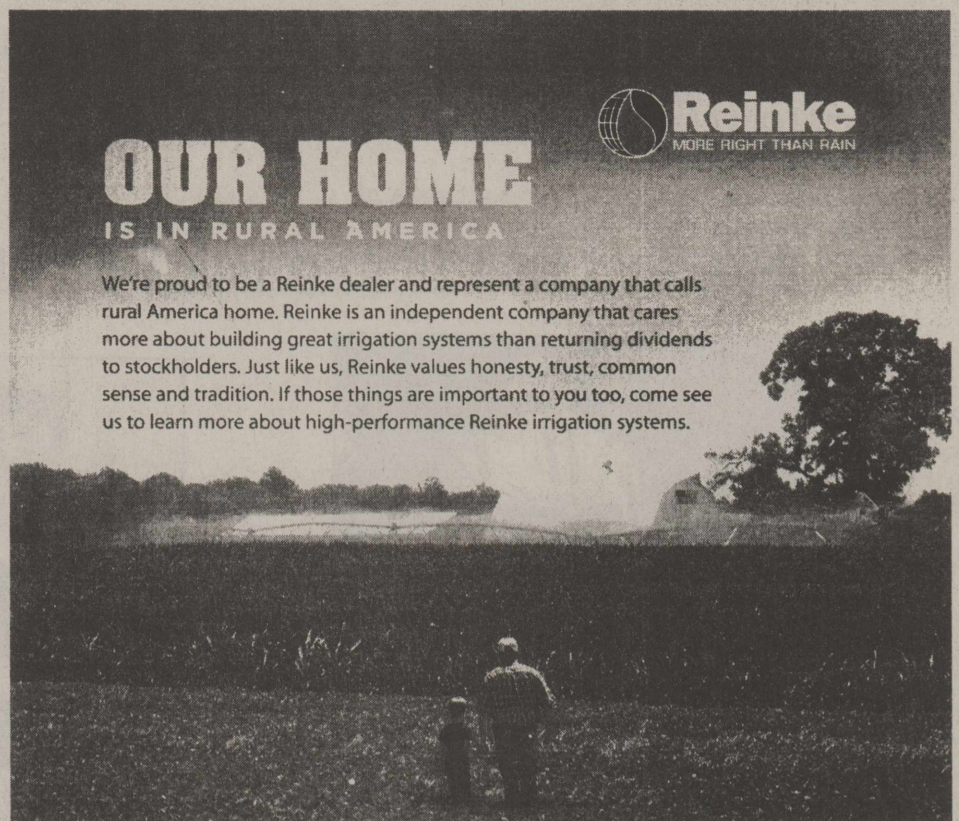
Some projects are for a short period of time and some last all year.

**How to join 4-H in Sherman County? Sherman County will be holding a Project Showcase and Sign up Night on Tuesday, September 13 at the County Barn from 6:30-7:30 p.m. 4-H members**

will be showing and telling about some of their projects and answering questions that families may have. Anyone interested is welcome and encouraged to attend. If you don't have someone of 4-H age but would like to see what is going on in 4-H today you are welcome to come as well.

Texas 4-H is for kids of almost any age - grades K-2 can be in Clover Kids. From 3rd-12th grades, you can be in 4-H.

*The members of Texas A&M AgriLife will provide equal opportunities in programs and activities, education, and employment to all persons regardless of race, color, sex, religion, national origin, age, disability, genetic information, veteran status, sexual orientation or gender identity and will strive to achieve full and equal employment opportunity throughout Texas A&M AgriLife.*



## OUR HOME IS IN RURAL AMERICA



We're proud to be a Reinke dealer and represent a company that calls rural America home. Reinke is an independent company that cares more about building great irrigation systems than returning dividends to stockholders. Just like us, Reinke values honesty, trust, common sense and tradition. If those things are important to you too, come see us to learn more about high-performance Reinke irrigation systems.

**Texas Electric Co.**

301 North Poplar  
 PO Box 1123  
 Stratford, Texas 79084

[www.reinke.com](http://www.reinke.com)

806-396-2300 Office  
 806-679-9007 Chuck's Cell

**SEPTEMBER IS CANCER AWARENESS MONTH AT COFFEE MEMORIAL!**

*You may not realize it but every day, cancer patients need you! They depend on blood transfusions to help them regain their strength, fight infections and recover from cancer treatment. By donating, you can help patients fight against cancer! Just one hour of your time and one unit of your blood could be the reason someone lives. That is a gift worth giving!*



**PHOTO ID or DONOR ID required.**  
 Must be at least 17 years old, 16 years old with written parental consent. For appointments, call 331-8800 or visit [donate.thegiftoflife.org](http://donate.thegiftoflife.org)  
 7500 Wallace Blvd., Amarillo, 79124  
[www.thegiftoflife.org](http://www.thegiftoflife.org)

**Join Us...**

**Stratford Community Blood Drive**

**Thursday, September 15, 2016**

**3:00pm-7:00pm**

**Blood Drive Location**

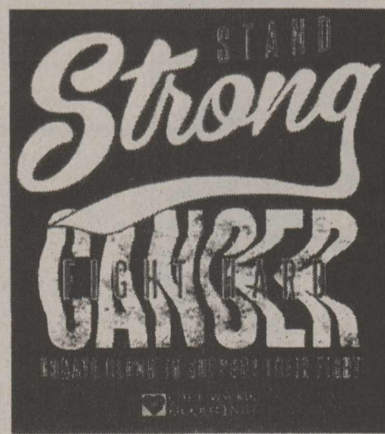
**5th and Maple**

**County Barn**

**Bloodmobile**

*(Include any additional incentives other than the t-shirt HERE)*

Every donor who presents to donate will receive this awesome t-shirt and the joy in knowing you helped support their fight!

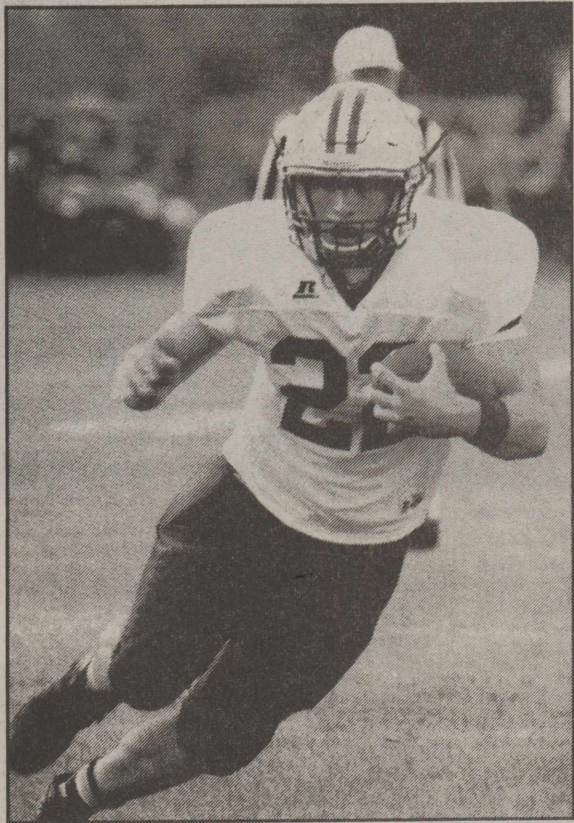


????????????????

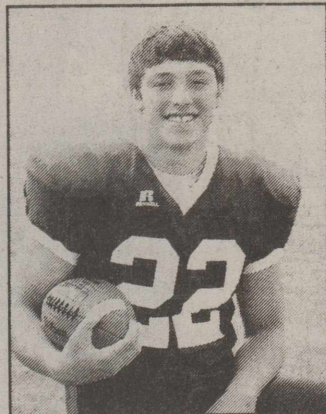
**Watch for changes coming in the next few weeks and months to The Stratford Star**

# Football- Stratford Elk Style

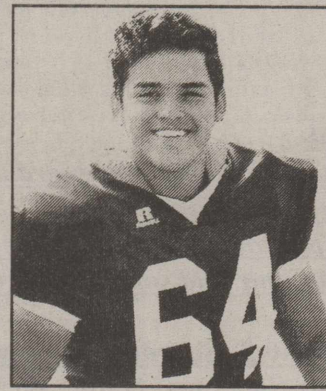
**Stratford Elks 56 Guymon Tigers 10** Players of the Week



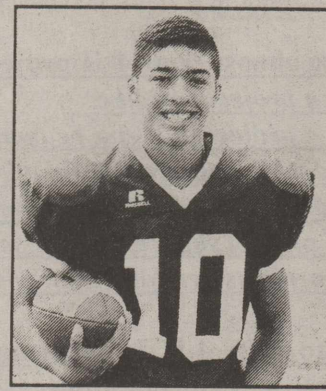
Stratford Elk #22 Gage Brooks scores for the Elks in their 56-10 win over Guymon.



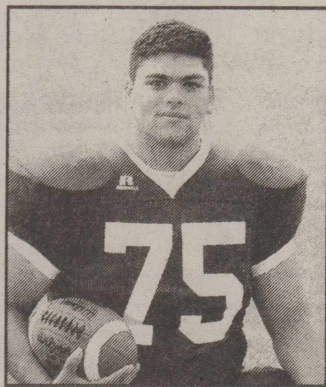
**Offensive Back**  
**Gage Brooks**



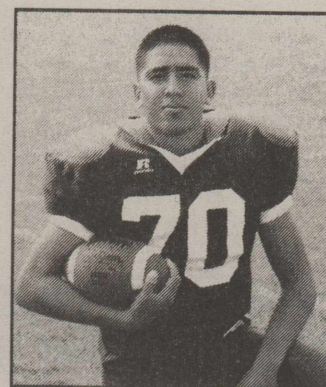
**Offensive Line**  
**Ruben Gonzalez**



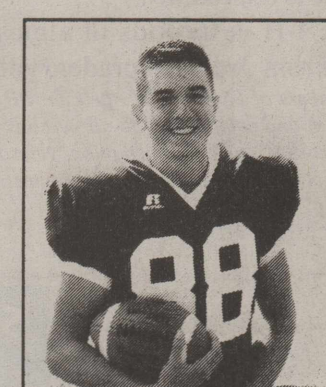
**Defensive Back**  
**Sergio Guerrero**



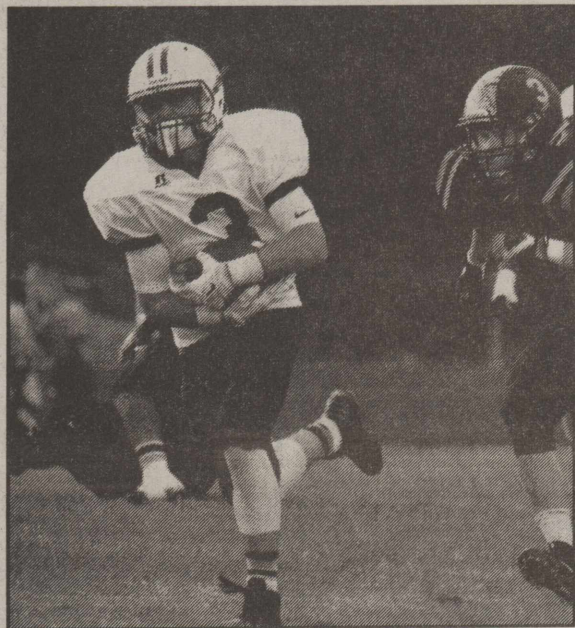
**Defensive Line**  
**Kobi Garza**



**Defensive Line**  
**Angel Guerra**



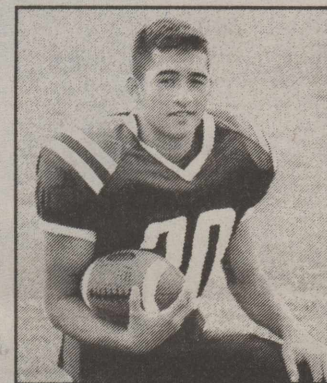
**Special Teams**  
**Luis Camillo**



Shay Hess #3 breaks free from Guymon defender in the Elks win on Friday, September 1, 2016.



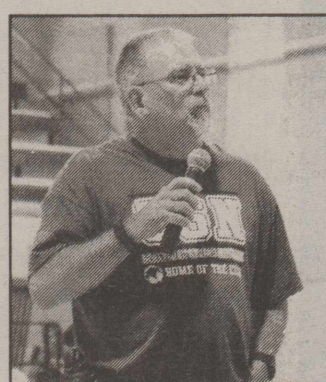
Stratford Elk quarterback #5 Kade McBryde breaks free from Guymon defender in the Elks win over Guymon on Friday, September 2, 2016.



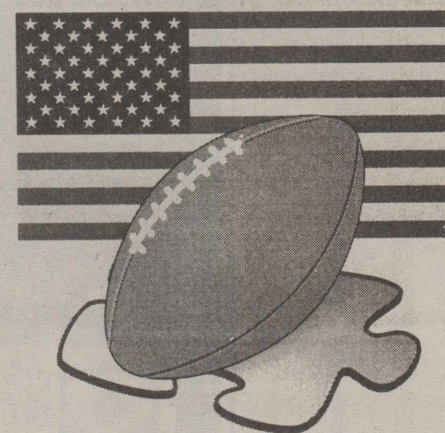
**Scout Team**  
**Andy Gutierrez**



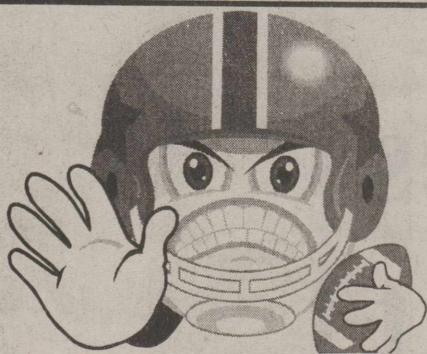
Stratford Elk #13 Pedro Ortega catches a pass in the end zone for an Elk touchdown in the Elks win over Guymon.



Jimmy Lanning gave the pep talk on Friday, September 2, 2016.



Stratford Elks beat the Guymon Tigers by a score of 56-10. Elks rushed for 377 yards. Running back Gage Brooks finished with touchdowns runs of 2, 3 and 18 yards. Gage Brooks made 126 yards on 16 carries. Shay Hess also had 113 Rushing yards. Elks are now 2-0  
 Congrats to the boys



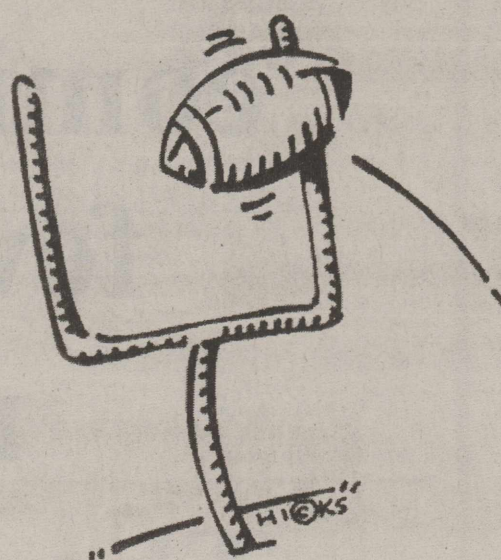
**Challenge**  
 Roger Allen Class of 1981  
 Dumas vs Lubbock High  
 Amarillo High vs Pala Duro  
 Happy vs Valley  
 Muleshoe vs Brownfield  
 West Texas vs Claude  
 Penn St. vs Pittsburg  
 Arizona St. vs Texas Tech  
 SM vs Baylor  
 Wake Forest vs Duke  
 TCU vs Arkansas  
 Tampa Bay vs Atlanta  
 Chicago vs Houston  
 Oakland vs New Orleans  
 Green Bay vs Jacksonville  
 Cincinnati vs New York Jets  
 Tie Breaker New York Giants-24 vs Dallas Cowboys 31

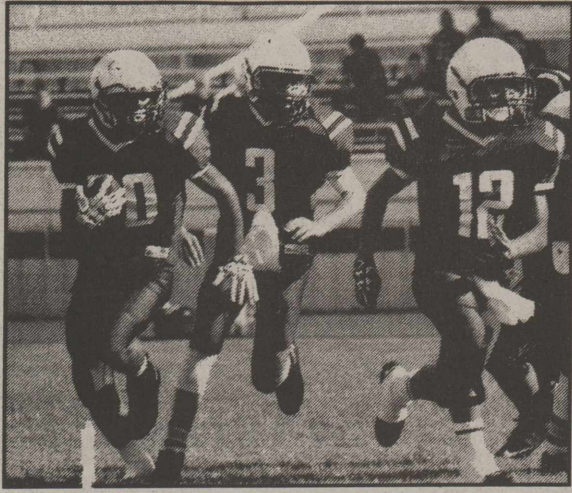
Kathy Riffe won Last week's challenge

## Challenge

Marcos Garza Class of 2012  
 Dumas vs Lubbock High  
 Amarillo High vs Pala Duro  
 Happy vs Valley  
 Muleshoe vs Brownfield  
 West Texas vs Claude  
 Penn St vs Pittsburg  
 Arizona St. vs Texas Tech  
 SMU vs Baylor  
 Wake Forest vs Duke  
 TCU vs Arkansas  
 Tampa Bay vs Atlanta  
 Chicago vs Houston  
 Oakland vs New Orleans  
 Green Bay vs Jacksonville  
 Cincinnati vs New York Jets  
 Tie Breaker  
 New York Giants 17 vs Dallas Cowboys 27

I ♥ Football

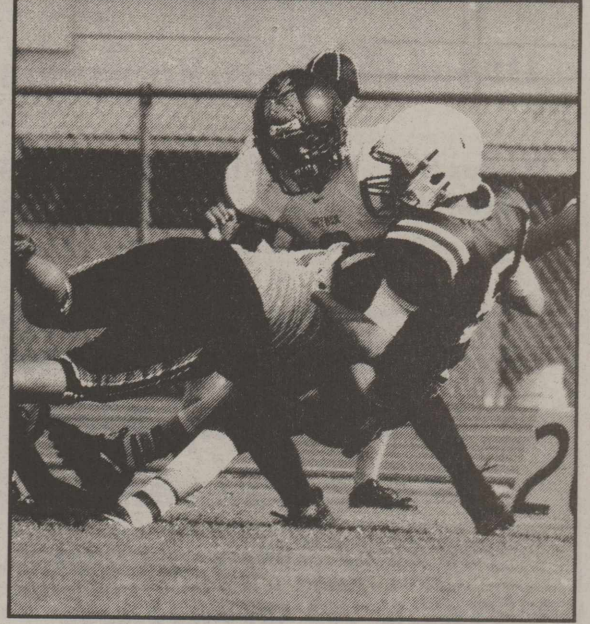




J.V. Elk #20 Andy Gutierrez racks up some yards on the carry while quarterback Ty McBryde #3 and #12 Abraham Villegas prepare to block.



J.V. Elk #11 Iuden Romero comes down with the catch in the Elks win over Guymon on Thursday, September 1, 2016.



J.V. Elk #5 Walker McBryde comes down with the catch in the Elks win over Guymon, OK on Thursday, September 1, 2016.



### 2016 Stratford Elk Composite Football Schedule

#### Varsity

Aug. 13	Dalhart (Scrimmage)	H	9:00am
Aug. 19	Perryton/Childress (Scrimmage)	Perryton	4:00
Aug. 26	River Road	H	7:00
Sept. 2	Guymon	T	7:00
Sept. 9	OPEN		
Sept. 16	Canadian	T	7:30
Sept. 23	Littlefield (Homecoming)	H	7:00
Sept. 30	Borger	T	7:00
Oct. 7	Sunray*	H	7:00
Oct. 14	Panhandle*	H	7:00
Oct. 21	Sanford-Fritch*	T	7:00
Oct. 28	West Texas*	H	7:00
Nov. 4	Boys Ranch*	T	7:00

\* district games

*Played  
Played  
Played  
Played*

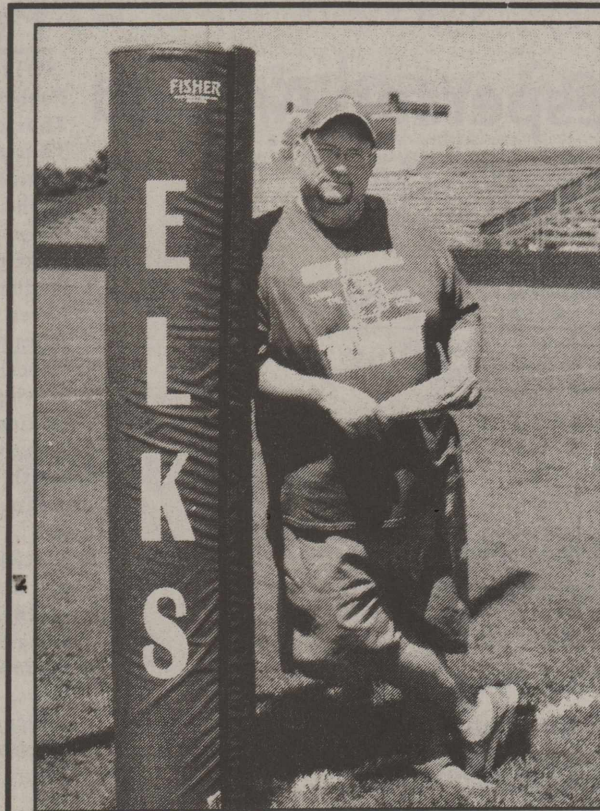
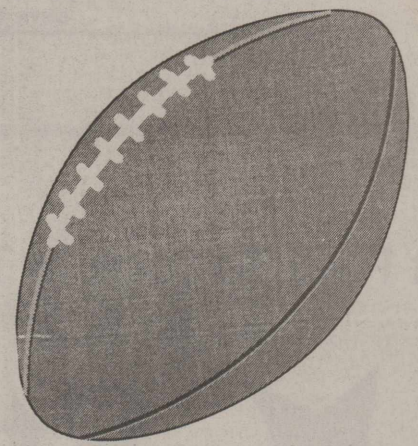
#### JV

Aug. 13	Dalhart (scrimmage)	H	9:00am
Aug. 19	Perryton/Childress (scrimmage)	Perryton	4:00
Aug. 25	River Road	T	6:30
Sept. 1	Guymon	H	5:00
Sept. 8	OPEN		
Sept. 15	Sunray	H	7:30
Sept. 22	Littlefield	Vega HS	7:30
Sept. 29	Borger	H	5:00
Oct. 6	Sunray	T	7:30
Oct. 13	Panhandle	T	7:30
Oct. 20	Sanford-Fritch	H	7:30
Oct. 27	West Texas	T	7:30
Nov. 3	Boys Ranch	H	7:30

*Played  
Played  
Played  
Played*

#### 7<sup>th</sup> and 8<sup>th</sup>

Sept. 8	Panhandle	H	5:00/6:00
Sept. 15	Sunray	H	5:00/6:00
Sept. 22	Littlefield	Vega HS	5:00/6:00
Sept. 29	Sanford-Fritch	T	5:00/6:00
Oct. 6	Sunray	T	5:00/6:00
Oct. 13	Panhandle	T	5:00/6:00
Oct. 20	Sanford-Fritch	H	5:00/6:00
Oct. 27	West Texas	T	5:00/6:00
Nov. 3	Boys Ranch	H	5:00/6:00



### Time Out With Rog!

Friday night Stratford went sweeping down the Plains. Y'all get it like the Oklahoma Song. Stratford beat the Guymon Tigers 56-10 in a stadium that was built in a hole. The Stratford Elks played a little slow in the first half but came out like greased lightning. There must have been a good talking at halftime! We came out with vengeance and a purpose. So enough of Oklahoma football because apparently all the cell towers are on the first down markers. Because we moved the chains so much nobody could get a cell phone signal. This week we don't play nobody because nobody wants to play us!!!! I bet the Guymon fans were saying "Can they go home now?" in the middle of the 4<sup>th</sup> quarter. So great game Stratford Elks, and the army of Stratford Fans was enormous especially on a holiday weekend in Oklahoma. This reporter did some on field reporting with our head football coach, I was trying to get a quote but stone face Lovern said "Go Elks". He is the Bill Belichick of High School football. So let's all rest up, heal up and get ready for THEM!!!! Let's pray for all who are sick and our National Leaders. Once an Elk always an Elk!

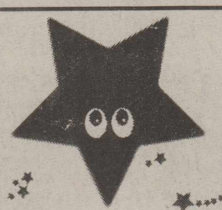
Roger Malon Allen  
Class of 1981

P.S. People from even Germany want to come play football for Stratford!!!!


**THE STRATFORD STAR**  
**Duane & Marty Robertson**  
PO Box 8 Office: 806-366-5885  
Stratford, TX 79084 Fax: 366-5884  
e-mail: stardm@xit.net


**A Medical Fund has been set up for Shelly Lawrence At the First State Bank of Stratford.**


**Deadline for The Stratford Star**  
Deadline for Stratford Star items. Photos by Sundays at 4 p.m. Letters to Editor 9 a.m. on Mondays (typed) and all other articles and ads at 10 a.m. on Mondays. (PLEASE) Thank you


**Stratford**   
**Appreciates your Patronage**

**STRATFORD YARD SIGN ORDER FORM**

 HOME OF AN ELK  
**JOHN SMITH**  18" X 24" COROPLAST Basic no sport icon "ELK" sign \$40

 HOME OF THE BIG BLUE BAND  
**JOHN SMITH**  18" X 24" COROPLAST Basic no icon "BIG BLUE BAND" sign \$40

 HOME OF A LADY ELK  
**JANE SMITH**  18" X 24" Basic no sport icon "LADY ELK" sign \$40

 HOME OF AN ELK FAN  18" X 24" Basic "ELK FAN" sign \$40

PLEASE CHECK MARK BESIDE THE SIGN YOU WISH TO ORDER, AS WELL AS ANY ADDITIONAL SPORTS ICONS.

SPORT ICONS ARE AN ADDITIONAL \$5 EACH:  \$5 BASKETBALL  \$5 FOOTBALL  \$5 TRACK  \$5 XC  \$5 GOLF

NAME (TO BE PLACED ON SIGN): \_\_\_\_\_

PHONE NUMBER: \_\_\_\_\_

EMAIL: \_\_\_\_\_

ADDRESS: \_\_\_\_\_

ORDERS ARE DUE MONDAY SEPT. 12 BY 4:00 PM TO THE GIRLS COACHES OFFICE.

**Stratford Hospital District**  
"Proudly serving the medical needs of Stratford and Sherman County"  
Stratford Family Medical Clinic  
**Stratford Family Medical Clinic**  
Mon. - Thurs 8 a.m. - 5 p.m. Fri, 8 a.m. - 3 p.m.  
396-5583 Tommy Brian, ANP & Krista Brown ANP  
**Elk Pharmacy**  
Mon.-Fri. 9 a.m. - 5:30 PM  
"Check our Competitive pricing"  
"Compounding Available"  
366-5505 Shelly Worley, PharmD, RPH  
**Coldwater Manor Nursing Facility**  
396-5568 Mark Moore, LNFA  
**Stratford EMS**  
9-1-1 or 396-2844 Jimmy Lanning, Director  
The Stratford Hospital District operates on a non-discriminatory basis, giving equal treatment and access to services without regard to sex, race, religion, age or ethnicity.

**Mitchell Theaters**  
Northridge 8  
Guymon, OK  
[www.northridge8.com](http://www.northridge8.com)  
580-338-3281  
Southgate 6  
Liberal, Kansas  
[www.southgate6.com](http://www.southgate6.com)  
620-624-5573  
Garden City, Kansas  
[www.sequoyah8.com](http://www.sequoyah8.com)  
620-275-2760

It Pays To Look In The

 **Star Classifieds**

Phone 366-5885

...The Best Salesperson Around

**Notice of Public Sale**

NOTICE of Public Sale - Published in the Stratford Star Thursday September 1, 2016 and Thursday September 8, 2016. Notice is hereby given that a public auction will be held by competitive bid at 11:00 a.m. On September 9, 2016, to satisfy landlord's lien on the property stored at Stratford Rentals, LLC Storage Unit #6 at 102 S. Main Street, Stratford, Texas 79084. No viewing of items prior to the auction. Items will be sold to the highest bidder and items may be sold individually, or as a group of items, or as a whole unit. Cash only. No checks accepted. All purchased goods are sold "AS IS" and must be removed by 1:00 p.m. on the date of the sale. Property being sold includes some or all of the following: furniture, household items, tools, clothes, books, sports equipment, lawn equipment and miscellaneous items. #6 Dara Moore.

**Help Wanted**

Coldwater Manor in Stratford, Texas is looking for experienced RN's, LVN's and CNA's. If interested please come by 1111 Beaver Road for an application or send your resume to [dgross@shdistrict.com](mailto:dgross@shdistrict.com) EOE

Elevator laborer wanted. Must have valid Texas Driver's License and a working knowledge of the English language. Apply in person at Stratford Grain Co. 4 N. Main

Coldwater Manor is now taking applications for immediate hiring in the Dietary Department and Housekeeping. Must be 18 years or older, if interested stop by Coldwater Manor at 1111 Beaver Road Stratford, TX for an application. EOE

**Houses for Sale**

House for sale: **REDUCED PRICE-\$125,000** 2 living areas, 3 bedroom, 1.75 bath, fireplace, nice yard, approx. 2,000 sq. ft. 1313 N. Chestnut St. Call Steve or Linda Haynes 806-366-2478, 7897956 5-2 tfn

Spacious 2100 sq. ft. 3 bedroom, 2.5 baths, 2 living areas, attached 2 car garage with covered driveway. Large backyard w/metal fence on large corner lot. New heating and A/C unit, updated bathrooms, gas/wood burning fireplace. \$146,900 320. N. Wall. For more information please call: 806-930-6575 or 806-930-6725

**Garage Sales**

2-Family Garage Sale- Exercise Equipment, crystal, clothing- odds and ends . 602 S. Pearl. Saturday, September 10- 8 a.m. to ??

**Remember The Stratford Star Classifieds**  
Call 366-5885  
Or Email to [stardm@xit.net](mailto:stardm@xit.net)

Or mail to PO Box 8  
Stratford, TX 79084