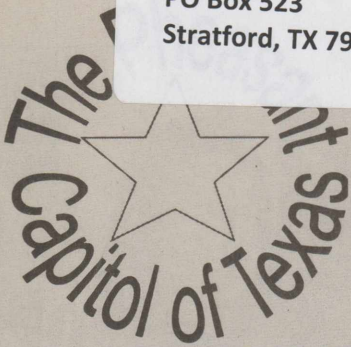


Melvin Mitts 06/17  
PO Box 523  
Stratford, TX 79084



# The Stratford Star

75 cents

Published for over 100 years in Stratford, Sherman County, Texas 79084 usps 523

Number 34 August 25, 2016



## Nothing stays the same

A landmark was taken down in the last few days. Elk Service & Equipment which was previously owned by JO Pulliam and Johnny. Johnny bought the business from his dad JO Pulliam in 1977 but JO continued to work there every day until declining health. Original owners of the business were JO Pulliam, Gerald Lasley and VO Lasley in 1961 when they bought the land and built the building and the business. The building and property is now owned by Duncan Chevrolet. We will have an updated photo and story on what is happening now in next week's edition. Editor's note: Information was taken from God, Grass and Grit Volume II.

## 2016 Stratford Elk Composite Football Schedule

### Varsity

Aug. 13	Dalhart (Scrimmage)	H	9:00am
Aug. 19	Perryton/Childress (Scrimmage)	Perryton	4:00
Aug. 26	River Road	H	7:00
Sept. 2	Guymon	T	7:00
Sept. 9	OPEN		
Sept. 16	Canadian	T	7:30
Sept. 23	Littlefield (Homecoming)	H	7:00
Sept. 30	Borger	T	7:00
Oct. 7	Sunray*	H	7:00
Oct. 14	Panhandle*	H	7:00
Oct. 21	Sanford-Fritch*	T	7:00
Oct. 28	West Texas*	H	7:00
Nov. 4	Boys Ranch*	T	7:00

\* district games

### JV

Aug. 13	Dalhart (scrimmage)	H	9:00am
Aug. 19	Perryton/Childress (scrimmage)	Perryton	4:00
Aug. 25	River Road	T	6:30
Sept. 1	Guymon	H	5:00
Sept. 8	OPEN		
Sept. 15	Sunray	H	7:30
Sept. 22	Littlefield	Vega HS	7:30
Sept. 29	Borger	H	5:00
Oct. 6	Sunray	T	7:30
Oct. 13	Panhandle	T	7:30
Oct. 20	Sanford-Fritch	H	7:30
Oct. 27	West Texas	T	7:30
Nov. 3	Boys Ranch	H	7:30

### 7<sup>th</sup> and 8<sup>th</sup>

Sept. 8	Panhandle	H	5:00/6:00
Sept. 15	Sunray	H	5:00/6:00
Sept. 22	Littlefield	Vega HS	5:00/6:00
Sept. 29	Sanford-Fritch	T	5:00/6:00
Oct. 6	Sunray	T	5:00/6:00
Oct. 13	Panhandle	T	5:00/6:00
Oct. 20	Sanford-Fritch	H	5:00/6:00
Oct. 27	West Texas	T	5:00/6:00
Nov. 3	Boys Ranch	H	5:00/6:00

## Take time to be heard, attend local conservation program meeting

When: Sept 14, 2016

Time: 9:00a.m. - 11:00a.m.

Location: Happy State Bank 100 N Main Stratford, TX

Stratford, Texas, Aug 10, 2016—The USDA Natural Resources Conservation Service (NRCS) in Sherman County and the Sherman County Soil and Water Conservation District cordially invite the public to attend their Fiscal Year 2017 Local Working Group (LWG) meeting Sept 14 2016, from 9a.m. to 11 a.m.

The purpose of this annual LWG meeting is to bring together conservation stakeholders to discuss conservation topics and issues, and to set local conservation priorities to help farmers, ranchers and private landowners conserve and manage the natural resources.

The meeting also updates attendees on recent conservation efforts and allows for an opportunity to collect public input to help guide future conservation activities. Through regular identification of conservation opportunities, effective Farm Bill investments can continue to benefit Sherman County. Farmers, ranchers, conservationists, and others interested in obtaining Federal technical and financial assistance to improve private lands are invited to participate.

For more information, please contact Bruce Meyer, district conservationist, at 806 396 5517 Ext-3 or visit the NRCS web site at <http://www.tx.nrcs.usda.gov/>.

## 2016 Fall Crops Tour

Oklahoma Panhandle Research & Extension Center/Field Research Services Unit Rt 1, Box 86 M or 2852 Mile 23 Road Goodwell, OK

Thursday, September 1, 2016 Registration

8:00 am-8:30am Tour 8:30 am-11:50 a.m.

Lunch 12:00 pm (reservation required)

Registration deadline is August 26, 2016

Call 580-349-5440 or email [jenni.formanokstate.edu](mailto:jenni.formanokstate.edu)

Presentations from Arysta, Fontanelle Hybrid, Hoegemeyer, Pioneer & L.G. Seed companies. Guest speakers Dr. Jason Warren, Dr. Saleh Taghvaeian, Dr. Ali Zarrabi & Dr. Tracy Beedy all from Oklahoma State University. Al Sutherland with Oklahoma Mesonet will also be joining us.

## Stratford Elks

### Season football tickets on sale now!

Season Football Tickets go on sale Thursday, August 11th, 2016, in the Dept. of Student Services located across from the High School Library. There are five (5) home games this year. If you plan to keep or give up your seat, call Annie at 366-3322. Tickets need to be picked up and paid for before the first home game.

Cost per seat for District 2-A for the season (5 Home Games):  
Adults - \$20.00  
Child/Student - \$15.00

The first ELK home game is Friday, August 26th vs River Road. **GO ELKS!!**

Office hours are Mon-Fri, 8:00 am-3:30 pm.

Home Ticket Prices for the 2016 Football Games

Varsity/JV- Jr High Game Adults - \$4.00 Students - \$3.00

JY- Jr High Game Adults - \$4.00 Students - \$3.00

## Your Invited, To First Assembly of God!

If you do not have a regular church home, then on September 11, 2016 you are invited to a special morning of Worship and Gods Word. We have been talking about this special day all summer and we are calling it "150 DAY". We are endeavoring to reach a goal of 150 in our morning worship service and you are invited to help reach that Goal. However its not about a number its about inviting you to come and worship the Lord with us. So set this day aside and come be with us. This special service will begin at 10:45 am and we would love to have you come and visit us.

Blessings to our friends in Stratford,  
Pastor Kevin Anderson

## To my friends in Sherman County,

I would like to personally invite you to a town hall meeting I am holding on Thursday, August 25, 2016 at 11:00 a.m., at the OL' Biddy Cafe. I look forward to hearing your input and thoughts on the upcoming session of the 85th Legislature. Feel free to extend this invitation to any of your family, friends and co-workers who may also be interested in attending. Thank you and I hope to see you soon.

Sincerely, Kel Seliger

## Stratford ISD "Gold Card"

### Available to those 62 Years of Age & Above

Stratford ISD is proud to offer a "Gold Card" for all citizens who are 62 years of age or older. This card will admit one person to all "home" UIL events. Gold Cards are NOT for the Reserved Seating Section at the Football Stadium; those tickets must be purchased in advance for the season. You may pick up a "Gold Card" at the Student Services office located across the High School Library Monday-Friday from 8:00 am to 3:30 pm. For previous card holders, there is no need to renew each year as "Gold Cards" are good for a lifetime, unless lost or damaged. If you would like one mailed to you, call Annie at 366-3322.

The Stratford ISD appreciates your support of the students and faculty of this district. We look forward to seeing you this year. Go ELKS!!



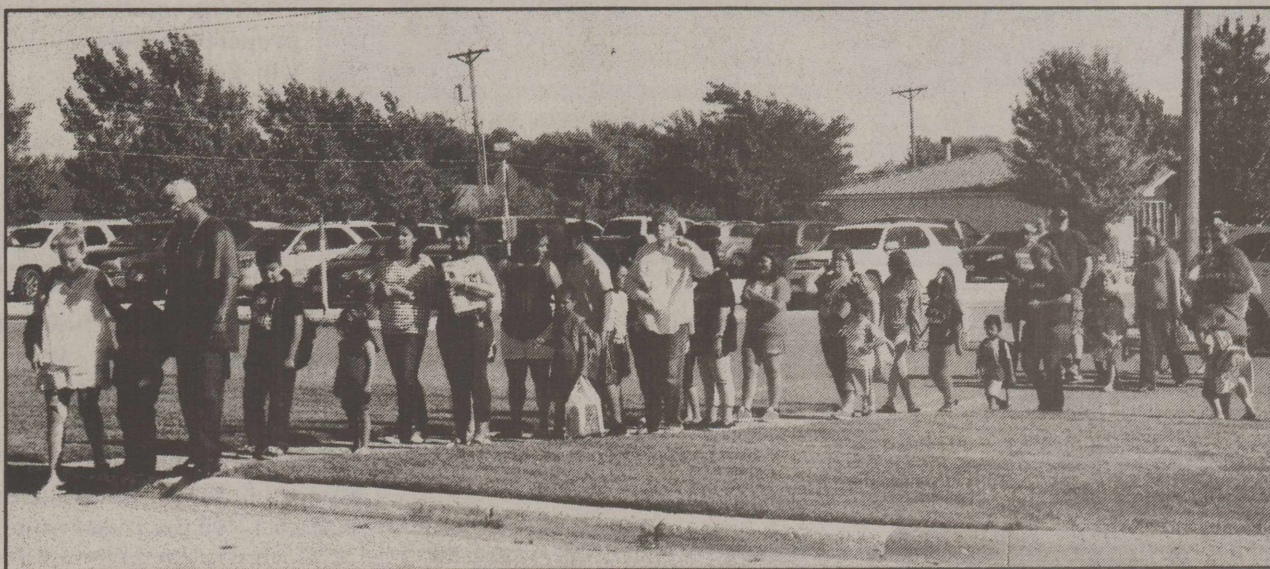
# Open House at SISD



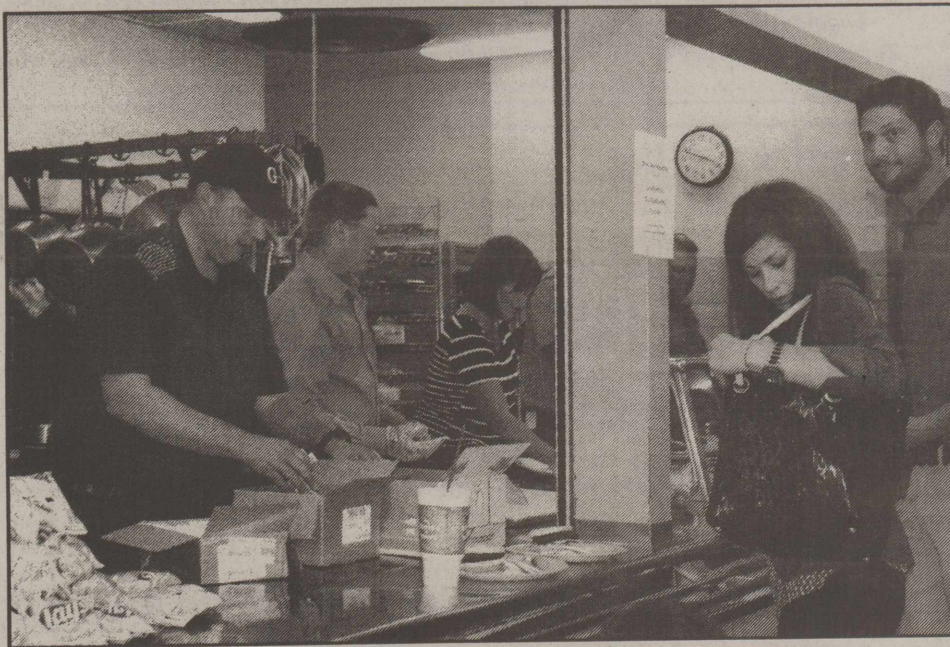
Lisa Griffith, Joli Hauser, Veronica Ruedas, Ruby Punch and Principal Jennifer DeAnda at Mary Allens Open House on Thursday, August 18, 2016



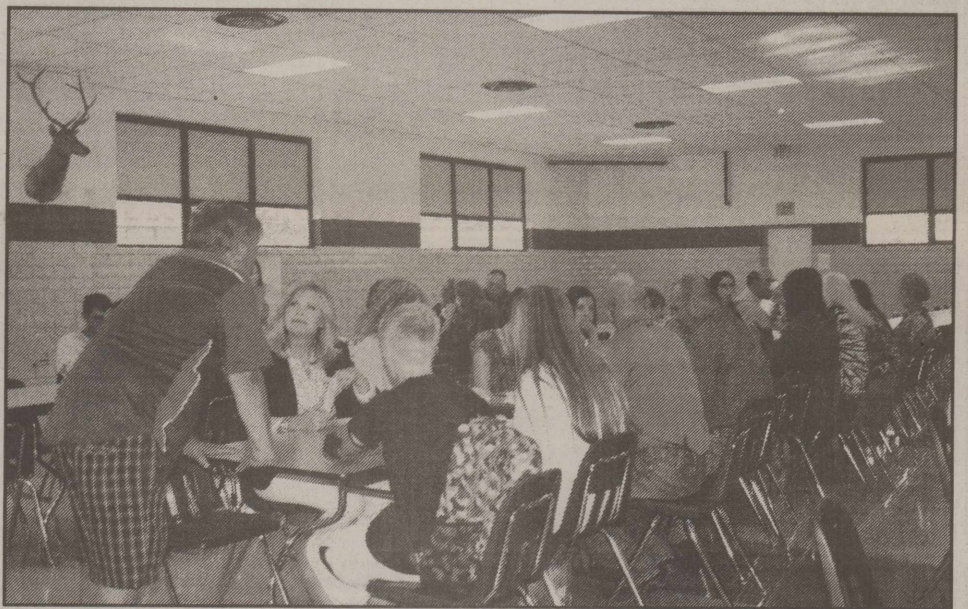
Terry Lantelme, Tracy Hicks and Christine Koehn at Mary Allen Open House on Thursday, August 18, 2016.



This just a part of the line that was waiting outside of Mary Allen Elementary last Thursday, August 18, 2016 to enter for the Mary Allen Open House



Being served by the Trustees of Stratford ISD. Thanks



Good crowd for Open house night at the Stratford High School Hamburger Feed. Which by the way was delicious. Thanks Guys for doing this every year.

**Effective Sept. 1, 2016  
Silvia's Barbershop  
Will be open on  
Tuesdays, Wednesdays  
and Thursdays**

**THE STRATFORD  
STAR**  
Duane & Marty Robertson  
PO Box 8      Office: 806-366-5885  
Stratford, TX 79084      Fax: 366-5884  
e-mail: stardm@xit.net

**A Medical Fund has  
been set up for  
Shelly Lawrence  
At the First State  
Bank of Stratford.**

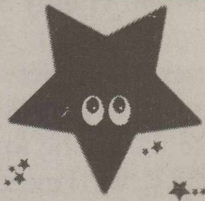
**SCOT HALL ACTIVITIES**  
Men's Pool-daily 1 p.m. M-F  
Ladies Mexican Train Dominoes-  
Mondays 1:30 p.m.  
Ladies Chair Exercises-M-W-F  
10:00 -10:30 a.m.  
Ladies Yoga-Tuesdays 9:15-10:00 a.m.  
Monthly Luncheon-4<sup>th</sup> Thursday-12 noon  
(covered dish luncheon)

**Mitchell  
Theaters**  
Northridge 8  
Guymon, OK  
[www.northridge8.com](http://www.northridge8.com)  
580-338-3281  
Southgate 6  
Liberal, Kansas  
[www.southgate6.com](http://www.southgate6.com)  
620-624-5573  
Garden City, Kansas  
[www.sequovah8.com](http://www.sequovah8.com)  
620-275-2760

**Good Luck Elks  
Beat River Road**

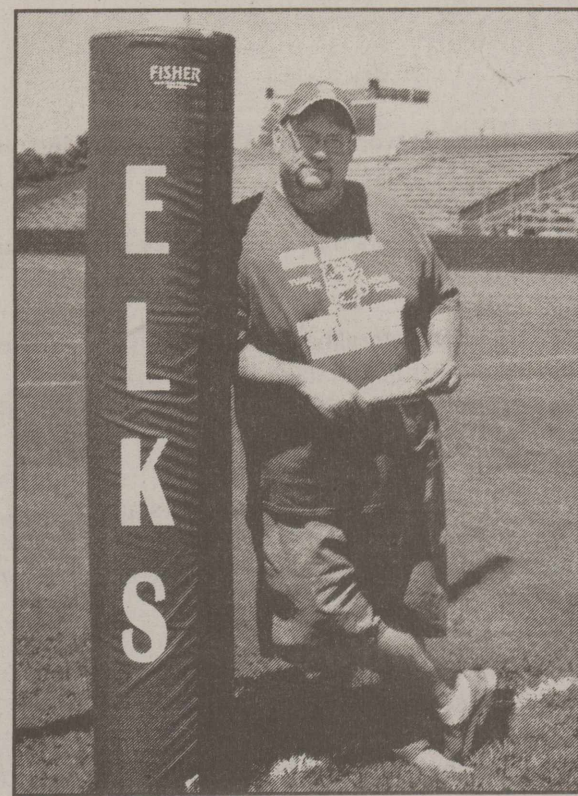
  
**The Stratford Star**  
(USPS 523-108)  
Published for over 100 years  
805 Purnell  
Stratford, TX 79084  
Telephone: 806-366-5885  
Fax: 806-366-5884  
E-Mail: [stardm@xit.net](mailto:stardm@xit.net)  
The Stratford Star is published weekly  
Editor & Publisher Martha Robertson  
Advertising & Photographer Shari Hudson  
Subscription rates  
\$33.00 per year in Sherman & Adjoining counties  
\$40.00 per year all others  
\$27.00 per (9 months) College rate  
The Stratford Star-PO Box 8-Stratford, TX 79084  
Periodicals postage paid at Stratford, TX  
POSTMASTER: Send address changes to Stratford Star,  
PO Box 8-Stratford, TX 79084

\*\*\*\*\*  
**Attention to all subscribers!!  
Rate change**  
The Stratford Star is no longer sending out notices when your paper is due. Check the label on the paper and see what month your subscription expires. **I will be putting "Stars" on the current month** If you have a Star on your label it means that your sub expires that month. If you are not sure the amount you owe if you live out of the area call 753-7373 and double check. Locally is \$33.00 and out of the area \$40.00. If you are paying for someone else's sub, you will be billed for that person. The Stratford Star, PO Box 8, Stratford, TX 79084  
Thanks-Marty

  
**Stratford**  
Appreciates your  
Patronage

**Deadline for  
The Stratford Star**  
Deadline for Stratford Star items. Photos by Sundays at 4 p.m. Letters to Editor 9 a.m. on Mondays (typed) and all other articles and ads at 10 a.m. on Mondays. (PLEASE)  
Thank you





## Time Out With Rog!

The last several mornings I have been waking up to crispness in the air, some people call it a cold front but I call that the start of football season!!!! There is a new herd of Elks roaming Cold Water Creek. This is the opening week of football versus the River Road Wildcats. Everybody knows that River Road is that school on the North side of Amarillo. There was a Movie called A River Runs Through It but we are playing a team where a road runs through it. "I have been reading a lot of articles on how good we can be but all that sells is candy bars and bubble gum, but elks you have to get it!" We have had a couple of scrimmages against some big foe but now we are playing for keeps. Scrimmages are like Diet Cokes, they are cokes but not Cokes. In other words we don't know what we got till we get it! So let's all meet up at Sam Bass Stadium at 7 o'clock on Friday Night and watch our Stratford Elks against the Road! Let's pray for all we know that are sick and our National Leaders. Once an Elk always an Elk!

Roger Malon Allen  
Class of '81

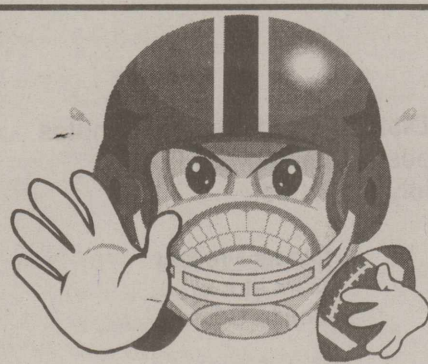
## Les Worsham Is Elected Alternate Angus Delegate To 133 Annual Meeting

Les Worsham, Stratford, Texas, has been elected as an alternate delegate to the 133rd Annual American Angus Association Convention of Delegates, Nov. 7 at the Indiana Convention Center in Indianapolis, Ind., reports Allen Moczygemba, CEO of the American Angus Association.

Worsham, a member of the American Angus Association with headquarters in Saint Joseph, Mo., is one of 260 Angus breeders who have been elected by fellow members to serve as an alternate state representative to the annual meeting. Representing 44 states and the District of Columbia, those serving as state delegates will participate in the business meeting and elect new officers and five directors to the American Angus Association board.

The annual meeting will take place in conjunction with the 2016 Angus Convention, Nov. 5-7, in Indianapolis, Ind. The event is open to anyone in the cattle business and will feature high-profile keynote speakers; educational sessions, including thought leaders from every industry-sector; the International Genomics Symposium, sponsored by Neogen's Gene Seek operations; Angus University, sponsored by Merck Animal Health; entertainment; evening galas; prize giveaways; and an expansive trade show. Visit [www.angusconvention.com](http://www.angusconvention.com) to learn more or to register. The early registration discount of \$75 ends Aug. 31.

The American Angus Association is the nation's largest beef breed organization, serving nearly 25,000 members across the United States, Canada and several other countries. For more information about Angus cattle and the 2016 convention, visit [www.ANGUS.org](http://www.ANGUS.org).



**I Challenge Roger**  
Post vs Abernathy  
Childress vs Wellington  
Amarillo High vs Palo Duro  
Dalhart vs Borger  
Wheeler vs Texhoma, OK  
Sunray vs Highland Park  
West Texas vs Gruver  
Dumas vs Perryton  
Valley vs Ropes  
Happy vs Sterling City  
Pampa vs Littlefield  
Fritch vs Spearman  
Tie Breaker  
River Road 20 vs Stratford Elks 35  
Howard Naugle 1971 Graduate

Post vs Abernathy  
Childress vs Wellington  
Amarillo High vs Palo Duro  
Dalhart vs Borger  
Wheeler vs Texhoma, Ok  
Sunray vs Highland Park  
West Texas vs Gruver  
Dumas vs Perryton  
Valley vs Ropes  
Happy vs Sterling City  
Pampa vs Littlefield  
Fritch vs Spearman  
Tie Breaker  
River Road 13 vs Stratford Elks 29  
Roger Allen 1981 Graduate

I ♥  
Football

## Card of Thanks

Words are not enough to express our appreciation to all of you who showed us your love and support during the loss of our Mother and Gran, Marcelle Sutton. Thank you for the food, visits, and memorials. Thank you to all who attended her service, the community choir, and the folks who provided the dinner at the church. Thank you to the Coldwater Manor Staff and Coon Memorial Hospice for your tender loving care not only to her but to our whole family. God bless you all.

Ray and Lynda Hauser  
Neal Hauser  
Dean and Joli Hauser, Brylynn and Layton

## Stratford Hospital District

"Proudly serving the medical needs of Stratford and Sherman County"  
Stratford Family Medical Clinic

### Stratford Family Medical Clinic

Mon. - Thurs 8 a.m. - 5 p.m. Fri, 8 a.m. - 3 p.m.  
396-5583 Tommy Brian, ANP & Krista Brown ANP

### Elk Pharmacy

Mon.-Fri. 9 a.m. - 5:30 PM  
"Check our Competitive pricing"  
"Compounding Available"

366-5505 Shelly Worley, PharmD, RPH

### Coldwater Manor Nursing Facility

396-5568 Mark Moore, LNFA

### Stratford EMS

9-1-1 or 396-2844 Jimmy Lanning, Director

The Stratford Hospital District operates on a non-discriminatory basis, giving equal treatment and access to services without regard to sex, race, religion, age or ethnicity.

## Card of Thanks

Many thanks go out to those who helped me with the parade this year. I will try to include everyone and hope I miss no one. First to Kathy Griffin Allen for the opportunity to organize and run the parade this year. For putting ads in the paper, (thank you Marty Robertson for printing them), printing flyers and reminding me of things I needed to do.

My second in command for weeks has been Brennan Lyman. What a great helper he has been!! A great gopher!

Today my second was Margaret Brooks. She seemed to be able to take care of ALL the details I couldn't get to and was a huge help organizing the lineup for the parade in the days leading up to it.

Steve Ulrey was our more than capable announcer today! He was able to shift on the fly when entries came down the street out of order! Thank you Steve!

Jesus Mariscal, if you hadn't set up the PA for us we would have been in big trouble! Thank you so much!! Marty Robertson, thank you for all the great press we got!

Ann Wells thank you for helping Steve out this morning!

The Police Chief, Randy Hooks for the great idea of putting all the law enforcement and emergency vehicles at the front of the parade so if there was call it was easy for them to get out!

Cece Yelek

## The Churches of Stratford Welcome You

**First Assembly of God**  
Kevin Anderson, Pastor  
921 Fulton  
Sunday School 9:45 a.m.  
Morning Worship 10:45 a.m.  
Evening Worship 6:00 p.m.  
Wed. Bible Study 6:30 p.m.

**First Christian Church**  
5th & Main  
Sunday School 9:45 a.m. (nursery)  
Morning Worship 10:45 a.m. (nursery)  
No Sunday evening Worship Service

**First United Methodist**  
Rev. Steve Ulrey 396-2178  
520 N. Main  
Sunday School 9:20 a.m.  
Morning Worship 10:30 a.m.  
Junior & Senior High UMY 6:00 p.m.

**St. Joseph Catholic Church**  
6th & Pearl  
Rectory 366-5687  
Sunday morning 8:00 a.m. (English) 9:30 (Spanish)  
Sacrament of Reconciliation Before Mass or t.  
Christian Formation Classes K-6 Grade Wed. Afternoon  
Jr. & Sr. High. Wed. 6:30-8:30 p.m.

**First Baptist Church**  
Pastor Ron Whitt  
702 N. 3rd  
Sun.-Coffee 8:30 a.m.  
Sunday School 9:30 a.m.  
Worship Service 10:30 a.m.  
Wed. Children 6 p.m. youth 7 p.m.

**Heritage Bible Baptist**  
Pastor Mark Looney  
302 S. Main  
For more info-call 396-2212  
Morning worship 11:00 a.m.  
Evening Service 6 p.m.  
Thurs. Service 7:00 p.m.



This page sponsored by  
Stratford Grain 396-5541  
Lautz 769-5541  
Stratford Star  
366-5885

**La Mision Bautista**  
Mision Bautista  
401 S. Wall 396-5376  
Domingo (Sunday)  
Estuela Dominical 9:45 a.m.  
Miercoles (Wednesday)  
Servicio De Adoracion 11 a.m. Estudio  
Biblico & Servicio De Oraction 6 p.m.  
Servicio De Adoracion 6 p.m. se Cuidamos  
Susunos Durante El Servicio

**Eben-Ezer Templo Hispano**  
Asambleas De Dios  
Pastor: Juan M. Valenzuela  
806-366-3071  
205 N. Poplar-Hwy 287 268-2188  
Escuela Dominical 10 a.m. - 12 noon  
Servicio De Adoracion 5 p.m.-7 p.m.  
Miercoles: Servicio De Adoracion 6-8 p.m.

**Kerrick Community**  
Pastor Roy Harris  
Community Building  
10 a.m. Worship Service

**Church of Christ**  
Raymond Glendinning  
N. 3rd & Chestnut  
Sunday School 9:30 a.m.  
Morning Worship 10:30 a.m.  
Evening Worship 5:00 p.m.  
Wednesday Bible Study 7:00 p.m.



## Stratford Hospital District Board Meeting Minutes July 19, 2016

### Board Members Present

Richard Chumley  
Janet Reinart  
Marsha Wright  
Cecil Wright  
Ed Metcalf

### Others Present

Mark Moore  
Shelly Worley  
Armando Rivera  
Jimmy Lanning  
Tommy Brian  
Lee Hughes

Meeting called to order:

Opening Prayer:

### Community Comments:

There were no community comments. Richard Chumley asked for the motion to approve the last months minutes along with the minutes of the July Special Meeting with a vote of 2/0 and 1 abstained, with a correction to the July Special Meeting to 3/0 and 1 abstained. Marsha Wright motioned to approve the minutes and Eddie Metcalf seconded and the motion carried 4/0.

### CEO Report:

#### SHD:

Update on Hail Damage:

Mark Moore reported to the Board of Directors that he is still in the "supplement" phase with adjusters, and it will be four more weeks until the windows are installed.

#### ColdWater Manor:

Mark Moore reported that we have 23 residents at Coldwater Manor.

Also, reported to the Board of Directors that we are preparing for Stratford Days with entries in the parade, and will be picking up the meal for the residents from the Lions Club barbeque.

### Clinic:

Due to the power outage the Escripts are not working and IT will be working on it.

### Pharmacy:

Shelly Worley reported to the Board of Directors that the Pharmacy is filling an average of 100 prescriptions a day.

### EMS:

Jimmy Lanning reported to the Board of Directors that for the month of April he had 11 Calls, 5 Transports, 6 Non Transports and 0 Stand-byes.

Jimmy Lanning reported that the new sign for the Stratford Emergency Medical Service has been installed.

### Lee Hughes:

Presented to the Board of Directors the LTC reports for all the nursing facilities, all clinical and reviews had no issues. Richard Chumley asked for the motion to approve the LTC. Janet Reinart motioned and Cecil Wright second and the motion carried 4/0.

### New Business:

There was no new business.

Richard Chumley asked for the motion to approve the district bills. Cecil Wright motioned to approve and Eddie Metcalf seconded and the motion carried 4/0.

Armando Rivera discussed the financial report with the Board of Directors with no overall concerns and will have a rough draft of the budget to be presented in August.

Richard Chumley motioned to adjourn at 7:11 PM, Eddie Metcalf motioned and Marsha Wright seconded and the motion carried 4/0.

## Stratford Hospital District Board Meeting Minutes Special Meeting July 6th, 2016

### Board Members Present

Richard Chumley  
Janet Reinart  
Marsha Wright  
Ed Metcalf

### Others Present

Mark Moore  
Donna Gross

Meeting called to order:

### Stratford Hospital District:

Mark Moore presented to the Board of Directors the two contractors bids to repair the hail damage to the Stratford Hospital District properties.

A discussion was held, and the decision was made to contract ACR Commercial Roofing from Pampa, TX.

Richard Chumley requested a motion, Janet Reinart motioned and Ed Metcalf seconded and the motion carried 3/0, with 1 abstained.

The Board of Directors also requested that information be gathered on hiring a consultant to oversee the repairs. Mark Moore will be contacting a consultant.

Richard Chumley requested a motion to adjourn at 8:45a.m., Ed Metcalf motioned and Janet Reinart seconded, and the motion carried 3/0.

# Business Directory

PO Box 510  
Stratford, TX 79084  
Phone: 806-366-5557

## Duncan Chevrolet

[www.duncanchevrolet.com](http://www.duncanchevrolet.com)

E-mail: [duncanch@xit.net](mailto:duncanch@xit.net)

AN AMERICAN REVOLUTION

## Stratford Auto Electric

806-366-5941

[saeroymc@gmail.com](mailto:saeroymc@gmail.com)

Altronics, starters, Alternators,

ACmotors

New & Rebuilt

Full Line Available

## Stratford Grain Company

Stratford 396-5541

Lautz 769-4485

4 North Main



## A & I Parts Center

Automotive and Industrial Parts

201 N. 2<sup>nd</sup> Street-  
Stratford, TX 79084

Tel: (806) 366-5592

\*Toll-free 800-624-5494

Fax: (806) 366-2583

## Structured Touch Massage Therapy Clinic

Cece Yelek, CMT, LMT

401 N. Third #11. or 7199 Co. Rd P

Stratford, TX - Sunray, TX

Office 806-366-ahhh (2444)

Cell 806-290-3655

Open 9-5 by Appointment Only

## Shari Hudson Photography

PO Box 243

Stratford, TX 79084

Cell PH: 806-753-7798

Email: [ghud@xit.net](mailto:ghud@xit.net)

[www.sharihudsonphotography.com](http://www.sharihudsonphotography.com)

Seniors-Children-Families

Wedding-Special events

Engagements



## Vincent Insurance Agency

Sabrina Melton

PO Box 739

Stratford, TX 79084

Office: 806-396-2456

Home: 396-2512

Email: [vincins@xit.net](mailto:vincins@xit.net)



DAVIS GEOMATICS, LLC  
PROFESSIONAL GEOMATIC CONSULTANTS

J.D. Davis

R.P.L.S., L.S.L.S., CFedS

Licensed State Land Surveyor

Certified Federal Surveyor

COLORADO • KANSAS • OKLAHOMA • TEXAS

Office: 806-374-4334 • Cell: 806-336-0564 • Fax: 806-359-0686

Toll Free: 866-570-0169 • [www.geopro.us](http://www.geopro.us) • e-mail: [jdavis@geopro.us](mailto:jdavis@geopro.us)

P.O. Box 4061 • Amarillo, Texas 79116-4061

Firm No. 100528-00

## Albert's Manor House Restaurant



Daily Specials

Friday Night

Fish Buffet

Sunday Buffet

Breakfast All Day

Open-6 a.m. - 9 p.m. Everyday

TAKE-OUTS WELCOME

1817 Dumas Ave Dumas, TX

935-5507



INSURANCE  
621 Peters Avenue  
Dalhart, TX 79022

Clements Insurance  
Home • Auto • Life  
Farm & Ranch • Commercial

Gary Clements

205 N Main  
Stratford, TX 79084

Cell: 806 346-5217

[glements@farmersagent.com](mailto:glements@farmersagent.com)







## 6th Annual Stratford Community Tailgate Party and Dance Saturday, September 10, 2016 Stratford Country Club

**No entry fee - Cash prizes for top three entries  
Cook Applications are available at extension office.  
You provide all items you need for cooking your item,  
equipment you need for set up, electricity, etc.**

**Meal - 7:00 PM  
Dance - 8:00 PM — 11:00 PM**

**Bring your lawn chair and enjoy an evening  
of food, fun and fellowship!**

**All proceeds go to Sherman County Livestock Association**

**Any questions call: Dinah - 806-753-7053, Eddie - 806-753-7039,  
or Heather - 620-629-1593**

**\*\* All 2017 Sherman County Livestock Exhibitors are required to sell 3  
tickets. Tickets can be picked up at the extension office. Exhibitors  
will be charged \$45 for not selling tickets.\*\*\***

# Stratford Hospital District News

The time is soon coming for three of the five Stratford Hospital District board member's terms to end. The Stratford Hospital District needs volunteers from the community to possibly replace these members. Board members must be a qualified voter and a resident of the Stratford Hospital District (same as Stratford Independent School District). The deadline for signing up to run as a board member is quickly approaching. Anyone interested must bring their voter registration card and pick up an application in person at the business office of Coldwater Manor, 1111 Beaver Road, between the hours of 8am and 5pm Monday through Friday. **The last day to sign up is August 31st, 2016**, so don't delay. For questions or additional details, please contact Mark Moore at (806)396-5568.

The Stratford Hospital District could not exist without members of the community taking an active role on the board. We send out a sincere thank you to those who are currently serving on the board, as well as those who have served in the past. By being a member of the Stratford Hospital District Board, you are doing your part to ensure the betterment of healthcare for the residents of Sherman County.

### Additional Household Member Space—2016-2017 Multi-Child Application for Free and Reduced-Price School Meals

Step 1, Additional List ALL Household Members Who Are Infants, Children, and Students up to and Including Grade 12.											
List each child's name.			Student Attends School in District?		Optional: Student ID Number		Check all that apply.				
First Name	MI	Last Name	Yes	No	Grade	Number	Foster	Head Start	Homeless	Migrant	Runaway
7.			<input type="checkbox"/>	<input type="checkbox"/>			<input type="checkbox"/>	<input type="checkbox"/>	<input type="checkbox"/>	<input type="checkbox"/>	<input type="checkbox"/>
8.			<input type="checkbox"/>	<input type="checkbox"/>			<input type="checkbox"/>	<input type="checkbox"/>	<input type="checkbox"/>	<input type="checkbox"/>	<input type="checkbox"/>
9.			<input type="checkbox"/>	<input type="checkbox"/>			<input type="checkbox"/>	<input type="checkbox"/>	<input type="checkbox"/>	<input type="checkbox"/>	<input type="checkbox"/>
10.			<input type="checkbox"/>	<input type="checkbox"/>			<input type="checkbox"/>	<input type="checkbox"/>	<input type="checkbox"/>	<input type="checkbox"/>	<input type="checkbox"/>
11.			<input type="checkbox"/>	<input type="checkbox"/>			<input type="checkbox"/>	<input type="checkbox"/>	<input type="checkbox"/>	<input type="checkbox"/>	<input type="checkbox"/>

Step 2, Additional Report income for ALL Household Members (Skip this step if you entered an EDG number or checked the box to indicate participation in FDIPIR in Step 1).									
Adult's First/Last Name	Work Earnings (Enter Amount)	Frequency (Circle One)	Public Assistance/ Child Support/Alimony (Enter Amount)	Frequency (Circle One)	Pensions/Retirement/ Social Security/ Supplemental Security Income (Enter Amount)	Frequency (Circle One)	All Other (Enter Amount)	Frequency (Circle One)	Frequency (Circle One)
6.	\$	W-E-T-M-A	\$	W-E-T-M-A	\$	W-E-T-M-A	\$	W-E-T-M-A	W-E-T-M-A
7.	\$	W-E-T-M-A	\$	W-E-T-M-A	\$	W-E-T-M-A	\$	W-E-T-M-A	W-E-T-M-A
8.	\$	W-E-T-M-A	\$	W-E-T-M-A	\$	W-E-T-M-A	\$	W-E-T-M-A	W-E-T-M-A
9.	\$	W-E-T-M-A	\$	W-E-T-M-A	\$	W-E-T-M-A	\$	W-E-T-M-A	W-E-T-M-A
10.	\$	W-E-T-M-A	\$	W-E-T-M-A	\$	W-E-T-M-A	\$	W-E-T-M-A	W-E-T-M-A

The Richard B. Russell National School Lunch Act requires the information on this application. You do not have to give the information, but if you do not, we cannot approve your child for free or reduced price meals. You must include the last four digits of the social security number of the adult household member who signs the application. The last four digits of the social security number is not required when you apply on behalf of a foster child or you list a Supplemental Nutrition Assistance Program (SNAP), Temporary Assistance for Needy Families (TANF) Program or Food Distribution Program on Indian Reservations (FDPIR) case number or other FDIPIR identifier for your child or when you indicate that the adult household member signing the application does not have a social security number. We will use your information to determine if your child is eligible for free or reduced price meals, and for administration and enforcement of the lunch and breakfast programs. We MAY share your eligibility information with education, health, and nutrition programs to help them evaluate, fund, or determine benefits for their programs, auditors for program reviews, and law enforcement officials to help them look into violations of program rules.

In accordance with Federal civil rights law and U.S. Department of Agriculture (USDA) civil rights regulations and policies, the USDA, its Agencies, offices, and employees, and institutions participating in or administering USDA programs are prohibited from discriminating based on race, color, national origin, sex, disability, age, or reprisal or retaliation for prior civil rights activity in any program or activity conducted or funded by USDA. Persons with disabilities who require alternative means of communication for program information (e.g. Braille, large print, audiotape, American Sign Language, etc.), should contact the Agency (State or local) where they applied for benefits. Individuals who are deaf, hard of hearing or have speech disabilities may contact USDA through the Federal Relay Service at (800) 877-8339. Additionally, program information may be made available in languages other than English.

To file a program complaint of discrimination, complete the *USDA Program Discrimination Complaint Form*, (AD-3027) found online at: [http://www.ascr.usda.gov/complaint\\_filing\\_cust.html](http://www.ascr.usda.gov/complaint_filing_cust.html), and at any USDA office, or write a letter addressed to USDA and provide in the letter all of the information requested in the form. To request a copy of the complaint form, call (866) 632-9992. Submit your completed form or letter to USDA by: (1) mail: U.S. Department of Agriculture, Office of the Assistant Secretary for Civil Rights, 1400 Independence Avenue, SW, Washington, D.C. 20250-9410; (2) fax: (202) 690-7442; or (3) email: [program.intake@usda.gov](mailto:program.intake@usda.gov).

This institution is an equal opportunity provider.

#### Do Not Fill Out This Part. This Is For School Use Only.

Income Determination: Multiple income frequencies must be converted to annual amounts and combined to determine household income. Do not convert if only one income frequency is provided by the household. If converting income to annual, round only the final number—Annual Income Conversion: Weekly x 52   Every 2 Weeks x 26   Twice a Month x 24   Monthly x 12						Date Received:					
Household Size: _____	Total Income: _____	Weekly	Every 2 Weeks	Twice a Month	Monthly	Annually	Categorical Determination	Eligibility:	Free	Reduced	Denied
		<input type="checkbox"/>	<input type="checkbox"/>	<input type="checkbox"/>	<input type="checkbox"/>	<input type="checkbox"/>	<input type="checkbox"/>	Free	<input type="checkbox"/>	<input type="checkbox"/>	<input type="checkbox"/>
Reviewing/Determining Official's Signature/Date						Confirming Official's Signature/Date					

### Stratford ISD, 2016-2017 Multi-Child Application for Free and Reduced-Price School Meals

Complete one application per household. Please use a pen (not a pencil).

**This Box for School Use Only.  
Date Withdrawn:**

Step 1 List ALL Household Members Who Are Infants, Children, and Students up to and Including Grade 12. If more spaces are needed, use the Additional Household Member Sheet on the back.											
List each child's name.			Student Attends School in District?		Optional: Student ID Number		Check all that apply.				
First Name	MI	Last Name	Yes	No	Grade	Number	Foster	Head Start	Homeless	Migrant	Runaway
1.			<input type="checkbox"/>	<input type="checkbox"/>			<input type="checkbox"/>	<input type="checkbox"/>	<input type="checkbox"/>	<input type="checkbox"/>	<input type="checkbox"/>
2.			<input type="checkbox"/>	<input type="checkbox"/>			<input type="checkbox"/>	<input type="checkbox"/>	<input type="checkbox"/>	<input type="checkbox"/>	<input type="checkbox"/>
3.			<input type="checkbox"/>	<input type="checkbox"/>			<input type="checkbox"/>	<input type="checkbox"/>	<input type="checkbox"/>	<input type="checkbox"/>	<input type="checkbox"/>
4.			<input type="checkbox"/>	<input type="checkbox"/>			<input type="checkbox"/>	<input type="checkbox"/>	<input type="checkbox"/>	<input type="checkbox"/>	<input type="checkbox"/>
5.			<input type="checkbox"/>	<input type="checkbox"/>			<input type="checkbox"/>	<input type="checkbox"/>	<input type="checkbox"/>	<input type="checkbox"/>	<input type="checkbox"/>
6.			<input type="checkbox"/>	<input type="checkbox"/>			<input type="checkbox"/>	<input type="checkbox"/>	<input type="checkbox"/>	<input type="checkbox"/>	<input type="checkbox"/>

**Children in Foster care; children who meet the definition of Homeless, Migrant, or Runaway or who participate in Head Start are eligible for free meals.**

**Participation in a Categorical Program**

- If every child listed in Step 1 is a participant any one of the following programs—Foster, Head Start, Homeless, Migrant, or Runaway, skip Step 2 and complete Step 3.
- SNAP, TANF, or FDIPIR: Do any Household Members (including you) currently participate in SNAP, TANF, and/or FDIPIR? If No, complete Steps 2 and 3. If Yes to SNAP/TANF > Write the Eligibility Determination Group (EDG) number in this space \_\_\_\_\_, skip Step 2, and complete Step 3. If Yes to FDIPIR, check this box , skip Step 2, and complete Step 3.

Step 2 Report income for ALL Household Members (Skip this step if you entered an EDG number or checked the box to indicate participation in FDIPIR in Step 1).											
A. Total Household Members (Children & Adults) _____						B. Last Four Digits of Social Security Number (SSN) of an Adult Household Member: XXX-XX-____					
						<input type="checkbox"/> Check if no SSN					
C. Income for Adult Household Members (Including Yourself, But Not Children)											
List all Household Members not listed in STEP 1 (including yourself) even if they do not receive income. For each Household Member listed, if they do receive income, report total income (without deductions) for each source in whole dollars only. Indicate the frequency of income: W=Weekly, E=Every 2 Weeks, T=Twice per Month, M=Monthly, A=Annually. If they do not receive income from any source, write '0'. If you enter '0' or leave any fields blank, you are certifying (promising) that there is no income to report.											
Adult's First/Last Name	Work Earnings (Enter Amount)	Frequency (Circle One)	Public Assistance/ Child Support/Alimony (Enter Amount)	Frequency (Circle One)	Pensions/Retirement/ Social Security/ Supplemental Security Income (Enter Amount)	Frequency (Circle One)	All Other (Enter Amount)	Frequency (Circle One)	Frequency (Circle One)		
1.	\$	W-E-T-M-A	\$	W-E-T-M-A	\$	W-E-T-M-A	\$	W-E-T-M-A	W-E-T-M-A		
2.	\$	W-E-T-M-A	\$	W-E-T-M-A	\$	W-E-T-M-A	\$	W-E-T-M-A	W-E-T-M-A		
3.	\$	W-E-T-M-A	\$	W-E-T-M-A	\$	W-E-T-M-A	\$	W-E-T-M-A	W-E-T-M-A		
4.	\$	W-E-T-M-A	\$	W-E-T-M-A	\$	W-E-T-M-A	\$	W-E-T-M-A	W-E-T-M-A		
5.	\$	W-E-T-M-A	\$	W-E-T-M-A	\$	W-E-T-M-A	\$	W-E-T-M-A	W-E-T-M-A		
D. Combined income for Children in the Household											
Record combined total income by frequency for all children listed in Step 1.											
			Weekly	Every 2 Weeks	Twice per Month	Monthly					
			\$	\$	\$	\$					

Step 3 Provide Contact Information and Adult Signature.												
I certify (promise) that all information on this application is true and that all income is reported. I understand that this information is given in connection with the receipt of Federal funds, and that school officials may verify (check) the information. I am aware that if I purposely give false information, my children may lose meal benefits, and I may be prosecuted under applicable State and Federal laws.												
Street Address/Apt #			City			State		Zip		Daytime Phone and Email (Optional)		
Printed Name of Adult Completing the Form				Signature of Adult Completing the Form				Today's Date				