

Early spring heat bakes potatoes

By JOANNA GALLMAN
Journal staff writer

A rash of early-evening thunderstorms this month have put the local potato harvest behind schedule.

"We're about two weeks behind schedule," said Jason Box, whose family owns and operates Barrett Produce, located on U.S. 84 just east of Muleshoe. "The rains have kept us from getting in the field."

Potatoes are one of the first spring-planted crops harvested.

Producers usually start harvesting about the third week of June, but had to wait until the beginning of July this year.

This region is usually one of the first to deliver its crop of Russett and red potatoes to market nationwide.

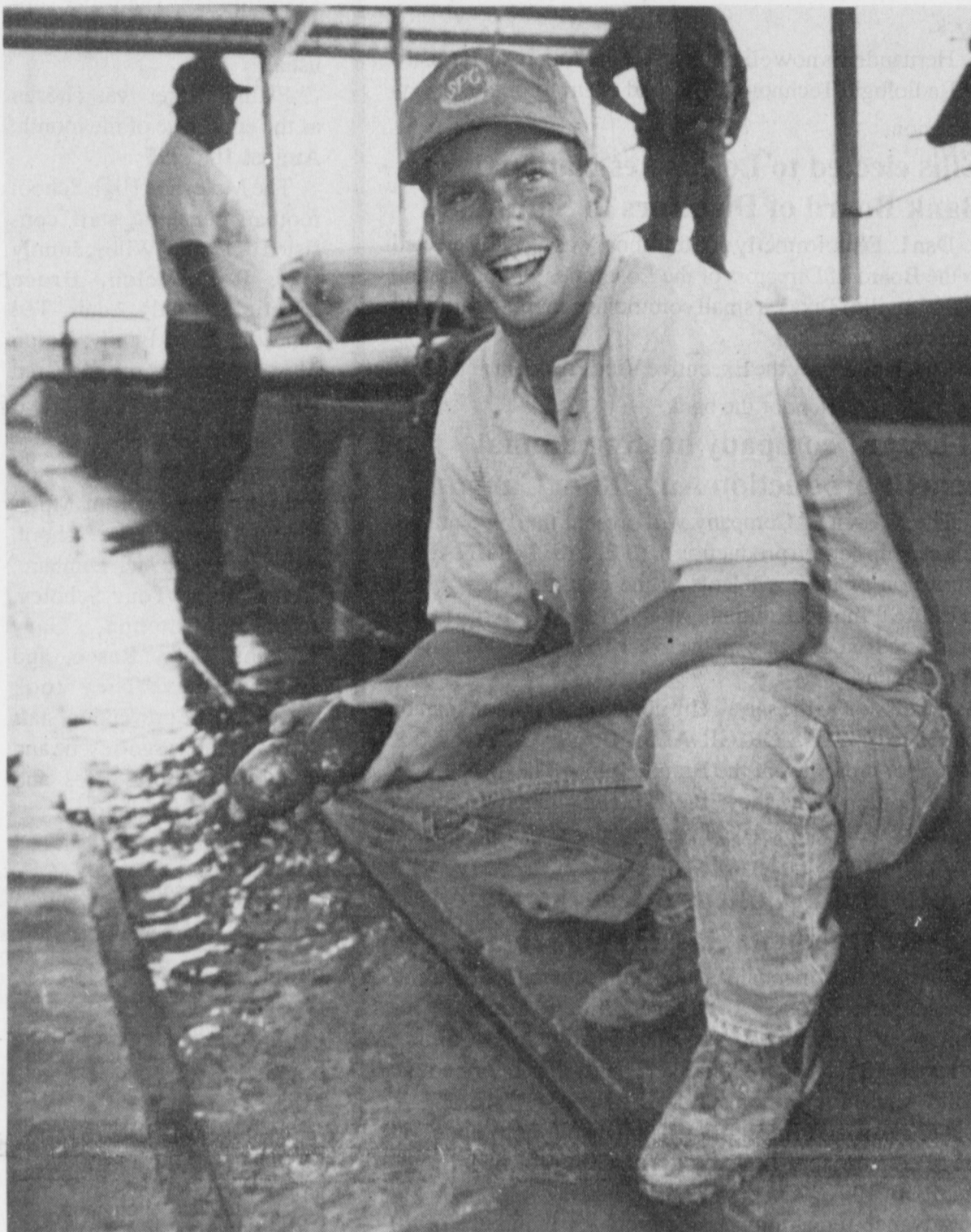
"We're one of the first ones to start digging," said Box, a fourth-generation potato farmer. "Right now we're (area producers) the only ones selling, but in a few weeks others will start to dig and hit the market."

Barrett Produce harvests approximately 600 acres of potatoes. Most are shipped to the eastern region of the United States.

Box called this year's crop average.

Temperatures that regularly soared into triple digits in May

Continued on page 4



This spuds for you

Jason Box of Barrett Produce plucks a few potatoes from the water used to transport the potatoes from the trucks into the shed. From there they are sorted and shipped.

Combest in line for Ag Committee Chair

If Republicans retain control of Congress next year, U.S. Representative Larry Combest is in line to be named House Agriculture Committee Chairman.

Fourth-ranking Republican on the committee, Combest was in the clear for the position after the death of Rep. Bill Emerson, R-Mo., and Chairman Pat Roberts, R-Kan., left to run for an open Senate seat.

Third-ranking chairman Steve Gunderson, R-Wis., had announced during his 1994 campaign that he would not run again.

But Combest's path to the chairmanship appeared to be obstructed after Wisconsin dairy farmers started a massive write-in campaign recently

to re-elect Gunderson, placing him ahead of Combest in the line for the chairmanship.

However, Gunderson refused to endorse the write-in, leaving Combest as the most senior committee Republican seeking re-election.

"My life is in agriculture, the economic lifeblood of our region and the nation is in the agriculture, supplying food and fiber to the world," Combest said. "I would be honored to take the lead in agriculture on behalf of the people of the Panhandle-West Texas region."

If Republicans do not retain control of Congress, South Plains farmer and U.S. Rep. Charles Stenholm, D-Stamford, will be named chairman.

MPD investigating rash of burglaries

Muleshoe Police were busy Friday morning collecting evidence following a string of burglaries along American Boulevard.

Acting Police Chief Jay Livingston said a series of footprints indicate the burglaries are related. Police believe the break-ins occurred between 1 a.m. and 5:30 a.m. Friday.

Businesses reporting break-ins were Alton Burton Service Center and the adjoining Feature Attractions, Weidebush & Co., Morrison Oil and Kuka's Burritos.

Taken were cash, silver dollars, ether and freon.

Police believe there were two people involved in the robberies and they probably traveled along the railroad tracks.

A pry bar believed to be used in the break-ins was discovered behind Morrison Oil, near the railroad tracks.

Anyone with information about the burglaries can call the Bailey County CrimeLine at 272-4357. Callers will remain anonymous.

Commissioners discuss employee retirement plan

By JOANNA GALLMAN
Journal staff writer

County Commissioners Wednesday were presented with several options to ensure that the County's employee retirement program meets state standards.

Texas County and District Retirement System Representative Joe Froh informed commissioners that within 25 years, the County will not have enough money in reserve to backup employee retirement plans.

Seven percent of a County employee's paycheck is deducted each month and deposited into an individual account at the Retirement System in Austin. According to the County's program, after 12 years of service, every dollar submitted into the employee's personal account must be matched by \$1.50 from the County.

There are 50 current County employees in the retirement fund, and 13 individuals who are no longer employed by the County, but still have accounts at the retirement system.

Although there are enough funds to cover current retirement plans, a slowed rate of turnover in the County will

Continued on page 4

Rural hospitals must change to survive

Editor's note: This is the second in a series of stories on the Muleshoe Area Health District.

The Muleshoe Area Hospital District is confronting change.

Across the country, change is occurring in health care delivery, and the district is involved. It has seen the need to broaden service from primarily inpatient, to a greater emphasis on outpatient, and established home health and day surgery as alternatives to in-hospital care. It has recognized the importance of long-term extended care, and has perpetuated the availability of such services for the area. And it is making every effort to address the circumstances of change in the best interest of

Jim Bone
Guest Column

local community need and available community resources.

After an alarming and significant number of rural hospital closings in Texas during the mid to late 1980s, communities across the state have made commitments to retain the availability of health care services at the local level. The Muleshoe area made such a commitment when the local hospital was closed for a period. Today, the Muleshoe area represents one of the success stories in the state, going from a hospital

that was closed for almost a year to a broad based health delivery operation. A great deal of pride can and should be taken in this accomplishment, along with pride in the quality and variety of services available today.

However, as great as what has been accomplished by local residents, medical staff and the hospital district, unfortunately it does not assure an ongoing, viable future. With the changes occurring nationally and regionally, local responses are required to assure that local needs are met in a prudent and competitive manner. In some cases, this will mean offering new or realigned services; in some cases, it will mean curtail-

ing certain services that can be provided outside the area in a more cost efficient manner; and in some cases, it will mean not considering services that would require resources that are not available or would be too costly to acquire.

Health care delivery in the Muleshoe area over the next several years will depend on the needs of the residents, the resources available to be committed in meeting those needs, and the utilization by local residents of the health care services offered. In the changing health care environment of today, maybe the single greatest

Continued on page 4

Taxes small part of district budget

By JOANNA GALLMAN
Journal staff writer

Muleshoe Area Hospital District taxpayers contribute only five percent to the total revenue generated for the district.

While some taxpayers frown on their yearly obligation, Interim Hospital Administrator Jim Bone said that revenue from local levies is crucial to the livelihood of the district.

"It is an important five percent," said Bone, a consultant in rural facilities for Methodist Hospital. "It determines whether there is a positive figure or a deficit at the end of the year."

The hospital district currently collects 25 cents per \$100 value of the district's prop-

erty, which it applies toward operating expenses within the hospital. Bone said operating expenses include salaries, labor costs, supplies, utilities, employee benefits and professional liability.

The 25-cent tax base has remained constant since the formation of the district. The district has collected approximately 93 percent of the \$489,128 in taxes due for 1995.

"Most rural hospitals operate off tax-revenues," Bone said. "I can't think of one free-standing facility in this part of the country; at least in a community of less than 20,000."

The process of deciding the amount of taxes the district will collect each year be-

Continued on page 4

Taking a closer look

\$50,000 appraised value

x .0025 tax rate

\$125 tax

less 3% early payment discount

\$121.25 total tax

Above is an example of how the Muleshoe Area Health District figures property taxes. The tax rate is 25¢ per \$100 assessed property value.



Source: Bailey County Appraisal District

AROUND MULESHOE

First Assembly of God hosting "Back to School Family Crusade" Aug. 4-9

The First Assembly of God Church, located at 521 south First, will begin a "Back to School Family Crusade" Sunday night at 6:30 p.m. The crusade will continue nightly at 7 p.m. Aug. 5-9.

Jennie Powell of Glendale, Ariz. will be conducting the series. Pastor Jack Stone encourages everyone to attend.

16th & D Church of Christ to host "Friend Day" Sunday, Aug. 4

The 16th & D Church of Christ will be hosting its annual "Friend Day" Sunday.

The day will begin at 9:45 a.m. with a coffee and donut time in the fellowship hall. Worship at 10:30 will be led by the Psalms IV Quartet from Amarillo. Curtis Shelburne will deliver the message.

A fellowship meal will follow the morning worship. At 1:30, Psalms IV will perform a variety of gospel songs and medleys, and Christian mime group "Silent Witness" will deliver a wordless message.

"We're looking forward to a great day on Sunday, and we'd love to invite anyone in the community who would like to enjoy the day with us to join us," said Curtis Shelburne, 16th & D pastor.

Girls physicals to be given at Muleshoe High School Aug. 11

Girls physicals for the 1996-97 school year will be given Aug. 11 at 1 p.m. in the high school gym. The physicals are given at no charge.

Physicals are required for all incoming 7th and 9th grade girl athletes, anyone who has been hospitalized, under a doctor's care, or who has suffered any type of injury.

Richland Hills Baptist establishing memorial fund for Pat Mudford

The Richland Hills Baptist Church of Muleshoe has set up a memorial fund in honor of Pat Mudford to defray funeral expenses. The fund is set up at the Muleshoe State Bank.

For more information, call Richland Hills pastor Bradley Gathright at 272-3229.

Mini-Mule Cheerleading Camp to be held Aug. 9 at Muleshoe Jr. High

The Mini-Mule Cheerleading Camp will be held Friday, Aug. 9 in the Muleshoe Junior High Gym from 8 a.m. to 3 p.m.

Children age two through 6th grade are invited to attend. Participants are encouraged to bring a sack lunch. Prizes will be awarded.

For more information, call Beatrice Mata at 272-3120.

Watson Junior High registration slated Aug. 7-9; school begins Aug. 15

Watson Junior High students will register for school Aug. 7-9 from 9-11 a.m. and 2-4 p.m. each day.

A parent must accompany students to registration. Students who cannot enroll during the day may enroll Thursday from 6-8 p.m. School will begin Aug. 15.

Epsilon Delta Chapter returns from 67th annual Alpha state convention

Nine members of the Epsilon Delta Chapter recently returned from the 67th Annual Alpha State Convention in Beaumont. Members attending included Johanna Wrinkle, Virginia Bowers, Jane Rudd, Lucy Faye Smith, and Geor-

gia Pena, all of Muleshoe; Barbara Willingham and Neal Kleman of Sudan; and Joy and Anne Hodges of Amherst.

The group joined 1,200 other Delta Kappa Gamma members from throughout Texas to engage in training and activities to promote education.

The Epsilon Delta Chapter is an organization that consists of women educators from Muleshoe, Olton, Sudan, and Springlake/Earth. Johanna Wrinkle will replace Georgia Pena as president of the chapter.

Muleshoe student graduates in radiology program at South Plains College

Yvette Hernandez of Muleshoe recently graduated from the radiologic technology program at South Plains College in Lubbock. Hernandez was among 15 honored at a pinning ceremony July 25 at Southwestern Public Service in Lubbock.

Hernandez is now eligible to take the American Registry of Radiologic Technologists board exam for national certification.

Ellis elected to Lost Pines National Bank Board of Directors in Smithville

Dan L. Ellis, formerly of Muleshoe, was recently elected to the Board of Directors of the Lost Pines National Bank in Smithville, Texas, a small community approximately 40 miles east of Austin.

Ellis is currently the Executive Vice President and Chief Operations Officer of the bank.

'TEXAS' company hosting annual benefit production Aug. 18 in Canyon

The "TEXAS" Company will present the 1996 annual scholarship benefit production of "TEXAS ORIGINALS," a creation of unseen talents of the cast and crew of the "TEXAS" musical drama, Aug. 18 at 7:30 p.m. in the Branding Iron Theatre on the West Texas A & M University Campus.

Admission to the show is by donation. Donations can be mailed to "TEXAS ORIGINALS," Box 268; Canyon, TX 79015, or presented at the Branding Iron Theatre.

In addition to the show, the "TEXAS ORIGINALS Art Gallery" will be displayed prior to the performance and during intermission.

South Plains College offers mandated law enforcement classes Aug. 26-30

Due to a new mandate changing the content of continuing education classes for peace officers, South Plains College will offer classes beginning Aug. 26 in Cultural Diversity, Special Investigative Topics and Intermediate Child Abuse Prevention and Investigation.

The classes will meet from 2-11 p.m. through Aug. 30 in the SPC Petroleum Technology-Law Enforcement Building, room 109C. Cost is \$42 per person.

Advance registration is required. A minimum of 10 students is required for the class. Payment in full is required prior to the first day of class.

A new mandate passed by legislation for the 1995-97 biennium requires that officers receive 40 hours of training every 2 years. Eight hours should include the course in Cultural Diversity, and 10 hours should include the course in Special Investigative Topics. Remaining hours are determined by the individual agency.

For more information on the course, call the SPC Law Enforcement Office at 894-9611, ext. 2291.



1 year ago August 6, 1995

Civic leaders were working to develop a High Plains Ogallala Regional Water Management Plan. The water supply was being used faster than usual.

Elaine Parker was chosen as the employee of the month.

The Muleshoe High School football coaching staff consisted of Donny Wiley, Jimmy Ore, Ron Welch, Bruce Lacefield, Randy Adair, Ted Johnson, Todd Bandy, Ralph Mason, Matt Owens and Brad Hill.

5 years ago August 8, 1991

Eight firemen from Muleshoe attended a fire school. Attending were Jack Dunham, Alton Parker, Tony Scholey, John McCutchen, Gary Toombs, Larry Rasco, and Jimmy Mills. They took courses on fire prevention, staff command and argo-rescue and practiced fighting fires and other rescuing techniques.

August 10, 1986

The legal drinking age was raised to 21.

Bacon at Pay-n-Save was \$1.88 a pound.

25 years ago August 5, 1971

Construction of the new library was underway.

A survey done by the Muleshoe Jaycees indicated that 60 percent of the people of Muleshoe thought that the population of this town would be 4,000-7,000 by 1985 and an additional 13.2 percent thought it would be 10,000 or more.

August 8, 1971

Shurline pencils at Jim's Pay-n-Save were 1¢ each.

Another survey by the Jaycees showed that 52.1 percent of Muleshoe felt like this town was not adequate in competition to other towns. The reasons being that retail prices were too high, new businesses and industries were needed, shortage of employment opportunities, lack of recreational facilities, and inadequate city leaders.

Community calendar

For more information, call Norma Perez at 272-4248.

The deadline to appear in the Journal's Community Calendar is Thursday at 5 p.m.

Monday, August 5
4-H meeting, Bailey County Coliseum, 6-8 p.m.

Tuesday, August 6
Alcoholics Anonymous, 7 p.m., 723 W. Ave. E. For more information, call 272-3002.
Rebekahs, 7:30 p.m., Rebekah Lodge.

The Rotary Club, 12-1 p.m., Bailey County Coliseum meeting room.

Beta Sigma Phi Alpha Zeta Phi, 7:30 p.m..
Beta Sigma Phi Zeta Rho, 7:30 p.m.

Eastern Star Masonics, Masonic Lodge, 8 p.m.
Wednesday, August 7

Watson Junior High registration, 9-11 a.m., 2-4 p.m.

Thursday, August 8
Watson Junior High registration, 9-11 a.m., 2-4 p.m., 6-8 p.m. TOPS, Church of Christ, 6 p.m.

Alcoholics Anonymous, 7 p.m., 723 W. Ave. E. For more information, call 272-3002.

Muleshoe Muleskinners, Fire Department, 7:30 p.m.
Oddfellows, 8 p.m., Oddfellows Lodge.

Friday, August 9
Kiwanis, 6:30-8 a.m., Snack Shack.
Watson Junior High School registration, 9-11 a.m., 2-4 p.m.

Editor's note: The Community Calendar appears in Sunday's Bailey County Journal.

North Plains Mall
invites you to the
Clovis Kids Show
Saturday, Aug. 10, 1996 at 2:00 p.m.

See What's In Style For Back To School During Our 1st Annual Clovis Kids Fashion Show

COME ONE, COME ALL TO MEET THE NEXT CHIEF JUSTICE OF THE TEXAS SUPREME COURT ANDREW JACKSON KUPPER

WHERE: Muleshoe State Bank - Community Room
101 West American Boulevard
Muleshoe, Texas

WHEN: Wednesday, August 7, 1996

TIME: 2:00 p.m.

ANDREW JACKSON KUPPER is currently District Judge for Hockley and Cochran Counties, Texas, and is committed to Justice for ALL OF THE PEOPLE. He needs and would greatly appreciate your support.
Come and bring a friend.

Political advertisement paid by George W. Payne, Jr., Treasurer, P.O. Box 1236, Levelland, Texas 79336, (806) 894-8191

Local news about local folks.

Muleshoe Journal

To subscribe, call 272-4536



Balancing act
Jason Jones, director of the Muleshoe Independent School District food services, is responsible for providing balanced meals for the 1,500 students in the district.

School nutrition: Finding a better balance

By RICK WHITE
Managing Editor

Overseeing the nutritional needs of the 1,500 students in the Muleshoe Independent School District is a daunting task.

Made even more difficult this year by new federal guidelines designed to balance calorie and fat intake among school children.

Especially considering that Skittles, Blizzards and nachos have seemed to replace some of the more traditional food groups.

"It's going to be a challenge," said Jason Jones, who manages the MISD food service program for Aramark, a Philadelphia-based international service company. "The new guidelines are a definite improvement."

The improved guidelines call for meals to meet at the least minimum daily allowances of calorie intake and limit the amount of fat and saturated fats.

Guidelines for the federally-funded National School Lunch Program had not changed much since they were developed just after World War II.

"It brings everything up to date about what we now know about nutrition," Jones said, amazed that the standards survived so long.

The Muleshoe School District serves more than 300,000 meals a year, including 228,000 hot meals.

Providing healthier choices isn't the hard part, Jones said, it's getting the kids to eat them. Jones said changes in food preparation can bring most meals in line with the new

An Olympian effort

Aramark, the food service management company that manages the Muleshoe Independent School District's breakfast and lunch programs, has been providing training meals at the Olympics since 1968.

Among the items Aramark purchased to feed the thousands of athletes and officials at the 1996 Olympics in Atlanta were a combined 1.2 million pounds of beef and lamb, 750,000 pounds of chicken, 48,000 dozen eggs, 70,000 gallons of milk and 750,000 apples.

standards.

"But it's not based on what we offer," Jones said. "It's based on what the kids actually choose. My main emphasis is what they want. If I don't offer them what they want, they're not going to eat."

Jones said education about proper nutrition is important, especially in the lower grades. Jones does a series of classroom lectures on nutrition.

"Most of the teachers wanted me to talk to them about eating healthy snacks," Jones said. "I feel I have an responsibility to them. Especially the little kids."

Jones added that like in all school programs, parental support is important.

"They eat what they eat at home," Jones said.

Area schools offer reduced school meals

Free and reduced price meals are available to those who qualify under the National School Lunch and Breakfast Program recently implemented at three local schools.

Muleshoe, Three Way and Lazbuddie schools will be offering meals free or at reduced prices to school children who fall at or below federal income levels.

Households that are currently receiving food stamps may receive meals for their children for free. Households that are at or below federally mandated income levels will receive lunch meals for 40 cents, and breakfasts for 30 cents.

For instance, a family of five that makes at or below \$33,707 annually are eligible for the reduced prices.

Foster children who are the legal responsibility of a welfare agency or court may receive discounted meals regardless of the income of the house-

hold in which the reside.

Application forms for eligibility are available at each school.

For more information, call the Muleshoe School at 272-4360, Three Way School at 927-5531, or Lazbuddie High School at 965-2156.

Household size	Annual	Monthly	Weekly
1	14,319	1,194	276
2	19,166	1,598	369
3	24,013	2,002	462
4	28,860	2,405	555
5	33,707	2,809	649
6	38,554	3,123	742
7	43,401	3,617	835
8	48,248	4,021	928
For each additional member add	4,847	404	94

WIN THIS COOL '96 FORD XLT PICK-UP AT ALLSUP'S

NO PURCHASE NECESSARY! REGISTER AT ANY ALLSUP'S STORE THROUGH AUGUST 17, 1996

CHECK OUT the FIREWORKS at ALLSUP'S

Enjoy Coca-Cola CLASSIC 6 pk., 12 oz. cans **\$1.99**

COMBO MEAL Piping Hot Link, Potato Wedges & Tallsup **\$1.99**

THORN APPLE VALLEY Chopped Ham 10 OZ. PKG. **\$1.09**

HORMEL Vienna Sausage 5 OZ. CAN **2 FOR 2.99¢**

ALLWAYS a LOW PRICE on

SAVE ON Tide Ultra 33 LOAD BOX **\$5.99**

SHURFINE Citrus Punch 64 OZ. BTL. **\$1.39**

SAVE ON Wesson Oil 48 OZ. BTL. **\$2.99**

You'll find all this and more at your Allsup's store
Store #34
318 W. American Blvd.
272-4862
MULESHOE

MARDI GRAS Paper Towels 1 ROLL PKG. **89¢**

CHILI DOGS **2/\$1** | HAM OR SAUSAGE BREAKFAST BURRITO **99¢**

Instantly Win up to \$1,000 or other great cash prizes & free products!

Get a Free Game Ticket With Every HONCHO 44 oz. Fountain Drink Purchase!

*No purchase necessary. Game begins 8:23:36 and ends 8:17:36. See cashier for details. Void where prohibited. ©1996 ALLSUP'S.

ALLSUP'S Always

\$50.00 WORTH OF GASOLINE FREE!!!

Take this coupon to any Strebeck location. If you purchase a new vehicle before August 31, 1996, you will receive \$50.00 worth of free gasoline courtesy of ALLSUP'S.

LOW PRICES, GREAT PRODUCTS 24 HOURS A DAY

PRICES EFFECTIVE AUGUST 4-10, 1996 OFFER GOOD WHILE SUPPLIES LAST

1996 Portales, NM Roosevelt County FAIR August 7-10, 1996
Entry Day Tuesday, Aug. 6th

FUN FOR EVERYONE!

- Livestock Shows
- Pet Show
- Stick Horse Race
- Roping for Kids
- Rodeo for Kids

Pork Chop Breakfast SATURDAY 6:30-8:30 a.m. \$3

Old Fiddlers Contest FRIDAY 6 PM

Top O'Texas Cloggers Saturday

Chok Rippee & The Roadrunners FRIDAY & SATURDAY 9 PM

Fashion Shows

- John Hill & Norris Twins Wednesday 7-10 PM on the slab
- Pioneer's Day - Thursday
- Gospel Singing - Friday 6-9 PM Nancy & Tim Tivis, "Homeward Bound", Vernon Davis
- Michelle Dunn Twirling - Saturday

Ranch Rodeo - Special Events Arena SATURDAY 1 PM & 8 PM

Junior Rodeo 7:00 P.M. THURSDAY

For More Information Call Roosevelt County Extension Office (505) 356-4417

JUNIOR LIVESTOCK SALE Saturday, Aug. 10 5:30 PM

Carnival Nightly Armband



Night lights

Lightning splits the sky west of Muleshoe on Highway 84 Wednesday night. Scattered storms all week dropped nearly an inch of rain in the city.

Bill concerning planting limits passes to Senate

All along farmers just wanted to know what the new rules were.

Legislation passed in the House of Representatives last week would let farmers know where they stand on new regulations for the Conservation Reserve Program and for planting on ghost acres.

The legislation, introduced by U.S. Rep. Larry Combest, R-Lubbock, would mandate the agency announced by Sept. 15 new governing guidelines for the CRP program. The bill would also increase farming flexibility by allowing the planting of fruit and vegetables

behind failed crops.

The bill has moved to the Senate.

"We have insisted for months that the USDA announce criteria for the future of the CRP," Combest said. "USDA's refusal to establish CRP policy has left farmers with important financial questions. Also, the USDA bureaucracy has failed to adequately address the double-cropping of black-eyed peas on land where the first crop failed earlier in the season."

The new farm bill provided authorization for the CRP to continue up to the current level

of 36.4 million acres. There is no guarantee that acreage currently in the CRP will be re-enrolled because the criteria may change.

When the government grass program began, land was chosen based exclusively on wind and soil erosion. The 1990 farm bill added water quality, while the USDA later added on wildlife habitat to the eligibility criteria.

Although most of the CRP acreage enrolled on the High Plains went in for 10 years at about \$40 an acre, the new farm bill does not specify rates or contract lengths.

Combest estimates there are about 1.5 million acres enrolled in the CRP program in the region.

Muleshoe Pea & Bean has been waiting for months to find out about the status of black-eyed peas, which were not permitted to be grown on contract acreage or behind failed crops in the previous farm bill.

"It won't help us this year, but it will help out next year," said a company spokesperson.

Black-eyed peas can be planted up until the third week of July. They have a 90-day growing season.

Baked

Continued from page 1

and June affected the overall quality of the crop.

"The extreme temperatures in June really stressed the vines," Box said. "We just couldn't keep them wet enough."

Extreme temperatures cause irregular growth of the tubers, decreasing the quality of the potato.

The weather could have been worse.

"It didn't hail," Box said of the critical May and early June growing period. "If it doesn't hail, we can get a crop."

Potatoes are watered on a schedule from the time they are planted.

"Potatoes really grow better without Mother Nature's help," said Cliff Black, an employee

of Springlake Potato, Inc. in Springlake Earth. "Because of all the other types of farming we have around here we appreciate the rain, but rain messes up the irrigation schedule. You never get exactly the right amount at exactly the right time, so you adjust the schedule to offset the rain you got."

Black said rains have not slowed their harvests down, but cold spells in April caused potatoes near Earth to mature one week to 10 days late.

"Normally we start about the 18th or 20th of June. This year we didn't start until July 1," Black said. "Our market win-

dow that we shoot for is the last of June to the first of July where we'll get a higher market price. But the late crop pushed us back into a later window where the price isn't so good."

Most area producers hope the harvest will be complete by mid August.

County

Continued from page 1

cause a deficit in the fund in 25 years.

In addition to low turnover rates, the retirement program implementation in 1971 caused an automatic deficit in the allotted funds.

The County is prohibited by law from submitting a lump

sum into the account to reconcile the difference.

Starting Jan. 1, the county is required by law to implement one of three options: they may lower overall employee retirement payments, increase the amount submitted by the County each month toward the retirement plans, or take no action at all.

If they choose to take no

action, in Jan. 1998, the Retirement System will automatically initiate one of the two options.

Commissioners will vote on the options at their next meeting.

In other action, Commissioners accepted a bid for \$2,500 from Maple Coop Gin on a dump truck offered for sale by Precinct #3.

Taxes

Continued from page 1

gins Jan. 1. The Bailey Central Appraisal office, contracted by the hospital to assess and collect the district's taxes, assesses property within the district using the mass-appraisal system. Homes are assessed according to square footage, structure, and location, and are depreciated for age or condition.

Once the total value of the entire district is determined, the Hospital District Board of Directors uses the tax rate and property value to figure the fiscal budget.

The tax rate is applied to the values in the district in September. Taxpayers then receive a multi-entity bill, which lumps hospital district, school district, and government taxes into one sum. Discounts of up to three percent are given for early payment.

For instance, a house that is appraised at a \$50,000 value by the appraisal office would be multiplied by .0025 to determine the tax amount — in this case, \$125. If the tax is paid before Nov. 1, a 3 percent discount would be deducted from the total amount, for a total of \$121.25.

Once paid, the taxes are collected by the appraisal office and separated by entity. The hospital district taxes are then paid in full to the district.

"There is not only an aspect of what you're paying for, but what you're getting," Bone said. "I think in a rural setting there are two very important things you're getting. You get access to health care that is convenient and competent, and an economic benefit to the community."

Changes

Continued from page 1

factor in rural communities ability to meet the challenges will prove to be local support. The adage "use it or lose it" may be more appropriate now than anytime in the past when it comes to the continued availability of health care services at the local level.

The Muleshoe Area Hospital District is committed to assuring the continued availability of health care services to the people of the area at a level appropriate to need and resource. It is interested in assuring access to quality service conveniently available when needed — be those services inpatient, outpatient, or long-term care. Consequently, the district operates the hospital, which includes a state certified Level IV trauma center, as well as services in the areas of internal medicine, obstetrics and surgery, plus radiology, laboratory, respiratory therapy, physical therapy, EKG, pharmacology

and CAT scan. It operates a successful state certified nursing home, with medicare certified skilled nursing beds. And it operates a state certified home health agency offering services to residents of the district and surrounding area.

Every resident of the Muleshoe Area Hospital District has a stake in the changes occurring in health care delivery. Each resident should consider those changes in terms of local need and local availability. If decisions about access to health care services aren't made at the community level, someone, somewhere else will decide. The recent history of the Muleshoe Area Hospital District would suggest that the area will make its own decisions and will commit to supporting those decisions.

(Jim Bone is the Interim Administrator of Muleshoe Area Health District.)

Miracle-Ear
Hearing Systems by Research & Labs
Miracle Ear will be in MULESHOE on August 8th from 9 am to noon at the MULESHOE AREA MEDICAL CENTER 708 S. 2nd Call 1-800-808-0188 FOR AN APPOINTMENT

Complete Line Monuments - Markers Memorials Granites - Bronze
Muleshoe Memorial Park Cemetery, Inc.
232 Main P.O. Box 373 Muleshoe, TX 272-5727 or 272-4670

We would like to express our thanks to all of our friends and family for the flowers, cards, food, your prayers and love shown to us during the loss of our son, Karsten. Your expression of love will never be forgotten.
Steve, Tracie, Kayla, JoBryan Claybrock
Beth Webb and family
Helen Bichel and family

"If This Truck Is Not Being Driven Safely, Please Call..."

My oldest son has had his driver's license for six months now. I've handled that fairly well, I think. And so, I readily admit, has he.

So far, we've nailed one neighbor's tail light lens and snagged a \$30 piece of chrome. Yes, one minor skirmish hair-



Focus On Faith
Curtis Shelburne

lipped the right front quarter panel of the rapidly aging Suburban, but, all told, it could have been worse.

I know that because it already has been. The boy has done nothing to the old rig any worse than what has already been done with railroad ties and a very foolish pheasant. (Interesting combination, I know, but don't ask about it. It's something of a sore spot. I will only say, quietly, that I was not at the helm on those occasions.)

And, though I understand better than I did why teenagers' car insurance premiums are what they are, it bugs me to pay for something you can't afford to use. Extortion is the word that comes to mind.

Anyway, I think we've done

fairly well with the new license.

But we've come to a new hurdle. He wants to drive my pickup. MY pickup. Not fancy. Not new. But mine. And I like it. A lot.

It has been fairly safe in the past because it has a "standard" transmission and my dear wife who, I hasten to add, I love dearly, doesn't like to drive it and my son can't. Or couldn't.

He can now. Why he should want to drive my pickup is beyond me; he has a perfectly good 1962 Pontiac Catalina!

Various friends have tried to make me feel better. On a serious note, one told of how his own newly-licensed son totalled the family's brand new Suburban. When dad saw what was left of the rig, he was just glad to get the boy home in one piece. I'm sure. But I'd like to think that there are a few other choices besides dinged boy or dinged truck.

Another, trying to be particularly helpful, said I should just hit it a good lick with a sledge hammer right now and get it over with. Thanks.

Makes me wonder how God must have felt when he created a brand new world and invited Adam & Eve to take it out for a spin. I wish they'd had insurance.

Curtis Shelburne is minister of the 16th & Avenue D Church of Christ in Muleshoe.

WEST PLAINS TELECOMMUNICATIONS, INC.
"THE PHONE COMPANY"
P.O. Box 1012 - Muleshoe - 1-800-741-5533
NEW DIGITAL TELEPHONE SERVICE

MULESHOE - SUDAN - EARTH - SPRINGLAKE - OLTON
Call Waiting -- Cancel Call Waiting -- Call Forwarding
Tone Dialing -- Speed Calling -- Three Way Calling
Remote Access to Call Forwarding -- Toll Control

(Additional Features available as tariffs are approved)
Such as Caller ID & Voice Mail
Call our office for details

Have A Nice Day!

ENGAGEMENT



Kimberly Moore and John Brooks

Richard and Janice Moore of Lazbuddie, formerly of Clovis, announce the engagement and approaching marriage of their daughter, Kimberly, of Lubbock, to John Brooks, also of Lubbock, son of O.C. (Charles) Brooks and the late Georgia Ruth Pitt Brooks of Houston. The bride-elect is a 1992 graduate of Texas Tech University and is employed at AA Production, Inc. of Lubbock. The future groom is a 1984 graduate of the University of Texas at Austin and is also employed by AA Production, Inc. The couple plan an Oct. 26th wedding at the Ransom Canyon Chapel of Lubbock, with a reception to follow. All friends and relatives of the couple are invited to attend.

NURSING HOME NEWS

By Joy Stancell

Friday afternoon, the residents gathered around the big screen TV to watch a movie and snack on soft pretzels, mustard and root beer.

Saturday afternoon, Melvin and Wanda Griffin directed the Bingo Bonanza.

Sunday afternoon, the Progress Baptist Church came for Gospel singing and Church services. Holly Millsap was a guest of her mother, Pearl Cox.

Naomi Black attended the Owens family reunion over the weekend. She made several decorative pillows to be auctioned off at the reunion.

J.C. Shanks comes every Saturday morning to cut the men's hair and give shaves.

Nettie Quesenberry's granddaughter, Michelle, and her great-granddaughter, who has recently moved to Artesia, N.M., visited her recently.

We have changed the date for our trip to the South Plains Mall in Lubbock. It will be August 15.

The Muleshoe A.A.R.P. made a donation to the Health-

care Center.

The residents gathered on our newly landscaped patio for a garden party Tuesday morning.

Beverly Wagnon, Mary Jo Burge, Lanell Stancell, Skeet Bradshaw, Chickie and Joy shampooed and set the ladies hair and gave manicures Tuesday afternoon.

Rosie Toscano had several family members visit her Tuesday morning.

Wanda Kittrell and Jane Reeder hosted coffee/donut time Wednesday morning. Jim Claunch was the guest of Cordie Claunch, Tennie McCormick was the guest of Leonard McCormick, and Jane Reeder was the guest of Roma Davis.

Nancy Kidd, our ombudsman, directed a residents' council meeting Wednesday morning.

Chickie Henderlite displayed and gave a program on her artifacts from Germany Wednesday morning.

Walter Lackey attended the

Glenda Jennings/Jonessa Brockman Sing-A-Long/puppet show Wednesday afternoon with his mother, Ruth Lackey.

Pearl Cox was admitted to the local hospital Wednesday morning. Please keep her in your prayers.

The G.A.s and R.A.s from the Trinity Baptist Church came to visit Wednesday night. They made a special visit to Mrs. Gibbs and Bootie Tiller and presented them with cards

they had made.

The August Birthday party will be Thursday, August 29 at 3 p.m.

Velta Fyie visited the Healthcare Center Tuesday afternoon. Ruby Garner visited Tuesday and Wednesday. Clifton Finley visited Wednesday and ran errands for the residents.

Melba and Richard Cunningham visited R.B. Cunningham every day this week.

HOSPITAL ADMISSIONS

The Muleshoe Area Medical Center has reported the following admissions:

July 26 — Anthony Gonzales, Danny Griswold,

Helen Hall, Howard Zimmerman, Michael Thompson

July 27 — Lionel Lopez, Helen Hall, Clydetta Mitchell

July 28 — Lionel Lopez,

Helen Hall

July 29 — Helen Hall

July 30 — Inez Rule, Helen Hall

July 31 — Inez Rule, Daniel Hernandez, Mary Jo Burge, Pearl Cox, Jesse Espinoza

Aug. 1 — Inez Rule, Daniel Hernandez, Mary Jo Burge, Pearl Cox, Jesse Espinoza

PUBLIC RECORD

OBITUARIES

Vera "Baba" Martin

EARTH — Funeral Services for Vera "Baba" Martin, 88, of Earth were held Wednesday, July 31, at the Earth Church of Christ with Danny Sneed and W. P. Dennis of Littlefield officiating.

Burial followed in the Earth Memorial Cemetery under the direction of Parsons-Ellis Funeral Home.

Mrs. Martin died July 29 at her residence.

She was born February 14, 1907, in Tipton, Okla. She married Perry Martin on February 7, 1929 in Altus, Okla.

Mrs. Martin moved to Earth in 1950. She had taught elementary and high school in the Tipton. She was a member of the Earth Church of Christ, where she taught ladies Bible classes and Sunday School classes.

Survivors include her husband, Perry Martin, and one son, Johnny K. Martin, both of Earth; one sister, Byrd Evans of Lubbock; one grandchild; three great grandchildren and one great-great grandchild.

The family suggests memorials be made to the Tipton Childrens Home, Tipton, Okla. and the New Mexico Childrens Home in Portales, NM.

Infant Rhys Harlan

SUDAN — Graveside services for infant Rhys Harlan of Del Rio were held Wednesday, July 31, at the Littlefield Cemetery.

Rhys died shortly after birth on July 26 in San Antonio.

Survivors include parents John and Tearsa Harlan of Del Rio; paternal grandparents, Nolan and Betty Harlan of Bula; maternal grandparents, John and Cherry Ellas of Houston; one sister Rhea Ruth of Del Rio.

Wheeler Durham

TEXARKANA — Services for Charlie Wheeler Durham, 78, were held Monday, July 29 at 11 a.m. at the Capelwood United Methodist Church with the Rev. John Montgomery officiating.

Burial was in Chapelwood Memorial Gardens under the direction of Texarkana Funeral Home.

Mr. Durham died Saturday, July 27, in a Texarkana hospital.

Mr. Durham was born February 27, 1918, in Bowie

County. He was retired from the Red River Army Depot and the Rock Arsenal Plant in Rock Island, Ill. He was a member of Chapelwood United Methodist Church, the Lions Club, and was a U.S. Army Veteran of World War II. Mr. Durham lived in Muleshoe from 1973 to 1977.

Survivors include his wife, Jeanne Wilson Durham of Nash; two sons and daughters-in-law, Thomas C. and Martha Durham of Park Ridge, Ill., and Bill Durham and Sandy Stone of Austin; one daughter and son-in-law, Karen and Larry Ohrberg of Moline, Ill.; two brothers, E.N. "Buddy" Durham of DeKalb, and J.N. Durham of Bonham; three grandchildren; and a number of nieces and nephews, including niece Margaret Hamilton of Muleshoe.

The family requests memorials be made to Chapelwood

United Methodist Church, 1004 S. Kings Highway, Texarkana, TX 76501.

SHERIFF'S

Arrests

July 24 — Terri Lynn Villa, 18, was charged with probation violation.

July 24 — Oscar Apodaca, 18, was charged on a local

warrant with a speeding fine.

July 26 — Maria D. Gutierrez, 24, was charged with class C theft.

July 28 — Pedro Ruiz Acosta, 33, was charged with class C theft.

POLICE

Arrests

July 26 — Lorena Cuevas,

24, was charged with issuing a bad check.

July 26 — Ruben Reyna, 32, was charged with probation violation.

July 29 — Marcos Guevara Orona, 62, was charged with public intoxication.

July 29 — Jose Quijas Rodriguez, 50, was charged with DWI, no drivers license, expired motor vehicle inspection sticker, and no insurance.

Home Folks Caring For Folks At Home.



MULESHOE AREA HOME HEALTH

Agency

Featured Employee

Kaci Miller is an L.V.N. at the Muleshoe Area Home Health Agency. She lives in Earth and is married to Scott Miller. They have two kids - Reagan and Brittany. Kaci enjoys doing crafts in her spare time. She goes to First Baptist Church in Springlake.

Kaci has just returned to work at the Muleshoe Area Home Health Agency. She worked in Lubbock at University Medical Center in Kidney Transplant & Dialysis before coming here. She enjoys working with the elderly. It's nice to be wanted and to be enjoyed so much.



Kaci Miller

To receive Home Health Services, talk with your physician or talk with hospital personnel when you are hospitalized.

24 Hour # 272-3346
Local Nurse on call 24 hours a day to offer prompt service.

We accept Medicare, Medicaid and Private Insurance
It Is Your Right To Choose The Home Health Agency You Prefer.



Affiliated with
LUBBOCK METHODIST HOSPITAL SYSTEM

FREE Information On Advance Directives
Also known as Living Wills or Right To Die Directives.
You may call our agency 272-3346 for these directives. You may also obtain these forms and assistance at 623 West 2nd Street.

Federal Land Bank Association
316 Main St., Muleshoe
806-272-3010

Long Term Financing for Farms, Ranches, Rural Housing, Operating and Improvements.

Current Variable Rate 7.8%.
Fixed rates are available.
Call for quote.
A Property Rights Advocate and Equal Opportunity Lender.

1996
Roosevelt County FAIR
Portales, NM Fairgrounds
AUGUST 7-10
FREE ENTERTAINMENT
With Purchase of Fair Gate Tickets



Chek Rippee & The Roadrunners
DANCE Friday & Saturday, Aug. 9 & 10

Co-Sponsoring
KSEL COUNTRY 95.3 FM John W. Hill & Norris Twins of Branson, Missouri
Wednesday Night 7:00-10:00 p.m.

9:00 P.M. THURSDAY: Dance on the Slab "The Chaser"
6:00 P.M. FRIDAY: Gospel Singing "Homeward Bound", Nancy & Tim Tivis and Vernon Davis
6:00 P.M. FRIDAY: Old Fiddlers Contest
7:00 P.M. SATURDAY: Chris Harrell - Medley of Songs
★ Pecos Valley Yodelers (Gene & Sharlene), ★
★ Top 'O Texas Cloggers, Michelle Dunn - Twirling ★

Business Opportunities

OWN YOUR OWN AP-PAREL OR SHOE STORE, Choose: Jean/Sportswear, Bridal, Lingerie, Western wear, Ladies, Men's, Large Sizes, Infant/Preteen, Petite, Dance wear/Aerobic, Maternity, or

Accessories Store. Over 2000 name brands. \$26,900 to \$38,900: Inventory, Training, Fixtures, Grand Opening, Etc. Can open 15 days. Mr. Loughlin (612) 888-6555. 311-1tpd

Classifieds Sell!
272-4536

OIL PAINTING
10 a.m. to 2 p.m. - August 7, 14, 21.
WATER COLOR
10 a.m. to 2 p.m. - August 8, 9, 15
FLORAL DESIGN
10 a.m. to 2 p.m. - August 10, 17, 24
(one day sessions)

Bring a sandwich
Reservations must be made.

RHEATA WHITE
213 E. Fir Ave.
272-3889 or 272-4696 after 6 p.m.
Tuesday, Wednesday, Thursday
1-5 p.m. 272-4888

Byrd Realty
Ronald Byrd
Licensed Broker
Farwell, Texas

Crista Bass
Sales Associate
Home (806) 925-6464

Office (806) 481-3846
Mobile (505) 760-1495
308 Third St., Farwell, TX

In The Country, 3 bedroom, 1 3/4 bath, 2 car garage. Additional 2 bedroom, 1 bath home, 30' x 80' quonset barn, large domestic metal R.V. storage building. Highway frontage. All on 8 acres. Many, Many extras! Call For Details

78 Acres NW of Muleshoe, Highway Frontage. Excellent development property. Owner will sell as one unit for \$40,000 or will divide into 5 or 10 acre tracts at \$750.00 per acre. If you have wanted a small acreage, this is your prime opportunity

Northwest of Muleshoe - Nice 3 bedroom, 1 3/4 bath home, has nice utility room and large living room with single car garage. Also large storage building and an additional mobile home hook-up. Call for more details

No man has a right in America to treat any other man tolerantly, for tolerance is the assumption of superiority.

—Wendell Wilkie

DeAnna & Larry Rasco
Muleshoe, TX 79347
806-272-5269
29s-tfc

D&L Upholstery
Farm Equipment
Auto - head liner
Residential
Commercial
Marine
Free Estimates
Non-Smoking Environment

SALE OF FARM REAL ESTATE
46.5 Acres More or Less
Southeastern Bailey County, Texas

The Farm Service Agency (FSA) will sell at a Trustee's Foreclosure Sale to the highest bidder or bidders, for cash, at the area of the Easterly door of the courthouse at 10:00 am or within three hours thereafter, in Bailey County, TX, on Tuesday August 6, 1996. FSA's minimum bid is \$8,399.00. For specific information contact Joyce Thompson, Agriculture Credit Manager at 115 East Ave. D., Muleshoe, Texas or call (806) 272-5549 or (806) 792-0078.

FSA is an Equal Opportunity Lender

Smallwood Real Estate
232 S. Main 272-4838
Commercial - with large house. Storage or apartments. Make repairs and make money. This is for someone who can repair and paint. Owner financed. 31s-2 sun c

Five Star Auctioneers
25th Annual
Special Harvest Equipment Auction

Note: New Harvest Auction Location
WE ARE NO LONGER AT THE PLAINVIEW AIRPORT
NEW LOCATION: Plainview, Texas, 3 Miles North On I-27 To Exit 54, Then Across Overpass To West Side. (Same Being Just Southwest Of Excel Beef Packers.)

FOR CONSIGNMENTS OR FOR COMPLETE LIST:
Call Five Star Auctioneers: (806) 296-0379 Or (806) 296-7252
P.O. Box 1030, Plainview, Texas 79073-1030

FIVE BIG DAYS
Tuesday, August 13 Thru
Saturday, August 17
Sales Start Each Day At 10:00 a.m.

We never remark any passion or principle in others, of which in some degree or other, we may not find a parallel in ourselves.

—Hume

BAILEY COUNTY DEVOTIONAL PAGE

Scoggin Ag Center, Inc.
"Where Fertilizer Is Our Business"
1532 W. American Blvd.
272-4613

IRRIGATION PUMPS & POWER
ZIMMATIC CENTER-PIVOTS
W. Hwy. 84 272-4483

MAPLE COOP GIN
927-5501
Maple, Texas

Leal's Tortilla Factory, Inc.
"Serving West Texas since 1957"
107 E. Ash 272-5772 Muleshoe, TX

Muleshoe Country Club & Golf Shop
900 Country Club Dr. 272-4250
Swimming, Dining, Golf Lessons Available Golf Accessories & Clothing

Henry Insurance Agency
111 West Avenue B
Muleshoe, TX 272-4581

BOBO INSURANCE AGENCY
108 E. Ave. C 272-4264

Shipman's Body Shop
Auto Painting • Wrecker Service • Free Estimates
Tractor Glass & Windshields
410 N. 1st Muleshoe, TX 272-4408 FAX 272-3366

SAIN IRRIGATION & MACHINES
Complete Pump Service
W. American Blvd. 272-4397
Walt Sain Muleshoe, TX 272-4148

Bob STOVALL Printing
Quality -- Service
221 E. AVE. B 272-3373
C.R. & EVA NELL DALE MULESHOE

Ellis Funeral Homes
Muleshoe - Morton - Earth - Sudan
Texas

RONNIE HOLT INSURANCE AGENCY
Specializing in Crop, Life & Health Insurance
Western 66 Office Bldg.
272-3614 Muleshoe, TX

PACO FEED YARD, INC.
Commercial Cattle Feeders
P.O. Box 956 265-3281
Frona, TX
Feller Hughes-Mgr.

WEST CAMP GIN, INC.
Better Ginning & Courteous Service
Rt 2, Box 1000
925-6681 Muleshoe, TX
James Shepard • Phyllis Shepard

JAMES CRANE TIRE CO., INC.
322 N. First 272-4594
Muleshoe, TX
Mike Hahn

Facts About The BIBLE BY JOHN LEHTI

THE BIBLE HAS BEEN THE WORLD'S "BEST SELLER" FOR MANY YEARS. ONE CAN TRAVEL TO THE FAR CORNERS OF THE EARTH AND STILL FIND A COPY OF THE BIBLE WAITING FOR HIM THERE. IT HAS BEEN TRANSLATED INTO 195 DIFFERENT LANGUAGES AND MILLIONS OF COPIES ARE SOLD EACH YEAR. IN A SINGLE YEAR, ENOUGH COPIES ARE DISTRIBUTED TO AVERAGE 47 FOR EVERY MINUTE OF EVERY HOUR, NIGHT AND DAY. WITH SO MANY EDITIONS AND SO MANY PRINTINGS OF THIS GREAT BOOK, OVER THE YEARS, SMALL WONDER THAT THERE HAVE BEEN OCCASIONAL ERRORS MADE IN ITS PRINTING! HERE ARE A FEW:

THE BREECHES BIBLE: IN 1560 AN EDITION OF THE BIBLE SAID ADAM AND EVE "SEWED FIG LEAVES TOGETHER AND MADE THEMSELVES BREECHES."

THE VINEGAR BIBLE: IN 1717, AN EDITION HAD THE 20TH CHAPTER OF LUKE HEADED AS "THE PARABLE OF THE VINEGAR" INSTEAD OF "VINEYARD."

THE WICKED BIBLE: IN 1631, A PRINTER WAS FINED 300 POUNDS BECAUSE HE LEFT OUT "NOT" IN ONE OF THE TEN COMMANDMENTS SO THAT IT APPEARED IN EXODUS 20:14 "THOU SHALT COMMIT ADULTERY."

THE TREACLE BIBLE: AN EDITION IN 1568 HAD JEREMIAH 8:22 READING "IS THERE NO TREACLE IN GILEAD" INSTEAD OF "BALM."

THE PRINTERS BIBLE: IN 1702 THE 119TH PSALM, VERSE 161, READ "PRINTERS HAVE PERSECUTED ME WITHOUT CAUSE" INSTEAD OF "PRINCES."

NOTWITHSTANDING THE ERRORS, THE BIBLE, IN THE THOUSANDS OF EDITIONS PUBLISHED AND THE MANY MILLIONS OF COPIES THAT HAVE BEEN DISTRIBUTED, CONTINUES TO BRING TO HUMANITY THE SPIRITUAL AND MORAL VALUES SO NEEDED BY THE WORLD AT LARGE!

NEXT WEEK: WOMEN'S LIB IN THE BIBLE?!!

SAVE THIS FOR YOUR SUNDAY SCHOOL SCRAP-BOOK

This devotional & directory is made possible by these businesses who encourage all of us to attend worship services.

- | | | |
|--|--|---|
| <p>ASSEMBLY OF GOD
FIRST ASSEMBLY OF GOD
521 South First Street • 272-3017
Jack Stone, Min. • 272-3984
S.S. 9:45 a.m., W.S. 11 a.m. & 6:30 p.m., Wed. 7:30 p.m.</p> | <p>ST. MATTHEWS BAPTIST
Corner of W. Boston & W. Birch
Floyd R. Monroe, Min.</p> <p>TRINITY BAPTIST
314 E. Ave. B
Robert Brown, Min.</p> | <p>LUTHERAN
ST. JOHN LUTHERAN
Lariat, TX
Richard Greenhaner, Min.
S.S. 10:30 a.m.; W.S. 9:30 a.m.</p> |
| <p>BAPTIST
CALVARY BAPTIST
1733 W. Ave. C.
Ben Davis, Min.</p> <p>CIRCLE BACK BAPTIST
Intersection FM 3397 & FM 298
Jessie Shaver, Min • 946-3676</p> <p>EMMANUEL BAPTIST
107 East Third
Isaias Cardenas, Min.</p> <p>FIRST BAPTIST
220 West Ave. E.
Stacey Conner, Min.</p> <p>FIRST BAPTIST
Lazbuddie • 965-2126</p> <p>PRIMERA IGLESIA BAUTISTA
223 E. Ave. B
Roy Martinez, Min.</p> <p>PRIMITIVE BAPTIST
621 South First
Elder Cleveland Bass, Min.</p> <p>PROGRESS BAPTIST
Progress, TX</p> <p>PROGRESS SECOND BAPTIST
Arthur Hays, Min.
1st & 3rd Sundays</p> <p>RICHLAND HILLS BAPTIST
17th & West Ave. D
Brad Gathright, Min.</p> | <p>CATHOLIC
IMMACULATE CONCEPTION CATHOLIC
805 E. Hickory
Joseph Augustine, Min.</p> <p>CHRISTIAN
THE CHRISTIAN CENTER
Morton Hwy. • 272-5105
Reydon Stanford, Min.</p> <p>CHURCH OF CHRIST
LARIAT CHURCH OF CHRIST
Sam Billingsley, Min.
S.S. 10 a.m.; W.S. 11 a.m. & 6 p.m., Wed. 7 p.m.</p> <p>LAZBUDDIE CHURCH OF CHRIST
Nathan Crawford, Min.
S.S. 9:30 a.m.; W.S. 10:20 a.m. & 5 p.m.; Wed. 7 p.m.</p> <p>MULESHOE CHURCH OF CHRIST
22nd & W. American Blvd.
John Knox, Min.
S.S. 9:30 a.m.; W.S. 10:20 a.m. & 6 p.m.; Wed. 7:30 p.m.</p> <p>SIXTEENTH & AVE. D CHURCH OF CHRIST
Curtis Shelburne, Min. • 272-4619
W.S. 10:30 a.m. & 6 p.m.; Wed. 7:30 p.m.</p> | <p>METHODIST
EL DIVINO SALVADOR METHODIST
E. 5th and E. Ave. D
Guadalupe Ballinas, Min.
FIRST UNITED METHODIST
507 W. 2nd St.
John Wagoner, Pastor
9 a.m. Holy Communion-Chapel, 9:45 a.m. Sunday School, 11 a.m. Morning Worship</p> <p>LAZBUDDIE METHODIST
965-2121</p> <p>NAZARENE
NEW VISION CHURCH OF THE NAZARENE
814 W. Ave. C • 272-3622
David R. McIntire</p> <p>PENTECOSTAL
IGLESIA PENTECOSTAL UNDISIA
207 East Ave. G • 272-3636
Wencelado Trevino, Min.</p> <p>OTHER
NEW COVENANT
Plainview Hwy.
Jimmy Low, Min.
W.S. 10 a.m.; Wed. 7 p.m.</p> |

1ST BANK MEMBER FDIC
202 South First 272-4515

WES-TEX FEED YARDS, INC.
Custom Cattle Feeding
272-7555 Muleshoe, TX

AMERICAN VALLEY INC. West Hiway 84 272-4266 Muleshoe

BAILEY GIN COMPANY, INC.
946-3397
Sudan, TX
Peanut Hawkins, MGR

WESTERN DRUG
114 Main 272-3106 Muleshoe

Church's CHICKEN 272-5581
1411 W. American Blvd., Muleshoe

HERITAGE HOUSE INN
2301 W. American Blvd. 272-7575
Muleshoe, Texas
Clint & Evelyn Peat - Resident Owners
Reservations 1-800-253-5896

BRUCE, INC.
AIR CONDITIONING
Hwy. 214 North 272-5114
Muleshoe, TX
TAEL-B003380C. LP08638

MULESHOE COOPERATIVE GINS
P.O. Box 569 Muleshoe, TX
272-4794

MULESHOE AREA HEALTHCARE Center
"Committed to Caring"
106 W. Ave. H Muleshoe 272-7578

MULESHOE MOTOR CO.
1225 W. American Blvd. 272-4251

"THE FIVE AREA TELEPHONE COOPERATIVE ORGANIZATION"
West Plains Telecommunications Co.
Five Area Systems, Inc., Plateau-Cellular Network
Five Area Long Distance - Five Area Internet
302 Uvalde Muleshoe, USA (806)373-5533

WANDA BROWND INSURANCE AGENCY
118 E. Ave. C Muleshoe 272-7548

Since 1957 - The Original
Leal's Mexican Restaurant
1010 W. American Blvd. 272-3294
Muleshoe, TX Victor & Debbie Leal

Risinger Plumbing
Serving Muleshoe Area
NO CHARGE TIL I ARRIVE AT DOOR!
1-800-749-4472

Journal Classifieds

Call 272-4536 Deadlines: For Thursday, 5 p.m. Monday; for Sunday, 5 p.m. Thursday Call 272-4536

Real Estate

For Sale - By owner, 3 bdrm, 1 3/4 bath, single garage in Richland Hills Addition of Muleshoe. For more info call 806-965-2477.
22s-tfc

For Sale: Recently updated 2100 sq. ft. home, 3 bdrm, 2 bath. A must see! \$65,000.00, 1722 W. Ave. D. Call 272-4818, leave message.
30t-2tpd

House for Sale: Nice 3 bdrm, one bath, in Lenau addition. Call 272-3920.
31s-6 sun c

Farm For Sale

2,600 acres, west of Muleshoe. 9 sprinklers, 3-1 3/4 - 2 home, 3 baths, some working pens, about 900 acres in native grass.

Jerry Leatherman

broker
806-799-0799
31s-2sun pd

Foreclosed Land

(Bailey County)
35 acre homesite/agriculture. 3 miles SE of Muleshoe off Hwy 84 and County Rd. 203. \$19,538.00. (Financed by owner, buyer pays closing cost, no credit check) \$158. per month
Call 409-925-1155, agent
31s-3tc

Miscellaneous

Round-Up Applications
Pipe-Wick mounted on high-boy. 30" or 4" rows. Cotton, Milo, Soy Beans and Corn.
Call Roy O'Bryan
806-265-3247
25t-tfc

Registered Massage

Therapy
Amanda Collins
806-272-5827
28t-8tc

Public Notice

Muleshoe I.S.D. offers career and technology education programs in Vocational Agriculture, Consumer and Gainful Homemaking, Industrial Education, Computer Applications and Marketing Education. Admission to these programs is based on enrollment in appropriate grade level in Muleshoe High School.

It is the policy of Muleshoe I.S.D. not to discriminate on the basis of race, color, national origin, sex, or handicap in its vocational programs, services, or activities as required by Title VI of the Civil Rights Act of 1964, as amended; Title IX of the Education Amendments of 1972; and Section 504 of the Rehabilitation Act of 1973, as amended.

It is the policy of Muleshoe I.S.D. not to discriminate on the basis of race, color, national origin, sex, handicap, or age in its employment practices as required by Title VI of the Civil Rights Act of 1964, as amended; Title IX of the Education Amendments of 1972; the Age Discrimination Act of 1975, as amended; and Section 504 of the Rehabilitation Act of 1973, as amended.

Muleshoe I.S.D. will take steps to assure that lack of English language skills will not be a barrier to admission and participation in all educational and vocational programs.

For information about your rights or grievance procedures, contact the Title IX Coordinator, Adrian Meador, at 514 West Avenue G, Muleshoe, Texas 79347, (806) 272-3325, and/or the Section 504 Coordinator, Bill Moore at 514 West Avenue G, Muleshoe, Texas 79347, (806) 272-3389.

Muleshoe I.S.D. ofrece programas vocacionales en Vocational Agriculture, Consumer and Gainful Homemaking, Industrial Education, Computer Applications and Distributive Education. La Admisión a estos programas se basa en enrollment in appropriate grade level in Muleshoe High School.

Es norma de Muleshoe I.S.D. no discriminar por motivos de raza, color, origen nacional, sexo o impedimento, en sus programas, servicios o actividades vocacionales, tal como lo requieren el Título VI de la Ley de Derechos Civiles de 1964, según enmienda; el Título IX de las Enmiendas en la Educación, de 1972, la Ley de Discriminación por Edad, de 1975, según enmienda, y la Sección 504 de la Ley de Rehabilitación de 1973, según enmienda.

Muleshoe I.S.D. tomara las medidas necesarias para asegurar que la falta de habilidad en el uso de la lengua inglesa no sea un obstáculo para la admisión y participación en todos los programas educativos y vocacionales.

Para información sobre sus derechos o procedimientos para quejas, comuníquese con el Coordinador del Título IX, Adrian Meador en 514 W. Avenue G, 272-3325, y/o el Coordinador de la Sección 504, Bill Moore, en 514 West Avenue G, Muleshoe, Texas 272-3389.

Published in the Bailey County Journal, August 4, 1996.

Elderly Care Home

State licenced family style. Good food. RN owned/operated. Daily, weekly, monthly 806-794-7603.

Wanted

\$\$\$WANTED\$\$\$
We buy used mobile homes. We pay top dollar, any year, any condition. We need your used mobile home. Please call 1-800-404-1321.
7t-tfc

Zeffa Shafer

at Needmore needs a full time companion to live in her home 24 hours a day. No heavy house work required.
946-3677

Help Wanted

29t-6tc
Set up worker - Truck driver Must Have CDL license and experience.
Contact Hal or Sam
272-5514

Muleshoe McDonalds

31t-4tc
is accepting applications for crew positions. Flexible hours, performance based pay and room for advancement. Pick up applications at McDonalds or the Texas Employment Office.
31t-4tc

Attention

Mothers and Others

House of Lloyds, Christmas Around the World is now hiring demonstrators. Free \$300 kit. Get \$50 in Free merchandise for holding a party.
Call Cammy 505-769-8377
41s-4sun c

Churchs Chicken and Dairy

Queen now accepting applications for all positions. Uniforms paid for. Insurance available. Birthdays paid. one week paid vacation after one year. Please apply in person at Churches.
31s-4tc

Wanted: Full or Part time help at Town and Country Apply in person.
31s-4tc

Child Care

Registered Day Care
CPR and First Aid Certified
For more information
Call 272-5866
31t-3tc

Automobile

'82 Ford XL Pickup. Tool Box, V-8 Automatic, \$1,500
272-3697
31s-2tc

For Sale: '93 Ford F150 XLT. Extended cab, white, loaded great condition.
806-965-2471

31s-tfc
1993 Chevy Short fender side-Texan Stagecoach conversion, Raspberry color - 40,000 miles, \$14,900.00 (505) 359-0947, Portales

1991 Chevy Blazer, 4 door, 4x4, 66,000 miles, \$11,400.00 (505) 359-1775, Portales

1993 Ford XLT Supercab 4x4 pickup. Very clean. \$9,500 OBO. 272-3102 or 925-6766.
31s-tfc

We are the people our parents warned us about.

James F. Hayes & Co.

AGRICULTURAL REAL ESTATE SERVICES

656 Acres of C.R.P. — Clays Corner Hub Area. Two years left on contract. 3 irrigation wells, 1 domestic well. 90% lays good with good soils. Will be productive farm when it comes out of C.R.P.

640 Acres Oklahoma Lane — 2 Sprinklers, 4 irrigation wells, 115 Acres of pasture, modest home, 2 domestic wells

152 Acres West of Muleshoe. Electric Center pivot sprinkler, 2 wells, 1/2 circle of improved grass. Good barbed wire fence.

120 acres west of Muleshoe. 2 wells. Good soil. Lays good. Immediate possession available. \$250.00 per acre.

320 Acres in the Lazbuddie area, 2 wells, 1 sprinkler, 80 acres of C.R.P. PRICED RIGHT

160 Acres Northeast of Muleshoe in Parmer County. Excellent water. Excellent soil. Electric Center Pivot Sprinkler. New set of bowls on pump. Top Notch Farm

317 Acres in Lamb County on Bailey County line. 3 wells, 1 sprinkler, lays good. Call for details!

Vic Coker, Agent

310 Main St. Suite 103 Muleshoe
Office 272-3100 Home 965-2468
WHEN LAND INVOLVES COWS AND PLOWS

Public Notification of Nondiscrimination

PUBLIC NOTIFICATION OF NONDISCRIMINATION IN CAREER AND TECHNOLOGY EDUCATION PROGRAMS

Three Way Independent School District offers career and technology education programs in Agricultural Science and Technology, Home Economics Education and Business Education. Admission to these programs is based on interest, grade placement, need, and availability.

It is the policy of Three Way ISD not to discriminate on the basis of sex, handicap, race, color, or national origin in its educational and vocational programs, activities, services, or employment as required by Title VI of the Civil Rights Act of 1964, as amended; Title IX of the Education Amendments of 1972; and Section 504 of the Rehabilitation Act of 1973, as amended.

Three Way ISD will take steps to assure that lack of English language skills will not be a barrier to admission and participation in all educational and vocational programs.

For information about your rights or grievance procedures, contact the Title IX Coordinator, William L. Hood, P.O. Box 60, Maple, Texas (806) 927-5532 or the Section 504 coordinator at the same address.

Distrto Escolar Independiente de Three Way ofrence programas vocacionales en Ciencia y Tecnología Agriculura. Domestico Vocacional y Educaiton de Comercia. La Admisio a esto programas se basa en interes, despacho de grado y necesidad.

Es norma de Distrto Escolar Independiente de Three Way no discriminar por motivos de raza, color, origen nacional, sexo, impedimento, en sus programas, servicios o actividades vocacionales, tal como lo requieren el Título VI de la Ley de Derechos Civiles de 1964, según enmienda; el Título IX de las Enmiendas en la Educación, de 1972, y la Sección 504 de la Ley de Rehabilitación de 1973, según enmienda.

Es norma de Distrto Escolar Independiente de Three Way tomara las medidas necesarias para asegurar que la falta de habilidad en el uso de la lengua inglesa no sea un obstáculo para la admisión y participación en todos los programas educativos y vocacionales.

Para información sobre sus derechos o procedimientos para quejas, comuníquese con el Coordinador de Título IX, William L. Hood, en P.O. Box 60, Maple, Texas (806) 927-5531 y/o el Coordinador de la Sección 504, a la misma dirección.

Published in the Bailey County Journal August 4, 1996.

1989 Chevy extended cab, long wide base, Silverado, red, 75,000 miles, \$9,900.00 (505) 359-0947, Portales

1993 Ford Super Cab Ranger, red, 49,000 miles, \$11,900.00 (505) 359-1775, Portales

1992 Chevy extended cab, shortwide base, 4x4, Z71 package, 60,000 miles, \$15,900.00 (505) 359-0947, Portales

For Sale

For Sale: 24 ft. Taurus Travel Trailer
In good condition.
Call 272-3350
31s-3tc

For Sale: Two choice cemetery plots, Muleshoe Memorial Park. Call 946-3696 or 272-3332.
31s-2 sun pd.

For Sale: 2 lots in Muleshoe Memorial Park. 806-355-8384
31s-2sun pd.

Auto Insurance
1 Mon. - 12 Mon.
Payment Plans
Jennings Insurance
1-800-413-4444
Littlefield
26s- sun tfc


Concealed
Handgun Course
Aug. 17
8 a.m. - 6 p.m.
Muleshoe
10% discount for
Pre-Registration
Shooting Same Day
contact
Toby Turpen
806-364-6362
31s-3tc

BETTER LIVING
MOBILE HOMES
Summer Special
6 - 1800' sq. ft. Double
Wides to choose from.
\$10,000 SAVINGS
WAS \$59,000
SUMMER SPECIAL
\$49,995
Hurry in - these won't last long!
Model #8952*
*Approximate
1-800-404-1321
(505)356-5448
Portales
Lic. # D00681
'Se Habla Espanol'

A leader in the telecommunications field.
SALES
Expansion and growth requires us to add to our sales team. We are now recruiting energetic, enthusiastic, motivated outside sales representatives for the Levelland area. Experience preferred but not required, will train.
We offer a great opportunity within one of the fastest growing industries that includes: stability of a base salary, plus an attractive commission/bonus structure, vehicle allowance, cellular telephone, medical/dental/life, 401 (k) retirement savings plan, vacation and more. Rapid advancement opportunities. EOE. Please submit your resume and cover sheet to:
Human Resource, 1005 College Avenue
Levelland, TX 79336 No Phone Calls Please
22t-tfc

PRIMESTAR
Available for your home
TODAY
Call Gabriel at
272-3072 or 1-800-815-2358
pin 9240
28t-tfc

Classifieds
Sell!
272-4536

QUALITY BUILT
SERVICE BODIES

AMERICAN
EQUIPMENT & TRAILER
3707 M.L.K. Jr. Blvd.-Lubbock, TX
806-747-2991

VIP PLUS, Ltd.
PERSONNEL SERVICES
JOBS! JOBS! JOBS!
Immediate Openings
Valley Grain Products and Texas Sesame has positions open for the Masa Plant and Grain Mill. No appointment needed. A total of 30 positions will need to be filled. Apply at either location. No Appointment Necessary.
"Never A Fee"
1-800-242-5369
31t-2tc

MUST SELL! 1995 Ford Contour
Power windows, power locks, air conditioning, AM/FM cassette, automatic, cruise, power mirrors, rear window defroster, and much more. No old contract to assume, no back payments to make, just need responsible party to make reasonable monthly payments.
Contact Freddy in the credit dept.
Friona Motors, 806-247-2701

MUST SELL! 1994 Chevrolet Silverado
4x4, Power windows, power locks, tilt, cruise, AM/FM stereo, 350 V-8, 4 speed automatic with overdrive, air conditioner, rally wheels, rear chrome bumper and much more. No old contract to assume, no back payments to make, just need responsible party to make reasonable monthly payments.
Contact Freddy in the Credit Dept.,
Friona Motors, 806-247-2701

MUST SELL 1995 Ford Mustang
Convertible, power windows, power locks, AM/FM Stereo cassette, tilt steering wheel, cruise control, dual electric mirrors, aluminum wheels and much more. No old contract to assume, no back payments to make, just need responsible party to make reasonable monthly payments.
Contact Eddie in the credit dept.
Friona Motors, 806-247-2701

Nieman Realty
116 E. Ave. C George Nieman, Broker 272-5285 or 272-5286

RICHLAND HILLS
JUST LISTED-IMMACULATE 3-2-2 Brick Home, Geo. Heat Pump, Built-ins, FP, Nice landscaped yd., Stor. Bldg., MORE!! \$70's!!! RH3
NICE 3-3-1 Brick, cent. Heat, Evap. Air, built-ins, 2000' + lv. area, fenced yd., stor. bldg., MORE!! \$60's!!! RH-2
VERY NICE 3-2-2 Brick, cent. A&H, built-ins, FP, approx. 2,000' + lv. area, auto, spkrl., storage bldg., fenced yd., MORE!!! \$60's!! RH-1
NICE 3-2-2 Brick, cent. A&H, built-ins, FP, approx. 2150' lv. area, fenced yd., MORE!!! \$69K!!! RH-7

HIGHLAND AREA
VERY NICE 2-1-1 Home, wall furnace, window air, nicely decorated, storm cellar, stor. bldg. \$20's!! HL-7
2 Bdrm, 1 bath home, fenced yard. \$16,500!!! HL-4
VERY NICE 3-2-2 Brick, Cent. A&H, built-ins, fenced yd., spkrl. sys., MUCH MORE!!! \$60's!!! HL-1
3-2-2 home, Cent. A&H, built-ins, fenced yd., corner lot. \$30's!!! HL-2
VERY NICE 3-2-1 carport Home, heat pump, built-ins, nice carpet, fans, storage-workshop! MUCH MORE!!! \$40's!!! HL-6
NICE 3-2 Home, Heat Pump, FP, fenced yd., stor. bldg. \$30's!! HL-3
VERY NICE 3-11/2-2 carport home, Geothermal Heat Pump, built-ins, FP, fenced yd., Stor. Bldg.!!! HL5

COUNTRY CLUB
2-1-1 carport home, wall furnace heat, nice carpet, storm shelter, storage bldg., fenced yd. MORE!!! \$20'S.

RURAL HOMES
NICE 3- 2-2 Brick, cent. A&H, built-ins, FP, approx. 15 acres, irrig. well & equip., barns, corrals, MUCH MORE!!! \$95K!!! HR-4
NICE 3-2-2+2 Carport Brick Home on 2.5 acres on pavement, close to town, Heat Pump, built-ins, FP, MUCH MORE. \$70K !!! HR-3
JUST LISTE 3-2-2 Home 1.36 ac. on pavement, Cent. A&H, built in., freshly painted interior & exterior, fans, fenced yd., 31' x 40' barn!!! \$40's!!! HR-2

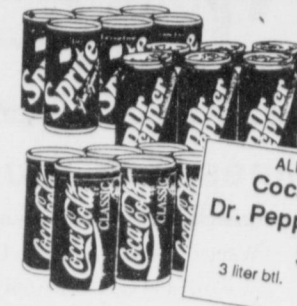
LENAU ADDITION
NICE 2-2-2 Brick, on corner lot, heat pump, fenced yard, storage bldg., MORE! \$40's!!! L-1
NICE 3-2-1 carport Home, geothermal heat pump, fenced yd., storage bldg. \$27,500!!! L-3
JUST LISTED - NICE 3-2-1 Home, built-ins, heat pump, extra insulation, fenced yd., stor. bldg., \$30's!!! L-4

HIGH SCHOOL
NICELY REMODELED 3-2-2 carport Home, Heat Pump, built-ins, fans, fenced yd., stor. bldg., & MORE!!! \$40's!!! HS-8
NICE 2-1-1 Brick, Heat Pump, nice carpets, well insulated, storm windows & doors. \$30's!!! HS6
NICE 3-1 3/4 - 1 Brick Home, Cent. Heat, Evap. Air, Built-ins, fans, fenced yd., MORE!!! \$30's!! HS-2

JUST LISTED -2-1-1 Home, floor & wall furnace, evap. air, siding exterior, stor. bldg., fenced yard!!! \$20's!!!! HS-7
JUST LISTED-NICE 2-1-1 Home, nice carpets, stove, refrig., wall furnace, covered deck, fenced yd., stor. bldg., MORE!!! \$20's!!! HS-4
NICE 4-3 Home on corner lot, Heat Pump, built-ins, FP, fenced yd., stor. bldg., 3100'+ Lv. area, storage basement, MORE!!! \$70's!!! HS-9

ASK ABOUT OUR COMMERCIAL LISTINGS!!!
Office Bldg. & 2, 160' shop bldg., 184' of frontage on Highway 214. PRICED TO SELL!!! \$20's!!!
160 acre tract, 8" well, circle spkrl. w/drops, fully allotted!!!
PARMER - BAILEY CO. Area-Elevator & Cleaning Facility - 12 million lb. Capacity, Scales, Dryer, & Office on approx. 6.5 acres!!! PRICED TO SELL !!! POSSIBLE OWNER FINANCING!!!

A+ VALUES



6 pack, 12 oz. cans
Coca-Cola,
Dr. Pepper, Sprite
\$1.79

ALL TYPES
Coca-Cola,
Dr. Pepper, Sprite
3 liter bot. **\$1.69**

MEAT

Oscar Mayer Red Rind, 1 lb. pkgs.
Beef Bologna 2/\$5
Oscar Mayer Ham & Cheese or
Chopped Ham ... 8 oz. pkg. **\$1.79**
Oscar Mayer Big & Juicy
Original or Hot N Spicy
Hot Dogs 1 lb. pkg. \$1.69

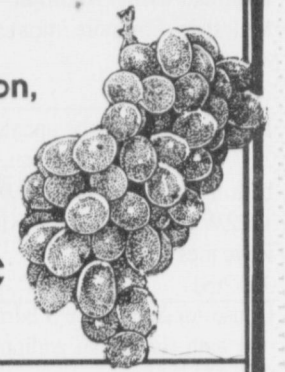
**Value Pack,
Beef Boneless
Top Sirloin Steak**
\$1.69
lb.

PRODUCE

**Golden Ripe
Bananas**
lbs. **4/\$1**

Flame or Thompson,
Seedless

Grapes
lb. **88¢**



**Cello Wrapped
Lettuce**
ea. **69¢**



Jennie-O
**Ground
Turkey**
1 lb. roll
49¢

**Twin Pack
Paty Bacon Wrapped
Beef Fillets**
2 ct., 10 oz. box
\$4.97

**Plantation
Turkey
Drumsticks**
2.5 lb. avg. pkg.
69¢

**Beef For
Stir
Fry**
lb.
\$1.99

**Mini Peeled
Carrots 1 lb. pkg. 88¢**
**Super Select
Cucumbers 3/\$1**
**No. 1 Baking
Potatoes 2/\$1**

Pedro's Mild or Spicy
Beef Tamales 1 dozen \$3.79
Pedro's
Pork Tamales 1 dozen 2/\$6
Bar S
Corn Dogs 3 lb. box \$4.99
Bar S
Meat Bologna 12 oz. pkg. 89¢
Thorn Apple Valley Honey Ham,
Turkey Breast or
Cooked Ham 10 oz. pkg. \$2.17
12 oz. pkg., Thorn Apple Valley,
Bun Size Polish, Cheese or Spicy
Smoked Sausage 5/\$5
Cry-O-Vac
Beef Tripas lb. 69¢

Asadero Cheese \$2.59
Small Pkg. lb.
Asadero Cheese \$2.39
5 lb. pkg. lb.

H & G Whitting \$2.99
3 lb. box
Beef For K-Bobs \$2.29
lb.



3 \$5
LAYS OR WAVY LAYS
Potato Chips
Reg. \$2.99
Size For

Dole Pineapple Juice 99¢
46 oz. can

SHURFINE Salad Dressing 99¢
32 oz. jar

HELLMANN'S LIGHT OR Real Mayonnaise 2.59
32 oz. jar

MAZOLA RIGHT BLEND OR Corn Oil 2.39
48 oz. bot.

Niagara Spray Starch 79¢
22 oz. can
Pre Priced \$1.19

Aunt Jemima Pancake Mix 1.59
12 oz. box

Mrs. Butterworth's Syrup 2.49
24 oz. bot.

Tide Ultra 2 Detergent 5.99
92-103 oz. box

Hunt's Original Spaghetti Sauce 99¢
24 oz. can

Smack Ramen Noodles 8 \$1
12 oz. pkg.

SKINNER Spaghetti 2 \$1
12 oz. pkg.

SKIPPY Peanut Butter 1.79
18 oz. jar

Super Students Values

Super Students Values

KLEENEX 175 CT. CLASSICS, 70-95 CT. BOUTIQUE OR ULTRA Facial Tissue 89¢
each box

Twix Candy Bars 1.99
6 ct. pkg.

Sunshine Assorted Tru-Blu Cookies 1.69
24 oz. pkg.

Twix, Mar's Almond Bar, Milky Way, Snickers, or 3 Musketeers 1.99
6 ct. pkg.

Twix, Mar's Almond Bar, Milky Way, Snickers, or 3 Musketeers 1.99
6 ct. pkg.

Twix, Mar's Almond Bar, Milky Way, Snickers, or 3 Musketeers 1.99
6 ct. pkg.

Twix, Mar's Almond Bar, Milky Way, Snickers, or 3 Musketeers 1.99
6 ct. pkg.

Twix, Mar's Almond Bar, Milky Way, Snickers, or 3 Musketeers 1.99
6 ct. pkg.

Twix, Mar's Almond Bar, Milky Way, Snickers, or 3 Musketeers 1.99
6 ct. pkg.

Twix, Mar's Almond Bar, Milky Way, Snickers, or 3 Musketeers 1.99
6 ct. pkg.

Max Pak, Eckrich Turkey, Ham, or Bologna Lunchmakers 9.5 oz. pkgs. 2/\$3



Assorted Punch Sunny Delight 64 oz. bot. 97¢

Mead, 70 sheets Theme Book 2/\$1
Eberhard Faber
Coloring Pencils 12 ct. pkg. 89¢
Crayola®
Crayons 16 ct. pkg. 63¢

Crayola® Crayons 24 ct. pkg. 97¢
Round Stic Black or Blue
Bic Pens 10 ct. pkg. 77¢
Mead Wide, 150 sheets-WITH COUPON
Notebook Paper 1/4 3 W/Coupon 19¢

2 \$4
ASSORTED PEANUT BUTTER CRUNCH BERRIES OR REGULAR
Cap'n Crunch Cereal
15-16 oz. boxes For

2 \$5
REDUCED FAT REGULAR, STRIPED, SPRINKLED, CHEWY OR CHUNKY
Chips Ahoy!
14.5-18 oz. pkgs. For

FROZEN & DAIRY

Tombstone Original 2 \$5
12 NEA

ASSORTED 12 Tombstone Pizza 2 \$6
21.5-25.0 oz. For

BLUE BUNNY ASSORTED OLD FASHION Ice Cream 2.99
1/2 gal. rnd. ctn.

SHURFINE Buttermilk 1.49
1/2 gal.

STILLWELL REGULAR Pie Crust Shells 99¢
10 oz. 2 ct.

STILLWELL Deep Dish Pie Crust Shells 1.29
12 oz. 2 ct.

BANQUET SLICED TURKEY OR SALISBURY STEAK Family Entrees 1.89
28 oz. box

SHURFINE Crescent Dinner Rolls 2 \$3
8 oz. cans For

SHURFINE Crescent Dinner Rolls 2 \$3
8 oz. cans For

SHURFINE Crescent Dinner Rolls 2 \$3
8 oz. cans For

SHURFINE Crescent Dinner Rolls 2 \$3
8 oz. cans For

SHURFINE Crescent Dinner Rolls 2 \$3
8 oz. cans For

SHURFINE Crescent Dinner Rolls 2 \$3
8 oz. cans For

SHURFINE Crescent Dinner Rolls 2 \$3
8 oz. cans For

SHURFINE Crescent Dinner Rolls 2 \$3
8 oz. cans For

SHURFINE Crescent Dinner Rolls 2 \$3
8 oz. cans For

BACK TO SCHOOL LIST

Mead Original Big Chief Tablet 115 sheets, 7 7/8x12 in. \$1.19
Black, Blue, or Red
Marks A Lot 69¢
Wide Ruled, 40 sheets
Garfield Notebook \$1.59
Small
Zipper Pouch 39¢
Mead Bond, 200 sheets
Typing Paper \$1.79
Mead, 120 sheets
3 Subject Notebook 99¢
Mead Wide Ruled, 5 Subject, 180 sheets
Theme Book 2/\$3
Original
Trapper Keeper \$5.99
5 Tab
Index Dividers 39¢
Helping Hand
Combination Padlock \$1.99
Portfolio
Twin Pocket 2/\$1
Crayola®, 96 ct. box
Crayons \$4.99

Pink Eraser 3/\$1
Yellow
No. 2 Pencils 1¢
Eberhard Faber
Yellow, 7 ct. pkgs.
No. 2 Pencils 2/\$1
Write Bros., 2 pack
Ball Pens 2/\$1
Red Fine or Black Fine/Black Ultra
Fine, Sharpie
Markers 69¢
Gel or Pen Instant, 7 oz.
Krazy Glue \$1.59
Blunt or Sharp, 5" Fiskar
Scissors \$1.88
Eberhard Faber
Pointed or Safety
Scissors 39¢
Brite
Liner Yellow 59¢
Washable, 8 ct. box
Watercolors 59¢
Elmer's®
All or Regular/Gel, 4 oz. bot.
School Glue 59¢
12" Plastic
Ruler 29¢
Mead 3 Brad Cover
With Pockets
Portfolios 5/97¢
Elmer's®, 1.25 oz. btl.
School Glue 39¢

MINIATURES Candy Bars 1.79
8 ct. pkg.

MINIATURES Candy Bars 1.79
8 ct. pkg.

MINIATURES Candy Bars 1.79
8 ct. pkg.

HEALTH & BEAUTY

ORUDIS KT Tablets or Caplets 6.99
100 ct.

SAVE \$1.00 ON ORUDIS KT 24's or Larger

WESTERN FAMILY Non Coated Aspirin 2 \$3
WESTERN FAMILY REGULAR OR SUPER FEMINE
Maxi Pads 2 \$3

TYLENOL PM 4.99
100 ct. box

COLOGNE Disposable Razors 79¢
10 ct. box

CLEAR UP Noxzema Pads 2.39
50 ct. box

SESAME STREET, GLO IN THE DARK, HOT COLORS, MICKEY PAL, OR MINNIE & ME Band-Aid Bandages 1.29
30 ct. pkg.

ACID CONTROLLER Pepcid AC 1.99
100 ct. box

RENU Solution 5.29
8 oz. bot.

ASSORTED MEDIUM, SOFT, OR FIRM Reach Toothbrushes 2 \$3
For

VO-5 ASSORTED Shampoo or Conditioner 89¢
11 oz. bot.

WESTERN MONEY UNION | TRANSFER™

Lowes' MARKETPLACE

Pay-n-Save

401 W. American Blvd. Muleshoe 272-4585

PRICES EFFECTIVE JULY 31-AUG. 6, 1996
OPEN MONDAY-SATURDAY 7:30 A.M. - 9:00 P.M., SUNDAY 8:00 A.M. - 8:00 P.M.