

mack's
tracks
-by dave

Congratulations to Coach Sam Brite on being named Coach of the Year for his job guiding the Elkettes to a State Championship this year. Sam is the only coach ever selected for the honor in both boys and girls coaching.

Another big bouquet to D'Lynn Brown, Dalene Prescott and Barrie Donelson for being named on the Class A All State Tournament Team down in Austin. That is just great. We bet that Barrie is one of the few freshmen ever named to such an honor and we know that D'Lynn and Dalene earned their honors for they have turned in superior performances all four years for the Elkettes.

Another couple of notes concerning Miss Brown and Miss Prescott. Miss Brown was notified this week that she has been selected as a forward to play in the Coaches All Star Basketball game to be held in July of this year.

Miss Prescott was also notified she had been selected to play in the East West Classic in Amarillo on March 20. These events are open to seniors only, and only one girl per school can be selected for each.

Only three girls have been so honored in the Coaches All Star Classic. These are LuAnn Plunk, Kathy Allen and now D'Lynn Brown.

Several others have been named to play in the East West Classic in Amarillo. The others selected in years gone by have included June Brown, Melinda Zaricor, Mary Caraway, Cindy Stokes and now Dalene Prescott. In fact, the Elkettes have missed only one year in placing a senior on the court in the Amarillo event.

XXXX

Don Riffe underwent minor surgery last week to help a spur on his elbow...seems the only comment Don had concerning the operation was to ask the doc if the operation might also hurt his golf game. The doctor is reported to have replied that it should help his swing. Y'know, it isn't often we've heard about golfers that go to that length to help their golf game, but after all Don is one of those that really feels deeply about his golf. We hope it does help his game. Lord knows nothing would help ours!

XXXX

This has been another of those busy weeks in our little city. The Consumers Company held their annual meeting last week, members of the Band went to their UIL Solo & Ensemble contests, and track season got underway.

We would be remiss if we didn't mention the fine job done with our Band by Gary Laramore and Steve Ragsdale. These two, along with Mrs. Lorraine Mehner, do a wonderful job instilling a love and appreciation for music with our young folks.

We are happy to include this week a story about a group who won honors at the UIL Contests in Canyon.

Leon Guthrie is manager of our local Consumers Company and his group had their annual meeting Saturday night.

We might add that this meeting is one which many folks enjoy each year. The food is always enjoyable, the business portion is brief and to the point and the entertainment is always top notch. This year Leon had a nephew and his wife to sing and they were just great. We know all those attending enjoyed the evening as much as did we.

XXXX

Bud Young called us the other day and told us of a little something which he had just read which we may enjoy... seems it went thisaway....

"God helps those who help themselves, and the government helps all the others!"

Ain't that the truth!

XXXX

The weather has long been the most cussed and discussed

ENGINEER'S REPORT

Natural Gas Tax Base May Be Raised Soon

An increase in the price of wellhead natural gas will result in additional tax base for the county, reported representatives of Pritchard & Abbott, taxing engineers for the county at Monday's meeting of the Sherman County Commissioners.

Two representatives from P&A, Louis Henderson of Amarillo and Vick Henderson of Fort Worth, told the Commissioners that they had no concrete information as to what the new wellhead price base may be in the future, but they would predict that local tax revenues would receive a healthy increase as a result.

The price of wellhead natural gas has long been a subject of

controversy. The price of natural gas on the consumer's side has been going up and up, but the tax base for the natural gas has not been changed in over 20 years.

County Judge W.S. Frizzell Jr., said that "If the price of the tax base on natural gas is changed upward at all it will result in a substantial savings to the county taxpayer."

In other business, the Court opened a bid on a new front end loader for Precincts 3 and 4. The bid, the only one received, was from Deckard Equipment Company of Amarillo in the amount of \$35,000 for a 544-B unit. This will be paid for by \$10,000 out of Federal Revenue Sharing Funds and the remainder out of County Road & Bridge Funds.

The Court set the Board of Equalization meeting for June 9, 1976, with industrial taxpayers and for 2 p.m. for local taxpayers to appear before the board.

The Court also met with a group comprised of Greg Pye, E.L. Bass and Les Dodson concerning the construction and location of three new tennis courts.

After discussion, the Court asked that representatives from the City of Stratford, School District, and the tennis group meeting to draw up plans and specifications for the project. Bids on the courts will then be let at a later date.

An opinion from County Attorney Bill Dyess was read

concerning the legality of using the Federal Revenue Sharing Funds for the project.

The Court approved for the County Judge to sign tax collector's certificates of cancellation; authorized the tax assessor to enjoin with other local taxing bodies to bring suit on delinquent taxes.

The Court also made application for a new ambulance to be purchased on a new Federal grant through the Panhandle Emergency Medical Plan. The vehicle will be paid for on a sharing basis with local taxpayers to pay for 25 percent of the cost and the Federal government to pay for the remaining 75 percent.

All members of the Court were present at the meeting.



VICTIM OF WINDS--The large EXXON sign which formerly stood just west of Bain Oil Company at the intersection of Highway 54 & 287 came down with a resounding crash last Thursday. Luckily, nobody was hurt and the end of the sign missed the gas pumps by only inches. Phillip Bain, station owner, said he had been afraid the sign had become loose and the winds of last week sent the huge sign crashing to the earth.

STRATFORD, SHERMAN COUNTY, TEXAS

THURSDAY, MARCH 11, 1976

THE STRATFORD STAR

Tip Top Town in Texas

VOLUME 76

FIFTEEN CENTS

NUMBER 11

Rick Olson Takes Honors At Houston

Fourteen members of the Sherman County 4-H and Stratford FFA Chapter returned from the Houston Fat Stock Show this weekend.

Ricky Olson, son of Mr. and Mrs. Ole Olson and winner of a calf in last year's calf scramble, came home with most of the honors.

Olson showed his heifer in two events at Houston and earned first place in the Angus Beef Scramble event and placed third in the Junior Angus Heifer Show.

"We are really happy with the way Ricky placed with his animal," said County Agent Jim Allison. "He had done a good job and showed his heifer well at the show," he added.

Olson's heifer was purchased with money he earned in last year's calf scramble and one of the requirements is that he then show the animal he purchased at the following exhibition in Houston.

The entire group of youngsters were accompanied to Houston by Allison and FFA Instructor Richard Carter. Those making the trip included Blake Sladek, Timmy Waters, Steve Dyess, Wayne Dyess, Dwayne Gillenwaters, David Duran, Ricky Olson, David Pronger, Mark Wright, Brian Wright, Don Harris, Ralph Keener, Mike Trotter and Jimmy Wright.

All three of the elections will be held on Saturday, April 3.

CITY & SCHOOL TRUSTEES

Two Contested Races Slated For April 3

Two contested races will be on the three ballots on local elections slated for April 3 following the filing deadline for candidates last Wednesday.

Leonard Duncan and Ron Hager are both seeking the office of Stratford Mayor while there are three candidates seeking two places on the City Council. Candidates in this race are J.R. Houston Jr., John Marvin Wilson and former Mayor Annell Wall.

The other contested race involves three places on the board of trustees for the Stratford Independent School District. There are four candidates seeking the three places with the three with the highest number of votes to be selected.

School trustee candidates include Rex Christian, Don Riffe, Don Dietrich and Keith Waters. Three of the candidates are incumbents, Christian, Dietrich and Riffe while Water is seeking his first public office.

There are three candidates seeking the three places on the board of the Stratford Hospital District. These are Shirley McReynolds and Joe Pete Flores, both incumbents, and a newcomer to politics, Belinda Bornstein.

All three of the elections will be held on Saturday, April 3.

Absentee voting in all three elections will begin on March 15.

Ballots may be cast at the School Business Office for both the School Trustee and Hospital Board Elections, while absentee ballots in the city races may be cast at the Stratford City Hall.

Holdover members of the SISD board of trustees includes

GOOD MARKET AT TEXHOMA LAST THURSDAY

The weather was cold last Thursday in Texhoma but the cattle auction saw 4636 cattle and calves sold through the arena. The market as a whole was very active at the prices established during the auction.

Some representative sales were as follows: 18 WF Steer Calves Av. Wt. 339# at \$42.25 per cwt.; 13 WF and Blk WF Heifer Calves Av. Wt. 466# at \$33.60 per cwt.; 53 WF and Blk WF Short Yearling Steers Av. Wt. 531# at \$39.50 per cwt.; 108 WF and Blk WF Feeder Heifers Av. Wt. 688# at \$39.90 per cwt.; 166 WF and Blk WF Feeder Heifers Av. Wt. 550# at \$34.40 per cwt.

For next Thursday we are expecting 4,000 to 4,500 cattle for that date. Listen to the radio of your choice for more information concerning the sale.

E.R. Bell, V.O. Lasley, Johnny Summerour and Joe Wells.

Holdover members of the City Council include Ron Hager, Dwayne Plunk, J.E. Moore and Bill Riffe.

Holdover members of the Hospital Board include Walter Lasley, and Carroll Wisdom.

IRENE WAKEFIELD NAMED MENTAL HEALTH CHAIRMAN

Mrs. Tommy Wakefield of Stratford was named Mental Health Chairperson for the May '76 campaign, announced Carol B. Bryant, President of the Texas Association for Mental Health.

As Chairperson, Mrs. Wakefield will recruit volunteers to go house-to-house during May, Mental Health Month.

The Texas Association for Mental Health is strictly a volunteer association, with members dedicated to informing the public about mental illness and mental health, while helping the mentally ill and their families.

With one in 10 persons needing some kind of mental health care, the association offers free literature to the public on alcoholism, children's mental health, sexuality, depression and other mental health topics. For information write to the Texas Association for Mental Health, 103 Lantern Lane, Austin, Texas 78731.

Calendar

of Events

THURSDAY, MARCH 11
10 a.m.-3 p.m. Home Demo club Craft Day at Farm Bureau Bldg.

FRIDAY, MARCH 12
2 p.m. Prospectus Study Club meets at Methodist Church
7,8 boys and girls Track Meet at Gruber

SATURDAY, MARCH 13
7:30 p.m. Prospectus Couple's Party at Country Club
Track Meet at Sunray

SUNDAY, MARCH 14
ATTEND THE CHURCH OF YOUR CHOICE

MONDAY, MARCH 15
7:30 p.m. Lions Club at County Barn

TUESDAY, MARCH 16
8 p.m. Fire Department Ladies' Auxiliary meets at Fire Hall
THURSDAY, MARCH 18
7:30 p.m. Band Concert in the high school gym

First Moisture Really Skimpy Over Area

Stratford got its first appreciable moisture over the weekend but still not enough to write home about.

A total of .29 of an inch of moisture has been recorded by Weatherman Horace Sneed as a result of moisture which fell last weekend and then on Wednesday of last week.

The early amount, some .13 of an inch, was nullified by high winds which blew into the area sending dirt and dust a-flying.

This past weekend a system moved in resulting in a good drizzle and even good snow on Monday. The same system dumped nearly seven inches of snow around the Canyon area south of Amarillo and moisture totals there amounted to over .82 of an inch.

However, the moisture became more stingy as it moved northward and Clayton, N.M. reported only a trace.

Weatherman Sneed's report shows that in January we received no moisture at all, February contributed only .01 of an inch and thus for March has come up with .28 for a total of .29 of an inch for the year.

The long drought has resulted in the virtual loss of any hope for dryland wheat over this area long ago. The weekend moisture, though not nearly enough to satisfy either the needs of the ground or the wants of area farmers and cattlemen sure as heck beat a dirt storm all to heck.

Checking with Weatherman Sneed, he reported during 1975 Stratford had a total of 17 inches of moisture. The moisture for the year totalled out in pretty good shape, more than our average per year, but the last three months of 1975 contributed only a total of .95 of an inch.

The moisture, by months, for 1975 is as follows: January .66; February .64; March .13; April 1.27; May 3.72; June 1.91; July 3.17; August 2.77; September .78; October .0; November .89 and December .06 for a total of 17.00 inches.

The drought has resulted in the total which has been received since September with zero in October, November with .89, December with .06, only a trace in January, February with .01 for .95 through February.

The weather has been warmer than usual for this time of year, but high winds are beginning to be a problem moving dirt and loose soil over the area.

Winds have been clocked over 60 mph several days and one day last week the big Exxon sign at Bain Oil Company fell as a result of high winds. Luckily, there were no injuries and little property damage except to the big sign. Several trailers have been overturned while being transported through the area, but the big loss has been to crops.

TOWN TALK

The Jimmy Lyles family and the Charles Harbour family skied at Red River and Angel Fire over the weekend.

AT BOARD MEETING

Teacher Contracts Get Trustee Approval

A total of 44 teachers were approved for rehiring for next year, textbook committee's report for new books was approved, members of the Board of Equalization were submitted; three resignations accepted and a report on spring sports given at Thursday night's meeting of the board of trustees of the Stratford Independent School District.

Three resignations were accepted by the board. These included Mrs. Irene New, Mrs. Carroll French and Ted Rush. The board hired Mrs. Susan Richardson to fill out Mrs. French's term for this school year while the other two resignations were to be effective with the end of the current year.

The Textbook Committee report for new books on math and spelling for Grades 1-6 was approved by the board as submitted.

Jerry Johnson, John Marvin Wilson and B.A. Donelson were nominated as members of the Board of Equalization to meet on June 24. The Equalization Board will meet with local taxpayers on the morning of June 24 and will hear industrial taxpayers during the afternoon. Athletic Director David Bornstein gave a report on boys and girls spring sports and the coaching assignments for the sports to the board.

A list of 44 teachers were hired for the new school year.

Five Directors Elected At Consumers Event

Over 250 members and their families attended the 1976 Annual Meeting of the Stratford Consumers Company held Saturday night in the high school cafeteria.

Five directors were elected to head up the locally owned cooperative at the meeting.

The directors include Arthur Judd, A.E. Pronger Jr. and Joe Pete Flores reelected to a new term with newcomers Paul Aduddell and Glenn White elected for their first term.

A Bicentennial Musical Program was presented by Jim and Diane Guthrie of Austin accompanied by Mrs. Olinda Boardman on the piano. A meal of barbeque was catered by Sutphens of Aparillo.

Consumers Manager Leon Guthrie gave the report of the previous year noting that sales were up to a record level of \$659,993.48 over last year's \$651,307.78 the cost of doing business was up from 1974's \$471,008.41 to \$503,119.31 during the past year.

Gross profit of the cooperative was down this past year to \$156,874.17 as compared with \$180,299.37 a year previously.

Cash door prizes of \$40 went to Carole Smith, \$20 went to James Boardman and \$10 went to Carolyn White.

The teachers rehired by schools, are as follows:

MARY ALLEN
ELEMENTARY SCHOOL
Mrs. Oleen Judd, Mrs. Lanell Waldrop, Mrs. Ruth Jamison, Mrs. Elizabeth Briscoe, Mrs. Dicy Stephenson, Mrs. Mary Nell Miller, Mrs. Pattl Vincent, Mrs. Donna Gillenwaters, Mrs. Anita DeBord, Mrs. Roberta Bollinger, Mrs. Annie Pulliam, Mrs. Lorraine Mehner, Mrs. Jan Heiskell, Miss Ronda Richards, Miss Gayle Burrow and Mrs. Viola Kautz.

STRATFORD MIDDLE SCHOOL
Larry Norris, Mrs. Leona Woods, William Martin, Dwayne Plunk, Mrs. Daina Starnes, Mrs. Sonja Kendrick, Mrs. Ann Martin, Mrs. Pat Brite, Mrs. Donna Kendrick, Mrs. Linda Swain, Steve Ragsdale and Miss Mona Gibson.

STRATFORD HIGH SCHOOL
Sam Brite, Bill Briscoe, Mrs. Lugenia Carter, Mrs. LaRuth Gates, Miss Marsha Howard, Andy Miller, Karl French, Mrs. Dorothy Haile, James Haney, Steven Haynes, Delvin Howard, Gary Laramore, Mrs. Linda Osborn, Mrs. Anita Prescott, Joel Richardson and Mrs. Wanda Riffe.

Those present at Thursday night's meeting included Board Members E.R. Bell, V.O. Lasley, Johnny Summerour, Rex Christian, Don Dietrich and Joe Wells with Supt. E.L. Bass and Principals Dale Prescott, Jack Gilley and H.T. Galloway and Athletic Director David Bornstein.

Flu Results In Absentees At School

Influenza took its toll of students at the Stratford Schools this week with a total of 86 out of school on Monday due to illness.

A check with authorities on Tuesday morning showed the total absentees dropping slightly so perhaps the worst part of the sickness is over.

The flu has been taking its toll in area schools, with several finding it necessary to close their doors in an effort to break what had become epidemic proportions.

Checking with local school authorities on Monday, the Stratford Middle School was the hardest hit with 43 absences earlier on Monday but six more left due to illness before the day was over. The Middle School also has three teachers out with flu.

Mary Allen Elementary School had 22 students out on Monday while the High School had 21 out on the same day.

Thursday morning, a complete check of absences was not finished but it seemed that the worst of the absentees had run its course.

TOWN TALK

Leonard Duncan Jr. underwent knee surgery last week and is now home.

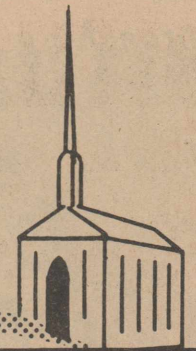


TOP IN CLASS--Ricky Olson is shown with his parents, Mr. and Mrs. Ole Olson and County Agent Jim Allison, at the Houston Livestock Show where Ricky's animal won two honors during the events last week. Rick's Angus Heifer won first in her class in the Angus Beef Scramble event and placed third in the Junior Angus Heifer Show. Ricky won the money with which to purchase the Angus Heifer, at last year's Houston Livestock Show.

"Thou wilt shew me the path of life:
in thy presence is fulness of Joy..."

PSALM 16-11

HERE IS THE PATH



Don's Super Market
Hwy 287 North

B&W Feed & Mineral
Box 1037, 820 Texas 396-2368
Mormans Purina Chow

Eddie Williams
Upholstery
396-5330

W.D. Brannan & Sons
Complete Flight Services
396-2157

Brown's Meat Locker
Baskin & Betty
Brown's Pharmacy
396-2281-Day or Nite

C&C Texaco Products
Box 125 Stratford

Cimarron Feeders Ltd.
Gateway to Better Feeding
Griggs, Okla. 543-2411

Consumers Company

COMPLIMENTS OF

Corral Ford Inc.
396-5511

Cut Rate Grocery of Stratford
Hwy. 54 East 396-5586

Elk Pharmacy
Phones 396-5631-396-5975 Nite
Bill & Kay Hammons

COMPLIMENTS OF

The First State Bank of Stratford

Foxworth-Galbraith Lbr. Co.
Harold Roberts, Mgr.

Hubbard & Poole Electric
Ernest Hubbard & Mike Mathews
396-2231

J Cattle Co.
Box 888-Stratford-396-5576

Stratford Implement Co.
Minneapolis-Moline Dealer
396-2271

Kerrick Farm Supply
Conoco Gasoline
Kerrick, Texas 367-9221

King Equipment Co.
Your International Harvester Dealer

Walter Lasley & Sons, Inc.
Custom TLC* Cattle Feeding
*Tender Loving Care
Box 147 396-5961 or 367-2411.

McDonald Concrete & Insulating, Inc.
396-5659

McGavock Pump & Machine
Sales-Service-Water Well Drilling
Machine Shop Welding
396-5601 or Nights 396-5976

Monsanto Farm Store
For All Your Needs
Kerrick 367-2347

Nortex Feedlot Co.
384-2311 Dalhart

North Plains Savings & Loan
396-5534

Oakley's Floral & Nursery
AFS FTD
George & Gaynelle Oakley
Florifax Wire Service 396-2521
Hwy. 54 East 396-2092

Riverside Chemical Co.
Bill Blount, manager
Stratford 396-5517
Ted Roberts

Stratford Cablevision
Jerry Ford, Mgr.
305 N. Main 396-2020

Sherman Implement Co.
Your JOHN DEERE Dealer
396-5561 - Hwy. 54-E

Stratford Auto Electric
119 Wall 396-5941

Stratford Bi-Products
Your Local Used Cow Dealer
396-5350 Gene Romero, Mgr.

COMPLIMENTS OF

Stratford Butane Co.

COMPLIMENTS OF

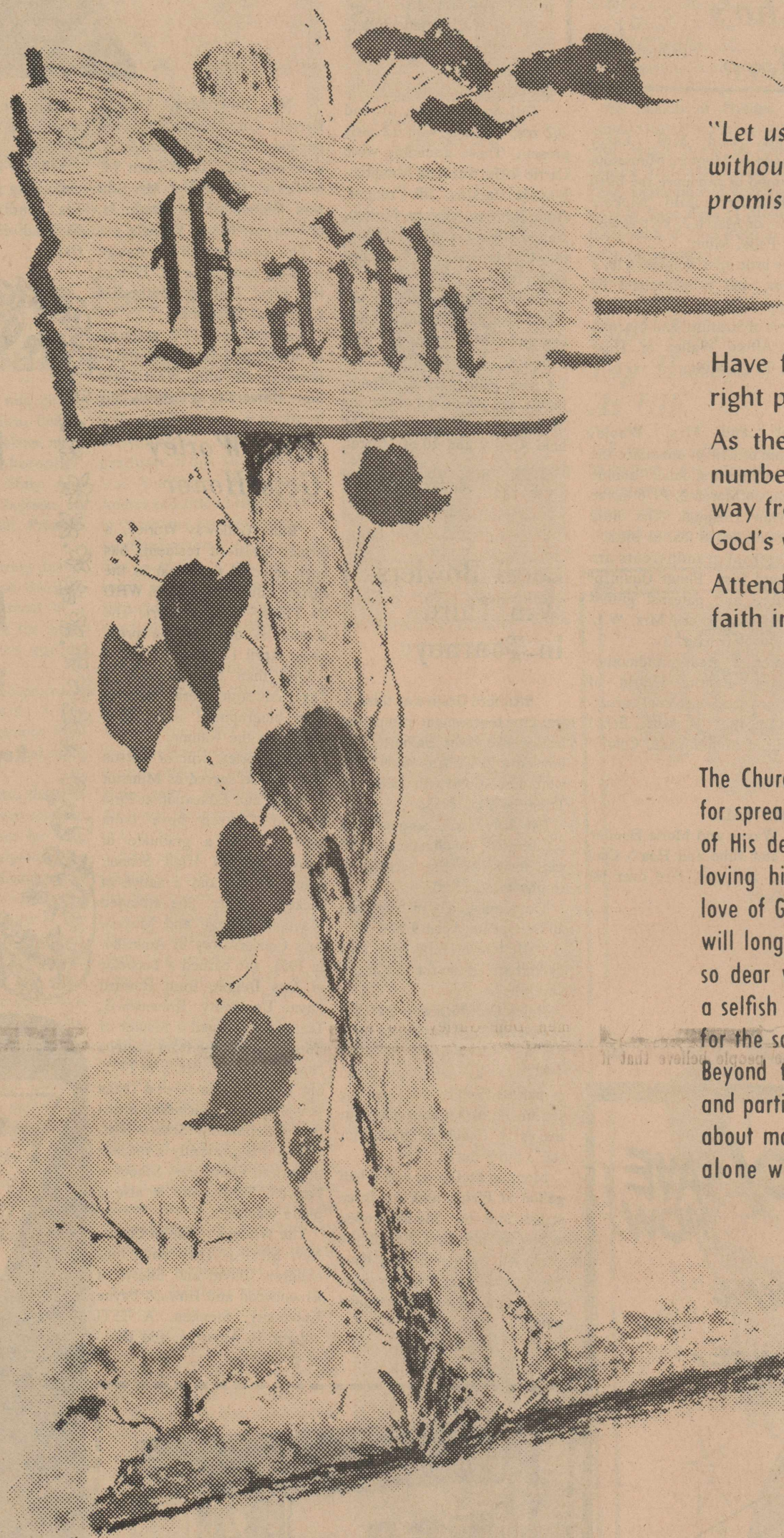
Stratford Grain Co.

Stratford Welding Shop

COMPLIMENTS OF

TOC Motor Co.
396-2038

Western Auto Associate Store
219 N. Main 396-5510



"Let us hold fast the profession of our faith without wavering; (for he is faithful that promised.)"

Have faith in God. He will lead us in the right paths. He will never fail.

As the highways are clearly marked and numbered so that we might easily find our way from city to city and across the nation, God's word clearly marks life's paths.

Attend church regularly and exercise your faith in God.

The Church is God's appointed agency in this world for spreading the knowledge of His love for man and of His demand for man to respond to that love by loving his neighbor. Without this grounding in the love of God, no government or society or way of life will long persevere and the freedoms which we hold so dear will inevitably perish. Therefore, even from a selfish point of view, one should support the Church for the sake of the welfare of himself and his family. Beyond that, however, every person should uphold and participate in the Church because it tells the truth about man's life, death and destiny; the truth which alone will set him free to live as a child of God.



The Churches Of Stratford Welcome Your Family

ASSEMBLY OF GOD

North Wall at Third Street
Sunday School 9:45 a.m.
Morning Worship 11:00 a.m.
Evening Worship 8:00 p.m.
Wednesday Services 8:00 p.m.
Rev. J.M. Ashley

CHURCH OF CHRIST

Third at Chestnut Street
Sunday Bible School 10:00 a.m.
Morning Worship 10:55 a.m.
Ladies Bible Class (Tuesday) 9:30 a.m.
Wednesday Bible Classes 8:00 p.m.
Minister Bob Beaty

FIRST BAPTIST

Third at Fulton Streets
Sunday School 10:00 a.m.
Morning Worship 11:00 a.m.
Church Training 6:00 p.m.
Evening Worship 7:00 p.m.
Wednesday Services 7:30 p.m.
Rev. Bruce Mitchell

FIRST UNITED METHODIST

Main at Sixth Street
Church School 9:40 a.m.
Morning Worship 10:50 a.m.
Youth Activities 5:30 p.m.
Evening Worship 6:30 p.m.
Rev. Cecl Hardaway

FIRST CHRISTIAN

North Main at Fifth Streets
Church School 9:50 a.m.
Morning Worship 10:50 a.m.
Evening Worship 6:00 p.m.
Wednesday Bible Study 7:00 p.m.
Choir Practice 8:00 p.m.
Rev. David Harker

INDEPENDENT BAPTIST

Sunday School 10 a.m.
Church Services 11 a.m.
Wednesday Nites 7:30 p.m.
Sunday Nite 7:00 p.m.
Training Union 6:00 p.m.
Elder Earnest Vanover

ST JOSEPH CATHOLIC

519 South Pearl Street
Schedule of Masses:
Sunday 9:00 and 11:00 a.m.
Saturdays 7:30 p.m.
Holy Days 7 a.m. and 7:30 p.m.
Wednesdays 7:30 p.m.
Confessions Before Saturday and Sunday Masses

This Series of Church Ads Is Being Published Through the Cooperation of the Local Ministerial Alliance and Is Sponsored By The Undersigned Individuals and Business Institutions

Approaching Marriage



Mr. and Mrs. Elmer Oquin of Stratford announce the engagement and approaching marriage of their daughter, Phyllis Raye, to Geary Stephen Brummell, son of Mr. and Mrs. D.C. Brummell of Pittsburg, Texas.

The couple will exchange wedding vows on May 15, 1976 in the University Christian Church in Lubbock, Tex.

Phyllis is a 1973 graduate of Stratford High School and attended Texas Tech University for one year. She is now employed by Radio Lab in Lubbock.

Geary is a 1972 graduate of Pittsburg High School and attends Texas Tech University majoring in Physical Education and Math. He is a member of FIJI Fraternity at Texas Tech.

Watch for Opening

Pro Sports Center

in the Mini Mall

OFFERING A FULL LINE OF TENNIS & SKI EQUIPMENT Sales & Rentals

OPENING SOON!!!!

Society

Music Club Hears Program On History

The Stratford Federated Music Club held its February meeting at the First United Methodist Church. "Building a Float of History" and "Parade of American Music" combined for the theme of the club's annual membership recital. The program director was Mrs. Doug McBryde.

Those performing included Mrs. Ronald Engelbrecht, organ solo, "Fanfare for Organ"; Mrs. Gary Laramore and Mrs. Bob Boardman, piano duet, "The American Patrol"; Mrs. Doug Reese, vocal solo, "The Red, White and Blue," accompanied by Mrs. Ronald Engelbrecht; Mrs. Gary Laramore and Mrs. Doug McBryde, vocal solo, "This is My Country," accompanied by Mrs. Bob Boardman; Mrs. Boyd Spurlock, vocal solo, "Battle Hymn of the Republic," accompanied by Mrs. Ronald Engelbrecht.

Co-hostesses for the program were Mrs. Floy Yates and Mrs. Boyd Spurlock. Those present included Mesdames: Bob Boardman, Doug McBryde, H.T. Galloway, R.C. Buckles, Johnny West, Stanley Pleyer, Doug Reese, Gary Laramore, Fred McDaniel, Bill Boren and Ronald Engelbrecht.

*** No race can prosper till it learns that there is as much dignity in tilling a field as in writing a poem. ***

Look Who's Here



Mr. and Mrs. Larry Evenson of Mentor, Minnesota are proud to announce the birth of their first child, Nickole Deann, on March 2, 1976 at Red Lake Falls, Minn.

The little miss weighed 6 lb. 1 1/4 oz. and is welcomed by grandparents Mr. and Mrs. Roy Powers of Stratford and Mr. and Mrs. Alfred Walter of Thief River Falls, Minn.

Mr. and Mrs. Wesley Maupin of Gruver announce the birth of their first child, Tammie Wynn, on March 2, 1976 in the Perryton Hospital. The little miss weighed 8 lbs. at birth.

Maternal grandparents are Mr. and Mrs. Elmer Oquin of Stratford and paternal grandparents are Mr. and Mrs. W.L. Maupin of Gruver.

Maternal great-grandmother is Mrs. Bertha Oquin of Stratford and paternal great-grandmother is Mrs. Ethyl Mapin of Monte Vista, Colo.

TOWN TALK

Wayne and Merle Henderson and Julie and Heath Cook skied at Angel Fire over the weekend.

Engagement Announced



Mr. and Mrs. Vernon Darrell Cotney announce the engagement of their daughter, Kimberly Ann, to William M. McGrath, III, son of Mr. and Mrs. William M. McGrath, Jr. of Newport News, Virginia.

The couple will exchange wedding vows June 12, 1976 in the First United Methodist Church of Stratford.

Kimberly is a 1975 graduate of Stratford High School and is presently attending West Texas State University in Canyon, Okla.

is employed part-time at the American National Bank in Amarillo.

William is a graduate of the University of Miami in Miami, Fla. and is employed by National Homes in Norman, Okla.

SCOT Ladies To Meet With Prospectus

Prospectus Study Club meets Friday at Fellowship Hall, Methodist Church at 2 p.m. Ladies belonging to SCOT are invited as special guests to hear Selma Pendleton and Vera Pronger telling stories of area pioneer women.

Final plans will be made about Top of Texas District Convention slated April 2-3 in Dalhart. There will also be election of officers.

Couples Party, using a St. Patrick's Day theme, and featuring Irish Stew, cornbread and desserts, and a surprise program, will be Saturday night, March 13, 7:30 p.m. at the Stratford Country Club.

Girl Scout Troops 31 and 262 met Tuesday with 12 girls present. Those attending were Carrie Riffe, Suzanne Almquist, Rhonda Harkins, Jill Pronger, June Romero, Sherry Melton, Annette Flores, Christi Harrington, Charla Bradford, Mellanee McMillion.

We wrote invitations for the father-Daughter Banquet and assigned the food for the banquet.

Carrie Riffe served refreshments and we talked about the Spring Campus Events to be held April 9 and 10 at Liberal, Kansas.

Girl Scout Sunday was March 7.

Local Bowlers Win Third In Tourney

Stratford Grain was third in the city tournament completed last weekend in Dalhart. The bowler a 2947. Ahead of them were Coca-Cola with 2982 and Triangle Mkt. 2968.

Pat Boren won singles with 556 scratch, plus handicap of 42 pins for a 682. She received a trophy and \$33.00.

The team bowls in Nationals at Denver on April 9 and 10. Mille Gore won two half gallons ice cream for 111 in the seventh.

Helen Crawford won a \$5 gift certificate from Anthony's for a 2-7 split.

Minnie Reeder won a \$5 certificate from Rita's for having 105 in the fifth frame plus four loaves of Cookbook Bread for the 3-5-6-9 bucket.

Marylou McDaniel won a half gallon of Plains milk for three strikes in a row. She also rolled a 216 for her first 200 of the year. All team members have now bowled over 200 this year, receiving a special Bicentennial patch.

Mrs. Worley Gets Honor

Billie Galloway Worley, a former Stratford resident, has been selected to appear in the current edition of WHO'S WHO IN TEXAS EDUCATION. The volume is due off the press about April 1, 1976.

Less than four percent of Texas educators were chosen to have biographical information appear in the volume.

Mrs. Worley, wife of Ladson Worley who served as Minister of Music and Education at First Baptist Church here from 1963-1970, is a graduate of Patton Springs High School, Afton, Texas, and a native of Dickens County. She attended Wayland College and Musical Arts Conservatory in Amarillo. In 1951, she earned a Bachelor of Arts Degree from Howard Payne University, Brownwood, Texas. She earned a Master of Education Degree from Eastern New Mexico University in 1973. She has taught in several Texas school systems, including Stratford Independent School District, and is presently a teacher in Farwell Elementary School in Farwell, Texas. She is also a piano teacher.

The Worleys reside in Clovis, New Mexico. They have four children: David and Sheryl of Brownwood and Howard Payne University; Stephen, A TSTI student in Amarillo, and Daryl of the home.

See our New Hair Care Products by Merle Norman

Shampoo for Dry or Oily Hair Shampoo with Conditioners Regular & Hard to Hold Spray Net

Ph 396-2570

Something Special

218 N. Main

Prices Are Going Up! SAVE NOW!

WE HAVE JUST BEEN NOTIFIED OF A PRICE INCREASE ON ALL WHIRLPOOL PRODUCTS IF YOU ARE CONSIDERING BUYING AN APPLIANCE... WITHIN THE NEXT FEW WEEKS... BUY NOW & SAVE!

Whirlpool

Model LDA 5300
 • 3 cycles: NORMAL, SHORT and PERMANENT PRESS
 • Cool-down care for Permanent Press fabrics
 • 3 wash/rinse energy-saving water temp selector
 • Easy-to-clean filter
 • Heavy-duty 1/2 hp. motor
 • Porcelain-enameled top and lid
 • SURGILATOR® agitator
 • Available in decorator colors
 • Bac-Pak Laundry Information Center

Model LDE 5700
 • Special cool-down care for Permanent Press and Knit fabrics
 • 3 drying temperature selections
 • TUMBLE PRESS® control
 • Extra large lint screen
 • Large 5.9 cu. ft. drying drum
 • Push-to-start button
 • Automatic door shut off
 • Bac-Pak Laundry Information Center

Model LDA 5500
 • 2 washing and 2 spin speeds
 • 3 cycles: NORMAL, PERM. PRESS and GENTLE
 • 3 wash/rinse water temps
 • 2 load-size water-saving selector
 • Easy-to-clean filter
 • Heavy-duty 1/2 hp. motor
 • Cool-down care for Perm. Press fabrics
 • Porcelain-enameled top and lid
 • SURGILATOR® agitator
 • Available in decorator colors
 • Bac-Pak Laundry Information Center

Model LDE 5800
 • Custom dry control
 • Special cool-down for Permanent Press and Knit fabrics
 • 5 drying temperature settings
 • TUMBLE PRESS® control
 • Extra large lint screen
 • Full-width door
 • Large 5.9 cu. ft. drying drum
 • Automatic door shut off
 • End-of-cycle buzzer
 • Bac-Pak Laundry Information Center

\$279⁹⁵ \$229⁹⁵ \$269⁹⁵ \$239⁹⁵

BOSTON'S
 Hwy 54 in Stratford

RCA The PROJECTA 15 Model EU353 15" diagonal

Here it is!
 Our lowest priced
RCA XL-100!
 Only **\$369⁹⁵**

- Don't let that low price fool you! This is an RCA XL-100 through and through... complete with RCA's most advanced picture tube system. See it today!
- RCA XL-100, 100% solid state for reliability—no chassis tubes to burn out.
- AccuLine black matrix picture tube system for brilliant, high contrast color.
- Automatic Fine Tuning pinpoints and holds the correct broadcast signal.
- Plug-in AccuCircuit modules simplify servicing.

Western Auto Store
 Stratford Ph 396-5510

YIELDS 8%

U.S. Government Guaranteed

If your goal is income... now is the time to look at 8% government-guaranteed bonds.

How much surplus savings do you have locked up? If it's yielding the usual rates... you might increase your income from that money by 40%, 50% or more! If that sounds good to you... read our new booklet: "8 Reasons Why Government-Guaranteed Bonds Make Sense Today."

For your free copy, just call A. G. Edwards or mail the coupon. It might yield a lot more than just interesting facts about bonds.

A.G. Edwards
 Investments Since 1887

I am interested in earning a higher interest on my money. Please send me your booklet "8 Reasons Why Government-Guaranteed Bonds Make Sense Today."

NAME _____
 ADDRESS _____
 CITY _____
 STATE _____ ZIP _____
 TELEPHONE _____

Mail to: **Bob Hill**
 A.G. Edwards & Sons, Inc.
 320 South Polk
 Amarillo, Tex. 79109
 Phone (806) 372-5751

AN-B-10-ERS-10-1-74

Cook of Week



COOK OF THE WEEK-Mrs. Clifton (Anna) Muir is shown seated in the living room of their home of North Wall Street. Mrs. Muir does custodian work at the Baptist Church and also works on piecing, appliquing and embroidering quilt tops in her spare time.

Lived Here 24 Years

Our cook for this week was raised in Kentucky and has lived in Stratford 24 years. Mrs. Clifton (Anna) Muir does custodian work for the First Baptist Church.

Clifton is retired from the Texas Highway Department.

The Muirs have two children, Carolyn Pool, who lives in Dumas and Jimmy, who lives south of Stratford. They have five grandchildren.

Anna embroideries, pieces and appliques quilt tops and also enjoys gardening and canning.

She has recently finished an embroidered quilt top done in red, white and blue with an eagle motif that she plans to enter in the fair in the fall. It was certainly a beautiful piece of work.

Anna's recipes include an Applesauce Cake, a pineapple and cheese salad and a good recipe for Raised Dinner Rolls.

APPLESAUCE CAKE

- 1/2 c. shortening
- 1 1/2 c. sugar
- 2 beaten eggs
- 2 c. flour
- 1 t. baking powder
- 1 t. cinnamon
- 1/2 t. soda
- 1/2 t. cloves
- 1/4 t. salt
- 1 c. applesauce
- 1 c. raisins

Stir shortening until soft.

Gradually add sugar and cream together until light and fluffy. Add eggs and mix well. Sift flour, baking powder, cinnamon, soda, salt and cloves together three times. Add to creamed mixture alternately with applesauce. Beat after each addition until smooth. Fold in raisins. Bake in paper lined 9x9 inch pan in moderate oven (350 degrees) for about 60 minutes. Serve plain or frosted.

PINEAPPLE AND CHEESE SALAD

- 1 large pkg. lemon jello
- 1 c. boiling water
- 1 c. grated cheese
- 1 large can crushed pineapple, undrained
- 1 large can evaporated milk, whipped

Dissolve jello in boiling water. Add grated cheese and undrained pineapple. Place in refrigerator until mixture begins to congeal. Add whipped evaporated milk and mix together. Return to refrigerator until ready to serve.

HOW TO WHIP EVAPORATED MILK

Place milk in bowl in the freezer and chill until ice crystals form around edges. Remove from freezer and whip until stiff. This recipe can be used as a salad or as a dessert.

RAISED DINNER ROLLS

- 1 1/2 c. water
- 2 pkg. dry yeast
- 2 eggs

Girl Scouts To Light Freedom Flame

Stratford Girl Scouts, like American Girl Scouts around the world, will light "Flames of Freedom," Friday at 5 p.m. Local ceremonies will be held in the First State Bank parking lot on Third Street with the candle lighting ceremony to be held in the Legion Hall.

The Flame of Freedom ceremony commemorates the 64th Birthday of Girl Scouting in the Bicentennial year and reaffirms the commitment of youth to building the future of our country.

Mrs. Betty Ford, as honorary president of Girl Scouts of the USA kindled the original flame at the opening of the national convention in Washington, D.C. on October 26. Presidents of local Girl Scout Councils then lighted tapers which they pledged to rekindle at home on March 12.

In explaining the national Flames of Freedom program, national president, Gloria D. Scott, said "March 12, 1976 is the 64th birthday of Girl Scouts of the USA. In our nation's 200th birthday year, it is especially fitting that we pause to celebrate the contributions of Girl Scouting as a growing vital force in the development of girls in the United States."

Local troops in Stratford have been working on the development of a park located on South Wall Street as their Horizona '76 Contributions.

Everyone who is or has been a part of the Girl Scout Program is invited and urged to be a part of this birthday celebration.

FREE CLINIC SCHEDULED IN TEXHOMA

The American Cancer Society and the Texhoma Chapter of Epsilon Sigma Alpha are presenting a BSE (Breast Self Examination) Clinic on March 16 at 3 p.m. in the Texhoma High School Auditorium.

Peggy White, Texas County Health Nurse, will be conducting the clinic demonstrating the technique for finding lumps in the breast. Free literature will be available and films will be shown.

- 1/4 c. sugar
- 1/4 c. oil
- flour

Dissolve yeast in warm water and add remaining ingredients, adding enough flour to make a stiff dough. Let rise until double and make into rolls. Let rise again and bake at 350 degrees. May be stored in the refrigerator until ready to use.

Kerrick News

Mrs. Fred McDaniel

Don Moon will have heart surgery Thursday morning in St. Anthony's in Amarillo.

Jan Wells was home Friday thru Wednesday on spring break from Amarillo College.

Celebrating Derrek's first birthday Sunday at his grandparents, Mr. and Mrs. Kenneth Wells, were Mr. and Mrs. Parker Maness and Parker Lee of Felt, Ok., Derrek's parents, Mr. and Mrs. Paul Wells and his aunts, Jan, Jennifer and Uncle Mark.

Mr. and Mrs. Dennis Weber, Sheridan Lake, Co., visited last week with the Bill Boren family.

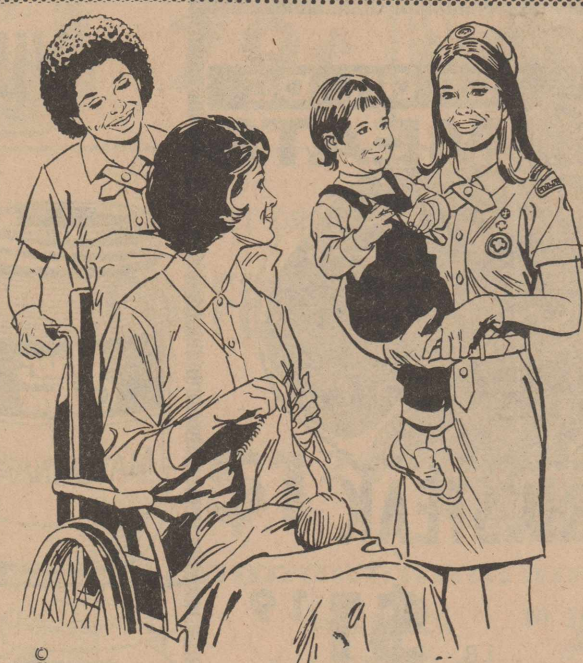
Supper guest Monday of Fred McDaniel was Randy Freeman of Dalhart.

Irlbeck youth did well Saturday at Dallam County 4-H Food Show. Melvin won a blue ribbon in the junior division of snacks and beverages. Randy and Kelley will be going to District in Amarillo this Saturday for having won first in junior-bread and dessert and senior-side dishes, respectively.

Seven Students On Honor Roll At WTSU

Seven students from Stratford have been named to the President's and the Dean's Honor Rolls for the fall semester at West Texas State University. Joseph B. Everett, sophomore, agriculture business and economics major, has been named to both honor rolls. He is the son of Mr. and Mrs. Joe F. Everett.

Students listed on the dean's honor roll are Lea R. Christian, senior, business education major, daughter of Mr. and Mrs. Rex Christian; Sandra R. Christian, junior, elementary education and art major, daughter of Mr. and Mrs. Rex Christian; Natalie Engelbrecht, freshman, accounting major, daughter of Alvin Engelbrecht and Doreen Engelbrecht; Jere L. Gilley, freshman, nursing major, daughter of Mr. and Mrs. Jack Gilley; Gloria L. Pleyer, freshman, music major, daughter of Mr. and Mrs. Stanley Pleyer; and Barbara Wright, senior, nursing major, daughter of Mr. and Mrs. Gail Wright.



They Enjoy Being Kind to Others

"To help other people at all times" ... that's the Girl Scout promise. Scouting teaches them compassion, a lesson they'll recall throughout their lives. Let's support them.



4th & Main in Stratford

OPEN 24 HOURS

JOIN THE BIGGEST SALE OF THE YEAR!

ALLSUP'S CONVENIENCE STORES

OPEN 24 HOURS

PRICES GOOD MARCH 1-13, 1976



SAVINGS STREET DAYS



SHURFRESH SLICED BACON 1 LB. PKG.

\$1.29

VACUUM PACKED



SHURFRESH FRANKS OR BOLOGNA 12 OZ. PKG.

69¢

YOUR CHOICE

SPECIAL GROCERY SAVINGS

SHURFINE DINNER HAMBURGER SLICED PICKLES

4 PKGS. 32 OZ. JAR

\$1.00 59¢

SHURFRESH SALTINES

2 16 OZ. BOXES

89¢

SOFTENING PAPER TOWELS

2 JUMBO ROLLS

89¢

ALLSUP'S DAIRY FAVORITES

HALFMOON LONGHORN COLBY CHEESE

10 OZ. PKG.

89¢

SWEETMILK OR BUTTERMILK BISCUITS

9 CANS

\$1.00

BORDEN COTTAGE CHEESE

24 OZ. CTN.

79¢

SHURFRESH MARGARINE

3 LBS.

89¢



SHURFINE FLOUR 5 LB. BAG

44¢

1st Bag With Coupon From Any Affiliated Foods Circular And An Additional \$7.50 Purchase Excluding Cigarettes - Thereafter Or Without Coupon 69¢



SHURFINE SUGAR 5 LB. BAG

84¢

1st Bag With Coupon From Any Affiliated Foods Circular And An Additional \$7.50 Purchase Excluding Cigarettes - Thereafter Or Without Coupon \$1.09



SHURFINE GREEN BEANS

5 16 OZ. CANS

\$1.00



SHURFINE LIQUID BLEACH

1 GAL. BTL.

49¢



SHURFINE SHORTENING 3 LB. CAN

84¢

1st Can With Coupon From Any Affiliated Foods Circular And An Additional \$7.50 Purchase Excluding Cigarettes - Thereafter Or Without Coupon \$1.09



SHURFINE ALL GRINDS COFFEE 1 LB. CAN

84¢

1st Can With Coupon From Any Affiliated Foods Circular And An Additional \$7.50 Purchase Excluding Cigarettes - Thereafter Or Without Coupon \$1.09

FROZEN FOOD & GROCERY

ORANGE JUICE 6 OZ. CANS

4 \$1.00

FRESH PRODUCE SAVINGS

WASH. RED DEL. APPLES OR CALIF. HAVEL ORANGES MIX 'N MATCH 4 LBS.

79¢

CRINKLE POTATOES 32 OZ. BAG

59¢

GARDEN FRESH UTILITY POTATOES 10 LB. BAG

69¢

SHURFINE EVAPORATED MILK

3 CANS

89¢

SHURFINE FRUIT COCKTAIL

3 CANS

\$1.00

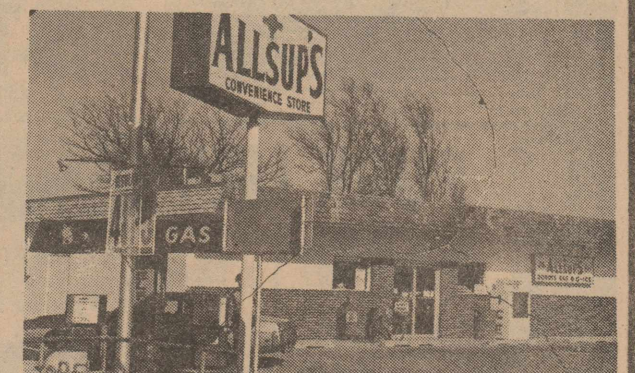
SHURFINE CORN WHOLE KERNEL OR CREAM STYLE

4 16 OZ. CANS

\$1.00

HOT COOKED FOODS

- BBQ CHICKEN
- HOT LINKS
- BURRITOS
- BBQ RIBS
- MILD LINKS
- GERMAN SAUSAGE
- CORN DOGS



Hwy 287 in Stratford



Each year, it costs more to manage each acre of land. But the dollars-per-acre investment is not as important as the farmer or rancher himself. The real strength of American agriculture is found, not only in better machines and better methods, but in the man. When we consider a long-term loan, we put a value on your experience ... and on your skills as a manager.



Land Bank loans have helped America farm better for 60 consecutive years.

Federal Land Bank Association of Dalhart

Box 1311

Dalhart

PRODUCE SPECIALS
 TEXAS LARGE TIES
GREEN ONIONS 2 BUNCHES **25¢**

ALL PURPOSE
 RUSSETS
POTATOES
 10 LB. BAG **87¢**

MEXICO VINE RIPE
TOMATOES
 3 POUNDS **99¢**

WASHINGTON
 D' ANJOU
PEARS
 POUND **29¢**




Check



Comp

Shurfine
 "Savings Street
 Days" Sale
 Continues Thru
 Saturday, March
 13, 1976. It's A
 Great Sale By The
 Can Or By The Case—

**YOU PAY NO MORE
 AT YOUR CUTRATE SUPERMARKET**
 WHERE YOU GET S & H GREEN STAMPS WITH
 FOOD STAMP CUSTOMERS WITH

CALIFORNIA
TANGERINES
 3 Pounds **\$1**



ORCHARD
BATHROOM TISSUE
 8 ROLL PKG. **98¢**



HUNTS WHOLE NEW
POTATOES
 NO. 3 **4**




WHIPPED
PARKAY
 2 - 8 OZ. CUPS
 16 OZ. **59¢**



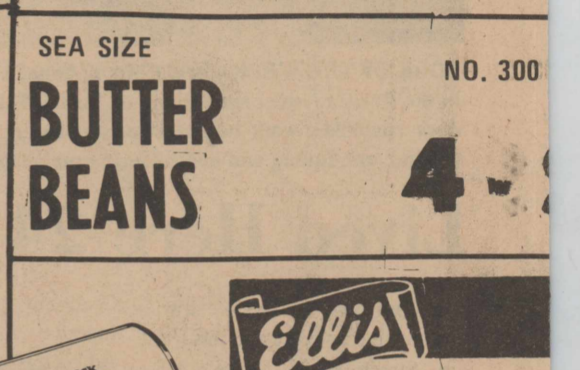
SOFLIN DAYTIME
 DISPOSABLE
DIAPERS
 30 CT. BOX
\$1.89



HERSHEY'S
 MILK CHOCOLATE
krackel
 CRISPED RICE IN MILK CHOCOLATE
 Milk Chocolate Bars - Mr. Good Bar -
 Almond Bar -
 Krackel
 GIANT SIZE **77¢**



SEA SIZE
BUTTER BEANS
 NO. 300 **4**



13 OFF
Cascade
 FOR VIRTUALLY
 SPOTLESS DISHES
 35 OZ. BOX **89¢**



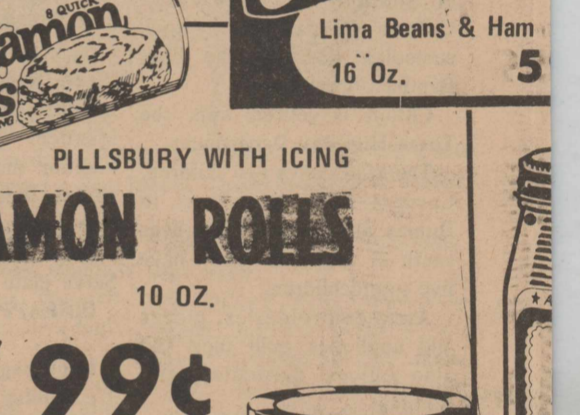
LUCKY LEAF APPLE OR LEMON
PIE MIX
 No 2 Can



SHURFINE ALL GREEN CUT
 ASPARAGUS
SPEARS
 14 1/2 OZ. CAN **2/\$1**



1 BUNCH
Cinnamon Rolls
 WITH ICING
 PILLSBURY WITH ICING
CINNAMON ROLLS
 10 OZ. **2/99¢**



BONUS SPECIAL
 PARKAY
MAGARINE
 1/4's
 1 LB. **1¢**
 WITH 1 FILLED
 BONUS SPECIALS BOOKLET



BONUS SPECIAL
 HERSEY'S
 BAK CHOCOLATE FLAVORED BAKING CHIPS
CHIPS
 6 OZ. PKG. **1¢**
 WITH 1 FILLED
 BONUS SPECIALS BOOKLET



BONUS SPECIAL
 EGGS
 GRADE A SMALL DOZ.
1¢
 WITH 1 FILLED
 BONUS SPECIALS BOOKLET



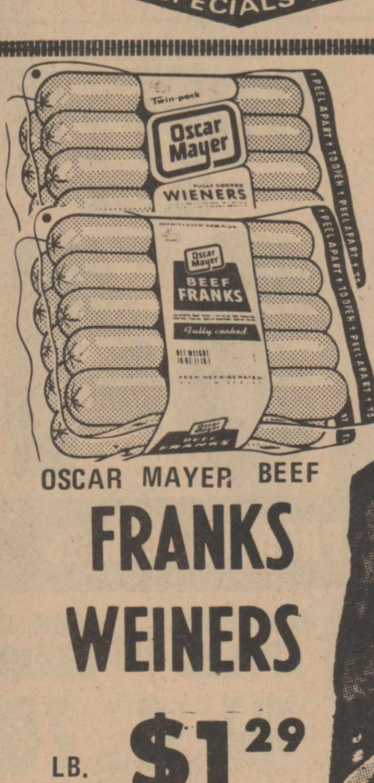
BONUS SPECIAL
 SHURFRESH
BUTTERMILK
 QT. **1¢**
 WITH 1 FILLED
 BONUS SPECIALS BOOKLET



ALABAM GIRL
 WHOLE DILL OR
 SOUR
PICKLES
 22 OZ. JAR **69¢**



OSCAR MAYER BEEF
**FRANKS
 WEINERS**
 LB. **\$1.29**



BONELESS
**PIKES PEAK
 ROAST**
 LB. **\$1.29**

BONELESS
**RUMP
 ROAST**
 LB. **\$1.29**



**TOP GRADE
 MEATS**
ROUND STEAK
 BONE IN LB. **\$1.19**
 BONELESS LB. **\$1.29**



HORMEL
VIENNA SAUSAGE
 5 OZ. CAN **3-\$1**

SHURFINE
MAYONNAISE
 32 OZ. JAR **\$1.09**

SUNSWEEET
PRUNE JUICE
 40 OZ. BTL. **77¢**



OSCAR MAYER
**SLICED
 BACON**
 LB. **\$1.69**

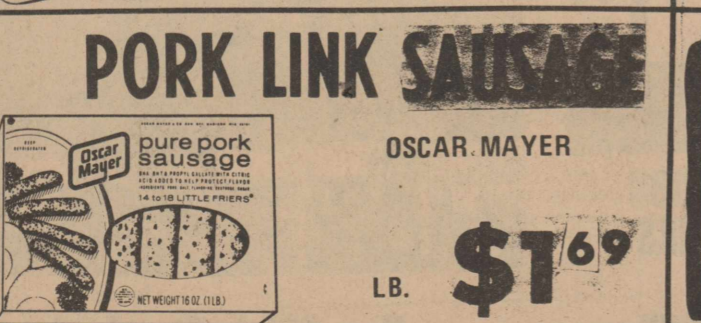


FRESH
BEEF LIVER
 LB. **49¢**



Call Our Markets For
 Delicious
 Broasted Chicken
 - French Fries
 To Go.

PORK LINK SAUSAGE
 OSCAR MAYER
 LB. **\$1.69**



OSCAR MAYER
VARIETY PAK
 12 PKG **\$1.29**



Cut Rate
GROCERY AND FAMILY CENTER
 OPEN 7 DAYS A WEEK
 HIGHWAY 54 EAST STRATFORD, TEXAS
 604 MAIN STREET SUNRAY, TEXAS
 DOUBLE S & H GREEN STAMPS WEDNESDAY
 WITH \$2.50 PURCHASE OR MORE
 PRICES EFFECTIVE THURSDAY, MARCH 11 THUR WEDNESDAY, MARCH 17th



Save **Save**

FOR QUALITY FOOD

PERMARKET

WITH EVERY PURCHASE

WELCOME

Shop Our 'New' Fabric Dept. At Cut Rate Of Stratford

DOUBLE S & H GREEN STAMPS WEDNESDAY WITH PURCHASE OF \$2.50 OR OVER

BORDEN'S ROUND CARTON ICE CREAM

\$1

SHURFRESH SOFT MARGARINE

2 - 8 OZ. TUBS

16 OZ. 2 for \$1

QUEEN'S COURT OR AMERICAN TEMPO STAINLESS FLATWARE

ITEM OF THE WEEK: Teaspoon

22¢

EACH PLACE SETTING PIECE ONLY

MIRACLE WHIP

48 OZ. **\$1.59**

SWIFT JEWEL SHORTENING

42 OZ. CAN **99¢**

GOLD MEDAL FLOUR

5 LB. BAG **77¢**

HEINZ KETCHUP

26 OZ. **79¢**

COMET CLEANSER

21 OZ. CAN **39¢**

PEPSI COLA

6 BTL. CTN. **\$1.49**

FOLGERS ALL GRINDS COFFEE

1 LB. CAN **\$1.28**

BALM BARR (LIQUID) LOTION

8 OZ. **\$1.79**

CLEAN RINSE

8 OZ. **\$1.79**

J & J BABY SHAMPOO

11 OZ. **\$1.79**

MISS BRECK LASTING HOLD

8 OZ. **\$1.59**

CREME RINSE

8 OZ. **\$1.19**

FLOWER & FOLIAGE PICKS

10¢

SAVINGS STREET SPECIAL

- Shurfine Apple Butter 28 oz. Jar. 59¢
- Shurfine Apricots Halves Unpeeled 16 oz. Can. 2/79¢
- Shurfresh Biscuits Buttermilk or Sweetmilk 8 oz. Can. 9/\$1.00
- Shurfine Blackeyes Fresh Shelled 15 oz. Can. 4/\$1.00
- Shurfine Bleach Liquid Gallon Jug. 49¢
- Shurfine Cake Mixes Devils Food/White or Yellow 18 1/2 oz. Box. 2/\$1.00
- Shurfine Catsup 32 oz. Bottle. 69¢
- Shurfresh Cheese Halfmoon Longhorn Colby 10 oz. Pkg. 89¢
- Shurfine Cherries Red Sour Pitted 16 oz. Can. 2/89¢
- Shurfine Coffee Vac/Pak All Grinds 1 lb. Can. \$1.09
- Shurfresh Cinnamon Rolls 9 1/2 oz. Can. 2/\$1.00
- Shurfine Coffee Creamer Non-Dairy 11 oz. Jar. 69¢
- Shurfine Corn Cream Style or Whole Kernel Golden 17 oz. Can. 4/\$1.00
- Shurfresh Crackers Saltine 16 oz. Box. 2/89¢
- Shurfine Detergent Powdered Blue or All Purpose 49 oz. Box. 89¢
- Shurfine Dills Hamburger Sliced 32 oz. Jar. 59¢
- Shurfine Evaporated Milk 14 1/2 oz. Can. 3/89¢
- Roxey Dog Food Ration 15 oz. Can. 7/\$1.00
- Shurfine Flour Enriched 5 lb. Bag. 69¢
- Shurfine Fruit Cocktail 16 oz. Can. 3/\$1.00
- Shurfine Grape Juice 40 oz. Bottle. 89¢
- Shurfine Green Beans Cut 16 oz. Can. 5/\$1.00
- Shurfine Macaroni & Cheese Dinner 7 1/2 oz. Box. 4/\$1.00
- Shurfine Mandarin Oranges 11 oz. Can. 3/\$1.00
- Shurfresh Margarine Quarters 1 lb. Pkg. 3/89¢
- Shurfine Orange Drink 46 oz. Can. 2/89¢
- Shurfine Orange Juice Frozen 6 oz. Can. 4/\$1.00
- Shurfine Peaches Yellow Cling Sliced or Halves 29 oz. Can. 2/\$1.00
- Softin Paper Towels Assorted Jumbo Roll. 2/89¢
- Shurfine Peas Early Harvest Sweet 17 oz. Can. 3/\$1.00
- Shurfine Pie Filling Cherry 21 oz. Can. 59¢
- Shurfine Potatoes Frozen Crinkle Cut 32 oz. Pkg. 59¢
- Shurfine Pork & Beans 16 oz. Can. 4/\$1.00
- Shurfine Shortening Pure Vegetable 48 oz. Can. \$1.09
- Shurfine Spinach 15 oz. Can. 5/\$1.00
- Shurfine Sugar Granulated 5 lb. Bag. 2/\$1.00
- Shurfine Tomato Juice Fancy 46 oz. Can. 2/\$1.00
- Shurfine Tomato Sauce 8 oz. Cap. 6/\$1.00
- Shurfine Tomato Soup 10 1/2 oz. Can. 6/\$1.00
- Shurfine Trash Can Liners 30 Gallon Size - 10 ct. Box. 79¢
- Shurfine Vegetables Frozen Chopped Broccoli/Cut Green Beans/Green Peas/Cut Corn Pkg. 3/\$1.00
- Shurfine Vegetables Mixed 16 oz. Can. 4/\$1.00
- Shurfine Whipped Topping Frozen Non-Dairy 9 oz. Bowl. 39¢

QUALITY VALUE

Shurfine Savings Street Specials Good March 1-13, 1976

FROZEN FOOD SPECIALS

MORTON BOSTON CREME DONUTS

14 OZ. PKG. **69¢**

WELCH'S GRAPE JUICE

WELCH 16 OZ. CAN **69¢**

SARA LEE POUND CAKE

BANANA NUT 11 OZ. **99¢**

WHITE RAIN SHAMPOO

NATURAL PH BALANCE

REG. \$1.10

8 OZ. **85¢**

California ROPED WEDGES

REG. \$3.99

• Open Toe Styles • Bright Colors!

Women's Sizes 5 to 10

SALE **2.99** pair

For bounce and softness. Glove-soft, leather-like vinyl upper with slab rubber outsole, rope wrap around sole.

MIDLAND CB TRANSCEIVER

2 1/2 - 1 1/2 x 9 in. size

99.88

REG. \$129.95

23 channel with easy to read top panel. P.A. capabilities, full squelch, W/microphone.

ALUMINUM BAKENWARE

REG. \$1.19

SALE **99¢**

Durable aluminum bakeware pieces with DuPont Teflon coating for no stick, baking, and easy clean-up. Cakes, Loaf Cakes, Muffin Pans, more.

Teachers Rank 24th By Pay Standards

Texas has moved up this year from 35th to 24th place among the 50 states in average annual pay for public school teachers, a national survey shows.

Average classroom teacher pay in Texas in 1975-76 is \$11,373, according to a survey of the National Education Association titled "Estimates of School Statistics, 1975-76."

This still leaves Texas \$1,151 below the national teacher pay average of \$12,524, as quoted in the NEA report. These are preliminary estimates, based on figures supplied by the 50 state education agencies, including the Texas Education Agency. Revised estimates will be compiled after the end of the school year.

The revised figures for the preceding year showed Texas in 35th place among the 50 states with average annual teacher pay of \$9,807, which was \$1,843 below the national average of \$11,650 for 1974-75.

Callie W. Smith, executive secretary of the Texas State Teachers Association, said that "these new figures show that while the 1975 Texas Legislature was passing House Bill 1126 to improve teacher pay, the other states were also moving ahead."

"We are pleased in the improved pay situation for Texas teachers, but we still have a long way to go to reach the national average, which probably will continue to climb from the present estimate of \$12,524."

TSTA pushed for a \$10,000 starting pay for Texas teachers in the 1975 Legislature. House Bill 1126 passed in the fading hours of the session, raised

starting bachelor's degree teachers from \$6,600 to \$8,000, and master's degree teachers from \$7,200 to \$8,000, and master's degree teachers from \$7,200 to \$8,600.

SHS Seniors Honorees At Local Banquet

Members of the Stratford High School Class of 1975 will be honored guests at a banquet slated to be held in the Fellowship Hall of the First United Methodist Church Monday evening beginning at 7 p.m.

The informal event is to be co-sponsored by three local churches. They include the First United Methodist, First Christian and St. Joseph's Catholic Church.

The Bicentennial Theme will be featured at the event.

Members of the Senior Class at SHS include Ted Allen, Debbie Arnold, John Ashley, Lou Ann Barrett, Vicki Bell, D'Lynn Brown, Tammy Cameron, Bitsey Chesmer, Shirley Christian, Kay Cotney, Roy Davis, Pete Dice, Darrell Doshier, Valerie Duncan, Ernie Ellison, Sergio Escamilla, Jeff Flores, Wayne Garoutte, Robert Hammons, Nora Hampton, Joel Hart, Joe Henry, Keith Hill, Phillip Huereca, Lester Irlbeck, Ricky Keener, Terry Kirkwood, Carl Luther, David Maas, Janice Messer, Waide Messer, Irma Olivias, Leon Payne, Mike Pilch, Karen Pleyer, Jimmy Powers, Dalene Prescott, Jeff Pronger, Delores Radford, Lupe Ramirez, Ricky Reed, Charlotte Robinson, Diane Romero, Blake Sladek, Johnny Slover, Sheri Slover, Debbie Stacy, Cheryl Starnes, Janet Vaughn, Jode Wells, Jeff Wiley and Jeff Witcher.



JUNIOR FOOD WINNERS--Chris Stanley, Susan Fesler, Carol Chesher and Annette Flores took top Junior Division Honors in Sunday's Sherman County 4-H Food Show. They all earned blue ribbons in their competition and received rosettes for their hard work.

SENIORS TO AMARILLO

Seven Youths Win Food Show Honors

Seven local and area youth took top honors in the Sherman County 4-H Food Show, Sunday, March 7 competing against 38 other youth in senior and junior division contests.

First-place winners in the senior division are Sheri Waters - Stratford, side dishes; Florene Schafer - Texhoma, breads and desserts; and Cindy Schafer - Texhoma, snacks and beverages.

They earned blue ribbons and the right to compete in the District 4-H Food Show on March 13 in Amarillo.

Junior division first-place winners are Chris Stanley,

main dishes; Annette Flores side dishes; Susan Fesler, breads and desserts; and Carol Chesher, snacks and beverages. They received rosettes, pitcher and glasses set.

The **Best Chef** award went to Terrell Smith, **Best Rookie** Connie Stork, **Best Menu**, J.W. Caraway, and **Best Exhibitor**, Leslie Flores.

Best second-place winners were awarded red ribbons, in the junior division, they are Carla Cluck, Nanette Boardman, Sammy Smith, Kamala Ford, Sherwin Burton.

Other second place winners of red ribbons were Dee Dee Caraway, Mary Schafer, Char-

isse Harland, Lea Ann Armstrong, Wilma Cluck, Donna Staton, Zenity Burton.

Blue ribbon winners were Sheri Waters, J.W. Caraway, Annette Flores, Karen Waters Cindy Schafer, Suzanne Almqvist, Lane Johnson, Carrie Brown, Terrell Smith, Nancy Schwertner, Carol Chesher, Jill Pronger, Chris Stanley, Leslie Flores, Florene Schafer, Lisa Harris, Paula Schwertner, Lisa Wiley, Susan Fesler, Mary Ann Ferguson, Dorothy Rolan, Connie Stork.

Food Show Leaders who have been an especially good help to 4-H were, Mrs. Grace Schafer, Mrs. Joy Caraway, Mrs. Pat Johnson, Mrs. Terry Flores, Mrs. Jan Harris, Mrs. Shirley Armstrong, Mrs. Carollee Waters, Mrs. Jimmy Pronger and Mrs. Bernice Schwertner. Miss Sheri Waters helped out a great deal by helping as a Teen Leader.

Sherman County 4-H Food Show was sponsored by the Texas Agricultural Extension Service and the Sherman County Farm Bureau.



SENIOR FOOD WINNERS--Florene Schafer, Cindy Schafer and Sheri Waters took top honors in the Senior Division of the Sherman County 4-H Food Show Sunday afternoon. They all earned blue ribbons and the right to advance to the District 4-H Food Show next weekend in Amarillo.



BEST OF SHOW--These four youngsters earned awards at Sunday's Sherman County 4-H Food Show, left to right, Terrell Smith, Best Chef; J.W. Caraway, Best Menu; Connie Stork, Best Rookie; and Leslie Flores, Best Exhibitor.



MARCH 15-19

MONDAY--Steak fingers, catsup, mashed potatoes, creamed gravy, green beans, hot rolls, butter, peanut butter, fruit, milk.
TUESDAY--Pizzas/ beef-cheese, tossed green salad, blackeyed peas/ snaps, apple cobbler, milk.
WEDNESDAY--Mexican green chilis casserole, brown beans, cole slaw/ apples, hot rolls, fruit, milk.
THURSDAY--Barbecued weiners, buttered steamed potatoes, buttered squash, carrot sticks, hot biscuits, butter, chocolate cake, milk.
FRIDAY--Hamburgers, cheese, onions, lettuce, pickle slices, french fries, catsup, peach cobbler, milk.

Elk Thinclads Compete At Boys Ranch

Stratford's Varsity Track Team entered their first meet of the season this past weekend and finished 15th out of a field of 20 teams at Boys Ranch Roughrider Relays.

The Varsity Sprint Relay Team finished sixth, comprised of Jeff Witcher, Tom McReynolds, Jimmy Powers and Joe Pete Albert; Jeff Witcher ran seventh in the 220 Dash; Witcher also finished 6th in the Pole Vault and Tobe Wisdom won 6th in Hi Jump.

The **Seventh Grade** wound up 12th out of 20 with the Sprint Relay Team running 6th, comprised of Arthur Hernandez, Joe Zak, Lee Riffe and John Rodriguez; 880 Relay Team ran 7th, comprised of Hernandez, Zak, Riffe and Rodrigues, and Tommy Guthrie earned 2nd place in the Discus Throw.

The **Eighth Grade** finished in 5th place out of 18 teams.

The **Eighth Grade Sprint Relay** ran 4th, comprised of Daniel Meyer, Matt Vincent, Joe Ramos and Reuben Rendon; 880 Relay ran 5th, comprised of Meyer, Vincent, Ramos and Rendon; Reuben Rendon ran 3rd in the 100 Yard Dash; Daniel Meyer ran 7th in the 220 Dash; and Kyle Ingham ran 2nd in the Low Hurdles and also finished 4th in the 60 Yd High Hurdles. Mike Carter won the Shot Put with a throw of 41ft 5 1/2 inches.

The **Freshman Team** won 7th overall with their efforts. Their Sprint Relay Team won 1st, comprised of Mark Keener, Jay Willard, Jerry Ewers and Horace Zaricor; Mark Keener won 1st in the 440 Yard Dash; Horace Zaricor won 3rd in the 220 Dash and 6th in the 100 Yard Dash.

This weekend Track Season gets into full swing with the Bobcat Relays upcoming for the Boys and on March 19 the Girls open their season. Junior High Track will go to Gruver Friday with 7-8 Boys and Girls competing.

 "If a nation expects to be ignorant and free, it expects what never was and never will be."

"These are the sorghums I'd plant if I farmed in this area."

Jim Higdon
 AGRONOMY SERVICE DIRECTOR

"Drouth, disease, insects, wind storms... taking everything into account that can plague a crop in this area, these are the sorghums I'd go with."

It's my job to know which are the best varieties for each locale in the states of Oklahoma, Texas and New Mexico. For the last five years I've had Crop Information Centers, Standard Comparison Tests and Uniform Strip Tests in this immediate area. In these carefully controlled tests, I've evaluated most of the sorghum varieties a farmer might consider planting. I've had the same headaches and frustrations you've had. My plantings have suffered the same weather conditions, epidemics and infestations yours have.

Based on these tests, there is no doubt in my mind what I'd plant in 1976 if I farmed hereabouts.

8311

8311 is a champion producer of high test weight, yellow endosperm grain. Pioneer introduced this golden bronze hybrid three years ago and it's been setting yield records in this area ever since. One reason is its ability to yield in the face of too wet or too dry weather, insects or disease. Another reason for the high yields is that 8311 tends to adjust its maturity to the growing season in a particular area. Whatever else you plant... put in some 8311.

8501

An outstanding new yellow endosperm hybrid with about the same maturity as 846. This hybrid has a superior yield record. The plant has excellent roots and stalks. Heads exert well above the flag leaf and are uniform in height. Pioneer brand 8501 has good tolerance to smut, MDMV, downy mildew and greenbugs. It performs well under stress and has semi-open heads that add to its good appearance.

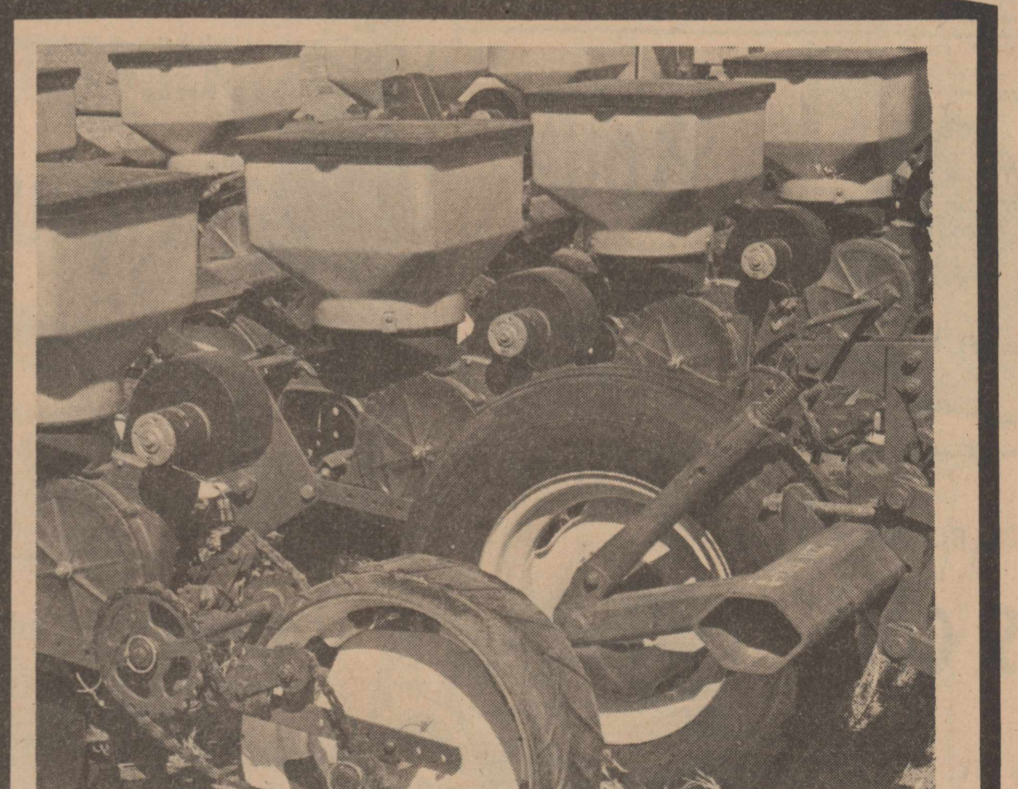
A WORD ABOUT GREENBUGS

Tolerance to both greenbugs and maize dwarf mosaic plus high yield potential give these two sorghum varieties an economically significant advantage that you'll want to consider for your grain sorghum crop in 1976.

Performance of seeds or the crop produced therefrom may be adversely affected by factors beyond our control including environmental conditions, insects and diseases. The limitation of warranty and remedy attached to each bag of Pioneer brand seed is a part of the terms and conditions of the sale thereof.

PIONEER
BRAND SEEDS

Pioneer Hi-Bred International, Inc., Southwestern Division, P. O. Box 788, Plainview, Texas 79072, (806) 293-5231
 Pioneer is a brand name. Numbers identify varieties. ® Reg. trademark of Pioneer Hi-Bred International, Inc.



Perfect Stands Depend on Seeds and Planters

6 Row Air Planter \$3,385

with Tool bar & Gauge Wheels \$4,000 Complete

Prices Include One Set of Plates

STRATFORD IMPLEMENT INC.
 POST OFFICE BOX 1050 ◊ STRATFORD, TEXAS 79084



GIRL SCOUT WEEK--This group of Stratford Brownies under the leadership of Mrs. Bonnie Borth and Mrs. Artie Muir are shown in their colonial dress as they got ready to practice for their part in the Father-Daughter Banquet. The banquet will be held this week in keeping with the observance of Girl Scout Week.

Elkettes, Brite Earn Area Basketball Laurels

Three Elkettes were named to the All State Tournament Team while two were also picked on the Amarillo Globe News Panhandle Plains Super Team and Coach Sam Brite was named Girls Coach of the Year. Ellette Seniors D'Lynn Brown and Dalene Prescott and Freshman Barrie Donelson were all picked as members of the Class A All State Tournament Team which was announced out of Austin last week.

In Sunday's Amarillo Globe News, Misses Brown and Prescott were picked for the second year as members of the Panhandle Plains Super Girls Team and Ellette Coach Sam Brite was selected as Girls Coach of the Year. Honors are not new to either Miss Brown nor Miss Prescott who have been selected All District, All Regional and to several area teams during their tenure in high school.

The selection of Barrie Donelson as a guard on the All State Class A Tourney team is probably not a first, but it is seldom that a freshman has been picked to this elite group.

Tournament Team was comprised of D'Lynn Brown, Dalene Prescott, Barrie Donelson, all of Stratford; Vivian Abernathy, Claudia Morrison, Mary Ann Culwell and Dianna Jackson, all of Archer City; and Priscilla Teal of Deweyville.

The All State Tourney teams were picked by sportswriters covering the tournament in a mail ballot following the State Tourney two weeks ago in Austin.

The Sunday announcement of the Panhandle Plains Super Teams included selections from all divisions in girls basketball across the area.

Coach Brite became the first coach ever to have been selected as Coach of the Year for both boys and girls participating. He was chosen as Boys Coach of the Year in 1972-73 when the Stratford Elks advanced to the Regional Tourney in Lubbock after having been picked to finish fifth in District IAA. This year, with only two starters back off last year's team and in his first year as mentor for the Elkettes, Coach Brite's team advanced to the State Class A Championship and ended the

season with a 33-1 record.

Coach Brite is a graduate of Weatherford, Okla., and a graduate from Southwestern State University. He coached at Amber and Friend High Schools in Oklahoma prior to moving to Stratford several years ago. He first worked as an assistant coach in the Stratford system then moved to Sunray where he coached the girls varsity for one year.

Brite returned to Stratford in 1972 to take the Varsity Boys job and was named Coach of the Year for this effort. He coached the Elks for three years and his teams were in contention all three years, advancing to the Regional Tournament in Class AA in 1973.

Last spring Coach Brite was named Varsity Girls Coach. In his first year he guided the team to State Class A Championship. Brite is married and his wife, Pat, is a teacher in the Sixth Grade at The Stratford Junior High. The couple have two children, Kara, 11 years old; and Jennifer, age 7.

Miss Brown is a senior Forward for the Elkettes. She is the daughter of Mr. and Mrs. M.H. Brown; named All District Forward all four years in high school, has been named to the All Regional Tournament Team three years; was named All Tournament at the Stratford tournament four years and to the All Tournament Team at Sunray for three years.

She was named to the Panhandle Plains Super Team two years, to the KVII All Stars last year and selected on second string all State last year.

Miss Brown was also notified this past week that she had been selected to play for the North in the annual Coaches All Star Classic to be held in July this year.

Miss Prescott is the daughter of Mr. and Mrs. Dale Prescott and has been All District Guard selection for two years and was an Honorable Mention during her sophomore year. She has been named All Tournament at the Sunray Tournament for three years and two years selected All Tournament at the Stratford Tournament. She was a member of the Panhandle Plains Super Team last year and also a member of the KVII Top Prep Teams in the Panhandle area.

Miss Prescott was named to the All State Tournament Team this year and was named All Regional Tournament this year and was All State last season. In addition, she was notified this past week that she had been selected to play in the annual East West Classic at Amarillo



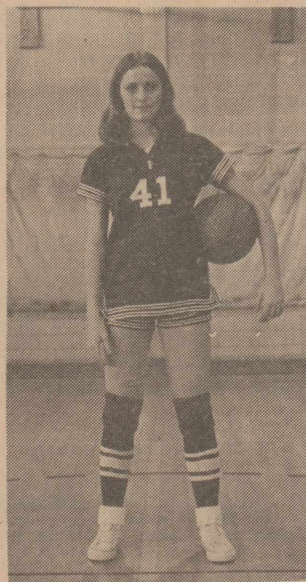
COACH SAM BRITE
...coach of year



D'LYNN BROWN



DALENE PRESCOTT



BARRIE DONELSON

last year; and Tresea Williams, Canadian, Senior Forward; a repeater from last year.

Guards this year include Dalene Prescott, Stratford, senior, repeat from last year; Marci Davis, Senior, Canyon; Mary Fangman, Vega, Senior; Rajan Martin, Spearman, Senior.

Second Team members include Elaine Schulte, Nazareth, senior; Kathy Booth, Farwell, junior, a repeat from last year; Beth Cleveland, Dimmitt, junior; and Louise Davis, Canyon, Senior; all forwards. Guards include Lucinda Aguirre, Friona, senior; Maria Winders, Dimmitt, senior; Merry Johnson, Canyon, Sophomore; and Jan Lawson, Phillips, junior.

Jill Rankin of Phillips was named Offensive Player of Year with Marci Davis of Canyon named Defensive Player of Year. Sophomore of Year honors went to Faye Beck of Memphis and Coach of Year went to Sam Brite of Stratford.

held this past weekend at WTSU in Canyon.

In addition, 17 others were awarded Division II ratings for solos and ensemble presentations at the UIL Contests.

The four earning Division I ratings, and were also presented medals for their work, included Lynn Williams, snare drum solo; Karen Pleyer, cornet solo; Jay Willard, cornet solo; and Pam McReynolds, clarinet solo.

Those earning Division II ratings included Kathy Lewis, French Horn solo; Jacque Chesher, alto saxophone solo; Karr Ingham, snare drum solo; Tammy Cameron, piano solo; Brass Sextet comprised of Jay Willard, Pete Dice, Carrie Cummings, Ken Ingham, David Maas and Jeff Witcher; Clarinet Quartet comprised of Shirlyn Christian, Pam McReynolds, Jana Wiley, Glynna Beaty; Flute Trio comprised of Beth Moore, Vicki Switzer, and Blynn Donelson.

Four Earn Top Honors At UIL

Four members of the Stratford Elk Band were awarded Division I ratings on their solos at the University Interscholastic League Contests

"We are very proud of these students and the results of the contests, especially in light of the short time they had to prepare," Laramore said. "The students did most of the work on their own as the majority of our time now is being spent preparing for the UIL Concert & Sightreading Contest slated for March 23," he added.



UIL SOLO AND ENSEMBLE WINNERS--These members of the Elk Band competed at Canyon Saturday in the annual UIL Solo and Ensemble Contests. Four members, Lynn Williams, snare drum solo; Karen Pleyer, cornet solo; Jay Willard, cornet solo; and Pam McReynolds, clarinet solo; earned Division I Ratings. The others all earned Division II ratings. Shown above, front row, Tammy Cameron, Karen Pleyer, Beth Moore and Pam McReynolds. Next row, Jay Willard, Kathy Lewis and Carrie Cummings. Next row, Shirlyn Christian, Vicki Switzer, Jana Wiley, Blynn Donelson, Glynna Beaty and Jacque Chesher. Back row, Jeff Witcher, Ken Ingham, Pete Dice and David Maas.

GIRL SCOUT WEEK

MARCH 7-13

Being a Girl Scout means a lot to so many. It's being active in all types of community projects. It's volunteering time and work to help others. And it encourages girls to become responsible, concerned individuals.

Stratford Grain Co.

Stratford-Lautz

CARD of THANKS

I would like to take this opportunity to express my sincere appreciation to all those who sent flowers, cards and visited while I was in the hospital. Your words of encouragement and your thoughts and prayers will never be forgotten.

Don Riffe

11-1tc

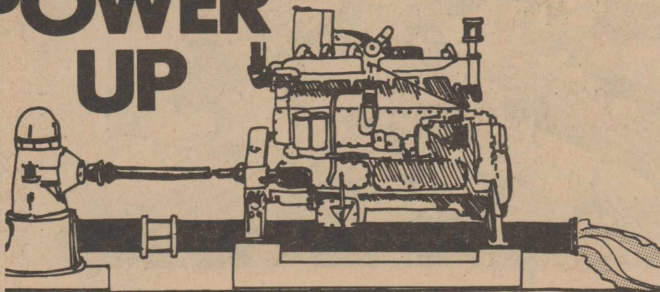
CARD of THANKS

To Our Friends,
Your good deeds while I was in the hospital and since I returned home will always be remembered.

Joe and Jane Willey

11-1tc

POWER UP



...to pump down deeper!

Cat Irrigation Engine performance, economy, reliability pay off on deep wells—big!

Caterpillar puts more into an engine... so you can get more out of it—year after year. Low-friction design results in high fuel economy whether you're burning natural gas or diesel.

Best yet, West Texas CAT PLUS services make sure you get the right engine... make sure it keeps pumping. Let our irrigation specialists analyze your need... and recommend the Cat-built power unit to meet it. No obligation.

WEST TEXAS EQUIPMENT CO.

Caterpillar Power Headquarters

1-40E and 1912 • Amarillo • (806) 335-1511

Caterpillar, Cat and B are Trademarks of Caterpillar Tractor Co.

LONCO

Pump & Repair

Complete Irrigation & Domestic Water Well Service
Gearhead Repair
Pump Setting & Repair on all Makes
LONNIE SWIMMER

Ph 733-5091 Day or Nite

Rita Blanca Electric Holds Meeting

Members of the Rita Blanca Electric Cooperative at their 29th Annual Meeting in Dalhart heard the annual report of operations and elected four board members.

Manager R.L. Elliott reported to the membership that the cooperative showed a margin of \$140,014 for 1975, as compared with margins of \$170,660 the previous year. He also explained the power cost adjustment, due to the rising cost of fuel used to generate electric power.

Members reelected Noel Higgins of Texline, Luther Browder of Sunray and J.R. Clements of Middlewell as

directors of the cooperative and named Bobby Glenn Green of Hartley to replace the late Russell Cosper.

Following the general membership meeting, all directors of the co-op met to reorganize for the coming year. All officers were reelected. These include Mr. Browder, president, Forrest Roberson of Dalhart, vice-president, and Mr. Higgins, secretary-treasurer.

Approximately 325 members and guests enjoyed a barbecue luncheon on noon.

The grand door prize of a microwave oven was won by Don Qualls of Texline and 45

other door prizes were awarded. Out-of-town guests, in addition to the membership, were from Guymon, Dumas, Amarillo, Hooker and Lubbock.

Nick Craig, executive assistant of the cooperative, gave the invocation and introduced the guests. President Browder presided at the meeting and Secretary Higgins read the notice of the meeting and minutes of last year's meeting.

Car Plates More Simple This Year

AUSTIN—Application for new motor vehicle registration plates is more simple in Texas this year than at any time since World War II.

Instead of new metal plates the Department of Highways and Public Transportation (DHT) is issuing validation stickers to be applied to the upper left-hand corner of the rear plates issued last year. An adhesive on the back of the sticker foils removal of the sticker by would-be thieves--motorists who foul up the instructions for application.

And, of course, there have been some almost unbelievable lash-ups by otherwise intelligent motorists. For instance: A motorist in Corpus Christi was very careful to put the validation sticker in the proper position on the rear plate--except that it was his neighbor's car. Both vehicles, parked side by side, were red.

In Amarillo a motorist paid for his sticker and immediately went to the parking lot of the county courthouse. He applied the sticker to the rear license plate--of the vehicle owned by the assistant county tax assessor-collector. Same make, same model, same color--wrong car.

But Texas motorists are not alone in fouling up. Louisiana also has initiated the validation-sticker system this year. There a tax collector was explaining how the sticker was to be applied. He pointed to a sample plate on the wall, which had a sticker in the proper position on the plate.

"Now you put the sticker exactly where that sticker is," he explained. Sure enough, the motorist quickly peeled the backing sheet off the sticker and had it on his thumb ready to put it on the sample plate. So the clerk stopped him in the nick of time.

So a reminder of two from the Motor Vehicle Division of DHT:

- 1) Read the instructions for applying your sticker. The instructions are available both in English and Spanish.
- 2) If you louse it up, carefully scrape off all the sticker and put the pieces in an envelope.
- 3) Take the sticker pieces, with your registration receipt, to the county tax assessor-collector's office or substation.
- 4) Take along \$1.30 for the replacement fee for each new validation sticker.
- 5) Now, have you got that right, cousin? If not, re-read the instructions.

State Fiscal Surge Blamed On Costs

Comptroller Bob Bullock said Thursday that large increases in personnel, education and welfare costs are leading a 29 percent state spending surge this year over fiscal 1975 levels.

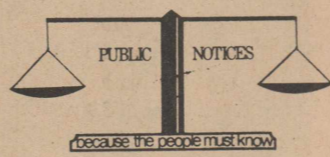
In his monthly financial statement, Bullock said salaries and wages have increased 26 percent, medical care for the needy 32 percent, foundation school program grants 43 percent and grants to higher education 33 percent.

But the Comptroller announced at the same time that tax revenues are 19 percent ahead of last year so far.

"The biggest jumps are in the natural gas tax, which is up 40 percent, the motor vehicle sales tax, up 27 percent, and insurance occupation taxes, up 33 percent," Bullock said.

Bullock added that state revenues during January totaled \$476 million, bringing revenues during the fiscal year, which began September 1, to \$2.4 billion so far.

Expenditures during January totaled \$528 million, he said, bringing expenditures this year to date to \$2.8 billion.



LEGAL NOTICE ELECTION ORDER
BE IT ORDERED BY THE BOARD OF TRUSTEES OF STRATFORD INDEPENDENT SCHOOL DISTRICT:

1. That an election be held in said School District on April 3, 1976, for the purpose of electing to the Board of Trustees of said School District THREE TRUSTEES.

2. That all requests by candidates to have their names placed upon the ballot for the above mentioned election shall be in writing and signed by the candidate and filed with the secretary of the Board of Trustees at the superintendents office not later than 30 days prior to the date of said election.

All candidates shall file with said application the loyalty affidavit required by Art. 6.02 of the Election Code.

The Secretary of this Board of Trustees shall post on the bulleting board in the building where the Board of Trustees meets the names of all candidates that have filed their applications in accordance with the terms and provisions of this Order, and said Secretary shall otherwise comply with the terms and provisions of Art. 13.32 of the Election Code.

3. That said election shall be held at the following place and the following named persons are hereby appointed officers for said election:

At High School Building in Stratford, Texas, in said School District, with George Jeffcoat as Presiding Judge, and four and o, clerks.

The polls at the above designated polling places shall on election day be open from 7:00 o'clock a.m. to 7:00 o'clock p.m.

4. Leslie Dodson is hereby appointed Clerk for absentee voting, and Ollie Mae Massie are hereby appointed Deputy Clerks for absentee voting. The absentee voting for the above designated election shall be held at Stratford ISD - Tax Office within the boundaries of the above named School District and said place of absentee voting shall remain open for at least eight hours on each day for absentee voting which is not a Saturday, a Sunday, or an official State holiday, beginning on the 20th day and continuing through the 4th day preceding the date of said election. Said place of voting shall remain open between the hours of 8 a.m. and 5 p.m. on each day for said absentee voting. The above described place for absentee voting is also the absentee Clerk's mailing address to which ballot applications and ballots voted by mail shall be sent.

5. The manner of holding said election shall be governed, as near as may be, by the Election Code of this State, and this Board of Trustees will furnish

all necessary ballots and other election supplies requisite to said election.

6. Immediately after said election has been held, the officials holding the same shall return to the president of the Board of Trustees in a sealed envelope a copy of the returns, poll list and tally sheet of said election shall be delivered to the president of the Board of Trustees in canvassing said election.

Another copy of the return, poll list, and tally sheet of said election shall be delivered to the president of the Board of Trustees in an unsealed envelope and this envelope shall be available in the office of the superintendent open to inspection by the public for 60 days from the date of the election.

7. The presiding judge for said election shall return to county clerk immediately after the votes have been counted the ballot box containing the voted ballots and all other election supplies and said ballot box shall be preserved and kept in accordance with the terms and provisions of the Texas Election Code.

8. The Board of Trustees shall give notice of said election, and this combined Election Order and Notice shall serve as Notice for said election. The President of the Board of Trustees is hereby authorized and instructed to post or cause to have posted said combined Election Order and Notice at three public places where notices are customarily posted in this school district, and said posting shall be made at least 20 days before the date of said election.

The President shall also cause a copy of his combined Election Order and Notice to be published one time in a newspaper of general circulation in the county where this school district is located. Said publication shall be not more than 30 days nor less than 10 days before the date of said election.

9. It is further found and determined that in accordance with the order of the Board of Trustees the Secretary posted written notice of the date, place and subject of this meeting on the bulletin board, located in the administrative office, a place convenient to the public, and said notice having been so posted and remained posted continuously for at least 3 days preceding the date of this meeting.

It is further found and determined that this district is located in Sherman & Dallam counties and that written notice of the date, place and subject matter of this meeting was furnished to the County Clerk of each county in which this

district is located and that said notices were posted by the County Clerk of each of said counties of the bulletin board at the door of the county courthouse for said county, a place convenient to the public, at least 3 days preceding the date of this meeting. The returns of said posting shall be attached to the minutes of this meeting and shall be a part thereof for all intents and purposes.

The above order being read, it

was moved and seconded that the same do pass. Thereupon, the question being called for, the following members of the Board voted AYE: E.R. BELL, V.O. LASLEY, DON RIFFE, DON DIETRICH, JOE WELLS, JOHNNY SUMMEROUR, and the following voted NO: NONE.

E.R. BELL
President, board of Trustees
V.O. LASLEY
Secretary, Board of Trustees
(Published in The Stratford Star March 11-18, 1976)

CARD of THANKS

A big "thank you" to you who remembered my family and me in your own special way since my surgery.

"A faithful friend is a sturdy shelter; he that has found one has found a treasure."

Ecclesiasticus 6:14
Sue Hudson

11-1tc

CARD of THANKS

Thanks so much to everyone for the cards, gifts, food, flowers and visits while I was in the hospital and since I've returned home. A special thanks also to everyone who helped out with the girls.

Ann Steward

11-1tc

Northern-grown HYBRID SORGHUMS

- Quick emergence
- Drouth resistant
- Extra vigor
- High yields

Bred and produced in the north, Weather Master hybrid sorghums have proved their superior performance in test plots and in the field. They are bred for heavy root systems to defy drouth, extra leafiness, unusually strong stalks and big heads of above-average bushel weights. Plant the sure ones—Weather Master hybrids.

John McNey

Ph 249-5558 Dalhart

Weather Master hybrids the sure ones!

Recommended for our area

EPX 888
King Of The Crowd
Grain & Silage

EPX 12A
Combination

EP97
Silage

Weather tolerance helps fill ears from butt to tip

They're weather tamers! EPX hybrids germinate in cold soil, plants get going fast. A re-shaped root system helps the crop through dry periods, reaching deep into the subsoil for moisture. Weather Master's ability to keep pushing out new silk assures pollination even in hot, dry weather. Strong brace roots and resistance to stalk damage keep corn standing in high winds.

Call Weldon Denby

249-5558 or 249-2460

Box 1150 Dalhart

CARD of THANKS

Elkette Fans,
We wish to take this opportunity to express our deep appreciation to all of you for the support you gave us this past season.

A special thank you to all who went out of their way to give us your best wishes, your telegrams, flowers and other acts while we were at Lubbock and Austin.

Without you behind us it would not have been possible.

A special thanks to our parents, and to the Elks for their backing this year and every year in the past.

Stratford Elkettes

11-1tc

PUBLIC AUCTION

**Irrigation Equipment Farming Equipment
Combines**

We have sold our Farm and will sell at Public Auction, 7 miles North of Dumas, Texas on North Maddox Street or 2 1/2 miles North of North Plains Country Club on Begeman Farm.

WEDNESDAY, MARCH 17 Beginning at 10:00 A.M.

1973 Model 6030 John Deere Tractor, Cab, Air Conditioner, Heater, Radio, Duals, Full Weighted. 1600 Hours. 1973 Model 4630 John Deere Tractor, Cab, Air Conditioner, Radio, Heater, Duals. Full Weighted. 1975 - 6600 John Deere Combine, 20 Foot Header. 289 Hours.	1975 - 7700 John Deere Combine, 24 Foot Header. 260 Hours. 1974 - 6600 John Deere Combine, Hydrostat, 20 Foot Header, 455 Hours. Big 12 Grain Kart. 643 John Deere Corn Header, 6 Row 30 Inch. 645 John Deere Corn Header, 6 Row 40 Inch. 444 John Deere Corn Header, 4 Row 40 Inch.
----------------------------------------------------------------------------------------------------------------------------------------------------------------------------------------------------------------------------------------------------------------------------	-----------------------------------------------------------------------------------------------------------------------------------------------------------------------------------------------------------------------------------------------------------------------------------------------------

- 6 Row Tye Drill
- 30 Foot John Deere No. 400 Rotary Hoe
- 28 Foot 9 Row 40 Inch 3 Point Shop Made Tool Bar. (Moore County Welding.)
- 21 Foot Double Tool Bar, Ammonia Applicators
- John Deere 4 Row Shredder
- Super Rino Blade
- John Deere Ditcher
- 8 Row Lister, Tool Bar with Roller Cone, Folding Markers
- 16 Foot Offset Miller Disc
- No. 220 John Deere Tandem Disc
- Bed Packers
- 2 Rancher's Pride Tandem Feeders
- 4 Steel Hay Feeders

- Mineral Feeders
- 6 Stock Tanks, Various Sizes
- Twin Cylinder Air Compressors
- Acetylene Welding Torches
- Measuring Wheel
- Aluminum Ladders
- 20 Ton Weaver Jack
- High Lift Jack
- Tools
- Battery Charger 6-12 Volt
- Pickup Tool Box
- Fence Chargers, Cattle Sprayer, Insecticide Boxes
- Used Disc, Sweeps, Points, Shanks, Weights, Bullett Drags
- Furrow Out Sweeps, Boomers, Chains

Many Related Farm Items

IRRIGATION

HD No. 800 M & M Irrigation Motor with Turbo.

- 1 Lot 40 Foot 8 Inch Flow Line.
- 1 Lot 8 Inch Gated Line.
- 1 Lot 10 Inch Flow Line.
- 1 Lot Hydrants, L's, T's and Plugs.

1974 Chevrolet C 65 Tandem Truck, 22 Foot American Bed with tip top Gallion Hoist. Full Air. 5300 Miles.

1974 Model Dodge Pickup. Loaded. 40,000 Miles. G.M.C. Winch Truck, Steel Bed.

Note: This is all good, clean equipment. Well cared for -- nearly all equipment less than 3 years old.

Lunch Available

FLORENCE and POWELL

Owners

(Not Responsible For Accidents)

Cleatus Calloway, Auctioneer
Phone 335-3233 Frederick, Okla.
License No. OKG 76-0354

For Information - Call:
Roy Ryan Real Estate
935-6877 Dumas, Texas

CLASSIFIED ADS *get action*

PUBLIC NOTICES

BECAUSE THE PEOPLE MUST KNOW

NOTICE TO BIDDERS
The City of Stratford will receive bids at City Hall until 5:00 p.m. on March 18, 1976 for one police car from following bids:

- (1) 1976 Ford LTD, 4-door Sedan, 400 cu. in. engine, 2 barrel carburetor
- (2) Ford Granada 4-door Sedan, 351 cu in engine, 2 barrel carburetor
- (3) 1976 Chevrolet Impala, 4-door Sedan 400 cu. in. engine, 4 barrel carburetor
- (4) 1976 Chevrolet, 4-door Sedan, 350 cu. in. engine, 4 barrel carburetor

The above car to have the following equipment:
6 way power seat
Automatic transmission
Power steering
Air conditioner
Steel radial tires
Radio
Left side control mirror
Vinyl Seats
Heavy duty alternator
Heavy duty battery
Color-tan

A 1974 Chevrolet Chevelle 4-door will be taken in trade. The City reserves the right to reject any and all bids.
(Published in The Stratford Star March 11, and 18, 1976.)

FOR RENT
OFFICE SPACE FOR RENT - Contact Bill Riffe or James Spurlock. 396-5541. 9-tfc

PUBLIC HEARING

Notice is hereby given by the Parks and Wildlife Department that a public hearing will be held at 10 A.M. on March 25, 1976 at the County Courthouse at Stratford for the purpose of gathering information concerning proposed hunting, fishing and trapping regulations for Sherman County.

As the result of action by the Texas Legislature, the Texas Parks and Wildlife Commission is responsible for the setting of seasons, bag limits, and means and methods of taking the wildlife resources in Sherman County. All interested persons are urged to attend and comment upon the proposed regulations.
(Published in The Stratford Star March 11, 1976)

FOR RENT

FOR RENT--Two bedroom trailer. Call 396-5312. 9-tfc

FOR RENT--Clean two bedroom house, unfurnished. Excellent location. Write or call Stanley Ullom, 4516 11th, Lubbock, Tx. 79416. (806) 792-8059. 8-tfc

BUSINESS OR OFFICE SPACE

FOR RENT--carpeted office space, refrigerated air, central heat. Phone 396-2149. 38-tfc

FOR RENT--Two bedroom unfurnished apartment, all electric. Call 5659; after 5:30 p.m. call 2378. 5-tfc

REAL ESTATE

WANTED--Land Listings--Irrigated, dry or grass. HAMBLY REAL ESTATE, Hwy 287, Dumas, Tx. Office 935-5651, Res. 935-3566. 48-tfc

SHARE CROP OPPORTUNITY

SW 1/4 Section 236 Sherman County. 65 acres irrigated this year, whole quarter next year. 1 1/2 miles SE feedlot. Pho. 316-356-4623 or write Box 1117, Garden City, Ks. 67846. 10-4tc

FOR SALE--2 bedroom house w/garage, 605 N. Grace. Call 396-2533 or 2464. 8-tfc

FOR SALE--Three bedroom house, nice. Roy Lusk Real Estate, Nell Wall, Stratford 396-5588. 40-tfc

HELP WANTED

HELP WANTED--Part or full time. Apply at the Dairy Queen. 18-tfc

MIS. FOR SALE

PINTO BEANS FOR SALE--50 lbs. \$15. After 5 p.m. Call 396-2058. Leroy Kautz. 4-tfc

FOR SALE--used 1965 Chev, 4-speed, LWB, V8, Pickup. would make good farm wagon, call 396-5555 or 5960. Dave Reynolds. 6-tfc

HOMEMADE BREAD, \$2/ loaf, made w/ home ground wheat and honey. Call 384-2116, Coldwater. 10-3tc

FULL SET OF ROGERS DRUMS--for sale, call 396-2074, Curt Pate. 10-3tp

FOR SALE; BARB WIRE----- \$18.50, Baling Wire- \$17.50, 2 inch pipe- .47 c. per foot, 1 1/2 x 1 1/2 sq. tubing- .31c Angles- .15c per lb., 6x6 galvanized bull wire- \$90.00 150 ft. reel. Call for large quantity prices. Watonga Steel Supply 301 E. Main, Watonga, Okla. 405-623-4894. 11-2tc

NOTICE

Due to traffic congestion at corners of North Main and Second Street, Third Street, Fourth Street and Eighth Street

U-turns are prohibited after March 7th.

Please Cooperate-This is for your Protection
Stratford City Council

FARM BUREAU TIRES & BATTERIES--Steel radial M&S now available. See Alvin's Tire Service or call 396-5980. 5-tfc

FOR SALE--boys double knit sports jacket, size 18, tan w/brown stitching, worn twice. Contact Sherry Gass at 396-2477 after 5 p.m. 10-2tc

FOR SALE--1966 Ford Falcon in good condition, 601 N. Grace or call 396-2047 after 6 p.m. 11-1tc

FOR SALE--Cabover, long, wide bed camper, insulated and sealed. \$400.00 Beaman Glenn, Call 396-2392. 11-2tc

FOR SALE--Solid Mahogany Buffet, Good shape. Mrs. Jack Dettle, 396-2274. 9-tfc

FOR SALE--14 stone turquoise squash blossom with matching ring and bracelet, \$450.00. Call 396-2339, Derra Sutterfield. 11-2tc

FOR SALE--1973 Ford Pickup. Pho. 396-2248. 9-tfc

SERVICES

PRETTY PLEATS DRAPERY SHOP, 709 N. Main, Stratford, Custom made drapes, tablecloths, accent pillows, bed spreads, roll shades, roman shades, cornices and etc. Call 727-4855 or 396-5664. 36-tfc

LAMPS, LAMP PARTS, ALL LIGHT BULBS--House of Shades & Lamp Repair, 2613 Wolfiin Ave., Wolfiin Village, Amarillo, Texas 79109. 8-52p

Let us clean your TAILWATER PIT
Large front-end loader and crane available
CLARENCE GETMAN
935-6503- Dumas

IF YOU WANT TO DRINK... THAT'S YOUR PROBLEM!!!
IF YOU WANT TO QUIT... THAT'S OURS!!!
A.A. & AL-ANON meets each Thursday evening at 8 p.m. in Methodist

USED PIANO & ORGAN SALE--GOOD SELECTION--BRIER & HALE MUSIC, LIBERAL. Phone 316-624-8421. 11-4tc

NEED USED PIANOS, WILL GIVE BEST TRADES OR PAY CASH, BRIER-HALE. Phone 316-624-8421 11-4tc

HORSES BOUGHT & SOLD, Registered & Grade, Bobby Edmond. AC806-396-5828. 9-tfc

WILL DO weekly babysitting in my home. Pho. 396-2492. 10-4tp

Letter to Editor

ED NOTE: Supt. E.L. Bass received two fine letters from Austin this past week which reflect upon our community. We feel the way in which our young people, and the fans, conducted themselves at Austin was really fine and include these letters for your information].

Dear Mr. Bass:
The Colonial Inn and staff takes this opportunity to express our appreciation to the Stratford High School Girls "State Champs" for staying with us this past week.
We also compliment the girls, sponsors, coaches and yourself for the excellent conduct that was displayed while here. We don't get many like that, most are rude, rowdy and destructive.
Congratulations again for winning State Champs in girls basketball. Believe me we here at the Colonial Inn were proud to have you as our guests. Thanking you again, I remain,
Sincerely,
W.C. Marks,
Manager
Colonial Inn Motel,
Austin, Tex.

CESSPOOL PUMPING--Phone 384-2124 or see Bob Bradford in Conlen. 23-tfc

GOD, GRASS & GRIT--copies of winning State History First Edition books still available at THE STRATFORD STAR, \$13.13 each while they last. Only few of these first books still available, make sure your family has one of these for your children. Send check or money order payable to THE STRATFORD STAR and we will mail your copy to you, or stop by our office Mondays-Fridays. 23-tfc

GOT PLUMBING PROBLEMS? Call Bob Garoutte Plumbing, 396-2490, for all your plumbing repairs and new installations. 26-tfc

ALL CABINET WORK--Custom built. Leo L. Scott, across alley from Stratford of Texas. Ph. 396-2219. 11-tfc

SADDLE SHOP at B&W Feed & Mineral. 34-tfc

MISCELLANEOUS

WANTED--black and white or black or calico kitten. Call 396-5602. 9-3tp

NOW ANNOUNCING--World Book Sale, 1975 edition. Reg. \$309.00 on sale for \$229.00 until March 15. Call 396-2117 after 5 p.m. 11-1tc

NOTICE--I will not be responsible for any debts other than my own--Steve Coss 11-4tp

Blanche's Blabs
Three Sherman County youth will demonstrate skills and knowledge in foods and nutrition against those of youth from 22 counties when they vie for honors in the District 4-H Food Show March 13 in Amarillo.

Competing in three food entry classes will be Sheri Waters side dishes; Florene Schaffer breads and desserts; and Cindy Schaffer snacks and beverages. They earned the right to compete at the district level when they took first-place honors in the Sherman County 4-H Food Show.

For side dishes, Miss Sheri Waters created "Spanish Grits," Miss Florene Schaffer will enter "Italian Cream Cake" in the breads and desserts class, and Miss Cindy Schaffer will compete with "Cheesecake" in the snacks and beverages class. These are first-place winners in the senior division.

First-place winners in the junior division who will compete at the district level in Amarillo were Chris Stanley, main dish, "Miniature Meat Loaves", Annette Flores, side dish, "Squash Casserole", Carol Cheshier, snacks and beverages, breads and desserts, Susan Fesler, "Indian Pudding."

Q. What does a person have to do to be entitled to Medicare? A. Almost everyone 65 or older is eligible for Medicare. Those who are entitled to monthly social security or railroad retirement benefits get hospital insurance automatically without paying monthly premiums when they attain age 65. Basically, to have Medicare protection you must have worked long enough under social security or railroad retirement. You should contact your social security office at least 2 to 3 months before you reach 65 to find out if you are eligible for Medicare.

Some people believe that if you put on your right sock and shoe before you put on your left sock and shoe you will have a good day.

REDUCE SAFE and fast with GoBese Tablets & E'vap "water pills" at Brown's Pharmacy in Stratford. 45-12-tp

Social Security News

Kirby Co. of Dumas
Authorized Sales And Service
New & Rebuilt
D.A. FLEMING
800 Dumas Ave
Box 953, Dumas
Ph 935-2524

Q. What is the difference between Medicare hospital insurance and medical insurance? A. The hospital insurance part of Medicare (called Part A)

*Save Money on Heating & Cooling Your Home!

SOLAR THERM INSULATING OF STRATFORD
Phone 396-2493 P. O. Box 773
Stratford, Texas 79084

VALLEY CENTER PIVOT TRAMMELL IRRIGATION CO.

CARROLL WISDOM 301 East 4th
SALES REP. DALHART, TEXAS
Res. 806-396-5990 806-249-5651

TRACTOR OWNERS!
We're Firestone equipped for IN-THE-FIELD service

Our up-to-date Firestone farm service


GIFFORD HILL
Jerry Wakefield
Sales Engineer
Ask about our Sprinkler Lease Plan
Phone 396-2350, Stratford
Box 395, Dumas, Tex. 79029
Home 806-935-6129 or Dumas 935-4148

CARD of THANKS
We wish to express our appreciation to all those who sent flowers, provided food for the family and the many other acts of kindness when we lost our mother. Your thoughts and prayers will never be forgotten.
The family of Lena Keenan
11-1tp

CARD of THANKS
A special thank you to all my friends and patrons for their support over the last 30 years in business in Stratford. My shop will be closed on March 8.
Alma Lee's Beauty Shop
Alma Lee McMahan
11-1tc

Shoe Repair
Boots - Saddles
Leather Goods
Buster's Boot Shop
103 W. 3rd Stratford

Your local Used Cow Dealer is Stratford Bi - Products



farmers ranchers
Gentlemen:
Seven days a week dead stock removal please call as soon as possible
Thank you
396-5350

Real Estate... Machinery... Livestock
SALES
LARGE OR SMALL
WE APPRECIATE YOUR BUSINESS

Stratford
Owe
W.S.
Stat
3rd

Real Estate... Machinery... Livestock
SALES
LARGE OR SMALL
WE APPRECIATE YOUR BUSINESS

Our up-to-date Firestone farm service





DON'S SUPER MARKET

Hwy 287 North in Stratford

We Give Gunn Bros Stamps



WE WELCOME
FOOD STAMP
CUSTOMERS

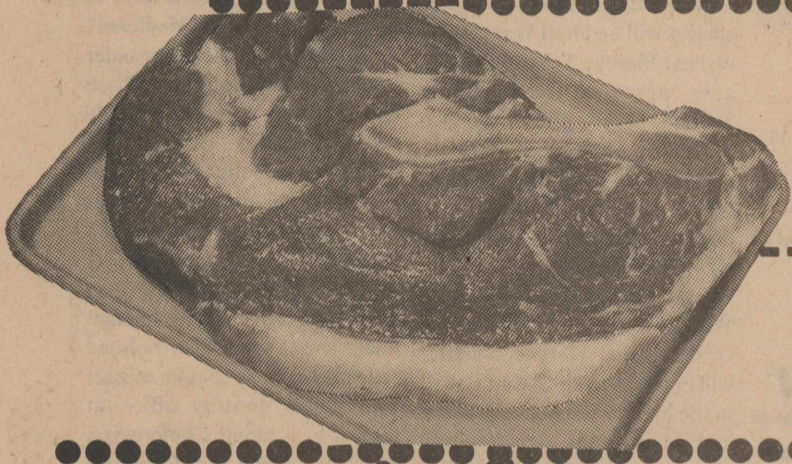


Double Gunn Bros. Stamps on Wednesdays on Purchases Over \$2.50

Open Monday thru Saturday 8 a.m. until 8 p.m.

CLOSED ON SUNDAYS

Specials March 11-17



Blade Cut

Roast lb **69c**

SEVEN BONE

CHUCK ROAST lb **98c**

LEAN CORSE GROUND

CHILI MEAT lb **89c**

Arm Roast lb **1.09**

SWIFT PREMIUM VAC PAK
BACON lb **1.39**

MEXICAN
Hot Links lb **79c**



Green Giant

PEAS
303 Cans
35¢

Minute Maid 6 oz Can

Orange Juice 3 for **99c**

Kraft 2 lb Box

Velveeta **1.99**



Cracker Barrel Pound

Crackers **49c**

Kountry Fresh 10 Count

Biscuits 7 for **\$1**

Plains 8 oz
Sour Cream or Dips 2 for **89c**

Imperial 5 lb bag
SUGAR **1.15**

Giant Size
Super Suds **79c**

Your Choice
Welch 20 oz Jars Grape Jelly



Plains 8 oz All Flavors

Yogurt 3 for **89c**
Plains 24 oz

Fabric Softener 20 Count
Bounce **99c**

Folger 10 oz Jar
Instant Coffee **2.79**

or
Grape Preserves
Each **89c**

Cottage Cheese **99c**
Plains Half Gallon

White King Complexion Size
Soap bar **5c**

Armour 3 lb
Shortening **1.19**
8 oz All Flavors

Carton of 6
32 Oz.



Buttermilk **79c**

Quaker 24 oz Box
Quick Grits **49c**

Paca Punch **39c**

Coca Cola
Plus deposit **1.59**

Green Giant 303 Cans



WK or CS
CORN **33¢**

Green Giant 303 Can French Style
Green Beans **30c**

Gladiola
Flour 5 lb Bag **69c**

200 BONUS GUNN BROS. STAMPS

Each Week for 12 Weeks

JUST CLIP AND REDEEM OUR STAMP COUPONS!

2 coupons will appear in our ad each week for 12 weeks—redeem them all and you'll have

2400 EXTRA STAMPS



California Cello Bag
Carrots 2 for **29c**

California
Green Onions 2 bunches **25c**

California Cello Bag
Radishes 2 for **25c**

California
Stalk Celery each **29c**

Colorado Russett
Potatoes 10 lb **89c**

Washington D'Anjou
Pears lb **29c**



ma
Congr
Brite on
the Year
Elkettes
ship this
coach e
honor in
coaching
Anot
D'Lynn
and Bar
named
Tourna
Austin.
bet that
freshme
honor a
and Dal
for they
perform
the Elk
Anot
concer
Miss Pi
notified
been su
play in
Basket
July of
Miss
notified
to play
in Ama
events
and on
be sel
Only
honore
Classi
Plunk,
D'Lynn
Sev
named
Classi
selecte
includ
Zarico
Stoke
Presce
have
placin
the An
D
surger
on his
comm
the op
if the
his ge
report
shoul
it isn'
golfer
help t
all Do
feels
hope i
knows
T
those
city.
held
week
went
Enser
seaso
We
didn'
with
Laran
These
Lorra
ful j
appr
young
We
week
won l
in C
Le
our l
and l
meet
W
meet
enjoy
alwa
porti
and l
top n
nep
they
all t
even
othe
some
read
seen
then
men
Ai
the