

## Citizen and Businessperson of the Year Announced at Chamber Banquet

By Bailey Naugle

Stratford residents gathered at the County Barn on Friday for the annual Chamber of Commerce banquet. Kathy Altman was selected for the honor of Citizen of the Year, and Javier Rodriguez was named Businessperson of the Year. House Representative David Swinford was present for the event and honored the recipients by awarding them flags that had been flown over the state capital. Attendees enjoyed the musical stylings of Branded, a local Christian rock band, along with a delicious meal prepared by Tip Top Catering. After the meal, Police Chief Greg Mullins spoke on the dangers of identity theft and followed up with a questions and answer period.

Photo by (Stratford Chamber of Commerce)

Shown above Kathie Altman and Javier Rodriguez, both with House Representative David Swinford.

## Horsford Wins 1<sup>st</sup> Place

Kyle Horsford won 1<sup>st</sup> place with his hamp at the Houston Livestock Show. The pig was bred by Horsford Show Pigs. Kyle also won the \$100.00 Certified Texas Bred Award for that class for having the highest placing Texas bred pig of that class. Kyle is the son of Lance and Dinah Horsford.

Photo by Barker Photography.

## Lion Queens vie for Scholarships

The Lions Queen contest will highlight the 2008 2-T1 District Convention in Dalhart April 25-26. Each Lions club is to bring their Club Queen, with scholarships awarded to first and second place winners and Miss Congeniality. Please enclose a picture of your Queen candidate.

The convention kicks off Friday with a golf tournament at the Dalhart Country Club, tee time, 1:00 PM. A BBQ dinner is scheduled at the Rita Blanca Coliseum and golf awards will be presented at that time.

Saturday's breakfast will feature introduction of the Queens and a scholarship auction. After breakfast is the District business meeting and training seminars. Lion Steve Wiegand will host the Vice Governor's luncheon which is followed by a Necrology Service. Dalhart's LaRita Theatre is the site for the much anticipated Queens contest at 3:00 p.m. which is open to the public. The convention will conclude with the Governor's banquet and reception. District Governor Bob Langhorne has issued the call to 51 Lions Clubs to attend the convention and is

## Watch for Wheat Diseases

By David Graf

Wheat producers need to be aware there have been some reports recently of wheat disease in the Texas Panhandle, said David Graf, Texas AgriLife Extension Service agriculture and natural resources agent for Sherman County.

Three viruses have been isolated in testing at the Great Plains Diagnostic Lab in Amarillo, including wheat streak mosaic, high plains virus and the newly discovered triticum mosaic virus, Graf said.

Symptoms include mottled and or streaked leaves and may appear to be the result of drought, he said. Laboratory testing is the only method of detection.

Severely infected plants can desiccate and die. While there is no remedy for virus infection, producers may want to consider grazing a severely affected field, Graf said.

Fields adjacent to Conservation Reserve Program grass are more likely to be infected, he said. The wheat curl mite is the sole vector for each of these three diseases. Breaking this mite's cycle by eliminating the "green bridge" of live plants between wheat crops will help prevent its recurrence.

"Certainly producers need to be aware of its presence, so it can be managed," states Graf.

Dr. Charlie Rush, Texas AgriLife Research plant pathologist in Amarillo, is currently conducting a wheat disease survey to compliment previous years of data.

Percentage of infected fields that have been tested in previous years have ranged from 25 to 60 percent.

Graf said anyone suspecting a disease problem should contact the Extension office for assistance in submitting samples. The office can be called at 366-2081.

Educational programs of the Texas AgriLIFE Extension Service are open to all citizens without regard to race, color, sex, disability, religion, age or national origin. The Texas A&M University System, U.S. Department of Agriculture and the County Commissioners Courts of Texas.

Daring ideas are like chessmen moved forward. They may be beaten, but they may start a winning game.

—Johann Wolfgang von Goethe

## Fund for Zelda Pickens Has Been Set Up

There has been a fund set up at Happy State Bank to help with Medical Expenses for Zelda Pickens.

## Presley Fund Set Up At Bank

A medical fund for the son of J.B. & Amanda Presley has been set up at the First State Bank of Stratford. For more information contact the First State Bank 396-5521.

## Early Release

Early Release, Wednesday, April 16<sup>th</sup>. Mary Allen Elementary-release at 12:55 p.m. Junior High and High School release at 1:00 p.m.

## The Imagination Station "Week of the Young Child" April 22 & 24

The Imagination Station will host their annual "Week of the Young Child" theme of "On the Farm". April 22 will feature crops and machinery. April 24 will feature animals. The April 24 program is filled with some space available on April 22. This program is for pre-kindergarten through 2nd grade.

## Weather Line 366-2000

Sponsored by Stratford Grain & ADM/Alliance Nutrition  
Greg Wright - 7 days a week, updating as needed

## Higher fuel costs drive up Xcel Energy bills

Higher natural gas prices have resulted in an increase in the fuel-cost portion of Xcel Energy customer bills in Texas.

Beginning May 1, Texas customers using 1,000 kilowatt-hours of power a month will see a 13 percent increase in the overall bill, or \$11.61 more per month.

The increase was filed today with the Public Utility Commission of Texas.

Fuel costs, which are passed through to customers directly at no profit to the company, are figured through a fuel factor, or formula, that is set twice a year. The summer factor will take effect May 1 and takes into account a 28 percent rise in the cost of natural gas over the winter. These costs are not part of a customer's base electric rate.

The recently announced fuel surcharge in Texas is also a separate charge that will expire in March 2009. Its purpose is to recover past under collections of fuel costs. It is not factored into this fuel cost increase.

The increase in the fuel factor is not permanent. If fuel prices fall over the next six months, the winter factor will be less when it goes into effect in October. Any over collections would be credited back to the customer.

Almost all utility companies that use large amounts of natural gas to generate power are increasing fuel-related charges on customer bills. Even with the increases, Xcel Energy bills remain among the lowest in the state.

Xcel Energy is investing in upgrades to our generation and transmission system that should slow the rise in future fuel costs by spurring the development of more wind power, enabling us to import lower-cost power and enabling us to generate our own power more efficiently. These measures also will help us lower our greenhouse gas emissions.

Customers can mitigate cost increases by using power more efficiently in their homes and businesses. Information on how to reduce power costs is available at [www.xcelenergy.com](http://www.xcelenergy.com) by clicking on the "residential" tab and going to the "save energy and money" link.

## WALK ACROSS TEXAS? DO IT SAFELY!

By Susie Spurlock

Walk Across Texas in Sherman County began Sunday, April 6, 2008 with 24 persons participating. All participants are reminded of simple walking rules to protect themselves and fellow walkers by following the safety guidelines.

**Walk on the sidewalk.** Stay on the sidewalk and use crosswalks. Avoid walking in traffic where there are no sidewalks or crosswalks. If you have to walk on a road that does not have sidewalks, most safety experts advise to always walk facing the traffic and as far to the left as possible so you can better see the approaching traffic.

**Look left, right, and left for traffic.** Stop at the curb or the edge of the road and look left, right, and left again for traffic. Stopping at the curb signals drivers that you intend to cross. If you see a car, wait until it goes by. Then look left, right, and left again until no cars are coming. Keep looking for cars while you are crossing. If a car is parked where you are crossing, make sure there is no driver in the car. Then go to the edge of the car and look left-right-left until no cars are coming.

**Cross at intersections.** Most people are hit by cars when they cross the road at places other than intersections. Cross in marked crosswalks, and obey traffic lights and traffic signs. Look left, right, left, behind you (for cars turning right) and in front of you (for cars

turning left). Look in every direction. Continue to look for cars as you cross the street. Drivers are supposed to watch out for people walking and to stop to allow pedestrians to cross safely, but pedestrians cannot count on drivers to see them or stop.

**See and be seen.** Remember that drivers need to see you to avoid you. Stay out of the driver's blind spot. Make eye contact with drivers when crossing busy streets. Dress to be seen. Brightly colored clothing makes it easier for drivers to see you during the daytime. At night, you also need to wear special reflective material

on your shoes, cap, or jacket to reflect the headlights of cars coming toward you. You should also wear bright colors or reflective clothing if you are walking near traffic when it is raining, snowing, or foggy. Carry a flashlight when walking in the dark. If you are pushing a stroller, make certain that the stroller is properly marked with reflective tape or reflective light.

**Reflective Safety Vest.** The Stratford EMS has reflective safety vests for all interested persons regardless of age. The vests are \$8.00 each. To secure one, call the EMS office at 396-2844.

Here's to your safety as you Walk Across Texas!!

Educational programs of the Texas AgriLife Extension Service are open to all citizens without regard to race, color, sex, disability, religion, age or national origin.



## Modern Woodmen Helps Out

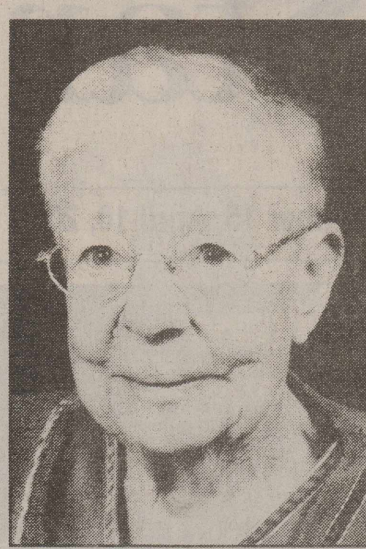
Local Modern Woodmen of America recently put their hands to work helping out one of Stratford's favorite neighbors. On March 31, 2008, members of the Stratford Modern Woodmen Camp worked together to clean up E.R. Bell's yard.

The project was part of the organization's Good Neighbor Program, a nationwide program that gives Modern Woodmen camps across the country money for hands-on repair and community beautification projects. Nearly 500 such projects benefit communities in the United States.

At E.R.'s home, the camp raked out countless bags of leaves from under all the bushes. They also cleaned out a pond that was full of leaves. We all had a wonderful time, especially the kids!! E.R. came out to enjoy the 30-member crew. Afterwards, the camp treated all the workers to pizza, drinks and desserts.

"Modern Woodmen strives to give families opportunities to volunteer and enhance their communities," says Laurie Spurlock, local Modern Woodmen camp secretary. "Our Good Neighbors Program does both." Pictured are Russell Spurlock and Clint Seward working hard.

# Obits



Doris Pronger Dyess

Doris Pronger Dyess - 96 passed away Tuesday, April 1, 2008 in Stratford, Texas. Services will be held at 2:00 PM, Friday, April 4, 2008 at First United Methodist Church with Rev. Gene Weinette, pastor of the church officiating. Burial will be in Stratford Cemetery. Arrangements are by Morrison Funeral Directors.

Doris Dyess was born March 2, 1912 to A.E. (Fred) and Ivie Pinkerton Pronger at the headquarters of the Pronger Brothers Ranch in Sherman County. Her father and his brother, P.J. Pronger were pioneer ranchers in the county, and was founders of the famed Pronger Brothers Registered Herefords. She graduated from Stratford High School with the class of 1929 as class valedictorian. She attended Texas Women's University, McMurry College and New Mexico Highlands College. After college, she was employed by the First State Bank of Stratford. On February 12, 1938 she married Roscoe Dyess of Wayne County, Mississippi. They farmed and ranched in Sherman County and also built and operated the Elk Pharmacy. They celebrated their 50th wedding anniversary in 1988.

Following her husband's death in 1992, Mrs. Dyess continued her interest in agriculture in Sherman County and Los Animas County, Colorado.

Mrs. Dyess was a lifelong member of the First United Methodist Church in Stratford and a member of the King Sunday School Class. She was very active in community and civic affairs, belonging to the Friendship Club, the Star Club of the Extension Homemakers, and Sherman County Older Texans. She was involved in the organization of the Stratford Library and served on the Stratford Cemetery Board. She and Roscoe were named "Friends of 4-H" in 1985 for their support of Sherman County youth. In 1998, Mrs. Dyess received the Life Long Learner Award recognizing 58 years as a member of the Family and Community Education Club. She was named Sherman County Old Timers Queen in 1999. That same year she addressed the Stratford Ex-Students and Teachers Reunion on the occasion of the 70th anniversary of the graduating class of 1929. An accomplished artist, Mrs. Dyess was a long time member of the Tri Corner Art Association. A number of her paintings are presently on exhibit at Window on the Plains Museum in Dumas.

Survivors include; sons, Bill Dyess and wife Glenda of Granbury, TX. and Ernie Dyess and wife, Natacha of Poolville, TX; daughter, Ellen Tillery and husband Sandy of Stratford, TX; brother, A.E. Pronger Jr. of Stratford; grandchildren, Wayne Dyess, Steve Dyess, Roxan Bowman, Shane Dyess, Allison Dyess, Trisha Schoonover, Alisha Gardner, Kendra Mungia; twenty great-grandchildren and many nieces and nephews. Later in life, she was blessed to be cared for by Lana Watkins, Dorothy Varner, Kenna Collums and Leslie Reagan as well as the staff of Coldwater Manor.

Memorials may be made to Stratford Cemetery Fund, PO Box 188, Stratford, TX 79084 or First United Methodist Church, PO Box 1289, Stratford, TX 79084.

# Letters to the Editor

Dear Editor:

We live on Purnell St. It's a nice Street to live on and we enjoy waving at the walkers, but because of the terrible accident near us last week, we want to tell you walkers some important things.

First, please always wear light colored clothing so we can see you! How many times have we or our neighbors almost hit you because we couldn't see you? And the sun may be coming up or going down behind you.

Second, please walk on the side of the street, facing the on-coming traffic. So many people have told us they almost hit you in the middle of the street! Remember it is a street and vehicles do have the right of way.

With the weather warming up, it's nice to see folks out enjoying themselves. We want you to be safe also.

Glenn & Joyce Hart

Dear Editor,

This is a letter to the voters of Sherman County. Having lived in two small communities that voted in the sale of alcohol, I felt I needed to point out what comes with this action.

In 1939, Cockeran County west of Lubbock voted in the sale of alcohol in package stores along with across the counter sales in eating establishments. This was in a large dry area that included Lubbock. On weekends, the road to Lubbock was like rush hour traffic in the larger cities. Cafe's were opened in buildings that had previously been vacant and even in some houses. Undesirable individuals from all over the area moved in (both men and women) and you could hardly get down the sidewalks for all the drunks. The jail was filled to overflowing capacity every weekend and holiday. This, plus the increase of thefts, robberies, and accidents prompted the citizens to petition another election and it was voted out.

The citizens of Dimmitt were not that lucky. Precinct 1 in Castro County voted package store sales in the 1960's. This only included the portion of town that was mostly industrial. Over 90% of the city voters were not able to vote on this issue. The huge economic impact advertised, included a \$25.00 permit for 6 stores. It created six jobs that I know of who were paid for by the tax payers. In a short time, you could pass these stores at night and there were one or more alcoholics (the finished product of the alcohol industry) lounging nearby, who for the price of a bottle of cheap wine or a six-pack would buy the teens whatever they wanted. The package-store owners did nothing about this and law enforcement were too busy working wrecks, thefts, burglaries, and domestic violence (the by-product of the industry) to spend much time on it.

Our grocery man at that time was a personal friend of mine and told me he didn't think it would make much difference. In less than three months time, he changed his mind. He said people who were affected the most were the laboring class, farm hands, vegetable harvesters, and vegetable processors. Most were paid on Saturday, so they would come in and buy a few groceries to get their checks cashed. They

drank the remainder of their check, because it was easy to go back and get more. They would come in by mid-week out of groceries and want credit or free groceries. It was so prevalent that the grocer was having to ask the churches and welfare for help.

We don't need any of this in Sherman County. Vote no to the sale of alcohol in the upcoming election.

Sincerely  
Odell Arnold

## Lunch N Learn EE Group Meeting April 15

By Susie Spurlock

The Sherman County Lunch N Learn Extension Education Study Group will meet Tuesday, April 15th from 12 Noon to 1:00 p.m. in the meeting room of the County Extension Office.

The program will be on New Kitchen Tools for Easy Food Preparation. Lunch will be served at the meeting for a small charge of \$5.00 per person. Interested individuals are asked to contact the County Extension Office by 5:00 p.m. Monday, April 14 so that adequate arrangements can be made.

For more information about the Study Group or to reserve a seat at the meeting, please contact Texas AgriLife Extension Service - Sherman County at 806-366-2122 or call Jean Everett at 806-966-5346.

Educational programs of Texas AgriLife Extension Service are open to all citizens without regard to race, color, sex, disability, religion, age, or national origin.



- Guymon, Okla  
Movies Beginning April 11th
- From Night  
PG-13 Brittany Snow
  - Street Kings  
R Keanu Reeves Chris Evans
  - Nim's Island  
PG Jodie Foster Abigail Breslin
  - Leatherheads  
PG-13 George Clooney Renee Zellweger
  - The Ruins  
R Jonathan Tucker Laura Ramsey
  - Never Back Down  
PG-13 Djimon Hounsou
  - Drillbit Taylor  
PG-13 Owen Wilson
  - Horton Hears a Who  
G Animated (Jim Carey)

FRESH POPCORN EVERYDAY  
Party Room & Arcade  
Showtimes 580-338-3281  
Off. 580-338-8969  
www.northridge8.com  
Cash & Credit cards only  
Thank You

**Luke Haile**

Luke Haile is a freshman at Stratford High School. He is a member of the big blue band and the student council. He is also a cast member of the one-act play. Luke also participates in UIL and 4-H activities.

**PERFORMANCE**  
Student of the Week

www.duncanchevrolet.com

**ALLSUP'S**

Prices Good Thru 4/19/08

KELLOGG'S SELECT GROUP  
**CEREAL IN A CUP**  
BUY ONE GET ONE FREE

BUY A 44 OZ. HONCHO GET A 1.8 OZ. KEEBLER CRACKERS FREE

Store No. 52  
101 S. Poplar  
Stratford, TX  
806-396-5334

MARS ASSORTED  
**CANDY BARS**  
REGULAR SIZE  
**79¢**

DELICIOUS  
**BBQ SANDWICH**  
**99¢**

**SHURFINE BUTTER FLAVORED 8 CT. JUMBOS BISCUITS**  
**\$1.69**

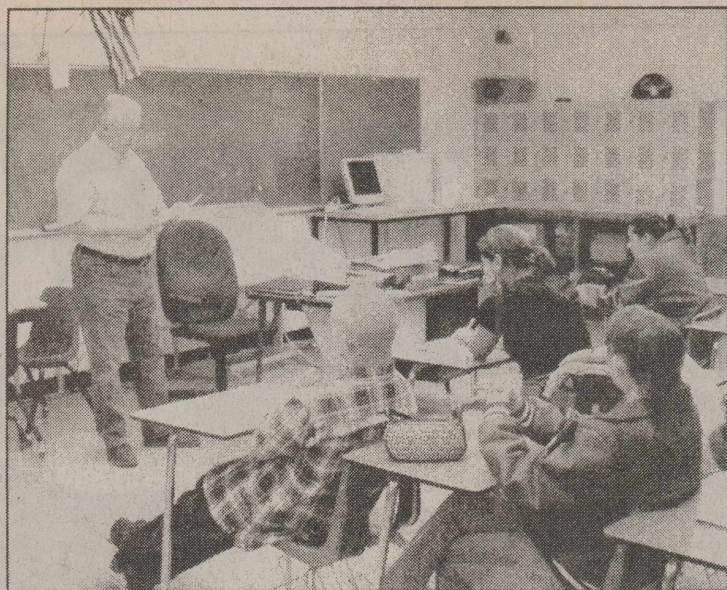
BAR-S 12 OZ. PKG.  
**SLICED BACON**  
**\$1.79**

**COMBO MEALS**

COMBO NO. 1 BACON/EGG BISCUIT & 16 OZ. COFFEE ..... <b>\$1.99</b>	COMBO NO. 6 3 TAMALES, HOWLERS & 32 OZ. TALLSUP ..... <b>\$2.59</b>
COMBO NO. 2 SAUSAGE/EGG BISCUIT & 16 OZ. COFFEE ..... <b>\$1.99</b>	COMBO NO. 7 2 HOT LINKS WITH BREAD & 32 OZ. TALLSUP ..... <b>\$2.49</b>
COMBO NO. 3 BBQ SANDWICH & 32 OZ. TALLSUP ..... <b>\$1.99</b>	COMBO NO. 8 2 CORN DOGS & 32 OZ. TALLSUP ..... <b>\$2.59</b>
COMBO NO. 4 HOMESTYLE POPCORN CHICKEN & 32 OZ. TALLSUP ..... <b>\$2.69</b>	COMBO NO. 9 CHIMICHANGA & 32 OZ. TALLSUP ..... <b>\$2.39</b>
COMBO NO. 5 SPICY POPCORN CHICKEN & 32 OZ. TALLSUP ..... <b>\$2.69</b>	COMBO NO. 10 2 BEEF & BEAN BURRITOS & 32 OZ. TALLSUP ..... <b>\$2.59</b>

**MORE SPECIALS**

LANCE SUNFLOWER SEEDS ASSORTED 59¢ EACH OR	<b>2 FOR \$1.00</b>
BLUE BUNNY KING CONES BUNNY TRACKS OR VAN. BROWNIE / KING SIZE	<b>\$1.59</b>
BLUE BUNNY PERSONALS ASSORTED	<b>\$1.59</b>
ALLSUP'S SANDWICH BREAD 24 OZ. / 99¢ EACH OR	<b>2 FOR \$1.69</b>
ALLSUP'S WHEAT BREAD 24 OZ. / \$1.09 EACH OR	<b>2 FOR \$1.89</b>
TENDER CRUST HOT DOG BUNS 8 CT. BAG	<b>\$1.39</b>
BAR-S TURKEY BREAST 12 OZ.	<b>\$2.59</b>
BAR-S MEAT FRANKS 12 OZ.	<b>89¢</b>
ALLSUP'S ICE 8 LBS. BAG	<b>\$1.59</b>
WIRED ENERGY DRINK SELECT GROUP 23.5 OZ.	<b>2 FOR \$5.00</b>
HALLS COUGH DROPS ASSORTED CHERRY, MENTHOL OR HONEY LEMON	<b>89¢</b>
FUJI QUICKSNAP 1000 CAMERA EACH	<b>\$9.99</b>
PURE AND GENTLE DIAPERS SIZE 5	<b>\$1.69</b>



Mr. Wayne Smith, Insurance Representative from the Smith Agency of Stratford, made an informative presentation to the DCP class of Stratford High School Thursday Morning, March 27, 2008. The students were informed of the types of insurance they should be interested in as they enter the work force or fields of advanced training. The topics included selection of types of health care insurance and auto insurance as well as homeowners and renter's insurance. Mr. Hembree and the students of the DCP class greatly appreciated the presentation and thank Mr. Smith for a job well done.



Of all known mammals, the yak—the wild ox native to the mountainous regions of Tibet—lives at the highest altitude.

I have made mistakes, but I have never made the mistake of claiming that I never made one.

—James Gordon Bennett

## Jackson Conducts Busy Session

Cindy Jackson, president of GFWC/Prospectus, conducted a busy session April 2 at Sherman County Library. Club members selected 2008 Old Timer King and Queen, discussed rules of scholarship.

Several members planned to attend District meeting last Saturday in Dalhart. A couple planned to go to TFWC 111th annual convention in Houston April 23-26.

Club members are reminded that club dues are due now.

Study Club will host Fall Board Oct. 11. Margaret Reed will be chairman for the event.

Wanted: A few good ladies who like to work for the betterment of the community!

Installation of 2008-2010 Officers will be May 7. Jill Killian will be new president. Others are President-Elect, Michelle Lutes; First Vice President, Cindy Jackson; Second Vice President, Laurie Spurlock; Secretary/Reporter Marylou McDaniel; Treasurer, Patti Vincent; Parliamentarian, Barbara Haile; Federation Counselor, Margaret Reed.

Present were Cindy Jackson, Barbara Haile, Dorothy Haile, Margaret Reed, Marry Bain, Oline Caraway, Jill Killian, Marylou McDaniel, Mattie Baskin, Sandy Baskin, Linda Swain.

## TRAINS, DOLLS AND PAINTINGS

The Scott Free Model Railroaders whose members come from Amarillo, Panhandle, Fritch, Borger and other locations in the Panhandle have prepared a layout that not only shows rail travel, but displays airplanes, trucks, cars and a pipeline to illustrate other forms of transportation. Teachers have requested this group as enhancement for the transportation units in social studies classes. They bring their models and layout materials to create a very interesting route for their trains to travel. Addressing many aspects of communities, the layout is delightful for children of all ages, and some who don't consider themselves children. This exhibit fills the Hazelwood Gallery and will be on display through May at the Carson County Square House Museum in Panhandle, Texas. Located at TX Hwy. 207 and Fifth Street.

Grace Geuther made exquisite porcelain dolls and clothed them in very fashionable clothing. This talented lady also was an extraordinary artist who took the beauty around her and put it into paintings others could enjoy. Her daughters, Emma Jean Geuther and Virginia Ferrell have graciously loaned a part of their collection to the Museum through the end of May.

Come by and enjoy these exhibits. For further information, please call 537-3524

## April—KAB Month Keep America Beautiful Keep Texas Beautiful Keep Stratford Beautiful

April is the national Klean-up month.

The day is April 26 however, who knows what the weather will be on the 26th. Starting now there are three week-ends to clean-up in April. It might be time to retrieve your fall, winter and faded flowers from the cemetery to get ready for the cemetery clean-up before Memorial Day. "Let everyone sweep in front of his own door and the whole world will be clean." Goethe.

## Ex-Students Reunion July 25-26

New addresses are needed for ex-students. Do you have a change of address for family, friends and class mates? We need them now to mail information before the stamp raise in May. Please call Gaynelle Riffe 396-5303 or B. A. Donelson 366-5905.

## THE GARDEN GATE

There's a new greenhouse in Stratford! Mary Carter will be opening April 16, 2008, weather permitting! Come by and see what Hardy Boy has to offer to get a jump start on spring.

Mary Carter

Hwy 54—Next to Acquisitions—806-753-6884

**The Stratford Star**  
Published Every Thursday at 805 Purnell, Stratford, TX 79084  
**Martha (Marty) Robertson Editor & Publisher**  
**Shari Hudson-Advertising & Photography**

Subscription Rates  
\$25.00 per year in Sherman & Adjoining Counties  
\$32.00 per year all others  
\$20.00 per (9 months)  
College Rate

The Stratford Star  
Box 8  
1-806-366-5885  
FAX-1-806-366-5885

**Mexican Pile-on Dinner**  
Sunday, April 13<sup>th</sup>  
To be held at  
**St. Joseph Parish Hall**  
11:30 to 2 p.m.  
Free will donation

**STEVENSON & SONS**  
PEST CONTROL  
Termite & Pest Control • Rat Control • Bird Control  
Yard & Tree Spraying

Residential • Commercial • Farms • Ranches  
"Professionals in Pest Control Technology"

249-4202 Jim Stevenson  
Owner

Dalhart • Stratford • Hartley  
Licensed & Insured

don't wait until it's TOO LATE!

Let us tell you how crop hail insurance can be a lifesaver for your farming operation.

**Jim D. Hubbard, CIC**  
114 S. Trice  
Claude, TX 79019  
cell 806.679.9457  
office 800.658.2122  
jhubbard@neely.com

**NEELY, CRAIG & WALTON L.L.P.**  
INSURANCE SINCE 1926

## Early Release

Early Release, Wednesday, April 16<sup>th</sup>. Mary Allen Elementary—release at 12:55 p.m. Junior High and High School release at 1:00 p.m.

**DID YOU KNOW?**  
A properly humidified home environment can keep you comfortable at lower thermostat settings, helping you save money in energy costs.

For more energy-saving tips, turn to your Dave Lennox Premier Dealer.

Receive up to a **\$1,000 Rebate\*** with the purchase of any qualifying Lennox home comfort system.

OR

**12 Months, No Payments, Deferred Interest Financing\*\*** with the purchase of any qualifying Lennox home comfort system.

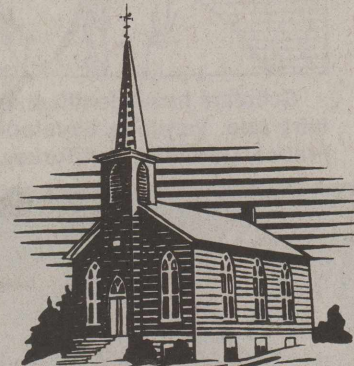
**Dave Lennox PREMIER DEALER LENNOX**

**DUMAS AIR CONDITIONING & HEATING, INC.**  
829 N. Dumas Ave.  
Dumas, TX 79029  
**(806) 935-2703 or (800) 658-2168**  
DeShazo Family since 1968

Offer expires 6/6/2008.  
\*Rebate offer is valid only with the purchase of qualifying Lennox products.  
\*\*Valid between 3/1/2008 and 5/31/2008. On promissory purchase, no monthly payments required & no finance charges assessed if (1) promissory purchase paid in full in 12 months, (2) any minimum monthly payments on account paid when due, and (3) account balance does not exceed credit limit. Otherwise, promo may be terminated & finance charges assessed from purchase date. Standard terms apply to non-promissory purchases. Additional charges & existing accounts. As of 1/1/2008, variable APRs: 15.9% & on all accounts in default: 28.99%. Minimum Finance Charge \$1.50. Subject to approval by GE Money Bank.  
© 2008 Lennox Industries Inc. See your participating Lennox dealer for details. Lennox dealers include independently owned and operated businesses.

- First Assembly of God**  
Kevin Anderson, Pastor  
921 Fulton  
Sunday School 9:45 am  
Morning Worship 10:45 am  
Evening Worship 6:00 pm  
Wed. Bible Study 7:00 pm
- First Christian**  
Rev. Charles F. Fische, Interim Pastor  
5th & Main  
Sunday School 9:45 am (nursery)  
Morning Worship 10:45 am (nursery)  
No Sunday Evening Worship Service  
Wed.: Youth Choir 3:45 pm, Chi Rho 5 p.m.,  
CYF 6 p.m., Bell Choir 6:50 p.m., Adult Choir 8 p.m.
- First United Methodist**  
Rev. Gene Weinette  
520 N. Main  
Sunday School 9:20 am  
Morning Worship 10:30 am  
Junior High UMY 5:00 pm  
Senior High UMY 6:00 pm
- St. Joseph Catholic**  
6th & Pearl  
Rectory - 366 - 5687  
Sunday morning: 8:00a.m. (English), 9:30 (Spanish)  
Sacrament of Reconciliation: Before Mass. or by appt.  
Christian Formation Classes: K-6th Grade, Wed. afternoon  
Jr. & Sr. High, Wed. - 6:30-8:30 p.m.
- Church of Christ**  
Ernie Maiwald  
N. 3rd & Chestnut  
Sunday School 9:30 am  
Morning Worship 10:30 am  
Evening Worship 5:00 p.m.  
Wednesday Bible Study - 7:00 p.m.
- Heritage Bible Baptist**  
Pastor Rick Carter  
302 S. Main - For More Info—call 396-2212  
Morning Worship - 11 a.m.  
Evening Service 6 p.m.  
Wed. Service - 7:30 p.m.
- First Baptist**  
Pastor Jason Stone  
702 N. 3rd  
Sun.—Coffee - 8:30 Sunday School - 9:30  
Worship Service - 10:30  
Wed. -Children—6:00, youth—7:00
- La Mision Bautista**  
Mision Bautista  
401 S. Wall 396-5376  
Domingo-(Sunday)  
Estuela Dominical 9:45 am
- Miercoles (Wednesday)  
Servicio De Adoracion 11:00 am Estudio  
Biblico & Servicio De Oracion 6:00 pm  
Servicio De Adoracion 6:00 pm Se Cuidamos  
Susninios Durante El Servicio.

## The Churches of Stratford Welcome You



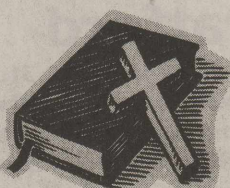
Jeremiah 17:14-  
Heal Me O LORD, &  
I shall be healed;  
save me & I shall be  
saved; for thou art  
my praise.

## This Page Sponsored by

Stratford Grain  
396-5541  
Lautz 769-4485  
Stratford Star  
366-5885  
Walter Lasley & Sons  
753-4411

**Eben-Ezer Templo Hispano**  
Asambleas De Dios  
Pastor: Juan M. Valenzuela 806.366.3071  
205 N. Poplar - Hwy 287 806.268.2188  
Escuela Dominical 10 a.m.-12:00 p.m.  
Servicio De Adoracion 5 p.m.-7:00 p.m.  
Miercoles: Servicio De Adoracion 6-8 p.m.

**Kerrick Community Church**  
Pastor Roy Harris  
Community Building  
Sunday Morning - 11:00 a.m.  
Sunday Evening-6:00 p.m.  
Prayer Meeting - 7:00 p.m. Wednesday



15 Years, 4500 Babies In Dumas

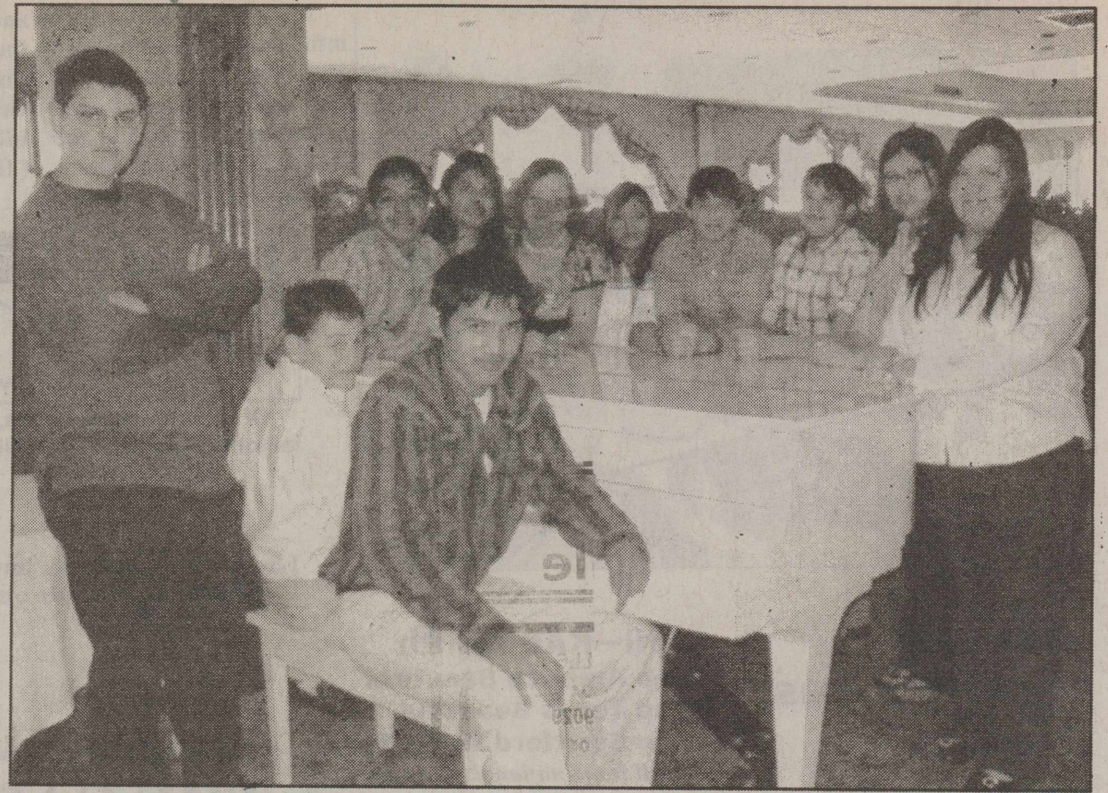
**Women's Health Center**  
Normal and high risk pregnancies  
Gynecologic cancer screening  
Breast cancer screening  
Infertility and family planning  
Menopause and hormone problems

**Dr. Turhan I. Baykan, M.D.**  
Specializing In  
OBSTETRICS-GYNECOLOGY

110 S. Bliss Monday-Thursday 8 a.m. - 5 p.m. Friday 8 a.m. - 12 noon



The 5<sup>th</sup> & 6<sup>th</sup> grade boy's basketball team won 1<sup>st</sup> place at the Spearman Tournament. Team members include from left: Trevor Melton, Dillon Keener, Preston Burr, Jiovani Romera, Sterling Audrain, Ben Gilliland, Braiden Galla, Rett Schoonover, Chase Lutes and Brenda Bell-Coch.



8<sup>th</sup> grade reading trip members  
Back row L/R: Nicolas Barajas, Adriana Ibarra, Mariah Mireles, Carina Michel, Jordan Johnson, Ruben Duran, Monica Chavez, Erika Chavez. Front row L/R: Jacob Mariscal (standing), Dillon Sellers, Neftali Valenzuela.



5<sup>th</sup> & 6<sup>th</sup> grade girl's team placed 3<sup>rd</sup> in the Boise City tournament March 30. Back row L/R: Bethany Everett, Ana Guerrero, Magaly Guerrero, Desinya Garza, Madison Mungia. Middle Row LR: Diana Vasquez, Nohemi Ruedas, Jacquéline Gonzalez, Alexa Peregrino, Brittany Law and in front Landry Davis.



Scholars have identified more than 1,000 versions of the Cinderella fairy tale. Versions developed in many countries, including China, France, Germany, and Turkey.



**THE MARTINS**



**SATURDAY, MAY 31, 2008--7PM**  
FIRST BAPTIST CHURCH, STRATFORD, TEXAS  
TICKETS \$25      CALL 806-396-5554



**THE 4 GIVEN QUARTET**

### Martins to Perform in Stratford

The Martins are coming to First Baptist Church of Stratford, Saturday, May 31, 2008 with special guests the 4Given Quartet. The Martins have traveled with the Gaither Homecoming, and have appeared at the White House for President Bush and First Lady Laura Bush, as well as with Billy Graham. It is rare to have someone of this caliber in Stratford. Don't miss your only chance to see the Martins in this area for 2008!!!! Call the First Baptist Church office at 396-5554 for tickets or contact any Ministerial Alliance pastor.

### Kautz Enrolled at Southwestern Oklahoma State University

A total of 338 high school seniors have enrolled for the 2008 fall semester at Southwestern Oklahoma State University as part of the New Student Orientation Program on the Weatherford campus.

Among the students who have enrolled is Craig Henry Kautz of Stratford TX High School.

SWOSU is offering four more enrollment opportunities for high school seniors who are planning to attend SWOSU this fall. Enrollment dates are April 22, June 11, July 14 and August 15.

Students must apply and be accepted to SWOSU before they can attend an enrollment session. Each of the enrollment sessions offers students the chance to meet current SWOSU students and new freshmen, visit and enroll with a faculty advisor within the major they have selected, and get all their questions answered.

### The Moodys will be at the FUMC on Sunday, April 13, at 6 p.m.

The Moodys are one of the most fun filled and ministry focused families in The gospel Music industry today. Hailing from Texas they have taken their style Of gospel music from coast to coast and border to border for over fourteen years. This family focused ministry has a style that some would say is a mixture of Both southern and country gospel while delivering their own personality that will Send you away having been both blessed and entertained. Touring for an average of 200 dates a year The Moodys spend a great deal of their time sharing with you the love of a wonderful Savior as well as there tremendous appreciation for the ones who daily give us the freedoms that we all so richly enjoy . . . our dedicated men and women in uniform. After spending more

than 10 weeks singing and ministering to our troops in Iraq John shares first hand account's of what is really taking place in the hearts and lives of our troops. You will hear what the news media refuses to tell you . . . the truth. You won't want to miss the opportunity to experience this talented and dedicated family. Texas has long been known for its many sons and daughter who have made their mark in gospel music. Once you experience The Moodys you will agree that God has sent one more gift from Deep In The Heart Of Texas!



Arnold Palmer was the first pro golfer to earn \$1 million in prize money.

<h2>Business Directory</h2>	<p><b>Stratford Hospital District</b> Coldwater Manor Stratford Family Medical Clinic Stratford EMS Proudly serving the medical needs of Stratford and Sherman County</p>
<p><b>WALTER LASLEY &amp; SONS INC.</b> THE Feedyard Since 1953 753-4411</p>	<p>TRCC # 11427 <b>PALMER CONSTRUCTION</b> New Construction Remodeling Roofing Free Estimates 610 E. Taylor P.O. Box 217 Texline, TX 79087 806-333-4253 806-362-4253</p>
<p><b>Stratford Grain Co.</b> Stratford 396-5541 Lautz 769-4485 4 North Main</p>	<p><b>Joe Taylor, Photography</b> PO Box 27 1305 N Chestnut Stratford, TX 79084 806-366-2459 Weddings, Portraits, Etc.</p>
<p><b>Stratford Auto Electric</b> 119 S. Wall, Stratford, Texas 79084 Phone 366-5941 366-5857 Alternator, Starter, -Magneto Repair Since 1964</p>	<p><b>Ivy Insurance Agency</b> Joanie Ivy Auto • Home • Life • Commercial Bus: (806) 396-5810</p>
<p><b>Betty Brown's Medical Claim Service</b> PO Box 20118 Phone 806-367-5617 Amarillo, TX 79114 Cell 806-367-0070</p>	<p>P.O. Box 610 Stratford, TX 79084 Phone 806-366-5557 <b>Duncan Chevrolet</b> www.duncanchevrolet.com E-mail duncanch@cit.net</p>
<p><b>This Space Available</b></p>	<p><b>Jesse's Gun Shop</b> Gun Repairs • Sales • Cleaning Hours: Mon. - Fri. - 1730 - 2000 Sat. - 0800-1600 Work Remodeling (806) 769-4454 (806) 366-3134 111 S. Maple Stratford, TX 79084</p>
<p><b>A&amp;I PARTS CENTER</b> AUTOMOTIVE AND INDUSTRIAL PARTS 201 N. 2nd Street - Stratford, TX 79084 Tele (806)366-5592 * Toll-free 800-624-5494 Fax(806)366-2583</p>	<p><b>Your Home Town Pharmacy</b> BLK PHARMACY 317 N. Main P.O. Box 280 Stratford, TX 79084 4505 Major Prescription Plans Accepted Certified Pharmacist, R.Ph. Dedicated Vendor/Owners Carroll County Millenium Candy Gifts Quality and Patient Satisfaction</p>
<p>WINDSHIELDS • LOCKOUTS • CUSTOM &amp; COLLISION WORK <b>DON'S COLLISION CENTER</b> Owner - Don Aduddell 319 S. Poplar Office 806-396-2812 • After hours 806-366-3233</p>	<p><b>FARM BUREAU INSURANCE</b> National Quality Award—35 Year Member <b>JOE FLORES</b> P.O. Box 25 AGENT Hwy 287S, Stratford, TX 79084 Office Phone/806-396-5538 Bus. Phone/806-396-2422 Residence/806-396-5389 Fax/806-396-2113</p>



