

Sherman County Museum 7 / 08  
Box 1248  
Stratford, TX 79084

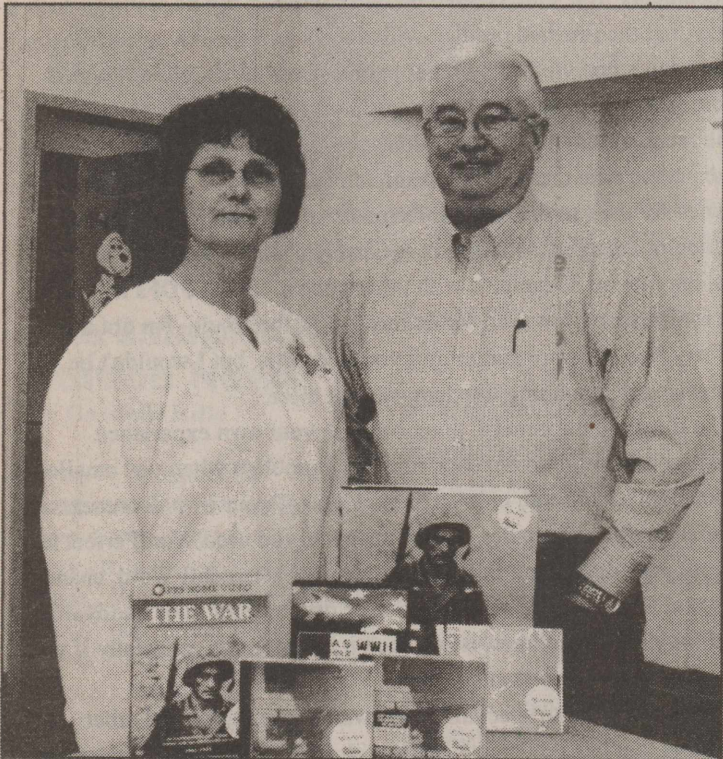
# The Stratford Star

75 cents

Published for over 100 years in Stratford, Sherman County, Texas 79084

usps 523

Number 7, February 14, 2008



Post Commander Wayne Smith with School Librarian Lynda Hauser. See Story below.

## AMERICAN LEGION POST DONATES WORLD WAR II REFERENCE MATERIAL

The Howard Norvell Green Post 262 of the American Legion in Stratford has donated the Ken Burns Production material on "The War" to Stratford Schools. "The War", a PBS production which was aired on public television nationwide in November and December 2007, is the story about four towns in the US during World War II and people in their community.

Also included in the material is local Texas Panhandle War Stories which was a product of KACV-TV in Amarillo. These materials are in CD format and

book form. Additionally, two CDs of narrative material and a CD of songs from the war period were also presented.

The local American Legion post received these materials from District 18, Legion Commander, Barry Schonehals as an award for their post revitalization efforts and decided to donate the material for use by the schools.

Post Commander Wayne Smith indicated that it was a pleasure to donate these materials to the school. "We hope that these materials will be a source of inspiration and pride for the students in our schools". It is imperative that we give our students the tools to learn from our history so they can appreciate the rights and

privileges of living in America".

## American Legion Post Schedules Meeting

The Howard Norvell Green Post 262 of the American Legion will hold their February meeting on Thursday, February 7, 2008 at 7:00 p.m. The meeting will be held at the Legion Hall in Stratford. All members are encouraged to attend this meeting. If you are a veteran and interested in joining the local post, contact Dennis Phelps at 753-7316 or Wayne Smith at 753-6708.

## IRS Forms

The Sherman County Public Library will no longer carry paper copies of IRS forms. Most forms are available online at [www.irs.gov](http://www.irs.gov). Library patrons may use the public computers at the library to print any forms at a cost of \$.10 per page. If you have any questions regarding this matter, please contact the library at 366-2200.

## Volunteer Community Responders Meeting

Volunteer Community Responders meeting to be held Monday, February 25, 2008 at 7 p.m. at Stratford Fire Station.

Program: Communications. New members invited and encouraged.

## Hospital District Election

STRATFORD HOSPITAL DISTRICT has three openings in the upcoming election. Applications may be picked up at the Business Office at Coldwater Manor. Application sign up time will be February 11<sup>th</sup> through March 13<sup>th</sup>, 8:00 a.m. to 5:00 p.m. Elections will be May 10<sup>th</sup>. Board members whose terms will expire are Kathy Allen, LeRayne Donelson and Kenton Kimball. Holdover members are Kathie Altman and Billy Bell.

## Stratford Recycling Center News

By Jesus Mariscal, Stratford Recycling Coordinator

One of the questions we routinely get at the City is "Why can I not recycle plastic?" The City Solid Waste Department would very much like to recycle plastics, but there are a couple of issues that currently prevent our entry into that market. Both of these are related to simple logistics.

Plastic is like any other recycled product in that you must first collect, bale and then deliver the product. Currently, this requires that roughly 40,000 pounds be collected and baled to make up one truckload. The time it takes to collect the plastics is roughly the same as it takes to collect any other product. Since the City currently recycles OCC, newsprint, white office paper, and slick (magazines, etc), the addition of plastic would add to the amount of time to get this accomplished.

Also, storage becomes an issue. Currently the City is able to store the paper goods because the City Council has allowed the use of grants from the Texas Commission on Environmental Quality (TCEQ) to purchase buildings and equipment for the management of those wastes. In the case of plastic, the City would have to virtually double its storage capacity to make a program viable. Plastic has a shelf life while stored in the sun, so inside storage would be necessary to ensure quality product for sale.

Baling requires that you have enough product to create one complete bale. There is no way to partially bale plastic and then move that partial bale out of the way so that you can use the baler for another product. This requires that the City have enough storage building capacity to hold a bale's worth of plastic at a time in loose form. That is the reason for the extra capacity.

Another issue is related to training. Currently the market is good for plastics numbers 1 & 2. Number 1 is Polyethylene Terephthalate or PETE. These are soda bottles, cooking oil bottles and peanut butter jars. Number 2 is High Density Polyethylene and is usually detergent bottles or milk jugs.

## City of Stratford to Hold Election

The City of Stratford will hold an election on Saturday, May 10, 2008 to fill four places on the ballot. The expiring terms are:

- David Brown, Mayor - two-year term;
- Connie Oquin, Councilmember - two-year term
- Jolie Asher, Councilmember — two-year term
- Duane Mungia, Councilmember - one-year term

Beginning Monday, February 11, 2008, anyone interested in filing for a place on the ballot may pick up an application packet from City Hall, 518 N. Third, between the hours of 8:00 a.m. and 5:00 p.m., Monday thru Friday, The last day to file for a place on the ballot is Monday, March 10, 2008 by 5:00 p.m.

## 4-Hers Compete At Ft. Worth

By David Graf

Three 4-Hers recently competed at the Ft. Worth Stock Show with their swine projects, said David Graf, Texas AgriLife Extension agriculture and natural resources agent for Sherman County. Brent Reed, Kaleb Horsford, and Kyle Horsford exhibited, respectively, a Hampshire and two Chester whites. None of them were fortunate enough to place in their class.

"These young men have done a great job of caring for and training their animals, while being involved in basketball, as well as other activities. Sherman County should be proud of these guys and their efforts."

People who recycle must learn that these are the only two plastics that are acceptable. The other plastics are of no value and lower the value if allowed to contaminate the plastics stream.

The City is currently in a program of converting our OCC or cardboard recycling to a more automated method of collection in order for the Solid Waste Department to provide better services for those people and organizations that are participating in the Recycling program. Look for the new dumpsters to be located at Cardboard Recycling locations in the near future. These were made available through a grant from the TCEQ.

## STRATFORD EDUCATION FOUNDATION HOSTS ASSEMBLIES FOR STUDENTS OF STRATFORD ISD

On Monday, February 18, all students of Stratford ISD will have the opportunity to hear one of the state's most dynamic and effective speakers, Dr. Eric Cupp, who is well-known for his success in working with children. Dr. Cupp holds various degrees, among them a doctorate in family studies. He has a background in sales, ministry, education, professional speaking and consulting. He will keep students entertained and laughing while learning about the following issues and more:

- that conflict is normal and how to deal with it
- self-esteem
- that it's cool to be different
- that it's OK to walk away
- that you always have choices
- what integrity is and how to keep it
- the value of an education
- how to believe in yourself
- how to rise above your circumstances
- how not to be a victim

An assembly will be held at each campus and tailored to the specific ages of the student body. The community is more than welcome to attend an assembly; it will offer insight to anyone who cares about or works with children. Parents are especially encouraged to attend so that this important message can be reinforced at home. The assemblies will be held from 10:30 to 11:30 at the high school, from 12:45 to 1:45 at the junior high and from 2:00 to 3:00 at Mary Alien.

Dr. Cupp is able to be with Stratford students thanks to a very generous grant funded by the Stratford Education Foundation.

## Cotton Production Meeting To Be Held Feb. 19th

By David Graf

Cotton producers in Sherman County will have the opportunity to attend a cotton production meeting, Tuesday, February 19 from 9 am till noon, said David Graf, Texas AgriLife Extension agriculture and natural resources agent for Sherman County. The meeting will be held at the Moore County Gin near Etter.

Topics to be presented include crop, insect, and water management, as well as variety trials and an overall cotton market outlook. Speakers include Leon New, Randy Boman, and Monti Vandiver of Texas AgriLife Extension, Leighton Stovall of Moore County Gin, and T.K. Baker of Monsanto.

Three CEU's will be offered and lunch will be provided.

The meeting was planned by the Moore County Ag Committee and Moore County Extension Agent Marcel Fischbacher said, "We encourage producers from the area to join us for a very informative meeting. The broader the base of producers we are able to educate, the stronger the cotton industry will be for this area."

## SCOT Members invited to see "Texas Mudd"

Scot Hall members are invited to see "Texas Mudd" a talented group from Branson which will be performing at the Hereford Senior Citizens on Saturday, Feb. 23. Leave SCOT Hall 11:30 a.m. Performance at 2:30 p.m. Tickets \$5.00. Sign up deadline Feb. 1. Contact Connie Oquin at 396-2450 for more information.

## "Thoroughly Modern Millie" Feb. 8-17

Guymon community Theatre present the musical "Thoroughly Modern Millie" Friday & Saturday: February 8, 9, 15, 16 at 7:30 p.m. Sunday: Feb. 10 & 17 at 2:00 p.m. Reservations call 580-338-0019 \$7.50 per person

**ATTENTION: All Junior class parents are needed to help build decorations for the Jr/Sr Prom. The Prom is April 5<sup>th</sup>. We will meet every Friday night at 6:00 p.m. in the upstairs of the High School.**

## CITY ELECTION

The City of Texhoma Texas will hold a City Election for two (2) Councilmen on May 10, 2008. Filing for a place on the ballot will begin February 09, 2008 and continue through March 4, 2008. You may file at the City Hall, Monday through Friday from 9:00 a.m. to 1:00 p.m. Councilmen Rusty Shoulders and Johnny James terms will expire.

## STATE OF TEXAS COUNTY OF SHERMAN Order Prohibiting Outdoor Burning

WHEREAS, the Sherman County Commissioners' Court finds that circumstances present in all or part of the unincorporated area of the county create a public safety hazard that would be exacerbated by outdoor burning; IT IS HEREBY ORDERED by the Commissioners' Court of Sherman County that all outdoor burning, including fireworks, is prohibited in the unincorporated area of the county for 90 days from the effective date of this Order, unless the restrictions are terminated earlier based on a determination made by the Texas Forest Service or tills Court This Order Is adopted pursuant to Local Government Code §352.081, and other applicable statutes. This Order does not prohibit outdoor burning activities related to public health and safety that are authorized by the Texas Commission on Environmental Quality for:

1. Firefighter training;
2. Public utility, natural gas pipeline or mining operations;
3. Planting or harvesting of agricultural crops; or
4. Burns that are conducted by a prescribed burn manager certified under Natural Resources Code §153.048, and meet the standards of Natural Resources Code §153.047.

In accordance with Local Government Code §352.081(h), a violation of this Order is a Class C misdemeanor, punishable by a fine not to exceed \$500.00.

ADOPTED this 8th day of February, 2008 by a vote of 4-ayes and 0 nays, with an effective date of February 8, 2008.

Terri Beth Carter  
County Judge  
Attest:  
Gina Jones  
County Clerk

## SCHOOL BOARD ELECTION

The Stratford Independent School District will hold a Trustee Election on May 10, 2008. Anyone interested in applying for a place on the ballot may do so from February 9 through March 10, 2008. You may apply at the Superintendent's Office, 503 N. 8th Street, from 8:00 A.M. until 4:00 P.M., Monday through Friday. On March 10th the Office will be open until 5:00 P.M.

Board members whose term will expire are Joe Reinart and Barney Wellborn. Holdover members are, Patti Vincent, Brent Spurlock, Greg Wright, Steve Hays and DeWain Traylor.

## 2008 Fort Worth Stock Show Results

2008 Fort Worth Stock Show Results are:  
Morgan Crabtree 5<sup>th</sup> place Heavy Spot  
Jennie Spurlock 8<sup>th</sup> place light spot  
Rowdy Lermon 9<sup>th</sup> place light hamp  
LJ Moreno 9<sup>th</sup> place Heavy hamp  
Craig Kautz 3<sup>rd</sup> Place med cross  
Trevor Christian 9<sup>th</sup> place steer  
Jordan Johnson 13<sup>th</sup> place Steer

**Weather Line 366-2000**  
Sponsored by Stratford Grain & ADM/Alliance Nutrition  
Greg Wright - 7 days a week, updating as needed

## Museum Fund Raiser Picnic

Sherman County Depot Museum Fund raiser Picnic will be held on Sunday March 9, 2008 from 11:30 a.m. to 1:30 p.m. at the County Barn.

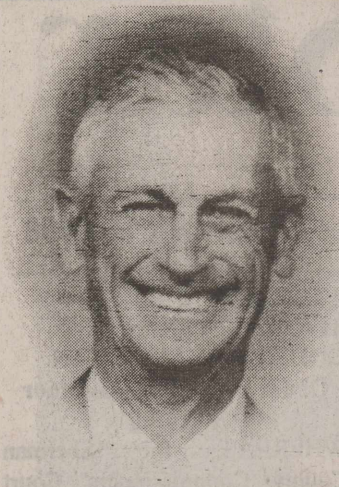
Menu is Burgers, Beans, Chips, Dessert and Drink. Free Will donation.

## Wildfire Danger.

Dry conditions have created another dangerous wildfire season. Please use caution with any outdoor burning, disposal of fireplace ashes, welding, cigarettes, etc. Under the current dry conditions, wildfires can ignite easily and spread quickly.



# Obits



Edd Trublood

DALHART - Edd Trublood, 97, died Thursday, Feb. 7, 2008. Graveside services will be at 3 p.m. today in Stratford Cemetery in Stratford with the Rev. George Chambers, pastor of Lakeview United Methodist Church, officiating. Arrangements are by Horizon Funeral Home.

Mr. Trublood was born Feb. 22, 1910, the youngest of five children to John F. and Byancy Schultz Trublood in Everton, Ark., where he grew up on the family's 40-acre farm. He said their nearest neighbor was the Johnny Cash family. Edd left Arkansas in the 1930s, moved to Stratford and worked putting in the first sewer lines for the city.

Edd married his first wife in October 1941 in Texhoma, Okla. They had two daughters, LaNell and Vicky. Edd served three years in the Army from 1941 to 1944 on the island of Bora Bora. After he was discharged from the Army, he and his family moved to Conlen and then later to Dalhart, where he worked for Floyd Holt Richards, Ideal Grocery and then Morman's Grocery for a number of years. Edd and his first wife divorced in 1966.

In 1966, Edd married Grace Clark Savage, to whom he had been happily married for 42 years. Edd and Grace farmed until they retired in the 1980s.

He was preceded in death by his parents, two brothers, two sisters, a grandson and his first wife.

Survivors include his wife, Grace; two daughters, LaNell Turpin and husband Billy of Amarillo and Vicky Parrott and husband Fred of Gainesville, Fla.; three grandchildren, Billy Ray

Turpin II of Amarillo, Robyn Kiddie and husband Bobby of Austin and Shanna Parrott of Jacksonville, Fla.; and a great-grandson, Dean Kiddie of Austin. The family suggests memorials be to Coon Memorial Hospice, 320 Texas Blvd., Dalhart, TX 79022.

## February 14, Valentine Dinner and Show Dalhart LaRita Theatre

Valentine Dinner Show, Thursday February 14 at the LaRita Theatre in Dalhart. Music presentation by Vickie Moore, Becky Seal, Shane and Matt Turner. Tickets are available at the Dalhart Chamber of Commerce. Dinner and Show 6:30, \$35.00 Show only at 8:00, \$20.00

\*\*\*  
Democracy is two wolves and a lamb voting on what to have for lunch. Liberty is a well-armed lamb contesting the vote!  
—Benjamin Franklin  
\*\*\*

**The Stratford Star**  
Published Every Thursday at 805 Purnell, Stratford, TX 79084  
**Martha (Marty) Robertson Editor & Publisher**  
**Shari Hudson-Advertising & Photography**  
Subscription Rates  
\$25.00 per year in Sherman & Adjoining Counties  
\$32.00 per year all others  
\$20.00 per (9 months)  
College Rate  
The Stratford Star  
Box 8  
1-806-366-5885  
FAX-1-806-366-5885

**MITCHELL THEATRES**  
**NCS**  
GUYMON, OKLAHOMA  
Guymon, Okla  
Movies Beginning February 14

The Spiderwick Chronicles  
PG Freddie Highmore  
Jumper  
PG-13 Samuel L. Jackson  
Step Up 2: The Streets  
PG-13 Briana Evigan  
Definitely, Maybe  
PG-13 Ryan Reynolds Abigail Breslin  
Fool's Gold  
PG-13 Kate Hudson Matthew McConaughey  
Welcome Home Roscoe Jenkins  
PG-13 Martin Lawrence  
The Eye  
PG-13 Jessica Alba  
Veggie Tales: The Pirates  
G Animated  
The Bucket List  
PG-13 Jack Nicholson Morgan Freeman

**FRESH POPCORN EVERYDAY**  
Party Room & Arcade  
Showtimes 580-338-3281  
Off. 580-338-8969  
www.northridge8.com  
Cash & Credit cards only  
Thank You

## Ask the Geek

By Kevin McDonald

### PDFs for One and All!

You've got to love the Portable Document Format. Even if you didn't know what "PDF" stood for, or didn't realize that's the kind of file that "Adobe Acrobat Reader" is usually used to open, a PDF has probably come in handy for you at least once. However, did you know that you can create your own basic PDF files? You can, and not only will it not cost you a dime, you won't even have to learn to use any new software. Today I'll point you in the right direction.

The "Portable Document Format" is just that - a way to ensure that documents which are created on one computer can be saved in such a way that the finished product will always look exactly as the creator intended when viewed by other people, even on different types of computer systems. The documents are "portable," and don't rely on the recipient having the same software installed on their computer as the person who created the document. These types of files are generally used to distribute information that is not intended to be edited or changed, so this isn't necessarily what you would use to collaborate on documents with other people. Some PDFs let you fill in forms, then print (and sometimes save), the result. I'm not aware of any free software that allows you to do this, but I wouldn't be surprised if something like that was out there.

To illustrate the benefit, think back on your own experience. Perhaps you might have once run into a problem when you emailed a document to a friend, or tried to open one of your own documents on someone else's computer. If, for instance, you used WordPerfect to create your document, but your buddy uses Microsoft Word, chances are that the document will look a little different for your buddy than it did for you. Sometimes, it will look a lot different, especially if you used images or non-standard fonts.

You can purchase specialized software from Adobe and other vendors that lets you create PDFs with embedded tables of contents, bookmarks, links, forms and all sorts of other bells and whistles. If you just want to create a document, sign or flyer to share with others or even take to a printer or copy shop, you should look into the free version of CutePDF.

From their web site: "CutePDF...enables virtually any Windows application (must be able to print) to create professional quality PDF documents - with just a push of a button!" They also boast that the software is free for personal and commercial use, that it doesn't embed advertising "watermarks" in your PDFs, and that you don't have to endure popup ads every time you use the software. I'm happy to report that all of those things are absolutely true. The software works perfectly, as advertised, without any advertisements or annoyances. It just works, and I've used it for several years.

To install it yourself, first go to the web site ([www.cutepdf.com](http://www.cutepdf.com)) and click the "Learn More" link near the "Free Download."

Kevin McDonald is a professional computer technician and novelist. He lives in Stratford with his wife children. He owns and operates Definition Computers: 806-366-7637. Email Kevin at [askthegEEK@definitioncomputers.com](mailto:askthegEEK@definitioncomputers.com) with your questions.

**Elk Junction**  
**Valentine Special**  
Steak with Shrimp Kabobs  
\$18.50  
Serving 6:00-8:30 p.m.  
Please call to make reservation if possible  
366-3400  
Need to add flowers for that special someone—Let us know when making reservation and they will be on the table!

# ALLSUP'S

Prices Good Thru 2/23/08



BLUE BUNNY ASSORTED ICE CREAM \$3.49  
64 OZ.

32 OZ. TALLSUP 59¢



Store No. 52  
101 S. Poplar  
Stratford, TX  
806-396-5334

ASSORTED BROWNIE BAKER MUFFINS

2 FOR \$3.00



ALLSUP'S "MOO"  
BUY 12 GALLONS OF FRESH ALLSUP'S MILK... GET ONE FREE!  
Collect Red Stick "Moo" Stamps Today & You Could Win FREE Milk For A Year!

HOT, BACON CHEDDAR, JALAPENO & CHEDDAR, HOT PEPPERJACK OR CHILI CHEESE

TOM'S FRIES

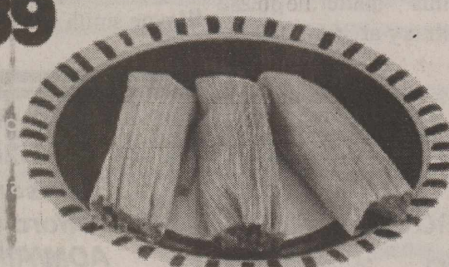
2 FOR \$3.50



ASSORTED DORITOS \$3.29



MILD OR HOT TAMALES \$1.39



### MORE SPECIALS

- BLUE BUNNY TURTLE SUNDAE BAR \$1.59
- JACK LINKS ASSORTED JERKY 3.5-3.65 OZ. \$3.99
- CAMPBELL'S TOMATO OR CHICKEN NOODLE SOUP 2 FOR \$2.00
- NISSIN SOUP BEEF, SHRIMP OR CHICKEN 49¢
- CHEER OR GAIN LAUNDRY SOAP 2X LIQUID \$3.99
- TURKEY CREEK PORK SKINS ASSORTED 79¢
- PUFFS TISSUES 96 CT. OR 132 CT. 2 FOR \$3.00
- BAR-S BACON 12 OZ. 2 FOR \$5.00
- RED DELICIOUS APPLES 3 LB. BAG \$2.99
- PLAINS DIPS FRENCH ONION OR GREEN CHILI 12 OZ. 2 FOR \$3.00
- MARS CANDY BARS SELECT GROUP SNICKERS, M&M'S PEANUTS, 3 MUSKETEERS OR STARBUSS REGULAR SIZE 79¢

### COMBO MEALS

- |   |   |
|---|---|
| COMBO NO. 1 BACON/EGG BISCUIT & 16 OZ. COFFEE \$1.99          | COMBO NO. 6 3 TAMALES, HOWLERS & 32 OZ. TALLSUP \$2.59      |
| COMBO NO. 2 SAUSAGE/EGG BISCUIT & 16 OZ. COFFEE \$1.99        | COMBO NO. 7 2 HOT LINKS WITH BREAD & 32 OZ. TALLSUP \$2.49  |
| COMBO NO. 3 BBQ SANDWICH & 32 OZ. TALLSUP \$1.99              | COMBO NO. 8 2 CORN DOGS & 32 OZ. TALLSUP \$2.59             |
| COMBO NO. 4 HOMESTYLE POPCORN CHICKEN & 32 OZ. TALLSUP \$2.69 | COMBO NO. 9 CHIMICHANGA & 32 OZ. TALLSUP \$2.39             |
| COMBO NO. 5 SPICY POPCORN CHICKEN & 32 OZ. TALLSUP \$2.69     | COMBO NO. 10 2 BEEF & BEAN BURRITOS & 32 OZ. TALLSUP \$2.59 |





GFWC/Prospectus Study club member Marty Bain (shown at left) had the program on Feb. 6<sup>th</sup>. Shown at right Cindy Jackson, President.

### Study Club Leans About State of Liberty

GFWC/Prospectus Study Club learned about the Statue of Liberty when they met Feb. 6 at the Library. Marty Bain had the program. The program was under Citizenship, Community and Safety. Roll call was answered with safety tips.

Cindy Jackson, president, conducted the business session. Plans were made for the February Coldwater Manor party.

Present were Cindy Jackson, Laurie Spurlock, Michelle Lutes, Dorothy Haile, Patti Vincent, Linda Swain, La Veil Haggard, Pat Hartman, Jill Killian, Mattie Baskin, Oline Caraway, Paula Everett, Marty Bain.



## Meet Your Candidates

Participants in the "Meet Your Candidates" forum held Thursday, February 7 (l/r) were David Hass, David Green, Kim Allen, Steve Pemberton, Jack Haile, Valerie McAlister, Jeff Crippen, Dana Buckles, and Jay Murphy.

### The Imagination Station News

By Gaynelle Riffe

The Imagination Station Computer Lab has been used every open day. Four days a week. It is mostly used for "my space, You Tube and Games" which has been disappointing but as our computer tech says, "They are learning and improving a skill."

The Computer Lab will be closed Feb. 10-17, Feb. 25-March 10, March 24-31. The Computer Lab is opened by volunteers and can be open on request. Call Jeanne Bell or Laurie Spurlock.

The Imagination Station tries to offers educational exhibits for children and adults in Arts and Sciences.

The Imagination Station offers a meeting place for boy and girl scouts and community programs such as the voter's forum. The bills for utilities, insurance, audits, building upkeep are paid with donations from the public, fund raisers and some rental fees. Matching Grants provide building upgrade.

The Imagination Station has received another exhibit from the Discovery Center in Amarillo. It is in storage with plans in the making on how best to use it.

The next exhibit will be the Week of the Young Child in April with the theme "On the Farm".

The Imagination Station is seeking persons interested in helping the program continue as board members, volunteers for programs and program ideas.

### Wheat Producer Meeting Looks Into Next Century

By Kay Ledbetter

AMARILLO An in-depth look at opportunities and challenges Texas, Oklahoma and Kansas wheat producers may face in the next century will be the focus of a seminar on Feb. 21 at the Texas AgriLife Research and Extension Center at Amarillo.

The wheat research, marketing, crop protection and variety update seminar is sponsored by Texas AgriLife Research, the Texas AgriLife Extension Service, AgriPro Wheat and the Texas Seed Trade Association.

Registration begins at 9:30 a.m. and the program will end around 4 p.m., said Leon Church, AgriLife Extension agricultural and natural resources agent in Potter County. Lunch will be provided. In addition to the faculty from the sponsoring agencies, there will be speakers from the Oklahoma Wheat Commission, Texas Department of Agriculture, Texas A&M University and Kansas State University. Morning session topics cover the wheat seed certification process. Quality-based wheat marketing and grazing issues. The afternoon session will address new wheat varieties, the future of wheat breeding, paying Royalties on certified wheat seed and patents and intellectual property protection systems.

Three continuing education units will be offered for licensed pesticide applicators and certified crop advisors, Church said.

For further information, contact an AgriLife Extension agent or Rob Borchardt at AgriPro Wheat, 940-552-8881.

### Lunch N Learn EE Group Meeting February 20

By Susie Spurlock

The Sherman County Lunch N Learn Extension Education Study Group will meet Wednesday, February 20th from 12 Noon to 1:00 p.m. in the meeting room of the County Extension Office.

The program will be on Houseplants- health benefits and care of plants. Lunch will be served at the meeting for a small charge of \$5.00 per person. Interested individuals are asked to contact the County Extension Office by 5:00 p.m. Tuesday, February 19 so that adequate arrangements can be made.

For more information about the Study Group or to reserve a seat at the meeting, please contact Texas AgriLife Extension Service - Sherman County at 806-366-2122 or call Jean Everett at 806-966-5346.

Educational programs of Texas AgriLife Extension Service are open to all citizens without regard to race, color, sex, disability, religion, age, or national origin.

### Kerrick News By Marylou McDaniel

Mike McDaniel and daughter Merilee went to Roby, Texas, Feb. 5 to see a basketball game that was coached by Johnny Hudson. They visited with the Hudson family, Nita, Braidon and Boston; Coach Hudson's girl's team won big and was advancing.

Marylou rode to Lubbock with Mike.

Elaine & Leo Home were Sunday dinner guests of Bill & Pat Boren. Pat is doing better after being ill.

Nicholas McDaniel left Tuesday to return to Iraq. Everyone's best wishes go with him.

Terry & Barbara Schoonover visited in Guymon Sunday with Terry's brother Todd Lewis. Also his folks, Raymond & Eula Faye Lewis. Granddaughter Rese went with them.

Ted Irlbeck has been visiting with son Randy & family in Dallas.

Ciccy Harris is doing some short trips. She has been a sick gal.

## Births

Austin is thrilled to have a brother to play ball with him in a few years. Daniel Gene arrived during the worst snowstorm of the season in Des Moines, Iowa on Feb. 6<sup>th</sup>. Weight 8 lbs 6 oz 21 1/2 inches long.

Proud parents are Craig & Julie Sladek. Grandparents are Ken and Nancy Rittgens and Janice Sladek

\*\*\*

Patriotism is your conviction that this country is superior to all other countries because you were born in it.

—George Bernard Shaw

\*\*\*

## Down Under Bowl Fundraiser for SANDRO GOMEZ Rack of Ribs

**\$20.00**

(cooked by Texas Brand BBQ)

To pre-order, please call 806-930-4684, 396-2073 or 366-2427



- Feed yard operating loans
- Dairy operating loans
- Crop and livestock production loans
- Real estate loans

## Generous Patronage Sets Us Apart

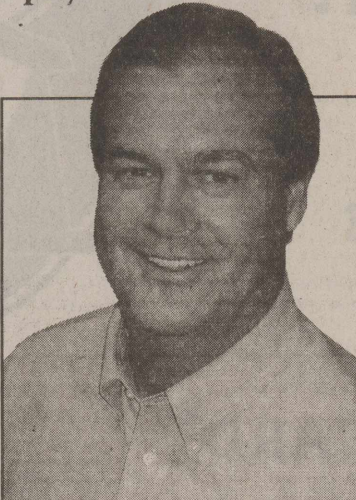
"Unlike traditional lenders, we offer generous patronage payments back to our borrowers."

We don't have to get all your business, just the part where you'd like to save money. We're experts at real estate and other ag-related loans. We've got rates that will compete with anybody in this area, plus you get money back!"

Johnny Schmucker,  
Great Plains Loan Officer

1315 E. 1st Street  
Dumas, Texas  
(806) 935-6851

greatplainsagcredit.com



GREAT PLAINS...GOOD PEOPLE

### First Assembly of God

Kevin Anderson, Pastor  
921 Fulton  
Sunday School 9:45 am  
Morning Worship 10:45 am  
Evening Worship 6:00 pm  
Wed. Bible Study 7:00 pm

### First Christian

Rev. Walter Reed  
5th & Main

Sunday School 9:45 am (nursery)  
Morning Worship 10:45 am (nursery)  
No Sunday Evening Worship Service  
Wed. : Youth Choir 3:45 pm, Chi Rho 5 p.m.,  
CYF 6 p.m., Bell Choir 6:50 p.m., Adult Choir 8 p.m.

### First United Methodist

Rev. Gene Weinette  
520 N. Main

Sunday School 9:20 am  
Morning Worship 10:30 am  
Junior High UMY 5:00 pm  
Senior High UMY 6:00 pm

### St. Joseph Catholic

Father Aleksy Kowalski  
6th & Pearl

Rectory - 366 - 3687  
Sunday morning: 9:00a.m. (English), 12 noon. (Spanish)  
Service - Wed. Thurs. Fri.—6 p.m. Sat. 5 p.m.  
Sacrament of Reconciliation: Before Mass, or by appt.  
Christian Formation Classes: K-6th Grade, Wed. afternoon  
Jr. & Sr. High, Wed. - 6:30-8:30 p.m.

### Church of Christ

Ernie Maiwald  
N. 3rd & Chestnut

Sunday School 9:30 am  
Morning Worship 10:30 am  
Evening Worship 5:00 p.m.  
Wednesday Bible Study - 7:00 p.m.

### Heritage Bible Baptist

Pastor Rick Carter

302 S. Main - For More Info—call 396-2212  
Morning Worship - 11 a.m.  
Evening Service 6 p.m.  
Wed. Service - 7:30 p.m.

### First Baptist

Pastor Jason Stone  
702 N. 3rd

Sun.—Coffee - 8:30 Sunday School - 9:30  
Worship Service - 10:30  
Wed. - Children—6:00, youth—7:00

### La Mision Bautista

Mision Bautista  
401 S. Wall 396-5376

Domingo-(Sunday)  
Estuela Dominical 9:45 am

Miercoles (Wednesday)  
Servicio De Adoracion 11:00 am  
& Servicio De Oraction 6:00 pm  
Servicio De Adoracion 6:00 pm  
Susninios Durante El Servicio.

Estudio Biblico

Se Cuidamos



## The Churches of Stratford Welcome You

### Bible Verse of the Day

- Colossians 3:17-  
*And whatever you do, whether in word or deed, do it all in the name of the Lord Jesus, giving thanks to God the Father through him. Lord of all pots and pans and things, Since I have no time to be A Saint by doing lovely things Or watching late with thee, Or dreaming in the dawnlight, Or storming heaven's gates, Make me a saint by getting meals And washing up the plates. — Anonymous*

### This page Sponsored by

STRATFORD GRAIN

396-5541

LAUTZ

769-4485

STRATFORD STAR

366-5885

WALTER LASLEY &

SONS, INC.

753-4411

### Templo Hispano Eben-Ezer

Pastor Roberto Frescas

205 N. Poplar - Hwy 287

Escuel Dominical 9 a.m.

Serbicio 5 p.m.

Meir C Les Serv De Ador 5 p.m.

### Kerrick Community Church

Pastor Roy Harris

Community Building

Sunday Morning - 11:00 a.m.

Sunday Evening-6:00 p.m.

Prayer Meeting - 7:00 p.m. Wednesday





## ELK TALES

By Lynda Hauser

On Monday, February 18, Stratford ISO students will have the opportunity to hear Dr. Eric Cupp, one of the state's most dynamic and effective speakers, thanks to a very generous grant funded by the Stratford Education Foundation. Assemblies will be held at each campus, and parents and all interested individuals are encouraged to attend one of them. The assembly times are as follows: high school - 10:30-11:30; junior high - 12:45-1:45; Mary Alien - 2:00-3:00. A detailed article about Dr. Cupp and his topics is found elsewhere in this publication.

Some of our students participated in a practice UIL Academic Meet in Canadian last Saturday. Those who placed are as follows: Lucero Ortega - 4th Informative Sierra Valenzuela - 3rd Persuasive Trena Maiwald - 4th Prose Luke Haile - 6th Prose Whitney Reese - 7th Poetry Jennie Spurlock - 2nd Accounting Becky Rosales - 3rd Accounting

Spelling: 2nd place team: Deborah Molina, Katie Killian, Braden Hamilton, and Sunny Russell. Deborah Molina and Katie Killian tied for 6th place in Spelling.

Tyler Gilliland - 3rd News Writing

Tyler Gilliland - 5th Headlines

Congratulations to these outstanding students.

The 2007-2008 annuals are on sale now. You can order online at [www.stratfordisd.net](http://www.stratfordisd.net)

, or come by the high school library and see Shari Hudson to order yours.

Our local American Legion Post donated the complete set of KACV World War II resource materials to the high school library. The set includes the seven-part PBS series on DVD and the companion volume, The War An Intimate History 1941-1949\$ "Texas Panhandle WWII Stories" on DVD; 2 CD's entitled "The Second World War—I Can Hear It Now" narrated by Edward R. Murrow; and the musical CD "#1 Hits of the Second World War". Thanks so much to the American Legion for this invaluable resource.

The American Legion also has chosen Manuel Chavoya as their representative to Boys' State and Chandler Lutes as alternate.

The One Act Play cast will have a clinic on Friday in Sunray.

The end of the 4th Six Weeks is this Friday. Just 2 more Six Weeks' to go! Can you believe it?

Quote of the week: "What we see depends mainly on what we look for."

### Presley Fund Set Up At Bank

A medical fund for the son of J.B. & Amanda Presley has been set up at the First State Bank of Stratford. For more information contact the First State Bank 396-5521.

\*\*\*  
A man's country is not a certain area of land, of mountains, rivers, and woods, but it is a principle; and patriotism is loyalty to that principle.  
—George William Curtis

\*\*\*  
A man's feet must be planted in his country, but his eyes should survey the world.  
—George Santayana

\*\*\*

### HAIL AND STRAIGHT LINE WINDS

Thousands of thunderstorms strike Texas every year, many of them severe. A severe thunderstorm is defined as a storm that produces winds of at least 58 mph; hail three-fourths of an inch in diameter or a tornado.

While tornadoes are extremely dangerous, wind and hailstorms can do similar damage, so thunderstorms should never be taken for granted. Dangers include:

1 Straight line winds, or winds in excess of 100 mph, strong enough to uproot trees and cause substantial damage to buildings.

2 Downburst winds - severe and rapid downdrafts of air that push damaging winds outward on or near ground level, especially dangerous to aviation.

3 Hail falling to earth at speeds nearing 100 mph, damaging trees, crops, automobiles and buildings. Hail storms cause more than \$1 billion in damage nationwide each year.

As with other severe weather threats, the key is to monitor TV and radio broadcasts as well as NOAA weather radio for storm warnings and watches.

When straight line winds threaten, respond the same way you would to the threat of a tornado. Seek shelter in an interior room on the lowest floor, such as a bathroom or closet. Stay away from windows.

If you are outside, cover your head to protect against flying debris. If you encounter hail while driving, turn around. You may be driving into the core of a thunderstorm where tornadoes form.

Domestic cats can purr while they're inhaling and exhaling. Wildcats only purr while exhaling.

## LANDOWNER CONSIDERATIONS FOR WIND FARM LEASES

Wednesday - February 27<sup>th</sup>  
9:30 a.m. - 12:00 Noon  
Sherman County Barn

Frank Horak with Astek Wind Energy, Inc Austin, TX

Rod Wetsel with Steakley, Wetsel & Carmichael, LLP Sweetwater, TX

These are two of the leading wind farm authorities in the U.S. and they will be here to speak to landowners on helpful procedures in handling the wind farm companies. At the end of the meeting you'll have a chance to ask questions and handouts will be available. There is no registration fee and reservations are not necessary.

Sponsored by:

High Plains RC&D and Sherman County Development Committee, Inc.



Chandler Lutes

Chandler Lutes is a junior at Stratford High School. He is a member of the Elk football and track teams. He is also a member of the student council and a leader of the FCA.

**Duncan Chevrolet**  
**PERFORMANCE**  
Student of the Week

[www.duncanchevrolet.com](http://www.duncanchevrolet.com)

# REWARD CHECKING

...ISN'T IT ABOUT TIME YOU START REWARDING YOURSELF

[www.firstclassbanking.com](http://www.firstclassbanking.com)

### START EARNING TODAY...

Reward Checking is the newest personal checking account available at First State Bank. It acts like a regular checking account but has bonus features that actually reward you for having it.

...YOU DESERVE IT!

- EARN A GREAT INTEREST RATE
- EARN FREE ATM USE ANYTIME • ANYWHERE
- FREE REWARD DEBIT MASTERCARD<sup>®</sup>
- FREE ONLINE BANKING AND BILL PAY

Some restrictions do apply. \* Annual Percentage Yield, APY correct as of 2/1/08. If minimum requirements are not met, the current APY \* is .25%. Rate is variable to change after account opening.

4.85%<sup>APY\*</sup>  
E-RATE  
ON YOUR BALANCE  
UP TO \$100,000

3.04%<sup>APY\*</sup>  
E-RATE  
ON YOUR BALANCE  
OVER \$100,000

OR

.25%<sup>APY\*</sup>  
STANDARD RATE  
ON ALL BALANCES



"First-Class Banking"

STRATFORD - DUMAS - DALHART

Stratford  
302 North Main • 396.5521

Dumas  
500 East 1st • 806.935.4184

Dalhart  
322 Denver • 806.249.5513





It Pays To Look In The

# Star Classifieds

Phone 366-5885

..The Best Salesperson Around

## Help Wanted

**Cimarron Feeders** needs a part time member to join the Doctor Crew. Excellent facilities, team atmosphere & respect for refined skills and quality performance. Must be able to work weekends and some weekdays. Questions? Call: Garrett @ 580-543-6383 ext. 1646. Must pass physical and drug test. EOE  
2-7-c-08

**COLDWATER MANOR** has an opening for C.N.A., L.V.N. or R.N. and a Maintenance Mgr. Apply in person. EOE  
2-7-c-08

The City of Stratford has an immediate opening for a full-time Administrative Assistant/Data Entry clerk. This position reports to the City Manager. Duties include data entry, word processing, filing and other duties as assigned. Background check and non-disclosure agreement are required. Applications will be accepted through Friday, February 15, 2008. Please apply at City Hall (513 N 3rd St) between the hours of 9:00 AM and 4:00 PM, Monday through Friday you may contact the City Manager at 366-5581 if you have any questions. The City of Stratford is an equal opportunity employer.  
2-7-08-c

Seeking career-oriented full-time teller. All applicants must possess excellent customer Service skills; and other previous teller or other Cash handling experience preferred. First State Bank offers complete pay along with excellent benefits. Interested applicants should bring a resume and apply in person at First State Bank, located at 302 N. Main between the hours of 8 a.m. and 4:30 p.m. First State Bank is an Equal Opportunity/Affirmative Action Employer  
2-7-08-c

Cimarron Feeders needs a full time equipment operator. Duties include operating loader, scraper, tractor and valid driver's license needed. Wage based upon experience. Great benefits include: Medical, Dental and Vision Insurance, 401 K and vacation. Please contact Rob at 580-543-6383 Ext. 1655. Successful completion of Pre-employment drug screen required. EOE M/F  
2-7-08-c

## For Sale

Full size mattress set-Brand new, still in package. Sell for \$125. 806-341-6233.  
2-7-08-tfn

**For Sale or lease 212 N. Poplar 40' by 60' office building.** Call 806-679-5585.  
11-1-tfn

### DEKALB

**Bar Double Diamond Seed**  
1580-544-2545-1-580-517-1700  
1-24-08-tfn

**FOR SALE: MERCURY, GRAND MARQUIS-LS.** THIS CAR HAS BEEN WELL MAINTAINED AND GETS GOOD GAS MILEAGE. IT RUNS GREAT AND IS VERY ATTRACTIVE. Please call Joe Flores during the day at 396-5538 or 396-2422 and after 6:00 p.m. at 396-5389.  
2-14-tfn

**BED-\$250-Brand Name King PT Mattress Set.** NEW in plastic, warranty, can deliver, 806-341-6233.  
2-7-08-tfn

Let's Make Arrangements has bridal selections for Shawnda McDaniel bride-elect of Scott McAlister  
3-6-08-c

**NEW QUEEN PillowTop mattress set.** Unopened, w/warranty. Delivery available. Sacrifice \$150. 806-341-6233.  
2-7-08-tfn

**Mattress Set-Queen Orthopedic \$140 Must Sell.** Still in plastic, Can deliver, 806-341-6233.  
2-7-08-tfn

**NASA VISCO memory foam mattress set,** never used, must move \$350. 806-341-6233.  
2-7-08-tfn

A brand new twin mattress and box. Sealed in plastic w/warranty \$100-806-341-6233.  
2-7-08-tfn

## Houses for Sale

For Sale: Country Living, 15 miles from Stratford. 25 from Dalhart, 4000 plus living, 4 bedrooms, 3 bath, formal dining, oak flooring, basement, 40 x 50 Insulated shop. All rooms extra large. Call 366-3233 for appointment. See pictures @ Shemancountytx.org  
6-28-tfn

**Ad Rem Land Co., LLC** Real Estate  
803 Bliss - Dumas, Texas 79029  
MLS Se Habla Español

935-7364

E-mail: adrem@adremland.com  
Website: www.adremland.com

**Commercial Property, 207 .exas Ave., Stratford 80 x 100 shop with 4.4 acres located on Dalhart Highway, 2 overhead doors with off space. \$129,000.**

**Lindahl Realty, LLC**  
701 S. Bliss/ PO Box 572  
Dumas, Texas 79029  
(806)935-7300 or toll free (866)935-7300

### Residential Property

**14433 Hwy 287 Stratford**  
\$127,500

4/2 1997 Saturn Manufactured Home on 24 acres. Cthd. Ceiling, wood burning f.p. in Living room. Kitchen has island with eating bar, pantry, and built-in desk. Master bath has walk-in shower, dbl. sinks, and garden tub. 4 car Quonset garage w/ elec. Barn with 220, & 2 addtl. Quonsets on concrete slabs.

**408 N. 8th Stratford**  
\$85,000  
Room & more Room! In this 3/1.75/1 home w/ office or 4th bedroom. Dining w/built-in corner hutch. Bedrooms with walk-in closets. Vinyl & carpet throughout home. Utility room. Fenced backyard, Wood deck, storm windows & doors, and storage building.

**402 N. 8th Stratford**  
\$20,000  
2/1 Home on Lg corner lot. Wall heater, evaporative cooler, and gas stove in kitchen.

**Commercial Property**  
501 S. Poplar Stratford  
\$29,900  
Commercial Building with lobby area, 3 offices, 2 bathrooms, & shop With 10x12 overhead door. It has approx. 1,776 sq. ft.

**301 N. Poplar Stratford**  
\$275,000  
NICE! NICE! NICE! 60x100 Commercial Building on huge lot. Building has several overhead doors, showroom, office, and handicap accessible restroom.

**Acreage**  
\$640,700  
Approx. 640.7 Acres w/ dbl. wide mobile home and 2 car detached garage just South of Stratford.



**911 N. Chestnut**  
\$89,000  
TAKE A LOOK AT THIS!!! 3/2.75/1 Brick home with steel trim. Kitchen w/stove, d.w., pantry & dining area w/carpet. Mtr. Bedroom with wall closet and drawers below and 1.75 baths. Fireplace in living room with gas starter. Walls have wood paneling and sheetrock. Second bdrm. W/1.75 bath and walk-in closet. Cabinets in utility room w/built-in ironing board. Heat pump. Third bdrm & office built in bookcases and cabinets.

## Legal Notices

### Public Hearing

A Public Hearing will be held Thursday, February 21, 2008, at 6:00 p.m. at SCOT Hall to discuss a possible zoning change to prevent the sale of alcohol from the 000 Block of Main Street to the 800 Block of Main Street and preventing the sale of alcohol within prescribed distances from any school, church, medical clinic, day care or residential area.

## Services

I will baby-sit evenings or weekends.  
Linda Forthman-366-2586.  
2-14-p

## For Rent

House to Rent: 609 N. Grace. Call 303-618-0060.  
1-10-tfn

For Rent: 2BR, 1 bath Apartments at 1319/1320 N. Chestnut. Newly Remodeled, spacious, kitchen appliances included. \$435-\$450 month. 806-244-3418  
2-5-08-c

## Cards of Thanks

To Friends & Neighbors  
Thanks to so many especially for their prayers and those who brought food and gifts, flowers and cards. Please accept our heartfelt thanks. God Bless everyone.

Lucy, Clay and Mike

### Berry-Walnut Muffins

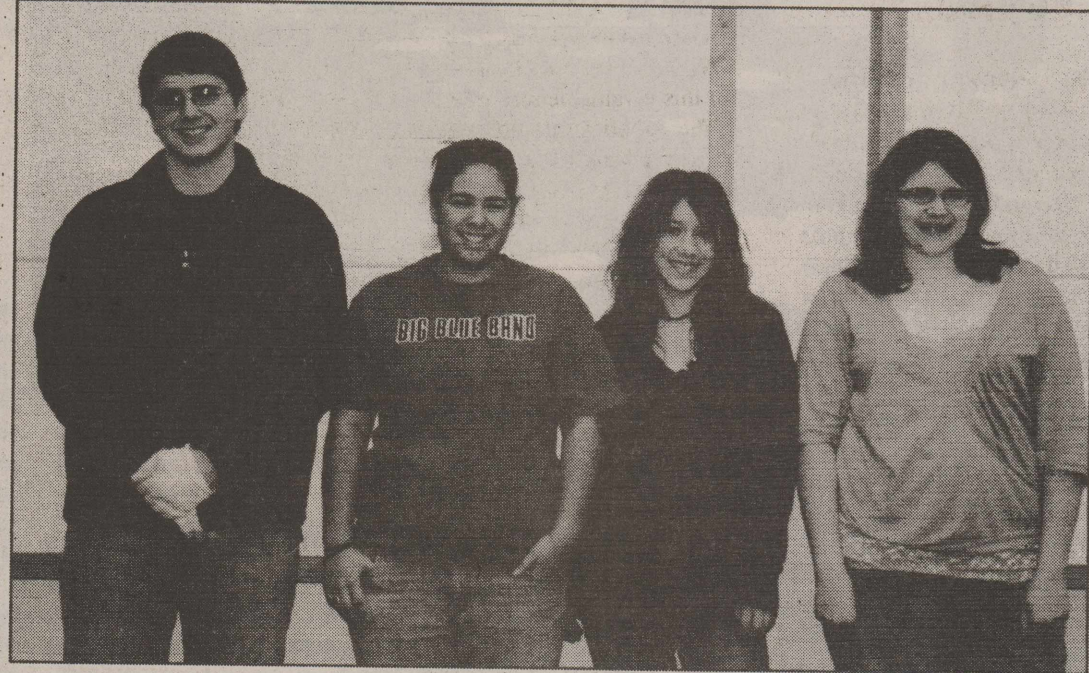
**Ingredients:**  
1/2 cup plus 2 tablespoons Diamond Chopped Walnuts  
2 cups flour  
1 1/2 teaspoons baking powder  
1 teaspoon baking soda  
1/2 teaspoon salt  
1/2 cup buttermilk  
1/2 cup packed light brown sugar  
1/2 cup unsalted butter, melted  
2 eggs  
1 teaspoon vanilla extract  
1 cup fresh or unsweetened frozen raspberries, blackberries or blueberries

**Directions:**  
Preheat oven to 350°. Spread walnuts on a baking sheet or in a shallow pan. Bake, stirring once or twice, until lightly browned and fragrant, 5 to 10 minutes. Let cool. Line 14 to 16 (2 1/2-inch) muffin cups with paper

baking cups or coat with vegetable oil spray.

In a large bowl, whisk together flour, baking powder, baking soda and salt. In another large bowl, whisk together buttermilk, brown sugar, butter, eggs and vanilla. Stir berries and 1/2 cup of the toasted walnuts into buttermilk mixture, then stir in flour mixture just until dry ingredients are moistened (do not overmix). Spoon batter into muffin cups, filling each about three-fourths full. Sprinkle muffin tops evenly with remaining 2 tablespoons walnuts. Bake until a toothpick inserted into the center of a muffin comes out clean, 20 to 25 minutes. Cool 5 minutes in the pans, then transfer to a wire rack. Serve slightly warm or at room temperature.  
Yields 14 to 16 muffins

This recipe comes from Diamond of California, the most popular brand of nuts for year-round meal preparation, baking and natural snacking, making it easy to add wholesome, versatile nuts to your daily menu without ever getting bored.



## Students Receive Rating of Excellent

Students from left, Luke Haile, Anna Torres, Catheryn Griffin and Anne Brooks performed Solos on Saturday, February 2 at solo and ensemble contest. All four students received a rating of Excellent. Congratulations!

15 Years, 4500 Babies In Dumas

## Women's Health Center

Normal and high risk pregnancies  
Gynecologic cancer screening  
Breast cancer screening  
Infertility and family planning  
Menopause and hormone problems

**Dr. Turhan I. Baykan, M.D.**

Specializing In  
OBSTETRICS-GYNECOLOGY

110 S. Bliss Monday-Thursday 8 a.m. - 5 p.m. Friday 8 a.m. - 12 noon

## Business Directory

**WALTER LASLEY & SONS INC.**

*THE Feedyard*  
Since 1953  
753-4411

**Stratford Grain Co.**

Stratford 396-5541  
Lautz 769-4485

4 North Main

**Stratford Auto Electric**

119 S. Wall, Stratford, Texas 79084  
Phone 366-5941 366-5857  
Alternator, Starter, Magneto Repair  
Since 1964

**Betty Brown's Medical Claim Service**

PO Box 20118 Phone 806-367-5617  
Amarillo, TX 79114 Cell 806-367-0070

This Space Available

**A&I PARTS CENTER**  
AUTOMOTIVE AND INDUSTRIAL PARTS

201 N. 2nd Street - Stratford, TX 79084  
Tele (806)366-5592 \* Toll-free 800-624-5494  
Fax (806)366-2583

WINDSHIELDS • LOCKOUTS • CUSTOM & COLLISION WORK  
**DON'S COLLISION CENTER**  
Owner - Don Aduddell

319 S. Poplar  
Office 806-396-2812 • After hours 806-366-3233

**Stratford Hospital District**

Coldwater Manor  
Stratford Family Medical Clinic  
Stratford EMS  
Proudly serving the medical needs of Stratford and Sherman County

**TRCC # 11427 PALMER CONSTRUCTION**

New Construction  
Remodeling  
Roofing  
Free Estimates  
806-333-4253 806-362-4253

**Joe Taylor, Photography**  
PO Box 27  
1305 N Chestnut  
Stratford, TX 79084  
806-366-2459  
Weddings, Portraits, Etc.

**Ivy Insurance Agency**

Joanie Ivy  
Auto • Home • Life • Commercial  
Bus: (806) 396-5810

P.O. Box 510  
Stratford, TX 79084  
Phone 806-366-5557

**Duncan Chevrolet**  
www.duncanchevrolet.com  
E-mail duncanchev@xit.net

**Jesse's Gun Shop**

Gun Repairs • Sales • Cleaning  
Hours: Mon. - Fri. - 1730 - 2000  
Sat. - 0800-1600  
Jesse Remendez  
(806) 763-4454  
(806) 366-3134 Shop 111 S. Maple  
Stratford, TX 79084

**Your Home Town Pharmacy..**

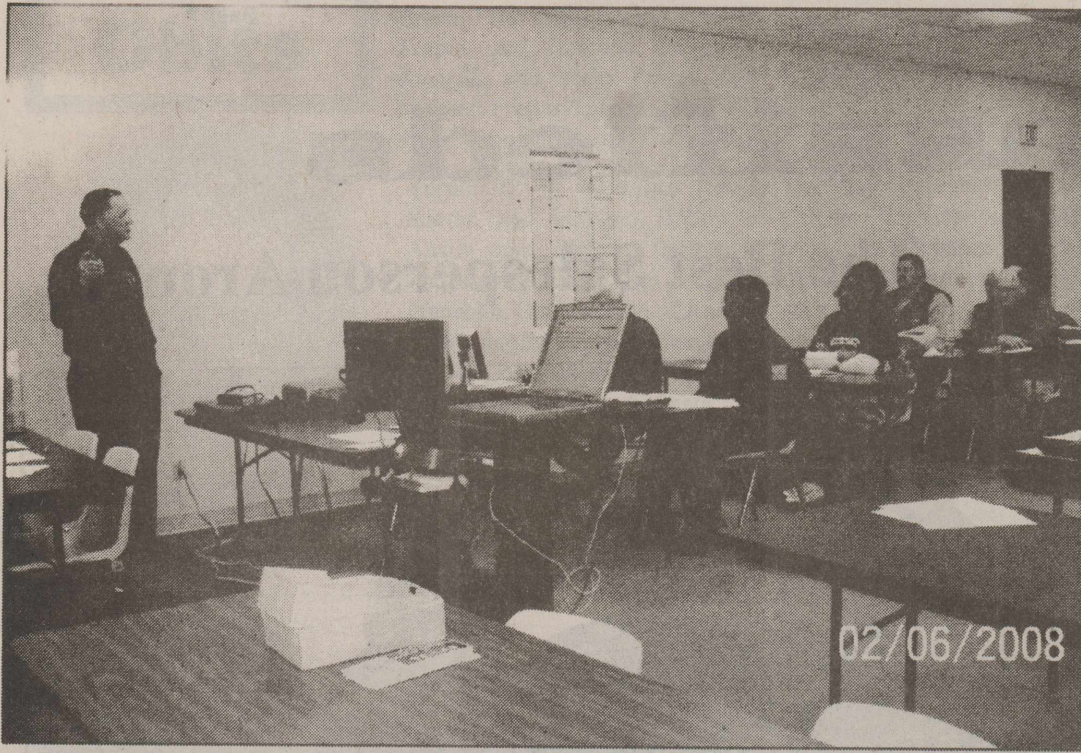
ELK PHARMACY  
317 N. Main  
P.O. Box 320  
Stratford, TX 79084  
806-366-4505  
Major Prescription Plans Accepted  
Gayland Vandiver, R.Ph.  
Debbi Vandiver Owners  
Cotton Candy...Millionaire Candy...Gifts  
Cookie and Balloon Bouquets

**FARM BUREAU INSURANCE**  
National Quality Award—35 Year Member

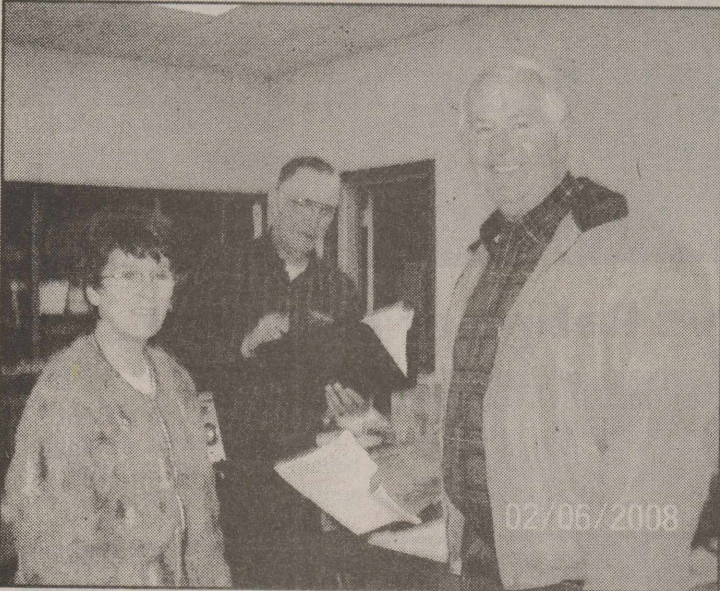
**JOE FLORES** P.O. Box 25  
AGENT Hwy 287S.  
Stratford, TX 79084

Office Phone/806-396-5538 Bus. Phone/806-396-2422  
Residence/806-396-5389 Fax/806-396-2113

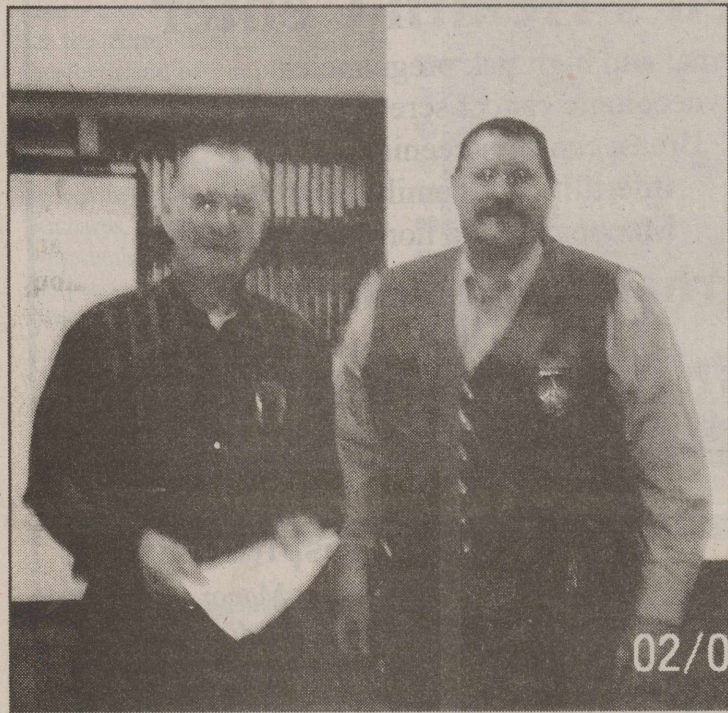




Shown at left some of the folks that attended the class on Courthouse Security.



Shown at left- Sherman County Judge Carter and Charles Sebesta and Hansford Co. Judge Wilson.



Shown above Charles Sebesta, instructor and Sheriff Jack Haile.

### Courthouse Security

On February 6, the Sherman Co. Sheriff's office and the Sheriff's Assn. of Texas hosted a class on Courthouse Security. Twenty people attended with people from Hansford Co., Randall Co., Dallam Co., Hartley Co., along with Sherman Co. and Stratford Police Dept. A big thank you to Jimmy Lanning for allowing us to use the excellent facilities at the Stratford EMS Building to conduct the class.

#### Food

(NU) - Howard Helmer, the Guinness record-holder for fastest omelet maker, offers two secrets to speed cooking: 1) know a few, simple recipes which you can vary to make new dishes and 2) use convenience foods, ready-cut or ready-cooked foods from the supermarket salad bar or deli, or leftovers and store-cupboard ingredients, to flavor them.

Consider scrambled eggs. They're quick and easy to fix, and popular everywhere, and by experimenting with herbs and spices, you can experience a world of flavors. Whatever you add, the eggs will provide the highest quality protein of any food, naturally.

#### Food

(NU) - There's a chill in the air, which means the season is upon us for warm gatherings around holiday tables with friends and family. With such hectic schedules this time of year, we're all looking for stress-free ways to enjoy the holidays.

When it comes to food, a simple appetizer can make an elegant statement. Choose flavorful ingredients right from your pantry, such as raisins. The sweetness of raisins adds a wonderful depth of flavor to savory dishes, and they become even more succulent when plumped in juices or wine.

Go to [www.LoveYourRaisins.com](http://www.LoveYourRaisins.com) for easy and delicious raisin recipes for your next holiday party.

**Freshest Flowers in Town!**  
 at  
**Let's Make Arrangements**  
 Professionally done for your  
 Valentine Needs!  
 Large Selection of Roses—  
 Many Dozen, Dozen, 1/2 Dozen,  
 Chocolate Covered Strawberries,  
 Chocolates, Specialty Vases for your  
 arrangement, Bears, Spring Mix  
 Arrangements & Much Much More for  
 that Special Valentine!!!  
 Call 366-ROSE (7673) or 366-2092

Hurry! Sale starts February 1st - 15th!

**Sweet Deals!**  
 Get a Samsung A436, Nokia 6085 or Nokia 2660 for only \$29.95!

Dalhart 244-3355 1624 Tennessee Ave.	Stratford 366-3355 401 N 3rd St.	Dumas 935-8777 1545 S Dumas Ave.	Hereford 364-1426 809 S 25 Mile Ave.
--	--	--	--

**XIT** Wireless

Not good with any other offer. Limited time offer. Some restrictions apply. See store for details. Some services not available in all locations.

**Valentine**  
**Headquarters!**

**Elk Pharmacy**  
 317 N Main Stratford, TX | 806-366-5505

Millionaire Candy    Cookie Bouquets    Balloon Bouquets  
 Candy Bouquets    Woodwick Candles    Jewelry  
 Cross T-Shirts

**FREE DELIVERY IN TOWN!**

**ROSES**  
 Our prices will make you Happy!

**BIG Bears!**  
**Little Bears!**