

Floyd Co. Hesperian

Published Every Thursday By HESPERIAN PUBLISHING CO.

HER STEEN Editor and Manager

Entered as second class matter April 20th, 1907, at the Post Office at Floydada, Texas, under the Act of Congress of March 3rd, 1879.

SUBSCRIPTION PRICES:
 One Year \$1.50
 Six Months85
 Three Months45
 In Advance

Advt. Rates Furnished on Application

Foreign Advertising Representative THE AMERICAN PRESS ASSOCIATION

CITY POLITICAL ANNOUNCEMENTS

The Hesperian has been authorized to make announcement of the following candidates for city offices as indicated, at the City Election to be held on April 3rd, 1923:

For City Assessor, Collector and Secretary:

- E. PLEAS NELSON.
- BURL BEDFORD
- ROE MCCLESKEY.

For City Marshall:

- P. G. STEGALL.
- CHAS. TROWBRIDGE.
- J. R. McFARLAND
- W. H. FINLEY

FOR MAYOR OF FLOYDADA

- F. P. HENRY
- A. L. BISHOP

With the avowed purpose of making Plainview one of the most attractive places in all Texas the Plainview Board of City Development has announced prizes totalling \$100 in cash for the most beautiful homes in that city, to be judged this fall.

Some newspaperman, cognizant of the charge against newspapers that they print too much of the crime news of the country, to the neglect of other more wholesome news, has gone to the trouble to count up for a month the per centage of crime and sensational news in connection with crime bears to the entire contents of the newspaper. This fellow declares that during the Herrin scandal in Illinois and the Mer Rouge scandal in Louisiana the per centage of crime news was about six per cent of the whole content of the average daily. If this statement be correct, is it possible the reader reads and is impressed by only that which he desires to read, passing up the other material? Certainly, we are not impressed by that in which we are not interested. It will do to study about.

A very clever hog thief has been operating around Plainview. Not to be caught red-handed through the grunts and squeals of the protesting porker as he shunted him out of the pen into his wagon the thief is said to have used chloroform. One farmer the other night went out with his shotgun and shot a man who was said to be near the farmers hog pen. The farmer examined his hogs and found several of them unconscious and, he thought, dead. In an hour or two the swine "came to" and the method in the madness of the thief became apparent.

About every so often we like to print that tale told on the surgeon for the benefit of the printer. How the surgeon wanted quotations on a lot of letter heads, in different sizes, grades and colors, and he wanted the form left standing. You know how the printer's reply read. He wrote back: "Am in the market for one operation for appendicitis, one, two or five-inch incision, with or without ether; also with or without nurse. Quotations must include putting appendix back and cancelling the order

if found sound. Successful bidder is expected to hold incision open sixty days, as I expect to be in the market for an operation for gallstones, and I want to save the extra cost of cutting."

Speaking of re-printing jokes and tales of one kind and another, probably no country newspaper man and even the big boys but reprint some bunk like the above to please the desire of some good friend or maybe they print something for some fellow because he has a penchant for demanding more than he is entitled to on the general principle that if you ask not you will not receive. The printer prints some of this kind of citizen's material on the ground that the law of averages ought to apply—surely there is some good in some of it. But there's one brother who appears at the newspaper's door about so often who has something of interest he wants printed, and he has a sort of a shine in his eye, a holy zeal as it were. He has a copy of a posthumous message from the Saviour found by workmen who were clearing a field near Jerusalem or Bethlehem or some convenient point. Anyway he has the message and it conjures against many things. It also conjures one to do several things, among which is that the recipient must not withhold the knowledge imparted in the letter but must forthwith give it as much publicity as possible. Where more publicity than through the newspaper? And to the newspaper he comes. He must wash his hands of this thing at any rate. Whether it be fake or not he's taking no chances. And the printer has to print or refuse to print. Well, many years ago printers wore out a font or two of type, doing and redoing this "message." And even yet, the printer has to do some tall arguing: In recent years many a man has lost sleep worrying because the printer would not print the "message." We are sure they must have lost sleep over it, for if not, why should they have trudged in with it and labored with the poor deluded printer so hard to get him to see the light? And then have left in such downcast manner?

Good times! Bad times! They come and go with the swing of the pendulum, but there be those, sometimes in the majority it seems, who in bad times never think there is a possibility of good times again. We may as well conclude now that within a period of ten years from today there'll be two or three more or less marked eras of good times in this particular section of the country, followed by reaction. It is reasonably certain this will be true. It has been in the past. Why not make up our minds to keep "sawing wood," building and working for a greater Floydada, a greater Floyd County? And be prepared to take the times as they come. If good, that's good; if bad, that's no more than we anticipated, and so that's good, too. Nothing is going to take the place of good old hard work at anything, good times or bad.

A colonel of the Second Division, who has been talking about the boys of the 36th, is up for confirmation by the senate for rank as a major general. Senators Culberson and Shepard want the colonel to prove his statements before the president's appointment is approved by the senate. Meanwhile the boys of the 36th who fit and bled on the battlefield beside the Second Division and the Marines are mostly "hot under the collar" about it. In this connection we are reminded of a little tale Judge Leake over at Vernon tells. He was a member of the famous 77th and was in Major Whittlesey's gang who got separated from the main body of the army and almost annihilated, finally winning immortal glory by pulling out of the tight. Their reply, "Go to hell," which Major Whittlesey is said to have made to the German envoys who wanted the bunch to surrender,

was made, not by the colonel at all, but by several of the buck privates. Judge Leake was a captain in the skirmish and doesn't give Colonel Whittlesey a great deal of credit for what was done. He says that after the colonel had detailed two men to dig him a hole in the advanced post he crawled in and gave his commands throughout from that vantage point. The colonel didn't shave as he boasted, either, the captain says, and was one of a mere handful not wounded or killed out of 790 men who went into this particular fracas. Judge Leake says the real trouble to begin with was that the liaison between the French and American armies was imperfect. His bunch was supposed to have a certain portion of the advanced line when the day's drive was over, but when they got to the point there was nobody on either side of them to keep the Germans from completely surrounding and riddling them.

TREE PLANTING

Governor Hogg, thought of by many as Texas' greatest governor, on his death bed uttered a beautiful sentiment about trees and tree planting.

But aside from the civic beauty and the direct economic value of trees to the people, as had in mind by the great statesman, there is a value to trees very largely out of proportion to their cost. This value is in the change which can be effected in climatic conditions. That the people of Kansas, now one of the most prosperous states in the union, learned this lesson early and began planting trees is well-known. And equally well-known have been the effects of denuding the timbered lands of the upper Mississippi Valley. Floyd County people have it in their hands to aid greatly in reducing the severity of our climatic changes, especially with regard to winds, and some believe, with regard to rainfall. Floydada people and their neighbors all over Floyd County should not only plant trees but take care of them after they are planted. And the next week or two is the limit for this year for best results. Wait another few weeks and you lose a year's growth for the trees.

Plant shade trees. And take care of them after you plant them.

A NEW DISEASE

A strange epidemic is sweeping the United States and Europe and threat-

ens to spread over the entire world. Scientists have made careful examinations and study of the victims, the symptoms and apparent cause of the disease. After careful and painstaking research they (the scientists) have come to the conclusion that the malady originated from a little bug, a tiny microbe, that as yet has not been analyzed even under the most powerful microscopes.

Medical authorities have applied the term "Guboidar" to the microbes which have been found to multiply very rapidly.

The alarming fact is, that no one is absolutely immune. No matter how old or how young, how fat or how lean a person may be, they are subject to be stricken at any unexpected moment and seldom recover.

It is very contagious, though no fatalities have been reported as resulting directly from it. The persons afflicted state that they enjoy rather pleasing sensations at times and as a rule are not prevented from going through their daily routine. The people who have the disease seem very careless and indifferent about the spreading of the malady and they usually "have their friends over" at a time when the ailment is in its most exciting stages. In fact, the general public seems to encourage its spread and boldly mingle with its victims.

These victims all have the same unmistakable marks of suffering. They all have a wise look and seem to be exceedingly communicative and very familiar with large words and when two get together in conversation a strange lingo is used which both apparently understand. The sufferer first takes with a fever which varies in intensity, and later develops into general lassitude of the afflicted who goes about with unmistakable signs of sleepless nights and lack of rest.

A sure sign of a victim of the bug is a strange contraption of wires on or about the habit of said person.

Quite a number of cases have been discovered in Floydada. Have you got the "Guboidar"? Spell the word backwards and divide it properly and see if you have.

Improving your community or city is working for yourself. If you want better conditions in Floydada work at it. You'll admit you're probably one of the most level headed in town. Town building needs level headed persons.

Carrol Duncan returned home Sunday from Breckenridge and other points where he has been employed as bookkeeper the past four months. W. A. Baker spent Friday of last week in Spur on business.

Floydada Machine Shop

LOCATED AT DAY & NIGHT GARAGE

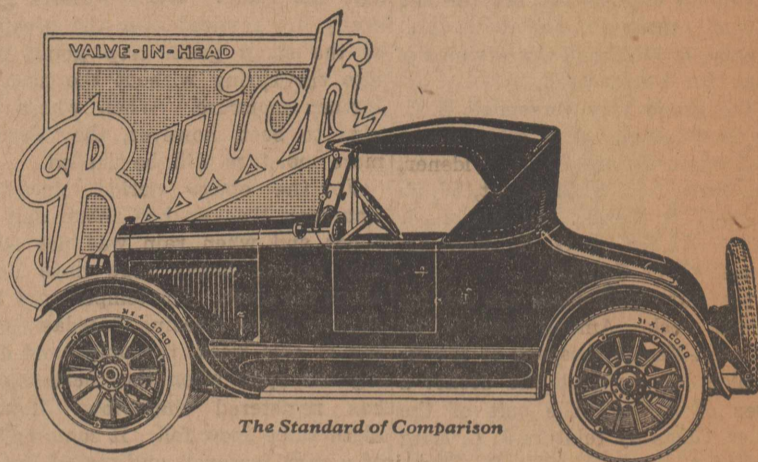
Bring your machinery problems to us. We are equipped:

To do all kinds of automobile repairing;
 To turn down fly wheels and put on new steel starter gears;

To turn down flat crank shafts and crank pins;

To re-bore and re-grind cylinders;
 And all other classes of machinists' work.

Boerner & Fritchie



As Good As It Looks

A glance at this beautifully proportioned two passenger four-cylinder roadster is an invitation to get behind the wheel.

The speed and power suggested by its graceful lines and low-hung body are fully realized on the open road. And its ease of manipulation and instant response to the throttle insure unusually satisfactory behavior in traffic.

It is roomy and comfortable for two people. It contains every convenience for easy, restful motoring in any weather.

Fours		Sixes		
2 Pass. Roadster	\$865	2 Pass. Roadster	\$1175	
5 Pass. Touring	885	4 Pass. Coupe	\$1895	
3 Pass. Coupe	1175	5 Pass. Touring	1195	
5 Pass. Sedan	1395	5 Pass. Touring	7 Pass. Sedan	2195
5 Pass. Touring	Sedan - - - 1935	Sport Roadster	1625	
Sedan - - - 1325	5 Pass. Sedan - 1985	Sport Touring	1675	
Sport Roadster	1025			

Prices f. o. b. Buick Factories; government tax to be added. Ask about the G. M. A. C. Purchase Plan, which provides for Deferred Payments.

D-15-30-NP

GAMBLE BROS., Dealers FLOYDADA, TEXAS

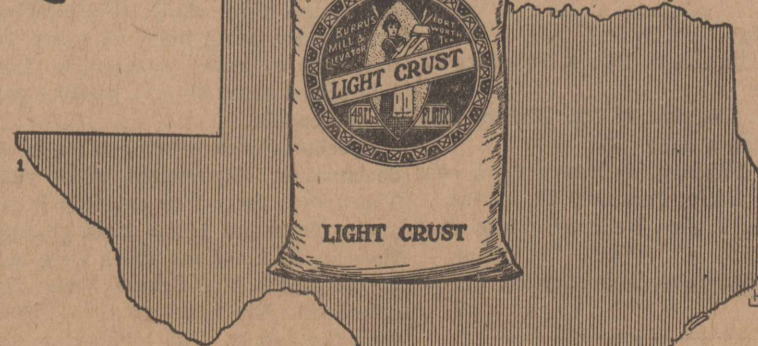
When better automobiles are built, Buick will build them

- Your Favorite Magazine
- A Good Cigar
- Her Choice of Candies or Perfume
- Can be Obtained from the

Floydada Drug Co.

The *Rexall* Store
 Make Our Store Your Store

For Over 19 Years
 -TEXAS' FAVORITE
 FLOUR



Burrus Mill & Elevator Co. Fort Worth, Texas

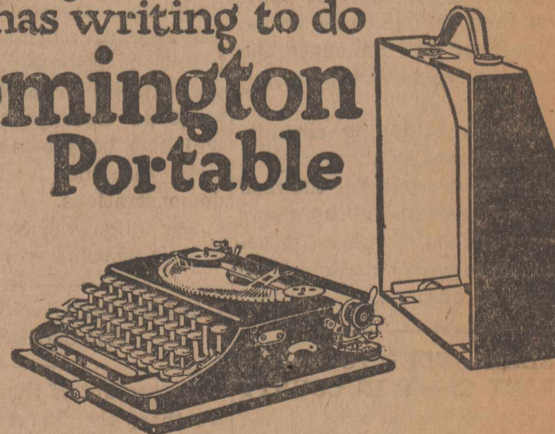
It's The Last Word In Goodness

Say "LIGHT CRUST" when you want the best flour

Sold in Floydada By BROWN BROS., BAKER-CAMPBELL CO.



For every man, woman & child who has writing to do
Remington Portable



THE Remington Portable is a capable, companionable, individual typewriter, built for the use of the man in his business or profession, the woman in her home, the child attending school—in fact for every man, woman and child who writes.

It is the most compact of all writing machines. Fits in a case only four inches high. Like every Remington, it is strong, speedy, durable and turns out beautiful work. —and mark this: It has the Standard Writing Key-board with which you are familiar—no shifting for figures. Small as it is, the operation of a Remington Portable is exactly like writing on a Standard machine. Just as easy, just as swift, just as simple.

Price, complete with case, \$60

HESPERIAN PUBLISHING CO. FLOYDADA, TEXAS

Every Day in Every Way
 THE
Floyd County Farm Bureau
 Is Increasing its Influence and Standing Among Thinking People.
Floyd Co. Farm Bureau

Instructions for Planting Trees

In connection with the Chamber of Commerce's idea of a "Tree Planting Day" in Floydada set for next Thursday, March 8th, and for the general information of others who desire to plant trees at this time, County Agent T. Scott Wilson has issued the following suggestions for planting which have been tested in this territory:

The holes should be dug before trees are delivered but if not the trees should be "heeled" with the roots thoroughly covered with soil.

Before making the holes where the trees are to be set, a strip should be plowed about six feet in width where the row of trees are to be set and the holes made in center of strip. This plowing is especially necessary if trees are to be put in a grass plat. The grass should be killed and kept thoroughly worked because grass will kill the trees if allowed to grow around trees before they are started good. The soil around trees should be kept cultivated and should be kept as level as possible or perhaps slightly lower around trees than elsewhere and by all means the soil shouldn't be piled higher around trees than the part away from trees. If soil is left higher around trees than it should be the water will flow away from the trees and they will die from lack of water. If irrigation is not available the ground around the trees should be worked often to conserve the natural moisture. It has been demonstrated by the Experiment Station at Lubbock

and by individuals that trees can be grown in this country without irrigation. But it takes work and care to do it.

The holes should be dug a little deeper than needed and filled in and the dirt packed till the tree is at just about the same depth as in the nursery but soil should not be banked around tree. As stated before dirt should not be as high near tree as elsewhere. A large hole should be made and no roots should be cut off except injured ones and extremely long and unwieldy ones. The tops of the trees should be cut back and a new top formed after the tree is well started. Then after the trees are growing well they should be kept pruned every year as needed.

A good way to prepare for irrigating trees is, when making the hole for the tree, to take a sewer tile or a tunnel made from one by four inch boards, placing one end of the pipe in the bottom of the hole and a slanting notch cut till the pipe projects out of ground at an angle of 45 degrees. After the soil is thrown back around the tree the hose can be placed in this pipe and the water is put down at roots where needed most. There are several places here using this method. And it is very satisfactory. If the water is put on top the ground there is great waste and a tendency to draw roots to surface instead of growing a long tap root.

COUNTY AGENT NOTES

Last Call for Pruning

The time is nearly up for pruning. If grapes have not been pruned you should do it at once. Apples, peaches, plums, pears and cherries may be pruned during the month of March. None of these trees should be pruned after the buds begin to come out. Shade trees should also be pruned now.

Grapes should not be put out any closer than about eight feet in the rows and about eight feet between rows. In pruning grapes one should allow one or two good trunks to come up this trunk should be trained upon wires to a height of about four feet. About two branches may be allowed to extend out from this trunk each way, one branch on each of two wires. These branches should be cut off to about three feet. These branches should not be allowed to overlay with the branches of another vine. All the new stalks coming from the bottom or below the wires should be cut off unless the old stalk is dying and you wish to start a new vine. All dead parts should be cut away and the last years growth should be cut back to about two buds. These short jointed last year's growths buds will furnish the branches for your fruit this year. By pruning out and removing the surplus parts you will have larger and better fruit and less vine to support.

Apples should be pruned out, leaving only about from three to five main limbs and well open in the center. No limbs should be allowed to cross and rub on each other. If the trees are leaning toward the north east the heavy branches on that side should be removed and those on south west side left to shade the body of the tree. This will help to balance the tree. The branches of an apple tree should never be topped as this will cause them to hedge and become too thick and keep out the sun. If an apple tree is too thick whole branches should be removed. All water sprouts should be removed from the trunk and bottom as this practice will injure the trees.

Peaches and plums should be kept back as low as possible in order to keep the branches from breaking under a heavy load of fruit. The main branches should be well arranged in order to balance the tree but should be topped and thinned out to keep them from breaking and the branches will become more strong and able to support their load.

Time to Plant Trees

Now is a good time to plant trees of all kinds. The instructions for putting out trees are given elsewhere and this will apply to all kinds of trees. Trees are needed very badly in this country. Trees will not only improve the looks of a place but will make it more pleasant for living and will furnish shade for livestock and poultry. These animals will thrive a great deal better when shade is furnished for them.

Grapes can be started without ordering from a nursery. If you know of some good grapes near you it is easy to get cuttings and put in your garden and water them well and get them well rooted the first year and then transplant them where they are wanted. The long jointed vines should be selected and cut into pieces of three bud lengths. These cuttings should be planted in a furrow with two buds under the soil, leaving only one bud projecting just above the soil. Water should be run in a furrow along the

side of the row frequently. The cuttings should be put about 18 inches apart.

Swine Breeders Meeting a Saturday, at Lockney

A meeting has been called of the Swine Breeders of Floyd County for 2 p. m. at Lockney National Bank. All the men of the county who are interested in hogs, and every one should be, are urged to attend this meeting. There are some important matters to come before the meeting. All members of the association are especially asked to come. Mr. C. D. Merrick is the president of the association and is one of the foremost breeders of the county and is the leading breeder of big bone Poland China.

Hatch Chicks Early

Every one should hatch chicks as early as possible because the early fryers are the easiest to raise and will cost less. Also the pullets that are to be kept over for another year should be of the early hatch in order to get them to laying before winter when eggs are a good price and when the old hens are molting. Late pullets will not lay till spring when eggs are cheap and will never be as good layers as the early ones. Also for the purpose of showing birds one should get them hatched early. The late ones are often put down at the bot-

tom of the class because they are undeveloped, although they may be good quality. Get Mr. Marshall to hatch them for you now. He can hatch eggs cheaper than you can.

The Sow, Cow and Hen Special

The Santa Fe Railroad in co-operation with A. & M. College is running a special exhibit train to our county. Every citizen in Floyd County is urged to be present when this train arrives at the depot. The Santa Fe is bearing the expense and A. & M. is furnishing the exhibits and speakers. The program will start as soon as the train arrives at the depot both at Lockney and Floydada.

This train will be at Lockney on March 28 at 1:15 and Floydada on the same day at 3:05. You will have an opportunity to see some stock from the A. & M. College and hear some of the specialists. Everyone come and show these people that we appreciate their visit to us and you will get your money's worth in information.

ALLEGED TURKEY THIEF GIVEN TWO YEAR SENTENCE

Andrew Newman, a young man, was given two years in the penitentiary by a jury in district court Wednesday afternoon, on a charge of breaking into a chicken house and stealing turkeys. The young man was arrested along with another young man by Constable Q. C. Davis of Petersburg near that place not long ago and brought to Plainview and lodged in jail. The other man escaped at the Knight Auto Company garage while being held for the arrival of the sheriff early one morning.

The jury was out only twenty minutes with the case. Newman was sent to the penitentiary once before by a Floyd County jury.—Plainview Herald.

W. L. Boerner made a business trip to Amarillo Monday.

Rogers, was for a number of years a resident of this city, now of Amarillo, passed through Floydada Sunday enroute to Lubbock.

Mesdames Lon. M. Davis and Jack Henry returned Saturday after a short visit in Amarillo and Canyon.

Mr. Davis, who accompanied them, returned home the following day.

George Webster, and son, Robert, of Lockney, were in Floydada the first part of the week on business.

C. Surginer left Tuesday on a business trip to Moran.

New Arrivals For Spring

WE ARE SHOWING THE NEW SPRING LADIES READY-TO-WEAR IN SUITS, COATS, DRESSES AND CAPES, BLOUSES, ETC.

We are receiving from New York every day something new and can show you a splendid assortment now. Don't wait about making your selection; come in now while the stocks are complete.

Women's Suits

Poret Twills and Tricotines, elaborated with silk braid, stitchery, embroidery and beads in box-coat, bloused, tailored and tucked styles

\$17.50 to \$35.00

Spring Dresses

A splendid assortment of dresses for Misses and Women. Made of excellent quality Canton crepe, taffeta, flat crepe and crepe de chine. Every new style note is charmingly represented—graceful draped effects, new tucked and pleated styles, new sleeve and collar ideas. In all the new spring colors. The trimmings are Paisley, Persian embroidery, lace and other modish garnishments. Sizes from 16 to 42.

Values from \$10 to \$45



Ladies' Blouses

Smart Spring Blouses in the fashionable new Jacquard patterns. The material of these blouses are fascinating Paisleys, Egyptian prints and flowered radiums. The styles are most attractive and designed to complete the spring costumes.

\$3.95 to \$10.00



Silk Hose

Made of pure thread silk. The new wide seam back and point heel. New ideas in lace stripes, all the popular colors.

\$2.25 to \$3.50

SHOES

Come to us for your shoes. We can show you the largest assortment that you'll find in the city and we are glad to announce that we are making the most popular prices you'll find anywhere.

We are featuring the famous RED RIDING HOOD PLA SHU for misses and children, new styles and qualities that will please the children and the parents alike. Complete run of sizes in all styles.

We have just received a shipment of men's and young men's shoes from Julian A. Crossett makers of shoes for men only, in glazed kangaroo and calf skin leathers. The new spring styles in men's oxfords, the popular straight lasts in brown and black.

\$9.00 and \$10.00



Baker-Campbell Company

"THE HOME OF GOOD MERCHANDISE"

Any Article

IN MY WINDOW ON

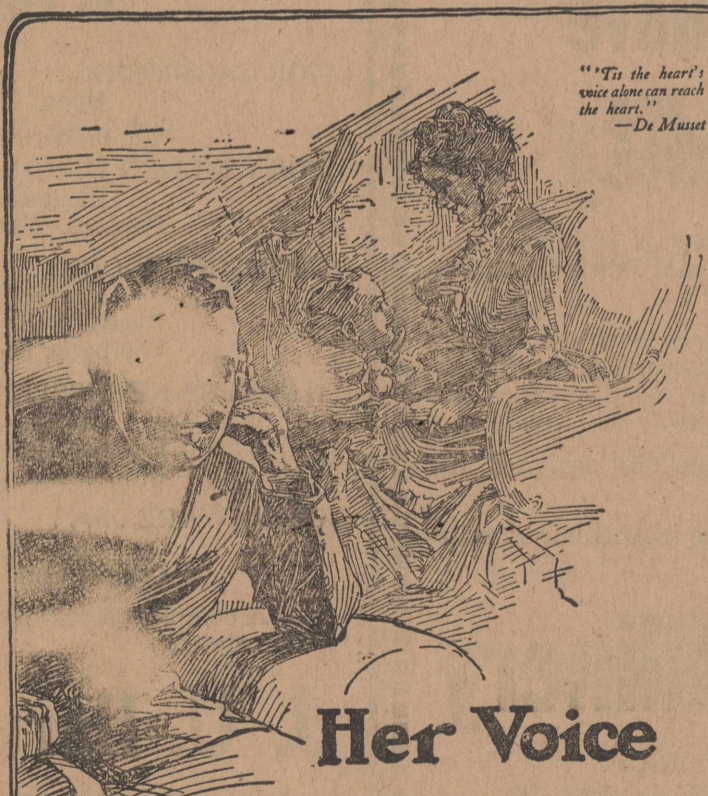
Sat. March 3rd

FOR \$1.00

Values running from \$1.25 to \$5.00 included. No junk—Judge for yourself.

C. H. Davis

AT WOODY DRUG COMPANY



"'Tis the heart's voice alone can reach the heart."
—De Masset

Her Voice

Hark back in memory to the days of childhood when you knelt at your mother's knee. Was ever anything sweeter than the sound of her voice? It was more beautiful than the distant chimes of a cathedral. There's something in the voice we love which overflows our hearts with joy.

Today others cherish your voice as you cherished hers.

If distance prevents your visiting family or friends—remember you can send your voice—yourself—to them over rivers, mountains and deserts, by Long Distance telephone.

Ask the Long Distance operator about Station to Station calls and particularly the low rates prevailing after 8:30 p. m.

SOUTHWESTERN BELL TELEPHONE CO.

Your Voice is You—Visit Them by Telephone



NOTICE OF ELECTION

The State of Texas, County of Floyd. Whereas on the 15th day of February, A. D. 1923, a petition was presented to me for an election in Common School District No. 17, of this County, on the question of increasing the tax heretofore voted for the purpose of supplementing the State School Fund apportioned to said District, from 50 cents on the One Hundred Dollars (\$100.00), valuation of taxable property in said District to not exceeding One Dollar (\$1.00) on the One Hundred Dollars (\$100.00) valuation of taxable property in said District, said petition bearing the requisite number of signatures of property tax paying voters of said District, and being in every respect in conformity with law; and

It appearing that Floyd County contains a population of 9,758, according to the last United States Census; and

It further appearing that said Common School District No. 17 has heretofore, to-wit, on the 3rd day of May A. D. 1920, been properly established by the County Board of School Trustees of said County, which is of record in the Minutes of the County Board of School Trustees of said County, Volume 1, page 28; and

It further appearing that said District so established contains an area of Twenty Six and Three-Fourths (26 3/4) square miles, and that no other district has been reduced in area below nine square miles by reason of the creation of this District;

Now, therefore, I E. C. Nelson, Jr., in my official capacity as County Judge of Floyd County, Texas, do hereby order that an election be held on the 24th day of March, A. D. 1923, at the Roseland School House, in said Common School District No. 17, of this County, established by order of the County Board of School Trustees of said County, of date the 3rd day of May, A. D. 1920, which is of record in the Minutes of the County Board of School Trustees of said County, Volume 1, page 28, to determine whether a majority of the legally qualified property tax-paying voters of said District desire that said tax heretofore voted for the purpose of supplementing the State School Fund apportioned to said District be increased from fifty (50) cents on the One Hundred Dollar (\$100.00) valuation of taxable property in said District to not exceeding One Dollar (\$1.00) on the One Hundred Dollar (\$100.00) valuation of taxable property in said District, and to determine whether the Commissioners' Court of this County shall be authorized to levy, assess, and collect annually a

tax of, and at the rate exceeding One Dollar (\$1.00) on the One Hundred Dollar (\$100.00) valuation of taxable property in said District for said purpose.

A. S. Cummings is hereby appointed presiding officer of said election, and he shall select two judges and two clerks to assist him in holding the same, and he shall, within five days after said election has been held, make due return thereof to the Commissioners' Court of this County, as is required for holding a general election.

All persons who are legally qualified voters of this State and of this County, and who are resident property tax-payers in said District shall be entitled to vote at said election, and all voters who favor the proposed increase of said school tax shall have written or printed on their ballots the words:

FOR INCREASE OF SCHOOL TAX, and those opposed to the proposed increase of said school tax shall have written or printed on their ballots the words:

AGAINST INCREASE OF SCHOOL TAX.

The Sheriff of this County shall give notice of said election by posting three notices in three public places in said District for three weeks before the election, and is further directed to have said notice of election published for three weeks prior to said election in some newspaper of general circulation that has been continuously and regularly published for more than one year previous to the date of this order, in Floyd County, Texas, the date of first publication being not less than twenty-one (21) full days prior to the date of the election.

Dated this 26th day of February, A. D. 1923.

E. C. NELSON, JR.,
County Judge, Floyd County, Texas.
52-4tc

CHRISTIAN ENDEAVOR

Program for Sunday, March 4.
Meet at 6:45 P. M.
Subject—The Refuge Psalm.
Scripture lesson—Psalm 91:1-16 (consecration.)
Leader—Mrs. Menefee.
Song—"The day is dying in the west."
Prayer.
Song—"Only a sinner."
Scripture reading and comments—
Leader.
Sentence prayers.
Song—"Blessed assurance."
Discussion topics.
The cities of refuge and their purpose—Mr. Bain.
What is meant by dwelling in God?—Mrs. Pierce King.
Christ, as our refuge in temptation—Helen King.
Suggestions for short talks—Leader.
Special—Marvin and Frank Menefee.
Pledge analyzed (In Cumberland Pearl)—John Burgett.
Song—"We shall see the King some day."
Business.
Dismiss.

W. J. Fairey, of Plainview was a business visitor in Floydada this week. He visited with L. A. Marshall and family during his stay here.

The Hesperian Want Ad Department

NOTICE TO HOLDERS OF CLAIMS OR ACCOUNTS AGAINST FLOYD COUNTY

Notice is hereby given to all persons or firms who hold accounts or claims against Floyd County, for articles sold or work done, or for anything whatever, to file those claims or accounts with the County Clerk before the second Monday in each month, so that they may be acted on by the Commissioners Court at their regular monthly sessions. It is difficult, and requires considerable time, to audit and allow old accounts, and the Court desires to allow all accounts monthly. Please see that your accounts or claims are filed as request-

The Commissioners Court of Floyd County. 52-2tc

AUCTION SALE

We will have an auction sale on the street in Floydada Saturday, March 3rd, beginning at 1:30. If you have anything you want to sell bring it in by 1 o'clock.
52-1tp W. H. SEALE, Auctioneer.

WANTED—Man with small family wants farm on shares or job on farm. Reference given. Delos R. Harris, Proctor, Texas. 51-2tp

Co-operative Marketing increases Business. 50-1tc

Bring us your cream, eggs and other produce. Guimarin Gro. & Produce Company. 52-1tc

Progressive everbearing strawberry plants 100, 50c; 300, \$1.25; 500, \$2.00; 1,000, \$3.00. S. B. McCleskey. 50-5tc.

T. E. Lemons, Plumber, telephone 225. 48-5tp

One Maxwell truck, A1 condition. Will trade for used cars or sell on easy terms. Barker Bros., Ford Dealers. 52-1tc.

Best grade kerosene. Collins Gro. Company. 4-tfc

For marble or granite Monuments see S. B. McCleskey. 4-tfc.

Fleshmans Yeast twice a week Brown Brothers. 49-tfc

T. D. Wood's thorough-bred S. C. Red Poultry Farm, best laying strain. Prices reasonable. See me for good setting eggs. Southwest part town. Route 1, Box 2. 50-4tp.

Co-operative Marketing Builds Better Homes. 50-1tc

If you want a farm lease see W. M. Massie & Bro. 31-tfc

Safety Hatch incubators, the old reliable brand, at C. Surginer & Son. 51-2tc

STRAWBERRY PLANTS
Real Progressive ever-bearing strawberry plants \$1 per 100, \$7.50 per thousand. Set plants in February. 46-tfc MARSHALL BROS.

FOR good garden plowing Phone No. 271 W. H. Finley. 47-8tc

Co-operative Marketing makes Bank Deposits. 50-1tc

Just received, TWO carloads of Fords, ONE carload of Ford parts. Will try to supply the demand for Ford products. \$132 buys a Ford now. Barker Bros., Ford Dealers. 52-1tc

We strive to make your dealings with us satisfactory in every respect. Bring us your produce. Guimarin Gro. & Produce Co. 52-1tc

TO WHOM IT MAY CONCERN:

Ordinance No. 20 of the City of Floydada forbids chickens running at large and as time to plant flowers and gardens will soon be here complaints are coming to me. Please confine your chickens and everything will be lovely.
CHAS. TROWBRIDGE,
City Marshal.
52-tfc

Safety Hatch Incubators have been used by many people over Floyd County with good results. C. Surginer & Son. 51-2tc

CRANBERRIES counteract the effect of rich, heavy food. Keep healthy during the inactivity of winter. 51-2tp

T. E. Lemons, Plumber, telephone 225. 48-5tp

FOR SALE
S. C. Buff Minorca eggs. From prize winners. \$1.00 for 15 eggs, or \$5.00 for 100 eggs, at residence. \$1.25 for 15 eggs or \$5.50 for 100 eggs post paid. Try this wonderful new breed of chickens. 30 years experience, testing out most all the standard breeds. Buff Minorcas by far the best to lay in the fall and winter, non-sitters. Cocks weigh 9 lbs. hens 7 lbs. Mrs. S. D. Irwin, Route 3, Floydada, Texas. 51-2tp.

CRANBERRIES are full of vitamins—just what is necessary at this time when grippe is prevalent. 51-2tp

CRANBERRIES give one that "peppy" feeling. They are rich in iron—Nature's greatest tonic. 51-2tp

Buy the Safety Hatch Incubators and be sure of good results. C. Surginer & Son. 51-2tc

JUST received, a carload of Queen of Dixie blacksmith coal. Boothe Bros. 51-3tc

We pay best prices for produce. Guimarin Gro. & Produce Co. 52-1tc

Lubricating oils, gas and kerosene. Collins Gro. Company. 4-tfc

Nice front room for rent. Phone 40. Mrs. J. E. Dickey. 51-2tc

Have mit, glove and ball for sale. Call at Star Cash Grocery. 51-2tp

CRANBERRIES supply the system with just what it needs to prevent winter colds and grippe. 51-2tp

FOR SALE—Ford Sedan, good condition, 1921 model, with starter, at City Hotel. 51-2tc

SEED OATS for sale. See P. M. Felton. 52-1tp

WORK STOCK for sale—easy terms. See J. G. Martin. Martin Dry Goods Co. 52-tfc

Every day in every way genuine Ford parts are better and cheaper. Barker Bros., Ford dealers. 52-1tc

BLUE HOGS, PEDIGREED
Attractive BLUE in color. They grow large and mature quickly. Fancy show animals and have big litters. Write for information. Our General Sales Manager, Mr. Eugene F. Kehoe, will be at Adolphus Hotel, Dallas, Texas, during month of March. Also write or call on him.
Blue Hog Breeding Co.
Wilmington, Mass.
52-4tc

What is the Farm Bureau? Ask your Neighbor. 50-1tc

T. E. Lemons, Plumber, telephone 225. 48-5tp

FOR SALE—My stock of merchandise, building and fixtures at Lakeview. T. J. Hooser. 52-2tc

FOR SALE—Pure Bred Rhode Island eggs at \$2.00 per setting of 15. Mrs. D. W. Sherrill. 52-4tp

T. E. Lemons, Plumber, telephone 225. 48-5tp

Co-operative Marketing Helps Land Values. 50-1tc

Highest prices paid for poultry and produce at Guimarin Gro. & Produce Company. 52-1tc

LOST—Gold Conklin pencil with clip. Reward. L. G. Mathews. 52-2tc

Fleshmans Yeast twice a week Brown Brothers. 49-tfc

Hemstitching

We have moved our Hemstitching machine down town and are now located in rear of BAKER - CAMPBELL CO'S. STORE.

We can take care of your hemstitching on short notice. Bring us your work. We do it right.

Mrs. S. W. Ross

The Lumber Situation

We read in the Gulf Coast Lumberman, February 15th, issue that for one week, this month, The Southern Pine Barometer showed production of 66,166,617 feet. Shipments 67,788,382 feet: Orders 90,981,593 feet.

The West Coast Lumberman's Association report for one week, this month, gave the following figures: Production, 88,943,839 feet: Shipments, 106,667,592 feet: Sales 112,520,703 feet.

The Gulf Coast Lumberman also states in this issue that scarcity of many items of lumber, at the mills, is beginning to be felt.

We are not attempting to tell you what the prices on building material is going to do for we do not know. We want you to be your own judge. Will say this, however, that we do not see anything pointing toward lower prices just at this time.

Higginbotham-Bartlett Company

The Season's Findings

- FOR GARDENING Hoes, Rakes, Forks, Shovels, Plows, Rubber Hose, Nozzles, Sprinklers, Etc.
 - FOR CHICKEN RAISING Incubators, Brooders, Brooder Coops, Feeders, Waterers, and Poultry Netting.
 - SPORTING GOODS Baseballs, Bats, Masks, Gloves, Mitts, Baseball Shoes, Tennis Rackets and Balls, Footballs, Etc.
 - HARNESS NECESSITIES Collars, Collarpads, Hames, Backbands, Leather Tugs, Trace Chains, Bridles, Bridle Bits, Buckles, Snaps, Single Trees, Etc.
 - CHINAWARE Cups and Saucers, Plates, Nappies, Bowls, Dinner Sets in plain and decorated patterns.
- A complete stock in every department. Your Business Appreciated.

J. U. Borum, Hardware
SOUTH SIDE SQUARE FLOYDADA, TEXAS

Hats that Have Individuality

Is what every well-dressed woman is seeking. Hats that add to your personality and lend that subtle touch called charm.

The colors this season are riotously lovely—a dashing bow or flippantly placed feather or flowers, gives that atmosphere which makes a hat different. And just such creations will be found at the Hall Millinery.

Here you will find every hat carefully designed and distinctively different.

We are delighted to have you come inspect our wonderful stock of new spring millinery.

The Hall Millinery

RUTH BROWN HALL, PROP.
BALCONY CLARK-WOOD DRY GOODS CO.



Light Colored Suits vs. Dark Colored Suits

It seems the jury has brought in the verdict of light colored suits.

GLAD'S RIGHT AGAIN

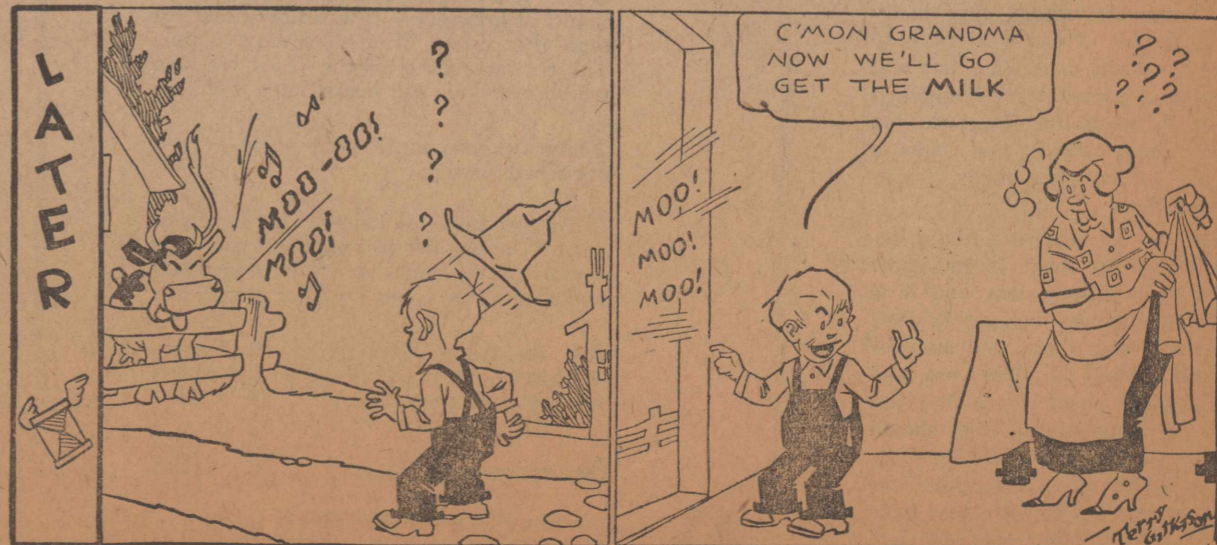
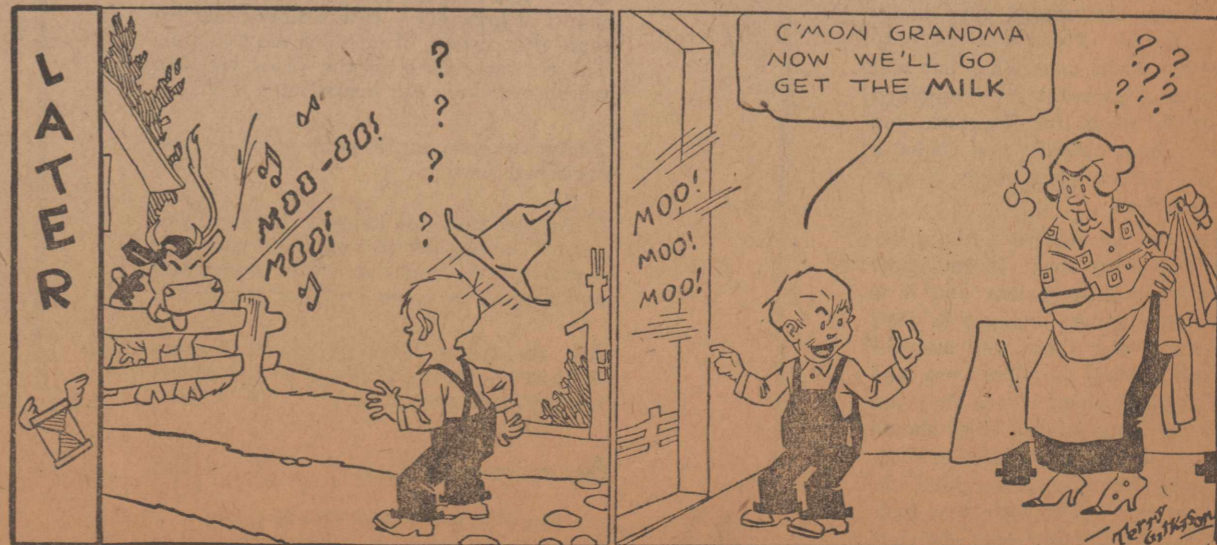
I'm selling 'em, brother, and if you don't come in here and buy an all-wool suit to fit you for LESS money its YOUR FAULT.

The NEW Florsheim's came this week—Stand on a pair of these a dozen months—then hand in your verdict.

Allow me to tell you, Ladies, how you can get better service from your silk hose—I'll show you if you buy—HOLEPROOF HOSIERY.

GLAD'S

HOME SWEET HOME
Frankie Thinks It Means The Same
by Terry Gilkison
AUTOCASTER



The Story of Our States

By JONATHAN BRACE

XII. NORTH CAROLINA

THE CAPITAL of North Carolina is very appropriately named Raleigh, for it was Sir Walter Raleigh who was responsible for North Carolina's first settlement. It was in 1584 that Raleigh obtained permission from Queen Elizabeth to plant an English colony in America, and the expeditions which he sent established a little colony in Roanoke island. There in 1587 was born the first American child of English parents. She was named Virginia Dare, after the virgin queen. This colony, due to England's war with Spain, could not be properly supported, and after a few years perished. It was not until over a century later that permanent settlements were made. Daring pioneers from Virginia pressed south into the new territory, and these, augmented by a large company of Huguenots from France and a greater number of Germans from the Palatinate, founded the first North Carolina town of Newburn in 1710. By the time of the Revolution the population in North Carolina had increased to such an extent, with an influx of Scotch-Irish and Scotch Highlanders who settled chiefly in the western counties, that it ranked fourth among the original thirteen colonies. Today its population entitles it to twelve electoral votes for president. In area it stands about half way among the states with 52,426 square miles. North Carolina was the twelfth state to adopt the Constitution, the formal ratification taking place in November, 1789. The derivation of the name Carolina, as in the case of South Carolina, came from the Latin Carolus, meaning Charles, and was given originally in honor of King Charles IX of France and retained by King Charles II of England. North Carolina is also known as the Old North State.

(© by McClure Newspaper Syndicate.)

DODGE SALES

Motor Supply Company delivered a Dodge touring car to J. A. Carruth this week.

FORD SALES

Calvin Steen, touring car; Edwards Grain and Elevator Company, Truck, high speed; J. B. Bishop, touring car.

J. B. Scott, of Plainview, manager of the Texas Utilities Company of that city, passed through Floydada Monday enroute to Ralls and Lubbock.

BORN—To Mr. and Mrs. J. A. Pruitt, of Campbell, February 25th, a son.

Otis Abston returned home Wednesday after some six months spent in California.

Rev. W. T. Cochran left this morning for southwest Missouri to be gone several days.

BORN—To Mr. and Mrs. Jess McNeely, of Campbell, February 28th, a daughter.

Notice to the Public

We are changing the name of our firm from

Gullion & Son TO THE Floydada Tire Service

The same good workmanship, fair prices and service as you have had in the past, with the assurance of careful attention to all Vulcanizing and work of that nature, in which we specialize.

"TIRE SERVICE" is what we have to feature and that's the reason we change the name. Call on us any time and let us demonstrate.

Floydada Tire Service NORTH SIDE

RINGS IMPORTANT IN BRAZIL

Various Stones Used to Advertise to the World the Profession of the Wearer.

Professional men in Brazil wear a large ring on their index finger to denote the profession to which they belong. Lawyers, for instance, wear a ring with a large ruby; doctors a ring with an emerald; engineers, a sapphire; priests, amethyst; military engineers, topaz; and bachelors of letters, opal. The stones invariably are very large, usually being oblong in shape and about half an inch wide and three-quarters of an inch or more long, so they can be distinguished at some distance.

Rings play a more important part in the life of the average Brazilian than they do to an American, and every married man in Brazil carries his sign of bondage in the shape of a plain gold-band wedding ring.

Even normal school students wear rings to indicate that they have reached that pinnacle of education, and they use a collection of five jewels which tell the world they know. The stones worn by these students in one ring are sapphire, amethyst, brilliant, emerald and ruby. The first letters of these words spell the Brazil word "saber," which means "to know."

NOVELTY



The Customer—See here, this watch you sold me gains from a half an hour to an hour a day and regulating does it no good.

The Dealer—Ah, I see! You have one of our latest models, the daylight saving watch. There will be no extra charge.

KNEW WHEREOF HE SPOKE

The auctioneer was endeavoring to dispose of a stock of cigars, of which the labels were undoubtedly the best part.

White was among the listeners and, having sampled this particular line, was not quite in agreement with the auctioneer's recital of their virtues.

"Yes," said the auctioneer, waxing eloquent, "these cigars are absolutely without equal in this country today. You may go and pay three times the price, but you will never obtain better quality. In short, gentlemen, you can't get better; what ever you do, you can't get better."

White was unable to restrain himself any longer.

"No, you can't get better," he broke in. "I smoked one last week and I haven't recovered yet."

LETTING IT LIE

"My dear," said Mr. Peckton, at the end of a harangue from the other side of the reading lamp that had lasted about an hour and a half, "were there any celebrated orators among your ancestors?"

"Not that I know of," said Mrs. Peckton, sharply. "What do you mean by that question?"

"Oh, nothing, nothing. A thought merely occurred to me, but—ahem—in the circumstances I don't believe I'll develop it."—Birmingham Age-Herald.

THE SEASON

Grandmother on her Sunday afternoon walk was impressed by the numerous bits of paper in the trees. All along the drive each tree was flecked with white blotches. There had been windier days and yet she had never noticed the disfiguring bits before. Upon arriving home she mentioned the matter at the supper table, whereupon her young relative said scornfully, "Why, grandmother, don't you know that this is the kite season?" thereby explaining all.

WATER MOTOR INVENTED

A hydraulic motor has been invented for use in streams where the head of water is low but the current swift.

SENIOR EPWORTH LEAGUE

Leader—Miss Emma Lou McKinney Lord's Prayer.

Song.

Dialogue of the 91st Psalm—1st and 2nd verses, Miss Tommie Lee Awtrey; 3rd and 4th verses, Miss Mildred Carter; 5th to 8th, Miss Awtrey; 9th to 13th, Miss Carter; 14th to 16th, Clement McDonald.

Hebrews 13:56.

Address—Leader.

Special Music.

Roll call by secretary answered by verse of scripture.

Reading.

Song.

League benediction.

SENIOR B. Y. P. U.

Program for Sunday, March 3.

Leader—Elmer Wood.

Future aims of our B. Y. P. U.—Miss Markarett Grigsby.

Reading—Mrs. T. R. Webb.

Talk—Rev. J. Pat Horton.

Solo—Mrs. Elmer Wood.

Meet at six o'clock.

CARD OF THANKS

To the people of the community, who have so kindly assisted me with money and goods since the burning of my house this week, I wish to say thank you with all my heart.

J. D. JENKINS.

FAIRVIEW NEWS

Fairview, Feb. 27th—We have been enjoying the rain and damp weather but are hoping for more before long. Mr. and Mrs. Bullard visited at the Hoffman home Saturday afternoon.

Mr. Shaw and family left Monday for Shannon where they were called to his father, who was very low.

Claude Snodgrass is in Crosby now at work.

We are glad to report that Rouel Irwin, who was operated on last week, is doing nicely. We hope for him a rapid recovery.

Quite a number attended Mrs. Kimble's birthday dinner Monday. All had a good time and enjoyed the dinner very much.

Mrs. Neeley visited Mrs. Kimble Saturday.

There are several on the sick list, but none seriously ill.

S. L. Rushing was in town Wednesday from Lockney on business.

ALLMON NEWS

Allmon, Feb. 22—The farmers of Allmon community are feeling very hopeful of a good rain soon.

Mrs. H. A. Krause was called to the bedside of her mother, Mrs. O. Holland, of Plainview, this week. Mrs. Holland is suffering from an attack of "flu", and at last report both Mr. and Mrs. Krause also had the "flu".

V. Harris and daughters are recovering from an attack of "flu".

Mrs. Guess has had a light case of pneumonia but is recovering.

Allan McReynolds, wife and little daughter have been real sick with the "flu".

The Dawson children have been out of school recently with the "flu".

Mr. Reed's daughter who lives at Petersburg was taken to Lubbock today for an operation for appendicitis.

The play "The Dust of the Earth" which was delayed by the illness of some of the players is now progressing nicely and the players expect to be able to put it on in a short time.

A meeting of school patrons and trustees was held at the school house

Style is a Greater Social Asset than Beauty

Your Clothes are Part of Your Personality

Do not lose an opportunity to see our wonderful selection of Ladies and Misses Suits. They are elaborately embroidered and of charming simplicity; also sport suits and knickers.

You may always be sure that suits of exclusive style, charming lines and correct tailoring are found in the Palmer Garment.

PRICE \$25.00 TO \$85.00



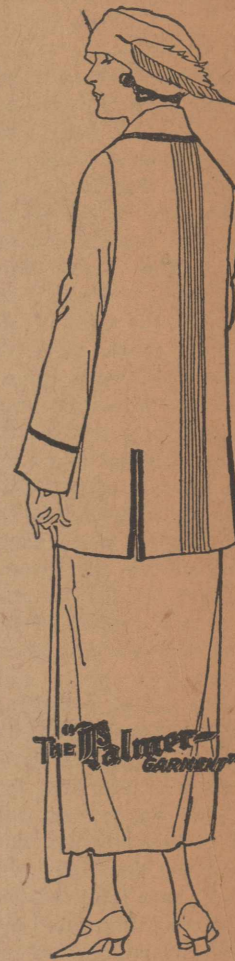
New Spring Hats

IN CHARMING, EXCLUSIVE MODES

To see these hats is to appreciate the full meaning of smartness, of style and of beauty.

We are fortunate to be able to offer such fascinating hats at such a moderate price.

PRICE \$4.95 TO \$9.75



Special For Saturday

Boys Cadet Hose, heavy ribbed, sizes 7 1-2 to 11, regular value 50c, Saturday only, 3 pair for	Special	19c
25c Yankee Boy, Ribbed Hose, Saturday	Ladies Fibre Silk Hose	65c
	Ladies Pure Thread Silk Hose	\$1.00
	Humming Birk Silk Hose	\$1.50

Martin Dry Goods Company

"THE STORE WITH THE GOODS"

Thursday afternoon of last week to discuss plans for an Arbor Day Program. The meeting was well attended in spite of the bad weather and the teachers expressed themselves as being greatly encouraged by the interest shown.

The Allmon basket ball team (girls) will meet the Sand Hill players tomorrow afternoon, Friday 23, at our home court. It will be the team's first game this season and every one is hopeful of winning the victory for Allmon.

Next Friday, March 3, has been designated as tree planting day at Allmon. They expect to set out about forty-eight trees in a grove which will furnish shade for future "dinners on the ground". A program is being arranged in which the patrons of the school will entertain the children in races, boxing matches, contests and basketball. Dinner will be served by the women of the community. The

final event of the day will be a match game by the girls basketball team with some visiting team. Everyone interested in our school is heartily invited to come, bring your lunch and join in the fun.

Last Saturday night there was a fruit supper at O. Cross'. The rooms were beautifully decorated with valentines. Every one enjoyed themselves immensely.

A singing was announced at the church house for last Sunday night, but when the crowd arrived it was found that the lights were out of order.

Mr. Green kindly consented for the singers to go up to his home. So the

singing was "transferred." Everyone enjoyed it and they made arrangements to have the singing at the church every Sunday night. Everybody come.

Last week Mr. and Mrs. W. L. O'dell were called to Lockney to the bedside of her brother, R. W. Watson, who was sick with pneumonia. He is now recovering and hopes to be up soon.

There have been quite a number of rabbit drives here recently and from all reports rabbits ought to be getting mighty scarce.

Mr. Dawson has set up a firstclass blacksmith shop on W. L. O'dell's farm two miles south of the school house.



To Girls

You meet a beautiful little girl, about thirteen years of age. She is growing rapidly and making for early maturity. In a sense she has a woman's body and a child's mind. Her mother is exceedingly careful that she does not submit herself to a draft of cold air, that she has warm clothes etc., yet she fails to notice that the waist of the child's dress is not being let out in proportion with her growth. She fails to observe that the pride of the little one is carrying her into the habit of pinching and contracting her body with a corset or harsh, cruel, stiff belt, thus preventing the growth of the muscles in the very region of the body where the greatest amount of change is taking place. The result being that the girl at eighteen years has a fashionable form, but already begins to complain, perhaps of the appendix and lower pelvic organs.—Thru lack of attention the child has been allowed to starve the muscles and ligaments of the vertebral column, pulling the ribs forward and together, weakening these tissues and causing the vertebra to become displaced and to disturb the nerves that would, but for these conditions, have caused all of the organs of which she now complains to grow to normal size and strength, and then would have maintained them in normal condition.

A COMPETENT CHIROPRACTOR is the only drugless remedy for such condition.

A. S. DOSS

CHIROPRACTIC—MASSEUR

PHONE 248 BARROW BUILDING
OFFICE HOURS 10 A. M. TO 6 P. M. FLOYDADA, TEXAS

The J. I. Case T. M. Co. Wishes to Announce

TO THEIR PRESENT CUSTOMERS AND FUTURE PROSPECTS THE COMING OF THE

Case Combine Harvester

And I will say for the benefit of those interested, in a conversation with a certain competitive district manager who is and has been prominent in the machinery circles for the past 12 years in the southwest, he told me that he had just returned from the Wichita, Kansas, Machinery Show and that, in his mind, the Case Combine was much improved over some other types.

We are in position to take your order subject to crop conditions.

J. H. Reagan, Agent

The Early History of Floyd County

By Claude V. Hall

CHAPTER I

Geographical Features—Political Changes

1. The Four Surface Regions of Texas

Geographically Texas is divided into four great surface regions; namely, the Trans-Pecos Country, the Coastal Plain, the Central Region, and the Great Plains Province. The Great Plains Province is the southern continuation and termination of what is known as the Great Plains of the United States. From the Rocky Mountains to the Gulf of Mexico the surface is a gentle slope. How the Great Plains Province came into existence is an interesting story.

Geologists assert that the Great Plains Province was many millions of years in process of formation. First there was an upheaval in the Rocky Mountain region, accompanied by a depression of the area now occupied by the Great Plains of the United States. A few millions of years later another elevation of the Rocky Mountain region took place, and at the same time a second subsidence of the Great Plains area occurred. These surface changes resulted in the extension of a great northern lake into North Texas. This was a vast fresh water lake, into which washed down sediments from the elevations on the west. Millions of years later this once fresh water lake was obliterated by a great continental elevation, whereby the Great Plains region was formed. Therefore the Great Plains Province of Texas is non-marine in origin and structure.

The Great Plains Province of Texas is composed of two sections or divisions. The one to the north is the Llano Estacado, or the Staked Plains, the other to the south is the Edwards Plateau. There is no structural break between the Staked Plains and the Edwards Plateau, the one region blending imperceptibly into the other. The provincial boundary line is fixed through Midland, Upton, and Crane counties. The Staked Plains and the Edwards Plateau together constitute a vast quadrangular tableland, "bordered on three sides by escarpments of erosion, and on the other by an escarpment of faulting". The escarpments and plains are known as the breaks and plains.

There are two kinds of plains. One built-up, constructional; the other, worn-down, destructional. The Staked Plains is the built-up sort. This region while accompanied with a slight dip towards the southeast, is "so level as to produce the appearance of being uphill in every direction."

Some confusion exists as to the area or extent of the Panhandle of Texas. West Texas is often perfunctorily referred to as the Texas Panhandle, but the Panhandle of Texas has well defined limits. The strip of country in Northwest Texas projecting like the handle of a frying pan has its beginning on the south with the line of counties running west from Childress County. Briscoe County, which lies just north of Floyd County, is a part of the Texas Panhandle, while Floyd County is just without the Panhandle of Texas.

Going east of the Staked Plains is the Breaks Country, which contains deep ravines, abrupt elevations, and picturesque valleys. This is predominantly a grazing country, although there is much in the valleys susceptible of cultivation. Then, too, there are in some localities the celebrated shinnery lands, which rate high for agricultural purposes. The soil of these shinneries is a coarse sand with a clay foundation. The lands get this name from the thick growth of bushes of oak family not more than eighteen inches high. These sprouts, or shin oaks, bear crops of acorns valuable as food for hogs.

The Breaks Country contains some timbers, such as mesquite, liveoak, cottonwood, hackberry, red and white cedars, and other kinds indigenous to the vegetable life zones of this region. Besides these timbers, wild plums and grapes grow profusely in some localities. Here nature provides plants with small leaves and large root systems that they may successfully resist the droughts for which this country is noted.

There is in the Breaks Country an abundance of surface water afforded by springs and water courses. The springs, with some noteworthy exceptions, are periodical in their flow. Roaring Springs, in Motley County, has a large and constant waterfall of several feet. The creeks are subject to overflow in times of copious rains, and also to a great diminution of volume in dry season. Tongue River, a branch of Pease River, has its source in Floyd County. It is the first stream south of Quitaque Creek and flows into the North Pease in

Motley County. Tongue River is an interesting stream because of the way in which it acquired its name. Captain Henry Strong, of Wichita Falls, who was Colonel Mackenzie's guide when the famous battle of Palo Duro Canyon was fought September 26, 1874, says that during a long time previous to the extermination of the Indians from this section of Texas the Comanches and Kiowas, who had reservations in the Indian Territory, made frequent "incursions in Texas, where they killed ranchers, burned their homes, and stole their livestock". He says further: There were no settlers in the Texas Panhandle then, and it was used as trading grounds, where stolen horses and cattle were disposed of. American, Mexican, and Indian outlaws and cattle rustlers made this region their headquarters. More horses and cattle changed hands in this region than in all the rest of Texas, and all of it was stolen.

According to Charles Goodnight, parties of traders came along trails from the west and sojourned in the broad valleys of the Tongue River to engage in the traffic of livestock. The Indians usually stole these horses and cattle from the settlers living on the borders of civilization. The participants in these trade meetings spoke several different languages. The Spanish term Las Linguas, signifying those tongues, and this term was Anglicized and eventually became the name applied to this stream.

Floyd County is situated on the eastern border of the Staked Plains. The eastern portion of the county lies partly in the Breaks Country. Floyd County is crossed by the draws of Quitaque, Runningwater, and Crawfish. Blanco Canyon has its origin in Floyd County.

Floyd County contains 1036 square miles, 663,040 acres of which about 500,000 acres are arable. The county is 30 miles wide and about 34 miles long, from north to south.

Floyd County was named in honor of Doniphon Floyd, one of the martyrs along with Travis, Crockett, and Bowie of the Alamo in its fall on March 4, 1836.

2. Political Changes in the Map of Texas

A study of various maps of Texas since 1835 reveals much interesting information pertaining to the political changes wrought at the hands of the Texas law-makers from time to time. The changes effected in the political map of Western Texas are particularly noticeable. They have been rapid and pronounced.

The Map of Texas, compiled by Stephen F. Austin, and published by H. S. Tanner of Philadelphia, in 1835, just before Texas accomplished an existence separate from Mexico control, furnishes rather meager information of the regions lying towards the West. This map represents the western lands as merely occupying space. Austin was temperamentally a cautious man. He had no knowledge of the geography of Western Texas, and he did not venture to make any representation based upon the contrivances of a fertile imagination. In fact, this map devotes nearly as much space to the country lying beyond the Rio Grande as to that on this side. The map however does give a rough representation of the various grants for the establishment of colonies. Then, too, this map contains the probable sources of the larger known streams in the settled regions. In an indefinite way "Level Prairies" and "Immense Herds of Buffaloes" are shown.

J. H. Young's map of Texas, published in 1853 by Thomas, Cowperthwait & Company, of Philadelphia, makes a sincere attempt to present fully the political and physical features of Texas. The western-most counties of Texas at this time are Cooke, Tarrant, Ellis, Navarro, McLennan, Bell, Travis, Williamson, Gillespie, Comal, Bexar, Medina, Uvalde, and Kinney. Some of these counties have subsequently been materially reduced in size and changed in form. Cooke County's south boundary line was an extension westward of the

boundary line of Tarrant County. Her west boundary line was about seventy miles west of Denton County. Her size than was about ten times that of her present limits. The country lying west of the counties above mentioned is not represented as subject to any jurisdiction. The courses of the streams are faithfully presented. The topography between the larger streams is described as "Rolling Table Lands", and that north of the Brazos as "Salt Plains," and west of the "Salt Plains" the eye greets the words "El Llano Estacado or Staked Plains," accompanied with this description: "El Llano Estacado (Staked Plains) is an elevated, desert plain of considerable extent, across which a traveling route was at one time marked by wooden stakes driven at short intervals into the ground." About midway between Laredo and Eagle Pass on the Rio Grande, Kingsbury's Rapids appear, described as two hundred feet in length with a fall of four feet. This point is noted as the "Head of Stream Navigation" on the Rio Grande. At a point on the Rio Grande slightly east of the east boundary line of New Mexico is Grand Indian Crossing, described as "a shallow place in the Rio Grande 1000 miles from its mouth, with 4 feet water." Here the "Comanche War Trail" crosses the Rio Grand from the northeastern part of Texas into Mexico. North of the Canadian River in the Panhandle is the home of the Apaches, while south of this river is occupied by the Comanches. All the Trans-Pecos region is embraced in the two unorganized counties of Presidio and El Paso. This entire region is designated as occupied by Apaches. South of the Conchos is the abode of both Comanches and Pipans. Across the State is Captain Marcy's road from Fort Smith, Arkansas, to Dona Ana, New Mexico, a settlement on the Rio Grande not far to the northwest of El Paso. This road crosses the Red River at Preston in Grayson County, passes south of the Double Mountains, Big Springs, and El Paso. The length of this road is put down at 960 miles. From Santa Fe, New Mexico, along the Canadian Valley of the Texas Panhandle to Fort Smith, Arkansas, is marked another road, which is 820 miles in length.

In 1861 was published DeCordova's Map of the State of Texas, which was "compiled from the records of the General Land Office of the State by Robert Creuzleaur." In the eight years since Young's map was published the political geography of Texas had undergone a marked change. Many new counties in the west had been created. The counties farthest west were Hardeman, Knox, Haskell, Jones, Taylor, Runnels, Concho, Menard, Kimble, and Edwards, which were established by the Seventh Legislature in 1858. The west boundary line of these are near the one hundredth meridian. All the region lying west except the Trans-Pecos Country, and Dawson and Kinney to the south, is indicated at Bexar Country, although the nearest

point of this area was about one hundred miles from the limits of Bexar County, proper. One transcontinental United States mail line passed through Sherman, Fort Belknap, Fort Phantom Hill, and El Paso. During the Civil War and Reconstruction the development of Texas was very much retarded. A large-scale Traveler's Map of the State of Texas, "compiled from the records of the General Land Office, the maps of the Coast Survey, the reports of the Boundary Commission, and various other military surveys and reconnoissances," by Charles W. Pressler, 1867. This map designated as Young Territory to the north a line running about the middle of the west boundary of Taylor County due west to New Mexico. All the region south of Young Territory as far as Kinney County on the south and southwest to the Pecos River was known as Bexar Territory. Bexar Territory was about one-half in area of Young Territory. Thus will be seen that all of Texas west of the one hundredth meridian was composed of Young Territory, Bexar Territory, Kinney County, Maverick County, and the two Trans-Pecos counties of Presidio and El Paso. Not one of the present counties west of the one hundredth meridian was organized at that time. Her organization took place April 21, 1856.

Pressler's map contains the projected Memphis, El Paso & Pacific Railroad, entering Texas at Texarkana and passing through the towns of Paris, Denton, and Palo Pinto in the southern portion of Jones County, in direct line towards El Paso. Colton's New Map of the State of Texas, 1872, presents only a few changes in the political features of the state. West of the one hundredth meridian only one new county had been created during the preceding five years, and that was Pecos County, which was carved out of Presidio County May 3, 1871. Instead of the projected Memphis, El Paso & Pacific Railroad this map shows a successor, to be known as the Southern Pacific Railroad. This railroad enters Texas near Marshall and passes through Dallas, Fort Worth, Weatherford, Palo Pinto, and along the route of the abandoned Memphis, El Paso & Pacific Railroad. A branch enters Texas at Texarkana, passes through Clarksville, Paris, and McKinney, and terminates at Fort Worth. This branch of the proposed Southern Pacific is called the Transcontinental Railroad.

A. R. Roessler's Latest Map of the State of Texas, "compiled and drawn by M. Y. Mettendorfer, C. E., 1874," is prepared on a rather comprehensive plan. The compiler and draftsman sets out in clear detail the agricultural districts, the timbered regions, the mineral resources, prairie and swamp lands, postoffices, mail routes, wagon roads, and railroads projected and finished. This map presents the newly created counties of Wegefath and Tom Green. Wegefath, created by an act approved June 2, 1873, was named

in honor of C. Wegefath, president of the Texas Immigrant Aid and Supply Company. Wegefath County adjoined Greer County on the west and lay north of the Prairie Dog Town Fork of Red River. Created out of Young Territory, Wegefath County was sixty miles square. The act creating Wegefath County provided in some detail for its organization, with C. Wegefath, L. P. Seiker, and Lewis T. Valentine commissioned with plenary powers to effect the organization. Tom Greer County was created out of that portion of Bexar Territory which lies north of a line running due west from the southwest corner of Concho County to the Pecos River, by an act approved March 13, 1874. The creation of Tom Green County reduced the area of Bexar Territory to about one-third its former extent.

Roessler's map designates that portion lying north of a line running east and west nearly with the north boundary line of Wegefath County as Bexar Territory, while Young Territory intervened between Bexar Territory and Tom Green County. Young Territory is described as a "Great Belt of Gypsum." This statement oc-

urs: "2500 to 3000 feet above the level of the sea. Soil sandy, but arable, owing to the fertility of the Gypsum with which it is impregnated, covered by coarse grass, destitute of water and timber." The proposed Southern Pacific Railroad of the map of 1872 is here laid down on the same route as the "Pecos Division Texas Pacific Railroad." A proposed Gulf Colorado & Santa Fe Railroad course from Belton through Haskell and Knox Counties, the southwest corner of Hardeman County, in a northwesterly direction through Young Territory towards Santa Fe, New Mexico. From Fort Griffin slightly north west to Cat Fish Creek in the vicinity of Canon Blanco is Mackenzie's Trail. No mail route yet pass into Young Territory. A twice-a-week mail service was maintained from Denton, Fort Chadbourne, by way of Belknap, in Young County, Fort Griffin, in Shackelford County, and Phantom Hill in Jones County.

(Continued Next Week)

Mr. and Mrs. P. M. Smith returned Saturday after some two months at Mineral Wells.

When General Robert E. Lee Came to Texas

Few of our readers know that Gen. Robert E. Lee visited Texas just before the breaking out of the Civil War, and was a guest at "Camp Colorado," on Jim Ned creek, in Western Texas. At the time of the visit General Lee was on a tour of inspection of army posts and was a colonel in the U. S. Army.

The Floyd County Hesperian monthly Magazine Section will tell the story of General Lee's visit to Texas. Watch for the date of the Magazine Section, March 8th and read the story—it is full of romance and pathos.

When the Fire Whistle Blows

Your first question is, where is the fire? Your second question is, Was it insured?

IF INSURED Your third question should be, Is it insured with a GOOD COMPANY? Two of our companies alone have a capital stock of Twenty Million Dollars.

TO BE SURE, INSURE WITH THE

Floydada Insurance Agency

J. G. WOOD—MANAGERS—T. R. WEBB
Insurance Department Loan Department
Room 6, First National Bank Building, Phone 273



For Easter

A greeting that will be as fresh, and welcome too, as the balmy air on that spring morning—your photograph.

Phone 162 for an appointment.

The photographer in your town

Wilson Studio

Have You Been Getting
HALF SLACK
or Something that Would not Burn?
Order Mutual Lump and Nut and
be Satisfied.

Prairie Hay, Red Seed Oats

J. R. YEARWOOD

On East Side of Track.

Phone 247



From the Store Where Your
Dollars Have More Cents

We have a nice assortment of Fresh Cakes and Crackers, also plenty of Garden Seeds of all kinds, Seed Potatoes and Onion Sets.

We always have FRESH VEGETABLES of ALL KINDS and will appreciate your MARCH GROCERY BUSINESS.

We deliver anywhere in town. Try our Service. Our phone is No. 40.

Star Cash Grocery

SOUTH SIDE

FLOYDADA

Avoid Trouble Before Trouble

An insurance agent's advice is always valuable before a possible misfortune appears. We can protect you from the results of trouble before trouble comes. You should see your insurance agent the day before you need help. Today is a good day—to see us.

DUNCAN INSURANCE AGENCY

Phone 272 Natl. Bk. Bldg.

Dr. C. M. Thacker
DENTIST
OFFICE OVER MITCHELL'S
HARDWARE
FLOYDADA, TEXAS

**W. M. HOUGHTON,
M. D.**
General Practice Medicine and
Minor Surgery
DISEASES OF WOMEN AND
CHILDREN A SPECIALTY
Rooms 11 and 12, 1st National
Bank Building.
FLOYDADA, TEXAS

FULL MOTOR EQUIPMENT
PRIVATE AMBULANCE
**Plainview
Undertaking Co.**
Undertaking, Embalming
A. A. HATCHELL, Director
PLAINVIEW, TEXAS
Phones: 6, 30, 243, 650

Dr. I. W. Hicks
DENTIST
OFFICE IN
SURGINER - FARRIS BLDG.,
OPPOSITE POST OFFICE
OFFICE TELEPHONE 56
RESIDENCE TELEPHONE
NO. 276
FLOYDADA.

Dr. W. H. Alexander
General Practice
Office examinations and treat-
ment a specialty.
OFFICE OVER MITCHELL
HARDWARE
Office Telephone No. 93
Residence Phone No. 260

Kenneth Bain
Lawyer
OFFICE ROOM 4 AND
5 FIRST NATION-
AL BANK BUILDING
General Practice

KODAKERS
Bring us your films today
And get your prints tomorrow.
WILSON STUDIO

F. C. HARMON
Funeral director and Embalmer
Motor Hearse.
FLOYDADA, TEXAS.

W. M. MASSIE & BRO
GENERAL LAND AGENTS
(The Senior Land & Abstract
Business of Floyd County.)
BUY, SELL, LEASE OR EX-
CHANGE LAND
Any size tracts through North-
west Texas, especially through
Floyd and other Counties of the
beautiful Plains. Render and
Pay Taxes, Furnish Abstracts,
Perfect Titles Etc.
NON-RESIDENT LANDS
A SPECIALTY
W. M. MASSIE & BROTHER
FLOYDADA, TEXAS

E. C. NELSON, JR.
LAWYER
PRACTICE IN DISTRICT AND
APPELLATE COURTS
OFFICE AT COURT HOUSE
FLOYDADA, TEXAS.

THINK ABOUT THIS
Mexico and Texas; Ignorance and
Poverty, Education and Wealth;
a Study in Contrasts

By R. T. Ellis:
Texas through the Governor and the
Legislature has expressed a desire to
see the United States extend recog-
nition to the present Mexican govern-
ment. This gives occasion to say as
did Alexander von Humboldt, the
famous scientist, nearly a century ago,
"Mexico is a beggar sitting on a bag
of gold."

Mexico is a treasure house wherein
is stored up perhaps the most enor-
mous and diversified wealth ever be-

Do You Want a Home?

I have two half sections in Floyd
County, each improved, can be bought
for a fair price and reasonable terms.
A half section 3 1-2 miles from Can-
yon Normal building, no buildings,
but partially cultivated. Good value
for the money. Part cash, balance
easy.

A 7-room house on half a block in
Floydada. \$2,200 will handle. Will be
a good buy.

These are a part of the lands I can
get for you if you want a home in this
section.

W. T. Cochran
Box 274, Floydada 51-2tc

After Every Meal
WRIGLEYS
Top off each meal
with a bit of
sweet in the form
of WRIGLEY'S.
It satisfies the
sweet tooth and
aids digestion.
Pleasure and
benefit combined.
Save the
Wraps
FOR THE
CHILDREN

L. G. MATHEWS
LAWYER
OFFICE IN MITCHELL
BUILDING
GENERAL PRACTICE ALL
COURTS

ARTHUR B. DUNCAN
GENERAL LAND AGENT
AND ABSTRACTER
Buys, sells and leases Real Es-
tate on commission; Render and
pay taxes; Investigate and per-
fect titles; Furnishes abstracts
of title from records; Owner of
Complete Abstract of all Floyd
County Lands and Town Lots;
30 years experience with Floyd
County land titles. List your
land and town lots with me, if
for sale or lease; and give me
your abstract of title work. Of-
fice South East Corner of
Square.

To cure constiveness the medicine
must be more than a purgative; it
must contain tonic, alterative and
cathartic properties.
Tutt's Pills
possess these qualities, and speedily
restore to the bowels their natural
function.

Drs. Smith & Smith
CHILDERS' PRIVATE
SANITARIUM
For Medical and
Surgical Cases
Phone No. 177
FLOYDADA, TEXAS

stowed by nature upon a single people
in a similar area. Scientists are awed
by the vast magnitude of her mineral
resources. For four centuries she has
supplied more than one-third of the
world's silver, and the deposits have
been barely scratched. The anthracite
coal fields of Sonora rival those of
Pennsylvania. The huge deposits of
copper and iron ore are incredibly rich.
Cattle men have found in its broad
pampas a paradise of grazing land
which each year they reap millions in
profits. Mexico's giant gushers of pe-
troleum are among the largest in the
world, but the untapped oil resources
are said to be vastly greater than any
yet uncovered. Ninety per cent of all
kinds of fruit grown in the world
flourish in Mexico, and every variety
of grain found in the United States
abounds even more luxuriantly in the
rich soils of that favored land. Mil-
lions of acres are densely forested
with trees whose woods are the most
valuable in the world for industrial
purposes.

And yet, despite these prodigious
natural resources, the one outstanding
characteristic of the overwhelming
majority of the Mexican people is
their bitter poverty. Ignorance and
poverty are coincident and concomi-
tant facts throughout the world. Good
schools are the greatest wealth pro-
ducing agencies in existence. Texas
should make her schools equal to the
best anywhere, and the schools for the
country children should be just as
good as those found in the cities.

SHERIFF'S SALE

THE STATE OF TEXAS, County of
Floyd.

Notice is hereby given that by vir-
tue of a certain Order of Sale issued
out of the Honorable District Court
of Hale County, on the 30th day of
January, 1923, by the clerk of said
court for the sum of \$3,567.50 Dollars
and costs of suit, under a judgment,
in favor of El Paso Burkburnett Oil
Co., in a certain cause in said Court,
No. 2119 and styled El Paso Burk-
burnett Oil Co. Vs. J. O. Crockett and
Alice G. Crockett, placed in my hands
for service, I, J. A. Grigsby, as Sheriff
of Floyd County, Texas, did on the
2nd day of February, 1923, levy on
certain Real Estate, situated in Floyd
County, Texas, described as follows,
to-wit: The Northeast One fourth
(N. E. 1-4) of Section No. Eight (8)
in Block D5, D. & P. Ry. Co. Cert.
No. 62 and levied upon as the prop-
erty of J. O. Crockett and Alice G.
Crockett and that on the first Tuesday
in March, 1923, the same being the
6th day of said month, at the Court
House door, of Floyd County, in the
town of Floydada, Texas, between the
hours of 10 A. M. and 4 P. M., by
virtue of said levy and said order of
sale I will sell said above described
Real Estate at public vendue, for cash,
to the highest bidder, as the property
of said J. O. Crockett and Alice G.
Crockett.

And in compliance with law, I give
this notice by publication, in the En-
glish language, once a week for three
consecutive weeks immediately pre-
ceding said day of sale, in The Floyd
County Hesperian, a newspaper pub-
lished in Floyd County.

Witness my hand, this 2nd day of
February, 1923

J. A. GRIGSBY,
49-4tc Sheriff Floyd County, Texas.

NOTICE

Notice is hereby given of intention
to apply to the Legislature of the
State of Texas for passage of an act
validating the sale of the land here-
inafter described by Floyd County,
said land sold to T. A. Caudle by deed
record in Vol. 41 page 145 Floyd
County Records as the property of
Floyd County by E. P. Thompson
County Judge of said county acting in
obedience to an order of the Commis-
sioners Court of Floyd County, Tex-
as, of record Vol. 4, page 492, Com-
missioners Minutes of Floyd County,
said land described as follows to-wit:
211 acres out of Section No. 89,
Block No. 1, A. B. & M. Cert. No.
1497, issued to B. S. & F., in Floyd
County, Texas, described metes and
bounds as follows: Beginning at an
iron pipe marked L. for N. E. corner
this tract; thence West 740 varas;
thence S. 10'20 W with fence 318
varas; thence S. 36'50 W with fence
80 varas; thence N. 89'20W with fence
234 varas; thence N. 36'50 W with
fence 450 varas for corner; thence
west 537 varas to pipe marked L. for
N.W. corner the survey; thence S 712.8
varas; thence E. 1900.8 varas; thence
N. 712.8 varas to place of beginning.
51-6tc. KENNETH BAIN.

—ADDRESS—
ARTHUR B. DUNCAN
FLOYDADA, TEXAS

PARTY
Randall Alexander entertained a
number of his friends with a party at
his home Friday night of last week.
The following guests were present:
Misses Ana Maude Garrison, Arie
Gamble, Pauline Stovall, Evelyn Kiz-
ziar and Audrey Felton; Messrs. Bon-
ner Baker, Ovis Awtray and Herbert
Hicks.

**GIRLS' POULTRY CLUB RE-
ORGANIZED AT SAND HILL**
The J. U. G. Club, of Sand Hill met
Monday, February 12, to organize for
their work in the year 1923. They
are planning to make their club one of
the best in Floyd County. Those
joining the club at the meeting were:
Louise Hanna, president; Zona Tin-
nin, secretary and treasurer; Eula
Weston, Fay McDaniel, Ada Rambo,
Corine Webb, Birttha Webb, and Alma
Smith.

**NOTICE OF SALE OF SCHOOL
BUILDING**

State of Texas, County of Floyd.
Notice is hereby given that the
trustees of Hillcrest Common School
District No. 28, Floyd County, Texas,
by virtue of an order lawfully issued
to them, will sell the one-room build-
ing until recently used as a school
house for said District. Said sale is
to be for cash to the highest bidder.
All persons who desire to bid on said
building will mail or deliver to A. T.
Swepton, Floydada, Texas, a sealed
bid. Bids will be opened and the sale
made on Saturday, March 3, 1923. The
right is reserved to reject any or all
bids.

E. C. NELSON, Jr.,
County Judge, Floyd County, Texas.
51-2tc

COUNTY ELECTION JUDGES

The list of appointees in Floyd
County for judges of election in the
respective precincts indicated, as made
last week by the Commissioners' Court
is as follows:

- Floydada: S. E. Duncan, presiding
judge; J. M. Willson, W. L. Boerner,
A. C. Goen.
- Starkey: J. W. Howard, presiding
judge; E. Kelley, S. F. Smith, W. E.
Smith.
- Allmon: H. A. Krause, presiding
judge; G. W. de Cordova.
- Harmony: G. L. Snodgrass, presiding
judge; Seth Waddill.
- Lockney: W. M. McGehee, presiding
judge; G. B. Harris, E. E. Wells, Carl
McAdams.
- Aiken: R. E. Jones, presiding judge;
O. L. Allian.
- Providence: Henry Ratjen, presiding
judge; Charley Viegel.
- Lone Star: Bert Bobbitt, presiding
judge; R. N. Woolfolk.
- Sunset: R. M. Haverty, presiding
judge; J. H. Solomon.
- Fairmont: Z. Hawkins, presiding
judge; Elmer Tibbett.
- Cedar: J. C. Fortenberry, presiding
judge; D. B. Brown, B. Yeary, W. E.
Broyles.
- Center: W. B. Jordan, C. Foster, R.
Houston, J. M. Branson.
- Baker: J. R. Reidheimer, G. L. Faw-
ver, J. D. Hart, G. C. Hopper.
- Antelope: Will Graham, presiding
judge; J. H. Lloyd.
- Lakeview: W. N. Jones, presiding
judge; T. J. Hopper, W. C. Wright, O.
F. Battey.
- Goodnight: J. W. Taylor, presiding
judge; J. L. Edwards.

**THE EDITOR IS THE ONLY
MAN WHO MAKES MISTAKES**

We made a mistake in last week's
issue, admits an exchange. A good
subscriber told us about it. The same
day there was a letter in our post-
office box that didn't belong to us.
We called for 98 over the phone and
got 198. We asked for a spool of No.
50 thread and when we got home we
found it was No. 60. The train was
reported 30 minutes late. We arrived
reported 30 minutes late. We arrived
train had gone. We got our milk bill
and there was a mistake of 10 cents
in our favor. We felt sick and the
doctor said we were eating too much
meat. We hadn't tasted meat for two
months. The garage man said the
jitney was missing because it needed
a new timer. We cleaned a spark
plug and it's run fine ever since. Yes,
we made a mistake in last week's is-
sue of the paper.—Clarendon News.

**GIN CLEANER FACTORY
POSSIBLE FOR MEMPHIS**

Hall County Herald:
The success of the demonstration
staged Monday and Tuesday at the
Rosamond Gin of the new cotton
cleaning and burr extracting machi-
nery recently patented by Messrs.
Rosamon and Lokey perhaps points to
a new industry for this city.
Over a hundred gin men from Texas,
Oklahoma and New Mexico were pres-
ent at the demonstration and all were
astonished at the success of the new
cleaning system. Orders for complete
equipment for six plants were taken
during the demonstration, and other
orders will no doubt follow rapidly.

With the remarkable success of the
demonstration, there is little doubt but
that Rosamond & Lokey will have to
put in ample manufacturing facilities
to turn out their machinery, and there
is a probability that this may grow
into a plant worth while.

In the demonstration the cotton
used was the poorest of poor dirty
bollies that looked hopeless, but after
being cleaned and ginned, the fleecy
staple compared most favorably with
clean picked staple.

**GIRLS' POULTRY CLUB RE-
ORGANIZED AT SAND HILL**

The J. U. G. Club, of Sand Hill met
Monday, February 12, to organize for
their work in the year 1923. They
are planning to make their club one of
the best in Floyd County. Those
joining the club at the meeting were:
Louise Hanna, president; Zona Tin-
nin, secretary and treasurer; Eula
Weston, Fay McDaniel, Ada Rambo,
Corine Webb, Birttha Webb, and Alma
Smith.

**SILVERTON WILL LIKELY
HAVE NEW GIN THIS YEAR**


Silvertown will probably have a new
gin the coming season as a result of
the activities of the Chamber of Com-
merce in that city, which is negotia-
ting with F. N. Welch, of Lockney, a
brother of E. O. Welch, of this city,
for the construction and operation of
the new plant.
Seven thousand acres of cotton for
this coming season was pledged by
farmers surrounding Silvertown in one
day last week, conditioned that the
new gin would be built.

**ANOTHER CANDIDATE IN
RING FOR CITY MARSHAL**

Another candidate has thrown his
hat in the ring for political preferent
at the City Election on Tuesday, May
3rd. He is W. H. Finley, who has
authorized the announcement that he
is a candidate for the office of city
marshal.
Mr. Finley has resided in this coun-
ty for many years and the past t
years has been a resident of the c
of Floydada.
If the citizens of the city give him
the office Mr. Finley pledges to give
his best services to it.

Don't Be Fooled
Low Price and High Quality
Don't Go Together, Stick to
CALUMET
The Economy BAKING POWDER
Never accept "Just as Good" Brands; it
will only mean disappointments and fail-
ures on bake-day, which are expensive.
**Calumet is a High Grade Baking
Powder, Moderate in Price**
When you use it
you never spoil any
of the expensive in-
gredients used —
such as flour, sugar,
eggs and milk.
The sale of Calumet
is 2½ times as much
as that of any other
brand.

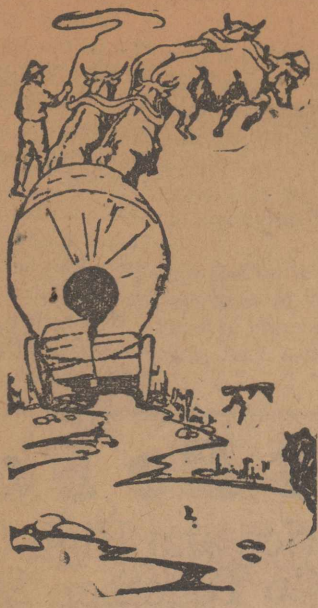
BEST BY TEST
THE WORLD'S GREATEST BAKING POWDER

O. P. RUTLEDGE CO.
FULL LINE INTERNATIONAL DEALERS
Tractors, Trucks, Harvesting and Till-
age and other Power Farming Machinery.

Telephone 57
FLOYDADA
TEXAS

FLOYD COUNTY ABSTRACT CO.
R. C. SCOTT, Manager O. W. GANO, Secretary
Abstract of Title to all Lands and Town Lots in Floyd County.
Deeds and other instruments of writing prepared. 20 years ex-
perience with Floyd County Land Titles.
Room 7 First National Bank Building Floydada, Texas

WARREN & TUBBS
GENERAL REAL ESTATE AGENTS
DEALERS IN FARMS, RANCHES
AND TOWN PROPERTY
SEE US FOR BARGAINS. DISTRICT CLERK'S OFFICE IN
COURT HOUSE, FLOYDADA, TEXAS.

**MORTGAGES YOU NEVER
HAVE TO PAY BACK**
Money to loan at 5 1-2 per cent by Floydada National Farm Loan
Association of Floyd County, Texas. Loans run from 5 to 34 1-2
years, payable on the amortization plan;
OLD PLAN
Interest on \$10,000.00 at 8 per cent for 34 1-2 years \$800.00
per year
Principal still unpaid
TOTAL
OUR PLAN
Sixty nine amortization payments of \$325.00 each
Principal fully paid.
You save on \$10,000.00 loan
We have loaned in Floyd county over \$375,000.00. Our
handled by us direct thru the Federal Land Bank, of Houst
Floydada National Farm Loan Assoc
ROOMS 8 AND 9 FIRST
FLOYD



The Hardy Spirit of Pioneer Times

MADE THIS NATION WHAT IT IS TODAY

We don't want to go back to the old days, with their trials and sufferings and hardships, but we need very much to go back to first principles in a few respects.

To work and save; to make provision today for the tomorrow that is coming is an old fashioned principle of up-to-date need.

A bank account is the first step in the right direction.

First National Bank

The bank that says: "Thank You."
FLOYDADA, TEXAS

PUBLIC FORUM

Rainer Suggests Committee to Investigate

Mr. Editor: In connection with Mr. Clark's article appearing in your issue of February 15th I would like to submit a brief statement. So far as I have been able to find out Mr. Clark is furnishing the greater part of the "street talk" to which he refers.

Now, according to the records, as I find them Mr. Clark's statement is in error a total of \$24,518.10. He has the county's indebtedness figured that much too much. It should also be borne in mind that the entire Refunding Warrant indebtedness to which he refers, is not due at the present time, as his article would have you infer but is extended over a period of sixteen years.

Now, Mr. Clark knows the public will not take the trouble to examine the records for themselves and I want to make this proposition: In order to stop controversy over the matter and determine for the benefit of the public, which foots the bill, just who is correct about the indebtedness of the county, that we choose a competent committee to examine the records and publish from the records the exact status of the county's refunded debts as they find them from the minutes of the court, Mr. Clark and myself to appoint an equal number of men (one or two each) and let these select the odd member.

EARL RAINER.

Chester Day left for Clovis Thursday after two weeks or more spent here with his parents.

HARMONY NEWS

Harmony, Feb. 26—Everyone is rejoicing over the nice rain we have had. It was surely a much-needed rain.

L. E. Williams and O. H. Heard attended the "turkey trial" at Plainview last week.

Mrs. L. E. Williams made the trip to southern Illinois last week in response to a telegram received Thursday telling of the illness of her mother who lives there.

The flu patients have about all recovered. Grandma Carr, the Finkner's and Mrs. D. T. Scott are among the last ones to take the trouble and we understand they are all better.

The attendance at church Sunday was very small owing to the shower and sickness.

School was dismissed Thursday, February 22, in honor of Washington's birthday.

Several ladies of the community attended a quilting given by Mrs. Robert Gary last Wednesday. They reported a good time and a nice amount of work done. Those present were: Mesdames Hanna, Waddill, Thomas Allmon, Oglesby, O. H. Heard, Erx Williams, L. E. Williams, Hennessee, Mack Carr, M. Carr, Snodgrass and Miss Lilly Hanna.

The ladies of the community are working on a play which will be presented later as their number of the lyceum course.

J. A. Bagwell returned home from near Dimmit, Monday.

Day & Shannon sold 61 head of their fat hogs from the Day Ranch southwest of town the latter part of last week, delivering them to N. A. Armstrong Friday.

GOOD FORM TO APPEAR COY

Greenland Bride Must Never Seem to Go Willingly to the Arms of Her Husband.

Marriage by capture thrives sturdily among the icebergs of Greenland. The Greenland bride-elect must appear unwilling, and the bridegroom must obtain her by force, genuine or counterfeit. The girl's relatives seldom interfere on her behalf, but still less must they seem glad to part with her. Indifference is the acme of Eskimo good form.

Some Greenland Eskimos, with exceptionally delicate minds, do propose for or to the maiden of their choice, but their proposal is never accepted. For a girl in Greenland to accept an offer of marriage is to shame herself and lose caste beyond the power of any penance to reinstate her.

An Eskimo selects a woman for his wife chiefly for her strength and health, that she may aid him in the endless toil which the cold climate and barren environment compel. It is a common thing for two Eskimos to trade wives.

BELIEVE IN ODD "REMEDIES"

Superstition Would Seem to Have Retained Hold in Parts of Ireland and Wales.

Some extraordinary remedies still in use in Ireland and Wales were enumerated in Britain's medical paper the Lancet the other day. The queerest of these are cures for epilepsy. One from Roscommon reads:

"Where a person falls at the time of a first attack, if on a flagged pavement or in a court, at once lift a flag. Kill a fowl and cut a piece of the warm flesh. Place the bit of fowl, with a silver coin, in the hole and replace the flag and there will be no return of the fit."

How long the silver coin is to remain in the hole and who is to collect it is not mentioned.

An old Welsh gardener said that he was able to cure shingles by passing his hands over the affected parts. When he was asked how he discovered that he had the gift of healing he said that he was the great-grandson of a man who had shot and eaten a bit of an eagle, which had given him and his descendants this miraculous power.

DREADFUL LOSS

Robert W. Chambers said at a luncheon in New York:

"Literature- in these deflation days is in a very bad way. The other afternoon at Coney island a gaunt, haggard individual with long hair accosted a policeman excitedly.

"Officer," he said, "I've been robbed. I was sitting on that bench there with the manuscript of three short stories beside me when a girl passed in a one-piece bathing suit. I wasn't gone a minute, but when I got back my manuscript had disappeared. Three short stories! Oh, officer, can nothing be done?"

"You can write the stories over again, can't you?" said the officer in a good-natured tone.

"Yes," said the litterateur, "but—here his voice broke—but there was a hot-dog sandwich wrapped up in those short stories, officer."

MISUNDERSTANDING

The new girl at the summer resort was being rowed out to the fishing grounds.

"All this sort of thing is new to me," she remarked. "How do you do when you hook a big fish?"

"You have to play him with some skill," answered the girl with the oars. "Don't let him have his head too much. Yield a little to his impetuosity, but keep a firm grasp. Accept his presents, such as candy and the like, but—"

"I was speaking of a real fish, you mean thing!" indignantly exclaimed the other.—Boston Transcript.

SACRIFICED TO FASHION

"Every year, before the war, 350,000,000 birds were sacrificed in order to satisfy fashion in this country alone," remarked a speaker at the humanitarian conference held at London recently, according to the Westminster Gazette. For every bird which found its way to a woman's hat, she said, it was estimated that ten birds were killed or wounded.

Plumage should be banned in all the countries in Europe.—New York Tribune.

NOTICE OF ELECTION

The State of Texas, County of Floyd.

Whereas, on the 15th day of February, A. D. 1923, a petition was presented to me for an election in Common School District No. 6, of this County, on the question of increasing the tax heretofore voted for the purpose of supplementing the State School Fund apportioned to said District, from 50 cents on the One Hundred Dollars (\$100.00) valuation of taxable property in said District to not exceeding One Dollar (\$1.00) on the One Hundred Dollars (\$100.00) valuation of taxable property in said District, said petition bearing the requisite number of signatures of property tax-paying voters of said District, and being in every respect in conformity with law; and

It appearing that Floyd County contains a population of 9758, according to the last United States Census; and

It further appearing that said Common School District No. 6 has heretofore, to-wit, on the 4th day of March, A. D. 1911, been properly established by the Commissioners Court of said County, which is of record in the Minutes of the Commissioners Court of said County, Volume 2, pages 634 and 635; and

It further appearing that said District so established contains an area of more than nine (9) square miles, and that no other district has been reduced in area below nine square miles by reason of the creation of this District;

Now, therefore, I, E. C. Nelson, Jr., in my official capacity as County Judge of Floyd County, Texas, do hereby order that an election be held on the 24th day of March, A. D. 1923, at the Starkey School House, in said Common School District No. 6, of this County, established by order of the Commissioners Court of said County, of date the 4th day of March, A. D. 1911, which is of record in the Minutes of the Commissioners Court of said County, Volume 2, pages 634 and 635, to determine whether a majority of the legally qualified property tax-paying voters of said District desire that said tax heretofore voted for the purpose of supplementing the State School Fund apportioned to said District be increased from fifty (50) cents on the One Hundred Dollar (\$100.00) valuation of taxable property in said District to not exceeding One Dollar (\$1.00) on the One Hundred Dollar (\$100.00) valuation of taxable property in said District, and to determine whether the Commissioners' Court of this County shall be authorized to levy, assess, and collect annually a tax of, and at the rate of, not exceeding One Dollar (\$1.00) on the One Hundred Dollar (\$100.00) valuation of taxable property in said District for said purpose.

J. W. Howard is hereby appointed presiding officer of said election, and he shall select two judges and two clerks to assist him in holding the same, and he shall, within five days after said election has been held, make due return thereof to the Commissioners' Court of this County, as is required for holding a general election.

All persons who are legally qualified voters of this State and of this County, and who are resident property tax-payers in said District shall be entitled to vote at said election, and all voters who favor the proposed increase of said school tax shall have written or printed on their ballots the words:

FOR INCREASE OF SCHOOL TAX, and those opposed to the proposed increase of said school tax shall have written or printed on their ballots the words:

AGAINST INCREASE OF SCHOOL TAX.

The Sheriff of this County shall give notice of said election by posting

Any One of These Three Will Give You Good Advice

THE BANKER

Because he can see how it profits a man, will advise a bank account.

THE MAN WHO HAS A BANK ACCOUNT

Will recommend it because his experience teaches him that it is profitable.

THE MAN WITHOUT A BANK ACCOUNT

Will tell you to open one because he knows by sad experience how much it has cost him to not have one.

When you are ready to select the bank, we will appreciate and endeavor to merit your patronage.

First State Bank

OF FLOYDADA

"The Bank of Friendly Service."



DIRECTORS: T. S. Stevenson, C. Surginer, N. G. Jackson, S. A. Greer, W. I. Allen, R. E. L. Muncy, Mrs. W. D. Long.

three notices in three public places in said District for three weeks before the election, and is further directed to have said notice of election published for three weeks prior to said election in some newspaper of general circulation that has been continuously and regularly published for more than one year previous to the date of this order, in Floyd County, Texas, the date of first publication being not less than twenty-one (21) full days prior to the date of the election.

Dated this 26th day of February, A. D. 1923.

E. C. NELSON, Jr.,
County Judge, Floyd County, Texas.
52-4tc

OPEN SESSION OF STUDY CLUB HELD LAST WEEK

Open session of the Nineteen Twenty Two Study Club was held at the home of Mr. and Mrs. Glad Snodgrass Thursday of last week.

The following ladies were hostesses for the evening: Mesdames Wilson Kimble, L. C. McDonald, W. I. Cannaday, J. E. Pitts, Geo. Lider, O. P. Rutledge, A. N. Gamble, Edd Johnson, F. S. Truitt and Glad Snodgrass. They were dressed in Colonial costume and were introduced to the guests at the beginning of the evening.

The home was artistically decorated with flags and patriotic colors, and in the center of the dining table grew a cherry tree laden with cherries. Each guest was blindfolded; given a pair of scissors, rather than a hatchet, and asked to clip a cherry.

Other very interesting games and contests followed. Tate Fry furnished the music for the occasion. Two solos were beautifully rendered by Mrs. T. R. Webb. J. B. Jenkins, by request, gave a special solo which created quite a laugh.

As Mr. Fry played Beethoven's Minuet in G, Misses Garnet White, Belle Cannaday, Mary Lou Crane and Mable Willis entered through the dining room and danced an old fashioned minuet.

At the close of the evening the guests were served a two course luncheon. The first course consisted of chicken salad, pickles, bread and butter sandwiches and tea. Brick ice cream, angel food cake and mints

were served in the last course. Favors of hatchets and flags were used. Those present besides club members were: Tate Fry and Misses Belle Cannaday, Garnet White, Mary Lou Crane and Mable Willis.

—Reporter.

PRESBYTERIANS IN MEETING

The Amarillo Presbytery of the Cumberland Church meets at Quanah, Texas, March 1 to 5th.

Those in attendance from Floydada, are Elder E. C. King, Miss Mamie Watson, Miss Thelma Teeple and Rev. O. N. Baucum, Mrs. Baucum and Anna Mary.

Frank Boerner made a business trip to Amarillo this week.

Jimmie Wade, of Wichita Falls, spent Sunday and Monday here with Roy Snodgrass.

IF

You've Tried Elsewhere And Failed to Get it

TRY BROWN BROS.

They Carry An Excellent Line of Staple and Fancy Groceries

Baby Chicks

The BIG HEN is staying on the nest fine so far—has not "flew the nest" yet.

We have 8,000 eggs under her or the "nest" half full.

First Hatch Due Next Saturday

We really appreciate the hearty support of the Poultry Raisers of this community, who are taking advantage of our very liberal prices on BABY CHICKS and CUSTOM HATCHING.

Our trays hold 8 dozen eggs. Will have some baby chicks for sale about March 15th.

Marshall Hatchery

If Your Appearance is Spick and Span

Then your mental state of being is very much at ease—You're in a frame of mind to do big things.

Now, since such a thing is possible by having me tailor your spring out fit, why not get that feeling of "I can do anything" for

Good Grooming and "Pep"

and in hand. And the best part of it is we can out-price that will further that "contented" feeling.

an fit you out from head to foot—anything you

ne when you need first class cleaning, pressing or I will give you the best of attention.

SELL'S STORE
FLOYDADA, TEXAS