

The Floyd Co. Hesperian

Published Every Thursday By THE HESPERIAN PUBLISHING CO

HOMER STEEN Editor and Manager

Entered as second class matter April 20th, 1907, at the Post Office at Floydada, Texas, under the Act of Congress of March 3rd, 1879.

SUBSCRIPTION PRICES:
 One Year \$1.50
 Six Months85
 Three Months45
 In Advance

Advt. Rates Furnished on Application

Foreign Advertising Representative THE AMERICAN PRESS ASSOCIATION

Cotton did three times as well as we expected, the price has been good, wheat is up to a stand or is being planted all over the county with all indications of good grazing for cattle and work stock, and everything in general is better than you expected. It's the kind of a situation that makes a fellow glad he didn't quit when it looked like one might as well.

The Hall County Herald was tickled to death to catch the Dallas News in a fine, large error one day last week, and indeed it gives all the boys of the press pleasure to catch The News napping, and give it a dig in the ribs for its alarming fall from grace. Used to be we believed The News first and the statute books next. We still like to have The News to confirm the statutes, and put its seal on the happenings of the day.

It was the independent voters of the normally republican states who made possible the Democratic victory in the congressional elections of last week. An independent Republican who lives in New York or some other northern or eastern state and votes for a Democrat is a patriot in the eyes of Texas Democrats. But an independent Democrat who does not believe in party before principle is a mugwump in the eyes of a lot of good Democrats in Texas. What makes the difference, whether you live in New York or Texas?—Rangall County News.

That the anti-diversification theory is creeping up on the plains counties, the old idea of betting it all on cotton gaining a strong foothold even in adjoining counties, is evidenced by recent contracts said to be made in Crosby county, where landlords are in instances demanding the renter, to plant 90 acres of every hundred to cotton. This kind of policy is one of the things so seriously wrong with central Texas—the black land belt. It won't work any better, year in and year out, in west Texas, than it will anywhere else. It isn't according to good business and it will ruin any country that tries it.

Judge James C. Wilson has been fully exonerated from charges which were made by Rev. J. Frank Norris as to his personal integrity, by a committee of the Fort Worth bar, after a most exhaustive investigation. We are glad this is so, for we have a high regard for Judge Wilson, and should regret to see his name dragged through the mire. He was formerly an anti-prohibitionist, but has always been considered a man of high standing and unimpeachable integrity. He is U. S. Judge of the Northern District of Texas, and was so appointed by President Wilson. We are glad the investigation has been made, for it will stop ugly rumors, and at the same time will put Judge Wilson on notice as to his personal conduct. We have great confidence in the bar committee that investigated the charges.—Hall County Herald.

PADUCAH MISTREATED AGAIN

Paducah High School has lost another football game but it was because of mistreatment at the hands of Quanah High School, it seems. Says the Post:

"Paducah can easily boast of having the best football team in this section of the state this year. While they were defeated at Quanah last Friday, yet it was due to mishaps from start to finish, and perhaps some other causes over which they could not play against. But so far as the real playing of the two teams was concerned it was easily to be seen that the game properly belonged to Paducah from the very beginning."

But the Post continues and makes the same editorial into an argument for high school athletics. Seems to us The Post is wrong. It will not do high school boys any good to develop them into poor losers. "Mishaps" are a part of football. Often the best team loses because of them. Football is supposed to aid in fitting school boys into better men for after life, but a poor loser has lots to unlearn.

PROHIBITION WAR

Political war over National Prohibition is in the offing, and The Hesperian "views with alarm" the thing against which we raised a scarcely audible voice in all the hubbub a few years since when all the "best folks" declared for national prohibition.

However, that is neither here nor there now. It is spilled milk, and what we have to do now, to retain prohibition in an enforceable form, is to put on our fighting clothes and see that the foreigner and the native anti-do not feed us a dose of our own medicine, by getting a modification of the enforcement laws. The politicians are scared, if we can read between the lines. All kinds of pressure is being brought to bear to loosen the enforcement strings. Naturally the law will apply everywhere, and if the thickly settled portions of the nation force less restrictive prohibition laws under the constitution then our section of the country will be helpless against it, whether or no.

THE CHAMPION WHIRLWINDS

Following is the champion squad of the Floydada High. Each man is given with the number of years experience he has had, including this season.

Position	Wt.	Yrs.
McDonald, guard	175	2
Britton, tackle	185	4
Luttrall, guard	165	2
Maurice Burke, fullback	159	3
Macyl Burke, qtr. back	140	1
Loran, half	155	2
Eubank, center	150	3
Shiple, half	150	3
Lewis, tackle	155	1
Arnold, guard	202	2
Nelson, half	151	1
Marshall, guard	185	1
Splawn, tackle	155	1
Moore, fullback	160	4
King, tackle	189	3
Henry, end	155	2
Parker, guard	157	1
Maxe, guard	170	3
Daily, end	152	1
Green, half	132	1

The entire squad of twenty men average 163 pounds. The first string eleven averages 161. The first team back field has an average of 150. The first string line an average of 167.

BLANCO NEWS

Blanco, Nov. 21.—This corner of Floyd County was blessed by a nice rain since our last paper. The wheat is looking fine. More wheat is being sown this week all over the community.

J. S. Childers returned to Electra Saturday to work this winter here.

Mrs. Fred Locke, of Okmulgee, Oklahoma is here to spend several weeks with her parents, Mr. and Mrs. S. C. Burns.

Rev. R. F. Dunn, of Lorenzo, was in the community on business Monday.

Walter and Herman Millican were in Lubbock on business recently.

Several from this community attended church Sunday morning at McCoy, also church and B. Y. P. U. Sunday night. Rev. Tarnison, of Plainview, delivered two good sermons.

Four quilts were quilted for Mrs. Earl Rogers at the home of Walter Millican last Wednesday by the following ladies: Mesdames Gaublin, Miller, McCarty, Jones, Wheeler, Guess, Ham Smith, Rogers, Jim Holmes and Billie Glenn, of Sand Hill; T. C. Russell and W. L. Ross of Floydada; Misses Vaughan West, Ludie and Jewel Pharr and Mrs. Earl Rogers. A good dinner, and a pleasant day was spent by all. They are to quilt Wednesday for Mrs. Billie Glenn near Sand Hill.

C. W. Boothe and son, Clarence, left Tuesday on a business trip in New Mexico.

W. M. U. MAKE DONATIONS

The Baptist W. M. U. sent joy to the kiddies at Buckner Orphans' Home the latter part of last week, when they sent them two large gift boxes. One box contained clothing and the other was a big box of good home made cookies. There were over twenty one hundred cookies in the box.

R. S. Boles and B. L. Blacklock with Baker-Campbell Company at Munday, Texas, visited Monday and Tuesday with W. A. Baker and family. They returned Wednesday.

Miss Lou Boothe left Tuesday for Tulsa where she will visit for a short time.

Mr. and Mrs. H. C. Kell and daughter; Mr. and Mrs. Joe Graham and niece, Miss Lela Graham, all of Quitaque, were shopping in Floydada last Tuesday.

Pitzer Baker, R. S. Boles, B. L. Blacklock and S. W. Ross were in Plainview Tuesday.

Mr. and Mrs. Boyd Roberts of Matador have made their home in Floydada. Mr. Roberts is a brother of Ben Roberts.

M. Easterling, who has been in Haskell county the past year, has returned to Floydada to make his home.

Mrs. A. Hathway left the latter part of last week for California, where she will spend the winter months.

Wilson Kimble left the first of the week for Dallas. He will probably spend sometime there under the care of a specialist. He is suffering from rheumatism.

Joe H. Smith and family returned last week from Hico, Texas, where they had made their home for a year or more.

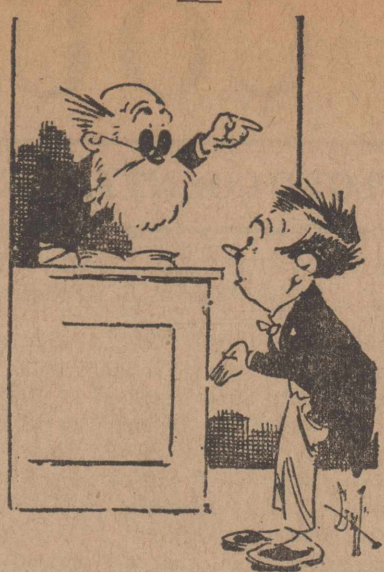
E. M. Johnson, of Lubbock, was here the latter part of last week visiting his daughter, Miss Clara Lee Johnson.

Lon L. McDaniel, of Plainview, was in Floydada Saturday on business.

JUD TUNKINS

Jud Tunkins says that women ought to meet civic responsibilities the same as men; only if he and his wife happen to be drawn on the same jury there won't be a chance on earth of its comin' to an agreement.

GETTING EVEN



Judge—Now, young man, I am going to discharge you, but I advise you to keep away from bad company hereafter.
 Young Man—Thank you, sir, You won't see me here again.

MINE TROUBLE LIFT

A mine cage, for carrying workmen down to the depths or up again, is much like an elevator. In a building there are stairs, if the elevator happens to be out of order. But there are no stairs in a mine, and if the cage is out of order, the trouble is serious.

Recently the bureau of mines has contrived an emergency cage, which can be used in such cases. It is a simple affair, of steel strips riveted together, with top and bottom of sheet iron. Four or five men can find standing-room inside of it, and it can be lowered or lifted through a shaft by a winch. Following a mine explosion or other disaster the device is likely to prove of utmost value where the regular cage is put out of commission.—Milwaukee Sentinel.

GRASS AS BALANCED RATION

Pasture grass is considered as near a balanced ration of any one feed as we can get. With an abundant supply of nature's palatable, inexpensive, succulent, nutritious and well-balanced food we can lower the cost of production of milk and butterfat.

Mr. and Mrs. Buie Henry of Crosbyton were among the out-of-town shoppers in Floydada last Saturday.

Mr. and Mrs. J. A. Awtrey and son, Ovis, accompanied by Mr. and Mrs. I. M. Pittmen visited in Cone Sunday.

Mr. and Mrs. J. B. Miller and Mrs. R. L. Blasingame of Ralls were shopping here Saturday.

Mrs. Ross Dickerson, of Lubbock, was in Floydada a short time Saturday.

F. C. HARMON
 Funeral director and Embalmer
 Motor Hearse.
 FLOYDADA, TEXAS.

ADVICE TO THE AGED
 Are brings infirmities, such as sluggish bowels, weak kidneys, torpid liver.
Tutt's Pills
 have a specific effect on these organs, stimulating the bowels, gives natural action, and imparts vigor to the system.

R. C. Scott
ABSTRACTER, NOTARY PUBLIC AND CONVEYANCER.
 Abstract of Title to all Lands and Lots in Floyd County. Deeds and other instruments of writing prepared. 20 years experience with Floyd County Land Titles.
 Room 7 First Nat'l Bank Building Floydada, Texas

SEE US FOR
6 PER CENT FARM LOANS
 —AND—
ALL KINDS OF INSURANCE
FLOYDADA INSURANCE AGENCY
J. G. WOOD, T. R. WEBB, MANAGERS
 Room 6 First National Bank Building
PHONE 273

Ship By Truck

How the trucks have speeded up business by giving quick, personal service.

Our service to and from Plainview and Lockney takes care of your large and small hauls. We make regular trips. Ask about it.

Anything, anywhere, any time—that's us.

Phone 207
Pitts Transfer & Storage Co.

P. S.—Special winter rates on refrigerator storage.

FAWVER REALTY COMPANY

30 YEARS IN FLOYD COUNTY; 16 YEARS EXPERIENCE IN THE LAND BUSINESS

Buy and sell land and cattle on commission basis in Floyd and adjoining counties.

PHONE 178

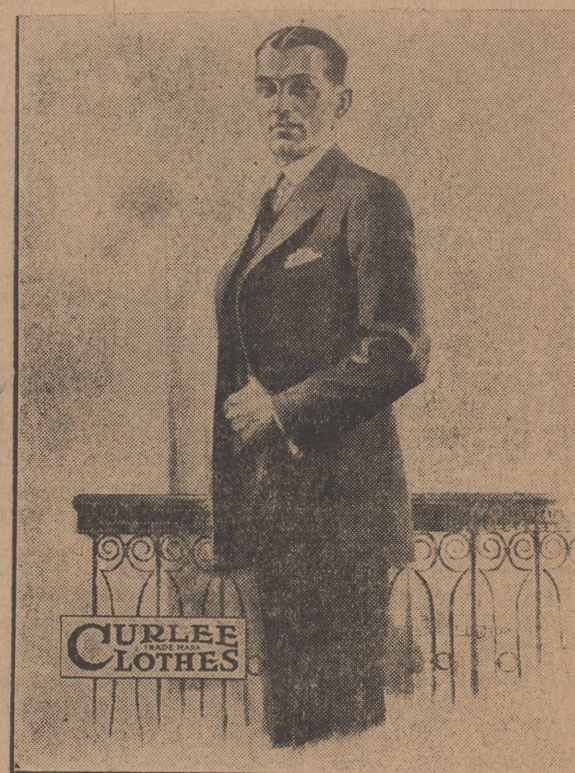
FLOYDADA, TEXAS

WARREN & TUBBS

GENERAL REAL ESTATE AGENTS

DEALERS IN FARMS, RANCHES AND TOWN PROPERTY

SEE US FOR BARGAINS. DISTRICT CLERK'S OFFICE IN COURT HOUSE, FLOYDADA, TEXAS.



Dependable Clothes All The Time

Whenever you buy a CURLEE suit you know that you are getting a full measure of value and a garment that is dependable in every way. The styles are right, the materials are right the tailoring is of the superior kind.

We are offering our entire stock of Curlee clothes at

Greatly Reduced Prices

Clark-Wood Dry Goods Co.

"Goods of the Better Kind."

South Side

Floydada

COLLECTION OF HIGHWAY TAX TO BEGIN SOON

New Number Plates will be Issued—Collections on Same Basis as Last Year

Collection of the State Highway Tax for 1923 will begin December 1st with the sale of the new license plates and it is expected that by January 1st, 1923 every motor vehicle in Floyd County will be equipped with a new number. The shipment of plates for Floyd County has been received at Tax Collector J. A. Grigsby's office for distribution as the taxes are paid. The receipts and records for the 1922 collections have not been received yet. Floyd County was allotted 1900 name plates by the State Highway Department. The plates issued to Floyd County are numbered 210,101 to 212,000 inclusive.

The highway laws covering the assessments of motor vehicle taxes are the same this year as they were last. This year tractors will be taxed and numbered plates issued the same as to passenger cars and trucks. No seals will be issued this year, as all cars are being renumbered, but the issuance of seals will begin with 1924. All persons paying highway taxes are requested to either send or bring their receipts for last year in order to simplify and facilitate the issuance of new receipts as taxes are paid.

New Plates Different

The new license plates for 1923 are somewhat different from the old plates which they replace. They are the same size as the old, but have a black background on which the white numerals are raised instead of a blue background, as was the case with the old plates. All plates have six numerals and further differ from the old plates in that "Texas" is displayed at each end of the plate instead of only at one end, and by the addition of a small white star which separates the first three from the last three numerals.

The registration fee for passenger cars will be computed on the same basis as was in effect last year. The fee is 35c per horsepower as determined by the standard gauging power employed by the Association of Licensed Automobile Manufacturers, with a minimum fee of \$7.50.

The new plates for motorcycles are essentially the same as those used last year, but a white background with black figures instead of the black background with red figures as used before.

The registration fee for all motorcycles is \$3.

Chauffeur's Badges to be issued this year present a different appearance from the badges used heretofore. They are in the shape of a seal and enameled in black. The numerals, letters and star in the center are in gold. The fee for a chauffeur's license is \$3.

Truck Fees

Registration fees for commercial motor vehicles, including trucks, trailers, semi-trailers and tractors, will be collected on a scale depending on the weight of the vehicle and the kind of tires. If the weight of the vehicle is less than 2,000 pounds the fee will be based on horsepower rating and above that weight the following scale will apply:

Net carrying capacity, in pounds—	1.	2.
2,001 to 3,000	\$30	\$36
3,001 to 4,000	40	48
4,001 to 5,000	50	60
5,001 to 6,000	65	78
6,001 to 7,000	80	96
7,001 to 8,000	100	120
8,001 to 9,000	120	144
9,001 to 10,000	150	180

1—If equipped with pneumatic tires.
2—Solid tires.

For trailers and semi-trailers the license fee will be based on tire equipment, gross weight and capacity load as follows:

Per 100 pounds gross weight vehicle and capacity load	Equipped with—
	Pneumatic tires
	Solid rubber tires

Iron, steel or other hard tires ...35c

The annual license fee for tractors will be based on the weight of the tractor, as follows:

1 to 2,000 pounds	\$ 5
2,001 to 4,000	10
4,001 to 6,000	15
6,001 to 8,000	20
8,001 to 10,000	25

NEW TREASURER SWORN IN IN MOTLEY COUNTY

Armistice Day Observed with Banquet for Ex-Service Men in Matador

W. M. Clarkson, who was arrested at Roaring Springs, on October 4th, charged with the theft of three bales of cotton from the local yard, and who had been indicted on eight separate charges alleging the theft of six bales during the year 1921 and the three mentioned, was arraigned in the District Court, Monday of this week, and put on trial for the alleged stealing of one bale belonging to J. A. Goodwin, and involved in the latest theft.

The defendant plead guilty to the charge and asked for a suspended sentence, which question was submitted to a jury, which after listening to the evidence and arguments of counsel, and charged by the court, deliberated several hours and finally brought in a verdict of sentencing the accused to two years in the penitentiary.

On the defendant accepting the sentence, the District Attorney dismissed the other seven indictments.

Tom Napier, who has recently moved back here from Afton, has decided to open a produce and poultry house in Matador, and has leased the building and grounds of what has been the wagon yard for that purpose and is now ready for business.

Mrs. Georgia Kindel, who was just completing the last of her second term as county treasurer of Motley county, tendered her resignation to the commissioners court, at its regular meeting held on Monday of this week.

The resignation was accepted and Mrs. Lizzie Clements, treasurer-elect, was named to fill the unexpired term.

The Armistice Day observance in Matador was very appropriate and

thoroughly enjoyed, every feature of the program being carried out in detail and with every number complete.

The prominent and paramount part of the program was the banquet tendered the ex-service men by the citizens of Matador, to which they and a companion were invited guests, was staged in the Luckett building at 8 p. m. and the spread was one that would have been enjoyed by royalty, bearing all the inviting viands that could be procured. A number of extra plates were provided for those who were not of the favored class, at so much per plate, and these were readily taken by patriotic citizens.

Ben Roberts and family, of Floydada, were Matador visitors Saturday. Tom Goslee of Floydada, was here Saturday attending the ex-soldiers' banquet.

Mr. and Mrs. Guy Bradley, Miss Opal Bradley and Miss Blanche McVicker, spent Sunday with relatives in Floydada.

Guy Cherry and wife, of Floydada, were greeting friends in Matador Saturday, and attending the banquet Saturday night.

—Motley County News.

DISTRICT CHAMPIONS TO MEET IN BI-DISTRICT BATTLES

The teams winning football honors of their respective districts and still remaining in the Interscholastic League race for state championship are scheduled to meet before Saturday, November 25th, in bi-district battles.

Amarillo, champions of district No. 1, is scheduled to play Floydada, champions of district No. 2, at Amarillo, next Saturday. Comanche, champions of district No. 8, is to play Cleburne, champions of district No. 7. Denison, champions of district No. 5, will play Sulphur Springs, champions of district No. 6. Waco, Champions of district No. 9, will play Palestine, winners of district No. 10. Austin or Temple champions of district No. 12 will meet Del Rio. Waco will battle Palestine and Bryan will meet Beaumont.

Mr. and Mrs. C. M. Wilson spent the week end visiting in Lockney.

WHEAT GROWERS TO EXTEND ORGANIZATION NORTH TEXAS

Amarillo, Texas, Nov. 23.—Extension of the work of the Texas Wheat Growers' Association to central north Texas is under way. Judge L. Gough, vice president of the association, left for that region this week and plans to line up a number of field men.

Counties that will be included in the organization drive are: Cherokee, Wise, Denton, Collin, Grayson and Tarrant, according to E. Bass Clay, secretary. The association has had a splendid growth from the beginning, according to Clay, and it is planned to expand the work.

Judge Gough probably will be gone until December 1, on this trip.

FLOYDADA HIGH SCHOOL RECORD IN FOOTBALL

The Floydada team under the able direction of Coach Wester has defeated the following teams in winning the championship of this district which carries with it the championship of the south plains: Ralls 0, Floydada 26; Paducah 25, Floydada 26; Ralls 10, Floydada 23; Lubbock 12, Floydada 13; Lockney 0, Floydada 30; Plainview 0, Floydada 16.

Miss Grace Williams of Canyon visited this week with Miss Thelma Williams of this city.

Everything Electrical

In stock at Floydada, and the best your money can buy.

In choosing electrical appliances for gifts or for yourself it is well to consider the reliability of the goods you buy.

Hot Point Appliances

Are the best and most reliable:

CHAFING DISHES, TOASTERS, PERCOLATORS, IRONS, GRILLS, CURLING IRONS, BEVAC ELECTRIC SWEEPERS, HEATING PADS, THOR WASHING MACHINES.

Here ready for your inspection and selection.

We guarantee and give service on every appliance we sell. Make this an Electrical Christmas and buy it in Floydada, from

E. E. Brown Electric Shop

Fordson

TRADE MARK

Clinic Tomorrow

9 to 11 A. M.,

Barker Bros. Garage

We especially invite all Fordson Owners to spend these two hours with us and get pointers from Ford Motor Company experts about the care and maintenance of your tractors.

Tomorrow Night

BEGINNING PROMPTLY AT 7:30

Free Moving Picture Show

—AT THE—

City Park Auditorium

By representatives of the Ford Motor Company on topics that will interest every farmer. Also T. Scott Wilson, county agent of Floyd County, will make an address on some phase of farm life or business.

NO CHARGES

EVERYBODY CORDIALLY INVITED

Alexander, The Tailor

HAS BOUGHT THE TAILOR SHOP OF

Skeet Tailoring Company

In rear of First State Bank Building, and is making a bid for your

Tailoring, Cleaning and Pressing

On the basis of strictly first class work—every job done with the expectation of a repeat order. Will specialize in ladies' work.

Customers and friends of the Skeet Tailoring Company invited to continue with us and all other business will be appreciated.

TELEPHONE 232

H. A. Alexander

WE DO YOUR MENDING.

Look, Mr. Light Car Owner, This Will Interest You

BELOW ARE OUR PRICES ON FORD SIZES FIRESTONE AND OLDFIELD CASINGS:

30x3 Oldfield "999"	\$7.99	30x3½ Heavy Oldfield Fabric	10.65
30x3 Nonskid Firestone Fabric	8.95	30x3½ Regular Size Firestone Cord	12.45
30x3½ Oldfield "999"	8.99	30x3½ Oldfield Cord	12.45
30x3½ Nonskid Firestone Fabric	10.65	30x3½ Oversize Firestone Cord	14.65

ALL OF THE ABOVE CASINGS ARE MADE AND SOLD BY THE FIRESTONE TIRE & RUBBER CO.

Phone 88

Collins Grocery Company

Phone 88

Thanksgiving Day

Will soon be here and you may need some cooking Utensils and other household necessities in preparing that big dinner.

For a reminder we give a partial list below:

Aluminumware

TURKEY ROASTERS, CHICK ROASTERS, PRESERVING KETTLES, STEWERS, TEA KETTLES, SAUCE PANS, PERCOLATORS, DISH PANS, WATER BUCKETS, ETC.

Chinaware

We have a well-assorted stock in this line. Plain white, floral and gold band patterns. We have a real pretty assortment of forty-two piece dinner sets.

Don't fail to see our hand-painted china.

Remember us when in need of anything in the Hardware line.

OUR STORE WILL BE CLOSED THURSDAY, NOVEMBER 30TH, THANKSGIVING DAY.

J. U. Borum Hardware

SOUTH SIDE SQUARE

FLOYDADA, TEXAS

PARENT-TEACHERS ASS'N HOLDS OPEN MEETING

On Friday afternoon, November 10, 1922, the Parent-Teachers' Association held an open meeting in the county court room at 3 p. m.

A good attendance of the membership, the school board, the south side teachers, and quite a number of interested patrons composed the attentive audience.

The president, Mrs. A. P. McKinnon, called the house to order and requested Prof. Johnston to open up the discussion on "Uniform Grading," which was the subject for the afternoon. This address was replete with many fine thoughts and to those parents who were never privileged to have a course in child study was doubly instructive and helpful.

Quite a number while listening to this address were enabled to see where they had failed in child training, and to discover the cause of failure. In many instances the remedy for these failures were shown and all felt they had received much help from this one feature of the program.

Let us say just here that if every patron of the Floydada school had been present to hear Prof. Johnston on this subject, you would have learned something that would have done you and your children good all your days.

Mesdames Nelson and Pitts and Miss Rea handled their part of the discussion in a very able and pleasing way.

The Association adjourned to meet November 24th at the North Side School.

Everyone expressed themselves as delighted with the program and wished to have another open meeting at an early date.

This the association plans to do. Watch for the announcement of program and date.

—Reporter.

VERY ECONOMICAL



Hubby—Does the new cook make the food go as far as possible?
Wifey—Yes; some of it goes all the way from our house to hers.

WHAT HE SAW

A rather foolish young man went to the doctor and told him that he had seen a ghost.

"Piffle!" said the doctor. "Where did you see it and what was it like?"

"Well, I was walking through the churchyard last night," blurted out the trembling fellow, "and right beside the wall I saw the ghost."

"Well, and what was this delusion like?"

"It had very long ears and looked like an ass."

"Go home, my good fellow," advised the doctor. "You have been frightened by your own shadow."

FAR-SIGHTED BROTHER

"My brother insists on my buying a suit of knickerbockers," remarked Miss Cayenne.

"He wants you to wear that kind of togs?"

"I don't think so. He probably wants to borrow them to play golf in."

Hesperian Want Ads Get Results—Try One.

Dairymen and Cow Owners

DO YOU KNOW how to figure exactly the right kind of concentrate to feed with silage and clover hay for a 900 pound cow?

DO YOU KNOW what makes cream yellow?

DO YOU KNOW how to size up a good cow?

DO YOU KNOW how much milk there is in a cow's udder just before milking?

DO YOU KNOW what makes cream yellow?

Will answer these questions and many more. This valuable book has 100 pages brimfull of just the information the practical dairymen wants to know.

The book is priced at 35 cents but complimentary copies have been mailed by us to the dairymen and cow owners in Floydada.

If you didn't get your copy apply at once to

Bonner-Price

PHONE 270

AT SMITH PRODUCE



ACUTE DISEASES

From the CHIROPRACTIC standpoint, one has disease when he suffers from any pain at all, no matter whether it is toothache, headache, stomachache, or toeache, but he does have a DISEASE.

That which is termed acute disease is the expression from occlusion of stimulus, arising shortly after an original displacement or where displacement which has existed, is made heavier by some fall, shock or poison, such as may result from wrongly selected or eaten food.

Every CHRONIC ailment has had its acute term, or to put it in other words, every ailment of sickness is acute, and if not removed becomes chronic.

A. S. DOSS

CHIROPRACTIC-MASSEUR

PHONE 248

BARROW BUILDING

Office Hours 1:00 to 8:00 P. M.
FLOYDADA, TEXAS

Holidays Closing ANNOUNCEMENT

Floydada, Texas, November 22, 1922.

We, the undersigned business firms of Floydada agree to close our places of business on the following holidays and remain absolutely closed on such days and transact no business whatsoever during these days:

Thanksgiving Day, 1922, November 30th, Thursday.
Christmas Day, 1922, December 25th, Monday.
Independence Day, 1923 July 4th, Wednesday.
Armistice Day, 1923, November 11th, Sunday.
Thanksgiving Day, 1923, November 29th, Thursday.
Christmas Day, 1923, December 25th, Tuesday.

It is understood and agreed that this agreement is not binding unless signed by all the business firms of Floydada. Also it is understood and agreed that we will not keep our back doors open, nor transact any business whatsoever in our places of business on these days, excepting emergencies.

The purpose of this agreement is to eliminate the necessity of circulating a petition every time it is desired to get the merchants of Floydada to close their places and for that reason is made for the balance of the year 1922 and for all of 1923.

This schedule is recommended by the Chamber of Commerce, acting through its committee composed of R. Fred Brown, W. A. Baker, J. G. Martin, W. G. Collins and J. U. Borum.

- | | | |
|---------------------------|--------------------------|---------------------------|
| First State Bank | Collins Gro. Co. | Motor Supply Co. |
| Martin Dry Goods Co. | Floydada Lumber Co. | Floydada Produce Co. |
| T. C. Russell | Smith Produce | Kirk & Sons |
| J. A. Blackwell | Bonner-Price | B. B. King |
| Wilson Kimble | Willson & Son | Gullion & Son |
| Carl W. Eubank Shop | Lee Faulkner | C. Surginer & Son |
| Glad Snodgrass | J. A. Lowry | Berry Cash Store |
| C. D. Hopkins | Boothe Bros. | W. W. Looney Shop |
| C. W. Mitchell | Tourist Garage | Barker Bros. |
| Woody Drug Co. | Pitts Transfer Co. | City Barber Shop |
| Stephens Store | W. R. Johnson Grocery | E. E. Brown |
| C. R. Houston & Co. | Star Battery Station | Texas Utilities Co. |
| Woodridge Lumber Co. | A. L. Stovall Market | Alexander the Tailor |
| Seale-Price Dry Goods Co. | Floydada N. F. L. A. | Higginbotham-Bartlett Co. |
| Floydada Drug Co. | W. C. Williams & Son | Gamble Bros |
| First National Bank | Ben Roberts | H. C. Bosley |
| Floydada Ins. Agency | W. J. Brown & Son | Lewis & Davis Gin Co. |
| W. H. Hilton | City Tire Co. | West Texas Gin Co. |
| Jones & Howard | E. S. Randerson | Farmers Gin Co. |
| Brown Brothers | E. E. Boothe Bakery | S. D. Furguson & Co. |
| Floydada Variety Store | Allen's Tin Shop | Wilson Studio |
| Clark-Wood Dry Goods Co. | Baker-Campbell Co. | A. D. White Produce Co. |
| Scoggins & Dickey | Marshall Grain Co. | O. P. Rutledge |
| J. U. Borum, Hardware | Ward Filling Station | Hesperian Publishing Co. |
| F. C. Hairmon | F. F. F. Service Station | Duncan Insurance Agency |
| Guimarin Produce Co. | | McCleskey Top Shop |

Baker-Campbell Co.

"The Home of Good Merchandise"

Thanksgiving

The day of the year when all should pause long enough to think of the many good things that has been our good fortune to enjoy and to give thanks to the supreme ruler who has made it possible.

To think of this great holiday is to think of friends and of gifts. We have many useful and suitable gifts here and if you are thinking of some friend that you want to remember with some nice gift we invite you to come in and see what we have in this line.



Are Always Acceptable as Gifts

All linen table damask and the napkins to match. We have some beautiful sets to match.
All linen damasks, in plain and fancy patterns, per yard.....\$1.50 to \$3.00
All linen napkins, in plain and fancy designs to match the damask, set of six,\$4.00 and \$5.00

Turkish Bath Sets

Beautifully embroidered with fast color embroidery thread in beautiful designs of different colors, set.....\$1.75

Dresser Scarfs

These are always acceptable and are always needed around any home, beautifully embroidered and trimmed with pretty Torchon laces, and neatly hemstitched 50c and 75c

Shoes

Don't overlook the fact that we have a good stock of good shoes for any member of the family and at prices that mean several dollars in savings to you.

We are always showing something new in ladies' oxfords. This week's express brought us a beautiful gray suede oxford, trimmed with brown suede, military heels, all sizes\$6.00

We have the largest line of Daniel Green house shoes in this city, some patterns that are new. Come in and let us show them to you. All prices.

Baker-Campbell Co.

WANT AD COLUMN

WANTED—First lien notes on Floyd County land. Can make Farm Loan on short notice. R. E. Fry, Floydada. 38-tfc

For marble or granite Monuments see S. B. McCleskey. 4-tfc.

See us for the best oil stove made. Kirk & Sons. 38-1tc

FOR Sale or Rent—Nice residence, stuccoed, six-rooms and bath, modern conveniences. See J. U. Borjup. 32-tfc

For MOTHER'S Christmas—nothing better than your photograph. Come Now. Wilson Studio. 37-tfc

Store your refrigerator at special price for the winter. Pitts Transfer Co. 38-3tc

TO SWAP—Good mare and some money, for 1921 model Ford car. John McDonald, phone 178-F3, Lockney. 37-4tc.

FOR RENT—Residence close in. See J. A. Fawver. 36-4tp

FOR SALE—12-25 tractor, 6-disc plow, new 9-foot tandem harrow, new 16-disc drill. See W. L. Boerner. 38-2tc.

Pipe and pipe fittings, valves, stop and waste. Kirk & Sons. 38-1tc

Give photographs this Xmas. Wilson Studio. 37-tfc

FOR SALE—Improved Acala cotton seed, produces more than a bale per acre, the lint brings a premium of 5c to 7c. Price 8c lb., f. o. b. Blythe. Address Bishop Carr, Blythe, Cal. 37-4tc.

Colorado Lump coal for sale \$12 per ton. West Texas Gin Company. 38-2tc

Schillings, Folgers, White Swan and Hill Bros. Coffees/Brown Bros. 37-1tc

Congoleum, linoleum, axminster and velvet rugs. Kirk & Sons. 38-1tc

FOR SALE OR TRADE
80 acres of rich Palo Verde Valley land, will produce over a bale of cotton or from 8 to 10 tons of alfalfa per acre each year. Would consider good improved land near Floydada up to \$10,000. Balance easy terms. Address Bishop Carr, Blythe, Cal. 37-4tp

Leather and leather goods of all kinds. Kirk & Sons. 38-1tc

Bulk red and black pepper, ground and leaf sage. Brown Bros. 37-1tc

FOR LEASE OR SALE—My brick bungalow on Virginia Street, lease to responsible couple, \$30.00 per month, or will sell on easy terms, write for contract, possession December the first. W. H. Nelson, Jr., 242 Palm St. Abilene, Texas. 37-2tc

The price of mattresses follows price of cotton. Buy now and save somey. Kirk & Sons. 38-1tc

Hen-Du egg laying tablets make hens lay more eggs. Guaranteed. Brown Bros. 37-1tc

Your obligation to your family and friends is best met by a portrait at Xmas. Wilson Studio. 37-tfc

Anything in the plumbing line. Kirk & Sons. 38-1tc

Michigan salt, bulk sage, brown sugar. Brown Bros. 38-1tc

A dozen photographs will solve 12 puzzling gift problems at one sitting. Come now. Wilson Studio. 37-tfc

GOOD used car to trade for good milk cows or team of mules. V. B. Fitch. 37-2tp

Four pounds Chilli pepepr 25 cents. Get more eggs. Brown Bros. 37-1tc

Best grade kerosene. Collins Gro. Company. 4-tfc

Heinz and Bepchnat lines. Libby's bulk pickles. Brown Bros. 37-1tc

Fine quality Irish potatoes two dollars and a half a hundred pounds. Brown Bros. 37-1tc

Lard cans and syrup cans. Kirk & Sons. 38-1tc

WANTS TO RENT a farm; can cultivate 150 or 200 acres in row crops. G. M. Brown, Floydada, Texas. 37-2tp

The SANIDDOWN is the only sanitary mattress. Kirk & Sons. 38-1tc

A complete line of fancy groceries for dinners, banquets, etc. Imported canned and bottled goods. Brown Bros. 37-1tc

WANTED—First lien notes on Floyd County land. Can make Farm Loan on short notice. R. E. Fry, Floydada. 38-tfc

Norwegian mackerel, coconuts, Heinz sweet and sour gherkins, Heinz plum pudding. Brown Bros. 38-1tc

Freh Walnuts and filberts. Loose-Wiles fine chocolates. Brown Bros. 38-1tc.

Colorado Lump coal for sale \$12 per ton. West Texas Gin Company. 38-2tc

PUBLIC INCUBATOR OF 10,000 EGG CAPACITY

Here is my proposition: I will hatch your chickens for you at \$5 per hundred. That is cheaper than you could hatch them if you owned your own incubator. My idea is to hatch chicks for Jan., Feb. and March, as broilers or early pullets. They would be worth more money than later hatchings. If you prefer I would hatch chicks for half. The question is, would you patronize it? Phone or see me and let's talk it over. L. A. Marshall. 38-2tc

LOST—In Floydada, O. E. S. Pin with Shrine emblem at bottom. Finder please return to Hesperian office. 38-2c

Colorado Lump coal for sale \$12 per ton. West Texas Gin Company. 38-2tc

WANTED—Sorghum, Sudan, Higgari and black-hull Dwarf Kaffir seed. A. D. White Produce Co. 38-2tc

Add to the happiness of your friends by giving them a Christmas portrait of yourself. Come NOW. Wilson Studio. 37-tfc

FOUND—Ladies' black gauntlet glove, white stitching. Owner pay for ad and claim same at Hesperian office. 38-1tc

LOST—Buggy seat, between Ward Filling Station and railroad crossing north of station. Finder notify or return to Ward Filling Station. 38-1tc

This Is Radio Time

We have the Westinghouse line of receiving sets, and accessories; including Detector tubes, head sets, lightning arrester, insulators, antenna wire, and plugs.

The Westinghouse sets are giving the best service, and you take no chances; we install them, and teach you how to operate these sets; let us show you.

We very much appreciate the good rains, and this brings lots of farm work, and this will create a demand for hardware; and that is our business.

Remember us for all kinds of hardware, harness, horse hardware; and that is our business.

We have a complete stock of fittings, pipe, and cylinders. Dempster-Challenge and Star Windmills, and a complete stock of repairs for same. See us if in need of a windmill.

LINOLEUMS, WALL PAPERS, AND WINDOW SHADES

Mitchell Hardware

Men, Women, Begin to Think About that Furniture, Mattresses, Rugs and Rockers

That you are going to surprise each other with for that Xmas present. Select it now and have me put away for you until Xmas.

If you want a bed room suite or living room or dining room suite we have it on display in room style just like it would look at HOME.

We have the SEALY and other grades of mattresses to fit all pocket books and they are all well worth the price asked for them.

WE ARE SELLING LOTS OF WALL PAPER, WINDOW SHADES, CURTAIN RODS AND LINOLEUMS, WHY?

NEW GOODS

A big shipment of Axminster, Tapestry and the well known GOLD SEAL congoleum art squares.

F. C. HARMON

Where you save the difference in dependable furniture, floor coverings and house furnishings.

New Coats For Ladies and Misses

Also a New Shipment of Novelties in Ladies' Footwear

Including

Sport Oxfords and Satin Colonial Pumps

Store Closed all Day Thurs., Nov. 30th, THANKSGIVING DAY

C. R. Houston & Co.
Floydada, Texas

Specials For Friday, Saturday, Monday

At

Seale's Store

Army Overcoats, reclaimed, good as new..... \$6.50
Army work shoes ,extra quality, Friday and Saturday.....\$2.95

Good assortment. Don't miss this price on work shoes.

One lot Boys' stitch down shoes, low heels, a regular value \$2.75, at \$1.95
Ladies' Felt House Shoes, regular value \$2.00, at.....98c
Men's O. D. Army Pants, at.....\$2.50
Men's O. D. Army all-wool shirts, regular \$5.00 value, at.....\$2.95
One lot Men's O. D. Army socks, 3 pair for.....\$1.00
Extra special prices on Men's and Young Men's suits and overcoats for Friday and Saturday; Men's and Young Men's overcoats, regular price \$20 and \$25, at..... \$10 and \$12.50

Everything in our store will go at reduced prices. Come, see for yourself.

Remember Our Motto:

"The Price Is The Thing"

New location two doors from The First National Bank. Store will be closed all day, THURSDAY WEEK, THANKSGIVING DAY.

W. H. Seale

Kenneth Bain
Lawyer
OFFICE ROOM 4 AND
5 FIRST NATIONAL
BANK BUILDING
General Practice

PLAINVIEW OFFERS REWARD FOR CHICKEN THIEVES

Plainview, November 17.—Merchants will give a reward of \$25.00 to the person supplying information leading to the arrest and conviction of any person guilty of the theft of poultry in this section. This was decided upon at a meeting of the Plainview Merchants Association Wednesday night.

This reward is offered as a supplement to the standing reward of \$25.00 offered by the South Plains Poultry Association of Plainview for the same purpose.

This applies not only to Hale county, but to the entire trade territory served by Plainview.

It has come to the local people that much stealing of turkeys, chickens and other poultry has been going on recently. It was with a view of stopping this practice that the merchants have decided to offer this reward.

George Pickett, of Quitaque, charged with incest before the Briscoe County District Court, at Silverton, was given a life sentence in the penitentiary, said District Attorney Charles Clements, who was in Plainview Wednesday. Pickett, who also went under the name of Gates, of Cates, was charged with improper relations with his two girls, one 18 and the other 15. When he thought the officers knew of his misdeeds, he attempted to escape, and was found hiding in the sand hills near Muleshoe, and was brought back and placed in the Silverton jail for trial.

A slow, drenching rain fell in this section Wednesday night and Thursday. The drizzle continued throughout the greater part of Thursday, ceasing about nightfall. W. J. Klingner, local weather observer, states that at the time the rain ceased .78 of an inch had been registered here.—From the Herald.

DR. AND MRS. I. W. HICKS LEAVE FOR ABILENE

Dr. and Mrs. I. W. Hicks left Tuesday for Abilene, following receipt of a message telling of the serious illness of Dr. Hick's father.

REV. TUBBS HOME

Rev. G. W. Tubbs returned home Monday from Waco, where he attended the Texas State Baptist Convention.

Rev. J. Pat Horton returned Wednesday.

PLAINVIEW HIGH SCHOOL BESTS LUBBOCK IN FOOTBALL

Plainview's High School football team won from Lubbock last Friday at Plainview 28 to 7, the Plainview team showing up better in all departments.

Emery Green and Clarence Lane who were returning from a hunting trip in north western New Mexico passed through Floydada last Thursday enroute to their home at Jayton, Texas.

Reduced prices for refrigerator storage. Pitts Transfer Co. 38-3tc

Mrs. Hugh Earthman and son, of Lockney, visited her parents, Mr. and Mrs. J. A. Carruth, here Saturday.

M. H. Martin left the latter part of last week for Valley View, Texas, to spend ten days or two weeks visiting relatives. Mrs. Martin preceded him several days, visiting with her mother, Mrs. W. M. Slinker.

Bevie Barton returned home last Thursday from Amarillo.

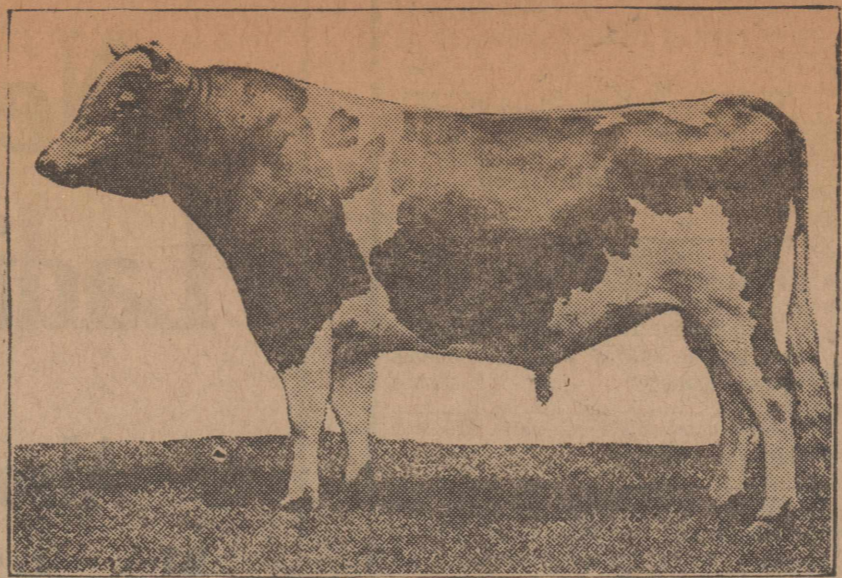
Mr. and Mrs. W. C. Henry and daughter, Ona, of Ralls, were shopping in Floydada Saturday.

W. H. Johnson and family formerly of Pleasanton, Texas, are making their home in Floydada.

C. R. Houston spent the first of the week in Dallas on business for C. R. Houston & Company.

Mrs. B. B. Pierce and little son, Orval, left Wednesday for Bakersfield, Calif., where they will join her brothers, Virgil and Earle, to spend the winter.

SUPERIORITY OF PUREBRED LIVE STOCK SHOWN BY RECENT INQUIRY



In Breeding for Dairy Cows It is Important to Have a Purebred Sire—He Represents Half the Value of the Herd From a Breeding Standpoint.

RAINS BRINGING WHEAT UP TO GOOD STAND

The rains of the past ten days over Floyd County have certainly brought the thousands of acres of "dusted in" wheat up to a good stand and farmers who have this kind of wheat believe it will stand until Christmas without further moisture. Other farmers by the hundreds over the county are planting their cotton fields and stubble to wheat and sufficient moisture is in the ground to bring it up to a good stand without a doubt.

Some of the wheat is coming so fast that it will do for stock pasture within ten days or two weeks.

The moisture is six to eight inches deep around the immediate environs of Floydada, but some sections report almost a thorough season. At Lake-

view, for instance, about three inches of rain have fallen during the period of three weeks and farmers in that section have a season that will last them well into the New Year.

SUPT. J. N. JOHNSTON GIVES ADDRESS AT CROSBYTON

Supt. J. N. Johnston gave an address at the Crosby County Parent-Teachers Association meeting held at Crosbyton last Saturday. He spoke on "Giving the rural boys and girls an equal opportunity with the boys and girls of the cities."

Mr. Johnston said that a full report of the Floydada Public Schools will be made next week.

Hesperian Want Ads Get Results—Try One.



OF COURSE, SHE WOULDN'T SAY JUST WHAT SHE WANTS FOR A

Thanksgiving Present

But you can make a safe wager that she would be delighted with a gift that lasts, from the shop of

C. H. DAVIS,
Jeweler
AT WOODY DRUG CO.

Floydada Drug Co.

CANDY



Everybody

Has a sweet tooth, particularly around holiday time. We have the finest and tastiest candies.

Every sweet is neatly arranged in special holiday box.

We have chocolate bonbons, chocolate covered nuts and fruits.

Remember,
Everybody Likes Candy

DUNCAN INSURANCE AGENCY
1st Nat'l Bank, Rooms 8 and 9
Floydada, Texas
TELEPHONE 272

Fire	Itsa	Every
Like	Horse	Man
Youth	Of	To
Has	Different	His
Its	Hue	Trade;
Fling;	Whenna	Many
Insure	Loss	Sure
Against	Is	Policies
The	Up	We
Pesky	To	Have
Thing.	You.	Made.

Get plenty of eggs when the mercury's down

Feed a complete egg ration and you will get eggs now.

The ration must contain plenty of material for both whites and yolks

PURINA CHOWS supply an equal number of whites and yolks

More eggs or money back guaranteed when you feed PURINA CHOWS

Get eggs now when prices are up. The GUARANTEE is your protection

Feed from Checkerboard Bags We sell Purina Chows

Bonner-Price
Phone 270 S. E. Corner Square

New Location

Wilson Studio
FORMERLY ACROSS STREET FROM POST OFFICE

In Montgomery Building, formerly occupied by Wilson Kimble, Jeweler, on South Side.
Make an appointment today for that Xmas Portrait.

W. E. Huffhines
LAWYER
GENERAL PRACTICE
SPECIAL ATTENTION GIVEN
INCOME TAX MATTERS.
Office Opposite
Post Office

ARTHUR B. DUNCAN
GENERAL LAND AGENT
AND ABSTRACTER

Buys, sells and leases Real Estate on commission; Render and pay taxes; Investigate and perfect titles; Furnishes abstracts of title from records; Owner of Complete Abstract of all Floyd County Lands and Town Lots; 30 years experience with Floyd County land titles. List your land and town lots with me, if for sale or lease; and give me your abstract of title work. Office South East Corner of Square.

—ADDRESS—
ARTHUR B. DUNCAN
FLOYDADA, TEXAS

LUDEN'S
MENTHOL COUGH DROPS
for nose and throat
Give Quick Relief

TEETH ALL GONE AND A PHYSICAL WRECK AT THIRTY

That's the story in brief of one successful young business man who was too busy to take care of himself and did not heed Nature's warning that Pyorrhea was at work, undermining his very life. Tender gums, bleeding gums, soft, spongy gums and many forms of "toothache" are but warnings of the presence of Pyorrhea germs—warnings that should be heeded at once. Dr. Barbee's famous Pyorrhea Remedy will correct these troubles—prevent Pyorrhea and preserve health. A germicide remedy with a guarantee. At your druggist.

Thanksgiving

And Good Things to Eat
ARE ALWAYS ASSOCIATED TOGETHER

It is at this time the housewife is especially particular that her grocer shall have only the best of everything for the table.

We are particularly fortunate in having such an assortment of Holiday Groceries as well as the everyday staples, which are the best quality we can buy.

Star Cash Grocery

P. S.—Use Figaro Preserver on your meats. You can buy it here.

Which Is Larger the Sun or a Cent

The sun is the largest but you can hold the cent so close to your eye that you'll lose sight of the sun. Don't let a cheap price or a big can baking powder make you lose sight of quality.

CALUMET
The Economy BAKING POWDER

Is the quality leavenener—for real economy in the kitchen, always use Calumet, one trial will convince you.

The sale of Calumet is over 150% greater than that of any other baking powder.

THE WORLD'S GREATEST BAKING POWDER

**JNO. M. HUGHES, J. D. STARKS
POSTMASTER ELIGIBLES**

Jno. M. Hughes, for the past five years agent of the Santa Fe at Floydada, and J. D. Starks, former postmaster here and long-time resident, have been certified by the Civil Service Commission to the president as eligibles for the postmastership here, according to news dispatches from Washington appearing in the daily press Saturday.

MORE ENJOINING

Another injunction has been filed. This time it is far removed from Texas and is not at all political. Two parents in Chicago, who are separated, have asked the judge to restrain their daughter from going with a certain boy. The judge granted the injunction.

Finley McGlinchey, of Eastland is visiting with his sister, Mrs. Wilson Kibmle.

HOW TO MAKE HENS LAY

By F. W. Kazmeier

In this article, we are confronted with the science and art of feeding hens for a profitable egg production. It truly is both a science and an art. The hen is the factory to be supplied the proper raw material with which to make the eggs. It stands to reason that the first thing we want to know is, what the egg is made out of or composed of. What constitutes an egg? An egg is composed of 66 per cent water, 13 protein, 11 fat and 10 per cent lime. Here we have the composition and the parts of an egg. The composition includes the shell. It is true we don't eat the shell, yet the shell is necessary for a complete egg, hence we include it in our composition.

The hen is the factory, that transforms the raw material into the finished product known as eggs. Now then is the hen a real factory? We say yes, indeed, she is a very highly developed machine.

All of us know that an old and worn out factory can not put out the work in the most efficient manner. The same applies to the hen. The old hen is a back number as an egg producer. It is also true that the interior equipment influences the total output of the factory. So it is with the hen. A hen that is not bred to lay is a factory with a poor interior equipment and the results must and will be accordingly. A hen is bred to lay. You breed the eggs into a chicken and feed them out. The trouble with many of our people is that they have been trying to feed eggs into a chicken. You breed speed into a horse, and you breed eggs into a chicken. Some hens you can feed on a hard boiled egg ration and they will still refuse to produce eggs. That shows it takes something besides feed to make eggs. Get a bred-to-lay strain. Then remember what we said about the old factory. The old hen is always a poor layer. Early hatched pullets make the best winter layers. Late hatched pullets are too late for fall and winter egg-production. In this article, we shall not say much about the hen or the factory, but we could not help but say something because it is a losing game to feed old hens, culls, sickly hens, late pullets or stock that has not been bred-to-lay. Breeding is half the battle. It is a pleasure to feed hens that have been bred-to-lay. It seems that bred-to-lay stock comes off the roost early in the morning ready to go, just like an active horse.

Eggs cannot be produced unless the material fed contains the materials from which the eggs are made. Remember, out of every five to six pounds of feed that a hen eats four pounds are used to maintain her body, and the balance is turned into eggs. This little story shows at once that the maintenance cost is the greatest, hence successful poultry keepers cull closely, weeding out all poor layers to reduce the maintenance cost. That is indeed a wise practice. It is poor economy to skimp on feed, or to fail to provide all the essentials necessary for profitable egg production. Hens fed on grain alone will not give a profitable egg yield, especially in the fall and winter. To balance such a ration if you can do no better add milk or meat food of some kind.

We have found that almost any kind of a hen with any kind of breeding behind her can produce at least 144 eggs in a year. The 144 eggs weigh about 18 pounds and it will take from 70 to 90 pounds of feed exclusive of water and green food as well as grit and oyster shell to make these eggs. Here is about what such a hen will eat: Dry mash, 45 pounds; whole grain 27 pounds; 15 gallons of milk or 8 pounds of meat scraps, 15 gallons of water; 15 pounds of green food; 3 pounds of oyster shell and 2 of grit.

Prepared Feeds the Best
Because most farmers and poultry keepers are not in position to mix their feeds properly, we have concluded that it is best for the majority of

people to buy commercial or ready mixed feeds. It is true that their increased production more than makes up for the increased cost. This feed is expertly balanced, and machine mixed. It contains nothing but what is needed to make eggs. There is no waste. It contains necessary ingredients that the individual will find difficult to get. In buying prepared feeds remember that there are many inferior brands on the market. In fact the country is flooded with commercial feeds that are made to sell, and not to make hens lay. We find that some concerns put out feed when it is nothing but grain elevator waste and sweepings sacked in fancy named and colored sacks. Such feed is not worth the money. Our advice is do not buy that kind of feed. Remember, there are feed manufacturers that make it a business to make poultry feeds. It is not a side line with them. It is their sole business and as a result, they put out a first class feed. We will be glad to give further confidential information along these lines upon request.

Milk of Meat Food Necessary

In studying the composition of the egg previously given, it will be noticed that 13 per cent of protein is required to complete the egg. We wish to say right there is the stumbling block. Right there is the secret of feeding for eggs if there is such a thing as poultry secrets or feeding for eggs secrets. First, let us see what happens if the hen does not get the 13 per cent protein. Does she lay the egg minus the protein? Does a hen lay half an egg? The answer to both questions is, she becomes a waiting hen instead of a laying hen. The hen cannot lay half an egg. All she can do is to wait until she gets the 13 per cent protein. If some of your hens are not laying, they may be waiting hens. They may be waiting for you to provide the 13 per cent protein, either in the shape of milk or some form of animal food. In the commercial feeds of the best grades they use both dried butter milk and meat scraps to provide the necessary protein to complete the egg. In west Texas, rabbits, jack rabbits, are sometimes fed to provide the protein so important. It is absolutely necessary. Further, remember that there is no substitute and nothing that will take its place. The 13 per cent protein must be provided or there will be no eggs, until spring, when the hen can balance her own ration to some extent by catching bugs and insects and worms.

Fat, Active Hen is the Layer

It takes a fat hen to be a laying hen. Feed liberally to get them fat. A hen may be too old to lay and then get fat and still not be a laying hen. In that case, it is because she is too old rather than too fat. Exercise is necessary to keep the hens healthy and laying. Exercise aids and increases digestion, just what laying hens need. Make your hens exercise. Keep them busy all day working in deep, loose, dry litter. The more they exercise, the better.

Dry Mash Mixture

It has been properly stated that it is the dry mash mixture that makes the hens lay. In the dry mash mixture are found all the ingredients that are necessary for egg production. The hens should eat twice as much dry mash as grains. This is true if you are forcing them for heavy production. If you wish only a normal egg production, then the hens should be fed to consume equal parts of grain feed and dry mash. The dry mash is composed of ground grains and meat scraps. We recommend the commercial dry mash mixtures, and have found the "Superior" laying mash, as the very best available in Texas. If, on the other hand, you wish to feed your own mixture then we recommend the following:

Dry Mash—2 parts corn meal, 1 part wheat bran; 1 part wheat middlings; 1 part beef scraps; 1-2 part of dried butter milk and 1 part corn meal.

Grain Mixtures—3 parts of cracked corn; 2 parts heavy oats; 1 part wheat

and 2 parts of milo or kaffir.

A hen will eat from 2 to 4 ounces daily.

One hundred hens on range with plenty of green feed will need daily from 5 to 10 pounds of grain and from 10 to 15 pounds of dry mash.

Cotton seed meal is not properly digested by hens and therefore not highly recommended for a poultry food.

Hens cannot handle roughage like alfalfa meal in great quantities, hence we do not feed alfalfa to our layers.

It has been repeatedly proven that where no meat or animal protein is fed to laying hens, seldom any great profit is made. Animal protein appears to be absolutely necessary for good and profitable egg yields.

HIGH LIGHTS ON HIGHWAYS

The Bureau of Public Roads of the United States Department of Agriculture states that there are enough motor vehicles in the United States to take the entire population for a ride at one time.

How climate affects the highway working season is shown by the fact that grading can be done on 100 days of the year in western Oregon, 110 in Maine, 260 in Maryland, and 300 in several of the southern states.

Federal-aid roads placed under construction in September amounted to 1,189 miles.

At the beginning of 1922 there were 4.2 motor vehicles for each mile of road in the United States.

From 19 to 35 cents per hour is the range of wages for common labor on Federal-aid roads east of the Rocky Mountains, with a few exceptions, where as high as 43 cents is paid.

One hundred and twenty vehicles a minute was the rate at which motor vehicles passed an observing station on a truck-line highway in Massachusetts, according to the Bureau of Public Roads of the United States Department of Agriculture. This rate was kept up from noon to 10 p. m.

Recently a tourist in passing through four states was required to buy four different sets of lenses in order that his head lights would comply with state laws. More uniformity in highway regulation is needed.

**MR. AND MRS. H. MARTIN STILL
THINK OF THE PLAINS**

Mr. and Mrs. H. Martin, in a short letter recently, in which renewal subscription was sent to The Hesperian, declared they still thought much of their friends and former neighbors here.

"We have a very tender feeling for the dear old plains and her people," the letter says.

Mr. and Mrs. Martin live at Italy, Texas, which was their home before moving to Floydada several years ago.

A pile of junk automobiles is not yet so common a sight as it is likely to be in a few years. Most automobiles are not yet worn out; many of the first million cars are still running, though they may have been rebuilt and made over with new parts several times. It is said that at current prices the scrap of an automobile is hardly worth the labor of making it. What will become of the used cars when there are two million or so a year to get rid of?

Harry Snodgrass returned Friday after a business trip in Kansas and Nebraska. He left Sunday for south Texas to be gone several days.

Producers' Refining Co.

We sell EMPIRE BRAND GAS, KEROSENE AND LUBRICATING OILS. Empire products are gaining an enviable reputation for excellence and we can assure you will give unqualified good service.

When in need of any of these goods, PHONE 74.

E. P. NELSON, Agent

AT THE DRIVE-IN STATION

O Me! O My!

How F. H. S. Will Beat

Amarillo Hi

Lubbock couldn't stop the Whirlwind, Plainview made a failure of it, too; and now, Amarillo must take her medicine.

Speaking of Champion Football Teams. This bunch at Floydada have been feeding on BREAD from our bakery. That's why they're so strong and fast. You'll do well to follow their example and buy our QUALITY LOAF.

**E. E. Boothe
Bakery**

Delays are Dangerous

One day's delay may find your wife a widow. She would need ready cash to meet the necessary expenses that would arise at your death. A Policy With—

THE FLOYD CO. MUTUAL AID ASSOCIATION

Will provide this ready cash at the lowest possible cost. For Further Information Address

E. C. NELSON, President —or— J. G. WOOD, Secretary

O. P. RUTLEDGE CO.

FULL LINE INTERNATIONAL DEALERS
Tractors, Trucks, Harvesting and Tillage and other Power Farming Machinery.



Telephone 57
FLOYDADA
TEXAS

FURNITURE!

Nice shipment expected soon. Furniture is advancing and we are selling our present stock for less than we will be able to sell our next shipment. Rugs are also higher. We have just received a nice shipment. More expected soon. Special price on congoleum and linoleum rugs. We have them in all sizes.

Plumbing and Well Suppliss

Bath tubs, lavatories, sinks, range boilers, water heaters, pipe and fittings, valves, stop and waste, casing, wood rod, cylinders—anything in the line.

Harness

The "JUMBO" line and the largest stock in town. Lines, harness, latigo and lace leather, sole leather and skirting. Harness hardware of all kinds. Harness made or repaired.

Kirk & Sons

CALL 84

NORTH SIDE SQUARE

**MORTGAGES YOU NEVER
HAVE TO PAY BACK**

Money to loan at 5 1-2 per cent by Floydada National Farm Loan Association of Floyd County, Texas. Loans run from 5 to 34 1-2 years, payable on the amortization plan;

OLD PLAN
Interest on \$10,000.00 at 8 per cent for 34 1-2 years \$800.00 per year \$27,600.00
Principal still unpaid 10,000.00

TOTAL 37,600.00
OUR PLAN
Sixty nine amortization payments of \$325.00 each \$22,425.00
Principal fully paid.
You save on \$10,000.00 loan 15,175.00

We have loaned in Floyd county over \$375,000.00. Our loans are handled by us direct thru the Federal Land Bank, of Houston.

Floydada National Farm Loan Association
ROOMS 8 AND 9 FIRST NATIONAL BANK BUILDING
FLOYDADA, TEXAS

E. C. NELSON, JR.

LAWYER

FIRST NATIONAL BANK
BUILDING

FLOYDADA, TEXAS

Dr. W. H. Alexander

General Practice

Internal Medicine and minor surgery.

OFFICE OVER MITCHELL
HARDWARE

Office Telephone No. 93
Residence Phone No. 260

W. M. MASSIE & BRO

GENERAL LAND AGENTS'

(The Senior Land & Abstract Business of Floyd County)
BUY, SELL, LEASE OR EXCHANGE LAND

Any size tracts through Northwest Texas, especially through Floyd and other Counties of the beautiful Plains. Render and Pay Taxes, Furnish Abstracts, Perfect Titles Etc.

NON-RESIDENT LANDS A SPECIALTY

W. M. MASSIE & BROTHER
FLOYDADA, TEXAS

**W. M. HOUGHTON,
M. D.**

General Practice Medicine and Minor Surgery

DISEASES OF WOMEN AND CHILDREN A SPECIALTY

Rooms 11 and 12, 1st National Bank Building.
FLOYDADA, TEXAS

FULL MOTOR EQUIPMENT
PRIVATE AMBULANCE

**Plainview
Undertaking Co.**

Undertaking, Embalming
A. A. HATCHELL, Director
PLAINVIEW, TEXAS
Phones: 6, 30, 243, 650

Dr. C. M. Thacker

DENTIST

OFFICE OVER MITCHELL'S
HARDWARE

FLOYDADA, TEXAS

Drs. Smith & Smith

CHILDERS' PRIVATE
SANITARIUM

For Medical and Surgical Cases

Phone No. 177

FLOYDADA, TEXAS



302 Years Ago



The little band of Pilgrims landed at Plymouth Rock, and thru innumerable hardships and distress gave the American people a great lesson of Thrift.

—And then, they stopped their labors and gave thanks. Emulating their example the undersigned

BANKS WILL NOT OPEN FOR BUSINESS THURSDAY, NOVEMBER 30TH, THANKSGIVING DAY

And will transact no business whatever. May we all observe with the true spirit this national holiday.

First State Bank
First National Bank
 FLOYDADA, TEXAS.

WANT AD COLUMN

GRATITUDE

The success of the greatest sale in our history—the overwhelming expression of public confidence evidenced by the making of so many new friends, as well as the confidence of old friends pledged anew—good will to overflowing. It is the most valuable asset we've realized from our great bargain event that is just over.

The building of permanent good will has always influenced every transaction made in this store. It has established our policy and it is evident that it must be made deep and firm in the confidence of the public if we continue to extend and grow. And, we would be ungrateful, indeed, should we fail to make a public expression of our gratitude, for the passing of this great merchandise sale, and we thank the public in general for the confidence placed in our store.

So, sincerely, we say "Thank you" and invite you to visit us again, at your convenience to view the advance showing of bright new merchandise so prevalent throughout the store.

The lucky number in our Sonora Contest was 10,748. It was held by Mrs. W. D. Smith, of Floydada, and she was awarded the machine.

If low prices, courtesy and splendid service will hold your friendship and patronage for life, we are going to stretch every point possible to do it.

THE MARTIN DRY GOODS CO.
 (Advertisement)

West Texas Gin Company and Lewis & Davis Gin Company will be closed down on Thursday, Thanksgiving Day, 38-1tc

We will not gin on Thursday, Thanksgiving Day, November 30th. West Texas Gin Co., Lewis & Davis Gin Co. 38-1tc

MISSIONARY AND THANKSGIVING PROGRAM SUN. NIGHT

A Missionary and Thanksgiving program to be given at the Cumberland Presbyterian Church Sunday evening, November 26th at 7:15:

Doxology.
 Song, "Come, Thou Almighty King"
 Prayer.
 Devotional, Mrs. C. J. Menefee.
 Song, "Praise Him."
 Welcome Address, Samuel Rutledge.
 Harvest Song, Children.
 Story of Thanksgiving, Ruth Rutledge.

Memory verse, Olive Virginia Grigsby, Margaret Anderson, Raymond King, Anna Mary Baucum.
 "How to thank the Father," Jean Bain and Wanda Teeple.

Reading, Minnie Anon Stanley, Blanche King and Junior Rutledge.
 Song, "Holy, Holy, Holy."
 Round table discussion on "The Real Meaning of Thanksgiving," led by Mrs. W. M. Massie.

"Giving up that we may give more," Miss Della Campbell.

"A great big little word," Ben Ayers, Harold Merriek, Billy Grigsby and Russell King.

"What our money is for," Mildred Teeple.

Consecration prayer.

INTERMEDIATE B. Y. P. U. PROGRAM

Sunday, November 26th.
 Leader—Clara Tubbs.
 Song Service.
 Introduction—Leader.
 Prayer.

What is meant by the church?—Cleo Norman

Who established the first church?—Dennis Wraske.

The members of a church—Syble Covington.

Divine laws given for churches—Vernon Abbott.

Piano solo—Ray Parker.
 Meet promptly at 5 p. m.

CHRISTIAN CHURCH SERVICES

10:00 a. m.—Bible School.
 11:00 a. m.—Preaching.

7:15 p. m.—Preaching, "Why I am not a Roman Catholic."

Friday, 7:15 p. m.—Prayer meeting and choir rehearsal.

W. T. COCHRAN, Pastor.

Don't forget, The Lewis & Davis and West Texas Gins will not run Thanksgiving Day. 38-1tc

SENIOR B. Y. P. U. PROGRAM

Sunday, November 26.

Leader—Elmer Wood.
 Introduction—Leader.

Our home mission program—Miss Lela Windsor.

Interesting items of the home board's work—Rufus Lowry.

1. Aiding weak churches to have preaching.

2. Mountain schools.

Evangelism and enlistment—Miss Velma Norman.

Indians and negroes—Miss Myrtle Muncey.

Cities and foreigners—Miss Gladys Covington.

Cuba and Panama—Clarence Boothe

Other activities—Mrs. Castlebury.

Bible quiz—Mrs. Doyle Garison.

Piano solo—Miss Virgie Price.

CUMBERLAND PRESBYTERIAN CHURCH

Sabbath school at 9:45 a. m.

Preaching 11 a. m. "Praise service."

Ladies Missionary Society will have charge of the evening service.

The Christian Edeavors will not have their usual program at 6:15 as it would conflict with the special program.

Try and be present unless you have an excuse that you can give to your Lord and Master.

O. N. BAUCOM, Pastor.

ENDS SMOKER'S WORRIES

A French physician, Doctor Ambial, told a medical association that all deleterious effects of tobacco smoking may be prevented by adding to the tobacco the stamens of the little plant known as "colt's-foot." Doctor Ambial declares that he can smoke 30 cigarettes a day of this mixture without inconvenience.

The only change noticeable in the tobacco, which retains its aroma perfectly, is that it seems to acquire some resemblance to oriental tobacco.

SHOPPING

"Have you any hose for ladies?"

"Certainly, sir. Here are some beauties, only \$18 a pair."

"They are for the wife."

"Here is something durable for \$1.50."—Birmingham Age-Herald.

If you want a farm lease see W. M. Massie & Bro. 31-ttc

METHODIST CHURCH

Preaching at 11 a. m., and 7:15 p. m.

At the morning service the sermon will be on the Lord's Prayer, and at night on the worship of a "Left-over God."

Sunday school at 9:45 a. m. Epworth Leagues 3 p. m.

"Come thou with us and we will do thee good."

J. L. HENSON, Pastor.

WANTED

Nineteen MEN and six WOMEN to take, by Mail or at College, specialized training under contract for \$1,000 to \$1,200-a-year positions as bookkeepers, bank clerks, stenographers, or telegraphers. Guarantee-position Contract sent on request. Special rates now. Write today. Abilene Draughton Business College, Box 38W, Abilene, Texas 37-2

Berry's Kash Store Is Still Selling BARGAINS!

- Good gingham for only, the yard.....10c
- Best cotton checks, for only, the yard.....15c
- Best cotton checks, for only, the yard.....10c
- Good work shoes for men, per pair.....\$2.19

Extra Specials

- 36 inch silk poplin, all shades, only, the yard.....98c
- 36 inch taffeta and messalines, none better, the yard.....\$1.25
- Best sheeting, 81 inches wide, the yard.....45c
- Best sheeting, 90 inches wide, the yard.....53c

COME TO THE BARGAIN STORE

Sam Berry

Tailoring Service of The Right Kind

That's what I give you. You want those heavy winter clothes cleaned up for the cold days but you want them done right. I will clean, press, repair or do whatever they need and you know they are done right for I am prepared to do it right.

Don't put off ordering that suit or overcoat too long. It will be Xmas soon and you will want them then, so come in the next time you pass and let me show you the nice samples and the low prices. I am making some special prices for you the rest of the season, and it will pay you to look them over.

Look over the nice gloves and neck wear we have for the holidays.

RUSSELL'S STORE

PHONE 66

FLOYDADA, TEXAS

