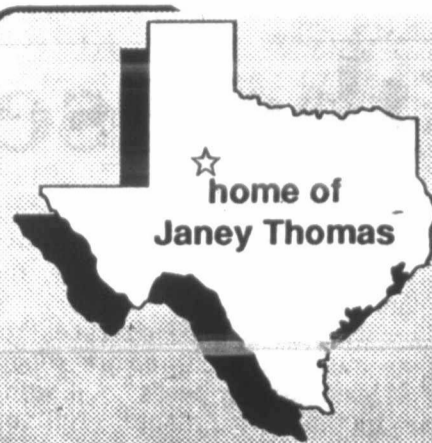


July 3,  
1991

Vol. 42 No. 55  
Snyder, Texas 79549  
14 Pages, 50¢

West Texas  
Intermediate Crude  
\$20.80



BEST AVAILABLE COPY

WEDNESDAY

# Snyder Daily News

## Ask Us

Q—What steps will have to be taken to get bingo on the ballot?

A—According to voting officials, after those wishing to put the issue on the ballot decide on a city or county election, a petition signed by at least 10 percent of the total number of people that voted in the last gubernatorial election should be submitted to the city or county clerk. Then an election can be held no later than 60 days following certification of the petition by the clerk.

## Local

### Holiday

Snyder Daily News will not publish a paper on Thursday, July 4. It is one of two holidays the paper is not published. The other is Dec. 25.

### Rotary Club

Rotarians will not meet at noon Thursday as usual but will instead meet at 7:30 a.m. in the county coliseum at the July 4th Prayer Breakfast.

### Closed

All county, state and federal offices in Snyder will be closed Thursday in honor of Independence Day. Financial institutions throughout the city will also be closed.

### Reunion

Snyder High School class of 1951 will have a reunion at Willow Park Inn on Saturday, beginning with a reception from 1-5 p.m. Guests are invited.

Class members will have a buffet and program at 7 p.m. For information, call 573-2433.

### Breakfast

Lt. Col. Charles Balbain, a veteran of Operation Storm, will be the key speaker at the annual July 4th Prayer Breakfast, scheduled for 7:30 a.m. Thursday in the county coliseum.

State Sen. David Counts will be among the dignitaries attending the breakfast, which serves to recognize outstanding lay leaders from area churches.

Tickets to the breakfast are \$5 each and include eggs, sausage, hash browns, biscuits, coffee and orange juice. Tickets are available at the chamber of commerce.

### Weather

Snyder Temperatures: High Tuesday, 93 degrees; low, 71 degrees; reading at 7 a.m. Wednesday, 72 degrees; no precipitation; total precipitation for 1991 to date, 9.70 inches.

Snyder Area Forecast: Tonight, partly cloudy with a 20 percent chance of thunderstorms. Low in the upper 60s. Southeast wind 5 to 10 mph. Fourth of July, mostly cloudy with a 40 percent chance of showers and thunderstorms. High around 90. East to southeast wind 5 to 15 mph. Remainder of July 4 weekend, partly cloudy with isolated mainly late afternoon or evening thunderstorms. Highs in the 90s with lows in the upper 60s to mid 70s.

Almanac: Sunset today, 8:52 p.m. Sunrise Thursday, 6:44 a.m. Sunset Thursday, 8:52 p.m. Sunrise Friday, 6:44 a.m. Of 182 days in 1991, the sun has shone 177 days in Snyder.

## City set for Fourth of July activities Parade, fireworks food, fun in day-long celebration here

From a morning breakfast to after dark fireworks, Snyder's annual July 4th festival promises to be a day-long experience filled with eats, entertainment and celebration.

Activities will include washer and horse shoe pitching, dunking booths, a fishing rodeo for the kids, and the traditional carnival.

Towle Park visitors can visit the art show and shop at arts and crafts booths or just listen to music in the shade of the trees.

Vendors will be serving up hot-dogs, hamburgers, burritos, ice cream and more, accompanied by soft drinks and iced tea.

Booths were to open today at 5 p.m. in the park and National Guard Armory. Most of the festivities are on Thursday, however.

The first activity of the day Thursday takes place at Scurry

County Coliseum where the July 4th Prayer Breakfast is scheduled at 7:30 a.m. The annual event serves to recognize outstanding lay persons from churches throughout the county. Speaker this year will be Dyess Air Force Wing Commander Lt. Col. Bruce Balbin, a veteran of Operation Desert Storm.

Tickets for the July 4th Prayer Breakfast remain on sale today at the chamber of commerce for \$5 each.

Registration for the Children's Fishing Rodeo begins at 8 a.m. at Towle Park Pond. The rodeo will begin at 9 a.m.

As the fishing rodeo begins, other youngsters will be lining up their bicycles at Moffett Field for the bike decorating contest. The art show begins in the park barn at that time and the arts and crafts booths will open in the armory.

The annual parade is set for 10 a.m. in the park, with opening ceremonies slated for 10:30 in front of the armory.

Dermott School and the Cornelius Dodson House, located on the county coliseum grounds, will be open for visitors from 1-5 p.m.

Towle Park Pool will be open from 2-5:30 p.m., then reopen for "family night" at 7:30 p.m.

The annual fireworks display will begin at dark.

Celebration officials note a \$1 charge to the arts and crafts booths in the armory this year. Children age 12 and under who are accompanied by an adult will be admitted free. Participating booths will redeem the \$1 fee to customers who purchase at least \$15 worth of merchandise.

Proceeds from the \$1 charge are being used to offset the cost of portable toilets being placed throughout the park.

## Thursday's events

|            |                             |                 |
|------------|-----------------------------|-----------------|
| 7:30 a.m.  | Prayer Breakfast            | Coliseum        |
| 8:00 a.m.  | Fishing Rodeo Signup        | Pond Area       |
| 9:00 a.m.  | Bike Decorating Contest     | Moffett Field   |
| 9:00 a.m.  | Art Show Begins             | Park Barn       |
| 9:00 a.m.  | Arts/Crafts Show Opens      | Armory          |
| 9:00 a.m.  | Contests Registration       | Towle Park      |
| 9:00 a.m.  | Fishing Rodeo Begins        | Pond            |
| 9:30 a.m.  | Parade Lineup               | Moffett Field   |
| 10:00 a.m. | Parade Begins               | Moffett Field   |
| 10:30 a.m. | Opening Ceremonies          | Armory          |
| 11:00 a.m. | Music Begins                | Cottonwood Area |
| 11:00 a.m. | Gymnastics Demonstration    | Park            |
| 12:00 a.m. | Fishing Rodeo Concludes     | Pond            |
| 1:00 p.m.  | Dermott School Opens        | Coliseum        |
| 1:00 p.m.  | Washer Pitching Contest     | Park            |
| 1:00 p.m.  | Horse Shoe Pitching Contest | Park            |
| 2:00 p.m.  | Towle Park Pool Opens       | Park            |
| 4:00 p.m.  | Gymnastics Demonstration    | Park            |
| 5:00 p.m.  | Dermott School Closes       | Coliseum        |
| 5:30 p.m.  | Towle Park Pool Closes      | Park            |
| 7:00 p.m.  | Art Show Closes             | Park Barn       |
| 7:30 p.m.  | Park Pool Family Night      | Park            |
| dark       | Fireworks Display           | Park            |
| 9:00 p.m.  | Arts/Craft Booths Close     | Armory          |

## Proposal may aid effort here toward second TDCJ unit

From Local Wire Reports  
AUSTIN — A state audit report touting a savings of \$5.2 billion contains information that could bolster Snyder's effort to secure another 1,000-bed prison.

State Comptroller John Sharp's report, Breaking the Mold, was released last week. The three-volume audit report contains recommendations that would either save or raise a total of \$5.2 billion. The report has been hailed by leaders of state government — including Gov. Ann Richards, who has said the work proves that a state income tax is not necessary.

Included in the report is a section dealing with prisons and prison construction.

Sharp's performance review contains an analysis showing that "location of a new, 1,000-bed prototype prison unit adjacent to an existing unit would have an annual savings of \$1 million."

The report said further savings are realized when support services and other indirect costs are shared between the two facilities.

Roy Baze, head of the Snyder prison task force, said Sharp's findings support the concept that Snyder has embraced since 1987. "The community donated 575 acres of the best farm land in Scurry County with the idea of future expansion. The community of Snyder has met or exceeded all agreements with TDCJ, and we have a proven track record."

"The findings indicate that clustering of units would be cost-effective for the state," Baze said. There are 10 1,000-bed prototype units in the state, and each site would represent a savings of \$1 million every year.

Sharp's report also made

strong recommendations for more private prisons, citing a savings of at least 10 percent. The report further recommended the continued use of bonding for construction of new prisons. Currently there are four 500-bed private prisons in Texas.

The state legislature, when it begins on July 15 its special session to write a new two-year state budget, will determine the number of new prison beds to be built.

In a speech last weekend, Gov. Richards cited the need for 15,000 new beds.

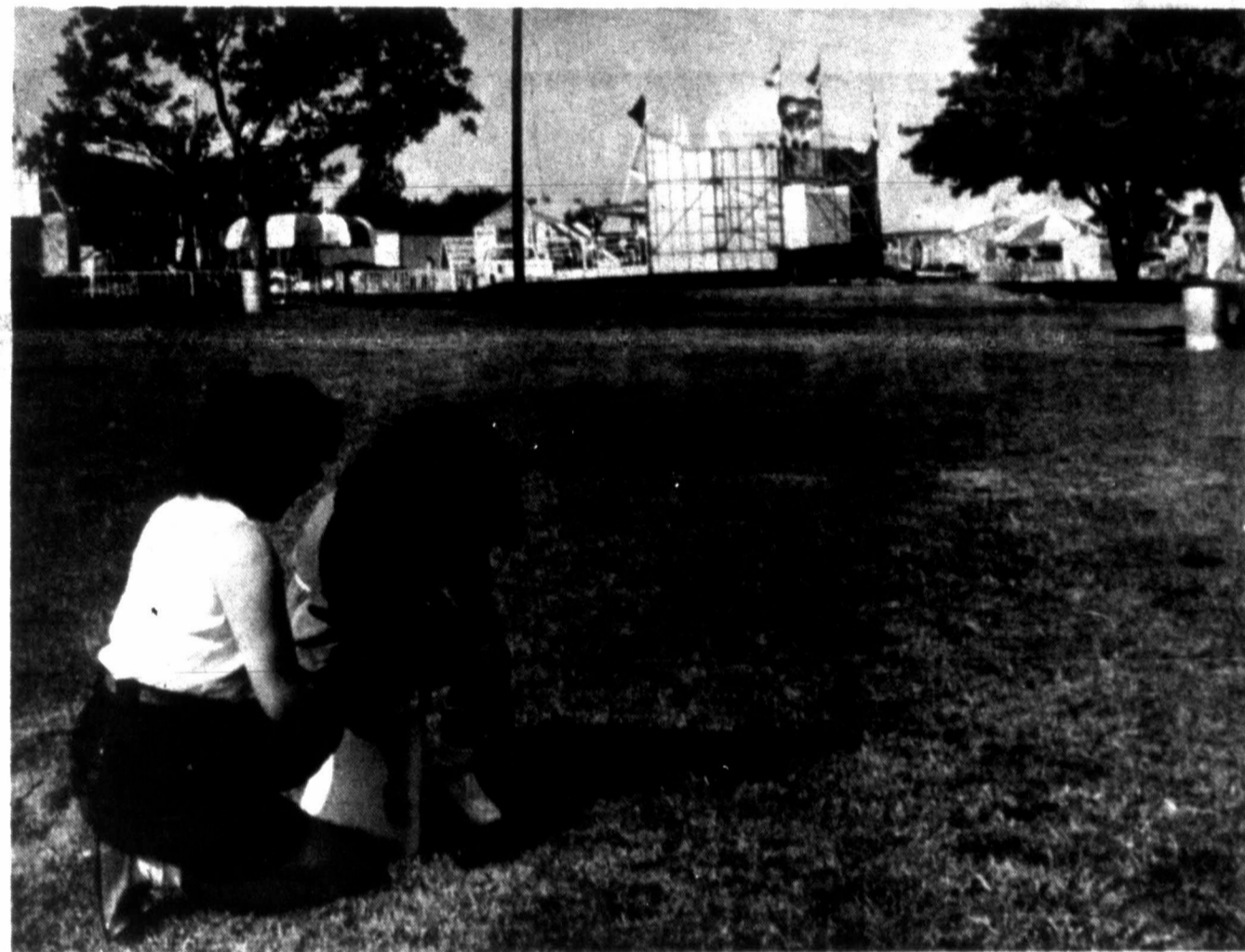
## Memorial to honor war dead

MIDLAND — Ceremonies will be held at Midland International Airport on Thursday to dedicate ground for a Vietnam Veterans Memorial.

The memorial will include the names of 211 former residents of 27 West Texas counties who were either killed or missing-in-action during the Vietnam conflict. Six of the individuals were from Scurry County.

The Midland City Council, by unanimous vote, adopted a resolution setting aside two acres of land near the airport for the purpose of building and maintaining the Vietnam Memorial Plaza. The resolution will be read as part of a brief ceremony at 1:30 p.m. at the Memorial Plaza site on Wright Drive, immediately next to the Armed Forces

(see MEMORIAL, page 12)



COUNTDOWN BEGINS — Chamber employees Patricia McCasland and Sandra Morin were marking food and activity booths this morning in Towle Park as last minute preparations are being

finished for the community's annual July 4th celebration. The arts and crafts show and outdoor booths will open at 5 p.m. today. (SDN Staff Photo)

## By President Bush...

## Powell, Schwarzkopf honored

WASHINGTON (AP) — President Bush today bestowed medals of freedom on Desert Storm commander Gen. Norman Schwarzkopf and Joint Chiefs of Staff Chairman Gen. Colin Powell, calling them "the men that our heroes look up to."

In a surprise announcement, Bush also gave the Presidential Medal of Freedom to Secretary of State James A. Baker III, National Security Adviser Brent Scowcroft and Defense Secretary Dick Cheney, who did not know

they were to be honored until he called their names at today's ceremony.

"Desert Storm marked the end of an era of self doubt and lingering uncertainty about America's staying power and sense of purpose," Bush said in an East Room ceremony honoring U.S. leaders of the Persian Gulf War effort.

Bush made the presentations before heading for the Black Hills of South Dakota to help mark the 50th anniversary of Mount Rushmore. He also will attend Fourth of July festivities in

Missouri and Michigan.

The president awarded the medals — the nation's highest civil honors — to the two generals "on behalf of a grateful nation."

He called the military operation "a team effort and I will always be grateful to those who were at my side."

Bush also presented Presidential Citizens Medals to eight top deputies from the National Security Council, the Pentagon, State and Defense departments for the counsel they gave before and during the war against Iraq.

## The SDN Column

By Roy McQueen

The feller on Deep Creek says, "When a husband is seen helping his wife into a car, it is safe to assume that he's just recently acquired one or the other."

Tomorrow is a special day in the United States. President George Bush has asked that Americans pay special tribute to the men and women who performed so well in the Persian Gulf.

July 4th is a special day, not only because of our recent military successes, but because of repeated sacrifices by our citizens to preserve the many freedoms that we enjoy.

America isn't a perfect place, but the Democratic system of government sure beats anything yet devised by a civilized society. The United States is one of the few places on earth where a guy has the right to be wrong — and can say it aloud.

July 4th is traditionally a great day in Scurry County. It's a day of getting back to our roots. It's a day of fun, good food and friendship as residents flock to Towle Park for a leisurely outing, topped off by one of the best fireworks displays in West Texas.

As is normal, the chamber's planning committee has done a great job for tomorrow's celebration. July 4th is another good reason for living in America — and in Snyder.

The Patriot Missile and Scuds became household words because of TV coverage of the war with Iraq to free Kuwait.

Because of it, there is a new form of competition for casual golfers. It's called "Scudlaunchers." It's for the guy, who after hitting his ball, doesn't know or doesn't care where it lands.

## In Yugoslavia...

## Fighting flares

BELGRADE, Yugoslavia (AP) — Scattered fighting flared again in Slovenia today, and at least 180 federal tanks were reported moving toward Croatia, raising fears the army was preparing for a showdown with the breakaway republics.

Slovenian officials also reported federal troop and tank columns moving in Yugoslavia's northernmost republic.

The moves came after a day of

fierce fighting in Slovenia between the federal army and Slovenian militia and threatened to widen the conflict that broke out last week after the two republics declared independence.

The Serbian-dominated national army rejected Slovenia's offer of a truce late Tuesday and appeared to be acting without the approval of federal government leaders.



# Many House aides make more than senators

WASHINGTON (AP) — Some 130 House aides earn over \$100,000 a year, with more than half making more than the \$101,900 paid to senators, a published survey shows.

Many of the high earners are lawyers. The legislative counsel's office has the most six-figure earners, followed by the House Foreign Affairs Committee,

where 12 staffers make over \$101,000.

Several aides defended their salaries as comparable to those made by top people working for the government or private industry. They also cited the high cost of living in the nation's capital and the nature of the work.

"We've got some very skilled lawyers here," David Meade, the

House legislative counsel, said Tuesday. "I've seen people walk out of here to a private firm and earn two to three times as much." Meade makes \$115,092.

As a result of a pay raise the House voted itself in 1989, members began collecting \$125,101 yearly as of January 1991. Senators earn \$101,900.

Because House aides' salaries are linked to their bosses' pay, top House leaders and committee staff can earn up to \$115,092. Aides on House members' personal staffs can make \$101,331.

Senate staffers have a \$97,359 limit.

Roll Call, a biweekly newspaper that circulates on Capitol Hill, published a list this week showing at least 81 House aides now earn more than \$101,900. The survey was compiled

by taking the quarterly reports from the House clerk, which list salary levels from Jan. 1-March 31. Each salary was multiplied by four.

Jeff Biggs, press secretary to House Speaker Thomas Foley, D-Wash., said many staffers have accumulated priceless skills over the years. "Often there is no corollary in the private sector," said Biggs, one of two Foley aides earning \$115,092.

"Even though they make more, House members and staffers are barred from accepting money for giving speeches. Senators, on the other hand, can accept \$23,680 yearly. And Senate staffers technically have no limit on honoraria, according to the Senate ethics committee.

Patricia Rissler, staff director at the House Education and

Labor Committee, said she did not view her salary as excessive considering her experience and her jurisdiction.

"The committee oversees the executive branch and we should at least be their peers," she said. In the government's civil service, the top people — outside Cabinet members — earn \$108,300, according to the Office of Personnel Management.

"Our salaries aren't out of line," said George Pence, director of the minority Republican staff on the House Merchant Marine and Fisheries Committee. He makes \$115,092.

Edward Sylvester, staff director of the House District of Columbia Committee, said he hasn't earned his potential by staying with the panel for 16 years. "I've lost money," said the aide, who

clears \$115,092.

Jobs with the House leadership, such as the clerk's office, or with committees are generally more lucrative than those on a members' personal staff.

Only four House members — Speaker Foley, and Reps. Frank Horton, R-N.Y.; Walter Jones, D-N.C.; and John Myers, R-Ind. — pay aides top dollar.

Jones is also chairman of the Merchant Marine and Fisheries Committee, where two people earn the maximum amount.

A committee chairman usually sets staff salaries. Because all congressional chairmen are Democrats, aides working for the majority have more people earning at the six-figure levels.

A committee's minority often does not have as big a budget for staff.

## Construction areas detailed for July Fourth travelers

AUSTIN (AP) — July 4 travelers should encounter only a few slowdowns on highways as a result of construction, the state highway department announced.

In downtown Dallas, motorists should expect an hour's delay on Interstate 30. Also, along Interstate 30, crews will be working near the Interstate 35 junction, and traffic at times will be restricted to one lane in each

direction, the department said Tuesday.

In the Panhandle, the department said, motorists should use extreme caution at the intersection of Texas 6 and U.S. 287 in Hardeman County. Southbound traffic along U.S. 287 has been moved to the northbound lanes for a six-mile stretch near Acme, and only one lane in each direction will be open on U.S. 287 near Quanah.

Drivers in Houston should anticipate construction on U.S. 59 between Beltway 8 and Shepherd Drive, and crews will be working on Interstate 45 between Airport Boulevard and Dixie Farm Road, the department said.

Travelers on Interstate 35 should take note of construction near Waxahachie and Waco, with traffic occasionally funneled to one lane in each direction, the department said.

**Multi-Mile TIRES**  
Because So Much Is Riding On Your Pocketbook... Call Us For A Quote on Your Next Set of Tires!  
McCORMICK MARKETING  
2401 Ave. Q 573-6365

## Boy arrested for selling crack cocaine

HOUSTON (AP) — A 10-year-old boy arrested for selling crack cocaine to an undercover officer while the boy's mother watched is apparently the youngest person ever caught dealing drugs in Houston, police say.

The boy was arrested Tuesday after first he, and then a competing 24-year-old woman sold crack to an undercover officer in an unmarked car, police said.

"As I bought from the girl standing next to him, he said, 'I have bigger rocks than her, buy (more) from me,'" said the nar-

cotics officer. "He told her to get away from me, because I was his customer."

Police Sgt. J.W. Collins said the boy's mother watched the transaction from a reputed crack house across the street. The mother was not charged, he said.

"The mother raised hell because we would not release her son to her," Collins said. "She knew what he was doing, and there was no way we'd release

him back to her in that kind of environment."

The 24-year-old woman selling crack next to the boy was also arrested. She is expected to be charged with delivery and possession of cocaine.

The boy was the first to approach the undercover officer and ask him if he wanted to buy drugs, the undercover officer said.

"The kid asked what I wanted,

and I told him a twenty (a \$20 rock of crack cocaine)," he said. "He reached into his pocket and told me to pick one."

Collins said the boy was turned over to Harris County juvenile authorities.

"They use the kids (to sell drugs) because they think we won't take them down," he said. "They think all we will do is take the drugs and let the kids go. It didn't happen this time."

Collins said officers have served three warrants and made four buy busts at a pair of suspected crack houses in the neighborhood since the first of the year. Between 10 and 14 children live in one of the houses, he said.

"There is no electricity or running water in the house. The children living there are anywhere from six or seven months to 18 years old," Collins said.

For Results Use Snyder Daily News Classifieds Ads Call 573-5486

### THE SNYDER DAILY NEWS

Published each Sunday morning and each evening, except Saturday, by Snyder Publishing Co., Inc., 3000 College Ave., Snyder, Texas 75689.  
Second Class postage paid at the post office at Snyder, Texas. Publication Number USP611-520.  
POSTMASTER send change of address to P.O. Box 940, Snyder, Texas 75689.  
SUBSCRIPTION RATES: By carrier in Snyder, \$6.95 per month.  
By mail in Scurry and adjoining counties, one year \$65.75, balance of Texas, and out of state \$85.00.

Roy McQueen, Publisher  
Bill McClellan, Managing Editor  
MEMBER OF THE ASSOCIATED PRESS

The Associated Press is exclusively entitled to use for republication all news dispatches in this newspaper and also local news published for republication of special dispatches.

**ANTHONY'S**

**JULY 4<sup>th</sup> WEEKEND SPECIALS**  
Now Through Sunday

**SAVE AN EXTRA 25% OFF** Inside The Store

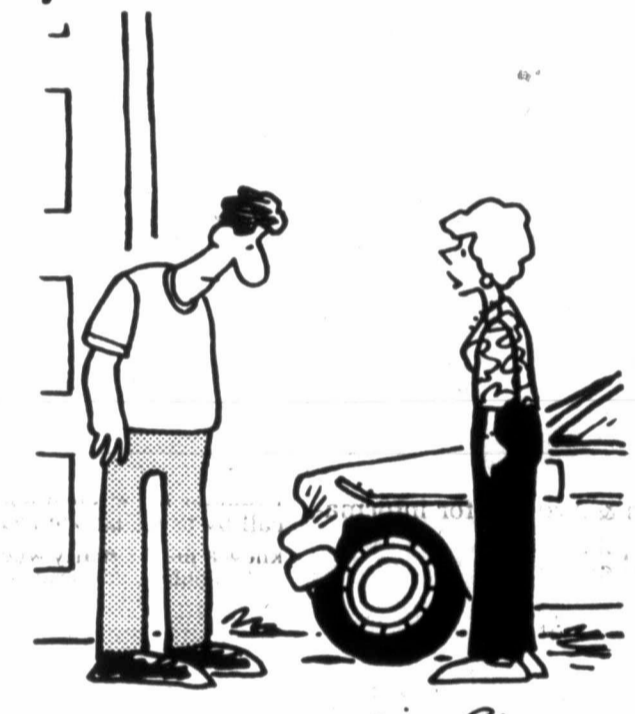
**ALL INSIDE-THE-STORE YELLOW TICKET MERCHANDISE**  
Take an Extra 25% Off All Inside-The-Store Yellow Ticket Spring and Summer Clearance Merchandise. Save on fashions for the Entire Family.  
Intermediate markdowns may have already been taken. No rainchecks. Merchandise will vary by store.

**SELECTED MERCHANDISE On The Sidewalk**  
**40% OFF**  
THE ALREADY LOW YELLOW TICKET PRICE (SIDEWALK ONLY)

**GREAT VALUES on Men's Knits, Wovens, Swimsuits, and Shorts**  
**OPEN JULY 4 10 A.M. - 6 P.M.**  
Sidewalk Hours July 5th & 6th 9 a.m. - 5 p.m.

ANTHONY'S  
3210 College Ave.

**Berry's World**



"Well, in the words of John Sununu — 'mistakes were made.'"

**skinny's**  
Come by and meet our friendly and helpful hometown staff.

**COKE, DIET COKE, 7-UP**  
6 Pack 12 oz cans  
**\$1.69**

**HOT DOGS**  
3/99¢

**SKINNY'S MILK**  
Packed by Borden's  
**\$2.09**  
1 Gallon Homo & Lowfat

**BLUE BELL FUDGE BOMBSTICKS**  
3/99¢

**BIG SWIG**  
44 oz Fountain Drink  
**59¢**



# Drug use said 'bottomed out'

WASHINGTON (AP) — Further declines in drug-related visits to hospital emergency rooms indicate that drug use has nearly bottomed out at the "bedrock" addict level, the nation's drug policy chief says.

Statistics from the Drug Abuse Warning Network, or DAWN, released Tuesday by Health and Human Services Secretary Louis Sullivan show there were 426,060 drug-related visits to hospital emergency rooms in 1989 and 365,708 last year.

In the final quarter of 1989, the number of visits dropped from an average of 110,300 earlier in the year to 95,100.

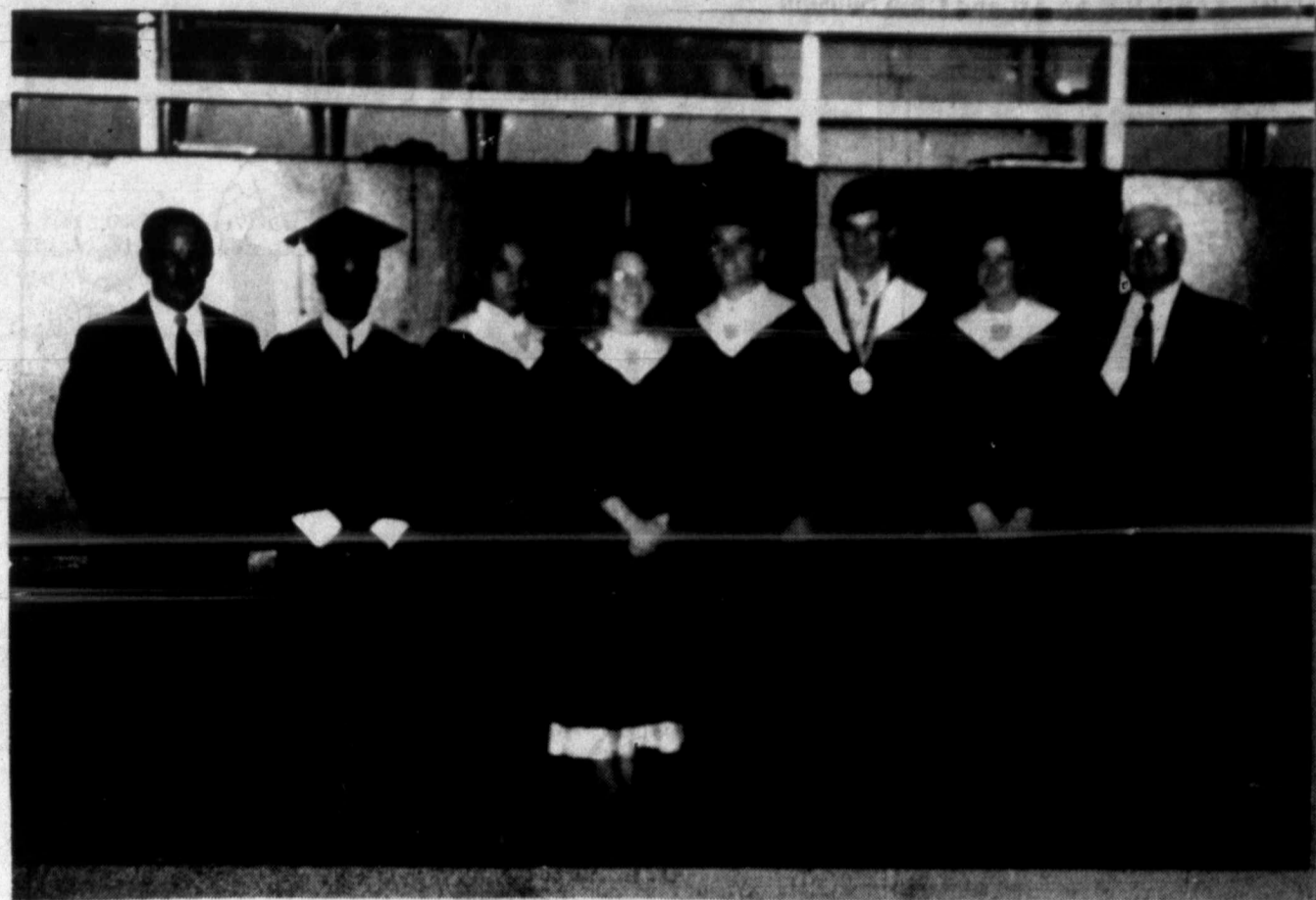
Last year, the number dropped again in the second quarter to 91,800, then declined more slowly the next six months to a fourth-quarter total of about 88,100.

The number of drugs mentioned during emergency room visits — one patient often has taken more than one drug — decreased from 713,400 in 1989 to 625,300 last year, DAWN reported.

But an emergency room physician who has studied the DAWN statistics said the findings are misleading.

DAWN picks up only "people who say they've overdosed," said Dr. Daniel Brookoff, an assistant professor of medicine at the University of Tennessee at Memphis.

Martinez conceded that DAWN may miss some drug cases because doctors diagnose a cocaine-induced heart attack victim only as a cardiac patient.



**SCHOLARSHIP WINNERS** — West Texas State Bank Scholarship recipients for the class of 1990-91 include starting second from left, Billy Tratree, Edward Alvarez, Angee Crawford, Terry Stephens, Mark Stansell and Jannet Nitsch. Next is WTSB chairman of the board, Martin Brooks. Bill Parker, far left, president of the WTSB, is pictured with the recipients. Not pictured are James Beauchamp, Robbie Braziel, Sandra Peralez and Kim Wilson. (WTSB Photo)

## Bridge By Phillip Alder

**NORTH** 7-3-91  
 ♠ K 9 8 3  
 ♥ 8 3 2  
 ♦ A K 9 3  
 ♣ A 7

**WEST** ---  
 ♠ A 10 7  
 ♥ 10  
 ♦ K J 10 8 6 5 4 3 2  
 ♣ 9

**EAST** ---  
 ♠ 10 7 5 4  
 ♥ Q J 9 6  
 ♦ J 8 5 2  
 ♣ A

**SOUTH** ---  
 ♠ A Q J 6 2  
 ♥ K 5 4  
 ♦ Q 7 6 4  
 ♣ A

Vulnerable: East-West  
 Dealer: South

|       |      |       |          |
|-------|------|-------|----------|
| South | West | North | East     |
| 1 ♠   | 4 ♣  | 4 ♠   | All pass |

Opening lead: ♠ J

pushed into bidding game when West jammed the auction with four clubs. (The vulnerability dissuaded West from bidding five clubs.)

You win the club lead in hand and cash the spade ace. West discarding a club. Next you try the diamonds, cashing dummy's A-K, but again West throws a club. With the heart ace hovering over your king, you seem doomed. But there is a way out of the predicament. At trick five, lead dummy's club queen, and if East doesn't ruff, discard a low heart.

If West switches to hearts, it will save you a heart loser. So assume he returns another club. Ruff with dummy's spade king, discarding your second low heart, and run the spade nine to pick up all the trumps. Your losers will be one heart, one diamond and one club.

What happens if East does ruff the club queen to prevent the throw-in? You parry that thrust by overruffing, drawing trumps (which leaves dummy with one spade) and exiting with a heart — the king, if you are flamboyant. The defenders take their three heart tricks, but whoever wins the last heart trick is endplayed. If it is West, he must lead a club, conceding a ruff and discard, so you don't lose a diamond trick. If it is East, he has to lead away from the J-8 of diamonds into

the tenace of dummy's nine and your queen.

**NORTH** 7-4-91  
 ♠ K J  
 ♥ 8 7 5  
 ♦ 8 7 4  
 ♣ A K Q 6 4

**WEST** ---  
 ♠ 10 9 8 5 3  
 ♥ J 10 9  
 ♦ Q 10 5 2  
 ♣ 3

**EAST** ---  
 ♠ A Q 7 6 4 2  
 ♥ 6  
 ♦ K 6 3  
 ♣ J 5 2

**SOUTH** ---  
 ♠ ---  
 ♥ A K Q 4 3 2  
 ♦ A J 9  
 ♣ 10 9 8 7

Vulnerable: Neither  
 Dealer: North

|       |      |       |      |
|-------|------|-------|------|
| South | West | North | East |
| 3 ♠   | Pass | Pass  | Pass |
| 4 ♣   | Pass | Pass  | Pass |
| 6 ♥   | Pass | Pass  | Pass |

Opening lead: ♠ 10

## The disappearing trick

In today's deal, declarer seems destined to lose four tricks: three hearts and a diamond. Do you see how to turn destiny aside?

North had been planning to make a limit raise in spades, but he was

## The Independence Day coup

By Phillip Alder

It is well-known that on July 4, 1776, the Declaration of Independence was signed. Less well-known is the fact that afterward four of the signers didn't go out on the town celebrating. Intensive research reveals that John Adams, Benjamin Franklin, John Hancock and Thomas Jefferson retired for a game of cards bearing a remarkable resemblance to bridge. Today's hand is the first one of the evening.

After Adams opened one club, Franklin made an imaginative overcall by psyching one heart. Jefferson knew a juicy penalty when he saw one, so he doubled. This was passed back to Franklin, who exposed his psych by bidding his real suit. To clarify matters for his partner, Jefferson jumped to three hearts. When Hancock preempted to four spades, Jefferson decided to shoot out a slam.

West led the spade 10: jack, queen, heart two. Declarer drew trumps in three rounds and cashed dummy's A-K of clubs. However, when West discarded on the second round, Jefferson paused, seeing that the club suit was blocked.

He could play on diamonds, hoping to have only one loser there — an approach that was destined to fail. But instead Jefferson led the spade king from the dummy and discarded a blocking club from his hand.

East won with the spade ace and switched to a diamond, but declarer won with the ace and then cashed dummy's three club winners, discarding his two diamond losers.

It isn't recorded whether Jefferson felt happier about this tour de force or about the earlier signing.

© 1991, NEWSPAPER ENTERPRISE ASSN.

On The Farm Tire Service  
 Goodyear Tires available:  
**Lang**  
**Tire & Appliance**  
 1701 25th Street  
 Snyder, Texas  
 Auto-Truck-Farm  
 573-4031

## Community Calendar

### WEDNESDAY

Free blood pressure clinic; Hermleigh Community Center; 1-2 p.m.  
 Narcotics Anonymous; Park Club in Winston Park; 8 p.m. For information, call 573-3961 or 573-8885.

### THURSDAY

Free blood pressure clinic; Dunn Community Center; 1-2 p.m.  
 Advanced Duplicate Bridge; Colorado City Bridge Room; 1:30 p.m.  
 Duplicate Bridge; Snyder Country Club; 1:30 p.m.  
 Alateen, Park Club in Winston Park, 37th & Ave. M; for information, call 573-5524 days, 573-2101 nights; 6:30 p.m.  
 Deep Creek Chapter of ABWA; The Shack; 6:30 p.m.  
 Snyder Fire Dept. Auxiliary; West Fire Station; 7 p.m.  
 Tumbleweed Toastmasters meeting; American State Bank Conference room; 7 p.m.  
 Deep Creek Cloggers lesson; VFW; 6:30-8 p.m.  
 New Horizons Alcoholics Anonymous (closed); in Winston Park; 8 p.m. For information, call 573-3308, 573-8110 or 573-5867.

### FRIDAY

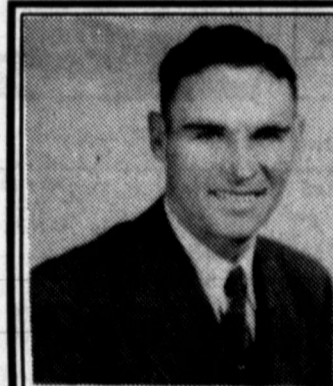
Storytime; Scurry County Library; 10 a.m.; 4 and 5 year olds.  
 Snyder Jaycees; noon luncheon; Golden Corral.  
 Overeaters Anonymous; Park Club at Winston Park. For information, call 573-8322, 573-7705 or 573-9839; 12-1 p.m.  
 Free blood pressure clinic; Cogdell Memorial Hospital emergency waiting room; 1-2:30 p.m.  
 ABCL Open Pairs Duplicate Bridge; Snyder Country Club; 1:30 p.m.  
 Cornelius-Dodson House; open by appointment by calling 573-9742 or 573-2763.  
 Friday Night Swingers Golf; Snyder Country Club; odd holes; 5:30 p.m.  
 Al-Anon; Park Club at Winston Park; 8 p.m. For information, call 573-2101, 573-3657 or 573-3956.  
 Scurry County Alcoholics Anonymous (closed); Park Club in Winston Park; 8 p.m. For information, call 573-8626, 863-2348 or 573-9410. (Last Friday of the month is open birthday meeting).

### SATURDAY

Alateen Step Study Group; Park Club at Winston Park; 2 p.m. For information, call 573-8929 or 573-5164.  
 People Without Partners; Inadale Community Center; games of 42 and dominos; 6:30 p.m.

### SUNDAY

Scurry County Alcoholics Anonymous; Park Club in Winston Park; 10 a.m. For information, call 573-8626 or 573-9410.  
 Scurry County Museum; Western Texas College; open from 1-4 p.m.  
 ACBL Open Pairs Duplicate Bridge; Snyder Country Club; 1:30 p.m.



Guess Who'll Be  
 75 Years  
 Young  
 On July 4th?

## To Look Your Best: Wrangler.



Our Wrangler Riata contemporary Western men's casual pants fit over boots and fit into today's Western scene with traditional details such as wide belt loops. They're tough 100% cotton. Khaki, Black, Blue Denim

Wrangler  
**RIATA**

Ropers  
 59<sup>95</sup>

All Straw Hats  
 20% off

We will be closed July 4th



**Western Wear**

College Heights Shopping Center



## Summer Sale

Beginning Monday, July 1 - 10:00 a.m.

Large Selection Summer  
 Dresses, Separates,  
 Shorts and Tops

**50% Off**

NO REFUNDS, LAYAWAYS, OR CHARGES  
 WE WILL BE CLOSED JULY 4TH

**B & J Style Shop**

HOURS:

Monday-Friday 10 a.m.-5:30 p.m.  
 Saturday 10 a.m.-5:00 p.m.

573-2972

2511 College Ave.





EEK & MEEK® by Howie Schneider



FLASH GORDON by Dan Barry



Barney Google and Snuffy Smith by Fred Lasswell



BLONDIE by Dean Young and Stan Drake



GRIZZWELLS® by Bill Schorr



FRANK & ERNEST® by Bob Thaves



ARLO & JANIS® by Jimmy Johnson



WINTHROP® by Dick Cavalli



ROBOTMAN® by Jim Meddick



ALLEY OOP® by Dave Graue



PHIPPS™ by Joseph Farris



SNAFU® by Bruce Beattie



KIT 'N' CARLYLE® by Larry Wright



DENNIS THE MENACE



NEA PUZZLES

ACROSS

- 1 Cover (a package)
- 5 Coldness
- 12 Ducklike birds
- 13 Distant star groups
- 14 Ice
- 15 Fixed in position
- 16 Spikes
- 18 Spoon bender — Geller
- 19 Dentist's deg.
- 20 Incorrect (pref.)
- 22 I cannot tell
- 26 Singer — Pina
- 28 Lizard
- 29 Fortune
- 32 Strong man of myth
- 34 Term of address
- 35 French yes

DOWN

- 1 How much wood — ...?
- 2 Attired
- 3 Army command (2 wds.)
- 4 Attention-
- 9 Yale studen.
- 10 Actor Mineo
- 11 Regard
- 12 New Deal program
- 17 Strike
- 21 Crystalline gem
- 23 At a —
- 24 Pelvic bones
- 25 Finnish first name
- 27 Author Grey
- 28 Tennis player Arthur —
- 29 Farm animals
- 30 Author Jean M. —
- 31 — colada
- 33 Go-between
- 39 — Marcos
- 41 Window slit
- 43 Underworld
- 45 Direction reversal
- 46 Do intensive research
- 48 Superman's love
- 50 First-rate (2 wds.)
- 51 Bridge of San Luis —
- 52 Inhabitant
- 53 Next to Sun.
- 54 Card game
- 55 Language suffix

Answer to Previous Puzzle

|   |   |   |   |   |   |   |   |   |   |   |   |
|---|---|---|---|---|---|---|---|---|---|---|---|
| H | O | K | E | H | O | S | T | H | A | S |   |
| U | R | N | S | U | F | O | S | U | R | E |   |
| S | L | O | E | M | I | T | E | R | B | O | X |
| S | A | T | T | I | T | O | A | B | U | T |   |
| E | N | T | A | I | L | A | B | U | S | E |   |
| I | D | E | N | T | I | C | A | L | B | E |   |
| N | O | D | E | A | L | G | A | E |   |   |   |
| W | A | T | E | R | W | E | S | T |   |   |   |
| Q | U | E | R | E | F | E | R | E | N | C |   |
| U | R | A | R | I | E | A | S | T | E | R |   |
| A | B | R | I | H | O | M | E | I | N | N |   |
| S | A | N | G | U | I | N | E | A | C | T |   |
| A | N | E | A | L | A | N | P | E | E | R |   |
| R | E | D | W | O | N | T | E | D | D |   |   |

- 5 Those in office
- 6 Constellation
- 7 Construction beam (2 wds.)
- 8 Type of goat

|    |    |    |    |    |    |    |    |    |    |    |
|----|----|----|----|----|----|----|----|----|----|----|
| 1  | 2  | 3  | 4  | 5  | 6  | 7  | 8  | 9  | 10 | 11 |
| 12 |    |    |    | 13 |    |    |    |    |    |    |
| 14 |    |    |    | 15 |    |    |    |    |    |    |
| 16 |    |    |    | 17 |    | 18 |    |    |    |    |
| 19 |    |    |    | 20 | 21 |    | 22 | 23 | 24 | 25 |
| 26 | 27 |    |    | 28 |    |    |    |    |    |    |
| 29 | 30 | 31 |    | 32 |    | 33 |    | 34 |    |    |
| 35 |    |    | 36 |    |    |    |    | 37 |    |    |
| 38 |    | 39 |    | 40 |    |    |    | 41 |    |    |
| 42 |    |    |    | 43 |    |    |    | 44 | 45 | 46 |
|    |    |    |    | 47 | 48 |    | 49 | 50 |    | 51 |
| 52 | 53 | 54 |    | 55 |    |    |    | 56 |    |    |
| 57 |    |    |    |    |    |    |    | 58 |    |    |
| 59 |    |    |    |    |    |    |    | 60 |    |    |

LAFF-A-DAY





# Allegations of selective enforcement studied

HOUSTON (AP) — Gov. Ann Richards' staff is investigating recurring complaints that the Texas Alcoholic Beverage Commission discriminates against Arabs, Hispanics and blacks in its enforcement of state alcohol laws.

"I've been contacted by an awful lot of people about selective enforcement, whether or not regulation is handled in an even-handed way," Annette LoVoi, the governor's ombudsman, told the Houston Chronicle in today's editions.

"Most of the complaints we've had have to do with enforcement actions," she said. "How they're determined, what is the basis for deciding who the targets are? And then, once the targets are determined, what are the standards for even-handed treatment?"

Several organizations, including the National Association for the Advancement of Colored People, are forwarding com-

plaints to the governor's office for review, the Chronicle reported.

Larry Sullivan, the agency's chief of enforcement and marketing practices, said the complaints, many of which have come from minority owners of clubs and of bingo halls regulated by the agency, are without merit. "The allegations are totally false. We want to meet with these people, because we are not selectively enforcing the law," Sullivan said.

However, the governor's newest appointee to the three-member TABC board, said one of her top priorities when she starts at the agency will be a review of the complaints.

"There's been that concern about selective enforcement, at least in the Fort Worth area, and I'm sure across the state," said attorney Renee Higginbotham-Brooks of Fort Worth, who was appointed to the board Tuesday. "Not knowing whether or not it

actually exists, we'll go in and we'll just investigate."

"I cannot attest to whether or not it's selective enforcement," said Glenn Lewis, an attorney for two convenience stores run by Jordanians in Fort Worth. "All I can talk about is the clients I've represented ... and the TABC seems to be riding them for no apparent reason that I can see, other than they're Arabs."

Lewis said the actions against his clients began after U.S. troops were sent to the Persian Gulf. He said TABC agents stalked out their stores, bothered employees and tried to get minors to buy beer there.

When he came to Austin to argue for his Arab clients, Lewis said, TABC officials were courteous, but "they totally ignored everything we had to say."

Gary Bledsoe, who heads the Austin office of the NAACP, said his organization's experience tends to support the complaints by Arabs and Hispanics.

"We have had a number of vendors come to us, and secondly, we've had an opportunity to go through actions ... and there does seem to be a disproportionate number that are against people with Spanish surnames or with Eastern names, Middle Eastern names particularly," Bledsoe said.

The NAACP's preliminary look at the numbers showed "something like 60 percent" of the actions were against people with Spanish and Middle Eastern surnames, Bledsoe said.

Randy Yarbrough, TABC's assistant administrator, said "70 to 80 percent" of the enforcement actions are based on complaints coming into the agency from the public.

"Unfortunately, the biggest problems end up in the lower economic problem areas of town, the downtown, the business districts, the same places you get all the shootings, the fights at night and so forth," he said.

"Those are the ones we get the complaints on, and that's where we go work."

"You don't get a whole lot of

## Old time capsule is discovered

WHARTON, Texas (AP) — It was not an ill wind that caused the old opera house to collapse because the mishap led to the discovery of a time capsule buried in the building's cornerstone for more than a century.

Frankie Cochran said he rushed to the site of the old opera house after learning last Saturday that it had collapsed Friday because of high winds and rain.

Cochran went to the site to warn those cleaning up the debris that they might destroy something of historical significance if they didn't use caution.

Elizabeth North Rugeley, who has since died, had told Cochran years ago that her father had placed a time capsule inside the cornerstone of the building.

The items placed in the cornerstone, the woman told Cochran, included a lock of her hair and bottle of wine and two gold coins.

Don Carlson, senior vice president at Healthfocus Physical Therapy Associates Inc., the company that owns the old opera house and adjacent buildings, said after Cochran told him about the time capsule, the bulldozer operator was instructed to protect the cornerstone.

No one knows just who built the building or exactly when the original building was erected, but it was dedicated in 1888.

Wharton County historical documents refer to the original building as a two-story structure, but at the time the opera house was dedicated, it had three stories with the opera house on the top floor.

For Results Use Snyder Daily News Classified Ads Call 573-5486

calls to the Loews Anatole (an expensive Dallas hotel). You get them to the dives, the topless joints, things like that."

Richard Sombrano, a conciliation specialist in the Justice Department's Dallas office, told the Chronicle he is trying to set up negotiations between TABC officials and representatives of several minority groups to discuss the agency's enforcement policies and its hiring practices.

"Our role is not to pass judgment — we're not investigating," Sombrano said.

"However, if there are perceptions out there, which obviously there are, then they need to be dealt with. We're not saying that they discriminate, but I imagine that the numbers of blacks and Hispanics are under-represented in the agency. Those are the kind of things we need to talk about."

# War hero honors dad killed in Vietnam

WASHINGTON (AP) — "This is for you, dad," said Marine Cpl. Michael Kilpatrick and carefully placed the Silver Star medal he won in Kuwait at the base of a marble panel at the Vietnam War Memorial.

"I wasn't looking forward to this day," his mother, Bonnie Lucido, said Tuesday. "It's the first time I saw my son and his father share anything."

Michael is 22. At the same age in 1969, his father was killed in Vietnam. Capt. Donald Kilpatrick was a helicopter pilot.

Michael drove a reconnaissance and fire support vehicle in Operation Desert Storm.

Michael thought his father deserved the medal more.

"Somebody saw me doing my job and thought it was special for some reason," he said. "He's the one who should be getting an award for what he did. He paid the ultimate price."

Young Kilpatrick is from Allentown, Pa., and is stationed at Camp Pendleton, Calif.

He won his medal for bravery on Feb. 24 and Feb. 25. When his

vehicle came under intense mortar and artillery fire on the 24th, the citation said, Kilpatrick maneuvered through the fire, simultaneously calling in air strikes.

The next day, when the enemy counterattacked, the young Marine "with no regard for his personal safety," singlehandedly disabled a tank. "His actions were critical in holding the counterattack and relieving the command post," the citation said.

The small ceremony in front of a Vietnam Memorial panel bearing Donald Kilpatrick's name took only a few minutes, a pause in the midst of a summertime tourist crush.

When Michael was through, former Marine Corps Commandant A.M. Gray gave Kilpatrick a replacement medal and his congressman, Rep. Don Ritter, R-Pa., handed him a flag that had flown over the Capitol.

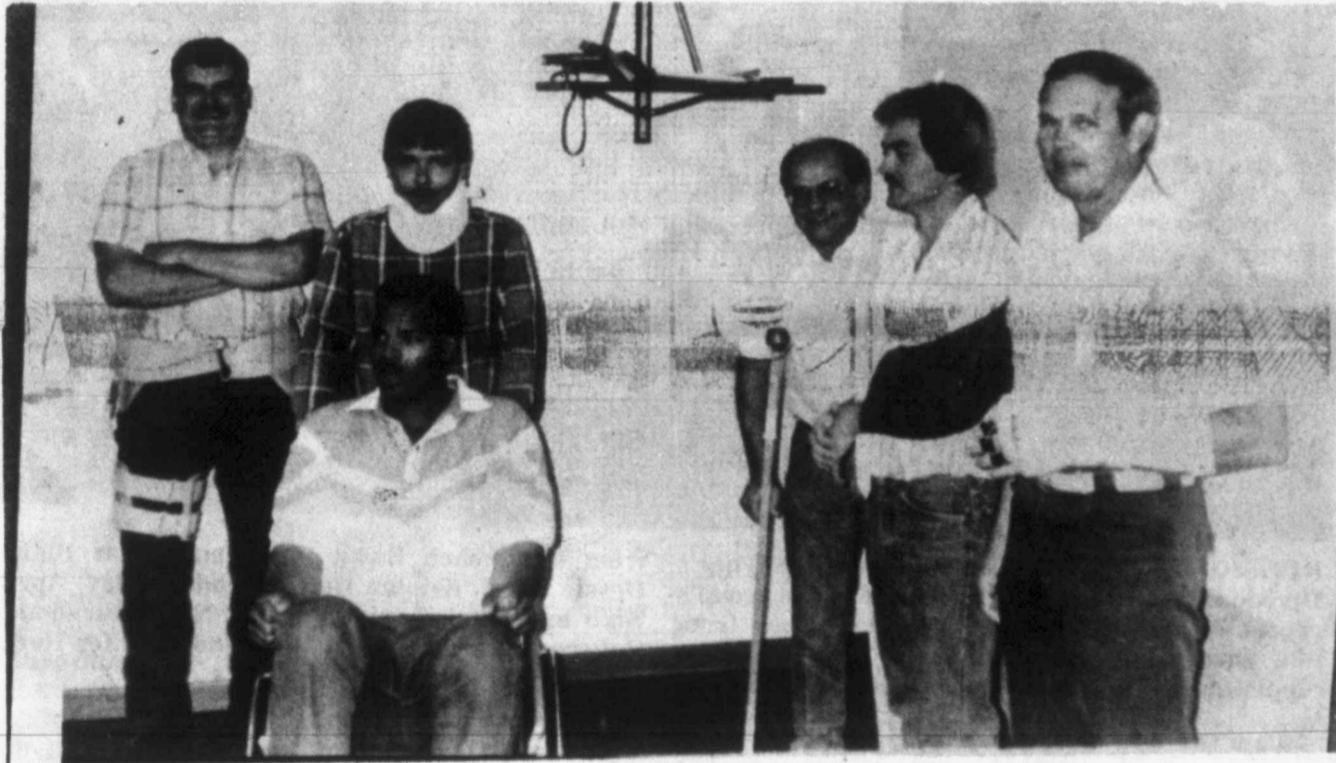
The original medal will be placed in a National Park Service museum.

Michael was two months old when his father went off to war. He said that all his life he had heard good things about his dad.

"Most everybody in my family was in the military one time or another," he said. "A lot of them have seen a lot of wars. I'm a Kilpatrick doing his job."

And what would his father think of him today?

"I hope he'd be proud," said the son.



SAFETY AWARDS — Participants in a recent Exxon Safety Award Dinner at Reta's Cake Shop included from left, Mike Bailey, Wayne Stark, Thomas Peoples, Dean McKenzie, Steve See and Ray Tampke. Medical supplies were donated by Burgess Pharmacy, Cogdell Memorial Hospital and Snyder Drug. (Exxon Photo)

**Snyder National Bank** Since 1905

1715 25th  
573-2681

**Our Own Part of America**

Be part of Snyder's July 4th Celebration Thursday in Towle Park.

Enjoy your friends and neighbors & honor America.

A Can-Do Bank For A Can-Do Community!

**Snyder National Bank**

Lobby Hours 9 a.m. - 3 p.m. **FDIC** Motor Bank Hours 9 a.m. - 5 p.m.

*This is the heart of AMERICA MY HOMETOWN*

**Blanche's Bernina Sewing Center**

"We help you Sew like a Pro"

**FIRECRACKER SALE**

Saturday, June 29 - Saturday, July 6

Buy 1 Yard & Get the Next Yard for a Penny

Belting 50¢ Yd.

Buy 1 Yard & Get the Next Yard for a Penny

ALL Interfacing 1/3 Off W/Purchase of Fabric

Belting 50¢ Yd.

Hurry In Offer Valid Only While Supplies Last

Full Yard Cuts - No In-Store Charges Please at These Prices

**Blanche's Bernina Sewing Center**

2503 College Ave. Snyder 573-0303

COUPON

Share the Prints

**DOUBLE PRINTS**

**At Low Prices!**

Because your pictures are worth a second look. Double Print Film Developing.

| Print Size     | Double Print Price |
|----------------|--------------------|
| 12 Exp. Roll   |                    |
| 24 Prints..... | \$1.99             |
| 15 Exp. Disc   |                    |
| 30 Prints..... | \$2.99             |
| 24 Exp. Roll   |                    |
| 48 Prints..... | \$4.99             |
| 36 Exp. Roll   |                    |
| 72 Prints..... | \$6.99             |

Receive a FREE album page coupon with every photo order. Film must be picked up within 10 days for sale price to apply. Good on 110, 126, Disc and 35mm color print film (K-4). Processing developing. No limit on number of cuts. Expires July 13, 1991.

**Snyder Drug**

**HEALTH MART**

3809 College 573-9333



# Buechele leads Rangers over Oakland

ARLINGTON, Texas (AP) — Texas Rangers rookies Dean Palmer and Ivan Rodriguez were smash hits in their 1991 home debuts.

But it was Steve Buechele's smash hit in the eighth inning that finally put Oakland away 9-6 Tuesday night, sending the Athletics into fifth place in the American League West for the first time since May 1987.

Buechele's two-run single off Gene Nelson broke a 6-6 tie to give Texas its fourth straight victory over the sliding Athletics.

Buechele said coming through in the clutch was simply a matter of pride.

"I looked up at the scoreboard about the sixth inning when we had 16 hits and they had three and we were tied 6-6," Buechele said. "It was the most ridiculous thing I'd ever seen."

Buechele's two-out, two-run single up the middle was the most beautiful thing the Rangers had seen, even on a night when Nolan Ryan set another record and Rafael Palmeiro hit two homers for the second time in four games.

The Rangers pounded out 19 hits, including four by Rodriguez and three by Palmer, a pair of much-heralded rookies making their much-anticipated home debuts before a sellout crowd of 41,176 at Arlington Stadium.

"I think they'll stick around for a few more days," Rangers manager Bobby Valentine joked.

Ryan, who had a no-decision, struck out Willie Wilson to end the fourth inning, setting a major league record with his 22nd straight season with 100 or more strikeouts. That broke a tie with Don Sutton.

Ryan, pitching for the first time in 11 days because of a sore right shoulder, allowed a three-run homer to Jose Canseco, who

had four RBIs, and a solo shot to Harold Baines. They were the only hits Ryan allowed in five innings.

Canseco's homer, his 19th, tied him with Detroit's Cecil Fielder and Minnesota's Chili Davis for the American League lead.

Kenny Rogers (5-7) pitched 1 1/3 innings of scoreless relief for the victory. Jeff Russell worked the ninth for his 16th save as the Rangers, who out-hit the Athletics 19-4. Rick Honeycutt (0-2) was the loser.

Palmer, who leads all of professional baseball with 25 homers, including 22 at Class AAA Oklahoma City of the

## Major League leaders

**AMERICAN LEAGUE**  
**BATTING**—Cripken, Baltimore, .348; Molitor, Milwaukee, .334; Sierra, Texas, .333; Puckett, Minnesota, .329; Baines, Oakland, .326; Joyner, California, .325; Greenwell, Boston, .323.  
**RUNS**—Molitor, Milwaukee, 59; Palmeiro, Texas, 57; Cripken, Baltimore, 55; Canseco, Oakland, 54; Franco, Texas, 54; DHenderson, Oakland, 54; Sierra, Texas, 53; White, Toronto, 53.  
**RBI**—Fielder, Detroit, 62; Thomas, Chicago, 57; Sierra, Texas, 56; Joyner, California, 55; Carter, Toronto, 55; Winfield, California, 55; Cripken, Baltimore, 54.  
**HITS**—Cripken, Baltimore, 104; Sierra, Texas, 101; Molitor, Milwaukee, 100; Puckett, Minnesota, 99; Palmeiro, Texas, 96; Joyner, California, 93; Carter, Toronto, 93; Franco, Texas, 93.  
**DOUBLES**—RAlomar, Toronto, 25; Carter, Toronto, 24; Palmeiro, Texas, 23; White, Toronto, 22; Boggs, Boston, 21; Cripken, Baltimore, 20; Reed, Boston, 19.  
**TRIPLES**—Molitor, Milwaukee, 7; Polonia, California, 6; RAlomar, Toronto, 5; White, Toronto, 5; Raines, Chicago, 5; 4 are tied with 4.  
**HOME RUNS**—Canseco, Oakland, 19; Fielder, Detroit, 19; CDavis, Minnesota, 19; Cripken, Baltimore, 18; DHenderson, Oakland, 18; Carter, Toronto, 17; JeBarfield, New York, 17; Winfield, California, 17.  
**STOLEN BASES**—RHenderson, Oakland, 30; Polonia, California, 27; RAlomar, Toronto, 26; Raines, Chicago, 25; White, Toronto, 19; Cuyler, Detroit, 16; RKelly, New York, 16; Franco, Texas, 16.  
**PITCHING** (7 Decisions)—Langston, California, 12-2, 8.57, 3.45; Erickson, Minnesota, 12-3, 8.00, 1.83; Finley, California, 11-3, 7.86, 3.72; Key, Toronto, 10-3, 7.69, 2.30; Stottlemire, Toronto, 9-3, 7.50, 3.13; Sanderson, New York, 9-3, 7.50, 3.89; Hennen, Detroit, 5-2, 7.14, 2.84; Klink, Oakland, 5-2, 7.14, 2.67; Thigpen, Chicago, 5-2, 7.14, 3.89; Gullickson, Detroit, 10-4, 7.14, 3.74.  
**STRIKEOUTS**—Clemens, Boston, 114; RJohnson, Seattle, 113; Ryan, Texas, 102; McDowell, Chicago, 96; Finley, California, 96; Candiotti, Toronto, 89; Swindell, Cleveland, 88.  
**SAVES**—Eckersley, Oakland, 22; Harvey, Los Angeles, 21; Aguiar, Minnesota, 20; Reardon, Boston, 19; JeRussell, Texas, 16; Olson, Baltimore, 15; Montgomery, Kansas City, 15; Thigpen, Chicago, 15.  
**NATIONAL LEAGUE**  
**BATTING**—TGwynn, San Diego, .359; Jose, St. Louis, .332; Pendleton, Atlanta, .326; McGee, San Francisco, .324; Biggio, Houston, .322; Samuel, Los Angeles, .320; Calderon, Montreal, .317.  
**RUNS**—Butler, Los Angeles, 54; TFernandez, San Diego, 50; Johnson, New York, 50; Sandberg, Chicago, 50; DeShields, Montreal, 47; OSmith, St. Louis, 47; Samuel, Los Angeles, 46; TGwynn, San Diego, 46.  
**RBI**—Johnson, New York, 58; WClark, San Francisco, 57; Kruk, Philadelphia, 54; Justice, Atlanta, 51; McGriff, San Diego, 50; Bonds, Pittsburgh, 49; Murray, Los Angeles, 49.  
**HITS**—TGwynn, San Diego, 112; Samuel, Los Angeles, 93; Calderon, Montreal, 90; Jose, St. Louis, 89; Sandberg, Chicago, 89; TFernandez, San Diego, 85; GBell, Chicago, 85.  
**DOUBLES**—Jose, St. Louis, 24; Bonilla, Pittsburgh, 21; McReynolds, New York, 20; TGwynn, San Diego, 20; Morris, Cincinnati, 19; LGonzalez, Houston, 18; Zeile, St. Louis, 17; Justice, Atlanta, 17; O'Neill, Cincinnati, 17; Sandberg, Chicago, 17.  
**TRIPLES**—TGwynn, San Diego, 8; Lankford, St. Louis, 6; Felder, San Francisco, 6; LGonzalez, Houston, 5; Kruk, Philadelphia, 5; Coleman, New York, 5; MThompson, St. Louis, 5.  
**HOME RUNS**—Johnson, New York, 18; O'Neill, Cincinnati, 15; McGriff, San Diego, 15; GBell, Chicago, 15; Gant, Atlanta, 14; Larkin, Cincinnati, 14; WClark, San Francisco, 13; Mitchell, San Francisco, 13; Sandberg, Chicago, 13; Brooks, New York, 13.  
**STOLEN BASES**—Nixon, Atlanta, 40; Grissom, Montreal, 37; DeShields, Montreal, 36; Coleman, New York, 33; Lankford, St. Louis, 31; Calderon, Montreal, 20; Bonds, Pittsburgh, 19; OSmith, St. Louis, 19.  
**PITCHING** (7 Decisions)—RMartinez, Los Angeles, 11-3, 7.86, 2.58; Carpenter, St. Louis, 7-2, 7.78, 3.26; Rijo, Cincinnati, 6-2, 7.50, 2.66; Glavine, Atlanta, 11-4, 7.33, 2.06; Sampen, Montreal, 5-2, 7.14, 4.71; Greene, Philadelphia, 5-2, 7.14, 2.74; Palacios, Pittsburgh, 5-2, 7.14, 3.10; Browning, Cincinnati, 10-4, 7.14, 3.49; Agosto, St. Louis, 5-2, 7.14, 5.44.  
**STRIKEOUTS**—Cone, New York, 105; Glavine, Atlanta, 98; GMaddux, Chicago, 94; Gooden, New York, 92; Rijo, Cincinnati, 86; Benes, San Diego, 81; Harnisch, Houston, 78.  
**SAVES**—Dibble, Cincinnati, 22; LeSmith, St. Louis, 22; Franco, New York, 17; DaSmith, Chicago, 16; BLandrum, Pittsburgh, 15; Lefteris, San Diego, 14; MiWilliams, Philadelphia, 13.

American Association, and Rodriguez, the Rangers' 19-year-old rookie catcher who extended his hitting streak to eight games, said they weren't nervous.

"I'm a lot more relaxed than when I first came up," said Rodriguez, who is hitting .422 with hits in 11 of his 12 games. "This is the first time I've seen this field, but the big leagues are no different. It's one pitcher throwing to home plate ..."

"I want to go out and have fun," said Palmer, who has three homers and 11 RBIs in seven games.

Palmeiro and Palmer, who had three RBIs each, hit back-to-back pitches for home runs off Bob Welch in the third, giving Texas a 3-0 lead. Palmer drove in Jeff Huson, who had singled.

"It was good to get one here," Palmer said, "especially in my home opener, that really got the

## Baseball glance

By The Associated Press  
 All Times EDT  
**AMERICAN LEAGUE**  
**East Division**

| Team      | W  | L  | Pct. | GB     |
|-----------|----|----|------|--------|
| Toronto   | 45 | 33 | .577 | —      |
| Boston    | 39 | 36 | .520 | 4 1/2  |
| Detroit   | 38 | 38 | .500 | 6      |
| New York  | 35 | 38 | .479 | 7 1/2  |
| Milwaukee | 34 | 41 | .453 | 9 1/2  |
| Baltimore | 31 | 44 | .413 | 12 1/2 |
| Cleveland | 24 | 50 | .324 | 19     |

**West Division**

| Team        | W  | L  | Pct. | GB    |
|-------------|----|----|------|-------|
| Minnesota   | 45 | 33 | .577 | —     |
| California  | 43 | 33 | .566 | 1     |
| Texas       | 40 | 32 | .556 | 2     |
| Chicago     | 40 | 35 | .533 | 3 1/2 |
| Oakland     | 41 | 36 | .532 | 3 1/2 |
| Seattle     | 39 | 38 | .506 | 5 1/2 |
| Kansas City | 34 | 41 | .453 | 9 1/2 |

**Tuesday's Games**  
 Detroit 4, Baltimore 3  
 Toronto 4, Minnesota 3  
 New York 8, Cleveland 5  
 Boston 14, Milwaukee 4  
 Texas 9, Oakland 6  
 California 10, Kansas City 3  
 Chicago 5, Seattle 4  
**Wednesday's Games**  
 Detroit (Tanana 5-6) at Baltimore (Milacki 4-2), 6:35 p.m.  
 Cleveland (Boucher 0-4) at New York (Kamienicki 2-1), 7:30 p.m.  
 Minnesota (Anderson 4-6) at Toronto (Candiotti 7-7), 7:35 p.m.  
 Boston (Harris 4-7) at Milwaukee (August 6-3), 8:05 p.m.  
 Oakland (Stewart 5-4) at Texas (Barfield 2-2), 8:35 p.m.  
 Chicago (Hough 5-3) at Seattle (Krueger 5-3), 10:05 p.m.  
 Kansas City (Aquino 1-1) at California (Finley 11-3), 10:35 p.m.  
**Thursday's Games**  
 Minnesota at Toronto, 12:35 p.m.  
 Baltimore at New York, 1:05 p.m.  
 Detroit at Boston, 6:05 p.m.  
 Chicago at Seattle, 6:35 p.m.  
 Milwaukee at Cleveland, 7:35 p.m.  
 Oakland at Texas, 8:35 p.m.  
 Kansas City at California, 9 p.m.  
**NATIONAL LEAGUE**  
**East Division**

| Team         | W  | L  | Pct. | GB     |
|--------------|----|----|------|--------|
| Pittsburgh   | 46 | 28 | .622 | —      |
| St. Louis    | 42 | 34 | .553 | 5      |
| New York     | 41 | 34 | .547 | 5 1/2  |
| Chicago      | 35 | 42 | .455 | 12 1/2 |
| Montreal     | 33 | 44 | .429 | 14 1/2 |
| Philadelphia | 32 | 45 | .416 | 15 1/2 |

**West Division**

| Team          | W  | L  | Pct. | GB     |
|---------------|----|----|------|--------|
| Los Angeles   | 46 | 29 | .613 | —      |
| Cincinnati    | 42 | 33 | .560 | 4      |
| Atlanta       | 37 | 37 | .500 | 8 1/2  |
| San Diego     | 38 | 40 | .487 | 9 1/2  |
| San Francisco | 33 | 43 | .434 | 13 1/2 |
| Houston       | 30 | 46 | .395 | 16 1/2 |

**Tuesday's Games**  
 Pittsburgh 13, Chicago 4  
 New York 2, Montreal 1  
 St. Louis 6, Philadelphia 1  
 Cincinnati 6, Atlanta 3  
 Los Angeles 4, San Diego 1  
 Houston 8, San Francisco 4  
**Wednesday's Games**  
 Pittsburgh (Smith 8-6) at Chicago (Lancaster 4-2), 2:20 p.m.  
 New York (Darling 4-5) at Montreal (Haney 0-2), 7:35 p.m.  
 St. Louis (Olivares 1-1) at Philadelphia (DeJesus 5-3), 7:35 p.m.  
 Cincinnati (Browning 10-4) at Atlanta (Avery 7-5), 7:40 p.m.  
 Los Angeles (Ojeda 6-5) at San Diego (Hurst 9-4), 10:05 p.m.  
 Houston (Deshaies 2-7) at San Francisco (Burkett 4-4), 10:05 p.m.  
**Thursday's Games**  
 Pittsburgh at Chicago, 1:05 p.m.  
 New York at Montreal, 7:05 p.m.  
 St. Louis at Philadelphia, 7:05 p.m.  
 Cincinnati at Atlanta, 7:10 p.m.  
 Los Angeles at San Diego, 10:05 p.m.  
 Houston at San Francisco, 10:05 p.m.

adrenalin going." Palmeiro hit the next pitch for his ninth homer.

Canseco's homer hurt the Rangers more because it followed walks to Mike Gallego and Rickey Henderson. Ryan finished with four walks and five strikeouts.

Reliever Terry Mathews blew the lead in the seventh when he walked Gallego and gave up a run-scoring double to Henderson, who scored on a groundout by Canseco. That tied the game at 6 despite Oakland having just three hits.

## Youth baseball results

**Junior Teenage League**  
 Buffs 15, Braves 4

Curt Rinehart got the win and Jeremy House came on for the save Monday as the Buffs took a 15-4 Junior Teenage League win over the Braves.

Greg McAden slammed a triple and twin singles for the Buffs. John Clinkinbeard doubled and singled and Wayne Brazier and Timmy Humphrey each punched a two-sacker.

Brian Lickey added four singles, Brad Hart ripped three, House managed two and Trent Owen and Rinehart each clubbed a hit.

Losing pitcher Lionel Aviles rapped two singles to pace the Braves' attack. Robert McDorman, Dameon Medrano and Daniel Fish drilled a hit apiece.

The Buffs wind up the regular season with a perfect 12-0 record. The team, managed by O.D. Brewer, will host the District Tournament July 29-31 at Moffett Field.



**HONORED PLAYERS** — Recently chosen to compete on the Snyder UGSA Division II All-Star squad are, front row from left, Shawn Purcell, Katy Walker, Brandi Bates, Mandy Hess, Rachele Wemken and Amanda Huff. Back row from left, Manager Connie Huddleston, coach Randy Bates, Joanie Wemken, Halea Huestis, Samantha Trevino, Shawna Huddleston, Brandy Gill, Erica Garvin and coach Ruben Trevino. The team will participate in the UGSA national softball tournament in San Angelo July 12-16. (SDN Staff Photo)



**DIVISION IV ALL-STARS** — Members of Snyder's Division IV softball all-stars, named at the group's recent closing ceremonies, are, front row from left, Sherry Fisk, Misty Jenkins, Amy Ramirez, Stephanie Fambro and Veronica Rivas. Back row from left, coach Brian Blair, coach Liz Blair, Dessie Ware, Kristen Huff, Belinda Kelley, April Blair and coach Gaylon Vaughn. Not pictured are Rebecca Ramey, Angela Good and Jennifer Herl. (SDN Staff Photo)

## Bagwell: HR, 4 RBI...

# Houston powers past Giants

SAN FRANCISCO (AP) — Jeff Bagwell thinks hitting home runs in the major leagues is actually easier than hitting them in the minors.

"In these ballparks up here, the ball really carries," said Bagwell, who homered and drove in four runs to help the Houston Astros beat the San Francisco Giants 8-4 Tuesday night.

The rookie first baseman hit six home runs in 711 minor league at-bats, including just four last

season at New Britain of the Eastern League. But he leads the Astros this season with eight homers in 255 at-bats.

"When I played in New Britain, we were in a place as big as the Astrodome," said Bagwell, "but the ball just doesn't go anywhere in those Eastern League places. Up here, in places like Cincinnati, Philly, Atlanta ... the ball carries real well."

His seventh-inning homer off Giants starter Buddy Black (6-7), a two-run shot, gave the Astros a 6-1 lead. They wound up needing the runs when the Astro bullpen gave up runs in the eighth and ninth after starter Mark Portugal (7-4) finished seven innings with a five-hitter.

Portugal is 8-1 lifetime against the Giants and 28-33 against everybody else in his major league career.

"I look forward to getting the ball every fifth day, no matter what club I'm facing," said Portugal. "But with the Giants, I've been able to keep the 1-2 hitters off base ahead of (Will) Clark, (Kevin) Mitchell and (Matt) Williams. And believe me, it makes a difference pitching to

those guys with nobody on base." Clark's sixth-inning homer, his 13th of the season, gave the Giants their first run off Portugal. Run-scoring singles by Mitchell in the eighth and Mark Leonard in the ninth made it close, but the Astros hung on.

The Astros rallied in the second off Black, who is 0-2 with three no-decisions since his last victory on June 6. Ken Caminiti led off the inning with a single and advanced to third on a wild pitch. He scored on Eric Anthony's single for a 1-0 lead.

Anthony moved to second on Eric Yelding's single and both players moved up one out later on Portugal's sacrifice bunt. After Craig Biggio was walked intentionally, Steve Finley delivered a two-run single to right and Bagwell drove in Biggio with an infield single to give the Astros a 4-0 lead.

Finley singled with one out in the seventh and scored on Bagwell's eighth home run for a 6-1 Astros lead.

Houston reached Giants reliever Mike LaCoss for two runs in the eighth on RBI singles by Biggio and Bagwell.

**OWN ALL THE LAUGHTER!**

Now Just \$19.95  
 GET \$3.00 BACK BY MAIL!

TOM SELLECK STEVE GUTTENBERG TED DANSON  
*Three Men and a Little Lady*

Previously Viewed Movies Now On Sale!  
 Offer Expires Nov. 30, 1991. Complete Details In Store.

PG-13  
**THE MOVIE STOP**  
 3607 College 573-4991

Available July 3  
 "Look Who's Talking II"  
 "Mr. & Mrs. Bridge"  
 "Almost an Angel"  
 Limited Quantities

# SWEET TALK

Go ahead — pick up the phone and tell her you love her...one more time.

Talking to your sweetie just got sweeter! For only 30¢ a minute you can afford to count the ways! With each call originated in a Texas Cellular cell, you pay only 30¢ per minute from 8 p.m. to 7 a.m. Monday through Friday and ALL DAY Saturday and Sunday. Now is that a sweet deal or what? Call your Texas Cellular representative for all the loving details!

**TEXAS CELLULAR**  
 A service of Taylor Telecommunications, Inc.

SNYDER-2403 W. 25th Street 573-2424

Now is This a Sweet Deal or What?

SAVE THIS AD

**JAPANESE SWORDS WANTED**  
 DO NOT CLEAN BLADE

LONG SWORDS UP TO \$2500.00  
 SHORT & MILITARY SWORDS UP TO \$400.00

ALSO BUYING GERMAN WAR RELICS  
 DAGGERS \* HELMETS \* FLAGS \* MEDALS \* UNIFORMS \* STEINS \*  
 GERMAN SWORDS & DAGGERS UP TO \$400.00 ea.

BUYING U.S. CIVIL WAR \* INDIAN WARS \* WWI & WWII  
 SWORDS \* FIGHTING KNIVES \* MEDALS \* LEATHER FLIGHT JACKETS

BRING TO **BEST WESTERN ROOM 237**  
 WILLOW PARK INN JCT. 84 & 180 SNYDER, TX  
 PREMIUM PRICES FOR MINT CONDITION ITEMS  
 ASK FOR WAR RELIC BUYERS

BUYING SAT. ONLY  
 JULY 6  
 9 am TO NOON

SAVE THIS AD



Wimbledon...

# Capriati upsets 9-time champ

WIMBLEDON, England (AP) — Jennifer Capriati dethroned grass-court queen Martina Navratilova 6-4, 7-5 today in a Wimbledon quarterfinal that presented a contrast of styles and generations in the completion of a match halted Tuesday by rain.

The match ended on a double fault by Navratilova, who served poorly throughout the match.

Capriati is the only person other than Steffi Graf to win a Wimbledon match against Navratilova in a decade. Navratilova holds the Wimbledon record for titles, victories and matches played.

The 15-year-old was leading 6-4, 2-3 when rain halted play on Tuesday. Play has been delayed at least once every day of the tournament except Saturday.

Action today began under a partly cloudy sky.

Thierry Champion of France was among the early winners, completing a fourth-round victory over Derrick Rostagno 6-7, 6-2, 6-1, 3-6, 6-3.

Rostagno earlier eliminated fellow American Jimmy Connors.

Another match being completed today involved second seed Gabriela Sabatini. She had won the first set of her quarterfinal with Laura Gildemeister 6-2 and was up 1-0 in the second set when play was halted.

Top seed Steffi Graf and fifth seed Mary Joe Fernandez, playing earlier, advanced to a semifinal showdown. Graf defeated seventh seed Zina Garrison 6-1, 6-3 and Fernandez won 6-2, 7-5 over fourth seed Arantxa Sanchez Vicario.

Before the rain returned to curse Wimbledon, John McEnroe was leveling some of his own profanity at a linesman.

McEnroe, who lost 7-6, 6-1, 6-4 to top seed Stefan Edberg in a fourth-round match, unleashed a stream of obscenities after a disputed line call late in the contest.

Though few fans could hear him, a TV microphone picked up the tirade and it was broadcast — albeit with bleeps — throughout Britain. No official complaint

## Heisman QB gets married

SALT LAKE CITY (AP) — BYU's Heisman Trophy winning quarterback Ty Detmer put behind his bachelor days Tuesday, marrying Kimberli Dawn Herbert in a private ceremony.

Only family and friends were invited to the wedding, conducted at the Mormon Church's 17th Ward chapel by Bishop Tom Liddell. But an estimated 1,000 guests attended an outdoor reception at the downtown Triad Center.

Family spokesmen for both the bride and groom told reporters the couple did not want to answer questions.

Detmer is a graduate of Southwest High School in San Antonio, Texas. Herbert is a BYU student from Salt Lake City, and a graduate of Alta High School.

The couple planned to fly to the San Antonio area to attend a barbecue reception Saturday hosted by Detmer's family. They will honeymoon in Hawaii.

Detmer set 42 NCAA passing and offense records in his junior year to win college football's highest honor. He is returning this fall for a final season at the BYU helm.

In January, Detmer underwent surgery to repair his right, throwing shoulder, which had been separated in last December's Holiday Bowl game with Texas A&M.

was filed, but a Wimbledon spokeswoman said McEnroe could be fined retroactively based on the TV tape.

Edberg, the defending champion, ran off 15 straight points midway through the second set and won 16 of 20 points in a third-set spurt.

McEnroe, a three-time champion, seemed to sag after losing a 7-4 tiebreaker in the first set.

"Once I got the break in the se-

cond set, then I really got on top of him and I started to play better," said Edberg, who is seeking his third Wimbledon title. "I started to feel more confident, and that's what I was waiting for."

Also reaching the men's quarterfinals was David Wheaton, who defeated Jan Gunnarsson 6-4, 6-3, 6-1.

Fourth seed Jim Courier and sixth seed Michael Stich advanc-

ed to a rematch of their French Open battle less than a month ago. Courier won that semifinal contest and went on to defeat Andre Agassi for the French Open title.

Courier defeated 14th seed Karel Novacek 6-3, 6-4, 6-2 and now has lost only 13 games in his last two matches. Stich reached the Wimbledon quarterfinals by outlasting Alexander Volkov 4-6, 6-3, 7-5, 1-6, 7-5.

## win, lose & DREW



## FW Judge orders deposition in Navratilova case by July 16

FORT WORTH, Texas (AP) — A judge has ordered tennis star Martina Navratilova to give a deposition July 16 in a lawsuit filed against her by her former live-in companion.

The lawsuit was filed against the defending Wimbledon champion on June 4 by Ms. Judy Nelson, who said the tennis star had ended their 7-year-long relationship but failed to live up to the conditions of an agreement, which the pair signed during a videotaped session in 1986.

Ms. Nelson claims the agreement called for Nelson to receive half of Navratilova's winnings and profits from business ventures since July 1984, when the couple began living together.

Lawyer Mike McCurley, who represents Navratilova, attempted to protect her from giving the deposition by claiming that Jerry Loftin, Nelson's lawyer, failed to confer with them before seeking the July 16 date.

The failure to confer, he said, was a breach of civil law rules.

Loftin objected, saying a conference between the two did occur.

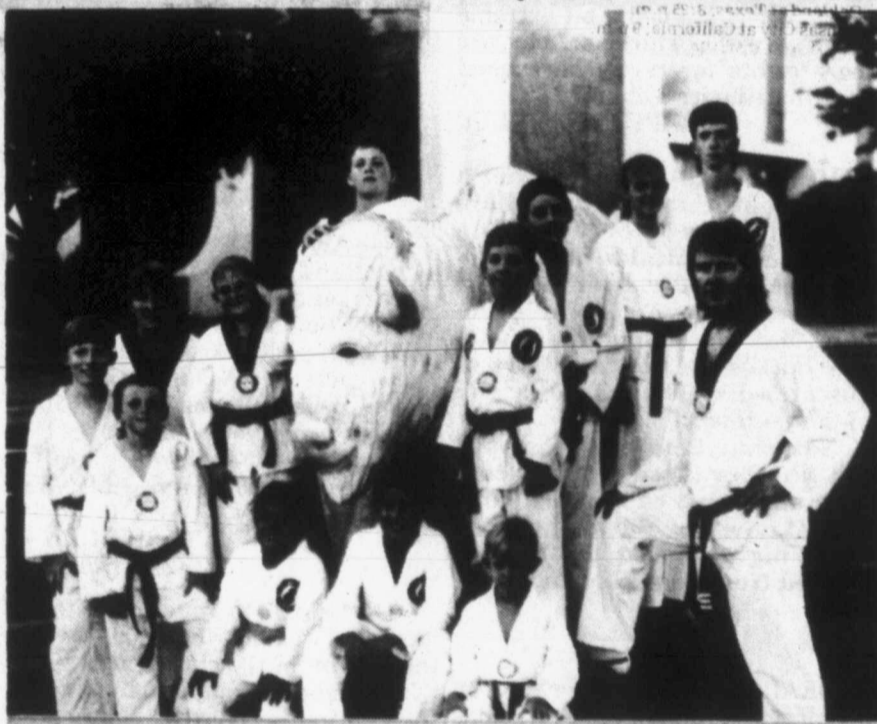
Judge Harry Hopkins overruled McCurley and ordered the deposition to proceed as requested July 16.

He also ordered the attorneys to get together and reach agreements on other disputes ranging from who will pay for

financial records subpoenaed from IMG Inc., Navratilova's management firm, and other materials sought by both sides in the pretrial process.

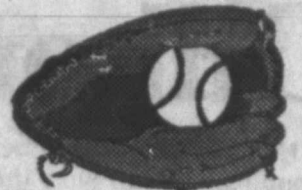
McCurley said he did not want to confer with his client until the Wimbledon tournament is completed.

Judge Hopkins, an avid tennis player, told him, "Wait until after Wimbledon to call her. You have until July 15 to get all this ready."



TAEKWONDO STUDENTS — Students of West Texas TKD Academy are currently in Cincinnati for the Junior National Taekwondo Championships. Snyder entrants, pictured above from left, include, Sean Duncan, Greg McAnaw, instructor Donna Gafford, Keisha Gafford, Amy Juarez, Chris Post, Jamie Juarez, Jared Thornhill, Tyson Terry, Gary Hays, Shelly Englert, instructor Greg Gafford and Dell Blackwell. The martial arts tournament begins with weigh-in today. Competition starts Thursday and lasts through Saturday. (Contributed Photo)

## Sport Shorts



### Local TKD qualifiers at nationals

CINCINNATI — Snyder's contingent to the National Junior Taekwondo Championships are scheduled to weigh-in today and begin competition on Thursday.

Local qualifiers in the forms division of the tournament include Jared Thornhill, Shelly Englert, Jamie Juarez and Greg McAnaw, all of whom will perform in Thursday's opening round.

Also on Thursday, McAnaw, Amy Juarez, Tyson Terry and Thornhill will compete in free-sparring.

### LGA winners announced for June

Norma Crowder, Kaye Cypert, Colleen Duke, Vivian Norwood, Becky Knipe and Jana Talbott were listed as winners of Snyder Country Club's Ladies' Golf Association Roughing It tournament June 4.

Other LGA winners for the month of June include Crowder, Duke, Susie Miller, Martha Fagin, Jo Sterling and Cypert in the June 11 Low Score on Nine Holes competition.

Queen of the Hill was played June 18 with Carolyn Greene, Miller, Cynthia Jackson, Knipe, Suzy Reed, Barbra Greenlee and Duke winding up winners.

### Chiamparino to have elbow surgery

ARLINGTON, Texas (AP) — Texas Rangers rookie right-hander Scott Chiamparino will undergo exploratory surgery on his injured right elbow.

A bone scan performed last week was inconclusive, the team said.

Dr. Lewis Yocum will perform the operation, but a date was not immediately set.

Chiamparino (1-0) has been on the disabled list since May 26 with a sore elbow, which failed to improve with rest alone. Until his injury, Chiamparino was the Rangers' fifth starter and a projected Rookie of the Year candidate.

### Scott Erickson goes on 15-day DL

TORONTO (AP) — Scott Erickson, one of the favorites to be the American League's starting pitcher in next week's All-Star Game, was placed on the 15-day disabled list by the Minnesota Twins with a strained right elbow.

Erickson, placed on the list retroactive to Sunday, leads the AL with a 12-3 record, a 1.83 ERA and three shutouts in 16 starts.

### Rocket misses CFL exhibition game

HAMILTON, Ontario (AP) — A pulled leg muscle kept Raghib "Rocket" Ismail out of his second straight CFL exhibition game with the Toronto Argonauts, a 28-25 overtime loss to the Hamilton Tiger-Cats.

Ismail, a wide receiver-punt returner from Notre Dame, was the consensus No. 1 pick in last April's NFL draft, but instead signed a four-year deal with the Argonauts worth up to \$26 million.

Toronto opens the regular season next Thursday at Ottawa.

### Knicks' Ewing files for arbitration

NEW YORK (AP) — Patrick Ewing filed for arbitration against the New York Knicks in an attempt to become a restricted free agent following the 1991-92 season.

Ewing, who signed a 10-year, \$32 million contract on Sept. 18, 1985, rejected a contract extension that would have made him the highest-paid player in team sports, Knicks president Dave Checketts said. Instead, Ewing will have his case heard later this month by arbitrator Daniel Collins.

Ewing's contract contains a clause that allows him to become a restricted free agent any time after his sixth season if he is not among the four highest-paid players in the NBA. Ewing would be free to negotiate with other teams. However, the Knicks could match any offer and keep him.

The center, who averaged 26.6 points and 11.2 rebounds last season, made more than \$4 million in 1990-91 and is scheduled to earn \$3,138,000 next season.

### Transactions

**BASEBALL**  
American League  
MINNESOTA TWINS — Placed Scott Erickson, pitcher, and Gene Larkin, outfielder-first baseman, on the 15-day disabled list. Erickson retroactive to June 30. Activated David West, pitcher, from the 30-day disabled list. Recalled Jarvis Brown, outfielder, from Portland of the Pacific Coast League.

**National League**  
CHICAGO CUBS — Optioned Shawn Boskie, pitcher, to Iowa of the American Association. Purchased the contract of Laddie Renfro, pitcher, from Iowa.

## Spanish Inn

"A Family Tradition Since 1943"

Will Be  
**OPEN**

**Thursday, July 4th**  
**6:00 a.m.-8:00 p.m.**

2212 College Ave.  
573-2355

### THE TOWN & COUNTRY DIFFERENCE

|                                              |        |
|----------------------------------------------|--------|
| Pepsi, Diet Pepsi,                           | \$1.79 |
| Mountain Dew 12 Oz., 6 Pk .....              | \$1.79 |
| Coke or Diet Coke 12 Oz., 6 Pk. ....         | \$1.79 |
| Gandy's Super Pro Milk 1/2 Gal. ....         | \$1.39 |
| Holsum Wheat                                 |        |
| Sandwich Bread 1-1/2 Lb. ....                | 99¢    |
| Fountain Drink 16 Oz., 20 Oz., 32 Oz. ....   | 49¢    |
| Beef & Bean Burrito Large, Reg. \$1.29 ..... | 89¢    |
| Spicy Fries                                  |        |
| W/Any Deli Purchase .....                    | 49¢    |

Town & Country #108  
1900 N. Kings Hwy.

THE TOWN & COUNTRY DIFFERENCE

## TEXAS GIANT DISCOUNT FIREWORKS

TEXAS GIANT FIRECRACKERS

300 Pack Reg. \$6.00  
NOW: \$2.00 Pkg.

CRACKER BOMBS

REG. \$1.50  
NOW: 50¢ Pkg.

TEXAS GIANT SNAPPERS

REG. \$1.00 box  
NOW 25¢ box

CHASERS

REG. 6/\$1.50  
NOW: 6 /60¢

SUPER BOMB ROCKETS

REG. \$2.50 ea.  
NOW: \$1.00 ea.

10 BALL CANDLES

REG. 25¢ ea.  
NOW: 10 ea.

Over 75 Items BUY 1 GET 1 FREE!

TEXAS GIANT SUPER CHARGED POP ROCKETS

FAMILY ASSORTMENT PACKAGES  
FROM: \$5.95, 9.95, 14.95, 19.95, 29.95, 39.95, 44.95

IN SNYDER:  
\* 800 E. 37th at Co-op Gin Lot.



# Calhoun County Grand Jury to probe meeting

AUSTIN (AP) — Members of a Republican group said they are delighted that a grand jury will consider their complaint that Democratic legislative leaders violated the state Open Meetings Act with a closed-door meeting on Matagorda Island.

"We think that if (Gov.) Ann Richards came out and said she's for the 'New Texas,' which is an open Texas, then by golly we're going to hold her to it," Glenn Goulet, spokesman of the Associated Republicans of Texas, said Tuesday.

Last Wednesday and Thursday, Richards, Lt. Gov. Bob Bullock, House Speaker Gib Lewis, four other top lawmakers and their aides met privately on the secluded island off the coast northeast of Corpus Christi.

The lawmakers, minus Richards, constituted a quorum of the Legislative Budget Board. Attorney General Dan Morales ruled the board is covered by the Open Meetings Act.

The Republicans protested the meeting last week in a letter to Travis County District Attorney Ronnie Earle, who passed it to Calhoun County District Attorney Jack Whitlow. Earle said he lacks jurisdiction over a meeting held in another county.

Whitlow said the Calhoun County grand jury would meet July 22 to decide whether to investigate the private budget talks.

"If we get a (sworn) complaint, we'll investigate it and apply the law to it and see what happens," Whitlow, a Democrat, said in a telephone interview.

"I want to stay out of the

political end of it. I'll present the legal questions to them (grand jurors) and make a decision whether to investigate," he said.

Richards, who is not a member of the budget panel, defended the meeting and said she was talking with the others as individual lawmakers rather than Budget Board members.

"These were committee chairman gathering information about proposals before the Legislature," said Bill Cryer, the governor's press secretary. "Maybe the Republicans are used to (ex-Gov.) Bill Clements, who didn't meet with anybody."

Richards, and spokesmen for Bullock and Lewis, argue that the session was exempt from the Open Meetings Act because they only received briefings from aides.

Whitlow said he wanted the GOP group, which is seeking the probe, to file a sworn complaint and to make an association representative available to talk to the grand jury. Goulet said the GOP group would do so.

"We really applaud the DA down there for really standing up — don't envy him, but we really applaud him," Goulet said.

Commercial planes don't fly to Matagorda Island. State leaders flew on a plane paid for with campaign funds and stayed at a house owned by the U.S. Fish and Wildlife Service.

To get to that house, visitors without a private airplane must take a boat to a small harbor on the island's north end. From there, it is a 20-mile walk down a one-lane road past swamps that

are home to rattlesnakes, alligators and coyotes.

The house also could be approached by boat from the Gulf

side. Visitors then must walk a mile past alligator ponds to reach it.

After the meeting, the gover-

nor said news reporters "were welcome, if you wanted to come down there." One Houston television news crew did fly to the

island and persuaded Richards, Lewis and Bullock to leave the session for interviews.

## Printing rape victim's name defended

FORT WORTH, Texas (AP) — The Fort Worth Star-Telegram plans to appeal a judge's order prohibiting the newspaper from revealing the name of a rape victim.

The newspaper generally does not publish the names of rape victims, and has no plans to do so. But a ban on naming the victims would constitute prior restraint and violate constitutional guarantees of free speech and press, attorneys for the newspaper say.

Tuesday, State District Judge Jeff Walker barred the Star-

Telegram and attorneys for the newspaper from revealing the name or other identifying details of a 1989 rape victim who is suing the publication for invasion of privacy.

Representatives for the newspaper said that they intend to appeal the judge's ruling.

The woman's name was included in the public record before and during the criminal trial of her assailant.

"Our quarrel is over the larger constitutional issue," Assistant Managing Editor Kenneth Bunting said. "It is important to

remember that although the rape occurred two years ago, we have never published the victim's name. And we certainly have no plans to do so now.

"But we feel duty-bound to appeal, in the public's interest, when a judge seeks to restrain us from using public information that has long been available for anyone to see."

But the woman's attorney, Mark Haney, said he believes her "constitutional right to privacy" outweighs constitutional protections of the press and speech.

"The newspaper is claiming

that the First Amendment, regardless of what the underlying circumstances or facts may be, has an absolute right to publish essentially any information that they so choose," Haney said Tuesday. "Our position is that for this narrow point — the identity of the victim of a sexually related offense — that person ought to have a right to keep those facts private."

The woman sued the Star-Telegram in July 1990, arguing that although her name was not used, the newspaper printed other specific details which identified her.

Dear Abby

By Abigail Van Buren



## Family Reunion Revelry Robs Motel Guests of Restful Sleep

DEAR ABBY: Now that vacation season has begun, will you please answer a question many people must have wondered about?

Every room in a hotel or motel has the management's "rights" posted. But what about the rights of the people renting that room?

Recently, my husband and I stopped in a small motel in Dade City, Fla. After we checked in, we learned that 10 of the 20 rooms were occupied by members of a family having a reunion! They pulled their cars into a circle in the parking lot, turned up their radios, got out their coolers and had a party. The noise and the laughter could have awakened the dead. And it went on until 2 a.m. Several of the other guests complained, but the owner sort of shrugged and indicated, "Too bad."

One man with a New York tag said he will never come to Florida again, which seemed a bit extreme — but we were all furious. Abby, are there "rights" for travelers in a motel unaffiliated with a chain?

UNHAPPY TRAVELER

DEAR UNHAPPY: Whether a motel is affiliated with a chain or not, it owes its occupants an atmosphere suitable for sleeping. Occasionally, even the best motels will have a noisy occupant, but the management usually makes an honest effort to quiet the disturbance. Sorry you picked a lemon.

Next time, before you register, ask whether there are any "conventions" booked during your stay. (I once stayed at a hotel on prom night — and the revelry rivaled New Year's Eve's.)

Abby, please ask your readers to kindly refrain from stopping the parents of multiple-birth children to ask a lot of personal questions such as, "Did you take fertility drugs?"

Whenever my granddaughter takes her triplets out — even for a breath of fresh air or grocery shopping — she is stopped by people who want to take a look at the triplets and ask a lot of questions. It's so difficult for her to get her shopping done, or even take a leisurely walk. Since you are a twin, you can probably feel for my granddaughter.

CALIFORNIA GRANNY

DEAR GRANNY: Twins or triplets are sure to attract attention, so the person accompanying them had better be prepared to answer a lot of questions. (A double or triple buggy alone is an attention-getter.) Should a stranger ask a question that you feel is too personal to answer, let your response be, "Forgive me if I choose not to answer so personal a question."

\*\*\*

DEAR ABBY: "Wrong Guy in Cleveland," who gets numerous messages on his answering machine from people who have dialed his number by mistake, should record a new message. A suggestion: "You have reached Pennsylvania 65000. Please leave your name and telephone number, and your call will be returned as soon as possible. Wait for the beep."

RIGHT GUY IN ELIZABETH, N.J.

DEAR ABBY: Your advice to the Arizona woman whose family was banned from the church was right. You told her to complain to someone higher in the church. However, I hope she had better luck than I had.

DEAR ABBY: I am writing on behalf of my granddaughter who has a set of triplets, now 7 months old.

### PLEASE NOTE!

We will be closed for vacation July 4-11  
**Jaramillo's**

East Hwy 180 Mexican Food 573-9253

## GIANT SUMMER CLEARANCE SALE

Special Group Ladies  
**Dress, Casual & Sport Shoes**

Buy One Pair  
And Get Second Pair  
Of Equal or Less Value

**FREE**

Group of Handbags 1/2 Price

**WOOD'S FAMILY SHOES**

E. I-20

Colorado City

728-8638

Great American Bargains For The **FOURTH**

Paper Goods  
Buttons  
Foil Streamers  
T-Shirts  
Party Goods  
Tinsel

The Pleasure's Mine  
2502 Ave. R 573-6536

Summer Celebration

★ ★ **SAVE \$10** ★ ★

**52 PORTRAITS**

NOW ONLY **\$4.95** plus 95c sitting fee (reg. \$14.95)

2-8x10s, 3-5x7s, 15 Wallets and 32 Mini-Portraits

on your choice of a traditional, nursery, spring or fall background

Bring in any lower-priced advertised offer and we'll match it!

We welcome everyone... babies, children, adults and family groups. No appointment is ever necessary. Satisfaction guaranteed. Poses our selection. White and Black Backgrounds, Double Exposure and other Special Effects Portraits not available in advertised package. Limit one special package per subject. \$2 for each additional person in portrait. Minors must be accompanied by an adult. \*approximate size

Studio Hours: Daily, 10 a.m. until one hour prior to store closing; Sunday (where open): store opening until one hour prior to store closing

**WAL-MART**  
Pictureland Portrait Studio

**5 Days Only!**  
Wednesday, July 3 through Sunday, July 7  
4515 COLLEGE AVE.  
SNYDER, TX.

KEEDS

L.A. GEAR

NATURALIZER

Hush Puppies



# Harris Co. jail ministry among largest in U.S.

HOUSTON (AP) — Downtown's 1301 Franklin building rivals Houston's First or Second Baptist churches in size, but the downtown congregation has a much larger reputation, law enforcement officials report.

The 13-floor Harris County Jail, at 1301 Franklin, has 10 concrete floors of hardened steel holding tanks and isolation cells. In size, the 9-year-old jail house ranks nationally behind only the Los Angeles County Jail, officials report.

Designed for 4,300 men and women, the jail's daily head count hovers around 6,000 people, officials said. Despite overcrowding and cuts in several out-

side chaplain positions, the jail has a full religious program, reports the Rev. Freddie Weir, head chaplain.

"I think we have one of the better jail ministries in the United States. We meet spiritual needs and have had few troubles," said Weir, a direct, 53-year-old independent Baptist minister.

He was named head chaplain recently by Houston Metropolitan Ministries, the interfaith group that coordinates religious services in the county jails. Five full-time chaplains, mostly lay volunteers, conduct 100 religious services and Bible studies a month, Weir said.

The Galveston-Houston diocese

pays for two Catholic priests to minister behind bars, while Houston Metropolitan Ministries pays for the other three ministers. The yearly budget is about \$150,000.

Harris County has about 8,000 men and women in four jails, including a new boot camp, or Courts' Regimented Intensive Probation Program, near Humble. In recent months, tight budgets left outside denominations to cut two clergy from the jail — an Episcopal priest and Southern Baptist home missionary.

When the new jail at 701 N. San Jacinto, across from Allen's Landing on Buffalo Bayou, opens ear-

ly this fall, Weir said Harris County likely will have the second and third largest county jail houses in the nation.

The jail at 1301 Franklin is a warren of identical, 24-person holding tanks. Each tank has single or double-cot cells, a dayroom with hard-steel tables and television, and a public shower and toilet.

Prisoners are housed on floors based on handicap, security risk or sex. The third floor includes the mentally ill and retarded. Women are jailed on fourth and 12th floors. Men under the age of 21 ride up the main elevator to the 10th.

Half of one floor is reserved for

professed homosexuals, Weir said. Men accused of child abuse or molestations are also segregated for safety.

Overcrowding is real, Weir said. "There are not enough beds," he said.

Protestant chaplains and local church volunteers focus on evangelism, either winning or reclaiming souls. "We can't have a long-term kind of ministry. We often have one shot at them so we try to win them to the Lord," Weir said.

The jail has chapel rooms on four floors. During a day service on the jail's fifth floor, the Rev. B.V. Harlan, 70, of Northside Antioch Missionary Baptist Church, told 12 men to think about the results of "ungodly people."

Many men have no faith background. Harlan exhorts them to read the Bible or other great books. On the pink-walled floor below, Deanna Kidder, 35, said she found Scripture only recently. "I never read the Bible until I got to jail," she said during a Bible study.

Assistant chaplains like Harlan volunteer because of personal calls, Weir said.

Protestants operate the largest ministry at the jail, but other faiths are represented. Muslims are considered the fastest-growing faith movement among blacks in the nation's jails, but militant teachings or other issues haven't occurred in Houston, Weir said.

## Chain drops additive-free cigarettes

DALLAS (AP) — A Texas chain of health food stores decided it no longer will stock a new brand of natural cigarettes said to be healthier than other cigarettes.

Herb buyers for Whole Foods Market in Dallas and Austin stocked the American Spirit cigarettes three months ago. The tobacco is grown without use of additives.

But a quality standards task force, comprised of a group of Whole Foods Market store

managers, concluded that cigarettes would damage the chain's image. The task force gave stores a July 1 deadline to get the cigarettes off their shelves.

"We decided, whether organic or not, cigarettes are still harmful to the body," said Margaret Wittenberg, who led the task force. "We want to emphasize that we don't advocate cigarette smoking in our stores."

Whole Foods Market stores sell organically grown produce and

other foods, and try to keep a health-related image.

The chain has three stores in Austin, including its central office, two stores in Dallas and one in Houston. New Orleans, Palo Alto and Berkeley, Calif., each have one store.

"It was the task force's impression that customers don't want us to sell them," said David Matthis, a Dallas store manager.

His store will lose about \$700 a week from the cigarette sales, a small fraction of the store's total

sales, Matthis said.

"Certainly we'll lose a few sales, but that's fine," Ms. Wittenberg said. "It's better to keep ourselves up to a standard."

However, she said it was difficult justifying the removal of cigarettes from the stores, while alcohol and coffee sales continue. The difference, she said, is that alcohol and coffee aren't harmful when used in moderation.

"There's no moderation in cigarette smoking," Ms. Wittenberg said. "When you smoke, you damage your lungs as well as other people's lungs who don't deserve to have their health damaged."

"Cigarettes are by far worse for everyone involved."

Dallas herb buyer Allen Schroeder said he initially distributed the cigarettes to Whole Foods workers, who later voted to stock them.

"We had a variety of feedback from 'thank you for offering an alternative' to 'I hate it, tobacco is addictive and we trusted you,'" Schroeder said.

Classified Ads Call 573-5486

## Cholera outbreak expected

EL PASO, Texas (AP) — There is no question that an outbreak of the deadly disease cholera will strike the U.S.-Mexico border, it's just a matter of when, health officials say.

The outbreak may be inevitable, Dr. Laurance Nickey, director of the El Paso City-County Health District said Tuesday.

"The Pan American Health Organization has issued a statement that it's not a matter of if cholera will hit the border, but when," Dr. Nickey said.

"It could be six days, it could be six months, it could be six years," he said.

There is no need to panic

because no cholera cases have been reported within hundreds of miles of the U.S.-Mexico border, he said, adding that he believes an aggressive education campaign might keep an epidemic from striking the 2,000-mile-long border.

"But all the ingredients are here: We have poverty, we have an undereducated populace, we have a lack of sanitation in certain areas, and we have precious little potable water in some places," Nickey said.


Conditions in impoverished colonies in El Paso, neighboring Ciudad Juarez, Mexico, and other border communities, are identical to neighborhoods in

Peru that were devastated by a cholera epidemic earlier this year, he said.


The epidemic quickly spread to other South American countries. More than 200,000 cases have been reported in South America, and more than 2,000 people have died, Nickey said.

The disease has now hit parts of Mexico with 17 cases reported in mountainous areas of the state of Mexico, and two cases were reported Tuesday in the state of Hidalgo.

The health official said he plans to issue a travel advisory later this week to people planning trips to areas hit by cholera.



**Beltone**  
50 years  
CELEBRATING  
THE SOUNDS OF LIFE



**J. Wampler,**  
Hearing Instrument Specialist

•All Makes Hearing Aid Service  
•FREE Hearing Tests

**New Location**  
**3902 College**  
**Snyder, Texas**

**DATE: Fri. July 5**  
**TIME 9a.m.-2p.m.**

Sponsored by Beltone of Lubbock

No Appointment Necessary  
or Call 1-800-222-4410  
For In-Home Service

## BACK IN SNYDER

By  
**Popular Demand**  
The Million Dollar Midway  
Bigger Than Ever!!

## Pride Of Texas Carnival

At  
**Towle Park**  
5 BIG NIGHTS - TUESDAY-SATURDAY

### Featuring Family Night Special

Tues., Fri. & Sat. Nights 7 p.m.-11 p.m.

## Ride All Rides For Only

# \$7

## Per Person

Sponsored  
by  
**Snyder  
Lions Club**

Ride The  
Space Sensation  
**GRAVITRON**  
\$200,000 Ride

1/4 Million  
Dollar  
Ride  
**The Love  
Machine**

SPIDER  
ZIPPER

Over 35 Rides  
& Concession

# FULTRON

## CAR STEREO

**SuperLaser**  
CD Player  
with AM / FM Receiver



Sale Price **\$474<sup>95</sup>**

**SuperDeck 6800**  
Cassette Player with  
AM / FM Receiver



Sale Price **\$179<sup>95</sup>**

**SuperDeck 8400**  
Cassette Player with  
AM / FM Receiver



Sale Price **\$179<sup>95</sup>**

**ColorMix Ten**  
10-Band Equalizer with 50 Watts Output  
Two Powerful 25-Watt Channels



Sale Price **\$79<sup>95</sup>**

**RipTide Amplifier**



SPECIFICATION 15-0425

Maximum Power 100 Watts  
Continuous Power 20 Watts x 4 Channels  
into 4 ohms

Sale Price **\$99<sup>95</sup>**

Great Quality

Lifetime Guarantee  
On Some  
Model

## Lang Tire & Appliance

1701 25th  
Snyder  
573-4031

Just Say Charge It!



700 E. Broadway  
Sweetwater  
235-5447



# PLAY IT SMART... GET INTO

# THE CLASSIFIEDS

**CLASSIFIED ADVERTISING RATES & SCHEDULES**  
15 WORD MINIMUM

1 day per word ..... 22¢  
2 days per word ..... 36¢  
3 days per word ..... 44¢  
4 days per word ..... 54¢  
5 days per word ..... 73¢  
6th day ..... FREE  
Legals, per word ..... 21¢  
Card of Thanks, per word ..... 21¢  
Card of Thanks, 2x2 ..... \$30.00

These rates for consecutive insertions only. All ads are cash unless customer has an established account with The Snyder Daily News.  
The Publisher is not responsible for copy omissions, typographical errors, or any unintentional error that may occur further than to correct it in the next issue after it is brought to his attention.

**ERROR**

The Snyder Daily News cannot be responsible for more than one incorrect insertion. Claims cannot be considered unless made within three days from date of first publication. No allowance can be made when errors do not materially affect the value of the advertisement.

All out of town orders must be accompanied by cash, check or money order. Deadline 4:00 p.m. Monday through Friday prior to any day of publication. Deadline Sunday & Monday, 4:00 p.m. Friday.

**070  
LOST & FOUND**

LOST: Rocky & Bandit (2 Male Siamese Cats). 7 years old, neutered, need special diet. 573-6703.

**090  
VEHICLES**

JACKS USED CARS- 1990 Silhouette Van, hard loaded, 1-owner, \$12,500. 573-9001.

CHECK YOUR Car Insurance with us!! Also, insure jet skis. Competitive rates. STEWART INSURANCE SERVICES, 573-8401.

FOR SALE: 1982 SUBURBAN, loaded, good tires, good condition. 573-0498.

FOR SALE: 1981 Chevy Citation, good work, school car, \$800. 573-5200.

JACKS USED CARS, 1212 25th. We finance. 573-9001.

1979 CHEVY SILVERADO 4x4 Stepside Pickup, chrome roll bar, new 33x12.50 tires. 573-0939.

**091  
VEHICLE PARTS**

FOR SALE: Chrome Roll Bar for long bed pickup, \$100.00. 573-0657.

**140  
BUSINESS OPPORTUNITY**

MAC TOOLS DISTRIBUTORSHIP AVAILABLE. Investment required. Call Bev Ford, 1-800-848-6500 between 7:30 a.m. & 3:30 p.m.

VENDING ROUTE: For Sale. Cash business. High traffic local locations. Hottest machines on market. 1-800-955-0354.

**150  
BUSINESS SERVICES**

NEW HOME Sewing Machines: Electrolux Cleaners, Quality Service All Machines. Stevens, 1101 James, Sweetwater, 1-235-2889.

PROFICIENT CONCRETE WORK. Also, Carpentry- Handyman work/repair. Have References. 573-0334.

## DIRECTORY OF PROFESSIONAL SERVICES

|                                                                                                                                                                                                 |                                                                                                                                                                                                                                                                     |                                                                                                                                                                                                                                   |                                                                                                                                                                                                                                                               |
|-------------------------------------------------------------------------------------------------------------------------------------------------------------------------------------------------|---------------------------------------------------------------------------------------------------------------------------------------------------------------------------------------------------------------------------------------------------------------------|-----------------------------------------------------------------------------------------------------------------------------------------------------------------------------------------------------------------------------------|---------------------------------------------------------------------------------------------------------------------------------------------------------------------------------------------------------------------------------------------------------------|
| <p><b>COOPER APPLIANCE</b><br/>Air Conditioning &amp; Heating<br/>Warranty<br/>Service &amp; Parts for<br/>Most Brand Appliances<br/>Located next to Sears<br/>573-6269 30 Years Experience</p> | <p>573-5486<br/>Puts you in the<br/>Classifieds!</p>                                                                                                                                                                                                                | <p><b>TURF MASTER<br/>LAWN CARE</b><br/>Lawn Maintenance<br/>Leave Message with<br/>Answering Service<br/>573-1533</p>                                                                                                            | <p><b>SNYDER<br/>APPLIANCE SERVICE</b><br/>Serving Snyder Area for 40 Years.<br/>Selling New Maytag &amp; Gibson Appliances.<br/>Repairs on all Makes &amp; Models.<br/>Will buy your used appliances.<br/>CAP HERNANDEZ, OWNER<br/>2415 College 573-4138</p> |
| <p>Fast Food Deli<br/>Ice<br/>Bulldog<br/>Workgloves<br/>Corner Grocery<br/>Ira, TX 573-4741<br/>Open 6 a.m. Mon.-Sat.<br/>Fountain Drinks<br/>Fishing Supplies Lake Permits</p>                | <p><b>NO LIMIT</b><br/>TO HOW<br/>FAST YOU CAN<br/>GET THROUGH<br/>THE<br/>CLASSIFIEDS<br/>573-5486</p>                                                                                                                                                             | <p>For Openings<br/>In the Directory<br/>please call<br/>573-5486</p>                                                                                                                                                             | <p><b>AVON</b><br/>Question - Mesquito Bites?<br/>Answer - Avon Skin So Soft<br/>For service or current sales<br/>brochure call anytime<br/>Doris Hale<br/>573-0205</p>                                                                                       |
| <p><b>WATERWELL SERVICES</b><br/>Windmills &amp;<br/>Domestic Pumps<br/>Move, Repair, Replace<br/>TOMMY MARRICLE 573-2493<br/>BENNIE MARRICLE 573-8710<br/>Before 8 a.m. &amp; after 6 p.m.</p> | <p><b>Bullard Desktop Publishing</b><br/>Design: Brochures, flyers,<br/>ads, newsletters, catalogs, etc.<br/>List Research: Compile<br/>names of potential customers,<br/>area, state, or nation wide<br/>Mailing Service: Bulk rates<br/>Drew Bullard 573-8860</p> | <p><b>Artistic Memorials</b><br/>...for your loved one.<br/>Complete Cemetery Care.<br/>See at 2nd &amp; Hickory<br/>(behind Col-Tex Station)<br/>Colorado City, TX<br/>For more information, call<br/>728-3468, Joy Dockrey.</p> | <p><b>DAVIS<br/>CONSTRUCTION CO.</b><br/>Metal Buildings • Metal Roofs<br/>Fencing • Concrete Work • Repairs<br/>Residential - Commercial<br/>Farm-Ranch<br/>Barry Davis 573-2332</p>                                                                         |

CANDLE SALE- 15% off Yankee Candles. New stock just in. Purple Sage Motel, 573-5491.

FAX 24 hrs. DAILY. PURPLE SAGE MOTEL. 915-573-9027 (FAX NUMBER). BEST RATES, FAST EFFICIENT SERVICE.

MOVING: Across the street or across town. 1 item or a housefull. Call Pioneer Furniture, 573-9834.

HORSE TRAILER, Air Compressor, Used Lawn Mowers. 573-2868, 1207 25th.

**BASEBALL CARD SALE**  
Stadium Club, Upper Deck, Fleer, and Donr uss. Starter sets available. July 4th-5th 8 a.m. to 5 p.m. Daily Northside of East Elementary 109 East 35th

**290  
DOGS, PETS, ETC.**

AKC registered Chinese pugs. Fawn & black, 1 male & 2 females. Call 573-8632.

FOR SALE: Red Miniature Dachshund Puppies. Call 573-9867.

FOR SALE: AKC Registered Boxer Pups, 3 females & 2 males. 573-2523.

KEY KENNELS- Boarding Dogs, Cats, Horses. All indoor runs & cages. Baths & Dips. 573-0264.

ALL BREEDS GROOMING. Collars, Leashes, Harnesses. Hill's prescription diet food. Scurry County Vet Clinic, 573-1717.

FOR SALE: 8 week old AKC Red Miniature Dachshund Puppies. Call 573-4448 after 5 p.m.

**310  
GARAGE SALES**

**GARAGE SALE**  
Association for Retarded Citizens open each Tuesday and Thursday, 8 a.m. to 3:30 p.m. 2504 Ave W. All donations of usable items accepted. For local pickup on items, call 573-4186, 573-5374 or 573-3729.

**GARAGE SALE**  
1600 Keller, north on College follow Hwy. #208, .8 miles past city limits, turn right on Keller 4th house on left Fri. & Sat. 8-5 Bicycle, afgan, lawn mowers, tables, ottoman, stove, TV, food processor, TOOL BOX.

**GARAGE SALE**  
3000 Denison Fri. & Sat. 7:30-6:00 No Early Sales We've cleaned out the attic and closets. Come shop with us.

**GARAGE SALE**  
308 35th Fri. & Sat. 9 a.m.-? Camper shell, baby items, adult clothes, lots of misc.

**GARAGE SALE**  
Pal-o-Mar Mini-Mall #143 Fri. & Sat. 8-5 Junk to good stuff.

**152  
STUDENT WORK ADS**

EXPERIENCED 16½ year old would like to Babysit, 8 months & older. 573-7246.

EXPERIENCED, Responsible Teenager would like to babysit, my home or yours. Call Cindi, 573-3726.

EXPERIENCED AND Dependable Housecleaning and Babysitting. Call Pam at 573-7360 or Leigh Ann at 573-6103.

EVERYTHING YOU need in Lawn, Home, Vacation Services for Pets, Etc. Call Jeff today at 573-8218.

GRASSBUSTERS! Self-propelled and tractor mowers. Can do large and small. Edge, Weedeat. Call 573-9894.

MOW, WEDEAT and Edge for reasonable price. Call 573-8239.

RESPONSIBLE TEENAGER will babysit in your home. Call 573-5923.

WILLING TO Do just about anything. Hauling Hay, Cotton Hoing, etc., etc. 863-2250 after 6:00 p.m.

**160  
EMPLOYMENT**

NEED: RN for Director of Nursing. Also, RN Coverage. Competitive wages, company benefits. Contact Sandra Givens, Administrator, Snyder Nursing Center, 573-6332. EOE.

NOW HIRING. MANAGEMENT potential. Contact Cinema 10 a.m.-3 p.m. 573-7519.

SNYDER ISD is accepting applications for the position of Assistant Principal Jr. High School. To qualify applicant must have the following credentials: Texas Professional Mid-Management Certification and TTAS Training. Application forms may be secured by contacting Personnel Office, 2901 37th St., Snyder, TX or by calling 915-573-5401. EOE.

CHRISTMAS AROUND THE WORLD now hiring Demonstrators. Free kits! Free training. Call Vickie Harrison, 573-3480.

LVN, part time, 3:00-11:00 & 11:00-7:00, above average wages. Call Linda Trout, RN DON, at 735-3291 (Rotan).

LVN NEEDED for 3:00-11:00 shift. Full time. Competitive wages & company benefits. Contact Sandra Givens, Administrator, Snyder Nursing Center, 573-6332.

LABORER: Must be able to perform Manual Unskilled and Limited Semi-Skilled Duties in the Maintenance, Repair & Construction of Streets, Alleys and any other areas in the City as required. Must be able to operate power tools and light duty vehicles as necessary. Valid Drivers License required. Apply in person at T.E.C., 2501 B College Ave. EOE. Employer Paid Ad.

**210  
WOMAN'S COLUMN**

ALTERATIONS for Men and Women with a Professional Look. Blanche's Bernina, 2503 College, 573-0303.

LVN WANTS to watch children in her home. Call 573-6063.

PORCELAIN DOLL Classes, July 5, 6 & 7. Supplies furnished, total \$130.00. Beginning 6:30 p.m. Jo Henry, 573-5941.

**220  
FARMER'S COLUMN**

HAY BALING. Round or Square Bales. Jesse Tolbert, 573-2026.

THE GARDEN: Clairmont Highway & Hargrove. 573-4491. Fresh Vegetables. Some Okra ready.

FOR SALE: Coastal Hay, \$3.50 per bale in the barn. 915-728-5550.

Custom plowing, chisel, ox or offset. 573-6670, 573-5657.

**250  
RECREATIONAL VEHICLES**

32' 1973 MODEL Silverstreak, extra nice. 573-6423.

**251  
BOATS**

15.9 ft. TRI-HULL walk thru, 90hp Evinrude tilt and trim. Like new, less than 30 hrs. on motor. 573-4060.

**260  
MERCHANDISE**

FOR SALE: Sears Washer and Full size Bed. 209 35th. 573-0635.

CONVALESCENT NEEDS Wheel Chairs, Walkers, Canes, Home Blood Pressure Kits, Etc. Sales & Rentals. BURGESS McWILLIAMS PHARMACY 3706 College 573-7582

LADIES WILSON Starter Golf Set (8), 3-5-7-9 & Wedge, 1-3 Woods & Putter, w/Bag & Accessories. 573-7604.

SATELLITE SYSTEM. 10'x10' Dish. MTI 2800 antenna positioner star drive. AR10 Broadcast Astron satellite receiver. \$500.00. 863-2734 (Hermleigh).

SIMMONS FLOATATION Queensize Waterbed; Queensize Oak Headboard; Oak Desk and a Coffee Table. 573-6423.

VIDEOS— Desert Storm Parade, SHS Graduation, SHS Bands Patriotic Salute, SHS All Sports Highlights, & SHS All Sports Awards Banquet. Call 863-2739 for prices & details or write: Zalman Enterprises, Rt. 1 Box 52, Hermleigh, TX 79526.

**Don't be left out in the Rain!!**



Get your Classified Ad in by 4:00 p.m. the day BEFORE you want it in the Paper. (4:00 p.m. Friday for Sunday & Monday paper).

Notice to Classified Ad Customers  
All Ads are cash unless customer has an established account with The Snyder Daily News. Ads may be taken over the phone so that they may be processed but payments must be made prior to publication.

PLAY IT SMART... GET INTO  
**THE CLASSIFIEDS**  
573-5486

**POOL COMPANY**, an industry leader in oilfield services, is accepting applications in the Snyder area for:  
**TRANSPORT/VACUUM/KILL TRUCK DRIVERS**  
Position requires a minimum of 3 years' experience with transport/vacuum & kill truck operations and maintenance. Must be certified by D.O.T. standards. POOL COMPANY offers an excellent wage and benefit package including medical/dental insurance, paid vacations/holidays, sick leave and retirement plan. Must have clean driving record and pass POOL's stringent hiring requirements. Apply in person to:  
Pool Company Lamesa Highway Snyder, TX 79549  
Pool Co. is an Equal Opportunity Employer

**MISS YOUR PAPER?**  
Your Snyder Daily News should be delivered to you by 6:00 p.m. Monday through Saturday. Your Carrier strives to give Prompt Service, but should your paper be missing...  
**PLEASE CALL 573-5486**  
Before 6:30 p.m. Monday through Saturday



# PLAY IT SMART... GET INTO THE CLASSIFIEDS

## FmHA debt stuck at \$6 billion level

WASHINGTON (AP) — Overdue debts owed to the Farmers Home Administration could still be close to \$6 billion by the end of this fiscal year, an analysis by the Agriculture Department says.

The department's Economic Research Service said "farm debt movements in 1991 will reflect the relative speed with which the FmHA is able to work through its problem loan portfolio."

Despite more than \$5 billion in writeoffs the last three years, the FmHA "loan payments that are delinquent more than one year still approach \$6 billion," the agency said Tuesday in its report.

The FmHA is known as the government's farm lender of last resort because of its historic policy of lending money to farmers who can't qualify for loans elsewhere.

In the credit crunch and hard times of the early and mid-1980s, FmHA was forced by lawsuits and Congress to remodel its programs and to offer various ways for hard-pressed borrowers to restructure their loans.

The Agricultural Credit Act of 1987 also authorized massive writeoffs, reductions and other measures to help relieve the financial pressure on borrowers.

"Delinquent FmHA loans made under major farmer programs have declined from almost 37 percent of all loans in 1988 to less than 27 percent of all loans in 1990," the report said.

"Many FmHA borrowers remain seriously delinquent," however.

The report said that of \$6.1 billion in delinquent interest and principal payments at the end of fiscal 1990 last Sept. 30, almost \$6 billion had been outstanding more than one year, with \$5.4 billion delinquent more than four years.

Nearly 93 percent of the amount delinquent more than four years is on non-real estate, leaving FmHA with little recoverable security.

Moreover, FmHA action against "chronically delinquent" borrowers was slowed by court injunctions and other legal action. That means the agency is now reporting loan losses that were actually incurred several years ago.

"Actual FmHA debt levels at the end of 1991 will reflect not only the catching up of the reporting of these cumulative past losses, but also the loan amounts written off due to continuing restructuring and debt referral options exercised by remaining delinquent borrowers," the report said.

Farm debt generally, increased about 2 percent last year, marking an end to six consecutive years of debt reduction by farmers.

Total farm business debt dropped almost 30 percent from its 1983 peak through the end of 1989, but the reduction slowed from 8 percent in 1987 to 3 percent in 1988 and to 2 percent in 1989.

"The 1990 reversal of this trend is expected to continue for at least another year, as total debt is forecast to increase about 1 percent in 1991," the report said.

## Special nets protect fish from birds

SAN ANTONIO (AP) — The Boating Trades Association of San Antonio has donated a large chunk of cash to the hatcheries branch of Texas Parks and Wildlife to purchase bird nets for brood fish ponds at San Marcos.

BTA president Jesse Cox presented a check for \$3,600 to Parks and Wildlife hatchery chief Gene McCarty. The money, proceeds from the BTA-sponsored San Antonio Sport, Boat and RV show, will be used to buy nets and cables to enclose three of the 45 ponds at the A.E. Wood State Fish Hatchery to foil fish-eating birds, cormorants in particular.

McCarty said the donation will qualify for federal aid under the Dingell-Johnson Act. D-J funds are derived from federal excise taxes paid on fishing tackle. For every dollar a state spends on a federally approved project, the government provides three additional dollars. This means the \$3,600 will be worth a total of \$14,400 to Parks and Wildlife.

Cox also said he has challenged BTA groups in Dallas and Houston to donate funds for nets at other state hatcheries where cormorants are a problem.

Local boat dealers have funded or partially funded a variety of projects in this area, including improvements to the only public boat ramp at Medina Lake, purchase of fingerling redbird for Braunig Lake and renovation of hatchery ponds at Calaveras. The group also donated funds to Choke Canyon Conservation Association efforts to stock game fish in Choke Canyon.

Young bass in the 1/4- to 1/2-pound range are especially susceptible to predation from cormorants. This seems to be the preferred size of the fish-eating birds.

Earlier this year cormorants cleaned out young smallmouth bass brood stock in a pond at San Marcos. The birds got all 900 of the fish the department had planned to use as brooders for the 1992 production year.

In another pond where largemouths were being held to serve as brooders next year, cormorants ate all but 60 of 557 bass. Cormorants also prey on catfish and rainbow trout when the fish are of the preferred size.

The department plans to have the nets in place by this fall.

The hatchery, which is located on the south side of San Marcos on Staples Road, is one of the most modern freshwater hatcheries in the nation.

The main hatchery building includes 33,000 square feet of fish production area consisting of 80-foot concrete raceways, an incubation room, fry rearing troughs and shipping and holding tanks.

Research activities in laboratories include work with fish genetics and DNA analysis.

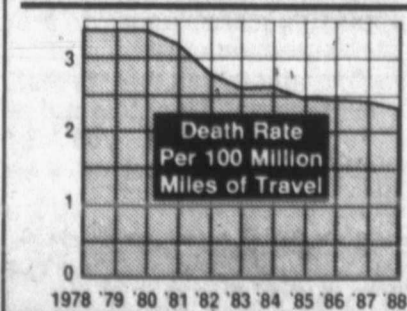
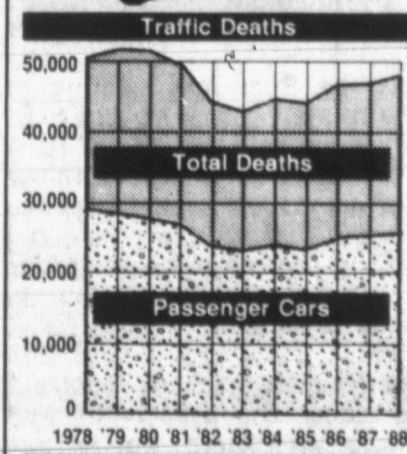
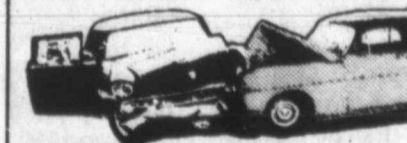
Largemouth and smallmouth bass and channel catfish are produced in 45 acres of ponds and the indoor raceways, and eggs of walleyes and striped bass are shipped to the facility for hatching.

Food production — the hatching and rearing of goldfish, koi carp, golden shiners and fathead minnows — is a necessary part of hatchery work. The 6,000 pounds of adult Florida largemouth brood bass maintained in outdoor ponds at the facility require more than 60,000 pounds of food — some 11 million forage fish — annually.

Paddlefish, an endangered species in Texas, also are being produced. Hatchery personnel will rear approximately 150,000 of these odd-looking fish this year. The paddlefish are stocked in East Texas rivers and lakes when they reach about 8 inches in length.

### HIGHWAY FATALITIES

Traffic deaths and death rates between 1978 and 1988



Source: Highway Users Federation NEA GRAPHIC

With new safety features on cars and lower speed limits nationwide, the death rate in U.S. traffic has declined dramatically. There were about 47,000 traffic deaths in 1988 — more than 25,000 of them were occupants of passenger cars. The rate of deaths per 100 million vehicle miles of travel fell to an all-time low of 2.33.

### 330 HOUSES FOR RENT

3 BEDROOM, 1 bath, den & livingroom, CH/A, no pets. \$425/mo., deposit required. 573-0372.

2 BEDROOM, 1 Bath, garage, fenced yard, Stanfield District. 573-5950 after 5 p.m. or leave message.

FOR RENT: Large 2 bedroom house. 1 bath, fenced, 1 car garage. 573-9963.

FOR SALE OR LEASE: Nice 3 bedroom, 1 bath, CH/A, fenced yard, \$350/mo., \$100/dep. 573-0569.

UNFURNISHED HOUSE, 3 bedroom, 1 bath, 3004 38th, has garage. 573-7306.

PLAY IT SMART... GET INTO THE CLASSIFIEDS 573-5486

### 335 MOBILE HOMES FOR RENT

AVAILABLE JULY 6th-2 bedroom, plus stove, refrigerator. 1807 40th. \$180/mo. \$50/dep. 573-8703 after 6 p.m.

FURNISHED MOBILES: 2 & 3 bedrooms, \$225 and \$250. No alcohol or drugs. 573-0317.

NICE, SMALL, 2 bedroom, furnished + washer/dryer, \$200/mo., \$100/dep. You pay bills. Call 573-8981.

### 340 MOBILE HOMES FOR SALE

\$7995.00 CASH buys 3 bedroom, 2-bath Mobile Home. "Won't Last Long!" For more information, call 1-363-0881.

FOR SALE: 14x76 Festival Mobile Home, located in Lubbock (close to Tech). Daughter graduated, must sell. In good condition. 3 bedroom, 2 bath. Call 573-8645.

\$207.99 MONTHLY Buys 1987 Double Wide Mobile Home. New carpet and drapes. Free delivery to your location. 10% down, 12.25 APR, 180 months. A-1 Mobile Homes, Odessa, TX, 1-363-0881.

ONLY \$13026 monthly buys 1984, 3 bedroom Home. Free Delivery and set up, 10% down, 12.25 APR, 180 months. A-1 Mobile Homes, Odessa, 1-363-0881.

RENT, LEASE OR SELL: Roomy Double wide, 3 bedroom, 2 bath. For more information, call 573-4338.

### 360 REAL ESTATE

611 East Highway  
**JACK & JACK**  
Realtors  
573-8571 573-3452

Highland Park-nice starter home, 2-1-1, covered patio, \$20,000.  
Assumable Loan-3 bedr, 2 bath, formal living & dining, \$52,500.  
Bassridge-3 bedr, 2 bath, 2 carport, \$69,500.  
Parkplace-3 bedr, 2 bath, 2 garage, \$70,000.  
Westridge-3 bedr, 2 1/2 bath, 2 garage, pool, \$87,500.  
Colonial Hill-3 bedr, 2 bath, 2 garage, corner lot, \$77,500.  
Highland Park-3 bedr, 1 1/2 bath, fireplace, \$42,500.  
Stanfield Area-3 bedr, 1 bath, 1 garage, \$35,000.  
North of Town-3 bedr, 2 bath, 3 lots, \$45,000.  
Edge of Town-3 bedr, 2 bath, carport, 5 acres, \$107,000.  
Commercial or Residential-2 bedrm, 1 bath, \$30,000.  
Faye Blackledge... 573-1223  
Louise Ball... 573-2969  
Lenora Boydston... 573-6876  
Linda Walton... 573-5233  
Dolores Jones... 573-3452

**ELIZABETH POTTS REALTORS**  
573-8505  
1,07 30th St.

5310 Etgen-3-2-2, \$75T.  
Near Park-3102 42nd, 3-2-2.  
4201 Denison-\$57,500.  
Alamo Hts.-3-1 1/2-cp, \$39,500.  
4101 Midland-\$73,000, 3-2-2.  
3405 44th-3-2-2, \$58T.  
2403 Ave N-4-3, apt., \$30,000.  
3501 Irving-3-2-2, \$44T.  
2207 43rd-3-1-CP, \$48T.  
N. Ave E-4-2-3, \$65T.  
307 31st-3-2-cp, only \$38T.  
Fluvanna-many extras + 33A.  
3109 40th-3-1, \$21,900.  
Ira-2000#, 3-2, \$59,500.  
2215 44th-3-2-1 & Apt.  
310 35th-2-1, \$9,900.  
2908 Ave X-2-1 1/2-2, \$23T.  
1200 26th-2-2-cp & Shop.  
Pal-a-Mar Motel-\$40T Cash.  
Bette League 573-8224  
Margaret Birdwell 573-6674  
Mary Lynn Fowler 573-9006  
Marla Peterson 573-8876  
Elizabeth Potts 573-4245

4 bedroom, 3 bath house for sale. Lake Thomas. 573-7964.

MOVING. MUST SELL: 1982 14x54 ft. mobile home. Call 573-0876.

811 17TH- 6 Room House. Fenced yard, shade trees, storage building, storm cellar, low teens. 573-4883.

**City REALTORS**

4610 College Ave.  
573-7100 573-7177  
5312 Etgen-3-2-2, din, 60's, 2 bath, 2000 Towle Pk. Rd.-3-2-2, form din., pool.  
4504 Galveston-Ig. 3-2-2, shop, reduced.  
2810 El Paso-4-3-2-pool, 80's.  
Near China Grove-5-3-3, over 3300 sq. ft., 1.4 acres, 80's.  
4 1/2 Acres w/14x80 Lancer Mobile Home- assum loan, 20's.  
FOUR bd-lv. & den, over 1600 sq. ft.-near Stanfield, 36T.  
FOR LEASE-211 Birch, 3 bd, \$300 & dep. COUNTRY-sm or Lg acreage, nice home.  
NEAR Jr. Hi and West-3-2-lv & den, 60's.  
4011 Avondale-fam. home, 3-2, 50's.  
4108 Eastridge-Nice 3-2-2, in 30's.  
STANFIELD Sch-2206 42nd, 2207 43rd, 2211 44th, 2315 42nd, 2309 40th, 3102 42nd, 2108 41st.  
NEW Listing-300 20th St. 3-1 for \$7,000.  
Country Home on about 7 acres-2 bd, barn, storm cellar, 30's.  
West Edge-3-2-2 on 2 1/2 acres, 60's.  
Residential lots available for home sites.  
Land-5 acres up to over 300 acres listed.  
Doris Beard 573-8480  
Clarence Payne 573-8927  
Wenona Evans 573-8165

**CORNETT REALTORS**  
24 Hour Phone 573-1818  
Claudia Sanchez 573-9615  
Pat Cornett 573-9488

**Win A FREE 1-Year Subscription to The Snyder Daily News**  
Persons Subscribing or Renewing Subscriptions for 6 Months or More during Each Month Are Eligible to Win A FREE 1-Year Subscription. Clip Coupon & Bring with Payment to the Snyder Daily News 3600 College Ave. or Mail to P.O. Box 949, Snyder, TX 79549. Drawing Will Be Held the End of Each Month

Name .....  
Address .....  
City .....  
State .....  
Zip .....

**STEVENSON REAL ESTATE**  
4102 College WEEKDAYS  
573-5612 or 573-1755

2314 41st-3-1-1, extra nice.  
3405 44th-3-2-2, \$58,000.  
3208 42nd-brick, 3-1-1, 33T.  
West 5 Acres-3-2-2cp, 80's.  
2301 37th-over 2000', 25T.  
3000 Denison-3-2-2, \$70,600.  
212 36th Pl-3-1-1, 32T.  
N.W. 2 Houses-8 acres.  
West 1/2 Acre-4-2-2cp, \$69T.  
Dble wide near Dunn, 25T.  
404 32nd-3-2-2cp, shop, 48T.  
SW-2 acres, 3-2, 60's.  
2908 Ave U-3-2-2, \$53,500.  
1507 20th-3-1-2cp, 2A, 30T.  
2000 Towle Park-3-2-2 pool, 95T.  
6 1/2 Acres-3-2-2, barns, 70's.  
Commercial Bldg-on sq. 28T.  
2802 Ave U-4-2-1, 49T.  
West-2 acres, 2 houses, 50T.  
Frances Stevenson... 573-2528  
Shirley Pate... 573-5340  
Jackie Buckland... 573-8193  
Joyce Barnes... 573-6970

2 1/2 ACRES, 2 Mobile Homes, 2 Car Garage, Storage Room, Pecan & Fruit Trees. At Dunn. 573-2173.

50 ACRES and 2 Lots, near Gary Brewer Road. Seabourn Eicke Estate. Can divide. Make offer. 573-9036.

5 BD., 2 bth., living rm. and large den. Garden and fruit & pecan trees. Fenced yd. and storage sheds, ChA. Small equity and pay off 31,000 mortgage. Call 573-4060.

BY OWNER- 2 bedroom, siding, storm windows, big corner lot, fenced, 2 storage buildings. 573-6730.

**BY OWNER-**  
3 bedroom, 2 1/2 bath, study, large garage, fireplace, CH/A, ceiling fans, 6 acres, Round Top Acres, \$95,000.  
573-2391 728-3495

**361 RESORT**

LAKE SWEETWATER waterfront lot by owner. 3 bedrooms, 3 baths, 2 fireplaces, 2 living areas, double garage, boat dock. 915-682-0396 weekdays, 915-235-3365 weekends.

**010 LEGAL NOTICES**

Western Texas College will be accepting bids to purchase the boiler retube contract until 10:00 A.M., July 11, 1991. Further information concerning the bid may be obtained by contacting the Business Office at Western Texas College, telephone 573-8511, ext. 306.

**THE RUMMAGE ROOM**  
1905 24th St.  
\$5 Stuff a Sack Sale (all Ladies Wear) Paperback Books  
Thurs. Only 9:30-3:00

**315 WANT TO BUY**

I WOULD like to buy a Meat Grinder. Call 573-6647.

**320 FOR RENT-LEASE**

KEY MOBILE HOME PARK, W. 37th, large lots. Reasonable rent, quiet country living. 573-2149.

LARGE OFFICE, Shop, Truck Shed, and Yard. All or Part. College & 84. 573-2442, 573-0972.

**325 APARTMENTS FOR RENT**

**FRIENDLY HOME COMMUNITY Western Crest Apartments**  
3901 Ave. O 573-1488  
2 Bedroom, 1 Bath; or 2 Bedroom, 2 Bath  
-Swimming Pool  
-Club House  
-Washer-Dryer Connections in each Apartment  
-Covered Parking  
-Fenced in Playground

1 BEDROOM FURNISHED Apt. to rent to single or couple only. No pets allowed, no utilities paid, deposit required. 573-9047 or 573-1101.

FURNISHED, large 3 Room Apartment. Water/Electric paid. \$200/mo. Deposit. 573-0562, 573-5525.

**Eastridge Apartments**  
One Bedroom From \$181 to \$192  
Two Bedroom From \$220 to \$236  
Unfurnished

**MOVE IN NOW!!!!**

Designer decorated, energy efficient with modern appliances, central heat and air. Laundry, large play area. Conveniently located near schools, churches, shopping. Resident Mgr. Family Living At Its Best, In A Quiet Neighborhood  
100 37th St.  
573-5261  
Equal Housing Opportunity

**Windridge Village July Special Balloon Burst**  
Be the one to win a free months rent on a 1 or 2 bed. apt. Come see why we're special across from Hospital  
5400 College 573-0879

NEWLY PAINTED, 2 bedroom Apartment, with appliances, garage. West School District. 573-2797, 573-8633.

QUAIL RUN APARTMENTS, 1100 East 10th, Colorado City, Texas. We don't run specials - Everyday is special at Quail Run. Friendly, quiet, senior citizens welcome. Laundry room, stove, refrigerator, total electric. \$150 deposit. \$225 month. Call Joy Dockrey, 728-3468. We care for our renters!

3 ROOM GARAGE Apartment, access to washer and dryer. Bills paid. 573-2880.



## Lee Remmick also succumbs to cancer

LOS ANGELES (AP) — Lee Remmick, a "clear-eyed Yankee girl" who gained an Oscar nomination playing an alcoholic, was remembered upon her death from cancer at age 55 as the "embodiment of grace" right up to the end.

Miss Remmick, who specialized in portraying women in crisis, died Tuesday at her home.

Miss Remmick appeared in more than 20 motion pictures and in dozens of TV productions, receiving an Academy Award nomination for her role as an alcoholic in the 1962 film "Days of Wine and Roses." Jack Lemmon was her co-star.

"Knowing and working with Lee will always remain one of the most joyous experiences of my life," Lemmon said. "She was precious, and certainly the embodiment of grace."

She was diagnosed with kidney and lung cancer in 1989. Her death came one day after "Bonanza" actor Michael Landon died of liver and pancreatic cancer.

Miss Remmick was too ill a few months ago to reprise her role in the play "Love Letters" but showed up to watch her replacement, Carol Kane, take the stage.

"She still, of course, had her beauty and her grace," said Steven Fertig, the play's casting director.

Angela Lansbury, who starred with Miss Remmick in the Stephen Sondheim musical "Anyone Can Whistle," said she "was such a brave and extraordinarily positive thinking person. She never gave into the cancer for one second."

Gregory Peck, who played Remmick's husband in the 1976 horror film "The Omen," said she possessed "a rare quality, which I would call a depth of womanliness."

"She made all of her leading men look good," Peck said. "I will never forget this clear-eyed Yankee girl."

Miss Remmick was born in Quincy, Mass., to a department store owner and an actress and made her Broadway debut at 17 as a wisecracking teen-ager in the 1953 flop "Bc Your Age."

Her film debut came in 1957 with "A Face in the Crowd," directed by Elia Kazan and co-starring Andy Griffith, also making his first movie. She played a sexy drum majorette who weds the power-mad Griffith.

Other films included "A Face in the Crowd," "The Long Hot Summer," "Experiment in Terror," "Tribute" and "The Competition."

Her TV credits included "Toughlove," "Mistral's Daughter" and "The Blue Knight." She played Dwight Eisenhower's wartime lover in "Ike" and a first lady in "Eleanor — In Her Own Words: A Tribute to Eleanor Roosevelt." In television's "Nutcracker: Money, Madness and Murder," she played a real-life socialite who persuaded her teen-age son to kill her father.

Survivors include her husband, producer Kip Gowans, a daughter, a son, her mother and two stepdaughters.

Funeral arrangements were not immediately known.



DISPLAYING HER WARES — Lola Yorty of Lubbock was setting up her crafts booth this morning at the National Guard Armory in Towle Park. The Arts and Crafts Show is scheduled to open to the public at 5 p.m. today and reopen at 9 a.m. Thursday. (SDN Staff Photo)

## Police clear theft case

Snyder police cleared up one case with the identification of two juvenile suspects, made one arrest and worked two traffic accidents Tuesday and early this morning.

Officers identified a 14-year-old male and a 13-year-old male Tuesday as suspects in the May 22, 1991, theft of a Spark-O-Matic radio from a vehicle parked at Jack's Used Cars. The radio was recovered and a report was forwarded to the district attorney's office.

The only arrest over the past 24 hours came at 12:54 a.m. today when police took a 50-year-old male into custody for driving while intoxicated in the 1300 block of 30th St. He was transported to the county jail.

Police filed a report of attempted burglary after a caller reported at 2:18 a.m. today that some subjects were attempting to take items from a jeep at 800 27th St. The subjects had fled the scene upon arrival of the officers.

Police also submitted a report for terroristic threats Class B after a Cogdell Hospital employee reported at 5:52 p.m. Tuesday that a male subject was harassing her at work.

At 11:39 a.m. Tuesday, police worked a minor accident. Involved were a 1979 trailer owned by Merchants Fast Motor Lines of Abilene, a meter loop at 2402 owned by Robert Vela, and an electrical drop owned by TU Electric. The trailer was being towed by a 1986 International Truck, driven by Sharon Smith of Sweetwater.

Police worked another accident at 11:30 p.m. Tuesday at 2300 Ave. I. Involved were a 1980 Ford pickup which left the scene and a 1977 Ford pickup driven by Maria Santos Medrano of 806 24th St. The 1977 model vehicle was towed from the scene.

Police also responded to eight domestic disputes and numerous calls of juveniles setting off fireworks.

## Memorial

Continued From Page 1  
Reserve Building. Former Scurry County, whose names will be engraved on the memorial are Donald E. Deere, SP5, Army; William J. Ostrcil, SP4, Army; Jerry P. Rodgers, AMS3, Navy; Reynaldo S. Rodriguez, PFC, Marines; William P. Rollins, WO, Army; and Richard L. Russell, 1LT, Air Force.

The Permian Basin Vietnam Veterans Memorial Committee is a non-profit organization.

## Aramco, others said to have stolen cleanup technology used in Gulf

HOUSTON (AP) — A Midland engineer claims he worked night and day on an unprecedented technique to clean up massive oil spills only to have his idea stolen by Saudi officials and oil company executives.

Clyde Veltmann said Tuesday that when he described his new cleanup process in February, he had no patent for the idea and no attorney to represent him.

The president of the Veltmann Corp. of Midland said he discussed the plan with members of the Saudi royal family, Crowley Maritime Corp. of Oakland, Calif., Saudi Aramco and Aramco Services Corp. of Houston, among other companies.

After the massive Persian Gulf oil spills triggered by the Iraqis during Operation Desert Storm, Veltmann said he worked "for a week-and-a-half, day and night," coming up with what he called a unique technique for cleaning up oil spills.

Veltmann said his process could gather up to 100,000 barrels of oil a day in shallow waters, an amount that other techniques have not been able to achieve.

At a news conference Tuesday, Veltmann began to relate the potential of his process to "10 Mega Borgs" before his attorney cut him off.

The Mega Borg was a Norwegian tanker that exploded in the Gulf of Mexico in June 1990 and leaked 3.9 million gallons of oil.

At the February meeting in Dhahran, Saudi Arabia, Veltmann said he came to a "meeting of the minds" with the Saudis and the companies that he would reveal his newly invented cleanup process in exchange for being hired as a subcontractor to help with the spill.

His lawyer, Charles Musslewhite, said no contract describing the agreement was ever written down, but he has "supporting memoranda" to prove the agreement existed.

Veltmann said once he revealed the process, "They told me to my face ... Thank you for everything. We've got all we need."

He said he was never hired as a subcontractor, but Crowley Maritime and Aramco now are using his process as contractors to the Saudi government to clean up the Persian Gulf spill.

Dick Simpson, a spokesman for Crowley Maritime, said Veltmann "made some overtures about this a couple of months ago, but I don't really know what he's talking about."

An Aramco Services Co. spokesman in Houston referred calls to the parent company, Saudi Aramco, in Dhahran. Offices there were already closed Tuesday.

Musslewhite said Veltmann was preparing a lawsuit seeking \$2.5 billion in damages for "fraudulently using his proprietary technology and designs for oil spill cleanup in the Persian Gulf."

Musslewhite said that under Texas law, the verbal agreement was sufficient to bind the parties in the agreement to hire Veltmann as a subcontractor in exchange for information.

## Panel endorses use of drug as breast cancer preventative

WASHINGTON (AP) — A federal advisory panel is endorsing a proposed study of whether the drug tamoxifen can prevent breast cancer in high-risk women over the objection of a women's health advocacy group.

The Food and Drug Administration's advisory committee on oncologic (tumor) drugs voted 6-1 on Tuesday to recommend that the FDA allow the proposed study to proceed.

But because of concern about the drug's possible effects, it said participation in the study should be limited to those at highest risk of breast cancer, said FDA spokeswoman Eva Kemper.

The National Women's Health Network, based in Washington, criticized the decision. It said it supports tamoxifen's use as a treatment for breast cancer, but that there are too many medical risks to justify its use in healthy women.

"Acceptable risks for the sick are not acceptable risks for the well," Dr. Adriane Fugh-Berman, representing the network, told the advisory committee. "We concerned that the concept of disease prevention may

## Clarence Thomas' every word, action comes under scrutiny

WASHINGTON (AP) — Supreme Court nominee Clarence Thomas in 1987 praised an essay that attacked the court for legalizing abortion and in his writings has expressed misgivings about a ruling on which the court based much of its landmark abortion decision.

Those comments were cited as "smoking guns" Tuesday by abortion-rights forces. They urged the Senate to reject the nomination of Thomas, a federal appeals court judge, unless he publicly declares his support for the 1973 Roe vs. Wade decision that declared a woman's constitutional right to an abortion.

"Judge Thomas' slate includes speeches and articles that mark a trail that leads directly to the loss of a fundamental right for millions of American women and families," said Kate Michelman, executive director of the National Abortion Rights Action League.

"Unless Judge Thomas explicitly repudiates this legal philosophy and clearly recognizes that the Constitution protects the fundamental right to privacy, including the right to choose, the Senate should reject this nominee," Michelman said.

Thomas, like President Bush's first Supreme Court nominee, David H. Souter when he was nominated, has never ruled in an abortion case. On Monday, Thomas declined to give his views on this and other issues likely to dominate his confirmation hearings.

But abortion-rights activists fear Souter and Thomas could provide the votes to reverse Roe vs. Wade. They cited in Thomas' background:

—A 1987 speech to the conservative Heritage Foundation in which he praised as "a splendid example of applying natural law" an essay in which conservative scholar Lewis Lehrman said the Roe vs. Wade ruling ran counter to the Constitution and Declaration of Independence and had resulted in a "holocaust."

—Writings in which Thomas appears to question the Supreme Court's 1965 decision in Griswold vs. Connecticut, in which the court struck down a state law that forbade all use of contraceptives.

It was in Griswold that the court ruled there were some areas so private the Constitution protected them from state interference — a case the court cited eight years later in the Roe decision.

NARAL has several allies on the Senate Judiciary Committee and was a leader in the successful effort to defeat President Reagan's nomination of Judge Robert Bork to the Supreme Court. Thomas, a 43-year-old black conservative, succeeded Bork on the U.S. Circuit Court of Appeals for the District of Columbia.

Civil rights groups, the other

major force in defeating the Bork nomination, on Tuesday promised a tough and thorough review of Thomas' record as a judge and as head of the Equal Employment Opportunity Commission. They said his race would not be a factor in their deliberations.

"We will review his record just as closely as if he were not an African-American," said Benjamin L. Hooks, executive director of the National Association for the Advancement of Colored People. Still, Hooks said the NAACP and its allies also "have to compare what might happen if we go against him and he doesn't make it; who will the president appoint?"

Hooks and other civil rights leaders are concerned with Thomas' longstanding opposition to affirmative action as a remedy for discrimination.

## Births

Isabel Rios and James Swigert announce the birth of their daughter, Ashley Raquel, born at 3:53 p.m. on June 26 at Mitchell County Hospital. She weighed five pounds and 10 ounces and is welcomed home by two brothers, Bobby and Bryan.

Grandparents are Nellie Rios and Dale and Judy Swigert. Great-grandmother is Lillian Dunn.

## Markets Midday Stocks

| NEW YORK (AP) | High    | Low     | Last    | K mart      | 45 1/4 | 44 1/4  | 45      | -   |
|---------------|---------|---------|---------|-------------|--------|---------|---------|-----|
| AMR Corp      | 63 1/2  | 61 1/2  | 63 1/2  | Kroger      | 21 1/2 | 21 1/4  | 21 1/2  | -   |
| ALLTEL        | 34      | 33 1/2  | 33 1/2  | vjLTV Cp    | 13-16  | 13-16   | 13-16   | ... |
| ALLTEL Cp     | 39 1/2  | 39 1/2  | 39 1/2  | Litton Ind  | 76 1/2 | 76 1/2  | 76 1/2  | ... |
| AmStores      | 78 1/2  | 78 1/2  | 78 1/2  | vjLoneStar  | 5 1/2  | 5 1/2   | 5 1/2   | ... |
| Amer T&T      | 39 1/2  | 38 1/2  | 39      | Lewis       | 33 1/2 | 33 1/2  | 33 1/2  | ... |
| Ameritech     | 60 1/2  | 59 1/2  | 60      | Lubys s     | 18 1/2 | 18      | 18      | ... |
| Amoco         | 50 1/2  | 50 1/2  | 50 1/2  | Maxus       | 8 1/2  | 8 1/2   | 8 1/2   | ... |
| AndarkPir     | 24 1/2  | 24 1/2  | 24 1/2  | MayDSt      | 55 1/2 | 54 1/2  | 55 1/2  | ... |
| Arka          | 17 1/2  | 16 1/2  | 16 1/2  | Medtronic   | 118    | 116 1/2 | 116 1/2 | ... |
| ArmoInc       | 5 1/2   | 5       | 5       | Mobil       | 64 1/2 | 64 1/2  | 64 1/2  | ... |
| AT&T          | 112 1/2 | 112 1/2 | 112 1/2 | Monsanto s  | 69 1/2 | 68 1/2  | 68 1/2  | ... |
| BakerHugh     | 23 1/2  | 23 1/2  | 23 1/2  | Motorola    | 66     | 65 1/2  | 65 1/2  | ... |
| BancTexas     | 13-32   | 13-32   | 13-32   | NCNE Cp     | 37 1/2 | 36 1/2  | 36 1/2  | ... |
| BellAtl       | 47 1/2  | 46 1/2  | 46 1/2  | Navistar    | 3 1/2  | 3 1/2   | 3 1/2   | ... |
| BellSouth     | 48 1/2  | 47 1/2  | 48 1/2  | Nyex        | 74 1/2 | 73 1/2  | 74 1/2  | ... |
| Beth Steel    | 16 1/2  | 16 1/2  | 16 1/2  | OryxEngy    | 30 1/2 | 29 1/2  | 29 1/2  | ... |
| Borden        | 35 1/2  | 34 1/2  | 35      | PacTelesis  | 41     | 40 1/2  | 41      | ... |
| Caterpillar   | 49 1/2  | 48 1/2  | 48 1/2  | PanECP      | 11 1/2 | 11 1/2  | 11 1/2  | ... |
| Centel        | 32 1/2  | 31 1/2  | 32 1/2  | PenneyJc    | 52 1/2 | 51 1/2  | 51 1/2  | ... |
| CentSo West   | 45      | 44 1/2  | 44 1/2  | PepBoys     | 13 1/2 | 13 1/2  | 13 1/2  | ... |
| Chevron       | 70 1/2  | 69 1/2  | 69 1/2  | Phelps Dod  | 68 1/2 | 68 1/2  | 68 1/2  | ... |
| Chrysler      | 14 1/2  | 14 1/2  | 14 1/2  | PhilPet     | 25 1/2 | 25 1/2  | 25 1/2  | ... |
| Coastal       | 29 1/2  | 29 1/2  | 29 1/2  | Polard s    | 24 1/2 | 24 1/2  | 24 1/2  | ... |
| CocaCola      | 55 1/2  | 55 1/2  | 55 1/2  | Primerica   | 27 1/2 | 27 1/2  | 27 1/2  | ... |
| ColgateP s    | 37 1/2  | 36 1/2  | 36 1/2  | PubS NwMx   | 79 1/2 | 78 1/2  | 78 1/2  | ... |
| ComMet        | 20 1/2  | 20 1/2  | 20 1/2  | SFEpAc Cp n | 10 1/2 | 10 1/2  | 10 1/2  | ... |
| CyprusMin     | 22 1/2  | 22 1/2  | 22 1/2  | SARL        | 9 1/2  | 9 1/2   | 9 1/2   | ... |
| DallasSemc    | 8 1/2   | 7 1/2   | 7 1/2   | SearsRoeb   | 41 1/2 | 41 1/2  | 41 1/2  | ... |
| DigitalArl    | 71 1/2  | 70 1/2  | 71 1/2  | Shrin s     | 35 1/2 | 35 1/2  | 35 1/2  | ... |
| DigitalEq     | 60 1/2  | 59 1/2  | 60 1/2  | SmtBchm     | 24 1/2 | 24 1/2  | 24 1/2  | ... |
| Dillard       | 125 1/2 | 125 1/2 | 125 1/2 | SmtBch eq n | 61 1/2 | 61 1/2  | 61 1/2  | ... |
| DowChem       | 53 1/2  | 53 1/2  | 53 1/2  | Southern Cp | 52 1/2 | 52 1/2  | 52 1/2  | ... |
| DresserInd s  | 20 1/2  | 19 1/2  | 20      | SwtAirl s   | 27 1/2 | 27 1/2  | 27 1/2  | ... |
| duPont        | 47 1/2  | 46 1/2  | 47      | SwtBell     | 36 1/2 | 35 1/2  | 35 1/2  | ... |
| EastKodak     | 39 1/2  | 39 1/2  | 39 1/2  | SterlingChm | 5 1/2  | 5 1/2   | 5 1/2   | ... |
| Ejerdnd       | 11 1/2  | 11 1/2  | 11 1/2  | TexasIn     | 35 1/2 | 35 1/2  | 35 1/2  | ... |
| Enerch        | 17 1/2  | 17 1/2  | 17 1/2  | TexasInd    | 24 1/2 | 24 1/2  | 24 1/2  | ... |
| Exxon         | 58 1/2  | 58      | 58      | TexasInt    | 61 1/2 | 61 1/2  | 61 1/2  | ... |
| FtCityBcp     | 2 1/2   | 2       | 2       | TexasInt    | 52 1/2 | 52 1/2  | 52 1/2  | ... |
| FlowerInd     | 16 1/2  | 15 1/2  | 16      | TexasInt    | 27 1/2 | 27 1/2  | 27 1/2  | ... |
| FordMotor     | 36 1/2  | 35 1/2  | 36 1/2  | TexasInt    | 36 1/2 | 35 1/2  | 35 1/2  | ... |
| GTE Cp        | 30 1/2  | 29 1/2  | 29 1/2  | TexasInt    | 22 1/2 | 22 1/2  | 22 1/2  | ... |
| Gndynam       | 42 1/2  | 42 1/2  | 42 1/2  | TexasInt    | 34 1/2 | 34 1/2  | 34 1/2  | ... |
| GenElet       | 74 1/2  | 73 1/2  | 74 1/2  | Tex Util    | 34 1/2 | 34 1/2  | 34 1/2  | ... |
| GenMills s    | 57 1/2  | 56 1/2  | 57      | Textron     | 32 1/2 | 32 1/2  | 32 1/2  | ... |
| GenMotors     | 42 1/2  | 42 1/2  | 42 1/2  | Tyler       | 3 1/2  | 3 1/2   | 3 1/2   | ... |
| GnMotrE s     | 47 1/2  | 47 1/2  | 47 1/2  | USWat       | 36     | 35 1/2  | 35 1/2  | ... |
| GalPacif      | 52 1/2  | 52      | 52 1/2  | USXMar n    | 23     | 22 1/2  | 23      | ... |
| GlobMar n     | 4       | 3 1/2   | 3 1/2   | USX-USA n   | 23 1/2 | 22 1/2  | 23 1/2  | ... |
| Goodyear      | 39 1/2  | 39 1/2  | 39 1/2  | UnCarbde    | 20 1/2 | 20 1/2  | 20 1/2  | ... |
| Goodyear      | 33 1/2  | 32 1/2  | 33 1/2  | UnPacCp     | 85 1/2 | 85 1/2  | 85 1/2  | ... |
| GLADPac       | 43 1/2  | 43 1/2  | 43 1/2  | UnTech      | 45 1/2 | 44 1/2  | 45 1/2  | ... |
| Gulf StatU    | 9 1/2   | 9 1/2   | 9 1/2   | United s    | 20 1/2 | 20 1/2  | 20 1/2  | ... |
| Halliburtn    | 35 1/2  | 35 1/2  | 35 1/2  | Unocal      | 22 1/2 | 22 1/2  | 22 1/2  | ... |
| Hanson        | 16 1/2  | 16 1/2  | 16 1/2  | WalM        | 43 1/2 | 43 1/2  | 43 1/2  | ... |
| Houstrnd      | 36 1/2  | 35 1/2  | 35 1/2  | WestHoll s  | 28 1/2 | 27 1/2  | 27 1/2  | ... |
| IBM           | 98 1/2  | 98 1/2  | 98 1/2  | Wolwh       | 31 1/2 | 31 1/2  | 31 1/2  | ... |
| IntPaper      | 71 1/2  | 71 1/2  | 71 1/2  | Xerox Cp    | 54 1/2 | 53 1/2  | 53 1/2  | ... |
| JohnsJhn      | 82 1/2  | 81 1/2  | 81 1/2  | ZenithE     | 7      | 7       | 7       | ... |

| INFANT MORTALITY                                  |                       |
|---------------------------------------------------|-----------------------|
| Infant mortality rates in developed nations: 1988 |                       |
| COUNTRY                                           | INFANT MORTALITY RATE |
| Japan                                             | 4.8                   |
| Sweden                                            | 5.8                   |
| Finland                                           | 6.2*                  |
| Switzerland                                       | 6.8                   |
| Canada                                            | 7.2                   |
| West Germany                                      | 7.5                   |
| Netherlands                                       | 7.6                   |
| France                                            | 7.7                   |
| Denmark                                           | 7.8                   |
| Austria                                           | 8.1                   |
| East Germany                                      | 8.1                   |
| Norway                                            | 8.4                   |
| Spain                                             | 9.0*                  |
| United Kingdom                                    | 9.0                   |
| Australia                                         | 9.2                   |
| Belgium                                           | 9.2                   |
| Ireland                                           | 9.3                   |
| Italy                                             | 9.6                   |
| United States                                     | 10.0                  |

Infant mortality rate is the number of deaths in the first 12 months per 1000 live births. \* 1987 rate.

SOURCE: United Nations and country publications. NEA Graphic

Japan has the lowest infant mortality rate of any developed nation. The U.S. rate in 1988 was more than twice Japan's.

The son of U.S. aviator Charles Lindbergh was kidnapped in 1932 and later found murdered.

Dance To Blue Highway Friday 9-12 VFW Members & Guests



# Free trade expectations may be too much

MEXICO CITY (AP) — The idea of a continental common market is getting a hard sell in Mexico. Too hard, some say.

The media is marching in faithful lockstep with the government, preaching the gospel of free trade as the answer to Mexico's economic malaise.

Glowing stories about the proposed accord with the United States and Canada have crammed the airwaves and the newspapers for a year.

Night after night, it has been the lead story on television. Major newspapers routinely run a

dozen or more articles a day about a North America without trade barriers — a single market of more than 360 million people.

Skeptics get short shrift in the mainstream media, and only a handful of mostly opposition publications air their doubts as to whether the treaty will bring widespread prosperity or just help the rich get richer.

In recent weeks, however, there has been a subtle change in the rhythm of the pro-pact drums in Mexico. Mexico's business and political leaders are quietly moving to crank down expectations a

notch. Will a place in what would be the world's largest economic bloc, with an annual output in the \$7 trillion range, make Mexico more democratic? Or powerful? Or rich? Or free?

A new message from the government is wafting softly through the air: Don't expect too much too soon.

"They are beginning to worry about oversell. They realize they

have raised expectations that don't coincide with reality," said Sergio Aguayo Quezada, a political scientist at the highly respected Colegio de Mexico.

The administration of President Carlos Salinas de Gortari is espousing the virtue of patience as a corollary to the doctrine of free trade.

"The free trade treaty is a commercial instrument, not something that will resolve all

our problems ...," Commerce Secretary Jaime Serra Puche cautioned recently.

The benefits of the accord won't be clear for a decade, he said. "Nothing will change from one day to the next."

The business community is also moving to shape people's thinking with a broad campaign run by the National Advertising Council.

"It's sad, but some people back

free trade without knowing much about it," said the council's director, Horacio Navarro. "Others think it will mean overnight change."

The slogan for the \$30-million pro-treaty campaign stresses the effort needed to compete in the international marketplace.

Why the move to bring down expectations?

Unrealistic — and unfulfilled — hopes carry huge political risks.

No one knows when...

## Greenspan's reappointment expected

WASHINGTON (AP) — Administration officials say President Bush is expected to reappoint Alan Greenspan to a second four-year term as chairman of the Federal Reserve Board. The big question is when.

It took Bush just four days to find a successor to retiring Supreme Court Justice Thurgood Marshall. And he's moved quickly to fill Cabinet vacancies as they've occurred. But he's coming under increasing criticism

## Two brothers involved in traffic mishap

SMITHVILLE, Texas (AP) — Nothing in his 15 years with the Texas Department of Public Safety could have prepared Trooper Rob Lunsford for what he found when he went to investigate a one-car accident near this Bastrop County town.

What he found was that two brothers, aged 5 and 6, were driving their mother's car when it went out of control and ran into a wall and trouble.

Lunsford said the 6-year-old boy was working the gas and brake pedals while the 5-year-old boy sat in his lap so he could see over the hood to steer the car.

They were doing fine until they reached the entrance of a subdivision and the older boy reportedly hit the gas pedal instead of the brake and the car slammed into a rock wall.

"Their grandfather takes them out on his farm and lets them drive his old truck through the pasture," Lunsford said. "They decided to try it on their own while mama was asleep and daddy was at work."

"These kids knew exactly what they were doing," Lunsford said. "Well, almost."

"We had to wake their mama out of bed," he said. "She asked the 5-year-old if he saw the wall, and he said, 'No ma'am. The (head)lights weren't on.'"

for dragging his feet on Fed positions.

Two seats on the board remain unfilled — one because the Senate hasn't acted, the other because Bush hasn't. And Greenspan's term as chairman is due to expire next month. Economists say markets may become jittery if Bush doesn't announce his intentions toward Greenspan soon.

Administration officials deny that Bush is delaying a decision for any particular reason — including keeping the pressure on Greenspan to further ease interest rates, as some analysts have suggested.

"There isn't any pressing need to do it" right away, said presidential spokesman Marlin Fitzwater. Greenspan's term expires Aug. 11.

Greenspan, 65, named by President Reagan in 1987 to succeed Paul Volcker, is a tennis

partner of Bush and the two are said to enjoy a comfortable relationship.

And while administration officials from time to time have engaged in mild Fed-bashing in behalf of lower interest rates, there hasn't been much of this sort of maneuvering lately.

"The president feels Greenspan has done a good job and we've been very supportive of the Fed," Fitzwater said.

The Fed, with its ability to directly influence interest rates and the supply of money, will be a key force in guiding the nation's economy out of the recession.

Bush's top economic officers — Treasury Secretary Nicholas Brady, Budget Director Richard Darman, Council of Economic Advisers Chairman Michael Boskin and Chief of Staff John Sununu — met at the White House on Friday to discuss the Fed and the chairmanship.

An official who spoke on the condition of anonymity said there was no talk of replacing Greenspan and that the session focused mainly "on Fed policy as we emerge from the recession."

Several White House officials, speaking under the same ground rules, confirmed widespread speculation that Bush intended to reappoint Greenspan.

Critics are suggesting that Bush needs to take a more active interest in the Fed and its membership if he wants to avoid sending the wrong signal to markets at a delicate time for the economy.

Some analysts have theorized that Bush is deliberately withholding saying what he'll do about Greenspan to keep pressure on the Fed chairman.

Adolf Hitler launched the Volkswagen, designed by Ferdinand Porsche, in 1936.

## Astro-graphs

By Bernice Bede Osol



Your Birthday

July 3, 1991

Once you get on a financial roll in the year ahead, you'll begin to pick up momentum. As a result, this might turn out to be one of your larger earning years. **CANCER (June 21-July 22)** Some information you recently acquired could be of value to an associate you're involved with in a separate endeavor. Don't let the day go by without sharing what you know. Cancer, treat yourself to a birthday gift. Send for Cancer's Astro-Graph predictions for the year ahead by mailing \$1.25 plus a long, self-addressed, stamped envelope to Astro-Graph, c/o this newspaper, P.O. Box 91428, Cleveland, OH 44101-3428. Be sure to state your zodiac sign.

**LEO (July 23-Aug. 22)** Something may be told to you today in the strictest confidence. It's the type of news you'll want to tell others, but it's best you keep what is said to yourself.

**VIRGO (Aug. 23-Sept. 22)** You could have an opportunity to reinforce a relationship that needs more bonding today. Your counterpart feels the same way, so things should work out well.

**LIBRA (Sept. 23-Oct. 23)** A goal you have recently established for yourself can be achieved, but it might have to be done one step at a time. Don't let your impatience urge you to do things hastily.

**SCORPIO (Oct. 24-Nov. 22)** Treating today's developments philosophically will help you make molehills out of mountains, and problems you perceive as impossible will become manageable.

**SAGITTARIUS (Nov. 23-Dec. 21)** An earnest discussion with a no-nonsense approach can help correct a condition at home that's been causing everyone frustrations of late. Call the meeting to order.

**CAPRICORN (Dec. 22-Jan. 19)** There's a big difference between looking at things realistically and just seeing the dark side. Try to do the former today, not the latter.

**AQUARIUS (Jan. 20-Feb. 19)** Conditions continue to look favorable for you where your material interests are concerned. However, don't think that every time you put a quarter in the slot you're going to hit the jackpot.

**PISCES (Feb. 20-March 20)** Someone you may become involved with socially today might turn out to be more of a tutor than a playmate. Something of intrinsic value could be learned.

**ARIES (March 21-April 19)** If you give outside interests priority over compassionate responsibilities, you're not likely to have peace of mind today. First take care of those to which you're emotionally attached.

**TAURUS (April 20-May 20)** You've been neglecting a friend with whom you used to be quite chummy. It would please this individual very much if you called occasionally. Why not today?

**GEMINI (May 21-June 20)** Something is developing at this time that could prove to be profitable. It's not apt to be glib in nature, but it could be moderately significant.

visions might work to your detriment. Trying to patch up a broken romance? The Astro-Graph Matchmaker can help you understand what to do to make the relationship work. Mail \$2 plus a long, self-addressed, stamped envelope to Matchmaker, c/o this newspaper, P.O. Box 91428, Cleveland, OH 44101-3428.

**LEO (July 23-Aug. 22)** Pace yourself sensibly today regarding a required task. Don't attempt more than you can manage, and don't do something on your own that needs an additional pair of hands.

**VIRGO (Aug. 23-Sept. 22)** Everything will be OK socially today, as long as you're doing things you like. However, when the crowd wants to do something else, you could become a trifle temperamental and resistant.

**LIBRA (Sept. 23-Oct. 23)** Keep outsiders out of your domestic problems today. If you open the door, you could put a friend in an embarrassing position, one in which sides must be chosen.

**SCORPIO (Oct. 24-Nov. 22)** Be doubly tactful in your dealings with co-workers today. If you are too assertive or bossy, you may end up doing things on your own instead of collectively.

**SAGITTARIUS (Nov. 23-Dec. 21)** Have fun and enjoy yourself today, but try to do so as economically as possible. Your extravagant impulses could be rather strong and they mustn't be allowed to gain control.

**CAPRICORN (Dec. 22-Jan. 19)** It's best not to leave important matters that require immediate attention until later in the day. With each passing hour, your chances of doing them severely lessens.

**AQUARIUS (Jan. 20-Feb. 19)** Your hunches might not be too reliable today, so to be on the safe side, don't put too much stock in them. You'll fare much better relying more on logic than on feelings.

**PISCES (Feb. 20-March 20)** A friend might make some unreasonable, material demands of you today. If caught off guard, you're likely to act against your better judgment.

**ARIES (March 21-April 19)** Your image could be a bit fragile today, especially if you behave in an erratic or inconsistent manner. Don't make others uncomfortable by forcing them to guess at your intentions.

**TAURUS (April 20-May 20)** Frustrations you may have to deal with today are likely to be of your own making. To avoid this, be methodical and try to plan a few steps ahead.

**GEMINI (May 21-June 20)** If you're sharing some type of event with friends today, be sure everyone has their particular assignments spelled out in advance. If not, chaos could result.

© 1991, NEWSPAPER ENTERPRISE ASSN.

### GOOD YEAR 4 DEALS FOR THE 4TH

Goodyear Celebrates A Very Special 4th of July Sale Ends July 6

| IMPORT                                                                                                                                                                                                                                                                                                    | PASSENGER                                                                                           | PERFORMANCE                                         | LIGHT TRUCK                                                                    |          |         |                 |          |         |                 |          |         |                 |                                                                                                                                                                                                                                                                                                          |               |            |          |          |         |                 |          |         |                 |          |         |                 |                                                                                                                                                                                                                                                                                                                                                                                                                                                                                                                                                                                                                                                                                                     |                 |            |          |              |          |                 |              |          |                 |              |          |                 |              |          |                 |              |          |                 |             |          |                 |              |          |                 |             |          |                 |                                                                                                                                                                                                                                                                                                                                                                                                                                                                                                                                                                                               |                     |            |          |          |         |                 |          |         |                 |          |         |                 |          |         |                 |          |         |                 |          |         |                 |             |         |                 |
|-----------------------------------------------------------------------------------------------------------------------------------------------------------------------------------------------------------------------------------------------------------------------------------------------------------|-----------------------------------------------------------------------------------------------------|-----------------------------------------------------|--------------------------------------------------------------------------------|----------|---------|-----------------|----------|---------|-----------------|----------|---------|-----------------|----------------------------------------------------------------------------------------------------------------------------------------------------------------------------------------------------------------------------------------------------------------------------------------------------------|---------------|------------|----------|----------|---------|-----------------|----------|---------|-----------------|----------|---------|-----------------|-----------------------------------------------------------------------------------------------------------------------------------------------------------------------------------------------------------------------------------------------------------------------------------------------------------------------------------------------------------------------------------------------------------------------------------------------------------------------------------------------------------------------------------------------------------------------------------------------------------------------------------------------------------------------------------------------------|-----------------|------------|----------|--------------|----------|-----------------|--------------|----------|-----------------|--------------|----------|-----------------|--------------|----------|-----------------|--------------|----------|-----------------|-------------|----------|-----------------|--------------|----------|-----------------|-------------|----------|-----------------|-----------------------------------------------------------------------------------------------------------------------------------------------------------------------------------------------------------------------------------------------------------------------------------------------------------------------------------------------------------------------------------------------------------------------------------------------------------------------------------------------------------------------------------------------------------------------------------------------|---------------------|------------|----------|----------|---------|-----------------|----------|---------|-----------------|----------|---------|-----------------|----------|---------|-----------------|----------|---------|-----------------|----------|---------|-----------------|-------------|---------|-----------------|
| <b>GOODYEAR CORSA GT</b><br>Free Treadlife Warranty<br><b>\$29.95</b>                                                                                                                                                                                                                                     | <b>GOODYEAR ARRIVA</b><br>Free Treadlife Warranty<br>Free "Quality Plus" Warranty<br><b>\$39.95</b> | <b>GOODYEAR EAGLE GA</b><br>Free Treadlife Warranty | <b>GOODYEAR P-METRIC WRANGLER</b><br>Year "Round Traction On And Off The Road" |          |         |                 |          |         |                 |          |         |                 |                                                                                                                                                                                                                                                                                                          |               |            |          |          |         |                 |          |         |                 |          |         |                 |                                                                                                                                                                                                                                                                                                                                                                                                                                                                                                                                                                                                                                                                                                     |                 |            |          |              |          |                 |              |          |                 |              |          |                 |              |          |                 |              |          |                 |             |          |                 |              |          |                 |             |          |                 |                                                                                                                                                                                                                                                                                                                                                                                                                                                                                                                                                                                               |                     |            |          |          |         |                 |          |         |                 |          |         |                 |          |         |                 |          |         |                 |          |         |                 |             |         |                 |
| <table border="1"> <tr><th>BLACKWALL SIZE</th><th>SALE PRICE</th><th>NO TRADE</th></tr> <tr><td>P185/R13</td><td>\$27.95</td><td>No Trade Needed</td></tr> <tr><td>P185/R14</td><td>\$28.95</td><td>No Trade Needed</td></tr> <tr><td>P185/R15</td><td>\$29.95</td><td>No Trade Needed</td></tr> </table> | BLACKWALL SIZE                                                                                      | SALE PRICE                                          | NO TRADE                                                                       | P185/R13 | \$27.95 | No Trade Needed | P185/R14 | \$28.95 | No Trade Needed | P185/R15 | \$29.95 | No Trade Needed | <table border="1"> <tr><th>WHITWALL SIZE</th><th>SALE PRICE</th><th>NO TRADE</th></tr> <tr><td>P185/R13</td><td>\$39.95</td><td>No Trade Needed</td></tr> <tr><td>P185/R14</td><td>\$40.95</td><td>No Trade Needed</td></tr> <tr><td>P185/R15</td><td>\$41.95</td><td>No Trade Needed</td></tr> </table> | WHITWALL SIZE | SALE PRICE | NO TRADE | P185/R13 | \$39.95 | No Trade Needed | P185/R14 | \$40.95 | No Trade Needed | P185/R15 | \$41.95 | No Trade Needed | <table border="1"> <tr><th>SIZE &amp; SIDEWALL</th><th>SALE PRICE</th><th>NO TRADE</th></tr> <tr><td>P185/R13 BSL</td><td>\$ 79.95</td><td>No Trade Needed</td></tr> <tr><td>P185/R14 BSL</td><td>\$ 80.95</td><td>No Trade Needed</td></tr> <tr><td>P185/R15 BSL</td><td>\$ 81.76</td><td>No Trade Needed</td></tr> <tr><td>P185/R14 BSL</td><td>\$100.26</td><td>No Trade Needed</td></tr> <tr><td>P185/R15 BSL</td><td>\$103.80</td><td>No Trade Needed</td></tr> <tr><td>P215/R15 WS</td><td>\$107.91</td><td>No Trade Needed</td></tr> <tr><td>P215/R16 BSL</td><td>\$107.90</td><td>No Trade Needed</td></tr> <tr><td>P225/R16 WS</td><td>\$113.21</td><td>No Trade Needed</td></tr> </table> | SIZE & SIDEWALL | SALE PRICE | NO TRADE | P185/R13 BSL | \$ 79.95 | No Trade Needed | P185/R14 BSL | \$ 80.95 | No Trade Needed | P185/R15 BSL | \$ 81.76 | No Trade Needed | P185/R14 BSL | \$100.26 | No Trade Needed | P185/R15 BSL | \$103.80 | No Trade Needed | P215/R15 WS | \$107.91 | No Trade Needed | P215/R16 BSL | \$107.90 | No Trade Needed | P225/R16 WS | \$113.21 | No Trade Needed | <table border="1"> <tr><th>OUTLINE LETTER SIZE</th><th>SALE PRICE</th><th>NO TRADE</th></tr> <tr><td>P185/R15</td><td>\$79.95</td><td>No Trade Needed</td></tr> <tr><td>P205/R14</td><td>\$81.56</td><td>No Trade Needed</td></tr> <tr><td>P205/R15</td><td>\$82.41</td><td>No Trade Needed</td></tr> <tr><td>P215/R15</td><td>\$82.41</td><td>No Trade Needed</td></tr> <tr><td>P225/R15</td><td>\$84.96</td><td>No Trade Needed</td></tr> <tr><td>P235/R15</td><td>\$86.66</td><td>No Trade Needed</td></tr> <tr><td>P235/R15 XL</td><td>\$82.61</td><td>No Trade Needed</td></tr> </table> | OUTLINE LETTER SIZE | SALE PRICE | NO TRADE | P185/R15 | \$79.95 | No Trade Needed | P205/R14 | \$81.56 | No Trade Needed | P205/R15 | \$82.41 | No Trade Needed | P215/R15 | \$82.41 | No Trade Needed | P225/R15 | \$84.96 | No Trade Needed | P235/R15 | \$86.66 | No Trade Needed | P235/R15 XL | \$82.61 | No Trade Needed |
| BLACKWALL SIZE                                                                                                                                                                                                                                                                                            | SALE PRICE                                                                                          | NO TRADE                                            |                                                                                |          |         |                 |          |         |                 |          |         |                 |                                                                                                                                                                                                                                                                                                          |               |            |          |          |         |                 |          |         |                 |          |         |                 |                                                                                                                                                                                                                                                                                                                                                                                                                                                                                                                                                                                                                                                                                                     |                 |            |          |              |          |                 |              |          |                 |              |          |                 |              |          |                 |              |          |                 |             |          |                 |              |          |                 |             |          |                 |                                                                                                                                                                                                                                                                                                                                                                                                                                                                                                                                                                                               |                     |            |          |          |         |                 |          |         |                 |          |         |                 |          |         |                 |          |         |                 |          |         |                 |             |         |                 |
| P185/R13                                                                                                                                                                                                                                                                                                  | \$27.95                                                                                             | No Trade Needed                                     |                                                                                |          |         |                 |          |         |                 |          |         |                 |                                                                                                                                                                                                                                                                                                          |               |            |          |          |         |                 |          |         |                 |          |         |                 |                                                                                                                                                                                                                                                                                                                                                                                                                                                                                                                                                                                                                                                                                                     |                 |            |          |              |          |                 |              |          |                 |              |          |                 |              |          |                 |              |          |                 |             |          |                 |              |          |                 |             |          |                 |                                                                                                                                                                                                                                                                                                                                                                                                                                                                                                                                                                                               |                     |            |          |          |         |                 |          |         |                 |          |         |                 |          |         |                 |          |         |                 |          |         |                 |             |         |                 |
| P185/R14                                                                                                                                                                                                                                                                                                  | \$28.95                                                                                             | No Trade Needed                                     |                                                                                |          |         |                 |          |         |                 |          |         |                 |                                                                                                                                                                                                                                                                                                          |               |            |          |          |         |                 |          |         |                 |          |         |                 |                                                                                                                                                                                                                                                                                                                                                                                                                                                                                                                                                                                                                                                                                                     |                 |            |          |              |          |                 |              |          |                 |              |          |                 |              |          |                 |              |          |                 |             |          |                 |              |          |                 |             |          |                 |                                                                                                                                                                                                                                                                                                                                                                                                                                                                                                                                                                                               |                     |            |          |          |         |                 |          |         |                 |          |         |                 |          |         |                 |          |         |                 |          |         |                 |             |         |                 |
| P185/R15                                                                                                                                                                                                                                                                                                  | \$29.95                                                                                             | No Trade Needed                                     |                                                                                |          |         |                 |          |         |                 |          |         |                 |                                                                                                                                                                                                                                                                                                          |               |            |          |          |         |                 |          |         |                 |          |         |                 |                                                                                                                                                                                                                                                                                                                                                                                                                                                                                                                                                                                                                                                                                                     |                 |            |          |              |          |                 |              |          |                 |              |          |                 |              |          |                 |              |          |                 |             |          |                 |              |          |                 |             |          |                 |                                                                                                                                                                                                                                                                                                                                                                                                                                                                                                                                                                                               |                     |            |          |          |         |                 |          |         |                 |          |         |                 |          |         |                 |          |         |                 |          |         |                 |             |         |                 |
| WHITWALL SIZE                                                                                                                                                                                                                                                                                             | SALE PRICE                                                                                          | NO TRADE                                            |                                                                                |          |         |                 |          |         |                 |          |         |                 |                                                                                                                                                                                                                                                                                                          |               |            |          |          |         |                 |          |         |                 |          |         |                 |                                                                                                                                                                                                                                                                                                                                                                                                                                                                                                                                                                                                                                                                                                     |                 |            |          |              |          |                 |              |          |                 |              |          |                 |              |          |                 |              |          |                 |             |          |                 |              |          |                 |             |          |                 |                                                                                                                                                                                                                                                                                                                                                                                                                                                                                                                                                                                               |                     |            |          |          |         |                 |          |         |                 |          |         |                 |          |         |                 |          |         |                 |          |         |                 |             |         |                 |
| P185/R13                                                                                                                                                                                                                                                                                                  | \$39.95                                                                                             | No Trade Needed                                     |                                                                                |          |         |                 |          |         |                 |          |         |                 |                                                                                                                                                                                                                                                                                                          |               |            |          |          |         |                 |          |         |                 |          |         |                 |                                                                                                                                                                                                                                                                                                                                                                                                                                                                                                                                                                                                                                                                                                     |                 |            |          |              |          |                 |              |          |                 |              |          |                 |              |          |                 |              |          |                 |             |          |                 |              |          |                 |             |          |                 |                                                                                                                                                                                                                                                                                                                                                                                                                                                                                                                                                                                               |                     |            |          |          |         |                 |          |         |                 |          |         |                 |          |         |                 |          |         |                 |          |         |                 |             |         |                 |
| P185/R14                                                                                                                                                                                                                                                                                                  | \$40.95                                                                                             | No Trade Needed                                     |                                                                                |          |         |                 |          |         |                 |          |         |                 |                                                                                                                                                                                                                                                                                                          |               |            |          |          |         |                 |          |         |                 |          |         |                 |                                                                                                                                                                                                                                                                                                                                                                                                                                                                                                                                                                                                                                                                                                     |                 |            |          |              |          |                 |              |          |                 |              |          |                 |              |          |                 |              |          |                 |             |          |                 |              |          |                 |             |          |                 |                                                                                                                                                                                                                                                                                                                                                                                                                                                                                                                                                                                               |                     |            |          |          |         |                 |          |         |                 |          |         |                 |          |         |                 |          |         |                 |          |         |                 |             |         |                 |
| P185/R15                                                                                                                                                                                                                                                                                                  | \$41.95                                                                                             | No Trade Needed                                     |                                                                                |          |         |                 |          |         |                 |          |         |                 |                                                                                                                                                                                                                                                                                                          |               |            |          |          |         |                 |          |         |                 |          |         |                 |                                                                                                                                                                                                                                                                                                                                                                                                                                                                                                                                                                                                                                                                                                     |                 |            |          |              |          |                 |              |          |                 |              |          |                 |              |          |                 |              |          |                 |             |          |                 |              |          |                 |             |          |                 |                                                                                                                                                                                                                                                                                                                                                                                                                                                                                                                                                                                               |                     |            |          |          |         |                 |          |         |                 |          |         |                 |          |         |                 |          |         |                 |          |         |                 |             |         |                 |
| SIZE & SIDEWALL                                                                                                                                                                                                                                                                                           | SALE PRICE                                                                                          | NO TRADE                                            |                                                                                |          |         |                 |          |         |                 |          |         |                 |                                                                                                                                                                                                                                                                                                          |               |            |          |          |         |                 |          |         |                 |          |         |                 |                                                                                                                                                                                                                                                                                                                                                                                                                                                                                                                                                                                                                                                                                                     |                 |            |          |              |          |                 |              |          |                 |              |          |                 |              |          |                 |              |          |                 |             |          |                 |              |          |                 |             |          |                 |                                                                                                                                                                                                                                                                                                                                                                                                                                                                                                                                                                                               |                     |            |          |          |         |                 |          |         |                 |          |         |                 |          |         |                 |          |         |                 |          |         |                 |             |         |                 |
| P185/R13 BSL                                                                                                                                                                                                                                                                                              | \$ 79.95                                                                                            | No Trade Needed                                     |                                                                                |          |         |                 |          |         |                 |          |         |                 |                                                                                                                                                                                                                                                                                                          |               |            |          |          |         |                 |          |         |                 |          |         |                 |                                                                                                                                                                                                                                                                                                                                                                                                                                                                                                                                                                                                                                                                                                     |                 |            |          |              |          |                 |              |          |                 |              |          |                 |              |          |                 |              |          |                 |             |          |                 |              |          |                 |             |          |                 |                                                                                                                                                                                                                                                                                                                                                                                                                                                                                                                                                                                               |                     |            |          |          |         |                 |          |         |                 |          |         |                 |          |         |                 |          |         |                 |          |         |                 |             |         |                 |
| P185/R14 BSL                                                                                                                                                                                                                                                                                              | \$ 80.95                                                                                            | No Trade Needed                                     |                                                                                |          |         |                 |          |         |                 |          |         |                 |                                                                                                                                                                                                                                                                                                          |               |            |          |          |         |                 |          |         |                 |          |         |                 |                                                                                                                                                                                                                                                                                                                                                                                                                                                                                                                                                                                                                                                                                                     |                 |            |          |              |          |                 |              |          |                 |              |          |                 |              |          |                 |              |          |                 |             |          |                 |              |          |                 |             |          |                 |                                                                                                                                                                                                                                                                                                                                                                                                                                                                                                                                                                                               |                     |            |          |          |         |                 |          |         |                 |          |         |                 |          |         |                 |          |         |                 |          |         |                 |             |         |                 |
| P185/R15 BSL                                                                                                                                                                                                                                                                                              | \$ 81.76                                                                                            | No Trade Needed                                     |                                                                                |          |         |                 |          |         |                 |          |         |                 |                                                                                                                                                                                                                                                                                                          |               |            |          |          |         |                 |          |         |                 |          |         |                 |                                                                                                                                                                                                                                                                                                                                                                                                                                                                                                                                                                                                                                                                                                     |                 |            |          |              |          |                 |              |          |                 |              |          |                 |              |          |                 |              |          |                 |             |          |                 |              |          |                 |             |          |                 |                                                                                                                                                                                                                                                                                                                                                                                                                                                                                                                                                                                               |                     |            |          |          |         |                 |          |         |                 |          |         |                 |          |         |                 |          |         |                 |          |         |                 |             |         |                 |
| P185/R14 BSL                                                                                                                                                                                                                                                                                              | \$100.26                                                                                            | No Trade Needed                                     |                                                                                |          |         |                 |          |         |                 |          |         |                 |                                                                                                                                                                                                                                                                                                          |               |            |          |          |         |                 |          |         |                 |          |         |                 |                                                                                                                                                                                                                                                                                                                                                                                                                                                                                                                                                                                                                                                                                                     |                 |            |          |              |          |                 |              |          |                 |              |          |                 |              |          |                 |              |          |                 |             |          |                 |              |          |                 |             |          |                 |                                                                                                                                                                                                                                                                                                                                                                                                                                                                                                                                                                                               |                     |            |          |          |         |                 |          |         |                 |          |         |                 |          |         |                 |          |         |                 |          |         |                 |             |         |                 |
| P185/R15 BSL                                                                                                                                                                                                                                                                                              | \$103.80                                                                                            | No Trade Needed                                     |                                                                                |          |         |                 |          |         |                 |          |         |                 |                                                                                                                                                                                                                                                                                                          |               |            |          |          |         |                 |          |         |                 |          |         |                 |                                                                                                                                                                                                                                                                                                                                                                                                                                                                                                                                                                                                                                                                                                     |                 |            |          |              |          |                 |              |          |                 |              |          |                 |              |          |                 |              |          |                 |             |          |                 |              |          |                 |             |          |                 |                                                                                                                                                                                                                                                                                                                                                                                                                                                                                                                                                                                               |                     |            |          |          |         |                 |          |         |                 |          |         |                 |          |         |                 |          |         |                 |          |         |                 |             |         |                 |
| P215/R15 WS                                                                                                                                                                                                                                                                                               | \$107.91                                                                                            | No Trade Needed                                     |                                                                                |          |         |                 |          |         |                 |          |         |                 |                                                                                                                                                                                                                                                                                                          |               |            |          |          |         |                 |          |         |                 |          |         |                 |                                                                                                                                                                                                                                                                                                                                                                                                                                                                                                                                                                                                                                                                                                     |                 |            |          |              |          |                 |              |          |                 |              |          |                 |              |          |                 |              |          |                 |             |          |                 |              |          |                 |             |          |                 |                                                                                                                                                                                                                                                                                                                                                                                                                                                                                                                                                                                               |                     |            |          |          |         |                 |          |         |                 |          |         |                 |          |         |                 |          |         |                 |          |         |                 |             |         |                 |
| P215/R16 BSL                                                                                                                                                                                                                                                                                              | \$107.90                                                                                            | No Trade Needed                                     |                                                                                |          |         |                 |          |         |                 |          |         |                 |                                                                                                                                                                                                                                                                                                          |               |            |          |          |         |                 |          |         |                 |          |         |                 |                                                                                                                                                                                                                                                                                                                                                                                                                                                                                                                                                                                                                                                                                                     |                 |            |          |              |          |                 |              |          |                 |              |          |                 |              |          |                 |              |          |                 |             |          |                 |              |          |                 |             |          |                 |                                                                                                                                                                                                                                                                                                                                                                                                                                                                                                                                                                                               |                     |            |          |          |         |                 |          |         |                 |          |         |                 |          |         |                 |          |         |                 |          |         |                 |             |         |                 |
| P225/R16 WS                                                                                                                                                                                                                                                                                               | \$113.21                                                                                            | No Trade Needed                                     |                                                                                |          |         |                 |          |         |                 |          |         |                 |                                                                                                                                                                                                                                                                                                          |               |            |          |          |         |                 |          |         |                 |          |         |                 |                                                                                                                                                                                                                                                                                                                                                                                                                                                                                                                                                                                                                                                                                                     |                 |            |          |              |          |                 |              |          |                 |              |          |                 |              |          |                 |              |          |                 |             |          |                 |              |          |                 |             |          |                 |                                                                                                                                                                                                                                                                                                                                                                                                                                                                                                                                                                                               |                     |            |          |          |         |                 |          |         |                 |          |         |                 |          |         |                 |          |         |                 |          |         |                 |             |         |                 |
| OUTLINE LETTER SIZE                                                                                                                                                                                                                                                                                       | SALE PRICE                                                                                          | NO TRADE                                            |                                                                                |          |         |                 |          |         |                 |          |         |                 |                                                                                                                                                                                                                                                                                                          |               |            |          |          |         |                 |          |         |                 |          |         |                 |                                                                                                                                                                                                                                                                                                                                                                                                                                                                                                                                                                                                                                                                                                     |                 |            |          |              |          |                 |              |          |                 |              |          |                 |              |          |                 |              |          |                 |             |          |                 |              |          |                 |             |          |                 |                                                                                                                                                                                                                                                                                                                                                                                                                                                                                                                                                                                               |                     |            |          |          |         |                 |          |         |                 |          |         |                 |          |         |                 |          |         |                 |          |         |                 |             |         |                 |
| P185/R15                                                                                                                                                                                                                                                                                                  | \$79.95                                                                                             | No Trade Needed                                     |                                                                                |          |         |                 |          |         |                 |          |         |                 |                                                                                                                                                                                                                                                                                                          |               |            |          |          |         |                 |          |         |                 |          |         |                 |                                                                                                                                                                                                                                                                                                                                                                                                                                                                                                                                                                                                                                                                                                     |                 |            |          |              |          |                 |              |          |                 |              |          |                 |              |          |                 |              |          |                 |             |          |                 |              |          |                 |             |          |                 |                                                                                                                                                                                                                                                                                                                                                                                                                                                                                                                                                                                               |                     |            |          |          |         |                 |          |         |                 |          |         |                 |          |         |                 |          |         |                 |          |         |                 |             |         |                 |
| P205/R14                                                                                                                                                                                                                                                                                                  | \$81.56                                                                                             | No Trade Needed                                     |                                                                                |          |         |                 |          |         |                 |          |         |                 |                                                                                                                                                                                                                                                                                                          |               |            |          |          |         |                 |          |         |                 |          |         |                 |                                                                                                                                                                                                                                                                                                                                                                                                                                                                                                                                                                                                                                                                                                     |                 |            |          |              |          |                 |              |          |                 |              |          |                 |              |          |                 |              |          |                 |             |          |                 |              |          |                 |             |          |                 |                                                                                                                                                                                                                                                                                                                                                                                                                                                                                                                                                                                               |                     |            |          |          |         |                 |          |         |                 |          |         |                 |          |         |                 |          |         |                 |          |         |                 |             |         |                 |
| P205/R15                                                                                                                                                                                                                                                                                                  | \$82.41                                                                                             | No Trade Needed                                     |                                                                                |          |         |                 |          |         |                 |          |         |                 |                                                                                                                                                                                                                                                                                                          |               |            |          |          |         |                 |          |         |                 |          |         |                 |                                                                                                                                                                                                                                                                                                                                                                                                                                                                                                                                                                                                                                                                                                     |                 |            |          |              |          |                 |              |          |                 |              |          |                 |              |          |                 |              |          |                 |             |          |                 |              |          |                 |             |          |                 |                                                                                                                                                                                                                                                                                                                                                                                                                                                                                                                                                                                               |                     |            |          |          |         |                 |          |         |                 |          |         |                 |          |         |                 |          |         |                 |          |         |                 |             |         |                 |
| P215/R15                                                                                                                                                                                                                                                                                                  | \$82.41                                                                                             | No Trade Needed                                     |                                                                                |          |         |                 |          |         |                 |          |         |                 |                                                                                                                                                                                                                                                                                                          |               |            |          |          |         |                 |          |         |                 |          |         |                 |                                                                                                                                                                                                                                                                                                                                                                                                                                                                                                                                                                                                                                                                                                     |                 |            |          |              |          |                 |              |          |                 |              |          |                 |              |          |                 |              |          |                 |             |          |                 |              |          |                 |             |          |                 |                                                                                                                                                                                                                                                                                                                                                                                                                                                                                                                                                                                               |                     |            |          |          |         |                 |          |         |                 |          |         |                 |          |         |                 |          |         |                 |          |         |                 |             |         |                 |
| P225/R15                                                                                                                                                                                                                                                                                                  | \$84.96                                                                                             | No Trade Needed                                     |                                                                                |          |         |                 |          |         |                 |          |         |                 |                                                                                                                                                                                                                                                                                                          |               |            |          |          |         |                 |          |         |                 |          |         |                 |                                                                                                                                                                                                                                                                                                                                                                                                                                                                                                                                                                                                                                                                                                     |                 |            |          |              |          |                 |              |          |                 |              |          |                 |              |          |                 |              |          |                 |             |          |                 |              |          |                 |             |          |                 |                                                                                                                                                                                                                                                                                                                                                                                                                                                                                                                                                                                               |                     |            |          |          |         |                 |          |         |                 |          |         |                 |          |         |                 |          |         |                 |          |         |                 |             |         |                 |
| P235/R15                                                                                                                                                                                                                                                                                                  | \$86.66                                                                                             | No Trade Needed                                     |                                                                                |          |         |                 |          |         |                 |          |         |                 |                                                                                                                                                                                                                                                                                                          |               |            |          |          |         |                 |          |         |                 |          |         |                 |                                                                                                                                                                                                                                                                                                                                                                                                                                                                                                                                                                                                                                                                                                     |                 |            |          |              |          |                 |              |          |                 |              |          |                 |              |          |                 |              |          |                 |             |          |                 |              |          |                 |             |          |                 |                                                                                                                                                                                                                                                                                                                                                                                                                                                                                                                                                                                               |                     |            |          |          |         |                 |          |         |                 |          |         |                 |          |         |                 |          |         |                 |          |         |                 |             |         |                 |
| P235/R15 XL                                                                                                                                                                                                                                                                                               | \$82.61                                                                                             | No Trade Needed                                     |                                                                                |          |         |                 |          |         |                 |          |         |                 |                                                                                                                                                                                                                                                                                                          |               |            |          |          |         |                 |          |         |                 |          |         |                 |                                                                                                                                                                                                                                                                                                                                                                                                                                                                                                                                                                                                                                                                                                     |                 |            |          |              |          |                 |              |          |                 |              |          |                 |              |          |                 |              |          |                 |             |          |                 |              |          |                 |             |          |                 |                                                                                                                                                                                                                                                                                                                                                                                                                                                                                                                                                                                               |                     |            |          |          |         |                 |          |         |                 |          |         |                 |          |         |                 |          |         |                 |          |         |                 |             |         |                 |

GOOD TIRES • GOOD SERVICE • GOOD PEOPLE • GOODYEAR

1- 10x13 (Wall Photo)  
1- 8x10  
2- 5x7  
2- 3x5  
16- King Size Wallets  
8- Regular Size Wallets

**30 Color Photos**

99¢ Deposit  
\$10.00 Due at Pick up (plus tax)

# \$10.99

WE USE KODAK PAPER

|                                                                                       |                                                                                                                           |                                                                                         |
|---------------------------------------------------------------------------------------|---------------------------------------------------------------------------------------------------------------------------|-----------------------------------------------------------------------------------------|
| <b>PASSENGER</b><br><b>DECATHLON</b><br>Free Treadlife Warranty<br><b>\$29.95</b>     | <b>PASSENGER</b><br><b>CONCORDE CALIBRE</b><br>Free Treadlife Warranty<br><b>\$32.95</b>                                  | <b>PASSENGER</b><br><b>GOODYEAR TIEMPO</b><br>Free Treadlife Warranty<br><b>\$35.95</b> |
| <b>IMPORTS</b><br><b>CONCORDE METRIC</b><br>Free Treadlife Warranty<br><b>\$26.95</b> | <b>IMPORTS</b><br><b>GOODYEAR INVICTA GL</b><br>Free Treadlife Warranty<br>Free "Quality Plus" Warranty<br><b>\$38.95</b> | <b>PERFORMANCE</b><br><b>CONCORDE CALIBRE HP</b><br><b>\$51.95</b>                      |

MORE TIRES FOR LT. TRUCKS

Starting As Low As...  
**\$59.95**

Tiempo P195/75R14 Whitewall

| TIRE        | SIZE & SIDEWALL | PRICE    |
|-------------|-----------------|----------|
| +Arriva     | P195/75R14 WW   | \$ 62.86 |
| Tiempo      | P235/75R15 WW   | \$ 76.95 |
| +Arriva     | P235/75R15 WW   | \$ 80.71 |
| Wrangler HT | P235/75R15 OWL  | \$102.95 |

+Arrivas On Sale Till July 6  
Tiempo shown.  
WW = Whitewall  
OWL = Outline White Letter

**COUPON**

**COMPUTERIZED WHEEL ALIGNMENT**

**\$5 OFF** retailer's selling price

\*Referencing Thrust Angle \*\*From 4 Rear Wheels

Set caster, camber and toe to exact manufacturer's specifications while referencing and compensating or adjusting thrust line, depending on alignment type. \*Chevrolet, Ford, Light trucks, 4-wheel drive vehicles requiring MacPherson Strut correction extra. \*\*Rear shims and installation extra, if needed.

Offer expires August 10, 1991. No other discounts apply.

**COUPON**

**AIR CONDITIONING SERVICE**

**\$5 OFF** retailer's selling price

Adjust drive belt, test for leaks, add up to 1 lb. refrigerant gas.

Offer expires August 10, 1991. No other discounts apply.

**Cinema I & II**  
1907 College II  
573-7519

Leslie Nielson is Frank Drebin

## THE NAKED GUN

# 2 1/2

THE SMELL OF FEAR

NEW TIMES  
2:15 7:20 9:00 PG-13

IT'S NOTHING PERSONAL!

SCHWARZENEGGER

It's Nothing Personal

TERMINATOR 2 JUDGMENT DAY

2:00 7:00 9:40  
MATINEE PRICE \$2.50

AT **Anthony's**  
3210 College  
Mon. & Tues.  
July 8 & 9  
9:30-1 & 2-7

**Shugart's inc.**

Group charge  
99¢ per person

Use **Kodak PAPER**  
FOR CREATIVE COLOR PORTRAITS

Just Say Charge It

# Lang Tire & Appliance

1701 25th Snyder 573-4031  
700 E. Broadway Sweetwater 235-5447



# Boot shone expert likes to work at race track

WEATHERFORD, Texas (AP) — Where there are horses, there are boots — plenty of dirty ones.

And Ruby Carnley knows a business opportunity when it walks up to her. That's why she's got a contract for five boot shine stands at Trinity Meadows Raceway, which opened in May in eastern Parker County.

At 39, Ms. Carnley is an expert at shines. She has 10 years' experience at Petro, a truck stop and restaurant in Weatherford where she averages about 30 shines a day. She said the minute she heard that pari-mutuel betting had been approved at the

track, she knew where she wanted to set up shop.

"It's been my goal since it was approved. I talked to anyone who came in Petro that was connected to Trinity Meadows. I'd give them my business card and tell them to remember I wanted to shine boots out there," she said.

"It's a good, honest job," she said as she rolled up her customer's pants leg on a recent workday.

And it's a job she loves. She can make two brushes sing and a buff cloth take on the sound of a drum as she rhythmically waxes,

polishes and buffs.

"I have a lot of regulars. I have a lot of drop-offs, where the people leave their boots and come back for them," Ms. Carnley said.

"It's the same atmosphere as a barber shop. They tell me their troubles. Sometimes I tell them mine. And I've gotten real close to some of them. Sometimes they even nod off while I'm working," she said.

A foot massage through the leather relaxes the customer, she said.

The average shine takes 10 to 15 minutes. The most exotic boot she's shined was a pair of sea bass. But she said she's at home with lizard, sea turtle, antelope and ostrich.

She's shined boots for Jerry Reid, Conway Twitty and B.J. Thomas. She said that she shines the singing group Alabama's boots often and that Gary Morris is a regular customer.

She said one trick to a good shine is to "stay steady," and

she's written a complete procedure manual, called "One Heck Of A Shine," to give to each of the women who work for her.

The manual covers everything about shines — starting with greeting the customer and pulling out the footrest, then on to the use of saddle soap and leather balm, brushing, adding the wax from among 100 colors, the finishing buff, rolling the pants leg down while adding its crease with a thumb and forefinger, and "tapping on the bottom of the shoes to let the customer know you're finished."

"Every time you wax, you brush. Everytime you brush, you buff," Ms. Carnley said. She said the final test of a good shine is the spit. (She uses water from a spray bottle.) "The water should bead up when the shine is right."

She compared getting up in the morning to shining shoes.

"When you saddle soap the boot, it's like washing or cleaning your face. Conditioning the boot with leather balm is like using

conditioning cream for your face.

"The first coat of wax is the base coat of makeup. Dying the soles is like using mascara. Coloring of strings is the eye liner and putting the wax on the boot is the blush," she said.

Ms. Carnley said neatness counts. She and her employees keep their nails clean, use cologne and wear makeup in moderation. And no lollygagging is allowed.

"We use good manners, we're polite to the customers, we don't use foul language and we don't hustle shines."

"No dates are made on the shine stand; no drugs or alcohol are tolerated. We don't discuss our earnings with customers," she said.

A former waitress, Ms. Carnley has been working since she was 6 years old. She said she began as a dishwasher "from daylight till dark" when her parents owned the Catfish Cafe on the Brazos River in western Parker County.

She said that by the time she was 10, she had worked as kitchen help and finally graduated to waitress and was making about \$50 per shift. She said her money accumulated and when she was 16, her parents sold the business.

Now the mother of three teenage girls, she said she started shining shoes to supplement her income and credits the Great American Shoe Shine Co. of Oklahoma with her training. She said that company had the first shine stand at Petro, where she was waitressing. She said the company later left the area and she took over the lease.

She said she intends to continue managing Petro Shine, where she pays \$25 per day for the use of a bench and chair that can heat and vibrate. Petro furnishes supplies and one complimentary meal per day.

Bill Shoemaker was the first jockey in racing history to reach the \$100 million mark in purses.

## Dr. Gott

Peter Gott, M.D.

DEAR DR. GOTT: In May of 1988 I was operated on for hemorrhoids and have not been able to control my bowels since. I've returned to my surgeon, a gastroenterologist and am now hoping you can tell me where to turn. I'm tired of soiling my clothing and having to wear pads for protection.

DEAR READER: In some cases, bowel incontinence is caused by certain diseases, such as diabetes, that affect the nerves controlling continence. Based on the scanty information you provide, I cannot conclude that your bowel incontinence is a direct consequence of your hemorrhoid surgery. To establish a cause-and-effect relation, I'd have to know the extent of the surgery and how much tissue was removed, as well as an analysis of your bowel control before the operation.

For example, the simple ligation (tying off) or cautery (burning) of external hemorrhoids outside the anus would be implausible causes of the problem you describe.

On the other hand, surgical removal of internal hemorrhoids, inside the rectal canal, can damage the anal sphincter, a ring of muscle that permits voluntary control of evacuation. Such a complication is a nightmare for any surgeon and a disaster for any patient.

Because the anal sphincter lies so close to the intestinal surface, surgeons must be obsessively cautious about injuring or cutting it when performing hemorrhoid surgery. An internal hemorrhoidectomy, during which the swollen and painful veins inside the anus are removed, carries some risk of post-operative incontinence. By and large, however, it is a safe operation — providing the surgeon confines the surgery to the veins themselves and avoids damaging the deeper tissues, including muscles and nerves.

Regardless of the cause, you have a serious problem that should be addressed by a qualified rectal surgeon, a specialist who plies his trade in a specific area of the body. Such specialists are generally on the staffs of major teaching centers, and are trained in repairing the very damage

I mentioned.

I urge you to ask your doctors to refer you to a teaching hospital in your area, in hopes that a rectal surgeon can return you to normal by repairing the anal sphincter and other tissues that may contribute to your incontinence.

To give you more information, I am sending you a free copy of my Health Report "Medical Specialists." Other readers who would like a copy should send \$1.25 plus a long, self-addressed, stamped envelope to P.O. Box 91369, Cleveland, OH 44101-3369. Be sure to mention the title.

© 1991 NEWSPAPER ENTERPRISE ASSN.

DEAR DR. GOTT: My doctor has suggested calcitonin every two days by injection for control of my osteoporosis. He was unable to tell me much about the side effects and cannot project how long I would have to take these injections. Can you fill in the blanks?

DEAR READER: Calcitonin (Calcimar) is an injectible protein that slows osteoporosis by inhibiting the loss of calcium from bone. As you know, osteoporosis is a common disease marked by excessive loss of calcium from bone, leading to weak and brittle bones that fracture easily, causing pain and disability.

The usual therapy for osteoporosis — including exercise, calcium supplements, female hormones (in women), and fluoride pills — may not be sufficient to compensate for bone-calcium loss.

Therefore, additional treatment may be required. Calcitonin is one such treatment. The drug is injected daily for several days and then the frequency of the injections is reduced (usually to every other day) depending

on the patient's response. The response is determined by urine and blood tests and by the disappearance of pain. Although calcitonin therapy is expensive and inconvenient, it produces marked improvement in a high percentage of patients.

The major side effects are allergic reactions (asthma, rash and shock), kidney damage, nausea and inflammation of the injection sites.

Ordinarily, calcitonin shots are administered indefinitely.

If you have moderate/severe osteoporosis, calcitonin may help you. Your doctor will recommend a schedule of treatment. Although I have given you a brief overview of this therapy, I suggest you question your doctor about your concerns; let him or her "fill in the blanks."

To give you more information, I am sending you a free copy of my Health Report "Osteoporosis." Other readers who would like a copy should send \$1.25 plus a long, self-addressed, stamped envelope to P.O. Box 91369, Cleveland, OH 44101-3369. Be sure to mention the title.

DEAR DR. GOTT: Can you provide information on

adrenoleukodystrophy?

DEAR READER: Adrenoleukodystrophy is a rare, inherited metabolic disease that occurs in boys and is characterized by shrinkage of the adrenal glands (which produce natural cortisone and other vital compounds) and brain damage.

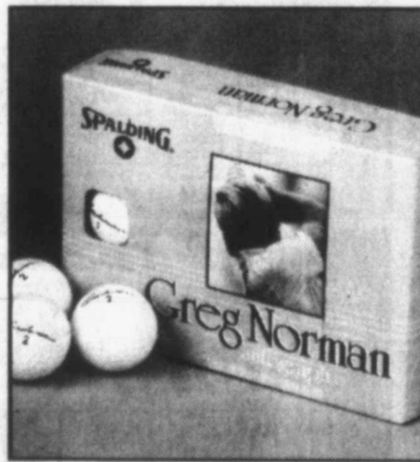
Although the adrenal complications of the disease are treatable (with medicine), the nervous system consequences are not, and lead to mental deterioration, weakness, paralysis and blindness. Despite therapy, death occurs within five years. Patients with this tragic affliction should be under the care of neurologists.

© 1991 NEWSPAPER ENTERPRISE ASSN.

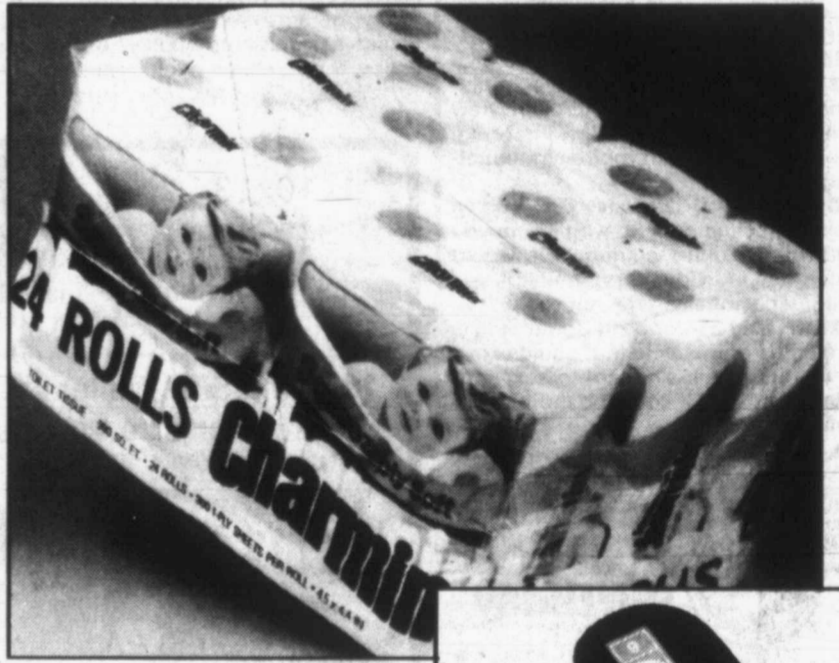
**8 AM TO 6 PM**

**The 4<sup>th</sup> of JULY Sale**

**9.77 Pkg.**  
12-pack Spalding golf balls.  
2-pc. Surlyn cover with Greg Norman signature. In white.



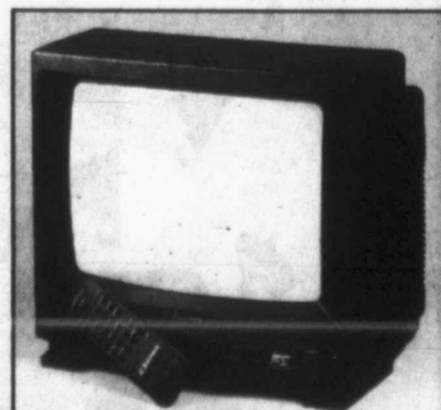
**9.99**  
Fab powder laundry detergent with fabric softener. Fresh scent for clean-smelling clothes. 15 lb.\*  
\*Net wt.



**6.99 Pkg.**  
Charmin bath tissue in economical 24-roll pkg. 300, 1-ply sheets per roll. Squeezable softness at a Kmart price!



**2.99**  
Our 4.99. Beach footwear. Choose from women's Islander thongs and other summer styles.



**\$179 Emerson**  
Emerson 13"-diag.-meas. color TV with 24-key infrared remote control, 155-channel cable compatibility. TC1316R



**6.99 T-shirts 2.99 Hats**  
Our 3.99-9.99. Classic American casualwear that reflects your patriotic spirit. Dress for the occasion this 4th of July in T-shirts and hats in colors and styles to celebrate America's independence.

**You're Invited To See and Hear**

# Family Portrait

A musical for unison and two-part voices  
**ELLEN-WOODS-BRYCE**  
Presented by the 45-voice  
Young Musician's Choir

**Wed. July 3, 7:00 p.m.**

**COLONIAL HILL BAPTIST CHURCH**

©1991 Kmart Corporation  
Layaway Not Available In All Stores  
Regular Prices May Vary In Some  
Stores Due To Local Competition  
All stores in Massachusetts and some stores in  
New Hampshire are closed Thursday, July 4  
in compliance with local blue laws