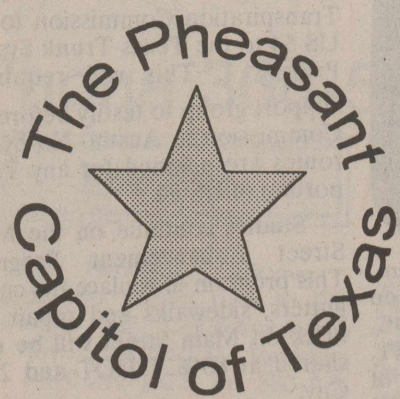


Stratford ISD Open House

Stratford ISD would like to invite the public to attend Open House. Dates and times are as follows:

Mary Allen Elementary Thursday, March 2 6:00-8:00 p.m.
 Stratford Junior High Tuesday, March 7 6:00-8:00 p.m.
 Stratford High School Tuesday, March 7 7:00-9:00 p.m.



THE STRATFORD STAR

50 CENTS

Published for 99 years in STRATFORD, SHERMAN COUNTY, TEXAS 79084

usps 523-108

NUMBER 8 FEBRUARY 24, 2000



Grand Opening Held

Carina's Bridal Shop held their Grand Opening and Ribbon Cutting on Thursday, February 17, 2000. On hand were from left: Deana Mungia - Stratford Chamber of Commerce, Caritina and Juan Salmeron, Celia Salmeron, Juan Salmeron, Jr. and Chamber Manager Paula Nusz. If you haven't had the chance to stop by, please do so and see Carina's great selection of dresses and accessories.

Chamber of Commerce Annual Banquet April 11

Plans for "The Sounds of Stratford" Chamber of Commerce Banquet are in full swing. "Citizen of the Year" to be nominated by the public and chosen by the Chamber Board. Listen to the "Sounds of Stratford" and remember the special people who make Stratford a special community.

Doctor Secured For Stratford

Stratford has a Medical Doctor coming to town. This past Saturday afternoon, a contract was signed by Dr. Perry E. Bassett M.D. and Stratford Hospital District Board President Gary Hudson. Dr. Bassett will begin his practice with Stratford Family Medical Clinic, 1220 Purnell on July 15, 2000.

Dr. Bassett is a native of Houston, Texas. He is currently practicing medicine in Plainview, Texas, where he has been responsible for six Federally-funded outreach clinics in the surrounding area. He will be completing his contract there the first week of July.

Dr. Bassett and his wife, Kathy have two sons. The older is a football player at W.T.A.&M. The younger will be graduating high school in Houston, this year. Mrs. Bassett is an educator. She is a teacher at a community college in Houston. She is also a Licensed Professional Counselor.

In addition to being a Medical Doctor, Dr. Bassett is also a Doctor of Philosophy. His course of study in that arena is professional counseling. He has an extensive background in counseling and chaplaincy in mental health hospitals in the Houston area. He is also an ordained Baptist minister.

Tree Orders Still Being Taken

REMINDER: The Sherman County Soil & Water Conservation District is still taking orders for windbreak and landscape trees. The deadline is the first of March. Come by the office or call as soon as possible.

School Board Election

The Stratford Ind. School District will hold a Trustee Election on May 6, 2000. The first day to apply for a place on the ballot is February 21, 2000 and will continue through March 22, 2000 at 5:00 p.m. You may apply at the Superintendent's office, 503 N. 8th Street, from 8:00 a.m. until 4:00 p.m. Monday through Friday. School will be closed for Spring Break March 13 through 17, 2000, and information concerning applications during this time will be posted on the window at the school.

Early voting by personal appearance will begin on Wednesday, April 19, 2000 and continue through May 2, 2000. Early voting will be conducted in the Superintendent's office from 8:00 a.m. until 4:00 p.m. each day.

Scholastic Book Fair March 7-8-9

A Scholastic Book Fair will be held March 7-8-9 at Mary Allen and Middle Schools. The Book Fair is open to parents, grandparents, aunts, uncles, and friends. Book fair hours are 2-4 p.m. March 7-8-9 and 6 to 8 p.m. on Tuesday, March 7th.

March 7, Middle School Open House is 6 to 8 p.m. The Book Fair will be at that time also. Other hours at Middle School are March 7-8-9 2 to 4 p.m.

This is the second time that GFWC/Prospectus Study Club has sponsored this event. Books that are old favorites and the newest titles are available. Stock up on books for birthdays and other special occasions.

Hass Announces Running For Re-Election

David Hass is running for re-election as County Commissioner, precinct 3. David has lived in Sherman County all his life, and has served the public in various offices. He has been County Commissioner for the last seven years and is familiar with the responsibilities and requirements of this office. Owning his own business for several years has given him experience in successful management which is very helpful in his capacity as commissioner.

He has been married to his wife Yvonne for 30 years, and they have two children, Darci and Clint. David is asking for your vote and a chance to serve Sherman County for the next term.

Paid Pol. Adv. Paid for by David Hass, P.O. Box 601, Texhoma, TX 73949.

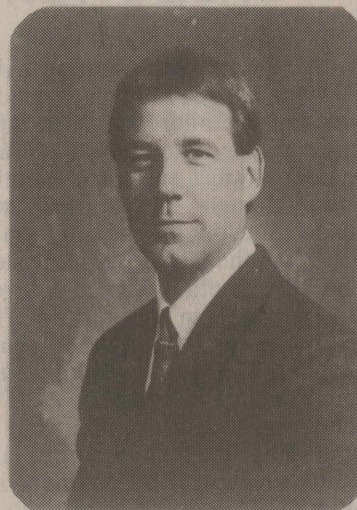
Community Awareness Meeting

A Sherman County Candidate Forum will be held on Thursday, March 2, 2000 at the Sherman County Library from 6 to 8 p.m. This forum is open to the public and all candidates running for Sherman County offices. The plan is to have all candidates available to answer questions and respond to the public. If you would like further information, please contact the SCDC office at 806-366-2897.

Directors Election For Hospital District To Be Held

Stratford Hospital District will hold a Director Election on Saturday, May 6, 2000. The first day to apply for a place on the ballot is February 21, 2000 and will continue through March 22, 2000. Application may be made at Stratford Hospital District Administrative offices at Coldwater Manor, 1111 Beaver Road, from 8:30 a.m. until 5:00 p.m. Monday through Friday.

Three directors' terms are expiring: Gary Hudson, Les Dodson, and Ineta Chesher. Directors whose terms continue for another year are Margaret Reed and Wayland Brown.



Tommy C. Sleeper



Julie Berry



Lori Ferguson

Sleeper Added To First National Bank Texhoma's Staff and Promotions Announced

The First National Bank of Texhoma is pleased to announce that Tommy C. Sleeper has recently joined the staff as Vice President. Sleeper is a native of Elkhart, Kansas, and a 1990 graduate of Oklahoma Panhandle State University with a degree in Business Administration with an emphasis in Management and Accounting. Tommy is married to Lana, a native of Hays, Kansas. The Sleepers have three children: Cody, Kara and Kylie.

Sleeper was employed by Home national Bank of Arkansas City, Kansas, from 1991 to 1998 as an Assistant Vice-President in the lending area. From 1998 to recently, Sleeper was employed by Value Financial Services and lived in Lake Mary, Florida.

"We are so pleased to have the opportunity to have Tommy Sleeper as an addition to our staff," stated Paul Freeman, President of FNB. Freeman further stated that "Tommy has big shoes to fill, and we thought the best way to do it was the exchange of one Sleeper for the other. Tommy's father, L.C. Sleeper, Jr., is retiring from the bank in the near future and has been a vital part of the bank for many years."

Julie Berry has been promoted to Assistant Vice President of The First National Bank of Texhoma. Julie has worked at the bank since August 15, 1987. Berry's responsibilities include the oversight of all deposit products and customer serve. Berry also oversees the ATM, Debit Card and Credit Card products for the bank. Julie's husband is Mike Berry, a longtime resident of Texhoma. Julie attended Texas Woman's University and Oklahoma Panhandle State University. Julie and Mike have two children, Ty Berry and his wife Mandi of Texhoma and Jo Berry of Stratford, Texas.

Lori Ferguson has been promoted to Assistant Vice President. Lori has worked at the bank since February 5, 1992. Ferguson's main responsibilities are the real estate and consumer loan portfolio of the bank. Ferguson received her BBA degree in accounting from Oklahoma Panhandle State University last December. Lori was raised in Hooker, Oklahoma and is married to Neil Ferguson, who was raised in Griggs. The Fergusons, with their son Tyler, reside in Texhoma.

Other promotions were Kathaleen Thrasher promoted to Senior Vice-President/Cashier, Norma Strain promoted to Vice-President, and Rowdy Slavin promoted to Assistant Vice-President.

Kathaleen Thrasher has been employed by the bank since June 14, 1982. Kathaleen is a certified community bank internal auditor and a certified community bank compliance officer. She is in charge of the accounting, auditing, personnel, and serves on many committees for the bank. Kathaleen graduated from OPSU and received her MBA from West Texas State University. She was raised in Texhoma, and is married to Dean Thrasher, also a native of Texhoma.

Norma Strain has been with the bank since August 2, 1993. Norma is the branch Manager of the Goodwell facility and is a real estate and consumer lender. Norma is a certified community bank compliance officer and has a total of 23 years of banking experience. Norma is the daughter of Clarence B. Clyman of Buffalo, Oklahoma, and Ruth Weir of Enid, Oklahoma. Norma was raised in Rosston, Oklahoma. She is an OPSU graduate and is married to Max Strain; they reside north of Goodwell.

Rowdy Slavin, a native of Higgins, Texas, has been employed with the bank since June 9, 1997. Rowdy is primarily involved in the agricultural and commercial lending functions of the bank. He is a graduate of the Oklahoma Bankers Association Lending School and received his BS degree from OPSU. Rowdy is the son of Bob and Mavontine Slavin of Higgins, Texas. Rowdy currently resides north of Texhoma with his wife Kelley Slavin.

Freeman states: "It is such a pleasure to be associated with such quality officers and employees at our bank. I thank my lucky stars to have this kind of talent employed here. The success of our institution is the direct result of these officers and the rest of our employees, directors and staff."



Grand Opening Held

Iowa Veterinary Supply Co. Grand Opening of New offices and warehouse facilities was held in Stratford, Friday, Feb. 18. L/R Tammie Lermon, Office Manager; Charlie Higdon-Director of Integrated Services- Kansas City, MO; T.J. Kruse-Marketing Vice President-Iowa Falls, Iowa; J.D. Henley-Stratford Location Manager; Harry Caldwell-Account Manager-Solgohachia, AR; Chad Walker and Kay Young Warehouse Staff.

Sherman Co. Child Welfare Board

To Report Suspected Child Abuse, Call

Kathie Altman - 366-5611
 Arlene Baker - 366-5318
 Joyce Dodson - 366-5608
 Patsy Harland - 827-7568
 Viola Kautz - 396-2058
 Mark Metzger - 396-2013
 Michal Meyer - 827-7453

Austin Hotline
 1-800-252-5400

ALL CALLS
 CONFIDENTIAL

Scot News
By Jack Gore

Obit

Jim Carson

Texhoma, Okla. - Jim Carson, 93, died Saturday, Feb. 19, 2000.

Graveside services were held on Monday at 3 p.m. in Texhoma Cemetery with the Rev. Terry Davidson, pastor of First Baptist church, officiating. Arrangements were by Dawson-Welch Funeral Home.

Mr. Carson was born in Medicine Bow, Mont. He moved to Texhoma, Texas, from Tulia in 1969. He worked with racing horses and was a general laborer.

He married Melva Armstrong in 1928 at Tijuana, Mexico. She died in 1985.

He is survived by friends and neighbors.

Bill J. Stanley

Amarillo-Bill J. Stanley, 58, of Canyon, died Sunday, Feb. 20, 2000.

Prayer service was held Tuesday, at 7 p.m. in Brooks Funeral Directors Chapel in Canyon. Services were held at 10:30 a.m. Wednesday in St. Ann's Catholic church with the Rev. Pat Carathers officiating. Graveside services were held at 3:30 p.m. Wednesday, February 23 in Resthaven Cemetery in Lubbock.

Mr. Stanley graduated from Plainview High School. For 25 years he was employed in metal fabrication and construction for the cattle feeding industry. He moved to Stratford in 1970 and to Canyon in 1989.

Mr. Stanley was employed by Budget Steel Building co. in Amarillo. He was a member of St. Ann's Catholic Church of Canyon.

He married Roberta Shimek in 1963 at Lubbock.

Survivors include his wife: two sons, Christopher J. Stanley of Tempe, Ariz., and Kevin B. Stanley of Rockwall; his mother, Alma Nowlin of Plainview; a brother, Bobby G. Stanley of Snellville, GA.; a sister, Daythel Torian of Seabrook; and three grandchildren.

The family suggests memorials be to Morning Star, Mark Schupp Center, 2501 W. Sixth Ave., Amarillo, TX 79107; or St. Ann's Catholic Church building fund, Connor Dr. and 38th St., Canyon, TX 79015.

Thursday luncheon will have great food and a repeat performance of a Stratford trio - come and find out who they are! Bring a guest and a dish of food and enjoy the luncheon.

Sat. night dance - open to all, come and enjoy the music, friends and get some great exercise also. 8-11 p.m.

Last week election of officers included: Wayne Smith, President, Mary Brannan, Vice-President, Vicki Gore - Secretary, Martha Mitts - Treasurer. Rose Wells & Wanda Woolsey co-chairperson for Program Directors.

With this new leadership, but all expect something great to happen at SCOT Hall.



Transportation Meeting in Childress, Feb. 14. to evaluate criteria for the Texas Trunk System. L/R seated; Kristene Olsen, Sherman County Development; Gaynelle Riffe - Chamber Transportation Chairman; L/R standing; Judge Bill Fesler; Jess Nelson-Mayor of Guymon; Sam Cartwright-PREDC, Guymon; Don Riffe-Stratford Grain; State Representative, Warren Chisum; Roy Ehly-SPIRIT, Guymon; Wayne Smith-Stratford Chamber Chairman; Arthur Bisson Guymon Chamber of Commerce; Others attending not pictured; City Manager, Ric Walton; Ginger Walton-Bradford Trucking; P.J. Pronger - Dalhart Chamber of Commerce.

Transportation News

A group representing U.S. Highway 54 "SPIRIT" attended a meeting in Childress, TX to input criteria for the Texas Trunk System. It was a successful meeting even though preparation was made to testify for the addition of US 54 to the Texas Trunk System and the meeting was to address the changes in the criteria for additions to the Texas Trunk System. The group learned the importance of attending each of the steps to achieve the goal of upgrading HWY. 54 to a four lane divided corridor connecting Wichita, KS and the midwest to El Paso and the Mexican Border. Of the original criteria, HWY. 54 could qualify for six of the nine criteria. One criteria not attainable; connecting with principal deep water ports with channel depths of 40 ft. or more. That is only a connection to Houston or to Hwy. 54, Veracruz, Mexico which would be a stretch. Several suggestions for changes and additions to the criteria will be made to the Texas Transportation Planning and Programming Department.

The Quarterly Sherman County Transportation Meeting was held Thursday, Feb. 17 at noon at the Headquarters Restaurant. Area Engineer,

Kenneth Petr reported on the following work and plans for Sherman County.

State Hwy. 15 to Gruver: Work has begun to improve the roadway with 8 ft.-10 ft. paved shoulders to improve safety, accommodating turning traffic. Completion date schedule is late fall. The long range plan is to continue this improvement to Gruver. An alternate extension of State 15, connecting US 287 with State 15 on McKee (past the County Buildings) was discussed. A collaborative effort of City and the County will encourage TxDOT to study this issue.

U.S. Highway 287 "PORTS-TO-PLAINS: Work continues on the north bound lanes of south US 287 from Etter to Stratford. The schedule for completion is November. Completing the concrete intersection at south US 287 and US 54 is planned for August. Landscaping the turning corners at that intersection is also planned at this time. US 287 north to Denver a Priority 2 on the Texas Trunk System, has completed the public meetings, preliminary engineering and is ready for a Priority 1 designation by the Texas Transportation Commission. This will require group support before the Texas Transportation Commission in

Austin. U.S. Highway 54 "SPIRIT" is part of the National Highway High Priority East-West Transamerica Corridor. Public meetings and Consultants are working on the engineering to put the highway on the shelf ready for the funding. It will be very important to encourage the Texas Transportation Commission to add US 54 to the Texas Trunk System, Priority 1. This will require a support group to testify before the Commission in Austin. No bypass routes are planned for any Texas portion of US 54.

Studies continue on the Main Street Enhancement Program. This program to replace the curbs, gutters, sidewalks and repair the brick on Main Street will be cost shared at 80% TxDOT and 20% City.

Nunsense Jamboree

The performance of "Nunsense Jamboree" by the Guymon Community Players was fun. It was fun for the performers and fun for the audience. The musicians were very good and kept the activity moving at a fast pace. "Nunsense Jamboree" next performance will be Friday and Saturday, Feb. 25, 26 at 8:00 p.m. at the Guymon Community Theater on Main Street. The performers will take to the road March 4, 5 to bring "Nunsense Jamboree" to the LaRita Theater in Dalhart.

The Stratford Star
Published Every Thursday
at 309 N. Main, Stratford, Texas
79084
Second Class Postage paid at
Stratford, TX. 79084
Martha (Marty) Robertson
Editor & Publisher
Shari Hudson - Advertising & Darkroom
Subscription Rates
\$18.00 per year in Sherman and
Adjoining Counties
\$25.00 per year all others
\$15.00 per year college rate
The Stratford Star
Box 8
1-806-366-5885
Fax 1-806-366-5885

Will R. Allen
Certified Public Accountant

244-7732

Come Enjoy Calf-Fries and BBQ.
FUNDRAISER FOR
PARKER & DAVID
Saturday, February 26th, 5-8 p.m.
Stratford HS Cafeteria

ELECT

◆◆◆ **BOYD SPURLOCK** ◆◆◆
County Commissioner Precinct 1
8 yrs experience & credits in County Government
Your Vote & Support would be greatly appreciated
Pd. Pol. Adv. Pd. for by Boyd Spurlock, HCR 1 Bx.200, Stratford, TX 79084

**CUSTOM CRP
GRASS DRILLING
&
CRP BREAKOUT**

Harold Heflin **Cody Heflin**
Home 505-276-8431 505-356-3668
Mobile 505-760-9171 505-760-1020

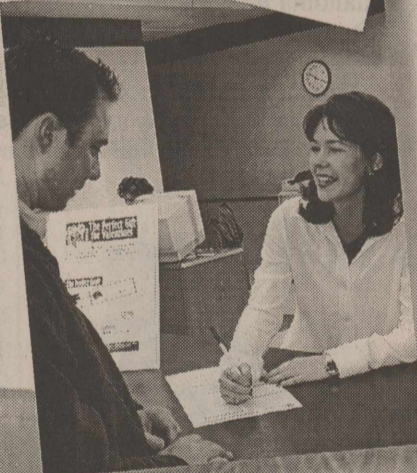
**If you have to switch...
Why not switch to someone you know?**

- Convenient Customer Care Centers
- Local Service from Local People
- State-of-the-Art Equipment
- Affordable Prices
- Local Number Portability
- Expertise to Provide Solutions for All Your Communication Needs
- No Conversion Charges

As you have seen and read, the local telephone exchanges in Dalhart and Stratford have been sold. Do you want to deal with new out-of-town owners, whose policies and services might change? Why wait? Find out what your friends and neighbors already know...**XIT** is the way to go!

The response to **XIT Communications'** offering of local service in Dalhart and Stratford was so great, it produced a backlog of orders. Construction is complete! We are now processing orders as they come in. If you think you've signed up for service with **XIT** and you're not connected, or if you are interested in changing your present services before they change on you, please call the **XIT** business office nearest you.

Office Hours 8:00 to 5:00 - Monday through Friday
Now Open During the Lunch Hour



... the brand of Excellence!

New Technology
Local Number Portability (LNP)

available now in Dalhart, and soon in Stratford - allows you to keep your existing 249 or 396 number when you change your service to XIT!

Dalhart - 244.3355 - 1624 Tennessee Ave. & 384.3311 - Hwy 87 North • Stratford - 366.3355 - 401 North 3rd St.
1.800.232.3312

Timis Tidbits

By Timi Brown

Happy day to you Sierman County Old Timers Readers, Citizens this sixty three degree Fahrenheit gentle breeze stirring atmosphere Monday February 21, 2000. Thanks you for your good wishes. We did arrive home safely Friday Feb. 17, However, within a short time we suffered a tumble which resulted in a gash in our scalp and a knot on our head. We were shaken of course but in a short time with the help of our local doctor John Schmidt, we had things pretty well in hand since five stitches closed the wound and we are convinced we protected our broken leg-which is still in the healing stage we enjoyed sitting in front of our beautiful windows Sunday blessing the people who went by and attending church at the First Baptist Church morning and evening by local T.V.

So if you will give us a little time to gather information of community doings. Remember your peers with shoulder pats of encouragement and expressions of Luv.

Check Out The Library

By Sandy Baskin

Story Time is continuing at the library until March 1st where the 3 and 4 year olds have been averaging about 20 in attendance. The children are learning about character and it is sometimes hard for them to understand how to be fair and polite. I think the most difficult thing that they have had to deal so far is learning to wait for their turn.

What was the greatest invention of the past 2,000 years, and why? This provocative question was posed to some of the world's foremost scientific and creative thinkers, including several Nobel laureates. Their answers may surprise you. Lively and thought-provoking, *The Greatest Inventions of the Past 2,000 Years* edited by John Brockman is not only an entertaining book about science and creativity but also an opportunity to peek inside the minds of some of the leading thinkers of our time.

Plainsong by Kent Haruf is a new fiction book which has just recently arrived at the library. It is a story of family and romance, tribulation and tenacity, set in Holt, Colorado east of Denver. In Holt, a high school teacher is confronted with raising his two young boys alone after their mother retreats first to the bedroom, then altogether. A teenage girl-her father long since disappeared, her mother unwilling to have her in the house-is pregnant, alone herself, with nowhere to go. And out in the country, two brothers, elderly bachelors, work the family homestead, the only world they've ever known. From these unsettled lives emerges a vision of life, and of the town and landscape that bind them together-their fates somehow overcoming the powerful circumstances of place and station, their confusion, curiosity, dignity and humor intact and resonant. Kent Haruf displays an emotional and esthetic authority to rival the past masters of a classic American tradition.

Also at the library is *Who Moved My Cheese?* by Dr. Spencer Johnson. This book reveals profound truths about change. It is an amusing and enlightening story of four characters who live in a "Maze" and look for "Cheese" to nourish them and make them happy. Two are mice are named Sniff and Scurry and two are "little people"-beings the size of mice who look and act a lot like people. Their names are Hem and Haw. "Cheese" is a metaphor for what you want to have in life-whether it is a good job, a loving relationship, money, a possession, health, or spiritual peace of mind. "The Maze" is where you look for what you want-the organization you work in, or the family or community you live in. In the story the characters are faced with unexpected change. Eventually, one of them deals with it successfully, and writes what he has learned from his experience on the maze walls. When you come to see "The Handwriting on the Wall," you can discover for yourself how to deal with change, so that you can enjoy less stress and more success (however you define it) in you work and in your life. This book is written for all ages and takes less than an hour to read, but has unique insights which can last a lifetime.

Check any of these book and lots more at the library where we have all of the New York Times Best Sellers. Our hours remain Monday 12 p.m.-8 p.m., Tuesday through Thursday 12 p.m.-6 p.m., and Saturday 9 a.m.-1 p.m.

Attention Junior & 8th Grade Parents

It's Prom time! Please come join us for decorating preparation. We need all parents to join in the fun!

There will be a short meeting at the Bus Barn on Thursday, March 2nd, at 7:00 p.m. to show everyone what decorations will need to be made.

Work schedule on decorations will then be as follows:

Place: Bus Barn
Dates: March 7th, 9th, 21st, 23rd, 28th, 30th.

We need all parents to help. This is your child's Prom, please come be a part of it.

Atencion Los Padres De Los Estudiantes De Juniors Y Grado 8

Es tiempo una vez mas del Prom! Por favor vengan y participen en el decorar del salon. Necesitamos que todos los padres participen.

Va ver una junta el dia 2 de Marzo a las 7:00 p.m. en el barn do los camiones. Para enseñarles a todos que decoraciones vamos hacer.

Vamos a trabajar los dias siguientes:

Luga: Barn de los camiones
Dias: 7, 9, 21, 23, 28, 30 de Marzo

Hora: de 7:00 p.m. - 9:00 p.m.
Este es el prom de sus hijos, por favor participen para ser esto una noche inolvidable.

Births

Kyle and Lisa Brack of Amarillo are happy to announce the birth of their son, Connor Wiley Brack born Feb. 3, 2000. Connor weighed 7 lbs. 3 oz and was 20 inches long. He was welcomed by his brother Landon Kyle.

Grandparents are Raymond and Betty Wiley of Stratford and Norman and Holly Brack of Spearman.

Kerrick News

By Marylou McDaniel

A class action suit against Southwestern Public Service was discussed at last week's Community lunch. In December several thousand dollars in damage was suffered by Kerrick residents when there was a power

surge. The surge was certainly not the resident's fault! A well motor, television sets, computers etc. were damaged.

Family and Fans are having a calf fry dinner as a fund raiser for Parker Wells and David Hunsaker. The boys will be going to the Down Under Bowl in Australia in June-July. The event is this Saturday, 5 to 8 p.m. at Stratford School Cafeteria. There will also be a Bake Sale. Tickets are \$7 for adults, \$5 for students.

Many of the cooks are those who helped with Kerrick Chuckwagon.

Cont. on page 8

OPSU Continuing Education

February	March	April
Surf's Up: The Internet Made Easy	Budding Talents: Floral Arrangement	Creative Writing Circle
Basic MS Windows	Basic MS Word	Foundations of Pencil Drawing
Elementary Auto Care	Basic Access 7	Power Point Made Easy
	Coming Up Roses (and Other Things)	

Classes starting soon

Call 580-349-2611 for enrollment information

Compare Our CD Rates

Bank-issued, FDIC-insured to \$100,000

1-year 6.50% APY* Minimum deposit \$5,000

3-year 7.05% APY* Minimum deposit \$5,000

5-year 7.20% APY* Minimum deposit \$5,000

*Annual Percentage Yield (APY) - Interest cannot remain on deposit, periodic payout is required. Early withdrawal may not be permitted. Effective 2/22/00.



Call or stop by today.

Tommy Wood
217 Denrock
Dalhart, TX 79022
(806) 249-5360
www.edwardjones.com

Edward Jones

Serving Individual Investors Since 1871

PCT. 1 RESIDENTS
VOTE FOR
★★ GARY DETTLE ★★
County Commissioner
35 Yrs. Land Owner & Operator
Your Questions & Suggestions
Are Welcome
769-4471 753-7099
Pd. Pol. Adv. Pd. for by Gary Dettle, HCR 1 Box 274, Stratford, TX 79084

Robert M. Brodtkin, DPM

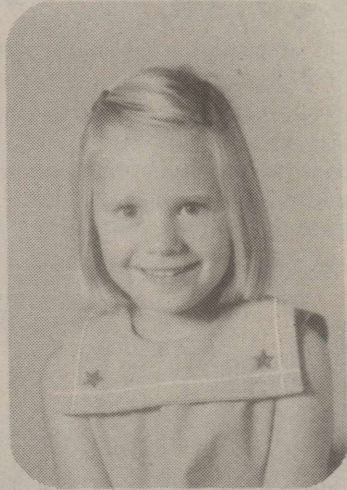
Podiatrist - Foot Specialist

- Nail Care
- Heel Spurs
- Corns, Calluses
- Foot Pain

Thursday, March 9, 2000
Stratford Family Medical
Clinic

Call Sheila Lanning at 396-5583
for appointment

Happy 40th Birthday to our very special sister & daughter & mom



We Love You,
Steve & Stan
Mom & Dad
Suzie & Blaine



Who takes care of them if they're taking care of you?

No one can predict what will happen in the future. But Farmers' Long-Term Care Insurance can get your family's lifestyle back where it belongs if something happens to you.

Don't wait until it's too late to give yourself and your loved ones the financial freedom to choose how and where you receive care. Call your Farmers agent today to find out more about long-term care insurance.

ALLEN-TARVER
INSURANCE AGENCY
205 N. Main St.
806-396-5810



FARMERS

Farmers New World Life Insurance Company
Mercer Island, Washington

- Assembly of God**
Rev. Dean Williamson
921 Fulton
Sunday School 9:45 am
Morning Worship 10:45 am
Evening Worship 6:00 pm - Youth Serv. - 6 pm.-Sun.
Wed. Royal Rangers (Pioneers) 6:30 p.m.
Wed. Royal Rangers (Straight arrows & Buckaroos) 7:30 p.m.
Wed. Missionettes - 7:00 p.m.
Wed. Bible Study 7:30 pm
- First Christian**
Rev. Rob Chandler
5th & Main
Sunday Coffee Fellowship 9:00 am
Sunday School 9:45 am
Morning Worship 10:45 am
No Sunday Evening Worship
Wed., Adult Choir 8:00 pm
- First United Methodist**
Rev. Mark Metzger
520 N. Main
Sunday School 9:40 am
Morning Worship 10:50 am
Junior High UMY 5:30 pm
Senior High UMY 6:00 pm
5:00 pm Cable Ch. 3 for
Morning Worship Service - Ev. worship - 7:00.
- St. Joseph Catholic**
Father Darryl Birkenfeld
6th & Pearl
Rectory - 366 - 5687
Sunday Liturgies: Sat. Evening - 7 p.m. (Bi-lingual)
Sunday morning: 8:30a.m. (English), 10:30 a.m. (Spanish)
Sacrament of Reconciliation: Saturdays, 4:30 p.m.
Christian Formation Classes: K-6th Grade, Sun. - 9:00 a.m.-10:25 a.m., Jr. & Sr. High, Wed. - 6:30-8:30 p.m.
- Church of Christ**
Mike Talley
N. 3rd & Chestnut
Sunday School 9:30 am
Morning Worship 10:30 am
Evening Worship 5:00 pm
Tuesday - Ladies Bible Class 9:30 a.m.
Wednesday Bible Study 7:00 pm
- Calvary Baptist**
John Widner
302 S. Main
Afternoon Worship 2:30 pm
Children's Active Learning 2:30 pm
No Evening Worship
Thurs. Bible Study & Fellowship 7:30 pm
- First Baptist**
Bro. Jerry Stewart
702 N. 3rd
Sunday School 9:45 a.m.
Morning Worship 10:50 a.m.
Church Training 6:00 p.m.
Evening Worship 7:00 p.m.
Wednesday Bible Study 7:00 pm
- La Mision Bautista**
Mision Bautista
401 S. Wall 396-5376
Domingo-(Sunday)
Estuela Dominical 9:45 am
Servicio De Adoracion 11:00 am
Servicio De Adoracion 6:00 pm
- Miercoles (Wednesday)
Estudio Biblico & Servicio De Oraction 6:00 pm
Se Cuidamos Susninos Durante El Servicio.

The Churches of Stratford Welcome You

No Condemnation

All her accusers walked away. Jesus asked, "Did no one condemn you?" The answer of the adulteress was simple. "No one, Lord." Jesus then said two astounding things. "I do not condemn you, either. Go. From now on sin no more" (John 8:10-11). Jesus Christ did not come to bring condemnation. Adultery already violates God's standards. "You shall not commit adultery" (Exodus 20:14). The penalty for adultery was death. "If there is a man who commits adultery with another man's wife, one who commits adultery with his friends wife, the adulterer and the adulteress shall surely be put to death" (Leviticus 20:10). The New Testament adds these solemn words, "The wages of sin is death" (Romans 6:23). The Old Testament penalty reflects the awesome spiritual reality. At the same time, "God sent not his Son into the world to condemn the world; but that the world through him might be saved" (John 3:17). Jesus did not condemn. He did not condone the woman's sin either. "Sin no more." Salvation means new life. God removes guilt and the inclination to sin. God also provides a new bent of heart. "There is now no condemnation for those who are in Christ Jesus. For the law of the Spirit of life in Christ Jesus has set you free from the law of sin and of death" (Romans 8:1).

Sponsored by;
Thriftway 396-5586
Smith & Smith Well Co.
396-2111
Stratford Grain 396-5541
Lautz 769-4485
Ellie's 396-2092
Stratford Star 396-5885
Walter Lasley & Sons, INC
753-4411

Templo Hispano Eben-Ezer
Pastor Roberto Frescas
205 N. Poplar - Hwy 287
Escuela Dominical 10 a.m.
Servicio De Adoracion 5 p.m.
Meir Co Les Serv De Ador 5 p.m.

Kerrick Community Church
Pastor Roy Harris
Community Building
Sunday Morning - 11:00 a.m.
Sunday Evening-6:00 p.m.
Prayer Meeting - 7:30 p.m. Wednesday

The Last "100" Years In Stratford

No pioneer town was considered bona fide until it had a railroad and an elevator. The pulse and prosperity of the community was tested first in the community elevator. This was one spot from which the family purse prospered or withered, depending on each year's crops--or lack of them. Farm people watched daily the posting of farm prices. Local merchants watched, too, because on these markets, their own prosperity rose or fell.

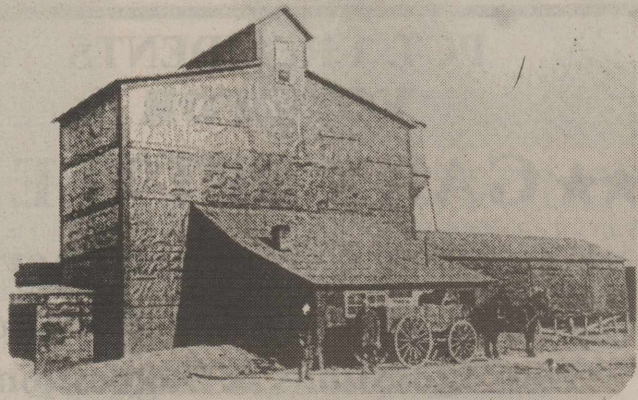
Stratford elevators bought and sold (for the most part) oats, corn, wheat, millet and cane. Feed grains for any livestock or fowls, mixed feeds, cottonseed cake, salt for livestock, seeds for planting and coal for heating or cooking purposes were sold. In addition, pinto beans were bought or sold, depending on the size of local crops. Broom corn was plentiful, usually, and a blind buyer from the School For The Blind in Nashville, Tenn., came each fall by railroad to buy the current crop to make brooms.

During World War I, the Stratford Elevator found cane seed so scarce that it sold from \$10-\$20 cwt. The Gillispie Family, from the Oklahoma Strip, sold (at one time) a car load of pinto beans to the H. Altringer Elevator. Before they could be shipped out by rail in the late fall of 1918, the Elevator (full to the brim with grain, and the beans) was burned to the ground, during a violent thunder storm. (In a taped interview with Mrs. Knudsen, she tells of their contract with the government to raise pinto beans.)

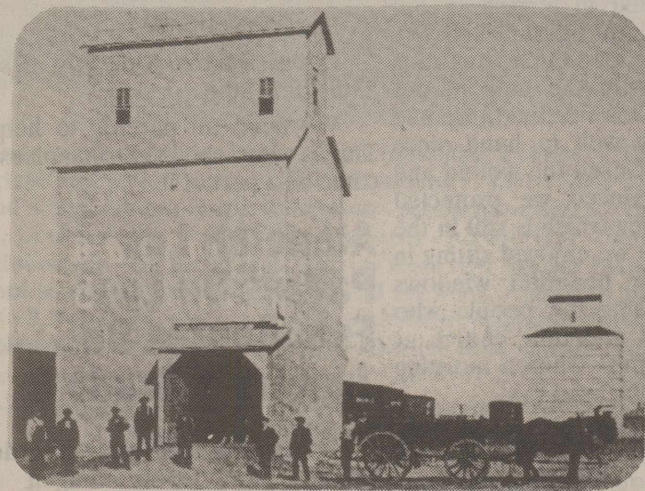
A Milling and Grain Mill was operated where farmers could take their own grain and have it ground as wished. White and whole wheat flour, cornmeal and all kinds of other ground feeds could be prepared.

A Co-Op Elevator may have been the first elevator in Stratford. Emmitt Gladish, according to report, was the manager. This was located south of the Rock Island Railroad and west of Main Street. Caldwell elevator has located at the site of the present Ranger Motel. Altringers bought the Caldwell Elevator and Flour Mill at Stratford during World War I. Altringer Elevator and Coal Co.

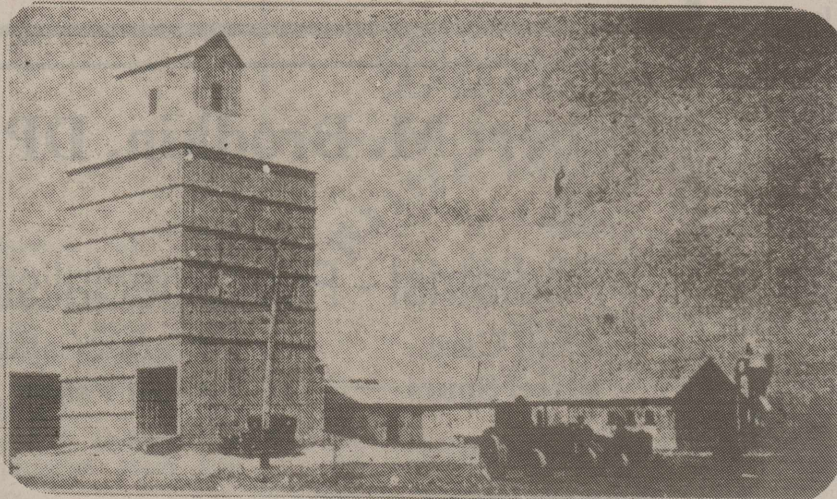
The Altringers Elevator ground wheat into flour for people. The Altringer Elevator was sold and moved to Boise City.



H. Altringer Elevator, dealer in all kinds of grain, farm seeds, coal and livestock.



B.O. Cator Grain Co. from left, fourth is W.H. "Bum" Douglas and fifth is Bertie O. Cator.



The R.E. Roberts Elevator and Implement House, Stratford

R.E. Roberts, technically a resident of Plains, Kansas, is Sherman County's biggest wheat farmer and one of its greatest boosters. He spends most of his time in Stratford looking after his varied interests here.

Aside from his big scale farming activities he owns the R.E. Roberts Grain company, a picture of the 40,000 bushel elevator appearing in connection with this article and has the agency for a full line of farm implements.

Mr. Roberts owns seven sections of land and will harvest 2,800 acres of wheat this year. He has 10,000 acres in cultivation and plans to have it all in wheat next season. He bought almost a half million bushels of Sherman county wheat last year, and much other grain. Mr. E.E. Williams is active manager of the elevator and implement business for Mr. Roberts, the former being an experienced grain man. Mr. Williams has been in the Panhandle country for 29 years and in Stratford the past five years. He was connected with an elevator here for four years previous to his association with Mr. Robert and has the confidence and good will of the farmers of the county.

Mr. Roberts sells, and uses on his farm the Allis-Chalmers tractor and Avery combines. He believes these implements to be the leaders in power farming equipment and can demonstrate his reasons. He also sells the original "Angell" one way plow. He has a large stock of implements on hand and keeps them under cover in the big implement shed.

About 1931, the Santa Fe Railroad was completed through Stratford. The first grain elevators were built on the Santa Fe in the early 1930s, one just north of the Santa Fe Depot in Stratford. The elevator in Stratford, known as the Santa Fe Grain Co. and run by Guy Bell, was of wood frame construction and had a capacity of 8,000 bushels. Kimball Milling Co. of Fort Worth owned this elevator in the late 1930s and it was operated by Van Boston in the early 1940s. After two years in the grain business Van left to open a hardware and general store on Highway 54. In 1944, Kimball Milling Co. sold to a partnership of J.K. Richardson and Earl Riffe. Cone Donelson bought into the company and agreed to operate the elevator.

According to Cone, who came to Stratford in 1942, a wet spring and summer brought a bumper crop of milo, oats, and barley. Dryland milo made 70 bushels per acre in 1944. That year Cone loaded out 144 railroad cars of grain. This was quite a job considering the fact that this was wartime and he ran the office, unloaded trucks, and loaded cars most of the time with no help. Cone operated this elevator until 1949 when he bought out Dan Wadley at Kerrick, Texas and organized the Kerrick Elevator Co. His son, Pat Donelson, was active in the business operating elevators at Cocklebur and Kerrick assisted by the bookkeeper, Warren Miller. The Santa Fe Grain Co. was closed in 1948 and was never reopened. In the early 1960s, Ross Wells contracted to tear it down.

In 1948, Paul Allison, a Fort Worth grain dealer, leased a site south of the Santa Fe Grain Co. Paul Allison Grain Co., consisting of two or three metal tanks and a leg, was operated first by J.E. Duncan, then by Charlie Simons, Fate Morris, Emory Roper, and Von Haggard. In 1974, Paul Allison Grain Co. was sold to Perryton Equity and became known as Stratford Equity, managed by Von Haggard.

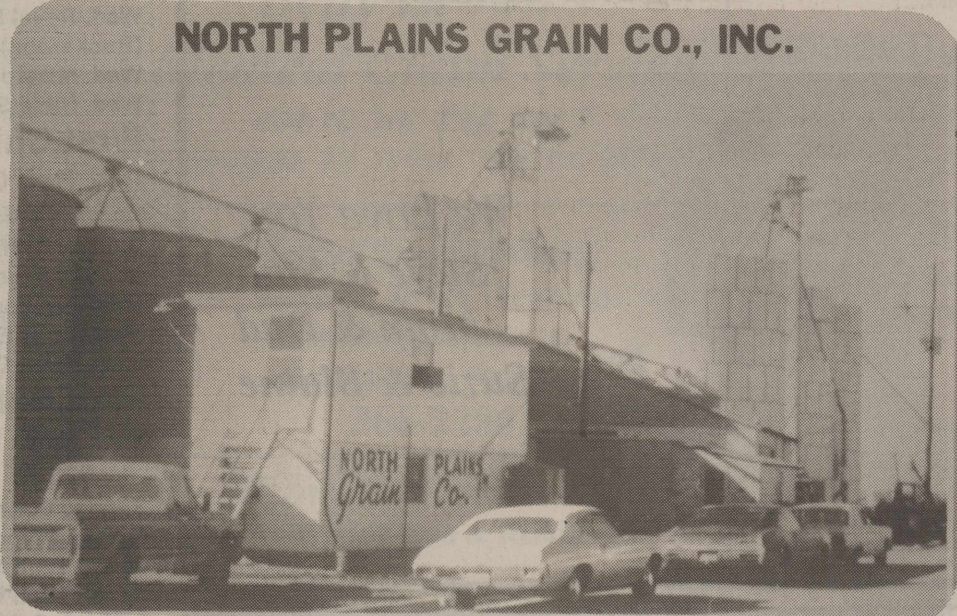
In April 1966, a pinto bean processing plant opened in Stratford. It was owned by Joe Yoder and Harry Peterson of Rocky Ford, Colorado. Gerald Yoder, son of Joe Yoder, managed the plant assisted by field man, Ed Martin. Ed Martin took over as manager in 1968. Pinto beans did not prove to be a profitable crop and in 1971-Yoder-Peterson bean Plant was sold to Bernard E. Baker of Garden City, KS. and converted to a popcorn processing plant, managed by Ed Martin.

Agricultural development in Sherman county began with kafir corn and other stock feed, raised on a small scale about 1900 and gradually increasing. Experiments with wheat, oats and barley were begun in 1903 or 1904 and a small threshing machine was operated in 1904. The next year's small horsepower thresher was brought in by Jap Green. For a number of years it was thought wheat could not be raised successfully in Sherman County and it was not until 1908 that the first elevator was built at Stratford. J.P. Reeder was president and manager. This elevator gave great encouragement to farming generally and gradually the production of wheat, oats and barley increased.

By the year 1926 wheat had moved into first place as a money crop and sorghum grains had dropped from first to third place. Hog raising had come to the front also and in 1927 and 1928 more money value was marketed at Stratford in hogs than in sorghum grains.



The Avery combine and tractor, sold in Sherman County by the R.E. Roberts Grain Company.



NORTH PLAINS GRAIN CO., INC.



KERRICK FARM SUPPLY



Aerial view of the Stratford Grain elevator and the City of Stratford.

Local Area Grain Elevators

The first elevator was built in 1908. J.P. Reeder was president and manager. This elevator gave great encouragement to farms and gradually the production of wheat, oats & barley increased.

In 1930 Stratford had three Grain Elevators.

1. The Chapman Elevator which the Riffe Brothers (Harry, George, Jess, Pete, Eugene (Bus) & Earl) purchased in 1928.
2. The R.E. Roberts grain Company owned by R.E. Roberts who was Sherman County's biggest wheat farmer. He farmed 7 sections. Manager of this elevator was E.E. Williams who came to Stratford in 1925.
3. Douglas & Barnes Grain Company which was built in 1919 by J.S. Kidwell.

All of these were on the Rock Island Railroad.

Earl Riffe came to Stratford in 1928 to manage the elevator that the Riffe Bro. purchased from Chapman Drilling Co.



The new 125,000 bushel elevator completed at Stratford in February by Riffe Brothers.

The Riffe Bros. Grain Company is one of the biggest private business firms in the Panhandle section. It is composed of six brothers, all active in the management of the various elevators owned by the company. They now own 18 elevators in 10 towns in the Texas and Oklahoma Panhandles.

They came into Stratford two years ago, buying the Chapman Elevator, and completed the erection last February of the splendid new elevator shown in the picture accompanying this article. The new structure is of steel and concrete construction, being absolutely fire proof. It has a capacity of 125,000 bushels and is one of the finest elevators in this entire territory. The new elevator gives Riffe brothers a total storage capacity in Stratford of nearly 150,000 bushels and it is possible for them to handle upwards of 60,000 bushels of grain per day. They bought more than three quarter of a million bushels of Sherman County wheat during the 1929 season, having elevators at Stevens switch and Texhoma, in this county. The construction of the new elevator at Stratford will obviate the necessity, to a great extent, of piling grain on the ground during the rush of harvest, as was done last season.

E. Riffe, one of the brothers, is local manager for the company and makes his home here. He is active in the civic life of the community and the company is interested in every move that is for the best interests of the town and country. In addition to buying and selling all kinds of grain the company also handles coal.

Most every line of business is represented in Stratford with live, aggressive merchants. There is a State and a National bank, three grain elevators, six implement dealers, four automobile agencies, a music store, grocery, furniture, hardware and dry goods stores, a fine brick theater and plumbing shops, two drug stores, a modern hotel (under course of construction) two restaurants and a progressive, independently owned Linotype equipped, newspaper.

The three grain elevators were 1. Roberts Elevator 2. Chapman Milling Co. 3. Douglas & Barnes Grain Co.

J.S. Kidwell came to Stratford in 1919 and his first job was to build a grain elevator for Douglas & Barnes Grain Co.

In 1924 or 1925, Chapman Milling Company bought out Stratford Equity, a small farmers Co-Op, located on the Rock Island Railroad. Chapman Milling was managed by A.L. Harrison.

Riffe Bros. of Texhoma bought Chapman Milling Co. in 1928 and Earl Riffe moved to Stratford to manage the elevator. Hazel Harris was working for Chapman Milling Co. at that time and continued to work for Riffe Bros. until her retirement in 1954. In 1928, Riffe Bros. bought the Douglas-Barnes Elevator (formerly known as Cator-Douglas-Barnes Elevator (formerly known as Cator-Douglas-Barnes) west of Main Street.

During these years Ray Roberts, a Kansas farmer and grain man, opened and operated another small elevator east of Chapman Milling Co. and one at Etter. The Stratford location was managed by Ray Roberts brother-in-law, Judge L.P. Hunter, and later by Preston Foreman. After the death of Ray Roberts, these two elevators were sold by his widow to Riffe Bros. in 1940.

After the purchase of the Roberts elevator in 1940, Riffe Bros. in Stratford reorganized, forming the Stratford Grain Co. A 600,000 bushel concrete elevator was constructed at Lautz in 1954. Earl Riffe continued to manage these elevators until his death in 1963. During those years of growth, the Stratford Grain Company was fortunate to have many loyal employees. Among them: Hazel Harris, Erick Kirkwood, Pierce O'Quin, Louie Brannan, Marvin Burkham, J.B. Burgess and Clinton Belcher. After the death of Earl Riffe in 1963 his son, Don Riffe, took over as president of the company. He was assisted by his brother, Conrad and Bill. Conrad Riffe managed the Stratford Grain Co. at Lautz until his death in 1964.

Don Riffe and his brother-in-law, James Spurlock, operate the Stratford Grain Co. in Stratford and Bill Riffe manages the Lautz branch. Mrs. Leland Lewis was employed as secretary and bookkeeper and Richard McDaniel, elevator supervisor, at one time. Additional storage was added in Stratford in 1962 and at Lautz in 1973, bringing the total storage capacity to five million bushels, Stratford Grain Co. has enjoyed many fine years of growth in Stratford and continues to serve the grain storage needs of this community.

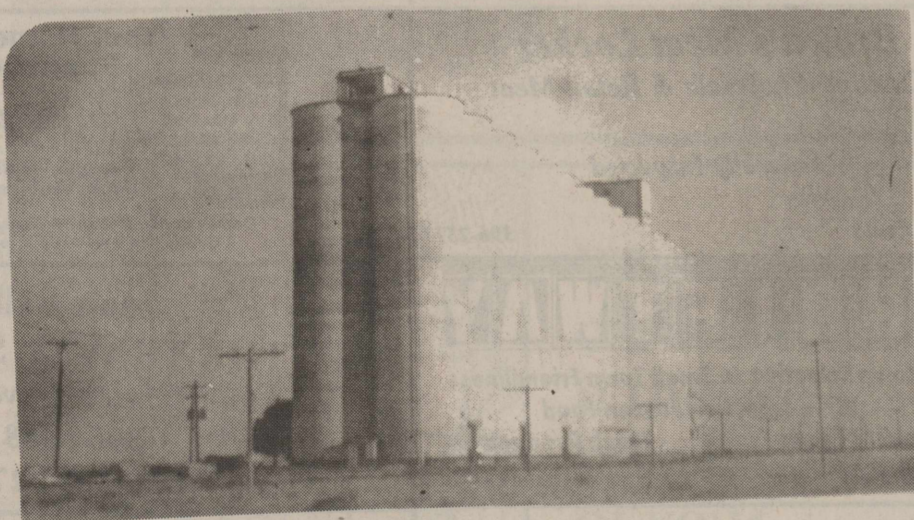
Stratford Grain Co. built a concrete elevator at Lautz in 1954, In 1992 they purchased Perryton Equity elevators on the Santa Fe Railroad.



Riffe Brothers Grain Company, Stratford



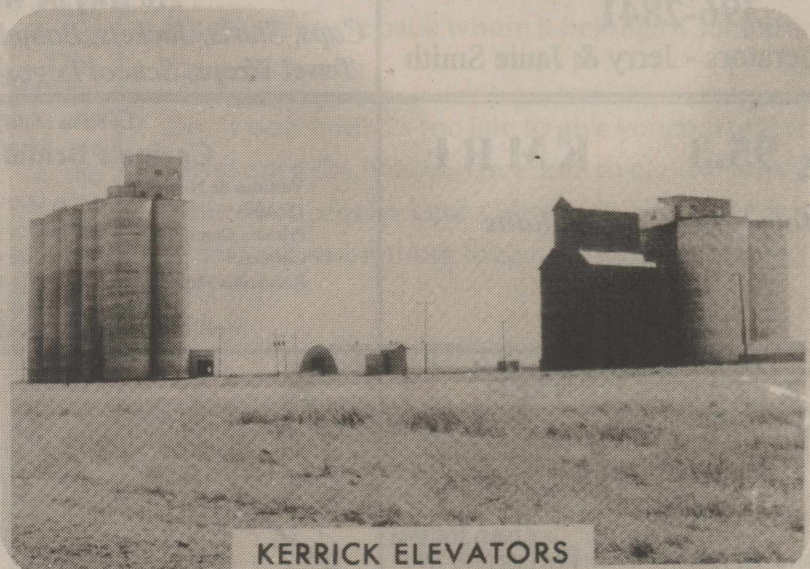
Stratford Grain Company



Lautz Elevator



A 1966 Boy Scout Tour shown left to right Doug McAdams, Ty Hacker, Unknown person, Pat Flores, Bryant Riffe, Bill Riffe, Jimmy Cearley and James Spurlock.



KERRICK ELEVATORS



Conlen Grain & Mercantile Co.

Some Articles and photos on these two pages were taken either from God Grass and Grit or a 1930 Stratford Star.



United Methodist Missionary Conference held Feb. 19-20, hosting missionaries sharing their work. L/R Jim Taylor and Laurie Foster with Backyard Missions in Lubbock, TX; Craig Sladek with Athletes in Action in Cincinnati, OK and the Wilkos family on furlough from Guinea, West Africa-Melody, Charles, Stevanie, John.



Twelve gymnasts from Kelly's Gymnastics traveled to Lubbock on Saturday, February 12th for a gymnastics meet. Shown bottom left to right and results were: Ashton Robinson - 8.9 on floor and 7.5 on tramp; Brittany Hudson - 9.2 on floor and 6.3 on tramp; Kayla Robertson - 9.2 on floor and 6.9 on tramp; Kira Downs - 9.1 on floor, 7.8 on tramp, Double-Mini - 6.4/12; Lindsay Stein - 9.2 on floor, competed on tramp, 8.8/12 on Double-Mini; Heather Robertson - 6.8 on tramp; Top row from left: Kelsey Stein - 9.5 on floor, competed on tramp, 8.7/12 on Double-Mini; Lyndsi Thiessen - 7.3 on floor, competed on tramp, 7.45/12 on Double-Mini; Meghan Brooks - 8.3 on floor, competed on Double-Mini; Channing Ziemann - 9.2 on floor, 6.6 on tramp, 4.2/12 on Double-Mini, and Chelsi Thiessen - 8.9 on floor, 6.8 on tramp and competed on Double-Mini.



Shown at left: Birthday Honorees at the February SCOT Hall birthday party held Thursday, February 17th were from left: Dicy Stephenson, Mardge Pilch, Red DeBord and not pictured Mary Lou Cotney.

New Places-New Faces



New home arriving from Reese Air Base in Lubbock. This home located at S. Wall and 5th will be renovated by Johnny Mungia Construction. Three more homes are expected to arrive soon, one to be next door to this home.



Shown at left: These gymnasts from Kelly's Gymnastics competed at Oklahoma City, OK Division I & II meet held on February 5th. They received 7 team trophies. Individual results were as follows: Alicia Adams - 6th place on floor and 4th on trampoline, Lyndi Berry - 2nd on floor and 1st on tramp, Meghan Brooks - 2nd on floor, 2nd on tramp, 1st on double-mini, Kira Downs - 5th on floor, 1st overall on tramp, 3rd on double-mini, Jessica Lomax - 1st on floor and 3rd on tramp, Kelsey Stein - 5th on floor, 1st on tramp, Lindsay Stein - 4th on floor, 2nd on tramp and double-mini, Chelsi Thiessen - 5th on floor, 1st on tramp and double-mini. Shown left to right: Alicia Adams, Lindsay Stein, Kira Downs, Kelsey Stein. Not pictured Lyndi Berry and Jessica Lomax.

Honor Roll

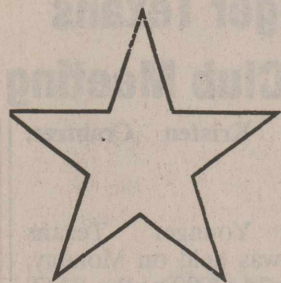
3rd Grade-Mary Allen Elementary "A" Honor Roll 4th Six weeks,
Patty Browns- James Daniels, Sinead Everett, Nathan Kimbrough and Margarita Rocha Zubia.
Shanda Davis-Stephanie Bell, Chandra Hawkins, Kaleb Horsford, Clayton Johnson, Deborah Molina and Becky Rosales.
Sonja Ragsdale-Chandler Lutes, Jennie Spurlock.
4th grade Mary Allen Elementary "A" Honor Roll 4th six weeks.
Kaci McBryde-Jordan Confer, Samantha Hart, Hailey Long, Austin Riffe and Yadira Rojas.
Stacy Metcalfs- Kristen Crabtree, Ashley Duschl, Michael Reinart.
Mary Pat Williams-Corey Carter, Taylor Howard, Alex Martinez Mendez, Mike Ong, Lucero Ortega, Brailly Palmer, Kelsey Stein, Chelsie West.

Arts in the Area

By Gaynelle Riffe
*** denotes new listing

Feb. 25,26	"Nonsense Jamboree" Musical Guymon Community Theatre 338-6760
Feb. 27	"Spirit of the Dance" Amarillo Civic Center 806-378-3096
Feb. 29	"Annie" Amarillo Civic Auditorium 806-378-3096
March 1-5	"The American Story" Musical Branding Iron Theatre, WTAMU, Canyon
March 2-11	"Death Of A Salesman" drama Amarillo Little Theatre 806-355-9991
March 4,5	"Nonsense Jamboree" Guymon Players LaRita Theatre, Dalhart 244-5646
March 4	The Harrington String Quartet Westminster Presbyterian Church 806-376-8782
March 4	Ohio Ballet "Kings of Swing" Lone Star Ballet Amarillo Civic Auditorium 806-372-2463
March 6	"Avalon-Anointed" Christian Contemporary Amarillo Civic Auditorium 806-378-3096
March 1	"One Flew Over the Cuckoo's Nest" State Right Theatre, Amarillo 806-353-7888
April 1	Amarillo Symphony- Copland & Ellington Amarillo Civic Auditorium 806-376-8782
March 11	Amarillo Symphony- Copland & Ellington Amarillo Civic Auditorium 806-376-8782
March 16-20	Disney on Ice "Wizard of Oz" Amarillo Civic Coliseum 806-378-3096
March 25***	Mozart's "Magic Flute" Amarillo Opera Amarillo Civic Center Auditorium 806-373-7464
March 31*** April 1	"The Music Man" ALT Academy Amarillo Little Theatre 806-355-9991

<p>Business Directory</p>	<p>COLDWATER MANOR "LOVE SPOKEN HERE" 1111 BEAVER RD., STRATFORD, TX (806) 396-5568</p>
<p>WALTER LASLEY & SONS INC. THE Feedyard Since 1953 753-4411</p>	<p>Brooks Motor Big A 396-2631 314 S. Poplar</p> 
<p>Stratford Grain Co. Stratford 396-5541 Lautz 769-4485 4 North Main</p>	<p>Robert's Service Center 400 S. Poplar 396-2882 Auto Repair & Lawn Mower Repair</p>
<p>CONSUMERS 208 Texas We Sell Seed & Fuel Farmland, Acco, & Moorman Seeds & Diamond Shamrock Products 366-2261</p>	<p>Randy Schreiner - Associate - TX 9095 (580) 423-7110 - Texhoma, OK NAYLOR AUCTION and REALTY, INC. Broker: Dale Naylor - OK 107486 - TX 7285 (580) 646-3548 - Balko, OK</p>
<p>Stratford Auto Electric 119 S. Wall, Stratford, Texas 79084 Phone 366-5941 366-5857 Alternator, Starter,-Magneto Repair Since 1964</p>	<p>Allen-Tarver Insurance Agency Carolyn A. Tarver Auto • Home • Life • Commercial Bus: (806)396-5810 • Res: (806) 396-2393</p>
<p>Betty Brown's Medical Claim Service 401 N. 3rd. P.O. Box 7 Stratford, TX. 79084 806-396-2623</p>	<p>Joe Flores Farm Bureau Insurance 396-5538 office 396-5389 home</p>
<p>George Harding Sewer & Drain Cleaning Plumbing, Electrical, Remodeling, Painting 366-2206</p>	<p>Jesse's Gun Shop Gun Repairs • Sales • Cleaning Hours: Mon. - Fri. - 1730 - 2000 Sat. - 0800-1600 Jesse Resendes (806) 769-454 (806) 366-3134 Shop 111 S. Maple Stratford, TX 79084</p>
<p>Brown's Meat Locker Custom Wholesale & Retail Meat Federally Inspected Hwy 287 South 396-2513</p>	<p>Your Home Town Pharmacy.. ELK PHARMACY 317 N. Main P.O. Box 360 Stratford, TX 79084 806-396-4505 Major Prescription Plans Accepted Gayland Vandiver, R.Ph. Debbi Vandiver/ Owners Carlton Cards...Millionaire Candy.Gifts Cookie and Balloon Bouquets</p>
<p>THROFTWAY Big Town Selection * Small Town Friendliness Wide Selection Frozen Food Quality Foods Fresh Produce Hwy 54 East 396-5586</p>	<p>Joan Bell THE TRAVEL STORE A Full Service Travel Agency 396-5958 1-800-753-2792</p>
<p>Westside Laundry/Stratford Laundry & Dry Cleaners 410 N. 4th - Stratford, Texas 396-2841 Owners/Operators - Jerry & Janie Smith</p>	<p>Tommy's Embroidery 580-423-7718 Texhoma, OK 210 Hwy 54 West Caps, Shirts, Jackets, Baby Blankets, Towels, Towel Wraps, School Logos, & Much More!</p>
<p>Oldies 95.3 KMRE The Voice of the North Plains An ABC Affiliate 935-4141</p>	<p>(La Sesta Motel) Carina's Bridal Shop Vestidos de Novia Wedding Dress 15 Años Sweet 15 Primera Comunión Baptism Coronas Crowns Recuerdos Etc. Etc. 514 Texas Ave. Stratford, TX 79084 (806) 396-2316</p>
<p>A & I PARTS CENTER AUTOMOTIVE AND INDUSTRIAL PARTS - THE CAR CARE PEOPLE Jerry Ewers Manager P.O. Box 1146 (806) 366-5561 201 N. 2nd - Stratford, TX 79084 Fax: (806) 366-2583</p>	<p>Dalhart 246-5676 Dumas 935-7979 Sunray 948-4404</p>
<p>This Space Available Call 366-5885</p>	<p>This Space Available Call 366-5885</p>



It Pays To Look In The

Star Classifieds

..The Best Salesperson Around

Phone 366-5885

For Sale

Attention PrimeStar Customer - Change your system over to Dish Network for FREE. Call Baber Supply Inc., Hwy. 54 & 2nd St., Texhoma, OK, 1-800-292-4023 or 580-423-7255. 11-25-tfn

Hay for Sale: Alfalfa, Small square & Round bales/ Cane Hay in small square bales/ grass small squares & round bales. Felt, OK 580-426-2256. 2-3-4xc

For Sale: 1985 Ford Ranger, 2.0 Liter Motor, See at A&I Parts or call 366-5592 ask for Jerry. 2-10-4xc

ARE YOU HAVING PROBLEMS SELLING? I CAN OFFER FULL MARKET PRICE. IF YOU CAN BE FLEXIBLE ON TERMS. I AM A PRIVATE INVESTOR. CALL MARTHA AT 806-827-1376. 2-10-4xc

For sale: Good used 6' & 8' Turbine irrigation pump. 806-249-0602. 2-20-4xc

For Sale: 1993 Buick Century, high road mileage, excellent cond., new tires, good paint, runs great. \$4200. Call Peggy Westbury 396-2858. 2-24-4xc

Free Puppies

FREE to good home. 1/2 Border Collie - 1/2 Sheltie. Adorable puppies, 396-2298. 2-24-1xp

Buildings for Sale

For Sale or Lease: 7200 sq. ft. bldg, concrete floor, 2 offices, 2 rest-rooms, overhead electric hoist, on lots 1-20, block 89, Stratford, TX. For information, call Keith Waters 806-355-2913 or 674-0661. 2-24-4xc

For Sale: New Steel Building in Crate. 40x22 was \$5,880 now \$2,830. Must Sell 1-800-292-0111. 2-24-1xp

Legal Notice

Notice To Bidders

Notice is hereby given that Sherman County Commissioners' Court will accept sealed bids for the purchase of one (1) 2000 model belly dump trailer for Precinct #3. Bids should be sealed and have "Bid Request" written on the outside of the envelope. Specifications may be picked up at the Sherman County Judge's Office located in the Sherman County Courthouse, 366-2021 or those interested may contact David Hass at his residence, (806) 827-7378 or his business (580) 423-7623.

Bids should be mailed to the County Judge at P.O. Box 165, Stratford and will be received up to 10:00 a.m., March 13, 2000, at which time they will be opened and considered. Sherman County reserves the right to reject any and all bids.

David Hass
Commissioner Pct. #3
Sherman County, Texas.
Published in The Stratford Star, Thursday, February 24, 2000; Thursday, March 2, 2000; and Thursday, March 9, 2000.

Community Awareness Meeting

There will be a Community Awareness Meeting for Special Olympics on Friday, February 25 at 7:00 p.m. at Sherman County Barn. Everyone interested is invited to attend.

Services

"Independent Insurance Agent"
Life Insurance, Retirement Planning, Burial Insurance, Medicare Supplement.
Molly Griffin, LUTCF
366-5612

Best Termite Control of Amarillo

Daniel Boyd - (Owner)
Leo Russell - (Previous Owner)
1-806-622-2171
Have City and State License for the City of Stratford
1-7-tfn

Authorized Sales & Service
New & Used Appliances
Baber Supply
1-800-292-4023 1-580-423-7255

House Settling? Cracks in brick or walls? Doors won't close? Call Childers Brothers Floor Leveling. 1-800-299-9563. 1-6-1yr.cont.

Dusky's Chimney Cleaning



396-2596
Minor Repairs
Safety Inspection
Chimney Caps
Animal Removal
Insured

Help Wanted

CIMARRON FEEDERS: Now Taking applications for YARD MAINTENANCE TEAM. If interested, please call Ed Burr or Lon Davis at 580-543-6383. 2-17-4xc

OFFICE MANAGER Needed for Stratford Family Medical Clinic. Duties will include supervision of office staff, patient & third-party payor billing, assisting medical staff with tertiary appt., assisting with scheduling patient appts. Apply in person, Stratford Hospital District Administrative Offices at Coldwater Manor, 1111 Beaver Rd., Stratford, TX. 2-20-2xc

First United Methodist Church is seeking applications for a care-giver in the children's department. For more information, call the church office 396-2178 or Linda Haynes at 366-2478. 2-24-c

Accepting applications for animal health position with Cimarron Feeders. If interested please call John Foley at (580) 543-6383. 2-24-4xc

Land For Sale

Land for Sale: One (1) 640 Acre tract cultivated land; 306.7 acres in CRP, 276.3 acres in CRP, 250.3 in CRP. Contact Trust Department/Martha Mitts, First State Bank 396-5521. 3-12-tfn

Acquisitions...

antiques & collectibles for home & garden

SPRING SPECTACULAR!!!

Lots of wonderful new merchandise including iron fencing and window guards, willow furniture, a small walnut desk, an oak Mission-style rocker, wooden dough bowls, an Asian market basket, a giant cowboy boot and MORE!
Wednesday - Saturday
March 1-2-3-4 only!
10:00a.m. to 5:00p.m.
AT THE CORNER OF HWYS 54 & 287
in Stratford, Texas

or call Karen at 806-396-2262 or Dana at 806-769-4464

Ad Rem Land Co.



Office
118 E. 7th, P.O. Bx. 621
Dumas, TX 79029



806-935-7364 ● Fax 935-7687

Sherman Co. Irrigated Section! Has 1/2 mile sprinkler and 3 wells. Available with or without nice home and barn. Call for details 1-806-935-7364. Tom Ferguson, Broker.
REDUCED: 3 Bdrm Mobile Home, 1 Bath, Carpeted, Central Heat/Air, 77 X 14 Ft. on 40 X 140 Ft. Lot \$18,000.

Tom Ferguson, Broker 935-7364
Keith Waters, Agent 355-2913 or 674-0661

For Rent

For Rent: Small 2 bedroom house-515 N. Chestnut. Call 356-6886. 1-13-tfn

For Rent: 1 Bedroom furnished apt. 6th & Fulton. Call 396-5541 daytime, 396-5692 at nights. 1-28-tfn

Storage Units Under New Management at 610 N. Pine. For more information call 366-5381. 1-6-tfn

Stratford Offers Night Classes

Stratford ISD would like to offer the following night classes. Classes will be on Monday and Thursday from 7:00 p.m. to 9:00 p.m. for eight weeks. The cost of each class will be \$25.00. There must be at least 10 people sign up to offer the class. Please call 366-3300 if you wish to sign up for a class. We must know by Wednesday, march 1, if you wish to take the class. This will give us time to contact everyone if we are going to have the class or not.

Classes will begin Monday, March 6 and end Thursday, May 4. There will be no classes during Spring Break, March 13-17. The following six classes will be offered:

- English as a Second Language
- Beginning Conversational Spanish
- Basic Computer Operations
- Word
- Power Point and Internet Use
- Desk Top Publishing

The state of Nebraska has an official fossil: it's the mammoth.

COUCH DRILLING AND PUMP SERVICE

Serving the Panhandle Since 1963

DRILLING SERVICES
Reverse Circulation Drilling
Test Hole Services
Electric Logging Services

WELL REHABILITATION
Down-Hole Video Surveys
Aquafeed CO2 Treatments
Sonar-Jet Treatments
Chemical/Acid Treatments

PUMP AND GEARHEAD SERVICES
Turbine and Submersible - Sales and Service
Dealer for Simmons, Worthington Pumps
Gearhead - Sales and Service

IRRIGATION - INDUSTRIAL - MUNICIPAL - DOMESTIC

806-966-5658

24 Hour Pager 806-934-6938

WATLEY SEED COMPANY

Box 51 ● Highway 15 ●
Spearman, TX 79081
Native Grass Seed - 4 wing Saltbush
Plowing & Planting CRP
Call Today! 1-800-338-2885

Cool, safe, educational kids' websites

- LycosZone
www.lycoszone.com
- Alfy.com
www.alfy.com
- Discovery Communications
www.discovery.com
- Educast, Inc.
www.educast.com
- Education World
www.education-world.com
- Family Education Network, Inc.
www.familyeducation.com
- Hewlett Packard Digital Book Club
www.hpdigitalbookclub.com
- HomeWork Central
www.homeworkcentral.com
- Knowledge Adventure, Inc.
www.knowledgeadventure.com
- National Education Association
www.nea.org
- Steck Vaughn Publishing Company
www.steck-vaughn.com
- Zeeks
www.zeeks.com

Keep away from people who try to belittle your ambitions. Small people always do that, but the really great make you feel that you too, can become great.
—Mark Twain

Houses For Sale

For Sale: 98 Fleetwood Mobile Home, 16x80, 3 Bdrm, 2 bath, central heat/air, fireplace, electricity approved, excellent condition. \$26,500. 806-753-4424. 2-3-4xc

House for Sale: 812 N. Pearl, 3 bedroom, 1 bath, big kitchen & living room, carpet. 396-5507. 2-10-3xp

For Sale: Older 3 bdrm, 2 bath, huge walk-in closet over 1600 sq. ft. Needs a little TLC. WILL NOT RENT. Appt. only, \$35,000. Call 366-5011, leave message. 2-10-tfn

For Sale: 4 Bdrm house, 1 bath, 2 car garage, fenced backyard. 506 S. Main. 396-2421 or 753-7376. 2-3-4xc

For Sale: Newly built home, 4 bdrm, 3 bath, close to school. 1217 Olive St. Call 366-2401. 2-17-2xc

For Sale: 313 S. Maple, 3 bdrm, 2 bath, corner lots with small rent house in back. Call 396-2024 or 383-9790 for appointment. Doug & Lola Cathey. 2-10-3xc

Cards of Thanks

We wish to thank everyone for their prayers after Phillip's burn accident. Thank you also for the concern, calls, food, and other acts of kindness. The burn center and Areace & David & girls took good care of him. Thanks to Bro. Jerry for coming down and Walter Eugene for flying him home. Also, thanks to Lee for his quick action. Please continue to pray for us.

God Bless You All,
Phillip & Marty

I wish to thank my friends for the calls, cards and flowers shown in the death of my mother.

Dorothy Robbins

Thank you to everyone for prayers, phone calls, cards, flowers, visits and concern during my hospital stay and continued recuperation. It helped so much to have good friends.

Bernice Christian

Basketball

The Lady Elks finished their season on February 15, 2000 with a bi-district loss to Clarendon 54-48. Lynz Browning led the Lady Elks with 15 points followed by Jessica King with 11 points. Others scoring for the Lady Elks were Carla Bell - 6 points, Kara Brownlee, Missy Sikora - 5 points each, Jessica Young and Oraliala Vital - 3 points each. Congratulations Lady Elks and coaches on a great season!! We're Proud of You!

The Elks beat Canadian 65-47 in their seeding game on Tuesday, February 15th. Adam Bell led the Elks with 22 points followed by Skyler Walden with 19 points and Michael McAlister with 9 points. Martin Acevedo added 7 points followed by Carlos Ortega with 3 points, Andy Witcher and Rene Vital with 2 points each and Nick Ashley with 1 point. The Elks drew a bye and their next game had not been scheduled at press time. Congratulations Elks and Good Luck in the Play-offs!!!

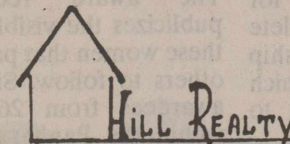
Heaven is under our feet as well as over our heads.
—Henry David Thoreau



Sales & Service

THE General Store

806-396-5308
Authorized Dealer



NOW READY TO HELP YOU
BUY OR SELL A HOUSE
CALL ROY J. HILL AT 396-2087
CURRENT LISTINGS

405 N. FULTON

LIC.#0118281



Women's Health Center

- Normal and high risk pregnancies
- Gynecologic cancer screening
- Breast cancer screening
- Infertility and family planning
- Menopause and hormone problems

Dr. Turhan I. Baykan, M.D.

Specializing In
OBSTETRICS-GYNECOLOGY

Monday - Saturday 9 a.m. - 6 p.m.

110 S. Bliss

935-6599

Golden Nail Awards Seek Nominations

Margaret Reed has been selected as an area representative by the 2000 Golden Nail Awards Committee.

Golden Nail Awards Gala planners are now seeking nominations from a 14 city area of those who have provided extraordinary support for the fine arts in the Texas Panhandle during 1999. The Golden Nail Awards is sponsored by the Arts Committee of the Amarillo Chamber of Commerce.

Recipients of the Golden Nail Awards include individuals, businesses, and foundations which will be honored at the ceremonies held on Saturday, April 8, 2000 at the Amarillo Civic Center. The gala will be held in conjunction with the Amarillo Symphony.

Established in 1982, the purpose of the Golden Nail Awards is to honor those who financial, in-kind and volunteer contributions to the fine arts in Amarillo and the Panhandle area are of such magnitude that the impact on the arts is significant.

Nominations are invited from individuals as well as organizations. Nomination forms are available at the Amarillo Chamber of Commerce office, 1000 S. Polk in Amarillo or from Mrs. Margaret Reed, phone 396-2273. The deadline for the nominations is February 28, 2000.

The Golden Nail Award categories include the Summit, Individual, Business, Foundation and Distinguished Volunteer. Each year, the Summit Award goes to an individual for lifelong support to the arts. Special awards are presented when warranted. Golden Touch Awards are also presented for innovative ideas in the arts events and area activities.

Individual winners of 1999 were Mr. and Mrs. James B. Franklin, Artrain, KACV-TV, LaNelle Polling, Robert Bryant, Strake Foundation, Brumley Foundation, Norwest Bank, Peterson, Farris, Doors and Jones, Bank of America, Mr. and Mrs. Wales Madden, Jr. and Mr. and Mrs. Don Paxton. Four Golden Touch Awards were presented to Amarillo Museum of Arts's Electronic Classroom, Amarillo Public Library's Gallery Wall, Amarillo Opera's "Jumping Frog", and "A Soliloquy of Charles Goodnight" and "My Molly" written by Montie Goodin.

Golden Nail Committee members are Mrs. Wendell Davies, Chairman, Mrs. William H. Brian, Jr., Mrs. Douglas Campbell, Mrs. Robert Cowan, Mrs. Warren Freeman, Mrs. Richard R. Ingerton, Mr. Jim Jordan, Mrs. John P. McKinley, Mr. Gil Renfro, Mrs. Randy Sharp, Mrs. Jack Stroup, Mrs. Rex C. Vermillion, Mrs. Robert Balliett, Arts Committee Chairman, Mr. Kris Miller, Civic Center Liaison, Mr. Jack Fishman, Amarillo Symphony Liaison, and Ms. Becky Zenor, Chamber of Commerce Liaison.

Morton Of Sunray Schools Gives Talk

Grants from federal, state and private entities are becoming an increasingly important source of revenue for the public schools. The knowledge of how to find sources of grant money and how to write proposals to the proper entities is important to both small and large schools. There has been a decrease in the valuation of properties, sometimes lowering of the tax rates for schools, increased enrollment, and a demand that all students be educated to their maximum ability to achieve are also demands placed on public school teachers. Finding sources of grant money and writing proposals that secure money for schools is essential. Nina Morton, of the Sunray schools gave an informative and enlightening talk on these subjects at the February meeting of the Gamma Xi chapter of the Delta Kappa Gamma Society which met in Hartley on February 5. Teachers who want more information on these subjects may contact Morton at the Sunray schools. also, most libraries have the information on computer discs. The librarian can help teachers learn how to access, search and use the information.

After the close of the business meeting and the program, a silent auction was held for the benefit of scholarships to be given to senior girls who wish to become teachers. Seniors students should contact their high school counselor for information and begin to complete applications. The scholarship money is paid to the college which the graduating senior plans to attend.

Mary Jo Ondracek called the business meeting to order. Mary Weatherford read the minutes of the last meeting which were approved. She also gave the roll call. Shirley Hendricks gave the treasurer's report. The resignation of Verna Smith was accepted with regret. Frances Holden lead the group in singing the official Delta Kappa Gamma Song.

Ondracek announced that several members may be dropped from the rolls due to non payment of dues. Please contact Shirley Hendricks or Mary Jo Ondracek about reinstatement.

Janet Pipkins will be in charge of making the buttons for all kindergarten children in area schools. These buttons are inscribed with the words "READ TO ME" in Spanish and English. They are very popular with the kindergarten students.

Members gave a brief report on what they are doing to help students in learning and also in building happy constructive lives.

Hartley members served delicious refreshments before the meeting. The tables were decorate with hearts and crepe paper streamers in honor of the valentine holiday soon to be celebrated.

Members and guests present but not previously named included: from Texline, Sudi Kneller; from Hartley, Ann Hormel, Addieree Bryant, Eva

Gay Keck; from Stratford, Viola Kautz, Kathie Altman; from Dalhart, Portia Dees, Nelda Askey; from Dumas Mildred Bosler, Frances Wardlaw, Claudine Terry; from Sunray, Sandy Carter, Beverly Hendrix.

The next meeting will be in Dumas on March 4. The Dumas members will notify an officer in each town of the place of the meeting.

Women's Forum Nomination For 2000 Distinguished Service Award

The Amarillo Women's Forum is seeking nominations for the annual Distinguished Service Awards. The purpose of the Distinguished Service Award is to honor outstanding women who have helped shape the development of the Texas Panhandle through their contributions of talent and skill. The award recognizes and publicizes the visible examples by these women that pave the way for others to follow. Since 1976, 200 awardees from 26 communities within the Panhandle have been selected from the arts, business, finance, education, health care, law, science, volunteerism and other fields.

Nominees must be Texas women who are legal residents of the top 26 counties of the Texas Panhandle and have not previously received this award. The forum encourages people to re-nominate women who were nominated in previous years.

Winners of the Distinguished Service Award will be chosen on the basis of an individual's significant impact on the Panhandle of Texas through their local communities. An anonymous panel of judges representing the Panhandle will select recipients on the basis of their lasting contributions and achievements. The deadline for nominations is March 15. Presentations of the Distinguished Service Awards will be made during a luncheon on May 6 at the Ambassador Hotel.

For nomination forms or additional information contact Jane Juett at 806-355-0603.

Past recipients for Stratford Area: 1984 Marilyn Albert Harkins, 1095 Timmie Brown, 1987 Lynn Wells, 1993 Marihoward Engelbrecht, 1998 Gaynelle Riffe.



Poster Winners Named

Pictured l to r are: Boss Lion Ronnie Pickens, 3rd Place winner April Whatley, Crimestoppers President Walter Lasley, 1st place winner Myranda Herring. Not pictured 2nd place winner Ashton Robinson. On February 14, 2000 Stratford Lions Club hosted the winners of the Sherman Co. Crimestoppers poster contest. The contest, sponsored by Sherman Co. Crimestoppers and Stratford High School Student council, received over seventy posters from students in the Stratford and Texhoma schools. Myranda's winning poster will be placed on a billboard in Stratford by Lamar Advertising of Amarillo. Lion's Club donated the funds to Crimestoppers for the production of the billboard and Lamar Advertising will donate the space and labor. Congratulations to Myranda, whose name will appear on the billboard, and thank you to all the participants.

Kerrick
Cont. from page 3

Would you believe there was another fire Sunday in R.J. Hill's CRP field???

Pat & Bill Boren went to Colorado Springs last week to get a Big Foot camper for their new pickup. Sure is a good looking rig! Visiting with them one night were Kerry, Kelly & Kevin Carlisle of Ropesville.

Chandra Hawkins was hostess to Jenny Spurlock Friday and Saturday night. Stephanie Bell was her guest Sunday & Monday.

Penny & Linda Whitson and Faye Daniell of Clayton took his sister, Jo June McDaniel for lunch in Dalhart Saturday.

Terry & Barbara Schoonover spent the week-end at their place in Folsom, N.M.

Trisha, Reed & Rett Schoonover took advantage of President's Day week-end to visit with her sister in Ballinger, TX.

Pat Boren, Betty Henry and Marylou McDaniel spent the week-end bowling in Dalhart Women's Bowling Association tournament. Bill Boren was on travel league at Guymon.

Merilee McDaniel spent Sunday night with her grandmother and dad.

Younger Texans 4-H Club Meeting

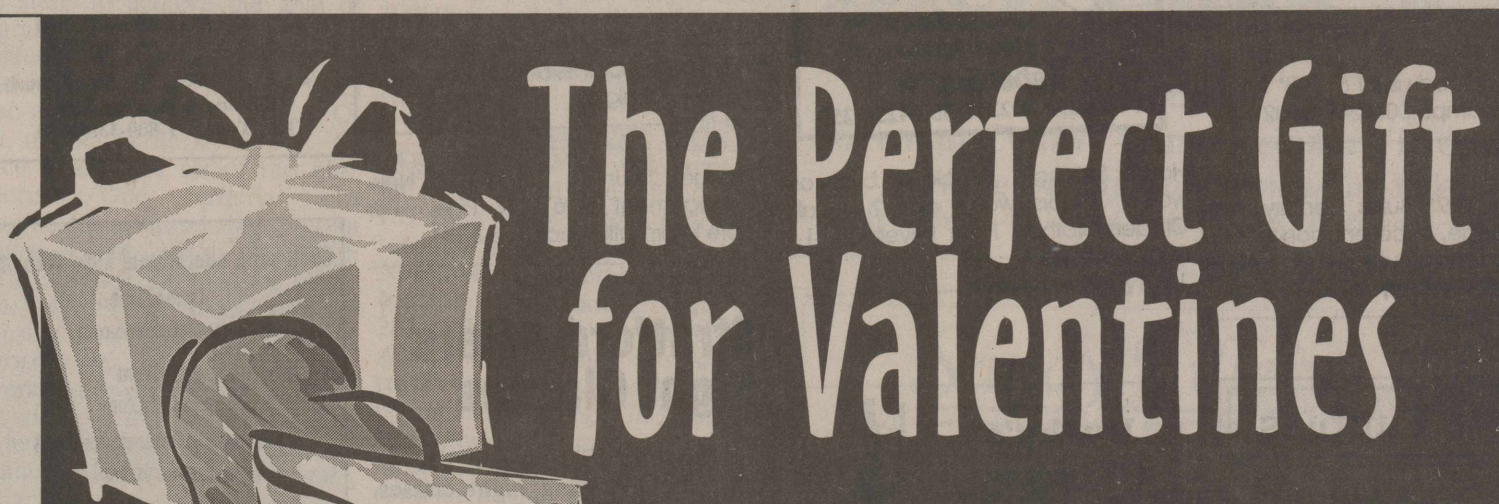
By Kristen Crabtree, reporter

The Younger Texans meeting was held on Monday, February 14, 2000 at the EMT Building. There were 14 club members and 4 adults who enjoyed the program presented by Jimmy Lanning. Club members learned the training required to be an EMT Volunteer. Jimmy gave an ambulance tour. He explained the equipment and the different parts of the ambulance. After the program everyone enjoyed refreshments provided by Kristen Crabtree and Brandon Davis.

Lasley Named Distinguished Student

College Station-Texas A&M University has named its honor students for the 1999 fall semester, recognizing several thousand students for outstanding academic performance.

Ashlie Lasley has been named to the "Distinguished Student", which is a student who earned a 3.25 to 3.75 GPR while taking at least 12 hours. Ashlie is the daughter of Walt and Kris Lasley of Stratford.



Give the security and convenience of staying in touch with those you care about!

Group Ringing

Allows you to have 4 phones ring at the same time so you never miss a call.

Companion Plan

Share the minutes of your primary phone with up to 2 other phones for only \$19.95 a month per additional phone.

The Perfect Deal!

An XIT Gift Certificate or a Nokia 282!



Purchase a Valentine's Day Gift Certificate for \$10.00 or more. May be redeemed for any XIT service equipment, accessory or applied to b'i'a.

Compact, lightweight and available in colors. It's the perfect phone for your Valentine. Stop by the XIT Customer Care Center nearest you and make the perfect connection.

\$49.95
Some restrictions apply



... the brand of Excellence!

Long Distance • Local Access • Cellular • Paging • Internet • Voice Mail
Dalhart - 1624 Tennessee Ave. & Hwy 87 North • Dumas - 1545 South Dumas Ave.
Hereford - 809 South 25 Mile Ave. • Stratford - 401 North 3rd St.
1.800.232.3312