

Thursday update

THE SNYDER DAILY NEWS

VOL. 32 NO. 107 SNYDER, TEXAS (79549), THU., SEPT. 4, 1980 14 PAGES 20¢

Eligible With 5% Of Vote

WASHINGTON (AP)—The Federal Election Commission gave John B. Anderson's independent presidential candidacy a big boost today by ruling that he may become eligible for federal campaign financing.

By a 5-1 vote, the commission decided that Anderson, although he is running as an independent, has the support of a national organization which is the functional equivalent of a political party.

Federal law says that any party nominee who gets 5 percent of the presidential vote is entitled to a share of federal funds after the general election in November.

Protestors Found Guilty

AUSTIN (AP)—Judge John Wisser today found 12 Middle Eastern students guilty of disrupting a University of Texas speech by the former ambassador to the United Nations under the late Shah of Iran.

Four of the 16 defendants were found innocent by Wisser, who posted all the names on the door to his office.

Attracting more attention than the students' trial was the issue of whether student newspaper editor Mark McKinnon of the Daily Texan would relinquish unpublished negatives of the Jan. 31 speech taken by a University of Texas student photographer.

McKinnon, 25, refused and was jailed for almost two hours Tuesday. He was released on \$1,000 bond, pending a hearing today on his claim Wisser's contempt order was unconstitutional.

GM Recalling One Million

DETROIT (AP)—More than 1 million General Motors Corp. cars will be recalled to fix a pollution control device, the automaker has announced.

GM said Wednesday it will ask owners of 1,034,000 Chevrolet, Pontiac, Buick and Oldsmobile models produced in the 1977 and 1978 model years to take the cars to dealers and have exhaust recirculation valves fixed.

The cars affected were GM's entire production in those two years with the 3.8-liter, or 232-cubic inch, V-6 engine. It was GM's largest recall to fix a pollution problem, though not an industry record. Ford Motor Co. once recalled 1.4 million cars for a similar reason.

The SDN Column

Snyder Jaycees found their organization on the news wires frequently last week as they were identified as co-sponsors of a concert by Willie Nelson in Big Spring the night of Aug. 31.

The flap over Willie's appearance began in Big Spring when some of the citizenry there objected. They said Willie would attract a lot of undesirables, cause traffic problems and set bad examples for young people.

Then, our old friend, Mike Cochran of the Associated Press, learned that a Dr. John Marcus Young, an inmate at the new minimum security federal prison at Big Spring, had helped lure Willie to Big Spring to headline the Jaycee benefit performance. Young's name rang a bell with Cochran, who spent many months covering the Cullen Davis trials. Young was sent to prison after pleading guilty to unlawful possession and dispensing of narcotics. One of this drug patients was Priscilla Davis, Cullen's ex-wife. Others included Willie Nelson and other country music stars.

So, Cochran produced a story for the AP about Young's connections and it got considerable play.

However, like many such incidents, it seemed to grow every time someone else got into the act. And so it was that the Fort Worth Star-Telegram reported in its issue last Friday evening that Young, like 85 other Big Spring inmates, is a member of the Snyder Jaycees.

A little far-fetched from more than one angle, since Young is 41 years old, above Jaycee age, and the Snyder Jaycee Club hasn't branched out quite that far yet.

But a lot of people who hadn't before now have heard of the Snyder Jaycees.

★ ★ ★

Incidentally, we seldom get an opportunity to see a copy of the Star-Telegram, the state paper that used to blanket all of West Texas. This one reached our hands via District Clerk Polly Underwood, who thought local Jaycees might like to know how their reputation had spread.

★ ★ ★

Picked up from the mail: Each human eyelash lasts about 150 days. An average of 12 generations of houseflies are produced in a single year.

The greatest single export of the early American colonies was tobacco.

The Hawaiian alphabet has only 12 letters.

★ ★ ★

The cactus patch philosopher says people who go to diet doctors usually have a wait problem—WACIL McNAIR

Over 90 Percent Eligible Sign-Up

WASHINGTON (AP)—More than 90 percent of eligible young men have registered in the nation's draft registration program launched last month. Selective Service Director Bernard Rostker said today.

Men born in 1960 and 1961 had been scheduled to sign up during the two-week period in August and Rostker said that 93 percent had done so.

Anti-draft organizations have speculated that there would be a large number of youths who would not register.



MUSEUM VISIT—Carrie Taylor, a Western Texas College student, examines a wooden water bucket of the type early settlers used in their wells. It is part of an exhibit in the Scurry County Museum, which serves as a community cultural center as well as a teaching facility for WTC. The Scurry County Museum Association, an organization devoted to support of the museum, is now conducting a membership drive. (SDN Staff Photo)

Drive Now Underway...

Museum Association Seeks New Members

If you enjoy vintage western movies, travel, eating out and congenial company, the Scurry County Museum Association would like to have you for a member.

The association is currently conducting a membership drive to make it known that new members are being sought and to encourage former members to renew their memberships.

The drive will close officially with a buffet dinner on the night of Sept. 27 at the opening of the Ben Konis exhibit, and persons who would like to pay memberships at the dinner are welcome to do so. Membership fees begin at \$15 with the family plan and are available in various other amounts for sustaining, patron and benefactor members. There is also a \$50 commercial or club membership.

Persons who would like to become members are invited to mail checks to the museum at P.O. Box 696 or to contact the museum office at 573-6107 for information.

Membership in the association is open the year around, of course, but the activities being planned for the coming year make membership especially attractive.

A literal once-in-a-lifetime opportunity is among those activities. It involves a trip to Fort Worth to see the Chinese Bronze Exhibit on Jan. 24, 1981. The bronze exhibit will be shown at only five locations in the United States, and the Kimbell Art Mu-



GARY TERRELL
...heads museum drive

seum in Fort Worth is one of those. Persons who make the trip with the local Museum Association will have the advantage of a private guided tour, advance tickets to avoid standing in line, and an introductory lecture and dinner before leaving Snyder.

"We're really excited about this tour, as well as the things being planned on the local level," Gary Terrell, membership chairman, said. "We want to make the Museum Association the focal point for a variety of activities interesting to community residents, and at the same time want to continue to pursue the preservation of local heritage in a meaningful way."

The first recreational feature scheduled is a John Wayne film series starting Sept. 22. There will be five films, all to be shown in the museum.

Tickets must be purchased in advance and will be \$10 for two persons or \$7.50 for one person. Children under 12 will be admitted free when they accompany an adult ticket holder.

A series of brown bag luncheons will begin on Sept. 15. Each luncheon will feature a different program. Lee Burke, physical education instructor at WTC, will be discussing aerobic exercise at the Sept. 15 session. Anyone who would like to attend is welcome to bring a lunch, or to call the museum by 11 a.m. to have a lunch delivered there. Coffee and tea will be furnished by the museum. No advance reservations are required (except when the museum is to pick up the meal), and there is no (See Museum, Page 13)

Annual Meet. Set Friday By Midwest

Midwest Electric Cooperative, Inc., will hold its annual barbecue banquet and election of directors Friday night at the Scurry County Coliseum.

Charles Stenholm, Congressman for the 17th District, will be the featured speaker, report Midwest officials.

Activities for the banquet will begin about 6 p.m. with registration of members and guests. The barbecue serving lines open about 7 p.m. Approximately 2,000 persons are expected.

Among the directors, three places will be voted on. H.H. Cary of Ira, place 3 incumbent, is resigning. Seeking his seat on the board is Joe Falls; also of Ira. Place 6 is contested by James Nettleton and Walter N. Miers. Place 7 is contested by James Cave and J.P. Moore. In addition to the candidates already seeking seats on the board, nominations for other candidates will be accepted from the floor.

Entertainment will be provided by Cindy Hataway of Snyder.

After 6 Years...

Abbie Hoffman Turns Self In

NEW YORK (AP)—Abbie Hoffman, the former Yippie leader and anti-war activist who had disappeared more than six years ago when he jumped bail on a cocaine charge, surrendered at the Manhattan district attorney's office today, a spokeswoman said.

He eluded about 40 reporters waiting for him in front of the New York State Office Building, where the state special narcotics prosecutor has his office, by going in a side entrance.

Hoffman had been living for several years under the name Barry Freed as a free-lance writer and ecology activist on a tiny island in the St. Lawrence river. His surrender was announced by Mary de

Bourbon, spokeswoman for Manhattan District Attorney Robert M. Morgenthau.

Prior to the surrender, an associate had said Hoffman would be at his publisher's office for a news conference at 12:30

p.m., less than four hours later.

Without a special deal, normal processing of a bail jumper takes 24 to 36 hours, with steps that include processing through central booking. (See Hoffman, Page 13)

Reunion Meal Tickets Ready

Tickets for a chuck wagon supper being planned as part of the second annual Scurry County Reunion will go on sale tomorrow.

The supper will be served from 5-7 p.m. on Sept. 20 at the coliseum, and will feature German sausage in barbecue sauce on a French roll, potato salad, pinto beans, homemade desserts, and iced tea. Tickets are \$4 each and are to be purchased in advance at Hugh Boren & Son Insurance, the coliseum office, the Scurry County Senior Citizens Center, the Scurry County Museum or at Texas Electric Service Co. They may be picked up at the drive-in window of Texas Electric, now located at 2301 Avenue R across the street from the post office.

The reunion is being sponsored by the Scurry County Historical Commission in conjunction with the annual county fair. Reunion visitors are invited to make Meeting Room A of the coliseum their gathering place and to register there.

Much of the food for the chuck wagon supper is being donated by members of the Commission, with profits from ticket sales earmarked for some special projects now in the planning stage. Several other local residents will also be providing homemade desserts for the supper and cookies to be served at a coffee starting at 10 a.m. on Sept. 20.

The Commission has had good response from

local people in helping plan this second reunion. Jean Everett, chairman said. "We appreciate the cooperation that has been shown. We have had several calls from people who are willing to share slides to be used in a visual presentation during the reunion and we think everyone will enjoy seeing these pictures from the past."

Registration for the reunion will be going on Sept. 19 and 20. Anyone who would like further information about the project may contact Mrs. Everett, Mrs. J.W. Headstream or other members of the Historical Commission.

Conference On Freight Service Set

The executive board of the Snyder Chamber of Commerce is scheduled to meet tonight with officials of Merchants Fast Motor Lines to discuss freight service here. The meeting is set for 7 p.m. in the chamber conference room.

Arrangements for the meeting grew out of a chamber survey which was prompted by complaints about local freight service. The chamber has collected written statements of complaints and these will be discussed with officials of the freight line during tonight's meeting, chamber officials said.



BACK FROM GREECE—Laguita Reaves, 18, returned from a 10-week trip to Varkiza, Greece Tuesday night and was given a welcome home reception Wednesday at City Hall. The Snyder chapter of the American-Field Service sponsored the trip abroad for the daughter of Dr. and Mrs. Joe Reaves, 3001 38th St. Above, she displays a sweater presented to her by Dalinda Roberts, president of the Snyder High School Student Council, on behalf of the student body. Roy Carter, president of the local AFS chapter, looks on. Miss Roberts is holding a book about the Greek isles that Miss Reaves brought back with her from the trip. (SDN Staff Photo)

WEATHER

SNYDER TEMPERATURES: High Wednesday, 93 degrees; low, 65 degrees; reading at 7 a.m. today, 70 degrees; precipitation, none; total precipitation for 1980 to date, 11.88.

West Texas—Mostly fair and hot through Friday with a chance of showers or thunderstorms extreme southwest. Highs low 90s north to near 100 Big Bend except 80s mountains. Lows low 60s Panhandle to low 70s except upper 50s mountains.

s
d
n

editorials-columns-cartoons-features-letters

opinion page

congressional comment

by charles stenholm, mc

building character

No one seems to agree on school prayer. Proponents think prayer is the best character-builder. They blame the school prayer ban for a whole host of our society's present troubles — including juvenile delinquency, crime, drug use and vandalism.

Actually, there is no evidence that school prayer can rid us of those things. Some say character cannot be taught, prayer or no prayer. Joseph Gauld, on the other hand, can point to Hyde School, which he founded in Bath, Maine, in 1966, to support his contention that character can indeed be taught in the schools.

Hyde School is so sure it can teach character that it offers a money-back guarantee to back up its claim. If a student or his parents do not feel the youth has profited from his experience at Hyde, the prep school will refund the entire \$6300 annual tuition fee.

In the 14 years of the school's existence, Hyde has never had to make a refund. Gauld, 52, who was headmaster at Hyde from 1966 until 1975 (he is still one of the school's trustees) is now encouraging public school systems to adopt the model he developed. Next month he will introduce the Hyde concept into the public schools in Cumberland County, Maine, for one year.

What is the Hyde concept? It is to bring out a student's "unique potential." This helps him to gain the confidence and the drive — what Gauld calls courage — to accomplish something with his life.

While other schools with a hard-line approach to discipline lay it on the line to the student as to what is expected of him, the Gauld approach is to first make a student aware of his potential and then insist he live up to that potential.

If not, well, sometimes at Hyde it meant that Gauld would come on like Ghengis Khan to a troublesome student. He does not apologize for this. Gauld is convinced that our sentimental attitude in raising kids is at least partly responsible for the "assaults, rapes and murders which mark us as the most violent society in the world today."

Phil may not have been typical but he is an example of how Gauld often handled problem students when he was Hyde's headmaster.

Phil was caught smoking and over a period of several months he insulted several teachers and physically threatened another. When he was brought into Gauld's office, the headmaster said, "Phil, I'm not going to lecture you. It's too late for that. I simply want you to decide if you think you really need our help. If not, just leave and live your own life. But if you decide to stay, you are going to grow up."

Phil would have to box the teacher he threatened. He had to get a haircut — and begin to look like the boy you are. He had to dig a six-foot pit in which to figuratively bury his old image. "Finally," said Gauld, "you will work on the grounds and live by yourself until you are proven ready to join the Hyde community again."

Phil decided to stay and take his medicine. "His bout in the ring taught him new respect for his teachers," says Gauld. "After getting a haircut, he got to work digging his pit. When it was finished, I went to inspect it. Phil, hands on his hips, smiled at me, sweat glistening on his face — sweat he proudly didn't wipe away."

A typical comment was this one by a 17-year-old senior boy: "I've grown at Hyde. For me, growth is when you do something you didn't think you could do."



paul harvey
the fuels future

Oils have been a good investment in recent months; what's next? Oil is getting too expensive to burn. We're going to have to fill the gas tank with something other than gas — but what? It will be a "synfuel," a "synthetic fuel." And if you can guess which — you can get rich!

The Wall Street Journal says that synfuels "promise to become one of the biggest investment opportunities of 1980s." The big investment houses, such as Merrill Lynch and Dillon Read, are mobilizing all the brainpower they can find on this subject. Synfuels will become a hundred billion dollar business these next 10 years and everybody wants a piece of it.

But which horse do we bet on? Coal, nuclear, solar, shale rock, tar sand, hydrogen, alcohol — each is promising — but none is yet a cinch to win. Three years ago, our government created a Cabinet-level Department of Energy, gave it 88 billion

of your dollars to invest in developing new energies. So far it has developed almost nothing. Sen. Tom Eagleton (D-Mo.), an early supporter for the DOE, has since reviewed 42 negative reports and concluded that the department has "belly-flopped" and "should be abolished." If the development of exotic new energies requires more flexibility than government has and more money than industry has, perhaps the best response involves government grants to small entrepreneurial companies already competing in the synfuels race.

my turn

by john long



Does life begin at 40, or later? Does it begin at 50, or at 60? Certainly it doesn't end at 21. Some people are ready for retirement at 40, whereas some people are going strong at 70. Below is a list of people who were productive far beyond the biblically promised three score and ten years. The list comes from the Sept. 1, 1979 edition of U.S. News & World Report.

looking back from the sdn files

5 YEARS AGO Ricardo Corrales, president of Lulac, presented a certificate to Marina Canales, the outgoing sweetheart, and presented the new title to Connie Herrera.

thoughts

When Jesus fed the multitude, twelve basketfuls were left over because each disciple had a basket. They were made of wicker work shaped like a narrow-necked pot, wider at the bottom, as Barclay explains. The loaves were like rolls and the fish were the size of sardines.

mount, but nothing is gained by burying our heads in the sand and pretending that those problems or the aliens themselves don't exist.

Such was the case in the U.S. House of Representatives recently, when an amendment was considered and passed which would prohibit the use of the 1980 census for the reapportionment of Congressional districts because the census count allegedly included illegal aliens.

Supporters of this amendment contended that the estimated 20 million illegal aliens — 5 million legally registered and an estimated 15 million undocumented, should not be included in the census.

I opposed this amendment on two basic grounds, one practical and the other Constitutional.

We are in the concluding stages of the decennial census of the U.S. and have spent over \$1 billion to arrive at this enumeration of our people. By barring the use of the census for the reapportionment of Congressional districts, this amendment will prevent the most effective use of the census.

As long as we rely on the principals of Constitutional government and "no taxation without representation," it is of paramount importance that all persons be counted in order that their needs be represented.

commentary

Bob Wagman

U.S. defense system in the coming decade. Its purpose is to deal with terrorist situations and to put out "brushfires" anywhere in the world.

To many civilian planners in government, the biggest threat to the future success of the RDF is an anti-terrorist and quick-strike force is the fact that it is organized the way the rescue team was set up.

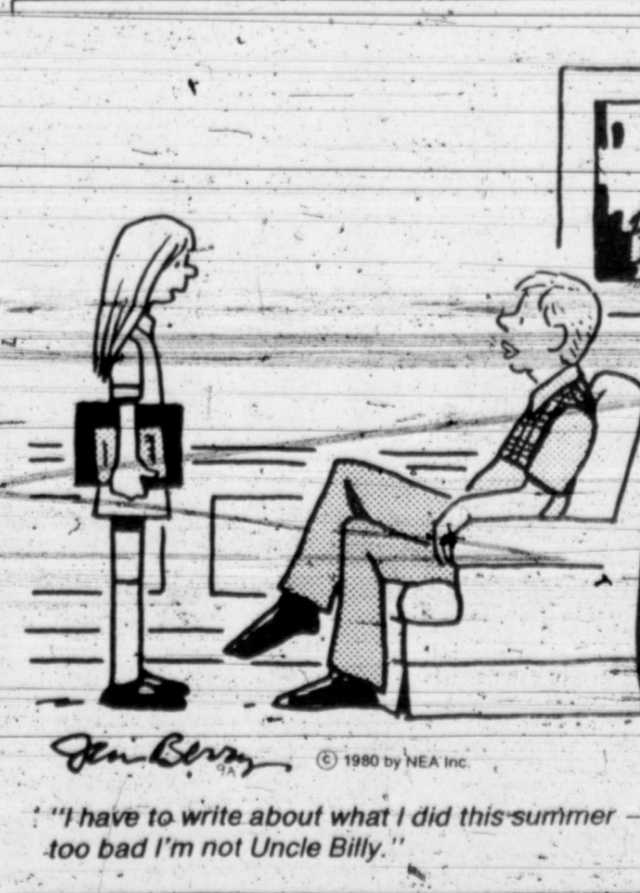
As the planner put it: "Those nations with effective rapid strike forces, ones that have actually proven themselves in combat — Israel, West Germany, Britain — have set up the units outside the normal multi-service command structure. Whether it's planes, or ships, or tanks, or men, they are under one command. We've chosen to go the other route. Each service is responsible for its own. It's a great way to run a bureaucracy but, as Desert One showed, a lousy way to run a war."

Use Snyder Daily News Classified Ads 573-5476 THE SNYDER DAILY NEWS Published Sunday morning and each evening, except Saturday, by Snyder Publishing Co., Inc., at Snyder, Texas 79549.

At 85, Coco Chanel was

However, despite the evi-

Berry's World



"I have to write about what I did this summer — too bad I'm not Uncle Billy."

Lace Is The New Rage

By Joanne Schreiber

You simply can't face fall without a lace collar. Add a soft lace collar to a plain blouse or dress, wear a lace collar with your crew neck sweater and put a lace collar on any of the blouses and shirt-dresses you'll be sewing for fall.

The new fall patterns show lace collars on all sorts of garments. These are meant to be purchased readymade and either added to the garment during construction or made to be worn separately.

A number of styles are available, including lawn collars with delicate openwork edgings, lacy collars that look like the doilies, Grandmother used to make and antique-looking collars with embroidery over ecru net. The neckline sizes vary, so be sure you know the neckline measurement of your pattern before buying the collar.

The makers of the Embassy line of collars offer these tips on working with lace collars:

1. To make a detachable lace collar, apply 1/4-inch ribbon to the neck edge of the collar using satin, grosgrain or velvet ribbon, depending on the collar fabric. Leave enough ribbon to tie in a bow at front or back.

You can also use snaps or Velcro dots to make a detachable collar. Just sew three or four snaps or dots to each collar piece and the matching snaps or dots to the garment.

2. To apply a lace collar instead of the pattern collar, just place edge of collar on 5/8-inch seamline at neck edge, with wrong side of collar to right side of fabric and baste in place. Apply facing as usual according to pattern instructions.

Some of the lace collars are made of 100 percent cotton and some are cotton blended with polyester. They should be hand-washed and laid flat on a towel to dry.

TOPS Lose 45 Pounds

Take Off Pounds Sensibly (TOPS) club met Tuesday for its regular weekly meeting.

Frieda Dever, co-leader, presided at the meeting since leader Jean Yearwood is on leave-of-absence.

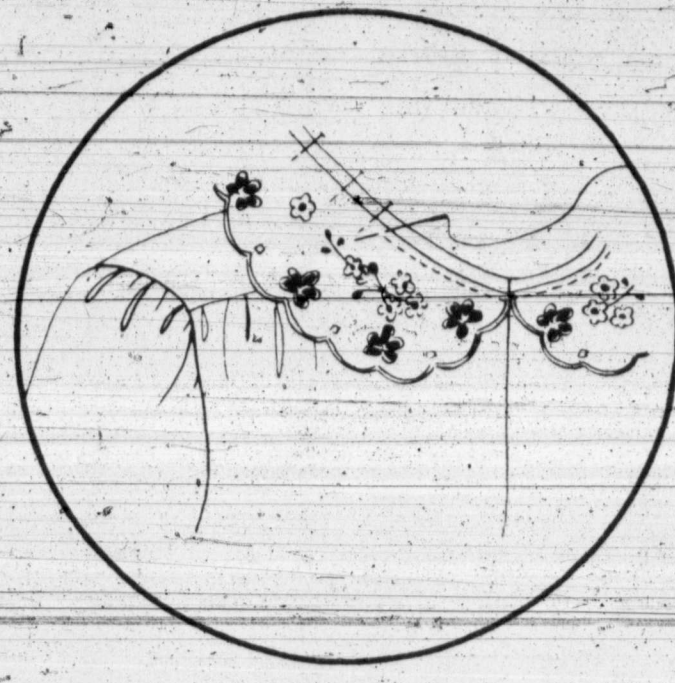
The August weight report was given with Bobby Rose, Janie Gibson and Peggy Vernon being the top losers in the three categories. The club had a loss of 68 1/4 pounds and a gain of 22 1/2 pounds, resulting in a net loss of 45 1/2 pounds.

At the Sept. 9 meeting, Emma Huffman will direct the club in exercises.

Clubs Plan Annual Sale

Thirteen clubs will be participating in the annual Martha Ann Woman's Club's garage sale held in Towle Park Barn Saturday from 8 a.m. to 5 p.m. Mrs. Essie Mae Davis, chairman, asks all members to bring their items to the barn, already marked and sized, tomorrow. Workers will be at the barn at 9 a.m.

Proceeds from the sale will be used to operate the clubhouse located on Martha Ann Boulevard, behind Cogdell Hospital. Donations will be appreciated. For more information, call Dena Ellis at 573-5970.



SEW A readymade lace collar to your Madras shirt-dress or wear one with your Shelland sweater. A lace collar may be substituted for any collar called for in a pattern.

If you have several of the lace collars, you can wear them not only on your tailored Madras shirt-dress, but also on such unlikely items as a sweatshirt or T-shirt. You

can't go wrong — lace collars are the top accessory for fall and easy to add to any garment you're sewing.

(NEWSPAPER ENTERPRISE ASSN.)

BRIDGE

Oswald Jacoby and Alan Sontag

Operation overtrick fails

NORTH 9-4-80	
♦ 105	
♠ A J 10 6 2	
♥ Q 9 3	
♣ A K 2	
WEST	
♦ K 9	
♠ 9	
♥ K 10 8 4 2	
♣ J 7 6 4 3	
EAST	
♦ J 4	
♠ Q 7 5 4 3	
♥ A J 7	
♣ Q 9 5	
SOUTH	
♦ A Q 8 7 6 3 2	
♠ K 8	
♥ 6 5	
♣ 10 8	

Vulnerable North-South Dealer: North

West	North	East	South
1♥	Pass	1♠	Pass
Pass	1NT	Pass	1♣
Pass	Pass	Pass	Pass

Opening lead: ♥ 9

By Oswald Jacoby and Alan Sontag

Some years ago a match-point duplicate player found himself in the company of a bunch of rubber bridge play-

ers on a cruise. A non-stop bridge game got under way almost as soon as the ship sailed.

In the first rubber, our match-point player worked out a brilliant end play to score an overtrick. One of the other players remarked, "We have no chance against you, Joe. You'll win a thousand points from us in overtricks."

Things didn't work out quite that way. Our duplicate player lost a game after game trying for those overtricks.

Here is an example of operation overtrick at its worst. Dummy's 10 of hearts was allowed to hold the first trick. Our hero saw a chance to make six or maybe seven and finessed his queen of spades at trick two. West took his king and led the four of diamonds. East took his jack and ace and led a second heart. West ruffed and instead of two 30-point overtricks, game and rubber had blown out the port hole.

A rubber bridge player would cash the ace of spades at trick two, go to dummy with a club and lead a second trump. West would get his king, but the contract would be safe.

(NEWSPAPER ENTERPRISE ASSN.)

Stars Of Tomorrow To Perform

The West Texas Theatre Arts Center has selected 17 local girls to perform in "The Stars of Tomorrow," a dance variety show.

The group will perform in Snyder and area towns throughout the school year. Organizations interested in having the dance show should contact Debbie Row, director, at 573-6269 or 573-0725.

Girls in the dance company include Carrie Gilbreth, Shelby Hildebrand, Denise Hood, Tracey Warton, Kelly Smith, July Lay and Paula Caldwell.

Snyder School Menu

FRIDAY BREAKFAST
Orange Juice
Donut
Milk

LUNCH
Vegetable Soup
Peanut Butter & Jelly Sandwich
Carrot-Celery Sticks
Oatmeal Cookie
Milk

Others are Meredith Reed, Tammy Williamson, Kristen Walton, Angie Lay, Shea Fenton, Shanda Wiman, Laurie Donelson, Susan Brim, Jennifer Cole, Rebekah Powell, Lisa Franklin and Michelle Holder.

Thirty-eight girls auditioned for the company.

Art Guild Club Plans New Year

The Art Guild Study Club met at the Martha Ann Woman's Club Sept. 2 with Mrs. Sam Chorn and Mrs. Wirt Holsinger as hostesses.

Mrs. Myron Roe, president, presided. Committees were appointed and plans were made for the club year.

The hostesses served refreshments to 19 members and one guest, Kay Sharp of Riverside, Calif., a former member.

THE SHOPPE
Quality Photography
Jane Wadleigh
3307 40th Pl.
Snyder, TX 79549
(915) 573-4281
(915) 573-3920
evenings



EXTENSION CLUB BUSY—Honey Do's Home Extension Club held a workshop Tuesday to prepare items for Christmas in November, a county-wide extension club project, set for Nov. 1 at the coliseum. Pictured, from left, are Dianne Price, Texa Jones and Shirley Bullard. The club meets every third Thursday for regular meetings.

COMMUNITY CALENDAR

FRIDAY
Duplicate Bridge Club; Snyder Country Club; 1:30 p.m.

SATURDAY
People Without Partners; 42 at Inadale Community Center; 6:30 p.m.

SUNDAY
Duplicate Bridge Club; Snyder Country Club; 1:30 p.m.
Scurry County Museum; Campus of WTC; 1:30 p.m.



RICH WOOLS TAKE-ON country colors in this autumn ensemble from Knockabouts by Pendleton. A moss-green flannel pant is paired with a houndstooth-check riding jacket in moss and bordeaux. The moss-colored crew-neck shetland is worn over a tailored shirt in buff oxford cloth.

Ira School Menu

FRIDAY
Chicken Fried Steak
Vegetable Salad
Gravy
Cream Potatoes
Orange

Bed, Bath, ETC.
2311 College Ave.
573-4442
"Martex Sheets and Towels"

Radi-Tan TANNING SALON

For the safe, gentle way to be a beautiful person.

Cogdell Center 915/573-0721 Snyder

INVENTORY Reduction Sale

25% OFF ON ALL "GIFT" ITEMS AND ALL JEWELRY INCLUDING 14 CT. GOLD

50% OFF ALL EVA GABOR WIGS ALL SALES FINAL

MERLE NORMAN
The Place for the Custom Face
West Side of Square

NOON BUFFET SUNDAY THRU FRIDAY 11 a.m. - 2 p.m.

All The Pizza & Salad You Can Eat \$2.89

EVENING BUFFET TUES. & THURS. - 5 To 8:30 p.m.

All You Can Eat \$2.89

PIZZA INN 573-3542 912 25th



POISONOUS PLANT—A special feature of the flower show division of the Scurry County Fair set for Sept. 18-20 at the coliseum is the poisonous plant exhibition. Shown are Mrs. Fred Davis, left, and Mrs. S.L. Terry holding a common houseplant that is poisonous, the dieffenbachia or dumb cane. (SDN Staff Photo)

Poisonous Plant Display To Be Featured At Fair

One of the more colorful divisions of the Scurry County Fair Sept. 18-20 will be the flower show division.

Under the direction of superintendents Mrs. S.L. Terry and Mrs. Bob Dupree, the flower division will be open to all amateur gardeners and exhibitors in this area.

A special feature of the flower show division will be a display of common poisonous plants. This display will give information about the poisonous plants, list their toxic part and give the symptoms of poisoning. Although this feature will not be judged, persons having poisonous plants are asked to bring their specimens for display.

Some of the more common houseplants that are poisonous include the oleander, poinsettia, dieffenbachia, elephant ear, castor bean and mistletoe. Dangerous garden plants include larkspur, monkshood, autumn crocus, star of bethlehem, lily-of-the-valley, iris, foxglove and bleeding heart. Ornamental plants that are toxic are wisteria,

azaleas, lantana, camara and rhododendron. Trees that are dangerous include oak, elderberry and black locust.

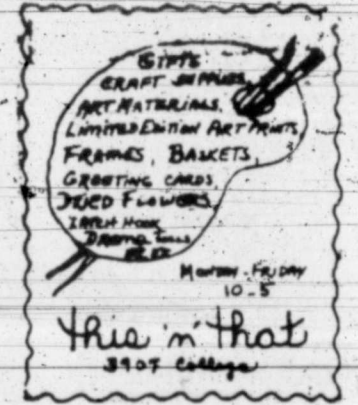
Rules for the flower division state that container grown plants should be delivered to the Scurry County Coliseum between 1-8 p.m. Sept. 17 for entry. Entries will be accepted between 8-10 a.m. Sept. 18 and may not be removed before 10 p.m. Sept. 20. The entries may be removed from 1-3 p.m. Sept. 21.

All of the entries must be in the building by 10:50 a.m., be classified, entered and ready for placement by 11 a.m. Sept. 18. The judging by the county judges will begin at 11 a.m. Sept. 18.

All exhibits containing a protected variety must be accompanied by a card

listing both botanical and accepted common name of the plant and certification that it was grown by the exhibitor, from seed or other method.

Awards for the exhibits will be given for first place (blue), second place (red), third place (yellow) and honorable mention (white). As many awards will be given in each class as merited.



Perkin's Gift Emporium

English Pub Mugs by Knobler Co.

Chilled Juice
Cinnamon Toast
Milk

LUNCH
Hot Dogs
Tater Tots
Cole Slaw
No Bake Cookies
Milk

Golden • cling peach halves stuffed with guacamole and served on a bed of lettuce are an easy tasty salad. It's a great accompaniment for a Mexican casserole dinner.

Hours: Mon. thru Sat. 9 a.m. to 5:30 p.m. East Side of Square

"unique shopping for a special gift" 573-6591

Living Sound International in concert

at **Agape Christian Fellowship**
Friday Sept. 5th 7:00 p.m.

THE BORN LOSER



ECK AND MEEK



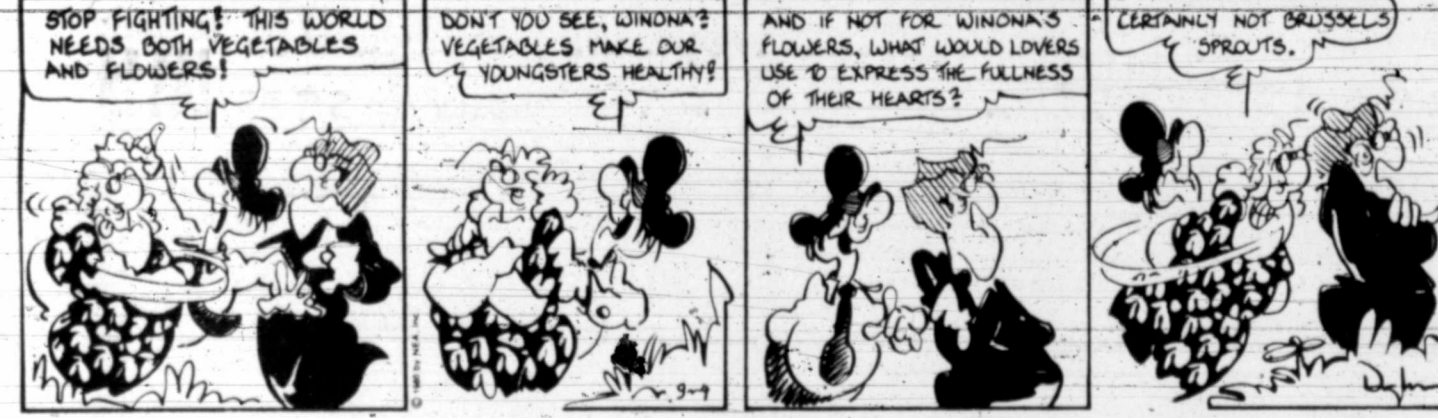
FLASH GORDON



BARNEY GOOGLE AND SNUFFY SMITH



FLETCHER'S LANDING

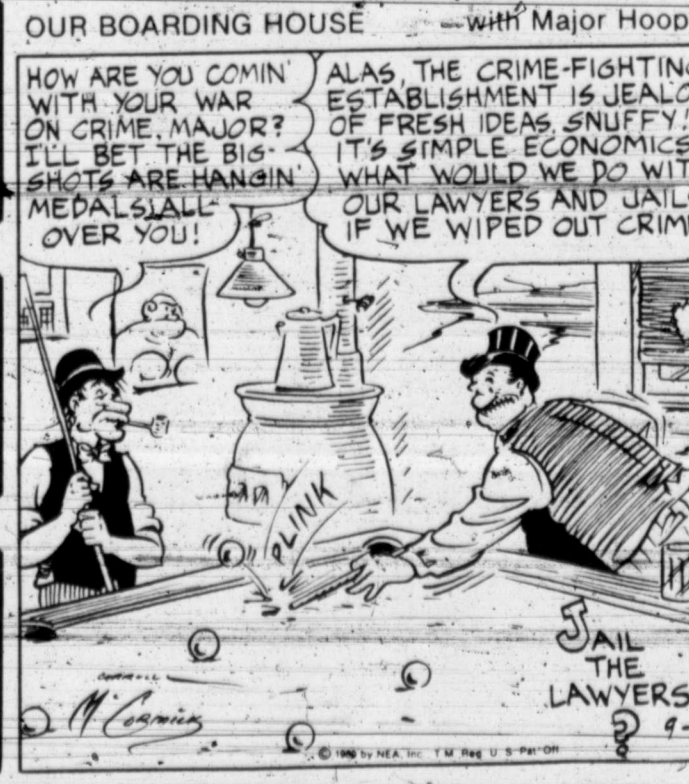


BLONDIE



- ACROSS**
- Abusive treatment (comp. wd.)
 - Feudal peasant
 - Nerve-ill
 - Suitcase
 - Overweight
 - Canker
 - Heating apparatus
 - Cinnabar
 - Powerful explosive (abbr.)
 - Sport of shooting clay pigeons
 - Look at
 - Greeting
 - More foxy
 - Jabs
 - Cornice
 - Sodium chloride (abbr.)
 - English count
 - Squeezed out
 - House fuel
 - Tenderfoot
 - Meeting
 - Fruit or vegetable dish
- DOWN**
- Information (abbr.)
 - Regan's father
 - Fractur rubber ring
 - Home of Abraham
 - Close relative
 - Make up for
 - Enricled
 - Compass point
 - Search
 - Feminine (suffix)
 - Ancient writing
 - Court order
 - Err
 - Sows
 - Vessel's frame
 - Looks
 - Body of water
 - Lawyer's patron saint
 - Ache
 - Tree
 - Tug
 - Goddess of fate
 - Search runners
 - City dirt
 - Mischievous child
 - Meal
 - Stem-like part
 - Ooze
 - Noblewoman
 - Customer
 - First word on the wall
 - Close door
 - Half (prefix)
 - State (fr.)
 - Indefinite number
 - Compass point
 - Doctor's helper (abbr.)

1	2	3	4	5	6	7	8	9	10	11	12
13								14			
15			16					17			
18				19				20			
			21					22			
23	24	25				26		27	28	29	30
31				32				33			
34								36			
37											
			40					41			
42	43	44	45					47	48	49	
50						51				52	
53											
56											



FRANK AND ERNEST



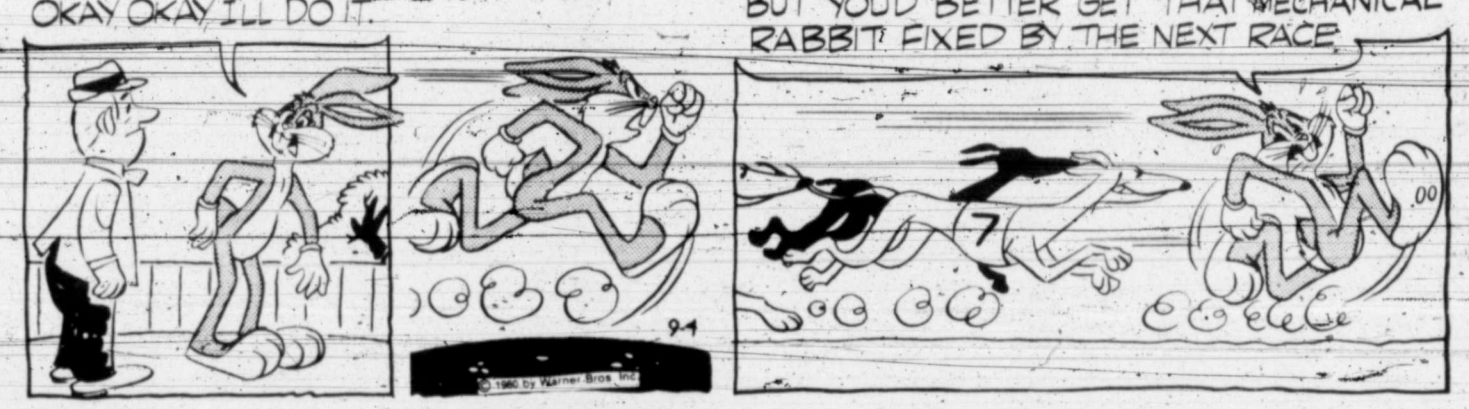
LEVY'S LAW



WINTHROP



BUGS BUNNY



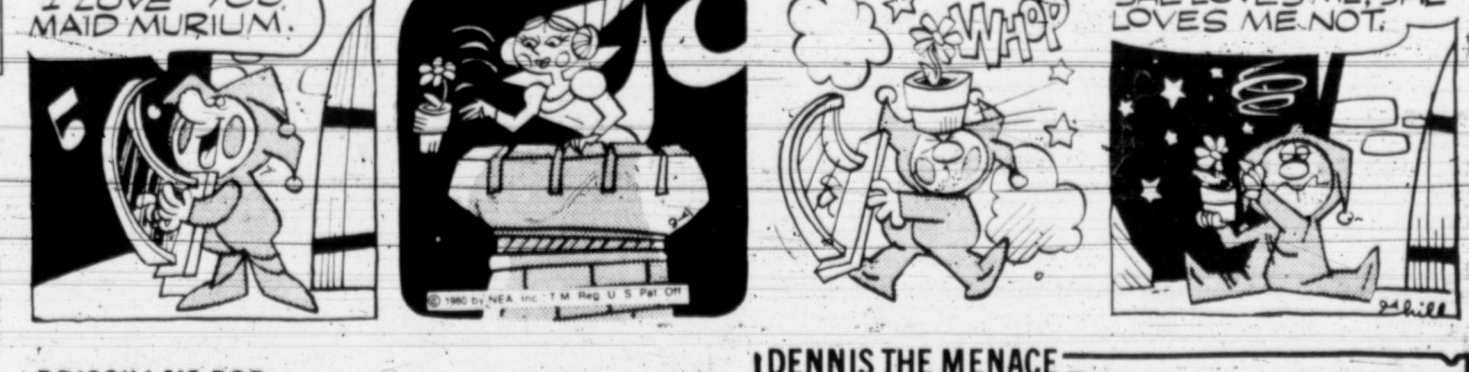
ALLEY OOP



CAPTAIN EASY



SHORT RIBS



PRISCILLA'S POP



DENNIS THE MENACE



Dear Abby



Caffeine May Cause Birth Defects

WASHINGTON (AP)—The federal government says pregnant women should stop drinking coffee, tea and some cola drinks or at least cut down because caffeine may cause birth defects. The Food and Drug Administration, expected to make that warning official today, stopped short of requiring warning labels

on products that contain caffeine. Pregnant women have long been warned to watch their diet and to curtail smoking, alcohol and drugs. Caffeine, a stimulant, and other substances reach the unborn child through the placenta that links mother and fetus. The agency's actions do not include warnings to

others who drink caffeine beverages. Americans consume an average of 2.5 cups of coffee and 12 ounces of a soft drink each day. The FDA action comes in the wake of studies that show caffeine causes birth defects in rats. But, FDA spokesman Wayne Pines said Wednesday, the evidence is inconclusive

whether the drug also causes human birth defects and the agency wants further studies done. "There is no reason for people to be frightened. The scientific evidence is not conclusive," said Pines. "We feel it is incumbent on us nevertheless to report to the public where we stand. We feel

that because caffeine is active as a drug, pregnant women should avoid caffeine-containing foods and drinks or use them sparingly." The agency also is changing its standards to permit the sale of decaffeinated cola drinks. One study, using rats, found that caffeine caused birth defects when fed to

the animals at levels equivalent to 12 to 24 cups of coffee a day. But another study, conducted for the coffee industry, found that rats metabolized caffeine differently than humans, undermining the results of the first study.

The British ended their protectorate over Egypt in 1922.

Company Show-Off Wants to Be Benched

By Abigail Van Buren

© 1980 by Universal Press Syndicate

DEAR ABBY: I'm 15, and I've been taking piano lessons since I was 8. I guess I'm pretty good, but I'm far from a concert pianist.

Whenever we have company, my mother asks them (right in front of me) if they would like to hear me play the piano. Well, what can they say?

Then they all start coaxing me and, of course, I have to play. I've asked my mother not to do this to me, but she does anyway. I know she's proud of me, but the company is probably bored stiff, and I'm embarrassed.

Please print this. It might do some good, but don't mention my name or I'll get killed.

COMPANY SHOW-OFF

DEAR SHOW-OFF: Appeal to your mother again. In the meantime, I'll help from this end by printing your letter. (P.S. Your company is lucky. Ours had to listen to my twin and me play violin duets until we were 17.)

DEAR ABBY: When my husband and I announced our plans to adopt a baby, here are some of the comments we received:

"Are you sure you really want to? I've known people who have adopted a baby and then had their own."

"Aren't you afraid? What if the baby's retarded? Will they take it back?"

Abby, please tell your readers that by the time a couple announces their plans, they have already given the idea a great deal of consideration, not to mention multiple discussions with a social worker, and all they want to hear is, "Congratulations!"

EXPECTING IN THE N.W.

DEAR EXPECTING: Congratulations! May I add a few more questions adoptive parents don't want to hear:

"Do you know anything about the baby's parents?"

"Where are you getting the baby from?"

"Are you going to tell the child he's adopted?"

"How much did it cost you?"

DEAR ABBY: I am a grown woman who is in a very embarrassing situation. The daughter of a friend was recently married, and I sent her a luncheon cloth with matching napkins for a wedding gift. She phoned me to say that the color did not go with her decorating scheme, and asked where it was purchased so she could exchange it for another color.

Well, Abby, I've had this luncheon set for years. It was given to me as a gift, so of course it can't be exchanged. How should this be handled?

EMBARRASSED

DEAR EMBARRASSED: Tell her that it was purchased years ago (it was), and cannot be exchanged.

DEAR ABBY: I saw red when I read that letter from "84 IN S.C.," complaining because her children moved her out of her old familiar home and away from lifelong friends because they wanted her in a better climate in a "cheerful apartment" near them.

"84" should consider herself lucky. Some elderly folks find their old familiar neighborhoods unsafe. My mother fought relocation until she was mugged, then she couldn't move fast enough. My husband and I were thrilled when we got her into a brand new senior citizens' apartment complex. Everything in her apartment is keyed for retired persons, including the best security features.

Know what Mom said? "I hate it! I can't hang my clothes out to dry. I feel like I'm living in an old folks' home!" (She's 80.)

"I, I, I..." Abby, it's self-centered, nit-picking people like my mother who are difficult to understand. Just think of all the poor people of any age who would gladly trade places with "84 IN S.C." and "80 IN PA."

KIDS CAN'T WIN

Do you hate to write letters because you don't know what to say? Thank-you notes, sympathy letters, congratulations, how to decline and accept invitations and how to write an interesting letter are included in Abby's booklet, "How To Write Letters for All Occasions." Send \$1 and a long, stamped (28 cents), self-addressed envelope to: Abby, Letter Booklet, 132 Lasky Drive, Beverly Hills, Calif. 90212.

Director Of Jazz

At NTSU Retiring

DENTON (AP)—Leon Breeden, who catapulted North Texas State University's jazz bands to worldwide fame during his 21-year tenure, will retire as director of jazz studies next August.

"It seems to me that the time has come for someone new to bring some fresh air to the program without the scars of the past constantly haunting that person," he told the largest group of jazz majors ever at the university in announcing his retirement Sunday.

Under Breeden's guidance, the One O'Clock Jazz Band has been nominated for two Grammy awards, won numerous awards at jazz festivals, performed with Stan Kenton and at the White House, made U.S. State Department tours to

Mexico and the Soviet Union, and appeared three times at the Spoleto USA festival.

Breeden, 59, read from a letter of resignation he wrote last November to Dr. Marceau C. Myers, dean of the School of Music. The announcement came as a surprise to students and faculty alike, however.

"It is my fervent hope that one will be chosen as my successor who is truly an educator and not one whose priorities are based upon commercial and show business aspects," he read.

Breeden said his plans include writing a book about the struggles that led to wide acclaim for the NTSU jazz program.

Use Snyder Daily News Classified Ads 573-5486

PLANTS 'N FLOWERS

FOR EVERY SPECIAL OCCASION!

SAFEWAY

Prices Effective Thursday thru Sunday, Sept. 4, 5, 6 & 7, 1980 in Snyder.

Sales in Retail Quantities Only!

Boston Fern

HANGING BASKET
Likes Partial Shade!
10-Inch Pot.

\$10.95

EACH

Fly Traps \$2.69

Venus Fly Traps, Decorative
Indoor Plants, 3-Inch Pot.

EACH

Yucca Tips \$4.98

Needs Bright Light! Water Thoroughly!
6-Inch Pot.

EACH

Tropical Plants \$2.69

Assorted Rare Foliage Plants, 4-Inch Pot.

EACH

Assorted Tropicals \$59c

California, 2 1/4-Inch Pot.

EACH

Pony Tail \$3.98

Palm, Keep Soil Moderately Moist.
5-Inch Pot.

EACH

Sansevieria Futura \$3.98

6-Inch Pot.

EACH

Dried Flowers \$2.99

Arrangement Under Glass. Great Gift Idea!

EACH

Spectracide \$9.95

"6000" Granules. Fertilizer.
12 1/2-LB. BAG EACH

EACH

Plastic Saucer \$19c

Clear 6-Inch Saucer For House Plants!

EACH

Plastic Rake \$2.49

Lawn and Leaf Rake. Lightweight.

EACH

Vertagreen \$5.95

Winterizer Fertilizer.
50-LB. BAG EACH

EACH

Plant Mistlers \$1.49

Easy-To-Use For Indoor Plants
16-oz. Size.

EACH

Zebra Plants \$3.98

Place Near Sunny Window!
5-Inch Pot.

EACH

Pothos Ivy \$79c

Golden Pothos.
3-Inch Pot.

EACH

Assorted Cacti \$1.69

and Succulents.
4-Inch Pot.

EACH

Potting Soil \$69c

STIM-U-PLANT INDOOR. Ready To Use!

2-Quart BAG \$69c

8-Quart BAG \$1.39

20-Quart BAG \$2.29

Plant Spikes \$98c

Jobe's House Plant Fertilizer.

PKG. \$98c

Ceramic Pots \$1.98

Glazed. Assorted Colors and Shapes.

6-Inch EACH \$1.98

8-Inch EACH \$3.98

10-Inch EACH \$4.98

SAFEWAY

© 1980 SAFEWAY STORES, INCORPORATED

Adult Classes

Meet Tonight

Adults who would like to prepare for GED tests are invited to enroll in the Adult Education classes meeting tonight at Western Texas College.

There is no charge for these classes, and students may enroll at any of the Tuesday and Thursday night meetings. The classes meet at 7 p.m. in the Learning Resource Center.



ADVISOR—Norman Spencer, Scurry County Library representative to the Big Country Library System since Oct. 11, 1977, was elected to the advisory council at a meeting in Abilene on Sept. 2. Council members serve as a liaison agency between the member libraries, their governing bodies and library boards.

TRAVIS FLOWERS
1942-3746
573-9379

Texas Key Battlefield In Presidential Quest

SAN ANTONIO (AP)—Texas is a key political battlefield in Ronald Reagan's drive for the White House and Republicans plan to launch an unprecedented effort to carry the state in November, said the state GOP chairman.

Chet Upham of Mineral Wells said the party plans to spend \$2 million and put forth an unprecedented organization effort to win the presidency for Reagan.

He said state Republican chairmen, who met in Chicago earlier, targeted Texas as a must-state for Reagan.

"The battleground is here and it's going to be waged as hard as we can," Upham said at a news conference Wednesday.

He said Texas Republicans were buoyed by the 1978 election of the state's first GOP governor since Reconstruction, Gov. Bill Clements, and that they were ready to carry on the fight for Reagan.

"The race in 1976 was close and Texas fell on the Democratic side. We're going to make every effort this year to carry Texas for the Republicans," said Upham.

"We feel, and the Demo-

crats feel, that traditionally and historically, the president has been elected the way that Texas goes. There's never been a Democrat or a Republican elected president this century that has not carried Texas."

The state party chairman's remarks came as Republicans prepared for their state convention here Friday and Saturday. A 20-member temporary resolutions and platform committee is working on the state platform to be submitted Saturday. And the state executive committee is scheduled to convene today.

Upham said that Reagan and his running mate, Texan George Bush, both would make several visits to Texas before the election and that he anticipated President Carter, also would campaign heavily in the state.

Bush, Gov. Bill Clements, Sen. John Tower - all of whom will address the convention this weekend - and campaign organizations in 240 of the 254 counties will make a strong push to elect Reagan, Upham said.

Upham said the latest Republican poll shows Reagan leading Carter by 10 percentage points in Texas. But he predicted the margin would narrow considerably by November.

The state chairman also said he hoped Reagan would receive at least the 25 percent of the Hispanic vote that Clements and Tower garnered in 1978.



WINS CONTEST—Marti Powell, 8, daughter of Mr. and Mrs. William Powell, is the winner of a Jerry Lewis Muscular Dystrophy contest sponsored by the Skinny's convenience store on the East Highway. Marti collected \$105 for the charity. Presenting her with her prize, a watch, are Ann Fisk, (left) manager and Elaine Buchanan, assistant manager. (SDN Staff Photo)

Complete Negotiations In Aramco Acquisition

HOUSTON (AP)—The Saudi Arabian government has completed negotiations for 100 percent acquisition of Aramco, the American consortium that has handled all Saudi oil production, a weekly publication reported.

The Saudi Report said Wednesday the Middle East government had purchased the remaining 40 percent share of concession rights, facilities and production held by the consortium of Exxon, Texaco, California Standard and Mobil.

"I don't think that the two actions, so to speak, are necessarily coinciding," he said.

"There is no need to rush or hurry to establish anything until the government is satisfied as to what should be done."

Taher said the actual takeover agreement spelling out the function of a national oil company as well as the continued responsibilities and guaranteed access to crude oil for the four American oil companies still must be signed.

No one knows when the takeover agreement will be signed, he said. Meanwhile, he added, "oil is being pumped, the money is coming in, so there is no problem."

Dallas Police Shoot Woman

DALLAS (AP)—A Dallas police officer shot a woman to death late Wednesday as the woman slashed at another woman with a butcher knife, according to Dallas Police spokesman Bob Shaw.

Shaw identified the woman as Patricia Ann Henry, 36.

Officer Manuel Vasquez shot the woman in the chest with his pistol after the woman allegedly refused to drop a butcher knife and slashed Lillie Walker, 26, on the elbow with the knife, Shaw said.

The Walker woman was taken to Parkland Hospital for treatment of the knife wound and a gunshot wound she suffered only minutes before Vasquez arrived.

HOSPITAL NOTES

ADMISSIONS: Hattie Carman, 3009 Ave. C; Floyd Dodson, Rt. 2; Leopoldo Aguilar, 1111 26th; Cecil Ham, 2512 29th; Arka Barnett, Rt. 3; Roberta Langford, Rt. 1; Juanita Sradar, Rt. 2; Ira Jenkins, Rt. 1; Gary Kasperck, 1202 20th; Norma Dominguez, 2009 Ave. E; James Doyle, 1111 26th; Della Wilson, 120 Peach; Audie Jones, Hermleigh; Lloyd Spraggins, 707 27th; Martha Logan, 3601 Ave. U; Dorothy Pope, Rt. 2; Shirley Kelly, 1906 Coleman.

DISMISSALS: Lynda Crenshaw, Susan Tolbert, Dorman Beane, Freddie Everton, Alfredo Barrera, Emogene Sterling, W.R. Sterling, Jack Tilson, Don Dillard, Connie Bleivins, Greg Jones, James Doyle, Corena Cole, Christopher Garcia, Eteña Samore, Domingo Fernandez.

BIRTHS

Jesus and Norma Jean Dominguez of 2009 Ave. E are parents of a 7 lb. 14 oz. son born at Cogdell Hospital Sept. 3 at 10 p.m.

Mr. and Mrs. Clay Taylor, 3003 34th, are the parents of a baby girl, Allison Jeanette, born Aug. 31 at Malone-Hogan Hospital in Big Spring. Miss Taylor weighed 8 lbs., 12 1/2 oz.

Stevens Manages Odessa Mortuary

Harry Stevens, who has been with Bell-Seale Funeral Home in Snyder for the past four years, is the new executive vice president and general manager of Hubbard-Kelly Funeral Home in Odessa.

Bell-Seale and Stevens recently acquired an interest in the Odessa funeral home, and Stevens and his wife, Frances, have moved there.

Use Snyder Daily News Classified Ads 573-5486

GRAVES COUNTRY PHOTOGRAPHY STUDIO
915-573-3911

SNYDER DRAPERY
Fine Draperies
Woven Woods
Mini Blinds
573-4213
Nena Mitchell
Owner
Downtown Bldg
1906 24th

FISH FRY
All Day Friday
All You Can Eat
\$2.99
The Other Place Restaurant
401 37th 573-0567

FM means First Methodist
on Sunday mornings.
Coming Sept. 7.
KSNY FM 102
Time: 10:55 a.m.

MONEY SAVERS

GIBSON'S DISCOUNT CENTER

OPEN 9 A.M.—8 P.M.
MONDAY THRU SATURDAY
MASTERCARD—VISA
PRICES GOOD THRU SEPT. 10TH.

LIFEBUOY SOAP
5 OZ. BATH SIZE
NOW ONLY **3 FOR \$1.00**

OLD ENGLISH FURNITURE POLISH
LEMON OR RED OIL POLISH.
REG. 1.47
NOW ONLY **\$1.19**

Close-up TOOTH PASTE
SUPER SIZE 8.4 OZ. 24' OFF LABEL
REG. 1.83
NOW ONLY **\$1.29**

RAY-O-VAC BATTERIES
HEAVY DUTY BATTERIES
SIZE C & D
TWIN PAC
REG. 99¢
NOW ONLY **69¢**

GIBSON'S IS PROUD TO ANNOUNCE THE ADDITION OF **PRESTON MILK** TO OUR STORE AT OUR REGULAR EVERY DAY LOW PRICES

KINGSFORD CHARCOAL BRIQUETS
5 LB. BAG
NOW ONLY **75¢**

TONKA SCRAMBLERS TOY CARS
FOR AGES 2 PLUS
REG. 1.39
NOW ONLY **99¢**

ZEBCO 33 SPINCAST REEL
WITH STREN 10 LB. TEST LINE
REG. 16.99
NOW ONLY **\$11.99**
SAVE 5.00

KODAK COLORBURST 50 INSTANT CAMERA
USES PR10 FILM
OUR REG. 37.99
NOW ONLY **\$29.99**
SAVE 8.00

KLEENEX—WHITE—100 2 PLY—REG. 49¢
FACIAL TISSUE NOW ONLY **3 FOR \$1.00**

MEAD SPIRAL NOTEBOOKS
BY MEAD
70 SHEETS—WIDE MARGIN
REG. 69¢
NOW ONLY **2 FOR \$1.00**

GOOP HAND CLEANER
3 1/2 OZ. MINI-CAN
NOW ONLY **4 FOR \$1.00**



Midland Art Event To Benefit Rehab Center

MIDLAND — "Children should be seen and not hurt..." That could be — but isn't the motto for the West Texas Rehabilitation Center of Abilene, San Angelo, and Snyder, which through the efforts of a staff headed by Shelley Smith of Abilene and financed through numerous contributions and imaginative fund drives, helps hundreds of young people (and some not-so-young people) overcome a variety of handicaps from birth defects, accidents, or disease.

The phrase also fits nicely at least two of the many artists who exhibit regularly at Midland's Hanging Tree Gallery: Jim Daly, of Oklahoma Indian extraction, whose young people live in canvas worlds of mystery and delight; and Bettie Felder of

Dallas, whose paintings are often populated by wonderfully human children coexisting in worlds on the threshold of God's eternity.

So Shelley Smith and Carol Swain aren't at all surprised that half a dozen of the Southwest's most perfectionistic artists are participating in an event this weekend in Midland aimed at sharing the world of great western art while helping to finance the costly treatment and research necessary to improve the physical and emotional lives of our neighbors.

It is the first "Rehabenefit" for Art scheduled at the Hanging Tree Gallery at 3201 North Big Spring in Midland, Saturday, Sept. 6, from 6 to 9 p.m. and Sunday from 1 to 5 p.m.

It will feature the original

oil paintings of some of the most important and popular artists from Texas to the Pacific: Glen Rose's Robert Summers, who was named the official Texas Bicentennial artist by Gov. Dolph Briscoe; Carl J. Smith of the Texas Panhandle, whose massive paintings of frontier scenes grippingly memorialize the western pioneers; Jim Daly, with Osage and Cherokee roots from Oklahoma; Lee K. Parkinson, schooled in the studios of Hollywood and steeped in the primeval grandeur of the Rockies, now living and working in Utah; and Nicholas Firfires of Santa Barbara, Calif., known for his realistic paintings of the proud Indians of the recent past and the enduring appeal of frisky horseflesh that is an important cultural talisman from Pioneer days.

The Hanging Tree and friends of the Rehabilitation complex have arranged reproductions of five of the major works: Daly's "Sunday Morning," Smith's "Stopover at Cottonwood Spring," Firfire's "The Sentinel," Parkinson's "Sagebrush Hangout," and Summer's "Before the Fall."

The prints will be sold during the exhibition at \$100 for two or \$200 for all five, to benefit the Rehab clinics in Abilene, San Angelo and Snyder. And most of the originals, as well as numerous other works by the featured artists, will be on sale also, with the clinics to benefit from all sales.

Admission is free, and reservations are not required, but Mrs. Swain said she welcomes inquiries at 684-4721 in Midland; and Smith and Associates of the Rehab Center system are expected to be on hand to talk rehabilitation and art.

Artists Summers and Parkinson have said they will attend.

Easements For Sun Suggested

AUSTIN (AP) — Solar easements should be established to keep sunlight from being blocked, a solar advisory committee has recommended.

The advisory committee to the Texas Energy and Natural Resources Advisory Council also recommended Wednesday the installation of solar energy systems in all new state buildings constructed after Aug. 31, 1981, except where it is clearly not in the public interest.

The advisory committee's other recommendations to accelerate the use of solar and wind energy in Texas included:

- State consideration of a voluntary program in which electric and natural gas companies help buy and install solar water heaters.
- Adoption of state standards for testing solar systems.
- More funding of solar research and development.
- A single statewide license for contractors installing solar energy systems for water heating, air conditioning and space heating of buildings.
- The committee's recommendations followed public hearings in El Paso, Lubbock, San Antonio, Dallas, Houston and Austin.
- Committee members also toured solar and wind energy projects in Texas, New Mexico and

Colorado.

Railroad Commissioner Mack Wallace, chairman of the advisory committee, said the recommendations would be presented to the Energy and Natural Resources Council at its Sept. 25 hearing in Austin.

Theft Case Under Probe

A felony theft is under investigation by city police.

Sgt. Ed Covington was dispatched to Merchant's Motor Lines Wednesday where he took a report from Steve Mason. Mason told him he was missing a stereo, speakers, and an amplifier, with an aggregate value in excess of \$200.

The incident was reported at 8:15 a.m.

Weathermen explain that a heat wave occurs when a high pressure area stalls over a region in the summer, resulting in a period of abnormally hot and uncomfortable hot and usually humid weather.

After a while drought conditions prevail, with no relief from rain because clouds don't form in high-pressure systems.

Ted Bigham
Photography
573-3622

Cinema I 7:15-9:05
The Children
... pray you never meet them
Cinema II 7:00-9:25
THE EMPIRE STRIKES BACK

EVERY SUNDAY
Beginning Sept. 7

Services Of

First Baptist Church

Will Be Broadcast On

KSNY — AM

10:45 a.m. 1450

"Because We Care"

SAFEWAY

RUBBING ALCOHOL
MEDICAL CENTER
Isopropyl Clear
(Save 18¢)
Safeway Special!

16-oz. Bottle **37¢**

VARIETY VALUES!

Head & Shoulders
Lotion Shampoo
(Save 58¢)
Safeway Special!

7-oz. Bottle **\$1.29**

Head & Shoulders
Shampoo
Fights Dandruff!
(Save 58¢)
Safeway Special!

4-oz. Tube **\$1.29**

EXCEDRIN TABLETS
(Save 28¢)
Safeway Special!

36-ct. Bottle **\$1.07**

VITAMIN C TABLETS
Safeway 500 Mg.
(Save \$1.00)
Special!

100-ct. Bottle **\$1.49**

OIL of OLAY LOTION
(Save 71¢)
Safeway Special!

4-oz. Bottle **\$2.88**

SAFEWAY FILM PROCESSING

Recording the good times is a "snap" when you stock up on the things you need at Safeway's Photo Supplies Department. Plenty of fresh film in all popular sizes... film for color slides, color prints, flash cubes and Polaroid film packs... Fast, expert film processing, too.

a little bit more... from Safeway!

A TOWERING BEST SELLER NOW ON SALE!

SHOGUN
A novel of Japan by James Clavell
\$3.50 EACH

MICROWAVE OVEN
Tappan #56-1226
(Save \$30.00)
Safeway Special!

EACH **\$189.95**

D CON FOUR/GONE BUG KILLER
(Save \$1.00)
Safeway Special!

7.5-oz. Aerosol **\$1.79**

TWIN PACK
(Save \$1.88)
Special!

2 7.5-oz. Cans **\$3.49**

BIC SHAVER DISPOSABLE
(Save 30¢)
Safeway Special!

5-ct. Pkg. **69¢**

SHAVE CREAM
Barbasol
(Save 38¢ on 2)
Safeway Special!

2 11-oz. Cans **\$1**

WEAREVER FRY PAN
Silverstone
10" Straight Sided
Non-Stick Surface.

Each **\$7.99**

Everything you want from a store and a little bit more.

Prices Effective Thur. Thru Sun., Sept. 4, 5, 6 & 7, in Snyder Sales in Retail Quantities Only!

SAFEWAY

TURN PAGE FOR SAFEWAY FOOD VALUES



HEALTH

Lawrence E. Lamb, M.D.

Destruction of liver cells

By Lawrence Lamb, M.D.

DEAR DR. LAMB — I need to know more about cirrhosis of the liver. The doctors have diagnosed this as my problem. I stay on a very slim diet at all times. Is there anything I can do for this disease? If so, please advise.

DEAR READER — Cirrhosis of the liver really refers to destruction and damage of the cells in the liver itself. Often the liver cells are replaced with a form of scar tissue. In some stages of cirrhosis the liver is enlarged. In advanced states, the scarring of the liver and the contractions of the scars may cause the liver to become hard and small.

Just as you can have many different forms of injury that cause a scar on your skin, you can have a lot of different forms of injury to liver cells that induce scarring. Perhaps the most common one in our society is the excessive use of alcohol, causing alcoholic cirrhosis.

You may be surprised to know that cirrhosis of the liver is the fourth most common cause of deaths in American men between the ages of 35 and 54. And it's the fifth most common cause in women in the same age group. About 60 percent of these cases are caused by excessive use of alcohol.

I'm sending you The Health Letter number 7-8, "Living with Your Liver," which

ASTRO-GRAPH

Bernice Bede Osol

Your Birthday

September 5, 1980

This coming year you are likely to move around more than you have in the past. In your short jaunts and journeys you will have some interesting experiences and meet some exciting people. VIRGO (Aug. 23-Sept. 22) Most persons you encounter today should be very easy to get along with, but you could run into one character who might rattle your feathers. Romance, travel, luck, resources, possible pitfalls and career for the coming months are discussed in your Astro-Graph, which begins with your birthday. Mail \$1 for each to Astro-Graph, Box 489, Radio City Station, N.Y. 10019. Be sure to specify birth date.

LIBRA (Sept. 23-Oct. 23) Generally this should be a pleasant day, but you must guard against treating your resources or possessions carelessly. Don't leave valuables lying around.

SCORPIO (Oct. 24-Nov. 22) Be ambitious and assertive today without doing anything at the expense of others, and everything will turn out OK. You don't need to depend on anyone to get ahead.

SAGITTARIUS (Nov. 23-Dec. 21) Normally you're not the type to harbor a grudge, but today you could treat another poorly because of a past misunderstanding. Be forgiving.

CAPRICORN (Dec. 22-Jan. 19) Friends will be cooperative and eager to share with you today if they see you are willing to do so with them. Remember, the choice is yours.

AQUARIUS (Jan. 20-Feb. 19) In important one-to-one relationships today, take care not to overpower your counterpart. Be a diplomat, not a dictator.

PISCES (Feb. 20-March 20) Enjoy yourself today, but don't neglect your responsibilities. You may later try to blame others for problems caused by your procrastination!

ARIES (March 21-April 19) You're very productive today as long as you schedule adequate time to complete your tasks. Jobs you rush to conclude could get fouled up.

TAURUS (April 20-May 20) Most of the day you'll be very pleasant and easy to get along with, but if you make too late a night of it your personality and attitude could make an about-face.

GEMINI (May 21-June 20) Coworkers will match you stride for stride today, provided you set a good example and don't make demands of them to undertake things you wouldn't do yourself.

CANCER (June 21-July 21) Your managerial and organizational qualities are very proficient early in the day, so take care of major projects at that time. Later, you may get a trifle careless.

LEO (July 23-Aug. 22) Be patient today in situations you can't personally control and things will work out smoothly. Getting pushy might cause a log jam.

explains how the liver functions, what it's for and provides some information about its common ailments including hepatitis. Other readers who want this issue can send 75 cents with a long, stamped, self-addressed envelope for it. Send your request to me, in care of this newspaper, P.O. Box 1551, Radio City Station, New York, NY 10019.

Now some people develop cirrhosis of the liver even if they've never had a drop of alcohol in their entire life. This can be a complication of hepatitis - or it can occur because the little bile ducts become inflamed or as a complication of obstruction of the bile duct system for any reason. It can even occur in

right heart failure that causes an accumulation of fluid in the abdomen and swelling of the liver. The treatment isn't always the same, it makes some difference what the underlying cause is. It is true, though, that whether cirrhosis of the liver is caused by alcohol or not, anyone who has it should not have a drop of alcohol thereafter: Alcohol is toxic to liver cells even if you're on a good normal diet. Many people have a chronic, low-grade form of cirrhosis that they can live with for years if they just follow a

few sensible rules, including a balanced diet. I wonder about your statement that you're on a very slim diet and would like to know more about that. You should have a normal amount of carbohydrates, proteins, vitamins and minerals. If you have trouble absorbing any of these you might need vitamin supplements. DEAR DR. LAMB — Is breathing through my mouth a habit or is there something wrong with me? DEAR READER — It could be a habit. Some people have

an obstruction of the nasal passages and this causes mouth breathing. Intermittent swelling of the lining of the nasal passages can also cause it temporarily. Enlarged adenoids cause mouth breathing. In children this can lead to a characteristic facial appearance. Let your doctor take a look and see if you have narrow passages or any other cause for an obstruction. Samuel Morse gave the first public demonstration of the telegraph in 1838.

Class Set In Spanish For Farm, Ranch

Spanish for Farm and Ranch will be studied in an Adult Vocational Education course scheduled from Sept. 8 through Dec. 15 at Western Texas College. Classes will meet from 6:30 to 9:30 p.m. on Mondays for a total of 45 hours

of instruction. Fees are \$30 per person and students will need to purchase a textbook costing \$4.75. Persons wishing to reserve space in the class are to call the Continuing Education office at 573-8611, extension 240. Information about other courses on the Continuing Education schedule may also be obtained by calling that number during regular office hours on weekdays. Classified Ads 573-5486

SAFeway Dollar Days

Tomato Soup
Town House (Save 35¢ on 5)
Safeway Special!
10 3/4-oz. Cans
\$1.50

Canned Biscuits
Mrs. Wright's ★ Buttermilk or ★ Homestyle (Save 38¢ on 6)
Safeway Special!
8-oz. Cans
\$1.60



Everything you want from a store ...and a little bit more!

RANCH STYLE Beans
Heat and Serve! (Save 17¢ on 3)
Safeway Special!
15-oz. Cans
\$1.30

Junior Foods
Heinz ★ Fruits ★ Vegetables ★ Desserts (Save 28¢ on 4)
Safeway Special!
7.5-oz. Jars
\$1.40

Lucerne Yogurt
★ Pre-stirred or ★ Fruit on Bottom (Save 56¢ on 4)
Safeway Special!
8-oz. Ctns.
\$1.40

KAL KAN Dog Food
Assorted Flavors! (Save 17¢ on 3)
Safeway Special!
14-oz. Cans
\$1.30

Shop These Cents Off Items For Extra Savings!

- Aim Toothpaste 20¢ Off Label
- Close-Up Toothpaste Regular 12¢ Off Label
- Aqua Fresh Toothpaste 6¢ Off Label
- Ban Roll-On Deodorant 20¢ Off Label
- Ultrabrite Toothpaste 25¢ Off Label
- Agree Shampoo Assorted Textures 20¢ Off Label
- Agree Conditioner Creme Rinse-Conditioner 15¢ Off Label
- Playtex Tampons Deodorant Super 25¢ Off Label
- Listermint Mouthwash 30¢ Off Label
- Close-up Toothpaste Regular 24¢ Off Label
- Sunlite Oil 10¢ Off Label
- Kleenex Boutique Facial Tissues 7¢ Off Label
- Cascade Dishwash Compound 13¢ Off Label
- Cheer Detergent 15¢ Off Label
- White Magic Fabric Softener 15¢ Off Label
- Ivory Liquid Detergent 20¢ Off Label
- OP Tea Bags Crown Colony 25¢ Off Label
- Comet Cleanser 3¢ Off Label
- Waffle Syrup Mrs. Butterworth's 15¢ Off Label
- Minute Rice 10¢ Off Label

Safeway Quality Frozen Foods!

- Cookin' Bags** 3 \$1.50 (5-oz. Pkgs.) Banquet Assorted. Fast and Easy! (Save 47¢ on 3) Safeway Special!
- Grape Juice** 3 \$1.50 (6-oz. Cans) Bel-air (Save 35¢ on 3) Safeway Special!
- Carrot Cake** 17-oz. Pkg. \$1.95 Oregon Farms Safeway Special!
- El Chico Entree** 15-oz. Pkg. \$1.23 Beef Enchiladas & Beans Safeway Special!
- Apple Juice** 12-oz. Can. \$1.94 Tree Top Safeway Special!
- Cheese Cake** 17-oz. Pkg. \$2.06 Sara Lee Safeway Special!
- Chocolate Eclairs** 8-oz. Pkg. \$1.07 Rich's Safeway Special!
- Patio Dinners** 11.25-oz. Pkg. \$1.04 Assorted. Ready to Bake! Safeway Special!
- Lender's Bagels** Plain, 6-count 12-oz. Pkg. \$1.62 Safeway Special!
- Jeno's Ravioli** Well Cooked 35-oz. Pkg. \$2.99 Safeway Special!
- Grape Juice** Welch Concentrate 12-oz. Can. \$1.94 Safeway Special!
- Roll Dough** Bridgford Parkerhouse 25-oz. Pkg. \$1.75 Safeway Special!
- Fish Fillets** Van De Kamp 24-oz. Pkg. \$3.61 Safeway Special!
- Honey Buns** Morton Mini 16-oz. Pkg. \$1.28 Safeway Special!
- Breaded Squash** Stillwell, I.O.F. Sliced, 16-oz. Bag. \$1.75 Safeway Special!
- Orange Juice** Minute Maid 16-oz. Can. \$1.23 Safeway Special!
- Ice Cream** Lucerne Assorted Flavors (Save 40¢) 1/2 Gallon Ctn. \$1.89 Safeway Special!

Red Apples 69¢ - Lb. Red Delicious. Extra Fancy. New Crop Washington State. Safeway Special!

Valencia Oranges 3 \$1.39 - Lb. Sunkist. Safeway Special!

Bartlett Pears 39¢ - Lb. Mellow and Sweet! Safeway Special!

Nectarines 69¢ - Lb. California. Safeway Special!

Yellow Onions 4 \$1.79 - Lb. Full of Flavor! Safeway Special!

Broccoli 79¢ - Lb. California

Cauliflower 99¢ - Lb. California

Large Celery 49¢ - Each. Crop!

Russet Potatoes 2 \$2.49 - 10-Lb. Bag. US-1 Scotch. Buy

Peanuts IN SHELL 1-Lb. Cello \$1.99 *Raw or *Roasted. Safeway Special!

Potted Mums Assorted Colors 6 Inch Pot. Each \$5.49

Zebra Plants 5 Inch Pot. Each \$3.98

Tropical Plants Assorted 2 1/2 Inch Pot. Each \$5.99

Bean Sprouts Ready to Use! 12-oz. Cello. \$1.89

Head Lettuce 45¢ - Each. Crisp Green Heads! Safeway Special!

Red Tomatoes 79¢ - Lb. Slicers

Green Onions 2 \$1.49 - 10-bz. Jar. Sunburst

Salad Dressing Marie's Blue Cheese \$1.59 - 10-bz. Jar

Dial A Devotional 573-8801

Refreshing, Thirst-Quenching!
Kool-Aid Drink Mix
Sugar Sweetened. Makes 2-Quarts Assorted Flavors
Regular Env. 57¢

Meaty Flavor Dogs Love!
Purina Moist and Chunky Dog Food For Everyday Feed
10-Lb. Bdg. \$4.39

Absorbent!
Gala Towels Soft and Strong!
94-ct. Roll 85¢

Spreads Easily
Soft Margarine Fleischmann's
8-oz. Tubs 10-bz. Pkg. \$1.12

HUD Says Texas Building Costs 'Catching Up'

By SOLL SUSSMAN
Associated Press Writer
WASHINGTON (AP) - A federal housing official says the rising prices of houses in Texas are an indication that construction costs in the state have caught up with the rest of the nation.

"Texas - the Houston area particularly - used to be one of the most inexpensive areas in the country to build in, but during the past 10 years we've seen it catch up with the other areas," he said.
The official, who asked not to be identified by

name, was discussing the dramatic jumps demonstrated in some categories of the Department of Housing and Urban Development's new list of typical housing costs.
In Houston, the high range house sold for \$112,600 - almost double the \$66,700

figure on last year's list. Increases in other categories for the Houston area were less severe. The price for a medium range home rose from \$53,500 last year to \$67,800 on the newly published list while the price of a low range home increased by \$500 to

\$41,000.
In Dallas, the price of a high range home soared to \$113,600 from \$76,600 last year while a medium range home increased to \$66,600 from \$56,500.
There was no change, however, in the low range where the HUD field office

reported the typical selling price was still \$36,000.
A HUD spokesman has said the list of "prototype housing costs," published for the first time last year, is similar in intent to the Environmental Protection Agency's regular publication of estimated gasoline

mileage for each kind of automobile.
"It's just supposed to be a guide to people," spokesman Andy Gasparich said.
In San Antonio, the price for a high range home increased from \$50,000 to \$67,500 and the medium range from \$38,400 to \$54,

500. The low range home rose to \$32,900 from \$27,500.
In Fort Worth, the high range home rose to \$80,600 from \$69,500; the medium range to \$66,500 from \$52,400; and the low range to \$56,000 from \$44,600.
In Lubbock, the price of a high range home jumped to \$70,200 from \$49,900; the medium range to \$52,800 from \$45,800; and the low range to \$32,900 from \$27,500.

Each HUD field office reported representative sales prices projected to 1982 for three types of homes, including land and site improvements in the price.

The low range home had three bedrooms and one full bath, the medium range three or four bedrooms and two full baths and the high range had three to five bedrooms and two or three full baths.

The square footage for the list of typical housing costs was different for each area.

The Dallas field office, also making reports for Waco and Tyler, said the low range home had 1,090 square feet, medium range 1,600 square feet and the high range 2,390 square feet.

In Tyler, the price of a low range home on this year's list was \$34,500. The medium range home sold for \$56,200 and the high range for \$109,000.

The low range home in Waco sold for \$33,800, the medium range for \$56,200 and the high range for \$109,000.

The Fort Worth field office also estimated prices for Wichita Falls, Abilene, Brownwood and San Angelo. It said low range homes had 1,400 square feet, medium range 1,600 square feet and high range 2,200 square feet.

In Wichita Falls, the low range home sold for \$52,700, the medium range for \$61,900 and high range for \$76,700.

The figures for Brownwood were \$42,700 for a low range home, \$51,900 for the medium range and \$77,600 at the top end.

In San Angelo, the low range home sold for \$42,700, medium range for \$59,600 and high range for \$77,600.

The Houston field office, also reporting for Beaumont-Port Arthur and Texas City-Galveston, said the typical low range home had 1,100 square feet, the medium range 1,620 square feet and the high range 2,150 square feet.

In the Beaumont-Port Arthur area, the low range home sold for \$39,500, medium range for \$66,900 and high range for \$112,200.

The figures for the Texas City-Galveston area were \$41,000 in the low range, \$68,900 for medium range homes and \$115,100 in the high range.

The Lubbock field office reported prototype housing costs for Lubbock, Amarillo, El Paso and Midland-Odessa. It said the low range home had 1,060 square feet, the medium range 1,390 square feet and the high range 1,700 square feet.

In Amarillo, the low range home sold for \$35,900, medium range for \$53,300 and high range for \$71,200.

at Safeway

Everything you want from a store ... and a little bit more

Golden Corn Freshlike Whole Kernel (Save 35¢ on 3) Safeway Special!  3 \$1 12-oz. Cans	Fruit Drinks Tropicana Assorted (Save 62¢ on 6) Safeway Special!  6 \$1 10-oz. Bottles
Paper Towels Truly Fine. (Save 38¢ on 2) Safeway Special!  2 \$1 120-ct. Rolls	Green Peas Freshlike Garden Sweet (Save 38¢ on 3) Safeway Special!  3 \$1 14 1/2-oz. Cans
Green Beans Freshlike Cut. (Save 35¢ on 3) Safeway Special!  3 \$1 13-oz. Cans	KOZY KITTEN Cat Food Flavors Cats Love! (Save 40¢ on 5) Safeway Special!  5 \$1 15-oz. Cans

LOW PRICES, SPECIALS and DOLLAR DAYS

Look in all departments for Safeway's Low Prices plus Specials. You'll be delighted with the Variety and Quality and Money-Saving Dollar Buys! You get the most for your money without sacrificing value. Come in and see the exciting Dollar Bargains throughout the store. Everything you want from a store and a little bit more!

Look For The Arrows For Extra Savings!

Scott Napkins	Paper Assorted Family Pack Safeway Special! 160-ct. Pkg.	89¢
Hydrox Cookies	Sunshine Safeway Special! 15-oz. Pkg.	\$1.30
Post Grape-Nuts	Cereal Crisp! 24-oz. Box	\$1.36
Nabisco Mints	Junior's Safeway Special! 5.5-oz. Box	79¢
Planters Peanuts	Salt Free Dry Roast Special 8.25-oz. Jar	\$1.17
Glass Plus Refill	Texize Safeway Special! 32-oz. Plastic	\$1.07
Heinz Ketchup	Thick and Rich! Safeway Special! 24-oz. Bottle	89¢

Look For The Arrows For Extra Savings!

Garbage Bags	Glad Small, 4 Gallon Safeway Special!	\$1.13
Chunk Chicken	Swanson White Meat Safeway Special!	75¢
Krispy Crackers	Sunshine Safeway Special!	79¢
Italian Dressing	Wishbone Safeway Special!	78¢
Yellow Corn Meal	Mrs. Wright's 32-oz. Safeway Special!	48¢
Bread	24-oz. Loaf	73¢
Jewish Rye Bread	Mrs. Wright's 16-oz. Loaf	73¢
Sesame Buns	Mrs. Wright's Jumbo 18-oz. Pkg.	69¢
Pecan Nuggets	Mrs. Wright's Danish 10-oz. Pkg.	\$1.29
Cheese Food	Kraft American, 16 Slices Safeway Special!	\$1.75
Cream Cheese	Weight Watchers 16-oz. Pkg.	87¢
Whipped Margarine	Blue Bonnet 16-oz. Ctn.	79¢
Avocado Dip	Santitas 8-oz. Ctn.	66¢

Shop Safeway and Save!

Facial Tissue	Orchids White, Everyday Low Price! 200-ct. Box	65¢
Liquid Bleach	Scotch Buy Gallon Plastic	63¢
Cleanser Powder	White Magic 14-oz. Can	38¢
Dish Detergent	Trix Pink 32-oz. Plastic	59¢

Compare Low Prices!

Canned Milk	Lucerne Evaporated-For-Cooking! 13-oz. Can	45¢
Chunk Tuna	In Water Sea Trader Light Meat 6 1/2-oz. Can	87¢
Long Grain Rice	Scotch Buy 2-Lb. Pkg.	59¢
Golden Corn	Scotch Buy 16-oz. Can	29¢

Save On Everyday Low Prices!

Toilet Tissue	Scotch Buy, White 4-Roll Pkg.	89¢
Enriched Flour	Scotch Buy All Purpose 5-Lb. Bag	89¢
Salad Dressing	Scotch Buy -For Sandwiches! 32-oz. Jar	89¢
Detergent	Scotch Buy, No Phosphates 49-oz. Box	\$1.19
Mac & Cheese	Dinner, Scotch Buy 7.25-oz. Box	25¢

Safeway Meats Are Guaranteed to Please!



Basted Turkeys 78¢
Manor House Butter Basted. Over 10-Lbs.
USDA Inspected-Graded 'A' Safeway Special! —Lb.



Pork Chops \$1.29
Loin Assorted Family Pack
Lean and Meaty! Safeway Special! —Lb.

Premium Ground Beef	Any Size Package. —Lb.	\$1.69
Boneless Brisket	Safeway Trim! USDA Choice Heavy Beef. Whole —Lb.	\$1.98
Boneless Hams	Smok-A-Roma, Water Added. (Half Hams —Lb. \$1.98) Whole —Lb.	\$1.78
Chicken Hens	Frozen Under 7-Lbs. USDA Inspected-Graded 'A' 1/2-Hens. 3-Pkg. —Lb.	59¢
Turkey Breast	Butter Basted, Manof House, Under 7-Lbs. Safeway Special! —Lb.	\$1.49
Turkey Roast	Manor House Light & Dark Meat Safeway Special! 2-Lb. Ctn.	\$3.19
Boneless Ham	Hawai'i Swift's Hostess Safeway Special! —Lb.	\$3.19
Cure 81 Ham	Nonfat Ham Halves Safeway Special! —Lb.	\$2.69
Turbot Fillets	Greenland Frozen Safeway Special! —Lb.	\$1.49
Catfish Steaks	Frozen Safeway Special! —Lb.	\$1.25
Chipped Meats	Safeway Thin Sliced 7 Varieties Safeway Special! 2 3-oz. Pkgs.	98¢
Sliced Bologna	Safeway Regular or Thick Sliced Safeway Special! 1-Lb. Pkg.	\$1.39
Eckrich Bologna	Regular + Thick Sliced 12-oz. Pkg.	\$1.69
Smorgas Pac	Eckrich Regular Safeway Special! 1-Lb. Pkg.	\$2.29
Oscar Mayer Franks	7 Varieties Safeway Special! 1-Lb. Pkg.	\$1.79
Safeway Franks	Meat or Beef Safeway Special! 12-oz. Pkg.	\$1.09
Taco Filling	Jimmy Dean's Safeway Special! 1-Lb. Pkg.	\$1.59

Shampoo
Silkience
Automatically Conditions Only Where Your Hair Needs It!
7-oz. Plastic **\$1.59**

Hi-C Drinks
Assorted Fruit Flavors
46-oz. Can **76¢**

Pampers
Disposable Diapers
*Toddler 48-ct. Box
*Extra Absorbent 60-ct. Box **\$7.69**

Adams Vanilla 1/2-gal. **\$6.99**
A.T. Steak Sauce 10-oz. Bottle **\$1.49**
Folger's Coffee 2-lb. Can **\$6.07**
Tender Chunk Turkey 8 1/2-oz. Shaker **\$9.99**
Parmesan Cheese 8-oz. Shaker **\$2.09**
Cream Cheese 8-oz. Pkg. **84¢**
Cinnamon Rolls 2-oz. Pkg. **98¢**
Sara Lee Apple Pie 9-oz. Pkg. **\$2.05**
Classic Pizza 12-oz. Pkg. **\$2.75**

we welcome **FOOD STAMP SHOPPERS**

Prices Effective Thur., Fri., Sat. & Sun., Sept. 4, 5, 6, & 7, 1980 8 a.m. - 10 p.m.
Sales in Retail Quantities Only!

SAFEWAY

Copyright 1980 Safeway Stores, Incorporated.

HUNTER'S HEADQUARTERS

WE BUY-SELL-TRADE
Rifles-Shotguns-Pistols
Fishing & Hunting License
TIMELY PAWN
2409 Ave. R. 573-9335

Rangers Fall Again; Blue Jays Win It, 4-2

ARLINGTON (AP) - Toronto catcher Ernie Whitt trembled when Texas outfielder John Grubb came to bat in the seventh inning Monday night with runners on first and third. "He kills us every game. He owns us. I don't know what it is. He scares me everytime he comes up. I thought he hit it good enough to go out that last

time up," Whitt said. But left fielder Bob Bailor, his back against the fence, hauled in Grubb's high fly and the Blue Jays held on for a 4-2 victory over Texas. Lloyd Moseby's three-run homer in the top of the inning had wiped out a 2-1 Texas lead that was built on solo homers by Grubb and Pat Putnam. Whitt

went 3-for-3, including a fifth-inning homer. Grubb had driven in five runs Monday night with a home run and double in the first game of the three-game series. Moseby's blast offset earlier at-bats when the 20-year-old Toronto outfielder had failed to deliver when the Blue Jays had men in scoring position. Dave Stieb, 12-10, got the victory for Toronto. He struck out seven, walked three and gave up six hits, including singles by Al Oliver and Richie Zisk in the first inning and singles by Dave Roberts and Mickey Rivers in the seventh.

Sagacious Sideline Selections



MIKEY BAIRD KEVIN HOLT DERWIN THOMPSON ERWIN PAVLIK MAL DONELSON

Big Spring at Snyder	Snyder	Snyder	Snyder	Snyder	Snyder
Seminole at Andrews	Andrews	Andrews	Andrews	Andrews	Andrews
Pecos at EP Riverside	Pecos	Pecos	Pecos	Pecos	EP Riverside
Canutillo at Ft. Stockton	Ft. Stockton	Ft. Stockton	Ft. Stockton	Ft. Stockton	Ft. Stockton
Del Rio at Lake View	Lake View	Lake View	Del Rio	Lake View	Monahans
Monahans at Kermit	Monahans	Monahans	Monahans	Monahans	Monahans
Caprock at Ector	Ector	Caprock	Caprock	Caprock	Ector
Lubbock High at Lamesa	Lubbock High	Lubbock High	Lubbock High	Lubbock High	Lubbock High
Clyde at Sweetwater	Sweetwater	Sweetwater	Sweetwater	Sweetwater	Sweetwater
Divide at Ira	Ira	Ira	Ira	Ira	Ira
Dawson at Hermleigh	Hermleigh	Hermleigh	Hermleigh	Hermleigh	Hermleigh
Cotton Center at Borden County	Borden Co.	Borden Co.	Borden Co.	Cotton Center	Borden Co.
Purdue at Notre Dame	Purdue	Notre Dame	Purdue	Purdue	Notre Dame
Texas A&M at Miss	Texas A&M	Texas A&M	Texas A&M	Texas A&M	Texas Tech
UTEP at Texas Tech	Texas Tech	Texas Tech	Texas Tech	Texas Tech	Texas Tech
Oilers at Steelers	Oilers	Steelers	Steelers	Steelers	Steelers
Broncos at Eagles	Eagles	Eagles	Eagles	Eagles	Eagles
Browns at Saints	Saints	Saints	Browns	Saints	Browns
Lions at Rams	Rams	Rams	Lions	Rams	Rams
Chargers at Seahawks	Seahawks	Seahawks	Seahawks	Seahawks	Seahawks

JV To Open 1980 Grid Slate Tonight

BIG SPRING - Snyder junior varsity officially opens the 1980 football season here tonight, taking on Big Spring at 7 p.m. The JV encounter sets the scene for Friday's annual

varsity game with the Steers, to be held in Snyder's Tiger Stadium at 8 p.m. Ticket information for tonight's junior varsity game was unavailable. Home JV games will be \$1 for adults and 50 cents for students. However, reminds the business office, Big Spring is in a different district (5-5A) and may charge slightly more or less.

Tickets Available
Tickets for Friday's Snyder-Big Spring varsity football game here are \$3 for adults and \$2 for students at the gate, the school business office reports.

However, students may purchase tickets for \$1 at their respective schools or at the business office before 4 p.m. Friday. The office also reports a number of season ticket holders have yet to pick up their tickets. Tickets must be picked up by 4 p.m. Friday if those individuals plan to use them for Friday's contest.

Parker Packs Pirates Past Houston Astros

By The Associated Press
Dave Parker's got it going, but now he has to take it on the road with the Pittsburgh Pirates. The Pirates, who ended an eight-game losing streak Monday, finished up a nine-game homestand with two straight wins, including a 10-4 victory over the Houston Astros Wednesday night, fueled by Parker's two home runs. The defending world champion Pirates, in a

three-way battle for first in the National League East with Montreal and Philadelphia, now begin a 10-game road trip that could be pivotal in the division. "It's going to be a tough road trip, but I think we're up for it," Parker said. "The important thing right now is the team thing, the overall thing, the Pirate family going to another World Series." The trip includes three games in Atlanta, two in

Philadelphia, two in St. Louis and three in Montreal. Philadelphia maintained a half game lead over Pittsburgh with a 4-3 victory over San Francisco, while Montreal dropped a game off the pace, losing 4-3 to San Diego. The Los Angeles Dodgers, meanwhile, took advantage of Houston's loss with a 2-0 shutout over the New York Mets to take a one-game lead over the Astros in the NL West.

Parker, who went into the game with only one homer since July 25, hit two-run homers in the third and fifth. Parker also singled home a run in the first off Joaquin Andujar, 2-5, and Mike Easler followed with a homer to help lefty John Candelaria to his 10th win. Parker has hit 400 in his last 21 games, and Manager Chuck Tanner said the man finally was getting his due. Elsewhere in the league, St. Louis edged Cincinnati 4-3 in 10 innings and Atlanta got by Chicago 4-3. Phillies 4, Giants 3. Philadelphia wound up a three-game sweep of San Francisco behind the pitching and hitting of Dick Ruthven, who won his fourth straight game. Ruthven picked up the Phils only extra-base hit with an RBI-double in a three-run second inning. Ruthven went 8 1-3 innings, leaving after rookie Chris Bourjos rapped in the homer in the ninth.

Jenkins, Gafford Get Good Doctor Reports

Good news comes from the Tiger varsity camp this week. Dale Jenkins and Curtis Gafford, both injured in accidents this summer, appear well on their way back to good health. While preparing his team for Friday night's opener here with Big Spring, Coach Mike Jenkins relayed the information. Dale Jenkins (no relation), District 3-3A's leading receiver last year and the state's top high school pole vaulter, injured his foot in an oilfield accident just prior to two-a-days this summer, and underwent surgery several days later. Coach Jenkins reports he will have the pins removed

from his foot Friday - a couple of weeks ahead of what doctor's had previously thought - and would begin walking on the foot immediately. "We still are not setting any dates to have Dale back," said Jenkins. "We're just going to see what happens." The Tiger flanker has been unable to exercise the leg to any great extent, so it will be at least several weeks of rehabilitation before he regains good strength, it is expected. Gafford, who broke an ankle in Junior Teenage League baseball playoffs late in the summer, is to see the doctor this weekend. It is hoped that Gafford, a sophomore, would be ready in a minor role if needed by the Lake View game, Oct. 3. Coach Jenkins also reported that fullback Mark Shaw, who suffered a slight injury in the scrimmage last week with Abilene Cooper, has not responded to treatment as quickly as was hoped. Shaw, a junior, injured his leg just above the knee.

Coaches are still waiting to see his condition prior to Friday's game. Vaughnie Voss, a 160-pound senior who starts at one of the safety spots on defense, will take over the fullback spot against Big Spring if necessary. Brent Roemisch, who was hit with a minor ankle injury early last week and missed the Cooper scrimmage, is working out and expected to be fine by Friday. Roemisch, a 145-pound sophomore, is a flanker.

Bowling
There will be a Wishball (five-man team) Bowling League meeting at Snyder Lanes, tonight at 7 o'clock. The Industrial Bowling League (three-man team) will meet Sept. 11 at Snyder Lanes, also at 7.

AMERICAN LEGION & AUXILIARY Membership Drive

Sept. 5th

All American Legion with paid up 1981 dues will have a drawing for a \$100 gift certificate at your favorite sporting goods store.

All American Legion Auxiliary with paid up 1981 dues will have a drawing for a \$50 gift certificate for senior and \$25 for junior members.

Hamburgers will be served to the Membership

SUNDAY BUFFET

Ships Roast of Beef
Chicken Stroganoff
Fried Catfish
Turkey & Dressing
Assorted Vegetables

From The Salad Bar
Assorted Salads

All You Can Eat **\$3.75**

FRIDAY SPECIAL

Whole Catfish
Served with Salad or Cole Slaw,
French Fries & Tartar Sauce

-ALL DAY FRIDAY-

FRED HEADY'S
Still Open 24 Hours A Day
Roby Highway, Snyder

It's decision time in Farm Bureau!

In Farm Bureau, members are encouraged to take part in all three major phases of the organization...

Education—through publications, seminars, meetings.

Decision—through policy development process.

Action—through legislative activities.

It's now decision time... when policies for 1981 will be decided. If you are an agricultural producer in Farm Bureau, please attend your county annual convention and let your voice be heard.

Sept. 9 7:00 p.m.
Scurry Co. Coliseum

SCURRY COUNTY FARM BUREAU
1903 Snyder Shopping Center

Football 1980 Style Set Kicks Off Friday Night

The night West Texas has been waiting for - Sept. 5 - is almost here. It's the time when stadium lights and scoreboards are turned on and four weeks of workouts are put into battle situations for the first time. A key example of football fever can be found at Ira, where Coach Tom Pierson is grooming his Bulldogs for a date with Divide.

"We're all healthy, our enthusiasm is still real high, and the fact that the Abilene Reporter News picked us third doesn't bother us at all," laughed Pierson, whose 'Dogs have been selected to win the six-man District 2-A race by Texas Sports magazine. In addition to the Divide at Ira, 8 o'clock game, other 2-A contests include

highly touted Cotton-Center at Gail; Dawson at Hermleigh; Highland versus Christoval; McCauley versus Blackwell; and Grady-versus Loop. Trent is open. All the games begin at 8. At Snyder, Coach Mike Jenkins' Tigers open the season by welcoming arch-rival Big Spring at 8. Other 2-4A battles pit loop favorite Andrews against 3A stronghorse Seminole at home; Pecos at El Paso Riverside; Monahans at Kermit; Fort Stockton to host Canutillo; Lamesa to entertain Lubbock High; San Angelo Lake View to host Del Rio; Amarillo Caprock at Odessa Ector; and Clyde at Sweetwater.

Suburban by Sachs

- 150 m.p. gal.
- 49 cc engine
- See it Today

AT **TOM'S MARINE**
Sales & Service 573-6562

Use Snyder Daily News Classifieds Ads 573-5486

Waterfowl Seasons Set By Parks And Wildlife

AUSTIN (AP) - Waterfowl hunting seasons were set Wednesday by the Texas Parks and Wildlife Commission with little change from last year. Duck hunting will be allowed in the High Plains Mallard Management Unit, that covers about the western fourth of the state, including the Panhandle, from Oct. 28 through Jan. 18. For the rest of the state the duck season is Nov. 8 through Nov. 30 and Dec. 13 through Jan. 18.

Shooting hours for all waterfowl is from half an hour before sunrise to sunset.

There was only one change in protected species. The fulvous whistling tree duck will be protected this year, along with the black bellied whistling tree duck and the masked duck.

The duck bag limit remains the same with one to 10 in the aggregate of 100 points assigned the various species of waterfowl.

The goose season for west of U.S. 81 will be Oct. 28 through Jan. 18. For east of U.S. 81, for both light and dark geese, the season

Fems Try Denver City

SAN ANGELO - Snyder High School varsity volleyball team is slated to take on Denver City here at 8 p.m. in the Central High Gym. Snyder girls will be looking for their sixth straight win of the season.

This weekend, Snyder will compete in the ASU Tournament of Champions here. Snyder takes on Crane in its first-round game, at 10 a.m. Friday in the ASU Gym.



KEITH DENIS

Denis, Others To Be Featured In WTC Event

Keith Denis is one of three returning players off of last year's National Championship Western Texas College basketball team who will be featured in an annual "Meet The Athletes" night next Tuesday.

The yearly program serves to acquaint the public with all of WTC's athletes and coaches.

Denis, from Gardena, Calif., joins Joey Rosales and Donald Warren as those returning from last year's squad. The 6-5 sophomore played point-guard, swing-man for the Westerners.

Denis, who will probably be one of the leaders of the 1980-81 team, is enthusiastic about new coach Larry Dunaway and his teammates.

"We have a lot of good, young talent," he said. "With a lot of hard work and determination we may go back to the national tournament. That's what it takes, a lot of hard work and determination, a lot of heart."

The eager said he "enjoyed working" with Coach Dunaway, who he feels is doing a "great job bringing us together as a team."

Tuesday's program will be held 7 p.m. at the WTC Gym and will feature both men's and women's basketball scrimmages.

is Nov. 8 through Jan. 18. Possession limit for geese west for U.S. 81 is 10, not to include more than four Canada or four white fronted in the aggregate. East of U.S. 81 the limit is five for light geese and for dark it is one Canada or one white fronted with the possession limit twice the bag limit.

For sandhill cranes, the season in Zone A is Oct. 31 through Jan. 31 and for Zone B, Dec. 5 through

Jan. 31. The bag limit is three with a possession limit of six.

Quail seasons were set earlier by the commission but bag limits set Wednesday were lower than last year because of the drought. In most of the state there will be a bag limit of 12 and a possession limit 36. In some North Central, West Central and eastern Panhandle counties the bag limit is 16 and possession limit of 48.



Borg Defeats Tanner

NEW YORK (AP) - "This was a great match, right up to the last point." With that statement, Bjorn Borg summed up his suspenseful quarterfinal slugfest with Roscoe Tanner at the U.S. Open Wednesday. The top seed from Sweden displayed all the skills that mark him as the best player in the world in his 6-4, 3-6, 4-6, 7-5, 6-3 victory over the gallant, cannonball-serving 11th seed.

"I'm very relieved to survive this match," added Borg, whose dreams of a tennis Grand Slam were smashed by Tanner in a night match in the same round here last year. Once again this year, Borg has a shot at the slam Wimbledon, the French, U.S. and Australian Opens - and, once more, Tanner took him to limit. "He ached me many times (19 in all, plus 25 service winners), but I won all the

big points. When he's putting in his first serve in, there's nothing you can do."

Trying to join Borg in the semifinals today were No. 2 seed John McEnroe, the defender, who took on No. 10 Ivan Lendl of Czechoslovakia under the lights, and No. 3 Jimmy Connors, who faced Eliot Teltscher in the afternoon. Striving for the women's semis were No. 8 Andrea Jaeger, who had a night

match with No. 14 Iv Madrugá of Argentina and No. 9 Hana Mandulová of Czechoslovakia, who took on unseeded Barbara Hallquist in the daytime. Tanner led Borg 4-2 in the fourth set and the Swede's chances for his first U.S. Open title looked slim. Borg plays Johan Kriek in the semifinals.

Use Snyder Daily News Classified Ads 573-5486

SAVINGS YOU CAN SEE EVERYDAY...

Thrifty Days



HUNT'S/WESSON SPECIALS

- ALL VEGETABLE WESSON OIL 24 OZ. BTL. \$1.19
- HUNT'S TOMATO SAUCE 15 OZ. CAN 49¢
- HUNT'S PUDDINGS SNACK PAK 4.5 OZ. CANS 98¢



PORK CHOPS \$1.79

- Lean Center Cuts **PORK CHOPS** Lb. \$1.79
- USDA Choice Tenderloin **BEEF FILETS** Lb. \$4.99
- Lean Fresh **PORK STEAK** Lb. \$1.49

PORK CHOPS \$1.49

Shurfine **BBQ SAUCE 59¢**

KRAFT MACARONI & CHEESE DINNERS 3 7/8 OZ. BOXES \$1.00

THRIFT KING SHORTENING 3 Lb. 99¢

- USDA Choice Boneless **CHUCK ROAST** Lb. \$1.99
- USDA Choice Boneless **ARM ROAST** Lb. \$1.99
- USDA Choice Boneless **CHUCK STEAK** Lb. \$2.99
- USDA Choice Boneless Arm Cuts **SWISS STEAK** Lb. \$2.99
- Lean Porkloin Cuts **PORK CHOPS** Lb. \$1.49
- Shurfine First Quality **SLICED BACON** Lb. \$1.29
- USDA Choice Boneless **SIRLOIN TIP STEAK** Lb. \$2.99
- Lean Fresh **PORK STEAK** Lb. \$1.49

- ### FRESH DAIRY SPECIALS
- SHURFRESH SOFT **MARGARINE** 1 LB. BOWL 59¢
 - SHURFRESH IND. WRAPPED AMERICAN **CHEESE FOOD** 16 OZ. PKG. \$1.79
 - SUPER SUDS** Giant Box 89¢

FOLGER'S MOUNTAIN GROWN COFFEE \$2.79

NESTEA 3 Oz. Jar \$2.19

GRAPE JUICE 12 Oz. Frozen 69¢

COCA-COLA \$1.09

- ### TOTAL GROCERY SAVERS
- CARNATION INSTANT **BREAKFAST BARS** 6 CT. BOX \$1.39
 - SUNSHINE COOKIES **HYDROX** 15 OZ. PKG. \$1.19
- ### FROM OUR SHELVES
- Shurfine Fresh Pack **DILL PICKLES** 32 Oz. Jar \$1.09

YELLOW SQUASH 10 Oz. 49¢

NEW CROP RED DELICIOUS APPLES \$1.29

SOFT 'N PRETTY BATHROOM TISSUE 4 ROLL PKG. 99¢



- ADORN AEROSOL REG. EX. HOLD. NEW! SOFT HOLD **HAIR SPRAY** 6.5 OZ. CAN \$1.29
- ADORN NON AEROSOL **HAIR SPRAY** 8 OZ. BTL. \$1.89
- CONDITIONER **SILKIENCE** 15 OZ. BTL. \$1.69
- ROLL ON DEODORANT **DRY IDEA** 1.5 OZ. BTL. \$1.29
- FOR HAIR CREME **TAME RINSE** 8 OZ. BTL. \$1.29
- TONI ASSORTMENT **SPIN CURLERS** EA. BOX \$2.89
- CREST 25' OFF LABEL **TOOTHPASTE** 9 OZ. TUBE \$1.39

- ### FROZEN FOOD SPECIALS
- MORTON MEAT **POT PIES** 8 OZ. BOX 39¢
 - Gebhardt's **HOT DOG SAUCE** 39¢
 - 8" OFF LABEL **IRISH SPRING** SHOWER SIZE 59¢
 - NEW YARDLEY'S COCOA BUTER-LAVENDER **LIQUID SOAP** 8 OZ. BTL. \$1.29

FROZEN PIZZA 12 OZ. 89¢

LADY VICTORIA FINE CRYSTAL STEAMWARE **ASHTRAY \$3.99** WITHOUT COUPON \$4.99

LADY VICTORIA FINE CRYSTAL STEAMWARE **ASHTRAY \$3.99** WITHOUT COUPON \$4.99

BAGS OF ICE AVAILABLE

MORTON FROZEN **HONEY BUNS 9 OZ. BOX 49¢**

Everybody's

THRIFTWAY WE ACCEPT FOOD STAMPS. PRICES EFFECTIVE AUG. 31-SEPT. 6.

Star Kist
Tuna
In Oil or Spring Water
Chunk Light
6 1/2-oz Can
79c

Zee Paper
Towels
Assorted Spice or Prints
ZEE
2 Large Rolls For \$1



Miracle
Whip
32-Oz Jar
\$1.09

Super Savings
Storewide Super Savings
Redeem your Super-Discount Booklet for **48c**

NOW! Shop Furr's for 7-Day Savings

THESE SPECIALS GOOD THURSDAY THROUGH WEDNESDAY, SEPT. 10

Garden Fresh Produce



Grapes
California New Crop Tokay
Lb. **59c**

Potatoes 5-lb Bag Russett Each **89c**
Cucumbers Long Green Slicers Each **6 For \$1**
Bell Peppers Large Green Pods Each **6 For \$1**

Furr's Plant Department

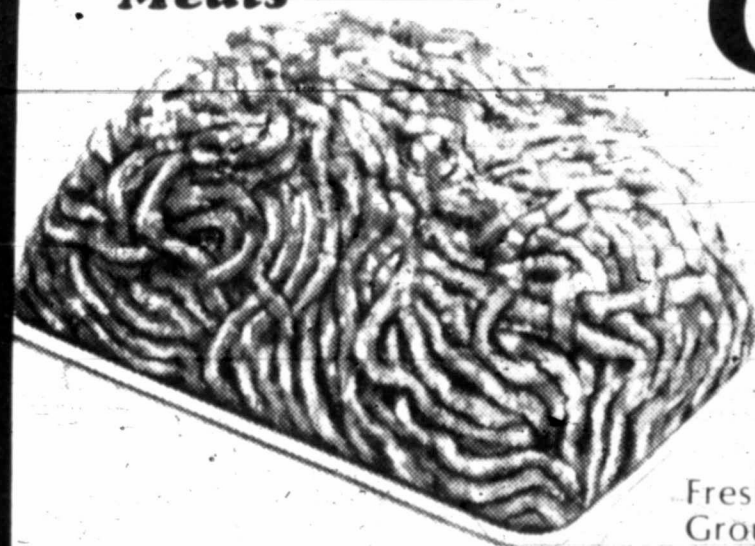
JADE

AN EASY TO GROW HOUSE PLANT

\$2.99

6 INCH POT

Tender Juicy Meats



Ground Beef
Fresh Ground Daily Lb. **\$1.27**

Jimmy Dean
Pork Sausage
Hot Mild or Sage 1-lb
\$1.29
2-lb Package \$2.57



Jimmy Dean
Taco Filling
\$1.49
1-lb Package

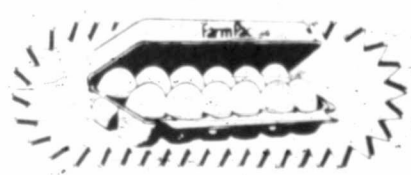
Jimmy Dean
Pork Chili
Pure Pork 1-lb **\$1.49**

Sliced Bologna Wilson's All-Meat Lb. **\$1.29**

The best things are close to home.



Oreo Creme
Cookies
15-oz Package **\$1.09**



Farm Pac
Eggs
Grade A Large Dozen **69c**



Quick Quaker
Oats
Quick or Reg. 18-oz Box **69c**



Texsun Orange
Juice
Frozen 6-Oz Can **3 for \$1**



Farm Pac
Bread
Sandwich or Ranch Style 1 1/2-lb Loaf **49c**

Introducing 7-Day Ad Specials

That's right! Beginning today, Furr's will offer advertised specials effective for one full week. This means each Thursday, Furr's will introduce advertised specials effective through the following Wednesday. The specials we will be offering are sure to please you and your budget plus make your shopping selection a little easier. It's our way of reminding you... That the best things are close to home... Don't forget Double Stamps Every Tuesday & Wednesday.



Instant Tea
Nestea 3-oz Jar **\$1.89**

Farm Pac
Choc Milk Qt. **57c**

Food Club
Butter 1-lb **\$1.49**

Assorted Flavors
Jell-o 3-oz Jar **3 for 79c**

Suave
Conditioner & Rinse
Suave Selective Normal or Extra-Body. Suave Finishing Rinse
16-oz **99c**

Mead 3-Subject
Notebook
Twin Wire Divided 9 1/2 x 6
\$1.39

See Thru
Binder
Press-Tite Zipper Pockets on Front and Back Covers
\$1.99

Topcrest Notebook
Paper
200-Count
\$1.77

Vaseline Intensive Care
Lotion
Hard Lotion--Reg. or Extra-Strength
15-oz **\$1.89**

Prell
Shampoo
11-oz **\$1.89**

Agua Fresh
Toothpaste 4-oz **\$1.19**

Sampler Pouch Holeproof
Knee Hi Hose Reg. **39c**

Facial TBSue
Posh Puffs Floral Design **56c**

Topcrest Comfort Top Ass. Colors 4-Pair Pkg
Knee Hi Hose \$1.49
Topcrest All Sheer
Panty Hose 2-Pair Pkg **\$1.49**

Gallon Size
Sun Tea Jar **\$1.79**

Final Net
Hair Spray
12-oz. Reg. or Unscented **\$2.79**