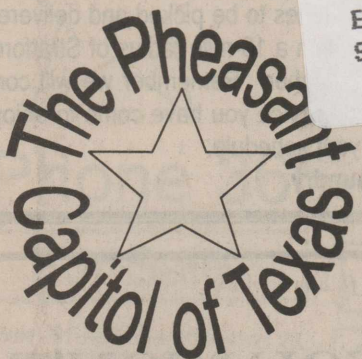


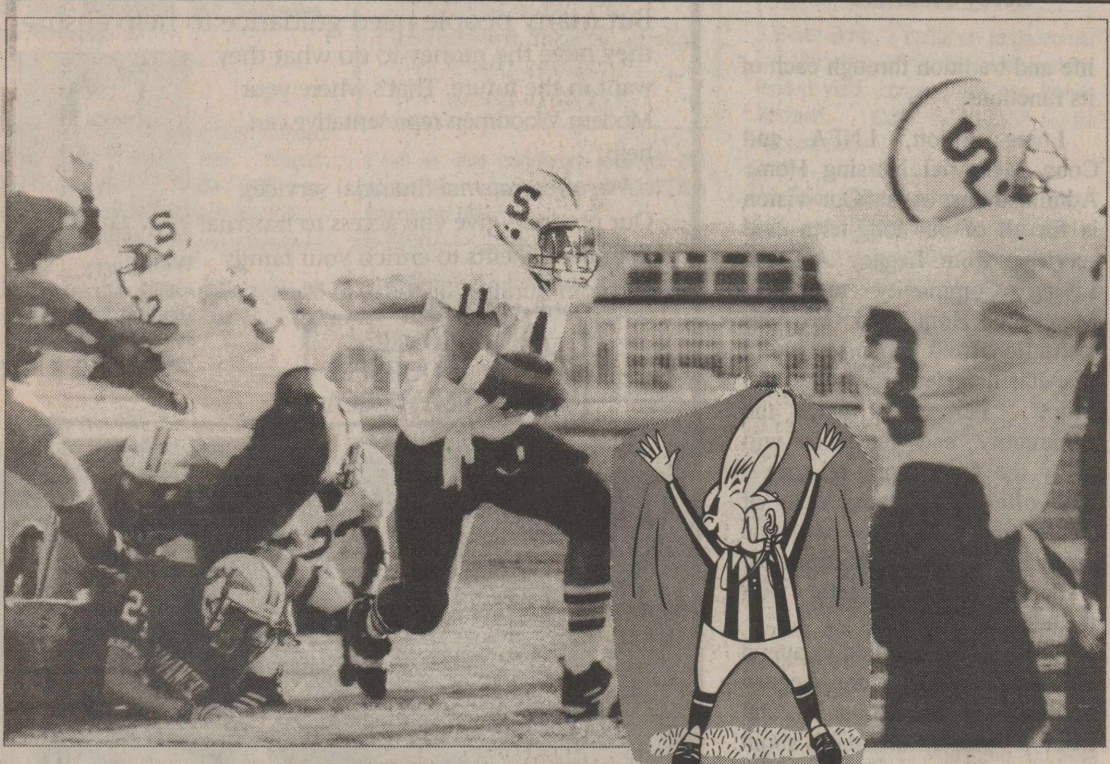
Good luck Varsity  
Best Panhandle

Sherman County Museum 7 /05  
Box 1248  
Stratford, TX 79084



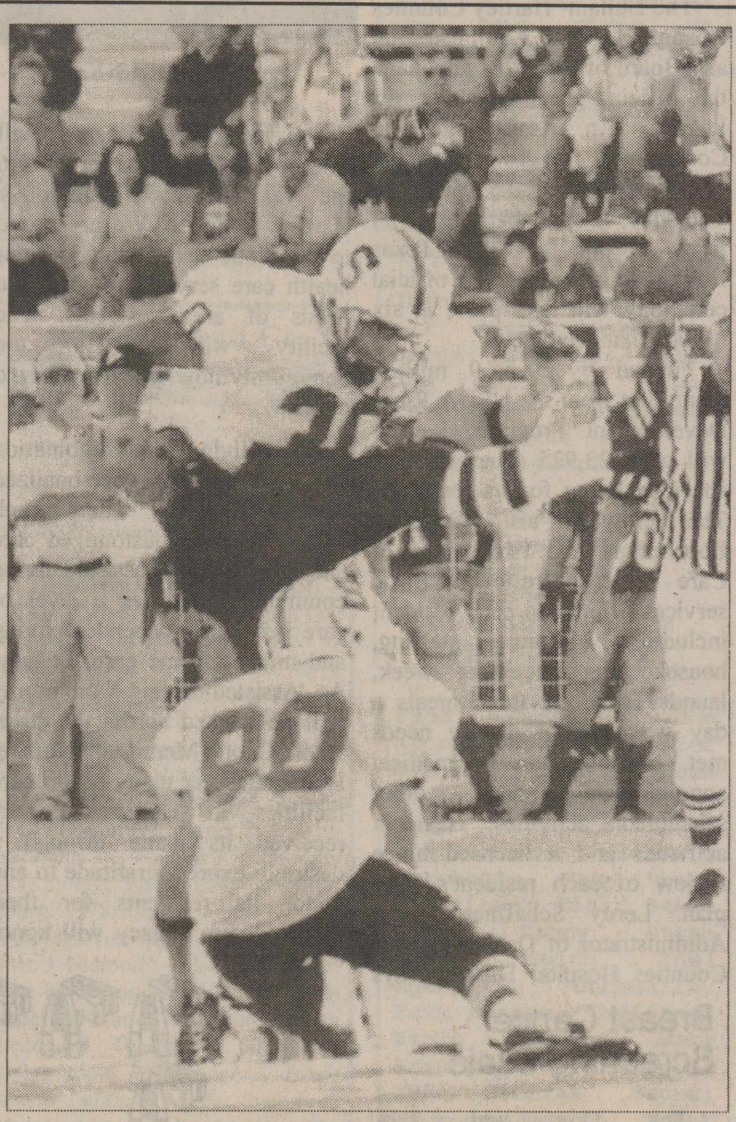
# The Stratford Star

75 cents Published for over 100 years in Stratford, Sherman County, Texas 79084 usps 523 Number 36 September 2, 2004



## Elks Beat West Texas

Quarterback #11 Josh King carries the ball for the Elks against West Texas as Stratford Elks #32 Gustavo Rosales & #3 Chris Ortega block.



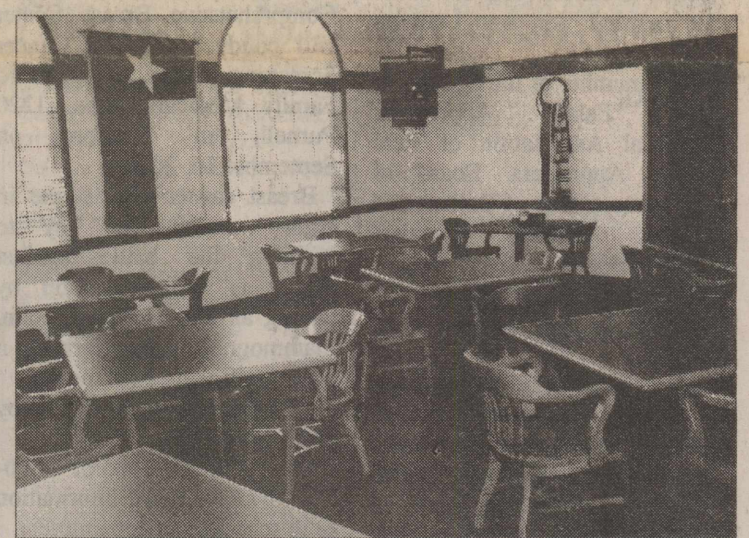
#80 Travis Soto holds the ball as #30 Martin Beltrans kicks the extra point for the Elks.

## Season Football Tickets on Sale Now!

The 2004 Football season is upon us...two-a-days began on Monday, August 2 and the Elks are eager to play ball! Season football tickets went on sale Monday, August 23 in the office of the Superintendent. Office hours are Monday-Friday, 8:00 a.m. to 4:00 p.m. Seating will be held for previous owners until Friday, September 3. After that date seats will be sold on a first come first serve basis. There are 5 home games this year. Cost of seats for the season: Adults-\$15.00 and Child-\$10.00. We are hoping for another great season and the Elks look forward to your support. For more information call Penny at 366-3305. Go Elks!!



Shown at left- The Big Blue Band marching at half time of the Elks vs. West Texas game on Friday



## Stratford's Happy State Bank Provides Community Room

<sup>4<sup>th</sup></sup> in a series by Tyler Haynes  
Happy State Bank has maintained its unique blend of style in all its buildings. The bank building itself, the lobby, and the vault, all unite to form an astonishing piece of architecture. My favorite piece to this masterful puzzle has to be the decorations you see on the walls. The theme of the Happy State Bank's interior decor will be based around Texas history. All artwork in Stratford's Happy State Bank will be comprised of only Texas artists. After my tour of the different branches in Amarillo and Canyon, it is easy to see that Texas has been home to many gifted artists. You will also see many Texas maps and flags. In the Happy State Bank on Soncy in Amarillo, you see all six flags that have flown over Texas. Some Texas historians believe that Happy State Bank has put together one of the most extensive Texas map collections ever assembled. There is even an entire set of the Republic of Texas currency on display at the Soncy branch. This money has been out of circulation since 1845 when Texas was annexed into the United States. Mr. Hickman invites all visitors to come see the collections at the Soncy branch any time, just let them know you're from Stratford. Happy State Bank of Stratford is constantly serving the community in countless ways. A special addition to Stratford's Happy State Bank allows them to continue to serve the community in a unique way. This addition is referred to as the community room. The community room is patterned after a similar room at the Canyon branch and has become a big part of that community. Various civic groups and even a couple of Bible studies take advantage of this service. The room also serves as a gathering place for many customers to get a cup of coffee and visit. It is accessible at any time without disturbing the bank's extensive alarm systems. As you walk through the front doors, you will enter a vestibule. There will be a door on the right that will allow you to enter the community room even when the bank is closed. There is a set of bathrooms and a kitchen directly adjacent to the community room which is all accessible without tripping the bank's alarm, because you really never have to enter the bank lobby. The room will seat about thirty people in oak tables and chairs and can be used by various groups who seek a meeting place. This is just another service that Stratford's Happy State Bank can offer to our community. Doak Crabtree, President of the Stratford Branch, believes that the community room is just a way to say thank you to the town of Stratford for their continued support of the new bank. They are excitedly anticipating the conclusion of construction so that the citizens of Stratford can begin to take advantage of it. The new building is completely framed, windows installed, roof almost completed, and the brickwork scheduled to get underway this week.

Winners of the EarRings and Ring at Circle Of Friends this past weekend- Ear rings-Jan Wright of Eva, Oklahoma and Ring was won by Melissa Donahue of Spearman. Congratulations Ladies.

## Traylor Scores Hole-In-One

DeWain Traylor from Stratford scored a hole-in-one on the 16<sup>th</sup> hole at Pheasant Trail Golf Course in Dumas on Saturday. The 16<sup>th</sup> At Pheasant Trail is a 147-yard, par 3. Witnesses were Wayne Smith from Stratford and Keith Morgan from Abilene. Congratulations, DeWain!!

## Stratford Patriots Will Represent Our Hometown at State in Waco

The Stratford Special Olympics team qualified Aug. 14<sup>th</sup> at Amarillo in aquatics to go to state competition in Waco. We will be raffling off a Stratford Elks stadium seat and 50 lbs. Of hamburger Sept. 10<sup>th</sup> to help raise funds to go. We have 7 athletes participating in aquatics this year and they have worked hard and deserve the chance to participate at State. Tickets for the raffle are \$1.00 and will be available from any Stratford Patriots coach and will also be available at First State Bank. For information please contact Cindy Larance or Carol Zimmer at 396-5521. If you would like to make a donation mail to Stratford Patriots, PO Box 1085, Stratford, TX 79084 or call Cindy at 396-5635 or Carol at 366-2109. We are so proud of the Stratford Patriots and would be honored to represent Stratford at Baylor in Waco this year.



## Queens Crowned

Miss Sherman County Farm Bureau was held on August 2, 2004 at the First Christian Church. Contestants were (l-r) Heather Seiler, Cheyenne Ziemann and Allison Baskin. Allison Baskin was chosen as Miss Sherman County Farm Bureau Queen and Heather Seiler as Miss Sherman County Farm Bureau Talent. Each girl received a \$250.00 scholarship.

## Good Luck Elks

## Stratford ISD "Gold Card" Available to Those 62 Years of Age & Above

Stratford ISD is proud to offer a "Gold Card" for all citizens who are 62 years of age or older. This card will admit one person to all "home" UIL events. You may pick up a "Gold Card" in the Office of the Superintendent Monday-Friday from 8:00 a.m. to 4:00 p.m. We would be happy to mail you one by calling us at 366-3305. The Stratford ISD appreciates your support of the students and faculty of this district. We look forward to seeing you this year. "Gold Cards" are good for a lifetime, unless lost or damaged.

## Whale of a Sale Sept. 18<sup>th</sup>

The Imagination Station will hold a Whale of a Rummage sale September 18. Featuring the 'Unique Boutique' "Like new gently worn items. "Hardware", light fixtures, conduit, builder's stuff. "Kitchen Cabinet" (bowls without lids, lids without bowls etc.) "GreenHouse" house plants, planters, silk or dried flowers. If you have items to donate to the Imagination Station, please call Gaynelle Riffe, Jeanne Bell, Kim Crippen, Kim Allen, George Harding, Melody York, Laurie Spurlock, B.A. Donelson, Terri Teig. Please have items clean, in working order, clothes sized and on hangers, if appropriate. Have you changed sizes or it hasn't been worn for 3 years? Maybe it is time to recycle. Baby is 10 and has out grown bottles, scooter toys, car seat, bottles etc.

## Beat Panhandle

## Red Hat Society to Meet Thursday

The monthly meeting of the Red Hat Society will meet Thursday, September 2, 2004 at Headquarters at 6 p.m.

Early deadline for The Stratford Star for Thursday, September 9<sup>th</sup> edition is Friday, September 3, 2004 at 12 noon. We will be closed on Monday, September 6 for Labor Day. Thank you very much. Have a safe holiday.

## Cowboy Church Held Wednesdays

Cowboy Church will meet every Wednesday at the County Barn at 7:30 p.m. Everyone is welcomed to attend.

## Football T-shirts on Sale Now

If you'd like to order a football T-shirt, please call Jessica Wheeler (Cheerleader sponsor) @ 366-3324.

## Pep Club Selling Blankets

Pep Club is selling Elk and Lady Elk blankets. Perfect for football season! Call Jessica Wheeler @ 366-3324 or contact a pep club member to order.

**Obits**

W. Joe Wells

Dalhart-W. Joe Wells, 74 died Saturday, August 28, 2004.

Services were held at 10 a.m. Tuesday, August 31, 2004 in Central United Methodist Church with Jeff Taylor, minister of Central United Methodist Church and Dick Brooks, pastor of First Presbyterian Church in Dalhart, officiating. Graveside services were held at 3 p.m. Tuesday in Old Hansford Cemetery between Gruver and Spearman. Arrangements were by Horizon Funeral Home.

Mr. Wells was born March 29, 1930 in Noma, FL to Wilbur and Inez Williams Wells. Joe was raised in Amarillo and graduated from Amarillo High School in 1948. He attended Amarillo College and Texas A&M University, majoring in business. He then was drafted into the Army, serving from 1950 to 1953, and was discharged as a captain. He also attended Eastern Kentucky University and Dodge City College.

He married Bertie Cator on Dec. 27, 1950. They moved to Colorado, where Joe worked for General Motors before moving to Stratford, where he owned and operated the Ford dealership.

In 1972, Wells helped establish the first branch office of North Plains Savings & Loan of Stratford. He moved to Dalhart in 1977, joining Dalhart Federal Savings & Loan as vice president. During his 18-plus years with Dalhart Federal, he held the offices of vice president, senior vice president and executive vice president. He retired from Dalhart Federal Savings in 1995 but continued serving on the board of Dalhart Federal as director.

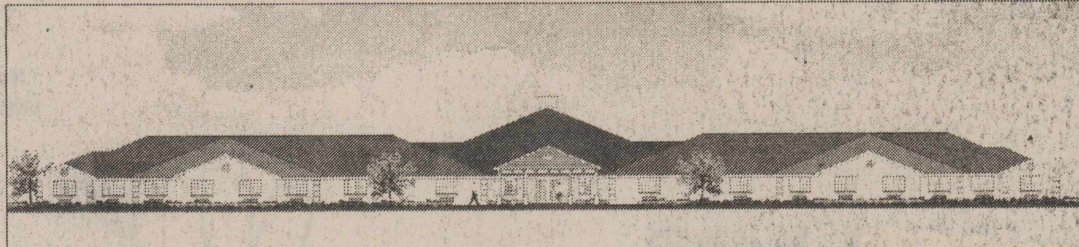
Joe lost his wife of 42 years, Bertie to cancer Aug. 20, 1993. He married Von Ann Lunt on June 24, 1995 in Dalhart. He was a member of the Society of Real Estate Appraisers, National Association of Real Estate Appraisers, Board of Adjustment, City of Dalhart and Hartley County Appraisal District Board.

He was preceded in death by his parents and his first wife, Bertie. Survivors include his wife, Von Ann; two daughters, Debbie Hopson and husband, Dwayne of Lake Kiowa and Deena Hulett and husband, Andy of Dalhart; two stepsons, Jeff Mercer of Amarillo and Clay Mercer and wife, Susannah, and their daughter, Alexandra, all of Lubbock; a sister, Jane Surber and husband, Willis of Salida, CO; four grandchildren, Melissa Cuthbertson and husband, Mark and Brianna Hopson, all of Denison, Jarrod Hulett of Lubbock and Maegan Hulett of Dalhart; two great-grandchildren, Nathan and Austin Cuthbertson, both of Denison; and several nieces and nephews.

The family suggests memorials be to the American Cancer Society or Central United Methodist Church in Dalhart.

\*\*\*  
Analyzing humor is like dissecting a frog. Few people are interested and the frog dies of it.  
—E. B. White  
\*\*\*

\*\*\*  
When we remember we are all mad, the mysteries disappear and life stands explained.  
—Mark Twain  
\*\*\*



The Legacy, An Assisted Living Community will be located at 301 Texas Boulevard in Dalhart

**Legacy, An Assisted Living Community Groundbreaking Announced**

Dallam-Hartley Counties Hospital District will host a groundbreaking ceremony for Legacy, An Assisted Living Community on Thursday, September 2, 2004

The Dallam-Hartley Counties Hospital District Administration and Board of Directors announce the official groundbreaking for Legacy, An Assisted Living Community. The groundbreaking celebration will take place on Thursday, September 2, 2004 from 5-7pm at 301 Texas Boulevard in Dalhart. An official ceremony will take place at six o'clock that evening.

Funded by a \$2.9 million loan/grant from the USDA Rural Development Program, Legacy will offer 23,925 square feet of spacious living for its residents. The facility will also offer three floor plans and two levels of Care to each resident. Basic services offered to each resident include 24-hour staffing, housekeeping once per week, laundry services, three meals a day with special dietary needs met, transportation to medical appointments and other scheduled activities, resident activities and a licensed nurse review of each resident's Care plan. Leroy Schaffner, CEO/ Administrator of Dallam-Hartley Counties Hospital District, says

**Breast Cancer Screening Clinic**

The Don and Sybil Harrington Cancer Center Comprehensive Breast Center will conduct a Breast Cancer Screening Clinic at Stratford Family Medical Clinic, 1220 Purnell, in Stratford on September 16, 2004.

Breast cancer affects one in eight women. The key to winning the battle against cancer is early detection by having an annual breast exam, mammogram and performing a breast self-exam each month.

All exams are done by appointment only.

Call (806) 356-1905 or 1-800-377-4673 for more information or to schedule an appointment.

\*\*\*  
There are only two ways to live your life. One is as though nothing is a miracle. The other is as though everything is a miracle.  
—Albert Einstein  
\*\*\*

**The Stratford Star**

Published Every Thursday  
At-805 Purnell, Stratford, TX 79084  
Second Class Postage paid at Stratford, TX 79084  
Martha ( Marty) Robertson Editor & Publisher  
Shari Hudson—Advertising & Photography  
Subscription Rates  
\$25.00 per year in Sherman And Adjoining Counties  
\$32.00 per year all others  
\$20.00 per year college rate  
**The Stratford Star**  
Box 8  
1-806-366-5885  
Fax 1-806-366-5885

**CHILD FIND.....**



Is the ongoing process of locating children With disabilities from birth through age 21.

If you suspect your child has significant delays in learning, behavior, motor skills, speech, vision or hearing contact your school district  
(806) 366-3320

**Good luck Varsity**

**Beat Panhandle**

**DID YOU KNOW !!!**

The Stratford Laundry is no longer in service. That is right it is no longer there. I was notified and given 30 days to move my service to my local location in Boise City, OK (The West Side Laundry). If you would like for your clothes to be picked and delivered to a location of your choosing within a 10-mile radius of Stratford, give me a call on my toll free number. Remember we will continue the same great rates, and service you have come to enjoy. Give me a call today to set up your schedule.  
1-800-547-2761 West Side Laundry.



Loree Elliott, LNFA



Leroy Schaffner

"The addition of Legacy will offer a wider range of services to the residents of Dallam & Hartley Counties. We are proud to continue expansion of our health care services to meet the needs of area residents. The facility will benefit the community now and for years to come."

Assisted living is a combination of housing and personalized support services where each person receives customized care and attention. An assisted living community provides a level of care between independent living and nursing home care. Legacy, An Assisted Living Community will be located across the street from Coon Memorial Nursing Home and near many health care facilities in Dalhart. Legacy received its name through a desire to express gratitude to and honor its residents for their unique lives. Legacy will honor

life and tradition through each of its functions.

Loree Elliott, LNFA and Coon Memorial Nursing Home Administrator, says "Our vision is for all of our long-term care services, from Legacy Assisted Living Community to Coon Memorial Home, to be less institutionalized and more like a five-star hotel environment" Ms. Elliott believes that the community and residents will enjoy the facility and all that it will offer. A greater ease of health care services will be provided to the residents of Dallam & Hartley counties with the addition of Legacy.

The public is invited to attend the groundbreaking for Legacy on Thursday, September 2, 2004 from 5-7pm. Information about Legacy will be available at the groundbreaking event. For more information regarding Legacy, An Assisted Living Community, please contact Loree Elliott, LNFA at (806) 244-8555.

modern woodmen of america

**MAYBE YOU WON'T WANT FINANCIAL FREEDOM.**

But many people need guidance to help ensure they have the money to do what they want in the future. That's where your Modern Woodmen representative can help.

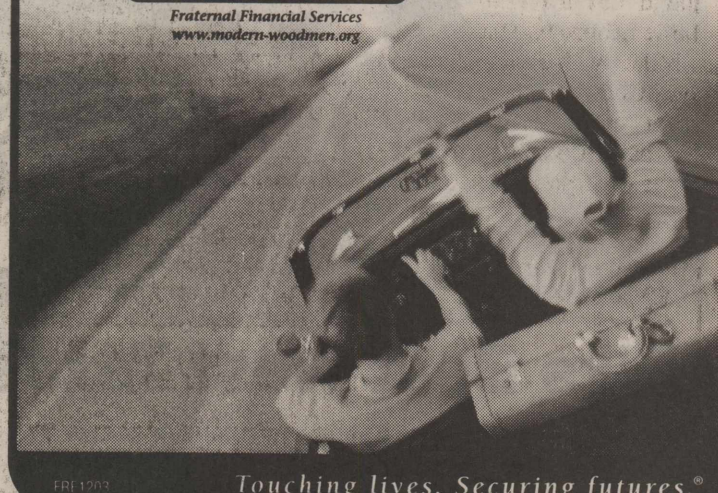
We offer fraternal financial services. Our products give you access to fraternal member benefits to enrich your family and community. Call today to learn more.



Walt Berry  
1305 N. Division  
Stratford, TX 79084  
806-366-2421  
Walt.A.Berry@mwarep.org



Fraternal Financial Services  
www.modern-woodmen.org



Touching lives. Securing futures.™

**Not Just Hardware  
The General Store  
We Also Stock**



**IMPROVING YOUR LANDSCAPE**



Build A Wall

Make A Sidewalk

Create A Pond

Pave A Patio

**Stop By And see What We Have To Make Your Building Project Easier!**

**WE NOW HAVE METAL ON NEW BUILDING!!!!!! COME SEE**



806-396-5308 Fax 806-366-5338 Do It Best. Com

## Kerrick News

By Marylou McDaniel

Lester Irlbeck and son Joseph and his wife Danielle and Ted & Joyce's great granddaughter Riseland of Arlington came after Nicole recently. Nicole had been with her grandparents most of August.

Reed Schoonover celebrated his 10<sup>th</sup> birthday Friday night with a cookout for family and two friends who stayed for a sleepover.

Pie Keener, Stratford had a birthday Saturday night. Enjoying the supper Mark, Klinton, Kelsey Keener, Morgan Carter, Jere Don Keener, Terri Boren and daughter Emma of Borger, Nita Taylor, Buck Weaver.

Roy & Ciccy Harris recently celebrated their parents' birthdays, Ciccy's dad, Littleton Fowler of Mineral Wells, Roy's mother, Rowena Whittle of Higgins.

Dr. Gary Mathews went to Costa Rica with a group of 17 friends. They had a great time.

Bill & Pat Boren visited with Kerry, Kelly & boys at their new home at Abernathy. They found out that Fall Ball was Little League baseball!

Mike & Marylou McDaniel and Cliff Abbott of Lubbock spent nine days at Fred's Spread in Colorado. They went to the Colorado State Fair.

## Scot News

By Mary Hill

Believe it or not—September has arrived! So maybe we need to be reminded of up-coming events!

But first, we want to thank Penny Boyd for providing our program for last week's luncheon. The luncheon was well attended, with plenty of great food, as usual. The program made it all more special.

Now, the first September activity will be bingo on the 2<sup>nd</sup>, at 7 p.m.; on the 7<sup>th</sup> there will be crafts at 5 p.m.; game night will be on the 10<sup>th</sup> at 7 p.m.; on the 16<sup>th</sup> the birthday party will be at 2 p.m.; and then bingo at 7 p.m. Crafts will be on the 21<sup>st</sup> at 5 p.m. with the board meeting at 5:30. The luncheon will be on the 23<sup>rd</sup>.

There were several SCOT members who went to the Eklund at Clayton on Saturday night. They enjoyed a good meal and good visiting.

Some things that are in the planning stage for the future are an open house at SCOT Hall and a noon time bean dinner. More on these things later, as definite plans are made.

See you at SCOT Hall!

## World

(NU) - When you think of volunteering, you probably think of canned food drives, nursing homes and home building. But a group called Engineers Without Borders-USA is taking volunteering to a new high. With international projects like improving drinking water for citizens and building irrigation systems for crops, Engineers Without Borders-USA makes a difference in people's lives. ASME has teamed up with Engineers Without Borders to promote the involvement of ASME members and student members in future overseas projects. For more information, visit [www.asme.org](http://www.asme.org).



Enjoying their reunion-back row: E.H. Baker, Sherry & Phil Dettle, Wanda Weller, Sue Plunk Hudson, Carol Reeder Conkling, Dennis plunk, Judy Hudson Jones, Duane Pittman, Senora Mullican Fansler, Cindy Heil Crabtree, Sandy Tillery, Judy Steinberger Keeney. Seated: Lanita Judd Tyson, Orlanda Lasley Garoutte, Gary Hudson, Lynn Allen.

## FSA Reminds Producers of Sherman County Committee Nomination Deadline

August 26, 2004-Sherman County Farm Service Agency (FSA) reminds America's farmers, ranchers and other agricultural producers that the U.S. Department of Agriculture (USDA) FSA County Committee nomination process is underway. September 3, 2004 is the deadline for eligible voters to nominate themselves or local producers to serve on the FSA County Committee.

According to Rebecca Hemphill, County Committees play an important role in the local implementation and oversight of FSA programs, but the committee system is only as successful as the election process.

"A successful election requires maximum participation from all eligible individuals," said Hemphill.

Hemphill clarifies that in Sherman County, a seat on the county committee is currently open for Local Administrative Area (LAA) #3. This area includes about the southeast quarter of the county.

Individuals elected to serve on county committees help ensure FSA agricultural programs adequately serve the needs of local producers. Committees make decisions on county commodity price-support loan eligibility, establishment of allotments and yields, conservation programs, disaster programs, employment and other issues important to the local agriculture community. USDA is implementing an enhanced outreach program to encourage greater participation in the county election process by socially disadvantaged and minority producers.

"Representation on FSA County Committees should be as diverse as the agriculture industry itself," said Hemphill.

"A county committee should mirror the demographics of the communities it serves—we need and welcome nominations and voter participation from all sectors of the agriculture community—men, women and minorities from all walks of life."

Nomination forms (FSA-669A) can be obtained from local FSA offices or USDA Service Centers or online at <http://forms.sc.gov.gov/efor.ms/mainervlet>. Details on FSA COC elections can be found on the Internet at: <http://www.fsa.usda.gov/pas/p.ublications/elections>

For more information on County Committees and related eligibility requirements, please contact the Sherman County FSA Office at 806-396-2241.

## Health

(NU) - Congress is considering legislation that would exempt association health plans from state laws and established consumer protections. AHPs are health insurance arrangements sold by business associations. The nonpartisan Congressional Budget Office found that the passage of AHP legislation could mean increased premiums for 75 percent of small employers and their families. In addition, older and sicker workers could lose coverage altogether. A coalition of more than 1,000 groups, including consumers, small businesses, health care providers and state officials, oppose AHP legislation.

## Health

(NU) - Susan, a 40-year-old school teacher, was suffering from daily headaches, neck pains, shoulder pains, chronic feelings of tension and sleepless nights. To her surprise, her doctor told her that her physical pains and discomforts were symptoms of depression. Susan is one of several people who tell their stories of painful physical symptoms disrupting their lives in a video titled "When the Mind Causes Pain." For more information, visit [www.freedomfromfear.org](http://www.freedomfromfear.org).

## Good Luck Jv

Beat Gruver

We call her Mom, or Mother, or Grandmother, or GG  
You probably call her J.A. or Joyce Ann.

She's turning 80 this year and we want you to help her celebrate.

We will celebrate on  
Sunday, September 5, 2004 in  
The Fellowship Hall of  
First Christian Church  
2-4 p.m.

No Gifts Please,  
Just your presence or a card!

15 Years, 4500 Babies In Dumas

## Women's Health Center



Normal and high risk pregnancies  
Gynecologic cancer screening  
Breast cancer screening  
Infertility and family planning  
Menopause and hormone problems

Dr. Turhan I. Baykan, M.D.

Specializing In  
OBSTETRICS-GYNECOLOGY  
Monday - Saturday 9 a.m. - 6 p.m.

110 S. Bliss

## First Assembly of God

Kevin Anderson, Pastor  
921 Fulton  
Sunday School 9:45 am  
Morning Worship 10:45 am  
Evening Worship 6:00 pm  
Wed. Bible Study 7:00 pm

## First Christian

Rev. Walter Reed  
5th & Main  
Sunday Coffee Fellowship 9:00 am  
Sunday School 9:45 am  
Morning Worship 10:45 am  
No Sunday Evening Worship  
Wed. Adult Choir 8:00 pm

## First United Methodist

Rev. Gene Weinette  
520 N. Main  
Sunday School 9:40 am  
Morning Worship 10:50 am  
Junior High UMY 5:00 pm  
Senior High UMY 6:00 pm

## St. Joseph Catholic

Rev. Dr. Johnson, Reiki Master  
6th & Pearl  
Rectory - 366 - 5687  
Sunday morning: 8:00a.m. (English), 12 noon. (Spanish)  
Sacrament of Reconciliation: Before Mass. or by appt.  
Christian Formation Classes: K-6th Grade, Wed. afternoon  
Jr. & Sr. High, Wed. - 6:30-8:30 p.m.

## Church of Christ

N. 3rd & Chestnut  
Sunday School 9:30 am  
Morning Worship 10:30 am  
Evening Worship 6:00 p.m.  
Wednesday Bible Study - 7:30 p.m.

## Calvary Baptist

James Washburn  
302 S. Main - 806-396-5335 lv. message  
Sunday School - 10 a.m.  
Morning Worship - 11 a.m.  
Evening Service 6 p.m.  
Wed. Service - 7:30 p.m.

## First Baptist

Brent Farney  
702 N. 3rd  
Early Service 9:00 a.m.  
Growth groups/Sun. School 10:00 a.m.  
Late Service 11:00 a.m.  
Growth Groups Nightly 7:00 p.m.  
Wed.- Youth Group Teen Kids 7:00 p.m./Adult Choir 7:00

## La Mision Bautista

Mision Bautista  
401 S. Wall 396-5376  
Domingo-(Sunday)  
Estueta Dominical 9:45 am

Miercoles (Wednesday)  
Servicio De Adoracion 11:00 am  
Servicio De Oracion 6:00 pm  
Servicio De Adoracion 6:00 pm  
Susninios Durante El Servicio.

Estudio Biblico &  
Se Cuidamos

## The Churches of Stratford Welcome You

A Loving God & His Hell

I stood on the porch debating with a man who did not believe in hell. In addition, this man did not believe Jesus-Christ is God. At any rate, as we talked, and I fumbled around with my Bible, I pointed this fellow to Mark 9. The verses I wanted were 47-48, "And if your eye causes you to stumble, cast it out; it is better for you to enter the kingdom of God with one eye, than having two eyes, to be cast into hell, where their worm does not die, and the fire is not quenched." I didn't quite get that far. I told this fellow he was on the way to the hell he didn't believe in because He also did not believe Jesus Chris was and is God. He left. I went back into the house. A lot of people do not believe in hell. They can't conceive of a loving God having an awful place like hell. But let's look at it this way. Suppose a vicious killer kidnapped your daughter, raped her several times, and left her dead, after mutilating her body with a butcher knife. Suppose the killer is apprehended, tried and convicted. You have an opportunity to speak at the sentencing hearing. Your position is simple. This malignant blot on society should be put away forever. The heinous nature of the crime demands it. When life without parole is handed down, you actually rejoice. You do not gloat. But you are happy and relieved proper punishment is meted out. Justice is done. At the same time, you are not unloving. You are active in community affairs giving yourself to the poor and needy. Isn't this the way it is with God? Can't He have a place where the scales of justice are finally balanced and just rewards are measured out?

Sponsored by:  
Thriftway 396-5586  
Stratford Grain 396-5541  
Lautz 769-4485  
Stratford Star 396-5885  
Walter Lasley & Sons, INC.  
753-4411

Templo Hispano Eben-Ezer  
Pastor Roberto Frescas  
205 N. Poplar - Hwy 287  
Escuela Dominical 10 a.m.  
Servicio De Adoracion 5 p.m.  
Meir Co Les Serv De Ador 5 p.m.

## Kerrick Community Church

Pastor Roy Harris  
Community Building  
Sunday Morning - 11:00 a.m.  
Sunday Evening-6:00 p.m.  
Prayer Meeting - 7:00 p.m. Wednesday

It's Coming Soon  
The Laundromat & Dry Cleaners  
The Cleaning Station  
Call 366-SOAP

"Pokey's" Ranch Rodeo 8:30 am  
PeeWee, Junior, and Senior Teams of four. \$20 Entry Fee per Team  
LIL' HOMBRE RODEO 12:00 Noon  
Entry fee - \$5.00 each event  
Four Age groups  
Seven events  
Sat. Sept. 18  
Cimarron County Free Fair, Boise City, Ok  
For Information Call:  
Kelly at 580-426-2245  
Cheryl at 580-544-3117  
Stephanie at 580-544-3663

## STEVENSON & SONS

PEST CONTROL  
Termite & Pest Control • Rat Control • Bird Control  
Yard & Tree Spraying

Residential • Commercial Farms • Ranches

"Professionals in Pest Control Technology"

249-4202

Dalhart • Stratford • Hartley  
Licensed & Insured

## Sherman Co. Child Welfare Board

To report Suspected Child Abuse, Call

Kathie Altman-366-5611  
David Cross-396-2396  
Ken Forthman-366-2586  
Patsy Harland-827-7568  
Michal Meyer-827-7453  
Jesse Resendes-769-4454  
Brent Farney-396-5554

Austin Hotline  
1-800-252-5400  
ALL CALLS  
CONFIDENTIAL

**LADY ELKS MAKE IMPRESSIVE FIRST SHOWING AT THE TASCOSA CROSS COUNTRY MEET**

The Lady Elks Cross Country team traveled to Amarillo this past weekend and competed in the Tascosa Cross Country Meet. Thompson Park was the sight for the meet and the varsity girls division began around 8:30 a.m. There were no official team scores kept for this first meet of the 2004 season, however, unofficial results indicated that the Lady Elks would have finished 3rd out of the 12 teams competing. Amarillo High, always a regional contender in the class 5A division, finished 1st with a score of 23 points. The Spearman girls, who qualified for state last year in class 2A, wound up 2nd with 116 points. And the Lady Elks took the 3rd spot with a total of 163 points. Other teams competing in the meet were Dumas, Pampa, Farwell, Tascosa, Caprock, Vega, Dalhart, White Deer, and Boys Ranch. The Stratford girls had some excellent first meet performances highlighted by Kristen Crabtree's 20th place medal performance in which she completed the course in 13:55. Yadira Ortega, state qualifier from 2003, finished 23rd with a time of 14:04 and Brittany Hudson, even with a sore ankle, came in 34th with a time of 14:24. Two freshmen girls, Whitney Reese and Lucero Ortega, finished 38th and 48th respectively in times of 14:30 and 14:49. Shiloh Dickenson completed the 2-mile course in 16:05 to round out the runners for the Lady Elks. When you consider there were 77 runners competing Saturday and many of them were from the large 4A and 5A schools in our area, our girls did an outstanding job. The Lady Elks Cross Country team is going to be off this coming Labor Day

Weekend, but will be back in action along with the junior high girls on Saturday, September 11th at Perryton. Come show your support for the Lady Elks Cross Country teams.

**Professor Returns to Classroom**

Dr. John Townsend has enjoyed serving as dean of OPSU's School of Agriculture, but has decided to return full time to teaching. "I requested the opportunity to return to my first love-teaching. I'm thrilled about what we have accomplished in the School of Ag, but my passion is teaching," Townsend said.

He was recently promoted to associate professor due to his teaching excellence. Townsend is also one of the favorite advisors on campus, and currently serves 105 students by helping them plan their college careers. He will continue to serve as head of the Ag Business department and will teach several classes in that area plus linear algebra.

Dr. Peter Camfield will take over as dean on an interim basis while an internal search for a permanent replacement is conducted. Camfield currently serves as head of the Animal Science department, teaches and manages the Firestone Meats Lab. "I am happy to take over the responsibilities of the School of Agriculture on an interim basis, I know I taking over an organized, well-run department thanks to Dr. Townsend," said Camfield.

**Home**

(NU) - A home featuring traditional wood crafts, folk art and hand-carved furniture exemplifies a unique style of beauty. The addition of wood as a classic backdrop throughout your home will enhance your home's sense of warmth and style. A stately carved wood door will set the tone before anyone even takes a step into your home. An elaborate wood entry system, like those available in the Jeld-Wen IWP Collection, features extraordinary details that emphasize the wood's character. Visit [www.jeld-wen.com](http://www.jeld-wen.com) for more information.



Kristen Crabtree



Yadira Ortega

**Modern Woodmen Program gets to Root of the Matter**

The name of one of the nation's largest fraternal benefit societies is confusing to many. But a new program launched by Modern Woodmen of America, which has offices in Stratford, ties to its roots.

Founded in 1883, Modern Woodmen was named in honor of the pioneer woodmen who cleared forests to build homes and secure futures for their families. Today Modern Woodmen offers financial services and fraternal members benefits to clear away burdens for families throughout the nation.

The Plant A Tree Program helps Modern Woodmen members plant seedlings-an activity the organization says is a great way to create a secure future for families, communities and the environment in the 21st century. Modern Woodmen's more than 750,000 members nationwide will be encouraged to order and plant a free tree provided by Modern Woodmen. With seven varieties available, participants can select a tree that's appropriate for the climate in which they live. "This program ties Modern Woodmen members to the roots of our organization in a modern way," says Walt Berry, local Modern Woodmen representative. "They can order and plant a free tree to beautify their communities, recognize family milestones or plant it as a family volunteering project."

Each Modern Woodmen member can order one tree per year, through the organization's web site at [www.modern-woodmen.org](http://www.modern-woodmen.org). Members can also take part in locally organized-tree planting events through their local Modern Woodmen chapters, called camps, and youth service clubs. Additionally, Modern Woodmen will offer a free tree as part of its comprehensive Ecology Awareness Program, a free educational program available to schools and youth groups.

Through the tree-planting program and the help of its members, Modern Woodmen aims to plant well over 10,000 trees across the United States in 2004.

Founded in 1883 as a fraternal benefit society, today Modern Woodmen of America offers financial services and fraternal benefits to individuals and families throughout the United States.

\*\*\*  
A celebrity is a person who works hard all his life to become known, then wears dark glasses to avoid being recognized.  
—Fred Allen  
\*\*\*

**S.P.I.R.I.T.  
9th Annual Conference  
September 1 and 2, 2004  
Guymon, Oklahoma**

**Wednesday, September 1, A Tour of Highway Users:**

- 11:00 am Tour Texas County Feedyard
- Noon Lunch at Seaboard
- 1:00-3:00 pm Tour the Seaboard Plant
- 3:30 pm Depart Plant
- 4:00 pm Board of Directors Meeting, Best Western Reunion Center
- 6:00 pm Reception, Wild Horse Art Gallery, 5th and Main, Guymon
- 7:00 pm Supper, Best Western Reunion Center

**Thursday, September 2, State of the Highway:**

- 7:30 am Registration and Breakfast, Best Western Reunion Center
- 8:30 am Welcome and Introductions- Mayor Jess Nelson
- 8:40 am Opening Addresses-  
Oklahoma Transportation Director Gary Ridley  
Texas Transportation Director Michael Behrens
- 9:10 am Federal Highway Administration Address-  
Oklahoma Deputy Director Kevin McLaury
- 9:20 am Report from Mark Schwartz Washington DC
- 9:30 am State Report, New Mexico-  
Deputy Director Andreas Viamonte
- 9:40 am State Report, Texas-District Engineer Mark Tomlinson
- 9:50 am State Report, Oklahoma- District Engineer Robert Ward
- 10:00 am State Report, Kansas- Dist. 6 Engineer Larry Thompson
- 10:10 am Question and Answers on State Reports
- 10:20 am S.P.I.R.I.T. Presidents Remarks- Max Zimmerman
- 10:25 am Break
- 10:35 am Panel Discussion by Highway Users- Moderator Jack Taylor  
K & J Trucking- Shelly Koch  
National Carriers-Steve Bevilacqua  
Groendyke-John Prather  
Air Products- Brad Beckley
- 11:25 am The Importance of Transportation to Agriculture-  
Oklahoma Secretary of Agriculture Terry Peach
- 11:45 am Depart for Lunch
- Noon Poolside Lunch
- Afternoon
- 1:00 pm Optional trip to Black Mesa, see gorgeous mesa lands, dinosaur tracks, Santa Fe Trail tracks....a full day of awesome touring.
- 6:00 pm Chuckwagon Cookout, Kenton
- 7:30 pm Arrive back in Guymon

**Host Motel: Best Western Townsman, Hwy 54 W, Guymon, OK 580-338-5665**

**Registration Form**

Name And Title \_\_\_\_\_  
Organization: \_\_\_\_\_  
City, State, Zip: \_\_\_\_\_  
Registration Fee: \$25 per person \_\_\_\_\_ people x \$25 = \_\_\_\_\_  
Kenton Trip Fee: \$15 per person \_\_\_\_\_ people x \$15 = \_\_\_\_\_

**Please mail to: Jess Nelson, City of Guymon, 219 NW Fourth, Guymon, OK 73942**

**More information: 580-338-5838 [www.southwestpassage.org](http://www.southwestpassage.org)**



**Notice of Public Hearing on Tax Increase**

The SHERMAN COUNTY COMMISSIONERS COURT will hold a public hearing on a proposal to increase total tax revenues from properties on the tax roll in the preceding year by 5 percent. Your individual taxes may increase at a greater or lesser rate, or even decrease, depending on the change in the taxable value of your property in relation to the change in taxable value of all other property and the tax rate that is adopted.

The public hearing will be held on SEPTEMBER 13, 2004 at 8:00 AM.  
**FOR** the proposal: Commissioner Tillery, Commissioner Williams, Commissioner Hass  
**AGAINST** the proposal: Commissioner Asher, Judge Crippen  
**PRESENT** and not voting:  
**ABSENT:**

The following table compares taxes on an average home in this taxing unit last year to taxes proposed on the average home this year. Again, your individual taxes may be higher or lower, depending on the taxable value of your property.

	Last Year	This Year
Average residence homestead value	\$ 32,067	\$ 34,847
General exemptions available (amount available on the average homestead, not including senior citizen's or disabled person's exemptions)	\$ -0-	\$ -0-
Average taxable value	\$ 32,067	\$ 34,847
Tax rate	.47175	.45544
Tax	\$ 151.28	\$ 158.71

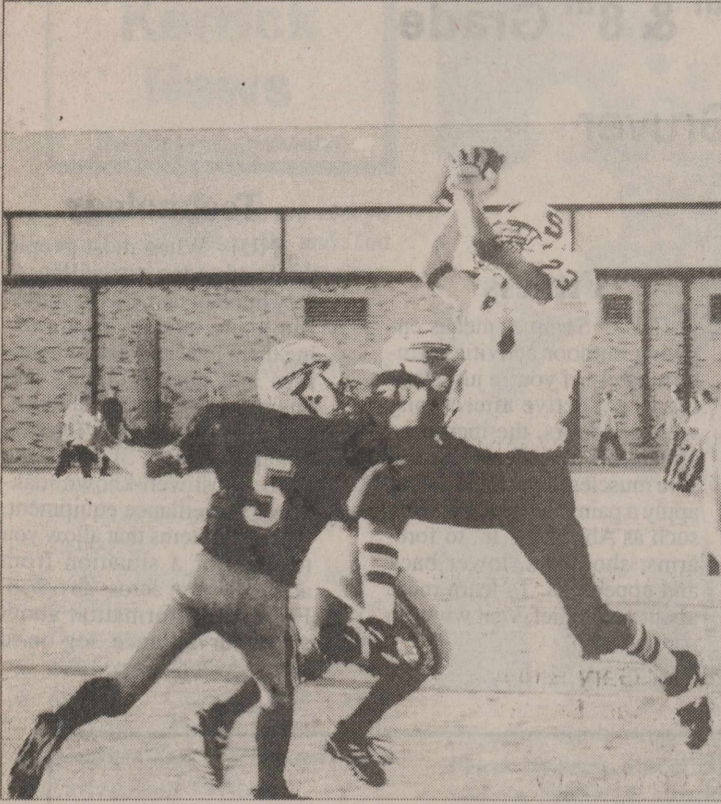
**Under this proposal, taxes on the average homestead would INCREASE by \$ 7.43 or 4.91 percent compared with last year's taxes. Comparing tax rates without adjusting for changes in property value, the tax rate would DECREASE by \$ .01631 per \$100 of taxable value or 3.45 percent compared to last year's tax rate. These tax rate figures are not adjusted for changes in the taxable value of property.**

**Criminal Justice Mandate (for counties):**

The SHERMAN County Auditor certifies that SHERMAN County has spent \$ -0- in the previous 12 months beginning JULY 1, 2003, for the maintenance and operations cost of keeping inmates sentenced to the Texas Department of Criminal Justice. SHERMAN County Sheriff has provided information on these costs, minus the state revenues received for reimbursement of such costs.

**Enhanced Indigent Health Care Expenditures (use if applicable):**

The \_\_\_\_\_ spent \$ \_\_\_\_\_ from \_\_\_\_\_ to \_\_\_\_\_ on enhanced indigent health care at the increased minimum eligibility standards, less the amount of state assistance. For the current tax year, the amount of increase above last year's enhanced indigent health care expenditures is \_\_\_\_\_.



#23 Tyler Haynes catches a pass from Josh King, but was ruled out-of-bounds.



Stratford Elk #22 Tony Ruiz carries the ball for the Elks on Friday night.

### Elks Roll Past West Texas

The Stratford Elks are off to a good start for the season after their 28-13 win over West Texas on Friday, August 27<sup>th</sup>.

The Elks accumulated 328 rushing yards and finished with 435 total yards while holding West Texas to 182 total yards.

Josh King was 6 of 10 passing for 107 yards and two touchdowns. King also scored a 5-yard touchdown run. Tony Ruiz led the Elks in rushing yards with 214 yards on 25 carries and an 86-yard

touchdown. Travis Soto scored on a 40-yard pass from King and an 8-yard pass from King. Josh King also scored on a two-point conversion. Martin Beltran connected for two PAT's for the Elks.

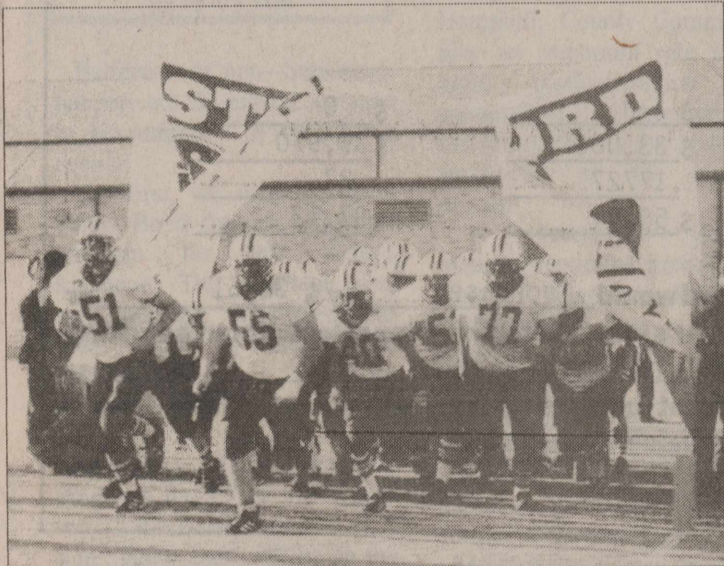
The Elks will face Panhandle there on Friday, September 3<sup>rd</sup> at 7:30 p.m. Good Luck Elks!



Stratford Elks #25 Asbel Gomez, #10 Josh Lanning, #80 Travis Soto, #23 Tyler Haynes, and #88 Jared Ewers.



Coach Johnny Hudson introduced the Cross Country Team at the pep rally.



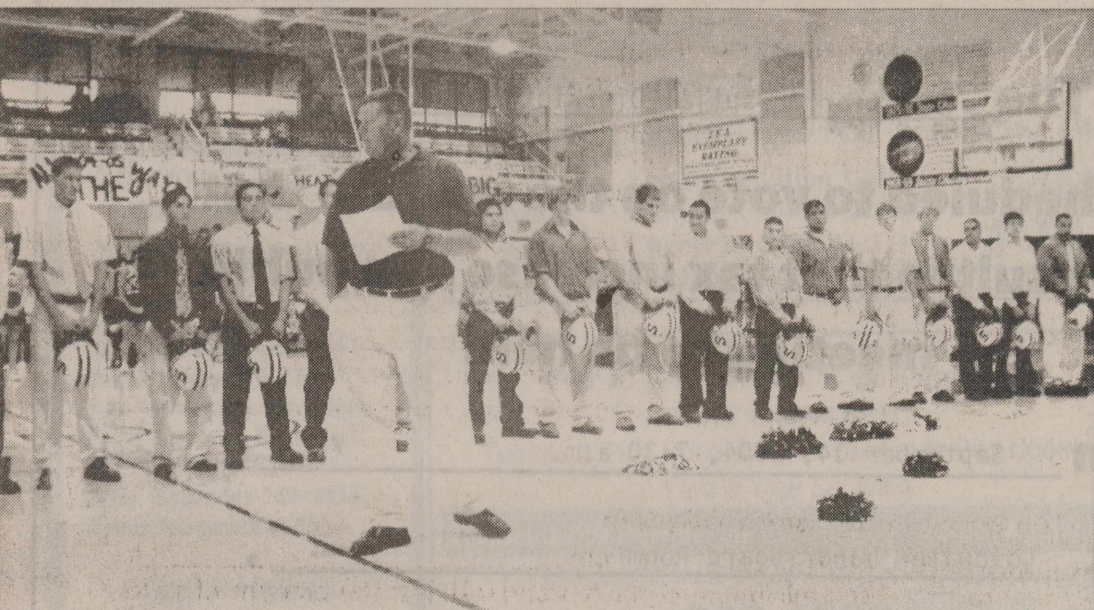
The Stratford Elks opened their season with a 28-13 win against West Texas on Friday, August 27<sup>th</sup>.



With the support of First State Bank, XIT Wireless, and KXIT Radio in Dalhart, you will be able to hear all of this seasons' football action with Greg Wright, Wayne Smith and Scott Buckles doing the "play by play" every Friday night. "This is just an idea that I had to bring Stratford sports to the folks that might not be able to make it to the games all of the time," says Greg. "I have had some great support from some great sponsors, First State Bank of Stratford, XIT Wireless, and KXIT Radio in Dalhart. I would also like to thank Jim Taliaferro and Eddie Metcalf for all of their support and assistance in getting this accomplished. I really think that this will be a great medium for our community, especially when bad weather keeps some folks at home. We had our first broadcast last Friday night for the West Texas Game, and other than a couple of glitches, it was great to be back in the booth with Wayne and Scott. They are great guys to work with and both of them enjoy Stratford sports as much as I do. We plan to do all of the games during football season, the playoffs, boys and girl's district basketball and the playoff's for that as well. We would also like to do a Scoreboard show with coaches' interviews, player interviews and stats, so if anyone is interested in sponsoring, please get in contact with one of us." They have an email address stratfordsports@amaonline.com... if you would like to contact them about sponsorship. You can tune into the Stratford Sports Network on 1240 am KXIT or Cable channel 6 on Classic Cable or XITV's Cable Channel 80 every Friday night beginning at 7 PM for the pre-game show.



All girls who attended cheer camp this summer cheered in the first pep rally on Friday, August 27<sup>th</sup>.



Coach Eddie Metcalf introduced the 2004 Stratford Elks at the pep rally on Friday, August 27<sup>th</sup>.

<h2>Business Directory</h2>	<h3>Stratford Hospital District</h3> <p>Coldwater Manor Stratford Family Medical Clinic Stratford EMS Proudly serving the medical needs of Stratford and Sherman County</p>
<p><b>WALTER LASLEY &amp; SONS INC.</b> <i>THE Feedyard</i> Since 1953 753-4411</p>	<p>This space available</p>
<p><b>Stratford Grain Co.</b> Stratford 396-5541 Lautz 769-4485 4 North Main</p>	<p><b>Robert's Service Center</b> 400 S. Poplar 396-2882 Auto Repair &amp; Lawn Mower Repair</p>
<p><b>CONSUMERS</b> 208 Texas <i>We Sell Seed &amp; Fuel</i> Farmland, Accto, &amp; Moorman Seeds &amp; Diamond Shamrock Products 366-2261</p>	<p>This space available</p>
<p><b>Stratford Auto Electric</b> 119 S. Wall, Stratford, Texas 79084 Phone 366-5941 366-5857 <i>Alternator, Starter, -Magneto Repair</i> Since 1964</p>	<p><b>Allen-Tarver Insurance Agency</b> Carolyn A. Tarver Auto • Home • Life • Commercial Bus: (806)396-5810 • Res: (806) 396-2393</p>
<p><b>Betty Brown's Medical Claim Service</b> 605 S. Main P.O. Box 7 Stratford, TX 79084 806-396-2623</p>	<p><b>Joe Flores Farm Bureau Insurance</b> 396-5538 office 396-5389 home</p>
<p><b>Brown's Meat Locker</b> <i>Custom Wholesale &amp; Retail Meat</i>  <i>Federally Inspected</i> Hwy 287 South 366-2513</p>	<p><b>Jesse's Gun Shop</b> Gun Repairs • Sales • Cleaning Hours: Mon. - Fri. - 1730 - 2000 Sat. - 0800 - 1600 Jesse Resendes (806) 763-4454 (806) 366-3134 Shop 111 S. Maple Stratford, TX 79084</p>
<p><b>A &amp; I PARTS CENTER</b> AUTOMOTIVE AND INDUSTRIAL PARTS - THE CAR CARE PEOPLE <b>Jerry Ewers</b> Manager P.O. Box 1146 (806)366-5561 201 N. 2nd-Stratford, TX 79084 Fax: (806)366-2583</p>	<p><b>Your Home Town Pharmacy..</b> ELK PHARMACY 317 N. Main P.O. Box 380 Stratford, TX 79084 806-396-4505 Major Prescription Plans Accepted Gayland Vandiver, R.Ph. Debbi Vandiver/ Owners Carlton Cards, Millionaire Candy, Gifts • Cookie and Balloon Bouquets</p>
<p><b>This Space Available</b> Call 366-5885</p>	<p><b>Tommy's Embroidery</b> 580-423-7718 Texhoma, OK 210 Hwy 54 West Caps, Shirts, Jackets, Baby Blankets, Towels, Towel Wraps, School Logos, &amp; Much More!</p>
<p><b>THRIFTWAY</b> Big Town Selection • Small Town Friendliness Wide Selection Frozen Food Quality Foods Fresh Produce Hwy 54 East 396-5506</p>	<p><b>Westside Laundry &amp; Dry Cleaners</b> Boise City, OK 1-800-547-2761 Owners—Jerry &amp; Janie Smith</p>
<p><b>Joan Bell THE TRAVEL STORE</b> affiliated with National Travel Systems A Full Service Travel Agency 396-5958 1-800-753-2792</p>	<p><b>Joe Taylor, Photography</b> PO Box 27 1305 N Chestnut Stratford, TX 79084 806-366-2459 Weddings, Portraits, Etc.</p>
<p>This space available</p>	<p><b>Rockin' C Cross Appraisals</b> Farm, Ranch &amp; Residential Appraisals 711 Purnell P.O. Box 1172 Jn 3:16 Stratford, TX 79084 Bus: (806) 366-7525 Fax: (806) 366-7515 <b>DAVID J. CROSS</b></p>

**GROW SHERMAN  
COUNTY  
ROUNDTABLE**

**NEWSLETTER**

**VOL 111  
August 30, 2004**

Sherman County Development Committee sponsored the 2004 Third Quarter Roundtable Meeting at the Imagination Station on August 26, 2004. It was a one-hour breakfast meeting with each of the Sherman County Taxing Entities presenting a brief update on their respective entity.

Shannon Taliaferro, Board President of the Stratford Hospital District introduced Ed Dudley, the incoming Administrator. Coldwater Manor has been given approval to convert the therapy rooms into rooms for occupancy. The Manor now has 42 beds for occupancy, with 37 filled.

The Stratford Ambulance Service has persons coming from other areas to receive training, but is in need of local persons to volunteer. A new class will begin in the near future.

The Stratford community enjoyed having a Thrift Store, but it was not cost effective for the Stratford Hospital Board. The Thrift Store could only be viable if it was operated by volunteers. The Thrift Store building is now for sale.

Beginning September 13, 2004 Stratford Family Medical Clinic will be open 4 days a week. The clinic hours will be 8:00 AM - 6:00 PM Monday through Thursday. The clinic will be open through the lunch hour. Dr. Bassett will be working Monday - Wednesday, and Nurse Practitioner, Elisa Flores will work on Thursday.

The Veterans Affairs Clinic is open and viable. Dr. Bassett has been recertified for VA and the Nurse Practitioner, Elisa Flores is working toward getting her credentials for VA certification.

Sherman County Judge, Kim Crippen reports that with the appraisal rates being up the projected 2004-2005 Sherman County Budget should show a drop in the tax rate. Cuts have been made in the budget where possible. For the first time in two years, county employees may receive a 5% increase in pay. The County is looking to replace the windows on the second floor of the Sherman County Courthouse.

County Commissioner, Randy Williams reported that the county had completed asphalt work on some of the roads at the Stratford Cemetery.

The Stratford City Manager, Sean Hardman, thanked Sherman County for their help with the asphalt work at the Stratford Cemetery. Sean Hardman reports that the city budget process is completed. The projected budget shows that the 2004-2005 tax rates should remain the same as the 2003-2004 budgets.

The Main Street Project is progressing very slowly, with the state plans now projecting that work be accomplished beginning at Highway 54 and ending at Stratford High School.

The Stratford Waste Water Plant is still a problem area and the city is researching

all possibilities of receiving money from some of the different US Government Agencies to help finance improvements. Stratford is in a unique situation. The medium household income is too high for the city to qualify for some grant moneys.

The request for building permits for the city of Stratford is up.

Patti Tims with the Stratford Chamber of Commerce reports two new members on the Chamber Board are Jim Alexander and Dick Bachman. The Ranch Rodeo was successful with a total of eighteen teams participating.

The Stratford Chamber of Commerce will offer single membership in September for \$15.00 per person.

Patti Tims introduced Susie Spurlock, Sherman County Extension Agent. Susie reports that there are 110 Sherman County youth signed up to participate in the 2004-2005 4-H Program. Susie gave a brief report from the Texas Extension

Association of Family and Consumer Sciences 60th Annual Conference. The Workshop-On-The-Move that Ms. Spurlock attended included the community of Olton, Texas where she visited a farm that is one of the largest growers of Cannas (Lilies) and ships Cannas bulbs all over the United States. This interesting way of promoting EcoTourism and uses of the land other than farming included the Olton Pheasant Hunt, the raising of pheasant for the pheasant hunt, and producing elk to be raised in another area of the Panhandle, and a private lake with a private restaurant, which Susie reports being served a most tender steak.

Stratford Independent School District reports that the enrollment for Mary Allen Elementary School is 253, Stratford Jr. High School is 171, and Stratford High School is 194, for a total of 618 students. The Stratford High School Elk Football games may be listened to on 1240 AM from Dalhart's XIT, Channel 80 on XIT, or Channel 6 on Classic Cable. **GO ELKS!**

Sherman County Development Committee announced that Kathy Allen will be their new full-time Executive Director effective September 7, 2004. No, the present part-time Executive Director, Ann Johnson, will not be leaving. There will be a transition period.

The Sherman County Development Committee may not have been a full partner in the development and the construction of new buildings and businesses in Stratford. The Board of the Sherman County Development, like most of the community, has been avid side-walk or drive-by building superintendents. There is an air of excitement, a quickness of step, and perhaps a more positive attitude. Yes, things are happening in Stratford. New homes are being built, and existing homes are being updated.

The estimated times for the businesses to open are:

**STRATORD SELF STORAGE:** This business is operated by J. People and Jim Bob Reynolds. Now open for business. You call and they will send someone to meet you and show you the unit. The area around the structure will soon have, weather permitting, a rock base spread and packed for access to the storage units.

**THE CLEANING STATION:** The laundry area should be open by September 7, 2004. The business will be cleaned, painted and offer new equipment for the public use. The owners and operators are Ken and Bob Harris.

**SUBWAY:** Estimated to open in mid September 2004.

**THE GENERAL STORE:** The present building is being doubled in size and the schedule is for opening by the end of November 2004, this schedule could slip to the Christmas Time period.

**HAPPY STATE BANK:** The construction is estimated to be completed by the end of February 2005.

Scott Buckles presented a brief outline on Long Range Planning for Sherman County. It has been several years since the SCDC and the Sherman County Taxing Entities have addressed this issue. The challenge for the Sherman County Development Committee is to help develop a long-range development plan. Sherman County needs to make plans for the future with advanced preparation completed by each taxing entity. A planning committee will be formed with two persons from each taxing entity as representatives.

**Health**

(NU) - More than 100 million Americans have high cholesterol. So, you probably know someone dealing with the condition, or you may have high cholesterol yourself. To help lower your cholesterol, ask your doctor about dietary supplements. For instance, Advanced Plant Pharmaceuticals Inc. (APPI OTC BB) produces a product called Lo-Chol, designed to help you maintain healthy cholesterol levels naturally. For more information, go to [www.appi.cc](http://www.appi.cc).

**Good Luck 7<sup>th</sup> & 8<sup>th</sup> Grade**

**Beat Gruver**

**Health**

(NU) - Movie stars, athletes, media, peers — children have the potential to be influenced by many outside factors. However, studies have found that parents have more potential to influence their children's behavior than anyone else does. As a result, parents are looking for creative ways to provide healthier lifestyle options for their families. In recognition of the importance of total family wellness, Bob Evans has listed a number of family wellness tips on its Web site, [www.bob-evans.com](http://www.bob-evans.com).

**Auto**

(NU) - If the air conditioning in your vehicle is not blowing cold in 90-degree heat, you'll probably be running to the repair shop. But should you? If saving money and time are your goals, many car repair experts say maybe not. Easy-to-use, cost effective air conditioner charging products, such as Measure & Charge from Interdynamics, can save the do-it-yourselfer up to \$100 per use compared to repair shop services. For more information on do-it-yourself air conditioner recharging and retrofitting, visit [www.id-usa.com](http://www.id-usa.com).

**Technology**

(NU) - When most people think of video surveillance, they think of cameras in stores. But many businesses are using them to keep track of meetings and ensure clients and business associates stand behind their word. CCS International (OTC BB: SITG) is one of the most well-known makers of surveillance equipment, making systems that allow you to monitor a situation from across town or across an ocean. For more information about video surveillance, log on to [www.spyzone.com](http://www.spyzone.com).

**Fitness**

(NU) - Summer means enjoying outdoor activities. Unfortunately, if you're just starting to get active after a long winter indoors, the increased physical activity can lead to sore muscles and pain. To help, apply a pain relieving liniment, such as Absorbine Jr., to forearms, shoulders, lower back and upper legs. To learn more about pain relief, visit [www.absorbine.com](http://www.absorbine.com).



**Notice of Public Hearing on Tax Increase**

The Stratford Hospital District will hold a public hearing on a proposal to increase total tax revenues from properties on the tax roll in the preceding year by 62.46 percent. Your individual taxes may increase at a greater or lesser rate, or even decrease, depending on the change in the taxable value of your property in relation to the change in taxable value of all other property and the tax rate that is adopted.

The public hearing will be held on September 9, 7:00pm at Coldwater Manor Board Room.

**FOR the proposal:** Ronnie Brooks, Wayne Smith, Shannon Taliaferro

**AGAINST the proposal:** Betty Brown, Larry Drake

**PRESENT and not voting:**

**ABSENT:**

The following table compares taxes on an average home in this taxing unit last year to taxes proposed on the average home this year. Again, your individual taxes may be higher or lower, depending on the taxable value of your property.

	Last Year	This Year
Average residence homestead value	\$ 33,006	\$ 35,970
General exemptions available (amount available on the average homestead, not including senior citizen's or disabled person's exemptions)	\$ 0	\$ 0
Average taxable value	\$ 33,006	\$ 35,970
Tax rate	.17727	.27
Tax	\$ 58.51	\$ 97.12

Under this proposal, taxes on the average homestead would increase by \$ 38.61 or 65.99 percent compared with last year's taxes. Comparing tax rates without adjusting for changes in property value, the tax rate would increase by \$ .09273 per \$100 of taxable value or 52.31 percent compared to last year's tax rate. These tax rate figures are not adjusted for changes in the taxable value of property.



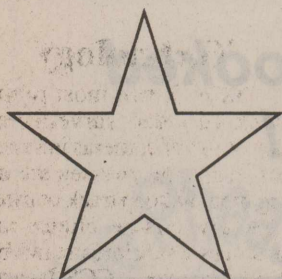
**Notice  
of Vote on Tax Rate**

The Stratford Hospital District  
conducted a public hearing on a proposal  
to increase the total tax revenues of the  
Stratford Hospital District  
from properties on the tax roll in the preceding  
year by 62.46 percent  
on September 9, 2004.

The Stratford Hospital District  
is scheduled to vote on the tax rate that  
will result in that tax increase at a public  
meeting to be held

on September 14, 2004, 7:30 a.m.

at Coldwater Manor Board Room.



It Pays To Look In The

# Star Classifieds

..The Best Salesperson Around

Phone 366-5885

## For Sale

For Sale: '91 Hitchhiker #5th wheel 29 1/2 ft. trailer 12' slide out-18' awning. Excellent condition 806-396-2285. 4-22-tfn

For sale: Motorcycle and 4-wheeler. Call 769-4446. 9-23-c

I have two GREAT Celine Dion Concert tickets for sale...Las Vegas, NV...September 17, 2004-8:30 p.m. Carolyn Tarver 396-5810 or 366-2393. 9-9-c

For Sale: 1995 Oldsmobile-Delta. 88 Royale-Nice-runs great. Call 753-7155 to see. 9-2-p

For Sale: '03 Cadillac CTS, Loaded, ON STAR, 26,000 miles. Call 769-4464. 9-16-c

For Sale: rustic, western metal art queen size bed, headboard, footboard and rails...never used. \$400-call Carolyn Tarver 806-396-5810 or 806-366-2393. 9-23-c

## Garage Sales

Garage Sale: Sat. Sept. 4. In Bldg. next door to Brooks Video on Main Street. 9 a.m. to? 9-2-c

## Land for Sale

Land for Sale: Section 66 and South 1/2 of Section 67 Block 8...Capital Syndicate sub-division...Dallam County CRP to 9-30-2007. Contact Trust Dept. at First State Bank of Stratford 806-396-5521. 10-23-tfn

## Wanted to Buy

Wanted to Buy, Aluminum Irrigation pipe 6"/10". Call 580-423-7193 or 580-851-0355 or 580-651-5605. 10-21-p

## Help Wanted

Certified Nurses Aide positions are now available at Coldwater Manor. Excellent benefits including health insurance and retirement after 90 days of employment. Apply in person at Coldwater Manor, 1111 Beaver Road, Stratford, TX 79084 E.O.E. 6-3-tfn

Coldwater Manor is now accepting applications for part-time office help. Basic office duties & some computer skills necessary. M-F, 11 a.m.-3 p.m. Apply in person or fax resume to (806) 396-5930 E.O.E. 8-26-tfn

I need truck driver. Call 753-7470. 8-26-2xp

Counter person at A & I Parts in Stratford, also need warehouse personal at same location. Call Jerry Ewers-806-366-5592 or 753-7593. 9-2-tfn

## Health

(NU) - A unique, interactive exhibit is traveling to 12 cities nationwide to educate health-conscious and at-risk people about cancers from the top of the body to the bottom — skin, oral, breast, prostate, lung and colorectal. The Cancer Research and Prevention Foundation's Check Your Insides Out — From Top to Bottom exhibit features six hands-on, family-friendly learning stations. For more information, visit [www.preventcancer.org](http://www.preventcancer.org).

## Health

(NU) - School boards and parents are discovering that schools they labored hard to raise money to build in the last 10 years or so are subjecting their children to mold and indoor air quality problems. A new book called "Are You Building a School or a Liability?" written by Chris Huckabee and Kyle Montgomery, calls attention to a serious problem with school buildings. For more information, visit [www.ncma.org](http://www.ncma.org).

## Services

**New & Used Appliances**  
Factory Authorized Service  
Whirlpool, G.E. & Frigidaire  
**BABER SUPPLY**  
DishNetwork Sales & Service  
1-800-292-4023  
1-580-423-7255

I will do little handiwork jobs for the elderly at a reasonable cost. Call Dick Bachman 366-7679. 8-19-tfn

Sandblasting & Painting Call 244-3839 or 268-0334. Keith Heiskell 10-7-p

Willing to provide services to the elderly in the evenings, weekdays 4 p.m.-6 p.m. Available some weekends. Services include but not limited to: Personal care, light housekeeping, meal preparation & errands. Call Amy Long at 753-4556 (evenings). 9-2-c

## For Rent

For Rent: 1 bedroom furnished apt. Call Al Baker at 366-5318 8-5-tfn

**PHEASANT RIDGE APARTMENTS**  
**STRATFORDS' NEWEST & NICEST**

- \* 2 Bedroom Apt.
- \* Very Nice
- \* CH/A
- \* New Appliances

**WEST TEXAS RENTALS**  
806-244-3418

House for Rent 2 Bdrm, basement, central Heat/Air Call 366-2493 or 930-1985. 9-9-c

For Rent: 1 Bedroom furnished apt., 6th & Fulton. Call 396-5541 daytime, 396-5692 at nights. 1-28-tfn

FOR RENT...Office space on Main Street for rent. For information call (806)396-5541. 11-27-tfn

## Houses For Sale

Owner Financing. Buying a House Made Simple. All 3 Bdrm. 319 S. Main, 611 N. 3rd. Call Brett Cummings 366-7664 (hm) or 753-6677 (cell). 1-2-04-tfn

3 Bdrm Brick, 2 baths on large corner lot. 1201 NW 2nd St. Sprinkler system, fenced yard. Located in Casa Bonita Addition. Call 366-2153 for Appointment 9-30-c

For Sale: House and furnishings as a package. 1320 sq. ft. living; detached garage; sprinkler system. \$49500.00. Shown by appointment only. Trust Dept. 396-5521. 9-25-tfn

Must see! Beautiful home on 1 acre. 2,100 sq. ft. 4 yr. Old, 4 bedrooms, 2 1/2 baths, double car garage. Open floor plan w/lg kitchen. Call Johnny @ (806)366-3584 or Brian @ (559)947-3272. 4-1-tfn

For Sale: 3850 Sq. Ft. living area, 4 BR, 2 1/2 baths, basement, covered patio, 2 car garage, corner lot w/circle drive. 420 N. Chestnut. Call 806-396-2348. 7-10-tfn

For Sale by owner: 3 bedroom, 1 & 1/2 baths, dining room, large living and utility rooms; 1 car garage w/shop; newly remodeled bathroom; new kitchen counter, cabinet, and dishwasher; carpet 2 years old. 1800 sq. feet (w/garage); vinyl siding, large 3-lot yard (90'x140'), 6' backyard picket fence w/ 3 gates, large storage building, backyard gym. \$39,900. 213 S. Fulton. Call (432) 586-6324 or (432) 940-6324. 7-29-tfn

4 Bdrm Brick Home in Texhoma, 2 baths, 2 fireplaces, 2 car garage, large walk-in closets, new roof & barn in backyard 40'x25'. (580)423-4553 or (580)423-7718 for more info. 7-31-tfn

FOR SALE BY OWNER...Beautiful 4 bedroom home, large sized rooms, 3 full baths, office, large utility room, basement, covered patio, beautifully landscaped backyard. W/deck. This house is located in a GREAT neighborhood!! 202 Kay Ave. Approx. 3800 sq. ft. Call 806-366-2482. 4-22-tfn

I'm Mad...at banks who don't give house loans because of bad credit, problems or new employment. I do, call L. D. Kirk, Homeland Mortgages, (254) 947-4475. Belton, TX TSLD #1667 9-2-p

For Sale: Our home at 619 S. Pearl (we're moving to the farm). 2572 sq. ft. living area, 3 b, 2 b, fireplace, heated tile floor in den & kitchen, 2 car garage, separate storage garage, extra lg. Lot 366-5829 or 753-7775. 4-22-tfn

For Sale: 4 -bd-2 bath. Lg. Living area, over 1800 sq. ft. 2 storage buildings, new fence & dog run. Sits on 3 lots, 104 N. 7th. Call 396-2300 daytime or 366-3109 nights. 7-22-tfn

## Ad Rem Land Co.

Office  
803 S. Bliss, Dumas  
806-935-7364  
Fax 806-935-7687  
E-MAIL [adrem@adremland.com](mailto:adrem@adremland.com)  
Visit our website @  
[Http://www.adremland.com](http://www.adremland.com)

This 2 Bedroom, 1 3/4 bath that has style. The office could serve as 3rd bedroom. Beautiful large living room and dining area. Extra room off of kitchen could serve many purposes such as hobby room or office. Hardwood floors, decorative wall paper. Home sits on a beautiful corner lot with sprinkler system, nice patio area and storage building in backyard. Hurry! \$78,900.

Buyers-You will fall in love with this 3 bedroom, 1 3/4 bath home! The home has been lovingly taken care of and is wonderfully decorated. The kitchen, dining and living room are all open. Large master, suite. Master bathroom shower has a wall with beautiful glass blocks. The property also includes a superb shop which is 1152 sq. ft. and has 2 overhead garage doors. The shop also has heat & air and includes a 1/2 bath. Great patio. Near schools. \$95,000.

This charming home has been remodeled and sits on a 5 1/2 fenced lots. Attached 18'6"x24'8" workshop and 11'9"x12" storage building in backyard. Seller will furnish home warranty. \$79,900.

Super nice home has been recently refurbished with new floor coverings and paint. It has walk-in closets. \$33,000.

Well maintained home in nice neighborhood. This home has large kitchen with dining area and large living room. Two large bedrooms, with large living room. Two large bedrooms, with large walk-in closets, plus office with closet that could be third bedroom, two full baths and large utility room. Two car attached garage, sprinkler system, CHA, and large shop in fenced backyard. We are offering a one-year home warranty with this home. This is a must see home ready to move into, for more information call 806-570-5716 or 806-655-2560. 10-28-c

## Cards of Thanks

Thank you for the prayers and support you have given us during the loss of my mother. What a great community Stratford is!

Glenn, Belinda, Calli & Braden Hamilton

Thank you so much for all your prayers, cards, flowers, calls and food while I was in the hospital. Stratford is full of wonderful people.

Thank you  
The Albert Family  
Lisa & Mary  
Shorty & Rose  
Joe Pete & family  
Steve & family

Fund Raiser Dance sponsored by Coldwater Manor Nursing Home Activity Department, would like to thank the following Merchants for their donations: First State Bank, Happy State Bank, Smith Ins. Agency, Duckwalls, Farm Bureau, Thriftway Store, Let's Make Arrangements, Betty's, THE General Store, Jackson Supply, Great Length's Salon, Brooks Video, Automotive, Viola's Beauty Shop, K-Bo's Steak House, El Rancho Café, Western Sizzler, O'Grady's, Swift & Co., Sands Café, John Deere, Bank of America, The Garden Patch, Bar-H-Steak House, Guymon Radio Station, Dalhart Radio Station, Boise City Newspaper, Dalhart News, Goodwell/Texhoma News, Hansford Newspaper, Perryton Newspaper, Stratford Star, and Moore County Senior Citizens. Thank you.

Jo Ann Cobos & Janice Vaughn, Activity Director's

## Health

(NU) - We've all heard the news about the potential health benefits of moderate alcohol consumption. Most news reports leave the impression that health benefits apply to men and women alike. Not so. According to Jennifer Grossman, director of the Dole Nutrition Institute, very little, if any, evidence suggests that alcohol consumption in younger women is beneficial. On the other hand, eating a diet rich in fruits and vegetables is beneficial to the health of young women.

## Pet of the Week



The Dalhart Animal Rescue Shelter ("no kill" facility) currently has over 100 dogs & Puppies available for adoption. These dogs are all sizes & range in age from 4 weeks on up. The older dogs have been spayed and/or neutered & have their shots. These dogs need a good home.

The Dalhart Animal Rescue Shelter needs your old blankets, towels, & rugs for the dogs and puppies. If you have any that you would like to provide them, please contact Linda Reimer at 244-6326 (leave message) or 249-5333. You can also drop them off at the shelter.

We are also seeking responsible individuals to provide foster care for the dogs. If you feel you would like to take one or two and car for them a couple of months, we will provide the food. All of these dogs have had their shots and are looking for lots of love. Please contact Diane Trull at 244-3216 for additional information.

## Pet Care

(NU) - As cats grow older, a host of feline health concerns can arise, including diabetes. Diabetes will increase the volume of a cat's urine. For this reason, some owners of older cats are realizing they need a more effective litter. One option is a natural cat litter such as Swheat Scoop, a clumping litter that's made from naturally processed wheat. For more information, visit [www.swheatscoop.com](http://www.swheatscoop.com) or call 1-800-SWHEATS.

## Health

(NU) - Movie stars, athletes, media, peers — children have the potential to be influenced by many outside factors. However, studies have found that parents have more potential to influence their children's behavior than anyone else does. As a result, parents are looking for creative ways to provide healthier lifestyle options for their families. In recognition of the importance of total family wellness, Bob Evans has listed a number of family wellness tips on its Web site. [www.bobevans.com](http://www.bobevans.com).

## HOME

# Tips to Create Peaceful Household Living

NewsUSA

(NU) - At the end of a long day, most people want a little peace, quiet and relaxation. They want a home free of potential annoyances like ringing phones, power tools and noisy family members.

Regardless of gender, everyone has unique likes and dislikes, and what may sound like a concert to one could be nails on a chalkboard to another.

In a recent poll conducted by Jeld-Wen Inc., men and women were surveyed about the most annoying noises made by housemates of the opposite sex. Nudging, slamming of objects and other emotional outbursts were the most offensive female noises, said an overwhelming number of men surveyed.

However, men irritate women in a different way. Of the women surveyed, 60 percent agreed that the gastrointestinal noises emitted by men topped their list of annoying sounds.

However, men and women found common ground on intolerable noises like car alarms, yelping little dogs and whiny children.

While it's not possible to completely eliminate these annoying noises, men and women can take steps to create a more tranquil home. By making a few minor improvements, homeowners of both sexes can significantly reduce these auditory privacy invasions.

• **Inspect interior doors.** You can shut out the noise of a television, laundry room or a teen-ager

with a solid-core door. They offer a greater sound transmission control rating than thin, lightweight hollow-core doors commonly built into many homes. Window and door manufacturer Jeld-Wen offers ProCore The Quiet Door, an interior door that is 50 percent quieter than a hollow-core door and is available in a wide variety of sizes and styles.

• **Find ways for your house to absorb sound.** Bare walls and hardwood floors magnify sounds. Consider decorating with insulated draperies and plush carpeting to absorb sound, thereby keeping those irritating distractions at bay. For those who do not want to give up their beautiful hardwood floors, try using decorative rugs in high-traffic areas to help absorb the sound of people walking.

• **Stop slamming things.** In the kitchen, using rubber mats as drawer and cupboard linings and placing padded stickers inside cabinet doors where wood meets wood will help eliminate those disturbances and alleviate the temptation to slam. Something as simple as a small piece of weather stripping on a doorstop can also help to deaden the noise of a door closed too hard.

While human behavior can be altered to a certain degree, these home improvement tips can even help those people who do not change.

To locate a local dealer carrying Jeld-Wen doors, visit [www.jeld-wen.com](http://www.jeld-wen.com).

\*\*\*  
Do not go where the path may lead, go instead where there is no path and leave a trail.

—Ralph Waldo Emerson  
\*\*\*

# Attention Farmers and Ranchers

HIGH Chemical Fertilizer Prices Hurting Your Bottom Line?

Consider

**HUMALFA Ag Compost**

For Pricing and Application Information

Call 1-580-938-2514

[www.hu-more.com](http://www.hu-more.com)

New Payment Plan Available

Pay 1/2 in October and 1/2 in March

## Benefits

- Organic Matter
- Organic Nutrients That Will Not Leach
- Mycorrhizal Fungi Stimulates Root Development
- Humic Acid
- Disease Control
- Improves Cation Exchange Capacity
- Cheaper Unit of Nutrient Cost than Chemical Fertilizer



**GIVE OUR SCHOOL  
A HELPING HAND!  
CLIP BOX TOPS COUPONS**

Save Your Box Tops For Education™ and give Mary Allen Elementary a helping hand.

We are trying to win a \$1,000 by turning in the most boxtops by Oct. 31.

The Box Tops For Education program and United Supermarket are teaming up with General Mills to provide \$1,000 each to five schools that collect the most Box Tops coupons from now through Oct. 31.

We will only be competing against other schools with similar enrollment.

I will put a drop box at Thriftway or call me Ronda Mathews 366-2291 and I will pick up or give them a Mary Allen student.

**HEALTH**

**Alzheimer's Disease:  
Know Early, Know the Signs**

NewsUSA

(NU) - Alzheimer's disease affects more than 4.5 million Americans. A lot of attention has been focused on Alzheimer's due to the recent loss of former President Ronald Reagan. This is a devastating disease that not only affects the victims, but the families and caregivers as well.

Alzheimer's causes a slow loss of brain cells resulting in the loss of many cognitive abilities. Recognizing the symptoms is often difficult and easily missed because of the resemblance to natural signs of aging. People with Alzheimer's exhibit a number of different symptoms.

Symptoms of Alzheimer's progress over time. In the early stages, family members and friends may notice minor personality changes. If you suspect someone you know has the disease, here are some signs to look for:

- **Loss of short-term memory.** Forgetting newly learned information is one of the most common early indications of Alzheimer's. People with Alzheimer's often misplace everyday objects such as keys. In early stages, they may have slight changes in attention span and minor language difficulties.

- **Trouble with common tasks.** For people with Alzheimer's, routine tasks — such as cooking, shopping or paying bills — become increasingly difficult and frustrating.

- **Confusion with times and dates.** Some people with Alzheimer's disease forget where they are, even in their own home. They may also forget details of events or appointments. As the disease progresses, patients have trouble recognizing family members or friends.

- **Disorientation.** Alzheimer's patients may get lost or confused

in familiar places and may wander off.

In the final stages of Alzheimer's disease, patients lose cognition and personality along with the ability to care for themselves and become more vulnerable to other illnesses.

While there is no cure for Alzheimer's disease yet, scientists are working on new ways to detect and diagnose the disease before these symptoms surface. One significant area of research in Alzheimer's and other neurodegenerative diseases is proteomics.

Proteomics is the study and analysis of proteins, the fundamental building blocks of the human body. By studying proteins, scientists can understand more fully the functioning of a healthy body and identify the proteins associated with specific diseases.

Power3 Medical (OTC BB: PWRM), a leader in proteomics research, has developed a promising Neurodegenerative Screening Test, which involves monitoring the concentration of a panel of proteins in the blood. According to the company, they are able to identify unique biomarkers whose profiles appear to distinguish patients with Lou Gehrig's (ALS), Alzheimer's and Parkinson's diseases from each other as well as from the normal individuals and patients with other neurological disorders.

Power3 Medical believes this test will give doctors the ability to diagnose these diseases before irreversible brain damage occurs — potentially providing the opportunity to delay their progression and the clues to design new drugs to treat the disease earlier.

For more information about proteomics and the development of Power3 Medical's Neurodegenerative Screening Test, visit [www.power3medical.com](http://www.power3medical.com).

**FOOD**



**COOKING**

**How to Spice Up Your Next Salmon Dish**

By Chef Paul Prudhomme  
For News USA

(NU) - Salmon has become one of the most popular fish to serve. People love the taste, and salmon cooks quickly, making it a great option for both weeknights and weekends.

Besides convenience, salmon is an excellent source of high-quality protein, containing all the essential amino acids, making it a great source of nutrition for the young and old alike.

If you want to prepare salmon, remember to purchase the freshest fillets you can. Keep the fish refrigerated until you are ready to cook it, and always prepare it on a clean, dry surface. In order to eliminate a strong oily taste, remove the skin as soon as possible.

If you are looking for a great way to liven up your salmon dish, you may want to try my Salmon Magic. This seasoning blend is a flavorful combination of dill, mustard seed, herbs and spices with just the right amount of salt and sugar, creating a versatile blend for all salmon recipes.

The distinct flavors enhance the natural goodness of salmon or any other type of fish, shellfish or seafood. Whether you are grilling, sautéing, baking, broiling or poaching, Salmon Magic will add just enough flavor.

To get you started, here is one of my favorite salmon recipes.

It's simple, and it will definitely spice up mealtime.

**MAGIC BAKED SALMON**  
(Makes 1 serving)

**1 salmon fillet**  
**2 teaspoons Salmon Magic**  
**Unsalted butter, melted**

Heat oven to 450 F. Lightly brush the top and sides of the salmon fillet with melted butter. Lightly brush a small sheet pan with melted butter.

Season the top and sides of the salmon fillet with the Salmon Magic. If the fillet is thick, use a little more Salmon Magic. Press the seasoning in gently.

Place the fillet on the sheet pan and bake until the top is golden brown, and the fillet is just cooked through. In order to have moist, pink salmon, do not overcook. Serve immediately.

Cook time: 4 to 6 minutes.  
For more recipes, visit my Web site at [www.chefpaul.com](http://www.chefpaul.com) or call 1-800-457-2857 for a free catalog with recipes.

One of the country's best-known chefs, Paul Prudhomme was the first American-born chef to receive the coveted Merit Agricole of the French Republic, an honor for contributions to cuisine. In September 2001, he was honored as "Chairman of the National Food Safety Education Month" by the National Restaurant Association. Today, he lives in New Orleans and heads his R&D Kitchen where he creates "Magic" for retail and food service customers and many restaurant chains.

**Good Job Big Blue Band-You looked good & sounded great !!!!!**

**Notice  
of Vote on Tax Rate**

The CITY OF STRATFORD

**conducted a public hearing on a proposal to increase the total tax revenues of the**

CITY OF STRATFORD

**from properties on the tax roll in the preceding year by 3.78 percent**

**on September 9, 2004 at 6:00 p.m.**

The City of Stratford

**is scheduled to vote on the tax rate that will result in that tax increase at a public meeting to be held**

**on September 9, 2004 at 6:00 p.m.**

**at 518 N. Third St. Stratford City Hall**

50-197 (Rev. 6-01/7)

**Notice of Public Hearing on Tax Increase**

The City of Stratford will hold a public hearing on a proposal to increase total tax revenues from properties on the tax roll in the preceding year by 3.78 percent. Your individual taxes may increase at a greater or lesser rate, or even decrease, depending on the change in the taxable value of your property in relation to the change in taxable value of all other property and the tax rate that is adopted.

The public hearing will be held on 9/09/2004 @ 6:00 p.m. at 518 N. Third Stratford City Hall

**FOR the proposal:** Mayor David Brown, Nan McWilliams, Nancy Kinball, Bryan Mungia, & George Harding  
**AGAINST the proposal:**  
**PRESENT and not voting:**  
**ABSENT:** Eric Werner

The following table compares taxes on an average home in this taxing unit last year to taxes proposed on the average home this year. Again, your individual taxes may be higher or lower, depending on the taxable value of your property.

	Last Year	This Year
Average residence homestead value	\$ 32,701	\$ 35,620
General exemptions available (amount available on the average homestead, not including senior citizen's or disabled person's exemptions)	\$ 0.00	\$ 0.00
Average taxable value	\$ 32,701	\$ 35,620
Tax rate	.85	.85
Tax	\$ 277.96	\$ 302.77

**Under this proposal, taxes on the average homestead would increase by \$ 24.81 or 8.9 percent compared with last year's taxes. Comparing tax rates without adjusting for changes in property value, the tax rate would stay the same by \$ 0 per \$100 of taxable value or 0 percent compared to last year's tax rate. These tax rate figures are not adjusted for changes in the taxable value of property.**