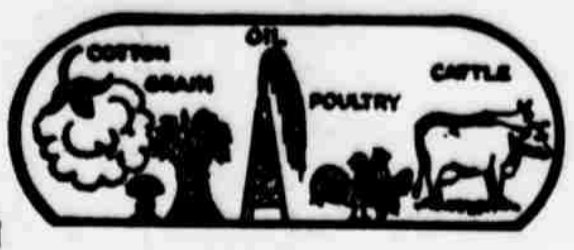


oter In 1958
ur Poll Tax!
to Date:
1850

THE HASKELL FREE PRESS



TEN PAGES

SEVENTY-TWO HASKELL, HASKELL COUNTY, TEXAS, THURSDAY, JANUARY 23, 1958 NUMBER 4

Mothers March on Polio Scheduled Here On Jan. 30

Plans for a mother's march on polio completed. The women will take the current March campaign into every city, County MOD B. Roberson has

Burglars Hit in Haskell and Weinert, Get \$130 Loot While Overlooking \$190

Near-sighted burglars collected about \$130 in a rash of break-ins in Haskell and Weinert Thursday night but overlooked a money bag containing \$190.00, officers reported Friday.

Poll Tax Payments Reach 1850, With Deadline Near

Poll tax payments, climbing slowly the past week, had reached the 1,850 mark late Wednesday, with only eight days remaining in which to secure the poll tax receipt, necessary to qualify as a voter in 1958 elections.

O'Brien Trustees Call Bond Election For Feb. 1st

Official order for a \$180,000 bond election to be held Feb. 1 in the O'Brien (Carney) School District was approved at a special meeting of the district board of trustees Friday night.

Council Orders City Election, Considers Leasing Pool

Commissioners Set 1958 Salary Schedule Of County Officials Same as Last Year

Elected officials of Haskell County will be paid on a salary basis during 1958 under the same schedule as last year, according to action of the Commissioners Court last week in setting up the salary schedules for the county officials and employees.

Contest Develops In County Judge Race

New entries in the county's political picture this week are John F. Ivy, former Haskell insurance agency owner, and J. M. Crawford, Haskell businessman and former ginner. Both announced this week as candidates for County Judge.

Majority of City Officials To Be Named This Year

Qualified voters in the city of Haskell will elect a majority of the city's governing body in the 1958 city election which will be held Tuesday, April 1.

Voters to Elect Three Trustees This Year

Terms of three members of the board of trustees of Haskell Independent School District will expire in April, 1958, with the vacancies due to be filled by voters balloting in the annual school trustee election on Saturday, April 5.

Barbara McAnelly New HD Agent for Haskell County

Miss Barbara McAnelly, County Home Demonstration Agent of Fannin County for the past three and one-half years, will be transferred to Haskell County Feb. 1, to begin work here in a similar capacity.

March of Dimes Film Shown at Rotary Club

The tremendous responsibility for rehabilitation of polio victims was emphasized in a film shown members of the Rotary Club at the weekly meeting and luncheon Thursday, in connection with the current March of Dimes campaign.

Haskell Lions to Cooperate in Soil Program Award

Haskell Lions, at their regular luncheon and meeting Tuesday at noon in the banquet room of the Texas Cafe, heard an interesting report from the District 2-E Convention held in Fort Worth.

Highway Drive

14.86, ports Out

Farmers Union to Launch Membership Drive at Breakfast

The local Farmers Union will launch a membership drive at a "kick-off" breakfast to be held at 7:30 a. m. Wednesday, Jan. 29 at the Highway Drive In Cafe in this city.

Indians Top 4-AA, To Meet Seymour In Crucial Tilt

Haskell Indians moved into undisputed lead in District 4-AA basketball this week, following Stamford's 57-33 defeat of the Seymour Panthers Tuesday night.

Traffic Blockade Here Saturday Nets \$488 for March of Dimes

A downtown Traffic Blockade conducted Saturday by members of the HHS Junior Class netted the substantial sum of \$488.00 for the 1958 March of Dimes, County MOD Chairman Thos. B. Roberson stated this week.

It's Weinert Grid Banquet Tonight, Not Haskell

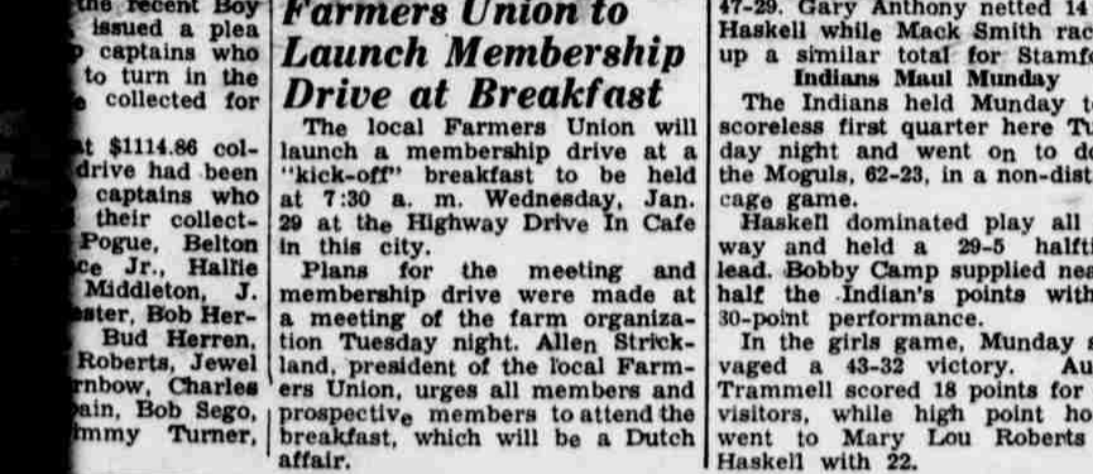
Through error last week the Weinert football banquet which will be held Thursday was listed as being a Haskell affair.

American Legion To Sponsor Dance For March of Dimes

The American Legion, Rogers-Cox Post 221 is sponsoring a March of Dimes dance, Jan. 30 in the Legion Hall. All proceeds from the admission charge of \$2.00 will go to the MOD campaign.

Haskell Merchants Designate Business Holidays

Haskell business concerns will observe five business holidays during the coming 12 months, with an extra day for Christmas, according to a schedule adopted by a majority vote of the Chamber of Commerce membership.



Employees of Anderson Construction Company who were given recognition for an enviable safety record when they were honor guests at a dinner hosted by Carl Anderson, owner of the oil field construction concern, Wednesday evening, Jan. 15 in the Highway Drive In.

Anderson Construction Co. Employees Given Recognition for Safety Record

Employees of Anderson Construction Company of this city were given recognition for an enviable safety record when they were honor guests at a dinner hosted by Carl Anderson, owner of the oil field construction concern, Wednesday evening, Jan. 15 in the Highway Drive In.

School Census in Haskell District Now Underway

Annual scholastic census for the Haskell Independent School District is being conducted this month, and school officials are anxious that all children of school age be listed in the census.

Jewel McLennan New Operator at The Criterion

Frances Arend of the Criterion Beauty Service is announcing this week that she now has associated with her a new operator, Jewel McLennan.

March of Dimes Film Shown at Rotary Club

The tremendous responsibility for rehabilitation of polio victims was emphasized in a film shown members of the Rotary Club at the weekly meeting and luncheon Thursday, in connection with the current March of Dimes campaign.

March of Dimes Film Shown at Rotary Club

The tremendous responsibility for rehabilitation of polio victims was emphasized in a film shown members of the Rotary Club at the weekly meeting and luncheon Thursday, in connection with the current March of Dimes campaign.

Employees of Anderson Construction Company who were given recognition for an enviable safety record when they were honor guests at a dinner hosted by Carl Anderson, owner of the oil field construction concern, Wednesday evening, Jan. 15 in the Highway Drive In.

Employees of Anderson Construction Company of this city were given recognition for an enviable safety record when they were honor guests at a dinner hosted by Carl Anderson, owner of the oil field construction concern, Wednesday evening, Jan. 15 in the Highway Drive In.

Employees of Anderson Construction Company of this city were given recognition for an enviable safety record when they were honor guests at a dinner hosted by Carl Anderson, owner of the oil field construction concern, Wednesday evening, Jan. 15 in the Highway Drive In.

Employees of Anderson Construction Company of this city were given recognition for an enviable safety record when they were honor guests at a dinner hosted by Carl Anderson, owner of the oil field construction concern, Wednesday evening, Jan. 15 in the Highway Drive In.

Employees of Anderson Construction Company of this city were given recognition for an enviable safety record when they were honor guests at a dinner hosted by Carl Anderson, owner of the oil field construction concern, Wednesday evening, Jan. 15 in the Highway Drive In.

Employees of Anderson Construction Company of this city were given recognition for an enviable safety record when they were honor guests at a dinner hosted by Carl Anderson, owner of the oil field construction concern, Wednesday evening, Jan. 15 in the Highway Drive In.

PIGGY WIGGLY'S PARADE of VALUES!



STAR VALUES

EXTRA SPECIAL!

- DRIFT
Whortening 3 Lb. Can **79¢**
- Y WHITE
Wach Half Gallon **25¢**
- OND, TALL CAN
ghetti 2 For **21¢**
- ING POWDER, LG. BOX
eer **28¢**
- EN
t Pies 2 For **45¢**



JEWEL
ORTENING **3** Lb. Can **69¢**

- MONTE, 46 OZ. CAN
Apple Juice **29¢**
- VIENNA
sage 2 Cans **35¢**
- ELL, 18-OZ. JAR
nut Butter **49¢**
- ist
A can **33¢**
- nte
SUP 14 oz. bottle **19¢**
- I STICKS** box **33¢**
- Jane Frozen
AWBERRIES box **23¢**
- ne Hydrox,
OKIES 12-oz. pkg. **37¢**

- BETTY CROCKER BOX
Cake Mix **25¢**
- COUNTY KIST
Corn 2 Cans **29¢**
- SUNSHINE BLACK WALNUT
Cookies 1 Lb. Bag **47¢**
- Delsey
TISSUE 2 rolls **25¢**
- Sunshine
FILLED SWEETS pkg. **35¢**

Save Two Ways
Every Day Low Prices PLUS S&H Green Saving Stamps. Wednesday is Double Stamp Day with \$3.00 or more purchase. Come in and SAVE!

SWIFT'S BROOKFIELD
Cheese 2 Lb. Box **63¢**

FRESH COUNTRY STYLE
Back Bone Lb. **43¢**

SWIFT'S OLD MILL
Sausage 2 Lb. Bag **89¢**

PORK BOSTON BUTT
Roast Lb. **49¢**

CHOPPED
HAM Lb. **49¢**

BEEF
Short Ribs Lb. **29¢**

DEL MONTE, NO. 303 CAN
PEAS **19¢**

DEL MONTE, SLICED OR HALVES, NO 2 1/2 CAN
PEACHES **29¢**

DIAMOND NO. 303 CAN **2 FOR**
TOMATOES **25¢**

DEL MONTE, YELLOW CREAM STYLE
CORN 2 Cans **29¢**

GOLDEN BRAND
OLEO Pound **15¢**

KIMBELL'S TALL CAN **3 FOR**
PORK & BEANS **25¢**

DEL MONTE 46 OZ. CAN
ORANGE JUICE **29¢**

Winning score for VALUES!

CRISCO 3-LB. CAN 79¢	FOLGER'S COFFEE 6-OZ. INSTANT 89¢	POTATOES 10-LBS. RUSSET 39¢	BISCUITS ALL BRANDS 9¢	FLOUR PURASNOW 10-LB. BAG 79¢
Lemons SUNKIST, LB. 9¢	Ornery FANCY PASCHAL, STALK 10¢	Tissue 400 SIZE HUDSON FACIAL 19¢	Cherries KIMBELL RED SOUR PITTED 19¢	Zee Tissue 4 ROLL PKG. COLORED 33¢
Salad Dressing 3, QT. 35¢	Lemonade FROZEN, CAN 10¢	Onions YELLOW POUND 5¢	Lux Soap 2 BATH SIZE BARS 25¢	Pumpkin STOKELY'S, CAN 10¢
Tomatoes ELLIS, 2½ CAN 39¢	Green Peas 2 CANS 29¢	Cabbage POUND 3¢	CHICKEN & RICE LIBBY'S TALL CAN 19¢	Frozen Food ASSORTED SWEET PICKIN'S 2 FOR 25¢
Tomatoes DIAMOND 2 CANS 25¢	Milk PET 2 TALL CANS 29¢		Cookies SUPREME, 1-LB. PECAN SANDIES 39¢	Soap WOODBURY BATH SIZE 4 BARS 39¢
CONDENSED MILK HEINZ STRAINED 3 JARS 29¢	PEPFRUIT JUICE 46-OZ. KIMBELL'S 23¢		Chili KIMBELL'S NO. 2 CAN 59¢	WOODBURY LOTION \$1 SIZE 50¢ Plus Tax

BETTY CROCKER MIXES Food 19¢ Macaroon	White Cake and Frosting Devil Cake and Frosting
25-POUNDS PURASNOW FLOUR US BULBS IN PLANTER WITH EACH SACK 1.69	

Bacon ARMOUR'S STAR, 2-LBS. THICK SLICED 98¢	
Aged Cheese POUND 55¢	
Sausage DELITE, LB. 33¢	
Miracle Oleo POUND 33¢	
Bologna ALL MEAT, LB. 35¢	
Bacon RANCH BRAND, LB. 43¢	

WHITE SWAN COFFEE 79¢
OLEO 15¢

Mrs. L. R. Burkett Directs Magazine Club Program

Continuing the study, History Past and Present, Mrs. L. R. Burkett was director when the Magazine Club met Jan. 17. The U. S. Fight for Democracy in World War I was the theme of the program. Mrs. Burkett very aptly discussed the events leading up to the war, and told how Presidents Theodore Roosevelt, William H. Taft, Woodrow Wilson and other Americans tried to promote peace. There were many conferences and arbitration treaties, but before the last of the treaties went into effect the world was plunged into the conflict known as World War I, Mrs. Burkett stated.

Hobby Club Has First Meeting Of New Year

The Neighbors Hobby Club met Jan. 15 in the home of Mrs. John Wallace for their first meeting of the new year. The new president, Mrs. Pansy Harris, presided. Following the business session, members present joined in making the new yearbooks for 1958. New officers were installed for the current year, as follows: Mrs. Pansy Harris, president; Mrs. Donna Thomas, vice president; Mrs. Winnie Hodgins, secretary and treasurer; Mrs. Lora Mae Mullins, reporter.

Camp Fire Group Meets in Home of Jennean Branch

The Wahanka Camp Fire group met Friday, Jan. 17 in the home of Jennean Branch with the hostesses, Jo Helen Elliott and Jennean Branch. The meeting was called to order by vice president Donna Kay Holter and the minutes were read by Judy Kay Sego. Members made heart-shaped pin cushions and then were served Cokes, sandwiches and cupcakes. After playing several games the meeting was adjourned.

VISITORS FROM SNYDER

Mr. and Mrs. Jerry Mowell and Kendall Lee of Snyder visited relatives and friends in Haskell this week.

NEWS OF INTEREST TO WOMEN



MRS. E. HAYES ROWAN

Colored Slides of Scenes in Japan, Korea, Shown Club

The Business & Professional Women's Club met for a brief business session January 7 in the Texas Cafe dining room. At conclusion of the business meeting, the Program Coordination Committee introduced Mr. and Mrs. Frank Montgomery who presented an interesting program of colored slides made in Japan and Korea. On Tuesday evening January 21 the Career Development Committee composed of Opal Nanny, Louise Greene and Madalin Hunt, chairman, was in charge of the program for the regular meeting of the club.

News From The Congress

By Congressman Frank Icard An acute disaster hit most farmers in the great area of our country during the 1957 growing season. It was actually more than a disaster. It was a calamity in a large area of the Southwest and the Deep South. Heavy rains during planting and growing seasons and early frosts and freezes during the harvest season greatly reduced farm yields and the quality of farm commodities. As a result, many of the farmers who had just gone through an extended drought find themselves in an acute economic condition. Along with members of Congress from the affected areas, I have met with Representatives of the Department of Agriculture this week in an effort to work out some workable plan through the Farmers Home Administration or other agencies for making additional financing available and working out ways to extend existing FHA obligations. It is hoped that something constructive can be developed immediately. The farm plan that Secretary Benson presented to Congress yesterday has little chance of being approved for it has practically no Congressional support. As fantastic as it may seem, there can be little question but what the Nation that controls outer space in the immediate future will be in the same position of power as those that controlled the seas one hundred years ago. We in the United States must move rapidly and gain this control or reconcile ourselves to be a second class power in the world. It is now evident that Congress will move swiftly to make available the funds necessary for research and development in this important field; however, the mere appropriation of money is not sufficient. We must have good organization and good management, and almost equally as important, be prepared in our thinking to accept the sensational and dramatic developments that will shortly be forthcoming with respect to travel and movement in outer space. It is hoped that the argument over why we are not ahead in missile development will not degenerate into a partisan, political hassle.

Bond-Rowan Nuptial Rites Read In Midland Church

In a double ring ceremony at 4 p. m. December 28, in the Calvary Baptist Church, Midland, Betty La Joyce Bond and E. Hayes Rowan, both of Midland, were married. Parents of the couple are Mr. and Mrs. L. T. Bond of Midland and Mr. and Mrs. T. L. Rowan of Pampa. The bride was graduated from Midland High School in 1957 and is employed with the Equitable Life Insurance Society in Midland. A 1955 graduate of Rule High School, the bridegroom attended Texas Technological College and now is service technician with the National Cash Register Company in Midland. Officiating for the ceremony was the Rev. Travis LaDuke, pastor of the church. Mrs. Waylon Deel, organist, played traditional nuptial selections and accompanied Mrs. Bob Frizzell of Seminole, who sang "O Promise Me." The bride was given in marriage by her father. She wore a street-length princess styled dress of white cotton lace over taffeta. Her chapel length veil of white tulle was attached to a headpiece embroidered with seed pearls. She carried a white Bible topped with white carnations. Carolyn Bond served her sister as maid of honor. M. D. Rowan of Pampa, brother of the bridegroom, was best man. Grady Glenn of Odessa, brother-in-law of the bridegroom, and James Cardin of El Dorado, Ark., brother-in-law of the bride, were ushers. A reception was held in the bride's home following the wedding. Assisting the couple in receiving guests were the bride's parents, the bridegroom's mother, the maid of honor and best man, and W. E. Colvin, uncle of the bridegroom. In the houseparty were Mrs. James Cardin of El Dorado, Ark., Mrs. Grady Glenn of Odessa and Mrs. M. D. Rowan of Pampa. The couple is at home at 412 Cottonwood St., Midland, after a wedding trip to Ruidosa, N. M.

Mrs. Anna Vaughn Observes 87th Birthday

Mrs. Anna Vaughn of this city observed her 87th birthday Thursday, Jan. 16, when she was honored with a dinner in the home of her daughter, Mrs. M. O. Brinlee and Mr. Brinlee of Haskell. Joining Mrs. Vaughn for the observance and as dinner guests were two other daughters and their husbands, Mr. and Mrs. W. T. Clark of Haskell and Mr. and Mrs. C. H. Bryant of Breckenridge. Mrs. Vaughn has been a resident of Haskell since 1920, when she and her late husband moved here from Burleson, Johnson County. She has seven children and a number of grandchildren and great-grandchildren. Two sons and two daughters who were unable to be here for the birthday observance are Mrs. J. C. Berry of Roxton, Mrs. Claude Aaron of Edinburg, Tex Vaughn of Cassville, Mo., and E. S. Vaughn of Dimmitt, Texas.

Munday Soldier in Field Artillery Unit In Germany

U. S. Forces, Germany (AFTNC) - Pvt. Wencil L. Jones, 23, son of Mrs. Lula M. Jones of Munday, recently arrived in Germany and is now a member of the 802d Field Artillery Battalion. A clerk in the battalion's Service Battery, Jones entered the Army last July and completed basic training at Fort Carson, Colo. Jones, a 1955 graduate of Munday High School, was employed in civilian life by Sunset Drive In. Chutney is made from ripe fruit, spices, herbs and seasonings, all pounded together and boiled.

THE OVAL SILHOUETTE:



SEASON'S SURPRISE!

Subtly shaped, soft fullness achieved by Betty Rose with deep front raglan sleeves and back box pleats stemming from a high, stitched yoke. Wide, curved collar is SO becoming! Lovely Shell Weave Wool in Blue, Nude, Pink, Red, Navy. Sizes for juniors - 5 to 15.

\$29.95

Betty Rose

Personality Shoppe

ATTEND FURNITURE SHOW

R. I. Johnson and Loraine Johnson of Boggs & Johnson have returned from Dallas where they attended a Furniture Show and market over the weekend.

Only the male cicada is capable of making a noise.



FRANCES AREND IS HAPPY TO ANNOUNCE THAT SHE NOW HAS ASSOCIATED WITH HER A NEW OPERATOR JEWEL McLENNAN

She has recently received training in advanced hair styling at Scoggins Beauty Academy with George W. Scoggins, instructor.

She invites her friends and the general public to call 330-W for appointments.

Criterion Beauty Service

TRICE'S

For Your Everyday Needs - N. 14th & Ave. 1

- UNDERWOOD'S BAR-B-Q BEEF FULL POUND 79c
JEAN'S OR GLADIOLA FROZEN ROLLS 2 DOZEN 29c
SUN VALLEY OLEO 1 lb. 15c
ARMOUR'S BEEF TRIPE 1 1/2 LB. CAN 25c
HUNT'S TOMATO SAUCE 2 8-OUNCE CANS 15c
BISCUITS can 9c

PRICES GOOD FOR JANUARY 24-25

Haskell Pharmacy advertisement with logo and contact information.

CITY OF HASKELL NOTICE Unpaid City Taxes for 1957 Become Delinquent After January 31, 1958. Avoid Penalty and Interest by Paying Your Taxes Before the Above Date.

L'Aiglon Migratory Cottons! advertisement with illustrations of dresses and brand name.

Sheep red In Area

Biggest game animals may become extinct in the Palo Duro Canyon Panhandle if a ment undertaken by Fish Commission biologists, according to Jackson in the Jan. of Texas Game and

rica, range barriers between the Sahara Desert and the Mediterranean Sea. Arab reports say aoudads can last five or six days without water. They appear to have the agility of American mountain sheep or goats and a speed at least equal to mule deer.

The average live weight of the rams is said to be 200 to 250 pounds. Its body is barrel-shaped and its coat a tawny, rufous color. The aoudad's long, narrow head is topped with large, backward-curled horns.

The aoudad release in Texas follows an apparently successful wild aoudad introduction in a New Mexico area resembling Palo Duro Canyon. High hopes are held by the Game Commission biologists for their adaptation to Texas, and for future big game hunts in Palo Duro Canyon.

All Persons With Income Over \$600 Must File Return

Ellis Campbell Jr., Director of Internal Revenue Service for this district today listed those who must file a Federal Income tax return for 1957. He also outlined the rules for claiming personal exemptions and exemptions for dependents.

Every citizen or resident of the United States, including minors, who had \$600 or more gross income in 1957 must file. If 65 or over by January 1, 1958, no return required unless gross income was at least \$1,200. Those with less income should file to obtain refund of any tax withheld from their salary or wages.

Returns should be filed as soon after Jan. 1 as possible, but no later than April 15, 1958. Returns should be mailed to the District Director of Internal Revenue for the district where you live. Area residents should mail their tax returns to the Director of Internal Revenue, Dallas, Texas. Checks or money orders for any tax due should accompany the return. These should be made payable to the "Internal Revenue Service."

Every taxpayer is entitled to at least one personal exemption of \$600. If 65 or over, or blind, you get two \$600 exemptions. If both blind and 65 or over, three exemptions. The same exemptions are allowed for your wife (or husband), if a joint return is filed. If you file a separate return, you may claim your wife's exemptions only if she has no income and was not the dependent of another taxpayer. If your husband or wife died during 1957, the number of his or her exemptions are determined as of the date of death. Be sure to check the appropriate blocks on your return.

You get only one \$600 exemption for each dependent, regardless of their age or other circumstances. You may claim an exemption for each child, step-child or legally adopted child who received more than half of his or her support from you and who had not reached the age of 19. If the child is 19 or over and is not a full-time student, you lose the exemption if he had over \$600 income of his own. The child must also be either a citizen of the United States, or a resident of Canada, Mexico, the Republic of Panama or the Canal Zone.

For dependents other than children, five requirements must be met to claim exemption. The dependent must: (1) Have received less than \$600 gross income; (2) have received more than half of his support from you; (3) not have filed a joint return with his wife (or husband); (4) be a citizen of the United States or a resident of Canada, Mexico, the Republic of Panama or the Canal Zone; and (5) must either have been a member of your household for the entire taxable year, or must be related to you (or to your wife or husband if a joint return is filed).

If several persons together contributed more than half the support of an individual during the year, but no one contributed more than half alone, the group may designate one of their number to claim the exemption. If a dependent was born or died during the year, you can claim a full exemption if the dependent met the above tests for the part of the year they were alive.

Under certain circumstances provided by law, individuals who are "Head of a Household" or "Surviving Spouse" are entitled to special tax rates. Consult the instructions accompanying your blank return form for details.

Mr. Dixon stated that taxpayers having question on this or any other Federal tax matters may obtain help by calling or visiting the local Internal Revenue office nearest their home.

About This and That

Haskell County has a land area of 888 square miles. Mary is the Hebrew name for bitter tears.

Cold weather never bothers Want Ads. They get results. Neither House of Congress can adjourn during a session for more than three days without the consent of the other.

For the price of a bar of soap the railroads carry a bushel of wheat 283 miles.

Forty million valentines were mailed in the United States last year.

A well-known character in a Western Canadian town is Brother Joe—a black bear that hibernates every winter under the platform of the railroad station.

The term "turnpikes" comes from 1796 when long poles (or "pikes") barred privately built roads in Pennsylvania. The "pikes" were not turned up to permit passages of stages and other vehicles until a toll was paid.

Turn unused furniture articles into cash with Free Press Want Ads.

Hospital Notes

The following persons were admitted this week to the Haskell County Hospital: Mickey Hutchinson, Munday; Mrs. Mark Clifton, Haskell; C. E. Hearn, Rochester; O. Z. Dial, Stamford; Bill Pennington, Haskell; Pamela Harris, Haskell; Mrs. Tony Galvan, Haskell; Mrs. W. W. Young, Stamford; Lonnie McSwain, Goree; Edwin Liven-good, Haskell; Mrs. Lula B. Hills, Rule; Mrs. D. A. Morgan, Rule; Mrs. Chas. W. Yarbrough O'Brien; R. F. Dudensting, Old Glory; Susan Swinson, Throckmorton; Wallace Allison, Rule; Mrs. J. R. Lawson, Rule; Mrs. Claudia Jones, Goree; Mrs. Manuel Flores and infant son, Rule; Mrs. Norvell Lehmann and infant daughter, Sagerton; Roy K. Miller, Haskell; Mrs. A. H. Allen, Rule; Mrs. Eugene Rose, Rochester; Robert C. Humphrey, Dallas; Mrs. E. R. Lee and infant daughter, Stamford; Mrs. A. V. Robertson, Stamford; Mrs. John B. King, Goree; Myron Biard, Haskell; Mrs. K. D. Simmons, Haskell; Mrs. Buster Ghelson, Haskell; Mrs. H. R. Trussell and infant son, Rule; Berry Norman, Rule.

missed this week from Haskell County Hospital: Mrs. M. and Mrs. H. R. Trussell, Rule, a son, David Christopher, born Jan. 14, weight 6 pounds 10 1/2 ounces. Mr. and Mrs. E. R. Lee, Stamford, a daughter, Karen Dianne, born Jan. 15, weight 7 pounds 8 1/2 ounces. Mr. and Mrs. Norvell Lehmann, Sagerton, a daughter, Norva Jane, born Jan. 16, weight 8 pounds 6 1/2 ounces. Mr. and Mrs. Manuel Flores, Rule, a son, Manuel Paul, Jr., born Jan. 18, weight 6 pounds 6 ounces. Mr. and Mrs. Bill Holley, Haskell, a son, William Carroll, Jr., born Jan. 18, weight 6 pounds 10 1/2 ounces.

WEEKEND VISITORS Miss Wynell Hellums and her aunt, Mrs. E. F. McGaughey, both of Dallas, spent the weekend with Miss Hellums' mother, Mrs. W. D. Hellums, Mrs. McGaughey is a sister of Mrs. Hellums and the wife of Rev. E. F. McGaughey. Also visiting in the home of Mrs. Hellums during the weekend was her brother, H. E. Gossett of Portales, N. M.

Two-Inch Snowfall Blankets County Sunday Night

Heaviest snow of the winter blanketed this area Sunday night and early Monday with a fall of two inches. The snow brought additional moisture and followed slow rain and drizzle Sunday which brought precipitation of .59 inch.

The snow and icy rains slowed traffic and increased the hazard of driving, but no traffic mishaps of consequence were reported. Highway crews were called out early Monday to clear danger spots on the highways where ice and snow had accumulated. Rising temperatures Monday and Tuesday resulted in melting of most of the snow, however, the mercury has dipped well below freezing each night since Sunday. Use the Want Ads.

Your Needs - We've Got 'Em BELTS, RADIATOR HOSE, OIL FILTERS, BRAKE FLUID, LIGHTS FOR ALL CARS, DELCO BATTERIES AND SERVICE CHARGING Wilfong's Texaco Sta. 1 Block North of Square Phone 50

1/2 PRICE SALE "once-a-year" Cream of Roses CLEANSING CREAM Dorothy Perkins LARGE \$2.00 JAR FOR ONLY \$1.00 You'll love CREAM OF ROSES Cleansing Cream... PAYNE DRUG CO.

LIFT TEARS AWAY A bra that fits you and HOLDS you A-ROUND BY BESTFORM Fully designed circular stitching gives you... Northeast Corner Square

BEST FOOD BUYS of the week Malt O' Meal Regular Box 33c 303 CAN Fruit Cocktail 2 For 49c Vegetable Soup 2 For 25c Instant Coffee 2 Oz. Jar 39c Kim Tissue Roll 5c

Dash DOG FOOD 2 for 25c Colored or White NAPKINS 2 cello pkgs. 25c Comet CLEANSER can 19c CHEER reg. box 25c Premium CRACKERS 1 lb. box 22c Supreme Salad Wafers CRACKERS 1 lb. box 22c Pillsbury FLOUR 14 Oz. Shaker Pkg. 15c Pet MILK 2 tall cans 29c Pet MILK 2 small cans 15c

CHOICE MEATS WILSON'S 1-POUND CELLO ROLL Sausage 39c BUDGET BRAND POUND Bacon 37c AMERICAN SLICED POUND Cheese 49c CENTER CUT POUND Pork Chops 59c

FOR REAL ECONOMY, SHOP AT GHOLSON GROCERY Phone 79 - Free Delivery

POLITICAL ANNOUNCEMENTS

The Free Press is authorized to make the following announcements for office, subject to action of the Democratic primaries. All listings are made on an advertising basis, cash in advance.

John F. Ivy Enters Race for Office Of County Judge

John F. Ivy, well-known Haskell businessman and former county official, authorizes the announcement this week of his candidacy for County Judge, subject to action of the Democratic primaries.

J. M. Crawford is Candidate for County Judge

J. M. Crawford, well-known Haskell businessman and civic worker, has authorized the announcement of his candidacy for the office of County Judge, subject to action of the Democratic primaries.

if elected to the office to serve in as fair and impartial manner as is possible. I ask anyone interested to check my record while I was in the office to see if I was fair and efficient.

Cemetery Dues Sole Means for Upkeep Of Many Plots

The Haskell Cemetery Association thanks the many owners of cemetery lots for their prompt payments of annual dues which are always payable in January of each year.

merce, Lions Clubs and other civic organizations over a long period of years. He has also been actively associated with various organizations, March of Dimes, Red Cross, and similar groups devoted to community interests.

Too Late to Classify

ONION PLANTS: We now have Crystal White Wax onion plants direct from South Texas growers. Also Porter tomato seed direct from grower. Seeds for all your garden seeds. Trice Hatchery, 4-5p

ORDER AND NOTICE OF ELECTION

The State of Texas County of Haskell City of Haskell ELECTION ORDER I. J. E. Walling, Jr., Mayor of the City of Haskell, Texas, by virtue of the power and authority vested in me by law, do hereby order that an Election be held in the City of Haskell, Texas, on April 1, 1958, being the first Tuesday thereof, for the purpose of electing the following officers of said City:

Three Suggest for January Pay Your Poll Tax Make Your Donation To The March of Dimes Discuss Your Insurance Needs With Us

Program to Form New Scout Troops Gets Underway

The "Together-We-Organize" program for the Chisholm Trail Council, Boy Scouts of America was launched Monday night at a supper meeting at Hotel Windsor in Abilene by Senator David Ratliff of Stamford, chairman of the campaign.

PRE-INVENTORY CLEARANCE All Prices Slashed for Quick Sale! Be Early for Best Selection! No Mail or Phone Orders, Please! All Sales Final!

Group WOMEN'S DRESSES Cottons \$2 Novelties Val. to 9.95 Group WOMEN'S DRESSES Crepes Cottons Novelties Val. to 11.95 \$3.88 Group Women's BETTER DRESSES Values to 17.95 \$5 Group Women's BETTER DRESSES Values to 27.95 1/2 PRICE Group Women's BLOUSES - SWEATERS NYLON GOWNS 1/2 PRICE Group PIECE GOODS 3 Yards \$1.00 Group PIECE GOODS Prints and Gingham Values to 1.29 66c Yd. One Table WOMEN'S JEWELRY Values to 2.00 1/2 PRICE Large Group WOMEN'S BELTS & SCARFS Values to 2.98 1/2 PRICE Large Table BRAS & FOUNDATIONS Gossard, V-ette 1/2 PRICE Group Women's, Children's SKIRTS 1/3 OFF CHILDREN'S DRESSES 1/3 OFF Group WOMEN'S SHOES Mostly Flats Values to 5.95 \$1.00 Group WOMEN'S SHOES Flats, Suedes and Smooth Leathers Regular 3.98 \$1.88 Large Group CHILDREN'S SHOES Oxfords and Slippers Values to 5.95 \$2.88 Group MEN'S DRESS SHIRTS Values to 4.00 \$1.88 Group BOY'S DRESS SLACKS Regular 4.98 \$1.88 BOY'S FLANNEL PAJAMAS Regular 2.79 \$1.49 Close Out - 85 Pair MEN'S SLACKS All Wool Flannel, Gabardine and Rayons. Regular 2.98 \$1.00 Regular 5.95 \$2.00 Regular 10.95 and 12.95 \$5.00 77 Only MEN'S FELT HATS Stetson and Others Regular 5.95 \$3.00 Regular 10.95 \$6.00 Regular 15.00 \$7.00 One Rack Men's and Boy's JACKETS Regular 7.95 \$4.00 Regular 4.95 \$2.00 One Table Men's TIES AND BELTS 1/2 PRICE One Table Manhattan MEN'S DRESS SHIRTS Whites and Colors Regular 4.00 \$2.00

Texas THEATRE FRI. - SAT., Jan. 24-25 HIS MOST ELECTRIFYING PERFORMANCE FRANK SINATRA MITZI GAYNOR JEANNE CRAIN The JOKER is Wild A Charles Ford Production SUN. - MON., Jan. 26-27 UNIVERSAL-INTERNATIONAL Presents JAMES STEWART AUDIE MURPHY NIGHT MESSAGE TECHNICAL TECHNORAMA

S - C - A - T 4 LARGE TABLES WITH ITEMS FROM ENTIRE STORE. MORE ITEMS ADDED DAILY. QUANTITIES TOO SMALL TO ADVERTISE