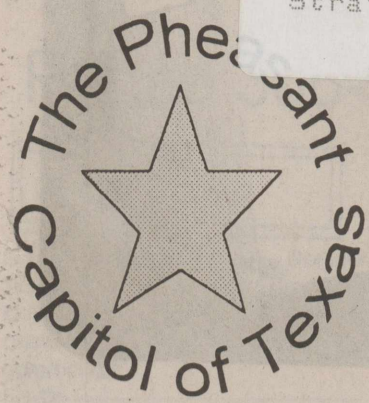


Sherman County Museum 7 /03  
Box 1248  
Stratford, TX 79084

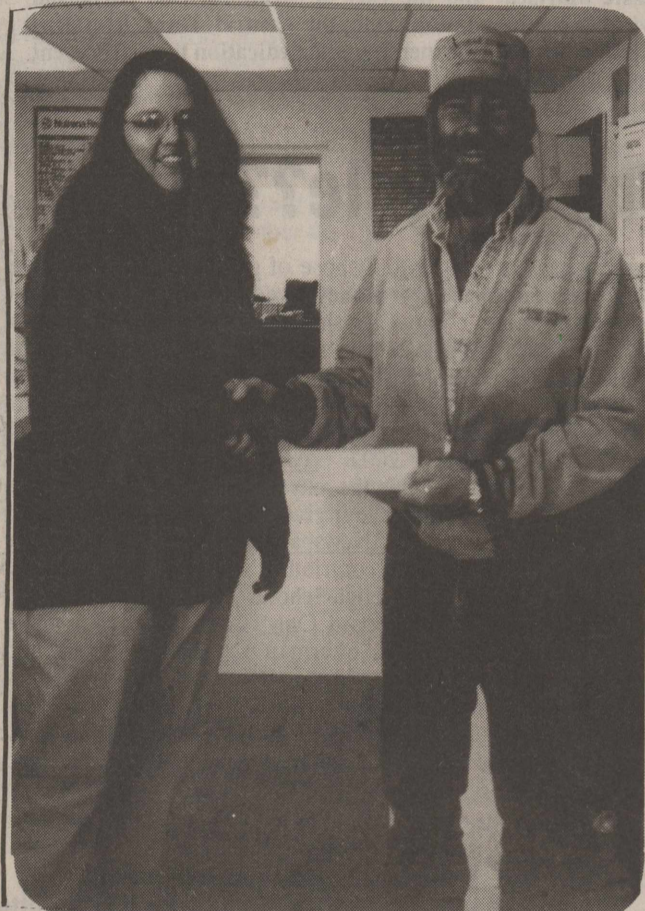


# THE STRATFORD STAR

75 CENTS

Published for over 100 years in Stratford, SHERMAN COUNTY, TEXAS 79084 usps 527

NUMBER 41 OCTOBER 10, 2002



## Personal & Business Planning Seminar To Be Held In Stratford

When was the last time you took a moment to seriously consider your long-term financial goals? If you have a financial plan in place, when was the last time it was reviewed to be sure it continues to be consistent with those goals? If you haven't made a long-term plan, perhaps now is the perfect time to do so.

Please join the Sherman County Development Committee and Wadell & Reed for a Personal & Business Planning Seminar to be held at the Sherman County Barn on South McKee Avenue in Stratford, TX on Tuesday, October 22, 2002 at 7:00 p.m. This seminar will educate you on aspects of sound financial planning both from a personal and business planning standpoint. Admission is free and open to anyone interested in attending.

With thousands of American workers' retirement savings affected by a drastically altered financial climate, understanding the importance of financial planning has been so crucial. Between corporate accounting scandals, the technology bubble bursting and the uncertainty of war and terrorist attacks, the need for comprehensive financial planning and personal service is not a luxury but a necessity for investors.

Wadell & Reed is committed to helping out develop a plan that:

- \* Addresses what you care about most;
- \* Identifies your financial objectives and recommends solutions to help achieve them;
- \* Creates a plan of action that addresses your specific financial needs;
- \* Helps you stay focused on achieving both your short-and-long term financial goals; and
- \* Reflects life's changes as they occur.

With this in mind, we are pleased to tell you about the first-ever National Financial Planning Week which will be held October 7-13, 2002. Designed to serve as a way to convey to American that their hopes and dreams are within reach with a sound financial plan, Financial Planning Week is a perfect time to review short-and-long term financial aspirations.

Wadell & Reed, in conjunction with the Financial Planning Association (FPA) and the Sherman County Development Committee, hopes to help people like you recognize the value of financial planning. Although you cannot predict the future, you can take the first steps toward reaching your financial goals and dreams. Keep in mind this planning seminar is open to anyone interested and will be a no charge. For questions please contact Kristine Olsen with the Sherman County Development Committee at 806-366-2897.

## Fall Fashion Show Oct. 12

Last chance to get a ticket for GFWC/Prospectus Study Club Luncheon and Style Show. Ticket sales stop Thursday, Oct. 10, noon. Contact any Study Club member.

The luncheon begins Oct. 2, 11:30 p.m. at Mary Allen Cafeteria. Fashions are by Kay's Classics and Creative Casuals of Dumas.



During Homecoming week at the Stratford High School last week, Monday was Farmers day. Shown above are some of the combines and tractors that some of the students drove to school for the day. Now we are sure they are in the field for corn harvest. More pictures on harvest in next weeks paper.

## Bell Brings In First Load

Crystal Murphey of Stratford Grain Company is shown above presenting a check to Kerry Bell for bringing in the first dry load of Corn. Test weight was 15.3 and was cut on September 30th. Congratulations Kerry.

## TDH To Conduct 'Getting the Most Out of Medicaid' Workshop

The Texas Department of Health (TDH) will conduct a free workshop on October 24, 2002 at Coon Memorial Hospital in Dalhart from 1:00 to 4:30 p.m. to explain Medicaid services and the Medicaid application process.

The workshop, "Getting the Most Out of Medicaid," is open to health care providers and representatives of agencies and organizations that work with or serve current or potential Medicaid children or their families.

Workshop topics include Medicaid eligibility, Texas Health Steps checkups, Medicaid case management and the Medical Transportation Program.

For more information or to register for the workshop, contact Tricia Vowels, TDH Region 1 Office, Lubbock, at (806) 767-0414.

## Bus Tour Panhandle Foliage & Indian War Sites October 19

Bob Izzard will narrate a bus trip on October 19 from the LaRita Theater in Dalhart to: the first town in the Panhandle, Old Mobeetie including "feather bed hill" and the museum/Jail; Adobe Walls; Canadian Foliage Celebration.

The Bus will leave at 8:45 from the LaRita Theater in Dalhart and plans to return about 5:00 p.m.

The Bus is \$35.00 each, a late lunch on your own in Canadian (bring snacks) and a stop in Spearman to look at the windmills and dessert. Call Dalhart Chamber of Commerce for reservations 244-5646.

\*\*\*  
Trying to squash a rumor is like trying to unring a bell.  
—Shana Alexander  
\*\*\*

## Night Pep Rally "Let's Make Some Noise"

As the 2002 ELK District football season gets underway, the SHS Cheerleaders would like to invite everyone to join us for a special NIGHT PEP RALLY that will be held on Tuesday, October 15th, at 8:15 p.m. at the football stadium. Please bring your noise makers to both the Night Pep Rally and the regular Friday afternoon Pep Rally. Thank you.

## Free Computer Classes At Stratford Library Research Center

Free computer classes will be offered to the community through the Stratford Community Area Network. The classes for October will be held Oct. 15, 22, and 29. Classes will meet in the new Stratford Library Research Center. Classes will be scheduled as follows: (1) October 15, 5 p.m. - 7 p.m., Using the Internet and Email, Shanda Davis Instructor. (2) October 15, 6 p.m. - 8 p.m., Using the Internet and Email, Linda Young, Instructor. (1) October 22, 5 p.m. - 7 p.m., Using the Internet and Email, Shanda Davis, Instructor. (2) October 22, 6 p.m. - 8 p.m., Basic Computer Operations and Maintenance, Linda Young, Instructor. (1) October 29, 5 p.m. - 7 p.m., Basic Computer Operations and Maintenance, Shanda Davis, Instructor (2) Basic Computer Operations and Maintenance.

All classes are free to the public. Please call (806) 366-3336 with questions or to reserve a seat. Classes scheduled from 5-7 can accommodate 20 students. Classes scheduled from 6-8 can accommodate 15 students.

\*\*\*  
There is no greater loan than a sympathetic ear.  
—Frank Tyger  
\*\*\*

## USDA & Texas Farm Service Agency Announce New Livestock Compensation Program (LCP)

Beginning October 1, 2002, the Texas Farm Service Agency (FSA) will begin accepting applications for the new Livestock Compensation Program (LCP). According to John Fuston, State Executive Director, LCP will only be available to counties within the state that were designated primary disaster areas for drought in 2001 or 2002. LCP provides direct payments, per head to producers who suffered livestock losses as a result of severe drought conditions. The Secretary of Agriculture is authorized to provide approximately \$752 million in LCP assistance nationwide.

"Eligibility for LCP is not a pasture loss issue, but rather a livestock loss program that provides financial assistance to farmers and ranchers who would otherwise have no opportunity for loss compensation," said Fuston. "We recognize that individuals who raise livestock only, and those who raise livestock in conjunction with row crops have suffered devastating losses on both accounts due to severe drought conditions," he said.

Eligible counties must have been named as primary counties under a Secretarial disaster designation or have been requested as such by the Governor no later than September 19, 2002 and are subsequently approved. A complete listing of all eligible Texas counties is being compiled at the state and national levels. Producers should contact their local county FSA office to confirm eligibility.

Lexie Albert and her grandmother M. L. (Shorty) Albert are shown at right with the pumpkin crop that was raised from Lexies' last year Halloween Pumpkin. Lexie asked her Grandma to plant the seeds out of her pumpkin and this is only a small portion of what grew this year. Congratulations! Lexie is the daughter of Steve and Carrie Albert of Dumas.



## Pheasant Season Approaching

The leaves are changing color, mornings and evenings are cool, combines are in the fields, and the fall hunting season is approaching. The Stratford Chamber of Commerce is actively seeking property to promote for our annual Pheasant Hunt. The Pheasant Season is December 14-29, 2002.

The Chamber Hunt generally comprises of CRP Grass, Corn and Milo stubble with the drought this year, many acres of dryland milo have been "Totaled" by insurance and would make prime habitat for pheasant. The price paid to the landowner is as follows:

CRP Grass and Corn stubble \$35/acre  
Milo Stubble and uncut fields \$70/acre

The final rental payment is determined by the total number of days the fields are available for hunting. In 2001, the Chamber sold permits to 102 hunters from across the nation. The total number of acres available in 2001 were 4,480.

Rental agreements for land owners are available from the Chamber Office. Anyone interested or who may need more information may contact Paula at the Chamber Office (366-2260) or come by the office located in the City Hall building.

"LCP provides assistance to eligible livestock producers who owned livestock for at least 90 days as June 1, 2002," said Fuston. "Livestock meeting these requirements that have been sold or died after June 1, 2002 and prior to LCP signup would still be eligible for payment."

Eligible livestock under LCP provisions are beef, dairy cattle, sheep, goats as well as buffalo and beefalo when maintained on the same basis as beef cattle. However, swine, poultry, feedlot livestock and equine animals used commercially for human food or kept for the production of food or fiber on the owner's farm are not eligible for LCP payments.

"This program is 50% larger than any of the previous livestock assistance programs paying on a per head bases and not prorated for herd liquidation. All things considered, LCP is a proactive, responsive and producer-friendly program developed with the rancher's well-being and financial viability in mind," said Fuston.

For more information regarding LCP provisions, payment rates and eligibility criteria contact your local FSA County Office or visit the USDA web site at <http://www.usda.gov> and FSA on the World Wide Web at <http://www.fsa.usda.gov>.

NOTE: Rebecca Hemphill, CED at the Sherman County FSA Office state that As of this date, Sherman County has not been officially notified of eligibility, but if you are interested in this program, please contact us at 806-396-2211 for updates".

Rick Reinart

Banking friends and neighbors at  
You ought to be banking with us!



FIRST STATE BANK  
HAPPY CANYON • AMARILLO • STRATFORD

STRATFORD 401 N. 3rd 366-BANK  
Express Money Line 35X-PRESS or TOLL FREE 866-75X-PRESS Member FDIC



## Letters To The Editor

Letters To The Editor Policy for Publication: All letters will be accepted provided they are not anonymous & a bonafide address is given. We will not print letters in the Star anonymous or name on file. Name will appear in paper. We will not print statements that are obscene or libelous per se. This paper assumes no responsibility for content and all views are strictly the view of the writer. Copies of letters which have been submitted to other newspapers will receive a low priority for publication. The newspaper reserves the right to edit letters with respect to length or potentially libelous material.

Dear Editor:

Last month we received our Water Bill from the City of Stratford. The amount that they had us using was extremely high since we did not live in Stratford at the time. We have moved to New Mexico, and no one is living in the house. We know that we did not use this amount of water and since talking to other citizens of Stratford, there are others who share our feelings. We also did not have a water leak, or if there was one, someone was nice enough to fix it for us and not tell us. There will be a City Council meeting next Tuesday, October 15th, 2002, at 7 p.m. If you are one of those persons who have a question as to why this utility bill is so high, please get on the agenda and show up at the council meeting.

Thank you.

Barry Hitson

A letter to family, friends, customers.

From Jode, Shannon, Slate & Lashala.

There is a scripture in Samuel 1:27 that I would like to share with you where it is singular I will make it plural: "We prayed for these children, and the Lord answered our prayer and gave them to us."

The lord sent them to us a little early, 32 weeks and five days to be exact. They were preemies in the Neonatal Ward of Northwest Hospital. A wonderful place with dedicated doctors and nurses. For this we are so grateful.

Slate Ethan has been discharged from the Neonatal and is living with Shannon and I at the Ronald McDonald's House, another wonderful place. Lashala Janne is still in the Neo Natal Unit-Improving-but is not quite there. Hopefully by the time you read this she will have joined her family 6 miles west of Stratford.

Your prayers, calls and concerns are so appreciated. Our family, all of them have been so very helpful. The calls, the visits-what a loving community Stratford really is. You have been wonderful. We ask for your continued prayers.

And we ask for your patience-especially now and after we arrive at our home in Sherman County. Visitations will be almost nil for awhile, not that we don't want to show off our pride and joys, but for babies health reasons.

To my customers, bear with me a little longer. I will be back-and when-all of you will be the first to know.

Stratford is a special place and again we thank you from the bottom of our hearts for your prayers, concerns, calls, visits (while here in Amarillo). We know you care, and we care for all of you.

Shannon, Jode, Slate and Lashala Anderton

\*\*\*  
A guilty conscience needs no accuser.  
—English proverb  
\*\*\*

**The Stratford Star**  
Published Every Thursday  
at 309 N. Main, Stratford, Texas  
79084  
Second Class Postage paid at  
Stratford, TX 79084  
**Martha (Marty) Robertson**  
Editor & Publisher  
**Shari Hudson - Advertising &  
Darkroom**  
Subscription Rates  
\$18.00 per year in Sherman and  
Adjoining Counties  
\$25.00 per year all others  
\$15.00 per year college rate  
**The Stratford Star**  
P.O. Box 8  
1-806-366-5885  
Fax 1-806-366-5885

## Farm Service Agency & Texas A&M University Offer Landowners & Operators A Web Based Tool For Making Base and Yield Decisions

Farm Service Agency (FSA) has launched the "Base and Yield Update Option Analyzer (BYA)", and interactive web-based tool for landowners and operators to use in evaluating and calculating base and yield options for direct and counter-cyclical payments. The web-based calculator can be found at <http://www.fsa.usda.gov/pas/farmbill/tools.asp>.

"The 2002 Farm Bill affords producers the opportunity to update bases and yields allowing them to take advantage of yield improvements due to improved technology resulting in government payments that are more in line with actual production," said Rebecca Hemphill, County Executive Director in Sherman County.

According to Hemphill, base and yield data currently on file at USDA service centers has been frozen since 1985.

The new tool is based on software developed by Texas A&M University's Agriculture Food and Policy Center (AFPC) in cooperation with the U.S. Department of Agriculture (USDA) and FSA. The analysis program helps producers evaluate the economic consequences of selecting different base and yield options on a case-by-case basis for each of their respective operations. When using the analyzer program, producers will need to provide information including planted acres, yields and types of crops grown. The software will prompt producers to enter projected crop prices and various base and yield options that will be used to estimate six years of payments for each crop.

Hemphill emphasized, "The agency fully supports educated consumers making informed decisions about their operations and encourages producers to use any and all calculation tools available to them, but return to the FSA version when making final decisions."

Landowners interested in receiving direct and counter-cyclical payments may begin to sign-up for the 2002 and 2003 crop years on October 1, 2002 and have until April 1, 2003 to make base and yield elections for the new farm program. If no election is made by the April 1, 2003 deadline, the farm's bases will default to the 2002 base, plus oilseeds if applicable. This is especially important for those farms that did not participate in the 1996 farm program and whose records currently show no base acres.

"Although the decision to change existing base and yield data is ultimately that of the landowner and FSA or its employees cannot make those decisions for a producer; we will be more than willing to assist producers. We also encourage producers to work with and seek assistance from their local County Extension Agent," said Hemphill.

For more information on the base and yield calculator or related information, please contact the Sherman County FSA county office at 806-396-2211 or visit the national FSA website at <http://www.fsa.usda.gov>.

## Wessler Bequest

City National Bank in Guymon, Oklahoma recently notified Oklahoma Panhandle State University of a bequest left to the University. Paul W. Wessler, a 1966 alumnus of Panhandle A&M College, left a significant portion of his estate to OPSU. Mr. Wessler specified that 75% of the amount be used for research and the remaining 25% for agronomy scholarships. OPSU will establish a scholarship in his name for the School of Agriculture.

## Arts in the Area

By Gaynelle Riffe

\*\*\* note new listing

- Oct. 19 Bop Izzard Presents a "History of Panhandle Indian Wars" Bus Tour Oct 19<sup>th</sup> Canadian foliage and Old Mobeetie LaRita Theatre, Dalhart . 244-5646
- Oct. 3-6 "Buddy-The Buddy Holly Story" 7:30, Sun. 3:00 Amarillo Little Theatre 806-355-9991
- Oct. 5 Lone Star Ballet "Street Car Named Desire" 7:30 p.m. Amarillo Civic Auditorium (806) 378-3096 or 372-2463
- Oct. 14 Steven Curtis Chapman Amarillo Civic Coliseum 806-378-3096
- Oct. 28 Amarillo Symphony "Richard Rodgers and Friends" Amarillo Civic Auditorium 806-376-8782
- Nov. 1-3\*\*\* "Alice in Wonderland" Amarillo Little Theatre Academy 806-355-9991
- Nov. 3\*\*\* Amarillo Youth Choirs 2:00 p.m. St. Andrew's Episcopal Church 806-372-1100
- Nov. 10\*\*\* "Porgy and Bess" Amarillo Opera 7:30 p.m. Amarillo Civic Auditorium 806-372-7464
- Nov. 13-16\*\* 20-23 "The Life of Henry the Fifth" 7:30 Branding Iron Theatre, WTAMU 806-651-2881

## HALLOWEEN HINTS

Scare Up Some Beauty With Flowers

(NAPS)—When you think of Halloween, do ghosts, jack-o'-lanterns and black cats immediately come to mind? How about flowers? You may think of flowers as an unusual Halloween ornament, but the floral experts at 1-800-FLOWERS.COM say that a technique utilizing "cobwebs" made with hot glue turns a seasonal arrangement into a frightfully festive piece.

To start, you will need a basket with floral foam (available at any florist and craft stores) and an assortment of seasonal flowers and birch branches. Make sure to thoroughly soak the foam before inserting the cut flowers. Choose an array of autumn hues, such as deep reds and purples, as well as plenty of orange and yellow. After your basket is designed and you've inserted the birch branches, you are ready to make your cobwebs.

Take two pieces of styrofoam (about 5"x3") and either dip one side in hot glue or generously coat with a hot glue gun. Press the two pieces together and hold for about 10 seconds. Gently pull pieces



A boo-tiful frights and flowers arrangement can add fun to any Halloween decorations.

apart; you'll immediately see fine threadlike strands forming. Wrap them gently around the birch branches until they stick. Repeat the process as often as needed to create the effect of cobwebs.

Visit 1800flowers.com for unique Halloween gifts such as the Masquerade Bear Gift Pack and the Frights and Flowers arrangement.

## Chamber News

*Economic Diversity.* We've all heard this before, *Economic Diversity.* What does it mean? Economic Diversity is a much an attitude, as it is anything else. An attitude of growth. An attitude of aggressiveness. An attitude of change.

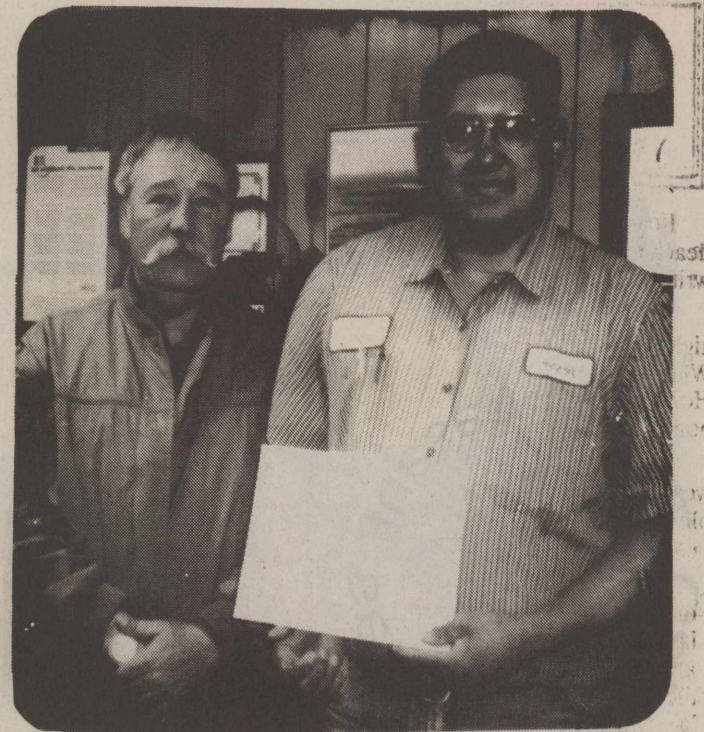
To become more diverse, the community must embrace and strive for growth. The community cannot strive for diversity without growth. To become more diverse. We must become aggressive. We must look outside of our community for new business. And rely less on our current businesses for growth and expansion. By the way, we, the community, should be prepared to fight to attract new businesses into our community.

We need to accept change as an everyday component of business. We cannot wait for things to settle. We cannot rely on past practices to attract more business. We have to become innovative, we have to become cutting edge. We may have to invest more to get the desired results.

What is the Chamber's role? We must continue to develop our workforce through educational opportunities. We must advocate for more efficient government that are less of an obstacle and more of a friend to business. We must develop and promote our regional identity as having everything business needs to succeed. We must support our development partners. Keeping business interests at the fore-front of all that the Chamber does.

(Used by permission of Jon Evenson, Wisconsin Rapids, Wisconsin. The Chamber of Commerce Pacesetter- Volume XXIV/Number 8/August 2002.

\*\*\*  
You can't cross a chasm in two small jumps.  
—David Lloyd George  
\*\*\*



## City Receives Commendation

Jessie Mariscal and the City of Stratford, Don Nicholson, receiving a commendation from the Central Texas Recycling Association for their partnership and dedication to environment and recycling efforts.

## Why Recycle???????

Stratford pays by weight to dispose of garbage. Any recyclable items kept out of dumpsters, is money saved. And some recyclables have monetary value. The City shipped a total of 74.3 tons of material at no cost to the City and received \$2,803.49 in payment. Panhandle Regional Planning Commission pays the shipping for recyclable goods and has helped the City with grants in amount of \$123,187.76 for recycling equipment and building. Recycling September 2001 to August 2002: Yard Waste using the green dumpsters. 42.05 tons saving the city over \$3500.00 in garbage disposal. Thank you for taking your grass clipping and tree limbs to the land fill area. Cardboard, Newspapers, Magazines and office paper. 74.3 Tons. Top three contributor's picked up: cardboard-Duckwalls, Iowa Vet, Stratford High School. Please recycle your flat cardboard in the green "Cardboard Only" Containers; Top three office paper- First State Bank, Sherman Co. Farm Service and Stratford Feedyard. Most is shredded and you can shred your own at the recycling building; Newspapers - Post Office, First State Bank; Farm Services; Magazines - Post Office, A&I, Stratford High School! Thanks to the individuals who take their recyclables to the land fill/recycling station.

\*\*\*  
Tell the truth, and so puzzle and confound your enemies.  
—Sir Henry Wotton  
\*\*\*

## Re-elect

## WOOD CRAIG

County Commissioner

Precinct 2

Your Vote Will Be Appreciated on  
November 5, 2002

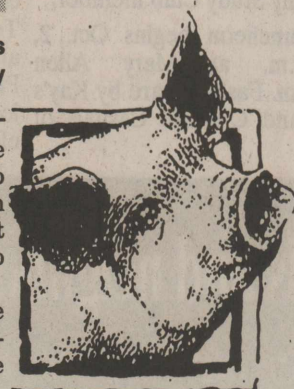
Pol. Ad. Pd. For By Wood Craig, P.O. Box 12850, County Road 24, Sunray, TX 79086



# FEED THE GRAND CHAMPION FOR FREE

**FEED OUR SHOW FEEDS TO YOUR ANIMAL FOR THE SHERMAN COUNTY LIVESTOCK SHOW. WHEN THEY BECOME GRAND CHAMPION WE WILL RETURN YOUR FEED BILL FOR THAT ANIMAL. IF THEY BECOME RESERVE GRAND CHAMPION WE WILL RETURN HALF OF THE ANIMAL'S FEED BILL. YOU MUST KEEP YOUR FEED BILL PAID UP CURRENTLY TO BE ELIGIBLE.**

**GOOD LUCK!**





## Lollies Line

By Lorelyn Powers

Howdy everyone since the Star deadline is gone I will think and write very quickly.

The Elks had a wonderful night for their victory over Wheeler Mustangs and being Homecoming that was an extra bonus.

With our rain and cooler weather the roses and other flowers are blooming and are very beautiful.

From near and far came the family & friends of Homer Allan Laile, to a birthday party on Saturday, October 6, 2002 at Jilens & Pattys home in Friona, TX which was called for the afternoon "Olde Soda Shoppe" with drinks of the 50th-60's and music and video tape of Allan as he was growing up in Stratford and moving to College. As the temp is sixty four degrees in the afternoon is cloudy that is good weather for sleeping and since this night person must rest, we want all who are awake or soon will be take care of one another and be patient and kind.

## Births

Micah and Capt. Kara Neuse of Travis Air Force Base, California announce the birth of ayece Parker on September 30, 2002.

Jayce is welcomed to the family by "Big Brother" two years old Bryce.

Maternal Grandparents are Ann Johnson and the late Jim Johnson of Stratford. Paternal Grandparents are Steven and Jenene Neuse of Fayetteville, Arkansas. Maternal Great Grandmother is Beatrice Johnson of Yazoo City, Mississippi. Paternal Great Grandmother is la Belle Nowotny of New Braunfels, Texas.

Jayce shares his birthday with his maternal Great Grandfather late Bob Burgess of Stratford. Jayce was born one hundred years later his Great-Granddaddy Bob.

My father taught me to work; he did not teach me to love it.  
—Abraham Lincoln

## Kerrick News

By Marylou McDaniel

Kerrick Ladies Day Out is Tuesday, Oct. 15. They will leave Kerrick at 3:30 p.m. for the Boise City Museum, then go the Chicken House in the Griggs Community for supper. They will have supper there at 6:00 p.m. There must a minimum of ten. Cost is \$6.50. Reservations must be made. Call Nadine Miller in Stratford for reservation or more information. If one can't make it to Boise City, she may meet the group at the Chicken House.

Mike McDaniel and Leonard Hawkins went to Fred's Spread last week to winterize the cabin. Made it just in time-it was cold! After the dry summer, had feared there wouldn't be good foliage color, but they said it was beautiful.

Ted & Joyce Irlbeck attended a 20th anniversary dinner in Hereford recently. It was for Wanda & Gerald Jesko. Wanda is Ted's niece.

There's excitement at the Hamptons! They are waiting to welcome Minnie's new grandniece, Alexis Lynn, who was born Sept. 24. Alexis' parents are Laura & Martin Cisneros of Belleville, Illinois.

Kerrick First Sunday Luncheon had 40 attending. The next luncheon is slated for Oct. 20.

Enjoying were Nadine Miller, Geneva & Joyce Wells, Mark, Klinton & Kelsy Keener, Charley & Denton Crabtree, Leo & Elaine Horne, Martha Ellison, Terry & Gail Wells, Christy & Sean Wells, Teresa Wells, R.J. & Mary Hill, Dudley Hill, Audrey Kinccanon, Lorene Oylor, Piper & Nathan Bennett, Ralph, Minnie, Ralph James, Annette Hampton, Ted & Joyce Irlbeck, Bill & Pat Boren, Nita Taylor, Buck Weaver, Marjory Munden, Dr. Gary Mathews, Virgie Mathews, Roy & Cicy Harris, Marylou & Mike McDaniel.

For a real quick energy boost, nothing beats having the boss walk in.  
—Robert Orben

## MAMA/GRANDMA MARYLOU



WE LOVE ALL OF YOUR 75 YEARS!

### Honey Bread Pudding

8 cups day-old egg bread, cubed  
3 cups milk  
1 cup half and half  
6 eggs, beaten  
1/2 cup honey  
1 tablespoon grated orange peel  
1 teaspoon each vanilla and ground cinnamon  
Honey Cream Sauce  
1 cup heavy cream  
1/4 cup honey  
1 tablespoon rum or 1/4 teaspoon rum extract

Place bread cubes in a lightly buttered shallow 2-quart baking dish. In a medium bowl, beat together milk, half and half, honey, orange peel, vanilla and cinnamon until well blended. Pour mixture over bread cubes and let stand for 1 hour or until the bread has absorbed the liquid. Pre-heat oven to 375 degrees. Place dish in hot oven and bake for 45 to 50 minutes or until a knife inserted in the center comes out clean. Meanwhile, beat cream until light and fluffy. Slowly add honey and beat until stiff. Fold in rum or extract. Serve dollops of cream over the warm bread pudding. Makes 8 to 12 servings.

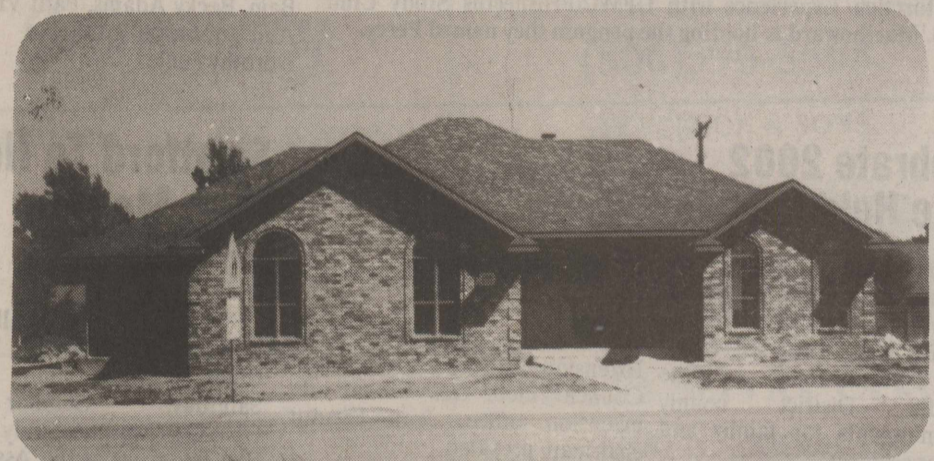
There's one thing to be said for inviting trouble: it usually accepts.

—May Maloo



## Arnold Receives Certificate

Gladys Arnold, center was surprised Oct. 3 at Dalhart Chapter 1051, Order of the Eastern Star, when she was presented with a framed certificate saying "Congratulations Gladys Arnold on your First 'A' certificate, earned Nov. 17, 2001, in Dumas, TX." Although she has been an Eastern Star member for over 50 years, she had never tried to earn an "A". Also on the certificate was this picture with Brooks Speer of Idalou, Grand Escort and Kimi Kidd of Abilene, Grand Examiner, District 2.



## New Faces-New Places

New Place-1206 N. Pearl, the new home of Gared and Misty McBryde who will be moving in soon.

### First Assembly of God

Terry Callis, Pastor  
921 Fulton  
Sunday School 9:45 am  
Morning Worship 10:45 am  
Evening Worship 6:00 pm  
Wed. Bible Study 7:00 pm

### First Christian

Rev. Bob Sweeten  
5th & Main  
Sunday Coffee Fellowship 9:00 am  
Sunday School 9:45 am  
Morning Worship 10:45 am  
No Sunday Evening Worship  
Wed., Adult Choir 8:00 pm

### First United Methodist

Rev. Mark Metzger  
520 N. Main  
Sunday School 9:40 am  
Morning Worship 10:50 am  
Junior High UMY 5:30 pm  
Senior High UMY 6:00 pm  
5:00 pm Cable Ch. 3 for Morning Worship Service - Ev. worship - 7:00

### St. Joseph Catholic

6th & Pearl  
Rectory - 366 - 5687  
Sunday morning: 8:30 a.m. (English), 10:30 a.m. (Spanish)  
Sacrament of Reconciliation: Before Mass.  
Christian Formation Classes: K-6th Grade, Sun. - 9:00 a.m. Jr. & Sr. High, Wed. - 6:30-8:30 p.m.

### Church of Christ

Larry Evans  
N. 3rd & Chestnut  
Sunday School 9:30 am  
Morning Worship 10:30 am  
Evening Worship 6:00 p.m.  
Wednesday Bible Study - 7:30 p.m.

### Calvary Baptist

James Washburn  
302 S. Main - 806-396-5335 lv. message  
Sunday School - 10 a.m.  
Morning Worship - 11 a.m.  
Evening Service 6 p.m.  
Wed. Service - 7:30 p.m.

### First Baptist

Brent Farney  
702 N. 3rd  
Sunday School 9:45 a.m.  
Morning Worship 10:50 a.m.  
Church Training 6:00 p.m.  
Evening Worship 6:00 p.m.  
Wednesday Bible Study 7:00 pm

### La Mision Bautista

Mision Bautista  
401 S. Wall 396-5376  
Domingo-(Sunday)  
Estuela Dominical 9:45 am

Miercoles (Wednesday)  
Servicio De Adoracion 11:00 am Estudio Biblico &  
Servicio De Oracion 6:00 pm  
Servicio De Adoracion 6:00 pm Se Cuidamos  
Sussinos Durante El Servicio.

## The Churches of Stratford Welcome You

### Creatures of Habit

You don't have any bad habits, do you? I do. Just ask my family. They'll be glad to give you a list. At any rate, can those ba habits be changed? Is it possible to make a dent in those really bad ingrained habits and actually form new good habits? The simple answer is "yes". But doing it is not so simple. And so we need to realize there is a principle at work here. We are creatures of habit and habits re formed by doing something over and over again. When I get into my car, unless I consciously think about it, I always turn the same way out of our driveway. And because I am a creature of habit, I head for the office, even if I am going someplace else. Sexual sins are like this. But they are not only habit forming, they are addictive, and you have to have special strength to get out of those sins and start on a new path. But this is what Christianity is all about. Christians have been "created in Christ Jesus for good works which God prepared beforehand, that we should walk in them" (Ephesians 2:10). Christians are new creatures. This means two things. First, the power of former sins has actually been broken. "Sin shall not be master over you" (Romans 6:14). Second, God gives the gift of His Holy Spirit which is power to form new habits. As a result, the Bible says, "Just as you present your members as slaves to impurity and to lawlessness, resulting in further lawlessness, so now present your members as slaves to righteousness, resulting in sanctification" (Romans 6:19). But only Christians have had the power of reigning sin over their lives broke. Only Christians have the grace of God to form new habits.

Sponsored by:  
Thriftway 396-5586  
Stratford Grain 396-5541  
Lautz 769-4485  
Ellie's 396-2092  
Stratford Star 396-5885  
Walter Lasley & Sons, INC  
753-4411

### Templo Hispano Eben-Ezer

Pastor Roberto Frescas  
205 N. Poplar - Hwy 287  
Escuela Dominical 10 a.m.  
Servicio De Adoracion 5 p.m.  
Meir Co Les Serv De Ador 5 p.m.

### Kerrick Community Church

Pastor Roy Harris  
Community Building  
Sunday Morning - 11:00 a.m.  
Sunday Evening-6:00 p.m.  
Prayer Meeting - 7:00 p.m. Wednesday

# WANTED DEAD OR ALIVE



# \$150 REWARD

For your active or inactive satellite dish.

### WANTED FOR

No local channels ★ Fees for additional TVs ★ Equipment & repair costs ★ Long contracts

GET CLASSIC CABLE AND STOP THIS VARMINT.

CALL NOW FOR THIS LIMITED-TIME OFFER AND GET FREE INSTALLATION.

# 800.999.6845



STAY HOME. GO FAR.  
www.classic-cable.com

Trade in your dish and receiver and get \$150 in discounts: \$12.50 per month for 12 consecutive months when you subscribe to Expanded Basic or greater level of service. New residential customers only. Taxes not included. Offer applies to services herein. Offer subject to expiration without notice. Not valid in conjunction with any other offer. Other restrictions may apply. Installation charges may apply for some digital services.



## Antarctica Program Presented At Study Club



Betty Lou O'Brien, seated, and Marihoward Engelbrecht shared their Antarctica Experience with GFWC/Prospectus Study Club last week. Marihoward is holding the penguin they named Percy.

Betty Lou O'Brien and Marihoward Engelbrecht entertained GFWC/Prospectus Study Club with stories of their adventures of Antarctica which they visited last February. They had pictures and items that accented their talk including Penguins Percy and Percy, Jr. Sonja Kendrick, International Affairs Coordinator, introduced the speakers.

Laurie Spurlock, club president, conducted the business session.

Final plans were made for the Oct. 12 luncheon and style show.

Top of Texas District meeting is in Stratford Oct. 26 at Assembly of God Church. See separate story.

Guests were Ione Kendrick, Norma Trimpa, Ann Burton, and George Harding.

Other members present were Liz Sanders, Betty Brown, ViAnn Reed, Marylou McDaniel, Linda Swain, Marsha Wright, Margaret Reed, Oline Caraway, Pat Hartman, LaVell Haggard, Marty Bain, Becky Adams, Patti Vincent, Ann Johnson, D'Lynn Reed, Dorothy Haile.



## XIT Communications Makes Donation To Circle Of Friends

Yvonne Miller, (left) XIT Communications Customer Service Clerk, presents Pat Johnson, representing the Circle of Friends, with a donation for their annual event. The Circle of Friends recently held their annual golf tournament at the Stratford Country Club to raise money for cancer research and awareness.



In parts of England it was once believed that a knife kept under a windowsill kept the Devil out of the house.

## Celebrate 2002 To Be Held

Holiday ideas galore for decorating, entertaining, and gift giving will be highlighted at the "Celebrate 2002" program to be hosted by members of the Panhandle District county extension agents for family and consumer sciences.

That program is scheduled at the Texas A&M Extension and Research Center, 6500 Amarillo Blvd. West, on Tuesday, October 22th, at afternoon and evening sessions.

Afternoon registration begins at 1:00. The evening session, a repeat of the afternoon program, begins with registration at 6:00.

Todd Williams, County Extension Agent for Agriculture and Natural Resources from Rockwell, Texas, will present a lively and educational demonstration on "Holiday Decorating with a Natural Flair."

And each of the Extension Agents in the area will present their own holiday idea, ready for duplication, from the written instructions to be included in each participant packet.

In the adjoining classroom, the agents will each appoint a holiday table and serve a prepared recipe selected to enhance entertaining for special holiday occasions. A variety of recipes including main entrees, desserts, and appetizers will be available for tasting with the recipes for each to be included in the participant information packets.

Tickets purchased in advance from any county office in the Panhandle district will be \$8.00 each. On site admission is \$10.00.

Complete agendas are available from each of the participating agents, as additional information.

In Stratford and Texhoma, tickets may purchased at the Sherman County Extension Office, 701 N. Third Street, Stratford, telephone 366-2122.

The event is sponsored by the Panhandle District Texas Association of Extension Family and Consumer Sciences. Proceeds from the event help to fund scholarships and enhance educational programming in the Panhandle area to improve quality of life.

Extension programs serve people of all ages regardless of socioeconomic level, race, color, sex, religion, disability, or national origin.

## Christmas In November In The Planning

Sherman County Texas Extension Education Association Council met Oct. 4 at the extension office. Jean Everett, chairman, presided.

Plans for Christmas in November program and turkey dinner were completed. Advance tickets are now available from club members. Advance tickets are a dollar less than those sold at the door. Watch for details in a later story.

Southside and Star Clubs have voted to combine and possibly meet only once a month. Other changes are being considered.

There will be a District Training meeting in Claude Nov. 21 for council officers.

Letters of appreciation have been received from Donna Brauchi, District Extension Director and Mary Wayne Spurlock, District 1 TEEA Director, for the county cooperation in making the recent State TEEA convention in Amarillo a big success.

Susie Spurlock, agent, gave her report of upcoming activities.

Council members present were Jean Everett, Mary Lou Walden, DeeDee Dewees, Elizabeth Zimmer, Reyna Everett, Marylou McDaniel.

## Stratford To Host Club Meeting October 26

Top of Texas Fall Board, Texas Federation of Women's Clubs, meets in Stratford Saturday, October 26. GFWC/Prospectus Study Club will host the event at the Assembly of God Church, 921 S. Fulton.

Lyndi Shadbolt of Canyon, District President, will convene the business session at 9:30 a.m. Registration, visitation and refreshments are from 8:30 to 9:30 a.m.

Club members from Amarillo, Canyon, Borger, Dalhart, Dumas, Dodson, and Stratford will learn about new GFWC/TFWC programs. Especially highlighted during this meeting is the Education Department.

"Daniel Webster" of Webster's Dictionary is a guest lecturer.

Reservations are due Oct. 19 to Lyndi Shadbolt, 20 Eagle Pass, Canyon, TX. 79015. Include Name, Club and \$12 for Registration and luncheon.

\*\*\*  
Tragedy warms the soul, elevates the heart, can and ought to create heroes.  
—Napoleon Bonaparte  
\*\*\*



The first Father's Day was celebrated on June 19, 1910. The holiday was launched by the Ministerial Association and the YMCA of Spokane, Washington.



A young salmon may be called a parr, a smolt or a grilse.

\*\*\*  
Reality is only one door—a narrow one—but it leads to life.  
—Paul Fromer  
\*\*\*



In the Cherokee tradition, the color black is associated with the west and death. White is associated with the south and happiness.

\*\*\*  
Gratitude is a useless word. You will find it in a dictionary but not in life.  
—La Rochefoucauld  
\*\*\*



Come in  
and see us!

**FIRST STATE BANK**  
HAPPY • CANYON • AMARILLO • STRATFORD

You ought to be banking with us!

AMARILLO  
3423 Soney Rd.  
354-BANK

AMARILLO  
51st & Western  
359-BANK

AMARILLO  
3131 Bell  
352-BANK

CANYON  
1908 4th Ave  
655-BANK

HAPPY  
100 E. Main  
558-BANK

STRATFORD  
401 N. 3rd  
366-BANK

Mortgage Lending Dept. 353-6300 • Express Money Line 35X-PRESS or Toll Free 866-359-7737 • www.happybank.com

Member FDIC





Imagination Station Work goes on. Kim Allen and Melody York along with LeRayne Donelson, Laurie & Russell Spurlock and Gaynelle Riffe cleaned up the Craft Room Tuesday. Saturday work day included Gail Wells, Linda Spurlock, Gayl Harding and Gaynelle Riffe. And George Harding, he is always there.



Austin Riffe, 7th grade and Tiffany Duke, President of the High School Student Council, prepare collected drink tabs to be sent to cancer patient, Jessica Brumalaw, 4th grader, in Hico, Texas. Two gallons have been sent to date. Drink tabs can be redeemed for a cancer treatment at Cooks Children's Hospital, Ft. Worth and/or lodging at the Ft. Worth Ronald McDonald's House. Diann Riffe Williams, 3rd grade teacher in Hico asked her Stratford family to save the tabs. Word spread and the Stratford extended family is participated including school students, churches and business. Bring your tabs by Stratford Grain or send them to school and they will be sent to Hico.

### School Days Don't Have To Mean Eating On The Run

(NAPS)—For many families, busy schedules filled with homework, sports, plays, band, dance, often mean eating on the run. Fortunately, after-school snacks and dinner time do not have to revolve around quick-fix salts and sweets, such as potato chips, cookies, or peanut butter and jelly.

There are a variety of recipes and meals that are well-rounded, providing on-the-go kids and families with the nutrients they need for lunch, dinner and the snacks in between.

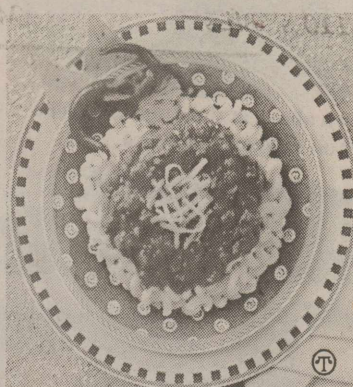
For example, chili is a quick and easy meal for parents to prepare as they shuttle kids to sports practices, music lessons, PTA meetings and football games. It is a versatile and hearty option that comes in several different varieties and flavors that are quick and easy to prepare in different ways.

Try serving a Turkey Skillet Dinner made with Hormel® turkey chili with beans, or Spaghetti Olé made with Hormel chili no beans. With prep time less than 20 minutes, you will be ready to serve a hearty snack or meal to your kids as they come home from school and daily extracurricular activities. Perhaps best of all, you can serve snacks and meals that will give them the energy they need before heading back out to their soccer game or play practice.

Try a new twist on an old favorite with Chili Mac Olé that kids are likely to ask for again and again!

#### Chili Mac Olé

1 (7-ounce) package elbow macaroni



- 1/2 cup chopped green bell pepper
- 1/4 cup sliced green onion
- 1 (15-ounce) can HORMEL chili no beans
- 1 (10-ounce) can CHI-CHI'S diced tomatoes with green chilies, drained
- 1 teaspoon seasoned salt
- 3/4 cup shredded Monterey Jack, divided

Prepare macaroni according to package directions. Drain. In saucepan, heat remaining ingredients except 1/4 cup cheese until cheese melts, stirring frequently. Spoon the macaroni onto serving platter. Pour hot chili mixture over macaroni. Sprinkle remaining 1/4 cup cheese over chili. Serves 6.

Hormel Foods has been making its chili for more than 50 years and maintains an extensive online database, which includes a variety of recipes from appetizers and hors d'oeuvres to dinner and other delights. For more easy-to-make recipes for your busy, active family, visit [www.hormel.com](http://www.hormel.com).

### Arts in the Area

By Gaynelle Riffe

\*\*\* note new listing

- Oct. 5 Bop Izzard Presents a 3 part series 2:00 p.m.
- Oct. 19 "History of Panhandle Indian Wars" LaRita Theatre, Dalhart . 244-5646  
Bus Tour Oct 19<sup>th</sup> Canadian foliage and Old Mobeetie
- Oct. 2-5, 6 "A Clearing In the Woods" 7:30 p.m. [6-3:00 p.m.] Branding Iron Theatre WTAMU 806-651-2881
- Oct. 3-6 "Buddy-The Buddy Holly Story" 7:30, Sun. 3:00 Amarillo Little Theatre 806-355-9991
- Oct. 5 Lone Star Ballet "Street Car Named Desire" 7:30 p.m. Amarillo Civic Auditorium (806) 378-3096 or 372-2463
- Oct. 5, 6 League of Celtic Nations, Festival & Craft Faire 10am-5pm Amarillo Fair Rex Baxter Bldg. 806-374-4243
- Oct. 6 B. B. King Amarillo Civic Center Auditorium 806-378-3096
- Oct. 14 Steven Curtis Chapman Amarillo Civic Coliseum 806-378-3096
- Oct. 28 Amarillo Symphony "Richard Rodgers and Friends" Amarillo Civic Auditorium 806-376-8782

### Honor Roll

#### Mary Allen Elementary Honor Roll - 1st Six Weeks.

3rd grade - Sergio Acevedo, Rhyon Burton, Marcos Garza, Ransom Lermon, Tori McGinnis, Carina Michel, Justin Mungia, Braiden Palmer, Perla Reta, Jared Saloga, Layne Sims, Gabriel Tarango, Derek Vasquez, Chance Walker, Autumn Witcher, Julie York.

4th grade - Heide Brooks, Morgan Carter, Matthew Chaffee, Brianda Chavoya, Trevor Christian, Lindsy Confer, Matthew Correll, Megan Crabtree, Bryce Cummings, Christopher Hart, Kyle Horsford, Kelsie Keener, Kimberly Melton, Taylor Melton, Miranda Olivas, Michael Ortega, Kimberly Ricks, Rubi Rueda, America Terrazas, Tyler Wright.

5th Grade - Eric Burton, Kelsi Dennis, Luke Haile, Jonathan Knight, Shelby McDaniel, Janeth Reyes, Sunny Russell, Nick Serna, Lyndsi Thiessen, Chrystal Thompson, Jennie Witcher, Channing Ziemann.

6th Grade - Brook Barnard, Stephanie Bell, Anne Brooks, Sinead Everett, Chandra Hawkins, Kaleb Horsford, Clayton Johnson, Jayton Lawrence, Deborah Molina, Jennie Spurlock.

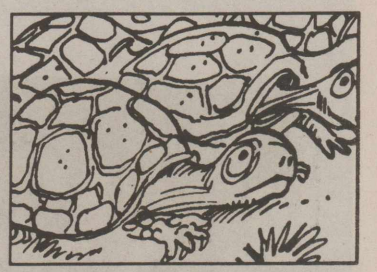
7th Grade - Jordan Confer, Kristen Crabtree, Ashley Duschl, Michael Frizzell, Samantha Hart, Hailey Long, Whitney Reese, Michael Reinart, Austin Riffe, Yadira Rojas, Joanna Rosales, Kelsey Stein, Ivy Valenzuela.

8th Grade - Candie Bell, Brant Cummings, Tiffni Drake, Rhia Everett, Ryan Ewers, Victor Garay, Evan Haile, Shadley Hawkins, Daniel Hays, Pablo Ibarra, Jacob Lawrence, Landan Luna, LaRissa Luna, David Marquez, Merilce McDaniel, Daniel Nusz, Obed Pantoja, Crystal Peregrino, Krista Reta, Eric Riffe, Steven Rueda, Juliana Taliaferro, Harrison Walden, Lisa Walls, Bryce Wright.

\*\*\*  
It is not a bad thing that children should occasionally, and politely, put parents in their place.  
—Colette  
\*\*\*



Mungia's set the heating/air conditioning unit, for the computer/reception area, Friday. The electrician will start working Monday, so things are moving right along.



A group of turtles is known as a bale.

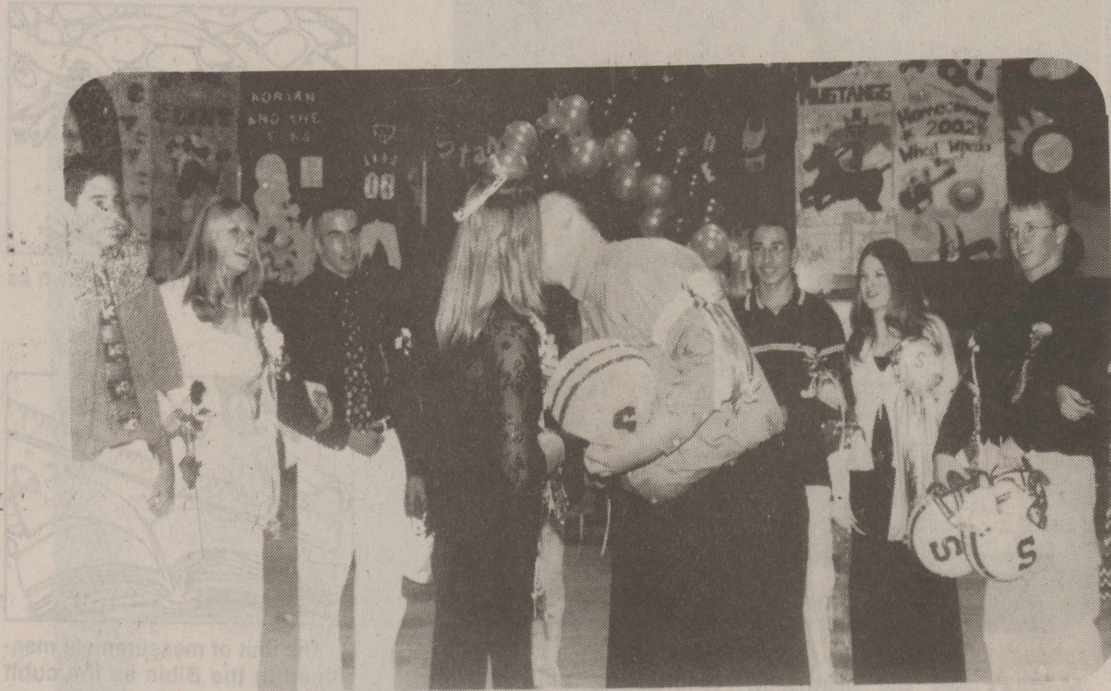
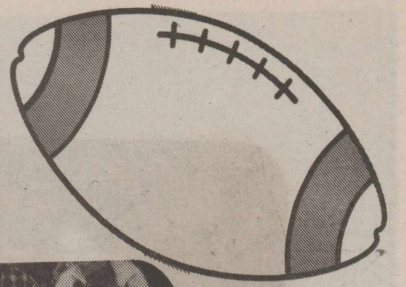


The unit of measurement mentioned in the Bible as the cubit equals 21.8 inches.

<h2>Business Directory</h2>	<b>COLDWATER MANOR</b> <i>"LOVE SPOKEN HERE"</i> 1111 BEAVER RD., STRATFORD, TX (806)396-5568
<b>WALTER LASLEY &amp; SONS INC.</b> <i>THE Feedyard</i> Since 1953 753-4411	<b>STEVENSON &amp; SONS</b> PEST CONTROL Termite & Pest Control • Rat Control • Bird Control • Yard & Tree Spraying Residential • Commercial • Farms • Ranches <i>"Professionals in Pest Control Technology"</i> Licensed & Insured 249-4202 Dalhart • Stratford • Hartley
<b>Stratford Grain Co.</b> Stratford 396-5541 Lautz 769-4485 4 North Main	<b>Robert's Service Center</b> 400 S. Poplar 396-2882 Auto Repair & Lawn Mower Repair
<b>CONSUMERS</b> 208 Texas <b>We Sell Seed &amp; Fuel</b> Farmland, Acco, & Moorman Seeds & Diamond Shamrock Products 366-2261	<b>Blue Stuff of Stratford Texas</b>  Betty Chamberlain 802 N. Pearl St. Stratford, TX 79084 (806)366-2843 E-Mail: <a href="mailto:rjb@xit.net">rjb@xit.net</a>
<b>Stratford Auto Electric</b> 119 S. Wall, Stratford, Texas 79084 Phone 366-5941 366-5857 Alternator, Starter, Magneto Repair Since 1964	 <b>Allen-Tarver Insurance Agency</b> Carolyn A. Tarver Auto • Home • Life • Commercial Bus: (806)396-5810 • Res: (806)396-2393
<b>Betty Brown's Medical Claim Service</b> 605 S. Main P.O. Box 7 Stratford, TX 79084 806-396-2623	<b>Joe Flores</b> Farm Bureau Insurance 396-5538 office 396-5389 home
<b>POOL HALL NOW OPEN</b> 218 N. Main 3 p.m. to 9:30 p.m. Monday thru Friday Saturday - 11 a.m. to 9 p.m.	 <b>Jesse's Gun Shop</b> Gun Repairs • Sales • Cleaning Hours: Mon. - Fri. - 1730 - 2000 Sat. - 0800-1600 Jesse Resendes (806) 769-4454 (806) 366-3134 Shop 111 S. Maple Stratford, TX 79084
 <b>A &amp; I PARTS CENTER</b> AUTOMOTIVE AND INDUSTRIAL PARTS — THE CAR CARE PEOPLE <b>Jerry Ewers</b> Manager P.O. Box 1146 201 N. 2nd - Stratford, TX 79084 (806) 366-5561 Fax: (806) 366-2583	 <b>Your Home Town Pharmacy..</b> ELK PHARMACY 317 N. Main P.O. Box 380 Stratford, TX 79084 806-396-4505 Major Prescription Plans Accepted Gayland Vandiver, R.Ph. Debbi Vandiver/ Owners Carlton Cards, Millionaire Candy, Gifts Cookie and Balloon Bouquets
<b>Lehr Air/Lehr Fertilizer</b> P.O. Box 585 Stratford, TX 79084 Off. 806-396-2284 Fax 806-396-5454 Randy Home 580-543-6488 Randy Cell 806-683-2830	<b>Tommy's Embroidery</b> 590-423-7718 Texhoma, OK 210 Hwy 54 West Caps, Shirts, Jackets, Baby Blankets, Towels, Towel Wraps, School Logos, & Much More!
 <b>THRUFTWAY</b> Big Town Selection • Small Town Friendliness Wide Selection Frozen Food Quality Foods Fresh Produce Hwy 54 East 396-5586	<b>Westside Laundry/Stratford Laundry &amp; Dry Cleaners</b> 410 N. 4th - Stratford, Texas 396-2841 Owners - Jerry & Janie Smith Operators - Bob & Keri Harris
<b>INDIAN LEATHER</b> 218 N. Main All types of leather repairs, Half-sole special \$43.00 Custom Made Work "We Repair Your Sole" Monday - Friday 3 p.m. to 9:30 p.m., Sat. 11 a.m. to 9 p.m.	<h2>This Space Reserved</h2>
 <b>Joe Taylor, Photography</b> PO Box 27 1305 N Chestnut Stratford, TX 79084 806-366-2459 Weddings, Portraits, Etc.	<h2>This Space Available Call 366-5885</h2>



# Homecoming 2002



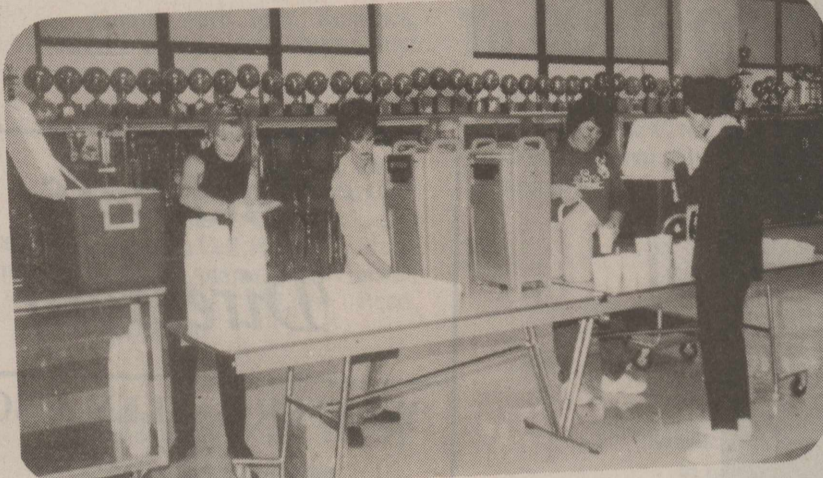
The Homecoming Court looks on as King Dylan Everett kisses Queen Alicia Adams.



Shown above the Homecoming Queen and court with their fathers. Shown from left, Amber and W.R. Larance, Erin and Russell Ashley, Queen Alicia and Cliff Adams, Heather Seiler and Don Aduddell, and Veronica and Mario Ortega.



#22 Rafael Rueda kicks an extra point.



Serving drinks to J.A. Lasley at the Band Homecoming Supper from left, Shannon Taliaferro, Janet Reinart, and Becky Adams.



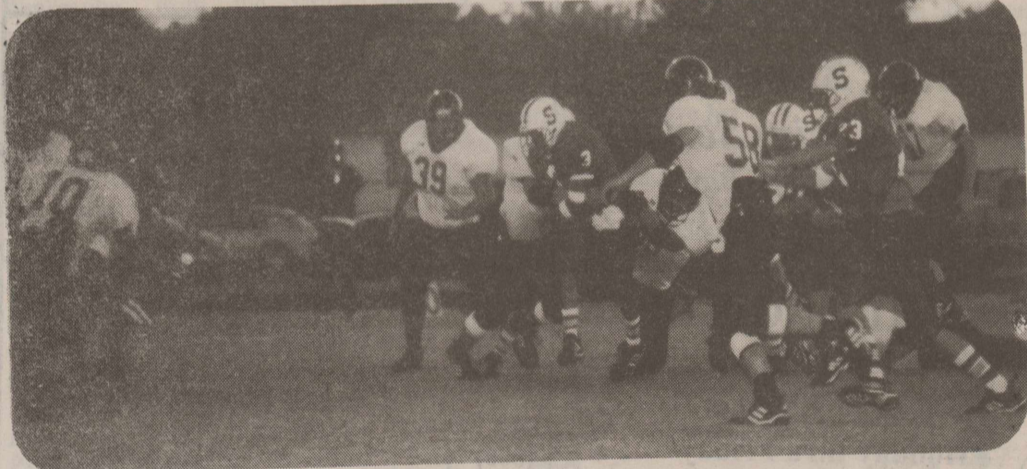
Homecoming Queen Alicia Adams and King Dylan Everett



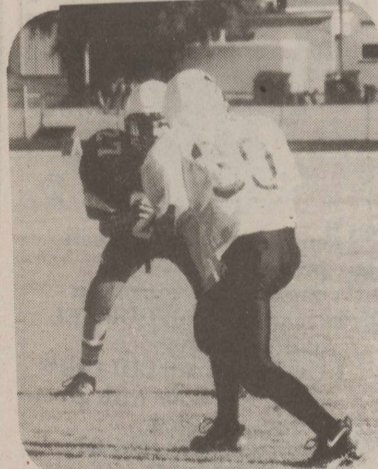
Clint Adams gave the Pep Talk on Friday, October 4th.



Gail and Randy Hunsaker shown above at the Band Boosters Homecoming Stew & Chili Supper on Friday, October 4, 2002.



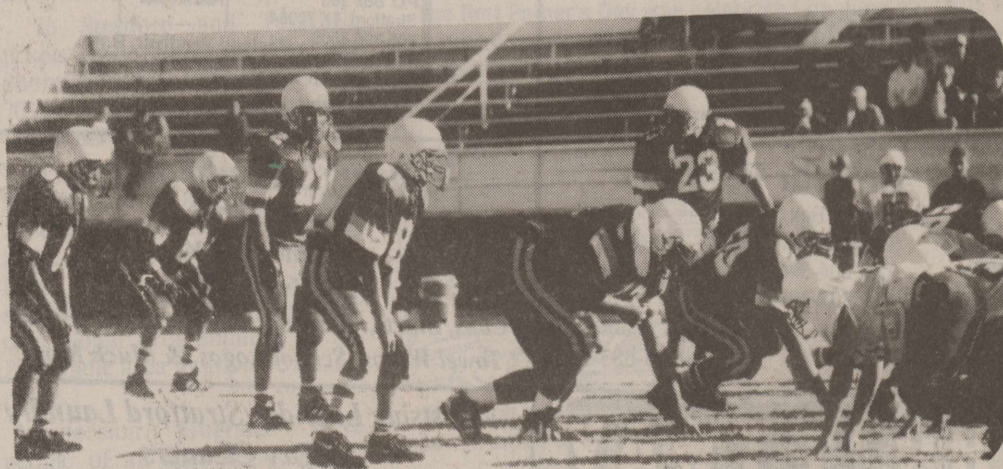
Shown above, the Stratford Elks beat Wheeler 56-6 on Friday, October 4th.



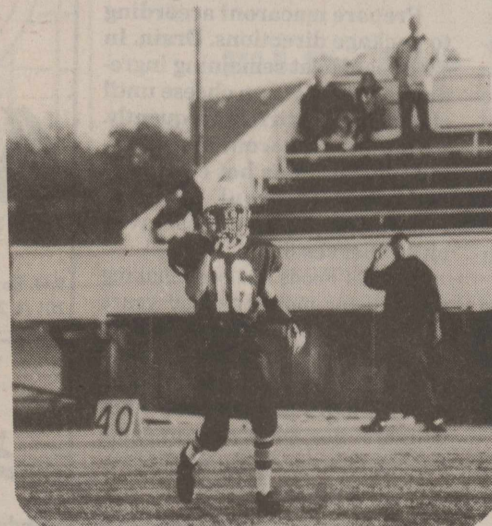
8th Grade Elk #27 Scott Hudson



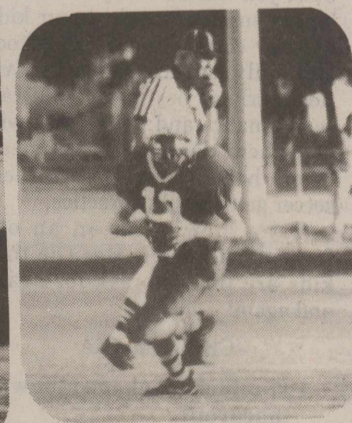
Stratford Elks #23 Tyler Haynes and #19 Denton Crabtree



The 8th grade Elks combined with the 7th grade Elks on Thursday, October 3rd to beat Vega 22-0.



J.V. Elk #16 Walter Spurlock



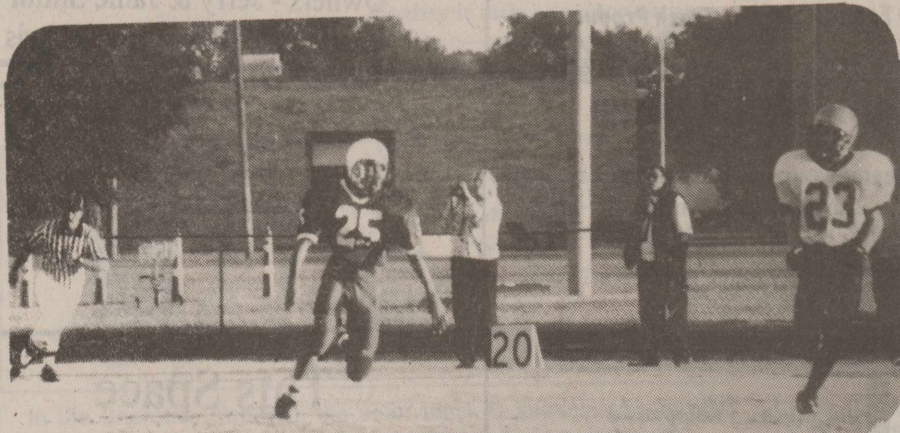
J.V. Elk #19 Case Crabtree

The Stratford Elks blew past the Wheeler Mustangs 56-6 on the Elks Homecoming on Friday, October 4, 2002.

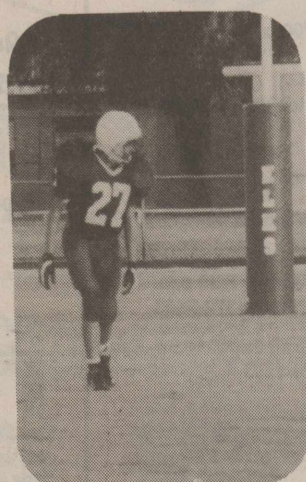
Josh King led the Elks hitting 12 of 13 passes for 255 yards and two touchdowns. Chance Crowl led the Elks in rushing with 118 yards on 18 carries and 4 touchdowns followed by Denton Crabtree with 103 yards on 10 carries and 1 touchdown. Tyler Haynes accumulated 85 yards for the Elks on 4 receptions and 1 touchdown followed by Chris Ortega with 67 yards on 2 receptions and 1 touchdown. Also scoring for the Elks was Brady Bell with 1 touchdown. Rafael Rueda added 6 extra points for the Elks and Denton Crabtree added 2.

Ryan McDaniel led the Elks defensively with 16 tackles followed by Carson Buckles and Mark Miller with 7 tackles each. Brady Bell added 6 tackles followed by Denton Crabtree and Dylan Everett with 5 tackles each. Carson Buckles had a quarterback sack and Josh King had 1 interception for the Elks. Also contributing to the Elks defense were Clint Adams, Chris Ortega, Eric York, Dalton Sladek, Tyler Haynes, Adrian Jacquez, Adam Witcher, Ryan Mendoza, Chance Crowl, and Travis Soto.

The Elks will face Gruver there at 7:30 p.m. on Friday, October 11, 2002. Good Luck Elks!



J.V. Elk #25 Brian Kimbrough

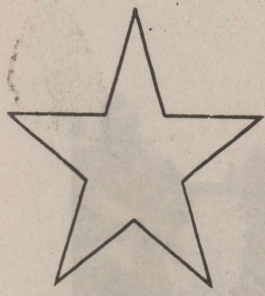


J.V. Elk #27 Jordan Taylor



Jr. High Cheerleaders bottom l-r; Ivy Valenzuela, Kelsey Stein, LaRissa Luna, Darcy Rosales, Merilee McDaniel, Candie Bell, Krista Reta, Kristen Crabtree, and Jordan Confer.





It Pays To Look In The

# Star Classifieds

..The Best Salesperson Around

Phone 366-5885

## For Sale

Rentals available at THE General Store. Appliance dolly, sheetrock jack, cement mixer, and rotatiller, airless paint sprayer, and rotary hammer drill.  
8-1-1fn

Propane Bottle Exchanges now available at THE General Store.  
4-18-1fn

We have Holland Barbecue Grills and Commercial Front Deck Lawn Mower. Call for more information.  
727-4671.  
5-2-1fn

Elies - Holiday Open House and Art Show & Sale Monday, November 4th 1:00 to 8:00 p.m.  
10-10-1xc

Now offering a 12 month rate guarantee with an A-rated health insurance company if you make application and are accepted from August through December 15, 2002--come in for questions and a quote. Allen-Tarver Insurance Agency, 205 N. Main, Stratford, Texas, 806-396-5810.  
8-22-8xc

For Sale: 1998 Z-71 Chevrolet pickup, ext. cab, 4 whl. drive. 396-2125.  
9-12-1fn

For Sale: 1992 Cadillac Sedan Deville. 396-5647.  
9-26-1fn

Are you getting close to you 65th birthday? Remember with Medicare Parts A and B, you can take out a Medicare Supplement policy that will help fill in the gaps with your medical claims. Contact us for quotes and information that will help you in this transition. Allen-Tarver Insurance Agency, 205 N. Main, Stratford, TX 806-396-5810.  
8-22-8xc

Elies - Holiday Open House and Art Show & Sale Monday, November 4th 1:00 to 8:00 p.m.  
10-10-1xc

Pumpkins for Sale: Come pick your own - 12 miles south of Conlen - 1 mile east. Jim Meyer Farm 384-2178.  
10-24-c

For Sale: 1998 Z-71 Chevrolet pickup, ext. cab, 4 whl. drive. 396-2125.  
9-26-1fn

For Sale: Mini-van 1994 Plymouth Voyager. Good condition, 1993 Lincoln Sedan Town Car, 1992 Toyota Paseo, 2 Bedroom House for rent, Big living room. Call 366-2493 or 753-7661.  
9-26-4xp

## Land For Sale

Land for Sale: One (1) 640 Acre Tract cultivated land; 306.7 acres in CRP, 276.3 acres in CRP, 250.3 in CRP. Contact Trust Department/Martha Mitts, First State Bank 396-5521.  
3-12-1fn

Land for Sale: 1000 Acres - Southeast of Conlen. (6) 1/4 mile pivots. Good access with paved frontage. 320 Acres - (2) 1/4 mile pivots. CAT Motors. Good location 10 miles south of Dalhart. 640 Acres - East of Hartley near Highway 87. Appx 500 irrigated acres. 1/2 mile pivot with 3 irrigation wells. 320 Acres - (2) 120 acre pivots. 2 irrigation wells. Paved access near Middlewell elevator in Moore county. Glenn Cummings Real Estate - 1611 Tennessee Blvd - Dalhart. (806) 249-6759.  
10-10-4xc

Help Wanted: A retiree or elderly person to work at The Pool Hall. Inquire at Pool Hall, 218 N. Main or call 806-898-4508.  
9-19-1fn

RN or LVN needed at Stratford Family Medical Clinic. Must be able to draw blood and must have excellent people skills. Full time position with benefits. Fax resume to Richard Fowler at 806-463-5223 or call 806-463-5111.  
9-26-1fn

Baby: An alimentary canal with a loud voice at one end and no responsibility at the other.  
—Elizabeth Adamson

## Services

Com & Milo Harvesting Wanted, John Deere Equipment, 8-12 Row Corn & Cropheads. Greg Schmidt Harvesting (580) 819-1496.  
10-31-p

**Whirlpool** Authorized Sales & Service  
**Barber Supply**  
New & Used Appliances  
1-800-292-4023 1-580-423-7255

Is your House or Foundation Settling? Cracks in brick or walls? Doors won't close?...Call Childers Brothers Stabilizing & Foundation Leveling. 1-800-299-9563 or 806-352-9563 Amarillo, TX.  
1-4-1typd

## Dusky's Chimney Cleaning



396-2596  
Minor Repairs  
Safety Inspection  
Chimney Caps  
Animal Removal  
Insured

\*\*\*  
Unless you try to do something beyond what you have already mastered, you will never grow.  
—Ralph Waldo Emerson  
\*\*\*

## For Rent

For Rent: 2 bedroom, 1 1/2 bath trailer house. Three miles west on FM 2014. \$275/month. Call 727-4664.  
9-26-1fn

2 Bedroom Trailer House for rent. 305 S. Wall. Call 935-6702.  
6-14-1fn

For Rent: 1 Bedroom furnished apt, 6th & Fulton. Call 396-5541 daytime, 396-5692 at nights.  
1-28-1fn

For Rent: 2 bedroom, 1 1/2 bath trailer house. Call 727-4664.  
8-29-1fn

For Rent: Small 2 bdrm house with fenced backyard. New storm windows & carpeting. 619 N. Wall. 396-2364  
9-12-1fn

## Help Wanted

Stratford Hospital District has an immediate opening for a front desk secretarial position at the Stratford Family Medical Clinic. Candidates should have a good phone voice, computer knowledge and a positive, hard working attitude. Medical Terminology a plus. Competitive wages, health insurance, and paid vacation offered. Apply in person 1220 Purnell, Stratford, TX.  
9-26-1fn

EARN EXTRA INCOME \$200-\$500 weekly mailing travel brochures. For more information send a self-addressed stamped envelope to: AmeriLink Travel, P.O. Box 612290, Miami, FL 33261.  
11-28-c

Help Wanted: A retiree or elderly person to work at The Pool Hall. Inquire at Pool Hall, 218 N. Main or call 806-898-4508.  
9-19-1fn

RN or LVN needed at Stratford Family Medical Clinic. Must be able to draw blood and must have excellent people skills. Full time position with benefits. Fax resume to Richard Fowler at 806-463-5223 or call 806-463-5111.  
9-26-1fn

## Houses for Sale

House for Sale: Great Location, beautiful corner lot, 2 large bedrooms, 1 large bath, garage, central heat/AC. 806-659-2345.  
8-2-1fn

For Sale: 3 Bdrm, 2 bath brick home, double car garage, fenced in backyard, across from City Park. 702 N. 7th. Call 396-2425, 396-2845, 396-5841, or 396-1050 for more information.  
6-14-1fn

3,600 sq. ft. 3,000 living, 3 bedroom, 3 bath, 2 living areas w/double fireplaces, covered/lighted patio, 2 car garage, corner lot, near both schools, 1220 N. Chestnut. For more info. call 1-903-732-5402 or 396-2498.  
1-3-1fn

For Sale: Perfect location! Close to school, town & park. 3 bedroom, 2 bath, big kitchen, large utility & office. Lots of storage! Attached garage, 1000 sq. ft. brick garage with game room or shop out back. Brick fence, sprinkler system. 701 N. Pearl. 366-5684.  
6-6-1fn

## WINDMILL REALTY AND HOME SERVICES

215 N. Dumas Ave. 935-6814  
Call Day or Night  
Toll Free 1-800-935-6814  
Toni Watson - 934-9191  
Daniel Flores - 935-7974

- 314 S. Chestnut - 2 Bedroom - 1 Bath - Basement - Washer-Dryer - Carport. \$32,000.
- 1209 N.W. 1st - 3 Bedroom, 1 3/4 Baths - New Floor Coverings - Beautiful Yard - Hot Tub - Double Oven - Dishwasher - Two Fireplaces. PRICE REDUCED.
- 514 S. Pearl - 3 Bedrooms - 1 1/2 Baths - Big Utility Room - Fireplace - Stove. \$51,000.

For Sale: 3 bdrm, 2 bath, brick home, 2 car garage, fireplace, large back yard with covered patio and metal building, near both schools-1205 Division. Phone 580-252-1387.  
11-28-p

## Garage Sales

Garage Sale: 801 N. Chestnut, Sat. only Oct. 12, 9 a.m. - 2 p.m. Toddler baby clothes, household items, everything must go.  
10-10-1xc

Garage Sale: Saturday, October 12th, 9:00 a.m. - 2:00 p.m. Alley behind Stratford Gym and Health Club. Lots of Goodies!!  
10-10-1xc

Moving Sale: Sat. Oct. 12, 8 a.m. to ?, furniture. VO's Storage - 102 South Main.  
10-10-1xc

Huge Garage Sale - Some new stuff & some half price from baby items to furniture. Everything needs to go. 101 N. Pearl  
10-10-1xc

Maturity is reached the day we don't need to be lied to about anything.  
—Frank Yeroy



A beaver has 20 teeth—four curved front teeth for gnawing and 16 back teeth for chewing.

House For Sale or Lease: Recently remodelled 2500 sq. ft house. 3 bdrm, 2 baths. Call for more information. 244-2155 or 333-7120.  
8-8-1fn

REDUCED for Sale: 604 S. Fulton, 3 bdrm, 2 bath, 1716 living, brick/steel siding, central heat/air a/c new vinyl windows, fireplace, large fenced backyard, new ceramic cook-top, built-in oven and microwave, dishwasher, pantry, ice maker hook-up, utility room, carpet, new vinyl flooring, attic storage w/stairs, covered patio, 2 storage sheds, 2 car garage, electric door openers. Phone 254-772-7927.  
1-10-1fn

## Ad Rem Land Co.

801 S. Bliss 107, Dumas 935-7364  
Fax 935-7687 or call our Stratford Agent  
Arnita Lane 366-5853

New Listing: Nice large home! 2 story, 2 baths, 2 or 3 bedroom with living, dining, den/living, gameroom. Fireplace, central heat & air. \$79,500.

Very Nice Yards! Backyard has rock gardens, big trees, deck. 3 B/R, 1 bath, steel siding, fireplace. \$49,500.

2 story, 4 B/R, 2 baths, basement, detached 2 car garage, metal roof. Comes with 1 year home warranty. Corner Lot. \$89,900.

Nice home on corner. Nearly new shop/garage. Brick 3 bedrooms, 2 baths, den/living room, bedroom/office. \$79,500.

3 B/R, 2 bath, nice brick home with single garage. Nice kitchen cabinets, ready to go at \$57,000.

3 B/R, 1 3/4 baths, fireplace, living room, dining room and gameroom. \$38,500.

Nice 3 B/R, 1 3/4 bath, single garage, gas fireplace, central heat/air. Huge closets, nice yard, storage bldg. \$55,000

## Cards of Thanks

Thank you to our friends in Stratford for the kindness you have shown since the passing of our mother and grandmother. Thank you for the prayers, cards, calls, flowers, and memorials. A special thanks to those who drove to Clayton for the funeral. Lulu always loved coming to Stratford. It truly is a special place.  
Love,  
Ken, Barbie, and Girls

Experience keeps a dear school, but fools will learn in no other.  
—Benjamin Franklin

You can't turn back the clock. But you can wind it up again.  
—Bonnie Prudden

## Legal Notices

### NOTICE OF GENERAL ELECTION

To the registered voters of the County of Sherman, Texas:

Notice is hereby given that the polling places listed below will be open from 7:00 a.m. to 7:00 p.m., November 5, 2002, for voting in a general election to elect Members of Congress, Members of the Legislature, and state, district, county, and precinct officers; and FR the purpose of adopting or rejecting the proposed Constitutional Amendment as submitted by the 77th Legislature, Regular session, of the State of Texas.

Location(s) of Polling Places-County Barn at Lautz-Box 101

Sherman County Library-Box 102

Sherman County Barn-Box 201

County Barn Prec. #2-Box 202

Stratford Ambulance Bldg.-Box 301

Elementary School at Texhoma, Texas-Box 302

County & District Courtroom-Box 401

Early Voting by personal appearance will be conducted each weekday at County & District Clerk's Office-701 N. 3rd. St. between the hours of 8:00 a.m. and 5:00 p.m. beginning on October 21, 2002 and ending on November 1, 2002.

Applications for ballot by mail shall be mailed to: M.L. Albert, P.O. Box 270, Stratford, Texas 79084.

Applications for ballots by mail must be received no later than the close of business on: October 29, 2002.

Issued this the 7th day of October, 2002

Kim Crippen  
Signature of County Judge.

Published in The Stratford Star, Thursday, October 10, 2002.

### AVISO DE ELECCION GENERAL

a los votantes registrados del Condado de Sherman, Texas:

Notifiquese, por las presente, que las casillas electorales sitados abajo se abriran desde las 7:00 a.m. hasta las 7:00 p.m. el 5 de noviembre de 2002 para votar en la Eleccion General para elegir Miembros del Congreso, Miembros de la Legislatura, y oficiales del estado, distrito, condado y del precincto y PARA adoptar o rechazar la enmienda propuesta constitucional asi como fueron sometida por la 77th Legislatura Regular Sesion, de la Estado de Texas.

Direccion(ES) De Las Casillas Electorales

County Barn at Lautz-Box 1-1

Sherman County Library-Box 102

Sherman County Barn-Box 201

County Barn Prec. #2-Box 202  
Stratford Ambulance Bldg.-Box 301

Elementary School at Texhoma, Texas-Box 302

County & District Courtroom-Box 401

La votacion adelantada en persona se llevara a cabo de lunes a viernes en: County & District Clerk's Office-701 N. 3rd St. entre las 8:00 a.m. de la manana y las 5:00 p.m. de la tarde empezando el October 21, 2002 y terminando el November 1, 2002.

Las solicitudes para boletas que se votaran adelantada por correo deberan enviarse a: M.L. Albert, P.O. Box 270, Stratford, Texas 79084.

Las solicitudes para boletas que se votaran adelantada por correo deberan recibirse para el fin de las horas de negocio el: October 29, 2002

Emitada este dia 7th de October, 2002.

Kim Crippen  
Firma del Juez del Condado

Published in The Stratford Star, Thursday, October 10, 2002.

### LEGAL NOTICE

The Stratford Independent School District is accepting requests for proposals for the following items:

- Blanket Building Insurance-Contents
- General Liability
- Employee Benefit Liability
- Boiler and Machinery Policy
- Educators Legal Liability
- Inland Marine

The proposals will be accepted until 2:00 p.m., Monday, October 28, 2002. Any request for proposal after this date will not be accepted. The proposals may be mailed to Stratford ISD, P.O. Box 108, Stratford, Texas 79084 or faxed to 806-366-3304, or delivered to the Office of the Superintendent at 503 N. Eighth Street, Stratford, Texas. The request for proposals will be opened on Monday, October 28, 2002 at 2:00 p.m. Specifications may be obtained from the Superintendent's Office. We reserve the right to accept or reject any and/or all bids.

Published in The Stratford Star, Thursday, October 10, 2002 and Thursday, October 17, 2002.



When the lapwing's nest is threatened, it limps and pretends to be hurt, and lures its enemies away.



**Dunn's**  
Fish Farms of Arkansas, Inc.  
1100 S. Highway 107, Morris, AR 72108  
www.dunnfishfarm.com

Channel Catfish, Bass, Hybrid Bluegill, Fathead Minnows, Koi, Crappie and Triploid Grass Carp are now available for Pond and Lake Stocking

One Week Notice & Permit Required for Triploid Grass Carp Purchase. We furnish Hauling Containers! Live delivery guaranteed!

Discounts/Special Deliveries on large orders! Turtle Traps, Fish Feeders, Fish Traps, Liquid Pond Fertilizer and Gift Certificates.

Delivery will be Wed. October 16 at the times listed for the following towns and locations.

Texhoma-Texhoma Wheat Growers 806-827-7261 7:30-8:30 a.m.

Stratford - THE General Store 806 366-5308 9:30-10:30 a.m.

Texline - OX Feed & Ranch Supply 806 362-4351 12-1 p.m.

Dalhart - Stockman's Feed Bunk 800-433-2950 2-3 p.m.

Eter - Hi-Pro Feed 806 966-5113 4-5 p.m.

To Place An Order or For More Information call one of our Aquatic Consultants, local dealer, or email sales@dunnfishfarm.com.

Offices located in Oklahoma & Arkansas!  
M-F 7 a.m.-8 p.m. Sat 8 a.m.-6 p.m. CST  
1-800-433-2950 Fax 1-870-589-202

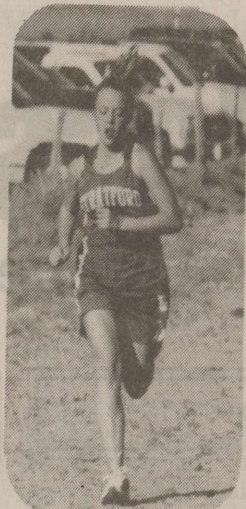
www.dunnfishfarm.com



# Cross Country



Adam Witcher & Bill Walker



Haley Buckles



The Varsity Lady Elk Cross Country at the starting line at Sunray this past Saturday.

Cross Country Results  
 Next Edition!

Go  
 Lady Elks!



The Junior High Lady Elk Cross Country at Sunray on Saturday, October 5th.



Heather Seifer

Go Elks  
 Beat Gruver!

**HARVEST SPECIAL**

**\$2,000 Discount**  
 on a T-L 1/4 Mile Pivot System  
**OR**  
**0% Financing**

**T-L The choice is simple.**

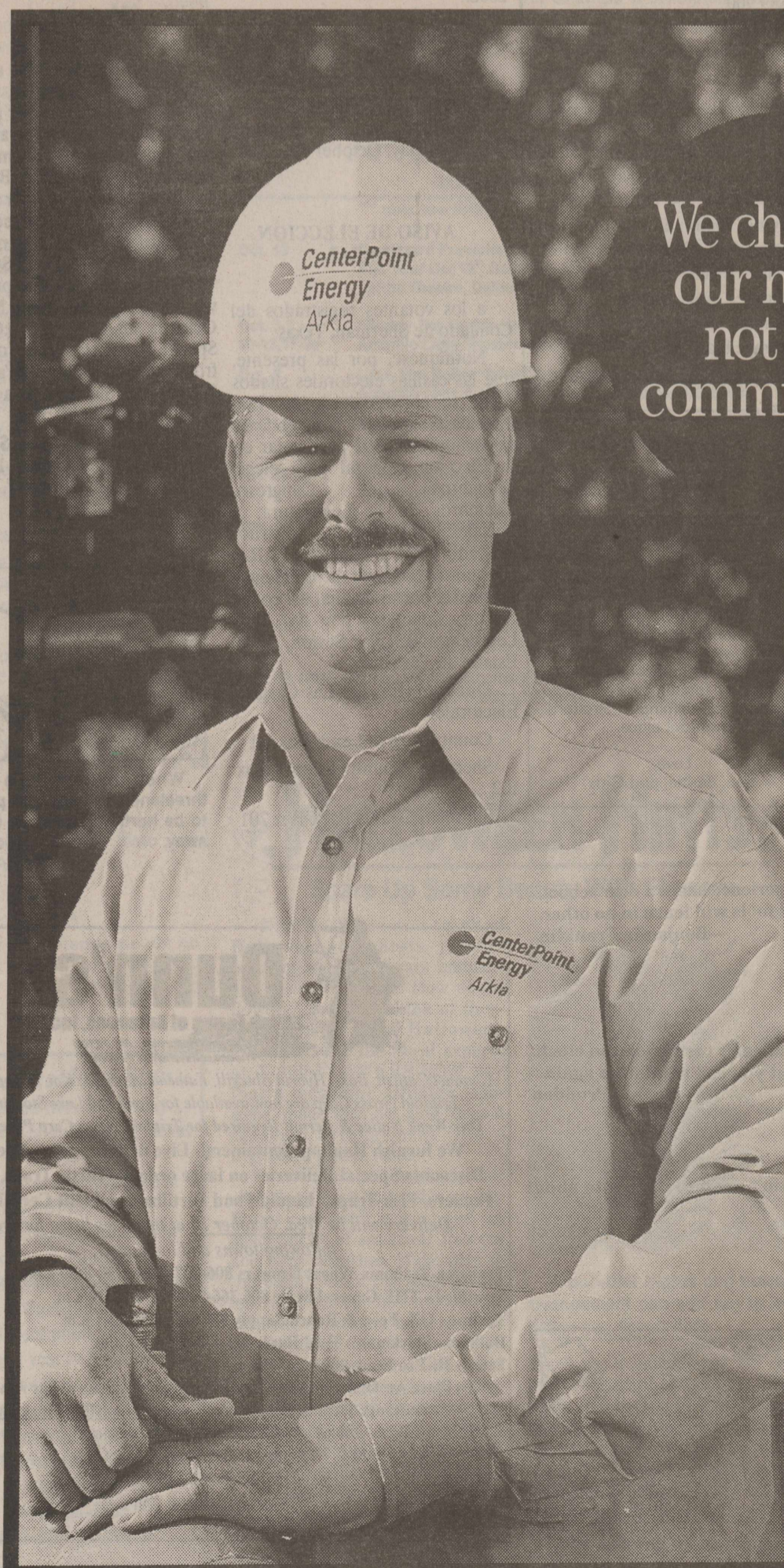
Compare fields this year... irrigation made the difference, especially with T-L continuous movement. Get a \$2000 factory discount when you purchase a 1/4 mile system OR get 0% financing. T-L helps you by building bigger yields AND better profits. Stop by and see us today for details.

**ISO 9001 CERTIFIED QUALITY** **45 YEARS**

**Pipeline & Electric Wire Installation**  
**Drop Conversion Packages.**  
**Len Sheets - Manager**

Office: (806) 935-6411  
 Home: (806) 935-6761  
 Mobile: (806) 922-4912

N. Dumas Hwy  
 Box 562  
 Dumas, TX 79029



We changed  
 our name,  
 not our  
 commitment.

Reliant Energy Arkla has become CenterPoint Energy Arkla. The name may be different, but our commitment to you is unchanged. Just as in the past, when it comes to our customers' satisfaction and safety, we're always there. • Why the name change? Because we separated Reliant Energy into two companies. And CenterPoint Energy Arkla is focused on doing what we do best, delivering and servicing natural gas to your homes and offices. • For nearly 100 years, we've been there for our customers. Today, our dedicated employees are working harder than ever in more than 620 communities throughout Arkansas, Oklahoma and Louisiana. • We added 19,819 miles of main line and 8,138 new service lines this past year. We're always there. So remember, while the name on our uniforms and trucks may be new, our dedication to being the leading energy delivery company out there isn't. We're committed to combining award-winning service to you with the bedrock values of hard work, honesty and involvement in our communities. Visit our website at [arkla.CenterPointEnergy.com](http://arkla.CenterPointEnergy.com).

**CenterPoint Energy Arkla**  
 Always There.