





## New Chevrolet Models Put On Local Market

Bigger and Better Chevrolet Goes on Display Simultaneously All Over County January 1.

Surpassing all its former achievements in the building of low cost transportation, the Chevrolet Motor Company January first announced a distinctive low priced automobile, and at the same time a showing of the new cars was made on the floors of the display room of Motor Supply Company, local dealers as a part of a nation-wide effort to give immediate distribution to the product.

The announcement of a complete new line of Chevrolet cars follows immediately on the close of Chevrolet's greatest year when its volume of one million units made it the world's largest builder of automobiles, and presages a year of unexampled activity for the organization that has been the pioneer volume producer of gear shift motor cars.

Known as the "Bigger and better" Chevrolet, the new car that goes on display throughout the United States today, not only succeeds the "Most Beautiful Chevrolet" but incorporates all the advantages that made the latter so popular and in addition embodies a host of refinements that combine to produce what General Motors officials believe will be the sensation of the automobile industry in 1928.

A quick picture of the new car that seems destined to write a new chapter into the history of the automobile business may be had by noting the following highlights of the 1928 Chevrolet:

Extended wheelbase, greater speed and power, four wheel brakes, longer, roomier Fisher bodies, new Duco colors, thermostat cooling, shock absorbing springs, motor enclosure, and indirectly instrument panel and other advantages built in as a result of lessons learned through 13 years of consistent progress.

The "Bigger and Better" Chevrolet owes its outstanding virtues to the manifold facilities at the disposal of the Chevrolet Motor Company, including the General Motors Proving Ground, the General Motors Research Laboratory, the Chevrolet experimental laboratory, the Chevrolet engineering department and the skill and resources of the Fisher Body Corporation.

Seven passenger cars, including five closed and two open types, comprise the line. Every driving requirement is cared for in the make up and appointments of the various body types.

Beauty in appearance, performance in driving and economy in operation are the keynotes of the car that owes its every detail to withering tests of days, weeks and months under all types of weather, road and driving conditions.

Every detail has been proved true in exhaustive tests. As a result, the new line achieves to a degree hitherto unexampled in the low priced field a standard of smartness, advanced performance, striking color combinations, completeness of equipment and minute attention to style, comfort and luxury.

The new car has a distinctive big car appearance entirely foreign to its price class. This is achieved by adding four inches to the wheelbase, bringing the present total to 107-inches.

The frame also has been deepened and strengthened to make a smoother riding, sturdier and better balanced car.

The four inches that have been added to the frame materially increase the beauty, and the effect of bigness, of the finished product.

Stressing the beauty of line are new honeycomb Harrison radiators of deep, slender, graceful design. Their added depth has so raised the front of the car that from the cowl to the base of the new low radiator cap the line is unbroken and nearly level.

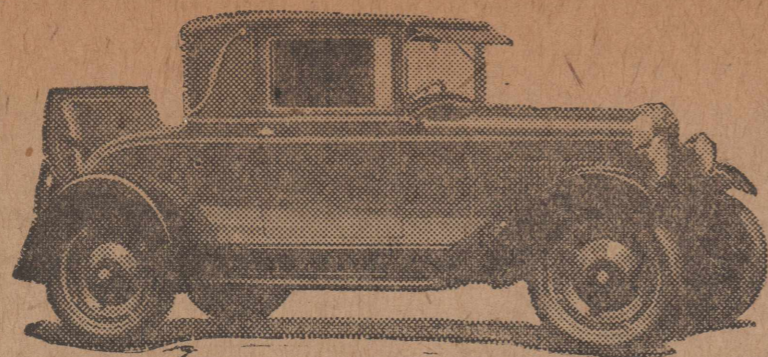
Radiator shells are of non-rusting airplane metal; while thermostat control of the cooling system is an additional feature.

Complementing the extra four inches in wheelbase is increased length in several of the body types. The coach body is five inches longer than a year ago. The sedan body likewise has been increased two and three-quarters inches.

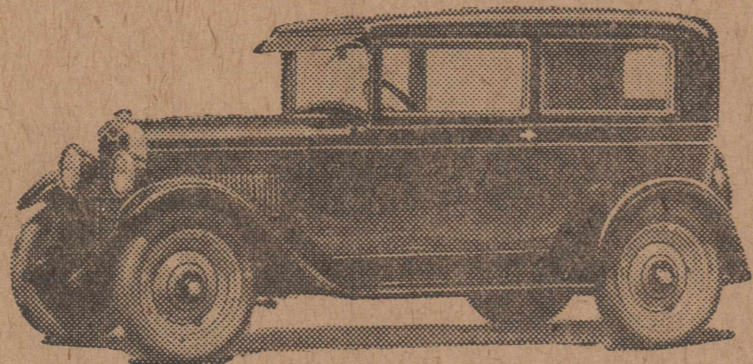
Among the many new body refinements is a fully inclosed and indirectly lighted instrument panel, oval in shape, with the speedometer, ammeter and oil gauge, in full view for day or night driving.

All passenger models have large 30 by 4.50 balloon tires and steel disc wheels as standard equipment. Other standard equipment includes stoplight, rear vision mirror, gasoline gauge, complete tool set, and theft proof steering

## Showing Two Of The 1928 Chevrolet Models



Chevrolet Sport Cabriolet



Chevrolet Coach

and ignition lock. Additional equipment is standard with individual models.

All closed bodies are by Fisher, styled and designed with the smartness and beauty for which the Fisher name is famous. All are of composite steel and hardwood construction of the type found on the highest priced cars. And all are finished in genuine Duco colors—five beautiful combinations on the seven models.

### CHILDRESS COUNTY HAS VOTED PAVING BONDS

Childress has been added to the growing list of West Texas counties going in for good roads. By a vote of 1143 to 213 the people of that county December 22nd authorized the issuance of \$650,000 bonds for the paving of highway 5, east and west and highway 4, running north and south through the county.

The roads will link up with roads being built by other counties of the Panhandle and the entire program when finished cannot fail to increase tourist traffic through the section.—Plainview News.

### Baker News

Baker, Jan. 3.—W. H. Nelson is in Waxahachie this week at the bedside of his father who is ill.

Mr. and Mrs. Allen A. Peacock spent Sunday afternoon with Mr. and Mrs. W. B. Jones.

Mr. and Mrs. J. M. Parsons, who are teaching school near Memphis, spent the week-end at the home of Mr. and Mrs. J. P. Hart.

Mrs. G. L. Fawver is visiting in Missouri.

Paul Peacock and Mrs. Allan A. Peacock and sister returned Tuesday of last week from East Texas where they spent Christmas.

The following took supper with Miss Opal Nelson Sunday evening: Misses Maggie Graves, Georgia Holder, Lela Jones; Messrs. Clay T. Crafton, Tate Jones, Hershell Green, Willie B. May and R. T. Jones.

J. D. Hart, who is in a hospital in Lubbock is greatly improved this week are reports from Lubbock.

Send your weekly message through The Floyd County Hesperian.

## Skilled Employees



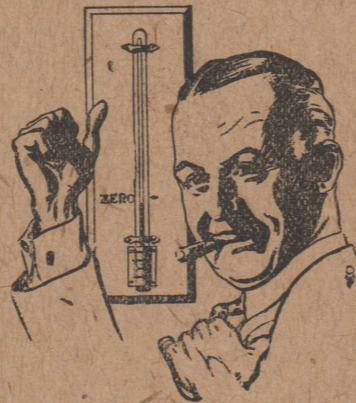
Linemen, repairmen, operators, accountants—all these and many other skilled men and women are needed in furnishing your telephone service.

Well trained employees and the best of equipment are needed. In addition, a capable management is essential to the kind of service you want and the kind we want to furnish you.

How we handle your calls, how we keep our records and otherwise operate our business will be interesting to you. We shall be glad to explain everything to you if you will pay a visit to our central office.

**Southwestern Bell Telephone Co.**

## Let Her Go Down



My bin is full of Yearwood's Coal, so what do I care how cold it gets. My buildings will be as snugly warm and comfortable as can be. I know from experience that there is nothing so good for heating as Yearwood's Coal.

PHONE 247 FOR A TRIAL ORDER

**J. R. YEARWOOD**

"Ask Your Neighbor"



See the **New Chevrolet** now on display!

Today, Chevrolet presents the crowning triumph of sixteen years' continuous progress—a great new automobile so impressive in appearance, performance and staunchness that it marks the opening of a new era of luxurious transportation at low cost.

Built on a 107-inch wheelbase—4 inches longer than before—the Bigger and Better Chevrolet is impressively large, low and racy. Its new Fisher Bodies are finished in new Duco colors and offer rich new upholstery and handsome appointments. Its improved valve-in-head engine has numerous impressive features such as alloy "invarstrut" pistons, hydro-laminated camshaft gears, mushroom type valve tappets, AC oil filter and AC air cleaner. The chassis also has been redesigned. As a result, the new Chevrolet provides delightful smoothness throughout the entire speed range—a wide margin of power for hills—

click-of-the-heel acceleration—the ability to maintain 50, 55 and 60 miles an hour without the slightest sense of forcing or fatigue—the safety of four-wheel brakes—the steering ease that can only result from a ball bearing worm and gear steering mechanism—and comfort over all roads at all speeds due to semi-elliptic shock absorber springs—84% of the wheelbase.

Come in—see the car—and learn how Chevrolet has again electrified America by creating a bigger and better motor car and offering it at prices so low as to be actually amazing!

Every feature of advanced design demanded in the finest cars now offered in the New Chevrolet! Read this partial list.

Improved valve-in-head motor.  
New stronger frame 4" longer; wheelbase-107".  
Thermostat control cooling system.  
New alloy "invar strut" pistons.  
New instrument panel, indirectly lighted.  
New two-port exhaust.  
New ball bearing worm and gear steering.  
Semi-elliptic shock absorber springs; 84% of wheelbase.

Safety gasoline tank at rear. Larger balloon tires 30" x 4.50".  
New streamline bodies by Fisher.  
Alumite pressure lubrication.  
New Duco colors.  
Theft-proof steering and ignition lock.  
AC oil filter.  
AC air cleaner.  
Single-plate dry disc-clutch.  
New crankcase breathing system.  
Heavy one-piece full-crown fenders.  
Vacuum tank fuel supply.

Improved Delco-Remy Distributor ignition.  
Combination tail and stop light.  
Large 17" steering wheel, spark and throttle levers located at top.  
Fisher "VV" one-piece windshield on closed models.  
Automatic windshield wipers on closed models.  
Semi-floating rear axle.

and **4-Wheel Brakes**

### PRICES REDUCED!

The Roadster . . . . . \$495  
The Touring . . . . . \$495  
The Coupe . . . . . \$595  
The Four-Door Sedan . . . . . \$675

The **COACH** \$585

The Sport Cabriolet . . . . . \$665  
The Imperial Landau . . . . . \$715  
Light Delivery . . \$375 (Chassis Only)  
Utility Truck . . \$495 (Chassis Only)

All prices f. o. b. Flint, Michigan  
**Check Chevrolet Delivered Prices**  
They include the lowest handling and financing charges available

**Motor Supply Company**

Floydada, Texas





### au District meeting At Matador

The district convention of the Northwest District Farm Bureau Federation of Texas will be held at Matador Saturday of this week, January 7, it is announced, the all-day session opening at 10:30 a. m. A number of Floyd County people are expected to attend the convention.

Prof. Spangler, of Matador, will preside at the meeting and Farris Fish, president of the Motley County Chamber of Commerce, will give the welcome address. M. S. Hudson, of Hale Center, will respond on behalf of the visitors.

Among the prominent Farm Bureau workers who will be heard at the convention will be J. D. Coghlan, field service supervisor of the cotton association for West Texas, R. E. Overstreet of Lubbock, director of the cotton association, Mrs. M. S. Hudson of Hale Center, Col. Harve H. Haines of Amarillo, John T. Orr, president of the Texas Farm Bureau Cotton Association.

One of the features of the day will be a general discussion of farm problems engaged in by delegates from all counties in the district, with J. Frank Triplett presiding. One of the features of the afternoon session will be the selection of the next meeting place and the election of officers.

#### LIKES PAVED ROADS

P. D. McBride and family returned home Saturday after spending a week at Paris on a visit with relatives during the holidays.

"We enjoyed the paved roads of that section very much," Mr. McBride said, "and all the people there seemed to be mighty proud of them. The paved roads made our Ford ride like a Pullman car."

#### TO THE VOTERS OF FLOYD COUNTY, TEXAS

My friends have begun to ask me if I am going to announce for county clerk for another term, which wakes me up to the fact that all too soon it is another campaign year.

I have been on the job now for twelve months doing my best to make you a good clerk. How well I have succeeded is for you to say. If you believe that I have made good I will appreciate your vote at the coming July 1928 Democratic Primaries.

Tom W. Deen.

(Political Advertisement)

#### GEO. L. FAWVER CANDIDATE FOR COMMISSIONER PRE. 4

Geo. L. Fawver, who has been a resident of Precinct Four in Floyd County for the past thirty-six years, Monday of this week announced his candidacy for the office of Commissioner Precinct 4, subject to the action of the Democratic Primaries, and asks The Hesperian to state for him that he will greatly appreciate the vote and influence of the people of his precinct in his race.

To those who have recently acquired residence in that precinct it may be said that Mr. Fawver has handled his own business affairs with success and served the precinct some years ago for six years as commissioner, being the first commissioner in the county to begin grading roads. "I will do my very best to make the people a good commissioner if they elect me," Mr. Fawver said.

(Political Advertisement)

Judge and Mrs. E. C. Nelson, Jr., of Amarillo, spent several days here during the holiday season with the judge's parents, Mr. and Mrs. E. C. Nelson.

J. R. Maddox returned to Slaton Tuesday afternoon after a brief visit here with his family.

#### J. W. PITTS OFFERS FOR TAX ASSESSOR OF COUNTY

J. W. Pitts, for twelve years a resident of Floyd County, having farmed during that time in the Lakeview Community, has announced his candidacy for the office of Tax Assessor of Floyd County, subject to the action of the Democratic Primaries.

Having had four years experience as a deputy assessor in this county, Mr. Pitts feels that he has thus become familiarized with the needs of the office and could undertake the duties of the place with good working knowledge of the demands it makes upon the incumbent.

It is his plan to make a thorough canvass of the county before election day, seeing as many as possible of the voters personally. In the meantime, he asks that his candidacy be kept in mind and all who feel they can give him their support. He promises to give his very best efforts to the office if elected.

(Political Advertisement)

#### McGEEHE ASKS RE-ELECTION

TO THE VOTERS OF FLOYD COUNTY: In announcing for re-election to the office of County Judge, of Floyd County, subject to the July primaries, I desire to thank the good citizens of the County for their staunch support and hearty co-operation since the beginning of my service as a public official. My work the past year has been a pleasure, owing to such co-operation of both citizens and County Officials.

If I have rendered acceptable service and in your opinion am worthy of this honor, I will appreciate your earnest consideration of my claims.

I believe that should you see fit to re-elect me to this office, that I will be able to render more efficient service in the future than I have in the past, on account of being more familiar with the problems of Floyd County.

Very respectfully,  
Wm. McGehee.

(Political Advertisement)

#### TEXAS COTTON GINNINGS

Cotton ginnings for Texas during the season of 1927 to and including December 13, have been announced through the Department of Commerce, Bureau of Census. They show the state ginnings for 1927 to have been 3,927,679 which compares with 4,857,315 on the same date in 1926.

In Floyd County the ginnings show a very heavy decrease, due largely to late planting season and reduced acreage. The figures given by the department are 5,238 compared with 24,901 on the same date last year. The total of the 1927 crop in the county is expected to run less than 7,500 bales while the total last year exceeded 40,000.

#### NEW SERIES PONTIAC SIX IS COMING SOON

The Oakland Motor Car company is planning to present soon a new and improved Pontiac Six series at no advance over the present base price, it is stated by an executive of the company.

Although declining to discuss details or specifications of the new car, the Oakland official authorized the following statement:

"The Oakland Motor Car company will offer on or shortly before January 7, the date of the New York Automobile Show, a New Series Pontiac Six that will establish even more firmly Pontiac's position in the low-priced six class. The new series is emphatically 'more car' and the base price has not been increased."

It is also stated on excellent authority that the New Pontiac Six will carry a more powerful engine, and that the increased power has been obtained without change in piston displacement. The car is said to have been improved by the adoption of several features which have proved their value on the Oakland All-American Six. Four-wheel brakes are only one of many improvements.

The New Pontiac Six is stated to offer something radically different in the matter of heat radiation. A totally new method of cooling the warm water received from the engine passages is asserted to have eliminated evaporation even of such volatile anti-freeze fluids as alcohol.

The car is said to retain the same wheelbase but to be slightly heavier due principally to a heavier frame. Two of the present body types, it is believed, will be replaced by other and ever more attractive models.

#### SHERIFFS SALE

THE STATE OF TEXAS  
County of Floyd.

NOTICE IS HEREBY GIVEN, That by virtue of a certain execution and order of sale, issued out of the Honorable District Court of Floyd County, Texas, on the second day of January 1928, by T. P. Guimarin clerk of said court, for the sum of \$30625.04 in favor of The First National Bank of Floydada and The Floyd County National Bank of Floydada, first, and second in favor of W. E. Brown and R. F. Brown for sum of \$851.71, and third in favor of J. C. Woodriddle Lumber Company for sum of \$418.99, on a judgement rendered in a certain cause in said court numbered No. 1889, styled First National Bank of Floydada vs. L. J. Davis et al, wherein The First National Bank of Floydada and The Floyd County National Bank of Floydada are plaintiffs and L. J. Davis Dora Davis, S. E. Duncan W. E. Brown, R. F. Brown and J. C. Woodriddle Lumber Company are defendants, placed in my hands for service, I, P. G. Stegall, as sheriff of Floyd County Texas, did on the third day of January

#### GAS MADE HER CROSS, CAN'T EAT OR SLEEP

"When I ate I would bloat up with gas. I couldn't sleep, was cross and nervous. Adlerika has given me real relief."—Mrs. M. Meyer.

Adlerika relieves stomach gas and sourness in TEN minutes. Acting on BOTH upper and lower bowel, it removes old waste matter you never thought was in your system. Let Adlerika give your stomach and bowels a REAL cleansing and see how much better you feel. It will surprise you! Floydada Drug Co.

W-5

1928 levy on certain Real Estate situated in Floyd County Texas, described as follows to-wit:

Survey No. Five (5) in Block One (1) located by virtue of land script 3/566 issued to H&GN R. R. Co and transferred and patented to Francis W. Abney by Patent No. 87 Vol. 36 dated Feb. 1, 1877, in Floyd County Texas, containing 640 acres of land, known as L. J. Davis place and I levied upon same as the property of L. J. Davis and Dora C. Davis, and on the FIRST TUESDAY in February 1928 same being the Seventh (7th) day of February 1928, at the Court House door of Floyd County in the County of Floyd state of Texas, between the hours of 10 A. M. and 4 P. M. by virtue of said levy and said execution and order of sale, I will sell said above described real estate at public vendue, for cash, to the highest bidder, as the property of L. J. Davis and Dora Davis. And in compliance with law I give this notice by publication in the English language once a week for three consecutive weeks immediately preceding said day of sale, in the Hesperian, a newspaper published in Floyd County Texas.

Witness my hand this the 3 day of January 1928.

P. G. STEGALL,  
454tc Sheriff Floyd County Texas.

Moving, Draying, Packing, Etc. Brick Storage Building 2 Doors North of The Floyd County National Bank.

## PITTS TRANSFER & STORAGE CO.

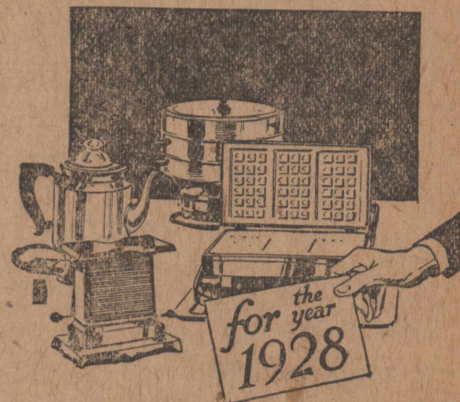
EXPRESS AND FREIGHT

### Truck Line to Plainview

We crate and ship to your order. Telephone Nos. 207 and 138

## "SUDDEN SERVICE"

## Greater Comfort and Convenience For 1928



An assortment of electrical utensils in your home the coming year will do much to lighten your daily labors. Let us demonstrate to you one or more of the many electrical utensils that we have in stock. Convenient payment terms may be arranged, if desired.



"Electricity—Your Cheapest Servant"

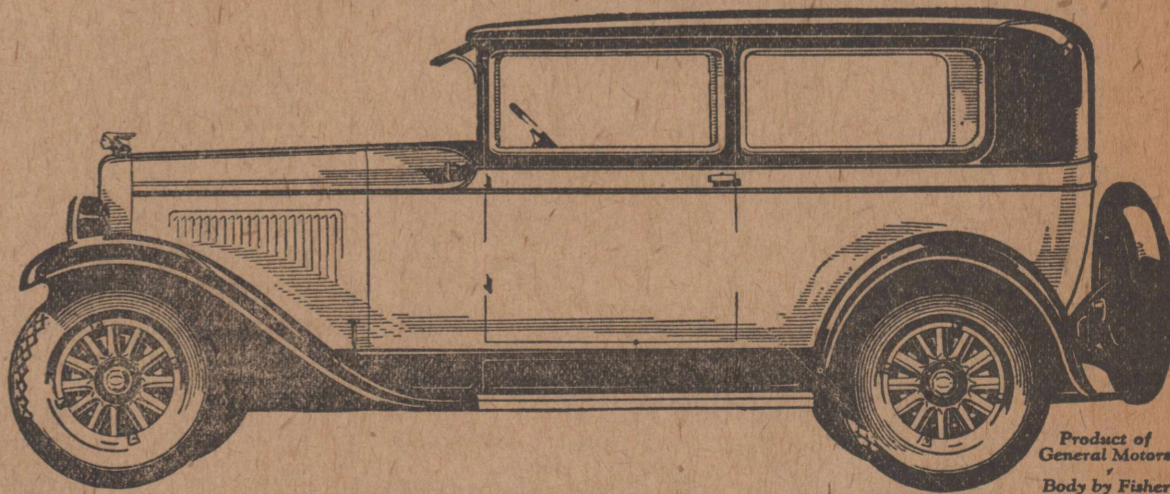
### Announcing the New Series

# PONTIAC SIX

With FOUR-WHEEL BRAKES



a Successful Six now bids for Even Greater Success



Product of General Motors  
Body by Fisher

## New In Style from Radiator to Tail-Light · Offering Scores of Vital Advancements at No Increase In Price!

EVEN the impressive array of new features given herewith cannot convey the extent to which the New Series Pontiac Six surpasses all previous attainments in the field of low-priced sixes. After enjoying a spectacularly successful career, Pontiac Six now bids for even greater success with a car greater in every way.

Emphasizing the importance of this announcement are two entirely new and additional body types: the Four-door Sedan; and the Sport Landau Sedan, a close-coupled, swagger creation, exemplifying the highest art of Fisher closed body craftsmanship. Come in and see this history-making line of Sixes, available in six body types.

2-DOOR SEDAN  
**\$745**  
(At Factory)

COUPE  
SPORT ROADSTER  
SPORT CABRIOLET  
4-DOOR SEDAN  
SPORT LANDAU SEDAN

#### Read This Partial List of Added Features

- |                           |                           |                         |
|---------------------------|---------------------------|-------------------------|
| New Fenders               | New Manifolds and Muffler | New Instrument Panel    |
| New Four-Wheel Brakes     | New and Greater Power     | New Coincidental Lock   |
| New GMR Cylinder Head     | New Cross-Flow Radiator   | New Dash Gasoline Gauge |
| New Fuel Pump             | New Thermostat            | New Stop-Light          |
| New Crankcase Ventilation | New Water Pump            | New Clutch              |
| New Carburetor            | New Wheel                 | New Steering Gear       |
|                           |                           | New Frame               |
|                           |                           | New Axles               |

SCOGGIN & DICKEY, Floydada, Texas



WHEN YOU LIGHT THE CANDLE

## Resolve—To Bake No More

Home baking in most homes is no longer an economy—it is an expense that should be done away with. Baked goods from our ovens, fresh daily, have taken the place of the home bake day, freeing the housewife from hours of drudgery. Make 1928 a bakeless year in your home.

Telephone your orders for Pies, Cakes, Rolls, Doughnuts, French Pastry, or anything in our line.

### Wester's Quality Bakery



Make it your first duty of the New Year to see that your first aid cabinet is fully equipped with first aid remedies. It may mean saving a life in case of accident.

Arwine carries the best line of pure drugs and Safety-First aids.

STOCK UP NOW!

## Arwine Drug Co.

"Goteverthing"

These 15 Men Designated Master Farmers of Texas For The Year 1927



Texas Master Farmers For 1927 Are Announced

Rigid Score Card And Questionnaire Covering All Phases of Farm Life Used in Selecting.

Dallas, Texas, January 1, 1927.—Winners in The Progressive Farmer Master Farmer Contest for 1927 were recently selected at the Texas A. & M. College by the final committee composed of Dr. T. O. Walton, Chas. H. Alvord, H. H. Williamson, Miss Mildred Horton, M. R. Martin and Paul Huey. The final number of farms contained in score cards which were prepared in detail for each farmer. The fifteen selected as Master Farmers for 1927 are:

- R. B. Gary, Floyd County;
- R. F. Alfrey, Johnson County;
- Douglass Pounds, Lubbock County;
- M. L. Cadwallader, El Paso County;
- H. Rueter, McLennan County;
- W. W. Dollahite, Blanco County;
- John Impson, Bee County;
- H. F. Wurzbach, Medina County;
- M. F. Orr, Cameron County;
- A. M. White, Kleberg County;
- L. H. Hensarling, Madison County;
- R. I. Windham, Shelby County;
- J. R. Wright, Morris County;
- Cal McCurdy, Wise County;
- J. A. Moore, Dallas County.

The Master Farmer movement is being carried out in 17 states this year by Standard Farm Papers in cooperation with the various state agricultural colleges. The Texas contest is very similar to that of the other states in that the selections are made on the basis of a rigid score card and questionnaire covering every phase of the farm operation and the community standing of the contestant. The score card is prepared on a basis of 1,000 points having six main divisions with values as follows:

Full Score Points	
1. Operation and Organization of Farms	375
1. Maintenance of soil fertility	80
2. Crop rotation	40
3. Efficient use of man and horse labor	25
4. Crop yields	50
5. Living at home	50
6. Seed	25
7. Feed and care of livestock	25
8. Quality of livestock and poultry	25
9. Adequate tools, machinery and equipment, well housed and repaired	25
10. Large and uniformed fields	15
11. Convenient farmstead arrangement	15
2. BUSINESS METHODS AND ABILITY	200
1. Relation of income to expense	100
Accounting methods	50
Business reputation	50
3. APPEARANCE AND UPKEEP OF FARM AND HOME	75
1. Repair and upkeep of buildings	25
2. Condition of fields, fences, ditches and rows	25
3. Appearance and condition of yard and lots	25
4. ADEQUACY OF FARM HOME PLANT	100
1. Adequate size house for family	50
2. Convenience of working area	25
3. Sanitation	25
5. HOME LIFE	150
1. Schooling of children	75
2. Family relationships	75
6. CITIZENSHIP	100
1. Neighborliness	25
2. Interest in schools	30
3. Interest in other community enterprises	25
4. Interest in local, state and national government	20

Approximately 150 of Texas' best farmers from 57 counties were in competition for the coveted honor of being listed among the fifteen winners this year. The county agricultural agents and home demonstration agents working with local committees made the selec-

tions of the individual farmers in their respective counties whom they considered most outstanding in home life and farm practices. The forty highest scoring farmers in the competition were visited by the district agents of the Extension Service and Paul Huey, Associate Editor of The Progressive Farmer, for the purpose of making a close study of the individual farms on which to base their report that guided the final committee in selecting the fifteen winners. Many factors have entered into the success of these farmers. They have taken advantage of influences which stabilize farm production and insure a creditable earning power of the farm. They plant the best seed obtainable and have in their herds and flocks high producing individuals which receive the feed and care that enables them to produce most economically. Crop yields are kept at high levels by these Master Farmers by their use of improved seed, the intelligent use of commercial fertilizer, legumes, cover crops and crop rotation. None of them deplete their soils by continuous one-crop methods, as is evidenced by the fact that an average of only 40 per cent of their cultivated land is planted to cotton. They force these acres released from cotton to be profitable by growing feed-stuffs, which are marketed through livestock.

No particular section of Texas seems to have a distinct advantage in the development of Master Farmers. They come this year as well as last from all corners of the state. Mr. Gary and Mr. Pounds from the Plains region and Mr. Cadwallader from El Paso represent what is usually termed West Texas. Central and North Texas have three winners—J. A. Moore of Dallas County; H. Rueter of McLennan, Cal McCurdy of Wise and R. F. Alfrey of Johnson. East Texas has three winners—Mr. R. F. Windham of Shelby, Mr. L. H. Hensarling of Madison and J. R. Wright, Morris County.

South Texas and the Rio Grande Valley are represented by John Impson of Bee, H. F. Wurzbach of Medina County, W. W. Dollahite of Blanco, A. M. White of Kleberg and M. F. Orr of Cameron County. Remarkable success has met the efforts of the men in the management of

their farms. Their farms have in every case paid a good dividend on the investment as well as producing enough to supply modern home conveniences. Paul Huey, Associate Editor of The Progressive Farmer, in giving a summary of conditions found on these farms, states that the average acreage per farm is 423 with an average of 207 acres in cultivations. The average total investment per farm \$47,660. An average net income of 9.1 per cent has been produced by these men over a period of years through their sound farm practices," continued Mr. Huey. "They have an average of 12 dairy cows, 4 brood sows, 120 standard-bred hens and 18 beef cows per farm. Some of these are more or less specializing with a large number of some class of livestock but these figures represent the average of the fifteen farms.

Modern home conveniences in the form of light plants, bathroom fixtures, radios, electric fixtures and labor-saving devices of various kinds to lighten the burden of the wives are found in the homes. Thirteen of the 15 have light plants, 13 have sewage and bathing facilities and 10 have radios in their homes.

These men and their wives will be the guests of The Progressive Farmer at the Master Farmer banquet to be given in their honor at Dallas, January 16, 1928. At this time they will also be awarded gold medals and be taken into the membership of the Master Farmer Association of Texas, of which W. F. Lowe of Plainview, a Master Farmer of 1926, is president.

Don't swear When It Breaks!

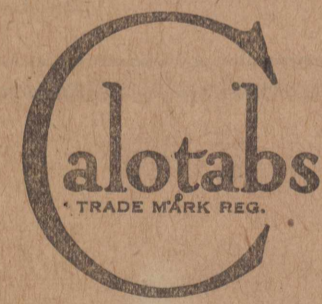
Call on us. We weld any kind of broken farm implements.



Any damaged metal part put back to work again in a jiffy by oxy-acetylene welding. If it's too big to bring in, we'll come out and do it on the spot!

ENOCH & McCLUNG  
The Best Blacksmiths On The Plains

For colds, grip and flu take



Relieves the congestion, prevents complications, and hastens recovery.

THREE WORDS YOUR GRANDMOTHER KNEW WELL—  
IN THE DAYS OF THE OLD SPINNING WHEEL—WHEN GRANDMOTHER WAS A GIRL—

ORIGINAL GENUINE MONTEVALLO COAL

1500 Pounds Original Montevallo Alabama Coal will go as far as 2000 pounds ordinary coal.

"THE WORLD'S BEST"

At **BOOTHE BROS.**

"SAVE THE DIFFERENCE"

CARD OF THANKS

We very deeply feel and appreciate the kindness shown by many friends in the sorrow following the accident last week in which our little son, grandson and nephew Charley James lost his life and Charles Smith and Carl Huckabay were injured. When sorrow comes your way we hope you will be equally fortunate in having so many thoughtful friends.

Mr. and Mrs. Charley Smith, Mr. and Mrs. Carl Huckabay, Mr. and Mrs. J. A. Huckabay and Family.

SUSTAINS BROKEN ARM

Mr. and Mrs. W. H. Foster returned home Sunday night from Rush Springs, Oklahoma, where they were guests during the Christmas holidays of their son, W. H. Foster Jr., and family.

Friday before their return home Mrs. Foster sustained a broken arm. Ice and snow which had gathered on the steps of their son's home become very slick. When she stepped out of the house she slipped and broke the left arm just above the wrist.

LEAVES FOR SCHOOL

J. I. Goins, son of Mr. and Mrs. J. A. Goins of this city, who is a senior in the Oklahoma University Law School at Norman, Okla., left the first of the week to resume his studies after a holiday visit with his parents.

Locals and Personals

Miss Fannie Bolding, daughter of Mr. and Mrs. D. I. Bolding, visited during the holiday season with an uncle at Greenville. She is a student at Baylor. She was mentioned last week in this newspaper as being among those who were at home for the Christmas vacation.

Miss Dorothy Biebel spent the holiday season at her home near Carrollton, Mo., returning Saturday of last week to resume her duties in the Floydada Public Schools as teacher.

Jno. A. Fawver

DEALER IN  
LAND AND CATTLE  
Values in Cattle, Real Estate, Royalties and Leases  
P. O. BOX 171  
Surginer Building, Room 7  
FLOYDADA, TEXAS

In a Bad Fix from INDIGESTION

"I had suffered with indigestion for 6 years," says Mr. H. C. Dove, R.F.D. 4, Chester, S. C. "I had gotten to the place where I could hardly eat a thing—everything hurt me. I had smothering spells and fell off 20 pounds. I was in a bad fix. "I read of Black-Draught and decided to try it. I do not believe that I would have been living today had it not been for Black-Draught. I had gotten to where I only ate milk and crackers, but after taking Black-Draught I began to eat and gradually got my appetite back. I gained in weight and felt better. I have not had a bad spell of indigestion in ten months." Theford's Black-Draught is prepared in a powder from medicinal roots and herbs. In use over 85 years. Sold everywhere. 25 cents.



Mrs. J. F. Pundt has been here since shortly before Christmas on a visit with her mother, Mrs. A. D. White. The Pundts are moving from Burk Burnett to Rankin, Texas, and Mr. Pundt spent Christmas day here, leaving immediately for Rankin. Mrs. Pundt will join him after a new home is completed for them there.

J. A. Wyman returned home the latter part of last week after a visit of eight weeks with his brother, T. O. Wyman and family at Carlsbad. He enjoyed his visit very much, Mr. Wyman said. Among other enjoyable features of his trip was a visit to Carlsbad Cavern.

The Hesperian, \$1.50 per year.

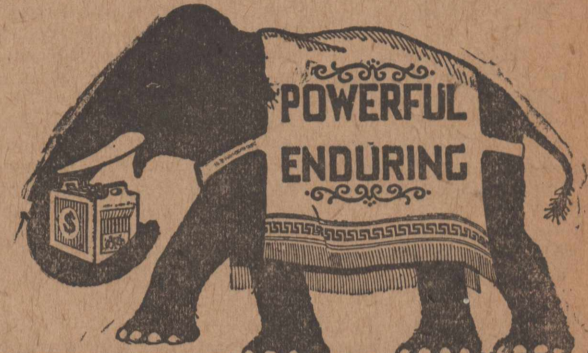
Top Prices For Hogs

We are in the market at Floydada every day for your hogs and will pay the top prices all the time—a good price every day is our motto.

Located at Armstrong's Stock Pens in southeast Floydada.

Peyton Packing Company

EL PASO, TEXAS  
Grover Smith, Local Manager



STANDARD BATTERIES

AUTOMOBILE - RADIO - HOUSELIGHTING FOR SALE BY

SMITH BATTERY STATION

Farm Loans

See me about attractive Farm Loans, one Deed of Trust and no expense to the borrower—Quick Action.

R. E. FRY, Representative

Southwestern Life Insurance Co.  
Floydada, Texas



THEY WEAR LONGER

SOLD BY—

MARTIN DRY GOODS COMPANY

Floydada, Texas

WANTED

Kindergarten pupils for second term, opening January 2. First grade for older group. Best training, gymnastics, singing, sewing, weaving, clay modeling and etc. for younger group. Rhythm Orchestra training to begin with second term. See Mrs. Harper Scoggins, kindergarten teacher.

