

Martin's Removal Sale!

This great Sale is gaining momentum daily, great crowds have jammed and packed our store, eagerly buying the best values we have ever offered. We have gone thru the stock and have marked down further reductions on many items that we find have not moved as they should and on all odd lots that have been left. Prices have hit a new low mark here. We are expecting the biggest attendance for the next few days we have ever had at any previous sale.



Folks we are going to move into our spacious new Home soon and we don't want to move any of this present stock of goods with us, therefore we are offering such great values and such ridiculous low prices to make this moving job as easy as possible and at the same time give our customers the advantage of the event. Don't miss any of the values, every one is as important as the others. We just mention a few of the many bargains you will find here. Don't miss this great sale.

HURRY!

HURRY!

Greater Values Than Ever Before!



MEN'S SUITS

Men, Young or Old, all sizes, all heights, every man, read this ad then act, and act quick for this final on men's suits.

2 Big Groups, all this seasons styles, new merchandise. There is just 85 suits in Group No. 1.

Regular values are \$32.50, \$35.00, \$37.50. **\$19.90**

YOUR CHOICE ANY SUIT IN THE LOT.

32 Suits in Group No. 2. Regular values are \$22.50, \$27.50. **\$14.85**

YOUR CHOICE ANY SUIT IN THE LOT.

Yard wide Dark Outing. New Pretty Patterns. Good Heavy Weight.

yd. 13c

Yard wide Brown Domestic. A good quality cloth, just been unpacked, while it lasts.

yd. 10c

Yard wide percale. New Fall Patterns. Our regular 20c per yard quality.

yd. 14c

VELVETS! VELVETS! VELVETS!

Fine dress velvets, nearly all colors, fancy patterns. None is reserved. Removal sale Price Is

1-2 Off

LADIES FINE ALL SILK HOSIERY

Wescott all silk. Narrow ankle hose for women. You positively cannot tell it from a full fashioned hose. All Colors.

pr. 87c

SHOES! SHOES!

Many folks exclaim "What fine Shoe Values" when they take a look at the great groups of shoes we have on our tables for you to make selections from.

A GREAT GROUP At, \$1.98	A GREAT GROUP At, \$3.89
A GREAT GROUP At, \$2.98	A GREAT GROUP At, \$4.98

Every group represents values you would not think possible. Men, Women and Children alike will find shoes here. Every shoe in the house is reduced for this Removal Sale.

Women's Coats and Dresses

Women's Winter Coats have got to sell, and sell quick so here is the final low price mark.

All \$49.00, \$59.00, \$69.00, \$79.00, \$89.00 Coats Now,

\$29.50

A rack of women's fur trimmed coats. Can be worn now or for spring, in fact there is several ladies spring coats on the rack. Values to \$25.00.

Your Choice \$9.95

We have a wonderful showing of women's New Spring Coats and Dresses that have just arrived. They are included in this Removal Sale at

25 per cent Off

All the other Ladies Dresses in the House grouped for Quick Selling.

GROUP NO. 1 \$6.69	GROUP NO. 2 \$9.69	GROUP NO. 3 \$16.69
---------------------------	---------------------------	----------------------------



Boy's Suits Priced To Sell Quick

\$10.50 SUITS ARE	\$ 7.88
\$11.75 SUITS ARE	8.81
\$13.85 SUITS ARE	10.59
\$18.50 SUITS ARE	13.88
\$22.50 SUITS ARE	16.88
\$25.00 SUITS ARE	18.75
\$27.50 SUITS ARE	20.63
\$30.00 SUITS ARE	22.50

Hey! You Can't Beat These Prices

- ALL MEN'S OVER COATS.
- ALL MEN'S WOOL SHIRTS.
- ALL SWEATERS; MEN, OR WOMEN'S.



DON'T LET ANYTHING KEEP YOU AWAY FROM THIS SALE. IT AFFORDS YOU AN OPPORTUNITY THAT YOU CANNOT AFFORD TO PASS UP. REAL SAVINGS PREVAIL ALL OVER THE HOUSE. NOTHING HAS BEEN RESERVED. YOU WON'T HAVE ANOTHER OPPORTUNITY LIKE THIS IN A LONG TIME. GRASP IT NOW!

Martin Dry Goods Company

FLOYDADA,

"THE STORE WITH THE GOODS"

TEXAS

Quanah Engine Plows Through Open Switch

None Injured When East Bound Train Wrecks at Roaring Springs.

Neither train crew nor passengers were injured Monday evening of this week when the engine of the Quanah, Acme & Pacific passenger plowed through an open switch on a curve at the edge of the yards in Roaring Springs and dug itself the depth of the drive wheels into the soft ground and carrying with it the baggage coach.

None of the rest of the equipment was thrown from the rails and an engine was hooked on to the train, hauling it on into Quanah, after a spider was hurriedly constructed around the engine and baggage coach. None of the schedules on the line were disrupted Tuesday, although heavy wrecking equipment was out cleaning up the wreck Tuesday morning.

Engineer Bill Norman and Fireman W. O. Lucas, of Quanah, were handling the engine when the wreck occurred. Both rode it till it stopped so deep in the ground that they stepped easily from their cab to the ground, the engine remaining upright. Engineer Norman saw the open switch and applied his brakes but too late to prevent derailing the engine and baggage coach. Neither of them were injured in the least, according to reports.

Attorney L. G. Mathews, of this city, who was in Motley County on legal business Tuesday morning viewed the work of clearing up the wreck. It was his idea that the all-steel equipment of the train was responsible for the fact that nobody was injured. Rails where the engine and baggage car went off the track were snapped like sticks, he said.

UNABLE TO FILL APPOINTMENT

H. C. Cragle, district superintendent of the Nazarene Church, who was to have been here last night and tonight to preach at the Nazarene church, will be unable to keep his appointment on account of being ill with the flu, according to information received by the local pastor, C. E. Hagemeyer, Wednesday.

-Political-Announcements

I am a candidate for the office of Mayor of Floydada and will appreciate your vote and influence in the city election.

W. C. Hanna.

As a candidate for the office of City Marshal of Floydada, I will appreciate your vote and influence in the city election.

Ed Griffin.

I am a candidate for re-election as City Secretary of Floydada and will appreciate your vote and influence.

JOHN E. (Maj.) HORTON

Hesperian Want Ads

FOR SALE—Baby Buggy, almost new. See or call Mrs. J. C. M. Day. 472tc.

1929 DISC ROLLING PRICES
14 Inch Tandem 20c
16 Inch Tandem 25c
18 Inch Tandem 30c
20 Inch Tandem 35c
20 Inch One Way Plow Disc 40c
22 Inch Plow Disc 50c
24 Inch Plow Disc 65c

When you have a job too difficult for others, bring it in. We can do it.

J. A. ENOCH
East Side Square 47tfc

FOR SALE or trade—'25 sport touring Buick price \$275. Terms. Apply at Floydada Gin. 472tp

FOR SALE—Bundled Higeria, about 2000 bundles. W. H. Mason. 472tp

SEE Our Price List on Tires in this issue of the paper. Floydada Rubber Company. 471tc

REAL ESTATE

FOR SALE—Nice building lots, three of which are best in town. See S. B. McCleskey. 17tfc

CHOICE Building Lots, well located, priced right. Monthly or yearly terms. W. Edd Brown, Owner, Phone 265. 38tfc

FOR bargains in lands and town lots see Arthur B. Duncan, Floydada Texas. 40tfc

SEE Floyd County Abstract Co., for improved and unimproved town lots. We represent the owners of more than 200 lots in Floydada. R. C. Scott, Mgr. 39tfc

LIVE STOCK

FOR SALE or trade—Paint pony, gentle for children to ride, a good one. Also two year old mare. Would trade for something heavier to work. S. M. Rawdon, 1 mi. south of Floydada, phone 905F11. 461tp

FOR SALE—Two fresh Jersey milch cows, 3 miles east of Floydada on Matador Highway. S. J. Latta. 472tc.

AM closing out my Chinchilla rabbits and hutches this week at reduced prices. See owner, P. T. Rucker at Angus Produce. 471tp

FOR SALE—Breeding stock Giant Goldbank Bronze turkeys, finest type, high vitality. Mrs. J. D. Christian, Route 1, Floydada. 42tfc

FOR SALE—Milk goat, fresh soon. L. P. Orsburn, 208 W. Tennessee St. 462tp.

FOR RENT

BARBER Shop, fixtures and two room residence at \$25 per month at McAdoo. J. C. Formby, McAdoo. 453tp.

FOR RENT—Two partly furnished light house keeping rooms. Water and gas furnished. Call 185. 462tc

FOR RENT—Desirable apartment, furnished. Garage. Goen & Goen. 471tc.

FOR RENT—Two rooms east of Andrews Ward School. Mrs. M. C. Young. 472tp

TWO room house for rent, furnished or unfurnished. 523 W. Georgia. Mrs. Ella Johnson. Phone 122. 471tc.

FOR RENT—One bedroom, all modern conveniences, close in. Phone 249 or call at 321 West Kentucky Street. 46tfc

MISCELLANEOUS

SEE J. B. Downs at Lockney Tourist Park for bargains in farm and city property. Have up-to-date stucco cabins with gas and all conveniences for tourists. 454tc

SUBSCRIPTIONS—to any kind of magazine at bargain rates, Phone 158, Mrs. Jennie Bishop. 45tfc

JUST received a carload of Oliver Listers at C. Surginer & Son. 471tc

THE Spirella Lingerie line is the best made. All garments made to measure. We also have a splendid line of hose at The Thrifty-Nifty Shop. 29tfc

IF you need a corset, brassiere-girdle or brassiere, have your measurements taken and be properly fitted in a Spirella at the Thrifty-Nifty Shop. 29tfc

WOOD AND KELLY for well drilling and carpenter contracting. Let us drill your well and build your house. 41tfc

HEMSTITCHING, Mrs. J. D. Weatherly at McGuire & Weatherly's Store. 17tfc

BRING your hemstitching to the Thrifty Nifty Shop. All work guaranteed. Hemstitching also done in gold and silver thread. 40tfc

SEE Our Price List on Tires in this issue of the paper. Floydada Rubber Company. 471tc

NOTICE—Purchasers of sand from the L. H. Lewis place, who have not paid for same, please remit at once. 472tp.

TM still giving the best bargains in monuments. See me before you buy. S. B. McCleskey. 2tfc

MAGAZINES—for subscriptions for any kind of magazine. Call 158, Mrs. Jennie Bishop. 45tfc

WANTS

WANTED—Plain and fancy sewing at my home two blocks north Andrews Ward School. Mrs. C. D. Hart. 464tp.

WANTED—Two boarders. One block east of high school. Mrs. Tom Smith. 462tc

WANTED—Plain or fancy sewing. Mrs. E. Ray Smith, Phone 318J. 464tc.

FOR HAULING or moving of any kind, call 57. C. A. Mullins. 43tfc

WANTED—Woman to do general house work. Phone 103, Mrs. K. Green.

WANTED—Lady housekeeper. Burl Bedford, or Phone 211.

Eggs and Poultry

FOR SALE—Rhode Island Red Cockerels. Olin W. Fry. 463tp.

FOR SALE—Turkeys for breeding stock. Mrs. B. C. Odum, Floydada, Rt. 2. 473tp

SETTING EGGS—High Bred White Wyandotte. 75c per setting or \$4 per 100. S. J. Latta, 3 miles east of Floydada on Matador Highway. 47tfc.

LOST AND FOUND

LOG chain and boomer lost between compress and Harry Christian's place. Return to Hesperian office. 453tp

LOST—Black leather handbag containing baby's clothing, ladies dress and a few other articles. Finder please return to Mrs. W. C. Tillson, Box 202, Matador, Texas. 462tc

LOST—Sapphire link bracelet. Valued as gift. Finder return to Helen King for reward. 47tfc

FOUND—Wagon sheet on Matador road. H. A. Copeland, 4 1/2 miles east of Floydada. 473tc

Picture at Royal Theatre has approval of critics. Critics of motion pictures are pointing to the well-rounded cast of "Sadie Thompson." Gloria Swanson's second independent United Artists screen offering, which comes to the Royal theatre next Monday and Tuesday, as proof of their contention that elimination of two major handicaps will go a long way toward materially increasing entertainment value of motion pictures.

The first handicap is frequent failure to pay sufficient attention to importance of proper characterization, in the constant effort to attain greater lavishness in production. The second is casting of players in roles for which they are not always suited, rather than permit these actors to draw salaries specified by their contracts, and remain idle.

"Sadie Thompson," based on W. Somerset Maugham's widely discussed short story, "Miss Thompson," and directed by Raoul Walsh, was put into production without being influenced by either of the specified evils.

Miss Swanson and Director Walsh first took steps to assure proper casting, to the end that various characterizations of the story might attain a uniformly high standard. And in selection of the cast they were able to exercise a free hand, without any consideration other than individual merit entering into the matter—the result being the strongest cast yet assembled in the producer-star's support.

Picture at Royal Theatre has approval of critics. Critics of motion pictures are pointing to the well-rounded cast of "Sadie Thompson." Gloria Swanson's second independent United Artists screen offering, which comes to the Royal theatre next Monday and Tuesday, as proof of their contention that elimination of two major handicaps will go a long way toward materially increasing entertainment value of motion pictures.

The first handicap is frequent failure to pay sufficient attention to importance of proper characterization, in the constant effort to attain greater lavishness in production. The second is casting of players in roles for which they are not always suited, rather than permit these actors to draw salaries specified by their contracts, and remain idle.

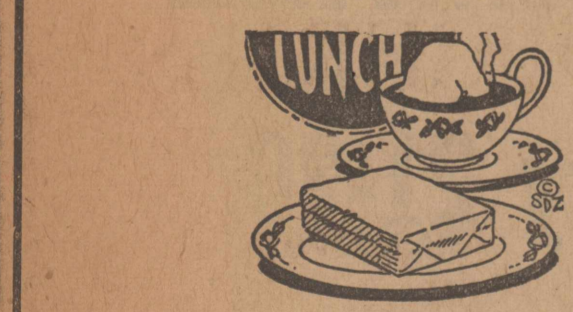
"Sadie Thompson," based on W. Somerset Maugham's widely discussed short story, "Miss Thompson," and directed by Raoul Walsh, was put into production without being influenced by either of the specified evils.

Miss Swanson and Director Walsh first took steps to assure proper casting, to the end that various characterizations of the story might attain a uniformly high standard. And in selection of the cast they were able to exercise a free hand, without any consideration other than individual merit entering into the matter—the result being the strongest cast yet assembled in the producer-star's support.

CARD OF THANKS

We wish to thank the people of the Campbell Community for their kindness and help during the illness and death of our baby daughter and granddaughter.

Mr. and Mrs. R. D. Hinkle.
Mr. and Mrs. W. F. Hinkle and family.



Floydada Coffee Shop

IN OUR NEW LOCATION

We are now in our new home on West California Street, in the building formerly occupied by the Bus Station.

Clean And Sanitary

GOOD COFFEE—DELICIOUS SANDWICHES
BIG JUICY HAMBURGERS
QUICK LUNCHES

H. A. (Jerry) Withers, Prop.

HERE TO STAY

It is with pleasure that The Floydada Rubber Company is able to extend the low prices of our Tires, Tubes, etc., well into the New Year and to meet so many people interested in the Goodrich products.

We know that we can save you money on tires. See us. We will swap for anything in our line where there is a profit.

Below is a partial list of our tires we have in stock:

BALLOONS				COMMANDERS			
Size	Goodrich						
	Silvertown 6 Ply	Silvertown	Cavalier	Balloon Commander	High Pressure Commander	High Pressure Commander	
29 x 4.40	\$10.35	\$ 7.60	\$6.10	29 x 4.40	\$5.20		
30 x 4.50	11.05	8.45		30 x 4.50	5.90		
28 x 4.75		9.20	6.90	30 x 3 1/2	\$4.15		
29 x 4.75	11.80	9.55	7.15	31 x 4	7.60		
30 x 4.75	12.25	9.90		32 x 4	7.95		
29 x 5.00	12.90	9.90	7.50	HIGH PRESSURES			
30 x 5.00	12.55	10.20	7.75	Size	Silvertown	Cavalier	
31 x 5.00	13.15	10.65	8.00	30 x 3 1/2	\$ 6.20	\$ 5.15 REG.	
32 x 5.00		11.75		30 x 3 1/2	7.90	5.65 GIANTESS	
28 x 5.25		11.15		30 x 3 1/2	8.35	S S	
29 x 5.25		11.55		31 x 4 Cavalier	9.15		
30 x 5.25	13.85	11.95	9.00	32 x 4	11.85	10.25	
31 x 5.25	14.35	12.25	9.20	32 x 4 1/2	20.05	12.85	
28 x 5.50	14.25	12.20		33 x 4 1/2	20.95	13.90	
29 x 5.50	14.80	12.70		34 x 4 1/2		14.90	
30 x 5.50	12.90	13.10		HEAVY DUTY TRUCK TIRES			
30 x 6.00	15.75	13.50		Size	Silvertown	Cavalier	
31 x 6.00	16.20	13.90		30 x 5	\$25.55	\$19.30	
32 x 6.00	16.65	14.35		33 x 5	28.25		
33 x 6.00	17.10	14.75		32 x 6	42.45		
30 x 6.50	16.65	16.65		36 x 6	46.70		
31 x 6.50	19.55	17.10		34 x 7	60.15		
32 x 6.50	19.90	17.45					

The above prices are made possible, not only by buying in quantities, but also by having the agency for the Goodrich Products in this territory.

Floydada Rubber Company

FLOYDADA PETERSBURG

Mail orders filled Promptly

We Do Vulca

Next Week Designated As 'Feed Grinder Week' By Local Dealers

Prove Value of Forage Grinders Through Demonstrations.

Great changes are being wrought in farm life by the feed grinder and this paper is cooperating with local merchants in a "Feed Grinder Week" in an attempt to arouse more people to the realization that the solution of the problem of making feed crops profitable possibly will also solve to a large degree the question of progress for the people of this country.

Actual Demonstrations
All of next week, January 21 to 26, has been designated as "Grinder Week" by local dealers. Every day during this educational week, dealers plan actual demonstrations of their various grinders.

D. W. Fyffe, dealer for the W-W Hammer type feed grinder, plans actual demonstrations of his grinder near his place of business on West California Street. The W-W

grinder is proving valuable and very satisfactory to many Floyd County farmers, and this demonstration week will enable others to see this machine in operation.

One of the most widely known grinders in this immediate territory is the Letz Grinder, sold by Stansell & Collins, dealers. The Letz is a John Deere product, and this fact alone tells a story of its efficiency. The Letz comes in many styles, equipped with or without the grain elevators. This machine will be demonstrated throughout next week at the Stansell & Collins grocery on South Main Street.

Rutledge and Company have introduced into this county, the new international grinder, a product of McCormick-Deering. This grinder is proving its worth to Floyd County farmers and, at present appears to be one of the leaders in modern type of feed grinders. All of the latest inventions are included on this grinder, making it one of the most modern on the market. Demonstrations of this machine are planned to be held near the Rutledge and Company implement store on South Main Street.

Encourage Grinding
These three Floydada implement dealers are the firms that are co-

operating to make this "Grinder Week" possible. Other than to give demonstrations of their own machines, their main idea is to encourage the use of grinders in this vicinity. It is claimed that every year millions of dollars in feeding values are wasted by farmers who feed "roughage" to their stock. Because, much of the fodder, alfalfa, bundle feeds, maize heads, snapped corn, etc., thrown into the feed lot is not eaten. Animals cannot chew or digest the stalks, stubs and stems of rough feed.

Dealers report that farmers with fairly large acreages, grain men as well as others interested in the agricultural development of Floyd County, have been investigating this source of profit making during the past three years, but that this year the interest manifested has more than doubled that shown in all other years combined.

This fact points to profound changes now at work in the life of the people of this county. It indicates better than any other criterion, the fact that the people of this county are turning to diversification of farm effort, and that they are applying present day methods to the fullest extent. It would seem to indicate that no more will cotton, or wheat, or any other one crop monopolize the attention of the entire farming population, but that the program of this county will be entirely balanced.

Greater Feeding Value

Feed Values Increase Hundred Per Cent When Fed in Crushed Form.

It is said that in production one foreign cow equals two American cows. And the answer to the enigma is declared to lie in the fact that for centuries Europe has fed her cows chopped hay, mixed with the grains. The American farmers, through actual tests, are proving that this fact is true, and as they learn the value of feed grinding they are becoming more and more sold on the modern type of grinders. To encourage the use of feed grinders in this territory, Floydada dealers are staging a "Grinder Week" next Monday to Saturday, inclusive. The sole purpose of this demonstration week, they declare, is to prove the value of feeding ground products.

The following article, written by an expert statistician on crop production, readily brings out some of the proofs of feeding ground foliage.

Saves Half Feed Bill
One farmer with whom the writer talked declared that his feed grinder has saved him about one-half of his usual feed bill. Another declared it had made possible a profit from his hogs, always hard to obtain before.

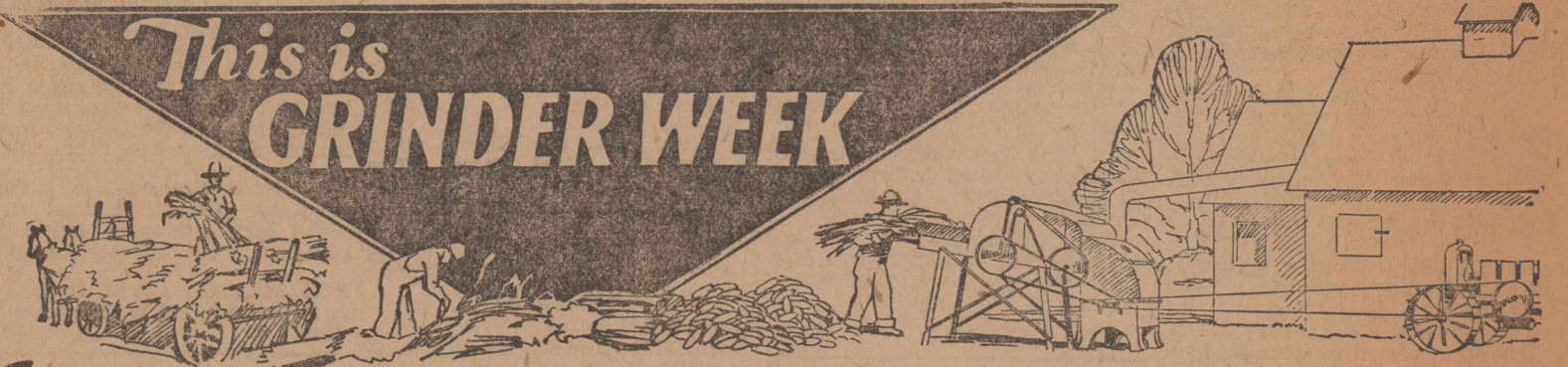
Others declared that milch cows do better on less than formerly. One man who keeps milch cows told the writer that whereas each of his cows had formerly required three bundles of feed daily, he now feeds her the equivalent of two bundles, still received more milk by using ground feed.

Many with whom the writer has talked said that the cost of owning a feed grinder is too much for the smaller farmer. It is true that the farmer who only has a few head of live stock to feed hardly can afford to own one for his own use only. The way out, it surely

seems, after one has considered the history of farming in this community is to increase the herd. Too much time might be required said another, but for most herds of this section a few hours work is sufficient to prepare feed for a week.

Since none of us ever cease to learn, it would seem advisable for every farmer, big or small to investigate the points claimed for the feed grinder summarized as follows: first—the use of a feed grinder will reduce the cost of feed; second—will increase production of milk or butterfat; third—eliminate or butterfat; third—eliminate expense of mixed feeds; and fourth—prevent waste on the farm.

Grinder week enables you to get the facts and see the feed grinders in actual demonstrations, grinding all kinds of feed. Farmers all over this section are urged to attend.



BIG DEMONSTRATION of the W-W HAMMER TYPE FEED GRINDER

The World's Greatest Feed Grinder

Jan. 21 to Jan. 26

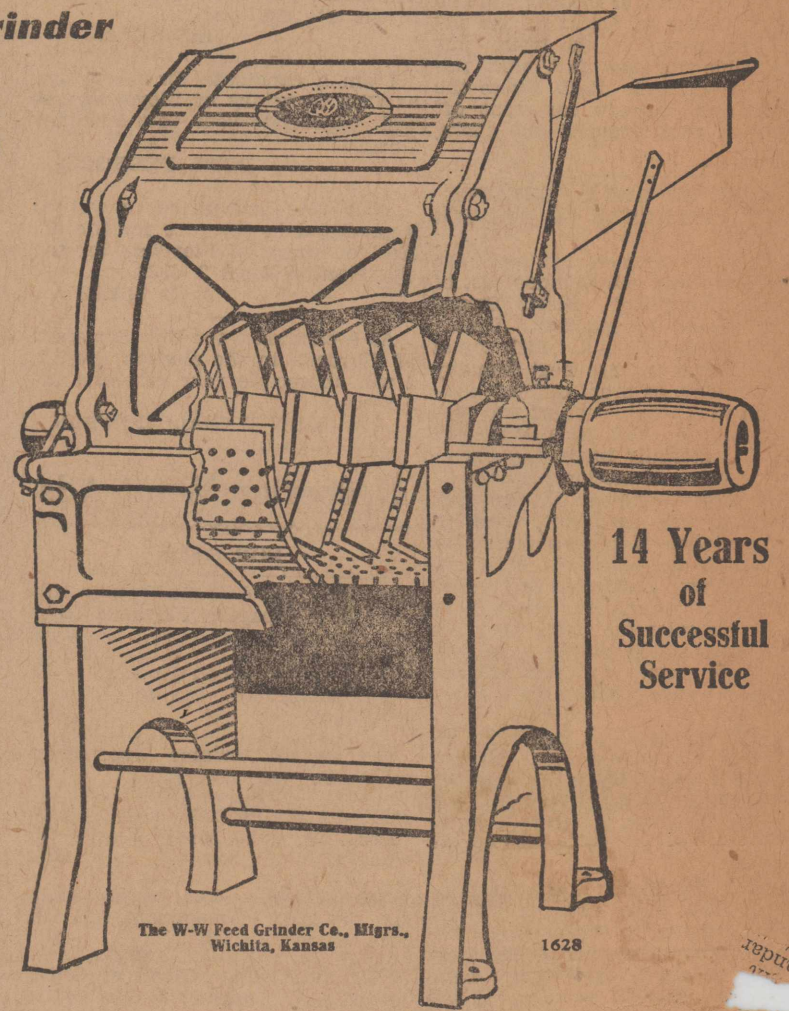
EVERY farmer and feeder interested in saving a third of his feed costs should see this demonstration.

Let us show you how to turn your roughage into dollars—how to make all the feed you raise go a third further!

The W-W Feed Grinder is making big profits for farmers everywhere. Learn how it will do the same for you. See for yourself how you can stop waste and lower production costs by grinding all your feed from the ground up.

Come In and See

the lightning speed with which the W-W Grinder turns snappeds or ear corn, alfalfa, oats, fodder, maize heads, bundle feed, etc., into valuable mixed feed. Watch the powerful W-W hammers do a better grinding job than easily-breakable burrs or knives. Six W-W sizes—elevator, blower, or self-feeder which handles any roughage or grain, separately or together. Equipped with Timken Tapered Bearings—Alomite-Zerk lubrication—Rockwood pulleys. SEE THIS GREAT DEMONSTRATION!



14 Years of Successful Service

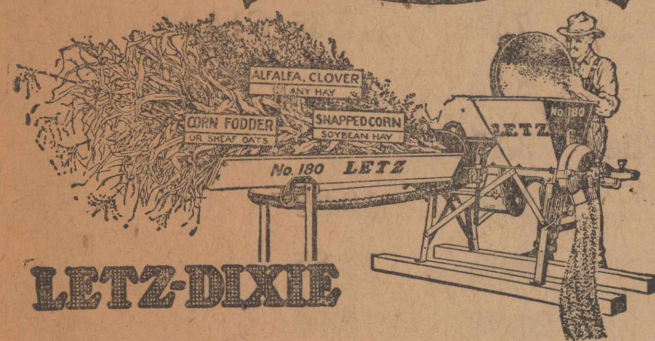
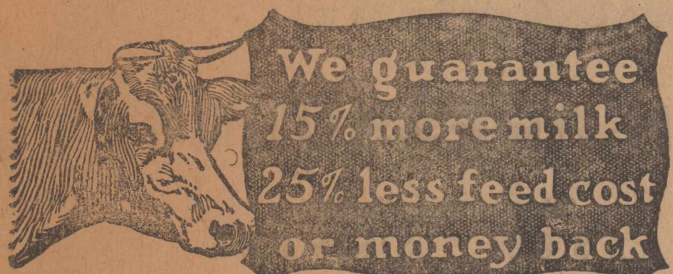
The W-W Feed Grinder Co., Mfgs., Wichita, Kansas 1628

FLOYDADA, D. W. FYFFE TEXAS.

"Feed Grinder Week"

Letz Feed Mill Demonstration

We will have a Letz Mill on Display at our store all week. Anyone that is interested in a mill, come in and see it. We will be glad to demonstrate.



Grind Your Feed For Bigger Profits

Take full advantage of the feed value of your hay, straw, cornstalks, stems and vines by grinding them into a bulky, tasty, wholesome feed that your stock will relish.

Letz-Dixie Mixed Feed Maker

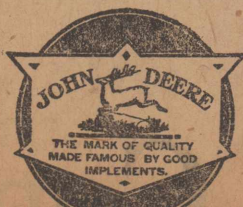
Cuts, re-cuts, mixes and grinds, all in one operation. Green, wet or oily material will not clog the Letz-Dixie—it grinds anything grindable.

The Letz has two to three times the capacity per horse power of any other roughage mill made. Built in three sizes for 4- to 25-H. P. engines.

Come in and examine the Letz-Dixie Mill. Let us explain how its use will add to your profit.

FOR FURTHER INFORMATION

PHONE 88



You Get QUALITY AND SERVICE

Stansell & Collins

FLOYDADA, TEXAS

"FARM WITH A FARMALL"

Feed Grinder Week---January 21-26

THE McCORMICK-DEERING FEED GRINDER, NEWLY IMPROVED, WILL DOUBLE THE FEEDING VALUE OF YOUR FORAGE AND GRAIN CROPS,

and will cut in half the amount of feed necessary for your own requirements, leaving you a similar amount to put on the market.

The 1929 Successful Farmer of Floyd County, will USE A FEED GRINDER, and naturally we suggest the McCormick-Deering, which is: LARGE ENOUGH FOR THE FEEDER OF LARGE HERDS OF STOCK AND FEEDER CATTLE, AND LOW ENOUGH IN PRICE, for the average farmer.

Let us demonstrate our new Feed Grinder during the week of January 21-26.

RUTLEDGE & COMPANY

FULL LINE INTERNATIONAL DEALERS.

"FARM WITH A FARMALL"

Floydada School News

Reporters from the various Classes and Departments of Floydada Public Schools, the English Class of the High School, and the typing class of the Commercial Department co-operating.

Oleta Jackson.....Editor-in-Chief Virginia Meachum, Associate Editor

Finals Given Last Week

Last week was a busy one for the high school because mid-term finals were being given. Some students declared that they would never be able to pass them, but grade cards, which were given Monday, proved that they were more successful than they anticipated.

This week we are very busy arranging new schedules. Several new courses are being offered. Everyone is looking forward to a very prosperous year.

Basketball

Last Friday night the basketball boys were winners in a game with

Local Cagers Defeat Crosbyton High Team

Coach Jones' Squad Take Heavy End of 22 to 9 Score Thursday At Local Gym.

Coach Troy H. Jones, through the F. H. S. cagers, demonstrated his coaching ability last Thursday night when his newly organized squad of basketball players swamped the Crosbyton five under a 22 to 9 defeat. The game, played at the Andrews Ward Gymnasium, was witnessed by a large, crowd of enthusiastic fans who kept the house roaring throughout the game.

The visiting lads were expected to carry the local high school team for a tough tussle, but from the close of the first quarter, the Whirlwinds played the visitors off of their feet. Floydada held a 6 to 4 lead at the end of the first quarter, and this lead was increased to 15 to 6 in the second quarter. They were held 17 to 7 at the close of the third quarter and by the close of the game, the Whirlwinds held the big end of a top-heavy score of 22 to 9.

Of the twenty-two points scored by Floydada, Joe Smith scored ten points by field baskets. Smith was the outstanding player on the court. He was the smoothest player of the two teams and probably drew fewer personal penalties than any other player. Welbourn and Nelson were also outstanding Whirlwind players. The F. H. S. line-up was as follows: J. Smith, f. f.; W. Smith, l. f.; Nelson, center; Widner, r. f.; and Welbourn, l. f.

The visiting starting line-up consisted of Karr, r. f.; Carter, l. f.; Blackwood, c; Hare, r. g. and Smith, l. g.

Mayview News

Mayview, Jan. 14.—On account of illness a small crowd attended Sunday school. All attended church at Dougherty after Sunday school. Bro. Jamerson filled his regular appointment.

Several of the young people attended a party at the Ferguson

Crosbyton. The Crosbyton team played an excellent game but the Whirlwinds won by a score of 22-9.

We are very proud of our basketball team this year. It is doing extraordinary work under the able supervision of Coach Jones. The school and town are behind them and wish them many more successes.

Jokes

Thelma's fad way of spending the typing period is by writing—Bud—Bud—Bud.

Mr. Cunningham: "Mildred, the reason you don't grow any is because you talk too much."

home in Dougherty Saturday night. Miss Sarah Davis of Floydada spent Friday night with Miss Annie McNeill.

Miss Robbie Lotspeich stayed with Mrs. H. E. Edwards who has been ill the past week.

Mr. and Mrs. A. C. Barnett of Wake spent Thursday evening with Mrs. C. E. Bartlett who has been ill for several days.

Mrs. Joe Glover of Campbell spent Friday with Mrs. J. R. Cardwell.

Mr. and Mrs. Cecil Payne spent Friday with Mr. and Mrs. R. W. Lotspeich.

Most everyone has been ill with the flu and bad colds but are better. Misses Grace and Jewel McNeill took dinner with Mrs. T. J. Campbell Sunday.

Miss Catherine Davis spent Saturday night with Miss Robbie Lotspeich.

Mrs. J. D. Holladay and children spent Sunday afternoon with Mr. and Mrs. H. E. Edwards.

Mrs. Jim Colston called Sunday morning to see Mrs. C. E. Bartlett who is very ill.

Mr. and Mrs. J. H. Poore and family spent Sunday with Mr. and Mrs. C. E. Bartlett and family.

E. Y. P. U. was postponed Sunday night and everyone attended church at Dougherty Sunday night. Bro. Jamerson filled his regular appointment. Twelve new members were added to the Methodist church.

Mrs. H. L. Handley, Mrs. George Wynn, and Mrs. R. W. Lotspeich called Sunday afternoon to see Mrs. C. E. Bartlett who has been ill for several days.

Miss Grace Readhimer spent Sunday with the McNeill girls.

Miss Mildred Wynn spent Sunday with Miss Rena Handley.

Mr. and Mrs. Floyd Readhimer spent Sunday with Mr. and Mrs. J. E. Readhimer.

Norman Payne left Sunday morning for Abilene where he will enter a business college.

JOYCE HOPKINS IMPROVING

Belief that their sister, Miss Joyce Hopkins, who has been at Sanatorium, Texas, for the past several months making a fight against tuberculosis, is showing definite improvement in health, was expressed

by Maury Hopkins, of Plainview, Monday night upon his return from San Angelo, where he and his sister, Mrs. Jack Henry, spent Saturday and Sunday.

Miss Hopkins, whose home of recent years has been at Miami, was formerly a resident of Floydada and a student of Floydada High School.

CARD OF THANKS

We wish to thank our friends and neighbors who so tenderly did everything possible to make our sorrows lighter in the recent sickness and death of our husband, father, son and brother Charley Walling, and for the many beautiful floral offerings given. When death invades your home we only hope that you will have such friends in that hour. May heaven's richest blessings rest upon you is our sincere wish.

Mrs. Addie Walling and daughters
Mrs. Millie Walling and daughters.

F. T. Walling and family,
E. N. Burrus and family,
John McDonald and family,
A. C. Goen and family.

Read The Hesperian for the news of Floyd County.

SHERIFF'S SALE

The State of Texas, County of Floyd.

NOTICE IS HEREBY GIVEN That by virtue of a certain Execution issued out of the Honorable District Court of Hale County, on the 15th day of December 1928, by M. Della Ansley, Clerk of said District Court for the sum of (\$2154.63) Two Thousand One Hundred Fifty Four and 63/100 Dollars

and costs of suit, under a Judgment, in favor of Nobles Bros. Grocery Company, in a certain cause in said Court, No. 2390 and styled Nobles Bros. Grocery Co. vs. Mrs. W. D. Long et al, placed in my hands for service, I P. G. Stegall as Sheriff of Floyd County, Texas, did on the 9th day of January 1929, levy on certain Real Estate, situated in Floyd County, Texas, described as follows, to-wit:

All of Section No. 96, Block G—M, Floyd County, Texas, and levied upon as the property of Mrs. W. D. Long, and that on the first Tuesday in February 1929, the same being the 5th day of said month, at the Court House door, of Floyd County, in the city of Floydada, Texas, between the hours of 10 a. m. and 4 p. m., by virtue of said levy and said Execution I will sell said above described Real Estate at public vendue, for cash, to the highest bidder, as the property of said Mrs. W. D. Long.

And in compliance with law, I give this notice by publication, in the English language, once a week for three consecutive weeks immediately preceding said day of sale, in the Floyd County Hesperian, a newspaper published in Floyd County.

Witness my hand, this 9th day of January 1929.

P. G. Stegall,
Sheriff Floyd County, Texas.
464tc.

NOTICE OF SHERIFF'S SALE

Notice is hereby given that by virtue of an Order of Sale issued out of the District Court of Floyd County, Texas, by the clerk thereof on the 2nd day of January 1929 upon a judgment in favor of Guy Jacob and Mrs. Sallie B. Slaton against A. H. McGavock and others, commanding me to seize and

sell the real-estate hereinabove described, I P. G. Stegall, Sheriff of Floyd County, Texas, did on the 3rd day of January 1929 levy on said real-estate which is described as all

County, Texas, and that I will on the first Tuesday in February 1929, same being the fifth day of February 1929, between the hours of 10:00 a. m. and 4:00 p. m. proceed to sell the above described land at the Court House door in Floyd

County, Texas, at Floydada, to the highest bidder for cash as I am commanded in said Order of Sale. WITNESS my hand this 3rd day of January 1929.
P. G. STEGALL,
Sheriff, Floyd County, Texas.

The New Spring Fabrics Are Here

As absorbing as the pages of an interesting book, our new styles and fabrics for Spring and Summer await your inspection.

Nothing finer loomed than these Imports and Domestic weaves from

Ed. V. PRICE & CO., and S. H. CHURCHILL & CO.

Your selection from these Nationally Known lines mean absolutely the most for the money in real tailored-to-order clothes. We guarantee a fit.

At these Popular Prices

SUIT OR OVERCOAT

\$25 to \$50

WOOD BROS. CITY TAILOR SHOP

South Side Square

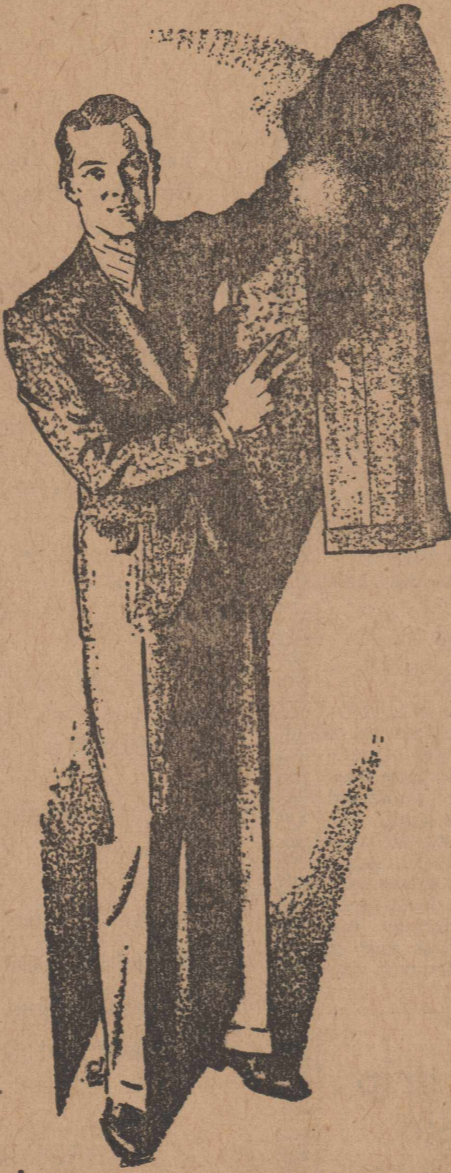
SAFETY HATCH INCUBATORS AND BROODERS

The small Incubator with a big record

C. Surginer & Son

January

CLEARANCE



EXTRA REDUCTION

ON

Men's and Young Men's Suits

Although the response to our sale has been very satisfactory, we are anxious to move every suit in our house before the close of the sale on January 31, and Offer any \$25 Suit in the House, for

only \$17.95

Reductions are effective all over the house. We intend this for a genuine clearance. Stetson Hats only excepted in the big price reductions. All goods sold for cash, nothing charged.

Other Men's Suits as Low as,	\$9.85	All \$29.50 and \$30.00 Suits, Sale Price,	\$23.85
Extra Pants,	\$2.50	All \$32.50 and \$35.00 Suits, Sale Price,	\$26.65
1 Lot of Men's Suits, Sale Price,	\$13.85		
All \$27.50 Suits, Sale Price,	\$21.85	1 Lot Men's Overcoats, values up to \$18.50, for,	\$12.75

All Men's and Boys' Dress Pants 33 1-3 % Off

MCGUIRE & WEATHERLY

"The Store For Men"

Floydada, Texas



The Best of Fresh Vegetables

Healthful, sparkling deliciously rich and appetizing. Vegetables that are so essential at this time of the year.

Call us daily. We always have some of them that we can deliver along with your regular order.

Star Cash Grocery

PHONE 40

Girls High School Basket Ball Tournament to Be Held at Snyder

The Floydada Girls High School basketball team has been officially invited to attend the West Texas Girls High School Basketball Tournament that will be held at Snyder February 14, 15 and 16 under the sponsorship of the Snyder Lions Club. Plans are being laid to entertain more than fifty girls teams during the three days.

R. H. Schultz, Dallas southern commissioner for the A. A. U., was in Snyder recently to complete preliminary plans and expressed satisfaction for the fine basketball floor and gymnasium that will be provided during the visit in Snyder of West Texas girl teams.

Six huge loving cups of solid gold and silver, one of which is the actual size of a basketball made of gold is first prize; a silver ball of the same dimensions is second prize; and the four other major prizes are huge loving cups standing waist high. In addition there are three sets of small gold and silver basketballs.

Visitors to Snyder will be privileged to visit the new \$10,000 athletic stadium only recently dedicated by Snyder High School which is said to be the finest outside of col-

What's Doing In West Texas Today

(By West Texas Chamber of Commerce.)

A deal whereby \$14,400 was the price for a five year lease on the building at the corner of Eighth Street and Hutchinson Avenue in Ballinger was paid recently by G. A. Ladig. Mr. Ladig intends to make big improvements in the inside of the building.

A recently discovered area of pure sand and gravel near Hamlin will be the incentive for the building of ten mile lines to it from the Abilene & Southern, The Orient and the M. K. and T. Railroads. The sand and gravel area is about three miles square and 100 cars of sand a day for several years can be shipped from it.

is under way on the new City Hall and Masonic Temple, to cost some \$20,000.

A building of buff brick, concrete and steel, 75x140 feet is the home of the Ford Motor Company in Plainview. The building has 10,500 feet of floor space which has been utilized for the best possible service to patrons. The office is easily accessible, conveniently arranged, and entirely modern.

Now that the courts have decided that a man has the right to control his wife, all we have to do is tell the wives about it.

Hesperian Want Ads Pay.

Look! Look!

The remainder of our Bridge and Floor Lamps must be moved.

We are offering them at

25% Discount

Until January 31.

Texas Utilities Company

lege fields in the state of Texas. Arrangements for the entertainment of teams and visitors will be in charge of a committee of the Federal Clubs and Parent-Teachers Associations, backed by the entire citizenship of Snyder.

Housing for anywhere between five and eight hundred girls with their coaches and escorts will be completed by a special committee whose headquarters will be with the Scurry County Chamber of Commerce.

Officials for the games which will start early Thursday morning, continuing game after game into the night, will be entirely picked and selected by state officials of the A. A. U.

The coming Snyder tournament will be the largest attended athletic event of more than one day's duration ever handled in West Texas, and it is Snyder's aim to have every detail worked out to clocklike precision that visitors may enjoy every moment of their stay.

Joining in the welcome to all West Texas is included City Supt. C. Wedgeworth, president Lions Club; County Supt. A. A. Bullock, general chairman of the tournament and president of the Scurry County Chamber of Commerce, together with every civic, fraternal and social organization of the city and county, who are lending their influence and invitation to the teams and visitors of West Texas to come to Snyder February 14, 15 and 16.

South Plains News

South Plains, Jan. 7.—Little Lenord Pearson, two year old son and only child of Mr. and Mrs. Lee Pearson who live 2 1/2 miles southeast of South Plains, passed away Saturday in Lubbock.

Little Lenord had been sick only a few days and despite all that medical skill and loving hands could do he gradually grew worse and departed this life Saturday morning, Jan. 5. Rev. T. P. Nelson, pastor of the Sunset Baptist church conducted the funeral services from the home Sunday afternoon at 1 o'clock. Interment was made in the Lockney cemetery.

Mrs. Sam Gilliland has been confined to her bed this week with flu. J. B. Jarnigan and two of his children have been on the sick list the past week.

Jim Harper and daughter of Lockney were South Plains visitors Saturday.

Mamie Lou Jarnigan spent the week end visiting friends in Lockney.

Kissing under the moon is punishable by imprisonment, according to a new rule in Italy. Already two marriages have been postponed as a result of penalties imposed upon lovers caught breaking this law. Well, it's an ill wind that blows no one any good.

Read The Hesperian for the news of Floyd County.

Bill Der Says

A man, like a nail, can only go as far as his head.

Twenty car loads of Kimble County Pecans have been shipped by the Schriener-Hodges Company from Junction lately. The last two cars had 33,000 pounds each. The firm has shipped about six hundred fifty thousand pounds and large quantities are being received daily.

Citizens of the fast building resident section in the South part of Big Spring are launching a movement to bring about a sidewalk building program so that free delivery of mail may be extended to that portion of the city. The service will be extended as soon as the property owners meet requirements.

Archer City is experiencing an improvement boom. A new Baptist Church costing \$25,000 is being built and \$80,000 worth of water and sewer extensions being installed. Work

The Midland courthouse was remodeled this week to handle the vastly increased land and lease sales in Midland and the Midland oil field area. The new abstract offices and chambers for J. M. Gilmore, corporation judge were created.

Farm demonstration week in Wheeler County during 1928 resulted in a profit or saving of \$10,320.90 on dairy cattle, swine, and poultry according to T. R. Broun, county agent. He reports that 518 farms adopted improved practices in poultry alone.

The nail picking machine which is the property of the Highway Department has been moved from Muleshoe to Olton. The machine is used in this territory exclusively, and is worked on the principal of a huge magnet which gathers metal off the highway so it can be placed where it is harmless.

An up-to-date hatchery for O'Donnell is practically assured according to H. H. Williams who intends to install a 18,000 egg capacity Peterman Electric incubator by the 20th of the month. Custom hatching will be done, and a complete line of chicken feed will be handled.

The United States Nail!

We hear a whole lot about the marvels of the United States Mail—which is a wonderful service and the best on earth—but what about the United States NAIL! The whack of our hammers is heard around the world, for we are th Biggest Builders of the Bunch, and our trusty NAIL is rapidly becoming the National Emblem.

We carry the best of 'em.

Did You Know

—That Floydada has fewer evergreens and shrubs than any town of its size on the Plains?

—That Hollums handles this in Carload lots and can save you quite a bit of money?

—That Hollums has a good line of trees, evergreens and shrubbery in stock at this time, and more coming in all the time?

—That a Real Landscape man doesn't have time to peddle trees?

—That if you come up and look at our stock, you can see what you are getting and take no chances?

—That we built our greenhouse and handle this nursery stock for the benefit of HOLLUMS and FLOYDADA, so why give your order to a transient agent, when you can get better stuff cheaper at home.

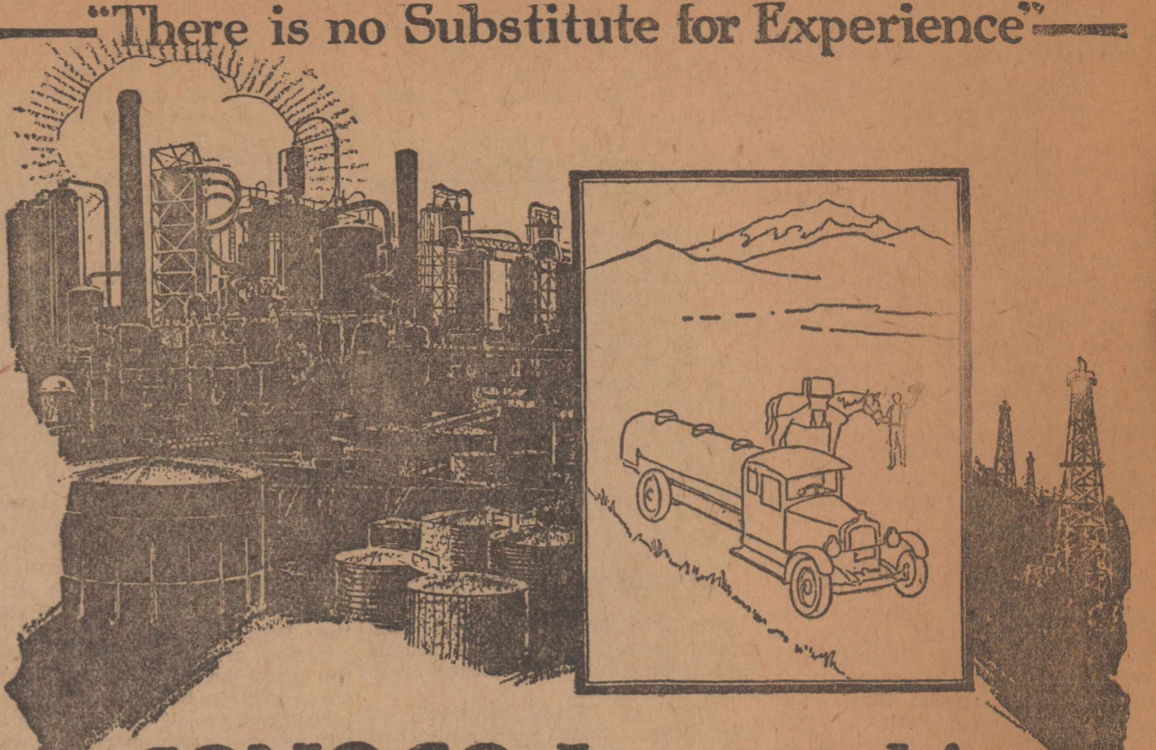
—That Baker Bros. are the biggest growers of Chinese Elms in the world, and we sell them to you cheaper than you can buy direct from them. We handle their trees.

HOLLUMS

Floydada Florists

Willson & Son

Floydada, Texas



There is no Substitute for Experience

CONOCO Leadership covers almost half a century

Such leadership must be earned. It comes from the proper co-ordination of resources, engineering skill and marketing facilities plus that willingness to serve for which the Conoco name has always stood.

Today, as always, Conoco stands for highest quality and unsurpassed service.

THE triple test MOTOR FUEL.

- 1 Starting
- 2 Acceleration
- 3 Power and Milcage

The Outstanding Chevrolet of Chevrolet History

- a Six in the price range of the four!

represents 4 years of Development and over a Million miles of Testing

Years ago, the Chevrolet Motor Company designed and built its first experimental six-cylinder motor. This far-sighted step was taken because Chevrolet engineers knew that the six-cylinder motor is inherently the most perfectly balanced motor—the ideal power plant to meet the growing public demand for greater reserve power, faster get-away and, above all—smooth, quiet performance.

During the last four years, over a hundred six-cylinder motors were built by Chevrolet engineers and tested on the General Motors Proving Ground.

Day and night, through winter's cold and summer's heat, the incessant testing went on—until the present motor was developed and finally pronounced correct.

At the same time other Chevrolet engineers were perfecting other parts of the chassis. And another great automotive organization—the Fisher Body Corporation—was devoting its gigantic resources to the creation of the finest, sturdiest and most beautiful bodies ever offered on a low-priced automobile.

As a result, the Outstanding Chevrolet offers an order of well-balanced excellence—a combination of performance, comfort, beauty and handling ease that is truly remarkable—with a fuel-economy of better than 20 miles to the gallon of gasoline.

You owe it to yourself to see and inspect this remarkable car. Come in today!

The COACH	\$595
The Roadster	\$525
The Phaeton	\$525
The Coupe	\$595
The Sedan	\$675
The Sport Cabriolet	\$695
The Convertible Landau	\$725
Sedan Delivery	\$595
Light Delivery	\$400
1 1/2 Ton Chassis	\$545
1 1/2 Ton Chassis with Cab	\$650

All prices f. o. b. Flint, Michigan

MOTOR SUPPLY CO.

Floydada, Texas

QUALITY AT LOW

IN THE FANCY SILVER PERCOLATOR

OR

THE OLD BLACK COFFEE POT

SUNSET COFFEE

MAKES THE DRINK ~ OF DRINKS ~ FOR COFFEE DRINKERS

Save the Coupons

A Delightful way to start the day!

