

FAST RAIL SERVICE EASTWARD BECOMES REALITY

Crowd of Ten Thousand Present at Fair on 'Floyd County Day' Thousands Present To Greet First Passenger

Exposition Declared Best County Ever Held

Colorful Parade Saturday Crowning Event Of Four Full Days

Ten thousand and certainly not less than eight thousand people of Floyd and adjoining counties attended the Floyd County Fair Saturday, "Floyd County Day," when with numerous entertainment as well as educational features the fifteenth annual fair passed into history, looked upon by local people as the most successful and most entertaining ever staged.

Parade is Colorful

Perhaps the most colorful activity of the entire fair was the parade of floats representing communities, organizations and business firms which started moving a few minutes after 1 o'clock Saturday afternoon and filled the streets for more than thirty minutes. A wide variety of ideas were used by the many interests represented in the parade and these were developed into some of the prettiest floats conceivable. The parade formed on Fifth Street near the Methodist church and proceeding north on that street to the intersection of Missouri moved southward on Main. Saturday afternoon's entertainment was further enriched by the old fiddlers' contest held in the open on the South Side of the square in which a number of fiddlers participated for a cash prize of \$25. In the evening couples from various parts of this section took part in an old-fashioned square dance also held on the pavement on south side. Jno. W. McDonald was in charge of this feature.

Auto polo apparently did not go over big with the crowds, although fairly good crowds attended Saturday afternoon and a rather considerably larger crowd on the previous day Friday, and a small crowd Thursday afternoon. Si Smith, the rube clown, did not appeal to the general public, apparently, as a portion of the crowd liked his stuff immensely.

Fire Works Popular

The last two days of the fair the weather was almost ideal. On Thursday morning it was partially cloudy and a fine mist fell for a few minutes. Wednesday the weather was threatening but the crowds were not large. Wednesday was preparation day and a very considerable part of the fair displays were not open to the public.

Friday and Saturday night's presentations of fireworks, staged northeast of the square by a specialist from one of the manufacturers of explosives, were very well received, indeed. Probably five thousand people witnessed the display on the ground and another five thousand parked about over the city. The fireworks were fully up to the standard advertised and the fair directors were complimented highly for the successful manner in which the job was handled. It was the first time a display of fire works had been attempted as a part of the local fair entertainment program.

Some of the other entertainment features included May Foster in a trapeze act twice daily on the grounds of the F. H. S.-Idalou football game Friday afternoon, the concerts of the Floydada Municipal Band, and the Copper States Shows with mid-way attractions. Following the close of the fair, Ed Bishop, secretary of the fair organization, gave expression to the appreciation of himself and his co-workers for the unstinted efforts of the people of practically every community in the county to make the fair successful as an educational and entertaining event. The fact that every community exhibiting at the

Newspaper Boys File Much First Train Copy

Newspaper men in Floydada Monday afternoon to "cover" the first Q. A. & P. passenger train story were given typewriters and desk room in the Hesperian office for the preparation of their "copy," and a line-out made by them following the filing of the last story indicated they had filed only slightly less than 50 words with the local Western Union office. Practically as many more words were forwarded by mail or carried into the different newspaper offices of the southwest.

The newspaper men who were on the special from Quanah were Alvin Rucker of the Daily Oklahoman, Oklahoma City, Frank O. Hall, of the Times and News-Record, Wichita Falls and Upshur Vincent, of the Star-Telegram, Fort Worth

Bombing Distrubs Peaceful Slumber

SEE FIREWORKS 25 MILES

To be awakened from one's slumber expecting to find either an earthquake or a revolutionary war in action, was the unusual experience of hundreds of people within a radius of twenty-five miles of Floydada last Friday and Saturday nights. Terrific bombing and a brilliant array of flares and rockets, a part of the fireworks display at the Floyd County Fair, was the cause of the disturbance.

C. B. Parker, Crosby County farmer who resides twenty-five miles south of this city, has the distinction of being the most distant witness of the fireworks display. Mr. Parker reports that he was awakened Friday night by the bombing, and that from his home near Crosbyton, he witnessed the fireworks display Mr. Parker helped make the Big Four community exhibit at the fair.

Many Floyd County residents, ten, twelve and fifteen miles from this city, reported this week that they had a "grandstand view" of the unusual attraction.

MARTIN WINS IN FIDDLERS CONTEST; TWELVE ENTRIES

E. Martin of Floydada was awarded first place over eleven other entries in the Old Fiddlers contest which took place on the south side of the square late Saturday afternoon. Cap Houston of Matador was a close second.

That the musicians were as good as any that could be found in the state, was the opinion of John McDonald who had charge of the contest. "The music went over with a boom with the audience and the entire program was a success," Mr. McDonald said. About three hours of old time dancing was enjoyed Saturday evening on the square, with both young and old participating.

Other entries were: Jo Snodgrass, Floydada; John Pavelka, Lockney; West Campbell, Amherst, H. P. Stalker, Hill county; Cap Houston, Bryant Houston, Matador; J. C. Fox, D. Fox, Floydada; J. P. Gilleher, Sand Hill; E. Martin, Floydada; F. M. Beck and J. H. Hibdon, Plainview.

Dist. Court Resumes Sessions Next Monday

Recess Taken Wednesday and Criminal Docket Will be Taken Up Monday Morning.

District Judge Charles Clements recessed District Court for Floyd County Wednesday of this week, to resume work again Monday morning. In three cases, two verdicts of not guilty were returned and one five-year suspended sentence was given.

Charlie Smith, charged with operating a motor vehicle on a highway while intoxicated, was freed by a jury, and Homer Cain, charged with possession liquor for the purpose of sale was given an instructed verdict of not guilty. Travis Gilliland pled guilty to a charge of forgery and was given a five-year suspended sentence.

Monday morning the court will have the following venire of jurymen chosen by the jury commission: W. O. Shurbet, C. H. Day, Morg Hamilton, J. H. Fowler, G. B. Johnson, J. W. Baggett, E. C. Mosley, G. F. Weast, W. H. Henderson, A. T. Pratt, P. D. McBride, E. J. Hoffman, N. D. Clark, V. A. Thorn, G. W. Phipps, Foster Amburn, W. H. Meacham, W. M. Sanders, R. H. Ashton, D. M. West, Ben Quebe, E. O. McElvey, N. E. Waller, G. F. Klebold, J. R. Baker, R. H. Tinsley, G. A. Tardy, J. R. Davis, L. C. Elliott, J. S. Jones, Floyd Daniel, R. A. Weiss, W. H. Crawford, B. L. Breed, E. W. Lightfoot, and H. R. Stanley.

The grand jury for the term is E. E. Dyer, J. P. Hart, A. T. Swepston, H. R. Wilson, H. A. Krause, J. T. McLain, H. L. Howard, P. L. Ormon, O. M. Watson, W. Edd Brown, Bert Bobbitt, Carl McAdams. Mr. McAdams is foreman of the jury.

SINGING CONVENTION AT CAMPBELL, SUNDAY WEEK

The South Side Singing Convention will meet at Campbell on Sunday, October 14, for an all day meeting. It was announced this morning by Price Scott, president of the convention. This date, the second Sunday in October, is the regular meeting date.

Singers at Campbell made special request that this be an all-day session, and all visitors are invited to assemble at 11 o'clock Sunday morning. All are requested to bring baskets, and to spread dinner on the ground.

Heads Committee



To J. B. Jenkins, who was chairman of the celebration committee of the Chamber of Commerce, largely goes the credit for the smooth manner in which the events of the day were handled, and for organizing the body of civic workers who fed the large crowd of excursionists and visitors here for the Q. A. & P. first official passenger train.

Newton's Dougherty Gin Ready Next Week

Gins of County Turn Out First Few Bales as Cotton Gathering Gets Under Way.

Every gin in Floyd County is tuned up and ready for the annual ginning season now just getting started, with the exception of the J. E. Newton Gin at Dougherty, which, however, will also be ready soon, probably by the first of next week.

First bales have been handled by every other gin in the county, except South Plains, in which territory the crop is a little slower than in other portions on account of heavier rains during August there. Lakeview Gin of J. E. Newton turned out two bales Friday of last week. They were for C. Jester and John Hambright. McCoy gin had turned out eleven bales the first of this week. That gin this summer has been improved by the addition of a round bale press, giving the people of that trade territory their preference of round or square bales as market conditions make desirable.

The gin at Joe Bailey and the four gins at Floydada, one gin at South Plains, one at Aiken, and four gins at Lockney, complete the complement of gins in the county that will handle the 1928 crop.

Expectations are now that forty per cent of the fields will have pickers in them by the latter part of this week, if weather conditions are not too unfavorable and that the gins will have a reasonably steady run by the middle of next week.

SHOWERS FALL IN SECTIONS OF FLOYD COUNTY TUESDAY

Showers of rain fell over Floyd County Tuesday of this week, ranging from a light sprinkle to nearly three-quarters of an inch in some sections.

At Floydada one quarter of an inch of rain fell. In some sectional reports it is indicated that an ample supply of moisture fell for the immediate needs of wheat and wheat land.

JUDGE KINDER'S SPEAKING DATE CANCELLED SATURDAY

On account of a death in the family of a close friend, Judge L. S. Kinder's speaking date in Floydada Saturday was cancelled last Friday afternoon. He made an unsuccessful effort to get another speaker to fill the date.

A date when he will speak favoring the candidacy of Governor Al Smith for the presidency at Floydada will be filled later, he told local supporters of the New York executive.

MCCLEURE-GAGE

Mr. Horace Gage, of Pansy, Crosby County, and Miss Bonnie Beatrice McClure, of Mt. Blanco, were united in marriage at Floydada Sunday afternoon last.

Rev. G. W. Tubbs officiated at the wedding ceremony, which was held at his home at 2:30.

The young couple will make their home in Crosby County.

Mrs. W. L. Porter and children, of Shawnee, Okla., returned to their home last week, after a visit of some five weeks here with her parents, Mr. and Mrs. H. T. Smith.

Sixty Floats Parade Before Fair Visitors

Lakeview, Juniors, Pep Squad, Scouts and Camp Fire Girls are Prize Winners.

A parade of over sixty beautifully decorated automobiles and floats passed in review before a cheering throng estimated at 10,000 last Saturday afternoon at 1:30 o'clock as a feature of the fifteenth annual Floyd County Fair. The floats entered by the various communities and organizations of the county were declared to be among the best ever shown on any similar occasion. A characteristic of this year's floats was the idea of representing some phase of the club or community work.

The parade was led by the local fire truck and volunteers, followed by Floydada's uniformed Municipal Band, and the cars that entered in the auto polo and push ball games. Little Dorothy Louise Allen, Juanita Halford and Gladys Watson, acted as special drum majors and guards for the Floydada band.

The Lakeview Community float was awarded first prize in the group of community floats. The Lakeview entry consisted of a large flat float, beautiful decorated in colored crepe paper. A negro (?) chauffeur was at the wheel, and two small children dressed in southern aristocratic attire, rode in the rear of the float.

Campbell community was awarded the second prize for the best float in the community group. The following communities also entered floats in the parade, and each drew favorable comment from the crowd: Starkey, Sand Hill, Center, Harmony Pleasant Valley, Pleasant Hill, Sunset, Lone Star, Roseland, Baker and Fairview.

In the group of floats from the Floydada schools, the Junior class of the high school, was awarded first prize of fifteen dollars, and the senior class second place. The sophomore and freshman classes also entered beautiful floats.

Most unique and original of the entire parade of floats, was a complete boy scout camp, entered by Floydada Boy Scout Troop 447. The camp was pitched on a large truck and truck trailer, and was composed of a boy scout tent, surrounded by a cedar forest. Members of the troop were at work near the camp, each carrying out some phase of scout activities. Russian thistle weeds, grape vines and cedar posts were used to make the float. Scoutmaster W. A. Gound reports that a total of sixty-five cents was spent on constructing the display. They were awarded a prize of ten dollars.

Following the community floats, was Floydada High school's pep squad car decorated in green and white crepe paper. Members of the pep squad, fifty high school girls, marched double file in the parade and sang school songs. This organization was awarded first prize of ten dollars in the organization group.

Floydada Camp Fire Girls were awarded a prize of ten dollars for the best Camp Fire representation in the float.

The Floydada Hardware and Grocery was awarded first ribbon in the group of business floats entered in the parade, and the Scoggins-Dickey Motor Company was presented second award. Approximately thirty automobiles were entered by various business firms of this city.

TWO HUNDRED SEE FIRST Q. PASSENGER AT DOUGHERTY

When the first passenger on the Quanah, Acme & Pacific came out on the extension Monday morning, two hundred Dougherty people were at their dandy new station to see it, and a very considerably proportion of the crowd loaded on and came on in to Floydada for the celebration.

Among the most-pleased at Dougherty was A. T. Swepston, who ranches at Hillcrest. His farm has been 22 or 23 miles from a shipping station ever since he began farming. Now it is only seven and a half miles from a shipping point. Besides saving a great deal on his hauling of various kinds, the new railroad has put his feed lots within 24 hours of two different live stock markets. He usually ships one to three cars of fat feed cattle annually. He made the Floydada committee a very valuable witness in the hearing held here in 1926.

NORTH SIDE CONVENTION AT PRAIRIEVIEW SUNDAY

The North Side Singing Convention will be held Sunday next with Prairie Chapel. The hour for the opening of the convention has been set at 1:30, and everybody is invited to be present. G. C. Hillburn, president of the convention said Monday morning.

Clayton Weathers is secretary of the convention. Large attendance is hoped for by officials of the organization.

Overwork Kept Him From Celebration



Chas. H. Sommer, of St. Louis, pictured above, President of the Quanah, Acme & Pacific Railway Company, was in Floydada in spirit but could not be here in person for the first train celebration Monday. He

cut loose from business affairs entirely last week for several days on orders of his doctor, and could only give his felicitations to the local Chamber of Commerce workers and citizens.

Job Feeding Big Throng Credited to Club Women

Oklahoma City Gets First Car Cattle Over 'Q'

The inauguration of regular outbound scheduled freight service on the Q. A. & P. Railway Company Tuesday morning was marked by the first shipment of a load of cattle over the line, which was forwarded by J. H. White, of northeast of Floydada, and went to the Oklahoma City Market.

Coincident with the opening of the regular scheduled freight service, it was announced that special live stock trains would be operated into Oklahoma City each Tuesday and Saturday, cattle shipped on the Tuesday live stock special arriving for Wednesday morning's market and cattle shipped on Saturday arriving Sunday for Monday morning market.

L. M. Pexton, vice president of the Oklahoma City Stockyards, pointed out to a reporter for The Hesperian Monday that this service would make feeding a much safer and more profitable venture for cattlemen in this area than it has ever been before.

OKLAHOMA CITY STOCKYARDS NOTABLES VISIT FLOYDADA

Two members of the official family of the Oklahoma National Stock Yards Company, visited in Floyd County during the past week. L. M. Pexton, vice president of the company spending Monday here and Chas. Hanson, general live stock agent of the organization, spending Thursday to Monday in this section.

"The new line of the Frisco into your section is going to be a great boon to cattlemen in freight and shrink saving on their shipments," Mr. Pexton said. "The company has announced the inauguration of a special livestock train on Tuesdays and Saturdays of each week that will give overnight service to the Oklahoma City market. Thus a shipment of cattle put on the train at Floydada Tuesday morning will be in the pens at our market for Wednesday morning traders, and Saturday's shipments will go on Monday morning's market."

In addition to their visit to Floydada, the Oklahoma stockyards men also paid visits to other cities and towns of the South Plains area.

'The Plainsman' Brings More Than 700 On Maiden Trip.

Arrival of the first passenger train of the Quanah, Acme & Pacific Railway Company in Floydada Monday from Oklahoma City over its extension from McBain, marked the beginning of a celebration by Floydada people and 3,000 visitors that only ended when the train departed at 6 o'clock the same day, marking the inauguration of out-bound service as well, and dramatically consummating the more than three years of effort on the part of the railway officials and citizens of this section.

700 Passengers Arrive

Delegations from neighboring cities and communities began arriving in Floydada before 11 o'clock in the forenoon of Monday and the town had a holiday appearance by noon, when half or more of the students of the local schools joined the throng and helped in the noisy welcome given the train upon its arrival at 1 o'clock. Plainview, Lockney, Lubbock, Ralls, Crosbyton, Idalou, Quitaque, Lorenzo, Amarillo and other cities of the plains and panhandle had delegations here for the event who came in caravans of automobiles and awaited the arrival of the train and the beginning of the celebration. The Plainview delegation, in particular, was large and well-organized and aided greatly in the events of the afternoon. Judge L. S. Kinder headed the delegation, which numbered in excess of 250 persons, and included one of the bands for which that city is noted.

The list of passengers on the train exceeded expectations by some 200 people, the big event in the history of the towns and cities along the route taking hold of the imagination of the residents and causing a larger delegation from every point than was anticipated. Quanah furnished more than 300 of the more than 700 passengers, the Paducah delegation more than 150, Roaring Springs and Matador each fifty or more, and the smaller communities several each. Paducah and Quanah furnished a dandy band each and these participated in the events of the afternoon, and following the return from the drive over the territory in the late afternoon serenaded for nearly two hours. Both had excellent and well-uniformed bands.

A beautiful day added to the enjoyment of the event for everybody concerned, including local residents, and when the tencoch train pulled by a double header engine and piloted by Roadmaster Wylie, pulled into the station, the blare of the bands and the yells of the crowds made a roisome welcome for the excursionists.

Lunch and Speech-Making As the excursionists alighted, they were greeted with a picnic lunch, prepared in large quantities by the 1922 Study Club. Sandwiches, coffee, cookies, fruit and pie was served each passenger as they stepped off the train and following them came hundreds of other visitors who shared in the plans for the welcome for the first train those responsible for the local entertainment reached a decision against the plan for a barbecue, and the lunch served took the visiting delegations.

Brief ceremonies marked the formal event. Noisy band and formal demonstrations preceded formal welcome to Floydada, led by E. C. Nelson, chairman of the committee on right-of-way for the new line. The inauguration of passenger service over the Quanah, Acme & Pacific line, Tuesday marks the beginning of a day for this section, he told.

Gov. Sweet Visitor In Floydada Tuesday

Ex-Governor Sweet of Colorado was a visitor in Floyd County Tuesday of this week, spending the four hours here with J. B. J. looking at Floyd County cattle in seven speeches at Plainview and Texas on a political speech-tour. He was accompanied by Rt. Rev. Allingham, Episcopalian minister of Amarillo.

The governor and his son were intensely interested in the business in the hill country the mountains in Colorado. The summer bought one of the priced herds of cattle from Armstrong that has ever been delivered from this point.

Governor Sweet spoke at Plainview Monday night and at Lubbock Tuesday night, opposing the candidacy of Al Smith for president.

The Floyd Co. Hesperian

Published Every Thursday By THE HESPERIAN PUBLISHING CO.

HOMER STEEN Editor and Manager

Entered as second class matter April 20th, 1907, at the Post Office at Floydada, Texas, under the Act of Congress of March 3rd, 1879.

SUBSCRIPTION PRICES
 One Year \$1.50
 Six Months .85
 Three Months .45
 In Advance

Advt. Rates Furnished on Application

THE FAIR AS A BUILDER

One must indeed be blind to the things around him not to see the value of a fair such as that just held in Floydada as a builder and as a moulder of closer relationship among the communities of a county. It might be said that such an occasion makes it possible for the communities to get closer together, to see each other as neighborly competitors in excellence, and if they find faults one with another to be in better attitude to call attention to these faults with least danger of causing offense. And then there is the probability that some of the faults we see are not faults at all but just things about the neighbors we couldn't understand.

The fair as a builder of belief in one's own county, as a cementing influence that makes praise of each other come easily and without reservation, and as an opportunity to study the better methods that others employ—such an institution is worth all the expense, time and effort it may entail.

LOOKING TO OKLAHOMA CITY

The visit of the Oklahoma City delegation to Floydada and the East Plains this week, when business leaders of that city visualized the extension of new country which the extension of the Quanah has brought closer to the jobbing and manufacturing centers of the country, also has brought to the minds of the people of this section that they have thus gained access to another sizable market, which should have some advantages for us over the markets we have already enjoyed. Indeed, Floydada, and the entire plains area for that matter, have only enjoyed the markets of the world by making a very considerable detour to get to them with what we have to sell.

After all, transportation and markets have been the things that have built some sections of the country while others have been more backward, and the value to Floyd County of its new rail lines will not come so much in increased values as in closer contacts with markets. The values and development will increase as a result of the better marketing facilities.

If one of the results of the visit of the Oklahoma City delegations is that it will make commerce more active between the east plains and that metropolis of Oklahoma, it will have been worth a great deal to this portion of the plains country.

VOTE FOR AL SMITH

Now that Al Smith, the New York governor, has made a swing around the country, and made speeches away from his native heath, so that the west and middle west may see what manner of man he is, those who have admired him from afar must be glad of the speeches he has made and the manner of man he has given evidence he is.

A Democrat who takes his without prefix or suffix, whose candidate has been praised for his statesmanship by the great of the earth, whose private life has been searched with a fine comb for twenty-five years by political enemies and admitted to be worthy—a Democrat who has such a candidate as a standard bearer, will be glad to go down to defeat if necessary in the wake of such a man.

What the people in a state of the political complexion of Texas can't see, and what will likely result in the state giving Hoover and Curtis its electoral vote, is that it is not Al Smith who is taking orders but the Republican candidate. Smith is the statesman who is going up and down the hand proclaiming his stand on political questions of the day, Hoover the well meaning business man who is letting his organization say what ought to be said and soft-peddle the rest.

DIMMITT IS GROWING

Dimmitt, county seat of Castro county, is a fine little city and has been growing satisfactorily the past few years. One of the major building activities under way there now, according to James W. Jones, former Floydada resident now living at Dimmitt, is the town is the terminus of the new western extension of the Fort Worth & Denver South Plains lines. It is the trading center for a wide territory.

POSSIBILITIES IN A CREAMERY

Although the larger companies which do a business in manufactured cream products advise against the cream factories, or creameries, they are termed, some of the best operators over the territory find the creameries they are operating profitable to the owner of the plant as well as to the community in the territory which they

serve. The number of people such a plant costing \$25,000 will employ, for it is said two men a plant costing \$25,000 will employ, that will use all the cream produced in the territory and even more. In fact, some of the cream marketed in Floydada and down the Quanah line are produced in an Oklahoma

plant that is open less than a half dozen men. The principal direct advantage in a creamery is the employment it will give indirectly and the increase in wealth it will bring to the territory surrounding it, on account of the impetus to the dairy industry. One of the serious things wrong in this section is the very small percentage of the feed crop that goes on the market in the form of live stock, cream, etc., which a creamery would have a tendency to relieve.

'Round The Square

BY OLD BATTLEAXE

Round the square has indeed graduated into the city class. When a town has something in the way of development under way all the time, it is surely out of the little town class. No sooner has the Floyd County Fair drawn to a successful close, than the Q. A. & P.'s first passenger train, the largest ever driven into this section, drives into Floydada with a big celebration. That's up-town stuff.

But, in all this development, and planning for the future, let's enjoy what we have today. Some people are so busy planning for tomorrow that they never get time for the things which yesterday they planned for today.

And this town is no mere village, either. A village used to be a wide place in the road. Now all the wide places in the road are filling stations.

Did you know that of the five to eight thousand people who witnessed the Floyd County Fair fireworks display last Friday and Saturday nights about three fourths of them, had never seen real fireworks before? That's a characteristic of the Floyd County Fair. They are always educating and offering something new.

One fellow round the square, a dry goodsman, says that if garters were worn around the neck, we'd have to have longer socks.

Floydada's football team is showing wonderful improvement. They are working hard to develop a championship team, and with the excellent coaching of Coach Jones, they may develop into the best this school has ever had. Their weak point is lack of experience, and to keep up their pep and winning spirit, they will need lots of side-line backing. Let's help them win every game this season by giving them side-line help.

One of the fellows who came in from Oklahoma City over the big special train Monday tells this one on a little girl on the train: The child had been crying most of the afternoon, and when told to go to

sleep said that she was afraid. "Now honey, there's no reason to be afraid" the mother told her, "Mother and Daddy will watch over you, and you must remember that God will watch you, too." Still, the little brat just kept a squalling. After a while she said, "Mother are you there?" "Great guns, yes," came the gruff voice of an irritated passenger. "We are all here, Mother, daddy, brother, sister, and everybody, so go to sleep."

The child was silent a few minutes. Then: "Mother, was that God?"

A few years ago, few people realized just how much the new Q. A. & P. railroad would mean to Floyd County. A year from today, they will realize that it has been the biggest thing that has happened here in many years.

By heck, Old Battleaxe is so pleased with the Floyd County Fair, the new railroad, and the new pavement under way that he is not going to say a single word about the Saliva Slingers or Non-Pavers this week.

But say, we noticed that we are not the only ones ashamed of the unpaved street round the square. When the Oklahoma City trippers visited this city Monday, the officials were so ashamed of this unsightly street, that they parked cars at the edge to keep them from seeing the unpaved rim. "But, Boy Howdy, It won't be long now." Gee!

FLOYD COUNTY 14 YEARS AGO

News items taken from files of the Floyd County Hesperian published in Floydada fourteen years ago.

ISSUE OF OCT. 8, 1914.

Line-ups for the Fat and Lean ball game Saturday is as follows: Fats, Nathe McCleskey, Henry Haines, Scott King, Bert Smith, Robt. Jones, J. A. Price, Homer Steen, Elder Morris, J. U. Borum, C. C. McMillan, E. C. Nelson, Horace Owens and I. D. Gamble; Leans: Frank Moore, Jim Donaldson, Chas. Featherston, W. D. Biles, Bud Bishop, Sam Goslee, Sam Beard, Chas. Veale, I. C. Surginer, J. M. Hughes, Earl French and T. B. Triplett. The Fats and Leans will "tie-in" Saturday during the Floyd County Fair.

Ohmer Kirk, who is teaching school this year at Lockney, was over Saturday and Sunday, visiting with his parents.

The second elevator to be constructed in Floydada combing the essential features of quick handling of grain, with a capacity of several carloads, has just been completed by the

Marshall Grain Company. Mr. Marshall had the new elevator running the first of this week.

Announcements are made in this issue of the New 1915 model Briscoe car, W. R. Cope and E. T. Green, salesmen at the Main Garage. The new car includes all the late inventions, such as the electric self-starter, electric light generator, one man top and boot, speedometer, high tension magnet, full floating rear axle, and many other features. The car sells for \$785, f. o. b. factory.

FINKNER MOTOR COMPANY PREPARING DISPLAY ROOM

Salesrooms of the Geo. Finkner Motor Company are being remodeled this week, and a more ample display room for Willys-Knight and Whippet automobiles being arranged. A display room 32 by 25 feet, has been partitioned off, from the rear of the building and this space reserved for car display only.

The interior of the room has been re-painted with white enamel, and plans are to paint and re-finish the concrete floors. Illustrations and sales charts are hung on the walls.

Dr. W. H. Alexander
 INTERNAL
 Medicine and Electrotherapy
 Readhimer Building
 Telephone 93; Residence No.260

FLOYDADA PEOPLE HEAR NORRIS

Among those from Floydada who went to Plainview Tuesday night of last week to hear Rev. J. Frank Norris, pastor of the First Baptist Church of Fort Worth, speak in opposition to Al Smith's candidacy for the Presidency of the United States were:

Rev. Ben Hardy, Rev. and Mrs. F. L. Davis; Mr. and Mrs. Fred Bell, F. G. Stegall, Noble House, Mrs. Sam Berry, Rev. Green B. Patterson, Mrs. Ama Smalley, J. J. Foster, Clarence Foster and family and Mr. and Mrs. T. S. Stevenson.

He: "I say, you've been out worse-looking fellows than I, ha you?"
 She: "I heard you the first time I was trying to think."

He: "You've been out with worse-looking fellows than I am, haven't you?"
 No answer.

HAWK BRAND WORK CLOTHES

THEY WEAR LONGER

Sold By—
MARTIN DRY GOODS CO.
 Floydada, Texas

1914 1928

Marshall Buys Grain

--AT--

Public Scales
 Since 1914

CASH FOR MILO

DAY PHONE ----- 147
 NIGHT PHONE ---- 145

Moving Draying, Packing, Etc. Brick Storage Building 2 Doors North of The Floyd County National Bank.

PITTS TRANSFER & STORAGE CO.

EXPRESS AND FREIGHT

Truck Line to Plainview

We crate and ship to your order. Telephone Nos. 207 and 138

SUDDEN SERVICE

What We Owe You

We realize that we owe it to you and to the public generally to give the most telephone service and the best at the lowest possible cost. This we are seeking to do.

Your service today is faster and more accurate than it was a year ago. Last year 100,000 more local calls per day were completed on the first attempt than in 1926. The average time for handling long distance calls has been reduced from over 4 minutes to almost 2 minutes.

We owe it to you to continually extend and improve telephone service just as we owe it to our stockholders to safeguard their savings and to insure an adequate return on their investment.

Southwestern Bell Telephone Co.

for Economical Transportation

CHEVROLET

And now, a **Million Chevrolets** Since Jan 1st

First Choice of the Nation for 1928

The COACH \$585

The Touring or Roadster.....\$495
 The Coupe.....\$595
 The 4-Door Sedan.....\$675
 The Convertible Sport Cabriolet.....\$695
 The Imperial Landau.....\$715
 Utility Truck.....\$520 (Chassis Only)
 Light Delivery.....\$375 (Chassis Only)

All prices f. o. b. Flint, Michigan

Check Chevrolet Delivered Prices. They include the lowest handling and financing charges available.

Sweeping month after month to even more spectacular heights of popularity . . . making and breaking new records of success with impressive regularity throughout the year—

—the Bigger and Better Chevrolet has been the greatest sensation of America's greatest industry!

And never was a success more soundly deserved—for the Bigger and Better Chevrolet embodies fourteen years of continuous progress in the building of quality automobiles and embodies elements of beauty, performance, dependability, long life and economy never before combined in any low-priced automobile.

Come in! Get a demonstration of this truly remarkable automobile! Learn why it has become first choice of the nation for 1928.

MOTOR SUPPLY CO.
 Floydada, Texas

F. C. HARMON
 Licensed Undertaker
 Modern Equipment;
 Hearse and Ambulance
 SERVICE ANYWHERE
 Phones: Day 242; Nights 174 and 259-W

Drs. Smith & Smith
 Sanitarium
 FOR SURGICAL CASES
 Phone No. 177
 Floydada, Texas

Dr. W. M. Houghton
 GENERAL PRACTICE
 Diseases of Women and Children a Specialty
 OFFICE IN READHIMER BUILDING
 PHONES: Residence 259 Office 256

KENNETH BAIN
 LAWYER
 Rooms 12 and 13
 First National Bank Building
 General Practice

A. C. Goen M. Polk Goen
 Phone 170
Goen & Goen
 Real Estate Loans, and Insurance
 6 Per Cent Farm Loans
 Farm Lands, Ranches, and City Property
 We handle city property and keep it rented. We render and pay taxes for non-residents. Would appreciate your Fire Insurance Business.
 Boothe Building West California Street

E. P. NELSON
 FIRE INSURANCE AGENCY
 WILL APPRECIATE YOUR BUSINESS
 Every detail of your fire insurance requirements will be carefully handled if entrusted to this agency.
 OFFICE—ROOM 8
 FIRST NATIONAL BANK BUILDING, FLOYDADA

Mathews & Folley
 LAWYERS
 Readhimer Building
 FLOYDADA, TEXAS

M. FROST, D. C.
 3-YEAR CARVER GRADUATE
Chiropractor
 Licensed under Kansas and Arizona Laws
 LADY ATTENDANT
 Suite 101, Surginer Bldg., North Side of Square
 OFFICE PHONE 175

H. Z. Pennington
 PHYSICIAN AND SURGEON
 Telephones: Residence 330 Office 73

Just Like An Ostrich

A medical authority says that a person who tries to cover up skin blemishes and pimples with toilet creams and powders is just as foolish as an ostrich that buries its head in the sand to avoid danger. Skin eruptions are nature's warning that constipation is throwing poisons into your blood stream and weakening your whole constitution. Remove the constipated condition and you will strengthen your system against disease and clear up your disfigured skin. The best way to do this is with a course of Ierbine, the vegetable medicine that acts naturally and easily, which you can get at Floydada Drug Co.

QUALITY AT LOW COST

Center News

ter, Oct. 2.—Well the fair has and is now a part of Floyd County's history and we feel it was a creditable epoch in our history, too, from the comments we heard from outsiders as well as from here folk.

A goodly number of Center folk attended the Fifth Sunday meeting at Lakeview Sunday.

W. C. Spence is visiting his sons, A. L. and C. O. Spence this week. He has just returned from a visit with his sister in South Texas, also his children who live along his route.

Mr. Noland and family spent Sunday at the Jackson home.

Miss Effie Noland entertained with a birthday slumber party Saturday night. Those present were Misses Thelma Jackson, Alma Montomery and Doris Spence.

J. W. Cole spent Saturday night with Hansel McAda and they took Sunday dinner with Mr. and Mrs. A. A. Tubbs.

Mr. and Mrs. Jernigan took Sunday dinner at the A. A. Tubbs home.

Mr. and Mrs. J. Q. Carpenter and

Mr. and Mrs. Leo Frizzell spent last Wednesday at Lubbock at the bedside of a daughter of Mr. Elam Carpenter's, who underwent an operation for appendicitis and was not doing very well.

Mr. and Mrs. W. L. McAda and son, Grady, spent Sunday with Mr. and Mrs. Van McAda. Mrs. Van McAda is very ill at this time.

Ruth Jordan was on the sick list and missed school today.

Mr. and Mrs. Felix Fred and Mrs. Arthur Caldwell, of Lubbock, spent last Thursday week with Mr. and Mrs. C. O. Spence. The ladies are sisters.

Campbell News

Campbell, Oct. 3.—Cotton picking time is here again. Some have already begun.

Grandma Dunn returned Sunday from Jones County, where she has been visiting relatives.

M. O. Wilson and J. T. Thomas of Gainesville are visiting Mr. Wilson's sister, Mrs. E. J. Womack.

Mr. and Mrs. Glover spent Sunday

with their son, Joe Glover and family.

Mr. and Mrs. Jewel Tinnin, of Fairview, spent Sunday with Mr. and Mrs. Joe Smith.

Miss Lou Ann Garner spent Saturday night with Opal Owens.

Miss Bertha Warren and Cary Bernice Garner spent Saturday night with Louvenia Perry.

Charlie Warren spent the week end with his cousins of Lakeview.

Miss Bernice Murray spent Sunday with Rena Mae Lyles.

Mr. and Mrs. Felix Ross spent Monday with Mr. and Mrs. P. Q. Haney.

Miss Mattie D. Garner spent Sunday with Mr. and Mrs. Ben Mullia.

James Owens and son, of Dougherty, spent Monday night with his parents, Mr. and Mrs. W. H. Owens.

Miss Vena Mae Taylor, of Hereford is visiting Mr. and Mrs. Henry Burgett.

Bro. Tubbs will fill his regular appointment Sunday. Our Sunday school will be at 10 a. m.

Typewriter carbon, ribbons and second sheets at Hesperian Office.

WE WANT TO ANNOUNCE TO OUR FRIENDS AND CUSTOMERS

THAT

We Are Ready For Ginning

Our gin was built last season. The latest and most modern machinery for handling all grades of cotton has been installed. We are fully prepared to clean the burrs and seed, thus insuring a good turn-out and a first class sample.

We have a Crew of Experienced Gin Men

J. P. Davidson is our cotton buyer. We have both the round and square bale presses and are in a position to give our customers the highest market prices for their cotton at all times.

We are sure that no gin can give a better sample or a larger turn-out than ours, and that no one will appreciate your business more.

We are here to serve.

THE LON DAVIS GIN

Telephon 280

Floydada, Texas

An Invitation---

To visit our new Whippet and Willys-Knight Sales Room. We have these cars displayed in such a way that you will really appreciate the beauty of these wonderful cars.

And when you have once driven them, then you will appreciate their superiority in economy, performance and durability.

Repair Work

We do First Class repair work on all Cars. Bring your car here if you want a good job of greasing done. We can do it right. We also have tires and tubes.

We want to urge that you come in today, and take one of our cars for a demonstration drive. You will like them.

Geo. M. Finkner Motor Company

Whippet, Willys-Knight Dealers

SAFETY DEPOSIT BOXES

We are still anxious to serve our friends and customers with our new safety deposit box protective service. We have erected a large and expensive fire-proof vault for the protection of your valuables, and invite you to use this new banking service.

Annual Rental Only \$3.00 to \$6.50

Floyd County National Bank

OFFICERS AND DIRECTORS:

- C. Surginer, Chairman of the Board
- T. S. Stevenson, President
- Jas. K. Green, Active Vice President and Cashier
- J. Clements, Assistant Cashier
- Mrs. May M. Garrett, Assistant Cashier.
- Leslie Surginer, Assistant Cashier
- Joe Breed, Assistant Cashier.

DIRECTORS:

- C. SURGINER
- JAS. K. GREEN
- S. A. GREER
- R. E. L. MUNCY
- T. S. STEVENSON

Hillcrest News

Hillcrest, Oct. 1.—Most everyone from here attended the Floyd County Fair at Floydada Saturday.

Oscar Hix and family and Orval Hix are visiting this week with relatives in Foard County.

Among those from here who met the first Q. A. & P. passenger train at Dougherty Monday were A. T. Swepston and Mr. and Mrs. L. H. Lewis.

Little J. L. Jones has been sick but is better now.

Dolph and Clark Hopkins are attending the South Plains Fair in Lubbock this week.

Mr. and Mrs. J. E. Swepston were visitors Saturday night and Sunday in the home of his brother, A. T. Swepston. Their home is in Tulla.

Everything is well at school, but the attendance is dropping considerably since the need for the children to help gather the crops is growing.

Harmony News

Harmony, Oct. 2.—After a great week of the fair and the Q. A. & P. railroad celebration the farmers are very busy harvesting the crops which have ripened very fast. We are all pleased the way the weeks affairs have gone off and we want to thank the Floydada people for the courtesies shown us during the fair, especially the Floyd County National Bank for the feed they gave us last Wednesday.

About twenty-five people from this community attended the Q. A. & P. first train celebration Monday and all enjoyed the day.

Wade Owens is here from Kress on a business trip. He is also visiting in the home of his brother-in-law, R. B. Gary.

Sunday School was well attended Sunday and the Epworth League had the regular program Sunday night.

Providence News

Providence, Oct. 1.—Mrs. Cleve Hartman, of Hereford, was a pleasant caller at the C. W. Cowart and McClaughlin homes last week. She was the guest of Mrs. Wm. Hatchett of near Lone Star.

Mrs. Ella Godbold and little daughter returned to their home in Arizona after a brief visit with home folk here.

Mrs. Lydia Walker has returned to her home in Oklahoma after a short stay with her parents, Mr. and Mrs. Sammans.

Mr. and Mrs. McLaughlin visited in Floydada Wednesday of last week. W. A. Boedeker and son also his father were in Plainview last Saturday.

Mr. and Mrs. McLaughlin and two sons were shopping in Plainview Saturday.

Mrs. Gene McCullough went to Plainview for treatment Saturday. Fine weather still prevails here which we are glad to have.

Hillcrest News

Arthur Heymyer and wife were visitors at the fair at Plainview last Saturday.

Cecil Harbour, of Spillman, stopped off and spent a few days with old friends, the Davenport brothers, while enroute home last week.

Mesdames Wright, Kennedy and Bennet and Miss Crouch went to Floydada Wednesday of last week to accompany the club exhibit to the fair.

J. W. and Bob Davenport were called to Chandler Tuesday morning on account of the death of their oldest brother, who died at 9 o'clock that morning. They were accompanied by Mr. Edelman, of Prairieview.

Vernon Eubank of Paducah has been employed as pharmacist at the Woody Drug store. He will arrive here Sunday.

Liberty News

Liberty, Oct. 2.—The farmers of this community are busy heading their maize, running binders and sowing wheat.

Miss Edna Lee Box spent Saturday night and Sunday with Misses Erna and Berma Bean.

Miss Grace Feagan is teaching school at Wallis.

Scott McCormick spent Saturday night with Bailey Bean.

Miss Verna Dunlap was the guest of Miss Willie Gilley Sunday.

Miss Altha Strickland, Mr. and Mrs. Fred Beard and Clarence Strickland were the guests of Mr. and Mrs. Claud Hammit Sunday.

Miss Opal Thornton spent Saturday night in Floydada.

Mr. and Mrs. C. A. Strickland and children took Sunday dinner in the J. V. Gilley home.

Mr. and Mrs. Sam Box and children spent Sunday afternoon with Mr. and Mrs. F. R. Bean.

Mrs. B. R. Lybrand and children visited school Thursday afternoon.

Ruth McCormick spent Friday night with Dorene Anderson.

Clarence Reeves, of the Cedar Hill Community, spent Sunday with Eugene and Carl Lee Gilley.

Clifton Gilley spent Sunday with his sister, Mrs. Claud Hammit.

Mr. and Mrs. Jim Anderson were visitors at South Plains Monday afternoon.

Mr. and Mrs. Jim McGuffee and daughters attended the singing at Flomot Sunday.

Andrew Jetton was a Lockney visitor Monday.

Mrs. W. L. Boerner returned Wednesday from Marlin Wells where she was with her daughter, Mrs. W. S. Posey of Lubbock who has been taking treatments there.

Mrs. L. E. Higginbotham, of Fort Worth, and Miss Belle Brown of Estacado, were here from Wednesday to Saturday of last week on a visit with Mrs. Higginbotham's nephew, Bob Smith and wife, during the Floyd County Fair.

Mrs. R. M. McCauley and daughter, Mrs. Calvin Steen returned Monday from Temple where Mrs. McCauley underwent an operation for goiter in the Scott & White Sanitarium. They were gone four weeks, visiting on their way home with friends and relatives at Waco, Dallas and Wichita Falls.

Mr. and Mrs. C. A. Mullins spent the earlier part of last week at Dallas.

F. H. S. Pep Squad Is Declared Best Ever

Organization of Fifty High School Girls Helps to Create School Interests.

"Peppiest pep to the Class A degree" is the way the "Green Peppers," Floydada High School's snap squad have expressed their feeling towards school and business activities during the past two weeks. This organization, declared to be the best squad of "Interest Compellers" ever organized by the Floydada Schools, is composed of fifty uniformed high school girls. Miss Lucille Hill, Home Economics teacher at the high school, is sponsor and director of the group.

"The Green Peppers" made their first appearance two weeks ago at the Floydada-Roaring Springs football game. Since that time, they have staged several "pep rallies" and have helped entertain visitors to Floydada a number of times. They marched double file in the parade of floats on Saturday afternoon of the Floyd County Fair, and this organization, together with their float, was awarded first prize in the organizations group. The pep squad float was decorated in the high school colors, Green and White, and carried the yell leaders, who directed the songs and yells while marching.

Compliments galore were flung to the pep squad members Monday of this week when they helped to entertain the guests who visited here from eastern cities, and who arrived on the Q. A. & P. railway's first passenger train. Especially composed songs and yells were sung and given as the train arrived and while the guests ate lunch. The squad then joined in with the parade, and in perfect step, marched and sang with the bands. Delegates from practically every city represented here Monday, were heard to compliment the pep squad.

"The Green Peppers" will demonstrate their lung power at each of the high school whirlwind football games this season, and are standing at readiness anytime the business organization wish to call upon them, Miss Hill states. The members of the squad are uniformed at present in a solid white outfit, but expect to have new uniforms this week-end. They will be dressed in green and white striped blazers, white skirts, and green and white bell-hop caps.

INTERSCHOLASTIC LEAGUE DEBATE SUBJECT CHOSEN

Austin, Texas, Oct. 2.—Selected arguments pro and con and affirmative and negative briefs are included in the material for the Interscholastic League debates which is now available at the State office of the League, according to Roy Bedichek, chief of the University of Texas League Bureau. The subject for debate in Texas, Nebraska, Missouri, Arkansas and Tennessee will be: Resolved: That the English Cabinet system of legislature is more efficient in England than the American Committee system in the United States.

SOUTH PLAINS NEWS

South Plains, Oct. 2.—Mrs. Burns and children attended the fair at Floydada Saturday.

Mrs. Elmer Thornton was ill last week but is better at this writing.

Acar Jackson is away on business. Mr. Myers and children have gone to Quitaque to pick cotton.

The South Plains Cotton Gin be in operation just as soon as ton is ready to pick. The cotton rather slow in opening on account so much rain.

Most of the farmers are t with their wheat sowing and heading maize this week.

Mr. Agee and family have gone Gasoline to pick cotton.

Sunset News

Sunset, Oct. 2.—Rev. Cal McGehey preached at morning and evening services Sunday. Sunday School is progressing nicely.

Sunset was represented at the Floyd county fair with a good attendance.

Mr. and Mrs. Glen Smith spent Sunday with Mr. and Mrs. Charles Knierim and family.

Misses Oleta and Neva Orman and Eddie Mae Gilliland spent the week end at home.

Claud Myers and Ray Burns returned home the latter part of last week from Oklahoma.

Argus Burcham spent Sunday with Orvus Shearer.

Mr. and Mrs. W. F. Cook motored to their farm near Kress Sunday afternoon.

Raymond Upton and Virgil Orman spent Sunday with Cecil Cook.

Armon Milton spent Friday night with Pete Edgmon.

Mrs. J. G. Shearer spent Monday with Mrs. G. D. Hawkins.

Miss Edith Wooten visited with Pauline Gilliland Sunday.

Oscar McGavock spent Sunday with Andrew Edwards.

Mandie Wooten spent Saturday with Ruth Childress.

Ruth Childress visited Lola Knierim Monday night.

Miss Johnnie Lyles visited Leona Wooten Sunday.

Mr. and Mrs. Walter Wood and family visited with Mr. and Mrs. R. M. Haverty Sunday.

NOTICE

Burl Bedford, City Secretary of the City of Floydada, Texas, do hereby give notice of the things contained in the following ordinance.

ORDINANCE NO. 128

ORDINANCE OF THE CITY OF FLOYDADA, TEXAS, DETERMINING THE NECESSITY OF LEVYING AN ASSESSMENT AGAINST THE PROPERTY AND THE OWNERS THEREOF ABUTTING UPON A PORTION OF MISSISSIPPI STREET IN THE CITY OF FLOYDADA, TEXAS, FOR A PART OF THE COST OF IMPROVING SAID STREET, AND FIXING A TIME FOR A HEARING OF THE OWNERS, OR AGENTS OF SAID OWNERS, OF SAID PROPERTY, OR OF ANY PERSONS INTERESTED IN SAID IMPROVEMENTS, AS PROVIDED BY CHAPTER 106, TITLE STREET AND ALLEY IMPROVEMENTS, GENERAL AND SPECIAL LAWS OF TEXAS PASSED BY THE FORTIETH LEGISLATURE AT THE FIRST CALLED SESSION, MAY 9TH TO JUNE 7TH 1927, AND THE ORDINANCE OF THE CITY OF FLOYDADA, AND DIRECTING THE CITY SECRETARY TO GIVE NOTICE OF SAID HEARING, AND EXAMINING AND APPROVING THE STATEMENT OR REPORT OF THE CITY ENGINEER, AND DECLARING AN EMERGENCY.

BE OBTAINED BY THE CITY OF FLOYDADA: That, whereas, the City Council of the City of Floydada, Texas, has heretofore by ordinance duly passed and approved ordered the improvements of the following Streets, to-wit:

- Mississippi Street, from the West property line of Main Street to the West property line of Fifth Street.
Mississippi Street from the West property line of Fifth Street to the West property line of Fourth Street.
Mississippi Street from the West property line of Fourth Street to the West property line of Third Street.
Mississippi Street from the West property line of Third Street to the West property line of Second Street.
Mississippi Street from the West property line of Second Street to the West property line of First Street.
Mississippi Street from the West property line of First Street to a point 150 feet West of the West property line of White Street.

AND WHEREAS; plans and specifications for the improvements of said streets have been duly prepared and approved as required by the statutes and the ordinance of the City of Floydada; and

WHEREAS; as required by the said ordinance and statutes, after advertising for bids; the work of improving said streets between the points above named has been let to the L. H. Lacy Co., to improve with a six inch reinforced concrete pavement, including excavating, grading, and filling, and concrete curbs and gutters, and other necessary work in connection therewith, as provided by the said plans and specifications; and

WHEREAS; a written contract has been entered into by and between the City of Floydada and L. H. Lacy Co. on the 11th day of September A. D. 1928, for the construction of said improvements; and

WHEREAS; the said L. H. Lacy Co. has duly given bond for the performance of said work, and the City Engineer of Floydada has, in accordance with the ordinance and the statutes, filed his report with the City Council as to the cost of said improvements and as to all other matters required by ordinance and statutes;

Now, therefore, BE IT OBTAINED BY THE CITY OF FLOYDADA: That the report or statement of the City Engineer filed with the City Council, describing the abutting property and giving the names of property owners and number of front feet and the cost of the improvement chargeable against each property and its owner, having been duly examined, is hereby approved.

BE IT FURTHER OBTAINED; That the City Council does hereby determine to assess part of the cost of said improvements against the owners of the property abutting thereon, and against their property and that the total cost of said improvements shall be paid and defrayed as follows:

(a) The total cost of curbs and walks shall be assessed against the abutting property and the owners thereof.

(b) The City of Floydada shall pay an amount equal to the cost of improving all intersections of said street with other streets and alleys, said amount being equal to or greater than one-tenth of the total cost of said improvements (except cost of curbs and walks)

(c) After deducting the proportion of the costs provided in sub-sections (a) and (b) above the total remaining cost of such improvements shall be paid by the owners of property abutting upon said streets named to be improved, and shall be assessed against them and their respective parcels of land abutting on said streets, and said assessments shall be made in accordance with the provisions of Chapter 106, Title Street and Alley Improvements, General and Special Laws of Texas passed by the Fortieth Legislature at the First Called Session, May 9th to June 7th 1927, and the ordinances of the City of Floydada. The said assessment shall be made after the notice to such property owners and all interested persons, and the hearing hereinafter mentioned, and that the said portion of the cost of improvements to be assessed against such property owners and their property shall be in accordance with the Front Foot Rule or Plan, in the proportion that the frontage of the property of each owner bears to the whole frontage of the property to be improved; provided, that after such hearing, if such plan of apportionment be found to be not just and equitable in particular instances, the City Council shall so apportion all said costs as to produce a substantial equality between all such property owners abutting upon said portion of said streets, having in view the enhanced value of that property and the benefits derived from such improvements, and the burdens imposed upon them by such assessment, and that in no event shall any assessment be made against any owner or his property in excess of the enhanced value of such property by reason of such improvement. That the proportionate cost of such improvement which is contemplated to be assessed against such owners and their properties shall become due and payable as follows:

One tenth payable within sixty (60) days after completion of the work and its acceptance by the City of Floydada, Texas;

- One tenth payable one year after said date of acceptance;
One tenth payable two years after said date of acceptance;
One tenth payable three years after said date of acceptance;
One tenth payable four years after said date of acceptance;
One tenth payable five years after said date of acceptance;
One tenth payable six years after said date of acceptance;
One tenth payable seven years after said date of acceptance;
One tenth payable eight years after said date of acceptance;

One tenth payable nine years after said date of acceptance together with interest from said date of acceptance at the rate of eight (8) per cent per annum, and reasonable attorney's fees and all costs of collection in case of default. That the total proportionate part of such improvement which is contemplated to be assessed against such owners and their respective properties, and the names of the owners of property abutting upon said streets aforesaid, properties to be improved and the description of that property, and the several amounts proposed to be assessed against them respectively for paving and for curb and gutter, and the grand total thereof; which said sum does not and shall not in any event exceed nine tenths of the total costs of said improvements, except curbs, is as follows:

UNIT NO. 1 PAVING ASSESSMENT

MISSISSIPPI STREET FROM W. LINE MAIN ST. TO W. LINE FIFTH ST. ROADWAY 50 FEET

6 INCH REINFORCED CONCRETE PAVEMENT

Table with columns: PROPERTY OWNER, LOCATION OF PROPERTY, Lot, Blk. No., Ft., Rate, Cost, Lin.Ft., Cost Assessed. Lists property owners like J. H. Shurbet, ALLEY, Mrs. Rosa Childers, etc.

TOTALS 750 5819.34 824.2 329.68 6149.02
Total Cost Improvements (Except Curbs) \$7,819.34
Part Cost to be Paid by City 2,000.00
Part Cost to be Paid by Property Owners 5,819.34
Cost Curbs 824.2 lin. ft. @ 0.40 329.68

UNIT NO. 2 PAVING ASSESSMENT

MISSISSIPPI STREET FROM W. LINE FIFTH ST. TO W. LINE FOURTH ST. ROADWAY 40 FEET

6 INCH REINFORCED CONCRETE PAVEMENT

Table with columns: PROPERTY OWNER, LOCATION OF PROPERTY, Lot, Blk. No., Ft., Rate, Cost, Lin.Ft., Cost Assessed. Lists property owners like J. P. Looney, R. Fred Brown, etc.

TOTALS 800 5009.49 900.8 360.32 5369.81
Total Cost Improvements (Except Curbs) \$6,315.61
Part Cost to be Paid by City 1,306.12
Part Cost to be Paid by the Property Owners 5,009.49
Cost Curbs 900.8 lin. ft. @ 0.40 360.32

UNIT NO. 3 PAVING ASSESSMENT

MISSISSIPPI STREET FROM W. LINE FOURTH ST. TO W. LINE THIRD ST. ROADWAY 40 FEET

6 INCH REINFORCED CONCRETE PAVEMENT

Table with columns: PROPERTY OWNER, LOCATION OF PROPERTY, Lot, Blk. No., Ft., Rate, Cost, Lin.Ft., Cost Assessed. Lists property owners like W. Maxwell, M. J. Maxwell, etc.

TOTALS 800 5009.49 900.8 360.32 5369.81
Total Cost Improvements (Except Curbs) \$6,315.61
Part Cost to be Paid by City 1,306.12
Part Cost to be Paid by the Property Owners 5,009.49
Cost Curbs 900.8 lin. ft. @ 0.40 360.32

PROPERTY OWNER LOCATION OF PROPERTY

Table with columns: Lot, Blk. No., Ft., Rate, Cost, Lin.Ft., Cost Assessed. Lists property owners like L. G. Withers, Mrs. N. A. Armstrong, etc.

TOTALS 800 5009.49 900.8 360.32 5369.81
Total Cost Improvements (Except Curbs) \$6,315.61
Part Cost to be Paid by City 1,306.12
Part Cost to be Paid by Property Owners 5,009.49
Cost Curbs 900.8 lin. ft. @ 0.40 360.32

UNIT NO. 4 PAVING ASSESSMENT

MISSISSIPPI STREET FROM W. LINE THIRD ST. TO W. LINE SECOND ST. ROADWAY 40 FEET

6 INCH REINFORCED CONCRETE PAVEMENT

Table with columns: PROPERTY OWNER, LOCATION OF PROPERTY, Lot, Blk. No., Ft., Rate, Cost, Lin.Ft., Cost Assessed. Lists property owners like Mrs. R. L. Ewing, J. E. Swinson, etc.

TOTALS 800 5009.49 900.8 360.32 5369.81
Total Cost Improvements (Except Curbs) \$6,315.61
Part Cost to be Paid by City 1,306.12
Part Cost to be Paid by Property Owners 5,009.49
Cost Curbs 900.8 lin. ft. @ 0.40 360.32

UNIT NO. 5 PAVING ASSESSMENT

MISSISSIPPI STREET FROM W. LINE SECOND ST. TO W. LINE FIRST ST. ROADWAY 40 FEET

6 INCH REINFORCED CONCRETE PAVEMENT

Table with columns: PROPERTY OWNER, LOCATION OF PROPERTY, Lot, Blk. No., Ft., Rate, Cost, Lin.Ft., Cost Assessed. Lists property owners like Mrs. Joe A. Montgomery, J. A. Price, etc.

TOTALS 800 5009.49 900.8 360.32 5369.81
Total Cost Improvements (Except Curbs) \$6,315.61
Part Cost to be Paid by City 1,306.12
Part Cost to be Paid by Property Owners 5,009.49
Cost Curbs 900.8 lin. ft. @ 0.40 360.32

UNIT NO. 6 PAVING ASSESSMENT

MISSISSIPPI STREET FROM W. LINE FIRST ST. TO 150 FT. W. OF WHITE ST. ROADWAY 40 FT.

6 INCH REINFORCED CONCRETE PAVEMENT

Table with columns: PROPERTY OWNER, LOCATION OF PROPERTY, Lot, Blk. No., Ft., Rate, Cost, Lin.Ft., Cost Assessed. Lists property owners like Roy L. Fawver, Jas. M. Hughes, etc.

TOTALS 1100 6888.05 1251.2 500.48 7388.53
Total Cost Improvements (Except Curbs) \$8,194.17
Part Cost to be Paid by City 1,306.12
Part Cost to be Paid by Property Owners 6,888.05
Cost Curbs 1251.2 lin. ft. @ 0.40 500.48

That a hearing shall be given to said owners, their agents and attorneys, and any person or persons interested in said improvements, before the City Council of the City of Floydada as provided by the provisions of Chapter 106, Title Street and Alley Improvements, General and Special Laws of Texas passed by the Fortieth Legislature at the First Called Session, May 9th to June 7th, 1927, and the ordinance of the City of Floydada, which said hearing shall be had on the 19th day of October, 1928, at 9 o'clock in the City Hall in the City of Floydada, Texas, and which hearing shall be continued from day to day and from time to time, as may be necessary to give all said property owners, their agents or attorneys, and any interested person or persons the right to appear and be heard in any manner concerning the said improvements or said assessments, or the benefits thereof to their property, or to any other matter of things in connection therewith, or to contest said assessment, and at such hearings a full and fair opportunity shall be extended to said property owners, their agents or attorneys, and to all interested persons, to be heard with respect to such improvements.

That after the conclusion of the hearing above mentioned such sum or sums as may be determined by the City Council to be payable by said property owners shall be assessed against them respectively, and against their respective properties, by ordinance or ordinances, in the manner prescribed by the statutes and ordinances above mentioned.

That the City Secretary of the City of Floydada is hereby directed to give notice to said property owners, their agents or attorneys, and to all interested persons, of said hearing, as provided by the said statutes and ordinances, by publishing said notice three times in a newspaper of general circulation in the City of Floydada, the first of said publications to be made at least ten days before the date set for said hearing. Said City Secretary may also mail a copy of said notice by registered mail to each of said property owners, if known, or to their agents or attorneys, if known, said letters to be deposited in a post office in the City of Floydada at least 10 days before the date set for the hearing. However, said notice by registered letter shall be cumulative only, and notice by publication shall be full, due, and proper notice of said hearing. It shall not be necessary to the validity of said notice of hearing to name any property owner abutting on said street, and the fact that any such property owner or owners are incorrectly named or not named at all shall in no wise affect the validity of the assessment against said property nor the personal liability against the real and true owner or owners of said property. No errors or omissions in the descriptions of the properties abutting upon said street shall in any wise invalidate said assessment, but it shall be the duty of such property owner or owners whose property is incorrectly described to furnish a proper description at the hearing or hearings provided for. No error or omission of any character in the proceedings shall invalidate any assessment or any certificate issued in evidence thereof.

BE IT FURTHER OBTAINED BY THE CITY OF FLOYDADA: That the fact that the improvement of the streets herein named is being delayed pending the taking effect of this ordinance, and that the condition of said portions of said streets endangers the public health, safety, and property and creates an urgent public necessity for the immediate preservation of the public peace, property, health, and safety, requiring that the rules providing that no ordinance shall be passed on the day on which it shall be introduced, and providing that no ordinance shall become effective until ten days after the date of its last publication, and requiring that said ordinance be published once a week for two consecutive weeks in some newspaper published in the City of Floydada, be and the same are each hereby suspended, and that this ordinance shall be and is hereby passed as an emergency measure, and shall take effect and be in force from and after its passage.

PASSED AN APPROVED this 21st day of September 1928.

ATTEST: BURL BEDFORD, City Secretary (SEAL) 323tc W. D. SMITH, Mayor.

CITATION BY PUBLICATION

THE STATE OF TEXAS, To the Sheriff or any Constable of Floyd County—GREETING: YOU ARE HEREBY COMMANDED, That you summon, by making Publication of this Citation in some newspaper published in the County of Floyd if there be a newspaper published therein, but if not, then in the nearest County where a newspaper is published once each week for four consecutive weeks previous to the return day hereof, A. M. Hickman whose residence is unknown, to be and appear before the Hon. County Court, at the next regular term thereof, to be held in the County of Floyd, at the Court House thereof, in Floydada, on the 15th day of October, A. D. 1928 then and there to answer a Amended Answer in Garnishment filed in said Court, on the 13th day of September, A. D. 1928, in a suit numbered on the docket of said Court No. 614, wherein South Plains Lumber Company is Plaintiff and Fireman's Fund Insurance Company, C. B. Harder, and Herbert Dysart, are Garnishees, and one A. M. Hickman is defendant. The nature of the Defendant's Answer in Garnishment being as follows, to-wit: A Denial under oath that they owed A. M. Hickman anything at the time of the service of the Writ, or since said time, and do not now owe him anything. That they, nor either, have now, nor had they at the time of the service of said Writ, any property or effects of A. M. Hickman in their possession, nor have they had during the interim. That they do not, nor neither of

them, know of any other person are either indebted, to A. M. Hickman, or have property or effects belonging to the said A. M. Hickman. The said Answer alleges that man's Fund Insurance Company issued its Policy No. 1203, to Hickman, in the sum of \$500.00, a 1-story shingle roofed frame building situated on 640 acres of 1 situated ten miles South-East of verton, in Briscoe County, Texas also insuring in the amount \$800.00 a barn adjacent, and \$150.00 on windmill and tower adjacent.

That said Company was served with a Writ of Garnishment in favor of First National Bank, of Plainville, Texas, on August 6, 1928;

That subsequent to the loss, said loss was adjusted for the sum of \$1300.00, and that said sum has been due to someone since the 20th day of May, 1928; that Garnishees understand that there is some question about whether said insurance money is exempt under the Constitution and Laws of this State to A. M. Hickman and his family.

That said Garnishees have been informed that Great Southern Life Insurance Company, a corporation, has a lien of some kind against the property. Garnishees further show that they do not know the residence of said A. M. Hickman, and pray for an allowance of \$75.00 attorney's fees.

HEREIN FAIL NOT, And have you before said Court, on the said first day of the next term thereof, this Writ, with your endorsement thereon, showing how you have executed the same.

Given under my hand and seal of said Court, at office in Floydada, Texas, this, the 13th day of September, A. D. 1928.

(SEAL) TOM W. DEEN, Clerk County Court, Floyd County, Texas. 304tc

CITATION IN PROBATE—ON ORDER TO APPOINT PERMANENT GUARDIAN

THE STATE OF TEXAS.

To the Sheriff or any Constable of Floyd County—GREETING:

YOU ARE HEREBY COMMANDED to cause the following citation to be published in a newspaper of general circulation which has been continuously and regularly published for a period of not less than one year preceding the date of the citation in the County of Floyd State of Texas, and you shall cause said citation to be printed at least once each week for the period of ten days exclusive of the first day of publication before the return day hereof:

Citation in Probate

THE STATE OF TEXAS.

To all persons interested in the welfare of Melton O. Lee and Clifford Lee Minors:

On the 27th day of July A. D. 1928, the Honorable Wm. McGehee County Judge of Floyd County, Texas, made an order appointing Mrs. Beulah McBride temporary guardian of the person and estate of the above named minors, which said order is now recorded in the Probate minutes of said Court, said minors having an estate of the probable value of \$600.00, consisting of Cash.

All persons interested in the welfare of Melton O. Lee and Clifford Lee, minors, are hereby cited to appear before the County Court of Floyd County, Texas, at the Court House in the town of Floydada on the 15th day of October A. D. 1928, the same being at a regular term of said Court, then and there to contest such appointment if they so desire, and that if such appointment is contested at such term, then the same shall become permanent.

HEREIN FAIL NOT, But have before said Court on the first day of the next term thereof, this Writ, your return thereon, showing you have executed the same.

WITNESS my hand and seal, at Floydada, Texas, this day of September 1928.

(SEAL) TOM W. DEE, Clerk County Court, Floyd County, Texas.

I HEREBY CERTIFY the above and foregoing is a true correct copy of the original now in my hands.

312tc P. G. STEGALL.

Lee Davis, who has been his home in San Francisco, California, the past two years, has been several days on a visit with his father, J. J. Davis. On the time he was accompanied by Homer, son of Springfield, Mo., who has also been in California.

Dont swe When It Brea. Call on us. We weld ar of broken farm imple



Any damaged metal part back to work again in a by oxy-acetylene welding. If it's too big to bring in, come out and do it on the s

ENOCH & McCLUNG The Best Blacksmiths On The Plains

Hesperian's Oklahoma City Trip Awaits Developments

Plans and preparations for the Hesperian's excursion of business and professional men to Oklahoma City over the Quanah, Acme & Pacific Railroad's first passenger train which ran over the new extension for the first time Monday, have gone forward slowly because of work on the Floyd County Fair and other plans. Although it was impossible for the trip to be made on the first train, The Hesperian is still in favor of the business men and citizens of Floydada and Floyd County making such a trip at an early date, and is willing to sponsor such a trip.

Besides offering a day of recreation for the trippers, the proposed trip will give the local people an opportunity to learn first hand what kind of service will be afforded over the new line, and will express this section's appreciation of the new exclusive passenger service.

Round trip excursion rates to the Oklahoma Capitol over "The Plainsman" will amount to \$10.00 and pullman service between \$4.00 and \$4.50 each way, making the total cost not to exceed \$19.00. In parties of twenty, special pullman cars can be arranged, according to the railroad officials.

The Hesperian is very anxious to see this good-will trip made, and is making preparations to continue

with plans for the excursion. All interested citizens who desire information, or who are making plans to make the trip, are requested to call this office.

PAY TRIBUTE TO LIFE OF MRS. LUCY DONATHAN AUSTIN

"There's a land beyond the river that we call the sweet forever and we only reach its shores by faith's decree." Another spirit has winged its way to that celestial place and left many hearts sad and grieving over the death of Lucy Donathan Austin last week.

Mrs. Austin was born near Paducah in 1900 but spent her early life and girlhood in the Lakeview community where her parents and several sisters and brothers still live. She was married to Otto Austin in 1923 and for some time they had lived in Floydada.

Mrs. Austin was a sweet, modest, self-sacrificing character, whose life was lived for others and because of this lovely trait her memory will linger on and on.

To the bereaved husband, parents, sisters, brothers and friends may her passing prove to be another tie to lead you on to that fair land "From Whence no traveler has ever returned" and may we like her be ready "When they ring the golden bells for you and me."

What's Doing In West Texas Today

The Sul Ross College gymnasium has been completed at a cost of around \$35,000. Citizens of Alpine and vicinity donated \$15,000 while \$20,000 was appropriated by the legislature.

The public school at Crane, which has fourteen teachers, and an enrollment of 265 students is to have a \$40,000 addition finished by the 15th of October. This will make it one of the finest school plants in this part of the state.

The custom of having the first Monday in the month designated as Trades day will start with October 1st in Petersburg, and will be featured with horse swapping, auction sales, and entertainment programs.

A franchise to run a cross town bus line with a charge of ten cents per passenger has been secured by J. F. Garrison for Big Springs. The bus is a sixteen-passenger one and will stop at every crossing for passengers.

The cotton compress at Turkey built at a cost of \$100,000 is inducing many farmers to bring their cotton to that thriving South Plains town. Turkey has four gins which give excellent service.

Roby public schools lay claim to having the unique distinction of serving 100 sections of land. The school has had a phenomenal growth and its scholastic and athletic records draw recognition all over the state.

Nolan County is to have one-half state aid in surfacing Highway No. 70 between Sweetwater, and Blackwell. This is expected to total \$74,710.

Grading work on Highway No. 51 through Hale County is progressing steadily according to accounts from Plainview. It is expected that the road will be ready for paving on schedule time.

"West Texas Today" official magazine of the West Texas Chamber of Commerce carried stories on Lubbock, Slaton, Floydada, Silverton, Quitaque, Turkey and other South Plains towns in the September issue.

Wheeler is proud of the fact that thirteen carloads of dressed poultry, and ten carloads of live poultry have been shipped out of Wheeler County which until recently was considered fit only for cattle grazing.

A check of the building program in Dublin reveals expenditures in excess of \$100,000. These include \$50,000 by a products company, \$35,000 by the Katy Railroad a \$10,000 creamery and \$300 fair exhibits.

Farmers in the immediate vicinity of Olney are taking advantage of the employment of a county agent to learn about terracing, caponizing, and culling, through demonstration.

A building twenty-seven feet by one hundred feet, built of brick with concrete floor will house the Lockney Beacon at Lockney soon. Part of the building will be available for meetings of organizations with out buildings.

Mrs. C. E. Swallow, of Dallas, in company with her son, Clyde, Jr., and Mrs. Ray Marshall and son, Billie, visited here from Friday to Monday with her sisters, Mmes. J. B. Jenkins and Jno. N. Farris. Clyde, Jr., remained for a visit of several days with Mrs. Farris.

NOTICE OF APPLICATION FOR LETTERS—GUARDIANSHIP

THE STATE OF TEXAS,
To the Sheriff or any Constable of Floyd County—GREETING:

YOU ARE HEREBY COMMANDED to cause the following notice to be published in a newspaper of general circulation which has been continuously and regularly published for a period of not less than one year preceding the date of the notice in the County of Floyd State of Texas, and you shall cause said notice to be printed at least once each week for the period of ten days exclusive of the first day of publication before the return day hereof:

Notice of Application for Letters—Guardianship:

THE STATE OF TEXAS,
To All Persons interested in the welfare of Felix West, a Minor, Mrs. Della Hudson, a feme sole, has filed in the County Court of Floyd County, an application for Letters of Guardianship of the person and Estate of the said Felix West, Minor, which will be heard at the next Term of said Court, commencing the Third Monday in October A. D. 1928, at the Court House thereof, in the town of Floydada, Texas, at which time all persons interested in the welfare of such minors may appear and contest such application should they desire to do so.

HEREIN FAIL NOT, But have you then and there before said Court this Writ, with your return thereon endorsed, showing how you have executed the same.

Given under my hand and the seal of said Court, at Floydada, Texas, this the 25th day of September A. D. 1928.

(SEAL) TOM W. DEEN,
Clerk County Court, Floyd County, Texas. 312tc

NOTICE TO BIDDERS

Sealed Proposals addressed to the Hon. Wm. McGehee, County Judge, Floyd County, Floydada, Texas, will be received at the office of the Clerk of the Commissioners Court until 10 a. m. October 6th, 1928, for furnishing all necessary materials, equipment and labor for constructing certain street improvements in the

City of Floydada, Texas for the Commissioners Court of said Floyd County.

Bidders must submit certified check in the sum of 5%, five percent, of the amount bid, payable without recourse to the order of Wm. McGehee, County Judge, as a guarantee that the bidder will enter into the contract and execute bond in the form provided within ten days (10) after notice of award of contract to him.

The successful bidder must furnish bond for fifty per cent (50%) of the sum bid, on the form provided, from a responsible surety company satisfactory to the Commissioners Court of said County.

The said Commissioners Court reserves the right to reject any or all bids and to waive formalities.

Bidders are required to inspect the site of the work and inform themselves regarding local conditions.

Proposal forms, specifications and plans are on file at the office of G. A. Linder, Engineer for the County, Floydada, Texas, or may be secured from him upon the payment of Ten Dollars (\$10.00).

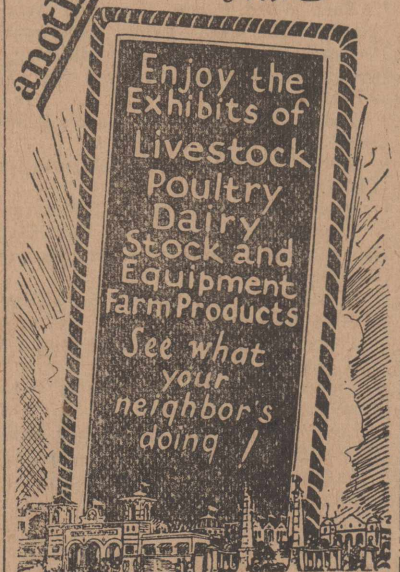
Bids will be received upon the following type paving:

Brick on reinforced concrete. Approximate quantities are: 1100 cu. yds. excavation. 7,246 sq. yds. pavement. 1,204 lin. ft. concrete curb.

TOM W. DEEN,
Clerk of Commissioners Court.

STATE FAIR OF TEXAS

another Ten Million Dollar Slate



DALLAS
OCTOBER 6 to 21
"Be One of the Million"

Gin More Money Into Your Cotton

When your cotton is cleaned and ginned in a way that produces a better sample and a greater lint turnout, with the long fibres preserved, your ginning costs are lower because your cotton has a higher value.

By reason of our modern gin equipment and the knowledge gained through years of successful operation, we are in a position to give patrons an unexcelled service. Whether your staple is long or short, brittle, soggy or sticky, our up to date gin equipment will make it worth more money.

A bale of cotton ginned here is clean and smooth clear through.

Those who are not acquainted with the excellent ginning service we are in position to give, we cordially invite you to ask anyone who has had ginning done here.

We also cordially invite those interested to call and let us show you through our modern plant.

Haynes Gin Co., Incorporated

Floydada, Texas

Most Families Prefer Baker's Bread

A man in a restaurant saw a sign on the wall, "Coffee Like Mother Used to Make." When the waitress came to his table he said, with a reminiscent look, "Bring me a cup of tea."

We don't mean to detract in the least from Mother's reputation as a cook. Not that!

But when it comes to bread making, the scientific methods now used by the bakeries results in a loaf is more than worthy of Mother's best efforts.

Fact is, we don't know of many families in Floyd County who dine on home made bread. Our local bakeries make such good bread that Mother no longer cares to bother with the weekly baking.

We have good bakeries in Floydada They produce exceptionally good bread and other bakery goods. And by so doing they are entitled to our patronage.

Floyd County Hesperian



Remain Healthy Use Common Sense

STATISTICS issued by public health bureaus confirm the belief that illness reaches its peak during winter-time. It's good common sense to forestall sickness by keeping your medicine chest full of the reliable specifics and remedies that treat germs roughly. We've a complete stock.

ARWINE DRUG

"Goteverthing"

South Side Square



The 4-Door Sedan Body by Fisher

NEW VALUE Brings New Heights of Public Favor

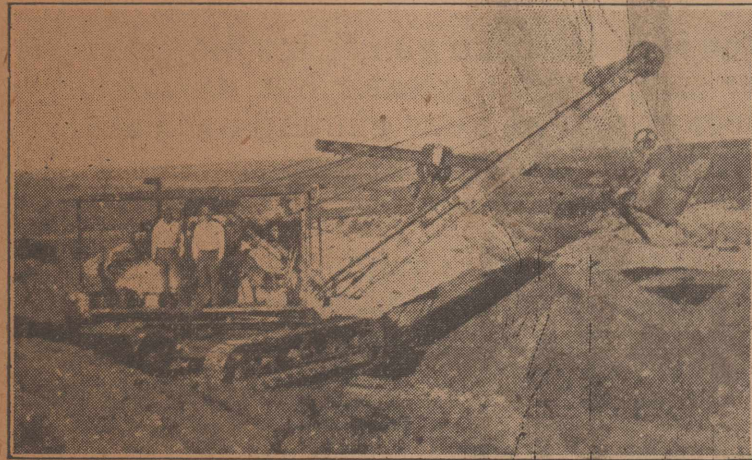
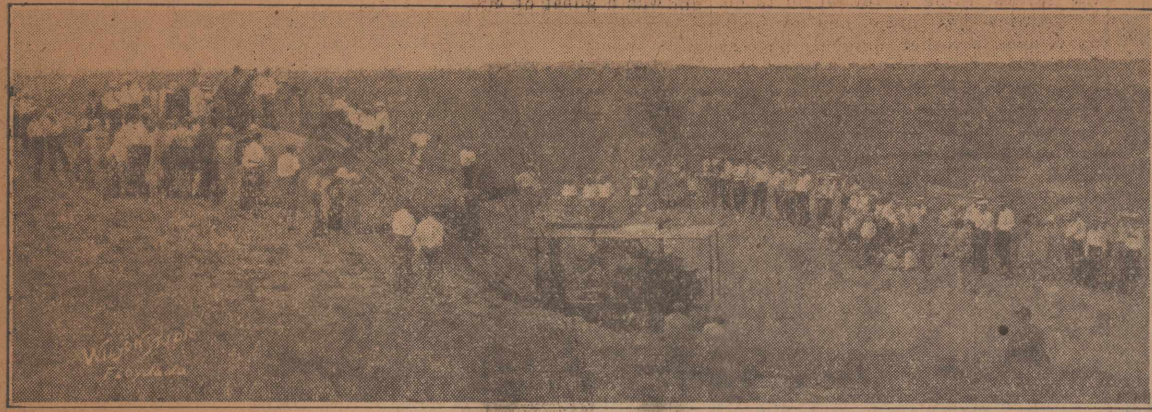
As a result of the new value offered by today's Pontiac—as a consequence of its greater power, higher speed and smarter style—this low-priced six is winning new heights of public favor . . . Pontiac Six now provides new motoring luxury. Staunch, beautiful bodies by Fisher—smaller, sturdier wheels with larger tires—an engine of 186 cubic inches displacement—the cross-flow radiator—the G-M-R cylinder head . . . all these and many other advancements are emphasized by the performance supremacy resulting from new carburetion and manifolding . . . That's why today's Pontiac Six is attracting thousands of new buyers. That's why it is winning leadership in the low-priced six-cylinder field.

2-Door Sedan, \$745; Coupe, \$745; Sport Roadster, \$745; Phaeton, \$775; Cabriolet, \$795; 4-Door Sedan, \$825; Sport Landau Sedan, \$875. All prices at factory. Check Oakland-Pontiac delivered prices—they include lowest handling charges. General Motors Time Payment Plan available at minimum rate.

SCOGGIN & DICKEY
Floydada, Texas

PONTIAC SIX
PRODUCT OF GENERAL MOTORS

Work Started On Q. A. & P. Caprock Climb Last Year



Here are two of the scenes enacted last spring when work was first begun by contractor Fred P. Holt, that were snapped by camera and kodak when steam shovels began eating into the caprock on the Q. A. & P. line.

The upper picture was taken by C. M. Wilson in the late afternoon of June 9 when clerks and salesmen from the Floydada stores were given two-hours off to go down and see the work in progress. Some three or four hundred were present from Floydada, and Matador and Roaring Springs also furnished sizable delegations for the event. This photo is from the Wilson Studio.

The lower picture was obtained by the rarest kind of good luck. The steam shovel had been in position and at work not over an hour when

J. G. Martin and a reporter from The Hesperian office drove up on the scene on a "scouting" expedition, following a rumor that work might begin sometime that week—the last week in May. The little pile of dirt started in this picture became a dump 85-feet high across an arroyo, the deepest fill on the Extension.

Muncy News

Muncy, Oct. 2.—Most of the farmers are through sowing wheat now, and are very busy with their row crops.

Quite a few of the people from this community attended the Floyd County Fair Friday and Saturday.

Mrs. J. F. Biggs and Miss Susie Smalley returned home from Marlin Wells last Saturday.

Mr. and Mrs. John McDonald were called to the bedside of their daughter, Mrs. Harley King, who is seriously ill at her home near Tulia.

Mr. and Mrs. Oscar Jetton of Lockney visited Mr. and Mrs. W. M. Vandergrieff Sunday afternoon.

W. G. Ferguson and family attended the fair Saturday.

Mr. and Mrs. Adrian Sparks called at the Vandergrieff home Sunday afternoon.

J. A. Smalley and family visited at the Ferguson home Sunday afternoon.

Joe Ferguson visited Shirley Race Saturday.

Mrs. Beulah Huckaby spent Sunday with her father, Mr. Foster.

James Lee Nichols has been absent from school the past week because of illness.

Mr. and Mrs. C. C. Husky attended the north side singing school.

DANIEL PICTURE HAS PERFECT COMEDY TRIO

"Fifty-fifty." That's the message flashed by Bebe Daniels from the Paramount studio in Hollywood. The command is part of the title of her new screen play, produced under the direction of Clarence Badger, which will show at the Royal theatre next week.

For this picture the comedy team of Miss Daniels, Badger and John McDermott, author, were brought together again. This is the combination responsible for "Senorita," "She's A Shiek" and many other laugh-getters. McDermott wrote the original story for "The Fifty-Fifty Girl."

The screen story is a tale of the modern young woman whose ideas on marriage are a bit out of the ordinary and who changes her mind considerably when backed up against the ideas of her leading man, in this case James Hall.

CARD OF THANKS

The many courtesies extended our people during the Floyd County Fair and the cordial manner which Floydada people have of making people of neighboring communities feel at home in their town, prompts us to take this means of expressing our appreciation to the Chamber of Commerce and other civic organizations, and to say that we are glad ours is one of the big family of communities that go to make up Floyd County.

Sand Hill Community.

At an actual cost of \$62,483 articles valued conservatively at \$121,187 were made by pupils in evening schools of Buffalo, N. Y., last year. The 6,922 persons enrolled turned out 27,599 articles, comprising clothing, dress accessories, embroidery work, woven goods, quilts, basketry, reed work, furniture, and other household furnishings. The evening classes specialized last year in making over old clothing, and hundreds of well-made garments were produced at little cost other than the expenditure of time and effort.

EDUCATION AND THE TEACHING PROFESSION

A current magazine tells of a "self-made man" who took his son to school and told the principal he wanted the boy taught Greek. The scholarly educator was greatly pleased, but asked why the father thought so favorably of the study of Greek. "Well," said the father, "I want the boy to take it because it is hard, because he doesn't want to take it, and because it isn't any good anyway. If he succeeds in it after that, it will show he's got something in him."

Without giving full approval to the father's ideas of the value of Greek, we can understand that he stressed a pedagogical principle that is too largely forgotten in this day. There is much to be said for allowing young people to take the courses in which they are interested, and for encouraging them to develop along lines most natural to them. But there must be an oversight on the part of persons of more experience and wisdom unless the pupil is to drift into doing those things which are merely easiest, and other things which appeal to him only because of his lack of maturity and knowledge. As a matter of fact, there most likely are no such differences in the aptitudes and likings of pupils as is now generally believed. The pupil who will genuinely apply himself to Greek, under the leadership of a good teacher, in ninety-nine cases out of a hundred, will come to like Greek. Certainly this is true of mathematics. He is going to like the thing in which he gains skill and understanding. And the result will be the same whether he starts in it because he has some vague idea that it will please him, or because parents or school authorities tell him that is the thing he should do.

The average pupil has little idea where any subject will lead him, and it is an injustice to him to allow him, with his insufficient knowledge of the facts, to have a great leeway in the selection of subjects. There remains the fact, too, illustrated in the above anecdote, that the student who masters any subject is accomplishing something. The most important thing an education can do for a youngster is to teach him to think clearly and consecutively, to associate ideas properly—in other words, to systematize his mental processes.

A study of Greek or Latin will do this almost as well as a study of mathematics. Perhaps other subjects can be of as much service, while at the same time putting the student further along in his life's work—if he has chosen any such work. But the decision necessarily is a thing for the parent or teacher rather than for the child. In making it, of course the parent or teacher may be shaping the child's equipment in such a way as to shape his entire future, and that is no light responsibility for any person to assume. But the responsibility must be taken; to leave it to the child is merely to leave it to chance. Consequently we must have confidence, and to which we can commit our young people with assurance that they will be set on the right track and kept there.

And we must discourage the criticism of that pedagogy by people—especially those who think a lack of theoretical knowledge makes them more "practical" than other people—who know nothing about the problems involved, or the experiences of men and women who have made a profession of teaching.

STUDENTS OF AGRICULTURE IN THE MINORITY

Of the 141,111 resident students enrolled in land-grant institutions of the United States during the school year 1925-26 more than a third—34 per cent—were registered for courses in arts and science, 20.5 per cent in engineering courses, 9 per cent in commerce and business, 3 per cent in agriculture, and 7.2 per cent in professional education, as shown by a report on land-grant colleges by Walter J. Greenleaf, associate specialist in land-grant college statistics of the United States by the Bureau as Bulletin, 1927, No. 37.—School Life.

Society & Clubs

Mrs. Wimberly Hostess To San Souci Club.

Mrs. Fred Wimberly was hostess to the San Souci Bridge Club Wednesday afternoon at 2:30 o'clock at her home. Mrs. R. B. Rosson was winner of high score for the visitors and Mrs. Terrell Loran got high score for the members.

A salad course was served to Miss Virginia Lewis and Mrs. R. B. Rosson, visitors and Mesdames Rip Snodgrass, Terrell Loran, Fred Jones, Joe M. Day and Misses Mabel Willis and Garnette White, members.

The club will meet Wednesday, October 17, with Mrs. Bill Daily as hostess.

Ladies Aid Meets With Mrs. J. L. King.

Mrs. J. L. King was hostess to the Ladies Aid Society of the Cumberland Presbyterian Church Monday afternoon. There was a small attendance on account of the Railroad celebration. A business meeting was held. An ice course was served by the hostess.

The next meeting will be held Monday afternoon at 2:30 o'clock with Mrs. B. M. Eubank as hostess.

Business Session of M. E. Society Held Monday.

The Women's Missionary Society of the Methodist Church met Monday afternoon at 3 o'clock in business session, with Mrs. J. M. Willson, presiding. Plans were made for a membership campaign.

Program For East Ward P. T. A. Meeting.

East Ward Parent-Teachers' Association will meet Friday afternoon, October 5, at 3:15. The following program has been arranged for the meeting.

Program subject—"Children's Reading."

Roll Call—"Favorite Book When a Child."

Piano Solo—Miss Mildred Houston. Five Minute Discussion, "Building Up a Child's Library"—Mrs. Harper Scoggins.

Musical reading—"Little Boy Blue"—Miss Hawkins.

Story telling and reading aloud—Mrs. Frank Stovall.

Piano Solo, "Second Valse" by Godard—Arlie Carleton.

Local Sources Which Supply Children's Reading"—Mrs. O. Stephens.

Vocal Solo—Mrs. W. E. Patty.

Business.

Honoree Given Surprise Dinner On 47th Anniversary.

Mrs. C. Surginer was given a surprise dinner at her home Monday by a number of her friends. She was told that the dinner was given to celebrate the arrival of her train, the Q. A. & P., which opened official passenger service that day. She calls it her train since the depot is located less than a block from her home. She informed the guests that it was a double celebration for her since it was also her forty-seventh wedding anniversary. All of the guests went down to see the arrival of the new train and returned to the home for dinner.

Among those present were: Mesdames A. P. McKinnon, Lula V. Slaughter, W. A. Baker, Jennie Bishop, T. M. Keelen, Richard Starcke, of Bastrop; Sam Henry, of Lubbock; J. O. Oswald, of Plainview; Wm. McGehee, Carr Surginer, Kate Manasco; F. P. Henry, T. P. Guimarin, Dora Reagan, Wm. Colville, E. C. Henry, C. Surginer and Miss Ruth Jones, of Breckenridge, who was a guest of Mrs. Oswald.

Martha Girls Pack Box For Orphan Girl.

Mrs. C. M. Wilson was hostess when members of the Martha Girls Sunday school class met Tuesday evening for supper at her home. Following supper a box of clothing, which had been made by the class for an orphan girl in the Methodist orphanage at Waco, was packed ready to be sent to her. Sixteen members were present.

The next social meeting will be held on Halloween, the place to be announced later.

Mr. and Mrs. May Entertain Guests Sunday.

Mr. and Mrs. G. R. May were host and hostess Sunday at dinner to the following guests: Mr. and Mrs. W. L. Holloman and son, of Lamesa; Mr. and Mrs. J. C. Edwards and son, Curtis, of Petersburg; Mr. and Mrs.

Social Calendar

East Ward Parent-Teachers Association will meet at the school building Friday afternoon, October 5, at 3:15.

K. K. Klub will meet Friday afternoon at 3 o'clock with Mrs. A. N. Branton instead of with Mrs. Fred Brown as was announced in last week's Hesperian.

Mrs. Leon Collins will entertain the Wednesday Bridge Club Wednesday afternoon, Oct. 10.

North and South Circles of the Baptist Women's Missionary Society will meet at the church Monday morning at 9:30, and spend the day quilting. Each member will bring a dish and lunch will be served at noon. Because of the railroad celebration no meetings were held last Monday.

1922 Study Club will meet this afternoon with Mrs. G. A. Linder.

Stitch and Chatter Club will meet this afternoon at 3:30 o'clock with Mrs. M. L. Probasco.

Andrews Ward Parent-Teachers' Association will meet Wednesday afternoon, October 10, at 3:30.

Ladies Aid Society of the Cumberland Presbyterian Church will meet Monday afternoon at 2:30 with Mrs. B. M. Eubank.

Women of the Methodist Missionary Society will meet Monday afternoon at 3 o'clock at the church for a Bible lesson.

Earl Edwards and daughters, of Lakeview and Mrs. A. N. Gamble and children.

EFFECT OF WIND ON COMMON OBJECTS INDEX TO VELOCITY

How hard is the wind blowing? Ask three people their opinions and you are likely to get three different answers. What seems a moderate breeze to one will be a "gale" to another. The Weather Bureau has worked out a scale of wind velocities as measured by scientific instruments and as correlated with the effects observed on various common objects in the outdoors.

The Forest Service of the United States Department of Agriculture has found need for a method of estimating wind velocities. In the forest-fire season, strong winds often mean that larger numbers of men should be called to the fire line. The service has therefore adopted a modification of the scale used by the Weather Bureau.

A light wind, according to this scale, is one moving not more than 7 miles an hour. Direction of the wind is shown by smoke drift; wind is felt lightly on face; leaves rustle. A gentle wind has a velocity of from 8 to 12 miles an hour and can be identified by the fact that it keeps leaves and small twigs in constant motion. Such a wind will extend a light flag.

Moderate winds blow from 13 to 18 miles an hour and raise dust and litter; small branches are moved and swayed.

Fresh winds have velocities of from 19 to 24 miles an hour and cause small trees in leaf (hardwoods) to begin to sway. Crested wavelets begin to form on inland waters.

In strong winds, large branches or whole trees are in motion; one walking against the wind experiences inconvenience, and wind whistles in telegraph or telephone wires. The velocity ranges from 25 to 38 miles.

A gale, velocity from 39 to 54 miles an hour, breaks twigs off trees, generally impedes progress, and is likely to inflict slight structural damage on buildings.

A whole gale blows from 55 to 75 miles an hour, uproots trees, and does much structural damage to buildings.

Any wind with a velocity of more than 75 miles an hour is classed as a hurricane, and a description of the effects is not considered necessary as an aid to identification.—From Forest Worker, July 28, Forest Service.

George A. Coverdale, of Coffeyville, Kansas, was a visitor in Floydada a few days ago, enroute home from a trip to California.

W. Ed Brown returned Monday night from Denver where he had been with his brother, Fred Brown who had his eye removed recently. The operation was very successful and Mr. Brown is doing nicely, his brother said. Mr. and Mrs. Martin Brown met him in Plainview.

The Hesperian \$1.50 per Year.

THE MEMBERS OF

The First Christian Church

hold their annual meeting for the

ELECTION OF OFFICERS

Sunday Afternoon, Oct. 7, at 1:30

Every member is urged to be present. Church services in the morning, with a dinner spread at the church, following which will be the business meeting.

An Enemy to Jack Frost is Lincoln-Climatic Paint

Protect your home from the rigors of winter. Protect the surface of your house with a covering of warmth that frost and storm cannot ruin.

The house painted right is the house that suffers least from winter's destructions.

J. C. Wooldridge Lumber Co., Inc.

"The Home of Quality Building Materials"

UNLESS IT'S POOL'S IT ISN'T "SWETPRUF"

Once You Wear POOL'S "SWETPRUF" SHIRTS and PANTS

You Won't Trust to Luck

You'll Call for Comfort and Long Wear by Name. And you'll get a Dressy Appearance in the Color that Suits You and Your Work.

POOL'S BLUE - POOL'S SAND - POOL'S TAN - POOL'S GREY - POOL'S OLIVE

SHIRTS \$2.25
PANTS \$2.50

"Swetprufs" Sold Here Exclusively

McGUIRE & WEATHERLY

"The Store For Men"

Phone 66 for Cleaning and Pressing

They Will Not Fade, Streak nor Spot

HEAR THEM On the RADIO

Atwater-Kent and R. C. A. Radios

Get the facts from these men and you can get them by Radio. Buy good radios and you will be assured of hearing everything.

REDUCED PRICES

Prices on Atwater-Kent Radios have been greatly reduced, we have replenished our stocks and are ready for the job. Come in to see these sets.

Surginer & Son

Hardware and Furniture

Rain or Shine---

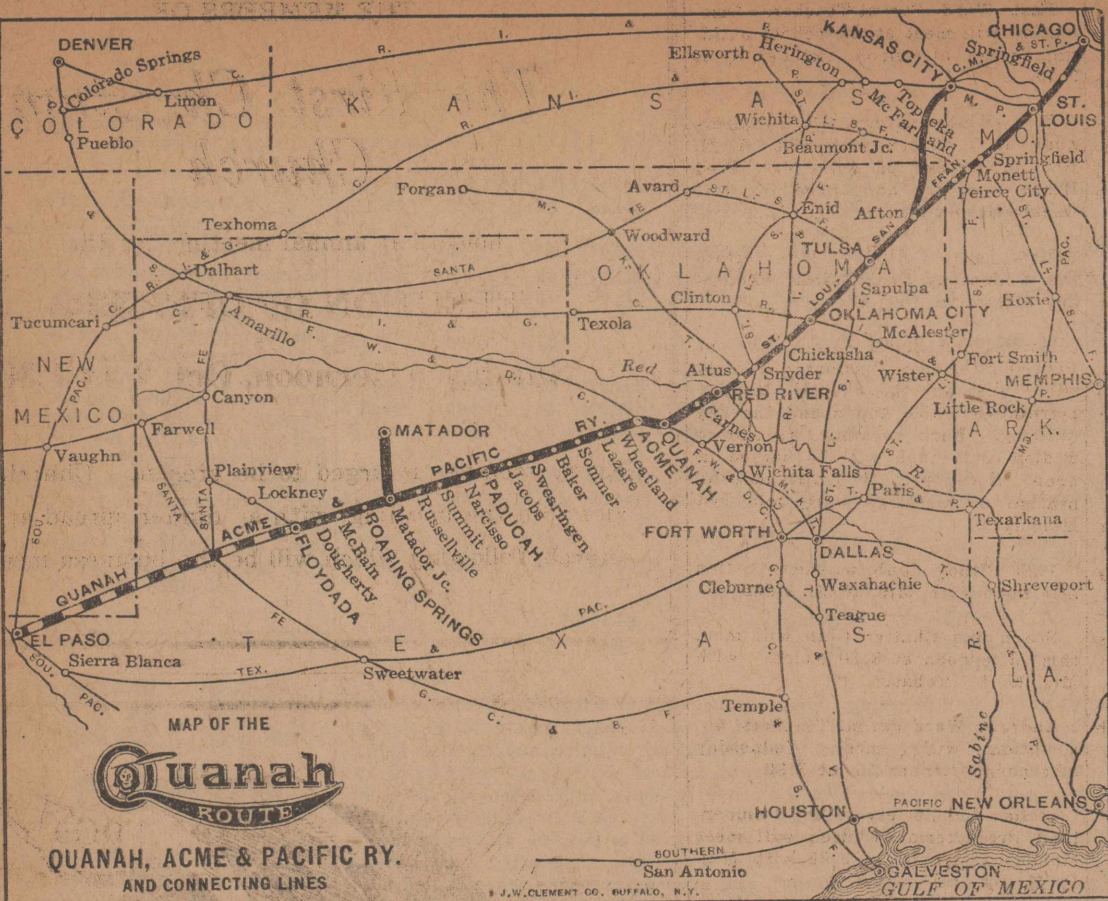
Bring me your maize heads. The rain does not stop for me, and I Don't stop for the rain.

About time for some Coal, too. I have it.

J. R. Yearwood

Phone 247 "Ask Your Neighbor"

Revised Map Of The Quanah, Acme & Pacific Railway Line



Above is the revised map of the Quanah, Acme & Pacific Railway Company, showing the Frisco connection east to Oklahoma City, St. Louis and Chicago, and other connections; also the proposed extension to El Paso.

Mrs. H. T. Smith, who has been ill in a Lubbock Hospital for the past several weeks, is greatly improved and is expected to be able to return home this week-end.

Mrs. Mary Brown and daughters, Mary and Belle, of Estacado, and Mrs. L. E. Higginbotham, of Fort Worth, returned to Estacado Sunday after spending the latter part of last week here as guests of Mr. and Mrs. Bob Smith, Mr. and Mrs. G. R. May and friends.

Misses Henrietta Mullinan and Virginia Lewis spent a part of last week at Abilene visiting and attending the West Texas Fair.

F. H. S. Gridsters Win Idalou Game, 6 To 12

Second Game of Season at Floyd County Fair Shows Improvements in Whirlwinds.

Basing their entire game on a newly acquired science and knowledge of football, the Floydada High Whirlwinds copped their second encounter of the season last Friday afternoon from the Idalou Wild Cats, 12 to 6. This game, a feature attraction of the Floyd County Fair, was witnessed by a crowd of several hundred people, and proved to be a thrilling and spectacular game.

As the score indicates, the game was by no means a walk-over for the Whirlwinds. Welbourn, the Whirlwind's most outstanding star, completed a beautiful ten yard end run around left end for the first counter in the first quarter. Nelson failed to make the kick for extra point.

In the first half of the second quarter, the Whirlwinds showed up weaker than at any time during the entire game. They carried the pigskin down the field to within three yards of the goal line, and were held for four downs at that position, when the ball went into the possession of the Wild Cats. The Whirlwinds failed to make first downs four times during the game.

The visitors tallied their lone score in the second quarter when their right half carried the ball through a series of terrific line plays and end runs and crossed the chalk line. An attempt at kick for extra point was blocked.

With the score tied, 6 and 6, at the beginning of the second half of the game, the Whirlwinds entered in to play with all the pep that could be mustered by the inexperienced lads. Welbourn again showed up as the outstanding man on the field, when he made a perfect end run for twenty-three yards. His interference held good for twelve yards, and the remainder of the run was made in a broken field.

Welbourn, Nelson and Porterfield each carried the pigskin in succession, until the Idalou goal line had again been crossed by the Whirlwinds. Nelson's kick was wide, and the final score, 6 to 12, was tallied with three minutes left to play.

The Idalou eleven showed up well in Friday's game, although every man on the squad was light. Their end men and halves were the outstanding players. Their left end broke through the Floydada line a number of times and threw local boys for heavy losses. The Wild Cats and Whirlwinds were well matched, and Floydada's victory is due to the coaching of Coach Jones and the players' willingness to put forth the best they had.

Coach Jones' starting line-up Friday was as follows: right end, Terry; right tackle, Meachum; right guard, Carter; center, Mathews; left guard, Green; left tackle, Newsome; left end, Summerville; quarter back, Porterfield; right half, Dave Luttrell left half, Nelson; full back, Welbourn. Goen was substituted for Luttrell, Luttrell for Porterfield, de Cordova for Meachum and Grady McAda for Cordova.

Mrs. L. E. McDonald and daughter of near Ralls, returned home Sunday after spending the week with her sister, Mrs. James Colville.

Mr. and Mrs. A. M. Bourland, of Matador, were guests of Mrs. W. A. Shipley Saturday night.

Too Late To Classify

FOR SALE—Ford touring car, Model A. Call 46 for particulars. 321tc

FOR SALE—A limited supply of black hull and Kanred wheat seed, cleaned and sacked. Jno. I. Hammonds. 322tc

MONEY TO LOAN—On farms in Floyd and adjoining counties, at a low rate of interest. See R. E. Fry. 324tc.

FOR SALE or trade—Practically new Chaissonette baby piano, Wurlitzer guaranteed. Phone 270. Box 786, City. 321tc

FOR SALE—Cheap—1927 Ford Coupe good condition. R. E. Fry. 322tc

FOR SALE—Practically new Ideal coal heater. W. D. Smith. 325tc

Heavy Gridsters Face Floydada At Paducah

Gridiron Classic Friday Will Furnish Real Test For Whirlwinds of F. H. S.

Floydada High Whirlwinds leave tomorrow morning for Paducah where they will clash with the Paducah eleven in their first out-of-town game this season. A large delegation of local fans and boosters will probably accompany the local gridsters, and plans are under way to carry the high school's pep squad of fifty girls.

The Whirlwinds are by no means expecting a walk-over Friday. The fact is, they are expecting one of their hardest games of the season with the Paducah team. Last week, the Paducah eleven completely ran away from the Childress High School team, and snapped off a 43 to 0 victory. The Childress squad is reported to have been up to standard in strength and the Paducah team is claimed to be the best that school has produced in a number of years.

On the other hand, local gridsters are new at the game and are inexperienced. Their entire game will be played on what has been drilled into them this season by Coach Jones.

Although they are facing great odds, Coach Jones and his recruits are going into Friday's game with all they've got and with the expectations of giving them "plenty of Whirlwind dust to get choked on." Coach Jones reports that he will use practically the same starting line-up that he used against the Idalou eleven last Friday.

NAZARENE CHURCH

Rev. R. A. Hocker, of Plainview, will preach at the Nazarene Church in Floydada, Saturday evening, at 8 o'clock.

The church is located at the corner of West Tennessee and Fourth streets. All are invited to come.

CITY HALL CONSTRUCTION AWAITING STEEL DELIVERY

Belief was expressed this week by officials of the city that the work of constructing the city hall, which has been delayed for several weeks on account of inability to obtain steel door frames from the manufacturers, would not be delayed much longer, promise of delivery for the needed steel having been received recently by Contractor H. E. Cannaday.

Foundation work was begun two months ago and a large amount of brick and other material has been on the ground for practically that length of time.

Judge and Mrs. Wm. McGehee and Mr. and Mrs. Paul Cisco attended the South Plains Fair at Lubbock Wednesday. While there Mrs. McGehee visited Mrs. E. Ray Smith, who underwent a minor operation Wednesday morning in a Lubbock hospital.

SEWER, WATER EXTENSIONS JOB IS BEING FINISHED

The work of extensions and additions to the water and sewer systems of Floydada, begun this spring by the Sherman Machine & Iron Works, Oklahoma City concern, is nearing completion, only some clean-up jobs being yet to finish. The crew this week loaded out the ditching machinery for return to headquarters.

As originally planned extensions to sewer and water lines were contracted at a figure of approximately \$20,000. However, very considerable additions were made to the job and slightly more than \$45,000 worth of improvements were made before finishing, in addition to more than \$20,000 expended for the drilling and development of two water supply wells and a site for them.

T. M. Keelen has been foreman in charge of the construction.

TO ADDRESS MINISTERS

"The preacher, his life, and work" will be the subject upon which Rev. P. D. O'Brien will address the ministerial alliance, composed of preachers in Wayland Baptist College at Plainview and the neighboring communities, every third Thursday afternoon in each month.

RELATIVE OF O'BRIEN DIES

Rev. P. D. O'Brien returned late Tuesday evening from Brownwood where he conducted the funeral of his sister-in-law, Mrs. M. M. Baskin of Lubbock, who died in a Lubbock sanitarium Sunday following an operation. The body was shipped to her old home in Brownwood for burial. Funeral services were held in the First Baptist church at Brownwood Monday afternoon.

IRICK 4-H CLUB

The Irick 4-H Club for the year 1928-29 met Friday, September 14, and reorganized the club. Six new members were present, Opal Billington, Myrtle Harkins, Gladys Wilton, Mildred Baughman, Leona McElroy and Vivian Baker, and six third year girls, Helen McElroy, Lucille Hampton, Ollie Glass, Ralphine McElroy, Gladys Potts, and Connie Robinson.

Following are officers elected: Lucille Hampton, president; Helen McElroy, vice president; Opal Billington, secretary; Mildred Baughman, reporter.

Poultry and gardening were discussed, also canning and other work which will be done.

CARD OF THANKS

We take this means of expressing our gratitude and appreciation to the friends and neighbors for their many kindnesses during the illness and death of our little son and nephew, and for the beautiful floral tributes.

Mr. and Mrs. P. D. McBride. Mrs. C. M. Kirby.

ACTOR DISCOVERS HARDEST THING REAL STAR MUST DO

George Bancroft has discovered the hardest thing in the world to do. "Genuine joy—untouched by jealousy—over another person's success is the hardest thing a man can accomplish," declares the Paramount star appearing in his first starring picture, "The Show Down" at the Royal Theatre tomorrow.

"One of the hardest tests of character for a man or a woman is to watch another score a great success. I don't know how to explain it, but there must be something rooted in human nature which feels jealousy under the circumstances. Personally, I am never so happy as when I see my friends or my co-workers scoring a success."

PROVIDENCE CLUB

The Providence Home Demonstration club ladies met at the Club room Sept. 25 with fourteen members present.

We were very glad to have Mrs. Hatchett from the Lone Star community visit us.

All articles that had been prepared for the fair was brought and the best out of the collection was selected for the exhibit at Floydada.

After we finished our work, our hostess, Mrs. Wright served delicious chicken sandwiches and coffee.

Everyone come to our next meeting October 9 at 1:30 p. m. Miss Biss will be present and give a demonstration on whole wheat dishes. Don't forget your pencil and paper as we will want to take down the recipes she gives. Mrs. Dock Bennett will be hostess at the next meeting.

Reporter.

Agent F. J. Barkhurst and wife reached home Monday of this week from an extended tour of the Pacific Coast states and a visit at his former home in Oklahoma during an absence of sixty days. Mr. Barkhurst resumed his duties as agent on Tuesday. D. D. Boler, of Littlefield, who relieved him, returned home Wednesday.

G. E. McWhirter and H. H. Cunningham, members of the High School Faculty, spent the week end in Amarillo, attending the Tri-State Fair.

John Edwards, who went to Canyon to attend school, changed his plans and went to Waco, where he is enrolled as a student in Baylor University.

Typewriter carbon, ribbons and second sheets at Hesperian Office.

Mr. and Mrs. H. A. Lattimore, of Lubbock, were guests of friends and relatives here Thursday. Mrs. Lattimore remained over until Saturday and was a guest of Mrs. G. R. May.

Mr. and Mrs. J. T. ... had been at Glenrose ... days while Mr. Howard took ... reached home the first of ... week.

FIRE INSURANCE Protects

Loss of property is an appalling thing, but especially so when it causes ruin to an individual. The answer is INSURE. We underwrite policies of all amounts on all sorts of property. Protect yourself beginning today.

ACT NOW!

Floydada Insurance Agency

G. C. Tubbs—W. H. Henderson

Keep Smiling with Kelly's

Kelly's Don't Cost More

Because the Kelly-Springfield tire has so long been known as a quality product, and because it is natural to associate high quality with a high price, many people have an idea that Kelly's are more expensive than other tires.

They're not. Not only do they cost no more to buy, but their long, uninterrupted mileage makes them cost less to own. Try one Kelly-Springfield and see for yourself if it's not so.

Scoggin-Dickey Motor Co.

MOHAWKS Go Farther

Drive in TODAY and get our price on a full set of the NEW SPECIAL MOHAWK BALLOONS.

The reasonable cost of the extra distinction and safety of the NEW Mohawk Balloon will be as much of a revelation to you as the beauty and performance of the tire itself.

MOHAWK

F. F. F. SERVICE STATION

Phone 113 for our Quick Road Service Truck

A Special Purchase Sale

ALLEN A SILK HOSIERY

Absolutely miracle values from a standpoint of selection, quality and wonderful values. We closed a fortunate deal with the Allen A manufacturer and the savings we affected are being passed on to you. Store in your Hosiery supply now. Don't miss this spectacular event.

Regular \$1.00 Values	78c
Regular \$1.50 Values	\$1.20
Regular \$1.75 Values	\$1.40
Regular \$1.95 Values	\$1.60

Every pair guaranteed perfect, every pair clear as the mist! Every pair reinforced all points of wear. These values are a lutely phenomenal. You'll agree with us when you attend to make your selection.

New Fall Colors

Plenty of Blacks, Tans, Gunmetal, Azure, fact every new color of the season. A collection to harmonize with your new Fall costume. All sizes. Don't miss this startling sale!

ALLEN A WEEK OCTOBER 5TH TO 12TH

C. R. Houston Company

Floydada

NOTICE

TO ALL OWNING OR CLAIMING ANY PROPERTY ABUTTING UPON THE HEREINBELOW MENTIONED PORTIONS OF STREETS IN THE CITY OF FLOYDADA, TEXAS, AND TO ALL OWNING OR CLAIMING ANY INTEREST IN ANY SUCH PROPERTY:

The Governing Body of the City of Floydada has ordered that the hereinbelow mentioned street be improved by raising, grading, and filling same, and installing concrete curbs and gutters, and paving with six inch (6") reinforced concrete, with incidentals and appurtenances, and contract has been made and entered into with L. H. Hay Company for the making and construction of such improvements.

Changes in the plan, extent and method of improvements on the hereinbelow mentioned portions of streets and places have been provided for and the necessary action taken in connection therewith, and a new estimate concerning cost of the improvements on said hereinbelow mentioned portions of streets, with amounts, have been prepared and approved, and new hearing ordered to be held. Such streets and places, together with estimated amounts per foot to be assessed, and other matters and things, being as follows, to-wit:

- Unit No. 1. Wall Street from the South property line of Mississippi Street to the South property line of Kentucky Street.
- Unit No. 2. Wall Street from the South property line of Kentucky Street to the South Property line of Tennessee Street.
- Unit No. 3. Wall Street from the South property line of Tennessee Street to the South property line of Georgia Street.
- Unit No. 4. Wall Street from the South property line of Georgia Street to the South property line of Houston Street.
- Unit No. 5. Wall Street from the South property line of Houston Street to the South property line of Crockett Street.

The improvements to be approximately 65 feet wide from curb to curb, but with a parkway through the center except at intersections with other streets, the parkway to be 29 feet wide; the estimated cost of the improvements is as follows:

Unit No. 1	\$6663.82
Unit No. 2	\$6488.98
Unit No. 3	\$6488.98
Unit No. 4	\$6488.98
Unit No. 5	\$6107.56

The estimated amount per lineal foot to be assessed against the abutting property and the owners thereof for curb is \$0.40 for each unit; the estimated amount per front foot to be assessed against abutting property and the owners thereof for the improvements exclusive of curbing is as follows:

- UNIT NO. 1.—From the South line of Mississippi Street to the South line of Kentucky Street \$6.45940.
- UNIT NO. 2.—From the South line of Kentucky Street to the South line of Tennessee Street \$6.45940.
- UNIT NO. 3.—From the South line of Tennessee Street to the South line of Georgia Street \$6.45940.
- UNIT NO. 4.—From the South line of Georgia Street to the South line of Houston Street \$6.45940.
- UNIT NO. 5.—From the South line of Houston Street to the South line of Crockett Street \$6.45940.

The total estimated amount to be assessed against abutting property and owners thereof is as follows:

PAVING ASSESSMENT

WALL STREET FROM S. LINE MISSISSIPPI ST. TO S. LINE KENTUCKY STREET. ROADWAY 18-29-18
6 INCH REINFORCED CONCRETE PAVEMENT

PROPERTY OWNER LOCATION OF PROPERTY	Lot	Blk. No.	Ft.	Rate	Cost	Lin.Ft.	Cost	Total Assessed	
EAST SIDE									
S. Velma Nelson Rabb Original Townsite	10	95	25	6.45940	\$161.49	25	\$10.00	\$171.49	
M. Massie Original Townsite	11	95	25	6.45940	161.49	25	10.00	171.49	
M. Massie Original Townsite	12	95	25	6.45940	161.49	25	10.00	171.49	
M. Massie Original Townsite	13	95	25	6.45940	161.49	25	10.00	171.49	
E. Thurmon Original Townsite	14	95	25	6.45940	161.49	25	10.00	171.49	
M. Massie Original Townsite	15	95	25	6.45940	161.49	32	12.80	174.29	
WEST SIDE									
M. Massie Original Townsite	16	95	25	6.45940	161.48	32	12.80	174.28	
M. Massie Original Townsite	17	95	25	6.45940	161.48	25	10.00	171.48	
Hicks Original Townsite	18	95	25	6.45940	161.48	25	10.00	171.48	
M. Massie Original Townsite	19	95	25	6.45940	161.48	25	10.00	171.48	
K. Snashall Original Townsite	20	95	25	6.45940	161.48	25	10.00	171.48	
M. Massie Original Townsite	21	95	25	6.45940	161.48	50.2	20.08	181.56	
ALLEY									
H Plains Lumber Co. Original Townsite	1, 2 & 3	94	75	6.45940	484.45	75	30.00	514.45	
M. Massie Original Townsite	4	94	25	6.45940	161.48	25	10.00	171.48	
M. Massie Original Townsite	5	94	25	6.45940	161.48	25	10.00	171.48	
E. Douglas Original Townsite	6	94	25	6.45940	161.48	32	12.80	174.28	
ALLEY									
M. Massie Original Townsite	7	94	25	6.45940	161.48	32	12.80	174.28	
T. Finn Original Townsite	8	94	25	6.45940	161.49	25	10.00	171.49	
V. M. Massie Original Townsite	9	94	25	6.45940	161.49	25	10.00	171.49	
R. Fred Brown Original Townsite	10	94	25	6.45940	161.49	25	10.00	171.49	
Mrs. Nannie A. Cristler Original Townsite	11	94	25	6.45940	161.49	25	10.00	171.49	
Mrs. Nannie A. Cristler Original Townsite	12	94	25	6.45940	161.49	50.2	20.08	181.57	
TOTALS					600		3875.64	678.4	4147.00

Total Cost Improvements (Except Curbs)	\$6,392.46	RATE PER FOOT	
Part Cost to be paid by City	2,516.82	Paving	\$6.45940
Part Cost to be paid by Property Owners	3,875.64	Curb	0.40
Cost Curbs 678.4 lin. ft., @ \$0.40	271.36		

PAVING ASSESSMENT

WALL STREET FROM S. LINE KENTUCKY ST. TO S. LINE TENNESSEE ST. ROADWAY 18-29-18
6 INCH REINFORCED CONCRETE PAVEMENT

PROPERTY OWNER LOCATION OF PROPERTY	Lot	Blk. No.	Ft.	Rate	Cost	Lin.Ft.	Cost	Total Assessed	
EAST SIDE									
R. Fred Brown Original Townsite	10	104	25	6.45940	\$161.49	50.2	\$20.08	\$181.57	
M. Massie Original Townsite	11	104	25	6.45940	161.49	25	10.00	171.49	
D. Bacon Original Townsite	12	104	25	6.45940	161.49	25	10.00	171.49	
V. M. Massie Original Townsite	13	104	25	6.45940	161.49	25	10.00	171.49	
G. A. Linder Original Townsite	14 & 15	104	50	6.45940	322.97	57	22.80	345.77	
ALLEY									
Mrs. J. L. Montgomery Original Townsite	16	104	25	6.45940	161.49	32	12.80	174.29	
Mrs. J. L. Montgomery Original Townsite	17	104	25	6.45940	161.49	25	10.00	171.49	
Lancaster Estate Original Townsite	18	104	25	6.45940	161.48	25	10.00	171.48	
M. Massie Original Townsite	19	104	25	6.45940	161.48	25	10.00	171.48	
K. Snashall Original Townsite	20	104	25	6.45940	161.48	25	10.00	171.48	
M. Massie Original Townsite	21	104	25	6.45940	161.48	50.2	20.08	181.56	
WEST SIDE									
Street Church of Christ Original Townsite	1 to 4 incl.	105	100	6.45940	645.94	125.2	50.08	696.02	
Kirk Original Townsite	5&6	105	50	6.45940	322.97	57	22.80	345.77	
Thomas Original Townsite	7	105	25	6.45940	161.48	32	12.80	174.28	
Williams Original Townsite	8&9	105	50	6.45940	322.97	50	20.00	342.97	
Baptist Church Original Townsite	10, 11&12	105	75	6.45940	484.45	100.2	40.08	524.53	
TOTALS					600		3875.64	728.8	4167.16

Total Cost Improvements (Except Curbs)	\$6,167.46	RATE PER FOOT	
Cost to be paid by City	2,291.82	Paving	\$6.45940
Cost to be paid by Property Owners	3,875.64	Curb	0.40
Curbs, 728.8 lin. ft., @ \$0.40	291.52		

PAVING ASSESSMENT

WALL STREET FROM S. LINE TENNESSEE ST. TO S. LINE GEORGIA ST. ROADWAY 18-29-18
6 INCH REINFORCED CONCRETE PAVEMENT

PROPERTY OWNER LOCATION OF PROPERTY	Lot	Blk. No.	Ft.	Rate	Cost	Lin.Ft.	Cost	Total Assessed	
EAST SIDE									
Original Townsite	6	117	50	6.45940	\$322.97	75.2	\$30.08	\$353.05	
Original Townsite	7	117	50	6.45940	322.97	50	20.00	342.97	
Original Townsite	8	117	50	6.45940	322.97	57	22.80	345.77	
WEST SIDE									
Original Townsite	9	117	50	6.45940	322.97	57	22.80	345.77	
Original Townsite	10	117	50	6.45940	322.97	50	20.00	342.97	
Original Townsite	11	117	50	6.45940	322.97	75.2	30.08	353.05	
ALLEY									
Original Townsite	1	116	50	6.45940	322.97	75.2	30.08	353.05	
Original Townsite	2	116	50	6.45940	322.97	50	20.00	342.97	
Original Townsite	3	116	50	6.45940	322.97	57	22.80	345.77	
ALLEY									
Original Townsite	4	116	50	6.45940	322.97	57	22.80	345.77	
Original Townsite	5	116	50	6.45940	322.97	50	20.00	342.97	
Original Townsite	6	116	50	6.45940	322.97	75.2	30.08	353.05	
TOTALS					600		3875.64	728.8	4167.46

Total Cost Improvements (Except Curbs)	\$6,167.46	RATE PER FOOT	
Cost to be paid by City	2,291.82	Paving	\$6.45940
Cost to be paid by Property Owners	3,875.64	Curb	0.40
Curbs, 728.8 lin. ft., @ \$0.40	291.52		

PAVING ASSESSMENT

WALL STREET FROM S. LINE GEORGIA ST. TO S. LINE HOUSTON ST. ROADWAY 18-29-18
6 INCH REINFORCED CONCRETE PAVEMENT

PROPERTY OWNER LOCATION OF PROPERTY	Lot	Blk. No.	Ft.	Rate	Cost	Lin.Ft.	Cost	Total Assessed	
EAST SIDE									
Original Townsite	6	126	50	6.45940	322.97	75.2	30.08	353.05	
Original Townsite	7	126	50	6.45940	322.97	50	20.00	342.97	
Original Townsite	8	126	50	6.45940	322.97	57	22.80	345.77	
WEST SIDE									
Original Townsite	9&N 1/2	126	75	6.45940	484.45	82	32.80	517.25	
Original Townsite	11&S 1/2	126	75	6.45940	484.46	100.2	40.08	524.54	
ALLEY									
Original Townsite	1	127	50	6.45940	322.97	75.2	30.08	353.05	
Original Townsite	2	127	50	6.45940	322.97	50	20.00	342.97	
Original Townsite	3	127	50	6.45940	322.97	57	22.80	345.77	
ALLEY									
Original Townsite	4	127	50	6.45940	322.97	57	22.80	345.77	
Original Townsite	5	127	50	6.45940	322.97	50	20.00	342.97	
Original Townsite	6	127	50	6.45940	322.97	75.2	30.08	353.05	
TOTALS					600		3875.64	728.8	4167.16

Total Cost Improvements (Except Curbs)	\$6,167.46	RATE PER FOOT	
Part of Cost to be Paid by City	2,291.82	Paving	\$6.45940
Part of Cost to be Paid by Property Owners	3,875.64	Curb	0.40
Cost Curbs 728.8 lin. ft. @ 0.40	291.52		

PAVING ASSESSMENT

WALL STREET FROM S. LINE HOUSTON ST. TO S. LINE CROCKETT ST. ROADWAY 18-29-18
6 INCH REINFORCED CONCRETE PAVEMENT

PROPERTY OWNER LOCATION OF PROPERTY	Lot	Blk. No.	Ft.	Rate	Cost	Lin.Ft.	Cost	Total Assessed	
EAST SIDE									
G. C. Tubbs Original Townsite	6&N 1/2	139	75	6.45940	\$484.45	100.2	\$40.08	\$524.53	
C. M. Thacker Original Townsite	8&S 1/2	139	75	6.45940	484.46	82	32.80	517.26	
ALLEY									
W. M. Houghton Original Townsite	9	139	50	6.45940	322.97	57	22.80	345.77	
W. M. Houghton Original Townsite	10	139	50	6.45940	322.97	50	20.00	342.97	
W. M. Houghton Original Townsite	11	139	50	6.45940	322.97	76.4	30.56	353.53	
CROCKETT STREET									
W. H. Foster Bartley Heights Addn.	1	2				27.5	11.00	11.00	
WEST SIDE									
C. L. Allmon Original Townsite	1	138	50	6.45940	322.97	75.2	30.08	353.05	
F. C. Harmon Original Townsite	2	138	50	6.45940	322.97	50	20.00	342.97	
F. C. Harmon Original Townsite	3	138	50	6.45940	322.97	57	22.80	345.77	
ALLEY									
W. N. Paschall Original Townsite	4&N 1/2	138	75	6.45940	484.45	82	32.80	517.25	
L. G. Mathews Original Townsite	6&S 1/2	138	75	6.45940	484.46	101.4	40.56	525.02	
CROCKETT STREET									
H. T. Smith Bartley Hts. Addn.	8	1				27.5	11.00	11.00	
TOTALS					600		3,875.64	786.2	4,190.12

Total Cost Improvements (Except Curbs)	\$5,793.08	RATE PER FOOT	
Part Cost to be Paid by City	1,917.44	Paving	\$6.45940
Part Cost to be Paid by Property Owners	3,875.64	Curb	0.40
Cost Curbs, 786.2 lin. ft., @ 0.40	314.48		

A hearing will be given and held by and before the governing body of the City of Floydada, Texas, on the 12th day of October A. D. 1928, at 9 o'clock, A. M. in the City Hall, in the City of Floydada, Texas, to all owning or claiming any property abutting upon said portions of streets, and to all owning or claiming any interest in any such property, or any to be assessed therefor, the benefits to the respective parcels of abutting property by means of the improvements on the portion of street or highway upon which the property abuts, and concerning the regularity, validity and sufficiency of the contract for, and all proceedings relating to, such improvements and proposed assessments therefor, and concerning any matter as to which they are entitled to hearing under the law in force in the City and under the proceedings of the City with reference to said matters. Following such hearing assessments will be levied against abutting property and owners thereof, and such assessments when levied shall be a personal liability of the owners of such property and a first and prior lien upon the property as provided by the law in force in the city, and under which the proceedings are taken, being the Act passed at the First Called Session of the 40th Legislature of the State of Texas, Known as Chapter 106, of the Acts of said Session.

Hesperian Want Ads

Cheapest, Busiest Salesmen In Floyd County

For Sale

FOR SALE—Good seed wheat, clear of Johnson Grass. J. S. Hale. 321tc

FOR SALE or trade—9 room house with four lots; also two used mules. A. D. Summerville, located north of carnival. 314tp

FORD Roadster for sale. Gullion & Son, Tires Service. 321tc

ALFALFA SEED—Home grown, re-cleaned, for only 15c per pound. Geo. M. Finkner. 23ftc

PHOTOGRAPHS of the Fair, at Wilson Studio. 321tc

GOOD used Lumber for sale, see Luther Fry. 31ftc

USED Remington portable Typewriter for sale. Good condition. See Tom Bishop at Hesperian office. 31ftc

SEED WHEAT FOR SALE—Cannaday Bros. Phone 144. 28ftc

FOR SALE—McCormick row binder in good running shape. Wilbur Nelson, 2 miles South of Blue Goose Filling Station. 322tp

FOR SALE CHEAP—Emerson 14-hoe drill, in good shape. Cannaday Bros. Phone 144. 28ftc

FOR SALE—For storage charges, to the highest bidder at auction, one meat display case, Saturday, October 20, at 2 p. m. Pitts Transfer Co., by J. C. Hay, Manager. 323tc

FOR SALE—Cheap, easy terms, the north 160 acres of my place 1 1/2 miles northeast of town. Also bundle cane for sale. Mrs. M. F. Swain. Box 185. 312tc

FOR SALE—Bookkeeping Scholarship in Lippert's Business College at Plainview. Sell worth money. J. U. Borum. 312tc

FOR SALE—Some nice young Rhode Island Reds. See L. B. Dawson. 322tp.

FOR SALE—one 16 hoe grain drill. See or phone S. D. Bunch, Lakeview. 302tp.

PHOTOGRAPHS of the Fair, at Wilson Studio. 321tc

PIGS for sale. J. C. Bolding. 31ftc

FOR SALE—Dodge Sedan in A-1 condition. Inquire at 412 W. Jackson Street. 30ftc

SEE J. M. Willson for good building sites \$10 and \$15 down, easy monthly installments. 28th

FOR SALE—Good seed wheat, clear of Johnson Grass. J. S. Hale. 321tc

WHY not buy a stringed musical instrument for a birthday present. You can find your choice, at Mrs. L. E. Fagan's, 316 W. Houston St. 312tc

FOR SALE—Lot 7, Block K, Andrews Addition, with two-room house. Will take in good Ford touring car, must be good, no junk. James W. Jones. Box 16, Dimmitt, Texas. 322tc

Live Stock

FOR SALE—Fresh thoroughbred or highgrade Jersey cows at Freeman Dale Jersey Farm, one mile south of Dougherty. 20ftc

FOR SALE—Extra good milch cow. Arch Muncy. 24ftc

SHEEP FOR SALE—500 to 1,000 head ewes, can deliver Oct. 1. Call or write Baker Merc. Co., Lockney, Texas. 28ftc

FOR SALE—4 registered Duroc junior boars. Choice individuals. W. A. King. 284tc

WE have leased our registered Jersey bull to E. A. Grigsby of Starkey community. Service charge remains same—one dollar. Holmes Bros., Hilltop Farm. 324tc

For Rent

FOR RENT—two furnished rooms for \$10. One block west of high school. Mrs. John Wahl. 1tp

ROOM and board for one or more, front rooms, lights, water and garage, third house west of Presbyterian Church. Mrs. T. J. Nance. 26ftc

WANTED—To rent 160 to 320 acre farm. Plenty tools, feed and force to handle it. See or write J. H. Strain, Route 2, Floydada. 312tp

Typewriter for rent at Hesperian Office. 281dh

FOR RENT—Two light housekeeping rooms, all modern conveniences, 321 West Kentucky Street. Phone 249. 31ftc

FOR RENT—at Plainview, 12 1/2 acres tract land, good irrigation well, six room house. Robert Sone, Floydada. 322tp.

Miscellaneous

BOARD and room for two. Good location. Convenient nicely furnished room. Call 334M. 31ftc

BRING your hemstitching to the Thrifty Nifty Shop. All work guaranteed. Hemstitching also done in gold and silver thread. 35ftc

PHOTOGRAPHS of the Fair, at Wilson Studio. 321tc

LET us upholster and repair your furniture. John McCleskey Top Shop. Phone 220. 24ftc

A new package line of embroidery for fall and winter has just arrived at the Thrifty-Nifty Shop. 28ftc

DON'T give your order to a transient agent. We will have a car load of trees and shrubbery here this fall. Hollums, Floydada Florists, 17ftc

THE Spirella Lingerie line is the best made. All garments made to measure. We also have a splendid line of hose at The Thrifty-Nifty Shop. 29ftc

FOR well drilling see C. A. Mullins or phone Willson & Son or 57. Might handle some trade on drilling. Also well equipped to do well and windmill repairing. 25ftc

SERVICE CAR—28 Model Ford. Drive it yourself. Phone 133. R. C. Henry. 294tc

HEMSTITCHING, Mrs. J. D. Weatherly at McGuire & Weatherly's Store 17ftc.

I'm Still giving the best bargains in monuments. See me before you buy. S. B. McCleskey. 2ftc

Reduced prices on all spring and summer packages at the Thrifty-Nifty Shop. 28ftc

IF you need a corset, brassiere-girdle or brassiere, have your measurements taken and be properly fitted in a Spirella at the Thrifty-Nifty Shop. 29ftc

Wants

WANTED—150 to 200 acres to rent for 1929. Good teams and two-room outfit. J. C. Burleson. 323tc

WANTED—Maize to head on shares. Have good crew, wagons, teams. Write Ed Bandy, Swearingin, Texas. 294tp.

WANTED—Second hand wagon in fair or good shape. Not larger than 3 inch. See R. C. Scott. 321tc

NOTICE

My ranch land, located in the northeastern district of Floyd County and on the Quitaque River, is again POSTED and the road closed by lock and chain. Owing to the fact that my cattle are grazing on this land, we have found travelers and picnickers a nuisance. The scattering of cans and papers which is endangering the stock as well as causing more flies, and the difficulty of keeping fences in shape, make it necessary to stop the public from entering said land. Hereafter, any person found therein will be prosecuted accordingly. The Flomot road or Quitaque road is private and CLOSED to travel. All business matters handled at headquarters. N. A. Armstrong. 20ftc

A FAMILY to gather maize and pull cotton. D. S. Battey, Rt. 4. Phone 903F51. 322tc

WANTED—Ambitious, industrious white person to introduce and supply the demand for Rawleigh Household Products in Floydada and other nearby localities. Make sales of \$150 to \$600 a month or more. Rawleigh Methods get business everywhere. No selling experience required. We supply Products, Sales and Advertising Literature and Service Methods—everything you need. Profits increase every month. Lowest prices; best values; most complete service. W. T. Rawleigh Co., Dept TX14422, Memphis, Tenn. 324tp

Real Estate

FOR SALE—Nice building lots, three of which are best in town. See S. B. McCleskey. 17ftc

BUY a building site in the path of development, pay it out on easy installments. Then you can build when you get ready. See J. M. Willson at Willson & Son Lumber. 28th

SEE Floyd County Abstract Co., for improved and unimproved town lots. We represent the owners of more than 200 lots in Floydada. R. C. Scott, Mgr. 39ftc

FOR bargains in lands and town lots see Arthur B. Duncan, Floydada, Texas. 40ftc

HOME building sites \$10 and \$15 down, and easy installments. See J. M. Willson. 28th

NEW seven room house, modern bungalow, 2 blocks from C. I. A., one of best streets north \$5,500 clear of debt, to trade for 160 to 320 acres of land. Land must be priced right. Will pay cash difference if any. Also some small farms to trade for plains land. Will pay difference. We match all trades. Baker & Bell, South Side Public Square, Denton, Texas. 312tp

Lost and Found

LOST—A silver mesh bag with red bird design, on streets of Floydada Saturday. Finder please return to Hesperian Office and receive reward. Mrs. G. R. May. 321tc

LOST—Pair packer wheels for wheat drill near Mrs. J. R. Evers farm. Finder notify R. F. Hall, Rt. 2, Floydada. 322tp

Sunset News

(Too late for last week)

Sunset, Sept. 19.—Sunday school met with regular attendance Sunday. Those attending school at Lockney, Plainview and other places who spent the week end at home were: Misses Oleta and Neva Orman, Eddie Mae Gilliland, Lockney and Miss Helen Upton who is attending Wayland Baptist College at Plainview. Misses Ruth Childress and Dorothy Stephenson spent Sunday with the Gilliland girls.

Mr. and Mrs. J. D. Shearer and family spent Sunday in their old home the Newland community. They also attended the Christian meeting at that place and helped eat that nice dinner which was spread at the noon hour.

Otis and Armon Milton and Ethel and Elsie Myers visited with Bessie and Orvus Shearer Saturday night.

Rev. Beavers preached here last Friday night and Brother Carney preached Monday night.

School is progressing nicely. The school buses are in good shape and have good drivers for each bus. Lester Simpson is driver of No. 1, Elmer Edgmon of No. 2, and Roy Jarnigan of No. 3.

Mr. and Mrs. Charlie Kneir and family spent Sunday with Mr. and Mrs. Sam Reeves.

Some of the South Plains young people spent Sunday in the brakes. They report a good time.

George Kneir spent Sunday with Raymond Upton.

Clyde and Claude Myers and Ray Burns have gone to Oklahoma.

The Dry Goods store in South Plains has moved.

Mrs. Callahan who has been in Louisiana returned home last week.

Mr. and Mrs. J. C. Parker, of Wink, have sold their theatre at that place and came to Floydada Monday for a visit here with her brother, Oliver Allen and family and also at Ralls with friends and relatives. Their plans for the future are indefinite.

With The Churches

SPECIAL SERMONS AT THE BAPTIST CHURCH

Dick O'Brien, Pastor

For the morning hour services during the month of October we will continue our study of the book of First Timothy. For the evening services we expect to discuss some of the deep fundamentals of the Christian religion. The sermon subject for next Sunday evening will be, "Is There A God After All?" We dare say that there is not a thinking man, woman, or child in our community who has not in some manner and to some degree wondered about this most fundamental of all life's questions. Let's take a square look at it Sunday night.

Next Sunday is promotion day for our Sunday School. Let all be in their places on time. Our program is distinctly on the upgrade. Let no one slacken, but all pull together and we will see wonderful things take place. If there be any who feel critical or inclined to find fault and hold back let us urge such an one to hook up with the crowd at least for a worthy test and see if that disagreeable feeling does not vanish. A kicking mule can't pull, and a pulling mule can't kick, which philosophy also holds with church members. We need you and we want you. "Let brotherly love continue."

Our B. Y. P. U. program is going over in a great way. We expect to have our new unions functioning right away.

The meeting at Wayland college last week, and the very sad funeral of my sister-in-law at Brownwood Monday afternoon, have kept me away from the community for several days. But we are here now for all that we can do to make the program of our church attractive, spiritual and altogether helpful.

Visitors always welcome at our services. The church with a program.

THE FIRST CHRISTIAN CHURCH

F. L. Davis, Pastor

Sunday School and church services will be held as usual at The First Christian Church Sunday morning, Oct. 7. Every member will please bring lunch for their family. A basket dinner will be spread in the church immediately following services. At 1:30 p. m. there will be a roll call of members followed by the election of officers for the coming year.

Every member is urged to be present and any friend welcome.

CUMBERLAND PRESBYTERIAN CHURCH

A. A. Collins, Pastor

B. F. McIntosh, Superintendent of Sunday school.

Sunday school at 9:45 a friendly class for every one.

Morning service at 11.

Christian Endeavor at 7.

Evening service at 7:45.

Prayer and study hour Wednesday evening at 7:30.

You will always find a welcome at the Presbyterian Church.

LOCKNEY CIRCUIT

J. N. S. Webb, pastor

You are cordially invited to attend the following services next Sunday at Aiken.

Sunday school at 10:00 a. m.

Preaching at 11:00 a. m.

League at 7:15 p. m.

Preaching at 8:00 p. m.

Services at Irick as follows: Sunday School at 2:00 p. m. Preaching at 3:00 p. m.

CHRISTIAN ENDEAVOR PROGRAM

Christian Endeavor program for Sunday, Oct. 7, will be:

Subject, "Workers together with God."

Leader, Pierce King.

Song, I am Thine O Lord.

Silent Prayer.

Reading of Romans 12, president.

Song, Take time to be Holy.

Prayer concluding with the Lord's prayer in unison.

Reading, He fell among the Thieves Robbie Archer.

Scripture lesson Corinthians I 3:1-9

"What does Paul mean when he says I can do all things in him that strengtheneth me," Mrs. Kenneth Bain.

What is meant by the statement of Phil. 2:12, 13, Ruel Fanning.

How can we find our work, Helen King.

How can we become equipped for our work, 11 Tim. 2:15.

Song, Have Thine Own Way.

Business.

Benediction.

FIRST CHRISTIAN CHURCH

F. L. Davis, Minister.

Last Lord's day was a good day with us. Had two fine services and the Every Member Canvas was very well done. Some few were not at home and did not get to make their pledge, but we feel sure they will do so as soon as they are asked. It is a blessed thing to help support the church for what we give to it we are giving to God, who gave His best for us.

Next Lord's day will be a great day for the First church. It is our Annual meeting. We will meet at the usual hour, 10:00 o'clock for the Sunday School and preaching at 11. We are all to bring our dinners and after the morning worship will spread our dinners together and enjoy the fellowship of the meal together. After we have eaten we will have reports from the different departments of the church. Will have the election of officers for both the Sunday School and church. Will also have a roll call of the members. Be sure to answer your name then. If part of the family do not belong to the church and will come bring them along. We want you. If any of you have friends whom you would like to invite do so. We do not want to be selfish, altho we are very anxious that all of the members of the First Church be present.

Owing to the meeting next Sunday afternoon we will not fill our appointment at Newland in the afternoon. Sorry of the conflict, but can not be helped.

The public in general are invited to worship with us at any time, where you will find a cordial welcome awaiting you. Come to Sunday School with us.

What a fine thing it would be for Floydada if we all adopted the slogan: "Every man in Floydada in Sunday School every Sunday." What business would be hurt if that motto could be realized. I can think of none.

THE NEW LINE OF THE Q. A. & P. RY.

Into the Floydada Section will provide 24-hour special service on Live Stock into Oklahoma City on—

Tuesdays And Saturdays

The Oklahoma City market provides the best and quickest out-let for Live Stock from this territory. Freight rates and shrink are lower than to any other point.

Oklahoma City

A Live Market for Live Stock

Read The Hesperian for the news

THEATRES

ROYAL

Thursday and Friday, Oct. 4 and 5
George Bancroft in
"The Showdown"

A gripping drama of life, love, hate, with George Bancroft, of "Underworld" fame the master of a masterful role.
Also good two reel educational comedy.

Saturday, October 6, One Day Only
Rex Bell
Here's a new Hard Riding Young Cowboy personality in

"The Cowboy Kid"
Love Laughs at Bandits in A Western Romance. Also good two reel comedy.

Monday and Tuesday, Oct. 8 and 9
Bebe Daniels in
"The Fifty Fifty Girl"

Pardon us while we laugh! You won't need any excuse to laugh at this joy girl when she sets out to wear trousers and finds they are too big for her—she is a big laugh. All lovers of comedy get much more than an even break from Bebe Daniels, and if it's hard for you to laugh, try Bebe Daniels latest.
Also comedy and news events.

Wednesday, Oct. 10; One Day Only
An All Star Cast in
"Sailors Wives"

Also Good Two Reel Comedy
Also "Old Fiddlin Contest"
Prizes given to the Best—Bring your fiddle.

WATCH FOR DATES
HAROLD LLOYD IN
"SPEEDY"
IT'S COMING

OLYMPIC

Friday, Oct. 5, One Day Only
Patsy Ruth Miller in

"Beyond Londons Lights"
Have you a Mine? Patsy Ruth Miller has one for you in her latest picture. Also Chapter One—"The Haunted Island." See the first of this big Super Serial. Also Good Comedy.

Saturday, October 6; One Day Only
Buffalo Bill Jr., in

"The Valley of Haunted Men"
Watch Buffalo Bill ride into trouble and fight his way out. Also Good Two Reel Comedy.

Monday and Tuesday, Oct. 8 and 9
Bessie Love in

"Sally of The Scandals"
A well arranged picture that will please every one. Also good two reel comedy.

Wednesday & Thursday, Oct. 10 and 11
An all Star Cast in

"Square Crooks"
Folks you can't go wrong on this one it is guaranteed to be the best. Also good two reel Comedy.



Walk Right In! and Watch Us Work

Then you'll know the difference between tube "Patching" and tube vulcanizing.

SO YOU'LL KNOW

The difference between an ordinary patch and a vulcanized job—so you can see for yourself what a real vulcanized patch is, and what it means when we say we have ample equipment to do the job right.

Any tire will "go flat" when you stick a big enough nail or tack into it to puncture the tube, but when you vulcanize the tube you won't have trouble with the patch slipping or coming off under the heat of the dusty roads and high speeds that are every day jobs for the tires and tubes to stand up under.

We Invite You!

to visit our workshop, and see the vulcanizing process in operation. When you see vulcanizing done at the same price as ordinary patching, we know you are going to prefer it.

Gullion & Son Tire Service

Telephone 83—"Invite Us to Your Next Blowout"

NOTICE

TO ALL OWNING OR CLAIMING ANY PROPERTY ABUTTING UPON THE HEREINBELOW MENTIONED PORTIONS OF STREETS IN THE CITY OF FLOYDADA, TEXAS, AND TO ALL OWNING OR CLAIMING INTEREST IN ANY SUCH PROPERTY:

The Governing body of the City of Floydada has ordered that the hereinbelow mentioned portions of streets be improved by raising, grading and filling same, and installing concrete curbs and gutters, and paving with six (6) inch re-inforced concrete, with incidentals and appurtenances and contract has been made and entered into with L. H. Lacy Company for the making and construction of such improvements.

Changes in the plan, extent and method of improvements on the hereinbelow mentioned portions of streets and places have been provided for and the necessary action taken in connection therewith, and a new estimate concerning cost of the improvements on said herein-below mentioned portions of streets, with amounts, have been prepared and approved, and the new hearing ordered to be held. Such streets and places, together with estimated amounts per front foot to be assessed, and other matters an dthings, being as follows, to-wit; on Main Street;

UNIT NO. 1—Main Street from the South Property Line of Kentucky Street to the South Property Line of Tennessee Street;

UNIT NO. 2—Main Street from the South Property Line of Tennessee Street to the South Property Line of Georgia Street;

UNIT NO. 3—Main Street from the South Property Line of Georgia Street to the South Property Line of Houston Street;

UNIT NO. 4—Main Street from the South Property Line of Houston Street to the South Property Line of Crockett Street;

The improvements to be approximately Sixty Nine (69) feet wide from curb to curb, with a parkway through the center except at intersections with other streets, the parkway to be Thirty Three (33) feet wide, the estimated cost of the improvements is as follows:

- UNIT NO. 1—\$6,717.92
- UNIT NO. 2—\$6,547.30
- UNIT NO. 3—\$6,547.30
- UNIT NO. 4—\$5,790.14

UNIT NO. 5—Main Street from the South Property Line of Crockett Street to the North Property Line of Jeffie Avenue;

The improvements to be approximately Thirty (30) feet wide from curb to curb, and paved solid; the estimated cost of the improvements is as follows;

UNIT NO. 5—\$8,613.00

The estimated amount per lineal foot to be assessed against the abutting property and the owners thereof, for curb is \$0.40 for each unit; the estimated amount per front foot to be assessed against the abutting property and the owners thereof for improvements exclusive of curbing is as follows;

- UNIT NO. 1—From the South Line of Kentucky Street to the South Line of Tennessee Street \$6.60660.
- UNIT NO. 2—From the South Line of Tennessee Street to the South Line of Georgia Street \$6.60660.
- UNIT NO. 3—From the South Line of Georgia Street to the South Line of Houston Street \$6.60660.
- UNIT NO. 4—From the South Line of Houston Street to the South Line of Crockett Street \$6.60660.
- UNIT NO. 5—From the South Line of Crockett Street to the North Line of Jeffie Avenue \$5.64944.

The total estimated amount to be assessed against the abutting property and owners thereof is as follows:

UNIT NO. 1
REVISED PAVING ASSESSMENT
MAIN STREET FROM S. LINE KENTUCKY ST. TO S. LINE TENNESSEE ST. ROADWAY 18-33-18
6 INCH REINFORCED CONCRETE PAVEMENT

PROPERTY OWNER	LOCATION OF PROPERTY	Lot	Blk. No.	Ft	Rate	Cost	Lin.Ft.	Cost	Curb	Total Assessed	
EAST SIDE											
First Baptist Church	Original Townsite	19	24	inc.l.	105	150	\$6.60660	\$990.99	167.5	\$67.00	\$1057.99
ALLEY											
D. T. Curry	Original Townsite	17	18	105	50	6.60660	330.33	57	22.80	353.13	
Herbert P. Ralls	Original Townsite	16	105	25	6.60660	165.16	25	10.00	175.16		
W. I. Allen, Estate	Original Townsite	15	105	25	6.60660	165.16	25	10.00	175.16		
W. I. Allen, Estate	Original Townsite	14	105	25	6.60660	165.16	25	10.00	175.16		
W. I. Allen, Estate	Original Townsite	13	105	25	6.60660	165.16	50.2	20.08	185.24		
WEST SIDE											
J. H. Shurbet	Original Townsite	10	106	25	6.60660	165.16	35.5	14.20	179.36		
J. H. Shurbet	Original Townsite	11	106	25	6.60660	165.16	25	10.00	175.16		
J. H. Shurbet	Original Townsite	12	106	25	6.60660	165.16	25	10.00	175.16		
T. F. Anderson	Original Townsite	13	106	25	6.60660	165.16	25	10.00	175.16		
T. F. Anderson	Original Townsite	14	106	25	6.60660	165.17	25	10.00	175.17		
T. F. Anderson	Original Townsite	15	106	25	6.60660	165.17	32	12.80	177.97		
ALLEY											
L. H. Lewis	Original Townsite	16	106	25	6.60660	165.17	32	12.80	177.97		
L. H. Lewis	Original Townsite	17	106	25	6.60660	165.17	25	10.00	175.17		
L. H. Lewis	Original Townsite	18	106	25	6.60660	165.17	25	10.00	175.17		
L. H. Lewis	Original Townsite	19	106	25	6.60660	165.17	25	10.00	175.17		
Mrs. Jeffie Smith	Original Townsite	20	106	25	6.60660	165.17	25	10.00	175.17		
Mrs. Jeffie Smith	Original Townsite	21	106	25	6.60660	165.17	50.2	20.08	185.25		
TOTALS											
					600		3963.96	699.4	279.76	4243.72	
Total Cost Improvements (Except Curbs)					\$6,438.16	RATE PER FOOT:					
Part Cost to be Paid by City					2,474.20	Paving					\$6.60660
Part Cost to be Paid by Property Owner					3,963.96	CURB					0.40
Cost Curbs 699.4 lin. ft. @ \$0.40					279.76						

UNIT NO. 2
REVISED PAVING ASSESSMENT
MAIN STREET FROM S. LINE TENNESSEE ST. TO S. LINE GEORGIA ST. ROADWAY 18-33-18
6 INCH REINFORCED CONCRETE PAVEMENT

PROPERTY OWNER	LOCATION OF PROPERTY	Lot	Blk. No.	Ft	Rate	Cost	Lin.Ft.	Cost	Curb	Total Assessed	
EAST SIDE											
W. M. Windsor	Original Townsite	12	116	50	\$6.60660	\$330.33	75.2	\$30.08	\$360.41		
W. M. Windsor	Original Townsite	11	116	50	6.60660	330.33	50	20.00	350.33		
J. H. Shurbet	Original Townsite	10	116	50	6.60660	330.33	57	22.80	353.13		
ALLEY											
J. H. Shurbet	Original Townsite	9	116	50	6.60660	330.33	57	22.80	353.13		
C. J. Stallings	Original Townsite	8	116	50	6.60660	330.33	50	20.00	350.33		
J. H. Shurbet	Original Townsite	7	116	50	6.60660	330.33	75.2	30.08	360.41		
WEST SIDE											
Kenneth Ewing Bain	Original Townsite	6	115	50	6.60660	330.33	75.2	30.08	360.41		
Kenneth Ewing Bain	Original Townsite	7	115	50	6.60660	330.33	50	20.00	350.33		
A. C. Goen	Original Townsite	8	115	50	6.60660	330.33	57	22.80	353.13		
ALLEY											
T. F. Anderson	Original Townsite	9	115	50	6.60660	330.33	57	22.80	353.13		
T. W. Salisbury	Original Townsite	10	115	50	6.60660	330.33	50	20.00	350.33		
N. W. Williams	Original Townsite	11	115	50	6.60660	330.33	75.2	30.08	360.41		
TOTALS											
					600		3963.96	728.8	291.52	4255.48	
Total Cost Improvements (Except Curbs)					\$6,255.78	RATE PER FOOT:					
Part Cost to be Paid by City					2,291.82	Paving					\$6.60660
Part Cost to be Paid by Property Owner					3,963.96	CURB					0.40
Cost Curbs 728.8 lin. ft. @ 0.40					291.52						

UNIT NO. 3
REVISED PAVING ASSESSMENT
MAIN STREET FROM S. LINE GEORGIA ST. TO S. LINE HOUSTON ST. ROADWAY 18-33-18
6 INCH REINFORCED CONCRETE PAVEMENT

PROPERTY OWNER	LOCATION OF PROPERTY	Lot	Blk. No.	Ft	Rate	Cost	Lin.Ft.	Cost	Curb	Total Assessed	
EAST SIDE											
Mrs. Lucy Clement	Original Townsite	12	127	50	\$6.60660	\$330.33	75.2	\$30.08	\$360.41		
J. S. Collins	Original Townsite	11	127	50	6.60660	330.33	50	20.00	350.33		
Mrs. H. J. Willis	Original Townsite	10	127	50	6.60660	330.33	57	22.80	353.13		
ALLEY											
Mrs. R. L. Glascock	Original Townsite	9	127	50	6.60660	330.33	57	22.80	353.13		
J. W. Ginn	Orig. Townsite	127	100	W50' of 7&8	6.60660	660.66	125.2	50.08	710.74		
WEST SIDE											
P. G. Stegall	Original Townsite	6	128	50	6.60660	330.33	75.2	30.08	360.41		
Mrs. Cornelia Goen	Original Townsite	7	128	50	6.60660	330.33	50	20.00	350.33		
Mrs. Cornelia Goen	Original Townsite	8	128	50	6.60660	330.33	57	22.80	353.13		
ALLEY											
I. C. Surginer	Original Townsite	9	128	50	6.60660	330.33	57	22.80	353.13		
I. C. Surginer	Original Townsite	10	128	50	6.60660	330.33	50	20.00	350.33		
I. C. Surginer	Original Townsite	11	128	50	6.60660	330.33	75.2	30.08	360.41		
TOTALS											
					600		3963.96	728.8	291.52	4255.48	
Total Cost Improvements (Except Curbs)					\$6,255.78	RATE PER FOOT:					
Part Cost to be Paid by City					2,291.82	Paving					\$6.60660
Part Cost to be Paid by Property Owner					3,963.96	CURB					0.40
Cost Curbs 728.8 lin. ft. @ 0.40					291.52						

UNIT NO. 4
REVISED PAVING ASSESSMENT
MAIN STREET FROM S. LINE HOUSTON ST. TO S. LINE CROCKETT ST. ROADWAY 18-33-18
6 INCH REINFORCED CONCRETE PAVEMENT

PROPERTY OWNER	LOCATION OF PROPERTY	Lot	Blk. No.	Ft	Rate	Cost	Lin.Ft.	Cost	Curb	Total Assessed	
EAST SIDE											
Mrs. Bertha A. Ewing	Original Townsite	12	138	50	\$6.60660	\$330.33	75.2	\$30.08	\$360.41		
Mrs. Bertha A. Ewing	Original Townsite	11	138	50	6.60660	330.33	50	20.00	350.33		
Mrs. Bertha A. Ewing	Original Townsite	10	138	50	6.60660	330.33	57	22.80	353.13		
ALLEY											
Mrs. Samantha Morris	Original Townsite	9	138	50	6.60660	330.33	57	22.80	353.13		
Mrs. Samantha Morris	Original Townsite	8	138	50	6.60660	330.33	50	20.00	350.33		
Mrs. Samantha Morris	Original Townsite	7	138	50	6.60660	330.33	76.4	30.56	360.89		
WEST SIDE											
W. A. Shipley, Estate	Original Townsite	6	137	50	6.60660	330.33	75.2	30.08	360.41		
W. A. Shipley, Estate	Original Townsite	7	137	50	6.60660	330.33	50	20.00	350.33		
W. A. Shipley, Estate	Original Townsite	8	137	50	6.60660	330.33	57	22.80	353.13		
ALLEY											
Oliver Allen	Orig. Townsite	9&N15' of 10	137	65	6.60660	429.43	72	28.80	458.23		
N. E. Meador	Orig. Townsite	11&S35' of 10	137	85	6.60660	561.56	111.4	44.56	606.12		
TOTALS											
					600		3963.96	731.2	292.48	4256.44	
Total Cost Improvements (Except Curbs)					\$5,497.66	RATE PER FOOT:					
Part Cost to be Paid by City					\$1,533.70	Paving					\$6.60660
Part Cost to be Paid by Property Owners					3,963.96	CURB					0.40
Cost Curbs 731.2 lin. ft. @ 0.40					292.48						

UNIT NO. 5
REVISED PAVING ASSESSMENT
MAIN STREET FROM SO. LINE CROCKETT ST. TO NORTH LINE JEFFIE AVE. ROADWAY 35 FEET
6 INCH REINFORCED CONCRETE PAVEMENT

PROPERTY OWNER	LOCATION OF PROPERTY	Lot	Blk. No.	Ft	Rate	Cost	Lin.Ft.	Cost	Curb	Total Assessed	
EAST SIDE											
CROCKETT STREET											
W. Ed Brown	Bartley Heights Addn.	1	1	140	\$5.64944	\$790.92	167.4	\$66.96	\$857.88		
Methodist Episcopal Church	S. Bartley Heights Addn.	16	1	140	5.64944	790.92	168.0	67.20	858.12		
MARIVENA AVE.											
L. B. Maxey	Bortley Heights Addn.	1	4	140	5.64944	790.92	168.0	67.20	858.12		
Mrs. Marivena Kemp	(nee Bartley)										
A. D. Hare	Brtly Hts. Addn. N2/3 14,15,16	4	93	1/3 5.64944	527.26	97.4	38.96	566.22			
	Brtly Hts. Addn. S1/3 14,15,16	4	46	2/3 5.64944	263.63	70.7	28.28	291.91			
WEST SIDE											
E. S. Randerson	Brtly Hts. Addn. N1/2 6, 7, 8	17	70	5.64944	395.46	96.4	38.56	434.02			
Mrs. Marivena Kemp	Brtly Hts. Addn.										
(nee Bartley)	So. 1/2 of Mid. 1/3 6, 7, 8	17	23	1/3 5.64944	131.81	23.3	9.32	141.13			
Mrs. Jeffie Smith (nee Shipley)	Bartley Heights Addition										
	So. 1/3 of 6, 7, and 8	17	46	2/3 5.64944	263.63	50.7	20.28	283.91			
ALLEY											
Mrs. Jeffie Smith (nee Shipley)	Bartley Heights Addition	9	17	140	5.64944	790.92	168	67.20	858.12		
MARIVENA AVE.											
G. A. Lider	Bartley Heights Addition	8	20	140	5.64944	790.92	168.0	67.20	858.12		
ALLEY											
L. B. Maxey	Bartley Heights Addition										
	No. 80' of 9, 10 and 11	20	80	5.64944	451.95	84	33.60	485.55			
Mrs. Ruby Boteler	Bartley Heights Addition										
	So. 60' of 9, 10 and 11	20	60	5.64944	338.78	84	33.60	372.38			
TOTALS											
Total Cost of Improvements (Except Curbs)					\$8,074.64	RATE PER FOOT:					
Part Cost to be Paid by City					1,747.52	Paving					\$5.64944
Part Cost to be Paid by Property Owners					6,327.12	CURB					0.40
Cost Curbs 1345.9 lin. ft. @ 0.40					538.36						

A hearing will be given and held by and before the governing body of the City Floydada, Texas, on the 19th day of October A. D. 1928, at Nine o'clock A. M. in the City Hall, in the City of Floydada, Texas, to all owning or claiming any property abutting upon said portions of streets, and to all owning or claiming any interest in any such property, or any interest therein, shall be and appear and will be fully heard concerning said improvements, the cost thereof, the amounts to be assessed therefor, the benefits to the respective parcels of abutting property by means of the improvements on the portion of street or highway upon which said property abuts, and concerning the regularity, validity and sufficiency of the contract for, and all proceedings relating to such improvements and proposed assessments therefor, and concerning any matter as to which they are entitled to hearing under the law in force in the City and under the proceedings of the City with reference to said matters. Following such hearing assessments will be levied against abutting property and owners thereof, and such assessments when levied shall be a personal liability of the owners of such property and a first and prior lien upon the property as provided by the law in force in the City, and under which the

Individual Exhibits Show Strong Rivalry

All Card of High Grade Products Shown at Floyd County Fair.

Individual agricultural exhibits at the Floyd County Fair this year made as good, if not a better showing than ever before. Strong competition existed on every item displayed, and practically a full score card was exhibited. Cash prizes were awarded to all first place winners, and ribbons awarded to all second place winners.

In the corn and cotton department, the following awards were made: corn, ten ears any variety, J. F. Dollar, first; R. B. Gary, second. Cotton, best twenty open bolls, Mrs. D. T. Scott, first; P. M. Leatherman, second. Cotton, three best stalks, J. B. Tinnin, first; P. M. Leatherman, second.

Particularly was rivalry strong in the grain and seeds department. The following list of winners illustrate the closeness in the awards. The first name given is winner of first place and the second name, the winner of second place.

Wheat, peck any variety, P. M. Leatherman, J. S. Miller. Oats, peck any variety, P. M. Leatherman. Barley, peck any variety, Mrs. D. T. Scott. Peanuts, W. W. Emert, M. Carr. Field Peas, any variety, T. Y. Martin, R. B. Gary, Millet, E. A. Grigsby. Milo heads, red, A. J. Beedy, W. E. Miller. Kaffir heads, red, A. J. Beedy, Mr. Billington. Feterita, ten heads, E. A. Grigsby. Hegira, ten heads, Layton Dorrell, E. A. Grigsby. Bundle Millet, E. A. Grigsby. Bundle Hegira, W. T. Hopper, Mrs. D. T. Scott. Bundle Forage D. W. Sherrill, R. B. Gary.

A large variety of vegetables were exhibited in the individual exhibits, also. The awards in this department are as follows: Bell peppers, Mrs. D. T. Scott, Mrs. E. A. Grigsby. Okra, Mrs. C. O. Spence, Mrs. D. T. Scott. Irish potatoes, T. J. Dobson, Mrs. D. S. Battey. Sweet Potatoes, W. A. Whitlock. Indian Sweet potatoes, Mrs. A. W. Chowning. Onions, H. T. Barton, Mrs. D. S. Battey. Turnips, J. B. Allen. Beets, Mrs. D. T. Scott, Mrs. Blackwell. Carrots, Mrs. D. T. Scott, Mrs. D. S. Battey. Radishes, J. S. Miller, J. B. Allen. Tomatoes, J. B. Tinnin, String Beans, J. B. Allen. Dry Beans, R. B. Gary, Mrs. S. Martin. Squash, Mrs. Mary Owens, E. Parrish. Cashaw, V. W. Hennessee, J. B. Allen. Pumpkin, J. T. Hart, J. S. Miller. Watermelon, R. F. Hall, P. M. Leatherman. Cantaloupe, J. B. Allen.

A Great Discovery

When Pasteur discovered, in 1852, that the infection of wounds was caused by malignant bacteria, he performed a service of inestimable value to mankind. Since then medical science has been producing better and better antiseptics, to kill these germs that may enter the smallest cut and give us diseases such as typhoid, tuberculosis and lockjaw. Now, all you have to do to be sure that these dreadful germs will not infect a wound, is to wash that wound, however small, thoroughly with Liquid Borozone, the modern antiseptic. You can get Liquid Borozone, in a size to fit your needs and purse, from Floydada Drug Co.

Of the fruits exhibited, the following awards were made: Apples, Mrs. W. H. Carr, J. B. Allen. Peaches, J. B. Allen. Plums, Mrs. A. R. Hanna. Grapes, Mrs. M. Carr, Mrs. D. T. Scott. Pop corn, M. Carr.

Flower Show

Mrs. C. Surginer, Mrs. E. C. Henry, Mrs. S. D. Bishop, and Mrs. William McGehee were supervisors of the flower show.

Premiums were given the following: Not less than three white roses, Mrs. C. A. Goen, first; not less than three red roses, Mrs. J. T. Dawson; not less than three pink roses, Mrs. W. A. Baker, first; Mrs. J. T. Dawson, second.

Best bouquet of dahlias, Mrs. Olin Fry, first; Mrs. R. E. Fry, second; Best bouquet of white dahlias, Mrs. R. E. Fry, first; Mrs. Mason Riley, second;

Best bouquet of red roses, Mrs. E. L. Angus, first; Mrs. W. A. Baker, second;

Best bouquet of yellow roses, Mrs. E. L. Norman, first;

Best bouquet of zennias, Mrs. R. E. Fry, first; Mrs. L. C. Wheeler, second;

Best bouquet of cosmos, Mrs. C. Surginer, first, Mrs. L. C. Wheeler, second;

Best bouquet of marigolds, Mrs. E. C. Henry, first;

Best bouquet of coxcomb, Mrs. J. R. Archer, first; Mrs. George Smith, second;

Best display of nasturtiums, Emma Louise Smith, first; Mrs. E. L. Norman, second;

Best display of snapdragons, Mrs. George Smith, first;

Best display of verbenas, Mrs. F. W. Payne, first; Mrs. R. E. Fry, second.

Sweet peas, Mrs. R. A. Hanna, first; Emma Louise Smith, second;

Scarlet sage, Mrs. W. A. Baker, first;

Pansy, Mrs. William Colville, first. Best hanging basket, Mrs. George Smith, first.

Boston fern, Mrs. C. Surginer, first; Lace fern, Mrs. F. W. Payne, first; Sprenger fern, Mrs. E. L. Angus, first.

Red geranium, Mrs. S. D. Bishop, first.

Begonia, Mrs. E. C. Henry, first; Butterfly begonia, Mrs. F. W. Payne, first;

Rex begonia, Mrs. J. D. Bishop, first.

Cactus specimen, Mrs. W. A. Baker, first.

In the ladies department of the general exhibit the score card was practically filled and several articles were brought which were not mentioned in the catalogue. The following were awarded places:

Food Preparation

Cakes: Best angel food cake, Mrs. M. F. Husky, first; Mrs. J. D. Bishop, second; Best layer cake, Mrs. L. L. Jones, no other entry; best caramel cake, Mrs. Alice Marney, no other entry; Jam layer cake, Mrs. Lucian Wheeler, no other entry; best six doughnuts, Mrs. Alice Marney, first; Mrs. J. D. Christian, second; best six tea cakes, Mrs. L. L. Jones, first; Mrs. Alice Marney, second.

Best custard pie, Mrs. J. G. Wood, first; Mrs. Alice Marney, second.

Bread: Best loaf yeast bread, Mrs. John Parker, first; Mrs. Charles Parker, second; best rolls, Mrs. Charles Parker, first; no other entry; best

biscuits, Mrs. E. A. Grigsby, first; Miss Ruth Carr, second; best corn bread; Mrs. Alice Marney, first; Mrs. Lucian Wheeler, second. Soap: Best pound cooked soap, Mrs. L. L. Jones, first; Mrs. C. O. Spence, second; best pound cold soap, Mrs. J. E. Tannehill, first; Mrs. J. W. Sims, second.

Food Preservation

Preserves and jellies: best jar strawberry preserves, Mrs. D. T. Scott, first, no other entry; best jar apple preserves, Mrs. C. E. Bartlett, first; best jar pear preserves, Mrs. D. S. Battey, first; Mrs. W. H. Nelson, second; best jar fig preserves, Mrs. A. P. McKinnon, first; Mrs. C. A. Smith, second; best jar watermelon preserves, Mrs. D. S. Battey, first; Mrs. L. C. Wheeler, second; best jar tomato preserves, Mrs. Maggie Carr, first; Mrs. Bob Gary, second. Apple jelly, Mrs. A. R. Hanna, first; Mrs. C. E. Bartlett, second; plum jelly, Mrs. A. P. McKinnon, first; Mrs. A. R. Hanna, second; strawberry jelly, Mrs. A. R. Hanna, first; grape jelly, Mrs. W. M. Knight first; Mrs. J. G. Wood, second; blackberry jelly Mrs. A. P. McKinnon, first; apple butter, Mrs. C. O. Spence, ribbon.

Canned vegetables: jar tomatoes, Mrs. S. D. Cooper, first, Mrs. O. S. Miller, second; jar corn, Mrs. L. A. Williams, first; Mrs. D. S. Battey, second; jar green beans, Mrs. C. E. Bartlett, first; Mrs. L. C. Wheeler, second; jar field peas, Mrs. Mal Jarboe, first; Mrs. C. E. Bartlett, second; Jar English peas, Mrs. Charlie B. Smith, first; Mrs. L. A. Williams, second.

Pickles and relish: jar sour cucumber pickles, Mrs. L. C. Wheeler, first; Mrs. O. S. Miller, second; jar sweet cucumber pickles, Mrs. L. C. Wheeler, first; Mrs. D. S. Battey, second; jar beet pickles, Mrs. L. C. Wheeler, jar mixed sweet pickles, Mrs. C. E. Bartlett, first; jar peach sweet pickles, Mrs. L. B. Dawson, first; Mrs. J. B. Dawson, second; jar chow-chow, Mrs. A. P. McKinnon, first, Mrs. L. C. Wheeler, second.

Canned fruit: peaches Mrs. J. W. Sims, first; Mrs. W. H. Nelson, second; pears, Mrs. D. S. Battey, first; Mrs. C. O. Spence, second; Grapes, Mrs. D. T. Scott, first; plums, Mrs. L. A. Williams, first, Mrs. L. E. Williams, second; strawberries, Mrs. D. T. Scott first; tomato catsup, Mrs. M. Carr, first; soup mixture, Mrs. L. E. Williams, first; Mrs. Chas. B. Smith, second; corn relish, Mrs. D. S. Battey, first; Mrs. Chas. B. Smith, second.

Fancy Work

Linens: lunch set, Miss Ruth Collins, first, Miss Dessie Walker, second; dresser scarf, Gertrude Davis, first; Mrs. C. F. Harris, second; buffet set, Lila Jane Watson, first; pillow cases, Mrs. C. F. Harris, first; Mrs. George Fawver, second; bed spread, Mrs. E. L. Angus, first; Mrs. H. Collins, second; guest towel, Mrs. C. F. Harris, first and second; handkerchiefs, Mrs. W. H. Nelson, first; Mrs. L. A. Williams, second; cut work embroidery, Mrs. H. Collins, first and second; tea towel, Mrs. C. F. Harris, first; Mrs. L. A. Williams, second.

Quilts: patch work quilt, Mrs. Will Maxwell, first; Mrs. S. G. McRoberts, second; appliqued quilt, Mrs. R. C. Watson, first; Mrs. A. J. Womack, second; crazy quilt; Mrs. T. M. Keelen, first.

Rugs: crochet rug, Mrs. G. E. Tannehill, first; braided rug, Mrs. George Stiles, first, Miss Thorpe, second; hooked rug, Miss Thorpe, first; Mrs. Mal Jarboe, second.

Plain sewing: buttonholes, Mrs. G. L. Snodgrass, first; apron, Mrs. E. A. Birch, first; Mrs. J. S. Sullivan, second.

Only ribbons were awarded the following entries since articles were not mentioned in the fair catalogue: table cloth, Mrs. E. L. Angus, first; Mrs. Jeff Welborn, second; pillows, Mrs. H. Collins, first; Mrs. J. E. Courtney, second; tatting, Mrs. A. H. Manning, first; crocheted shawl, Mrs. George Armentrout; door stops, Mrs. T. S. Stevenson, first; Mrs. Fred Bell, second; silk quilt, Mrs. Stella Heard; Bonnet, Mrs. Robertson; pound butter, Mrs. W. F. Daniel.

Mrs. E. L. Angus was in charge of the individual exhibits booth.

Art Show

Oil painting; animal, Mrs. Hazel Hughes, first; Bess Clair Smith, second; head or figure, Mrs. A. P. Barker, Lockney, first; Mrs. Hazel Hughes, second; landscape or marine Mrs. C. E. Neil, first; Mrs. A. P. Barker, second.

Water color, animal, Miss Ola Hanna, first; Miss Florence Summers, second; head or figure, Jessie Mae Wood, first; Florence Summers, second; landscape or marine, Ruth Rutledge, first; Bess Clair Smith, second; fruit, flower or still life, Jessie Mae Wood, first.

Piece of handpainted pottery or plaster of paris; Jessie Mae Wood, first; Mrs. C. M. Wilson, second.

Piece of polychrome; Mrs. E. L. Norman, first and second.

Best specimen of handpainted cloth; Miss Mollie Crum, first and second.

Basketry; Mrs. C. A. Smith, first and second.

Pillows; Mrs. Oggie Johnson, first; Mrs. Leon Collins, second.

Pastel; Miss Blanche Ramsey, first and second.

China tea set; Mrs. C. M. Wilson, first.

Handpainted pitcher; Mrs. C. M. Wilson.

Mrs. E. B. Massie and Mrs. O. S. Miller were in charge of the art exhibit.

100 HOUR ENDURANCE TEST COMPLETED BY CAR DRIVER

The South Plains first automobile non-stop endurance drive was successfully completed last Saturday afternoon at 2 o'clock, when C. F. Hamilton, a stunt driver, finished a 100 hour test at Plainview. The test was made under the direction of the Blackmon Motor Company of Plainview and the driver spent several hours in Floydada and on the Floydada-Plainview highway last Wednesday.

A Pontiac Six was used in the test, and the car was driven 3172 miles in the 100 hour drive. The car was driven an average of 27.7 miles to each gallon of gasoline. It consumed one quart and two ounces of oil

and five pints of water. The transmission and crankcase were sealed when the drive was started. Following the test, the driver spent several hours sleeping in the showroom of a Plainview hardware store.



Skilled Upholstering At Low Prices

And our men know their business, having devoted their time to it. We know the latest styles, and we guarantee best workmanship. Quick service. Phone for one of our men to come over and give you quotations.

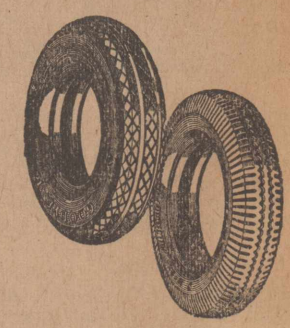
L. & O. TOP SHOP

"First Class Auto Top and Finder work of all kinds"

Don't Write, Wire Teacher—If you never learn to write how will you be able to carry on correspondence when you grow up? Johnny—won't have to do any writing, because all of my folks live right in town.—Youngstown Telegram.

Read The Hesperian for the news of Floyd County.

Save Tire money



Here's a tire that combines good looks, high quality, and low price.

It's not an unknown brand. It's built by the world's largest manufacturer of tires.

It's a Genuine Goodyear Pathfinder. It's a tire you'll be proud to own. Fine looking—quality built from carcass to tread—larger—heavier—sturdier.

No need to take a chance on risky medium brands.

Motor Inn

Floydada, Texas

Every Room Well Lighted

KEEP A SUPPLY OF LIGHT GLOBES

On Hand All The Time.

Buy a Handy Kit

Texas Utilities Company
"Electricity—Your Cheapest Servant"

BROADCLOTH PAJAMAS
Solid colors, and many with fancy stripes and patterns. Exceptional wearing qualities.

UNION SUITS
Finely finished knit cotton and wool garments—not too heavy for fall.

SHOES
Snappy new Fall shoes in new patterns, and lasts for young men and boys. Exceptional values.

BOYS SUITS
The kind of suits boys want. New fabrics, new styles, great values.

The GENTLEMAN
Unlined \$3.50

Be Particular

Let *The Gentleman* be your choice of gloves for all dressy occasions and early season street wear. The best quality imported cape leather in a variety of popular shades. The swankiest gloves on the boulevard. Styled with the usual Osborn correctness.

Osborn Gloves

Fall Suits Topcoats
For men of all ages. New styles; new fabrics.

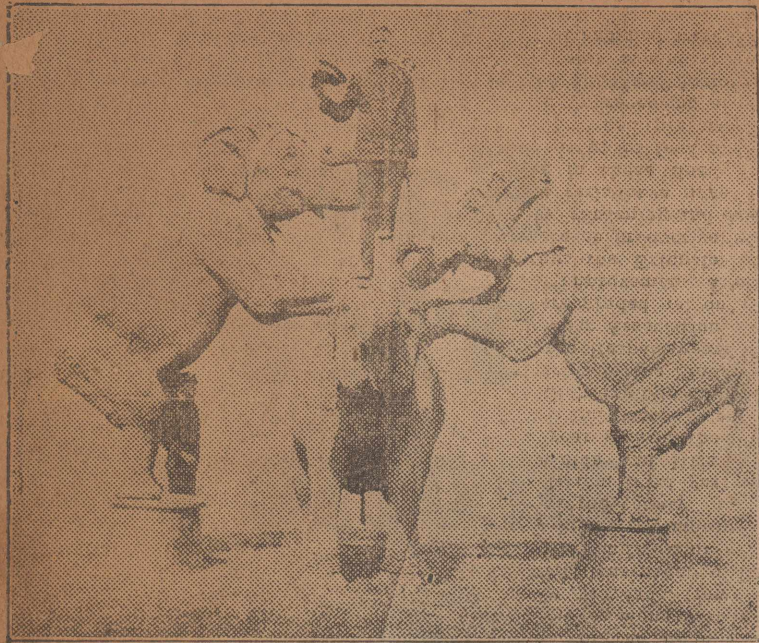
HAND-MADE CRAVATS
Patterns and colors to meet every preference. Exceptionally good quality of silk, and every one hand finished.

TAILORED SHIRTS
In an infinite variety of styles, colors and designs—extremely fashionable and well tailored.

MARTIN DRY GOODS CO.

"The Store With The Goods"

Katie, Jennie and Babe



Knowing that a really good trained elephant act pleases everyone, young and old, the State Fair of Texas has engaged the best on the road for this season's show in front of the Grand Stand, afternoons and evenings. These three little elephants do everything but talk—and it seems sometimes they even try their trunks at that accomplishment. The acts stands out from all others because of the snap and ginger the elephants put into it.

Thousands Present To Greet First Passenger

(Continued from page one)
 A crowd of four thousand, and among other things he also told of the pleasure with which local business interests had dealt with the railway officials in the construction of the line. "They have done everything they promised us they would do, and more," he declared. Following announcement of the plans for the afternoon he called upon G. E. Hamilton, general attorney of the Q. A. & P. Railway Company, of Matador, R. A. Singletary representing the Oklahoma City Chamber of Commerce, Carl Guin secretary of the Quanah Chamber of Commerce, R. N. Huckabee of Paducah, C. L. Glenn mayor of Matador, G. F. Stephens, secretary of the chamber of commerce at Roaring Springs, R. A. Underwood representing the Plainview Board of City Development, and J. E. Biggs representing the Amarillo Board of City Development. Judge C. Y. Welch, of Quanah, spoke for that city and its commercial interests, and Roy Gilliland of Quanah, paid a pretty tribute to the part women had played in the development of the county and the part they had in the work of the day, presenting Miss Lucille Hill, leader of the F. H. S. girls pep squad with a beautiful bouquet of roses. Much applause greeted his talk and the brief response of the recipient.

Many Parade Down-Town

The ceremonies over, delegations from the various cities and towns formed in a parade with the Quanah Band leading, and Floydada, Paducah and Plainview Bands in the line and marched down-town where exhibits laid over from the fair by special arrangement were on display in charge of Rev. A. A. Collins and Rev. F. L. Davis. The brief stay in the business section and the exhibit halls was followed by a drive of thirty miles over the territory southeast of Floydada led by W. L. Boersner. The trip took the excursionists through a portion of Lakeview, Pleasant Hill and Baker communities where they were shown fine feed crops and many excellent fields of cotton. More than a hundred cars were parked in line for the convenience of the visitors who desired to make the tour. The trip over the visitors had nearly two hours in town before the departure of their train which they spent as they desired, visiting among business firms and making acquaintances.

Expressions of regret were general that Chas. H. Sommer, president of the line, could not be present on the big day on account of doctor's orders that he take a rest. It was not generally learned that he could not be present, until after the arrival of the passenger with its big load of humanity. A telegram expressing his regrets was received from Mr. Sommer by Chamber of Commerce President Frank L. Moore Monday afternoon, in which he said: "Deeply regret that I am unable to be with you today in celebrating the official opening of our Floydada Extension as well as the inauguration through Pullman passenger service. It is an epoch in the history of our prosperous community and is the beginning of a new era well deserved by an aggressive people. Our people with your good folk during this period of construction involving many necessary details have not only been most cordial but have always met with instantaneous response and I certainly hope for a continuance of that friendly feeling and spirit of co-operation that is bound to inure to our mutual benefit. Kindly express to your citizenship my deep appreciation of our cordial relations."

The message from Mr. Sommer was filed at Colorado Springs.

Among the prominent visitors in Floydada during the day was E. H. Whitehead, representing West Texas Chamber of Commerce. Motor trouble enroute prevented his reaching Floydada from Stamford in time for the principal events. However, he attended in the general celebration and most cordial in expressing his interest in the general growth and prosperity of this section and the Pullman passenger service which was officially inaugurated on that day.

Representatives of the railway present for the day included Sommer, vice president and manager, W. L. Richardson, agent, T. K. Hawkins general agent, and J. L. Douglas passenger agent for the line of Quanah, and M. G.

Exposition Declared Best County Ever Held

(Continued from page one)
 The fair had the score card perfectly filled with high class products, displayed advantageously and artistically, was pointed to as proof that people from communities other than Floydada were heart and soul into the effort to put forward the county's resources in an attractive light, and their efforts were not only highly successful but in addition are deeply appreciated, he said.

All Exhibits Complete
 Every community exhibiting completed the score card, and had almost ideal exhibits. The ideas and color schemes used in back ground and floors of the booths varied widely but all were effective and created much comment. Communities completing the score card and receiving the \$15 award were Blanco, Harmony, Pleasant Hill, Aiken, Mayview, Pleasant Valley, Sand Hill, Big Four (Crosby County), Campbell, Allmon, Lakeview, Starkey, Roseland, Fairview, Baker, Center, Antelope, Lone Star, Irick.

A graceful gesture that was keenly appreciated by representatives of the various communities, here Wednesday to put the community exhibits on display, was that of T. S. Stevenson, president of the Floyd County National Bank, who had as the bank's guests at lunch all the workers in the community and Home Demonstration Clubs department. "It was one of the nicest things imaginable," Mrs. J. R. Evers and Mrs. P. J. Wilkes, of Pleasant Hill, declared at The Hesperian office Monday morning, "And we feel that we are speaking for every lunch guest of the bank when we say this."

Every exhibit in the main halls were left intact over Monday so that excursionists in Floydada from the east on the first passenger of the Quanah, Acme & Pacific, could have an opportunity to see a composite of the resources of the county.

Miss Verna Nixon, third year girl in the McCoy club and Miss Ollie Glass, second year girl in the Irick club, won first and second place in the Girls 4-H Club exhibits and were awarded free trips to the State Fair at Dallas, by the Hesperian and the Floyd County Fair Association.

The girls were graded not only on sewing, home improvement articles and cooking but the Extension college counts more on productive work, such as poultry, gardening and dairying, and these girls have done outstanding work in those lines. Exhibits were made up of food production, preparation and preservation, clothing, home improvement articles and the record book and history of their work as club members. Club interest and attendance were also considered.

Miss Nixon and Miss Glass will attend the fair Oct. 16, 17 and 18.

Home Demonstration Clubs

Exhibits in the home demonstration club department were not judged, but the fourteen clubs that entered filled their score cards and were awarded \$15 each.

Harmony probably had the best arranged booth which was made more attractive by bouquets of flowers changed every day. A little boy's suit was especially outstanding for perfection in design and workmanship.

Pleasant Valley had an excellent jelly collection. Their house-dress of French gingham was beautifully made.

Another house-dress in the Sand Hill exhibit received much comment for its style and workmanship. A child's dress of Japanese crepe trimmed with smoking was also very attractive. This booth exhibited the only pickle collection and a jar of baby cucumber pickles seemed almost perfect.

Lakeview, Providence and Roseland booths were outstanding in their exhibition of good linens. One of the most beautiful home improvement articles in the entire exhibit of women's clubs was a table cloth in the Lakeview booth. It was made of plain linen with the hems blindstitched. This booth also had two hand-made reed floor baskets, the only articles of that kind shown.

Starkey, Irick and Prairie Chapel had excellent canned products. The latter entered the fair for the first time this year.

Blanco had the only collection of sweet fruit pickles in the entire exhibition. Their house-dress was also very good in design.

Campbell's showing of rugs, braided and hooked, were especially good in color combination and workmanship.

Canned articles in the Sunset booth were outstanding. Antelope Club had an excellent relish collection. This was their first year to have an exhibit.

Pleasant Hill, the latest club to be organized, also entered the fair

for the first time but their sewing and home improvement articles were especially good.

Miss Blanche Bass, demonstration agent, was director of the club exhibit, and to her is due an unlimited amount of credit for the success of the Floyd County Fair.

WM. CLIFFORD LEE DIES AFTER ILLNESS OF WEEK

William Clifford Lee, sixteen-year-old son of Mrs. P. D. McBride, 4 miles east of Floydada, succumbed to an illness of slightly more than a week's duration at the Smith & Smith Sanitarium, and was buried late Tuesday afternoon in Floydada Cemetery, following funeral services held at the First Baptist church. Rev. F. L. Davis, pastor of the First Christian Church, officiated at the funeral service.

Born in Lamar County, the lad had been ailing all his life, his physical condition becoming more acute within the past six months. He had just entered high school.

W. C. Lee, grandfather of the boy, and Fred Lee, A. J. Drake and C. M. Kirby, his uncles, were here the latter part of last week, but returned to their homes in Lamar County Monday, when his condition apparently became more assuring.

Besides his mother and step-father, Mr. and Mrs. P. D. McBride, the lad is survived by a brother, Milton, who is in the navy, and a little sister at the parental home.

Misses Lorane Palmer and Josephine Aiken, of Quanah, employees of the Q. A. & P. railway, were among the visitors in this city Monday who arrived over the first passenger train over the Quanah Route.

MEMBERS OF FIRST TRAIN CREW ON 'THE PLAINSMAN'

Following are the members of the crew who operated the train inaugurating passenger service on the Quanah Route extension to Floydada October 1, running "The Plainsman" into Floydada with the largest human cargo ever to reach this point by rail:

E. H. Young conductor, O. L. Wood and T. P. Addison brakemen; W. H. Norman engineer and W. O. Lucas fireman on the first engine; L. E. Marsalis engineer and C. Miller fireman on the second engine; R. Q. Larrabee, Pullman conductor; H. H. Myer, baggage and express messenger.

Roadmaster B. F. Wiley piloted the train into Floydada, and W. O. Davis chief clerk of railway mail service out of Fort Worth accompanied mail clerk J. F. Teddlie on his first run.

UTILITIES HEAD HERE

I. R. Kelso, of St. Louis, president of Texas Utilities company, with Mrs. Kelso and J. P. Scott of Plainview were visitors in Floydada late Wednesday evening.

Concerning the fair, Judge Kelso said that Floydada had the best arranged and best looking fair of any he had seen in a town of its size anywhere.

Mr. and Mrs. Cleve Probasco and son, R. C. of Paducah came on the new train Monday and visited with his nephews, M. L. and Zell Probasco and families. They said that there would always be a warm place in their hearts for the people of Floydada for the cordial way they were treated.

I Will Be Located —AT— Lon M. Davis Gin This Season

Will appreciate my friends calling on me there when in town with cotton.

Have outlet for both round and square bales, with market prices all the time.

J. P. DAVIDSON

In Appreciation---


To the civic organizations and to the business men of Floydada, this firm wishes to express its appreciation for the splendid way the Floyd County Fair was conducted, and the way the Q. A. & P. Railway celebration was carried out.

Such splendid co-operation is truly a compliment to this city, and is sure to merit success for all of us.

TRIANGLE GARAGE

J. B. BISHOP


"THE HOME OF FISK TIRES"



Friday and Saturday

SPUDS	10 POUNDS	19c
PEACHES	SO-CALLED GALLONS	47c
Tomatoes	3 CANS NO. 2	25c
GRAPES	CALIFORNIA TOKAY, LB.	10c
RICE	5 POUNDS BLUE ROSE	29c
FLOUR	48 POUND BAG	\$1.79
Compound	8 POUNDS	\$1.19

All orders of \$2.50 or over Delivered Free — Phone 4



\$1.00

SPECIALS FOR FRIDAY and SATURDAY

4 Yards Oil Cloth, Special for	\$1
3 Yards 9-4 Bleached Sheeting, Special for	\$1
3 Yards 9-4 Brown Sheeting, Special for	\$1
14 Yards Cotton Checks, Special for	\$1
4 Yards 29c Gingham, Special for	\$1
6 Yards Shirting, Special for	\$1
7 Pair Men's Sox, Special this sale	\$1
1 Pair \$1.25 Unionalls, Sale Special	\$1
5 Pair Men's 25c Sox, Special for	\$1
10 Yards 33 inch Gingham, Special Sale	\$1
12 Wash Rags, Special for this sale only,	\$1
5 pair Children's 25c Hose, Special price,	\$1
5 Yards Jap Crepe, Special Sale price,	\$1
5 Pair Ladies' 25c Hose, Special for,	\$1
6 Yards, 36 Inch Prints, Special price.	\$1
7 Yards 36 inch Percale, This Sale Only	\$1
6, 18x36 Turkish Towels, For Only,	\$1
Men's Dress Shirts, Special This Sale	\$1
6 Yards, 36 inch Outing, Special For,	\$1
7 Yards, 27 Inch Outing, Special Only,	\$1

Baker, Hanna & Co.

"Where Most People Trade" Floydada, Texas