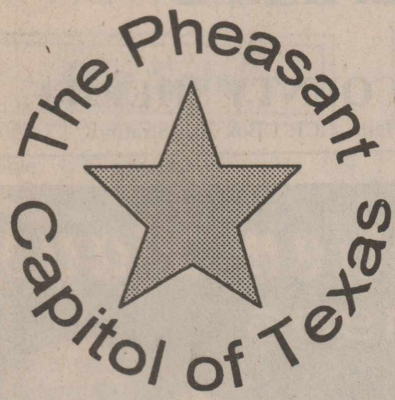


W.G. Hart
Box 3
Stratford, TX 79084

12/96

What's Inside

Chuckwagon
Page 4
Tractor Pull
Page 7
Football
Page 10



THE STRATFORD STAR

50 CENTS

Published for 95 years in Stratford, SHERMAN COUNTY, TEXAS 79084 usps 525-108

NUMBER 39 SEPTEMBER 26, 1996

Corrections On Queen's Story

Correction: Name Corrections on Queen's story--Sorry, Mary Woodford--Vonnell Iams, Buck Horn & Grandson Cade, Dixie Mowbray, Darrell Brumley.

Simulator Car To Be Here One Day Only

The Neon Drunk Driving Simulator Car will only be in Stratford at the Airport for one day, Wednesday, October 16, 1996.

Neon Drunk Driving Simulator To Be In Stratford

Area youth will step outside the classroom for a lesson in the dangers of drinking and driving when the Neon Drunk Driving Simulator, a unique vehicle which allows drivers to experience driving "drunk" makes an appearance October 16, 1996, at the Stratford airport, Hwy 54 East.

The Simulator will visit approximately 130 high schools throughout the United States. Students with valid driver's licenses will be allowed to operate the Neon Drunk Driving Simulator throughout the day.

The Simulator is the new Dodge/Plymouth Neon equipped with an on board computer that can be programmed to simulate the delayed reactions of alcohol-impaired drivers by delaying the car's braking and steering reaction times. The Simulator allows sober drivers to experience firsthand the dangerous loss of physical coordination which results from drinking alcohol, but without the danger normally associated with drunk driving.

The participants first drive one lap of the pylon-lined course with the car unaltered by the computer. Each driver will then have the opportunity to drive the car after a hypothetical number of drinks and the driver's body weight have been entered into the computer.

Faculty members, law enforcement personnel, media representative and parents have also been invited to participate in the Drunk Driving Simulator activities.

For more information or to make a donation, contact Lynette Wright at (806) 249-5270 or Katherine Sadau at (806) 935-6945.



Stratford Chamber of Commerce "kicks off" the Build A Fire Station Campaign by donating the first two yards of concrete. Funds for the donation came from the fair flags. Shown above is Eddie Williams, Stratford Fire Department Fire Chief and J.A. Lasley, Chamber Manager.

"Build A Fire Station"

Stratford Fire Department needs you!! Help us build a new fire station. The fire department has outgrown its present home and the volunteers are working toward building a new station. Plans are underway for various fund raising activities and we will appreciate your help.

The land for the new building is being donated by Mr. and Mrs. Jim Payne. The City of Stratford will provide the ground plumbing. The new station will be 120' x 70' and will house all the current equipment of the fire department, along with office spaces, storage space and meeting/training room as well as a kitchen. All this may seem to be a little much, however the fire department is looking to the future and growth of our town and possible expansion of the department in the future.

Alan Gore, son of Jack and Vicki Gore, and Plains Cooperative Oil Mill, Lubbock, Texas are providing the blueprints and specifications at no charge to the fire department. Alan Gore is also a student at Texas Tech University majoring in electrical engineering and will receive credit toward his degree for this project.

Plans are to complete the building project in stages.

Volunteers are presently working on donations for the concrete. Plans for the building call for 235 yards of concrete. The concrete costs, which include dirt work, forms, rebar and concrete, is estimated at \$80 per yard. Volunteers are asking for donations of \$80 or more. We will accept a donation of any amount. Each and every contributor is important. All the fire fighters have pledge forms for your convenience in pledging or donating to the fire department.

After the concrete is completed, the department will continue work toward funding the building. We will have fund raising activities and we have a committee planning future projects. A good deal of the labor will be done by the volunteer fire department members.

We will appreciate any help from the community. The fire department is working toward improving our department in order to better serve our community. We want to work and raise the funds for this project and do not want this project to be a burden on the tax payer.

Pledge forms are also available at The Stratford Star newspaper office.

Band Homecoming Supper

Support the Stratford Elk Band by making plans to eat at the Band BBQ Brisket Supper Friday, Sept. 27, from 5:00 to 7:00 p.m. at the High School Cafeteria. Before attending the Homecoming Game enjoy a meal of brisket, beans, coleslaw, homemade bread, cobbler, & drink for the price of \$5.00 for adults and \$3.00 for ages 12 and under.

Purchase your tickets from any band student or you can purchase at the door.

Come and eat early so you will not miss any of the Homecoming

Early Praise & Worship Service To Be Held

First Baptist Church of Stratford invites you to an early Praise and Worship Service, led by a Praise team through the month of October from 9:00 to 9:45 a.m. All other bible studies and worship services of the day will be the same as usual. Nursery will be provided.

CRP Symposium To Explorer Renewal Possibilities

A "DECISION CRP" Symposium will be held in Guymon on Tuesday, October 8, 1996. Registration will start at 9:30 a.m. at the Texas County Activity Center. A \$20.00 registration fee will be charged which includes a noon meal and conference proceedings.

The symposium is one of seven meetings being held throughout the Southern Great Plains. The meetings are designed to assist landowners or producers with a Conservation Reserve Program (CRP) contract to decide what to do with the land once the contract expires. What course of action will bring the highest return for the next several years? What's best for the land? What will government regulations allow? These are just some of the questions that will be discussed at the symposium.

At the symposium, speakers will address regulations concerning the future of CRP lands under the new farm bill. The CRP meeting will offer the most current and complete information available from University specialists, USDA staff, and producers in the Great Plains.

Topics to be discussed include:

*How should you consider the economics of possible alternate uses of CRP, such as cropping, haying, or grazing?

*What role will "Market Transition Payments" play in the economics of alternative uses?

*What is the role of Conservation Compliance in the decision?

*Can CRP Contracts be extended?

*Was land profitable before entering the CRP contract?

*How can you take CRP alternatives into consideration when planning your transition to production flexibility?

The deadline to pre-register for the CRP Symposium is Thursday, October 3rd. To pre-register or for more information, contact the Sherman County Extension Office at (806) 396-2081.

Homecoming Queen Candidates

The 1996 Homecoming Queen Candidates are Lori Brooks, daughter of Ronnie & Becky Brooks, Jennifer King, daughter of Keith and Tami King, Ashlie Lasley, daughter of Walter and Kris Lasley, Cara Lavake, daughter of John and Nina Lavake and Ashley Stoy, daughter of Tommy & Judy Stoy.

The Homecoming Queen will be crowned at 3:20 at the Pep Rally on Friday, September 27, 1996.

Lions Club Selling Chances

The Stratford Lions Club will be selling chances on a Package to see the Dallas Cowboys vs. Philadelphia Eagles on Sunday, November 3 in Dallas. This game begins at 12:00 noon. The package includes: Roundtrip airlines from Amarillo to Dallas, one night stay for two at the Radisson Hotel, transportation to and from the airport, game day tickets, 2 free drink coupons per person and game day breakfast & cost of the tickets will be \$10.00 per ticket and will be given away at half time of the Stratford vs. Gruver football game.

Tickets may be purchased from any of the local Lions Club members.

Leadership Sherman County Program First Session October 9, 1996 Contact Joyce McBryde, Jean Everett, or Susie Spurlock at the Sherman County Extension Office

1996 Tax Statements To Be Mailed Mon. Sept. 30th

Sherman County Appraisal District will be mailing 1996 tax statements on Monday, September 30. Please check all your statements carefully and be sure that you receive tax statements on all your property. Failure to receive a tax statement does not excuse you from paying your taxes. Whether you've received a statement or not, you are still legally liable for the taxes on your property.

If you have any questions about your property values, please contact the Sherman County are collected at the Courthouse by the County Tax Assessor-Collector. Other taxes are collected by the Appraisal District located at 402 N. Third, Stratford.

Taxes By Edgar A. Guest

When they become due I don't like them at all.
Taxes look large be they ever so small.
Taxes are debts which I venture to say
No man or no woman is happy to pay.
I grumble about them, as most of us do.
For it seems that with taxes I never am through.

But when I reflect on the city I love,
With its sewers below and its pavements above,
And its schools & its parks where children may play,
I can see what I get for the money I pay
And I say to myself: "Little joy would be known
If we kept all our money & spent it alone."

I couldn't build streets & I couldn't fight fire
Policemen to guard us I never could hire.
A water department I couldn't maintain,
Instead of a city we'd still have a plain,
Then I look at the bill for the taxes they charge,
And I say to myself: "Well, that isn't so large."

I walk through a hospital thronged with the ill
And I find that it shrivels the size of my bill.
As in beauty & splendor my home city grows,
It is easy to see where my tax money goes,
And I say to myself: "If we lived hit & miss
And gave up our taxes, we couldn't do this."



Sculpture Exhibit In Stratford

Artist Judy Sutton Kracke, left was in Stratford Sunday afternoon at the Imagination Station with her exhibits of Time, Cycles and Art sculpture. Shown above with her is Ann Wells, Evlyn Schmidt, Lari Wells, Teresa, Wells and Bailey Bryson in front.

Applications Accepted For Leadership Sherman County

Applications are being accepted for the upcoming LEADERSHIP SHERMAN COUNTY program to begin October 9, 1996. Sponsored by the Sherman County Extension Program Council, the seven month course is designed to identify and prepare future leaders to face future issues of our county.

Subject matter to be covered during the course of the class includes understanding of leadership styles and personalities, getting to know your local government on the city, county, state, and federal level, the triad for quality living in Sherman County, the economic base of the county, getting to know our neighbors in Texhoma, and new approaches to building teams and coalitions.

Applicants for LEADERSHIP SHERMAN COUNTY will be any persons engaged in any career who has an interest in community affairs. The class is limited to 12 persons who represent a cross-section of the community. Tuition costs is \$150.00 per person and deadline for application is October 4, 1996.

LEADERSHIP SHERMAN COUNTY is people like yourself from all walks of life learning to make a difference. It will provide a foundation of knowledge individuals can use to become involved, meet the challenges associated with change, and make our county a better place to live and work.

For more information, interested individuals are encouraged to contact either Joyce McBryde, 396-5688, Jean Everett, 966-5346, Doak Crabtree at First State Bank 396-5521, or Susie Spurlock at the Sherman County Extension Office 396-2122. Texhoma residents interested in the course may contact Kim Crippen at 927-7044.

LEADERSHIP SHERMAN COUNTY addresses the Texas Agriculture Extension Service goal of developing responsible, productive, self-motivated youths and adults. In addition, it supports the county Long Range Extension Program enhancing skills for quality life.

Special Meeting Of SISD Held

The Board of Trustees of the Stratford Independent School District met for a special board meeting on Monday, September 23, 1996. The meeting was called to order at 7:05 a.m. by president Kenton Kimball. All members were present with Jim Taliaferro, Middle School Principal also present.

The Board accepted proposals on computer equipment from Panhandle Satellite of Amarillo in the amount of \$72,685.00. The money was made available through the academic 2000 reading grant awarded to the Stratford Schools.

In other business, the board tabled accepting the renovations on the Middle School and High School. Motion was made to let bids on 72 passenger bus.

Mr. Vernon Paul, Supt. discussed with the board the Energy Management program.

Meeting adjourned at 7:50 a.m.

FCE Clubs to Sponsor "Kids For Character" Contest

On Wed. Sept. 25, 1996, FCE (Family, Community, Education) Clubs in cooperation with Mary Allen School and the Character Counts! Coalition, will introduce a fun video to teach young children right from wrong. This Video teaches children the "Six Pillars of Character": Trustworthiness, Respect, Responsibility, Fairness, Caring and Citizenship. Each of the six pillars are explained and illustrated by Shari Lewis and Lambchop, Barney, Babar, Magic School Bus, The Puzzle Place, and Nick Jr. Gullah Gullah Island and a happy troupe of children teach other aspect of these core values throughout the video.

The program viewing schedule is: 2:00 - 2:30 p.m. K-1st grades.

2:45 - 3:15 2nd - 3rd grade

FCE will announce a "Kids for Character" contest following the viewing of the video. Students will be encouraged to make a poster, draw and/or paint a picture, write a poem or story to show one or more of these "Six Pillars of Character". Entry deadlines will be Monday, Oct. 14, 1996 and prizes will be presented on Friday, Oct. 18, 1996.

FCE Clubs are a volunteer organization for supporting families through lifelong learning opportunities. FCE is a member of the Character Counts! Coalition, a non-partisan alliance of nearly 60 organizations that advocate values education.

SCS&WCD To Have Election In Zone 4

The Sherman County Soil and Water Conservation District has scheduled an election for the board member position in Zone 4 of the District for October 9, 1996 at 7:00 p.m. at the NRCS office in Stratford.

Zone 4 encompasses the area south of the Pronger Brother Ranch-Conlen County Road to the Moore County Line and east of FM 199 west to the Dallam County Line. In order to serve as a director, a person must be an eligible voter who owns land within the numbered subdivision from which the person is elected and must be actively engaged in the business of farming or animal husbandry. Soil and Water Conservation District Directors serve a term of four years.

Scott Buckles is the incumbent in zone 4 and is running unopposed.

Obit

Richard Williams

Fort Worth-Richard (Cotton) Williams, 62, a certified public accountant, died Thursday, September 12th at his home. Funeral was held Monday September 16th at Mount Olivet Funeral Home at 9:30 a.m. Burial was in Rose Lawn Cemetery in Denton.

Memorials may be made to the American Cancer Society or Fort Worth Hospice Program.

Richard "Cotton" Williams, born April 21, 1934, in Stratford, Texas, died with his family by his side on Thursday, Sept. 12, 1996.

Dick Williams graduated from Texas Tech in 1956. He obtained his CPA designation and worked for many years for Haskins and Sells as an auditor. He has been with FFP, LP for 17 years as its financial officer. He lived in the Oakhurst section of Fort Worth for 10 years.

Survivors include his wife of 43 years, Jean Williams; sons, Warner Lee Williams 11 and Scott Kendall Williams of Fort Worth, daughter-in-law, Hope Harvison Williams; grandchildren, Warner Lee Williams 111 and Lauren Elizabeth Williams; sister, Jackie Reed of Houston; and numerous nieces and nephews.

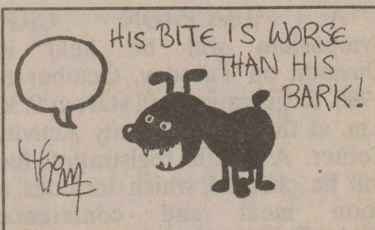
Robert Dixon

Houston, TX.- Robert Dixon, age 72 died Monday, September 16, 1996 at Silsbee, Texas. Services were held Friday, September 20, 1996 at 11 a.m. in First Christian Church in Stratford with the Rev. David Harker pastor, of First Christian Church officiating. Burial was in Stratford Cemetery.

Mr. Dixon was born September 15, 1924 in Stratford, Texas. He has lived in Houston for last 10 years. He was an engineer. A veteran of the army, World War II. Mr. Dixon married Pearl Smyth Dixon in October 1944 in Villisca, Iowa. He received his engineering degree in Ft. Collins, Co. after the war. He was preceded in death by his son Curran Lee Dixon on September 19, 1969.

Survivors include his wife of Houston. 3 sons: William Paul Dixon of Malaysia; Douglas Dixon of Silsbee, Texas and John Robert Dixon of Nederland, Texas. Two sisters: Mary Hazel Hill of Amarillo, Texas, Dixie Baker of Longmont, Colorado and one brother John Frank Dixon of Bovina, Texas.

Memorials may be made to a favorite charity.



Basenji is a breed of dogs first found in central Africa. Basenjis cannot bark but they can make a whining sound.

*** The world gets better every day—then worse again in the evening.

Kin Hubbard

To become mature is to recover that sense of seriousness which one had as a child at play.

—Friedrich Nietzsche



★★ RE-ELECT ★★

**SHERIFF
JACK HAILE**

SHERMAN COUNTY SHERIFF

Pd. Pol. Adv. Pd. for by Jack Haile, HCR 1 Box 302, Stratford, TX 79084

Customer Appreciation Days

September 1-30, 1996

40th ALLSUP'S

1956 - 1996 *Always*

<p>"ALL VARIETIES" Doritos REG. \$2.09 \$1.49</p>	<p>BUY ONE GET ONE FREE! ALLSUP'S Corn Dogs 79¢</p>
<p>"ALL VARIETIES" 6 PACK CANS OR 3 LITER Coca-Cola CLASSIC \$1.49</p>	<p>COMBO MEAL RIB-B-QUE Sandwich Potato Wedges & Tallsup \$1.99</p>
<p>"ALL VARIETIES" ALLSUP'S Ice Cream 1/2 GALLON \$1.59</p>	<p>HORMEL Little Sizzlers Canadian Bacon, Egg & Biscuit 12 OZ. PKG. 99¢</p>

<p>MRS. FRESHLEY'S Cinnamon Rolls 8 CT. PKG. 11.5 OZ. 89¢</p>	<p>VALLEY FARE Paper Towels JUMBO ROLL 2 \$1.00</p>	<p>ALL VARIETIES Snapple Drinks 16 OZ. BTL. 69¢</p>
<p>SHURFINE GRAY OR CHUNK Dog Food 20 LB. BAG \$4.69</p>	<p>LANCE Cashews & Pistachios 1 1/2 OZ. BAG 79¢</p>	

40th ANNIVERSARY SPECIALS!

<p>ALL VARIETIES Sunny Cookies REG. 2 FOR \$1.00 40¢</p>	<p>Lay's 40¢</p>	<p>Fritos®, Lay's® or Way's Lay's® Grab Bags REG. 75¢ 40¢</p>	<p>VANILLA & VARIETIES Champ! Cones REG. 89¢ 40¢</p>
<p>You'll find all this and more at your Allsup's store Stratford, Texas</p>	<p>ALLSUP'S Fresh Coffee 12 OZ. CUP 40¢</p>	<p>Ozarka Spring Water 24 OZ. SPORT CAP BTL. 40¢</p>	<p>MRS. FRESHLEY'S Honey Buns 3 OZ. PKG. 40¢</p>

As part of our 40th Anniversary celebration on September 28, 1996 from 9:00 a.m. to 5:00 p.m. we will have full service at all Allsup's stores.

\$1.00 Off

Super Clean PREMIUM High Octane UNLEADED

The Purchase Of 8 Gallons Or More Of Unleaded Gas!

Coupon Cannot Be Redeemed For Cash Or Any Other Purchase Other Than Gasoline. Coupon Good 9/28/96 Only. Limit One Per Customer
OFFER GOOD AT ANY ALLSUPS

LOW PRICES, GREAT PRODUCTS
24 HOURS A DAY

ALLSUP'S

Always

PRICES EFFECTIVE Sept. 25-Oct. 1, 1996 OFFER GOOD WHILE SUPPLIES LAST

Rib Night
at
The Crossroads
Sat. Night, Sept. 28
Starting at
6:00 p.m.

The Stratford Star

Published Every Thursday
at 309 N. Main, Stratford, Texas 79084
Second Class Postage paid at Stratford, TX. 79084

Martha (Marty) Robertson
Editor & Publisher
Shari Hudson-Advertising & Darkroom

Subscription Rates
\$18.00 per year in Sherman and Adjoining Counties
\$25.00 per year all others
\$15.00 per year college rate
The Stratford Star
Box 8
1-806-396-5885
Fax 1-806-396-5885

Timi's Tidbits

By Timmie Brown

Happy Day to you Sherman County Old Timers and readers the calm Monday morning September 23, 1996.

We're sort of in a state of limbo this morning concerning the reporting of community news, printed temperature is 67 degrees at 9:00 a.m. with a North wind at 14 m.p.h. Prospects are good for a grain ripening day.

Numerous harvesting crews are here to take care of the bumper crops as we hear the word fantastic yields per acre on every hand. Personally these words are outside of our actual knowledge but we feel sure that dependable reports will be published in the current issue of the local newspaper.

Senior Citizens and shut ins who take advantages by listening to our local T.V. Church ministry on Sunday enjoyed a rare treat yesterday. The Youth community youth choir composed of young people from the Baptist, Christian, Methodist and Assembly of God Churches under the direction of Principal of the Middle School Jim Taliaferro presented a musical program in the four churches we saw and heard them at 11 a.m. and 5 p.m. There are about 35 young people in the choir this choir has been organized about a month and are making commendable progress. We send Scot Timers and personal support and blessings to this group and its sponsors.

For this week activity remember Scot luncheon on Thursday, September 26, 1996 at 12 noon. Bring food and desire to visit and make this a big day for Scotters and visitors.

Best wishes to Mary Peach Smith who is recuperating from leg surgery performed at St. Anthony's Hospital in Amarillo. She had the misfortune to fall. She was at home, her leg was broken in the fall and we understand she called 911 for assistance. Isn't that just like Mary Peach? Blessings in prayer for a quick recovery, Friend.

Joy Hester is recovering from throat surgery. She is with her daughter Myrna Plunk, Arlington, Texas.

H.L. Haile's 80th birthday

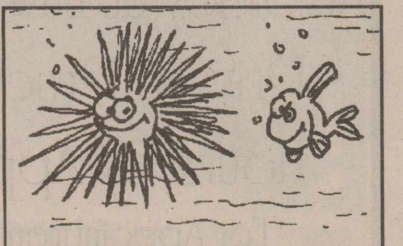
party which was held in Amarillo Saturday, September 21, 1996 was almost like a homecoming event to long standing friends and family members among those attending were the R.W. Standefers, White Deer, Art Fosters, Lubbock, Marlene (Knapp) & Tom Stone, Borger, Ken & Carolee Campbell, Liberal. The Bob Boardmans and Evelyn Cooper and Dorothy Kendall, Hubert Waldrops. The Wilson's, The Ernest Cummings from Amarillo, Texas, The Eddie Wilson Family from Canyon, Texas, Sue Haile, Childress, Texas, Dorothy Haile, Rene Plunk, Mattie Baskin, Glenn & Carolyn White of Stratford. Ginger Crabtree and the exchange student from Stratford. Mike Powers and fiance Lori Goens, Atlanta, Ga. Marian, Ronnie & Elizabeth Williams, Plano, Texas, Allan, Patty, Nathan, Marc, Chris and John Haile, Friona, Texas, Joy Powers and Devan, Timi Brown, Lorelyn Powers, Stratford. The Patriotic theme was carried out in the Birthday cake and table decorations, expressing H.L.'s deep sense of loyalty to his country.

Following the party there was family photo session at "Family Photo's" in West Gate Mall.

Matt Powers of Elkhart, KS. was the only family member unable to attend the party.

To close out the eventful day H.L. and Geneva hosted a Mexican dinner at Abuelo's including a birthday party for Lori Goins whose birthday was Sat.

Concluding this issue Tidbits we are rejoicing with fellow towns people and peer's who are happy, and grieving with those who are sad, and Join senior citizens and old timers who are cheering their fellow man with shoulder pats of encouragements and expressions of lov. Amen.



Spiny-skinned sea animals, named echinoderms, have radial symmetry. Their body parts are arranged around the center of the animal like the spokes of a wheel around the hub.

Jo Alice Rogers, Oden, Arkansas, arrived Saturday for a few days visit with Hank and Mabel Rogers. Also here for the Chuckwagon were Florene Wolfe, son Mark Wolfe and his friend, Pamela, of Amarillo.

Kerrick News

By Marylou McDaniel

On a beautiful night Saturday, 484 enjoyed barbecued beef, beans, potato salad, red apples, pickles, onions, peppers and all the calf fries that the cooks could keep up with!

The weekend started Friday with a half dozen making potato salad at the Community Center. Sandy Wells made the red apples in place of Lynn Wells who was in Denver with her sister and brother-in-law, Lyman Potter. Lyman was having some tests. Lynn did make it back to work with the crew Saturday night.

There were 20 who cleaned and sliced calf fries at Gillenwaters. About 20 gathered for supper at the center and 28 for lunch Saturday. After cleanup Sunday, 30 ate again! Brenda Taylor said this was the weekend to come home from Denver.

Brenda arrived Friday evening to help at the chuckwagon. She's moving some of her furniture back to Denver to her new house.

To add to the excitement, Jo June McDaniel found a sick skunk in her front yard! She yelled at Pat Boren who came with a gun and shot it!

Music was provided by Ted & Faye Smith of Boise City, Frank & Deanna Francis of Felt, Ok., and Jay Levett, Clayton, N.M.

See the card of thanks elsewhere in the Stratford Star.

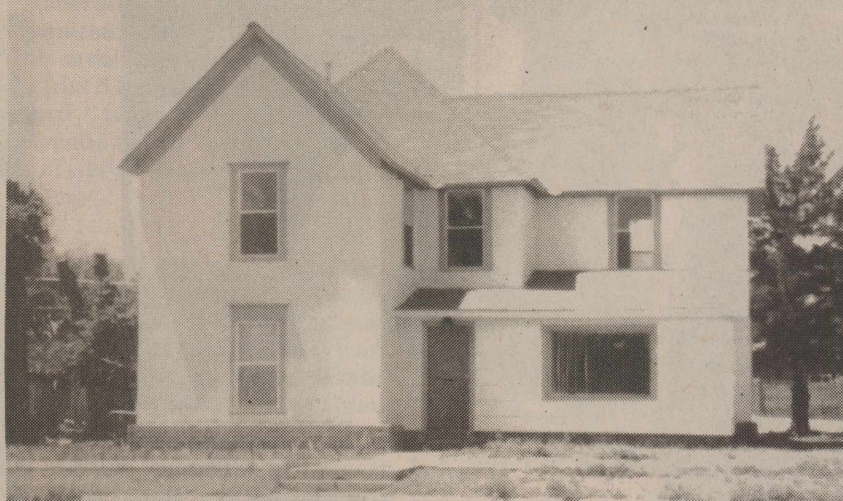
Ralph James Hampton and sister Annette Hampton won overall Reserve Champion for their pure-bred Landrace pig at Tri-State Fair. It was in the Swine Futurity in which the swine are judged on foot, then on rail (carcass). (Hope I get this straight!) They measured the loineye which was 9.10 and the back fat at .55. It weighed 219 lbs. They will be going to Dallas State Fair with another swine.

Steve Elliott was injured Sunday afternoon when his horse rolled on him. He was joined two weeks ago by his son, three year old Cody and his mother, Tracy, who came from California. They live at Perkins-Prothro Ranch.

While in Tyler for FCE convention, the Sherman County delegates saw Miranda, Florida, former Kerrick resident. She sent greetings to everyone.

Cont. in col. 2

New Places--New Faces



One of the oldest homes in Stratford has been saved and resurrected by Raul and Monica Duran. On the corner of 5th and Main, T.D. Lipscomb built his family home in 1903. (Bob Pendleton delivered milk to the home in 1904). It was sold to J.H. Lafrenz in 1910 and remained in that family until 1965. Delbert and Dortha Cummings remodeled the home at that time. The house stood empty for the last 20 years and was close to being condemned and torn down. In 1995 Raul and Monica saw the possibilities of creating their family home with a lot of hard work and improvements made in stages. The work goes on.

Come And Stargaze

Come and Stargaze in the inflatable planetarium at The Imagination Station on Tuesday, October 1 at 6:30 or 7:30. Aaron Guzman from the Don Harrington Discovery Center in Amarillo will narrate the free hour long programs. The planetarium will hold 30 persons for each program so come and enjoy this unique activity.

School classes ages kindergarten thru sixth grade from the towns of Stratford, Texhoma, Dalhart and Hartley, Texas and Turpin, Boise City and Keyes, Oklahoma will be attending daytime programs from October 1-9. Some classes will also be visiting the Depot Museum as part of their field trip experience. Over 900 students will be visiting the Imagination Station and Stratford.

Also on display Family Night will be the preliminary model for the Pendleton Park sculpture and the exhibit of Judy Sutton Kracke from Amarillo.

Hope to see you during our evening opening of this special Starlab planetarium program. Learn about our Solar System, Skylore or the Night Sky. For more information please call 396-2380 or 396-2262.

Assembly of God

Rev. Mike Leonard
921 Fulton
Sunday School 9:45 am
Super Church 10:45 am
Morning Worship 10:45 am
4:00 Cable Ch. 3 for
Morning Worship Service
Evening Worship 6:00 pm
Wed. Youth Service 6:30 pm
Wed. Bible Study 7:00 pm

First Christian

Rev. David Harker
5th & Main
Sunday Coffee Fellowship 9:00 am
Sunday School 9:45 am
Morning Worship 10:45 am
Evening Worship 6:00 pm
Wed., Adult Choir 8:00 pm

First United Methodist

Rev. Mark Metzger
20 N. Main
Sunday School 9:40 am
Morning Worship 10:50 am
Junior High UMY 5:30 pm
Senior High UMY 6:00 pm
Evening Worship 6:00 pm
5:00 pm Cable Ch. 3 for
Morning Worship Service

St. Joseph Catholic

Michael Colwell - pastor
6th & Wall
Rectory - 5687, Parish Hall - 2298
No Saturday Mass
Sunday English Mass 9:00 am
Sunday CCD 10:00 - 11:00 am
Sunday Spanish Mass 11:00 am

Church of Christ

Jon Heatwole
N. 3rd & Chestnut
Sunday School 10:00 am
Morning Worship 11:00 am
Evening Worship 6:00 pm
Wednesday Bible Study 7:30 pm
Calvary Baptist
Gerald Clark
302 S. Main
Morning Worship 10:30 am
Children's Active Learning 10:30 a.m.
Evening Worship 6:00 pm
Wed. Bible Study & Fellowship 7:30 pm

First Baptist

Bro. Jerry Stewart
702 N. 3rd
Sunday School 9:45 a.m.
Morning Worship 10:50 am
Church Training 6:00 pm
Evening Worship 7:00 pm
Wednesday Bible Study 7:00 pm

La Mision Bautista

Roca De Salvacion
County Barn
Domingo-(Sunday)
Estuela Dominical 9:45 am
Servicio De Adoration 11:00 am
Servicio De Adoration 5:00 pm

OUTDOOR CONCERT
September 29th 2-4PM
featuring **GOSPEL MUSIC** from
the **TOP-OF-TEXAS!**

at **302 South Main**
Sponsored by **Calvary Baptist Church**

FREE Homemade Icecream for EVERYONE!
"Come as you are"
and bring a blanket or lawn chair!
RELAX and ENJOY some GREAT GOSPEL MUSIC!
For information, call **396-5632**

The Churches of Stratford Welcome You

Petition in Faith

When your problems rise up
To bog and depress,
And your spirit gives way to despair;
When your mind is a vent
To A burden's intent,
And your lips can't give voice to a prayer.

Turn away from the thoughts
That cause you distress,
They hinder the self in repair;
Trust God to provide
What the heartstrings confide;
With assurance, you're still in His care.

Roxie Lusk Smith

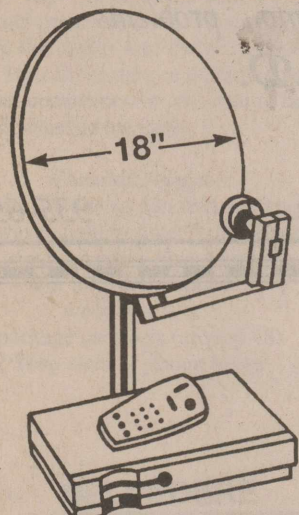
Sponsored by:
Thriftway 396-5586
Smith & Smith Well Co.
396-2111
Stratford Grain 396-5541
Lautz 769-4485
Ellie's 396-2092
Stratford Star 396-5885
Walter Lasley & Sons, INC.
753-4411

Mission Hispania Assemblies DeDios

Pastor Roberto Frescas
County Barn
Sunday School 10:00 a.m.
Morning Worship 11:30 a.m.

Miercoles (Wednesday)
Estudio Biblico & Servicio De Oracion 6:00 pm
Se Cuidamos Susninios Durante El Servicio.

SATELLITE SALE



18 INCH DISH
\$199^{95*}

* Requires purchase of subscription channels

Reg. Price \$599.95

★FREE DELIVERY★

GUARANTEED
LOWEST PRICE
IN THE USA

SATISFACTION
GUARANTEED OR
YOUR MONEY BACK

CALL TODAY

1-800-777-4326

FOR FREE CATALOG

SATELLITE
DEPOT

WHOLESALE TO THE PUBLIC

Winter Pasture Cattle Insurance

starting
October 1st
Same Rates As Last Year
Allen Agency
396-5513

End of story Zilch
Free
checking.
Nada
PERIOD

At First State Bank, when we say FREE checking, we mean FREE. No surprises. No hidden costs. Just free. Period. There's no minimum balance to maintain. No per-check fee no matter how many checks you write. And no monthly maintenance fee.

First Class Banking

So instead of paying all those extra checking charges, visit First State Bank and tell us you want a totally free personal checking account. It couldn't be easier. Oh! If you need overdraft protection for those occasional problems, we've got that too.

STOP BY OUR NEAREST OFFICE TODAY

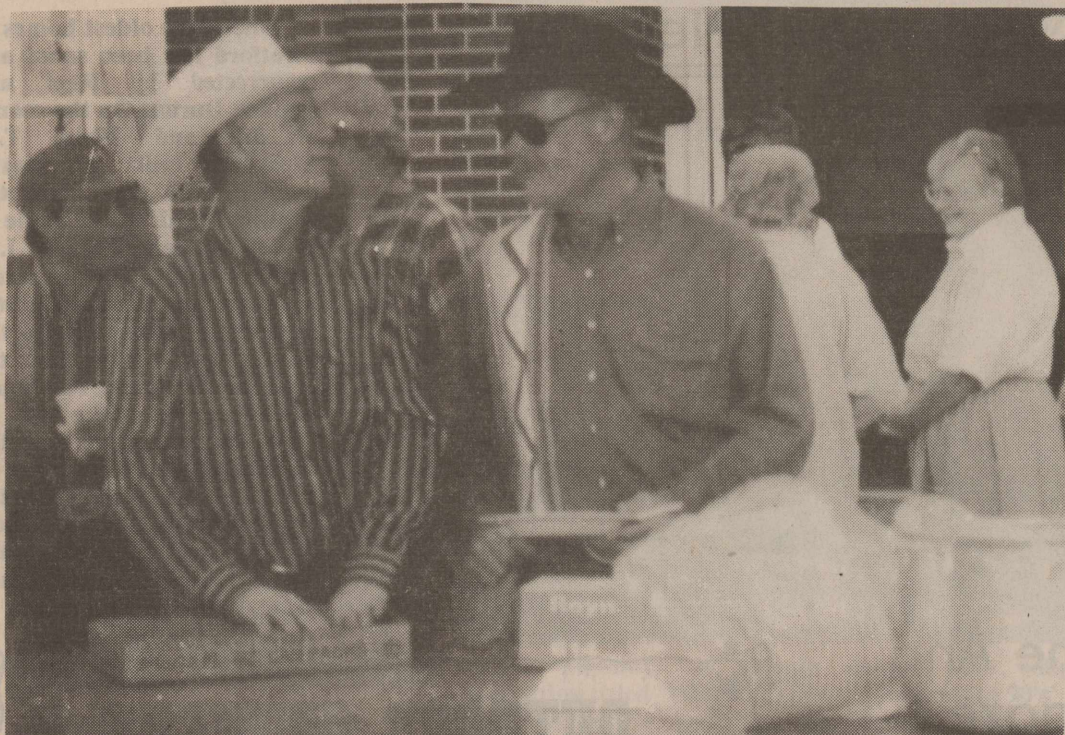
302 N. MAIN STRATFORD, TX 79084-0048 800-306-6321 (TX) 800-306-0261

301 EAST FIRST DUMAS, TX 79009-0080 800-306-6321 (TX) 800-306-0221

301 DENVER AVENUE DALHART, TX 79022-1112 800-306-6321 (TX) 800-306-0277

FIRST STATE BANK STRATFORD - DUMAS - DALHART

Kerrick Chuckwagon Supper



Terry Schoonover and Malcolm Long were in deep discussion at the Kerrick Chuckwagon supper held Sat. night, September 21, 1996.



About 484 people attended the Kerrick Chuckwagon supper last Saturday night. They were treated to barbecued beef, calf fries and all the fixin's.



Music for the Kerrick Chuckwagon supper was provided by Ted & Faye Smith of Boise City, Frank & Deanna Francis of Felt, Ok., and Jay Levett of Clayton, N.M.

Conservation Plans Kept Confidential

Ft. Worth-Conservation district officials, attending their annual state meeting want formal steps taken to assure that information contained in a producer's conservation plan will be kept confidential.

With the advancement of computers and the Internet, electronic mail has become a way of conducting business among local, state and federal agencies. This has caused concern, due to the ability of information to become inadvertently exposed. Although no conservation plans have currently been sent over electronic mail systems, SWCD district directors want steps taken to ensure no producer's conservation plans will be electronically transferred without prior consent from the producer, SWCD District Director and the Natural Resources Conservation Service (NRCS) District Conservationist.

"There has always been an informal understanding between the NRCS and soil and water conservation districts that a district cooperators conservation plans were confidential; and the property of the district cooperator," said John Earl Smith, chairman of the Maverick SWCD in Eagle Pass. "We just want to make sure that a producer's privacy is protected."

Over 800 soil and water conservation district directors representing 214 Texas Soil and Water Conservation Districts (SWCDs) and other conservation leaders are attending the 56th annual meeting of SWCD directors which is being held in Ft. Worth.

Stratford Emergency Medical Services To Hold Public Meeting

Stratford EMS will hold a Town meeting on Wednesday-October 9, 1996 at 5:00 p.m. at the EMS building located at 1109 Beaver Road. The meeting is being held to discuss a staffing variance requested from the Texas Department of Health by Stratford EMS. A representative from the Texas Department of Health will be at the meeting to explain the process to the public and answer any questions. The meeting is a requirement of the staffing variance application process. According to state requirements. Ambulances have to be staffed by at least two emergency medical technicians every time it responds to a call. The variance would allow the ambulances to be staffed with one certified person and a non-certified person. Stratford EMS rarely experiences times when meeting this staffing requirement is not possible. Stratford EMS has one full time paid paramedic and the rest of the staff members are volunteers. Stratford EMS has two basic licensed emergency medical vehicles with Mobile intensive care unit capabilities. Although both ambulances are staffed with a paramedic, an EMT and a driver most of the time, it is difficult for volunteers to take time off from their jobs during the day to staff the two ambulances with two certified personnel each. Stratford EMS has had a variance for sometime. The process is a yearly process. In the past year, Stratford EMS had to utilize the staffing variance on a couple of occasions. A violation of the two EMT staffing rule carries a monetary penalty and possible suspension of the services emergency medical services pre-hospital provider license.

Stratford EMS is in the process of recruiting new volunteers and will hold an emergency medical technician certification class within the next year. If you are interested in becoming a volunteer emergency medical technician please call Kenneth Bump[as at 396-2844 for further information.

Tri-State Fair Winners

Sherman County Fair Best of Show entries went to the Tri-State Fair. Seven items were entered. Four prize winners as follows: Janice Brown, 1st Cherry Jelly; Joyce Hart 2nd Childs dress; Paul Brown 2nd Salsa and Todd Teig, 2nd woven table runner. Other entries, Cheyenne Ziemann, vest; Artie Muir-crochet doll, Terry Smith-Quilt table top. Stratford was well represented.



The tallest recorded height for a gorilla living in the wild is 6 feet, two inches.

We give advice but we cannot give the wisdom to profit from it.

—La Rochefoucauld

HOLIDAY'S ARE COMING!
Order your fancy
Extra Large Pecan Pieces Now!
1 lb. packages/\$4.00 per lb.
Contact FCE Club:
Kristi Walden - 769-4467, Mary Lou Walden - 769-4410
Mary Wayne Spurlock - 806-948-5212,
Jean Everett - 806-966-5346
Deadline for placing order is October 10, 1996.
Pecans are to be paid for when ordered.
DELIVERY DATE!
NOVEMBER 7, 1996

Jack Barton
Attorney at Law
Private Practice Law Office
Hours By Appointment Only
For Appointments call 8:00 - 5:00
Monday - Friday 396-2270
Evenings 396-2140

10th Year, 2681 Babies In Dumas
Women's Health Center
Normal and high risk pregnancies
Gynecologic cancer screening
Breast cancer screening
Infertility and family planning
Menopause and hormone problems
Dr. Turhan I. Baykan, M.D.
Specializing In
OBSTETRICS-GYNECOLOGY
110 S. Bliss Monday - Friday 9 a.m. - 6 p.m. 935-6599



Most geckos can walk easily on an upright pane of glass. The tip of each toe has a pad that enables the gecko to cling to surfaces which appear smooth.

Vote for
JOHNNY PULLIAM
Republican Candidate for
Sherman County Sheriff
Your Vote will be Appreciated!
Pol. Ad. Pd. by: Johnny Pulliam, Box 541, Stratford, TX 79084

HILL REALTY
NOW READY TO HELP YOU
BUY OR SELL A HOUSE
CALL ROY J. HILL AT 396-2087
CURRENT LISTINGS

1215 N. Division 619 N. Maple 806 N. Maple
207 S. Pearl LIC.#0118281 508 N. Fulton
N. 3rd & Maple 511 S. Main

Multi-Draw.
The Easy Way To Stay In The Game.

Find a pencil.

Grab a playslip.

Choose six numbers or play Quick-Pick.

Fill in a Multi-Draw box.

Play up to the next 10 drawings.

Don't miss a chance to win.

Must be 18 years or older to play. ©1996 Texas Lottery



These four attended State FCE convention in Tyler Sept. 19-21. From left, Mary Lou Walden, member; Reyna Everett, Marylou McDaniel, Jean Everett, delegates. Reyna wonders what's going on! Note woman in back on left, it's Miranda Florida, former Kerrick resident.

Annual State Convention Held

Sherman County Family Community Education (FCE) club members were welcomed by District 5 FCE members and State Board to the annual state convention held September 19-21 at Tyler's Harvey Convention Center.

Mary Wayne Spurlock, District 1 Director; Jean Everett, Sherman Co. FCE Chairman; delegates, Reyna Everett and Marylou McDaniel; member Mary Lou Walden were among 808 attending.

Martha Crawford, Ballinger, President State FCE, presided with the theme, "FCE and Community-Committed to Changing Lives", mini workshops, educational workshops in Health, Literacy, Membership/Marketing, Public Policy and Property Rights.

Speakers from District 1 included Dr. Martha Couch at Excellence Luncheon; Mary Neal Henry, Happy, Stress Management Workshop LaJuana Thames, Canyon, Health Seminar; Hazel Crawley, Amarillo, Parliamentary Procedure.

Others were Mike McKinney, Director, 4-H Center, Brownwood, who was presented with a check for \$7,461 from FCE members; Doug Smart on Time Management; Bonnie McGee, who explained "Friends of 4-H and the new Alumnae Association.

Southside FCE Club received an award for being 100% in Messenger subscriptions.

In a surprise presentation Reyna Everett was called to the podium by State President and was given a silk rose pin by Mary Wayne Spurlock in recognition of she being the newest citizen present. She was given a great ovation.

Following the closing banquet, Carol Daig, Victoria, was installed as State President along with other officers. Tyler Jr. College Jazz Band had all toe-tapping.

Those from Sherman County traveled by bus with other District 1 members, except Mary Wayne who went early to prepare for the event. The District Directors presented a clever and funny skit.

True contentment is the power of getting out of any situation all that there is in it.

—G.K. Chesterton

A Tasting Tea and Fashion Show

Saturday, Oct. 12

2 p.m. at the SHS Cafeteria

Given by Prospectus Study Club

Fashions from:

Bette's Plus of Amarillo &

Mr. G's, Especially for You

Also Jewelry by Duncan & Boyd of Amarillo

Tickets \$10.00 per person

Can Be Purchased From any Club Member

Family & Friends

218 N. Main Stratford, TX

A \$79.95 Value For Only

\$19.95

Plus Shipping & Handling

By Appointment Only

(806) 396-2809

Glamour Photo Session

Great Senior Picture

Mon., Sept. 30, 1996

Session Includes:
Hair & Make Over
4 to 5 Different
Wardrobe Changes
12 to 14 Different Poses
and an 8 x 10 Color
Portrait of Your Choice



BEFORE AFTER

Professional Makeup Artist
Feel and Look Like A Model

Must Be (18) or Over or
Accompanied By An Adult

Photographed By

Spotlight Glamour

Check Out The Library

By Dorothy Haile

Exciting activities have been planned for the Story Time program for 3 and 4 year old children. Your child needs to be pre-registered if at all possible. Please come by the library to sign the forms or if you call the library we will get the necessary information by telephone. The number is 396-2200.

Starting date is October 2nd at 11:15. You may pick up your child at 12:00 noon. The programs are on Wednesday, Only. The final day for the planned activities is November 6th.

Plan now for your child to have the opportunity to learn about the library, have some fun learning experiences, and get books to take home.

All books are checked out for a two week period. Patrons are expected to take care of the materials they use.

If you travel, walk, or just need to have something to listen to Talking books may be just what you need. We have a rotating packet from Texas Panhandle Library System and also have many that are owned by our library.

Large Print materials are available. This is a rotating packet, also, so one may continue to find new books on the shelf.

Library hours: Monday 1-8 p.m., Tuesday-Thursday 1-5 p.m., Saturday 9 to 1 p.m.

Did You Know?

(NAPS)—Laws have been passed in all 50 states making it illegal to sell cigarettes to minors.

ACTION against ACCESS

This law was supported by a cigarette company that is now doing even more. Philip Morris USA has launched a ten-step program called Action Against Access to make it as difficult as possible for minors to purchase cigarettes.

Wisdom is knowing when you can't be wise.

—Paul Engle



State President Martha Crawford, left and Mary Wayne Spurlock, District 1 Director, honored Reyna Everett at FCE convention as being the newest citizen present. It was a surprise presentation. Seated is Hazel Crawley of Amarillo.

Caramel Apples For Fall

(NAPS)—Plump and juicy apples are ripe for the picking in orchards and farmstands. There are many ways to enjoy these delicious fruits, but none more seasonally appealing to both children and adults than a juice-sweet caramel-covered apple.

With the help of the microwave and a bag of caramels, it's a cinch to whip up a batch of these classic autumn treats. Simply "zap" the caramels with a bit of water and peanut butter in the microwave and dip the apples into the rich, smooth sauce. The crisp texture of the tart apple is a perfect complement to the creamy taste of the rich melted caramels.

Caramel Apples
Prep time: 20 minutes plus refrigerating.
Microwave cooking time: 3 1/2 minutes or; top of stove cooking time: 15 minutes.
4 or 5 medium apples
wooden sticks

1 package caramels (around 48)
2 Tbsp creamy peanut butter

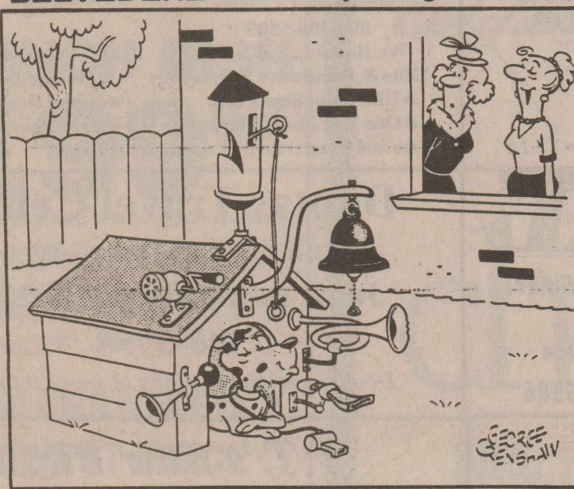
2 Tbsp. water
chopped peanuts

- Thoroughly wash and dry apples; insert stick into stem end of each apple.
- Microwave caramels, peanut butter, and water in small deep microwaveable bowl on high 2 1/2 to 3 1/2 minutes or until smooth, stirring every minute. (If caramel sauce is too thin, let stand about 2 minutes before dipping apples.)
- Dip apples into hot caramel sauce; turn until coated. Scrape excess sauce from bottom of apples. Dip caramel-coated apples in chopped peanuts. Place on greased wax paper. Decorate with candy, if desired.
- Store in refrigerator. Let stand at room temperature 15 minutes before serving. Makes 4 to 5.

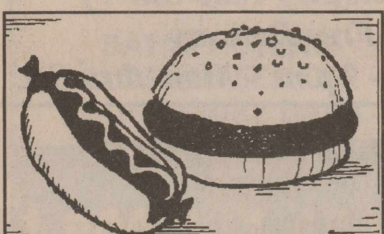
North American
Precis Syndicate

6104405C.DOC

BELVEDERE by George Grenshaw



"WE ALWAYS KNOW WHEN HE WANTS SOMETHING."



Frankfurters were named after Frankfurt, Germany and hamburgers after Hamburg, Germany.

The great pleasure of a dog is that you may make a fool of yourself with him and not only will he not scold you, but he will make a fool of himself too.

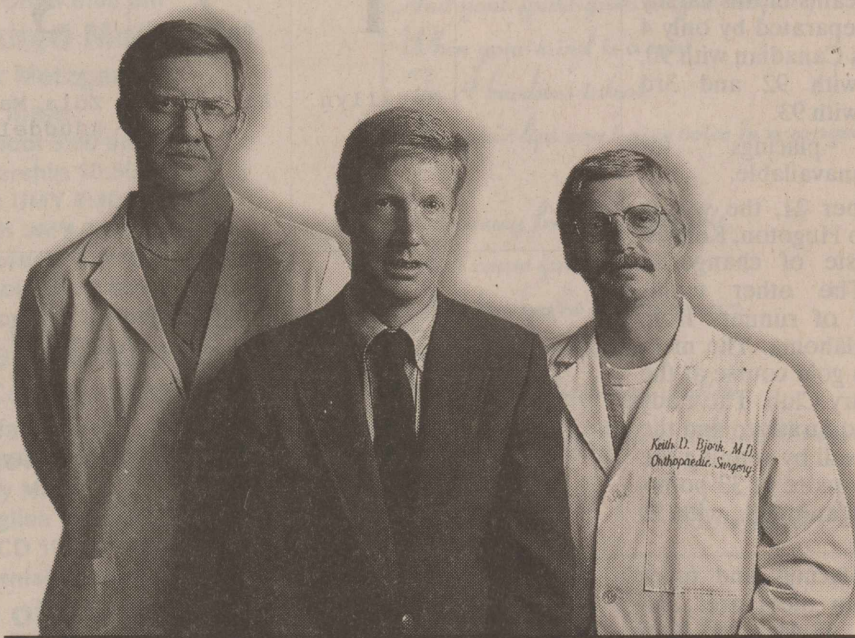
—Samuel Butler

Bill K. Forbus, D.D.S.
is pleased to announce
the association of
John W. Sparkman, D.D.S.
for the practice of
Family Dentistry

222 South Bliss 935-2725

Dumas, TX 79029 935-2560

Insurance accepted



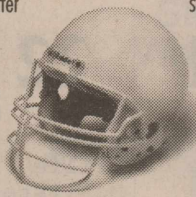
HIGH PLAINS SPORTS MEDICINE CENTER

It's A Whole New Game.

Why should a football injury end your season? Today, our team is breaking new ground in sports medicine. We're even returning players back to the field in better shape than before their injury.

Dr. Keith Bjork is an internationally trained knee surgeon. And we're connected to the area's premier health care system, Baptist St. Anthony's.

High Plains Sports Medicine Center is on your team, with all-star players. Dr. James Rogers is an orthopedic surgeon and former doctor for the Houston Oilers. Dr. Neil Veggeberg is the region's specialist in sports rehabilitation.



Your team even includes licensed athletic trainers, physical rehabilitation specialists and nutritionists for the most advanced care possible. That's peace of mind. And as athletes, our treatment is also from a personal perspective. That's peace of mind and body.

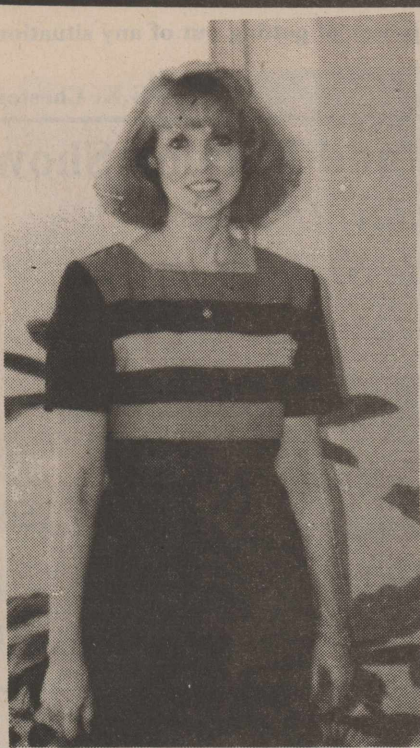
Call High Plains Sports Medicine Center today. See why It's A Whole New Game.

Free Saturday Morning Sports Clinic • 9-11:00 AM

Dr. Keith Bjork • 345-2522 Dr. Jim Rogers • 358-2626 Dr. Neil Veggeberg • 353-7018
5111 Canyon Drive • Amarillo, Texas • (806) 467-7000 • (800) 477-8763

High Plains Sports Medicine Center is an affiliate of Baptist St. Anthony's Health Systems



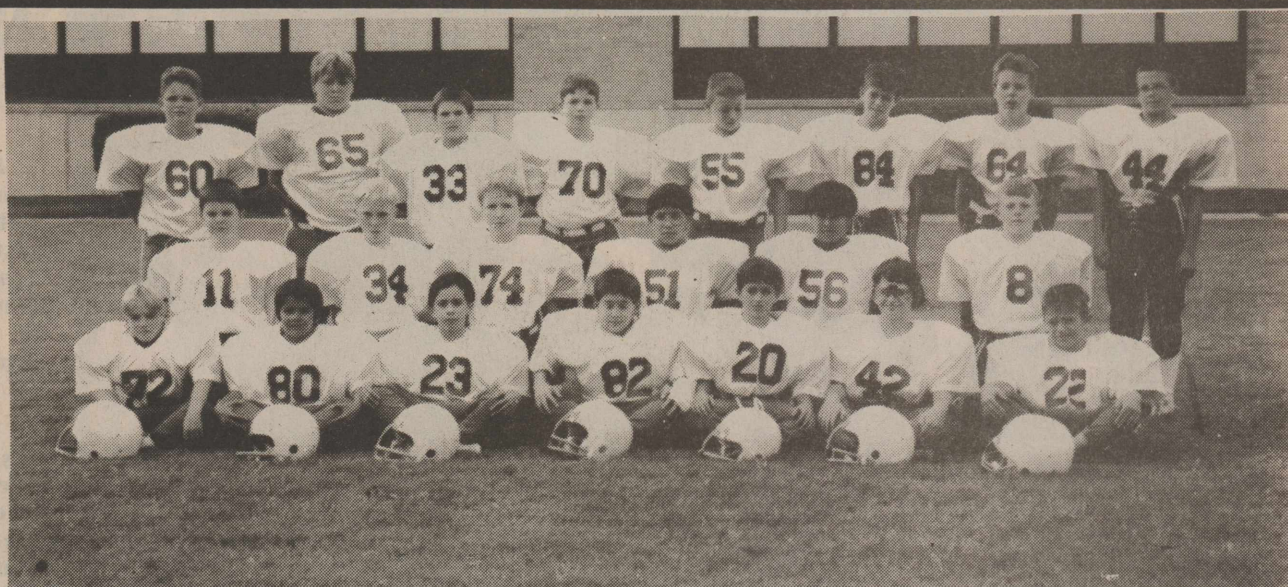


Duggan Speaks To Lions Club

Kathy Duggan of XIT spoke to Stratford Lions Club on Monday, September 16th on "The Internet".



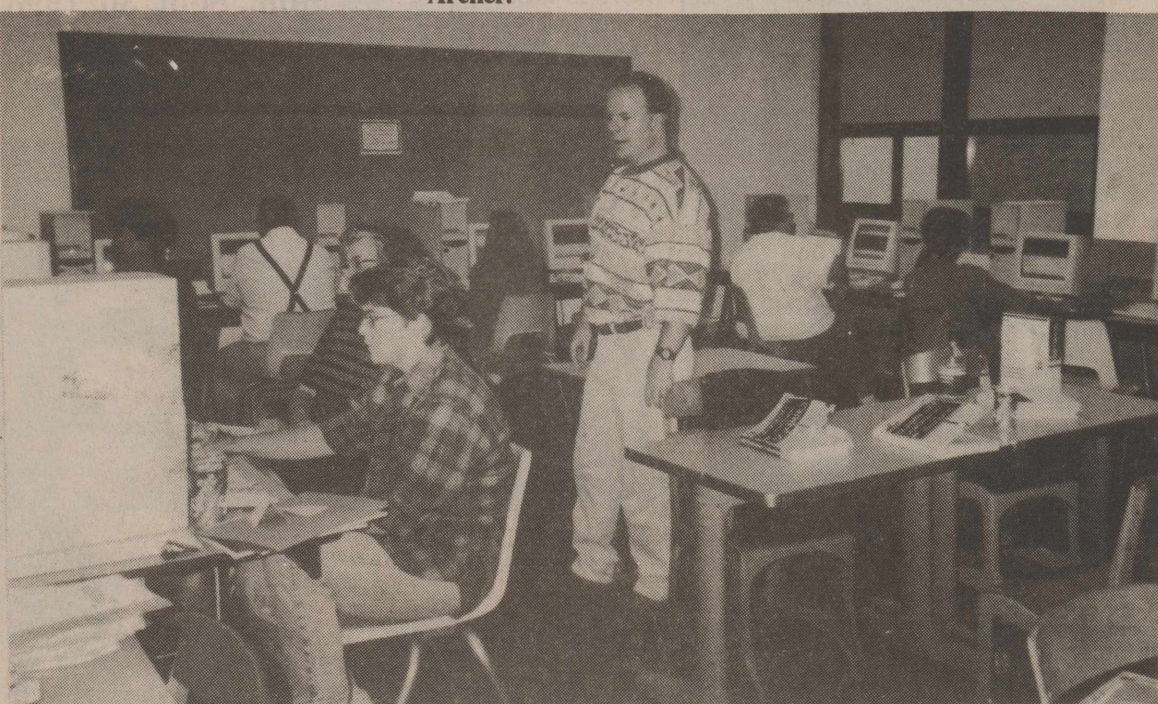
Last Tuesday, 40 people enjoyed an enlightening presentation titled "WOWing the Customer of the 90's" given by Jeanne Archer of Amarillo. Ms. Archer is the owner and President of STRATEGIES, INC. and is the co-author of the best-selling book, "Up Against the Walmarts". The seminar was sponsored by Sherman County Development Committee, Inc. Our appreciation to the First Christian Church for the use of their Fellowship Hall and to Marie Sladek for preparing a wonderful lunch. Pictured above is Joan Bell and Jeanne Archer.



The Stratford 5th & 6th Grade Football team, shown above will play the Dumas Ravens, here on Saturday, September 28th at 4:30 p.m.



Golf probably developed in Scotland around 1100 from a Roman game called paganica. The Romans played paganica in the open countryside with a bent stick and a leather ball stuffed with feathers.



An enthusiastic crowd of 12 students participated in an eight-hour computer training course on Word Perfect for Windows. The course was held on Saturday, September 14th and was presented by Shawna Nelson, owner of Nelson Creative Consulting in Amarillo. The course was sponsored by the Sherman County Development Committee, Inc. in cooperation with the Stratford School System. We were given permission to use the new and improved computer lab at the High School. Our appreciation to the school staff for their help in getting ready for the course. Just another example of how public/private partnerships benefit the entire Community!

<p>Business Directory</p>	<p>COLDWATER MANOR "LOVE SPOKEN HERE" 1111 BEAVER RD., STRATFORD, TX (806) 396-5568</p>
<p>WALTER LASLEY & SONS INC. THE Feedyard Since 1953 753-4411</p>	<p>BROOKS MOTOR PARTS PLUS 396-2631 314 S. Poplar</p> 
<p>Stratford Grain Co. Stratford 396-5541 Lutz 769-4485 4 North Main</p> 	<p>For Your Moorman Mineral & Feed Supplements Come By THE General Store or Call Ronnie at 396-5308</p>
<p>This Space Available Call 396-5885</p>	<p>Nina C. Lavake Bookkeeping & Income Tax Service 396-5874 N. 3rd & Chestnut (North plains Savings & Loan Building)</p> 
<p>Stratford Auto Electric 119 S. Wall Stratford, Texas 79084 Phone 396-5941 396-5857 Alternator, Starter, - Magneto Repair Since 1964</p>	<p>Ellie's For all your gift and floral needs Baby & Bridal Registry 209 S. Main 396-2092</p>
<p>Betty Brown's Medical Claim Service 401 N. 3rd. P.O. Box 7 Stratford, TX. 79084 806-396-2623</p>	<p>Joe Flores Farm Bureau Insurance 396-5538 office 396-5389 home</p>
<p>George Harding Sewer & Drain Cleaning Plumbing, Electrical, Remodeling, Painting 396-2206</p>	<p>This Space Available Call 396-5885</p>
<p>Brown's Meat Locker Custom Wholesale & Retail Meat Federally Inspected Hwy 287 South 396-2513</p>	<p>ELK PHARMACY 317 N. Main Stratford, TX 79084 806-396-5505 We Honor.....P.C.S. P.A.I.D. BC/BS Texas Medicaid Gifts & Decorative Accessories ● Helium Balloons ● UPS Shipping Center ● Bridal Registry ● One Day Photo Processing ● Baby Shower Registry Visa and Mastercard Welcomed ● Toys</p>
<p>THRIFTWAY Big Town Selection ★ Small Town Friendliness Wide Selection Frozen Food Quality Foods Fresh Produce Hwy 54 East 396-5586</p>	<p>Dumas Travel Center A Full Service Travel Agency Joan Bell 1-800-753-2792 396-5958 Do all your travel plans at no cost to you.</p>
<p>Westside Laundry Call 1-800-547-2761 for Pickup and Delivery Mon. - Wed. - Fri. Pants \$1.75 Shirts \$1.50</p>	<p>P.T.'s Star Pizza 287 South 396-5332 Dine In - Take Out Free Delivery 5:30 p.m. - 9 p.m. - Mon. thru Sat.</p>
<p>Termite Termination 10 Yrs. Exp. - Free Estimates Lots of Local References House Leveling Call Dennis at 1-800-613-9317</p>	<p>Tommy's Embroidery 405-423-7718 Texhoma, OK. 122 W. Main Caps, Shirts, Jackets, Baby Blankets, Towels, Towel Wraps, School Logos & Much More!</p>
<p>The Designers Salon Alma Perez, Owner & Stylist Karina Chabolla/Stylist Tues. - Sat. 9:00 - 6:00 715 E. 1st Street Dumas, Texas 79029 Bus. 935-9922 Res. 935-8763 Tanning Bed</p> <p>Haircuts, Perms, Hi-Lites, Up Do's Nails, Facials, Wax, Ear Piercing</p>	<p>This Space Available Call 396-5885</p>

Cross Country

The Lady Elks Cross Country team is proving itself to be one of the top teams in the area for the 1996 season. On September 14, the team traveled to Lake Fryar to compete in the Wolf Creek Classic. The course was run around Lake Fryar with the hilly terrain made up of grass and dirt. The top three teams in this varsity division, were separated by only 4 points. First was Canadian with 90, 2nd-Stratford with 92 and 3rd Sanford-Fritch with 93.

Individual placings for Perryton were unavailable.

On September 21, the varsity team traveled to Hugoton, Kansas, for a little taste of change in competition. The other teams there consisted of runners from Kansas and Oklahoma. The meet was held on the gold course at the Hugoton Country Club. The Lady Elks represented Stratford and the state of Texas well by winning the meet with a low score of 33 points followed by Ashland, KS., with 50 points.

Individual placings and times for the Hugoton meet are: 2nd Jennifer King, 13:41; 5th Keri Wight, 14:35; 6th Julie Kimball, 14:36; 8th Hillary Baskin, 14:57; 12th Ashley Stoy, 15:20; 13th Jasmin Sanchez, 15:28; 17th-Megan Baskin, 16:03.

EASY PESTO PIZZAS
Makes 2 (6-inch) pizzas

1/4 cup prepared pesto sauce
2 (6-inch) pre-baked pizza crusts
1/2 cup thinly sliced vegetables (red and yellow peppers, zucchini, mushrooms)
EASY CHEESE American Pasteurized Process Cheese Spread

Spread 2 tablespoons pesto over each pizza crust. Top with vegetables. Bake at 450°F for 8 minutes. Top with cheese spread as desired; return to oven for 2 minutes or until cheese melts. Serve hot.
Pepperoni Pizzas:
Substitute 1/3 cup pizza sauce and 1/4 cup thinly sliced pepperoni for pesto and vegetables. Prepare as above.

Depot Museum Calendar
Sponsored by The Stratford Star & The Depot Museum

October 1996

Mon	Tue	Wed	Thu	Fri
	1 Marillyn Albert	2 Al Baker	3 Zola Mae Aduddell	4 Pat Boren
7 Betty Ray Brown	8 Barbara Bouldin	9 Irene Butler	10 Oline Caraway	11 Bernice Christian
14 Anita DeBord	15 Lucy Hills Museum Board 1pm	16 Doris Dyess	17 Louella Johnson	18 Donna Kendrick
21 Luzelle Lowe	22 Billie McAlister	23 Aida Mitts	24 Marylou McDaniel	25 Charlene Oquin
28 Mae Plunk	29 Rene' Plunk	30 Dicy Stephenson	31 Billy Jo Ross	

Tractor Pull Participants!!!!



Dog Show Results

Twenty participants participated in the Fair and Jamboree Dog Show held at Pendleton Park under the direction of Superintendent, Ronna Riffe.

Jay Baraza/Donna, Best dressed and ugliest!

Trenton Boyd/Gracie, Shortest Hair, best trick

Nick Ashley/Grounder

Brady Booth/Heidi

Brian Booth/Boo

Johnny Cavitt/Lady Beth, Shortest Tail

Robin Daniels/Cookie

Schanna Ewers/Mickey & Peanuts

Erin/Thumper

Jodi/Precious

Melody/Baby

McKaler/Mitzy

Morgan/Socks smallest mature dog

Results Cont. on page 8



Ninety seven contestants participated in the Texas Pedal Pull at the Sherman County Fair. The registration was fee to all participants courtesy of Sherman County Farm Bureau and Joe Flores, Farm Bureau Agent.

Age 4- 1st, Clinton Keener, 2nd Roy Allen, 3rd Jonathan Knight, other participants: Chrystal Thompson, Ashley Haire, Bryce Cummings, Taylor Holman, Jace Edwards, Tanner Riffe, Lavien Hare, Bryon DeAnda, Luke Haile, Shelly McDaniel, Zachary White, Carina Michel, Angie Rosales, Dillon Cox, Thomas Allen.

Age 5-1st Brent Reed, 2nd Stephanie Bell, 3rd Angel Resendes, other participants: Robbie Goodman, Talon Haire, Clayton Johnson, Brady Booth, Chandler Lutes, Jennie Spurlock, Klay Rodgers, Sinesal Everett.

Age 6- 1st Matthew Artho, 2nd Hunter Buckles, 3rd Craig Kautz, other participants: Landon Pickens, Katelyn Blain, Bubba Keener, Jay Hacker, Cody Ewers, Austin Riffe, Taylor Howard, Morgan Crabtree, Klint Rodgers, Chase Brooks, Andy Pale, Darcy Rosales.

Age 7-1st Eric, Riffe, 2nd Kyler Kirkwood, 3rd Bailey Bryson, other participants: Scott Hudson, Abbie Potts, Harrison Walden, Houston Sneed, Ally Keener, Jessica Escamilla, Ryan Ewers, Marilee McDaniel, Evan Haile, Nathan White

Age 8-1st Haley Buckles, 2nd Tyler Lane, 3rd Derek Blain, other participants: Brant Cummings, Shannara Ricks, Katelyn Reed, Cheyenne Ziemann, Bryan Hensley, Walter Spurlock, Aubry Gibson, Heather Robertson, Victor Michel, Tye Hammontree

Age 9-1st Deidre Tarver, 2nd Tyler Haynes, 3rd April Kautz, other participants: Logan Potts, Josh King, Roy Escamilla, Whitney Kautz, Kayla Robertson, Holly Heatwole, Nicholas McDaniel, Rebekah Griffin.

Age 10-1st Kayce Allen, 2nd Shane Douglas, 3rd Brad Reed, other participants: Brian Booth, Marcus McAlister, Carson Buckles, Adam Gomez, Levi Artho, Carley Bryson, Tiffany Knight.

Age 11- 1st Robin Daniels, 2nd Dylan Everett, 3rd Clint Adams, Denton Crabtree, Eric Heatwole

Age 12 1st Joseph Garcia, 2nd Kent Heatwole.

You can use these ears...

WITH
XIT
CELLULAR

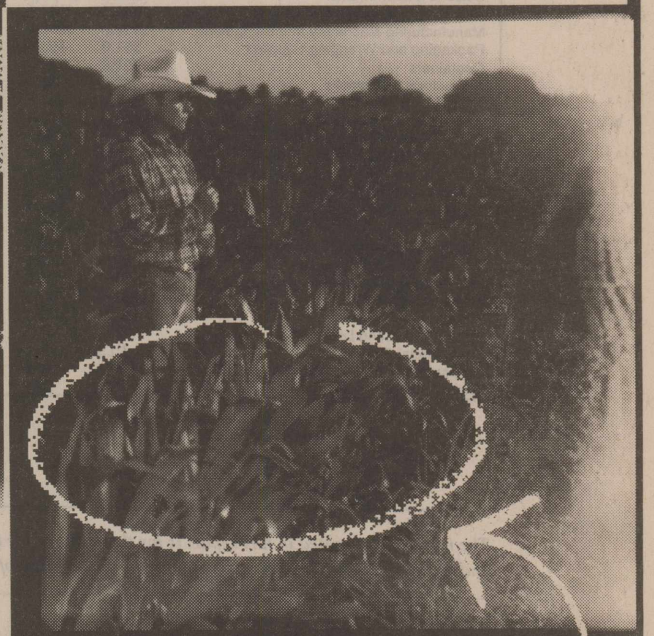
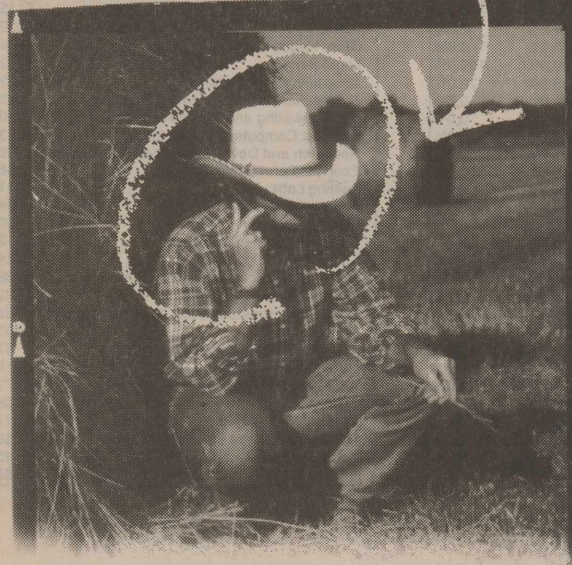
During harvest, timing is everything. That's why more and more farmers are using cellular phones to take better care of their crops. With cellular service from XIT Cellular, you can use your phone to stay ahead; at prices that are below what you'd expect.

With a cellular phone, you can:

- stay ahead of the weather;
- stay current on market prices;

- limit your downtime for repairs;
- keep in touch with other harvesters, your crew, your family, your life.

With a cellular phone and service from XIT Cellular, you can use your ears to take better care of those other ears. And that's what we call using your head.



... To take care of these ears

Call XIT Cellular Today and Take Advantage of One of These Special Harvest Time Offers:

- Motorola Tote Phone + 30 free minutes of local airtime \$29.95 (battery not included)
- Motorola Flip Phone + 60 minutes of local airtime \$59.95
- Mounted permanent phone + installation + 90 minutes of local airtime \$89 (antenna not included)

Check out these great offers!



The brand of exCellence!

1-800-232-3312

1545 S. Dumas Avenue
Dumas, TX
(806) 955-8777

1009 W. Park Avenue
Hereford, TX
(806) 364-1426

Highway 87 North
Dalhart, TX
(806) 384-3333

Chamber Chatter

By J.A. Lasley

The last of the three tax breaks for the relief of the Property tax is the Sales Tax Alternative. This sales Tax Alternative seems to be the second best alternative. You make the decision. This will be a hot and heavy issue with Congress this next session.

A reminder of the Imaginations Stations October 1 display. They are expecting a number of busses with school kids to roll into Stratford. As a community we have the opportunity of these visitors coming in. It is a fact that they often times eat perhaps spend time in our shops; as well. The Imagination Station is an asset to this Community. Lets all enjoy!

Last Tuesday, the 17th some 37 folks got a real treat with Jeanne Archers "WOWing The customer". We all think we know, as merchants or business folks how to sell, and make our customer or inquirer happy. But being reminded of the old saying "I've done that, been there..." or "it won't work for me and my business or profession" or even "I don't need an outsider coming in and telling me how to run my business" these excuses won't hack it in this ever changing world we live in. We need to change with the times. Customers are the most important folks we deal with, believe it or not!!!

- Looking ahead to the rest of this month
- Thursday, Sept. 26th Scot Hall 1 p.m. pool, 8 p.m. AA/Alnon at county Barn. Scot Luncheon at noon.
- Friday, Sept. 27 Homecoming, Scot Hall 1 p.m. Pool and ceramics.
- Sat. Sept. 28 Scot Dance here
- Sun. Sept. 29 Coldwater Manor Worship 9 a.m. First United Methodist Church.
- Mon. Sept. 30 Scot Hall 1 p.m. Ceramics & pool 7 p.m. Dance practice.



Perfect Apples

These perfect looking apples shown above were raised right here in Stratford, Texas. They came from the backyard of John and Sharon Wilson's apple tree.

Legal Notice

PUBLIC NOTICE

Legal Notice

The Stratford Independent School District will accept sealed bids to purchase one (1) new diesel powered school bus. The bids shall be in the Stratford School District's Office at P.O. Box 108, Stratford, Texas 79084 no later than 12:00 noon, October 14, 1996. Bid Envelopes must be marked in lower left hand corner (school bus bid).

Specifications may be obtained at the School Administration Office at: Stratford Independent School District, N. Main Stratford, Texas or by mailing requests to Stratford Independent School District, P.O. Box 108, Stratford, Texas 79084. Specifications may also be requested by calling (806) 396-2612 Monday through Friday, 8 a.m. to 4 p.m.

Stratford Independent School District reserves the right to accept or reject any or all bids in the best interest of the Stratford Independent School District.

Published in The Stratford Star, Thursday, September 26, 1996 and Thursday, October 3, 1996.

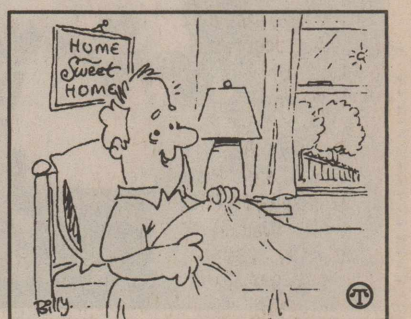
Texhoma ISD is currently taking bids on Cafeteria Equipment. Deadline is Friday, October 4, 1996. Contact the office for specifications at Texhoma ISD, P.O. Box 709, Texhoma, Texas 73949 (806) 827-7400.

Published in The Stratford Star Thursday, September 26, 1996 and Thursday, October 3, 1996.

SENIOR WATCH

Long Term Care: What You Should Know

(NAPS)—What do Americans prefer when it comes to long term care? By a massive 19 to one majority, Americans who need long term care prefer to be cared for in their own home rather than in a nursing home.



By a 19 to one majority, Americans who need long term care prefer to be cared for in their own home.

Nonetheless, we as a society spend \$6 on nursing homes for every \$1 we spend on home care, points out Families USA Foundation, a health care consumer group. And it's going to get more expensive for families if Congress has its way.

Congress is now planning to slash the little bit of help America gives families with home care. The same Congressional assault on Medicaid will make nursing homes unaffordable for millions of our parents.

That man is richest whose pleasures are the cheapest.
—Henry David Thoreau

Dog Show Results
Cont. from Pg. 7

- Megan/Novi Longest Hair-Fuzziest-smallest mature dog.
- Raniel/Porky
- Eric Riffe/Francis Best groomed-biggest
- Heather Robertson/Lucy Longest Ears
- Austin Riffe/Bailey Longest Tail
- Tanner Riffe/Hank Oldest
- Dancy Rosales youngest dog. Name not available.

Sales Tax Alternatives

General Description. Unlike a gross receipts or business activity tax, a sales tax is already in place in Texas with almost 600,000 businesses permitted and a collection and enforcement system in place at the Comptroller's Office.

The sales tax¹³ is a consumption-based tax, paid to the seller at the time a taxable item is purchased. The seller then remits the tax collected to the state. It is the state's largest tax revenue source by far. During the 1996 state fiscal year the 6.25 percent sales tax (including the motor vehicle sales tax) is expected to generate almost \$12.5 billion for the state treasury. On top of that, Texans will pay another \$2.6 billion in local sales taxes.

Texas has one of the nation's highest sales tax rates, but ranks about in the middle of all states in terms of the breadth of the sales tax base (if, however, the comparison is limited to the most populous states, Texas' sales tax base is relatively broad).

With a state rate of 6.25 percent, Texas ties with Illinois for the fifth highest sales tax rate in the nation. Texas' combined state and local rate also ranks among the nation's highest.¹⁴

In terms of the breadth of the sales tax base, Texas ranks roughly in the middle of all states (supporting details are profiled in the Sales and Use Tax Profile in Part 2). Texas exempts some big-ticket items other states include in their sales tax, such as food, residential utilities and gasoline; however, Texas does tax several types of services many other states do not.

¹³ In this analysis the "sales tax" is defined as the state's limited sales, excise and use tax and the separate sales tax on motor vehicles.
¹⁴ Direct comparisons of state and local tax rates can be misleading because of wide disparities of local taxation within states.

The material presented in this report is for the purpose of beginning the discussion of the replacement of the local school tax, and does not reflect an endorsement by the Governor, Lt. Governor, the Speaker of the House or the Comptroller.

Figure 10
Sales Tax Exemptions and Exclusions

Exemptions	1998		1999		Initial Incidence	
	part year	full year	Business	Individuals	Business	Individuals
Food for Home Consumption	\$494.6	\$877.4	0.0%	100.0%		
Water	\$83.9	\$148.0	14.0%	86.0%		
Residential Gas and Electricity	\$283.8	\$500.7	0.0%	100.0%		
Manufacturing Gas & Electricity	\$219.0	\$391.0	100.0%	0.0%		
Mining Gas and Electricity	\$20.6	\$36.0	100.0%	0.0%		
Agricultural Gas and Electricity	\$9.3	\$16.6	100.0%	0.0%		
Property for the Impvt of Exempt Realty	\$5.9	\$10.2	100.0%	0.0%		
Ag Feed, Seed, Chemicals, & Supplies	\$103.9	\$184.7	96.0%	4.0%		
Ag Machinery and Equipment	\$26.1	\$46.3	100.0%	0.0%		
Livestock for Food	\$54.8	\$97.5	98.0%	2.0%		
Horses, Mules & Work Animals	\$6.0	\$10.6	100.0%	0.0%		
Sales to Governments	\$58.2	\$104.0	0.0%	100.0%		
Prescription Medicine and Other	\$45.0	\$81.5	28.0%	72.0%		
Manufacturing Machinery and Equipment	\$157.8	\$282.1	100.0%	0.0%		
Packaging and Wrapping Supplies	\$51.0	\$91.0	100.0%	0.0%		
Containers	\$39.8	\$71.0	100.0%	0.0%		
Agricultural Containers	\$0.2	\$0.4	100.0%	0.0%		
School Lunches and Certain Food Sales	\$30.0	\$53.8	0.0%	100.0%		
Certain Drilling Equipment	\$115.5	\$20.1	100.0%	0.0%		
Coin Operated Amusement	\$16.0	\$28.3	0.0%	100.0%		
Certain Ships	\$14.1	\$25.2	100.0%	0.0%		
Newspapers	\$6.8	\$12.2	4.0%	96.0%		
Newspaper Inserts	\$9.5	\$17.0	100.0%	0.0%		
Magazine Subscriptions	\$8.0	\$14.2	100.0%	0.0%		
Aviation Fuel	\$61.2	\$108.7	95.0%	5.0%		
Repair Equipment for Certain Aircraft	\$6.4	\$11.5	100.0%	0.0%		
Sales to Non-Profits	\$7.1	\$12.6	100.0%	0.0%		
Railroad Fuels and Supplies	\$3.1	\$5.6	100.0%	0.0%		
One Day Sales	\$1.6	\$2.9	9.0%	91.0%		
Religious Writings	\$1.5	\$2.7	5.0%	95.0%		
Rolling Stock and Locomotives	\$0.8	\$1.5	100.0%	0.0%		
Commercial Fishing Ice	\$0.5	\$0.9	100.0%	0.0%		
Equipment Used in Enterprise Projects	\$0.4	\$0.7	100.0%	0.0%		
Certain Aircraft	\$0.1	\$0.1	100.0%	0.0%		

Services Excluded from Taxation	1998		1999		Initial Incidence	
	part year	full year	Business	Individuals	Business	Individuals
New Residential Construction	\$54.3	\$94.4	10.0%	90.0%		
New Non-Residential Construction	\$73.0	\$126.8	100.0%	0.0%		
Residential Repair and Remodeling	\$27.8	\$48.3	10.0%	90.0%		
Barber and Beauty Services	\$21.7	\$38.8	0.0%	100.0%		
Funeral Services	\$16.6	\$29.7	0.0%	100.0%		
Coin-Operated Laundry	\$3.5	\$6.1	5.0%	95.0%		
Child Day Care	\$24.4	\$43.6	30.0%	70.0%		
Miscellaneous Personal Services	\$2.8	\$5.0	14.0%	86.0%		
Physicians	\$115.9	\$207.5	76.0%	24.0%		
Dental Services	\$32.6	\$58.4	47.0%	53.0%		
Other Health Care	\$44.4	\$79.4	65.0%	35.0%		
Legal Services	\$72.4	\$129.6	74.0%	26.0%		
Accounting and Auditing	\$62.3	\$111.5	94.0%	6.0%		
Architectural and Engineering Services	\$63.3	\$110.1	97.0%	3.0%		
Mgt Consulting and Public Relations	\$30.8	\$55.2	97.0%	3.0%		
Contract Computer Programming	\$23.3	\$41.7	98.0%	2.0%		
Research and Development Lab Services	\$6.1	\$11.0	100.0%	0.0%		
Economic and Social Research	\$9.5	\$15.2	100.0%	0.0%		
Testing Labs	\$11.5	\$20.6	100.0%	0.0%		
Advertising Media	\$84.2	\$150.7	99.0%	1.0%		
Film Production	\$2.2	\$3.9	100.0%	0.0%		
Employment Agency Services	\$12.1	\$21.7	75.0%	25.0%		
Temporary Labor Supply	\$24.7	\$44.2	100.0%	0.0%		
Financial Services and Brokerage	\$38.2	\$38.4	62.0%	38.0%		
Other Financial Services	\$32.3	\$57.9	47.0%	53.0%		
Real Estate Brokerage and Agency	\$62.8	\$112.5	65.0%	35.0%		
Freight Hauling	\$103.7	\$185.7	79.0%	21.0%		
Other Non-Passenger Transportation	\$7.0	\$12.6	88.0%	12.0%		
Veterinary Services	\$18.5	\$33.2	23.0%	77.0%		
Automotive Maintenance and Repair	\$72.2	\$129.3	97.0%	3.0%		
Car Washes	\$6.6	\$11.9	15.0%	85.0%		
Travel Arrangement	\$17.8	\$31.9	79.0%	21.0%		
Private Vocational Education	\$6.4	\$11.4	20.0%	80.0%		
Other Educational Services	\$3.3	\$5.9	8.0%	92.0%		
Interior Design	\$2.6	\$4.6	30.0%	70.0%		

The material presented in this report is for the purpose of beginning the discussion of the replacement of the local school tax, and does not reflect an endorsement by the Governor, Lt. Governor, the Speaker of the House or the Comptroller.

12

Figure 10, Continued
Sales Tax Exemptions and Exclusions

Sales Tax Exclusions Other than Services	1998		1999		Initial Incidence	
	part year	full year	Business	Individuals	Business	Individuals
Materials Used in Manufacturing*	\$3,521.0	\$6,284.8	100.0%	0.0%		
Motor Fuels	\$459.6	\$832.2	42.0%	58.0%		
Mixed Drinks	\$71.6	\$128.2	0.0%	100.0%		
Discounts	\$29.8	\$53.3				
Timely Filing Discount	\$29.8	\$53.3	100.0%	0.0%		
GRAND TOTAL BASE EXPANSION	\$7,110.4	\$12,654.2				

* Estimate based on definition in V.T.C.A., Tax Code §151.318.

Notes: All estimates are based on a January 1, 1998 effective date, and are adjusted to reflect collection lags and exemptions for prior contracts.

Source: Comptroller of Public Accounts.

Figure 11
Sales Tax Rate Options

Rate	1998		1999		Initial Incidence of Tax:	
	Business	Individuals	Business	Individuals	Business	Individuals
Rate decrease to 6.0 percent	(\$244.2)	(\$437.0)	48.0%	52.0%		
Rate decrease to 5.75 percent	(\$504.8)	(\$903.5)	48.0%	52.0%		
Rate decrease to 5.5 percent	(\$766.7)	(\$1,372.4)	48.0%	52.0%		
Rate decrease to 5.25 percent	(\$1,029.7)	(\$1,843.7)	48.0%	52.0%		
Rate increase to 6.5 percent	\$221.5	\$406.9	48.0%	52.0%		
Rate increase to 6.75 percent	\$429.6	\$789.4	48.0%	52.0%		
Rate increase to 7.0 percent	\$636.9	\$1,169.9	48.0%	52.0%		
Rate increase to 7.25 percent	\$843.1	\$1,548.4	48.0%	52.0%		

Notes: All estimates are based on a January 1, 1998 effective date, and are adjusted to reflect collection lags and exemptions for prior contracts.

Source: Comptroller of Public Accounts.

Call or FAX The Star
24 Hours a Day

STAR LINE

(806) 396-5885

24 Hour Answering

Phone or fax

During Business Hours your voice call will be answered by a staff person. If no one is available to take your call within a minute, you will be switched to the answering machine to leave your number and message so we can return your call.

Fax calls are either auto-receive, or you will be instructed to hit start, depending upon the mode you are using to send.

All Other Times for phone calls you will be asked to leave your number and message, so we can return your call.

Fax calls are automatically intercepted if you are in direct mode, or you will be instructed to hit start if you are in the manual send mode.

To leave a message and send a fax on the same call, leave your voice message, and then hit STAR (asterisk) on your phone pad to switch to fax mode. Then, at the fax tone, send your fax.

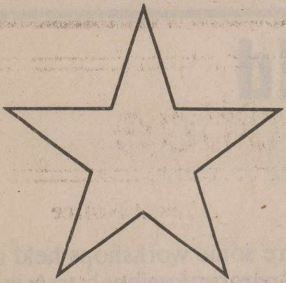
The Stratford Star

Box 8 - Stratford, TX 79084 - Phone 806 396-5885

Happy Birthday,
Duane, Jonathan, Peggy, Skyler, Martha, Roger, Caleb,
Deena, Jaclynn, Kyle, Ramiro, Rodney, Ryan, Jenny,
Walter, Christina, Justin, Priscilla, Kayla, Lachelle,
Tammie

C R E E P A P S O L A I R
L A P E L F A W N Y M C A
E M I L E T R I O R E A P
A B C D R E A M F I N N S
N O S H A R G W A C
A N N O M A R Z E N
I R A T E O N I T G O G O
D E L E T E D S T R A N G E
L I E D R I O T C R E S S
E N G P I E S F A B
P A C T R A O V E R
M O U R N T R U T H E V E
I P S O B A I T A P R I L
T I E D I T C H T A S T E
T E D S B A H S S W E A T

ANSWERS



It Pays To Look In The

Star Classifieds

..The Best Salesperson Around

Phone 396-5885

For Sale

For Sale: 1993 Mustang Convertible. Call Arnita at First State Bank. 396-5521. 4-4-tfn

Lawn & Garden Sale at THE General Store. 30% off selected items while supplies last. 9-12-tfn

It's time to get your lawn winterizer from THE General Store. Be sure to see our monthly specials while you're here! 9-19-tfn

Elk Pharmacy has shower selections for Elizabeth Kee, bride-elect of Thad Parsons. Free Delivery to the shower on October 13, 1996. 10-10-c

Halloween decorations are at THE General Store. We have luminarias, silhouettes table decorations, lawn bags & black kettles. 9-19-tfn

Holidays Are Coming! Order your fancy Extra Large Pecan Pieces Now! 1 Lb. packages/\$4.00 per lb. Contact FCE Club: Kristi Walden - 769-4467, Mary Lou Walden - 769-4410, Mary Wayne Spurlock - 806-948-5218 or Jean Everett - 806-966-5346. Deadline for placing orders is October 10th, 1996. Pecans are to be paid for when ordered. Delivery Date: November 7, 1996. 9-12-2xc

Get your bulbs for Fall planting from THE General Store. We have tulips, daffodils, crocus, peonies in assorted colors & more. Shop early for good selection. 9-26-2xc

For Sale: 2 lazy boy recliners, couch & coffee table. Call 396-2270 day or 396-2411 after 5 p.m. 9-26-c

For Sale: Acreage & Barns. Contact First State Bank Trust Department 396-5521. 7-11-tfn

Mrs. Blake is ordering pecans. Call 396-2567. 9-26-2xc

Texhoma Fiesta Days is October 12, 1996. If anyone is interested in bringing their arts & crafts to Fiesta Days, please contact Bobbie Dunn at 1-800-886-7443 to reserve a table. 9-26-p

Kay's Interiors
20% Off
Accessories
Through Sept.
396-2760

For Sale: 1986 Chev. Heavy Duty 1-Ton. Flat Bed Dually pick-up. 30,000 miles on 454 engine. 4-speed transmission. Super Steel Flat Bed rigged for Gooseneck and bumper pull trailers. New paint job and 8 good tires. Call Joe Flores day (806) 396-5538, night (806) 396-5389. 9-26-tfn

FOR SALE: HESSTON Model 1014 Swing Tongue Windrower Reconditioned And Field Ready. Call Tommy Baskin. 806-769-4422.

SINGER 1996 New school models. Serge finish. Heavy duty. Sewes silk, jeans, leather. Monograms, zig-zags, buttonholes, etc. 10 year factory warranty. \$198 w/ad; \$439 wo/ad. Singer 1800 S. Georgia, Amarillo (806) 467-1771. 12-26-c

For Sale: Brand new queen size comforter, dust ruffle, shams - \$75.00. Kitchen China - white with desert rose - \$50.00. Call 396-2388. 9-19-2xc

For Sale: 81 Chevy station wagon - full size V-8 automatic. Three overhead 500 gal. fuel tanks and five 13 & 14 in. steel culverts. Cecil Borth 769-4456. 9-19-2xp

For Sale: Building in Stratford next to City Hall needs repair. Call 396-2439. 9-19-4xc

For Sale: 1990 Pontiac Bonneville LE 4 Door Sedan, low mileage, one owner. Call 396-2019. 9-19-2xc

Shower Selections for Elizabeth Kee, bride-elect of Thad Parsons are at THE General Store. Free delivery to the shower on October 13th. 10-10-c

Christmas light sale at THE General Store. 50% off on all colors miniature light sets thru Sept. 30th. 9-19-2xc

Services

"Independent Insurance Agent"
Life Insurance, Retirement planning, Burial Insurance, Medicare Supplement, Disability Income Insurance
Molly Griffin, LUTCF
396-5612

For Termite Control
Call Leo Russell

1-383-7075 Amarillo. Have been working Stratford for 28 years. Have City and State license for the City of Stratford. 1-12-tfn

Recycle

(Behind Thriftway)

New Hours:

Effective May 1st

Wed. 9-11 a.m.

Sat. 9-12 a.m.

Newspapers & Magazines,

Glass-clear, colored plastic milk cartons

Soft-Drink, tin, aluminum,

sorted-flattened-rinsed

VETERANS-Needing Assistance in applying for pensions, hospitalization, burial benefits, and other VA benefits. Contact Max Stephenson CSO at 396-5348. 10-31-p

GIFTS, GIFTS, GIFTS

Showers, Baby,

Wedding, Birthdays, &

Anniversary Gifts at

K's INTERIORS

Gift Wrapping (FREE)

Register for Bridal &

Shower selections

396-2760

VERTICALS 2", WOOD

BLINDS & MINI BLINDS

(Installed)

50% OFF

AT

K's INTERIORS

396-2760

Free estimates!

New Shipment of

FURNITURE &

GLASSWARE

at

K's INTERIORS

Help Wanted

NEEDED!!! COWBOY TO START WORK IMMEDIATELY ON RANCH. CALL 806-534-2302 for information.

9-26-2xc

Help Wanted: Needed - Truck Driver/Concrete Plant Manager for the Stratford Plant. Apply at Trans Mix in Dalhart, Hwy 54 West. 5-2-tfn

Nurse Aide Positions are now available at Coldwater Manor. Excellent benefits including health insurance after 90 days. Will provide training for certification. Apply in person at Coldwater Manor. 1111 Beaver Road, Stratford, Texas. EOE. 7-25-tfn

Garage Sale

Estate/Garage Sale

Furniture/Glassware, Misc. Behind K's Interiors (In Barn) Friday & Sat. 9:00 - 5:00.

9-28-96 BIG Garage Sale. 1208 Putman. 9 a.m. - 3 p.m. Coats, clothing, Christmas Decorations, toys, skis. NO EARLY BIRDS, PLEASE. 9-26-c

Alcohol Anonymous
And Al-Anon meets
every Thursday at 8
p.m. at the County
Barn

Houses For Sale

House for Sale: 2 story home, 4 bedroom, 2 bath, den, North 3rd & Maple. Call 396-5927 or 396-5831. 11-9-tfn

94 16 X 80 Mobile Home 3 Bdrm., 2 bath w/ fireplace. All appliances included. Call 396-2596. 7-18-tfn

For Sale: 2 BR. 1 3/4 Bath Mobile Home. Interested Persons call evenings 1-806-948-5409. 9-19-tfn

Home for Sale: 3 bedroom, 1 3/4 bath, lots of closet space, corner lot, new paint inside and outside, near school. Ready for immediate occupancy. 1002 N. Maple. For appointment call 1-806-935-2853. 1-11-tfn

Houses for Sale: 3 BR, Brick home, 1200 sq. ft., 1 1/2 bath, 1 car garage, central heat, equipped with dishwasher stove and refrigerator, close to both schools at 806 N. Fulton. A 3 BR, wood siding, 2000 sq. ft., 1 bath, central heat/air, with basement at 401 N. Wall. Call 806-396-2348. 4-4-tfn

Card of Thanks

I would like to thank everyone for the opportunity to represent Stratford. Thank you to everyone who helped with the pageant and a special thanks to my mom for supporting me. I am looking forward to the following year as a representative to our town as Miss Stratford.

Sincerely,
Tami Davis



The first machine-made paper bags were created in the 1860s.

Kerrick Community wishes to thank everyone for another successful Chuckwagon. First to all the people who came! To the musicians, Ted & Faye Smith, Frank & Deanna Francis & Jay Levett and the following businesses: Cimarron Feeders for 1/2 the beef; Sneed-Poole Cattle Co. for 1/2 the beef; Dalhart United Grocery, beans; Dalhart Thriftway, crackers and cups; Brown Meat Locker, lard; Stratford Thriftway, milk, eggs, oleo; XIT Telephone, cash; Stateline Country Store, ice and onions; Cline's Corner Liquor, ice; Sam's Border Stop, cokes; Everett Bros and Bill Reed for calf fries and the Stratford Star. And many thanks to those from Lollipop Junction who worked so long breading the fries. Join us next year!

Ad Rem Land Co.

Office
118 E. 7th, P.O. Bx. 621
Dumas, TX 79029

806-935-7364 • Fax 935-7687

Homes • Farms • Ranches • Commercial Real Estate

New Listing: 3 Bedroom, 1 Bath, 1,240 Sq. Ft., Newly Remodeled Inside & Out with Vinyl siding & New Central Heat/Air. \$34,000

New Listing: 3 Bedroom Brick, 1 3/4 Baths, 1,913 Sq. Ft. Living Area, Double Garage, Storage Bldg., Central Heat/Air. \$72,000

New Listing: 4 Bedroom Brick, 2 3/4 Baths, 2,550 sq. ft. living area, garage, storage building, central heat/air, new sprinkler system. \$85,000

Reduced: 3 Big Bedrooms Brick Home, 2 Full Baths, New Garage, New Living Area, New Utility Room, 24x48 Shop Building, 14x38 Lean To in Pasture, 12x24 Storage Building, 3 12x12 Horse Stalls with outside runs & pens, 7.5 acres. \$130,000

Reduced: 4 Bedroom, 1 bath on 3 lots with all new storm windows. \$22,500

Agent: Keith Waters - Call 806-396-5391 Day or 806-396-5801 Night

Tom Ferguson, Broker - Res. 806-935-7408

For Rent

For Rent: One bedroom, furn. apt. 6th and Fulton. 396-5692 night, day 5541 day. 12-21-tfn

Kittens For Sale

Kittens For Sale: Fluffy 1/2 Persian Kittens. \$10.00. 6 weeks old. Call Kathy 396-5692. 9-19-2xc

To Give Away

To Give Away - 5 precious puppies, part Sheltie. Contact Carolyn at 396-5513 days or nights 396-2393. 9-26-c

Lost and Found

Found: Red & White Spiziel type dog, male. Please claim by calling 396-5330. 9-26-c

CROSSWORD 1

1	2	3	4	5	6	7	8	9	10	11	12	13	
14					15				16				
17						18				19			
20				21	22				23				
24			25		26				27				
		28	29			30	31			32	33	34	
35	36	37				38				39			
40					41		42			43			
44					45		46			47			
48				49					50				
			51			52	53			54	55	56	57
58	59	60				61			62		63		
64						65				66	67		
68						69				70			
71						72				73			

ACROSS

- Slink
- Lhasa ___ (dog breed)
- Beast's abode
- Coat fold
- Young deer
- Where some work out
- Sociologist Durkheim
- Magi or Musketeers, e.g.
- Harvest
- As easy as ___
- Night vision
- Natives of Oulu
- Eat between meals
- Falklands feuder. abbr.
- Milit. female
- Actress ___ B. Davis
- General Bradley
- ___ Buddhism
- In a high dudgeon
- Don't bet ___! (2 wds.)
- Member of an '80s pop group (2 wds.)
- Took out
- Weird
- Perjured oneself
- Disturbance
- Salad ingredient
- School course: abbr.
- Props for Soupy Sales

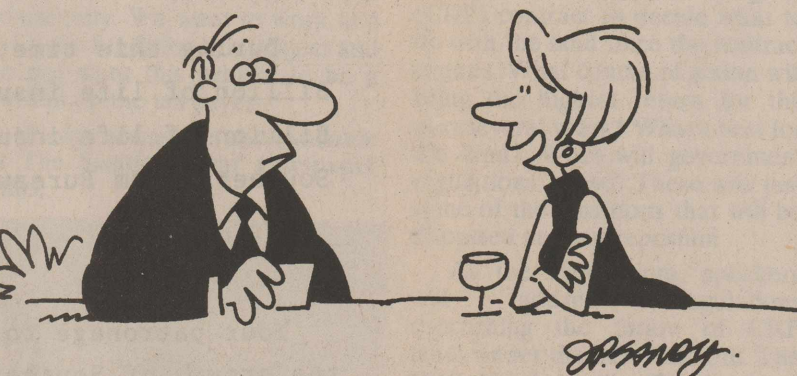
- Bealltemania adjective
- D.C. lobbying gp.
- Singing syllable
- ___ the Top (Stallone film)
- Express grief
- Honesty
- All About ___
- ___ facto
- Cheese, in a mousetrap
- "Out like a lamb" follower
- Made a knot
- Restless desire
- Vulgar one's lack
- Bessell and Mack
- Words from Scrooge
- Perspire

- Cold, in a guessing game
- Loathed
- Inventor James
- Clear profit
- Moor morning feature
- "The Twilight ___"
- Layers' legacies
- Nays
- Spin wheels
- Tackroom item
- Break ___ ("Good luck") (2 wds.)
- Garfield's stooge
- ___ Talks (1984 film)
- Actor Bogosian
- NYC building
- Flightless bird
- Certain camera shot
- Suet
- Nudges
- Gordon and Roman
- Poet's output
- Musical set in Argentina
- Rent anew
- Catcher's need
- Early Ron Howard role
- ___ car dealer
- Adieu!
- Boaters
- Tucker's mate
- Hand, informally

DOWN

- Purge
- MIA rescuer of film
- Narratives
- Electric ___
- Asked for mercy
- Ten Years ___
- Model
- Do the crawl
- Artist Yoko
- Kind of soprano
- Hymn ender
- Positive thinker's phrase (2 wds.)
- Sings like Hammer
- Also-___

ANSWERS ON PAGE 8



"But enough about me, let's talk about you.
What's your credit card limit?"

Munden & Munden

Certified Public Accountants
Accounting ★ Auditing ★ Tax Service

Hours: 9-5 216 N. Main (806) 396-2177
Mon.-Fri. Stratford, TX



Sales & Service

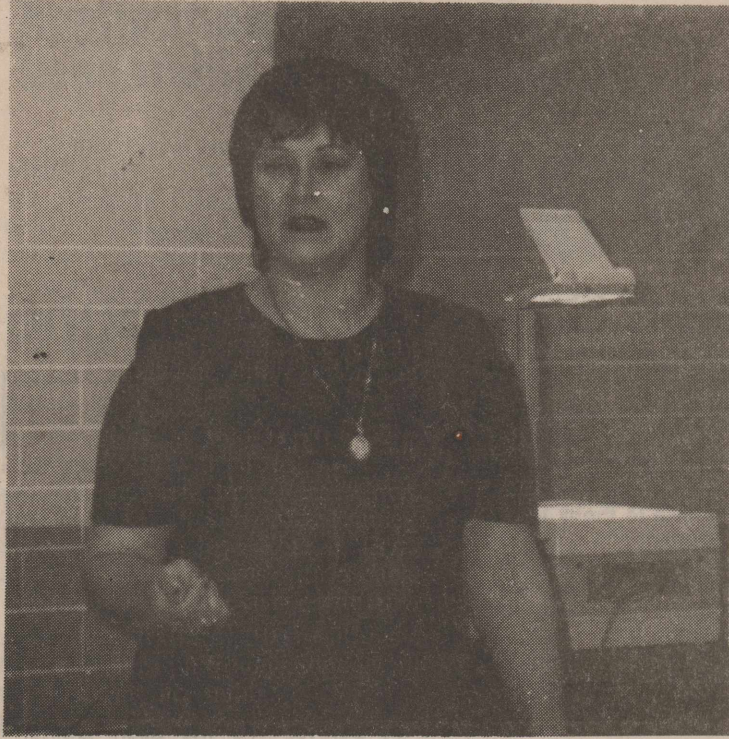
THE General Store

806-396-5308
Authorized Dealer

Williams Repair Service
Residential & Commercial
Plumbing Service
Ditching & Backhoe
We Sell & Install State Water Heaters
396-5330

FARM LAND FOR SALE!
Sherman County Irrigated Farm Land
Fully Equipped with 3 - 8 in. wells and
4 center pivot sprinklers.
\$750.00 per acre
Call
Agent: Keith Waters - 806-396-5391 Day or
806-396-5801 Night
Tom Ferguson, Broker - Res. 806-935-7408





Shown above is Karen Shawver of Region XVI ESC from Amarillo.



Shown above is Francis Whitson, Reading Recovery Trainer from Dumas I.S.D.

Workshops Held At Mary Allen

Last Thursday, September 19th there were some workshops held at Mary Allen Elementary School. For the paraprofessional training, Karen Shawver of Region XVI ESC, from Amarillo trained paraprofessionals from Stratford, Dalhart and Texhoma. The topic was Multisensory Learning and Partners in Education.

Reading Recovery Workshops was also given at the Mary Allen Elementary. This was funded by "Academics 2000" Grant. The trainer was Francis Whitson, Reading Recovery Trainer from Dumas I.S.D. She spoke to Mary Allen Teachers Kindergarten through 2nd grade. Grades 3 and 4 and Title 1 will be this week. These teaches are being taught Reading Recovery Techniques.



In the 1940 NFL championship game, the Chicago Bears beat the Washington Redskins by the score of 73-0.

Elks Spoil Olton's Homecoming

The Stratford Elks spoils Olton's Homecoming 42-0 on Friday, Sept. 20, 1996.

The Elks accumulated 367 rushing yards while holding Olton to only 74 rushing yards.

Dusty Stewart threw for 125 yards on 6 of 11 passing and Levi James threw for 19 yards on 1 of 2 passing.

Leading in receptions were Ross Davis with 65 yards on 4 receptions, J.B. Presley with 53 yards on 2 receptions followed by Jose Reta with 26 yards on 1 reception.

Michael Navarette led the Elks in rushing yards with 101 yds. on 8 carries followed by Justin Starnes with 81 yds. on 11 carries & Ty Young with 68 yds. on 6 carries.

Scoring for the Stratford Elks were Dusty Stewart with 3 touchdowns, Michael Navarette with 2 and Justin Starnes with 1 touchdown. Dane Ashley kicked the Elks 6 extra point kicks.

On defense, Ezra Daniels had 1 running back sack, Michael Meil - 1 quarterback sack and Dusty Stewart had one interception for the night.

Leading in solo tackles were Mark Meil with 4 followed by Dusty Stewart, Jose Reta, Chris Haynes, J.B. Presley & Levi James with 2 each. Jose Reta & Ezra Daniels led in assists with 5 each followed by Chris Haynes with 4.

The Stratford Elks will play Gruver here on Friday, Sept. 27 at 7:30 for Homecoming.

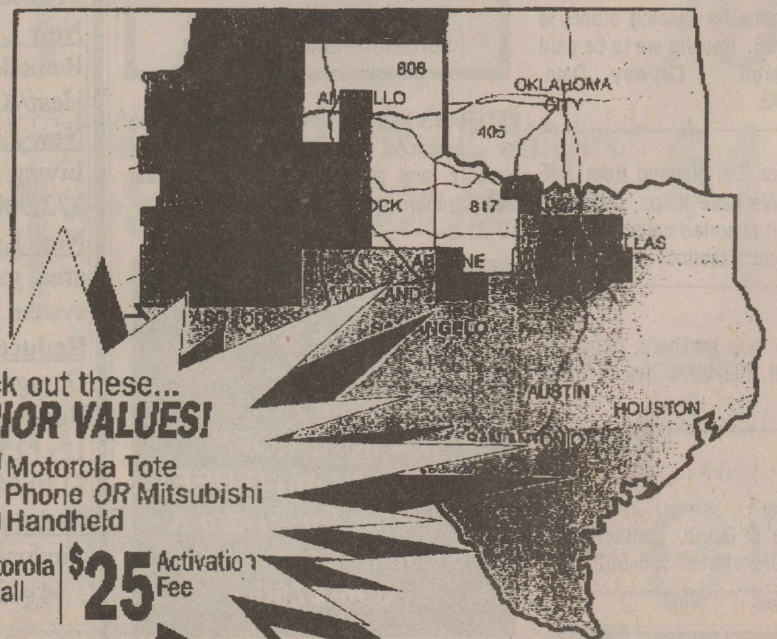
CELLULARONE® "New Dimension" Of The Panhandle in Cellular Service!

Now Offers A...



*Activations require a 12 or 24 month contract.

Ask us today about our expanded home rate coverage area and make "THE CLEAR CHOICE!"



Check out these... SUPERIOR VALUES!

FREE Motorola Tote Phone OR Mitsubishi Handheld

\$69 Motorola Install | \$25 Activation Fee

CALL TODAY! 1-800-530-4335

Sales Representative
Cynthia Leach and the Cellular One Van
will be in Stratford Monday, September 30th.

THANKS FOR ONE-THIRD OF A CENTURY OF PATRONAGE

TEXAS FARM BUREAU INSURANCE COMPANIES

ROBERT W. PEACOCK, CLU
VICE PRESIDENT, MARKETING

For the last thirty-three years I have been seriously engaged in the life insurance business, as an agent of Southern Farm Bureau Life Insurance Company.

September 17, 1996

During this time, I have seen our company attain our first One Billion of life insurance in force. We are now approaching Forty Billion of life insurance in force, and the 50th anniversary of Southern Farm Bureau Life Insurance Company.

Joe Flores
P.O. Box 25
Stratford, Texas 79084

Your patronage to me has made it possible for me to be a part of the growth of Southern Farm Bureau Life Insurance Company, and make a living for my large family of kids.

Dear Joe:

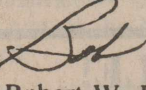
The National Quality Award is one of the most prestigious awards our industry offers. It is with great pride that I offer my congratulations on your achieving this award for the 25th year.

Your patronage has also made it possible for me to receive the attached letter from my State Sale Director. But most importantly it has made our company a vital part of the financial integrity and stability of our community and area.

Thank you for your dedication to this industry and for the continued effort put forth to your clients and our Company.

Sincerely,

I pledge to you my continued efforts as your Southern Farm Bureau Life Insurance agent, but I probably won't last another one-third century.


Robert W. Peacock, CLU
Vice President, Marketing

Thanks for all of the ways our lives have touched.

RWP/dsw

JOE FLORES

You're the best!!
Bob