



'Meet The Mules' August 23 - 8 P.M.

The Foreman Co.
Box 68
Monmouth, Ill.



WEATHER

August 18 101 61
August 19 100 65
August 20 94 64

BAILEY COUNTY JOURNAL

'The Community of Opportunity-Where Water Makes the Difference'

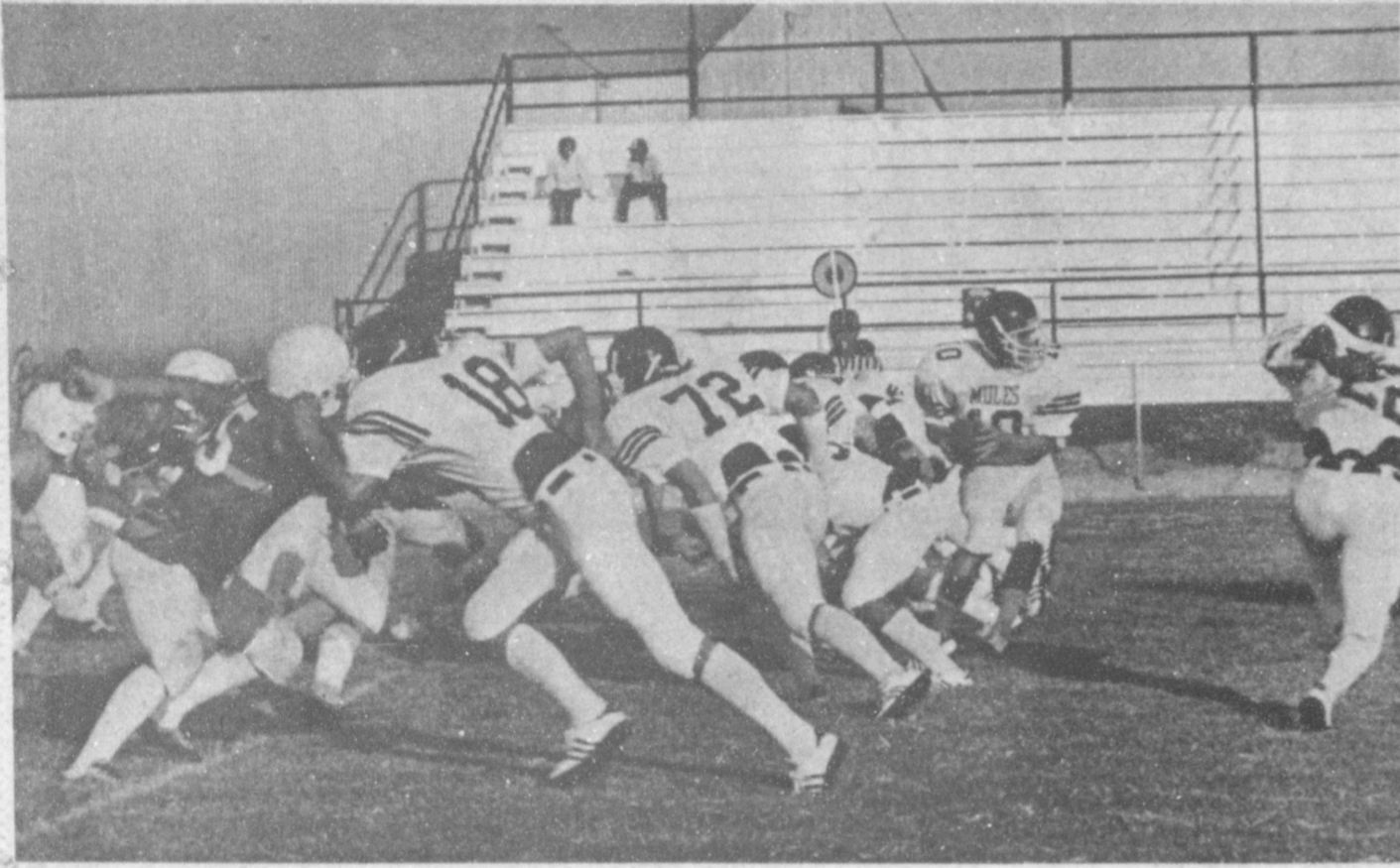
20¢

Volume 21, No. 33

12 Pages

Published Every Sunday at Muleshoe, Bailey County, Texas 79347

Sunday, August 21, 1983



SHOWING WHAT THEY ARE MADE OF--The Muleshoe Mules scrimmaged the Shallowater Mustangs Thursday evening and came on strong. Execution was good, although a few assignments were missed; but, all in all, the Mules look tough. They have some added speed and size this year and are ready to take on all comers. The Mules open in Portales on September 2 at Greyhound Stadium against the state-ranked Rams. Season tickets are now on sale, so be sure to get your seats early and don't miss any of the out of town games.

Five Area Cooperative Inc. Will Initiate Telephone Access Charges

Five Area Telephone Cooperative, Inc. members, as well as customers of all other telephone companies can expect a major change in a key aspect of their

long-distance telephone service beginning January 1, 1984. Hubert Kidd, manager of Five Area Telephone Cooperative, Inc., said,

The change in how telephone users pay for their access to the long-distance network will result in a monthly flat-rate "access charge" to all customers. This access charge system COULD be accompanied eventually by decreases of 35 percent to 40 percent in long distance telephone rates, he added.

Access charges result largely from competition from the Federal Communications Commission has introduced in long-distance telephone service. Several firms began to offer long-distance service after the FCC decided that competition will benefit consumers, he added.

School Budget Adoption Date Set August 30

A special meeting of the governing body of the Muleshoe Independent School District will be held on August 30, 1983 beginning at 6:30 a.m. in the school administration office at 514 West Avenue G.

Items up for consideration at this special meeting

Kidd stated that, before this competition was introduced, end-to-end telephone service was provided jointly by the local telephone company at each end whether Bell System or Independent and by a national long-distance service network controlled mostly by the American Telephone and Telegraph Company. These companies shared in the revenues from long-distance calls under procedures established by public regulators.

This shared revenues system would not work in a competitive environment

where several firms offer long-distance services, which is why the FCC devised its system of access charges, according to Kidd.

The FCC's ruling calls for residential customers to pay a flat charge of \$2 each month initially for the capability of making interstate long-distance calls, and for business customers to pay a charge of \$6 each month. He added that state regulators can impose an additional access charge for access to long-distance service within our state.

"Long-distance companies

City Sales Tax Rebates Ahead Of '82 By 8 Percent

ASCS Director Explains Programs

With farm news at the forefront right now, Bailey County ASCS Executive Director Danny Noble has made his own survey of both the 1984 Wheat Program and the new Upland Cotton Purchase Program. Both of these are extremely important to area producers and details must be followed.

According to Noble, the 1984 Wheat Program includes a \$4.45 per bushel target price; a \$3.30 per bushel national average loan rate and an acreage reduction requirement of 30 percent. Producers will be required to limit 1984 wheat planted acreage to no more than 70 percent of the particular farm's wheat base.

There will be no advance deficiency payments under the 1984 wheat program, Noble says, and the 1984 acreage base will be the average of the acreage planted and considered planted to wheat in 1982 and 1983.

The County Director points out that farmers participating in the acreage reduction program may divert an additional ten to twenty percent of their wheat base and receive PIK equal to 15 percent of the established yield times the acres diverted.

PIK program participants

will not receive wheat from CCC stocks. Producers signing up in the PIK program will agree first to use their outstanding price support loans. Producers with no outstanding loans agree to harvest for PIK. Those producers with no outstanding loans and who are unable to harvest for PIK will not receive a PIK payment. Land designated for CUA must have been devoted to a row crop or small grains in two of the last three years.

Offsetting and cross compliances will not apply and there will be no immediate entry into the farmer-owned reserve, Noble explained. New and recent legislation which provides for Commodity Corporation (CCC) to purchase upland cotton from producers who have outstanding 1980, 1981 and 1982 loans in excess of their PIK needs. Noble pointed out that because of the new cotton purchase program, the "Harvest for Cont. Page 6 Col. 1

State Comptroller Bob Bullock today sent checks totaling \$103 million in local sales tax payments to 974 cities that levy the one-percent sales tax.

"So far this year, we are just a little ahead of 1982 payments," Bullock said. "This is about where we expected to be by this time when we put out our revenue estimate for the state."

The City of Muleshoe seems to be "on a roll" so far in 1983 sales tax rebates. In comparison to nearby towns and counties, the local averages remain ahead of last year's receipts. Some cities however are beginning to come out of the lag that has affected them in 1983.

The net payment through the period ending August 6, 1983 for Muleshoe/Bailey County amounted to \$28,366.69 in comparison to \$23,940.98 comparable payment in 1982. Total 1983 payments to date for Muleshoe reached \$139,513.12, showing a 8.18 percent increase over last year's receipts. Since Muleshoe is the only reporting city in Bailey County, the same amounts apply both ways.

Castro County, which has Dimmitt, Hart, and Nazareth reporting, showed a net payment for this same period of \$19,982.01, down

from the \$22,295.31 payment of the prior year. Total Castro County payments to date were \$106,425.59, also down by a minus 7.72 percent from the \$115,324.04 payment at the same time in 1982. Although all three towns in Castro County showed to be down in receipts, Dimmitt had the largest lag in percentage. Dimmitt's net payment for the August 6 report amounted to \$16,906.51, down from the prior year's comparable payment of \$18,889.61. Total payments for 1983 for Dimmitt were \$87,302.71, also down from the 1982 payments to date of \$95,240.24 - reflecting a minus 8.33 percent change to date.

The City of Morton reflected a net payment for this period of \$8,541.48, as compared to the \$6,686.90 comparable payment in the year prior. Payments to date in Morton amount to \$31,092.24, down from the \$32,608.92 by minus 4.65 percent to date. Whiteface, also in Cochran County was down by minus 47.62 percent from the same time last year. The county on the whole reflected a total of \$9,838.33 net payment for this period, as opposed to the \$9,083.91 from the same time last year. Payments to date in Cochran County amount to \$35,014.40, down from the \$40,096.21 of 1982 to date by minus 12.67 percent.

In Levelland, the net payment for the period ending August 6 amounted to \$99,181.72, up from the \$91,748.12 comparable payment at the same time last year. Overall, however, Levelland lags behind in totals to date with \$447,217.89 for 1983 as compared to \$501,289.79 for 1982 to date. This reflects a minus 10.79 percent change to date. Cont. Page 6 Col. 3

Adult Sewing Classes Planned

A series of basic clothing construction classes are being planned by Linda Mullin, County Extension Agent, to be conducted September 7, 8, and 9th during the afternoon. The classes are being directed toward the new or inexperienced home sewer and will Cont. Page 6 Col. 1

'Meet The Mules' Tuesday At 8 P.M.

There is magic in the air have you felt it? Well, if you have, it is because you are living in Mule Country-MULESHOE MULES, that is.

The Mules started off two a day practices on August 8 after 45 athletes made an appearance for physicals on August 7. More athletes are expected to join the crowd the first week of school.

The Mules have twelve returning starters this year and if enthusiasm is any indication, they are looking forward to a great football season.

On Tuesday, August 23, the annual MEET THE MULES night has been scheduled for area residents and parents to be introduced to the 1983 edition of the Mules and their coaches. The festivities will

get underway at 8 p.m. in Benny Douglass Stadium, where all teams, players and coaches will be recognized.

Following the introductions, those attending will be treated to their fill of home made ice cream. A film of the scrimmage between Muleshoe and Shallowater played on August 18 will be shown in the High School Cafeteria at 9:15 p.m.

The event is sponsored by the Muleshoe Athletic Booster Club, which is once again getting ready for a busy year. Several members will be calling on businessmen, selling ads for the football programs. "Without the support we get from our local businesses and football fans, we just could not produce Cont. Page 6, Col. 8

Mules Show Mettle In Shallowater Scrimmage

The Muleshoe Mules have 23 reasons to cite fear into the hearts of their opponents for the upcoming 1983 football season. Head Coach and Athletic Director Windy Williams is not bashful at all in telling you just how good he thinks his Mules are-not just a few but all of them.

The Mules scrimmaged Shallowater, a tough District 2A state playoff team on Thursday evening at Benny Douglass Stadium, and came out of it in fine shape, according to Williams.

Williams explained that in a scrimmage, there is no actual winner or loser. Each team is allowed a certain number of plays on both offense and defense, giving each team a chance to sort of feel out their strategies. Shallowater scored one time, as did the Mules, making the tally come out even up.

Another scrimmage is planned next Friday, (August 26) in Denver City, with the first varsity game set for September 2 in Portales against the tough Rams.

The loss of a couple of close games last year kept the Mules out of the playoffs in the tough 2 AAA race, but Williams has every reason to believe that the Mules will have a good 1983 season. Twelve of these reasons lie in the knowledge that the Mules have six offensive, as well as six defensive starters coming back from the pig-

skin wars of last year.

Williams expressed his pleasure in the outcome of the Thursday scrimmage: "Our boys executed well and had their line up established good. We really knocked the fire out of Shallowater from beginning to end of the scrimmage. We have a tough offense and our backs can run with the ball. They knocked a lot of holes in the Shallowater line.

The Mule's passing is coming along well. Jeff Hamilton will lead the pack this year as senior quarterback. Williams says that Hamilton is a tough, intense ball player and does a good job in both the running and passing departments. Hamilton can think on his feet.

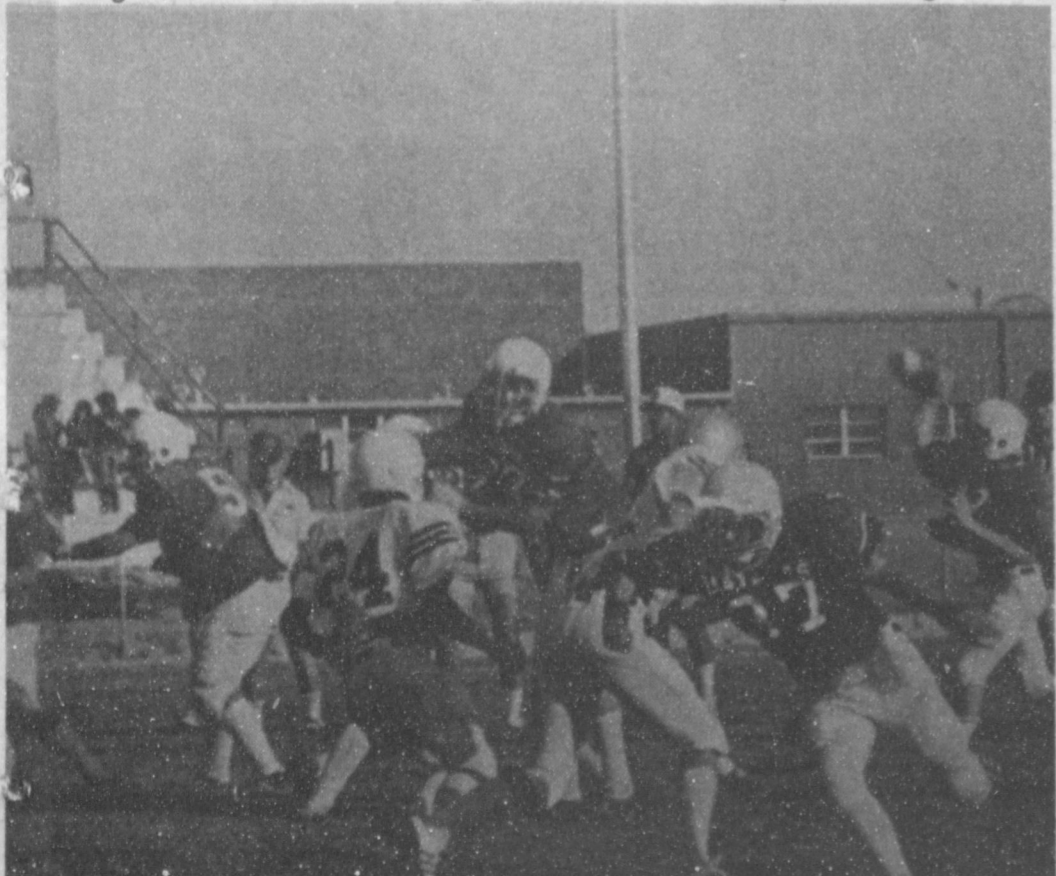
The Head Coach also told the Journal that he was greatly impressed with the Mule's defense. Shallowater had us backed up to Cont. Page 6 Col. 1

Police Urge Safety, Caution In School Zones

Sgt. Wayne Holmes of the Muleshoe Police Department told the Journal recently that with the start of school, children will be running back and forth at random in and around the school yards. He cautions drivers to pay strict attention to the stop signs and also reminds of the required stop before passing a stopped school bus, loading or unloading passengers.

"Our speed limits around the schools and in school

zones will be strictly enforced," so if a summer of laxness has caused forgetfulness of the zones, a traffic offender's reminder may come in the way of a citation. The Muleshoe Police will patrol the schools steadily for the first few weeks of classes, until things begin to settle down. Holmes further cautioned, "Watch those smaller children, things are new to them and they are excited-the child's life you save could be your own."



DEFENSE HANGING TOUGH--A Shallowater quarterback moves back to let one fly in this photo; however, all he could see was Mules and More Mules. Defensive linemen did a good job in containing the Mustangs. The Mustang quarterback suffered an injury in the Thursday battle. Be sure to get out to Benny Douglass Stadium Tuesday night for the Meet The Mules night, when all coaches and players will be introduced.



BACK TO THE GOOD OLD DAYS--An old-fashioned farmers' market was held in Muleshoe on Saturday morning, with several area farmers participating. If you missed it, you missed your chance to get some home-grown fresh fruit and vegetables. The Market was sponsored by the Muleshoe Chamber of Commerce and Agriculture and held on the Robert D. Green, Inc. used car lot on West American Blvd.

MULESHOE SUPERMARKET
 HOME OWNED AND HOME OPERATED
 WE SPECIALIZE IN QUALITY MEATS AT THE BEST PRICES IN TOWN
 Store Hours: Mon.-Fri. 7:30 to 9:00 P.M. Sat. 7:30 to 10:00 P.M. Sun. 9 A.M. to 9 P.M.

shopping on a budget?
 shop these food savings!

OLD EL PASO FOR THAT REAL MEXICAN TASTE
REFRIED BEANS 2 16 OZ. FOR **89¢**

BETTY CROCKER ASSORTED
CAKE MIX 18 1/2 OZ. **79¢**
 GREAT FOR DESSERT OR SNACKS

GOLD MEDAL
FLOUR 5 LB. BAG **99¢**
 ALL PURPOSE ENRICHED FLOUR

25¢ OFF LABEL
BIZ BLEACH 30 OZ. **\$1.99**
 KINGS GREAT TASTE
HAWAIIAN BREAD 16 OZ. **99¢**
 OLD EL PASO
TACO SAUCE 16 OZ. **\$1.09**
 DOWNY 15¢ OFF LABEL
FABRIC SOFTENER 33 OZ. **\$1.19**

HEINZ
WHITE VINEGAR 16 OZ. **\$1.19**

ALL TEMPERATURE CHEER 49 OZ. 25¢ OFF LABEL WITH BONUS BOOKLET	BETTY CROCKER CAKE MIX 39¢ 18 1/2 OZ. WITH BONUS BOOKLET	KING HAWAIIAN BREAD 59¢ 16 OZ. WITH BONUS BOOKLET
MR. P.'s PIZZA 9 1/2 39¢ All Varieties WITH BONUS BOOKLET	SPAM 99¢ 12 OZ. WITH BONUS BOOKLET	BELL LOWFAT MILK \$1.58 1 GAL. WITH BONUS BOOKLET

Frozen Food Favorites
PIZZA ALL VARIETIES 8 1/2 OZ. **79¢**
 MINUTE MAID
ORANGE JUICE 12 OZ. **99¢**
CHOPPED BROCCOLI 10 OZ. **2.89**

Health & Beauty Aids
STICK DEODORANT 2 1/2 OZ. **\$1.59**
TOOTH PASTE 4 OZ. **\$1.29**
SHAVE LOTION 8 OZ. **\$2.19**

ALL TEMPERATURE 25¢ OFF LABEL
CHEER 49 OZ. **\$1.89**

COCA COLA 2 LITER BOTTLE
98¢
 With Super Saver Booklet - 59¢

LUNCHEON MEAT
SPAM 12 OZ. **\$1.39**
 SMOKED OR REGULAR

COMEBREAD OR BISCUIT
GLADIOLA POUCH MIXES 4 1/2 OZ. **4.99**
 WHITE HOUSE
APPLE JUICE 32 OZ. **89¢**
 OLD EL PASO
GREEN CHILIES 4 OZ. **2.99**
DRAGON RICE 28 OZ. **89¢**

BELL
ICECREAM 1/2 Gal. **\$1.89**
 BELL LOW FAT
MILK GAL. **\$1.98**
 1/2 GAL. BELL
BUTTERMILK **99¢**
 TEXSUN GRAPEFRUIT
JUICE 46 OZ. **79¢**

WHITE SWAN
VEGETABLE OIL 48 OZ. **\$1.89**

FRESH PRODUCE
 CALIFORNIA
GREEN ONIONS BUNCHES **4/\$1.00**
 FRESH
KIWI FRUIT NEW **3/\$1.00**
 CALIFORNIA
PEACHES SWEET & JUICY LB. **49¢**
 TEXAS FRESH GREEN
CUCUMBERS VINE RIPE **6/\$1.00**

SELECTED QUALITY MEAT CUTS

FULL CUT BONE IN
ROUND STEAK **\$1.58** LB.
 BONELESS ROUND STEAK \$1.78 LB.

EXTRA LEAN
GROUND CHUCK **\$1.78** LB. ~~\$1.59~~
 FOR TASTY HAMBURGERS

WHITE SWAN PIMENTO
CHEESE SPREAD FOR PARTS OF SNACKS 14 OZ. **\$1.49**
 ARMOUR STAR
HOT DOGS 12 OZ. **98¢**
 BONELESS
RUMP ROAST LB. **\$1.98**
 BONELESS PIKE'S PEAK
ROAST LB. **\$1.89**
 BONELESS
STEW MEAT LB. **\$1.89**

THOMPSON SEEDLESS
 GREAT FOR ANYTIME OF THE DAY
GRAPES **65¢** LB.

WSTU Sets Registration For Fall Semester

West Texas State University students will register for the fall semester on Wednesday, Aug. 24.

From 8:40 a.m. to 7:20 p.m., students will register at the Activities Center. This is the first fall semester for computers to be used during registration. After selecting courses, students take the schedules to computer terminal operators and receive, within minutes, printed copies of schedules and bills. Last spring semester was the first for the system.

Classes will begin on Thursday, Aug. 25. Late registration also will begin on Thursday at noon in the Registrar's Office and continue each day from 8 a.m. to 5 p.m. through Friday, Sept. 2. Late registration includes a \$5 late fee.

Students registering only for evening courses may begin late registration with a \$5 late fee at 6:30 p.m. on Thursday, Aug. 25. Late registration for evening courses also will continue from 6:30 p.m. to 8 p.m. through Wednesday, Aug. 31.

Evening courses will be available in accounting, administrative services, agricultural business and economics, animal science, art, arts and sciences, Bible, biology, business administration, business education, computer information systems, economics, elementary education, English and finance.

Other subjects for even-

ing courses are geology, history, health, physical education and recreation, industrial education and technology, management, marketing, mathematics,

Functional Efficiency- Key For Cattle Selection

Economics of cattle production demand fertility, growthability and carcass quality, in that order, as the main priorities, a world renowned industry expert told 700 cattlemen taking part in the International Ranchers Roundup in San Angelo.

Dr. Cas Maree, head of the Department of Livestock Science at the University of Pretoria, South Africa, emphasized that beef cattle should be selected for their functional efficiency.

"It goes without saying that production economics also demand as prerequisites the factors of adaptability and physical and structural soundness as well as functional efficiency," Maree said.

The animal scientist is the successor to Dr. Jan Bonsma, another widely respected animal science leader at the same university.

"Parameters of fertility in cows are ease of birth, calf survival, good milking ability, and early conception and reconception," Maree said.

He said the most distinctive feature of the fertile beef cow is that her general appearance is not

music, nursing, physics, plant science, political science, psychology, secondary education, social work and sociology, Spanish and speech.

The university will close on Monday, Sept. 5, for the Labor Day holiday.

Students will register according to an alphabetical schedule.

Courthouse News

MARRIAGE LICENSE

Rene Ortiz Chavez, Forgan, Okla. and Dorothy Jean Garcia, Farwell Layton Pat McGonagill and Kathy Muriel Fitzwater, Muleshoe

William Michael Durben and Patricia Elizabeth Davis, Muleshoe

George Vela and Stacy Lynn Elder, Muleshoe

WARRANTY DEEDS
Hazel Dyer and Renee Allen Dyer to Ron L. Lawlis--All of Lot No. (3) and the Southwesterly 40 feet of Lot No. (2), in Jones Subdivision of Block No. (4), Hillcrest Addition No. (2), to the Town of Muleshoe, Bailey County, Texas.

William Boyce Lowery, Curtis Eugene Lowery, Elmer Loyd Lowery, Elmer Boyd Lowery, Ruby Aliene Lowery Campbell, Della Virginia Lowery Cline, Goldie Sue Lowery Privett, Dex Dwayne Lowery and Jimmy Glen Lowery to Flora Ema Lowery -- A rectangular tract of land out of the Southeast one-quarter of the Northeast one-quarter of the one-quarter of (SE/4 of the NE/4 of Section (40), Block Y, WD & FW Johnson Subdivision Number (2), in Bailey County, Texas.

Mid State Homes, Inc. to Betty Stewart--Lots 18 and 19 in Block one, D.L. Morrison Addition to the City

of Muleshoe, Bailey County, Texas.

Charles L. Lenau and wife, Marie Lenau, and Julian E. Lenau and wife, Lois K. Lenau to Joe Robert Gonzales--All of the (S/2) of Lot Number (34), and all of Lot Number (33), in Block Number (6), Lenau Subdivision to the City of Muleshoe, Bailey County, Texas.

Lavina Crow to Ron L. Lawlis--The Southeasterly 60 feet of Lots Nos. 7, 8, 9, and the Southeasterly 5 feet of Lots Nos. 7, 8 and the Southerly 40 feet of Lot No. 9, all in Block No. 4, Warren Addition No. 2 to the Town of Muleshoe, Bailey County, Texas.

William Boyce Lowery, Curtis Eugene Lowery, Elmer Loyd Lowery, Elmer Boyd Lowery, Ruby Aliene Lowery Campbell, Della Virginia Lowery Cline, Goldie Sue Lowery Privett, Dex Dwayne Lowery and Jimmy Glen Lowery to Flora Ema Lowery -- A rectangular tract of land out of the Southeast one-quarter of the Northeast one-quarter of the one-quarter of (SE/4 of the NE/4 of Section (40), Block Y, WD & FW Johnson Subdivision Number (2), in Bailey County, Texas.

Raul Trevino, DWI, 30 days jail, \$250 fine

Luis Rivera, DWI, 13 months probation

Norbet Babilis, Order of Dismissal

Maria Sotelo, Possession of Alcoholic Beverage in dry area, \$250 fine

Santos Badillo Castro, DWI, 3 days jail, \$350 fine.

DISTRICT COURT
Nora Gauna and Marciso Gauna DV

Richard N. Johnson VS H.D. Hunter, Jr. and Helen Hunter, Judgment

NEW VEHICLES

West Plains Medical Center, 1983 Ford 4dr, Muleshoe Mtr. Co., Inc.; Gary Hooten, 1983 Ford Pu, Muleshoe Mtr. Co., Inc.; Steve Claybrook, 1983 Ford 2dr, Muleshoe Mtr. Co., Inc.; Valley Grn. Products, Inc., 1983 Ford Pu, Muleshoe Mtr. Co., Inc.; Rod Springfield, 1983 Ford SW, Muleshoe Mtr. Co., Inc.; Mrs. Stan Barrett, 1983 Linc. 4dr, Muleshoe Mtr. Co., Inc.; Spencer D. Tanksley, 1983 Olds 4dr, Robert D. Green, Inc.; Debra Gilbreath, 1983 Chev PU, Robert D. Green Inc.; Joe L. Smallwood, 1983 Buick 4dr, Robert D. Green, Inc.; Thomas J. Merritt, Jr., 1983 Olds 4dr, Robert D. Green, Inc.; Michael R. Caldwell, 1983 Pont 4dr, Robert D. Green, Inc.

Rates Increase Between Gas Pipelines

The Railroad Commission has approved on an interim basis contract amendments between Delhi Gas Pipeline Corp. and Houston Pipeline Co. and Intratex Gas Co. that may result in slightly lower gas costs for utilities serving Texas consumers.

Although no evidence to support the changes has yet been filed with the Commission, the RRC approved the new contract rates on an interim basis to allow Houston Pipeline and Intratex to pass the reduced charges on to their city gate customers. The city gate is the point at which gas distribution systems receive gas from their suppliers.

The changes involve one

contract between Delhi and Intratex and four contracts between Delhi and Houston Pipeline. The new rates are \$3.80 per MMBtu (million British thermal units) of gas. The old contract rates ranged from \$3.88 per MMBtu to \$5.71 per MMBtu.

A Btu is a measure of the energy content in a particular volume of gas. Although this value varies with the quality of the gas, a thousand cubic feet of gas contains approximately one million Btu's of energy on the average.

Before saying "never" remember "never" is a long, long time.

Criticism springs from two sources--intelligent disapproval and emotional reaction.

ROBERT D. GREEN, INC.
2400 West American Blvd.
MULESHOE, TEXAS 79401
OLDSMOBILE - BUICK - PONTIAC - GMC

TERRY YELL
Sales Representative

Business Phone 806 272-4588
505 762-2772
Home Phone 806 272-4948

July Drilling Report

Railroad Commission Chairman Mack Wallace has announced that Texas operators reported 111 gas and 67 oil discoveries in July 1983.

In the same month a year ago, 141 gas and 51 oil discoveries were filed with the state's energy regulatory agency. So far this year, there have been 497 oil and 780 gas discoveries reported to the Commission. There were 368 oil discoveries and 871 gas discoveries to date in 1982.

Gas discoveries in July included 29 in deep South Texas, 28 in the Refugio area, 16 in Southeast Texas, 14 in West Central Texas, 11 in East Texas, six in the San Antonio area, two each in North Texas, the Panhandle, and the San Angelo area, and one in the Midland area.

Oil discoveries included 17 in deep South Texas, 15 in Southeast Texas, eight each in the Midland and Refugio areas, six in East Texas, five each in West Central Texas and North Texas, two in the Panhandle, and one in the Lubbock area.

In July, operators reported 320 exploratory and field tests wound up as dry holes.

New applications for permits to drill oil and gas tests totaled 2,826 in July, as compared to 2,245 during the same month a year ago. So far this year, there have been 17,673 such tests compared to 17,794 to date a year ago.

Applications to drill, deepen, plug back and for service wells in July amounted to 3,204 against 3,166 in the same month a year earlier. To date, there have been 20,286 similar applications, while to date a year ago there were 20,093.

LAZUBDIE FARMER'S SUPPLY RETAIL / WAREHOUSE FACILITY 14,000 sq. ft. of office, retail and warehouse space in Lazubdie. Priced to sell at \$195,000.

XIT STEAK HOUSE, MULESHOE. Excellent restaurant facility on Highway 84. Ample parking. Could be converted to offices or retail. Priced below market at \$70,000. Building 5100 sq. ft. Parking area 17,000 sq. ft.

BROKER COOPERATION INVITED
West Texas Investors Realty, Inc.
5760 40th Street
Lubbock, Texas 79407
(806) 797-3231

Texas May Gas Production

Railroad Commission Chairman Mack Wallace has announced that Texas oil and gas wells produced 446,439,498 Mcf (thousand cubic feet) of gas in May, down 10.41 percent from field runs a year earlier.

That brings total production for the year through May to 2,268,876,425 Mcf of gas. Through May of 1982, Texas had produced 2,586,557,821 Mcf of gas.

Marketed gas production in May totaled 369,820,700 Mcf and reflected a 8.56 percent decrease from the May 1982 volume. Marketed production is the total gas to transmission lines and for carbon black, plant fuel and lease uses.

Gas exported from Texas in May totaled 197,830,080 Mcf. Exports of Texas-produced gas in May totaled 147,683,606 Mcf, and reflected a 17.04 percent decrease from the year-earlier month.

Texas gas production in May came from 234,518 oil and gas wells.

In April 1983, Texas wells produced 439,716,283 Mcf of gas. Marketed gas production in April totaled 359,407,312 Mcf. April exports of Texas-produced gas totaled 168,310,478 Mcf.

beef. Fertile cows look feminine and are not heavy and fleshy, and are never of extreme size or weight. A feminine body profile of highly fertile cows is wedge shaped to the front, displaying femininity about the shoulders, withers and neck and in the conformation of the rump, he said.

Maree said main components for functional efficiency in bulls are the production of live fertile sperm, a high level of sexual drive and the physical ability to serve a large number of females each breeding season.

The scientist said that complete physical fitness and a high degree of environmental adaptability are prerequisites before genetic qualities such as growthability or carcass quality should be considered.

Maree said that fertile bulls are hardly likely to be of extreme size or growth index. The early onset of puberty in bulls, together with other fertility indicators like libido, good semen quality and sexual development dampen tallness in bulls and are related to strong secondary sexual characteristics, he said.

The scientist from South Africa said the body profile of bulls should be distinctly heavier in the forequarters than the hindquarters. "The bull profile should exhibit heavy muscle development of the forequarters and clear definition of the muscles of the neck, withers, shoulders and back,"

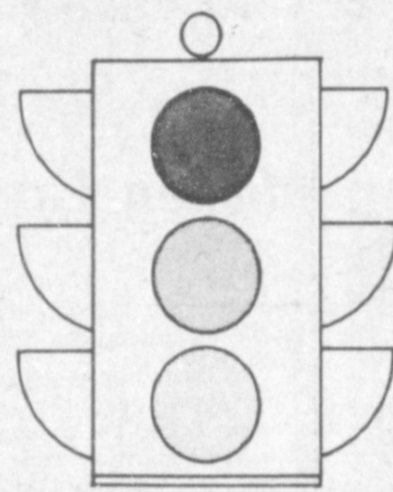
Physical fitness for bulls depends on adaptability and sound legs and feet, he said. "Beef bulls have to be athletes," he emphasized.

Eye-balling or naked eye inspection is the only way to identify structural weakness in cattle, Maree said. "Animals so affected may do well at an early age and may even qualify with excellent performance records," he added.

"Delay in the elimination of animals with conformational defects or weaknesses is extremely dangerous in the long term because of the heritable nature of so many defects," Maree said.

He added that problems with legs and feet, udders, wry face, asymmetry of gonads and certain other fertility problems and pigmentation problems are a few examples of the nature of structural weaknesses.

"This requires not only a keen eye and sense of observation but a good understanding of the anatomical and physiological basis of conformation and functional efficiency of cattle," Maree said.



Last Stop for School Basics

SALE STARTS 12 NOON MONDAY!!

Playtex Bra's

20% OFF

Thick 'N Thirsty Bath Towels

\$2.97 3 FOR \$8

Your Choice Panty Hose Buy 3 Get One FREE!

JUNIOR JEANS SALE

Calvin Kleins or Gloria Vanderbilt

\$29.88

Chic Lee or Levi Fashion Jeans \$22.88
ATB Fashion Jeans \$14.88



FABRIC SALE

54" Wincama Velour... 2 yds For \$5

Washable Woolens... 2 yds For \$9

Assorted Prints... 97¢ yd

Short Length Cotton Velvets \$6.97 yd

Wintuk Yarn... 97¢ ea.



Ladies Fashion Blouses... \$12.88

Levi Bendovers... \$16.88

Stockton or Donnkenny Fashion Pants... \$10.88

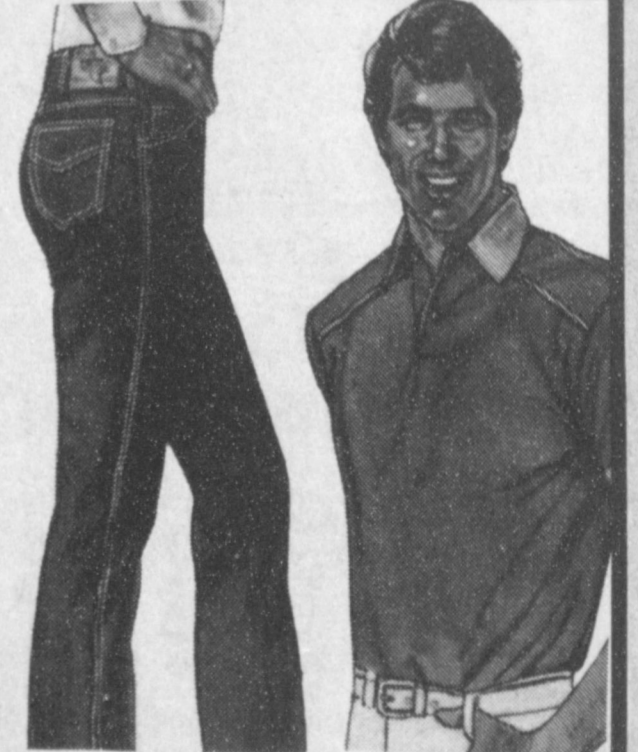


Acme Western Boots and Red Wing Work Boots

20% OFF

Fastbak Athletic Shoes

\$8.88 \$9.88 \$10.88



Men's Knit Shirts... \$9.88

Wranglers... \$13.88

Levi's... \$15.88

True Value HARDWARE STORES

TOOL VALUE OF THE MONTH
GREEN PLUMB
6.99
While Supplies Last
Lopping Shear. For trimming branches. Sharp blades. 27 1/4 in. L. 137810
Quantities Limited

HARDWARE VALUE OF THE MONTH
EMPIRE
4.99
While Supplies Last
18-in. Garage Broom. Steel connector handle, sturdy palmaya bristles. 25-2626
Quantities Limited

Fry & Cox, Inc.
401 S. 1st 272-4511

321 Main St.

Anthony's
C. R. ANTHONY CO.

Closed Monday Morning!!

Morning Ceremony Unites Miss Precure, Mason



MRS. SCOTT MASON
(nee Judy Precure)

In a morning ceremony Miss Judy Precure and Scott Mason exchanged wedding vows Friday, August 12 at 11 a.m. in the First Baptist Church. Rev. Glenn Harlin of Plains First Baptist Church officiated at the double ring ceremony.

Parents of the couple are Mr. and Mrs. Kenneth Precure of Muleshoe and Mr. and Mrs. Elden Mason of Center.

Wedding vows were exchanged before an altar setting of two large bouquets of white gladiolas, pink carnations and lemon leaves atop grecian pedestals. A garland of lemon leaf and baby's breath accented with white satin bows lined the choir rails. The unity candle set in an arrangement of white gladiolas, pink roses, carnations and baby's breath. This

arrangement was also placed on a grecian pedestal. Lemon leaves completed the altar setting. Baby's breath and lemon leaf tied in large white bows marked the parents pews.

Miss Loya Harrison registered the wedding guests.

Organ music by Mrs. J.B. Jennings preceded the ceremony. Her selections included: Fugue in "E" by Bach and three selections from Water Music by Handel, Air, Horn Pipe and Allegro Maestoso. Also Rhapsody by Demarist accompanied by Miss Mia Jennings at the piano.

Following the seating of the mothers, "The Pachelbel Canon" was performed on the flute by Mrs. Alton Rogers. She was accompanied at the piano by Miss Mia Jennings. The processional followed with organ music. The attendants entered by the "Trumpet Tune" by Handel and the traditional Wedding processional from Lohengrin by Wagner for the bride. Miss Nona McWilliams, cousin of the bride accompanied by Larry Shafer at the piano sang "Make Us One" during the lighting of the unity candle. The recessional was "Toccata" by Widor, with Mrs. Jennings

on the organ. The bride, escorted to the altar by her father wore a white organza gown with a neckline shaped with a

self ruffle of organza rushing and finished with a cap sleeve. The fitted bodice fell into a full skirt and wide ruffle. The matching headpiece was accented with scattered silk flowers. The white illusion veil was gathered in the back and fell to the shoulder. The bride accented her dress with diamond earrings borrowed from her paternal grandmother.

She carried a regal nose-gay bouquet of white bridal roses, stephanotis and baby's breath tied with white lace and satin.

Sisters of the bride, Mrs. Stan Harrison and Mrs. Larry Shafer served as honor attendants. They wore identical tea length rose colored cotton moray taffeta dresses. The dresses featured square necklines with elbow length dolman sleeves. The bodice was fitted and the dresses were accented with iridescent olive and rose colored cummerbunds. Their flowers were nosegay bouquets of pink sweetheart roses, white miniature carnations and baby's breath tied with lace and pink satin ribbons.

Eldon Mason, father of the groom, served as best man and Wayne Mason, brother of the groom, was a groomsman. Larry Shafer and Stan Harrison were ushers.

Following the ceremony a reception was held in the church parlor. The bride's table was draped with a floor length white organza table cloth with pink rose buds caught up in the drapes.

The bride's cake was a white three tiered cake decorated with fresh pink rose buds and baby's breath. Gold services completed the bride's table. The groom's table featured a chocolate cake inlaid with pecans completing the table were gold appointments, with various selections of sandwiches.

fresh vegetables with dip. Mrs. Carrol Precure, Mrs. Douglas Precure and Miss Loya Harrison served at the tables.

The bride is a 1981 graduate of Texas Tech and will be playing with the Midland-Odessa Symphony this season. Mason received his masters degree from Stephen F. Austin University and is employed as High School Band Director in Crane.

The couple will make their home in Crane after a wedding trip to Ruidosa.

Out of town guests included: Mr. and Mrs. Eldon Mason and Mr. and Mrs. Wayne Mason of Center; Mrs. Jim Barten and Nona McWilliams of Lake Jackson; Mrs. Donna Precure Ross, Mr. and Mrs. Leon Harris, Mr. and Mrs. Jerry Gowler and Mrs. David Peterson, all of Lubbock; Jim Smith of Amarillo; Mr. and Mrs. Ralph Green of Midland; Mrs. David Boyce of Oklahoma City, Okla.; Mrs. Karen McDade of Dumas; Mr. and Mrs. Doug Precure of Brownfield; Mr. and Mrs. Gordon Harrison, L.B. Harrison, Loya Harrison and Mrs. Alton Rogers all of Arch, N.M.; from Snyder, Murray Anne Ray, Connie Ray, John Zalman IV, Chris Knight, Jane Kirby, Mr. and Mrs. Sam Robertson, Mindy Robertson, Angela Franklin, Ann Deavers and Mike Clair.

Sudan Young Homemakers Elect Officers

The Sudan Young Homemakers met recently and made plans for several events. The date was set for the annual Secret Grandfather Supper, to be held at 7 p.m. on Sept. 8 in the home ec department using the back entrance. Door prizes will be given away.

Meetings will be held on the first Monday of each month with the exception of September due to the Labor Day Holiday. The September meeting will be held the second Monday, Sept. 12.

Officers for the new year will be: president, Mechele Edwards; first vice-president, Dana Martin; second vice-president, Robin Gore and Tonya Wall; secretary-reporter, Neal Malherbe; treasurer, Kathy Humphreys; historian, Margaret Williams. Installation will be held on Sept. 12 at the first meeting of the new year.

Thirty-Six Attends Masten Family Reunion

The Masten family held their 32nd. annual family reunion at the Mahon Party House in Lubbock on Sunday, Aug. 7.

Bill Wood gave the invocation before the covered dish luncheon was served to the 29 relatives and seven guests.

The business meeting was held following the meal with Robert R. Masten in charge. Mrs. Addie Masten, 91 years of age was honored as being the eldest family member present.

The benediction was given by Billy Wood and the group adjourned after singing "Blest Be The Tie That Binds."

Those attending from Lubbock were: Mr. and Mrs. R.L. Masten, Norene Andrew, Donnie Masten, Mr. and Mrs. Robert R. Masten and Nathan, Mr. and Mrs. George Gilkerson, and Mrs. Cecil Simpson, Richard, Sherry, Crystal and Debbie.

Others were Mrs. Margaret Masten, Susan Merritt, Addie Masten and Mr. and Mrs. Bill Wood of Morton, Mr. and Mrs. Rayford Masten of Maple, Mrs. Stan Conway of Lawton, Okla., Elva Bagwell of Ft. Worth, Mr. and Mrs. Lamar Plollar, Wade and Bryan of Littlefield, Mr. and Mrs. Billy Wood and Pat of San Francisco, Calif., Mr. and Mrs. Bill Socorro and Stephanie of Aurora, Ill., Mr. and Mrs. James Masten and Mrs. Pauline Masten of Wellington.

Claudine's Country Club Comments By Claudine Elliot

We are seeing new faces on the golf course these days with our ladies -- and it's great! Marlene Martin is joining us for some of our scrambles and she had a ball! Also, was good to have Sherry Shipman play with us this month. She was on the winning team this week, too. We have really loved having Shirley Hicks play all summer -- she's starting back to work, but will still play on week-ends.

The ladies met August 17th for lunch and golf. All business was discussed and committees made their reports. Seven ladies went to Farwell this month for Hi-Plains Playday and had a good day. Dorothy and Cookie have everything "on go" for our ladies annual Partnership Tournament September 8th. They have a full field with several teams on stand-by. All Committees were announced to handle activities for the day. Everyone works together so well to make

this day a big day for our ladies tournament.

The ladies divided into teams for their monthly scramble. Each team has played so well together and from the laughter and yells all over the course -- you know they are really enjoying competing against each other. The team winning this month was Sherry Shipman, Shirley Hicks, Melzine Elliott and Jeanette Precure. Just 2 strokes difference in the first two teams, so were all evenly matched. Our thanks to our Pro, Cliff Goff, for that. We really appreciate all his nice help to us ladies.

Neats gave out awards for the month to the following:

July 27th - Low Putts on all 3 Pars to Jo and Jeanette.

August 3rd - Least on all 5 Pars to Neats and Jeanette.

Here's hoping our weather gets cooler -- nearly too hot for golf and that has to be hot! See you next month.

Ruth Sunday School Class Meeting Held

The Ruth Sunday School class of the Sudan First Baptist Church members met Monday evening in the home of Libby Mudgett for their August meeting with some 20 persons attending.

Following the barbecue dinner, Matt Hanna brought the devotional of "Labor of Love". Following the devotional, Rosemary Seymour presided over the business meeting. Officers for 1983-84 were presented by the nominating committee.

The teacher for the upcoming year will be Jean Harvey with Mary Harper as assistant; class presi-

dent, Billye Doty; vice president, Rosemary Seymour; secretary-treasurer, Evelyn Ritchie; group captains, Sue Chester, Zetha Young and Mary Harper; projects committee, Winona Dudgeon, Edna Seymore, Sue Whiteaker and Tinie Williamson; and class minister, Mary Hanna. Those were voted on and accepted.

Other business included plans for the Senior Citizens of the Baptist Church to be honored with a dinner by class members and their husbands. The committee appointed for this were Winona Dudgeon, Jean Harvey, Ruth Baker

Ideal
The ideal wife is one who grows dearer instead of merely more expensive.

and Pee Wee Lance. Attending were Rosemary Seymour, Jean Harvey, Evelyn Ritchie, Mary Harper, Pee Wee Lance, Billye Doty, Winona Dudgeon, Ruth Baker, Sue Whiteaker, Frances Gardner, Elsie Seymore, Edna Seymore, Phil Bellar, Zetha Young, Martha Markham, Mary Hanna, Matt Hanna and her granddaughter, Dawn Grey and niece, Mitzie Glasscock and the hostess.

Golden Gleams

Many a man fails as an original thinker simply because his memory is too good.

-F.W. Nietasche.

There's hope a great man's memory may outlive his life half a year.

-Shakespeare.

If you don't know the answer, don't answer the question.

Get Your Wedding Invitations Here.
Williams Bros Office Supply
322 Main 272-3113

Best Hotel Location in Town

Next to New Orleans' Famous French Quarter

We're on world famous Canal Street in the central business district overlooking the mighty Mississippi River, opposite the Convention Center and next to the exciting historic French Quarter with its sidewalk artists, famous restaurants, antique shops, naughty Bourbon Street and all that jazz.

Just minutes from Louisiana's unrivalled Superdome and 20 minutes from International Airport via Interstate I-10.

Excellent accommodations and service at reasonable prices await you at the first class International Hotel... 375 handsomely appointed rooms and suites, color TV, fingertip climate control, great restaurants and lounges, pool, valet parking, airport transportation... everything!

The International Hotel is "the place" to stay in romantic New Orleans... one of the world's most unique cities... debonair, pleasure-loving, with a live and let-live philosophy. New Orleans hasn't forgotten her European heritage, nor has she abandoned the flavor of the Old South.

You'll love New Orleans and she'll love you right back.

FAMILY PLAN
(UP TO 4)
\$48
JUNE 15-SEPT. 15
Subject To Availability

INTERNATIONAL HOTEL
300 Canal Street, New Orleans, Louisiana 70140
For Reservations Call Toll Free: Louisiana, 800-662-1930
United States, 800-535-7783

Bouquets Of Special Thanks To All The Many People Who Helped Make The Mule Day Festival A Huge Success! See You Again Next Year Bigger & Better
Jeff Smith & Larry Winkler

Ellis Funeral Home
Pre-Need Funeral Needs
Price Is Frozen At Time Of Purchase & Guaranteed
272-4574 Muleshoe

Now Taking Registration For Fall Classes!!

Muleshoe Dance ★ ★ Gymnastics

Boys & Girls Ages 3 Yrs. & Up
Preschool, Beginner, Intermediate, And Advanced Classes
Taught By QUALIFIED, PROFESSIONAL, AND EXPERIENCED INSTRUCTORS!

Dance: New for this year SOFT SHOE and TAP CLASSES Ballet, Jazz, Pointe, and Dance for Gymnasts

Gymnastics: Tumbling, Trampoline
Girls - Floor Exercise, Balance Beam, Vault, Uneven Bars, Competition Team
Boys - Floor Exercise, Still Rings, High Bar, Parallel Bars, Side Horse, Pommel Horse

PRESCHOOL CLASSES - designed a combination of dance-gymnastics, teaching-listening, perceptual body awareness, motor, and communication skills

Under The Direction Of Bob Cowley And Sheri Hawkins

To Register And For More Information Call:
272-4017 965-2689 or 965-2353
Call Early -- Classes Will Be Limited



Dupler, Sinclair Wed In Formal Ceremony

Miss Mary Jo Dupler became the bride of Bobby Sinclair on Friday, July 22, at the Three Way Baptist Church with Robert Edwards, cousin of the bride, performing the ceremony.

Parents of the couple are Mr. and Mrs. Bill Dupler of Maple and Mr. and Mrs. Y.L. Sinclair of Morton.

An arch of yellow and white roses and greenery formed the setting for the ceremony.

Doyleen Terrell, pianist, accompanied Robert and Donna Edwards as they sang "You And I" and a solo by Donna Edwards, "Let It Be Me."

Given in marriage by her father, the bride wore a formal white gown of crinkled gauze with lace overlay

on the laced-up, fitted princess bodice. It had a scoop neckline and long sleeves of lace gathered to button cuffs. It was waisted with a ruffled hemline. She wore a veil of white net and lace gathered to a beaded caplet and carried a cascading bouquet of yellow and white roses with white streamers.

Dyrinda Tyson served as maid of honor and Eugenia Dupler, sister of the bride, was bridesmaid. They wore long ruffled dresses in pastel colors.

Lee Sinclair, brother of the groom, served as best man and groomsmen were Monty Arledge of Monahans.

Following the ceremony, a reception was held in the fellowship hall of the church. Sylinda Tyson registered the guests and Sylinda and Lykinda Tyson served at the bride's table. Serving at the groom's table was Treva Sinclair, sister-in-law of the groom.

Following a wedding trip to Ruidoso, N.M., the couple is at home in Monahans, where the groom is employed by the city of Monahans.



Kyla Nicole Elliott

Mr. and Mrs. Scott Elliott of Earth are the proud parents of a daughter born at 4:42 p.m. Sunday, Aug. 7 in the Methodist Hospital in Lubbock.

The young lady weighed eight pounds four ounces and was 21 inches long. She has been named Kyla Nicole. She is the couple's first child.

Grandparents are Mr. and Mrs. Hubert H. Elliott of Clovis, N.M. formerly of Lubbock, and Mrs. Sam (Betty) Hopper of Amarillo, formerly of Muleshoe.

Great grandfather is Alfred Scott of Lubbock.

Mrs. Elliott is the former Janet Hopper.

Cearic Lear Bowling

Mr. and Mrs. Tracy Bowling of Houston are the proud parents of a son born at 8:50 p.m. Aug. 9 in Houston.

The young man weighed eight pounds 12 ounces and was 21 inches long. He has been named Cearic Lear.

Grandparents are Mr. and Mrs. Kenneth Noles and Mr. and Mrs. Marvin Bowling, all of Sudan.

Great grandparents are Mr. and Mrs. Byrd Tharp of Throckmorton.

H & R Block Tax Course Begins Soon

H&R BLOCK is offering a Basic Income Tax Course starting September 8, 1983.

There will be a choice of morning or evening classes held at the H&R Block office at 224 W. 2nd, Muleshoe. The twelve week course is taught by experienced H&R Block personnel and certificates are awarded to all graduates.

While thousands of job opportunities are available, graduates are under no obligation to accept employment with H&R Block. Courses are licensed by the Texas Education Agency.

Registration forms and brochures may be obtained by contacting the H&R Block office at 224 W. 2nd, Ph. 272-3332. ADV

West Plains Medical Center

ADMITTED

Aug. 15-Florence Wilson, Ruby Murdock, Elizabeth Cook, Thesia Davis, Gloria Torres, Bill Snell and Bobby Canfield

Aug. 16-Jared Williams, Mary Ellen Bolton, Francisco Castorena, Janie Acosta, Ufredo Jaramillo, San Juana Marcias and John Seid

Aug. 17-Melissa Mata and Roberto Hernandez

Aug. 18-Socoro Jaramillo and Allie Browning

DISMISSED

Aug. 15-Felix Rodriguez and Marty Hernandez

Aug. 16-Chad Black

Aug. 17-Francisco Castorena, San Juana Marcias, Jeff McCarty, O.O. Bruce, Ada Duncan and Thesia Davis

A born leader knows how to get other people more enthusiastic than he is.

A processing charge of \$3 is made when a photo accompanies any wedding, engagement, or anniversary with the exception of anniversaries of 50 years or more.

Five dollars will be charged for any shower picture taken by the Journal and \$3 charged for any shower picture accompanying a story. Pictures may be picked up after the article appears in the paper.

Wedding, engagement, and anniversary stories must be in the Journal office by Monday noon for the Thursday paper, and by Thursday noon for the Sunday paper.

After that time, stories will be run on a space, available basis. Any wedding more than two weeks old, when received, will be edited and only the basic information will be included.

Shower pictures will not be taken without a 24 hour notice and copy must be in the office by 5 p.m. Monday for the Thursday paper and 5 p.m. Thursday, for the Sunday paper.



MOST BEAUTIFUL...Kyla Morris, three year old daughter of Mr. and Mrs. Mike Morris, was named most beautiful, in the two and three year old division of the Little Miss and Master Pageant held in Amherst Saturday during their birthday celebration. Kyla competed against several other children in her age group. She is the granddaughter of Mr. and Mrs. Norman Humphreys of Sudan and Mr. and Mrs. Ray Lusk of Muleshoe. Her great grandparents are Mr. and Mrs. Earl Davison and Mrs. Ruth Martin, all of Sudan.

Five Sudan Students Honored

Five students from the First Baptist Church of Sudan have been accepted for membership in the Society of Distinguished American High School Students, according to Truman Johnson, pastor.

Founded in 1968, the Society has honored some of the most outstanding high school students in the nation.

To qualify for Society membership, a nominee must excel in academics, extra-curricular or civic activities and be nominated by a local sponsor. Once accepted for this select honor, members become eligible to compete for college scholarships through the Society's National Awards Program. This year 118 colleges and universities have earmarked scholarship funds for Society members.

Students from the Sudan First Baptist Church who were awarded memberships are Aprice Johnson, Perry Kent, Shanda Vernon, Jon Ann Williams and Lisa Wood.

untiring efforts and steadfast dedication on behalf of the students from Sudan.

The society has also presented a National Appreciation Award to First Baptist Church, the student's sponsor. This award was made in acknowledgment of

untiring efforts and steadfast dedication on behalf of the students from Sudan.

To preserve the honor, these members names and their biographical accomplishments will be listed in the Society's 1983 membership registry.

HONEY-WINE PEARS

Total cooking time: 17 minutes

2 cups water
1 cup concord grape wine or grape juice
1/2 cup honey
1 teaspoon finely shredded lemon peel

2 tablespoons lemon juice
2 inches stick cinnamon
8 pears, peeled, halved, and cored

In 2-quart casserole combine water, wine, honey, lemon peel, lemon juice, and cinnamon stick. Place in microwave oven. Cook wine mixture for 10 minutes at HIGH till boiling. Add pears. Cover and cook for 7 minutes at HIGH till tender, stirring once. Remove cinnamon stick. Serve pears warm or chilled. Makes 8 servings.

TIPS & TECHNIQUES

Advance Preparation: Cheeseballs can be prepared ahead of time and frozen till ready to use. Microwave-thaw the cheeseball (2 1/2 cups mixture) for 8 minutes at MEDIUM LOW; let stand 15 minutes.

Prepare an appetizer meatball recipe (or similar recipe that uses 1-inch chunks of hot dogs or fully cooked ham in 1 to 1 1/2 cups sauce) and refrigerate in heat-proof serving dishes. Reheat for 7 to 8 minutes at MEDIUM HIGH.

Enochs News

By Mrs. J.D. Bayless

Mr. and Mrs. Bob Newton went to see Texas at Palo Duro Canyon recently and went on to Stinnitt and spent the weekend with their son Mr. and Mrs. Dennis Newton and family.

The Senior Citizen's met at the Bula-Enochs Community Center Monday August 8 p.m. President Bob Newton opened the meeting with everyone with the allegiance to the flag and was in charge of the business and recognized the visitors, Hubert Kidd and Mr. and Mrs. Hugh Young from Muleshoe.

Hubert Kidd presented the program about the Five Area Telephone and its changes and showed a film. Refreshments of chips, dips, cake, cookies, punch and Kool-Aid was served to 21 that were present. Mr. and Mrs. Stuff Jones, Mr. and Mrs. Chester Petree, Mr. and Mrs. J.D. Bayless, Mr. and Mrs. E.N. McCall, G.O. Smith, Etta Layton, Winnie Byars, Elnita Kay, Olive Cox, Mr. and Mrs. Bob Newton, Mr. and Mrs. Clifford Snitker, and guests, Hubert Kidd and Mr. and Mrs. Hugh and one new member Chester Settiff. Our next meeting will be August 22.

Mrs. Bill Key, Mrs. Winnie Byars and Mrs. Mamie Adams went with the Morton Senior Citizens to the Palo Duro Canyon to see Texas Tuesday afternoon.

Mrs. Audra Hill and Mrs. Clara Williamson of Lubbock spent Tuesday night with her sister, Mr. and Mrs. Chester Petree.

Mr. and Mrs. Sid Key took her children Vonna and C.W. Hamilton home Saturday at Roswell, they had spent about a month and a half with them.

The things that were hardest to bear are sweetest to remember.

Bailey County Journal (525) (940) 200

Established March 31, 1961. Published by Muleshoe Publishing Co., Inc. Every Sunday at 304 W. Second, Box 409, Muleshoe, Texas 79361. Second Class Postage paid at Muleshoe, Texas, 79361.

TA MEMBER 1983 TEXAS PRESS ASSOCIATION

L.B. Hall President
James W. Hall Vice President
Shirley Farmer-Sears Editor
Franklin Harris-Spafford Circulation Manager
Clara Williams-Advertising Secretary
Lillian Hall-Bookkeeper

Muleshoe Journal and Bailey County Journal
Bailey and surrounding counties... 12¢
Muleshoe Journal and Bailey County Journal
Elsewhere... 15¢

Advertising rate card on application

MRS. BOBBY SINCLAIR

[Mary Jo Dupler]

Mrs. Winnie Byars is home from visiting her children, Mr. and Mrs. Tom Byars and family at Seminole, Mrs. Henry Hardaway and family at Brownfield, and the Jack Parr family in Lubbock.

Mr. and Mrs. Bob Newton attended the Fred Reunion at the Cochran Activity Building at Morton Sunday Aug. 14. There were approximately 55 in attendance, L.G. Fred also a brother, Felix Fred of Morton are the only ones living in their family. Felix is 91. Mr. and Mrs. Dennis Newton and children of Stinnitt, Mr. and Mrs. Tom Newton and children of Morton attended the Fred reunion and spent the weekend with their parents, the Bob Newtons.

Everyone is very thankful for the rain they received Wednesday afternoon, west of Enochs they got one inch and some hail and north of Enochs some received .4 and Wednesday afternoon some received .2 of rain.

Mr. and Mrs. Jeff McGennis of Lubbock and Mrs. Viola Dick of Redlands, Calif were dinner guests in the home of Mr.

and Mrs. J.E. Layton Monday. ***

Rev. and Mrs. B.A. Dickenson of Plainview were visitors at the Baptist Church Sunday and he brought both messages Sunday and were dinner guests in the home of Mr. and Mrs. Bill Key. ***

Guests in the home of Mr. and Mrs. Bill Key Wednesday were Ophelia Fort, Mr. and Mrs. Bo Beates, Donald Lynn, Mr. and Mrs. Tim Prickett, Shawn, Daniel all of Brownwood, Mr. and Mrs. Bobbie Adams and Bonnie Long all of Morton, Mr. and Mrs. H.O. Huff and Mark of Three Way, Mr. and Mrs. Paul Huff, Aaron Chrystal and Tova, Mr. and Mrs. Sid Key of Enochs and Vonna and C.W. Hamilton of Roswell, N.M.



The world's oldest existing Parliament is in Iceland. It was established in 930.



STOCK ON HAND. NO RAIN CHECKS



NOW'S THE TIME TO CAN and FREEZE Vegetables

USE Kerr JARS-CAPS-LIDS

Prices effective thru Aug. 27th



Self-Sealing Mason Jars 389 reg. 4.89

Case of 12 jars and lids.

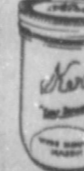


Wide Mouth Mason Jars 430 reg. 5.44

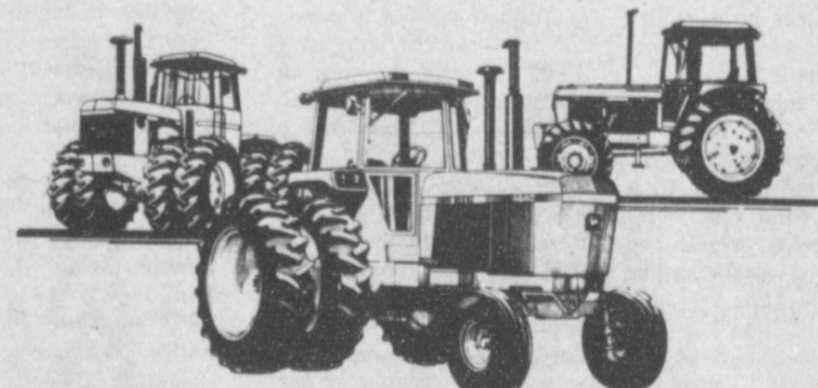
Case of 12 jars and lids.



Self-Sealing Pint Jars 319 reg. 4.14



Wide Mouth Pint Jars 370 reg. 4.74



August-only closeout specials on John Deere 40 Series tractors: finance charge waiver to March 1, '84; or cash rebates to \$2,150

Our selection dwindles down daily on remaining 40 Series tractors—40 through 228 hp. So, act promptly to get 40 Series tractor value while these special offers are in effect:

- We're dealing from 1981 prices on John Deere 40 Series tractors that'll perform with higher-priced 1983 competitors. And our deal is on top of special John Deere-to-you offers.
- Finance your new 40 Series with John Deere during August and cut your costs by \$100's, even \$1,000's. Purchases made by August 31 will be eligible for finance charge waiver until March 1, 1984; or you can choose to get a cash rebate check from John

Deere (amounts shown below).
If you expect taxable income in 1983 (keep PIK acres with minimum expenses in mind), we urge you to use John Deere financing to take advantage of Investment Tax Credit in 1983 plus full-year depreciation expense to reduce your taxes. You'll not only shield income but greatly reduce actual cost of your new 40 Series.
3. Lease a new '80 Series tractor and lease payment will be discounted. Here's a way to get the modern power you need, plus tax advantages, even if your taxable income for 1983 is low. See us for details.

Model	August '83 Cash Rebate In Lieu of Waiver	Model	August '83 Cash Rebate In Lieu of Waiver
228-hp 8640	\$2,150	90-hp 4040	875
179-hp 8440	1,750	80-hp 2940	600
180-hp 4840	1,500	70-hp 2640	525
155-hp 4840	1,350	60-hp 2440	450
130-hp 4440	1,050	50-hp 2240	350
110-hp 4240	950	40-hp 2040	300

(Offer subject to tractor availability.)

*Availability of John Deere financing and leasing subject to approval of credit. This offer may be reduced in value or withdrawn at any time.

Dent-Rempe, Inc.

1516 W. Amer. Blvd.

272-4296

JP, Municipal Court Dockets 'Up To Par'

Seventy fines were paid in combined Municipal and Justice Courts over the past week, with an additional 51 more cases filed for the same time period.

In Municipal Court, Judge Linda Huckaby reported ten cases disposed of for speeding, four for bad checks, three for violation of city ordinance, two for no drivers license, two for running stop signs and one each on the following violations: drinking on school property, assault, failure to appear, expired plates, exhibition of acceleration, failure to leave information at the scene of an accident, failure to drive in a single land.

Twenty cases were filed in Municipal Court this

Crop Insurance

Deadline August 31

August 31 is the last day to apply for crop insurance for barley and wheat in Bailey County, Texas, according to Carey Johnson, Director for the Federal Crop Insurance Corporation (FCIC).

Crop Insurance covers unavoidable loss of production from damage caused by adverse weather conditions, insects, plant disease, wildfire, earthquake or fire. Insurance begins when the crop is planted.

Producers may choose from three coverage levels: 50-, 65-, or 75-percent of the established farm yield for insurance protection. "Three optional price elections for valuing production lost or damaged also are available," Johnson says.

"Producers of wheat, barley, and oats who can qualify for a new Individual Yield Coverage (IYC) plan are offered higher yield guarantees at no additional cost," Johnson says. For information about eligibility under the IYC plan, producers should contact an authorized crop insurance agent well in advance of the August 31 deadline.

To select an agent, producers should check the list of agents available at their county ASCS office.

week, including four for speeding, three for no drivers license, three for violation of city ordinance, and two for running red light, two for exhibition of acceleration, two for expired plates and two for bad checks. One case each was filed for expired MVI and one for unsafe speed.

Justice of the Peace, Jack Bates reported a total of 31 filings for the week just past, along with 42 disposals of outstanding cases.

For the period in question, a total of 15 filings were made for speeding, eight for being over allowed gross weight, three for no liability insurance and one each for public intoxication, expired plates, violation of drivers license restrictions, no operators license and expired MVI.

Disposals in Justice Court totaled 21 for speeding, five for being over allowed gross weight, four for expired MVI, two for no operators license and two for running a stop sign. One case each was disposed of on the following: operating motorcycle without license, no tail lights, public intoxication, violation of drivers license restrictions, failure to yield right of way, operating an unregistered vehicle, littering and allowing a minor to operate a vehicle without a license.

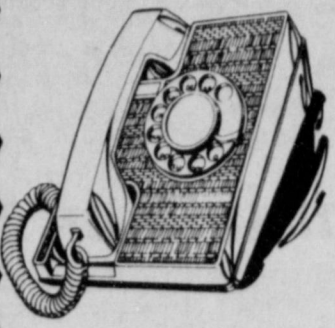
Motorists Warned To Slow

In School Zones

The summer vacation will soon be over and thousands of youngsters will be starting back to school, many of those for the first time. Last year in Texas the pedestrian fatalities accounted for 732 traffic deaths according to Major Vernon Cawthon, Regional Commander of the Texas Department of Public Safety.

He said, "Motorists need to slow down as they drive through school zones and in and around school areas."

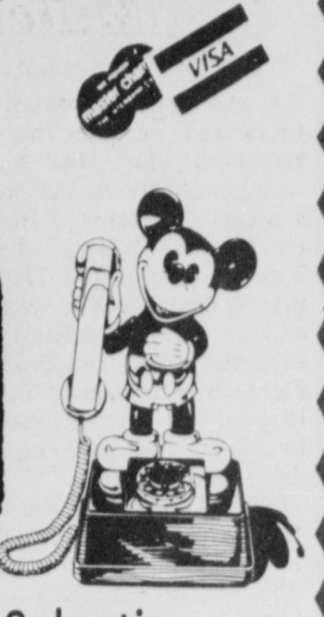
Trees more than 4,000 years old can be found in California's Inyo National Forest.



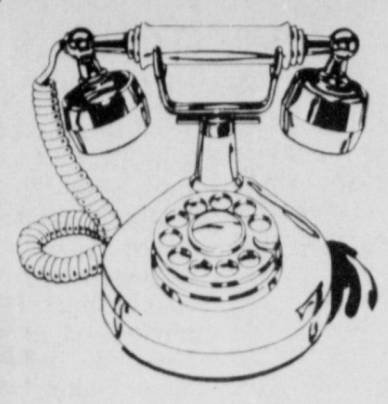
New At Fry & Cox, Inc.

401 S. First

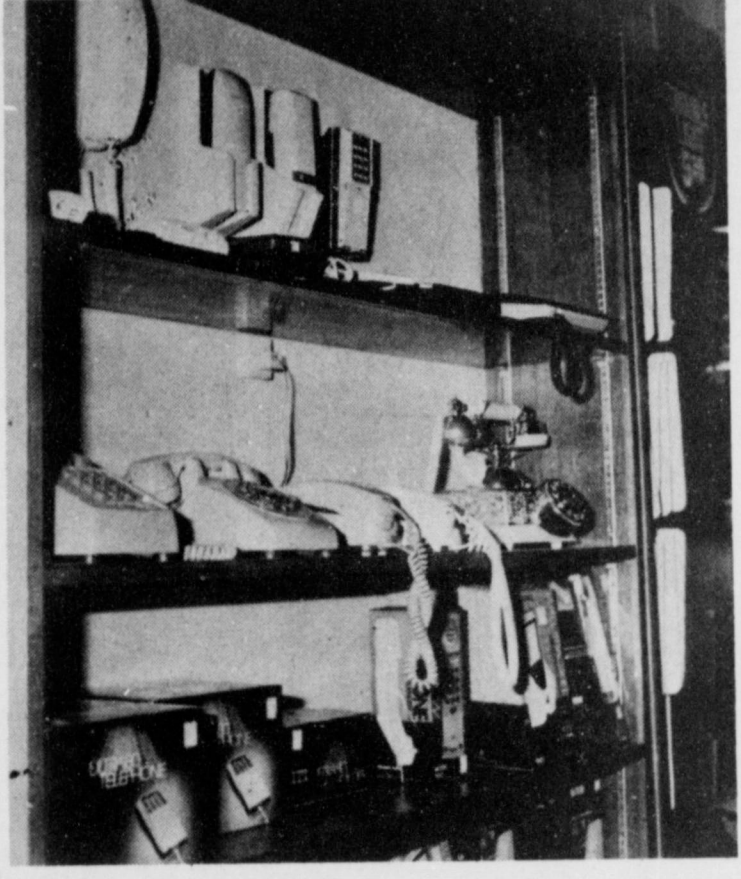
272-4511



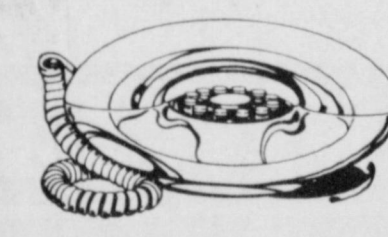
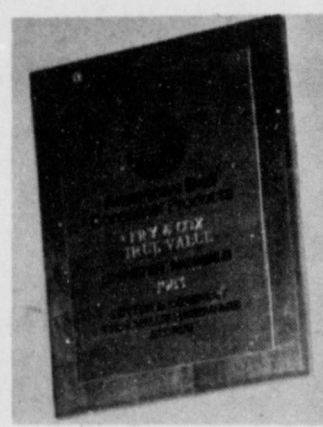
Order Now For Christmas While
Best Selections Are Available



See Our Complete Selection
Of Do-It-Yourself Wiring
& Phone Accessories



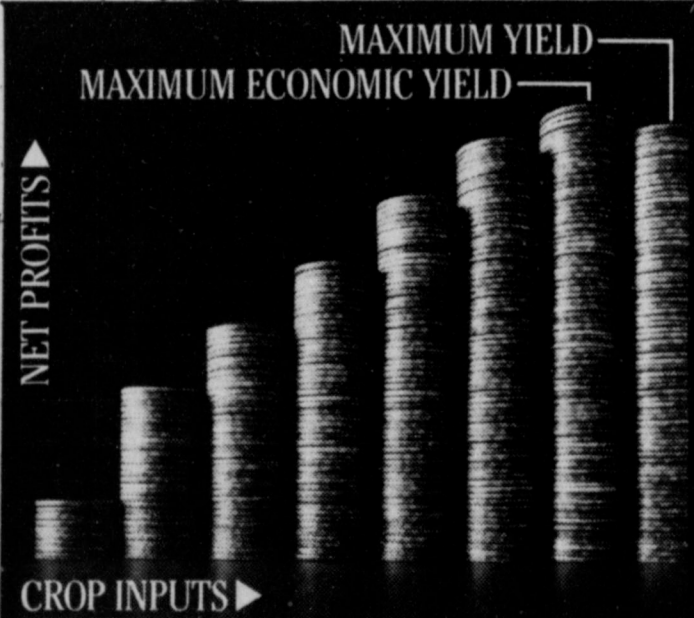
Because of the popularity of so many of the phone styles -
order early to assure Christmas delivery.



Traditional
BELL
Table Model
Rotary Dial
\$2995
00103



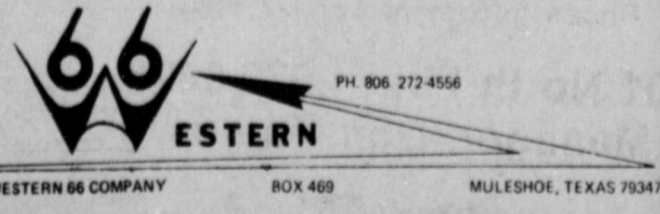
We have at least 20 cordless phones for you to choose from -
and we can order others.



Stack crop inputs in your favor.

Profitable yields demand proper soil fertility. If you cut back on fertilizer last year, residual fertility may be inadequate for your yield goals. This year, plan for profit. Apply the crop input that offers the most growth for the dollar - fertilizer.

Soil test and fertilize for Maximum ECONOMIC Yields. **IMC**



- ★ Cordless
- ★ Touchtone
- ★ Universal Dial
- ★ Designer
- ★ Traditional
- ★ Answering Services
- ★ Automatic Dialers

\$109⁰⁰

BELL
Nomad™ 200
cordless telephone



- ★ Uniden
- ★ Electra Freedom
- ★ Panasonic
- ★ Soundesign
- ★ General Electric
- ★ GTE
- ★ ITT



Electra
Freedom Phone

SOUNDESIGN

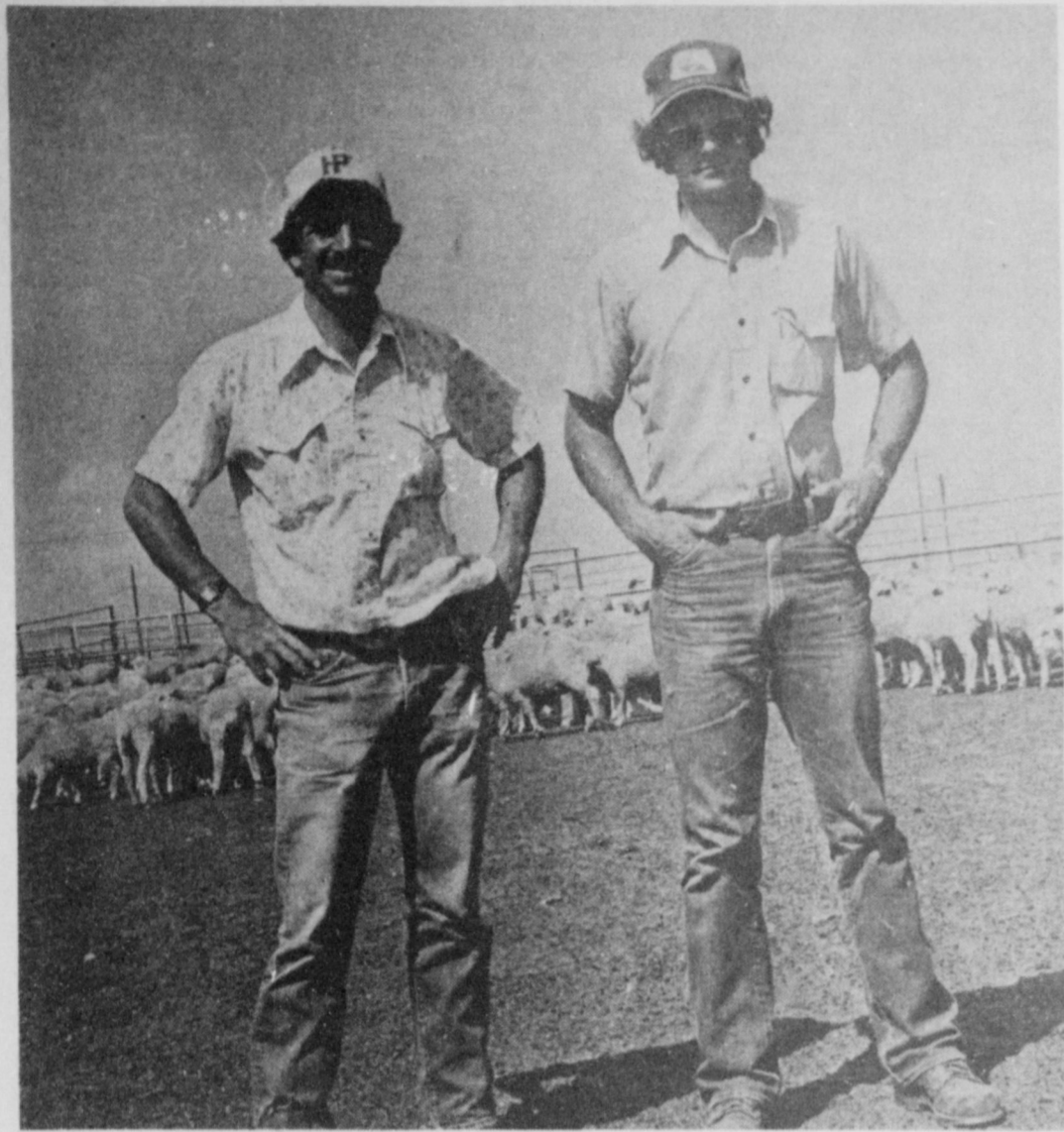


GTE



uniden
Extend-a-phone
It goes with the conversation

OVER THE COUNTER REPLACEMENT DURING WARRANTY
ON ALL PHONES SOLD BY FRY & COX, INC.



SHEEP IN A BIG WAY--Harry Peroulis, left, and Gray Hibbard have moved to the Muleshoe area and operate Lamb Star, Inc., a sheep feeding operation west of Muleshoe. Presently, they have more than 20,000 sheep in their pens and at capacity, will have more than 40,000 head in the pens. Sheep are fed out and ready for slaughter after 60-90 days.

Local Sheep Feeders Work To Dispel Myths

In an effort to dispel many myths about eating lamb, and in an effort to introduce persons in this area with what can be a very delectable dish when cooked properly, a new sheep operation has begun near Muleshoe.

Lamb Star, Inc. operated by Harry Peroulis and Gray Hibbard both formerly of Craig, Colo., is located west of Muleshoe at the former Sandlyland Feedyard.

Peroulis and Hibbard were raised in the lamb business and are very knowledgeable of all phases of raising the gentle animals.

Recently, Peroulis and Hibbard prepared and served six barbecued lamb to persons who visited the annual Mule Day Festival supper and persons who tasted the lamb spoke of the delightful way the meat was prepared.

With a 40,000 head capacity, Peroulis and Hibbard presently have slightly more than 20,000 sheep at their operation, and when at full capacity, will have a seven or eight person crew to operate the facility.

The duo said adamantly "Lamb is not Mutton. Mutton is the name given to old sheep bought during WWII to feed the soldiers. Lamb is the healthiest of all red meats," added Peroulis and Hibbard, "and is also the most digestible of the red meats. It is low in cholesterol, and higher in proteins and minerals."

Also, contrary to the old western tales, the men say that sheep are cleaner, and definitely not hard on farm land. Hibbard, who had a sheep operation at Roswell, N.M. for eight years before moving to the Muleshoe area, said he frequently "farmed out" his sheep to various farmers around Roswell.

"During all the time I farmed out the sheep, the farmers in the Roswell area said they preferred sheep to cattle 3-1, as they were not hard on

the yard. New lambs are brought into the yards, put in pens and fed. After a few days they are given shots and wormed, and then about a week later the sheep are sheared. They are at the feed yard from 60-90 days

before being shipped out to be slaughtered. At this time, the strongest markets for the sheep are in Denver, Iowa and San Angelo in Texas. The shipping is usually to the southern part of Texas,

the farm land, were cleaner and smelled better," said Hibbard.

There is very little adverse smell at the sheep yard west of Muleshoe, with the only sharp odors coming from infrequent puddles of water around

Oklahoma, Colorado, Utah, Arizona and New Mexico.

Shearing crews who work at the sheep yards are generally members of a family, who shear over 100 sheep per day, per man. Unlike the sheep ranches with small turnovers in sheep, the shearers are busy most of the time shearing in sheep yards, because of the constant turnover.

Peroulis and Hibbard have operated the sheep yard for the past several months near Muleshoe, and voiced their hope that sheep will begin to "Catch on" as one of the meats fed to consumers throughout this area. They are firm believers that if people would just try the delicate flesh of lamb, they will acquire a taste for the red meat of the sheep.

VA To Administer SS Program

The Director of the Waco Veterans Administration Regional Office has announced that the VA has been designated as the agency to administer the benefit program which restored former Social Security benefits to veterans' spouses and children that had been terminated as a result of the Omnibus Reconciliation Act of 1981.

Congress has restored entitlement to these benefits to eligible persons as a

result of a promise made to military and service personnel who died on active duty prior to Aug. 13, 1981, or whose death after discharge was the result of disabilities incurred in, or aggravated by, military service before Aug. 13, 1981.

Students between the ages of 18 and 22, enrolled in full-time, post-secondary programs, may be eligible to receive the restored benefits. A parents with a child between the ages of

16 and 18 in his/her custody may also be eligible.

The first payments of the restored benefits were issued July 27. The checks will cover the restored benefits from January through July. A separate check will be issued September 1 for the month of August.

New VA application forms are being developed for the program. The forms are to be mailed to recipients this month.

Lazbuddie Sets Lunch Guidelines

Lazbuddie Independent Schools will begin classes in Lazbuddie on Monday, August 22 for all grades K-12. The Lazbuddie ISD is required to make certain information regarding regular and reduced price meals as well as free meals available to all students.

At Lazbuddie, students from kindergarten through sixth grade may purchase breakfast at 35 cents; and those in grades seven through twelve is 45 cents for regular prices. Reduced rate breakfast prices are 30 cents.

Students in kindergarten through the fourth grade may buy lunch at regular prices for 70 cents; from grade five through eight; 85 cents and from 9

through 12, \$1.00. Reduced lunch prices are 40 cents, with extra milk costing 20 cents each.

Children whose families' income is at or below levels shown on a scale provided at school offices are eligible for either free or reduced-price meals. To apply for these free meals, an application may be obtained from the Lazbuddie Elementary School Principal, Charles Beam. The form must be completed and returned to the school.

Each application must contain the total household income, the names of all household members, social security numbers of household members 21 years of age or older, and the signature of an adult house-

hold member. These requirements are necessary before an application can be processed. Other miscellaneous rules regarding verification of information, the reporting of changes, re-application and foster children can be explained by school personnel.

The child feeding program operation will in no way discriminate against because of race, sex, color, national origin, age or handicap.

Applications also have the right to a fair hearing as prescribed by law. This may be done by contacting Charles Beam, Lazbuddie Elementary Principal, Lazbuddie Schools, Lazbuddie, Texas.

School District: Muleshoe Independent School District

NOTICE OF CALCULATION OF EFFECTIVE TAX RATE AND PUBLICATION OF ESTIMATED UNENCUMBERED FUND BALANCES

I, Dale F. Jones, Chief App. for MISD, in accordance with the provisions of Sec. 26.04, Property Tax Code, have calculated the tax rate which may not be exceeded by more than three percent by the governing body of the MISD without holding a public hearing as required by the code. That rate is as follows: \$.96 per \$100 of value.

The estimated unencumbered fund balance for Maintenance & Operation fund: \$17,855. The estimated unencumbered fund balance for Interest & Sinking fund: \$10,091.

Dale F. Jones, Chief App.
Aug. 10, 1983

CALCULATIONS USED TO DETERMINE EFFECTIVE TAX RATE

I. DATA		
1. 1982 Total tax levy from the 1982 tax roll	\$	1,334,366
2. 1982 Tax rate (\$.88 M&O and \$.08 I&S)	\$.88 / \$100
3. 1982 Debt service (I&S) levy	\$	-0-
4. 1982 Maintenance and operation (M&O) levy	\$	1,334,366
5. 1982 M&O taxes on property in territory that has ceased to be a part of the unit in 1983	\$	-0-
6. 1982 M&O taxes on property becoming exempt in 1983	\$	100,080
7. 1982 M&O taxes on taxable value lost because property is appraised at less than market value in 1983	\$	-0-
8. 1983 Total taxable value of all property	\$	136,934,080
9. 1983 Taxable value of new improvements added since Jan. 1, 1982	\$	1,450,000
10. 1983 Taxable value of property annexed since Jan. 1, 1982	\$	-0-
11. 1983 Tax levy needed to satisfy debt service (I&S)	\$	-0-
*12. Rate to raise 1982 tax levy due to appraisal roll errors (rate that should have been less rate that was levied) (\$.8990 / \$100 - \$.8800 / \$100)	\$.0190 / \$100
*13. Rate to recoup taxes lost in 1982 due to appraisal roll errors (lost dollars divided by the difference of 1983 taxable values minus 1983 over-65 homesteads taxable value) (\$ 28,319 ÷ (\$ 136,934,080 - \$))	\$.0214 / \$100
14. 1983 Taxable value of over-65 homesteads with frozen taxes	\$	4,807,240
15. Frozen M&O levy of over-65 homesteads with frozen taxes	\$	21,366
16. Frozen I&S levy of over-65 homesteads with frozen taxes	\$	-0-

II. CALCULATION		
MAINTENANCE AND OPERATION (M&O) TAX RATE		
1. (A) 1982 Total tax levy (Data 1)	\$	1,334,366
(B) Subtract 1982 Debt service levy (Data 3)	-\$	-0-
(C) Subtract 1982 Taxes on property no longer in unit (Data 5)	-\$	-0-
(D) Subtract 1982 Taxes on exemptions (Data 6)	-\$	100,080
(E) Subtract 1982 Taxes on productivity valuation (Data 7)	-\$	-0-
(F) Subtract frozen M&O levy of over-65 homesteads (Data 15)	-\$	21,366
(G) Adjusted 1982 M&O levy	\$	1,212,920
2. (A) 1983 Total taxable value of all property (Data 8)	\$	136,934,080
(B) Subtract 1983 Value of new improvements (Data 9)	-\$	1,450,000
(C) Subtract 1983 Value of annexed property (Data 10)	-\$	-0-
(D) Subtract 1983 Value of over-65 homesteads (Data 14)	-\$	4,807,240
(E) Adjusted 1983 Taxable value for M&O	\$	130,676,840
3. (A) Divide the adjusted 1982 M&O levy (1-G above) by the adjusted 1983 taxable value for M&O (2-E above) (\$ 1,212,920 ÷ \$ 130,676,840)	\$.009281
(B) Multiply by \$100 valuation	× \$.9281 100
(C) Calculated maintenance and operation (M&O) rate for 1983	\$.9281 / \$100

INTEREST AND SINKING (I&S) TAX RATE		
4. (A) 1983 I&S levy needed to satisfy debt (Data 11)	\$	-0-
(B) Subtract frozen I&S levy of over-65 homesteads (Data 16)	-\$	-0-
(C) Adjusted 1983 I&S levy	\$	-0-
(D) 1983 Total taxable value of all property (Data 8)	\$	-0-
(E) Subtract 1983 Value of over-65 homesteads (Data 14)	-\$	-0-
(F) Adjusted 1983 Taxable value for I&S	\$	-0-
(G) Divide the adjusted 1983 I&S levy (4-C above) by the adjusted 1983 taxable value for I&S (4-F above) (\$ -0- ÷ \$ -0-)	\$	-0-
(H) Multiply by \$100 valuation	× \$	100
(I) Calculated interest and sinking rate (I&S) for 1983	\$	100 / \$100

APPRAISAL ROLL ERROR RATE		
5. (A) Rate to raise 1982 levy due to appraisal errors (Data 12)	\$.0190 / \$100
(B) Add rate to recoup taxes lost due to errors (Data 13)	+	.0214 / \$100
(C) Total rate to adjust for appraisal roll errors	\$.0404 / \$100
TOTAL EFFECTIVE TAX RATE FOR 1983		
6. (A) Calculated maintenance and operation (M&O) rate (3-C above)	\$.9281 / \$100
(B) Add calculated interest and sinking (I&S) rate (4-I above)	+	-0- / \$100
(C) Add rate to adjust for appraisal roll errors (5-C above)	+	.0404 / \$100
(D) Calculated 1983 Effective Tax Rate	\$.9685 / \$100

A&M
FARM AND RANCH SUPPLY
OPEN ALL DAY SATURDAY
Prices effective thru Aug. 24th

LAWN MOWER SALE!

ALL ITEMS LIMITED TO STOCK ON HAND. NO RAIN CHECKS!

MOW LIKE A PRO!
WITH THE JACOBSEN SUPER BAGGER.™

21" Rear Bagger Lawn Mower

SAVE \$55

404⁵⁰
4 HP

- Large reinforced 3-bushel rear grass catcher • 21" stabilized gull-wing blade.
- Convenient on-handle Command Control™ System • High vacuum, rust-resistant die cast aluminum deck • Powerful Briggs & Stratton engine with solid state ignition • Meets all CPSC safety standards • 1-year warranty, plus new 2-year warranty on gear box • Quick-change cutting height adjusters. Model S21P4E.

3 1/2 HP Key Start Jacobson Mower
Model S21E

323⁵⁰

3 1/2 HP Rear Bag Jacobson
Model S21

279⁹⁵

36" Tractor Mower

\$949

- Riding mower with 36" cut and twin blades.
- 11 hp synchro-balanced engine • Electric start with alternator • 5-speed inline transaxle • Variable cutting heights from 1 1/2" to 4 1/2" • No. 3-34508.

Self-Propelled Rear Bagger Mower

219⁹⁵

- 21" cut, 3.5 hp engine. Fully baffled deck. 8" cog tread wheels. Self-propelled (cog drive) deluxe height adjusters, folding box style handle. Model 3-21951.

SAVE 194⁰⁰

Finest Rear Bag Mowers Made

\$899
SAVE \$300

Twin-Chute Rear Discharge Lawn Tractor

SAVE \$280

\$1149

- 11 HP • 40" cut • 5 speed transaxle with electric start • Model 133-699

ALL MOWERS IN STOCK NOT SHOWN 15% OFF

DR. PEPPER



6 pk
12 oz. **\$1.69**



GREAT FOOD VALUES



EARTHTONE/ WHITE HI-DRI
PAPER TOWELS



PRINTS/ WHITE/ ASST. COLORS
DELSEY
BATHROOM TISSUE



2 \$1
JUMBO ROLL

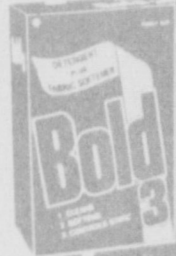
79¢
4 ROLL PKG.



WHIPPED SHORTENING

BAKE-RITE

\$1.09
42 OZ. CAN



50% OFF LABEL
LAUNDRY DETERGENT
KING SIZE BOLD-3

\$2.99
84 OZ. PKG.

NOTHING SATISFIES LIKE BEEF.

BONELESS CENTER CUT
ROUND STEAK LB. **\$1.89**



HEAVY GRIN FED BEEF
ROUND STEAK LB.

\$1.69



HORMEL FINEST QUALITY BLACK LABEL
SLICED BACON

\$1.79
1 LB. PKG.

HORMEL CURE #1 BONELESS FULLY COOKED
HALF HAMS 4-5 LBS. AVG. LB. **\$2.69**

HEAVY GRAIN FED BEEF BONELESS SIRLOIN
TIP ROAST LB. **\$2.59**

HEAVY GRAIN FED BEEF BONELESS SIRLOIN
TIP STEAK LB. **\$2.69**

GOOCH MEXICAN STYLE
HOT LINKS LB. **\$1.19**

HORMEL LITTLE SIZZLERS PORK LINK
SAUSAGE 12 OZ. PKG. **\$1.19**

GOOCH GERMAN BRAND SMOKED
SAUSAGE 12 OZ. PKG. **\$1.59**

TEXAS VINE RIPENED
CANTALOUPE

19¢
LB.

CALIFORNIA RED DIAMOND

NECTARINES LB.

49¢

CALIFORNIA
AVOCADOS
FOR **\$1.00**
LARGE HAAS

CALIFORNIA THOMPSON SEEDLESS

GRAPES LB. **69¢**

TEXAS LONG GREEN
CUCUMBERS LB. **19¢**

FRESH DAIRY SPECIALS

MARGARINE QUARTERS
PARKAY

2 \$1
1 LB. PKGS.



PILLSBURY BTRMLK/CS.
BISCUITS 4 7 1/2 OZ. CANS **\$1.00**

KRAFT PLAIN/ PIM/ JALA.
CHEEZ-WHIZ 8 OZ. JAR **\$1.99**

BORDENS
DIPS/SOUR CREAM 2/ **\$1**

BORDENS
ICE CREAM 5 QT. **\$3.99**

BORDENS Hi Pro
MILK 1/2 GALLON **99¢**

TOTAL GROCERY SAVERS

SKINNER SHORT CUT ELBO
MACARONI

\$1.19
24 OZ. PKG.

PINE-SOL 15 OZ. **\$1.19**

DEL MONTE ASST. PUDDING OR
FRUIT CUPS 5 OZ. 4 CT. **99¢**

GLADIOLA ENRICHED ALL PURPOSE
FLOUR 5 LB. BAG **99¢**

FOLGER'S INSTANT
COFFEE 8 OZ. JAR **\$3.69**

SUNSHINE CRACKERS
CHEEZ-ITS 10 OZ. PKG. **99¢**

SCHILLING EXTRACT
VANILLA 2 OZ. BTL. **\$1.99**

MAXWELL HOUSE
COFFEE J. I.B. REG. **\$2.29**

BATH SOAP
CAMAY 5 OZ. BAR **59¢**

SHURFINE CUT
GREEN BEANS 16 OZ. **3/\$1.00**

ASSORTED CREAM FILLED
SUNSHINE COOKIES 12 OZ. PKG. **79¢**

GERBER STRAINED FRUITS & VEGETABLES

BABY FOOD

5 \$1
4 1/2 OZ. JARS



POST TOASTIES

CORN FLAKES

\$1.09
18 OZ. BOX



PINK GRAPEFRUIT JUICE

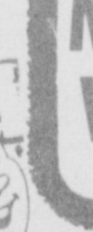
TEXSUN

69¢
46 OZ. CAN



KRAFT

MIRACLE WHIP 32 OZ. **\$1.37**

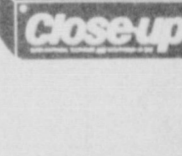


HEALTH & BEAUTY AID SAVINGS

30% OFF LABEL-TOOTHPASTE

CLOSE-UP

\$1.19
6.4 OZ. TUBE



EXTRA STRENGTH
TYLENOL CAPSULES 100 CT. PKG. **\$4.99**

ARMOUR
TREET 12 OZ. CAN **\$1.39**

FROZEN FOOD DAIRY

CRISP CRUST Part / Pizza
TOTINO'S SAUSAGE HAMB. PEPPERONI
PARTY PIZZA 11 OZ. PKG. **99¢**

SHURFINE CRINKLE CUT
POTATOES 32 OZ. PKG. **\$1.09**

STILWELL FROZEN
STRAWBERRIES 16 OZ. PKG. **\$1.59**

SHURFINE FROZEN
LEMONADE 2 12 OZ. CAN **\$1.00**

BOOTH COD
FILLETS 1 LB. PKG. **\$1.99**

Double Stamps

AT AFFILIATED FOODS INC. MEMBER STORE



SERV-ALL THRIFFTWAY

We're proud to give you more!

PRICES EFFECTIVE AUGUST 21-27, 1983
WE RESERVE THE RIGHT TO LIMIT QUANTITIES
WE ACCEPT FOOD STAMPS

STORE HOURS:
8:00 A.M. to 8:30 P.M. - Mon. thru Sat.
9:00 A.M. to 7:00 A.M. Sun.
401 W. American 272-4739

Muleshoe ISD Provides For Special Children

The Muleshoe Independent School District provides comprehensive education services for handicapped children living in the district.

Speech handicapped, learning disabled, emotionally disturbed, autistic, mentally retarded, orthopedically or other health handicapped children who were 3 years of age or older on September 1, 1982 may be eligible for these services. Visually and hearing impaired children may be eligible from birth.

Referrals can come by any source from parents, school personnel, neighbors, doctors, civic agencies, human resource agencies, and others. The referral may be directed to the principal of the school or to the office of Special Education services. Children referred to the Special Education Department receive a comprehensive assessment to aid in determining the needs of the child. A committee will meet to review the data collected and to determine a student's eligibility for special education services. The student's parents attend this meeting. They assist in the development of the student's Individual Education Plan (IEP), if the student is eligible for special education services. At this meeting the student's annual goals are established, as well as short-term instructional objectives.

Muleshoe I.S.D. is in compliance with Public Law 94-142, as well as the State Board of Education and Texas Education Agency. Implementation of the student's IEP attempts to provide an appropriate blend of educational & related services in a learning environment which is the least restrictive alternative for the student.

With an appropriate blend of educational and related services and with placement in the least restrictive environment, the student's program is implemented according to the individual needs of the student and at the student's own rate of speed with all of these elements available when needed: teacher instruction, individualized instruction, special methods, materials, and equipment, service coordination, daily planning, task analysis, and periodic reviews.

With Muleshoe I.S.D. demonstrating its commitment for providing handicapped students with appropriate educational programs, it is anticipated that handicapped students will have the maximum opportunity to develop to their fullest potentials and they will be able to graduate from high school with the necessary skills and social competencies for successful living.

For further information contact Special Education Office at 272-5239.

The Three Way Baptist Church held a business meeting at the church Wednesday evening with supper after the Meeting. Their pastor Rev. Robert Edwards resigned as pastor and is moving to Ft. Worth.

Mr. and Mrs. Rayford Masten their daughter the Bill Solara family all had supper in Whitterrell Friday evening to celebrate the Mastens birthdays.

Mr. and Mrs. H.C. Toombs spent the past week fishing as Lake Kemp.

Mrs. Adolph Wittner was in Lubbock Monday to visit her sister Dorothy Neutzler who is a patient in St. Mary's Hospital.

Mrs. Bulah Toombs spent the week in Morton visiting her daughter the Bob Vinsons.

Mrs. Lula Brinker, a resident of the Three Way community for fifty years died Wednesday in a Lubbock hospital. Funeral services were held Saturday at Three Way Baptist church with burial in Morton Memorial cemetery.

Mrs. Robert Kindler, Mrs. Rayford Masten, Mr. and Mrs. S.G. Long and Mrs. H.W. Garvin went with the Morton senior citizens to see the show Texas Tuesday night.

Three Way News

By Mrs. H.W. Garvin

Soybean Yield Contest Announced

Texas soybean growers have a chance to win some awards by producing a top crop this year.

All they need to do is enter the Texas Soybean Yield Contest sponsored by the Texas Soybean Association and Elanco Products Co. in conjunction with the Texas Agricultural Extension Service, Texas A&M University System.

The contest is designed as an educational tool to stimulate interest in soybean production and to promote production efficiency," says Dr. Travis D. Miller, Extension Service agronomist. "Benefits include the development of worthwhile cultural information, cooperation within the industry to increase production efficiency, and recognition of individuals who achieve superior yields."

Interested producers should contact their county Extension agent for contest rules and entry forms. All entries must be in by Sept. 1.

Each entrant must grow at least 50 acres of soybeans and designate at least five acres to be harvested. There may be only one entry per entire farm operation. Measuring of the land, harvesting and weighing of the soybeans will be supervised by a three-member County Soybean Contest Committee.

This year's contest has been changed somewhat, notes Miller, and will be based on two categories of production -- irrigated and non-irrigated -- rather than on geographical areas.

According to the agronomist, awards -- plaques and supplies of herbicides -- will be presented to the top three producers in each of these two categories. The top producer in each category will also receive an expense-paid trip for two.

With Muleshoe I.S.D. demonstrating its commitment for providing handicapped students with appropriate educational programs, it is anticipated that handicapped students will have the maximum opportunity to develop to their fullest potentials and they will be able to graduate from high school with the necessary skills and social competencies for successful living.

For further information contact Special Education Office at 272-5239.

Mrs. Lula Brinker, a resident of the Three Way community for fifty years died Wednesday in a Lubbock hospital. Funeral services were held Saturday at Three Way Baptist church with burial in Morton Memorial cemetery.

Mrs. Robert Kindler, Mrs. Rayford Masten, Mr. and Mrs. S.G. Long and Mrs. H.W. Garvin went with the Morton senior citizens to see the show Texas Tuesday night.

Alan D. Row M.D. Announces The Opening Of His Office In Ophthalmology Diseases And Surgery Of The Eye 3813 22nd St. Suite 5 Lubbock, Texas 79410 (806) 797-9550 By Appointment Only.

Letter To The Editor

Part of the community received rain and some hail the past week with amounts ranging from light showers to two inches in the north part of the community.

On March 31, 1983 the town of Popayan, Colombia was destroyed by an earthquake. Consequently, schools will not open there next year.

Sixteen year old Mauricio Jose Lopez would like to become an Exchange Student to the U.S.A. and it is hoped, a local family might be located to host him.

Jose is entering the 12th grade. He speaks English and plans to be and M.D. like his father who is a professor in a school of medicine.

His interests include basketball, swimming, bicycling, reading and listening to music. He has four older brothers and sisters plus a twin sister.

Any family willing to provide a bed, 3 meals daily and transportation to school and church should contact Wm. R. Smith, International Fellowship, Inc., P.O. Box 1212, Sedona, Az. 86336, or phone 602-284-1413, collect.

Work Saver Tomorrow has been defined as "today's greatest labor-saving device." -Record, Columbia, S.C.

Irish Wit People nowadays are showing more concern with higher things of life--especially prices. -Irish Digest.

Letter To The Editor

Jose will have his own funds for personal expenses and will be fully insured. He will be one of the family for the school year, sharing in the tasks, joys and concerns, and tax deductible.

Wm. R. Smith International Fellowship, Inc.

Universal It seems that modern statesmen can't tell a lie, either. The correct name for it is "official denial." -Star, Minneapolis.

The Promise

"My, how careful you are of your toys--you've picked up every one. I supposed your mother promised you something for doing it." "No, she said I'd get something if I didn't."

A&M
Five Point
\$10.59
HI PROTEIN DOG FOOD

- A 26% crude protein dog food.
- Formulated for hard working dogs.
- For peak conditioning and performance.

City or Special District: City Of Muleshoe

NOTICE OF CALCULATION OF EFFECTIVE TAX RATE AND PUBLICATION OF ESTIMATED UNENCUMBERED FUND BALANCES

I, Dale F. Jones, Chief App. for City of Muleshoe, in accordance with the provisions of Sec. 26.04, Property Tax Code, have calculated the tax rate which may not be exceeded by more than three percent by the governing body of the City of Muleshoe without holding a public hearing as required by the code. That rate is as follows: \$.71 per \$100 of value.

The estimated unencumbered fund balance for Maintenance & Operation fund: \$-0-. The estimated unencumbered fund balance for Interest & Sinking fund: \$-0-.

Dale F. Jones
Dale F. Jones, Chief App.
Aug. 8, 1983

CALCULATIONS USED TO DETERMINE EFFECTIVE TAX RATE

I. DATA

1. 1982 Total tax levy from the 1982 tax roll	\$ 468,440
2. 1982 Tax rate (\$.57 M&O and \$.06 I&S)	\$ 63 /\$100
3. 1982 Debt service (I&S) levy	\$ 44,595
4. 1982 Maintenance and operation (M&O) levy	\$ 423,845
5. 1982 M&O taxes on property in territory that has ceased to be a part of the unit in 1983	\$ -0-
6. 1982 M&O taxes on property becoming exempt in 1983	\$ 2622
7. 1982 M&O taxes on taxable value lost because property is appraised at less than market value in 1983	\$ -0-
8. 1983 Total taxable value of all property	\$ 68,410,300
9. 1983 Taxable value of new improvements added since Jan. 1, 1982	\$ 1,404,110
10. 1983 Taxable value of property annexed since Jan. 1, 1982	\$ -0-
11. 1983 Tax levy needed to satisfy debt service (I&S)	\$ 22,727
*12. Rate to raise 1982 tax levy due to appraisal roll errors (rate that should have been less rate that was levied) (\$.6543 /\$100 - \$.6300 /\$100)	\$.0243 /\$100
*13. Rate to recoup taxes lost in 1982 due to appraisal roll errors (lost dollars divided by 1983 taxable values) (\$ 17,440 ÷ \$ 68,410,300) 4,807,240	\$.0254 /\$100

* Steps necessary for appraisal roll errors (if more than 1% of total appraisal roll), effective for taxing units on June 17, 1983.

II. CALCULATION

MAINTENANCE AND OPERATION (M&O) TAX RATE

1. (A) 1982 Total tax levy (Data 1)	\$ 468,440
(B) Subtract 1982 Debt service levy (Data 3)	-\$ 44,595
(C) Subtract 1982 Taxes on property no longer in unit (Data 5)	-\$ -0-
(D) Subtract 1982 Taxes for exemptions (Data 6)	-\$ 2622
(E) Subtract 1982 Taxes for productivity valuation (Data 7)	-\$ -0-
(F) Adjusted 1982 M&O levy	\$ 421,223
2. (A) 1983 Total taxable value of all property (Data 8)	\$ 68,410,300
(B) Subtract 1983 Value of new improvements (Data 9)	-\$ 1,404,110
(C) Subtract 1983 Value of annexed property (Data 10)	-\$ -0-
(D) Adjusted 1983 Taxable value for M&O	\$ 67,006,190
3. (A) Divide the adjusted 1982 M&O levy (1-F above) by the adjusted 1983 taxable value for M&O (2-D above) (\$ 421,223 ÷ \$ 67,006,190)	\$.006286
(B) Multiply by \$100 valuation	× \$.6286 100
(C) Calculated maintenance and operation (M&O) rate for 1983	\$.6286 /\$100

INTEREST AND SINKING (I&S) TAX RATE

4. (A) 1983 I&S levy needed to satisfy debt (Data 11)	\$ 22,727
(B) 1983 Total taxable value of all property (Data 8)	\$ 68,410,300
(C) Divide the 1983 I&S levy (4-A above) by the 1983 total taxable value (4-B above) (\$ 22,727 ÷ \$ 68,410,300)	\$.000332
(D) Multiply by \$100 valuation	× \$.0332 100
(E) Calculated interest and sinking rate (I&S) for 1983	\$.0332 /\$100

APPRAISAL ROLL ERROR RATE

5. (A) Rate to raise 1982 levy due to appraisal errors (Data 12)	\$.0243 /\$100
(B) Add rate to recoup taxes lost due to errors (Data 13)	+ \$.0254 /\$100
(C) Total rate to adjust for appraisal roll errors	\$.0497 /\$100

TOTAL EFFECTIVE TAX RATE FOR 1983

6. (A) Calculated maintenance and operation (M&O) rate (3-C above)	\$.6289 /\$100
(B) Add calculated interest and sinking (I&S) rate (4-E above)	+ \$.0332 /\$100
(C) Add rate to adjust for appraisal roll errors (5-C above)	+ \$.0497 /\$100
(D) Calculated 1983 Effective Tax Rate	\$.7118 /\$100

A&M
FARM AND RANCH SUPPLY
OPEN ALL DAY SATURDAY
Prices effective thru: August 24

SUPER MARKDOWN

ALL ITEMS STOCK ON HAND. NO RAIN CHECKS
2-Speed Window Air Cooler
SAVE \$45 299⁹⁵

Whole house cooling with easy, low-cost installation! Completely wired, factory installed motor, pump, float, and bleed-off. Adjustable 4-way air flow and "pump on" control for instant cooling at start up. Thermally protected motor and pump. 3300 CFM. Model WH3300-P2.

ALL COOLERS NOT SHOWN NOW 10% OFF

Cooler Pads	Pump Basket	Brass Sillicok	Float Valve	Cooler Pump	PLASTIC Tubing
129	59 ^c	329	199	799	149 199
Assorted sizes.	Helps prevent clogging.	1/2" AM-135	No. AM-66P	Model P-50	1/2" x 50' 1/4" x 100'

Accessory Items 20% OFF

Belts	2.88-4.81	Main Coupling 1/4" Plast. x 1/2" NPT	.46
Straight Noodle Valve	1.82	Soft-Piercing Valve Assembly	2.32
Angle Noodle Valve	1.38	Overflow Drain	.82
Compression Sleeve 1/4"	.25	3-Way Spider Kit	3.78
Compression Nut 1/4"	.49	4-Way Spider Kit	4.27
Compression Union 1/2 1/4"	.88	Scale Remover Plat.	1.14
Scale Coupling 1/2" Comp x 1/2" NPT	.48	Scale Remover Quart.	1.78
Tube Adapter	.27	Cooler Gasket (Quart.)	2.96
Compression Union 1/4" Plast. x 1/4" Plast.	.88	2 Speed 1-Gang Switch	6.74
Union 1/4" Plast. x 1/4" Copper	.88		

Save Now For Next Spring!



AID TO MILLIONS CLASSIFIED ADS

DEADLINE FOR CLASSIFIED ADS IS TUESDAYS AND FRIDAYS 11:00A.M

CLASSIFIED RATES
1st Insertion Per Word...\$15
Minimum Charge...\$2.30
2nd Insertion Per Word...\$13
Minimum Charge...\$2.00
CARD OF THANKS
Per Word...\$2.20
CLASSIFIED DISPLAY
\$1.70 per column inch
BLIND AD RATES
50% more
DEADLINES
11 a.m. Tues. for Thurs.
11 a.m. Fri. for Sun.
WE RESERVE THE RIGHT TO CLASSIFY REVISE OR REJECT ANY AD. NOT RESPONSIBLE FOR ANY ERROR AFTER AD HAS RUN ONCE.

1. PERSONALS

HOT WEATHER Fertilizer for lawns. Baker Farm Supply. 1-30t-8tc
DALLAS DIET: Lose Up To 10 Lbs. In 15 Days. The Most Effective Diet For Today's Fast-Paced Life Style. Delicious, Safe, Simple. Look & Feel Great! Call: 925-6644. Preferably Mornings. Weekdays. Ellen Glover, Distributor. 1-8tc-32s

HOUSE CLEANING: We will clean your home. Honest, reliable & references. Please write, P.O. Box 97, Muleshoe, Tx. 1-34s-2tp

James's Garden has black-eyed peas & some green beans. Call 925-6716. 1-34s-1tc

I make silk flower arrangements for sale. Call Allie Browning at 272-3718 for your fall and winter arrangements. 1-33s-33s

CONCERNED about someone's drinking **HELP IS AVAILABLE** through Al-Anon Call 227-2350 or 965-2207 or come to visit Tuesday nights, 8:30 p.m. at 1116 W American Boulevard, Muleshoe. 1-18s-tfc

3. HELP WANTED

WANTED Full-charge Bookkeeper with computer experience. Call: 946-3321. 3-tfc-28t

NEED FARM worker. Experience required. Top wages. 965-2259 anytime, 272-3257 after 6 p.m. 3-27s-tfc

HELP WANTED: Cooks and Waitresses. Pizza Hut, talk to manager in person. 3-32s-tfc

Part-time RN or LVN to complete Health History's for Insurance Co. Call 806-747-3223. 3-33t-2tc

APPLICATIONS BEING accepted by Muleshoe Police Department for: Secretary. Requirements: Typing 60 wpm or better. Minimum 5 years secretarial experience. Able to learn dispatching duties. Residency requirement (those not able to meet requirements need not apply) **NO PHONE CALLS ACCEPTED.** Must apply in person, 8 a.m. - 5 p.m., Mon.-Fri., 215 E. Ave. B, Muleshoe. **EQUAL OPPORTUNITY EMPLOYER.** 3-34s-4tc

SECRETARY WANTED: The Muleshoe Chamber of Commerce is now accepting applications for the position of secretary. Typing and bookkeeping required. Apply at City Hall, 215 S. 1st. 34s-1tc-3

Suspicious people are those who judge mankind by themselves.

3. HELP WANTED

EXCELLENT INCOME for part time home assembly work. For information call 504-641-8003 Ext. 8911. Open Sun. 32s-3-3tpeosts

5. APTS. FOR RENT

FOR RENT: One bedroom apartment. Call 272-4754 after 5 p.m. 32t-tfc-5

8. REAL ESTATE FOR SALE

FOR SALE BY OWNER: 3 br, 2 bath brick home. Fireplace, carpeted garage. Beautiful yard & covered patio. Close to high school. 272-3402 or 272-3839. 8-19s-tfc

EXTRA NICE 3-1/2-1. New carpet, paneling through out. Screened in patio. Call 4541 or 5671 after 5:00 p.m. Ask for Debby. 8-13t-tfc

HOUSE FOR SALE: 2350 sq. ft. 3 bedroom, 2 baths, formal living room, den with fireplace, dining room, kitchen, laundry room with sewing center, basement, double car garage, patio, storage shed, 2 lots. Located 1/4 miles east from Earth, Texas on hwy 70. Call (806) 257-3785. 8-14s-tfc

Brick Home. 2,700 Sp. Ft. 1 Acre. Near Earth. Call Jack 293-1736. 8-1m-32s

FOR SALE: 3/4 Miles on Clvs. Hwy. 2 Bdrm, 1 bath, living room, kitchen, family room, 2 car garage (one door). Basement & Domestic Well with submergible pump. Highway frontage, trees & orchard 6/10 Acre. Call 272-3526. 8-2tc-34s

KREBBS REAL ESTATE If it's Real Estate you want, we have it or can get it. Appraisals - Tele. 272-3191-office and residence 8-16s-tfc

JIMMIE CRAWFORD REAL ESTATE & INS. 1725 W Ave E Muleshoe, Texas Phone 272-3666

160 acres West of town with 2 wells.

320 acres N.E. of town with 3 wells.

2-2 Trailer House with 5 lots at Progress.

3-2-with carport in Richland Hills.

4-2-2 with fireplace in Richland Hills.

3-1/2 with carport in Lenua Addition.

HOME WITH ACREAGE. Approx. 10 Acres with Spacious 4 bdrm. brick home & Stucco Barn, Insulated & Heated horse stable, Domestic Well, Fruit Orchard This is beautiful level land, located 4 miles N.W. of Muleshoe. Small distance off U.S. 84. Priced to Sell! Show by appointment only. Contact HUGULEY AND CO. REAL ESTATE. P.O. Box 1316, Clovis, N.M. 88101. Call 505-763-3851 or evenings 505-762-2185. 33t-4tc-11

Contact **Huguley & Co. R.E.** P.O/Box 1316 Clovis, N.M. 88101 Ph. (505) 763-3851 Evenings (505) 762-2185.

9. AUTOMOBILES FOR SALE

FOR SALE: 1979 Ford Fairmont, 4-door, power and air, 30,000 miles good rubber. Current tags. Call 272-4613 or see at 1532 W. American Blvd. 9-30t-tfc

10. FARM EQUIP. FOR SALE

FOR SALE: Avenger 3-Wheel hoe hands with spray tanks attached. Call First National Bank 272-4515. 10-21t-tfc

11. FOR SALE OR TRADE

Ladies Schwinn Bicycle 5 speed. 27-5617 or 272-3487 11-tfc-28t

WE RESERVE THE RIGHT TO CLASSIFY, REVISE OR REJECT ANY AD. NOT RESPONSIBLE FOR ANY ERROR AFTER AD HAS RUN ONCE.

8. REAL ESTATE FOR SALE

8. REAL ESTATE FOR SALE

11. FOR SALE OR TRADE

FOR SALE: 1967 Hicks Mobile Home. Size 8x48. New Carpet throughout. Personally furnished. Very, very good condition. \$4,900 or we will trade for a 32 to a 35 foot travel trailer in good condition. 272-3640. 34s-1tc-11

FOR SALE: A super Single Free Flow Waterbed with a Book-case Headboard. \$140.00 Call 272-3140. 11-34s-4tp

FOR SALE: A complete Welding Rig includes 1976 Dodge 1 ton with a Miller Big 20 Welding Machine & Accessories. 272-3640. 34s-1tc-11

FOR SALE: 3 br, 2 bath unfurnished mobile home. For information call 272-5370. 11-23t-tfc

Band Instruments For Sale: Student or Professional Cornets, Clarinets, Trombones. \$60.00 & Up. Earth: 257-2173. 11-34s-6tc

8. REAL ESTATE FOR SALE

8. REAL ESTATE FOR SALE

15. MISCELLANEOUS

Bring your Aluminum cans to Shorts Iron & Metal for high cash prices. 33 cents per lb. for Aluminum cans. We also buy copper, brass, batteries, radiators, scrap iron and aluminum. 505-762-7337. 511 S. Prince. Next door to American Auto Salvage. 15-33t-tn3

Let Us Paint! House, Trim, Fences, Etc. Free Estimates. Call 272-3600. 33t-3tc-15

LAWN TIRED?SICK? Heal with Lawn Food from Baker Farm Supply. 15-30t-8tc

HONEY FOR SALE

Nick Landers 334 W. Ave. J. 272-3096 15-5t-tfc

Aluminum Cans 31 cents - Garza Scrap Metal. 411 Prince, Clovis, N.M. 32t-9tc-15

FRANK'S REFRIGERATION APPLIANCE & SERVICE PARTS & REPAIR 315 W. 3rd. Ph. 272-3822 15-5t-tfc

8. REAL ESTATE FOR SALE

8. REAL ESTATE FOR SALE

15. MISCELLANEOUS

J.L. SOTO & SON roofing. Roof Jobs. New Repair, Painting, Carpentry Acoustical Ceilings. 272-3668. 15-30t-8tc

HOME REPAIRS. F.M. Saldana Construction. Licensed and bonded plumber. Specialize in cement, carpenter work, remodeling, painting, acoustical ceilings. 272-4955. 15-16s-tfc

To Place Your Want Ads Call 272-4536

After Deadline??? You can call 272-4536 until 5:30 p.m. on Friday and Tuesday and get your WORD AD in TOO-LATE-TO CLASSIFY in the next issue!!! Tuesday for Thursday and Friday for Sunday.

8. REAL ESTATE FOR SALE

8. REAL ESTATE FOR SALE

8. REAL ESTATE FOR SALE

8. REAL ESTATE FOR SALE

8. REAL ESTATE FOR SALE

8. REAL ESTATE FOR SALE

8. REAL ESTATE FOR SALE

8. REAL ESTATE FOR SALE

8. REAL ESTATE FOR SALE

8. REAL ESTATE FOR SALE

8. REAL ESTATE FOR SALE

8. REAL ESTATE FOR SALE

8. REAL ESTATE FOR SALE

8. REAL ESTATE FOR SALE

8. REAL ESTATE FOR SALE

8. REAL ESTATE FOR SALE

8. REAL ESTATE FOR SALE

8. REAL ESTATE FOR SALE

8. REAL ESTATE FOR SALE

8. REAL ESTATE FOR SALE

8. REAL ESTATE FOR SALE

8. REAL ESTATE FOR SALE

8. REAL ESTATE FOR SALE

8. REAL ESTATE FOR SALE

8. REAL ESTATE FOR SALE

8. REAL ESTATE FOR SALE

8. REAL ESTATE FOR SALE

8. REAL ESTATE FOR SALE

8. REAL ESTATE FOR SALE

8. REAL ESTATE FOR SALE

8. REAL ESTATE FOR SALE

8. REAL ESTATE FOR SALE

8. REAL ESTATE FOR SALE

8. REAL ESTATE FOR SALE

8. REAL ESTATE FOR SALE

8. REAL ESTATE FOR SALE

8. REAL ESTATE FOR SALE

8. REAL ESTATE FOR SALE

8. REAL ESTATE FOR SALE

8. REAL ESTATE FOR SALE

8. REAL ESTATE FOR SALE

8. REAL ESTATE FOR SALE

8. REAL ESTATE FOR SALE

8. REAL ESTATE FOR SALE

8. REAL ESTATE FOR SALE

8. REAL ESTATE FOR SALE

8. REAL ESTATE FOR SALE

8. REAL ESTATE FOR SALE

8. REAL ESTATE FOR SALE

8. REAL ESTATE FOR SALE

8. REAL ESTATE FOR SALE

8. REAL ESTATE FOR SALE

8. REAL ESTATE FOR SALE

8. REAL ESTATE FOR SALE

8. REAL ESTATE FOR SALE

8. REAL ESTATE FOR SALE

8. REAL ESTATE FOR SALE

8. REAL ESTATE FOR SALE

8. REAL ESTATE FOR SALE

8. REAL ESTATE FOR SALE

8. REAL ESTATE FOR SALE

8. REAL ESTATE FOR SALE

8. REAL ESTATE FOR SALE

8. REAL ESTATE FOR SALE

8. REAL ESTATE FOR SALE

8. REAL ESTATE FOR SALE

8. REAL ESTATE FOR SALE

8. REAL ESTATE FOR SALE

8. REAL ESTATE FOR SALE

8. REAL ESTATE FOR SALE

8. REAL ESTATE FOR SALE

15. MISCELLANEOUS

GRUBWORMS? They're eating your lawn now if brown irregular patches are starting to show up. Professional control or assistance. Decorators Nursery & Floral, Danny 272-4340. 33s-3tc-15

Acoustical ceilings blown. Phone 272-4083 after 6:00 p.m. 15-34s-3tc

REPOSSED SIGN! Nothing Down! Take over payments. \$58.00 monthly. 4' x 8' flashing arrow sign. New bulbs, letters. Hale Signs. Call FREE 1-800-626-7446, anytime 15-34s-1tpts

WE BUY USED FURNITURE AND APPLIANCES CALL 272-3030 HARVEY BASS APPLIANCE 15-5t-tfc

Opening for another child in registered home. Call 272-4777. 15-34s-3tc

STORAGE ROOMS FOR RENT \$25.00-\$30.00 **TED BARNHILL** 272-4903 15-14s-stfc

Round-up Application 30" or 40" Rows Cotton Milo, Soybeans and Layout. Pipe Wick Mounted on Hi-Boy. Call: Roy O'Brian 265-3247 15-1m-31t

MOBILE HOME OWNERS: Keep your home in good repair with low cost parts and supplies from **FUTURE MOBILE HOME SUPPLY** 117 W. 2nd Clovis, N.M. 505-769-2235 34s-tfc-15

8. REAL ESTATE FOR SALE

TOWN and COUNTRY Real Estate

AFFORDABLE 3 bedroom 1 bath living room and large den with fireplace. ***

Gracious living in this spacious 2-2 fireplace in excellent condition located in Lenua Additions finest area. ***

Need an office at home? 2-1/2 offers just that plus RV shed in rear moderately priced. ***

Large kitchen with lots of storage. Great for growing family. ***

OWNER ANXIOUS to sell 3 bedroom, 2 bath brick, double garage. Country Club Addition. ***

PLACE YOUR LISTINGS WHERE THE ACTION IS! CALL US. John W. Smith Broker 806-272-5335 223 East Ave. B Muleshoe, Tx 79347 8-34s-stfc

TOO LATE TO CLASSIFY

Relief-Night Watchman Wanted for Feedyard. Apply Farmer County Cattle Co. 4 1/2 miles west on Hwy 60 from Bovina, TX. Contact Frank McSwan. 806-225-4400 tlc-tfc-31t

Speaking About Time "Pardon me, but have you the correct time?" "Don't keep any artificial time, mister. It's just milkin' time and I don't pertain' to be any statistician. If you're a city daylight savin' man you kin do your own addin', subtractin', or multiplayin'."

Those who love money greatly are never much in love with anything else. ***

No one can afford serious mistakes but everyone makes them. ***

Those who violate the law should not object to the penalty. ***

Life can be enjoyed by all who are willing to accept it patiently. ***

FOR LEASE FOR SALE

FOR LEASE/PURCHASE YOU NAME YOUR OWN TERMS! 640 Acres. 6 wells. 2 Electric Valley Pivots. 6 Siderolls. Ideal for Grazing Operation. 272-4266

AMERICAN VALLEY INVESTMENTS REALTORS

Derrell Matthews 965-2127 Rex Harris 272-5183 11tc-33t-2tp

PUBLIC NOTICE

NOTICE OF SPECIAL (EMERGENCY) MEETING OF THE GOVERNING BODY OF THE

MULESHOE INDEPENDENT SCHOOL DISTRICT Notice is hereby given that an emergency and/or urgent public necessity meeting of the governing body of the above named political subdivision will be held on the 30th day of August 1983, at 6:30 a.m. in the School Administration Office 514 West Avenue G, Muleshoe, Texas, and the subject of said meeting will be 1. Consider amending the 1982-83 school budget. 2. Consider adopting the 1983-84 school budget. 3. Consider setting the tax rate for 1983. 4. Personnel considerations. A. Executive Session, B. Consider appropriate personnel action following executive session.

The fact that this meeting deemed necessary and the fact that the subject matter of said meeting is urgently needed to maintain and operate said political subdivision for the best interest of said political subdivision, makes it an emergency or urgent public necessity that said meeting be held. DATED this 17th day of August, 1983. Muleshoe Independent School District, By H. John Fuller, Supt.

I, The undersigned authority, do hereby certify that the above Notice of Meeting of the governing body of the above named political subdivision is a true and correct copy of said Notice, and that I posted a true and correct copy of said Notice on the bulletin board, located at 514 West Avenue G, School Administration Office, Muleshoe, Texas, a place convenient and readily accessible to the general public at all times, and said Notice was posted on August 17, 1983, at 2:00 o'clock p.m., and said time of posting was at least 2 hours before said meeting was convened or called to order. I gave notice by (telephone) (telegraph) to KMUL Radio, Channel 6 Broadcasting, Muleshoe Journal. Dated this 17th day of August, 1983. Muleshoe Independent School District By H. John Fuller, Supt. 34s-1tc-18

Those who love money greatly are never much in love with anything else. ***

No one can afford serious mistakes but everyone makes them. ***

Those who violate the law should not object to the penalty. ***

Life can be enjoyed by all who are willing to accept it patiently. ***

You can always question the intelligence of the man who boasts of what he knows.

Speaking About Time "Pardon me, but have you the correct time?" "Don't keep any artificial time, mister. It's just milkin' time and I don't pertain' to be any statistician. If you're a city daylight savin' man you kin do your own addin', subtractin', or multiplayin'."

Those who love money greatly are never much in love with anything else. ***

No one can afford serious mistakes but everyone makes them. ***

Those who violate the law should not object to the penalty. ***

Life can be enjoyed by all who are willing to accept it patiently. ***

You can always question the intelligence of the man who boasts of what he