

The Floyd County Hesperian-Beacon

50¢

Floyd County Historical Museum
Box 304
Floydada, TX 79235

"Celebrating 105 Years of Floyd County News"

<http://www.texasonline.net/floydco>

Thursday, July 5, 2001

©The Floyd County Hesperian-Beacon

Floydada, Texas 79235 (USPS 202-680)

Volume 105 Number 27



FLOYD COUNTY FARMERS KEEP ON KEEPING ON-Lakeview farmer Joe Max Harrison is shown mounting his tractor recently trying to keep the weeds down in his dry fields. Cotton in the background is starting to suffer for lack of moisture. Rain in Floyd County has been spotted. (see related story) Staff Photo

Weather and prices create uncertain future for farmers

By Darwin Robinson

The Floyd County farmers have taken some big financial setbacks in the last three or four years. These hard economic difficulties were brought on by drought, hail, wind, boll weevils, thrip insects, high fuel costs, expensive equipment, and above all, the low market selling prices.

In a recent article in the Lubbock Avalanche Journal, June 24, it stated that out of the 3.7 million total acres planted on the High Plains this year, around 350,000 to 400,000 acres of irrigated crops had already been declared lost due to weather related disasters and another 400,000 acres of dryland acres would probably be declared lost by the end of June, with another 350,000 acres in doubt.

Roger Haldenby, a vice president of the Plains Cotton Growers, said, "It's like predicting what the weather's going to be like in September. Insurance settlements would not cover the actual cash value for lost cotton."

According to Trent Johnson of the USDA/Farm Service Agency here in Floyd County, of the approximate 190,000 acres of cotton planted this year in Floyd County, 10,000 acres were lost on June 5th due to the hail storm in the southwest part of the county. 85,000 acres more were damaged due to hail, wind, static electricity, and hard rain.

Texas Tech Professor/Chairman Don Ethridge of the Agriculture and Applied Economics Department, in

the same A-J article of June 24, said, "The seriousness of the thing (the farmer's dilemma) has a lot more to do with the markets they are facing than the weather. Economists generally consider that a region loses \$3 for every dollar of cotton that is not produced."

"Those economic pressures include developing countries flooding the American market with subsidized textile products, which decreases the domestic market for U.S. cotton," Ethridge said.

U.S. Rep. Larry Combest and chairman of the House Agriculture Committee is very concerned over the plight of the American farmer and what it could mean to rural America, according to an article in the Plainview Daily Herald, June 22.

Combest said, "I don't want to de-emphasize how significant agriculture is (on the High Plains). There is just not another industry that can come in and replace that industry."

In a May interview, Combest emphasized how he and his colleagues were trying to pass a budget resolution providing an additional funding amount of \$79 billion for 2001-2002.

"During my 16 years in Congress, I have worked to cultivate an appreciation of agriculture and rural America. I believe this additional funding is unprecedented and proof of our commitment to America's producers," Combest said.

However, the resolution failed and

the House Ag Committee voted 24-23 to adopt a \$5.5 billion cap provision for additional funding, with \$4.6 billion of that going to market loss payments to major crop producers.

Floyd County Extension Agent J.D. Ragland told the Hesperian-Beacon, "We need a good rain. About sixty percent of the cotton planted in Floyd County is irrigated and about forty percent is dryland. We have some producers with crops that just look excellent, then we have some that do not have anything."

Concerning the lost 10,000 acres of cotton hailed out on June 5th, Ragland said, "The hail was real spotted and it varies from place to place as to what they have left. Some producers replanted with hay grazer, and then others have left it alone and will replant with some early wheat in August."

Ragland said, "In Floyd County this year, we will have about 60,000 acres of sorghum, 10,000 acres of corn, 3,500 acres of sunflower, 1,800 acres of pumpkins, and 1,000 acres of guar."

"The producer needs to be diversified (in crops being planted)," Ragland said, concerning the low cotton prices facing the farmers today.

Ragland added, "The current farm bill we are under has hurt us in some instances, and needs to be restructured, primarily with the free trade agreement with other countries. This has had an impact on our prices, along

Continued On Page 2

Thank God for America

There is a legend told of a boy who came to a capital where men from all countries were met to talk about life and living. And he turned to an old man to ask, "How can I tell which is an American and which a European--since all are speaking one language?" The old man pondered a moment, and in time he began to speak. And he was heard to say...

"Look around you carefully, my son. If he wears a worried countenance--he is an American fighting for business. If he wears a gas mask--you will know he is a European fighting to live. Listen carefully--and if you hear him speak out boldly, unafraid, a free man--you will know he is an American. If you hear him speak in a bated whisper, fearful, turning his head left and right to see if he is being overheard--you can be absolutely certain of one thing--he is not an American.

"Walk among children, my son, and if you hear talk of camps where children play under blue sky you will know they can be Americans. If you hear whispers of concentration camps to which men are exiled--you will know they are not Americans.

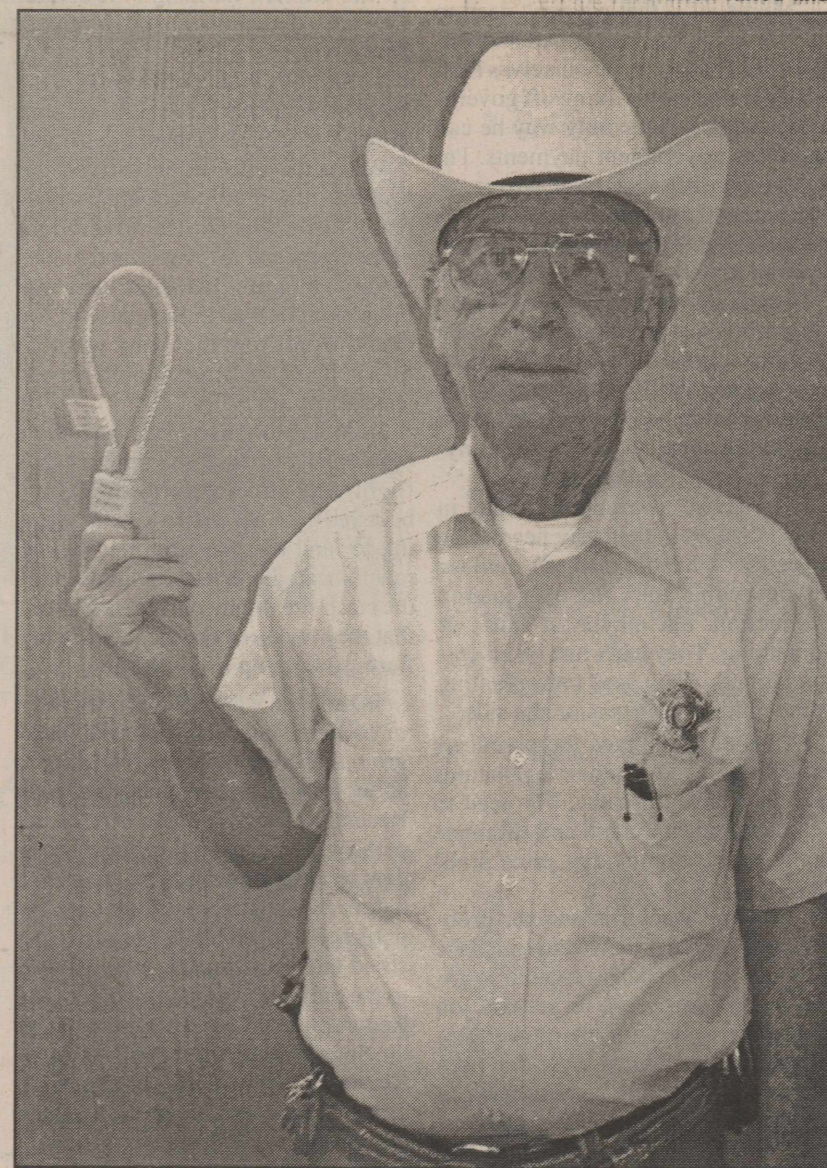
"Walk into homes, my son, and if you find food and comfort and hear echoes of laughter and young people speaking of their dreams of tomorrow, you will know they can be Americans. If you find tables bare of food and warehouses loaded down by supplies stored for war--if you find children who no longer dream but count each tomorrow as one more day towards a new devastation, you will know you are in an old world, my son.

"Walk into schools and universities--and if you find teachers who are free to teach and pupils who are free to inquire--you will know you are very likely in America, for there you will find the sons and daughters of all men, all free to learn and to speak regardless of race or religion. But if you find rigid regimentation, and you find schools are barred to some and open to some, and only what one man believes to be true is taught and offered as education and knowledge, you will know by the heads which are bent down and the eyes from which all spark and love of life and living are gone--you will know you are in an old world, my son.

"Do you find men who worship God as they believe in their hearts--do you find men free to speak out, to write and to read and feel no terror--you will know you are in America, or in one of the few remaining countries where such freedom still lives, my son. Do you find men marching behind one man--living dead men, who do as one man wills--do you find fear and foreboding and hunger and pain and a complete surrender of liberties for an old world, my son, where dead men walk and chant a hollow, empty, melancholy dirge of blind obedience to a man by whose words they and their children eat or go hungry, live or perish...

"Go into legislative assemblies. Do you hear a man stand up to protest and declare his political opposition; do you hear debate which is free, do you hear men vote and say, 'No, I vote no, when majorities say 'Yes.' Do you hear men rule in courts of law and say, 'This law which you have passed is illegal because it violates our constitution, our bill of rights and our sacred concept of freedom.' If you do, you may know that that is the American way, my son. But if you find men waiting for one man to say what tomorrow shall bring, and you find all men who surround him chanting agreement as do many puppets--knowing disagreement would bring agonizing retribution, swift and terrible, then you will know you are in a dying world, my son--where a few men are free--where all which remains of centuries of civilization is a tiny fragment growing smaller each passing hour. You will know you are in a world, my son, where life is a strange interlude between wars--between generations which are born only to die in pain and travail and mud. Realizing all this, my son, you will say in the quiet of your heart, as many millions of Americans are saying..." "Thank God for America."

This was originally printed in a Feb. 1945 "Patriotic Ideals" magazine and again in "American Ideals" published shortly after the Korean War. It was given to this paper by Darlinda Marquis, of Floydada. We will be reprinting stories from this magazine through July in celebration of our liberties and independence.



FREE GUN LOCKS--Sheriff Royce Gilmore holds up one of the 100 gun locks recently delivered to the Floyd County Sheriff's Office and which are now available free to the public. The locks can be used on most firearms and can also be used to lock a gun to a solid object.

Free gun locks now available

One hundred cable gun locks were recently delivered to the Floyd County Sheriff's Department as part of Project ChildSafe, sponsored by the Office of the Governor and the Texas Criminal Justice Division.

The gun locks will be available, for free, at the Justice of the Peace Office in Lockney and the Floyd County Sheriff's Office in Floydada. The only requirement to obtaining a lock is to sign your name so the offices can keep track of how many locks were given away.

The lock consists of a vinyl-covered steel cable with one end permanently secured to a keyed padlock. When properly installed, the firearm is unloaded and the lock prevents the firearm's action from closing. Before installing the gun must be unloaded and the safety must be on safe.

The lock is only meant to discourage unauthorized access to a firearm, particularly by young children. The lock can be cut by a "determined" individual and it may not prevent intentional misuse of a firearm. The keys to the lock must be stored away from children.

The lock will work on automatic pistols, revolvers, automatic and pump action shotguns, and bolt action rifles.

RC&D grant money available for a variety of community projects

By Claude Ross

The Wes-Tex Resource Conservation and Development (RC&D) Area, Inc. has announced the availability of \$5,000 in the 2001 Matching Grant Program for local communities.

Bill Odom, President of Wes-Tex, says "Our goal is to make these funds available to the communities and organizations in our sixteen county area for local projects."

The county RC&D council or local RC&D Council Director must approve the submitted grant application. Grants will require an equal match of local contributions or donations and will be limited to \$500. Applications will be due in the Wes-Tex RC&D

office by August 15, 2001.

The grants can be used by civic organizations, for community programs and school endeavors, by Chambers of Commerce, and Fair Boards. "The grants are meant to help improve the community in some fashion," said Odom.

The RC&D program is authorized by USDA and administered by the Natural Resources Conservation Service (NRCS). The individual RC&D councils direct the program to the needs of the local communities.

Odom says "We hope that more funds for this program will be available next year." Congress appropriates funding yearly for the RC&D pro-

gram. Odom also says, "Our U.S. Senators and Representatives have been tremendous supporters of the RC&D program. Recently the House Agriculture Appropriations Subcommittee increased the RC&D program by \$6.438 million."

For more information and to obtain grant applications, contact your local USDA-NRCS office at 983-2352, or RC&D Council Director, Dora Ross at 983-3107 or by calling the Wes-Tex RC&D office at (806) 266-5067.

The Wes-Tex RC&D Area and the United States Department of Agriculture (USDA) prohibits discrimination in all its programs and activities.

BY THE WAY



By
Alice Gilroy
floydada@amaonline.com

Retort for Malcontents

By Edgar A. Guest

*Son, when some alien comes prating
Of better than what you possess,
Endeavoring to trade you with hating
Your more for his pitiful less,
Look off to the land of his leaders,
Where men in subjection remain,
And mothers are cannon-food breeders,
Then ask if he thinks you insane.*

*Son, when you hear someone mutter
Disdain of your land of the free,
Ask if for bread they have butter,
And sugar and cream for their tea?
Ask 'neath the rule he's admiring
If workers drive cars of their own
And what worth the toil of acquiring
In his land has ever been shown.*

*Son, when you hear someone screeching
Disdain of the wages you earn,
Just ask to the land of his teaching
Why quickly he doesn't return?
Ask why he lingers here neck-fast
'Neath the flag which he'd have you discard,
Having two eggs and bacon for breakfast,
Instead of his black bread and lard.*

*Ask if that ism he'd fled from
Enriched or impoverished his clan;
If the teaching he hurried in dread from
Made easier the lot of a man?
If so, then why didn't he stay there
Instead of deciding to flee
And escaping the lashes that flay there
To come to this land of the free?*

Farmers face uncertain future

Continued From Page 1

with the weather. "For example, gas prices go up just because they could, why can't the cotton industry do that. Oil prices go up the same way. Heating bills go up during the winter, then why can't cotton go up. All other industries do it, except the cotton industry.

"We have a real disadvantage in this part of the world in producing a cotton crop, because we have a very high input cost, compared to other countries. And that is what hurts us around this area with cotton.

"We have basically been in a six to eight year drought here. It cost the producers here three or four times more to produce the same type, kind, and quality of cotton as they do in other parts of the country," Ragland said.

"I do believe agricultural, in terms of prices and commodities, will turn around. We will see the day again of .80 cent to .90 cent cotton, but I don't know when that will be. I know the producers are out there right now having a tough time just hanging on.

"Our current price for cotton today is the same as we were getting 30 to 40 years ago. We have all these increased input prices that keep going up for production, but the price is staying down where it was 40 years ago."

Concerning China's impact on the cotton market, Ragland continued, "For example, China can produce more cotton at a cheaper price with only hand labor. They have small acreages, but in a highly populated country, they can hire their labor for nearly nothing and produce a crop for nearly nothing.

"They say, China has enough cotton in storage right now to supply the world for three to five years. I believe our cotton mills need to take some sort

of means to assist in pricing. They need to cater to our producers here, rather than buying cotton from China and shipping it over here.

"My belief is that we don't need to trade with anybody else but ourselves. We need to take care of ourselves first. Today the farmer is living off government and that is the only way he can make his government payments. I'm not saying that is right or wrong, or indifferent. I am glad we have it now, because that is the only way they are making it work.

"I think we will always need to have some sort of a government program to protect against disasters, but right now we are totally dependent on the government to pay our bills. We need this today or we wouldn't have anyone farming," Ragland added.

"My advice to producers today in Floyd County is that they need to be diversified (in crops planted), until we get out of this hole. Not only in crop production, but maybe in cattle or something. They can't just be all cotton farmers. They need to be planting some milo or soybeans on the side.

"I would encourage the producers to get involved with their legislatures and the farm programs. We need to restructure the farm bill and eliminate some of our commodity price problems.

"The boll weevil is another problem and the program we have in place is going to be expensive and it is going to take ten years to get this job done."

Ragland concluded, "We don't see many young people coming back to the farm, and at this point in time, you can't blame them. This concerns me, because who is going to be farming in the next twenty years? The average age of farmers in Floyd County is 60 years old. That bothers me," Ragland concluded.

Courtroom Activities

In District Court, last week, Tony Zuniga, 29, of Floydada, pled guilty to Felony DWI. He was sentenced to 4 years which was probated for 4 years. He was fined \$500 and court costs and his driver's license was suspended for one year. He must also have a breath analysis mechanism on his vehicle.

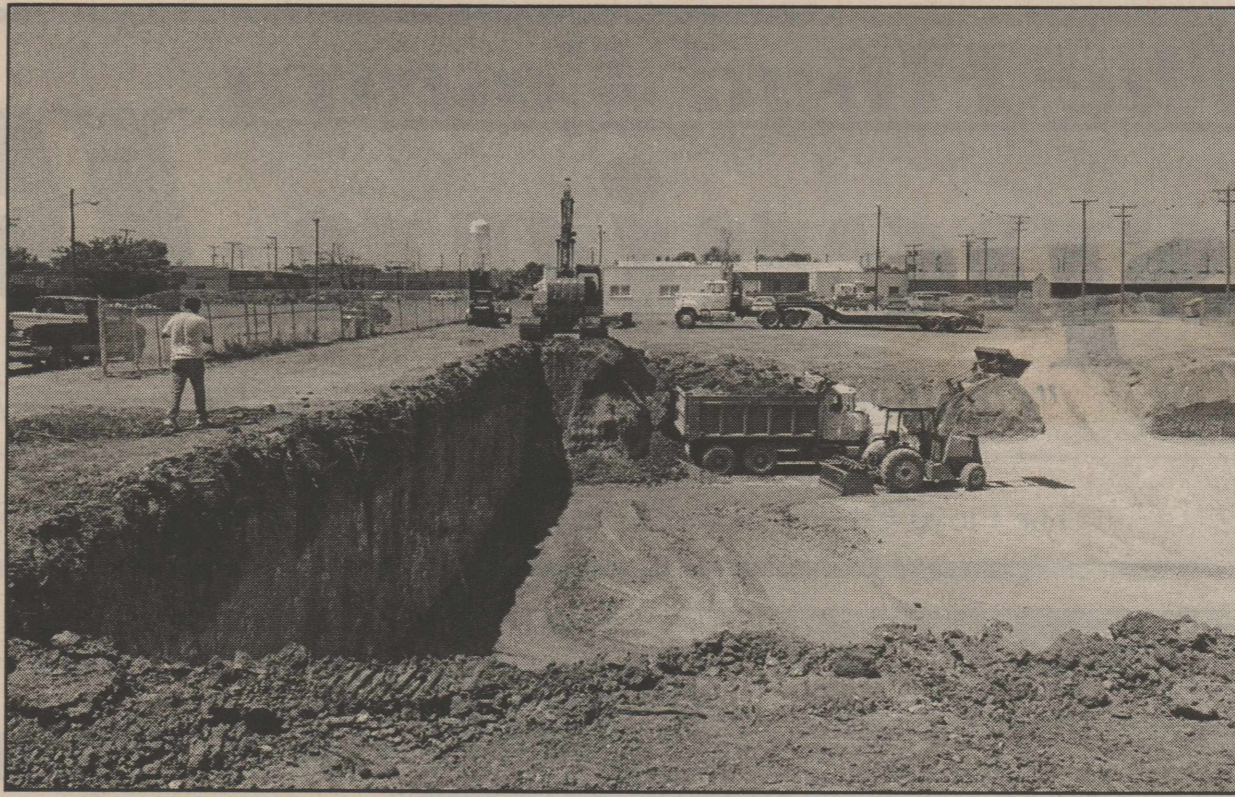
In County Court, June 28, 2001: Tauren McDonald was charged with Possession of Marijuana, 2 ozs. or less. There was no disposition on this case.

McDonald was also charged with Abuse of a Volatile Chemical to which he pled guilty and was sentenced to 90 days in jail plus court costs.

FLOYDADA FORD - MERCURY

Will Replace Your
Firestone Wilderness AT's
(On your Ford vehicle)
At No Charge.

Just Call Danny Frances at 983-3761



FIRST STAGES OF THE NEW MULTIPURPOSE BUILDING-Last week workmen were digging a basement for the activities center and fellowship hall for the new building of the First Baptist Church of Floydada. Construction is underway and material for the new structure will arrive soon. The old sanctuary and the old Sunday School building were destroyed by a fire on March 12, 2000.

Floydada EMS sponsors blood drive

Floydada EMS will sponsor a Blood Drive, Saturday, July 7th, from 10:00 a.m. - 5:00 p.m.

The Blood Drive will be held in the EMS Center, 109 N. Main.

Appointments should be made in advance by calling Paul Moore, at 983-3004.

Donors must bring picture I.D. and a list of medicines being taken. All donors will receive a t-shirt.

SHAKLEE
983-5246

THE FLOYD COUNTY
HESPERIAN-BEACON
(USPS 202-680)

Published weekly each Thursday at 111 E. Missouri St. Floydada, Texas 79235. Periodical postage paid at Floydada, Texas 79235.

Yearly subscription rates: Floyd County: \$18.00. Out of county and out of state: \$21.00.

POSTMASTER: Send change of addresses to: The Floyd County Hesperian-Beacon, 111 E. Missouri, Floydada, Texas 79235.

For more information: Call 806-983-3737, or 806-652-3318, Monday-Friday, 8:00 a.m. - 5:00 p.m.

Ken Towery.....owner
Alice Gilroy.....Publisher & Editor

email: floydada@texasonline.net
Web site: http://www.texasonline.net/floydco.

Letters to the Editor

Dear Editor:
June 10, 2001

The March 30, 1944 edition of the Hesperian reported the crash of a B-24 Liberator two and one half miles west of Floydada. The war was in full swing at that time and the U.S. Army released no information as to the cause of the crash. The Hesperian reported that the gallant young airman struggled to save their plane but lost a fight with the elements.

I was seven years old when this crash occurred. My family lived about a mile west of the center of Floydada and about a mile and a half from the crash site. It was bedtime for children my age and mother had just given her last warning to get to bed. There were a number of airplanes flying over at the time and my mother said: "Those are just boys flying those planes." At that moment we heard a tremendous roar of an airplane much closer than normal. A few seconds later my brother Douglas came running into the kitchen yelling, "An airplane just crashed." The whole family went to the back yard and saw a wall of flame on the western horizon. A few minutes later there was a stream of cars going from town to the vicinity of the crash site. My family only stood in the back yard and marveled at the amount of fire a single plane could generate.

When the Hesperian arrived we learned little more than what we already knew. We did learn the origin of the flight and the names and hometowns of the crew. However, there was no information as to the cause of the crash. Word from the Army was that no such information would be released.

Folks around Floydada had their opinions as to what the crew of that flight was attempting to do. Many believed that the crew was attempting to land the plane on the Massey ranch located just to the southwest of the crash site. Many observers insisted that they had seen the plane dropping flares to light up a landing area.

In time the war ended and for most of us the event faded into the background. I for one always wondered about what really happened that night. Recently I learned that a service out of New Jersey would research accident reports for events that happened before 1945. Apparently all such reports before that date had been declassified and those reports are available to the public. I obtained a copy of the Report of Aircraft Accident Issued by the South Plains Army Air Field (now Reese Air Force Base) at Lubbock, Texas. The narrative portion of the report reads as follows:

"At approximately 2110 CWT (Central War Time) 26 March 1944, B24E #42-7409, piloted by 2nd Lt. Leslie A. Porter, Jr., with the crew listed in Column 10 on opposite side of this report, lost 22-1/2 feet of left wing at an undetermined altitude approximately 2 miles West of Floydada, Texas. The aircraft was flying in a southerly direction, and continued in that direction for approximately three-

fourths of a mile before it struck the ground in an inverted position, destroying the aircraft completely and killing all occupants. The parts of the aircraft, which were not scattered away from the aircraft, burned completely upon impact. The pilot was briefed to fly at 11,500 feet altitude. He reported in, by radio, 5 miles West of Amarillo, Texas, at 2040 CWT, at this altitude, giving no indication of trouble. At exactly 15 minutes later (2055) CWT the radio operator made his last entry into the log requesting weather conditions at Peterson Field from station 4-LR. Two requests were made at that time and the radio log indicates that no response was received. This request for weather is believed to be a routine request required as a part of the training mission."

"It is believed, that the responsibility for this accident rest with the pilot (pilot error - technique) for losing control of the aircraft, permitting it to go into a dive and pulling out sharply, causing the wing to come off. A known contributing factor is the loss of 22-1/2 feet of the left wing, which caused the airplane to dive into the ground in an inverted position. It is believed, that a possible contributing factor was the restricted visibility, estimated at 1-1/2 miles at the time of the accident.

"The above opinions are based on the opinions of Colonel William Lewis, Jr. Commanding Officer, Peterson Field, Colorado Springs, Colorado, and Captain Walter M. Blakey, Aircraft Accident Investigator of Peterson Field, both of whom have technical and flying knowledge of B-24s, and both of whom assisted in this investigation.

"Corrective Action: AAF Form 54, Unsatisfactory Report, submitted."

"Recommendations: It is recommended, that the wing of this airplane and the ailerons, which are at this station in a remarkable good state of preservation, be forwarded to the competent investigating personnel to further determine the exact cause of this accident."

This report was signed by Jack Payne, Major, President of the investigating committee; R.O. Mosher, Major; and Ernest W. Walden, Captain, members of the investigating committee.

The finding of pilot error was concurred in by the commanding officer of the South Plains Army Air Field, Col. James A. De Marco.

The receipt of this accident investigation report was a let down for me. I

had always imagined that the crew of this plane had detected problems and that they had circled over Floydada looking for a landing site. In the nighttime the Massey ranch would have presented a black hole that would indicate that there were no houses and therefore it was a safe place to attempt a landing. The reports of flares having been seen were consistent with this theory. Then the imagined scenario came to an end with an official find-

ing of pilot error. In 1944 all of the men who were in uniform were heroes. It was too much for a young mind to comprehend at that time that such an event could be just the result of human error.

I do not know how many people are left around Floyd County who remember this event. However, I felt that there had to be a few people who would remember and who would appreciate hearing of the official report.

Sincerely,
Cypert O. Whitfill

On the "Way to Go! Good Neighbor Tours" children will meet Old Testament and New Testament people who became neighbors and understood that the "Way to Go" was to love God and their neighbor as themselves and be neighbors themselves

We want all children to join us for "Way to Go" stories, songs, games, crafts, and fun!



Daily tours will be at Lockney Methodist Church on Sunday, July 8th through Thursday, July 12th between the hours of 6:30 pm and 8:30 pm. For information call the church office at 652-2193

NEW ARRIVALS!!!

Candles by Heartland America

Banana Nut
Blueberry Muffin
Vanilla Butter Crunch
Melon Patch
Baby Powder
And more!!

Solid Jars
Tri-Colored Jars
Votives

Pretty, Smell Yummy and Burn Great

Don't Forget Our Sale on Baseball Pants, Socks & Belts

KALEIDOSCOPE

110 S. Main
Lockney

652-2960

Jamaica

WHERE: St Mary Magdalen Catholic Church, Floydada

WHEN: July 14, 2001
Time 9:00am-?

LIVE MUSIC: 11am Los Centinarios
4pm Los Termentos
Mariache Flores
5 to 6:30pm Mariache
7pm Group Motivo Amino

Food: Tamales, Gorditas, Briskets, Menudo, Hamburgers, and much more!

Lots of different games to play and religious gifts to buy.

COME JOIN THE FUN!

Estate Planning - Retirement Savings
Family Protection - Loan Requirements

ALL GOOD REASONS
FOR LIFE INSURANCE

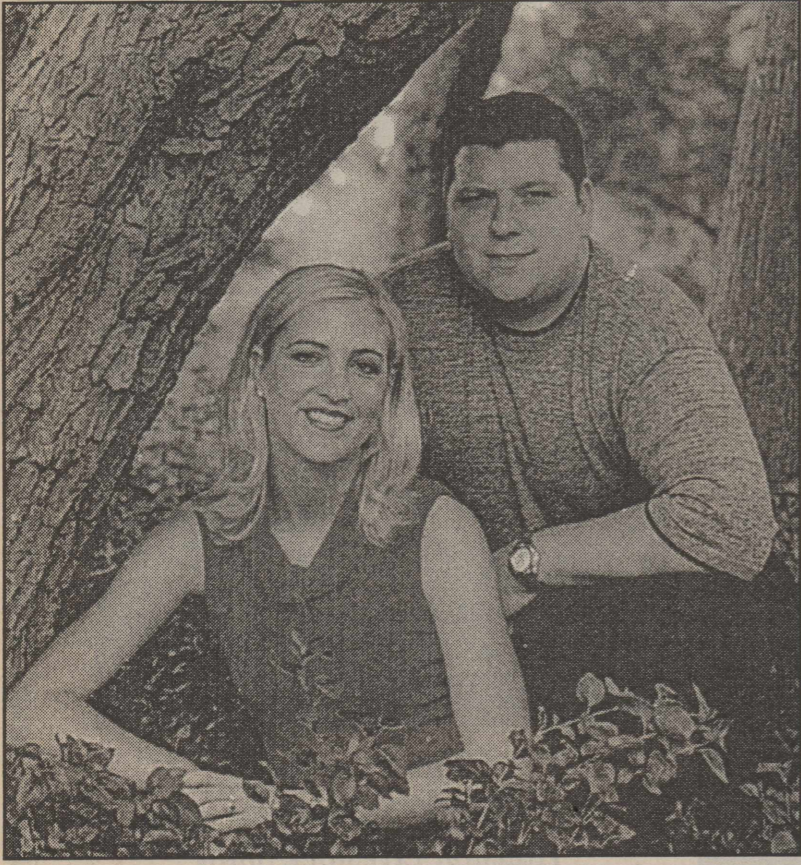
GOEN & GOEN

HAS A POLICY TO FIT YOUR NEEDS

Come by for more information

102 E. California 983-3524

www.goen-goen.com



JULIE ANNE ROWAN AND JERRY DON

Rowan and Evans

Bill and Karen Evans of Wolfforth, formerly from Lockney, wish to announce the engagement and approaching marriage of their son, Jerry Don, to Julie Anne Rowan, daughter of Garland and Marilyn Rowan of Lorena.

Jerry Don attended school in Lockney ISD before moving to Wolfforth where he graduated from Frenship High School in 1991. He graduated from the University of North Texas, where he earned a Bachelor of Business Administrative degree in Marketing in 2000. Jerry Don also served four years in the United States Marine Corps.

The bride-elect is a 1993 graduate of Lorena High School, a 1998 graduate of the University of Texas at Austin, where she earned a Bachelor of Science degree in Applied Learning and Development, and a 1999 graduate of the University of Texas at Dallas, where she earned a Master of Arts degree in Interdisciplinary Studies.

The couple will marry August 4, 2001, at Miller Chapel on the campus of Baylor University in Waco. Following a honeymoon, the couple will reside in Plano.

Floydada Senior Citizen News

By Margarette Word

The center is open Monday through Friday. July 4th is a holiday and the center will not be open. If you are 60 years or older this center is for you.

Evelene Goodnight's daughter Peggy Nicholson from Omaha, Nebraska was at the center Tuesday, June 26th. She was also here to help Bob Goodnight celebrate his 80th birthday last Saturday, June 30th. Bob received lots of cards and a few gifts at his party. There were about 35 friends and relatives at the center helping him celebrate.

Edna Patton's son Larry Patton of Florida ate lunch with his mother at the center Wednesday, June 27th.

Sue Lowell, her daughter Lu Ann Collins and sons John and Jim of Lubbock have just returned from visiting Sue's sister Lu Artz in Santa Monica, California. While there, they visited Santa Monica Pier, Bel Air Boys Club, Universal Studios, and the beach.

My son, Greg Bond, spent last weekend with me. His wife Mona and their children, Bethany and Michael spent the weekend in Lubbock with her family. They live in Granbury.

I want to "Thank" the highway department for fixing the chug holes and the bad lumps in the streets that I drive on here in Floydada. My car appreciates you too.

Betty Threadgill had knee surgery last week. She is home now.

Billie Jordan had back surgery last Friday, June 29th.

Hollis Payne is still in the hospital. Thank you for remembering the center when you need to make a memorial donation.

In memory of **Blanche Williams** -

Imelda Ramsey, Edna Patton.

In memory of **Alma Dunn** - Fred & Carolyn Marble, Lola Pahl, Guy Garrison.

In memory of **Joy Jones** - Janet & Jerry Chapman, Mr. & Mrs. Bob Goodnight, Willie McCormick, Kyle & Diana Glover, Darrell & Nancy Mayo, Edna Patton, Guy Garrison, Mamie Bunch.

In memory of **Carl Turner** - Charlene & Harold Norrell.

In memory of **Doris Huckabee** - Mr. & Mrs. Harold Norrell.

In memory of **Elaine Stout** - Mr. & Mrs. Harold Norrell.

In memory of **Beulah Hammons** - Edna Patton.

In memory of **Omer F. Pearson** -

Faye & Ruby Gooch, Irene King.

Thought for the week
Let freedom reign. The sun never set on so glorious a human achievement.

Nelson Mandela

Menu July 9-13

Monday- Chicken ala king, egg noodles, squash, wheat roll, strawberry or peach shortcake.

Tuesday- Baked ham, blackeye peas, brussel spouts, carrot raisen salad, hot roll, lemon cake.

Wednesday- Chicken fried steak, white gravy, baked potato, green beans, wheat roll, apricots.

Thursday- BBQ chicken, butter beans, spinach, coleslaw, cornbread, rice or bread pudding.

Friday- Ham w/pineapple, rice, chinese vegetables, wheat roll, gingerbread with topping.

etables, salad, and dessert.

Tuesday- Hamburger and fries, vegetables, salad, and dessert.

Wednesday- Chicken fried steak, vegetables, salad, and dessert.

Thursday- Baked chicken, vegetables, salad, and dessert.

Friday- Beef enchiladas, vegetables, salad, and dessert.

etables, salad, and dessert.

Tuesday- Hamburger and fries, vegetables, salad, and dessert.

Wednesday- Chicken fried steak, vegetables, salad, and dessert.

Thursday- Baked chicken, vegetables, salad, and dessert.

Friday- Beef enchiladas, vegetables, salad, and dessert.

etables, salad, and dessert.

MENU June 9-13

Monday- Chicken strips, veg-

Have a blessed day!

Bridal Selections for

Brianne McCamish & Tate Glasscock

Amanda Ogden & Dustin White

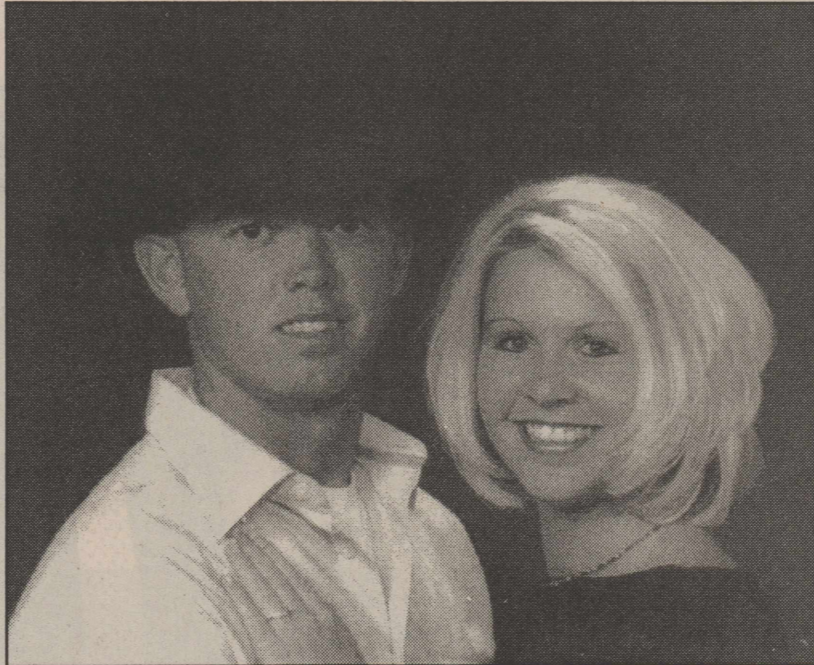
Jim & Karen Perales (nee Wyrick)

Kelli Bertrand & Chad Hinsley

PAYNE PHARMACY

200 S. Main, Floydada 983-5111

Floyd County Lifestyles



TATE GLASSCOCK AND BRIANNE MCCAMISH

Glasscock and McCamish

Boyd and Cecilia McCamish of Littlefield announce the engagement and approaching marriage of their daughter, Brianne McCamish of Littlefield, to Tate Glasscock of Floydada, son of Joel and Ann Evans of Floydada and Lanny and Holly Glasscock of Ada, Oklahoma.

The wedding ceremony will take place at 5:00 p.m. August 10, 2001, at the Mandalay Bay Resort in Las Vegas, Nevada.

The bride-elect is the granddaughter of Frank and Melba McCamish of Muleshoe, and Cecil and Pat Richardson of Cotton Center. She is the great-granddaughter of Leone McCoy of Littlefield.

The future bridegroom is the grandson of Ruth Hammonds of Floydada and Nell Glasscock of Lockney.

Brianne is a 1998 honor graduate of Littlefield High School. She received a Bachelor of Science Degree in Human Development Cum Laude from Texas Tech University in May, 2001.

Tate is a 1994 graduate of Floydada High School. He graduated from South Plains College with an Associates in Applied Science in Agricultural Business in 1997 and attended Texas Tech University. He is currently employed as a lineman with Lighthouse Electric Cooperative in Floydada.

The couple will reside in Floydada.



EVANS RETIRED FROM POST OFFICE-Ronald Evans (left) retired last week from the Floydada Post Office after 36 years carrying the mail. Celebrating with him were: (l-r) wife, Alyne; Ann and Joe Evans, daughter-in-law and son.

Staff Photo

McCoy to hold Annual Reunion

By Flora McNeill

Preparations are being made for the 49th annual Reunion of McCoy and the surrounding communities. It will be held on Sunday, July 9, 2001 at Lighthouse Electric Coop Community Room on the Matador Highway.

The Starkey and Blanco communities have played an important part in

the church and school activities when they were thickly populated and the friendships formed then still exist. This event would not be complete without them.

Registration begins at 10:30 a.m. The covered dish lunch will be served at about 12:30 p.m. then visiting, picture taking/viewing, and reminiscing will be the order of the day.

Super Savings of 25% to 50% Throughout The Store!

Take an additional 10% off on all orange tag items!

START YOUR CHRISTMAS SHOPPING NOW!

Schacht FLOWERS, JEWELRY & GIFTS

112 W. Poplar, Lockney 8:30-5:30, Mon.-Sat., 652-2385

Eye Exams with the only Vision Computer in 5 counties as seen on T.V.!

Dr. Michael J. Dunn, Optometrist

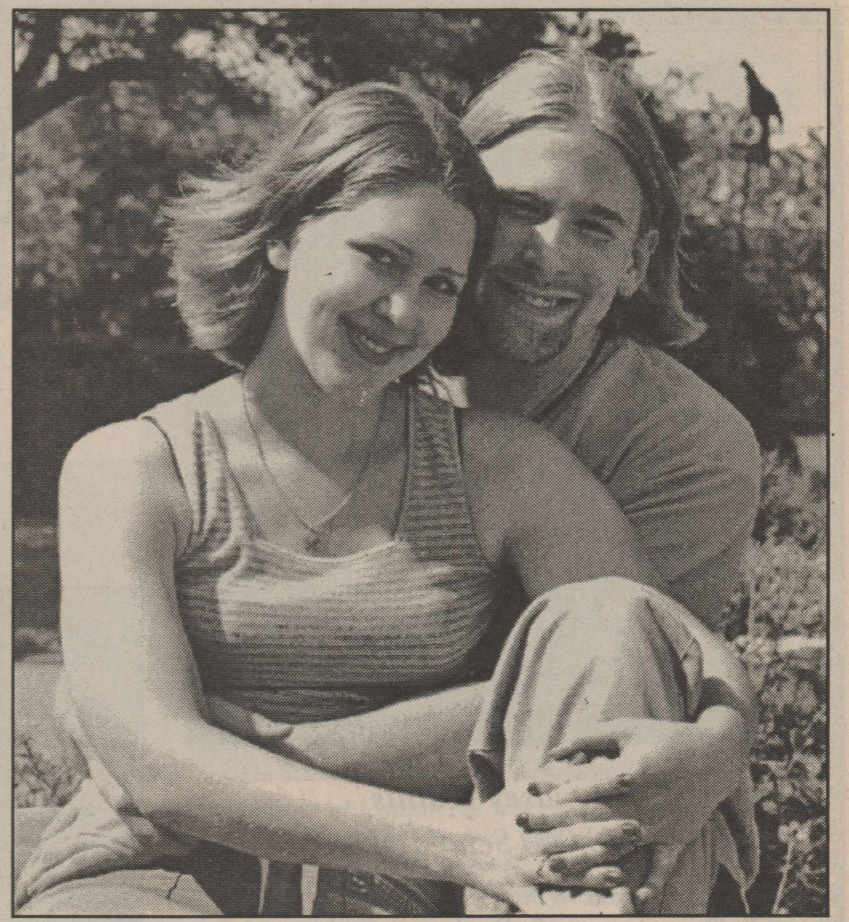
The Family Vision Center II

704 Tilford Ralls, Texas 79357

Phone (806) 253-0067 or 745-2222

Eye Exams, Glasses, Contacts

Fridays 9:30 a.m. to 5 p.m., lunch 1 to 2 p.m.



JESSICA MIZE AND AARON KIRK

Mize and Kirk to wed

Kenney and Terri Kirk of Floydada, announce the engagement of their son, Aaron, to Jessica Mize, daughter of Jimmy and Joy Mize, all of Marble Falls.

The couple will marry December 22, 2001 at Beltway Baptist Church in Abilene.

The bride elect attends McMurry University and is employed by the Financial Aid Office. The future bridegroom also attends McMurry University and is employed by Manpower, Inc. and Paramount Theater.

Look Who's New...

HILL

Kelton Kaliche, age 2 of Canadian, and Kelly and Kimbra Hill of Katy, are excited to announce the arrival of their new sister, Kyndall Lynn.

She arrived at 6:32 p.m. on Saturday, June 23rd, weighing 7lbs. 1/2 oz and 19 inches long. Their proud parents are Wallace & Rhealene Hill of Canadian.

Grandparents are Frankie Hill of Canadian and Gary & Charlene Brown of Floydada.

Great grandmothers are Sybil Brown of Groom and Ismanell Gray of Clarendon.

STANFORD

Joe and Cindy Stanford of Plainview are proud to announce the birth of their son, Calahan Davis Stanford. He was born on June 23, 2001 at 12:32 p.m. weighing 8 lbs. and 1 1/2 oz.

Calahan is the grandson of A.W. & Karen Lindeman of Kress, L.T. & Carolyn Cooper of Lubbock, and Joe and Eunice Stanford of Plainview.

Great Grandparents are Arthur Brown of Plainview, Laverne Cooper of Lockney, Ruth Burleson of Blackwell, Oklahoma, and Emma Stanford of Tulsa, Oklahoma.

Bridal Selections for

* Brianne McCamish & Tate Glasscock

* Amanda Ogden & Dustin White

* Kelli Bertrand and Chad Hinsley

* Jim & Karen Perales (nee Wyrick)

Sue's Gifts & Accessories

100 East California, Floydada 983-5312

Bridal Selections for:

Brianne McCamish & Tate Glasscock

for: Jim & Karen Perales (nee Karen Wyrick)

Kelli Bertrand & Chad Hinsley

Amanda Ogden & Dustin White

Duke's Dodads

Located inside Kirk & Sons

119 E. Missouri 983-3280

Bridal Selections For

Amanda Ogden & Dustin White

Jim & Karen Perales (nee Wyrick)

Kelli Bertrand & Chad Hinsley

Caprock Motor Parts & Hardware

114 W. California, Floydada 983-2865

Have You Checked Blue Cross/Blue Shield Health Insurance Rates Recently?

Couple 34 Non-Tobacco User w/ 2 Children

\$250 Deductible	\$365.00 mo.
\$500 Deductible	\$299.00 mo.
\$1000 Deductible	\$233.00 mo.
\$2500 Deductible	\$174.00 mo.

Windmark Insurance Agency, Inc.

P.O. Box 201 N. Main, Lockney 806-652-2241

Fax 806-652-2426 • Mobile 292-3647

Clar Schacht June McGaugh



Lindsey Mathis
\$10,000 Scholarship
Houston Livestock Show
& Rodeo

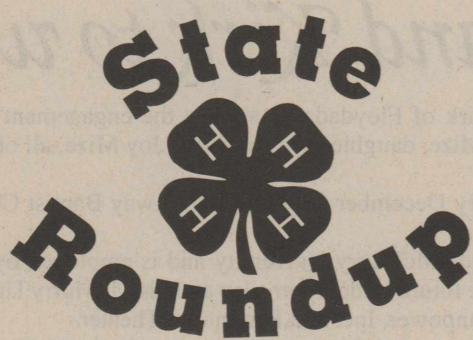
Nothing less than our
Best
Roundup 2001



Cienna Carthel
\$10,000 Scholarship
Houston Livestock Show
& Rodeo
\$1,000 Scholarship
Texas Extension
Education Association



Rusty Keaton, Katie Kelley, Tasha Powell & Skyler Cornelius
National 4-H Congress Delegates



Cienna Carthel
2nd Place
Buying Dressy Division
Fashion Show



Share The Fun - Celebrate 4-H - 1st Place
Cienna Carthel, Jurahee Jones, Brittany Aston
Brady Rasco, Brandon Hennagan, Tyler Phillips and Bonnie Dunlap



Laura Miller
3rd Place
Construction Casual Division
Fashion Show



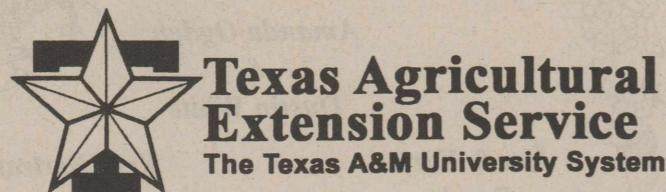
Laura Miller
1st Place & \$1,000
Scholarship
Nutritious Snacks
Food Show



Share The Fun - Drama - 3rd Place
Julianne Cornelius, Josh Bradley, Chance Crossland, Lindsey Nutt,
Skyler Cornelius, Melissa Dunlap, Rachel Miller and Derrick Griggs



Molly Long
1st Place & \$1,000
Scholarship
Breads & Cereals
Food Show



Cooperative Extension Service
Prairie View A&M University



Rusty Keaton
2nd Place
Main Dish
Food Show



Thank you to 4-H Parent-Leaders Attending:

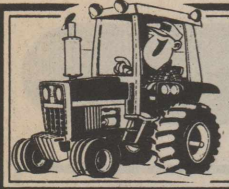
We would like to thank the following sponsors for making this page possible

- | | |
|-------------------------|----------------------------------|
| State Farm Insurance | Don's Heating & Air Conditioning |
| Cornelius Conoco | Heptad Vegetables |
| Kaleidoscope | Edd Henderson CPA |
| Producer's Coop | Floydada Coop Gin |
| Assiter Insurance | City Bank Lockney |
| City Bank Floydada | Lighthouse Electric Cooperative |
| Davis Farm Supply | Lockney Vet Clinic |
| Sam & Becky Fortenberry | Floyd County Farm Bureau |
| Lockney Coop | Floyd County Supply |
| Windmark Insurance | Muncy & Sandhill Elevators |
| J&K Insurance | American State Bank |
| Heart's Desire | |

- | | | |
|-------------------------|-----------------------------|--------------------|
| Anne Carthel | Jimmy McGaugh | Dana Crossland |
| Judy Dunlap | Charles & Donna Keaton | Carol Huggins |
| Larry Jones | Kay Martin | Carol Kelley |
| Nick Long | Karen Miller | Allen Martin |
| Mike & Ginger Mathis | D'Lee Powell | Tim Mitchell |
| Marva Rasco | Warren & Charlotte Mitchell | Robin Stoerner |
| Keith & Marcia Phillips | | Julianne Cornelius |

Also participating: Garrett Mathis, Chelsea Kirk, Justin Stoerner, Melissa Schaeffer, Melanie Huggins, Tasha Powell, Janee' Hrbacek, Jay McGaugh, Lacy Austin & Katie Kelley

Thank you KFLP and Floyd County Hesperian-Beacon for your great coverage of Floyd County 4-H



Floyd county Farm News

Drought causes unclear crop status

By Shawn Wade

Wondering what will happen next is probably the foremost thought of many growers trying to find a light at the end of the 2001 growing season.

For some growers drought will claim their Crop and divert them to other alternatives. For others the tough decisions could just be starting depending, on the final determination of crop insurance companies.

Growers across the southern portion of the High Plains are now trying to get their crop situations sorted out after eleventh hour rains clouded what many thought was a foregone conclusion: that a significant number of dryland acres would be zeroed out due to drought.

Growers were almost through the 15-day late planting period that governs the earliest date that crops could be released because seeds failed to emerge or germinate.

Plains Cotton Growers efforts several years ago resulted in the current late planting period which was shortened from the original 25-day late planting period first implemented by the USDA Risk Management Agency.

Now insurance companies are struggling to make their own determinations about what to do to meet the needs of their customers. Apparently there is no hard and fast rule in this situation and the companies are left with a thin line to walk.

On one hand they have their customers who want a quick decision. On the other they have the responsibility to make sure that the crop is evaluated in the most accurate and fair manner possible given the circumstances that exist.

The spotty nature of the rainfall that fell, primarily in Lynn and Dawson counties, last weekend doesn't change much for growers who received little

or no rain. These growers can still ask for and receive appraisals and even have their acreage released for other purposes without delay.

Other growers can also request that the insurance company look at their crop with the understanding that the insurance company will decide whether or not enough rainfall was received at the location to merit waiting to see if the crop makes a stand.

If a stand is achieved the company would then evaluate the potential based on the quality of the stand and other factors.

How this scenario eventually plays out is anybody's guess. The potential to meet or exceed the level of acreage loss detailed in last weeks newsletter (350,000-400,000 acres irrigated, 750,000-800,000 acres dryland) still exists despite the rains that fell just before the end of the 15-day waiting period.



CHAMBER TO RAFFLE TRACTOR--The Lockney Chamber of Commerce will raffle off a Model A John Deere pedal tractor during the Old Fashioned Saturday Celebration. Pictured with the tractor are; (L-R) Chamber member Phillip Glasson and Glenn Hardin. Purchase your ticket at City Bank in Lockney, Kaleidoscope or from any chamber member. Tickets are \$3.00 and the drawing will be immediately after the tractor pull competition during Old Fashioned Saturday August 18th. Staff Photo

Floyd County Summer Show Results

Six Floyd County 4-H members exhibited heifers and steers at the recent Panhandle Parade of Breeds Show held June 15-17 in Plainview. Heifer results were: Senee' Foster exhibited Reserve Breed Champion Chianina Heifer. Segayle Foster received a 1st and 2nd Place with her heifers. Steer results were: Scott Nixon, 1st Shorthorn; Chase Beedy, 4th Shorthorn; Taylor Beedy, Breed Champion Simmental and Scott Nixon 2nd Place. Also, Tye Wood exhibited an AOB.

Also on June 19th the Floyd County Steer Validation Day and Prospect Show was held at the old Floyd County Show Barns. A fun filled day was had by all 4-H'ers and family members that attended. The entire morning consisted of validating and processing of all steers. At noon a hamburger lunch was provided followed by a round of the ever so popular game "Who Wants To Be A Stock Show Millionaire." Then a showmanship practice session was held as we wound up with the Prospect Show.

Show results are as follows: Champion Angus Heifer - Brazos Williams; Champion Shorthorn Heifer - Mason

Lipham; Champion Chi-Angus Heifer - Senee' Foster; Reserve Grand Chi-Angus Heifer - Segayle Foster; Grand Champion Heifer - Senee' Foster; Reserve Grand Heifer - Brazos Williams.

Steer Division: Angus - Lt. Wt. Brazos Williams 1st; Brazos Williams 2nd; Hvy Wt. Cody Ware 1st; Breed Champion Angus - Brazos Williams Reserve Breed Champion Cody Ware.

Hereford - Lt. Wt. Brady Ragland 1st; Michael Fortenberry 2nd; Hvy Wt. Lexie Covington 1st; Clay Ware 2nd, Breed Champion Hereford - Brady Ragland, Reserve Breed Champion - Lexie Covington.

Shorthorn Lt. Wt. - Brady Ragland 1st; Blake Greer 2nd; Md. Wt. - Payte Beedy 1st; Mandi Wood 2nd; Hvy Wt. - Mason Lipham 1st; Breed Champion Shorthorn - Payte Beedy, Reserve Breed Champion Shorthorn - Mandi Wood.

European Cross - Lt. Wt. Whitley Beedy 1st, Tye Wood 2nd, Michael Fortenberry 3rd; Md. Wt. - Taylor Beedy 1st, Colton Covington 2nd, Mason Lipham 3rd, Colton Covington 4th; Hvy Wt. - Tye Wood 1st, Taylor Beedy 2nd, Mandi Wood 3rd, Blake Greer 4th Champion European Cross

- Tye Wood, Reserve European Cross - Taylor Beedy. Grand Champion Steer - Champion European Cross Tye Wood, Reserve Grand Champion Steer - Champion Shorthorn Payte Beedy.

Showmanship winners were: Champion Junior Showman - Senee' Foster, Runner up Junior Segayle Foster, Champion Senior Showman - Tye Wood, Runner up Senior Cody Ware.

Stop by or give us a call
Panhandle-Plains FLBA
629 Baltimore Plainview, Texas
(806) 296-5579



Part of the fabric of rural life.

**PRODUCER'S
COOPERATIVE
ELEVATOR**

983-2821 - Floydada
983-3770 - Dougherty

**FIRST NATIONAL
BANK OF FLOYDADA**



Floydada 983-3717
Member F.D.I.C.

**FLOYDADA
COOPERATIVE
GINS, INC.**



Floydada 983-2884



LANEY & STOKES
LAWYERS
600 Ash Street
Plainview

Cotton Aphids, Cotton Bollworms and Cotton Square Borers have all been reported in program fields but all have been sub-economic to this point except one field in Floyd County that was treated for Lygus the first part of the week. Heliothis moth traps are showing very little activity at this time but should pick up shortly as other counties to the south are beginning to report increased bollworm activity.

Beneficial Insects, especially "crab spiders", are hopefully going to be with us for the bollworm battle. Checking program cotton this week has revealed what appears to be at least on spider per plant, and sometimes two, where weeds were burned down with herbicide. Lady beetles have increased in proportion to the slight increase in aphid populations and Minute Pirate and Big-Eyed bugs seem to have increases also.

Thanks for Reading
The Hesperian-Beacon!

Loan Forfeiture Rules Update

Last week PCG passed along some advice received concerning the possible ramifications for producers considering forfeiting their cotton to the Commodity Credit Corporation in lieu of selling or redeeming their cotton on their own.

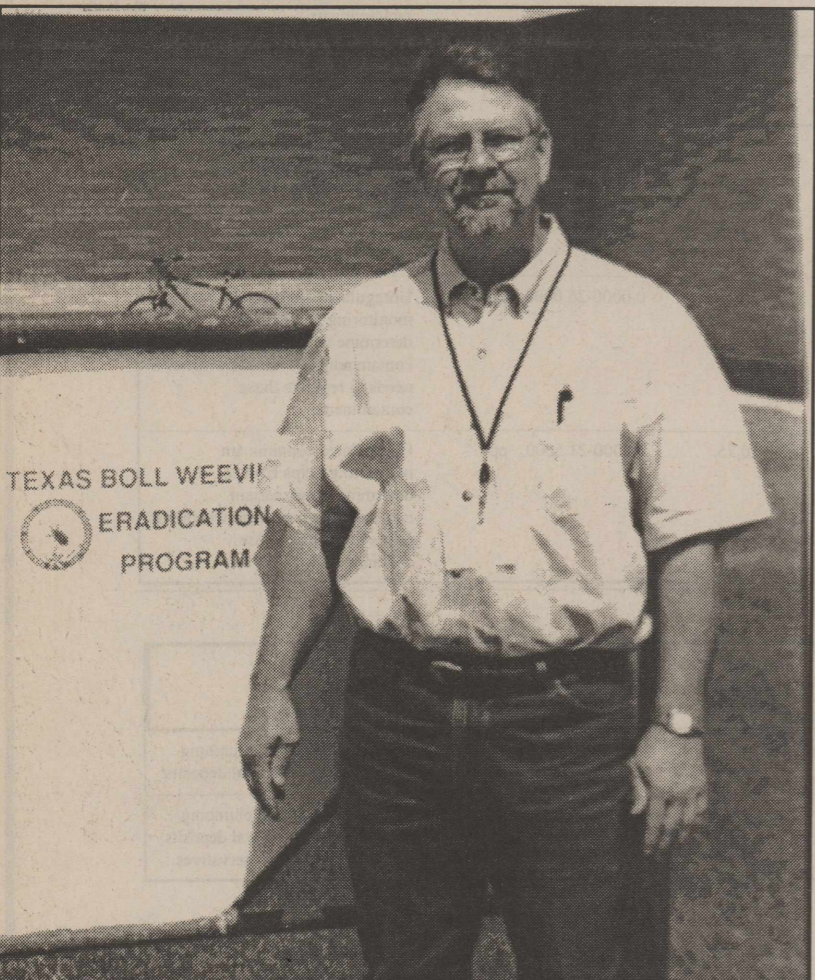
Due to some confusion about what charges are due under what circumstances the following is offered to hopefully clarify exactly what a grower could face when forfeiting to the government in lieu of repaying the original loan amount.

Probably the most important thing to remember is that when cotton is forfeit to the government the grower becomes liable for reimbursing the

government for several charges tied to the cotton.

The only charges to be paid by the grower when cotton is forfeit are the storage that accrued before the loan was initiated and the unpaid receiving charges, including any charges for new ties. Compression charges will not be paid by the CCC and will not be billed to the producer.

When the Adjusted World Price is below the base loan rate the grower can redeem the cotton at the lower rate (up to the \$150,000 payment limitation allowed for LDPs and marketing loan gains), take the marketing loan gain and then find a buyer for the crop at the lower price.



PAIGE UNDERWOOD is the District Supervisor in charge of the Lockney office of the Northern High Plains Texas Boll Weevil Eradication Program. He can be contacted at 652-8827.

Support your Lockney Chamber of Commerce

**Oxygen & Acetylene
Refills**
Available at
FERGUSON SPRAYING, INC.
608 E. Houston, Floydada - 983-2474

Bloys Baling & Swathing

- Large Square
- Round Bales
- Small Squares

983-2724 or 292-2163

MIDWAY DRIVE-IN
Between Turkey and Quitaque...New York and L.A.
Friday, Saturday & Sunday Nights, July 6, 7, 8

Special Tx. Chili Cheese Burger

Atlantis
Rated PG

Adults \$4.00 ~ 12 & under \$2.00
CONCESSION & GATE OPENS 8:00 p.m. Every night
MOVIE STARTS - at Dark! For info. call: 806-423-1166

Discover why State Farm insures more homes than anyone else.

See State Farm Agent:

NICK LONG
201 W California
Floydada, TX 79235
806/983-3441

Like a good neighbor, State Farm is there.
STATE FARM LLOYDS ■ HOME OFFICE: DALLAS, TEXAS
statefarm.com

NOW OPEN
Chad's Automotive
Advanced Technology For Today's Cars
112 W. Locust Lockney 652-3407 Mon. - fri. 8-5

Want Speed? Yes
Right Now? Yes
Call 353-7638! OK

Wireless Internet Service
Only \$44.95 / mo*
includes service & lease equipment

No phone line needed
Always on connection * plus set-up

ama
wireless

amaonline
2642 W 34th
Amarillo, TX 79109
806-353-7638
www.amaonline.com

Public Notice

2000 Drinking Water Quality Report

(Consumer Confidence Report)

CITY OF FLOYDADA

Special Notice for the ELDERLY, INFANTS, CANCER PATIENTS, people with HIV/AIDS or other immune problems:

Some people may be more vulnerable to contaminants in drinking water than the general population. Immuno-compromised persons such as persons with cancer undergoing chemotherapy, persons who have undergone organ transplants, people with HIV/AIDS or other immune system disorders, some elderly, and infants can be particularly at risk from infections. These people should seek advice about drinking water from their health care providers. EPA/Centers for Disease Control and Prevention (CDC) guidelines on appropriate means to lessen the risk of infection by Cryptosporidium and other microbial contaminants are available from the Safe Drinking Water Hotline (800-426-4791).

Our Drinking Water Meets or Exceeds All Federal (EPA) Drinking Water Requirements

This report is a summary of the quality of the water we provide our customers. The analysis was made by using the data from the most recent U.S. Environmental Protection Agency (EPA) required tests and is presented in the attached pages. We hope this information helps you become more knowledgeable about what's in your drinking water.

En Español

Este reporte incluye informacion importante sobre el agua para tomar. Si tiene preguntas o discusiones sobre este reporte en espanol, favor de llamar al tel. (806)-983-2834 par hablar con una persona bilingue en espanol.

Where do we get our drinking water? Our drinking water is obtained from Ground and Surface water sources. It comes from the following Lake/River/Reservoir/Aquifer: OGALLALA and LAKE MACKENZIE. TNRCC will be reviewing all of Texas' drinking water sources. The source water assessment process will be completed within three years. It is important to protect your drinking water by protecting your water source.

ALL drinking water may contain contaminants.

When drinking water meets federal standards there may not be any health based benefits to purchasing bottled water or point of use devices. Drinking water, including bottled water, may reasonably be expected to contain at least small amounts of some contaminants. The presence of contaminants does not necessarily indicate that water poses a health risk. More information about contaminants and potential health effects can be obtained by calling the Environmental Protection Agency's Safe Drinking Water Hotline (800-426-4791.)

About the Following Pages

The pages that follow list all of the federally regulated or monitored constituents which have been found in your drinking water. U.S. EPA requires water systems to test up to 97 constituents.

Secondary Constituents

Many constituents (such as calcium, sodium, or iron) which are often found in drinking water, can cause taste, color, and odor problems. The taste and odor constituents are called secondary constituents and are regulated by the State of Texas, not EPA. These constituents are not causes for health concerns. Therefore, secondaries are not required to be reported in this document but they may greatly affect the appearance and taste of your water.

DEFINITIONS:

Maximum Contaminant Level (MCL)
The highest permissible level of a contaminant in drinking water. MCLs are set as close to the MCLGs as feasible using the best available treatment technology.

Maximum Contaminant Level Goal (MCLG)
The level of a contaminant in drinking water below which there is no known or expected health risk. MCLGs allow for a margin of safety.

Treatment Technique (TT)
A required process intended to reduce the level of a contaminant in drinking water.

Action Level (AL)
The concentration of a contaminant which, if exceeded, triggers treatment or other requirements which a water system must follow.

NTU - Nephelometric Turbidity Units
MFL - million fibers per liter (a measure of asbestos)
pCi/l - picocuries per liter (a measure of radioactivity)
ppm - parts per million, or milligrams per liter (mg/l)
ppb - parts per billion, or micrograms per liter (ug/l)
ppt - parts per trillion, or nanograms per liter
ppq - parts per quadrillion, or picograms per liter

Inorganics

Year	Constituent	Highest Level at Any Sampling Point	Range of Detected Levels	MCL	MCLG	Unit of Measure	Source of Constituent
1999	Arsenic	6.5	2.1000-6.5000	50	0	ppb	Erosion of natural deposits; Runoff from orchards; Runoff from glass and electronics production wastes.
2000	Barium	0.131	0.0980-0.1310	2	2	ppm	Discharge of drilling wastes; Discharge from metal refineries; Erosion of natural deposits.
1999	Fluoride	3.1	1.8000-3.1000	4	4	ppm	Erosion of natural deposits; Water additive which promotes strong teeth; Discharge from fertilizer and aluminum factories.
1999	Nitrate	0.76	0.0000-0.7600	10	10	ppm	Runoff from fertilizer use; Leaching from septic tanks, sewage; Erosion of natural deposits.
1999	Selenium	7.4	0.0000-7.4000	50	50	ppb	Discharge from petroleum and metal refineries; Erosion of natural deposits; Discharge from mines.

Inorganics

Year	Constituent	Highest Level at Any Sampling Point	Range of Detected Levels	MCL	MCLG	Unit of Measure	Source of Constituent
1999	Gross alpha adjusted	5.3	5.3000-5.3000	15	0	pci/l	Erosion of natural deposits.
1999	Gross beta emitters	17.9	17.9000-17.9000	50	0	pci/l	Decay of natural and man-made deposits.

Organics

Year	Constituent	Highest Average of Any Sampling Point	Range of Detected Levels	MCL	MCLG	Unit of Measure	Source of Constituent
2000-2000	Atrazine	0.18	0.1800-0.1800	3	3	ppb	Runoff from herbicide used on row crops.

THM NOT TESTED FOR OR NOT DETECTED

Turbidity

Turbidity has no health effects. However, turbidity can interfere with disinfection and provide a medium for microbial growth. Turbidity may indicate the presence of disease-causing organisms. These organisms include bacteria, viruses, and parasites that can cause symptoms such as nausea, cramps, diarrhea and associated headaches.

Year	Constituent	Highest Single Measurement	Lowest Monthly % of Samples Meeting Limits	Turbidity Limits	Unit of Measure	Source of Constituent
1999	Turbidity	*	*	0.5	NTU	Soil runoff.

* TURBIDITY DATA NOT FURNISHED TO TNRCC. WATER SYSTEM MUST COMPLETE THIS SECTION.

Unregulated Contaminants

Year	Constituent	Average of All Sampling Points	Range of Detected Levels	Unit of Measure	Reason for Monitoring
2000-2000	Chloroform	13.25	0.5000-26.0000	ppb	Unregulated contaminant monitoring helps EPA to determine where certain contaminants occur and whether it needs to regulate those contaminants
2000-2000	Bromoform	1.4	0.0000-2.8000	ppb	Unregulated contaminant monitoring helps EPA to determine where certain contaminants occur and whether it needs to regulate those contaminants
2000-2000	Bromodichloromethane	13	0.0000-26.0000	ppb	Unregulated contaminant monitoring helps EPA to determine where certain contaminants occur and whether it needs to regulate those contaminants
2000-2000	Chlorodibromomethane	10.75	0.0000-21.5000	ppb	Unregulated contaminant monitoring helps EPA to determine where certain contaminants occur and whether it needs to regulate those contaminants

Lead and Copper

Year	Constituent	The 90th Percentile	Number of Sites Exceeding Action Level	Action Level	Unit of Measure	Source of Constituent
1998	Lead	3.6000	0	15	ppb	Corrosion of household plumbing systems; Erosion of natural deposits.
1998	Copper	0.1940	0	1.3	ppm	Corrosion of household plumbing systems; Erosion of natural deposits; Leaching from wood preservatives.

Total Coliform NOT DETECTED

Fecal Coliform NOT DETECTED

Public Participation Opportunities

Date: July 18, 2001
Time: 7:30 - 8:30 P.M.
Location: Floydada City Hall Council Chambers
Phone No.: (806) 983-2834

I am not out of business - Just temporarily sold out of inventory. I will have a full inventory in approximately two weeks.

Porch furniture

- Double Glider \$235.00
- Double Rocker \$165.00
- Single Glider W. Table \$165.00
- Single Rocker..... \$135.00

I will also have a limited number of childrens Single & Double Rockers

Horse ~ N ~ Around

Located inside the Lockney Beacon Office 116 S. Main & inside the Hesperian Office in Floydada 983-3737 or 652-2552



Public Notice

NOTICE TO BIDDERS

Mackenzie Municipal Water Authority is seeking sealed bids to construct a 10 stall boat storage building at Lake Mackenzie. The building must be 30 feet wide and 125 feet long with 10 divided 11 ft. stalls. Each stall will have a 8 foot overhead door.

Building material must be 26 gauge or better galvanized steel.

Bids will be opened at the regular scheduled board meeting on July 17, 2001 at 6:00 p.m.

For further information call Tom Davey, General Manager at (806) 633-4318.

6-28, 7-5, 7-12c

BID NOTICE

Floydada Independent School District is now taking bids for the reconstruction of two tennis courts located at Floydada High School, 618 Whirlwind Alley, Floydada, Texas.

The reconstruction will be achieved by pouring a 4-inch slab with post-tension abilities over the existing slab, as per specifications. Specifications may be obtained by contacting Jimmie Collins, 226 West California, Floydada, Texas 79253, 806-983-3498.

Bid must be received in the office of the Superintendent, 226 West California, Floydada, Texas 79235, not later than 3:00 p.m. July 10, 2001. Bids will be opened and tallied at this time. Floydada ISD reserves the right to reject any and all bids and to waive any formalities.

6-28, 7-5c

THE CLASSIFIEDS

Call 806-983-3737 or 806-652-3318
web site: [http:// www.texasonline.net/floydco](http://www.texasonline.net/floydco)

AUTOMOTIVE FOR SALE

FOR SALE--1989 Oldsmobile. Four new tires. Call 983-2797. 7-5p

****MUST SELL 2000 CROWN VICTORIA,** 4,000 miles.
****MUST SELL 1999 MERCURY MOUNTAINEER,** 21,000 miles - 6.9% financing WAC.
****MUST SELL 1996 NISSAN QUEST VAN,** 59,000 miles.
****MUST SELL 1997 MAZDA 626,** 37,000 miles. Leather seats, very nice.
****MUST SELL 1998 CHEVY CAVALIER,** White, 55,000 miles. Economical vehicle.
AFFORDABLE MONTHLY PAYMENTS! Call the Credit Department Floydada Ford-Mercury. Call 1-800-983-3761.
www.FLOYDADAFORDMERCURY.COM

FOR RENT OR LEASE

FOR LEASE OR RENT--Two houses, 5 miles east of Petersburg. First two houses on the left, east of Allmon. Quiet neighborhood and lots of trees. Call 298-2682. 7-5p

RESTORED COUNTRY HOME FOR RENT--2 bedroom, bath, double garage, central heat/air, hardwood floors. Located on 1 acre. 3.5 miles N.W. Lockney. \$525.00 monthly. Call 652-3410. 6-28c

FOR RENT OR SALE--Houses, mobile homes or apartments. Call 983-5552. 7-26c

TRAILER HOUSE AND LOT. Great rental property. Possible owner financing. Call 983-5475 or 983-5013. tfn

ADAMS WELL SERVICE

Complete Irrigation Service
5 Year Warranty, Domestic Pump
High Speed Bailing
720 N. 2nd
983-5003

*Do you want your child to stay in touch?
Give them a subscription to
The Floyd County Hesperian-Beacon
It's a great graduation present!*

GARAGE SALES

Floydada
BIG FAMILY GARAGE SALE--625 W. Kentucky - Saturday, July 7th - 8:00 a.m. - ??. NO EARLY BIRDS! 7-5p

LARGE 2 FAMILY GARAGE SALE--902 W. Crockett - Saturday - 8:00 a.m. - ??. Riding lawn mower, furniture, much miscellaneous. 7-5p

827 W. JACKSON--Garage sale-- Friday, July 6th - 8:00 a.m. - ??. Television, furniture and accessories, exercise bike, clothing and odds & ends. 7-5c

HELP WANTED

PETERSBURG CO-OP GRAIN is seeking an experienced applicator driver and general farm service worker. Position is for full time employment. CDL with haz mat endorsement as well as commercial applicator license a plus. Great benefits. Salary based on experience. Contact Jack or Bennie Martin at Petersburg Co-op Grain for more information. 806-667-3595. 7-12c

PETERSBURG CO-OP GRAIN is seeking general elevator workers. These positions are seasonal and will end late November/December. Salary is based on experience. Call 806-667-3595 for more information. 7-12c

FLOYD COUNTY APPRAISAL DISTRICT now taking applications for qualified secretarial and clerical work. Skills require computer, typing and communicating well with the public. Applications can be picked up at the Appraisal District Office located at 104 E. California or call at 806-983-5256. tfn

RN NEEDED!! Our agency is looking for a caring, compassionate RN for a full-time on call position. Experience and Medicare helpful. Please call Betsy at 806-983-3001 or 1-800-851-6977. 7-12c

POOLE WELL CAM

Dual Lens
for Color Videos of Irrigation and domestic wells.
Reveals sand infiltration, crusting or deterioration, blockage 4"- 30" I.D.
704 Matador Hwy. Floydada, Texas
806-983-2285

HOUSES FOR SALE

Floydada
ASSUMABLE LOAN--114 J.B. Avenue 3 bedroom, 2 bath, fireplace, storage building. Central H/A/C. 983-6456 or 983-2814 (Brenda). 7-12p

HOUSE FOR SALE--Pretty white brick 3/2/2. Located at 716 West Kentucky Street. Phone 983-5308, 983-2967 or 983-6500. 7-12p

HOUSE FOR SALE--1024 S. 4th Street. 2 bedroom, 1 bath, livingroom, kitchen. \$18,000.00. Call 983-5598. 7-5p

HOUSE FOR SALE--3 bedroom, 2 bath. Nice yard. Good neighborhood. Call 983-5660. tfn

HOUSE FOR SALE--Unique two bedroom, 1 bath, livingroom, family room, basement, one car garage. 605 W. Kentucky. Call Corey at 983-2714 or 983-5063. tfn

****LARGE 3 BEDROOM,** 2 bath, 2 storage buildings and basement on Second Street. **REDUCED!!**

****REAL NICE 2 bedroom, 2 bath,** garage and large workshop on Marivena Street.

****NEW LISTING on Houston Street.** 3 bedroom, 1 bath.

****NICE 2 BEDROOM,** one bath home on 1 acre, just north of Floydada on highway.
ALL SHOWN BY APPOINTMENT-- Call Sam Hale Insurance and Real Estate - 806-983-3261. tfn

3 BEDROOM, 2 BATH, newly remodeled. Garage/shop. Call 983-5475 or 983-5013. tfn

3 BEDROOM, 1 BATH, 2 STORY - \$9,000.00 with partial owner financing or \$7,000.00 cash. Call 983-5475 or 983-5013. tfn

Lockney
FOR SALE--N.E. 2nd, Lockney--Nice brick 4 bedroom, 1.5 bath, attached garage. \$40,000.00. "Owner to help on closing cost." Barker Realty, 652-2642. 7-5p

EXERCISE

Does Your Heart Good.
American Heart Association
Fighting Heart Disease and Stroke

LOTS FOR SALE

REDUCED!! LOT FOR SALE-- \$1,000.00 negotiable. Driveway, improvements. Apogee Street. Call 983-3737 - day or 652-2552 - night. tfn

FLOYD COUNTY, pursuant to a tax foreclosure sale, is offering for sale the following property in the City of Lockney: All of Lots No. 1, 2, 3, 4, and 5 in Block 35 and Lots 1 and 2 in Block G of the N. B. Davis Survey located in the City of Lockney, Floyd County, Texas also known as the Webster Service and Supply, Inc. property. All offers should be submitted to: William D. Hardin, County Judge, Courthouse Room 105, Floydada, Texas. 7-26c

MISCELLANEOUS

LIKE NEW Drexel pecan dining room table, 2 leaves, 6 chairs with table pad. \$900.00 OBO. Call 983-5565. 7-5c

COMPLETE EXHAUST systems - catalytic converters and shocks. Don's Muffler Shop - 983-2273. tfn

LAWN SWINGS and picnic tables. Don's Muffler - 983-2273. tfn

POOLE WELL SERVICE
Complete Irrigation
Well Service
Simmons Pumps
High Speed Bailing
704 Matador Highway
983-2285 983-5610
Business Residence

Holland's Carpentry
All Types of Carpenter Work
Interior and Exterior Painting
Cedar and Shake Roofing Repair
free estimates
983-2278

SCRIPT PRINTING & OFFICE SUPPLY
* Commercial Printing
* Office Supplies & Furniture
* Business Machines
108 S. Main Floydada 983-5131

PUBLIC NOTICE

NOTICE TO BIDDERS

Floydada ISD will accept bids for the purchase of fuel, oil and other services for its transportation department for the school year 2001-2002.

Bids will be accepted in the Superintendent's Office until 2:00 p.m. on Tuesday, July 10, 2001. Bids will be opened on Tuesday July 18, 2001 and 2:15 p.m. in the Superintendent's Office and a recommendation made to the school board on Tuesday, July 10, 2001 at the regular meeting. Bid packets can be obtained at the Superintendent's Office at 226 W. California Street. Floydada ISD reserves the right to reject any and all bids. 7-5c

NOTICE TO BIDDERS

The Commissioners' Court of Floyd County will accept sealed bids until 10:00 a.m., July 9, 2001 for the sale of the following:

Precinct No. 3

1981 GMC Sierra 1500, 1/2 Ton, VIN: 1GTDC14D1BS1544 and

Precinct No. 2

1979 Chevrolet Pickup 1/2 Ton, VIN: CCD149S125889

INSTRUCTIONS:

All bids should be delivered to the County Judge's office, Floyd County Courthouse, Room 105, Floydada, from 8:30 a.m. to 5:00 p.m., Monday thru Friday. Bids shall be sealed when presented and will be opened at the above time and date.

For more information:

Contact: Craig Gilly, Commissioner Precinct No 3, at 806-983-3620 after 5:00 p.m.

Lennie Gilroy, Commissioner Precinct No 2, at 806-652-2552 after 5:00 p.m.

Payment shall be made in cash. Floyd County reserves the right to accept or reject any or all bids and right to waive all formalities.

COMMISSIONERS' COURT, FLOYD COUNTY, TEXAS
BY: WILLIAM D. HARDIN, County Judge

6-28, 7-5c

PETS

FREE TO GOOD HOME--2 bassets-- 2 year old and 5 year old. Call 983-5618. 7-5p

FREE FEMALE GRAY striped kittens. 8 weeks, shop raised, litterbox trained. Call 983-3901. 7-5p

ALPHATEX KENNEL, AIKEN, TEXAS offers superior quality AKC Registered, DNA Certified Collies, Golden Retrievers and German Shepherds. Puppies and stud service available. 806-652-3458 or 806-292-5348. tfn

SERVICES

GIVE YOUR LIFE A MAKEOVER-- To buy or sell AVON, call 652-2029. 7-19p

TIME TO SPRAY YARDS for weeds. Call Emert Spraying Service - 806-839-1509 - Hale Center. tfn

LARRY OGDEN AUCTIONEERING-- Estates, Farm, Ranch, Business, Liquidations, State Licensed and Bonded. (806) 983-5808. TX. #9240. tfn

IS YOUR HOUSE OR FOUNDATION SETTLING? Cracks in brick or walls? Doors won't close?...Call Childers Brothers Stabilizing & Foundation Leveling. Call 1-800-299-9563 or 806-796-0063 Lubbock, Texas. 2-7-02

ECONOMICAL STORAGE

TRY BARKER'S

Rates: 5x10 - \$18.00 per month
10x10 - \$28.00 per month
10x15 - \$35.00 per month
10% DISCOUNT
ON 6 MONTHS PREPAID
PHONE: 652-2642
Corner Main & Locust, Lockney

LONG RANGE DIGITAL WIRELESS

Higher Tech CDMA Digital Service

Free Month & Free Accessories

48-State Toll-Free & Caller ID

Call DON HENDERSON

Your Cell-TONE; authorized Cell-ONE Professional

PH 292-0009, 995-5100 or 983-7001

PUBLIC NOTICE

NOTICE TO ALL PERSONS HAVING CLAIMS AGAINST THE ESTATE OF SUE L. GUTHRIE

Notice is hereby given that original Letters Testamentary for the Estate of SUE L. GUTHRIE, Deceased, were issued on June 18th, 2001 in Cause No. 5564 pending in the County Court of Floyd County, Texas, to:

AUBREY E. GUTHRIE, II
CARROLL B. GUTHRIE
SUZANNE GUTHRIE STABILE

The address of such persons, respectively, are:

3235 River Bend Drive
Hurst, Texas 76054

1135 King Mill
McDonough, Georgia 30252

3726 Blue Grass
Grand Prairie, Texas 75052

Persons having claims against this Estate which is currently being administered are required to present them within the time and in the manner prescribed by law.

DATED the 27th day of June, 2001

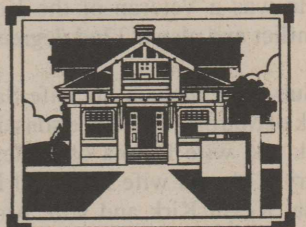
Law Offices of
BAKER, BROWN, THOMPSON & WAGNON
A Professional Corporation
By Norton Baker
State Bar No. 01602000
Attorneys for the Estate

7-5c

The Undersigned hereby gives notice of application to the Texas Alcoholic Beverage Commission, Austin, Texas, for the renewal of a Private Club Permit. Said Business is located at Hwy 62 West Side 1.6 miles N. INT FM 54, Floydada, Floyd County, Texas. Said Business to be operated under the name of Floydada Country Club 19th Hole; an unincorporated association of persons. Stephen C. Fyffe, President; Keith Evans Thomas, Vice President; James Clay Simpson, Secretary.

6-28, 7-5c

JONES ENTERPRISES, INC. 983-2151



-FLOYDADA-

- Large 3 br - 2 bath for large family in good location.
- 4 br - 2 bath in a great SW location. Owner says sell now!
- Nice size 3 br - 1 1/2 bath with 2 car garage and extras. Nice location!
- Brick 3 br on corner lot with 2 car garage.
- Only 2 story home in town for sale. 3 br - 2 bath with swimming pool.
- 2 br - 1 bath great for small family in a good south location.

-LOCKNEY-

- Great 3 br - 2 bath large country home on 2 acres with basement
- Country home with shop, five acres and located on the pavement.

Warren Mitchell 652-3613

*"Love...bears all things, believes all things, hopes all things, endures all things.
Love never fails."
1 Corinthians 13: 7-8*

SUMMER TENNIS CAMP

Given by: Rebecca Warren

When: July 9-13

Time: 8:00 a.m. - 11:00 a.m.

Age: 3rd grade - 7th grade

Price: \$50.00

Drills, matchplay, improvement on techniques and games.

TO REGISTER CALL: 983-5840

ADAMSON REAL ESTATE

Bill Strickland 652-3424
Tom or Francis Adamson.....296-7228
Leonard Harper 296-7543
Lockney Office 652-2275

2703 24th St. Plainview
293-5212

<http://www.texasonline.net/Adamson>

FLOYDADA - 2-2-0 Home or could be restaurant on Hwy. 70. Corner lot, fenced backyard \$ 35,000.00

CAR WASH - LOCKNEY--Good location. The only car wash in Lockney. Tax appraised \$28,468.00.....**PRICE**..... \$19,500.00
ON PAVEMENT NEAR LOCKNEY--22.6 acres farmland with 4" submersible well. House with city water.....\$30,000.00

THE Roberts COMPANIES

(806) 293-4413

Rhonda K. Thomas, Realtor - 652-2152
Rob & Ceil Wilson, Realtors - 293-5722

DIAMOND IN THE ROUGH--Spacious 1700+ sq. ft. home with 3 or 4 bedrooms, 1 3/4 bath on large lot at edge of town..... \$ 39,000.00
BRICK HOME ready to move into 2-2-1 with finished basement that could be 3rd bedroom, fireplace, almost 1900 sq. ft..... **PRICED REDUCED**
LARGE 4/2/2 brick home on pavement N/E of Lockney with 3 acres and shop.....**POSSIBLE LEASE OPTIONS**..... \$ 89,500.00
ELEGANT COUNTRY HOME on 3 acres north of Lockney. Over 4500 sq. ft. 4 bedroom, 2 3/4 bath, 2 living areas, lovely kitchen and SO MUCH MORE! **CALL FOR DETAILS!!**
ROOM TO ROAM in this 5 bedroom, 3 bath home on 18 acres north of Floydada.....**CALL FOR DETAILS!!**

Obituaries

KIRK

Services for Lacie G. "Shorty" Kirk, 69, of Marble Falls were held at 11:00 a.m. Thursday, June 29, 2001 at the Veterans of Foreign Wars Hall, Post 10376 in Marble Falls.

Burial was in Petersburg Cemetery under the direction of Edgar Funeral Home of Marble Falls.

Kirk died Monday June 25, 2001. He was born August 23, 1931 in Floyd County to I.C. Kirk and Nora Martin Kirk.

He was a Veteran of the Korean Conflict and also a 32nd degree Mason.

Survivors include his wife Sandra Kirk of Marble Falls; three sons, Lacie Kirk and wife Donna of Muleshoe, Larry Kirk and wife Nancy of Floydada, Kevin Kirk and wife Amy of Olton, one stepson Mike Black and wife Allyson of Marble Falls; two sisters, Cleo Fitzgerald of Richland Springs and Dimple McGuire of Cheyenne, Oklahoma; and 10 grandchildren.

WILSON

Funeral services from L.G. Wilson, 76, former longtime area football coach, were at 1:00 p.m. Monday in Central Church of Christ. Trey Morgan, Minister, officiated.

Burial was in Plainview Memorial Park by Wallace Funeral Home of Tulia.

Mr. Wilson died at 11 p.m. Friday, June 29, 2001, at his residence.

He was born November 5, 1924 in Anson where he grew up and graduated from high school in 1943. He served in the U.S. Navy during World War II from 1944-45. He played football, basketball, and baseball at Abilene Christian University, graduating in 1950.

He married Elaine Halbert on June 16, 1949 in Sweetwater.

For the first 10 years of his 40-year coaching career, he was an assistant at Brownfield, Weatherford and Temple and then served as head coach and athletic director in Winters, Floydada and Tulia.

He was at Winters for eight years with a 53-30-3 record, one state semi-finalist team and one regional finalist; at Floydada from 1968-83 with a 114-34-5 record and 10 district titles, and at Tulia from 1983 with a 40-31-4 record and four playoff teams.

When he retired in 1990, his overall coaching record was 207-95-12. He also coached numerous successful track teams.

He was inducted into the Texas High School Coaches Hall of Honor in 1979, was a lifetime member and former board member of the Texas High School Coaches Association and was an assistant coach in a Texas High School All-Star Game. He served in the All-Star and Hall of Honor selection committees.

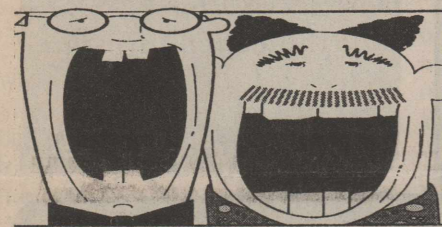
He was a member of Central Church of Christ.

Survivors include his wife; a daughter and son-in-law, DeAun and Davis Criswell of Plainview; a son and his wife Stan L. and Angela Wilson of Santa Fe, New Mexico; two brothers, Dee Wilson of Rising Star and Del Wilson of Lampasas; a sister, Ladelle Green of Abilene; and five grandchildren.

The family suggests memorials to the Lubbock Children's Home or to the American Heart Association.

The family of Carl Lemons would like to thank the community for the expressions of sympathy to our loved one. We loved your community.

Phil and Linda Lemons & Family



This Week's Announcements

WHIRLWIND BOOSTER CLUB MEETING

The Whirlwind Booster Club will hold a meeting Monday, July 9 at 7:00 p.m. in the Floydada High School Cafeteria. Election of officers for the 2001-2002 school year will be held. Everyone is encouraged to attend.

MISS FLOYDADA PAGEANT

Anyone interested in the Miss Floydada Pageant needs to call the Chamber office. There will be a pageant in October and possible a few changes involving entry guidelines and an optional talent category. Please call 983-3434 for more information.

BLOOD PRESSURE CLINIC

A free blood pressure clinic is held in the community room of the First National Bank in Floydada every Tuesday from 9 a.m. to 11 a.m. Everyone is welcome.

ALCOHOLICS ANONYMOUS

Alcoholics Anonymous and Al-Anons meet each Tuesday night in Floydada at 8:00 p.m. Anyone wanting the loving fellowship of men and women who can share their experience, strength and hope is welcome. Meetings are at 111 North Wall, a block north of the courthouse. Anyone interested can call 983-3635 or 652-3546.

WEDNESDAY QUILTERS AND STITCHERS

Wednesday Quilters and Stitchers will meet in the Lockney First Baptist Church Garden Room every Wednesday 9:00 a.m. - 12:00 Noon. Everyone is welcome. Bring handwork or "show and tell work."

LOCKNEY AA

Open meetings of Alcoholics Anonymous in Lockney will be Fridays, at 8 p.m., at Grace Fellowship Church, across from the hospital. If you are worried about your drinking, or someone else's, we understand, we care, and we want to help. Phone 652-3546 or 652-2280.

Subscribe and Have Your Newspaper Delivered to You!

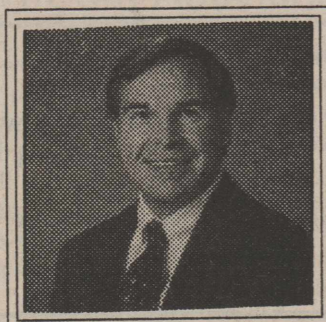
Free Bible Correspondence Course

Send your request on a post card (including your return address) to:

PO Box 596
Lockney, TX 79241

We would love to send you introductory lesson today.

Cardiology Care Now Available In Lockney & Floydada



Donald Heine M.D.

Specializing in Heart Disease

Now accepting new patients at W.J. Mangold Memorial Hospital. Next Clinic Wednesday, July 18, 2001

Plainview Cardiology, PA.

Call 293-9999 for an appointment

Floyd County Church Directory

AIKEN BAPTIST CHURCH

Henry Martin, Pastor
Sunday School 10:00 a.m.
Morning Worship 11:00 a.m.
Evening Worship 6:00 p.m.
Wednesday:
Bible Study 7:30 p.m.

BIBLE BAPTIST CHURCH

810 S. 3rd, Floydada
Darwin Robinson, Pastor
983-5278
Sunday School 10:00 a.m.
Morning Worship 10:50 a.m.
Evening Worship 6:00 p.m.
Wednesday Prayer &
Bible Study 7:30 p.m.

CALVARY BAPTIST CHURCH

Floydada
Glenn Truett, Pastor
Sunday School 9:45 a.m.
Morning Worship 11:00 a.m.
Bible Study 6:00 p.m.
Evening Worship 6:00 p.m.
Wednesday Evening 7:00 p.m.

CARR'S CHAPEL

Service Every Sunday:
Morning Worship 9:00 a.m.
Sunday School 10:30 a.m.

CHURCH OF CHRIST

West College & Third, Lockney
Steve McLean - Minister
Morning Worship 10:30 a.m.
Evening Worship 5:30 p.m.
Wednesday Service 7:30 p.m.

CITY PARK CHURCH OF CHRIST

Doug Rainbolt - Minister
Floydada
Sunday:
Bible Study 9:30 a.m.
Morning Worship 10:30 a.m.
Evening Worship 6:00 p.m.
Wednesday:
Bible Study 7:30 p.m.
(Summer 8:00 p.m.)

FIRST ASSEMBLY OF GOD CHURCH

701 W. Missouri, Floydada
Vance Mitchell, Pastor
Sunday School 9:45 a.m.
Morning Worship 10:50 a.m.
Sunday Evening
Evangelistic 6:00 p.m.
Wednesday:
Night Service 7:00 p.m.

FIRST BAPTIST CHURCH

401 S. Main, Floydada
Anthony D. Sisemore, Pastor
Les Reed, Minister of Students
Sunday:
Sunday School 9:15 a.m.
Morning Worship 10:30 a.m.
Handbells 4:00 p.m.
Christian Growth, Youth Drama, Faith Weavers, Mission Friends, Nursery 5:00 p.m.
Evening Worship 6:00 p.m.
Wednesday:
Children's Choir 4:00 p.m.
Nursery, Preschool Choir, RA's, GA's, Youth Bible Study, Adult Bible Study 7:00 p.m.
Adult Choir Practice 7:00 p.m.

FIRST BAPTIST CHURCH

Lockney
Phillip Golden - Pastor
Philip Oswald, Director of Music
Rodney Hunt, Youth Minister
Sunday:
Sunday School 9:45 a.m.
Morning Worship 10:45 a.m.
Evening Worship 6:00 p.m.
Youth 7:00 p.m.
Wednesday:
Prayer Meeting 7:00 p.m.
Youth Bible Study 7:00 p.m.
Adult Choir 8:00 p.m.

FIRST CHRISTIAN CHURCH

Reverend Ione Sedinger
Pastor
Sunday Worship 11:00 a.m.
Monday Bible Study 9:30 a.m.

FIRST UNITED METHODIST CHURCH

Floydada
Wendell Horn, Pastor
Sunday School 9:45 a.m.
Morning Worship 11:00 a.m.
Youth Fellowship 5:00 p.m.
Evening Worship 6:00 p.m.

FIRST UNITED METHODIST CHURCH

Lockney
Russ Byard, Pastor
Sunday School 9:15 a.m.
Worship Service 10:30 a.m.
UMY 5:00 p.m.
Evening Worship 6:00 p.m.
United Methodist Women, Hill Circle, 3rd Tues. 9:30 a.m.
Ruth Wesley Circle:
2nd & 4th Mondays 10:30 a.m.

FRIENDSHIP CHAPEL CME

Floydada
Rev. James Jenkins
Sunday 9:45 a.m.
Morning Service 11:00 a.m.
Wednesday:
Bible Study 8:00 p.m.

GRACE FELLOWSHIP CHURCH

211 N. Main, Lockney
Interdenominational Church
806-652-2332
Sunday School 9:45 a.m.
Morning Worship 11:00 a.m.

GRANT CHAPEL CHURCH OF GOD IN CHRIST

Joe Bennett, Pastor
Sunday School 10:00 a.m.
Monday Worship 11:00 a.m.
Evening Service 7:30 p.m.
Tuesday:
Prayer Service 8:00 p.m.
Wednesday Service 7:30 p.m.

MAIN STREET CHURCH OF CHRIST

Lockney
Russell Harris, Minister
Bible Study 9:30 a.m.
Morning Worship 10:30 a.m.
Evening Worship 6:00 p.m.
Wednesday:
Ladies Bible Class 9:30 a.m.
Bible Study 7:30 p.m.

MT. ZION BAPTIST CHURCH

Floydada
Rev. Ralph Jackson
Sunday School 10:00 a.m.
Morning Worship 11:00 a.m.
BTU 6:00 p.m.
Evening Worship 7:00 p.m.
Wednesday:
Mid-Week Prayer 7:00 p.m.
Thursday:
Bible Study 7:00 p.m.

NEW SALEM PRIMITIVE BAPTIST CHURCH

Floydada
Sunday: Congregational
Singing 10:30 a.m.
Morning Worship 11:00 a.m.
Pastor Elder Ronnie Hedges
Telephone (806) 585-6342

POWER OF PRAISE FULL GOSPEL CHURCH

Rev. Manuel Rendon, Pastor
704 N. Main, Lockney
652-3704
Sunday Services 10:00 a.m.
Sunday Evening 5:00 p.m.
Wednesday 7:30 p.m.
Friday - Youth Service 7:00 p.m.

PRIMER IGLESIA BAUTISTA

Lockney
Pedro Villareal, Pastor
Sunday School 9:45 a.m.
Worship Service 11:00 a.m.
Training Union 5:00 p.m.
Evening Service 6:00 p.m.
Wednesday Service 7:30 p.m.
G.A.'s 7:30 p.m.
Ambassadors 7:30 p.m.
Fellowship Luncheon - 1st Sunday of Month;
Music Worship;
Last Sunday with evening service

PRIMERA IGLESIA BAUTISTA

Floydada
Rev. Lupe Rando
Sunday School 9:45 a.m.
Morning Worship 10:55 a.m.
Evening Worship 6:00 p.m.
Wednesday Evening 7:00 p.m.

SAN JOSE CATHOLIC CHURCH

Lockney
Jim McCartney, Pastor
Wednesday:
Communion Service 8:00 p.m.
Sunday Mass 11:30 a.m.

SOUTH PLAINS BAPTIST CHURCH

Joe Weldon, Pastor
Sunday School 10:00 a.m.
Morning Worship 11:00 a.m.

SPANISH ASSEMBLY OF GOD TEMPLO GETSEMANI

308 Mississippi
Rev. Alejandro Ruiz Jr.
983-2864 or 983-5286
Sunday School 10:00 a.m.
Morning Worship 11:00 a.m.
Evening Evangelistic Service 6:00 p.m.
Wednesday:
Family Night 7:00 p.m.

ST. MARY MAGDALEN CATHOLIC CHURCH

Floydada
Father Rudolf Crasta
Deacon Ricky Vasquez
Sunday Mass 11:30 a.m.
Wednesday Mass 6:30 p.m.
Rosary recited 1/2 hour before Sunday Mass
Phone: 983-5878

TEMPLO BAUTISTA SALEM

Lockney
Pedro Reyes, Interim Pastor
Sunday Prayer Service 9:30 a.m.
Sunday School 9:45 p.m.
Worship Service 11:00 a.m.
Christian Training 5:00 p.m.
Evening Worship 6:00 p.m.
Wednesday:
Prayer Meeting 7:00 p.m.

TEMPLO BETHEL SPANISH ASSEMBLY OF GOD

Washington and 1st St.
Lockney 652-1008
Pastor, Rev. Eliseo Ovalle
983-6202
Sunday School 9:45 a.m.
Morning Worship 11:00 a.m.
Evening Worship 5:00 p.m.
Wednesday Service 7:00 p.m.

TEMPLO EVANGELICO PENTECOSTAL CHURCH

515 E. Missouri, Floydada
Sunday School 9:45 a.m.
Evening Worship 5:00 p.m.
Wednesday Service 7:00 p.m.

LIBERTY CHRISTIAN

203 SE 2nd, Lockney
652-2793
Pastor David Hinojosa
Wednesday Evening 7:30 p.m.
Sunday School 10:00 a.m.
Sunday Worship 5:00 p.m.

TEMPLO NUEVA VIDA

Rev. Herman Martinez
308 W. Tennessee, Floydada
Sunday School 10:00 a.m.
Prayer Service 2:00 p.m.
Evening Worship 5:00 p.m.
Tuesday:
Evening Service 7:30 p.m.
Thursday Service 7:30 p.m.

TRINITY CHURCH

500 W. Houston Floydada
Interdenominational Church
Henry Russell, Pastor
983-5499
Sunday School 9:45 a.m.
Morning Worship 10:40 a.m.
Sunday Evening 6:00 p.m.
Wednesday 7:00 p.m.
4th Sunday Singing 6:00 p.m.

TRINITY LUTHERAN CHURCH

Providence Community on FM 2301 293-3009
John Chandler, Pastor
Sunday School &
Adult Bible Class 10:00 a.m.
Worship Service 11:00 a.m.

WEST SIDE CHURCH OF CHRIST

Floydada 983-3548
Sunday Worship 10:30 a.m.
Sunday Evening 6:00 p.m.

This page is brought to you by the following sponsors:

Barwise Gin
Barwise Community
983-2737

Goen & Goen Insurance
102 E. California 983-3524

Oden Chevrolet-Olds
221 S. Main - Floydada - 983-3787

Cargill Hybrid Seeds
652-3339, Aiken

Floyd County Hesperian-Beacon
111 E. Missouri, Floydada - 983-3737
120 S. Main, Lockney - 652-3318

Pay-n-Save
210 N. Main - Lockney
652-2293

City Auto
201 E. Missouri - Floydada
983-3767

Lighthouse Electric Coop
Floydada- 983-2184

Payne Family Pharmacy
200 S. Main, Floydada, 983-5111

Clark Pharmacy
320 N. Main - Lockney
652-3353

Lockney Co-op Gin
Lockney - 652-3377

Schacht Flowers, Jewelry & Gifts
112 W. Poplar, Lockney, 652-2385

Davis Lumber
102 E. Shurbet - Lockney
652-3385

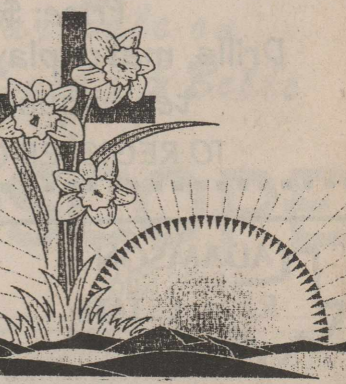
Lockney Ins. Agency
105 N. Main - Lockney - 652-3347

Sunshine Pump
Oliver Clark
Box 266, Lockney, Tx. 79241
983-5087 Mobile 774-4412

Garcia's OK Tire Store
308 S. Main - Floydada - 983-3370
511 1st. - Olton, Tx. -285-7796

Moore-Rose-White Funeral Home
329 W. Calif., Floydada, 983-2525
402 S. Main, Lockney, 652-2211

American State Bank
Member FDIC
217 W. California - 983-3725



Old Blue Quilt Box
200 S. Main, Lockney
652-2183

JACK'S ELECTRIC
101 E. Houston, Floydada
983-7555 or 983-2847

Attend the Church of Your Choice on Sunday.