

# The Floyd County Hesperian-Beacon

50¢

"Celebrating 105 Years of Floyd County News"

http://www.texasonline.net/floydco

Thursday, January 4, 2001

©The Floyd County Hesperian-Beacon

Floydada, Texas 79235 (USPS 202-680)

Volume 105 Number 1

Bale count better than last year

## Ginning over

Drought, hail storms, and drenching harvest rains fought the Floyd County farmers during the year 2000. Although most yields were down and poor, it was surprising to see that the total bales ginned in 2000 were up from last year.

All gins were finished ginning by January 1, with the exception of Blanco Gin. It is estimated that Floyd County Gins have ginned approximately 144,027 bales. Blanco Gin reported on January 2 that they estimate they have 100 bales left to gin.

Floyd County Extension Agent J.D. Ragland said, "The total acreage planted in Floyd County in 2000 was

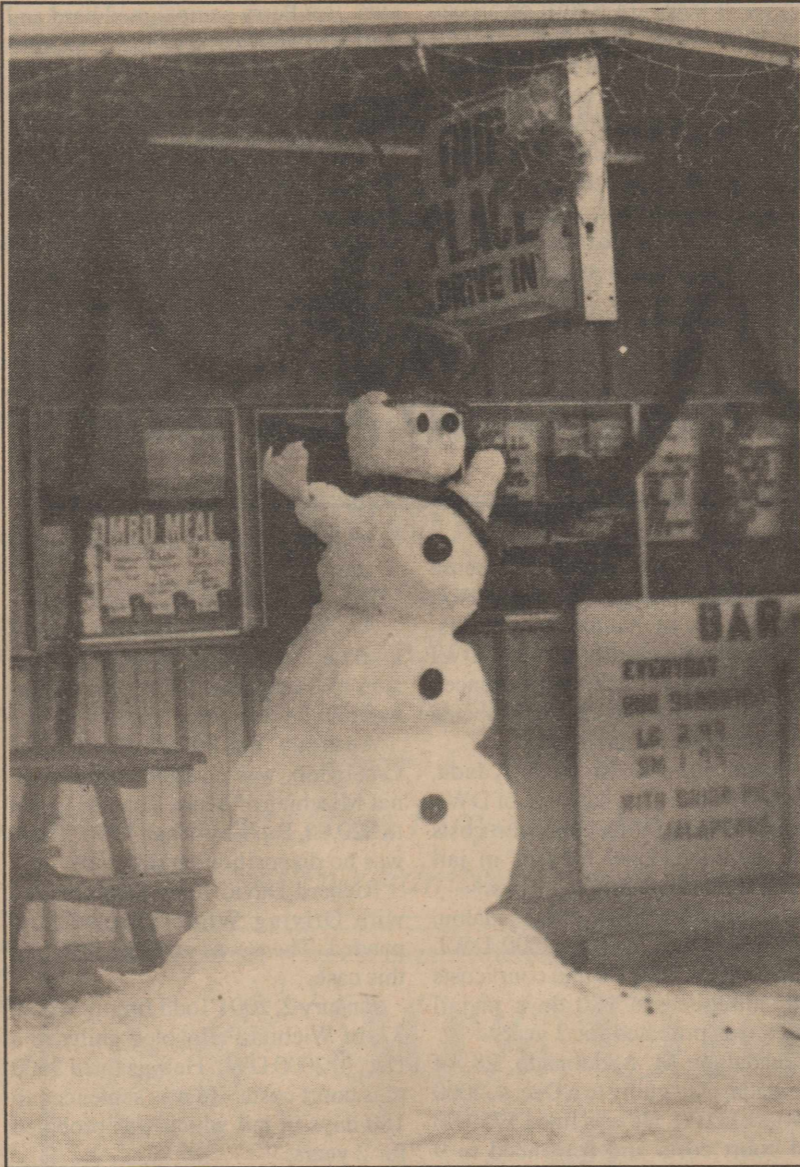
207,245. However, many of those acres were disaster out by hail and some by rain during the harvest.

Information on the number of acres declared a disaster was not available this week.

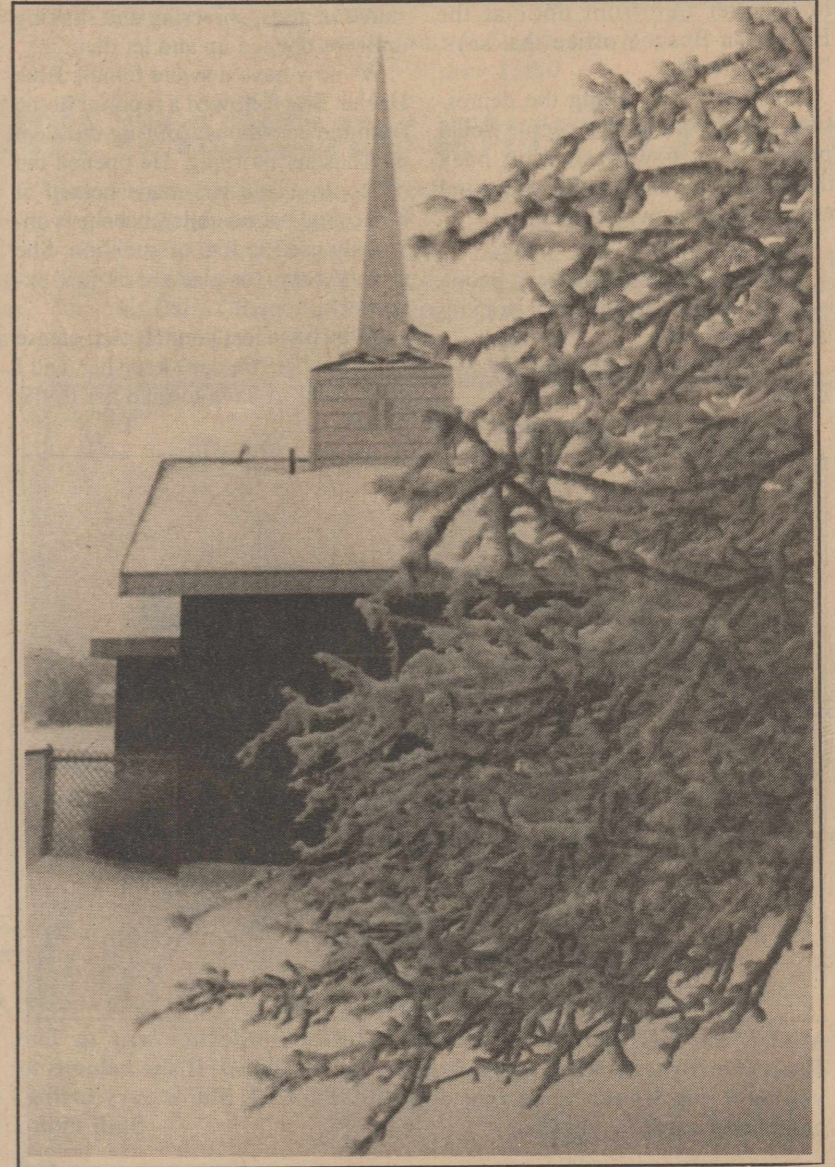
"This was a tough year with the drought during the growing season and then the wet harvest impacted the yields," said Ragland. "Those farmers who used harvest aid early in the harvest season did real good on yields.

"Of course, the price is still down and that hurts. The damp harvested cotton produced poor quality at the gins," Ragland concluded.

Gin	2000	1999	1998	1997
Barwise Gin	20,120	18,074	14,577	13,832
Blanco Gin	7,550	7,000	7,646	16,371(est)
Darty Gin	8,190	8,936	7,515	12,113
D&J Gin	24,879	27,362	27,500	22,150
Floydada Coop	30,479	21,349	37,200	36,200
Lockney Coop	24,141	28,700	23,920	19,500
Lockney Gin	7,350	9,300	10,025	6,600
Marble Bros.	3,200	3,745	3,700	3,050
McCoy Gin	5,286	3,857	8,166	5,544
Scott Gin	12,457	8,093	12,400	13,985(est)
South Plains	375(gin fire)	closed	5,400	10,474(est)
<b>TOTALS</b>	<b>144,027</b>	<b>136,416</b>	<b>158,049</b>	<b>159,759</b>



SNOW SLOWED DOWN BUSINESS at Our Place and other businesses around town last week. Owner Mike Ferrer occupied his spare time building a snowman to greet customers who braved icy roads. Staff Photo



MORE ICE FELL on Floyd County over the New Year's week-end and cold temperatures kept snow and ice covered limbs frozen. This snow covered steeple sits atop Bible Baptist Church. Staff Photo

## Lockney Stock Show will be held Saturday

The Lockney Stock Show will be held January 6, at the old show barn in Lockney.

The swine show will open the event at 9:00 a.m., followed by lambs, heifers and steers.

Animals must be in the barn and weighed by 6:00 p.m., Friday.

The judge this year will be Hall County Agent, Brad Snickner.

## Unity Center hosts Jamboree

The Unity Center will once again be the site of the Floyd County Gospel Jamboree, January 6.

The Jamboree will kick off at 7:00 p.m., Saturday, with a variety of singers to entertain.

There is no charge to attend, however a collection will be taken to pay the expenses of the building rental.

The Boy Scouts from Floydada and Lockney will open the concession stand for light snacks and hamburg-

ers will also be served.

Door prizes will also be given

Already signing up to participate are: Bill Gilbreath, Mt. Zion singers, U.S. Pickers, Judy Macha, Randy Miller, Ed Marks, Chuck Afill, and Larry Mullins.

## Valentine Brag Pages

The deadline to have your pictures submitted for the Valentine Brag Pages is February 2. The special edition will be printed February 8th.

The cost for a small picture in a heart frame will be \$15.00. The cost for a larger heart frame will be \$20.00. Any photo with 4 or more people will have to be put inside a larger heart frame.

## Unity Center proves versatility

Building site of 100 events

Just one year after the dedication service, the Floyd County Unity Center hosted its 100th event, on Thursday night, December 28th, with Jason Nutt's 13th birthday skating party. Ja-

"It is even better than we expected. One of the highlights for the 'Friends' was the county stock show last year when people started referring to the show as 'Little Houston'. That is a very

than anyone dreamed and those who participated in the 4-H Food Show were very complimentary of the facility.

"Those who used the building for banquets, and serving in excess of 600, were pleasantly surprised at how quick the building set up and broke down. All the tables and chairs are on carts. You don't have to load and unload from a trailer," said Long.

Unity Center Manager Jon LaBaume agreed with Long on the versatility of the building. "Over the past year the Unity Center attendance has totaled over 17,000 people.

"Besides the stock show and County Fair, there have been numerous skating parties and ag meetings," said LaBaume. "The Center has also hosted the Plainview Theatre production, Homecoming dances, family reunions and celebrations, banquets, a circus, gospel jamborees, and First Baptist Church's performance of Heaven's Gate.

"The largest commercial event was Lighthouse Electric Coop's annual meeting. The last event held for the year 2000 was a New Year's eve fellowship of the City Park Church of Christ."

Anyone wishing to use the facility should call Jon LaBaume at 983-3334 or the Unity Center at 652-3129.



KIDS CELEBRATE Jason Nutt's 13th birthday with a skating party at the Unity Center. The party was the 100th event at the Unity Center.

son is the son of Danny and Laura Nutt.

"We've been surprised at how versatile the building is," said Floyd County Friends President Nick Long.

high compliment for the facilities."

According to Long the building has earned rave reviews from everyone who has used the facility. "The Floyd County Fair also turned out far better

## County Stock Show finalizes new schedule for show and auction

The Floyd County Stock Show will be held at the Unity Center, in Muncy, January 25-27. The schedule has changed significantly for this year's Stock Show.

The Show will kick off at 5:00 p.m.,

Thursday, January 25., with the lamb show.

Steers and heifers will show on Friday, January 26, beginning at 8:00 a.m. School will be out in Floydada and Lockney to accommodate the

stock show.

The Swine Show will be held on Saturday, starting at 8:00 a.m. and the auction sale will also be on Saturday, beginning at 6:00 p.m.

## Cotton Conference set for January 23 at PBA

By J.D. Ragland

The Caprock Cotton Conference is scheduled for January 23, 2001 at the Plains Baptist Assembly between Ralls and Floydada. Registration begins at 7:30 a.m. Three CEU's will be given this year, 1 in Integrated Pest Management and 2 in General. The cost of the conference is \$25.00 (we will be accepting pre-registration until January 12) after this date a \$10 late fee will be collected. This will include lunch and conference cap and program materials.

The program will start at 8:00 a.m. with topics on Marketing Outlook, Crop Insurance Program, State Wide Water Management Guidelines, Economics on Energy Comparison, Update on Plains Cotton Growers Association, No Till cotton management, 2000 Insect Recap, What to Expect from Boll Weevil Eradication and Varieties and Harvest Aids. The conference will over at approximately

3:30 p.m.

Major sponsors for this year's conference are Delta & Pine Land Company, and Watermaster Irrigation Supply. Other sponsors are Abell-Prewitt company, Hurst Farm Supply, Irrigators Inc., Ray Lee Equipment, Terry Rainwater Crop Insurance, Fuel Efficient Engine Service, Brown Implement and Wilbur-Ellis Company. These sponsors as well as others will have booths set to advertise their products.

Registration information can be received through the Floyd or Crosby County Extension Office.

The Extension Office will seek to accommodate all person with disabilities for the meeting.

If you need assistance or have questions please call the Crosby County Extension Office (675-2347) or the Floyd County Office (983-4912) as soon as possible to advise of auxiliary and/or service needed.

## Series continues on the surrender of Corregidor

(This is the 5th part of a series of stories taken from Chapter 2 of "The Chow Dipper", written by Ken Towery, owner of The Hesperian-Beacon. Towery was captured while defending the Island of Corregidor in the Philippines. He spent 3 1/2 years as a Japanese Prisoner of War. Chapter 2 deals with the bombing of Corregidor and Bataan, which began Dec. 8, 1941 and the subsequent surrender.)

Maiinta Tunnel was an engineering masterpiece. The hill through which it ran rose abruptly at the beginning of the tadpole tail of Corregidor. At some time in the past engineers had bored, blasted, or otherwise hacked a tunnel through the base of the hill, connecting the main portion of the island to its curling tail. Off the main tunnel were numerous laterals, all dedicated to various uses. In peacetime it was a quiet place, entered only by a few persons on official business and small, trolley-type electric rail cars that plied the rail line between topside and bottomside. When war came the scene changed rapidly and drastically. Probably one of the earliest to move into the tunnel was the hospital, into pre-designated laterals. It was a happy move, for the regular hospital was among the first things hit.

Also moving there were Gen. Douglas MacArthur's Command Headquarters, the ordnance people, the quartermaster (or supply) units, the finance people, those people not needed on the guns.

By the time I made a trip to the tunnel in wartime, in company with others from the battery to obtain a load of ammunition; it seemed that fully half the island's population must have been crowded into the tunnel and its laterals. In a way it was a frightening experience to enter the tunnel, but it gave us some sort of inner satisfaction, for the inhabitants seemed to regard us in awe, as if we were from another planet. One would have thought that with 300 feet of solid rock overhead, with no danger of having to face the bombs, and later the shelling and the bombs, they would have felt perfectly safe. But such was not the case. Their eyes held more terror than those who daily faced that threat. It is possible that a psychologist could explain all this, but then, a psychologist would not have been on the guns....

...In theory the supply units in the tunnel were supposed to deliver our rations, bring us our replacement ammunition when supplies got low, come

Continued On Page 2

## Unity Center Endowments Tax Deductible

The Floyd County Friends have started a drive for contributions to the Unity Center endowment fund.

"Our building is 100% paid for and we have money to operate for close to 2 years," said Friends President Nick Long. "We now have \$13,500 in the endowment and if we can get our endowment fund up to \$150,000 the Center could operate off of the interest plus usage fees."

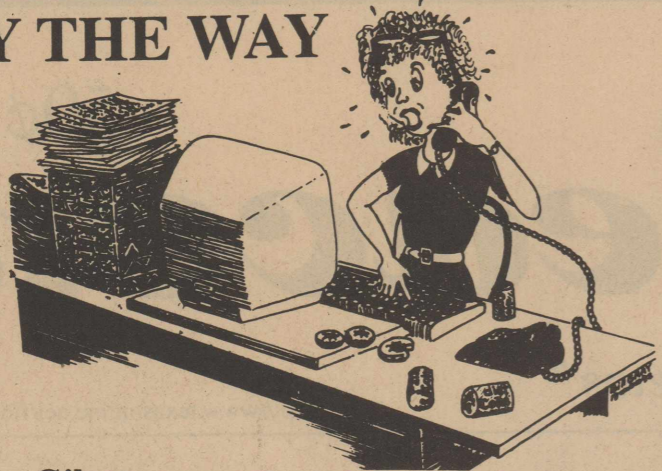
According to Long any time the Friends receive any type of donation the funds are first considered for savings, then operations, and then purchasing of equipment or supplies.

"The endowment fund would eventually replace the need for raising funds through the Gala," said Long. "We just want people to remember the Unity Center when they are looking to make charitable gifts."

"Memorial gifts are also a wonderful way to contribute to the endowment fund. All memorial gifts--no matter how small--are recognized on a display near the concession stand."



## BY THE WAY



By  
Alice Gilroy

Floydada@texasonline.net

I wonder if we have some kind of mark over our front door at the Hesperian-Beacon office that says, "Suckers inside".

I've heard that during the depression, out of work hungry people would place marks over restaurant back doors if someone inside was kind enough to give away food.

Other out of work hungry people would see the sign and keep stopping at the restaurant.

I think we have a sign that only dogs can read.

I won't go into how many dogs have

stopped at our front windows and stared in at us, shivering and shaking until we opened up and let them in.

We now have a sweet female Blue Heeler. She followed a reporter home from the courthouse, during the sleet on Tuesday morning. He opened the office door and she made herself at home. She has no collar, but she is obviously used to lots of attention. She is very calm (or else she is just extremely pooped).

If you have lost your Heeler, please come get her. We can't keep her, and I don't want to have to take her to the pound.



**MADE IN THE SHADE--**This Blue Heeler found her way to The Hesperian-Beacon office and is looking for her home. If she belongs to you or if you would like a free dog call 983-3737. She is very loving, gentle and calm.  
Staff Photo

A view from



# The Lamplighter

email: chowdipper@earthlink.net

By Ken Towery

Almost lost in all the hoopla over pregnant chads, missing chads, simple dimples (on chads) in Florida, the final election of a new President and the naming of new Cabinet members, Texas got herself a new Governor. Rick Perry replaced George Bush's as Governor and took over the reins of state government. And, in the Senate, Perry was replaced as presiding officer of the Senate by Sen. Bill Ratliff of Mount Pleasant, in East Texas.

Our own State Senator Tom Haywood voted for Ratliff on all ballots, so he should be riding high at the moment, for what that may be worth. Ratliff won't be a real Lieutenant Governor, in the strictest sense of the word. He will merely be presiding officer of the Senate and "acting" Lieutenant Governor, which is just a little short of being Lt. Governor.

Perry first got his statewide exposure by running for Texas Commis-

sioner of Agriculture when that post was held by Jim Hightower.

Not many people expected the rancher-legislator from Haskell to beat Hightower, who was looked upon by many in the then-dominant Democratic Party, as a "comer," with a brilliant future in this state's political establishment. For instance, so certain were the Israeli lobbyists that Hightower was headed to the top that he even got an expense paid indoctrination tour of Israel, courtesy whom-ever. But Perry campaigned hard and surprised nearly everyone except himself by trouncing Hightower convincingly.

After a few terms as head of the Texas Department of Agriculture, Perry went on to become Lt. Governor, probably the most deceptively influential post in state government. From there it was the Governor's chair

when Bush went off to become President. Mr. Hightower went off somewhere. The last we heard he was on the radio, still insisting he was right (or left) all along. One of his most avid listeners, judging from what she writes, was Ms. Molly Ivins.

Perry has always done well in Floyd County. Local voters favored him even when he was running against Hightower, and they have favored him ever since. Perhaps that inclination to favor Perry comes only from his own rural background, but that, in our opinion, is not the case and should not be

the case. We have prime examples, in certain political figures we shall not name here, of individuals getting themselves elected and then promptly forgetting their roots. In the case of Perry, unless we are mistaken, the roots are deep, and not subject to changes for reasons of personal aggrandizement. Here, at this desk, we think the trust Floyd County folks have shown in Perry is well founded. We hope so, and if there is ever reason to think otherwise, we'll let you know.

Meanwhile, Perry will have an uneven road to travel during his time in the Governor's office. Bush will be President, and will no doubt want another term. Some of the issues Bush wants solved to Bush's advantage before he seeks a second term will not necessarily be issues that redound to Perry's benefit as Governor of Texas, should he also want a term in his own right. If they have any disagreement on those issues, we hope Perry's ideas prevail. Bush will, after all, belong to the nation, and the nation's problems will be his to wrestle with. Perry will belong to Texas, and Texas, problems will be his to wrestle with. Certain problems are peculiar to each. It's just that simple.

In any event, we wish them both well, and we wish their constituents well. All of us.

Elsewhere: Our current President is using his constitutional prerogatives with a vengeance. The end of his White House stay is fast approaching, so he's busy issuing pardons for a host of people he feels have been punished

enough, or shouldn't have been punished at all. As of this writing 69 individuals (according to press reports), convicted on a range of offenses have benefitted from the President's benevolence. Several, including Susan McDougall, Roger Milikan (the former junk bond dealer) and one Mr. Webster Hubbell, a former Assistant Attorney General appointed by Clinton, (and Hillary's former law partner in the Rose law firm in Little Rock, Arkansas,) wait with crossed fingers. They may make it under the wire.

Also anxiously sweating out the Clinton clock are the "peace negotiators" in Washington and Israel. The on-again, off-again talks between Pal-

estinians and Israelis are currently almost on again. Meanwhile, people there continue to die. How long has this been going on? Thirty years? Forty years? Never mind. They'll settle when the price is right, or when George W. Bush becomes President. Somehow, we doubt Bush will be prepared to forever underwrite Israeli expansion in the Mid-east. When the money ceases to flow, if it ever ceases to flow, peace will ensue. The last tally of American tax dollars going to Israel (in the form of foreign aid) that we saw amounted to more than \$130 Billion, even as the per capita income of the Israelis approached that of Great Britain. For that kind of money, the U.S. Government could move water from the Great Lakes to just about every farm on the Plains, and reclaim the Florida Everglades as well. But that would make only a few Senators and Congressmen happy. By continuing the current recycling of wealth from American taxpayer to the Israeli government, to Israeli businessmen, back to American politics, many Senators and many Congressmen are made happy.

Incidentally, in our view, Mr. Bush's Cabinet is a mixed bag, appointed with one eye looking toward satisfying the Senate confirmation process, and the other eye looking toward satisfying certain interest groups. But, it's a fair beginning. He'll do better.

Happy New Year.

## Courtroom Activities

In County Court December 21:

A Nov. 22, a Driving While License Suspended charge against Jason Jacquez, 22, of Plainview, was dismissed. He pled guilty to a 2nd DWI and was fined \$750.00 and sentenced to 9 months in jail which was probated for 2 years plus court costs.

Martin Garcia, 36, of Floydada, pled guilty to a Dec. 4 charge of DWI. He was fined \$750.00 and court costs and sentenced to 9 months in jail which was probated for 2 years.

Michael Glen Howe, 54, of Idalou, pled guilty to a Dec. 4, 2000 DWI. He was fined \$600.00 and court costs and sentenced to 180 days in jail which was probated for 2 years.

Guadalupe M. Maldonado, 28, of Floydada, pled guilty to a Dec. 4, 2000 charge of DWI. He was fined \$750.00 and court costs and sentenced to 9

months in jail which was probated for 2 years.

Dec. 27, 2000:

Anthony Tapia Ascencio, 28, of Lockney, was charged with Possession of Marijuana. There was no disposition on this case.

Anthony Paul Barboza, 28, of Crosbyton, was charged with Criminal Mischief of More Than or Equal to \$20.00, But Less Than \$500. There was no disposition on this case.

Richard David Jones was charged with Driving While License Suspended. There was no disposition on this case.

January 2, 2001 Todd Jimmy Wood, 37, of Wichita Falls, pled guilty to a Dec. 4, 2000 DWI. He was fined \$600 plus court costs. He was sentenced to 180 days in jail which was probated for 2 years.

## Series continues on surrender of Corregidor

Continued From Page 1

and pick up our dead and wounded after the daily bombing runs were over. At first it worked that way, but as the siege wore on and as the battle intensified, it did not. On many occasions we had to make the winding trip down the bombed out trails to deliver our own wounded to the hospital, or to replenish our ammunition supply.

One such trip stands out in my memory, reminding me then and now it is dangerous to categorize men. We received word that a submarine had eluded the blockade and had delivered a supply of newer ammunition with thirty-second mechanical fuses, which would allow us to reach higher altitudes. The problem was that if we wanted it, we had to come get it. The ammunition had been delivered into Malinta Tunnel, but from there the responsibility was evidently ours, so we went. It was dusk and if the bombers stuck to their routine we had a while before the sirens sounded again. Weary and exhausted, we loaded our ammunition while the tunnel's cowering inhabitants watched. As we left the tunnel's west entrance we passed a group of men gathered there for a breath of fresh air. Among them was a tall, dignified individual wearing the eagle of a colonel's rank. There was a sadness about his eyes as he greeted us. Somewhat startled at being addressed by an officer of such rank, I stopped. He asked how things were going "up there."

"It's pretty rough," I answered. "It sounds like it," he said. "It sounds awful." Then he added, "God bless you. You're all we have left."

There was something about him, something about the way he spoke, that said more than what he said. It said, to me at least, "If I could help, I would." I believed what he said, and

what he didn't say.

We returned to the guns, but I felt there was at least one in the tunnel who would have helped us, if he could.

I do not know why that one small incident has remained in my memory all these years. Perhaps because it challenged thoughts that were rapidly crystallizing in my mind, thoughts which said all men on the guns were doing their duty and were therefore worthwhile, and all men in the tunnel were not doing their duty and were therefore not worthwhile. Could it be that those of us on the guns were not quite as brave as we thought, or forced ourselves to believe, and that not all men in the tunnel were quite the cowards they seemed? That the principal difference between us was circumstance—that most men will rise to the occasion if circumstance dictates, no matter the hardships? That only some men, given the opportunity by circumstance, will seek the path of safety and security, no matter the humiliation involved?

At least some of the bitterness engendered by these conditions rubbed off on our officers, and would dog the trails of both officers and men in the months and years to follow. Among soldiers trained to follow orders of those in higher rank, conditioned to think the reasons for their own lowly status is that others are better trained, more experienced, and somehow smarter, the blame tends to go up the ladder, whether justified or not. Who was allowing these conditions to exist? Certainly not the troops, according to the way the troops saw it. Who could make things better? Again, certainly not the troops, as the troops saw it.

At least some of the officers did little to counter the feeling that was

developing. In our own battery the captain insisted, for instance, that officers have their own latrine, even under conditions that existed. Such officers had obviously been indoctrinated into the belief that "familiarity breeds contempt," and were determined not to bare their rear in the presence of enlisted men doing the same. It was a small thing, a silly thing, but it did nothing to elevate them in the eyes of the men. Not when men were fighting and dying alongside. It is true, of course, that familiarity may indeed breed contempt when that familiarity reveals weaknesses in character previously obscured by rank, position, or circumstance. But it also proved true in the terrible years to follow that familiarity fosters respect and admiration when it reveals strengths that would otherwise be obscured by rank, position, or circumstance.

I saw none of this spill over into the way men went about their duty. They never slackened, never spoke of it openly. The attitudes just seemed to contribute to the war becoming intensely personal, with each man knowing that there was someone out there on the other side with whom he was in mortal combat, and over whom he had to prevail. Eventually we came to realize that those who were left would have to meet the enemy on the beaches and in the foxholes. In the meantime, we, or at least I, developed a little cocoon in which life went on. When the bombers came there were things to do, and when they left one went about other things, preparing for the next wave. Part of me seemed always back among my family. There was peace, no matter what was going on around me.

I do not know the thoughts of men on a winning drive, where the tanks roll forward, where planes in the sky may well be your own, where this or that hill is taken, where this or that town is taken and it is on to the next, minus, of course, those friends left along the way. I only know that on Corregidor it must have been different. True, some things were similar. People died. But here there was no advancing, no retreat. The ground we contested today was the same ground we contested yesterday, last week, last month. It was the same ground where this friend or that friend had fallen during that time. And we knew also it would be the same ground we would contest, and where more men would fall, tomorrow and tomorrow and tomorrow.

Under those circumstances, and despite the closeness of the men who inhabited it, our little plot of land atop Morrison Hill became a somewhat lonely place, visited only on a more or less regular basis by people from the quartermaster corps, who would drop our meager supplies of food just off the roadway by our gun and speed away, lest they get caught away from the tunnel while bombs were falling. Occasionally our battalion commander would come, but never, to my knowledge, our regimental commander. Once we even had a visit from The General himself.

Continued Next Week

Advertising  
pays off!!

Extra, Extra Photo Savings!

**FREE**  
2nd Set!

3" DUCKWALL'S Prints

OR

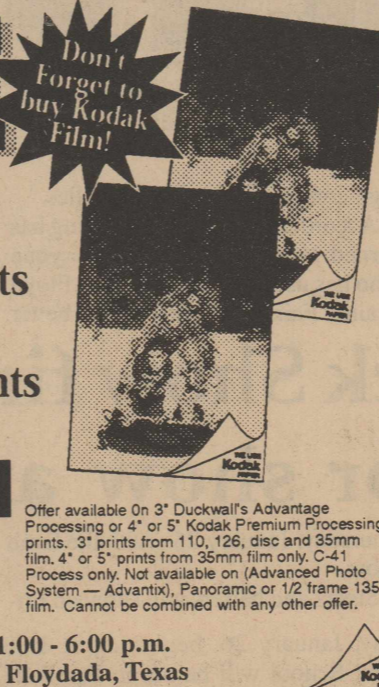
4" or 5" Kodak Prints

PREMIUM PROCESSING

Every Tuesday & Saturday!

**DUCKWALL'S**  
Advantage

Daily: 9:00 a.m. - 6:00 p.m. Sunday: 1:00 - 6:00 p.m.  
ADDRESS: 114-118 E. California, Floydada, Texas



HAVE CROP INSURANCE QUESTIONS?

**GOEN & GOEN**  
HAS THE ANSWERS

Let us prove it to you.

Visit with Kyle Smith  
Gail Dubois or Pat Franklin

102 E. California 983-3524

www.goen-goen.com

*Shugart's*  
inc.®

1 - 10X13  
1 - 8X10  
2 - 5X7  
2 - 3X5  
16 King Size Wallets  
8 Regular Size Wallets

**30**  
Color  
Photos

**\$12.99**

99¢ Deposit  
\$12.00 (plus tax)  
due at pickup  
group charge  
99¢ per person



We use  
**Kodak**  
PROFESSIONAL  
FILM & PAPER



LOWE'S MARKET PLACE  
220 SOUTH 2<sup>ND</sup>  
FLOYDADA, TX.

THURSDAY JAN. 11

PHOTO HOURS  
9-1 & 2-6

WE USE KODAK PAPER, FILM & CHEMISTRY

Get Your  
**FLU SHOT**

This Thursday, January 4th

4:00 to 5:00

No Charge with copy of Medicare Card

All others \$10.00

Payne Family Pharmacy

**PAYNE PHARMACY**

200 S. Main, Floydada 983-5111



# Floyd County Lifestyles

## FLOYDADA SENIOR CITIZEN NEWS

**By Margarette Word**  
The center was closed last Monday New Years Day but was open Tuesday through Friday.

The weather has been so bad I was unable to take my article in last week. I also had my son Greg and family here for the Christmas holidays and their stay was extended due to the weather. They also had trouble getting home. They were caught in the road block at Ranger. They were 20 hours in the car. A normal trip is around 4 1/2 hours. My grandchildren and their dog had never seen this amount of snow. They felt it was really Christmas. They had so much fun playing in it.

Congratulations to Bob and Charlene Alldredge who celebrated their 50th wedding anniversary Sunday, December 31st, at Wall Street Parlor. Their children hosted the party. Charlene and Bob were married December 26, 1950.

I should have lots of new about our seniors family get together for the Christmas holidays but with weather so bad and having company I was unable to go to the center to learn about what our seniors were doing. Marie Warren did call me to let me know that she and Thomas had 27 family members in their home December 23rd.

I do know that William and Faye Bertrand had some of their family in December 28th to celebrate Christmas, some of the family was unable to be here due to the weather.

Vic and Ione Sedinger went to Arlington to have Christmas with their daughter and family and their younger daughter and her family from Missouri was also there. On their way home the Sedingers had to spend 2 night at Jacksboro due to the ice on the road.

J.W. and Betty Gilbreath went to Weatherford to spend Christmas with Jan and Gene Wats and Family. The Gilbreaths also got snowed in and had to stay 3 extra days.

Flora McNiell went to Wolforth to have Christmas with her daughter

Janice and Allen and they were going on to Canyon to have Christmas with granddaughter Misty and her family but the snow came and they put off going to Misty's till last Saturday December 30th and just spent the day then.

Our sympathy to the family of D.M. Cogdell, Jr.

Our sympathy to the family of T.L. Holland, Jr.

Our sympathy to the family of Mattie Covington.

Frieda Simpson fell on the ice and broke her left arm.

Wayland fell on the ice and broke a arm.

Thank you for remembering the center when you need to make a memorial donation.

In memory of Mae Muncy: Judy Beedy, Todd and Jan Beedy, Mark and Melanie Beedy, Margarete Word.

In memory of T.L. Holland, Jr.: Margarette Word.

In memory of D.M. Cogdell, Jr.: Edna Gilly.

In memory of Jewell McNeese: Fay and Ruby Gooch.

**Thought For The Week.**

Have a good week. Happy New Year. Count your blessings and remind everyone else how blessed we all are. Thank God for who He is and that He loves us and blessed us each day.

**MENU**

January 8-12

**Monday**-Beef Enchiladas, Spanish rice, green beans, crackers, dry jello salad.

**Tuesday**-Chicken Fried Steak, white gravy, baked or mashed potatoes, broccoli, wheat roll, oranges and bananas.

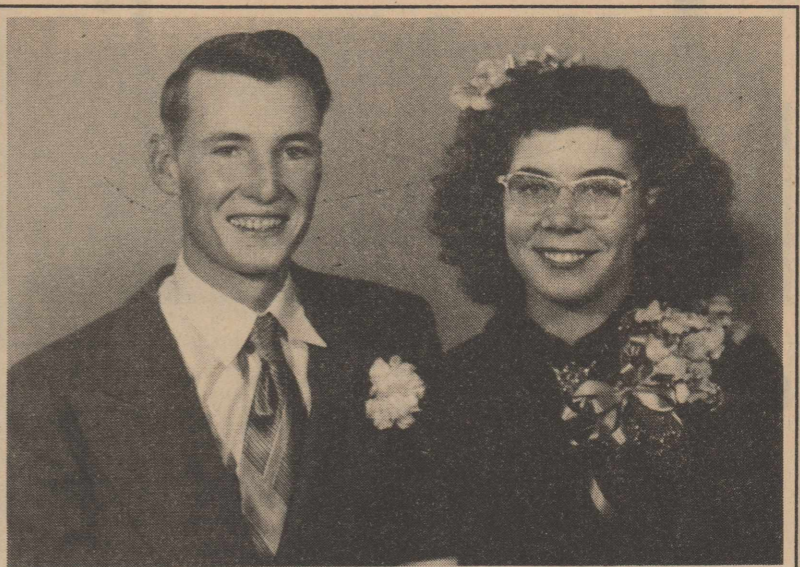
**Wednesday**-Beef Pot Pie, green peas, cauliflower, cheese sauce, hot roll, pumpkin pie or bars.

**Thursday**-Baked Chicken, pinto beans, mixed vegetables, sliced onions, cornbread, apple cobbler.

**Friday**-Meat Loaf, au gratin potatoes, carrots and zucchini, wheat roll, angelfood or white cake, fruit cocktail.



Mr. and Mrs. E.O. Chappell  
December 2000



Mr. and Mrs. E.O. Chappell  
December 1950

### Chappells celebrate 50th wedding anniversary

Mr. and Mrs. E.O. Chappell were the honored guests at a dinner celebrating their 50th wedding Anniversary recently. The former Juanita Huckabee and Ozell Chappell were married December 21, 1950, in Floydada. The ceremony was performed by the Reverend R. Earl Allen. The dinner was held at the County Line Restaurant in Lubbock. It was hosted by the Chappell's children and

grandchildren and attended by family and friends of the couple. Their children and spouses are, Kathy and George Lange of Lubbock, Jerry and Darla Chappell of Floydada, and Judy and Steve Lloyd of Floydada. Grandchildren are Stacey Lloyd of Canyon, Shane Lloyd of Floydada, Kelly Lange of Lubbock and B.J. Chappell and J.C. Chappell, of Floydada.

**Floyd County Gospel Jamboree**

Door Prizes      January 6th      Door Prizes

7:00 pm

Floyd County Friends  
Unity Center

Boy Scouts from Floydada & Lockney  
will be selling hamburgers & Snacks

Bridal Selections for  
Jodie Villarreal & Brandon Burriss

**PAYNE PHARMACY**  
200 S. Main, Floydada 983-5111

**30% OFF**  
all  
Christmas Items

We now accept  
Master Card, Visa, Discovery & American Express

**Sue's Gifts & Accessories**  
100 East California, Floydada 983-5312

**AFTER Christmas SALE**

**Schacht FLOWERS, JEWELRY & GIFTS**  
112 W. Poplar, Lockney  
8:30-5:30, Mon.-Sat., 652-2385

**Mary Kay Cosmetics**  
Susan Simpson  
Independent Consultant  
983-5325

**SHAKLEE**  
983-5246

**LANEY & STOKES**  
LAWYERS  
600 Ash Street  
Plainview

Support your  
Lockney  
Chamber of  
Commerce  
www.lockneychamber.com

Have You Checked Blue Cross/Blue Shield Health Insurance Rates Recently?  
Couple 34 Non-Tobacco User w/ 2 Children

\$250 Deductible	\$365.00 mo.
\$500 Deductible	\$299.00 mo.
\$1000 Deductible	\$233.00 mo.
\$2500 Deductible	\$174.00 mo.

**Windmark Insurance Agency, Inc.**  
P.O. Box 201 N. Main, Lockney 806-652-2241  
Fax 806-652-2426 • Mobile 983-1906 • 983-2906  
Clar Schacht      June McGaugh

**KALEIDOSCOPE**  
110 S. Main Lockney      Open Mon-Fri 9:00-5:30  
(806) 652-2960

20% Off Denim Shirts Long-Sleeve T-Shirts Button-Up Shirts	30% Off All Christmas Sweatshirts Baby Items Fleece Pullovers & Vests
---	--

# HALE'S DEPARTMENT STORE

## SEMI-ANNUAL CLEARANCE SALE

**EVERYTHING ON SALE STARTS THURSDAY JAN. 4TH 9A.M.**

### 10% - 20% - 30% - 40% - 50% - 60% - 70% OFF

Women's Dress Shoes - Women's Casual Shoes - Women's Athletic Shoes - Girl's Dress Shoes - Girl's Casual Shoes - Girl's Athletic Shoes - Men's Dress Shoes - Men's Casual Shoes - Men's Athletic Shoes - Boy's Dress Shoes - Boy's School Shoes - Boy's Athletic Shoes!

Women's Dresses - Women's Accessories - Women's Co-ordinates - Women's Sweaters - Women's slacks - Women's Jeans - Women's Tops & Blouses - Women's Purses - Baby Gifts - Toddler Outfits - Baby Clothes - Girl 4-6 X - 7-14 Dresses and Casual Clothes - Towels - Washcloths - Rugs - Pillows - Hose - Sox - Underwear - Men's Suits and Sportcoats - Men's Shirts - Men's Knit Shirts - Dress Slacks - Casual Cotton Slacks - Dress Shirts - Men's & Boy's Briefs, Boxers, Knit Boxers - Men's & Boy's Jeans - Overalls - Coveralls - Belts - Ties - Wallets

Brand Names From Brighton - Alfred Dunner - Selby - Naturalizer - Nike - Adidas - Dexter - Rockport - SAS - Tony Lama - K-Swiss - Hanes - Munsingwear - Jockey - Wrangler - Levi - Gepeto - Northern Isle - Bordada - Ivy - On-The-Verge - Belle Point - Foxcroft - Shadowline - Fieldcrest - Red Wing - Worx - Bianca - Foot Cradle - Bugle Boy - SRT - Enro - Bamboo Cay - Siegfried.

**BUY NOW AND SAVE PLENTY - SOME OF THESE BARGAINS WILL ONLY BE ON SALE FOR ONE WEEK ONLY**

**HALE'S On the Square - Floydada - 983-2388**





A SNOWMAN'S HOME IS HIS CASTLE-A snowman to re-open after the Christmas holidays. is seen at 100 E. Hallie in Floydada waiting for school

Staff Photo

## Registration continues for South Plains College courses in Floydada

Registration is continuing for two South Plains College courses, College Algebra and American Government, Functions, to be offered this spring in Floydada.

Registration is underway 10:00 a.m. - noon and 1-3 p.m. Tuesdays and Thursdays at the Floydada Chamber of Commerce.

Later registration is 5:30-6:30 p.m. Tuesday (January 9th). Classes begin January 16th.

College Algebra (MTH1314-71)

will meet 6-9 p.m. Thursdays. Instructor is Dr. Jim Durham.

High school seniors may apply for early admission to SPC classes offered in Floydada through their high school principal.

Other persons must be high school graduates or possess the GED certificate.

Steps for admission include completing an application for admission to SPC, providing an official transcript from high school or college, provid-

ing proof of Texas residency for the previous 12 month period (usually a valid Texas driver's license is sufficient); and taking the Texas Academic Skills Program (TASP) test, a state required assessment of basic college skills, unless otherwise exempt.

In-state cost is \$171 for three semester hours and \$309 for six semester hours.

For more information, contact the SPC Office of Continuing Education at 806-894-9611, ext. 2341.

## Lady 'Winds take home third place trophy at Clarendon Tournament

FLOYDADA 62  
HEDLEY 54

The Floydada Lady 'Winds traveled to Clarendon on December 29-30 to participate in the Clarendon Tournament. Their first opponent was Hedley and the Lady Winds came away with a win by a score of 62-54.

Leading the way for the Lady Winds was Erin Ralston with 17 points. She hit 8 two-point field goals and 1 free throw. She also had 1 offensive rebound and 2 defensive rebounds.

Lana McCandless had a good game as she had a double-double for the night. She scored 10 points and had 10 rebounds. She sank 3 two-point field goals, 1 three-point field goal and 1 free throw. She added 8 huge defensive rebounds, 2 offensive rebounds, 9 big assists and 4 steals.

Tamara Black scored in double digits with 10 points. She hit 5 two-point field goals along with 2 offensive rebounds and 2 defensive rebounds.

Jessica Castaneda added 9 points to the scoreboard as she sank 3 two-point field goals and 3 free throws. She had 5 assists, 1 offensive rebound and 1 steal.

Abby Sanders ended the night with 8 points. She hit 4 two-point field goals along with 1 assist and 4 defensive rebounds.

Tara Williams added 5 points to the victory. She made 2 two-point field goals and 1 free throw. She also had 1 assists, 4 offensive rebounds, 3 defensive rebounds and 1 steal.

Ragan Beedy added 3 points to the scoreboard as she hit 1 three-pointer. She also had 1 assist and 2 defensive rebounds.

Mandy Holbert contributed to the victory with 1 assist.

Jenna Payne also contributed to the win with 3 assists and 1 defensive rebound.

SCORES BY QUARTERS  
Floydada 12 16 18 16  
Hedley 11 14 12 17

FLOYDADA 58  
CLARENDON 65

In their second game of the tournament, the Lady Winds took on Clarendon and lost by a score of 65-58.

The Lady Winds came out slow in the first quarter but picked up the pace in the remaining three quarters but never could overcome the deficit.

Lana McCandless led the way with a double-double. She scored 17 points as she hit 4 two-point field goals, 1 three-point field goal and 6 of 6 free throws. McCandless had a great game on the boards as she had 10 big defensive rebounds, 2 offensive rebounds along with 2 assists and 2 steals.

Tamara Black also scored in double digits with 13 points. She sank 5 two-point field goals and 3 free throws. She also had 1 assist, 2 offensive rebounds, 2 defensive rebounds and 1 steal.

Jessica Castaneda had a good game as she sank 1 two-point field goal, 2 three-point field goals and 1 free throw for a total of 9 points.

Abby Sanders ended the game with 7 points. She made 3 two-point field goals and 1 free throw along with 2 offensive rebounds and 4 defensive rebounds.

Ragan Beedy added 7 points to the scoreboard as she hit 2 three-point field goals and 1 free throw. She also had 3 assists.

Erin Ralston scored 4 points for the night as she sank 1 two-point field goal and 2 free throws along with 4 assists, 2 offensive rebounds and 2 defensive rebounds.

Tara Williams added 1 point to the scoreboard as she hit 1 free throw. She also had 4 assists, 2 defensive rebounds and 1 blocked shot.

SCORE BY QUARTERS  
Floydada 5 19 21 13  
Clarendon 11 10 18 26

FLOYDADA 60  
RIVER ROAD 53

In their third and final game of the tournament, the Lady 'Winds played River Road in a game that would decide third place. The Lady 'Winds came out ready to play and beat River Road by a score of 60-53 and took home the third place trophy.

Abby Sanders was named to the All-Tournament Team.

Abby Sanders had a tremendous game as she scored 28 points.

Tamara Black scored in double digits with 11 points.

Jessica Castaneda added 7 points to the scoreboard.

Lana McCandless scored 6 points for the game

Erin Ralston ended the game with 6 points.

Mandy Holbert contributed to the win with 2 points.

SCORE BY QUARTERS  
Floydada 12 15 10 23  
River Road 12 7 11 23



COOLIN OFF IN THE FLOYD COUNTY JAIL-The ice and snow storm last week cooled the county jail down on the Floydada city square.

Staff Photo

## Environment may increase drug abuse

COLLEGE STATION - When it comes to drug addiction and abuse, a Texas A&M University psychologist believes certain populations may be at more of a risk than others because of what, up until now, has remained an unknown factor - chemicals in the environment.

"We have to say it's possible that a chemical environment may actually increase drug abuse," says Texas A&M psychologist Jack Nation, who for the last 15 years has studied the effects of environmental contaminants on drug use.

"There's an entire chemical soup we all live in that could interact with drugs that have abuse liability," Nation says. "No one has ever looked at that. We're the only lab in the world that systematically looks at the effects of environmental pollution on drug abuse, using animal models."

The contaminants Nations studies are lead and cadmium.

Through the use of an animal model, Nation has determined both of these environmental contaminants act as antagonists to drugs such as cocaine and alcohol. In other words, they create a tolerance for the drugs that results in the user having to take more of the drug to reach the level he or she is seeking.

Nation says research indicates

the threat of lead poisoning is especially great among economically disadvantaged, nonwhite and inner-city children. A 1999 report places the at-risk figure for children suffering from excessive lead exposure at 70 percent in major metropolitan areas of the United States, he notes.

Cadmium naturally accrues in tobacco products at a point where it is toxic to humans, and it is present in all tobacco products. Nation notes that almost 20 percent of North American women who are pregnant smoke and transfer cadmium to their babies.

FLOYDADA - LOCKNEY - FLOYDADA -

LOCKNEY - FLOYDADA - LOCKNEY -

LOCKNEY - FLOYDADA - LOCKNEY -

THE FLOYD COUNTY  
HESPERIAN-BEACON  
(USPS 202-680)

Published weekly each Thursday at 111 East Missouri Street, Floydada, Texas 79235. Periodical postage paid at Floydada, Texas 79235.

POSTMASTER: Send change of addresses to: The Floyd County Hesperian-Beacon, 111 E. Missouri, Floydada, Texas 79235.

### Floydada School Menu

**Monday**  
Breakfast-Cereal, graham crackers, cheese toast, milk, juice.

**Lunch**-Grilled Cheese Sandwich, vegetable, beef soup, fresh broccoli, ranch dressing, crackers, fruit cup, milk.

**Tuesday**  
Breakfast-Cereal, graham crackers, oatmeal, sausage, milk, juice.

**Lunch**-Tacos, grated cheese, spanish rice, pinto beans, lettuce, tomatoes, pears, milk.

**Wednesday**  
Breakfast-Cereal, graham crackers, cherry or blueberry muffins, yogurt, milk, juice.

**Lunch**-Country Fried Steak, scalloped potatoes, carrot sticks, roll, jello with whipped topping, milk.

**Thursday**  
Breakfast-Cereal, graham crackers, pancakes, syrup, milk, juice.

**Lunch**-Spaghetti with Meat Sauce, garlic bread, corn, tossed salad, fruit cobbler, milk.

**Friday**  
Breakfast-Cereal, late risers, milk, juice.

**Lunch**-Pork Rib Sandwich, ranch style beans, French fries, apple, milk.

### Lockney School Menu

January 8-12

**Monday**  
Breakfast-Scrambled Eggs/Cereal, toast, juice, milk.

**Lunch**-Steak Fingers/Tuna Sandwich, mashed potatoes, green peas, applesauce, hot rolls, milk.

**Tuesday**  
Breakfast-Donut/Cereal, toast, juice, milk.

**Lunch**-Beef Tacos/Grilled Cheese, pinto beans, tossed salad, mixed fruit, cornbread, milk.

**Wednesday**  
Breakfast-Sausage Patty/Cereal, juice, toast, milk.

**Lunch**-Baked Chicken/Corndog, mashed potatoes, broccoli, sliced peaches, hot rolls, milk.

**Thursday**  
Breakfast-Cheese Toast/Cereal, toast, juice, milk.

**Lunch**-Fish Sticks/PBJ Sandwich, green beans, squash casserole, applesauce, milk.

**Friday**  
Breakfast-Cinnamon Roll/Cereal, toast, juice, milk.

**Lunch**-Hamburger/Bologna and Cheese Sandwich, French fries, lettuce, tomatoes, peach cobbler, milk.

American Heart Association  
Fighting Heart Disease and Stroke

### Tobacco?

**Don't get me started...**

©1997, American Heart Association

**YOU WOULDN'T TRUST JUST ANYONE TO DRIVE YOUR CAR,**

**SO WHY TRUST JUST ANY COMPANY TO INSURE IT?**

Don't trust just anyone to insure your car, see me:

**Nick Long, Agent**  
201 W California  
Floydada, TX  
806/983-3441

Like a good neighbor, State Farm is there.®

State Farm Mutual Automobile Insurance Company (not in NJ)  
State Farm Indemnity Company (NJ) • Home Offices: Bloomington, Illinois  
statefarm.com

### HONORING LOVED ONES

Give a MEMORIAL or CHARITABLE GIFT to the Unity Center.

Donations will go to the Unity Center's Permanent Endowment goal of \$150,000 or future purchases of equipment.

All memorials are recognized at the Unity Center. All gifts are tax deductible since Floyd County Friends FLOYD is a 501c3 non-profit organization. FLOYD

FLOYD COUNTY Friends  
Floyd County Friends  
PO Box 58  
Floydada, TX. 79235

**PARENTS!!! Show you care!**  
Check on your child's school progress daily!

Take a break from the kitchen  
Friday, January 5  
Enchilada plate Dinners  
for \$5.00 each  
FLOYDADA REHAB AND  
CARE CENTER

925 W. Crockett  
5:50 - 7:30 PM  
call 983-3704 and place your order  
carry out only

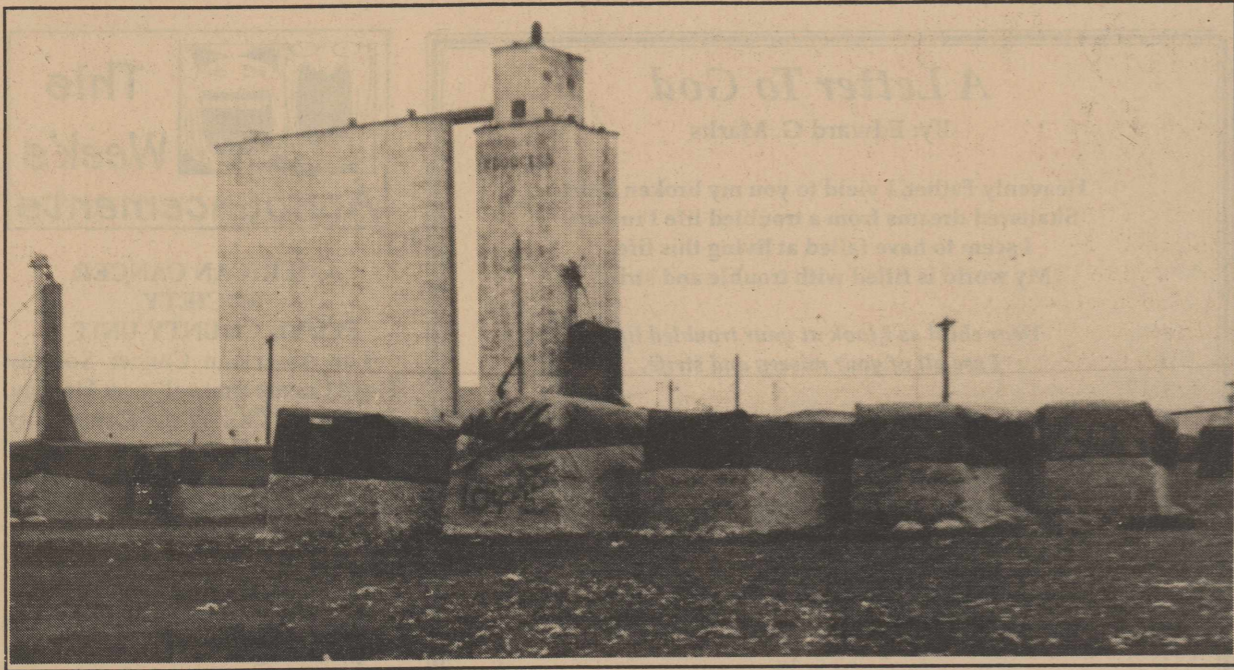
## PIP is Here!!!

Players in progress  
(youth basketball)  
Grades: 1st - 5th

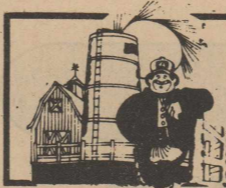
Where: Floydada High School gym  
1:00 - 5:00

When: **SUNDAY**; January 7th  
Cost; \$50.00 New Pips  
\$40.00 Returning Pips  
(payment due at camp)





LOCAL COTTON GINS FINISHING UP--Area cotton gins only have approximately 100 bails of cotton left to gin in Floyd County. See related story on page one. Staff Photo



## Floyd County Farm News

### Combs addresses new farm bill

Agriculture Commissioner Susan Combs today said the upcoming Farm Bill should emphasize improved risk management and export assistance for a coalition of large agricultural states known as NFACT, encompassing New Mexico, Florida, Arizona, California and Texas.

Combs spoke during an NFACT listening session that she hosted in Austin on the upcoming Farm Bill, which is scheduled to be reauthorized in 2002, but could be taken up by Congress as early as 2001. More than 40 agricultural organizations and individual farmers and ranchers spoke at the session, which is one of several meetings on the Farm Bill that will be held in the five NFACT states.

"I appreciate the time and effort our producers are taking to come to this meeting," Combs said. "I and the other NFACT states very much admire all that they do for agriculture, and I know that their comments will be very helpful in the coming months."

After recognizing common interests like trade and the need for additional federal assistance for preventing the introduction of plant diseases and pests from across the border, the five states formed the NFACT coalition in 1999 by signing a Memorandum of Understanding, Combs said.

"Our five NFACT states are a fairly powerful agricultural force in our own right," Combs said. "We account for

25 percent of all the nation's agricultural cash receipts. In total, our congressional delegations makes up 27 percent of Congress. With this clout, we have come together to give our producers a strong, powerful and unified voice to address agricultural issues in Washington, D.C."

Each of the five states has experienced agricultural losses from weather disasters, but Texas' drought has been reducing farmers' and ranchers' incomes since the last Farm Bill was reauthorized in 1996, Combs said.

"In Texas, no one could have predicted that our farmers and ranchers would enter into .. drought in 1996, when the last farm bill was enacted, and four years later in 2000 still be suffering tremendous losses," the commissioner said. "Since 1996, drought has taken a \$5 billion bite out of our farmers' and ranchers' pocket-books."

"Arizona has experienced \$1 million worth of agricultural losses due to drought this past year. New Mexico has had \$190 million in drought losses, and in Florida, ag losses due to drought are more than \$314 million," Combs said. "In California, the threat most recently has not been from weather but from a bacterial plant disease, Pierce's Disease, and an insect—the glassy-winged sharpshooter—that carries it. This year, Pierce's Disease has threatened \$14 billion worth of California's agricultural crops includ-

ing wine grapes and produce. "Whether the threat is from plant diseases or weather, the practice of ad-hoc disaster assistance from Congress for our NFACT states has not been very efficient or effective," Combs said. "Clearly, we must come up with a better safety net for our producers."

The NFACT states also need continued assistance for developing export markets and for controlling the introduction of plant diseases and pests from other countries, Combs said.

"We all are high volume trade states," she said. "And we essentially serve as a buffer zone protecting the rest of this nation's agriculture from the introduction of foreign pests and plant diseases."

The Farm Bill is a multi-year, multi-commodity federal support law that encompasses commodity programs, trade, rural development, farm credit, conservation, agricultural research, food and nutrition programs and marketing. Every few years, Congress reauthorizes, repeals or amends sections of the Farm Bill that are not part of permanent law. The last adjustment to the Farm Bill occurred with the Federal Agriculture Improvement and Reform Act of 1996, also known as the Freedom to Farm bill, which authorized reducing crop price supports through 2002 through gradually declining transition crop payments.

### Applicators given more options

Pesticide applicators have more options than ever to earn the continuing education units (CEUs) necessary to renew their license, Agriculture Commissioner Susan Combs said. Many private applicators, as well as all commercial and noncommercial applicators, face a Feb. 28, 2001, renewal date. Private certificate holders face a Dec. 31, 2000, deadline.

"We believe education is important for safe pesticide use," Combs said. "Applicators need to stay informed of changing regulations as well as new products and new application methods."

The Texas Integrated Pest Management Foundation has become the second company to offer credits over the Internet. Applicators can check out the site [www.tipmf.org] or call (512) 836-5221. Pestnetwork.com (512-288-8288) has been offering courses over the Internet for about a year.

TDA and other government and private groups offer traditional classroom courses. Applicators can also obtain some credits at home through self-study options. Applicators can obtain a list of approved courses or other information on CEU courses by calling 1-800-TELL-TDA or (512) 463-7622 or by logging on to TDA's web site [www.agr.state.tx.us/pesticide/ceuhome.htm].

Applicators in the San Antonio area

can earn 10 CEUs at a Dec. 13 course. For more information, contact Joe Taylor at the Bexar County Extension Office, (210) 467-6575.

All private applicators may earn the required credits by passing a comprehensive recertification exam. This test costs \$50 for each attempt. After passing, an applicator will receive a certificate of completion for 15 CEUs.

Applicators will receive a certificate of completion at the end of each course. They should hold onto these for a year after they have renewed their license. The certificate contains the course number and CEU hours completed. The applicator transfers this information to the renewal form he or she receives in the mail.

TDA mailed renewals to private certificate holders the week of Nov. 20. Renewals for all other licensees will be mailed in mid-January. Private certificate holders who also hold a private applicator license will receive their renewal in January.

This renewal cycle will be especially large, Combs said. "More than 26,000 private applicator licenses or certificates will be due for renewal, which is more than twice the normal number."

Private applicators must renew their license every five years and obtain 15 CEUs during that period. Two credits must be in integrated pest manage-

ment and two in laws and regulations.

Licensed private applicators cannot retake the private applicator training course and test to renew their license in place of getting the CEUs. A license must have been expired for a year before an applicator can retake the private applicator training test.

Private certificate holders must also obtain 15 CEUs to keep their certificate current. While the certificate never expires, an applicator cannot purchase or apply restricted-use or state-limited-use pesticides or regulated herbicides unless the CEUs are kept up-to-date. A certificate holder who has never obtained a private applicator license may take the private applicator training and obtain a private applicator license instead of earning the CEUs. However, they will be required to earn 15 CEUs over the next five-year cycle.

Commercial and noncommercial applicators renew each year and must earn five CEUs annually, including one CEU in each of two of the following categories: laws and regulations, integrated pest management and drift minimization.

Applicators should be sure TDA has their correct address to avoid a delay in receiving their renewal on time and keeping their license current. Call 1-800-TELL-TDA or e-mail changes to rrivera@agr.state.tx.us.

### Cattle feeders outlook for 2001

"Cattle feeders are ending the year with a stronger market than many anticipated, and Santa Clause himself couldn't have done any better." That's how Jim Gill, market director for the Texas Cattle Feeders Association (TCFA), summarized the year during the annual TCFA Year-End News Conference in Amarillo.

"In many respects, 2000 was a turnaround year for cattle feeders," Gill said. "Large numbers of market-ready cattle and record large weights plagued feeders much of the year. But it appears we've turned the corner and 2001 looks very positive."

Gill estimates fed cattle will sell from \$72 to \$78 per cwt. in the first quarter of 2001; \$70 to \$75 in the second quarter; \$68 to \$72 in the third quarter and \$76 to \$80 in the fourth.

Cow-calf and stocker operators will enjoy continued market strength as well. "Feeder cattle supplies will continue to tighten over the next several years. Prices for a 750-lb. feeder steer, which averaged near \$85 in 2000, will

average in the low \$90s during 2001," Gill predicted.

Cattle prices will take a cue from beef production, which will be near 26 billion pounds in 2001, 3.1% below 2000, he said. "This will be the first decrease in beef production since 1993 and will put annual per-capita beef consumption around 66.5 lbs. on a retail weight basis." Gill says the drop in beef production will stem mainly from the expectation that average carcass weights will fall back from the record 745 lbs. notched in 2000. "We placed a lot of lightweight calves the last half of 2000 and particularly the last three months. Lighter weight calves produce lighter weight finished cattle, which yield lighter weight carcasses."

However, competitive meat supplies will remain a challenge. Increases in pork and poultry production will offset the decrease in beef production, bringing total meat and poultry production to around 83 billion lbs., a 0.5% increase over 2000.

Pork production will be near 19.4 billion pounds, a 2.5% increase, and poultry production will be near 37 billion pounds, a 3.4% jump.

Grain prices, which played a major role in 2000, will continue to be a factor in cattle feeders' purchasing and placement decisions, Gill said. "Corn production in 2000 was estimated at 10.05 billion bushels, up 6.5% from 1999. Production in 2001 will likely again be around 10 billion bushels. Changes in the farm could eventually influence grain production, but it's unlikely to have much effect in the 2001 crop year."

Consumer demand for beef took a strong upswing in 2000, which is expected to continue into 2001. Retail beef prices averaged \$2.95 per pound in 2000, up about 10 cents from 1999. "With the anticipated drop in beef production in 2001 and continued improvements in demand, prices may edge higher and reach an average of slightly more than \$3.00 per pound during 2001."

### NGSP leaders meet with Bush

National Grain Sorghum Producers (NGSP) President Leo Bindel, a sorghum farmer from Sabetha, Kan., was among a group of farm leaders in Austin, Texas, on Friday (December 22) to meet with President-Elect George W. Bush, Agriculture Secretary-designee Ann Veneman and Gov. Christine Todd Whitman of New Jersey, who Bush tapped on Friday to head the Environmental Protection Agency.

Two days after nominating Veneman as U.S. agriculture secretary, Bush and others sat down with farm leaders to discuss Bush's agricultural agenda as it relates to the challenges with which producers are faced. Also

in attendance were state secretaries of agriculture from Wisconsin, Pennsylvania, Florida, Tennessee, Michigan, Texas and Ohio. Additionally, Clayton Yeutter, who served as agriculture secretary for the first two years of Bush's father's administration, participated in the discussion.

"We are indeed grateful that President-elect Bush along with Secretary-designee Veneman and other leaders took the time to visit with us about the issues facing farmers today, such as regulations, trade, farm policy and the financial situation in agriculture," said Bindel. "President-elect Bush and

others let us know this afternoon that help is on the way for U.S. farmers, and I was impressed with the level of concern and the familiarity he demonstrated in discussing the challenges we face," Bindel added.

**AgriFlex Credit**  
**OPERATING FINANCING**

Name Brand Crop Inputs  
Flexible Credit Package  
Agronomic Advice  
Marketing Advice  
Crop Insurance  
Leasing

All from one source...

Contact your local representative:  
**Terry Moore**  
Plainview, TX  
806-296-5679

**Ag Services**  
of America, Inc.  
www.agservices.com 1-800-395-8505

### TDA to hold hearings

The Texas Department of Agriculture will hold two public hearings on Monday, January 8th to review the guidelines for organic cotton in active boll weevil eradication zones. The scheduled hearings were included in the rules which were adopted in June 2000.

The rules cover indemnification eligibility and the method for calculating any compensation for organic growers who may need to destroy crops because of infestation in an active eradication zone.

TDA developed the rules to maintain the effectiveness of the boll weevil eradication program as well as to protect the integrity of TDA's organic certification standards and the crops marketed under the program.

In the hearings, TDA will take comments on any changes that may need to be made in the regulations for the 2001 growing season.

The hearings will be:  
\*11:00 a.m. at the Texas A&M University Agricultural Research and Extension Center, 1102 E. FM 1294 in Lubbock.

\*3:00 p.m. at the Dawson County community Center, 910 S. Houston in Lamesa.

TDA will take comments for 10 days beginning January 8th. Those who wish to comment can write TDA at P.O. Box 12847, Austin, Texas 78711 or fax to (512) 463-1104. For more information, call John McFerrin, producer relations specialist, at (512) 463-7593.

Stop by or give us a call  
Panhandle-Plains FLBA  
629 Baltimore Plainview, Texas  
(806) 296-5579



Stay off Drugs - Just say "no!"

### Cantwell Irrigation Pipe Co.

105 East 24th St. Plainview, Tx.  
See us for all your Underground Irrigation Pipeline needs  
Backhoe Work - Small Ditcher - Custom Ditch - Aluminum Pipe & Fittings - Poly Pipe  
**Shorty Cantwell**  
Mobile 292-1175  
Plainview - Home 296-9401  
**David Lee**  
Mobile 774-2891  
Lockney Home 652-2538  
**Randy Ware**  
Mobile 774-4987  
Plainview Home 293-2895  
Experienced Crew brings quality work, every time  
**Plainview Office**  
293-2506

People Helping People  
**MORGAN-EAVES**  
Let us give you a competitive quote for Health Insurance

Your family depends on you  
See Candy Cameron-Thrasher for all your Insurance needs 296-5514 or 983-2891  
716 Broadway, Plainview, Tx. 79073

- Home -
- Auto -
- Life -
- Health -
- Annuities -
- Commercial -

**Oxygen & Acetylene Refills**  
Available at  
**FERGUSON SPRAYING, INC.**  
608 E. Houston, Floydada - 983-2474

**DRIP IRRIGATION**

**DSI**

**Abell Prewitt Implement & Diversified Sub-Surface Irrigation, Inc.**

are teaming up together to offer G.P.S. design and installation of underground drip systems.  
Contact Darcy Martin at (806) 253-2243 or (806) 778-7244  
Financing Available

Self Install systems or turnkey installations.  
Call for pricing on PVC Pipe & Fittings  
Trenching service available  
722 Avenue E. Ralls, TX. 79357

Even small ads get read in this newspaper! Advertising works!

**PRODUCER'S COOPERATIVE ELEVATOR**

983-2821 - Floydada  
983-3770 - Dougherty

**FIRST NATIONAL BANK OF FLOYDADA**

Floydada 983-3717  
Member F.D.I.C.

**FLOYDADA COOPERATIVE GINS, INC.**

Floydada 983-2884



# Obituaries

## GAYNELLE S. BAYLEY

Funeral services for Gaynelle Smith Bayley, 83, of Bryan, were held at 11:00 a.m. Saturday, December 30, 2000, in the Main Street Church of Christ with the Rev. Jeff Bayley, pastor of the United Methodist Church in Texline, officiating.

Burial was in the Lockney Cemetery by Wood-Dunning Funeral Home of Plainview.

Mrs. Bayley died at 8:30 p.m. Tuesday, December 26, 2000, in Bryan.

She was born July 3, 1917, in Rincona, New Mexico, the daughter of the late Jake and Verdie Wofford Smith. She grew up in Lockney where she graduated from high school in 1934. She attended Draughan's Business College. She managed the Hilton Hotel from 1960-1962 and worked for Sears, Roebuck and Company in Plainview, retiring as assistant credit manager in Lubbock in 1980. From 1980 to 1996 she worked for Crawford Hefflefinger Partnership.

She was a member of the Church of Christ.

On October 2, 1937, she married Spencer Alanson Bayley in Lubbock. He died November 16, 2000.

Survivors include a daughter and son-in-law, Pat and Wilson DiCuffa of Bryan; a sister Josephine Smith of Plainview, a brother and sister-in-law, Charles and Mildred Smith of Plainview; five grandchildren; and seven great-grandchildren.

The family suggests memorials to the Lockney Cemetery Association, Main Street Church of Christ in Lockney, or the Ninth and Columbia Church of Christ in Plainview.

## MATTIE COVINGTON

Services for Mattie Emma Covington, 99, of Dougherty were held at 2:00 p.m. January 2, 2001, at First United Methodist Church with the Rev. Anthony Sisemore officiating and Michael Holster assisting.

Burial was in Floyd County Memorial Park under the direction of Moore-Rose-White Funeral Home of Floydada. She died Saturday, December 30, 2000, at Lockney Rehabilitation and Care Center.

She was born August 11, 1901, in Stephens County. She attended schools in Stephens County and graduated from High School in Lakeview. She attended West Texas State Teachers College for two years.

She married F.M. Covington on May 22, 1923. He died June 18, 1974. She was a lifelong resident of Floyd County, a homemaker and a member of the First Baptist Church.

Survivors include three sons, Bob of Lubbock, Jack of Lockney and Kent of Floydada; a daughter, Jean Mayes of Dallas; two brothers, Buck Hall of Amarillo and Henry Hall of Artesia, New Mexico; 11 grandchildren; 18 great-grandchildren; and one great-great-grandchild.

The family suggests memorials to the First Baptist Church, 401 S. Main, Floydada, 79235, or to a favorite charity.



## T.L. HOLLAND JR.

Services for T.L. Holland Jr., 85, of Floydada were held at 10:00 a.m. Tuesday, January 2, 2001, at First United Methodist Church with Charles, Rick and David Holland officiating.

Burial was in the Floydada Cemetery under the direction of Moore-Rose-White Funeral Home of Floydada.

He died Sunday, December 31, 2000, at the Floydada Rehabilitation and Care Center.

He was born July 13, 1915, in Anson, where he graduated from high school. He married Dorothy Mae Pratt on December 17, 1937, in Stamford. He was a veteran of the U.S. Navy, having served during World War II. After the war, he was a lumber yard manager, builder and real estate broker. He moved to Floydada from Amherst in 1952.

He was active in the Scouts, and he and his wife started an Eagle Scout Scholarship. In Amherst, he was on the school board and former president of the Lions Club in Amherst. He also was a former president of the Lions Club and Chamber of Commerce in Floydada. He was a member of the Veterans of Foreign Wars, American Legion and was a 32nd degree Mason.

An active member of first Baptist Church, he served as deacon and was a former Sunday school superintendent, teacher and department superintendent.

Survivors include his wife; three sons, Charles of Fort Worth, Rick of Arlington and David of Weston, Colorado; a brother, Charles of Fort Worth; and four grandchildren.

The family suggests memorials to Vista Care Family Hospice, 4416 Olton Road, Plainview, 79072; or Dorothy and T.L. Holland Jr. Eagle Scout Scholarship Fund, 2301 Ryan Place Drive, Fort Worth, 76110.

## STELLA LEE SEVIER

Stella Lee Fortenberry Sevier, 82, died Sunday, December 17, 2000.

Memorial services were held at 10:00 a.m. Wednesday, December 20, 2000, in Montwood Church of Christ at El Paso with Randy Flynt, minister, officiating. Services were at 2:30 p.m. Friday, December 22, 2000, at Gilland-Watson Funeral Home, Rose Chapel at Hereford. Burial was in West Park Cemetery at Hereford.

Mrs. Sevier was born in the Cedar Hill Community of Floyd County December 28, 1917 to Jack and Bobbie Conner Fortenberry. They moved to Deaf Smith County about 1927 and had been a resident of El Paso since 1939.

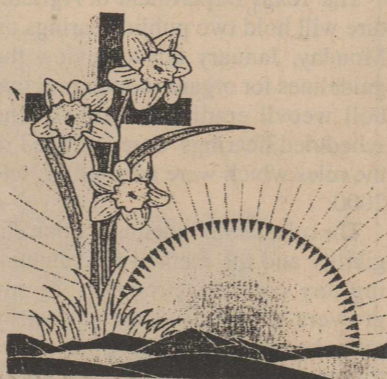
She was a graduate of West Texas State University and earned a master's degree at Texas Western College of Mines. She taught at numerous schools in Texas and New Mexico for 52 years, retiring from Yselta I.S.D.

She was recipient of several awards including Woman of the Year in 1987 by the El Paso Political caucus and was entered into the retired teachers Hall of Fame for her 39 years of service with Y.I.S.D. She was a former member of North Loop Church of Christ and was a member of Montwood Church of Christ.

She was preceded in death by her husband, Raymond Sevier, and a son, Leroy Sevier.

Mrs. Sevier is survived by a son, Lonnie Wayne Sevier of Clifton and a daughter Carolyn Rae Smith of Missouri City, Texas, nine grandchildren and ten great-grandchildren.

Also surviving are four sisters, Mary Dorris of Clovis, New Mexico, Alta Mae Higgins of Hereford, Anna Kate Bradley of Adrian, Chloe Dell Dowd of Lehigh Acres, Florida and one sister-in-law of Hereford.



## Research could enhance recovery from spinal injury, says A&M prof

COLLEGE STATION - Victims of debilitating spinal cord injuries may in the future have greater chances for recovery of some locomotive functions, thanks to pioneering spinal cord research by Texas A&M University neuroscientist James Grau.

Grau, who has studied the spinal cord for more than a decade, has helped advance the concept that the spinal cord - long considered to be only a simple conduit for the relaying of impulses to and from the brain - is capable of learning without the brain.

"It appears the spinal cord is far smarter than most assume," Grau says.

He says his animal models have demonstrated neurons in the spinal cord are capable of different types of advanced learning, acting as a "back-up system" when communication with the brain is disabled.

Normally, the brain is responsible for locomotive activities and inhibits the spinal cord's learning abilities. However, given a potentially catastrophic set of events, the spinal cord can take on extra responsibilities that include the ability to learn locomotive function, Grau explains.

The ability of the spinal cord to learn, which is referred to as "plasticity," has come to the forefront of the scientific community within the last five years thanks to Grau and his colleagues, but Grau's continued research has taken spinal cord plasticity into uncharted territory.

While spinal cord plasticity has been the focus of experts throughout the United States and Europe, Grau and former student Robin Joynes' work on the phenomenon of "learned helplessness" in the spinal cord is unique to Texas A&M, Grau says.

## A Letter To God

By: Edward G. Marks

Heavenly Father, I yield to you my broken heart.  
Shattered dreams from a troubled life I impart.  
I seem to have failed at living this life.  
My world is filled with trouble and strife.

Dear child as I look at your troubled life,  
I see all of your misery and strife.

You've lived for yourself and yourself alone;  
That is where your life went wrong.

Because you did not look up and trust in me,  
You became adrift upon life's stormy sea.

The shattered dreams that you hold so dear,  
I had another calling, but you would not hear.

This broken heart that you gave to me,  
It's not really broken that I can see.

I see love here that's never been used  
While others needed it, you refused.

You must give love away if you want to be free;  
It is a gift to all, through you, from me.

You are a vessel, by which I might do my good deeds.  
The greatest gift is to fill someone's needs.

Your broken life and these shattered dreams  
Are foundation stones for a better life, you see.

Look up to me and do not fear;  
I have many gifts for you to hold dear.

Listen to my voice, and beckon my call  
And on life's path you will not fall.

John 11:25-26

*If you humble yourselves under the mighty hand of God, in his good time he will lift you up. Let him have all your worries and cares, for He is always thinking about you and watching everything that concerns you. Be careful-watch out for attacks from Satan, your great enemy. He prowls around like a hungry roaring lion, looking for some victim to tear apart. Stand firm when he attacks. Trust the Lord; and remember that other Christians all around the world are going through these sufferings too. After you have suffered a little while, our God, who is full of kindness through Christ, will give you his eternal glory. He personally will come and pick you up, and set you firmly in place, and make you stronger than ever.*

1 Peter 5: 6-10

## Social Security benefits go up annually with cost of living

By Mary Jane Shanes, Social Security Manager

People wise enough to plan for their retirement should note that any estimate they get of what they and their family will receive at retirement, death or disability is less than they are likely to be receiving sometime later. This is because Social Security benefits increase annually with increases in the cost of living.

Why is it important for you to know this? Well, consider that most experts say you need to start planning as early as possible for retirement since you can expect to live longer. The fastest growing age group is age 85 and over. When you plan today, you need to use sources of retirement income you can count on to be there for you in the long stretch.

Up until 1972, this was not true. The Congress had to pass legislation every few years to increase Social Security to help retirees keep up with inflation. But in an effort to take the issue out of politics and provide a

more efficient way of helping benefits fight inflation, the Congress introduced a cost-of-living provision in the benefit formula. Today, the retirement, disability or survivors benefit you receive is designed to resist inflation automatically.

Since many other types of retirement income, including investments and private insurance, may not contain this feature, it cannot be underestimated. It reinforces Social Security's role as a base of retirement income and it provides beneficiaries with a source of income they can count on for life.

For more information, check your Social Security Statement you should have received in the mail (or will receive) three months before your birthday if you are age 25 or older. Or you can call us at 1-800-772-1213 and ask for one. Another source of information is the Internet, at [www.ssa.gov](http://www.ssa.gov), where you can request a Statement or find out other information about Social Security.

## Religion changing, says Texas A&M prof

COLLEGE STATION - Religion, as an institution, will change dramatically in the coming years, thanks to the communications revolution and an increased emphasis on tolerance, says a Texas A&M University philosophy professor who has studied religion for the past 40 years.

As people's religious beliefs become more accepting of other beliefs, they may find it easier to incorporate aspects of these different religions, becoming more eclectic as well as more tolerant, he explained.

The rise of designer religion has to do with the way people perceive religion, he said.

Professor Richard W. Stadelmann said people are picking and choosing their religious ideals and beliefs from a variety of religions, customizing their own personal belief system, - resulting in what he terms "designer religion."

This change is occurring as people's preferences for stricter, fundamentalist beliefs systems shift to more tolerant and accepting beliefs systems, he said.

"There is not a sharp break where religion ends and the general feeling about that which is valuable begins; it's more of a gradation," Stadelmann explained.

Stadelmann believes the change is especially pronounced in America's youth.

## This Week's Announcements

### AMERICAN CANCER SOCIETY

#### FLOYD COUNTY UNIT

The American Cancer Society Floyd County Unit will meet Monday, January 8, 2001 in the Community Room of the First National Bank of Floydada. All board members please be present for this first meeting of the new year.

### FLOYDADA BUYERS CLUB

The Floydada Buyers Club for the Floyd County Junior Livestock Show will meet Wednesday, January 10th, at 8:00 p.m. at the County Extension Office in Floydada.

### LOCKNEY STOCK SHOW

The Lockney Stock Show will be held January 6th starting at 9:00 a.m. and will be sponsored Lockney Chamber of Commerce.

### RURAL NURSES RESOURCES, INC.

#### CNA TRAINING CLASS

Rural Nurse Resource, Inc. is now registering students. The Floydada class begins January 5. The Lubbock class begins January 8, 2000. To receive an application packet or for more information call RNR's office at 806-983-8096.

### BLOOD PRESSURE CLINIC

A free blood pressure clinic is held in the community room of the First National Bank in Floydada every Tuesday from 9 a.m. to 11 a.m. Everyone is welcome.

### ALCOHOLICS ANONYMOUS

Alcoholics Anonymous and Al-Anons meet each Tuesday night in Floydada at 8:00 p.m. Anyone wanting the loving fellowship of men and women who can share their experience, strength and hope is welcome. Meetings are at 111 North Wall, a block north of the courthouse. Anyone interested can call 983-3635 or 652-3546.

### BLOOD PRESSURE AND GLUCOSE TESTING

Free blood pressure and glucose testing is held every other Thursday from 9 to 11 a.m. at the Lockney Care Center. Everyone is welcome.

### VETERANS SERVICE OFFICER AVAILABLE

Veterans Service Officer Ralph Jackson is available on Wednesdays, from 9:00 a.m. to 5:00 p.m. in Room 112 of the Floyd County Courthouse. Call 983-4933.

### LOCKNEY AA

Open meetings of Alcoholics Anonymous in Lockney will be Fridays, at 8 p.m., at Grace Fellowship Church, across from the hospital. If you are worried about your drinking, or someone else's, we understand, we care, and we want to help. Phone 652-3546 or 652-2280.

Thanks for reading The Hesperian-Beacon

**A stroke can be a mind-blowing thing**

American Heart Association  
Fighting Heart Disease and Stroke

Reduce your risk factors

## College financial aid resources help families

'Tis the season to be jolly, and for many families with seniors in high school, it's also the season to get busy with financial aid applications for college.

Experts at ACT offer the following information to help families find the resources they need to complete their financial aid paperwork.

The most important form is the Free Application for Federal Student Aid (FAFSA). The FAFSA determines eligibility for student financial aid from federal programs. Colleges and universities also use the FAFSA, but may also require students to fill out additional forms. Families can begin submitting their FAFSA forms any time after January 1st when they have the necessary income statements from the previous year to complete the form.

The FAFSA, available from high school counselors or at [www.fafsa.ed.gov](http://www.fafsa.ed.gov), collects information that is used to determine how much the family is expected to contribute toward the student's education (Expected Family Contribution, or EFC). Families usually receive a Student Aid Report three to four weeks after submitting the FAFSA form. It will summarize the data reported on the application. (Families can get estimates of what their EFC may be and the costs of attending specific institutions by using ACT's Financial Aid Need Estimator at [www.act.org/fane](http://www.act.org/fane).) Families can find information on more than 600,000 scholarships total-

ing more than \$1.6 billion at [www.collegenet.com](http://www.collegenet.com). This website provides a broad search of scholarships or a list of scholarships by category such as age, academics, ethnicity, interests, nationality or sports. Students also can apply online for the scholarships. For additional opportunities, including local scholarships, please see your school counselor.

#### Financial Aid tips from ACT:

- \*Apply early for admission and financial aid.
- \*Check with your college to determine if other financial aid forms are required.
- \*Apply for scholarships and grants.
- \*Look into Work Study programs.
- \*Surf the web for financial aid information.
- \*Try these websites:  
Financial Aid Need Estimator and financial aid information

- [www.act.org/fane](http://www.act.org/fane)
- Free scholarship search -- [www.collegenet.com](http://www.collegenet.com)
- The Financial Aid Information page -- [www.finaid.org](http://www.finaid.org)
- The Federal Government Financial Aid Page -- [www.ed.gov/finaid.html](http://www.ed.gov/finaid.html)
- Free Application for Federal Student Aid -- [www.fafsa.ed.gov](http://www.fafsa.ed.gov)
- College Scholarship Search -- [www.collegenet.com](http://www.collegenet.com)
- Scholarship scams -- [www.ftc.gov/bcp/online/edcams/scholarship](http://www.ftc.gov/bcp/online/edcams/scholarship)

THERE'S A KILLER ON THE LOOSE!

Help us fight amyotrophic lateral sclerosis, better known as Lou Gehrig's disease.

MDA  
Muscular Dystrophy Association  
1-800-572-1717 • [www.mdaua.org](http://www.mdaua.org)



# THE CLASSIFIEDS

Call 806-983-3737 or 806-652-3318  
web site: [http:// www.texasonline.net/floydco](http://www.texasonline.net/floydco)

### AUTOMOTIVE FOR SALE

1997 FORD F-250 XLT--5 speed, 351 motor. 69,000 miles. Good condition. \$11,500.00 firm. Call 983-387. 1-4

### GARAGE SALES

GARAGE SALE--Saturday, 8:30 - 2:00. Good furniture, computer, electric range, clothes, miscellaneous. 7 1/2 miles east of Floydada on Matador Highway. 1-4p

### HOUSES FOR SALE

Floydada  
HOUSE FOR SALE--3 BEDROOM, 2 BATH, 2 car garage, large living area and patio room. Swimming pool. Contact 983-3879 after 5:00 p.m. tfn

### HOUSES FOR SALE

\*\*NICE 2 BEDROOM, one bath home on 1 acre, just north of Floydada on highway.  
\*\* GOOD LOCATION. NICE 2 bedroom, 1 bath on Lee Street.  
\*\* FIVE NICE SIZE BEDROOMS, 3 baths, central heat and air on 18 acres of land. About 7 miles NE of Floydada.  
\*\* NICE 3 BEDROOM, 1 bath, single car garage on J Avenue.  
ALL SHOWN BY APPOINTMENT-- Call Sam Hale Insurance and Real Estate - 806-983-3261. tfn

### MISCELLANEOUS

DIVORCE SALE--New refrigerator, new gas range, treadmill, 27" TV and Hi-Fi VCR, microwave oven. Call 983-5051. 1-4p

### BUILDING MATERIALS

STEEL BUILDINGS, new must sell. 30x40x12 was \$10,200 now \$6,990; 40x60x12 was \$16,400 now \$10,971; 50x100x16 was \$27,590 now \$19,990; 60x200x16 was \$58,760 now \$42,990. Call 1-800-406-5126. 1-4p

### HELP WANTED

THE JUVENILE PROBATION DEPARTMENT is looking for a Certified Mechanic/Vocational Coordinator to head up the new Vocational Training Program. Salary commensurate with experience. Applications may be picked up at 111 North Wall, Floydada or by calling 806-983-4925. 1-4c

READY TO MOVE IN--Cute 3 bedroom, 2 bath, 2 living areas, utility, central heat/air conditioning, fireplace, storage building. 114 J.B. Avenue. 983-6456 or 983-2814 (Brenda). 1-4p

### MOTORCYCLES

1988 KAWASAKI TECATE 250--Runs good. \$1,200.00. Call 652-3502. 1-4c

### CHILD CARE

IMMEDIATE OPENINGS for child care in my home. Call 652-2204. 1-4c

FULL TIME LVN needed for 11-7 shift. Full benefits and comparable salary. Contact Linda Dewbre at 806-675-2382. Crosbyton Hospital. tfn

\*\* FLOYDADA-- \*\* Owner will consider lease purchase on this 3-1-1 on corner lot. West Missouri Street.  
\*\* Owner will carry the note on this 2-1 newly remodeled. Call for terms. West Lee Street.  
\*\* 2-1, brick home with vacant lot included. CH/RA. West Missouri Street.  
\*\* 2 story, 3-2-2, 2,700 sf, CH/RA, recently remodeled. West Mississippi Street.  
\*\* 3-2-2, brick, metal roof in west part on West Kentucky Street.  
\*\* 4-2 Brick w/carport, CH/RA, Cedar Street.  
\*\* 3-2-2, Brick, CH/RA, West Ollie Street.  
\*\* LOCKNEY-- \*\* Nice 3-2, Carport, CH/RA. Large Yard. West Shurbet Street  
CALL JONES ENTERPRISES - 983-2151, Warren Mitchell - 652-3613. tfn

### PETS

ALPHATEX KENNEL, AIKEN, TEXAS offers superior quality AKC Registered, DNA Certified Collies, Golden Retrievers and German Shepherds. Puppies and stud service available. 806-652-3458 or 806-292-5348. tfn

### FOR RENT OR SALE

LOCATED IN FLOYDADA--2 BEDROOM MOBILE HOME and 3 bedroom mobile home. Central air and heating. Water and sewer furnished. Call 652-2651. 1-18c

**POOLE WELL CAM**  
Dual Lens  
for Color Videos of Irrigation and domestic wells.  
Reveals sand infiltration, crusting or deterioration, blockage 4" - 30" I.D.  
704 Matador Hwy. Floydada, Texas  
806-983-2285

FARM HOUSE FOR RENT--3-2-2. Call 983-2329. tfn

IN LOCKNEY: 401 West Washington. Nice 2 bedroom. Remodeled, new roof, new paint and ready for sale. Barker Real Estate. Call 652-2642. \$27,500.00. tfn

### SERVICES

AIR CONDITIONING--Financing available on new central refrigerated air conditioning/heating equipment. As low as \$59 a month. Bad credit? Bankruptcy? No Problem! WE WILL FINANCE YOU. Air America - 791-1093. tfn

3 BEDROOM 2 BATH, 1400 sq. ft. on 3 lots with large garage/shop. Completely remodeled inside. Call 983-5475 or 983-5013. tfn

### LOST AND FOUND

FOUND--FEMALE Blue Heeler. No collar. Very gentle. Staying at Hesperian-Beacon office in Floydada. Call 983-3737. tfn

### LOTS FOR SALE

LOT FOR SALE--REDUCED TO \$1,500.00--Apogee Street. Driveway and slab improvements. Call 652-2552 (after 6:00 p.m.), 983-3737 during day or 652-2332 and leave message. tfn

**Advertising pays off.**

### ADAMS WELL SERVICE

Complete Irrigation Service  
5 Year Warranty, Domestic Pump  
High Speed Bailing  
720 N. 2nd  
983-5003

The Roberts Companies  
Rhonda Thomas, Realtor  
293-4413 or 652-2152

NEW LISTING--Special home on large corner lot features three bedrooms, 1 bath, double garage and basement. See to appreciate. ----- \$ 58,000.00

LARGE VACANT lot in Lockney ----- \$ 7,500.00  
ALMOST 2000 sq. ft. of living area in this spacious brick home. 2 or 3 bedroom, 2 bath, great storage. --PRICE FOR QUICK SALE.

" I have buyers looking for homes in the Lockney area. If you are considering selling your home please give me a call.

### Free Cell-ONE Phones

Now-500 Anytime & 1500 Nites & Weekends  
America Toll-Free & Caller ID - \$39.99!  
Call DON HENDERSON  
Your Cell-TONE; authorized Cel-ONE Professional  
PH 292-0009 or 296-0009

**Wanted Old Wooden Fence & Barnwood**

If you have some old fence sections or if you have an old barn you are going to tear down I am in need of some of the wood. Please call me at 652-2552

**BUCKLE UP AMERICA**  
There's Just Too Much to Lose

*Not Advertising is like a wink in the dark - Only you know what you are doing.*

### how can you keep a kid off drugs?

The truth is, a little of your time can make a lifetime of difference. Because kids with something to do are less likely to do drugs. You can help. For more information on drug prevention programs in your community, call or visit:  
1 877 KIDS 313  
[www.youcanhelpkids.org](http://www.youcanhelpkids.org)  
Office of National Drug Control Policy

Floyd County Hesperian-Beacon Classified Ad Rates  
25 cents per word for the first insertion (minimum \$ 3.00)  
20 cents per word for add'l runs (\$ 2.00 minimum)  
Deadline for all news and all advertising is Tuesday at 3:00 p.m.

Advertising in this newspaper, benefits your community.

Before trekking off to college...



Before you head to the big city...



Be Sure and Check Out our special rates for 9 month subscriptions to The Hesperian-Beacon!  
Call or Come By Today!  
111 E. Missouri, Floydada 938-3737  
102 W. Bryant, Lockney, 652-3318

### PUBLIC NOTICE

#### NOTICE TO BIDDERS

The Commissioners' Court of Floyd County will accept sealed bids until 10:00 a.m., Monday, January 8, 2001, for the purchase of the following:

Precinct #3 - One new Motor Grader

Trade-In or Straight Cash Buy:  
One-1987 770B John Deere SN 511581

#### INSTRUCTIONS:

Bidding Specifications and Total Cost Bid Forms are available in the County Judge's office, Floyd County Courthouse, Room 105, Floydada, from 8:30 a.m. to 5:00 p.m., Monday thru Friday. Bid Forms provided by Floyd County must be used.

All bids should be delivered to: County Judge, Floyd County Courthouse, Room 105, Floydada, Texas 79235. Bids shall be sealed when presented and will be opened at the above time and date. Bids should be plainly marked as such.

Payment shall be made in cash. Floyd County reserves the right to accept or reject any or all bids and the right to waive all formalities.

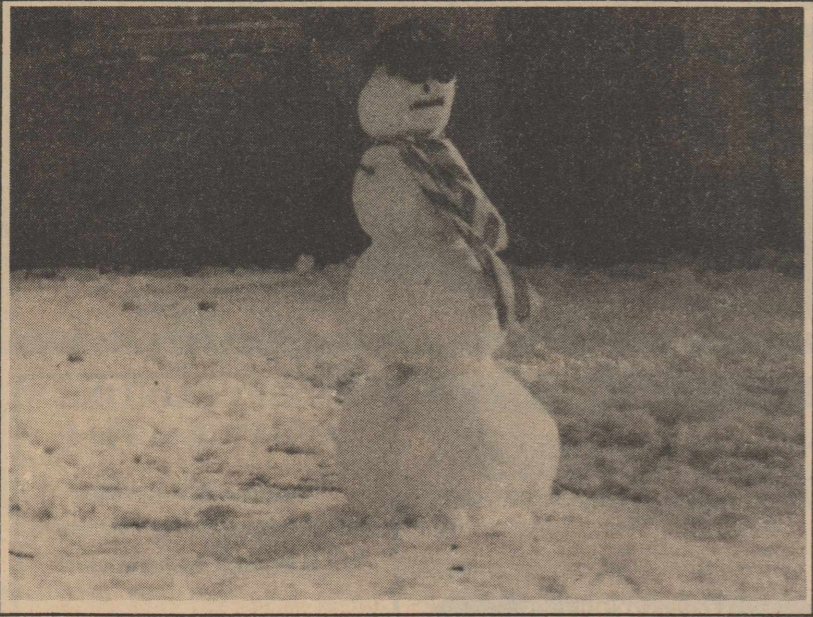
COMMISSIONERS' COURT, FLOYD COUNTY, TEXAS  
BY: WILLIAM D. HARDIN  
County Judge

12-21-00, 12-28-00, 1-4-01c

Put your shopping dollars back into this community and we'll all reap the rewards!

# SHOP LOCALLY





**SNOWMEN ALL OVER TOWN-Here is a cool snowman at 206 E. Hallie in Floydada enjoying the snowfall that fell last week.** Staff Photo

## The Paper Pulpit

By: Pastor Henry Russell



**"THEN GOD SAID..."**  
By Pastor Henry Russell  
*I am God.* Today I will be handling all of your problems. Please remember that I do not need your help.

If life happens to deliver a situation to you that you cannot handle do not attempt to resolve it. Kindly put it in the SFGTD (something for God to do) box. It will be addressed in My time, not yours. Once the matter is placed into the box, do not hold on to it.

If you find yourself stuck in traffic; Don't despair. There are people in this world for whom driving is an unheard of privilege. Should you have a bad day at work; Think of the man who has been out of work for years. Should you despair over a relationship gone bad; Think of the person who has never known what it's like to love and

be loved in return. Should you grieve the passing of another weekend; Think of the woman in dire straits, working twelve hours a day, seven days a week to feed her children. Should your car break down, leaving you miles away from assistance; Think of the paraplegic who would love the opportunity to take that walk. Should you notice a new gray hair in the mirror; Think of the cancer patient in chemo therapy who wishes she had hair to examine. Should you find yourself at a loss and pondering what is life all about, asking what is my purpose? Be thankful. There are those who didn't live long enough to get the opportunity. Should you find yourself the victim of other people's bitterness, ignorance, smallness or insecurities; Remember things could be worse. You could be them.



### DEPRESSION AND ALCOHOL ABUSE AMONG THE ELDERLY

by Ron Trusler

Suicide. The term frightens all of us. We wonder how anyone can view life so hopelessly that he/she cannot face another day. We wonder how someone becomes convinced that the emotional pain that is felt will never go away. We see visions of teenagers who are confused and, with little warning, end their lives.

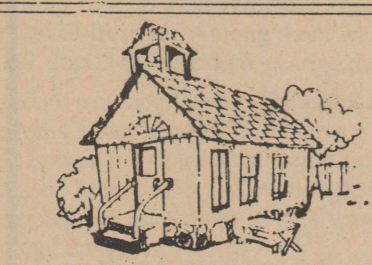
We rarely think of suicide as a threat to older adults, but people over age 60 have the highest rate of suicide in the United States. Older adults don't make unsuccessful attempts at suicide; when they decide on suicide, they usually succeed.

Alcohol can be a major contributor to suicide among older adults. They may feel empty, believing that all the value in their life has been lost due to retirement, the death of a spouse or friends, health problems, or a combination of these losses. Alcohol sometimes becomes the 'pain killer' chosen to dull the heartache and feeling of emptiness. Increased use of alcohol can lead to suicide because only the pain is reduced; the hopelessness continues. Alcohol also gives the person a false sense of courage, which gives them enough strength to take their own life.

Family members and friends can

help older adults by being observant of their moods. If someone talk only of what they have lost - health, job, spouse-try to get them re-involved in some facet of community life such as church, volunteer work or civic clubs. If they refuse more involvement and tend to isolate themselves, visit more often, if possible, to maintain some level of contact with them. If you notice that they have increased their intake of alcohol, discuss it with them personally. If signs of intoxication or lingering depression are present, don't wait to see if things get better - contact a professional counselor for help.] Family and friends often ignore or deny the signs of depression or alcohol abuse they see in their older loved ones. It can be difficult to admit that someone you care for has a serious problem.

Sometimes it is difficult to get involved. But by all means, do. Your willingness to work toward getting professional care for an older friend or relative might save their life. Don't underestimate the powerful effect of showing how much you care. Whether someone receives professional care for alcohol abuse, depression, or both, the involvement of family members or friends who care can enhance the chances of recover.



## The Country Preacher

By Pastor Darwin Robinson

**CHONTAL INDIANS, DEERS, AND GUNS-**The Chontal Indians in Oaxaca, Southern Mexico have a hard life. They live high in the mountains that over look the Pacific Ocean. Their arid, dry mountains have cactus at the lower levels and pine trees on top.

It would take us about three hours to climb to the top where the Indian village, Las Cruces, was located. We organized a church there after several years in the 70's. Another church was organized at the bottom of the mountains in a village called Limon.

We would park our pickup in Limon and then climb the mountain to conduct services in Las Cruces for a couple of days. On one of my early trips, I was climbing the trail in a hurry and got way ahead of the pastor. I decided to rest on a boulder and wait for the pastor to catch up. Immediately I was surrounded by five Indians with rifles pointed at me. They wanted to know who I was and my business.

I told them quickly that I was a missionary and the pastor of the church was coming right behind me. That satisfied them and they disappeared into the brush. Later I found out marijuana was in these mountains.

On another winter trip, we arrived

around dark in Limon. We walked up to Las Cruces in the dark with flashlights and arrived around 10 p.m. I was escorted to a thatched roof hut.

Inside the hut, a gutted deer was hanging by its feet in the center of hut with its bloody nose almost touching the dirt floor. The Indian lady of the hut cut a big piece of raw meat from the freshly killed deer. She cooked it over an open fire in one corner while I watched.

I ate the deer meat with some beans and tortillas and honestly I really enjoyed it. Maybe I was just real hungry. It was told they hunted these deer with 22 rifles at night. Using flashlights or helmet lights, they could get real close and shoot the deer in the eye as it stared at the light.

Personal guns are banned in Mexico. These Indians hide their guns in the mountains from the military raids on their villages searching for guns. Cold fronts run these deer into the Southern mountains of Mexico. One good deer will sell at the market for about \$40 dollars, or a month's wages for these Indians.

**MORAL OF THE STORY:** "Don't knock another person's way of life, unless you have lived it."

# Floyd County Church Directory

**AIKEN BAPTIST CHURCH**  
Henry Martin, Pastor  
Sunday School . . . . . 10:00 a.m.  
Morning Worship . . . . . 11:00 a.m.  
Evening Worship . . . . . 6:00 p.m.  
Wednesday:  
Bible Study . . . . . 7:30 p.m.  
\*\*\*\*\*

**BETHANY BAPTIST CHURCH**  
607 W. Lee St., Floydada  
J.D. Young, Pastor  
Sunday School . . . . . 10:00 a.m.  
Morning Worship . . . . . 11:00 a.m.  
Evening Worship . . . . . 6:00 p.m.  
Wednesday Evening  
Prayer Meeting . . . . . 7:00 p.m.  
\*\*\*\*\*

**BIBLE BAPTIST CHURCH**  
810 S. 3rd, Floydada  
Darwin Robinson, Pastor  
983-5278  
Sunday School . . . . . 10:00 a.m.  
Morning Worship . . . . . 10:50 a.m.  
Evening Worship . . . . . 6:00 p.m.  
Wednesday Service . . . . . 7:30 p.m.  
\*\*\*\*\*

**CALVARY BAPTIST CHURCH**  
Floydada  
Glenn Truett, Pastor  
Sunday School . . . . . 9:45 a.m.  
Morning Worship . . . . . 11:00 a.m.  
Bible Study . . . . . 6:00 p.m.  
Evening Worship . . . . . 6:00 p.m.  
Wednesday Evening . . . . . 7:00 p.m.  
\*\*\*\*\*

**CARR'S CHAPEL**  
Service Every Sunday:  
Morning Worship . . . . . 9:00 a.m.  
Sunday School . . . . . 10:30 a.m.  
\*\*\*\*\*

**CHURCH OF CHRIST**  
West College & Third,  
Lockney  
Frank Duckworth, Evangelist  
Morning Worship . . . . . 10:30 a.m.  
Evening Worship . . . . . 5:30 p.m.  
Wednesday Service . . . . . 8:00 p.m.  
\*\*\*\*\*

**CITY PARK CHURCH OF CHRIST**  
Doug Rainbolt - Minister  
Floydada  
Sunday:  
Bible Study . . . . . 9:30 a.m.  
Morning Worship . . . . . 10:30 a.m.  
Evening Worship . . . . . 6:00 p.m.  
Wednesday:  
Bible Study . . . . . 7:30 p.m.  
(Summer . . . . . 8:00 p.m.)  
\*\*\*\*\*

**FIRST ASSEMBLY OF GOD CHURCH**  
701 W. Missouri, Floydada  
Vance Mitchell, Pastor  
Sunday School . . . . . 9:45 a.m.  
Morning Worship . . . . . 10:50 a.m.  
Sunday Evening  
Evangelistic . . . . . 6:00 p.m.  
Wednesday:  
Night Service . . . . . 7:00 p.m.  
\*\*\*\*\*

**FIRST BAPTIST CHURCH**  
401 S. Main, Floydada  
Temporarily Meeting at  
Floydada High School  
Offices located at 402 S. Wall  
Anthony D. Sisemore, Pastor  
Les Reed, Minister of Students  
Sunday:  
Sunday School . . . . . 9:15 a.m.  
Morning Worship . . . . . 10:30 a.m.  
Christian Growth, Youth Drama,  
Faith Weavers, Mission Friends,  
Nursery . . . . . 5:00 p.m.  
Evening Worship . . . . . 6:00 p.m.  
Wednesday:  
Children's Choir . . . . . 4:00 p.m.  
Nursery, Preschool Choir, RA's,  
GA's, Youth Bible Study, Adult  
Bible Study . . . . . 7:00 p.m.  
Adult Chori Practice . . . . . 7:00 p.m.  
\*\*\*\*\*

**FIRST BAPTIST CHURCH**  
Lockney  
Phillip Golden - Pastor  
Phillip Oswald, Director of  
Music  
Rodney Hunt, Youth Minister  
Sunday:  
Sunday School . . . . . 9:45 a.m.  
Morning Worship . . . . . 10:45 a.m.  
Evening Worship . . . . . 6:00 p.m.  
Youth . . . . . 7:00 p.m.  
Wednesday:  
Prayer Meeting . . . . . 7:00 p.m.  
Youth Bible Study . . . . . 7:00 p.m.  
Adult Choir . . . . . 8:00 p.m.  
\*\*\*\*\*

**FIRST CHRISTIAN CHURCH**  
Reverend Ione Sedinger  
Pastor  
Sunday Worship . . . . . 11:00 a.m.  
Monday Bible Study . . . . . 9:30 a.m.  
\*\*\*\*\*

**FIRST UNITED METHODIST CHURCH**  
Floydada  
Wendell Horn, Pastor  
Sunday School . . . . . 9:45 a.m.  
Morning Worship . . . . . 11:00 a.m.  
Youth Fellowship . . . . . 5:00 p.m.  
Evening Worship . . . . . 6:00 p.m.  
\*\*\*\*\*

**FIRST UNITED METHODIST CHURCH**  
Lockney  
Russ Byard, Pastor  
Sunday School . . . . . 9:15 a.m.  
Worship Service . . . . . 10:30 a.m.  
UMY . . . . . 5:00 p.m.  
Evening Worship . . . . . 6:00 p.m.  
United Methodist Women,  
Hill Circle, 3rd Tues. . . . . 9:30 a.m.  
Ruth Wesley Circle:  
2nd & 4th Mondays . . . . . 10:30 a.m.  
\*\*\*\*\*

**FRIENDSHIP CHAPEL CME**  
Floydada  
Rev. James Jenkins  
Sunday . . . . . 9:45 a.m.  
Morning Service . . . . . 11:00 a.m.  
Wednesday:  
Bible Study . . . . . 8:00 p.m.  
\*\*\*\*\*

**GRACE FELLOWSHIP CHURCH**  
211 N. Main, Lockney  
Interdenominational Church  
806-652-2332  
Bible Study . . . . . 9:45 a.m.  
Morning Worship . . . . . 11:00 a.m.  
Evening Worship . . . . . 6:30 p.m.  
Wednesday Service . . . . . 7:00 p.m.  
\*\*\*\*\*

**GRANT CHAPEL CHURCH OF GOD IN CHRIST**  
Joe Bennett, Pastor  
Sunday School . . . . . 10:00 a.m.  
Monday Worship . . . . . 11:00 a.m.  
Evening Service . . . . . 7:30 p.m.  
Tuesday:  
Prayer Service . . . . . 8:00 p.m.  
Wednesday Service . . . . . 7:30 p.m.  
\*\*\*\*\*

**MAIN STREET CHURCH OF CHRIST**  
Lockney  
Russell Harris, Minister  
Bible Study . . . . . 9:30 a.m.  
Morning Worship . . . . . 10:30 a.m.  
Evening Worship . . . . . 6:00 p.m.  
Wednesday:  
Ladies Bible Class . . . . . 9:30 a.m.  
Bible Study . . . . . 7:30 p.m.  
\*\*\*\*\*

**MT. ZION BAPTIST CHURCH**  
Floydada  
Rev. Ralph Jackson  
Sunday School . . . . . 10:00 a.m.  
Morning Worship . . . . . 11:00 a.m.  
BTU . . . . . 6:00 p.m.  
Evening Worship . . . . . 7:00 p.m.  
Wednesday:  
Mid-Week Prayer . . . . . 7:00 p.m.  
Thursday:  
Bible Study . . . . . 7:00 p.m.  
\*\*\*\*\*

**NEW SALEM PRIMITIVE BAPTIST CHURCH**  
Floydada  
Sunday: Congregational  
Singing . . . . . 10:30 a.m.  
Morning Worship . . . . . 11:00 a.m.  
Pastor Elder Ronnie Hedges  
Telephone (806) 585-6342  
\*\*\*\*\*

**POWER OF PRAISE FULL GOSPEL CHURCH**  
Rev. Manuel Rendon, Pastor  
704 N. Main, Lockney  
652-3704  
Sunday Services . . . . . 10:00 a.m.  
Sunday Evening . . . . . 5:00 p.m.  
Wednesday . . . . . 7:30 p.m.  
Friday - Youth Service . . . . . 7:00 p.m.  
\*\*\*\*\*

**PRIMER IGLESIA BAUTISTA**  
Lockney  
Pedro Villareal, Pastor  
Sunday School . . . . . 9:45 a.m.  
Worship Service . . . . . 11:00 a.m.  
Training Union . . . . . 5:00 p.m.  
Evening Service . . . . . 6:00 p.m.  
Wednesday Service . . . . . 7:30 p.m.  
G.A.'s . . . . . 7:30 p.m.  
Ambassadors . . . . . 7:30 p.m.  
Fellowship Luncheon -  
1st Sunday of Month;  
Music Worship;  
Last Sunday with evening service  
\*\*\*\*\*

**PRIMERA IGLESIA BAUTISTA**  
Floydada  
Rev. Lupe Rando  
Sunday School . . . . . 9:45 a.m.  
Morning Worship . . . . . 10:55 a.m.  
Evening Worship . . . . . 6:00 p.m.  
Wednesday Evening . . . . . 7:00 p.m.  
\*\*\*\*\*

**SAN JOSE CATHOLIC CHURCH**  
Lockney  
Jim McCartney, Pastor  
Wednesday:  
Communion Service . . . . . 8:00 p.m.  
Sunday Mass . . . . . 11:30 a.m.  
\*\*\*\*\*

**SOUTH PLAINS BAPTIST CHURCH**  
Ernest Stewart, Pastor  
Sunday School . . . . . 10:00 a.m.  
Morning Worship . . . . . 11:00 a.m.  
\*\*\*\*\*

**SPANISH ASSEMBLY OF GOD TEMPLO GETSEMANI**  
308 Mississippi  
Rev. Alejandro Ruiz Jr.  
983-2864 or 983-5286  
Sunday School . . . . . 10:00 a.m.  
Morning Worship . . . . . 11:00 a.m.  
Evening Evangelistic  
Service . . . . . 6:00 p.m.  
Wednesday:  
Family Night . . . . . 7:00 p.m.  
\*\*\*\*\*

**ST. MARY MAGDALEN CATHOLIC CHURCH**  
Floydada  
Father John Olig  
Deacon Ricky Vasquez  
Sunday Mass . . . . . 11:30 a.m.  
Tuesday Mass . . . . . 6:30 p.m.  
Wednesday Mass . . . . . 6:30 p.m.  
Rosary recited 1/2 hour before each Mass  
Phone: 983-5878  
\*\*\*\*\*

**TEMPLO BAUTISTA SALEM**  
Lockney  
Pedro Reyes, Interim Pastor  
Sunday School . . . . . 9:45 p.m.  
Worship Service . . . . . 11:00 a.m.  
Christian Training . . . . . 5:00 p.m.  
Evening Worship . . . . . 6:00 p.m.  
Wednesday:  
Prayer Meeting . . . . . 7:30 p.m.  
\*\*\*\*\*

**TEMPLO BETHEL SPANISH ASSEMBLY OF GOD**  
Washington and 1st St.  
Lockney 652-1008  
Pastor, Rev. Eliseo Ovalle  
983-6202  
Sunday School . . . . . 9:45 a.m.  
Morning Worship . . . . . 11:00 a.m.  
Evening Worship . . . . . 5:00 p.m.  
Wednesday Service . . . . . 7:00 p.m.  
\*\*\*\*\*

**TEMPLO EVANGELICO PENTECOSTAL CHURCH**  
515 E. Missouri, Floydada  
Sunday School . . . . . 9:45 a.m.  
Evening Worship . . . . . 5:00 p.m.  
Wednesday Service . . . . . 7:00 p.m.  
\*\*\*\*\*

**LIBERTY CHRISTIAN**  
203 SE 2nd, Lockney  
652-2793  
Pastor David Hinojosa  
Wednesday Evening . . . . . 7:30 p.m.  
Sunday School . . . . . 10:00 a.m.  
Sunday Worship . . . . . 5:00 p.m.  
\*\*\*\*\*

**TEMPLO NUEVA VIDA**  
Rev. Herman Martinez  
308 W. Tennessee, Floydada  
Sunday School . . . . . 10:00 a.m.  
Prayer Service . . . . . 2:00 p.m.  
Evening Worship . . . . . 5:00 p.m.  
Tuesday:  
Evening Service . . . . . 7:30 p.m.  
Thursday Service . . . . . 7:30 p.m.  
\*\*\*\*\*

**TRINITY CHURCH**  
500 W. Houston Floydada  
Interdenominational Church  
Henry Russell, Pastor  
983-5499  
Sunday School . . . . . 9:45 a.m.  
Morning Worship . . . . . 10:40 a.m.  
Sunday Evening . . . . . 6:00 p.m.  
Wednesday . . . . . 7:00 p.m.  
4th Sunday Singing . . . . . 6:00 p.m.  
\*\*\*\*\*

**TRINITY LUTHERAN CHURCH**  
Providence Community  
on FM 2301 293-3009  
John Chandler, Pastor  
Sunday School &  
Adult Bible Class . . . . . 10:00 a.m.  
Worship Service . . . . . 11:00 a.m.  
\*\*\*\*\*

**WEST SIDE CHURCH OF CHRIST**  
Floydada 983-3548  
Sunday Worship . . . . . 10:30 a.m.  
Sunday Evening . . . . . 6:00 p.m.  
\*\*\*\*\*

**Old Blue Quilt Box**  
200 S. Main, Lockney  
652-2183

God's House Is Always Open

Attend the Church of Your Choice on Sunday.

This page is brought to you by the following sponsors:

**Barwise Gin**  
Barwise Community  
983-2737

**Goen & Goen Insurance**  
102 E. California 983-3524

**Oden Chevrolet-Olds**  
221 S. Main - Floydada - 983-3787

**Cargill Hybrid Seeds**  
652-3339, Aiken

**Floyd County Hesperian-Beacon**  
111 E. Missouri, Floydada - 983-3737  
120 S. Main, Lockney - 652-3318

**Pay-n-Save**  
210 N. Main - Lockney  
652-2293

**City Auto**  
201 E. Missouri - Floydada  
983-3767

**Lighthouse Electric Coop**  
Floydada- 983-2184

**Payne Family Pharmacy**  
200 S. Main, Floydada, 983-5111

**Clark Pharmacy**  
320 N. Main - Lockney  
652-3353

**Lockney Co-op Gin**  
Lockney - 652-3377

**Schacht**  
Flowers, Jewelry & Gifts  
112 W. Poplar, Lockney, 652-2385

**Davis Lumber**  
102 E. Shurbet - Lockney  
652-3385

**Lockney Ins. Agency**  
105 N. Main - Lockney - 652-3347

**Sunshine Pump**  
Oliver Clark  
Box 266, Lockney, Tx. 79241  
983-5087 Mobile 774-4412

**Garcia's OK Tire Store**  
308 S. Main - Floydada - 983-3370  
511 1st. - Olton, Tx. -285-7796

**Moore-Rose-White Funeral Home**  
329 W. Calif., Floydada, 983-2525  
402 S. Main, Lockney, 652-2211

**American State Bank**  
Member FDIC  
217 W. California - 983-3725