

Hesperian-Beacon

"Celebrating 111 Years of Floyd County News"

www.hesperianbeacon.com

Thursday, February 1, 2007

©The Floyd County Hesperian-Beacon

Floydada, Texas 79235 (USPS 202-680)

Volume 111 Number 5

Kirk and Sons closes doors after 96 years

By Alice Gilroy

After an all day auction to liquidate remaining stock, Kirk & Sons closed their doors for the final time.

Now empty are the walls and floors that used to be packed with hardware, furniture, household appliances, paint, floor coverings, guns, hunting items, and much more.

In May, 2006, owner Layne Kirk announced his intention to sell his 96 year old business. Both Layne and his wife, Susan, have been offered job opportunities in Amarillo.

Layne will begin his first day of work at Amarillo Hardware Company on February 1st.

"I only sold the business because of this job opportunity," said Layne.

Layne is the 4th generation Kirk to run the business. The sale of the building and stock was not an easy decision for him.

Layne started working at the store for his dad David Kirk when he was child. "All of us kids would be running around the store and my dad figured the way to keep us in line was to put us to work."

"My first job was putting nuts on the bolts. Then I moved up to vacuuming off the bottom shelves and dusting the merchandise."

"In Junior High when I got out

of school for the day, I would come to work and move furniture. I guess my first sale was in junior high and I rang up a kitchen knife from the display shelf."

Ironically the only other place Layne has ever worked besides Kirk and Sons was in 1981 when he went to work for Amarillo Hardware for 3 years.

In 1984 Layne came back to the store to help his father. In 1986, when David died, Layne took over the operation.

He was assisted by his mother, Jill, who had worked in the store since 1947. Jill helped out until 2001 when she moved to Arizona.

Another popular fixture at Kirk and Sons has been John Campbell who has worked at the store since 1954.

Besides knowing all the ins and outs of the store, John is also well known for his beautiful framing work he did upstairs in Kirk and Sons.

"John will continue his framing work at his home at 506 E. Tennessee," said Layne.

"I'm going to miss John's humming and singing," said Layne. "He was always coming up with his own songs. I'll miss it."

Layne said that Julie Duke (a former employee) bought the last item at the auction January 27. "She stayed all day to get some

antique shelves and it was the last item sold."

The building was sold immediately prior to the auction, to Stan Payne, of Floydada.

"Stan says he is going to use the furniture side to store his car collection and will lease out the other side," said Layne.

Included with the purchase of the building was the 1886 Mosler Safe, originally brought to Lockney from San Antonio by an eight mule team. The exact weight of the safe is unknown but a conservative estimate was 7 tons.

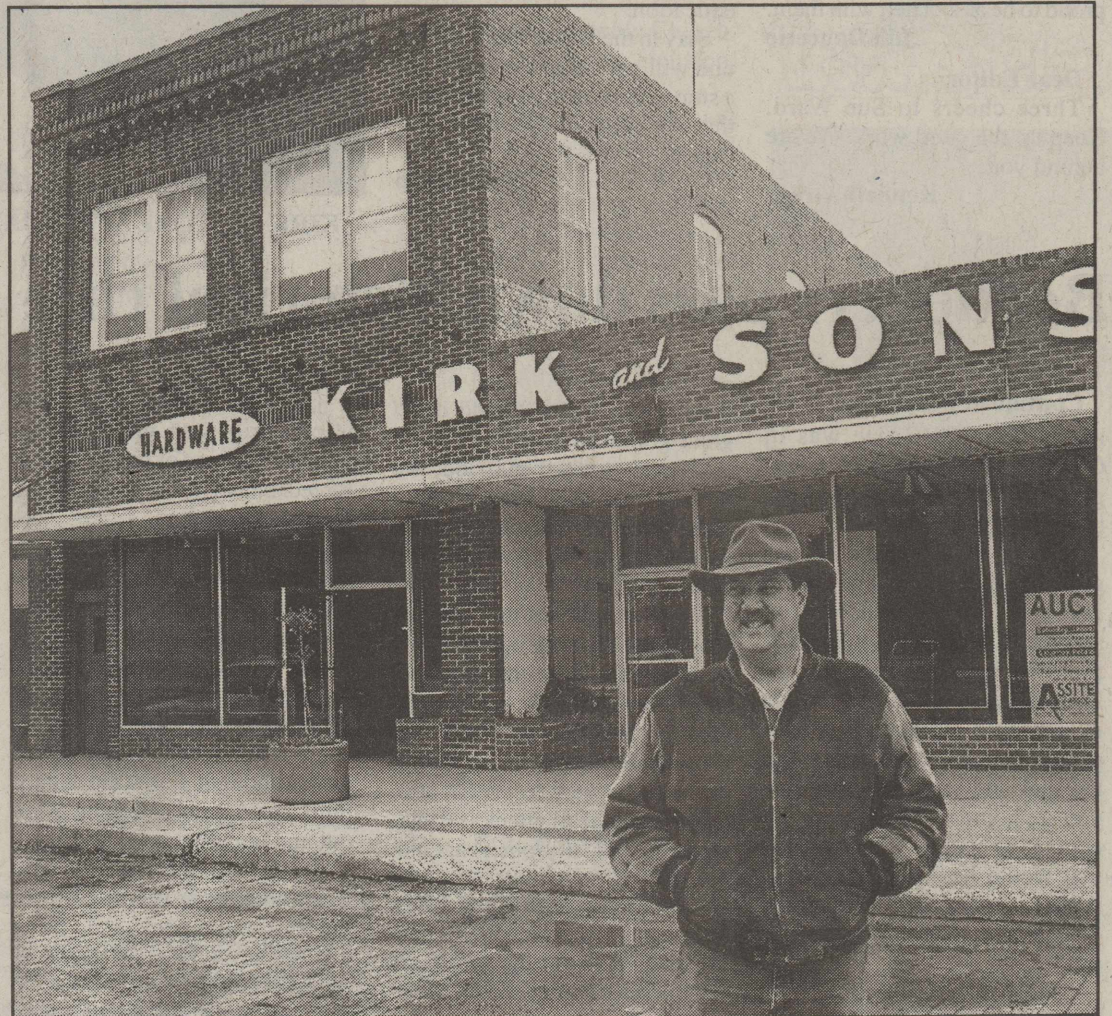
Originally opened in 1910 by Layne's great grandfather, James T. Kirk, the building still held lots of family memories and mementos.

"It really hit me what was happening during the auction on Saturday," said Layne. "People kept coming up and asking me how I was doing and it got harder and harder. I finally started finding things for me to do to help out so I could stay busy and keep from crying."

"I look around and can't believe that 96 years of stuff is all gone in one day."

"I've got general ledgers and journals for the store dating back to 1918. I've got bank statements from the 'Floyd County Bank, our original bolt scale from 1910 and the original Warren antique shelving."

Not only will Missouri Street



LAYNE KIRK IN FRONT OF CLOSED KIRK AND SONS, JANUARY 29, 2007

look different without Kirk and Sons, but so will the organizations in which Layne worked to promote Floydada—the Lions

Club, Museum Board, 4-H, Old Settlers, and more.

Layne Kirk will be taking a lot of Floydada memories with him

in his move to Amarillo, but Floydada will also retain a lot of memories of Layne and the Kirk pioneers.



FIRST NATIONAL BANK OF FLOYDADA DONATES \$5000 to Kids Korner Learning Center of Floydada. Shown receiving the donation is Director of KKLC Beverly Collins from FNB President Tom Farris.

Staff Photo

Commissioners hire new budget clerk

By Darwin Robinson

The Floyd County Commissioners met in Special Session Tuesday, January 30, and hired a new County Budget/Finance Clerk, took no action on the vacated Sheriff's position and heard the resignation of Preston Belt from the Floyd County Emergency Management Coordinator position.

Following a closed session to review several applications, Gayla Griffin was hired as Budget/Finance Clerk by the commissioners, with a 3-1 vote, to replace Debra Burson who passed away in November, 2006. Commissioner Lennie Gilroy made the motion to hire Griffin and Commissioner Jon Jones seconded it. Commissioners Gilroy, Jones and Bill Quattlebaum voted to hire Griffin and Commissioner Ray Nell Bearden voted against it.

Several applications for the County Sheriff's position being vacated on January 31, 2007 by Royce Gilmore were discussed during closed session, but no action was taken on the matter fol-

lowing closed session.

In a related matter, another County Commissioners' Special Session was set for Friday, February 2, at 3:00 p.m. to accept the written resignation of Sheriff Gilmore and consider appointing someone to the sheriff's position.

Preston Belt told the court, "I must step down from the Floyd County Emergency Management Coordinator position because I have some personal things in my life that I must attend to. I want to thank you for your confidence in me."

Commissioner Gilroy told Belt, "We (the court) appreciate what you have done for us."

Belt further addressed the court "as a citizen of Floyd County" and gave his endorsement of Patrolman Paul Raissez for the next sheriff of Floyd County. "He is qualified and capable to be our sheriff. I am asking the commissioners to step up to the plate and invest in one of our own young people in Floyd County. He knows this county and we can be proud of him."

Continued on Page 2

Mud hampers Lighthouse repairs

Lighthouse Electric Cooperative crews have been hampered in their repair work this week by muddy conditions that have mired equipment and slowed crews trying to fix damage left by recent ice storms. Overnight freezes have allowed crews to work through only about noon most days before frozen ground thaws, becoming a quagmire that traps heavy equipment.

Contractors working with Lighthouse EC line crews were sent home until after the weekend in hopes that the ground would dry enough to permit resumption of repairs on the more

than 300 poles, including 13 transmission structures, 500 or more cross arms and thousands of conductors damaged or destroyed by the storm. Lighthouse General Manager Bill Harbin, who estimated that the repairs are about one-third completed, said the co-op has requested assistance from the Federal Emergency Management Agency, which is expected to send a representative to the area next week to survey the damage wrought by the storm.

"We are grateful for the help we have received in this difficult

time," Harbin said. "Employees' spouses, retired employees, members, friends and neighbors from the community have offered and given us help, encouragement, food and many other acts of kindness - and the employees' response has been awesome. ... Where disaster brought great loss, it also brought out the best in those who answered the call for help."

A Lighthouse employee assisting in the recovery who was hurt when he inadvertently contacted an energized line was back at work after spending Wednesday

night in a hospital as a precautionary measure. His injuries were not serious, but crews and safety personnel at the co-op took the incident quite seriously. They discussed what went wrong and how to avoid future accidents of a similar nature. "Lighthouse employees are dedicated professionals with an enviable safety record. To a man, they were chagrined and saddened by the accident but are grateful that there were no serious injuries," Harbin said. "They all renewed their commitment to work safely and to support each other."

Boedekers pass down historical rifle

By Judy Macha

An artifact, by its nature, is a common link in history's chain. It connects times, places, people and events. One such artifact is an 1860 Spencer lever action, rear loading 50 caliber carbine; a soldier's saddle gun.

Through an interview with

Cecil Boedeker, it became evident, that for the Boedeker family of Floyd County this simple carbine is the common link in their family's history. It is a family heirloom passed down from father to son through the years beginning with Cecil's great-grandfather, Theodore Boedeker,

who served as an orderly for General George Armstrong Custer.

Theodore Boedeker was born in Hanover, Germany and was sent by his father to the United States, as were his brothers, as they became of military age. One of the brothers fell sick during his

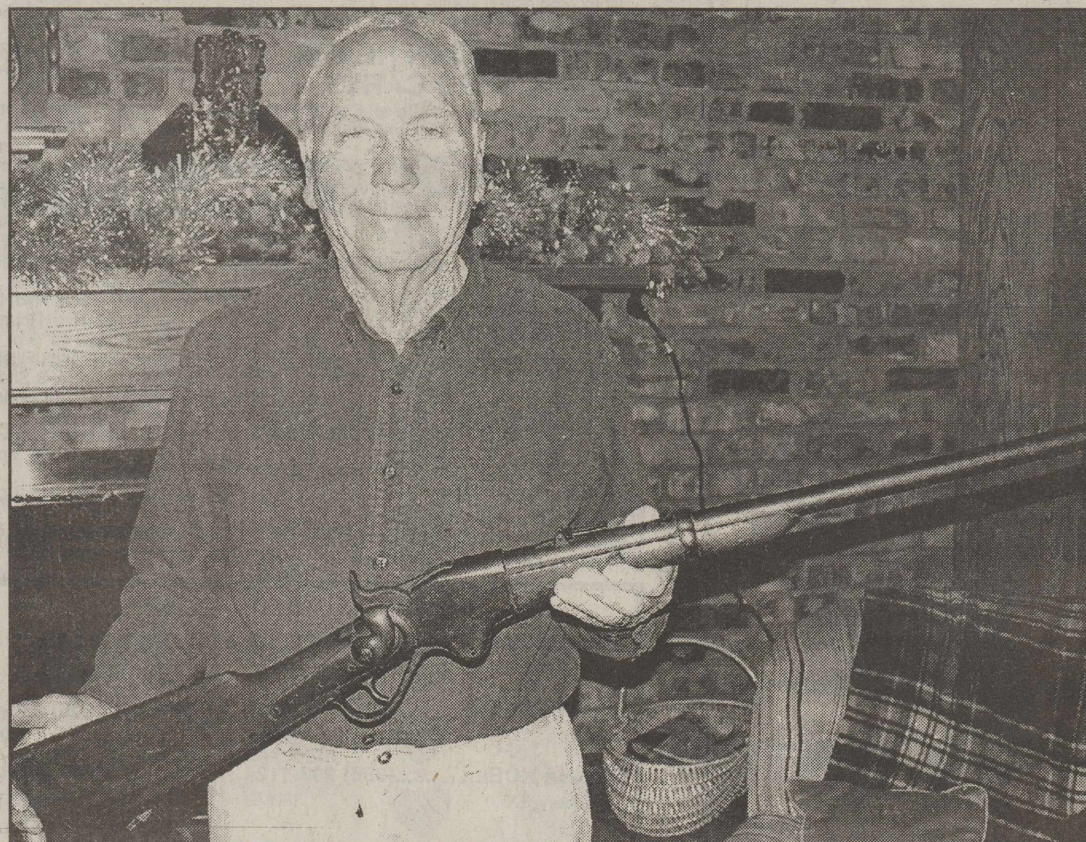
journey and died sitting on a bale of cotton at Galveston, Texas.

Theodore immigrated to the United States in 1855. He arrived in Galveston on the ship Weser. He soon started farming in Washington County, near Gay Hill. Cecil added, "I've been there. It is where my dad was baptized. Now there's just a church and cemetery left."

Theodore Boedeker was drafted into the Confederate Army during the Civil war, but he dropped out during a night march and did not rejoin the Confederates. He was later captured by the Union Army where he spent the rest of his Civil War years as an orderly for General George Custer. "He was spared death in the Battle of the Little Big Horn by a quirk of fate," Cecil said. "He was sick at the time and the Army physician refused to release him for service."

Cecil continued, "I guess he must have been good friends with the Custers, because he continued written correspondence with Elizabeth Custer after her husband's death. Some of our family still possess one or more of her letters. My second cousin, I think, once had the military pistol issued to great-granddad. He donated it to the Museum at Canyon. I have copies of some of his Confederate military papers dat-

Continued On Page 2



CECIL BOEDEKER holding his great-great-grandfather's 1860 Spencer, lever action, rear load-50 caliber carbine. (See related story.)

Staff Photo

Letters to the Editor

Dear Editor,

During the recent winter storms the performance of the people at Lighthouse Electric Cooperative was, to say the least, courageous.

They worked faithfully under horrible conditions. They are true heroes.

I was out of town at the time of the storm and I appreciated the way they took care of my family and checked on their welfare.

We take the Lighthouse employees for granted and we shouldn't.

I'm proud to live here and proud to be associated with them.

Jim Doucette

Dear Editor,

Three cheers to Sue Ward. Keep up the good work. We are behind you.

Kenneth Gregg

Dear Editor:

We sure miss Sue Ward at the FSA office. However she is still trying to help farmers by her attempt to cut "education" costs.

Someone needs to have Vaughn read the Webster's dictionary for the meaning of "education". It has nothing to do with expensive trips.

I don't believe Floydada needs to spend so much money on building new schools. I think the money would have been better spent on teacher's salaries, so the school could always have quality teachers providing quality education.

Stay in there Sue. Hope everyone will get behind you and put a stop to the outrageous expenses that are mistakenly called education.

Beth Kropp



KIRK IN STORE AFTER JANUARY 27, 2006 AUCTION



KIRK & SONS NOVEMBER 2006

Make it Convenient
Have The Hesperian-Beacon Delivered
\$23 In County-- \$25 Out of County

Boedekers pass down historical rifle

Continued From Page 1

ing back to 1862. He was in Company D of Waul's Texas Legion (Infantry, Cavalry and Artillery.)"

Cecil reminisced, "As I was growing up there was not much said about great-granddad. You see, dad did not have the gun at the time. But of course we all knew the story about him. He and mom would go visit my grandparents and they would show him the gun and say, 'Ted, one day you are going to get this gun.' Of course, he had no idea of when that would be. He didn't really think he ever would. As it turned out it was a long time before he did."

Cecil Boedeker was born March 25, 1933 to Ted and Freida Boedeker in Plainview, Texas. "My dad graduated from Lippert's Business College in Plainview. I doubt many people now remember there ever was one. Then he went to work for an oil company," Cecil said. "When my uncle went to serve in WWII, the family needed help on the farm, so my dad moved us to the farm in Floyd County in about 1945 or 1946. There were four children, my sister Foncena (she married Royce Carthel) and three boys, myself, Larry and Merlin. This is where we settled, right here."

Cecil served 1954-1955 in the army during the Korean War. He married Lajuanna Richards in 1954. They have two children, Gary and Vicki; three grandchildren; and four great-grandchildren (including a "brand new" great-grandson.)

"After we got married, we moved into this very house," Cecil said. "Of course, it doesn't look the same. We have added on since then."

Cecil continued as a part of the family farming operation. "I have always farmed," he said. "My brother Larry and I kept farming together after my dad passed away. Merlin, the youngest brother, went to Fort Worth. Larry had a heart attack in 1998, when he was fifty-one years old, and that is when I quit farming."

Cecil shares more than a love of farming and guns with his dad. He also loves flying and has a photo collection of the different planes the family has used through the years. "My dad was taught to fly a glider as well as a plane by Mr. Brown over at Finney Switch," Cecil said. "He learned to fly in an Interstate Cadet military plane. A Piper, four place, tail dragger is the plane we used right out here. My dad and I used to farm at Uvalde. We would fly down there and back. Then we started farming in Springfield, Colorado. Flying made it possible. The last time I flew was in 1998. Now, I have had kidney stones, cataracts and wear glasses." "And---you wear hearing aids," Lajuanna added. "I what," he laughed?

Cecil thinks he has gotten too old to fly now, but his eyes still light up when he talks about flying and the different planes he has flown through the years.

One fond memory Cecil has is of a trip with his father to Uvalde. Because of fog they were forced to land in Del Rio until the weather cleared.

"While we were waiting, we saw this brand new 182 Skylane Cessna sitting in the hanger, and before we left, we had done traded airplanes. Then we went from Del Rio to Uvalde to do our business at the farm. When we came home and told our wives we had bought a new airplane, I think maybe one of them went out and bought a new car!"

Referring back to the rifle Cecil added, "It is loaded from the back of the stock, and I think it holds seven or eight shells. A ramrod then goes in to hold the shells in place. The lever action injects the shells into the chamber. I have several guns, all right, but I really didn't start out to be a gun collector. I've bought some guns and I've had some given to me. It was just kind of like women and their shoes!"

"My intention is to pass the gun down to my son," Cecil said. "Eventually, I'd like to see our brand new great-grandson get it."

The Caprock Cotton Conference Is Now Feb. 27th

Estate Planning - Retirement Savings
Family Protection - Loan Requirements

ALL GOOD REASONS FOR LIFE INSURANCE

GOEN & GOEN

HAS A POLICY TO FIT YOUR NEEDS
Come by for more information

102 E. California 983-3524

www.goen-goen.com

\$1,000 REWARD OFFERED

Floydada Cooperative Gin is offering a \$1,000 reward for the arrest and conviction of any and all persons involved in the 12-17-06 destruction of cotton modules located on the gin property.

A reward of \$1,000 is being offered for substantial information about the fires and leading to the arrest and conviction of those involved.

Anyone with information about this crime shall contact Darryl Gooch at 983-2834.

Palo Duro Basin Oil and Gas Update

Courtesy of Tom Musser

Hale County: PetroGlobe Energy USA Ltd. is drilling ahead on the Ramsower Lease Well #1113. Drilling is expected to reach total depth this week.

Floyd and Motley Counties: Anticipated-drilling rig moves to

new locations on the McIntosh land in Floyd County and on the D.M. Cogdell, Jr. Estate in Motley County may be delayed for a few days due to the current muddy conditions of lease roads.



PICK THE COTTON THE ONE TON CLUB PICKS.

Go with a variety that's been proven to yield a ton of cotton fiber per acre. Ask your seed dealer or visit us at CottonExperts.com for more information.

KEY ONE TON VARIETIES

FM 958LL FM 955LLB2
FM 989RR FM 9060F
FM 960B2R FM 9063B2F
FM 989B2R

FiberMax
cotton seed

FROM THE FIELD TO MILLS WORLDWIDE QUANTITY ALL-DOWN THE LINE

Bayer CropScience

©2006 Bayer CropScience, 2 T.W. Alexander Drive, Research Triangle Park, NC 27709. Always read and follow label instructions. For additional product information call toll-free 1-866-99-BAYER (1-866-992-2937) or visit our Web site at www.CottonExperts.com. BCSRFB0617



AUCTION



Friday, February 9, 2007 — Sale Time: 10:00 a.m.

LOCATED: From Floydada, Texas 6 Miles West On Highway 784 Or From Lockney, Texas 10 Miles South On Highway 378 To Sandhill Community, Then 2 1/4 Miles East On Highway 784.

CECIL JACKSON - Owner

For Info. Phone: Cecil (806) 778-1807 Or 5 Star Auctioneers: Jimmy (806) 864-3362 Or Jim (806) 864-3611

I Am Retiring From Farming And Will Sell The Following At Public Auction:

TRACTORS, FRONT END LOADER —

- 1—1996 Case-IH 7230 MFWD Diesel Tractor, Cab, A/C, Htr., T.H., Wts., 14.9x30 Front Rubber, 18.4x42 Rear Rubber (5,916 Hrs.) S.N. 70238
- 1—1990 Case-IH 7130 MFWD Diesel Tractor, Cab, A/C, Htr., T.H., Wts., 18.9x28 Front Rubber, 20.8x42 Rear Rubber (9,700 Hrs. W/Rebuilt Trans.) S.N. 28719
- 1—1989 Case-IH 7130 MFWD Diesel Tractor, Cab, A/C, Htr., T.H., Wts., 18.4x26 Front Rubber, 20.8x42 Rear (4,815 Hrs. Case-IH O/H Eng @ 1,500 Hrs.) S.N. 10936
- 1—1978 International 1086 Diesel Tractor, Cab, A/C, Htr., T/A, 5 Hyd. Outlets, 18.4x38 Rubber W/KD Hyd. Front End Loader, 7' Bucket (1,000 Hrs. On New Eng.) S.N. 30639
- 1—1957 Ford 850 Gas Tractor, 3-pt., W.F. (New Rear Wheels & Tires)

COTTON EQUIPMENT —

- 1—International 1400 S.P. 4 Row-40" Cotton Stripper, Cab, A/C, Htr.
- 1—IHC 2 Row Cotton Stripper W/Basket
- 1—Bush Hog 32' Cotton Module Builder W/PTO & Chev. 283 Power Unit
- 1—Caldwell Single Dump T.A. Boll Buggy
- 1—International 1064 6 Row-40" Cornhead
- 1—Massey 1164 6 Row-40" Cornhead
- 1—Massey 20' Offset Milo Header On 4 Wheel Trailer Chassis
- 1—Big 12 400 Bu. Grain Kart
- 1—John Deere 68 PTO Auger Seed/Grain Wagon

GRAIN TRUCKS, GRAIN TRAILERS —

- 1—1970 Chevrolet C-60 S.A. Grain Truck, 454 Eng., 5 Spd.-2 Spd., 16' Metal Grain Bed, T/C Hoist
- 1—1969 Chevrolet C-60 S.A. Grain Truck, 454 Eng., 5 Spd.-2 Spd., 16' Metal Grain Bed, T/C Hoist
- 2—J&M 30,000 Lb. 4 Wheel Belly Dump Grain Trailers, Surge Brakes

EQUIPMENT —

- 1—International 900 3-pt. 8 Row-40" Planter Mounted On D.S.B. Tool Carrier
- 1—International 800 3-pt. 8 Row-40" Planter Mounted On Hamby D.S.B. Tool Carrier
- 1—RAC 8 Row-40" 3-pt. Single Disc Bedder 4"x7" Front Bar, G.W., L.T.M., 2 Yrs. Old (2 Yrs. Old) Nice
- 1—Roll-A-Cone 3-pt. 8 Row-40" Double Slanted Gang Stalkcutter, T.S.B., 4"x7" Top Mast (Late Model & Nice)
- 1—Hamby 3-pt. 8 Row-40" Lister, D.S.B., L.T.M., G.W.
- 2—Tye 3-pt. 20'-8" Space Grain Drills (1W/Plastic Cups & 1W/Cast Cups)
- 1—Hamby 3-pt. 8 Row-40" Hyd. Rod Weeder Rig, D.S.B., L.T.M., G.W.
- 2—Bigham Bros. 3-pt. 8 Row-40" Stiff Shank Cultivators D.S.B., G.W. (Ford Cult. Shanks)
- 1—John Deere RM 3-pt. 8 Row-40" Cultivator
- 1—Hamby 3-pt. 8 Row-40" Ripper/Lister, T.S.B., G.W.
- 1—Hamby 3-pt. 8 Row-40" Knifing Rig, T.S.B.
- 1—Hamby 3-pt. 8 Row-40" Bed Roller
- 2—Lilliston 3-pt. 8 Row-40" Rolling Cultivator, G.W., S.B.
- 2—John Deere 400 3-pt. Rotary Hoes, L.T.M.
- 1—Yetter 3-pt. 28' Rotary Hoe, L.T.M.
- 1—International Cyclo 500 3-pt. 8 Row-40" Air Planter, IHC 800 Units
- 1—International Cyclo 500 3-pt. 8 Row-40" Air Planter
- 1—Ferguson 20' 3-pt. Tillage/W/Cleanouts
- 1—Hamby 8 Row-40" 3-pt. T.S.B., A.A. Fert. Rig W/Cleanouts, L.T.M. Flow Divider
- 1—Hamby 9 Shank 3-pt. D.S.B., C/S Plow
- 1—Case/IH 770 D.T. 21' Offset Disk
- 1—Case/IH 485 24' Hyd. Fold Tandem Disk
- 1—IHC 480 21' F.W. Tandem Disk
- 2—Hamby 21' T.S.B. 3-pt. Chisel/Sweep Plow, G.W., L.T.M. W/RAC Lift Mulch Harrows
- 1—Bush Hog 14' D.T. Shredder
- 1—Caldwell D.T. 4 Row Shredder
- 1—Eversman 10' Camelback Land Float
- 1—Eversman 10' Float
- 1—AgKrone 3-pt. Hyd. Lift W/Hay Forks
- 1—S/M 3-pt. Hyd. Round Bale Lift
- 1—S/M 8 Row 40' 3-pt. Row Packer, 15" Tires
- 1—3-pt. Disc Ditch Filler
- 2—Big Ox 3-pt. V-9 Shank Rippers
- 1—Hamby D.T. 28' Spring Shank Field Cultivator W/Lift Harrows
- 2—International 10 D.T. 16-10" Grain Drills
- 1—International 165 3-pt. 5 Btm. Spinner Mouldboard
- 1—International 316 3-pt. 3 Btm. Mouldboard
- 1—Bush Hog 176 3-pt. 8 Hyd. Blade
- 1—Servis 3-pt. 8 Hyd. Blade
- 1—Servis Super Rhino 3-pt. 7 Blade

SPRAY EQUIPMENT —

- 1—Lawson Big Boy 3 Seat Spot Sprayer, B&S 18 HP Gas Eng., Hyd. 2 Wh.Dr., Cyl. Control, Lift Boom (897 Hrs.)
- 2—Roll-A-Cone 3-pt. 8 Row-40" Hooded Sprayers, D.S.B., 200 Gal. Poly Tanks, Ace Hyd. Pumps, G.W.
- 1—3-pt. 200 Gal. Poly Spray Tank, Ace Hyd. Pump
- 1—200 Gal. Front Mount Spray Tank, Ace Hyd. Pump

TRAILERS, TANKS, LIVESTOCK EQUIPMENT —

- 1—Neckover G/N 6'x20' T.A. Stock Trailer, Bow Top/Canvas Cover
- 1—Hammonds 16' T.A. Stock Trailer, F.M.C. (Bumper Pull)
- 1—16' T.A. Car Hauler Trailer
- 1—Rhoman 30' Lowboy Trailer
- 1—Wylie T.A. 1,000 Gal. Poly Tank Water Trailer W/2' Pump & Motor
- 1—S/M 4 Wheel 1,000 Gal. Water Trailer W/2' Pump & Motor
- 1—Big 12 20' Metal Box Bed Trailer
- 4—24' Metal Flatbed Cotton Trailers (Big 12 & Cobey)
- 2—Ranger 8'x9'x24' Metal Cotton Trailers
- 1—500 Gal. T.A. Diesel Or Oil Tank/Trailer
- 1—250 Gal. Fuel Trailer W/12 Volt Pump
- 2—Pickup Bed Trailers
- 1—EXCL 12 Volt Wire Roller
- 1—Large Lot Electric Fence Posts, Spools Of Electric Fence Wire, T-Posts, Misc.
- 6—Chevrolet 454 Irrigation Engines (1-New Never Used)
- 5—Chevrolet 350 Irrigation Engines
- 1—Chrysler 440 Irrigation Engine (Low Hrs.)
- 27—Jts. 8'x30' Alum. Flowline
- 120—Jts. 6'x20' Alum. Gated Pipe, 40" Rows
- 100—Jts. 7'x20' Alum. Gated Pipe, 40" Rows
- 13—6'x17' Irr. Hydrants 13-7'x10' Irr. Hydrants
- 1—Lot 6'x7' Alum. Fittings, T's, L's, End Caps
- 1—Lot Alum. Irr. Tubes, 1", 1 1/4", 1 1/2", 2"
- 1—30' S.A. Pipe Trailer

TRACTOR, TOOLBAR MAKE-UPS

NOTE: Any Announcement Sale Day Takes Precedence

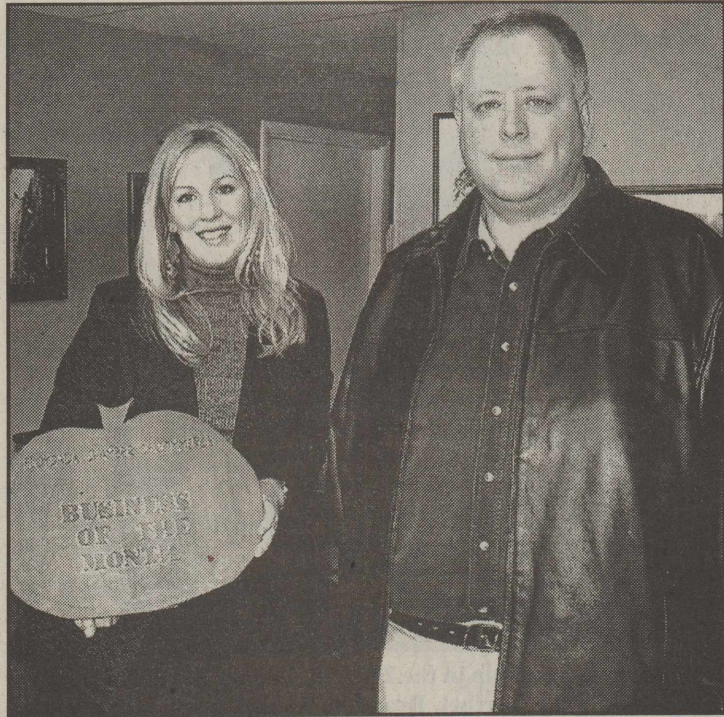
JIM SUMMERS.....(806) 864-3611
(1008) (HOME)

JIMMY REEVES.....(806) 864-3362
(Clerk) (HOME)

DONNA NOEL.....(806) 293-1124
(Secretary) (HOME)

Five Star Auctioneers
OFFICE: (806) 296-0379 — P.O. BOX 1030 — PLAINVIEW, TEXAS 79073-1030
WEB SITE: WWW.5STARAUCIONEERS.COM

Terms of Sale: Cash, Personal or Business Check, Cashier's Check
All Accounts Settled Day of Sale — Lunch Will Be Available
NOTE: Please Bring Your Own Check Book. If You Have Not Established Yourself With Our Company, Please Bring Bank Letter.



BUSINESS OF THE MONTH-KFLP COUNTRY AM & FM of Floydada and Floyd County was selected as Business of the Month for January, 2007. Call (806)983-5704 for advertising on any of their programs, including ALLAG ALL DAY 900 KFLP. Shown are: Lana McCandless, Sales Associate and Steven Orr, Sales Manager. Tony St. James is the owner and General Manager.
Staff Photo

Lockney Senior Citizen News and menu

By Vera Jo Bybee

The Center has been happy to have several guests to eat with us recently.

Dorothy Hooten Solomon was in town to be with her new grandbaby so she ate with us. Doyleene brought her Mother, Velma Harrison in. Also Dorsey Lynn and Char Baker of South Plains ate with us and we want to welcome them as new members.

Homer and Marge Cypert and son Jerry of Lubbock went to Flomot to gather with Marge's Starkey family in honor of her late Mother, Bessie Starkey's birthday Jan 27.

Jr. and Gene Brotherton went to visit Jr.'s son Rick and family in Sunray, Sunday. They came home through Amarillo and had supper in Canyon with Jim and Donna Bobbitt Mitchell.

This week I got the Floyd County History Book out and did some research on the Ewing family tree. I want to thank Betty Jackson Bruce for sending me a copy of Maurice Ewing's obituary that she found in her mother, Rex Sams Jackson's bible. His obituary only listed all the honors that was awarded to him but nothing about his family so that was the reason I had to do some research. Rex's mother, Ruby Thompson Sams, and Maurice Ewing were 1st cousins. Maurice's father, Floyd Ewing and Ruby's Mother Roseland Ewing Thompson were brother and sister.

The Ewing family and the Thompson family moved to Lockney from the F Ranch and Mr. Thompson put in a Hardware, Furniture and Dry Good Store on the corner of Locust and Main Street in Lockney. Floyd Ewing worked there for his brother-in-law for awhile before he went to work for Tab Meriwether and Oscar Shurbet in the Lockney Implement Company.

In 1923, during the depression, business was so bad EP Thomp-

son and wife Rose and several of his children moved to California. Daughter Ruby and son Henry stayed here and later Dick and Juanita came back. Both E.P and Roseland Ida are buried in California.

The Ewings also moved off in the depression. They moved to Quitaque, Estelline and Childress. All except Floyd and his family. Their home was about 1 mile north of Lockney at the end of Main Street and just a little east. Their house is no longer there and the land is now owned by Joe Taylor. His Father Jack Taylor owned it at one time.

The Thompsons and Ewings have been really interesting to get to know.

They were all so gifted and talented. Not just Maurice but all of them.

Next week my research project is going to be on a very interesting man from Lockney by the name of Gordon Suits who passed away January 18, 2007. My cousin W. L Thomas of Canyon called me about reading his obituary in the Amarillo paper. He thought this "Radio Host" might be of interest to the Lockney readers.

W.L. has such a good memory of Lockney long ago and the people who lived here and where they lived. I had the Ewing family living out near the Roseland community and he said, "No Sir they lived at the north end of Main Street." I know I'm gonna be mad at myself for not having my recorder going when we visit. That is just one of the many things I should have done. Ha!

May you always have love to share, health to spare and friends to care.

Menu	
February 5 - February 9	
Mon:	Meatloaf
Tues:	Fried chicken
Wed:	Chicken Fried Steak
Thrs:	Soft tacos
Fri:	Brisket

Floydada Senior Citizens News

By Margarette Word

Thursday, February 8 and Friday, February 9, from 1:00 p.m. to 5:00 p.m. each day an AARP representative will be at the Center teaching a course of Driver's Education. Taking this 8 hour course will give you a discount on your auto insurance. The cost is \$10.00 per person. Please call the Center at 983-2032 to sign up. No tests will be given. There will be discussions and update information on being safe in your automobile. They will only have 30 in the class so call today to sign up.

Elaine LaBaume, her daughter and husband, Charles and Kellie Chalдре and children Harrison and Kate of Lubbock all flew to Orlando, Florida to Disney World recently. Elaine said they enjoyed 80 degree weather while we were having snow. She said they really had a good time. They also visited the John F. Kennedy Space Center.

This Center does provide home deliveries of a noon meal. If you are disabled, unable to get out of your home, or if you are a caretaker of a homebound person you are eligible for a lunch delivered daily Monday through Friday to your home.

Depending on your income, the meal will either be free, reduced or the suggested donated daily cost of \$3.00. If you are interested please contact the Senior Citizen Center at 983-2032 and talk with our director Joanne Smith.

Bill Gilbreath ate lunch at the Center Friday January 19. We are happy he is coming to the Center visiting friends and eating lunch with us.

Our sympathy to the family of Arlene Shuping.

Our sympathy to the family of Teddy Alvis Hasley.

Our sympathy to the family of E.T. Evans.

Our sympathy to the family of Bill Snell.

Our sympathy to the family of Gene Lowrance.

Happy birthday to those who have a February birthday.

Feb. 2 Jackie Gregory; Feb. 9 Jean Kendrick and Maria Bueno; Feb. 10 Sue Sewell; Feb. 12 Frances Weathersbee, Charles Craig, Buck Johnson and Gordon Hambricht; Feb. 13 Martha Farris; Feb. 14 Ed Henderson; Feb. 19 Wayland Fortenberry; Feb. 20 Lida Smithy; Feb. 23 Cleo Whittle; Feb. 26 Oleta Wilson.

Thank you for remembering the Center when you need to make a memorial donation.

In memory of Arlene Shuping-Tommy and LaVerne McIntosh, Dale and Carolyn Smith.

Thought for the week - Be careful and do not fall on the ice we have had recently.

Menu

February 5 - February 9
Monday-BBQ brisket, black-eyed peas, broccoli, roll, frosted cake

Tuesday-Lemon chicken, red beans, tossed salad/ranch, roll, peaches

Wednesday-Polish sausage, sauerkraut, mixed vegetables, roll, blonde brownies

Thursday-Chicken quesadillas, stewed okra and tomatoes, tossed salad, fresh fruit

Friday-Hamburger steak in brown gravy, mashed potatoes, squash, wheat roll, cherry cobbler

Words cannot express how thankful we are for all the thoughts, prayers, and food before, during and after the loss of our loved one, Arlene Shuping.

We would like to give a special thanks to the following: Brother Mitchell for all of the home visits and for lifting her spirits; Moore-Rose-White Funeral Home for all your courtesy and kindness; Trinity Church included Brother Russell and Brother Mitchell for the lunch and the service, it was beautiful and just the way she wanted it; Hospice and Interim Health Care for giving her the care she needed and deserved; First Baptist Church for all the prayers and food they prepared for her every week and Floydada EMS for all the wonderful care you gave her each and every time she was being transported to the hospital.

Our heartfelt thanks goes out to each and every one of you.

The Family of Arlene Shuping



REV. ERVIN ASIATICO

Special Services at Trinity Church

Rev. Ervin Asiatico of Dallas will be ministering in services at the Trinity Assembly Church, located at 500 .W. Houston, Floydada.

Services will be held February 4th (Sunday) through the 7th (Wednesday) at 7 p.m. Sunday services will convene at 10:30 a.m. and 5 p.m. respectively.

Rev. Asiatico comes with over 45 years of ministry having completed over 20 years in evangelism.

He has ministered coast-to-coast across the contiguous United States, as well as Alaska. He has conducted ministry in foreign campaigns.

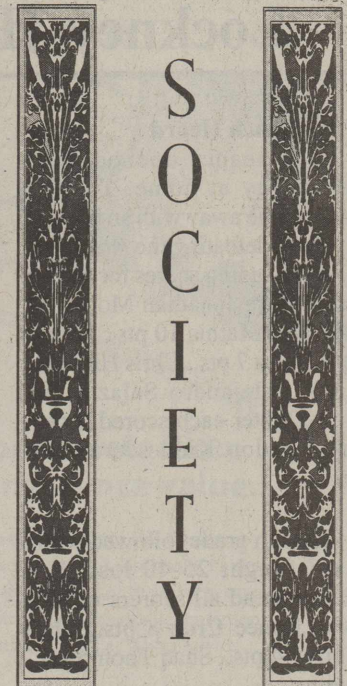
Asiatico is an accomplished guitarist and will provide ministry in music during the course of the meeting.

Pastors Vance Mitchell and Henry Russell and the congregation of Trinity Assembly extend a cordial invitation to the public to come and enjoy these special services.

County considers Sheriff's vacancy

Continued From Page 1

Also, citizen Randy Henderson told the commissioners, "I have known Paul (Raissez) for the past 18 to 20 years. I have watched him grow up. Many of our young people are leaving Floyd County and never returning. Paul knows this county and this position. He is dependable and doing a good job. You have a good opportunity to keep a home grown young man in this county."



STICE

Justin and Jamie Stice of Childress are proud to announce the birth of their daughter, Lucy Tatum Stice, born January 11, 2007. She weighed eight pounds 6 ounces and was 20 1/4 inches long.

Grandparents are Jerry and Jodie McGuire of Floydada and Rev. Lloyd and Shirley Stice of Post.

Great-grandparents are Carmel Eastham and the late Lucy Eastham of Lubbock; Joyce McGuire and the late Rev. Jimmy McGuire of Lubbock; the late William Tatum and Laura Mayberry; Berniece Stice and the late Noah Stice.

What will happen if you die without a Will?

Laney & Stokes, Lawyers
293-2618
www.laneystokes.com

Bridal Selections For:
Kathryn LaGasse & Lonny Nelson
Mandi Cranmer & Jake Cranmer
(nee Yeary)

Caprock Motor Parts & Hardware
114 W. California, Floydada 983-2865

Bridal Selections for:
Kathryn LaGasse & Lonny Nelson
Mandi Cranmer & Jake Cranmer
(nee Yeary)

PAYNE PHARMACY
200 S. Main, Floydada 983-5111

Order Early for Valentine's Day

Bridal Selections for:
Matt & Megan McPherson
Amy Taylor & Glenn Sutterfield

Schacht FLOWERS, JEWELRY & GIFTS
112 W. Poplar, Lockney 8:30-5:30, Mon.-Sat., 652-2385
1-800-566-5754

Bridal Selections for:
Kathryn LaGasse & Lonny Nelson
Mandi Cranmer & Jake Cranmer
(nee Yeary)

Sue's Gifts & Accessories
100 East California, Floydada 983-5312

For Your Valentine:
Candy & Balloon Bouquets
New Market Arrivals Daily
We now stock Longhorn Bracelets

Bridal Selections:
Matt & Megan McPherson
Amy Taylor & Glenn Sutterfield
CLARK PHARMACY
Danny Clark
309 North Main, Lockney, Pharmacy - 652-3353
Residence - 652-3712 (24 hour call)
Free in town prescription delivery

Mary Kay Cosmetics
Susan Simpson
Independent consultant
983-5325

THE FLOYD COUNTY HESPERIAN-BEACON

Published weekly each Thursday at 111 E. Missouri Street, Floydada, TX 79235. Periodical postage paid at Floydada, Texas 79235

POSTMASTER: Send change of address to: The Floyd County Hesperian-Beacon, 111 E. Missouri Street, Floydada, TX 79235

Subscriptions:
\$25.00 -- Out of county
\$23.00 -- In County
website:hesperianbeacon.com
(806) 983-3737

Fill Your Heart With Brighton!
February 2nd - February 16th, 2007

Valentine's Day is traditionally the day we shower our loved ones with affection and gifts... and what a better gift than something special from Brighton. We would like to shower you with a special gift too... an Earring Tree, to be given away with any purchase of \$100 or more. This special gift is another "must have" for every Brighton Collector! Limit one per customer, while supplies last.

Bridal Selections
Matt & Megan McPherson
Amy Taylor & Glenn Sutterfield
Jullie Cowart & Simon Martinez

M-F 10AM-6PM
Sat. 10AM-6PM
www.heartsdesireonline.com 652-2548

Heart's Desire

Brighton.

Remember Your Special Someone On Valentines Day - February 14th

FREE DELIVERY on all valentine orders placed before February 12th

Cathy's Floral & Gifts
128 W. California - 983-5013

Flower & Gift Bouquets
Stuffed Animals
Snack Packs
Smooching Apes
Gift Baskets
Roses Galore
Singing Dragons
Stuffed Balloons
Plants
Candy Bouquets
Bath & Body Gift Sets
Candle Baskets

Lockney JHS Boys Basketball Report

By Coach Heard

Both teams opened with Abernathy at home. The 7th grade came away with an impressive win defeating the Antelopes 37-23. Leading scorers for the 7th grade were Jonathan Molina 11 pts., Rex Mathis 10 pts., Steven Fernandez 7 pts., Chris Hinojosa 4 pts., Alejandro Salazar and Riley Teeter each scored 2 pts., and Landon Kidd scored one point.

The 8th grade followed with a hard fought 25-40 loss. Eric Deluna led all scorers with 11 pts., Renee Cruz 8 pts., Chris Torrez 4 pts., Shaq Thompson 2 pts.

Next the Shorthorns traveled to Shallowater. The 7th grade continued their strong play against Shallowater but fell short

17-23. Jonathan Molina scored 9 pts., Steven Fernandez 4 pts., Riley Teeter, Chris Hinojosa and Rex Mathis all finished with 2 pts. each. The 8th grade started well, but in the end fell 13-51. Renee Cruz led the Horns with 7 pts., Eric Deluna, Shaq Thompson and Josh Cuellar each had 2 points.

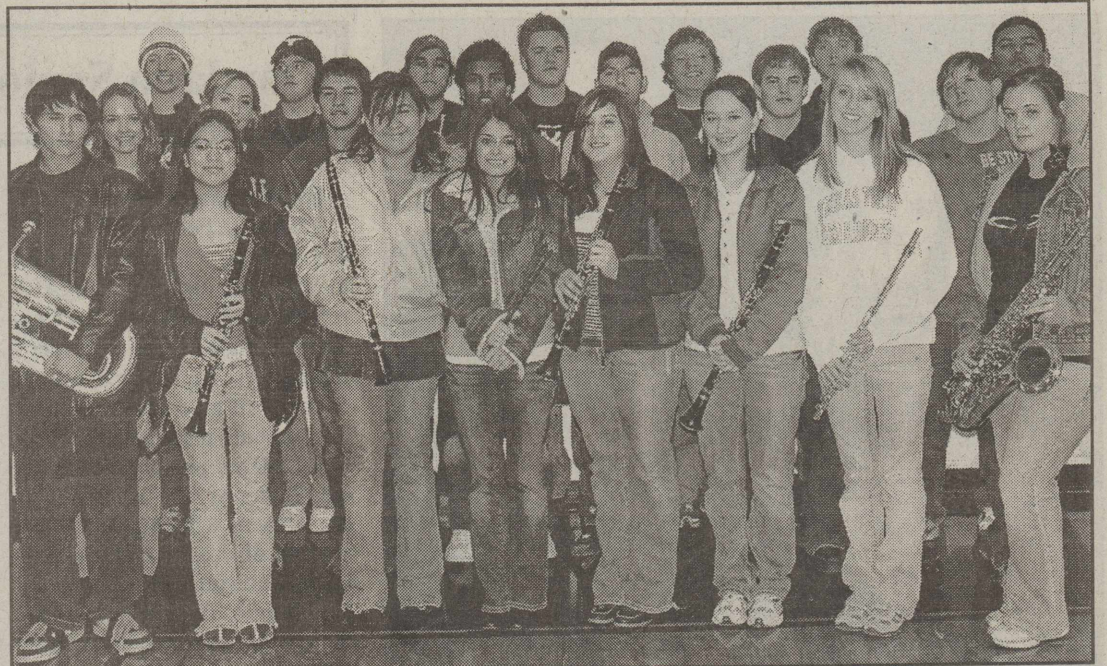
The Shorthorns then took on Floydada. The seventh grade played hard, but fell short 22-25. Marcos Bernal/lead all scorers with 9 pts., Rex Mathis 4 pts., Jonathan Molina, Riley Teeter, Chris Hinojosa, Dylan Aufill all has 2 pts., and Steven Fernandez had 1 point. The 8th grade lost 7-35. Eric Deluna led with 6 points and Josh Cuellar had 1 point.

The Shorthorns traveled to Childress and both teams worked

hard, but in the end came up short. The 7th grade score was 24-38. Rex Mathis and Chris Luna scored 5 pts. each, Alejandro Salazar 4 pts., Marcos Bernal and Steven Fernandez 3 pts. each.

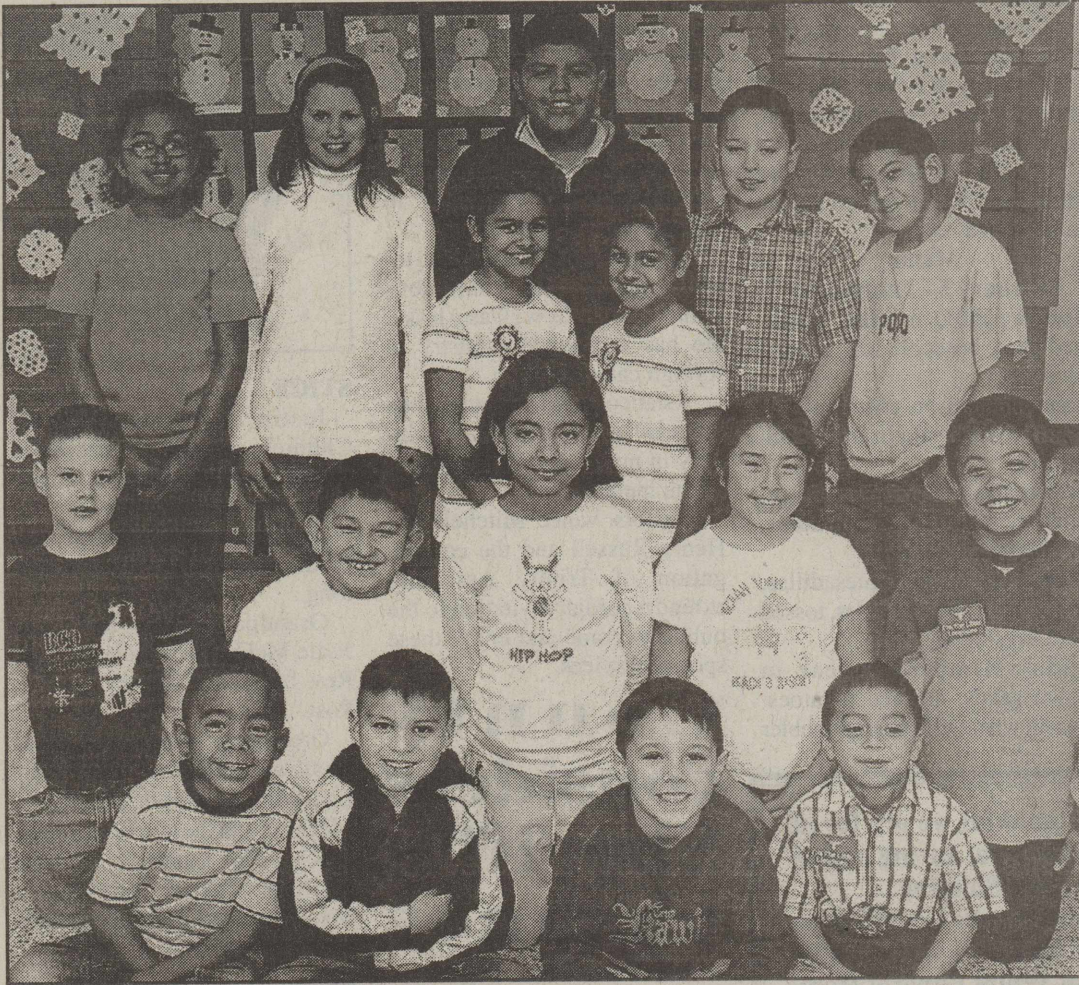
The 8th grade started the game, but came up short 23-42. Eric Deluna led with 9 pts., Renee Cruz and Rico Rodriguez each added 3 pts., Keenan Stennett, Shaq Thompson, Josh Cuellar and Edgar Ruiz all finished with 2 points each.

The Shorthorns are set to finish with Littlefield at home and Abernathy away.



LONGHORN BAND members selected for membership in the 2007 All-Region Band: (back row, l-r) Rion Aufill, Cole Patton, Jay Ragland, Tyson Carthel, Brandon Wilson, Zach Montandon, A.J. Jimenez, (second row, l-r) Erin Mangold, Lauren Stewart, James Mercado, Jonathan Coleman, Greg Gonzales, Patrick Doucette, Bryan Cooper, (front row, l-r) Ryker Cabler, Aura Rodriguez, Stephana Villarreal, Desiree DeLeon, Destinee DeLeon, Katie Bice, Anna Sherman and Ashley McCulloch. There were students from 31 High School bands at the tryouts in Abernathy. The All-Region Band performed a concert Saturday, January 27, 2007, at the Lubbock Civic Center.

Staff Photo



LOCKNEY'S LITTLE LONGHORNS for the week of 1-29-07, (back row, l-r) Sadie Mathis, Memory Lane, Marino Alonzo, Andrew Palomin, Anthony Nunez, (third row, l-r) Tanisha and Taleah Peralez, (second row, l-r) Nathan Dolloff, Nival Gomez, Emily Reyes, Brittany Peralez, Enrique Rodriguez, (front row, l-r) Lathan Clay, Andres Garcia, Nickolas Rendon, Keanu Villarreal

Lockney School Menu

February 5 - February 9
Monday

Breakfast-Pancakes or cereal, toast, juice, milk

Lunch-Popcorn chicken or PBJ sandwich, potatoes, mixed vegetables, fruit, roll, milk

Tuesday

Breakfast-Eggs and sausage or cereal, toast, juice, milk

Lunch-Fish sticks or corn dog, pinto beans, macaroni and cheese, fruit, cornbread, milk

Wednesday

Breakfast-Oatmeal or cereal, toast, juice, milk

Lunch-Pizza or burrito, corn, salad, fruit, milk

Thursday

Breakfast-Breakfast pizza or cereal, toast, juice, milk

Lunch-Chicken noodle soup or grilled cheese, salad, fruit, crackers, milk

Friday

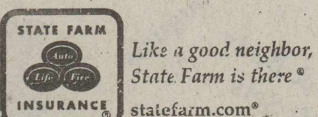
Breakfast-Cinnamon roll or cereal, toast, juice, milk

Lunch-Hamburger or tuna sandwich, lettuce and tomato, french fries, fruit, milk

**Medicare Supplement Insurance...
The State Farm Way!**

Look to your Good Neighbor agent for help in choosing a Medicare Supplement Insurance plan that is right for you. Call me for choices in health care protection.

Nick W Long, Agent
201 W California
Floydada, TX 79235
Bus: 806-983-3441
nick.long.cgr@statefarm.com



Like a good neighbor, State Farm is there.
statefarm.com

*State Farm Mutual Automobile Insurance Company
Home Office: Bloomington, Illinois
Call for details on coverage, costs, restrictions and renewability. Note: These policies are not connected with or endorsed by the United States Government or the Federal Medicare Program.

AUCTION CALENDAR

Wednesday, Jan. 31, 2007 - Sale Time: 10:30 a.m.

Billy Morris - Owner
Located: Flomot - Selling: Farm Equipment & Cotton Equipment

Thursday, Feb. 1, 2007 - Sale Time: 10 a.m.

Littlefield Farms - Owners
Located: Littlefield, Texas - Selling: Farm Equipment

Tuesday, Feb. 6, 2007 - Sale Time: 10 a.m.

Bill Rollow - Owner
Located: Abernathy, Texas - Selling: Farm Equipment

Wednesday, Feb. 7, 2007 - Sale Time: 10 a.m.

Pope Farms - Owners
Located: Abernathy, Texas - Selling: Farm Equipment

Friday, Feb. 9, 2007 - Sale Time: 10 a.m.

Cecil Jackson - Owner
Located: Floydada, Texas - Selling: Farm Equipment

Saturday, Feb. 10, 2007 - Two Locations

Sale Time 1st Location: 10 a.m.
Sale Time 2nd Location: 1:00 p.m.

Birdsong Pumps Company - Owners
1st Location: Plainview, Texas - 2nd Location: Alkon
1st Location - Selling: Smeal Pump Truck, Shop Equipment & Pickups
2nd Location - Farm Equipment

Wednesday, Feb. 14, 2007 - Sale Time: 10:30 a.m.

William Gromowski - Owner
Located: Friona, Texas - Selling: Farm Equipment

Thursday, Feb. 15, 2007 - Sale Time: 10:00 a.m.

Wamon Foster - Owner
Located: Hart, Texas - Selling: Farm Equipment

Saturday, Feb. 17, 2007 - Sale Time: 10 a.m.

Norman Strange - Owner
Located: Silverton, Texas - Selling: Farm Equipment

Tuesday, Feb. 20, 2007 - Sale Time: 10 a.m.

Greener Farms - Owners
Located: Morton, Texas - Selling: Farm & Cotton Equipment

Wednesday, Feb. 21, 2007 - Sale Time: 10:30 a.m.

North Star Farms - Owners
Located: Dahart, Texas - Selling: Farm, Hay & Construction Equipment

Tuesday, Feb. 27, 2007 - Sale Time: 10:00 a.m.

Walter Randolph - Owner
Located: Shallowater, Texas - Selling: Farm Equipment

Saturday, March 3, 2007 - Sale Time: 10 a.m.

Main Street Hardware - Owners
Located: Tahoka, Texas - Selling: Hardware, Plumbing Supplies, 1993 Ford

Wednesday, March 7, 2007 - Sale Time: 10 a.m.

Muleshoe Farms - Owners
Located: Muleshoe, Texas - Selling: Farm, Ranch & Cotton Equipment

Five Star Auctioneers

JIMMY REEVE (806) 864-3292
JIM SUMMERS (806) 864-3611
OMMA NORR (806) 293-1924

OFFICE: (806) 298-4279 - P.O. BOX 9038 - PLAINVIEW, TEXAS 79273-1038
WEB SITE: WWW.FIVESTARAUCTIONEERS.COM/NESTAR

Terms of Sale: Cash, Personal or Business Check, Cashier's Check
All Auctions Start Day of Sale - Lunch Will Be Available

NOTE: Proceeds for One Day Sales. For more information contact Jimmie Reeve, Jimmy Summers or Omma Norr.

SALVATION ARMY IN LOCKNEY

The Salvation Army in Lockney is in need of children's winter clothing. All sizes needed. Due to the cold weather, they are also in need of blankets.



Lady Horns lose to Claude

By Coach Johnson

Lady Horns - 34
Claude - 44

The Lady Horns lost a hard game to Claude on November 7, 2006.

The scoring results were: Crystal Yannis - 9; Melissa Luna - 6; Mercedes Aday - 5; Leslie Jackson - 3; Carrol Chavez - 3; Tessa Saul - 3; Laura Fulton - 2; Dora Bueno - 2; Janie Martinez - 1.

Lady Horns win over Dimmitt

Lady Horns - 29
Dimmitt - 26

The Lady Horns won a good game over Dimmitt on November 10, 2006.

The scoring results were: Crystal Yannis - 10; Carrol Chavez - 7; Melissa Luna - 5; Tessa Saul - 3; Leslie Jackson - 2; Mercedes Aday - 2.



We are proud to offer
Circle E Candles.

983-2220

Come see Stacie
at Scott Gin

2 miles south on
the Ralls Hwy.

Say,
"I Love You"
with
Caprock Plus Plans

- * Monthly Plans for 2 phones begin at \$59.95
- * Unlimited Mobile to Mobile Minutes
- * 2000 Night & Weekend Minutes
- * Night Minutes start at 7:00 p.m.
- * Nationwide Roaming
- * Caller ID included
- * Text Messaging Available

**Buy one Razr,
Get one PINK
Razr FREE!**

Limited time only. 2 phone plan and 2 year commitment required. While supplies last.

Caprock Cellular
The wireless evolution

GSM
The wireless evolution

ACE Hardware 1101 S. Ralls Hwy. - Floydada (806) 983-3000
Oden Chevrolet 221 S. Main - Floydada (800) 570-3787
Floyd County Supply 720 S. Main - Lockney (806) 652-2312

©2007 Caprock Cellular. All rights reserved. Eligible 2 phone plans begin at \$59.95 per month. Coverage not available in all areas. See coverage maps for details. See contract and rate plan brochure for details. \$25 non-refundable activation fee per phone may apply. Subject to credit approval or a deposit may be required. Equipment price and availability may vary. Early Termination Fee: none if cancelled in first 14 days; thereafter \$200 may apply per phone. Taxes and fees excluded. All products and service marks referenced are the names, trade names, trademarks and logos of their respective owners. Screen images are simulated. Seventy-five percent of all plan minutes should be on the Caprock Cellular Network. Minutes used while off of the Caprock Cellular Network which exceed 25% of plan minutes and minutes exceeding plan will be billed at 20¢ per minute.

Lady Winds Basketball Report

LADY WINDS - 44 SHALLOWATER - 65

The Lady Winds hosted the Shallowater Fillies on January 19, 2007 and came up short at the final buzzer by a score of 65-44.

Scoring results are as follows: Kelsey Ross - 14 points; Jennifer Leatherman - 10 points; Megan Aleman - 9 points; Magan Flores - 7 points; Lexie Terrell - 2 points; Marlen Carmona - 2 points.

SCORE BY QUARTERS

Floydada - 11 23 31 44
Shallowater - 19 41 54 65

LADY WINDS - 40 CHILDRESS - 51

The Lady Winds played host to the Lady Bobcats from Childress on January 23, 2007. The final score was 51-40.



FLU SHOT CLINIC

The RNR Parish Nurse Community Outreach, Floydada United Methodist Church Library and Covenant Hospital Plainview are sponsoring a flu shot clinic for anyone who has not yet been vaccinated. Shots will be given Sunday, February 4th - 8:00 a.m. - 1:00 p.m. at the Floydada United Methodist Church Library. Cost is \$20 (cash or checks only) for adults and youth. Everyone is welcome!

FOOD MANAGER CERTIFICATION TRAINING COURSE

Texas Cooperative Extension, Floyd County, is offering a food manager certification training course. This program will be offered for \$89 on February 15 & 16, 2007 at the Hale County Extension Office, 225 Broadway, #6, Plainview, TX. Deadline for registration is February 2, 2007.

Leading scorers were as follows: Kelsey Ross - 15 points; Magan Flores - 13 points; Megan Aleman - 4 points; Jennifer Leatherman - 4 points; Morgan Norrell - 2 points; Marlen Carmona - 2 points.

SCORE BY QUARTERS

Floydada - 8 28 30 40
Childress - 16 28 40 51



FLOYD COUNTY 4-H RIFLE PROJECT MEETING

Floyd County 4-H Rifle Project Safety/Orientation Meeting will be held on Monday, February 5, 2007 at 7:00 a.m. at the Floyd County Friends Unity Center. All rifle participants and one parent must attend. If you haven't signed up to participate in the rifle project and would like to call the Extension Office at 983-4912.



BRINGING THE BALL AROUND A DEFENDER-Whirlwind Eladio Saldana (2) is shown dribbling around a Childress defender last Tuesday night. Floydada won the game 76-48.

Photo by Jim Covington

Keep Up On Your Community News
Subscribe to the Floyd County
Hesperian-Beacon

UPCOMING AUCTION



Saturday, February 3 10:00 AM

Ford Automotive Repair Shop
1101 Hwy 62 S, Floydada, Texas

Complete Shop Equipment & Accessories

Coates 5030E Rim Clamp Tire Machine • Coates Balancer
5 Challenger Model 2700 Lifts • 1 Platform Lift • Shop Benches
66 Rotunda Service Sets • Diagnostic Machines • Pressure Washer
Engine Stands • Transmission Jack • 2 Porta Cool 2000 • Jacks
Lowery Parts Washer • Parts • Sunfighters • Computers • Printers
Desk • Shelving • Cornwell Tool Chest • Welder • Lot New Tires
Gas & Diesel Caddies • Brake Service Table • CT2 Coolant
Rotunda Refrigerant Reclaim System • Signs • Bumpers
Car Trailer • Branick Strut Spring Compressor • Much More

See Partial Catalog online www.assiter.net

www.assiter.net

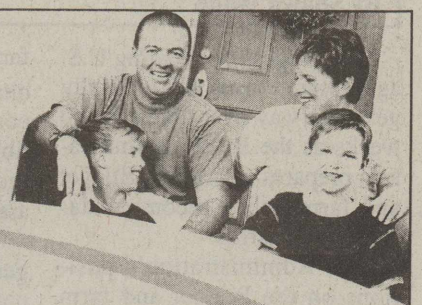
806.983.3322 806.777.5577
Tim # 11550 Bandy # 10331 Broker # 0334107

TERMS: 10% Buyers Premium. Buyers must register and provide settlement by check, cash or certified funds day of auction prior to removal of items. All items are sold As-Is.

Be Wise--Advertise



Auto • Home • Life



Top home protection, great insurance value...

The Farm Bureau Insurance Companies are among the most respected sources for Home Insurance in the nation. For years, we've covered American homes with dependable protection, combined with fast and fair claims service.

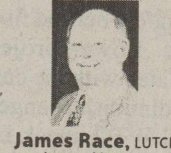
Call today for a free, no-obligation review of your Home Insurance needs, as well as Auto and Life Insurance Coverage.

Helping You is what we do best.

FLOYD COUNTY
101 S. Wall • Floydada, TX 79235
(806) 983-3777

BRISCOE COUNTY
802 Lone Star • Silverton, TX 79257
(806) 823-2234

sfbl.com • txfb-ins.com



James Race, LUTCF
Agency Manager



David True, LUTCF
Agent



Tammy Brannon
Agent



Chris Fulton
Agent

Texas Farm Bureau Mutual Insurance Co. • Texas Farm Bureau Underwriters
Southern Farm Bureau Casualty Insurance Co. • Southern Farm Bureau Life Insurance Co. • Jackson, MS
Farm Bureau County Mutual Insurance Company of Texas



Super Bowl XLI and Super Sunday coming February 04th
on CBS Sports In Miami, Florida

Super Saturday

coming to Floyd County
on March 24th In Muncy, Texas

Floyd County Friends 12th Annual Gala

Lance Barrow, CBS Sports Coordinating Producer
of Football and Golf

Will be the featured guest speaker/entertainer

(Barrow will be coming to Floyd County between the Super Bowl and the Masters Golf Tournament in Augusta, Georgia)

Have it
Delivered
To
Your Door!
Subscribe
to The
Hesperian-
Beacon!
\$23.00
In County
\$25.00 Out
of County

Floydada School Menu

February 5 - February 9

Monday

Breakfast-French toast or cereal and graham crackers, juice, milk
Lunch-Hot dog, oven fried potatoes, apple and orange smiles, sherbet cup, milk

Tuesday

Breakfast-Sausage, toast/jelly or cereal and graham crackers, juice, milk
Lunch-Enchiladas, refried beans, tossed salad, cinnamon apples, milk

Wednesday

Breakfast-Waffles with syrup or cereal and graham crackers, juice, milk
Lunch-Teriyaki chicken, rice pilaf, English peas, pineapple tidbits, hot roll, milk

Thursday

Breakfast-Breakfast sausage, roll or cereal and graham crackers, juice, milk
Lunch-Taco salad, seasoned corn, fruited gelatin, brownie, milk

Friday

Breakfast-Scrambled eggs, toast or cereal and graham crackers, juice, milk
Lunch-Hamburger, lettuce, tomato and pickles, quick baked potatoes, baby carrots w/Ranch, crispy cereal treat, milk



THE HOUSE DOCTOR

Over 30 years experience
Remodeling & New Construction

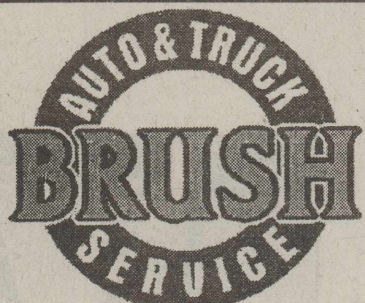
Serving Floyd County and the South Plains

I have got the
remedy for all
your repairs

David Kelso
(806) 632-6827

Small jobs
Big jobs
I can do it

www.thehousedoctorco.com



BERRY BRUSH
HAPPY UNION, TX

806.292.4495
806.292.5144
FAX 806.895.4653

POWERSTROKE CERTIFIED
CUMMINS CERTIFIED



AMA-TECHTEL

Satisfy your
need
for speed!

AMA-TECHTEL brings you high-speed fixed wireless Internet access. With speeds up to 50 times faster than dial-up and access that's always on, you'll connect to the world faster than ever.

AMA-TECHTEL is committed to providing the latest technology and the best customer service, so no matter who you're connecting with, you can count on us to get you there.

Now you can have the fastest, most reliable Internet service available. So act fast, contact your local distributor today!

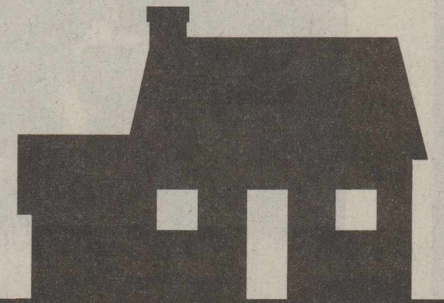
ASSITER INSURANCE
120 W. CALIFORNIA • 983-2511

ACE HARDWARE
1101 S. RALLS HIGHWAY • 983-3000

connect

THIS YARD CONTAINS

TWO RAWHIDE BONES,
ONE SPRINKLER SYSTEM
AND ONE PET TURTLE
THAT DIDN'T MAKE IT.



IT ALSO CONTAINS
MULTIPLE PIPELINES.

Pipelines safely move energy resources, fuels and refined products throughout the nation. Before you dig or build anywhere, make sure to have these lines marked by calling 1.800.DIG.TESS. If you smell gas, hear a hiss, see dead plants, a vapor cloud or bubbles in the ground, leave the area immediately and call 911. For more information about pipeline safety, visit www.pipeline-safety.org.

By Shawn Wade **Cotton News** 4517 West Loop 289
Lubbock, Texas 79414
Telephone: 806-792-4904 Fax 806-792-4906

The process of updating U.S. agriculture policy will officially get underway over the next two weeks as the Bush Administration prepares to offer its Budget and farm policy recommendations to Congress.

The Administration's positions on the Budget and farm policy are essentially recommendations and nothing more, so the larger questions will be what the reaction in farm country will be and to what extent Congress will consider the recommendations.

First out of the chute for the Administration will most likely be the Farm Bill blueprint they would like to see implemented upon expiration of the 2002 Farm Bill. While no specific information regarding the Administration's plan has been made available, cost observers expect that the policy statement will at some level reduce the safety net for U.S. farmers and ranchers, both in terms of funding and structure.

Supporting that opinion are the comments of USDA Secretary Mike Johanns who has been consistent in saying that the Administration believes current U.S.

farm policy provisions are inequitable in terms of providing support to producers and are susceptible to challenge and scrutiny in the international trade policy arena.

On the other side of the ledger is Congress, where there is considerable support for the current farm policy's funding and structure since it has proven to be a strong safety net and fiscally responsible. Lower projected costs associated with the current policy also diminish changes for a successful WTO attack in the future.

Perhaps the most vocal of this group is House Agriculture Chairman Collin Peterson (D-MN), who has voiced his strong support for the framework of the 2002 Farm Bill and an intent to use it as the basis for U.S. policy going forward.

With such a divergent dynamic in place the debate will, as usual, hinge on the overall budget provided to write the bill.

New needs have been identified since 2002 while existing needs have not diminished at all, creating the need for additional budget resources.

Groups representing non-program crops, conservation and renewable energy are lined up and ready to make their cases for increased funding under the next farm bill.

To accommodate them will take concerted effort and a willingness to secure additional funding authority. That reality has not been lost on agriculture groups or Congressional leaders. Efforts to secure a broad foundation of support for the infusion of new funding into the Farm Bill to meet those needs have already begun.

The bottom line is that with agriculture funding already having declined by more than \$21 billion, according to the Congressional Budget Office, it should receive some credit for these savings.

**FLOYD COUNTY
COW/CALF BEEF PRODUCER
MEETING**

Floyd County Unity Center, Muncy
Tuesday, February 6, 2007
8:00 a.m. - 2:00 p.m.

3 CEU's available for Private Applicators
RSVP TO 983-4912 by Friday, Feb. 2nd



- 8:00 Registration, Coffee, Donuts, Welcome
- 8:30 - 9:00 Feed requirements and needs for cows during winter
- 9:00 - 9:20 Mineral/Supplement products available for beef cows
- 9:20 - 9:30 BREAK
- 9:30 - 10:00 Managing Cow-Calf Grazing System
- 10:00 - 10:30 Utilizing condition scoring and cow calculation systems.
- 10:30 - 11:00 Using Bi Product Feed for Grazing cattle
- 11:00 - 11:30 Ethanol Products and Bi Products
- 11:30 - 12:00 Wheat Management for grazing BQA- Quality & Cattle Care
- 12:00 - 1:00 LUNCH (then Depart to Foster Brothers Farm)
- 1:00 - 1:30 Chute Side Cattle Handling & Safety Demonstration
- 1:30 - 2:00 Calf Pulling Demonstration

Meal Sponsors:

- Panhandle Plains Land Bank - Jeff Taylor
- Hi-Pro Feeds - Jerry Shields
- City Bank, Lockney - Chuck senter
- Texas Range Minerals - Brian Borchardt

**PRODUCERS
COOPERATIVE
ELEVATOR**

983-2821 - Floydada
983-3020 - Dougherty

**FIRST NATIONAL
BANK OF FLOYDADA**



Floydada 983-3717
Member F.D.I.C.

**FLOYDADA
COOPERATIVE
GINS, INC.**



Floydada 983-2884



Caprock Irrigation Systems

CUSTOMER APPRECIATION LUNCH!!

• WHEN:

Friday, Feb. 2nd from 11am-2pm

• WHERE:

Our office 609 North 2nd Floydada

• WHAT:

Hamburgers

**BE SURE TO ATTEND, WE'LL BE
GIVING AWAY DOOR PRIZES!!**

**ZIMMATIC®
STRENGTH TO GROW ON**

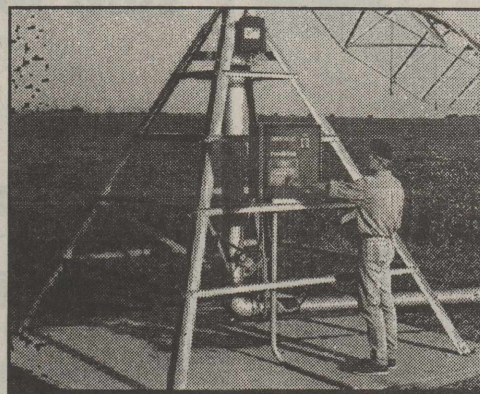
center pivots
LINDSAY IS PROUD TO INTRODUCE AS THIS AREA'S
corner systems
COMPLETE SOURCE FOR ALL OF YOUR ZIMMATIC SALES

lateral moves
& SERVICE NEEDS!

mobile pivots



**FLOYD
COUNTY
SUPPLY**
Lindan & D'Lyn Morris
Owners



center pivots
THEY OFFER A FULL LINE OF ZIMMATIC IRRIGATION SYSTEMS, EACH TAILOR MADE FOR
corner systems
YOUR SPECIFIC NEEDS

lateral moves
THEY ALSO STOCK A FULL INVENTORY OF GENUINE ZIMMATIC REPLACEMENT PARTS,
mobile pivots
AND HAVE TRAINED PERSONNEL READY TO TAKE CARE OF YOUR SERVICE NEEDS.

720 S. Main St. Lockney, Texas. 79241

(806) 652-2312

THE CLASSIFIEDS

Call 806-983-3737 or 806-652-3318

web site: www.hesperianbeacon.com ---- e-mail: floydada@amaonline.com

AUTOMOTIVE FOR SALE

1985 FORD BRONCO XLT and 1990 Jeep Cherokee - 4 wheel drive. Call 983-2985. 2/22p

FARM MISCELLANEOUS

MUST SELL! Landpride Treker Utility Vehicle. 20 hp Honda engine, 4x4, NEW! Price - \$6,999.00. Call for information, 806-620-0463. www.affordablecompacttractors.com 2-1c

GRAIN FED BEEF for sale. Half or whole. Call 292-9723. tfn

NO-TILL DRILL--Custom drilling of wheat in milo. Inter-seeding of grass, cotton stalks, etc. 806-292-9723. tfn

WHEAT PASTURE WANTED--Call 806-292-9723. tfn

FOR RENT OR SALE

FOR RENT OR SALE-- 2 bedroom, 1 bath house. 416 West Missouri, Floydada. Call 983-6111. tfn

FOR RENT-- House 1/2 mile east on Matador Highway. \$650 month plus first and last month deposit. Call 983-6291. tfn

GARAGE SALES

Lockney ESTATE SALE--205 SW 6th Lockney. Friday and Saturday, 9:00 a.m. House full of furniture, paintings and household items. 2-1c

Dougherty 125 BAILEY STREET, Dougherty--Garage sale Saturday, February 3rd - 10:00 a.m. - ?? 2-1p

NOW HIRING

Truck drivers, Painters, Welders
Assembly Workers

Top pay
Major Medical, 401K
Permanent full time positions.

Wylie Mfg.
North Main St,
Petersburg, Texas

Wylie Mfg.
516 E. 42nd St,
Lubbock, Texas

pray
for our country,
its leaders and
our soldiers.

HELP WANTED

APPLICATIONS ARE BEING accepted until February 7, 2007 for a temporary fulltime position with the Floyd County Farm Service Agency. Applicant must be able to meet the public well, exhibit good organizational skills, excellent computer skills, accept daily multi-tasking duties and be willing to accept responsibilities. Applications can be obtained in person from the Floyd County Farm Service Agency, HW 70 East, Floydada, Texas 79235 or call 806-983-3763 extension 2 for more information. USDA is an Equal Opportunity Employer. 2-1c

RALLS NURSING HOME seeking RN's and LVN's. Small town working environment. Call Dawn 253-2596. 2-1c

HOUSES FOR SALE

Floydada TAX REFUND--Owner will finance two bedroom house to qualified buyer. Call 791-2277 or 543-7540. 2-22c

801 MESQUITE--3 bedroom, 2 bath, 2 car garage, storm cellar. Call 983-2048 or 983-3284. tfn

MOVING, MUST SELL SOON! 3 bedroom, 2 bath, new floors, fresh paint, huge lot, large trees, sprinkler system, 2 car garage. 900 block W. Ross. Call 983-3116. tfn

HOUSE FOR SALE--3 bedroom, 2 bath, 1 car garage. 815 W. Jackson, Floydada. \$40,000. Call 806-296-5006 (H) or 806-292-5408 (C). tfn

FOR SALE--2 bedroom/1 bath house. Carports, storage sheds. Big back yard/fenced. 102 E. Jeffie. \$22,000. Call 291-0333. 2-1p

HOUSE FOR SALE--3/1-1/2-2 - 714 W. California. 1800 sq. ft. Call 806-543-7540. tfn

COZY 3 BEDROOM, 2 bath home located in the 800 block of west Ross in Floydada. A MUST SEE! Call Assiter & Associates. 806-983-3322. tfn

POOLE WELL CAM & SUBMERSIBLE SERVICE

Dual Lens
for Color Videos of
Irrigation and domestic wells.
Reveals sand infiltration,
crusting or deterioration,
blockage 4" - 30" I.D.
704 Matador Hwy.
Floydada, Texas
806-983-2285

MISCELLANEOUS

NEIGHBORS COLORADO bulldog responsible for pig farmer's broken arm, NOT my flying pig. 2-1c

FOR SALE--Heritage Studio Piano. Excellent condition. Call 983-2203 to see. 2-1c

FLOYDADA SELF-STORAGE business for sale. 102 units with cash flow potential of \$4000 per month. This is an excellent opportunity for a local person to own and manage. \$219,000. Call Eddie @806-778-9466. More info at www.storagezone.com/floydada tfn

PLAINS BELL FEDERAL CREDIT UNION
206 W. California, Floydada.
Remember us for all your personal financial needs - CD's, loans, checking and savings accounts. Call Laura at 983-3922. www.plainsbellfcu.org 1-4-07p

SELLING QUEEN pillowtop mattress set, in plastic, warranty. 806-549-3110. 2-1c

MUST SELL king pillowtop mattress and box. \$210. Never used. warranty. 806-549-3110. 2-1c

BEAUTIFUL CHERRY solid wood sleigh bed with mattress. Brand new from factory. \$379. 806-549-3110. 2-1c

SACRIFICE COMPLETE all wood. Bedroom set. Beautiful \$699. Still boxed. 806-549-3110. 2-1c

MICROFIBER sofa, loveseat, 3 pc. table set. New with lifetime warranty. \$799. 806-549-3110. 2-1c

LARGE OAK DINING table, 6 chairs, hutch, buffet. New, boxed. List \$2990. Sell \$999. 806-549-3110. 2-1c

PETS

ALPHATEX KENNEL, AIKEN, TEXAS offers superior quality AKC Registered, DNA Certified Collies, Golden Retrievers and German Shepherds. Puppies and stud service available. www.alphatextennels.com tfn

SERVICES

LARRY OGDEN AUCTIONEERING Estates, Farm, Ranch, Business, Liquidations, State Licensed and Bonded. (806) 983-5808. TX. #9240. tfn

Be Wise-
ADVERTISE!



**RENEWABLE ENERGY SYSTEMS
WHIRLWIND ENERGY PROJECT
FLOYD COUNTY, TEXAS**

Construction activity on this new wind project will soon commence, and RES (Construction), L.P. invites applications for the following temporary positions:

Site Inspectors

The successful applicant shall ideally have a construction background, be able to read construction drawings, be familiar with construction equipment and techniques, and be practical and enthusiastic. The role involves overseeing, inspecting and monitoring various aspects of the site work, as well as helping to maintain a safe working environment. The successful applicant will hold a clean driving license and be available to work long hours, as dictated by the site activities, including some weekends. A vehicle will be provided. Applicants for these roles should fax their resume to (512) 617-3542 for the attention of Robert Gehring.

Site Administrator

The successful applicant shall be familiar with all aspects of office management and administration. Duties will include answering telephones, document issuing and tracking, filing, copying, providing clerical support to site personnel and the cleaning and tidying of site offices. The applicant will hold a clean driving license, and MS Office computer skills are essential. Applicants for this role should fax their resume to (512) 617-3542 for the attention of Robert Gehring.

Tradesmen and Laborers

As the number of contractors on the project increases, so will the requirement for construction personnel. Persons interested in applying for any trade or general laboring positions that may become available may register their interest from 1st February 2007 at the Floydada Economic Development Corporation; Attention: Dora Ross, 806-983-3318.

Subcontractors and Equipment/Material Suppliers

Construction subcontractors, and material suppliers such as lumber, concrete, fasteners, etc. and equipment rental agencies may register their company name, location, primary contact and telephone number from 1st February 2007 with the Floydada Economic Development Corporation; Attention: Dora Ross, 806-983-3318.

* RES operates a drug and alcohol free workplace *

LARRY JONES
REAL ESTATE

Dedra Thomas
806-791-2277 (o)
806-543-7540 (c)

- NEW LISTING!! Beautiful 3 bed-2 bath home with 2 car garage near high school.
- Cozy 3bed-2 bath home with 2 car garage in nice neighborhood.
- NEW LISTING!! Spacious 3 bed-2 bath home with 2 car garage and shop with cellar.
- Nice brick 3 bed, 2 bath home with 2 car garage on southwest side of town. MUST SELL!!
- COMMERCIAL BUILDING--Large building great for starter business!! MUST SELL!!

Call for more details on these houses and the others we have listed!!

ERA REAL ESTATE **Roberts & Wilkins REALTORS®**

- * New Interior Paint in this lovely brick 4-2-3/4-2, basement, horse barn & corrals, 6 acres fenced on S Hwy 378. PRICE REDUCED! Call Rhonda.
- * A Dollhouse - 2 bedroom, 1 bath, plumbing, wiring, H/A/C replaced in 1996, 40x40 barn. \$62,500.
- * Cozy Cottage on edge of town. 3 bedroom, 2 bath, carport, storage, central H/A/C on large lot. \$49,500.

Rhonda K. Thomas 652-2152
Rob or Ceil Wilson 293-5722
Dan or Debbi Wilkins 292-0263
Joey Davis - 292-7589
Jolie Steele - 729-6278

3009 Olton Road
Plainview, Texas
www.rwrealtors.com

NOW LEASING
Whirlwind Country Self-Storage
Sizes --- 10'x10' and 10'x15'
115 W. Virginia, Floydada (across from City Hall)
Call 806-983-3774

New Date for Caprock Cotton Conference

The annual Caprock Cotton Conference has been rescheduled and, with good weather, will be held on Tuesday, February 27th at the Plains Baptist Assembly, south of Floydada.

(The date of March 27th that was first announced was wrong. February 27th is the correct date !)

The agenda has been changed only slightly for this meeting and, since TDA approval has been granted, we will award 7 and * CEU hours - 4 General, 2 IPM, 1 Laws and Regs, and * of Drift Minimization requirements.

Note !! For those producers needing to update their applicator's license, these CEU hours will be awarded in time to count for the 2006 year !

The same number of CCA hours will also be awarded for those individuals requesting them.

Meeting time will be from 8:00 (registration beginning at 7:00) until approximately 4:30.

SHOP LOCALLY

Put your shopping dollars back into this community and we'll all reap the rewards!

SCRIPT PRINTING & OFFICE SUPPLY

- * Commerical Printing
- * Office Supplies & Furniture
- * Business Machines

108 S. Main Floydada
983-5131

Have a nice week!

BARKER MINI-STORAGE

MONTHLY RENTALS
5'x10' - \$20.00 per month
10'x10' - \$30.00 per month
10'x15' - \$40.00 per month

ASK ABOUT OUR LONG TERM DISCOUNTS
PHONE: 652-2642
Corner Main & Locust, Lockney

Thanks for reading the Hesperian-Beacon

COGDELL CLINIC L

IMMEDIATE CNA OPENINGS

Busy Rural Health Clinic seeking full time CNA's to work Monday thru Friday with some Saturday morning work. Bilingual preferred. Pleasant working environment with low employee turn over. Competitive wages. Excellent benefit package including health insurance, paid vacations, personal days, paid holidays and retirement. Qualified individuals can pick up an application at Cogdell Clinic in Lockney at 320 N. Main Street, Lockney. For further information contact Shelda Rogers, Clinic Manager at 806-652-3373, ext 269.

Public Notice

NOTICE OF MEETING
The Floyd County Central Appraisal District will hold its regular board meeting at 9:00 a.m. Thursday, February 1, 2007 at 104 E. California, Floydada. 2-1c

A Subscription Is A Gift That Gives Every Week

Obituaries



E.T. EVANS

Memorial services for E.T. Evans, 92, of Amarillo were held at 11:00 a.m. on Friday, January 26, 2007 at the West Amarillo Christian Church. Pastor Ray Guy, Ron Kohler and Mr. Gene Shelburne officiated.

Burial was held at 10:00 a.m. Friday, January 26, 2007 at the Memorial Park Cemetery under the direction of Schooler Funeral Home in Amarillo.

Evans died Monday, January 22, 2007.

He was born April 26, 1914 in the Vivian Community in Foard County, Texas to E. T. Evans, Sr. and Eva Magee Evans. He was the fourth of eight children in the family.

He graduated from high school in Paducah, Texas in 1931, lettering in football, baseball and track. He attended West Texas State Teachers College, first receiving a Teaching Certificate and later a Bachelor of Science Degree with a major in Government and History. His education led to teaching positions at Vivian Rural School in Foard County and Phillips High School.

He served in the Signal Corps of the US Army from 1941-1946 as a Radar Technician, spending one year in the European Theatre. He married June Delight West at her country home near South Plains, Texas on July 4, 1943. E. T. and June settled in Amarillo after WWII. E. T. continued his teaching career at Sam Houston Jr. High School and at Amarillo High School where he taught Texas and U.S. Government and sponsored several senior classes. He received his Masters Degree in Political Science from West Texas State in 1947. In 1954, his career as a principal began at Glenwood Elementary School.

He opened Whittier Elementary School and served as principal from 1954 to 1960 and then opened Ridgecrest Elementary School serving as principal until his retirement in 1976. Throughout his teaching career, E. T. always kept current information on his students and always knew their names of his students and parents. He took great pride in following his students as they grew up and their parents. He took great pride in following his students as they grew up and became successful members of the Panhandle community.

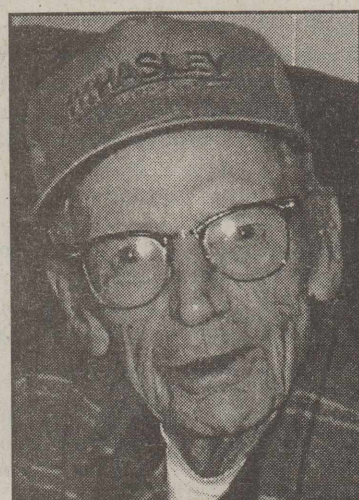
A longtime member of West Amarillo Christian Church, E. T. served as Bible school teacher, deacon, elder and trustee for over 30 years after which he was honored as Elder Emeritus. He was on the Board of Directors of the Mary E. Bivins Foundation for 31 years, serving three terms as president. The E. T. Evans Chapel at Mary E. Bivins Memorial is named in recognition of his many years of dedicated service. He helped organize the Bible Chair of the Southwest at Amarillo College and the Multi-Service Center for the Aging, serving as president for 2 years and becoming Member Emeritus. This Center established the pilot program for day care for the aged, now the Jan Werner Adult Day Care Center.

E. T. and June enjoyed traveling throughout the U.S. and the world. With his sons, grandsons and great-grandsons, E. T. particularly loved spending time at the family cabin in Woody Creek, Colorado, fishing, exploring, jeeping and skiing. E. T. had a passion for learning and was an avid reader of American history and Biblical history. E. T. was known to say "The world keeps turning," and his love of keeping the extended family in touch and aware of their heritage is an important part of his legacy.

Mr. Evans was preceded in death by his parents, Elbert Turner and Eva Magee Evans; his brothers, Earl and Franklin Evans; sisters, Minnie Fay Thomas Easter, Alice Thayer, Margaret Daniel and Evalyn Luker. Survivors include his wife,

June of Amarillo; daughter, Sharon Evans Hrubes and husband, Al, of Montrose, CO; three sons, Gary Evans and wife, Angela, of Vienna, VA, Joel Evans and wife, Sherri, of Montrose, CO and Eric Todd Evans and wife, Jamie, of Cleburne, TX; brother, Milton Evans and wife, Geneile, of Floydada; grandsons, Kyle Evans of Detroit, MI, Michael Evans of Vienna, VA, Eric Evans and wife, Rachael, of Grand, Prairie and Derek Hrubes and wife, Amy, of Spokane, WA; granddaughters, Myra Brown and husband, Rick, of Grand Junction, CO, Alyssa Dons and husband, Chris, of Chicago, IL, April Hipps and husband, Riley, of Grand Prairie, TX, Stacie Evans of Grand Junction, CO, Melody Hrubes of Chicago, IL, Rachel Evans of Vienna, VA and Jenny Evans of Montrose, CO; great-grandchildren, Gavin, Landon, Calvin, Maryn and Brenden.

Memorials may be sent to The Mary E. Bivins Foundation Scholarship Fund, % Mary E. Bivins Foundation, P.O. Box 1727, Amarillo, TX, 79105. (This fund provides college scholarships to those pursuing the Christian ministry.)



TEDDY HASLEY

A celebration of life service for Teddy Alvis Hasley will be held at 10:00 a.m. Wednesday, January 31, 2007 at Resthaven's Abbey Chapel with Dr. Ken Horn officiating. Interment will follow in Resthaven Memorial Park. The family will receive guests from 7-8 pm Tuesday, January 30, 2007 at Resthaven Funeral Home.

Teddy Alvis Hasley was born August 8, 1926 in Fredrick, OK, to the late Huylar and Deffa (Easley) Hasley. He married Jessie Lorene McDowell on June 20, 1946 in Altus, OK. They made their home in Tipton, OK where Alvis farmed. They moved to Floydada in 1955 where he started his career as a mechanic owning and operating Halsey Automotive. In 1977 they moved to Lubbock where he retired from Gene Messer Ford in 1991. He was preceded in death by his wife Jessie, in 1996, 4 brothers; Paul, Dale, Aaron and Thurman Halsey, and 6 sisters; Ruby Purdy, Lillian Boyd, Audie Bob Parks, Pearl Wylie, Sylvia Posey and Vera Fitzgerald.

Those left to cherish his memory are his sister, Lucy Odessa Randolph, 108, of Downey, CA, his children, David Hasley and wife Christi, Patricia Pemberton, Sharon Hanna all of Lubbock, Lois Bowen and husband Bob of Tucson, AZ, and Teresa Hooper and husband Barry of Ft. Worth, TX, grandchildren; Lisa Lopez, Crystal Pemberton, Nathan and Rusty Bowen, Tim, Ted, Ross, Denton, Dana and Darren Hanna, Matt and Ty Hasley, Samatha and Mandi Hooper, great-grandchildren; Adam, Matthew, and Luke Lopez, Madison Cortinaz, Erica, Derek, Caleb, Aja, Dana, Ray, April, Sierra, Thomas, Alyssia, Ashlee and Ash Hanna, Taylor Bowen, and P.J. Mockler. The family would like to say a special thanks to Kenna with NurseCare Hospice.

The family suggests memorial be made to NurseCare Hospice 1312 Texas Avenue, Lubbock, TX 79401.

LIGHT THE CROSS DONATIONS

Donations to Light the Cross Fund have been made as follows: **In Memory of Sam McGowan** by Bill and Ardis Daniel.

Donations to the Light the Cross Fund may be deposited to the Ministerial Alliance Fund at American State Bank.

Thanks for reading the Hesperian-Beacon

GENE LOWRANCE

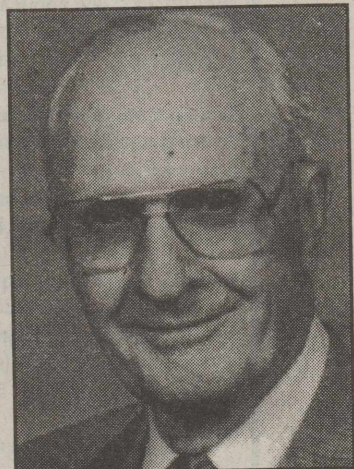
Gene Lowrance, 67, of Floydada died on Monday, January 29, 2007 at the Lubbock Heart Hospital.

Gene Lowrance was born on July 30, 1939 in Floydada to the late Olan Lee and Frances Nettie (Nixon) Lowrance. He attended school in the Starkey Community and Floydada High School. He married Billie JoAnn "Tiny" Copeland on September 10, 1961 in Floydada. Gene worked for Floyd County Precinct #1 and was also a farmer. He was a member of the First Baptist Church of Floydada.

Gene is preceded in death by his parents and son, Billy Gene Lowrance.

He is survived by his wife, Tiny; two sons, Van Lowrance of Lubbock and Clay Lowrance of Floydada; 4 grandchildren, Magan, Matt, Tucker and Jessica; 3 brothers, Olan Lee, Melvis and Jack Lowrance, all of California and 1 niece, Kim Lowrance of California.

Services were held at 10:00 a.m. Wednesday, January 31, 2007 at First Baptist Church. Reverend Rance Young officiated. Burial was held at the Lakeview Cemetery under the direction of Moore-Rose-White Funeral Home of Floydada.



BILLY WILSON SNELL

Billy Wilson Snell of Lubbock passed from this life on Wednesday, Jan. 24, 2007 at the age of 89. Mr. Snell was born on Feb. 15, 1917 in Turnersville, TX to Willie and Annie (Jones) Snell. He served our country in the U.S. Army during WWII. He married Virginia McKinney on Aug. 4, 1940 in Floydada, TX. Mr. Snell was a bookkeeper for many years and then owned a restaurant supply business and after retiring he bought a janitorial business. He was a honorary lifetime member of Downtown Kiwanis and a member of Yellowhouse Lodge and Friendship Sunday School Class since 1940. He was a devout Christian and a member of the First United Methodist Church.

He is preceded in death by his parents; an infant daughter, Virginia Ann; two brothers Wilbur and Clyde Snell and two sisters, Annie Snell and Ruth Hale.

Mr. Snell is survived by his wife of 66 years, Virginia of Lubbock; one son, Steve Snell of Lubbock; one daughter, Susie and husband, Larry Moss of Lubbock; five grandchildren; Tim Snell of Cabot, AR, Sarah Snell of N. Little Rock, AR, Tracey Benson of Cookesville, TN, Heather and husband Robert Newburn of Dallas, Hollie Thornburg of Lubbock and two great-grandchildren, Jacob and Hannah Newburn of Dallas.

Family will greet friends from 6:30 - 8:00 pm, Friday, Jan. 26, 2007 at White Funeral Home. Funeral Services will be held at 3:00 pm, Saturday, Jan. 27, 2007 at First United Methodist Church. Interment will follow in Resthaven Memorial Park.

Arrangements are under the personal care of White Funeral Home of Lubbock. Online condolences may be sent at www.whitefuneralhome.com.

THIS WEEK'S

WOMEN'S BIBLE STUDY

Women's Bible Study will begin on Monday, February 12th at 7:00 p.m. in the Fellowship Hall of First Baptist Church in Lockney. Workbook is \$14.95. Call Jackie Holt at 653-3456 or 652-2104 to enroll.

American Heart Association
Fighting Heart Disease and Stroke

Floyd County Church Directory

AIKEN BAPTIST CHURCH
Jay Simpson, Pastor
Sunday School 10:00 a.m.
Morning Worship .. 11:00 a.m.
Evening Worship 6:00 p.m.
Wednesday 7:30 p.m.

BIBLE BAPTIST CHURCH
810 S. 3rd, Floydada
Darwin Robinson, Pastor
983-5278
Sunday School 10:00 a.m.
Morning Worship .. 10:50 a.m.
Evening Worship 6:00 p.m.
Wednesday 7:30 p.m.

CALVARY'S CORNERSTONE FELLOWSHIP
Floydada
Armando Morales, Pastor
Sunday School 9:45 a.m.
Morning Worship .. 11:00 a.m.
Bible Study 6:00 p.m.
Wednesday Evening 7:00 p.m.

CARR'S CHAPEL
Service Every Sunday:
Morning Worship 9:00 a.m.
Sunday School 10:30 a.m.

CHURCH OF CHRIST
West College & Third,
Lockney
Steve McLean - Minister
Morning Worship .. 10:30 a.m.
Evening Worship 5:30 p.m.
Wednesday Service 7:30 p.m.

CITY PARK CHURCH OF CHRIST
Ken Free- Minister
Floydada
Sunday Bible Study 9:30 a.m.
Morning Worship .. 10:30 a.m.
Evening Worship 6:00 p.m.
Wed. Bible Study 7:00 p.m.

FIRST BAPTIST CHURCH
Anthony D. Sisemore,
Pastor
Bill Swinney,
Minister of Ed./Music
Eric Kaiser - Min. Students
Sunday School 9:15 a.m.
Morning Worship ... 10:30 a.m.
Evening Worship 6:00 p.m.
Wed. Bible Study ... 7:00 p.m.

FIRST BAPTIST CHURCH, Lockney
Carl Moman, Pastor
Chad Cook, Youth Min.
Phil Cotham, Music Min..
Sunday School 9:45 a.m.
Morning Worship 10:45 a.m.
Evening Worship 6:00 p.m.
Wednesday 6:30 p.m.
Wednesday (Youth).....7:15 pm

FIRST UNITED METHODIST CHURCH
Floydada
Rev. Les Hall, Pastor
Early Worship8:30 am
Sunday School..... 9:45 a.m.
Morning Worship ...10:50 a.m.
Youth (Sunday).....5:00p.m.
Youth (Wednesday)..7:30 p.m.

American State Bank
Member FDIC
217 W. California
983-3725

Barwise Gin
Barwise Community
983-2737

City Auto Buick, Pontiac, GMC
201 E. Missouri
Floydada
983-3767

Clark Pharmacy
320 N. Main - Lockney
652-3353

Davis Lumber
102 E. Shubert
Lockney
6523385

Garcia's OK Tire Store
306 S. Main - Floydada - 983-3370
511 1st Olton, TX 2657796

Lighthouse Electric Coop
102 E. California
983-3524

FIRST UNITED METHODIST CHURCH
Lockney
Rev. Brian Adams
Pastor
Sunday School 9:30 a.m.
Worship Service ... 10:30 a.m.
Evening Service 6:00 p.m.
Wed. Jr. High5:30 p.m.
Wed. High School... 6:30 p.m.

GRANT CHAPEL CHURCH OF GOD IN CHRIST
Joe Bennett, Pastor
Sunday School 10:00 a.m.
Morning Service 11:00 a.m.
Evening Service 7:30 p.m.
Tuesday 8:00 p.m.
Wed. Service 7:30 p.m.

MAIN STREET CHURCH OF CHRIST
Lockney
Jay Don Poindexter,
Minister
Bible Study 9:30 a.m.
Morning Worship .. 10:30 a.m.
Evening Worship ... 6:00 p.m.
Wednesday 7:30 p.m.

MT. ZION BAPTIST CHURCH
Floydada
Rev. Ralph Jackson
401 N 12th St (983-5805)
Sunday School 10:00 a.m.
Morning Worship .. 11:00 a.m.
Evening Worship 6:00 p.m.
Wednesday Study .. 7:00 p.m.

NEW SALEM PRIMITIVE BAPTIST CHURCH
Floydada
Pastor Elder Ronnie Hedges
(806) 637-0430
Sunday Singing 10:30 a.m.
Morning Worship .. 11:00 a.m.

OUT REACH HARVEST PENTECOSTAL CHURCH
310 E. Mississippi
Floydada
Rev. David Ramos, Pastor
Ester Ramos, Praise Leader
Sunday Bible...10:00 a.m.
Morning Praise...11:00 a.m.
Evening Praise5:00 p.m.
Wed. Worship.... 7:00 p.m.

POWER OF PRAISE FULL GOSPEL CHURCH
Rev. Manuel Rendon,
Pastor
704 N. Main, Lockney
Sunday Services .. 10:00 a.m.
Sunday Evening 5:00 p.m.
Wednesday 7:30 p.m.

TRINITY ASSEMBLY
500 W. Houston
Floydada
Henry Russell, Co-Pastor
Vance Mitchell, Co-Pastor
983-5499 or 983-2887
Sunday School 9:45 a.m.
Morning Worship ... 10:40 a.m.
Sunday Evening 5:00 p.m.
Wednesday 6:00 p.m.

TRINITY LUTHERAN CHURCH
Providence Community
on FM 2301 293-3009
Rev. Burnell Lund,
Minister
Sunday School 9:45 a.m.
Worship Service ... 11:00 a.m.

WEST SIDE CHURCH OF CHRIST
Floydada 983-3548
Sunday Worship ... 10:30 a.m.
Sunday Evening 5:00 p.m.

LOCKNEY CO-OP GIN
652-3377

LOCKNEY INS. AGENCY
105 N. Main
652-3347

MOORE-ROSE-WHITE FUNERAL HOME
329 W. Calif. Floydada 983-2525
402 S. Main Lockney 652-2211

ODEN CHEVROLET-OLDS
221 S. Main, Floydada
983-3787

PAYNE FAMILY PHARMACY
200 S. Main, Floydada
983-5111

PAY-N-SAVE
210 N. Main
Lockney
652-2293

PRIMERA IGLESIA BAUTISTA
Lockney
Jesus Caballero, Pastor
Sunday School 9:45 a.m.
Worship Service ... 11:00 a.m.
Discipleship 5:00 p.m.
Wed. Service 7:00 p.m.

PRIMERA IGLESIA BAUTISTA
Floydada
Sunday School 9:45 a.m.
Morning Worship .. 10:55 a.m.
Evening Worship ... 6:00 p.m.
Wed. Evening 7:00 p.m.

SAN JOSE CATHOLIC CHURCH
Lockney
Jim McCartney, Pastor
Wed. Communion .. 8:00 p.m.
Sunday Mass 11:30 a.m.

SOUTH PLAINS BAPTIST CHURCH
Joe Weldon, Pastor
Sunday School 10:00 a.m.
Morning Worship ... 11:00 a.m.
Prayer Meeting..... 7:00 p.m.

TEMPLO GETSEMANI ASSEMBLY OF GOD
701 W. Missouri
Rev. Ray Gonzales
983-5286 (church)
983-3047 (parsonage)
Sunday School 9:45 a.m.
Morning Worship .. 11:00 a.m.
Evening Service 5:00 p.m.
Wednesday 7:00 p.m.

ST. MARY MAGDALEN CATHOLIC CHURCH
Floydada
Father Jose Relente
Phone: 983-5878
Sunday Mass 11:30 a.m.
Mon/Wed. Mass 6:30 p.m.
Confession Sat. 10:00-11:00 a.m.

TEMPLO BAUTISTA SALEM
Lockney
Pedro Reyes, Pastor
Sun. Prayer Service 9:30 a.m.
Sunday School 9:45 p.m.
Worship Service ... 11:00 a.m.
Evening Worship ... 6:00 p.m.
Wed. Meeting 7:00 p.m.

TEMPLO BETHEL SPANISH ASSEMBLY OF GOD
Washington and 1st St.
Rev. Eliseo Ovalle 983-6202
Sunday School 9:45 a.m.
Morning Worship ... 11:00 a.m.
Evening Worship ... 5:00 p.m.
Wed. Service 7:00 p.m.

TEMPLO NUEVA VIDA
Rev. Herman Martinez
308 W. Tennessee,
Floydada
Sunday School 10:00 a.m.
Evening Worship 5:00 p.m.
Tuesday 7:30 p.m.
Thursday Service ... 7:30 p.m.

TRINITY ASSEMBLY
500 W. Houston
Floydada
Henry Russell, Co-Pastor
Vance Mitchell, Co-Pastor
983-5499 or 983-2887
Sunday School 9:45 a.m.
Morning Worship ... 10:40 a.m.
Sunday Evening 5:00 p.m.
Wednesday 6:00 p.m.

TRINITY LUTHERAN CHURCH
Providence Community
on FM 2301 293-3009
Rev. Burnell Lund,
Minister
Sunday School 9:45 a.m.
Worship Service ... 11:00 a.m.

WEST SIDE CHURCH OF CHRIST
Floydada 983-3548
Sunday Worship ... 10:30 a.m.
Sunday Evening 5:00 p.m.

This page is brought to you by the following sponsors:

Schacht
Flowers, Jewelry & Gifts
112 W. Poplar, Lockney
652-2385

Sunshine Pump Oliver Clark
Box 266, Lockney
983-5087 - 774-4412 (Mobile)