

7/30/07

Floyd County Historical Museum  
P.O. Box 304  
Floydada TX 79235

The Floyd County

50¢

# Hesperian-Beacon

"Celebrating 110 Years of Floyd County News"

www.hesperianbeacon.com

Thursday, September 7, 2006 ©The Floyd County Hesperian-Beacon Floydada, Texas 79235 (USPS 202-680) Volume 110 Number 36

## Rains saturate Floyd County

**By Darwin Robinson**  
Thanks to Hurricane John in the Pacific Ocean last weekend Floyd County and the general High Plains area received a slow soaking rainfall over the long Labor Day weekend. The rainfall started on Friday and continued almost nonstop until Monday afternoon.

Floyd County Extension Agent J.D. Ragland told the Hesperian-Beacon, "This four to five inch county wide rainfall probably did not help our cotton acres very much. It could help develop some of the later boles and up the yields maybe 10 to 20 percent, if the killing frost holds off some and lengthens our growing season."

Floyd County cotton acreage planted this year was 181,309 acres, of which 11,833 acres have already been reported as failed acres, according to Ragland. "These failed acres will increase substantially as some dryland fields may not even be harvested."

According to Ragland, "This slow falling rain has been excellent and very beneficial for the wheat crop already planted. By the rain falling slowly, it kept from washing up the newly planted seeds. Wheat can be planted up to October 1st usually. There may be some wheat that might need to be replanted."

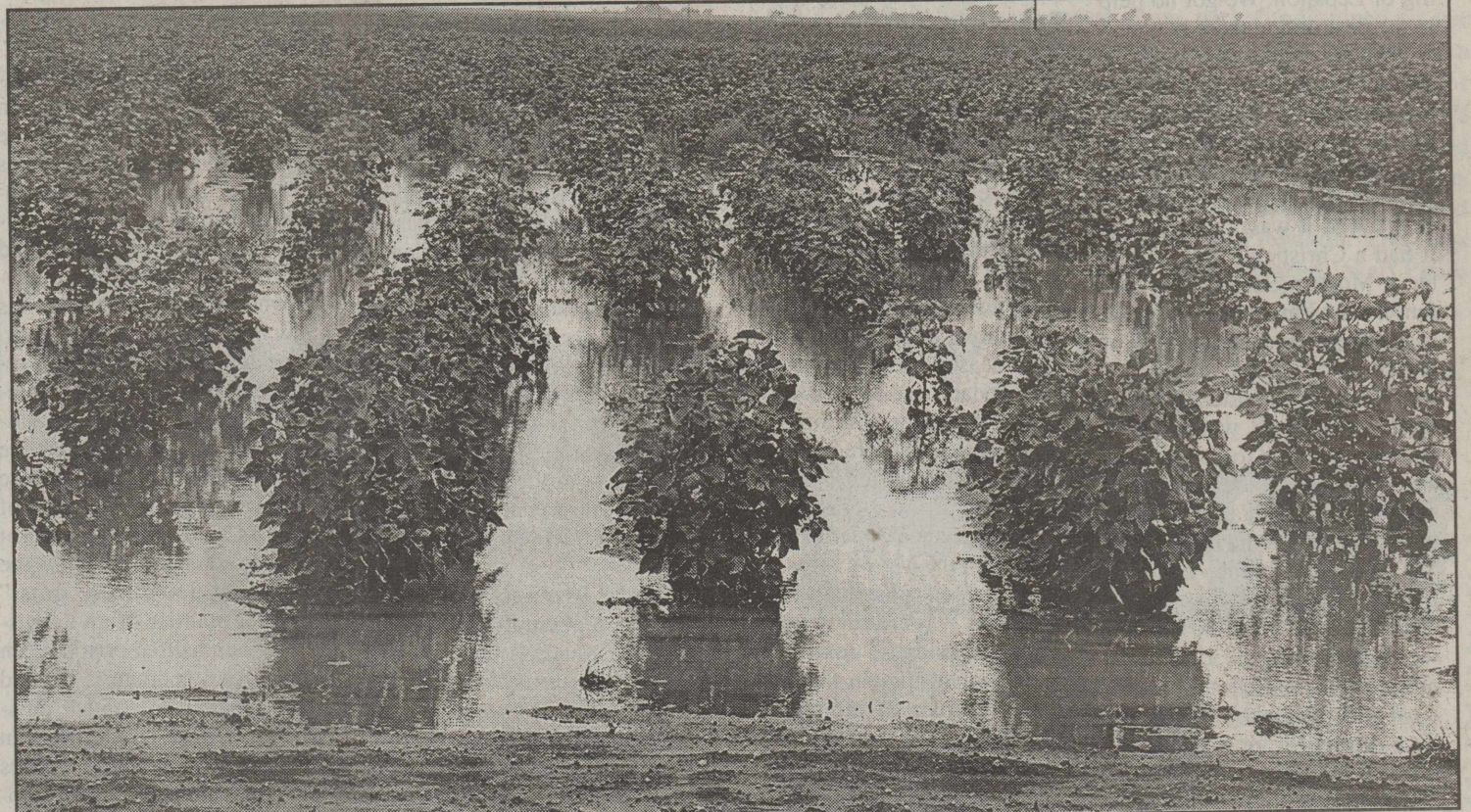
In the September issue of the

Floyd County Happenings/Ag Report, Ragland stated, (prior to this past weekend rains), the total 2006 county rainfall was at 9.01 inches. With this week's rainfall of around 5 inches overall, Floyd County is almost up to the 2005 rainfall of 15.42 inches at this same time last year.

Concerning the 1,100 acres of pumpkins in Floyd County this year, Ragland said, "They have had a tough year. It seems the later planted pumpkins have developed better than the earlier planted fields. This could be related to low soil moisture profile at planting. Some pumpkins will begin to be harvested within the next week or two. The potential yields look to be average at this time."

### AREA RAINFALL TOTAL September 1-4, 2006

Lockney Coop Gin.	5.0"
Lockney D&J Gin..	5.0+"
Barwise Elev & Gin	4.8"
Floydada Airport.	3.4"
Floydada Coop Gin.	5.0+"
Darty Gin.....	4.25"
South Plains.....	4.0"
Providence Fm.Sup.	2.3"
Sandhill Elev.....	4.5"
Muncy Elev.....	5.7"
Sterley Com.....	5.5"
Harmony.....	6.75"
McCoy Gin.....	5.0"
Blanco Gin.....	4.5"



**FIELDS OF WATER**--Depending on the field and the location in the County, some Floyd County cotton was standing in water after the week-end rains. Playa lakes were also holding water--a sight not seen in Floyd County in a long time. Staff Photo

## Jennings guilty of Attempted Murder

After a two day trial, August 29-30, Floyd County jurors found Christopher Jennings, 19, of Hale Center, guilty of Attempted Murder. Jurors sentenced Jennings to 5 years in prison.

According to District Attorney Becky McPherson, the offense occurred on October 15, 2005 in southwest Floyd County.

"Jennings took an 18 year

woman, of Plainview, out to a barn located in the southwest part of the county. He pulled her out of the car by the hair and choked her. While reaching for a rope she got away and ran for help.

"He thought she was still in the barn and set the barn on fire. He said in a confession that he was trying to kill her."

Jennings had no prior record as an adult.

## County's gold may be in Wind energy

**By Dora Ross**

One thing is for sure--the wind blows in Floyd County! We've known it for a long time and now, several wind companies realize the potential as well. Since early June, wind developers have shown an interest in leasing land for wind power generation in Floyd, Briscoe, Motley, Crosby and Dickens Counties. "If Floyd County rolls out the welcome mat and plays our cards right, in time, everyone who wants wind power will have it," says Dora Ross, Director of the Floydada Economic Development Corporation.

"The quality of the wind resources and the availability of transmission are perhaps the two most important initial factors a developer looks at when evaluating a site for wind development. As landowners seeking to lease their property for wind de-

velopment are learning, a developer can only get financing for a wind project if transmission is available or there is a strong evidence indicating transmission will be available within a set period of time," says Lisa Chavarria. Ms. Chavarria is an attorney whose practice focuses on energy law particularly in wind power and oil and gas; she will be presenting "Harvesting the Wind", Monday, September 11, 2006, 7:00 p.m. at the Floyd County Friends Unity Center.

Other topics to be covered include how to get a project and not just a lease, an overview of how a project comes together, what questions should you ask a wind developer, what do you want in your lease, what is a good rent and royalty agreement. The educational seminar is open to everyone and is free of charge.

## Win money in Football Contest

The Hesperian-Beacon's annual football contest is currently in progress with weekly cash winnings of \$50 given out to lucky players.

The contest will last for 10 weeks and will pay out \$500 to winners by the time the contest is over - thanks to our local sponsors.

The football contest can be found on the back page of every

edition. Follow the instructions on the page and submit your entries by Friday at 5:00 p.m.

Sponsors who make the game possible are: KFLP Radio, Stapp Paint and Body Shop, Providence Farm Supply & Grain, Light-house Electric, Muncy Elevator, Scott Gin, Clark Pharmacy, First National Bank of Floydada, City Auto, Windmark Insurance, **Continued On Page 3**

## Lockney to host "Old Fashioned" fun

Old Fashioned Saturday will return to Lockney September 9, with "Old Fashioned" entertainment.

Booth vendors will be ready for business by 10:00 a.m. The traditional evening street dance, from 8:00 p.m.-midnight, will return with local boys, Todd and Landon Cotham bringing their "Second Hand Superman" band to town for the entertainment.

A DJ will also be on hand to play records when the band is on break.

Main Street will be the place

## Bible Ministry will honor Craig Gilly

Craig Gilly, of Cedar Hill, would be very pleased that his legacy will be living on in Bibles for new Christians.

Before he became ill, Gilly, had expressed his wishes to purchase all the Bibles that would be needed for Floyd County's Christian Women's Conference in October.

"We are going to give Bibles to anyone who comes forward and makes a decision to follow Christ," said Karen Houchin. "When Craig found out about this plan he told us he wanted to be the one to furnish Bibles. Evidentially Craig had a history of giving Bibles to people."

"When the Bibles arrived, Craig was in the hospital battling with cancer. We didn't bother him with this at the time."

Craig didn't make it out of the hospital. He died August 28, 2006.

When the word spread that Craig had wanted the Bibles given away at the Women's Conference, money started coming in to pay for them.

Contributions are still needed. Anyone interested in being a part of this in memory of Craig Gilly, should contact Karen Houchin's Law Office, or Connie Johnson at Nick Long's Insurance Agency.

## Lockney will have Early Voting place

An early voting location has been approved for the City of Lockney by the Attorney General's office.

Early voting will be held in Lockney at the J.P. office on Main Street (next to the Post Office) from Oct. 23-Nov. 3 from 8:30 a.m. - 5:00 p.m.

The building will be equipped with a handicap ramp.

to enjoy a variety of foods, a car show, pedal pull, and lawnmower races. The Library also has special plans for the day

The Car Show will give away \$100 prizes to the winners of Best Interior, Best Motor, Best Paint, and Best of Show. \$50 will go to the Motorcycle Best of Show. All classifications of cars, trucks, and motorcycles are welcome.

Set up time for the car show will be from 7:00 a.m. to 10:30 a.m. and will last until 4:00 p.m.

For more information on the car show, call Louie at 293-3000, or Michael at 652-2239 or 2201.

The Pedal Pull will be held in front of Freedom to Go (the former Brown's Dept. Store), on Main Street.

There will be food booths on Main Street and fun to enjoy at the Dunking Board. Cow Patty Bingo will also be played and tickets can be purchased now through Lockney Rotary members.

The Lockney High School Band will hold their "March-A-

Thon through Lockney neighborhoods on Saturday and will end their march on Main Street around noon.

The Lockney Library will have a Book Signing for "A Time for the Crawfish", by John Perry, from 10:00 a.m. until 3:00 p.m. The Library will also have a Bake Sale/Book Sale beginning at 10:00 a.m.

Planners for Old Fashioned Saturday are advising people to bring lawn chairs and umbrellas for shade.



**KAREN HOUCHIN** displays Bibles being purchased in honor of Craig Gilly.

## County raises tax rate

Thursday, August 31, Floyd County Commissioners voted to raise the Tax Rate to .54090 per \$100 assessed valuation of property. This is an increase from the previous tax rate of .48296.

Commissioners also voted to continue to tax personal property. According to the County Judge Bill Hardin, personal property that is taxed amounts to \$22,797,780.

"We would lose \$115,000 n

revenue," said Hardin, "if we did not tax personal property."

Commissioners adopted a proposed budget of \$2,215,658.

Included in the budget was an increase in salary for some elected officials.

The County Clerk, District Clerk, Justices of the Peace, County Treasurer, and Tax Assessor-Collector would all get an annual increase of \$964.34. This would be the proposed salary

to \$25,058.00.

Those elected officials excluded from the raise are: Commissioners, County Judge, Sheriff, and County Attorney.

A personnel policy was adopted by the Commissioners which includes the changes: "Should a County Official/Supervisor select a work period where employees are not working 40 hours every work period, the employee will be paid only for the hours actually worked."

A view from



# The Lamplighter

By: Ken Towery  
email: chowdipper@austin.rr.com

Another war in the Middle East has come and gone. Or, we hope it is gone, at least for a while. Israelis, with their recent raid into the Bekaa Valley region, are determined to prolong the fracas as long as possible, but just have patience, gentle reader. It will be over eventually, when the Middle East runs out of people to kill.

American taxpayers, quite naturally, will pay for the rebuilding of Lebanon, just as they did for the destruction of Lebanon. It is only fitting and proper. We may get some help in the rebuilding of Lebanon. We got no help in the destruction thereof.

We, all Americans, paid for the planes, the tanks, the artillery that made a shell out of the small but once proud country of Lebanon, which was, when I was there 30 years ago, billed as a "democracy." And it was a democracy. It had a Christian Prime Minister, a Moslem Secretary of Defense, and a Finance Minister that rotated between the parties, all of which were elected. Indeed, it was far more "democratic" than Israel to the south, where all Arabs were referred to as "vermin" and destined to be eradicated if at all possible, just as in the days when Joshua led the tribe.

Once upon a time, when the United States was in a life or death struggle with the old Soviet Union, we (the US) had a printing plant in Beirut. The principal job of that plant was to produce, primarily for a very, very limited circulation within certain circles of the Soviet Union, (and anywhere else except the United States, which was strictly forbidden), a beautifully-done Life-sized magazine called "America Illustrated." The magazine was much sought after in the Soviet Union. In return, in those Cold War days, the Soviet Union could

circulate its own "Soviet Life" within the United States, a magazine that had to be "pushed" very hard, lest its circulation drop to the point where our own publication would no longer be permitted to circulate in the Soviet Union.

In those days our printing plants around the world, in Manila, Mexico City and Beirut, fell under my own purview, so I have been to Beirut many times. I was then what they called an "Assistant Director" of the US Information Agency, later made Deputy Director and finally Acting Director of the worldwide agency. So I've sat in coffee houses in Sidon and listened to artillery blasts from the Israelis into southern Lebanon as they sought, with the help of Pat Robertson's "South Lebanese Army" of mercenaries, to create a "buffer zone" between themselves and the Lebanese to the north. I've even been down to Tyre, a Lebanese town on the coast just north of the Israeli border, whose king, Hiram, according to Masonic lore, furnished the giant cedars used in the construction of Solomon's Temple, and have viewed Jewish destruction that was even then apparent. I was in Lebanon, at a place called Baalbeck, when Americans first landed on the Moon. I was there too when Teddy Kennedy had his drunken accident up at Chappaquiddick, costing one more human life. In those days the symbiosis of interests between Israel and the US was such that we tolerated the constant Jewish demands for more money, and resisted the constant Arab warnings that our one-sided policies in the region were breeding more, much more, trouble in the future. That future is now upon us.

We cannot say we were not forewarned. American administrations simply ignored the warn-

ings. Most American administrations tried to approach the Middle East with the knowledge that there was a difference between what the Jews thought and what non-Jews thought. (going all the way back to the matter of Sarah and Hagar, and Issac and whoever that other kid was. God, according to the Scriptures, (as interpreted by Bible scholars) sent Hagar and her kid out into the wilderness with the promise that he would make of their descendants, "a great nation." A great many Moslems evidently think God was talking about them. After all, Hagar's kid was Abraham's first child, which accounts for some of the friction between Jews and Moslems today.

But our struggles with the old Soviet Union were such that we (the US) rewarded Israel with billions and billions of dollars in return for their "friendship" in an increasingly hostile world, a world in which the Israeli propaganda machine, with the help of nearly all American administrations, was extremely successful in portraying Israel as "a democracy, and America's only true friend in the Middle East." At that time, Lebanon was much more of a "democracy" than Israel.

Henry Kissinger was not the first to point out that nations do not have friends, "only interests." It is "interests" that make "friends," (not the other way around) and it is those interests that have bound the United States to Israel. Entirely too much money is at stake for it to be otherwise. Many nations, including Taiwan and India, have given up their claims on American Foreign Aid, but not Israel.

That propaganda machine was entirely successful in portraying Jews, who moved violently into the land of the

Canaanites and Hittites and Amorites during the times of Moses and Joshua (before the crucifixion of Jesus Christ) and built that people into the powerhouse we see today, and the "victims" we see today. The long years of exile in various lands, following the Roman period, where they struggled for an existence while they gained experience and wisdom, have now redounded to their credit. Seldom, in America, will one encounter a Jew who does not make known that fact.

They are proud of their heritage, and should be. I well remember one "Good Deal Brill" who wandered through a Japanese Prisoner of War camp in Cabanatuan, long ago, in the 1940's, hawking pots and pans and knives and forks of prisoners who had recently died, saying (or asking) "have I got a good deal for you" and telling everyone who would listen that he was a Jew from Brooklyn, New York. Even Jack Ruby, in what we remember as his only public comment after murdering a handcuffed Lee Harvey Oswald in the basement of the Dallas Police headquarters before a horde of cameras, claimed he shot Kennedy's assassin "to show the world that Jews have guts." (How the murder of an unsuspecting handcuffed prisoner can prove group courage is beyond me, no matter how much satisfaction we all may take in Oswald's death.) Everyone seeks recognition, whether Jew or Gentile. Jack Ruby or Good Deal Brill, Bill Clinton or Jesse Jackson. Until someone finds and identifies that innate desire, the world will probably continue to have problems.

And certain people will continue to make money off that situation.

"Join in the Journey"  
Christian Women's Conference  
Saturday, October 21, 2006

Elect  
**Margaret Herrera Ponce**  
The Most Qualified Candidate  
For Your County Judge  
Vote for 26 years of

Knowledgeable  
Honest  
Fair  
Experienced  
Committed  
Conservative  
Dependable



and  
Dedicated Service to Floyd County.

Court Coordinator/Secretary for the  
County Judge for 26 years  
Notary Public, State of Texas for 24 years  
Veterans Service Officer for 10 years

The County Judge has tremendous responsibility ranging from serving as the Chief Information Official to Committing a Mentally Ill Person to Declaring a Local State of Disaster. I am fully prepared to assume these responsibilities and faithfully execute the colossal duties of this Office! I ask for your Vote in the General Election on November 7, 2006. *Early Voting Oct. 23, 2006 thru Nov. 3*

- I have earned over 26 years of knowledge and working experience...
- ...Formulating and Compiling the Annual County Budget for all Departments
  - ...Monitoring Monthly County Expenses & Revenue
  - ...Applying Truth and Taxation Laws and Procedures
  - ...Researching, Preparing, and Updating Personal Policy
  - ...with Criminal Case Procedures and Laws
  - ...with Mental Commitment Laws and Procedures
  - ...with Probate Procedures
  - ...applying Election Laws and Procedures
  - ...Researching, Compiling and Applying Public Assistance Program Guidelines

Additional qualifications will be in next weeks paper  
Political ad paid for by Candidate

## Letter to the Editor

Dear Editor,

I am Abraham Rosales, Jr. I was reading the Beacon for August 24, 2006 and was disgusted and felt utter disrespect for all the soldiers, Marines, and Airmen, etc., that Lockney/the Veteran's Association would present the Graves family with a flag for their son serving in Iraq right now.

Don't get me wrong, my fellow service member is my brother in arms and I respect that, but what about all the other soldiers' families that are in the service, deployed or have deployed.

Those families do not get any recognition. I am deployed right now in OEF, my brother Abel has done two tours of duty both in OIF, and my oldest brother, Adrian has done one tour of duty in OIF.

My mom did not receive anything or get any kind of recognition and that goes for all the families and service members in Lockney and surrounding areas that you all know about. It is a shame that Lockney/the Veteran's Association only recognized one family, when there

are a lot of families with their sons, daughters, fathers, brothers, sisters, etc. serving right now.

I don't know how the other service members felt but I feel very disrespected. That goes for my family and all my brothers and sisters in arms serving right now. I don't want you all to go out and give every family a flag, but the least you could do is recognize all the service members who are serving, not just one.

### County Ag Tour is Sept. 19th

The 2006 Floyd County Ag Tour will be held on Tuesday, September 19. Registration will be at 8 a.m., while the bus tour will be loaded at 8:20 a.m. Tour stops will be at the Randy Bennett Farm west of Lockney, the Lanney Bennett farm south of Tour Stop 1, and the Dan Smith farm east of Tour Stop 2. Following a noon meal, awards will be presented and from 1:30 p.m. to 3:30 p.m. will be programs for Floydada and Lockney 3rd through 5th grade students.

Kenneth McDonald, of Mator, Theft by Check, \$20-\$500.  
Mingo Nuncio, 44, of Lockney, with DWI;  
Elisa Poole, of Lockney, with Theft by Check, \$20-\$500;  
Genevieve E. Sims, of Flomot, with Theft by Check, \$20-\$500; and  
August 30, 2006, Linda Ratliff Williams was charged with Theft by Check \$20-\$500.

## Courtroom Activities

In County Court, September 5, 2006, Ignacio Soto Mondragon pled guilty to DWI-2nd. He was fined \$750 and sentenced to 6 months in jail which was probated for 1 year. His driver's license was suspended for 90 days.  
Also on September 5, the following cases were filed:  
Edward Richard Hernandez, 23, of Lockney, with Possession of Marijuana;

## Nathan Johnson

Write in Candidate for Commissioner Pct. #3

- Has been married to Connie Johnson for 34 years and they have two boys. Connie has worked for Nick Long, State Farm for 14years.
- Is a member of South Plains Baptist Church and has been a deacon for 21 years.
- Graduated from Floydada High School and Texas Tech University with a B.S. in Ag Education.
- Served in the United States Marine Corp for 2 years.
- Has lived in Floyd County for 46 years.
- Has farmed and been a beef producer in Pct. #3 for the past 29 years.
- Has served on gin, grain, feed yard, school, church, and stock show boards.

During this campaign I look forward to meeting all the people in pct. #3. I feel I have an understanding of the needs and desires of the people in Floyd County. I will do the best job I can possibly do as a commissioner for this county.

Your support and vote will be greatly appreciated.

Political ad paid for by candidate

**ACE Hardware**  
Floydada  
Delivery to  
Floydada & Lockney  
Everyday  
Call 806-983-3000

## HARVESTING THE WIND

SEPTEMBER 11, 1006  
FLOYD COUNTY FRIENDS UNITY CENTER  
7:00 PM  
FREE INFORMATION - OPEN TO EVERYONE



### PROPOSED OUTLINE OF MEETING

- I. Overview of how a project comes together
  - A. How does a developer identify an area
  - B. What are the steps once an area is identified
  - C. What to look for in a developer
  - D. Identifying an area and specific properties within that area
    1. Wind resource - what is the capacity factor for an area
      - a. Historic data
      - b. Explanation of and potential CREZ areas
      - c. Transmission
      - d. What does the "big picture" show
      - e. Proximity to a load center
    2. Land features
      - a. Ridge lines
      - b. Overall high elevation
      - c. Transmission line on the property
- II. Acquisition of Land/Signing Leases
  - A. Assessment period begins
    1. Metrological tower
    2. Transmission analysis done
    3. Site assessment done
    4. Turbines ordered
  - B. Construction begins
  - C. Electricity is generated
    1. Royalty Clause
      - a. Defining Gross Revenues
      - b. Royalty Forecast sheet
        - i. Cap factor
        - ii. Electricity sale
        - iii. Number of Megawatts installed on property
        - iv. Royalty
    2. Minimum rent explanation
  - III. Question and answer period
  - IV. Economic impact potential

Confirmed Speaker

Lisa Chavarria

Attorney-at-Law

Concentration: Wind Power & Renewable Energy

McElroy, Sullivan & Miller

Austin, Texas



P. O. Box 15  
105 South 5th Street  
Floydada, Texas 79235  
806-983-3318  
Email: floydadaedc@door.net  
www.floydadaedc.com

# Women's Conference tickets on sale

Tickets are now on sale for the October 21st, Christian women's conference at Floyd County's Unity Center in Muncy. Any profits from the conference will be used to help with the Christian Women's Job Corp. "God's purpose for this conference," said Connie, "is to strengthen women so as to fulfill His purpose in their lives through a growing relationship with Him. The Conference is built around the idea of refocusing our lives and redefining our pur-

pose." The conference will include speakers: Shelly Pulliam, Tracey Book, Hilda Almaraz, and Pam Kanaly.

Tammy Aten, formerly of Floydada, will kick off the conference at 9:00 a.m. with praise and worship music, followed by Jody Wilson's welcome and introduction of speakers.

Tickets are available at Nick Long Insurance and The Hesperian-Beacon in Floydada,

and J&K Insurance and Heart's Desire in Lockney. You can also purchase tickets through mail and email: [connie@joininthejourney.org](mailto:connie@joininthejourney.org) to reserve your space.

Mail your money to: Box 106, Floydada, TX 79235

Tickets to the conference are \$20.00 and will include lunch. Registration begins at 8:00 a.m. (for door prizes) and the conference begins at 9:00 a.m., and ends at 4:00 p.m. There will be a

concession stand for breakfast and snacks.

There will also be booths for shopping (this is for women, after all). Women can browse through: Silver City Mercantile, Premier Jewelry, Mary K, Covenant Home Health, Women's Health, Health Food, Candles, Greeting Cards, and Brent Bullock's "America Bless God" ministry will also have a booth.

A concession stand will be open for breakfast and snacks.



SEPTEMBER FLAG DONATION--4-H'er Jordan Cornelius (left), and Polly Campbell (right) hold up the flag that she and the Campbell family donated along with funds given to her from courthouse friends in memory of her late husband, Ken Campbell, a Vietnam Veteran, who served in the military for four years. The flag will be flown at the Floyd County Veteran's Memorial. The flags at the Veteran's Memorial are replaced every three months because of wear and tear from 24 hour use. Individuals wishing to donate a flag for replacement should contact Jordan or Julianne Cornelius in Floydada. The flags are returned to the previous donor when replaced. Staff Photo

## Rent your booth space now

# Floydada Chamber plans 'Punkin Day'

Floydada Chamber of Commerce will be sponsoring the 20th annual Punkin Day on Saturday, October 14th.

Events for the day will include entertainment at the Pavilion, Cow Patty Bingo, arts and crafts and food booths galore, motorcycle games, pumpkin-pie eating

contest, family games, the popular Texas Pedal Pull, and many other fun activities.

The Floyd County Historical Museum will be open and will provide rope-making activities so popular with youngsters. The Floyd County Library

will again be open with their annual book sale.

Rachael Castillo, Chamber manager, states "Our booth rentals are filling up very quickly with several new vendors. We hope to provide an enjoyable day for our community and visitors at Punkin Day. We certainly

thank our pumpkin growers for their help in making Punkin Day an area-wide festival."

For more information on the event, to reserve booth space, or for information on local pumpkin growers, call Rachael at 983-3434, or at the Chamber office at 114 W. Virginia.

## Palo Duro Basin Oil and Gas Update

By Tom Musser

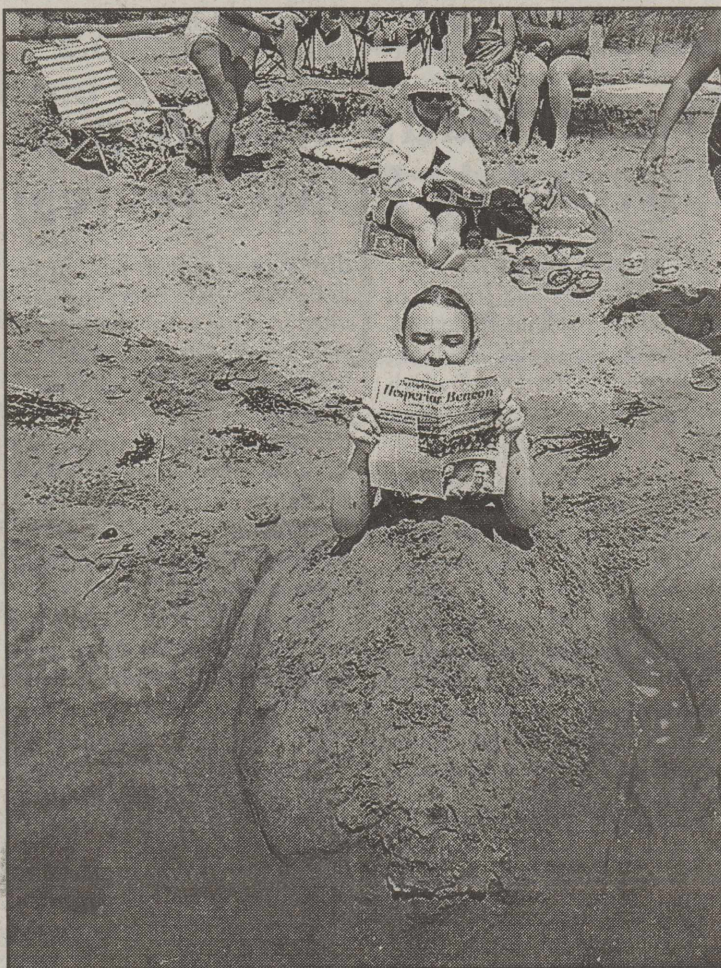
**Floyd County:** BASA Resources, Inc. Foster Lease Well #1 is proceeding with the stages of the perforating and frac work. Currently working on stage three of the planned five stage job.

**Floyd County:** PetroGlobe Energy USA Ltd. McIntosh Lease Well #1077 location has been prepared. The moving of the drilling rig from its current location near Seminole, Texas to Floyd County has been delayed due to the recent rains. The drilling rig will be moved from the Seminole area location to the McIntosh location as soon as it is dry enough (hopefully this week.) The McIntosh Lease Well

#1077 is located 1980 feet from the south line and 660 feet from the west line of Section 77, Abstract 44, Block 1, Adams, Beaty and Moulton Survey. The McIntosh Lease Well #1077 is located eleven miles east of Floydada and 660 feet north of Highway 62/70.

**Floyd County:** The SimDril Rig which drilled the Bankers Petroleum (US) Inc. Stansell Lease Well #1 is scheduled to move off the Stansell location on Thursday of this week and move to a location in Oklahoma. The SimDril Rig has remained on the Stansell location conducting repairs since July 1, 2006.

### CONTEST PHOTO



KATIE HINTON is covered in sand in Portland, Maine. Katie and her brother, Matthew, got to tour Maine while her mother, Sharon Hinton, of Floydada, attended St. Joseph's College in Standish, Maine working towards her Master's Degree.

## Win money in contest

Continued From Page 1

Quality Body Shop, Ray Lee Equipment, Oden Chevrolet-Olds, Schacht Flowers, Floydada Power & Light, Davis Lumber, Lowe's Pay-N-Save in Lockney and Floydada, D & J Gin, Lockney Cooperatives, Payne's Family Pharmacy, Triple T Restaurant, Producers, DeBruce Ag, City Bank, Hammond Sheet Metal, Blanco Offset, Script

Printing, Cornelius Conoco and the Floyd County Hesperian-Beacon.

**Shaklee Products**  
For your Shaklee needs  
call Sue Reeves  
**983-2562**

CONTEST PHOTO

**Wise Advertise**

**Floydada Ford-Mercury**  
Pickup and Delivery in  
Floydada & Lockney  
Everyday  
Call 806-983-3761

"I want to know my family will be OK."

Life insurance is an important part of your family's financial plan. It can help ensure those you love will be taken care of if something happens to you. Find out how easy it can be to obtain life insurance from Symetra. Call me today.

Kyle Smith  
Goen & Goen, Inc.  
983-3524  
102 E California  
Floydada, TX 79235

Life insurance is issued by Symetra Life Insurance Company, 777 108th Avenue NE, Suite 1200, Bellevue, WA 98004.  
Symetra™ and the Symetra Financial logo are service marks of Symetra Life Insurance Company.



JUDY AND SPENCER SCHACHT reading the Hesperian-Beacon on an Alaskan Cruise.

## Voters of Precinct III, Floyd County, Texas

### Who Am I??

- ◆ Born, May 2, 1928, Caps, Taylor County, Texas
- ◆ Father, Cotton Ginner & Mother, School Teacher
- ◆ Graduated Texas Tech 1949, B.S., Agricultural Engineering
- ◆ 1951 married Mary Manning, Lone Star Community
- ◆ Employed 56 1/2 years in cotton ginning & cottonseed oil mill industry
- ◆ Three Children and Seven Grandchildren
- ◆ Landowner in Floyd County since 1972
- ◆ Member, FBC, Floydada - Chairman of the Deaconate

May I have your vote and support in the November 7th Election?

**Bill Quattlebaum, Appointed Commissioner**

Political ad paid for by candidate

The Lockney Veteran's Association would like to thank everyone who supported our Golf Tournament and Fun Run. We appreciate everyone who participated and helped in any way, *We apologize if we left anyone out.* Your efforts made these events a huge success. This project has crossed all social barriers, racial barriers, and economic barriers. It has galvanized support in our community for a common goal - that is to honor all those that serve.

### Fun Run Supporters

- Mary Jo Calvert
- Rosalee King
- Rock 101
- Lockney Coop
- I-27 Marine
- Good Times Power Sports
- Damrons
- Cap-Rock Cafe
- Lone Star Customs
- Davis Lumber
- 378 Liquor Wine & Beer
- Crazy Horse
- Cap-Rock Thunder
- Heart's Desire
- Honda of Lubbock
- City Bank Lockney
- Main Street Pizza
- Rosa's
- Subway
- City Auto
- First National Bank
- Raceway Fuel
- Triple T Restaurant
- H&R Block Floydada
- Lockney Meat

### Thomas Trucking

- Payne Pharmacy
- Snyder Chamber of Commerce
- Ray Lee Equipment
- American State Bank
- Dick's Automotive
- Golf Tournament Supporters**
- High Plains Bandag Inc.
- W.J. Mangold Hospital
- DeBruce AG Service
- Kaleidoscope
- Lockney Meat
- Lockney Coop Gin
- Barwise Gin
- Floyd County Supply
- Nick Long Insurance
- City Bank
- J&K Insurance Agency
- D&J Gin
- Ray Lee Equipment
- 378 Liquor Wine & Beer
- Tom & Patsy Byars
- Lambert Spraying
- Sweetwater Steel Company
- American State Bank

# "Hearts in Harmony" theme for National Assisted Living Week

Shepherd's Meadow Assisted Living in Floydada will participate in the annual National Assisted Living Week September 10-16, beginning on Grandparent's Day.

Hearts in Harmony, this year's theme, was selected to recognize the shared desire of employees, residents, resident's relatives and friends to have care delivered in a loving manner that respects resident's preferences and maintains their independence.

National Assisted Living Week highlights the crucial role assisted living residences play in helping our communities' seniors and people with disabilities enjoy a meaningful quality of life. On any given day, residents

participate in recreational and therapeutic activities, and visit with family, friends, and fellow residents. Caregiving professionals provide assistance with basic human needs such as bathing, toileting, dressing, eating, or taking medicine. The staff at Shepherd's Meadow see their care giving duties as a calling and are trained to maintain a resident's right to make his or her own choices about their daily life and routines.

Shepherd's Meadow staff invite everyone to visit the facility during National Assisted Living Week and experience the difference between assisted living and other choices offered in the community.



## RNR, Inc. provides health and safety education

Rural Nurse Resource, Inc. (RNR), a nonprofit organization that provides health and safety education, and Smithlawn Maternity & Adoption Services are co-sponsoring a free 6.6 Contact Hour CEU Program entitled: Understanding Infant Adoption on Tuesday, Sept. 19, 8:30 a.m. - 3:00 p.m. at RNR, 312 W. Georgia Street, Floydada, TX 79235.

If you interact with pregnant women and want to become more comfortable discussing pregnancy options this program is for you.

Healthcare professionals (nurses, physicians, social workers, technicians, educators, etc) are eligible for free CEUs. A light breakfast and lunch will be provided at no charge. Seating is limited. For more information or

to pre-register for the program call RNR's office at (806) 983-8096. you must pre-register to attend.

Rural Nurse Resource (RNR), a nonprofit organization that provides health and safety education, is now registering students for Certified Nurse Aide Training, CPR, and First Aid Classes. The CNA class trains individuals to care for patients in the Nursing Home, Hospice, Home Health, Hospital and private care setting.

To receive an application packet or for more information email at:

coordinator@ruralnursesresource.com or call the office at 806-983-8096.

All classes require pre-registration to attend.



KASON LEE HUGHES

### HUGHES

Kendal Lynn Hughes is excited to announce the arrival of her new baby brother, Kason Lee. Kason was born 12:42 p.m. June 14, 2006 at Covenant Medical Center in Lubbock. He weighed 7 pounds 13 ounces and was 21 inches long.

Proud parents are Rickey and Tasha Hughes of Floydada.

Grandparents are Rodney and Janell Rochelle of Paducah and Butch and Janice Hughes of Flomot.

### GUERRA

Azariah Jade'n Guerra proudly announces the recent birth of his baby brother, Jacobrian Ry'ley Guerra. Born 7:30 p.m. Friday, August 18, 2006 at UMC in Lubbock. He weighed 8 pounds 1 ounce and was 20 1/4 inches long.

Proud mom is Rosa Guerra of Floydada.

Grandparents are Eliseo and Seferina Guerra of Floydada.

**Old Fashioned Saturday is Sept. 9th**

Have a nice week!

**Mary Kay Cosmetics Susan Simpson Independent consultant 983-5325**

**Floydada Ford Mercury Home of the \$9.95 Oil Change Call 806-983-3761**

### New Fall Arrivals

#### New Shipment of WEBKINZ

**Schacht FLOWERS, JEWELRY & GIFTS**  
112 W. Poplar, Lockney 8:30-5:30, Mon.-Sat., 652-2385  
1-800-566-5754

### EDWARDS

1st Lt. Tyson and Kristina Edwards of Las Vegas, Nevada, are proud to announce the birth of their daughter Evelyn Alexandra Edwards. She was born 12:26 a.m. Thursday, August 24, 2006 at Mike O'Callaghan Federal Hospital in Las Vegas, Nevada. She weighed 6 pounds 9 ounces and was 20 1/4 inches long.

Dominick Lucas is her proud brother.

Grandparents are Dr. Robert T. and Elaine Hegglund of San Angelo and Roy Eugene (Bud) and Barbara Edwards of Floydada.

Great-grandparent is Lillie Maye Milton of Floydada.

### Mark Your Calendar For

## Old Fashioned Saturday

Sept. 9th

### Subscribe to the Floyd County Hesperian-Beacon

In County \$23.00  
Out of County \$25.00

## Floydada Senior Citizen News

### By Margarette Word

Everyone enjoyed having a holiday over Labor Day.

Most of all I'm sure everyone enjoyed the wonderful rain we have all been praying for. Everything looks so green and fresh. I enjoyed it so much.

Sue and James Lovell's grandson John Collins, a Texas Tech student at Lubbock recently spent the weekend visiting.

Genelle Breed's son Mike Breed and a friend Noni Fryfrier of Rockport spent Labor Day weekend visiting.

My son Greg Bond and his wife Mona and their children Bethany and Michael of Grandbury, came in Friday evening spending Labor Day weekend here in Floydada and Lubbock visiting Mona's family.

The Center had a great fundraiser bake sale that took place Saturday, September 2 at Lowes Pay N Save.

We do appreciate everyone who helped by working the booth, donating money and for all the wonderful cakes, pies, and all the other goodies that were provided for the sale. We sold out by 2:00 p.m., and we had lots of goodies to sell. We felt it was very successful and we truly appreciate all who took part. We thank Lowes Pay N Save for giving us space in their grocery store to have this bake sale.

We start lunch at the Center at 12:00 noon. If you are 60 years or older come join us. We are located at 301 E. Georgia. If you

plan on eating it helps us to know you will be there, so please call the Center at 983-2032. The more we have to eat and take part in games helps us to have a better Center.

Our sympathy to the family of Craig Gilly.

Our sympathy to Mary Alice Eaken on the loss of her brother Robert Montgomery.

Our sympathy to Ruth Hammonds on the loss of her sister-in-law Betty Gafford.

Thank you for remembering the Center when you need to make a memorial donation.

In memory of **Ruth Adams-Dixie Harris.**

In memory of **Jake Colston-Dixie Harris.**

In memory of **Craig Gilly-Carmen Starkey, Joe Starkey.**

Thought for the week - Every time you speak, your mind is on parade.

### Menu

**September 11-September 15**

**Mon:** Oven fried fish, corn, turnip greens, cornbread, pineapple gelatin

**Tues:** Polish sausage cabbage, black eyed peas, pickles, cornbread, pumpkin bars

**Wed:** Baked ham with pineapple, rice, mixed vegetables, wheat roll, golden congealed salad

**Thurs:** Beef stroganoff, noodles, broccoli, wheat roll, peach shortcake

**Fri:** Baked chicken with pineapple sauce, broccoli and cheese, tossed salad/1000 Island, rolls, lemon pie

## Lockney Senior Citizen's News

### By Gene Brotherton

Lunch at the Center costs \$3.50 for members and \$4.00 for nonmembers. Takeout meals start at 11:00 a.m. and we start serving at 11:30 a.m. Call 652-2745 by 9:30 a.m. if you would like to eat lunch at the Center. It is located on 118 W. College Street.

Tickets are still available for our lovely "Trip Around the World" king size quilt. They are \$1.00 each or 6 for \$5.00. You may buy them at the Center or from me. The quilt will be on display September 9, Old Fashion Saturday, at the Rotarian's booth. It will be raffled off 6:00 p.m. Thursday, September 14,

2006 during our pot luck supper. Don't miss your chance to win.

Claude and Wilma Brown had guests eat with them at the Center last week. They were: Wilma's niece and her husband Susie and Tom Nystrom; Wilma's brother and wife Norman and Annabelle Holcomb; and Wilma's sister, Sally Smoot. We enjoyed visiting with all of them.

### Menu

**Sept. 11 - Sept. 15**

**Mon:** Spaghetti

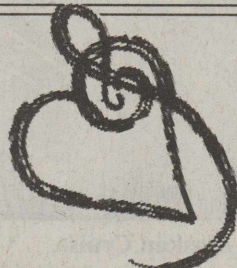
**Tues:** Beef tips and rice

**Wed:** Chicken fried steak

**Thurs:** Soft tacos

**Fri:** Meat loaf

## Celebrating Hearts in Harmony



### Shepherd's Meadow Assisted Living NATIONAL ASSISTED LIVING WEEK

September 10 - 16, 2006

Celebrated by Residents, Staff, Volunteers, and families of Assisted Living Communities Across the Nation  
**983-8177**

Come in during **Old Fashioned Saturday** for Old Fashioned Prices

### SIDEWALK SALE

Open 8 a.m. - 8 p.m. for Old Fashioned Saturday  
M-F 10AM-6PM Sat. 10AM-4PM  
www.heartsdesireonline.com  
652-2548 Fax 652-2546

### SUBSCRIBE TODAY! or RE-NEW!

**\$23 in County, \$25 out of County.**

(\$1 off for Seniors 65+) Send payment to:  
**HESPERIAN-BEACON**  
111 E. MISSOURI  
FLOYDADA, TX 79235

### We are proud to offer Circle (E) Candles.

Come see Stacie **983-2220** at Scott Gin 2 miles south on the Ralls Hwy.

## Farm Equipment INSURANCE

Tired of high insurance rates on your **Farm Equipment?**

Here are some examples of the rates Farm Bureau Insurance offers:

FARM MACHINERY RATES		
ITEMS	VALUE	PREMIUM
Pivots	\$40,000	\$236
Tractors	\$80,000	\$176
Strippers	\$115,000	\$794
Module Builders	\$20,000	\$44
Combines	\$140,000	\$966

Call Floyd County Farm Bureau We want to be your insurance agent.  
\*Rates are based on a \$1,000 deductible available.

**James Race- LUTCF, Agency Manager**  
**David True- LUTCF, Agent**  
**(806) 983-3777**  
101 South Wall  
Floydada, TX 79235

Auto • Home • Life  
**Helping You is what we do best.**

©2006 Farm Bureau Mutual Insurance Co.  
Trade Farm Bureau Underwriters  
Southern Farm Bureau Casualty Insurance Co.  
Southern Farm Bureau Life Insurance Co., Jackson, MS  
Farm Bureau County Mutual Insurance Company of Texas

# Longhorns fall to Slaton

By Coach Joe

The 2006 High School Football season got underway last Friday night and for the Lockney Longhorns that meant a road trip to Slaton to take on a very good Tiger eleven.

The preseason picks had Slaton picked to win their District over teams such as Idalou, Post and Denver City. The Longhorns have been placed to finish last in District 3-AA with Childress, Littlefield, Abernathy, Shallowater and Floydada.

Excitement was high for both teams and a great fan turnout filled both sides of the stands. Both teams played very well for the first game, however the "big play" was the downfall for the Lockney Longhorns. The defense played very hard and there were some big hits in the game but Slaton was able to turn four long touchdowns into a 27-0 game win.

The Longhorn coaches were very proud of the Lockney players as their effort was great all night long. The coaching staff is very optimistic as the young Longhorns showed improvement and played so hard. Of the 27 players that suited up Friday night 17 were playing in their very first varsity competition.

The game may prove costly however as two Longhorn players were sent to the sidelines with injuries. Adrian Luna went out with a knee injury in the first quarter, as did Dusty Morgan in the fourth quarter.

Our prayers and best wishes go out to these young men as they

are very important to the Longhorn team.

"The game in a nutshell"

LOCKNEY: 0 0 0 0 - 0

SLATON: 7 13 7 0 - 27

**First quarter:** Slaton's Garcia 45 yard run - Torres Pat, good.

**Second quarter:** Slaton's Garcia 63 yard run - Torres Pat, good; Slaton's Garcia 46 yard pass from Coronado; Torres Pat blocked by Lockney's Matt Prather.

**Third quarter:** Slaton's Hastling 78 yard run - Torres Pat, good.

	Lockney	Slaton
First Downs	7	10
Rushing	42-106	29-264
Passing	0	93
Passes	0-4-2	4-6-0
Punts	6-40	3-21
Penalties	4-40	4-50

Lockney's Individual Stats: Bryan Cooper, 6 carries - 22 yards; Adrian Luna, 5 carries - 20 yards; Wes Davis, 13 carries - 17 yards; Asa Cole, 8 carries - 16 yards; Jonathan Coleman, 4 carries - 16 yards; Zach Gonzales, 5 carries - 14 yards; Angel Cruz, 1 carry - 1 yard.

The Junior Varsity played Thursday night against Slaton's sophomores and juniors and played very strong in a 15-16 loss. The Horns' JV will travel to Sundown this Thursday for a 6:00 p.m. contest.

The Horns' next varsity contest is this Friday night at home against a very good Sundown team.

Come out and support your young men and enjoy an evening of great High School football.



## Longhorn band to conduct March-a-thon

The Lockney Longhorn Band will have their 2006 March-a-thon in conjunction with "Old-Fashion Saturday" on Saturday, September 9th.

The march-a-thon will begin at 8:00am at the High School parking lot and end downtown at 12:00 noon with a concert for the community.

"The Longhorn Band will march 5 miles through the streets of Lockney, trying to add a little spirit to this fun-filled day," said Band Director Rob Lovett.

Citizens are encouraged to make a pledge to any band member on a per mile basis. Pledges will be collected the week of Sept. 11-15.

Citizens may march all or part of the way with the Longhorn Band as they march our way through Lockney.

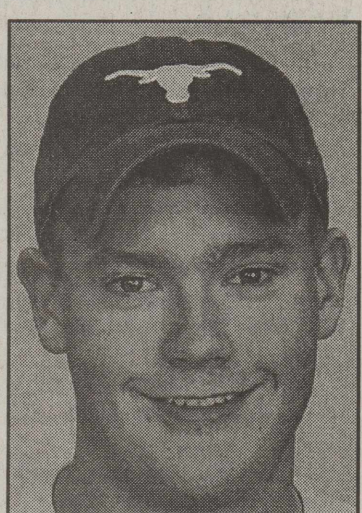
"We will be stopping along the way to present several "mini-concerts" along the route," said Lovett.

Band members will once again present music for the residents at the Lockney Care Center.

The final performance stop will be in downtown Lockney as part of Old Fashioned Saturday activities.

"We hope that many Lockney citizens will come out in their front yards and enjoy our march-a-thon," said Lovett.

## COLLEGE NEWS



**TY YOUNG**--Lockney native, Ty Young, has received the Dora E. Cunningham Scholarship to attend Western Texas College in Snyder, TX. Ty is the son of Ted and Kathy Young and is a Freshman at WTC majoring in Welding. Ty is also on the meats judging team. The Dora E. Cunningham Scholarship is given to individuals in the top 20 percent of their graduating high school class that wish to attend WTC.

## LOCKNEY SCHOOL MENU

- September 11-September 15 Monday**  
Breakfast-Donut or cereal, graham crackers, juice, milk  
Lunch-Pig in the blanket or tuna sandwich, tossed salad, macaroni and cheese, fruit, milk
- Tuesday**  
Breakfast-Sausage biscuit or cereal, toast, juice, milk  
Lunch-Chicken nuggets or corn dog, potatoes, green peas, fruit, roll, milk
- Wednesday**  
Breakfast-Pancakes or cereal, toast, juice, milk  
Lunch-Nacho grande or grilled cheese, corn, tossed salad, fruit, milk
- Thursday**  
Breakfast-Scrambled eggs or cereal, toast, juice, milk  
Lunch-chicken spaghetti or steak fingers, tossed salad, green beans, fruit, hot rolls, milk
- Friday**  
Breakfast-Cinnamon roll or cereal, toast, juice, milk  
Lunch-Hamburger or PBJ sandwich, salad, potato rounds, fruit, milk

## Lockney ISD campuses earn "Recognized" status

Lockney Elementary School and Lockney Jr. High both achieved "Recognized" status for the 2005-2006 school year. The Texas Education Agency rates schools annually according to how well students do on state mandated tests. The Texas Assessment of Knowledge and Skills (TAKS) is given to all students in grades 3 - 11. Students are tested in math, reading, writing, science, and social studies.

In Lockney Elementary School, 100 percent of the students passed 3<sup>rd</sup> and 5<sup>th</sup> grade reading and 3<sup>rd</sup> grade math. Scores were above 80 percent in all tests taken. Other scores were 5<sup>th</sup> grade math - 97%, 5<sup>th</sup> grade science - 81%, 4<sup>th</sup> grade math - 90%, and 4<sup>th</sup> grade reading and

writing - 83%. Lockney Jr. High also bolstered high scores. The highest of those scores were in 6<sup>th</sup> grade reading (95%), 7<sup>th</sup> grade writing (94%), and 8<sup>th</sup> grade social studies (90%). The other subjects tested in jr. high were 6<sup>th</sup> grade math (83%), 7<sup>th</sup> grade reading (83%), 7<sup>th</sup> grade math (72%), 8<sup>th</sup> grade reading (75%), 8<sup>th</sup> grade math (77%), and 8<sup>th</sup> grade science (66%).

Lockney ISD Curriculum Director and Test Coordinator, Marva Rasco, said, "We are extremely pleased with the progress our students are making. These test scores prove that our teachers and students are working hard to be successful."

### Longhorn Fans!

**Let's turn out Friday night to support the Longhorns as they take on Sundown**

**At Home Game Time**  
7:30

## Ramirez, Quebe and Ramirez win 1st week of football contest

Martin Ramirez, Karen Quebe and Francisco Ramirez are winners in the first week of the Hesperian-Beacon football contest.

The game between Canyon Randall and Amarillo High was rained out and was not counted in the contest. Due to our error we did not count the games between Shallowater and Wichita Falls High and Shallowater and Brownfield as Shallowater was listed in two separate games by mistake.

Ramirez of Floydada will receive the first place check of \$25. He missed only 4 games in this week's contest.

Karen Quebe of Lockney will receive a check for \$15.00 for second place as she missed 5 games.

There were 4 entries that missed 6 games. They were Francisco Ramirez and Imelda Resendiz, both of Floydada and Alvin Hayes and Konner Ellison, both of Lockney. To determine third place we used the first tie-breaker game between Lockney and Slaton. The final total score

of that game was 27 (Slaton 27 - Lockney 0).

Ramirez picked Slaton to win by a total score of 38 (11 points off), Imelda Resendiz picked Lockney to win by a total score of 41 (14 points off), Hayes chose Slaton to win by a total score of 42 (15 points off) and Ellison didn't circle the winner in the tie-breaker game so he was disqualified.

Ramirez of Floydada will be receiving the third place check of \$10.

Honorable Mention goes to those missing 7 games. They were Gene Lowrance and Franklin Harris, both of Floydada; W. L. Carthel and Rickey Ascencio, both of Lockney and Keith Marricle of Floydada-Muncy-Lockney. We had a total of 44 entries turned in. Please be sure and circle the winning team in each game and in the tie-breaker games. If these are not circled, it could keep you from winning the contest.

Be sure and thank all the businesses for sponsoring this contest.

Praise God  
for the rain

**NAPA Auto Parts**  
Floydada  
Delivery to  
Floydada & Lockney  
Everyday  
Call 806-983-6272

**Win \$100**  
**Enter the Hesperian-Beacon Photo Contest**

**THIS WEEK'S LOCKNEY BAND BOOSTERS**

Lockney Band Boosters will hold a meeting September 12th in the band hall at 6:30 p.m.

**LONGHORN BOOSTER CLUB MEETING**

The Lockney Athletic Booster Club will hold a meeting on Monday, September 11th at 7:00 p.m. in the Longhorn Gym. LHS Cheerleaders will be serving a meal at 6:30 p.m. The cost is \$5.00.

**LOCKNEY HIGH SCHOOL BAND**

The Lockney High School Band will be performing their annual March-a-thon on September 9th from 8-12. They will perform for the community around noon for Old Fashioned Saturday. Please come out and let these students know how proud of them you are. If you hear them in your neighborhood go out and wave! 5 miles is a long way.

**Medicare Supplement Insurance... The State Farm Way!**

Look to your Good Neighbor agent for help in choosing a Medicare Supplement Insurance plan that is right for you. Call me for choices in health care protection.

Nick W Long, Agent  
201 W California  
Floydada, TX 79235  
Bus: 806-983-3441  
nick.long.cgr0@statefarm.com

**Keep Up On the Coverage of Floydada and Lockney's School Years--Your Local Government--and Your Community With a Subscription to The Floyd County Hesperian-Beacon. For Only \$23.00 (In County) and \$25.00 (Out of County), the Paper Will Be Delivered to Your Door Each Week.**



**KATIE HINTON** in Scarborough, Maine. She is standing in front of a moose made of 1,700 pounds of milk chocolate. Now That's a Chocolate Moose! Katie and her brother, Matthew, got to tour Maine while her mother, Sharon Hinton, of Floydada, attended St. Joseph's College in Standish, Maine working towards her Master's Degree.

What will happen if you die without a Will?

**Laney & Stokes, Lawyers**  
293-2618  
www.laneystokes.com

**THE FLOYD COUNTY HESPERIAN-BEACON**

Published weekly each Thursday at 111 E. Missouri Street, Floydada, TX 79235. Periodical postage paid at Floydada, Texas 79235

**POSTMASTER:** Send change of address to: The Floyd County Hesperian-Beacon, 111 E. Missouri Street, Floydada, TX 79235

Subscriptions:  
\$25.00 -- Out of county  
\$23.00 -- In County  
website:hesperianbeacon.com  
(806) 983-3737

**AMA TECHTEL**

Satisfy your need for speed!

AMA TECHTEL brings you high-speed fixed wireless Internet access. With speeds up to 50 times faster than dial-up and access that's always on, you'll connect to the world faster than ever.

AMA TECHTEL is committed to providing the latest technology and the best customer service, so no matter who you're connecting with, you can count on us to get you there.

Now you can have the fastest, most reliable Internet service available. So act fast, contact your local distributor today!

**ASSITER INSURANCE**  
120 W. CALIFORNIA • 983-2511

**ACE HARDWARE**  
1101 S. RALLS HIGHWAY • 983-3000

connect

# 'Winds scratch and claw with 'Cats

**By Nick Long**  
Rusty Purser's debut as Floydada's Head Football Coach sure had its moments of excitement on September 1<sup>st</sup>, but it ended in disappointment in a hard fought 25-15 loss to the Idalou Wildcats at Wester Field.

The young coach, who just turned age 30 the week of his first game as a head coach, inspired the Whirlwinds to a gutsy performance by leading nearly 40 of the 48-minutes against the highly favored Wildcats who were coming off a 10-3 campaign in 2005. "I am disappointed that we got beat", said Purser, "but I could not ask any more from my team. I am so proud of how hard they played. We just did not get it done."

Fans witnessed signs of a tough defensive effort by the Whirlwinds early in the game. Idalou took the opening kickoff and executed 8-plays before Floydada put up the initial road-block of the contest at its 35 yard line causing the Wildcats to punt. The Whirlwinds were nailed deep in their territory at the 10-yard line. Then the first burst of excitement followed on a 90-yard touchdown gallop by sophomore tailback Aarrhon Flores on a draw play. It was Floydada's first play of the season in Purser's new "spread" offense. Senior Brandon Rainwater added the extra point kick. At the 7:30 mark of the first quarter Wester Field was stunned to see Floydada leading 7-0.

The rest of the first half saw Floydada's defense continually bending, but not breaking until the final play of the second quarter. Idalou senior Josh Stephenson flew over his offensive line and into the end zone on a one yard plunge with no time remaining on the clock. The Whirlwinds blocked the extra point kick and Floydada was holding on to a hard earned 7-6 lead as the two teams headed to the locker room.

In between Flores's electrifying run and Stephenson's plunge, Idalou had drives of 6 and 14-plays all stopped in Whirlwind territory. The latter possession was stopped at Floydada's 16-yard line on downs. The Wildcats scoring drive that ended the first half was 10-plays. By time of possession there is no way Floydada should have led at intermission since Idalou held a 36-9 advantage in the number of offensive snaps, but the Whirlwinds did lead because of the intensity on defense.

The third quarter was a continuation of the first half. Idalou mounted two more sustained drives. The first possession started at midfield after a Floydada punt. The Wildcats again were stopped in their tracks at Floydada's 24-yard line after 8-plays. The Whirlwinds made only their 3<sup>rd</sup> first down of the game on the next series before

having to punt it back. Idalou again had great field position by starting at their 45. On the first play of the 4<sup>th</sup> quarter the Wildcats took their first lead on Jared Dewbre's 34-yard touchdown pass to Tanner Cook. The extra point pass failed and Idalou was in front 12-7 with 11:48 remaining in the game.

The Idalou lead lasted only 17-seconds, because Floydada's Flores got his second 90 yard score, this time on a kick off return. Wester Field was near bedlam on Floydada's side, and shocked on Idalou's side. Junior Quarterback Magdiel "Pickles" Alvarado ran in the extra point to give Floydada a 15-12 advantage. Idalou answered with yet another long 8-play 66 yard drive that ended with Stephenson scoring his 2<sup>nd</sup> touchdown on a 10-yard run. Tyler Speck made the extra point kick and Idalou regained the lead 19-15 with 6:39 remaining.

The game had not been marred with a turnover until Alvarado's pass was intercepted at Floydada's 29-yard line. The next play, Floydada junior Eladio Saldona was injured and left the stadium by ambulance due to a grade one concussion. After a long delay, Idalou scored on Dewbre's 20-yard pass to Angelo Rodriguez. The Wildcats missed the PAT and had stretched its lead to 25-15 with 5:33 left. Floydada mounted a 7-play drive that ended on downs at Idalou's 24, and the Wildcats then took a knee on the games final two plays.

"The interception and the injury was the turning point," said Purser. "We were in it, and had a chance to win. We experienced an untimely let-up." The coach's voice had a mixture of disappointment, but still proud of his young and undersized team. "Did you see how much bigger they were than us when we shook hands at midfield after that great game?"

We did notice coach, and that's why we were all proud of what we saw in the Whirlwinds season opening loss of 25-15 to a reputable foe - the Idalou Wildcats.

FLOYDADA	IDALOU
First Downs 8	21
Rushing 14-129	49-144
Passing 7-12-51	9-17-184
Total Yards 180	328
No. of plays 26	66
Interceptions Thrown 2	0
Fumbles lost 0	0
Punts - avg 4-28	3-31
Penalties 6-50	4-25

**Scoring:**  
Idalou: 0 6 0 19 - 25  
Floydada: 7 0 0 8 - 15

**First Quarter:**  
F - (7:30) Aarrhon Flores 90 run (Brandon Rainwater kick) Flo. 7-0

**Second Quarter:**  
I - (:00) Josh Stephenson 1 run (kick blocked) Flo 7-6

**Third Quarter:**  
No scoring

**Fourth Quarter:**  
I - (11:48) Jared Dewbre 34 pass to Tanner Cook (pass failed) Ida. 12-7

F - (11:31) Flores 90 kickoff return (Magdiel Alvarado run) Flo. 15-12

I - (6:39) Stephenson 10 run (Tyler Speck kick) Ida. 19-15

I - (5:33) Dewbre 20 pass to Angelo Rodriguez (kick failed) Ida. 25-15

Record: Floydada 0-1; Idalou 1-0

Next week: Floydada hosts Slaton



A WHIRLWIND RUSHING FOR A TOUCHDOWN last Friday night against Idalou. Whirlwind Aarrhon Flores (5) is shown heading for one of his two 90 yard touchdowns. Floydada lost a hard fought game to Idalou 25-15. The Whirlwinds play Slaton here this Friday night. Photo by Jim Covington



2006 GRAND CHAMPION MEAT GOAT-Kortney Williams of Floydada showed the Grand Champion Goat of the West Texas Meat Goat Classic in Odessa on August 5, 2006. Kortney is the daughter of Larry & Kellie Williams of Floydada.

Courtesy Photo

Keep Up on What is Happening in Your Schools  
Subscribe to the Floyd County  
Hesperian-Beacon

## FLOYDADA SCHOOL MENU

September 11-September 15  
Monday

**Breakfast**-Scrambled eggs, toast and jelly or cereal and graham crackers, juice, milk  
**Lunch**-Frito Pie, salad, beans, fruit, milk

Tuesday

**Breakfast**-Breakfast pizza or cereal and graham crackers, juice, milk  
**Lunch**-Lasagna, peas, baby carrots, bread sticks, Jello, milk

Wednesday

**Breakfast**-Pancake & Sausage on a Stick, milk

**Lunch**-Pigs in a blanket, corn, salad, fruit, milk

Thursday

**Breakfast**-English muffin with egg, cheese, sausage or cereal and graham crackers, juice, milk  
**Lunch**-Enchiladas with meat sauce, beans, salad, cornbread, fruit, milk

Friday

**Breakfast**-Cinnamon roll, fruit or cereal and graham crackers, juice, milk  
**Lunch**- "Whirlwind Sandwich", (Chicken Fried Steak Sandwich) fries, salad, assorted fruit, milk

## Floydada Rotary Club's Annual Barbeque Brisket Dinner

**When:** September 8, 2006  
Immediately before the  
Floydada-Slaton Football Game  
**Time:** 5:00 PM to 7:30 PM  
**Where:** Floydada Junior High Cafeteria  
**Menu:** Barbeque Brisket & Sausage, Beans Potato Salad, Coleslaw, Condiments, Homemade Desserts, Iced Tea  
**Price:** Adults - \$6.00 Children Under 10 - \$4.00 Eat in or Takeout Pickup at Back Door

Tickets available in advance from all Rotary members or buy your tickets at the door.

Give your cook the night off and support Rotary!

Proceeds used to fund scholarship & other Rotary Projects

## THIS WEEK'S

### WHIRLWIND BOOSTER CLUB MEETING

The Whirlwind Booster Club will hold a meeting at 7:00 p.m. Tuesday, September 12th in the FHS Library. Game film will be shown and there will be a short business meeting.

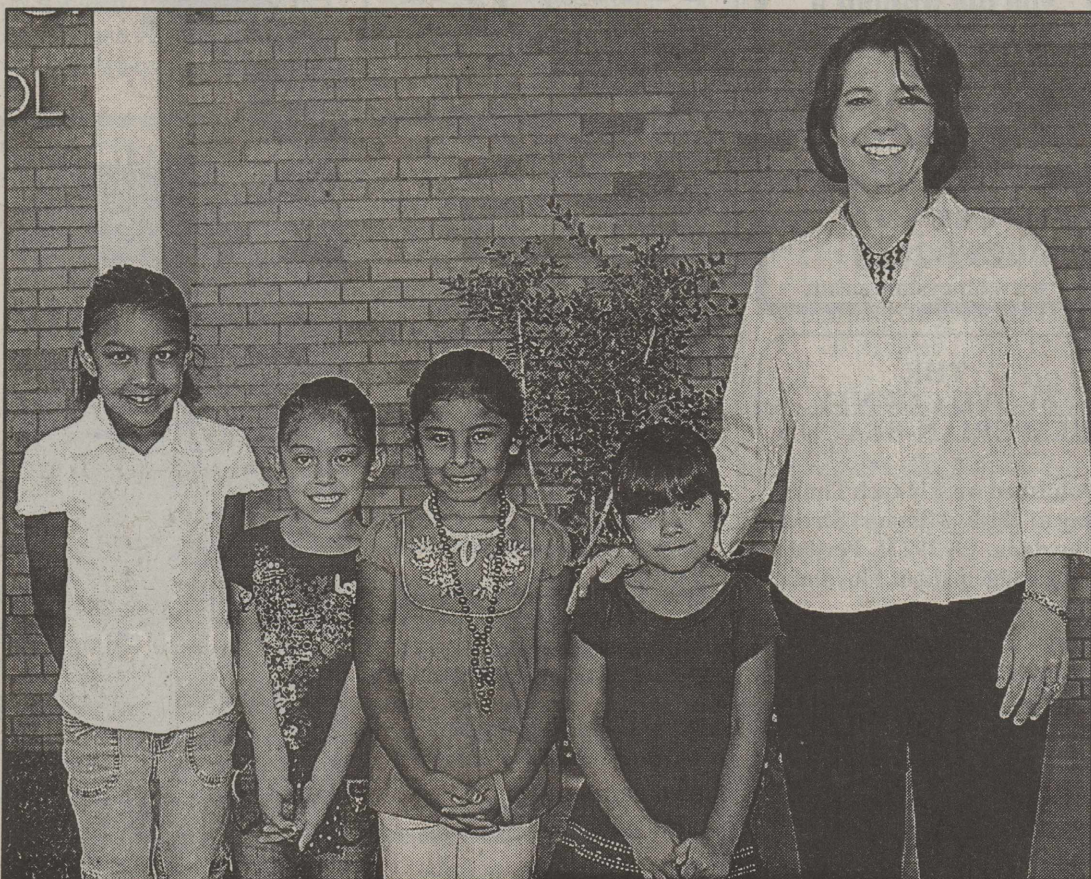
**Go Winds!**

**Everyone is encouraged to support the Whirlwinds as they face the Slaton Tigers Friday night**

"Tattoo The Tigers"  
All school Pep-Rally  
Friday morning 8 a.m.  
Whirlwind Gym

**Friday, Sept 8th at Wester Field 7:30 Kick Off**

**Be Wise-ADVERTISE!**



DUNCAN STUDENTS AND EDUCATOR OF THE WEEK WERE: (L-R) Alyssa Vega, 2B; Lee Jay Castaneda, 1B; Haley Sanchez, K2; Bresa Gonzales, PK2; and Educator Regina Orr.

The NEW CellTone! Great Deals Going On!  
All New Management & Staff!  
Hurry In! Customer Appreciation Specials End Soon

2 National Freedom Lines for \$75!  
1000 Anytime Minutes Unlimited  
Mobile to Mobile Unlimited Nights and Weekends And start your nights at 7 p.m. for FREE!

Motorola V262 RAZR  
**FREE 49.99**  
after 100.00 mail-in rebate and 2-year agreement



**CellTone Reaction WIRELESS**

3316 Olton Road Palinviev  
Right next to the Cotton Patch on 5th Street!  
806-296-0009

FREE Car Charger With New Activation!  
\*offer expires 9/30/06

25% OFF any in-stock accessory!!!  
\*offer expires 9/30/06

\$25.00 OFF your bill when you refer your friends and family to activate in one of our stores. Up to \$75.00 per month.

Limited time offer at participating locations. Requires service agreement. Other restrictions apply. See store for complete details.

## Texas weather, cattle and crop report

COLLEGE STATION-- While certain regions have received some rain, drought conditions prevailed throughout most of the state, according to Texas Cooperative Extension reports.

"We received rain in most of our 24 counties, ranging from 0.5 inch to 3.5 inches," said Galen Chandler, Extension district administrator for the Rolling Plains. "The moisture combined with the cooler weather gave farmers and ranchers some relief. The rains will help with preparations for sowing wheat this fall, plus it has begun to green up some of the rangeland grasses throughout the Rolling Plains, which is helping area livestock producers."

While last week's rains also benefitted the Panhandle, South Plains and North regions, the drought continued in the western, southern and central parts areas of the state.

The unusually hot weather has further aggravated the dry spell, said Jose Pena, Extension economist at the Texas A&M University System's Agricultural Research and Extension Center in Uvalde.

"By the end of the past week, the Southwest district had about 20 days of 100-degree-plus heat in the month of August," Pena said. "This record-breaking heat has made crop and livestock production even more challenging for area farmers and ranchers."

Corn and sorghum harvest in that region are now complete, but yields have been disappointing, he said.

"Production is down 70 to 80 percent from last year," he said. "There was very little produced on our dryland fields, and the yields from irrigated fields were reduced. Also, the heat from earlier in the year, especially April and May, may have had an impact on corn quality, so we're monitoring that situation."

On the positive side, cotton is doing well at this time, he added.

"Last year was a record-breaking year for cotton, he said. "And this year, because cotton is a good hot-weather crop, we expect it to do well again, but not to produce the kind of yields as last year."

The drought and heat have also made it economically feasible for many landowners in that region to use grass and other forage materials to support wildlife for hunting and other recreational uses versus using it for livestock production, he said.

Area reports from Extension follow:

**PANHANDLE:** Temperatures were below average at the start of the week, but were above normal by week's end. The region finally received some much-needed rain. Rain from 1 to 3 inches was reported in many areas, with a few isolated areas receiving 4 to 6 inches. Soil moisture was rated from surplus to very short, but most reports showed it to be adequate to short. Some early planted corn is fully mature, while most of the crop is in the dent stage. Silage harvest continues. Cotton is reported mostly fair to good, and some bolls have begun to open. A few bollworm problems were reported. Sorghum continues to head, and some fields are turning color.

Head worms are a problem in a few fields. Peanuts are rated mostly fair to good with a few fields rated excellent. No pest problems reported. Soybeans are rated mostly fair to good with no pest problems. Wheat planting is temporarily halted by recent rains. Rains have improved range conditions and reduced the fire danger threat. Cattle are rated in fair to good condition.

**SOUTH PLAINS:** Rainfall

received this week across most of the region ranged from 0.7 to 4 inches. Soil moisture was short. Cotton is in poor to fair condition. Dryland cotton has reached cutout, and irrigation wells are beginning to be shut off on irrigated cotton. Corn has dried down, and some fields have been harvested. Peanuts are in fair to good condition and will need some hot, dry weather to finish out. Dryland sorghum probably won't be harvested and irrigated sorghum has reached the heading stage.

Pumpkins are progressing well, and harvest will begin within the next week. Pastures and ranges are in very poor to poor condition. Cattle are in fair to good condition and supplemental feeding continues.

**ROLLING PLAINS:** Counties across the region have recently received scattered rain from a trace amount up to 6 inches. Most summer crops are too far gone to recover, but this will help pastures and improve the chance for fall and winter wheat pasture. Temperatures were in the 100s F, but were moderated by recent rain showers. Livestock are maintaining condition but some early culling and shipping of yearlings continues.

**NORTH:** Soil moisture ranges from short to very short. Scattered showers provided a little relief and eased the triple-digit temperatures, but there was still great need of moisture. Corn and grain sorghum have been harvested or baled. The yield was far below average. Most soybeans were baled for hay. Farmers are hoping for more rain as they prepare for the planting of winter wheat, oats and winter annual pastures. Pastures are deteriorating fast with the heat and lack of rainfall. Since most pastures are burned up, hay is expensive, providing it can even be found. Pastures in some areas are already dormant for the year. Some trees are dying because of the extreme heat. Cattle markets are being flooded as cattlemen continue to reduce herd numbers, including selling light-weight calves. Stock ponds continue to shrink.

**EAST:** Some counties received scattered showers this past week; most did not. Amounts ranged from trace to about 1 inch. Conditions were very dry and the burn ban continued. Cattle were holding their own and remained in fair to good body condition. For many stock ponds, water is becoming an issue. Hay harvest has slowed with dry conditions as compared to two weeks ago, with supplies at 20 percent of normal. Producers are moving cattle due to grass shortages. The quality of cows offered is getting worse as the drought continues. Producers continue to reduce numbers because of poor pasture conditions and the high price of hay. Dryland cotton is poor at best, while irrigated cotton is holding on. Yields are expected to be lower and input cost higher. Pecan production was off due to lack of water and high heat. Pastures are burned up, and hay is expensive, provided it can be found. Upshur County filed for disaster relief, while some parts of Wood County got a little rain. Hay is in very short supply with producers feeding hay that was supposed to be used in the winter.

**FAR WEST:** Soil moisture was very short to adequate. El Paso County is reporting a surplus of moisture due to all the recent rains received. Range and pasture conditions range from very poor to fair conditions with El Paso County reporting excellent conditions. Cotton is in very poor to good condition. Cattle

prices continue to decline. Livestock producers are stretching their hay supply while hoping for rain so they might get some fall and winter grazing vegetation. Due to the recent rains in El Paso County, cotton quality and yield are expected to suffer.

**WEST CENTRAL:** Extremely hot, dry conditions continued this week with highs in the triple digits. A few counties have reported scattered rain. Soil conditions for planting crops is very poor. Most small grain fields are being readied for sowing, but must wait for moisture. Most hay fields have been grazed, cut down or plowed under. Cotton crops continue to suffer from the severe heat. Dryland cotton is a total loss while irrigated cotton is doing very well. Yields look to be very low. Some corn crops were green chopped and the majority of milo is a loss. Soil insects and armyworms are becoming a problem. Weevil problems are expected in pecans. Livestock producers are supplementally feeding and hauling water. Producers continue selling off their livestock due to drought conditions. Cattle prices remain steady.

**CENTRAL:** Severe drought conditions prevail. Ranchers are feeding hay, and many are beginning to liquidate cattle. Corn harvest is winding down, and cotton harvest should be in full swing next week. Pecan drop is very short, and those with yield potential are seeing many of those trees shed pecans due to high heat and stress.

**SOUTHEAST:** Everything is burning up or has been gone for awhile. Cows and calves are being culled very heavily now due to limited grazing and the cost to keep and feed them all winter. The pecan crop is falling due to shuckworm damage. All available corn and milo stubble is being baled up, as are johnsongrass patches. Prussic acid is a problem, and will be a major problem when it rains. Some Asian Soybean Rust was found in the county this past week and some fields had varying degrees of downy mildew, as well as stink bugs. Livestock are doing well with no report of any large-scale disease or pests. Producers were able to get hay cut and baled. Cattle are doing very well as there is adequate forage material for them to eat.

**SOUTHWEST:** While the northern part of the district received sporadic rain, the region remained almost completely dry. This has been the driest year on record with only 8.6 inches of rain, compared to a long-term average of 26.7 inches for the same period. Abnormally hot temperatures and high southerly winds aggravated the dry spell. August is ending as the hottest month on record, and the winds are causing dust storms. The cotton harvest has peaked and started to wind down. While yields are excellent from irrigated fields with significant water, cotton production this season is down about 70 percent from last year. Ranchers are concerned with road fires and the rate of wildlife survivability as a result of dry stock tanks. There was almost no forage left.

**COASTAL BEND:** Nothing reported.

**SOUTH:** Hot and dry soil moisture conditions continue throughout most of the region. Some northern parts of the region received scattered showers, which slightly improved range conditions. Hay bailing continued in improved pastures, but has begun to slow down in western areas due to excessive heat and dry forage. Preparations for fall vegetable crops are under way. Cotton harvesting continued in some parts of the district.



**DISASTER PREPAREDNESS WEEK--** Judge Bill Harding signing a proclamation declaring September 10 - 16, 2006 as Floyd County's "Disaster Preparedness Week." Texas Cooperative Extension supports and is a member of the nationwide Disaster Education Network. Also pictured are: (standing, l-r) Floyd County Extension Agents, J. D. Ragland and Melissa Long and Floydada City Manager, Gary Brown. Preston Belt serves as the Emergency Management Coordinator for Lockney as well as Floyd County and Carroll Sims serves as the coordinator for Floydada.

## Texas makes wind turbine bid

\$80 billion international market for turbines at stake

Jerry Patterson, Commissioner of the Texas General Land Office, staked a claim for the future of wind power and announced a Texas bid for the proposed U.S. Department of Energy large-scale wind turbine research and development facility.

"The race for wind energy is like a modern day space race," Patterson said. "In Texas, our program is go for launch. We're charging ahead to bring a large-scale turbine testing facility to the Texas coast."

Texas has brought together a coalition of its best academic minds, industry leaders and public servants to focus on this bid, which will be submitted to the Department of Energy by the University of Houston. Austin-based Good Company Associates is coordinating the coalitions efforts.

Patterson, speaking on behalf of the coalition, explained that Texas best fits the Department of Energy requirements for the new research and testing facility. "This test facility will be a magnet for research and manufacturing," Patterson said. "It will establish Texas as a worldwide leader in wind power for the next 100 years. It is a vital race. It is a race Texas will win."

Wind is the fastest growing source of energy in the world today. And the potential for coastal wind power is greater than the nation's entire capacity to generate electricity, according to researchers at the University of Houston. No coastal state has

greater wind energy potential than Texas.

But research into the huge turbines that will power the future just can't be done at the Department of Energy's National Renewable Energy Laboratory in Colorado. The Colorado facility is unable to test blades 70 meters long. The next generation blades are expected to grow even larger. Without a Texas-sized facility, the nation will be at a disadvantage in the projected \$80 billion annual international business in designing and building turbines.

Texas has the deep-water ports, strong gulf winds, industrial know-how and political will to make our coast the perfect site for the Department of Energy's new blade-testing facility, Patterson said. The only hard part here will be deciding where along the coast to place it.

A competitive site-selection process is ongoing along the Texas coast.

The Texas coalition seeking the testing facility is being organized by the University of Houston's Cullen College of Engineering, and includes the University of Texas at Austin, Texas Tech University, West Texas A&M University, the Houston Advanced Research Center, the State Energy Conservation Office, Lt. Governor David Dewhurst, the Texas Workforce Commission, Governor Rick Perry's Emerging Technology Fund and the Wind Coalition.

"Texas is now the largest producer of wind energy in the

United States and is on the path to be the U.S. leader in offshore wind development," said Ray Flumerfelt, Dean of the University of Houston's Cullen College of Engineering. "We believe we will submit a formidable proposal to the Department of Energy that will ultimately result in a world-class facility being built in Texas as soon as 2008."

The potential for offshore wind power in Texas is enormous. Texas could generate as much as 10 gigawatts of offshore wind energy, according to resource assessments conducted by the University of Houston. The nation's cumulative wind power capacity is currently 9,971 megawatts.

In May, the Department of Energy announced it is seeking partners to build a new facility capable of testing blades up to 70 meters long.

Texas which has already signed two offshore wind leases is a natural fit for such a Texas-sized research and development effort, Patterson said.

Patterson admitted that the groups goals are ambitious, but added that failure would mean ceding a potential \$80 billion business in designing and building wind turbines to the Europeans.

"It ain't bragging if it's true," Patterson said. "Texas leads the nation in the production of wind energy today, and will lead the world in the production of wind turbines tomorrow. No lesser state can compete."

**FLOYD COUNTY**

**FARM NEWS**

**PRODUCERS COOPERATIVE ELEVATOR**

983-2821 - Floydada  
983-3770 - Dougherty

**FIRST NATIONAL BANK OF FLOYDADA**

Floydada 983-3717  
Member F.D.I.C.

**FLOYDADA COOPERATIVE GINS, INC.**

Floydada 983-2884

**FLOYD COUNTY AG TOUR**  
TUESDAY, SEPTEMBER 19, 2006  
Tour Sponsored by: Floyd County Ag. Committee, Texas Cooperative Extension & Texas Alliance for Water Conservation

**REGISTRATION: 8:00 - 8:15 a.m.**  
Floyd County Unity Center  
Muncy  
(US Hwy. 70 approx. 6 miles West of Floydada or 4 miles East of Lockney)

**TOUR AGENDA**

8:20 Load Buses & Leave For Tour  
9:00 - 9:45 **TOUR STOP 1: Randy Bennett Farm**  
(from Lockney go 7 miles west on Hwy 70, at County Road DD go south 2 miles)  
*Site Topics: Irrigated Six Cell Cow/Calf Grazing System*  
Site Speakers: Randy Bennett, Producer  
Dr. Ted McCollum, TCE Beef Cattle Specialist  
Dr. Vivien Allen, Texas Tech University

9:50 - 10:35 **TOUR STOP 2: Lanney Bennett Farm**  
(turnrow south of Tour Stop 1)  
*Site Topics: Irrigated Cotton on 20" Centers view Broadcast Harvest Header*  
Site Speakers: Lanny Bennett, Producer  
Dr. Randy Boman, TCE Agronomist - TCE Cotton Specialist

10:40 - 11:25 **TOUR STOP 3: Dan Smith Farm**  
(turnrow east of Tour Stop 2)  
*Site Topics: Forage Sorghum & Corn Silage on 20" Centers; Tractor GPS Guidance Demonstration; view Weather Station*  
Site Speakers: Dan Smith, Producer  
Dr. Calvin Trostle, TCE Agronomist  
Steve Johnson, Contracts with Legacy Dairy  
Dr. Dana Porter, TCA Ag Engineer

12 NOON - LUNCH & Award Presentations  
1:30 - 2:30 Floydada & Lockney 3rd thru 5th Grade Student Ag Program  
3 CEU's PROVIDED

### Cotton Market Weekly A service provided by Plains Cotton Cooperative Association

After a week of mostly lower trading, New York cotton futures firmed Thursday on a late short-covering rally coupled with concerns that heavy rains in North Carolina and Virginia could damage crops.

Concerns over a strengthening Tropical Storm Ernesto, which some thought would be upgraded to a hurricane, forced some traders to cover short positions and prices rallied into the closing bell, according to one analyst.

Tropical Storm Ernesto came ashore in southern Florida Tuesday evening and moved slowly north into the Carolinas. The weakening storm poured torrential rain across North Carolina

and Virginia on Friday.

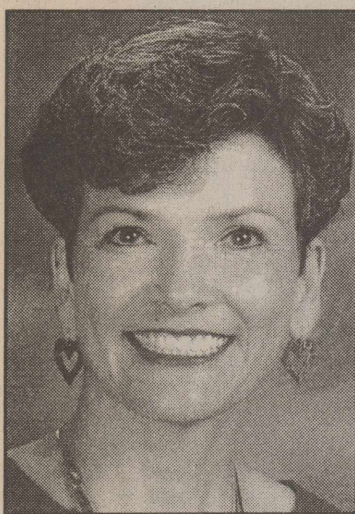
Even in a state that has seen widespread drought this summer, many in North Carolina fear the rain might be too much of a good thing. A separate storm system already had dropped as much as eight inches of rain on parts of central and eastern North Carolina on Wednesday.

"Ernesto's track into North Carolina and Virginia put some of the storm's heaviest rains in these states, where a respective 15 percent and 30 percent of cotton bolls already are open," one trader said. "We'll just have to wait until things dry out to see how much damage was done to

the crop."

Meanwhile, Thursday's trading began on a somewhat bearish note due to the release of a disappointing weekly export report from USDA. Total shipments for the week ended August 24 were only 88,800 bales, far below most trade expectations. The figure was 56 percent less than the previous week and 79 percent less than the four-week average. Primary destinations were Mexico, China, and Indonesia. At 64,000 bales, net export sales of U.S. cotton were 30 percent less than the week before. Turkey, Mexico, South Korea and Hong Kong were major buyers.

# Obituaries



### TRUDY ANDERSON

Trudy Jane Jarrett Anderson, a woman of faith, departed earthly life on September 4<sup>th</sup> at her home in Fredericksburg, Texas. She was 57 years of age. Trudy was a beautiful and genuinely sincere woman who strove to see the bright side. She was as kind and generous to strangers as she was to friends and family.

Trudy gracefully fought cancer for almost three years and through her courageous battle, which included experimental studies and fund raising, made a real difference for those who follow her in a similar fight.

Trudy was born to Charles (Bob) and Dorothy Jarrett in Lockney, Texas in 1948 where she was raised and attended school before completing her Bachelors degree in Education at West Texas State University. She met and married Charles Thomas Anderson while attending WTSU. Their love was immediate and lasting, producing three fine sons, Charles Jarrett Anderson, James Mason Anderson and John Thomas Anderson.

Trudy taught for many years in Lamesa where she made an indelible impression on the lives of many, including co-workers, administrators, parents, and especially her students. In recent years, she taught in Comfort and Fredericksburg. Trudy was a dedicated educator and a lover of children. In honor of her many years of teaching, friends created an endowed scholarship in her name to be given every year to deserving high school seniors from Fredericksburg and Lamesa.

Trudy leaves her beloved husband, Tom, and son, Jarrett, with his wife, Tracy, and grandsons Mason and Clayton Anderson of Austin and son, John, with his wife, Rachel, and grandson Marshall Anderson of The Woodlands. Trudy's cherished son, Mason, preceded her in death. In addition, she leaves her parents, Bob and Dorothy Jarrett, and her sisters and their families: Mickey and Jerry Gowler of Allen, and their daughters, Natalie Gowler and Emily Bohn and husband Levi, and Peggy Jarrett and her sons, Caleb and Cameron Whaley of Knoxville, Tennessee. She will be missed by scores of devoted friends, especially those in her book club, in P.E.O., and in her church.

A celebration service of her life was held at the United Methodist Church in Fredericksburg on Thursday, September 7<sup>th</sup> at 2:00 p.m. Honorary pallbearers will be her book club members, P.E.O. members, special friends from Lamesa and high school friends from Lockney. A graveside service will be held in Lamesa at 2:00 p.m. on Saturday, September 9<sup>th</sup> with a reception following at the First Presbyterian Church.

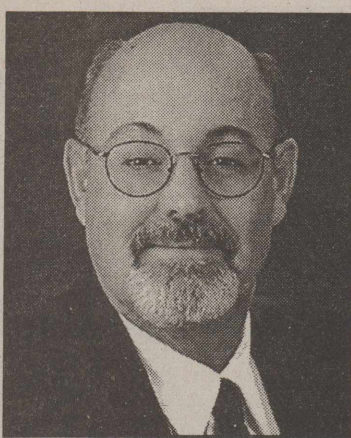
In lieu of flowers, the family requests donations to the Trudy Anderson Memorial Scholarship Fund to be sent to: Texas Hill Country University Center Foundation, P.O. Box 724, Fredericksburg, TX 78624.

### THIS WEEK'S

#### FUMC FLOYDADA REVIVAL

Revival September 10-13  
Combined service at 10:50 a.m. on Sunday morning.  
Covered dish supper at 6:00 p.m. before worship.  
Monday 7:00 a.m. Men's breakfast  
Wednesday 12 Noon - Women's luncheon (brown bag), dessert and drink provided  
Worship every evening at 7:00 p.m. Please join us!

Thanks for reading the Hesperian-Beacon



### CRAIG GILLY

Craig Gilly, 54, of Floydada, Texas died on Monday, August 28, 2006 at University Medical Center in Lubbock.

Craig was born on July 7, 1952 in Floydada to Eugene and Edna (Patterson) Gilly. He was a life-long resident of Floydada. Craig graduated from Floydada High School in 1970. He married Trudi (Miller) Gilly on May 18, 1972 in Floydada. Craig was Floyd County Commissioner and had retired in early 2006. He was a member of Trinity Assembly Church in Floydada.

He is preceded in death by his father, Eugene Gilly.

He is survived by his wife, Trudi Gilly of Floydada; mother, Edna Gilly of Plainview; two daughters, Amy Gilly of Anna and Tara Gilly of Sherman; a brother, Mark Gilly and wife, Beth of Dimmitt and a sister, Deliece and husband, J.T. Harrison of Hale Center.

Funeral services were held at 2:00 p.m. Wednesday, August 30, 2006 at Trinity Assembly Church. Reverend Henry Russell and Reverend Vance Mitchell officiated. Pallbearers were Bud Taylor, Jay Lackey, Jon Jones, Kerry Pratt, J. A. Welch, Ed Hartman, Rick Myers and William Hardin. Burial was held in the Floyd County Memorial Park under the direction of Moore-Rose-White Funeral Home of Floydada.

### GLADYS GOLDEN

Gladys Golden, 92, of Lockney, TX died Thursday, August 31, 2006 at Floydada Rehab and Care Center.

She was born September 29, 1913 in Floyd County, TX to the late B.R. and Jessie Carthel. A lifelong resident of Floyd County, she married Oscar Golden on June 27, 1934 in Lockney, TX. He preceded her in death on June 25, 1998. She was a homemaker and a member of the West College and Third Street Church of Christ.

She was also preceded in death by one daughter, Kay Williams; one sister and three brothers.

Survivors include one son, Larry Golden and wife Jill of Aiken, TX; one sister, Mary Barr of Denver, CO; Six grandchildren, Ty Williams, Libby Coody, Matt Williams, Colt Golden, Chad Golden, Clay Golden and 10 great grandchildren.

Funeral services were at 11:00 a.m. Saturday, September 2, 2006 at the West College and

Third Street Church of Christ in Lockney with Steve McLean, officiated and Raymond Lusk and Russell Harris, assisted. Burial was in the Lockney Cemetery under the direction of Moore-Rose-White Funeral Home of Lockney.

The family suggests memorials be made to the West College and Third Street Church of Christ, P.O. Box 217, Lockney, TX 79241.

### ELZADA LEE

Memorial services for Elzada Lee, 82, will be held 2:00 PM Tuesday, September 5, 2006 at Lockney Cemetery under the direction of Freeman-Abell Funeral Home.

Mrs. Lee died August 31, 2006 at Legend of the Plains Nursing Home in Hale Center.

She was born February 3, 1924 in Fluvanna, Texas. She married Frank Hardy on December 9, 1944. He passed away in 1982. She married W.J. Lee on February 26, 1985 in Aiken, Texas. He passed away in January of 1997. She lived in Lockney since 1944 before moving to Hale Center in April of 2006. She was a Baptist.

She is survived by 2 daughters: Pat Nelson and her husband Charles of Floydada and Frankie Dean Adams and her husband Wilbur of East Wenatchee, WA; 3 sisters: Viola Ferguson of Plainview, Luceta Staats of Shell Knob, MO and Ethel Meek of Hyco, TX; 4 grandchildren: Kayna Layman of Ruidoso, NM, Tim Nelson of Andrews, Phyllis Meyer of East Wenatchee, WA and Robin Daniel of Prairie Grove, AR; 6 great grandchildren; 1 step-son David Lee of Lockney and 1 step-daughter: Debbie Lee of South Carolina.

In lieu of flowers, the family suggests donations to your favorite charity.

### E.M. PYLE

E.M. Pyle Jr., 72, of Lockney, TX died Tuesday, September 5, 2006 at Lockney Health and Rehabilitation Center.

He was born May 31, 1934 in Elmore City, OK to the late Esker Moten and Rosie Bell Pyle. He moved to Lockney from Elmore City, OK in 1936. He was a member of the West College and Third Street Church of Christ.

He was preceded in death by two brothers and one sister.

He is survived by one son, David Pyle of Pleasant Hope, MS; two sisters, Eunice Lynn and Bernice Mathis both of Plainview, TX; three nieces and 2 nephews.

Graveside services will be at 2:00 p.m. Wednesday, September 6, 2006 at the Lockney Cemetery with Steve McLean, officiating. Burial will be under the direction of Moore-Rose-White Funeral Home of Lockney.

### Public Notice

#### CITY OF FLOYDADA TO RECEIVE EQUITY RETURN FROM TML-IRP

City of Floydada has received notification from Texas Municipal League Intergovernmental Risk Pool (TML-IRL) that it will receive a return of equity in the amount of \$3,872.00 based on the City's successful loss prevention efforts and length of membership. TML-IRP, a self-insurance fund, provides liability, property and workers' compensation coverages to Texas local governments. During its 36-year existence, TML-IRP has a history of returning portions of Members' equity to members when financial results are better than expected. The liability equity return is due to be delivered in November.

9-7c

### PUBLIC NOTICE

I, Donna Fincher, will no longer be responsible for debts incurred by anyone other than myself.

9-7, 9-14p

#### PUBLIC NOTICE CITY OF FLOYDADA TEXAS COMMUNITY DEVELOPMENT BLOCK GRANT PROGRAM

City of Floydada is giving notice of the city's intent to submit a Community Development Fund application for a grant from the Texas Community Development Block Grant Program. The grant application requested is \$250,000.00 for water system improvements in the City of Floydada. The application is available for review at City Hall during regular business hours.

9-7c

## Floyd County Church Directory

<b>AIKEN BAPTIST CHURCH</b> Jay Simpson, Pastor Sunday School ..... 10:00 a.m. Morning Worship .. 11:00 a.m. Evening Worship .... 6:00 p.m. Wednesday ..... 7:30 p.m. *****	<b>FIRST UNITED METHODIST CHURCH</b> Lockney Rev. Brian Adams Pastor Sunday School ..... 9:30 a.m.. Worship Service .... 10:30 a.m.. Evening Service .... 6:00 p.m.. Wed. Jr. High .....5:30 p.m.. Wed. High School... 6:30 p.m. *****	<b>PRIMERA IGLESIA BAUTISTA</b> Lockney Jesus Caballero, Pastor Sunday School ..... 9:45 a.m. Worship Service ... 11:00 a.m. Discipleship ..... 5:00 p.m. Wed. Service ..... 7:00 p.m. *****
<b>BIBLE BAPTIST CHURCH</b> 810 S. 3rd, Floydada Darwin Robinson, Pastor 983-5278 Sunday School ..... 10:00 a.m. Morning Worship .. 10:50 a.m. Evening Worship .... 6:00 p.m. Wednesday ..... 7:30 p.m. *****	<b>GRANT CHAPEL CHURCH OF GOD IN CHRIST</b> Joe Bennett, Pastor Sunday School ..... 10:00 a.m. Morning Worship .. 11:00 a.m. Evening Service ..... 7:30 p.m. Tuesday ..... 8:00 p.m. Wed. Service ..... 7:30 p.m. *****	<b>PRIMERA IGLESIA BAUTISTA</b> Floydada Sunday School .... 9:45 a.m. Morning Worship .. 10:55 a.m. Evening Worship ... 6:00 p.m. Wed. Evening ..... 7:00 p.m. *****
<b>CALVARY'S CORNERSTONE FELLOWSHIP</b> Floydada Armando Morales, Pastor Sunday School ..... 9:45 a.m. Morning Worship .. 11:00 a.m. Bible Study ..... 6:00 p.m. Wednesday Evening 7:00 p.m. *****	<b>MAIN STREET CHURCH OF CHRIST</b> Lockney Jay Don Poindexter, Minister Bible Study ..... 9:30 a.m. Morning Worship .. 10:30 a.m. Evening Worship ... 6:00 p.m. Wednesday ..... 7:30 p.m. *****	<b>SAN JOSE CATHOLIC CHURCH</b> Lockney Jim McCartney, Pastor Wed. Communion .. 8:00 p.m. Sunday Mass ..... 11:30 a.m. *****
<b>CARR'S CHAPEL</b> Service Every Sunday: Morning Worship .... 9:00 a.m. Sunday School ..... 10:30 a.m. *****	<b>MT. ZION BAPTIST CHURCH</b> Floydada Rev. Ralph Jackson 401 N 12th St (983-5805) Sunday School ..... 10:00 a.m. Morning Worship .. 11:00 a.m. Evening Worship .... 6:00 p.m. Wednesday Study .. 7:00 p.m. *****	<b>SOUTH PLAINS BAPTIST CHURCH</b> Joe Weldon, Pastor Sunday School ..... 10:00 a.m. Morning Worship ... 11:00 a.m. Prayer Meeting ..... 7:00 p.m. *****
<b>CHURCH OF CHRIST</b> West College & Third, Lockney Steve McLean -Minister Morning Worship .. 10:30 a.m. Evening Worship .... 5:30 p.m. Wednesday Service 7:30 p.m. *****	<b>NEW SALEM PRIMITIVE BAPTIST CHURCH</b> Floydada Pastor Elder Ronnie Hedges (806) 637-0430 Sunday Singing .... 10:30 a.m. Morning Worship .. 11:00 a.m. *****	<b>TEMPLO GETSEMANI ASSEMBLY OF GOD</b> 701 W. Missouri Rev. Ray Gonzales 983-5286 (church) 983-3047 (parsonage) Sunday School ..... 9:45 a.m. Morning Worship .. 11:00 a.m. Evening Service ..... 5:00 p.m. Wednesday ..... 7:00 p.m. *****
<b>CITY PARK CHURCH OF CHRIST</b> Ken Free - Minister Floydada Sunday Bible Study 9:30 a.m. Morning Worship .. 10:30 a.m. Evening Worship .... 6:00 p.m. Wed. Bible Study .... 7:00 p.m. *****	<b>OUT REACH HARVEST PENTECOSTAL CHURCH</b> 310 E. Mississippi Floydada Rev. David Ramos, Pastor Ester Ramos, Praise Leader Sunday Bible...10:00 a.m. Morning Praise...11:00 a.m. Evening Praise ....5:00 p.m. Wed. Worship.... 7:00 p.m. *****	<b>ST. MARY MAGDALEN CATHOLIC CHURCH</b> Floydada Father Jose Relente Phone: 983-5878 Sunday Mass ..... 11:30 a.m. Mon.Wed. Mass ..... 6:30 p.m. Confession Sat. 10:00-11:00 a.m. *****
<b>FIRST BAPTIST CHURCH</b> Anthony D. Sisemore, Pastor Bill Swinney, Minister of Ed./Music Eric Kaiser - Min. Students Sunday School ..... 9:15 a.m. Morning Worship ... 10:30 a.m. Evening Worship .... 6:00 p.m. Wed. Bible Study ... 7:00 p.m. *****	<b>POWER OF PRAISE FULL GOSPEL CHURCH</b> Rev. Manuel Rendon, Pastor 704 N. Main, Lockney Sunday Services .. 10:00 a.m. Sunday Evening .... 5:00 p.m. Wednesday ..... 7:30 p.m. *****	<b>TEMPLO BAUTISTA SALEM</b> Lockney Pedro Reyes, Pastor Sun. Prayer Service 9:30 a.m. Sunday School ..... 9:45 p.m. Worship Service ... 11:00 a.m. Evening Worship ... 6:00 p.m. Wed. Meeting ..... 7:00 p.m. *****
<b>FIRST BAPTIST CHURCH, Lockney</b> Carl Moman, Pastor Chad Cook, Youth Min. Phil Cotham, Music Min.. Sunday School ..... 9:45 a.m. Morning Worship .... 10:45 a.m. Evening Worship ..... 6:00 p.m. Wednesday ..... 6:30 p.m. Wednesday (Youth).....7:15 pm *****	<b>TRINITY ASSEMBLY</b> 500 W. Houston Floydada Henry Russell, Co-Pastor Vance Mitchell, Co-Pastor 983-5499 Sunday School ..... 9:45 a.m. Morning Worship .. 10:40 a.m. Sunday Evening ..... 6:00 p.m. Wednesday ..... 7:00 p.m. *****	<b>TEMPLO BETHEL SPANISH ASSEMBLY OF GOD</b> Washington and 1st St. Rev. Eliseo Ovalle 983-6202 Sunday School ..... 9:45 a.m. Morning Worship .. 11:00 a.m. Evening Worship ... 5:00 p.m. Wed. Service ..... 7:00 p.m. *****
<b>FIRST UNITED METHODIST CHURCH</b> Floydada Rev. Les Hall, Pastor Early Worship .....8:30 am. Sunday School ..... 9:45 a.m. Morning Worship ...10:50 a.m. Youth (Sunday).....5:00p.m. Youth (Wednesday)..7:30 p.m.	<b>WEST SIDE CHURCH OF CHRIST</b> Floydada 983-3548 Sunday Worship ... 10:30 a.m. Sunday Evening ..... 5:00 p.m. *****	<b>TRINITY LUTHERAN CHURCH</b> Providence Community on FM 2301 293-3009 Rev. Burnell Lund, Minister Sunday School ..... 9:45 a.m. Worship Service ... 11:00 a.m. *****

### American State Bank

Member FDIC  
217 W. California  
983-3725

### Barwise Gin

Barwise Community  
983-2737

**City Auto Buick, Pontiac, GMC**  
201 E. Missouri  
Floydada  
983-3767

### Clark Pharmacy

320 N. Main - Lockney  
652-3353

### Davis Lumber

102 E. Shubet  
Lockney  
6523385

### Garcia's OK Tire Store

306 S. Main - Floydada - 983-3370  
511 1st Olton, TX 2657796

### Lighthouse Electric Coop

102 E. California  
983-3524

### Goen & Goen Insurance

102 E. California  
983-3524

### Lockney Co-op Gin

652-3377

### Lockney Ins. Agency

105 N. Main  
652-3347

### Moore-Rose-White Funeral Home

329 W. Calif. Floydada 983-2525  
402 S. Main Lockney 652-2211

### Oden Chevrolet-Olds

221 S. Main, Floydada  
983-3787

### Payne Family Pharmacy

200 S. Main, Floydada  
983-5111

### Pay-n-Save

210 N. Main  
Lockney  
652-2293

*This page is brought to you by the following sponsors:*

### Schacht

Flowers, Jewelry & Gifts  
112 W. Poplar, Lockney  
652-2385

### Sunshine Pump

Oliver Clark  
Box 266, Lockney  
983-5087 - 774-4412 (Mobile)



# THE CLASSIFIEDS

Call 806-983-3737 or 806-652-3318

web site: [www.hesperianbeacon.com](http://www.hesperianbeacon.com) ----- e-mail: [floydada@amaonline.com](mailto:floydada@amaonline.com)

**AUTOMOTIVE FOR SALE**

1989 JAYCO popup camper. Great shape. Kept in shed. Sleeps 6. \$1100 OBO. Call 983-2581. 9-28p

1995 CHEVY SUBURBAN. 118,000 miles. One owner. \$8,000. Call 652-2722. 9-14c

FOR SALE-- 2004 red Mustang convertible. Good shape. Great school car. Call 293-7827 after 5:30 p.m. tfn

**FARM MISCELLANEOUS**

WANTED--Part-time plowing or planting wheat. Approximately 20-25 hours week. Call Terry at 231-9648. 9-7c

CUSTOM HAY SWATHING and baling. Large round bales or small square bales. Call \*Steve Pierce - 983-5348 or 292-1642 (cell) or Tom Pierce 983-2578 or 983-0928 (cell). 9-28p

RYE SEED FOR SALE--Rye is an excellent cover crop and great for grazing. Rye matures earlier than wheat, so it can be terminated earlier to plant cotton. 806-292-9723. tfn

NO-TILL DRILL--Custom drilling of wheat in milo. Inter-seeding of grass, cotton stalks, etc. 806-292-9723. tfn

WHEAT PASTURE WANTED--Call 806-292-9723. tfn

**FOR RENT OR SALE**

RENT OR LEASE OPTION--Large 3-4 bedrooms, 2 bath house. In good location across from high school. For more info call 983-5440. 9-7c

**GARAGE SALES**

Floydada 603 W. MISSISSIPPI--Garage Sale--Saturday, 8:00 a.m. - ?? (if weather permits). A little bit of everything. 9-7c

FOUR FAMILY --Garage sale Saturday, September 9th - 8:00 a.m. til 2:00 p.m. 816 Cedar. 9-7p

Thanks for reading the Hesperian-Beacon

**HELP WANTED**

SECURITY POSITION for Pete's Paladium on Saturday nights. Call 806-729-6695. 9-7p

HELP WANTED--Taking applications for full-time secretary and part-time evening and weekend work for Floydada and Lockney. Moore-Rose-White Funeral Home. 9-7p

**HOUSES FOR SALE**

Floydada HISTORICAL TWO STORY landmark home with double bricked walls 4 miles from Floydada on major US highway. 5/2 unfinished basement storm shelter. 4,000 sq.ft. Four acres pecan and fruit trees. Appointment only (806) 748-4972, leave message. \$185,000.00. tfn

HOUSE FOR SALE--Brick, corner lot, 3-1-3/4-2, circle drive. 2300 sq. ft. New A/C and kitchen appliances and roof. 902 S. Leonard. Call 983-5278. tfn

OWNER WILL FINANCE--E-Z Terms. \*\* 206 E. Jeffie. 3 bedroom, 1 bath, large livingroom. \*\*119 W. Jeffie. 3 bedroom, 1 bath, 2 story house. Very reasonable priced. Call Milton 806-790-0827. tfn

Lockney HOUSE FOR SALE IN LOCKNEY--3 bedroom, living and dining room, 1 bath, garage, fenced back yard. 705 SW 2nd. Call 983-7731 or 652-3115. tfn

**INSTRUCTIONAL**

PUBLIC SCHOOL teacher in Lockney offering private voice lessons for 6th - 12th grades. More info call 983-3566 or 292-3070. 9-7c

PIANO LESSONS--\$5.00 for 30 minutes. You buy the lesson book (approximately 6-8 dollars). Mrs. Kathy Johnson Piano Studio, 983-5070. 9-7cp

**LIVESTOCK FOR SALE**

FOR SALE--1 red Limozine bull (3-1/2 years old) and 1-6 year old red horse (green broke). Call 292-5219. tfn

**MISCELLANEOUS**

HOUSE FOR SALE! Troublesome neighbor and pig pen next door. 9-7p

OVER THE RANGE stainless steel hood. Call 983-7689. 9-14p

AVON REPRESENTATIVES needed in Floydada and Lockney. Call TODAY. WORK TOMORROW. Free gift and samples. Will train. Call 441-5620 or 577-8197. 9-28p

NEED A PLACE TO PARK your R.V., trailer or boat? Call 983-5516. tfn

NEW FULL size mattress and box. In plastic, warranty. \$135. NEW twin mattress sets. \$99. 806-549-3110. 9-7c

2 PIECE QUEEN pillowtop mattress set. New in plastic, \$145. Three piece KING mattress and foundation. Brand new, warranty. \$249. Call 806-549-3110. 9-7c

BLACK IRON CANOPY bed and mattress. Never used \$299. Warranty, 806-549-3110. 9-7c

HEADBOARD, frame, dresser, mirror, nightstand, chest, new in box. Must sell, \$569. 806-549-3110. 9-7c

FOR SALE--6 Lockney cemetery plots. Row 44, Section 3, Block 5, Lot 5. Sell as one unit. Call 652-2674. 9-7p

PLAINS BELL FEDERAL CREDIT UNION 206 W. California, Floydada. Remember us for all your personal financial needs - CD's, loans, checking and savings accounts. Call Laura at 983-3922. [www.plainsbellfcu.org](http://www.plainsbellfcu.org) 1-4-07p

**PETS**

ALPHATEX KENNEL, AIKEN, TEXAS offers superior quality AKC Registered, DNA Certified Collies, Golden Retrievers and German Shepherds. Puppies and stud service available. [www.alphatekennels.com](http://www.alphatekennels.com) tfn

**SERVICES**

CEMENT WORK-- Need a new driveway, sidewalk, patio or a flower bed curb? Call Gary Bennett, 983-5120 (home) or 778-8549 (cell). tfn

LARRY OGDEN AUCTIONEERING Estates, Farm, Ranch, Business, Liquidations, State Licensed and Bonded. (806) 983-5808. TX. #9240. tfn

**VEGETABLES FOR SALE**

DON'T LET THE RAIN BOTHER YOU! WE STILL HAVE TOMATOES. Make your own hot sauce. Plenty of tomatoes, jalapenos, onions, cantalopes, watermelons and okra. Call before you come. PANCHO'S GARDEN - 806-652-2727 or 292-2204. One block south on Highway 378 - east side of road, Lockney, Texas. tfn

A subscription to this newspaper is the gift that gives every week!

Have a nice week!

**POOLE WELL CAM & SUBMERSIBLE SERVICE**

Dual Lens for Color Videos of Irrigation and domestic wells. Reveals sand infiltration, crusting or deterioration, blockage 4" - 30" I.D. 704 Matador Hwy. Floydada, Texas 806-983-2285

**SCRIPT PRINTING & OFFICE SUPPLY**

\* Commerical Printing  
\* Office Supplies & Furniture  
\* Business Machines  
108 S. Main Floydada 983-5131

**BARKER MINI-STORAGE**

MONTHLY RENTALS  
5'x10' - \$20.00 per month  
10'x10' - \$30.00 per month  
10'x15' - \$40.00 per month  
ASK ABOUT OUR LONG TERM DISCOUNTS  
PHONE: 652-2642  
Corner Main & Locust, Lockney

LARRY JONES REAL ESTATE

Dedra Thomas 806-791-2277 (h) 806-543-7540 (c)

- NEW LISTING!! 2 bed-1 bath home with 2 living areas and cellar near lower elementary.
- NEW LISTING!! 2 bed-1.5 bath home with 1 car detached garage in nice neighborhood.
- Fixer-upper--Must Sell!! 2 bed-1 bath house.
- Cozy 2 bed-1bath home with 1 car detached garage on northwest side of town.
- Colonial 2 story home with 4 bed-3 baths in great area with 2 car attached garage, storage on a corner lot.
- COMMERCIAL BUILDING--Large building great for starter business!! MUST SELL!!

Call for more details on these houses and the others we have listed!!

Ranch Style Country Home  
3/2/1, Barn, 6 acres with fence. \$120,000

315 W. Mississippi  
3/1-1/2/2 - \$19,900.00

801 S. Main  
3/1/1 detached  
\$31,500.00

BILL STRICKLAND AREA WIDE REALTY  
(806) 292-1687

American Heart Association  
Fighting Heart Disease and Stroke

**PUBLIC NOTICE**

**WATER DISTRICT NOTICE OF PUBLIC HEARING ON TAX RATE**

The Mackenzie Municipal Water Authority will hold a public hearing on a proposed tax rate for the tax year 2006 on September 19, 2006 at 7:30 p.m., at the Administrative Offices of MMWA. Your individual taxes may increase or decrease, depending on the change in the taxable value of your property in relation to the change in taxable value of all other property and the tax rate that is adopted.

FOR the proposal: Phillip Smitherman, Joe Adams, Dwight Ramsey, Gordon Lowrey, Cory Hoelting, Jimmy Kemp  
AGAINST the proposal: None  
PRESENT and not voting: None  
ABSENT: Jeffrey Johnson, Edward Marks

The following table compares on an average residence homestead in this taxing unit last year to taxes on an average homestead in this taxing unit last year to taxes proposed on the average residence homestead this year.

	LAST YEAR	THIS YEAR
Total tax rate (per \$100 of value)	0.2408/\$100 Adopted	0.2405/\$100 Proposed
Difference in rates per \$100 of value		\$0.0003/\$100
Percentage increase/decrease in rates(+/-)		-1.001%
Average appraised value	\$ 30,949	\$ 31,042
General exemptions available (excluding senior citizens or disabled person's exemptions)	\$ 0	\$ 0
Average taxable value	\$ 30,949	\$ 31,042
Tax on average residence homestead	\$ 74.53	\$ 74.65
Annual increase/decrease in taxes if proposed tax rate is adopted (+/-)		+ \$ 0.12
and percentage of increase (+/-)		+ \$.9983%

**NOTICE OF TAXPAYERS' RIGHT TO ROLLBACK ELECTION**

If taxes on the average residence homestead increase by more than eight percent, the qualified voters of the district by petition may require that an election be held to determine whether to reduce the operation and maintenance tax rate to the rollback tax rate under Section 49.236(d), Water Code.

**NOW LEASING**  
Whirlwind Country Self-Storage  
Sizes --- 10'x10' and 10'x15'  
115 W. Virginia, Floydada (across from City Hall)  
Call 806-983-3774

**ERA REAL ESTATE**  
**Roberts & Wilkins REALTORS**

COUNTRY HOMES WITH ACREAGE ON PAVEMENT  
\* Lovely Brick 4-2-3/4-2, basement, horse barn & corrals, 6 acres fenced on S Hwy 378. Owner will consider reasonable offers. Call Rhonda  
\* A Bargain - 5-3-1, two story home on 3 acres on N. Hwy - \$119,000  
LOCKNEY HOMES  
\*Large Family Home at a Good Price - 4-1-3/4-2, great den/kitchen combo and covered back. Over 2200 sq. ft. Reduced to \$84,900  
\* A Dollhouse - 2 bedroom, 1 bath, plumbing, wiring, H/A/C replaced in 1996, 40x40 barn. \$62,500.  
\*Two Story - Lots of room, recently updated, 3 bedroom, 1 bath, upstairs could be 3rd bedroom or gameroom. Reduced to \$22,500.

Rhonda K. Thomas 652-2152  
Rob or Ceil Wilson 293-5722  
Dan or Debbi Wilkins 292-0263  
Joey Davis - 292-7589  
Jolie Steele - 729-6278

3009 Olton Road  
Plainview, Texas  
[www.rwrealtors.com](http://www.rwrealtors.com)

Subscribe to the Floyd County Hesperian-Beacon



In County \$23.00  
Out of County \$25.00

**Plainview Area Farmers Market**

Each Wednesday and Saturday 7:45 am till we run out.

Local home-grown vegetables in the J.C. Penney parking lot.

**Our country, our military men and women and our leaders need your prayers.**

Newspaper Advertising Fits Your Budget! We Have A Wide Variety of Ad Sizes To Choose From!



# 2006 HESPERIAN-BEACON

# FOOTBALL CONTEST

Winners will be announced in next week's issue of the Hesperian-Beacon.

**1st Place: \$25    2nd Place: \$15    3rd Place \$10**

**KFLP Radio  
106.1 FM**  
1. Lubbock High  
2. Canyon Randall

**Stapp Paint & Body Shop**  
3. Muleshoe  
4. Cooper

**Providence Farm  
Supply & Grain**  
5. Roosevelt  
6. Brownfield

**Muncy Elevator**  
7. Hart  
8. Smyer

**Lighthouse  
Electric Coop**  
9. Frenship  
10. Odessa

**Scott Gin**  
11. Stratford  
12. Childress

**Clark  
Pharmacy**  
13. Wellington  
14. Ralls

**First National  
Bank of Floydada  
Member FDIC**  
15. Levelland  
16. Idalou

**City Auto**  
17. Snyder  
18. Hereford

**Windmark  
Insurance  
(Clar Schacht)**  
19. Coronado  
20. Plainview

**Quality  
Body Shop**  
21. Crosbyton  
22. Munday

**Ray Lee  
Equipment**  
23. Olton  
24. Sudan

**Oden  
Chevrolet-Olds**  
25. Canadian  
26. Perryton

**Schacht Flowers,  
Jewelry and Gifts**  
27. Texas Tech  
28. UTEP

**Floydada  
Power and Light**  
29. Clemson  
30. Boston College

**Davis Lumber**  
31. Notre Dame  
32. Penn State

**Lowe's Pay-n-Save  
Floydada**  
33. Iowa  
34. Syracuse

**D&J Gin, Inc.**  
35. Ohio State  
36. Texas

**Lockney  
Cooperatives**  
37. Michigan  
38. Vanderbilt

**Lowe's Pay-n-Save  
Lockney**  
39. Buccaneers  
40. Ravens

**Payne Family  
Pharmacy**  
41. Lions  
42. Seahawks

**Triple T  
Restaurant**  
43. Cowboys  
44. Jaguars

**Cornelius  
Conoco Service**  
45. Bears  
46. Packers

**City Bank  
Member FDIC**  
47. Bills  
48. Patriots

**Hammond Sheet  
Metal**  
49. Eagles  
50. Texans

**Producer's  
Coop Elevator**  
51. Jets  
52. Titans

**Blanco Offset  
Printing**  
53. Cardinals  
54. 49'ers

**DeBruce Ag  
Services**  
55. Colts  
56. Giants



CUT ALONG THE DOTTED LINE

## Official Entry Form Floyd County Hesperian-Beacon Football Contest

1	2	3	4	5	6	7	8	9	10	11	12	13	14
15	16	17	18	19	20	21	22	23	24	25	26	27	28
29	30	31	32	33	34	35	36	37	38	39	40	41	42
43	44	45	46	47	48	49	50	51	52	53	54	55	56

### Tie Breakers

circle winner and write total combined score in football

Floydada vs Slaton



Name: \_\_\_\_\_

Address: \_\_\_\_\_

City: \_\_\_\_\_

Lockney vs Sundown



## Contest Rules

Any subscriber or purchaser age 7 or older is eligible to enter this contest. Only one entry per week per person.

To play, circle the number of the teams you believe will win on the official entry form. To indicate a tie, circle the numbers of both teams playing the game. Also, write a guess of the combined total points to be scored by the two teams listed in each of the tie-breaker games.

Only entries on official entry forms brought to a Hesperian-Beacon office in Floydada or Lockney no later than 5 p.m. on Friday will be accepted. Photocopies and mail entries will not be accepted.

Three cash prizes are awarded each week. In the event of ties (the same number of correct games and equal scores on the tie breakers), prizes will be combined and shared equally by those tied. The tie-breaker scores will be used only to break a tie on the number of games correct.

Print your name and address plainly on the official entry form and double check your choices before clipping out the entry form and depositing it at a Hesperian-Beacon office before 5 p.m. on Friday.

Entries are limited to one per person per week. Weekly winners are limited to one per household.