

7/30/07  
Floyd County Historical Museum  
P.O. Box 304  
Floydada TX 79235

The Floyd County

50¢

# Hesperian-Beacon

"Celebrating 110 Years of Floyd County News"

www.hesperianbeacon.com

Thursday, August 10, 2006

©The Floyd County Hesperian-Beacon

Floydada, Texas 79235 (USPS 202-680)

Volume 110 Number 32

## Have "Coffee with the Congressman" in Lockney

Congressman Randy Neugebauer will be in Lockney and Plainview on Monday, August 14 to meet with constituents and talk about the important issues affecting Floyd and Hale County residents.

During the "Coffee with the Congressman" event, Neugebauer will provide updates on efforts to strengthen border security, lower taxes, and write the next Farm Bill.

The "Coffee" in Lockney will be held at the Community Center at 502 Southeast 8th Street from 3:15 p.m. to 4:15 p.m.

Neugebauer's Plainview "Coffee" will take place in the council chambers at the Plainview City Hall located at 901 Broadway Street. The "Coffee" will begin at 1:30 p.m. and last until 2:30 p.m.

## "Letters from Dad" in the mail soon

Letters from Dad may become more frequent and sincere after local men experience the "Letters from Dad" seminars at First United Methodist Church, in Floydada.

The program, which has grown in leaps and bounds nationwide, will hit Floydada with a kick off bar-b-que dinner, August 21, at 7:00 p.m. at the Methodist Church.

The workshops are held to teach men how to write a letter of love to their wives, children, grandchildren, parents, etc.

When you enroll in the program you will be a part of group workshops with Christian instructors guiding you down the path of putting your thoughts on paper.

Your journey begins when you join the "Legacy Group" where you will work through the "Letters from Dad" curriculum. You will learn to write 5 specific types of letters and also learn what it means to give the blessing to your wife and family.

A description of the program reads, "Our heavenly father left us a book of love letters called the Bible. We invite you to leave your book of love letters called--Letters from Dad."

According to a Los Angeles Times, November 2005 story, "the course has become a surprise hit in scores of churches across the nation this fall."

As of the 2005 writing, more than 5,000 men had joined support groups to help one another put their feelings to paper.

The groups are springing up in Texas, California, South Carolina, Oregon, Alaska, in small churches and in mega churches; in congregations of Quakers, Catholics, Seventh-day Adventists, Lutherans, and Baptists.

Participants get a list of recommended adjectives, sample letters to crib from, even a CD with a 60-minute tutorial on "The Lost Art of Letter Writing."

The love-letter movement began with Greg Vaughn, a member of McKinney Fellowship Bible Church, and a veteran video producer.

Vaughn, 58, says he found his inspiration while cleaning out his garage.

He came across a rusted fishing box belonging to his late father. He was about to toss out the tangled lures before he realized it was the only thing he had left of his dad.

Becoming angry that his father had not left anything more meaningful, Vaughn then began

Continued On Page 2



## Silage harvest good for Cargill

Silage production is going at a very fast pace in Floyd County now.

Pat O'Connell, manager of Cargill Feedyard, NW of Lockney, said, "Three companies contract to cut our silage (left photo), for Cargill each year. They will cover 2,200 to 2,800 acres in 10-21 days depending on the weather." The silage is then delivered to Cargill (bottom right photo) where it is unloaded and packed. During the process, the high level sugars contained in fresh cut corn silage are broken

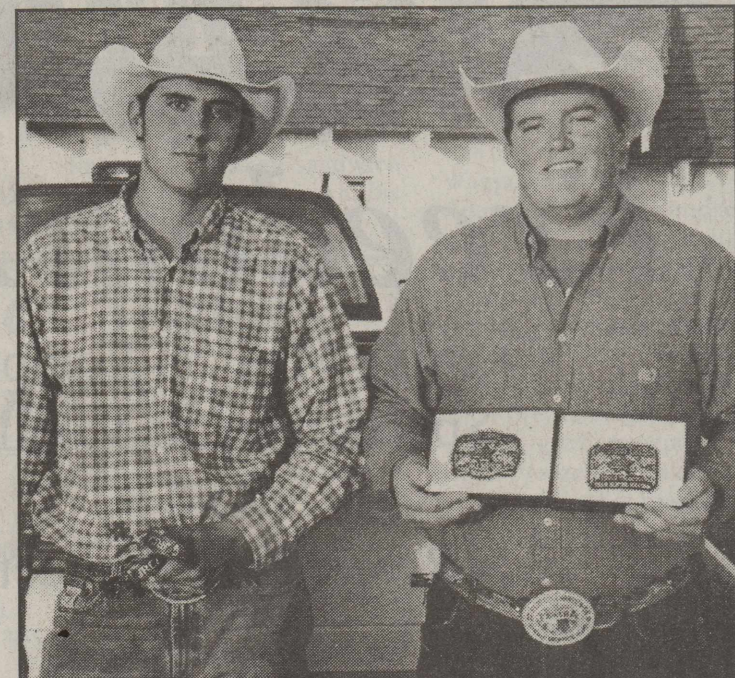
down into acidic acid. In much the same way as vinegar preserves pickles the acidic acid preserves the silage. "In fact," said O'Connell, "last year's silage pit emits a vinegar-like odor."

Cargill mixes their own feed, which contains 18%-20% of corn silage, at the plant.

It is mixed with flake grain, beef tallow, a pre-mix, wet or dry distillers grain (a by-product of the ethanol production process), and high fructose corn syrup. We mix 1.8 million lbs. of feed a day--365 days a year."



FLOYDADA BOOSTER CLUB SPONSORING RAFFLE-A family pass for admission to ALL Varsity, JV and Junior High football and basketball games for the 2006-2007 season is being raffled off by the Booster Club. Tickets are \$1.00 each. See any Booster Club officer or member for tickets, or tickets can be purchased at the Cogdell Clinic or at Cornelius Conoco Oil. The family pass winner will be drawn at the Whirlwind's first home game on September 1st. Shown are: Marty Covington, President of the Floydada Booster Club, and FISD Superintendent Jerry Vaughn. Staff Photo



JUNIOR RODEO COWBOY ASSOCIATION YEAR-END CHAMPIONS-Clay Ware (right) won two belt buckles for winning the JRCA Year-end Finals Champion Header and the 6th Place Healer. Cody Ware (left) won spurs for winning the JRCA Year-end Reserve Champion Heeler and the Fastest Time at the Finals. Courtesy Photo



LIBOR MATUS among Texas "stuff" inside Heart's Desire store.



FOOTBALL PRACTICE STARTED IN FLOYD COUNTY AUGUST 7, with 2-A-Days in Lockney (top) and 3-A-Days in Floydada (bottom photo). The first scrimmage for Floydada is Aug. 19 against Tulia (there). Lockney's first scrimmage is also on the 19th against Roosevelt at Lockney.



## Czech youth visiting family in Texas

By Judy Macha

Seventeen year old Libor Matus of Ostrava, Czech Republic (about ten miles from the Polish border) came to Texas June 28 for an extended visit with various U.S.A. relatives. He wanted to see family and life in the states for himself and earned half of the funds necessary for the trip. His parents paid the rest.

Matus has visited with family in Seymour, Lubbock, Plainview and Lockney. He speaks fluent

French, English and fair Russian as well as his native Czech language and thoroughly enjoys conversing on any topic.

Since his arrival he has been shown many of the highlights of Texas and New Mexico, and will see more before he departs for home, such as the Alamo, a Rangers baseball game and a trip to Schlitterbahn. He has already been to Sea World, Carlsbad Caverns and to Ruidoso for the horse races and a local festival

there. He has toured the Ranching Heritage Center in Lubbock, and enjoyed boating and water skiing for the first time. He took in a tour of the Museum at Canyon and the play "Texas" with his Plainview and Lockney relatives, Joe and Josephine Macha, daughters Johanna and Sarah and Raynard and Judy Macha. He was treated to a true Texas home cooked meal of grilled steak, potato salad and red beans. He

Continued On Page 5

## Letters to the Editor

### To the Editor,

I was impressed with the Floydada Back to School guide in last week's paper, however, I was struck by the glaring absence of any mention of the tremendous student accomplishments in UIL academics at the Regional and State level. The science team of Reagan Heflin, Sean Miller, Jarrett Kirk and Abel Cortinas finished 2nd in the state.

Abel received a gold medal as Top Biology Scorer and Jarrett received a 3rd Place High Individual medal. Achieving success at this level allows these students to qualify for UIL Foundation scholarship money.

Most people do not realize the infinite practice hours, trips to invitational meets, and dedicated effort of students and coaches that goes into such an accomplishment as this.

Failure to even mention this in such a school promotional document reminds me once again that academic success is not as appreciated or respected as athletic success.

The purpose of my letter is to attempt to change that thinking and educate our communities about the value of all areas of UIL. I encourage everyone to be aware of the students that participate in UIL academic events, find out who they are, when they are competing and in what event so that we can provide the much needed support and encouragement just as we do for our athletes.

Many students compete in both areas. The academic scholarship possibilities for students from 2A high schools are much greater than athletic scholarship possibilities. Athletics have enjoyed the spotlight for many years and are a valuable part of the high school experience, but with the continually rising cost of higher education, I suggest we renew all efforts to raise our academic programs to the next level.

Congratulations Reagan, Abel, Sean, Jarrett and Mr. Wilson and Mrs. Hollums. I applaud your efforts.

D'Lyn Morris  
Lockney High School UIL  
Academic Coordinator  
Lockney Athletic Boosters  
President

*"Letters from Dad" in the mail soon*

### Continued From Page 1

to question whether he had done any better for his children and stepchildren.

He made up his mind to give his children letters expressing his pride and his faith in them; his hopes for their future; and his memories of the joy they had shared.

Vaughn is dyslexic and hated writing, so he looked up friends he thought could help. A dozen agreed to not only help, but to write letters of their own.

Their first efforts were ready by Christmas 2002.

The results were explosive. As children and family members started commenting on the wonderful letters, requests came in to Vaughn to teach more men to write.

Vaughn then set about developing a curriculum that he could license to pastors. He launched it in the summer of 2005 with his book, "Letters from Dad".

Now pastors travel to McKinney to take Vaughn's workshop, and more listen in on internet training.

Once the pastors take the course they are then free to offer the program to their home churches.

The course will be presented at FUMC in four monthly sessions--one Monday each month.

The men will watch motivational videos, discuss good writing, and then break into small groups to share their work.

To get more information on being part of this training, call 983-3706.

THE FLOYD COUNTY  
HESPERIAN-BEACON  
(USPS 202-680)

Published weekly each Thursday at 111 East Missouri Street, Floydada, Texas 79235. Periodical postage paid at Floydada, Texas 79235.  
POSTMASTER: Send change of addresses to: The Floyd County Hesperian-Beacon, 111 E. Missouri, Floydada, Texas 79235.

### Dear Editor,

When I first heard about Leadership Lockney I had reservations. I don't know what I expected but I knew I was already busy with other things and I didn't know where it would fit in. I am happy to say that even though it is one day a month for nine months I am so grateful I was approached.

I have received so many blessings. I have heard others say the same thing. Many have said "I grew up here and I had no idea..." Several have said "I have made some good friends." Others have grown in areas there were already good at.

We are now in our 4th year. We have grown to the point that the majority of the students this year approached us. I have personally seen where it not only has benefitted Lockney but Floyd County.

I know that Floydada also has many good things going for them. They know how to attract people to Old Settlers and Pumpkin Days. Many businesses have what you need and you don't have to use much gas. We have the best in family owned businesses and we as a community need to use them to keep Floyd County growing. They are the ones who donate to football, baseball, basketball 4-H, FFA, school activities, band, boy scouts, girl scouts, and many other things we take for granted. If you have ever asked for donations to any of these things you need to think about that the next time you shop in a business that doesn't.

There are still some openings for the class of 2006-2007. If you would like to be in the class this year or more information about Leadership Lockney please call Kristy Lefevre 291-0411 or Debbie Montandon 652-3696.

Debbie Montandon

## County proposes increase in tax rate

### By Darwin Robinson

The Floyd County Commissioners met in Special Session Friday, August 4, 2006 and voted on a 'proposed' tax rate of \$.54090 cents per \$100 valuation of property for the 2006-2007 fiscal year.

Compared to this year's tax rate of \$.48296 cents. If approved, this would be a \$.05794 cents increase per \$100 valuation. Two Public Hearings are scheduled on August 18th at 9:00 a.m. and August 22nd at 9:00 a.m.

In other matters, the commissioners approved 6 farm contracts. They are: Pct. 1, 4 miles southwest of Floydada, to level ground for sprinkler system for soil conservation, by Caprock Irrigation; Pct. 3, 3 miles east of SH207 on FM2286, to bury improvements, by Donald Bean; Pct. 4, 9 miles north of Dougherty, to build up terraces for soil conservation; Pct. 3, one mile south of FM689 on CR209, to clean out old improvements, by Mark Beedy; Pct. 3, one and one-half miles south of FM2286 on CR189, to fill in pit, by Nathan Johnson; and Pct. 4, south of Floydada, to divert run off for soil conservation, by Floydada Coop.

Floydada  
Ford-Mercury  
Pickup and Delivery in  
Floydada & Lockney  
Everyday  
Call 806-983-3761

## Courtroom Activities

In County Court August 3, 2006:

Javier Hernandez, 52, of Plainview, pled guilty to DWI. He was fined \$750, 9 months in jail probated for 2 years; court costs, and his driver's license was suspended for 6 months.

August 8, Shannon Bolton 18, of Floydada, pled guilty to Theft of Property Equal to or Greater than \$50 But Less Than \$500 from March 14, 2006. He received Deferred Adjudication for one year; a fine of \$350 and court costs.

Also on August 8, Michael Vega, 24, of Lockney, pled guilty to a August 17, 2005 charge of DWI. He was fined \$1,000, 6 months in jail which was probated for 2 years, plus court costs.

ACE Hardware  
Floydada  
Delivery to  
Floydada & Lockney  
Everyday  
Call 806-983-3000

HAVE CROP INSURANCE QUESTIONS?

**GOEN & GOEN**  
HAS THE ANSWERS

Let us prove it to you.

Visit with Kyle Smith, Pat Franklin,  
& Gail Dubois

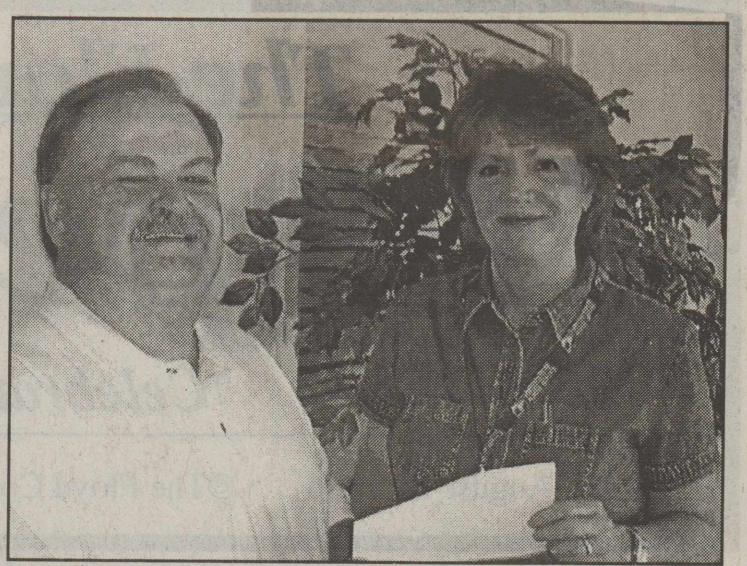
102 E. California

983-3524

www.goen-goen.com



CONNIE JOHNSON (left) accepts a \$100 donation from Pam Ricketts (KFLP) to help with the expenses of the October "Join in the Journey" women's Christian Conference at the Unity Center.



NICK LONG (left) presents a \$100 donation to Lenda Clark for the October 21st women's Christian conference to be held at the Unity Center. The money will be used to pay expenses for the conference.

## Taylors honored in Petersburg

### By Darwin Robinson

Longtime Floyd County residents, Cecil and Lila Taylor, along with their children, grandchildren and great-grandchildren were honored this past Saturday, August 5, 2006 at the annual celebration of 'Petersburg Day'. They were the center of attention in the parade through downtown Petersburg and then again they were recognized at the Community Center at the noon meal.

Cecil and Lila have farmed over 50 years. Their farm is about two miles east of Petersburg and about one-half a mile inside Floyd County. They have the best of the two counties and have many longtime friends in both Petersburg and Floydada.

The Taylors do their official county business in Floydada. They have been faithful charter members of the Bible Baptist Church in Floydada for the past 55 years, where Cecil is a deacon, music director and was the adult Sunday School teacher for many years.

Cecil graduated from Petersburg High School. His parents were W.H. and Virgie Taylor from the Petersburg area. He has two sisters, Evelyn Davis of Petersburg and Margie Sue of Floydada. Another sister, Floudie Greene, is deceased.

Lila is the daughter of G.B. and Mae Jenkins from the Floydada area. She has two sisters, Juanita Essary of Cedar Hill and Norma Wheeler of Tyler. Her brother, Luther, is deceased.

Cecil and Lila married in 1942. After Cecil served in the Army Air Corp, they moved back to the farm where they farmed



CECIL AND LILA TAYLOR RIDING WITH CECIL'S SISTER MARGIE SUE IN PETERSBURG PARADE HONORING THE CECIL TAYLOR FAMILY

until a few years ago. Now in retirement they raise a large garden each year and still can most of their vegetables.

The Taylors have four children, two boys and two girls. Their oldest, Dave Taylor, lives in Lubbock and their other son, Bob Taylor, lives in Ralls. Their

two daughters are Sharon Markham of Keller and Arlene Gahl of Orange County, California. They have 9 grandchildren and 16 great-grandchildren.

The Taylors love their family

and their community. Cecil and Lila both are very active in the Petersburg Senior Citizens, and

Lila served as President in 2003. They also have served on several committees. This Christmas Day, December 25, 2006 the Taylors will celebrate their 64th wedding anniversary.

Their son, Dave, told the Hesperian-Beacon, "You can truly call the Taylors an 'All American Family.'"

# GRAND OPENING

## Freedom 2go

Durable Medical Equipment  
Specializing in Mobility  
And  
Respiratory Products

104 N. Main  
Lockney, TX. 79241  
(806) 652-2587

**AUGUST 14, 2006**  
**10:00 A.M. TIL 3:00 P.M.**

*Door Prizes Will Be Given Away*  
*"Must Be Present To Win"*

Food And Refreshments Will Be Provided

**COME IN AND MEET**  
**OUR FRIENDLY STAFF**

**"PEOPLE YOU COME TO KNOW AND TRUST"**



## R.C. Andrews School Supply List

### 3rd Grade:

Pocket folders, 2 blue, 2 green, 1 red, 1 purple, no brads; 2 box crayons; 1 box map colors; 3 boxes of Kleenex; 2 pkgs #2 pencils; 3 large erasers; 120 page spiral notebook (1); 70 page spiral notebooks (2); 1 pair sharp scissors; 1 zipper pouch or box; wide rule notebook paper.

### 4th Grade:

2 boxes Kleenex; 2 pkgs. #2 pencils; 1 binder or notebook; 2 spiral notebooks; 1 box map colors; 1 pair sharp scissors; 1 school glue; 3 highlighters; 1 box crayons.

### 5th Grade:

Wide rule notebook paper; 2 pkgs. #2 pencils (no mechanical pencils); 1 box map colors; 4 folders with brads and pockets; 1 pair sharp scissors; 1 school glue; 1 box crayons; 1 ruler; Note Book or binder; 2 boxes of Kleenex; 1 red pen; 70 page spiral; 1 large eraser.

Registration for all students will be on Thursday, August 10th. Please come to the cafeteria from 8:00 a.m. to 12:30 p.m.

## Floydada Junior High Pre-Registration

Monday, August 14, 2006

6th Grade--5:00 p.m. - 6:00 p.m.

7th Grade--6:00 p.m. - 7:00 p.m.

8th Grade-- 7:00 p.m. - 8:00 p.m.

Students new to FISD need to bring their birth certificate, social security card, immunization record, and information from last school attended (example: report card or identification card)

## Reflections of Love providing school supplies

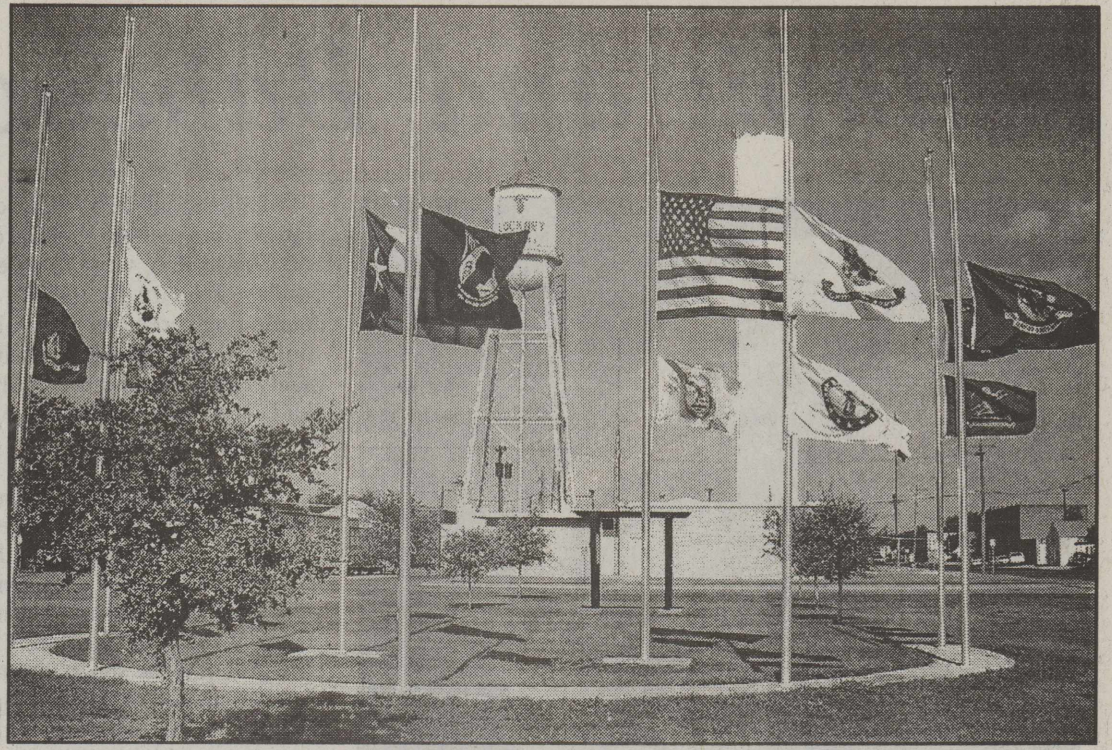
Reflections of Love, a non-profit organization in Floydada, is asking that you help provide school supplies for elementary age students.

The goal is to make sure all students in the district can succeed by providing the supplies they need but may not be able to afford.

"The community has always given generously to this project in the past," said Sally Bradley, president of Reflections of Love. "Once again, we are asking you to help us as the list of those needing school supplies is longer than in past years. It's not too late to donate."

Donations may be sent to: Fred Thayer, Reflections of Love, Box 9, Floydada, TX 79235.

"We appreciate you help with this project," said Bradley. "Not only are we helping elementary students, but this is a great benefit to the teachers of FISD as well."



FLAGS AT HALF MAST---flags at the Lockney Veterans Memorial Park were flown at half mast on Thursday, July 27; a day set aside to honor the veterans of the Korean War. Their flag is shown flying underneath the American flag. The Memorial Park is located on Locust street east of the fire station. Staff Photo

## Lockney High School Schedules Ready to be picked up. Seniors & Juniors Thursday a.m. Sophomores & Freshmen Friday a.m.

### LOCKNEY SCHOOL MENU

August - 16 - August 18 Wednesday

Breakfast-Donut or cereal, toast, juice, milk  
Lunch-Pizza or burrito, fruit, tossed salad, milk

Thursday

Breakfast-Eggs or cereal, toast, juice, milk  
Lunch-Popcorn chicken or ham, potatoes, green beans, fruit, hot rolls, milk

Friday

Breakfast-Cinnamon roll or cereal, toast, juice, milk  
Lunch-Hamburgers or corndog, baked fries, lettuce and tomato, fruit, milk

### Floydada School Menu

August 16 - August 18 Wednesday

Breakfast-Pancakes with syrup or cereal and graham crackers, juice, milk  
Lunch-Chicken nuggets, mashed potatoes with gravy, green beans, hot roll, Jello with fruit, milk

Thursday

Breakfast-Oatmeal and cinnamon toast or cereal and graham crackers, juice, milk  
Lunch-Spaghetti with meat sauce, tossed salad, corn, garlic bread, frozen fruit bar, milk

Friday

Breakfast-Breakfast burrito or cereal and graham crackers, juice, milk  
Lunch-BBQ on a bun, French fries, pickle spears, brownie, milk

### Car insurance with PERSONAL SERVICE.

No extra charge.

At State Farm you get a competitive rate and an agent dedicated to helping you get the coverage that's right for you. Contact me today.



Nick Long, Agent  
201 W California  
Floydada, TX 79235  
Bus: 806-983-3441  
nick.long.cgr@statefarm.com



LIKE A GOOD NEIGHBOR, STATE FARM IS THERE.

State Farm Mutual Automobile Insurance Company  
State Farm Indemnity Company • Bloomington, IL  
RM4202 05/05 statefarm.com



THE LOCKNEY BAND BOOSTERS say "Thank-you" to LISD for paving the parking lot at the football field and also a big thank-you to the coaches and Kenny Hooten for painting a practice field for the Longhorn Band to use for marching practice. Shown here in the new paved lot are: (l-r) Coaches Chad Young, Buster Brown; Superintendent Phil Cotham; Coach Mike Williams, Kenny Hooten, and Coaches Joe Robertson and Garrett Heard. Courtesy Photo

The photo of the three men on the Farm Page, according to the names on the back of the original photo., are Bill Colston, T.B. Armstrong and "R.W." ?

### Shaklee Products

For your Shaklee needs call Sue Reeves  
983-2562

NEWS  
ENTERTAINMENT  
ACCESS  
TRAVEL  
HIGH-SPEED

# High-Speed Internet Where You Live!

## HIGH-SPEED INTERNET IS HERE!

Introducing WildBlue high-speed Internet - up to 30 times faster than dial-up - and it's now offered to all residents in your area.

WildBlue is always on, so there are no "dial-up" delays and you don't need an expensive second phone line. True broadband allows you to download movies and music, share photos, and more.

## \$99.99 FOR EQUIPMENT AND INSTALLATION.

CALL FOR MORE INFORMATION TODAY!

SAVE NOW!  
OFFER ENDS  
SEPTEMBER 15, 2006



HIGH SPEED SATELLITE SERVICES

806-561-4588 • 1-877-218-2308;  
www.lyntegar.coop

Promotion Code: DMPC  
Not available in all areas. Requires a clear view of the southern sky. Equipment fee of \$299.00. Installation taxes and minimum term required. Downstream speed comparison between Pro Pak and 42 Kbps dial up. Value Pak is up to 10X faster than dial-up. Speeds are not guaranteed. Usage subject to WildBlue's Fair Access Policy. Monthly fees refer to Value Pak. Equipment and installation charges, taxes and minimum term commitments also apply. Prices subject to change. © 2006 WildBlue Communications, Inc.



The NEW CellTone! Great Deals Going On!  
All New Management & Staff!  
Hurry In! Customer Appreciation Specials End Soon

2 National Freedom Lines for \$75!  
1000 Anytime Minutes Unlimited  
Mobile to Mobile Unlimited Nights and  
Weekends And start your nights  
at 7 p.m. for FREE!

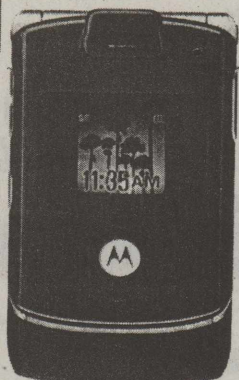
Motorola V262

RAZR

FREE 49.99

with 2-year agreement

after 100.00 mail-in rebate and 2-year agreement



alltel wireless authorized agent



3316 Olton Road Palinyview  
Right next to the Cotton Patch on 5th Street!

806-296-0009

FREE Car Charger With New Activation!

\*offer expires 9/30/06

25% OFF any in-stock accessory!!!

\*offer expires 9/30/06

\$25.00 OFF your bill when you refer your friends and family to activate in one of our stores. Up to \$75.00 per month.

Limited time offer at participating locations. Requires service agreement. Other restrictions apply. See store for complete details.

**Cotton**  **News**  
 4517 West Loop 289  
 Lubbock, Texas 79414  
 Telephone: 806-792-4904 Fax 806-792-4906  
 By Shawn Wade

Representatives from the American Cotton Producers (ACP) and Texas Cotton Producers (TCP) organizations gathered in San Antonio August 1-3 for a series of meetings to discuss current cotton industry issues.

Plains Cotton Growers was well represented at the meetings by a contingent that included current PCG President Mike Hughes of Lamesa, PCG Secretary-Treasurer Brad Heffington of Littlefield, PCG Chairman Rickey Bearden of Plains and PCG Executive Vice President Steve Verett.

With so many producers gathered in one place a natural topic of discussion was the status of the 2006 crop and the effect that hot, dry conditions across the Cotton Belt, and especially in Texas, have had on yield expectations in 2006.

During the various meetings the PCG contingent discussed issues and heard reports from National Cotton Council staff, Senate Ag Committee staff and representatives from the USDA Agricultural Marketing Service Cotton Program and the USDA Risk Management Agency.

An interesting portion of the ACP's meeting agenda, according to PCG Executive Vice President Steve Verett, was a presentation on the Wal-Mart Sustainability Project by Wal-Mart representative Kim Brandner, Brand Manager of Sustainability, from the company's Bentonville, Arkansas headquarters.

Additional agenda items included the WTO and prospects for restarting the stalled Doha negotiations, Federal Crop Insurance issues, cotton flow issues, Farm Bill issues (including the recently announced Senate Farm Bill hearing in Lubbock) and the current cotton economic situation.

In addition to the ACP and TCP meetings, PCG representatives also participated in a series of caucuses to select producer representatives and alternates to serve on the Cotton Incorporated and National Cotton Council Boards and to submit nominations to the Secretary of Agriculture for producer representatives and alternates to serve on the Cotton Board beginning in 2006. Texas Farm Service Agency figures show High Plains abandonment at 970,000 acres.

Acreage certification figures obtained from the Texas Farm Service Agency August 1 indicate the High Plains region has abandoned just over 25 percent of the reported 3.8 million cotton acres planted in Plains Cotton Growers 41 county service area.

Totalling just over 970,000 acres, the majority of the region's abandonment has been caused by drought conditions that prevented hundreds of thousands of non-irrigated cotton acres from establishing a stand. The rest of the acres failed so far were destroyed by a variety of other causes including hail, high winds and blowing sand.

Statewide, producers certified a total of 6.34 million acres planted to cotton with county FSA offices. Of that total 1.54 million acres have been failed statewide. The 3.8 million acres planted on the High Plains amounts to approximately 60 percent of the State's cotton acres. The 970,000 acres abandoned on the High Plains computes to 63 percent of the States failed cotton acreage through August 1.

High Plains irrigated cotton continues to look pretty good in the field, although some producers are having a difficult time keeping up with the moisture demands of the rapidly maturing crop.

Yield prospects for the regions's remaining non-irrigated acreage should come into focus fairly soon as a majority of the remaining dryland crop is already "blooming out the top." In the

coming days dryland cotton will establish or "set" its ultimate boll load based on the availability of soil moisture.

Based on the region's dismal dryland prospects and rapidly maturing crop, PCG has initiated discussions with officials at the USDA Risk Management Agency regarding the use of boll count appraisal rules for non-irrigated Upland cotton on the Texas High Plains to USDA Risk Management Agency Administrator Eldon Gould.

**ICAC Forecast predicts tighter world cotton stocks and higher prices in 2006/2007**

World cotton ending stocks are now forecast at 45 million bales in 2006/07, down 5 million bales from 2005/06 according to the International Cotton Advisory Committee's latest cotton supply and demand estimates.

ICAC's latest 2006/07 projections also suggest cotton prices will increase by as much as 14 percent to around 64 cents per pound, based on ICAC projections of the 2006/07 season average Cotlook A Index price at 56 cents per pound.

World cotton production is forecast at 113 million bales in 2006/07, slightly lower than in 2005/06. World cotton mill use is expected to grow by 3% to a record 119 million bales in 2006/07. The ICAC data shows that the mainland Chinese textile industry will continue to drive world mill use, with Chinese consumption expected to reach a record 48.1 million bales in 2006/07, up 2.75 million bales from 2005/06.

Chinese imports are expected to remain at a record 19.25 million bales in 2006/07, sustaining world cotton trade at 44 million bales. In 2006/07, India is expected to become the third largest cotton exporting country behind the United States and Uzbekistan, Indian cotton exports are forecast at over 3.6 million bales in 2006/07.

Average price received through June 2006

The Weighted Average Price received by farmers for 2005 crop Upland cotton, calculated

through June 2006, remained virtually unchanged from the previous month at 47.76 cents.

Adding in an estimated 635,000 bales marketed in June 2006, USDA figures indicate that producers have marketed 14.337 million bales during the 2005 Upland Cotton marketing year that began August 1, 2005.

With only the July numbers left to be included, it is fairly safe to say that the outcome of the 2005 Counter-cyclical (CC) payment rate calculation is certain and that the USDA Farm Service Agency will be able to make a timely announcement of the final payment rate in September.

The 47.76 cent Weighted Average Price is more than four cents below the level that would trigger a 2005 crop Upland Cotton CC payment rate below the 13.73 cent maximum.

**For Sale: Remington 870 Wingmaster 12 Ga. Pump Shotgun. 3" Mag with 3 chokes. Like New. \$350 (retails for over \$500). See at Kirk & Son's.**

**PRODUCERS COOPERATIVE ELEVATOR**

983-2821 - Floydada  
 983-3770 - Dougherty

FIRST NATIONAL BANK OF FLOYDADA



Floydada 983-3717  
 Member F.D.I.C.

FLOYDADA COOPERATIVE GINS, INC.



Floydada 983-2884

**Lockney Veterans Memorial Golf Tournament**  
**Saturday, August 12**

- \*Entry fee is \$75 per 2 man team
- \* 1 Muligan per person- \$10 each
- \*Tee times- 9:00 a.m. and 2 p.m.
- \$500 prize for the 1st place team!**

\* Pre register with James McNeil at the Floydada Country Club by calling **983-2769**

\*Door prize to be given away at dinner. Must be present to win.

**Dinner provided following tournament**  
**RSVP BY AUGUST 8TH**

**AMA-TECHTEL**

**Satisfy your need for speed!**

AMA-TECHTEL brings you high-speed fixed wireless Internet access. With speeds up to 50 times faster than dial-up and access that's always on, you'll connect to the world faster than ever.

AMA-TECHTEL is committed to providing the latest technology and the best customer service, so no matter who you're connecting with, you can count on us to get you there.

Now you can have the fastest, most reliable Internet service available. So act fast; contact your local distributor today!

**ASSITER INSURANCE**  
 120 W. CALIFORNIA • 983-2511

**ACE HARDWARE**  
 1101 S. RALLS HIGHWAY • 983-3000

**connect**

**NAPA Auto Parts**  
 Floydada  
 Delivery to  
 Floydada & Lockney  
 Everyday  
 Call 806-983-6272



**GUESS WHO ?... This photo was taken in February of 1956. Do you know who is in this picture? The answer is located somewhere inside this paper.**

**Czech youth visiting family in Texas**

**Continued From Page 1**  
 also got a taste of farm and ranch life.

"Here, Americans think 100 years is very old. In my country, 100 years is young," he said after touring some historical sites.

He loves most things any normal teenager loves and got to enjoy a night out with some other teen agers thanks to Brandon Gilroy.

"Sports in my country are very different than here I think," said Matus. "We do not participate at all during school hours, as this time is just for education. Students interested in participating in sports such as soccer, tennis, bowling, etc. must do it after school hours. I love tennis and give lessons after school to younger children five years and up and older adults for a fee of the equivalent of \$6 an hour. Soccer is the most popular sport where I live."

"Our schooling including college and medical expenses are paid by our government, but that does not guarantee a job as there is a set number allowed for doctors, policemen and firemen. Tests determine who can enter these occupations. Many people enter the police and fireman professions because after working ten years, their rent is free for the rest of their lives," he said. "They can then start another occupation."

Because towns and cities are not very far apart in the Czech Republic, walking, biking,

buses, trains and trams are the most common forms of transportation. "I walk mostly. My dad has a car and my older brother will probably get one for college," Matus said.

His dad has a heating business (there are no air conditioning businesses in the Czech Republic, just heating) and his mom is a nurse in the city of Ostrava where they live.

Gas prices are causing a pinch in the Czech Republic as everywhere else. Russia is the supplier for them. Because of the increase in gas, many who can, are switching to wood burning stoves for heat in the winter. Of

course apartment dwellers such as the Matus family cannot. Individuals do not control their own thermostats in multistory apartment buildings; there is one control for the whole building.

When asked what he enjoyed doing growing up, the first thing he mentioned was going to the cottage on his grandparent's place for weekends. They live 20 miles away in Verovica. He and friends enjoy sports; hiking, camping and skiing in the mountains.

Matus admitted, "I have very much enjoyed my time here, but I am getting homesick and am ready to go back soon."

**Farm Equipment INSURANCE**

Tired of high insurance rates on your Farm Equipment?

Here are some examples of the rates Farm Bureau Insurance offers:

ITEMS	VALUE	PREMIUM
Pivots	\$40,000	\$236
Tractors	\$80,000	\$176
Strippers	\$115,000	\$794
Module Builders	\$20,000	\$44
Combines	\$140,000	\$966

Call Floyd County Farm Bureau  
 We want to be your insurance agent.  
\*Rates are based on a \$1,000 deductible available.

**FARM BUREAU INSURANCE**  
 Auto • Home • Life

**James Race- LUTCF, Agency Manager**  
**David True- LUTCF, Agent**

**Helping You is what we do best.**

(806) **983-3777**  
 101 South Wall  
 Floydada, TX 79235

sbli.com-hdb-ins.  
 Texas Farm Bureau Mutual Insurance Co.  
 Texas Farm Bureau Underwriters  
 Southern Farm Bureau Casualty Insurance Co.  
 Southern Farm Bureau Life Insurance Co., Jackson, MS  
 Farm Bureau County Mutual Insurance Company of Texas

**CASE III**

**BROWN'S IMPLEMENT**  
 FLOYDADA, TEXAS  
 983-2281

<b>NEW</b>	<b>MX 210 Tractor</b>	<b>95,000.00</b>
<b>USED</b>	<b>7140 Magnum Tractor</b>	<b>21,000.00</b>
<b>USED</b>	<b>STX 9180 4WD</b>	<b>35,000.00</b>
<b>USED</b>	<b>J.D. 4650 Tractor</b>	<b>19,500.00</b>
<b>NEW</b>	<b>Wilson Towable Corral</b>	<b>8,900.00</b>
<b>NEW</b>	<b>Ag-Crane Lift</b>	<b>3,650.00</b>
<b>USED</b>	<b>Crustbuster Drill</b>	<b>4,000.00</b>
<b>USED</b>	<b>8 Row Tye Drill</b>	<b>2,500.00</b>

**Order a NEW 1200 Planter In August And Receive An Additional 9% Discount**

**See Us For All Of Your Farm Needs**  
**Trimble Guidance Systems, Wylie, Yetter, Great Plains, Sam Stevens, Bigham Bros., Rhino, Lorenzo MFG and Others**





