

*****5-DIGIT 79235
 426 07-30-10 13P 8T
 FLOYD COUNTY HISTORI MUSEUM
 PO BOX 304
 FLOYDADA TX 79235-0304
 Bridal Selections
 • Heather Ware & Chance Baker
 Michelle Hale & Danak Spradlin
 Baby Shower
 Adam & Laura Zepeda
 (baby boy)
Payne Pharmacy
 Monday - Friday 8:30-6:00 p.m. • Saturday 8:30 - 1:00 p.m.
 200 S. Main St. Floydada
 (806) 983-5111 • (800) 345-7961

Receive a Free Brighton Sunglass Case
 when you purchase any pair of brighten sunglasses

Eye on Brighton

Heart's Desire

M-F 10 AM - 6 PM SAT. 10 AM - 4 PM
 WWW.HEARTSDESIREONLINE.COM
 120 S. MAIN LOCKNEY (806) 652-2548

BMG BLACKBURN MEDIA GROUP

Market your business!
 Logos • Brochures •
 Advertising • Business Cards

info@blackburnmediagroup.com



The Floyd County
HESPERIAN-BEACON

©The Floyd County Hesperian-Beacon (USPS 202-680) www.hesperianbeacon.com

VOLUME 113 NUMBER 32 THURSDAY, AUGUST 6, 2009 12 PAGES - 75¢

Floydada Independent School District Tax Rate \$1.30

Last week, the Floyd County Hesperian-Beacon reported that the proposed tax rate for the Floydada Independent School District would be \$1.117 per \$100 valuation. But, that rate was only for maintenance and operation and should

have been listed as \$1.17. The interest and sinking tax rate is 13-cents per \$100 valuation bringing the total tax rate to \$1.30 per \$100 valuation. The two tax rates were not added together in the story that appeared

on page one of last week's edition. We regret the error. For more details on the tax rate public notices are in this week's paper for Lockney ISD, Floydada ISD and Floyd County from the tax office.



Courtesy Photo

LOWE'S \$1000 WINNER—Bertha Barrera of Floydada was a \$1000 "Cool Summer Cash" winner at Floydada Lowe's store on Saturday, August 1st. Assistant Manager, Martin Rios, (left) presents Barrera with her winnings.

Fair Day Coming August 22

By Charlene Brown
 The Floyd and Surrounding Counties Fair Day is August 22nd. We are having a one-day event this year but plan to do a full fair of three days next year. This year we have lots of activities planned for the whole family. The kids will be entertained

by the Floydada Police's jumping booth. Also, there will be an inflatable slide, paint ball shoot set up, and several other activities for kids. All ages will be entertained by bingo, run by the St. Mary Magdalen Catholic Church of **FAIR continued on Page 12**

USDA Announces \$1.7 Billion In Loan Assistance

TEMPLE — Agriculture Secretary Tom Vilsack has announced that USDA is now accepting applications for up to \$1.7 billion to fund projects that help spur business activity and economic growth in rural communities. This infusion of money from the American Recovery and Reinvestment Act into rural business is designed to create and save jobs

and help rural communities grow and prosper. "The Recovery Act funds announced today will help businesses get access to the capital they need to launch and expand their businesses and help bring additional jobs to America's small cities and towns," said Vilsack. "President Obama and I are com- **USDA continued on Page 12**

Caprock Hospital Board Meets

By JRoyce Bradshaw
 The Caprock Hospital District board of directors met on July 21, 2009 at 7 a.m. for the regular board meeting. On the agenda was an EMS update with the EMS showing a total of 31 calls for the month of June 2009 and a total of 186 calls for the year. Also on the agenda was discussion of the sign on Highway 62, of which a bid was accepted from Garrison Brothers to install a new sign.

Financial reports were given for the Floydada EMS. They showed expenses of \$23,273.33, with a cash balance of \$187,940.60 at the end of the month of June 2009. Caprock Hospital District had expenses of \$73,634.31 with a cash balance of \$285,149.48 at the end of the month of June 2009. The PNS Clinic had a total of 1361 visits for the month of June bringing the total for the year to 7176.

Floydada Girl Killed Friday

A 12-year-old Floydada girl died Friday after being struck by a vehicle while she was riding her bicycle. According to DPS officials, the girl was struck by the vehicle while she was crossing US Highway 62 just before 4 p.m. Friday, July 31. The girl was transported to Mangold Memorial where she died later that evening. The accident is under investigation.



Photo by Jim Huggins

The Lockney Longhorns started two-a-day workouts on Monday, August 3rd and will be conducting a Midnight Madness workout at 10:30 p.m. Friday, August 7 at the football field. This will give all football fans an opportunity to see the 2009 edition of the local team. Come on out and show your support of the Horns by attending this workout. Complimentary refreshments will be served by the Lockney Athletic Boosters. A highlight of the evening will be the Manmaker Conditioning Period, which all the players enthusiastically look forward to.



Photo by Jeff Blackmon

First year Floydada High School Football Coach Todd Bandy supervises practice during two-a-day workouts Monday morning in Floydada. The Whirlwinds' first scrimmage is Saturday, Aug. 15 at Brownfield. The time of the scrimmage will be announced in the next week.

2009 Lockney Longhorn Football Schedule

August 15	Roosevelt Scrimmage	Away	10:00 am
August 20	Idalou Scrimmage	Home	5:00 pm
August 28	Slaton	Home	7:30 pm
September 4	Floydada	Away	7:30 pm
September 11	Claude	Away	7:30 pm
September 18	Sprinklake-Earth	Away	7:30 pm
September 25	Nazareth	Home	7:30 pm
October 2	OPEN		
October 9	*Crosbyton	Home	7:30 pm
October 16	*New Deal	Away	7:30 pm
October 23	*Olton	Home	7:30 pm
October 30	*Balls	Home	7:30 pm
November 6	*Hale Center	Away	7:30 pm
*District Game			

2009 Floydada Whirlwind Football Schedule

August 15	Brownfield Scrimmage	Away	TBA
August 20	Olton Scrimmage	Home	6:30 pm
August 28	Lubbock Roosevelt	Away	7:30 pm
September 4	Lockney	Home	7:30 pm
September 11	Abernathy	Away	7:30 pm
September 18	Post	Home	7:30 pm
September 25	Bushland	Away	7:30 pm
October 2	OPEN		
October 9	*Muleshoe	Home	7:30 pm
October 16	*Childress	Home	7:30 pm
October 23	*Frona	Away	7:30 pm
October 30	*Tulia	Home	7:30 pm
November 6	*Dimmitt	Away	7:30 pm
*District Game			

OPINIONS

Letters to the Editor Policy

Letters should be no more than 200 words and can be mailed to the Floyd County Hesperian-Beacon, 111 E. Missouri St., Floydada, Texas 79235. Please include your street mailing address (no P.O. boxes), daytime phone number and full name and signature. Our e-mail address is floydada@amaonline.com.

THE FLOYD COUNTY HESPERIAN-BEACON

Published weekly each Thursday at
111 E. Missouri St., Floydada, Texas 79235.
Periodical postage paid at Floydada, Texas 79235.
Postmaster: Send change of address to: The Floyd County Hesperian-Beacon, 111 E. Missouri Street,
Floydada, TX 79235
(806) 983-3737 • www.HesperianBeacon.com

The Leaderless Revolution

A revolution is taking place in America. It's as intangible as the whispering wind. Yet as ineluctable as mounting gale. To the politicians, it's still but a passing breeze rustling the hair at the nape of the neck. To the grassroots masses, it's rushing torrent destined to sweep the elite from the Halls of Power.

America is at the very incipience of a Leaderless Revolution. One could see it at the hometown Tea Parties disclaimed by politicians as ragtag assemblies and disdained by Barack Obama who speciously claimed not to have even known they even occurred. One can sense it in the polls, as one after another shows plunging support for this president and his policies.

And one can hear it loud and clear in the angry outpourings at "Town Hall" meetings where sputtering politicians are driven from the podiums and forced to seek shelter behind a phalanx of guards.

In New Hampshire, Rep. Carol Shea-Porter tried to defend the snails' pace of socialized medicine with the absurd claim, "Many of my constituents would love to stand in line." Maryland's Sen. Ben Cardin, when pressed by his constituents on why they should be forced to turn over their health care to government bureaucrats, yammered that Americans simply can't be trusted. (And he has now made his town meetings "by invitation only.")

In Syracuse, NY, Rep. Dan Maffei had to call in the police to restore order at his health care town hall after angry protestors shouted him down. And Rep. Tim Bishop (D-NY1), experiencing his own problems with outraged attendees decided just to cancel town hall meetings altogether.

Ellen Sauerbrey - the courageous lady who many feel won the governorship of Maryland in 1994, only to have it snatched away by a post-

election recount - recently wrote: "I have never seen people so upset and scared. The rebellion today is a true grassroots uprising of citizens that don't believe either party in Washington represents them, hears them or cares what they think. More and more I hear, 'A plague on both their houses. Throw all the bums out!'"

What the politicians need to learn is that insulting their constituents' intelligence, denouncing them as slackers, having them arrested, or trying to act as if they simply don't exist is not going to solve the problem of a grassroots rebellion on the ascent. Nor will trying to single out some contrived opponent to belittle and besmirch, as Barack Obama did Rush Limbaugh.

The real problem the politicians face is that there is no opposition leader. In fact, there are no leaders at all. The hallmark of the grassroots uprising now befuddling and deflating the Washington political elite (and their mainstream media factotums) is that they are flying in the face of a Leaderless Revolution soundlessly inundating the very air they breathe.

It is amorphous. It is dauntless. It is unyielding. And it needs no person or party to state its case or fight its cause.

Carried in a purse, a brief case, or a backpack; wielded in the palm of the purveyor's hand; as easy as aps; and summed up in 140 characters or less; this is the Leaderless Revolution that Bill Gates predicted was coming at the "Speed of Thought" on the wireless wings of the wind.

Unfortunately for the Washington establishment, in America today - just as in Iran, Honduras, and Moldavia -- the thought has now become an action. The words have become deeds. They have begun to sew the wind. And the tone-deaf political elitists are about to reap the whirlwind.

Senator Hutchison Slams Tax Increases in Government-Run Health Care Plan

WASHINGTON, DC - Today on CNBC's "Squawk Box" health care roundtable, U.S. Senator Kay Bailey Hutchison (R-TX) said Congressional health care legislative proposals are "counterintuitive" in a time of economic downturn because they discourage investment and hiring, while proposing higher taxes and fines.

Below is a transcript of her remarks: "I think we should step back and in the worst downturns in our country. When we have had economic downturns in the recent past, President Kennedy, President Reagan, President Bush lowered taxes and it got the economy going again."

"Today, we are talking about increasing taxes at a phenomenal rate, plus adding new taxes and fines on employers to pay for a healthcare system

that is going to drive people into this government plan. So, it is totally counterintuitive and against everything that has ever worked in the past to increase taxes. And we are going to increase capital gains and dividends which is going to take away jobs. We are going to increase individual rates, which is going to cause people not to hire people because half of the higher income people who are going to pay higher taxes are small business."

"What are we thinking here? We are going against everything that has worked in the past in an economic downturn. We should be encouraging investment, encouraging hiring people, not discouraging it with higher taxes and fines."

Senator Hutchison joined Senators Lamar Alexander (R-TN), Judd Gregg (R-NH), Jack Reed (D-RI), Kent Conrad (D-ND), and Jeff Bingaman (D-NM) as a guest on CNBC's "Squawk Box" for an hour-long health care Roundtable" to discuss health care reform legislation.



The Paperboy

By Christopher Blackburn

How Stimulating

Our tax dollars are going toward pornography in Speaker of the House Nancy Pelosi's district. Hard to believe?

According to news reports, the National Endowment for the Arts is spending some of the money it received from the Recovery and Reinvestment Act to fund nude simulated-sex dances, Saturday night "pervert" revues and the airing of pornographic horror films at art houses in San Francisco.

The NEA was given \$80 million of the government's \$787 billion economic stimulus bill to spread around to needy artists nationwide. Most of the money is being spent to help preserve jobs in museums, orchestras, theaters and dance troupes which have been hit hard during the recession. I don't have a problem with that as cultural things are needed in our society.

But some NEA grants are being misused, in my opinion, for things which Americans should be up in arms against. One such matter is a \$50,000 infusion for the Frameline film house, which recently screened "Thundercrack," "The world's only underground kinky art porno horror film, complete with four men, three women and a gorilla."

Makes you wonder what else has slipped through the cracks concerning the stimulus package. Guess that's what happens when Pelosi and her cohorts decide to pass bills without reading them first.

A few members of Congress raised questions as the stimulus bill was being drafted and approved, but President Obama, while admitting there were problems with the \$787 billion legislation, stressed the need for immediate action.

Surely Obama didn't intend to have stimulus money help fund the weekly production of "Perverts Put Out" at San Francisco's CounterPULSE, whose "long-running pansexual performance series" invites guests to "join your fellow perverts for some explicit, twisted fun."

CounterPULSE received a \$25,000 grant in the "Dance" category; a staffer there said they were pleased to receive the grant, "which over the next year will be used to preserve jobs at our small non-profit."

Wow. So basically, our tax dollars are going to porn stars in Pelosi's district. Victoria Hutter, an NEA spokeswoman defended the agency's choices and said its grants would help "preserve jobs in danger of going away or that had gone away because of the economic downturn."

"Our review process is very comprehensive -- we take great care with applicants and with grantees," said Hutter. "It's a thorough, rigorous process that they all go through, and we're proud of the projects that we've been able to support."

Really? "The Symmetry Project," which has received past NEA funding and stands to get an additional boost from a \$25,000 stimulus grant, is a dance piece by choreographer Jess Curtis.

According to Curtis' Web site, "The Symmetry Project" features (hold on to your hat) "the sharing of a central axis, [as] spine, mouth, genitals, face, and anus reveal their interconnectedness and centrality in embodied experience."

Basically, it's a live sex show. Curtis said the NEA funding will help keep his art afloat. "I think art is an incredibly important part of our culture and our life and ... that it's very much appropriate that our government should be supporting it," Curtis said.

Well, I think it's a complete waste of our tax dollars and San Francisco may be as out of touch with mainstream America as a remote village in Nepal.

"With these stimulus funds San Francisco arts organizations will be able to weather the storm and continue to provide jobs and to generate revenue while enriching people's lives through innovative, high quality programming," said Luis R. Cancel director of cultural affairs for the San Francisco Arts Council.

High quality? Doubtful. No question, the stimulus bill needs oversight BEFORE money is handed out. Porn, questionable art, etc... - these things need to be funded by patrons and not the taxpayer. As for Nancy Pelosi, she's needs to be run out of office in the worst way.

Copyright Christopher Blackburn 2009

Christopher Blackburn is the president of Blackburn Media Group, owner of this publication. Feel free to comment on The Paperboy at <http://thenebastion.blogspot.com/>.

Thornberry Says Delay In Vote On Health Care Bill A "Small Victory For Common Sense"

Congressman Mac Thornberry (TX-13) issued the following statement regarding the schedule for a vote on President Obama's health care reform proposal: "It is good that a vote on health care legislation has at least been delayed for a time. This issue is too important to rush through Congress, as other bills have been. But this small victory for common sense will be fleeting unless significant changes are made to this proposal. No one should mistake tactical compromises to move the legislation along for substantive changes in the goal of the President and the Speaker to have government-run health care."

"Everyone should examine how this health care reform bill may affect them. For example, senior citizens would see significant cuts in Medicare. Millions of seniors who have chosen Medicare Advantage plans will lose their coverage,

and other seniors will find it harder to locate a doctor who will treat Medicare patients."

"In addition to the tremendous cost, this bill makes a fundamental change in the relationship between the people and their government."

Medical-of-life choices should always be, personal decisions made by a patient and a physician. If this bill becomes law, federal government bureaucrats will have a heavy hand in making decisions on who has "priority" for health care and other choices that should be made by families, patients, and doctors."

Don't Forget our new deadline: Friday at 5 p.m.



"I want to know my family will be OK."

Life insurance is an important part of your family's financial plan. It can help ensure those you love will be taken care of if something happens to you. Find out how easy it can be to obtain life insurance from Symetra. Call me today.

Kyle Smith
Goen & Goen, Inc.
(806) 983-3524
102 E. California St
Floydada, TX 79235

Life insurance is issued by Symetra Life Insurance Company, 777 108th Ave. NE, Suite 1200, Bellevue, WA 98004. Symetra™ and the Symetra Financial Logo are service marks of Symetra Life Insurance Company

Subscribe!
In county: \$25
Out of county: \$28

www.hesperianbeacon.com



MR. AND MRS. TAYLOR WD BECKER

Smith and Becker exchange vows

Garland Street Church of Christ was the site for the marriage of Cortney Nicole Smith and Taylor W.D. Becker on Saturday evening, June 13, 2009. Performing the ceremony was Weldon Melton, Elder at Garland Street Church of Christ.

The bride is the daughter of Mr. and Mrs. Doug Smith of Plainview. She is the granddaughter of Mr. and Mrs. Barry McMennamy of Plainview and Mr. and Mrs. Bill Smith of Olton.

The groom is the son of Mr. and Mrs. Neal Becker of Plainview. He is the grandson of Mr. and Mrs. Don Eddleman of Lubbock, Mr. and Mrs. Don Hegi of Petersburg and the late Weldon Melton.

Given in marriage by her parents, the bride wore a formal gown of white point D'Esprit net with appliquéd Alençon lace and featured a sculptured strapless bodice with a sweetheart neckline. The snug empire waist was defined with delicate scallops of hand-beaded lace. Alençon appliqué cascaded down the flared skirt and chapel train, with scallops of wide lace gracefully surrounding the hem. She wore her paternal grandmothers heirloom brooch in her hair and her great-great-grandmothers wedding rings in the pocket of her garter.

The bride carried a bouquet consisting of yellow roses, green hydrangeas, cymbidium orchids and a yellow protea accented with lily grass.

Whitney Smith, of Plainview, sister of the bride, served as maid of honor. Bridesmaids were Kayla Craig of Plainview and Erin Melton of Lubbock, childhood friends of the bride and K'Nell Engle of Midland, college friend of the bride.

The attendants wore floor length yellow dresses featuring a single shoulder strap and bust line of charmeuse yellow fabric cascading down the back of the dress. They held bouquets of yellow roses and green hydrangeas accented with lily grass.

The best men were Tyson Powers and Mason Powers, of Lubbock, childhood friends of the groom. Groomsmen were Alston Becker, of Plainview, the groom's brother, and Reid Carthel, of Lubbock, high school friend of the groom. Ushers were Rance Loafman and Landon Loafman, lifetime friends of both the bride and groom, Luke Rogers, childhood friend of the groom and Marcus Davis, college friend of the groom. They were attired in tuxedos with yellow ties and vest that matched the color of the bridesmaid's dresses.

Registering guests were Kaitlyn True and Megan Igo, lifetime friends of both the bride and groom. Caroline Kinkaid, the bride's cousin and Madeline Spears, Trinity Spears, and Seflee Foster, the groom's cousins, passed out programs to the guests.

After the ceremony, guests were invited to a reception at the church. Serving at the bride's table were D'Anna Kellum and D'Nae Kellum, childhood friends of the bride. The groom's cake was served by Liz Lean and Jessica Pickens, college friends of the groom. Honorary servers were Caitlin Vaughan and Jaqualine Ebling, school friends of the bride.

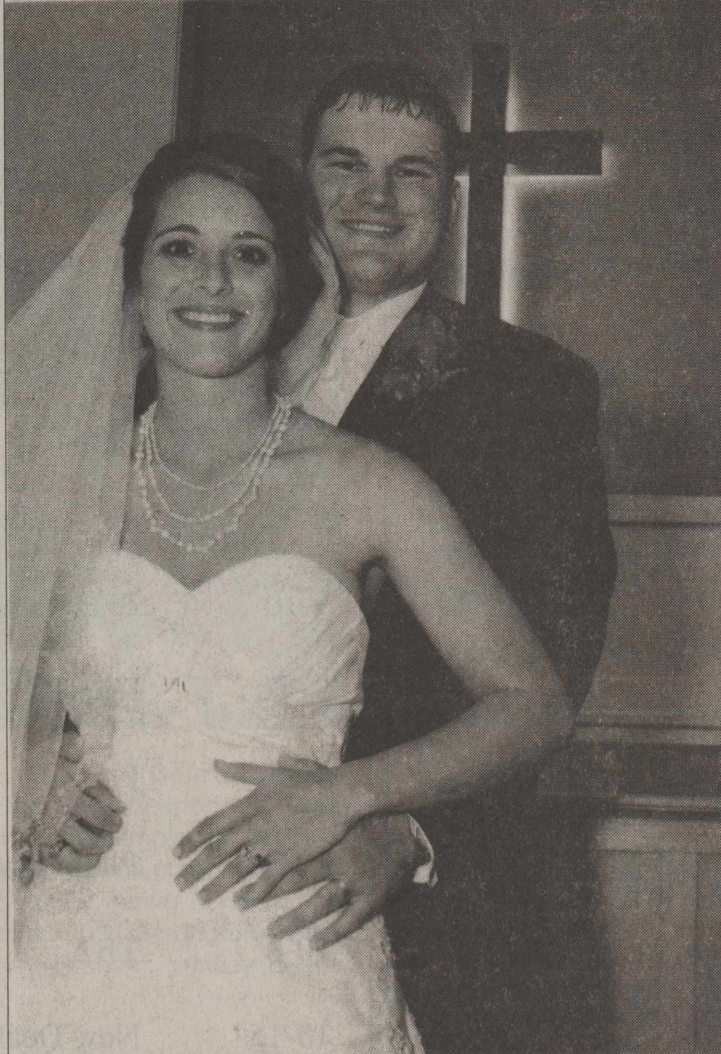
A rehearsal dinner was hosted by the groom's parents in the backyard of their home.

The bride is a 2007 graduate of Plainview High School. She attended Lubbock Christian University and will begin the Clinical Laboratory Sciences program at Texas Tech Health Sciences Center in the fall.

The groom is a 2005 graduate of Lockney High School. He is a 2008 graduate of Lubbock Christian University. He is employed as an auditor at Bolinger, Segars, Gilbert and Moss LLP in Lubbock.

The couple was given a shower in the home of Mary True and a family shower in the home of Connie Templeton. Miss Smith was also given a lingerie shower hosted by Kayla and Jill Craig, an invitation party hosted by Judy Melton and a bridal brunch hosted by DeLynn Wardlow.

After a wedding trip to Orlando, Florida, the couple will reside in Lubbock.



MR. AND MRS. JOSHUA TAYLOR BERRY

Edwards and Berry unite in marriage

Kelli Shayne Edwards and Joshua Taylor Berry were united in marriage 4 p.m. Saturday, June 6, 2009 at the First Baptist Church in Llano, Texas with Rick Cundieff officiating the ceremony.

The bride is the daughter of Bill and Sandi Edwards of Llano. She is the granddaughter of Earl and Claire Edwards of Llano and the late Walt and Janie Waters of LaFeria, Texas. She is the great-granddaughter of the late Earl and Lola Edwards of Floydada.

The groom is the son of Rick and Anne Berry of Canadian, Texas. He is the grandson of Neta Berry of Carrollton, Texas and Jean Abbott of Portland, Texas.

The bridesmaids and groomsmen entered the church to the song of "Like Red on a Rose" sang by Renee' Fowler with accompanying piano music by Claire Edwards, the bride's grandmother.

Escorted on the arm of her father, Kelli wore an ivory satin and tulle asymmetrical pickup gown with a pleated bodice and beaded metallic embroidered lace with a chapel length train. She also wore a string of pearls around her neck that belonged to Janie Waters, her late grandmother.

Tiffany Kaspar of Kingsland, served as maid of honor. Bridesmaids were Katie Berry of San Angelo, Kyndel Howell of San Angelo, and Britney Mikulik of Llano.

The best man was Caleb Berry of Canadian. Brian Edwards of Llano, Wayland Thomas of Canyon and Patrick Vasquez of Canyon served as groomsmen.

Amy and Wesley Fowler of Llano served as flower girl and ring bearer. Samantha and Isabella Mayo of San Marcos handed out rice bags. Usher and usherettes were Tony Livingston of Winters, Cory Waters of College Station, Hank Waters of College Station, Carrie Bush of Stephenville and Chelsea Platt of Fairplay Colorado.

The bride is a May graduate of Texas A&M University. She is employed by the Texas Department of Agriculture.

The groom is a May graduate of Texas A&M University. He is employed by Border States Electric.

After a wedding trip to the Bahamas, the couple will make their home in Manor, Texas.



MR. AND MRS. JOSHUA LEE KRUEGER

Hrbacek and Krueger exchange wedding vows

Karah Jo Hrbacek and Joshua Lee Krueger were united in marriage on Saturday June 27, 2009 at 6:30 in the evening at the amphitheater located at Tenroc Ranch in Salado, Texas. The ceremony was officiated by Kyle Brock at the bottom of a wooden cross, surrounded by native Austin rock amidst majestic oaks and pecan trees.

The bride is the daughter of Mr. and Mrs. Ricky Hrbacek of Lockney. She is the granddaughter of Mr. and Mrs. Jimmy Cummings of Hale center and Vida Hrbacek of Lockney and the late Paul Hrbacek.

The groom is the son of Mr. and Mrs. Leroy Krueger. He is the grandson of Gloria Smith of McCoy and the late Guy Holland Smith and Matilda Krueger of Fashing and the late Alfred William Krueger Sr.

As the bride was escorted by her father to the bottom of the hill, they crossed the bridge over the creek, full of tiger lilies, where he shook hands with the groom. The bride was attired in a formal gown with diamond white embellished lace over light gold Italian matte satin featuring a sculptured sweetheart neckline with narrow, graduated shoulder straps. The lace pattern created a swirl effect around the entire gown and was accentuated with pearl and crystal hand beading. The back of the gown was complete with a lace-up back and demicathedral train.

Jane Harrison of Plainview, sister of the bride, served as the maid of honor. Bridesmaids were Melanie Stendebach of Pleasanton, Trinity Ford of San Angelo and Randi Mitchell of Tuscaloosa, Alabama. Addyson and Rylee Stendebach served as flower girls.

The attendants wore knee length royal blue dresses in sheer chiffon featuring delicate shoulder straps and a long satin sash at the waist.

Zack Pawelek of Jourdanton, friend of the groom, served as the best man. Groomsmen were Jason Krueger of Jourdanton, Matthew Krueger of Rocksprings, both brothers of the groom and J.Paul Hrbacek of Lockney, brother of the bride. Groomsmen wore black tuxedos with royal blue vests and ties.

Kieth Pawelek of Kingsville, Levi Geyer of Lancaster, Pennsylvania, Daryn McCarter of Lockney and Dahlen McCarter of Borger, cousins of the bride, served as ushers.

Following the ceremony, everyone enjoyed a dinner and dance. It was held in the reception hall at the top of the hill and was decorated with round tables covered in navy table clothes. Each table was adorned with centerpieces made of glass vases, filled with limes, sage hydrangeas, and orange tiger lilies. The parents of the bride and groom hosted the reception.

The bride is a 2005 graduate of Lockney High School. She is a graduate of Texas A&M University Kingsville where she earned a Bachelor of Education degree.

The groom is a 2000 graduate of Jourdanton High School. He is currently a pilot for Smith Helicopters in Laredo.

The couple will reside in Laredo, Texas.

LOOK WHO'S NEW DEWBRE

Sarah and Ryan Dewbre of McKinney are proud to announce the arrival of their son, Charles William.

He was born July 7, 2009. He weighed 7 pounds, 6 ounces and was 20 inches long.

Grandparents are Jim and Kay Martin of Lockney and Jerry and Kathy Dewbre of Corpus Christi.

Great-grandmothers are Naomi Johnston of Lockney, Jo Anne McGiboney of Flower Mound and Marie Dewbre of Tishomingo, Oklahoma.

WEDDING SELECTIONS FOR
Michelle Hale
Danak Spradlin
Caprock Motor Party & Hardware
 114 California St., Floydada • 983-2865

VJ's News
 By Vera Jo Bybee
 Jr. Brotherton was transferred last Friday to Mangold Memorial Hospital from Amarillo where he had knee replacement surgery. He will be taking therapy here in the Lockney Hospital. He and wife, Gene were both happy to be back in Lockney.
 The Center wants to thank Paul and Gayle Schacht for the sweet corn. It was really good. I ate there the day Wanda cooked it.
 The attendance on Thursday night was way down for our potluck supper and games. There were only 12 that stayed for games.
 Poor Windy Clark and Lynn Ray Smith had to have Geneva Barclay and me for partners for their domino games. Now I have played "42" before but never "dominoes".
 I played partners with Windy so Lynn Ray played behind me and made some count every time. But thank goodness Windy would make some count too so he kept us in the game. Believe it or not I really enjoyed playing that
VJ...
 (continued on Page 12)

The 501
 by Hanaba Munn Welch

Can you dry up a wetland without an environmental impact study? Probably not. I am. Don't tell.
 As wetlands go, it's a small one -- the result of a longstanding water leak under the carport at the rent house on our farm. I use the term "rent house" loosely because I'm a loose landlady regarding rent and repairs. But I use the term "wetland" seriously. What else would you call a permanent mud bog with a shallow puddle in the middle?
 I guess you could call it a water leak.
 It's not like I haven't known about it. My now-departed tenants (who, believe it or not, found a better place) showed me the mud circa 2006 when they moved into the house. I told them then it was a water leak. It's grown some since.
 OK, I'll admit a part of me thought they might fix it. But they didn't. I didn't either. Now the soggy site has resident bullfrogs, and a new tenant is moving in. She didn't panic when she saw the snake in the house. My kind of renter. It seemed I should fix the carport quagmire. She has a nice car. Nicer than mine.
 Advice:
 When it comes to well-established water leaks in rural outdoor settings, the most interesting time to fix one is after dark. That's when you meet critters that frequent the artificial oasis. Some you don't meet are watching from the shadows. Frogs leap

501..
 (continued on Page 12)

Mary Kay Cosmetics
 Susan Simpson
 Independent Consultant
983-5325

NEW SHIPMENT
 Melissa & Doug
 Floor Puzzles and Toys
Also check out our 50% OFF SALE
Schacht
 Flowers, Jewelry, & Gifts • 112 W. Poplar, Lockney
 (806) 652-2385 (800) 566-5754

REACH
 Broadband
HIGH-SPEED INTERNET
SPECIAL OFFER !!!

256Kbps	\$9.95	Monthly for 6 Months
512Kbps	\$19.95	Monthly for 6 Months
1Mbps	\$29.95	Monthly for 6 Months

Free Installation (with one year contract)
 CALL TODAY TO SIGN-UP • 1-800-687-1258
 SOME RESTRICTIONS MAY APPLY. THIS OFFER IS FOR NEW CUSTOMERS ONLY

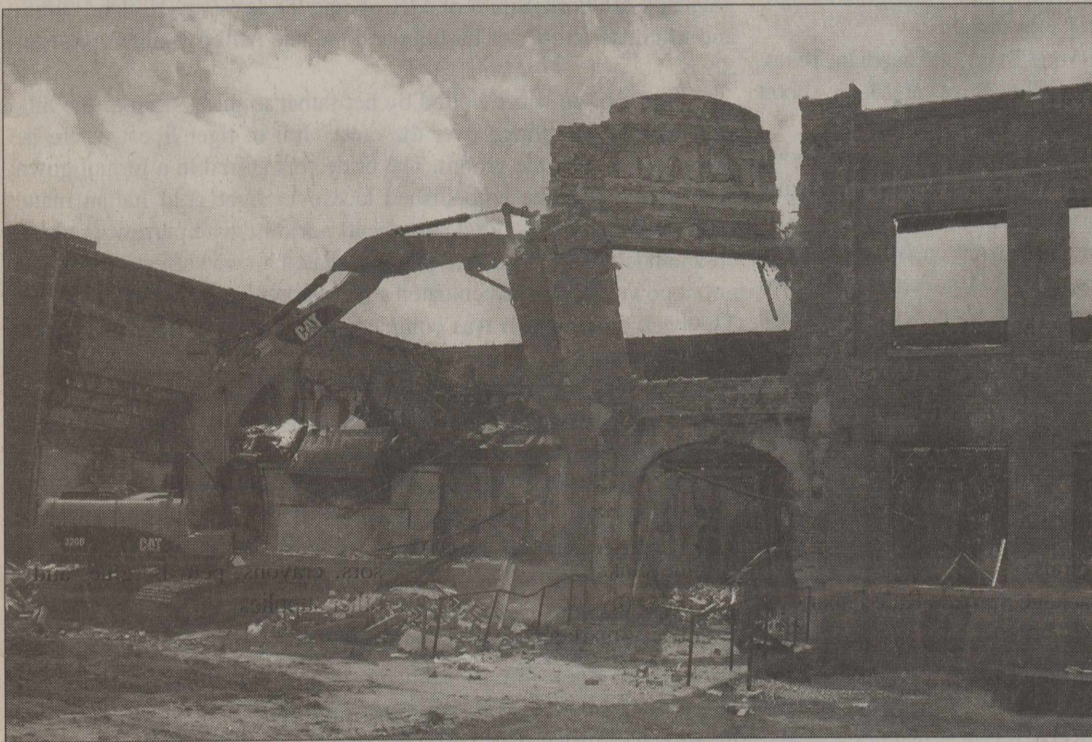
Oil Painting Instruction
 Contact Glenn Lyles
 806-293-7339 (Plainview)
 16 week semester
Tuesday
 6-9 p.m.

2009 LOCKNEY LONGHORN JUNIOR HIGH SCHEDULE

DATE	OPPONENT	HOME/AWAY	TIME
9-10	Plainview	Here	5:00, 6:00
9-17	Spr.-Earth	Here	5:00, 6:00
9-24	Plainview	There	5:00, 6:00
10-1	Floydada	Here	5:00, 6:00
10-8	Crosbyton	There	5:00
10-15	New Deal	There	5:00, 6:00
10-22	Olton	Here	5:00, 6:00
10-29	Ralls	Here	5:00, 6:00
11-5	Hale Center	There	5:00, 6:00

2009 LOCKNEY LONGHORN JUNIOR VARSITY SCHEDULE

DATE	OPPONENT	HOME/AWAY	TIME
8-15	Roosevelt- SCR.	There	10:00 a.m.
8-20	Idalou- SCR.	Here	5:00
8-27	Slaton	There	6:00
9-3	Floydada	Here	6:00
9-10	Plainview Soph.	Here	7:30
9-17	Farwell	There	6:00
9-24	Farwell	Here	6:00
10-1	Plainview Soph.	There	6:30
10-8	TBA		
10-15	New Deal	Here	6:30
10-22	Olton	There	6:00
10-29	TBA		
11-5	Hale Center	Here	6:00



Courtesy Photo by Danny Huggins

Courtesy Photo

COMING DOWN – The wall above the main entrance to the old Lockney High School is pictured as it fell to the ground last week. Work has started on tearing down the burned-out shell in preparation for construction of a new school building at the site.

KORTNEY WILLIAMS, FLOYD COUNTY 4-H member, competed at the Basic Science Blow Out held July 19th at Cooper I. S. D. Kortney's goat was the Class 6 - 1st place winner, as well as the Grand Champion of Show A and Show B. Kortney will be a senior at Lockney High School and is the daughter of Larry Williams and Kellie Cantwell.

Lockney Junior High Releases Supply List for 2009-10

2009-2010 Sixth Grade:

- Pencils
- Black pens
- Red pens
- 1 pkg. multicolor highlighters
- Notebook paper
- 1 folder with pockets and brads
- 1 three-subject spiral notebook
- 1 1/2" binder with pockets
- 2 boxes Kleenex for homeroom teacher

Seventh Grade:

- Pencils
- Black pens

- Red pens
- 1 pkg. multicolor highlighters
- Notebook paper
- Map colors
- 1 folder with pockets and brads
- 2 folders with brads
- 1 five-subject spiral
- 1 three-subject spiral
- 1 set of markers
- 2 boxes Kleenex for homeroom teacher

Eighth Grade:

- Pencils
- Black pens
- Red pens
- Notebook paper
- Ruler
- Map colors
- 1 one-subject spiral notebook
- 1 five-subject spiral notebook
- 2 folders with brads and pockets
- 1 1/2" binder

- 2 boxes Kleenex for homeroom teacher
- Resource Students Going to Mrs. Stoerner:**

- Pencils (wood or mechanical)
- Black pens
- Notebook paper (2 or 3 pkgs.)
- 1 pkg. dividers to keep in room
- 2 boxes Kleenex
- 1 1/2" binder

LHS Band Summer Rehearsals

Monday – August 10th 11:30 a.m. - 3:30 p.m. - Come to the band room and sign in. You can reserve your locker, get your flip folder, turn in your t-shirt size, order your warm-ups, and get your instrument ready to play. It will take about 10-15 minutes.

8:00 – 10:00 p.m. – First playing rehearsal

Tuesday – August 11th – 8:00 – 10:00 p.m. – Rehearsal

Thursday – August 13th – 8:00 – 10:00 p.m. – Rehearsal

Monday – August 17th – 8:00 – 10:00 p.m. – Rehearsal

Tuesday – August 18th – 8:00 – 10:00 p.m. – Rehearsal

There will be a Band Booster meeting on Tuesday, August 11th from 6-7 p.m. in the band hall. All band parents are encouraged to attend! We will discuss funding for the band trip to Orlando, Florida and other fund-raisers.

Freshmen will need to turn in \$40.00 for the red warm-ups by August 18th.

Band room phone #652-4940 – Please communicate!

Band room email: Lovett.rob@lockney.isd.tenet.edu

Beat the Heat, with **Caprock-Cellular...**
and Dive in with the New **SAMSUNG...**

B2100 XPLOER!

\$99.95
* 2yr. Commitment Required
* While Supplies Last



- water submersible
- dust resistant
- shock resistant
- stereo bluetooth
- 1.3mpx camera
- easy grip, and much more.

ACE Hardware
Floydada, TX
(806) 983-3000

Oden Chevrolet
Floydada, TX
(800) 570-3787

Caprock Cellular GSM

©Caprock Cellular 2009. All rights reserved. Limited time offer. Coverage not available in all areas. See coverage map, contract and rate plan brochure for details. Equipment price and availability may vary. Subject to credit approval or a deposit may be required. All products and service marks referenced are the names, trade names, trademarks and logos of their respective owners. Screen images are simulated. Fifty percent of all plan minutes should be on the Caprock Cellular Network. Minutes used while off of the Caprock Cellular Network, which account 50 percent of plan minutes and minutes exceeding plan, will be billed at 50¢ per minute.

AMA•TECHTEL

Satisfy your need for speed!

AMA•TECHTEL brings you high-speed fixed wireless Internet access. With speeds up to 50 times faster than dial-up and access that's always on, you'll connect to the world faster than ever.

AMA•TECHTEL is committed to providing the latest technology and the best customer service, so no matter who you're connecting with, you can count on us to get you there.

Now you can have the fastest, most reliable Internet service available. So act fast; contact your local distributor today!

ASSITER INSURANCE
120 W. CALIFORNIA • 983-2511

"THANK YOU" to all our employees for your hard work and a deficiency free inspection!

Rachel Chavira	Jessica Coss
Beatrice DelaFuente	Ofelia Hammons
Liz Garza	Griselda Lira
Mary Ann Luna	Laura Menez
Brenda Ortiz	Lusia Rea
Mary Segura	Balinda Segura
Kathy Smith	Danuta Torez

MELVIN & JANET LLOYD



Courtesy Photo

THE FLOYDADA HIGH SCHOOL VARSITY CHEERLEADERS recently attended the Texas Tech Cheerleading Camp in Lubbock. The cheerleaders received the camp's top honor of the Leadership Award. They received first place in the small varsity dance competition and second place in the cheer division. They also earned a superior rating. FHS varsity cheerleaders are (front row, l-r) Hannah Griffin, Kristen Sanchez, Lexi Covington, Brityn Helms, Blanca Suarez; (back row, l-r) Elizabeth Suarez, Mallory Graham, Whitley Beedy, Makenzie Schwertner, Laci Nixon and Masot, Anna Mora.

Whirlwinds begin two-a-day practice

Head Coach Todd Bandy has announced the two-a-day practice schedule for the Whirlwind football players as they begin the 2009 season.

Two-a-day practices began Monday, August 3 and continue through Friday, August 14.

On Saturday, August 15 the Whirlwinds will travel to Brownfield for their first scrimmage. Time to be announced later. The Whirlwinds will then host Olton on Thursday, August 20 for their second scrimmage. The scrimmage against Olton will begin at 6:30 p.m. and following the scrimmage "Meet the Whirlwinds" will be held.

Two-a-day practice schedule is as follows:

Wednesday - August 5 - Workout - 8 - 9:30 a.m.; Workout - 5:30 - 6:45 p.m.; Workout - 7:30 - 8:45 p.m.

Thursday - August 6 - Workout - 8 - 9:30 a.m.; Workout - 5:30 - 6:45 p.m.; Workout - 7:30 - 8:45 p.m.

Friday - August 7 - Workout - 8 - 9:30 a.m.; Workout - 10:45 - 12:15; Workout - 7:30 - 8:45 p.m.

Saturday - August 8 - Workout - 9 - 11 a.m.

Monday - August 10 - Workout - 4:10 - 5:45 p.m.; Workout - 6:30 - 7:45 p.m.

Tuesday - August 11 - Workout - 8 - 9:30 a.m.; Workout - 10:45 - 12:15; Workout - 7:30 - 8:45 p.m.

Wednesday - August 12 - Workout - 8 - 9:30 a.m.; Workout - 10:45 - 12:15; Workout - 7:30 - 8:45 p.m.

Thursday - August 13 - Workout - 8 - 9:30 a.m.; - Workout - 4:10 - 6:10 p.m.

Friday - August 14 - Workout - 8 - 9:30 a.m. - Workout - 4:10 - 6:10 p.m.

Monday - August 17 thru Wednesday, August 19 - Workout - 4:10 - 6:10 p.m.

A.B. Duncan Elementary Supply List for 2009-2010

PRE-KINDERGARTEN

- Kindermat
- Small blanket or towel
- Change of clothes
- Kleenex (2 boxes)
- Baby Wipes (2 boxes)
- 8 count box of crayons (Crayola brand) (1)
- Jumbo Glue Sticks (4)
- 2-Spiral Notebooks (70 ct.)
- 10-count box of washable markers (Crayola brand) (1)
- Crayola watercolors (1)
- Quart-size Ziploc bags (1)
- 2 - Hand Sanitizer (12 oz.)

KINDERGARTEN

- 6 box of crayons
- 1 Bottle of Elmer's White Glue
- 6 Glue Sticks
- 1 Box of Markers
- 1 Set of watercolor paints
- 2 Blunt Tip Scissors
- 2 Packages of Pencils
- 2 Large Erasers
- 2 Pocket Folders
- 2 Spirals
- 1 Package of Wide Rule Paper
- 1 School box
- 1 Backpack
- 2 Boxes of Kleenex
- 1 Bottle of Hand Sanitizer
- 1 Box of Quart size Ziploc Bags
- 1 Box of Gallon size Ziploc Bags
- 1 Change of Clothing (pants, shirt, underwear)

FIRST GRADE

- Packages Crayons (24 count) - true colors
- Wooden #2 Lead Pencils
- Wire Bound Spiral Notebook (70 page)
- Pair of Fiskar Scissors
- 250 Count Kleenex Boxes
- 4 Pocket Folders (Red, green, blue, yellow, without brads)
- School Box (SMALL)
- 1 Elmer's White School Glue (4 ounce)
- 4 Glue Sticks
- Box of Markers (8 count)
- Water Colors
- Big Pink Erasers
- 2 Packages of Pencil Toppers
- Hand Sanitizer (girls)
- Liquid Soap (boys)

- 1 Box of 12 Colored Pencils (Labeled with your child's name) (Map)
- Girls: 1 Box of Gallon Size Zip-tab Baggies
- Boys: 1 Box of Quart Size Zip-tab Bag

SECOND GRADE

- 2 pkg. 48 count crayons
- #2 wooden pencils (Eagle is best)
- 2 wire-bound spiral notebooks with 70 pgs. (wide-ruled)
- 1 pair of sharp metal scissors with plastic handles and pointed tip (Fiskar jr.)
- 4 boxes of 250 count Kleenex
- 3 plastic folders (either red, yellow or blue-no designs with brads)
- 1 small school box with zipper (no larger than 3"x6"x9")
- 1 box of gallon-sized Zip tab baggies
- 1 box of quart-sized Zip tab baggies
- 3 pkgs. notebook paper
- 6 glue sticks
- 2 bottles of glue
- 2 pkg. of markers

THIRD GRADE

- 2 pkg 24-count crayons
- #2 wooden pencils (Eagle is best)
- 2 big pink erasers
- 4 wire-bound spiral notebooks with 70 pages (wide-ruled)
- 1 pair of sharp metal scissors with plastic handles and pointed tip
- 2 boxes of 250-count Kleenex
- 3 folders (1 purple, 1 red, 1 green)
- 1 small school box (not larger than 3"x6"x9")
- 1 four-ounce Elmer's White School glue
- 1 backpack or tote bag

FOURTH GRADE

- 1 three ring binder (1 in.) with pockets full of wide-ruled notebook paper
- 2 one subject spiral notebooks
- 2 pink erasers
- 20 pencils
- 3 red ink pens
- 5 plastic folders with pockets and brads
- 1 composition journal for science (not spiral)
- Wide ruled notebook paper (NO college ruled)
- 4 highlighters
- 1 box of crayons
- 2 boxes of Kleenex
- 1 pair of scissors
- 1 bottle of glue/ 1 glue stick
- Pouch or small bag to hold scissors, crayons, pencils, glue, and other supplies

FIFTH GRADE

- 3 - 3 Ring Binders (1")
- 8 Tab Dividers
- Notebook Paper
- Pencils
- Red Grading Pens
- Highlighters
- 2 Large Pink Erasers
- Glue Sticks
- Scissors
- Crayons
- Colored Pencils
- Markers
- 3 Boxes Kleenex
- Pocket Folder
- 1 Spiral Notebook (for Reading)
- 1 Composition Book (for Science)
- Small Pencil Sharpener

CITY OF FLOYDADA HISTORICAL NEWS:
A sewer system election was held and passed in 1923 with \$60,000 to be used for a sewer construction project beginning in 1924. In 1933, S.E. Price was appointed City Water Superintendent. In May 1954, the 12th street lift station was constructed.
October is Floydada's Centennial Celebration!

FLOYDADA COMPUTER SERVICE

- Computer Repairs and Troubleshooting
- Windows, Software and Virus Problems
- Custom and High-end Computers and Upgrades

Free Estimates Very Reasonable House Calls Prices

Call Greg at
(806) 686-4740

824 W. Tennessee St.
Floydada, Texas 79235

NAPA AUTO PARTS®

Monday thru Friday
8:00 a.m. - 6:00 p.m.
Saturday
8:00 a.m. - 3:00 p.m.

Floyd Co. Auto Parts
1103 Ralls Hwy.
Floydada, TX 79235

(806) 983-6272

FLOYDADA WHIRLWINDS

2009 JUNIOR VARSITY FOOTBALL SCHEDULE

DATE	OPPONENT	HOME/AWAY	TIME
AUG. 15	BROWNFIELD (SCR.)	AWAY	TBA
AUG. 20	OLTON (SCR)	HOME	6:30
AUG. 27	LUBBOCK ROOSEVELT	HOME	7:30
SEP. 3	LOCKNEY	AWAY	7:30
SEP. 10	ABERNATHY	HOME	7:30
SEP. 17	POST	AWAY	7:30
SEP. 24	BUSHLAND	HOME	7:30
OCT. 1	OPEN		
OCT. 8	MULESHOE*	AWAY	7:30
OCT. 15	CHILDRESS*	AWAY	7:30
OCT. 22	FRIONA*	HOME	7:30
OCT. 29	TULIA*	AWAY	7:30
NOV. 5	DIMMITT*	HOME	7:30

*DENOTES DISTRICT 2-AA GAMES

FLOYDADA WHIRLWINDS

2009 JUNIOR HIGH FOOTBALL SCHEDULE

DATE	OPPONENT	HOME/AWAY	TIME
SEP. 10	ABERNATHY	AWAY	5:00/6:00
SEP. 17	POST	HOME	5:00/6:00
SEP. 24	FRIONA	HOME	5:00/6:00
OCT. 1	LOCKNEY	AWAY	5:00/6:00
OCT. 8	MULESHOE*	HOME	5:00/6:00
OCT. 15	CHILDRESS*	HOME	5:00/6:00
OCT. 22	FRIONA*	AWAY	5:00/6:00
OCT. 29	TULIA*	HOME	5:00/6:00
NOV. 3	DIMMITT*	AWAY	5:00/6:00

*DENOTES DISTRICT 2-AA GAMES

Thanks For
Reading
The Hesperian-
Beacon

We are proud to offer
CIRCLE (E) CANDLES

Come see Stacie
at Scott Gin

983-2220

Two miles south on
the Ralls Hwy.

Why cut
CORNERS
on car insurance?
Turn to me for
competitive rates and the
right coverage.
Call today.



Nick Long, Agent
201 W. California
Floydada, TX 79235
(806) 983-3441
nick.long.cgr0@statefarm.com



LIKE A GOOD NEIGHBOR
STATE FARM IS THERE®
Providing Insurance and Financial Services
State Farm Mutual Automobile Insurance
Company (not in NJ), Bloomington, IL
P040028 12/04

Floyd County Classifieds

Call 806-983-3737 or 806-652-3318

website: www.hesperianbeacon.com

e-mail: floydada@amaonline.com

Services

D & D CONCRETE—For your concrete work call Daniel, 806-317-0843 or 806-983-9006. FREE ESTIMATES!

LARRY OGDEN AUCTIONEERING

Estates, Farm, Ranch, Business, Liquidations, State Licensed and Bonded. (806) 983-5808. TX. #9240.

FIERROS AND SONS—AA Concrete. Gabriel, 806-292-5006/652-2292/570-2740. No job too small. FREE ESTIMATES! (Since 1979). Lockney.

CEMENT WORK—Need a new driveway, sidewalk, patio or flower bed curb? Call Gary Bennett at 983-5120 (home) or 778-8549 (cell).

COVINGTON CONSTRUCTION— Home repairs and remodels. Call me, Monte Covington, 548-3357.

ERNIE'S LAWN SERVICE—Includes tree trimming and leaf clean-up. Call Ernie Torrez, Sr. - 806-685-4539 or 806-983-3365.

Help Wanted

THE FLOYD COUNTY HESPERIAN-BEACON is looking for part time help for the position of reporter. Job duties include covering school board, city council and commissioners' court meetings. Applicants should submit a resume to our main office in Floydada, 111 E. Missouri, or e-mail resume to: floydada@amaonline.com or fcfb.editor@yahoo.com

CLASS A CDL DRIVER NEEDED— Benefits: health/life, 401K w/match, vacation/holiday, & safety bonus. 2 years experience and good driving record. Apply online: www.transportinc.com

Houses for Sale

FLOYDADA MUST SELL—2-1-1 in Floydada. 425 W. Missouri. Reduced! \$16,900; Call 806-685-0194.

HOUSE FOR SALE—818 W. Georgia Street. Approximately 2400 sq. ft. 4 bedroom, 2 bath with large storage building and new carport. Corner lot. Call 806-543-3932. (after 5 p.m.) Leave message.

PRICE REDUCED—3 bedroom, 2 bath, large utility. Lots of storage. Large corner lot. 801 W. Tennessee. Call 806-983-2040.

LARRY JONES REAL ESTATE—
** Very nice 3 bed-2 bath home on 3 lots with 1 bed-1 bath apartment!
** Large 3 bed-2 bath home on corner lot with 2 car garage and NEW fence.
** Cute 3 bed-1 bath home with 2car carport.
** Remodeled 2 bed-1 bath home with 1 carport. Extra nice interior!
Call Dedra at 543-7540 for more details or appointment.

Instructional Lessons

PIANO AND VOICE lessons. Certified music teacher. Call 652-2536.

Farm Miscellaneous

WANTED TO RENT barn and pens, small pasture, lake pasture, etc. Will even clean up a place. Call 806-268-2500.

Garage Sales

FLOYDADA ESTATE SALE—315 Kentucky. 9:00 a.m. Saturday, August 8th. Lots of furniture, stove and much more.

Miscellaneous

TEXAS PLAINS FEDERAL
206 W. California, Floydada
Remember us for all your personal financial needs - CD's, loans, checking and savings accounts. Call Laura at 983-3922 or visit our website at: www.texasplains-federal.org

Pets

BORDER COLLIE PUPS for sale. Poco Bueno Stock Dogs. Call Tim at 983-3322 or email: tim@pocosd.com

ALPHATEX KENNEL, AIKEN, TEXAS offers superior quality AKC Registered, DNA Certified Collies, Golden Retrievers and German Shepherds. Puppies and stud service available.

www.alphatexkennels.com

BARKER MINI-STORAGE

MONTHLY RENTALS

5'x10' - \$20.00 per month
10'x10' - \$30.00 per month
10'x15' - \$40.00 per month

ASK ABOUT OUR LONG TERM DISCOUNTS
PHONE: 652-3379

Lockney

SCRIPT PRINTING & OFFICE SUPPLY

- * Commerical Printing
- * Office Supplies & Furniture
- * Business Machines

108 S. Main Floydada

POOLE WELL CAM & SUBMERSIBLE SERVICE

Dual Lens for Color Videos of Irrigation and domestic wells. Reveals sand infiltration, crusting or deterioration, blockage 4" - 30" I.D.

704 Matador Hwy. Floydada, Texas 983-2285

HOUSE FOR SALE BY OWNER

819 W Missouri, Floydada, TX. 1680 sq. ft. approximately 3 Br., 2 bath, 2 car garage, central heat & air, nice fireplace, fenced backyard, House sits on 1.5 lots. ~~\$75,000~~ REDUCED \$65,000. Owner Ready To Sell Call 806-296-5228

NOTICE TO BIDDERS

Floydada ISD will accept bids on a house located on the R. C. Andrews campus to be moved. The house is a 3-bedroom, 2-bath house with approximately 1800 sq. ft. The house is to be moved and property to be cleaned to the surface with 60 days of bid acceptance. Sealed Bids are due no later than August 20, 2009 at 1:00 p.m. Sealed bids should be marked "house bid" and addressed to:

Floydada ISD
226 W. California
Floydada, Texas 79235

Floydada ISD reserves the right to accept or reject any and all bids.

7-30, 8-6, 8-13c

Citation By Publication

THE STATE OF TEXAS

TO: The Unknown Heirs of HANNAH KEETER OVERSTREET, respondents in the cause described in this citation.

You and each of you, are commanded to appear and to answer before the Floyd County Court in the County Courtroom in Floydada, Floyd County, Texas at or before 10:00 a.m. on the first Monday after the expiration of ten days from the date of issuance of this citation, being at or before 10:00 a.m. on Monday, August 17, 2009, then and there to answer the petition of Applicant, Edwina Davenport in cause No. 5833, styled "IN THE ESTATE OF HANNAH KEETER OVERSTREET, DECEASED", in which Edwina Davenport is the applicant seeking a determination of heirship and unknown heirs are respondents.

The application, filed on July 27, 2009, discloses that the nature of the suit is as follows:

A determination of the heirs and only heirs of HANNAH KEETER OVERSTREET

ISSUED AND GIVEN UNDER MY HAND AND SEAL OF SAID COURT at office in Floydada, Floyd County, Texas this 31st day of July, 2009.

Marilyn Holcomb
Clerk of the County Court
Courthouse Room 101
Floydada, Floyd County, Texas

8-6c

Report child abuse and neglect

Call 1-800-252-5400

Subscribe to
The Floyd County Hesperian-Beacon
Today!
806-983-3737

SUDOKU

8	7		1					
							1	3
			9	7	4	8		
			4	6			9	8
4	6				7	3	2	
9		2						
	8				3	2		
3		1	7					8
	2			4	5			

Level: Intermediate

Here's How It Works:

Sudoku puzzles are formatted as a 9x9 grid, broken down into nine 3x3 boxes. To solve a sudoku, the numbers 1 through 9 must fill each row, column and box. Each number can appear only once in each row, column and box. You can figure out the order in which the numbers will appear by using the numeric clues already provided in the boxes. The more numbers you name, the easier it gets to solve the puzzle!

9	8	1	5	4	8	6	2	7
5	8	9	6	2	7	1	4	3
4	7	2	3	1	9	6	8	5
7	9	1	4	8	3	2	5	6
1	2	3	7	6	5	8	9	4
8	6	5	2	9	4	7	1	3
6	9	8	5	7	4	3	2	1
3	4	2	5	8	7	1	6	9
2	3	6	9	4	2	5	8	7

ANSWER:

PUBLIC NOTICE OF HEARING ON PROPOSED BUDGET FOR 2009/2010 AND ADOPT THE BUDGET OF 2009/2010 ADOPT THE EFFECTIVE TAX RATE FOR 2009/2010

On August 24, 2009 at 10:00 a.m. the Commissioners' Court will hold a Hearing on proposed budget and adopt the Budget at a special called meeting. Then on September 14, 2009 at 9:00 a.m. Commissioners' Court will adopt the Tax Rate, at a regular called meeting in the Floyd County Courthouse Room 106, Floydada, Texas.

8-6c

Bad news for fire ants - Phorid flies feeling at home in North Texas

Life from now on will be harder for red imported fire ants in some North Texas communities, say experts with the Texas AgriLife Extension Service.

The fire ant's, natural enemies "phorid flies" have been introduced in Red River County, and established populations have spread through areas of Denton County.

"We've been hoping that two species of the flies would take hold in Red River County after being released there nearly two years ago," said Kim Schofield, an AgriLife Extension program specialist in Dallas. "We're glad they're finally established."

After two releases since 2004 in Denton County, the phorid flies have spread as far as 30 miles from the original release site at Ray Roberts Lake State Park, about 45 miles northwest of Dallas, Schofield said.

"That's bad news for fire ants," she said.

It's good news, however, for residents of Red River County who are happy for another helpful tool in fighting off red imported fire ants, said AgriLife Extension agent Lynn Golden, based in Clarksville.

"The flies as a biological control hold promise for suppressing red imported fire ants," he said. "They don't promise to eradicate the ants. They're just another way to help control them."

Phorid flies are native to South America where they and other predators keep red imported fire ants in check, Schofield said. The female flies attack the ants and lay eggs in their bodies. Larvae eventually hatch and burrow into the ant's, heads. There, they grow and release enzymes that cause the heads to fall off. Mature flies eventually emerge from the decapitated heads, and the cycle starts over.

"The flies attack and eventually kill the ants, but their real impact is that they stalk the fire ants when they're foraging," Schofield said. "That reduc-

es foraging activity which, in turn, helps limit food within the fire ant colony."

The Clarksville project is Extension's latest and northernmost release of phorid flies in a long-running battle against fire ants in the state, said Dr. Bart Drees, a Texas A&M University professor and AgriLife Extension entomologist.

"In the late 1990s, researchers began to see these as potential biological control agents," said Drees, who is based in College Station. "And since that time the flies have been imported to the United States, mass-produced and released."

Test releases began in 1997 to determine whether the flies would populate designated areas and to make sure they posed no threat to anything other than fire ants, he said.

In 2000, a governmental initiative brought several agencies together to raise and release large quantities of phorid flies in southern states, Drees said.

The initiative involves AgriLife Extension, the University of Texas at Austin, U.S. Department of Agriculture's Agricultural Research Service, the USDA's Animal and Plant Health Inspection Service and the Florida Department of Agriculture and Consumer Services.

Phorid fly populations have spread to 97 counties in Texas, Drees said.

A new species of phorid fly was released in East Texas in April where AgriLife Extension entomologists hope they will eventually establish themselves as the others did near Dallas. The species has already been established in 10 sites in southern and central Texas.

For more information on fire ants in Texas, go to <http://fireant.tamu.edu> and <http://www.sbs.utexas.edu/fireant>.

Texas Receives \$10.4 Million for Water Conservation Projects

The USDA Natural Resources Conservation Service (NRCS) is making \$10.4 million available through the Agricultural Water Enhancement Program (AWEP) for five water conservation and water quality projects on Texas agricultural working lands.

"AWEP is a voluntary conservation initiative that provides financial and technical assistance to farmers and ranchers to improve water conditions on their agricultural land," said Don Gohmert, NRCS state conservationist for Texas. "With water supplies short across Texas, this is just one more way agriculture can help conserve its use."

Funded projects in Texas include:

- Water quality improvement project for the Leon River sponsored by Texas State Soil and Water Conservation Board
- Texas agriculture water conservation project for the Ogallala Aquifer sponsored by the Texas Water Development Board
- Lake Arrowhead watershed project to improve available water quantity sponsored by the Chisholm Trail Resource Conservation and Development (RC&D), Inc.

- Water enhancement projects for drought mitigation and water conservation on University lands owned and managed by the University of Texas System sponsored by the University of Texas
- Brazos Bottom Irrigation Water Management sponsored by the Post Oak RC&D, Inc.

Funding is being made available for 63 AWEP projects in 21 states. Project proposals were developed by sponsors who offered services and resources, allowing the Federal Government to leverage its investment in natural resources conservation.

AWEP promotes ground and surface water conservation and improves water quality by helping farmers and ranchers implement agricultural water enhancement activities, including water quality or water conservation plan development, conversion to the production of less water-intensive agricultural commodities or dry land farming; water quality or quantity restoration or enhancement projects; irrigation system improvement or irrigation efficiency enhancement; and activities designed to mitigate the effects of drought.

AWEP was established by the Food, Conservation, and Energy Act of 2008 (2008 Farm Bill) and funding comes from the Environmental Quality Incentives Program (EQIP). NRCS implements AWEP by entering into EQIP contracts directly with agricultural producers.

Everyone receiving assistance through AWEP must meet EQIP requirements. Though participating AWEP producers do not need to have existing EQIP contracts, they must be eligible for EQIP. All partner proposals were selected competitively at the national level. Proposals for priority areas may have received higher rankings, and include property undergoing conversion of agricultural land from irrigated to dry land farming; projects that help producers meet regulatory requirements; and projects located where there is a high percentage of agricultural land and producers in a region or area.

More information about specific AWEP projects visit: <http://www.nrcs.usda.gov>, or visit the nearest USDA Service Center in your area.

2009 Carlton Reunion held

The family of Aubrey and Elmina (Crow) Carlton, formerly of Friona, held their 23rd annual reunion at the homes of Rocky and Donette (Carlton) Sabins and Debbie Carlton in Plainview on Saturday, July 25.

Special guests attending were: Aunt Zula Carlton - Plainviw, Aunt Sue Inman - Hereford, Donna Vernon - Plainview, Tami Vernon - Plainview, Ethelyn Gamett - Lockney, Douglas, Laura, Zachery & Katrina Lappe - Lubbock, Holly Rhodes - Plainview, Jody and Libby Sabins - Plainview and Erin Lappe - Lubbock.

Family attending were: Sonny and Sandra Lappe Carlton - Ovala, Tx., Terry, LeeAnn, Karlee

and Alessia Carlton - Aubrey, Tracy, Jennifer, Preston and Ashley Carlton - Corinth, Jerry and Liz Carlton - Clovis, New Mexico, Walter and Renda Carlton - Weatherford, Marti and Hannah Gresham - Stephenville, Jesse Milton and Sandi Carlton - Leander, David and Patti Carlton - Plano, Micah, Leslie, Aiden and Baylie Carlton - McKinney, Debbie Carlton - Plainview, Rocky and Donette Sabins - Plainview, Tim Sabins, Kress, Sarah Sabins - Canyon, Wyman, Tammy, Shelby, Devinney and Walker Rexrode - Leander, Heath, Jeri, Austen and Audrey Rexrode - Lockney and Joe and Margie Rexrode - Lockney.

Xcel Energy customers in Texas to receive refund

AMARILLO - Xcel Energy retail customers in Texas will soon be receiving a refund on their bills because of lower fuel costs.

The refund will be a one-time credit based on August usage. A residential customer using 1,000 kilowatt-hours in August will receive a credit of \$23.60. Because the refund will be calculated on August usage, customers can expect to see the credit on bills received in August, September and/or October depending on their billing cycles.

Xcel Energy collects its fuel and purchased-energy costs in Texas through a fuel factor that is approved by the Public Utility Commission of Texas. At the time the current factor was developed, fuel and purchased power expenses were projected to be higher than the actual amount spent. The credit will rebate customers for amounts collected under the allowed fuel factors in early 2009 that exceeded actual fuel and purchased-energy costs.

Xcel Energy (NYSE: XEL) is

a major U.S. electricity and natural gas company with regulated operations in eight Western and Midwestern states. Xcel Energy provides a comprehensive portfolio of energy-related products and services to 3.4 million electricity customers and 1.9 million natural gas customers through its regulated operating companies. Xcel Energy's headquarters are located in Minneapolis. More information is available at www.xcelenergy.com

NOTICE OF PUBLIC MEETING TO DISCUSS BUDGET AND PROPOSED TAX RATE

The Lockney Independent School District will hold a public meeting at 7:45 PM ON AUGUST 18, 2009 in BOARD ROOM, ADMINISTRATION OFFICE 416 W. WILLOW LOCKNEY, TEXAS. The purpose of this meeting is to discuss the school district's budget that will determine the tax rate that will be adopted. Public participation in the discussion is invited.

The tax rate that is ultimately adopted at this meeting or at a separate meeting at a later date may not exceed the proposed rate shown below unless the district publishes a revised notice containing the same information and comparisons set out below and holds another public meeting to discuss the revised notice.

Maintenance Tax \$ 1.14/\$100 (Proposed rate for maintenance and operations)

School Debt Service Tax

Approved by Local Voters \$ 0.00/\$100 (proposed rate to pay bonded indebtedness)

Comparison of Proposed Budget with Last Year's Budget

The applicable percentage increase or decrease (or difference) in the amount budgeted in the preceding fiscal year and the amount budgeted for the fiscal year that begins during the current tax year is indicated for each of the following expenditure categories:

Maintenance and operations	1.16 % increase	or	_____ % (decrease)
Debt service	0.00 % increase	or	0.00 % (decrease)
Total expenditures	1.16 % increase	or	_____ % (decrease)

Total Appraisal Value and Total Taxable Value (as calculated under Section 26.04, Tax Code)

	Preceding Tax Year	Current Tax Year
Total appraised value* of all property	\$ 145,718,250.00	\$ 157,602,080.00
Total appraised value* of new property**	\$ 29,400.00	\$ 221,930.00
Total taxable value*** of all property	\$ 89,063,028.00	\$ 86,110,778.00
Total taxable value*** of new property**	\$ 24,210.00	\$ 198,500.00

* "Appraisal value" is the amount shown on the appraisal roll and defined by Section 1.04(8), Tax Code.

** "New property" is defined by Section 26.012(17), Tax Code.

*** "Taxable value" is defined by Section 1.04(10), Tax Code.

Bonded Indebtness

Total amount of outstanding and unpaid bonded indebtedness* \$ 0.00

* Outstanding principal

Comparison of Proposed Rates with Last Year's Rates

	Maintenance & Operations	Interest & Sinking Fund*	Local Revenue Total	State Revenue Per Student	State Revenue Per Student
Last Year's Rate	\$ 1.14	\$ 0.00*	\$ 1.14	\$ 1,844.00	\$ 7,893.00
Rate to Maintain Same Level of Maintenance & Operations Revenue & Pay Debt Service	\$ 1.14	\$ 0.00*	\$ 1.14	\$ 1,807.00	\$ 7,674.00
Proposed Rate	\$ 1.14	\$ 0.00*	\$ 1.14	\$ 1,807.00	\$ 7,674.00

* This Interest & Sinking Fund tax revenue is used to pay for bonded indebtedness on construction, equipment, or both. The bonds and the tax rate necessary to pay those bonds, were approved by the voters of this district.

Comparison of Proposed Levy with Last Year's Levy on Average Residence

	Last Year	This Year
Average Market Value of Residences	\$ 35,864.00	\$ 36,035.00
Average Taxable Value of Residences	\$ 23,665.00	\$ 24,943.00
Last Year's Rate Versus Proposed Rate per \$100 Value	\$ 1.14	\$ 1.14
Taxes Due in Average Residence	\$ 269.00	\$ 284.00
Increase (Decrease) in Taxes		\$ 15.00

Under state law, the dollar amount of school taxes imposed on the residence homestead of a person 65 years of age or older or of the surviving spouse of such a person, if the surviving spouse was 55 years of age or older when the person died, may not be increased above the amount paid in the first year after the person turned 65, regardless of changes in tax rate or property value.

Notice of Rollback Rate: The highest tax rate the district can adopt before requiring voter approval at an election is 1.14. This election will be automatically held if the district adopts a rate in excess of the rollback rate of 1.14.

Fund Balances

The following estimated balances will remain at the end of the current fiscal year and are not encumbered with or by a corresponding debt obligation, less estimated funds necessary for operating the district before receipt of the first state aid payment:

Maintenance and Operations Fund Balance(s)	\$ 3,300,000.00
Interest & Sinking Fund Balance(s)	\$ 0.00



ELMER DEAN WILLIAMS AND MARTHA SMITHEY WILLIAMS of Floydada will celebrate their 50th wedding anniversary on August 6, 2009 with a small dinner reception at the Floydada Country Club given in their honor by their children. Elmer Dean Williams married Miss Martha Smithey in the Harmony Community in Floyd County on August 10, 1959. He is a farmer and she was a sales clerk at Hale's Department Store. She is retired. Their children are Todd and Karrie Williams of Floydada, Monty and Donna Williams of Paragould, Arkansas, and Chad and Jamie Williams of Floydada. Elmer Dean and Martha are proud grandparents of Whitney and Kelsey Williams of Lubbock, Keaton Williams of Little Rock, Arkansas, Montana Williams of Floydada, and the late Dylan Thomas of Floydada.



Floydada Senior Citizens News

By Margarette Word

The center is open Monday through Friday. Lunch starts at 12 noon. If you are 60 years or older, come join us.

Sue Daniels drove this past weekend to San Antonio. She picked up her daughter, Zan and they drove to Ft. Worth to help celebrate Sue's grandson, Brayden's, third birthday. He is the son of Brandon and Janie Daniels.

Margaret Soudilier went to McKinney, Texas to visit her daughter, Denise Nixon recently. They had fun shopping and visiting.

On Wednesday, July 29 we had a couple of visitors to eat lunch at the center. They were Sam Spence of Lubbock and Leddie Walls of Floydada.

I have really enjoyed the rain we have been blessed with recently. I'm sure the farmers are grateful too. The crops look so good.

Nell McClung received word last week of the arrival of her new great-grandson, Hudson Chance. He was born July 24 to Marcie and Randy Giesbrecht of Rayville, LA. Grandparents are Shirley and Joe Parker of Jacksonville, Texas. The new baby was also welcomed by four big brothers, Jaylen - 9 years, Kayden - 6 years, Landen - 4 years and Nathen - 2 years.

Nell McClung spent the weekend visiting her daughter, Sue and husband, Alton Higginbotham in Burleson, Texas.

Jon LaBaume was surprised after church on Sunday night at City Park Church of Christ with a "70th birthday party." Sandwiches and homemade ice cream was served to the large number that stayed to help celebrate. A photo

was displayed of Jon and his twin brother, Don. He also has two younger sisters.

"Happy Birthday" to those who have August birthdays.

- August 2 - Joyce Henderson;
- August 3 - Jon LaBaume; August 6 - J.V. Martin; August 13 - Evalene Goodnight; August 14 - Clorene Holladay; August 15 - Bill Feuerbacher; August 16 - Donna Pernel; August 17 - Loretta Leatherman & Sally Salazar; August 18 - Frieda Simpson; August 19 - LaVerne McIntosh; August 20 - Lee Moss; August 25 - Nell McClung; August 27 - William Bertrand & Guy Ginn; August 30 - Flora McNeill.

Our sympathy to the family of Jonelle Fawver.

Thank you for remembering the center when you need to make a memorial donation.

In memory of **Jonelle Fawver** - James and Sue Lovell, Herman and Bonnie Graham

Thought for the Week

I think people should go into public office for a term or two and then get back into their businesses and live under the laws that they passed.

Mike Curb

MENU

AUGUST 10- AUGUST 14

Monday - Oven fried pork chops, mashed potatoes, peas, roll, cake

Tuesday - Beef stroganoff, green beans, macaroni & cheese, roll, pistachio salad

Wednesday - Chicken fajitas, pinto beans, salad, cobbler

Thursday - Green chili chicken, pinto beans, peas, roll, fruit

Friday - Hamburgers, French fries, baked beans, cake

Museum News

By Dorothy Turner

Have you visited the Floyd County Historical Museum lately? We have many new displays and memorial plaques.

The Genealogy department is always busy helping families to find their roots. This is surprising of how many things have happened in Floyd County History. Janet Milam is always willing to help you.

During April, May and June we had 1187 visitors. Fifteen states, 59 Texas towns, and the countries of Switzerland, France, England and Canada were represented.

Memorials for the families of Carol Bell, Stinson Stringer, Beth

Atkinson, Dorothy Reeves, Chase Mitchell, Wilma Brown, J.D. Copeland, Doris Snodgrass, Adrain Helms, Virginia Cage, Bill Gray, Scott Faulkenberry, Bessie Wilson, Huford Sue, and Clint Lamb were received.

During Old Settlers Day we had the wild flower show and the quilt display in the Barrow Building. The usual attraction of rope making was thoroughly enjoyed. Registered guests numbered 326.

Our official hours are 1 to 5 Monday through Friday, but there is usually someone here each morning. The building is not air-conditioned but we do have fans, so come on by and visit.



Courtesy Photo

THE FLOYD COUNTY 4-H Junior Share-The-Fun team recently enjoyed a trip to Joyland Amusement Park in Lubbock. The Share-The-Fun team coaches treated them with the trip for placing first in 4-H district competition on June 22. Pictured are (l-r) Adree Stapp, Selena Espinoza, Montana Williams, Valerie Espinoza, Tristan Schlueter, Austen Rexrode, Remington Ricketts, Stetson Lane and Keenan Nixon.

Thanks For Reading!

2009 Property Tax Rates in Floyd County

This notice concerns 2009 property tax rates for Floyd County. It presents information about three tax rates. Last year's tax rate is the actual rate the taxing unit used to determine property taxes last year. This year's effective tax rate would impose the same total taxes as last year if you compare properties taxed in both years. This year's rollback tax rate is the highest tax rate the taxing unit can set before taxpayers can start tax rollback procedures. In each case these rates are found by dividing the total amount of taxes by the tax base (the total value of taxable property) with adjustments as required by state law. The rates are given \$100 of property value.

	General Fund	Farm to Market/ Flood Control Fund	Special Market/ Bridge Fund
Last year's tax rate:			
Last year's operating taxes	\$ 1,517,818.00	\$	\$ 81,365.20
Last year's debt taxes	\$	\$	\$
Last year's total taxes	\$ 1,517,818.00	\$	\$ 81,365.20
Last year's tax base	\$ 248,877,253.00	\$	\$ 248,877,253.00
Last year's total tax rate	\$.67722 /\$100	\$ /\$100	\$.03269 /\$100
This year's effective tax rate:			
Last year's adjusted taxes (after subtracting taxes on lost property)	\$ 1,559,478.00	\$	\$ 103,965.25
/ This year's adjusted tax base (after subtracting value of new property)	\$ 257,993,163.00	\$	\$
= This year's effective tax rate for each fund	\$.60446 /\$100	\$ /\$100	\$.04029 /\$100
Total effective tax rate	\$.60446 /\$100		

In the first year a county collects the additional sales tax to reduce property taxes, it must insert the following lines unless its first adjustment was made last year:

- Sales tax adjustment rate	\$ /\$100
= Effective tax rate	\$ /\$100

This year's rollback tax rate:			
Last year's adjusted operating taxes (after subtracting taxes on lost property and adjusting for any transferred function, tax increment financing, state criminal justice mandate, and/or enhanced indigent health care expenditures)	\$	\$	\$
/ This year's adjusted tax base	\$	\$	\$
= This year's effective rate	\$.60466 /\$100	\$ /\$100	\$.04297 /\$100
x 1.08 = this year's maximum operating rate	\$.70040 /\$100	\$ /\$100	\$.04297 /\$100
+ This year's debt rate	\$ /\$100	\$ /\$100	\$ /\$100
= This year's rollback rate for each fund	\$ /\$100	\$ /\$100	\$ /\$100
This year's total rollback rate	\$.70040 /\$100		

A county that collects the additional sales tax to reduce property taxes, including one that collects the tax for the first time this year, must insert the following lines

- Sales tax adjustment rate	\$ /\$100
= Rollback tax rate	\$ /\$100

For a county with additional rollback rate for pollution control, insert the following lines:	
+ Additional rollback rate for pollution control	\$ /\$100
= Rollback tax rate	\$ /\$100

Statement of Increase/Decrease

If Floyd County adopts a 2009 tax rate equal to the effective tax rate of \$.64852 per \$100 of value, taxes would decrease compared to 2008 taxes by \$13.00.

Schedule A - Unencumbered Fund Balances

The following estimated balances will be left in the unit's property tax accounts at the end of the fiscal year. These balances are not encumbered by a corresponding debt obligation.

Type of Property Tax Fund	Balance
General-	\$403,425.00
Road & Bridge-	\$16,492.00

Schedule B - 2009 Debt Service

The unit plans to pay the following amounts for long-term debts that are secured by property taxes. These amounts will be paid from property tax revenues (or additional sales tax revenues, if applicable.)

Description of Debt	Principal or Contract Payment to be Paid from Property Taxes	Interest to be Paid from Property Taxes	Other Amounts to be Paid	Total Payment
(expand as needed)	\$	\$	\$	\$
Total required for 2009 debt service				\$
- Amount (if any) paid from funds listed in Schedule A				\$
- Amount (if any) paid from other resources				\$
- Excess collections last year				\$
= Total to be paid from taxes in 2009				\$
Amount added in anticipation that the unit will + collect only _____ % of its taxes in 2009				\$
= Total Debt Levy				\$

Schedule C - Expected Revenue from Additional Sales Tax

(For hospital districts, cities and counties with additional sales tax to reduce property taxes) In calculating its effective and rollback tax rates, the unit estimated that it will receive \$ in additional sales and use tax revenues. For County: The county has excluded any amount that is or will be distributed for economic development grants from this amount of expected sales tax revenue.

Schedule D - State Criminal Justice Mandate (For Counties)

The _____ County Auditor certifies that _____ County has spent \$ _____ in the previous 12 months beginning _____, for the maintenance and operations cost of keeping inmates sentenced to the Texas Department of Criminal Justice. _____ County Sheriff has provided information on these costs, minus the state revenues received for reimbursement of such costs.

Schedule E - Transfer of Department, Function or Activity

The _____ spent \$ _____ from _____ to _____ on the _____. The _____ operates this function in all or a majority of the _____. [Second Year of Transfer: Modify schedule to show comparison of amount this year and preceding year by unit receiving the function.]

Schedule F - Enhanced Indigent Health Care Expenditures

The _____ spent \$ _____ from _____ to _____ on enhanced indigent health care at the increased minimum eligibility standards, less the amount of state assistance. For the current tax year, the amount of increase above last year's enhanced indigent health care expenditures is \$ _____.

This notice contains a summary of actual effective and rollback tax rates' calculations. You can inspect a copy of the full calculations at Floyd County Judge's Office Room 105 Courthouse Name of person preparing this notice Penny Golightly Title Floyd County Judge Date Prepared July 31, 2009

Edward Jones Ranks Highest In Investor Satisfaction

For the fourth year out of the past five, financial-services firm Edward Jones ranks highest in investor satisfaction with full service brokerage firms, according to the J.D. Power and Associates 2009 Full Service Investor Satisfaction StudySM, announced Edward Jones Financial Advisors, Don Book, Gary Massingill, Paul Garcia and J Pat Manning.

The study measures overall investor satisfaction with full service investment firms based on six factors: account offerings, convenience, commissions and fees, financial advisor, investment performance and account statements. The J.D. Power and Associates study found that Edward Jones performed particularly well in convenience and account statements.

Edward Jones prides itself on giving their investors a personal, one-on-one relationship personified by their Web site communication of "A bad day is when I don't meet any clients face-to-face."

Edward Jones ranked highest in investor satisfaction by J.D. Power and Associates in 2005, 2006 and 2007, and highest in 2002 in a tie, when the study began. Edward Jones in Canada also twice ranked highest in the J.D. Power and Associates Canadian Full Service Investor Satisfaction Study.

Headquartered in Westlake Village, California, J.D. Power and Associates is a global marketing information services company operating in key business sectors including marketing research, forecasting, performance improvement, training and customer satisfaction. The firm's quality and satisfaction measurements are based on responses from millions of customers annually. For more information

and full-service investor satisfaction, car reviews and ratings, car insurance, health insurance, cell phone ratings, and more, please visit JDPower.com. J.D. Power and Associates is a business unit of the McGraw-Hill companies.

The 2009 Full Service Investor Satisfaction Study is based on responses from more than 4,400 investors who primarily invest with one of the 21 firms included in the study. The study was fielded in the spring 2009.

Edward Jones provides financial services for individual investors in the United States and, through it affiliates, in Canada and the United Kingdom. Every aspect of the firm's business, from the types of investment options offered to the location of branch offices, is designed to cater to individual investors in the communities in which they live and work. The firm's 12,00-plus financial advisors work directly with more than 8 million clients to understand their personal goals - from college savings to retirement - and create long-term investment solutions that emphasize a well-balanced portfolio and a buy-and-hold strategy. Edward Jones embraces the importance of building long-term, face-to-face relationships with clients, helping them to understand and make sense of the investment options available today.

Edward Jones, which ranked No. 2 on FORTUNE magazine's "100 Best Companies to Work For 2009," is headquartered in St. Louis. The Edward Jones interactive Web site is located at www.edwardjones.com, and its recruiting Web site is www.career.edwardjones.com. Member SIPC.

Caprock Pest Management Newsletter

Dustin Patman, Extension Agent-IPM
201 West Aspen, Suite 011
Crosbyton, Texas 79322
806.675.2426 (Office)
806.675.2348 (Fax)
806.319.0888 (Cell)
drpatman@ag.tamu.edu
July 30, 2009



Improving Lives. Improving Texas.

http://crosby-tx.tamu.edu
http://ipm.tamu.edu
http://www.tpma.org



Volume 1 No. 6

In This Issue

- Current Crop Conditions
- Pest Situation
- Heat Unit Layout

Current Crop Conditions

Program cotton is ranging from match-head to full bloom with a few pest problems to report. For most of you with blooming cotton you are in full bloom, with some finishing up your second week. For the rest with younger cotton time may well be your biggest pest and will need a wide open fall.

Water also seems to be big problem for many of you who are not able to keep up the water demand. I have seen a couple of fields that have gone into cut-out which is not good. Cut-out is defined as NAWF=5 (nodes above white flower). Your best bet is to keep the water to it in hopes of possibly adding a couple of more nodes. As stated above, water seems to be a big problem. So all I can say is keep your wells running and try to keep up as best you can.

As for pumpkins I am going to start using stages to describe growth stages. It just makes it easier to describe. So with that being said, program pumpkin fields are ranging from stage 4 (Flower Pollination) to stage 5 (Fruit Growth). Producers should continue their fungicide applications for Powdery Mildew, which is every 7-10 days. Also we need to keep the water going on your fields as well.

Pest Situation Cotton



Again, I do not have much to report on the pest situation in cotton at the moment. Even though I haven't seen any in the field, we still need to keep an eye out for bollworms and the same goes for lygus. I have however seen fleahopper numbers increase but this is blooming cotton and we don't need to worry about them because they can't do any significant damage to the cotton.

Need to renew?

Subscription rates

\$25 - in county \$28 - out of county
Ask about our senior citizens discount!

We Appreciate Every One Of You....Our Readers

NOTICE OF PUBLIC MEETING TO DISCUSS BUDGET AND PROPOSED TAX RATE

The Floydada Independent School District will hold a public meeting at 6:30 PM, August 25, 2009 in FISD Superintendent Office Board Room, 226 W. California St. Floydada, TX. The purpose of this meeting is to discuss the school district's budget that will determine the tax rate that will be adopted. Public participation in the discussion is invited.

The tax rate that is ultimately adopted at this meeting or at a separate meeting at a later date may not exceed the proposed rate shown below unless the district publishes a revised notice containing the same information and comparisons set out below and holds another public meeting to discuss the revised notice.

Maintenance Tax \$ 1.17/\$100 (Proposed rate for maintenance and operations)

School Debt Service Tax

Approved by Local Voters \$ 0.13/\$100 (proposed rate to pay bonded indebtedness)

Comparison of Proposed Budget with Last Year's Budget

The applicable percentage increase or decrease (or difference) in the amount budgeted in the preceding fiscal year and the amount budgeted for the fiscal year that begins during the current tax year is indicated for each of the following expenditure categories:

Maintenance and operations	2.05 % increase	or _____ % (decrease)
Debt service	9.69 % increase	or _____ % (decrease)
Total expenditures	11.74 % increase	or _____ % (decrease)

Total Appraisal Value and Total Taxable Value (as calculated under Section 26.04, Tax Code)

	Preceding Tax Year	Current Tax Year
Total appraised value* of all property	\$ 324,772,500	\$ 355,757,900
Total appraised value* of new property**	\$ 79,331,830	\$ 1,536,990
Total taxable value*** of all property	\$ 214,875,039	\$ 217,359,510
Total taxable value*** of new property**	\$ 79,325,900	\$ 1,482,880

* "Appraisal value" is the amount shown on the appraisal roll and defined by Section 1.04(8), Tax Code.

** "New property" is defined by Section 26.012(17), Tax Code.

*** "Taxable value" is defined by Section 1.04(10), Tax Code.

Bonded Indebtness

Total amount of outstanding and unpaid bonded indebtedness* \$ 5,500,000.00

* Outstanding principal

Comparison of Proposed Rates with Last Year's Rates

	Maintenance & Operations	Interest & Sinking Fund*	Local Revenue Total	State Revenue Per Student	State Revenue Per Student
Last Year's Rate	\$ 1.04	\$ 0.115*	\$ 1.155	\$ 2886	\$ 6517
Rate to Maintain Same Level of Maintenance & Operations Revenue & Pay Debt Service	2.06373	.014054	2.20427	5858	6429
Proposed Rate	\$ 1.17	\$ 0.13*	\$ 1.30	\$ 3430	\$ 7227

* This Interest & Sinking Fund tax revenue is used to pay for bonded indebtedness on construction, equipment, or both. The bonds and the tax rate necessary to pay those bonds, were approved by the voters of this district.

Comparison of Proposed Levy with Last Year's Levy on Average Residence

	Last Year	This Year
Average Market Value of Residences	\$ 32,929	\$ 33,665
Average Taxable Value of Residences	\$ 21,443	\$ 22,456
Last Year's Rate Versus Proposed Rate per \$100 Value	\$ 1.155	\$ 1.30
Taxes Due in Average Residence	\$ 247	\$ 292
Increase (Decrease) in Taxes		\$ 45

Under state law, the dollar amount of school taxes imposed on the residence homestead of a person 65 years of age or older or of the surviving spouse of such a person, if the surviving spouse was 55 years of age or older when the person died, may not be increased above the amount paid in the first year after the person turned 65, regardless of changes in tax rate or property value.

Notice of Rollback Rate: The highest tax rate the district can adopt before requiring voter approval at an election is **1.04**. This election will be automatically held if the district adopts a rate in excess of the rollback rate of **1.04**.

Fund Balances

The following estimated balances will remain at the end of the current fiscal year and are not encumbered with or by a corresponding debt obligation, less estimated funds necessary for operating the district before receipt of the first state aid payment:

Maintenance and Operations Fund Balance(s)	\$ 4,400,000.00
Interest & Sinking Fund Balance(s)	\$ -0-

Book Reviews

Shanghai Girls
 Lisa See

In 1937, Shanghai is the Paris of Asia, a city of great wealth and glamour, the home of millionaires and beggars, gangsters and gamblers, patriots and revolutionaries, artists and warlords. Thanks to the financial security and material comforts provided by their father's prosperous rickshaw business, twenty-one-year-old Pearl Chin and her younger sister, May, are having the time of their lives. Though both sisters wave off authority and tradition, they couldn't be more different: Pearl is a Dragon sign, strong and stubborn, while May is a true Sheep, adorable and placid. Both are beautiful, modern and carefree...until the day their father tells them that he has gambled away their wealth and that in order to repay his debts he must sell the girls as wives to suitors who have traveled from California to find Chinese brides.

As Japanese bombs fall on their beloved city, Pearl and May set out on the journey of a lifetime, one that will take them through the Chinese countryside, in and out of the clutch of brutal soldiers, and across the Pacific to the shores of America. In Los Angeles they begin a fresh chapter, trying to find love with the strangers they have married, brushing against the seduction of Hollywood, and striving to embrace American life even as they fight against discrimination, brave Communist witch hunts, and find themselves hemmed in by Chinatown's old ways and rules.

At its heart, *Shanghai Girls* is a story of sisters: Pearl and May are inseparable best friends who share hopes, dreams, and a deep connection, but like sisters everywhere they also harbor petty jealousies and rivalries. They love each other, but each knows exactly where to drive the knife to hurt the other the most. Along the way, they face terrible sacrifices, make impossible choices, and confront a devastating, life-changing secret, but through it all the two heroines of this astounding new novel hold fast to who they are—Shanghai girls.

Lisa See is the *New York Times* bestselling author of *Peony in Love*, *Snow Flower and the Secret Fan*, *Flower Net* (an Edgar Award nominee), *The Interior*, and *Dragon Bones*, as well as the critically acclaimed memoir *On Gold Mountain*. The Organization of Chinese American Women named her the 2001 National Woman of the Year. She lives in Los Angeles.

Undead and Unwelcome

"Ms. Davidson has her own brand of wit and shocking surprises that make her vampire series one of a kind" (*Darque Reviews*). And heroine Betsy Taylor has problems that only a suburban vampire-queen housewife could possibly understand, such as....

Fifty thousand angry werewolves.
 That's what Betsy is facing when she takes her werewolf friend Antonia's body to Cape Cod, where the Pack resides at Wyndham Manor. Because Antonia died in her service, Betsy is alive and well—and wracked with guilt. She has no idea if the Wyndham werewolves will greet her with fangs or friendship.

While Betsy and her husband, Sinclair, try to make nice, their legal ward, BabyJon, freaks out every werewolf he meets. Meanwhile, Betsy's posse back at the St. Paul mansion is not LOLing. Increasingly frantic e-mails alert Betsy to her half sister's increasingly erratic behavior. Looks like the devil's daughter is coming into her own—and raising hell. All in the name of making Betsy's life easier, of course.

Ravens

George Dawes Green

The Boatwrights just won \$318 million in the Georgia State Lottery. It's going to be the worst day of their lives.

When grifters Shaw McBride and Romeo Zderko pull up at a convenience store off I-95 in Georgia, their only thought is to fix a leaky tire and be on their way again to Florida—away from their dull Ohio tech-support jobs. But this happens to be the store from which a multimillion-dollar jackpot ticket has just been sold, and when a pretty clerk accidentally reveals to Shaw the identity of the winning family, he hatches a ferociously audacious scheme: He and Romeo will squeeze the family for half their prize.

That night, Shaw visits the Boatwright home and takes the family hostage, while Romeo patrols the streets nearby, prepared to murder the Boatwrights' loved ones at any sign of resistance. At first, the family offers none. But Shaw's plot depends on maintaining constant fear—merciless, unfaltering terror—and soon, under the pressure, everyone's sanity begins to unravel...

At once frightening, comic, and suspenseful, *Ravens* is a wholly original and utterly compelling novel from one of our most talented writers.

George Dawes Green is a highly acclaimed novelist and poet and the founder of the New York City club for raconteurs, *The Moth*. He currently divides his time between Georgia and New York.

Rain Gods
 James Lee Burke

When Hackberry Holland became sheriff of a tiny Texas town near the Mexican border, he'd hoped to leave certain things behind: his checkered reputation, his haunted dreams, and his obsessive memories of the good life with his late wife, Rie. But the discovery of the bodies of nine illegal aliens, machine-gunned to death and buried in a shallow grave behind a church, soon makes it clear that he won't escape so easily.

As Hack and Deputy Sheriff Pam Tibbs attempt to untangle the threads of this complex and grisly case, a damaged young Iraq veteran, Pete Flores, and his girlfriend, Vicki Gaddis, are running for their lives, hoping to outwit the bloodthirsty criminals who want to kill Pete for his involvement in the murders. The only trouble is, Pete doesn't know who he's running from: drunk and terrified, he fled the scene of the crime when the shooting began. And there's a long list of people who want Pete and Vicki dead: crime boss Hugo Cistranos, who hired Pete for the operation; Nick Dolan, a strip club owner and small-time gangster with revenge on his mind; and a mysterious God-fearing serial-killer-for-hire known as Preacher Jack Collins, with enigmatic motives of his own.

With the FBI, Immigration and Customs Enforcement, and a host of cold-blooded killers on Pete and Vicki's trail, it's up to Sheriff Holland to find them first and figure out who's behind the mass murder before anyone else ends up dead. In this thrilling and intricate work, James Lee Burke has once again proven himself a master storyteller and a perceptive chronicler of the darkest corners of the human heart.

James Lee Burke, a rare winner of two Edgar Awards, is the author of 27 previous novels and two collections of short stories. He lives in Missoula, Montana and New Iberia, Louisiana.

Texas crop, weather

Despite drought some crops bloom and thrive

COLLEGE STATION – Most of Texas received from 0.25 to 1.5 inches of rain in the last week of July, with a few areas recording 3 inches or more, according to the National Weather Service. (<http://water.weather.gov/>)

South of San Antonio, the state remained rain-free, and record high temperatures continued to hammer crops, rangeland and livestock, according to reports from Texas AgriLife Extension Service personnel. Despite the drought, some crops are having a good year. Peanuts, for example, are ahead of schedule and looking very good, said Dr. Todd Baughman, AgriLife Extension agronomist based at Uvalde.

Texas peanut acreage totals about 160,000 acres this year, down about 40 percent from 2008, he said. The drop in acreage was only due in part from a drop in prices because of the salmonella scare earlier this year. A larger effect was the drought. "At least 98 percent of Texas peanuts are irrigated and most are grown in West Texas," Baughman said. "Peanuts are heavy water users, and with the

dry spring, many producers elected to put in other crops."

Most irrigated cotton is doing well too, though reports from some counties indicate it is from one to two weeks late. "Dryland crop condition is beginning to decline as plants become moisture-stressed due to lack of moisture," said Dale Dunlap, AgriLife Extension agent for Collingsworth County, east of Amarillo. "Irrigated crops look good, cotton is in full bloom and peanuts are pegging."

"Crops appear to be embracing the moisture as the sorghum and cotton have really seemed to take off this week," said Todd Beyers, AgriLife Extension agent for Lamb County, northwest of Lubbock. "We're seeing several more white blooms and a couple of purple blooms this morning in the cotton fields."

"We received about 1 inch (of rain) around the county this week with western portions receiving nearly 2 inches," said Greg Jones, AgriLife Extension agent for Garza County, southeast of Lubbock. "Cotton crop is still all over the board in terms of condition. Some

locations, crops look good and others crops are behind and needing moisture and time after a long dry spell."

More information on drought in Texas can be found at the Web site of the Drought Joint Information Center at <http://agrilife.tamu.edu/drought/>.

The following summaries were compiled by AgriLife Extension district reporters:

Central: Temperatures were cooler this week. Most counties received some rain, but for most it was not significant. Most of the corn has been harvested, and the grain sorghum harvest was nearly completed. Livestock producers were liquidating and downsizing herds or providing heavy supplemental feed. Stock water tanks were low.

Coastal Bend: Record high temperatures were recorded throughout the reporting period. In the northern part of the region, dry conditions were conducive to harvesting but harmful for grazing. Some areas received scattered showers. Sorghum harvest yields were good to poor, with some being baled for livestock feed. In the southern part of the region, the

drought remained more severe. Beef cattle producers were weaning early and culling cows. Most producers were trying to hold on to cows that would cost too much to replace later. Pasture and hay meadow conditions continued to decline. Producers continued to provide heavy supplemental feed to remaining livestock.

East: As much as 3 inches of rain fell across the region which helped jump-start pastures. In some areas, the rain will allow producers to soon take another cutting of hay. Some stock ponds were partially refilled. The burn ban in Cherokee County was lifted, but kept in effect in other counties. Polk County still desperately needed rain. Livestock were in fair to good condition.

Far West: Widely scattered thunderstorms visited the region, with heavy storms reported in parts of Brewster and Winkler counties. Cotton farmers were battling cotton rust in the areas that received rain. Weeds were a problem in some fields. Alfalfa farmers were doing well, with cuttings going to schedule. Armyworms departed and blister beetles arrived.

North: Soil moisture ranged

from adequate to very short. Scattered showers provided some relief, but mostly in the form of cooler temperatures. Most of the area remained dry. Without rainfall, many producers will have to begin feeding hay soon – a few already started. Corn, soybeans and sorghum were in fair to good condition. Corn was nearly ready to harvest in some areas. Grain sorghum headed out, and in many areas the heads were starting to turn color. Soybeans were setting pods. Rice and cotton were in fair condition. In some areas, where hay was in very short supply, corn was being chopped for silage. Rangeland and pastures were in poor to good condition. Livestock were in fair to good condition.

Panhandle: Scattered showers and cooler temperatures were seen across the region. All irrigated crops were in good shape. Dryland crops were still in need of rain in the eastern counties and some sorghum crops may be lost if there is no moisture soon. Corn was helped by the cooler temperatures and showers. Cotton was 100 percent squared with 20 percent to 25 percent of the crop setting bolls. Peanuts were 100 percent pegged. Soybeans were 100 percent bloomed and in good condition. Sunflowers were 100 percent planted. Rangeland needed moisture in the east, but looked better in the west. Cattle were good shape. The cooler temperatures were welcomed at the feed yards.

Rolling Plains: A little rain fell;

more was needed. Cotton plants shed bolls and squares in the heat due to lack of moisture. Milo and haygrazer looked surprisingly good despite lack of moisture. Armyworm populations increased but were not yet numerous enough to justify treatment. Cotton and peanuts looked really good. Overall, pasture conditions were fair to poor. Hay supplies were low, and prices were climbing.

South: Soil moisture was very short. Record-high temperatures took their toll on farmland, rangeland and pastures. Many beef cattle producers continued drastically cull their herds. Farmers were irrigating heavily to maintain crops. The corn and sorghum harvests were ongoing in the northern parts of the region, and cotton continued to develop in that area. Peanuts were in the pegging stage. In the eastern counties, sesame fields that were planted after failed cotton showed the potential of making a crop. This is the first year sesame has been planted as an alternative crop in the eastern counties. In the western parts of the region, AgriLife Extension agents reported corn and sorghum harvesting as being very active. Field preparation for fall planting preparations were under way the southern counties.

South Plains: The region received from 0.5 to 2 inches of rain. Soil moisture levels ranged from short to adequate. Cotton was in fair to good condition, with maturity ranging squaring to late bloom. Corn was in good to excellent condition. Some of the corn was in the dough stage. Grain sorghum was in fair to good condition, ranging from 6 inches tall to the flowering stage. Head worms and other insects were reported in sorghum. Peanuts were in good condition. Pastures and rangeland were in fair to good condition. Livestock were mostly in good condition.

Southwest: Sporadic showers deposited about 0.1 inches across the southern part of the district. The light rain helped settle dust but was not economically significant. Incidences of roadside and field wildfires increased. The soil profile was extremely dry. Forage was almost non-existent. The cantaloupe, watermelon, and potato harvests were completed. Produc-

CROP...

(continued on Page 12)



Texas
Auto • Home • Life

Across the State, Texas Farm Bureau Insurance Companies provide Auto protection with prompt, professional attention, and fast, fair claims service. So, for Auto coverage, as well as Home and Life Insurance, call today for a free, no-obligation review.

JAMES RACE, LUTCF
Agency Manager

DAVID TRUE, LUTCF
Agent

TAMMY BRANNON
Agent

CHRIS FULTON
Agent

FLOYD COUNTY
101 S Wall • Floydada, TX 79235
(806) 983-3777

BRISCOE COUNTY
802 Lone Star • Silverton, TX 79257
(806) 823-2234

sfbli.com • txfb-ins.com

Great back to school deals!

Flips one way!
\$79.99
after mail-in rebate debit card
\$129.99 2-year retail price - \$50 mail-in rebate debit card
With new 2 year activation.

PLAINVIEW - 3316 Olton Rd 806-296-0009
LEWELLAND - 1005 Colleve Ave 806-894-4003
POST 410 N. Broadway 806-495-0277

Activation fee/line: \$35 (\$25 for secondary Family SharePlan lines w/2-yr Agmt). IMPORTANT CONSUMER INFORMATION: Subject to Customer Agmt, Calling Plan, rebate form & credit approval. Up to \$175 early termination fee & other charges. Device capabilities, add'l charges & conditions apply. Offers & coverage, varying by service, not available everywhere. Network details & coverage maps at verizonwireless.com. While supplies last. Shipping charges may apply. Limited time offer. In CA: Sales tax based on full retail price of phone. Rebate debit card takes up to 6 wks & expires in 12 months. © 2009 Verizon Wireless.

PRODUCER'S COOPERATIVE ELEVATOR

983-2821 Floydada
983-3770 Dougherty

First National Bank of Floydada
983-3717

THE FIRST NATIONAL BANK OF FLOYDADA
Member F.D.I.C.

FLOYDADA COOPERATIVE GINS, INC.

FLOYDADA • 983-2884

Obituaries

ELENA CASTILLO

Elena Castillo, 85, of Floydada passed away Tuesday, July 28, 2009 at her residence.

Rosary services were held at 6:30 p.m. Wednesday, July 29, 2009 at Moore-Rose Funeral Home. Deacon Ricky Vasquez officiated and Cruz Castillo assisted.

Prayer services were held at 7 p.m. Thursday, July 30, 2009 at the Templo Getsemani Assembly of God Church. Pastor Joe Hernandez officiated and Andy Rodriguez assisted.

Funeral services were held at 10 a.m. Friday, July 31, 2009 at the Templo Getsemani Assembly of God Church. Pastor Joe Hernandez officiated and Pastor Andy Rodriguez assisted. Burial followed at the Floydada Cemetery under the direction of Moore-Rose Funeral Home of Floydada.

Elena (Hernandez) Castillo was born August 18, 1923 in Menard, Texas to Santos Hernandez and Tomasa (Coronado) Hernandez. She married Aurelio Castillo, Sr. on March 17, 1940 in Asherton, Texas. He preceded her in death on February 11, 1969.

She loved the outdoors working with her flowers, and also loved to make quilts. Her favorite time was spending it with her family cooking their favorite dishes. Elena was a wonderful wife, mother, grandmother and great-grandmother. She was a member of the Templo Getsemani Assembly of God Church in Floydada.

Elena is preceded in death by her parents, her husband, a son, Dario Castillo, Sr., five grandchildren and a great-grandson.

She is survived by her children, Petra Gonzalez and husband, Enrique, Aurelio Castillo, Jr. and wife, Rachael, and Alamar Ovalle, all of Floydada; Cruz Castillo and wife, Hortencia and Pedro Castillo, all of Plainview; Maria Luna and husband, Anselmo of Seminole; Ilda Vasquez and husband, Ricky of Lubbock and Norma Hernandez and husband, Joe of Lamesa; a daughter-in-law, Crestina Castillo of Plainview; a sister, Maria Pallen of Plainview; twenty-four grandchildren; thirty-eight great-grandchildren and one-great-great-grandson.



JONELLE BURKE FAWVER

Janelle Burke Fawver, loving mother, grandmother, great-grandmother, sister, aunt, and friend, age 83, passed away on Monday, July 27, 2009.

Funeral services were held Saturday, August 1, 2009 at 10 a.m. at the First United Methodist Church. Rev. Les Hall officiated. Burial followed at the Floyd County Memorial Park under the direction of Moore-Rose Funeral Home.

Family greeted friends from 6:30 - 7:30 p.m. on Friday, July 31, 2009 at the Moore-Rose Funeral Home in Floydada.

March 10, 1926 marks the date of birth of Janelle (Burke) Fawver in the town of Conway, Arkansas. Her parents, Dee Witt and Martha Lee (Hickman) Burke moved to Floyd County in 1928 when Janelle was two years of age. She attended schools in Sandhill and Floydada - graduating from Floydada High School in 1944. Upon graduation she moved to Amarillo to work at Pantex.

She returned to Floydada to marry Thomas Leslie Fawver on June 2, 1946. The couple was blessed with three children, Eilene Francis, Gayle Ferguson, and Larry Fawver. She has five

grandchildren and five great-grandchildren.

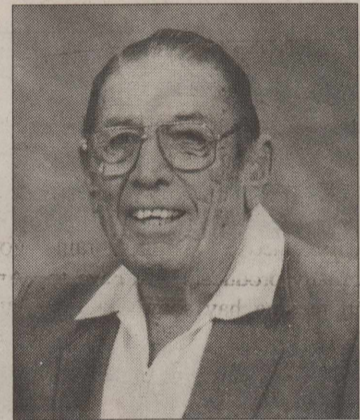
Jonelle was employed by various businesses in Floydada (including Lighthouse Electric, Perry's and the County Tax Assessors office.) She was elected Tax Assessor of Floyd County in 1972 and retired in 1987. After retirement she had remained busy holding elections, conducting registration during Old Settlers, working with the Spirit of Sharing and helping ladies who were unable to drive or stay at home by themselves. She is a longtime member of the First United Methodist Church. She is and has been an excellent role model for her children and grandchildren.

She is preceded in death by her parents, her husband, two brothers, DeWit Burke and James Burke, and two sisters, Mildred Cates and Valerie Tye.

Jonelle is survived by a son, Larry Fawver and wife, Ellie of Lubbock; two daughters, Eilene Francis and husband, Bruce of Carrollton and Gayle Ferguson and husband, Robert of Slaton; a brother, Lawrence Burke and wife, Doris of South Dakota; five grandchildren, Lesley, Cassy, Ty, Brittney, and Kyle; five great-grandchildren, Blake, Carly Jo, Brendan, Trey, and Tyke.

Jonelle was a servant who helped many throughout her life, always wanting to do more.

Memorials may be made in Jonelle's name to First United Methodist Church, 203 W. Kentucky, Floydada, TX 79235 or to the Floydada Senior Citizens, PO Box 573, Floydada, TX 79235.



R. T. FURROW

Celebration of Life services for R. T. Furrow, 83, of Lubbock were held at 1 p.m. Tuesday, August 4, 2009 at Resthaven's Abbey Chapel with Rev. Ross Dunn officiating. Services were under the direction of Resthaven Funeral Home.

R. T. passed away Friday, July 31, 2009. He was born February 11, 1926 in Floydada, TX. R.T. married the love of his life, Sammie Lee McCleskey, September 18, 1943.

He volunteered his service to the U.S. Navy from 1944 - 1946. They moved to Lubbock in 1947 where they started their family of one son and two daughters.

R.T. was in the car business

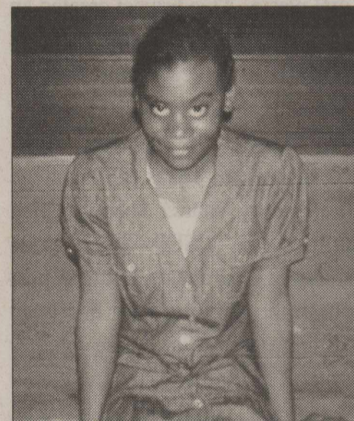
for over 50 years. During this time he worked for Womble Olds, Modern Chevrolet, Lone Star Ford and for himself.

He was preceded in death by his parents, two brothers and three sisters. He will always be remembered as a loving husband, Dad, Papaw, great Papaw Hound Dog and a friend to many.

Those left to cherish his memory are his wife, Sammie, of almost 66 years; son, Larry Furrow and wife, Cindi; two daughters, Patricia Young and husband, Steve and Lisa Thomas and husband, Neal; seven grandchildren, eight great-grandchildren, with one on the way; his dog, Cuddles, and numerous nephews and nieces.

In lieu of flowers, memorials may be made to Forrest Heights United Methodist Church.

Please join in celebrating the life of Mr. Furrow by visiting www.mem.com



KASSANDRA WICKWARE

Funeral mass for Kassandra Wickware, 12, of Plainview, formerly of Floydada, will be held at 11 a.m. Friday, August 7, 2009 at the First Baptist Church in Floydada. Rev. Ralph Jackson of Mt. Zion Church in Floydada will officiate.

Burial will follow at the Forrest Lawn Cemetery in Floydada under the direction of Bartley Funeral Home of Plainview.

She died Friday, July 31 2009 in a bicycle accident.

Kassandra Wickware was born April 5, 1997 in Lockney to Michael and Shelly Wickware.

She loved sports and animals and hoped to be a veterinarian some day.

Survivors include her parents, Michael and Shelly Wickware of Plainview; grandparents, Kenneth and Dorothy Coleman of Floydada and Carolyn Lawson of Rusk, Texas; two brothers, Hadrian Coleman of Floydada and Jayvaughn Wickware of Plainview.

Online condolences may be made at bartleycares@nts-online.net

OBIT...

(continued on Page 12)

Thanks For Reading

The family of Abraham N. Alaniz would like to thank everyone for their love, support and prayers during the loss of our son.

To all those who brought food, sent flowers and cards and all the phone calls, thank you so much. It meant more to us than you will ever know. May God bless you.

Jorge and Esther Alaniz
Noe and Yolanda Martinez & Family
Carlos and Gloria Hernandez & Family

Dear Friends,
Thank you for a wonderful retirement party. I was so humbled by the large crowd that attended. I appreciate your confidence and continued support for the past 25 years. A special thanks goes to Peggy Hill who has served so faithfully as my deputy for the past 10 years and to all the election workers who have always been there for me throughout the years. It has been a privilege and pleasure to serve the citizens of Floyd County.
Marilyn Holcomb

Floyd County Church Directory

AIKEN BAPTIST CHURCH

Dennis Butler, Pastor
Morning Worship ..11:00 a.m.

BIBLE BAPTIST CHURCH

810 S. 3rd, Floydada
Darwin Robinson, Pastor
983-5278
Sunday School10:00 a.m.
Morning Worship ...10:50 a.m.
Evening Worship6:00 p.m.
Wednesday.....7:00 p.m.

CALVARY'S CORNERSTONE FELLOWSHIP

Floydada
Armando Morales, Pastor
Sunday School9:45 a.m.
Morning Worship ..11:00 a.m.
Bible Study6:00 p.m.
Wednesday Evening 7:00 p.m.

CARR'S CHAPEL

Service Every Sunday:
Morning Worship9:00 a.m.
Sunday School10:30 a.m.

CHURCH OF CHRIST

West College & Third,
Lockney
Steve McLean -Minister
Morning Worship ..10:30 a.m.
Evening Worship5:30 p.m.
Wednesday Service 7:30 p.m.

CITY PARK CHURCH OF CHRIST

Levi Sisemore, Minister
Floydada
Sunday Bible Study:9:30 a.m.
Morning Worship ..10:30 a.m.
Evening Worship6:00 p.m.
Wed. Bible Study.....7:00 p.m.

FIRST BAPTIST CHURCH

Anthony D. Sisemore, Pastor
Terry Simmons,
Minister of Ed./Music
Eric Kaiser - Min. Students
Sunday School9:15 a.m.
Morning Worship ...10:30 a.m.
Evening Worship6:00 p.m.
Wed. Bible Study.....6:30 p.m.

FIRST BAPTIST CHURCH,

Lockney
Carl Moman, Pastor
Chad Cook, Youth Min.
Phil Cotham, Music Min..
Sunday School 9:45 a.m.
Morning Worship 10:45 a.m.
Evening Worship 6:00 p.m.
Wednesday.....6:30 p.m.
Wednesday (Youth)....7:15 pm

FIRST UNITED METHODIST CHURCH

Floydada
Rev. Les Hall, Pastor
Early Worship8:30 a.m.
Sunday School..... 9:45 a.m.
Morning Worship ...10:50 a.m.
Youth (Sunday).....5:00 p.m.
Youth (Wednesday)..7:30 p.m.

FIRST UNITED METHODIST CHURCH

Lockney
Rev. Ricky Carstensen
Pastor
Sunday School9:30 a.m.
Worship Service10:30 a.m.
Evening Service..... 6:00 p.m.
Wed. Jr. High5:30 p.m.
Wed. High School... 6:30 p.m.

GRANT CHAPEL CHURCH OF GOD IN CHRIST

Joe Bennett, Pastor
Sunday School10:00 a.m.
Morning Worship ...11:00 a.m.
Evening Service.....7:30 p.m.
Tuesday.....8:00 p.m.
Wed. Service7:30 p.m.

MAIN STREET CHURCH OF CHRIST

Lockney
Jay Don Poindexter, Minister
Bible Study9:30 a.m.
Morning Worship ..10:30 a.m.
Evening Worship ... 6:00 p.m.
Wednesday.....7:30 p.m.

MT. ZION BAPTIST CHURCH

Floydada
Rev. Ralph Jackson
401 N 12th St (983-5805)
Sunday School10:00 a.m.
Morning Worship ..11:00 a.m.
Evening Worship6:00 p.m.
Wednesday Study ...7:00 p.m.

NEW SALEM PRIMITIVE BAPTIST CHURCH

Floydada
Pastor Elder Ronnie Hedges
(806) 637-0430
Sunday Singing10:30 a.m.
Morning Worship ..11:00 a.m.

OUT REACH HARVEST PENTECOSTAL CHURCH

310 E. Mississippi
Floydada
Rev. David Ramos, Pastor
Ester Ramos, Praise Leader
Sunday Bible...10:00 a.m.
Morning Praise..11:00 a.m.
Evening Praise5:00 p.m.
Wed. Worship.... 7:00 p.m.

AMERICAN STATE BANK

Member FDIC
217 W. California
983-3725

Barwise Gin

Barwise Community
983-2737

Tastee Burger

116 North Main
652-2630

Clark Pharmacy

320 N. Main - Lockney
652-3353

Davis Lumber

102 E. Shubert
Lockney
6523385

Sawaya Ins. Agency

120 E. 7th Street
Plainview
293-1318

Lighthouse Electric Coop

703 A Matador Hwy
983-2814

FIRST UNITED METHODIST CHURCH

Floydada
Rev. Les Hall, Pastor
Early Worship8:30 a.m.
Sunday School..... 9:45 a.m.
Morning Worship ...10:50 a.m.
Youth (Sunday).....5:00 p.m.
Youth (Wednesday)..7:30 p.m.

FIRST UNITED METHODIST CHURCH

Lockney
Rev. Ricky Carstensen
Pastor
Sunday School9:30 a.m.
Worship Service10:30 a.m.
Evening Service..... 6:00 p.m.
Wed. Jr. High5:30 p.m.
Wed. High School... 6:30 p.m.

GRANT CHAPEL CHURCH OF GOD IN CHRIST

Joe Bennett, Pastor
Sunday School10:00 a.m.
Morning Worship ...11:00 a.m.
Evening Service.....7:30 p.m.
Tuesday.....8:00 p.m.
Wed. Service7:30 p.m.

MAIN STREET CHURCH OF CHRIST

Lockney
Jay Don Poindexter, Minister
Bible Study9:30 a.m.
Morning Worship ..10:30 a.m.
Evening Worship ... 6:00 p.m.
Wednesday.....7:30 p.m.

MT. ZION BAPTIST CHURCH

Floydada
Rev. Ralph Jackson
401 N 12th St (983-5805)
Sunday School10:00 a.m.
Morning Worship ..11:00 a.m.
Evening Worship6:00 p.m.
Wednesday Study ...7:00 p.m.

NEW SALEM PRIMITIVE BAPTIST CHURCH

Floydada
Pastor Elder Ronnie Hedges
(806) 637-0430
Sunday Singing10:30 a.m.
Morning Worship ..11:00 a.m.

OUT REACH HARVEST PENTECOSTAL CHURCH

310 E. Mississippi
Floydada
Rev. David Ramos, Pastor
Ester Ramos, Praise Leader
Sunday Bible...10:00 a.m.
Morning Praise..11:00 a.m.
Evening Praise5:00 p.m.
Wed. Worship.... 7:00 p.m.

AMERICAN STATE BANK

Member FDIC
102 E. California
983-3524

Lockney Co-op Gin

652-3377

Oden Chevrolet Inc.

221 S. Main, Floydada
983-3787

Payne Family Pharmacy

200 S. Main, Floydada
983-5111

Pay-n-Save

210 N. Main
Lockney
652-2293

Schacht

Flowers, Jewelry & Gifts
112 W. Poplar, Lockney
652-2385

Sunshine Pump

Oliver Clark
Box 266, Lockney
983-5087 - 774-4412
(Mobile)

POWER OF PRAISE FULL GOSPEL CHURCH

Rev. Manuel Rendon, Pastor
704 N. Main, Lockney
Sunday Services....10:00 a.m.
Sunday Evening5:00 p.m.
Morning Worship7:30 p.m.
Wednesday.....7:30 p.m.

PRIMERA IGLESIA BAUTISTA

Lockney
Jesus Caballero, Pastor
Sunday School9:45 a.m.
Worship Service11:00 a.m.
Discipleship5:00 p.m.
Wed. Service7:00 p.m.

PRIMERA IGLESIA BAUTISTA

Floydada
Pastor Reverend Raymond Asebedo
Sunday School 9:45 a.m.
Morning Worship ..10:55 a.m.
Evening Worship ... 6:00 p.m.
Wed. Evening6:00 p.m.

SAN JOSE CATHOLIC CHURCH

Lockney
Jim McCartney, Pastor
Wed. Communion....8:00 p.m.
Sunday Mass.....11:30 a.m.

SOUTH PLAINS BAPTIST CHURCH

Joe Weldon, Pastor
Sunday School10:00 a.m.
Morning Worship ...11:00 a.m.
Prayer Meeting..... 7:00 p.m.

TEMPLO GETSEMANI ASSEMBLY OF GOD

701 W. Missouri
Andy Rodriguez
983-5286 (church)
983-3047 (parsonage)
Sunday School9:45 a.m.
Morning Worship ...11:00 a.m.
Evening Service.....5:00 p.m.
Wednesday.....7:00 p.m.

ST. MARY MAGDALEN CATHOLIC CHURCH

Floydada
Rev. Angelo Consemino
Phone: 983-5878
Sunday Mass.....11:30 a.m.
Mon./Wed. Mass.....6:30 p.m.
Confession Sat.....10-11 a.m.

TEMPLO BAUTISTA SALEM

Lockney
Rev. Joe Hernandez
Sun. Prayer Service 9:30 a.m.
Sunday School9:45 p.m.
Worship Service11:00 a.m.
Evening Worship ... 6:00 p.m.
Wed. Meeting7:00 p.m.

TEMPLO BETHEL SPANISH ASSEMBLY OF GOD

Washington and 1st St.
Sunday School9:45 a.m.
Morning Worship ..11:00 a.m.
Evening Worship 5:00 p.m.
Wed. Service7:00 p.m.

TEMPLO NUEVA VIDA

Rev. Herman Martinez
308 W. Tennessee, Floydada
Sunday School10:00 a.m.
Evening Worship5:00 p.m.
Tuesday7:30 p.m.
Thursday Service.....7:30 p.m.

TRINITY ASSEMBLY

500 W. Houston
Floydada
Vance Mitchell, Pastor
983-5499 or 983-2887
Sunday School9:45 a.m.
Morning Worship ...10:40 a.m.
Sunday Evening6:00 p.m.

TRINITY LUTHERAN CHURCH

Providence Community
on FM 2301 293-3009
Rev. Peter W. Harrington
Minister
Sunday School9:45 a.m.
Worship Service11:00 a.m.

WEST SIDE CHURCH OF CHRIST

Floydada 983-3548
Sunday Worship ...10:30 a.m.
Sunday Evening5:00 p.m.

Floyd County Hesperian-Beacon

Floydada - Lockney
983-3737 - 652-3318

501..

(continued from Page 3)

away. Armadillos are slower to sense your presence.

It's not as if I meant to be working at midnight. It just worked out that way.

Already a late-in-the-day trip to town for a half-inch compression fitting had turned into a side-adventure that landed me in the plumbing section of the lumberyard after hours. I'll spare you the details. Think breaking and entering.

Meanwhile, back at the farm, the leaky water pipe lay exposed for the first time in decades. It was ugly. Think rust.

My husband, a comfortable 150 miles away, agreed with me that the pipe should be smooth for the bushings in the repair fitting to function properly. He suggested emery paper. I told him I'd be using a hammer.

Hunks of rust fell off under my blows. I'd turned the water off, but what remained in the pipe dripped from multiple leaks — more leaks.

The fitting was designed to span a short gap. I had created a long one. Could I somehow use the device simply to plug the severed pipe?

At 11 p.m. Central Standard Time would my slumbering husband like to answer that question? Or should I call someone in Alaska?

Alaska is the right answer.

My only friends there are Jim and Carolyn in Juneau. Their business is plumbing. Sometimes you get lucky.

I used my cell phone to ask their advice and to send them a shot of the midnight armadillo.

The leak? It's now just a tiny drip.

Should I need a defense, that drip has an official name:

Environmental impact mitigation.

VJ...

(continued from Page 3)

game but the poor guys probably thought "Oh my gosh, that poor dumb woman".

Tyler and Amy Bybee of Cedar Park are here visiting his parents and brother, Louie, Cynthia and Bryan Bybee of Providence. Tyler and Amy were honored with a cook out Sunday night. Those attending were Tyler and Laci Phillips and children, TyAnn and Austin, Aaron and Jolie Dietrich, John and Karen Quebe and son, Josh. Also attending was their daughter Gretchen Koen and baby boy, Cash, Steve, Becky, Matt, Megan and Payce McPherson, Martin, Robin, Justin, Heath, Cailee Stoerner and baby girl, Henley, A great time was had by all of us. We asked Louie if he would cook out again next weekend since this was his second weekend in a row. But he said he didn't know about that.

I talked to Gretchen about her grandmother, Anna Dell Quebe. She said Anna Dell was doing better and has been able to get out and come to church. She is now living at the Santa Fe House Assisted Living in Plainview.

Homer Cypert is home after spending over a month at the Covenant Hospital in Lubbock and at the Carillon Rehab Center. He still hasn't got all his strength back but seems to be getting better. Elsa Cooper checks in on him in the mornings and a home health nurse comes and checks his vital signs to make sure his potassium doesn't get low again.

Clementine Carthel is recuperating at home after having a bad fall causing a concussion and bruises all over.

Please keep all the sick and injured people in our community in your thoughts and prayers.

MENU
AUGUST 10 – AUGUST 14

- Monday** – Baked potato, chicken salad sandwich
- Tuesday** – Salmon
- Wednesday** – Steak fingers
- Thursday** – Chili hot dogs
- Friday** – Brisket

Fair...

(continued from Page 1)

Floydada.

Men – be sure to practice for the horseshoe and washer pitching.

Several old vehicles, tractors as well as cars, will be on display for everyone to enjoy.

Ladies and anyone else interested in quilting, canning, candy making, campfire cooking, cake decorating and other demonstrations will be entertained all day in the Lockney Community Center.

A list of all activities will be printed in the Hesperian-Beacon the next two weeks.

Come and have fun at the Floyd and Surrounding Counties Fair Day on Saturday, August 22.

USDA...

(continued from Page 7)

mitted to building strong rural communities by helping businesses grow so we can put people back to work."

The funding announced today will be made available through USDA Rural Development's Business and Industry Guaranteed Loan program, which supports the development of private businesses. Eligible applicants include cooperative organizations, corporations, partnerships, nonprofit groups; federally recognized Indian tribes, public bodies and individuals. The funds will be targeted to creating and retaining quality jobs and serving difficult to reach populations,

and areas hardest hit by the current economic downturn.

USDA will accept applications for this Business and Industry Guaranteed Loan program until Sept. 15, 2010, or until all funds are expended. Recovery Act funding will be available through Sept. 30, 2010. For information on eligibility criteria and for application assistance, please contact your state Rural Development office, or visit www.rurdev.usda.gov for a listing of all state offices.

For example, projects that have utilized the program in the past include Hoffland Environmental, Inc. who refinanced their loan thru a Business & Industry Guaranteed Loan to expand operations, purchase additional equipment, and pay for professional services associated with the loan. The company designs and manufactures equipment, primarily for the economical treatment of wastewater that contains toxic heavy metals, oil & grease, toxic hydrocarbons, suspended solids, and animal waste. This project created an additional 10 new skilled jobs and retained 30 skilled jobs in Conroe, Texas.

Pineywoods Academy, located in Lufkin, Texas, is a college preparatory charter school which utilized the USDA Business & Industry Guaranteed Loan to purchase the building they had been leasing that hosted their charter school. Originally, the Academy was Pre-K through the 8th grade, now they are planning to incorporate a high school. The Academy has an enrollment of 276 students and meets or exceeds the standards set forth by the Texas Education Agency.

More information about USDA's Recovery Act efforts is available at www.usda.gov/recovery. More information about the Federal government's efforts on

the Recovery Act is available at www.recovery.gov.

OBIT...

(continued from Page 11)

RAYMOND ORTA YANNIS, JR.

Raymond Orta Yannis, Jr., 61, of Floydada passed away Sunday, August 2, 2009 at his residence.

Funeral services will be held at 10 a.m. Thursday, August 6, 2009 at the St. Mary Magdalen Catholic Church with Father Angelo R. Consemio officiating. Burial will follow at the Ralls Cemetery in Ralls, Texas under the direction of Moore-Rose Funeral Home of Floydada.

Rosary services were held at 7 p.m. Tuesday, August 4, 2009 and Wednesday, August 5, 2009 at the Moore-Rose Funeral Home.

CROP...

(continued from Page 10)

ers finished the harvesting of corn and sorghum early as the drought accelerated dry-down. Cotton, peanuts, and pecans made excellent progress under heavy irrigation. The grape harvest was just beginning.

West Central: A cool front came through late in the reporting period, lowering temperatures and bringing some desperately needed rain in some areas. But overall, conditions remained hot and dry. Many small-grain fields were plowed and prepared for September planting. Irrigated crops were doing very well. Dryland crops were looking much better where there was rain-

fall. Rangeland and pastures also benefitted from recent rains. Stock tanks remained very low.

This Week's

WHIRLWIND BOOSTER CLUB MEETING

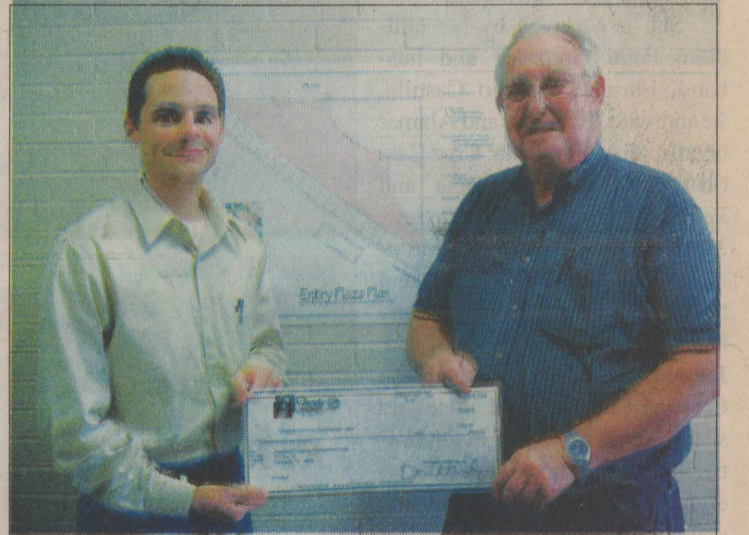
The Whirlwind Booster Club will hold their monthly meeting on Tuesday, August 4 at 7:00 p.m. in the FHS cafeteria. Everyone is welcome to attend.

"WHIRLWINDS"

The Whirlwind Booster Club will begin painting driveways and sidewalks with the Whirlwind logo soon. The cost will be \$10.00. For more information contact Jamie Williams at 806-983-3553.

BEGINNING OF THE YEAR LOCKNEY BAND BOOSTER MEETING

The Lockney Band Boosters will hold their first meeting of the 2009-2010 school year on Tuesday, August 11 at 6:00 p.m. in the band hall. It is very important that all parents attend this meeting.



Courtesy Photo

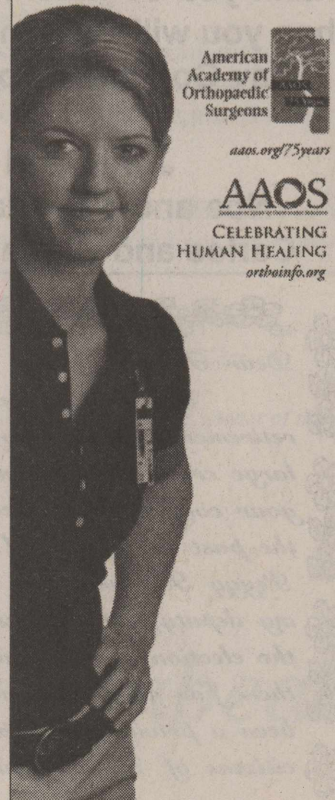
THE WELCOME ENTRANCE PROJECT received another generous donation, this time from Don and Carolyn Hardy with the Gang at Fuel Efficient Engine Service. The Hardy's donated \$300 toward the project, which is hoped to be completed by October. Don (right) is pictured with Justin Jaworski (left), the Floydada Economic Development Corporation's Executive Director

A SHORT STORY ABOUT A MOTORCYCLE AND A SUDDEN TURN.

When she was a young college student, Elisabeth Marra had a serious motorcycle accident that ultimately changed her life. Two years after the crash, her painful open fractures had failed to heal. Then she heard about a new and complex surgery pioneered by a surgeon who used a patient's own stem cells to concentrate the healing process. This time, her surgery and subsequent therapy were successful.

Elisabeth's experience caused her to re-direct her own career aspirations. Inspired by the medical professionals who helped her reclaim her active lifestyle, she changed her major to study physical therapy—a profession where her own experience could help other patients prevail through difficult recoveries.

We tell Elisabeth Marra's story here to illustrate two of the most profound messages we know. Don't give up, and remember to give back. If reading it inspires just one more person to achieve something special, then its telling here has been well worth while.



Got stuff to sell?
Try our classified section!

Call 983-3737 for our classified rates today to put more cash in your pocket!



\$3000 CASH

REWARD

Offered for the return of our dog "Peaches" (no questions asked)

Or for information leading to her return

She is a white toy poodle, last seen

Wednesday, July 29, 2009 at

Floyd County Memorial Park Cemetery.

Please call 983-2525 with any information

She is wearing a pink collar with

a purple heart tag.