

Back from Market! Come see what's new!

ShowER Selections For:

Katy Austin & Brent Coleman
Jenna Ford & Ty Hefflin
Lindsay Roberts & Carson Johnson

Hearts
Desire

M-F 10 AM - 6 PM SAT. 10 AM - 4 PM
WWW.HEARTSDESIREONLINE.COM
120 S MAIN LOCKNEY (806) 652-2548

Stretch your dollar for a better!

Advertise your local business

HERE!

*****5-DIGIT 79235
426 07-30-09 13P 8T
FLOYD COUNTY HISTORI MUSEUM
PO BOX 304
FLOYDADA TX 79235-0304

Jenna Ford & Ty Hefflin
Abigail Chisum & Beau Stringer
Heather Ware & Chance Baker

Payne Pharmacy
Monday-Friday 8:30-6:00 p.m. • Saturday 8:30 - 1:00 p.m.
200 S. Main St. Floydada
(806) 983-5111 • (800) 345-7961



The Floyd County

HESPERIAN-BEACON

©The Floyd County Hesperian-Beacon

(USPS 202-680)

www.hesperianbeacon.com

VOLUME 113 NUMBER 28

THURSDAY, JULY 9, 2009

10 PAGES - 75¢

National Labor Recruitment Brings Workers To South Plains Of Texas

When economic conditions deteriorate, greater attention is paid to those who are without work and seeking jobs — the unemployed. It is those 'marginally attached' individuals, or those who have shown interest in labor force participation and are actively searching for work, who suffer the greatest losses during times of national economic downturn as experienced in recent months.

Yet it is these same Americans, the ones committed enough to working 40 hours a week to earn a living for their families, who actually hold the key to increased economic development in select areas of the nation ... and they may not even know it.

As the U.S. unemployment rate rose to 9.4 percent in May, the highest in 25 years, and the nation's employers shed more than 345,000 jobs during that same month, the number of people who are marginally attached to the labor force rose to 2.2 million. It is their existing job skills, desire to be gainfully employed and work ethic that South Plains employers are rallying to capture.

As the rest of the nation deals with the turbulence created by the economic recession, South Plains

residents continue to enjoy the effects of long-term economic growth. Compared to the 2008 national unemployment rate of 7.2 percent, the South Plains region held to an astoundingly low 3.7 percent rate and the Lubbock MSA reflected a 1.5 percent job growth in 2008 compared to the national rate of a 1.9 percent decrease.

As a result of the region's ongoing economic stability and employer demands for skilled workers, a \$360,000 Texas Workforce Commission training grant was awarded to Workforce Solutions South Plains in support of the South Plains Recruitment and Reemployment Initiative, a project designed by the region's economic and workforce development leaders and area employers to recruit workers outside of Texas into the area in an effort to fill the hundreds of available job openings. The initiative will tap into the segment of the U.S. population affected by job loss and channel this valuable human capital to meet the demands of local industry by strategically connecting workers to well-paying job opportunities and ultimately, an enhanced quality of life.

Project partners are the Lubbock Economic Development Alli-

ance, Levelland Development Corporation, Floydada Economic Development Corporation, Brownfield Industrial Development Corporation, Muleshoe Development Corporation, Texas Manufacturing Assistance Center, National Association of Workforce Boards and a number of area employers.

Justin Jaworski, Director of Development for the City of Floydada, said the initiative will assist all communities located within the South Plains region. "We are honored to be a part of this unique project. It's a humbling experience when you look at how well this region collaborates to ensure development in any capacity. Especially from a regional perspective, the level of partnership that takes place among these community leaders is unheard of in other areas of Texas and the nation. It is because of the character of those who live and work in this area that I am here, and I feel certain the reason many of you are here. We appreciate the efforts of Workforce Solutions to develop strategies for growth within all South Plains communities and will work with all partners of the South Plains Recruitment and Reemployment group to ensure continued

economic growth throughout the region."

During a recent press conference held in Lubbock to announce the recruitment project, State Senator Robert Duncan recognized the collaborative efforts of all involved to make the South Plains Recruitment and Reemployment Initiative a possibility. "You would be surprised as I'm in Austin the people in all parts of state within the Senate and House floor who look to

Lubbock, Texas for leadership. We always have a tendency to do things right. Everyone looks to this area for best practices in terms of collaboration and innovation. It is the leadership and regional collaboration within our communities that is essential to our success. I have no doubt this region of the state will be the template for which other projects can look to as a model for success," Senator Duncan said.

Texas Workforce Commissioner Andres Alcantar of Austin, who presented Workforce Solutions with a check in the amount of \$360,000 during the recent press conference, added that growth in any community can have its challenges, but the business and community leaders in the South Plains area have established a strong plan to help employers expand their enterprises. "This area is a place

LABOR continued on Page 10



Floydada Economic Development Corporation Director Justin Jaworski, third from right, is pictured with a grant check to help lure workers to the South Plains to help fill hundreds of job openings.



Staff Photo/Jim Huggins

FOUR-WHEELIN' - Haygen and Hunter Lefevre and Jayee Poindexter are ready to roll in the Lockney Fourth of July children's parade. They are children of Billy and Kristy Lefevre and Debora and Jay Don Poindexter

USDA Taps Juan M. Garcia for Top Post in Texas

Agriculture Secretary Tom Vilsack has announced the appointment for State Executive Director (SED) of the USDA Farm Service Agency (FSA) in Texas. The secretary has tapped Juan M. Garcia to serve the Obama Administration in this capacity.

The Farm Service Agency administers federal farm policy as laid out by Congress through a network of federal, state and county offices. FSA programs are designed to improve the economic stability of the agricultural industry and help agricultural producers adjust production to meet demand. Economically, the desired result of these programs is a steady price range for agricultural commodities for both producer and consumer.

As Executive Director for the Texas FSA, Garcia will oversee all aspects of federal farm program delivery for an agency that employs nearly 1700 people and on average, issues more than \$1 billion annually in commodity, conservation, disaster

and credit benefits to farmers and ranchers across the state.

"FSA plays a vital role in the economic viability of rural America. As the Executive Director in Texas, I have a significant responsibility to insure the Agency is making wise use of taxpayer dollars and that our employees are provided the fiscal and human resources necessary to efficiently and effectively deliver our programs to the state's farmers and ranchers," said Garcia.

Garcia currently has served as the Agricultural Program Manager for FSA and as acting SED since January. He has 32 years of experience in the delivery of federal farm commodity and farm credit programs, and began his career with Texas FSA at the county level. During his time at the USDA Soil Conservation Service, Garcia provided technical guidance to farmers, ranchers and organizations in the planning and implementation of conservation programs.

He served as an FSA County

Executive Director in Hidalgo, Nolan and Cameron County, Texas, and also as a District Director for both the southern and eastern districts of the state. He holds a bachelor's degree in animal science from Texas A&I University. Garcia was raised on a cotton, grain sorghum and cattle operation in Willacy County.

"My immediate expectation for Texas FSA is delivery of the disaster programs outlined in the 2008 Farm Bill just as soon as these program regulations are confirmed by our national office in Washington, DC. Similarly, I anxiously await release of additional funding for our farm loan programs," said Garcia.

"In the very near future, our agency will be poised to offer long-awaited relief to producers suffering from disaster losses and relief to producers who require our lending assistance to remain operational."

For more information about FSA and programs administered by the Agency, visit the national web-

Reward Offered for Information on Break-ins

Lockney Independent School District (LISD) is offering a \$750 reward for information leading to the arrest and conviction of the individual(s) responsible for recent break-ins at different school cam-

pus locations.

Phil Cotham, LISD superintendent, said the Lockney field house and a portable building at the high school were both broken into.

Those that have information about these break-ins are encouraged to call the Lockney Police Department at (806) 652-3323.

All calls will remain confidential.

Floyd County 4-H'ers and Leaders Recognized at State

By Melissa Long
CEA-FCS, Floyd County

Twelve 4-H'ers along with fourteen parents and two County Extension Agents took part in the State 4-H Roundup on the Texas A&M campus June 8 - 12.

Bailey Davenport interviewed for a Texas 4-H Foundation Scholarship on Monday. Scholarships ranged from \$1,500 to \$16,000.

On Tuesday, two rifle teams consisting of Dillon Chesshir, J. C. Chappell and Alece Annunziato along with Jill Bramlet, Bailey Davenport and Kattie Miller took part in their state competition in Rosenberg. That evening Jill Bramlet and Dillon Chesshir

attended the District Council meeting and officer elections where Jill was elected as president, which also enables her to serve on State 4-H Council.

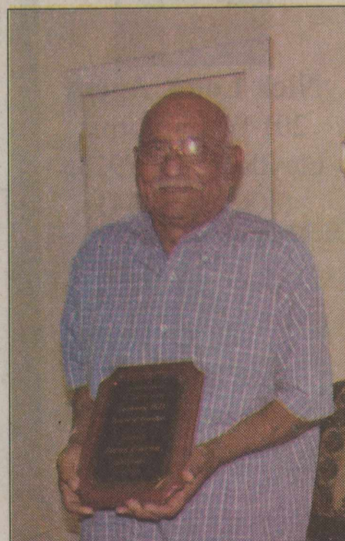
On Wednesday, Evan Johnson and Bailey Davenport both competed in the Share The Fun Vocal category.

Dillon Chesshir and Jill Bramlet took part in the Share The Fun Poetry/Prose category and placed second.

Also on Wednesday, Don and Christina Chesshir were recognized at the Salute To Excellence Banquet with the District II Distinguished Leader Award. The Livestock Judging Team made up of

SyAnn Foster, Tylee Williams and McCrae McCormick all competed on Wednesday as well.

Jill Bramlet competed in the Family Life category of Educational Presentations. Jill Bramlet also submitted entries in the Photography contest and received four blue awards. Friday morning rounded out the week with the presentation of a \$10,000 Dick Wallrath Scholarship awarded to Bailey Davenport.



Staff Photo
JESUS (JESSE) GARZA was presented a 15 year plaque in appreciation of his service on the school board. School board president John Quebe made the presentation on June 18, 2009. The plaque read, "Presented to Jesus Garza in appreciation for service on the Lockney ISD Board of Trustees from 1994 to 2009." Garza also received a card of appreciation from the Texas Association of School Boards. Jesse is married to Irene and they reared their family in Lockney.

site at HYPERLINK "http://www.fsa.usda.gov" www.fsa.usda.gov.

The U.S. Department of Agriculture (USDA) prohibits discrimination in all its programs and activities on the basis of race, color, national origin, age, disability, and where applicable, sex, marital status, familial status, parental status, religion, sexual orientation, genetic information, political beliefs, reprisal, or because all or a part of an individual's income is derived from any public assistance program. (Not all prohibited bases apply to all pro-

grams.) Persons with disabilities who require alternative means for communication of program information (Braille, large print, audio-tape, etc.) should contact USDA's TARGET Center at (202) 720-2600 (voice and TDD).

To file a complaint of discrimination write to USDA, Director, Office of Civil Rights, 1400 Independence Avenue, S.W., Washington, D.C. 20250-9410 or call (800) 795-3272 (voice) or (202) 720-6382 (TDD). USDA is an equal opportunity provider and employer.

Seal Coating to start on US 70

Texas Department of Transportation (TxDOT) contractor, Lipham Construction Company will start seal coating US 70, from the Floyd County line to the west city limits of Plainview on July 8th.

The seal coat will last approximately one week, with varying lane closures. Drivers are advised to use caution in the work zone when workers are present, watch for slow moving construction equipment, and possible loose rock along the roadway.

Construction is part of the District Seal Coat Program that encompasses 145.22 miles of the Lubbock District. For more information contact Plainview Area Engineer, Mike Craig, P.E. at 806-293-5484.

OPINIONS

Letters to the Editor Policy

Letters should be no more than 200 words and can be mailed to the Floyd County Hesperian-Beacon, 111 E Missouri St., Floydada, Texas 79235. Please include your street mailing address (no P.O. boxes), daytime phone number and full name and signature. Our e-mail address is floydada@amaonline.com.

THE FLOYD COUNTY HESPERIAN-BEACON

Published weekly each Thursday at 111 E. Missouri St., Floydada, Texas 79235. Periodical postage paid at Floydada, Texas 79235. Postmaster: Send change of address to: The Floyd County Hesperian-Beacon, 111 E. Missouri Street, Floydada, TX 79235 (806) 983-3737 • www.HesperianBeacon.com

The Public "Option"

By Robert Romano

Like all big lies, the public "option" deceives individuals not only through distortion, but also omission. And unless the American people are warned and stand up for the true health options they currently possess, Barack Obama and Congress will rapidly enact legislation that is designed to degrade and, eventually, destroy those choices that Americans today take for granted.

Through a sleight of hand, proponents of the public "option" act as if there are not already other public options already available when there are: Medicare, Medicaid, and other state and local services for the elderly, poor, and children.

This is the omission. It is designed to fool the American people that they do not already have enough "choices" in health care. That the government does not do enough already. Or that, somehow, there are not enough options currently available. Which, of course, is a lie.

The U.S. spends more on health care than any other nation. As of 2006, the Census Bureau estimates that some 201.7 million, or 71.5 percent of Americans with health insurance, get their insurance privately. 28.5 percent of those with insurance, or 80.3 million, get it from the government.

Presently, the average premium for single coverage is \$4,700, according to the National Coalition on Health Care. All told, in 2007, the U.S. spent \$2.4 trillion in total health care spending.

Not enough options? \$2.4 trillion is just the beginning. The price tag for health care expenditures, NCHC projects, will rise to \$3.1 trillion by 2012, and \$4.3 trillion by 2016.

Advocates claim this will create competition between the public and private sectors—as if the private sector could compete with a "business"

with an unlimited money supply that has no incentive to even operate in the black. This year alone it finds itself in a \$1.8 trillion hole, before any public "option" has even been enacted.

Once passed, the federal government will cover what it can through revenue, and then just borrow and/or print the rest. What will private health carriers do?

Since they cannot charge lower rates and then borrow to make ends meet, they'll lose customers. And then have to jack up premiums ever further in order to stay solvent.

Employers on the other hand will have lost the incentive to provide coverage to employees. To save costs, they'll pass the buck back to the taxpayers, who will now be guaranteed coverage through the public "option."

The greatest misrepresentation of all is that the public "option" will at all be optional. It will not be. Because it cannot be. It is designed to crowd out private options by guaranteeing coverage on a federal level—indeed, by mandating it.

President Obama seems optimistic: "When I say if you have your plan and you like it... or you have a doctor and you like your doctor, that you don't have to change plans, what I'm saying is the government is not going to make you change plans under health reform."

Of course, even if there is no sweeping mandate to use the public "option," the law of gravity still applies—the larger mass shall attract the smaller masses towards it. This is how monopolies are formed, whether state-run or not.

The big lie is that the American people will have any choice at all but to use the public "option," which will be the only option left.

Robert Romano is the Senior Editor of ALG News Bureau.



The Paperboy

By Christopher Blackburn

Down From the Mountains

When I was young, it sure seemed like vacations were easy. I just hopped in the car and in a few hours, we were there.

They're not easy when you're on the parenting end. To be gone a week takes planning and timing. Never mind all of the things you have to do at home and work to get ready for a trip ... the actual trip can be pretty rough.

Going to Colorado was a virtual breeze last week. Coming home Sunday was a nightmare.

This side of Raton, N.M., is a stretch of highway from there to Clayton I like to call hell. It was there five years ago I hit a deer at 2 a.m. on the way to Colorado.

This year at the same place, we got caught in a severe rain storm with 70 mph winds. The tarp over the bed of my truck was nearly blown off forcing me out in the elements (when I finally found a safe place to pull over). In all, I had to stop in the rain three times to secure the thing and I got as wet as a human can get. Not good when you have six hours left and finding dry clothes would take an hour to get to, then repack.

Anyhow, we got to Amarillo at 8 p.m. and were heading to eat when I had a blowout on the trailer I was pulling. It was then I discovered my lug wrench was too large for the trailer tire.

My wife made a phone call to a friend and an hour later, we were at the restaurant.

Between Memphis and Childress, I thought I saw a UFO. It was a glowing stationary light above the horizon to the south and it was off in the distance. Turns out, it was either a star or planet (I'm going to research to be sure) because it rose slowly, I finally started looking at what you'd expect a star or planet to look like. Very bright however, which I think is strange.

All-in-all, the trip was great. It's so fun getting that special family time with no distractions. I firmly believe little boys need rugged outdoor fun and my two sure got it.

I damaged my arm on the first day we were there when I was helping Jackson, my 6-year-old, fish. I lost my footing on a dam and when I caught myself, I guess I did something to a nerve. Feels like I hit my funny bone all of the time as my hand is numb and tingly and my fingers and thumb don't work right.

I also punctured a hole in my left heel. I stepped off a ladder onto a steel object and it went right through the skin. Good thing my own personal Florence Nightingale was on the scene. My wife would have made a good doctor or nurse. She is not afraid to administer pain (no offense to any real nurses or docs out there).

One of the neatest things about the trip was the fact I got to bond with my niece Samantha, 1. By the end of the week she was letting me love on her pretty good and she was giggling the whole time. Like I told my wife, I can always get the cuties ... sometimes it just takes a little time.

In big towns and small, we live pretty busy lives in the U.S. When you take away work, computers and cell phones and have the opportunity to totally focus on your family and yourself, it helps put everything into perspective. That's a great thing.

Copyright Christopher Blackburn 2009

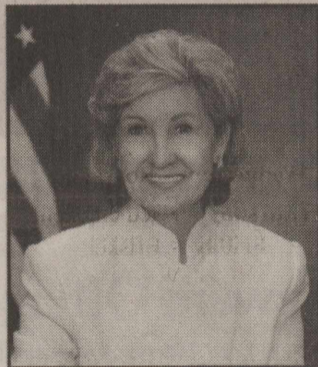
Christopher Blackburn is the president of Blackburn Media Group, owner of this publication. Feel free to comment on The Paperboy at <http://thenewbastion.blogspot.com/>.



CAPITOL COMMENT

U.S. SENATOR

KAY BAILEY HUTCHISON



In the past week, millions of Iranian citizens have taken to the streets protesting the election of Mahmoud Ahmadinejad, saying it was a sham. Iranian leaders blame

foreign influence for this unrest. But what is really happening is that Iranians are looking to beacons of freedom around the world for solidarity and support as they appeal for the basic liberties that, today, we take for granted in America. The people of Iran know their call for freedom is resonating around the globe. In photos sent from blackberries and cell phones we see Iranians of every generation holding signs, many of them in English, demanding, "Where is my vote?"

Some of the most disturbing images to come out of Iran show the last moments of the life of a young woman who was shot in the streets of Tehran. The world has come to know her as "Neda," Farsi for "the voice" or "the call." The picture that will endure and define this chapter in history is of Neda

lying on the ground, desperately clinging to life while her teacher tries to staunch the flow of blood drawn from a cowardly sniper's bullet.

The Iranian regime has resorted to violence, media blackouts, and murder to retain power and to extinguish the people's desire for freedom. Today, the world stands at a critical juncture. What happens in the streets of Tehran has major implications for the future of democracy in the Middle East, as well as the ability of the Free World to prevail against all the forces of tyranny in the 21st Century.

The Ayatollah Khomeini's regime, founded in 1979, could be described as the first modern terrorist state. It has been the key financial and weapons supplier of

Hezbollah, which, in 1983, bombed U.S. military barracks in Beirut, killing over 200 U.S. Marines. For 30 years, the regime has sponsored countless attacks on American troops, allies, and assets in the Middle East, causing death and destruction.

But the greatest victim of this nefarious regime has been the Iranian people. Because of the leading Islamic clerics' extreme interpretation of "sharia law," Iran is one of the world's worst violators of human rights — especially the rights of women and religious minorities.

While President Ahmadinejad and his cronies, empowered by the Ayatollah, repress the Iranian people, they are also accelerating Iran's nuclear weapons program. We must not allow Iran's theocracy to bear nuclear arms. It would pose a greater threat than ever to Ameri-

can interests and allies, including Israel, which Ahmadinejad has publicly said should be "wiped off the face of the Earth."

That is precisely why America must support the brave men and women in the streets of Iran who are confronting the Iranian regime head-on with a battle cry of freedom. The success of the Iranian people is indispensable to U.S. leadership of the Global War on Terror.

Since 9/11, the U.S. has worked to advance democracy in the Muslim World so that its people might enjoy free elections, equal rights for women, religious tolerance, and other basic civil liberties. Our efforts have been costly and paid with the lives of Americans. But we are beginning to see progress. Last year, radical Islamists were dealt a grave blow in the Pakistani election. Earlier this year, secular


forces in Iraq won a huge election victory. Even more recently, Hezbollah was routed in Lebanon's election.

In his inaugural speech, President Obama proclaimed, "To those who cling to power through corruption and deceit and the silencing of dissent, know that you are on the wrong side of history; but that we will extend a hand if you are willing to unclench your fist."


The Iranian mullahs are clenching their fists against the people and the President must say so forcefully; proclaiming to the world that the United States stands firmly with the Iranian people and on the right side of history. America has the perspective — and the responsibility — to espouse democracy for all who desire it both in words and deeds.

Why cut CORNERS on car insurance?

Turn to me for competitive rates and the right coverage. Call today.



Nick Long, Agent
201 W. California
Floydada, TX 79235
(806) 983-3441
nick.long.cgr0@statefarm.com



LIKE A GOOD NEIGHBOR STATE FARM IS THERE®
Providing Insurance and Financial Services

State Farm Mutual Automobile Insurance Company (not in NJ), Bloomington, IL P040028 12/04

Don't Forget our new deadline: Friday at 5 p.m.



HIGH-SPEED INTERNET

SPECIAL OFFER !!!

256Kbps	\$9.95	Monthly for 6 Months
512Kbps	\$19.95	Monthly for 6 Months
1Mbps	\$29.95	Monthly for 6 Months

Free Installation (with one year contract)
CALL TODAY TO SIGN-UP • 1-800-687-1258
SOME RESTRICTIONS MAY APPLY. THIS OFFER IS FOR NEW CUSTOMERS ONLY

Estate Planning - Retirement Savings
Family Protection - Loan Requirements

ALL GOOD REASONS FOR LIFE INSURANCE

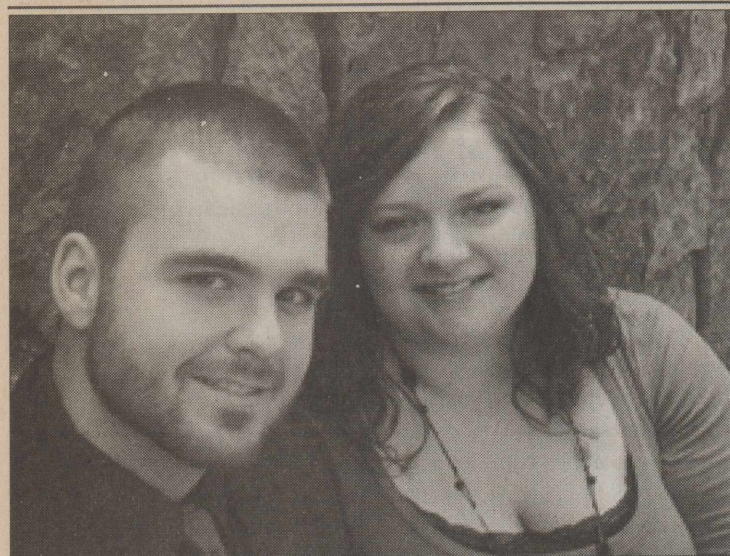
GOEN & GOEN
HAS A POLICY TO FIT YOUR NEEDS
Come by for more information

102 E. California St., Floydada • 983-3524
www.goen-goen.com

Our Readers Are Very Important to Us and We Appreciate Every One of You!



Diane Ramon
Consultant
(806) 983-8083
Tupperware is Back!
Visit www.my.tupperware.com/dramon for orders



ZACH DELONG AND DANESA THOMPSON

Thompson and DeLong Engaged

Mr. and Mrs. Jeff Thompson are proud to announce the engagement and approaching marriage of their daughter, Danesa Beth, to Zachariah Preston DeLong, son of Margo DeLong of Pampa.

The bride-elect is a 2006 graduate of Mineral Wells High School, and will graduate in December from West Texas A&M University with a degree in Theater Arts.

The prospective groom is a 2006 graduate of Hobbit Hole Academy and is currently pursuing a degree in Mechanical Engineering from West Texas A&M University.

Miss Thompson is the granddaughter of Joyce Wilson and the late Chuck Wilson of Lockney, Pat Reed and the late Jack Reed of Wichita Falls, and Mr. and Mrs. Dalton Thompson of Beaumont.

DeLong is the grandson of Dr. and Mrs. Earl Hoffer of Pampa.

The couple will be married December 27, 2009 at the beautiful Chandor Gardens in Weatherford, Texas.

Floydada Senior Citizens News

By Margarette Word

The center was closed Friday, July 3, for a holiday and reopened Monday, July 6.

Lowe's grocery store did not serve breakfast and hot dogs and hamburgers on the Fourth of July this year. I always looked forward to spending a good part of the day on their parking lot. I know it is a lot of hard work and expense for them. I'm sure many people do not let them know how much we all appreciate what they do for this community on July Fourth. It is such a tradition, it is going to seem odd to not have anything to do on that holiday.

Betty Baker has been on a short trip recently to Ardmore, Oklahoma for a "Stephens Family Reunion." She picked up a niece in Vernon on the way. It was a great time for the family. Sixty-eight were present at Bill Stephens' (Betty's brother's) ranch outside of Ardmore. The temperature was 106 degrees for several days. Heat index was 115 degrees. It was very hot and humid. It was nice getting home to rain and cooler weather.

Imogene Fortenberry is back at the Shepherd's Meadow Assisted Living Center after being in the hospital several days. We hope she is feeling better.

Evalene Goodnight was at the center Thursday, July 2. She has been ill and in the hospital several days. We were glad she felt well enough to be home.

On Thursday, July 2, Glenna Watson and her daughter, Sherry Robison of Lubbock ate lunch at the center.

We had several visitors Thursday, July 2. They were LuAnn Collins of Lubbock, visiting her mother and dad, James

and Sue Lovell. Also, Pat Ginn ate lunch with his dad, Guy Ginn.

Jon and Elaine LaBaume and Coy LaBaume of Plainview spent the Fourth of July weekend in Mesquite. Charles, Kelli, Harrison and Kate Childre of Lubbock also went. They were attending a LaBaume Reunion. Jon has two sisters that live there, Ann Haynes of Mesquite and Glen and Jane Bell of Plano. Other family members also attended.

Our sympathy to the family of Rafe Ferguson.

Thank you for remembering the center when you need to make a memorial donation.

In memory of **Stinson Stringer** - Mr. and Mrs. J. W. Cannon, Jessie and Donna Pernel, Betty Baker.

In memory of **Rafe Ferguson** - Mr. and Mrs. J. W. Cannon, Shorty and Louise Turner.

In memory of **Glenna Smith** - Jessie and Donna Pernel.

Thought For The Week - Heat up leftover pizza in a non-stick skillet on top of the stove and put a lid on it, set heat to medium-low and heat until warm. This keeps the crust crispy. No soggy micro pizza. I saw this on the cooking channel, and it really works.

MENU

JULY 13 - JULY 17

Monday - Sausage, cabbage, cornbread, cake

Tuesday - Chicken quesadillas, salad, beans, cinnamon crisps

Wednesday - Meatloaf, broccoli w/cheese, potatoes, roll, cobbler

Thursday - Salmon patties, pinto beans, coleslaw, cornbread, fruit salad

Friday - Chicken fajitas, pinto beans, rice, cake

VJ's News

By Vera Jo Bybee

I hope everyone had a great 4th of July with all kinds of celebrations, cookouts, parades, fireworks etc. I hope we all remember what the 4th is all about, the birthday of our great country the U.S.A. It is the time to celebrate its Independence.

The Center had twenty to eat breakfast Saturday morning. Put it on your calendar so you will remember to call Wanda so she can count on you eating with her on the first Saturday of every month.

The Center wants to thank Joyce Marks for the nice pecans she gave them.

Also thanks goes out to Vonda McLaughlin for the four boxes of puzzles she gave the Center. The ladies enjoy putting them together and have one up all the time and exhibit the ones they just finish on a side table for all to see and enjoy.

Congratulations to Dennis and Mary Carter on being great grandparents to Alexa Marie born June 19 weighing 5 pounds, 6 ounces and 18" long. Parents are the Carter's granddaughter, Desire' and husband, Jared Smith. Jared is in the Marines.

After going to "Texas" Saturday a week ago, I was really down in my back last week. So bad I had to go see my chiropractor, Dr Cunningham, on Monday and Wednesday for an adjustment.

I also sat on a heating pad for three days. Thursday I could get out of a chair okay and was walking fine. I sure don't plan on going to that play again anyway soon that's for sure.

I still have jobs for my children to do for me all the time. Last week the tree, on the southeast corner of my house, big branch and some limbs broke and fell across my neighbors fence and into the south window of my front bedroom breaking the glass pane. I called Louie and told him that he would need to bring in a truck or trailer and a saw to cut and load the tree up. He said okay, he

would be in the next morning when the lumberyard was open. I got to thinking I didn't want that widow to be open all night so I called daughter Becky to come and put something over it because I was afraid to get up on a ladder to do it myself. She came right on up with everything to fix it. Donnie taught her how to fix things too. The next day Louie and son Bryan came in and got the window fixed and the tree all hauled off. Who knows what will be next? It's seems to always be something.

Our sympathy is with the Nino Garcia family on his passing away Wednesday, June 24 at the Mangold Memorial Hospital. Services were Saturday, June 27 at the San Jose Catholic Church in Lockney, followed with burial in the Lockney Cemetery. His wife Rosa was J.W. and Matt McPherson's sitter for several years. They grew to love the whole family.

Our thoughts and prayers are also with Dahlia Hight, Homer Cypert, Doyle Poole, Monte Lass, Jeffrey Hunter, Bettye and David Jackson, Frances Huddlestone and Ronnie Belt, the 5 yr old son of Johnny and Carmin Belt, also Ruby McWaters is back in Lockney. Sally Shaw is with her daughter Amy and family in Dallas, recuperating from having both knees replaced.

The thought for the day is what Jeff Foxworthy has to say about folks from Texas.

If you measure distance in hours you may live in Texas. If vacation means going anywhere south of Dallas for the weekend you may live in Texas. If you know several people who have hit a deer more than once you may live in Texas

Menu

July 13-17

Monday - Baked potato and trimmings

Tuesday - Pork chop

Wednesday - Roast beef

Thursday - Fried chicken

Friday - Brisket



If the word nostalgia sounds like a disease you get when you're old, it is.

If most of your email messages have "remember when" in the subject line, you're terminal.

Time was when nostalgia didn't involve me personally. Poodle skirts and bobby socks were dormant. When they reemerged as costumes, it hit me I was getting old. It's been hitting me ever since.

Even colors trigger symptoms of nostalgia. Especially colors. Or the lack thereof. Remember when everything was black and white? Cars were black and refrigerators were white. Those were the days.

This week I bought a new cutting board. It's red, and there's nothing nostalgic about it. I'd call it blood red, appropriate for a cutting board. No doubt there's a different official name for the hue, one of the trendiest new colors for all things culinary. I wouldn't be surprised if you can't get a blood red refrigerator nowadays. It's what happens when you've already been through harvest gold, avocado, copper, stainless, black and almond, not exactly in that order and not to mention white.

As for cutting boards, when I was a kid, I'd never even heard of one. I'm that old. We didn't have cutting boards. We had breadboards. The fact that breadboard is just one word is proof that cutting boards are the newcomers.

Our house had two breadboards. One slid out from under the kitchen counter and the other one slid out from under the pantry counter. Handy.

That was back before somebody got worried about germs living in breadboards,

especially if you used them like butcher blocks. We sometimes did. Back then, butchers had the corner on butcher blocks. Not to worry. My mother didn't spare the bleach. Some people wax nostalgic if they smell their mother's favorite perfume fragrance. I'm that way about Clorox. No doubt Mother had a favorite Coty fragrance, but it's the bleach I remember. I'm glad she wasn't into Pine-Sol too.

Back to my new red cutting board. It says a lot about how times have changed. Allow me to dig that label out of the garbage.

GARBAGE PAUSE.

My husband came home during that pause. It's worth an aside.

"What are you doing?" he asked.

"Digging in the garbage to find something for my column," I replied.

You can guess what he said. I didn't hear it.

Meanwhile, I retrieved the packaging. It's proof my cutting board is cutting-edge.

It's an "eco smart" cutting board. Remember when the word "smart" couldn't possibly describe an inanimate object, car or cutting board, and everyday vocabularies didn't include "ecology," much less "eco"?

The cutting board material is 100-percent recycled. Remember when "recycled" wasn't a household word either?

Flax husk, an agricultural byproduct, is one of the materials in the board. Remember when that ingredient wouldn't have been a selling point?

My new cutting board was made in the USA. Remember when that was no big deal?

If you don't remember when, buy yourself a cutting board. Your day will come.

Thanks For Reading!

Bridal Selections for:

Leslie McBroom & Scott Nixon
Jenna Ford & Ty Heflin

Cathy's Floral & Gifts
128 W. California St. Floydada
983-5013

WEDDING SELECTIONS FOR
Leslie McBroom @ Scott Nixon
Jenna Ford @ Ty Heflin
Caprock Motor Parts & Hardware
114 California St., Floydada • 983-2865

Subscribe!

In county: \$25

Out of county: \$28

Wedding shower selections for:

Lindsay Roberts & Carson Johnson

Check out the 50% off table of merchandise

Schacht

Flowers, Jewelry, & Gifts • 112 W. Poplar, Lockney
(806) 652-2385 (800) 566-5754

Our Readers Are Very Important to Us and We Appreciate Every One of You!

Wedding Selections for
Lindsay Roberts & Carson Johnson
Clark Pharmacy
Danny Clark
309 North Main Street, Lockney, Texas
Pharmacy 652-3353 • Residence 652-3712 (24hrs)
Free in-town prescription delivery

It's that time again, time for the 121st Annual Old Settlers Reunion & Rodeo!
July 17 & 18

- Entries for the parade need to contact the Childress Chamber of Commerce for more information.
- Craft Show after parade, booths are available for \$20, also contact the Childress Chamber of Commerce @ (940)937-2567.

RECEPTION HONORING Former County Judge, William D. Hardin

Rep. Joe Heflin will honor Judge Hardin with a special presentation.

Date- Sunday, July 12th
Location- Lighthouse Electric Coop Community Room

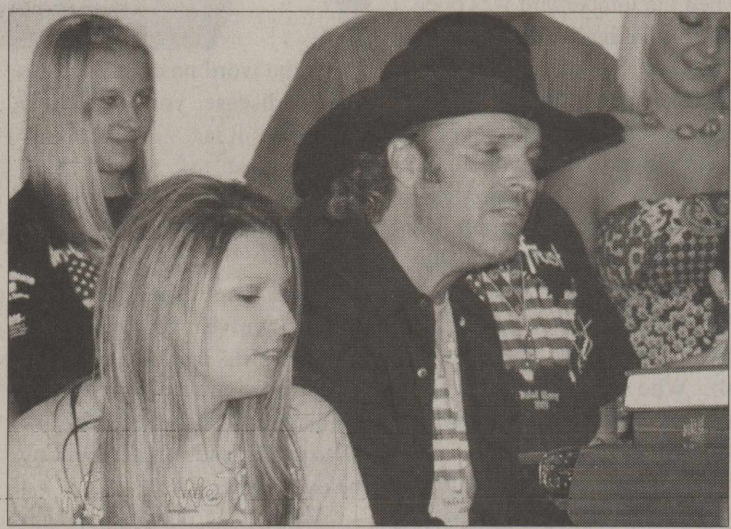
Time- 4:00-5:00 p.m.
Everyone is Welcome!

Lockney High School Holds Benefit

Country recording artist and songwriter, Daron Norwood, headlined a concert to benefit Lockney High School on Saturday, June 27th, at the First Baptist Church in Lockney. The concert, which included Jack & Deb Stone, Russ Murphy & Friends, and Cindy Hughlett, netted over \$1900 for the fire-damaged school.

Jack & Deb Stone are in full time gospel music ministry and appear in churches all over the South Plains. Cindy Hughlett is a Christian performer and songwriter and appears in many churches in the Lubbock area as well. Russ Murphy was voted ICM (Inspirational Country Music) New Artist

of the Year in 2007. He released the single "Welcome Home Soldier" in 2004. He resides in Nashville, Tennessee, and is a full-time songwriter and performer.



Daron Norwood, a native of Tahoka, emerged on the country music scene in 1993. He went on to record hits "If It Wasn't For Her, I Wouldn't Have You" and "Cowboys Don't Cry". In 2002, He released the single "In God We Trust" and performed it for President George W. Bush at the White House. He is currently engaged in a program called Keep It Strait - a program for school-aged children to help them learn the perils of drug and alcohol abuse.

Area Students Named to SPC Dean's List

South Plains College recognized students achieving academic excellence by naming them to the Dean's List for the spring 2009 semester.

"Achieving such a high grade point average is a great accomplishment, and it is very exciting and rewarding to see so many students accomplish this honor," said Darrell Grimes, vice president of academic affairs.

Students named to the Dean's List earned at least a 3.25 grade point average with no failing grades while carrying at least 12

semester hours.

Area students are:

Kelsey N. Williams of Floydada. She is the daughter of Todd and Kerrie Williams.

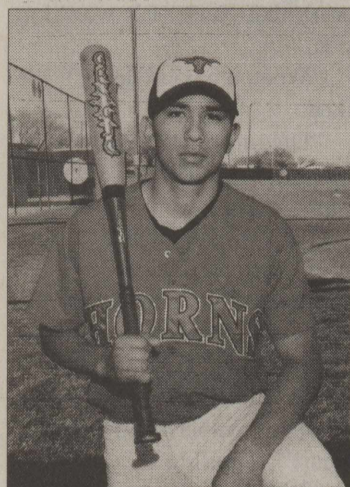
Jose M. Duron of Lockney. He is the son of San Juana Gomez.

Yadira Guerrero of Lockney. She is the daughter of John and Yolanda Guerrero.

Amos L. Poole of Lockney. He is the son of Doyle and Brenda Poole.

Carri M. Palomin of Lock-

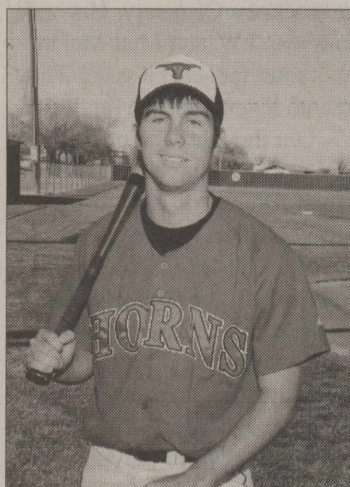
Lockney Baseball and Softball All-State



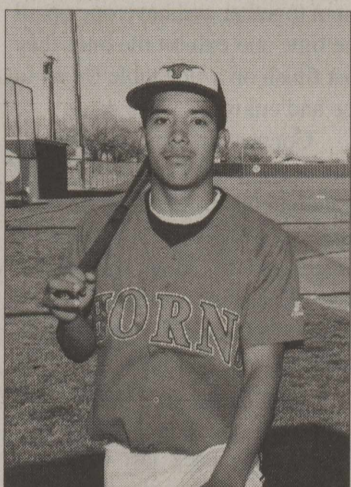
ANGEL CRUZ
Lockney - Senior
AJ All-South Plains
First Team
Catcher



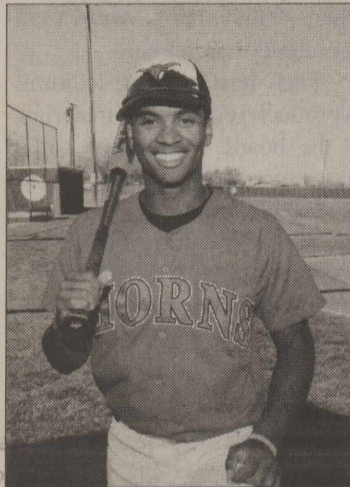
JACOB LUNA
Lockney - Senior
AJ All-South Plains
Second Team
Pitcher



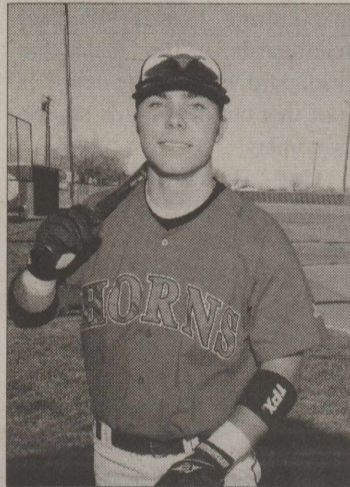
KYLER ELLISON
Lockney - Senior
AJ All-South Plains
Second Team
Outfielder



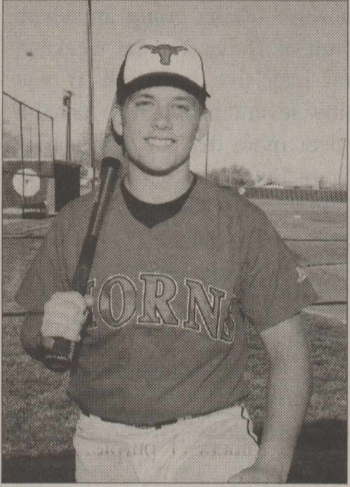
LOUIE PERALEZ
Lockney - Junior
AJ All-South Plains
Second Team
Shortstop



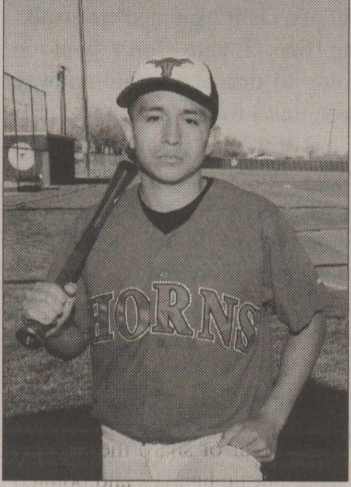
JONATHAN COLEMAN
Lockney - Senior
AJ All-South Plains
First Team
Outfielder



KONNER ELLISON
Lockney - Senior
AJ All-South Plains
First Team
Second Baseman
THSBCA All-State
Third Team
Second Baseman



LUCAS HALL
Lockney - Senior
Player of the Year
AJ All-South Plains
THSBCA All-State
Second Team
First Baseman



RENEE' CRUZ
Lockney - Sophomore
Pitcher of the Year
AJ All-South Plains
THSBCA All-State
Third Team
Pitcher



GARRETT HEARD
Lockney Head
Baseball Coach
Avalanche Journal
All-South Plains
2009
Coach of the Year

Rasco named to WTAMU President's List

Krista D. Rasco of Lockney was named to the WTA&M University President's List for the 2009 spring semester. She is a junior Speech Communications major.

West Texas A&M University has named more than 1000 students to honor lists for the spring 2009 semester. Of that total, 356 were named to the President's List and 646 were named to the Dean's List.

Students named to the President's List must have a grade point average (GPA) of 4.00 and carry a minimum class load of 12 undergraduate hours.

She is the daughter of Darrell and Marva Rasco of Lockney.

Lockney Chamber Announces Membership Drive

By Melissa Kunselman

The Lockney Area Chamber of Commerce is initiating its annual commercial business membership drive. Membership rates this year for a business membership are \$50 a year. The Chamber is very excited about the new year ahead and hopes to attract a significant number of new members as well as retain past members. Funds provided through the membership drive assist the Chamber in continuing to help our community and local businesses to grow, and we encourage you to support the Lockney Chamber.

The Chamber currently sponsors a number of events in Lockney, including Old Fashioned Saturday, a Holiday Christmas Affair, downtown Christmas decorations, prize money for Lockney's First Bale of Cotton, Citizen of the Year award, and the annual Chamber Banquet. The Chamber also provides, funding to the Floyd County Stock Show as well as to the Downtown Beautification Projects. They have been able this past year to donate to the upgrading of the Lockney Swimming Pool, provide scholarships to two Lockney High School seniors, and helped provide the meal and thank you's to the first responders after the Lockney High School fire.

Please submit membership dues to:

Lockney Area
Chamber of Commerce
P.O. Box 477
Lockney, TX 79241

The Hesperian-Beacon

Palo Duro Basin Oil and Gas Update

By Tom Musser

The McIntosh Lease (247277) Well #1077 is listed for the first time on the Railroad Commission of Texas Oil and Gas Division July 2009 Gas Proration Schedule.

The McIntosh Lease (247277) Well #1077 is listed on the July 2009 Gas Proration Schedule as: TE OZ. This means the McIntosh Well #1077 has a temporary exception to the requirement to file a gas well status report (form G-10), that the McIntosh Well #1077 is NOT eligible for an allowable, and that the McIntosh Well #1077 is shut-in. This occurs when the operator has filed a form G-1 (Gas Well Completion Report) for record purposes only, without filing potential test information. This is an accepted filing procedure with the Railroad Commission of Texas Oil and Gas Division to initially place a gas well on the proration Schedule.

The McIntosh Well #1077 is listed on the July 2009 Gas Proration Schedule under PetroGlobe Energy USA Ltd. PetroGlobe Energy USA Ltd. is shown as P-5 Delinquent. PetroGlobe Energy USA Ltd.'s Annual Organizational Report (form P-5) expired on April 1, 2009, and PetroGlobe Energy USA Ltd. has NOT yet filed the annual renewal form P-5.

•••••
• *Thanks For* •
• *Reading!* •
•••••

TxDOT to begin FM 2286 preventative maintenance project

The Texas Department of Transportation (TxDOT) is scheduled to begin work on an American Recovery and Reinvestment Act (ARRA) funded project to make improvements to FM 2286 in Hale and Floyd counties in July.

The project will make more than \$2.4 million in repairs to the roadway said Mike Craig, P.E., Plainview Area engineer.

"Duinick Brothers, of Roanoke, Texas, has been contracted to perform work to refurbish 10.25 miles of FM 2286," Craig said. "Motorists traveling on the roadway can expect various daily lane closures and a pilot car to guide traffic through the work zone."

The project is expected to take 4-6 weeks to complete, weather permitting.

FM 2286 is one of five preventative maintenance projects awarded to the Lubbock District through the ARRA. Roadway projects in Castro, Floyd, Hale and Lubbock counties were awarded economic stimulus funds and will see repairs and maintenance in the coming months.

For more information contact Mike Craig, P.E., Plainview Area engineer at (806) 293-5101



Tired of fighting your way through the real estate maze?

Panhandle-Plains Land Bank can help.

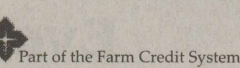
Buying land should not be a fight. As experts who specialize in rural real estate lending, the loan officers at Panhandle-Plains Land Bank can make the process easier. Plus, because we are a cooperative, we share our earnings with our borrowers. We have returned more than \$10 million in cash since 2005.

Find out how our lending and patronage programs can work for you.



Offices in Amarillo, Pampa, Perryton and Plainview
806-296-5579

Financing for: Farms & Ranches, Rural Recreation Tracts, Country Homes



Need to renew?

Subscription rates

\$25 - in county

\$28 - out of county

Ask about our senior citizens discount!

Don't Miss the Chance. Hug a Kid Today!



Satisfy your need for speed!

AMA-TECHTEL brings you high-speed fixed wireless Internet access. With speeds up to 50 times faster than dial-up and access that's always on, you'll connect to the world faster than ever.

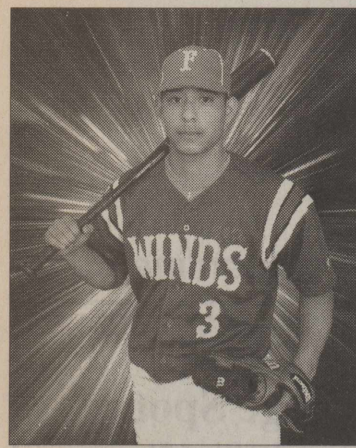
AMA-TECHTEL is committed to providing the latest technology and the best customer service, so no matter who you're connecting with, you can count on us to get you there.

Now you can have the fastest, most reliable Internet service available. So act fast; contact your local distributor today!

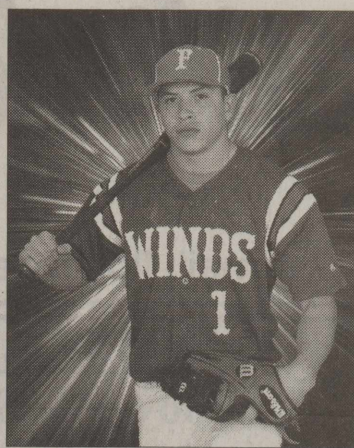
ASSITER INSURANCE
120 W. CALIFORNIA • 983-2511

conne

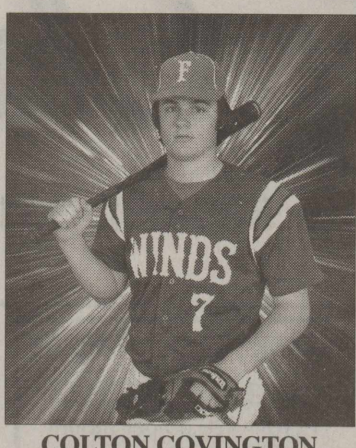
Ten Floydada Whirlwinds Named All-District Baseball



JOSEPH SEGURA
Floydada - Junior
2-2A All District
First Team *
Middle Infield
*Unanimous Selection



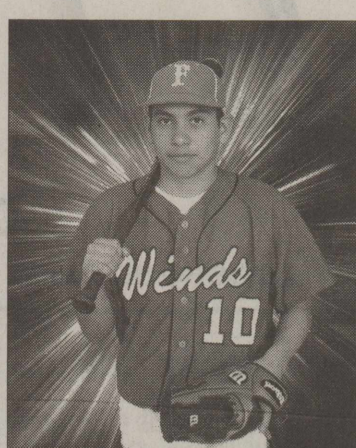
JOE LOUIS SUAREZ
Floydada - Senior
2-2A All District
First Team *
Designated Hitter
*Unanimous Selection



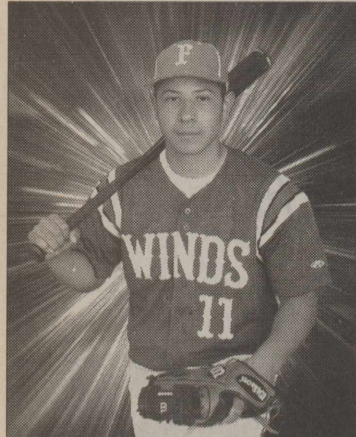
COLTON COVINGTON
Floydada - Senior
2-2A All District
First Team
Catcher
AJ All-South Plains
Second Team - Catcher



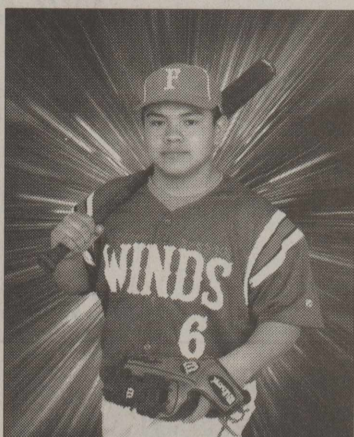
DUSTY HICKS
Floydada - Senior
2-2A All District
Second Team
Designated Hitter



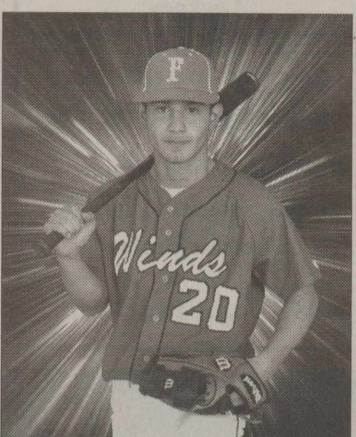
JOSE MARTINEZ
Floydada - Freshman
2-2A All District
Second Team
Pitcher



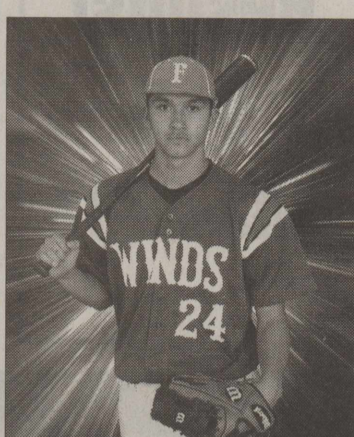
ANTHONY SEGURA
Floydada - Junior
2-2A All District
Second Team
Outfield



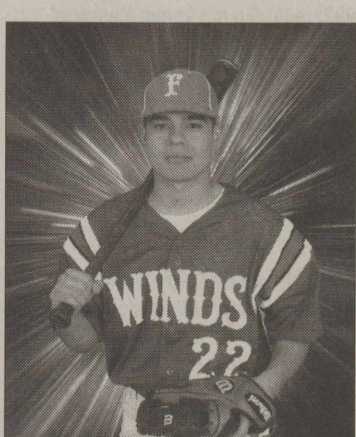
JESSE IBARRA
Floydada - Junior
2-2A All District
Honorable Mention
First Baseman



EDDIE RODRIQUEZ
Floydada - Sophomore
2-2A All District
Second Team
Middle Infield



RANDY LERMA
Floydada - Senior
2-2A All District
Honorable Mention
Pitcher



MANUEL DELAFUENTE
Floydada - Junior
2-2A All District
Honorable Mention
Outfield

Golf Tournament to support South Plains 4-H

Plainview - The South Plains 4-H program will host a one-day golf tournament at the Plainview Country Club. The tournament is open to anyone wishing to play golf. The format for the tournament will be a four-person scramble. The entry fee is \$50 per person (\$200 per team). Individuals are welcome.

Entries are due August 7. Entry fee cover the green fee, cart rental, lunch, beverages, and all the fun you can have. Prizes will be awarded to 1st, 2nd, and 3rd place teams. The tournament will include individual prizes for closest to the pin, longest drive, and door prizes. The field is limited to 22 teams.

Lunch will be served beginning at 11:30 a.m. There will be a 1:00 p.m. shotgun start. Sign up at your County Extension Office.

The golf tournament supports two important South Plains 4-H activities. The Bob Benson Memorial 4-H Scholarship - Bob Benson was a longtime county agent in the South Plains 4-H, District 2, (Hale County). Bob lost his battle with cancer in August 1999, and a memorial educational scholarship was developed in Bob's name for South Plains 4-H members. Fifty percent of the proceeds will be used to fund the scholarship.

Miller named to President's List

South Plains College recognized students achieving academic excellence by naming them to the President's Honor List for the spring 2009 semester.

"Achieving such a high grade point average is a great accomplishment, and it is very exciting and rewarding to see so many students accomplish this honor," said Darrell Grimes, Vice President of Academic Affairs.

Students named to the President's Honor List earned a 4.0 grade point average while being enrolled in at least 12 college credit hours.

Floydada student listed was: Sean R. Miller, son of Ford and Kay Miller of Lockney.

A.B. Duncan Elementary Supply List for 2009-2010

- | | | | | |
|---|---|--|--|---|
| <p>PRE-KINDERGARTEN
Kindermat
Small blanket or towel
Change of clothes
Kleenex (2 boxes)
Baby Wipes (2 boxes)
8 count box of crayons (Crayola brand) (1)
Jumbo Glue Sticks (4)
2-Spiral Notebooks (70 ct.)
10-count box of washable markers (Crayola brand) (1)
Crayola watercolors (1)
Quart-size Ziploc bags (1)
2 - Hand Sanitizer (12 oz.)</p> <p>KINDERGARTEN
6 box of crayons
1 Bottle of Elmer's White Glue
6 Glue Sticks
1 Box of Markers
1 Set of watercolor paints
2 Blunt Tip Scissors
2 Packages of Pencils
2 Large Erasers
2 Pocket Folders
2 Spirals
1 Package of Wide Rule</p> | <p>Paper
1 School box
1 Backpack
2 Boxes of Kleenex
1 Bottle of Hand Sanitizer
1 Box of Quart size Ziploc
Bags
1 Box of Gallon size Ziploc
Bags
1 Change of Clothing (pants, shirt, underwear)
FIRST GRADE
Packages Crayons (24 count)—true colors
wooden #2 Lead Pencils
Wire Bound Spiral Notebook (70 page)
Pair of Fiskar Scissors
250 Count Kleenex Boxes
4 Pocket Folders (Red, green, blue, yellow, without brads)
School Box (SMALL)
1 Elmer's White School Glue (4 ounce)
4 Glue Sticks
Box of Markers (8 count)
Water Colors
Big Pink Erasers</p> | <p>2 Packages of Pencil Toppers
Hand Sanitizer (girls)
Liquid Soap (boys)
1 Box of 12 Colored Pencils (Map)
Girls: 1 Box of Gallon Size Zip-tab Baggies
Boys: 1 Box of Quart Size Zip-tab Bag
SECOND GRADE
2 pkg. 48 count crayons
40 # 2 wooden pencils (Eagle is best)
2 wire-bound spiral notebooks with 70 pgs. (wide-ruled)
1 pair of sharp metal scissors with plastic handles and pointed tip (Fiscar jr.)
4 boxes of 250 count Kleenex
3 plastic folders (either red, yellow or blue-no designs with brads)
1 small school box with zipper (no larger than 3"x6"x9")
1 box of gallon-sized Zip tab baggies
1 box of quart-sized Zip tab baggies
3 pkgs. notebook paper</p> | <p>6 glue sticks
2 bottles of glue
2 pkg. of markers
THIRD GRADE
2 pkg 24-count crayons
20 #2 wooden pencils (Eagle is best)
2 big pink erasers
4 wire-bound spiral notebooks with 70 pages (wide-ruled)
1 pair of sharp metal scissors with plastic handles and pointed tip
2 boxes of 250-count Kleenex
3 folders (1 purple, 1 red, 1 green)
1 small school box (not larger than 3"x6"x9")
1 four-ounce Elmer's White School glue
1 backpack or tote bag (Labeled with your child's name)
Girls bring 1 box of gallon-sized Zip-tab Baggies
Boys bring 1 box of quart-sized Zip-tab Baggies
FOURTH GRADE
1 three ring binder (1 in.) with pockets full of wide-ruled note-</p> | <p>book paper
2 one subject spiral notebooks
2 pink erasers
20 pencils
3 red ink pens
5 plastic folders with pockets and brads
1 composition journal for science (not spiral)
Wide ruled notebook paper (NO college ruled)
4 highlighters
1 box of crayons
2 boxes of Kleenex
1 pair of scissors
1 bottle of glue/ 1 glue stick
Pouch or small bag to hold scissors, crayons, pencils, glue, and other supplies
FIFTH GRADE
3 - 3 Ring Binders (1")
8 Tab Dividers
Notebook Paper
Pencils
Red Grading Pens
Highlighters
2 Large Pink Erasers
Glue Sticks
Scissors
Crayons
Colored Pencils
Markers
3 Boxes Kleenex
Pocket Folder
1 Spiral Notebook (for Reading)
1 Composition Book (for Science)
Small Pencil Sharpener</p> |
|---|---|--|--|---|

CITY OF FLOYDADA HISTORICAL NEWS:
In 1912, the City started work in city parks. The trees and the shrubbery were purchased from Waxahachie, Texas and shipped to Floydada. Improvements continued at the City Park during the next years. A person was eventually hired to maintain the parks until 1931 when times got so bad that this position was terminated.
October is Floydada's Centennial Celebration!

FLOYDADA COMPUTER SERVICE

- Computer Repairs and Troubleshooting
 - Windows, Software and Virus Problems
 - Custom and High-end Computers and Upgrades
- Free Estimates Very Reasonable House Calls Prices

Call Greg at (806) 686-4740
824 W. Tennessee St. Floydada, Texas 79235

Need to renew? Subscription rates

\$25 - in county
\$28 - out of county

Thanks For Reading The Hesperian Beacon

Floyd County Supply

Firestone

Farm Tires

(806) 652-2312
720 S. Main
Lockney, Texas 79241
Mobile: 292-5150
Fully Equipped Service Truck

Lindan & D'Lyn Morris, Owners
Paul Marmalejo, Tire Manager

Floyd County Classifieds

Call 806-983-3737 or 806-652-3318

website: www.hesperianbeacon.com

e-mail: floydada@amaonline.com

Services

ALANIZ CONCRETE--For all your concrete needs call Victor, 806-559-0351 or 806-559-0226. FREE ESTIMATES. 7-29p

LARRY OGDEN AUCTIONEERING Estates, Farm, Ranch, Business, Liquidations, State Licensed and Bonded. (806) 983-5808. TX. #9240. tfn

FIERROS AND SONS--AA Concrete. Gabriel, 806-292-5006/652-2292/570-2740. No job too small. FREE ESTIMATES! (Since 1979). Lockney. tfn

CEMENT WORK--Need a new driveway, sidewalk, patio or flower bed curb? Call Gary Bennett at 983-5120 (home) or 778-8549 (cell). tfn

COVINGTON CONSTRUCTION--Home repairs and remodels. Call me, Monte Covington, 548-3357. tfn

ERNIE'S LAWN SERVICE--Includes tree trimming and leaf clean-up. Call Ernie Torrez, Sr. - 806-685-4539 or 806-983-3365. tfn

Pets

BORDER COLLIE PUPS for sale. Poco Bueno Stock Dogs. Call Tim at 983-3322 or email: tim@pocosd.com tfn

ALPHATEX KENNEL, AIKEN, TEXAS offers superior quality AKC Registered, DNA Certified Collies, Golden Retrievers and German Shepherds. Puppies and stud service available. www.alphatexkennels.com tfn

Miscellaneous

KENMORE WASHER/DRYER for sale. White stackable. Runs great. \$375.00. Call 983-4905 or 983-2019. 7-9p

FOR SALE--2009 shelled pecans. \$8.00 per pound. Call 983-2470. 7-9p

TEXAS PLAINS FEDERAL 206 W. California, Floydada Remember us for all your personal financial needs - CD's, loans, checking and savings accounts. Call Laura at 983-3922 or visit our website at: www.texasplainsfederal.org 1-30-10p

ORTHOPEDIC QUEEN SIZE mattress and box, new in wrapper. Can deliver. \$119. Call 806-549-3110. 7-9c

3 PIECE COMPLETE KING orthopedic mattress set. New in plastic \$225. Small delivery fee. Call 806-549-3110. 7-9c

MAJOR BRAND full orthopedic mattress set, never used. Delivery?? \$109. Call 806-549-3110. 7-9c

NASA memory foam mattress set, contours to body. UNUSED. \$375. Call 806-549-3110. 7-9c

YOUTH'S BEDROOM set. Black laquer finish, still boxed. \$475. 806-549-3110. 7-9c

BRAND NEW ultrasuede sofa set, 5 piece stain resistant, kid and pet friendly. \$450. Delivery available. Call 806-549-3110. 7-9c

BLACK pub dining set. Must sell but never used. Only \$380. Call 806-549-3110. 7-9c

KING SIZE bed frame, dresser, mirror, nightstand, first \$690 takes it. Call 806-549-3110. 7-9c

HUGE 6 PIECE leather reclining sectional. Lifetime warranty. List \$3600, forfeit \$1580. Call 806-549-3110. 7-9c

Houses for Sale

FLOYDADA
2-1-1 HOUSE FOR SALE. Good investment. 425 W. Missouri. \$17,900 cash. Call 806-685-0194. tfn

HOUSE FOR SALE--818 W. Georgia Street. Approximately 2400 sq. ft. 4 bedroom, 2 bath with large storage building and new carport. Corner lot. Call 806-543-3932. (after 5 p.m.) Leave message. tfn

HOUSE FOR SALE--3 bedroom, 2 bath, 2 living areas, dining area, large utility, basement, new tile and carpet, sprinkler system. 123 J.B. Avenue. Call 806-983-3608 or 806-559-0185. tfn

PRICE REDUCED--3 bedroom, 2 bath, large utility. Lots of storage. Large corner lot. 801 W. Tennessee. Call 806-983-2040. tfn

LARRY JONES REAL ESTATE--** Very nice 3 bed-2 bath home with 3 extra lots. tfn

** Large 2 bed-1.5 bath home in country with 0.75 acres. tfn

** Cute 3 bed-1 bath home with 2 carport. tfn

** Remodeled 2 bed-1 bath home with 1 carport. Extra nice interior!! tfn

Call Dedra at 543-7540 for more details or appointment. tfn

Farm Miscellaneous

WANT TO RENT OR LEASE land for livestock. Barn, small pasture, etc. Call 806-268-2500. 7-9p

Garage Sales

Lockney
CARPOT SALE--Saturday, July 11th. 9:00 a.m. - ??, 314 SW 5th, Lockney. 16' fishing boat, baby items, kitchen items and lots, lots more. 7-9p

Help Wanted

PLAINVIEW DAILY HERALD is looking for a distributor for the Floydada area. Come by 820 Broadway in Plainview to fill out questionnaire or call 806-296-1344. tfn

PLAINVIEW DAILY HERALD is looking for a distributor for the Floydada area. Come by 820 Broadway in Plainview to fill out questionnaire or call 806-296-1344. tfn

LVNs
Full- and Part-Weekend Shift
Sign-On Bonus!
Floydada Rehabilitation and Care Center
925 W. Crockett
Floydada, TX 79235
806-983-2624
806-983-3704
EOE/DFW

Classifieds
Get Results!
Call
983-3737

BARKER MINI-STORAGE

MONTHLY RENTALS

5'x10' - \$20.00 per month
10'x10' - \$30.00 per month
10'x15' - \$40.00 per month

ASK ABOUT OUR LONG TERM DISCOUNTS
PHONE: 652-3379

Lockney

SCRIPT PRINTING & OFFICE SUPPLY

* Commerical Printing
* Office Supplies & Furniture
* Business Machines

108 S. Main Floydada

NOW LEASING

Floydada Storage Spot

Sizes --- 10'x10' and 10'x15'

115 W. Virginia, Floydada (across from City Hall)

Call 806-853-9075

We have advertising plans to fit any budget!

Subscribe to
The
Hesperian-Beacon
Today!
806-983-3737

POOLE WELL CAM & SUBMERSIBLE SERVICE
Dual Lens
for Color Videos of Irrigation and domestic wells.
Reveals sand infiltration, crusting or deterioration, blockage 4" - 30" I.D.
704 Matador Hwy.
Floydada, Texas
983-2285

SUDOKU

			6			2	8	
			1	7			5	
	5							1
	9	1			5	7		
	6			3				
		3		7		5	1	
					9			
2						6		4
	1			6				

Level: Intermediate

Here's How It Works:

Sudoku puzzles are formatted as a 9x9 grid, broken down into nine 3x3 boxes. To solve a sudoku, the numbers 1 through 9 must fill each row, column and box. Each number can appear only once in each row, column and box. You can figure out the order in which the numbers will appear by using the numeric clues already provided in the boxes. The more numbers you name, the easier it gets to solve the puzzle!

7	9	2	8	9	7	6	1	8
7	5	2	8	6	4	6	1	8
4	6	9	1	8	5	8	7	2
8	8	1	6	2	7	9	4	5
9	1	5	9	7	8	8	2	4
2	4	8	8	6	1	9	9	7
9	8	7	5	4	2	1	6	8
1	7	8	2	8	6	4	9	9
5	9	4	7	1	8	2	8	6
8	2	6	4	5	6	7	8	1

ANSWER:

Advertising
Deadline is
Friday at 5
p.m.

Check out our website hesperianbeacon.com

USDA Taps Juan M. Garcia for Top Post in Texas

(College Station) – July 2, 2009 – Agriculture Secretary Tom Vilsack has announced the appointment for State Executive Director (SED) of the USDA Farm Service Agency (FSA) in Texas. The secretary has tapped Juan M. Garcia to serve the Obama Administration in this capacity.

The Farm Service Agency administers federal farm policy as laid out by Congress through a network of federal, state and county offices. FSA programs are designed to improve the economic stability of the agricultural industry and help agricultural producers adjust production to meet demand. Economically, the desired result of these programs is a steady price range for agricultural commodities for both producer and consumer.

As Executive Director for the Texas FSA, Garcia will oversee all aspects of federal farm program delivery for an agency that employs nearly 1700 people and on average, issues more than \$1 billion annually in commodity, conservation, disaster and credit benefits to farmers and ranchers across the state.

"FSA plays a vital role in the economic viability of rural America. As the Executive Director in Texas, I have a significant responsibility to insure the Agency is making wise use of taxpayer dollars and that our employees are provided the fiscal and human resources necessary to efficiently and effectively deliver our programs to the state's farmers and ranchers," said Garcia.

Garcia currently has served as the Agricultural Program Manager for FSA and as acting SED since January. He has 32 years of experience in the delivery of federal farm commodity and farm credit programs, and began his career with Texas FSA at the county level. During his time at the USDA Soil Conservation Service, Garcia provided technical guidance to farmers, ranchers and organizations in the planning and implementation of conservation programs. He served as an FSA County Executive Director in Hidalgo, Nolan and Cameron County, Texas, and also as a District Director for both the southern and eastern districts of the state. He holds a bachelor's degree in animal science from Texas A&I University. Garcia was raised on a cotton, grain sorghum and cattle operation in Willacy County.

"My immediate expectation for Texas FSA is delivery of the disaster programs outlined in the 2008 Farm Bill just as soon as these program regulations are confirmed by our national office in Washington, DC. Similarly, I anxiously await release of additional funding for our farm loan programs," said Garcia. "In the very near future, our agency will be poised to offer long-awaited relief to producers suffering from disaster losses and relief to producers who require our lending assistance to remain operational."

For more information about FSA and programs administered by the Agency, visit the national website at www.fsa.usda.gov.

Cotton Market Weekly



A service provided by Plains Cotton Cooperative Association

Cotton futures on the Intercontinental Exchange (ICE) shot to the 300-point limit on the first day of July, spurred higher by technical buying, active options, and strength in outside markets. The excitement cooled somewhat on Thursday but the market still closed on the upside.

The big news of the week was the release of USDA's June 30 acreage report which showed U.S. cotton acreage toward the top end of most expectations. USDA's National Agricultural Statistics Service (NASS), pegged 2009-10 cotton acreage at 9.0 million acres, a four percent decline from the previous year and the lowest number of acres planted to cotton since 1983. Interestingly, the figure was three percent higher than the 8.8 million acres estimated in the March planting intentions report.

Cotton plantings in Mississippi and Louisiana are expected by NASS to be the lowest on record, and California's upland cotton acreage is expected to drop 46 percent from 2008-09 to just 65,000 acres. The bulk of the U.S. cotton crop again will be planted in Texas, where producers are projected to plant 4.9 million acres, which is 54 percent of the total cotton acreage in the United States. Last season, growers from the state farmed 53 percent of the

nation's cotton acreage.

USDA said although the 2009 acreage figure is larger than the March planting intentions estimate, it still is the smallest amount of acreage dedicated to cotton since 1983. However, some in the industry feel that upon close examination, the data revealed increased acres were in areas of lower yielding ground, while reduction of acreage was in the higher yielding ground that typically does not get abandoned.

"It's easy to see where all the acreage that once went to cotton has gone," an analyst said. "While cotton acreage is vanishing, soybean farmers will plant the largest acreage on record and corn farmers have planted the second largest acreage since 1946, other than for 2007."

The weekly crop conditions report showed only 28 percent of the Texas crop was rated in good to excellent condition compared to 30 percent last week and the 40 percent 10-year average. Traders will be watching the West Texas weather as the chance of scattered rains and a break from temperatures in the 90-degree range is in the short-term forecast.

USDA's crop progress report confirmed a late start to the U.S. crop as well as a crop that was declining in quality. The department reported squaring at 32 per-

cent versus a 46 percent norm for the date, and boll setting was at eight percent compared to the usual 11. Week-on-week, the crop's condition has deteriorated in every single category, a market observer explained.

"It is very early in the season, and as is always the case, the absolute levels are not as telling as the prevailing trend," an analyst noted.

Meanwhile, USDA reported net export sales of 156,200 bales for the week ended June 25 were down one percent from the previous week, but 10 percent higher than the four-week average. China, Turkey, and Taiwan were the primary buyers. Net sales of 82,500 bales for delivery in 2009-10 were mainly for Turkey, Vietnam, and Thailand.

Export shipments of 333,600 bales were up 21 percent from the previous week and six percent higher than the four-week average. Major destinations included China, Turkey, and Mexico.

Closer to home, spot cotton sales were significantly higher as producers in Texas, Oklahoma, and Kansas sold an impressive 2,036 bales online in the week ended July 2 compared to just 48 bales the previous week. The average price received by producers ranged from 44.35 to 46.54 cents per pound.

Wild Horse Adoption Heading to Lubbock

The U.S. Bureau of Land Management (BLM) will hold a wild horse adoption in Lubbock, Texas, July 16-18, 2009.

The three-day event at the Panhandle-South Plains Fairgrounds will feature over 70 spectacular animals, including some for which a \$500 adoption incentive is being offered. These are adult and yearling horses that once roamed free on public lands in the West. The BLM periodically removes excess animals from the range in order to ensure herd health and to maintain ecological balance. The adoption program is essential for achieving these important management goals.

Adoption Schedule – Preview all of the animals Thursday, July 16, from 4 – 6 p.m. Gates reopen Friday, July 17, at 8 a.m., with adoptions starting at 10 a.m., and ending at 6 p.m. Adoptions continue Saturday, July 18, from 8 a.m. – noon.

Adoption Qualifications – Application approval is required and can be done on site. To qualify to adopt, one must be at least 18 with no record of animal abuse. Adopters must have suit-

able facilities and can adopt no more than four animals. All animals must be loaded in covered stock-type trailers with swing gates and sturdy walls and floors. BLM staff will be on hand to assist adopters through the short application process.

Adoption Fees – The minimum adoption fee for most animals is \$125, as set by law. An auction will be held Friday at 10 a.m. to determine adoption fees for any animals sought by more than one person. Animals not selected during the auction Friday morning will be offered for adoption on a first-come-first-served basis for the flat fee of \$125 for the rest of the weekend. Those interested in bidding are encouraged to come Thursday afternoon or early Friday to identify their desired animals and to complete their adoption applications in time.

Announcing a Major New Adoption Incentive: Lubbock will be a test site for a new adoption incentive program in which BLM pays a \$500 care-and-feeding allowance to adopters of selected older horses (4 years old +). The allowance is paid in full after one

year when adopters receive official ownership title for their horse(s). All standard adoption conditions and fees apply. A limited number of eligible horses will be available at Lubbock.

Younger horses (under 4 years old) are not eligible for this incentive. If successful, this incentive program could save taxpayers hundreds of thousands of dollars in long-term pasturing costs.

Wild horses and burros – iconic symbols of America's western heritage – are renowned for their strength, endurance, agility and intelligence, characteristics bred into them in the wild that make them ideal for work or recreation. Since 1973, the BLM has placed more than 220,000 of these "living legends" in approved homes across the country.

For more information, call toll-free 866-4-MUSTANGS or visit www.blm.gov/nm.

Directions: From I-27 North or South, take Exit 4 East. The Fairgrounds are located on the northeast corner of Broadway and US Hwy 87.

Connie Cogdell Clark joins membership of American Angus Association

Connie Cogdell Clark, Lockney, Texas, is a new member of the American Angus Association®, reports Bryce Schumann, CEO of the national breed registry organization in Saint Joseph, Missouri.

The American Angus Association, with nearly 33,000 active adult and junior members, is the largest beef cattle registry Association in the world. Its computerized records include detailed information on nearly 16 million registered Angus.

The Association records ancestral information and keeps production records on individual animals for its members. These permanent records help members select and mate the best animals in their herds to produce high quality, efficient breeding cattle which are then recorded with the American Angus Association. Most of these registered Angus are used by the U.S. farmers and ranchers who raise high quality beef for U.S. consumption.

Russell Graves Outdoors Balmorhea State Park

By Russell A. Graves

Of all the cool places I've been, Toyahvale, Texas has to be among the coolest. Before you drag out the atlas or access Google Maps, I'll just tell you that Toyahvale is a wide spot on state highway 17 in southern Reeves County way out in far West Texas. Nestled at the foot of the Davis Mountains in the harsh environs of the creosote bush scrub desert, Toyahvale boasts a post office, one or two homes, a state park, and a scuba diving shop. Yep, you read right - a scuba diving shop. Across the highway from the Funky Little Dive Shop is one of the best kept secrets in Texas - Balmorhea State Park.

The state park is small - only 45.9 acres. What makes the park so unique is what's below - water.

Bubbling up on the park's west end is San Solomon Springs. Each day, the springs flows over 22-million gallons of water and fills a huge swimming pool that's almost two acres in size. On the east side of the pool, water flows out through a canal and waters a cienega (desert wetland) before it flows through a series of viaducts used to provide irrigation to the Madera Valley.

Built between 1936 and 1941, the state park's buildings and structures were erected by the Civilian Conservation Corp and today greet thousands of visitors to this oasis in the desert. Inside the park is the vintage San Solomon Springs Motor Court which I always choose for lodging when I visit.

For the past seven years, I've made a pilgrimages to the park to swim in the clear, chemical-free water. On one arm of the boomerang shaped pool, the bottom is concrete just like a traditional swimming pool. That, however, is where the resemblance to a traditional swimming pool stops. The rest of the pool has a natural bottom complete with rocks, springs, turtles, and fish including the endangered Comanche Springs pupfish and the Pecos gambusia.

Because the water emerges from the ground and is a fairly constant temperature (in the 1970's), I've swam in the park in January. Also (I know this sounds crazy), I scuba dive in Balmorhea State Park every year and received my open water scuba diving certification at the park. In the deep end of the pool, the bottom is around 25 feet deep. At that depth, the water is so clear, sunlight has no problem penetrating and the colors are vivid. For some reason at that depth the Mexican tetra fish swarm around you in hopes you'll feed them.

On my yearly dive this past June, I make the normal rounds and follow a soft-shell turtle across the bottom and pause for a moment and watch a Comanche Springs pupfish defend the top of his rock with a territorial fervor. Elsewhere on the bottom, I watch springs bubbling through the sand and swim to where the big spring emerges from beneath some rocks. While you can't see the water rushing into the pool, when you swim next to the rocks, the water rushes in so hard it feels like the wind blowing across you. Every time I dive to the big spring, a bevy of catfish swim headfirst into the current without ever moving forward - kind of like their swimming to nowhere.

I soon surface and swim to the shallow area where my two kids are splashing with their mother.

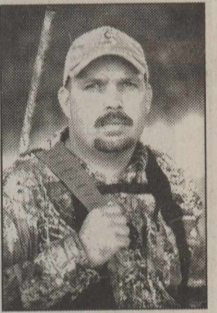
Before this trip, I bought them a snorkel kit and amazingly, even my four year old boy manages to figure it out in no time and is watching fish swim around him.

Outside the water, the desert is a dry, 98-degrees. In the water, we're a cool 75-degrees. No wonder I keep coming back.

If you want to see a video of Balmorhea State Park, check out www.russellgraves.com/videos.html

Any questions or comments? Contact Russell at russell@russellgraves.com or visit his website at www.russellgraves.com

russellgraves.com



Need to renew?

Subscription rates

\$25 - in county
\$28 - out of county

Ask about our senior citizens discount!

SOIL & WATER CONSERVATION DISTRICT NEWS

Is your irrigation water declining? Are you interested in reducing your property taxes? If your answer to these questions is yes, the Floyd County Soil & Water Conservation District can help you. By having the district meter your irrigation wells during irrigation season, you could reduce your property taxes. The appraisal district uses the pumping information on your wells, recalculating and adjusting "irrigated acres" and in most cases, lowering your taxes on that farm. The deadline for FY 2009 adjustments at the tax office was July 1st. However, you can still meter wells in July and August and use the adjustments for your 2010 taxes. Call the district at 983-2352 for more information.

Adopt a Wild Horse or Burro

Adopt an Adult Horse (4 yrs +)
We'll Pay You \$500
First-Year Care & Feeding When You Receive Title

July 16-18
Lubbock, Texas
Panhandle-South Plains Fairgrounds
1012 Avenue A

Thursday Preview: 4 - 6pm
Friday Adoption: 8am - 6pm
Saturday Adoption: 8am - Noon
Oral Bid Adoption starts Friday at 10am.
First-come-first-served afterward for remainder of weekend.

866-4MUSTANGS
wildhorseandburro.blm.gov

U.S. Department of the Interior
Bureau of Land Management
Wild Horse and Burro Program

Receive a free wild horse magnet when you call and mention this ad.

PRODUCER'S COOPERATIVE ELEVATOR

983-2821 Floydada
983-3770 Dougherty

First National Bank of Floydada
983-3717

THE FIRST NATIONAL BANK OF FLOYDADA
Member F.D.I.C.

FLOYDADA COOPERATIVE GINS, INC.

COOP

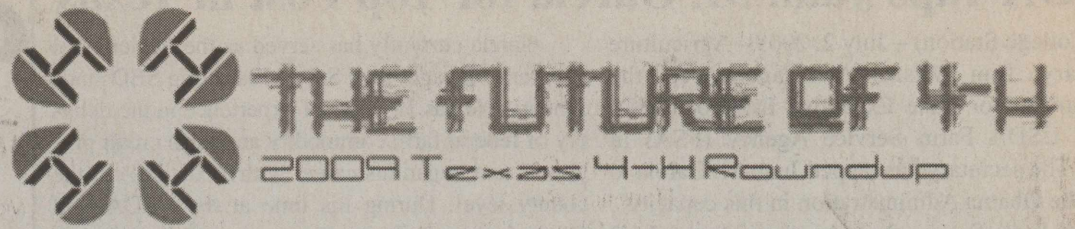
Floydada • 983-2884

Sponsored by:





Bailey Davenport
\$10,000 Richard Wallrath Educational
Foundation Scholarship

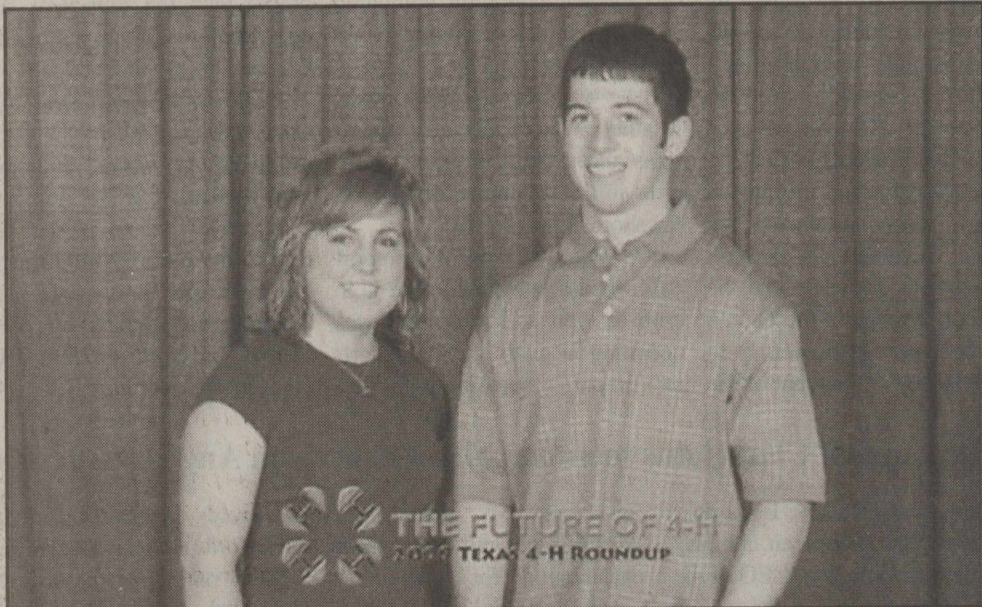


Don & Christina Chesshir
South Plains District 2
Distinguished Leader Award

AgriLIFE EXTENSION

Texas A&M System

Improving Lives. Improving Texas.



Jill Bramlet & Dillon Chesshir
Share The Fun - Poetry/Prose
2nd Place



Evan Johnson
National Anthem
Thursday Night General
Assembly



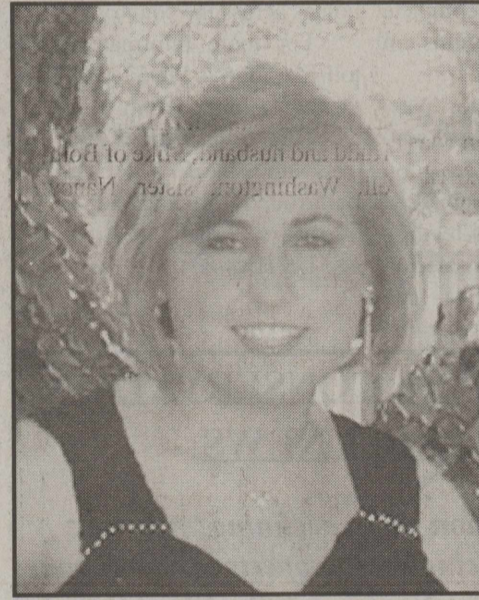
Jill Bramlet
Elected District Council President
2009 - 2010



Jill Bramlet
Photography Contest
4 Blue Awards



Bailey Davenport
Share The Fun
Vocal



Jill Bramlet
Educational Presentation
Family Life



Evan Johnson
Share The Fun
Vocal



Jerry Chappell, Coach, J. C. Chappell, Bailey Davenport, Dillon Chesshir, Don Chesshir, Coach, Jill Bramlet, Kattie Miller and Alece Annunziato.



McCrae McCormick, Tylee Williams, SyAnn Foster, J. D. Ragland, Coach, Livestock Judging.

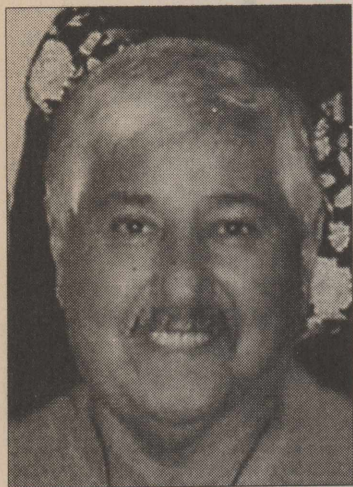
We would like to thank the following sponsors for making this page possible.

- Ace Hardware • Adams Well Service • American State Bank
- Assiter Punkin Ranch • Producer's Coop
- Assiter Insurance Agency, LLC • City Bank, Floydada • City Bank, Lockney
- Cornelius Conoco • D & J Gin • Darla C. Chappell, CPA, PC
- Davis Farm Supply • Don's Heating & Air Conditioning
- First National Bank, Floydada • Floyd County Farm Bureau - James Race, David True & Chris Fulton • Floyd County Supply • Heart's Desire
- J & K Insurance • Kaleidoscope • Lighthouse Electric • Lockney Coop
- Lowe's Pay-N-Save • Main Street Pizza
- R.E.S. Whirlwind Energy Center • Schacht's Flowers, Jewelry, & Gifts
- State Farm - Nick Long • Triple T
- Windmark Insurance

Thank You to Parents & Leaders Attending:

- Larry & Beth Bramlet
- Jerry & Darla Chappell
- Don & Christina Chesshir
- Winfield & Patty Davenport
- Shawnda Foster
- Jeffery & Roijon Johnson
- Kelly McCormick
- Nikolyn Williams
- Melissa Long
- J. D. Ragland
- Mick Annunziato

Obituaries



MIKE GALVAN

Mike Galvan, 62, of Plainview passed away Saturday, July 4, 2009 in Plainview.

Funeral Services were held at 10:00 a.m. Wednesday, July 8, 2009 at Sacred Heart Catholic Church. Rev. Andres Mendoza L. and Rev. Arsenio Redulla officiated.

Burial followed in Plainview Memorial Park under the direction of Kornerstone Funeral Directors of Plainview. Visitation for family and friends was held on Tuesday, July 7, 2009 from 5-7 p.m. Rosary service started at 7 p.m. at the Kornerstone Funeral Directors in Plainview.

Mr. Galvan was born March 2, 1947 in Anson, Texas to Florencio and Mariana Trevino Galvan. He married Simona Montez on December 23, 1964 in Plainview. He moved to Plainview in 1959 and worked in road construction for High Plains Pavers and TxDOT.

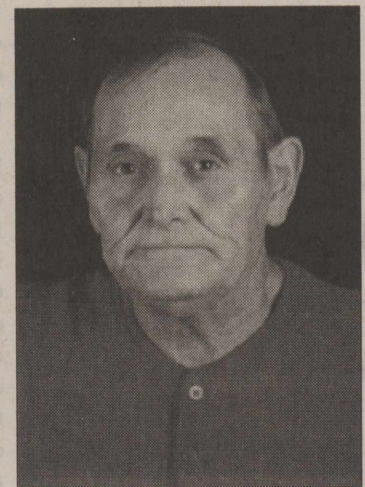
Mr. Galvan was a lifetime member of Sacred Heart Catholic Church.

He is survived by his loving wife of 44 years, Simona Galvan of Plainview; two sons, Henry Galvan and wife, Angie of Plainview and Michael Galvan and wife, Amber of Hobbs, New Mexico; two daughters, Sally Marroquin and husband, Randy of Plainview and Cathy Sarabia and husband, Albert of Lubbock; nine grandchildren, John Henry, Mikel J. and Kristen Galvan, Kiahna and Ari Marroquin, Aaron and Myka Sarabia, Ryan and Alex Galvan; one great granddaughter, Mia Galvan; six sisters, Luisa Sebal-

los of Abilene, Feliz Cervantes of Lamesa, Hortencia Rodriguez of Amarillo, Loy Chapa of Plainview, Janie Gonzales of Tulsa and Eva Galvan of San Antonio and two brothers, Eligio Galvan of Plainview and Raul Jimenez of Amarillo.

He was preceded in death by five brothers, Jesse Galvan, Carlos Galvan, Gilberto Galvan, Adan Galvan and Jose Lozano; three sisters, Audelia Garcia, Maria Ruiz and Lydia Ochoa. Pallbearers will be Rene Ochoa, Navor Ochoa, Jr., Johnny Galvan, Michael Chapa, Robert Seballos and Robert Galvan.

In lieu of flowers, make donations to the Area Community Hospice 3109 Olton Road, Ste. C, Plainview, Texas 79072.



RUDDIE L. MCMURRRIAN

Ruddle L. McMurrrian, 59, of Floydada, passed away on Wednesday, July 1, 2009 at his home.

Family greeted friends from 7-8 p.m., Sunday, July 5, 2009 at the Moore-Rose Funeral Home.

Funeral services were held at 10:30 a.m., Monday, July 6, 2009 at the Trinity Assembly Church. Pastor Vance Mitchell officiated. Burial followed at the Floydada Cemetery under the direction of Moore-Rose Funeral Home of Floydada.

Ruddle L. McMurrrian was born on August 2, 1949 in Nashville, Arkansas to Charlie Allison McMurrrian and Cora Lee Weems. Ruddle married Janis Ellis on July 5, 1988 in Plainview. Ruddle

was a veteran of the Vietnam War having served in the US Navy from 1969-1973. Ruddle loved the outdoors and enjoyed fishing. He loved life, and cherished his family.

He was preceded in death by his parents, a nephew, Bennie McMurrrian and a brother, Charles McMurrrian.

He is survived by his wife Janis McMurrrian of Floydada; and his children, Quetha Derryberry of Idalou, Dewayne Reeve of Canyon, Daniel McMurrrian of Amarillo, Kayla Knight of Washington, Deana Bodine of Gun Barrel City, and Lyle Rushing of Plainview; three brothers, Bennie McMurrrian and Donald McMurrrian both of Idaho, and Larry McMurrrian of Plainview; a sister, Judy Dugan of Oregon; nine grandchildren and two great grandchildren.

Memorials may be made in Ruddle's name to Floydada EMS, 109 N. Main St / PO Box 373, Floydada, TX 79235 or to the Floyd County Museum, PO Box 304, Floydada, TX 79235.

WILLIAM JAMES TILT

Born January 26, 1926, William James Tilt passed away Monday, June 29, 2009 at his home in Carlsbad.

Mr. Tilt served in the Canadian Air Force during WWII. He enjoyed golf and travel and it was his spirit of adventure which led him to China late in his life to climb the Great Wall.

Mr. Tilt retired as Meat Department Manager in 1991 after over 45 years in the industry. He was also a loyal member of St. Patrick Catholic Church.

Mr. Tilt was predeceased by his wife, Florence, in May of 2006.

He is survived by daughter, Deborah Martin and husband, Howard of Matador; son, James Tilt and wife, Cindy of Bullhead City, Arizona; daughter, Joan Rudd and husband, Mike of Bothell, Washington; sister, Nancy; nine grandchildren and five great-grandchildren.

He will be remembered as a loving husband, father, grandfather and friend to all.

Floyd County Church Directory

AIKEN BAPTIST CHURCH

Dennis Butler, Pastor
Morning Worship ..11:00 a.m.

BIBLE BAPTIST CHURCH

810 S. 3rd, Floydada
Darwin Robinson, Pastor
983-5278
Sunday School10:00 a.m.
Morning Worship ..10:50 a.m.
Evening Worship 6:00 p.m
Wednesday.....7:00 p.m

CALVARY'S CORNERSTONE FELLOWSHIP

Floydada
Armando Morales, Pastor
Sunday School9:45 a.m.
Morning Worship ..11:00 a.m.
Bible Study6:00 p.m.
Wednesday Evening 7:00 p.m.

CARR'S CHAPEL

Service Every Sunday:
Morning Worship9:00 a.m.
Sunday School10:30 a.m.

CHURCH OF CHRIST

West College & Third,
Lockney
Steve McLean -Minister
Morning Worship ..10:30 a.m.
Evening Worship5:30 p.m.
Wednesday Service 7:30 p.m.

CITY PARK CHURCH OF CHRIST

Levi Sisemore, Minister
Floydada
Sunday Bible Study..9:30 a.m.
Morning Worship ..10:30 a.m.
Evening Worship6:00 p.m.
Wed. Bible Study7:00 p.m.

FIRST BAPTIST CHURCH

Anthony D. Sisemore, Pastor
Terry Simmons,
Minister of Ed./Music
Eric Kaiser - Min. Students
Sunday School9:15 a.m.
Morning Worship ..10:30 a.m.
Evening Worship6:00 p.m.
Wed. Bible Study6:30 p.m.

FIRST BAPTIST CHURCH, Lockney

Carl Moman, Pastor
Chad Cook, Youth Min.
Phil Cotham, Music Min..
Sunday School 9:45 a.m.
Morning Worship 10:45 a.m.
Evening Worship 6:00 p.m.
Wednesday..... 6:30 p.m.
Wednesday (Youth).....7:15 pm

FIRST UNITED METHODIST CHURCH

Floydada
Rev. Les Hall, Pastor
Early Worship8:30 a.m.
Sunday School..... 9:45 a.m.
Morning Worship10:50 a.m.
Youth (Sunday).....5:00 p.m.
Youth (Wednesday)..7:30 p.m

FIRST UNITED METHODIST CHURCH

Lockney
Rev. Ricky Carstensen
Pastor
Sunday School9:30 a.m.
Worship Service10:30 a.m.
Evening Service..... 6:00 p.m.
Wed. Jr. High5:30 p.m.
Wed. High School... 6:30 p.m.

GRANT CHAPEL CHURCH OF GOD IN CHRIST

Joe Bennett, Pastor
Sunday School10:00 a.m.
Morning Worship ...11:00 a.m.
Evening Service.....7:30 p.m.
Tuesday.....8:00 p.m.
Wed. Service7:30 p.m.

MAIN STREET CHURCH OF CHRIST

Lockney
Jay Don Poindexter, Minister
Bible Study9:30 a.m.
Morning Worship ..10:30 a.m.
Evening Worship ... 6:00 p.m.
Wednesday.....7:30 p.m.

MT. ZION BAPTIST CHURCH

Floydada
Rev. Ralph Jackson
401 N 12th St (983-5805)
Sunday School10:00 a.m.
Morning Worship ..11:00 a.m.
Evening Worship6:00 p.m.
Wednesday Study ...7:00 p.m.

NEW SALEM PRIMITIVE BAPTIST CHURCH

Floydada
Pastor Elder Ronnie Hedges
(806) 637-0430
Sunday Singing10:30 a.m.
Morning Worship ..11:00 a.m.

OUT REACH HARVEST PENTECOSTAL CHURCH

Floydada
Rev. David Ramos, Pastor
Ester Ramos, Praise Leader
Sunday Bible...10:00 a.m.
Morning Praise...11:00 a.m.
Evening Praise ...5:00 p.m.
Wed. Worship.... 7:00 p.m.

POWER OF PRAISE FULL GOSPEL CHURCH

Rev. Manuel Rendon, Pastor
704 N. Main, Lockney
Sunday Services....10:00 a.m.
Sunday Evening 5:00 p.m.
Wednesday.....7:30 p.m

PRIMERA IGLESIA BAUTISTA

Lockney
Jesus Caballero, Pastor
Sunday School9:45 a.m.
Worship Service11:00 a.m.
Discipleship5:00 p.m.
Wed. Service7:00 p.m.

PRIMERA IGLESIA BAUTISTA

Floydada
Pastor Reverend Raymond Asebedo
Sunday School 9:45 a.m.
Morning Worship ..10:55 a.m.
Evening Worship ... 6:00 p.m.
Wed. Evening6:00 p.m.

SAN JOSE CATHOLIC CHURCH

Lockney
Jim McCartney, Pastor
Wed. Communion....8:00 p.m.
Sunday Mass..... 11:30 a.m.

SOUTH PLAINS BAPTIST CHURCH

Joe Weldon, Pastor
Sunday School10:00 a.m.
Morning Worship ...11:00 a.m.
Prayer Meeting..... 7:00 p.m

TEMPLO GETSEMANI ASSEMBLY OF GOD

701 W. Missouri
Andy Rodriguez
983-5286 (church)
983-3047 (parsonage)
Sunday School9: 45 a.m.
Morning Worship ...11:00 a.m.
Evening Service.....5:00 p.m.
Wednesday.....7:00 p.m.

ST. MARY MAGDALEN CATHOLIC CHURCH

Floydada
Rev. Angelo Consemino
Phone: 983-5878
Sunday Mass.....11:30 a.m.
Mon.Wed. Mass.....6:30 p.m.
Confession Sat.....10-11 a.m.

TEMPLO BAUTISTA SALEM

Lockney
Rev. Joe Hernandez
Sun. Prayer Service 9:30 a.m.
Sunday School9:45 p.m.
Worship Service11:00 a.m.
Evening Worship ... 6:00 p.m.
Wed. Meeting7:00 p.m.

TEMPLO BETHEL SPANISH ASSEMBLY OF GOD

Washington and 1st St.
Sunday School9:45 a.m.
Morning Worship ..11:00 a.m.
Evening Worship 5:00 p.m.
Wed. Service7:00 p.m.

TEMPLO NUEVA VIDA

Rev. Herman Martinez
308 W. Tennessee, Floydada
Sunday School10:00 a.m.
Evening Worship5:00 p.m.
Tuesday.....7:30 p.m.
Thursday Service.....7:30 p.m.

TRINITY ASSEMBLY

500 W. Houston
Floydada
Vance Mitchell, Pastor
983-5499 or 983-2887
Sunday School9:45 a.m.
Morning Worship ...10:40 a.m.
Sunday Evening6:00 p.m.

TRINITY LUTHERAN CHURCH

Providence Community
on FM 2301 293-3009
Rev. Peter W. Harrington
Minister
Sunday School9:45 a.m.
Worship Service11:00 a.m.

WEST SIDE CHURCH OF CHRIST

Floydada 983-3548
Sunday Worship ...10:30 a.m.
Sunday Evening5:00 p.m.

Thanks For Reading

Need to renew?

Subscription rates
\$25 - in county
\$28 - out of county
Ask about our senior citizens discount!

The family of Nino Garcia would like to thank everyone for their kind words, for keeping us in your thoughts and prayers, for visiting us, for the great food that was brought, for all the phone calls, for all the beautiful flowers and plants, for all the other items that were brought, and all the support we all received.

We lost a very loving and humble man, who would've done anything to help anyone he could. We will miss him tremendously!! Love you Papa Nino!!

Our sincerest gratitude,
Rosa, Patricia, Nino Jr., Armando, Diana, Jennifer, Bertha, Daniel, Annika, Jordan, Maisey, Evan, Diego, Dean and Aryssa

On behalf of St. Mary Magdalen Catholic Church, we would like to express our gratitude and appreciation to our community, visitors, church parishioners, musicians and entertainment, and the following businesses, which made our Annual Jamaica (fundraiser) on June 14th a success, with their kindness and generosity. We are truly blessed to live in the community that we live in.

Thank you so much!!

ACE Hardware, Allure Hair Salon, American State Bank, Selia Arellano-Avon, Azteca Milling Company, Bibi's Dream Cuts, Cathy's Floral, City of Floydada, Cornelius Conoco, Dollar General Store, FCS Credit Union, First National Bank of Floydada, Floydada Police/Fire Departments, Hammond Sheet Metal, Lighthouse Electric, JRD Farm Supply & Welding, Lone Star Decorating, Lowe's Grocery Store, Molinar Roofing, NAPA Auto Parts, Nielson's Restaurant & Catering, Norma's Hair Studio, Oden Chevrolet, Parent Adolescent Center, Poole's Well Service, RRR Mobile Car Wash & Detail, Ray Lee Equipment, Luis Saenz, Script Printing, Serendipity Hair Salon, Texas Plains Federal Credit Union, Tina's Doughnuts, UMC/PNS-Cogdell Clinic, Veronica's Spa & Hair Salon, Wal-Mart Distribution/Super-Center in Plainview and Lubbock

- Winners of the Raffle Ticket drawing**
- 2009 2-DR Chevy Cobalt Car (purchased at Oden Chevrolet)
Joe & Bennie Perez-Floydada
 - Electric Fire Place (donated by ACE Hardware) Terry - Plainview
 - \$100.00 Gift Certificate (donated by Lowe's Grocery Store) - Sara Sanders- Floydada
 - \$50.00 (donated by Rolando & Cynthia Cisneros) - Alfredo Peralez - Olton
 - Digital Camera (donated by Wal-Mart Distribution) - Atha Sue - Floydada



American State Bank
Member FDIC
217 W. California
983-3725

Goen & Goen Insurance
102 E. California
983-3524

Barwise Gin
Barwise Community
983-2737

Lockney Co-op Gin
652-3377

Tastee Burger
116 North Main
652-2630

Oden Chevrolet Inc.
221 S. Main, Floydada
983-3787

Clark Pharmacy
320 N. Main - Lockney
652-3353

Payne Family Pharmacy
200 S. Main, Floydada
983-5111

Davis Lumber
102 E. Shubert
Lockney
6523385

Pay-n-Save
210 N. Main
Lockney
652-2293

Sawaya Ins. Agency
120 E. 7th Street
Plainview
293-1318

Schacht
Flowers, Jewelry & Gifts
112 W. Poplar, Lockney
652-2385

Lighthouse Electric Coop
703 A Matador Hwy
983-2814

Sunshine Pump
Oliver Clark
Box 266, Lockney
983-5087 - 774-4412
(Mobile)

Floyd County Hesperian-Beacon
Floydada - Lockney
983-3737 - 652-3318

Labor...

continued from page 1

of tremendous regional opportunity and I am impressed with your focus on developing and refining innovative service delivery strategies in the context of a regional economy. The South Plains economy has expanded beyond the cornerstone twenty-five billion agriculture industry, diversifying into industries such as healthcare and renewable energy. Clearly this area not only contributes to the clothing of our nation but is primed to become a national world leader in green energy production, research and training," the Commissioner stated.

During the first year of the grant, WorkForce Solutions will facilitate the relocation and placement of at least 200 workers from labor surplus areas across the U.S. Additional efforts will be made to recruit out-of-state workers residing in labor surplus regions that correlate highly with areas of in-migration and those areas most affected by trade-related business closures. A number of the recruits will receive on-the-job skills training upon relocation. If the project funding is renewed in 2010 and 2011, the initiative will fund recruitment of an additional 200 workers per year for a total of 600 new workers to the South Plains over the three year period.

"I want to thank WorkForce Solutions South Plains and the partnering economic development agencies for their leadership in securing this investment for a region with economic promise as vast as its big skies. And on behalf of the Texas Workforce Commission, we congratulate all partners involved in the development of the South Plains Recruitment and Reemployment Initiative for their vision in developing this award winning recruitment project in Texas," said Commissioner Alcantar.

The project offers facilitation, relocation and placement of at least 200 workers from labor surplus areas within the U.S. Additional efforts will be made to recruit out-of-state workers residing in labor surplus regions that correlate highly with areas of in-migration and those areas most affected by trade-related business closures. A number of the recruits will receive on-the-job skills training upon relocation. If the three-year project is awarded again in 2010 and 2011, the initiative will fund recruitment of an additional 200 workers per year for a total of 600 new recruits into the area.

For more information regarding the South Plains Recruitment and Reemployment Initiative, contact Workforce Solutions Public Information Officer at 806.744.1987, mobile 806.438.0767, or Workforce Solutions Chief Executive Officer at mobile 806.577.6877.

Texas Crop and Weather Report

COLLEGE STATION - The drought has made hay scarce in some areas. But before producers buy, they should remember drought can also make warm-season sorghum forages toxic, said an Texas AgriLife Extension Service forage expert.

"With the hot, dry conditions we are currently experiencing in most of Texas, producers should be aware that their warm-season annual grass hays could have nitrates accumulated in them to a toxic level," said Dr. Larry Redmon, AgriLife Extension state forage specialist, College Station.

The warning applies to forages such as haygrazer, forage sorghums and sorghum-sudan hybrids. Though not of the genus Sorghum, warm-season annuals such as pearl millet, foxtail millet and German millet can also become toxic under drought conditions.

"People like them because they are pretty tolerant of hot, dry conditions," Redmon said. "But the forages also have the unique capability of accumulating nitrates in their tissues to toxic levels."

The nitrate levels do not diminish over time, he said.

"If the nitrate levels are high when the hay is baled up, they will be high enough when the hay is fed in the winter," Redmon said.

Redmon recommend that anyone producing or selling warm-season grass hay get a forage-nitrate analysis performed.

The forage-nitrate analysis is not included in a standard nutritive-value forage analysis. The cost is an extra \$5 for the test, but well-worth the money, Redmon said.

Redmon said producers wishing more information on sampling, testing and management for nitrates in forages should either contact the AgriLife Extension office in their county or go to the Texas A&M University forage Web site at <http://forages.tamu.edu/PDF/Nitrate.pdf>.

More information on drought in Texas can be found at the Web site of the Drought Joint Information Center at <http://agrilife.tamu.edu/drought/>.

The following summaries were compiled by AgriLife Extension district reporters:

CENTRAL: Conditions remained hot and dry, and soil moisture was very short. All forages and grain crops were stressed by the drought and heat. Stock tanks were low. Cattle producers were concerned about prussic acid developing in sorghum and Johnson grass fields. Corn growers who were baling stalks for hay were

encouraged to test for nitrate levels.

COASTAL BEND: Triple-digit temperatures, high winds and no rain worsened the drought conditions. The sorghum harvest began on some fields not zeroed-out by insurance adjusters. Some producers were baling sorghum for livestock rather than incur harvest costs on very limited production fields. Cotton bolls were beginning to open. The condition of cattle worsened with little forage available.

EAST: A few areas received as much as 1.3 inches of rain, but most were left dry. What moisture was received was quickly lost to evapotranspiration due to 100-de-

good, while other fields were plowed under because of poor stands or other problems. Alfalfa fields were ready for a fourth cutting. Chiles were in full bloom.

NORTH: From 0.5 to 2.5 inches of rain in part of the region gave temporary relief to pastures and crops. Soil moisture remained short in other areas, and pastures deteriorated under 100-plus degree heat. Stock tank levels appeared to be holding though the past two weeks were dry and hot. Those producers who are properly stocked will be able to stand dry weather fairly easy, but lack of rain lowered prospects for hay for many producers. Despite the deluge of rain received in May, quantity and qual-

ity of cut hay was down. Some cornfields were changing colors, and grain sorghum began to head. Most well-drained corn fields looked very good while those fields that did not drain well appear to have been damaged by the heavy rains in May. The same held true for grain sorghum and soybeans. Rice and cotton were in fair condition. The winter wheat and oat harvests were completed. Livestock were in fair to good condition. Rangeland and pastures were in fair to poor condition.

PANHANDLE: All summer crops looked good, especially corn and cotton. The wheat harvest wound down with average to below-average yields. Soil moisture was low across the region,

except in the south central counties. Range and pastures were in fair condition. Cattle were in good shape, though plagued with horn flies across the entire region.

ROLLING PLAINS: Crops and pasture land were beginning to dry out as daily temperatures reached 100. Late in the reporting period, 1 to 3 inches of rain fell on most of the district bringing cooler temperatures and helping drought-stressed dryland crops. Hay remained in high demand. Rangeland was beginning to look a little poor due to the lack of moisture, but improved with rain. Cotton progressed well with the warm days and nights, while milo and haygrazer were starting to stress

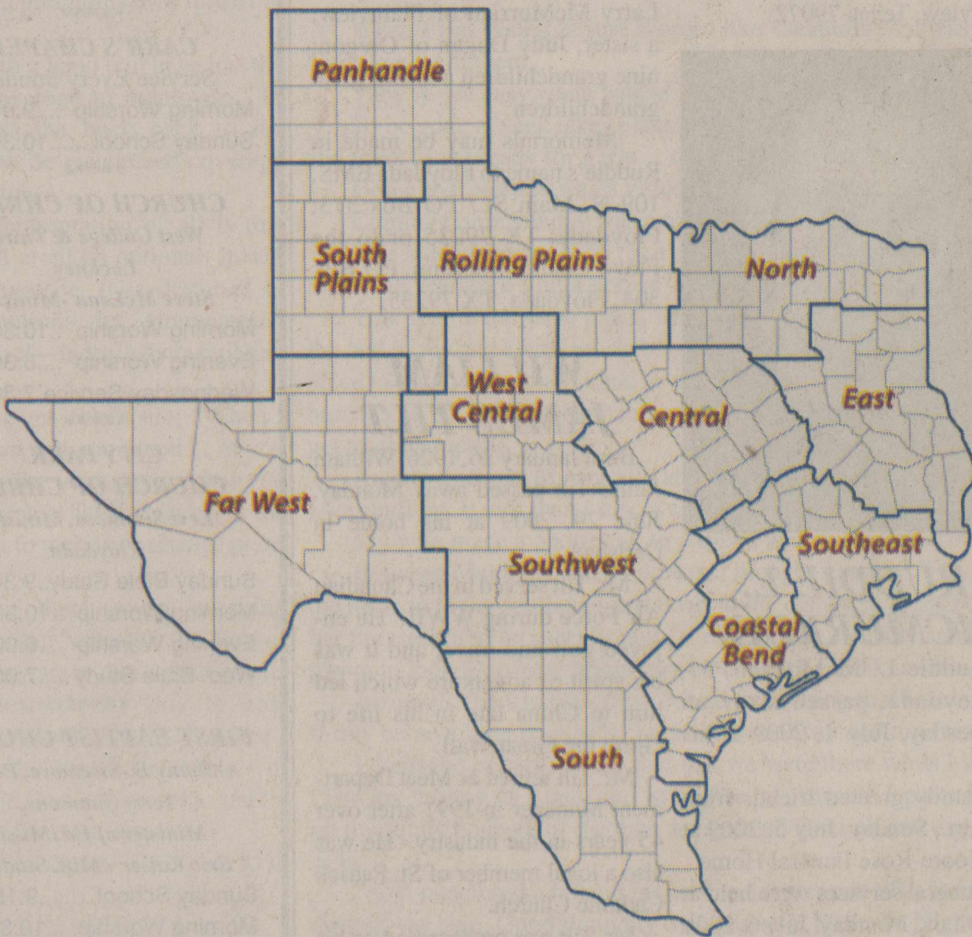
carried to harvest in the eastern parts of the region was rapidly maturing. In the western parts of the region, producers were heavily irrigating corn and sorghum. Also in the west, growers were expected to finish the watermelon harvest soon.

SOUTH PLAINS: From 0.5 to 3 inches of rain cooled things off and raised humidity. Soil moisture was short to adequate. Corn was in good condition and started to tassel. Sorghum was in fair to good condition. The wheat harvest was ongoing. Sunflowers and soybeans were in various stages of development, depending upon when they were planted, but most fields looked fair to good. Cotton was in fair to good condition and neared the bloom stage. Pastures and rangeland were in fair to good condition. Cattle were in good condition with continued supplemental feeding.

SOUTHEAST: Extremely dry, hot conditions stressed crops, animals and people. Total rain for the first six months of 2009 was only 7 inches, 20 inches below average. Cattle producers were aggressively culling cow herds and marketing calves early. Burn bans were in effect in most counties. The condition of corn and grain sorghum continued to deteriorate with no moisture available for grain development. No hay was being baled, and ponds continued to shrink.

SOUTHWEST: Dry weather continued with record highs. The soil profile was very dry. High, dry winds increased the risk of wildfires along roadsides and in fields. Except for deferred pastures, forages were nearly nonexistent. The cantaloupe and watermelon harvests were ongoing. Corn and sorghum were drying down. Below-average yields were expected due to the dry, hot weather. Cotton and peanuts were making excellent progress under heavy irrigation.

WEST CENTRAL: Some scattered showers were reported, but extremely hot, dry conditions were the rule. Hay harvesting continued. Irrigated cotton crops were doing well. Producers were planting dryland cotton, hoping the showers brought enough moisture to get the cotton up and going. Rangeland and pastures were showing signs of heat stress. Livestock were in fair to good condition. Flies were becoming a major problem with livestock, as were other internal and external parasites.



from lack of moisture. AgriLife Extension personnel reported that nitrates were up in several samples of haygrazer last week.

SOUTH: Green grass on rangeland and pastures was non-existent in many parts of the region. Livestock producers were heavily providing supplemental feed to livestock. Some producers had to liquidate their cattle herds. In the northern parts of the region, watermelon harvesting was nearly complete. Peanut plants emerged and were in fair condition. Corn began to mature, and cotton was setting bolls. What little sorghum that was

Got stuff to sell? Try our classified section!

Call 983-3737 for our classified rates today to put more cash in your pocket!

Check out our website hesperianbeacon.com

Don't forget our new deadline Friday, 5 p.m.

We are proud to offer **CIRCLE E CANDLES**

Come see Stacie at Scott Gin 983-2220 Two miles south on the Ralls Hwy.

Summer Fun in the Sun!

Saturday, July 25!

Come join NAPA Auto & ACE Hardware. More details to come or call 983-6272 (NAPA) or 983-3000 (ACE) for details!

NAPA AUTO PARTS®

Monday thru Friday 8:00 a.m. - 6:00 p.m. Saturday 8:00 a.m. - 3:00 p.m.

Floyd Co. Auto Parts 1103 Ralls Hwy. Floydada, TX 79235 (806) 983-6272

FARM BUREAU INSURANCE Texas Auto • Home • Life

Across the State, Texas Farm Bureau Insurance Companies provide Auto protection with prompt, professional attention, and fast, fair claims service. So, for Auto coverage, as well as Home and Life Insurance, call today for a free, no-obligation review.

FLOYD COUNTY 101 S Wall • Floydada, TX 79235 (806) 983-3777

BRISCOE COUNTY 802 Lone Star • Silvertown, TX 79257 (806) 823-2234

James Race, LUTCF Agency Manager
David True, LUTCF Agent
Tammy Brannon Agent
Chris Fulton Agent

sfbli.com • txfb-ins.com