

\*\*\*\*\*5-DIGIT 79235  
 426 07-30-15 12P 1N  
 Floyd County Histori Museum  
 PO BOX 304  
 FLOYDADA, TX 79235-0304

# The Floyd County Hesperian-Beacon

THURSDAY, JANUARY 8, 2015

HESPERIANBEACONONLINE.COM

\$1.00

## Spirit of Christmas provides holiday meals to hundreds



Courtesy photo

Volunteers served more than 365 meals on Christmas and delivered them to Plainview, Floyd County and the Ronald McDonald House in Lubbock.

By Kay Ellington  
 The Hesperian-Beacon

"We think we served more than 365 meals," said Corey Johnson with the Spirit of Christmas.

Johnson, sales/music/sports director of KFLP Radio, and his entire family joined more than 35 volunteers to prepare hundreds of Christmas Day meals in the First Baptist Church of Floydada.

This Floyd County holiday tradition goes back several decades, through multiple families and multiple generations. In many ways the entire community gets involved. Ninety percent of the food is ordered locally, and the Floydada Volunteer Fire Department provides the smokers for smoking the turkeys.

On Christmas morning the meals were delivered throughout Floyd County, Plainview and the Ronald McDonald House in Lubbock.

"This community is incredible," Johnson said, "People here will really go out of their way to make sure that everyone has a good meal on Christmas Day."

He continued, "For me and my family that's what it's all about, the feeling you get when you walk up to each and every one of those doors and realize that you've made that person's Christmas with a good meal."

"We want to thank everyone in the community who played any kind of role in making this happen," Johnson said.

## Late December Winter Storm Hits Area



Charles Keaton/Hesperian-Beacon

Winter paid a visit to the area as 2014 came to an end. Snow and freezing precipitation fell in the area on Tuesday and Wednesday causing many travel issues as the New Year approached. Neither Lockney nor Floydada received any significant accumulations of snow or ice but roads did become icy and travel was discouraged across the region.

By Charles Keaton  
 The Hesperian-Beacon

LUBBOCK – Cold, arctic air helped close out 2014 and welcome in 2015. A strong cold front moved through

See **STORM**, Page 6



## Floyd County Youth Prepping for Saturday's Junior Stock Show at the Unity Center

By Kay Ellington  
 The Hesperian-Beacon

For more than 40 years, the young people of Floyd County have been showing their animals at their annual stock show. This year's event kicks off Saturday, Jan. 10 at 7:30 a.m. at the Unity Center in Muncy.

This year's judges are Tracy Blount, agriculture teacher at Friona High School, and Cody Lanier from Boerne whose company is Cody Lanier Show Team. Blount, a native of Hale Center has a degree in animal science from Texas A&M and a degree in agriculture education from Texas Tech and has been involved in showing animals and teaching the showing of animals for more than three decades. Lanier is a native of Seminole, and his father was the ag teacher at Seminole High. Lanier has also been involved in showing animals for many years. Lanier graduated from Texas Tech with a degree in agriculture education. He lives in Boerne where he buys and resells livestock and teaches young people how to show their animals.

Since 2002, more than a dozen years, the Floyd County Junior Stock Show Scholarship Program has rewarded the years of hard work by the High School Senior Exhibitors who have shown at the county stock show three of the last four years.

The individual scholarships awarded

initially were in the amount of \$500.00. However, due to the support of the Floyd County community, these scholarships have increased over the years to \$750.00 in 2010 and to \$1000.00 in 2011.

The 2014 "John Deere Gator Raffle" greatly contributed to the funding of the scholarship program into the future.

Through this program, the stock show's board of directors have worked to help further the exhibitors' higher education at a college, university or trade school.

2014 - 2015 Floyd County Junior Stock Show Assn. Board of Directors  
 Pres. Tanner Smith  
 V Pres. Clint Bigham  
 Sec. Robin Nixon  
 Treas. Katie Cook  
 Gen. Sup. Clint Bigham

Gary Nixon  
 Ron Graves  
 Chad Cook  
 Steven Orr  
 Shad Schlueter  
 Heath Rexrode  
 Zach Nutt  
 Ricky Cartensen  
 Corbin Kellison  
 Roger Hughes  
 Buster Powell  
 Billy Lefever

Lamb / Goat Sup. Don Chessir

See **SHOW**, Page 6

## Donation



Courtesy Photo

First National Bank of Floydada Vice President and Compliance Officer Brianne Glasscock presented the Floyd County Day Care Executive Director Beverly Collins with a \$5,000 donation. Pictured are (left to right) Corey Johnston, Kristy Whittle, Beverly Collins, Brianne Glasscock, and Jonathan James.

## Upcoming

Events are listed free of charge for nonprofit civic organizations, schools and community events. Please submit listings at least two weeks ahead of the date. Listings will run through the date of the event. Emailed submissions are preferred to fchb.editor@yahoo.com.

### HARRINGTON BREAST CENTER MOBILE

The date for the Harrington Breast Center Mobile Mammography Coach to be in Lockney has been RESCHEDULED! It will be at the Mangold Memorial Hospital on Thursday, Feb. 5 from 9 a.m. - 4:30 p.m. to provide women 35 years and older with their yearly mammograms. To schedule an appointment or for more info, please call 1-800-377-4673.

### FLOYD COUNTY STOCK SHOW

The Floyd County Stock Show will be held Saturday, January 10 at the Unity Center in Muncy. Show starts at 7:30 a.m. The gilts will be shown first followed by the barrows, sheep, goats, heifers and the steers last. The premium sale and buyer's meal will be held on Saturday also. See front page article in this week's issue of the Hesperian-Beacon

### 2015 CAPROCK CROP PRODUCTION MEETING

The 2015 Caprock Crop Production Meeting will be held on Wed., Jan. 15 at the Floyd County Unity Center in Muncy. Registration begins at 7 a.m. The cost of the pre-registration for the conference is \$35. The cost is \$45 at the door. For more info you can call the Floyd County Ag Extension Office at 806-983-4912.

### OLD SETTLER'S ASSOCIATION

The Old Settler's Association will hold a meeting on Thursday, Jan. 19 at 6:30 p.m. in the First National Bank Community Room.

### FLOYD COUNTY HISTORICAL MUSEUM

Nativity scenes from the collection of Carolyn Cunningham will be on display at the Floyd County Historical Museum throughout the month of January. Museum hours are Monday - Friday, 1 p.m. - 5 p.m.

### BLOOD PRESSURE CLINIC

Calvert Home Health holds their blood pressure clinic on every first and third Thursday of each month between 9 - 11 a.m. at the Community Room of the First National Bank of Floydada.

## Correction

If you spot an error of fact, contact the FCHB office email: fchb.editor@yahoo.com

## News on the go



Use your smartphone to scan the quick response, or QR, code to visit us online.

The Floyd County Hesperian-Beacon  
 Copyright 2014  
 118th Year, No. 41  
 USPS 202-680



**We Carry Great Selections For Your Wedding Shower Registry**  
 Pfaltzgraff Dinnerware • Mikasa Dinnerware  
 Noritake Dinnerware • Fiesta Ware Dinnerware  
 Oneida Stainless • Home Décor & Much More...

**Cathy's Floral & Gifts**  
 128 W. California St. Floydada  
 806-983-5013

Out with the old,  
 in with the new!

**January Clearance Sale.**

*Hearts Desire*

2900 Olton Road Plainview (806) 296-2549  
 120 S Main Lockney (806) 652-2548

**Bridal Shower**  
 Amy Garbutt &  
 Jesse Finley

**Payne Pharmacy**  
 200 S. Main St. Floydada (806) 983-5111 • (800) 345-7901 Denise Payne, R.Ph.



BMG | BLACKBURN MEDIA GROUP

The Floyd County Hesperian-Beacon, 201 W. California, Floydada, Texas 79235. Is open from 10 a.m. to 5 p.m. Monday through Friday. Phone (888) 400-1083 Email fcbh.editor@yahoo.com

**PUBLISHER**  
William C. Blackburn

**REPORTER**  
Charles Keaton  
**GENERAL MANAGER**  
Barbara Anderson

The Floyd County Hesperian-Beacon (USPS 202-680) is published every Thursday, including holidays, by Blackburn Media Group Inc., P.O. Box 1260, Childress, Texas, 79201-1260. Entered at U.S. Post Office, Floydada, Texas, for transmission through the mail as a Second-Class matter, according to an Act of Congress, March 3, 1879. Periodical Rate Postage Paid at Floydada, Texas, 79235. Postmaster: Send address changes to The Floyd County Hesperian-Beacon, 201 W. California, Floydada, Texas, 79235

All material Copyright 2014 The Floyd County Hesperian-Beacon

It is the mission of this newspaper to promote the rights of individualism in the American Declaration of Independence. The right of life, liberty and ownership of property are the cornerstone of freedom. Government's sole purpose is to enhance our liberty and freedom. Therefore, we hold every elected and appointed agent of government accountable to that standard.

**DEADLINES**  
Advertising: Noon Fridays  
Editorial: Noon Mondays

**SUBSCRIPTIONS**  
\$30 a year in the county  
\$35 a year outside the county

## Deaths

### Patsy L. Bailey

Patsy L. Bailey, age 69, passed away Wednesday, December 31, 2014 in Lockney. Funeral services were held at 10 a.m., Monday, January 5, 2015 at the First United Methodist Church in Lockney with Vance Mitchell officiating.

Interment followed at the Lockney Cemetery. Visitation was held from 2 p.m.- 4 p.m., Sunday, January 4, 2015 at Moore-Rose Funeral Home in Lockney.

Arrangements were under the care of Moore-Rose Funeral Home in Lockney.

Patsy was born on January 6, 1945 in Lockney



**PATSY BAILEY**

to Owen Elbert and Avis (Miller) Emert. Patsy and her family always went on vacation in the summer to Lake Kemp where she loved to go fishing. One thing she loved to do was cook for her family. Patsy enjoyed gardening. The

most important thing Patsy loved to do was spend time with her family and especially her grandkids.

She is preceded in death by her husband, James Richard Bailey, parents, Owen and Avis Emert and brother, Keith Emert.

Patsy is survived by three sons, Tracy Bailey and wife, Bobbye of Lubbock, Ronnie Bailey of Floydada, Kevin Bailey of Midland; one daughter, Terri Bailey of Lubbock; a sister, Vickie Emert and husband, Curtis of Floydada; one brother, Floyd Emert and wife, Janet of Sulfur, Oklahoma; 11 grandchildren and four great-grandchildren.

### Byrd T. "Buster" Mooney

Byrd T. "Buster" Mooney, age 83, passed away in New Mexico on Sunday, December 28, 2014.

Funeral services were held at 2 p.m., Sunday, January 4, 2015 at the Floydada Cemetery. Arrangements were under the care of Moore-Rose Funeral Home in Floydada.

Byrd was born on May 20, 1931 to O.R. and Roe Annie (Terrell) Mooney in Oglesby, Texas. Byrd moved to Floydada in

1934, he graduated from Floydada High School in 1950.

He was drafted into the Army on May 11, 1953 and volunteered for the paratroopers. He was honorably discharged from the Army May 10, 1955. Byrd worked for many years at the Amerada Hess and over 30 years for Peabody Coal in Kayenta, Arizona.

He was preceded in death by two brothers, Rex and Bob, and a sister, Muri-

Byrd is survived by a sister, Jo Beth Walker of Lubbock; three nephews, Mike Walker, (Holli, Landon and Logan) of Lubbock, Stevan Walker of Lubbock, and Rex Mooney (Barbara and Kathrine) of River Ridge, Louisiana, and a special Farmington family, Beth Ann Williams and family.

Online condolences may be made at [www.moore-rose.com](http://www.moore-rose.com)

### Allen Lee Stallings

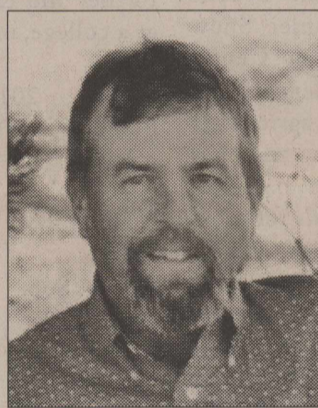
Allen Lee Stallings, 46, of Plainview passed away on Friday, December 26, 2014.

Funeral services were held at 10 a.m., Wednesday, December 31, 2014 in the Colonial Baptist Church with Rev. Roger Foote officiating.

Burial followed in the Parklawn Memorial Gardens under the care of Kornerstone Funeral Directors of Plainview.

A visitation was held on Tuesday evening for 6 to 8 p.m. at Kornerstone.

Allen was born on November 28, 1968 in Lockney, Texas to Claude and Linda Stallings. He grew up in Lockney and attended schools there. He attended South Plains College and then went to Texas Tech University where he received his Bachelors in Ag Economics and his Masters in



**ALLEN STALLINGS**

Plant Science. Allen was a crop consultant in the area for many years. He was a member of the Colonial Baptist Church.

Allen married Carolyn Shugart on September 23, 2010.

He is survived by his wife, Carolyn Stallings of Plainview; father, Claude Stallings of Lockney; two step-children, Shelly Kile and husband, Johnathan of Perryton and Heath Pinkerton and wife, Mary

Ann of Plainview; nieces and nephews that he considered his kids, Aaron Dietrich of Plainview, Jalee Victory of Plainview, Bethany Williams of Providence, Miranda Skinner of Canyon, Joseph Mack Allen Skinner of Canyon; two sisters, Lou Ann Skinner and husband, Randy of Canyon, Jo Beth Dietrich and husband, Michael of Providence; and seven grandchildren, Tanner Walker, Channing Perkins, Camryn Perkins, Cade Pinkerton, Brooklyn Kile, Kayden Kile, and Lilly Kile.

Allen was preceded in death by his mother, Linda Stallings.

Memorials may be made to the Colonial Baptist Church, 910 Kokomo, Plainview, Texas 79072.

Online Condolences may be made at [www.kornerstonefunerals.com](http://www.kornerstonefunerals.com)

### Ruby Jewel Nichols Whitfill

Ruby Jewel Nichols Whitfill passed away after a brief illness at age 85 on December 29, 2014.

Ruby was born September 18, 1929 in Plainview, Texas, the only child of Alvin and Louzilla (Cox) Nichols, early Floyd and Hale County settlers. When Ruby was young, they moved from Plainview to the family farm near South Plains, Texas. After graduation from Floydada High School, Ruby married Glenn Tierce Whitfill on July 6, 1947 at her parents' home. They lived in Floyd County where their daughters Judy and Cindy were born. They farmed there until 1957, when the family moved to Mathis, Texas, where Glenn began his career with Purina dealerships. Ruby began working at the local paper, where her specialties were serving as Society Editor and covering local stories of interest.

Following a move to Sweetwater in 1960, Glenn and Ruby both worked for the local Purina dealership, Porter Feed Company. They purchased the business in 1969 and changed the name to El Rancho Feed Company, Inc. Ruby's specialties in the business were accounting and the plant nursery. She also became an active member of ABWA (Association of Business Women of America) and served in various capacities in that organization. Ruby and Glenn were active members of Highland Heights United Methodist Church, serving in various ministries. Following a chance encounter at the local hospital with a sweet thirteen year old named Ann, they demonstrated the true love of Christ when they opened their home to Ann and her younger sisters Sue and Patricia. Ruby loved these "adopted" daughters as she loved her own, and they became true family to Ruby and Glenn.

In 1984, they sold their business and moved to Lake Sweetwater. Following this first retirement, they enjoyed a variety of activities, beginning with a cross country RV trip across the western and northwestern United States and up to Canada. Much of their time revolved around Glenn's passion for playing Traditional Country and Western Swing music; and they ventured to many senior dances, local musicals, and nursing homes. Probably their favorite "hobby" at the lake was entertaining children, especially family.

They took special delight in taking the children "tubing", seeing who would be the first one tossed into the waves. Ruby also "un-retired" and went to work in sales for Beall's Department Store, where her specialties were helping her customers and enjoying friends.

After Ruby retired for the final time, they enjoyed many summers in Ruidoso, New Mexico. Again, much of their life there revolved around music and church. They became summer members at the J-Bar-J Country Church, where Glenn played in the band. They maintained contact with friends from that time throughout the years. Back in Sweetwater, they continued to enjoy music and dancing. Glenn preceded her in death in 2011, after 63 years of marriage. Ruby remained at the lake until her death, where her specialties were spoiling grandchildren; great-grandchildren; and her two dogs, Prissy and Peanut.

Ruby is survived by daughters, Judy Allen of Gulf Breeze, Florida, Cindy Michaels (wife of Terre) of Garland, Texas, and Patricia Hamra (wife of Kent) of Lewisville, Texas. Grandchildren include Davyonnae Krehl (wife of Matt) of Pensacola, Florida, Stefanie Michaels of Plano, Texas, Tammie Smith of Plano, Texas, Spencer Hamra of Lewisville, Texas, Amy Bates of Chicago, Illinois, Nick Mays of Odessa, Texas, Tasha Landrum of Odessa, Texas, Bobby Landrum of Odessa, Texas and Christine Cummings (wife of Tim) of Arlington, Texas; great-grandchildren include Makayla Krehl of Pensacola, Florida, Ethan Wilmore of Saginaw, Texas, Keshie Holt of Azle, Texas, and Austin Holt of Azle, Texas.

She was preceded in death by her parents, Alvin and Louzilla Nichols, daughter, Ann Seay (wife of Melvon of Seminole, Texas), daughter, Sue Landrum and son-in-law Robert Landrum

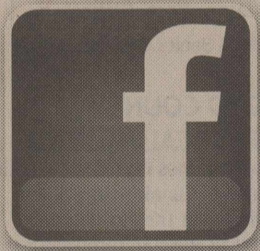
Services were held at Highland Heights United Methodist Church with Pastor Jake Wade officiating at 2 p.m., Sunday, January 4, 2015. Burial was held in the Sweetwater Cemetery.

Arrangements were under the direction of Cate-Spencer & Trent Funeral Home.

In lieu of flowers, the family requests memorial donations in Ruby's honor to Highland Heights United Methodist Church.



**RUBY WHITFILL**



Find us on Facebook Today!

#### FLOYDADA INDEPENDENT SCHOOL DISTRICT STATEMENT OF REVENUES, EXPENDITURES, AND CHANGES IN FUND BALANCES - GOVERNMENTAL FUNDS FOR THE YEAR ENDED AUGUST 31, 2014

EXHIBIT C-2

Data Control Codes	10		98	
	General Fund	Other Governmental Funds	Total Governmental Funds	
<b>REVENUES:</b>				
5700 Local and Intermediate Sources	\$ 2,912,549	\$ 816,815	\$ 3,429,364	
5800 State Program Revenues	5,223,429	176,003	5,699,432	
5900 Federal Program Revenues		1,669,871	1,669,871	
6020 Total Revenues	<u>8,435,978</u>	<u>2,262,689</u>	<u>10,698,667</u>	
<b>EXPENDITURES:</b>				
Current:				
0011 Instruction	3,497,131	1,030,231	4,527,362	
0012 Instructional Resources and Media Services	83,005		83,005	
0013 Curriculum and Staff Development	105,572	2,200	107,772	
0021 Instructional Leadership	115,562	166,268	301,830	
0023 School Leadership	557,632	1,577	559,209	
0031 Guidance, Counseling, & Evaluation Services	226,814	54,966	281,780	
0032 Social Work Services		36,653	36,653	
0033 Health Services	37,470		37,470	
0034 Student Transportation	592,950	733	593,683	
0035 Food Service	13,743	494,368	508,111	
0036 Cocurricular/Extracurricular Activities	434,005	135,791	569,796	
0041 General Administration	325,465	730	330,195	
0051 Facilities Maintenance and Operations	1,247,510		1,247,510	
0052 Security and Monitoring Services	9,542	30,000	39,542	
0053 Data Processing Services	417,506	4,366	421,896	
0051 Community Services	3,706		3,706	
0071 Principal on Long-term Debt		130,000	130,000	
0072 Interest on Long-term Debt		232,439	232,439	
0073 Bond Issuance Costs and Fees		400	400	
0099 Other Intergovernmental Charges	75,426		75,426	
6030 Total Expenditures	<u>7,747,040</u>	<u>2,340,745</u>	<u>10,087,785</u>	
1100 Excess (Deficiency) of Revenues Over (Under)				
1100 Expenditures	<u>688,938</u>	<u>(79,056)</u>	<u>609,882</u>	
Other Financing Sources and (Uses):				
7915 Transfers In		90,594	90,594	
8911 Transfers Out	(90,594)		(90,594)	
7080 Total Other Financing Sources and (Uses)	<u>(90,594)</u>	<u>90,594</u>	<u></u>	
1200 Net Change in Fund Balances	<u>598,344</u>	<u>11,538</u>	<u>609,882</u>	
0100 Fund Balances - Beginning	5,664,295	138,893	5,803,188	
3000 Fund Balances - Ending	<u>\$ 6,262,639</u>	<u>\$ 150,431</u>	<u>\$ 6,413,070</u>	

#### SHERIFF'S SALE

THE STATE OF TEXAS  
County of Floyd

**NOTICE IS HEREBY GIVEN** That by virtue of a certain Writ of Execution, issued out of the Honorable 242<sup>nd</sup> District Court of Hale County, Texas on the 18th day of November 2014, by Carla Cannon, District Clerk of Hale County, Texas for the sum of One Hundred Ten Thousand Nine Hundred Ninety Three Dollars and 67/100. (\$110,993.67) plus costs of suit, under a Judgement in favor of Petersburg Co-Op vs: Deryl Evans, Defendant, in cause number B39594-1402 placed in my hand for service, I, Paul Raisse, Sheriff of Floyd County, Texas did on the 5th day of January 2015 levy upon certain Real Property, situated in Floyd County, Texas described as follows, to wit:

Legal description: TR: S/PT W ¼, BLK: K, SURV: 10 LE Williams  
Situs: ACRES 234.000

Approximate location: 300 blk CR 280 Floyd County, Texas

and levied upon as the property of Deryl Evans, and that on the first Tuesday of February 2015, the same being the 3rd day of said month, at the Front of the Court House of Floyd County, in the City of Floydada, Texas at 10:00 AM, by virtue of said Levy and Writ of Execution, I will sell the above described property at public vendue, for cash to the highest bidder, as the property of said Deryl Evans, and in compliance with law, I give this notice by publication, in the English Language, once a week for three weeks preceding said day of sale, in the Hesperian Beacon, a Newspaper published in Floyd County.

Witness my hand, this 5th day of January 2015

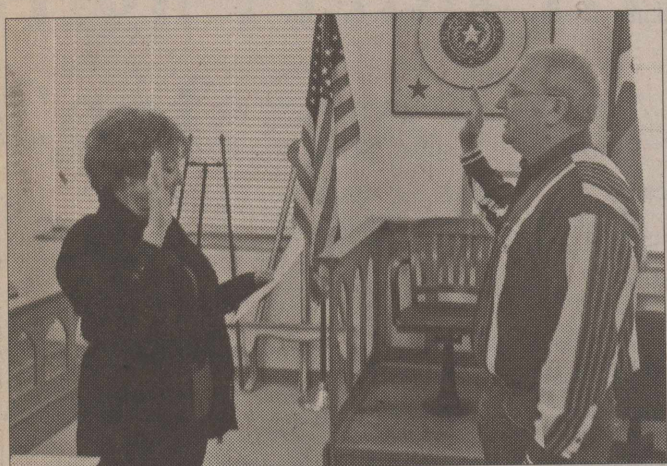
Paul Raisse  
Sheriff Floyd County

By Cory Speed  
Chief Deputy, Cory Speed



# SOCIETY

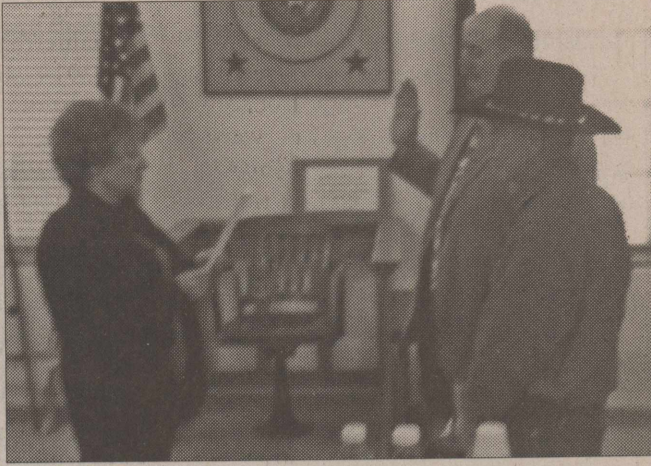
## FLOYD COUNTY ELECTED OFFICIALS SWORN IN



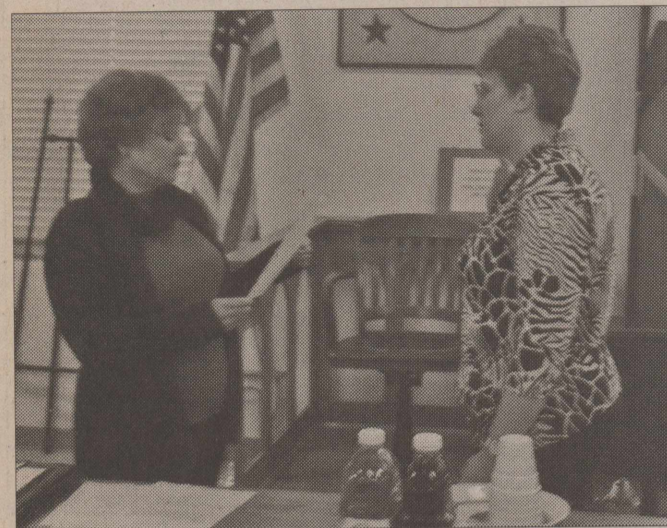
Courtesy Photo  
Newly elected Floyd County Judge, Marty Lucke, is pictured being sworn into office on Friday, Jan. 2, 2015 by Ginger Morgan, Floyd County Clerk.



Courtesy Photo  
Re-elected Floyd County Clerk, Ginger Morgan, was sworn into office on Friday, Jan. 2, 2015 by Tali Jackson, a Notary Public.



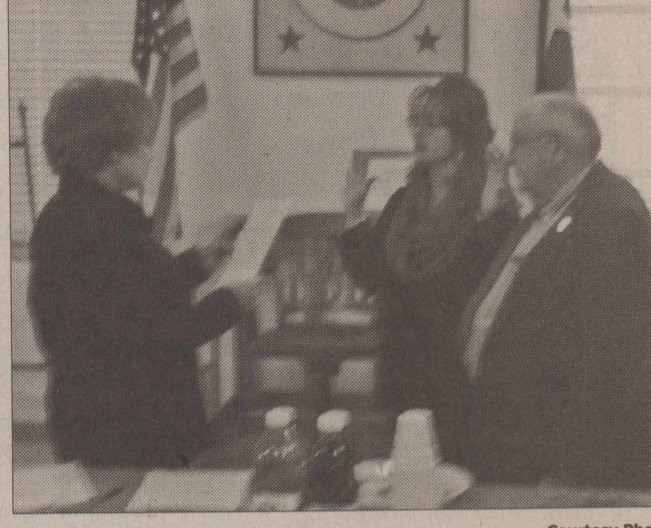
Courtesy Photo  
Re-elected Floyd County Commissioners, Precinct 2, Lindan Morris and Precinct 4, Amado Morales, is pictured being sworn into office on Friday, Jan. 2, 2015 by Ginger Morgan, Floyd County Clerk.



Courtesy Photo  
Re-elected Floyd County District Clerk, Patty Davenport, was sworn into office on Friday, Jan. 2, 2015 by Floyd County Clerk, Ginger Morgan.

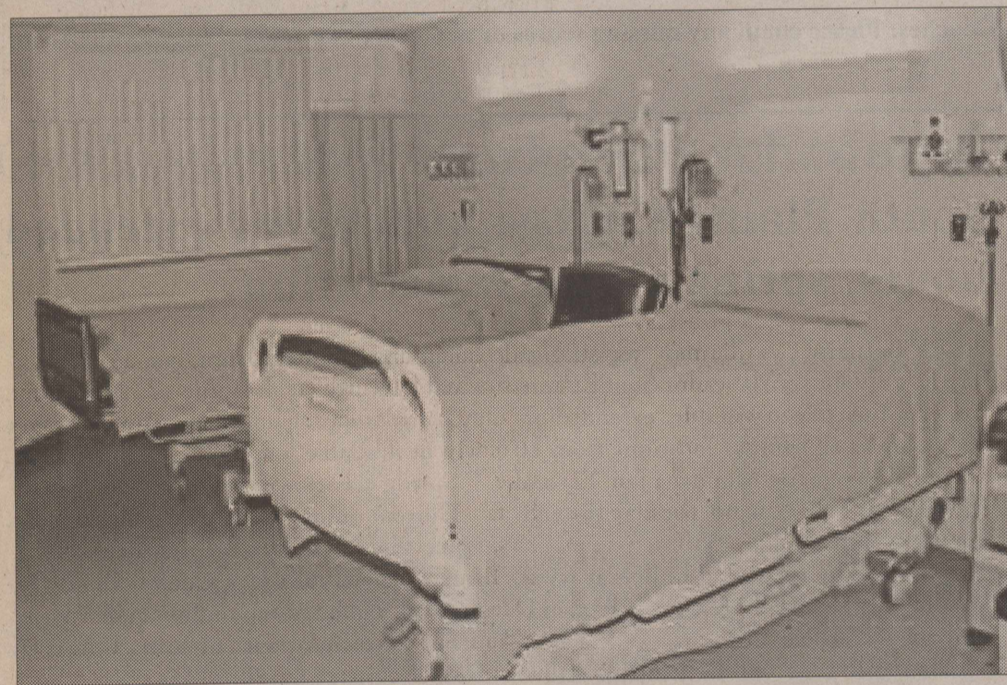


Courtesy Photo  
Re-elected Floyd County Treasurer, Lori Morales, is pictured being sworn into office on Friday, Jan. 2, 2015 by Ginger Morgan, Floyd County Clerk.



Courtesy Photo  
Re-elected Floyd County Justice of the Peace, Precincts 1 & 4, Tali Jackson and re-elected Justice of the Peace, Precincts 2 & 3, Ed Marks, was sworn into office on Friday, Jan. 2, 2015 by Ginger Morgan, Floyd County Clerk.

### W.J. Mangold Memorial Hospital Makes New Changes to Facility



By Alyssa McCarter

With the help of supportive donors as well as their fundraising Dinner Dance held in September 2014, W.J. Mangold Memorial Hospital has purchased new patient beds and has begun renovations to their in-house laboratory. These advances will not only benefit

the patients themselves, but the community as well. WJMMH continues to improve the hospital and their two health care clinics with advances in technology and equipment.

WJMMH wants to thank all those who have donated and to those who continue to donate. Without your help, the improvement of the hospital and clinics would not be possible.

### Museum Archives Floyd County Historical Museum "Memories, 1979"

#### THE RAYMOND UPTONS

Raymond was born in Floyd County to J. H. and Bell (Bourland) Upton at their home which was located where the Johnnie Wilson home now stands in the South Plains Community. At that time the community was known as Sunset but was later changed in 1928 when the small town of South Plains was built. In 1925 Raymond met Nina Calahan, the daughter of H. S. and Lola D. (Shelby) Calahan. The Calahan family moved to Floyd County from Farmersville in Collin County in 1924. They lived in the Roseland Community near Lockney for a year where H. S. Calahan was engaged in farming. The Calahans moved to this area after the doctor advised that a higher climate was needed for the health of a son Jack who was in the habit of having pneumonia every winter. The family belongings were shipped by freight to Lockney and the family came in two Model T. Ford cars. The trip took three days. It was summer and the children got thirsty. Seeing the mirages on the road they were

sure there would be water to drink but soon found that they had false hopes as there was no water. One night was spent in Bowie in an old hotel. Nina's sister complained that the furniture was covered with dust. Their dad said, "The beds are clean" and that ended the complaining. Much West Texas dust was to be seen by the family after that day. The Calahan family moved to the Sunset Community in 1925. Raymond and Nina were classmates at Sunset and also at South Plains School. Both joined the Baptist Church at an early age following the example set by their parents who believed in keeping the Sabbath Day holy by attending Sunday School and Church.

Raymond and Nina were united in marriage November 14, 1934 at Plainview, Texas. To this union were born three children, Ronnie Dale, Bonnie Latreece and Jimmy Ray. Raymond farmed his father's land the first few years, then after the death of H. Upton the land was sold in 1945. Raymond and Nina purchased the grocery store in South Plains from Lenton Lanham. Times were hard and money

was scarce but through the faithfulness of their customers they were able to rear their children and see that they had the necessities of life.

In 1954 Nina became postmaster at the South Plains Post Office. Between the post office and the grocery store they were able to see that their children got a college education which prepared them for the future as far as jobs were concerned. Raymond and Nina taught their children to put God first in their life and to be faithful to their religion. All the children became members of the South Plains Baptist Church. Ronnie married Betty Blum of the Dougherty Community; Bonnie married Karl Craig of Halfway, and Jimmy married Vickie Johnson of South Plains.

At the present time the Uptons are still in the grocery business and Nina is still serving as postmaster. They appreciate their faithful customers and are grateful for the opportunities they had had to gain many friends whom they feel they could not live without.

### The Paperboy

#### Can the new kids make a difference?

The Republicans are now in power in the House and Senate.

They seem ready to go and should have bills in front of President Obama soon. Let's hope those bills are done in a bipartisan fashion and feature strong legislation which will benefit Americans.

I was hoping the House would replace Speaker John Boehner, but I doubt that happens. Too much politics involved.

However, if they were to do it, I think it would be a positive move for the country and Congress. In my opinion, the GOP needs new blood in leadership positions. In the long run, I think it would make the party better and more seemingly more attractive.

I think Democrats can look squarely at their national leadership and place direct blame on the shoulders of Nancy Pelosi and Harry Reid for how the party has fared over the past couple of years.

Those two had it their way for years and provided cover for Obama instead of making choices in the best interest of the country. In fact, they filled their time with blocking legislation and shutting out the opposition so very little could be accomplished.

Democrats need a change at the top and they should be looking elsewhere as well for their next presidential candidate.

In my 45-plus years on this planet, there has been

one constant: The country runs better when neither party is in control of all three branches of government. It also works better with more moderate leaders in control of the respective parties.

I hope most Americans, regardless of party, are like me and are encouraging their elected officials to find common ground with the other party and get strong legislation passed for the country.

There is a reason that Presidents Reagan and Clinton are regarded as strong leaders. They were able to find common ground in a variety of areas that most Americans could get on board with. The result was economic growth. Both presidencies occurred in more peaceful times when compared to other modern day presidencies.

What's strange about American politics to me is that if you take out a handful of issues, nearly all Americans are on the same page.

Probably the easiest thing for elected officials to do is concentrate on the economy and how to get our economic engine humming to the point that the U.S.A. is once again a great investment.

Let's put aside the issues that separate us and concentrate on those that unite us. When our leaders show us they can do that and get results, Americans will buy in and so will the world. At that time, we can create serious momentum.

**Chris Blackburn serves as CEO at Blackburn Media Group, proud owner of The Red River Sun, The Floyd County Hesperian-Beacon, The Knox County News-Courier and The Post Dispatch. He can be reached by email at [chris@blackburnmediagroup.com](mailto:chris@blackburnmediagroup.com) and you can follow him on Twitter @WCSBlackburn, although he doesn't tweet much.**

### Lockney Senior Citizens News

By Renee Armstrong  
Special to The Hesperian-Beacon

We hope that all is getting back to normal after the holidays.

The special meeting to discuss the roof has been postponed until a later date so that the board can get more information.

Remember exercise with Dorothy is Monday, Wednesday and Friday 8:45- 9:15 a.m. Coffee time is Monday - Saturday from 9:30-10:30 a.m. Thursday Pot luck is at 5 p.m. Bring a dish and enjoy games afterwards.

Family Night Fish Fry is Friday nights from 5-8 p.m. It's all you can eat. Come let

us do the dishes!  
Thank you all who have given memorial donations in honor of Bernice Kent, Alice Mitchell, Coy Kidd, Cindy Ford, Ray Sissney, Peggy Nance. We appreciate you all.

#### MENU Jan. 12 - Jan. 16

- Monday - Hamburger steak
- Tuesday - Enchiladas
- Wednesday - Ham
- Thursday - Chicken & dumplings
- Friday - Pot roast

(Menus subject to change with notice)

For great rates and service on auto insurance.

Call Today!

Nick Long, Agent  
201 W. California  
Floydada, TX 79235  
(806) 983-3441  
[nick.long.cgr0@statefarm.com](mailto:nick.long.cgr0@statefarm.com)



LIKE A GOOD NEIGHBOR STATE FARM IS THERE  
Providing Insurance and Financial Services

State Farm Mutual Automobile Insurance Company  
(not in NJ) Bloomington, IL

P0400238 12/04



# SCHOOL NEWS

## Floydada Varsity Basketball Round-up

### BOYS

Date	Opponent (*=District)	Results	Score	Record (Overall/Dist)
11-25	Childress	72-53	L	0-1
12-1	@ Idalou	78-30	L	0-2
12-4	Nazareth	41-33	L	0-3
12-12	Anton	58-47	W	1-3
12-13	Tahoka	56-54	W	2-3
12-16	Farwell	65-58	L	2-4
1-2	@ Hale Center *	37-35	L	2-5 / 0-1
1-6	Olton *			
1-9	@ Lockney *			

### GIRLS

Date	Opponent	Results	Score	Record (Overall/Dist)
11-11	Dimmitt	L	71-33	0-1
11-21	Petersburg	L	48-36	0-2
11-25	Childress	L	49-45	0-3
12-12	Anton	L	59-30	0-4
12-12	Kingdom Prep Academy	W	44-15	1-4
12-12	Lubbock Home School	L	69-17	1-5
12-30	Hico	L	71-35	1-6
1-2	@ Hale Center *	L	51-37	1-7 / 0-1
1-6	Olton *			
1-9	@ Lockney *			

Coaches: Please email any missing scores or new scores to: fchblockney@yahoo.com

## Lockney Varsity Basketball Round-up

### BOYS

Date	Opponent (*=District)	Results	Score	Record (Overall/Dist)
11-18	Paducah	L	49-48	0-1
11-21	@ Claude	L	57-41	0-2
11-24	Hart	W	71-32	1-2
11-25	Bovina	W	78-54	2-2
12-2	Roosevelt	W	72-44	3-2
12-4	Haskell	W	50-30	4-2
12-5	Knox City	W	50-46	5-2
12-6	Anson	W	59-49	6-2
12-9	Spur	W	78-35	7-2
12-12	Plainview Christian	W	74-25	8-2
12-16	Morton	W	68-50	9-2
12-19	@ Sanford Fritch	W	61-42	10-2
1-2	Abernathy *	L	52-51	10-3 / 0-1
1-6	@ New Deal *			
1-9	Floydada *			

### GIRLS

Date	Opponent	Results	Score	Record (Overall/Dist)
11-11	Childress	L	50-25	0-1
11-15	@ Roscoe Highland	L	69-20	0-2
11-21	@ Claude	L	57-41	0-3
12-2	Roosevelt	L	72-36	0-4
12-4	Haskell	L	46-21	0-5
12-5	Knox City	W	33-27	1-5
12-6	Anson	L	51-24	1-6
12-16	@ Olton *	L	51-30	1-7 / 0-1
1-2	Abernathy *	L	89-31	1-8 / 0-2
1-6	@ New Deal *			
1-9	Floydada *			

Coaches: Please email any missing scores or new scores to: fchblockney@yahoo.com

## SPC to offer NRA Basic Pistol course on Jan. 10-11

LEVELLAND – South Plains College will offer an NRA Basic Pistol class on Jan. 10 (Saturday) and Jan. 11 (Sunday) in Room 115 of the Law Enforcement Technology building on the Levelland campus.

This is an excellent course for new pistol shooters or those who need more training before applying for a Texas Concealed Handgun License.

Basic Pistol covers NRA's rules for safe gun handling; pistol parts and operation; ammunition; shooting fundamentals; range rules; shooting from the bench rest position, and two handed standing positions; cleaning the pistol; and continued opportunities for skill development. The cost includes the NRA Guide to the Basics of Pistol Shooting handbook, NRA Gun Safety Rules brochure, and Winchester/NRA Marksmanship Qualification booklet.

The course runs eight to 10 hours, depending on the number of students, and includes classroom and range time. The classroom portion will begin at 9 a.m. on Jan. 10, with breaks every hour as well as a lunch break. The shooting portion will begin at 2 p.m. on Jan. 11. Pistols, ammunition, hearing and eye protection are provided although students are free to bring their own pistols.

The cost of the course is \$75, and students need to register and pay in advance. Space is limited.

To sign up, call Kasey Reyes at (806) 716-2341 or email kreyes@southplainscollege.edu.

## South Plains College announces extended hours, spring online registration

LEVELLAND – Online registration for spring 2015 continues for South Plains College. The college will offer extended office hours at all campus locations from 10 a.m. to 5:30 p.m. on Monday (Jan. 12) and 8:30 a.m. to 5:30 p.m. on Tuesday through Thursday (Jan. 13-Jan. 15).

Students can register at online at [www.myspc.southplainscollege.edu](http://www.myspc.southplainscollege.edu). Registration opened on Nov. 13.

Late registration will be available online

beginning around 10 a.m. Jan. 16-19. Payments are due at the time of registration. Adding/dropping and/or schedule changes will be available Jan. 20-21.

Spring classes will begin Jan. 20.

Current or new students who need assistance should contact their academic advisors or the Counseling Center. The list of advisors can be found online under myspc.

For more information, contact Andrew Ruiz, Registrar, at (806) 716-2371.

### Hospice Hands of West Texas

Established From the Heart 1997

806-652-3000

Toll Free: 1-888-795-1212

Fax 806-652-2766

305 N. Main P.O. Box 1118 • Lockney, TX 79241

[hospicehandswt@yahoo.com](mailto:hospicehandswt@yahoo.com)

### ADAMS WELL SERVICE

806.983.5003

DAVID & DAR LEE FOSTER

JODY & SHAWNDA FOSTER



(806) 652-3351  
(806) 652-3738 (Fax)  
email: [dandjgin@pcca.com](mailto:dandjgin@pcca.com)

LESCA DURHAM  
Marketing Specialist  
306 E. Shurbet St.  
Lockney, TX 79241



Floydada – Memphis, Texas

Your Touchstone Energy® Cooperative  
The power of human connections®

LIFE HEALTH CROP HOME OWNERS AUTO COMMERCIAL



J & H Insurance Agency Inc.

119 West College, P.O. Box 100  
LOCKNEY, TEXAS 79241

JIM MARTIN  
LOCKNEY 806-652-3386  
FLOYDADA 806-983-3284  
E-MAIL: [jim@sbcbglobal.net](mailto:jim@sbcbglobal.net)

KAY MARTIN  
OFFICE 806-652-3386  
HOME 806-652-3694  
FAX 806-652-2802

On-line Banking and TeleBanking  
Banking at your fingertips

**THE FIRST NATIONAL BANK OF FLOYDADA**

Member FDIC



## W.J. MANGOLD MEMORIAL HOSPITAL

320 N. Main Lockney, Texas 806-652-3373



McCoy 4-Way Gin, LLC

Clay Lowrance  
733 FM 54  
Floydada, TX 79235

Ph.: 983-3087  
Fax: 983-8097  
Cell: 983-4168



Floydada – Memphis, Texas

Your Touchstone Energy® Cooperative  
The power of human connections®



SOLID - STABLE - STILL JOHN DEERE



ROGER HUGHES  
SALES  
(806) 983-3999 Home  
(806) 292-6157 Mobile

Route 2, Box 1  
Floydada, Texas 79235  
(806) 983-3732 Work

## STAPP BODY SHOP

Insurance Approved  
Certified Precision Paint Matching  
120 N. Main, Lockney, 806-652-2354

## Quality Body Shop

983-5032



# AGRICULTURE

## High Plains Irrigation Conference set for Jan. 15 in Amarillo

By Kay Ledbetter

AMARILLO – The annual High Plains Irrigation Conference will be held Jan. 15 in the North Exhibit Hall of the Amarillo Civic Center, 401 S. Buchanan St., Amarillo.

The program, hosted by the Texas A&M AgriLife Extension Service and the Texas Agricultural Irrigation Association, will address a wide variety of topics of interest to the general public, as well as to agricultural producers, landowners, crop consultants and irrigation professionals, said Dr. Dana Porter, program coordinator and AgriLife Extension agricultural engineering specialist-irrigation and water management, Lubbock.

A concurrent trade show also will provide opportunities for attendees to see new products and technologies, and to visit with experts from industry, non-profit organizations and agencies.

Registration will be onsite only, beginning at 8 a.m., with the program starting at 8:30 a.m. The fee is \$30.

Two Texas Department of Agriculture pesticide applicator continuing education units - one general and one integrated pest management - will be offered, as well as six Agricultural Irrigation Association certified irrigation designer units and 6.5 certified crop adviser continuing education units - 5.5 soil and water management and one integrated pest management.

Topics and speakers for the program will be:  
 - Agricultural Water Issues and How Local/Regional Applied Research Programs are Answering Critical Questions, Dr. Dave Brauer, U.S. Department of Agriculture-Agricultural Research Service soil and water management research unit leader, Bushland.

- Implementing the State Water Plan: Agricultural Water Conservation Strategies in the Panhandle Regional Water Plan, Dr. Nolan Clark, Panhandle Regional Water Planning Group Agricultural Water Demands and Projections Committee chair, Amarillo.

- Updates on SWIFT, Groundwater Rules, Legislative Actions and Other Hot Topics, C.E. Williams, Panhandle Groundwater Conservation District manager, White Deer.

- Update from the Texas Alliance for Water Conservation, Dr. Chuck West, Texas Tech University Thornton Distinguished Chair of plant and soil science department, Lubbock.

- Comments from Mark Stutler, Texas Agricultural Irrigation Association president, Stephenville.

- Practical Implications of Applied Irrigation Research, Dr. Gary Marek, USDA-ARS research agricultural engineer, Bushland.

- Water Management Considerations in Integrated Pest Management, Blayne Reed, AgriLife Extension integrated pest management agent, Hale and Swisher counties.

- Irrigation "Ex-Spurs": Tips on Maintenance, Management and Troubleshooting to Get the Most From Your Irrigation System, industry representatives.

The meeting will conclude with a wrap-up, evaluation and CEU distribution.

For more conference information, go to the Texas Agricultural Irrigation Association website, [http://taia.org/HPIC\\_2015.html](http://taia.org/HPIC_2015.html). Questions about the program can be directed to Porter at [dporter@ag.tamu.edu](mailto:dporter@ag.tamu.edu). Trade show questions should be directed to Kern Stutler at 806-786-5644.

## Floydada Police Report

From November 29 through December 21, Floydada police answered 162 calls for service.

Incidents report:  
 12/02 Credit Card or Debit Card abuse, criminal offense, on W. California St. in Floydada

12/04 Reckless Driver, resisted arrest, on 800 Block of Kentucky in Floydada

12/05 Theft on E. Kentucky in Floydada

12/05 Criminal mischief, criminal offense, on W. Crockett in Floydada

Arrest report:  
 12/04 A 14-year old juvenile was arrested for fleeing a police officer, resisting arrest/search and for driving without an operator/driver's license

12/10 Kaylynn Devon Wickware was served with an arrest warrant for suspicion of theft for over \$50 but less than \$500.

## Western Rolling Plains Chemical Conference

January 19, 2015

Spur Community Center

Spur, Texas

5 CEU's will be offered (pending TDA approval)

3 - General

1 - IPM

1 - Laws & Reg.'s

Registration will begin at 8:00 a.m. and the program will commence at 8:15 a.m. Registration costs are \$10.00 which includes training materials, CEU's and a catered lunch provided by Capital Farm Credit, The Altman Group and Crop Production Services.

Please RSVP to the Dickens County Extension office by January 16, 2015 at (806)623-5552 or the Motley County Extension Office at (806) 347-2733.

Please contact the Extension Office to make arrangements for special accommodations due to a disability.

## Assignment: Texas

### Plays Lakes - Part 4



## Grain elevator workshop scheduled for Jan. 29 in Amarillo

By Kay Ledbetter

AMARILLO – The Texas High Plains Grain Elevator Workshop will be held Jan. 29 at the Homewood Suites by Hilton, 8800 Interstate 40 W. in Amarillo, according to a Texas A&M AgriLife Extension Service specialist.

The meeting is set for 8 a.m. to

4:15 p.m., said Dr. Ed Bynum, AgriLife Extension entomologist in Amarillo. Registration is \$50 and requested by Jan. 23. Checks and a registration form should be mailed to Ronda Fisher, Texas A&M AgriLife Extension Service, 6500 Amarillo Blvd. W., Amarillo, Texas 79106. Make checks payable to: Tri-State Chapter of GEAPS.

Program topics and speakers

include:

- Aeration, Dr. Carol Jones, Oklahoma State University agricultural engineer, Stillwater, Oklahoma. - Dust management, Ben Kice, Kice Industries Inc., Wichita, Kansas. - Stored grain, Jones. - Laws and regulations, Steve Boston, Texas Department of Agriculture, Lubbock. - Weed control, Dr. Jourdan Bell, AgriLife Extension, Amarillo. - Worker protection standards, Brian Foote, Ag Producers Co-op, Sunray.

Continuing education units by the Texas Department of Agriculture for commercial, non-commercial and private applicator licensees are pending at this time, Bynum said.

For a registration form, go to: <http://amarillo.tamu.edu/facultystaff/ed-bynum/upcoming-events/>

The program is jointly sponsored by AgriLife Extension and the Tri-State Chapter of Grain Elevator and Processing Society. For more information, contact Fisher, 806-677-5600, or David Hoffman, president of the Tri-State Chapter, 806-676-3418

**EAST OF PETERSBURG, TX.** at the intersection of SH 54 & FM 378 - great location as staging area for wind energy companies, trucking, fertilizer and other company related businesses - 8 acres +/- w/a grain elevator w/flat storage, brick office bldg., scale & other related bldgs., domestic well, 3 phase electricity & natural gas.

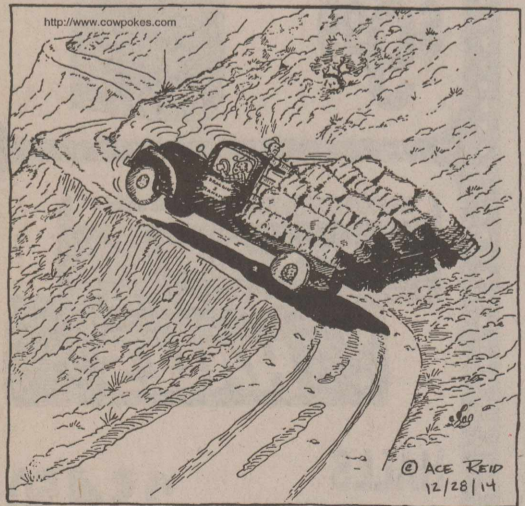
Please view our websites for details on this property, choice NM ranches (large & small), choice ranches in the high rainfall areas of OK, irr./dryland/CRP & commercial properties. We need your listings on any types of ag properties in TX., NM, OK or CO.

[www.scottlandcompany.com](http://www.scottlandcompany.com)

[www.texascrp.com](http://www.texascrp.com)

Ben G. Scott - Krystal M. Nelson - Brokers  
 800-933-9698 5:00 a.m./10:00 p.m.

### COWPOKES® • By Ace Reid



"Well, Jake, the question is--do we let her go and get f'ired or jist quit right now?"

FEATURE IS SPONSORED BY THE

Financing for: Farms, Ranches, Rural Recreational Properties and Rural Homes

**Jeff Taylor**  
 806-296-5579

[panhandle-plainslandbank.com](http://panhandle-plainslandbank.com)

Part of the Farm Credit System

### NOTICE OF SCHEDULED ENTRY INTO FIELDS

Pursuant to Tex. Agric. Code, Sec. 74.117, cotton producers in the Northern High Plains Boll Weevil Eradication Zone, which consists of all of Hale and Swisher counties and portions of Randall, Armstrong, Briscoe, and Floyd counties are hereby notified that Texas Boll Weevil Eradication Foundation personnel will be conducting eradication activities in and around their fields, beginning **January 16, 2015**. All cotton fields will be mapped, and treatment will begin during the cotton-growing season. For notification prior to any chemical treatment, call 1-800-687-1212 with the exact location of your field and appropriate telephone numbers. Field entry and treatment is expected to last until all cotton is harvested in the zone. For more information regarding this program, please call the Texas Boll Weevil Eradication Foundation at 1-800-687-1212.

That's why sedimentation is such a danger to the wetlands. When sedimentation fills a lake, the depth is reduced and the water



RUSSELL GRAVES

spreads over a broader area and evaporation accelerates. More detrimental, however, is when the sedimentation fills the cracks in the playa's clay bottom, which greatly impedes recharge and degrades all of the vital ecological services provided by playalakes. Since no state or federal legislation protects playalakes, Birkenfeld is afraid that the intense drawdown of the Ogallala Aquifer and

indifference to playalakes by landowners, could lead to the loss of the wetland complex and irreparable damage to the lakes and the aquifer over the next 20 years.

"Clearly, without functioning playalakes, it will be impossible for us to preserve the Ogallala Aquifer over the long term when we are withdrawing a foot or more from the water table every year," warns Birkenfeld. "In much of the central Southern Plains, where the concentration of playalakes is as high as one per square mile, if these playalakes are conserved and remain functioning, then recharge from healthy playalakes could play a major role in stabilizing the Ogallala Aquifer and help to preserve it for generations."

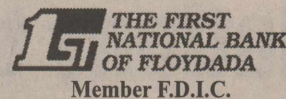
Anne Bartuszevige, Conservation Science Director for Playalakes Joint Venture agrees.

"Given the region's dependence on the aquifer for farm and municipal water, and the drastic decline in the water table over the past century, maintaining the natural functions and cycles of playalakes is crucial for sustaining the economies and communities of the western Great Plains," says Dr. Bartuszevige. "Over the past

several decades, researchers have gathered substantial evidence pointing to playalakes as the primary source of recharge for the Ogallala. This is big news for western Great Plains states, which have relied on pumping the Ogallala for agricultural, municipal and industrial use since the early 1900s. Since about 99 percent of playalakes are located on private land, this information is crucial for farmers, ranchers, and natural resource managers who hope to conserve water and maintain agricultural economies of the region.

She says that the playalakes are not only important to the region, but also the entire nation. "The western Great Plains are known as the 'bread basket' of the United States," she explains. "This mostly due to irrigation water available from the aquifer. The region provides much of the wheat, corn, and livestock produced in the U.S. The agricultural economy in the region depends on water withdrawal from the aquifer. However, recharge happens over many, many years, so the recharge that happens today will help future generations to live and work in this landscape."

**First National Bank of Floydada**  
 983-3717



**FLOYDADA COOPERATIVE GINS, INC.**



Floydada • 983-2884



**Schedule of Events**

Friday, January 9, 2015	
9:00 am	Barn Opens
1:00pm – 4:30pm	All Animals Weigh In and in place
Saturday, January 10, 2015	
7:30am	Gilt Show
	Barrow Show
Approx. 12:00pm	Lunch Break
	<b>No Animals Leave Barn without Superintendent Approval</b>
	Goat Show
	Lamb Show
	Heifer Show
	Steer Show
Approx. 4:00pm	<b>Set Up Premium Sale</b>
	Scholarships / Entertainment
Approx. 5:00pm	Buyer's Meal
Approx. 6:00pm	Premium Sale
	<b>Load All Animals Upon Conclusion of Premium Sale</b>
Sunday, January 11, 2015	
2:00pm	Cleanup Unity Center

**Floydada Senior Citizens News**

**By LuAnn Collins & Elaine LaBaume**  
Special for The Hesperian-Beacon

Happy New Year from Floydada Senior Citizens!  
Thank you to all who have remembered the Center with donations and memorials for 2014. We appreciate your thoughtfulness.

**In Memory of Guy Ginn** - Gary and Emma Pate, Janet Milam, Kendis and Janice Julian, Shorty Turner, First National Bank of Floydada

**In Memory of Dorothy Schweitzer** - Nancy Lawson, Donna Pernell

**In Memory of Olive Hinton** - Donna Pernell

**In Memory Euna Bradford** - Clinton Fawver

**DONATIONS** - Floydada Lighthouse Electric Coop, South Plains Hobby Club, Golden Spread

Jon and Elaine LaBaume had their children home for Christmas on Christmas Eve. Those attending were Coy and Deb LaBaume of Plainview and Charles, Kelli, Harrison and Kate Childre of Cedar Park, Texas. The Chil-

dres' went to Lubbock on Christmas Day for Charles's family Christmas. Coy had to work on Christmas Day at the Texas Department of Criminal Justice in Tulia.

For those who wish to give memorials and donations, our mailing address is P.O. Box 573, Floydada, Texas 79235.

Serving time is 12 noon until 1:00 p.m. Please call Sylvia or Anna by 9:30 if you plan to eat at the Center. 806-983-2032. We are located at 925 W. Crockett St.

**MENU**  
Jan. 12 – Jan. 16

**Monday** – Oven fried chicken, bow tie pasta, broccoli raisin salad, fruit cocktail, low-fat milk

**Tuesday** – Taco salad & corn chips, seasoned corn, watermelon, peach cobbler, low-fat milk

**Wednesday** – Creamy mushroom steak, mashed potatoes, peas & carrots, whole wheat roll, emerald pear, low-fat milk

**Thursday** – Ham & beans, cornbread, margarine, spinach, seasoned corn, orange pineapple cup, country apple crisp, low-fat milk

**Friday** – Cheeseburger, potato wedges, tomato wedge, salad, melon medley, low-fat milk

**SHOW**  
From Page 1

Cattle Sup.	Danny Nutt
Swine Sup.	Vance Lemons
Floydada FFA	Shane Sherrill
Lockney FFA	Cristen Brooks
Floyd Co 4-H	Jon Labaume
Unity Center	

"There is also a sweepstakes award," said Tanner Smith, stock show board president for the past three years. "It is for \$500 and it is by nomination. It goes to the one person most active in FFA or 4-H."

There are 177 entries in the show this

year through all species. According to Smith, this represents an increase of 27 head of livestock and speaks well of the community's support of the program.

The Unity Center Barn opens Friday at 9 a.m. and weigh-in of the animals will be from 1 to 4:30.

By 4:30 all animals should be in place. Saturday's events kick off at 7:30 a.m. with the Gilt Show, followed by the Barrow Show, and then Lunch. The Goat Show's at 1; the Lamb's Show's at 2; the Heifer Show's at 3; and then the Steer Show's at 4.

From 4 to 6, there's entertainment, the buyer's meal, and the awarding of scholarships. At 6 p.m. the premium sale commences.

**STORM**  
From Page 1

the region on Monday evening Dec. 29, according to the National Weather Service Office (NWS) in Lubbock and quickly dropped temperatures below freezing where they would remain until Saturday, Jan. 3.

Most of the South Plains region experienced freezing drizzle and light rain making an impact on holiday travel and New Year's plans. During Tuesday evening, a light snow dusted much of the region with some areas picking up about an inch. Even though the moisture stopped by the afternoon of Wednesday, Dec. 31, the cold temperatures remained. Another round of light drizzle fell Wednesday evening but New Year's Day was cold and dry although

travel was still slowed by the moisture that had fallen.

On Jan. 2, a potent upper level storm system approached from the west with significant precipitation forecast, mostly as freezing rain. At one time, nearly half the state of Texas was under some kind of winter weather advisory or warning. The band of precipitation came in from the southwest so much of the worst icing and travel issues were south of the Lubbock area. As the large area of freezing rain moved to the east, a second band of moisture moved into the area from the west. According to the NWS, the most persistent and intense snow bands came across the southwest Texas Panhandle where Friona reported over six inches of snow and Clovis, NM reported over eight inches.

The initial forecast had pro-

jected upwards of two to four inches in the Floyd County area but due to dry area coming in from the south, Lockney received approximately one inch and Floydada reported only a trace of snow on Saturday.

According to the Texas Department of Transportation's website, at one time most of the roads from IH-10 north and IH-35 west were impacted by ice and/or snow making travel difficult in the western half of the state.

Monday, Jan. 5 temperatures moved into the 50s prior to another predicted blast from 'Old Man' winter later in the week. At press time, there was no mention of moisture in the forecast but temperatures would again see highs in the 20s and 30s for the Wednesday, Thursday and Friday.

Prices Good Thru 01/24/15



**Store #50**  
102 East Houston Floydada  
806-983-5773  
**Store #59**  
209 South Main St Lockney  
806-652-3727



**Red Diamond Tea**  
gallon, All Varieties  
Mix or Match  
**2 for \$5**

**Fish or Chicken Tender Basket Deal**  
Includes Potato Wedges  
**\$3.99**

**EXTRA SAVINGS**

**COLD-EEZE COLD REMEDY**  
24 CT.  
**\$9.99**

**HALLS COUGH DROPS**  
9 CT.  
**2 \$1.50 FOR 1**

**MTN DEW PRODUCTS**  
24 OZ. CANS  
**2 \$3 FOR 3**

**PEPSI PRODUCTS**  
12 PACK  
**2 \$8 FOR 8**

**SPECIAL K BARS**  
EACH  
**2 \$2.50 FOR 2**

**Congratulations to RUDY SOLIZ, JR.**  
Who Won Our Ford Mustang/\$30,000 Contest



Representatives from Allsup's, Pepsi, and Dr. Pepper Present a Check to Rudy Soliz, Jr. for \$30,000.  
Back row, left to right: Scott Stanfield, Allsup's; Rudy Soliz, Jr.; Bryan Marshall, Dr. Pepper; Jackie White, Pepsi;  
Front: Elyas Soliz and Rachael Soliz



# Hesperian-Beacon Market Place

Phone: 888-400-1083 • Email: fchb.editor@yahoo.com • 201 W. California, Floydada

## Help Wanted

### CROP PRODUCTION SERVICE IS NOW HIRING: Truck Driver.

Job requirements:

- High School diploma or GED
- Valid CDL/HAZMAT license
- DOT - minimum age requirement is 21 years
- Handles and delivers bulk and packaged fertilizer and chemicals
- Performs daily vehicle inspections and maintain manifest
- Cleans and maintains equipment.
- Reliable transportation to/from work
- Pass background check and DOT drug test
- Be able to lift 50# or more

Benefits include: Insurance package/401 K package/ paid vacation/sick days.

No phone calls please. Apply in person @ 517 E. Houston Street, Floydada. 1-15c

**HELP WANTED FOR FULL-TIME** position at Caprock Motor Parts and Hardware. Apply in person only. No phone calls. 114 W. California, Floydada, TX. Tfn

## Houses For Sale

**PROPERTY FOR SALE IN LOCKNEY, TEXAS** - Home and 2 lots at 501 Southwest 8th Street AND Downtown Building at 210 S. Main Street. Call 806-438-0081 or 903-733-2754. 1-29p

**LOCKNEY - 4 BEDROOM HOUSE FOR SALE** - Remodeled inside. Very low down with

## Texas Plains Federal

Floydada  
•CD's •Loans  
•Checking •Savings  
**Laura Turner- Manager**  
806-983-3922  
Website:  
www.texasplainsfederal.org

**Children's Eye Exams**  
Medicaid, Chip, Most Insurances  
3415 19th Street Lubbock  
806-796-2020

good credit. 304 West 7th Street. Owner/Agent. Call 806-983-6059. tfn

## Services

**LARRY OGDEN AUCTIONEERING - FLOYDADA** Estates, Farm, Ranch, Business, Liquidations, State Li-

censed and Bonded. 806-983-5808. TX #9240.tfn

**CEMENT WORK**- Need new driveway, sidewalk, patio or flowerbed curb? Call Gary at 806-983-5120 (home) or 806-778-8549 (cell). tfn

## Mesothelioma

EXPERIENCE COUNTS  
Lawyers with more than 100 years combined expertise.  
may occur 30 to 50 years after exposure to asbestos. Many workers were exposed from the 1940s through the 1970s. Industrial and construction workers, along with their families (second hand exposure) are among those at risk for mesothelioma, lung cancer or gastro cancer (throat, stomach, colon). Call us for professional insight.

Ryan A. Krebs, M.D., J.D.  
Doctor-Lawyer in Full-time Law Practice  
Richard A. Dodd, L.C.  
Timothy R. Cappolino, P.C.  
Board Certified Personal Injury Trial Law and Civil Trial Law by the Texas Board of Legal Specialization  
NO FEE FOR FIRST VISIT  
OFFICES IN HOUSTON/CONROE, TEMPLE AND AUSTIN.  
PRINCIPAL OFFICE IN CAMERON  
**1-800-460-0606**  
www.AsbestosLaw.com


**Convention & Visitors Tourism Manager**  
Seeking a creative candidate to strengthen Graham's image as a destination for tourism, meetings, conventions and events. This position will develop and design dynamic marketing material to promote the city of Graham. A Bachelor's Degree in marketing or related field is required with two years' experience in convention, visitors, hospitality, destination marketing, or communications. Send resume and cover letter to: jennifer@grahamtxchamber.com

## TEXAS INVESTMENT OPPORTUNITY AUCTION • JAN 21 • 10 AM

**21 Comm'l, Development & Land Properties**  
Auction Location: Hilton Dallas Lincoln Centre, LBJ  
5410 Lyndon B Johnson Freeway, Dallas, TX 75240

Single Family Lots • Undeveloped Land Zoned Residential & Comm'l  
Located in various towns throughout TX • Mixed-Use Comm'l Development Land  
Mike Jones, TX Broker #902372, AUC TX #6756  
TERMS: 10% Buyer's Premium. The properties are being sold subject to seller's confirmation. See website for full terms.  
TexasInvestmentAuction.com • 816-420-6295

Calcet® is designed to help stop low calcium leg cramps. Just ask your pharmacist.



Petite Tablet with More Calcium & Vitamin D3  
Helps fight leg cramps\*  
For those with milk allergies  
Fights osteoporosis

\*These statements have not been evaluated by the Food and Drug Administration. This product is not intended to diagnose, treat, cure, or prevent any disease.

## 18-Wheeler Wrecks

EXPERIENCE COUNTS  
Lawyers with more than 100 years combined expertise.  
It's easy to blame the driver when a big rig is involved in a wreck, but the truth is usually much more complex. When trucking company management cuts corners in training, equipment and maintenance, the rest of us pay the price. If you or someone you love has been killed or injured in a commercial truck wreck, call us today for professional insight.

Ryan A. Krebs, M.D., J.D.  
Doctor-Lawyer in Full-time Law Practice  
Richard A. Dodd, L.C.  
Timothy R. Cappolino, P.C.  
Board Certified Personal Injury Trial Law and Civil Trial Law by the Texas Board of Legal Specialization  
NO FEE FOR FIRST VISIT  
OFFICES IN HOUSTON/CONROE, TEMPLE AND AUSTIN.  
PRINCIPAL OFFICE IN CAMERON  
**1-800-460-0606**  
www.YourCarWreck.com

**GET RESULTS!!!  
ADVERTISE HERE!!!  
Call 888-400-1083!**

## TEXAS STATEWIDE CLASSIFIED ADVERTISING NETWORK

# TexSCAN

**TexSCAN Week of January 4, 2015**

### JOB OPPORTUNITY

**Traveling Sales..** HIRING entry positions. Must be 18+ w/D. Transportation provided. DL unnecessary. All states + Hawaii. MUST TRAVEL FULL TIME. www.protekchemical.com 812-841-1293 BBB A+

### DRIVERS

**25 DRIVER TRAINEES NEEDED!** Become a driver for Stevens Transport! No experience needed! New drivers earn \$800+ per week! PAID CDL TRAINING! Stevens covers all costs! 1-888-589-9677 drive4stevens.com

### DRIVERS - No Experience?

Some or LOTS of experience? Let's Talk! No matter what stage in your career, it's time, call Central Refrigerated Home. 1-844-945-3509 www.CentralTruckDrivingJobs.com

### REAL ESTATE

**LOOKING TO SELL** land? Reach over 2-million readers for one low price in the Texas Statewide Advertising Network. Contact this newspaper or call 1-800-749-4793

### AUCTIONS

**Scaled Bid Auction.** Four Contiguous Lakelands Applehead Island-Horseshoe Bay, Texas Bids due: January 27, 2015. 2PM CT Selling recently replatted lots. Info: www.JonesSwendon.com or 512-261-3838 W.S. Swenson, #7809, Broker #0425652, 10% BP

### Run Your Ad In TexSCAN!

Statewide Ad.....\$550  
290 Newspapers, 871,154 Circulation  
North Region Only.....\$250  
93 Newspapers, 297,505 Circulation  
South Region Only.....\$250  
97 Newspapers, 366,627 Circulation  
West Region Only.....\$250  
98 Newspapers, 205,950 Circulation  
To Order: Call this Newspaper direct, or call Texas Press Service at 1-800-749-4793 Today!

## Floyd County Church Directory

<p><b>AIKEN BAPTIST CHURCH</b> Dennis Butler, Pastor Morning Worship ..11:00 a.m. *****</p> <p><b>BIBLE BAPTIST CHURCH</b> 810 S. 3rd, Floydada Darwin Robinson, Pastor 983-5278 Sunday School .....10:00 a.m. Morning Worship ..10:50 a.m. Evening Worship .... 6:00 p.m. Wednesday.....7:00 p.m. *****</p> <p><b>CALVARY'S CORNERSTONE FELLOWSHIP</b> Floydada Armando Morales, Pastor Sunday School .....9:45 a.m. Morning Worship ..11:00 a.m. Bible Study .....6:00 p.m. Wednesday Evening7:00 p.m. *****</p> <p><b>CARR'S CHAPEL</b> Service Every Sunday: Morning Worship ....9:00 a.m. Sunday School .....10:30 a.m. *****</p> <p><b>CHURCH OF CHRIST</b> West College &amp; Third, Lockney Morning Worship ..10:30 a.m. Afternoon Worship ..1:30 p.m. Wednesday Service 7:30 p.m. *****</p> <p><b>CITY PARK CHURCH OF CHRIST</b> Matthew Benfield - Minister Floydada Sunday Bible Study..9:30 a.m. Morning Worship ..10:30 a.m. Evening Worship .... 6:00 p.m. Wed. Bible Study.....7:00 p.m. *****</p> <p><b>FIRST BAPTIST CHURCH</b> Tim Franks, Pastor Terry Simmons, Minister of Ed./Music Josh Burgett - Min. Students Sunday School .....9:15 a.m. Morning Worship ..10:30 a.m. Evening Worship .... 6:00 p.m. Wed. Bible Study...6:30 p.m. *****</p> <p><b>FIRST BAPTIST CHURCH, Lockney</b> Jonathan Sullivan, Pastor Chad Cook, Youth Min. Phil Cotham, Music Min. Sunday School ..... 9:45 a.m. Morning Worship .... 10:45 a.m. Evening Worship ..... 6:00 p.m. Wednesday..... 6:30 p.m. Wednesday (Youth). 7:15 p.m. *****</p>	<p><b>FIRST UNITED METHODIST CHURCH</b> Floydada Rev. Ken Peterson, Pastor Morning Worship .....9:30 a.m. Sunday School..... 10:50 a.m. Youth (Sunday).....5:00 p.m. Youth (Wednesday)..6:30 p.m. *****</p> <p><b>FIRST UNITED METHODIST CHURCH</b> Lockney Rev. Ricky Carstensen Pastor Sunday School .....9:30 a.m. Worship Service ....10:30 a.m. Evening Service..... 6:00 p.m. Wed. Jr. High .....5:30 p.m. Wed. High School... 6:30 p.m. *****</p> <p><b>GRANT CHAPEL CHURCH OF GOD IN CHRIST</b> Joe Bennett, Pastor Sunday School .....10:00 a.m. Morning Worship ...11:00 a.m. Evening Service.....7:30 p.m. Tuesday.....8:00 p.m. Wed. Service .....7:30 p.m. *****</p> <p><b>MAIN STREET CHURCH OF CHRIST</b> Lockney Beau A. Hart, Minister Bible Study .....9:30 a.m. Morning Worship ..10:30 a.m. Evening Worship ... 6:00 p.m. Wednesday.....7:00 p.m. *****</p> <p><b>MT. ZION BAPTIST CHURCH</b> Floydada Rev. Timothy Askew 401 N 12th St (983-5805) Sunday School .....10:00 a.m. Morning Worship ..11:00 a.m. Evening Worship .....6:00 p.m. Wednesday Study ..6:00 p.m. *****</p> <p><b>NEW SALEM PRIMITIVE BAPTIST CHURCH</b> Floydada Pastor Elder Ronnie Hedges (806) 637-0430 Sunday Singing .....10:30 a.m. Morning Worship ..11:00 a.m. *****</p> <p><b>OUT REACH HARVEST PENTECOSTAL CHURCH</b> 310 E. Mississippi Floydada Rev. David Ramos, Pastor Ester Ramos, Praise Leader Sunday Bible...10:00 a.m. Morning Praise..11:00 a.m. Evening Praise ....5:00 p.m. Wed. Worship.... 7:00 p.m. *****</p>	<p><b>POWER OF PRAISE FULL GOSPEL CHURCH</b> Rev. Manuel Rendon, Pastor 704 N. Main, Lockney Sunday Services.....10:00 a.m. Sunday Evening ..... 5:00 p.m. Wednesday.....7:30 p.m. *****</p> <p><b>PRIMERA IGLESIA BAUTISTA</b> Lockney Jesus Caballero, Pastor Sunday School .....9:45 a.m. Worship Service ....11:00 a.m. Discipleship .....5:00 p.m. Wed. Service .....7:00 p.m. *****</p> <p><b>PRIMERA IGLESIA BAUTISTA</b> Floydada Rev. Toby Gonzales Sunday School 9:30 a.m. Morning Worship ..10:40 a.m. Evening Worship ... 6:00 p.m. Wed. Evening .....7:00 p.m. *****</p> <p><b>SAN JOSE CATHOLIC CHURCH</b> Lockney Rev. Patrick Maher Wed. Communion....8:00 p.m. Sunday Mass.....11:30 a.m. *****</p> <p><b>SOUTH PLAINS BAPTIST CHURCH</b> Joe Weldon, Pastor Sunday School .....10:00 a.m. Morning Worship ...11:00 a.m. Prayer Meeting..... 7:00 p.m. *****</p> <p><b>TEMPLO GETSEMANI ASSEMBLY OF GOD</b> 701 W. Missouri Joe M. Hernandez 983-5286 (church) ..... Sunday School ..... English..... 9.45 a.m. Spanish..... 11:00 a.m. Spanish Worship .....9:30 a.m. English Worship.....11:00 a.m. Evening Service.....5:00 p.m. Wednesday.....7:00 p.m. *****</p> <p><b>ST. MARY MAGDALEN CATHOLIC CHURCH</b> Floydada Rev. Ike Temporaza Phone: 983-5878 Sunday Mass.....11:30 a.m. Mon.Wed. Mass.....6:30 p.m. Confession Sat.....10-11 a.m. *****</p> <p><b>TEMPLO BAUTISTA SALEM</b> Lockney Rev. Joe Hernandez Sun. Prayer Service 9:30 a.m. Sunday School .....9:45 p.m. Worship Service ....11:00 a.m. Evening Worship ... 6:00 p.m. Wed. Meeting .....7:00 p.m. *****</p> <p><b>TEMPLO BETHEL SPANISH ASSEMBLY OF GOD</b> Washington and 1st St. Sunday School .....9:45 a.m. Morning Worship ..11:00 a.m. Evening Worship ... 5:00 p.m. Wed. Service .....7:00 p.m. *****</p> <p><b>TEMPLO NUEVA VIDA</b> Rev. Herman Martinez 308 W. Tennessee, Floydada Sunday School .....10:00 a.m. Evening Worship .....5:00 p.m. Tuesday.....7:30 p.m. Thursday Service...7:30 p.m. *****</p> <p><b>TRINITY ASSEMBLY</b> 500 W. Houston Tom Ross - Pastor 983-5499 Sunday School .....9:45 a.m. Morning Worship ...10:40 a.m. Sunday Evening .....6:00 p.m. *****</p> <p><b>TRINITY LUTHERAN CHURCH</b> Providence Community on FM 2301 293-3009 Rev. Peter W. Harrington Minister Sunday School .....9:45 a.m. Worship Service ....11:00 a.m. *****</p> <p><b>WEST SIDE CHURCH OF CHRIST</b> Floydada 983-2672 or 470-0950 Sunday Worship ...10:30 a.m. Sunday Evening .....2:00 p.m.</p>
---	--	--

**If you would like to be a sponsor on the church page, call the Hesperian-Beacon at 888-400-1083**

NOTICE: While most advertisers are reputable, we cannot guarantee products or services advertised. We urge readers to use caution and when in doubt, contact the Texas Attorney General at 1-800-621-0508 or the Federal Trade Commission at 1-877-FTC-HELP. The FTC web site is www.ftc.gov/bizop

Extend your advertising reach with TexSCAN, your Statewide Classified Ad Network.



## Christmas Tradition



Photos by Denise Doucette  
 It's a tradition the Lockney Fire Dept. drives through town blowing their horn announcing the arrival of Santa Claus to the Lockney Salvation Army to see all the children excitedly waiting to see him on Saturday, Dec. 20th. Monsanto collected and donated toys for the children again this year. We really appreciate all the support Monsanto gives to our Salvation Army each year at Christmas.

**Texas Plains Federal**  
*Just plain Texas... just like you!*

**Laura Turner**  
 Floydada Branch Manager

Laura Mendez  
 Lou Burleson

806-983-3922 office  
 800-272-6641 toll free  
 806-983-3932 fax

206 W. California St.  
 Floydada, Texas 79235  
 www.texasplainsfederal.org

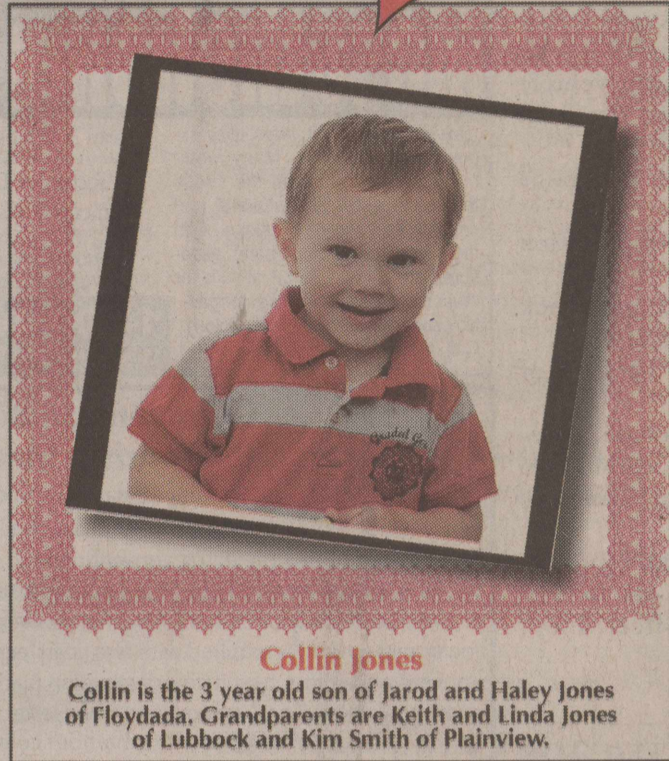
• CDs • Loans • Checking • Savings •

**Parents and Grandparents:  
 Brag on your little ones  
 this Valentine's Day!**



Commemorate this time in their lives with a keepsake Valentine's ad.

**Actual Size! \$30**



**Collin Jones**

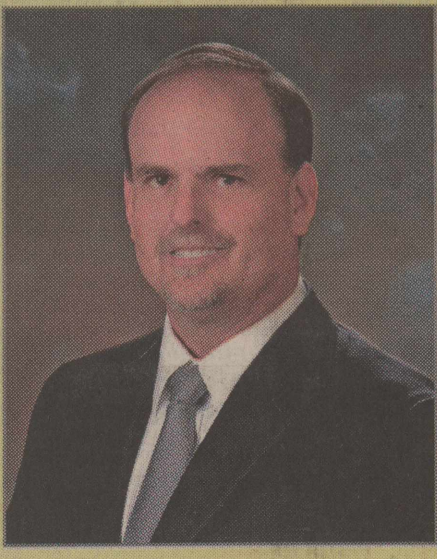
Collin is the 3 year old son of Jarod and Haley Jones of Floydada. Grandparents are Keith and Linda Jones of Lubbock and Kim Smith of Plainview.

Valentine's ads will publish in our Feb. 12 edition. Limit 30 words per ad. Deadline to submit an ad and content is Jan. 30 at 5:00 pm. Send one photo and a caption to: fchb.editor@yahoo.com

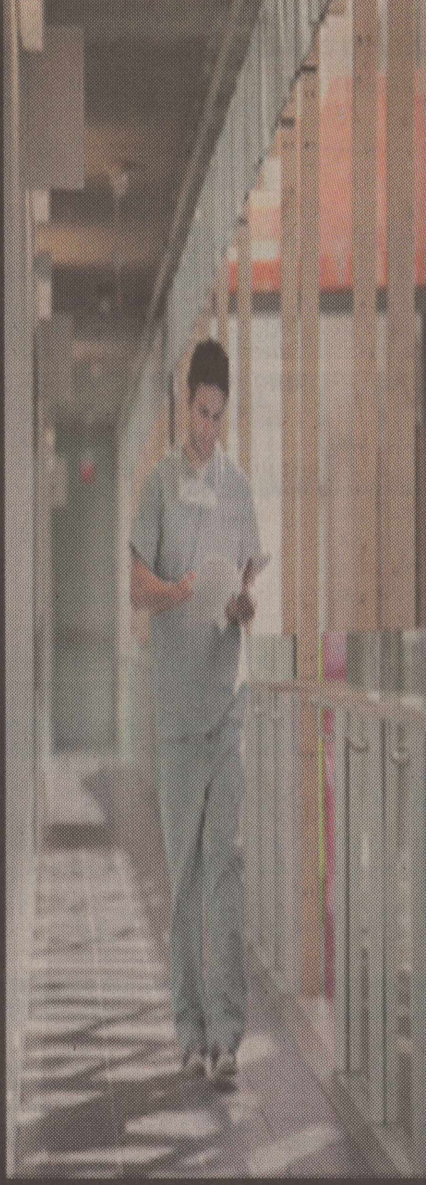
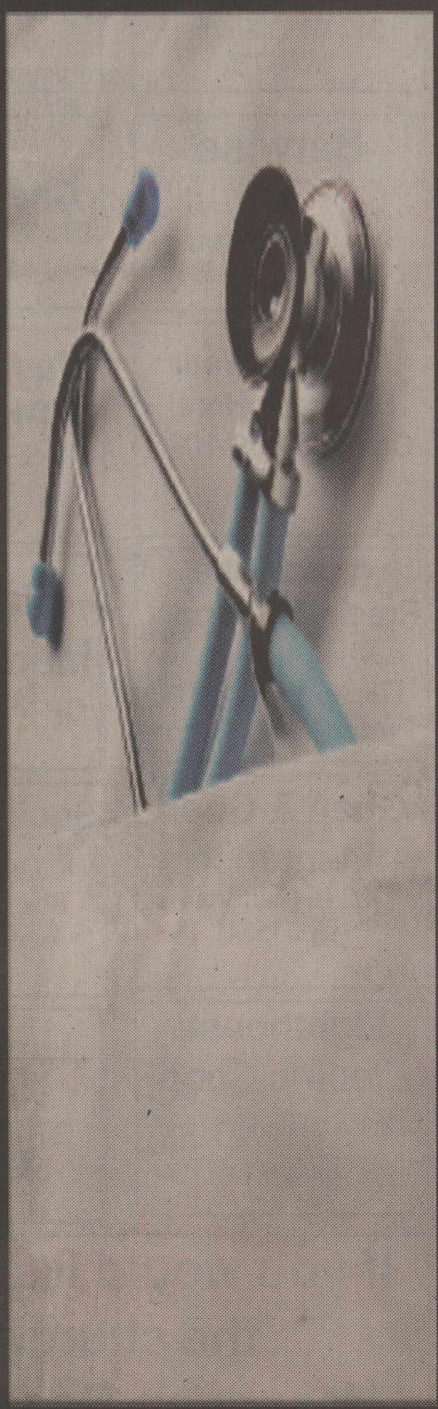
All ads require pre-payment. Call 888.400.1083 or stop by our office. **They're only this little ONCE!**

# We Care For Our Patients

**WEST TEXAS**  
 FAMILY MEDICINE  
 Of Floydada  
 at the Cogdell Clinic  
**901 W. Crockett**  
**Floydada**  
**(806) 402-4033**



**Dr. Monte Swanson**



**By appointment or walk-ins welcome**

- We Provide:**
- Health Steps • Physicals
  - Well Child Check-Ups
  - Sports Injuries
  - Immunizations •
  - Sports Physicals Well
  - Woman Care • Urgent Care • DOT Physicals •
  - Obstetrical Care
  - Fracture Management
  - In-House X-Ray • Family Planning • Allergy Testing
  - Immunotherapy

*West Texas Physicians serving West Texas Families*

**Clinic Hours: 8:30 a.m. - 5:00 p.m.**  
**Monday - Friday**  
 Closed for lunch from 12 p.m. - 1 p.m.