

# The Floyd County Hesperian-Beacon

CAR-RT LOT\*\*B 003  
426 97 30 17 000404 35 11  
Floyd County Historical Museum  
PO BOX 304  
FLOYDADA, TX 79235-0304

THURSDAY, MARCH 2, 2017

HESPERIANBEACONONLINE.COM

\$1.00

## Mangold Adds New PA to their Medical Team



Courtesy photo

Jenna Evans, the newest member of the Mangold medical team, is a member of the American Academy of Physician Assistants and Texas Academy of Physician Assistants.

Special to the Hesperian-Beacon

W.J. Mangold Memorial Hospital would like to introduce the newest member of their medical team: Jenna Evans, P.A.-C. Jenna is a 2009 graduate of Fort Davis High School.

She received a Bachelor of Science in Clinical Laboratory Science from Texas Tech University Health Sciences Center in 2014. She then received her Master of Physician Assistant Studies in 2016, also from Texas Tech University Health Sci-

ences Center. Jenna is board certified by the National Commission on Certification of Physician Assistants.

She is a member of the American Academy of Physician Assistants and Texas Academy of Physician Assistants.

Evans currently resides in Floydada and is excited to be working in a family centered atmosphere. If you would like to make an appointment with Jenna or another member of the medical staff at WJMMH, please call 806-652-3373.

## Only Contested Race in Lockney Council

By Kay Ellington  
The Hesperian-Beacon

The Lockney City Council will have the only contested race in the May election in Floyd County this year.

In Lockney, council positions 1, 2, and 3 are on the ballot this year.

In District 1, Aaron Wilson was appointed to serve out that term, but he is not running for District 1. He has filed to run for District 2 which is currently being served by incumbent Rosie Rendon. Rendon has filed for

re-election, so that will be a contested race.

Ray Jimenez has filed to run in District 1.

The District 3 position which is currently held by Dart Carthel who was appointed to the seat is also on the ballot.

The Lockney City Council positions are two-year terms.

The Lockney Independent School District will have two three-year positions up for election this year—place 5, occupied by Jimmy Kemp, and one at-large seat, occupied by John Quebe. Both of these

positions are uncontested.

The Floydada City Council will have three positions on the ballot—Mayor At Large, currently held by incumbent Bobby Gilliland; District 2 Dana Crossland; and District 3 Steve Lloyd. None of these incumbents are contested.

For the Floydada Independent School District the At Large trustee position currently held by incumbent Lyle Miller and the District 3 position currently held by Gracie Diaz will be on the ballot. Both of these positions are uncontested.

## Upcoming

Events are listed free of charge for nonprofit civic organizations, schools and community events. Please submit listings at least two weeks ahead of the date. Listings will run through the date of the event. Emailed submissions are preferred to fchb.editor@yahoo.com.

### MOBILE MAMMOGRAPHY

CovenantHealth and Arrington Comprehensive Breast Center Mobile Mammography is scheduled to be in Floydada on Thursday, March 9, 2017 at A.B. Duncan Elementary (10111 South 8th Street, Floydada). To schedule an appointment the patient needs to call our Mobile Mammography Scheduling Office at 1-877-494-4797 or 806-725-6579. Scheduling hours are Monday - Thursday, 8 a.m. - 5:30 p.m. and Friday, 8 a.m. - 12 p.m. This process will ensure complete confidentiality of personal, demographic and insurance information.

### FLOYD COUNTY GALA

The 22nd Annual Floyd County Friends Gala will be Saturday, March 25th at the Unity Center in Muncy. This year's event features a Beef Tenderloin dinner catered by Gilbert's of Lubbock with beer, liquor and wine available for purchase. Individual tickets are \$75, a reserved table for 8 is \$750. Entertainment features live music from Steve Burrus and The High Plains Drifters and our headliner BLACKHAWK.

### BINGO NIGHT FLOYDADA SR. CITIZENS

The "BINGO NIGHT" at the Floydada Center is held the 2nd Tuesday of each month. Doors open at 6:30 p.m. Anyone ages 16 and over are welcome to come join us for a night full of fun! Refreshments available for purchase.

See **UPCOMING**, Page 9

## Correction

If you spot an error of fact, contact the FCHB office email: fchb.editor@yahoo.com

## News on the go



Use your smartphone to scan the quick response, or QR, code to visit us online.

The Floyd County Hesperian-Beacon  
Copyright 2017  
120th Year, No. 48  
USPS 202-680



8 10499 02101 7

## FHS Inducts 8 New Members into NHS



Courtesy photos

New FHS NHS Members are Karley Weems, Valerie Espinoza, Selena Espinoza, Gabe Delafuente, James Gibbens, Kylie Ricketts, Allison Muniz, Allison Orr.



The current members of the Floydada High School National Honor Society are: Macee Brotherton— President, Cassandra Cervera, Jacob Chavarria, Brooke Galvan— secretary, Donald Gibbens, Alex Glass— Vice President, Rachel Graham, Catharine Kemp, Alfonzo Mendoza, Kaylee Morren, Keenan Nixon, Alejandro Pinon—Treasurer, Remington Ricketts, Montana Williams. New NHS Members are Karley Weems, Valerie Espinoza, Selena Espinoza, Gabe Delafuente, James Gibbens, Kylie Ricketts, Allison Muniz, and Allison Orr.

By Kay Ellington  
The Hesperian-Beacon

Floydada High School inducted eight new members into the National Honor Society last week.

Inductions were held on Thursday, Feb. 23 at the high school auditorium.

The National Honor Society (NHS) is a national organization that seeks to honor students who demonstrate excellence in the areas of scholarship, leadership, service and character.

Students are eligible to be inducted into NHS in the 10th through 12th grade and this is done through a formal induction ceremony in the spring.

There were eight new

member inducted this year. New NHS members are Karley Weems, Valerie Espinoza, Selena Espinoza, Gabe Delafuente, James Gibbens, Kylie Ricketts, Allison Muniz and Allison Orr.

Current NHS members are Macee Brotherton— President, Cassandra Cervera, Jacob Chavarria, Brooke Galvan— secretary, Donald Gibbens, Alex Glass— Vice President, Rachel Graham, Catharine Kemp, Alfonzo Mendoza, Kaylee Morren, Keenan Nixon, Alejandro Pinon—Treasurer, Remington Ricketts, Montana Williams.

The sponsor of the National Honor Society is Dana Crossland.

## Win Tickets to Science Spectrum Dinosaur Exhibit/Movie

Special to The Hesperian-Beacon

Patagonia Exhibit.

Looking for something fun to do for Spring Break?

You could win tickets to the Lubbock Science Spectrum's Be the Dinosaur Exhibit plus movie tickets to their Dinosaurs: Giants of

It's easy. All you have to do is go to the Floyd County Hesperian-Beacon's Facebook page and LIKE us. We'll be doing a random drawing from ALL of our Facebook Likes.

Deadline to enter is noon

Friday, and we'll contact the winners on your Facebook page by Facebook message.

If you have questions, just message us on our Facebook page at <https://www.facebook.com/FCHesperianBeacon/>

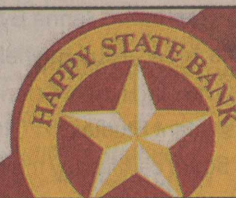


# HAPPY STATE BANK

105 S. Wall St., Floydada • 983-BANK • happybank.com Member FDIC



Robbie Hilton



**Cathy's Floral & Gifts**  
128 W. California Street • Floydada, Texas 79235  
806-983-5013  
Hours: Monday - Friday - 8 a.m. - 5 p.m.  
Saturday - By appointment

**Bridal Shower Selections**  
Jill Bramlet & Jordan Reece - March 11  
Linay Runnels & Brazos Williams - April 8  
**Baby Shower Selections**  
Nash James son of Kirk & Brittney Wilson - March 11

**Hearts Desire**  
2900 Olton Road Plainview (806) 296-2121  
120 S Main Lockney (806) 652-2548

**Wedding Selections**  
Christina Muniz & Daniel Longoria  
Ashley White & Adam Rainwater

**Payne Pharmacy**  
200 S. Main St. Floydada, Texas 79235 • (806) 983-5011 • Hours: 9am - 5pm

BMG BLACKBURN MEDIA GROUP

The Floyd County Hesperian-Beacon, 201 W. California, Floydada, Texas 79235, is open from 10 a.m. to 5 p.m. Monday through Friday. Phone (888) 400-1083. Email fchb.editor@yahoo.com

**PUBLISHER**  
William C. Blackburn

**REPORTER**  
Charles Keaton  
**GENERAL MANAGER**  
Barbara Anderson

The Floyd County Hesperian-Beacon (USPS 202-680) is published every Thursday, including holidays, by Blackburn Media Group Inc., P.O. Box 1260, Childress, Texas, 79201-1260. Entered at U.S. Post Office, Floydada, Texas, for transmission through the mail as a Second-Class matter, according to an Act of Congress, March 3, 1879. Periodical Rate Postage Paid at Floydada, Texas, 79235. Postmaster: Send address changes to The Floyd County Hesperian-Beacon, 201 W. California, Floydada, Texas, 79235

All material Copyright 2017 The Floyd County Hesperian-Beacon

It is the mission of this newspaper to promote the rights of individualism in the American Declaration of Independence. The right of life, liberty and ownership of property are the cornerstone of freedom. Government's sole purpose is to enhance our liberty and freedom. Therefore, we hold every elected and appointed agent of government accountable to that standard.

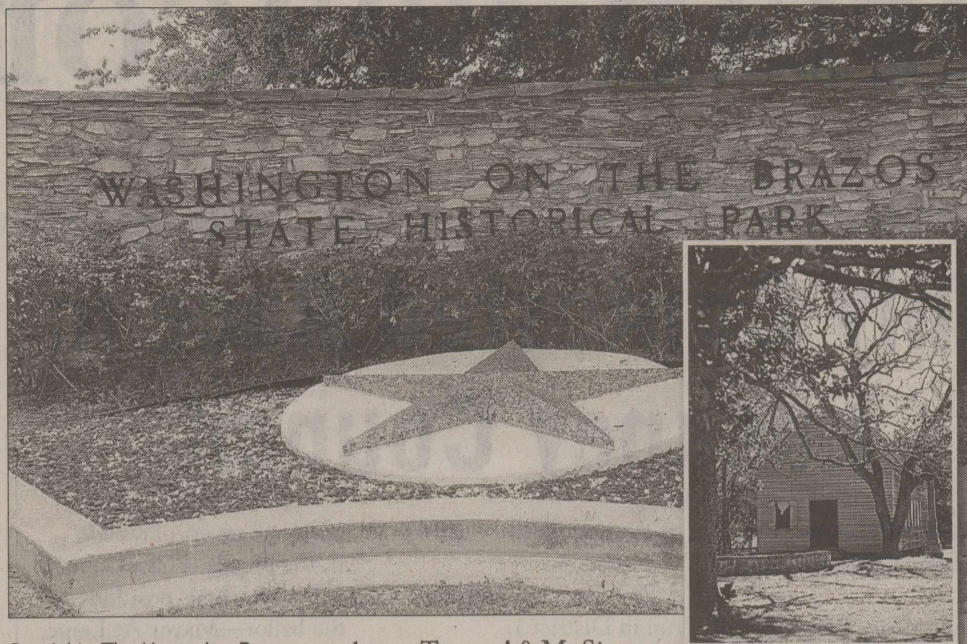
**DEADLINES**  
Advertising: Noon Fridays  
Editorial: Noon Mondays

**SUBSCRIPTIONS**  
\$36 a year in the county  
\$42 a year outside the county

Call 888-400-1083

**MEMBER 2017**  
**TEXAS PRESS ASSOCIATION**

## Washington on the Brazos to mark 181st Anniversary of Texas Independence



Special to The Hesperian-Beacon

Washington on the Brazos State Historic Site invites you to its Texas-size 181st birthday party! The park's annual "Texas Independence Day Celebration" will be Saturday, March 4 and Sunday, March 5 from 10 a.m.-5 p.m.

Featuring live music; food; old-time medicine

show; Texas A&M Singing Cadets; a bona fide 1836 Army camp to wander freely around; musket firings; programs in the Museum; family activities; arts & crafts; and so much more.

Admission fees are waived for the site's attractions (Independence Hall, Star of the Republic Museum, and Barrington Living History Farm) during

the TIDC weekend celebration. Free entry, free parking and free shuttle.

Washington on the Brazos is located at 23400 Park Rd. 12 in Washington-- approximately halfway between Brenham and Navasota, off of State Hwy. 105. For more information, call 936-878-2214 or visit [wheretexas-becametexas.org](http://wheretexas-becametexas.org).

### The Floyd County Hesperian-Beacon

#### DEADLINES

Display ads - Friday @ Noon  
Legals - Friday @ Noon  
Classified ads - Monday @ Noon  
Editorial - Monday @ Noon

E-mail: [fchb.editor@yahoo.com](mailto:fchb.editor@yahoo.com)  
Telephone: 888-400-1083  
Address: 201 W. California Street  
Floydada, TX 79235

*These deadlines must be met in order to guarantee your ad or editorial is placed in The Hesperian-Beacon on the date requested.*

## Letter to the editor policy

The Floyd County Hesperian-Beacon welcomes letters from readers on topics of local, state, national and international importance. Email letters are preferred to: [fchb.editor@yahoo.com](mailto:fchb.editor@yahoo.com).

All letters must include a first and last name, street address (no post office boxes), town, and daytime phone number. Letters sent via U.S. mail may be sent to 201 W. California Street, Floydada, Texas 79235.

## The Paperboy Lol at Hollywood

And the winner is ... not Hollywood. After a year in which Hollywood struggled at the box office, I suppose it's easy to predict that the ratings for the Oscars would follow suit and they did. The 2017 Oscars were down four percent in viewership and 13 percent among adults 18-49 from last year.

In all, the Oscars hit a nine-year low and were the third lowest rated Oscars ever.



CHRIS BLACKBURN

My guess, since the show was political in what has become typical anti-Trump fashion, is that Hollywood, just like the NFL, has not realized that many Americans are turned off by the liberal elite.

Sitting behind gated walls with armed body guards, the liberal elite continues to spew how the rest of us should live. And alone with their counterparts in office, they are as out-of-touch as ever.

How out-of touch? Democrats have a net loss of over 1,000 state and federal offices since 2010. That is staggering.

Part of me wants these limo liberals to continue on with their collective head in the sand so that these people are marginalized into oblivion.

However, there is still apart of me that wishes common sense would prevail and the elite would realize that the constant fit throwing and name calling will never result in a fairytale ending.

You can count me as one who is turned off by the limo liberals. As long as they are this partisan, they will receive zero support from me.

My sincere hopes are that the moderate Democrats remaining in the party can somehow seize control of the party and move it forward. And while I think this will happen eventually, it's looking like it will be decades in the process.

After all, just eight years ago, the Republicans looked like the party doomed for eternity.

If you have a couple of hundred million dollars burning a hole in your pocket, you might want to call Elon Musk and hitch a ride on one of SpaceX's rockets.

SpaceX is planning on sending two passengers on a week-long journey around the moon within a few years.

According to Musk, SpaceX must first send NASA astronauts to the International Space Station. Once it has safely managed that endeavor and obligation to NASA, SpaceX will transport the anonymous passengers, who paid untold millions for the trip, around the moon and back or approximately 400,000 miles.

My two takes on this story are as follows:

1. I'm excited to see a renewed interest in space exploration for a variety of reasons.
2. It would be cool to be worth \$13 billion like Musk and have the ability to create industry.

Musk's main goal is to eventually have a colony on Mars. But before such a trip can be made, we have to make sure we can get there and back and do it safely and repeatedly.

And just like the Mercury, Apollo and Space Shuttle missions, it will be fascinating to watch.

Copyright 2017

Chris Blackburn serves as CEO at Blackburn Media Group, proud owner of The Red River Sun, The Floyd County Hesperian-Beacon, The Knox County News-Courier and The Post Dispatch. He can be reached by email at [chris@blackburnmediagroup.com](mailto:chris@blackburnmediagroup.com) and you can follow him on Twitter @WCSBlackburn.

## Introducing the newest member of our medical team



W.J. Mangold Memorial Hospital would like to introduce the newest member of their medical team: Jenna Evans, P.A.-C. Jenna is a 2009 graduate of Fort Davis High School. She received a Bachelor of Science in Clinical Laboratory Science from Texas Tech University Health Sciences Center in 2014. She then received her Master of Physician Assistant Studies in 2016, also from Texas Tech University Health Sciences Center. Jenna is board certified by the National Commission on Certification of Physician Assistants. She is also a member of the American Academy of Physician Assistants and Texas Academy of Physician Assistants. She currently resides in Floydada and is excited to be working in a family centered atmosphere.

If you would like to make an appointment with Jenna or another member of the medical staff at WJMMH, please call 806-652-3373.

**WJ MANGOLD**  
Memorial Hospital

*Our family caring for your family.*

## The 501 School lunch flunks taste test

Raise your hand if you've eaten a school lunch lately. I have.

Was I disappointed? No. I wanted it to be bad enough to describe in awful detail. Stay tuned.

The occasion was Grandparents' Day at our grandson's school. It's when grandpar-



HANABA MUNN WELCH

ents and grandchildren to eat together and then buy books together at a book fair. I suspect the book-sellers are on something like a carnival circuit to take unfair advantage of the silver-haired set, but skepticism should be quelled for a chance to see a fourth-grader choose a book over a video game (since there are no video games on hand).

My husband is worse than I am, but in a different way. He wanted to be sure our grandson had read last year's books before he bought him more. Ultimately he softened and didn't grill him before plopping down a handsome price for a book on weird stuff around the world. Something like that.

Back to lunch. Grandson Cutter had asked us to bring him a hamburger from a nearby joint for the special meal. Normally his mother packs his lunch. Now I know why.

I ended up eating cafeteria fare while he and his granddad feasted on hamburgers and fries. Because my husband and I were late, Cutter had already bought a school lunch, thinking we might not arrive. He's a good thinker. Cutter gladly gave me the lunch.

Only later did I learn he'd managed to evade the lunch police to get by without a healthy vegetable to counteract the other stuff. Apparently he's sneaky. Who knew?

Yep, I talked to the nice cafeteria people after lunch to be sure I understood the system before criticizing it. That's when I learned Cutter really should have selected carrots to compliment the substandard pigs in blankets, star-shaped tater tots, Rice Krispie treat and little ice cream sandwich. It's a rule that no child can escape without a healthy vegetable. He escaped. At least he chose chocolate milk to swig with the pale array.

"Cutter, do you know the meaning of 'bland'?" I asked.

"Tasteless," he said, not making the connection.

We sat with one of his husky classmates. After downing one pig in a blanket, I guessed correctly that Cutter's friend would take the rest of my herd.

I quizzed the boy (can't remember his name) to determine whether Cutter was choosing good friends.

"I'm guessing you're a smart kid," I said. "Straight A's," he replied with pride.

Then, as if to be sure he'd chosen the right friend, he looked across at Cutter and asked him if he was 'straight A's.' Cutter said he was.

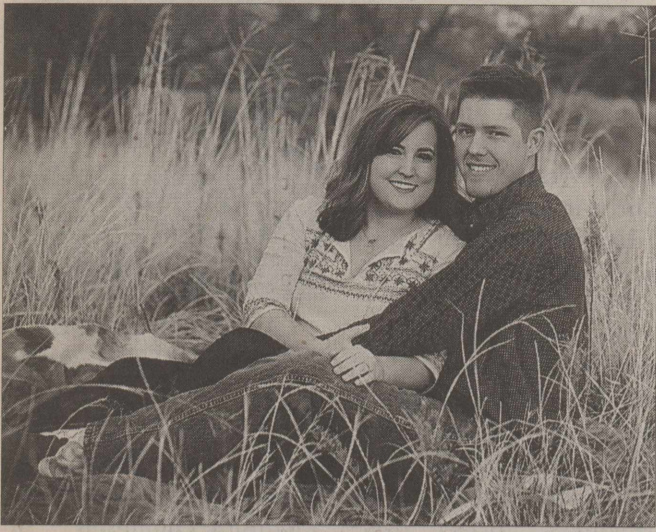
That's when I felt a little surge of pride.

The future looks bright for Cutter based on what I learned at Grandparents' Day at school. He does like books. Maybe he'll sail through college and he doesn't evade any more police - or worse, get caught.

On second thought, I'm thinking he really might like jailhouse food.

# SOCIETY

## Bramlet and Reece to marry



**JILL ELIZABETH BRAMLET  
AND JORDAN LEE REECE**

Larry and Beth Bramlet of Lockney announce the engagement of their daughter, Jill Elizabeth to Jordan Lee Reece, son of Rick and Donna Reece of Canyon.

Jill is a 2010 graduate of Lockney High School. She received a bachelor's degree from West Texas A&M University in 2013 and a master's degree from Texas A&M in 2016. She is employed by North Plains Electric Cooperative in Perryton.

Jordan is a 2010 graduate of Canyon High School and will receive a bachelor's degree from West Texas A&M University in August. He is employed by Perryton ISD.

The couple is planning a March 25, 2017 wedding in Amarillo and will reside in Perryton.

## 1956 Study Club

**By Sheree Cannon**  
Special to The Hesperian-Beacon

The 1956 Study Club celebrated Valentine's Day with laughter and fun in the gracious home of Judy Dunlap on February 14, 2017. Co-hostess for the evening was Sheree Cannon.

Members were served salads, finger foods, and delicious Cherry Cheese Cake for dessert. Roll call was very special as members exchanged all kinds of neat and fun Valentine gifts among each other as their names were called.

At the end of a short business meeting, club members displayed their individual quilt squares that they had made. All of the squares will be combined into a quilt for a lucky club member to receive when complete. Suggestions were made on how the quilt should be given when it is finished. A quilt workday was scheduled for the following Tuesday afternoon in the home economics room at Floydada High School.

Instead of a usual program, everyone enjoyed playing Party Bridge with the guest of the evening John Dunlap filling in for an absent club member.

Those attending the fun-filled evening were Judy Dunlap, Sheree Cannon, Charline Hendrix, Trena Simpson, Susan Simpson, Snow Payne, Janis Julian, Sheryl Back, Jennisu Smith, Terry Jackson, Terri Bush, Kay Dean Smith, Virginia Stringer, and Dana Crossland.

Meeting was adjourned with Terry Jackson leading members in the "Club Collect".

Our next club meeting will be on March 14 with Le'Ann Pigg, Caprock Canyon Park Ranger, presenting facts of the Caprock Canyons.

## Floydada Senior Citizens News

**By LuAnn Collins**  
Special to The Hesperian-Beacon

FLOYDADA - "Bingo Night" is scheduled for Tuesday, March 14th. Doors open at 6:30 p.m. Anyone ages 16 and over are welcome to come join us for a night full of fun! Refreshments will be available for purchase.

If you have never eaten with us, we invite you to join us from 12:00 to 1:00 p.m., Monday through Friday. We think you will be pleased with the quality and quantity of food you will receive.

Floydada Senior Citizen's Center is open to people of all ages. You do not need to be a senior citizen, nor a member to eat with us. However, if you are a member, your meal is \$5.00 instead of non-member price of \$6.00. To become a member, all you need

do is pay a \$25.00 yearly membership fee.

We serve a delicious meal with salad bar at 12 p.m. daily, Monday through Friday. Join us at 925 W. Crockett Street or we will deliver a meal anywhere in town. Call 983-2032.

Our mailing address is P.O. Box 573, Floydada, Texas 79235

### MENU

**March 6 - March 10**

**Monday** - Sirloin pattie w/natural gravy

**Tuesday** - Chicken strips w/cream gravy

**Wednesday** - Hamburger casserole

**Thursday** - Spaghetti

**Friday** - Shrimp gumbo w/rice

(Menus subject to change without notice)

## Lockney Senior Citizens News

**By Renee Armstrong**  
Special to The Hesperian-Beacon

LOCKNEY - Family Night Fish Fry will return Friday, March 3. All you can eat...\$10 for adults, \$5 children under 10 years of age.

Breakfast is served here at the Center from 5:30 a.m. - 9:30 a.m. Monday thru Friday only.

Be sure and call the Center by 9:30 a.m. if you would like to eat. Our phone number is 652-2745.

Remember Exercise with Dorothy - Monday, Wednesday, and Friday, 8:45 - 9:30 a.m.

Coffee time - Monday - Saturday - 9:30-10:30 a.m.

Thursday night pot luck.

Bring a dish and a friend and enjoy games afterwards. 5 - 9 p.m.

"Bingo Night" is held the 3rd week of each month. Come join us for some fun!

Hope you all have a great week!!

### MENU

**March 6 - March 10**

**Monday** - Baked potatoes

**Tuesday** - Tacos

**Wednesday** - Pot roast

**Thursday** - Chicken & dumplings

**Friday** - Meatloaf

(Menus subject to change without notice)

## Museum Archives

### Floyd County Historical Museum "Memories, 1979"

DOYLE AND EDNA LOVE

Doyle and Edna Love were married April 15, 1939. Doyle was born in Jack County and moved to Floyd County in 1916 with his parents, the late Freeman and Alice Thompson Love. Doyle was two years old when he came to Floyd County in a covered wagon.

Edna Easley was born in Wise County and moved to Floyd County when I was twenty-one years old. My reason for coming to Cedar Hill was to teach school. I will never forget the first time I came up the Cap at Flomot. I thought it was so lonesome looking with-

out trees-looked like everyone had gone somewhere.

I spent some enjoyable years at Cedar Hill. I taught with Clarence Guffee and lived in a teacherage with Clarence and his wife, Opal, and son Corky. I also taught there with Opal Nelson Higgins, Mildred Kemp McClung. Mildred's mother, Cora Kemp, lived with us there too. Johnnie Johnston Shepard and I lived with Aunt Martha Portwood one year after Mr. Bill Portwood passed away.

My sister, Lottie, was married to Doyle's brother, Orville. I used to visit in Mr. and Mrs.

Love's home with Lottie and Orville. Doyle and I didn't pay much attention to each other on my visits there. One year we were practicing on a play to be presented in the Cedar Hill School auditorium, that was when Doyle and I started going together.

The first year we were married, we lived on one of the late Pete McDonald's places. From there we moved to Childress for one year. From there we moved to Wise County and have been there since.

We have two sons, Verlon Doyle and Jerry Melvin, also

two grandchildren, Tammy and Keith.

Doyle had three brothers to grow up in Floyd County; Marvin and Orville, both deceased. Raymond who lives in Bridgeport with his wife Etta; one sister still lives in Floyd County, Imogene Fortenberry of Cedar Hill.

The years spent in Floyd County were very enjoyable ones, even if we did have some severe sand storm at that time-at times the sun was hidden and almost as dark as night. There are lots of wonderful people left in Floyd County.

## Texas A&M experts reveal which is more important - sleep, diet or exercise

COLLEGE STATION, Texas — As the year begins anew, so do the goals of many. One of the most commonly made resolutions is to live a healthier lifestyle. For a vast majority of people, that goal involves vowing to make improvements in diet and exercise but rarely sleep. It is easy to fall off the wagon when it comes to achieving health goals. However, Texas A&M University experts say that even with one simple modification, it is possible to get back on track to becoming a healthier you.

### Sleep

Getting the recommended seven to eight hours of sleep each night is important, but consistency in the time of day those sleep hours occur plays a major role in regulating our internal body clocks, which regulate sleep-wake schedules, metabolism and immune responses. "Our body clocks, like your watch or clock on your computer, are only good if they're keeping accurate time," said David Earnest, PhD, a professor at the Texas A&M College of Medicine who studies circadian rhythms (our 24-hour body clocks). "No longer are we a nine-to-five society, but as long as a person is consistently going to sleep within the same hour or two each night, the body will be able maintain its schedule more efficiently."

Indeed, sleep, diet and exercise are each important, and if you neglect any of them, it's not ideal. "However, sleep is often most neglected, and when sleep is compromised, it doesn't allow people to mentally, emotionally

and physically recover, which commonly holds people back from being all they can be," said Jesse Parr, MD, a clinical professor with the Texas A&M College of Medicine and team physician for the Texas A&M University Athletic Department. And as we all know, when we are sleep-deprived, it is difficult to maintain a healthy diet or get enough exercise.

### Diet

Diet is essential to maintaining health, but the various recommendations are endless and overwhelming. Parr recommends to both his patients and athletes that they follow the guidelines of Choose MyPlate, which emphasizes that small changes—such as simply reducing the amount of sugar-loaded drinks consumed—matter.

Earnest recommends avoiding foods, like fast foods, cheeses or pizza, that contain high levels of saturated fats. You know, the good stuff we seem to crave when school or work is keeping us up late. Still, these types of foods disrupt the internal timing of the body clocks by shifting their settings and essentially making them experience jetlag. "The whole process starts spiraling into a situation that we believe might be a critical factor in the epidemic of obesity and type 2 diabetes," Earnest said. "If you are going to eat saturated fats, it is best to eat them in the morning, and then consume fruits, vegetables or nuts if you are eating within three hours of bed."

### Exercise

Working out tends to be one of the more difficult regimens

to maintain because if results do not appear within the first couple of weeks of beginning an exercise program, people get discouraged and often give up. However, noticing results depends on what type of exercise goals were set, whether it was to be healthier, lose weight or get stronger for performance.

When someone starts being active, they will use muscles they have not used before and will become sore, but people can start feeling better and notice they are getting stronger after a couple of weeks. However, exercising to lose weight takes longer, often a few months. The American College of Sports Medicine recommends getting at least 150 minutes of moderate exercise or 75 minutes of intense exercise per week. Alternating aerobic and resistance exercises is important for keeping the entire body fit.

Doing a high-intensity workout later in the evening may make it difficult for the body to wind down prior to bedtime,

but, according to Parr, "exercising when time is available, even if that workout occurs in the evening, is more important than not exercising at all."

### So, which is it?

It is commonly said that health benefit ratio of diet to exercise is 80-20. However, when sleep was factored in, Earnest said his ratio analysis of the health implications of the three would be 60-30-10, sleep, diet and exercise respectively. "While each factor is important individually, the lynchpin in health is how we organize our bodies in time, which consists of how our internal body clocks are regulating our sleep-wake cycles and how mealtimes fall and what energy we have for exercise," Earnest said.

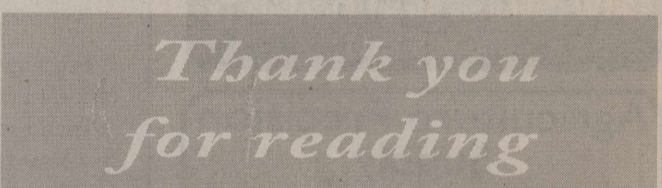
All three factors are very important to overall health, and Parr concluded that all three are equally important to the trifecta necessary for a healthy lifestyle. "We're biologically designed to be active, but we can't

be active unless we eat properly and get plenty of sleep," said Parr. However, he warned not to bite off more than you can chew when setting health goals. "Make one resolution you can easily be successful with, even if it's modest, and then make new ones," he said.

Given that sleep is the most neglected, a little extra shuteye and regular sleep-wake times may prove quite beneficial to your health and get you back on track with your health goals. So try this one goal: go to bed within the same hour every day this week; you just might start to feel better.

About Texas A&M University Health Science Center

Texas A&M University Health Science Center is transforming health through innovative research, education and service in dentistry, medicine, nursing, pharmacy, public health and medical sciences. As an independent state agency and academic unit of Texas A&M University, the health science center serves the state through campuses in Bryan-College Station, Dallas, Temple, Houston, Round Rock, Kingsville, Corpus Christi and McAllen. Learn more at [vitarecord.tamhsc.edu](http://vitarecord.tamhsc.edu) or follow @TAMHSC on Twitter.



## Help Wanted

The Floydada Chamber of Commerce is taking applications for Manager.

Part Time - 10 hours per week.

Applicant should be proficient in QuickBooks and fiscally responsible.

**Special event promotion and organization experience preferred.**

Applications Available At 120 W California Assiter Insurance: Kalli Martin

No Phone Calls Please.



Has now partnered with Dr. Sharie Moore to bring quality health care to our residents. There is no longer a need to travel for health care. Dr. Moore will be making on-site monthly visits and will assist with new resident admission paperwork.

\*Low Monthly Rates \* Low Move-in Rates  
\*Never an additional cost for extra or outside services  
\*Private rooms and an at home environment  
\*Move in and enjoy the BeeHive Family!

FOR MORE INFO CALL 806-983-8177  
1230 S. Ralls Highway, Floydada, Texas 79235

# OBITUARIES/CHURCH

## David "Ross" Miller

David "Ross" Miller passed away peacefully with family by his side on December 27, 2016.

A Memorial Service will be held on Saturday, March 4, 2017 at Trinity Assembly of God in Floydada, Texas.

Burial will follow the service at the Floydada Cemetery.

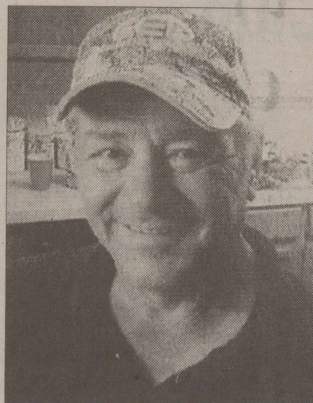
Ross was born and spent most of his life in Fort Worth, Texas. After returning from the Navy, he turned his career to Union Pacific Railroad where he

worked more than 30 years.

He was a 32nd Degree Mason and was a faithful member of the Masonic Lodge #331 in Mansfield, Texas. He loved hunting, fishing and the time he had with his family.

Ross was always the first to lend a hand when the situation would arise.

Survived by two sons, David James Miller and wife, Denise, and Clint Jay Miller and wife, Lauren; two brothers, Ben Miller and wife, Nancy and Matt Miller



DAVID 'ROSS' MILLER

and wife, Renee; grandson, Landon; granddaughter, Payton; and numerous nieces, nephews and friends.

## Lavona "BooBoo" Carthel Pitchford

Lavona "BooBoo" Carthel Pitchford, 73, of Denton passed away on February 17, 2017 in Lubbock.

Funeral services were held at 2 p.m., Wednesday, February 22, 2017 at Westside Church of Christ in Lockney, Texas.

Arrangements were under the care of Kornerstone Funeral Directors of Plainview.

Graveside services were held at 10 a.m., Friday, February 24, 2017 at Crystal Hill Cemetery in Wickes, Arkansas.

A visitation will be held on Tuesday evening at Kornerstone from 6 to 8 p.m.

Lavona was born on October 24, 1943 in Lockney, Texas to Cecil and Charlotte Carthel. She grew up in Lockney and graduated from Lockney High School in 1962. She attended Nursing School and graduated in 1971. She

later attended Wayland Baptist University where she received her Bachelor of Science in Occupational Education. She worked as a Nurse and a Nursing Home Administrator for many years. She was a member of the Westside Church of Christ in Lockney.

Lavona married Billy Joe Pitchford on April 18, 1975 in Lockney.

She was preceded in death by her parents, Cecil and Charlotte Carthel, as well as her husband, Billy, on July 22, 2012.

Survivors include four daughters, Becky Myers and husband, Mike of Lockney, Margaret Adams and husband, Bucky of Petersburg, Teresa Pitchford of Denton, Brandy Scott and husband, David of Krum; six grandchildren, Taylor Hernandez and husband, Jace of Petersburg, Hope Pitchford of Denton, Skyler Dunn of Lock-



LAVONA "BOOBOO" CARTHEL PITCHFORD

ney, Caitlyn, Alexa, and Becca Scott of Krum; two great-grandchildren, Ryder Pitchford-Thompson of Denton, and Madalynn Hernandez of Petersburg; a brother Charlie Carthel and wife, Barbara of Lockney, and numerous nieces and nephews.

The family suggests memorials be given to the Ronald McDonald House, 3413 10th St, Lubbock, TX 79415.

## Pat Whitfill

Pat Whitfill, 98, of Lockney died Tuesday, February 21, 2017.

Graveside services were held at the Silverton Cemetery at 11 a.m., Saturday, February 25, 2017. The family received friends at Moore-Rose Funeral Home in Lockney on Friday, February 24, 2017 from 5 p.m. - 7 p.m.

Mrs. Whitfill was born July 21, 1918, in San Antonio, Texas, to Roy and Edith (Knox) Patterso. She graduated Lockney High School and attended Texas Women's College and Texas Tech.

She married Ben Whitfill

in 1936 and moved to Silverton where they farmed and raised their children.

They moved back to Lockney in 1995. Mrs. Whitfill was involved in First Baptist Church, Eastern Star, Study Club, and Rainbows. Anyone who knew her knows she was devoted to her family and their happiness.

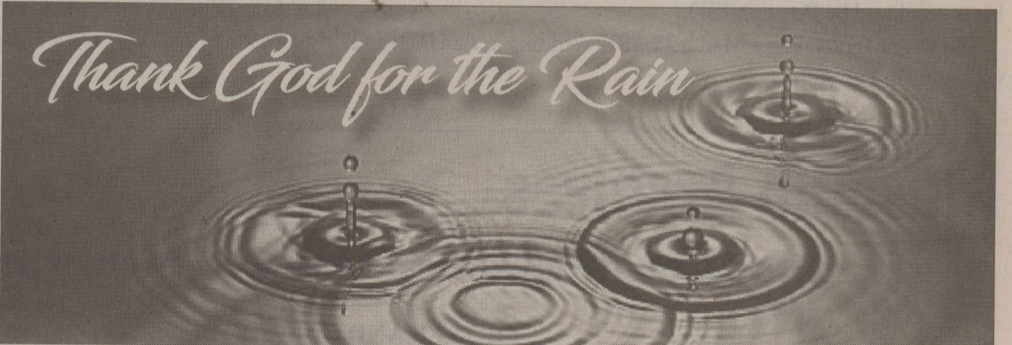
Survivors include two sons, Rusty and wife, Tish, of Burleson, Texas and Gene and wife, Deana, of Plainview; and one daughter, Gale and husband, Dan, of Lockney. She is also survived by her sister, Sally Shaw, of Dallas; and Jimmy Scott's widow, Gwen.



PAT WHITFILL

Cherishing her memory are ten grandchildren, twenty-five great-grandchildren; and one great-great grandchild.

She was preceded in death by her husband, Ben, and their son, Jimmy Scott.



**Lighthouse Electric Coop**  
806.983.2814  
703 A Matador Hwy.

**ASSITER INSURANCE AGENCY, LLC**  
120 W. California Street, Floydada, Tx.  
806-983-2511

**Agriculture Precision Supply**  
Pivots, Flow meters & Equipment  
www.GoA-P-S.com  
806.773.3025 • 806.253.2521

**Sunshine Pump**  
Oliver Clark  
806.983.5087 - 806.774.4412 (mobile)  
Box 266 - Lockney

**Plains LAND BANK** Jeff Taylor  
806-296-5579  
plainslandbank.com  
Part of the Farm Credit System

**Payne Family Pharmacy**  
806.983.5111  
200 S. Main, Floydada

**Goen & Goen Insurance**  
806.983.3524  
102. E. California - Floydada

**Floydada Coop Gin, Inc.**  
319 N. 5th Street  
Floydada TX 79235  
806-983-2884

**Barwise Gin**  
Barwise Community  
806.983.2737

**Lockney Co-op Gin**  
Lockney, Texas  
806.652.3377

**Prosperity Bank**  
Member FDIC  
217 W. California — 806.983.3725

## CHURCH DIRECTORY

### Renewed Day-by-Day

If anyone is in Christ, the new creation has come: The old has gone, the new is here!

—2 Corinthians 5:17 (NIV)

I struggle with an illness that saps my strength and energy. As a result, I have difficulty getting myself out of bed in the morning. A friend sent me a picture of a phoenix (a mythological creature that rises from the ashes) with the words, "Still I rise." I added today's verse and 2 Corinthians 4:16: "Therefore we do not lose heart. Though outwardly we are wasting away, yet inwardly we are being renewed day by day." I use it as a bookmark and keep it by my bed.

Many of us go through trying times, whether dealing with

illness, limitations, or the emotions of accepting these realities.

The words and picture on my bookmark remind me that each day is an opportunity to rise again, physically and emotionally, and to become a new creation in Christ.

Now, each morning after looking at my bookmark, I stretch my arms upward. I pray for God to fill me with the strength of the Holy Spirit as I rise and am renewed. Our transformation in Christ is an ongoing process, and each day moves us further along this path.

Scott Martin (New Jersey, USA)

**Though for the Day**

Each day is an opportunity to be renewed in Christ.

- |                                                                                                                                                                                                                                                                                                                                                                                                                                                                                                                                                                                                                                                                                                                                                                                                                                                                                                                                                                                                                                                                                                                                                                                                                                                                                                                                                                                                                                                                                     |                                                                                                                                                                                                                                                                                                                                                                                                                                                                                                                                                                                                                                                                                                                                                                                                                                                                                                                                                                                                                                                                                                                                                                                                                                                                                                                                                                                                                                                                                                                             |                                                                                                                                                                                                                                                                                                                                                                                                                                                                                                                                                                                                                                                                                                                                                                                                                                                                                                                                                                                                                                                                                                                                                                                                                                                                                                                                                                                                                                  |                                                                                                                                                                                                                                                                                                                                                                                                                                                                                                                                                                                                                                                                                                                                                                                                                                                                                                                                                                                                                                                                                                                                                                                                                                                                                                                                                                                                                                                  |
|-------------------------------------------------------------------------------------------------------------------------------------------------------------------------------------------------------------------------------------------------------------------------------------------------------------------------------------------------------------------------------------------------------------------------------------------------------------------------------------------------------------------------------------------------------------------------------------------------------------------------------------------------------------------------------------------------------------------------------------------------------------------------------------------------------------------------------------------------------------------------------------------------------------------------------------------------------------------------------------------------------------------------------------------------------------------------------------------------------------------------------------------------------------------------------------------------------------------------------------------------------------------------------------------------------------------------------------------------------------------------------------------------------------------------------------------------------------------------------------|-----------------------------------------------------------------------------------------------------------------------------------------------------------------------------------------------------------------------------------------------------------------------------------------------------------------------------------------------------------------------------------------------------------------------------------------------------------------------------------------------------------------------------------------------------------------------------------------------------------------------------------------------------------------------------------------------------------------------------------------------------------------------------------------------------------------------------------------------------------------------------------------------------------------------------------------------------------------------------------------------------------------------------------------------------------------------------------------------------------------------------------------------------------------------------------------------------------------------------------------------------------------------------------------------------------------------------------------------------------------------------------------------------------------------------------------------------------------------------------------------------------------------------|----------------------------------------------------------------------------------------------------------------------------------------------------------------------------------------------------------------------------------------------------------------------------------------------------------------------------------------------------------------------------------------------------------------------------------------------------------------------------------------------------------------------------------------------------------------------------------------------------------------------------------------------------------------------------------------------------------------------------------------------------------------------------------------------------------------------------------------------------------------------------------------------------------------------------------------------------------------------------------------------------------------------------------------------------------------------------------------------------------------------------------------------------------------------------------------------------------------------------------------------------------------------------------------------------------------------------------------------------------------------------------------------------------------------------------|--------------------------------------------------------------------------------------------------------------------------------------------------------------------------------------------------------------------------------------------------------------------------------------------------------------------------------------------------------------------------------------------------------------------------------------------------------------------------------------------------------------------------------------------------------------------------------------------------------------------------------------------------------------------------------------------------------------------------------------------------------------------------------------------------------------------------------------------------------------------------------------------------------------------------------------------------------------------------------------------------------------------------------------------------------------------------------------------------------------------------------------------------------------------------------------------------------------------------------------------------------------------------------------------------------------------------------------------------------------------------------------------------------------------------------------------------|
| <p><b>Aiken Baptist Church</b><br/>Dennis Butler, Pastor<br/>Morning Worship...11 a.m.<br/>*****</p> <p><b>Bible Baptist Church</b><br/>810 S. 3rd, Floydada<br/>Darwin Robinson, Pastor<br/>983-2578<br/>Sunday School...10 a.m.<br/>Morning Worship - 10:50 a.m.<br/>Evening Worship - 6 p.m.<br/>Wednesday - 7 p.m.<br/>*****</p> <p><b>Calvary's Cornerstone Fellowship</b><br/>Floydada<br/>Armando Morales, Pastor<br/>Sunday School - 9:45 a.m.<br/>Morning Worship - 11 a.m.<br/>Bible Study - 6 p.m.<br/>Wednesday Evening - 7 p.m.<br/>*****</p> <p><b>Carr's Chapel</b><br/>Service Every Sunday<br/>Morning Worship - 9 a.m.<br/>Sunday School 10:30 a.m.<br/>*****</p> <p><b>Church of Christ</b><br/>West College &amp; Third<br/>Lockney<br/>Morning Worship - 10:30 a.m.<br/>Afternoon Worship - 1:30 p.m.<br/>Wednesday Service - 7:30 p.m.<br/>*****</p> <p><b>City Park Church of Christ</b><br/>Matthew Benfield, Minister<br/>Floydada<br/>Sunday Bible Study - 9:30 a.m.<br/>Morning Worship - 10:30 a.m.<br/>Evening Worship - 6 p.m.<br/>Wed. Bible Study - 7 p.m.<br/>*****</p> <p><b>First Baptist Church</b><br/>Floydada<br/>Tim Franks, Pastor<br/>Logan Lamb, Min. Students<br/>Sunday School - 9:15 a.m.<br/>Morning Worship - 10:30 a.m.<br/>Evening Worship - 6 p.m.<br/>Wed Bible Study - 6:30 p.m.<br/>*****</p> <p><b>First Baptist Church</b><br/>Lockney<br/>Joseph Tillery, Pastor<br/>Chad Cook, Youth Min.<br/>Phil Cotham, Music Min.</p> | <p>Sunday School, 9:45 a.m.<br/>Morning Worship, 10:45 a.m.<br/>Evening Worship, 6:00 p.m.<br/>*****</p> <p><b>First United Methodist Church</b><br/>Floydada<br/>Rev. Ken Peterson, Pastor<br/>Morning Worship - 9:30 a.m.<br/>Sunday School - 10:50 a.m.<br/>Youth (Sunday) - 6:30 p.m.<br/>*****</p> <p><b>First United Methodist Church</b><br/>Lockney<br/>Rev. Ricky Carsensen, Pastor<br/>Sunday School - 9:30 a.m.<br/>Worship Service - 10:30 a.m.<br/>Evening Service - 6 p.m.<br/>Wed. Jr. High - 5:30 p.m.<br/>Wed High School - 6:30 p.m.<br/>*****</p> <p><b>Grant Chapel Church of God In Christ</b><br/>Joe Bennett, Pastor<br/>Sunday School - 10 a.m.<br/>Morning Worship - 11 a.m.<br/>Evening Worship - 7:30 p.m.<br/>Tuesday - 8 p.m.<br/>Wednesday Service 7:30 p.m.<br/>*****</p> <p><b>Main Street Church of Christ</b><br/>Lockney<br/>James Blair, Minister<br/>Bible Study - 9:30 a.m.<br/>Morning Worship - 10:30 a.m.<br/>Evening Worship - 6:00 p.m.<br/>Wednesday - 7:00 p.m.<br/>*****</p> <p><b>Mt. Zion Baptist Church</b><br/>Floydada<br/>Rev. Timothy Askey<br/>401 N 12th Sty. 983-5805<br/>Sunday School - 10 a.m.<br/>Morning Worship 11 a.m.<br/>Evening Worship - 6 p.m.<br/>Wednesday Study - 6 p.m.<br/>*****</p> <p><b>New Salem Primitive Baptist Church</b><br/>Floydada<br/>Pastor Elder Ronnie Hedges<br/>(806) 637-0430<br/>Sunday Singing - 10:30 a.m.<br/>Morning Worship -11 a.m.<br/>*****</p> <p><b>Out Reach Harvest Pentecostal Church</b><br/>310 Mississippi</p> | <p>Floydada<br/>Rev David Ramos, Pastor<br/>Ester Ramos, Praise Leader<br/>Sunday Bible - 10 a.m.<br/>Morning Praise - 11 a.m.<br/>Evening Praise 5 - p.m.<br/>Wed Worship - 7 p.m.<br/>*****</p> <p><b>Power of Praise Full Gospel Church</b><br/>Rev. Manuel Rendon, Pastor<br/>704 B Main, Lockney<br/>Sunday Services - 10 a.m.<br/>Sunday Evening - 5 p.m.<br/>Wednesday - 7:30 p.m.<br/>*****</p> <p><b>Primera Iglesia Bautista</b><br/>Lockney<br/>Jesus Caballero, Pastor<br/>Sunday School - 9:45 a.m.<br/>Worship Service - 11 a.m.<br/>Discipleship - 5 p.m.<br/>Wed. Service - 7 p.m.<br/>*****</p> <p><b>Primera Iglesia Bautista</b><br/>Floyada<br/>Rev. Toby Gonzales<br/>Sunday School - 9:30 a.m.<br/>Morning Worship 10:40 a.m.<br/>Evening Worship - 6 p.m.<br/>Wed Evening - 7 p.m.<br/>*****</p> <p><b>San Jose Catholic Church</b><br/>Lockney<br/>Msgr. Nickolas Rendon<br/>Wed. Communion - 8 p.m.<br/>Sunday Mass - 11:30 a.m.<br/>*****</p> <p><b>South Plains Baptist Church</b><br/>Joe Weldon, Pastor<br/>SuNday School - 10 a.m.<br/>Morning Worship - 11 a.m.<br/>Prayer Meeting - 7 p.m.<br/>*****</p> <p><b>Templo Getsemani Assembly of God</b><br/>701 W. Missouri<br/>Joe M. Hernandez<br/>983-5286 (Church)<br/>Sunday School<br/>English - 9:45 a.m.<br/>Spanish - 11 a.m.<br/>Worship<br/>Spanish - 9:30 a.m.<br/>English - 11 a.m.<br/>Evening Service 5 p.m.<br/>Wednesday 7 p.m.</p> | <p>*****</p> <p><b>St Mary Magdalen Catholic Church</b><br/>Floydada<br/>Rev. Ike Tempozza<br/>983-5878<br/>- Sunday Mass - 11:30 a.m.<br/>Mon. &amp; Wed. Mass - 6:30 p.m.<br/>Confession Sat - 10-11 a.m.<br/>*****</p> <p><b>Templo Bautista Salem</b><br/>Lockney<br/>Rev. Joe Hernandez<br/>Bun Prayer Service - 9:30 a.m.<br/>Sunday School - 9:45 a.m.<br/>Worship Service - 11 a.m.<br/>Evening Worship - 6 p.m.<br/>Wed. Meeting - 7 p.m.<br/>*****</p> <p><b>Templo Bethel</b><br/><b>Spanish Assembly of God</b><br/>Washington And 1st St.<br/>Sunday School 9:45 a.m.<br/>Morning Worship - 11 a.m.<br/>Evening Worship - 5 p.m.<br/>Wed Service - 7 p.m.<br/>*****</p> <p><b>Templo Nueva Vida</b><br/>Rev. Herman Martinez<br/>308 W. Tennessee, Floydada<br/>Sunday School - 10 a.m.<br/>Evening Worship - 5 p.m.<br/>Tuesday - 7:30 p.m.<br/>Thursday Service - 7:30 p.m.<br/>*****</p> <p><b>Trinity Assembly</b><br/>500 W. Houston<br/>Tom Ross, Pastor<br/>983-5499<br/>Sunday School - 9:30 a.m.<br/>Morning Worship - 10:40 a.m.<br/>Sunday Evening - 6 p.m.<br/>*****</p> <p><b>Trinity Lutheran Church</b><br/>Providence Community On Fm 2301<br/>293-3009<br/>Rev. Peter W. Harrington, Minister<br/>Sunday School - 9:45 a.m.<br/>Worship Service 11 - a.m.<br/>*****</p> <p><b>West Side Church of Christ</b><br/>Floydada<br/>983-2672 Or 470-0950<br/>Sunday Worship - 10:30 a.m.<br/>Sunday Evening - 2 p.m.</p> |
|-------------------------------------------------------------------------------------------------------------------------------------------------------------------------------------------------------------------------------------------------------------------------------------------------------------------------------------------------------------------------------------------------------------------------------------------------------------------------------------------------------------------------------------------------------------------------------------------------------------------------------------------------------------------------------------------------------------------------------------------------------------------------------------------------------------------------------------------------------------------------------------------------------------------------------------------------------------------------------------------------------------------------------------------------------------------------------------------------------------------------------------------------------------------------------------------------------------------------------------------------------------------------------------------------------------------------------------------------------------------------------------------------------------------------------------------------------------------------------------|-----------------------------------------------------------------------------------------------------------------------------------------------------------------------------------------------------------------------------------------------------------------------------------------------------------------------------------------------------------------------------------------------------------------------------------------------------------------------------------------------------------------------------------------------------------------------------------------------------------------------------------------------------------------------------------------------------------------------------------------------------------------------------------------------------------------------------------------------------------------------------------------------------------------------------------------------------------------------------------------------------------------------------------------------------------------------------------------------------------------------------------------------------------------------------------------------------------------------------------------------------------------------------------------------------------------------------------------------------------------------------------------------------------------------------------------------------------------------------------------------------------------------------|----------------------------------------------------------------------------------------------------------------------------------------------------------------------------------------------------------------------------------------------------------------------------------------------------------------------------------------------------------------------------------------------------------------------------------------------------------------------------------------------------------------------------------------------------------------------------------------------------------------------------------------------------------------------------------------------------------------------------------------------------------------------------------------------------------------------------------------------------------------------------------------------------------------------------------------------------------------------------------------------------------------------------------------------------------------------------------------------------------------------------------------------------------------------------------------------------------------------------------------------------------------------------------------------------------------------------------------------------------------------------------------------------------------------------------|--------------------------------------------------------------------------------------------------------------------------------------------------------------------------------------------------------------------------------------------------------------------------------------------------------------------------------------------------------------------------------------------------------------------------------------------------------------------------------------------------------------------------------------------------------------------------------------------------------------------------------------------------------------------------------------------------------------------------------------------------------------------------------------------------------------------------------------------------------------------------------------------------------------------------------------------------------------------------------------------------------------------------------------------------------------------------------------------------------------------------------------------------------------------------------------------------------------------------------------------------------------------------------------------------------------------------------------------------------------------------------------------------------------------------------------------------|

# AGRICULTURE

## Local Ranching Event Scheduled for March 2 in Turkey

Special to The Hesperian-Beacon

FORT WORTH — The Texas and Southwestern Cattle Raisers Association (TSCRA) will host a ranch gathering Thursday, March 2 at the Bob Wills Center in Turkey, Texas. Registration will begin at 5:30 p.m. followed by a complimentary beef dinner.

The event is free and open to the public.

TSCRA Special Ranger Harold Dempsey will provide a law enforcement up-

date and offer ranchers information on how they can keep their livestock and equipment safe and secure. TSCRA staff will also update cattle raisers on eminent domain reform efforts being pursued during the 2017 legislative session. Attendees will be briefed on other areas of interest to cattle raisers and the community as well.

Please RSVP to (800) 242-7820, ext. 192, or [rsvp@tscra.org](mailto:rsvp@tscra.org).

The Bob Wills Center is located at 602 Lyles Street, Turkey, Texas 79261. To get

there from the intersection of state Highway 70 and Main Street, head west on Main Street and in 0.1 mile turn south onto 8th Street. In another 0.1 mile, turn right onto Lyles Street and the event will be on the left. Follow the TSCRA signs when you arrive.

The ranch gathering is sponsored by Elanco Animal Health and Capital Farm Credit.

All members of the press are invited to attend.

## Palo Duro Basin Yearly oil and gas update

By Tom Musser  
Special for The Hesperian-Beacon

### Floyd County 2016 Oil Production:

During the Year 2016, a total of 352 barrels of oil and zero mcf of casinghead gas was produced in Floyd County from the Southwestern Petroleum, E.M. Carmickle "A" Lease (00339) Well #1, Arick Field.

From 1948 thru 2016 the E.M. Carickle "A" Lease (00339) has produced a total of 128,879 barrels of oil and 6,679 mcf of casinghead gas.

Since 1948, a total of 240,372 barrels of oil and 12,014 mcf of casinghead

gas has been produced in Floyd County.

### Floyd County Shut-In Wells which were drilled for Oil and Gas:

During the year of 2016 the following wells which had been drilled for oil and gas within Floyd county were shut-in and non-productive.

### Continental Exploration, LLC:

Adams Lease (65282) Well #1, Stanley Gray Field; Shut-in since November 2015.

### ESCO Oil Operating Company, LLC:

Maurice Campbell Lease (234802) Well #1: Shut-in since May 2007

Fowler Unit (68818) Well #1: Shut-in since January 2006

Misener Lease (69148) Well #1: Shut-in since April 2007

Stansell Lease (69367) Well #1: Shut-in since 2015

### Gordy Oil Company:

Mathis-Cartheil Lease (70436) Well #1: Shut-in since September 2015

### West Texas Royalties, Inc.:

Kenneth Broseh Lease (68969) Well #1: Shut-in since December 2011

Cox, Lease Well #1013: Shut-in since 2008

## SAVE THE DATES: Annual rainwater harvesting workshops

Special to The Hesperian-Beacon

We all know "April showers bring May flowers." However, rainfall from April showers can be used to irrigate flowers later in the year with proper use of rainwater harvesting techniques.

HPWD is hosting a series of workshops in March, April, and May to share rainwater harvesting information with area residents. The cost of each workshop is \$20 at the door. In addition, the first 25 persons to RSVP will receive a free rainwater harvesting barrel and a rain chain—courtesy of HPWD.

Workshops will be held from 6:30 p.m. to 8:30 p.m. at the following locations:

- March 30 -- Ollie Liner Center, 2000 S. Columbia, Plainview TX.
- April 6 -- Bailey County Electric Co-op, 610 E. American Blvd, Muleshoe TX.
- April 13 -- Mallet Event Center, 2320 S. U.S. 385, Levelland TX.
- April 27 -- Cole Community Center, 300 N. 16th Street, Canyon, TX.
- May 4 -- HPWD Office, 2930 Avenue Q, Lubbock, TX.

"We will have a panel of experts at each workshop who will share their hands-on experience with rainwater catchment. So whether you're a novice or already have a rainwater harvesting system, this is a great learning opportunity," said Katherine Drury, HPWD Education and Outreach Coordinator.

This is the fourth year for the HPWD sponsored workshops.

Persons are encouraged to register for the workshops by calling the district office in Lubbock at (806) 762-0181. Online registration will be available on or about February 28.

## Cotton acres likely up, grain acres down in 2017

By Adam Russell,  
Texas A&M AgriLife Communications

COLLEGE STATION — Cotton acres in Texas will likely increase as producers seek an alternative to grains this season, said a Texas A&M AgriLife Extension Service expert.

Dr. Mark Welch, AgriLife Extension grains marketing economist, College Station, said 4.5 million acres of planted wheat this crop season compared to the 6 million acres planted normally will mean Texas farmers will look for alternatives to plant. Nationally, Midwest corn acres will likely drop as farmers shift to soybeans due to favorable prices.

Texas farmers will also likely shift from corn to alternatives, most likely cotton, due to better market conditions and lower production costs, Welch said.

"Cotton performed really well in Texas last year," he said. "Conditions were perfect for most producers and with good yields and prices holding, it makes cotton a viable alternative to grains."

Water availability could also be a consideration for corn producers who might view cotton as the "biggest bang per gallon" when it comes to irrigation, he said.

Welch said there is also still concern about sugarcane aphids among many sorghum producers. The costs associated with managing the pest on those acres and sagging prices will likely deter some from planting sorghum.

"I think we'll see fewer grain acres planted and see those acres go to cotton," he said.

AgriLife Extension district reporters compiled the following summaries:

**SOUTH PLAINS:** Temperatures reached a high of 91 degrees on Feb. 11, but a cold front brought near-freezing temperatures and widespread rain days later. Rainfall ranging from 0.5-1 inch was received. Water stood on the surface of many



Courtesy photo

Texas farmers could shift more than a million acres from corn and wheat to cotton, due to better market conditions and lower production costs.

fields. The unusual winter rainfall should be beneficial for wheat and spring-planted crops. Subsoil has held moisture due to soil breaking well. Topsoil improved with recent moisture. Winter wheat continued to mature and responded positively to recent moisture. Pastures and rangeland were in fair condition. Near-freezing temperatures stressed livestock.

**PANHANDLE:** Conditions were windy with up and down temperatures. Temperatures were cold with some wintery mix of precipitation before temperatures warmed to above normal. Precipitation amounts were 0.5-2 inches. Soil moisture was mostly adequate. Field preparations were on hold due to recent weather conditions. Deaf Smith County producers were starting to apply fertilizers and finished compost spreading. Dryland winter wheat fields started to green some after the re-

cent moisture events. Stocker cattle operations were grazing as much irrigated wheat as possible and looking to stock more cattle in the near future. Land preparations continued for spring planting. Most cattle were being fed hay or cake. Field work has slowed, but as warmer weather returns field work will resume.

## Xcel Energy and FAA launch first-of-its-kind safety partnership

Special to The Hesperian-Beacon

MINNEAPOLIS - Xcel Energy announced this week a first-of-its-kind partnership with the Federal Aviation Administration to research the safe operation of drone technology to inspect critical infrastructure. The agreement involves using unmanned aircraft systems to inspect more than 20,000 miles of Xcel Energy transmission lines in 10 states. The data collected from diverse climates, conditions and geographies will be used by the federal agency to secure the nation's airspace now and in the future.

"We're proud to partner with the FAA to explore ways unmanned aircraft systems can enhance public safety while protecting the national grid and gas pipelines," said Kent Larson, Xcel Energy's executive vice president and group president of operations. "Drone technology is already giving us better inspection

data to efficiently and effectively monitor our systems, ensuring employee safety and improving reliability to better serve customers."

Among the goals of the "Partnership for Safety Plan," is to shape future FAA policies for safe and routine beyond visual-line-of-sight operations to inspect the electrical grid. In 2017, Xcel Energy plans at least one beyond visual-line-of-sight mission using drone technology along transmission lines in a rural area. The FAA and Xcel Energy will plan and develop safety measures and evaluate outcomes.

Xcel Energy has previously worked with the FAA to advance UAS guidelines for the energy sector. During the past three years, Xcel Energy has conducted more than a dozen outdoor missions using drone technology including a beyond visual-line-of-sight flight in 2016.

Last year, Xcel Energy began a year-long research

project in partnership with the state of North Dakota, the University of North Dakota and other partners to use drone technology to assess damage after severe weather events. The company is sharing its operational and safety data with the FAA and the Edison Electric Institute, an association that represents all U.S. investor-owned electric companies. Learn more about Xcel Energy's work here.

About Xcel Energy  
Xcel Energy (NYSE: XEL) provides the energy that powers millions of homes and businesses across eight Western and Midwestern states. Headquartered in Minneapolis, the company is an industry leader in responsibly reducing carbon emissions and producing and delivering clean energy solutions from a variety of renewable sources at competitive prices. For more information, visit [xcelenergy.com](http://xcelenergy.com) or follow us on Twitter and Facebook.

## SEND US YOUR NEWS!!

Email:

fchb.editor@yahoo.com

News, Pictures, Ideas, Suggestions! Send to the Editor!

### WE BUY OIL, GAS & MINERAL RIGHTS

**Both non-producing and producing, including Non-Participating Royalty Interest (NPRI)**

Please provide us your desired price when you contact us and we will evaluate for a possible offer.

**Lobo Minerals, LLC**  
P.O. Box 10906 • Midland, TX 79702  
C: 806-620-1422  
[lobomineralsllc@gmail.com](mailto:lobomineralsllc@gmail.com)

**COWPOKES®** By Ace Reid

<http://www.cowpokes.com>

© ACE REID 2/26/2017

"Doc, you told me to quit smoking' and drinkin', wul I have fer a week and I still don't feel worth a dang!"

FEATURE IS SPONSORED BY THE

Financing for: Farms, Ranches, Rural Recreational Properties and Rural Homes

**Jeff Taylor**  
806-296-5579

[plainslandbank.com](http://plainslandbank.com)

Part of the Farm Credit System



# TRIPLE YOUR PROTECTION



NEW NEXGEN B2XF & XF cotton varieties – tolerant to THREE different herbicides: dicamba, glyphosate, & glufosinate.

## NG 3406 B2XF



“ NG 3406 B2XF was a good fit for this farm. We only got two early rains with not much rain in either of them. We usually average 1,500 pounds on this field and it’s never looked as good as it does this year. NG 3406 B2XF was very easy to manage, and from what we’ve seen it has a good storm tolerance. We can’t wait to get it stripped! We also have some NG 4545 B2XF that came up really well and looks really good. We’re also excited to see how well it does. ”



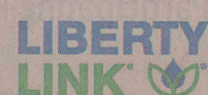
CIRCLE Z FARMS *Silverton, Texas*

Contact your local seed dealer or Americot Rep for details on AMERICOT'S FINANCE, REPLANT, CROP LOSS & DROUGHT PROGRAMS!

www.americot.com | 888.678.SEED | facebook.com/AmericotNexGen



Before opening a bag of seed, be sure to read, understand and accept the stewardship requirements, including applicable refuge requirements for insect resistance management, for the biotechnology traits expressed in the seed as set forth in the Monsanto Technology/Stewardship Agreement that you sign. By opening and using a bag of seed, you are reaffirming your obligation to comply with the most recent stewardship requirements.



Monsanto Company is a member of Excellence Through Stewardship® (ETS). Monsanto products are commercialized in accordance with ETS Product Launch Stewardship Guidance, and in compliance with Monsanto's Policy for Commercialization of Biotechnology-Derived Plant Products in Commodity Crops. This product has been approved for import into key export markets with functioning regulatory systems. Any crop or material produced from this product can only be exported to, or used, processed or sold in countries where all necessary regulatory approvals have been granted. It is a violation of national and international law to move material containing biotech traits across boundaries into nations where import is not permitted. Growers should talk to their grain handler or product purchaser to confirm their buying position for this product. Excellence Through Stewardship® is a registered trademark of Excellence Through Stewardship.

ALWAYS READ AND FOLLOW PESTICIDE LABEL DIRECTIONS. Bollgard II® XtendFlex® cotton contains genes that confer tolerance to glyphosate, dicamba, and glufosinate, the active ingredient in Liberty® brand herbicides. Glyphosate will kill crops that are not tolerant to glyphosate. Dicamba will kill crops that are not tolerant to dicamba. Glufosinate will kill crops that are not tolerant to glufosinate. Contact your Monsanto dealer or refer to Monsanto's Technology Use Guide for recommended Roundup Ready® Xtend Crop System weed control programs. Acceleron®, Bollgard II®, Bollgard II and Design®, Respect the Refuge and Cotton Design®, Roundup®, Roundup Ready® and Bollgard II® XtendFlex® are registered trademarks of Monsanto Technology LLC. ©2014-2016 MONSANTO COMPANY

Liberty® and LibertyLink® and the Water Droplet Design® are registered trademarks of Bayer. Americot® and NexGen® are registered trademarks of Americot, Inc.

# FLOYDADA SCHOOL NEWS

## Lady Winds go 1-2 in Sanford-Fritch Tournament

By Charles Keaton  
The Hesperian-Beacon

FRITCH – Floydada Lady Winds participated in the Sanford-Fritch softball tournament on Friday, Feb. 24. The Lady Winds went 1-2 in the tournament, with a victory over Clarendon and losses to Perryton and Stinnett West Texas.

In the game against Clarendon, the Lady Winds won 12-2 behind the pitching of Hannah Morales. Morales pitched four innings, allowing only one hit and two runs while striking out seven batters. Leading the way at the plate for the Lady Winds, Angela Vega went 3-3 with four RBIs and two runs and scored two runs, Karley Weems went 3-3 with two RBIs with courtesy runner Selena Espinosa scoring three runs

and Kylie Ricketts went 2-2 with one RBI and two runs scored. Clarendon scored two in the top of the first. Floydada scored one run in the bottom of the second, six runs in the bottom of the third and five runs in the bottom of the fourth.

In the second game, the Lady Winds were unable to come from behind and fell to Perryton, 9-8. Hannah Morales pitched four innings allowing nine runs on five hits while striking out five and walking two. Fielding for Floydada caused issues as the Lady Winds committed nine errors. Karley Weems went 2-3 with two RBIs, Kylie Ricketts went 1-3 with two RBIs and one run scored and Morales went 2-3 with one RBI and one run scored. Perryton scored four runs in the bottom of the fourth, one run

in the bottom of the third and four in the bottom of the fourth. Floydada scored one run in the top of the third, six runs in the top of the fourth and one run in the top of the fifth.

In the final game of the day, Stinnett West Texas pitching shut out the Lady Winds and allowed only one hit as Floydada fell 4-0. Hannah Morales pitched four innings allowing four runs on five hits while striking out three. Kylie Ricketts picked up the lone hit for the Lady Winds. Stinnett West Texas scored one run in the bottom of the first and three runs in the bottom of the second.

The Lady Winds played Crosbyton on Tuesday, Feb. 28 to open district play. They will participate in the Ralls tournament this weekend.

## Lady Winds fall to Slaton 11-9

By Charles Keaton  
The Hesperian-Beacon

SLATON – Floydada Lady Winds scored six runs in the top of the seventh inning but come-back fell short as the Slaton Tigerettes claimed the 11-9 victory.

Slaton got on the board first with a run in the bottom of the first inning. Aryanna Zapata was hit by a pitch then stole second before scoring on a double by Malory Coteld.

The Tigerettes added three more runs in the bottom of the third. Singles by Zapata and Coteld and an error that allowed Kamryn Gibbs to reach base and load the bases. Alexis Rubio also reached on an error while Zapata scored. After Coteld was picked off at third, Gibbs stole third then stole home to score the second run of the inning. Rubio also stole home to give Slaton a 4-0 lead after three innings.

In the top of the fourth, the Lady Winds put two runs on the board. Angela Suarez singled and stole second then was replaced by Valerie Espinosa as a courtesy runner. Kylie Rick-

etts doubled but V Espinosa was thrown out at home. Karley Weems singled to drive in Ricketts for Floydada's first run. With Selena Espinoza running for Weems, Angela Vega singled as S Espinosa moved to second. Clary Segura singled to drive in S Espinosa as Floydada closed the gap, 4-2, after three and one-half innings.

Slaton answered in the bottom of the fourth by adding five runs. Lizzie Thomas singled to lead off and moved second on an error that allowed Thomas to move to second. Zapata walked to load the bases. Coteld picked up a grand slam with a shot to left field, giving Slaton a 9-2 lead after four innings.

Floydada added another run in the top of the sixth on a home run by Ricketts but Slaton came back with two runs in bottom of the inning to stretch their lead to 11-3. Coteld reached on an error to lead off then moved to third on a double by Gibbs. Coteld and Gibbs both scored on a pop out to the pitcher.

In the top of the seventh, the Lady Winds scored six runs but it wasn't enough as Slaton

held on for an 11-9 win. Dora Cervera singled for Floydada to lead off the inning. Cervera stole second then moved to third on a ground out by Brooklyn Smith. Hannah Morales doubled to drive in Cervera. V Espinosa singled to drive in Morales. Denise Riojas reached on a bunt single as V Espinosa moved to second. Ricketts doubled to drive in V Espinosa but Riojas was thrown out at third. S Espinosa singled to drive in Ricketts. Vega singled, driving in S Espinosa. C Segura tripled to drive in Vega but Segura was thrown out trying to score to end the game with Slaton winning 11-9.

For the game, Floydada scored nine runs on 16 hits and committed six errors. Slaton scored 11 runs on seven hits and no errors. For Floydada, Ricketts went 3-4 with two RBIs and three runs scored, Vega went 3-4 with one RBI and one run scored, Segura went 2-4 with two RBIs and Weems went 2-3 with one RBI. Morales pitched six innings, allowing 11 runs on seven hits while striking out nine and walking three.

## South Plains College announces start of online registration for summer classes

Special to The Hesperian-Beacon

southplainscollege.edu.

LEVELLAND – Online registration for summer classes is now open to for all South Plains College campuses.

Students can register online at [www.myspc.edu](http://www.myspc.edu).

Classes for Summer Session I will begin June 5. Summer Session II will begin July 13.

Current or new students who need assistance should contact their academic advisors or the Advising

Center. Student advisors can be found when they login to MySPC.

Online registration for fall 2017 begins April 19.

For more information, contact Andrew Ruiz, Registrar, at (806) 716-2371.

## Texas A&M To Offer New Degree In Oceanography

By Keith Randall

Marketing and Communications

COLLEGE STATION, Feb. 17, 2017 – Responding to new challenges impacting the Earth's oceans, Texas A&M University's Department of Oceanography will offer a new undergraduate degree in oceanography.

The new bachelor of science degree in oceanography is necessary for several reasons, officials say.

"The exploration and exploitation of energy resources in deeper waters offshore, the continued growth of human populations along the coast, and growing efforts to predict and mitigate coastal hazards such as hurricanes, tsunamis, oil spills, and harmful algal blooms are driving an increase in the need and opportunities for well-trained ocean scientists," says Shari Yvon-Lewis, acting department head of oceanography.

"We are extremely excited, to

offer the new bachelor of science degree in oceanography. This new degree is tailored to providing skills for new oceanography-related jobs emerging as we tap further into the resources provided by the ocean, as well as skills that are transferable to a wide array of technical careers.

"This new degree will provide students with the skills they need to go directly into the workforce as well as provide a strong STEM (science, technology, engineering and math) foundation for students wanting to pursue an advanced degree. We have built professional development opportunities into the curriculum and provide opportunities for study abroad and internships."

The new major will provide education and training in one of three areas of concentration: ocean observing systems and technology; ocean climate and marine ecosystem science and health.

Some experts say geosciences

could be the defining scientific discipline of the 21st century, noting that human society of the future depends more on innovation and application of discovery in the geosciences than on any other discipline. The field is essential to solving society's critical challenges – global climate change, air and water quality, and adequate energy and food supplies.

For more information, about the new degree, go to <http://ocean.tamu.edu/academics/degrees/index.html>.

## Texas A&M researchers discover a new regulator

Special to The Hesperian-Beacon

(COLLEGE STATION, Texas) — Cancer cells' ability to invade and spread is what makes them deadly. In a study published today in the journal *Current Biology*, Texas A&M College of Medicine researchers demonstrate that mitochondria, the so-called powerhouses of the cell, play a crucial role in a tumor's ability to grow. With a better understanding of how this process is regulated, new targets for cancer treatments could be identified.

Mitochondria, the organelles inside each cell that generate energy, play a crucial role in a tumor's ability to generate the energy needed to invade healthy tissue. "Mitochondria exhibit a remarkable ability to change their shape and spatial distribution within a cell," said Raquel Sitcheran, PhD, assistant professor at the Texas College of Medicine and corresponding author of the study. "We uncovered a surprising new regu-

lator of mitochondrial dynamics that is important for promoting cancer cell invasion."

This regulator, which is called NIK, is a protein that regulates immune cell function and inflammation. Their new finding is that NIK is also present on mitochondria in brain, pancreatic and breast cancer cells. When the research team removed all NIK expression using CRISPR-Cas9 genome editing, the cancer cells were no longer able to invade. On the other hand, NIK is upregulated when a cell becomes cancerous, and the more invasive tumors had higher activation of the NIK pathway.

In cancer cells, mitochondria typically undergo fission and are small in size, allowing them to move rapidly to areas of the cell with high energy demands—usually the branches of a cell that are invading surrounding tissue. Without NIK, the mitochondria become fused and are impaired in their ability to move efficiently to areas of the cell that initiate and

drive the process of invasion.

"There's a link between NIK, mitochondrial function and cancer cell invasion," Sitcheran said. "It gives us a new angle in thinking about the role of mitochondria in cancer progression."

To understand how this works, think of the mitochondria—under normal circumstances, when they have plenty of NIK—as being able to morph into different shapes, from a slow, hulking bus to a nimble race car. "Mitochondria are very dynamic and can split, fuse and move in the cell," Sitcheran said. "When they're smaller, they can get where they need to go much more easily."

Sitcheran's work, led by doctoral student Jiung Jung and Sowndharya Ravi, was supported by grants from the Cancer Prevention and Research Institute of Texas and the National Institutes of Health.

The research team's next steps involve learning more about exactly what NIK targets in the mitochon-

dria and how NIK regulates cell migration during development.

"We've identified a new branch of the NIK signaling pathway, distinct from the known players," Sitcheran said. "We still have to understand each of the new players a bit better, but our findings highlight NIK's potential as a therapeutic target in a wide variety of deadly cancers."

**FLOYDADA SCHOOL MENU**  
**March 6 – March 10**

**Monday**  
**Breakfast** – Banana loaf, cereal, fresh fruit, milk  
**Lunch** – Bean nachos, turkey and cheese sub, refried beans, fresh fruit, vegetable bar, milk

**Tuesday**  
**Breakfast** – Cocoa Puffs cereal, graham cracker, fresh fruit, milk  
**Lunch** – Creamy macaroni and cheese, chicken tostado w/ rice, peppered broccoli florets, fresh fruit, vegetable bar, milk

**Wednesday**  
**Breakfast** – Egg, cheese & turkey sausage breakfast burrito, cereal, fresh fruit, milk  
**Lunch** – Turkey chili dog, Sloppy Joe sandwich, seasoned green beans, fresh fruit, vegetable bar, milk

**Thursday**  
**Breakfast** – Cinnamon bun, cereal, fresh fruit, milk  
**Lunch** – Chicken parmesan, chicken sandwich, peppered corn, fresh fruit, vegetable bar, milk

**Friday**  
**Breakfast** – Sausage and cheese pizza, cereal, fresh fruit, milk  
**Lunch** – Green chili chicken, enchiladas w/ rice, pepperoni pizza, spicy pinto beans, fresh fruit, vegetable bar, milk

**Giles Angus Ranch**  
Canyon, Texas

**18 months old**  
Registered  
1 Year Guarantee  
Commercial  
5 Month Guarantee  
We Deliver!

**Bulls for Sale**  
Kelly Giles 806-655-5800  
[www.GilesAngus.com](http://www.GilesAngus.com)

**i50K**  
DNA Tested  
A.I. Sires:  
GAR Prophet  
GAR Composure  
GAR Anticipation

**For the best insurance service let my agency help you.**  
See **Connie Johnson** or **Olga Chavarria!**  
**Nick Long, Agent**  
201 W. California  
Floydada, TX 79235  
(806) 983-3441  
[nick.long.cgr0@statefarm.com](mailto:nick.long.cgr0@statefarm.com)

**STATE FARM INSURANCE**  
LIKE A GOOD NEIGHBOR STATE FARM IS THERE  
Providing Insurance and Financial Services

State Farm Mutual Automobile Insurance Company  
(not in NJ) Bloomington, IL  
P0400238 12/04

# LOCKNEY SCHOOL NEWS

## Longhorns topple Whirlwinds in Bi-District, Mustangs in Area

By Charles Keaton  
The Hesperian-Beacon

PLAINVIEW – Following a one-point difference in the first quarter, the Lockney Longhorns held off the Floydada Whirlwinds to claim a 57-36 Bi-District victory on Feb. 20 at Wayland Baptist University.

The Longhorns jumped out to a 5-0 lead before the Whirlwinds tied it at 7-7 and 12-12 but Lockney's Chris Emert sank a free throw late in the quarter to give Lockney the 13-12 lead at the end of the quarter. Jaden Butler and Emert each scored four points for

the Longhorns and Garrett Hobbs scored four points for the Whirlwinds.

In the second quarter, the Longhorns outscored the Whirlwinds 14-6 to give Lockney a 27-18 half time lead. Butler led the Longhorns with eight points and Jesse Segura and Jordan Mendoza scored two points each in the quarter.

Lockney continued to stretch their lead in the third quarter, outscoring Floydada 15-10, to take a 42-28 lead. Emert led the Longhorns with five points and Segura and Abraham Perez scored three points each for the Whirlwinds.

The Longhorns out-

scored the Whirlwinds 15-8 to claim the 57-36 victory and move on in the playoffs. For Lockney, Jonathan Rodriguez scored six points and for Floydada, Hobbs scored six points.

For the game, Lockney shot 39 percent and grabbed 45 rebounds and Floydada shot 25 percent and grabbed 35 rebounds.

Individually for Lockney, Butler scored 17 points, Jaden Rosales, Rodriguez and Emert scored 11 points, Luke Kasner scored five points and Tavian Walrath scored two points.

Individually for Floydada, Hobbs scored 13 points, Perez scored seven

points, Segura scored five points, Remington Ricketts scored four points, Albert DeHoyos scored three points and Brayden Campbell, and Mendoza scored two points each.

In other Bi-District action involving Districts 3-2A and 4-2A, New Deal defeated Bovina 65-59, Farwell defeated Post 72-49 and Abernathy defeated Olton 45-31.

In Area action, Lockney defeated the Wheeler Mustangs, 72-66, on Friday, Feb. 24. They played New Deal, who defeated Stratford 76-72, in the Regional Quarterfinals on Tuesday, Feb. 28.

## Lady Horns go 1-3 in Slaton Tournament

By Charles Keaton  
The Hesperian-Beacon

SLATON – Lockney Lady Horns went 1-3 in the Slaton Tournament on Feb. 23-24. They picked up a win over Tulia and lost to Slaton, New Deal and Denver City.

On Feb. 23, the Lady Horns defeated Tulia 19-1.

On Feb. 24, Slaton defeated the Lady Horns 21-4 in the first game of the day.

In the second game, New Deal defeated Lockney 8-5.

In the final game of the day, Denver City defeated the Lady Horns 10-0.

The Lady Horns were scheduled to play Idalou on Tuesday, Feb. 28, the same day as the Longhorns were playing their Regional Quarterfinals basketball game. The Lady Horns open district play on Saturday, March 3 and will travel to Crosbyton on March 7.

## Longhorns open baseball season with win over Memphis

By Charles Keaton  
The Hesperian-Beacon

LOCKNEY – Lockney Longhorns began their baseball season a little short-handed as several players are still part of the Area Champions basketball team. The Longhorns opened with a 6-2 victory over the Memphis Cyclones, Thursday, Feb. 23.

The Longhorns struck first with six runs in the bottom of the second to take a 6-0 lead. Noel Cineceros led off with a walk, then Devin DeLeon was hit by a pitch. With Josiah Rodriguez at bat, Cineceros stole third then stole home as DeLeon stole second and moved to third on an error. Rodriguez reached base on a dropped third strike that also allowed DeLeon to score. Shawn Marquez doubled then Clay Moore grounded out as Rodriguez scored. Ruben Marmolejo tripled to right sending Marquez home. Marmolejo scored on a passed ball then Nick Rendon tripled past the third baseman. Rendon then scored on a passed ball to give Lockney a 6-0 lead after two innings.

The Cyclones picked up their first run in the top of the fifth. The lead-off batter

doubled then stole third and home. The Longhorns led 6-1 after five innings.

Memphis picked up their second run after the lead-off batter walked, moved to second when the second batter walked then moved to third on a single by the third batter. The lead-off batter then stole home to make it 6-2.

Neither team added to the scoreboard as the Lockney Longhorns picked up their first win of the year, 6-2 over the Memphis Cyclones.

For the Longhorns, Marmolejo picked up the win by pitching four innings and only allowing one hit while striking out seven batters, Bryce Reese pitched two innings, allowing two runs on two hits while striking out four and Moore picked up the save by pitching one inning and allowing one hit and striking out one.

Offensively for the Longhorns, Moore went 1-2 with one RBI, Marmolejo went 1-2 with one RBI and one run scored and Rendon went 1-3 with one run scored.

Lockney was scheduled to play Kress on Feb. 28 at the same time as the Regional Quarterfinal basketball game. The Longhorns are scheduled to play in the Tulia Tournament March 2-4.

## Lady Horns fall in softball opener

By Charles Keaton  
The Hesperian-Beacon

LOCKNEY – Roosevelt pitching only allowed one hit to the Lockney Lady Horns and took home a 12-0 win in the opening game for the Lady Horns.

Roosevelt scored three runs in the top of the first. Ford led off the top of the first with a walk followed by a walk by Salazar. Cortez reached on a one-out error that allowed Ford to score. Hernandez then doubled to drive in Sala-

zar and Cortez as the Lady Eagles took a 3-0 lead.

In the top of the second, the Lady Eagles added five more runs. P Brown singled to lead off then Ford tripled to drive in Brown. Ford scored on an error by the catcher. With one out, Castro singled. L Brown came in to run for Castro and moves to second on a fielder's choice. Hernandez reached on an error that allowed Cortez to score. Hernandez scored on a wild pitch. Castor walked then

Mendez singled. Bond singled to drive in Castro, giving Roosevelt an 8-0 lead after two innings.

In the top of the third, the Lady Eagles added two more runs. Salazar drew at one-out walk, stole second and moved to third on a wild pitch. With two outs, Cortez singled to drive in Salazar. Cortez stole second then moved to third on a single by Hernandez. Cortez then scored on an error to make it 10-0 for the Lady Eagles.

Roosevelt added two more

runs in the top of the fifth. With one out, Castro singled then scored on a double by Cortez. Hernandez singled to drive Cortez to third. Castro grounded out but Cortez scored on the play to give the Lady Eagles a 12-0 lead and the win.

Reagan Nuncio took the loss, pitching five innings, allowing 12 runs on 12 hits while striking out seven and walking five. Alyssa Barretero picked up the only hit for the Lady Horns, going 1-2 at the plate.

### LOCKNEY JR. HIGH HONOR ROLLS

#### "A" Honor Roll

6th Grade  
Hailey Aull

7th Grade  
Gabriella Cervantes

8th Grade  
Jessica Hernandez, Hunter Lefevre, Dylan Morgan

#### "AB" Honor Roll

6th Grade  
Cristian Ascencio, Thalia Ascencio, Senayda Bernal, Eddeny Chavira, Aracely Cuellar, Sabrie Gutierrez, Madison Johnson, Lexi Morgan, Elijah Sotogonzalez, Valeria Tijerina, Karen Trenado, Deacon Widener, Bree'Anna Williams, Andrea Zarate Guerrero

7th Grade  
Mireya Ascencio, Hunter Flick, Damion Gonzales, J'Ann Pena, Caleb Pritchard, Austin Rodriguez, Brianna Rodriguez, Taylor St. Dennis

8th Grade  
Justin Abbott, RyAnn Castillo, Fette Jackson, Audrey Rexrode, Jayda Rosales, Cristal Sanchez, Kristina Sanchez, Vanessa Tijerina

### LOCKNEY HIGH SCHOOL HONOR ROLLS

#### "A" Honor Roll

9th Grade  
Anahi Ascencio, Diego Azua, Emily Longoria, Tyra Rosales

10th Grade  
Lyndee Setliff

11th Grade  
Ryann Araujo, Alyssa Barretero, Ricky Cuellar, Alyssa Gutierrez, Karissa Petty, Nohelia Salazar, Destiny Soliz

12th Grade  
Lizzie Belt, Tabetha Bigham, Shelby Dunbar, Seattle Jackson, Luke Kasner, Tavian Walrath

#### "AB" Honor Roll

9th Grade  
Madai Chavira, Tatyanna Cienfuegos, Jerry Franklin, Edwi Martinez, Brett Moore, Joshua Short

10th Grade  
Austin Ascencio, Madison Chance, Tyrell Egnew, Mason Etsy, Bryson Hallmark, Maykala Hernandez, Sierra Landeros, Austin Ledesma, Reagan Nuncio, Haley Sanchez, Fernando Valdez, Bryson Walker

11th Grade  
Aleah Jimenez, Sara Keyser, Julio Lara, Shawn Marquez, Alma Mendez, Nimsi Perez, Austen Rexrode, Nickolas Rendon, Jaden Rosales

12th Grade  
Calvin Borunda, Emiliee Encizo, Valerie Hernandez, Hannah Kidd, Maria Palomin, Lucas Rendon, Salvador Ruiz, Haley Walker



### LOCKNEY SCHOOL MENU

March 6 – 10

Monday, Mar. 6

Breakfast – Waffles, Bacon, Fruit Juice, Fruit, Milk

Lunch – Pizza Choice or Hamburger, Oven Fries, HB Garnish, Baby Carrots Mixed Fruit, Milk

Tuesday, Mar. 7

Breakfast – Biscuit and Gravy, Scrambled Eggs, Ham, Fruit Juice, Fruit, Milk

Lunch – Ham and Cheese Pretzel Sandwich or Asian Bowl, Tomato/Cucumber Cup, Garden Salad, Fruit, Milk

Wednesday, Mar. 8

Breakfast – Cinnamon Roll, Sausage, Fruit Juice, Fruit, Milk

Lunch – Chicken Alfredo, Tuscan Veggies, Breadstick or Texas Basket, Carrot Coins, Apple Slices, Milk

Thursday, Mar. 9

Breakfast – Sausage, Egg and Cheese Pretzel Sandwich, Fruit Juice, Fruit, Milk

Lunch – Fish Strips and Toast or BBQ on a Bun, Cole Slaw, Pinto Beans, Orange Smiles, Milk

Friday, Mar. 10

Breakfast – Breakfast Burrito or Hash Browns, Fruit Juice, Fruit, Milk

Lunch – Chicken Bowl with Roll and Gravy or Philly Cheese Steak with Potato Rounds, Green Beans, Fruit, Milk

## Texas A&M Prof Offers Clues Why Sahara Desert Was Once A Rainy Place

Special to The Hesperian-Beacon

COLLEGE STATION, Nov. 30, 2016 – As little as 6,000 years ago, the vast Sahara Desert was covered in grassland that received plenty of rainfall, but shifts in the world's weather patterns abruptly transformed the vegetated region into some of the driest land on Earth. A Texas A&M university researcher is trying to uncover the clues responsible for this enormous climate transformation – and the findings could lead to better rainfall predictions worldwide.

Robert Korty, associate professor in the Department of Atmospheric Sciences, along with colleague William Boos of Yale University, have had their work published in the current issue of Nature Geoscience.

The two researchers have looked into precipitation

patterns of the Holocene era and compared them with present-day movements of the intertropical convergence zone, a large region of intense tropical rainfall. Using computer models and other data, the researchers found links to rainfall patterns thousands of years ago.

"The framework we developed helps us understand why the heaviest tropical rain belts set up where they do," Korty explains.

"Tropical rain belts are tied to what happens elsewhere in the world through the Hadley circulation, but it won't predict changes elsewhere directly, as the chain of events is very complex. But it is a step toward that goal."

The Hadley circulation is a tropical atmospheric circulation that rises near the equator. It is linked to the subtropical trade winds, tropical rainbelts, and affects the po-

sition of severe storms, hurricanes, and the jet stream. Where it descends in the subtropics, it can create desert-like conditions. The majority of Earth's arid regions are located in areas beneath the descending parts of the Hadley circulation.

"We know that 6,000 years ago, what is now the Sahara Desert was a rainy place," Korty adds.

"It has been something of a mystery to understand how the tropical rain belt moved so far north of the equator. Our findings show that large migrations in rainfall can occur in one part of the globe even while the belt doesn't move much elsewhere.

"This framework may also be useful in predicting the details of how tropical rain bands tend to shift during modern-day El Niño and La Niña events (the cooling or warming of waters in the

central Pacific Ocean which tend to influence weather patterns around the world)."

The findings could lead to better ways to predict future rainfall patterns in parts of the world, Korty believes.

"One of the implications of this is that we can deduce how the position of the rainfall will change in response to individual forces," he says. "We were able to conclude that the variations in Earth's orbit that shifted rainfall north in Africa 6,000 years ago were by themselves insufficient to sustain the amount of rain that geologic evidence shows fell over what is now the Sahara Desert. Feedbacks between the shifts in rain and the vegetation that could exist with it are needed to get heavy rains into the Sahara."

The project was funded by the National Science Foundation.



# Mobile Breast Mammography to be in Floydada

Special to The Hesperian-Beacon

CovenantHealth and Arrington Comprehensive Breast Center Mobile Mammography is scheduled to be in Floydada on Thursday, March 9, 2017 at A.B. Duncan Elementary (10111 South 8th Street, Floydada).

To schedule an appointment the patient needs to call our Mobile Mammography Scheduling Office at 1-877-494-4797 or 806-725-6579. Scheduling hours are Monday - Thursday, 8 a.m. - 5:30 p.m. and Friday, 8 a.m. - 12 p.m. This process will ensure complete confidentiality of personal, demographic and insurance information.

Scheduling by phone usually takes less than 5 minutes and eliminates many of the forms you would normally fill out. We accept most medical insurance plans, Medicare and Medicaid and for those in need, we also offer financial assistance through our partnership with the Susan G. Komen Foundation - Lubbock Area affiliate.

Before you schedule your appointment, please verify that you are: (1) age 40 or

over (no doctor's order required). If you are under age 40, a doctor's order is required; (2) Need to have a physician of record; (3) Have not had a mammogram in the last year (365 days); (4) You do not have a palpable lump in breast area or any physical problems with breast, like swelling, pain, discharge, ect...

When you schedule your appointment, you will need to provide: (1) Insurance information; (2) The location of your previous mam-

mogram; (3) Any changes in address or phone number.

Additionally, to assist us in the preparation of our mobile unit and equipment please let us know if our wheelchair lift will be needed. Also, please let us know if you have breast implants.

On your appointment day, you will need to bring your insurance card to the appointment. We also ask that you do not wear deodorant or powder. After your screening, we will provide deodorant wipes for your use.



## Love is Worth It

"Love hurts, by another. Really, it's the story of a love scars, love wounds and mars at my most unlovable. / Any heart not tough nor strong enough To take a lot of pain, take a lot of pain / Love is like a cloud, holds a lot of rain / Love hurts" (Love Hurts, first recorded/popularized by The Everly Brothers in 1960).

Happy Valentine's Day! Don't the above lyrics make you feel all warm and lovey-dovey inside?

This song probably finds its mark with teenagers experiencing a first breakup (it's true what they say, all the songs begin to make sense when you're in love - even the breakup songs!), though other folks might try to take its emotionalism in stride. Most people have learned to minimize the hurts of love, rationalizing away the emotion and finding some comfort in "big picture" solutions. But I think the hearts that feel the greatest love are also the hearts which remain open to the greatest pain. Woe unto us when - for the sake of painless lives - we forget how to love openly!

I'm not emotional masochist, I have no martyr's complex about the romanticism of suffering for love's sake, but there is a profundity in loving someone who doesn't want to be loved, loving someone despite the pain it brings. It's not romantic, it's gritty; it's not always happily-ever-after, it's life. It's a mother who refuses to give up on her children, although they have wandered far from wholesome living; it's a wife who continues to have hope for her husband, though he's decided the play the field; it's a friend who stays loyal, even when he's been betrayed

God who loves me, even when I am at my most unlovable.

Whom can God love? Even a people of whom he says, "There is no faithfulness or steadfast love, and no knowledge of God in the land; there is swearing, lying, murder, stealing, and committing adultery; they break all bounds, and bloodshed follows bloodshed" (Hosea 4:1f). No, the book of Hosea doesn't condone those actions, but it does reaffirm the love of God for people. Despite all of Israel's unrighteousness, unfaithfulness, and betrayal, God says, "I will heal their apostasy; I will love them freely, for my anger has turned from them" (Hosea 14:4).

Love is the most powerful force. Without it no one stands, with it the weakest become strong and bold. Loving this way is not an easy-to-navigate field, so the book of Hosea ends with these words: "Whoever is wise, let him understand these things; whoever is discerning, let him know them; for the ways of the LORD are right, and the upright walk in them, but transgressors stumble in them" (14:9).

Choose to be like God and learn to love others. "By this we know love, that he laid down his life for us, and we ought to lay down our lives for the brothers ... Little children, let us not love in word or talk but in deed and in truth" (1 John 3:16, 18).

Levi Sisemore preaches for the 37th Street church of Christ, meeting Sunday for Bible Classes (9:30 AM), Worship (10:30 AM & 5:00 PM); Wednesday for Bible Classes (7:00 PM). [snyder37church@gmail.com](mailto:snyder37church@gmail.com)

# Wit and Wisdom

By Charles Keaton  
The Hesperian-Beacon

(Note: All quotes from Groucho Marx)

A child of five would understand this. Send someone to fetch a child of five.

Age is not a particularly interesting subject. Anyone can get old. All you have to do is live long enough.

From the moment I picked up your book until I laid it down, I was convulsed with laughter. Some day I intend reading it.

I could dance with you until the cows come home. On second thought I'd rather dance with the cows until you come home.

I never forget a face, but in your case I'll be glad to make an exception.

I sent the club a wire stating, PLEASE ACCEPT MY RESIGNATION. I DON'T WANT TO BELONG TO ANY CLUB THAT WILL ACCEPT ME AS A MEMBER.

It isn't necessary to have relatives in Kansas City in order to be unhappy.

Military justice is to justice what military music is to music.

There's one way to find out if a man is honest-ask him. If he says, "Yes," you know he is a crook.

Those are my principles, and if you don't like them... well, I have others.

# Cracks Can Cause Hazards in Trees

Special to The Hesperian-Beacon

Tree failure is a major cause of property damage, especially after high-winds. If the wind is strong enough, even healthy trees can be uprooted or broken. But it might not take a storm or high winds to cause a cracked or rotted tree to fail under its own weight.

"Homeowners worried about trees falling and damaging property should call a qualified arborist for an on-site inspection," advises Tchukki Andersen, BCMA, CTSP® and staff arborist with the Tree Care Industry Association (TCIA). Andersen notes that trees are genetically designed to withstand storms, but all trees can fail - and defective trees fail sooner than healthy trees.

"To a professional arborist," notes Andersen, "certain defects are indicators that a tree has an increased potential to fail."

Cracks in tree trunks can be one of the major indica-

tors of an unstable tree. Most cracks are caused by improper closure of wounds or by the splitting of weak branch unions. They can be found in branches, stems or roots, and vary in type and severity:

There are horizontal and vertical cracks. Horizontal cracks run across the grain of the wood and develop just before the tree fails, making them very difficult to detect. Vertical cracks run with the wood grain along the length of the tree and may appear as shear or ribbed cracks.

Shear cracks can run completely through the stem and separate it into two halves. As the tree bends and sways in the wind, one half of the stem slides over the other, elongating the crack. Eventually the enlarging crack causes the two halves of the stem to shear apart.

Ribbed cracks are created as the tree attempts to seal over a wound. Margins of the crack meet and mesh but are reopened due to tree

movement or extremely cold temperatures. Thicker annual rings are created in order to stabilize the developing crack at the location of the wound. This forms the ribbed appearance over a period of many years.

These cracks put a tree at high risk of failure, and are especially dangerous when combined with other defects or with advanced decay.

A qualified arborist can determine the potential for failure by measuring the shell thickness in a few locations around the tree's circumference, determining the width of the crack opening, and looking for the presence of any other type of defect.

What is the risk?

Cracks are hazardous because they compromise the structure of the tree. They can eventually split the stem in two, and are very dangerous when combined with internal decay. The presence of multiple cracks and decay indicates a potentially hazardous tree.

Prices Good Thru 03/25/17

# LUCK OF THE IRISH SALES EVENT

Store #50

102 East Houston Floydada  
806-983-5773

Store #59

209 South Main St Lockney  
806-652-3727



WAKE UP WITH A FRESH COFFEE OR CAPPUCCINO

CLINT & SONS JERKY \$4.99

TERIYAKI OR BLACK LABEL 3 oz.

Catfish Basket

Two Fillets & Potato Wedges

## EXTRA SAVINGS

Oh yeah! It's That Good

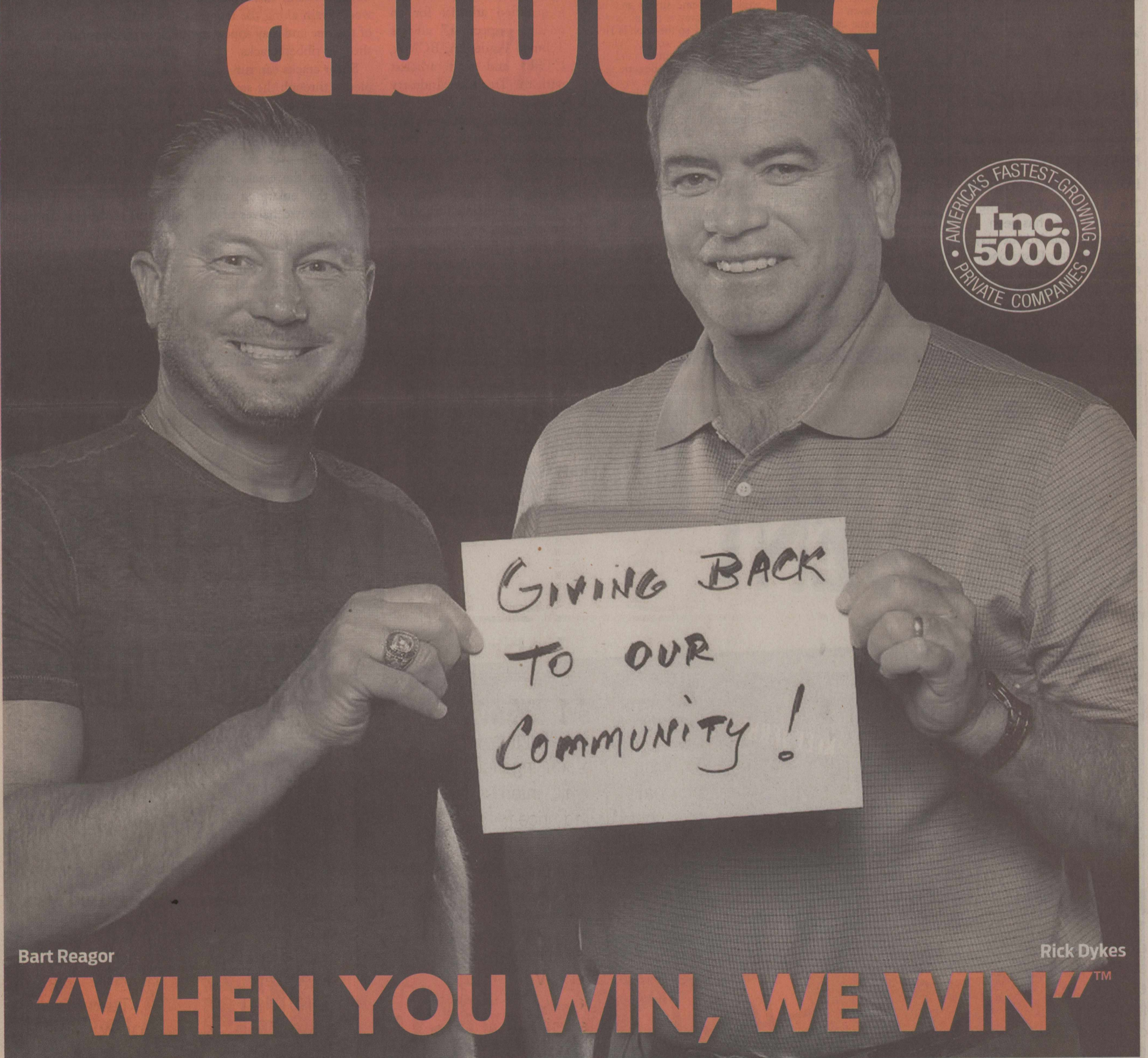
PEPSI 1893 OR MTN DEW BLACK 2\$3 FOR 16 OZ., ONE AT REG. PRICE OR

## Ice Cream Sandwiches

Vanilla, Mississippi Mud, or Neapolitan, 6 oz.

99¢

# What are we passionate about?



Bart Reagor

Rick Dykes

## "WHEN YOU WIN, WE WIN"<sup>TM</sup>

"YOUR FRIEND IN THE CAR BUSINESS"<sup>TM</sup>

FIND NEW ROADS

CHEVROLET 



### reagordykeschevrolet.com

221 South Main Street • Floydada, Texas • 806-983-3787

 [blog.reagordykesautogroup.com](http://blog.reagordykesautogroup.com)
 [@Reagor\\_Dykes](https://twitter.com/Reagor_Dykes)
 [facebook.com/reagordykesautogroup](https://facebook.com/reagordykesautogroup)
 [reagordykesautogroup](https://reagordykesautogroup)
 [pinterest.com/reagordykes](https://pinterest.com/reagordykes)

# Hesperian-Beacon Market Place

Phone: 888-400-1083 • Email: fchb.editor@yahoo.com • 201 W. California, Floydada

## BULLS

**CHAROLAISBULLS** for sale. Registered, home raised, breeding age bulls. Call Greg Parr - (806) 681-6315. 3-31p

## HELP WANTED

**HAMMOND SHEET METAL** is looking to hire a full-time employee. Must have clean professional appearance and be

punctual. Good physical condition and have the ability to lift and carry at least 100 lbs. Jobs can require working from ladders, in attics and under houses. Passing a criminal back ground check and being registered with the state is required. Pick up application at Hammond Sheet Metal, 105 N 5th, Floydada, Texas. 3-16c

## SERVICES

**AMADO MORALES CONCRETE WORK** - Driveways, sidewalks, curbs, gutters, patios, barn slabs. Call 806-983-7486. 8-31

**LARRY OGDEN AUCTIONEERING - FLOYDADA** Estates, Farm, Ranch, Business, Liquidations, State Licensed and Bonded. 806-983-5808. TX #9240. tfn

**Children's Eye Exams**  
Medicaid, Chip, Most Insurances  
3415 19th Street Lubbock  
806-796-2020

## PUBLIC NOTICES

**PUBLIC NOTICE**  
Lockney General Hospital District has one seat opening on the Board of Directors. Petitions for candidates are available at the administrator's office, 320 North Main in Lockney, Texas, and are due back by March 12, 2017.



**Mesothelioma** EXPERIENCE COUNTS  
Lawyers with more than 100 years combined experience.

may occur 30 to 60 years after exposure to asbestos. Many workers were exposed from the 1940s through the 1970s. Industrial and construction workers, along with their families (second hand exposure) are among those at risk for mesothelioma, lung cancer or gastro cancer (throat, stomach, colon). Call us for professional insight.

Ryan A. Krebs, M.D., J.D.  
Doctor-Lawyer in Full-time Law Practice  
Richard A. Dodd, L.C.  
Timothy R. Cappolino, P.C.  
Board Certified Personal Injury Trial Law and Civil Trial Law by the Texas Board of Legal Specialization  
NO FEE FOR FIRST VISIT  
OFFICES IN HOUSTON, CONROE, TEMPLE AND AUSTIN.  
PRINCIPAL OFFICE IN CAMERON

**1-800-460-0606**  
www.AsbestosLaw.com

**WE BUY OIL, GAS, & MINERAL RIGHTS**

Both non-producing and producing including Non-Participating Royalty Interest (NPRI)  
Provide us your desired price for an offer evaluation.

CALL TODAY: **806.620.1422**

**LOBO MINERALS, LLC**  
PO Box 1800 • Lubbock, TX 79408-1800  
LoboMineralsLLC@gmail.com

**Public Notice Q&A**

**What is a public notice?**

It's information about important government activities. Notice in the newspaper is required for a good reason - to make sure it's NOTICED. It's crucial to government transparency...and government accountability.

Your local paper is the most visible, independent source for this crucial service. We not only print notices in the paper, but post them on our website and a statewide website at no extra charge. And they're archived forever, so there's a permanent and unalterable record.

Texas newspapers have published public notices since 1836. As your hometown paper, we're proud to provide this service to our communities.

**www.TexasPublicNotices.com**  
for free access to legal notices in Texas newspapers

A public service provided by member newspapers of the Texas Press Association

## Limited Time, Special Offer Below!

It's easier than ever to wake up with...

# The Floyd County Hesperian-Beacon

**\*Subscribe to the Hesperian-Beacon each week and get it every day online for FREE!**

NEWS • SPORTS • OBITS • LEGALS  
AGRICULTURE • COLUMNS • CLASSIFIEDS

NAME \_\_\_\_\_  
STREET \_\_\_\_\_  
TOWN \_\_\_\_\_ ZIP \_\_\_\_\_  
TELEPHONE ( ) \_\_\_\_\_

EXPIRATION DATE \_\_\_\_\_ V CODE \_\_\_\_\_  
MM/YY on back of card

SIGNATURE: X \_\_\_\_\_  
Email Address for FREE Online Sub: \_\_\_\_\_

**\*For a limited time, get a complimentary online subscription with the purchase of a print subscription!**

CHOOSE SELECTION(S):

In County Resident Annually \$36  Out of County Resident Annually \$42  
 Out of State Resident Annually \$52  Online FREE

PAYMENT BY PHONE: 888-400-1083, Ext. 100  
OR MAIL CHECK TO: Blackburn Media Group, P.O. Box 1260, Childress, Texas 79201  
Thank you for your business!  
www.hesperianbeacononline.com

# TEXAS STATEWIDE CLASSIFIED ADVERTISING NETWORK

# TexSCAN

TexSCAN Week of February 26, 2017

**ADVERTISING**  
**YOUR STATEWIDE ADVERTISEMENT** will be sent to all participating newspapers for publication during the week you specify. Ads can be purchase for statewide distribution or by region. Call now, 1-512-477-6755. www.texaspress.com/advertising.

**MINERALS OIL & GAS**  
We buy oil, gas & mineral rights. Both non-producing and producing including non-Participating Royalty Interest (NPRI). Provide us your desired price for an offer evaluation. CALL TODAY 1-806-620-1422. www.lobomineralsLLC@gmail.com.

**HEALTH / MEDICAL**  
**MALE ENHANCEMENT PUMP.** Get Stronger & Harder Immediately. Gain 1-3 inches permanently and safely guaranteed results. FDA Licensed. FREE Phone Consultation: 1-800-354-3944. www.drjoelkaplan.com.

**ACREAGE**  
**10-20 acres, Dúval County**, north of San Diego; Live Oak County, south of Georgewest; Kinney County, southwest of Brackettville. Deer, hogs, turkey, quail. 30 yr. owner financing, 5% down. 1-866-286-0199. www.texasbrushcountry.com.

**ADOPTION**  
**Dear Birthmom- Happy**, single, Jewish women, spiritually & financially secure. Will provide loving for your baby. Openness welcome / be blessing to know you. CONTACT Andrea, 610-659-7989.

**PILOT TRAINING**  
**Kansas State Polytechnic.** Become a FAA certified drone pilot. A part 107 training course. May 12- 14th. Dallas, Texas. Register Today! Call now 1-785-826-2633. Ksu-uas.com/training.

**DRIVERS WANTED**  
**CDL TRUCK DRIVERS WANTED.** Belly Dump. End-Dump. Pneumatic. Well Maintained Trucks. Insurance Package. Driver Bonuses. Call now. 1-405-942-4658. www.browntransportation.com 1-855-755-5545. EOE. Oklahoma City,OK.Davis,OK.Denton, TX.

**EDUCATION**  
**Medical Billing and Coding Career Training** at Sullivan and Cogliano Training Centers Call 1-888-535-9909 or click learn.sctrain.edu

**CDL TRAINING**  
**DRIVER - CDL A TRAINING.** \$500 - \$1000 Incentive Bonus. No Out of Pocket Tuition Cost! Get Your CDL In 22 Days.6 Day Refresher Courses Available. Minimum 21 Years. 1-855- 755-5545. EOE. www.kllmdrivingacademy.com.

**AVIATION**  
**AIRLINE MECHANIC TRAINING** - Get FAA certification. Approved for military benefits Financial Aid if qualified. Job placement assistance. Call Aviation Institute of Maintenance, 1-800-475-4102.

**EDUCATION**  
**QuickBooks and Payroll Career Training** at Sullivan and Cogliano Training Centers Call 1-888-535-9909 or click learn.sctrain.edu Financial Aid Available to those who qualify. Sctrain.edu/disclosures

**SAWMILLS FOR SALE**  
**SAWMILLS from only \$4397.00-** MAKE & SAVE MONEY with your own bandmill- Cut lumber any dimension.In stock ready to ship! FREE info/DVD: www.norwoodsawmills.com, 1-800-578-1363, Ext.300N.

**NOTICE: While most advertisers are reputable,** We cannot guarantee products or services advertised. We urge readers to use caution and when in doubt, contact the Texas Attorney General at 1-800-621-0508 or the Federal Trade Commission at 1-877-FTC-HELP. The FTC web site is www.ftc.gov/bizop

# FHS Classes Come Together to Build Structure

Special to the Hesperian-Beacon

After many hours of prep work, planning and actual construction, the Advanced Building Trades class along with the Ag. Mechanics class completed a large building project.

The group constructed a large metal storage building adjoining the Ag. Shop on the High School Campus. Students were involved in the prep work and demolition of a fenced area. They hauled away trash and junk and cleared the area for the new structure.

Next, the students worked on the layout of the storage facility. The large odd shape of the area presented problems in correct measurements and squaring cor-

ners. A drawing of the building was necessary to see the shape and the needs for the structure. The most advanced students actually constructed the storage building.

The building was made of 4" square tubing, 2" square tubing, 6" Cee Purlin and Receiver Channel. There were obstacles and problems during this project, but the students worked and adjusted to each situation. They learned to communicate with each other and were able to plan the next step.

"The students were really proud of the final results, and the metal storage is already being used. It was a great project and Ms. Alejandra Munoz and I are proud of how the boys preformed," - Mr. Tommy Rambo.



Courtesy photo  
The Advanced Building Trades class along with the Ag. Mechanics class constructed a large metal storage building adjoining the Ag. Shop on the High School Campus. Students were involved with every aspect—from hauling off trash, preparing the ground, to building the structure.

## Appreciation lunch



Courtesy Photo  
Texas Plains Federal in Floydada presented a lunch, a poster size card with signatures, and t-shirts for the Floydada Police Department to show our appreciation for their hard work last Friday, February 24. Shown are (left to right) Michael Knowles, Texas Plains Federal, Darrell Gooch, Floydada Police Chief, Landon Walker, Floydada police officer, Ruben Ramon, Floydada police officer, Robert Angeloff Floydada police officer, and Laura Turner, Texas Plains Federal in Floydada.

## Area State Parks Offer Plenty During Spring Break

By Kay Ellington  
The Hesperian-Beacon

Have the pleasant, sunny days made your family excited and ready to get outdoors for Spring Break? Both Floydada and Lockney School Districts are having spring break March 13-17, and area state parks have plenty of ways for families to enjoy the great outdoors.

**Caprock Canyons**  
March 14 - 9 to 10:30 a.m. Canyon Walk & Talk, a guided nature hike where anything from the geology, history, flora, and fauna of the park will be discussed.

March 15 - 8:30 to 10 p.m. Constellations in the Canyons: Join astronomer Arthur Schneider to view constellations and planets with his large telescopes underneath one of the darkest night skies in Texas!

March 16 - 2 to 3 p.m.



Courtesy photo

Join astronomer Arthur Schneider for Constellations in the Canyons at Caprock Canyons State Park Wednesday evening March 15 from 8:30 to 10 p.m. View constellations and planets with his large telescopes underneath one of the darkest night skies in Texas.

**Animal Bingo.** Want to play a fun game and learn about animals at the same time? Then, this program is for you. Join us to play Animal Bingo where we will have fun, learn about some of the animals of Caprock Canyons State Park, and win some fun prizes!

March 17 - 2 to 3 p.m. **Skins and Skulls.** You can learn a lot about an animal just from observing features of their skins and skulls. Join us for this hands-on presentation to discover the unique attributes of many of the animals of Caprock Canyons State Park.

**The Floyd County Courthouse will be CLOSED until 1:30 PM on Monday, March 6, 2017 for employee training.**

**Thank you for your understanding and we apologize for any inconvenience.**

**The Floyd County Tax Assessor's Office will be CLOSED until 1:00 PM on Thursday, March 9, 2017 for the installation of new equipment.**

**Thank you for your understanding and we apologize for any inconvenience.**

**Get a free online subscription with a print subscription!**

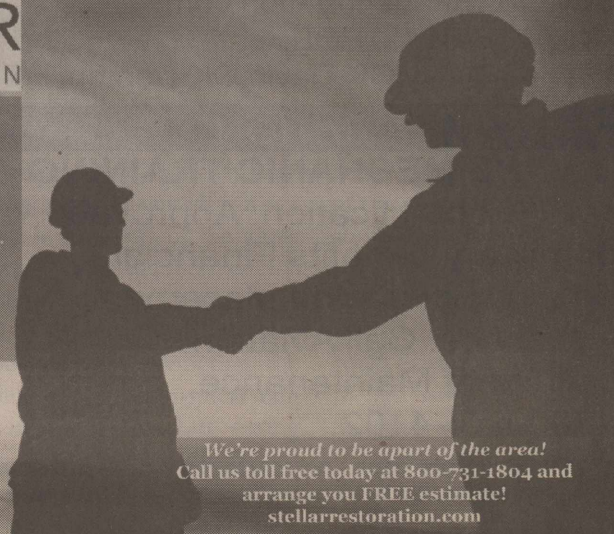
Call: 888-400-1083



## STELLAR RESTORATION

We provide a comprehensive range of services, from all aspects of insurance loss restoration to general contracting, and commercial/multi-family roofing, we will help guide you through the entire construction and insurance recovery process. We will help you develop innovative solutions to meet or exceed your restoration project goals!

- Restoration Services
- General Contracting
- Commercial Roofing



We're proud to be a part of the area! Call us toll free today at 800-731-1804 and arrange you FREE estimate! [stellarrrestoration.com](http://stellarrrestoration.com)