

# THE OBSERVER/ ENTERPRISE

Single Copy 50¢



Serving Coke County

(USPS 467-480)  
(ISSN 8750-197X)

Vol. 127, No. 05

Friday, August 8, 2014

## Back to School Swim Party set for 4-H members

The annual end of summer, back to school swim party will be held at the Robert Lee Swimming pool on August 18, 2014, from 6 pm to 8 pm. This is the first opportunity of the year to enroll in 4-H for the 2014-2015 year and to meet other 4-H members from Coke County. Dues are \$20 if signed up before October 31, 2014.

## Shooting Sports Meet and Greet scheduled

Coke County 4-H Shooting Sports will be starting back this fall and we are having a meet and greet at 5:00 at the show barn prior to the back to school swim party. This will allow anyone that is interested to ask questions and meet some of the team members.

## Tax-Free Weekend set for August 8-10

Texas Comptroller Susan Combs reminds shoppers they can save money on certain items priced under \$100 during the state's annual sales tax holiday. This year, the sales tax holiday is scheduled for Friday, Saturday and Sunday, August 8, 9, and 10.

The law exempts most clothing, footwear, school supplies and backpacks priced under \$100 from sales tax, which could save shoppers about \$8 on every \$100 they spend during the weekend.

"Families gearing up for the new school year will not pay any sales tax for many back-to-school items ranging from pens to blue jeans," Combs said. "When the back-to-school list is long and the money is short, it can be difficult for Texas families. We hope this tax break will help ease that burden."

Lists of apparel and school supplies that may be purchased

tax free can be found on the Comptroller's website at [www.TexasTaxHoliday.org](http://www.TexasTaxHoliday.org).

This year, shoppers will save an estimated \$82.7 million in state and local sales taxes during the Sales Tax Holiday. The tax holiday weekend has been an annual event since 1999.

## Steers begin Two-A-Days

The Robert Lee High School Steers began two-a-day football practices on Monday, August 4. Morning and evening practices will be held Monday, August 11, and Wednesday, August 13. Morning only practices will be held Tuesday, August 12, and Thursday, August 14. Evening only practices will be held Monday, Tuesday and Wednesday, August 18-20, from 7 pm to 9 pm.

A scrimmage against May will be held Friday, August 15, at 6 pm in May. The Steers will scrimmage Borden County at home on Thursday, August 21, at 6 pm.

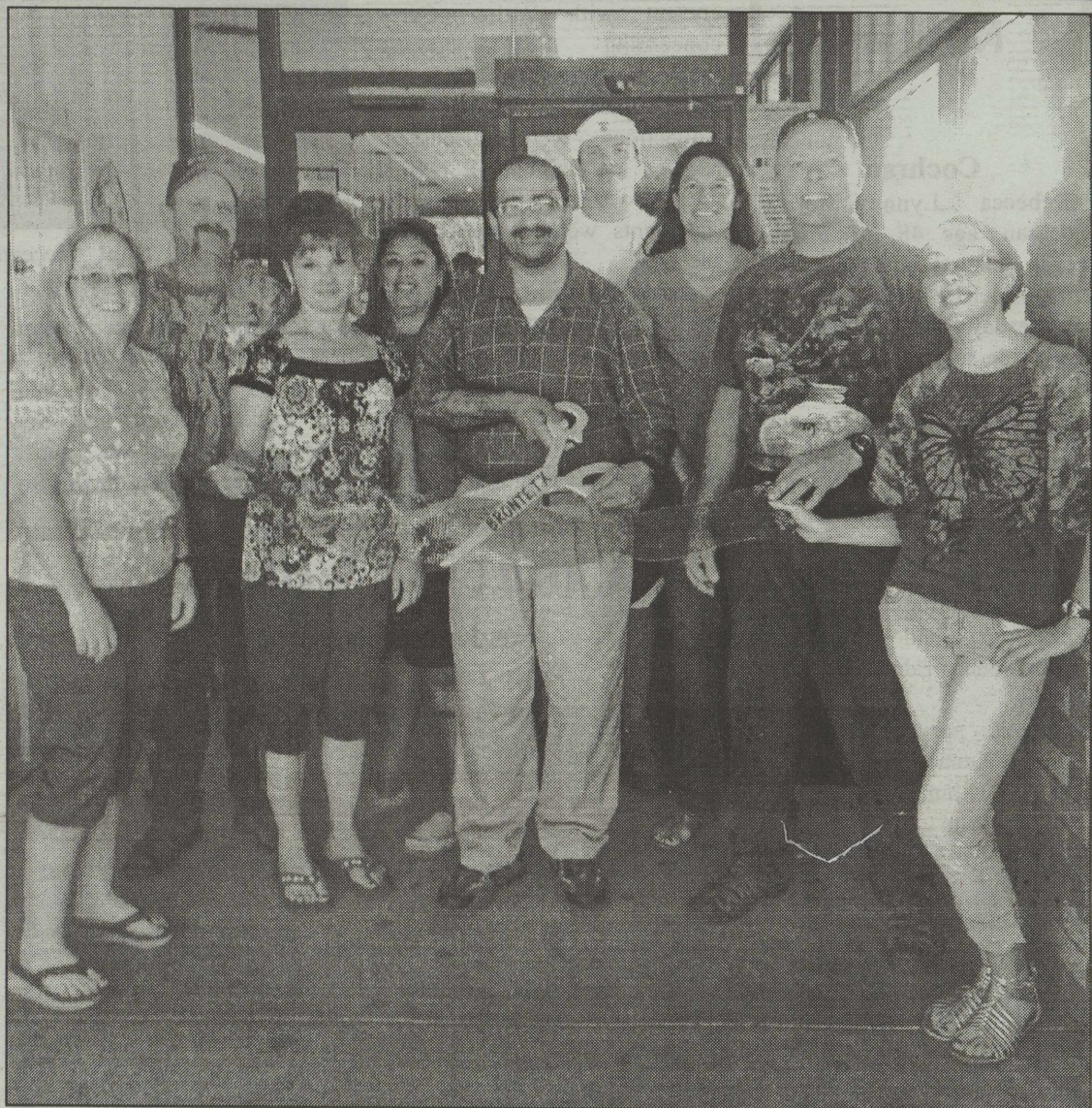
## Cemetery Association to meet

The Hayrick Lodge Cemetery Association that oversees the care of the Robert Lee Cemetery will meet on Monday, August 11, at 5:30 pm at the Masonic Lodge Hall in Robert Lee. All interested persons are urged to attend.

## Red Hat Society meeting slated

The Red Hat Society will be meeting Thursday, August 7, at the Windmill City Grill in Bronte. The time will be 11 am.

You are welcome to join this group where there is fun after fifty (and before) for women of all walks of life. There are no dues, no rules, no business, no nothing really but lots of good fun and fellowship. Come join us.



**Ribbon Cutting!** Members of the Bronte Chamber of Commerce were on hand for Ribbon Cutting celebrations at Bronte Grocery Store (top photo) and Bronte Hardware Store Saturday, July 26, 2014. This summer, these businesses received new owners and management, along with a brand new names. Shown at the Bronte Grocery Store celebration are (from left) Teresa Swecker, James Sutton, Connie Fine, Julie Martinez, Waseem Malik, Stetson Emfinger, Angel Cervenka, Bryan Swecker and Kaitlyn Swecker. Shown at the Bronte Hardware Store celebration are (from left) Doris Smith, Angel Cervenka, Debbie Lorenz, Carter Reeves, Erin Tatsch, Bryan Swecker, Teresa Swecker, and Kaitlyn Swecker.



**Regular Meeting  
Commissioners Court  
Monday, August 11  
9 am**

**Commissioners Courtroom  
Coke County Courthouse**



**THE OBSERVER/ENTERPRISE**  
 Published Weekly  
 707 Austin (325) 453-2433 • (325) 453-4643 FAX  
 email: o-e@wcc.net

Periodical Rate Postage paid at Robert Lee, TX.  
**POSTMASTER: Please send address changes to**  
**Observer/Enterprise**  
**PO Box 1329, Robert Lee, TX 76945.**

**STAFF**  
 Melinda McCutchen, Publisher/Editor  
 Amber Sawyer

**SUBSCRIPTION RATES**  
 Per Year in Coke & Sterling Counties..... \$30.00  
 Per Year Elsewhere in Texas..... \$35.00  
 Per Year Outside of Texas..... \$37.00

**Death Notices**

**Cochran**  
 Rebecca Lynn Morrow Cochran, age 48, of Bronte, Texas, entered into the loving arms of her Heavenly Father on Wednesday, July 31, 2014. Graveside service were held at 2 pm Saturday, August 2, in Fort Chadbourne Cemetery with the Rev. John Driggers officiating. Services were under the direction of Shaffer Funeral Home.

Becky was preceded in death by her maternal grandfather, Jack Corley; and her paternal grandparents, Edna and Jake Morrow.

She is survived by her husband, Kenneth Cochran; son Cory Cochran; son Tanner Cochran and wife Kaitlin; grandson Kason Ray Cochran; parents Jim and Mary Morrow; maternal grandmother Christine Corley (lovingly called Big Mama); brother John Morrow; sister Jami Williams; best friend Carol; beloved dog Oliver; and numerous nephews, nieces and other relatives.

**West Coke County Hospital Board Meeting detailed**

By Pat Stephens  
 The Board of Directors of the West Coke County Hospital District met in regular session July 29, 2014. President Mary Bessent called the meeting to order and declared a quorum was present. Other Board members present were Dessie Kendall, Sarah Green, Pat Stephens and Pat Carwile. Monica Toney, Administrator, and Janie Munoz, BOM, were also present at the meeting. The invocation was given by Pat Stephens. Minutes from the previous meeting were approved, and absent Board members were excused.

In the census count, there are currently 31 residents in the facility.

In the staffing update, the need continues for additional nurses. There is currently an ad running for these positions. The facility is sufficiently staffed at this time.

In the Administrator's report, Monica informed the Board of the development of a newsletter for the facility, which will be very beneficial in marketing.

Under capital projects, the

asbestos abatement is pending, and Monica is keeping in close contact with Walter Curry concerning the upcoming renovation of the east wing.

Accounts Receivable/Collections were discussed. Monica and Janie, will review these bi-weekly. The financial statements were discussed and accepted.

The next meeting date, August 26, was selected, and future agenda items were discussed. The meeting adjourned at 11:35 am, and the Board once again enjoyed a meal of the resident's choosing. This month, it was hot



**BHRC Field Trip!** Recently residents of Bronte Health and Rehab Center enjoyed an outing to Hummer House in Christoval.

dogs, chips, and ice cream bars—a perfect summer lunch.

A steak dinner was enjoyed last Friday evening by the Board, Administration, staff, and employees of the facility to

celebrate a wonderful report of the facility, the employees, from the annual State survey of and the diligence, dedication, the Care Center. The surveyors and love with which they were extremely complimentary attended the residents and cared

**Come As You Are**

Sunday Mornings • 10 am  
 Table Time • Tuesday evening  
 Pot Luck 6 pm • Study 7 pm

**FORGIVEN MINISTRIES**  
 Downtown Bronte • Across from Grocery Store  
 Russ Frasier, Preacher

**Area Churches**  
 Invite You to Worship

**Bronte**  
**Bronte Church of Christ**  
 PO Box 346 • 118 S. Jefferson • Bronte  
 (325) 473-3291  
 Preacher John V. Driggers  
 Sun. 10 am & 6 pm, Wed. 7 pm  
**Central Baptist Church**  
 324 S. Franklin • Bronte  
 (325) 473-4811  
 Dale Patterson, Pastor  
 Sun. 10 am Sunday School  
 11 am & 6 pm Worship  
 Wed. 6 pm  
**First Baptist Church**  
 424 S. Washington • Bronte  
 (325) 473-2331  
 Bro. Corey Cornutt, Pastor  
 Sunday 9:45 am Sunday School,  
 10:55 am Worship,  
 5 pm Worship  
 6 pm Youth  
 Wednesday 7 pm Prayer Meeting  
**First United Methodist Church**  
 Corner of Washington & Holmes  
 Bronte  
 (325) 473-3281  
 Rev. Everette Boyce, Pastor  
 Sun. 10:00 am Sunday School  
 11:00 am Worship  
**Forgiven Ministries**  
 117 W. Main, Bronte  
 Russ Frasier, Pastor  
 Sun. 10 am  
**St. James Catholic Church**  
 215 N. Washington, Bronte  
 (325) 365-2687  
 Rev. Hubert Wade, Jr., Pastor  
 Sun. 5 pm

**Coke County**  
**Pecan Baptist**  
 PO Box 542 • 12 miles West of  
 Robert Lee on Sterling City Hwy  
 (325) 453-2065, Bill Hood, Minister  
 www.pecanbaptist.org  
 Sun. 10 am, Sunday School  
 11 am & 7 pm, Worship

**Robert Lee**  
**Bible Baptist Church**  
 PO Box 938 • 9th & Austin  
 (325) 453-2621 Robert Lee, Dennis Clark, Pastor  
 Sun. 10 am Sunday School, 11 am  
 Worship

**Emmanuel Pentecostal**  
 PO Box 683 • 1019 Colorado City Hwy  
 Robert Lee (325) 453-2360  
 Sun. 10 am & 6 pm, Wed. 7 pm  
**First United Methodist Church**  
 PO Box 144 • 9th & Chadbourne  
 Robert Lee • (325) 453-2417  
 Cyndi Weidner, Pastor  
 Sun. 10 am Sunday School  
 11 am Worship, 5 pm Choir Practice  
**Iglesia Bautista Betel**  
 101 Houston • Robert Lee  
 Sun. 9:45 am • Sunday School  
 11 am Service • Bible Study Wed. 6 pm  
**Southside Church of Christ**  
 PO Box 698 • 8th & Houston  
 Robert Lee (325) 453-2176  
 Jordan Arnold, Preacher  
 Sun. 10 am, Sunday School  
 11 am & 6 pm, Worship  
 Wed. 6 pm, Worship  
**Northside Church of Christ**  
 PO Box 508  
 9th & Chadbourne • Robert Lee  
 (325) 453-2685, (806) 543-2118 or  
 (325) 473-1053  
 Services: Sun. 10 am  
**Our Lady of Guadalupe Catholic Church**  
 601 W. 10th, Robert Lee  
 (325) 365-2687  
 Rev. Hubert Wade, Jr., Pastor  
 Sat. 6 pm  
**Robert Lee Baptist Church**  
 PO Box 493 • 22 W. 11th  
 (325) 453-2724  
 Danny White, Pastor  
 Sun. 9:45 am, Sunday School  
 11 am & 7 pm, Worship  
 Wed. 7 pm, Prayer Meeting  
**Victory Assembly of God**  
 (325) 453-2208, PO Box 638  
 6th & Houston, Robert Lee  
 Rev. Irving Smith, Pastor  
 Sun. 9:45 am, Sunday School  
 10:45 am & 6 pm, Worship  
 Wed. 6 pm, Bible Study

**Tennyson**  
**Tennyson Baptist Church**  
 Hwy 277 • Tennyson  
 (325) 473-2040  
 Sun. 9:45 am, Sunday School  
 11:00 am & 6 pm, Worship  
 Wed. 6:00 pm Prayer Meeting

**PHARMACY**  
**DOC'S DRUGSTORE**  
**SCDA FOUNTAIN**

**Doc's Drugstore is now serving the residents of Coke County and the surrounding areas!**

**FREE DELIVERY OF YOUR PRESCRIPTIONS**

*All residents are eligible to have their prescriptions filled and delivered by Doc's.*

**Doc's eliminates the hassle of getting your medications!**

**No more trips to the "Big City" or waiting in long lines at the big box stores to pick up your meds.**

**ALL ORDERS ARE DELIVERED DAILY.**  
 All your pharmacy needs delivered to you, including

- Over the Counter Medications
- Vitamins • Diapers • Herbals and More Pharmacy Items!

**Simple Billing & Payment Options**

- All insurances accepted.
- All major credit & debit cards accepted.
- Extended Credit - Charge accounts available for approved customers.

**How to Order:**

1. Have your doctor call or fax your prescription to Doc's Drugstore.
2. We will process, bill and fill your order.
3. Your medications will be delivered to you - at your home, place of work, or another location - per your request.

**Doc's comes to you!**

**Toll-Free: 844.383.DRUG**  
**Fax: 325.643.3811**



for them. The Board expresses sincere appreciation to Monica and everyone at the facility for a job well done!

Looking at the calendar for August, we see summer fast slipping away. In addition to all the regular activities, everyone enjoyed an evening with the San Angelo Cloggers on Monday. August 9 at 3 pm will be Sunshine Saturday, featuring some good singing!

The monthly birthday party will be held at 3 pm, August 19. Our birthday honorees this month are Valerie Taylor, Hazel Hayes, Frances LaComb, and Jim Skinner. Happy birthday to all. At 10 am August 23, Loryessa Martindale, of the San Angelo Symphony, will be featured with some beautiful harp music. On August 25, at 2:30 pm, Elvis will be in the building! He will be performing at the End of Summer Luau at the facility! I don't know if he will be signing autographs, but it might be worth your while to come and check it out. Last, but not least, the monthly Sing-A-Long with our very own Roger Alexander will be held August 29 at 3 pm. And with that, we say a fond good-bye to summer, and get ready for the fun festivities of fall.

**RLISD Board posts minutes**

A regular meeting of the Robert Lee ISD Board of Trustees was held in the Robert Lee ISD Conference Room 119 at 12 noon Tuesday, July 22, 2014. The meeting was called to order by President Washam.

Members present included Wes Washam, Jeffie Roberts, Beverly Sinclair, Tom Sawyer, George Grim, and Erin Oleksiuk. Irma Torres was absent.

The Invocation and pledge were led by Erin Oleksiuk.

The Board recessed for lunch at 12:02 pm to listen to a presentation by James Roberts, FCCLA State President. The Board reconvened into open session at 12:35 pm.

Tom Sawyer made a motion to approve the minutes of the June 24, 2014, meeting, seconded by George Grim. All voted for.

Jeffie Roberts made a motion to accept the financial report as presented by Supt. Hood and to pay the bills, seconded by Erin Oleksiuk. All voted for.

Supt. Hood gave the elementary and high school principals' reports.

Beverly Sinclair made a motion to approve the PDAS Calendar for 2014-2015 presented by Supt. Hood, seconded by Erin Oleksiuk. All voted for.

Tom Sawyer made a motion to approve District Appraisers for PDAS 2014-2015 as presented by Supt. Hood, seconded by George Grim. All voted for.

Supt. Hood presented the RLISD Student Handbook for 2014-2015.

Supt. Hood presented the RLISD Student Code of Conduct for 2014-2015. Tom Sawyer made a motion to approve the 2014-2015 Student Code of Conduct as presented,

**Presentation!** A presentation was held at the old Coke County Jail Thursday afternoon, July 31, 2014. Several county citizens were given the stones (photo at right) and replicas of the shadow box in honor of John Russel Saul. Mr. Saul, grandson of former Coke County Sheriff Sam Russell, was born April 16, 1930, on the upper level of the jail - just a little ways from the Colorado River. He passed away near the Colorado River, but in Columbus, Texas, on September 1, 2013. The stones were cut from stones used to build the jail in 1907. The original stones were gathered by Commissioner Bobby Blaylock and given to John Shaddix to be delivered to be crafted by Buddy Hudson. Attending the presentation were (from left) John Shaddix, Bonita Cartright, Wayne McCutchen, Buddy Hudson, (not pictured) Phelan Wrinkle and Bobbie Allen.

seconded by Erin Oleksiuk. All voted for.

Supt. Hood presented the Extracurricular Code of Conduct for 2014-2015. A motion by Jeffie Roberts to approve the Extracurricular Code of Conduct as presented was seconded by George Grim. All voted for.

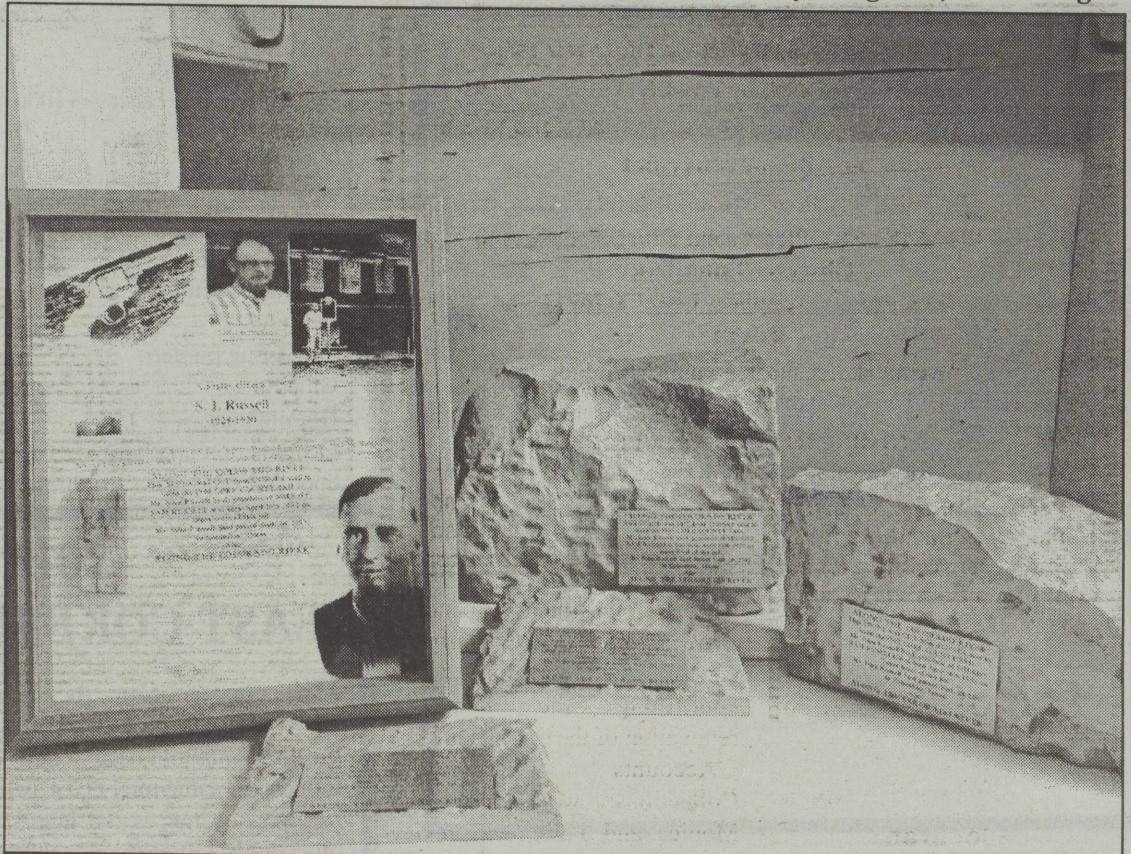
Supt. Hood presented the RLISD Responsible Use Policy. A motion by Erin Oleksiuk to approve the RLISD Responsible Use Policy as presented was seconded by Tom Sawyer. All for.

A 2014-2015 budget workshop was held.

Supt. Hood recommended a proposed tax rate for 2014-2015; M&O \$1.04, I&S .42 for a total tax rate of \$1.46. Tom Sawyer made a motion to approve the proposed tax rate as presented, seconded by Beverly Sinclair. All voted for.

Supt. Hood presented a proposal from Project Graduation 2015. Jeffie Roberts made a motion to approve the proposal from Project Graduation 2015, seconded by Beverly Sinclair. All voted for.

Supt. Hood recommended Option 3 for Equalizing Wealth for the 2014-2015 school year based on Chapter 41 of the Texas Education Code. Erin Oleksiuk made a motion to approve this recommendation as presented, seconded by Tom Sawyer. All voted for.



Supt. Hood presented the Shared Services Arrangement with Small Schools Cooperative for 2014-2015. A motion made by George Grim to approve this recommendation was seconded by Tom Sawyer. All voted for.

Supt. Hood gave his report on summer maintenance, Head Start Bldg, and a special called meeting scheduled for August 27, 2014, at 5 pm to set tax rate and adopt budget and elementary numbers.

The next regular school board meeting will be Thursday, August 21, 2014, at 5 pm.

The meeting was adjourned at 1:42 pm.

**FLOYD C. PETITT INSURANCE**

LIFE • HEALTH • GROUP HEALTH  
LONG TERM CARE • ANNUITIES  
MEDICARE SUPPLEMENTS  
AUTO • HOME • COMMERCIAL

**WE PUT YOU FIRST!**

YOU'RE NOT A NUMBER TO US, BUT A MEMBER OF OUR FAMILY!

(325) 453-4551 (325) 223-1563  
PO BOX 184 • 715 AUSTIN 5002 KNICKERBOCKER  
ROBERT LEE, TEXAS 76945 SAN ANGELO, TEXAS 76904

floyd@floydpetittinsurance.com



**Enjoy smart financial planning**

You can. We have the most modern banking services like Checking, Savings, Certificates of Deposit and personal and real estate loan services you will like. Yes, we set the pace when it comes to financial planning!



**Robert Lee State Bank**

621 Austin Street • Robert Lee, Texas  
**453-2545**

*What Can We Do For You?*



MEMBER FDIC





**LOOK WHO'S NEW!** Sutton Elaine Mayes was born July 5, 2014, at 5:26 pm to Cody and Shannon Mayes. She weighed 9 pounds, 15 ounces and was 21 inches long. Sutton has a big brother, Canton, and a proud grandparent, Robin Allen aka Sweetie.



**Bronte Elementary School Supply List 2014-2015**

**Preschool program for children with disabilities & Pre-K**

- \*1-Blunt 5" Fiskar Scissors
- 3 - 1.25 oz. Elmer's Glue
- 3 boxes Kleenex Facial Tissue
- 1 bottle Purell hand sanitizer (8 oz.)
- 1 box "Ziplock" Bags, Quart Size
- 1 box Crayola Crayons (8 count only - NO Jumbo)
- 1 set Dry Erase Markers (set of 4)
- 5 Glue Sticks
- \*1 Spiral Notebook (100 count wide rule)
- \*1 Large Zippered Top Backpack
- \*1 Set of extra clothing
- Adopt-A-Longhorn t-shirt-\$10.00

\*Indicates items to be labeled with child's name. All other items will be shared in the classroom as community property. For example, each student's glue will be placed in the class' glue box.

\*Please consider clothing that will allow your child to dress and go to the bathroom independently.

**Kindergarten**

- 6 boxes Crayola Crayons-Primary colors (8 count only - NO Jumbo-NO glitter)
- 3 boxes Facial Tissues (100 count)
- 12 No. 2 Pencils
- 1 box Crayola Thick Markers (10 count)
- 3 - 4.0 oz. Elmer's Glue (No Rose Art)
- 1 set Dry Erase Markers (set of 4)
- 10 Folders with only Bottom Pockets (NO plastic)
- 1 Sharp 5" Fiskar Scissors
- 1 Canister of pull-up Clorox

- Disinfectant wipes
- 2 Pink Bevel Eraser
- 1 Small Plastic School Box (no zipper bags please)
- 1 School Bag or Backpack (large enough to hold folders)
- 1 roll 1/2" Transparent Tape
- Adopt-A-Longhorn t-shirt-\$10.00

\*Please label everything your child brings to school.

**1st Grade**

- 2 boxes Crayola Crayons (16 count)
- \*2 boxes Facial Tissues (100 count)
- \*10 No. 2 Pencils
- \*1 Elmer's 4 oz. Glue
- 6 Assorted Folders (Pockets only)
- 1 Sharp 5" Fiskar Scissors
- 2 Glue Sticks
- 1 Plastic School Box
- 1 School Bag or Backpack
- \*1 box "Ziplock" Bags, Quart size
- Adopt-A-Longhorn t-shirt-\$10.00

\*Community Property - You do not need to have your child's name on them.

**2nd Grade**

- 1 box Crayons (24 count)
- 1 box Kleenex
- 20 No. 2 Pencils
- 1 Elmer's 4 oz. Glue
- 1 Scissors
- 4 Pink Erasers
- 1 School Box
- 1 School Bag or Backpack
- 6 Folders with Pockets
- 1 Ruler
- 1 - 1" 3-ring binder
- 6 Glue Sticks
- 1 Large Cloth book cover
- 4 Dry Erase Markers (Black)
- Adopt-A-Longhorn t-shirt-\$10.00

**3rd Grade**

- 1 box Facial Tissues
- 4 Glue Sticks
- 1 Elmer's Glue
- 2 Permanent Markers
- 3 Notebook paper (wide rule-not college)
- 2 Pencil sharpener & Eraser
- 1 box Multiplication flashcards
- 3 Red pens
- 1 Supply box/bag
- 1 box Crayons or Markers
- Adopt-A-Longhorn t-shirt-

- \$10.00
- 4th Grade**
- 2 boxes Facial Tissues (100 count)
- 24 No. 2 Pencils
- 1 School Bag or Backpack
- 3 Pocket folders
- 4 Cloth Book Covers
- 2 packages Notebook Paper (Wide Rule)
- 1 - 1" 3-ring binder
- 2 Glue Sticks
- 2 Highlighters
- 1 Composition notebook
- Adopt-A-Longhorn t-shirt-

- \$10.00
- 5th Grade**
- 3 boxes Facial Tissues
- 3 Pocket Folders
- 4 Jumbo Book Covers
- 1 package Index Cards (3x5)
- 2 Pencil Sharpeners (hand held)
- 24 No. 2 Pencils
- 2 Highlighters - Yellow
- 1 package Wide Ruled Notebook paper
- 1 box Quart Size "Ziplock" bags
- 2 Glue Sticks

- 1 - 1" 3-Ring Binder
- Adopt-A-Longhorn t-shirt-\$10.00
- 6th Grade**
- 12 No. 2 Pencils (wood)
- 2 packages Notebook Paper (200 wide rule)
- 2 boxes Facial Tissues
- 4 Cloth book covers (Jumbo size)
- 3 Pocket Folders
- 1 - 1" 3-Ring Binder
- 1 Hand-held pencil sharpener
- 4 Glue Sticks
- 1 package 3x5 ruled index cards

**2014 Property Tax Rates in EAST COKE COUNTY HOSPITAL DISTRICT**

This notice concerns the 2014 property tax rates for EAST COKE COUNTY HOSPITAL DISTRICT. It presents information about tree tax rates. Last year's tax rate is the actual tax rate for the taxing unit used to determine property taxes last year. This year's effective tax rate would impose the same total taxes as last year if you compare properties taxed in both years. This year's rollback tax rate is the highest tax rate the taxing unit can set before taxpayers start rollback procedures. In each case these rates are found by dividing the total amount of taxes by the tax base (the total value of taxable property) with adjustments as required by state law. The rates are given per \$100 of property value.

**Last year's tax rate:**

Last year's operating taxes	\$559,363
Last year's debt taxes	\$0
Last year's total taxes	\$559,363
Last year's tax base	\$136,614,263
Last year's total tax rate	\$0.409447/\$100

**This year's effective tax rate:**

Last year's adjusted taxes (after subtracting taxes on lost property)	\$558,230
÷ This year's adjusted tax base (after subtracting value of new property)	\$128,978,780
= This year's effective tax rate	\$0.432807/\$100

(Maximum rate unless unit publishes notices and holds hearings)

**This year's rollback tax rate:**

Last year's adjusted operating taxes (after subtracting taxes on lost property and adjusting for an transferred function, tax increment financing, state criminal justice mandate, and/or enhanced indigent healthcare expenditures)	\$558,230
÷ This year's adjusted tax base	\$128,978,780
= This year's effective operating rate	\$0.432807/\$100
× 1.08 = this year's maximum operating rate	\$0.467431/\$100
+ This year's debt rate	\$0/\$100
= This year's total rollback rate	\$0.467431/\$100

**Statement of Increase/Decrease**

If EAST COKE COUNTY HOSPITAL DISTRICT adopts a 2014 tax rate equal to the effective tax rate of \$0.432807 per \$100 of value, taxes would increase compared to 2013 taxes by \$4,769.

**Schedule A - Unencumbered Fund Balance**

The following estimated balances will be left in the unit's property tax accounts at the end of the fiscal year. These balances are not encumbered by a corresponding debt obligation.

Type of Property Tax Fund	Balance
UNENCUMBERED FUNDS	191,000

**Schedule B - 2014 Debt Service**

The unit plans to pay the following amounts for long-term debts that are secured by property taxes. These amounts will be paid from property tax revenues (or additional sales tax revenues, if applicable).

Description of Debt	Principal or Contract Interest to be Paid		Other Amounts to be Paid	Total Payment
	Payment to be Paid from Property Taxes	from Property Taxes		
	0	0	0	0
Total required for 2014 debt service				\$0
- Amount (if any) paid from Schedule A				\$0
- Amount (if any) paid from other resources				\$0
- Excess collections last year				\$0
= Total to be paid from taxes in 2014				\$0
+ Amount added in anticipation that the unit will collect only 0% of its taxes in 2014				\$0
= Total debt levy				\$0

This notice contains a summary of actual effective and rollback tax rates' calculations. You can inspect a copy of the full calculations at 13 E. 7TH STREET, ROBERT LEE, TEXAS.

Name of person preparing this notice: JOSIE DEAN, PCC

Title: TAX ASSESSOR-COLLECTOR

Date Prepared: 08/05/2014



- 1 box Color Pencils (12 ct.-crayola brand)
- 1 box Gallon size "Ziplock" bags
- 1 Composition Notebook
- 2 Highlighters-yellow
- Adopt-A-Longhorn t-shirt-\$10.00
- Robert Lee Elementary**
- 2014-2015 School Supply List**
- Pre-K**
- 2 boxes 8 or 16 count Crayola Brand crayons (no 24 count)
- 1 pair Scissors
- 2 packages Glue Sticks
- 1 package Assorted Construction Paper
- 4 Pencils
- 1 box Quart Size Ziploc Bags
- 4 boxes Kleenex
- 1 set Water Colors
- 1 package of 3x5 Index Cards
- 2 large Disinfectant Wipes
- 1 set of extra clothes
- 1 old large shirt that can be used for painting
- Kindergarten**
- 3 boxes Crayola Brand crayons (no more than 24)
- 8 Glue Sticks
- 6 regular Yellow #2 Pencils
- 2 Composition Notebook
- 1 Small Plastic School Box
- 3 large boxes Kleenex
- 2 sturdy, slick plastic Pocket folders (no brads)
- 2 large Pink Erasers
- 3 packages 3x5 Index Cards
- 1 larger Hand Sanitizer
- 1 box Quart Size Ziploc Bags
- Towel for rest time (no vinyl mats)
- Backpack
- 1 set of extra clothes
- \*Initial each eraser and crayon and leave crayons in the original box
- \*Do not initial pencils or glue sticks
- 1st Grade**
- 2 packages of pencil top erasers
- 2 Red Plastic Folders with brads and pockets
- 1 Orange folder with brads
- 2 Black Marble Composition Notebooks (100 sheets-Wide Ruled)
- 1 large Zipper Pencil Pouch (no boxes)
- 3 boxes Kleenex
- 2 boxes Crayola Crayons at least 24 count
- 1 package Ticonderoga yellow pencils 24 count
- 2 Glue Sticks
- 2-1 1/4 oz. bottle Elmer's Glue
- 1 box Ziploc bags (Girls-Gallon size)(Boys-Quart size)
- 1 Clipboard
- 1 Backpack-NO WHEELS
- \* PLEASE DO NOT LABEL THE SUPPLIES!
- 2nd Grade**
- 2 packages (24 count) #2 yellow pencils
- 2 Composition Notebooks (100 sheets-Wide Ruled)
- 2 Red Plastic Folders with Pockets and Brads
- 1 box of Crayons (doesn't matter how many)
- 1 box of Map Colors
- 1-4 oz. bottle of Glue or 3 glue sticks
- 1 large Zipper Pencil Pouch (no boxes)
- 2 Pink Erasers
- 2 boxes of Pencil Top Erasers
- 1 Backpack (NO WHEELS)
- 1 Clipboard
- 2 boxes Kleenex
- Girls-1 box of Gallon size Ziploc Bags
- Boys-1 box of Quart size and Snack size Ziploc Bags
- 3rd Grade**
- 1 package (24 count) #2 Yellow Pencils
- 2 Pink Erasers
- 6 Red Grading Pens
- 1 large Zipper Pencil Bag or box
- 3 boxes Kleenex
- 2 boxes 12 count Map Pencils
- 1 box 24 count Crayons
- 1 bottle of glue

- 2 packages Wide Ruled Notebook Paper
- 1 container of Disinfectant Wipes
- 1 Backpack (NO WHEELS) Girls-1 box Gallon Size Ziploc Bags
- Boys-1 box Quart Size Ziploc Bags
- \*PLEASE LABEL ALL SUPPLIES!
- 4th, 5th, and 6th Grade**
- 2 Pink Erasers
- 4 Red Pens
- 2 Black sharpies
- 1 pair scissors
- 1 box or zippered bag for supplies
- 1 hand held pencil sharpener
- 24 count crayons
- 3 boxes Kleenex
- 2 containers Disinfectant Wipes
- 2 packages of notebook paper
- 3 packages 4x6 index cards
- 24 pencils
- Map pencils
- 1 package markers
- 6 glue sticks
- 2 highlighters
- 4 dry erase markers
- 2-3 subject spiral notebooks (math)
- 2 composition notebooks (science)
- 1-1"ring notebook (language arts)
- 2 composition notebooks
- 2 folders with pockets
- Boys-sandwich bags
- Girls-Colored paper (any color)
- Backpack (NO WHEELS)
- \*Supplies may be added after school starts\*

## 2014 Property Tax Rates in KICKAPOO WATER DISTRICT

This notice concerns the 2014 property tax rates for KICKAPOO WATER DISTRICT. It presents information about tree tax rates. Last year's tax rate is the actual tax rate for the taxing unit used to determine property taxes last year. This year's *effective* tax rate would impose the same total taxes as last year if you compare properties taxed in both years. This year's *rollback* tax rate is the highest tax rate the taxing unit can set before taxpayers start rollback procedures. In each case these rates are found by dividing the total amount of taxes by the tax base (the total value of taxable property) with adjustments as required by state law. The rates are given per \$100 of property value.

<b>Last year's tax rate:</b>	
Last year's operating taxes	\$12.411
Last year's debt taxes	\$0
Last year's total taxes	\$12.411
Last year's tax base	\$64,305,699
Last year's total tax rate	\$0.019300/\$100
<b>This year's effective tax rate:</b>	
Last year's adjusted taxes	\$12.411
(after subtracting taxes on lost property)	
÷ This year's adjusted tax base	\$63,722,830
(after subtracting value of new property)	
= This year's effective tax rate	\$0.019476/\$100
(Maximum rate unless unit publishes notices and holds hearings)	
<b>This year's rollback tax rate:</b>	
Last year's adjusted operating taxes	\$12.411
(after subtracting taxes on lost property and adjusting for an transferred function, tax increment financing, state criminal justice mandate, and/or enhanced indigent healthcare expenditures)	
÷ This year's adjusted tax base	\$63,722,830
= This year's effective operating rate	\$0.019476/\$100
x 1.08 = this year's maximum operating rate	\$0.021034/\$100
+ This year's debt rate	\$0/\$100
= This year's total rollback rate	\$0.021034/\$100

### Statement of Increase/Decrease

If KICKAPOO WATER DISTRICT adopts a 2014 tax rate equal to the effective tax rate of \$0.019476 per \$100 of value, taxes would increase compared to 2013 taxes by \$164.

### Schedule A - Unencumbered Fund Balance

The following estimated balances will be left in the unit's property tax accounts at the end of the fiscal year. These balances are not encumbered by a corresponding debt obligation.

Type of Property Tax Fund	Balance
UNENCUMBERED FUNDS	6,000

### Schedule B - 2014 Debt Service

The unit plans to pay the following amounts for long-term debts that are secured by property taxes. These amounts will be paid from property tax revenues (or additional sales tax revenues, if applicable).

Description of Debt	Principal or Contract Interest to be Paid			Total Payment
	Payment to be Paid from Property Taxes	from Property Taxes	Other Amounts to be Paid	
	0	0	0	0
Total required for 2014 debt service				\$0
- Amount (if any) paid from Schedule A				\$0
- Amount (if any) paid from other resources				\$0
- Excess collections last year				\$0
= Total to be paid from taxes in 2014				\$0
+ Amount added in anticipation that the unit will collect only 0% of its taxes in 2014				\$0
= Total debt levy				\$0

This notice contains a summary of actual effective and rollback tax rates' calculations. You can inspect a copy of the full calculations at 13 E. 7TH STREET, ROBERT LEE, TEXAS.

Name of person preparing this notice: JOSIE DEAN, PCC  
 Title: TAX ASSESSOR-COLLECTOR  
 Date Prepared: 08/05/2014

### Finding Solutions for Your Financial Needs

**Tommy E Neal, AAMS®**  
 Financial Advisor  
 2412 College Hills Boulevard  
 Suite 102  
 San Angelo, TX 76904  
 325-223-8244  
[www.edwardjones.com](http://www.edwardjones.com)

MAKING SENSE OF INVESTING

## Glenn-Bivins Insurance

325-473-6791

[GlennBivinsUsa@aim.com](mailto:GlennBivinsUsa@aim.com)

Locally and Family Owned Since 1922

We'll Be Here When You Need Us!

Home - Auto - Life - Commercial - RV

"Insure your home and auto with Germania and save 15% on both; and receive an additional 10% with a Life policy."



# CLASSIFIEDS

**BUY IT! SELL IT! FIND IT!**

**CLASSIFIED ADVERTISING RATES**  
Rates when paid in advance.

25¢ Per Word  
\$5 Minimum


Legal Notices:  
35¢ Per Word

*A service charge will be added to all ads which must be billed.*

**ADVERTISING DEADLINE**  
Tuesday at 10 am

**PUBLISHER'S NOTICE:**  
All real estate advertising in this newspaper is subject to the Fair Housing Act which makes it illegal to advertise any preference, limitation or discrimination based on race, color, religion, sex, handicap, familial status or national origin, or an intention, to make any such preference, limitation or discrimination." Familial status includes children under the age of 18 living with parents or legal custodians, pregnant women and people securing custody of children under 18.

This newspaper will not knowingly accept any advertising for real estate which is in violation of the law. Our readers are hereby informed that all dwellings advertised in this newspaper are available on an equal opportunity basis. To complain of discrimination, call HUD toll-free at 1-800-669-9777. The toll-free telephone number for the hearing impaired is 1-800-927-9275.



EQUAL HOUSING OPPORTUNITY

**FOR SALE**

**HOME FOR SALE PRICE REDUCED**

323 Key St--Corner lot professionally landscaped 4br/3ba, 2442 sq ft home, 2 car garage & carport. San Angelo Real Estate 325-277-7653 Janie Thomas. \$214,400.

44-tnc

**Fish Fridays!**  
**Catfish or Shrimp**  
**All the Fixin's**  
**\$8.99**  
**per plate**

**CINDY'S**  
409 W. 10th  
Robert Lee  
453-9200

**POLITICAL CALENDAR**

The Observer/Enterprise has been authorized to make the following announcements for the political offices in Coke County. Each announcement must be a paid announcement.

**Coke County Judge**  
Roy Blair (Rep.)

**Justice of the Peace Precinct 1**  
Jackie Walker (Rep.)

**Justice of the Peace Precinct 2**  
Grady Coulter (Dem.)

**Commissioner Precinct 2**  
Paul Williams (Rep.)

**FOR RENT**

**BRONTE MINI STORAGE**  
Has storage buildings for rent. 473-2221, 473-0409.

45-tnc

**MISCELLANEOUS**

**GENERAL CONTRACTING Handyman.** Call for more information about services. Kenneth Prine (325) 453-2339.

27-tnc

Bob Frazee's 944-0010  
473-6603

**Texas Best**  
Deflooding & Carpet Cleaning

24 hr. Emergency Water Damage Service

**o-e@wcc.net**

**PITCOCK PROPERTIES**

Farm & Ranch, Commercial, & Residential Real Estate  
Texas General Certified Appraiser

**Jerrold Pitcock, Broker**  
www.pitcockproperties.com • (325) 650-4079

1,100 Acres in Runnels County, Minerals Available \$1,250/acre  
813 Acres East of Robert Lee Good Surface Water. Lake Stocked with Fish, Easement Access \$1,350/acre. **SOLD**

2 Sections in Reagan County, House, 3 Wells \$695/acre.  
632.1 Acres North of Robert Lee on Sanco Road, 3 BR, 2 BA House, 2 Water Wells \$1,375/acre.

4 Sections in Reagan & Upton Counties, 7 Water Wells, Good Hunting, \$685/acre.

50 Acres on Hwy 208 12 Miles North of Robert Lee \$125,000 Owner will drill well & provide electricity!

**HELP WANTED**

**CNA'S NEEDED**  
for Sterling County Nursing Home. Starting wages \$12.00/hour plus shift differentials and mileage allowance. Excellent retirement and insurance. Call Ashley Porter or Amanda Arispe at 325-378-2134.

49-tnc

**DRIVERS:**  
Great Pay! 100% PAID Health Ins! Quarterly & Annual Bonuses! Regional & Long Haul Openings! CDL - A, 1 yr w/ Tank-Haz End 100% Employee Owned Martin Transport 1-844-527-5285.

04-4twp

**THE CITY OF BRONTE**  
is accepting applications for a part-time deputy city secretary. Salary based on experience. High School diploma or equivalent required. Office skills, bookkeeping skills, and computer experience required. Bilingual skills preferred but not required. Applications can be picked up at the City Hall. Applications will be received until August 8th. The City of Bronte is an equal opportunity employer.

04-2tc

**WANTED**

**WANTED**  
Someone to mow, weed eat, and haul away a lot of brush. Give me an estimate. Call Bill at (325) 453-4658.

05-2tc

**FOUND**

**FOUND**  
On Crowe Ranch off Cox Road near Robert Lee. 2-3 year old Black Angus bull, no brand or eartag. For more information, call Coke County Sheriff's Office at (325) 453-2717.

05-2tp

**Homemade Pies, Cakes & Treats**

**CINDY'S**  
409 W. 10th  
Robert Lee  
453-9200

**ASH-CARSON REAL ESTATE**  
453-5144 OFFICE • 21 E 6TH STREET • ROBERT LEE, TX  
JOE ASH • 473-0164 www.amcwesttexasranches.com

**Coke County Ranch & Recreational Land**

**New Listing: Exclusive Office Listing! Large House, 380.801 ac. of ranchland NW of Robert Lee, Great Hunting**

**New Listing! - 3006.7 ac., all pasture land, Excellent Hunting \$1,000/acre**  
**1,120 acres - 1/4 of minerals sold with property, good hunting \$1,350/acre**  
**1,122 acres - High Fenced, Exotics sold with property, excellent water**  
**29 Acres - Highway frontage. Used for hunting or commercial use.**

**Other Tracts - 316.5 ac, 215 ac, 6.15 ac, 795.5 ac in Runnels County**

**Houses - 3 BR/1 1/2 BA - Good Repair in Bronte**  
**Robert Lee - 2 BR/2 BA - updated inside & out, many amenities**  
**Brick House on 2.6 acres**  
**New Listing Cedar Cove - 3 BR/2B Beautifully Landscaped**

**GARAGE SALES**

**INSIDE SALE**  
Friday, Saturday and Sunday, August 8-10. 510 State Street in Bronte.

05-1tp

**NOTICES**

**NOTICE TO CREDITORS**  
Notice is hereby given that original Letters Testamentary for the Estate of Ralph E. Williams were issued on July 28, 2014, in Cause No. PR1401807, pending in the County Court of Coke County, Texas, to Robert Williams. Claims may be presented in care of the attorney for the Estate addressed as follows:  
Robert Williams  
Independent Executor  
Estate of Ralph E. Williams, Deceased  
c/o Larry W. Bale  
P.O. Box 271  
San Angelo, TX 76902-0271

05-1tc

HAY, WITTENBURG, DAVIS, CALDWELL & BALE, L.L.P.  
By:  
Larry W. Bale  
State Bar No. 01629830  
P.O. Box 271  
San Angelo, TX 76902-0271  
325-658-2728/325-655-2278 (fax)

**For our Bronte customers' convenience, there is a Drop Box at Bronte Hardware Store.**

**BRONTE HEALTH & REHAB CENTER**

**Now Taking Applications for the following positions.**

**Part Time CNA**  
Days 6 am to 6 pm

**PRN CNAs**  
Days and Nights

**PRN Nurses**  
Days

Apply in person at 900 S. State Street Bronte, Texas, or online at www.bronte-hrc.net  
EOE

**Tony's Wrench**

201 W. 10th  
Robert Lee, Texas  
(325) 453-2640



**RIVERVIEW DRIVE!** 2 Bedroom 1 Bath Home! Updates include; flooring, kitchen cabinets & counter tops, paint, plumbing & bathroom fixtures! Huge covered carport for vehicles or RV! Garage/shop or Storage in back! 69,500!!!



**NEAR SCHOOL & FOOTBALL FIELD!** 3 Bedroom 2 Bath Home has large covered front porch/carport! Large Living area! Patio doors lead from Dining area to covered back patio! Kitchen has Breakfast bar and appliances stay! Double car garage 79,900!!!

**Price Reduced!!!**

**Concho Realty**  
Office 653-4535  
www.conchorealty.com

**Becky Clendennen**  
Owner/Broker

Home 453-4748  
Cell 650-9729



...More Classifieds

**NOTICES**

**BLACKWELL CISD**

Is accepting bids for gasoline and diesel to be used in school vehicles for the 2014-2015 school year. Bidder must furnish two 1,000 gallon on-site tanks for dispensing fuel. Bidder must be responsible for all tax exempt documents. Blackwell CISD reserves the right to accept or reject any and/or all bids. For more information, contact Abe Gott, Superintendent, PO Box 505, Blackwell, Texas 79506, Phone: 325-282-2311. Deadline for accepting bids is August 22, 2014, at 2 pm. Winning bid will be approved at August 26, 2014, board meeting.

05-21c

**Blackwell High School office now open for schedule selections**

The Blackwell High School office is open for class schedule selections from 8 am to 3 pm Monday through Friday.

The Texas Legislature made changes to graduation plans for Texas high school students. The new plan then required many modifications that occurred throughout the past school year, and some changes still occurred during the month of June. Hopefully, the modifications to the new graduation plan are complete and we are ready to make schedules for the 2014-15 school year. Freshman students are required to graduate under this plan, but Sophomores, Juniors, and Seniors may choose to remain under the previous graduation plan or move to the new plan. The new plan does offer greater flexibility for the student in choosing courses.

Students/parents can call or come by the office between 8:00 and 3:00 Monday-Friday to discuss graduation plan options and choose courses.

**Fall Gardening Tips**

Submitted by Morgan Runyan  
Texas AgriLife Agent

So you want to grow garden fresh vegetables this fall. Where do you start? Simply looking at seed packets in catalogs or local nurseries will not get the job done. One must garden smartly if economical production and utilization are expected. Here are some quick tips to get your fall garden started.

- Remove all plants in the garden that have matured and are no longer producing. Leave okra, cherry tomatoes, and pole beans if the foliage is healthy. Don't try to compost insect and disease-ridden plants--spider mites don't compost!

- Make sure your garden placement is in "Full" sun. That means at least 8 hours of intense, direct exposure. Shade after 3pm is wonderful: shade in the morning is acceptable.

- Prepare your garden beds by tilling the soil, adding your slow release fertilizer or manure, and pre-irrigate the entire garden area by wetting with a sprinkler.

- Tomatoes and peppers are easier to grow as transplants. Transplants WILL survive hot temperatures and full sun IF adequate moisture is available to the plant. Provide adequate, daily moisture to allow for root system establishment. Fall-recommended tomato varieties such as Bingo, Merced and Celebrity can be purchased in a large transplant form with larger root systems in mid to late August. Surefire and Heatwave are the only tomato varieties which will set flowers and fruit during the heat of September and are thus the earliest maturing tomatoes of a fall planting. The best bell pepper, Summer Sweet 860, is also available in local nurseries

- Plant long-term, frost-tolerant vegetables together. Frost-tolerant vegetables include beets, broccoli, Brussels sprouts,



**RLCC Celebration!** Robert Lee Care Center residents enjoyed the 4th of July party and dance with music provided by Rough Creek. Refreshments served were lemonade and watermelon.

cabbage, carrots, cauliflower, chard, collards, garlic, kale, lettuce, mustard, onions, parsley, spinach and turnips.

- Plant short-term, frost-susceptible vegetables together so that they can be removed after being killed by frost. Frost protection and the planting of a cereal rye cover crop are facilitated if such a grouping system is used. Frost-susceptible vegetables include beans, cantaloupes, corn, cucumbers, eggplants, okra, peas, peppers, Irish potatoes, sweet potatoes, squash, tomatoes and watermelons.

- Keep in mind the relative maturity rate, average height (in feet) and frost sensitivity of the crop of various garden vegetables with FS meaning frost-susceptible crops which will be killed or injured by temperatures below 32 degrees F. and FT meaning frost-tolerant crops which can withstand temperatures below 32 degrees F.

- The quick (30-60 days) maturing vegetables are: beets (1 1/2 feet) FT; bush beans (1 1/2 feet) FS; leaf lettuce (1 foot) FT; mustard (1 1/2 feet) FT; radishes (1 1/2 feet) FT; spinach (1 foot) FT; summer squash (3 feet) FS; turnips (1 1/2 feet) FT; and turnip greens (1 1/2 feet) FT.

- The moderate (60-80 days) maturing vegetables are: broccoli (3 feet) FT; Chinese cabbage (1 1/2 feet) FT; carrots (1 foot) FT; cucumbers (1 foot) FS; corn (6 feet) FS; green onions (1 1/2 feet) FT; kohlrabi (1 1/2 feet)

FT; lima bush beans (1 1/2 feet) FS; okra (6 feet) FS; parsley (1 1/2 feet) FT; peppers (3 feet) FS; and cherry tomatoes (4 feet) FS.

- The slow (80 days or more) maturing vegetables are: Brussels sprouts (2 feet) FT; bulb onions (1 1/2 feet) FT; cabbage (1 1/2 feet) FT; cantaloupes (1 foot) FS; cauliflower (3 feet) FT; eggplant (3 feet) FS; garlic (1 foot) FT; Irish potatoes (2 feet) FS; pumpkins (2 feet) FS; sweet potatoes (2 feet) FS; tomatoes (4 feet) FS; watermelon (1 foot) FS; and winter squash (1 foot) FS.

Licensed

Insured

**A-BAN EXTERMINATORS**

"A BAN ON BUGS"

TERMITES, ROACHES, ANTS, MOTHS, ETC.

TIM BYRD, Owner  
Phone: (325) 944-4031  
Cell: (325) 656-6212



P.O. Box 861  
San Angelo, Texas 76902

**JOIN OUR TEAM**

Robert Lee Care Center is searching for qualified & motivated professionals and paraprofessionals to join our team.

We provide health insurance for our employees, with no cost to the employee, paid vacations, flexible hours, rewards, and incentives.

We are currently accepting applications for RNs and LVNs.

Please come in and fill out application. We are located at 307 W. 8th ST. Robert Lee, TX

EOE

**IVEY MOTOR COMPANY, INC.**

2012 Ford Flex Limited #7133 \$27,995  
*White Suede w/Black Leather*

2013 Ford Escape SE #7149 \$23,997  
*Ingot Silver with Gray Interior*

2013 Ford Focus SE #7150 \$18,695  
*Ingot Silver with Gray Leather • Moonroof!*

2013 Ford Explorer Limited #7158 \$33,995  
*Tuxedo Black w/Black Leather, Sharp!!!*

2013 Ford Fusion #P147B \$22,995  
*Ingot Silver w/Graphite Cloth Interior*

2013 Ford Explorer Limited #5192 \$33,995  
*Tuxedo Black w/Stone Leather*

2011 Toyota Tacoma Sport #P282A \$24,994  
*Double Cab w/TRD Pkg. • Magnetic Gray w/Graphite Int. Really Nice!!*

2013 Taurus Limited #7152 \$23,995  
*Silver w/Black Leather • Super Sporty • 21K Miles!*

2008 Ford F-250 Reg. Cab 4x4 #6643A \$11,995  
*Oxford White, 5.4 V8 • Great Truck for Anything!*

2011 Ford Expedition # \$27,995  
*Golden Bronze w/Tan Leather • Rear DVD*

2009 Ford Mustange Coupe #Q273A \$10,695  
*Black w/Charcoal Cloth*

*We are now doing state inspections.*

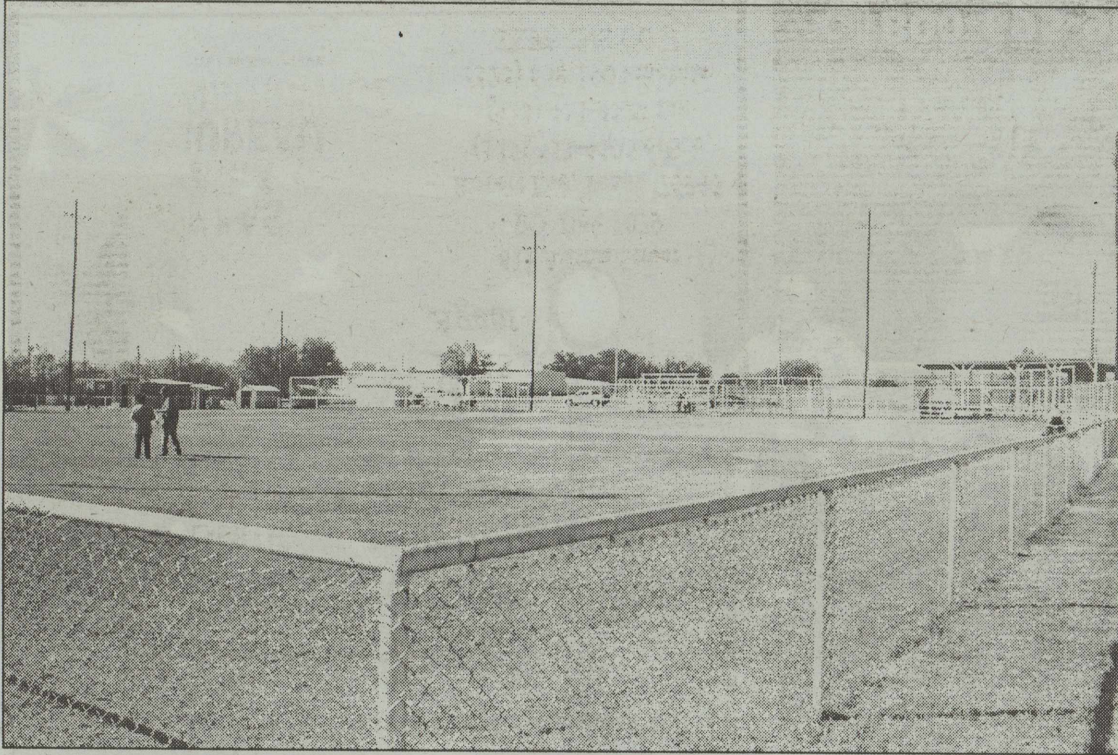
**453-4561**

Ask For:

**Randy Flanagan • Billy Wayne Roe**







**Field Prep!** Debbie Childers, Jason Moran and Gina Moran were just three of the Robert Lee Vision with a Purpose members getting Robert Lee's softball field ready for tonight's tournament. The Sons of Pitches Midnight Madness Co-ed Softball Tournament will begin at 8:30 tonight (Friday), August 8.

**Bronte Golf Tourney slated for Aug. 23**

The Bronte Longhorn Golf Club is sponsoring a 3 person 27 hole golf tournament on Saturday, August 23. Tee time is 9 am.

When signing up you must let them know if a cart is needed and leave a call back number. For more information, contact Bronte Longhorn Golf Club at 325-473-2156, 325-473-3231 or 325-262-6617. After 5 pm call 432-661-3431 or 325-864-3312 or 325-236-0089.

**CRMWD Project named state's top engineering project**

A groundwater system that prevented a water supply crisis in West Texas has been named the top civil engineering project in Texas and one of the top five in the United States.

The Ward County Water Supply Project, owned and operated by the Colorado River Municipal, received the 2014 Texas Outstanding Civil Engineering Achievement Award from the American Society of Civil Engineers Texas Section. It is also one of the five finalists for the 2015 Outstanding Civil Engineering

Achievement Award, given by the ASCE national organization.

The project is a \$120 million groundwater well field and transmission system supplying an additional 30 million gallons of water per day to Odessa, Big Spring, Snyder, Midland and Stanton. As CRMWD's emergency response to the drought, the entire system was designed and constructed in less than 18 months. That included 21 ground water wells, 65 miles of pipeline, four pump stations and related facilities. With this project CRMWD can now supply a total of 45 million gallons of groundwater per day.

The ASCE judges recognized the Ward County project as critical in meeting West Texas' water needs amid dramatic population growth, the Permian Basin oil and gas boom, and sustained drought. The judges also commended the CRMWD team for completing the project \$15 million under budget.

The project draws groundwater from the Ward County North Well Field, west of Monahans. CRMWD bought the field from Luminant Generation in 2010 to diversify its supplies and provide an

additional water source over the long term. But then the severe drought struck; 2011 would become the driest year on record in Texas. CRMWD's three

supply reservoirs-J.B. Thomas, E.V. Spence and O.H. Ivie-were projected to be completely dry in the spring of 2013.

The CRMWD Board of Directors responded to the emergency by moving quickly to develop the well field. It began the Ward County project in June 2011; to avoid interruption of the cities' water supplies, the system had to be operational by Jan. 1, 2013. Meeting that demanding schedule required seven design teams, seven pipe production plants, five pipe-laying crews and four construction contractors. Major construction and startup was completed Dec. 13, 2012, two weeks ahead of schedule.

Freese and Nichols, Inc. designed and oversaw construction of the well collection and water transmission system; the company is headquartered in Fort Worth and has offices in Midland and Lubbock. Daniel B. Stephens and Associates, Inc. designed and oversaw construction of the well field; the company headquartered in Albuquerque and has an office in Lubbock. General contractors

were Garney Construction of Kansas City, MO; S.J. Louis Construction of Mansfield; Oscar Renda Contracting of Roanoke; and Hydro Resources of Sugar Land.

The CRMWD team will receive the Texas OCEA Award in September at ASCE Texas' annual conference in Galveston; the winner of the national award will be announced in March 2015. In addition to the awards from the ASCE, the project has also been recognized by the American Council of Engineering Companies, receiving the Gold Medal in Water Resources at the 2014 Texas Engineering Excellence Awards and one of eight Grand Awards at the 2014 Nation Engineering Excellence Awards.

The CRMWD was created in 1949 to provide water to its member cities of Odessa, Big Spring and Snyder. It also has contracts to provide specified quantities of water to the cities of Midland, San Angelo, Abilene, Stanton, Robert Lee, Grandfalls and Pyote, and the Millersview-Doole Water Supply Corp.

WEST CENTRAL  
LTE

It's here,  
**Unlimited Wireless Internet**  
with all new  
**LTE technology!**

**Twice the speed at the same low price!**

**1st month FREE\***  
\*For a limited time only, with one year contract. Certain restrictions apply.

Prices starting at only  
**\$29.95** per month

Free Installation • 10 Free Email Accounts  
Free Local 24/7 Tech Support • Free Virus Filtering  
Free Spam Filtering • Free Parental Controls

Call **800-695-9016** to see if you're included in our new coverage area.

**Paul's Body Shop**

- Complete Auto Body Repairs & Paint
- Insurance Claims Welcome

**PAUL KNIGHT**  
123 N. State Bronte, Texas  
(325) 473-2425 • (325) 450-2281

**Russell Davis**  
Agent

611 Austin Street  
PO Box 1079  
Robert Lee, Texas 76943  
(325) 453-4505 office  
(325) 453-4524 fax  
(325) 650-1904 mobile  
TXFB-INS.COM