

# THE OBSERVER/ENTERPRISE

Single Copy 50¢



Serving Coke County

(USPS 467-480)  
(ISSN 8750-197X)

Vol. 127, No. 04

Friday, August 1, 2014

## Rain Totals Higher on Coke County's East Side

This year, Bronte and the eastern portions of Coke County have received almost twice as much rain as the areas around and west of Robert Lee.

Through the first quarter of 2014, rainfall over Coke County was dismal at best - on both sides of the county. Dee and Dessie Kendall had yet to see a drop of rain at Edith during the first three months of 2014. The top prize for the most rainfall during these three months went to Charles and Dorris Sonnenberg in Bronte with a whopping grand total of .48 inches.

April began in the same fashion with the Edith area still dry. However, it was getting a little better the further east you went with Bobby and Jeffie Roberts reporting a half an inch in the Valley View area (south of Robert Lee) for April and Wayne and Melinda McCutchen reporting .67 inches (north of Bronte) for the month.

The rains in May were the turning point for the year. Although, the Kendalls and Jerry and Susan Wellborn (west of Pecan Creek in far west Coke County) still received less than the rest of the county. Everyone reported at least 3.60 inches, with the McCutchens reporting 7.70 inches for the month.

All those reporting totals saw rain in June. The Wellborns saw the least with only .65 inches, while the reports in and around Bronte ranged from two to three inches.

This difference between the east and west side rain totals is not something seen in the last few years. In 2008 and 2009, rain totals on both sides were relatively even with average to just below average totals. 2010 proved to be an excellent year county-wide with an average of just under 30 inches of rain. The worst year in recent history for Coke County was 2011 with an average of less than 10 inches. However, both sides shared in the lower totals. Huge rains in September of 2012 helped that year's totals. Most of the county experienced average rainfall with Edith enjoying a little wetter weather than the rest of the county.

In 2013, it was a little wetter south of Robert Lee than in the rest of the county. Totals for the rest of the county came in at average to just below average.

(Continued on Page 2)

### County Rainfall Totals

Year	Jan.	Feb.	Mar.	Apr.	May	June	July	Aug.	Sept.	Oct.	Nov.	Dec.	Total for Year
<b>Dee &amp; Dessie Kendall • Edith Area</b>													
2008	0.00	0.00	3.50	2.30	3.85	3.00	1.50	6.40	1.75	1.80	0.00	0.00	24.10
2009	0.00	0.00	1.50	1.20	2.60	3.55	4.25	0.45	2.60	1.50	0.00	2.75	20.80
2010	N/A	N/A	N/A	3.70	4.50	0.90	5.40	0.20	5.10	0.60	0.00	0.90	29.90
2011	0.00	0.09	0.10	0.00	0.10	0.40	0.0	2.05	1.35	4.30	0.30	0.90	9.59
2012	3.30	2.40	0.80	1.90	3.40	1.20	4.30	0.50	12.4	0.70	0.00	0.00	30.90
2013	2.55	0.00	0.00	1.50	3.50	3.05	4.70	0.50	4.50	4.10	0.10	1.80	26.30
2014	0.00	0.00	0.00	0.00	3.60	0.95							
<b>Bobby &amp; Jeffie Roberts • Valley View Area</b>													
2008	0.06	0.60	3.29	1.92	2.41	2.15	0.52	6.01	1.73	1.60	0.01	0.01	20.31
2009	0.05	0.04	1.50	2.10	2.90	1.57	4.11	0.85	3.17	1.84	0.02	2.10	20.25
2010	2.03	2.69	1.02	2.78	4.71	3.01	4.41	0.07	5.90	0.90	0.00	0.70	28.22
2011	0.23	0.60	0.16	0.00	1.10	0.01	0.02	4.33	0.45	3.67	0.37	1.45	12.39
2012	3.40	2.80	1.00	1.21	4.08	0.34	1.39	1.07	8.90	0.13	0.01	0.00	24.33
2013	1.52	0.05	0.00	1.15	6.51	4.10	5.36	2.10	3.31	2.40	0.66	0.70	27.86
2014	0.00	0.31	0.00	0.50	3.90	1.57							
<b>Fran Sonnenberg • 3 Miles East of Bronte</b>													
2008	0.30	1.00	5.70	3.10	1.10	3.00	0.95	7.92	2.16	1.28	0.00	0.00	26.51
2009	0.00	0.45	1.47	1.48	1.75	1.36	5.84	0.45	1.75	3.10	0.04	2.31	20.00
2010	3.68	3.09	1.92	2.11	4.33	2.20	4.33	0.75	5.50	1.25	0.05	1.00	30.21
2011	0.12	0.80	0.10	0.10	0.55	0.02	0.00	1.47	0.54	3.00	0.35	1.30	8.35
2012	2.80	2.24	0.89	2.28	4.99	0.26	0.54	1.96	7.85	0.00	0.00	0.05	23.86
2013	1.55	0.29	0.00	1.90	2.44	1.58	4.40	0.53	6.20	2.05	0.95	1.25	23.14
2014	0.00	0.33	0.00	0.45	7.55	2.02							
<b>Charles &amp; Dorris Sonnenberg • Bronte Area</b>													
2008	0.26	0.67	4.02	1.51	1.09	2.14	0.47	8.43	2.05	1.25	0.00	0.00	21.89
2009	0.09	0.48	1.50	1.95	1.26	1.75	5.40	0.22	1.11	2.52	0.06	2.16	18.94
2010	3.76	3.17	2.07	2.45	3.74	2.19	3.27	0.15	6.69	1.13	0.00	1.25	29.87
2011	0.14	0.72	0.07	0.03	1.20	0.02	0.00	1.48	0.74	3.25	0.64	1.47	9.78
2012	3.38	2.20	0.78	1.56	5.46	0.73	0.69	1.75	8.53	0.05	0.00	0.18	25.31
2013	1.49	0.22	0.00	1.88	2.57	2.84	4.22	0.59	4.71	2.09	1.10	1.15	22.86
2014	0.00	0.47	0.01	0.39	6.70	2.01							
<b>Paul Sheffler • 7 Mile Hill</b>													
2010	N/A	N/A	N/A	4.00	3.67	3.02	4.66	0.21	6.65	0.94	0.00	1.10	33.56
2011	0.15	0.65	0.05	0.00	1.24	0.00	0.00	2.36	0.36	3.28	0.39	1.54	10.02
2012	3.50	2.75	0.75	1.39	4.99	0.49	2.44	2.06	6.42	0.07	0.00	0.12	24.98
2013	1.90	0.10	0.00	0.39	4.12	2.51	6.12	1.04	4.02	2.70	0.64	1.15	24.69
2014	0.00	0.24	0.11	0.36	6.30	2.22							
<b>Wayne &amp; Melinda McCutchen • 3 Miles North of Bronte</b>													
2008	0.00	0.90	5.10	2.90	1.45	1.65	0.30	7.80	2.30	2.20	0.00	0.00	24.60
2009	0.00	0.60	1.50	1.80	1.35	2.20	5.00	0.40	0.68	2.52	0.15	2.20	18.40
2010	3.54	3.43	1.78	2.87	3.69	4.09	3.43	0.00	5.20	1.34	0.00	1.02	30.39
2011	0.23	0.45	0.15	0.00	0.99	0.04	0.00	1.15	0.78	2.56	0.36	1.20	7.91
2012	3.11	2.11	0.83	1.14	3.69	0.40	1.36	2.03	8.73	0.05	0.00	0.06	23.51
2013	1.08	0.19	0.00	1.25	3.12	1.71	5.02	0.75	4.22	2.10	0.93	1.18	21.55
2014	0.00	0.33	0.09	0.67	7.70	2.96							
<b>Jerry &amp; Susan Wellborn • 12 Miles West of Robert Lee</b>													
2010	N/A	N/A	N/A	N/A	N/A	N/A	4.35	0.50	5.20	1.25	0.00	1.10	25.45
2011	0.25	0.00	0.10	0.00	0.40	0.30	0.00	1.00	1.40	3.15	0.20	1.75	8.55
2012	2.85	2.05	0.60	1.55	3.55	1.10	1.50	1.40	10.4	0.40	0.20	0.15	25.75
2013	1.65	0.05	0.00	0.90	4.20	3.70	3.60	0.15	3.50	2.60	0.95	0.60	21.90
2014	0.00	0.15	0.00	0.15	3.85	0.65							



**THE OBSERVER/ENTERPRISE**  
 Published Weekly  
 707 Austin (325) 453-2433 • (325) 453-4643 FAX  
 email: o-e@wcc.net  
 Periodical Rate Postage paid at Robert Lee, TX.  
**POSTMASTER: Please send address changes to**  
**Observer/Enterprise**  
**PO Box 1329, Robert Lee, TX 76945.**  
**STAFF**  
 Melinda McCutchen, Publisher/Editor  
 Amber Sawyer  
**SUBSCRIPTION RATES**  
 Per Year in Coke & Sterling Counties..... \$30.00  
 Per Year Elsewhere in Texas..... \$35.00  
 Per Year Outside of Texas..... \$37.00

**... Rainfall Totals**

(Continued from page 1)

The Texas Water Development Board has placed all of Coke County in the "moderate" drought range as of July 28, 2014.

**Bells to signal call to prayer**

Listen for the church bells or set your alarm and join with over 800,000 believers and say the Lord's Prayer at noon everyday. Teach it to your children so they will have a prayer to say during the moment of silence at school. Praise be to God. Matthew 6:9-13

**RLHS Cross Country practice begins August 4**

Robert Lee cross country practice will begin August 4 at 8 am. All high school students interested in running cross country need to meet at the gym no later than 8 am. Coach Dunham will be the new cross country coach this year.

**Steers to begin Two-A-Days**

The Robert Lee High School Steers will begin two-a-day football practices on Monday, August 4. Players need to be dressed and ready by 7 am.

Practices will be held from 8 to 11 am and 7 to 9 pm on Monday, August 4, and Wednesday, August 6. Tuesday, August 5, and Thursday, August 7, will be morning practice only from 8 to 11 am. On Friday, August 8, a midnight madness practice will be held from 12 am to 2 am. A full pad practice will be held that evening from 7 pm to 9 pm. Morning and evening practices will also be held Monday, August 11, and Wednesday, August 13. Morning only practices will be held Tuesday, August 12, and Thursday, August 14. Evening only practices will be held Monday, Tuesday and Wednesday, August 18-20, from 7 pm to 9 pm.

A scrimmage against May will be held Friday, August 15, at 6 pm in May. The Steers will scrimmage Borden County at home on Thursday, August 21, at 6 pm.

**Cemetery Association to meet**

The Hayrick Lodge Cemetery Association that oversees the care of the Robert Lee Cemetery will meet on Monday, August 11, at 5:30 pm at the Masonic Lodge Hall in Robert Lee. All interested persons are

urged to attend.

**Blackwell High School office to open August 4 for schedule selections**

The Blackwell High School office will be open for class schedule selections from 8 am to 3 pm Monday through Friday beginning August 4.

The Texas Legislature made changes to graduation plans for Texas high school students. The new plan then required many modifications that occurred throughout the past school year, and some changes still occurred during the month of June. Hopefully, the modifications to the new graduation plan are complete and we are ready to make schedules for the 2014-15 school year. Freshman students are required to graduate under this plan, but Sophomores, Juniors, and Seniors may choose to remain under the previous graduation plan or move to the new plan. The new plan does offer greater flexibility for the student in choosing courses.

The school offices will open August 4 and students/parents can call or come by the office between 8:00 and 3:00 Monday-Friday to discuss graduation plan options and choose courses.

**Bronte Physicals set for August 2**

Bronte High School Physicals will be Saturday, August 2, 2014, in San Angelo at Shannon Sports Medicine. All student athletes need to meet in front of the High School at 7 am. The bus will be leaving at 7:15 am. The physical will be of no cost to the student athlete if taken at this time.



**Advisory Committee Meeting!** The Regional Advisory Committee on Aging (RACOA) met for their regularly scheduled bi-monthly meeting May 28. This committee provides a valuable service by helping the Area Agency on Aging identify needs, develop accessible services, target resources in your community and others in the Concho Valley Region. They advise and make recommendations to the Area Agency on Aging of the Concho Valley on Aging matters. The purpose of this organization is to assure that the Concho Valley is a good place to grow up and grow old. Committee members include (back row, from left) Rebecca Whitecotton, Mary Cortinas, Jim Brisbin, Brigitte Rogers, Dolores Schwertner, Wayne Merrill (Chair), Ralph Teague, LeeRoy Kiesling, Mike Matthews, Maggie Farrington (Co-Chair), Robert Gauer, (front row, from left) Mary Roden, Bill Sohn, Patsy Kellogg, Beth Grounds, and Louise Jacobsen. Committee members not pictured are Vicki Bledsoe, Lynn English, Mary Kay Henson, Deborah Palmer, Kaye Pitcock, and Kathy Aycock.

**Red Hat Society meeting slated**

The Red Hat Society will be meeting Thursday, August 7, at the Windmill City Grill in Bronte. The time will be 11 am.

You are welcome to join this group where there is fun after fifty (and before) for women of all walks of life. There are no dues, no rules, no business, no nothing really but lots of good fun and fellowship. Come join us.

**Community Band Practice set for July 24**

Robert Lee Community band practice will be held Thursday, July 24 at 6 pm in the RLHS Band Hall. Plans are in the works for practices to be held every Tuesday in August. All are welcome and encouraged to join.

**Bronte Band to begin practice August 4**

The Bronte High School Band will begin rehearsals on August

4 from 5-9 pm. Practice will be Monday-Friday with Wednesday off for 2 weeks in August.

**Bronte Golf Tourney slated for Aug. 23**

The Bronte Longhorn Golf Club is sponsoring a 3 person 27 hole golf tournament on Saturday, August 23. Tee time is

9 am.

When signing up you must let them know if a cart is needed and leave a call back number. For more information, contact Bronte Longhorn Golf Club at 325-473-2156, 325-473-3231 or 325-262-6617. After 5 pm call 432-661-3431 or 325-864-3312 or 325-236-0089.

**Area Churches Invite You to Worship**

**Bronte**

**Bronte Church of Christ**  
 PO Box 346 • 118 S. Jefferson • Bronte  
 (325) 473-3291  
 Preacher John V. Driggers  
 Sun. 10 am & 6 pm, Wed. 7 pm

**Central Baptist Church**  
 324 S. Franklin • Bronte  
 (325) 473-4811  
 Dale Patterson, Pastor  
 Sun. 10 am Sunday School  
 11 am & 6 pm Worship  
 Wed. 6 pm

**First Baptist Church**  
 424 S. Washington • Bronte  
 (325) 473-2331  
 Bro. Corey Cornutt, Pastor  
 Sunday 9:45 am Sunday School,  
 10:55 am Worship,  
 5 pm Worship  
 6 pm Youth  
 Wednesday 7 pm Prayer Meeting

**First United Methodist Church**  
 Corner of Washington & Holmes  
 Bronte  
 (325) 473-3281  
 Rev. Everette Boyce, Pastor  
 Sun. 10:00 am Sunday School  
 11:00 am Worship

**Forgiven Ministries**  
 117 W. Main, Bronte  
 Russ Frasier, Pastor  
 Sun. 10 am  
**St. James Catholic Church**  
 215 N. Washington, Bronte  
 (325) 365-2687  
 Rev. Hubert Wade, Jr., Pastor  
 Sun. 5 pm

**Coke County**

**Pecan Baptist**  
 PO Box 542 • 12 miles West of  
 Robert Lee on Sterling City Hwy  
 (325) 453-2065. Bill Hood, Minister  
 www.pecanbaptist.org  
 Sun. 10 am, Sunday School  
 11 am & 7 pm, Worship

**Robert Lee**

**Bible Baptist Church**  
 PO Box 938 • 9th & Austin  
 (325) 453-2621 Robert Lee, Dennis Clark, Pastor  
 Sun. 10 am Sunday School, 11 am  
 Worship

**Emmanuel Pentecostal**  
 PO Box 683 • 1019 Colorado City Hwy  
 Robert Lee (325) 453-2360  
 Sun. 10 am & 6 pm, Wed. 7 pm

**First United Methodist Church**  
 PO Box 144 • 9th & Chadbourne  
 Robert Lee • (325) 453-2417  
 Cyndi Weidner, Pastor  
 Sun. 10 am Sunday School  
 11 am Worship, 5 pm Choir Practice

**Iglesia Bautista Betel**  
 101 Houston • Robert Lee  
 Sun. 9:45 am • Sunday School  
 11 am Service • Bible Study Wed. 6 pm

**Southside Church of Christ**  
 PO Box 698 • 8th & Houston  
 Robert Lee (325) 453-2176  
 Jordan Arnold, Preacher  
 Sun. 10 am, Sunday School  
 11 am & 6 pm, Worship  
 Wed. 6 pm, Worship

**Northside Church of Christ**  
 PO Box 508  
 9th & Chadbourne • Robert Lee  
 (325) 453-2685, (806) 543-2118 or  
 (325) 473-1053  
 Services: Sun. 10 am

**Our Lady of Guadalupe Catholic Church**  
 601 W. 10th, Robert Lee  
 (325) 365-2687  
 Rev. Hubert Wade, Jr., Pastor  
 Sat. 6 pm

**Robert Lee Baptist Church**  
 PO Box 493 • 22 W. 11th  
 (325) 453-2724  
 Danny White, Pastor  
 Sun. 9:45 am, Sunday School  
 11 am & 7 pm, Worship  
 Wed. 7 pm, Prayer Meeting

**Victory Assembly of God**  
 (325) 453-2208, PO Box 638  
 6th & Houston, Robert Lee  
 Rev. Irving Smith, Pastor  
 Sun. 9:45 am, Sunday School  
 10:45 am & 6 pm, Worship  
 Wed. 6 pm, Bible Study

**Tennyson**

**Tennyson Baptist Church**  
 Hwy 277 • Tennyson  
 (325) 473-2040  
 Sun. 9:45 am, Sunday School  
 11:00 am & 6 pm, Worship  
 Wed. 6:00 pm Prayer Meeting

  
**TEXAS FARM BUREAU INSURANCE**  
 611 Austin Street  
 PO Box 1079  
 Robert Lee, Texas 76945  
 (325) 453-4505 office  
 (325) 453-4524 fax  
 (325) 650-1904 mobile  
 TXFB-INS.COM

**Come As You Are**  
 Sunday Mornings • 10 am  
 Table Time • Tuesday evening  
 Pot Luck 6 pm • Study 7 pm  
**FORGIVEN MINISTRIES**  
 Downtown Bronte • Across from Grocery Store  
 Russ Frasier, Preacher



**Commissioners Court minutes posted**

The Coke County Commissioners Court met in regular session July 14, 2014, at the courthouse in Robert Lee. Members of the court present included Commissioner, Pct. #1 Gene Montgomery, Commissioner, Pct. #2 Wendell Lee, Commissioner, Pct. #3 Gaylon Pitcock, Commissioner, Pct. #4 Bobby Blaylock. Clerk Mary Grim was also in attendance.

The meeting opened with prayer given by Comm. Blaylock and pledge to the flag was recited.

Judge Pro Tem Montgomery announced the presence of a quorum. Judge Blair was absent.

Comm. Lee made a motion to approve the minutes for June 23, 2014. The motion was seconded by Comm. Pitcock. Motion carried.

Treasurer Hal Spain presented his report. Comm. Lee made a motion to approve the Treasurer's Report as presented. The motion was seconded by Comm. Blaylock. Motion carried.

County Agent Jan Yanez presented county extension report.

Sheriff Wayne McCutchen presented his report.

Tax Collectors report was presented by Judge Pro Tem Montgomery.

County/District Clerk Mary Grim presented her report.

Constable Pct. 1 report was presented by Constable Marshall Millican.

Constable Pct. 2 report was presented by Constable Marty Boyd.

J.P. Pct. 1 report was given by Judge Jackie Walker.

J.P. Pct. 2 report was given by J.P. Coulter.

D.R. Report was presented by Judge Pro Tem Montgomery.

Trapper's Report was presented by Judge Pro Tem Montgomery.

Comm. Pitcock made a motion to put the burn ban back on. The motion was seconded

by Comm. Blaylock. Motion carried.

Comm. Blaylock made a motion to allow Comm. Lee to purchase a lawn mower for Precinct #2 for \$11,500.00. Comm. Pitcock seconded the motion. Motion carried.

Comm. Blaylock wanted to hold off on purchasing a lawn mower for Precinct #4 at this time. No action taken.

Comm. Blaylock reported that he is Mr. Garrison at the detention center to see if they can find keys.

Judge Pro Tem Montgomery reported that Natalie Clawson had turned in her resignation. She is going to work for Ivey Motors.

There being no road work requests, no action was taken.

Comm. Blaylock made a motion to pay bills. The motion was seconded by Comm. Pitcock. Motion carried.

Judge Pro Tem Montgomery adjourned the meeting at 9:50 am.

\*\*\*\*\*

The Coke County Commissioners Court met in special session July 22, 2014, at the courthouse in Robert Lee. Members of the court present included County Judge, Roy Blair, Commissioner, Pct. #1 Gene Montgomery, Commissioner, Pct. #3 Gaylon Pitcock, Commissioner, Pct. #4 Bobby Blaylock. Clerk Mary Grim was also in attendance.

The meeting opened with pledge to the flag and prayer was offered by Comm. Blaylock.

Judge Blair announced the presence of a quorum. Comm. Lee was absent.

Guest present for the meeting were Neil Brown and Jeff Lopez with the Concho Valley Council of Governments and representing Robert Lee Care Center were Mary Bessent and Monica Toney.

Judge Blair reported that we have an interlocal agreement with Tom Green County to take over the 911 when the equipment is installed and there is approval with the state. He also reported that Concho County has agreed



**RLCC Gardeners!** Residents of Robert Lee Care Center planted a garden of tomatoes and peppers and are proud of how well their garden grew. They are enjoying eating the fresh vegetables. The gardeners include (back row, from left) Julia Longoria, Fran LaComb, David Key, Marie Raney, Juanell Brown, Hazel Hayes, Jim Skinner (front row, from left) Marie Lewis, and Billie Curry.

to temporarily take over the 911 for Coke County at this time. We will also do an interlocal agreement with them. It was reported that Charlie Campbell will possibly start next week installing the equipment in Tom Green County.

Neil and Jeff explained the procedures for removing the equipment and will schedule the removal with their guys. Concho Valley COG will pay the bill for the removal.

Mary Bessent explained the need to do this as soon as possible because of remodeling and the removal of asbestos.

Judge Blair adjourned the meeting at 9:20 am.

**Tax-Free Weekend set for August 8-10**

Texas Comptroller Susan Combs reminds shoppers they can save money on certain items priced under \$100 during the

state's annual sales tax holiday. This year, the sales tax holiday is scheduled for Friday, Saturday and Sunday, Aug. 8 - 10.

The law exempts most clothing, footwear, school supplies and backpacks priced under \$100 from sales tax, which could save shoppers about \$8 on every \$100 they spend during the weekend.

"Families gearing up for the new school year will not pay any sales tax for many back-to-school items ranging from pens to blue jeans," Combs said.

"When the back-to-school list is long and the money is short, it can be difficult for Texas families. We hope this tax break will help ease that burden."

Lists of apparel and school supplies that may be purchased tax free can be found on the Comptroller's website at [www.TexasTaxHoliday.org](http://www.TexasTaxHoliday.org).

This year, shoppers will save an estimated \$82.7 million in state and local sales taxes during the Sales Tax Holiday. The tax holiday weekend has been an annual event since 1999.

**YOU ARE INVITED  
THE CHURCH OF CHRIST  
meeting at 120 S. Jefferson  
in BRONTE, TEXAS**

**to hear God's Word presented  
in an inspiring, enthusiastic way  
by His servant, Leonard Keele  
of Duncan, Oklahoma  
Sunday, August 3, -  
Wednesday, August 6**

**Sun. - Bible Class at 10:00 am  
- Worship times:  
10:50 am & 6:00 pm  
Mon - Wed - 7:00 pm**

**May you feel a warm welcome  
and a blessing from above.**

**ROBERT LEE  
Past & Present**  
PUBLISHED BY VISION WITH A PURPOSE

**Past**      **PRESENT**

Top - First Football Team 1927-28. Middle - '29 Team 1928-29. Bottom - Football Game 1929.

VP sponsors working the Concession Stand at a Robert Lee Home Football Game - Top - James Martin, Concho County, Ben Potts, Renee Smith, Bobby & Janice Roberts, Nicole Clark & Heidi Tucker, Brian & Dawn Hester.

During the 2014 Football Season, Vision with a Purpose is proud to announce we will be working the Concession Stand at all Robert Lee Home Football Games! Vision with a Purpose is a huge supporter of our local school and loves the history this school has. We want to continue the history of this great school for years to come! Come on out and support the Robert Lee Steers!

Vision with a Purpose's sole purpose is Beautification & Restoration of Robert Lee with Unity in the Community. If you would like to help contribute to the efforts of Vision with a Purpose, you can send donations to:  
P.O. Box 203  
Robert Lee, TX 76945  
For more information or how to contact - [info@robertleevp.com](mailto:info@robertleevp.com)





**4-H District Fashion Show!** Kelby Clawson recently participated in the District 7 4-H Fashion Show. Kelby took top honors in the Non Apparel division with her iPad cover. Kelby has taught herself the skill of crocheting via YouTube. She has made various non-apparel items using this lost clothing and textiles skill.



**Bronte Elementary School Supply List 2014-2015**

**Preschool program for children with disabilities & Pre-K**

- \*1-Blunt 5" Fiskar Scissors
- 3 - 1.25 oz. Elmer's Glue
- 3 boxes Kleenex Facial Tissue
- 1 bottle Purell hand sanitizer (8 oz.)
- 1 box "Ziplock" Bags, Quart Size
- 1 box Crayola Crayons (8 count only - NO Jumbo)
- 1 set Dry Erase Markers (set of 4)
- 5 Glue Sticks
- \*1 Spiral Notebook (100 count wide rule)
- \*1 Large Zippered Top Backpack
- \*1 Set of extra clothing
- Adopt-A-Longhorn t-shirt-\$10.00

\*Indicates items to be labeled with child's name. All other items will be shared in the classroom as community property. For example, each student's glue will be placed in the class' glue box.

\*Please consider clothing that will allow your child to dress and go to the bathroom independently.

**Kindergarten**

- 6 boxes Crayola Crayons-Primary colors (8 count only - NO Jumbo-NO glitter)
- 3 boxes Facial Tissues (100 count)
- 12 No. 2 Pencils
- 1 box Crayola Thick Markers (10 count)
- 3 - 4.0 oz. Elmer's Glue (No Rose Art)
- 1 set Dry Erase Markers (set of 4)

- 10 Folders with only Bottom Pockets (NO plastic)
- 1 Sharp 5" Fiskar Scissors
- 1 Canister of pull-up Clorox Disinfectant wipes
- 2 Pink Bevel Eraser
- 1 Small Plastic School Box (no zipper bags please)
- 1 School Bag or Backpack (large enough to hold folders)
- 1 roll 1/2" Transparent Tape
- Adopt-A-Longhorn t-shirt-\$10.00

\*Please label everything your child brings to school.

**1st Grade**

- 2 boxes Crayola Crayons (16 count)
- \*2 boxes Facial Tissues (100 count)
- \*10 No. 2 Pencils
- \*1 Elmer's 4 oz. Glue
- 6 Assorted Folders (Pockets only)
- 1 Sharp 5" Fiskar Scissors
- 2 Glue Sticks
- 1 Plastic School Box
- 1 School Bag or Backpack
- \*1 box "Ziplock" Bags, Quart size
- Adopt-A-Longhorn t-shirt-\$10.00
- \*Community Property - You do not need to have your child's name on them.

**2nd Grade**

- 1 box Crayons (24 count)
- 1 box Kleenex
- 20 No. 2 Pencils
- 1 Elmer's 4 oz. Glue
- 1 Scissors
- 4 Pink Erasers

- 1 School Box
- 1 School Bag or Backpack
- 6 Folders with Pockets
- 1 Ruler
- 1 - 1" 3-ring binder
- 6 Glue Sticks
- 1 Large Cloth book cover
- 4 Dry Erase Markers (Black)
- Adopt-A-Longhorn t-shirt-\$10.00

**3rd Grade**

- 1 box Facial Tissues
- 4 Glue Sticks
- 1 Elmer's Glue
- 2 Permanent Markers
- 3 Notebook paper (wide rule-not college)
- 2 Pencil sharpener & Eraser
- 1 box Multiplication flashcards
- 3 Red pens
- 1 Supply box/bag
- 1 box Crayons or Markers
- Adopt-A-Longhorn t-shirt-\$10.00

**4th Grade**

- 2 boxes Facial Tissues (100 count)
- 24 No. 2 Pencils
- 1 School Bag or Backpack
- 3 Pocket folders
- 4 Cloth Book Covers
- 2 packages Notebook Paper (Wide Rule)
- 1 - 1" 3-ring binder
- 2 Glue Sticks
- 2 Highlighters
- 1 Composition notebook
- Adopt-A-Longhorn t-shirt-\$10.00

**5th Grade**

- 3 boxes Facial Tissues
- 3 Pocket Folders
- 4 Jumbo Book Covers
- 1 package Index Cards (3x5)
- 2 Pencil Sharpeners (hand held)
- 24 No. 2 Pencils
- 2 Highlighters - Yellow
- 1 package Wide Ruled Notebook paper
- 1 box Quart Size "Ziplock" bags
- 2 Glue Sticks
- 1 - 1" 3-Ring Binder
- Adopt-A-Longhorn t-shirt-\$10.00

**6th Grade**

- 12 No. 2 Pencils (wood)
- 2 packages Notebook Paper (200 wide rule)
- 2 boxes Facial Tissues
- 4 Cloth book covers (Jumbo size)
- 3 Pocket Folders
- 1 - 1" 3-Ring Binder
- 1 Hand-held pencil sharpener
- 4 Glue Sticks
- 1 package 3x5 ruled index cards
- 1 box Color Pencils (12 ct.-crayola brand)
- 1 box Gallon size "Ziplock" bags
- 1 Composition Notebook
- 2 Highlighters-yellow
- Adopt-A-Longhorn t-shirt-

**Robert Lee Elementary 2014-2015 School Supply List**

**Pre-K**

- 2 boxes 8 or 16 count Crayola Brand crayons (no 24 count)
- 1 pair Scissors
- 2 packages Glue Sticks
- 1 package Assorted Construction Paper
- 4 Pencils
- 1 box Quart Size Ziploc Bags
- 4 boxes Kleenex
- 1 set Water Colors
- 1 package of 3x5 Index Cards
- 2 large Disinfectant Wipes
- 1 set of extra clothes
- 1 old large shirt that can be used for painting

**Kindergarten**

- 3 boxes Crayola Brand crayons (no more than 24)
- 8 Glue Sticks
- 6 regular Yellow #2 Pencils
- 2 Composition Notebook
- 1 Small Plastic School Box
- 3 large boxes Kleenex
- 2 sturdy, slick plastic Pocket folders (no brads)
- 2 large Pink Erasers
- 3 packages 3x5 Index Cards
- 1 larger Hand Sanitizer
- 1 box Quart Size Ziploc Bags
- Towel for rest time (no vinyl mats)
- Backpack
- 1 set of extra clothes
- \*Initial each eraser and crayon and leave crayons in the original box
- \*Do not initial pencils or glue sticks

**1st Grade**

- 2 packages of pencil top erasers
- 2 Red Plastic Folders with brads and pockets
- 1 Orange folder with brads
- 2 Black Marble Composition Notebooks (100 sheets-Wide Ruled)
- 1 large Zipper Pencil Pouch (no boxes)
- 3 boxes Kleenex
- 2 boxes Crayola Crayons at least 24 count
- 1 package Ticonderoga yellow pencils 24 count
- 2 Glue Sticks
- 2-1 1/4 oz. bottle Elmer's Glue
- 1 box Ziploc bags (Girls-Gallon size)(Boys-Quart size)
- 1 Clipboard
- 1 Backpack-NO WHEELS
- \* PLEASE DO NOT LABEL THE SUPPLIES!

**2nd Grade**

- 2 packages (24 count) #2 yellow pencils
- 2 Composition Notebooks (100 sheets-Wide Ruled)

- 2 Red Plastic Folders with Pockets and Brads
- 1 box of Crayons (doesn't matter how many)
- 1 box of Map Colors
- 1-4 oz. bottle of Glue or 3 glue sticks
- 1 large Zipper Pencil Pouch (no boxes)
- 2 Pink Erasers
- 2 boxes of Pencil Top Erasers
- 1 Backpack (NO WHEELS)
- 1 Clipboard
- 2 boxes Kleenex
- Girls-1 box of Gallon size Ziploc Bags
- Boys-1 box of Quart size and Snack size Ziploc Bags


**3rd Grade**

- 1 package (24 count) #2 Yellow Pencils
- 2 Pink Erasers
- 6 Red Grading Pens
- 1 large Zipper Pencil Bag or box
- 3 boxes Kleenex
- 2 boxes 12 count Map Pencils
- 1 box 24 count Crayons
- 1 bottle of glue
- 2 packages Wide Ruled Notebook Paper
- 1 container of Disinfectant Wipes
- 1 Backpack (NO WHEELS)
- Girls-1 box Gallon Size Ziploc Bags
- Boys-1 box Quart Size Ziploc Bags

**4th, 5th, and 6th Grade**

- 2 Pink Erasers
- 4 Red Pens
- 2 Black sharpies
- 1 pair scissors
- 1 box or zippered bag for supplies
- 1 hand held pencil sharpener
- 24 count crayons
- 3 boxes Kleenex
- 2 containers Disinfectant Wipes
- 2 packages of notebook paper
- 3 packages 4x6 index cards
- 24 pencils
- Map pencils
- 1 package markers
- 6 glue sticks
- 2 highlighters
- 4 dry erase markers
- 2-3 subject spiral notebooks (math)
- 2 composition notebooks (science)
- 1-1"ring notebook (language arts)
- 2 composition notebooks
- 2 folders with pockets
- Boys-sandwich bags
- Girls-Colored paper (any color)
- Backpack (NO WHEELS)
- \*Supplies may be added after school starts\*

**Finding Solutions for Your Financial Needs**



**Tommy E Neal, AAMS®**  
Financial Advisor  
2412 College Hills Boulevard  
Suite 102  
San Angelo, TX 76904  
325-223-8244  
www.edwardjones.com

**Edward Jones®**  
MAKING SENSE OF INVESTING

**Glenn-Bivins Insurance**  
325-473-6791  
GlennBivinsUsa@aim.com

Locally and Family Owned Since 1922

*We'll Be Here When You Need Us!*  
Home - Auto - Life - Commercial - RV

*"Insure your home and auto with Germania and save 15% on both; and receive an additional 10% with a Life policy."*





**Scholarships Awarded to Bronte Class of 2014**

The following scholarships were awarded to the Bronte Class of 2014

**Stetsen Emfinger**

\$250.00 Bronte All Sports Boosters Scholarship \$500.00 West Central Wireless Scholarship

**Tabatha Huffman**

\$500.00 Bronte Evening Lions Club Scholarship \$500.00 Bronte Faculty Scholarship \$12,000.00 C.J. Macon Memorial Scholarship

over four years \$125.00 Bronte Student Council Scholarship

**Ty Lee**

Valedictorian Scholarship - 1st year of tuition paid for by the State of Texas (valued at ASU at \$7,642.00) \$16,000.00 ASU CARR Scholarship over four years \$1,000.00 Ivey Ford Motor Company FFA Scholarship \$1,000.00 Coke County Foundation Scholarship \$1,000.00 Robert and Jean Ann LeGrand Scholarship \$500.00 Clay Antilley Memorial Scholarship \$250.00 National Honor Society Scholarship in memory of C.J. Macon \$500.00 Martin and Pat Lee Scholarship \$500.00 Bronte Faculty Scholarship \$125.00 Bronte Student Council Scholarship \$4,000.00 First National Bank of Sterling City Scholarship over four years

**Coby Malone**

\$1,000.00 Coke County Foundation Scholarship \$500.00 Bronte Faculty Scholarship

**Brittany Neagle**

\$1,000.00 Coke County Foundation Scholarship

**Mizael Perez**

\$500.00 Sorosis Study Club Scholarship \$500.00 St. James Parish Scholarship \$250.00 Bronte All Sports Boosters Scholarship \$500.00 Bronte Evening Lions Club Scholarship \$500.00 Bronte Volunteer Fire Department \$250.00 Jostens Make a Difference Scholarship \$12,000.00 C.J. Macon Memorial Scholarship over four years \$125.00 Bronte Student Council Scholarship

**Manuel Perez**

\$500.00 Coke County Foundation Scholarship \$500.00 St. James Parish Scholarship

**Marisa Sanchez**

\$500.00 Sorosis Study Club Scholarship \$500.00 East Coke County Emergency Medical Scholarship \$1,000.00 Coke County Foundation Scholarship \$1,000.00 Robert and Jean Ann LeGrand Scholarship \$500.00 Bronte Volunteer Fire Department \$12,000.00 C.J. Macon Memorial Scholarship over four years

**Maria Tapia**

\$1,000.00 Coke County Foundation Scholarship

**River Wood**

\$12,000.00 ASU CARR Scholarship over four years \$1,000.00 Elwood Nanheim Scholarship \$500.00 East Coke County Emergency Medical Scholarship

**Megan Yackley**

\$12,000.00 ASU CARR

Scholarship over four years \$100.00 City of Bronte Recycling Scholarship; \$1,000.00 Coke County Foundation Scholarship; \$1,000.00 Elwood Nanheim Scholarship \$2,500 Bronte High School Band Alumni Scholarship; \$300.00 Bronte Chapter No. 187 Order of the Eastern Star Scholarship \$250.00 National Honor Society Scholarship in memory of C.J. Macon \$125.00 Bronte Student Council Scholarship

The total amount of scholarships awarded to Bronte High School graduates so far is \$93,292.00. Also receiving C.J. Macon Memorial Scholarships were the following BHS alumni: Ernesto Casillas, Kimber Lee and Savannah Martinez.

**Scholarships and awards presented to RLHS Class of 2014**

**Beta Club Seniors**  
Michael Curry, Hanna Hamrick, Will Howard, Bianca Huapilla, Kassie O'Dell, Jesse Sheets, Ashlie Tennison, Everett Wilson

**DAR Good Citizen Certificate**  
Kassie O'Dell

**DAR Excellence in History**  
Everett Wilson

Approximately \$159,560 was awarded to RLHS students. Students receiving scholarships are listed below.

**Casey Eubanks Memorial Scholarship**  
Hanna Hamrick, \$500; Kassie O'Dell, \$500;

**Eastern Star Scholarship**  
Will Howard \$300

**64 Study Club Scholarship**  
Ashlie Tennison, \$1,000; Will Howard, \$1000

**West Central Wireless Scholarship**  
Sydney Sheldon, \$500

**Clay Antilley Golf Scholarships**  
Bianca Huapilla, \$500; Hanna Hamrick, \$500; Will Howard, \$1,500; Jesse Sheets, \$1,500; Kassie O'Dell, \$1,500; Ashlie

Tennison, \$1,500  
**ASU Carr Scholarship**  
Hanna Hamrick, \$7,500/year for 4 years; Kassie O'Dell, \$4,000/year for 4 years; Jesse Sheets, \$1,000/year for 4 years

**Spanish Club Scholarship**  
Hanna Hamrick, \$300; Bianca Huapilla, \$300; Sydney Sheldon, \$300; Everett Wilson, \$300; Michael Curry, \$300

**Jack & Nina Brewer Scholarship**  
Ashlie Tennison, \$500; Sydney Sheldon, \$500; Jesse Sheets, \$500; Bianca Huapilla, \$500; Will Howard, \$500; Hanna Hamrick, \$500; Berenice Fabian, \$500; Michael Curry, \$1,500; Everett Wilson, \$1,500; Kassie O'Dell, \$1,500

**AON Kirk Bagwell Memorial Scholarship**  
Bianca Huapilla, \$200; Ashlie Tennison, \$200; Jesse Sheets, \$200; Will Howard, \$200; Sydney Sheldon, \$500; Everett Wilson, \$500; Hanna Hamrick, \$500; Kassie O'Dell, \$500

**Ivey Motor Company FFA/Ford Scholarship**  
Kassie O'Dell \$1,000

**Coke County Foundation Scholarship**  
Will Howard, \$1,000; Hanna Hamrick, \$1,000

**Robert Lee Sports Boosters Scholarship**  
Bianca Huapilla, \$250; Will Howard \$250

**ASU LeGrande Scholarship**  
Hanna Hamrick, \$500/semester for 1 year

**Hardin Simmons Deans Scholar**  
Will Howard, \$8,000/year for 4 years

**Baylor Provost's Gold Scholarship**  
Michael Curry, \$14,000/year for 4 years

**Baylor Scholarship**  
Michael Curry, \$980/semester for 1 year

**Midwestern State Scholarship**  
Jesse Sheets, \$2,000

**2014 Meeteetse/Robert Lee Scholarship**  
Bianca Huapilla, \$500;

Michael Curry, \$500  
**Catholic Church Scholarship**  
Bianca Huapilla, \$500

The following awards were presented at the end of the 2013-2014 school year.

**Seniors**  
**Michael Curry**  
Pre-Cal

**Ashlie Tennison**  
English IV 93, Government

**Jesse Sheets**  
Economics

**Kassie O'Dell**  
DL US History 1301, DL English 1302, DL Economics, Earth & Space

**Everett Wilson**  
DL English 2322

**Will Howard**  
DL Government 2305, Problems 1/Scholarships, Physics

**Hanna Hamrick**  
DL English 2323, Dollars & Sense, Spanish III, Business II, United Blood Services cord

**Bianca Huapilla**  
United Blood Services cord

**Sydney Sheldon**  
United Blood Services cord

**Juniors**  
**Jerry Wofford**  
English III

**James Roberts**  
DL US History 1302, Culinary Arts, Algebra II, Art I

**Mason Hill**  
DL English 1301

**Tristen Hildebrand**  
US History

**Mychael Tijerina**  
Math Models

**Sophomores**  
**Kodi Drennan**  
English II

**Justice Saucedo**  
World History

**Julia Madrid**  
Principles of Human Services, Art II

**Brady Clawson**  
Principles of Hospitality & Tourism, Business I

**Karlee Roach**  
Chemistry, Geometry, Spanish II

**Freshmen**  
**James Wyatt**  
English I, Livestock Production, Biology, Communications

**Matthew Curry**  
World Geography, Algebra I

**Gabriel Abalos**  
Ag Mechanics, Spanish I

(Continued on Page 7)



**Doc's Drugstore is now serving the residents of Coke County and the surrounding areas!**

**FREE DELIVERY OF YOUR PRESCRIPTIONS**

*All residents are eligible to have their prescriptions filled and delivered by Doc's. Doc's eliminates the hassle of getting your medications!*

*No more trips to the "Big City" or waiting in long lines at the big box stores to pick up your meds.*

**ALL ORDERS ARE DELIVERED DAILY.**

All your pharmacy needs delivered to you, including

- Over the Counter Medications
- Vitamins • Diapers • Herbals and More Pharmacy Items!

**Simple Billing & Payment Options**

- All insurances accepted.
- All major credit & debit cards accepted.
- Extended Credit - Charge accounts available for approved customers.

**How to Order:**

1. Have your doctor call or fax your prescription to Doc's Drugstore.
2. We will process, bill and fill your order.
3. Your medications will be delivered to you - at your home, place of work, or another location -per your request.

**Toll-Free: 844.383.DRUG**

**Fax: 325.643.3811**

*Doc's comes to you!*

**DARYL'S BODY SHOP**

**300 STATE HWY 229**

**ROBERT LEE, TEXAS 76945**

**DARYL COPELAND, OWNER 453-2980**

**FLOYD C. PETITT INSURANCE**

**LIFE • HEALTH • GROUP HEALTH**

**LONG TERM CARE • ANNUITIES**

**MEDICARE SUPPLEMENTS**

**AUTO • HOME • COMMERCIAL**

**WE PUT YOU FIRST!**

**YOU'RE NOT A NUMBER TO US, BUT A MEMBER OF OUR FAMILY!**

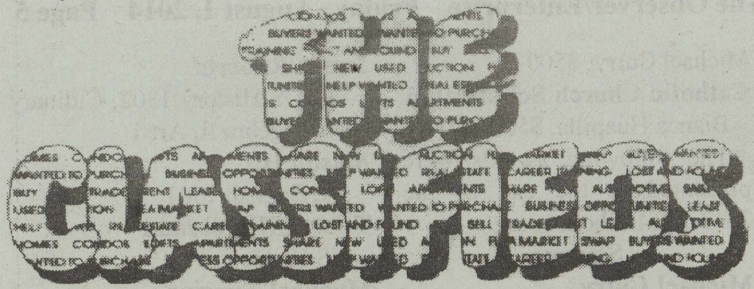
(325) 453-4551 (325) 223-1563

PO BOX 184 • 715 AUSTIN 5002 KNICKERBOCKER

ROBERT LEE, TEXAS 76945 SAN ANGELO, TEXAS 76904

floyd@floyddepetitinsurance.com





**BUY IT! SELL IT! FIND IT!**

**CLASSIFIED ADVERTISING RATES**

Rates when paid in advance.

25¢ Per Word  
\$5 Minimum

Legal Notices:  
35¢ Per Word

*A service charge will be added to all ads which must be billed.*

**ADVERTISING DEADLINE**

Tuesday at 10 am

**PUBLISHER'S NOTICE:**

All real estate advertising in this newspaper is subject to the Fair Housing Act which makes it illegal to advertise "any preference, limitation or discrimination based on race, color, religion, sex, handicap, familial status or national origin, or an intention, to make any such preference, limitation or discrimination." Familial status includes children under the age of 18 living with parents or legal custodians, pregnant women and people securing custody of children under 18.

This newspaper will not knowingly accept any advertising for real estate which is in violation of the law. Our readers are hereby informed that all dwellings advertised in this newspaper are available on an equal opportunity basis. To complain of discrimination, call HUD toll-free at 1-800-669-9777. The toll-free telephone number for the hearing impaired is 1-800-927-9275.



EQUAL HOUSING OPPORTUNITY

**FOR SALE**

**HOME FOR SALE PRICE REDUCED**

323 Key St--Corner lot professionally landscaped 4br/3ba, 2442 sq ft home, 2 car garage & carport. San Angelo Real Estate 325-277-7653 Janie Thomas. \$214,400.

44-tnc

**Fish Fridays! Catfish or Shrimp**

All the Fixin's

**\$8.99**  
per plate

**CINDY'S**

409 W. 10th  
Robert Lee  
453-9200

**POLITICAL CALENDAR**

The Observer/Enterprise has been authorized to make the following announcements for the political offices in Coke County.

Each announcement must be a paid announcement.

**Coke County Judge**

Roy Blair (Rep.)

**Justice of the Peace**

Precinct 1

Jackie Walker (Rep.)

**Justice of the Peace**

Precinct 2

Grady Coulter (Dem.)

**Commissioner**

Precinct 2

Paul Williams (Rep.)

**FOR RENT**

**BRONTE MINI STORAGE**  
Has storage buildings for rent. 473-2221, 473-0409.

45-tnc

**FOR RENT**

8 x 10 storage units in Bronte. Call 325-473-3257.

14-tnc

**MISCELLANEOUS**

**KIM'S PET GROOMING AND BOARDING**  
1023 Austin, Robert Lee, Kim Harvey, 325/721-8493.

46-11tp

**GENERAL CONTRACTING Handyman.** Call for more information about services. Kenneth Prine (325) 453-2339.

27-tnc

**HELP WANTED**

**CNA'S NEEDED**

for Sterling County Nursing Home. Starting wages \$12.00/hour plus shift differentials and mileage allowance. Excellent retirement and insurance. Call Ashley Porter or Amanda Arispe at 325-378-2134.

49-tnc

**HELP WANTED**

**COKE COUNTY SHERIFF'S OFFICE**

Is currently accepting applications for a TCOLE Certified DEPUTY to be stationed in Robert Lee. Apply in person at 13 E. 7th St., Robert Lee, TX 76945, or call 325-453-2717, Monday - Thursday 8-5, Friday - 8-1. Experience Preferred. EOE

03-2tc

**DRIVERS:**

Great Pay! 100% PAID Health Ins! Quarterly & Annual Bonuses! Regional & Long Haul Openings! CDL - A, 1 yr w/ Tank-Haz End 100% Employee Owned Martin Transport 1-844-527-5285.

04-4twp

**THE CITY OF BRONTE**

is accepting applications for a part-time deputy city secretary. Salary based on experience. High School diploma or equivalent required. Office skills, bookkeeping skills, and computer experience required. Bilingual skills preferred but not required. Applications can be picked up at the City Hall. Applications will be received until August 8th. The City of Bronte is an equal opportunity employer.

04-2tc

**NOTICES**

**PUBLIC NOTICE CITY OF BRONTE PUBLIC NUISANCE ORDINANCE #349 NOTICE TO ABATE**

TO: Danny Saldana  
PROPERTY LOCATION:  
209 N. Fayette St.

All of Lots 4 1/4 of 5, Block 4, OT, Bronte, TX 76933

**VIOLATIONS:** Failure to keep weed and grasses at a height of less than twelve (12) inches.

**ACTIONS REQUIRED TO ABATE NUISANCE:** Mow weeds and grasses. In the event you fail to do so, the City will enter upon your property and

Bob Frazee's 944-0010  
473-6608

**Texas Best**  
Deflooding & Carpet Cleaning

24 hr. Emergency  
Water Damage Service

**ASH-CARSON REAL ESTATE**

453-5144 OFFICE • 21 E 6TH STREET • ROBERT LEE, TX  
JOE ASH • 473-0164 www.amcwesttexasranches.com

**Coke County Ranch & Recreational Land**

**New Listing: Exclusive Office Listing!** Large House, 380.801 ac. of ranchland NW of Robert Lee, Great Hunting

**New Listing!** - 3006.7 ac., all pasture land, Excellent Hunting \$1,000/acre

**1,120 acres** - 1/4 of minerals sold with property, good hunting \$1,350/acre

**1,122 acres** - High Fenced, Exotics sold with property, excellent water

**29 Acres** - Highway frontage. Used for hunting or commercial use.

**Other Tracts** - 316.5 ac, 215 ac, 6.15 ac, 795.5 ac in Runnels County

**Houses** - 3 BR/1 1/2 BA - Good Repair in Bronte

**Robert Lee** - 2 BR/2 BA - updated inside & out, many amenities

**Brick House on 2.6 acres**

**New Listing Cedar Cove** - 3 BR/2B Beautifully Landscaped

mow or have it mowed at thirty day intervals during such growing season.

**REQUEST FOR HEARING:** Request must be made in writing by August 11, 2014 and addressed to Municipal Court Judge, P.O. Box K, Bronte, TX 76933.

**DEADLINE FOR ABATING NUISANCES:**

August 11, 2014

**IF NO ACTION IS TAKEN TO ABATE THE NUISANCE VIOLATIONS, THE CITY SHALL ABATE SUCHY NUISANCES AND ASSESS THE COST AGAINST SUCH PERSON OR ESTATE.**

BY: GRADY COULTER,  
MUNICIPAL COURT JUDGE,  
CITY OF BRONTE

04-1tc

**PUBLIC NOTICE CITY OF BRONTE PUBLIC NUISANCE ORDINANCE #349 NOTICE TO ABATE**

TO: James D. Vivian  
PROPERTY LOCATION:  
624 W. Trammel Avenue

All of Lots 7 and 8, Block 13, OT, Bronte, TX 76933

**VIOLATIONS:** Failure to keep weed and grasses at a height of less than twelve (12) inches.

**ACTIONS REQUIRED TO ABATE NUISANCE:** Mow

weeds and grasses. In the event you fail to do so, the City will enter upon your property and

**Tony's Wrench**

201 W. 10th  
Robert Lee, Texas  
(325) 453-2640

weeds and grasses. In the event you fail to do so, the City will enter upon your property and mow or have it mowed at thirty day intervals during such growing season.

**REQUEST FOR HEARING:** Request must be made in writing by August 11, 2014 and addressed to Municipal Court Judge, P.O. Box K, Bronte, TX 76933.

**DEADLINE FOR ABATING NUISANCES:**

August 11, 2014

**IF NO ACTION IS TAKEN TO ABATE THE NUISANCE VIOLATIONS, THE CITY SHALL ABATE SUCHY NUISANCES AND ASSESS THE COST AGAINST SUCH PERSON OR ESTATE.**

BY: GRADY COULTER,  
MUNICIPAL COURT JUDGE,  
CITY OF BRONTE

04-1tc

**BRONTE HEALTH & REHAB CENTER**

Now Taking Applications for the following positions.

**Part Time CNA**  
Days 6 am to 6 pm

**PRN CNAs**  
Days and Nights

**PRN Nurses**  
Days

Apply in person at  
900 S. State Street  
Bronte, Texas,  
or online at  
www.bronte-hrc.net  
EOE

**PITCOCK PROPERTIES**

Farm & Ranch, Commercial, & Residential Real Estate  
Texas General Certified Appraiser

Jerrold Pitcock, Broker  
www.pitcockproperties.com • (325) 650-4079

**1,100 Acres in Runnels County,** Minerals Available \$1,250/acre  
**813 Acres East of Robert Lee** Good Surface Water, Lake Stocked with Fish, Easement Access \$1,350/acre.

**2 Sections in Reagan County,** House, 3 Wells \$695/acre.  
**632.1 Acres North of Robert Lee on Samen Road,** 3 BR, 2 BA House, 2 Water Wells \$1,375/acre.  
**4 Sections in Reagan & Upton Counties,** 7 Water Wells, Good Hunting, \$685/acre.  
**50 Acres on Hwy 208 12 Miles North of Robert Lee** \$125,000 Owner will drill well & provide electricity!

**Price Reduced!!!**

**RIVERVIEW DRIVE!** 2 Bedroom 1 Bath Home! Updates include: flooring, kitchen cabinets & counter tops, paint, plumbing & bathroom fixtures! Huge covered carport for vehicles or RV! Garage/shop or Storage in back! 69,500!!!

**NEAR SCHOOL & FOOTBALL FIELD!** 3 Bedroom 2 Bath Home has large covered front porch/carport! Large Living area! Patio doors lead from Dining area to covered back patio! Kitchen has Breakfast bar and appliances stay! Double car garage 79,900!!!

**Concho Realty**  
Office 653-4535  
www.conchorealty.com

Becky Clendennen  
Owner/Broker

Home 453-4748  
Cell 650-9729



...More Classifieds

**NOTICES**

**PUBLIC NOTICE  
CITY OF BRONTE  
PUBLIC NUISANCE  
ORDINANCE #349  
NOTICE TO ABATE**

TO: Robert Eugene Trussell

PROPERTY LOCATION:  
307 W. Barclay  
All of Lot 1, Block 82, OT,  
Bronte, TX 76933

VIOLATIONS: Failure to keep weed and grasses at a height of less than twelve (12) inches.

ACTIONS REQUIRED TO ABATE NUISANCE: Mow weeds and grasses. In the event you fail to do so, the City will enter upon your property and mow or have it mowed at thirty day intervals during such growing season.

REQUEST FOR HEARING: Request must be made in writing by August 11, 2014 and addressed to Municipal Court Judge, P.O. Box K, Bronte, TX 76933.

DEADLINE FOR ABATING NUISANCES:

August 11, 2014

IF NO ACTION IS TAKEN TO ABATE THE NUISANCE VIOLATIONS, THE CITY SHALL ABATE SUCH NUISANCES AND ASSESS THE COST AGAINST SUCH PERSON OR ESTATE.

BY: GRADY COULTER, MUNICIPAL COURT JUDGE, CITY OF BRONTE

04-1tc

... RLISD Awards

(Continued from page 5)

**7th Grade**

**Kelby Clawson**

Technology 7, English 7, Texas History 7, Science 7, Exploring Careers 7, Math 7, STAAR Commended Reading

**Kaden Austin**

Reading 7

**Autumn Ramon**

Skills for Life

**Chelsea Wyatt**

Commended Reading

**UIL Awards**

**Everett Wilson**

1st District Physics

**Michael Curry**

6th District Mathematics

**FCCLA**

**James Roberts**

Incoming State President 2014-2015 Family and Consumer Sciences Assessment

**Berenice Fabian**

Gold Step One

**Myrka Rangel**

Gold Creed, Mission, Purpose 100%

**Mychael Tijerina**

Gold Step One

**State Star Event Competitors**

Karlee Roach, Berenice Fabian, Kassie O'Dell, Myrka Rangel

**Region FCCLA Competitors**

Karlee Roach 1st Sports Nutrition; Justice Saucedo 1st Sports Nutrition; Brady Clawson, 1st Sports Nutrition

**Most Athletic RLHS Boy**

Will Howard

**Most Athletic RLHS Girl**

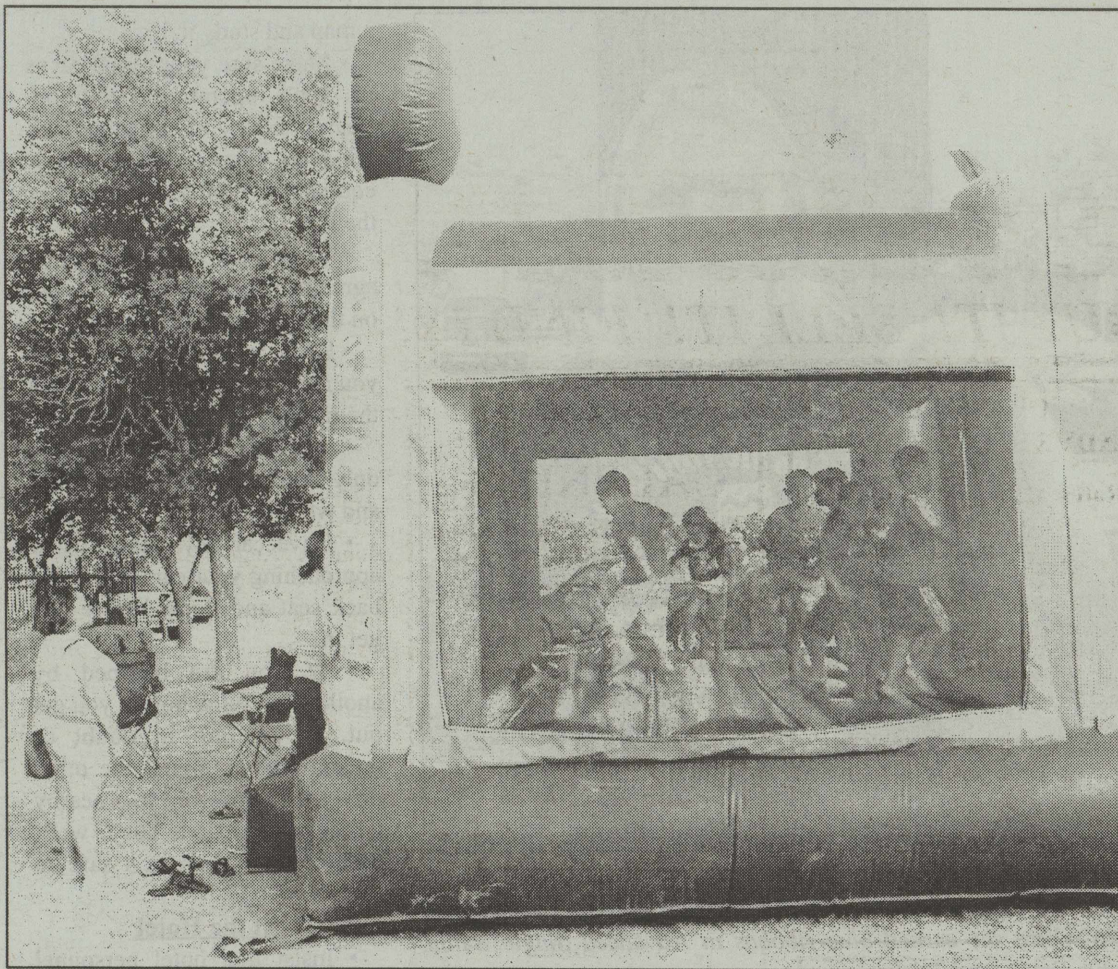
Brady Clawson

**Teacher's Choice**

**Citizenship Awards**

Kassie O'Dell and Michael Curry

**Perfect Attendance for Year**



**Fourth of July Fun!** These children enjoyed the bounce house before the fireworks at the Bronte Health and Rehab Center July 4th Celebration.

- |  |  |                                     |   |
|--|--|-------------------------------------|---|
| Brady Clawson 10, Karlee Roach 10, Will Howard 12, Bianca Huapilla 12, Everett Wilson 12 | Kelby Clawson 7, Matthew Curry 9, Brady Clawson 10, Karlee Roach 10, James Roberts 11, Michael Curry 12, Hanna Hamrick 12, Will Howard 12, | Kassie O'Dell 12, Everett Wilson 12 | <b>Presidential Award</b><br>Will Howard, Hanna Hamrick and Michael Curry |
|--|--|-------------------------------------|---|

Licensed

Insured

**A-BAN EXTERMINATORS**

"A BAN ON BUGS"

TERMITES, ROACHES, ANTS, MOTHS, ETC.

TIM BYRD, Owner  
Phone: (325) 944-4031  
Cell: (325) 656-6212



P.O. Box 861  
San Angelo, Texas 76902

**Homemade Pies,  
Cakes & Treats  
CINDY'S**

409 W. 10th  
Robert Lee  
453-9200

**JOIN OUR TEAM**

Robert Lee Care Center is searching for qualified & motivated professionals and paraprofessionals to join our team.

We provide health insurance for our employees, with no cost to the employee, paid vacations, flexible hours, rewards, and incentives.

We are currently accepting applications for RNs and LVNs.

Please come in and fill out application. We are located at 307 W. 8th ST. Robert Lee, TX

EOE

**IVEY MOTOR COMPANY, INC.**

2012 Ford Flex Limited #7133 \$27,995

White Suede w/Black Leather

2013 Ford Escape SE #7149 \$23,997

Ingot Silver with Gray Interior

2013 Ford Focus SE #7150 \$18,695

Ingot Silver with Gray Leather • Moonroof!

2013 Ford Explorer Limited #7158 \$33,995

Tuxedo Black w/Black Leather, Sharp!!!

2013 Ford Fusion #P147B \$22,995

Ingot Silver w/Graphite Cloth Interior

2013 Ford Explorer Limited #5192 \$33,995

Tuxedo Black w/Stone Leather

2011 Toyota Tacoma Sport #P282A \$24,994

Double Cab w/TRD Pkg. • Magnetic Gray w/Graphite Int. Really Nice!!

2013 Taurus Limited #7152 \$23,995

Silver w/Black Leather • Super Sporty • 21K Miles!

2008 Ford F-250 Reg. Cab 4x4 #6643A \$11,995

Oxford White, 5.4 V8 • Great Truck for Anything!

2011 Ford Expedition # \$27,995

Golden Bronze w/Tan Leather • Rear DVD

2009 Ford Mustange Coupe #Q273A \$10,695

Black w/Charcoal Cloth

**We are  
now doing  
state inspections.**

**453-4561**

Ask For:

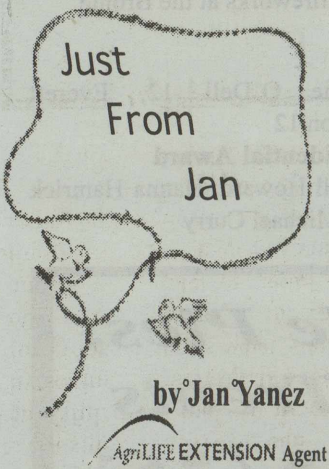
**Randy Flanagan • Billy Wayne Roe**







**Talented Twirler!** Audrey Mink, Blackwell High School sophomore varsity twirler, attended camp at Kilgore College July 23-26 where she earned blue ribbons in Advanced Single Baton, Double Baton, and Tricks.



**Travel Safety Tips**

Business travel can be stressful. Why make it more so by setting yourself up as a target for crooks? Here's what you can do—at the airport, on the road, and at your hotel or motel—to improve the chances you'll return home safely.

**At the Airport**

- Stay especially alert and

watch your bags and laptop computer carefully at all times.

- Don't let anyone but uniformed airline personnel handle your bags.
- Watch out for staged mishaps, like someone bumping into you or spilling a drink. Often it's a ploy to divert your attention.
- Carry your purse close to your body, or your wallet in an inside front pocket. Better yet, wear a money pouch under your clothes.

**On the Road**

- Become familiar with your travel route before you start. Get

a map and study it.

- Make sure your rental car is in good operating condition. Learn how to operate all windows, door locks, and other equipment before you leave the lot.
- Keep your maps and rental agreement concealed, not lying on the seat or the dashboard.
- Keep car doors locked while you are driving. Store luggage in the truck.
- Park in well-lighted areas only, close to building entrances and walkways.
- Have car keys ready when approaching your car. Check the back seat and floors before you get in.

- If you are bumped by another car, think before you get out. If you are in doubt or uncomfortable, signal the other driver to follow you to a nearby police station or a busy, well-lighted area where it's safe to get out.

**At the Hotel**

- Insist that hotel personnel write down your assigned room number so others can't see or hear it.
- Never leave luggage unattended.
- Keep all hotel doors and windows locked, and use all door locks.
- Learn the location of fire exits, elevators, and public phones in case of emergency.
- Make sure your room has an indoor viewer and a dead bolt lock.
- Keep valuables—jewelry,

cash, etc. in the hotel safe. Better still; leave jewelry in a safe at home.

- Ask hotel staff about the safety of the neighborhood and what areas to avoid.

- Before taking a cab, ask the staff about directions and estimated costs. Always verify who's at your door. Don't open the door to someone you don't know. If an unexpected visitor claims to be a hotel employee, call the front desk to make sure.

- Don't display room keys in public or leave them on the restaurant tables, at the swimming pool, or in other places where they can easily be stolen.

- If you lose the plastic key card to your room, insist on a new-keyed card. Crime can be random, but there's a lot you can do to limit your chances of becoming a victim. Often simply being aware of the threat of crime—and alert to what you can do to prevent it—will go a long way to making your business trip both safe and successful.

Remember to practice safety. Don't learn it by accident.

**The Most Problematic Plant**

By Morgan Runyan  
Texas AgriLife Agent  
With the recent rains that Coke County has received, brush managers should opt to change their spraying routines for the next few weeks. While soil moisture is essential for spraying prickly pear, an

overabundance can create heartaches when trying to spray mesquites.

In the areas of the county that received multiple inches of rain, watch the mesquite trees over the next few weeks go from a dark olive green to a bright green color. This color symbolizes that the trees are putting on new growth and the flow of carbohydrates is moving up the tree. When this process occurs, it is difficult for the herbicides to go against the flow of the carbohydrates. As the soil dries out and warms up and the mesquite leaves mature to the point they are able to replenish, the carbohydrate flow is reversed and the tree starts to replenish the carbohydrate reserves in the root system. This takes place when the leaves are mature and fully developed. This is the best time to apply leaf herbicides resulting in a higher mortality rate due to the herbicides being carried down in the root system of the trees. This occurs when the soil temp reaches 75 degrees. However, when mature leaves reach the uniform dark olive green color, this is a good indicator that the soil temp has reached 75 degrees.

**For our Bronte customers' convenience, there is a Drop Box at Bronte Hardware Store.**

**NOTICE OF PUBLIC HEARING ON COKE COUNTY APPRAISAL DISTRICT BUDGET**

The Coke County Appraisal District will hold a public hearing on a proposed budget for the 2015 fiscal year.

The public hearing will be held on August 18, 2014, at 5:30 pm at the Coke County Courthouse, second floor jury room.

A summary of the appraisal district budget follows:

The total amount of the proposed budget	\$209,015.00
The total amount of increase over the current year's budget	\$ 14,450.00
The number of employees compensated under the proposed budget	3
The number of employees compensated under the current budget	3

The appraisal district is supported solely by payments from the local taxing units served by the appraisal district.

If approved by the appraisal district board of directors at the public hearing, this proposed budget will take effect automatically unless disapproved by the governing bodies of the county, school districts, cities and towns served by the appraisal district.

A copy of the proposed budget is available for public inspection in the office of each of these governing bodies. A copy is also available for public inspection at the appraisal district office.

Coke County Appraisal District  
PO Box 2  
Robert Lee, Texas 76945  
325-453-4528

**Don't Miss Out on the 125th Celebration Issue!**

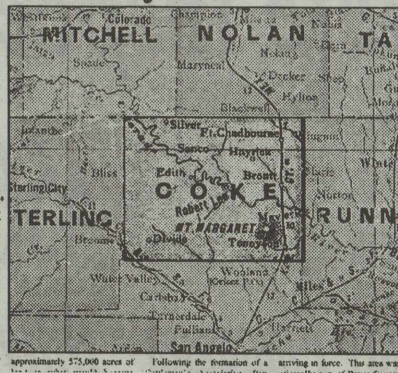
If you failed to get a copy of the 125th Coke County Celebration issue, it's not too late! Extra copies are available at the office of The Observer/Enterprise.



**Celebrating Coke County's 125th Year!**

Coke County enjoys a colorful history

*Editor's Note:* The information for the following article appeared in the July 27, 1992, issue of The Observer/Enterprise, with credit given to Mrs. Arlene Vanbrough's "History of Coke County" feature. *Editor:* Southern Long before Columbus discovered America according to Mary Jordan Whitman's "The Texas Indians." The main Indians who lived here and named the country of the Colorado and Comanche were Comanches, the Kiowa Apache and the Jarvis. Many creeks on the east side of Coke County are named for the Kiowa Indians. There are still many Indian springs and petroglyphs in the county. More than twenty Indian camps have been found in Coke County.



Single Copy 50¢

(USPS 467-480) (ISSN 8790-197X)

Vol. 126, No. 52 Friday, July 4, 2014