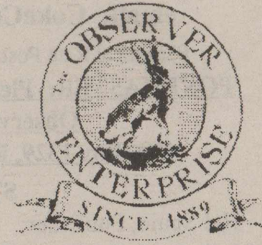


Single Copy 50¢

THE OBSERVER/ ENTERPRISE

Serving Coke & Sterling Counties



(USPS 467-480)
(ISSN 8750-197X)

Vol. 121, No. 05

Friday, August 15, 2008

County receives much needed moisture, some slight damage from thunderstorms

by Hal Spain, Publisher

Hurricane Dolly and tropical storm Edouard were big duds as far as supplying any moisture for Coke County. Residents were hoping for some relief from the dry conditions, but Dolly took a path along the Rio Grande and into Mexico. Edouard had the right idea, but when it got to Brownwood, it turned north and the rains never made it to Coke County.

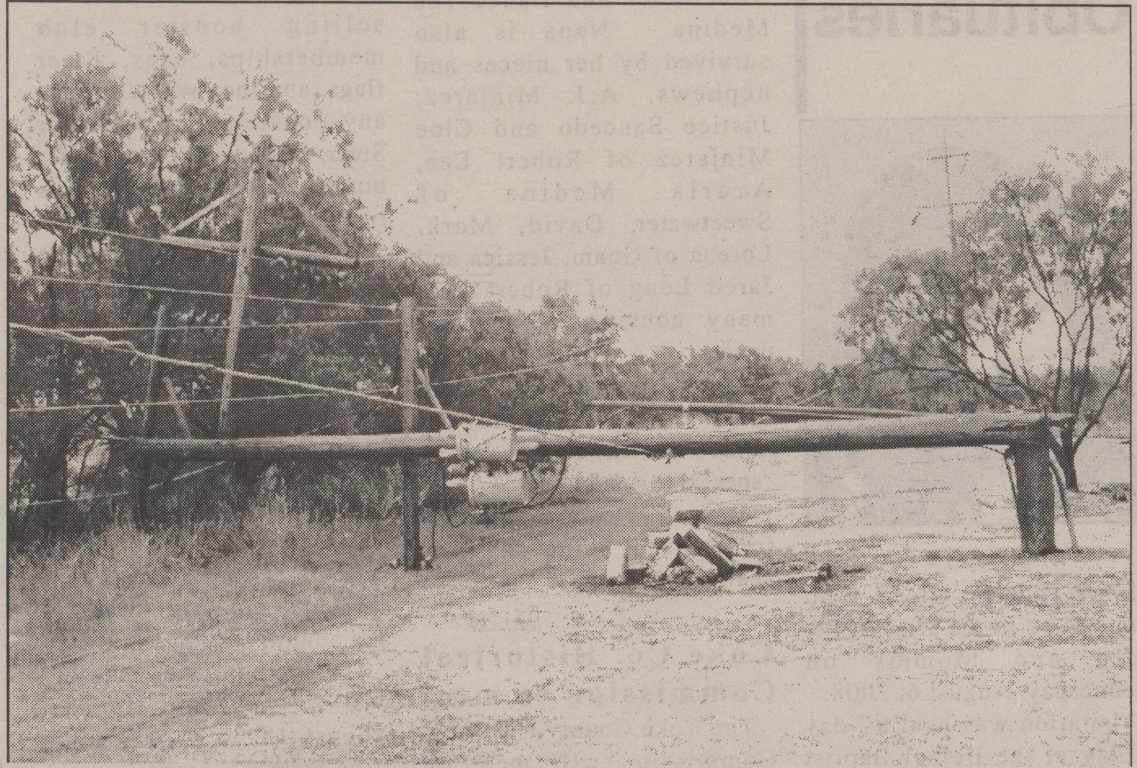
Sunday night and early Monday morning thunderstorms were a welcome sight for most county residents, and the rainfall results were general across most of the county. For the most part, the rainfall from these storms was slow and soaked into the dry landscape.

We have some "coffee shop" totals from throughout the county. Both the cities of Robert Lee and Bronte received up to 3.5 inches, with Louis Clark of Robert Lee reporting 3.5 inches, and George Snapp, Joe Draper, and Harold McCutchen of Bronte reporting up to 3.5 inches. Pete Roe reported 2.8 inches at Sanco, and Rhonda Askins had 2.1 inches at her home five miles north of Robert Lee. Bob and Gayle Bolding reported 3.3 inches

in Robert Lee and at their farm at 7 Mile Hill on Hwy 158 between Bronte and Robert Lee.

Hal Spain and David Hefner reported 3.3 inches near Lake Spence. Bruce Sonnenberg totaled 2.3 inches east of Bronte, and Bobby and Melissa Blaylock had 2.5 inches on FM 2662 between highways 277 and 208 south of Bronte.

As to damage from the storms, most residents got away clean, but some of us had to deal with electric and water outages for a couple of days. Around 10:00 pm Sunday night, what I can only describe as a microburst hit just south of Robert Lee on Hwy 158. The area included the residences of Jana and Jeff Brisbin, B. W. and Dolores Roe, Kevin and Tammy Roe, and Gary Hildebrand. The Brisbins had a stock trailer that was blown across the road, and the Hildebrands had some extensive roof damage. The worst damage was caused when five A.E.P. utility poles were snapped as a result of the microburst. Residents along this utility line which extends past Lake Spence and on out through Edith were without electricity for a period of almost 36 hours following



Power Outage! Rural Robert Lee residents were without power for a period of about 36 hours when Sunday night's microburst snapped five utility poles on Highway 158, west of Robert Lee. Some rural water customers contended with low water pressure or none at all as a result of the storms.

the storm, while AEP crews worked non-stop to erect new poles and get the electricity flowing again. Some residents were also without water, as the rural water system pumps are powered by these lines. At 10 am Tuesday morning, these residents were overjoyed to get their air conditioning and lighting going again, not to mention taking a good shower.

The only damage reported at Bronte was the splitting of a big pecan tree at the First Methodist Church, as reported by City Secretary Pat Martindale.

BHS Class of '58 reunion set

The Bronte graduating class of 1958 will hold their 50th Class Reunion Saturday, August 16, at the Bronte Housing Authority. Activities for the class will begin at 9 am and include registration, touring of the school, a barbecue luncheon and a program. A reception and visitation time for classmates, former teachers, relatives and friends will be from 3 pm until 6 pm. Anyone is invited at this time to come and share memories of lots of fun and good times at Bronte High School with the Bronte Senior Class of 1958. For further information, please contact Pat Lee at 473-4881.

BHS Class of '68 to celebrate 40th Reunion

The class of 1968 of Bronte High School will have their 40th Reunion at Davis Corley's place at Tennyson. The reunion will begin at 11 am on Saturday, August 16. A barbecue buffet will be served for lunch.

Also on Saturday, there will be a tour of the Bronte school from 9 am until 10:30 am. A program, visitation and reception will be held at the Corley Ranch from 2 pm to 5:30 pm.

In addition, at 7 pm on Friday, August 15, there will be a get-together at 503 S. Madison, San Angelo.

For more information contact Linda Cumbie Gladden at (325) 655-6693.

Singing Winds to host golf tourney

There will be a 27 hole, 2 person select shot golf tournament on August 16, 2008, at the Singing Winds Golf Course in Bronte. For more information, call 473-2156.

Bruce Sonnenberg benefit slated

A benefit has been planned for Bruce Sonnenberg of Bronte on Friday, August 29, beginning at noon.

Hamburgers, sausage wraps, and homemade baked goods will be for sale. All donations will benefit Bruce's cancer recovery treatment. Location will be the Longhorn Barbecue in downtown Bronte.

For more information or to see how you can help, contact Glenda or Joe Draper at 473-2050, or Jimmie Guthrie at 473-3049.

Lamb and Goat Validation Tags

Any 4-H or FFA member who plans on showing a lamb or goat at a major stock show (Fort Worth, San Angelo, San Antonio or Houston) must order validation tags by August 29, 2008.

Please call the Extension office at 453-2461 to place your order. If you are showing only at the county show you will not need to order validation tags.



THE OBSERVER/ENTERPRISE
 Published Weekly Except Christmas
 707 Austin (325) 453-2433 • (325) 453-4643 FAX
 email: CokeCoObserver@aol.com
 Periodical Rate Postage paid at Robert Lee, TX.
POSTMASTER: Please send address changes to
Observer/Enterprise
PO Box 1329, Robert Lee, TX 76945.

STAFF
 Hal Spain, Publisher Morgan McCutchen, Editor
 Melinda McCutchen Pat Clement Wayne McCutchen

SUBSCRIPTION RATES
 Per Year in Coke & Sterling Counties.....\$25.00
 Per Year Elsewhere in Texas.....\$30.00
 Per Year Outside of Texas.....\$32.00

Obituaries



Gloria

Janie Saucedo Gloria went home to be in the arms of her Lord and Mommy on Wednesday, August 6, 2008.

Visitation was held all day Friday at the Bethel Baptist Church with a Prayer Service at 6 pm. Funeral service was held at 2 pm, Saturday, August 9, 2008, at the Bethel Baptist Church. Burial followed in the Robert Lee Hispanic Cemetery. Services were under the direction of Shaffer Funeral Home.

Janie was born in Abilene to Alejo and Juanita Saucedo on February 13, 1974. Janie was a very loving person with a big heart, always setting everyone else's needs above hers and would do anything for anybody.

She was an amazing sister and a loving mom with gentle hands. She was a wonderful daughter and always helped her Mom and Dad. She was also a great wife. Janie touched many friends' lives in a special way that will always be cherished and remembered. "Nana" was a wonderful aunt and helped raise her nieces and nephews and cared for them in a special way no matter how bad she felt.

Janie will be forever missed and loved and will never be forgotten.

She is preceded in death by her mother.

Janie is survived by her husband, Efren James Gloria of San Angelo; three daughters, Elana Jade Gloria, Justina Marie Gloria and Jasmine Nichole Cortinez, all of Robert Lee; her father, Alejo Saucedo of Robert Lee; a brother, Fransico Javier Saucedo and wife, Loretta of Guam; two sisters, Liz Minjarez and fiancé, Joey Rhodes of Robert Lee and

Cristina Saucedo of Sweetwater and fiancé Tim Medina. Nana is also survived by her nieces and nephews, A.J. Minjarez, Justice Saucedo and Cloe Minjarez of Robert Lee, Azaria Medina of Sweetwater, David, Mark, Lorena of Guam, Jessica and Jared Long of Robert Lee; many cousins, aunts, and uncles.

Special thanks to Denise Servine who was not only her home health nurse but a "special" friend.

"Nana" we are looking forward to being together again.

05-1tc

Coke Co. Historical Commission to meet

The Coke County Historical Commission will meet on Monday, August 18, in the Courthouse parking lot at 2:30 pm to caravan to the Rock Hotel in Winters.

A tour of the building has been scheduled for 3 pm, on Monday, August 18. Anyone is welcomed and urged to come caravan to Winters or to meet the group there for the tour. It is worth the drive to see what the volunteers of the Runnels County Historical Commission have accomplished.

Bronte Elementary Open House set

Bronte Elementary School will host an Open House so that all parents can meet the teachers for the upcoming school year. The Open House will be Thursday, August 21 from 5 pm - 6 pm. Everyone is asked to meet in the auditorium upon arrival for a brief meeting and introduction of teachers.

RL Sports Boosters make plans

The Robert Lee All Sports Booster Club met on Thursday, August 7, and again on August 12, at 7 pm, in the High School Library to elect officers and finalize plans for the Meet the Steers

night.

The new officers for 2008-2009 are President - Kim Phillely, Vice President - Brenda Skinner, Secretary/Reporter - Cynthia Dillard, and Treasurer - SueAnn Nesbit.

Meet the Steers Night will be held during the first home scrimmage against Water Valley on Friday, August 22, at 6 pm. During the scrimmage, Rhonda Hood and Judy Blair will have their Shaved Ice Cream available for purchase with part of the proceeds going to the Booster Club. The Booster Club will also be selling booster club memberships, caps, Steer flags, and they will also take any donations. Orders for Steer, Dogie and Cheerleader buttons can be made at this time also.

They encourage everyone to please become a member of the Robert Lee All Sports Booster Club and help support our students and athletic programs. Come out to Meet the Steers on Friday, August 22, and watch the Steers scrimmage the Water Valley Wildcats. Your support is important to our students, coaches, sponsors and administration.

The next booster meeting will be held on Monday, August 18, at 7 pm in the High School Library.

Coke/Sterling County Farm Service update

The Coke-Sterling County Farm Service Agency is announcing a critical program deadline for your calendar. Be sure to contact your local office now at (325) 453-2751 for an appointment or more information.

2009 Non-Insured Disaster Assistant Program (NAP).

September 1, 2008 is the final date to purchase 2009 coverage for the following crops.

*Barley, oats, wheat, triticale, rye, and seeded small grain mixtures intended for grazing or forage production.

*You will be required to obtain NAP coverage and/or crop insurance on all 2009 crops you intend to produce, to qualify for: Supplemental Revenue Assistance Program (SURE), Livestock Forage Disaster Program (LFP), Tree Assistance Program (TAP), and Emergency Assistance for Livestock, Honey Bees, and Farm-Raised Fish (ELAP).

Contact your crop

insurance agent for sales closing dates on insurable crops.

BHS Class of 1948

The 1948 Senior class of Bronte High School will have a 60 year reunion on homecoming day, Friday, Sept. 12, 2008.

Class members will meet at the Housing Authority Rec. room from noon Friday until midnight. Visitors are welcome.

Miranda Lambert and Blake Shelton to perform charity concert in Abilene

Country music sensations Miranda Lambert and Blake Shelton will be performing an acoustic set in an intimate setting at the Legends Country Concert Sunday, September 14 in Abilene, Texas. Lambert and Shelton will be performing to help raise funds for Hendrick Children's Hospital and Children's Miracle Network in Abilene.

The performance, which is presented by the National Rifle Association Foundation, begins at 8 pm at Frontier Texas! in downtown Abilene. Because of the generosity of Lambert and Shelton, 100 percent of the proceeds from ticket sales go to benefit the sick and injured children served through Hendrick Children's Hospital and Children's Miracle Network.

"We are very fortunate these two award-winning artists have stepped up to help our cause," said Melinda Blay, Children's Miracle Network coordinator at Hendrick Medical Center. "Both artists regularly sell out concerts with thousands of tickets, so it is a unique

honor to have them in Abilene to help raise funds and awareness for the kids served by Hendrick Children's Hospital."

Every dollar raised for Children's Miracle Network is used to purchase vital medical equipment, fund important health education programs and allows Hendrick Children's Hospital to treat every child without regard to the way they pay.

For more information about the concert or for ticket information, visit www.legendsdovehunt.com or contact Children's Miracle Network at Hendrick at 325-670-6557.



Look Who's New!

Layla Joydell Thomas

Christopher and Kindra Thomas are pleased to announce the birth of their daughter Layla Joydell Thomas. She was born at Shannon Medical Center in San Angelo, Texas, at 2:55 pm, on Sunday, July 13, 2008, weighing 2 lbs and was 14 inches long.

Layla's maternal grandparents are Dallas and Vallery Johnson and maternal great-grandparents include the late James and Joydell Deen and the late Fred and Addie Johnson. Her maternal great-great-grandparents are Dean Kinsey and the late Wesley Kinsey. Layla's paternal grandparents are Harold (Harry) and Ann Thomas. Her great-grandparents include the late Henry (Jack) and Sylvia Kresta of Ballinger and William D. and Norma Thomas and the Late Ruth Thomas of Charles City, Iowa.

Area Churches

- Invite You to Worship**
- Bronte Church of Christ**
PO Box 346 • 118 S. Jefferson • Bronte
(325) 473-3291
Preacher John V. Driggers
Sun. 10 am & 6 pm, Wed. 7 pm
 - Central Baptist Church**
324 S. Franklin • Bronte
(325) 473-4811
Dale Patterson, Pastor
Sun. 10 am Sunday School
11 am & 6 pm Worship
Wed. 6 pm
 - Emmanuel Pentecostal**
PO Box 683 • 1019 Colorado City Hwy
Robert Lee
(325) 453-2360
Rev. Ray Aldridge, Pastor
Sun. 10 am & 6 pm, Wed. 7 pm
 - First Baptist Church**
424 S. Washington • Bronte
(325) 473-2331
Bro. Corey Cornutt, Pastor
Sunday 9:45 am Sunday School,
10:55 am Worship,
6 pm Youth and Worship
Wednesday 7 pm Prayer Meeting
 - First United Methodist Church**
Corner of Washington & Holmes
Bronte
(325) 473-3281
Rev. David Bailey, Pastor
Sun. 10:00 am Sunday School
11:00 am Worship
5:00 Youth
 - First United Methodist Church**
PO Box 144 • 9th & Chadbourne
Robert Lee
(325) 453-2417
Rev. George Bradley, Pastor
Sun. 10 am Sunday School
10:50 am Worship
Wed. 6 pm Choir
 - Iglesia Bautista Bethel**
101 Houston • Robert Lee
(325) 763-9208 • 320-1354
Sun. 10 am • Worship
11 am & 6 pm • Service
Wed. 7 pm
 - Southside Church of Christ**
PO Box 698 • 8th & Houston
Robert Lee • (325) 453-2176
Frank J. Daniels, Preacher
Sun. 10 am, Sunday School
11 am & 6 pm, Worship
Wed. 7 pm, Worship
 - Northside Church of Christ**
PO Box 508 • 9th & Chadbourne
Robert Lee
(325) 655-9784 or 453-2685
Portis Ribble, Minister
Services: Sun. 10 am & 1:30 pm;
Wed. 6 pm
 - Our Lady of Guadalupe Catholic Church**
601 W. 10th, Robert Lee
(325) 365-2687
Rev. Hubert Wade, Jr., Pastor
Sat. 6 pm
 - Pecan Baptist**
PO Box 542 • 12 miles West of
Robert Lee on Sterling City Hwy
(325) 453-2482
Jim Dominey, Pastor
Sun. 10 am, Sunday School
11 am & 7 pm, Worship
 - Robert Lee Baptist Church**
PO Box 493 • 22 W. 11th
(325) 453-2724
Jason Martin, Pastor
Sun. 9:45 am, Sunday School
11 am & 6 pm, Worship
Wed. 7 pm, Prayer Meeting
 - Tennyson Baptist Church**
Hwy 277 • Tennyson
Joe Hodges, Pastor
(325) 473-2040
Sun. 9:45 am, Sunday School
11:00 am & 6 pm, Worship
Wed. 6:00 pm Prayer Meeting
Victory Assembly of God
PO Box 638 • 6th & Houston
Robert Lee
(325) 453-2208
Rev. Irving Smith, Pastor
Sun. 9:45 am, Sunday School
10:45 am & 6 pm, Worship
Wed. 7 pm, Prayer Meeting
 - St. James Catholic Church**
215 N. Washington, Bronte
(325) 365-2687
Rev. Hubert Wade, Jr., Pastor
Sun. 5 pm

Tommy E. Neal, AAMS
Financial Advisor

Edward Jones ®

2412 College Hills Boulevard
Suite 102
San Angelo, Texas 76904-8475
Bus. (325) 223-8244 Toll free (877) 223-8244
www.edwardjones.com
MAKING SENSE OF INVESTING

Rodriquez-Flanagan united in marriage

Monica Renea Rodriquez and Cole Alan Flanagan were married June 14, 2008, at the Cactus Hotel in San Angelo, Texas. The ceremony was officiated by Reverend Ray Aldridge.

The bride is the daughter of Mike and Mary Rodriquez of Robert Lee. The groom is the son of Ann Coffee of Odessa and Randy and Camille Flanagan of Robert Lee. Monica is the granddaughter of Sotera Galvan and the late Juan Galvan of Robert Lee and Frank and Lupe Rodriquez of San Angelo. Cole is the grandson of the late R.L. and Evelyn Flanagan of Robert Lee, the late Jim and Barbara Coffee of Odessa, and Johnny and Faye Nixon of Midland.

Prelude and recessional for the ceremony was provided by pianist Sterling Myers. Monica was given in marriage by her father Mike Rodriquez. The Maid of Honor was her cousin Stephanie Trejo of Abilene. The bridesmaids were childhood friends Amber Colon, Tyler Lott, Cara Eaton, all of San Angelo, and Shannon Honse of Dallas. Nieces of the groom, Aubrey and Zoey Nichols, of Robert Lee served as flower girls. Cousin of the bride, Ian Zander Galvan of Robert Lee served as escort for the flower girls. Cousin of the bride, Noah Rodriquez, of San Angelo served as ring bearer.

Brother of the groom, Casey Flanagan, of Odessa was the best man. Friends and family of the groom, Mitchell Earls of Albuquerque, New Mexico, Jon Paul Parker of San Angelo, Kevin Honse of Dallas, and Kagan Maxcey of Iraan, served as groomsmen.

Ushers included brother of the bride Michael Rodriquez of Robert Lee, brother of the groom Cade Osterlon of Houston, and cousin of the bride Rocky Ybarra of Keller. Assisting at the register table were Olivia Trejo of Robert Lee, Anna Rojas of San Angelo and Molly Taylor of Copperas Cove.

The reception and dance were held at the Mezzanine and ballroom of the Cactus Hotel. Bag Pipes and Mariachis came together to provide entertainment during the reception. Music was also provided by DJ David Sheldon.

Following a honeymoon trip to Las Vegas, the couple is living in San Angelo.

Rodriquez honored with bridal shower

Monica Rodriquez was given a bridal shower on May 3, 2008, by hostesses, Irma Torres, Brenda Skinner, Cookie Burns, Linda Burns, Dolores Roe, Myna Kay



Mr. and Mrs. Cole Flanagan

Copeland, Terri Key, Marsha Wink, Robin Allen, Linda Eaton, Martha Trejo, Kelly Millican, Sterling Myers, Jeffie Roberts, Elena Sanchez, and Laura Organ at the Catholic Church fellowship hall.

The hostesses did such a wonderful job decorating and the food they brought and made was delicious. Monica enjoyed every minute of spending time with friends, family and opening her gifts.

THE OBSERVER/ENTERPRISE
 Serving Coke County
 P.O. Box 1329 Robert Lee, TX 76945
 (915) 453-2433

drop box is

HOMETOWN HARDWARE

in Bronte.

Dear Citizens,
 Before the election, I will try to visit each and every one of you. If I miss you when I stop by, please feel free to call with any questions or concerns.

Wayne McCutchen

Write-In Candidate for Coke County Sheriff
 (325) 473-3201

Pd. Pol. Adv. by Melinda McCutchen, Treasurer, PO Box 554, Bronte, Texas 76933

 You Are Invited To Attend The
Coke-Sterling Farm Bureau Annual County Convention
Saturday, August 16, 2008
Dinner at 6 pm
Recreation Center
Robert Lee, Texas
Guest speaker will be Drew Darby.
 Members are urged to bring a guest!
 Any member signing up a new member receives one year free membership!
Come See What Farm Bureau Is About!!
Door Prizes!

SUPER H

Texas Lotto Tickets Sold Here
 WIC Cards Welcome
 ATM Available



501 Commerce - Robert Lee, TX
 Store Hrs: Mon.-Sat. 8-8 Sun. 8-6
SPECIALS GOOD 8/13 Thru 8/19
 LIMIT RIGHTS RESERVED

Preferred Trim
 Boneless • Family Pack
Sirloin Cut Pork Chops
\$1.99 Lb.

Pilgrim's Pride
 Grade A • Family Pack
Drums or Thighs
\$.99 Lb.

Preferred Trim
 Boneless Beef
Bottom Round Steak
\$2.99 Lb.

Bar S
Sliced Bacon
2 12 Oz. Pkg. **/\$3**

Farm Fresh
Cantaloupe Melon
\$.99 Ea.

Miller Lite or
Coors Light
 18 Pack Cans
\$12.79
 Reg., Light or Select
Budweiser Beer
 20 Pack Bottles
\$13.99

**RL School Supply List
Pre-Kindergarten**

- 1 box 8 count crayons (if you can't find 8, just get 16, but please no 24 count)
- 1 pair of scissors
- 2 pkgs. of glue sticks
- 1 pkg. of assorted construction paper
- 4 pencils
- 2 boxes of kleenex
- 1 set of water colors
- One set of extra clothes
- 1 old large shirt that can be used for painting

Kindergarten

- crayons (no more than 24)
 - 1 bottle school glue (white)
 - 3 glue sticks
 - 6 regular yellow #2 pencils
 - 1 spiral notebook—wide ruled
 - 1 small plastic school box
 - 3 large boxes kleenex
 - 2 sturdy, slick pocket folders (no brads)
 - towel for rest time (no vinyl mats)
 - backpack
 - 1 change of clothes for accidents
 - bottled drinking water (if desired)
 - 1 large pink eraser
 - 3 pkg. index cards
 - 2 small boxes ziplock baggies (quart size)
- PLEASE LABEL EVERYTHING! INITIAL EACH CRAYON!

1st Grade

- 6 pencils
 - 2 large erasers or pkg. of pencil top erasers
 - 1 pair of 5 inch Fiskar scissors
 - 1 large zipper pencil bag
 - 1 box of 24 crayons
 - 1 large Elmer's glue
 - 3 sturdy slick pocket folders
 - 1 ruler with centimeters and inches
 - 2 red and green pencils or pens
- PLEASE INITIAL EVERYTHING!

2nd Grade

- 1 Spiral notebook (wide ruled) 80 pages
- 6 Folders (with brads and pockets-no designs, (1-blue, 1-yellow, 1-green, 1-purple, 2-red)
- 1 Bottle of glue (4 ounce)
- 1 Glue Stick
- 1 Pencil Sharpener with shaving holder
- 1 Ruler (with metric and standard measurement)
- 2 Red Pens
- 1 Box of 12 count map pencils
- 1 Box of 24 Crayons
- 2 pkgs. of 200 count WIDE RULED notebook paper
- 2 pkg. (12 count) #2 pencils
- 2 Pink erasers or pkg. of pencil top erasers
- 1 large zipper pencil bag
- 1 pair 7 inch Fiskar scissors

- 2 Boxes of Kleenex
 - 2 Pkgs. of lined index cards
 - 1 box of 50 count quart size baggies
 - 1 box of 15 count gallon baggies
- PLEASE LABEL EVERYTHING

3rd Grade

- 1 ream of computer paper
 - 1 pkg. of 200 count WIDE RULED notebook paper
 - 3 pkg. (12 count) # 2 pencils—no mechanical pencils
 - 2 pink erasers or pkg. of pencil top erasers
 - 6 red grading pens or pencils
 - 3 spiral notebooks---wide ruled with 70 pages
 - 1 pkg. assorted construction paper 9 X 12" -50 count
 - 1 box of 24 crayons
 - 1 large zipper pencil bag
 - 1 pair 7 inch Fiskar scissors
 - 2 boxes of Kleenex
 - 2 boxes of 12 count map pencils
 - 1 ruler with metric and standard measurement
 - 5 pocket folders with brads---Need red, blue, yellow, green, and purple
 - 1 pencil sharpener with shaving holder
 - 1- 2 ounce (small) bottle of glue
 - 1 glue stick
- GIRLS -1 box of quart size Ziploc "Easy Zipper" baggies
BOYS -1 box of gallon size Ziploc "Easy Zipper" baggies
- NO TRAPPERS OR NOTEBOOKS

4th Grade

- 2 boxes tissues
- 12 - #2 pencils
- 1 spiral notebook
- 2 pkgs. 3-ring notebook paper (wide ruled)
- 1 12" ruler
- 3 boxes 100 count zipper seal sandwich bags
- 6 pocket folders with brads
- Sharp scissors
- Glue stick
- Markers
- Map colors
- 1 container disinfectant wipes (Clorox, Store Brand)

5th Grade

- 2 boxes tissues
- Fiskar scissors
- Glue stick
- 12 #2 pencils
- Markers
- 1 spiral notebook
- 6 pocket folders with brads
- 2 pkgs. 3-ring notebook paper (wide ruled)
- 12 inch ruler
- Map colors
- 1 container disinfectant wipes (Clorox, Store Brand)

6th Grade

- 2 pkgs. 3-ring wide-ruled notebook paper
- 12 #2 pencils
- Ruler
- Fiskar scissors (good quality)

- Glue stick
- Markers
- 6 pocket folders with brads
- 2 boxes tissues
- 1 spiral notebook
- 1 compass for math
- 1 protractor
- Map colors
- 1 container disinfectant wipes (Clorox, Store Brand)

Bronte

**School Supply List
Preschool program for
children with disabilities
and Pre-K**

- 1 blunt 5" Fiskar scissors
 - 3 Elmer's glue 1.25 oz.
 - 3 boxes Kleenex Facial Tissue
 - 1 Purell hand sanitizer (8 oz.)
 - 1 box "Ziploc" bags, quart size
 - 1 set washable Crayola thick markers
 - 2 rolls Scotch transparent tape
 - 1 set Dry Erase markers (set of 4)
 - 5 glue sticks
 - 1 *spiral notebook (100 ct. wide ruled)
 - 1 *folder with 3 brads
 - 1 *lg. Zippered top backpack
- *set of extra clothing
- Please consider clothing that will allow your child to dress and go to the bathroom independently.
- *Indicates items to be labeled with child's name. All other items will be shared in the classroom as community property. For example, each student's glue will be placed in the class glue box.

Kindergarten

- 6 boxes Crayola crayons (8 count only - NO Jumbo)
- 3 boxes facial tissues (100 count)
- 6 No. 2 pencils

- 1 box Crayola thick markers (10 count)
 - 4 Elmer's glue 1.25 oz.
 - 1 set Dry Erase markers (set of 4)
 - 8 folders with only bottom pockets
 - 1 sharp 5" Fiskar scissors
 - 40 ct. "Ziploc" bags, gallon size (these need to have a zipper)
 - 1 box "Ziploc" bags, quart size (these need to have a zipper)
 - 1 canister of pull-up Clorox disinfectant wipes
 - 2 pink bevel erasers
 - 1 sm. plastic school box (no zipper bags please)
 - 1 school bag or backpack
 - 1 roll 1/2" transparent tape
- Please label everything your child brings to school.

1st Grade

- 2 boxes Crayola crayons (16 ct.)
- 1 box facial tissue (100 count)
- 12 No. 2 pencils
- 3 Elmer's glue, 4 Oz.
- 8 assorted folders (pockets only)
- 1 sharp 5" Fiskar scissors
- 5 pink bevel erasers
- 1 canister of pull-up Clorox disinfectant wipes
- 1 plastic school box
- 1 school bag or backpack
- 1 box gallon "Ziploc" bags
- 1 box sandwich sized Ziploc bags

2nd Grade

- 1 box 24 count Crayolas
- 2 boxes facial tissues (100 count)
- 12 No. 2 pencils
- 1 Elmer's glue, 4 oz.
- 1 scissors
- 1 pink eraser
- 1 school bag or backpack
- 1 school box
- 8 folders with pockets
- 1 ruler
- 1 spiral notebook (70 sheet wide ruled)

- 6 glue sticks
 - 1 box Gallon Ziploc bags
 - 2 cloth book covers
- 3rd Grade**
- 1 box 24 count Crayolas
 - 2 boxes facial tissues (100 ct.)
 - 24 No. 2 pencils
 - 1 box Crayola markers (thick 10 ct. assorted colors)
 - 1 Elmer's glue, 8 oz.
 - 6 folders (pockets only, assorted colors)
 - 1 sharp 5" Fiskar scissors
 - 1 plastic school box
 - 8 Elmer's glue sticks
 - 2 filler paper, 200 ct. wide ruled
 - 1 box map colors, 12 count
 - 1 box quart size "Ziploc" bags
 - 1 box gallon size "Ziploc" bags
 - 1 school bag or backpack
 - 1 pkg. eraser tips

4th Grade

- 1 box facial tissues (100 count)
- 12 No. 2 pencils
- 1 school bag or backpack
- 1 set of 4 dry erase markers
- 8 colored ink pens for journals
- 6 pocket folders
- 6 cloth book covers
- 1 pkg. Notebook paper, wide ruled
- 1 spiral notebook
- 1 composition notebook (wide ruled 9 3/4" X 7 1/2")
- 1 pkg. index cards (3 x 5)
- 2 glue sticks

5th and 6th Grade

- 12 No. 2 pencils (wood)
- 2 pkgs. Filler notebook paper (200 wide ruled)
- 1 pkg. of 8 colored gel pens for journals
- 1 box facial tissues
- 6 cloth book covers
- 8 pocket folders
- 1 pkg. of 4 highlighters
- 3 spiral notebooks (70 page, wide ruled)
- 1 box quart "Ziploc" bags (5th grade only)
- 4 glue sticks (white or clear, not blue)

**NOTICE OF PUBLIC MEETING TO DISCUSS
BUDGET AND PROPOSED TAX RATE**

The BRONTE ISD will hold a public meeting at 6:00 PM, August 28, 2008 in BRONTE ISD BOARD ROOM, 210 S JEFFERSON, BRONTE, TEXAS. The purpose of this meeting is to discuss the school district's budget that will determine the tax rate that will be adopted. Public participation in the discussion is invited.

The tax rate that is ultimately adopted at this meeting or at a separate meeting at a later date may not exceed the proposed rate shown below unless the district publishes a revised notice containing the same information and comparisons set out below and holds another public meeting to discuss the revised notice.

Maintenance Tax	\$1.040000/\$100 (proposed rate for maintenance and operations)
School Debt Service Tax	\$0.000000/\$100 (proposed rate to pay bonded indebtedness)
Approved by Local Voters	

Comparison of Proposed Budget with Last Year's Budget

The applicable percentage increase or decrease (or difference) in the amount budgeted in the preceding fiscal year and the amount budgeted for the fiscal year that begins during the current tax year is indicated for each of the following expenditure categories:

Maintenance and operations	(42.58)% (decrease)
Debt service	0.00 % increase
Total expenditures	(42.58)% (decrease)

Total Appraised Value and Total Taxable Value

(as calculated under Section 26.04, Tax Code)

	Preceding Tax Year	Current Tax Year
Total appraised value* of all property	\$ 203,991,100	\$ 182,401,460
Total appraised value* of new property**	\$ 1,098,144	\$ 3,968,442
Total taxable value*** of all property	\$ 75,802,196	\$ 77,319,028
Total taxable value*** of new property**	\$ 1,098,144	\$ 3,968,442

* "Appraised value" is the amount shown on the appraisal roll and defined by Section 1.04(8), Tax Code.
** "New property" is defined by Section 26.01(17), Tax Code.
*** "Taxable value" is defined by Section 1.04(10), Tax Code.

Bonded Indebtedness

Total amount of outstanding and unpaid bonded indebtedness* \$0

* Outstanding principal.

Comparison of Proposed Rates with Last Year's Rates

	Maintenance & Operations	Interest & Sinking Fund*	Total	Local Revenue Per Student	State Revenue Per Student
Last Year's Rate	\$ 1.040000	\$ 0.000000	\$ 1.040000	\$ 1.628	\$ 9,307
Rate to Maintain Same Level of Maintenance & Operations Revenue & Pay Debt Service	\$ 1.073680	\$ 0.000000	\$ 1.073680	\$ 2,487	\$ 8,330
Proposed Rate	\$ 1.040000	\$ 0.000000	\$ 1.040000	\$ 2,489	\$ 8,479

* The Interest & Sinking Fund tax revenue is used to pay for bonded indebtedness on construction equipment, or both. The bonds, and the tax rate necessary to pay those bonds, were approved by the voters of this district.

Comparison of Proposed Levies with Last Year's Levy on Average Residence

	Last Year	This Year
Average Market Value of Residences	\$ 51,872	\$ 54,152
Average Taxable Value of Residences	\$ 26,497	\$ 28,322
Last Year's Rate Versus Proposed Rate per \$100 Value	\$ 1.040000	\$ 1.040000
Taxes Due on Average Residence	\$ 275.57	\$ 294.55
Increase (Decrease) in Taxes		\$ 18.98

Under state law, the dollar amount of school taxes imposed on the residence homestead of a person 65 years of age or older or of the surviving spouse of such a person, if the surviving spouse was 55 years of age or older when the person died, may not be increased above the amount paid in the first year after the person turned 65, regardless of changes in tax rate or property value.

Notice of Rollback Rate: The highest tax rate the district can adopt before requiring voter approval at an election is \$1.040050. This election will be automatically held if the district adopts a rate in excess of the rollback rate of \$1.040050.

Fund Balances

The following estimated balances will remain at the end of the current fiscal year and are not encumbered with or by a corresponding debt obligation/less estimated funds necessary for operating the district before receipt of the first state aid payment	
Maintenance and Operations Fund Balance(s)	\$ 1,100,000
Interest & Sinking Fund Balance(s)	\$ 0

GLENN-BIVINS INSURANCE
Our local volunteer fire departments need your support!
123 W. Main Bronte 473-6791

The Best Connection
402 Hwy 208 • Robert Lee, Texas
•24-Hour Towing•
Oil Changes,
Routine Maintenance, Light
Mechanical Work
(325) 453-2342

Robert Lee ISD holds public update meeting

On August 4, 2008, the Robert Lee Independent School district held a community meeting to give the public an update on school construction, wind energy, and the sale of school bonds. Aaron Hood, Superintendent, informed the community that the school board selected W.B. Kibler Construction from Dallas, Texas as construction managers. School administration, Cadco Architects, and Kibler have been meeting to discuss tentative timelines for the pre-construction and construction phases of the project. Tentative plans are to have final plans in place by the end of November 2008, bid the project in mid January 2009, and possibly start the construction of the new facility in March 2009. The building committee which includes community members and staff members from RLISD have been touring other facilities and meeting to discuss the components of the new school.

Several people have been discussing wind energy and the projects that are being constructed in Coke County and Robert Lee school district. Mr. Hood gave an update on the two projects that are in the district. He stated that one project is 100% complete while the other project has 63 turbines functioning and 29 more that will be up and running before the end of 2008. Mr. Hood stated that the projected value at the end of the year was on target with the value used in the bond proposition and that everything was going as planned.

Mr. Hood also informed the community that the School Board was considering selling \$9.5 million of the \$15 million bonds in August 2008. This is being considered because if the bonds are sold in August, they would be insured by the state which would save the school district about \$450,000. Also, by having two sales, both bond sales will be considered bank qualified which should provide the district with a lower interest rate. An early sale would mean that there would be an I&S tax of about \$.44 which would make the school tax rate \$1.48 per \$100 valuation.

The RLISD School Board will have its regular meeting on August 21, 2008 at 7:00 p.m. in the high school library. The board will set a proposed tax rate at this meeting and public input is welcome. The board will also meet on August 27,

2008 at 7:00 p.m. in the high school library to set the tax rate and adopt the budget. Public input is also welcomed at this meeting.

Sales Tax Holiday Brings Relief to Family Budgets

With the rising cost of gasoline, groceries and other goods, the annual clothing sales tax holiday will help families' back-to-school budgets go farther, Texas Comptroller Susan Combs said today.

Combs announced that the 10th annual sales tax holiday will take place Aug. 15-17. During the tax holiday weekend, most clothing and shoes priced less than \$100 can be purchased tax free. The tax break applies to both children's and adults' apparel.

"We estimate shoppers will save about \$54 million in sales tax during the sales tax holiday, including approximately \$42.1 million in state sales tax and \$11.9 million in local sales taxes," Combs said.

The shoppers' gain is not expected to have a significant impact on sales tax collections.

"Though the national economy has slowed, Texas sales tax revenue continues to grow at a healthy pace," Combs said. "Through June, state sales tax collections for fiscal 2008 were up 6.1 percent compared to the same point in fiscal 2007. Cities' and counties' calendar year-to-date sales tax revenues were up an average of 5.1 percent."

A list of items that will be tax exempt during the sales tax holiday is available on the Comptroller's Web site at http://www.window.state.tx.us/taxinfo/taxpubs/tx98_490/tx98_490.html.

Combs reminds families that school backpacks and messenger bags costing less than \$100 are now included in the sales tax holiday, but school supplies are taxable.

31st Miles Cotton Festival Sept. 13

The 31st annual Miles Cotton Festival will be held on Saturday, September 13, 2008 in Miles, Texas.

The day's activities begin at 6 am with a pancake breakfast. The day's fun filled activities include arts and craft booths, parade, brisket, rib and chicken cook-off, kid's games, and Cotton Festival Queen's Contest. The day's activities are topped off with a concert by Country music recording artist Aaron Watson from 8 pm to 1 am.

For more information call (325) 468-3611 or visit the Miles, Texas website at www.milestexas.com.

2008 Property Tax Rates in COKE COUNTY

This notice concerns 2008 property tax rates for COKE COUNTY. It presents information about three tax rates. Last year's tax rate is the actual rate the taxing unit used to determine property taxes last year. This year's effective tax rate would impose the same total taxes as last year if you compare properties taxed in both years. This year's rollback tax rate is the highest tax rate the taxing unit can set before taxpayers can start tax rollback procedures. In each case these rates are found by dividing the total amount of taxes by the tax base (the total value of taxable property) with adjustments as required by state law. The rates are given per \$100 of property value.

	General Fund	Farm to Market/ Flood Control Fund
Last year's tax rate:		
Last year's operating taxes	\$ 1,173,292	\$ 306,102
Last year's debt taxes	\$ 21,750	\$ 0
Last year's total taxes	\$ 1,195,042	\$ 306,102
Last year's tax base	\$ 264,144,379	\$ 261,252,742
Last year's total tax rate	0.452420 /\$100	0.117167 /\$100
This year's effective tax rate:		
Last year's adjusted taxes (after subtracting taxes on lost property)	\$ 1,182,608	\$ 302,365
+ This year's adjusted tax base (after subtracting value of new property)	\$ 291,319,462	\$ 288,434,072
= This year's effective tax rate for each fund	0.405948 /\$100	0.104829 /\$100
Total effective tax rate	0.510777 /\$100	
<i>(Maximum rate unless unit publishes notices and holds hearings.)</i>		
This year's rollback tax rate:		
Last year's adjusted operating taxes (after subtracting taxes on lost property and adjusting for any transferred function, tax increment financing, state criminal justice mandate, and/or enhanced indigent health care expenditures)	\$ 1,161,085	\$ 302,365
+ This year's adjusted tax base	\$ 291,319,462	\$ 288,434,072
= This year's effective operating rate	0.398561 /\$100	0.104829 /\$100
x 1.08 = this year's maximum operating rate	0.430445 /\$100	0.113215 /\$100
+ This year's debt rate	0.006818 /\$100	0.000000 /\$100
= This year's rollback rate for each fund	0.437263 /\$100	0.113215 /\$100
This year's total rollback rate	0.550478 /\$100	

Statement of Increase/Decrease

If COKE COUNTY adopts a 2008 tax rate equal to the effective tax rate of \$0.510777 per \$100 of value, taxes would increase compared to 2007 taxes by \$125,271.

Schedule A: General Fund - Unencumbered Fund Balances

The following estimated balances will be left in the units property tax accounts at the end of the fiscal year. These balances are not encumbered by a corresponding debt obligation.

Type of Property Tax Fund	Balance
UNENCUMBERED FUNDS	\$587,110

Schedule B: General Fund - 2008 Debt Service

The unit plans to pay the following amounts for long-term debts that are secured by property taxes. These amounts will be paid from property tax revenues (or additional sales tax revenues, if applicable).

Description of Debt	Principal or Contract Payment to be Paid from Property Taxes	Interest to be Paid from Property Taxes	Other Amounts to be Paid	Total Payment
AIR CONDITION SYSTEM	\$16,903	\$4,414	\$0	\$21,317
Total Required for 2008 Debt Service				\$21,317
- Amount (if any) paid from funds listed in Schedule A				\$0
- Amount (if any) paid from other resources				\$0
- Excess collections last year				\$0
= Total to be paid from taxes in 2008				\$21,317
+ Amount added in anticipation that the unit will collect only 98.00% of its taxes in 2008				\$435
= Total Debt Levy				\$21,752

Schedule A: Farm to Market/Flood Control Fund - Unencumbered Fund Balances

The following estimated balances will be left in the units property tax accounts at the end of the fiscal year. These balances are not encumbered by a corresponding debt obligation.

Type of Property Tax Fund	Balance
UNENCUMBERED FUNDS	\$373,698

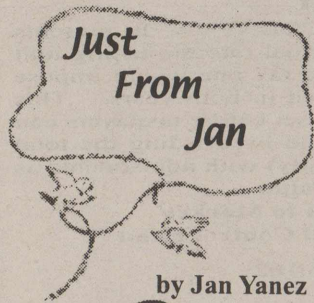
Schedule B: Farm to Market/Flood Control Fund - 2008 Debt Service

The unit plans to pay the following amounts for long-term debts that are secured by property taxes. These amounts will be paid from property tax revenues (or additional sales tax revenues, if applicable).

Description of Debt	Principal or Contract Payment to be Paid from Property Taxes	Interest to be Paid from Property Taxes	Other Amounts to be Paid	Total Payment
Enter Text Here	\$0	\$0	\$0	\$0
Total Required for 2008 Debt Service				\$0
- Amount (if any) paid from funds listed in Schedule A				\$0
- Amount (if any) paid from other resources				\$0
- Excess collections last year				\$0
= Total to be paid from taxes in 2008				\$0
+ Amount added in anticipation that the unit will collect only 98.00% of its taxes in 2008				\$0
= Total Debt Levy				\$0

This notice contains a summary of actual effective and rollback tax rates calculations. You can inspect a copy of the full calculations at 13 E 7TH STREET ROBERT LEE, TEXAS.

Name of person preparing this notice: JOSIE DEAN
Title: TAX ASSESSOR COLLECTOR
Date Prepared: August 12, 2008



by Jan Yanez
AgriLIFE EXTENSION Agent

Back to school lunch tips

You've likely prepared hundreds of lunches over the years. If you just can't bear to pack another PB&J, use these tips to plan for a year of fun and nutritious school lunches that your child WON'T want to trade!

Plan Ahead

It's tempting to revert to packaged junk food or boring lunches when you're short on time. Planning ahead will help you feel better about what your children are eating.

Involve the Kids

- Children are more likely to eat what they've prepared.

- Discuss a lunch menu, try new recipes and fun ideas.

- Add these items to your grocery list.

Taste Test

Trying new foods is important, but a school lunch is not the time to pack foods that have yet to pass your child's taste test. Try new things at home first and keep a list of favorites.

Get Organized

Once the menu items are purchased, spend some time on early preparation; grate cheese, wash fruits and vegetables, prepare snack mixes and dips, cut grapes into clusters, place juice boxes in the freezer, etc. This will take about an hour of your weekend, but will save so much time during the week.

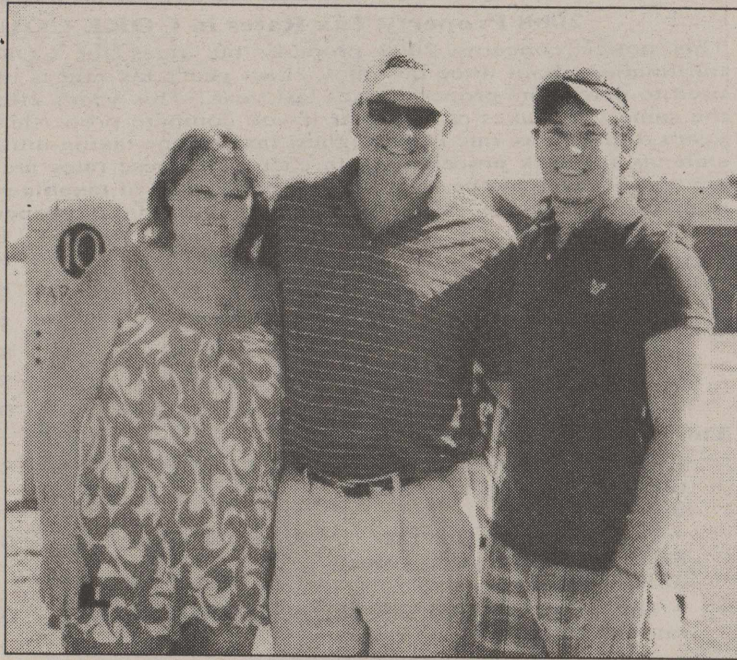
Storage Issues

Who has time in the morning to rush around looking for plastic containers, not to mention a matching lid (always an issue in our house)? Before the school year begins, treat yourself to a new set of plastic lunch containers. Store them where the kids can reach, along with zip-top bags, lunch bags, thermoses, wood craft sticks for spreading, plastic spoons, forks, napkins and straws. Every so often check to see if it's time to re-stock or even better ask the kids.

Eww, Gross Mom!

- Keep hot foods hot, cold foods cold and sandwiches from getting soggy.

- Purchase and use thermoses for their intended purpose. Freeze juice pouches and boxes, they'll help keep things cold. I place frozen juice boxes in a plastic bag to avoid



Scholarship! Steve and Tonda Alexander presented Brody Dillard with a \$400 scholarship from the West Texas Junior Champions Golf Tour. Brody is a 2008 graduate of Robert Lee High School and will be attending Western Texas College in Snyder this fall.

condensation moisture. Pack lettuce and tomato separately to be added to sandwiches when they're ready to eat.

- Save or purchase ketchup, mayonnaise and mustard pouches to add to sandwiches at school (the pouches might be too hard for little ones).

How to Keep Apples from Turning Brown

Keep a small water spray bottle filled with lemon juice and water in the fridge. Spray the cut apples before packing.

Include These Items In Your Back-To-School Shopping So You'll Be Prepared To Make A Fun Lunch Every Day

- Large set of kid's cookie cutters- animal shapes, holidays, letters and a variety of objects.

- Stickers, stickers and more stickers. Pick up the packages that are on sale to use throughout the year.

- Check out your party supply store for discontinued packs of napkins on sale. Select favorite characters, themes and holidays.

Drunk driving on rise in Texas

Federal, state and local transportation officials rallied at Texas Southern University recently to call attention to the growing problem of drunk driving in Harris County and across the state.

The Texas Department of Transportation (TxDOT) and the National Highway Traffic Safety Administration (NHTSA) joined Mothers Against Drunk Driving, local law enforcement and other community leaders to weigh alternatives for combating drunk driving, which is on the rise in Texas.

Texas continues to lead the nation in drunk driving traffic fatalities. During 2006, 1,354 motorists in Texas died in alcohol-impaired crashes where the driver had a blood or breath alcohol concentration of .08 or higher-up 34 deaths from the previous year. Despite improvements during 2006, an average of 17 motorists per month died in alcohol-related traffic crashes in



Championship Golfers! Logan Philley (left), son of Tim and Kim Philley of Robert Lee, won first place in the 14-15 year old division at the West Texas Junior Champions Golf Tour tournament, held in Merkel July 31 - August 1. Logan had scores of 71 and 69. Janzen Digby, grandson of Mario and Sheryl Tavarez of Robert Lee, placed second in the same division with scores of 67 and 78.

Harris County.

The meeting precedes the national drunk driving crack-down planned for the two weeks leading up to this year's Labor Day holiday.

TxDOT officials announced recently that thousands of state troopers and local law enforcement will be stepping up enforcement between August 15 and September 1. Last year, 3,979 drunk drivers were arrested during the two-week crack-down, up more than 700 arrests from the prior year. Preliminary data indicates 168

people died in alcohol-related traffic crashes in Texas during August and September last year.

"Our Drink. Drive. Go to Jail campaign reminds motorists that if they drink and drive this Labor Day holiday, they will get arrested. Our goal is simple: to prevent alcohol-related crashes, which saves lives and prevents injuries," said Carlos Lopez, TxDOT's director of traffic operations. "Stay out of trouble and don't get behind the wheel if you've been drinking."

WINK INSURANCE AGENCY
Home • Auto
Life • Commercial
715 Austin • 453-4551

SIGLER Construction Services, Inc.
Commercial • Residential
New • Remodeling
Professional • Experienced
Licensed • Insured & Bonded
Call Todd Smith
325-453-2646 • Cell 325-234-0157
Robert Lee, Texas

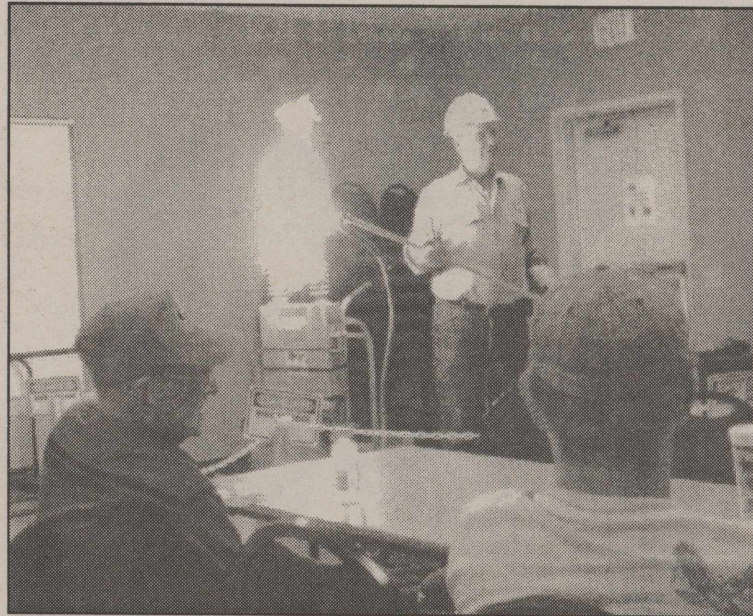
DARYL'S BODY SHOP
300 STATE HWY 229
ROBERT LEE, TEXAS 76945
DARYL COPELAND, OWNER 453-2980

Robert Lee State Bank
Internet Banking Has Arrived
Come by or call the bank at 325/453-2545 to sign up!
robertleestatebank.com

Online Bill Pay Available!

Full Service ATM & Night Drop On Site!

MEMBER FDIC



Danger! The Bronte and Robert Lee Volunteer Fire Departments and EMS (above photo and right photo) spent August 11 learning about the dangers of fallen power lines. AEP presented a program at the Bronte Community Room.



Convicted first-time DWI offenders can pay a fine of up to \$2,000, lose their driver's license for as long as a year, and serve 180 days in jail. Safety officials say other costs associated with a drunk driving arrest and conviction can add up to more than \$10,000 for bail, legal fees, court appearances, court-ordered classes and vehicle insurance increases and other expenses.

Silver Spur Ball benefits WTRC

Close to 450 people attended the recent Silver Spur Ball benefiting the West Texas Rehabilitation Center. The event raised more than \$32,000, which makes it possible for the WTRC to treat all who seek its services, regardless of their financial situation. In 18 years, the Silver Spur Ball has raised approximately \$368,000 for the Center, thanks to generous support of sponsors and those who attend each year. Thanks to West Central Wireless, CV Home Health Care, Superior Services, Catholic Life Insurance, Angelo Fleet & Industrial Supply, Bearing Service & Supply, Hartman Roofing, Milford Engineering, SA Standard Times, and Wal-Mart of Ballinger for underwriting this year's event.

Through its facilities in San Angelo, Abilene and Ozona, West Texas Rehab Center provides outpatient rehabilitation care each year to more than 23,000 children and adults who've experienced disabling illnesses or injuries.

Make Safety Essentials Part Of Checklist For College-bound Students

As thousands of students return to college campuses this fall, many are preoccupied with what to wear, how to accessorize their dorm rooms, and whether their new roommate will have a mini fridge or TV to share. While there's no

need to sweat the small stuff, packing for college does require careful planning for essential household items to help keep students safe and secure while away from home. In fact, one of the most serious threats to student safety is alarmingly on the rise. The National Fire Protection Agency reports that while the overall number of structure fires has decreased by 52 percent since 1980, the number of campus housing fires has increased to more than 3,300 annually.

Here are a few planning tips from First Alert, the leader in home safety, to consider when preparing your college packing list:

Making the Trip Safely

* Before you start packing, make sure you have the right number and size of boxes or other packing systems for transporting items. Use smaller boxes for heavier items so they are easier to lift. Pack large boxes to capacity so items don't shift during transport.

* Use bubble wrap or other protective material for delicate belongings, such as mirrors, dishware or knick-knacks. Carefully wrap sharp edges. Mark these items as "fragile."

* Never pack bedding or clothes in plastic bags. Items may absorb moisture, tear or otherwise incur damage.

* When transporting items on a trailer or in a truck bed, carefully secure them with restraints or a tie-down. A new stretch rope called Cordzilla is available in 3-foot, 4-foot and 5-foot lengths stretching up to nine feet. Cordzilla features two slidable, protective foam sleeves that can be moved to fit over valued possessions like table corners that might otherwise get scratched. The rubber foam sleeves stay firmly in place, keeping the rope inside the sleeves in place helping to eliminate abrasion.

Fire Prevention and Safety

* Make sure that every student's room has a working smoke alarm. If living in off-campus housing, make sure to install smoke alarms

on every level of the residence and in every bedroom or sleeping area.

* Test smoke alarms at least once a week and replace batteries every six months.

* Never disable smoke alarms or remove batteries even temporarily; forgetting to replace them is a common cause of fire deaths and injuries.

* Keep a fire extinguisher or Tundra Fire Extinguishing Spray in your dorm room or off-campus apartment near your microwave or cooking areas.

* Know where all exits and fire escapes are located for both on-campus and off-campus housing. Create and practice an escape plan at least twice a year.

Poison Prevention

Carbon monoxide (CO), an invisible, odorless gas, can also threaten your health and

can cause serious injury or death before you even know that it's there. Here are a few precautions students living in off-campus housing can take to protect against this insidious gas:

* Have all fuel-burning appliances carefully checked to ensure they are working properly, including your furnace, oven or stove.

* Check to make sure that appliances, flues and chimneys are in good working order and are properly ventilated.

* Install a minimum of one CO alarm outside each sleeping area, and for maximum protection, install at least one CO alarm per level.

* Inspect the pilot lights on natural gas appliances to ensure that they are not mostly yellow in color, which indicates that the fuel

is not burning efficiently.

"Packing for college often requires trade offs due to the space limitations for dorms and off-campus housing," says Deborah Hanson, BRK Brands/First Alert director of external affairs. "But don't let those space considerations stop you from making the right choices for creating a safe and secure college environment."

To learn more about potential home safety hazards, visit <http://www.firstalert.com> or <http://www.homesafetycouncil.org>.

To advertise, call 453-2433!

NOTICE OF PUBLIC MEETING TO DISCUSS BUDGET AND PROPOSED TAX RATE

The Robert Lee Independent School District will hold a public meeting at 7:00 p.m. August 27, 2008 in the High School Library at 1323 Hamilton Street in Robert Lee, Texas. The purpose of this meeting is to discuss the school district's budget that will determine the tax rate that will be adopted. Public participation in the discussion is invited.

The tax rate that is ultimately adopted at this meeting or at a separate meeting at a later date may not exceed the proposed rate shown below unless the district publishes a revised notice containing the same information and comparisons set out below and holds another public meeting to discuss the revised notice.

Maintenance Tax	\$ <u>1.04000</u> /\$100 (Proposed rate for maintenance and operations)
School Debt Service Tax Approved by Local Voters	\$ <u>0.44000</u> /\$100 (proposed rate to pay bonded indebtedness)

Comparison of Proposed Budget with Last Year's Budget

The applicable percentage increase or decrease (or difference) in the amount budgeted in the preceding fiscal year and the amount budgeted for the fiscal year that begins during the current tax year is indicated for each of the following expenditure categories:

Maintenance and operations	<u>1.00000</u> % increase or _____ % (decrease)
Debt service	<u>100.00000</u> % increase or _____ % (decrease)
Total expenditures	<u>23.00000</u> % increase or _____ % (decrease)

Total Appraised Value and Total Taxable Value (as calculated under Section 26.04, Tax Code)

	Preceding Tax Year	Current Tax Year
Total appraised value* of all property	\$ <u>304,924,360.00</u>	\$ <u>356,483,450.00</u>
Total appraised value* of new property**	\$ <u>851,715.00</u>	\$ <u>22,831,479.00</u>
Total taxable value*** of all property	\$ <u>155,709,611.00</u>	\$ <u>196,046,812.00</u>
Total taxable value*** of new property**	\$ <u>851,715.00</u>	\$ <u>22,831,479.00</u>

* "Appraised value" is the amount shown on the appraisal roll and defined by Section 1.04(8), Tax Code.
 ** "New property" is defined by Section 26.012(17), Tax Code.
 *** "Taxable value" is defined by Section 1.04(10), Tax Code.

Bonded Indebtedness

Total amount of outstanding and unpaid bonded indebtedness* \$ 0.00

* Outstanding principal.

Trim your back-to-school expenses

By Jason Alderman

It usually bugs me when retailers start hawking events months before they happen — like selling Halloween candy before Labor Day or displaying barbeque grills while it's still freezing outside. But sometimes a little forewarning is a good idea.

Take back-to-school shopping. For something so predictable, it's surprising how many people are caught off guard every year and must scramble to buy their kids proper clothes and supplies. With the average family spending over \$500 per child, any planning and budgeting you can do ahead of time are well worth the effort.

Here are a few suggestions for getting more bang for your buck:

Get organized. With gas topping \$4 a gallon, driving across town to save a few dollars on socks doesn't make financial sense — not to mention the time you waste. Before you buy a single thing, develop a list of everything your kids need and create a budget so you'll know how much you can afford to spend.

Visa Inc.'s free personal financial management site, Practical Money Skills for Life, contains a Back-to-School Budgeting site that features an interactive budgeting calculator, online shopping tips and much more (www.practicalmoneyskills.com/backtoschool).

Find deals. While developing your shopping list, save newspaper ads and flyers featuring sales on items you need. Take them along when shopping at stores promising to match other stores' prices, thereby eliminating additional stops. Also, check retailers' websites for online specials and free shipping, saving time and gas.

Don't rush. You needn't buy everything on your list before the first day of school. Ask the teacher which supplies your kids will need on Day 1 and which can wait until after stores start unloading their overstuffed inventory.

Wardrobe check. Clothing is usually the biggest expense. Before hitting the mall, sort through your kids' closets to see what still fits, what they've outgrown, and which items can be mended, handed down to other kids, sold or donated. If your kids grow like weeds, spread clothing purchases throughout the year so they don't outgrow everything all at once.

Form your own shopping co-op. Thanks to tightening school budgets, parents are being asked to provide more and more schoolroom supplies for their kids — it's not just paper and pencils anymore. Go in with other parents on bulk-item purchases.

The school may be willing to coordinate the effort for even larger-scale savings.

Know when quality counts. There's not a lot of difference between brands of notebook paper, but some items may merit spending more. For example, older kids can get several years' use out of a well-constructed backpack, but if they're in first grade and likely to lose or outgrow it, a cheaper variety might suffice. And poorly made shoes aren't worth the damage they can do to growing feet.

Rent vs. buy. Before you plunk down hundreds of dollars for musical instruments or sporting equipment your kid may quickly lose interest in, considering renting or buying used equipment first.

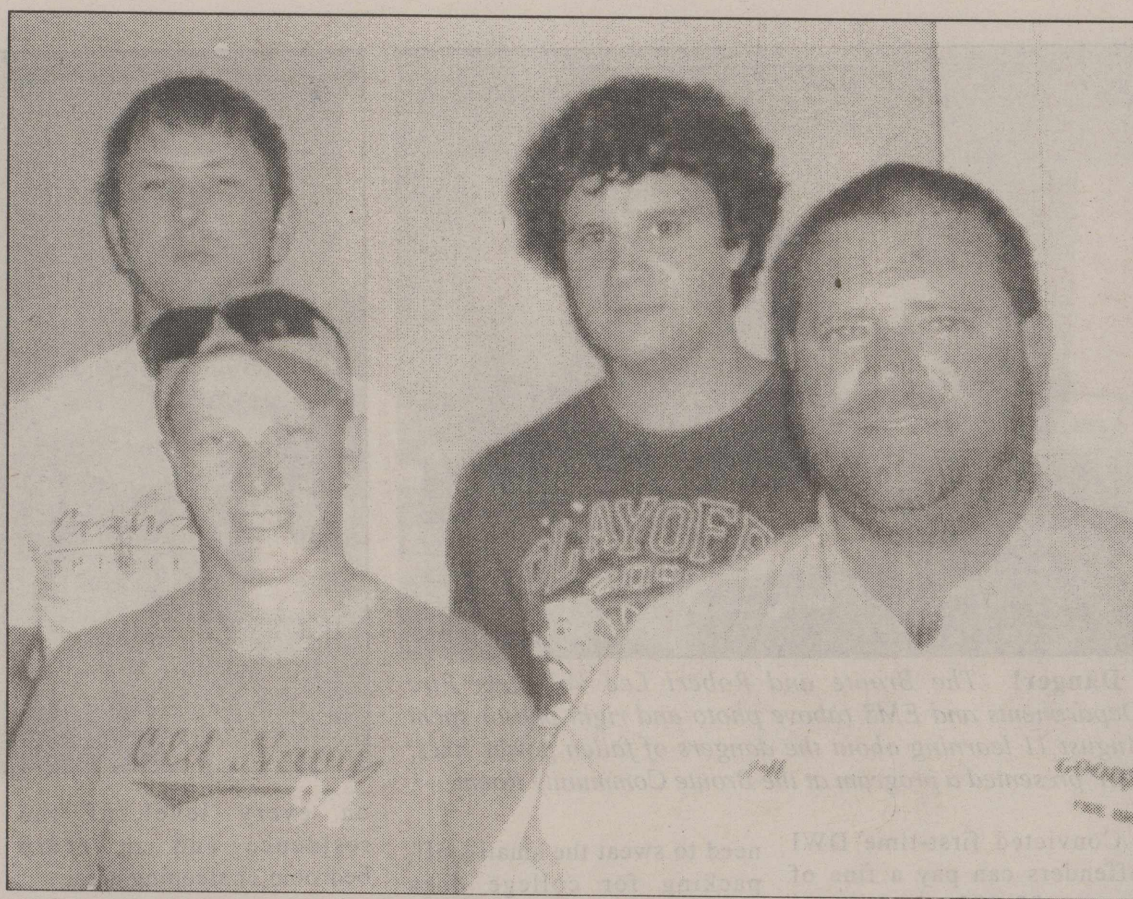
Help your school. To stretch your dollars even further, you can join school fundraising organizations like Electronic Scrip Incorporated (www.escrip.com) and Schoolpop (www.schoolpop.com). As a member, a percentage of all purchases you make at participating retailers and service organizations — and there are lots — are donated to the school of your choice. Rules vary so check out their websites for details.

Back-to-school shopping is a tedious chore, but if you plan carefully, you can save time, money and aggravation.

Looking for homes for foreign students

Foreign high school students are scheduled to arrive soon for academic semester homestay programs, and the sponsoring organization needs a few more local host families. The students are anxiously awaiting news of their new families. These young ambassadors are looking forward to fulfilling their life-long dreams.

According to Pacific Intercultural Exchange (P.I.E.) President, John Doty, the students are all between the ages of 15 and 18 years,



Fire School! The Bronte Volunteer Fire Department had four members attend the annual Summer Fire School, July 21-25, at Texas A&M University in College Station, Texas. Paul McConnell (back row, right) and Jesse Rosson (front row, left) attended Firefighting Phase 1. Riley Coalson (back row, left) attended Firefighting Phase 2 and Jeff Lee attended the Firefighting Confined Space Training. Donations and fundraising helped pay for the cost of the school and the travel to College Station.

are English-speaking, have their own spending money, carry accident and health insurance, and are anxious to share their cultural experiences with their new American families. P.I.E. currently has programs to match almost every family's needs, ranging in length from a semester to a full academic year, where the students attend local high schools.

P.I.E. area representatives match students with host families by finding common interests and lifestyles through an informal in-home meeting. Prospective host families are able to review student applications and select the perfect match. As there are no "typical" host families, P.I.E. can fit a student into just about any situation, whether it is a single parent, a childless couple, a retired couple or a large family.

Families who host for P.I.E. are also eligible to claim a \$50.00 per month charitable contribution deduction on their itemized tax returns for

each month they host a sponsored student.

For the upcoming programs, P.I.E. has students from Germany, the Former Soviet Union, Venezuela, Argentina, Brazil, Japan, Hungary, Korea, Mexico, Australia, Yugoslavia, China, and many other countries.

P.I.E. is also participating in two special government-funded programs to bring scholarship students from the Newly Independent States of the former Soviet Union as well as predominantly Islamic countries such as Yemen, Syria, Jordan, Morocco, Kuwait, Iraq and Qatar to the United States.

Jesus Has and Is Your Answer

The Purpose Of Your Life

And we know that all things work together for good to those who love God, to those who are the called according to His purpose. • *Romans 8:28*

Plans For Your Life

For I know the thoughts and plans that I have for you, says the Lord, thoughts and plans for welfare and peace and not for evil, to give you hope in your final outcome. • *Jeremiah 29:11*

Success For Your Life

This book of the law shall not depart from your mouth, but you shall meditate in it day and night, that you may observe to do according to all that is written in it. For then you will make your way prosperous, and then you will have good success. • *Joshua 1:8*

Your Daily Bread

It is written, man shall not live by bread alone, but by every word that proceeds from the mouth of God. • *Matthew 4:4*
Give us this day our daily bread. • *Matthew 6:11*

Your Wealth

And you shall remember the Lord your God, for it is He who gives you power to get wealth, that He may establish His covenant which He swore to your fathers, as it is this day. • *Deuteronomy 8:18*

Your Life And Death

For the wages of sin is death, but the gift of God is eternal life in Christ Jesus our Lord. • *Romans 6:23*

Your Life Of Profit

Whosoever desires to come after Me, let him deny himself, and take up his cross, and follow me. For whosoever desires to save his life will lose it, but whosoever loses his life for my sake and the gospel's will save it. For what shall it profit a man if he gains the whole world, and loses his own soul? • *Mark 8:34-36*

Victory Assembly of God
Corner of 6th & Houston • Robert Lee
Pastor Irving Smith

Ranch Land Co.

430 W. Beauregard Suite C • San Angelo, Texas 76903
(325) 658-8978 • Office • (800) 960-9001 • (325) 658-2400 • Fax

Leon Nance, Broker
Sunni Gothard, Agent
Laurie Lasater, Agent



Broker in Texas, New Mexico & Oklahoma

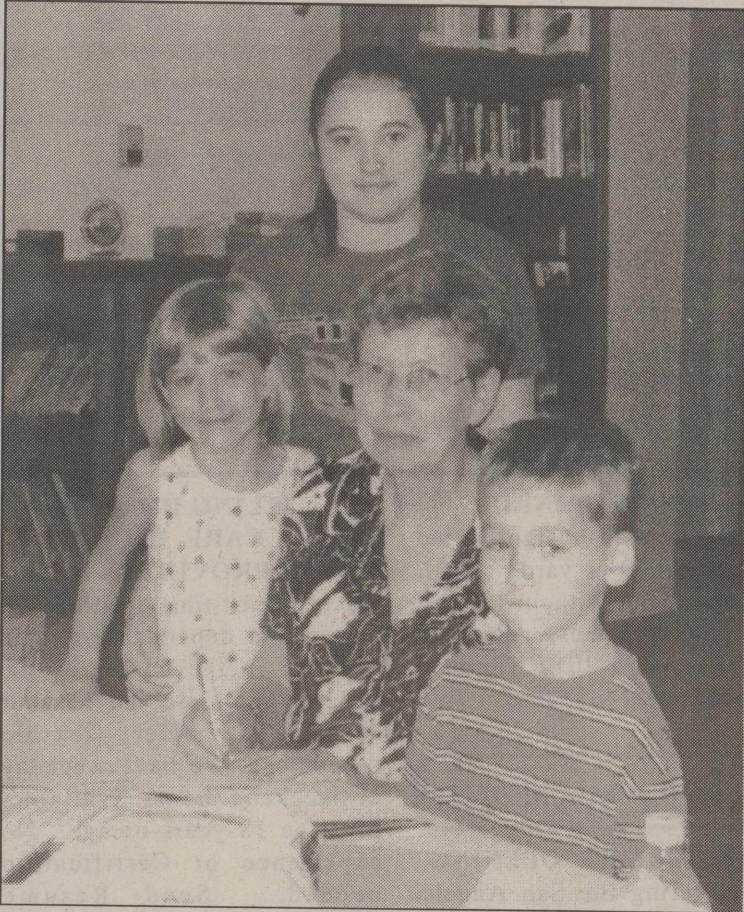
New to the Market - 59 cultivated acres - Bronte

Beautiful 2400 sq. ft. brick home with 4 bedroom/3 bath, 30x50 metal shop, 3 stall horse barn, dove hunting, income producing garage apartment. Call Sunni for more information.

New to the market - Oak Creek Lake

Very nice 2 bedroom/1 bath home with possible 3rd bedroom, on Oak Creek Lake, Crappie house and boat dock, lake side entertaining room with 1 bath. Exceptional views of the lake. Two water wells. Call Sunni for more information.

www.ranchlandco.com



Helping Soldiers! Shaylea Castleberry, Colby Castleberry, Christina Jones, Josie Castleberry and Pat Gunnells recently packed and mailed another 15 boxes to women serving in the United States Navy who are currently overseas in Iraq.

P.I.E. is a non-profit educational organization that has sponsored more than 25,000 students from 45 countries since its founding in 1975. The organization is designated by the United States Department of State and is listed by the Council on Standards for International Educational Travel (CSIET), certifying that the organization complies with the standards set forth in CSIET's Standards for International Educational Travel Programs.

Coke County area families interested in learning more about student exchange or arranging for a meeting with a community representative may call P.I.E., toll-free, at 1-866-546-1402. The agency also has travel/study program opportunities available for American high school students as well as possibilities for community volunteers to assist and work with area host fami-

lies, students and schools.

Library News

The Coke County Road Trip final drawing on August 1 brought up the following names: Elizabeth Chancellor, Rani Coppedge, and Patrick Barrera. These students can come in any time to choose a prize.

Besides those names above, other winners in the drawing this year were Ashlie Tennison, Jessica Wheat, Hunter Hamrick, Daria Wink, Jorge Mendoza, Daniel Mendoza, and Caitlyn E. Any student who has not picked up his or her prize can come by the Library anytime to do so.

The Big Country Library System is sponsoring live homework help for another year. Check out bclstx.com for details.

Library hours are Tuesdays, 8-12; Wednesdays, 8-4; Thursdays, 1-5; and Fridays, 8-12. Call 453-2495 for information.

		----- Week Ending -----		
Cash Markets		08/09/2008	08/02/2008	08/11/2007
Feeder Steers (\$/cwt)		111.35	110.44	119.58
Finished Cattle (\$/cwt)		99.98	97.80	90.53
Slaughter Lambs (\$/cwt)		92.00	82.50	97.50
Slaughter Goats (\$/cwt)		95.00	94.00	109.00
Cotton (¢/lb)		64.25	65.00	56.00
Wheat (\$/bu)		7.22	7.40	5.91
Corn (\$/bu)		4.87	5.53	3.55
Grain Sorghum (\$/bu)		7.65	8.82	5.59
Watermelons (\$/lb)		0.17	0.18	0.10
Futures Markets				
Feeder Cattle (\$/cwt)		114.53	115.63	114.95
Finished Cattle (\$/cwt)		101.48	100.03	90.80
Cotton (¢/lb)		67.25	69.31	60.25
Wheat (\$/bu)		8.04	8.22	6.60
Corn (\$/bu)		4.99	5.65	3.32
Lumber (\$/1000bd.f)		256.90	254.80	280.10

"She's healthy. She's perfect. Thank you, Community."

— Erika Aguirre, Mother

When her water broke six weeks early, Erika Aguirre was frightened for the safety of her and her baby. To add to the fear, her husband, Joe, was out of state at officer's training and wouldn't make it home in time for the unexpected delivery. What was a surprising change in plans became something beautiful when the staff at Community got Joe on the phone just before little Alessandra Grace arrived. "Dad got to hear the baby's first cry. They turned an unbearable experience into a memorable event," says Erika. "We can't thank them enough." For more information, call 325-949-9511 or visit sacmc.com today.

Neonatal ICU at **San Angelo Community Medical Center™**
 3501 Knickerbocker Rd. • 325-949-9511 • www.sacmc.com

0% FOR 60 MONTHS*
ON SELECT DX MODELS

\$650
Fuel Card Rebate

OFFER ENDS AUGUST 31, 2008.

Stop waiting! Get the tractor you want and start doing more now. See us today!

CASE IH

Formerly **San Angelo**
TRACTOR & EQUIPMENT
Easy to Do Business With!

CISCO Equipment Since 1978
 San Angelo • Odessa • Lubbock

620 N. Bell • San Angelo, TX • (325) 653-2121 • 800-496-0271

CNH CAPITAL

*Offers subject to CNH Capital approval. See your Case IH dealer for details and eligibility requirement. Down payment may be required. Offers valid through August 31, 2008 and are subject to change without notice. ©2008 CNH America LLC.

BUY IT! SELL IT! FIND IT!

CLASSIFIED ADVERTISING RATES
 Rates when paid in advance.
 First Insertion 20¢ Per Word
 \$3 Minimum
 Subsequent Insertions 16¢ Per Word
 \$2.50 Minimum
 Legal Notices: 25¢ Per Word
 A service charge will be added to all ads which must be billed.
 ADVERTISING DEADLINE Tuesdays at 2 pm

PUBLISHER'S NOTICE:
 All real estate advertising in this newspaper is subject to the Fair Housing Act which makes it illegal to advertise "any preference, limitation or discrimination based on race, color, religion, sex, handicap, familial status or national origin, or an intention, to make any such preference, limitation or discrimination." Familial status includes children under the age of 18 living with parents or legal custodians, pregnant women and people securing custody of children under 18.
 This newspaper will not knowingly accept any advertising for real estate which is in violation of the law. Our readers are hereby informed that all dwellings advertised in this newspaper are available on an equal opportunity basis. To complain of discrimination, call HUD toll-free at 1-800-669-9777. The toll-free telephone number for the hearing impaired is 1-800-927-9275.

EQUAL HOUSING OPPORTUNITY

Political Calendar
The Observer/Enterprise
 has been authorized to make the following announcements for the political offices in Coke County.
 Each candidate or the campaign treasurer has paid for his or her announcement. All political advertising, announcements, and printing is cash in advance.

CONSTABLE PRECINCTS 1 & 3
 Marshall Millican (Dem.)
COKE COUNTY SHERIFF
 Randall Jacks (Dem.)
 George Brickey (Rep.)
 Wayne McCutchen

NEWLY REMODELED BRICK HOME
 3 Bedroom 1 3/4 bath. 2 living areas. Pick your paint and carpet. 1604 Childress, Robert Lee. (325) 234-0157.
 04-2tp

FOR SALE
 \$299. NEW Queen Wrought Iron bed with mattress set, still pkgd. 432-664-8980.
 04-4tc

FOR SALE
 Pillow Top King mattress with box and warranty never slept on. Will sell for \$245. 432-664-8980.
 05-1tc

FOR SALE
 ALL NEW mattress set. No springs or coils, MEMORY FOAM pressure relieving sleep, \$550. 432-664-8980.
 05-1tc

FOR SALE
 Bed. All new pillow top set. Queen \$150 in plastic. Factory warranty 432-664-8980.
 05-1tc

HOUSE FOR SALE
 in Bronte. 3 BR, 1 BATH. Carport, laundry room. 2 lots. Fenced and barn. \$40,000. Call Launi Smith, 450-7990.
 05-4tp

NATE'S PRODUCE
 will be open Saturdays instead of Fridays. 9am til sellout. 325-234-0654.
 05-3tp

FOR SALE
 Large 3 BR/3 bath, 2 LA, 4 sides brick. Fireplace, CH/A. Fenced yard. Quiet area. Priced to sale. Diane ERA 325-277-7195.
 02-4tp

Amazing Hair Salon & Gifts
 401 W. 10th
 Robert Lee • 453-2125

LEASE TO OWN
 SUNNY, 4 BRM HOME IN RLISD! NEW DECKING & ROOF, WIRING, TERMITE PROTECTED! SOLID INVEST. GENEROUS BUY TERMS! \$695/MO. CALL JHS @ 655-9141.
 03-tnc

HOUSE FOR SALE
 901 Bishop, Robert Lee. Newly remodeled. 763-7417 or 453-9852.
 05-1tc

VEGETABLES
 Home grown, farm fresh. Mountain Creek Mercantile, Hwy 158 East, Robert Lee. 453-2731.
 05-tnc

FOR RENT
FOR RENT
 2 BR/1 BA, furnished, covered parking, fenced yard. 325-763-7843.
 40-tnc

FOR RENT
 New medium size storage units, utility trailers 1 & 2 axle, hand trucks and dollies available with day rates. Jesse's, 503 South State Street, Bronte, Texas 76933. 325-473-3900.
 01-tnc

FOR RENT
 3 BR/2 BA house. 215 NW Railroad, Bronte. \$700/mo, with deposit. 830-298-3790.
 04-4tc

TAKING APPLICATIONS
 for one, two & three bedroom apartments. Washers, dryers, RO water systems in each unit. Contact Housing Authority of Robert Lee, 710 N. Bishop, 453-2912. Equal Housing Opportunity.
 16-eow

MISCELLANEOUS
NEED A SIGN?
 Banners, Graphics, Vinyl Lettering, Magnetic Signs and Vehicle Lettering. Juan Rangel, (325) 453-9010.
 40-tnc

LOST
 Small trolling motor (Minn Kota). Lost at City Lake area, Robert Lee. Call 453-2263.
 05-1tp

The "BARBER" SHOP
 Debra England, 107 W. Main, Bronte. Monday, Tuesday, Wednesday. 9 am - 5 pm. Avon, buy or sell, independent rep. 650-1970.
 50-tnc

PARKER PLUMBING
 Residential & Commercial. All types plumbing repair - new construction, remodeling, fixtures, and sewer service. Licensed Master Plumber. 473-2131, Bronte.
 34-tnc

Bob Frazee's 944-0010 473-6603
Texas Best
 Deflooding & Carpet Cleaning
 24 hr. Emergency Water Damage Service

ASH-MILICAN-CARSON REAL ESTATE
 453-5144 OFFICE • 21 E 6TH STREET • ROBERT LEE, TX
 JOE ASH • 473-0164 MARSHALL MILICAN • 473-0437
 For information & photos, visit our web site at www.amcwesttexasranches.com

Coke County ~ Ranch & Hunting Properties
 91+/- ac., Highway frontage, 2 water wells, a 36'x45' all metal barn with plumbing, nice 3 bedroom, 2 bath mobile home.
 New to Market! 110+/- ac., convenient to Robert Lee, mountainous views, good hunting.
We have Buyers, We need Land Listings.
 Lake Spence, mobile home on large lot with huge storage/shop.
 Nice Mobile Home. 2 BR, 2 Bath, fully furnished.
 On 30 Acres, 3 BR, 2 Bath Brick home near Bronte. Barn, Pecan trees, cross fenced with good cultivation.

STUMP GRINDING
 You have an unsightly tree stump in your yard? We'll grind it out without leaving a hole or a mess. Richard Baker. 473-2017 (home), (325) 669-7415 (cell).
 20-tnc

HELP WANTED
IMMEDIATE OPENING
 Delivering the San Angelo Standard Times in Robert Lee. Earn approximately \$750/month working 2 1/2 hours each morning. 659-8294 or 659-8292.
 04-tnc

FIRST NATIONAL BANK OF STERLING CITY
 is accepting applications for teller/bookkeeping position at the Bronte bank. Applications may be picked up in the lobby.
 05-2tc

LIKE WORKING WITH KIDS
 After school program in Ballinger and Winters. K-12, shifts from 2-6pm available, competitive pay! Call WillStaff 325-676-7179.
 04-2tc

THE BRONTE HOUSING AUTHORITY
 will be taking applications for a full time maintenance position. Applications can be obtained at 116 NE Railroad Bronte, TX. Closing date will be August 15, 2008. For more information call 325-473-3541.
 04-2tc

To advertise, call 453-2433!

GIRLING HEALTH CARE, INC. PROVIDERS
 We have part-time positions for caring and dependable people to work in the homes of the Elderly and Disabled in your area. We offer flexible schedules. We have weekday or weekend hours available. Must be 18 years of age. No experience or Certification needed. Send Resume referencing Ad # 8427. Fax to 325-643-9679. Call 1-800-665-4471. Email to opportunities@girling.com. E.O.E. M/F/D/V.
 05-1tc

GARAGE SALES
GARAGE SALE
 Sat., Aug. 23rd. Furniture, men, women, children's clothing. Knick Knacks, misc. 710 S. State St., Bronte. Beginning at 8:00 am. Lemonade stand.
 05-2tc

CARD OF THANKS
WE WOULD LIKE TO THANK
 each and every one who expressed their sympathy in our loss of a wonderful mother, sister, wife and daughter, Janie Gloria. We deeply appreciate everyone who helped with food, flowers, clothes and most of all, the hugs and shoulders to cry on. At times like this, we thank the good Lord to live in a town like this where everyone could get together and help one another. Once again, thank you all so very much. May God bless each and every one.
 Our thoughts and prayers, Jasmine, Justina, Elana, Saucedo family and Gloria family
 05-1tc

Available Homes!

- Stainless Appliances! Updated 3 Bedroom 2 Bath Home! Ceramic Tile!
- 15 Acres On Creek! Updated Brick Home! Large Oak & Pecan Trees!
- Hillcrest Addition! 4 Bedroom 2 Bath Rock Home! Enclosed Patio! \$60's!
- Near Golf! Under Contract 4 Bedroom 2.5 Bath Brick Home! Fireplace!
- Near River! 4 Bedroom 2.5 Bath Home! 2 Living 2 Dining Areas! Fireplace!
- Bay Windows & Island! 2 Bedroom 2 Bath Brick Home! Fireplace! \$70's!
- Woodlawn Addition! 3 Bedroom 2 Bath Brick! 2 Living & 2 Dining Areas!
- Lake House! Water Front! Large Brick Home & Boat Dock! Beautiful Views!
- 6.5+/- Acres! 4 Bedroom, 2 1/2 Bath 2 Story Home! \$90's!

Land Available!

- New Listing! SOLD Large Home! Barn & Pens! Northwest Hwy 208!
- New Listing! 62+ Acres! 3 Bedroom 2 Bath Home with Rock Trim! Hilltop Views!
- New Listing! Under Contract 3 Bedroom 2 Bath Home with Guest House! Frontage!
- New Listing! 290+ Acres Sanco Loop Area! Remote! Mountainous! Home & Barn!
- Rugged Hills! 149+ Acres with Large Home! Barn & Shop! 4 Ponds & Creek!
- Hills & Live Oaks! Fabulous Home with Hardwood Floors! Working Pens & Barns!

Concho Realty
 Office 653-4535
 Becky Clendennen Home 453-4748 Home 473-3201
 Owner/Broker Cell 650-9729 Cell 473-8863 REALTOR®
 Melinda McCutchen

...More Classifieds
CARD OF THANKS

THE FAMILY OF BILL ALLEN

wishes to express deeply felt gratitude for the loyal support given to all of us during Bill's recent illness and at the time of his passing on August 2. The many visits, phone calls, cards, messages, flowers, and other spontaneous expressions of support were a source of encouragement, inspiration, and strength to Bill in the past months. And the inimitable outpouring of sympathy and generosity at the time of the funeral - the overflowing crowd at the service, a breathtaking array of flowers and food, the many touches of tenderness and love - gave us much comfort. All of you enriched his last days and you have shared our grief in making possible, in the fullest sense, "a celebration of his life." For this we are deeply grateful.

05-1tc

Inspection Requirements Toughened

The Texas Association of Builders (TAB) has announced that new legislation requires that all new residential construction and remodeling, which occurs in unincorporated areas or those not subject to municipal inspection, have a minimum of three inspection to ensure compliance with all applicable building codes. All construction or remodeling that begins on or after September 1, 2008 is subject to the inspections.

Inspections are to be performed by a third party Fee Inspector and are to occur as applicable, at the following construction stages:

1. Foundation (prior to the placement of concrete);
2. Framing and Mechanical Systems (prior to frame coverings); and
3. Final Inspection upon completion of the project.

The builder/remodeler is responsible for contracting with the Fee Inspector who must be either: (1) a licensed engineer; (2) a registered architect; (3) a professional inspector licensed by the Texas Real Estate Commission; or (4) a third-party inspector approved by the Texas Residential Construction Commission ("TRCC"). The builder/remodeler may use the same or different Fee Inspector for each of the required inspections. Additionally, the builder/remodeler has the ability to hire the Fee Inspector of their choice and is not forced to use any one Fee Inspector for all the inspections.

Inspection records and documents will not be turned over to the TRCC by the inspector or builder. However, the TRCC will conduct random audits of the

inspection records, and builders must maintain those records for a minimum of five years.

To see a copy of the formal rules, please visit the TRCC's website at: <http://www.trcc.state.tx.us/Inspectors/CountyInspections.asp> or the TRCC at 512/463-1040.

Pet Talk

Pickles and ice cream may sound like a mouth-watering meal for your pregnant Aunt Peggy, but when your pooch is expecting a litter, nix the pickles and pack on the protein.

Pregnant and nursing canines require an increased supply of nutrients, especially calcium and protein, to support multiple growing fetuses, says Teresa Shisk, a veterinary technician in the College of Veterinary Medicine & Biomedical Sciences at Texas A&M University.

"Pregnant dogs not only have to support their growing puppies, but themselves as well," says Shisk. "This is especially true if the mother is two years or younger, because younger dogs are still growing themselves and

cannot afford to exhaust their nutrient reserves."

During the pregnancy, which typically lasts 58 to 65 days, the fetuses will use calcium in the mother's body to form strong bones, says Shisk. Once the puppies are born, the mother's calcium will be used to produce milk to feed her litter. But if she hasn't been on a calcium-rich diet, she may not have enough calcium to support herself, resulting in a potentially life-threatening condition called eclampsia.

Shisk says to keep your dog from experiencing any deficiencies, a quality diet goes a long way.

"If your dog is on a good diet, it can stay on that diet until the last two weeks of pregnancy," notes Shisk. "Much of the puppies' development will occur in the two weeks before the mother gives birth. Because they're using more nutrients, the mother will need to ingest more nutrients. Then you'll need to put her on a quality puppy formula."

But why would an adult dog need food designed for

pups?

Typically, puppy formulas are high in energy, easily digestible, contain a larger quantity of body-building protein and provide an adequate supply of calcium, says Shisk. She advises continuing puppy food after the dog gives birth and throughout her lactating period. An added bonus is that the puppies, once ready to try solid food, will be able to nibble from their mother's bowl and receive the right mix of nutrients.

Vitamins are available for pregnant and nursing dogs but there is no substitute for a quality diet, says Shisk. "You can't fix a bad diet with vitamins," she believes.

Because her stomach is under more pressure than usual, your dog will probably eat smaller meals on a more frequent basis, she notes. "As long as the dog doesn't have any medical problems and is basically healthy, it will consume enough to maintain itself and not overeat," adds Shisk. "A complete loss of appetite is usually a good indication that

she will go into labor soon."

Even though it may look like Fifi isn't getting her fill, pregnancy is no time to tempt her with table food. "You want to be careful not to upset her balance," says Shisk. Table scraps like your unwanted meatloaf can contribute to excessive weight gain and digestive problems in your pregnant dog.

Once your dog has given birth and nursed all of her puppies, it's time to return her to a normal maintenance diet. "Any time you change your dog's diet, you want to do it gradually over a period of about two weeks," Shisk adds.

Abruptly changing formulas can upset your dog's system and give her the "mother" of all stomach aches, she adds. Each time you feed your dog, add a slightly higher percentage of the food you want to change to until a complete transition is made.

Having raised many dogs herself, Shisk knows the importance of a healthy diet and proper care for a pregnant dog. "It wasn't easy," she recalls, "but I ended up with a healthy mother dog and some beautiful grandpuppies."

A new brand of golf.

NOW OPEN.



Odessa's NEW **Ratliff Ranch Golf Links** is open and ready for you to take your best shot. The beautifully renovated 18-hole course, grill, clubhouse, pro shop and new tournament pavilion are waiting...for you!

In addition to great golf, you'll enjoy fabulous food from Sid & Sam's Grill & Bar! Whether you're hungry for breakfast, lunch or dinner, Sid & Sam's has offered the area's best flavors since 1991.

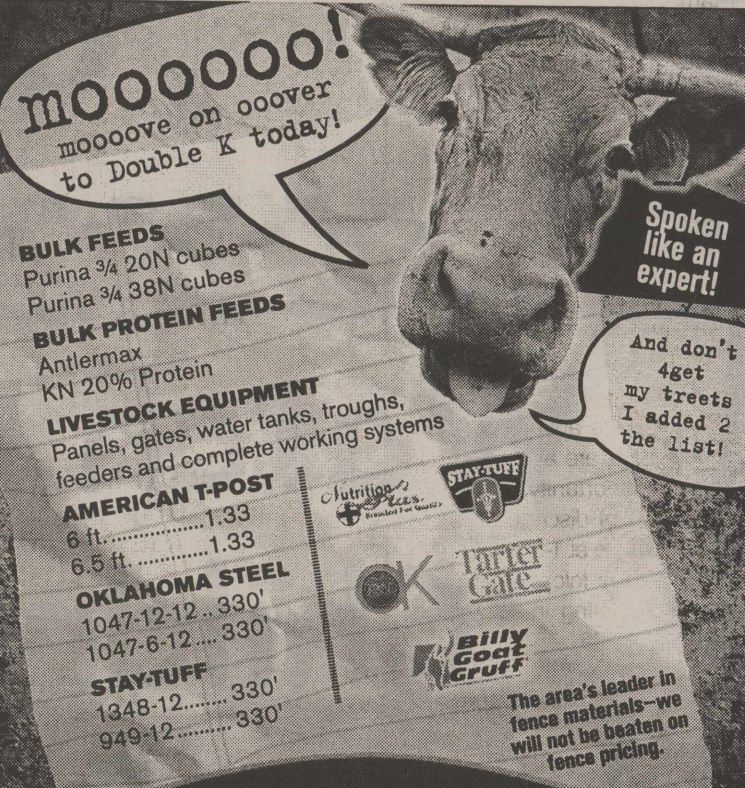
You deserve a round at Ratliff Ranch Golf Links.

Visit us at: ratliffgolfodessa.com for annual passes, tee times, tournament bookings and pavillion reservations.



RATLIFF RANCH GOLF LINKS

432.550.8181 • Sid & Sam's Grill & Bar 432.617.4745 (617.GOLF) • 7500 N. Grandview • Odessa
www.ratliffgolfodessa.com • Ratliff Ranch Golf Links is owned and operated by the City of Odessa



BULK FEEDS
 Purina 3/4 20N cubes
 Purina 3/4 38N cubes

BULK PROTEIN FEEDS
 Antlermax
 KN 20% Protein

LIVESTOCK EQUIPMENT
 Panels, gates, water tanks, troughs, feeders and complete working systems

AMERICAN T-POST
 6 ft. 1.33
 6.5 ft. 1.33

OKLAHOMA STEEL
 1047-12-12 ... 330'
 1047-6-12 330'

STAY-TUFF
 1348-12 330'
 949-12 330'

And don't forget my treats I added 2 the list!

The area's leader in fence materials—we will not be beaten on fence pricing.

DOUBLE K COUNTRY STORE

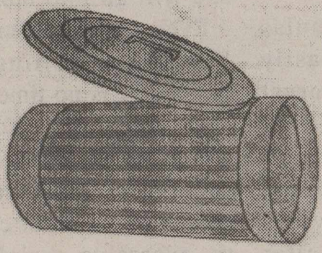
FEED, PET SUPPLIES, DEER FEED, FENCING, LAWN AND GARDEN
 3744 Summer Crest Dr. & Hwy. 67 Just West of Sam's Club • (325) 942-6516

IVEY MOTOR COMPANY, INC.

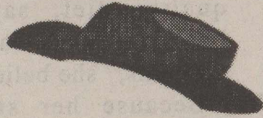
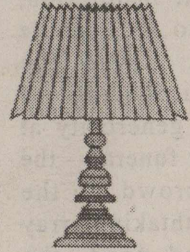
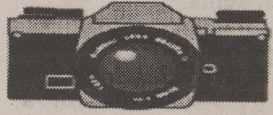
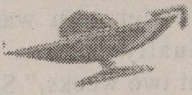
2008 Ford Escape XLT Red Fire • Camel Cloth • V-6 • 17K Miles!	#7091	\$18,995	2005 Ford Explorer XLT 4x4 Silver • 3rd Row Seat • Rear Air	#4986A	\$13,495
2007 Ford Expedition XLT Red Fire • Stone Cloth • 24K Miles!	#5105	\$20,995	2004 GMC Yukon XL SLT Dark Gray • Charcoal Leather • DVD • VCP	#6005A	\$15,595
2007 Ford F-150 SuperCrew XLT Red Fire • Tan Cloth • 24K Miles • Really Sharp!	#5102	\$19,995	2004 Ford F-150 SuperCab XLT Toreador Red • V-8 • Automatic	#7074A	\$11,995
2007 Ford Explorer XLT Pearl Blue • 3rd Row Seat	#5093	\$19,495	2004 Ford F-150 STX White • Gray Cloth • V-6 Auto • Only 35K Miles! • Sporty Ride!	#H250A	\$11,995
2007 Mercury Grand Marquis LS Vibrant White • Tan Leather • 24K Miles!	#5103	\$15,995	2003 Ford Excursion Limited Hunter Green • Tan Leather • Powerstroke • Wow!	#H221A	\$19,595
2007 Ford Taurus SEL Spruce Green • Leather • Moon roof	#5104	\$14,495			
2007 Ford Taurus SEL Tan • Only 24K Miles!	#5111	\$12,495			
2007 Ford Taurus SE Silver • Floor Shift • Power Seat	#7087	\$11,595			
2006 Ford Expedition XLT Pueblo Gold • Tan Leather • DVD • Power Fold 3rd Row Seat	#H248A	\$19,995			
2006 Ford F-250 SuperCab XLT White • Powerstroke • Auto • Grill Guard • Headache Rack	#6031A	\$17,995			
2006 Ford F-150 SuperCab STX Black • Gray Cloth	#5107	\$13,995			
2005 Ford F-150 SuperCrew XLT Dark Stone • Tan Cloth • Really Nice!	#6081A	\$15,495			

453-4561

Ask For:
Randy Flanagan • Marsha Wink
Billy Wayne Roe



One man's trash is another man's treasure.

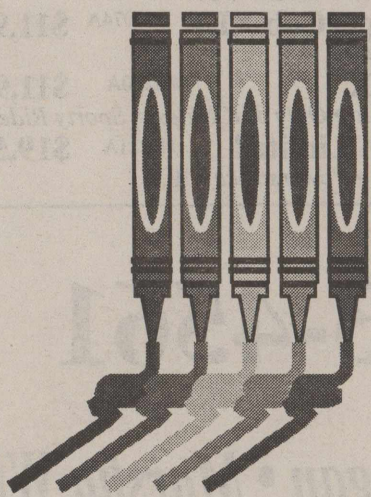
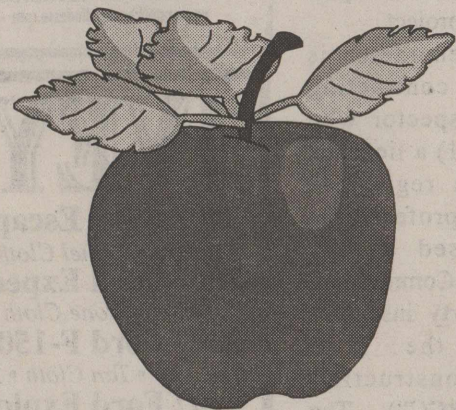
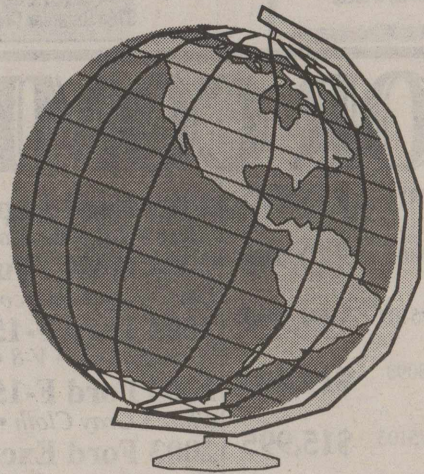


A garage sale is the perfect place to get rid of all your unwanted stuff!

Make sure yours is a success by placing a Garage Sale ad in the Classifieds!

THE OBSERVER/ENTERPRISE
Serving Coke County
P.O. Box 1329 Robert Lee, TX 76945
(325) 453-2433 • FAX (325) 453-4643
CokeCoObserver@aol.com

Watch Out For The Children As They Head Back To School



Public Service Announcement by

THE OBSERVER/ENTERPRISE
Serving Coke County

P.O. Box 1329 Robert Lee, TX 76945
(915) 453-2433