

THE OBSERVER/ ENTERPRISE

Serving Coke County

Single Copy 35¢



(USPS 467-480)
(ISSN 8750-197X)

Vol. 115, No. 23

Friday, January 3, 2003

Blood Drive being held today, Jan. 3, in Bronte

United Blood Services of San Angelo will be in Bronte for a blood drive on Friday, January 3, 2003, from 2:00 pm until 6:00 pm in the Bronte Health and Rehab parking lot. Please call Mary Beth at 473-3621 for an appointment. Please try to make an appointment. It will help you get in and out in a timely manner.

According to Toni Fox, Community Relations Representative of United Blood Services, "The need for blood is constant, and volunteer blood donors contribute to nearly all the blood used for patient care in the United States. If all who are eligible to donate would do so on a regular basis, say three times per year, blood needs could be met and shortages could become a thing of the past."

Donors must be at least 17 years old, weigh more than 110 pounds and be in

good health. We also ask that you have proof of identification and know the names of any medications you may have taken in the past 30 days.

United Blood Services is the area's not-for-profit provider. In order to supply the 10 area hospitals, United Blood Services must collect more than 300 units each week. Blood products have a shelf life of 5 to 42 days. We need your help.

Community Network Training classes scheduled

The Coke County Community Network Training Classes that are set for January 2003 are as follows.

January 6, 7, 9 - Power Point Intermediate - HS Lab

January 7, 9, 14 - Word Processing Intermediate (Word) - Bus Lab

January 20, 21, 23 -

Spreadsheet Intermediate (Excel) - Ele. Lab

January 27, 28, 30 -

Word Processing Beginning (Word) - Bus Lab *New Class!

All classes are from 6:00 pm to 9:00 pm on the days listed. Call 453-4555 to sign up. If you forget go ahead and show up and we are sure that there will be enough room.

Runnels Baptist Association to meet
Runnels Baptist Association will meet Monday, January 20, 2003, at First Baptist Church, Paint Rock for their regular meeting.

The meeting will be on Doctrinal Emphasis.

The executive board and W.M.U. will meet at 5:30 pm. The evening meal will begin at 6:15 pm. The program will begin at 7:15 pm. Roy Epperson, Director of Missions, will present the program on The Doctrine of Scripture.

The public is invited to attend.

Kickapoo Water Board sets election

Coke County Kickapoo Water Control and Improvement District #1 will

hold an election on January 14, 2003, for the purpose of electing three directors. Directors filing for re-election to the board are Gerald Sandusky, Elton Moore, and Noah Pruitt, Jr. The election will be held at Bronte City Hall.

For further information concerning the election, contact President Gerald Sandusky at (915) 473-3391.

64 Study Club Christmas Dinner

The 64 Study Club met on December 10, 2002, at the Catholic Church Fellowship Hall for their Christmas Dinner with 29 members and 20 guests present. Each member either brought canned goods or gave cash for the Coke County Food Closet.

John and Pat Stephens and Roger and Della Alexander presented a program of Christmas music. Birthdays celebrated in December were Nettie Autry and Neta Duncan.

Hostesses for this occasion were all members of the club.

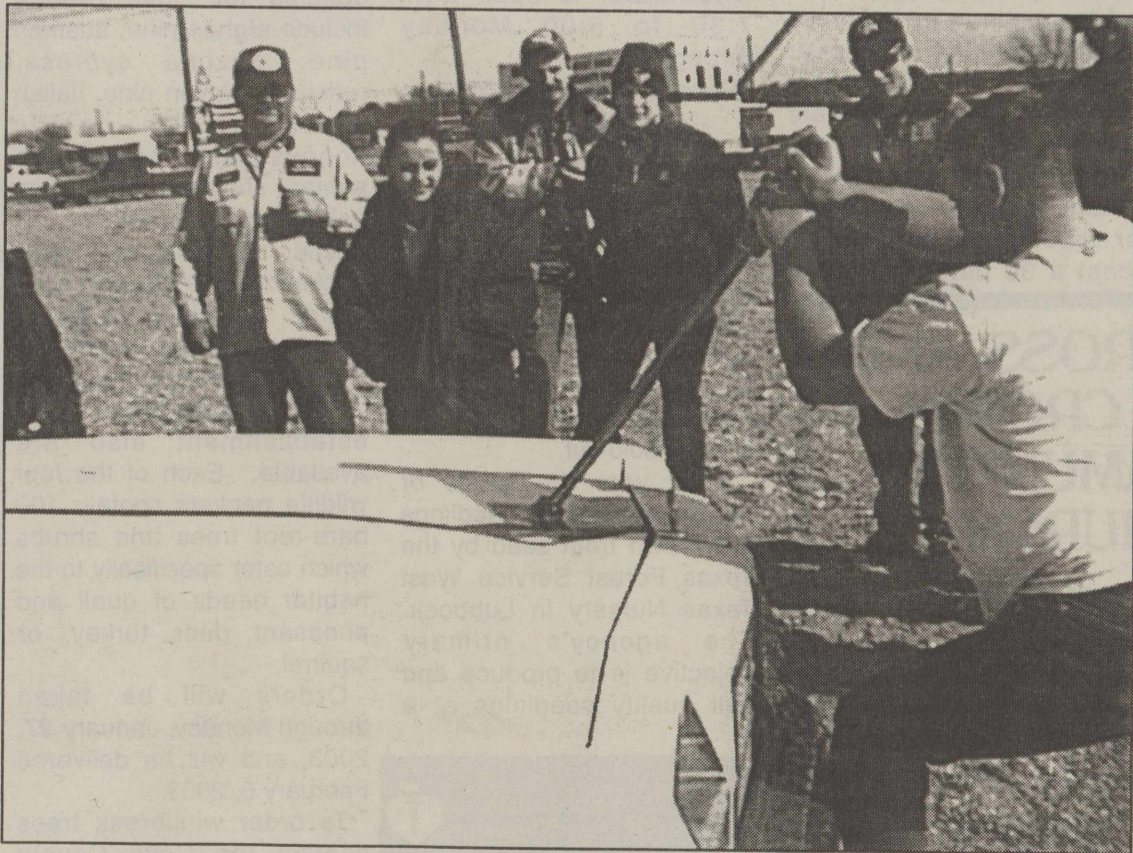


Photo courtesy of Bud Thompson, RLVFD

Members of the Robert Lee Volunteer Fire Department were joined by Howard College students, a Grape Creek fireman and others qualifying for Advanced EMT certification at an extrication class. The class was held December 7, 2002, on Highway 208 South in Robert Lee. Those attending were given instruction in and were able to practice extricating people from vehicles at accident scenes.

THE OBSERVER/ENTERPRISE

Published Weekly Except Christmas
707 Austin (915) 453-2433

(USPS 467-480) (ISSN 8750-197X)
Periodical Rate Postage paid at Robert Lee, TX.

**POSTMASTER: Please send address changes to
Observer/Enterprise
PO Box 1329, Robert Lee, TX 76945.**

STAFF

Hal Spain, Publisher Melinda McCutchen, Editor
Morgan McCutchen Pat Taft Wayne McCutchen

SUBSCRIPTION RATES

Per Year in Coke County.....\$20.00
Per Year Elsewhere in Texas.....\$22.00
Per Year Outside of Texas.....\$25.00

----- Obituaries -----

McCutchen

Kathleen Olsen McCutchen, 83, of Robert Lee, died on Saturday, December 21, 2002, at Brownwood Regional Medical Center.

Funeral services were held at 10:00 am, Monday, December 23, 2002, at the First United Methodist Church of Robert Lee.

Burial followed in the Robert Lee Cemetery. Family visitation was held from 4:00 - 6:00 pm, December 22, 2002, at the funeral home. Services were under the direction of Shaffer Funeral Home.

Kathleen was born October 2, 1919, in San Angelo, Texas to Will and Alta Mae Olsen. On June 5, 1937, she married Raymond McCutchen.

She was a homemaker and a loving wife and mother.

She was a lifelong resident of Robert Lee and a longtime member of the First United Methodist Church.

She is survived by two daughters, Kathy Anderson and husband, Chad, of Goldthwaite and Rhea Irish and husband, Mike, of Lubbock; one brother, Wilburn Olsen and wife, Ruth, of Wingate; one sister, Allene Johnson and husband, C.C., of Grand Prairie; three grandchildren, Patrick Irish and wife, Jennifer, of Lubbock; Becky Kerby and husband, David, of Lubbock; and Clay Anderson of Goldthwaite; and two great-grandchildren, Lauren Kathleen Irish and Patrick Michael Irish II.

The family asks that memorials be made to the First United Methodist Church.

23-1tc

Interest in past County judges

Coke County residents are being asked to contact the county judge's office if they have any knowledge, news articles, or pictures of past county judges. Although some pictures exist in the courthouse of judges, there are a number of gaps, especially in early years. If you should have relatives or friends whose history has a Coke County judge in it, please call Judge Walker's office, 453-2641.

Interest in judges' history has been renewed by Bonita Copeland's forthcoming historical account of Coke County sheriffs. Our county history is important and should be preserved.

Coke County Commissioner Bill Wheat recently constructed two displays for photos of a number of past county judges. He is hopeful relatives and friends may know where other photos could be obtained. Even some snapshots could be enlarged for the display.

Emergency farm loan applications being accepted

Applications for emergency farm loans for losses due to damages and losses caused by drought and excessive temperatures that occurred on various dates from January 1, 2002, and continuing, are being accepted at the Farm Service Agency (FSA) office located in Sweetwater.

Coke and Sterling Counties, as primary disaster counties, were recently declared eligible for FSA EM loss loans.

Farmers may be eligible for loans of up to 80 percent of their actual losses or the operating loan needed to continue in business or \$500,000.00, whichever is less. For farmers unable to obtain credit from private commercial lenders the interest is 3.75 percent.

As a general rule, a farmer must have suffered at least a 30 percent loss of



Tony Harwell of Amarillo, Texas, took this 160 class whitetail buck on November 25, 2002, while hunting with Robert Lee's Ron Dickey in the Texas Panhandle.



Brandon Smith from Georgia took this 160 class whitetail buck on November 30, 2002, while hunting with Robert Lee's Ron Dickey in the Texas Panhandle.

Churches of Robert Lee

Invite You to Worship

Emmanuel Pentecostal
PO Box 683 • 1019 Colorado City Hwy
(915) 453-2360

Rev. Ray Aldridge, Pastor
Sun. 10 am & 6 pm, Wed. 7 pm

First United Methodist Church
PO Box 144 • 9th & Chadbourne
(915) 453-2417

Rev. Steve Rowe, Pastor
Sun. 10 am Sunday School
11 am Worship

Wed. 7 pm Choir

Northside Church of Christ
PO Box 388 • 9th & Chadbourne
(915) 453-2619 or 453-2270

Tommy Williams, Minister
Services: Sun. 10 am & 6 pm;
Wed. 7 pm

Pecan Baptist

PO Box 542 • 12 W. Sterling City Hwy
(915) 453-4645

Rev. Dale Patterson, Pastor
Sun. 10 am, Sunday School
11 am & 7 pm, Worship

Southside Church of Christ
PO Box 698 • 8th & Houston
(915) 453-2176

Frank J. Daniels, Preacher
Sun. 10 am, Sunday School
11 am & 6 pm, Worship

Wed. 7 pm, Worship

Robert Lee Baptist Church
PO Box 493 • 22 W. 11th
(915) 453-2724

Dr. Kenneth G. Patrick, Int. Pastor
Sun. 9:45 am, Sunday School
11 am & 7 pm, Worship

Wed. 7 pm, Prayer Meeting
Our Lady of Guadalupe
Catholic Church

601 W. 10th
(915) 365-2687

Rev. Hubert Wade, Jr., Pastor
Sat. 6 pm

Victory Assembly of God
PO Box 638 • 6th & Houston
(915) 453-2208

Rev. Erma Johnson, Pastor
Sun. 9:45 am, Sunday School
10:45 am & 6 pm, Worship

Wed. 6 pm, Prayer Meeting
Tennyson Baptist Church

Hwy 277 • Tennyson, Texas
(915) 482-0663

Rev. Rickey D. Green, Pastor
Sun. 10:00 am, Sunday School
11:00 am & 6 pm, Worship



THE CROSS AND THE CROWN COMMUNITY CHURCH

Non-Denominational Worship

ATTENTION!

We will be meeting in the Senior Citizens Center beginning Sunday, November 3. NEW TIME! 11 am

Everyone Welcome

Rev. Jim Reeves, Pastor

production to be eligible for an FSA emergency loan. Farmers participating in the PIC or Federal Crop Insurance program will have to figure in proceeds from those programs in determining their loss.

Applications for loans under this emergency designation will be accepted until June 23, 2003 but farmers should apply as soon as possible. Delays in applying could create backlogs in processing.

The FSA office in Sweetwater is open from 7:30 to 5:00 Monday through Friday.

Forest Service offers windbreak trees

Seedlings for conservation windbreaks are now available for order through the Coke County Soil and Water Conservation district (SWCD). Landowners in Coke County are encouraged to purchase the one-year-old seedlings before preferred stock is sold out.

Each year thousands of regionally adapted seedlings are grown from seed by the Texas Forest Service West Texas Nursery in Lubbock. The agency's primary objective is to produce and sell quality seedlings at a

price landowners can afford, allowing them to plant large quantities of trees for windbreaks, says Robert Fewin, Texas Forest Service forester, Lubbock.

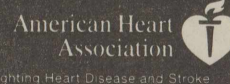
"Windbreaks are trees and shrubs systematically planted adjacent to fields, homesteads, or feedlots as a barrier to reduce or redirect the wind," Fewin explains. "They create permanent, natural protection and habitat for wildlife, reduce erosion, and increase land value and aesthetics." Available species for Coke County include afghan pine, austrian pine, arizona cypress, redcedar, pinyon pine, italian stone pine, amur honeysuckle, skunkbush sumac, shumard oak, green ash, russian olive, desert willow, lacebark elm, hackberry honeylocust, sand plum, fourwing saltbush, nanking cherry, flameleaf sumac, and osage orange.

Wildlife packets for habitat establishment also are available. Each of the four wildlife packets contain 100 bare-root trees and shrubs which cater specifically to the habitat needs of quail and pheasant, deer, turkey, or squirrel.

Orders will be taken through Monday, January 27, 2003, and will be delivered February 6, 2003.

To order windbreak trees contact the Coke County SWCD located at 214 East 7th Street in Robert Lee or call 453-2623, ext. 3.

For more information about the display, call (915) 949-5097.



American Heart Association
Fighting Heart Disease and Stroke

www.americanheart.org

Fraze - Johnson exchange vows

Katy Michelle Frazee and Kevin Allen Johnson, both of Bronte, were married Saturday, November 9, 2002, at 3 pm in the First Baptist Church in Bronte.

Brother Morris Johnson, father of the groom and pastor of the First Baptist Church in Bronte, officiated the ceremony.

The bride is the daughter of Bob and Patti Frazee of Bronte. Katy's grandparents are James Chambers of San Angelo and the late Katy Chambers and Jack Frazee of Bronte and the late Virginia Frazee.

The bridegroom's parents are Morris and Judy Johnson of Bronte. Kevin's grandparents are Doyle and Wanda Lenz of Eula, Texas, and Juanita Johnson of Clyde, Texas.

Given in marriage by her father, Katy wore a white satin gown by Sweetheart Gowns, her mother's diamond earrings, and her late grandfather's pin.

Lacy Schoenfield, of Bronte, friend of the bride, served as maid of honor. Bridesmaids were Daisy Porter, cousin of the bride, Britni Adams, and Cassandra Casares, all of Bronte. Flower girls were the bride's cousins, Korynn Johnson of San Angelo and Hope Talton of Katy, Texas.

Chad Barnett of Brownwood, Texas, served as best man. Groomsmen were Dustin Johnson of San Angelo, brother of the groom, Eric Johnson of San Angelo, brother of the groom, and Justin Frazee of Bronte, brother of the bride. Ring bearer was Riley Casey of Abilene, cousin of the groom.

Serving as ushers were Cody Lenz of Eula, cousin of the groom, and Derrick Black of San Angelo, cousin of the groom.

Khanni Beauchamp of Bronte, cousin of the bride, served as the guestbook attendant.

Ida Lee Ellis played the piano for the ceremony. Vocalists for the ceremony were Jayci Malone singing "The Wedding Prayer" and Nathan Barnett singing "The Wedding Song".

A reception at the church followed the ceremony. The fellowship hall was colorfully decorated with red, white and blue to follow the colors from the wedding. The bride's cake was a white chocolate cake with cream cheese icing decorated with red roses and white daisies. The groom's cake was a chocolate cake in the shape of Texas with icing in a Texas flag design adorning the top.

On October 6, 2002, Katy was the guest of honor at a bridal shower held at the First Baptist Church of Bronte Fellowship Hall. Hostesses for the occasion were Nancy Adams, Brenda Barnett, Marilyn Bivins, Susan DeLaGarza, Ida Lee Ellis, Susan Graves, Bonnie Reed, Sue Schoenfield and Julie Springer.

Katy is a 2002 graduate of Bronte High School. She is currently a sophomore Elementary Education Major at Angelo State University.

Kevin is a 1999 graduate of Bronte High School. He is a



Mr. and Mrs. Kevin Johnson

Corporal in the United States Marine Corps stationed at Camp Pendleton, California.

After a wedding trip to Julian, California, the couple will make a home in Bronte.

State employee turnover expensive

Employees continue to leave state employment at alarming rates, costing the state more than \$227 million dollars this past year, according to the 2002 Texas State Auditor's turnover report.

Employees under the age of 30 account for 15 percent of the State's workforce, but more than 30 percent of its turnover. At the same time, retirements are increasing as Baby Boomers reach retirement age.

"The state is unable to retain emerging leaders to replace retirees. This high turnover rate is driven by inadequate compensation," said Gary Anderson, executive director of Texas Public Employees Association, "and it threatens the state's ability to deliver vital public services effectively."

Opportunity for better pay and benefits was the number one reason employees in 2002 cited for leaving state government, according to an on-line exit survey available to agencies for the first time in 2002.

"Even with the downturn in the economy, employees are leaving in droves for better opportunities. This exodus costs the taxpayers money and depletes a valuable state asset - our human capital," Anderson said.

The state auditor's report noted that even though the economy is uncertain, demographic trends are not. The report cites a Watson Wyatt study predicting a labor shortage continuing into the next decade.

According to the state auditor's report;

There are not enough GenXers and GenYers to replace the Baby Boomers who are retiring. Even in the

economic slowdown, the competition for talent is not going away.

"In the past, the state was able to compensate for low pay with very attractive health care benefits. That is no longer a reality for a variety of reasons. Namely, it is more expensive to buy health care insurance today and the state now insures more and more of its citizens," said Anderson.

State employee turnover for FY 2002 was 14.8 percent, almost 50 percent higher than the national rate for state governments.

Spring Registration Begins at TSTC Waco

Spring 2003 registration for Texas State Technical College Waco will be from 8 am - 5 pm weekdays through January 6.

The registration process, for new students, begins in College Relations, located in the TSTC Student Services Center. Because financial aid processing can take several weeks to complete, those in need of financial assistance should contact the TSTC Financial Office immediately at (254) 867-4814.

The TSTC Waco web site - www.waco.tstc.edu - provides details, dates and on-line application information. With more than 110 instructional programs in an array of technologies, TSTC offers the skills and knowledge critical to the careers of today and tomorrow. Call TSTC toll-free at (800) 792-8784 or direct (254) 867-2360 or go to www.waco.tstc.edu for more information.

THE OBSERVER/ENTERPRISE
Serving Coke County
P.O. Box 1329 Robert Lee, TX 76945
(915) 453-2433

drop box is located at
HOMETOWN HARDWARE
in Bronte.

LONE STAR CARDS WELCOME

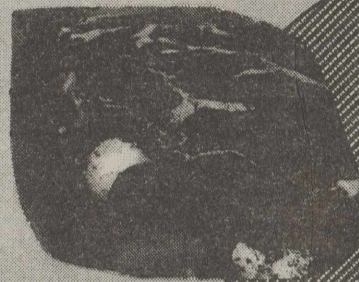


LIMIT RIGHTS RESERVED

501 Commerce - Robert Lee, TX

Store Hrs: Mon.-Sat. 8-8 Sun. 8-6

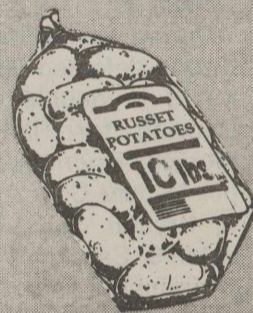
SPECIALS GOOD 1/1 Thru 1/7



Boneless
Chuck Roast
Lb. **\$1.59**

Family Pack
Split Breast

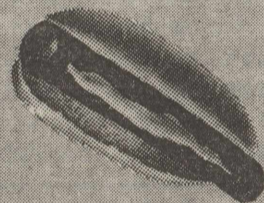
Lb. **.79**



10 Lb. Bag
Russet
Potatoes
Ea. **\$1.59**

Regular or Mesquite Decker
Meat Franks

12 oz. Pkg. **.59**



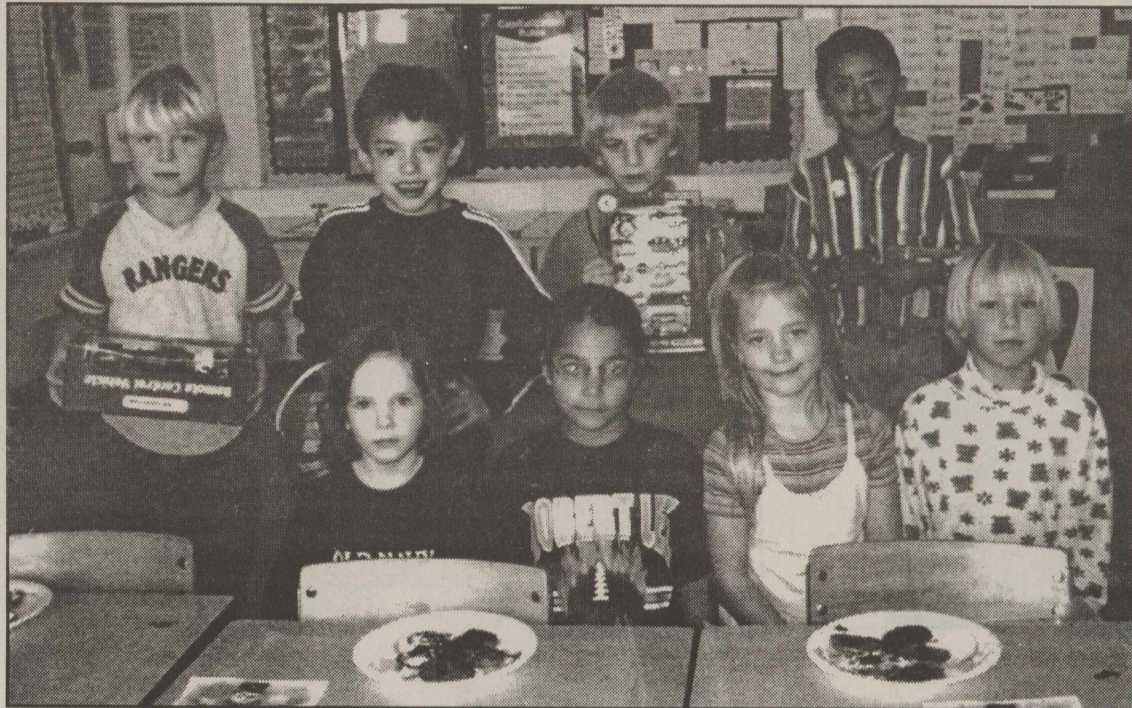
Selected Varieties
Bounty Paper Towels
4-8 Ct. Pkg. **\$5.99**

Selected Varieties
Cheer Detergent
58-80 Oz. Cntr. **\$4.99**



Selected Varieties
Charmin Bath Tissue
24-Roll Pkg. **\$5.99**

ROBERT LEE SCHOOL NEWS



As part of their pre-Christmas activities, the students in Mrs. Payne's First Grade Class at Robert Lee Elementary had a cookie decorating contest. Jacob Torres took first place and was awarded a free pizza from D & E Restaurant. All the children received a candy cane prize from This-N-That Shop.



The Robert Lee High School Spanish Club hosted the December birthday party for the Robert Lee Care Center.

The residents received Christmas trees decorated by the students, enjoyed refreshments and Christmas carols sung by the students who were accompanied by Mrs. Janet Wallace.

Spanish Club members helping with the activity include Alana Parker, Monica Barrera, Amber Perez, Rachel Wallace, Phillip Rangel, Shelby Roe, Michele Sanchez, Dorothea Wright, Janet Wallace, Alan Roe, Stewart Millican, Krystal Soliz, Amie Kendall, Ashlee Millican, Alice Beach, Nicole Sanchez and Pam.

RLHS Varsity Girls post results

December 20, the Robert Lee Varsity Girls basketball team defeated Irion County 40-24. Scoring for Robert Lee were Jessica Fluhmann with 6 points, Julia Cruz 1, Tyler Lott 7, Krystal Soliz 11, Cara Eaton 4, Christina Middleton 9 and Michele Sanchez 2.

At the Sterling City Tournament on December 27, during the first round, Robert Lee was defeated by Klondike 48-52. Julia Cruz had 11 points, Tyler Lott 7, Krystal Soliz 9, Cara Eaton 5,

Cassidy Wink 6, Christina Middleton 8 and Amie Kendall 2.

During the second round, Ozona defeated Robert Lee 49-53 in double overtime. Scoring for RLHS were Monica Rodriguez with 1 point, Julia Cruz 1, Tyler Lott 7, Krystal Soliz 15, Cara Eaton 9, Cassidy Wink 4 and Christina Middleton 10.

In the third round, Robert Lee finally had a win over Forsan 52-44. Jessica Fluhmann had 11 points, Monica Rodriguez 1, Tyler Lott 7, Krystal Soliz 17, Cara Eaton 10, Christina Middleton 3 and Amie Kendall 3.

RLHS JV Girls results

On December 20, the Robert Lee JV girls basketball team defeated Irion County 34-19. Analy Gallegos had 4 points, Cassidy Wink 7, Tiffany Bagwell 6, Julie Riley 8, Kyla Millican 2 and Lindsey Roe 7.

fiction, a full two sections of shelves of westerns, a full collection of children's books, biographies, how-to books, Christian writings, a Texana collection, and an expanding non-fiction section thanks to two grants from Loan Star Libraries and the Texas Book Festival Award to upgrade reference and non-fiction materials.

The library provides inter-library loan books. Books are ordered through Abilene's database which searches the United States library catalogs. Turn-around time on an order is usually three to four days.

The library also has a collection of large print books and books on tape. Patrons have been generous in giving books on tape to the library for listening enjoyment.

The books are checked out for two weeks. Returns may be made to the library, the book drop in front of the library available 24/7, and the Main Street Market in Bronte. Over-due fees are accepted but not charged. Non-perishable food is accepted in lieu of fines and is taken to the Food Pantry.

The New Year is a good time to return any library books that have fallen behind the couch, that are hiding under the bed, or have gotten mixed up with other books. Library books are interesting to many people and aren't getting circulated if they are not turned in.

Library hours are Tues. 8 am - 12 noon, Wed. 8 am - 4 pm, Thurs. 1 pm - 5 pm and Fri. 8 am - 12 noon.



Breakfast

Monday, Jan. 6

Juice, Pizza, Cereal, Milk

Tuesday, Jan. 7

Juice, Cinnamon Roll, Cereal, Milk

Wednesday, Jan. 8

Juice, Burrito, Cereal, Milk

Thursday, Jan. 9

Juice, Muffin, Cereal, Milk

Friday, Jan. 10

Juice, Pancake on a Stick, Cereal, Milk

Lunch

Monday, Jan. 6

Chili w/Crackers, Cheese, Potato Patty, Salad, Fruit Cocktail, Milk

Tuesday, Jan. 7

BBQ Ribs, Corn, Broccoli & Cheese, Applesauce, Roll, Milk

Wednesday, Jan. 8

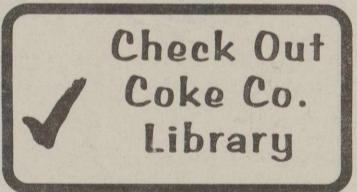
Taco/Cheese, Salad, Chili Beans, Pears, Milk

Thursday, Jan. 9

Oven Baked Chicken, Gravy, Creamed Potatoes, Green Beans, Fruit Cup, Bread, Milk

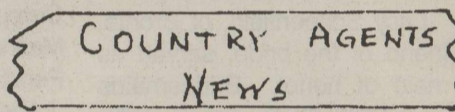
Friday, Jan. 10

Hamburger, Lettuce, Tomato, Pickles, Tator Tots, Pudding, Milk



The Coke County Library wishes everyone a Happy New Year, and would like to invite those who haven't yet been to the library to come by, get a free card and become a regular patron.

The Coke County Library has a up-to-date collection of popular



By Tommy Antilley
Cooperative Extension Agent

You make it known agriculture counts

Every five years the U.S. Department of Agriculture, National Agricultural Statistics Service (NASS), conducts the Census of Agriculture will be mailed to nearly 3 million producers across the country in mid-December. For Texas, we expect to send out about 300,000 forms. An producer who does not receive a Census form by the first week of January should call the Ag Census toll-free number 1-888-4AG-STAT (1-888-424-7828) to get a copy sent to them.

All producers of any agricultural product should participate in the Census of Agriculture to ensure that all operations, large and small, are properly counted and represented. The Census is the most comprehensive source of statistics portraying our Nation's agriculture. It is the only source of uniform agricultural data for every county in the United States. The information is used by producer organizations, local governments, university researchers and many others to support agricultural policy and development,

promote agricultural products, aid production, and much more. Because of the importance of the census, response is required by law (P.L. 105-113,, the Census of Agriculture Act of 1997, also documented in Title 7, U.S. Code). Also, it is important to note that by law (U.S. code, Title 7) individual reports to NASS are kept strictly confidential. They are only used in statistical summaries and no individual reports are ever released to anyone outside of NASS. NASS cannot and will not share its list of names or any individual data with any other organization - public or private.

With the 2002 Census of Agriculture, farmers and ranchers have the opportunity to show the value of agriculture industry for the U.S. as well as for each State and county. Again, producers should call the Ag Census toll-free number to get a copy of the form or for assistance completing the form received in the mail. It's important that every producer, large or small, promptly complete and return their form and make it known - agriculture counts!



YOU WON'T BE HUNGRY.

YOU WON'T BE BORED.

YOU WON'T BE THE SAME.

Winning Points is a plan you can stick with till you reach your goal. You can eat the foods you love, stay satisfied, and still lose weight.

Now at Weight Watchers-get "In the Groove"-your cool guide to getting started,

free
when you join.

JOIN MEETINGS NOW FOR ONLY \$15!

1 800 651 6000 WEIGHTWATCHERS.COM

WeightWatchers

real food. real life. real results.

Void where prohibited. Offer ends February 1, 2003. ©2003 Weight Watchers International, Inc. Owner of the WEIGHT WATCHERS trademark. All rights reserved. Offer valid in participating locations only in AL, FL, GA, OK, TX, NC and SC. Fee for subsequent weeks \$11-\$12 depending on geography. Not valid for Corporate Solutions (On Site Meetings) or online services.

DARYL'S BODY SHOP

300 STATE HWY 229

ROBERT LEE, TEXAS 76945

DARYL COPELAND, OWNER

453-2980

BISD Board holds Public Hearing and regular meeting

The Bronte ISD Board of Trustees held a public hearing on the TEA Academic Excellence Indicators on Thursday, December 19, 2002, at 6:00 pm in the Board Room. Donna Poehls gave the report. The regular Board Meeting for December immediately followed the Public Hearing with Wayne Coalson, Terry Charles, Jeff Schoenfield, Bob Frazee and Kendall Gibbs present. Doug Hoyt and David Scott were absent from the meeting.

Burl Lowery, CPA, gave the 2001-2002 Annual Audit Report and it was approved by the board.

The Principals' reports were given.

Approval was given for the following items: Legal Retainer with Walsh, Anderson, Brown, Schulze and Aldridge, P.C., amendment to the 2002-2003 budget, and payment of the November bills.

The January regular board meeting date was set for January 16, 2003, at 7:00 pm.

The resignation of Kristin Trimble, Special Ed Teacher at CCJJC, was accepted by the Board. Mr. Richey informed the Board of the hiring of Karla Moore as Educational Aide at CCJJC.

Alan Richey, Superintendent's report included financial and facili-

ties updates.

Board correspondence included WABSA request for email addresses and the Winter Governance and Legal Seminar, February 20-22.

The meeting was adjourned at 9:30 am by the president.

Soto graduates from combat training

Army Pvt. Santiago J. (Jimmy) Soto has graduated from basic combat military training at Fort Sill, Lawton, Oklahoma.

During the eight weeks of training, the soldier studied the Army mission and received instruction in drill and ceremonies, rifle marksmanship, weapons, map reading, tactics, armed and unarmed combat, military courtesy, military justice, physical fitness, first aid, Army history, core values and traditions, and special training in human relations.

Soto is a 1999 graduate of Bronte High School.

Fall graduates announced for ASU

Angelo State University conferred degrees upon 371 students during 2002 Fall commencement exercises December 13 in San Angelo.

Areas of undergraduate academic study at ASU lead to the following degrees: Bachelor of Arts (B.A.), Bachelor of Business Administration (B.B.A.), Bachelor of Fine Arts (B.F.A.), Bachelor of General Studies (B.G.S.), Bachelor of Music (B.M.), Bachelor of Science (B.S.), Bachelor of Science Nursing (B.S.N.), and Associate in Applied Science (A.A.S.).

The following graduate degrees are offered: Master of Arts (M.A.), Master of Business Administration (M.B.A.), Master of Education (M.Ed.), Master of Physical Therapy (M.P.T.), Master of Public Administration (M.P.A.), Master of Science (M.S.), and Master of Science in Nursing (M.S.N.).

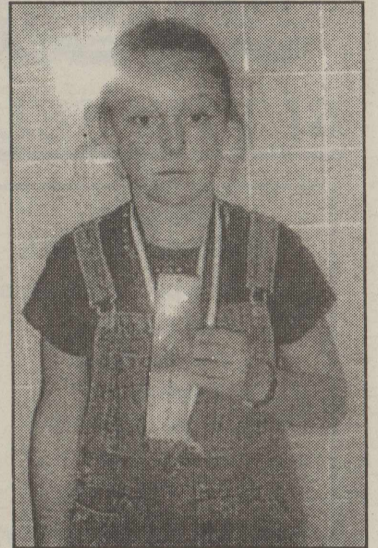
The 2002 Fall graduate from the Bronte area was Amy Harrell Harris, B.B.A.

College Financial Aid Process to begin

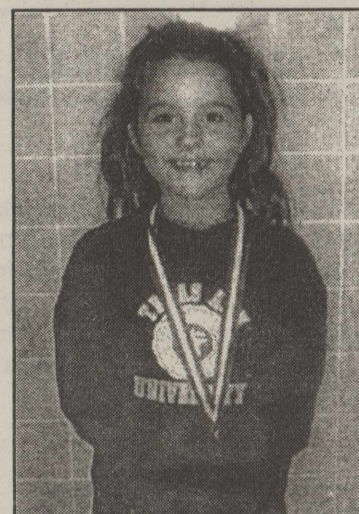
Completing the Free Application for Federal Student Aid (FAFSA) is the first step college-bound students must take to qualify for many federal and state aid programs. The Department of Education will begin accepting the forms in January for students planning to start college in Fall 2003. It's important to submit the form as soon as possible, and Texas Guaranteed (TG) offers the following tips to help families and students prepare:

- Consider filing the FAFSA electronically at www.fafsa.ed.gov. You can save

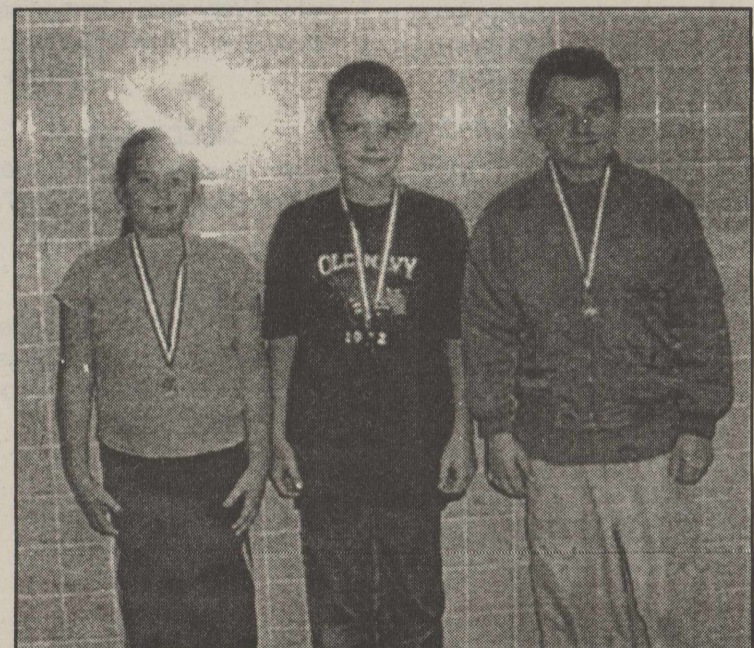
BRONTE SCHOOL NEWS



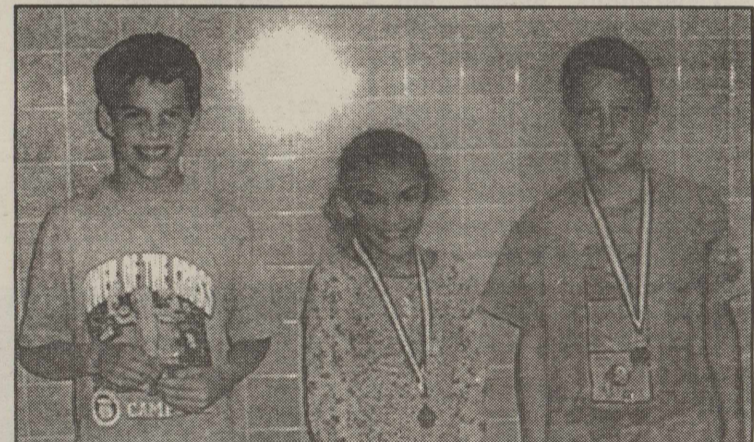
Ashley Royall (left) placed first, Ariel Coalson (center) placed second and Chloe Grigg placed sixth in Oral Reading at the Elementary UIL District Meet in Miles November 23, 2002.



Jael Williams placed 2nd in Second Grade Storytelling at the Elementary UIL District Meet in Miles November 23, 2002.



The Bronte Elementary 5th grade Art Team placed 1st at the Elementary UIL District Meet in Miles November 23, 2002. Team members include (from left) Kimberly Womack, Caleb Rosson and Tyler Riney.



The Bronte Elementary 4th grade Art Team placed 3rd at the Elementary UIL District Meet in Miles November 23, 2002. Team members include (from left) Dakota Rawls, Tori Acevedo and Michael Evans.

your work on the electronic form as you go, and there are some safeguards programmed into the form to alert you if you've made an error. Electronic forms are also processed twice as fast as the paper forms. If you prefer paper, you can pick up a paper FAFSA from a college financial aid office or at your high school guidance office.

- Fill out tax returns as soon as possible. If your employer doesn't provide a W2 until late January, your December 31 pay stub (or the last pay stub you received from a particular employer) should contain the salary and tax information as needed. (Note that you don't have to file your tax returns before sending in the FAFSA, but much of the information on the FAFSA directly references line items from the federal tax forms.)

- Apply for a PIN from the Department of Education's web site at <http://pin.ed.gov>, if you're planning to complete the FAFSA online. This is one of the few tasks you can complete prior to January.

- Call the Texas Financial Aid Information Center at (888) 311-8881 if you need help with the form, or if you have any general questions about financial aid. In addition, you can find more infor-

mation on financial aid and planning for college on TG's public service web site at www.AdventuresInEducation.org.

School Menu

Breakfast

- Monday, Jan. 6**
Cereal, Sliced Peaches, Toast, Milk
- Tuesday, Jan. 7**
Sausage Rolls, Apple Juice, Milk
- Wednesday, Jan. 8**
French Toast Sticks, Grape Juice, Milk
- Thursday, Jan. 9**
Breakfast Burrito, Orange Juice, Milk
- Friday, Jan. 10**
Donut, Orange Half, Teddy Grams, Milk

Lunch

- Monday, January 6**
Pizza, Sweet Corn, Tossed Salad, Milk, Apple Crisp
- Tuesday, January 7**
Sausage Links, Sliced Peaches, Macaroni & Cheese, Blackeyed Peas, Rolls, Milk
- Wednesday, January 8**
Spaghetti, Tossed Salad, Corn on the Cob, Breadsticks, Milk, Jello
- Thursday, January 9**
Spud Day, Chili & Cheese, Baked Potato, Steamed Broccoli, Crackers, Milk, Banana Pudding
- Friday, January 10**
Cheeseburgers, French Fries, Lettuce, Tomato, Pickle, Bun, Milk, Chocolate Chip Cookies

WINK INSURANCE AGENCY
Home • Auto
Life • Commercial
715 Austin • 453-4551

INSURED CORPORATE BONDS
Among the Highest Yielding Investments Available Today

JIM WOODRUFF
719 Strong Avenue
Ballinger, TX 76821
(915) 365-2505
1-800-995-1252
www.edwardjones.com

Edward Jones
Serving Individual Investors Since 1871
Member SIPC

FINANCIAL FOCUS

With Jim Woodruff of Edward Jones

Know "Gift Tax" Rules Before Giving Presents

If you plan on giving cash or financial assets to your family, you'll want to make sure you avoid a side effect of your generosity — gift taxes.

Gift tax laws are designed to discourage people from giving away all their assets to reduce the estate tax burden on their heirs. And yet, by being creative, you can still make sizable presents to your loved ones, without being hit by heavy gift taxes.

Before making any gifts, though, you'll want to familiarize yourself with gift tax regulations. To begin with, you can give away \$11,000 to any one person in any one year. Gifts above that amount may be subject to the gift tax, which, in 2002, can be as high as 50 percent, depending on the size of your taxable estate. The top gift tax rate is scheduled to gradually decline, until it reaches 35 percent in 2010.

Of course, \$11,000 is not an insignificant sum. But if you want to give your child or grandchild even more, your spouse can also contribute \$11,000, thereby doubling your gift. And the two of you can keep making the cumulative \$22,000 gift year after year.

Furthermore, there's no limit on the number of people to whom you can give the \$11,000 annual gifts. You can make gifts to your children, your children's spouses, your grandchildren, your nephews and nieces, your friends — anyone you choose.

In fact, by making multiple, repetitive gifts, you can greatly reduce the size of your taxable estate. Under current law, you can give away up to \$1 million in your lifetime, in addition to the \$11,000 annual gifts, without being required to pay gift taxes. Consequently, gifting can be an important estate-planning tool. (Right now, estate taxes are slated for elimination in 2010, but there's no guarantee they won't be reinstated by a future Congress and administration.)

Gifts of financial assets

Thus far, we've only talked about cash gifts. But you may well decide to give your children or other family members gifts of other financial assets, such as stocks. If you do, you'll still face the same \$11,000 limit, but you'll also have some other issues to consider.

Suppose, for example,

that, many years ago, you bought some stock worth \$7,000. Today, your shares are worth \$11,000. If you were to sell your shares, you'd have to pay capital gains taxes on your \$4,000 profit. If you decided to give these shares to your grandson, you could escape the capital gains tax — but your grandson couldn't. Even though he only acquired the stock when it was at the \$11,000 level, he will have to pay capital gains on the \$4,000 appreciation — plus any other price increase — when he sells the stock.

Does this mean you should never make a gift of appreciated stock? Not necessarily. But if you do, make sure you communicate all the tax ramifications to your intended recipient — before you make the gift.

In fact, it's a good idea to talk to talk beforehand to everyone to whom you plan to give a gift. By providing them with some advance notice, you'll give them a chance to plan ahead — and to get the most out of your philanthropy.

THD offers cold weather precautions

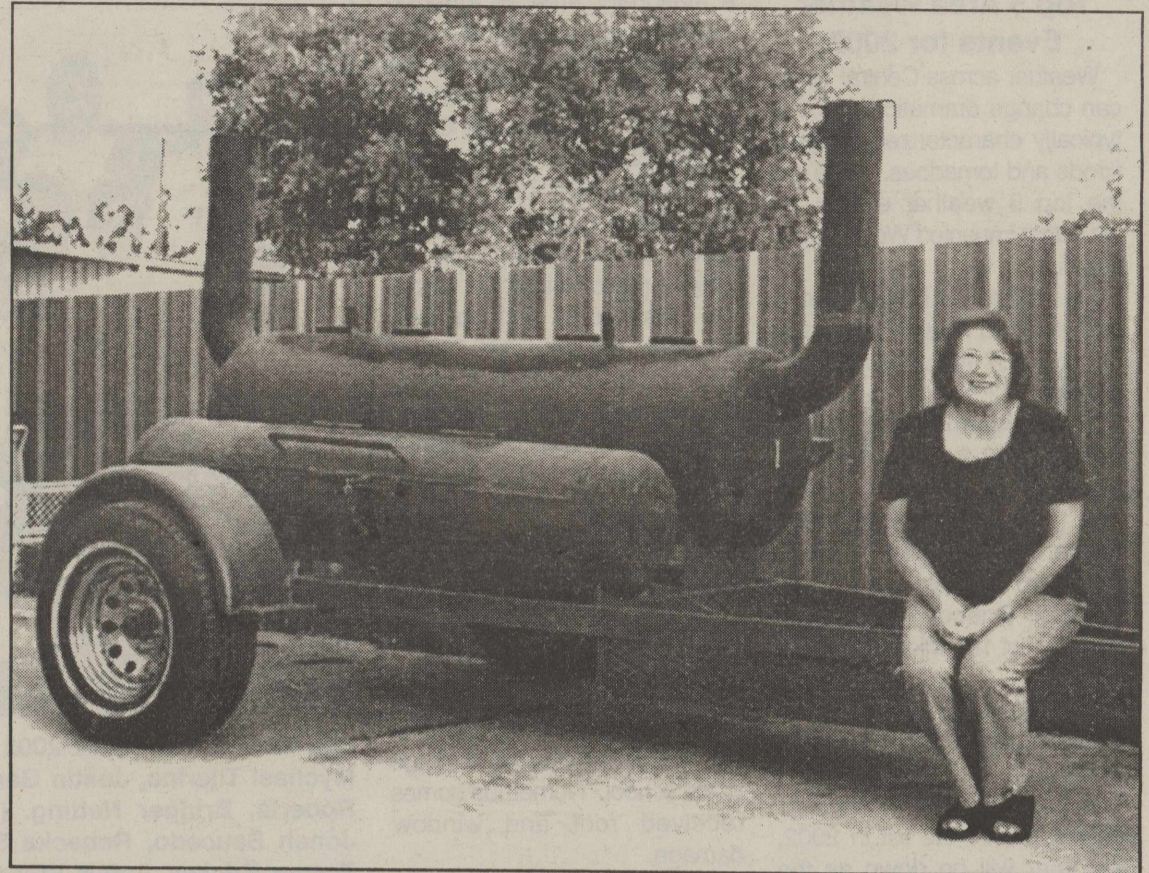
Whether the information comes from the National Weather Service, an almanac or a knee joint, cold weather is on the horizon in Texas. Intermittent cold fronts, frost, chilling winds, ice storms or snow can create severe problems in a state that usually measures the heat index, not the chill factor.

Hypothermia, the severe or prolonged loss of body heat, begins when a person's body temperature falls below 95 degrees. Because the temperature drop may be gradual, and an early symptom of hypothermia is mental confusion, the victim may not know there is a problem. And, Texas Department of Health (TDH) officials warn, vulnerable people can die from cold weather.

Last year, hypothermia was a contributing factor in 21 Texas deaths.

People most susceptible to hypothermia include those 60 and older, infants and small children, the sick, those taking certain prescription drugs or drinking alcohol, the homeless, auto or boating accident victims and those unable to find temporary shelter in cold weather.

Often an older person's metabolism is slower than that of a younger person,



Elizabeth Henry of Bronte won the Barbecue Pit raffle at Fort Chadbourne. Paul Bradley Welding of San Angelo donated the \$2500 pit to the fort for the fund raiser. The drawing was held September 21, 2002, during the Fort Chadbourne 150th Anniversary celebration.

which means less body heat is generated. Or the older person may already be in poor health and taking medications that can alter awareness of dangerously low temperatures.

People 60 and older may not perceive or respond to cold as readily as younger people because the body's natural alarm signal - the reflex of shivering that increases blood flow - lessens with age. Some hypothermia victims die because they simply are unaware of gradual temperature changes.

And some people, especially the elderly on fixed incomes, may set their thermostats dangerously low for fear of high heating bills.

To reduce potential dangers:

- *Watch for hypothermia symptoms including confusion, drowsiness, slurred speech, a drop in blood pressure, shallow breathing and a pinkish tint to the skin. Anyone with these symptoms related to cold temperatures is in immediate danger.

- *Check on elderly or ill people, especially if they live alone or in isolated areas.

- *Wear loose-fitting clothing in layers, gloves and a face cover to block the wind if you must be outside. Stay dry.

- *Be extremely cautious in the wind. A strong wind, even in only moderately cool weather, can cause a wind chill far below freezing.

- *Remember, too, that animals may die if left outside in extremely cold weather. Provide them a warm environment, out of the chilling wind. Be sure they have access to food and that their water has not frozen.

Winter storms also may cause power outages, and food safety becomes a problem along with

heating. If you lose power for more than four hours, take the following precautions with refrigerated food products:

- *Keep refrigerator and freezer doors closed as much as possible.

- *Discard any potentially hazardous foods such as meats, eggs, dairy products and leftovers that may have exceeded 45 degrees. When in doubt, throw it out.

- *Any frozen food that has thawed but not exceeded 45 degrees should be prepared as soon as possible. Do not re-freeze.

Wind chill refers to the cooling effect wind has on the skin. Not only can wind chill cause rapid heat loss from the body, but it also can cause frostbite - actual freezing of tissues. Frostbite can occur in 15 minutes or less at wind chill values of 18 below zero or lower.

TDH officials warn that no one should underestimate weather changes and should dress appropriately. Anyone planning outdoor activities in cold weather should refer to local weather forecasts for information.

IVEY MOTOR COMPANY, INC.

Come see us today! You'll like the way we do business!!

2002 Ford Ranger XLT Super Cab \$14,995

White w/Tan Interior • PW/PL/CD • Automatic • 21,000 Miles

2002 F-350 Crew Cab XLT \$24,995

*Powerstroke • White • Automatic
Excellent Condition*

2000 F-350 Crew Cab Chassis \$17,900

White, Flat Bed, Powerstroke Diesel,

2002 Ford Escape XLT \$16,995

Bright Red/Gray Cloth, PW/PL/CD • 22,000 Miles

2001 Ford F-150 Super Crew \$16,995

Arizona Beige • PW/PL/CD

2002 Grand Marquis LS \$18,695

White/Gray Leather, PW/PL/CD • 14,000 Miles

2001 Ford F-150 Super Crew XLT \$21,295

Red/Gray Cloth, CD, Running Boards, Cargo Cage, 19 K

2001 Chev. 1500 Ext. Cab \$19,995

White w/Pewter Accent • Silverado • 26,000 Miles • Nice!!

2002 Ford Mustang \$13,995

Mineral Gray • 15,000 Miles • Great Condition!!!

2001 Ford F-150 \$12,995

White w/gray interior • Automatic • 29,000 Miles • Clean

Ask For:

453-4561

Randy Flanagan • Buck Duncan • Billy Wayne Roe

Top 5 Area Weather Events for 2002

Weather across Central Texas can change dramatically and is typically characterized by flash floods and tornadoes. Here are the top 5 weather events for 2002 that impacted West Central Texas.

1) **The Abilene and Brownwood Flash Flood**, July 6-7, cost 57 million dollars, no fatalities;

2) **The Albany Flash Flood**, April 25, cost 3 million dollars, 1 fatality;

3) **The San Angelo Hail Storm**, March 19, cost 16 million dollars, no fatalities;

4) **The Roscoe Hail Storm**, May 4, cost 12 million dollars, no fatalities;

5) **The Large Throckmorton Tornado**, April 7, cost \$10,000, no fatalities.

Although these 5 weather events topped the list in 2002, last year will go down as the year with a record high number of tornadoes. In fact, 34 tornadoes were observed across West Central Texas by our excellent network of SKYWARN storm spotters and the general public. In addition, numerous hail storms battered many towns across the region. These hail storms knocked out windows, destroyed crops, and damaged roofs and vehicles. One winter storm on January 1, produced 3 to 4 inches of heavy snow from Coleman to San Angelo.

We are grateful that more lives were not lost. But one life is too many. We are sorry about the many who experienced property damage in West Central Texas. Since the potential is there for more devastating storms, we must always be ready.

Here are a few safety tips.

1) Know the name of your county and those around you.

2) Have a means to receive forecasts, watches and warnings such as your local radio and TV station, cable, internet provider, and NOAA Weather Radio 24 hours a day.

3) Take appropriate action when a watch or warning is issued for your county because the weather can change suddenly as it did in 2002.

Fact Sheet

Abilene and Brownwood Flash Flood, July 6 - 7 - A slow moving very moist tropical low pressure system that plagued South Central Texas moved north and went stationary from Abilene to Brownwood and produced torrential rainfall. Rainfall rates of 2 to 3 inches per hour produced rainfall amounts of up to 12 inches in the southern portions of Taylor county, and around 12 to 14 inches across Brown county. Runoff from this heavy rainfall flooded Pecan Bayou of Brownwood and the business district of Brownwood. Heavy rains that fell across the hills located just south of Abilene, flooded small towns south of Abilene like Tuscola, Buffalo Gap, Ovalo and areas around Lake Abilene. As this heavy runoff flowed north, it flooded several creeks that wind across Abilene and produced significant property damage.

Albany Flash Flood, April 25 -

A stationary area of thunderstorms produced 8 to 12 inches of flooding rainfall across the north and west parts of Albany. The north Hubbard and Gourd Creeks came out of their banks. More than 100 homes were damaged and destroyed by the flood. There was one fatality.

San Angelo Hail Storm, March 19 - Hail up to golf ball size pounded the southern half of San Angelo shortly after noon, creating drifts several feet deep in places. Around 3500 homes suffered light to moderate damage, along with 4000 automobiles. Many trees were stripped of their leaves. Hail stayed on the ground for at least 8 hours in some places.

Roscoe Hail Storm, May 4 - Hail up to the size of baseballs fell for nearly 40 minutes on the city of Roscoe causing damage to the school. Numerous homes received roof and window damage.

The Large Throckmorton Tornado, April 7 - This tornado developed during the afternoon and became a multiple vortex tornado about three quarters of a mile wide. This tornado tracked along the ground across open country for 7 miles before dissipating. This large spectacular tornado was videotaped by storm chasers and was played on various TV stations including The Weather Channel during the week.

TDH continues rabies fight

Attention all coyotes and gray foxes in south and west-central Texas.

Dinner is served.

These hungry animals may look to find food falling from the sky in the lean winter months as a special treat. But to staff from the Texas Department of Health's (TDH) zoonosis control program, feeding coyotes and gray foxes special prepared food packets is not particularly an act of kindness. Rather, it is part of a vitally serious program to protect the public by helping control the spread of rabies.

For the ninth year, TDH will air-drop bait food filled with oral rabies vaccine. This year, the Oral Rabies Vaccination Program (ORVP) will drop about 2.5 million baits from airplanes flying across 50 counties beginning in early January. The first flight takes off January 7, weather permitting, from the Zapata County Airport in South Texas. The second portion of the drop will begin about January 15 from the Kimble County Airport in Junction, and the final phase will fly from the Pecos County Airport in Fort Stockton beginning about January 23.

TDH initiated the program in 1995 in South Texas where canine rabies in coyotes and domestic dogs had reached epidemic proportions and threatened to invade San Antonio and other major population areas. The next year, an air-drop began in West-Central Texas where an epidemic of gray fox rabies had been occurring since 1988.

The TDH plan was to create zones of vaccinated coyotes and gray foxes to, first, stop the



The Robert Lee 2002-2003 PIPS (Players In Progress) include (front row, from left) Mychael Tijerina, Justin Gartman, Valerie Gonzales, Daria Tinkler, Jayton Torres, James Roberts, Bridger Netting, (middle row, from left) Kacee Roberts, Gregory Gonzales, Jonah Saucedo, Rebecka Saucedo, Jordan Gartman, Joshua Barnes, Briana Brisbin, Tanner Brickey, Ashlie Wheat, Zachary Sanchez, Meagan Ross, Garrett Rogers, Makenna Netting, (back row, from left) Mason Ross, Norma Rojas, Olga Perez, Garrett Blair, Robbie Gonzales, Laredo Williamson, and Rachel Rojas.

spread of the rabies virus, then eliminate canine and gray fox rabies.

"This program continues to show results," said TDH veterinarian Tom Sidwa, ORVP director. "We have had no human cases of rabies in either area since the vaccine drop began. And among the coyotes and gray foxes we have seen a significant drop in the number of animal rabies cases."

The number of canine rabies cases in South Texas had

declined from a high of 142 cases when the program began in 1995 to 1 in 2001 and none in 2002 through October. Gray fox cases have shown a similar decline from 244 cases in 1995 to 54 through last October.

Four Beechcraft King Air aircraft are used to spread the baits. The number of air miles flown in distributing the baits each year is equal to four trips around the world.

The baits offer fish meal for coyotes and dog food containing

molasses and flavored with vanilla for gray foxes. Inside each bait is 2 millimeters of oral rabies vaccine in an edible sack.

"The baits are harmless," Sidwa said. "The vaccine inside the bait cannot cause rabies in people or animals."

People should not handle these baits, however; wildlife is less likely to eat them if people have touched them. Anyone who comes in contact with the baits may call TDH toll free at 1-877-722-6725 for information.

**Wishing
Everyone
a
Very Happy
2003**

**THE OBSERVER/
ENTERPRISE**
Serving Coke County
P.O. Box 1329 Robert Lee, TX 76945
(915) 453-2433